

SPRING/SUMMER 2023

POMME DE TERRE

Lake News

Water Quality at
Pomme de Terre Lake

Safety Tips
For Memorial Weekend

POMME DE TERRE AREA MAP

Recreational Marijuana

Legal in Missouri, What to Know

Calendar of Events

Dining & Lodging Guides

**Kathy
Stanley**
Real Estate, Inc.



Highway 54, P.O. Box 331
Wheatland, MO 65779
Office: 417-282-LAND • Toll Free 1-888-384-LAND
Home 417-754-8630
www.kathystanleyre.net
E-mail ksre@abbmissouri.com

Honoring our Nations Heroes on Memorial Day!



Open 7 Days, All Year Round



24474 Hwy 254, Hermitage, MO
www.PDRitas.com 417-745-6900

Lakeview Cove on Pomme de Terre.
PHOTO BY GAYLA BOYD



table of contents

- 6** Welcome to Pomme de Terre
- 8** Safety Tips for Memorial Weekend
- 11** Avoiding and Controlling Poison Ivy
- 12** Squirrel, Black Bass Season Opens
- 16** Pomme de Terre Area Map
- 18** Recreational Marijuana is Legal in Missouri, What to Know
- 20** Courtesy On Land and Water
- 21** Shopping Guide
- 22** Calendar of Events
- 24** Water Quality at Pomme de Terre Lake
- 25** Dining Guide
- 26** June Garden Calendar
- 28** Freshwater Jellyfish inhabit Pomme de Terre Lake
- 30** Be Water Safe
- 30** Lodging Guide

Published by *The Index* Newspaper, Hermitage MO
Wednesday, May 24, 2023



The Index

P.O. BOX 127
Hermitage, MO 65668
417-745-6404
417-745-6244
theindex1885@gmail.com
Fax: 417-745-2222

PUBLISHER

Trevor Vernon

LAKE NEWS ADVERTISING

Janet Gordon

EDITOR

Aleia Ream

REPORTER

Tessa Simmons

PRODUCTION

Michelle Herring

DESIGN

Tracey Steinkraus

ADMINISTRATION

Stephanie Fox

Copyright © 2023 Vernon Publishing. All rights reserved. No part of this publication may be reproduced in any form or by any means, electronic or mechanical, including a photocopy, recording, or any information retrieval system, without permission in writing from the publisher.

THE COVER

Pomme deTerre Lake
Tessa Sunset Nemo

**vernon
PUBLISHING**



Buckhorn
Land and Home

NEW LEADER IN Hickory County Real Estate

National Marketing, Local Expertise®



Hickory Grove Hideaway Resort | \$949,000



501.9± Acres | \$1,731,555



Beautiful Country Home on 40± Acres



- \$9.9 Billion & 2.8 Million Acres Sold Companywide
- Access to 4 MLS's
- Professional & Drone Photography
- Page #1 Ranking for Over 700 Search Phrases
- On-Demand Search Database of 1+ Million Buyers

Contact The Land Man Bret Brown

417-557-1234 • BBrownUC@gmail.com • UCBuckhornLandPro.com

22285 County Rd 242 L, Wheatland, MO 65779 • Franchise office is independently owned and operated.

AKINS REALTY

417.993.5622

LEADING AT THE LAKE

HELPING BUYERS AND SELLERS FOR 38+ YEARS



CHUCK AKINS
BROKER
417.399.3864



NICHOLAS HENDERSON
BROKER - SALES
417.840.6894

LOCATED AT THE FOUR WAY STOP IN NEMO

26838 HWY NN, HERMITAGE, MO 65668

FARMS, ACREAGES, LAKE LOTS, LAKE
HOMES || COMMERCIAL & RESIDENTIAL

MEMBER OF THE MISSOURI MULTI LIST

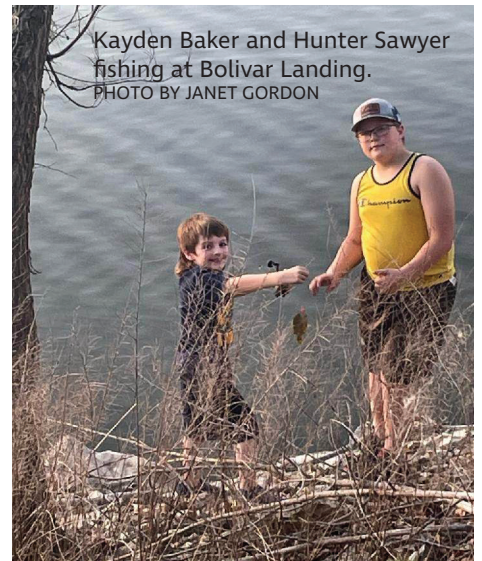
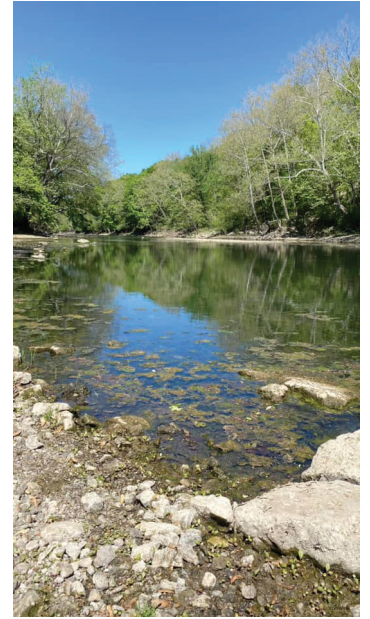


WWW.AKINSREALTY.COM



Below the Pomme de Terre dam; while they were discharging water into the Pomme de Terre river. PHOTO BY GAYLA BOYD

PHOTO BY AMBER MORELAN



Kayden Baker and Hunter Sawyer fishing at Bolivar Landing. PHOTO BY JANET GORDON

welcome

Welcome to Lake Pomme de Terre—"GEM OF THE OZARKS." We invite you to take advantage of the many recreational opportunities—including sand beaches, hiking trails, picnic areas with playgrounds, tennis courts, a bowling alley, race tracks, and an eighteen-hole golf course.

All the necessary facilities to make your vacation enjoyable are available. There are four marinas serving the lake with boats and motors for rent, and storage facilities. Many reasonably priced motels and resorts are conveniently located in the area—some with swimming pools and/or restaurants. Interesting shops and service business will make your stay at Lake Pomme de Terre a pleasant one.

Wheatland Water Tower. PHOTO BY AMBER MORELAN

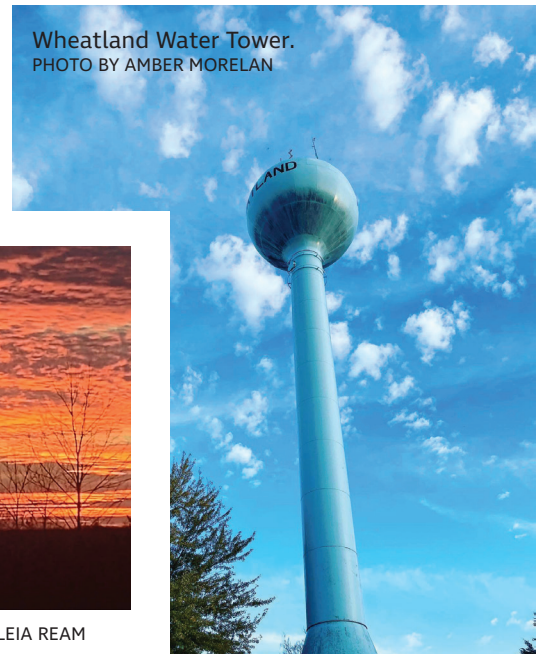


PHOTO BY GAYLA BOYD



Taken west of Hermitage. PHOTO BY ALEIA REAM



PHOTO BY APRIL WISE



Heritage Damsite Campground. PHOTO BY DONNA SWARTWOUT

You are invited to visit the Corps of Engineers Visitor's Center at Pomme de Terre Dam. [FACEBOOK.COM/US ARMY CORPS OF ENGINEERS](https://www.facebook.com/usarmycorpsengineers)



Hickory County **FARMERS MUTUAL** INSURANCE COMPANY

107 Polk Street,
Hermitage MO 65668
417-745-6722
hcfmic@centurytel.net
www.hickorycountymutual.com



***Proud to be
a part of this
great
community!!***



Safety Tips for Memorial Day Weekend



As the area's largest federal provider of water-based recreation, the U.S. Army Corps of Engineers, Pomme de Terre Lake stresses water safety and urges extra caution while in or around water during the upcoming Memorial Day holiday.

Many are eager to get outside and enjoy water-based recreation as part of their Memorial Day weekend celebration. Outdoor enthusiasts can enjoy scenic river and lake views while taking advantage of picnicking, hiking, camping, fishing, boating, and swimming opportunities.

Recent localized rainfall across the area have increased water in our reservoir, tributaries, and rivers. Current conditions and outlook continue to improve on the reservoir and the tributaries that feed into it. However, with the higher-than-normal lake level it is important that boaters pay close attention as hazards may be submerged underwater or floating debris.

Unfortunately, some celebrations end tragically due to accidents in, on and around the water. To ensure a safe recreation experience over the holiday week and throughout the year, the Corps of Engineers urge visitors to practice the following public safety tips:

BEAT THE HEAT

- Take frequent breaks during your outdoor activities
- Wear sunscreen for skin protection
- Stay hydrated with water and non-caffeinated beverages
- Avoid excessive alcohol; alcohol and drugs contribute to 20% of all boating fatalities

WEAR YOUR LIFE JACKET

- 90% of drowning victims at U.S. Army Corps of Engineers lakes and rivers were not wearing life jackets
- Drowning is the nation's second leading cause of accidental deaths
- Many people overestimate their swimming ability and swim beyond their limits

PAY ATTENTION WHILE BOATING

- Inattentive boating is the leading cause of boating accidents
- Obey all navigation rules established in your state
- Be a defensive boater
- Pay attention to and follow all regulatory buoys and be aware of lake conditions
- Watch for floating debris or submerged hazards

RECREATE RESPONSIBLY

- Don't litter; take your trash with you
- Leave only footprints and enjoy the public lands

Please take the time to practice all these safety tips while recreating over the busy Memorial Day holiday. A little time spent now on these details will go a long way towards making your 2023 at Pomme de Terre Lake a wonderful summer to remember.

For more information, visit the Pomme de Terre Lake home page at <http://www.nwk.usace.army.mil/Locations/District-Lakes/Pomme-de-Terre-Lake>

Like us on Facebook @ Pomme de Terre Lake, U.S. Army Corps of Engineers

Or contact the Pomme de Terre Lake Project Office at 417-745-6411.

BENTLEY TITLE GUARANTY INC.

Public Square

• 23630 Polk St.

Hermitage, MO

• 745-6626

• Escrow Closing Services

• Title Insurance



Animal Care Clinic

*“Large and Small Animal
Medicine & Surgery”*

Boarding and Grooming

417-326-2997

2830 S Springfield Ave

Bolivar, MO 65613

animalcareclinicbolivar@gmail.com

Levin Roweton, D LVM • Lindseyindsey



Conveniently Located on Highway 54, Herrmitage • 745-2123

7 a.m.–8 p.m., Monday–Saturday • 7 a.m.–7 p.m., Sunday

- Full service deli...
Special order your party tray today
- Fresh cut meats...
Great for grilling
 - Bakery items made fresh daily

- *Hometown Service*
- *Hometown Prices*
- *Hometown Friendliness*

NOW OFFERING...
Grocery Home Delivery
Call by 11a...get it same day!

Fees Apply

- Breakfast served every morning
- Fountain drinks EVERY DAY
- Chester Fried Chicken...
Every...Single...Day
 - Wing Bar
- Money orders available

Looking for a healthy choice? FRESH SALAD BAR-dine in or carry out!

CHECK YOUR LOCAL INDEX OR FIND US ON FACEBOOK TO SEE OUR DAILY LUNCH SPECIALS.

BRESHEARS PUMP AND EXCAVATING COMPANY



Robert Breshears
Danny Breshears



417-852-4252

Backhoe Work
Watermain
Installation
Septic Tank and
Lateral Installation
"Have Rig, Will Dig"

Red Jacket
Submerged Pumps
Sales & Service
Water Well Service

Registered Installers

Pittsburg, MO

Breshears Nemo Boat Storage



★Storage Space Available★

Call 417-399-5656
or 417-852-4252

We're also very proud to support our Veteran's and our military... those who have served & those who are serving!

HERMITAGE LUMBER, INC.

Bring your next project in for a bid

- New House
- Room Addition
- Decks
- Plumbing
- Electric

HERMITAGE LUMBER, INC.

valspar paint® — Color match paint

**Come see us at our NEW LOCATION!
We are BIGGER and BETTER!!
Pitts Complex, 1 mile South of
Hermitage on Hwy. 254.**

**"Now Open till 4 p.m. on Saturdays"
417-745-6419 • 800-444-4641**

PROTECT THE HARVEST

KEEPING OUR TRADITIONS ALIVE FOR FUTURE GENERATIONS

Preserving Consumer Access to Affordable Food

PROTECT THE HARVEST

INFORM • PROTECT • RESPOND

Protect The Harvest was created to fight back and defend American families, farmers, sportsmen and animal owners from the growing threat posed by the radical animal rights movement.

For more information on how you can Protect The Harvest, visit protecttheharvest.com!



PHOTO BY APRIL WISE

Avoiding and Controlling POISON IVY

IRRITATING TO HUMANS BUT GOOD FOR WILDLIFE

Poison ivy (*Toxicodendron radicans*) is a woody shrub or vine with hairy-looking aerial roots. It grows to 10 feet or more, climbing high on trees, walls and fences, or trails along the ground. All parts of poison ivy, including the roots, are poisonous at all times of the year.

The toxin in poison ivy is an oil which causes an irritating skin reaction on many people. The reaction, an itchy rash with clear blisters, is variable in severity among people, and can vary from year to year on the same individual.

The poison ivy reaction can be reduced if you change clothing immediately and wash the exposed skin with soap and water. If you can wash all the oil off exposed skin within five minutes of contact, no reaction will occur. Even water from a running stream is an effective cleanser. The oil from poison ivy can remain active on clothing and footwear as long as a year, so be careful not to expose yourself to the oil again. The oil can also be transmitted on pet fur and in the smoke of burning poison ivy.

You can use various products such as MultiShield applied prior to anticipated exposure or Tecnu Skin Cleanser to cleanse exposed skin. However, the best way to avoid the irritating rash is being able to identify poison ivy.

LEAVE SOME FOR THE BIRDS

Poison ivy is a nuisance to people, but it provides considerable wildlife value.

The white, waxy berries are a popular food for songbirds during fall migration and in winter when other foods are scarce. Robins, catbirds and grosbeaks especially like the berries. Many birds feed on insects hiding in the tangled vines. Small mammals and deer browse on the poison ivy foliage, twigs and berries. If you can leave thickets or swags of this plant in remote areas on your property, your wildlife will appreciate it.



CONTROL

Poison ivy control can be done at any time of the year, but is best achieved May through July while the plants are flowering. Poison ivy should be accurately identified before you attempt any control measures. Spraying is recommended over burning because poison ivy oil vaporizes when hot, carries in smoke and can cause a severe rash.

Poison ivy foliage within reach can be sprayed with glyphosate (sold under the trade names Roundup, Kleenup and others) according to label directions. When using this or any herbicide, always read and follow label directions carefully. Take care to avoid other plants and do not spray so heavily the herbicide drips off the leaves. Glyphosate is a nonselective herbicide and will kill any vegetation it contacts.

To kill poison ivy that climbs high into trees, cut the vine off 6 inches above ground level. Treat the stump with glyphosate (according to label directions) immediately after cutting to kill the roots and prevent sprouting. If re-sprouting does occur, treat the leaves with glyphosate.

Poison ivy can be very persistent, so you may have to spray the vines two or more times for complete control. Poison ivy can spread along fence or hedge rows and under trees by birds dispersing the seeds. Treating young seedlings with glyphosate will kill them and limit the spread of poison ivy.

Information from Missouri Department of Conservation



SQUIRREL, BLACK BASS SEASON OPENS MAY 27

The MDC says you may catch-and-keep black bass, such as largemouth, small-mouth, spotted/Kentucky bass from May 27 through Feb. 29, 2024.

Black Bass

Black bass can be found statewide, but have a closed season part of the year in most streams south of the Missouri River.

According to the MDC, black bass can be caught and released legally throughout the year anywhere in Missouri. In addition, legal-sized bass may be kept all year long from impoundments and streams with no closed season.

In most states, the daily limit regarding black bass is six. Fish taken from most rivers and streams must be 12 inches long.

Anglers must have a valid fishing permit or be exempt.

Squirrels

According to MDC, the hunting season for eastern gray squirrels and fox squirrels runs from

May 27 to Feb. 15, 2024.

MDC says shotguns, rifles, and other legal firearm methods, as well as archery equipment, slingshots, or atlatls are permitted when hunting. You may also harvest squirrels cage-style traps as long as you have a valid Small Game Hunting permit.

Finally, MDC says your traps must be labeled with your full name and address, or Conservation Number, be attended daily, and have an opening of 144 square-inches or smaller.

The daily hunting limit, including the use of cage-style traps, is ten and the possession limit is 20. Hunters must have a permit valid for hunting small game or be exempt.



FOR ALL YOUR LAND, FARM & HOME SELLING & BUYING NEEDS



660-668-4868

MISSOURILANDCO.COM

14884 CENTERLINE AVE. COLE CAMP, MO. 65325



Candlelight Creations

Ozarks Finest Gifts from over 50 Crafters



FRESH GROUND

- Original White
- Cranberry
- Apricot

- Designer Aprons
- Jewelry • Art
- Handcrafted Candles
- Quilts • Pillows
- Scroll Saw Art
- Designer Towels
- Placemats

Huge selection of bulk spices

Now available:
WHOLE ALLIGATOR
(please give three weeks notice)

NOW AVAILABLE:

- Extra Large Shrimp, EZ peel 16/20ct.
- Peeled & Deveined Shrimp 16/20ct.
- EZ Peel Red Shrimp 16/20ct
- Lg. Sea Scallops 8/10ct.



- Frog legs • X-Large shrimp • Walleye • BBQ Riblets
- Alligator Legs & Meat • Wurst Haus Brats & sausages (from Hermann, MO)
- Norwegian Salmon • Crab cakes • Salmon Burgers • Crab Meat

Hwy. 54, Weaubleau, Mo • 417-428-3625
Open: Mon.-Sat., 10a-5p (Appointments available)



Southwest Electric
Cooperative

800
262
0326

SWEC
.coop

SWEC
app

"Celebrating over 40 years in business"

GOODY'S RESORT

Lakeview Cabins - RV Park - Park Model Sales
Church-Pool-Lodge-Courtesy Dock & Slips-Laundry-Launch Ramp

21222 County Road 191, Flemington, MO 65650

417-282-6338

www.goodysresort.com

email: info@goodysresort.com

BRING YOUR FAMILY & FRIENDS!

PRESTON BIBLE BAPTIST CHURCH

COMMUNITY APPRECIATION

DAY

417-766-4317 FOR INFO



ON THE SQUARE IN PRESTON HWY 54 & HWY D

SATURDAY, JUNE 3, 2023 | 11 - 2

POTTER'S WHEEL PERFORMING @ 12:30 * FREE HOT DOGS AND FISH FRY STARTING @ 11:30 *

BARREL TRAIN RIDES & BOUNCE HOUSE

HOME TOWN DINER

WEST OF DOLLAR GENERAL ON 54 IN HERMITAGE

OPEN
7:30-2PM
WED-SUN

417-912-6704



Now
Serving
Sunday Chicken Dinners

(Available after 11am)

Try our
Waffles!

BEST OF
2022
RURAL
MISSOURI
VOTED

RURAL MISSOURI'S
"BEST BREAKFAST"

As Seen In Rural Missouri Magazine



Big
Mike
The Meal on a Bun

Full Breakfast &
Classic Lunch



27043 State Hwy 64, Pittsburg
1 baths 7,200 SF
#60218980 • \$160,000

Located at Lake Pomme De Terre, these storage units are ideal for a great business opportunity.



25858 State Hwy 64, Pittsburg
#60235634 • \$44,900

Shared well & electric. Wonderful lot in Pittsburg just across the street from Alps Grocery Store. Pump in well was replaced locally approximately three years ago. Excellent location for a small business venture.



18760 Cedar Street, Hermitage
3 beds 2 baths 1,976 SF
#60241123 • \$218,000

Stunning countryside view on the river, large yard, detached garage, storm shelter and privacy. Close to river access and centrally located. Fenced in yard, 3 car detached garage, multiple sheds, appliances included.



24790 County Road 220, Hermitage
2 beds, 1 baths 1,000 SF
#60241253 • \$139,900

Completely remodeled. New floors, new counter, new fence, wonderful screened in back porch with community pond behind. 2 car detached garage. All of this is located close to the dam on Lake Pomme De Terre.



21650 Hwy Rd., Hermitage
3 beds, 4 baths, 2,091 SF
#60241134 • \$599,900

Wonderful front porch, MBR has a walk-in closet, BA with walk-in shower with radiant heated floor, extra large living room. The second residence has 1BR. 30X50 Shop, 30X30 garage detached, additional 30X30 covered parking .



22054 County Road 286, Pittsburg
2 beds, 1 baths 1,284 SF
#60231725 • \$154,900

Charming home with wood burning stove, attached garage, two carports, and a storage shed sitting on over a half of an acre! Beautiful lot with mature trees and a large fenced garden area. HVAC system less than 5 years old.



24696 Canyon View Road, Pittsburg
2 beds, 1 baths, 1,150 SF
#60241068 • \$144,900

Charming Lake house in Hidden Acres sub. Open concept with large kitchen/island. Sun room off the kitchen could be used as a second living, oversized garage with workshop. Great lake access. Furnishings negotiable.



19090 Us Highway 54, Wheatland
2 baths, 3,124 SF
#60239542 • \$265,000

Location, Location, Location with an opportunity to buy commercial property with established buildings in a desired location by Lucas Oil Speedway and Pomme de Terre Lake. Highway frontage on US 54.



2926 254, Wheatland
2 baths, 2,400 SF
#60225867 • \$205,000

Great opportunity to be a bar/grill owner. Complete turn-key establishment including equipment, bar & furniture. 3.6 acres, HIGHWAY frontage, 2 wells, septic, pond and 2400 SF building plus 2 RV hookups.

CENTURY 21

Peterson Real Estate



Janice Greenburg, Broker/Associate
417-327-3393

Marilyn Gowin, Broker/Associate
417-399-1760

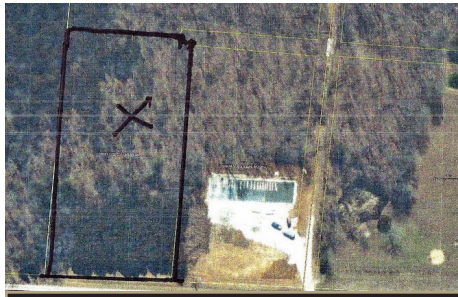
Lynn Gambrell, Realtor
816-405-5442

Victoria McGinnis, Realtor
913-674-6058



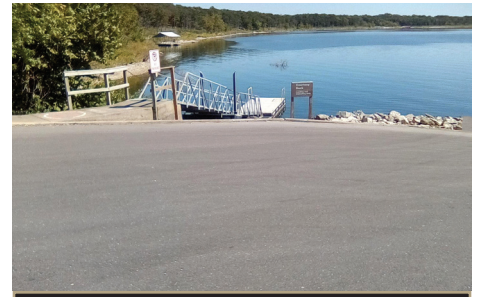
25425 County Road 327, Urbana
3 beds, 2 baths, 1,500 SF
#60224383 • \$167,500

Lake view from 2nd tier and only 3 blocks from boat ramp/launch area. Central heat/air, covered deck with view of the lake. Metal roof, large utility room/mudroom.



20648 State Highway 254, Wheatland
#60231854 • \$38,000

Commercial Building Lot with 2 acres on State Highway at Lake Pomme de Terre, High volume traffic area. Perfect building site for your business or home. Rural water is available with power at the road.



Lot 132 Riviera West Subd., Wheatland
#60224602 • \$9,950

"Catch of the day - minutes away" camp or build at Lake Pomme de Terre. Mostly level with some trees, this lot has rural water service available, and electrical power at the road. Courtesy dock and paved ramp.



23477 County Road 181, Wheatland
4 beds, 2 baths, 2,372 SF
#60237812 • \$464,990

Wonderful hobby farm with 19.4 acres. 1936 Dutch Gambrel Roof barn. Major renovations to the 1957 home were completed in 2017. Upper level offers you a chance to finish. Mostly fenced, 50% wooded/50% cleared.



23958 State Highway 64b, Pittsburg
5 beds, 4 baths, 3,506 SF
#60226372 • \$399,000

Beautiful custom built home on 4.9 acres, pond and a pool! Finished basement, 2 living areas, open concept design. The kitchen island and open to the living room and dining room. 12 x 20 garage, 2500 gallon septic tank.



401 West Maple Street, Urbana
3 beds, 2 baths, 1,782 SF
#60239541 • \$179,900

Beautiful remodeled home with new flooring, windows, kitchen appliances, MBA and interior paint. The open concept provides plenty of room. 2.9 acres for outdoor living, home water filtration system. Skyline school district.



Lakeview Lodge For Sale
Pomme de Terre Lake
\$424,900



Excellent Investment Opportunity!
10 unit Motel has attached 2 story home with awesome view from backyard and inground pool. Great business for Owner-Operator or First-Time Motel Buyer. This is truly a turn key opportunity to run and operate your own business in a beautiful busy lake community. Close to boat ramps, swim beaches, restaurants, convenient gas stations & shopping. Owner is a licensed realtor in MO. Call Lynn with questions.

Pamela Colvin, Broker/Manager

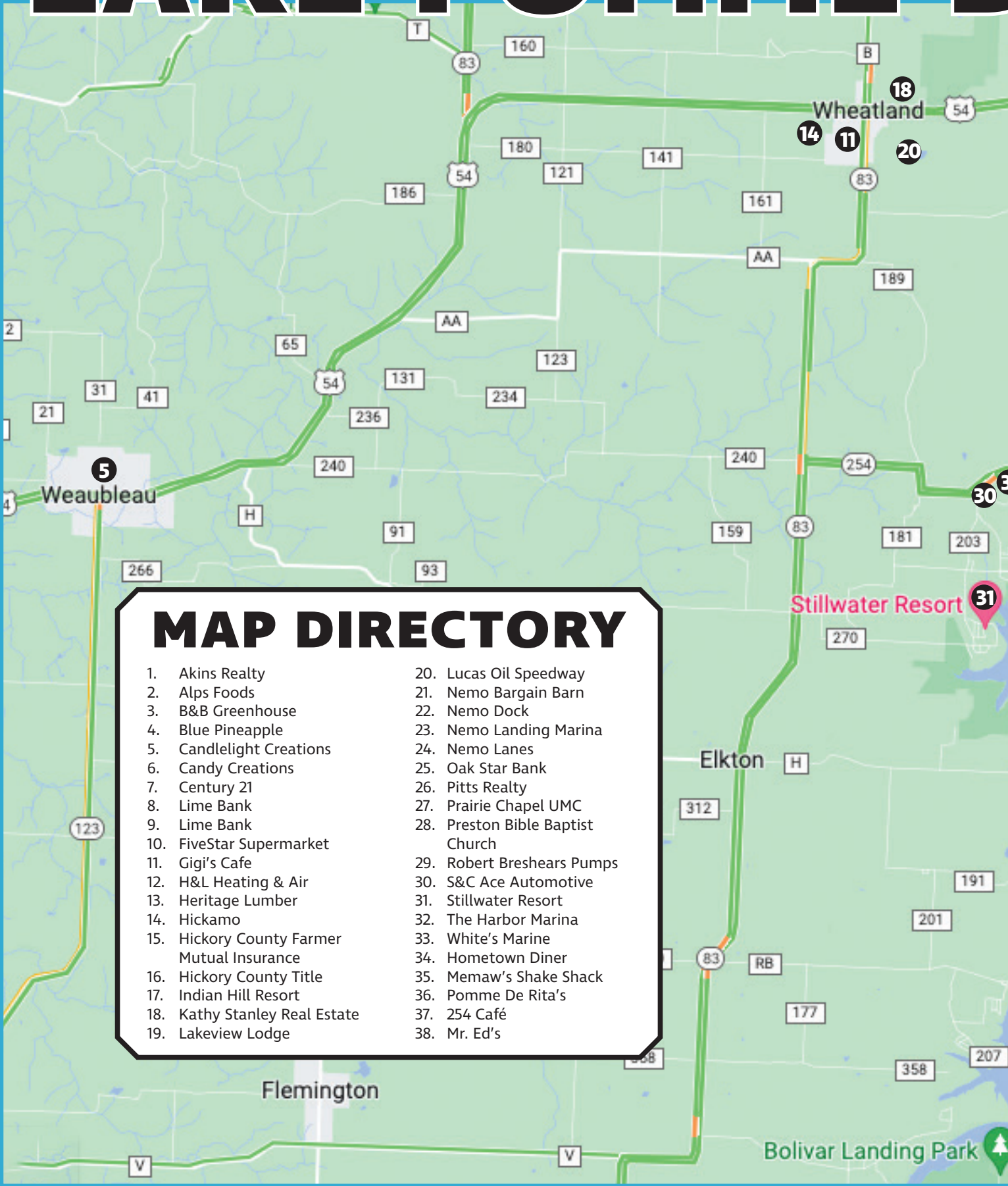
816-914-2193
colvinsold@gmail.com

417-745-6798
22568 State Hwy 64
Hermitage, MO 65668

CENTURY 21
Peterson Real Estate



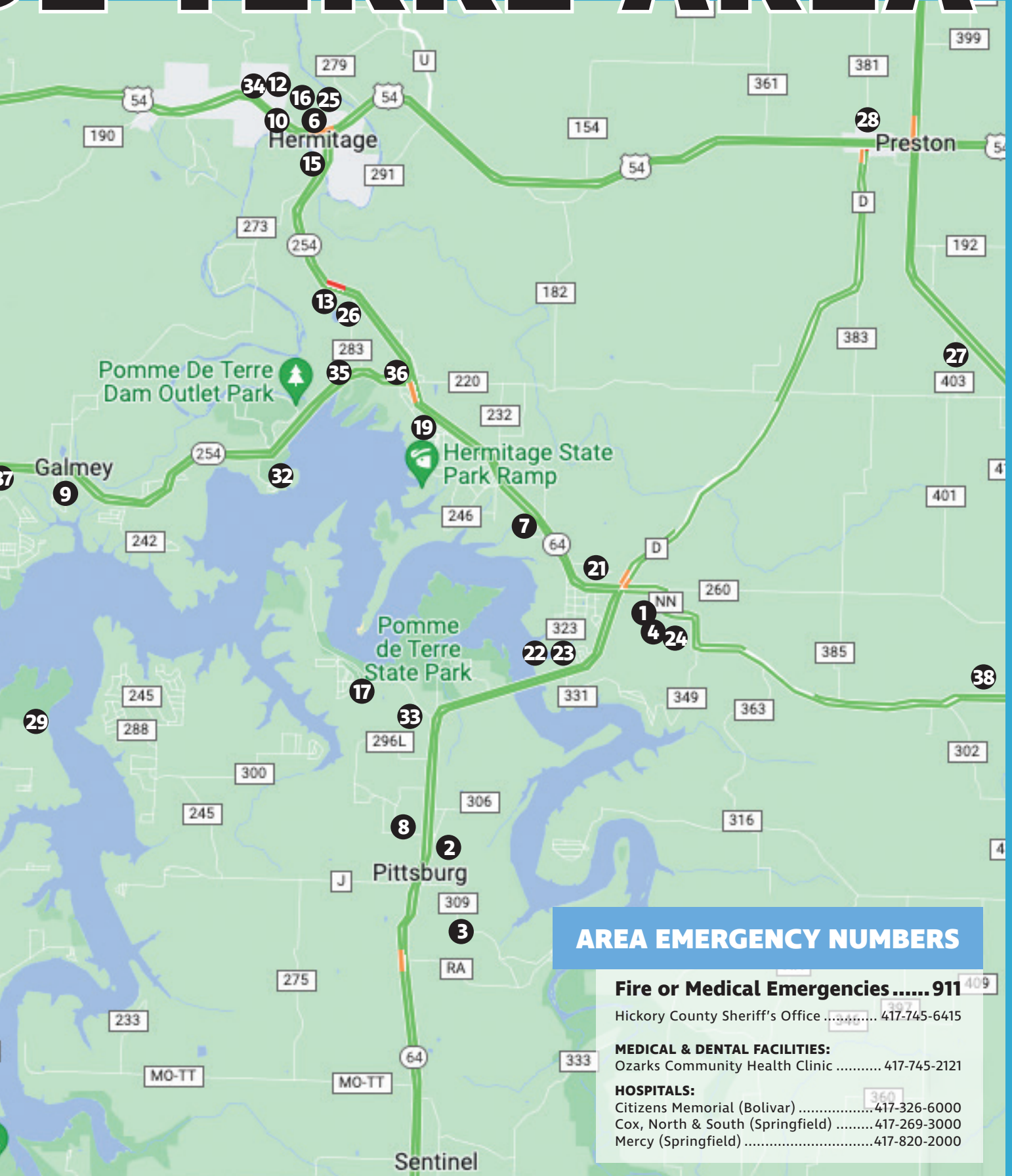
LAKE POMME DE TERRE



MAP DIRECTORY

1. Akins Realty	20. Lucas Oil Speedway
2. Alps Foods	21. Nemo Bargain Barn
3. B&B Greenhouse	22. Nemo Dock
4. Blue Pineapple	23. Nemo Landing Marina
5. Candlelight Creations	24. Nemo Lanes
6. Candy Creations	25. Oak Star Bank
7. Century 21	26. Pitts Realty
8. Lime Bank	27. Prairie Chapel UMC
9. Lime Bank	28. Preston Bible Baptist Church
10. FiveStar Supermarket	29. Robert Breshears Pumps
11. Gigi's Cafe	30. S&C Ace Automotive
12. H&L Heating & Air	31. Stillwater Resort
13. Heritage Lumber	32. The Harbor Marina
14. Hickamo	33. White's Marine
15. Hickory County Farmer Mutual Insurance	34. Hometown Diner
16. Hickory County Title	35. Memaw's Shake Shack
17. Indian Hill Resort	36. Pomme De Rita's
18. Kathy Stanley Real Estate	37. 254 Café
19. Lakeview Lodge	38. Mr. Ed's

POMME DE TERRE AREA



AREA EMERGENCY NUMBERS

Fire or Medical Emergencies 911

Hickory County Sheriff's Office 417-745-6415

MEDICAL & DENTAL FACILITIES:

Ozarks Community Health Clinic 417-745-2121

HOSPITALS:

Citizens Memorial (Bolivar) 417-326-6000

Cox, North & South (Springfield) 417-269-3000

Mercy (Springfield) 417-820-2000

Recreational Marijuana

IS LEGAL IN MISSOURI, WHAT TO KNOW



Sheriff Greg Burke. PHOTO PROVIDED

In the November 2022 election Missouri residents voted to officially legalize the recreational use of Marijuana. However, there are still a few things visitors and guests to Hickory County should be aware of this summer before they light up or break open the bag of edible gummies, and Hickory County Sheriff Greg Burke sat down to help educate the public on how to avoid trouble with their summer fun.

First and foremost, a person must be at least 21-years of age to possess Marijuana. It is illegal to have Marijuana in your possession if you are under the age of 21.

Second, it is still illegal to drive under the influence of Marijuana. This applies to both vehicles on the roadway and boats on the water. While laws have yet to settle on a legal limit of THC in the system, if a person is caught smoking Marijuana while driving an automobile or boat they can and will be arrested for DWI. DWI first offenses are considered a misdemeanor and can result in up to six months in jail or a \$500 fine. The severity of the punishment increases with each subsequent offense.

"Under the influence is under the influence, regardless on if it is alcohol, marijuana, or prescription medicines. And we can still arrest for driving under the influence," Burke stated.

Third, land owned by the U.S. Army Corps of Engineers and National Parks are still operated under federal standards. By federal law any federally owned land it is still illegal for Marijuana to be consumed in any form. This means there is a zero-tolerance rule at all campgrounds around the lake and on the lake itself. Those caught with Marijuana, or its products, will be asked to leave the parks or be cited for trespassing. It is also illegal to have Marijuana on school grounds or at correctional

facilities or any place that prohibits the smoking of tobacco.

Though nothing official has been passed, discussions on city and county wide ordinances forbidding the smoking of Marijuana in public places have been held. As always it is highly encouraged that when visiting a new area that one does their research on local ordinances to avoid accidental violations. Hickory County does not have any ordinances passed forbidding the smoking of Marijuana in public places, yet, but it is always possible this may change in the future. However, it should be noted that in the April election Hickory County voters chose to enact a three percent (3%) Sales Tax on Marijuana and Marijuana products sold in stores.

Now, the law regarding Marijuana remains vague according to Sheriff Burke, who has expressed in the past frustrations with the lack of answers regarding what is a violation and how to enforce the rules that are in place. He explained that a person can use both their medical Marijuana card and their grower's card. However, there are strict rules for those that plan to cultivate Marijuana. First and foremost, the plants must be locked away in an isolated area and non-visible. Those in possession of either or both cards are encouraged to always keep those cards on them.

"If we pull someone over and find a joint in their car, we don't care about that unless we suspect they've been smoking while driving," Burke explained. "However, right now, we don't really know at what point we can press charges and make case law. But if we find, say, 30 pounds of Marijuana in a person's vehicle, we may still try to make case law and take it to court to see what happens and make the courts decide on where the line is. This was advertised as a way of helping law enforcement and veterans. I am both and I have yet to see the benefit of this, it's just made law enforcement more confusing."

Burke went on to explain that his frustration doesn't lie with the fact that recreational Marijuana is legal, but rather with the laws he feels are not well defined enough to provide law enforcement with an adequate guide on how to handle situations where Marijuana is involved. He noted that from this point going forward none of the K9 officers or their dogs will be trained on Marijuana detection. Burke is currently putting his two-year-old Texas heeler named Pudge through the academy training and is adamant that when Pudge becomes certified, he will not be trained to alert on Marijuana.

At the end of the day, it boils down to using common sense and being aware of laws on both the federal, state, and local levels. Be responsible for your actions and courtesy to others if planning to get high this summer. Make smart and safe choices to protect yourself and others.

"Be aware of your surroundings, and be safe," Burke said in closing. "Often times people come here, and they don't act like they do at home."

Pelican Inn

Pelican Inn is a quaint 10 unit motel located in Galmey. We have kitchenettes and standard rooms, plenty of boat parking with electrical hookups, a pavilion with a grill. Located just minutes to the lake, speedway, restaurants and convenient stores. Come stay with us!

21001 HWY 254
Wheatland, Missouri 65779
417-282-5937
Owners: Russ and Pam Colvin
www.facebook.com/254highway

COME PLAY!

COME EAT!



Synthetic Lanes | Automatic Scoring

Cosmic
BOWL!
LATE SATURDAY NIGHTS

MUSIC | LIGHTS | BOWLING

2 HOURS FOR
ONE LOW PRICE!

HOME MADE
STONE BAKED
PIZZA!

VISIT OUR
SPORTS BAR
& CAFE

FRIED CATFISH
THURSDAY
NIGHTS!



Book online at www.nemolanes.com/book-online
Reserve Open Bowling, Cosmic Bowl, Parties, and Group Events



Quiet and
secluded on
Decker Branch

OPEN
ALL YEAR

We offer clean facilities, quiet wooded seclusion, and friendly service.

- Seven one-room units w/ kitchenette
 - Four large two-bedroom units w/ living room and kitchenette.
- We provide bed and bath linens

Each unit is equipped with:
Heating & air conditioning, cable TV

- Our kitchens are equipped with:
- Dishes, tableware, cooking utensils, pots and pans, electric coffee pot, toaster, refrigerator, stove/oven, microwaves

Angie & Steve Capkovic
24227 County Road 287,
Pittsburg, MO 65724

417-852-4444

Also available for use by our guests:

- Swimming pool
- Playground
- Covered, lighted dock with padded slips and electric plug-ins
- BBQ grills
- Picnic tables
- Horseshoes
- Boat trailer parking lot
- Fishing boats and motors for rent

Also available near Indian Hill:

- A variety of restaurants on land or water
- Fishing guide service
- Boat and jet ski rental
- Country music and dancing
- Golf • Bowling • Hiking
- Antique Shops
- Flea Markets

≡ 417.282.5937 ≡



BE YOUR BEST FITNESS
WEIGHTS | CARDIO | CIRCUIT | STRENGTH
OPEN DAILY

Fully equipped gym for all fitness levels.
We offer a variety of memberships and have daily/weekend passes. Serving Hickory County proudly!

21993 CR 273A Wheatland (Galmey)



OZARKS COMMUNITY HEALTH CENTER
 MEDICAL • DENTAL • BEHAVIORAL HEALTH

Offering full service
Medical, Dental & Behavioral
 health care for all ages!

WWW.OZARKSCHC.COM

HERMITAGE | URBANA | BOLIVAR | GREENFIELD

Spring is in the air!

CENTRAL INSURANCE

Agency of Mo, LLC
 (417)745-6356



Gail Freed **Natasha Lawrence**



The Blue Pineapple Boutique

- All Inclusive Womens Boutique Clothing, Shoes & Accessories
- Minnetonka Moccasins • Graphic T's

Coffee

- Blended Frozen Coffee
- Iced Coffees • Lattes

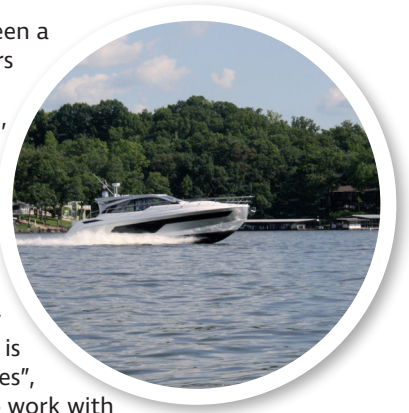


Located at the 4-way stop in Nemo.

COURTESY

on Land and Water

Recently there has been a surge in the numbers of users who are purchasing campers, boats, and camping equipment and setting out to enjoy the variety of outdoor experiences that Missouri and our lakes offer. As a result of the increasing number of users occasionally there is a conflict, whether it is between “veterans” or “rookies”, however we all must learn to work with each other and be good neighbors. Many individuals who are new to camping and boating are not as efficient or quick at setting up a campsite, or launching a boat. We may discover someone new fishing our favorite spot, or simply notice an increase in the number of people boating around the lake. Every one of us can serve as an ambassador to the outdoors for both new and inexperienced users. Whether we provide advice and assistance or simply exercise a little more patience with their actions.



Whether we are assisting someone with setting up a new RV, discussing fishing opportunities, or explaining the importance of water safety it is important to the future of outdoor recreation that we all do our best to be courteous and polite. The future of outdoor recreation rests with all of us.

WATER SAFETY

What does it mean to be water safe? No one is entirely and completely water safe in every situation. Not even the most confident swimmer in the world. Many users are very safe, taking the time to ensure that all safety precautions are followed, dangers and hazards are identified and addressed, and everyone is wearing the proper PFD.

And then there are those who don't make the best decisions, thinking things like, “I am a great swimmer, I can go get our boat that floated off and not even be tired”, or “The kill switch is not necessary on my boat”, “there has never been any debris in this area of the lake before”, Etc. It is extremely easy to bypass or justify a lack of basic safety precautions. Sadly, on occasion these choices can lead to tragedy. Storms can build up rapidly, a child wading in shallow water can step over a ledge into deep water, an improperly chosen or fitted PFD can slip off, and there is never a good way to explain to someone that just experienced a tragedy that a simple choice or mistake has cost a loved one their life. There is nothing that can prepare you to experience such a loss or to be a part of the team that recovers a victim. Become part of the solution and prevent tragedy before it happens. Take a few minutes to make sure everyone is aware of potential hazards, and that everyone has their properly fitted and chosen PFD, that the weather conditions and water conditions are safe to enjoy. Those few moments spent on safety can prevent a lifetime of thoughts about a tragedy.

Safety First and Always!

From the Pomme de Terre Corps of Engineers



Beyond Bargains
Flea Market

HOURS:
Wed-Sun • 9:30a-5p

Hwy. 54, Hermitage
417-399-1474

Nemo Bargain Barn
Flea Market

22917 State Hwy. 64, Nemo (across from Eagle Stop gas station)
417-733-5924 Open: Thursday - Saturday 10 a.m. to 5 p.m.

Hickory County
C.A.R.E.S.
THRIFT STORE

www.hickorycountycares.org

Store Hours:
Tues - Sat. 10 a.m. - 2 p.m.
22469 Hwy. 54, Hermitage • 417-242-0019

Follow us on Facebook!
Like-new quality clothing for Women,
Men & Children...ALL at a great price!

The Blue Pineapple Boutique

- All Inclusive Womens Boutique Clothing, Shoes & Accessories
- Minnetonka Moccasins • Graphic T's

GO & FIND IT
Since G 1979
FUN PROJECTS FUN

Find me on Facebook - Martha Igo
Highway 54 Wheatland, Mo.

Shop Local

CALENDAR OF Events

The Hickory County Farmers Market is open every Friday through July 28, 3 p.m. to 6 p.m. and is located on Highway 254 behind the Hickory County Health Department. Children 18 years and younger eat free here throughout the summer every Friday.

Please note that the Galmev VFW often hosts pool tournaments, dart tournaments, and card games throughout the week. Pool Tournaments are held every Wednesday at 4:30 p.m. Dart tournaments are held every Friday night at 6 p.m. Pitch card games are held Thursday at 2 p.m. free pool is available every Monday beginning at 2 p.m.

MAY

25-27 • Preston Volunteer Fire Department Boot Drive Preston four-way



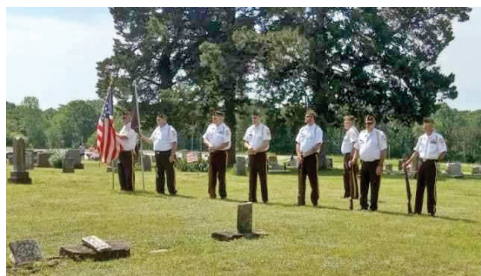
FACEBOOK.COM/SHOW-ME 100

26-28, 31 • 4 p.m. Annual Lucas Oil Show Me 100.

26-28 • 8 a.m. to 6 p.m. Prairie Swap located on the Wheatland prairies 1/2 mile west of Wheatland on Highway 54.

27 • 10 a.m. to 3 p.m. Bennett Benefit Bonanza at Skyline School on Highway 65 (help support a local firefighter injured in a wreck while responding to a call for service). Food, music, games, live music, live auction at 1 p.m.

27 • 8 a.m. to 3 p.m. PommeStock Festival at the Blue Pineapple Boutique in Nemo next to the Nemo Lanes Bowling Alley at the four-way stop. Vendors, food, and live music,



FACEBOOK.COM/GALMEV VFW POST 9638

27 • Galmev VFW handing out poppy flowers at local gas stations and grocery stores

29 • 11 a.m. Dooly Bend Memorial Day Ceremony conducted by the Galmev VFW.

JUNE



FACEBOOK.COM/PITTSBURG COMMUNITY CENTER

3 • 9 a.m. to 3 p.m. Pittsburg Swap Meet at the Pittsburg Community Building

3 • 8 a.m. to 3 p.m. Hickory County Yard Party at Pomme de Terre United Methodist Church on Carson's Corner.



FACEBOOK.COM/POMME DE TERRE BEEKEEPERS ASSOCIATION

8 • 7 p.m. Pomme de Terre Beekeepers Meeting- Due to their typical location being currently closed to the public the location of the monthly meeting has not been determined at the time of this write-up. Please email Secretary Nicole Neeld at pdtbeekeeper@gmail.com for updates or pick up a copy of The Index the Wednesday before the event.

9 • 7 p.m. Pomme de Terre Shrine Club hosting Capitan's Party

10 • 9 a.m. Lucas Oil Speedway Off-Road Races



FACEBOOK.COM/POMME DE TERRE SHRINE CLUB

10 • 12 p.m. Pomme de Terre Shrine Club lake Poker Run- registration 11 a.m. at Lake Point 7

10 • 9 a.m. to 3 p.m. Food Truck Festival on Wheatland Square

11 • 2 p.m. Hickory County Archaeology Society Meeting at the Hickory County Emergency Management Office (Former Dollar General Building) located on Highway 54, west of Hermitage.

13 • 1 p.m. Hickory County Historical Society Meeting at the Hickory County Library

17-18 • 8 a.m. KDBA Summer Thunder on Lake Lucas Oil Speedway

As always, these are only the events that were known before the printing of this magazine. For more information on upcoming activities in Hickory County pick up the latest issue of The Index Newspaper or visit hermitageindex.com.



17 • 2 p.m. VFW 2nd annual BBQ Cook-off. The Public is invited to come out and help determine the People's Choice winner

17 • 5 p.m. Pittsburg Community Picnic at the Pittsburg Community Center

25-26 • The Fallen Outdoor Annual Veteran Shootout. Open to everyone, must have a minimum of two veteran shooters. Guaranteed \$1,500 first place prize. Call Nate DeCavelle at 417-399-4188 for more information.

29 • Lucas Oil Speedway Thursday Night Thunder Fireworks Show and Bike Give away.

30 • 2 p.m. to dusk. Cross Timbers Blackberry Picking Day Festival on Cross Timbers square- food, games, vendors, and fireworks.

JULY

1 • 8 a.m. to 3 p.m. Ozark Market Day on Hermitage Square

1 • 9 a.m. to 3 p.m. Pittsburg Swap Meet at Pittsburg Community Building



FACEBOOK.COM/POMME DE TERRE CHAMBER OF COMMERCE

1 • 3:30 p.m. to 5 p.m. The Great Pomme Duck derby at the Pomme de Terre Dam Spillway

1 • Dusk-Saturday, July 1, Fireworks Over The Water at Pomme de Terre Dam.

22 • 7 p.m. Karaoke at the VFW

• Licensed • Bonded • Insured

Bugman

Complete Termite & Pest Control
Mold & Mildew Elimination

417-531-0176
Owner: Dale Haley

CIVIL WAR ITEMS WANTED

Especially interested in tintypes, photographs and letters

CALL DOC HOOD @ 417-777-1529

ACTION DRILLING, LLC

WATER WELLS

4 Generations of Experience Working For You!

SERVICES OFFERED:

- Irrigation
- Residential
- Contractor For Ground Source
- Heating & Air Systems

Guaranteed Work • Free Estimates

Gary & Donna Spradling, Owners
22131 Pepper Ln., Wheatland, MO 65779
Gary - 417-276-1730
State Certified Driller • MO Permit #003116WH

417-282-5270

Water Quality at Pomme de Terre Lake

When visitors come to Pomme de Terre Lake they are usually thinking about boating, fishing, swimming, and camping. Do you ever think about the quality of the water you are fishing, swimming, or boating in or wonder about how it is tested to ensure it's safe for all forms of life not just humans?

Well this article should be able to answer most if not all of those questions. The U.S. Army Corps of Engineers Kansas City District has a robust Water Quality Program in place at all 18 lake projects, including Pomme de Terre Lake. Through this program, staff ensure the quality of water is suitable for project purposes, existing water uses and public health and safety standards.

Pomme de Terre Lake was built on the Pomme de Terre River and reached full pool in 1961. The watershed that drains into Pomme de Terre Lake encompasses 611 square miles. This means that while the U.S. Army Corps of Engineers is responsible for ensuring good management practices to maintain good water quality here at Pomme de Terre, the responsibility is shared with all of the businesses, landowners, and visitors that reside within the watershed as runoff sooner or later flows into Pomme de Terre Lake.

Water quality at Pomme de Terre Lake is a product of all the sediment, chemicals, and biological input that could run into streams during rain events that eventually flow into the lake. Knowing this, the Corps operates campgrounds and manages natural resource areas that are within this watershed in a conservative manner to protect the lake. Our campgrounds have

strict rules and guidelines to follow when dealing with sewage and the treatment of it before it can safely be released into the watershed. We also are mindful of any chemicals used in our natural resource areas whether it be for fertilization or weed/pest control, certain chemicals are not allowed to be sprayed within so many feet of body of water. We are aware of those chemicals and are trained on which to avoid and how to properly apply the ones we can use to restrict any impacts to the surrounding water and ultimately the water quality of the lake. Within our campgrounds and day use areas at the lake we are also involved in sampling of our public drinking water supplies, this involves monthly sampling of each well that the Corps operates around the lake to ensure that the water is safe for consumption. This shows that water quality is not just a surface water concern, we are also concerned with the quality of our ground water and ensuring it remains safe for us to use into the future.

As part of the Districts Water Quality Program the staff at Pomme de Terre Lake and Kansas City District Water Quality Program staff sample the waters of Pomme de Terre Lake monthly from April through September. They will sample the main lake arms looking at physical profiles (temperature, dissolved oxygen, pH, turbidity, conductivity, salinity, and suspended solids) using special instruments. These measurements are taken at each meter of depth, providing profile of the conditions from top to bottom. Chemical samples follow next, primarily checking for nutrient, sediment, herbicides, chlorophyll concentration and metals. Biological components like algae/cyanobacteria counts, algal toxin and bacteria are other important measures taken situationally for recreational advisories. Samples from inflow streams (bridge crossings) and outflow below the dam to complete the picture. A majority of the chemical samples are sent to Federal water quality labs for analysis to obtain the data which can be found on the public web page (<https://www.nwk.usace.army.mil/Locations/Water-Quality/>) and annual water quality reports.

Swimming beaches are a popular attraction during the summer months here at Pomme de Terre. Water quality presents a safety issue when it comes to our swimming beaches. Each summer the Corps conducts three routine samplings at all Corps owned beaches to check for safety related issues mainly dealing with E. Coli. These samples are conducted prior to the three major holidays of Memorial Day, Independence Day, and Labor Day. Other water quality sampling that is conducted by the Corps staff has to deal with harmful algae blooms. When satellite imagery or a public complaints indicate significant presence of blue-green algae, local and Kansas City District staff work together to collect samples to define the algae population, toxins, and locations to work with Missouri Department of Natural Resources, which is tasked to provide public health advisories.

Water quality at Pomme de Terre Lake is an important subject as it should be everywhere. The efforts by the surrounding population and the U.S. Army Corps of Engineers continues to show that Pomme de Terre Lake has some of the best water quality in the region. That is something for all of us to be proud of and something for all of us to protect to ensure that it remains the same into the future. The management of Pomme de Terre Lake and its water quality would not be possible without the coordinated efforts of the surrounding landowners, visiting public, our partners, Missouri Department of Natural Resources and the Corps. We encourage you to like our Facebook page: Pomme de Terre Lake, U.S. Army Corps of Engineers at <https://www.facebook.com/PommeDeTerreUSACE>.

From the Pomme de Terre Corps of Engineers



**HICKORY COUNTY
TITLE COMPANY** LLC

**TITLE INSURANCE, CLOSINGS,
AND ESCROW SERVICE**



• Title Insurance • Closing • Escrow Services

—SERVING HICKORY AND SURROUNDING COUNTIES—

P.O. Box 46 • 406 West Highway 54 • Hermitage, Missouri 65668-0046
417-745-2331 • FAX 417-745-2327
www.hctitle.com



MEMAW'S
 Shake Shack
 Open Temporarily:
 Friday 3-8
 Saturday 11-8
 Sunday 11-6

Molly's
 MAIN STREET CAFE
 202 North Main St., Urbana
 417-993-5903
 HOURS
 Monday-Saturday, 7a-2p
 Closed Sunday

Hermitage Coffee Shop
 On the Square in Hermitage
 6 a.m. - 1 p.m. Mon-Fri
 Serving Breakfast & Lunch
 "Taco Thursday" 417-745-6449
 Homemade Pies

GiGi's Cafe
 On the square in Wheatland
 Breakfast - Lunch - Dinner
 Monday-Saturday,
 7a - 7p

Open 7 Days, All Year Round
Pomme de Ritas
 TEX-MEX & BBQ
 24474 Hwy 254, Hermitage, MO
 www.PDRitas.com 417-745-6900

THE HARBOR
 Bar & Grill
 Hours
 Thursday • 4 P.M. - 10 P.M.
 Friday & Saturday • 11 A.M. - 10 P.M.
 Sunday • 11 A.M. - 7 P.M.
 Memorial Day
 11 A.M. - 7 P.M.
 (417) 745-6865
 Campground • Marina • Boat Rentals

HOME TOWN DINER
 "Let's Eat!"
 7:30-2P
WED-SUN
 West of Dollar General in Hermitage

JUNE

Garden Calendar



ORNAMENTALS

- Deadhead bulbs and spring flowering perennials as blossoms fade.
- Watch for bagworms feeding on many garden plants, but especially juniper and arborvitae.
- Thin seedlings to proper spacings before plants crowd each other.
- Plant tropical water lilies when water temperatures rise above 70 degrees.
- When night temperatures stay above 50 degrees, bring houseplants outdoors for the summer.
- Apply a balanced rose fertilizer after the first show of blooms is past.
- Rhizomatous begonias are not just for shade. Many varieties, especially those with bronze foliage, do well in full sun if given plenty of water and a well-drained site.
- Most houseplants brought outside prefer a bright spot shaded from afternoon sun. Check soil moisture daily during hot weather.

- Apply organic mulches as the soil warms. These will conserve moisture, discourage weeds, and enrich the soil as they decay.
- Apply a second spray for borer control on hardwood trees.
- Softwood cuttings can be taken from trees and shrubs as the spring flush of growth is beginning to mature.
- Continue spraying roses with a fungicide to prevent black spot disease.
- Tired of the same old foundation plantings? Find fresh ideas among the evergreens planted in the Dwarf Conifer collection.
- Trees and shrubs may still be fertilized before July 4th.
- Pruning of spring flowering trees and shrubs should be completed before the month's end.



LAWNS

- Water turf as needed to prevent drought stress.
- Mow lawns frequently enough to remove no more than one-third the total height per mowing. There is no need to remove clippings unless excessive.

Come see us!!
(417) 993-5160
NEMO MARINA

23876 N. Nemo Park
Pittsburg MO 65274

BOAT RENTALS

- ★ **JET SKIS**
Three seater sit down Fun!
- ★ **DECK BOATS**
Our deck boats accommodate 8 people and come with AM/FM cassette player. Perfect for skiing, tubing or just getting around!
- ★ **PONTOON BOATS**
Our pontoon boats accommodate 12 people and come with CD player/USB ports, swim ladder and canopy top. Perfect for tubing or just getting away!
- ★ **KAYAK RENTALS**

Ice Cream Social Saturday Nights from 6-8 p.m. through Labor Day!

It's not just an adventure... it's a "GET-AWAY"!
On 64 Highway, at Nemo Bridge
www.nemomarina.com

OakStar BANK

YOUR LAKE FINANCING SOURCE

**SECONDARY HOMES
RECREATIONAL TRACTS
LAKE LOTS • MOBILE HOMES**

Experience. The Difference.

23193 US Highway 54 | PO Box 397 | Hermitage, MO 65668 | NMLS# 406107

417.745.4242 | OakStarBank.com

MEMBER FDIC

- Gradually increase the mowing height of zoysia lawns throughout the summer. By September, the mowing height should be 2 to 2.5 inches.
- Mow bluegrass at 2 to 3.5 inch height. Turfgrasses growing in shaded conditions should be mowed at the higher recommendations.
- Zoysia can be fertilized now while actively growing. Do not exceed 2-3 pounds of actual nitrogen fertilizer per 1000 sq. ft. per year.
- Vegetables
- Repeat plantings of corn and beans to extend the harvest season.
- Plant pumpkins now to have Jack-o-lanterns for Halloween.
- As soon as cucumber and squash vines start to 'run,' begin spray treatments to control cucumber beetles and squash vine borers.
- Set out transplants of Brussels sprouts started last month. These will mature for a fall harvest.
- Soaker hoses and drip irrigation systems make the most efficient use of water during dry times.
- To minimize diseases, water with overhead irrigation early enough in the day to allow the foliage to dry before nightfall.
- Start seedlings of broccoli, cabbage and cauliflower. These will provide transplants for the fall garden.
- Stop harvesting asparagus when the spears become thin.
- Control corn earworms. Apply several drops of mineral oil every 3 to 7 days once silks appear. Sprays of Bt are also effective.
- To maximize top growth on asparagus, apply 2 pounds of 12-12-12 fertilizer per 100 sq. ft., water well and renew mulches to conserve moisture.



FRUITS

- Oriental fruit moths emerge. They are most serious on peaches where the first generation attacks growing tips. Wilted shoots should be pruned out.
- Thinning overloaded fruit trees will result in larger and healthier fruits at harvest time. Thinned fruits should be a hands-width apart.
- Enjoy the strawberry harvest.
- Renovate strawberries after harvest. Mow the rows; thin out excess plants; remove weeds; fertilize and apply a mulch for weed control.
- Summer fruiting raspberries are ripening now.
- Begin control for apple maggot flies. Red painted balls that have been coated with tanglefoot may be hung in apple trees to trap egg-laying females.
- Spray trunks of peach trees and other stone fruits for peach tree borers.
- Prune and train young fruit trees to eliminate poorly positioned branches and to establish proper crotch angles.
- Miscellaneous
- When using any gas powered equipment, be sure to allow the engine a few minutes to cool before refilling empty fuel tanks.
- A mailbox mounted on a nearby post makes a handy place to store and keep dry any small tools, seeds, labels, etc. frequently used in the garden.

<https://www.missouribotanicalgarden.org>

encounter • grow • serve

Prairie Chapel

SUNDAYS

Sunday School (for all ages) – 9:30 a.m.
 Fellowship – 10:00 a.m.
 Worship – 10:30 a.m.

PASTOR JEFF COLE

417-993-4403 • EMAIL: office@prairiechapelmo.com
 20414 US-65, Urbana, MO 65767 • (417) 993-4403
 Prairie Chapel is located on Hwy. 65 across from Skyline School.

J & H

LAND SERVICES, LLC

PROFESSIONAL LAND SURVEYING

LICENSED SURVEYORS IN MO-IL-IA-NE

Jack Butler

541-280-8853

Hank Martin

417-770-0025

23381 US Highway 54, Hermitage, MO 65668



FACEBOOK.COM/ US ARMY CORPS OF ENGINEERS

Freshwater Jellyfish Inhabit Pomme de Terre Lake

When a person thinks about jellyfish, their mind usually goes to the ocean. But did you know there is such a thing as freshwater jellyfish, and some can be found right here in Pomme de Terre Lake?

William Mabee works in the Missouri Department of Conservation Central Region Office and Conservation Research Center in Columbia and recently sat down to discuss these tiny and fascinating living organisms that inhabit waters all throughout the United States of America. Beyond general research, Mabee has a deeper connection to the freshwater jellyfish inhabiting Pomme de Terre. He was part of the original team that confirmed their existence in the lake in 1991, specifically July 24, 1991. He had spent from 1987 through 1991 taking samples from both Pomme de Terre and Stockton lakes before making this discovery. He described sampling as towing a 500-micron mesh net behind a boat to collect larval fish. When they stopped to look at their collection, they found they had caught 37 jellyfish in their medusa (or adult) stages. They preserved this sample in alcohol and ethanol and took it with them back to the labs to study it further. Later, in the year 2000, he wrote a research paper on these fascinating creatures.

The first and most crucial thing Mabee stressed in both his paper and now to you as the reader of this article is that these animals are entirely harmless to humans and their pets. Freshwater jellies are small in size, with the largest recorded from Pomme de Terre measured at only 15 millimeters, smaller than a quarter, and stressed that their sting doesn't harm humans.



Freshwater Jellyfish. PHOTO PROVIDED

So there's no need to rush to cancel summer swimming plans and enjoy Pomme de Terre Lake's many accommodations. In fact, stick around and see if you can spot some of these beautiful little life forms, as they are a rare treat to find.

As neat as these creatures are, there is a gap in the knowledge surrounding them. Believed to have originated in China, they were first described in the 1880s by researchers in England. They were first documented in the United States over 100 years ago. Biologist Rudolf Bennett provided the first record of freshwater jellyfish in Missouri in the 1930s.

Originally considered an invasive species, these little organisms have become naturalized and are here to stay as well-established North American animals. There are two main theories on how these little guys came to be found in freshwater lakes and quarries. The most likely of which are they were transported on boats that weren't properly cleaned after being in waters with jellyfish. The second is that they were passively introduced to new bodies of water off the feet of waterfowl.

Most of the jellyfish's life is spent in a "Polyp" stage. They asexually breed in a budding process more similar to that of vegetation than that of other animals. In his research paper, Mabee described that the budding process occurs when an outgrowth of cells from the body of one jellyfish develops into a new individual with an identical genetic makeup. Polyps live in underwater colonies attached to debris such as logs and aquatic

plant life. This is when you get into the mystery surrounding jellyfish. When environmental conditions are right, the polyps will develop into medusa or free-swimming jellyfish. If a person sees a jellyfish, this is the stage it will be in.

These jellyfish have all the same features as a traditional jellyfish in an ocean, generally on a much smaller scale, again getting no bigger than a quarter. An umbrella-shaped body and numerous tentacles are lined with stingers for catching prey. These jellyfish feed primarily on zooplankton, microscopic creatures related to crayfish, water worms, and larval fish. By contracting its umbrella-shaped body, which Mabee called a "bell," these animals can swim through the water. However, the most interesting thing about the medusa stage of jellyfish is that, unlike in the polyp stage, they can reproduce sexually. Females release eggs, and males release sperm into the water that, when combined, produce an egg that will develop into a new polyp.

What are the "right" environmental conditions to trigger the development of a polyp into a medusa, though? No one knows for sure. This makes their occurrence unpredictable, and jellyfish sightings are rare and exciting. In Missouri, freshwater jellyfish are most likely to be seen between the months of July and September when surface water temperatures are near 80 degrees. Some years the lake might be heavy with them, and Mabee described these large groups as looking like snowflakes on the water, as they are often white or cream in color. And sometimes, the jellyfish may not reappear for years.

"I recommend stopping and looking at them if you see them," Mabee stated. "They're a fascinating fauna, but you're unlikely to ever see a large group of them as they never really get that dense."

Mabee explained that if a person wishes to see one up close and observe them, the jellies can be captured using a jar. However, he advised that they're fragile and challenging to keep alive, so it wouldn't be wise to try to take one home. It would be best to release them back where they were found after getting a good look at them. That being said, the population is well established, and there's no real chance of negatively impacting the local population.

One of the reasons the jellyfish have been able to thrive in freshwater lakes, such as Pomme de Terre, is the lack of predators. Crayfish will snack on jellies occasionally, or, as Mabee put it in his report, "Crayfish consumed the jellyfish like children eating popcorn." Other fish will attempt to eat the jellies when first exposed but often reject them immediately. As they also don't tend to eat much, it's difficult, and a frequently debated topic among researchers, to determine just what role these critters play in their environments and ecosystems. Some anglers have reported that when dense populations of these freshwater jellyfish are present, there has been a decrease in fishing success. Still, for the most part, it appears they are just here to be here.

Pomme de Terre Lake is often referred to as a "hidden gem" tucked away in southwest Missouri. Sporting various parks, campgrounds, scenic walking trails, and some of the best fishing in the state of Missouri, there's little doubt once you've visited that term "hidden gem" is an apt description. The man-made lake is owned and operated by the U.S. Corps of Engineers and was constructed to help control flooding in the area. Its construction was completed in 1961, and since then, the lake has provided a place of respite for millions of people from everyday life. Now visitors can add jellyfishing to the list of potential activities. Locals state that the island in the lake's center near the Pomme de Terre Dam is a popular spot to find these little creatures.

NEMO DOCK Co.

Building Quality Docks for over 25 Years

Hugh Vaughan

Hwy. 64 Nemo

- ◆ Encapsulated Flotation
 - ◆ Dock Ladders
 - ◆ Dock Cable & Clamps
 - ◆ Dock Parts
 - ◆ Boat Lifts
 - ◆ No Wake Buoy

Installation Available • Builders Welcome

**"We Also Build
New Galvanized Steel
Boat Docks"**

Call us Toll Free

1-888-262-8738



LimeBank



New Products Being Offered!

**Check out our new FREE checking accounts
& Personal / Business Credit Cards**



lime.bank

Lets Connect!



**Bolivar
Galmei
Pittsburg**



**417-777-3322
417-282-5660
417-852-4330**

**Member
FDIC** 

BE WATER SAFE

What does it mean to be water safe? No one is entirely and completely water safe in every situation. Not even the most confident swimmer in the world. Many users are very safe, taking the time to ensure that all safety precautions are followed, dangers and hazards are identified and addressed, and everyone is wearing the proper PFD.

And then there are those who don't make the best decisions, thinking things like, "I am a great swimmer, I can go get our boat that floated off and not even be tired," or "The kill switch is not necessary on my boat," or "there has never been any debris in this area of the lake before," etc. It is extremely easy to bypass or justify a lack of basic safety precautions. Sadly, on occasion, these choices can lead to tragedy.



Storms can build up rapidly, a child wading in shallow water can step over a ledge into deep water, an improperly

chosen or fitted PFD can slip off, and there is never a good way to explain to someone that just experienced a tragedy that a simple choice or mistake has cost a loved one their life. There is nothing that can prepare you to experience such a loss or to be a part of the team that recovers a victim.

Become part of the solution and prevent tragedy before it happens. Take a few minutes to make sure everyone is aware of potential hazards, and that everyone has their properly fitted and chosen PFD, that the weather conditions and water conditions are safe to enjoy. Those few moments spent on safety can prevent a lifetime of thoughts about a tragedy.

Safety First and Always!

From the Pomme de Terre Corps of Engineers

LODGING GUIDE

Where To Stay & Play

Overlooking Beautiful Pomme de Terre Lake



Lakeview Lodge

Call today to reserve your room...417-745-6485



POMME DE TERRE

Angie & Steve Capkovic
24227 County Road 287
Pittsburg, MO 65724
417-852-4444



**WHEATLAND
MOTEL**
417-282-7100

"Celebrating over 40 years in business"

GOODY'S RESORT

Lakeview Cabins - RV Park - Park Model Sales
Church-Pool-Lodge-Courtesy Dock & Slips-Laundry-Launch Ramp

21222 County Road 191, Flemington, MO 65650

417-282-6338

www.goodysresort.com

email: info@goodysresort.com

Pelican Inn



21001 HWY 254

Wheatland, Missouri 65779

417-282-5937

Owners: Russ and Pam Colvin

www.facebook.com/254highway



60232604\$275,000

What a great property to own! The 23 acres are scattered and full timber and the home is a 2017 manufactured doublewide with a private well. The setting is marvelous with scattered timber all around and an end of the road location. The home has 3 BR, 2 BA, an open concept with a kitchen island. The bedrooms are a split design and the bathroom has a soaking tub and double shower in the master bath. Portable building with one garage door.



60240176\$269,000

City living that feels like the country! Lovely 3 BR, 2 BA brick & vinyl home with a 2 car attached garage and then another 2 car detached garage and a storage building. All on 1 acre+/- . Brick fireplace in the great room with beamed ceilings, formal dining room, U shaped kitchen with custom oak cabinets with a wall oven and cooktop and breakfast area. The main bathroom is undergoing some remodeling. Located in Oakwood Addition.



60241409\$249,900

This beautiful home has city utilities and is fronted by a paved street but is just minutes to Pomme de Terre River and Lake! Built in 2005 it has 3 bedrooms, 2 baths and an oversized 2 car garage with lots of storage space! Very nicely landscaped yard with chain-link fence in back. There is new flooring in the kitchen and the oak cabinets are beautiful. It sits in a nice quiet subdivision on a dead-end street. Extremely well built home and very well maintained. Come see before it's gone.



60237125\$144,500

Look at this rare opportunity for a lake home with a partial winter lakeview! 3 BR, 1 1/2 BA home has over 2000 sq. ft. and is within minutes of lake access! Two detached carports with power and an attached 1 car garage! Large family room, screened in porch. The galley style kitchen includes the refrigerator and stove and the wood cabinets are plentiful! Newer laminate flooring. Several large closets for storage! Almost 3/4 of an acre there is a large backyard for the kids or pets. Enjoying the lake this summer!!



60224754 & 60224946 \$169,900

OWNER MOTIVATED!! BRING OFFERS!! Looking for a business with a home combination?? Come see this cute 2 BR 1 BA home with a huge shop building on Hwy 54 frontage. It was previously a trucking company, so it has all things necessary for you to work on them, deep pit for changing oil, bathroom, 2 containers on each end, garages on each end for other equipment. The roof was recently coated with the rubberized paint. There are so many features here! The house is much larger than it appears.



60231089\$105,000

Some big things come in small packages!! Two loft areas, kitchen area and storage room and the cutest full bath you'll see. Sliding doors have metal trim from an old church and lots of other decorative ideas! White pine tongue and groove siding interior, R13 insulation and two new window heat & air units! Slice of lake view year round, 2 full RV hookups, wraparound deck has plenty of room! Recently added a detached room from the home to use as a main bedroom. Borders Corp property.



60240522\$94,900

Come check out this little slice of heaven at the lake! Modified A-frame has much more room than it looks thanks to an addition on the front! Lots of custom features, laminate flooring, newer mini-split for heat and air. 1BR downstairs and upstairs has a half wall that has plenty of room for two beds. Only a short distance to lake access. Outbuilding w/concrete floor and power. New deck in front of the house. Come see this unique home!



60241154\$35,000

Three lots on county gravel road frontage. Excellent home sites or camper sites. Close to lake access and all timber.



60241155\$30,000

Cul de sac lots available for camping or building. Some open and some timber. Close to the lake.

Kathy Stanley Real Estate, Inc.

Highway 54, P.O. Box 331 • Wheatland, MO 65779
Office: 417-282-LAND
Toll Free 1-888-384-LAND • Home 417-754-8630
www.kathystanleyre.net • E-mail ksre@abbmissouri.com
OFFICE HOURS: MONDAY-FRIDAY 9-4; SATURDAY 9-12;
SUNDAY BY APPOINTMENT





60234040\$25,000
 Level building lot with city utilities. Close to grocery store and all amenities. Walk to Lucas Oil Speedway Complex. Across the street from the City Park!



60234038\$25,000
 Level buildable corner lot with city water meter already there. Hwy 83 frontage, walk to all conveniences.



6023403725,000
 Level buildable lot with Hwy 83 frontage. City utilities available and electric meter is already there. Close to Lucas Oil Speedway Complex and all the conveniences of city living.



60242773\$225,000
 You need to check this one out!! Home, garage, 3 RV hookups, and extra lots to add more if you choose to. Oh, and there is a dock!! You can buy separately or this price is for the whole package! A new metal roof will be put on the detached garage before closing. The house needs some TLC, so would have to be conventional financing. It has rural water and the RV lots have a private well. There is county road frontage and Mockingbird Trail is a dead end road. This would be ideal for a family compound and it is close to the lake access! Come see before it is all gone!



**22447 Mockingbird
 Wheatland MO 65779**

Kathy Stanley
Real Estate, Inc.

Highway 54, P.O. Box 331 • Wheatland, MO 65779
 Office: 417-282-LAND
 Toll Free 1-888-384-LAND • Home 417-754-8630
 www.kathystanleyre.net • E-mail ksre@abbmissouri.com
 OFFICE HOURS: MONDAY-FRIDAY 9-4; SATURDAY 9-12;
 SUNDAY BY APPOINTMENT

