

# Discover

Tyler County



## Take a Hike!

Hiking through the Big  
Thicket National Preserve

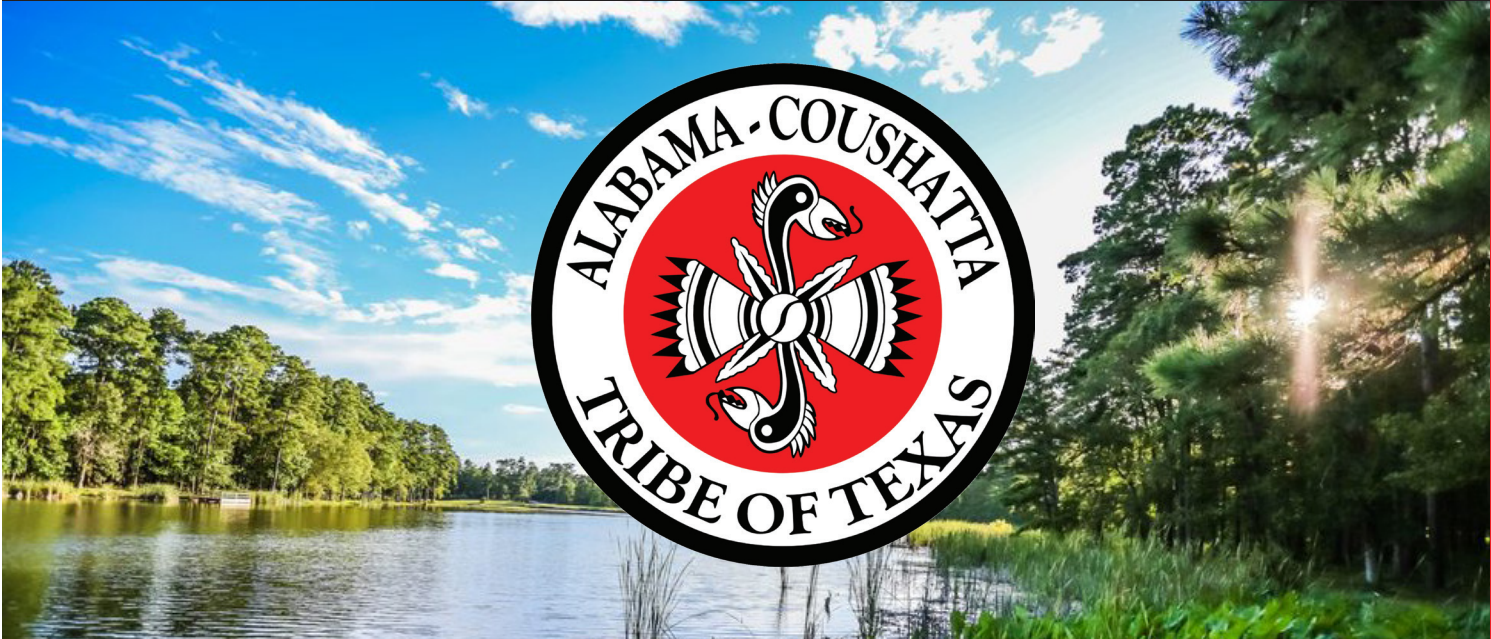
**The Pickett House**  
Chicken & Dumplins  
every day

## Naskila Casino

AC Tribe's recipe for winning

**Ties to Texas History**  
in Peach Tree Village







SOME THINGS ARE JUST BETTER  
**TOGETHER**



**FURNITURE & APPLIANCE** Ltd.

[www.mannfurniture.com](http://www.mannfurniture.com)

Mann Furniture & Appliance, Ltd.  
1123 South Magnolia | Woodville, TX 75979 | (409) 283-8286



## on the cover

Lucas Babin, the current District Attorney in Tyler County, graciously agreed to pose for the cover of our 2025 Discover Tyler County magazine.

COVER & INSIDE PHOTO  
BY DONNA HAMMER



## contents

- 17 Day Trip: Allan Shivers Museum
- 22 Shopping Tyler County
- 27 Day Trip: Lake Tejas
- 30 Entertainment: Dogwood Festival
- 33 Find your happy place in the woods: Camping & RV parks
- 34 Local Eats
- 36 Entertainment: Triple Creek RV Park

## features



### Take a Hike!

Hiking through the Big Thicket National Preserve



### The Pickett House

Chicken & Dumplins every day



### Naskila Casino

AC Tribe's recipe for winning



### Ties to Texas History

in Peach Tree Village



# Discover

Tyler County 2025

## Polk County Publishing Co.

Alvin Holley, Owner; Kelli Barnes, Publisher

100 E. Calhoun St. • P.O. Box 1726

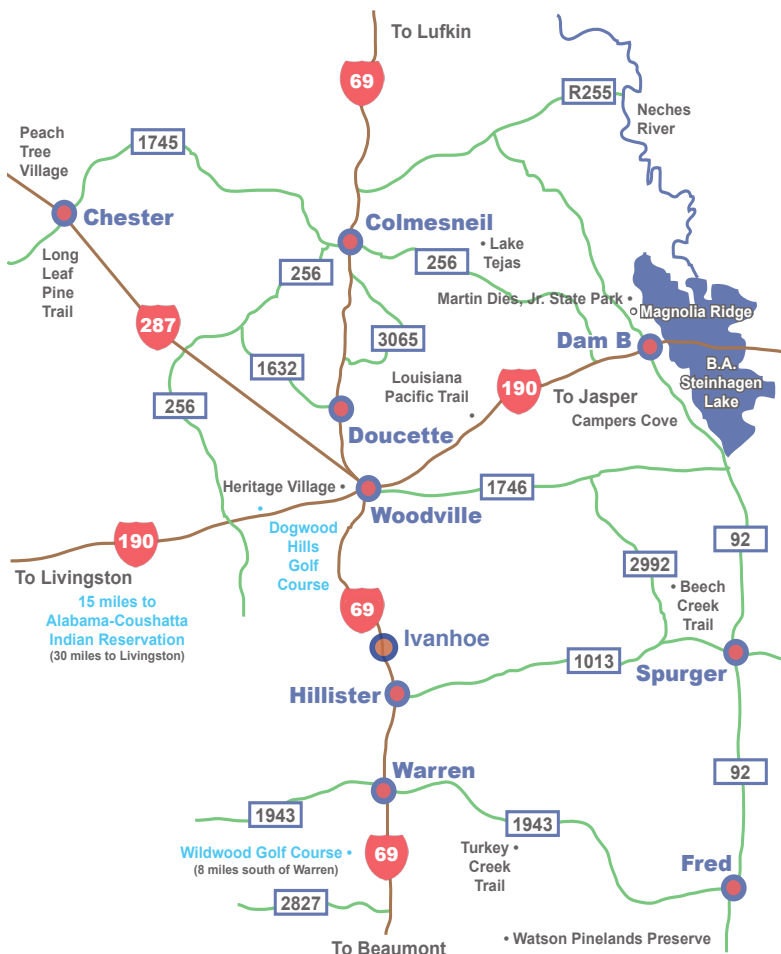
Livingston, TX 77351

936-327-4357

To contact the editor of the Tyler County Booster,  
email Chris Edwards at [news@tylercountybooster.com](mailto:news@tylercountybooster.com).

Discover Tyler County Magazine 2025 is published by Polk County Publishing Company, Inc. serving Alabama Coushatta Tribe of Texas, Chester, Colmesneil, Doucette, Dam B, Fred, Hillister, Ivanhoe, Spurger, Warren, Wildwood and Woodville. Discover Tyler County Magazine is a visitor's guide to the pineywoods of deep East Texas, with emphasis on Tyler County and surrounding areas and is dedicated to the people and businesses that make Tyler County such a wonderful community to work, live and play.

## Tyler County Area Map



*This year, we are celebrating the 26<sup>th</sup> edition of this publication, focusing on tourism. Nature tourism is big in our region, with hiking trails at Heritage Village featured on the cover, Big Thicket trails around the county, birding and other wildlife viewing opportunities around the B.A. Steinhagen Lake and Martin Dies Jr. State Park. In addition to nature tourism, we also have Alabama Coushatta Tribe of Texas, Naskila Casino, historic sites, libraries and museums, the famous Lake Tejas, and a multitude of shopping and dining opportunities unique to our area. We welcome you to Discover Tyler County.*

— Kelli Barnes, Publisher

### PUBLISHER

**POLK COUNTY PUBLISHING**

Kelli Barnes

### EDITOR

**TYLER COUNTY BOOSTER**

**WRITER/PHOTOGRAPHER**

**DISCOVER TYLER COUNTY**

Chris Edwards

### DESIGN EDITOR

**TYLER COUNTY BOOSTER**

**EDITOR/DESIGN EDITOR**

**DISCOVER TYLER COUNTY**

Beth Faircloth

### ADVERTISING

**TYLER COUNTY BOOSTER**

**DISCOVER TYLER COUNTY**

**PHOTOGRAPHER**

**DISCOVER TYLER COUNTY**

Donna Hammer

### ADVERTISING

**DISCOVER TYLER COUNTY**

Rebecca Byley

### REPORTER/PHOTOGRAPHER

**TYLER COUNTY BOOSTER**

**WRITER**

**DISCOVER TYLER COUNTY**

Mollie LaSalle





Start your trip here! The visitor center, in the middle of the Big Thicket region, is the best place for information about the preserve. Swing by to grab some maps before you hit the trail or stay awhile and watch our park film. We're here to help you make the most of your Big Thicket trip. **NPS Photo**

# TAKE A HIKE!

## Hiking through the Big Thicket National Preserve

Information and photos courtesy of the National Park Service

The Big Thicket National Preserve protects 113,114 acres of land and water spread over seven counties in southeast Texas. While public roads connect the units of the preserve, few roads lead into it; the best way to explore and experience this area is by foot or by boat. Approximately 40 miles of hiking trails and countless miles of creeks, bayous, and the Neches River wind through the Big Thicket. Most people come to walk, bird-watch, canoe, and kayak.

There are 4 trails in Tyler County, located in 3 units of the preserve.

The visitor center is located about 7 miles north of the city of Kountze at the intersection of US 69/287 and FM 420. Address: 6102 FM 420, Kountze, TX 77625 Hours: 9:00 am–5:00 pm, 7 days a week (closed Thanksgiving, December 25, and January 1) Phone: 409-951-6700

### Questions About Camping?

What does backcountry camping mean?

There are no campgrounds in the preserve. You'll need to hike or paddle in with all of your supplies. Camping is allowed in the woods, at least 500 feet from roads, trails, and the park boundary. Paddlers may camp on sandbars along certain waterways.

Camping in a vehicle at a trailhead or roadside pullout is prohibited.

### Camping Permits

A free permit is required for camping in the preserve. All permits are issued at the visitor center. No reservations needed.

### Check-In

Check in for your permit at the visitor center. You'll need to provide the following information about your trip:

- Where you plan to camp, including the entry/exit trailhead
- Dates of your trip
- Number of people in your group (8-person maximum)

- Method of travel (foot, kayak, canoe, etc.)
- Vehicle description: color, make, model, license plate
- Your contact information: name, address, phone number
- Emergency contact information: name, phone number

### Check-Out

To check out, call 409-951-6701 and leave a message that includes the name of the permit holder and the date.

### Where to Camp

Camping is available year-round in the Big Thicket, though there are some seasonal closures to certain areas. Most of the preserve is open for camping during the spring and summer months (March 1–September 30). In fall and winter (October 1–February 28), camping is limited to areas that do not allow hunting. Check the park map to see the location of each unit.



## TURKEY CREEK UNIT



### Pitcher Plant Trail



Stay dry on the wooden boardwalk above the pitcher plant bog. **NPS Photo/Scott Sharaga**

#### The Hike

The Pitcher Plant Trail leads hikers to a vast, natural garden of carnivorous pitcher plants and sundews.

The trail is a 1-mile loop with options to hike further north or south on the Turkey Creek Trail. To see the pitcher plants, follow the paved path from the trailhead as it leads to a wooden boardwalk over the pitcher plant bog. Past the boardwalk, the trail becomes a dirt path as it goes through the woods, briefly joins the Turkey Creek Trail, and loops back to the trailhead.

#### Getting Here

GPS Coordinates:  
30.582384, -94.336575

The trailhead is on County Road 4850, about 2 miles south of FM 1943 and 4.5 miles east of Warren.

#### Accessibility

The beginning of the trail is paved and leads to a wooden boardwalk through the pitcher plant bog. Beyond the boardwalk, the trail is a dirt path, which can get muddy following

heavy rain.

#### More Information

Backcountry camping is allowed along the Turkey Creek Trail year-round with a free permit.

The first quarter-mile of the Pitcher Plant Trail passes through longleaf pines into a large bog of pitcher plants and sundews. The 1-mile trail continues through a mixed woodland, joining the Turkey Creek Trail for a short distance before looping back to the trailhead. This loop trail is marked with green trail blazes.

#### Amenities

Benches/Seating, Information Kiosk/Bulletin Board, Parking - Auto, Pets Allowed, Picnic Table, Restroom, Restroom - Accessible, Toilet - Vault/Composting, Trailhead, Trash/Litter Receptacles, Wheelchair Accessible

A pair of pale pitcher plants (*Sarracenia alata*). Can you see the wasp going down the funnel?  
**NPS Photo/Scott Sharaga**





# TURKEY CREEK UNIT



## Turkey Creek Trail



Find solitude on the Turkey Creek Trail **NPS Photo**

### The Hike

This is the northernmost trailhead for the Turkey Creek Trail. Start here and head south to experience the backcountry of the Turkey Creek Unit.

The entire Turkey Creek Trail is 17 miles long, from FM 1943 to FM 420. Shorter hikes are possible along the route, as the Turkey Creek Trail crosses a few roads and trails along the way.

### Getting Here

GPS Coordinates:  
30.613469, -94.344245

This trailhead is located 3.5 miles east of Warren on FM 1943. The Turkey Creek Trail can be accessed via these trailheads as well: Pitcher Plant Trail, County Road 4825, Gore Store Road, and Kirby Nature Trail.

### Accessibility

The trail surface is hard-packed soil with uneven surfaces, tree roots, and muddy sections.

### More Information

Located in the Turkey Creek Unit of Big Thicket National Preserve

Backcountry camping is allowed on the Turkey Creek Trail year-round with a free permit.

Six trailheads provide access to different parts of this 17-mile trail, providing opportunities for hikes of varying distances. The trail roughly parallels Turkey Creek and passes through several plant communities, from hardwood forests to cypress sloughs. Hikers can access this trail on FM 1943, 3.5 miles east of Warren; at the Pitcher Plant Trail, 2 miles south of FM 1943 on County Road 4850; on County Road 4825; along Gore Store Road, 4 miles east of US 69/287; and on FM 420 at the Kirby Nature Trail. This trail is marked with red trail blazes.

### Amenities

Benches/Seating, Grill, Parking - Auto, Pets Allowed, Picnic Table, Restroom, Restroom - Accessible, Toilet - Vault/Composting, Trailhead, Trash/Litter Receptacles



Pitcher plant bog  
**NPS Photo / Mary Kay Manning**



# HICKORY CREEK SAVANNAH UNIT

## Sundew Trail



Follow the Sundew Trail through a forest of pines and ferns **NPS Photo/Mark Kay Manning**

### The Hike

This is one of the best places in the Big Thicket to see birds and wildflowers, as well as the tiny red sundew plants.

Both the inner 0.3-mile loop and the outer 1-mile loop pass through a small bog of pitcher plants. The inner loop continues through a savannah that has abundant summer wildflowers, while the outer loop winds through a pine forest with many longleaf pines.

### Picnic Area & Pavillion

The picnic area at the trailhead has a large shaded pavilion with 4 picnic tables and 2 charcoal grills.

### Getting Here

GPS Coordinates:  
30.548274, -94.409666

The trailhead is located about 4 miles south of Warren and 14 miles north of Kountze. From US 69/287, head west on FM 2827, then turn left (south) onto County Road 1910. Follow the signs to the Sundew Trail parking area.

### Accessibility

The wheelchair-accessible inner loop has a mix of pavement and wooden boardwalks. The outer loop is a dirt path and can get muddy after heavy rain.

### More Information

Located in the Turkey Creek Unit of Big Thicket National Preserve

Backcountry camping is allowed on the Turkey Creek Trail year-round with a free permit.

Six trailheads provide access to different parts of this 17-mile trail, providing opportunities for hikes of varying distances. The trail roughly parallels Turkey Creek and passes through several plant communities, from hardwood forests to cypress sloughs. Hikers can access this trail on FM 1943, 3.5 miles east of Warren; at the Pitcher Plant Trail, 2 miles south of FM 1943 on County Road 4850; on County Road 4825; along Gore Store Road, 4 miles east of US 69/287; and on FM 420 at the Kirby Nature Trail. This trail is marked with red trail blazes.

### Amenities

Benches/Seating, Grill, Parking - Auto, Pets Allowed, Picnic Table, Restroom, Restroom - Accessible, Toilet - Vault/Composting, Trailhead, Trash/Litter Receptacle



Pink sundews. Look closely and you can see tiny insects caught on the sundews' leaves. **NPS Photo**



## BEECH CREEK UNIT

### Beech Woods Trail



Ferns create a jungle-like atmosphere on the Beech Woods Trail. **NPS Photo/Scott Sharaga**

#### The Hike

The Big Thicket forms the southwestern limit of the range of the American beech tree, which extends from southeast Texas to the northeastern United States and Atlantic Canada. Follow the Beech Woods Trail to see magnificent beech trees, along with magnolia and loblolly pine.

The trail is a 1-mile loop with an out-and-back section at the beginning. If you want to hike further, follow the old logging road beyond the loop to explore more of the Beech Creek Unit.

#### Getting Here

GPS Coordinates:  
30.719469, -94.227299

The trailhead is on FM 2992 near Spurger. From Kountze, head north on US 69/287, then east on FM 1013, then north on FM 2992. From Woodville, head east on FM 1746, then south on FM 2992.

#### Accessibility

The beginning of the trail follows a wide, old dirt road. The trail portion is gener-

ally wide-enough for a wheelchair, but some obstacles exist, such as tree roots and uneven surfaces. The trail is hard-packed soil, covered with leaves.

#### More Information

Located in the Beech Creek Unit of Big Thicket National Preserve Backcountry camping is allowed in spring and summer with a free permit.

Hikers in the Beech Creek Unit can follow either the Beech Woods Trail, which makes a 1-mile loop, or a former dirt road that extends from the trailhead for 6 miles through the unit. The Beech Woods Trailhead is located on FM 2992, 1.5 miles north of FM 1013. NOTE: Hunting is allowed in the Beech Creek Unit during the fall/winter season. The trail is not in the hunting area. Hikers who explore beyond the trail during hunting season are encouraged to wear Hunter Orange.

#### Amenities

Benches/Seating, Grill, Parking - Auto, Pets Allowed, Picnic Table, Restroom, Restroom - Accessible, Toilet - Vault/Composting, Trailhead, Trash/Litter Receptacles



Forest of American beech trees  
**NPS Photo / J. Barker**



# Lake Tejas

The best swimmin' hole in East Texas

*Come enjoy the day or an overnight stay*

**152 Lake Tejas Loop Colmesneil, Tx. 75928**  
**(409)837-5757 ext 1022 laketejas@colmesneilisd.net**





## ESCAPE TO LOUISIANA'S LARGEST CASINO RESORT

Play the largest gaming floor in the Lake Charles Area! With live bingo, poker, sports betting, award-winning restaurants, three beautiful hotels, and the #1 golf course in Louisiana!



*Louisiana's Best Bet!*



1-10 Exit 44-Kinder, LA | 800-584-7263 | [ccrla.com](http://ccrla.com) |  

Coshatta supports responsible gaming. Call 877-770-7867. Coshatta Casino Resort is owned and operated by the Coshatta Tribe of Louisiana.









World Famous Pickett House, the jewel of Heritage Village. **Photos by Mollie LaSalle**

# The Pickett House: Chicken and Dumplins Every Day

---

***“If you go away hungry, it’s your fault.”***

---

By Mollie LaSalle

**T**he Pickett House restaurant has something of a reputation; this old school house nestled in the east Texas piney woods has been serving old-fashioned, down-home meals boarding house style since the 1960’s.

This unassuming old building is known for its simple fare of fried chicken and various tasty side dishes. On any given day, you can get your fill of their world-famous fried chicken, and if you leave still hungry, you’ve got no one to blame but yourself.

The Pickett House story begins in 1908 when some Polk Countians donated two and one - half acres of land near the old Midway church. A two-room schoolhouse was built on the land, and named “Midway School”. The work was done by the W.T. Carter sawmill in Camden. The Midway Way school ceased to operate in 1945, when the students were transferred to the Big Sandy School District. At that point in time, Charles Dickens purchased the building, and moved it to Highway 190, where he operated it as the County Line Grocery Store for several years.

Eventually, Clyde Gray, the owner of Heritage Gardens

in Woodville, bought the building, and through some cloak and dagger operations, the old Midway school building found its final home at Heritage Gardens. The Pickett House formally opened in 1965 in the spot it is in to this day; it is the drawing card to visitors of the now re-named Heritage Village and Museum.

The menu at the Pickett House has pretty much remained the same since they opened: All you can eat fried chicken, potatoes, gravy, greens, green beans, biscuits, cornbread muffins, and all the fixings. You pretty much help yourself to your choice of drink, including sweet or unsweet tea, lemonade, water, buttermilk, and coffee. canned drinks are also available for purchase. The food is brought to your table, and you eat what you want, and seconds, (or thirds) are brought out when you need a re-fill. In house peach cobbler with vanilla ice cream, (if you want it) is offered to finish off your meal, and if you left room for it, it is a treat.

There is a sign and it is their “Eatin’ Rules” which says: 1. Fix your own drink at the drink bar. 2. We will show you where to sit. 3. The cooks will bring the food. 4. Eat all you want-what you can’t eat leave on the table-we got hogs to feed. 5. Take your plate & tools to the kitchen, boarding house style. 6. The cook’s pot goes to the cooks.





The first thing you will notice inside the Pickett House is the extensive collection of vintage circus posters adorning the walls. There are two most frequently asked questions from visitors, one being about the posters. Clyde Gray's good friend Bubba Voss was a circus expediter with over 22 years experience traveling the United States playing trumpet in circus bands. Voss began donating the circus posters during the early days of the Pickett House's existence, some dating as far back as 1914, and no, they are NOT for sale. The other question most frequently asked is where did the name originate from for the restaurant. C.A. Pickett was a good friend of Clyde Gray's who was instrumental in helping Gray secure loans through the Small Business Administration. Pickett was a mayor in Houston in the early 1940's.

The Pickett House has become somewhat of a celebrity lately. For the folks who are not lucky enough to live in Tyler County, there have been countless stories written about the restaurant. The popular national syndicated weekly show, "The Texas Bucket List" visited the Pickett House in July, and host Shane McAuliffe and crew greatly enjoyed the food, along with the ambiance of the village.

The Pickett House recently began hosting "Pickin' at the Pickett House", earlier this year, on the last Friday

of every month, which has showcased various musical acts from around east Texas. The inaugural show took place Memorial Day weekend 2024, and featured up and coming entertainer Tyler Dozier of Spurger. In October, Yasha Hubert, a classically trained violinist from Chester, entertained diners, and November's performer was Brian Winfield from Nacogdoches.

New manager Troy Miles, elaborated on some of the plans he has for the restaurant going forward into the new year, "We plan on trying to get some better marketing for the restaurant, going into different cities like Lufkin, Livingston, Jasper, and even Beaumont, putting out flyers, maybe even billboards, hopefully bring in more people just out of curiosity, to check out the place". He added, "revamping the building....kind of not necessarily a face-lift, but make it close to its original appearance, make it brighter, more appealing, have it shine like the jewel of Tyler County, as it should be".

The Pickett House is located inside Heritage Village at 157 Private Road 6000, Woodville, Texas. Hours of operation are: Sunday, 11 a.m.-3 p.m., Monday-Thursday, 11 a.m.-2 p.m., Friday & Saturday, 11 a.m.-7 p.m. The Pickett House is closed on Thanksgiving, Christmas, New Year's Eve, New Year's Day, and Easter. ■





From the collection of Clyde Gray's good friend Bubba Voss. Posters date back to the early 1910's.







Nestled in the heart of Woodville, TX, the Stagecoach Inn of Woodville isn't just a place to stay – it's a place to feel at home.

Come stay with us at the Stagecoach Inn of Woodville and see for yourself why we are rated as the #1 motel in Woodville on TripAdvisor!

(409) 331-1100

902 S. Magnolia St.  
Woodville, TX 75979

Reserve your stay online at:  
[stagecoachinns.com](http://stagecoachinns.com)



**COMMUNITY BANKING...**  
**WHERE RELATIONSHIPS MATTER.**



We have been helping our clients achieve their goals for over 100 years, whether it is to open a new business, grow an existing business, build a home, save for college or just have a hassle-free banking experience. Citizens State Bank is designed to make your life a little better, your banking a little easier and help you achieve your dreams.

Learn more at [citizensbank.net](http://citizensbank.net) and open an account today.



*Relationships Matter*

877.621.7658

# David Norton Tire Center

WHEELS  
BRAKES  
A/C  
ALIGNMENTS  
SHOCKS  
STRUTS  
RADIATORS  
BATTERIES  
BELTS  
AND MORE!

**DAYTON**



1116 A. S. MAGNOLIA • WOODVILLE, TEXAS 75979

409-283-8191



**Mental Health  
Concerns  
are Common**

*We are here to help.*



**Burke**  
Celebrating **50**  
Years

**Woodville Clinic at  
Tyler County Hospital**  
Call (936) 237-3786  
[www.myburke.org](http://www.myburke.org)





Photos and information courtesy of Allan Shivers Library & Museum

## DAY TRIP ALLAN SHIVERS LIBRARY & MUSEUM

Step into the life, career, and accomplishments of Governor Allan Shivers to preserve, educate, and share his role in contributing to the history of Texas.

Self-guided tours are offered Tuesday through Friday, 10 a.m. - 3 p.m. and Saturday, 10 a.m. - 2 p.m. Admission is free for individuals and groups of less than 10. Please call ahead for groups of 5 or more. Admission is \$2 for docent-led tours for groups of 10 or more. There is no fee for school groups.

Adjoining the museum is a completely equipped library for reading, study, and research.

The Allan Shivers Library & Museum is located at 302 N. Charlton, Woodville, TX 75979. The phone number is 409-283-3709.

For more information visit [allanshiverslibrary.com](http://allanshiverslibrary.com).









# Naskila Casino:

## AC Tribe's recipe *for winning*

By Chris Edwards

**B**illing itself “The Luckiest Spot in Texas,” Naskila Casino, which is located on Alabama-Coushatta tribal land, between Woodville and Livingston, off of US Highway 190, is flourishing.

It provides visitors with a chance to win big without leaving Texas, and in 2024, the tribe announced plans to expand that vision further, with the construction of a new casino and resort. Final details are yet to be finalized on that front, but the tribe did confirm that the new venue will offer a variety of amenities, including, but certainly not limited to, hotel accommodations, new dining and entertainment options and a state-of-the-art casino gaming floor.

The tribe has fought an uphill battle to operate Naskila on its land. Most forms of gambling are prohibited in Texas, but the Kickapoo Tribe was permitted, under the Indian Gaming Regulatory Act of 1988, to operate a casino, and while the law allows federally recognized native American tribes to offer gambling on their reservation lands, both the Alabama-Coushattas and the Tigua tribes faced opposition with their efforts to offer gambling.

An attempt to open a casino on Alabama-Coushatta land in the early 2000s sputtered, and the tribe was only able to reopen Naskila in 2016. Since then the operation has greatly expanded, and in June 2022,

the United States Supreme Court sided with the tribes to affirm their right to offer gambling, regardless of state laws. Twenty-twenty-five could see a renewed legislative push to offer sports betting, statewide, in Texas.

A poll conducted in 2023 by the University of Texas showed that a majority – 75% – of participants favored gambling expansion in the state.

Tribal Council chairman Ricky Sylestine said the new casino will “not only provide significant economic benefits for those living and working in the region, but will also become a vibrant destination for visitors.”

Naskila, which with its current venue, offers dining options and live music, along with the many opportunities to win cash prizes, as well as vehicles, boats and other great offerings during different promotional events, encourages visitors to “come enjoy a whole world of winning.”

Naskila – which is tribal tongue for “dogwood,” offers more than 800 games, with titles such as “Dublin Your Luck” and “Crystal Star” to celebrity-themed games like Willie Nelson’s “Shotgun Willie,” and even a game based on the cult classic film “Little Shop of Horrors.”

Within its 30,000-square foot building, Naskila employs more than 400 team members, many of them tribal members, as well as many Tyler County residents. ■

*Naskila Casino is located at 540 State Park Road 56 near Livingston. The phone number is 936-563-2WIN*







The historic Peter Cauble House as it appears today. **Photos by Chris Edwards**

# Ties to Texas history in Peach Tree Village

By Chris Edwards

**T**he oldest house in Tyler County and a striking, beautiful brick chapel are basically all that remain of Peach Tree Village, which sits two miles north of Chester, off Farm Road 2019. According to historian Henry Chenoweth, Peach Tree Village is classified as a ghost town, yet it is more of a memorial from a son to his parents.

The son in question was born in 1860 as John Henry Kirby. As a lawyer, Kirby earned a reputation for representing lumber companies and took his fortune to invest in his homeland. He built a railroad and founded the Kirby Lumber Company. Kirby later served in the Texas Legislature for two terms. He also established the Kirby Petroleum Company, and with his many ventures, became known as “The Prince of the Pines,” in the eyes of his peers. That moniker would also serve as the title of a biography, written by Mary Lasswell Smith.

As accomplished in the eyes of the world as Kirby became, he never got beyond his raising. He preferred the quiet, rural atmosphere of Peach Tree Village and built his parents a home there, and in 1912, three years after his father died, he erected the red brick chapel in

honor of his parents.

While Kirby, whose list of titles stretches longer than most modern “Renaissance men” was the most famous export of Peach Tree Village, the area located near the Neches River, factors into the rich tapestry of our state’s history in surprising ways outside of its favorite son.

The village was founded by the Alabama Indians in the latter part of the eighteenth century. The name Peach Tree Village was given to the area by white settlers. Prior to that, it was known as Indian Village, and the white settlers in the region knew of the peaceful Alabama Indians and their trading post there. According to historian Bob Bowman, the Alabamas’ claim to the land that comprised Peach Tree Village was contested for the first time in 1834 by Col. Peter Ellis Bean, an American who served in the Mexican Army. Bean, who was stationed at Nacogdoches, applied for and received a grant of 11 leagues of land from the Mexican government.

Bowman writes that the natives who occupied the village were on good terms with the white settlers in the area, who included Peter Cauble and Valentine Ignatius Burch. Cauble, who settled at Peach Tree Village around 1831, was Burch’s father-in-law. The latter man





The striking chapel at Peach Tree Village.



The cornerstone of the Peach Tree Village chapel, which bears a dedication to John Henry Kirby's parents.

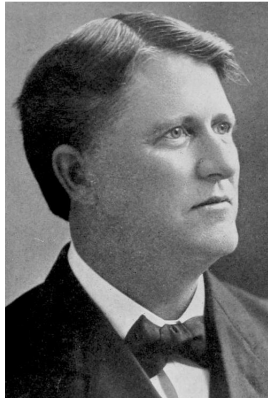
settled there about 1845 after marrying Cauble's youngest daughter.

Cauble, who was a first-generation American born to German immigrants, was a schoolteacher by trade. In Peach Tree Village, he became so well-known as a teacher that the residents bestowed the title of "Professor" upon him. He and his wife Mary Rotan moved to Peach Tree Village when Mexico offered plentiful parcels of land to homesteaders. The house Cauble built around 1835 still remains.

The dogtrot house's porch faced the Jordan Ferry Road, otherwise known as the Old Beef Trail, and was once used to hail to travelers news of San Jacinto still standing, according to historian Col. Eddie Boxx. The house served as a major milestone, as the road sometimes known as the Old Beef Trail passed through Peach Tree Village along the timbered ridge into Polk County and on into the Brazos Valley.

The house is the oldest known structure still in use in Tyler County, and in 1846 was recognized via legislative action as a locator for pinpointing the common boundary line between Tyler and Polk counties, which is two miles west of the home. It is now owned by the Tyler County Heritage Society, which has taken care of it since 1990.

When Sam Houston began to build his army of Texians to fight for independence from Mexico, Cauble, then 50 years of age, joined up, as did his son-in-law. When the war ended, Cauble, whom Boxx has written about as an "irascible and a larger-than-life figure," returned to Peach Tree Village, where he and his family lived until his death. He served in many roles, including Road Commissioner and Justice



John Henry Kirby, the "Prince of the Pines" (Photo used by Creative Commons license)

of the County Court, after returning. Burch, who fought at the Battle of San Jacinto, also became a leader in the community, and a key figure in the development of Peach Tree Village.

Burch and his wife Helen often hosted travelling Catholic missionaries, and the village thrived during the years of the Republic of Texas. It boasted a store, a cotton gin, saloon, grist mill, church, school and a post office. The Alabamas, who remained neutral during the Texas Revolution, gradually left Peach Tree Village and moved five miles southeast to the Fenced-in Village, an area of land granted to the tribe by the Republic of Texas.

The construction of the Trinity and Sabine Railway in 1883 and establishment of the city of Chester caused a decline in Peach Tree Village, as the post office, school and commercial businesses were moved to Chester. The chapel Kirby built in 1912 still stands, and it, along with two acres of land surrounding it, are under the trusteeship of the Tyler County Commissioners Court. Along with the chapel, a donation of 22.4 acres of land was developed into Camp Ta-Ku-La, a non-denominational campsite that is available to churches and groups for activities, retreats and youth camps. According to the site's history, the word "Ta-Ku-La" is an Alabama Indian word meaning "peach tree."

Even though little remains of the once prosperous frontier town, its history is still accessible to anyone who finds their way there. The story of Peach Tree Village, as written by Kirby, is still on display on a sign in the center of the village and the art inside the chapel, which Kirby hired a Russian artist to render, uses images to tell the story of the area and its part in the formation of the state of Texas. ■



# Shopping Tyler County

Sullivan's Hardware and Gifts  
211 W. Bluff, Woodville  
409-283-2231  
Hrs: 7:30 – 5:30 Monday – Saturday

TCAL Art Gallery  
210 W. Bluff, Woodville  
409-242-7851  
Hrs: Monday – Friday 11-4; Saturday 11-3

Dixie's Vintage Vogue  
205 S. Magnolia, Woodville  
409-429-4080  
Hrs: Monday – Saturday 10 – 5

Studio 409  
814 W. Dogwood, Woodville  
Hrs: Monday – Saturday 10-5

Lorretta's Too Antique Mall  
502 N. Magnolia, Woodville  
409-363-9135  
Hrs: Monday – Friday 9:30-4:30;  
Saturday 9:30 – 3

Country to Classy Boutique  
105 E. Wheat, Woodville  
409-239-4584  
Hrs: Tuesday – Friday, 10-5

Everything U  
316 S. Magnolia, Woodville  
409-283-3311  
Hrs: Monday – Friday 6:30 – 6;  
Saturday 8 – 2

Bailey Made Tee's & Boutique  
Woodville  
Shopbaileymade.com  
Hrs: Monday – Friday 10 – 5;  
Saturday 10 – 2

Mott's Wholesale & TK&C Knives  
13250 Hwy. 92, Spurger  
409-429-3461  
Tkc.motts@gmail.com  
Hrs: Monday – Friday 7 – 6;  
Saturday 7 – 5

Passin Thru Boutique  
12212 US-69 S, Warren  
409-200-1395  
Passinthruboutique.com  
Hrs: Monday – Friday 7 – 5;  
Saturday 8 – 3

Dare to Dazzle  
1905 W Bluff St. Woodville  
409-350-7310





# WOODVILLE CHURCH OF CHRIST

*Keith Bellamy, Minister*

Sunday Morning  
Bible Class 9:30

Sunday Morning  
Worship 10:30

Sunday Afternoon  
Worship 1:00 pm  
(except first Sunday)

Wednesday Bible  
Study 6:00 pm

Watch us on Facebook Live and YouTube

1805 W Bluff, Woodville, TX 75979 | 409-283-5977



The  
CATHOLIC COMMUNITY  
of



OUR LADY OF THE PINES CHURCH

*welcomes you with great joy!*

MASS TIMES:

Saturdays: 4:30 PM (English)

6:30 PM (Spanish)

Sundays: 9:00 AM (English)



1601 North Pine St  
Woodville, Texas



Tuesday 10 a.m. Women's Bible Study & Fellowship  
Wednesday 5:30 p.m. Fellowship & Meal, 6:30 p.m. Bible Study  
Sunday Bible Study 10 a.m. Worship 11a.m.

*Pastor: Sis Gina Harrison*

1102 FM 1745 | Colmesneil, TX 75938 | 409.426.2017

# VICTORY

IN JESUS CHURCH

13626 FM 1746

Woodville (Town Bluff), Texas 75979

[www.vijbc.org](http://www.vijbc.org)

(409) 429-3460

Pastor

August S. Francis

(409) 499-6951

[pastor@vijbc.org](mailto:pastor@vijbc.org)



WOODVILLE METHODIST  
CHURCH

*A Global Methodist Church*

508 W. Bluff St., PO Box 698  
Woodville, TX 75979  
[Woodvillemethodistchurch.com](http://Woodvillemethodistchurch.com)  
Phone: 409-283-2471

Sundays

Sunday School: 9:45 a.m.  
Worship: 11 a.m.  
*Come visit us!*

## Woodville's First Baptist Church

*We are generations together  
reaching others with love,  
connecting them to Jesus,  
growing them in truth,  
serving them everywhere.*

**Sunday Schedule:**

Bible Study Groups 9:30 am  
Worship Gathering 10:45 am

[www.fbcwoodville.com](http://www.fbcwoodville.com)

202 S. Charlton St | Woodville, TX 75979

[info@fbcwoodville.com](mailto:info@fbcwoodville.com) | 409.283.2588



Sunday School 9:30am | Praise & Worship 10:30am  
Evening Service 6pm | Wednesday Classes 6:30pm

120 County Road 1095 | Woodville, TX 75979  
409-283-2447 | Pastor Wayne Watts

# VICTORY CAMP

Colmesneil

[changinggenerations.com](http://changinggenerations.com)

**ANNUAL SATURDAY CAMPS:**

**EASTER WALK WITH JESUS**

Saturday before easter weekend

**BACK TO SCHOOL RALLY**

3rd Saturday in August

**HARVEST PARTY**

4th Saturday in October

**BIRTHDAY PARTY FOR JESUS**

1st Saturday in December



**2472 FM 1745 N. Colmesneil, TX 75938 409-837-4472**



# Heritage Village

## Museum & Gift Shop

*Book your  
special events  
and parties with us.*

**Hours of Operation**  
9 a.m.- 3. p.m. Every day.

Closed Major Holidays  
Guided Tours & Group Rates available

Visit us at  
[heritage-village.org](http://heritage-village.org)  
to see our 2025 Schedule of Events.

Visit the  
*Clyde Gray House Museum*

to learn about the artist and  
founder of Heritage Village.

Dine at the world famous  
*Pickett House Restaurant*  
Home cooking served Boarding House style.  
**409-283-3371**

11 a.m.-2 p.m. Mon-Thurs  
11 a.m.-7 p.m. Fri-Sat • 11 a.m.-3 p.m. Sun  
*Pickin' at the Pickett House Live entertainment*  
Last Friday of the month 5-7 p.m.



*Cherokee Church at The Village*  
Wedding Venue  
Call us for availability & rates



*The Pickett House Restaurant*

Hwy 190 W. | Woodville, TX 75979 | 409-283-2272 | 1-800-323-0389





Dedicated Medical Center  
&  
Urgent Care

*Higher Quality*

PRIMARY CARE & URGENT CARE



ALICIA SCOGGINS, WHNP-BC, FNP-C



JESSALYN JONES, FNP-C



MEAGAN YEATES, APRN, FNP



CURTIS EVANS, APRN, FNP

Primary Care Providers

Urgent Care Providers

703 W. Bluff Street | Woodville, TX 75979 | 409-200-2811 | DMCUrgentCare.com

# TYLER COUNTY ART DISTRICT

*Emporium for the Arts, Inc.*  
*Community Centre | Concerts | Theatrical Events*  
*Event space for rent.*

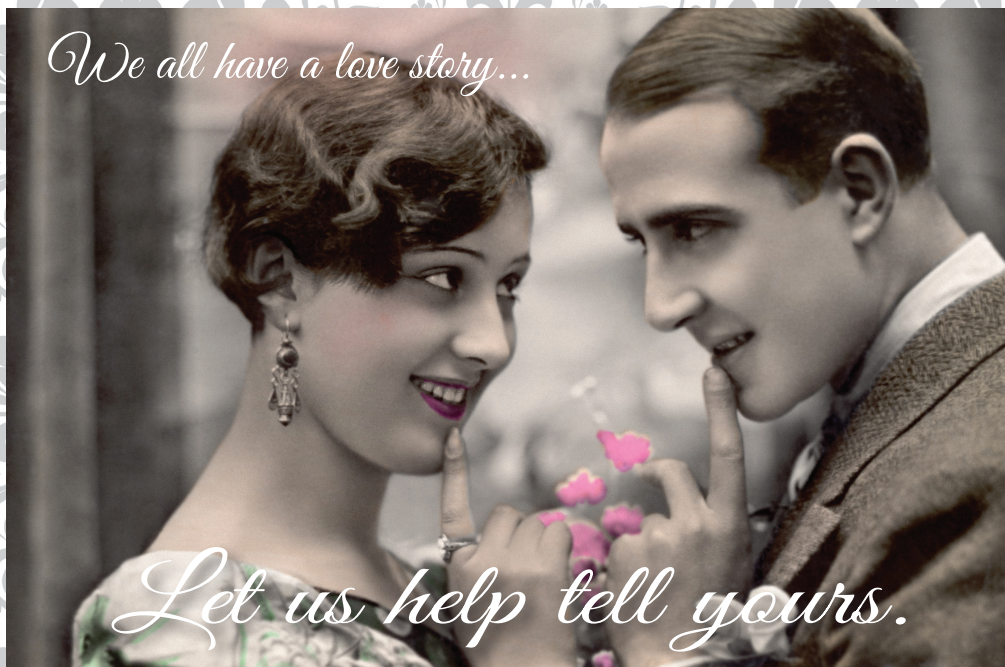
216 W. Bluff St., Woodville, TX 75979  
409-283-3832 | 409-200-4759 | [emporiumstage.org](http://emporiumstage.org)

*Tyler County Art League*  
*Art Centre & Sales Gallery*  
*Art classes offered.*

210 W. Bluff St., Woodville, TX 75979  
409-242-7851 | [tylercountyartleague.org](http://tylercountyartleague.org)  
Hours: Tuesday-Friday 11-4:30, Saturday 11-3



*We all have a love story...*



*Let us help tell yours.*



People you can talk to...  
Professionals you can depend on...

113 West Holly  
Woodville  
409-283-8218

2577 N. Wheeler  
Jasper  
409-384-5781

FM 1414-Chapel  
Burkeville  
409-565-2216



# McClure's Furniture & General Store

605 S. Magnolia • Woodville, Texas • (409) 283-2519

Ashley • Maytag • Western Accessories • Delivery Available





Photos by Donna Hammer

# **DAY TRIP** **LAKE TEJAS**

Lake Tejas offers overnight accommodations, day use, a concession stand and recreational activities. The swim beach has approximately 80 yards of sandy beach with plenty of room to roam. The lake’s buoyed swimming area is large enough to accommodate all levels of swimming ability, from the total novice to the advanced swimmer. There is plenty of fun for the entire family with our diving platforms, volleyball, slides, paddle boating, fishing piers, concession building, and hiking trails.

There are rustic cabins, varying campsites, and pavilions along with a highly sought after swim beach. The beautiful landscape, spring fed lake, and family friendly atmosphere make it the perfect place for birthday parties, scout campouts, school trips, vacations, family reunions, church retreats, or just a fun filled day in the sun.

email: [laketexas@colmesneilisd.net](mailto:laketexas@colmesneilisd.net)

Concession building/summer season  
409-837-2063

Off season voicemail  
409-200-0205

*Information sourced from [colmesneilisd.net](http://colmesneilisd.net) and [sites.google.com](https://www.google.com)*





# Shirley Electric

## 409-429-0368

40+ Years Experience  
Residential & Commercial  
Available 24/7

# GENERAC®

**SALES & SERVICE DEALER**

Financing Available



Email: [sales.service@shirleyelectric.com](mailto:sales.service@shirleyelectric.com)

Woodville, Texas  
T.E.C.L. # 35239

**In God We Trust**

**MARTINDALE**  
Real Estate Investments  
*To Buy or Sell Call Martindale!*

*Committed to bringing  
buyers and sellers together.*



321 S. Magnolia  
Woodville, TX 75979  
409-283-8727

202 Button Willow  
Village Mills, TX 77663  
409-834-6006

[martindalerealestate.com](http://martindalerealestate.com)

**TRENT  
ASHBY**  
STATE REPRESENTATIVE  
REPUBLICAN

**Proud to  
represent  
Tyler  
County**



Political ad paid for by the Trent Ashby Campaign



# Our services

## Care and recovery

Memory care unit  
Transitional care  
Chronic care  
Post-surgical recovery  
Cardiac recovery  
Pulmonary recovery  
Stroke recovery  
Hospice and palliative care  
Respite care

## Clinical services

24-hour skilled nursing  
Restorative nursing services  
Physician services  
Interdisciplinary care plans  
Medication administration  
Post-surgical stabilization  
Intravenous therapy  
Respiratory therapy  
Tracheotomy care  
Enteral and parenteral care  
Wound management  
Telemedicine

## Rehabilitation services

Physical, occupational, and speech therapies

## Diagnostic services

Laboratory services  
X-ray services

## Pharmacy services

Pharmacy services 7 days a week

## Other special services

Nutrition services  
(Therapeutic diets and selective menu)  
Personal care and hygiene administration  
Robust lifestyle/activity programs  
Social services  
Discharge planning and transition assistance



*A great place to call home.*

**WOODVILLE**  
HEALTH AND REHABILITATION CENTER  
*by Cantex Continuing Care Network*

**JOURNEYS**  
**WOODVILLE**  
HEALTH AND REHABILITATION

Nestled in the piney woods of East Texas, Woodville Health and Rehabilitation Center is a close-knit 98-bed community with a warm, inviting atmosphere. As a newly renovated facility with a home-town feel, residents enjoy a lush landscape that features large trees and colorful flowers, along with exercise programs, group outings, devotionals, and games. With strong ties to Tyler County and surrounding areas, our team offers skilled nursing and rehabilitation services 24 hours a day.



102 N Beech St., Woodville, TX 75799 | 409-283-2555 | [cantexcc.com](http://cantexcc.com)





## ENTERTAINMENT

# DOGWOOD FESTIVAL

Experience the annual celebration of the stunning Dogwood trees in Woodville, Texas at the Tyler County Dogwood Festival. Join us for our three weekends filled with music, food, arts, and fun for the whole family!

### *2025 Festival Theme*

From Pines to Prosperity-  
Timber Industry of Tyler County

Festival of the Arts Weekend

March 22-23, 2025

Western Weekend

March 28-29, 2025

Queen's Weekend

April 5, 2025

For more information visit [tylercountydogwoodfestival.org](http://tylercountydogwoodfestival.org)







## ENERGIZING COMMUNITIES

You provide the power that helps our communities grow. Learn more about how Sam Houston Electric Cooperative and our members work together to make East Texas a better place to live at [SamHouston.net/community](http://SamHouston.net/community).



**"SELLING THE PINEY WOODS SINCE 1997"**

## MOFFETT & COMPANY EAST TEXAS LAND



*When You're Buying or Selling*

Contact the Pineywoods Specialists

802 W. Bluff St, Woodville - (409) 283-8737

[WWW.PINEYWOODS.COM](http://WWW.PINEYWOODS.COM)



**don't miss  
Woodville's  
MOST INTERESTING STORE**

- Hardware
- Fasteners
- Garden
- Gifts
- Paint
- Tools
- Electrical
- Plumbing
- Home Goods

**Since 1944**

**"For all your hardware needs...and much more."**

# SULLIVAN'S ACE Hardware

211 W. Bluff (One block west of the courthouse) • 283-2231  
Monday-Saturday 7:30-5:30



## RAMSEY RANCH

Wedding & Event Venue

For more information check out  
our website:  
[www.ramseyranchevents.com](http://www.ramseyranchevents.com)


FOLLOW US ON OUR SOCIAL MEDIA





# Lake Tombigbee

CAMPGROUND



RV & TENT SITES - CABINS - LODGE ROOMS  
FISHING - SWIMMING - WATERCRAFT RENTAL  
PARK STORE - DAY PASSES - PAVILION RENTAL

1427 Campground Rd. | Livingston, TX 77351  
936-563-1220

# Fowler Realty

907 West Bluff St.  
Woodville, Texas 75979  
Office Phone  
(409) 331-9636  
www.fowler1st.com





Randy B & Jared W  
(409) 331-0044 Woodville  
randy.b.carter@gmail.com  
jaredwaynecarter@gmail



# Your Community, Your Credit Union

**Rave** FINANCIAL®  
800-892-1111 | 430 S. Magnolia - Woodville, TX




Insured by NCUA.



# Find your happy place in the woods

## Camping and RV Parks



### **Selah Acres**

717 County Road 1700  
Warren, TX 77664  
409-219-6463  
Facebook/ Selah Acres

### **Martin Dies Jr. State Park**

634 Park Road 48 South  
Jasper, TX 75951  
409-384-5231  
tpwd.texas.gov

### **Triple D Ranch RV**

4299 County Road 4800  
Warren, TX 77664  
409-547-2248  
tripledranchtx.com

### **Windmill Farm RV & Bed & Breakfast**

340 County Road 1245

Warren, TX 77664

409-377-0126

windmillfarmbedandbreakfast.com

### **Lake Tombigbee**

1427 Campground Road  
Livingston, TX 77351  
936-563-1220  
alabama-coushatta.com

### **Paradise in Woodville RV Park**

1510 Hwy. 190 West  
Woodville, TX 75979  
409-283-7018  
paradiseinwoodvillervpark.com

### **Triple Creek RV Music Park**

2850 PR 8335  
Woodville, TX 75979

409-283-3799

triplecreekrv.com

### **Sunset RV Park and Cabins**

1445 US Hwy 69 N  
Woodville, TX 75979  
409-283-2290  
sunsetrvparkandcabins.com

### **Backyard RV Park**

1200 N. Wheeler  
Colmesneil, TX 75938  
409-200-9516

### **Magnolia Ridge**

1376 Magnolia One  
Woodville, TX 75979  
409-429-3491  
www.recreation.gov



# Local Eats



## THE BURGER HOUSE

905 N. WHEELER  
COLMESNEIL, TX 75938

Burgers, chicken strips, salads, homemade onion rings and desserts

Hours: Mon-Sat 10 am-6:45pm

Call in orders: 409-837-2321



## PICKETT HOUSE RESTAURANT

157 PRIVATE ROAD 6000 | WOODVILLE, TX 75979

Boarding House style serving fried chicken, chicken and dumplings, country vegetables, cobbler, biscuits and cornbread

Hours: Mon-Thurs 11am-2pm, Fri-Sat 11am-7pm, Sun 11am-3pm

For reservations or more information: 409-283-3371 or toll free 1-800-323-0389



## ELIJAH'S CAFE

810 S. MAGNOLIA  
WOODVILLE, TX 75979

Beef tips and rice, chicken pare-san, chicken pot pie, chicken spaghetti, fried catfish, chicken fried steak, Granny Fay's meatloaf, burgers, quesadillas, Mama Geraldine's Pot Roast, vegetable plate

409-331-9090  
elijah's.cafe



## WILD BILL'S GRILL

233 US HWY. 190  
WOODVILLE, TX 75979

Full breakfast menu, burgers, steaks, chicken strips, chicken fried steak, sides, desserts

Hours: Mon-Sat 6am-9pm

For more information: 409-331-9811  
wildbillsgill.com



## COUNTRY BOYS SMOKING FOOD TRUCK

Grilled cheese, bbq sandwiches, quesadillas, street tacos, fries, pasta, fish

409-200-1538  
Or email  
specialsmoking@gmail.com



## EVERYTHING U

316 S. MAGNOLIA  
WOODVILLE, TX 75979

Coffee!

409-283-3311



## JUDAETS FIRE & ICE FOOD STAND

200 N. MAGNOLIA  
WOODVILLE, TX 75979

Snowcones, ice cream, hot and cold coffee

888-945-0911  
info@fireandicelic.net



## VINNY'S CAJUN KITCHEN

135 IVANHOE DRIVE  
WOODVILLE, TX 75979

Pork chops, baked potatoes, smoked boudin, ribs, gumbo, homemade soup, pulled pork, catfish and shrimp baskets, hamburgers, eggrolls

409-200-5853



## SWEET LIFE BAKERY

Homemade cakes, pies and cookies

409-231-0220  
erin@sweetlifebakery.com



## TIMBERS GRILLE - INSIDE NASKILA CASINO

HWY. 190 BETWEEN WOODVILLE & LIVINGSTON  
540 STATE PARK ROAD 56, LIVINGSTON, TX 77351  
936-563-1648

Sunday - Thursday 6 a.m. - 12 a.m.; Friday-Saturday 6 a.m. - 2 p.m.

Full breakfast all day; salads, pizzas and wings, steak and lobster, fish, alfredo, gumbo, salmon, tacos, quesadillas, sandwiches, burgers





**BULLDOG CAFE**  
203 W. ELDER, COLMESNEIL  
409-837-2010

Full breakfast, fish, shrimp, chicken fried steak, hamburgers, salads, sandwiches



**BAR-B-Q PITT**  
11861 US-69, WARREN  
409-547-2203

Barbecue, fried chicken strips, catfish, shrimp, ribs, gumbo, hamburgers



**DONUT PALACE**

422 S MAGNOLIA ST,  
WOODVILLE, TX 75979  
409-283-3181

Donuts, breakfast sandwiches, kolaches, coffee, soda, juice



**WISE EATS & TREATS**  
219 S. MAGNOLIA  
409-554-7363  
WISEEATSANDTREATS@OUTLOOK.COM

Take out or drive up only  
Brisket, links, ribs, loaded potatoes, potato salad, cole slaw, beans and treats



**SEÑOR TOROS**  
1966 US HWY. 69 S,  
WOODVILLE, TX 75979  
409-331-9958

Mixed drinks, tamales, enchiladas, fajitas, tacos, burritos, cheese dip, salsa, guacamole



**LA ENCHILADA**  
1206 S. MAGNOLIA,  
WOODVILLE, TX 75979  
409-283-6881

Mixed drinks, nachos, stuffed jalapeños, fajitas, enchiladas, taco salad, chimichanga, chili rellenos



**CHINA CAFE**  
104 N. MAGNOLIA,  
WOODVILLE  
409-283-2800  
CHINACAFEWOODVILLE.COM

Egg rolls, crab Rangoon, chicken teriyaki, Fried or steamed dumplings, wonton soup, fried rice, lo mein, pepper steak



**HITCHIN' POST**  
2201 BUTTON WILLOW DR.,  
VILLAGE MILLS, TX  
409-547-5027

Steak, shrimp, full breakfast, southern meals, baked potatoes, yeast rolls



**SAKURA**  
1011 S. MAGNOLIA,  
WOODVILLE  
409-200-2360

Monday – Sunday 11 a.m. – 9 p.m.  
Sakurawoodville.com  
Asian cuisine and sushi



**ROSSANA'S TAQUERIA**  
1901 S. MAGNOLIA, WOODVILLE  
346-442-7267  
ROSSANAS-TAQUERIA.SQUARE.SITE

Taco shop with fresh, authentic street tacos, barbacoa, tortas, burritos, quesadillas, Al Pastor, chorizo



**J BIRD'S DOGWOOD  
SCRATCH KITCHEN**  
202 W. BLUFF, WOODVILLE  
409-200-2024

7 a.m. – 2 p.m. – closed Saturdays

Chicken pasta salad, tuna salad, chicken bacon ranch wrap, boudin grilled cheese, burgers, chicken and catfish baskets





## ENTERTAINMENT

# TRIPLE CREEK RV MUSIC PARK

If you like music, good food, friendly people, and being in the woods, you will LOVE Triple Creek RV! We have weekly music jams, potluck suppers, and more every weekend in the winter. Come and join in the fun!

Each Saturday night features Gospel, Country, and Bluegrass (4th weekend of the month is bluegrass).

There are potluck dinners at 5 and open music jams Friday and Saturday afternoons (during the winter).

2850 Private Road 8335, Woodville, TX 75979

409-283-3799

For more information visit: [triplecreekrv.com](http://triplecreekrv.com)





### Our Team

Tyler County Title, LLC has a staff of highly skilled professionals in the Title Industry.

You will find our staff very courteous and knowledgeable and willing to complete all your Real Estate Title/Escrow Transactions as quickly and professional as possible.

We are here to serve you!  
Send your orders to: [orders@tylercotitle.com](mailto:orders@tylercotitle.com)

### Services

We provide a full-range of real estate closing and title insurance services throughout Texas. We now offer bilingual closings.



## Tyler County Title, LLC

318 W. Dogwood St. • Woodville, TX 75979  
(409) 283-2582



## BE A PART OF THE DISCUSSION

ADVERTISE IN THE

# East Texan

### DEADLINES

Fall | September 1

Winter | December 1

Spring | March 1

Summer | June 1



**Madison Bland**

Polk County  
Ad Manager

(832) 540-2275  
[madison@polkcountypublishing.com](mailto:madison@polkcountypublishing.com)



**Donna Hammer**

Account  
Executive

(409) 429-0085  
[donna@polkcountypublishing.com](mailto:donna@polkcountypublishing.com)

- ▶ Printing 20,000 copies
- ▶ Covering 20+ counties
- ▶ 90% advertiser retention

**Scan here  
to see all issues**







## TYLER COUNTY APPRAISAL DISTRICT



Have you recently acquired or sold property in Tyler County?

Contact us to make sure we have: Correct Ownership, Address,  
Eligible Exemptions, Eligible Ag or Timber Appraisals

Tyler County Tax Appraisal District  
806 West Bluff St. | P.O. Drawer 9  
Woodville, TX 75979  
[www.tylercad.net](http://www.tylercad.net) | (409) 283-3736

Serving Tyler County since 1995



## EAST TEXAS HOME HEALTH

*Thank  
you*

*for letting us  
care for you  
in this great community*

936-969-2103

Locally owned and operated.  
[www.ethhc.com](http://www.ethhc.com)

## LAWSON INSURANCE AGENCY



*Get an instant quote!*

[www.lawsoninsurancetx.com](http://www.lawsoninsurancetx.com)

Angie Neal, Agent

Auto Insurance  
Home Insurance  
Home Liability Insurance  
Life Insurance

**(936) 897-2573**  
ZAVALLA, TEXAS







*The* **LUCKIEST SPOT** *in*



## **TEXAS-SIZED JACKPOTS DOWN 59 IN LIVINGSTON, TX!**

24-hour Excitement  
790 of the Hottest Machines  
Delectable Dining at 2 Restaurants

Food Specials  
Incredible Giveaways  
Players Club Benefits



**NASKILA**  
CASINO



540 State Park Road 56  
Livingston, TX 77351

**936.563.2WIN**  
naskila.com



**OXYGEN**

---

**NEBULIZERS**

---

**WHEELCHAIRS**

---

**HOSPITAL BEDS**

---

**CPAP/BI-PAP**

---

**WALKERS/ROLLATORS**

---

**BEDSIDE COMMODORES**

---

**AND MORE...**

Medicare, Medicaid &  
most insurance accepted.



# **AREA MEDICAL**

Serving East Texas since 2006



# **SUPPLIES**

**Monday-Friday 8:30am-5pm**

After hours service & local delivery available.

1015 S. Magnolia St. | Woodville, TX 75979

T: 409-331-1400 | F: 409-331-9180 | areamedicalsupplies@yahoo.com

**Owner: Peggy B. Myers**