



ROCHELLE News-Leader

WEEKEND EDITION | WWW.ROCHELLENEWS-LEADER.COM

Today's RNL issue sponsored by Community Unity member:

ROCHELLE
Community Unity
Shop • Play • Stay

CENTRAL ILLINOIS LOAN

310 Eagle Drive
815-561-4035

Vol. 106 • No. 3

LOCAL NEWS... LOCAL VIEWS SUNDAY, MAY 4, 2025 \$1.25

More coverage. Less spendage.

Discounts up to 40%
Get more. Spend less. It's that simple when you get car insurance from us. Like a good neighbor, State Farm is there. **CALL FOR A QUOTE 24/7.**

Terri Schaefer, Agent
Bus: 815-562-7063
terri.schaefer.115n@statefarm.com

State Farm
State Farm Mutual Automobile Insurance Company, 0901129
State Farm Indemnity Company, Bloomington, IL



Nurses serve important roles

Nurses Week for 2025 will take place from May 6-12. **Page 8**

WEATHER

 SUNDAY HIGH LOW 59 43	 MONDAY HIGH LOW 58 40
 TUESDAY HIGH LOW 69 46	 WEDNESDAY HIGH LOW 70 44

ROCHELLE
Community Unity
Shop • Play • Stay

Today's RNL issue sponsored by Community Unity member:

COUNTRY FINANCIAL

AUTO | HOME | LIFE | BUSINESS | RETIREMENT

501 N. 6th St.
815-562-8164

OBITUARIES

- KEITH WORLEY
- ROBERT EUGENE WHITE
- TRACY LOUISE MCBEE

See page 4

INSERTS

- MENARDS

INSIDE

Local News.....2, 3, 5
Obituaries.....4
Opinion.....6
Community.....7



RPD sees locker room renovation

Camera upgrades coming in near future

BY JEFF HELFRICH
MANAGING EDITOR

ROCHELLE — The Rochelle Police Department recently wrapped up a locker room renovation project and will soon upgrade its camera system at its building and City Hall, RPD Chief Pete Pavia said April 16.

The \$251,950 locker room renovation included shower improvements to allow for hot water, male and female changing facilities, locker updates and work on the firing range. Renovation of the area had not been done since RPD moved into the facility. The facility's previous state didn't have hot water for showers or a dedicated area for female officers. Lockers were enlarged in size and upped in number from 18 to 30 lockers in the male locker room with 10 new lockers in the new female locker room. The RPD locker rooms are located in the basement of City Hall.

"It was just in dire need of upgrading and we had some storage rooms down there that were seeing issues with their ceilings and just in bad shape," Pavia said. "We had no locker rooms for females and the



(PHOTO BY JEFF HELFRICH)

The Rochelle Police Department recently wrapped up a locker room renovation project and will soon upgrade its camera system at its building and City Hall, RPD Chief Pete Pavia said April 16.

showers didn't have hot water. We went to the city manager and city council and told them the vision and they approved it. It's been great. Our officers are so appreciative of it. It's just amazing that something as simple as locker rooms can go that far. It was wrapped up in January."

At its March 24 meeting, the Rochelle City Council approved a resolution authorizing the purchase, installation and maintenance of a camera system at the Rochelle Police Department and City Hall.

The cost for the camera system from Beck Tech will be \$111,686.76. It will include 34 new cameras and a new server. 10 of the city's current cameras will be able to be utilized. The new system will include a five-year warranty.

"That was something that needed to be updated," Pavia said. "It seemed like our camera system had been piecemealed together over time. We have cameras all over the place that no one understands where they went to. "

See ROCHELLE POLICE page 5



(PHOTO BY JEFF HELFRICH)

The City of Rochelle has four tax increment financing (TIF) districts that it uses to create funds that can be used to incentivize new development and improvement by current business owners.

City utilizes TIF districts to bridge project funding gaps

BY JEFF HELFRICH
MANAGING EDITOR

ROCHELLE — The City of Rochelle has four tax increment financing (TIF) districts that it uses to create funds that can be used to incentivize new development and improvement by current business owners.

TIF districts are funded by incremental growth in the values of property within them. When growth is seen in a TIF district, taxing bodies receive whatever amount they did before that growth, and the rest goes into the TIF district for the funding of economic development, infrastructure improvement and anything that's deemed a TIF-eligible expense.

"For example, Hickory Grove was a public building that didn't pay property taxes before it was demolished, so the increment was zero," Rochelle City Manager Jeff Fiegenschuh said. "We created a TIF there so if someone bought the property and built a building, all of that additional value goes into the TIF district. If there was a privately-owned house there valued at \$100 and change occurred, all of the taxing bodies would get their money from that \$100 value but the difference in value after improvements would go into the TIF district."

See TIF DISTRICTS page 2

'We are probably moving along at a record pace'

OCFB's Kern: Farmers ahead of schedule, looking for rain this spring

BY JEFF HELFRICH
MANAGING EDITOR

OGLE COUNTY — Spring planting is in full swing for farmers in Ogle County, with dry conditions allowing field work to be done in recent weeks, Ogle County Farm Bureau Manager Ron Kern said April 29.

Ogle County farmers typically look to wrap up planting by June 1. Kern said that likely won't be a problem this year.

"We are probably moving along at a record pace with spring planting right now," Kern said. "We haven't had many days that brought weather that kept us out of the fields. Planters have been just rolling constantly these past 7-10 days. I would be surprised if we didn't have everything wrapped up by Memorial Day. Research shows getting crops into the ground sooner helps with growth. Later planted crops can lose yield come fall."

Spring work for farmers includes putting anhydrous ammonia on corn acres, along with getting equipment ready and having seed, fuel and fertilizer purchased and delivered. Some farmers spray prior to planting and some spray afterwards depending on their setup, Kern said.

Once out in the fields planting, Kern said days can get long for Ogle County farmers, though many will have the chance to get caught up to potentially alleviate late nights.

While dry conditions have lent themselves to getting field work done, Kern would like to see rain in the forecast in coming weeks to help with the growing season.

"We've been dry," Kern said. "We've been getting some rain in the past 2-3 weeks, and that helps. We just really haven't had any significant



(PHOTO BY JEFF HELFRICH)

Spring planting is in full swing for farmers in Ogle County, with dry conditions allowing field work to be done in recent weeks, Ogle County Farm Bureau Manager Ron Kern said April 29.

rain. Recently it's been a quarter of an inch or a half an inch. Some days it dries out the same day and tractors can get back into fields. We really could use a good soaking rain. Farmers like to plant into moisture so the seed will sprout. I'm not sure if we have those conditions now. We're running out of moisture in the top two inches of soil."

USDA's prospective plantings report recently predicted a five percent increase in corn acres and four percent decrease

in soybean acres in the U.S. this planting season. The acreage shift in Illinois is projected to be lighter with three percent fewer soybean acres and three percent more corn acres.

Kern said input costs for soybeans are less than corn per acre, but U.S. farmers have had a harder time selling soybeans due to market competition with South America.

See SPRING PLANTING page 3

Hit a Homerun by Calling Anderson!

Plumbing, Heating & Cooling
Water Heaters • Water Softeners
Drinking Water Systems
Iron Filters
Sewer Rodding & Jetting & More

ANDERSON
PLUMBING & HEATING, INC.

621 First Avenue, Rochelle • 815-562-8784

Free Estimates, Residential & Commercial, Licensed & Insured

Holcomb Bank
Where Relationships Matter

Classic Oldies Celebration River Cruise

Thursday, September 11th
\$115/person
Includes transportation, 4 hour cruise with buffet & fabulous entertainment

Call Julie to reserve - 815.561.2627

www.holcomb.bank

Member FDIC

LOCAL NEWS

TIF DISTRICTS: Funding is available to businesses for eligible projects

From page 1

The City of Rochelle's four TIF districts are as follows: the Downtown & Southern Gateway TIF District, the Northern Gateway TIF District, the Lighthouse Pointe TIF District, and the recently-established Eastern Gateway TIF District.

The city comes to development agreements with business owners and developers to establish how much funding they will receive. Agreements then go before the city council for approval. TIF-eligible expenses include construction, buildout and infrastructure. It can't be used for a new building. If a business wanted to expand the square footage of its current building, that would be a TIF-eligible expense. It can be used for surveys or assessments.

Fiegenschuh said TIF funding and development agreements are used to bridge the funding gaps that developers and business owners have for projects that will increase property values and future increment in TIF districts.

"TIF is really there as a backstop," Fiegenschuh said. "It's supposed to be a funding gap closer. We require that businesses

show us what their funding gap is. We don't just give TIF dollars out because someone asks for them. There has to be a need and the project has to be in need of TIF funding to make it happen. In my 7.5 years with the TIF agreements we've negotiated that have been approved by the city council, they've always been reimbursable. They do the project and bring in their receipts and we inspect them to make sure they're eligible expenses and we make sure they pay their property taxes every December and we cut them a check for what we've negotiated. We've also never funded more than 50 percent of a project."

Projects that have received TIF funding in the city's Northern Gateway TIF District have included Breakthru Beverage (building renovation) and Benny's Corner Market (infrastructure work). In its Downtown & Southern Gateway TIF District, projects receiving TIF funding have included the Kennay Farms Distilling Rick House (infrastructure, property acquisition and demolition), the renovated Seldal properties on Lincoln Highway at the former Moore's Hardware site, wall improvements

done at The End Zone, the teardown of the old printing building across from the golf course on South 7th Street, and Luna (renovations).

The Lighthouse Pointe TIF was used to put in the road and infrastructure in for Walmart. The city took out a bond and used those funds to put in all of the infrastructure and uses TIF dollars generated by the growth in value to service the debt. The Walmart developer did not receive any TIF funding and was incentivized by the city putting the infrastructure in. The city is currently raising money to pay off those bonds and the TIF will be eliminated when that happens.

The city has not seen any development deals yet in its recently-established Eastern Gateway TIF District. That TIF district was established to see development of the former site of Sullivan's Foods and also includes farm land from Caron Road to Dement Road.

"We've had several conversations with different developers interested in the Sullivan's space," City Community Development Director Michelle Pease said. "Conversations are being had with the current

property owners to see what could come out of that space because they have the TIF funding tool to provide incentives."

The city's highest-performing TIF Districts recently that have seen the most growth are the Downtown & Southern Gateway TIF and Northern Gateway TIF.

"I think our TIF districts have all been successful and we've done multiple development agreements since I've been here," Fiegenschuh said. "The downtown TIF has grown the most and we're proud of it. The Kennay Farms Distilling Rick House, Benny's Corner Market and Breakthru Beverage would not have happened without TIF funding. I think we've utilized it to the best of our ability. I think the core of TIF has clearly worked very well for us."

The City of Rochelle will be hosting an informative session on Tuesday, May 6 from 6-7 p.m. at City Hall on incentives available to small businesses, including TIF, a facade grant program Lee-Ogle Enterprise Zone benefits, the Downtown Historic District, and Flagg Township's business loan program.

Fiegenschuh and Pease

they want to make sure every business in Rochelle knows what's available to it and the right questions to ask so they all have an equal opportunity at funding.

"That doesn't always mean there is money available," Fiegenschuh said. "Sometimes you have to wait for the money to come in. We want to make sure people know what questions to ask and to have those conversations so we can assist them if we can. Some people know the right questions to ask and some are unaware of TIF. We want all of our businesses and residents to understand the programs available."

The city currently has a detailed application on its website for TIF funding for projects. Pease said she is considering streamlining its process with applications to make a fillable online document to start the process to discuss and negotiate a development deal and make sure that expenses are TIF-eligible.

Fiegenschuh said potential changes to the city's TIF rules are also under consideration, such as making sure buildings do not remain vacant after TIF-funded improvements.

The city manager said

TIF-funded projects need to result in increased increment within the district to ensure the TIF survives financially.

"We try to look at projects to ensure that they bring increment and make TIF districts grow in funds," Fiegenschuh said. "The whole point of a TIF is to bring values up. If you're funding projects that don't bring up value overtime that's a disservice to the TIF long-term. The amount of money available is based on each project individually because a project could make more funding available in the future to reimburse them."

The city manager thanked Pease and her team for their work on managing the TIF districts in the past and said he looks for more success from them in the future. Pease said she believes TIF is "hugely valuable" as a tool.

"It's just another way for us to be able to help with gaps in financing and have a project come to fruition," Pease said. "I think our mayor, city council and city manager have been very supportive of things like this. It's a nice way for us to be able to attract businesses and offer incentives to make things happen."

Construction scheduled for Interstate 88 in DeKalb

DEKALB—Long-term lane closures and traffic shifts will begin this week and continue through the summer for repair work on the Reagan Memorial Tollway (Interstate 88) bridge over the Union Pacific Railroad (UPRR). Electronic message signs and construction

signage will be in place in advance to alert drivers to the lane closures and traffic shifts scheduled throughout the work. Up-to-date closure information will be available on the Illinois Tollway's Daily Construction Alert. All work is weather dependent. Beginning the week of

April 28, all traffic on I-88 between Illinois Route 23 and the DeKalb Oasis is scheduled to be shifted onto the eastbound side of the road and reduced to a single lane in each direction. Traffic on I-88 is scheduled to remain in this configuration into the summer as repair work is

underway in a work zone on the westbound side of I-88.

Once repair work is completed on the westbound side of the bridge, all traffic will be shifted onto the westbound side of I-88 and remain reduced to a single lane in each direction. Traffic on I-88 is scheduled to remain in this configuration through late fall as repair work is underway in a work zone on the eastbound side of I-88.

The traffic shift and lane reductions will allow the Tollway to safely accommodate traffic and provide a work zone for the repairs to the I-88 bridge over the Union Pacific Railroad. Work will include bridge deck, parapet, abutment and approach slab repairs, as well as bridge joint work and pavement and shoulder repairs.

Lane closures are being coordinated with the Union Pacific Railroad, as well as local fire and police

departments.

In 2025, the Illinois Tollway work on the Reagan Memorial Tollway (I-88) will include repairs to the mainline bridge over the Union Pacific Railroad in DeKalb and corridor-wide pavement repairs, as well as the completion of the York Road Bridge reconstruction over the ramps connecting eastbound I-88 to southbound I-294 and northbound I-294 to westbound I-88 in Oak Brook. This work is part of the Tollway's 15-year, \$14 billion capital program, *Move Illinois: The Illinois Tollway Driving the Future*.

Maps and construction information are available in the Projects section on the Tollway's website at illinoistollway.com.

Construction zone speed limits are in effect in all construction zones 24/7 and drivers should continue to watch for changing traffic patterns and use caution, especially when workers are present.

On I-88, a 45 miles per hour work zone speed limit is in effect throughout the construction season.

The Illinois Tollway reminds motorists that the "Move Over Law" requires motorists to change lanes or to slow down and proceed with caution when passing any vehicle on the side of the road with hazard lights activated. If you see flashing lights ahead, please move over or slow down.

Illinois State Police have zero tolerance for drivers speeding in work zones or failure to comply with the Move Over Law. The minimum penalty for speeding in a work zone is \$250 with up to a \$25,000 fine and a 14-year jail sentence for hitting a roadway worker. Penalties for failure to slow down or move over for a vehicle on the shoulder with flashing lights include up to a \$10,000 fine, two-year suspension of driving privileges and jail time, in extreme cases.

Real people. Real support.



Whether you want to talk,
cry, or simply sit in silence,
support is always on standby.
When you're ready,
so are we.

- Trained crisis workers
- Available 24/7
- Confidential support
- Free



988illinois.com

Call or text 988

Mother's Day Flower Walk in Genoa is May 10

GENOA — On Saturday, May 10, from 10 a.m. to 1 p.m., the day before Mother's Day, University of Illinois Extension offers guided wildflower walks at the Natural Resource Education Center (NREC) in Russell Woods Forest Preserve. Russell Woods is located one mile west of Genoa on State Route 72. The Natural Resource Education Center (NREC) is at the end of the forest preserve road. The guided walks will be on the hour, starting at 10 a.m. with the last one at 1 p.m.

"Visitors often ask us to come outside and help them identify one of the

many beautiful, spring native wildflowers in the forest preserve," said Peggy Anesi, University of Illinois educator. "Spring is crucial for these delicate plants. The spring woodland flowers grow in wooded areas but come up early to capture enough sunlight to make food for themselves. If they wait too long, the shade of the trees blocks the precious light they need," continued Anesi. "The spring beauties, one of the earliest bloomers, are one of the most delicate flowers found on the forest floor, and research has shown they are critical for many

native pollinators." The upland paved path allows people of all abilities to enjoy the flowers. According to Anesi, people must understand that removing plants from preservation areas is illegal, so capturing with a camera is the best way to take something home.

All are welcome on the guided hikes. Two local botany enthusiasts, Karen Matz and Brian Hale, will lead the discussion about forest plants and what is blooming. "They love to share their enthusiasm regarding wildflowers," said Anesi, adding, "If people have company in for the weekend, this would be a great destination and activity for everyone to share." There is no fee for the walks, and Extension Master Naturalists will be in the Natural Resource Education Center to welcome visitors while they wait for the next walk. If you have questions, please call the NREC at 815-784-2000.



Stillman Valley Nursery

9979 N. Kishwaukee Road
Stillman Valley, Illinois 61084

(815) 645-8113

Premium Hardwood • Designer Colored Mulches
Pulverised Dirt • Mushroom Compost • Straw Bales

Delivery Available

08032020

LOCAL NEWS

SPRING PLANTING: OCFB's Kern discusses ongoing farm activity in Ogle County

From page 1

“South America will be the king of soybeans before long if it isn’t already, and prices for our producers are tending to sag,” Kern said. “Even though input costs on soybeans might be less, the commodity costs when you sell them are getting a lot of pressure. The U.S. will definitely remain the king of corn. Because that’s what we grow here. Corn costs tend to be more per acre to plant. Because of all these tariffs and the export market, I think this will be a very trying year for farmers.”

In an interview with the Rochelle News-Leader and Ogle County Life earlier this year, Kern expressed concerns about The White House’s planned tariffs and their potential impact on farmers, with tariffs historically affecting agricultural commodities.

Kern said that uncertainty is causing farmers to try to be as sharp as possible with their expenses this year along with utilizing every marketing

tool at their disposal to try to capture a profit at the end of the year.

“I wish I had the answer to what this year will hold in farming and the markets,” Kern said. “China recently canceled a huge pork order it had placed. How many more orders of ag commodities like that will be canceled? These are the things that are typically targeted under a tariff war. During the last go around with tariffs in the first Trump administration, we conservatively lost 20 percent of the soybean market to the rest of the world. When you do these kinds of things and the people you’re supplying can’t get it from you at a reasonable price, they go somewhere else. And wherever they go becomes their new go-to supplier and you become an unreliable supplier. I don’t know if that will happen again. If we lose another 20 percent, that totals 40 percent and now we’re talking real dollars and cents.”

Kern also hopes to see progress made by Congress on a new federal

Farm Bill, which it passes every five years to set comprehensive agricultural programs and policies. The current Farm Bill, passed in 2018, has been extended for a year twice, most recently in December. The federal Farm Bill allocates funding for crop insurance, disaster assistance and conservation programs for farmers.

“In the coming months, we need rain,” Kern said. “At least an average amount if not a little more. I’d love to see Congress get cracking on getting a new farm bill out because the current one has already been extended for long enough. And then I’d like to see some kind of quick resolution to this tariff war we’re having. Because we need to get that done.”

Safety

Kern also asked Ogle



(PHOTO BY JEFF HELFRICH)

Ogle County farmers typically look to wrap up planting by June 1. Farm Bureau Manager Ron Kern said that likely won’t be a problem this year.

County motorists to take extra caution in the coming weeks with planters and farm equipment on roads in between field work.

“I hope the farmers stay safe out in the fields and

in between and I ask folks on the roadways to please slow down around them,” Kern said. “Farmers don’t want to be on the road any more than drivers want them there. They’re just

trying to get to where they have to go as safely as possible. Be very careful when passing farm equipment and please try to see what they’re seeing before you pass them.”

Illinois Extension to hosts webinar on farm property insurance June 23

FREEPORT — The University of Illinois Extension will present the final session of its Legal Training for Illinois Small Farms Webinar Series, focusing on Farm Property Insurance. This virtual event, delivered by Farm Commons, is scheduled for June 23 from 7-8 p.m.

Farm and ranch operations rely heavily on physical assets such as buildings, equipment, vehicles, and supplies. Damage or loss of these resources can significantly impact profitability. This webinar will explore how various property insurance options can mitigate these risks when properly understood and implemented.

“Our Legal Training for Illinois Small Farms Webinar Series has empowered Illinois farmers with essential legal knowledge in an accessible format, and this final session on farm property insurance continues that tradition by giving producers practical tools to protect their operations from potentially devastating losses,” said Grant McCarty, Local Foods Systems and Small Farms educator, U of I Extension. “Throughout this series, participants have gained confidence in navigating complex

agricultural business matters, from land leases to insurance policies, helping them build more resilient and legally sound farm enterprises.”

This webinar concludes the Legal Training for Illinois Small Farms Series, which has provided farmers with crucial legal knowledge to strengthen their business practices and operational resilience.

How to register: Participation is free of charge. Secure your spot by visiting go.illinois.edu/Farm-PropertyInsurance or calling 815-235-4125.


For questions about the series or to request reasonable accommodations, please contact Nikki Keltner at nkeltner@illinois.edu or 815-235-4125. Early accommodation requests are encouraged to ensure proper arrangements.

Series background: The Legal Training for Illinois Small Farms Series is a quarterly program offered by University of Illinois Extension, serving Jo Daviess, Stephenson, and Winnebago counties, in partnership with Farm Commons, a nonprofit dedicated to helping farmers navigate business legal challenges through community support.

Gone, But Not Forgotten

Remember your loved one with a special tribute this Memorial Day.

With Fondest Memories
David C. Andrews
July 10, 1961 – May 5, 1980



Your courage and bravery still inspire us all, and the memory of your smile fills us with joy and laughter.

Love, Mom & Dad

In Honor of Memorial Day

The Rochelle News-Leader will publish memorials of those who are gone but not forgotten. This is a wonderful way to remember those dear to us, and share memories.

Tributes include your choice of verse from the right, and an optional photo if submitted.

To remember your loved one in this special way, send this form, a photo and \$12.00 per listing.

These tributes will be published in the special Memorial Day section On May 25, 2025.

Deadline is Wed., May 21 at 2 p.m.

If you wish, select one of the following verses below to accompany your tribute.

1. We hold you in our thoughts and memories forever.
2. May God cradle you in His arms, now and forever.
3. Forever missed, never forgotten. May God hold you in the palm of His hand.
4. Thank you for the wonderful days we shared together. My prayers will be with you until we meet again.
5. The days we shared were sweet. I long to see you again in God’s heavenly glory.
6. Your courage and bravery still inspire us all, and the memory of your smile fills us with joy and laughter.
7. Though out of sight, you’ll forever be in my heart and mind.
8. The days may come and go, but the times we shared will always remain.
9. May the light of peace shine on your face for eternity.
10. May God’s angels guide you and protect you throughout time.
11. You were a light in our life that burns forever in our hearts.
12. May God’s graces shine over you for all time.
13. You are in our thoughts and prayers from morning to night and from year to year.
14. We send this message with a loving kiss for eternal rest and happiness.
15. May the Lord bless you with His graces and warm, loving heart.

You can email a high quality photo and verse number/message to: kwhite@rochellenews-leader.com. Please call 815-562-4171 to arrange payment or pay with this QR Code.



Fill out the form below and drop off or mail to:
Rochelle News-Leader, (Gone, But Not Forgotten), 211 Hwy. 38 East, PO Box 46, Rochelle, IL 61068

Name Of Deceased: _____	Verse Number: _____
Relationship To Me: _____	Birth Date: ____/____/____ Passing Date: ____/____/____
Additional Information _____	
Your Name _____	
Address _____	Phone Number _____
City _____	State: _____ Zip: _____
In Lieu of Verse, my message is: _____	

Stillman BANK

Local Lenders. Local Decisions.

Buying a new home?
Our experienced mortgage team is here to help!

- Our staff is professional, knowledgeable, and experienced
- Decisions are made locally - by us!
- We service our loans, so if you have a question, you can talk to us - not some out of state firm
- FREE pre-approvals
- Access to Stillman Mortgage Online - find a lender, apply online in less than 20 minutes, and more!
- Proud to be voted Ogle County's Best Mortgage Lending Services AND Best Loan Officer - Diana Davidson!

Member FDIC

815.562.7071 | www.stillmanbank.com

LENDER

Lincoln Manor

Owned and operated by Lutheran Social Services of Illinois (LSSI) offering apartment living for older adults in Rochelle and the surrounding communities.

Rent based on 30% of a Resident's Adjusted Gross Income

- Secure Entry System
- Community room with kitchen
- Activities
- On-site coin operated laundry
- On-site management office
- Dependable 24/7 maintenance service
- On-site parking for residents

Full time Social Service Coordinator is available to assist residents

For more information, please call 815-562-1404

615 N. Lincoln Hwy.
Rochelle, IL 61068
TTY 847-390-1460

MANAGED BY:
Lutheran Social Services of Illinois
www.LSSI.org

07262023

LOCAL NEWS

Obituaries

Keith Worley

ROCHELLE — The family of Keith Worley is saddened to announce his unexpected passing on April 15, 2025 at the age of 64.

He was born on April 1, 1961 to his parents Ray and Helen Worley.

Keith Worley, a proud union carpenter local 792 and friend to many, passed away peacefully. Keith dedicated his life to his craft, but a reputation for hard work, integrity, and pride in every job he touched.

Outside of his work, Keith found his greatest joy in spending time with his family and friends. Whether watching wildlife in the back yard, checking out

swap meets, or simply sharing a meal, Keith's presence was a constant reminder of the importance of loyalty, laughter, and love.

Keith's spirit lives on in the memories he created, the lessons he taught, and the many lives he touched with his kindness and generosity. He will be deeply missed but forever remembered by all who had the honor of knowing him.

He is preceded in death by father Ray Worley, brother Lynn Worley, nephew Adam Aurand, and his grandparents.

He was survived by daughter Jennifer Peterson, grandson Nicolas Peter-



son, mother Helen Worley, brother Ed (Sue) Worley, sister Peggy Worley, sister Christine (Keith) Van Dyke and several nieces and nephews.

A celebration of Keith's life will be held July 5, 2025 at the Conservation Club in Chana, IL, from noon to 4:00. Please come join us share your memories.

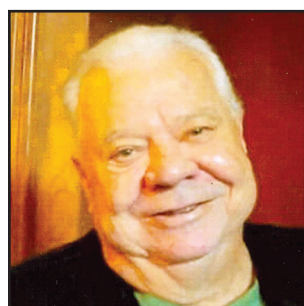
Robert Eugene White

ROCHELLE — Robert Eugene White, age 79, passed away on Thursday, May 1, 2025 at the U.W. Swedish American Hospital in Rockford. He was born on March 25, 1946 in Lincoln, IL to Burnell and Eileen (Shane) White. Bob served in the U.S. Navy. He married Judith L. Scharlow on May 3, 1969 in Bartlett, IL. Bob owned and operated the White Hen Pantry in Sycamore before later retiring from Northern Illinois University, where he worked in materials management. He is preceded in death by his parents, Burnell and Eileen.

He will be deeply missed by his wife Judy White of 56 years of

Rochelle; his son, Brian (Bridget) White of Davis Junction; his daughter, Brooke (White) Dowty of Davis Junction; seven grandchildren—Alexis (Mike) Schroeder, Elizabeth White, Austin Dowty, Alyssa Dowty, Abigail Ptaszek, Carolyn Ptaszek, and James McAvoy; three great-grandchildren—Ryder, Ellie, and Liliana; and his sister, Judy Park of Hampshire.

Visitation will be from 9-11:00 A.M. on Wednesday, May 7, 2025 at the Unger Horner Funeral Home, 400 N 6th St., Rochelle. Funeral service will be at 11:00 A.M. on Wednesday at the Unger Horner Funeral Home with Rev. Dave Rogula



officiating. Burial will follow at the Flagg Center Cemetery with Military Honors provided by the Eastern-Lee Ogle Honor Guard, and the U.S. Navy Honor Guard. In lieu of flowers, memorials may be made to the American Heart Association.

To share condolences, memories or stories, please visit our memory book at www.UngerHorner.com

Tracy Louise McBee

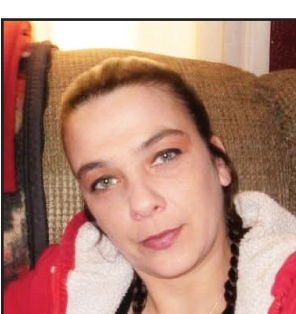
ROCHELLE — Tracy Louise McBee, 47, passed away Thursday, April 24, 2025 at PA. Peterson in Rockford, Illinois. Tracy was born on Aug. 7, 1977 the daughter of James and Velda (Simmons) McBee in Rochelle, Illinois.

Tracy was loved very much by everybody. She was a great babysitter to all the kids she cared for. She

even took care of many sick adults. She had a heart of gold.

Tracy is survived by three siblings: Tina (Kevin) Paxton, Seresa (Brandt) Zies and James McBee and his partner Pammy Nailor and many nieces and nephews.

She was preceded in death by her parents, Janes and Velda McBee; her grandparents, and many



aunts and uncles and the love of her life, David Newman.

Illinois Extension offers free dial-gauge pressure canning testing for home canners

OREGON — With summer gardens gearing up, it's time to take canning equipment out of storage. Illinois Extension in Boone, DeKalb, and Ogle counties offers free dial-gauge pressure canner testing to ensure the equipment works accurately. Testing should be done annually since the needle on a dial-gauge

pressure canner can become inaccurate, causing foods to be under-processed, increasing the risk of serious illness from botulism.

Various foods can be canned at home through boiling water bath canning and pressure canning. Pressure canning is required when canning low-acid foods, particularly meats

and vegetables. Having equipment checked every year is an important part of the canning process. Tests are free and take around 15 minutes per canner.

Call your local office today to schedule an appointment: Boone County, 815-544-3710, DeKalb County, 815-758-8194, and Ogle County, 815-732-2191.

REPORT POLICY

Any arrests listed in this paper are merely charges and the defendants are presumed innocent unless proven guilty in a court of law. Please note that all police reports received from the Rochelle Police, the

Ogle County Sheriff's Department and the Illinois State Police, will be printed without exception. Requests to omit particular reports will not be considered or honored at any time.

Serving Rochelle's Favorite Chicken for over 40 years!

By the Snack-Dinner-Bucket!

Enjoy 16 flavors of ice cream, soft serve, splits, sundaes, cones, malts & shakes



Call for our catering menu!

OUR MENU

INCLUDES:

Hamburgers, Fries, Hot Dogs, Gyros, Italian Beef, Seafood, Sandwiches, Sausages, Shrimp, Homemade Soups
Breakfast: Sausage Gravy With Biscuits and Tater Tots



See us on Facebook for daily specials!

Open Daily at 9AM

COUNTRY SCHOOL

DRIVE-IN RESTAURANT

Hwy 251 N. Rochelle • 815-562-6039

ROCHELLE WILDLIFE CONSERVATION CLUB



Monthly Steak Fry

\$30 per person Starts at 6pm

Ribeye, baked potato, corn, beans, a salad and desert

Porkchop or Hotdog option at reservation

GRILL

YOUR OWN STEAK

over our charcoal pits!

Please RSVP no later than 5pm the Thursday before the steak fry and call Nick - 815-677-8981

Covered outdoor and indoor seating enjoy your meal surrounded by nature and good friends.



May 10th

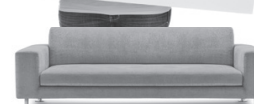
June 14th

July 12th

Aug 9th

Sept 13th

Oct 11th



Place an Ad or Subscribe:
Rochelle News-Leader
815-562-4171
Ogle County Life
815-732-2156

All in the Classifieds!

ROCHELLE News-Leader

211 IL Route 38 East, Rochelle, IL 61068
(815) 562-4171

USPS (467-820) ISSN (1075-2811)

Published every Wednesday and Sunday by Rochelle Newspapers Inc. at 211 E. State Route 38, Rochelle, IL 61068. Periodical postage paid at Rochelle, IL 61068. Postmaster send address changes to the Rochelle News-Leader, P.O. Box 46, Rochelle, IL 61068. Subscription rates are \$139.99 per year by mail in Ogle County. Outside county rate is \$149.99 per year. The circulation department is open Monday through Thursday from 9 a.m. to 3 p.m. and Friday from 9 a.m. to 1 p.m. For subscription information, contact Kelly White at 562-4171.

IN-COUNTY REGULAR SUBSCRIPTION RATES

• \$139.99 for one year • \$79 for six months
• \$34.99 for three months • \$13.99 for one month

Call (815) 562-4171 or
Visit our website at
www.rochellenews-leader.com



HOW TO CONTACT US

News-Leader Main Switchboard (815) 562-4171

General Manager (815) 561-2124

Newsroom Staff
Jeff Helfrich, Managing Editor (815) 561-2151
Russ Hodges, Sports rhodges@rochellenews-leader.com

To Place a Display Ad
Chris Ackland (815) 561-2153

To Place a Legal Ad
Mike Feltes mfeltes@oglecountylife.com

To Place a Classified Ad
Chris Ackland (815) 561-2153

Subscriptions and Delivery
Kelly White (815) 562-4171
kwhite@rochellenews-leader.com



BRUNCH

8am to 1pm • Sunday, May 11th
at the Rochelle Wildlife Conservation Club

Indoor and covered outdoor seating surrounded by nature.

Pancakes, sausage, bacon, scrambled eggs, hash-browns and biscuits and gravy

\$15 per person | kids 5 and under Free
Need to RSVP to Bob Grace at 815-622-8940 by 5/9

LOCAL NEWS

ROCHELLE POLICE: ‘Just these little changes we’re doing are huge morale boosters for everyone’

From page 1

“There were cameras added that run to a closet and cameras added that run to another closet and some cameras ran into the dispatch center. It’s just a mishmash of cameras and they’re so outdated. One in the council chambers is a 20-year-old camera.” RPD hopes to have the camera work done soon and Beck Tech has ordered the equipment for it. The new system will eliminate some lag time issues that have been seen with camera feeds that will improve safety. The entirety of RPD and City Hall will now be covered by cameras.

“We have cameras in the jail cells,” Pavia said. “We have to be able to watch those live and we

can’t have a lag. It’s very important. We need to see what’s going on and a live feed of it. An officer could be booking a prisoner or something like that and if we’re not seeing what’s going on live, that could put our officers at more risk. Now we’re adding a camera in our gym that we’ve made improvements to. If someone is down there and something were to happen, at least someone is looking now.”

The improvements represent over \$360,000 in reinvestment in RPD’s space at City Hall. Pavia said that goes a long way towards improving employee morale and RPD’s ability to recruit potential future officers and dispatchers.

“We want people to be proud of the place they work in,” Pavia said.

“Just these little changes we’re making are huge morale boosters for everyone. People see that we care and notice the small things. An example is female locker rooms. It’s a huge thing. Now one of the focal points when we give a tour to a prospective employee is the renovated downstairs area. We’re fortunate that we have our own shooting range here. Most police departments don’t have an in-house range. When other agencies look in there they’re impressed by that.”

Pavia thanked the mayor and city council along with City Manager Jeff Fiegenschuh for being willing to listen to and execute the improvements. Fiegenschuh said the reinvestment shows pride in the building and is a great way



(PHOTO BY JEFF HELFRICH)

The \$251,950 locker room renovation included shower improvements to allow for hot water, male and female changing facilities, locker updates and work on the firing range.

to recruit and retain officers.

“Especially for recruiting,” Fiegenschuh said. “If you bring potential candidates through and there’s mold on the walls and the showers are cold,

that’s not good. The shape of facilities says a lot about the organization. I think the improvements have gone a long way. We did some painting. It just looks like a completely new facility.

The mayor and council have said they want to keep RPD and City Hall downtown. We’re going to do that, and that means reinvesting in the building so it lasts.”

CHURCH DIRECTORY

Ashton Bible Church, corner of Main and Paddock in Ashton. Pastor Farrel Stauffer, church phone is (815)453-2190, church website www.ashtonbible.org. Sunday School for all ages 9:00-10:00am, Morning Worship 10:15am, Wednesday Prayer Meeting/Bible Study 6:30-8:00pm.

Calvary Lighthouse Church, Assemblies of God, Senior Pastor, Dr. James Horvath. 14409 Hemstock Rd., Rochelle. Sunday Morning: Sunday Worship & Children’s Church 10:00 A.M., Wednesday Evening 7:00 P.M. – Adult Teaching, Missionettes & Royal Rangers Childrens Classes, Nursery available for all services. HE-Brews Cafe is open before and after services. For further information, please call the CLC office at 815-562-7701, or email us at staff@calvarylighthouse.com

Rochelle Church of Christ, Keeping Christ at the center in the Hub City. We meet Sundays at 9:00am for Bible Study and 10:00am for worship. We also have a Wednesday Bible Study at 7:00pm. 206 Erickson Rd, Rochelle, IL 61068. You can call us at (815) 562-6572 or visit us on the web at rochellechurch.com. We also have a radio program Sundays just after 8am on WRHL 1060AM. Minister Dominic Venuso.

Creston United Methodist Church and Steward United Methodist Church - Rev. Ilhan You, Creston: 126 West South Street, P.O. Box 209, Creston, Illinois 60113. Sunday morning worship 9:00am. Coffee fellowship at 10:15am. Steward: 507 Main Street, P.O. Box 80, Steward, IL 60553. Adult Sunday School, 10:00am. Sunday morning worship and Children’s Sunday School 11:00am. Contact the church office at 847-730-4370 for more information. facebook.com/crestonumcil facebook.com/stewardilumc

Elim Reformed Church, 140 S. Church Road, Kings, IL 61068. Phone: 815-562-6811. Email goelimchurch@gmail.com Website www.goelimchurch.org Sunday Morning Worship 10:00 Rev. Marv Jacobs

Faith Lutheran Church – (14206 E. Flagg Rd.) – “Making Christ Known Through Lives of Faith.” In-person worship is available each Sunday at 9:00 a.m. or online at “Faith Lutheran Social” on YouTube. Worship resources are also available on our Facebook page - ‘Faith Lutheran Church ELCA.’ You may also e-mail Pastor Joy Alsop at Pastor@faithlchrochelle.org for more information. All are welcome to join us!

First General Baptist Church, 500 S. 12th St, Rochelle. Phone: 815-562-5221. Email: fgbcrochelle@gmail.com. Website: www.fgbcrochelle.org. Facebook: www.facebook.com/fgbcrochelle. Pastor: Rev. Angelo Bonacquisti. **Sunday worship services:** 8:30 am, 11:15 am and 6:00 pm. **Sunday school:** 10:00 am. We’d be honored to have you join us as we worship JESUS and continue to grow in truth and love for God and each other. A nursery, children’s church, youth group and small groups are available. If you need a ride please contact our church bus driver, John, at (815) 262-4275 by 8:30 am on Sunday. “For if you confess with your mouth that Jesus is Lord and believe in your heart that God raised him from the dead, you will be saved.” Romans 10:9

First Presbyterian Church – An Amazing Place for Amazing Grace- Rev. Doug Forsberg, Senior Pastor. 1100 Calvin Road, Rochelle. Email: info@placeforgrace.com. Sunday morning worship 9:00am. In person or streamed online. On our Website and Facebook Live. www.placeforgrace.com/ www.facebook.com/placeforgrace

Harvest Baptist Church 241 Scott Ave. (Hillcrest). Rev. Duane Boehm, pastor. Email duane712@hotmail.com, cell 815-757-3427. Visit us on Facebook! Service times: Sunday morning worship with Children’s Church at 10 am. Wednesday night worship at 7 pm.

Immanuel Lutheran Church Missouri Synod 16060 E. Lindenwood Road, Lindenwood, IL 61049. Rev. Dr. Matthew Rosebrock. Church Phone 393-4500. Church Worship 9:00 a.m. Sunday School Christian Education Hour at 10:30 a.m.

Living Water Community Church 405 N. Main St, Downtown Rochelle. Phone 815-561-6249, Website: www.lwccr.com, Like us on Facebook. We are Non-Denominational, Christ Centered, Casual dress, Christ Centered Live Band Worship. Mike Vogeler - Outreach and Seven C’s Pastor, Chris Bender- Teaching Pastor and Doug Bungler - Missions and Children’s Pastor. Sunday Worship Service- 10:00am. Nursery/Toddlers Ages 0-5 available during the service in the Splash building. Swim- Grades 1st-5th worship with the adults then break out for age appropriate teaching. Youth groups, Small groups, Life Groups and Workshops meet throughout the year for Bible teaching. 7C’s Mission- serves the community physically & spiritually each month from 1135 Lincoln Hwy, providing lightly used clothing, Hygiene items, a light lunch and Elder Prayer open the second Saturday from 10am-2pm and the 4th Thursday from 4pm to 7:00pm and by appointment.. [f](#)

New Hope Fellowship (Church of God - Anderson, IN), 1501 10th Ave., Rochelle, IL 61068. Service: Sunday at 9 a.m. 10:30 a.m., (815)561-8400, www.NHFchurch.net Pastor: Dan Sergeant and Pastor Nick Tornabene. (Classes for children through age fifth grade during service.)

Rochelle United Methodist Church welcomes everyone to their worship service, and practices openness for all activities including communion. Worship is at 9:00 am. Sunday school for children begins around 9:15, following the Children’s Time in worship. A fellowship time with food and space for conversation occurs in Hicks Hall every week following the worship service. We celebrate communion with an open table on the first Sunday of every month, and on other appropriate occasions. Youth group is on Sunday evenings from 5:30-7:30. Our youth program includes service projects, discussion topics, Bible Study, and lots of fun and fellowship together. Some of our activities include packing meals at Feed My Starving Children, helping at Rochelle Christian Food Pantry and 7C’s, working with animals at Barn on Baseline, Mystery trips (Destination Unknown!), and Interactive experiences on Dating boundaries, refugees, and homelessness. Youth group is for grades 6-12 and friends are always welcome. Recorded services are available on our YouTube channel and our website at www.rochelleumc.com. Our services are on the radio (93.5 FM) on Sunday mornings at 9:00 am. Our Facebook page is www.facebook.com/rochelleumc. **Our pastor is the Rev. Dr. Katherine Thomas Paisley.** Our address is 709 Fourth Ave. (815) 562-2164. Email is admin@rochelleumc.com. At Rochelle United Methodist Church, everyone is welcome and loved!

St. John’s Lutheran Church, 126 E. South Street, Creston. Phone 815-384-3720, Email: StJohnsLutheran@aol.com, members of NALC/LCMC. Worship is led by **Pastor Terese Whitten** 231-878-4150. St. John’s Lutheran Church is a part of God’s Family, planting hope, nurturing faith and harvesting love. Coffee or Fellowship at 10:00 a.m. Worship begins at 10:45 a.m. Sunday school is conducted during worship service except during the summer.

St. Patrick Catholic Church Rev. Jesus Dominguez; Deacon Fermin Garcia; Deacon George Schramm; 244 Kelley Dr. (Corner of Kelley & Caron Rd.), PO Box 329, Rochelle, IL 61068. **Office Hours:** 9:00 AM- 4PM Monday-Thursday, Phone: 815-562-2370. **Mass times:** 8:00 AM Monday-Thursday, Saturday Vigil Mass 5:00 PM English, 7PM Spanish, Sunday Mass 7:30 AM, 9:00 AM in English and 11:00 AM in Spanish. **Confessions:** Monday 8:30AM & 6:30PM, Tuesday 8:30AM, Saturday 8:30am & 4:00-4:45 PM Or by appointment. **Religious Education:** Deacon George Schramm, Director of Religious Education. 903 Caron Road, Rochelle, IL 61068, 815-561-0079; Website: stpatricksrochelle.com Email: stpatrick-rochelle@rockforddiocese.org Facebook.com/StPatrickRochelle

St. Paul Lutheran Church “Building Relationships in Christ, Now and Forever!” Steven Hall, Principal, Parish Nurse-Marcia Schnorr. 1415 Tenth Ave., Rochelle. Church Office-562-2744. Worship times: 6:00 p.m. Saturday, 9:00 a.m. Sunday. Our service is broadcast over WRHL 1060AM at 10:00 a.m. Sunday. Sunday School 10:15-11:15 a.m. Call 562-6323 for more information about the school.



LOCAL VIEWS

Consider this: The feeling of fascism

HAVE we officially moved to the next level? Down, not up. I knew by President Trump's first four years, by his campaign statements, and in reading Project 2025, that he was headed down a path that would make our beautiful country look dreadful. I really didn't know what path we would end on, but I had some idea. I thought dictatorship, oligarchy, authoritarianism, maybe even king. Not, however, fascism. But, with recent events, it appears that may be where we end up.

Event one: In May of 2022, I wrote an article titled "Traveling While Young" about how many countries have high school graduates that take time off before they enter college. Some may also take the time off in between college years. During this hiatus, they travel around the world absorbing various cultures and some find temporary jobs to observe how citizens of other countries live and receive funds to proceed with their travels. Some of their countries urge this type of travel to expand their



Reed Harris

knowledge of how others live, work, and use their time off. There are even some countries that help monetarily with this travel. That is unless a country abruptly changes these plans. A few weeks back, two German girls aged 18 and 19 were traveling in this manner until they arrived in Hawaii. The border officials didn't care for their travel plans and instead of just deporting them, strip searched, clothed them in uniforms, and jailed them over night. You can find more information at "beatofhawaii.com/why-these-hawaii-travelers-were-jailed-and-deported/"

Event two: By this time, we all know about Kilmar Abrego Garcia, who was sent to El Salvador's infamous prison by mistake. Even though they have said it was a mistake, the administration is now saying he was a member of the horrible MS-13 gang. They have not given any proof of this other than their word. This movement of him was done even though a judge in this country had forbidden this and had already determined his innocence. He has not been

returned and the Salvadorian President Nayib Bukele said the man will remain in prison. The administration is not pushing against this even though we have paid El Salvador \$6 million to house the detainees. You can find more information at "www.nbcnews.com/news/us-news/kilmar-abrego-garcia-deported-el-salvador-trump-immigration-what-know-rcna201708". Another man has been sent to the El Salvador prison by the administration, seemingly by mistake. Andry José Hernandez, a makeup artist was detained and the administration has said he belonged to the Tren de Aragua gang based on his tattoos. The administration also says that was not the only determination but have supplied no additional evidence. You can find more information at "www.usatoday.com/story/news/politics/2025/04/22/congressman-letters-gay-stylist-sent-el-salvador/83193541007/"

Event three: Badar Khan Suri is an Indian national who was duly granted a visa to enter the United States and was a student at Georgetown University. Georgetown's student newspaper, The Hoya,

reported Suri studies religious violence and peace, focusing on the Middle East and South Asia. He is currently teaching a class on majoritarianism and minority rights in South Asia at the university, the report said. His was sent to Louisiana, for reportedly opposing U.S. foreign policy, where he is awaiting a hearing in immigration court. Most recently, however, he was moved to a Texas facility. His lawyer is trying to make sure he has that hearing. You can find more information at "www.newsnationnow.com/us-news/immigration/georgetown-deportable-ice-arrest/"

Event four: Like the plight of Badar Khan Suri, although most may end up deported for more simple reasons, President Trump tried cancelling international student visas under many pretexts. He is currently being opposed in court and has backed down for now, but what can be the motive for this? Could it be that students are protesting the handling of Palestinians? Could it be the administration doesn't want international students? Maybe certain international students? You can find more information at "www.msn.com/en-us/news/us/trump-backs-down-in-legal-fight-over-canceling-international-students-status-records-for-now/ar-AA1DCOsD?o-cid=BingNewsSerp"

We seem to be expanding the immigration argument week by week. I believe what was intended by the voters that put President Trump into office was to deport any immigrants that were known criminals. Not necessarily all immigrants. What is being done recently is stopping other countries from vacationing here. Many vacations destinations are finding very little interest from other countries to come here. It will be a miracle if our farmers find enough employees to carry on their businesses due to a loss in migrants. What else are we doing that will affect our everyday work force and prices?

I feel that the events mentioned above, with many others to follow, gives me the feeling of fascism. Now it's your turn to determine what it feels like to you. Are we on the right path? Are we on any path? Is this just chaos with no reasoning behind it? Whether we protest, write our congressmen, print our own op-eds, or sit on our hands, the future is ours, you see.

our state must bear. SB 1238 is a common-sense proposal that puts patients first, prioritizes public safety, and helps break the cycle of opioid addiction before it begins. I urge the Illinois Legislature to pass this bill and take a critical step toward combating the opioid crisis in our state. Illinoisans deserve better than a system that prioritizes opioids over safer, nonaddictive treatments. I urge our state lawmakers to pass this bill. *Jeremy Lloyd is the Johnson County state's attorney.*

Lawmakers must step up and address opioid crisis

LIKE everywhere across the US, Illinois continues to struggle with the opioid crisis, but rural communities like Johnson County face unique challenges in addressing this epidemic. Many residents in our community struggle to access basic health care services, and finding quality, affordable addiction treatment can be even more difficult. When one of our neighbors develops an opioid dependency and can't get the care they need, the ripple effects are felt throughout the community — impacting

families, straining law enforcement, and stretching our limited local resources even thinner. As the state's attorney for Johnson County, I've got a front row seat to this crisis. Our law enforcement officers, who already work under immense pressure, are often the first responders to overdose calls. More of these cases than you can imagine can be traced back to a prescription opioid used to manage pain. It's time for Illinois to ensure that safe and effective pain management options are available to

every patient before they are ever put on a path toward opioid dependency, despite the best intentions of their providers. One step toward tackling this crisis is passing Senate Bill 1238, legislation that would make it easier for residents in our state to access non-opioid pain treatment options. This bill would prevent health insurance companies from denying a patient coverage of a non-opioid in favor of an opioid drug, ensuring

patients can choose safer pain treatments options without financial or bureaucratic barriers. SB 1238 also recognizes that not enough people know about the non-opioid options on the market, and patients can't choose a treatment option they don't know exists. To fix this, the legislation would allow the Illinois Department of Public Health to author and publish a pamphlet to educate the patients and providers



Jeremy Lloyd

about non-opioid pain treatments. These policy changes are crucial for protecting Illinois residents from the devastating effects of opioid addiction. By making nonopioid alternatives more accessible and affordable, we can keep patients off the path to opioid addiction. This is not just a public health issue; it's a matter of public safety and fiscal responsibility. Every overdose call strains emergency response resources, and every new case of opioid addiction adds to the long-term health care and law enforcement costs

our state must bear. SB 1238 is a common-sense proposal that puts patients first, prioritizes public safety, and helps break the cycle of opioid addiction before it begins. I urge the Illinois Legislature to pass this bill and take a critical step toward combating the opioid crisis in our state. Illinoisans deserve better than a system that prioritizes opioids over safer, nonaddictive treatments. I urge our state lawmakers to pass this bill. *Jeremy Lloyd is the Johnson County state's attorney.*

How to contact government officials

U.S. Con. Darin LaHood
1424 Longworth HOB
Washington, D.C.
20515
(202) 225-6201

IL Sen. Li Arellano Jr.
Stratton Office Bldg
Springfield, IL 62706
(217) 782-1942

IL Rep. Bradley Fritts
Stratton Office Bldg
Springfield, IL 62706
(217) 782-0535

Have a letter you want to submit to us? Send it to (news@rochelle-news-leader.com

KEEPING YOU IN TOUCH WITH YOUR LOCAL LEADERS

* Denotes Chairman/President

Rochelle City Council
*John Bearrows jbearrows@rochelleil.us
Kathryn Shaw-Dickey kshaw-dickey@rochelleil.us
Bil Hayes bhayes@rochelleil.us
Rosaelia Arteaga rarteaga@rochelleil.us
Dan McDermott dmcdermott@rochelleil.us
Tom McDermott tmcdermott@rochelleil.us
Benjamin Valdivieso bvaldivieso@rochelleil.us

Rochelle Elementary School Board
*Steve Builta sbuilt@rochelle.net
Ashley Jackson ajackson@rochelle.net
Stephanie White swwhite@rochelle.net
Javier Zepeda jzepeda@rochelle.net
Jennifer Thompson jthompson@rochelle.net
Evan Tracy etracy@rochelle.net
Stacey Dunphy sdunphy@rochelle.net

Rochelle Township High School Board
*Jeff Tilton jeff.tilton@rthsd12.org
Bobby Chadwick bobby.chadwick@rthsd12.org
Brent Ohlinger brent.ohlinger@rthsd12.org
Laurie Piller laurie.piller@rthsd12.org
Joel Thompson joel.thompson@rthsd12.org
Trisha Vaughn trisha.vaughn@rthsd12.org
Janet Kacvinsky janet.kacvinsky@rthsd12.org

Flagg-Rochelle Park Board
Brent Carmichael bcarmichael@rochelleparkdistrict.org
John Dobbs jdobbs@rochelleparkdistrict.org
Dale Wells dwells@rochelleparkdistrict.org
*Tim Hayden thayden@rochelleparkdistrict.org
Jodie Hart jhart@rochelleparkdistrict.org
Joe Lenkaitis jlenkaitis@rochelleparkdistrict.org

Ogle County Board Dist. 3
Austin Gillis agillis@oglecounty.org
Dan Miller dmiller@oglecounty.org
Joseph Simms jsimms@oglecounty.org

Ogle County Board Dist. 4
Jackie Ramsey jramsey@oglecounty.org
Skip Kenney skenney@oglecounty.org
David Williams dwilliams@oglecounty.org

Creston Village Board
*Tom Byro tommyb_47@yahoo.com
Greg Hopkins ghopkins522@comcast.net
Justin Hibshman jhibshman20@gmail.com
Mike Kerns ac.kerns@comcast.net
Curt Ward caward92@comcast.net
Mark Hibshman mark@headons2go.com
Reid Elliot oneluckydog7@gmail.com
Jennifer Payton creston.clerk09@gmail.com

Hillcrest Village Board
*Richard Rhoads rrhoads@hillcrestil.us
Pam Pittman ppittman@hillcrestil.us
Dan Potter dpotter@hillcrestil.us
Tim Ball tball@hillcrestil.us
Jose Huerta jhuerta@hillcrestil.us
Eileen Braski ebraski@hillcrestil.us
Patricia Garcia pgarcia@hillcrestil.us

Flagg Township
Sue Messer supervisor@flaggtownship.org
Joanna Patrick clerk@flaggtownship.org
Rachel Berry assessor@flaggtownship.org
Scott Seebach commissioner@flaggtownship.org

Board of Trustees
Lance Noggle noggle62@gmail.com
Eric Gruben egruben@comcast.net
Susan Hager susanhager303@comcast.net
Jim Kenney jimk@rocketsupply.com


Flagg-Rochelle Library
Jaqueline Dickow dickow@comcast.net
*Teresa Haggstad haggstads@comcast.net
Kelly Johnson kellyjohnson0927@yahoo.com
Lanning Nicoloff nicoloff118@comcast.net
Sheri Klindera alwayslefty2@gmail.com
Susan Sevedge nit1pri22@yahoo.com
Darci Waltrip doobs12@comcast.net

LETTERS TO THE EDITOR POLICY

The Rochelle News-Leader encourages responsible letters to the editor on subjects of interest to our readers. Editing may be necessary for space, clarity or to avoid obscenity or libel, but ideas will not be altered. All letters must bear the handwritten signature of the writer and include address and phone number or e-mail address for verification purposes. Neither the street address nor phone number will be printed. Letters should be typed or


legibly handwritten, and no anonymous letters will be published. Any letters from boards or organizations must include at least one name of an individual. Any criticism of public officials should be limited to issues related strictly to their position or actions made in office, as personal attacks will not be published. Letters involving private disputes between the writer and a business will not be published. Political endorsements will be published, however

letters from candidates endorsing themselves will not be printed. Letters may be dropped at the News-Leader office (211 IL Route 38 East), mailed to the News-Leader (P.O. Box 46, Rochelle, IL 61068) or e-mailed (news@rochellenews-leader.com.) The News-Leader reserves the right to edit or reject any letter to the editor for any reason, and letters chosen for publication do not necessarily reflect the views of this newspaper.




NEED A WELL-TARGETED AD?
Our sales reps would be glad to lend a helping hand!

Your Best GARAGE SALE
Got Lots to Sell?



Make sure to ask about our online classified ads!

Reach Thousands of Potential Local Buyers! with print and online exposure!



ROCHELLE News-Leader
In Print & Online
815.562.4171
www.rochellenews-leader.com

COMMUNITY

Fritts honors local women at Women to Watch event

SPRINGFIELD – On April 22, State Rep. Bradley Fritts (R-Dixon) welcomed Dallas Knack and Dr. Jennifer Hintzsche to the Women to Watch Event in Springfield. The event consisted of a breakfast, listening session, networking lunch, and informational seminar from other women in leadership roles.

“I was thrilled to welcome Dallas Knack and Dr. Jennifer Hintzsche to the Women to Watch Event,” said Rep. Fritts. “Both Dallas and Jennifer are incredibly accomplished women who are dedicated to making our community a better place.”

Dallas Knack is a dedicated community leader with various local organizations, including the Sauk Valley Community Leadership Program, the Creating Entrepreneurial Opportunities (CEO) Program, Sterling Main Street’s Economic Vitality, the Sauk Valley Under 40 group, and is the executive director for the Sauk Valley Chamber of Commerce. A dedicated alumna of Alpha Gamma Delta, Dallas serves as a volunteer advisor to two collegiate chapters and facilitates the Empower Leadership Program for young women across the United States and Canada.



On April 22, State Rep. Bradley Fritts (R-Dixon) welcomed Dallas Knack and Dr. Jennifer Hintzsche to the Women to Watch Event in Springfield.

Dr. Jennifer Hintzsche was the first individual to receive a Ph.D. in Bioinformatics (Biology and Computer Science) from Northern Illinois University in 2014. During her postdoctoral tenure at the University of Colorado, she made significant strides in cancer genomics that secured million-dollar grants, papers, and clinical trials. Dr. Jennifer’s research portfolio includes over 25 peer-re-

viewed scientific articles and 800+ citations in prestigious academic journals. She also pioneered the first and only FDA-cleared, sterile, at-home insemination kit, The PherDal Kit, which has led to hundreds of women who were previously declared ‘infertile’ to have babies.

Rep. Fritts concluded, “This event was an incredible opportunity for Dallas, Jennifer, and dozens of other women from across Illinois

to meet and network with other emerging women leaders. I was honored to welcome both of these accomplished women, who call the 74th district home, to Springfield.”

Dallas and Jennifer were two of nearly 50 women from across the state who attended this event. The contributions of these women were also honored by House Republican Leader Tony McCombie.



- Apr. 8 - Edward Jones, Rochelle, \$25
- Apr. 9 - Dawn Plock, Leaf River, \$25
- Apr. 10 - Pat Fletcher, Rochelle, \$25
- Apr. 11 - John Bearrows, Rochelle, \$25
- Apr. 12 - Connor Macklin, Rochelle, \$25
- Apr. 13 - Linda Ohlinger, Rochelle, \$50
- Apr. 14 - Mona Daum, Dixon, \$25
- Apr. 15 - Jillian Condon, Rochelle, \$25
- Apr. 16 - Jayme McCombs, Rochelle, \$25
- Apr. 17 - Ida Maeial, Rochelle, \$25
- Apr. 18 - Ellyn Schoenholz, Paw Paw, \$25
- Apr. 19 - Marina Lawrence, Rochelle, \$25
- Apr. 20 - John Bearrows, Rochelle, \$300
- Apr. 21 - John Pearson, Lindenwood, \$25
- Apr. 22 - Alyssa Perez, Rochelle, \$25
- Apr. 23 - Pat Fletcher, Rochelle, \$25
- Apr. 24 - Diane Smith, Rochelle, \$25
- Apr. 25 - Eva Lenkaitis, Rochelle, \$25
- Apr. 26 - Odessa Waters, Rochelle, \$25
- Apr. 27 - Dawn Sperry-Gribbe, Ashton, \$50
- Apr. 28 - Janie Hughes, Oregon, \$25
- Apr. 29 - Chelsey Stolte, Rochelle, \$25
- Apr. 30 - Beth Costa-Bland, Belvidere, \$25
- May 1 - Joseph Young, Creston, \$25
- May 2 - Andrea DeKing, Rochelle, \$25
- May 3 - Kim Dale, Amboy, \$25
- May 4 - Colton VanKirk, Rochelle, \$50

BIRTHDAYS & ANNIVERSARIES

May 4 Susan Morris	May 6 Abbie Overstreet Kane Cromwell Kevin & Courtney South (anniversary)	May 10 Dominic Lopez	May 18 Arianna Thompson
May 5 John & Kris Oleson (anniversary) Diana Dickey Troy & Minia Waters (anniversary) Abigail Norris	May 7 Barb Aleman Darah Bridgeman	May 12 Bill & Mary Baskins (anniversary)	May 20 Darrell & Beth Bolhaus (anniversary)
	May 8 Ashley Martinez	May 16 Kathy Conant	
		May 17 Krynn Hayward	

Call 815-561-2151 to submit names for birthdays and anniversaries



Coffee Break

MAGIC MAZE

C Q N L J G E C Z X V S C T R
D P N L J H N E C A N E Y W V
T O L W I S D O M O L S R P N
L K O I I G R E I E C O Y C B
Z X V H N W A T B T U R L H S
R P E O R E C R M L I J I I I
G E E N D E A R I N G D M L D
B A L U F T H G U O H T A D Y
X W U F I T S T E Q P O F R N
L K A O S R E W O L F J H E T
Y D N A C G F H T M R A W N D

Find the listed words in the diagram. They run in all directions forward, backward, up, down and diagonally. Unlisted clue hint: LIFE IS A BED OF —

Affection	Children	Lineage	Tradition
Candy	Endearing	Love	Warmth
Card	Family	Motherhood	Wisdom
Celebration	Flowers	Thoughtful	

MOTHER'S DAY

Answers:

Super Crossword

MOTHER'S DAY

Super Crossword

ACROSS

- 1 Spicy cured brisket
- 9 Competitive cowboy contests, informally
- 17 Roads: Abbr.
- 20 Trash-filled lots, e.g.
- 21 Distinctive feature of "DeVito"
- 22 "The Simpsons" barkeeper
- 23 2021 animated film featuring search-and-rescue dogs
- 25 Veneration
- 26 Light-splitting thing
- 27 Roman 901
- 28 That lady
- 29 Ticked off
- 31 Jillian of TV
- 32 High-end retail chain, informally
- 36 Shaq's sport
- 37 2022 Marvel film with Chris Hemsworth
- 43 Last part of some plays
- 46 It's close to Cedar Rapids
- 47 Ear: Prefix
- 48 2017 superhero film with Gai Gadot
- 52 Top of a "j"
- 53 Italian wine, for short
- 54 First-aid plants
- 55 — out a living
- 56 2013 superhero film with Alden Ehrenreich
- 59 Goes bad
- 60 Navratilova of tennis
- 63 Texter's hugs
- 64 Previous to
- 65 2015 sci-fi film with a dinosaur theme
- 69 "NCIS" ailer
- 72 Brooch
- 73 Rescued person's cry
- 74 Like limes
- 75 2014 fantasy film with Angelina Jolie
- 81 Brit. mil. fliers
- 82 Old Aegean region
- 83 Ever and —
- 84 Pub potable
- 85 2019 animated musical film set in Pride Rock
- 88 NBC show since '75
- 89 Lie out to tan
- 92 Just so
- 93 2018 space Western film with Alden Ehrenreich
- 98 Chicken — masala
- 99 Dessert with a cookie crust
- 100 Pic that may be on a pit
- 103 Slip up a bit
- 104 "That hurts!"
- 107 [not my typo]
- 108 Bluish purple
- 110 Skater Midori
- 111 What each of eight long answers in this puzzle was
- 117 Agent, briefly
- 118 Heighten
- 119 Ballot casters
- 120 Radio spots
- 121 Not crying
- 122 Fish that swims upright
- 7 "Laura" lyricist
- 8 Brand of infant formula
- 9 Tax rate fig.
- 10 Rally cheer
- 11 Unlock, to a bard
- 12 Cup edges
- 13 "Conversely," to a texter
- 14 Foo Fighters guitarist
- 15 Manning of the gridiron
- 16 Purchase in excess
- 17 Little bit of medicine
- 18 Wet wipe
- 19 Fruit core bit
- 24 Car for a VIP
- 30 Filmdom's McKellen
- 32 "The Maltese Falcon" genre
- 33 Athletic shoe brand
- 34 An inert gas
- 35 Wood cutter
- 36 Food preservative
- 37 Ocean motions
- 38 Goes fast, old-style
- 39 Zip, in Spain
- 40 Brand of rodenticide
- 41 Latin jazz great
- 42 Muddy up
- 43 Clued in
- 44 Palette option
- 45 Govt.-issued bond
- 49 Erode (away)
- 50 Cajun veggie
- 51 1986 Series winners
- 53 — Z (the gamut)
- 56 Non-PC computers
- 57 Origami feature
- 58 Apply turf to
- 60 Local bond, for short
- 61 "That so?"
- 62 Takeaway logic game
- 65 Brand of peanut butter
- 66 Ending for silver or stem
- 67 Ellipsoidal
- 68 Mortgage deal, for short
- 69 "Zip your lip!"
- 70 Pickling need
- 71 Theater part
- 72 Writer's tool
- 74 Fine sweet wine
- 75 Swarm
- 76 Marked with comments
- 77 Suckers
- 78 Is unable to
- 79 Idris of "The Dark Tower"
- 80 Close at hand
- 82 "Are you — out?"
- 85 "There's gold in them — hills!"
- 86 At this spot
- 87 Siouan people
- 89 Group of vessels for serving rice wine
- 90 D.C.'s home
- 91 Binary base
- 94 Approves of
- 95 Middling
- 96 Livens (up)
- 97 Stir to laughter
- 100 Private teacher
- 101 States boldly
- 102 Curt
- 103 Pre-euro coin
- 104 Community rec center
- 105 Sharif of film
- 106 In fine health
- 108 A lot
- 109 In re
- 112 Purpose
- 113 "Norma —"
- 114 "Butter"
- 115 The, in Arles
- 116 Arthur of "Maude"

SEASONAL CINEMA

HOCUS-FOCUS

BY HENRY BOLTINOFF

Find at least six differences in details between panels.

Differences: 1. Name tag is missing. 2. Chair is missing. 3. Vase is different. 4. Table is wider. 5. Planter is different. 6. Stripe is added to towel.

Super Crossword

Answers:

MOTHER'S DAY

Super Crossword

Answers:

MOTHER'S DAY

SEASONAL CINEMA

Super Crossword

Answers:

MOTHER'S DAY

SEASONAL CINEMA

NURSES WEEK

Nurses serve in a variety of important roles

NURSES are invaluable professionals within the medical community. Whether they work in hospital settings, nursing homes, assisted living facilities, doctor's offices, or elsewhere, nurses provide vital services to individuals in need every day.

Nurses wear many hats, and that's evidenced by the different types of nurses making a difference each day. Individuals considering a career in nursing should know that talented nurses are in high demand and career opportunities in the field are expected to grow in the years to come. For example, the U.S. Bureau of Labor Statistics estimates that employment of registered nurses will grow by 6 percent between 2022 and 2032. That growth rate exceeds the average expected for all occupations. Whether individuals want to become a nurse or gain a greater understanding of the many ways nurses contribute each day, this run-down of the various types

of nurses can shed light on these unsung heroes of the medical community.

- **Pediatric nurse:** Pediatric nurses make a strong impression because they are the first nursing professionals many people recall interacting with, and those interactions may last from early childhood through adolescence. Pediatric nurses perform a range of tasks, including the administration of medication; monitoring of vitals like temperature, pulse and blood pressure; health evaluations to identify symptoms; and even speak with parents to calm any nerves or anxieties they may have. Pediatric nurses typically work in doctor's offices or hospital settings.

- **Geriatric nurse:** Geriatric nurses figure to be in especially high demand in the coming years, as an analysis from the Bipartisan Policy Center indicates more than four million individuals in the United States will turn 65 in 2024. AARP has characterized that surge in the over-65 population



as a "silver tsunami," and geriatric nurses will play pivotal roles in ensuring the aging population gets the care it needs in the decades to come.

- **Family nurse practitioner:** The American Association of Nurse Practitioners® notes family nurse practitioners (FNPs)

provide a wide range of family-focused health care services to patients of all ages. FNPs perform physical exams; order or perform diagnostic tests; prescribe medications; develop treatment plans; and treat acute and chronic illnesses. If that sounds like a role played by physicians, it's not far off,

making this among the most challenging jobs within the nursing profession.

- **Emergency room nurse:** Individuals who think a fast-paced work environment is for them may want to consider a career as an emergency room nurse. ER nurses treat patients of all ages from all walks of

life. No two emergency room patients are the same, so ER nurses will rarely, if ever, have the same day on the job more than once. Accurate assessment skills are vital for ER nurses, who also must be skilled communicators, as emergency room patients are often in distress.

Long shifts are another example of nurses' commitment to quality care

FEW likely forget scenes that emerged during the early days of the COVID-19 pandemic

when nurses working in hospitals overwhelmed with sick and dying patients were applauded by local residents. Such public

expressions of appreciation were a testament to the sacrifices and risks nurses accepted as COVID claimed more and more

lives.

In those early days of the pandemic, nurses worked especially long hours, and even though the pandemic

is over, nurses continue to work considerably longer workdays than the average profession. The American Nurses Association notes that 12-hour shifts are the standard for many nurses working in hospital settings.

The lengthy, often exhausting shifts worked by nurses are another example of their devotion to their patients, as the ANA notes one of the reasons nursing shifts are so long is to ensure better continuity of care for patients. With just two shift changes per day, hospitals reduce patient handoffs, and the ANA notes that decreases the risk for miscommunication

or misunderstandings that could compromise patient care and health.

Though 12-hour shifts are the norm for nurses working in hospitals, the ANA notes that such schedules can have drawbacks, and those can adversely affect nurses. Fatigue from 12-hour shifts, which can and often do last longer than 12 hours thanks to paperwork and additional tasks nurses may not be able to get to during ordinary working hours, can lead to burnout.

Twelve-hour shifts are another example of the selfless commitment exhibited by nurses working in hospital settings.

International Nurses Day

May 12, 2025

Caring for our nurses strengthens economies.



In recognition of the nurses and all employees at the Rochelle Community Hospital, especially Eric & Kara Van Hise!
I am proud of you both!
From Grandpa

James E. Supancic Insurance

Call "Spud" for all your insurance needs...

Auto • Home • Life • Health
License & Title Service - License Renewal Stickers

516 Lincoln Ave., Rochelle • 815-562-7552
spudinsurance.com

Davis Family Health LLC

Not All Superheroes Wear Capes. Some Wear Scrubs. Thank You, Nurses!

We Fix Boo Boos
Most insurances accepted

Kelly Ann Tonielli Davis
DNP, APRN, FNP-BC-CME

Best Medical Practice & Best Doctor

1212 Currency Court, Rochelle, IL • 815-561-8500
1201 Meriden Street, Mendota, IL • 815-538-1800

Primary Care, Physicals, Weight Loss, Dermal Fillers, Botox Injections, Suboxone Program

2023 VOTED BEST OF ROCHELLE COUNTY
2024 VOTED BEST OF ROCHELLE COUNTY

Veteran Owned & Operated

Rochelle Foods

Thanks, Nurses!
We appreciate healthcare heroes like you!

1001 S. Main Street | Rochelle
815-562-4141 | rochellefoodsjobs.com

Sending a HUGE Thank You to Jordan Miller and all the Nurses at RCH

HOME • FARM • AUTO • LIFE • HEALTH • COMMERCIAL

Miller Insurance Group
Dan Miller
427 N Main Street
Rochelle, IL 61068
815.562.9911
migrochelle.com

Happy National Nurses Week
Thank You, Nurses

Training the next generation of health care heroes.

kish.edu/nursing

Kishwaukee College

Thank You

You have dedicated your careers to help care for others.

We are so very grateful for that choice!

Your dedication and expertise is incredible!

www.statelinenurses.org

Stateline Nurses Network

NPRN

Nurses HELPING PEOPLE
One life at a time

ANDERSON
Plumbing & Heating, Inc.
Since 1976

621 First Ave., Rochelle
(815) 562-8784

Like us on Facebook

VISA
MasterCard

Become a
Hubs Super Fan
today!

ROCHELLE
News-Leader



GO HUBS!



Contact your sales
representative today!
Christel Ackland
815-561-2153
cackland@rochellenews-leader.com



SUNDAY, MAY 4, 2025

ROCHELLE NEWS-LEADER • SECTION 2 • PAGE 1

SPORTS



GIRLS TAKE ON OTTAWA

The Rochelle Lady Hub softball team hung tough against Ottawa on Monday.

See page 4 for more details

Illinois Wrestling Coaching & Officials Association

Kessen earns IWCOA Lifetime Service Award

Rochelle native honored during annual awards banquet in Alsip on April 27

ALSIP — Rochelle's Connie Kessen was honored with an IWCOA Lifetime Service Award for over 25 years of service at the local and state levels. Connie, who was born and raised in Rochelle, was recognized during a banquet at the DoubleTree by Hilton in Alsip on April 27.

Connie originally was brought into the sport of wrestling through her brother Chuck, who was a 167-pound wrestler for Rochelle Township High School during the early 1980s. From that point on she fell in love with the sport, a love which only grew when her son, IWCOA Hall of Fame official and past-president Nate Kessen, began wrestling.

Connie attended Rochelle Township High School and Kishwaukee College. She was a softball player, playing competitively in the elite circuit well into her 20s. She also coached youth softball for many years where she consistently produced championship caliber teams.

Throughout the past 40 years, Connie has served as a volunteer, organizer, bench official, bracket master, scorekeeper, timer, club director, coach and most of all, a fan and supporter of the sport. She has volunteered at the IHSA Individual State Wrestling

Finals for the past two decades, serving as a bench official, scorer, timer and supporting the grand march organizing.

For the past 15 years she has volunteered at the IHSA Dual Team Championships in the same capacity, also working as a weigh-in official. She has volunteered at every girls high school state finals ever hosted, including those hosted by the IWCOA.

For the past 15 years, Connie has served and supported the IWCOA in many capacities. She received a silver award in 2016 and again in 2019. From 2010 until her retirement she served as the IWCOA banquet programs printer, in 2011 bringing both the Hall of Fame and All-State program to their current color format.

For the past two decades, she has served as a tournament worker and volunteer extraordinaire at the annual IWCOA championships held in Springfield, including volunteering for all six days of tournaments during the 2021 COVID season championships.

Connie served as a volunteer board member with the Rochelle Wrestling Club for 20 years, including serving as the club director for 15 years. She was an active member within the north section for



(COURTESY PHOTO)

Rochelle's Connie Kessen was honored with an IWCOA Lifetime Service Award for over 25 years of service at the local and state levels. Connie, who was born and raised in Rochelle, was recognized during a banquet at the DoubleTree by Hilton in Alsip on April 27.

both the IKWF and IWF, serving on many committees and as an alternate sectional director.

During this time, she also coached and cornered wrestlers who specifically asked for her in their matches. Even after she passed the reins of the Rochelle club onto her successors, she continued to volunteer at regular and postseason tournaments hosted by the club.

For her dedication and

impact, she received a Lifetime Service award from the Rochelle Wrestling Club Board of Directors. In addition, she served on the high school boosters helping organize fundraisers, concession stands and working conference and IHSA postseason tournaments that the school hosts.

To this day she continues to travel to support the team at various dual meets and tournaments, and volunteers at any tournaments

the program hosts. In 2024 the Rochelle High School program presented Connie with their Lifetime Service award.

For 31 years, Connie worked at Kishwaukee College where she managed the campus printing and mail services. During her time at Kish, she served as union president for three successful collective bargaining terms and then became an advisor as she moved into professional

administration. She retired from Kish in 2020.

For the past 39 years she has volunteered and worked at HOPE of Ogle County, a domestic violence agency. She continues to serve in the same capacity. Connie lives in Rochelle where she continues to support her local sports teams. When she is not volunteering at a wrestling event she can be found spending time with her three granddaughters.

RTHS Girls Soccer

Morris rallies to beat Rochelle in PK shootout

Senior captains combine for four goals as Lady Hubs concede Interstate 8 match

BY RUSSELL HODGES
SPORTS EDITOR

ROCHELLE — A left-footed blast from senior midfielder Makayla Lara found the upper back corner of the Morris net and gave the Rochelle Lady Hubs a two-goal advantage late in the second half of their Interstate 8 Conference varsity soccer match on Wednesday evening.

It was the second goal of the match for Lara, one of three senior captains to score as the Lady Hubs looked to snap a three-game conference losing streak. Despite leading 4-2 with under 10 minutes remaining in regulation time, Rochelle was unable to withstand an aggressive late push from the Morris offense, which struck for back-to-back goals in the 70th and 71st minutes.

The rally enabled Morris to tie the score at 4-4 and send the match into a penalty-kick shootout, where the team drilled all five of its chances to earn the win. Senior Betty Flores knocked in Rochelle's first ball of the shootout before Lara added the team's second, but on the team's third attempt, Morris keeper Zara Lugo made the deciding save, as a shot from se-

nior Emma Kennay was deflected up and off the crossbar. Makensi Martin delivered the final PK for the Morris side.

"I thought we played more as a team this time," said head coach Brad Male, whose team fell at Morris 3-1 earlier this season. "We were looking for those outlet passes and defensively, we covered for each other. We went to the ball, which has been something we've lacked over our last couple of games. Today, we came out and we proved that we can play as a team."

Each of Rochelle's senior captains found the net during the first half. The Lady Hubs scored the first goal of the match, taking a 1-0 lead after Lara sent the ball into the Morris net in the 12th minute. Senior defender Betty Flores extended Rochelle's lead in the 23rd minute, converting her first and only shot on goal to give the Lady Hubs a two-goal advantage in the first half.

"I thought we came out with intensity today," Male said. "We were looking for those passes and those through balls and I thought that definitely helped us out... I thought we gained confidence in ourselves and we showed

today that we can go to the ball and cover for each other. We had a couple of miscommunications in the back and that ultimately let [Morris] back into the game."

Despite a quick answer from Morris, who responded with a strike in the 24th minute, Rochelle tacked on its third goal late in the first half, surging ahead 3-1 after senior midfielder Emma Kennay followed a shot from freshman teammate Martha Landa and found the net in the 36th minute to round out the trio of scoring captains on Wednesday. Morris cut the lead to one in the final seconds of the half, sending the ball into the Rochelle net with nine seconds on the clock.

"It's always nice when we have different players scoring so we aren't relying on one," Male said. "It was a great outcome from our captains and I'm looking forward to watching them continue to improve and help the rest of the team out as we move through the rest of the season."

Clinging to a one-goal lead throughout most of the second half, Rochelle executed well on defense, holding its line and forcing the Morris attackers



(PHOTO BY RUSSELL HODGES)

Freshman Evelyn Garcia avoids the contact from Morris defender Makensi Martin during the Rochelle Lady Hub soccer match on Wednesday evening.

offside on three different occasions. Sophomore goalkeeper Yana Bartkiv also delivered timely saves including a huge stop in the 60th minute, when the first-year starter blocked a direct shot from Morris forward Skylar Sparks, whose superior speed enabled her to beat the Lady Hub defense to the goal on a through ball.

With the match tied

at 4-4 and under nine minutes left in regulation time, Morris (11-4-1, 5-2 Interstate 8) nearly found a game winner in the 80th minute, but another big-time save from Bartkiv, who totaled four saves in the match, allowed the Lady Hubs (6-11, 1-7 Interstate 8) to stall the Morris momentum and send the match to PKs. Junior defender Abby Bozinov-

ich converted Rochelle's fourth PK attempt of the shootout, cutting the Morris lead to 4-3, but Martin's game-winning conversion on her team's fifth and final attempt sealed the match.

Morris held a 9-5 shot-on-goal advantage during regulation time. Rochelle returned to action with a nonconference road match against DeKalb on Thursday evening.



The businesses featured on this page are

"Hubs Super Fans"

They proudly support our local athletes and students.

Please show your appreciation by patronizing their businesses.



WE SUPPORT OUR HUBS!

HUB SPOTLIGHT



Elena Salas-Duran
Year: Sophomore
Sport: Soccer

Q: How many years have you been playing this sport?

A: I played a little when I was young, but I started my commitment to soccer last year (freshman year).

Q: What do you enjoy most about this sport?

A: Being able to make friends and playing the sport makes me happy.

Q: What is your favorite school subject and why?

A: French because it's a good environment and I have an amazing teacher (Mrs. Cartwright).

Q: Who is your favorite athlete and why?

A: Betty Flores because she's an amazing soccer player and a huge

inspiration.

Q: Who is your biggest role model and why?

A: My dad because he always pushes me to be my best and he's the most hard working person I know.

Q: What is your dream job and why?

A: To be a therapist so I could help others when they need help.

Q: Where would your dream vacation be and why?

A: Mexico so my parents could see their families again.

Q: What is your favorite thing about being a student-athlete at RTHS?

A: Being able to play my sport while having fun.

Anessa Rollin

Year: Freshman
Sport: Soccer



Q: How many years have you been playing this sport?

A: I just started this year.

Q: What do you enjoy most about this sport?

A: Being able to play with my friends.

Q: What is your favorite school subject and why?

A: English because I like to write.

Q: Who is your favorite athlete and why?

A: Lionel Messi because he's really good at soccer and he's a huge inspiration to be.

Q: Who is your biggest role

model and why?

A: My mom.

Q: What is your dream job and why?

A: To be a tattoo artist because I enjoy art.

Q: Where would your dream vacation be and why?

A: Hawaii because I want to visit the beaches there.

Q: What is your favorite thing about being a student-athlete at RTHS?

A: Being able to represent my school and becoming a part of the RTHS community.

Alfano's
Pizzeria and Italian Restaurant
Taste The TRADITION
Taste The DIFFERENCE

- Best Pizza • Pasta
- Italian Restaurant
- Appetizer/small plate
- Family Restaurant • Local Business

Pizza • Pastas
Sandwiches • Salads and Lots More!

Dine-In • Carry Out • Home Delivery
1115 TURKINGTON TERRACE, ROCHELLE
815-562-3312

ANDERSON
PLUMBING & HEATING, INC.

Plumbing, Heating & Cooling
Water Heaters, Water Softeners,
Drinking Water Systems, Iron Filters,
Sewer Rodding & Jetting & More!

Since 1976

621 First Ave., Rochelle
(815) 562-8784

"Proudly Serving the Rochelle Area Since 1945"

Berg-Johnson
Electric

FREE ESTIMATES
Licensed and Insured

Residential • Commercial • Industrial

24 Hour Emergency Service
815-562-4937
500 Cleveland Avenue

Bruns
Construction, Inc.

FREE ESTIMATES!
Tim & Roger Bruns,
Owners
Established 1997

- Residential & Commercial
- Concrete
- Additions

815-561-0099
Free Estimates • Fully Insured
www.brunsconstructioninc.com

CENTRAL ILLINOIS LOAN

Loans For All Your Needs
Auto • Home Improvement • Vacation

Jami Rees • Tonia Holland

815★561★4035!

310 Eagle Drive, Rochelle
All loans subject to our normal credit requirements and policies.

Busy Schedule?
Leave the cooking to us.

- Large menu of foods
- Rochelle's famous chicken by the dinner or bucket
- Hand dipped ice cream (16 flavors)

COUNTRY SCHOOL
DRIVE-IN RESTAURANT
251 N. ROCHELLE • 562-6039

JOHNSON TRACTOR

SALES • PARTS • SERVICE

200 Steward Road
800.262.1680
www.johnsontractor.com

EVE Lassiter
HOME AUTO - LIFE BUSINESS

Go Hubs!
Lassiter Agency
1220 Currency Ct., Rochelle, IL
815-787-8280
elassiter@farmersagent.com
License IL, WI, & MI Insurance

CERTIFIED PUBLIC NOTARY
MORTGAGE LOAN ORIGINATOR
NMLS: 2516202

Stillman BANK

GO HUBS!

Earning Your Trust Since 1882
www.stillmanbank.com

Home & auto.
Easy & affordable.

Call me for a quote today

State Farm
Huber Ins and Fin Svcs Inc
Shane Huber, Agent
221 E Route 38
Rochelle, IL 61058-2303
Bus: 815-562-7011
shane@shanehuber.com
www.shanehuber.com

Local People Providing Local Service

Rochelle MUNICIPAL UTILITIES

Water • Waste Water
Electric • Communications

Phone: 815-562-4155 333 Lincoln Highway
Fax: 815-562-5861 Rochelle, IL

www.rmuet.net

Rochelle Community Hospital
Your Local Healthcare Resource.

900 N. 2nd Street, Rochelle
815-562-2181
www.rochellehospital.com

Rochelle Chiropractic Clinic
Dr. Chad M. Piller

227 E. Rt 38 • Rochelle, IL
815-562-8706
www.rochellechiropractic.com
Now Accepting New Patients!

QUEEN'S TRUCKING & CONSTRUCTION, INC.

Small or Big Construction Jobs, We Do Them All!

Queen's Trucking & Construction, Inc.
322 Errett Road, Rochelle
815-562-6064 | queens-trucking.com

Hiring Class A CDL Drivers

MORTON BUILDINGS
If you can dream it, we can build it.

Rochelle Sales Office • Hwy. 251 N. • 877-613-3050

MEYERS FURNITURE & FLOORING

209 Powers Road, Hwy 251 N
Rochelle, IL 61068
(815) 562-8792
www.meyersfurniture.com

Good luck to our local student athletes!

GO, HUBS!



SPORTS

RTHS Boys Tennis

Hubs take two singles matches during loss to DeKalb

Winters earns three-set singles victory as Rochelle falls against LaSalle-Peru

BY RUSSELL HODGES
SPORTS EDITOR

ROCHELLE — Juniors Mark Green and Philip Winters shined in singles play as the Rochelle Hub tennis team took the court for its nonconference varsity match against DeKalb on Monday.

Winters turned in a clean 6-0, 6-0 sweep against Ata Shakir at the No. 2 singles court, while Green handled Jahan Islam for a 6-2, 6-1 victory at the No. 1 singles court. While Rochelle claimed both singles points in the match, DeKalb secured all three doubles points to hand the Hubs a 3-2 defeat. Rochelle (3-5, 1-2 Interstate 8) hosted LaSalle-Peru on Tuesday evening.

Sophomore Noah McK-

inney and freshman David Eckardt nearly took their No. 2 doubles match to three sets, falling just short in the second set and conceding a 1-6, 5-7 loss against Kameron Falk and Esteban Cardoso. Sophomores Derek Swartz and Connor Hunley took three games in their 0-6, 3-6 loss against Charlie Vander Bleek and Marcos Zaylik at the No. 3 doubles court.

Junior Caleb Mortensen and sophomore Sam Sergeant represented Rochelle at the No. 1 doubles court, earning one game in a 1-6, 0-6 loss to Rylan Lottes and Matthew Williams.

LaSalle-Peru

Junior Philip Winters scored a three-set singles victory to lead the Rochelle Hub tennis team during its

Interstate 8 Conference varsity match against LaSalle-Peru on Tuesday.

Winters bounced back from a first-set defeat against John Crane, rallying to earn second and third-set victories to secure a 2-6, 7-5, 10-7 win at the No. 2 court. It was the lone triumph of the evening for the Hubs, who conceded all three doubles points and fell in five of the six singles matches during their 8-1 loss to the Cavaliers. Rochelle (3-6, 1-3 Interstate 8) returned to action on Thursday, when the Hubs headed west for a nonconference match against the Sterling Golden Warriors.

LaSalle-Peru won all three doubles points on Tuesday evening. Juniors Mark Green and Philip Winters took their No. 1 doubles match against

Danny Santoy and Michael Milota to three sets, falling just short in a 1-6, 6-2, 6-10 defeat. Junior Parker Slattengren and sophomore Noah McKinney played a close first set during their No. 3 doubles match against Diego Mondragon and Kotaro Yasui, falling 4-6, 2-6. Junior Caleb Mortensen and sophomore Sam Sergeant took two games in their 0-6, 2-6 loss to Jackson Sellett and Riley Cetwinski at the No. 2 court.

The Cavaliers took five of the six singles matches in straight sets. Mark Green hung tough in his No. 1 singles match against Nick Olivero, falling 5-7, 1-6. Sam Sergeant also showed promise early in his No. 4 singles match against Danny Santoy, falling 5-7, 0-6. Sophomore Connor



(PHOTO BY RUSSELL HODGES)

Freshman David Eckardt hits a ball down the alley during the Rochelle Hub tennis match against DeKalb on Monday.

Hunley played a strong second set during his 1-6, 4-6 loss to Riley Cetwinski at the No. 6 court.

Freshman David Eckardt won four games during

his 1-6, 3-6 loss to Michael Milota at the No. 5 court, while Mortensen took two games in his 1-6, 1-6 loss to Jackson Sellett at the No. 3 court.

RTHS Football

2025 Rochelle Football Family Night scheduled for May 13

ROCHELLE — A reminder to all Rochelle football families - Mark your calendars now for the Rochelle Football Family Meeting Night on Tuesday, May 13 at 6:30 p.m. in the RTHS Auditorium.

This meeting is for all families of Rochelle football and any community members who'd like to attend and learn more about the program. The meeting is for both returning families and incoming

freshman families. All transitioning eighth grade to freshman football families should plan to attend.

This meeting will serve as the only parent meeting for the 2025 season. We will utilize this meeting

to deliver all schedules, receive information regarding summer Hub Power, meet our staff and trainer, learn about our parent group and booster club as well as an in-depth look at our program phi-

losophy and expectations and most importantly, an opportunity to ask questions.

The Rochelle Football Family Meeting is an all-inclusive opportunity to deliver all the information

you will need for the 2025 season. You do not want to miss it. So mark your calendar today to attend our Rochelle Football Family Meeting Night on Tuesday, May 13 at 6:30 p.m. in the RTHS Auditorium.

RTHS Girls Soccer

(PHOTOS BY RUSSELL HODGES)



Rochelle Lady Hubs concede Interstate 8 Conference loss against Kaneland on Monday evening

The Rochelle Lady Hub soccer team hosted an Interstate 8 varsity match against Kaneland on Monday evening. Senior Makayla Lara scored the lone goal for Rochelle in a 10-1 loss to the Knights. Rochelle (6-10, 1-6 Interstate 8) returned home for an Interstate 8 match with Morris on Wednesday. At left, junior defender Abby Bozinovich takes a goal kick from the Rochelle end of the field. At right, senior midfielder Emma Kennay battles with Kaneland's Samantha Ortega.

COMMUNITY BOARD

Need to get the word out about a product or service you offer? Give us a call at 815-561-2153. We can reach over 9,000 homes!

Concrete

FREE ESTIMATES!

- Residential & Commercial Concrete
- Additions

815-561-0099
Free Estimates • Fully Insured
www.brunsconstructioninc.com

Tim & Roger Bruns, Owners
Established 1997

Decking

DECKS UNLIMITED
Let Me Deck You

- Custom Decks • Swimming Pool Decks • Wheel Chair Ramps • Stairs • Pergolas • Porches • Windows • Doors • Add-Ons • Tear-Downs • Staining • Power Washing • Complete Maintenance

Free Estimates
Guaranteed Workmanship
815-393-3514
Michael P. Nelson

Over 1,300 Decks Built with 40 Years Experience

Gutters, Roofing & Siding

THEISEN ROOFING
Free Estimates!
ROOFING
SIDING
GUTTERS

CONTACT US
815-758-8998
THEISENROOFING@COMCAST.NET
Family owned & operated for over 50 years

Heating & Air Conditioning

Air Conditioner Clean & Check
\$60.00
After \$35 rebate.
Promotion only available to RMU customers.

815-561-6551
www.HullHVAC.com

Ask about duct cleaning and protecting your home's air quality.

Plumbing, Heating & Cooling

ANDERSON PLUMBING & HEATING, INC.

Plumbing, Heating & Cooling
Water Heaters, Water Softeners,
Drinking Water Systems, Iron Filters,
Sewer Rodding & Jetting & More!

Since 1976

621 First Ave., Rochelle
(815) 562-8784

Storage Sheds

Rocky Ridge Structures

We Specialize in Portable/Quality Built Storage Sheds

- Stock & Custom Design
- Competitive Pricing
- Many Options Available
- Site Preparation Available

See Displays at 3500 S. Chana Rd. Chana IL 61015
Call Norm or Albert for Free Literature packet
779.861.3542

Advertise Here

What Service Do You Offer?

561-2153
The Rochelle News-Leader

SPORTS

RTHS Softball

Lady Hubs make strides during home loss to Ottawa

Rochelle scatters nine hits in Interstate 8 Conference defeat against Sycamore

BY RUSSELL HODGES
SPORTS EDITOR

ROCHELLE — Consistent pitching and a strong start at the plate allowed the Rochelle Lady Hubs to take the early lead and hang tough during their varsity softball game against Ottawa.

The Lady Hubs scored five runs over the first three frames, while sophomore Emma Heller and senior Lauren Dyer combined for 13 strikeouts without allowing a single walk over seven innings of work from the pitcher’s circle. Entering as the ICA’s No. 14 ranked school in Class 3A, Ottawa managed to overcome the early deficit, but Rochelle showed that it could compete against a top team in the conference, totaling 10 hits and committing just one error in a 7-5 loss to the Pirates. “We were able to hit the ball well early in the count and we didn’t allow them to get into positions where they could use more nasty pitches,” head coach Deanna Jacobs said. “We were able to put the ball in play and make them work, which was nice to see. Unfortunately, there were too many strikeouts

for our liking, but it was a confidence booster as far as how we hit the ball.”

Ottawa (13-5, 3-2 Interstate 8) opened the game with a bang, taking a 1-0 lead after lead-off batter Piper Lewis belted a home run over the left-center field fence. But Dyer was able to shake off the solo blast and settle in over her first three frames of work, striking out four batters without allowing a walk and holding the Pirate offense to three runs over three innings from the circle.

Using the opposite field and gusty winds to their advantage, the Lady Hubs (5-14, 0-5 Interstate 8) rallied for three runs in the bottom of the first inning to take their first lead of the evening. Freshman Mya Martinez slapped a one-out single into right field before Dyer floated a single to the opposite field and sophomore Camryn Metzger drew a hit-by-pitch to load the bases.

Continuing to attack the other way, Rochelle tied the score when Heller lofted an RBI single to shallow right field, allowing Martinez to touch home and even the game at 1-1. Two batters later, freshman Au-

drina Rodriguez delivered a clutch hit with two outs, shooting a two-run ground ball single through the right side of the Ottawa infield to drive home both Dyer and Metzger.

Rochelle had a chance to balloon its lead in the bottom of the second inning, where Martinez and Dyer singled to load the bases with one out, but a strikeout and a flyout ended the scoring threat. The Pirates evened the score with a pair of runs in the top of the third inning, but the Lady Hubs answered with two runs in the bottom half, where RBI groundouts from freshman Cheyenne Somers and junior Keirra Clark capped off a three-hit inning for the Rochelle side.

Trailing 5-3 entering the top of the fourth inning, Ottawa found success during its second trip around the order, opening the frame with a single before an RBI triple from Kilah Figenbaum cut the Rochelle lead to one and ended Dyer’s day in the circle. Heller took over in relief, but the Pirates were unfazed by the pitching change, tying the score on Annamaria Corsolini’s RBI single to center. Corsolini eventually scored on a passed ball

to put Ottawa ahead 6-5.

The Pirates added insurance in the top of the fifth inning, where Bobbi Snook singled and scored on a passed ball to give Ottawa a two-run cushion. The Pirates would do no further damage, however, as Heller recorded four strikeouts over the final two frames, including striking out the side in the top of the seventh inning, to strand a pair of baserunners. Heller ultimately fanned nine batters without allowing a walk and limited Ottawa to one earned run in four frames.

Sycamore

Three Rochelle Lady Hub softball players recorded multi-hit games during the team’s Interstate 8 Conference varsity matchup against Sycamore on Wednesday evening.

Senior Lauren Dyer went 2 for 3 with two singles and one run scored, while sophomores Emma Heller and Camryn Metzger each went 2 for 3 with two singles for the Lady Hubs, who scattered nine hits in their 11-1 loss to the Spartans. Sycamore (17-2, 5-1 Interstate 8) broke a scoreless tie with four runs in the second



(PHOTO BY RUSSELL HODGES)

Freshman Audrina Rodriguez puts the ball in play during the Rochelle Lady Hub softball game against Ottawa on Monday evening.

inning and clinched the victory with two runs in the fifth inning. Rochelle (5-15, 0-6 Interstate 8) faced Oregon on the road at 4:30 p.m. Friday afternoon.

The Spartans took a 4-0 lead in the bottom of the second inning, where Kaitlyn Williams ignited Sycamore’s offense with a two-run homer to center field and Addison Armstrong rolled a two-run double through the left side of the Rochelle infield. The Lady Hubs responded with four straight singles in the top of the third inning, scoring on an

RBI knock from freshman Audrina Rodriguez.

Kairi Lantz smacked a solo homer to center in the bottom of the third inning, giving Sycamore a 5-1 lead over Rochelle. The Spartans extended their lead after Faith Heil delivered a two-run single through the right side of the Lady Hub infield in the bottom of the fourth inning. Bella Jacobs followed with an RBI single, slapping a line drive to center and putting Sycamore up 9-1. Bella Johnson’s two-run single in the bottom of the fifth inning clinched the Spartan victory.

RTHS Baseball

Hubs concede Interstate 8 Conference series against Morris

Rochelle falls to 6-12 overall and 0-9 in conference play after midweek defeats

BY RUSSELL HODGES
SPORTS EDITOR

MORRIS — The Rochelle Hub baseball team opened its third Interstate 8 Conference series of the season Monday evening, totaling one run on four hits during a 15-1 road loss against Morris.

Senior Ethan Goodwin drove in Rochelle’s lone run of the evening, reaching on an infield single in the top of the third inning to bring home sophomore teammate Brody Bruns, who smacked a two-out double to center in the previous at-bat. But the Morris offense opened the game with four runs in the first inning before erupting for 11 runs on eight hits including a pair of home runs from Jack Wheeler, who finished with five RBIs. Morris finished with 12 hits in the series opener.

RBI singles from Brett Bounds and Colin Pfeifer sparked a four-run effort in

the bottom of the first inning for Morris (13-6, 6-0 Interstate 8), who led 4-0 before its massive second inning, where Wheeler belted a two-run homer to straight-away center before blasting a three-run homer in his second at-bat of the frame. Bounds notched his second RBI single of the game during the second inning, while Mick Smith added an RBI double and Landon Norris delivered a two-run double to left field.

Trailing 15-0, Rochelle (6-10, 0-7 Interstate 8) tallied one run on Goodwin’s RBI infield single in the top of the third inning.

Wednesday

Junior Brode Metzger’s RBI single in the bottom of the fifth inning was a lone highlight for the Rochelle Hubs during their varsity baseball game against Morris on Wednesday.

Despite a scoreless first frame, Morris rallied for nine

runs over the second and third innings while holding Rochelle to four hits as the Hubs fell 15-1 in Interstate 8 Conference action. Morris (14-6, 7-0 Interstate 8) added two runs in the fourth inning and capped off its series-clinching victory with four runs in the top of the fifth inning. Morris notched four consecutive singles in the top of the second inning, where RBI knocks from Steven Wagner, Landon Norris and Griffin Zweeres helped the team take a 5-0 lead over the Hubs. A pair of sacrifice flies in the top of the third inning tacked on two more runs for Morris, who extended its lead with two runs on RBI singles from Norris and Mick Smith in the top of the fourth inning. Smith’s two-run double highlighted a four-run fifth inning for the Morris offense.

Down 15-0, Rochelle (6-11, 0-8 Interstate 8) avoided the shutout with one run in the bottom of the fifth inning,

scoring after back-to-back singles from senior Carson Lewis and Metzger, who drove in teammate Gavin Neale with an infield single to the left side.

Thursday

The Rochelle Hub baseball team was held scoreless on three hits in an 11-0 loss during its Interstate 8 Conference varsity series finale against Morris on Thursday evening.

Griffin Zweeres belted a two-run homer to highlight a seven-run second inning for Morris, who took a 1-0 lead in the bottom of the first inning and tacked on three more runs in the bottom of the third inning. Zweeres, who smacked a two-run single in the third inning, finished with four RBIs for Morris (15-6, 8-0 Interstate 8), who received four shutout innings from Brett Bounds and Steven Wagner.

Rochelle had three bat-



(PHOTO BY RUSSELL HODGES)

Senior Carson Lewis throws a pitch during the Rochelle Hub baseball game against Morris on Wednesday.

ters reach base in the top of the second inning, where sophomore Dylan Manning slapped a lead-off single and senior Carson Lewis reached on a fielder’s choice. While a tagout between first and second led to two outs in the frame, junior Brode Metzger singled to put two runners on base, but a groundout in

front of the pitcher’s mound ended the threat.

Sophomore Andrew Huerta singled to lead off the top of the fifth inning, but with the Hubs needing two or more runs to extend the game, Rochelle (6-12, 0-9 Interstate 8) struck out in three consecutive at-bats to end the game.

RTHS Track & Field

Rochelle earns 16 event wins at Interstate 8 triangular meet

Hubs finish first with 99 points, Lady Hubs take third against Kaneland, Ottawa

BY RUSSELL HODGES
SPORTS EDITOR

OTTAWA — The Rochelle Hub and Lady Hub track and field teams combined for 16 event victories during their Interstate 8 triangular meet against Ottawa and Kaneland on Tuesday.

The Hubs won 10 events and finished first with 99 points, while the Lady Hubs claimed six events and took third with 52 points in the three-team meet at Ottawa Township High School. Rochelle’s girls will be back in action at the Sterling Night Relays on Friday. The boys will head north for the Oregon Hawk Classic on Friday.

Hubs

Senior Virgil O’Dell brought home a pair of field event victories on Tuesday, winning the triple jump with a PR of 12.09 meters and the

long jump with a distance of 6.00 meters. Senior Jack Tilton was also victorious in the field, clearing 1.92 meters to win the high jump competition.

Junior Andrew Nuyen finished third in the pole vault with a clearance of 3.62 meters. In the throwing events, seniors Jacob Ost and Logan Frye led the way, with Ost marking 11.92 meters for fourth place in the shot put and Frye setting a PR of 36.15 meters for seventh in the discus.

Rochelle took all four relay races on Tuesday, winning the 3200-meter relay (Johnny Morales, Eduardo Cisneros, Levi Waddle and Chris Hickey) with a time of 9:50.31 and the 400-meter relay (Caden Goodwin, Virgil O’Dell, Nathan Rosas and Richard Pierce) with a time of 44.96 seconds. The Hubs ran first in the 800-meter relay (Jaden

Martina, Aaron DeClerck, Justin DeClerck and Nathan Rosas) with a time of 1:36.51 before winning the 1600-meter relay (Nathan Rosas, Elijah Mayen, Tyler Johnson and Chris Hickey) with a time of 3:46.71.

Sophomore Hunter Bivins and junior Wyatt Worthington led the charge in both hurdle events, with Bivins finishing second in the 110-meter hurdles (17.73 seconds) and the 300-meter hurdles (42.58 seconds) while Worthington took third in each event with times of 17.73 and 45.72 seconds. Freshman Tyler Johnson scored a pair of wins in the distance events, taking the 800-meter run with a PR of 2:15.19 and the 1600-meter run with a time of 4:58.00. Sophomore Edward Kozioł added a win in the 3200-meter run, clocking in with a PR time of 12:54.93.

Seniors Jack Tilton and Virgil O’Dell spearheaded the charge in the sprints, with Tilton setting a PR of 12.05 seconds for third in the 100-meter dash before O’Dell set a season-best time of 25.20 seconds for second in the 200-meter dash. Sophomore Pedro Rosales and junior Elijah Mayen ran second and third in the 400-meter dash with times of 54.75 and 54.98 seconds.

Lady Hubs

Senior Erin Murphy earned Rochelle’s lone victory in the field events, winning the shot put with a heave of 11.45 meters. Sophomore Maddie Peska aided the efforts in the throws, marking 24.08 meters for sixth in the discus. In the jump pits, freshman Zoey Schabacker took third in the triple jump (8.99 meters) and junior Rose Luxton placed fourth in

the long jump (3.87 meters). Senior Taelynn Rodeghero finished second in the high jump with a height of 1.42 meters and junior Samantha Overton took fifth in the pole vault with a height of 1.97 meters to round out the field.

Rochelle took three of four relay races, winning the 3200-meter relay (Brisa Zepeda, Arline Villanueva, Bridgett Ramirez and Marley Cherry) with a time of 11:58.99 and the 400-meter relay (Zoey Schabacker, Reese Kissack, Dylan Etes and Katie Toczylowski) with a time of 56.13 seconds. The Lady Hubs won the 800-meter relay (Gwendolyn O’Dell, Jasmine Walsh, Elyse Manning and Kyrie Cragin) with a time of 1:56.38 before finishing second in the 1600-meter relay (Alex Neece, Marianna Saldaña, Dylan Etes and Elena Daugherty) in 4:56.94.

Junior Samantha Over-

ton led the Lady Hubs in the hurdles, finishing third in both the 100-meter hurdles (21.32 seconds) and the 300-meter hurdles (1:06.32). Freshman Carol Carpenter won two distance events on Tuesday, claiming the 800-meter run with a PR of 2:42.14 before adding a victory in the 1600-meter run with a time of 6:06.95. Sophomore Lydia Von Haden aided the efforts in the distance events, placing second with a time of 17:41.55 in the 3200-meter run.

Senior Arline Villanueva spearheaded the charge in the sprints, taking fourth in the 400-meter dash with a time of 1:12.00. Freshman Kaliyah Cathina finished seventh in the 100-meter dash with a PR of 14.06 seconds and junior Katie Toczylowski placed eighth in the 200-meter dash with a time of 31.10 seconds.



Rochelle Township High School Staff

AGRICULTURE/BUS/TECH Donna Page - Dept. Chair Dale Bergeson Deanna Jacobs	Charity Prose Lindsay Suess Ryne Vrana
ART DEPARTMENT Beth Mock - Dept. Chair Andrea DeKing	LIBRARY/MEDIA CENTER Ann Marie Jenkins - Chair
DRIVER EDUCATION Erick Olson	MUSIC DEPARTMENT Keaton Shumard - Dept. Chair Chris Marigomen
ENGLISH DEPARTMENT Kristin Flanagan - Dept. Chair Anna Adolph Anna Adolph Matt Hagemann Abby Jamison Meagan Stoops Scott Swartz Danae White Brian Worthington	PHYSICAL EDUCATION Amy Schweitzer - Dept. Chair Bethney Dufoe Kyle Kissack Molly Sly Alphonso Vruno
ENGLISH LANGUAGE LEARNERS Ida Maciel	GROWTH COACH Sumayya Staab
FOREIGN LANGUAGE Eva Lenkaitis - Dept. Chair Anna Birs Elizabeth Cartwright Cody Denneau Edna Vazquez	PLUS (OCEC) Brandon Krantz
G FORCE Cody Denneau	SCIENCE James Jackson - Dept. Chair Nelson Baker Anna Criswell Justin Otte Adrian Smith Tim Thompson
GUIDANCE/COUNSELING Mike Dale - Dept. Chair Natasha Hacaga Colfay Pointer Javier Zepeda, ELL Chair	SOCIAL SCIENCES David Cartwright - Dept. Chair Jonathon Gehm Kevin Hunt Holly Karner Jarrod Reynolds
MATHEMATICS John Pfaff - Dept. Chair Nicole Canfield - Infinity Math Mike Fonfara Tim Hill Glenn Mehrings David Moglas Rachel Plock	SPECIAL EDUCATION Erin Bergeson - Dept. Chair Max Basler Joe Howard Susan Naylor Sarai Orozco Jarrod Reynolds
	FOCUS HOUSE Tony Wyatt - Dept. Chair Kim Dewey Scott Stevens

St. Paul Lutheran School Staff

ST. PAUL LUTHERAN Jaime Haedt - PreK3 Peggy Bialas - PreK 4 Hannah Hoffman - K Peggy Thompson - 1	Cheryl Bunger - 2 Kate Sonntag - 3 Maylene Carreno - 4 Trish Rodeghero - 5 Lisa Good - 6 Dawn Andermann - 7	Jolene Bresson - 8 Teresa Green - Music Kara Reynolds - Aide Steve Hall - Principal
---	--	--

Creston School Staff

Creston CSD #161 Mrs. Breneisen - Kindergarten Mrs. Ryan - 1st Grade Mrs. Larsen - 2nd Grade	Mrs. Samp - 3/4 Grade Mrs. Messenger - 5th Grade Mrs. Wyruchowski - 6th Grade Ms. Haub - 7th Grade	Ms. Byrne - 8th Grade Mrs. Perkovich - Art Ms. Weber - Music Ms. Forney - P.E. Mrs. Hohlfeld - Special Education
---	---	--

Kings School Staff

Kings School District #144 Mrs. Crobbe Ms. Hunter Mrs. O'Dell Mrs. Ost	Miss Greene Mrs. Hopp Mrs. Dewey Mr. Steiner Mr. Hickman Mrs. Dylak	Miss Hohlfeld Mrs. Eldred Ms. Hall Ms. Crumley Ms. Pearson
--	--	--

Steward School Staff

Steward Elementary School District #220 Deanne Aldridge Michelle Esposito Melissa Dietze	Christopher Groth David Hanes Rebekah Hayes Kara Johnson Lisa Johnson Stacey Leifheit Sarah Loeffelholz	Erin Odle Jeanette Rod Chris Roberts Brittany Drozd Heather Dewey
---	---	---

May 5-11, 2025

Rochelle Elementary School District Staff

CENTRAL SCHOOL Tracy Alford Lillian Andrew Aleigha Bialas Chris Bogle Yuliana Cintora Jackie Cruz Marisol Garcia Lisa Gineman Arely Hickey Stacey Horstmeier MiKayla Hussey Kristen Kida Kim Lumzy Laura Martinez Josie McCune Candace Meiners Megan Monfils Ruby Nambo Alexa Ochoa Angie Primrose Yensy Rodriguez Tara Roman Morgan Sarver Katie Sullivan Betsie Swartz Darci Waltrip	Jennifer Herrera Phoebe Hughes Amanda Hunley Sarah Kennay Amber Kreiser Summer Linboom Kent Lodico Jocelyn Ortiz Alyssa Perez Amy Price Elisa Rubeck Tiffany Siebrasse Julie Slack Erin Strouss Lisa Sutton Margaret Taylor Nicole Tobler Carmen Vogeler	Justine Miller Alexa Ochoa Kathy Prestegaard Jaclyn Ramsey Desiree Rones Juanita Saldana Haydin Sorrentino Kristine Speece Chad Stewart Chelsey Stolte Stephanie Tepinski Chris Underwood Alva Valle Sam Volkert Hayley Wendling Melody Worthington Victor Worthington
LINCOLN ELEMENTARY SCHOOL Dani Alfano Rosie Arteaga Melissa Bowers Christina Calvey Brandi Casey Deb DaCosta Kim Davidson Stephanie Dillon Marilu Dougherty Lisa Friday Katelyn Gabbard Karen Hall Dhana Hansen Eryn Harper Andrea Hernandez	ROCHELLE MIDDLE SCHOOL Karen Anderson Ben Baar Vanessa Belmonte Alicia Brown Marcy Bruhn Joelle Builta Theresa Crystal Jason Deutsch Brooke Freeman Bryan Garcia Belmonte Luis Garcia Diez John Gonzales Jennifer Gonzalez Beth Hahn Jessica Hickey Jennifer Hunley Cathy Larkin Tracey Lawton Paul Madere Ana Maria Martin Jeannie Matura Jayme McCombs Noah Mershon	TILTON ELEMENTARY SCHOOL Kaylee Bearden Jackie Brown Eva Chu Sara Daugherty Melissa Frankfother Jodi Hayes Jennifer Hernandez Shannon Howell Jessica Kiesling Anna Kray John Loggins Samantha Lower Joe McKinney Will McKinney Angela Meyer Jeannette Mingus Jasmine Mondragon Denise Orlikowski Kelly Polz Deanne Ponto Antonio Ruiz Fernandez Jennifer Siebert Amy Springmire

Ashton-Franklin Center SD #275 Staff

Elementary Amanda Chapman - School Social Worker Kristyne Arjes-Librarian Debbie Bay - 2nd Grade Julie Brooks - 3rd Grade Denise Coffman - K-4th General Music Laura Coffman - K-6th Art Maura Daly - Band/Chorus Amber Dimmig - Title I Reading Specialist Ann Dubois - 3rd Grade Dan Fassler - 6th Grade Mary Flaherty - Early Childhood Education Tarah Holmgren - 4th Grade Abbie Janicke - Math Specialist Marie McCannon - 1st Grade Michelle Mairs - K-6th Grade Physical Education	Trista Matson - 6th Grade Jordan Piller - K-6th Special Education Christie Pollom - Speech/Language Pathologist Marcy Ramsdell - 5th Grade Julie Reinhart - 2nd Grade Jane Rueff - 1st Grade Karen Sondgeroth - Kindergarten Penny Thomas - K-6th Special Education Christine Wolf - 5th Grade Jessica Wolf - 4th Grade	Middle School & High School Carley Ackland - HS ELA Kristyne Arjes - Librarian Greg Cissna - JH Social Studies/P.E. Laura Coffman - Art Maura Daly - Band/Chorus
		Jeri Dempsey - JH Science/HS Earth Science John Dudziak - P.E./Health Rebecca Engelbarts - HS Science Kelsi Eyster - JH Literature Sarah Lave - School Counselor Kassandra McKay - Special Education/Resource Kim Penick - JH Math/Algebra I David Smith - Driver's Education Josh Stone - JH ELA/HS Speech & Consumer Ed Kim Toole - Dual Credit English Brian Treadwell - HS Social Studies Kelly Viall - Science/Agriculture Kim Waters - Spanish Sean Waters - HS Math/AP Calculus Heather Winterland - P.E./Health

Teachers play an enormously important role in the development of our nation's youth. They teach and inspire, guiding our kids toward bright, successful futures. They act as educators, role models and coaches, broadening minds and encouraging achievement. During Teacher Appreciation Week, we recognize teachers for their dedication to helping our children, our nation's future leaders, succeed.

Classified Marketplace



ROCHELLE • HILLCREST • CRESTON • STEWARD • KINGS • ASHTON

PUBLIC NOTICE
Public Notice is hereby given that on April 9, 2025 a certificate was filed in the Ogle County Clerk's Office setting forth the names and post office address of all of the persons owning, conducting and transacting the business known as: Hayes Drywall and Restoration
1305 Crest Lane
Rochelle, IL 61068
Dated: April 9, 2025
Laura J. Cook, Ogle County Clerk
No. 0415
(April 20, 27 and May 4, 2025)

The City of Rochelle Illinois will receive sealed bids for a project entitled 2025 New Community Entrance Sign Project until 10:00 o'clock A.M. local time on the 28th day of May 2025, at the Rochelle City Hall located at 420 North 6th Street, Rochelle, Illinois 61068. Immediately following said time all bids will be publicly opened and read aloud at the same address.

The proposed work for which the City of Rochelle is soliciting bids consists of, but is not limited to, the following: construction of a new community entrance sign including reinforced concrete foundation, stone and wood sign surround structure, graphic sign panel and sign support structure and other associated work.

The Bid and Contract Documents, including Drawings, Specifications, Project Requirements and form of contract are on file at the

office of the Project Engineer, Willett, Hofmann & Associates, Inc., 809 East 2nd Street, Dixon, Illinois 61021 and at the Rochelle City Hall, 420 North 6th Street, Rochelle, Illinois 61068. Bid and Contract Documents may be obtained on May 7, 2025. Copies of the Bidding Documents shall be obtained electronically in PDF format from the Willett, Hofmann & Associates, Inc. website at www.WillettHofmann.com. Bidders shall click on "Bid Login" on the homepage of the website and follow instructions. The eBidDoc# (project number) is 9664709 for this project. Contract Documents can be downloaded in PDF format from the website by depositing Twenty-Two Dollars (\$22.00) by credit card. A bid security in an amount equal to not less than five percent (5%) of the total base bid shall be submitted with each bid. Bids may be held by the City of Rochelle for a period not to exceed sixty (60) days from the date of the opening of bids for the purpose of reviewing the bids and investigating the qualifications of bidders, prior to awarding the Contract. A Pre-Bid Conference has been set for May 14, 2025 at 10:00 AM at Rochelle City Hall located at 420 North 6th Street, Rochelle, Illinois 61068. Attention is called to the fact that not less than the minimum salaries and wages as set forth in the Contract Documents must be paid on this project, and all Contractors must insure employees and applicants for employment are not discriminated against because of their race, color, religion, sex

or national origin. The City of Rochelle, Illinois is an equal opportunity employer and does not discriminate on the basis of handicapped status in the admission or access to, or treatment or employment in, its programs or activities. The City of Rochelle, Illinois reserves the right to reject any or all bids or to waive any informalities in the bidding and also reserves the right to reject any non-responsive bid and/or non-responsible bid.

BY ORDER OF THE CITY OF ROCHELLE, ILLINOIS
Date: May 7, 2025
No. 0502
(May 4, 2025)

**NOTICE
IN THE CIRCUIT
COURT OF THE FIFTEENTH
JUDICIAL CIRCUIT
OGLE COUNTY,
ILLINOIS**

IN THE MATTER OF THE ESTATE OF JUDITH L. PALIAN, Deceased.

NO. 2025PR31
CLAIM NOTICE

Notice is given of the death of JUDITH L. PALIAN, of Oregon, Illinois. Letters of Office were issued on April 29, 2025, to SUZANNA L. PALIAN-GERBER, whose address is 6217 E. Husking Peg R., Chana, IL 61015, and whose attorneys are Fearer, Nye & Chadwick, 420 4th Avenue, PO Box 117, Rochelle, IL 61068.

Claims against the Estate may be filed in the office of the Circuit Clerk of the Court at Ogle County Courthouse, Oregon, IL 61061, or with the representative, or both, no later than November 4, 2025, and any claim not filed within that period is barred. Copies

of a claim filed with the Clerk must be mailed or delivered to the representative and to the attorney within 10 days after it has been filed. FEARER, NYE & CHADWICK, Attorneys for SUZANNA L. PALIAN-GERBER, Executor of the Estate of JUDITH L. PALIAN, deceased
No. 0507
(May 4, 11 and 18, 2025)

This publication does not knowingly accept fraudulent or deceptive advertising. Readers are cautioned to thoroughly investigate all ads, especially those asking for money in advance.

"This publication does not knowingly accept fraudulent or deceptive advertising. Readers are cautioned to thoroughly investigate all ads, especially those asking for money in advance."

NOTICE Advance Fee Loans or Credit Offers
Companies that do business by phone can't ask you to pay for credit before you get it. For more information, call toll-free 1-877-FTC-HELP. A public service message from your hometown newspaper and the Federal Trade Commission

“This publication does not knowingly accept

fraudulent or deceptive advertising. Readers are cautioned to thoroughly investigate all ads, especially those asking for money in advance."

Furman's Lawn Care
& Tree Service. 26
Years of Experience.
Fully Insured. Weekly
Mowing, Spring Clean
Up & More. Call
Jeremy 815-761-9619
(RNL04162025)

NO INDIVIDUAL, unless licensed or holding a permit as a childcare facility, may cause to be published any advertisement soliciting a child care service. A childcare facility that is licensed or operating under a permit issued by the Illinois Department of Children and Family Services may publish advertisements of the services for which it is specifically licensed or issued a permit. Your Hometown Newspaper strongly urges any parent or guardian to verify the validity of the license of any facility before placing a child in its care.

ANTIQUES WANTED:
I pay cash for antiques; furniture, glassware, pottery & crocks, tin & iron toys, sterling silver, decoys. If it's antique, I'm interested in looking! Call 815-562-2928 or email dickharms@hotmail.com

BUNDLED Newspaper
-\$3 per Bundle.
Available Monday-
Thursday 815-562-
4171 (9AM-3PM)
Rochelle News Leader

SPLIT Firewood For
Sale. Contact 779-251-
0254

New Milford Refrigeration

6331 11th Street | Rockford

**New, Used,
Scratch & Dent**

- Refrigerators
- Freezers
- Washers/Dryers
- Stoves
- Air Conditioners
- Dehumidifiers

815-262-3900

We also carry a large selection of refurbished appliances with a warranty.

Multimedia Sales Consultant

If you have an outgoing personality, an energetic get-it-done approach, and enjoy helping clients build their business, then you may be a perfect fit for a sales position with the Rochelle News-Leader. This is a full-time position.

As a multimedia sales consultant, you will service current accounts and also cultivate new clients in the Rochelle/DeKalb region of northern Illinois, helping them market their products and services through a variety of highly visible, popular and effective local media vehicles.

If you have a passion to get out of the office on a regular basis to help clients grow their audience and reach new customers, then we would like to talk to you.

Applicants should possess excellent communication and organizational skills with a positive personality and team-player approach. Previous media sales or related marketing experience is a plus, including print, digital and social media advertising.

The sky is the limit on earning potential and career development in this position. We offer a competitive base salary plus commission.

Qualified applicants should mail or e-mail their resume to the following address:

**Multimedia Sales Position
Rochelle News-Leader
ATTN: Will McMacken
P.O. Box 46, Rochelle, IL 61068
or email to
bmcmacken@newsmediacorp.com**

ROCHELLE
News-Leader

DAVID L. HOUDE

The Rochelle News-Leader has an opening for a part-time newspaper bundle delivery driver who would load and deliver bundles to the post office, store racks and machines.

The daytime deliveries would be two or three days per week (including weekends) and consist of approximately 4-5 hours per shift depending on the route usually 10-15 hours per week.

Applicants must be at least 18 years old, possess a valid driver's license, proof of insurance and a safe driving record. Drivers will use company vehicles when delivering, and will be trained on the respective routes.

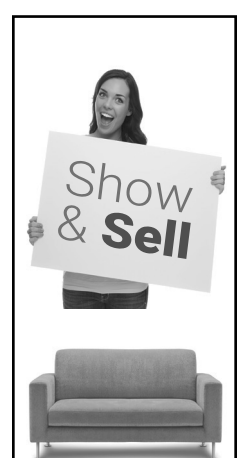
Candidates must be able to load, unload and carry multiple bundles of 5 to 10 pounds each. Driver applicants must be reliable, personable and have a general knowledge of area streets and roads.

This position is perfect for someone looking to supplement their income or retirement.

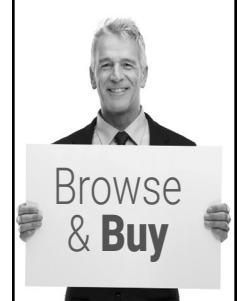
Interested individuals must fill out an application in person at the Rochelle News-Leader office at 211 Hwy. 38 E., Rochelle.

No phone calls please

status, or national origin, or intention to make any such preferences, limitation or discrimination. We will not knowingly accept any advertising for real estate which is in violation of the law. All persons are hereby informed that dwellings advertised are available on an equal opportunity basis.



Place an Ad:
Rochelle News-Leader
815-562-4171
Ogle County Life
815-732-2156



Subscribe:
Rochelle News-Leader
815-562-4171
Ogle County Life
815-732-2156

All in the Classifieds!

H.O.P.E
For Free Help
or
Information
Call
815-562-8890
24 Hours

All Calls Are Confidential.

Support,
Advocacy, Referral
Services,
Shelter for victims
of domestic
violence and their
children.



P.O. Box 131
Rochelle, IL 61068
Public Service
Announcement

CLASS OF 2025 | CLASS OF 2025 | CLASS OF 2025


YOU'VE COME A LONG WAY, BABY!

**ATTENTION
FAMILY AND
FRIENDS OF THE
CLASS OF 2025!**

Submit a high quality, scannable baby photo and senior photo of your favorite graduating senior, a message with up to 15 words and a \$12 placement fee to the Rochelle News-Leader office at: 211 Hwy 38 E or mail to PO Box 46, Rochelle, IL 61068.

High quality photos* and message can be emailed to kwhite@rochellenews-leader.com.

Please call 815.562.4171 to arrange payment or use QR code on this ad.



Deadline is 2:00PM on Wednesday, May 21.

This special feature will be published on Monday, May 25, 2025.

Photos may be picked up at the Rochelle News-Leader office after the May 25th publication date or we can mail back to you in a self-addressed stamped envelope.

*Make sure emailed photos are at least 200dpi.



ENTRY FORM

GRADUATE'S FIRST/LAST NAME _____

15-WORD MESSAGE (PLEASE PRINT CLEARLY): _____

Person submitting photo: _____

NAME _____

PHONE _____ EMAIL _____

Photos may be picked up after May 25, 2025. Entries must be received by 2:00pm on Wednesday, May 21, 2025.
 Mail a high quality, scannable photo and payment (\$12) along with this completed form to:

Rochelle News-Leader • PO Box 46 • Rochelle, IL 61068
815-561-2153
 Emailed photos* can be sent to **kwhite@rochellenews-leader.com**

ROCHELLE NEWS-LEADER OFFICE HOURS · M-TH 9AM-3PM & FRI 9AM-1PM

763033

MOTHER'S DAY

Great gifts for moms from all walks of life

MOTHER'S Day is an opportunity to show moms how much they're loved and appreciated. Though many moms may insist they don't want anything beyond spending the day with their children, gifts are a big part of Mother's Day.

No two moms are the same, and though standards like flowers and greeting cards will always have a place on Mother's Day, the following are some gift ideas that can put smiles on the faces of moms from all walks of life.

Bookworm

There's no end to the gift options for mothers who love to curl up with a good book. Of course, some new books may delight Mom,

but gifts that can improve the reading experience also merit consideration. For example, an ergonomic backrest reading pillow can make bedtime reading sessions more comfortable and ensure Mom's neck and back get ample support as she reads the latest page-turner. A nightstand book holder also can be ideal for moms who can't seem to keep track of their bookmarks.

Fitness enthusiast

Some moms simply love to get in a good workout. Shoppers whose mothers or wives love to break a sweat might want to look into home gym equipment, as many fitness enthusiasts transformed part of their homes into exercise areas during the pandemic. If that sounds like the mom on

your shopping list, then a suspension training system won't take up much room but can provide an intense, full-body workout. A new yoga mat, some wireless Bluetooth headphones or a compression stretching mat are some additional gifts that might make exercise-loving moms smile this Mother's Day.

Traveler

Moms whose children still live under the same roof may not have much opportunity to travel, but empty nesters and grandmothers might. For such moms, a foldable, hanging travel bag can make it easy and convenient for mom to carry all of her toiletries and access them without taking up what's often minimal hotel room counter space. For moms



who want to document their excursions, a leather travel journal encourages them to note their experiences

and gives them something they can revisit for years to come. Of course, some new luggage can make

the perfect gift for newly retired moms who can't wait to start visiting places on their travel bucket lists.

MEYERS
FURNITURE & FLOORING

You'll Find the Perfect Gift for Mom at Meyers!
Meyers helps you make it **memorable...** stop by!

209 Powers Rd. Hwy. 251, Rochelle, IL • 815-562-8792 • meyersfurniture.com
Hours: Mon-Fri 9-5 • Sat 10-4 • Sun Closed

BEST OF OGLE COUNTY (2019, 2020, 2021, 2022, 2023, 2024)

ChemDry®
Drier. Cleaner. Healthier.™

a Deeper **Cleaning** for a **Healthier** Home

Mom Wants Clean Carpets for Mother's Day!

BEFORE **AFTER**

2023 VOTED BEST OF OGLE COUNTY **2022 VOTED BEST OF OGLE COUNTY**

ChemDry Kishwaukee
815-762-7555
cdkishwaukee.com

Superior Carpet, Tile & Upholstery Cleaning
Locally Owned and Operated
Serving DeKalb, Lee & Ogle Counties

OPEN

Mother's Day

Great Gifts for Mom!

- Patio Pots
- Garden Art
- Hanging Baskets
- Roses & Clematis
- Annuals & Perennials
- Blooming Trees & Shrubs



HIDDEN TIMBER GARDENS
PREMIUM PLANTS & TREES

Hours:

Tues - Sat 9a-6p &
Sun 12p-5p



462 S. Chana Rd. Chana, IL



hiddentimbergardens.com



(815) 751-4162



info@hiddentimbergardens.com

Remember Mom with a gift from

Merlin's
& The Other Side Boutique
Hagemann Horticulture

20% OFF BOTH STORES!
Excluding Greenhouse
Buy 3 hanging baskets at regular price, get the 4th FREE!

HAPPY MOTHER'S DAY

May Sunday Hours: 9AM - 1PM - Merlin's Side Only
300 Mix Street • Oregon, IL 61061
815-732-2969
Check out our Facebook page for all the latest details.

MOTHER'S DAY

Mother's Day crafts Mom will cherish forever

MANY mothers will attest that few things are better than a little rest and pampering on Mother's Day. And when it comes to gifts, homemade items are among the most heartfelt.

Although schools and day care centers may take the lead and guide children through Mother's Day crafts, parents and caregivers looking to encourage kids to make crafts at home can explore these ideas that can turn into wonderful gifts or decorative items for Mom.

Floral votive holders
Kids can create special candle holders that they customize with pressed or paper flowers. New jars can be purchased from a craft store or empty jars at home can be repurposed. Using

Modge Podge or another durable adhesive, children can attach dried, pressed flowers to the outside of the jar by painting the adhesive over the flowers; otherwise, paper flowers cut out from tissue paper or construction paper can be used. Once dry, attach a piece of decorative twine, yarn or ribbon around the mouth of the jar. Place a tealight candle inside for Mom to enjoy.

Writing pen bouquet

Why not give Mom something that is both beautiful and functional this Mother's Day? Children will have fun making flower pen bouquets. All it takes are a few inexpensive disposable pens, floral tape and artificial flowers. Place an artificial flower stem alongside the pen. It should be short enough that it will



not impede writing, so cut if necessary. The petals of the flower should be up at the non-writing end. Starting at the non-writing end of the pen, begin to wrap floral tape snugly around the stem and pen to just before the tip of the writing end. It is better to use too much floral tape than not enough. Repeat the process for as many pen flowers as you'd like to make, then offer as a gift in a vase.

Jewelry dish

Mom can keep her favorite pieces of jewelry safe with a heartfelt clay jewelry dish. It's easy to make with only a few materials. Using air-dry clay and a heart-shaped cookie cutter, children can roll out the clay and cut out the shape. Turn up the edges slightly to make a rim so that rings or earrings won't fall out of the dish later on. Then kids can press decorative items, such as beads, small seashells, sequins, or faux gems, into the clay. The jew-



elry dish is beautiful as-is, or it can be painted after dry.

Faux stained glass

This project mixes paint with glue to create a stained glass effect. The colors can be painted on any acrylic surface, whether it's a flat, plastic photo protector in a picture frame or clear, plastic cosmetic bottles. When the light hits the items, it will produce a prismatic effect just like the real stained glass. Take painter's tape and mark off a desired design, such as writing "I Love Mom." Using separate small containers

(an empty foam egg carton would work well), add a little bit of clear school glue and a few drops of desired colors or acrylic paint. Paint the different colors as they pertain to the design or pattern. The glue and paint should dry quickly and extra coats can be applied depending on how intense you want the color to be. Once the stained glass is dry, peel off the painter's tape and gift. Kids can get busy crafting gifts that show Mom just how much she's loved and appreciated.

Proudly Serving
The Rochelle Area since 1968

Colonial Flowers and Gifts

Holiday Hours:
Monday thru Thursday: 10a-3p
Friday: 9a-5p
Saturday: 9a-4p
Mother's Day: CLOSED

Unique Fresh Designs
Silk Arrangements
Blooming & Green Plants
Gifts for the Garden
Sassafras Mats
Chocolates
Inside Robin's Closet
Crystals & Jewelry

Happy Mother's Day

Order online at: floristrochelleil.com
408 Lincoln HWY, Rochelle • 815-562-8101

Mother's Day BRUNCH BUFFET

Let every Mother feel Special

Sunday May 11th From 10am-2pm

Adults \$25.99 Children 5-10 \$9.99 Under 5 Free

Reservations Highly Recommended

Entrees;

Sliced Honey Baked Ham
Biscuits and Gravy
Pancakes, Scrambled Eggs, Cheesy Hash Browns,
Bacon, Sausage and Fresh Fruit Blend

COMPLEMENTARY MIMOSAS FOR ALL MOTHERS

531 S. 7th St. • 815-561-2727 • lunarochelle.com

SPECIAL PERFORMANCE BY NEIL WOOLBRIGHT

Gift CARD Available

GROWN WITH CARE. GIVEN WITH LOVE.

Mother's Day Deals May 9th & May 10th

Buy any 5 hanging baskets and get a 10" basket FREE!
All in-stock Poly furniture on sale up to 25% off!
Special Orders welcome!

New for 2025: Onion plants pruned and ready to plant!
• This Candy Onion Plant will produce a lot of onion!
Buy a bundle of 5 plants for \$1.00
We also have Onion Sets - Ready to plant!
\$1.00 for 1/2 pound

Strawberry bare roots -
June bearing and ever bearing \$1.50

2810 W IL Route 64 9-5 Mon., Wed., Thur., Sat
Oregon, IL 61061 9-6 Tue., Fri.
920-229-9787 Closed on Sunday

