



ROCHELLE News-Leader

WEEKEND EDITION | WWW.ROCHELLENEWS-LEADER.COM

Today's RNL issue sponsored by Community Unity member:

JEFF PERRY Auto Group

1260 N. 7th St.
815-561-4672

Vol. 105 • No. 101

LOCAL NEWS... LOCAL VIEWS SUNDAY, APRIL 13, 2025 \$1.25

More coverage. Less spendage.

Discounts up to 40%
Get more. Spend less. It's that simple when you get car insurance from us. Like a good neighbor, State Farm is there. CALL FOR A QUOTE 24/7.

Terri Schaefer, Agent
Bus: 815-562-7063
terri.schaefer.115n@statefarm.com

State Farm
State Farm Mutual Automobile Insurance Company,
State Farm Indemnity Company, Bloomington, IL



IEPA winners announced

Local winners from the IEPA's Earth Month contest were recently revealed.

Page 2

WEATHER

SUNDAY	MONDAY
HIGH LOW	HIGH LOW
65 46	61 45
TUESDAY	WEDNESDAY
HIGH LOW	HIGH LOW
52 38	56 32

Today's RNL issue sponsored by Community Unity member:

Rochelle Community Unity member:
Shop • Play • Stay

PRESCOTT BROTHERS AUTOMOTIVE GROUP

620 S. 7th St.
815-562-2177

OBITUARIES

NONE

INSERTS

• MENARDS

INSIDE

Local News.....2, 3, 5
Obituaries.....4
Opinion.....6
Community.....7



'Wheels in serious motion' for preschool move to May School

Improvement plan progress presented

BY JEFF HELFRICH
MANAGING EDITOR

ROCHELLE — At its monthly meeting Monday, the Rochelle Elementary School District Board of Education heard an update from Assistant Superintendent Tony Doyle on a Stepping Stones Preschool fiscal year 2026 transition plan that will see it expand the district's preschool offerings and utilize the currently-vacant May Elementary School building for that purpose.

Doyle said "wheels are in serious motion" for the move from Stepping Stones Preschool (inside Lincoln Elementary School) to May School for fall 2025. Work on the inside of the building to allow for the move is underway.

Stepping Stones Preschool currently serves 180 students and has a waiting list of about 40 kids. The district has a desire to serve students on the waiting list and recently received a preschool-for-all grant for two years (fiscal year 2025 and fiscal year 2026) that made it consider expanding its offerings.

May School at 1033 N. 2nd St. was closed by the



(PHOTO BY JEFF HELFRICH)

At its monthly meeting Monday, the Rochelle Elementary School District Board of Education heard an update from Assistant Superintendent Tony Doyle on a Stepping Stones Preschool fiscal year 2026 transition plan,

school board before the 2021-2022 school year as the district shifted to an attendance center model due to declining enrollment and an increase in the district's dual language program, which was previously only offered at Lincoln and Central Elementary Schools. The district was facing a half-full May School before the decision was made.

There are currently six preschool classrooms at Stepping Stones Preschool. It will be expanded to seven classrooms that will all be located at May School. The preschool expansion is planned to start on Aug. 19 at the beginning of the 2025-2026 school year.

The seven preschool classrooms would have morning and afternoon classes at May School.

Two notable areas that are being modified for the repurposing of May School for preschool are bathrooms and the playground, which are seeing changes to accommodate younger, preschool-aged children.

See **ELEMENTARY BOARD** page 3



(PHOTO BY JEFF HELFRICH)

At its monthly meeting Wednesday, the Hillcrest Village Board of Trustees heard an update from Village Engineer Kaitlin Wright on ongoing state-mandated water service line inventory work.

Significant progress seen on water service line inventory

BY JEFF HELFRICH
MANAGING EDITOR

HILLCREST — At its monthly meeting Wednesday, the Hillcrest Village Board of Trustees heard an update from Village Engineer Kaitlin Wright on ongoing state-mandated water service line inventory work.

The village must check to see if water lines running into homes are possibly made of lead or galvanized pipe for future replacement. The inventory has an April 15, 2025 submission deadline to the state.

After saying last month that 50 percent of water lines running into homes in Hillcrest were unidenti-

fied, Wright said Wednesday that significant progress has been made and the makeup of only 60 water lines remain unknown. A village representative worked on the task in the past month going door-to-door and attempting to schedule visits with homes that had not reported the material their service line is made up of.

Hillcrest's current water service line inventory now says that 326 are made of copper, 20 are galvanized pipe, 12 are plastic and 22 are unknown but lead has been ruled out due to age of construction.

See **HILLCREST** page 3

Officials react to potential future township consolidation

Flagg and Byron Townships would be only ones not consolidated

BY JEFF HELFRICH
MANAGING EDITOR

ROCHELLE — Amid bills the state is considering that would see townships consolidated into county government, Flagg Township officials spoke with the Rochelle News-Leader and Ogle County Life on April 4.

Senate Bill 2504, Senate Bill 2217 and House Bill 2515 were introduced by the 113th Illinois General Assembly in March 2025 asking for the consolidation of township government. Gov. JB Pritzker also included township consolidation as a fiscal year 2026 proposed budget initiative for the state. Townships in Illinois provide services including road and bridge maintenance, property assessment and general assistance. Under the state's potential new bills, those services would be provided by the county after townships were eliminated. The bills would not impact



(PHOTO BY JEFF HELFRICH)

Amid bills the state is considering that would see townships consolidated into county government, Flagg Township officials spoke with the Rochelle News-Leader and Ogle County Life on April 4.

Flagg and Byron Townships, which would remain due to being large enough in size.

"Not being affected is a positive for our township specifically," Flagg Township Supervisor Sue Messer said. "What would

impact us is if it was tagged into the budget on a bigger scale. I think the biggest thing is that people just don't understand what townships do. The state believes it would lower taxes, which everyone is in favor of.

But they don't understand how it's going to impact the residents and their taxes directly and how it would all work. The counties really don't want it either."

See **TOWNSHIPS** page 2

YOU CAN PUT ALL YOUR EGGS IN ONE BASKET WITH

ANDERSON PLUMBING & HEATING, INC.

621 First Ave. • Rochelle, IL
815-562-8784

HolcombBank

Chicago Shopping & Christkindlmarket Trip

Enjoy the beautiful sights of the city at Christmas! Shopping on Michigan Avenue & a visit to the Christkindlmarket - let us drive you!

Thursday, December 4, 2025 \$47/person

Cost includes bus transportation (and fun!) from New Milford & Rochelle.

Contact Julie - 815.561.2627 - to sign up!

LOCAL NEWS

TOWNSHIPS: Flagg officials react to potential future consolidation by state

From page 1

In Ogle County there are 927 miles of road and 199 bridges currently maintained by 24 townships. In the state as a whole, 72,000 miles of road and approximately 12,000 bridges are maintained by townships. SB 2217 provides that all townships with a population less than 5,000 are dissolved and must either consolidate with an adjacent township or the county containing the geographic boundaries of the dissolving township. SB 2504 abolishes the offices of township assessor and multi-township assessor in counties with a population of less than 50,000 after their term expires with the county assessor assuming their responsibilities. HB 2515 provides that all townships with a population less than 500 are dissolved two years after the effective date of passage with duties transferred to the county. The Flagg Township Board of Trustees passed a resolution in March opposing the state bills and consolidation of township government. The Ogle County Board passed a resolution against consol-

idation in March as well. Messer has written letters to State Rep. Bradley Fritts (R-Dixon) and State Sen. Li Arellano Jr. (R-Dixon) stating her and Flagg Township's opposition to the bills seeking consolidation of township government. "The research shows it would cost substantially more if township work went to the county level," Messer said. "We believe there would be a decrease in services to residents. For snowplowing, the county is further away and they have more high-traffic roads to address. Some of the roads with less traffic would be that much further down the list. Ogle County is one of the biggest in the state. The road and bridge work has to be done. The assessing work has to be done. And some of the things like emergency and nonprofit assistance that don't have to be done, I'd hate to see go away." Townships in Ogle County have four elected positions: supervisor, clerk, assessor and road commissioner. In the case of Flagg Township, the largest township in Ogle County, it also has two additional full-time positions and two part-time employees. The rest of the

work is done by seasonal employees. "There would be a huge difference in expenses," Messer said. "We have a skeleton crew here. It's not more than is needed. Our annual budget for 2023-2024 was a little over \$2 million. That's been typical for recent years. Our department with the largest budget is the highway department, which has to have equipment and prepare for the unexpected in the winters." Flagg Township Assessor Susan Rothenberger and Assessor-Elect Rachel Berry said they maintain property record cards on 5,322 land parcels in Flagg Township alone. Information on property parcels are updated every four years. The local office also helps township residents with matters like exemption forms to keep them from having to travel to Oregon, and with answering questions on the assessment process. Rothenberger said assessing at a township level allows for people familiar with the area to keep eyes on parcels and work with local residents that they know. "Each township can provide direct information

on and are familiar with local properties," Rothenberger said. "A township in that sense is a good thing. Assessment is the base for all taxing bodies to be able to operate. It needs to be done correctly and fairly and us being in this area makes us familiar with it and gives us a better handle on it. What bothers me about consolidation is how it's presented as this great, cost-efficient change. But it won't play out that way. Knowing how we and all the other townships operate, going to an all or mostly county system is not going to be good." The Flagg Township highway department maintains 48 miles of road and five bridges. Messer said having a local crew also allows for quick help in emergency situations, such as deploying and moving signs during a recent wind storm and providing an excavator for a recent house fire. "Our highway department goes above and beyond," Messer said. "When the EF4 tornado hit this area 10 years ago, they were very involved with the cleanup and they do that for any storm. Even when



(PHOTO BY JEFF HELFRICH)
Senate Bill 2504, Senate Bill 2217 and House Bill 2515 were introduced by the 113th Illinois General Assembly in March 2025 asking for the consolidation of township government.

it's something the county is responsible for, they do it because they're closer." Flagg Township does work it is not required to do by statute, including providing emergency assistance to residents for resources like shelter and utilities, Messer said. Flagg Township budgets a certain amount each year to help nonprofits in the area and offers an economic development loan program to help people bridge funding gaps for their businesses. Messer said she believes township consolidation decisions should be left up to the people who live in them. There is already state law in place for local voters to decide to consolidate their own township into the county. "There's a difference between rural and urban settings in Illinois," Messer said. "In an urban setting, it's much different in Chicago where towns and townships run into each other. In a rural setting where a lot of areas aren't covered by a town of any kind, it's completely different. And there's already legislation in place on how that can be done. There's no reason to overstep those people. We just enjoy serving the community and our neighbors. That's why we do this. It's important to us. I get satisfaction out of it. You see it in our staff. They care. It's not just a job."

Illinois EPA celebrates local students through Earth Month contest

SPRINGFIELD — On Saturday, April 5, the Illinois Environmental Protection Agency (EPA) honored a group of creative fifth and sixth grade students selected for their artistic and writing skills used to express environmental awareness, as part of the Agency's Annual Poster, Poetry, and Prose Contest. The students selected from throughout Illinois were recognized at

a ceremony at the Illinois State Library in Springfield. Each year, fifth and sixth grade students in Illinois take part in the Poster, Poetry, and Prose contest as one of the Agency's environmental education initiatives. As part of the contest, participating schools study environmental concepts with an emphasis on the current year's environmental theme. Teachers

round out the classroom instruction by having the students create posters or poetry/prose works to illustrate what they have learned and submit these to the Illinois EPA. Participating schools can select four works in each category to submit for competitive judging. This year's theme, "How Can You Slash Your Trash?" invites students to think creatively on how to reduce the

amount of waste they produce. This could include buying fewer single-use products; composting food waste; repairing broken items instead of replacing or buying new; and recycling items that cannot be re-used or repaired. "Each year, the Poster, Poetry, and Prose Contest provides us the opportunity to recognize the creative and artistic talents of environmentally engaged fifth and sixth grade students throughout Illinois," said Illinois EPA Acting Director James Jennings. "We also want to thank the teachers and families for their participation, and for incorporating this important environmental topic into the classroom so the students can learn the importance of reducing the amount of waste they create."

Poetry/Prose Top Award Winners included Emma Mikkelsen of Eswood School District #269, Lindenwood. Students, their families, and teachers were invited to Saturday's awards ceremony at the Illinois State Library, where the top award and honorable mention winners received environmental reference books for their school libraries. The winners, along with all finalists, also received certificates and



(COURTESY PHOTO)
On Saturday, April 5, the Illinois Environmental Protection Agency (EPA) honored a group of creative fifth and sixth grade students selected for their artistic and writing skills used to express environmental awareness, as part of the Agency's Annual Poster, Poetry, and Prose Contest.

denwood. Students, their families, and teachers were invited to Saturday's awards ceremony at the Illinois State Library, where the top award and honorable mention winners received environmental reference books for their school libraries. The winners, along with all finalists, also received certificates and

Let us help
make your yard
Beautiful

Mark
Your Calendar!
Spring Open House
Saturday, May 3 &
Sunday, May 4

*Open for the
Season
April 15th*

Premium Mulch & Compost • Trees
• Shrubs • Perennials • Annuals •
Natives • Vegetable Plants

HIDDEN TIMBER GARDENS
PREMIUM PLANTS & TREES

462 S. Chana Rd., Chana, IL • 815-751-4162
Just North of Route 64
Tue-Sat 9am-6pm • Sun Noon-5
Closed Mondays
(& Sundays after July 1)
www.hiddentimbergardens.com

EASTER HAM GIVEAWAY WINNERS!

The following list of winners will receive a gift certificate for \$25 toward the purchase of an Easter Ham. Thanks to all our participating businesses that helped make our annual giveaway a big success.

Davis Family Health, LLC Elsie Johnson
Rochelle Community Hospital Lela Pemberton
Rochelle News-Leader Barb Palmer
Prescott Brothers Ford Terri White
James E. Supancic Insurance Sally Sawicki
Hub City Senior Center Nancy Brown
Rochelle Pharmacy Christa Seebach

LOCAL NEWS

ELEMENTARY BOARD: Personnel changes approved at meeting Monday evening

From page 1

Doyle said Monday said the entrance to May School is seeing security upgrades. Staffing changes for the preschool expansion will consist of the addition of one teacher and one classroom aide. The expansion will be able to serve all of the current students on the district's waiting list.

Improvement

During the meeting Doyle provided an update to the board on district and school improvement plans. The district's plan through May 2026 has an emphasis on student growth and hopes to see a 15 percent increase (five percent increase each year) in STAR reading and math test scores after three years of the plan. "This school year we're a little bit better than we were in 2023-2024 when

it comes to reading and math," Doyle said. "We're about six percent higher further along this year in reading and two percent higher in math. That's good news. But we need to do a lot more work and we want to keep growing. The goal is to maximize student growth."

New to the district this year are student growth coaches in each building. A task force has been established jointly with the Rochelle Township High School District with a combination of teachers and administrators from both districts with an emphasis on assessment, social emotional learning, academic readiness, and employee recruitment and retention.

Land

The board unanimously approved an extension of a cash rent agreement with Jim Gensler for the farming

of land the district owns. Gensler has been farming the land on a cash rent agreement since the district purchased it. The terms of the agreement remained the same as last year, with Gensler paying \$275 per acre for the 14 tillable acres.

Personnel

The board approved personnel changes including the resignation of three certified employees effective at the end of the current school year: Phoebe Hughes (student growth coach/HUB coordinator), Jennifer Hunley (sixth grade special education teacher) and Anna Kray (fifth grade teacher). The board approved the 2025-2026 employment of Sara Elisa Cortabitarte Bustamante as a fifth grade bilingual teacher and the 2025-2026 transfers of Lillian Andrew (K-5 art teacher to Rochelle Middle School art

teacher) and Olga Nambo (paraprofessional at Lincoln to preschool teacher at Stepping Stones). On the extracurricular side, the board approved the resignation of Hunley as sixth and seventh grade track coach, sixth grade speech coach and student council advisor. Employment was also approved Monday for Johnny Gonzales to serve as athletic director and for Alex Bueno to serve as seventh grade boys basketball head coach (2025-2026).

Fundraiser

The Crawford Foundation will be hosting its annual spaghetti dinner fundraiser on Friday, April 25 at Lincoln Elementary school from 5-7 p.m. Meals will cost \$5 apiece and the maximum cost for a family is \$20. Carry out and dine-in options will be available. The regional office of ed-



(PHOTO BY JEFF HELFRICH)

During the meeting, Assistant Superintendent Tony Doyle provided an update to the board on district and school improvement plans.

ucation will be hosting a family night with activities that evening as well.

The Crawford Foundation is dedicated to raising money for the education of preschool through eighth grade students in the elementary school district.

Meeting

Following the April 1 Consolidated Election, the board will be holding a reorganizational meeting on Monday, April 28 at 6 p.m. in the boardroom at

Rochelle Township High School to swear in new board members and those re-elected. Officers for the next two years will be established. On April 1, incumbents Stephanie White and Ashley Jackson were re-elected. New to the board will be Evan Tracy and a to-be-determined write-in candidate. Trisha Vaughn and Dave Casey were longtime elementary school board members that did not seek reelection and Monday was their final meeting.

HILLCREST: Village Board details car-versus-hydrant accident from March

From page 1

One lead service line has been reported, which Wright said she'd still like to verify.

The village will be submitting the inventory to the state this week along with a replacement plan. Hillcrest will fund that plan with the remainder of a \$30,000 grant it received for inventory work and is eligible to apply for another grant for replacement costs. During the meeting Wright suggested hydro excavation work to determine the remaining 60 unknown water service lines.

Hydrant

Village President Rick Rhoads said during the meeting that a car-versus-fire hydrant accident that took place last month that caused a hydrant to be damaged and water service to be knocked out to the village for a short time along with a day-long boil order yielded a \$15,000 cost.

"We had to empty two water towers worth of water, losing over 200,000 gallons," Rhoads said. "That's probably between \$2,000-3,000 worth of water. And then the cost for the hours it took to get it all put back together and get new grass seed down." The bill has been submitted to the driver's insurance, village officials said. The hydrant, located on Scott Avenue, had to be replaced and was part of the recently-completed Priority 1A water main project.

That project had a \$1.2 million total budget and replaced mains along the full length of Scott Avenue, parts of Errett Road and Erickson Road from Scott Avenue to Jeffrey Avenue, and parts of Jeffrey Avenue from Errett Road to Erickson Road. Those streets are in the southern and oldest part of the village. The project was financed with an IEPA loan that will involve 50 percent loan forgiveness. The debt service on the

project will be \$35,000 per year over 20 years. The village hopes to receive its loan forgiveness funds in the next month.

Chip seal

Wright said during the meeting that the cost for chip seal work in Hillcrest in 2025 will be \$38,452. The engineer's estimate for the work was \$48,000. The contractor for the work will be Helm Civil.

Hillcrest's 2025 chip seal program will include Hillcrest Avenue, Jeffrey Avenue, Wayne Road from Scott Avenue to Hillcrest Avenue, Errett Road from Scott Avenue to Hillcrest Avenue, Erickson Road from Scott Avenue to Hillcrest Avenue, and Powers Road from Scott Avenue to Hillcrest Avenue.

Streets & grounds

Rhoads said during the meeting that plans are in place to install speed bumps at multiple



(PHOTO BY JEFF HELFRICH)

Village President Rick Rhoads said during the meeting that a car-versus-fire hydrant accident that took place last month that caused a hydrant to be damaged and water service to be knocked out to the village for a short time along with a day-long boil order yielded a \$15,000 cost.

locations in Hillcrest in coming weeks in an effort to decrease speeding vehicles. The village currently has four sets of speed bumps and is considering purchasing more to install them in more locations.

Mentioned locations Wednesday included Hillcrest Avenue, Errett Road, and in the Windover Park subdivision.

Rhoads also mentioned during his streets & grounds update that mos-

quito abatement spraying will be done in Hillcrest this summer.

Cleanup

The village will be hosting a clean-up day for residents on Saturday, May 17 from 9 a.m. to 3 p.m. at 422 Wayne Road. There will be a dumpster on site and accepted items will include scrap metal, yard waste, electronics (seven items per vehicle limit), and car and light

truck tires (\$5 disposal fee per tire). No batteries will be accepted. The event is for Hillcrest residents only and participants are asked to bring proof of address.

Egg hunt

The village will be holding its annual Easter Egg Hunt on Saturday, April 12. The event will be held at Flannigan Park after being held at Powers Park last year.



Hands off rally held in Oregon on Saturday

On Saturday, April 5 at the corner of Illinois Route 2 and Illinois Route 64 in Oregon, a Hands Off rally was held for the Ogle County area in protest of current White House policies and priorities. Organizers estimated that 300 people participated. Other rallies like it were held around the region and country. (Courtesy photos)

LOCAL NEWS

ROCHELLE POLICE REPORT

ROCHELLE — On April 8 at 10:23 a.m. Jennifer Stark, 39, of Rochelle was arrested for criminal damage to property. She was released on a notice to appear with a May 9 Ogle County court date.

On April 8 at 1:25 p.m. Ihor Talanov, 29, of Chicago was cited for failure to yield right of way. He signed a promise to comply and was given a May 9 Rochelle court date.

On April 8 at 1:48 p.m. Britni N. Wiersema, 30, of Chana was arrested for driving while license suspended and cited for failure to reduce speed to avoid an accident. She

signed a promise to comply and was given a May 9 Rochelle court date.

On April 8 at 5:39 p.m. Demeya Gillespie, 30, of Rochelle was arrested on an Ogle County warrant and transferred.

On April 10 at 12:23 a.m. Hector Losoya, 56, of Rochelle was arrested on two Ogle County warrants and transferred.

On April 9 at 7:12 a.m. Jessee Infante, 23, of Rochelle was cited for expired registration. He signed a promise to comply and was given a May 9 Rochelle court date.

On April 11 at 1:44

a.m. Hayley D. Christy, 41, of Rochelle was arrested for driving under the influence times two and cited for leaving the scene of an accident, failure to give information, failure to reduce speed to avoid an accident, and failure to report an accident. She signed a promise to comply and was given a May 9 Rochelle court date.

On April 10 at 11:54 a.m. Jennifer R. Stark, 39, of Rochelle was arrested for disorderly conduct and transferred.

All individuals are considered innocent until proven guilty.



RTHS team wins ethics competition at NIU
Rochelle Township High School students Abby Metzger, Riley Doyle, and Erin Murphy placed first out of 51 teams at NIU Lead Program's Ethics Competition. They presented their ethical solution to their dilemma to a panel of judges in both the preliminary and final rounds competing against schools from Genoa Kingston, Rochelle, Sycamore, Dekalb, Stillman, and Belvidere. This is the second year in a row an RTHS team has won this event. (Courtesy photo)

Lions Club thanks community for Rose Day support

ROCHELLE — The Rochelle Lions Club would like to thank everyone that supported our Rose Day Event on Saturday, April 5. Proceeds will be utilized to help fund vision and hearing services for citizens in the greater Rochelle area. Your support continues to improve the quality of life for many local children and adults.

Thank you once again for your support and a special thank you to Nao-

mi Baldwin of Colonial Flowers for coordinating our event.

If you have questions about our vision and hearing services or would like to become a member of the Rochelle Lions Club, please contact: Kevin K. Zilm—President; Rochelle Lions Club; PO Box 283; Rochelle, IL 61068. rochellelionsclub@gmail.com

mi Baldwin of Colonial Flowers for coordinating our event.

If you have questions about our vision and hearing services or would like to become a member of the Rochelle Lions Club, please contact: Kevin K. Zilm—President; Rochelle Lions Club; PO Box 283; Rochelle, IL 61068. rochellelionsclub@gmail.com

You've found the Easter Egg!

Enjoy this offer!

promotion code
GOLDENEgg



Read and Recycle

ROCHELLE News-Leader
211 IL Route 38 East, Rochelle, IL 61068
(815) 562-4171

USPS (467-820) ISSN (1075-2811)
Published every Wednesday and Sunday by Rochelle Newspapers Inc. at 211 E. State Route 38, Rochelle, IL 61068. Periodical postage paid at Rochelle, IL 61068. Postmaster send address changes to the Rochelle News-Leader, P.O. Box 46, Rochelle, IL 61068. Subscription rates are \$139.99 per year by mail in Ogle County. Outside county rate is \$149.99 per year. The circulation department is open Monday through Thursday from 9 a.m. to 3 p.m. and Friday from 9 a.m. to 1 p.m. For subscription information, contact Kelly White at 562-4171.

IN-COUNTY REGULAR SUBSCRIPTION RATES

- \$139.99 for one year • \$79 for six months
- \$34.99 for three months • \$13.99 for one month

Call (815) 562-4171 or Visit our website at www.rochellenews-leader.com

HOW TO CONTACT US

News-Leader Main Switchboard	(815) 562-4171
General Manager	(815) 561-2124
Newsroom Staff Jeff Helfrich, Managing Editor Russ Hodges, Sports	(815) 561-2151 rhodges@rochellenews-leader.com
To Place a Display Ad Chris Ackland	(815) 561-2153 cackland@rochellenews-leader.com
To Place a Legal Ad Mike Feltes	mfeltes@oglecountylife.com
To Place a Classified Ad Chris Ackland	(815) 561-2153
Subscriptions and Delivery Kelly White	(815) 562-4171 kwhite@rochellenews-leader.com

OGLE COUNTY SHERIFF'S REPORT

OREGON — On April 5 at approximately 5:35 a.m. deputies responded to a single-vehicle crash on Illinois Route 64 near the intersection of Kent Road in rural Rochelle. An initial investigation revealed a vehicle was traveling westbound on Illinois Route 64 when it crossed over the center line into the eastbound lane before entering the south ditch. After entering the ditch the vehicle proceeded into the field where it overturned coming to rest on its roof. The driver, Douglas Carr, 55, of Rochelle, was transported to the Rochelle Community Hospital where he was pronounced deceased. The incident is still under investigation. Deputies were assisted by Hillcrest Fire/EMS, Rochelle Fire/EMS, and the Illinois State Police.

On April 5 at 2:12 a.m. deputies checked on a vehicle in the ditch on Interstate 39 southbound at mile marker 112. After an investigation, Ciro Nelson Santos, 43, of Milwaukee, Wisconsin was arrested for driving under the influence of alcohol. Santos was also issued citations for driving with no valid driver's license, driving under the influence of alcohol over .08, and aggravated driving under the influence of alcohol. Santos was transported to the Ogle County Jail and released on a notice to appear with a return court date.

On April 5 at 3:44 p.m. the Ogle County Sheriff's Office investigated a motorist assist near the intersection of South Meridian Road and East Illinois Route 64. After an investigation, Daniel J. Lamczyk, 42, of North Lake was placed under arrest for driving under the influence of alcohol. Lamczyk was also issued a citation for improper parking on a roadway. Lamczyk was transported to the Ogle Jail and released on a notice to appear.

On April 5 at 7:08 p.m. deputies conducted a traffic stop in the 5,000 block of North Illinois Route 2 for a speeding violation. After an investigation, a 15-year-old male juvenile from Byron was arrested for no valid driver's license, and driving under the influence of alco-



hol. The juvenile was additionally issued citations for driving under the influence of alcohol over .08, and speeding. A 14-year-old female juvenile from Oregon, a 16-year-old female juvenile from Byron, and a 17-year-old male juvenile from Byron were also in the vehicle, and issued citations for illegal consumption of alcohol under age 21. All of the juveniles were released to parents or guardians and provided with a future court date.

On April 7 at approximately 12:20 p.m. deputies initiated a traffic stop in the 5,000 block of East Flagg Road. After further investigation Anthony Frey, 31, of Mt. Morris, was placed under arrest for an outstanding Lee County warrant. Frey was transported to the Ogle County Jail where he was held in lieu of bond.

On April 8 at approximately 6:16 a.m. deputies initiated a traffic stop in the 20,000 block of East Illinois Route 64. After further investigation Anthony Roman, 41, of Rockford, was placed under arrest for driving while license suspended. Roman was also cited for speeding. Roman was released on a notice to appear bond.

On April 8 at approximately 8:56 a.m. deputies initiated a traffic stop in the 2,000 block of North River Road. After further investigation Tomas Garcia Larios, 51, of Oregon, was placed under arrest for driving while license revoked. Garcia Larios was transported to the Ogle County Jail where he was released on a notice to appear bond.

On April 9 at approximately 4:41 p.m. deputies responded to the intersection of Queens Road and Flagg Road in Rochelle for a check welfare on the driv-

er of a semi-truck/trailer. After an investigation, deputies arrested David Allen Vaultonburg, 39, of Polo for driving under the influence of alcohol. Vaultonburg was transported to the Ogle County Jail and released on notice to appear with a return court date.

On April 9 at 8 p.m. deputies conducted a warrant service in the 700 block of West Indian Terrace in Oregon. Deputies arrested Shannon E. Tompkins, 41, of Oregon on an Ogle County warrant for failure to appear (driving while license suspended). Tompkins was transported to the Ogle County Jail and held in lieu of bond.

On April 10 at 6:37 p.m. deputies conducted a motorist assist in area of East Illinois Route 64 and South Kent Road for a vehicle stopped in the roadway. After a brief investigation, Fernando Hernandez, 76, of West Chicago, was arrested for driving unlicensed. Hernandez was transported to the Ogle County Jail where he was processed and released with a further court date. Hernandez was additionally cited for unlawful parking.

On April 10 at approximately 5:30 p.m. deputies and Rochelle Fire Department responded to the 12,000 block of East Flagg Road in rural Rochelle for a two-vehicle accident. After a brief investigation, deputies learned a green Dodge Dakota struck the rear end of a red Chrysler 300 that was attempting to make a left-hand turn. Deputies cited a 16-year-old male juvenile from Chana for failure to reduce speed to avoid an accident. All parties involved were unharmed.

All individuals are considered innocent until proven guilty.

Illinois State Police Troop 1 announces monthly activity for March

STERLING — Illinois State Police Troop 1 Captain Joseph Blanchette has announced enforcement figures and activity for March.

Illinois State Police Troop 1 Troopers issued 1,489 citations, 983 written warnings, and made 35 criminal arrests during the month of March.

Troopers issued 482 citations for speeding, 76 citations for distracted driving violations and 177 citations for occupant restraint violations.

Troopers investigated 83 traffic crashes, assisted 230 motorists, and conducted 369 commercial motor vehicle inspections, of which 51

were placed out of service for safety reasons. There were 34 arrests for driving under the influence.

Troop 1, which encompasses Boone, Carroll, Jo Daviess, Lee, Ogle, Stephenson, Whiteside and Winnebago counties, investigated no fatal crashes in March.

Stillman Valley Nursery
9979 N. Kishwaukee Road
Stillman Valley, Illinois 61084
(815) 645-8113

Premium Hardwood • Designer Colored Mulches
Pulverised Dirt • Mushroom Compost • Straw Bales

Delivery Available

08032020

Report policy

Any arrests listed in this paper are merely charges and the defendants are presumed innocent unless proven guilty in a court of law. Please note that all police reports received from the Rochelle Police, the Ogle County Sheriff's Department and the Illinois State Police, will be printed without exception. Requests to omit particular reports will not be considered or honored at any time.

LOCAL NEWS



(COURTESY PHOTOS)

Eagle's Nest Art Group will hold its annual Spring Membership Show at its Conover Square gallery located on the second floor at 201 N. 3rd St., Oregon.

Eagle's Nest Art Group Spring Membership Show at Conover Gallery opens April 26

OREGON — Eagle's Nest Art Group will hold its annual Spring Membership Show at its Conover Square gallery located on the second floor at 201 N. 3rd St., Oregon. The show will open with a reception on Saturday, April 26 from 1 p.m. to 4 p.m. The art show will continue on Sunday, April 27, Saturday, May 3 and Sunday, May 4, from 1 p.m. to 4 p.m. The show contains over 80 original pieces of art, including paintings, glass work, pottery, calligraphy, drawings, fiber art, and works in wood. In addition, large and small prints are available for sale. ENAG is a group of over 90 members who are all from our local area: Oregon, Mt. Morris, Chana, Byron, Polo, Dixon, Forreston, Lindenwood, Rochelle, Hampshire, Ashton, Sterling, Rock Falls, Winnebago, Rockford, Sycamore, Pecatonica, and Pearl City, and Loves Park. This show is dedicated to celebrating the long history of art in this area. ENAG was founded in 1957 to support the work of local artists and share art through hosting shows, offering programs and informal studio art sessions, and conducting art classes. Artists will be on hand each day of the show to welcome you. Refreshments will be served. The shops of Conover Square will be open during show hours. The show is free and parking is plentiful. For more information about the group call 815-

CHURCH DIRECTORY

Ashton Bible Church, corner of Main and Paddock in Ashton. Pastor Farrel Stauffer, church phone is (815)453-2190, church website www.ashtonbible.org. Sunday School for all ages 9:00-10:00am, Morning Worship 10:15am, Wednesday Prayer Meeting/Bible Study 6:30-8:00pm.

Calvary Lighthouse Church, Assemblies of God, Senior Pastor, Dr. James Horvath. 14409 Hemstock Rd., Rochelle. Sunday Morning: Sunday Worship & Children's Church 10:00 A.M., Wednesday Evening 7:00 P.M. – Adult Teaching, Missionettes & Royal Rangers Childrens Classes, Nursery available for all services. HE-Brews Cafe is open before and after services. For further information, please call the CLC office at 815-562-7701, or email us at staff@calvarylighthouse.com

Rochelle Church of Christ, Keeping Christ at the center in the Hub City. We meet Sundays at 9:00am for Bible Study and 10:00am for worship. We also have a Wednesday Bible Study at 7:00pm. 206 Erickson Rd, Rochelle, IL 61068. You can call us at (815) 562-6572 or visit us on the web at rochellechurch.com. We also have a radio program Sundays just after 8am on WRHL 1060AM. Minister Dominic Venuso.

Creston United Methodist Church and Steward United Methodist Church - Rev. Ilhan You, Creston: 126 West South Street, P.O. Box 209, Creston, Illinois 60113. Sunday morning worship 9:00am. Coffee fellowship at 10:15am. Steward: 507 Main Street, P.O. Box 80, Steward, IL 60553. Adult Sunday School, 10:00am. Sunday morning worship and Children's Sunday School 11:00am. Contact the church office at 847-730-4370 for more information. facebook.com/crestonumcil facebook.com/stewardilumc

Elim Reformed Church, 140 S. Church Road, Kings, IL 61068. Phone: 815-562-6811. Email goelimchurch@gmail.com Website www.goelimchurch.org Sunday Morning Worship 10:00 Rev. Marv Jacobs

Faith Lutheran Church – (14206 E. Flagg Rd.) – “Making Christ Known Through Lives of Faith.” In-person worship is available each Sunday at 9:00 a.m. or online at “Faith Lutheran Social” on YouTube. Worship resources are also available on our Facebook page - ‘Faith Lutheran Church ELCA.’ You may also e-mail Pastor Joy Alsop at Pastor@faithlchrochelle.org for more information. All are welcome to join us!

First General Baptist Church, 500 S. 12th St, Rochelle. Phone: 815-562-5221. Email: fgbcrochelle@gmail.com. Website: www.fgbcrochelle.org. Facebook: www.facebook.com/fgbcrochelle. Pastor: Rev. Angelo Bonacquisti. **Sunday worship services:** 8:30 am, 11:15 am and 6:00 pm. **Sunday school:** 10:00 am. We'd be honored to have you join us as we worship JESUS and continue to grow in truth and love for God and each other. A nursery, children's church, youth group and small groups are available. If you need a ride please contact our church bus driver, John, at (815) 262-4275 by 8:30 am on Sunday. “For if you confess with your mouth that Jesus is Lord and believe in your heart that God raised him from the dead, you will be saved.” Romans 10:9

First Presbyterian Church – An Amazing Place for Amazing Grace- Rev. Doug Forsberg, Senior Pastor. 1100 Calvin Road, Rochelle. Email: info@placeforgrace.com. Sunday morning worship 9:00am. In person or streamed online. On our Website and Facebook Live. www.placeforgrace.com/ www.facebook.com/placeforgrace

Harvest Baptist Church 241 Scott Ave. (Hillcrest). Rev. Duane Boehm, pastor. Email duane712@hotmail.com, cell 815-757-3427. Visit us on Facebook! Service times: Sunday morning worship with Children's Church at 10 am. Wednesday night worship at 7 pm.

Immanuel Lutheran Church Missouri Synod 16060 E. Lindenwood Road, Lindenwood, IL 61049. Rev. Dr. Matthew Rosebrock. Church Phone 393-4500. Church Worship 9:00 a.m. Sunday School Christian Education Hour at 10:30 a.m.

Living Water Community Church 405 N. Main St, Downtown Rochelle. Phone 815-561-6249, Website: www.lwccr.com, Like us on Facebook. We are Non-Denominational, Christ Centered, Casual dress, Christ Centered Live Band Worship. Mike Vogeler - Outreach and Seven C's Pastor, Chris Bender- Teaching Pastor and Doug Bunger - Missions and Children's Pastor. Sunday Worship Service- 10:00am. Nursery/Toddlers Ages 0-5 available during the service in the Splash building. Swim- Grades 1st-5th worship with the adults then break out for age appropriate teaching. Youth groups, Small groups, Life Groups and Workshops meet throughout the year for Bible teaching. 7C's Mission- serves the community physically & spiritually each month from 1135 Lincoln Hwy, providing lightly used clothing, Hygiene items, a light lunch and Elder Prayer open the second Saturday from 10am-2pm and the 4th Thursday from 4pm to 7:00pm and by appointment.. [f](https://www.facebook.com/lwccr)

New Hope Fellowship (Church of God - Anderson, IN), 1501 10th Ave., Rochelle, IL 61068. Service: Sunday at 9 a.m. 10:30 a.m., (815)561-8400, www.NHFchurch.net Pastor: Dan Sergeant and Pastor Nick Tornabene. (Classes for children through age fifth grade during service.)

Rochelle United Methodist Church welcomes everyone to their worship service, and practices openness for all activities including communion. Worship is at 9:00 am. Sunday school for children begins around 9:15, following the Children's Time in worship. A fellowship time with food and space for conversation occurs in Hicks Hall every week following the worship service. We celebrate communion with an open table on the first Sunday of every month, and on other appropriate occasions. Youth group is on Sunday evenings from 5:30-7:30. Our youth program includes service projects, discussion topics, Bible Study, and lots of fun and fellowship together. Some of our activities include packing meals at Feed My Starving Children, helping at Rochelle Christian Food Pantry and 7C's, working with animals at Barn on Baseline, Mystery trips (Destination Unknown!), and Interactive experiences on Dating boundaries, refugees, and homelessness. Youth group is for grades 6-12 and friends are always welcome. Recorded services are available on our YouTube channel and our website at www.rochelleumc.com. Our services are on the radio (93.5 FM) on Sunday mornings at 9:00 am. Our Facebook page is www.facebook.com/rochelleumc. **Our pastor is the Rev. Dr. Katherine Thomas Paisley.** Our address is 709 Fourth Ave. (815) 562-2164. Email is admin@rochelleumc.com. At Rochelle United Methodist Church, everyone is welcome and loved!

St. John's Lutheran Church, 126 E. South Street, Creston. Phone 815-384-3720, Email: StJohnsLutheran@aol.com, members of NALC/LCMC. Worship is led by **Pastor Terese Whitten** 231-878-4150. St. John's Lutheran Church is a part of God's Family, planting hope, nurturing faith and harvesting love. Coffee or Fellowship at 10:00 a.m. Worship begins at 10:45 a.m. Sunday school is conducted during worship service except during the summer.

St. Patrick Catholic Church Rev. Jesus Dominguez; Deacon Fermin Garcia; Deacon George Schramm; 244 Kelley Dr. (Corner of Kelley & Caron Rd.), PO Box 329, Rochelle, IL 61068. **Office Hours:** 9:00 AM- 4PM Monday-Thursday, Phone: 815-562-2370. **Mass times:** 8:00 AM Monday-Thursday, Saturday Vigil Mass 5:00 PM English, 7PM Spanish, Sunday Mass 7:30 AM, 9:00 AM in English and 11:00 AM in Spanish. **Confessions:** Monday 8:30AM & 6:30PM, Tuesday 8:30AM, Saturday 8:30am & 4:00-4:45 PM Or by appointment. **Religious Education:** Deacon George Schramm, Director of Religious Education. 903 Caron Road, Rochelle, IL 61068, 815-561-0079; Website: stpatriksrochelle.com Email: stpatrick-rochelle@rockforddiocese.org Facebook.com/StPatrickRochelle

St. Paul Lutheran Church “Building Relationships in Christ, Now and Forever!” Steven Hall, Principal, Parish Nurse-Marcia Schnorr. 1415 Tenth Ave., Rochelle. Church Office-562-2744. Worship times: 6:00 p.m. Saturday, 9:00 a.m. Sunday. Our service is broadcast over WRHL 1060AM at 10:00 a.m. Sunday. Sunday School 10:15-11:15 a.m. Call 562-6323 for more information about the school.



LOCAL VIEWS

Ron Kern: Tax programs' impacts on farmers

PLENTY to do in the halls of Congress as we sit squarely in the second term of President Trump. One area that will be examined closely are the tax cuts implemented in his first term that expired at the end of 2025. Those tax initiatives had a profound effect on agriculture and we will see if they are continued into the future. In the meantime let's look at how those tax programs helped or hurt farmers courtesy of the American Farm Bureau. The majority of farm profit nationwide is taxed as a farmer's or rancher's individual income, so changes to the individual tax code significantly impact farm tax liabilities. Farmers utilize business provisions like bonus depreciation, full depreciation, business income deductions and alternative use valuations to reduce their tax liabilities from farm profit, but the individual income tax code is the ultimate determination of most farmers' yearly tax burden.

TCJA individual income provisions that reduced the average farm tax liability across farms of all sizes include reduced federal income tax

rates, new income ranges for each rate, increased limits for the alternative minimum tax (AMT) and limits on personal deductions. Combined, these provisions have the single largest impact on farmers and ranchers' tax liability. Were they to expire, USDA's Economic Research Service (ERS) estimates the average farmer would owe an additional \$2,300 a year in taxes, not including any other expiring provisions. These expirations alone increase farm taxes paid by \$4.5 billion.

Nearly 98% of farm operations are pass-through entities: sole proprietorships (which are not legally separate from the operator), S corporations and partnerships. While C corporations, including co-operatives, are taxed at a corporate tax rate on their business income and then taxed again as individual income when dividends are paid out to stakeholders, pass-through entities include business profit in its entirety as personal income.

In pass-through businesses like farms and ranches, all sources of income combined determine what individual income tax brackets the

owner's income will fall into. Ninety-six percent of farm households receive some amount of income from off-farm employment. Midsize, large and very large farm families are the only categories that earn the majority of their income from farming, and even those have a large share of income coming from off-farm jobs, on average.

Adjusted gross income (AGI) is the total income, from all sources, minus deductions or exemptions, for the household. Only farm *profit* is counted as income, not total revenues. Farm losses can also be carried back to the two preceding tax years or forward to a later year; farming receives this carryover because of the extreme year-to-year volatility of net farm income. AGI is the ultimate amount of money that a farmer will pay taxes on at the designated rates.

TCJA reduced individual income taxes through a twofold approach: lower tax rates and new income brackets for each rate. The average taxpayer saved \$1,260 from the individual rate changes,

increasing after-tax income by nearly 2%.

The TCJA aimed to simplify tax filing by reducing the amount of itemized deductions a tax filer is eligible to make including a deduction restriction that was used to offset lower TCJA tax rates is a cap on state and local taxes (SALT) deductions, particularly income, property or sales taxes. SALT deductions aim to reduce federal tax liability by balancing income already spent on taxes for local services. Prior to TCJA, there was no limitation on how much of these local taxes a taxpayer could deduct; TCJA implemented a \$10,000 maximum SALT deduction. Nearly 65% of SALT deductions are claimed by those with incomes over \$500,000 and are concentrated in California, New York, New Jersey and Illinois.

USDA's Economic Research Service (ERS) estimates that 3.3% of all farmers have state and local taxes greater than \$10,000. However, that share increases to 23% and 43% of large and very large farm households,

respectively; these are the farm families whose income depends largely on the farm business but also typically have the highest tax bill.

The expiration of individual tax provisions in 2026 is estimated to increase the average farm's tax liability by nearly \$2,300 a year, close to 12% higher than under TCJA tax provisions. While very large farms have the highest dollar value increase in tax liability with over \$27,500 in additional taxes a year, lower earning farms are hit hardest in terms of their percentage increase in tax burdens. The \$27,000 increase for very large farms is 5% higher than under TCJA. Off-farm occupation, low-sales and moderate-sales farms – more than 1.4 million farm families nationwide – would have tax liabilities increase by more than 10%. Moderate-sales farms are the lowest revenue farm category whose principal operator's primary job is to farm and which make positive income farming, on average; these would have their tax liabilities increase by over 15% (\$2,300 annually), the highest share of any farm

category.

With more than 96% of farms passing business profits directly through to their individual income, provisions in the individual tax code play a huge role in determining the tax burden on farm families. Increased taxes would add to farmers' current difficulties, as farmers continue to face increasing production expenses and declining farm profits. Decisions made this year about the TCJA's individual income provisions will have implications for farmers' and ranchers' real profitability for years to come. Farm profits have decreased 23% since 2022, driven by a combination of lower crop revenues and higher production expenses. With everyday farm production expenses up 6% in two years, including a 10% increase in taxes and fees, added tax burdens could weaken a farm economy that is already struggling.

"Any politician promising not to raise your taxes is like a vampire promising to become a vegetarian." -Pierre Poilievre

Ron Kern is the manager of the Ogle County Farm Bureau.



Ron Kern

Letter to Editor: Congress allowing tariffs

DEAR editor: In the wake of the recent hype surrounding the President's imposition of large tariffs on much of the world, it may surprise some to find out that he has no power to do so under the Constitution.

Instead, Article I of the Constitution assigns to Congress — not the President — the power to "To lay and collect Taxes, Duties, Imposts and Excises" as well as the power "to regulate Commerce with foreign nations".

How, then, can the President presume to exercise a power which belongs only to Congress?

The answer: Only because Congress appears willing to let him do so.

Since early on, there has been a tension between the Constitution's delegation of all Legislative power to Congress, and the practical need for Congress to delegate some degree of discretion to the Executive branch in order that complex legislative commands be carried out fairly and effectively. The Supreme Court has long held that Congress cannot delegate powers which are strictly and exclusively Legislative. At the same time, the Court has upheld legislation which delegates to the Executive some discretion in how it enforces laws, but only if the scope of the delegation is clearly expressed and limited.

Now the President

seeks to assume, and Congress seems willing to cede to him, Congress' exclusive Constitutional power to impose tariffs, without a clear expression of Congressional intent to do so, and without limits.

The President purports to impose the new tariffs under the authority of the International Emergency Economic Powers Act of 1977. That Act authorizes various punitive economic sanctions on dangerous foreign actors, primarily terrorist organizations and hostile countries, but it does not authorize tariffs; indeed, it makes no mention of tariffs at all. It is therefore not surprising that no President

has sought to use it as authorization for tariffs during the 48 years since it was enacted.

Moreover, when Congress has intended to authorize tariffs, it has enacted trade legislation which says so clearly and with limits. The President surely knows this, because he imposed tariffs during his first administration in reliance on Trade Acts that expressly authorized them.

But those Trade Acts also required advance public disclosure of proposed tariffs, a period of public comment, a public hearing, and a detailed report, a process that can be lengthy. It is not surprising

that the President would prefer to avoid that process, but Presidential preference cannot override the Constitution.

The President's reliance on a statute that provides no basis for imposing tariffs seems disturbingly similar to his reliance on the Alien Enemies Act for deporting people to El Salvador without a court hearing normally required before deportation. In that case, the President has attempted to usurp the Judicial power which the Constitution vests in the Supreme Court by arguing that he alone, and not the Federal Courts, can interpret the Alien Enemies Act. It will not be surprising if a similar argument is made with respect to his reliance on the

International Emergency Economic Powers Act of 1977 to impose tariffs.

Should the President succeed in both cases, he will have successfully concentrated all Government power — the power to make laws, to enforce the laws, and to interpret the laws — in the Executive branch. Our Constitutional Republic and our liberty would then be at risk because, in the words of James Madison, "there can be no liberty where the legislative and executive powers are united in the same person" or "if the power of judging be not separated from the legislative and executive powers".

Alan Cooper,
Rochelle

How to contact government officials

U.S. Con. Darin LaHood
1424 Longworth HOB
Washington, D.C.
20515
(202) 225-6201

IL Sen. Li Arellano Jr.
Stratton Office Bldg
Springfield, IL 62706
(217) 782-1942

IL Rep. Bradley Fritts
Stratton Office Bldg
Springfield, IL 62706
(217) 782-0535

Have a letter you want to submit to us? Send it to news@rochelle-news-leader.com

KEEPING YOU IN TOUCH WITH YOUR LOCAL LEADERS

** Denotes Chairman/President*

Rochelle City Council

*John Bearrows	jbearrows@rochelleil.us
Kathryn Shaw-Dickey	kshaw-dickey@rochelleil.us
Bil Hayes	bhayes@rochelleil.us
Rosaelia Arteaga	rarteaga@rochelleil.us
Dan McDermott	dmcdermott@rochelleil.us
Tom McDermott	tmcdermott@rochelleil.us
Benjamin Valdivieso	bvaldivieso@rochelleil.us

Rochelle Elementary School Board

*Trisha Vaughn	tvauhn@d231.rochelle.net
Dave Casey	dcasey@d231.rochelle.net
Steve Builta	sbuilt@d231.rochelle.net
Ashley Jackson	ajackson@d231.rochelle.net
Stephanie White	swhite@d231.rochelle.net
Javier Zepeda	jzepeda@d231.rochelle.net
Jennifer Thompson	jthompson@d231.rochelle.net

Rochelle Township High School Board

*Tom Huddleston	tom.huddleston@rthsd12.org
Bill Ravnaas	bill.ravnaas@rthsd12.org
Jeff Tilton	jeff.tilton@rthsd12.org
Bobby Chadwick	bobby.chadwick@rthsd12.org
Brent Ohlinger	brent.ohlinger@rthsd12.org
Laurie Pillen	laurie.pillen@rthsd12.org
Joel Thompson	joel.thompson@rthsd12.org

Flagg-Rochelle Park Board

Brent Carmichael	bcarmichael@rochelleparkdistrict.org
John Dobbs	jdobbs@rochelleparkdistrict.org
Dale Wells	dwells@rochelleparkdistrict.org
*Tim Hayden	thayden@rochelleparkdistrict.org
Jodie Hart	jhart@rochelleparkdistrict.org
Joe Lenkaitis	jlenkaitis@rochelleparkdistrict.org

Ogle County Board Dist. 3

Austin Gillis	agillis@oglecounty.org
Dan Miller	dmiller@oglecounty.org
Joseph Simms	jsimms@oglecounty.org

Ogle County Board Dist. 4

Jackie Ramsey	jramsey@oglecounty.org
Skip Kenney	skenney@oglecounty.org
David Williams	dwilliams@oglecounty.org

Creston Village Board

*Tom Byro	tommyb_47@yahoo.com
Greg Hopkins	ghopkins522@comcast.net
Steve Katzman	skatzman@essex1.com
Mike Kerns	ac.kerns@comcast.net
Curt Ward	caward92@comcast.net
Mark Hibshman	
Reid Elliot	
Jennifer Payton	

Hillcrest Village Board

*Richard Rhoads	rrhoads@hillcrestil.us
Pam Pittman	ppittman@hillcrestil.us
Dan Potter	dpotter@hillcrestil.us
Tim Ball	tbhall@hillcrestil.us
Jose Huerta	jhuerta@hillcrestil.us
Eileen Braski	ebraski@hillcrestil.us
Patricia Garcia	pgarcia@hillcrestil.us

Flagg Township

Sue Messer	supervisor@flaggtownship.org
Joanna Patrick	clerk@flaggtownship.org
Susan Rothenberger	assessor@flaggtownship.org
Scott Seebach	commissioner@flaggtownship.org

Board of Trustees

Lance Noggle	noggle62@gmail.com
Eric Gruben	egruben@comcast.net
Susan Hager	susanhager303@comcast.net
Jim Kenney	jimk@rocketsupply.com

Flagg-Rochelle Library

Jaqueline Dickow	dickow@comcast.net
*Teresa Haggstad	haggstads@comcast.net
Kelly Johnson	kellyjohnson0927@yahoo.com
Lanning Nicoloff	nicoloff118@comcast.net
Sheri Klindera	alwayslefty2@gmail.com
Susan Sevedge	nit1prl22@yahoo.com
Darci Waltrip	doobs12@comcast.net

LETTERS TO THE EDITOR POLICY

The Rochelle News-Leader encourages responsible letters to the editor on subjects of interest to our readers. Editing may be necessary for space, clarity or to avoid obscenity or libel, but ideas will not be altered. All letters must bear the handwritten signature of the writer and include address and phone number or e-mail address for verification purposes. Neither the street address nor phone number will be printed. Letters should

be typed or legibly handwritten, and no anonymous letters will be published. Any letters from boards or organizations must include at least one name of an individual. Any criticism of public officials should be limited to issues related strictly to their position or actions made in office, as personal attacks will not be published. Letters involving private disputes between the writer and a business will not be published. Political endorsements will be

published, however letters from candidates endorsing themselves will not be printed. Letters may be dropped at the News-Leader office (211 IL Route 38 East), mailed to the News-Leader (P.O. Box 46, Rochelle, IL 61068) or e-mailed (news@rochellenews-leader.com.) The News-Leader reserves the right to edit or reject any letter to the editor for any reason, and letters chosen for publication do not necessarily reflect the views of this newspaper.

COMMUNITY

Portion of Caron Road closed through May 20 starting April 15

ROCHELLE — City of Rochelle Engineer Sam Tesreau has announced the closure of Caron Road, from Kelley Drive to south of Creston Road/1st Avenue for 1,000 feet, beginning Tuesday, April 15 for inlet, manhole and storm sewer reconstruction along with concrete curb and gutter repairs and asphalt pavement restoration and resurfacing. This work is expected to be completed by end of day on May 20.

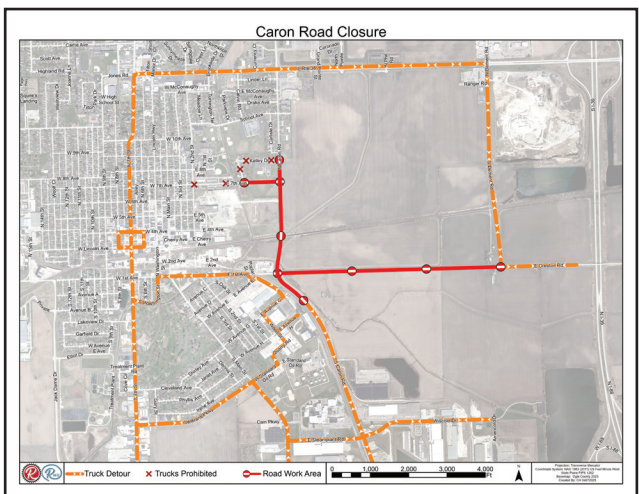
As a reminder Creston Road is also closed, during this time, south of Dement Road.

All truck traffic must use the Illinois Route 251

detour to Veterans Parkway or other available marked truck routes during this time. No truck traffic will be allowed to use Kelley Drive, 1st Avenue, Creston Road or 7th Avenue to and from Caron Road.

All other traffic must use marked detour or other alternate routes.

Advance warning, road closure barricades, detour and other temporary traffic control devices will be posted near the affected area. Please use caution while traveling in this area and pay special attention to the advanced warning signage and message boards, road closed signage and other temporary traffic control



(COURTESY PHOTO)

City of Rochelle Engineer Sam Tesreau has announced the closure of Caron Road, from Kelley Drive to south of Creston Road/1st Avenue for 1,000 feet, beginning Tuesday, April 15

devices within or in advance of the work zone. We appreciate your patience during this project.

April is Sexual Assault Awareness Month

OGLE COUNTY — Rockford Sexual Assault Counseling (RSAC) provides free & confidential services to victims of sexual violence ages 3+ and their non-offending family members in Winnebago, Boone & Ogle County. The Ogle County office, located downtown Oregon, provides essential services to victims and their families. Essential services: Counseling (ages 3+ & non-offending family members). School-based counseling. Crisis Intervention. Medical &

Legal Advocacy. Prevention Education. Professional Training.

RSAC works with many local agencies and organizations to spread awareness about RSAC's free services. If your agency or organization is wanting to know more about RSAC's services, please reach out to RSAC! We would love to come talk about our free essential services and how we can help one another in serving our community!

Upcoming events: Denim Day April 30.

Threads of Triumph June 26 6:30-8:30 p.m. CT, The Standard, 214 E. State St., Rockford. Join us for a powerful evening of fashion, awareness, and solidarity in support of survivors of sexual assault. All proceeds from this event will benefit Rockford Sexual Assault Counseling.

Dispelling the Darkness Candlelight Vigil on Sept. 9 at 6:30 p.m. CT, Rockford University Fisher Memorial Chapel, 5050 E. State St., Rockford. We are currently seeking sponsorships for this event

that provides an opportunity for survivors to share their stories. Join us and the community to shed a light in the darkness of sexual violence!

Become a volunteer! Volunteer Advocates are essential in helping survivors feel heard and supported, and to identify their options after a recent sexual assault. Visit our website or call our office to learn more! Rockford/Crisis 815-636-9811. Boone 815-544-6821. Ogle 815-732-0000. Rockford-SexualAssaultCounseling.org

BIRTHDAYS & ANNIVERSARIES

- | | | | |
|---|--|---|---|
| April 16
Marissa Seldal
James Doering | April 19
Pastor Angelo
Bonacquisti | April 24
Jose Tlapa
Lainie Arnold | April 30
Nora Bridgeman
Oakley Gonzales |
| April 18
Millie Danekas | April 21
Emma Waters | April 26
Evan Jones | May 1
Jamey King |

Call 815-561-2151 to submit names for birthdays and anniversaries



Coffee Break

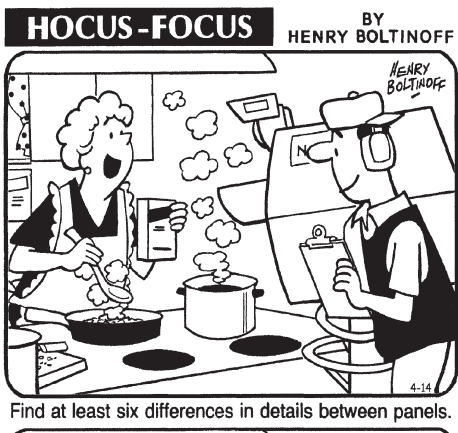
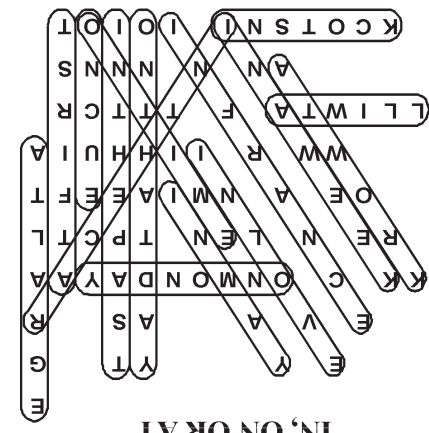
MAGIC MAZE • IN, ON OR AT

C B Y W T R P M K I F D B Y W
U S Q O M K I F D B Z X W U E
S Q O E N Y L J H F Y T D C G
A Y E W V V A E S T A S T S R
K K Q C P O N M O N D A Y A A
N R E L N K L E N I T P C T L
H F O E E A C N M I A E E F T
B Z Y W W W R V I I H H U I A
L L I W T A U F S T T T C R R
Q P N M L A N J N I N N N S H
F K C O T S N I E I O I O T D

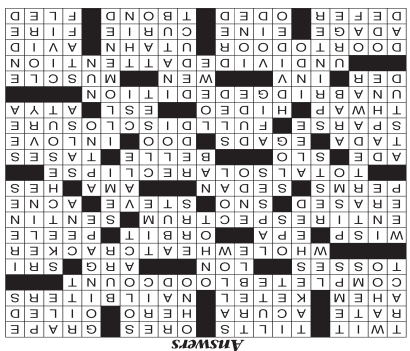
Find the listed words in the diagram. They run in all directions forward, backward, up, down and diagonally. Unlisted clue hint: THE SAILOR SPENT YEARS —

- | | | | |
|----------|-----------|-------------|-------------|
| At first | In a week | In stock | On Monday |
| At large | In France | In the car | On that day |
| At will | In love | In the past | On time |
| At work | In May | On cue | |

©2025 King Features Syndicate, Inc. All rights reserved.



Find at least six differences in details between panels.



Differences: 1. Pot is moved. 2. Box is larger. 3. Apron is smaller. 4. Cabinet is wider. 5. Curtain is different. 6. Nose is different.

Super Crossword

ALL THERE

- | | | | | | |
|---|--|---|--|---|---|
| ACROSS
1 Taunt in fun
5 Pinball fouls
10 Tram loads
14 Raisin, at first
19 \$5/hour, e.g.
20 Maker of the RDX SUV
21 Leading man
22 Greased
23 "Pardon me"
24 — One (vodka option)
25 Suspenseful situations
27 Test giving information about red and white cells
30 Throws
31 Actor Chaney
32 Country west of Uru.
33 — Lanka
36 Triscuit or Ritz tidbit
43 Faint streak
47 Clean air gp.
48 Comet's path
49 "Us" director Jordan
50 Gamut
54 Remitted
55 Wiped away
56 — -cone
57 Carell of "Date Night" | 59 Clearasil or Stridex target
60 Jobs at hair salons
61 Roomy car
63 Doctors' gp.
65 "— So Fine"
66 Sun-hiding phenomenon
72 Suffix with lemon
74 — -Blo (fuse type)
75 Beauty in "Beauty and the Beast"
76 Stuns with a charge
79 "There, I did it!"
81 "By gar!"
85 Whoop-de- (fuss)
86 Like sweethearts
87 Not at all dense
89 Withholding of no relevant facts
92 "Bam!"
93 Pitcher — Nomo
94 Subj. for U.S. immigrants
95 "Back—!" ("Ditto!") | 96 Larger version of a dictionary, say
101 Article in Essen
102 Bill for services: Abbr.
103 Scientist — Ho Lee
104 Triceps, e.g.
109 What you are giving when you contemplate this puzzle's theme?
115 Like some canvassing
118 Orem native
119 Eager
120 Wise truism
121 Article in Essen
122 Physicist Marie
123 Inferno
124 Put off
125 Really binged, for short
126 Long-term govt. security
127 Turned tail | 3 Agenda parts
4 Office subs
5 Listens carefully
6 "Law & Order: SVU" actor
7 Guitar's kin
8 High-pitched
9 Sickly yellow
10 "This is bad!"
11 Part of ROM
12 "Layla" singer Clapton
13 Single-person show
14 Freaking out
15 "Norma Rae" director Martin
16 Bristol brew
17 Part of rpm
18 Mag VIPs
26 Hamilton's duel rival
28 "Holiday" actor Ayres
29 Like a stove burner turned way up
33 Does a rough plan of
34 Mend the inner layer of
35 Castle and Cara
37 Intel missions, e.g.
38 Backslides
39 Is mistaken | 40 Lie next to
41 Clock info
42 Pro wrestler John
43 Sob
44 As to
45 Provoked major fighting
46 California's — Beach
51 Respite
52 Root canal performer, informally
53 Either of Frosty's eyes
54 Hauling truck
58 Hollow between hills
61 Plod heavily
62 Snag
64 Abbr. in many urban addresses
67 Not aweather
68 Actor Foxx
69 Race created by H.G. Wells
70 Storeroom
71 Taco topping
72 Offered for breeding, as a horse
73 Niles' wife on "Frasier"
77 "Climb — Mountain" ("The Sound of Music" tune) | 78 "— penny, pick it up ..."
80 Saudi, e.g.
82 Not worth —
83 Guy
84 Arctic vehicle
86 Inauspicious
88 Rapid runner
90 "Camelot" composer Frederick
91 "—: Vegas" (CBS series)
93 Sharp TV images, e.g.
97 — -Chinese
98 Subtract, as an expense
99 Like "three men" of kids' verse
100 Convent woman
105 Work group
106 Part of ACLU
107 French river
108 Ceased
109 Implore
110 Make null
111 Actress Skye
112 — Scott case
113 Poi source
114 Slender
115 Pa
116 Keats poem
117 Stumblebum |
|---|--|---|--|---|---|

©2025 King Features Syndicate, Inc. All rights reserved.



Stop By These Businesses

and see why they were

VOTED #1 in Ogle County!

VOTED BEST

HVAC / HEATING & AIR & PLUMBING COMPANY



Lic. No.
058-08789-1

ANDERSON
PLUMBING & HEATING, INC.



LENNOX
HOME COMFORT SYSTEMS
Innovation never felt so good.™



815.562.8784

email: aphc621@yahoo.com

621 1st Ave. • Rochelle, IL 61068

VOTED BEST

APPLIANCE REPAIR & APPLIANCE STORE



B and W Appliance Repair | 567 W. IL. Rte. 38, Rochelle, IL.



CONQUER PET HAIR LIKE A PRO

MAYTAG® PET PRO WASHER REMOVES **5X MORE** PET HAIR*

Learn more at maytag.com/pets

815-562-6253

MAYTAG

*Comparing normal cycle with Pet Pro filter and option to cycle using traditional agitator without Pet Pro filter and option. Results will vary based on fabric and type of pet hair.
©/™ © 2023 Maytag. All rights reserved. Printed in the U.S.A. 230123ML.

VOTED BEST

PAYROLL SERVICES, TAX SERVICES, ACCOUNTANT AND TAX PROFESSIONAL



Brown's Tax Service

Carolyn Brown, Jade Brown and
Marilyn Oropeza

Our combined 50+ years of service means great service for you. Make an appointment today for Tax Preparation, Payroll and/or Book-keeping Services!

361 IL Route 38 | Rochelle, IL

815-561-6861 | carolyn@brownstaxoffice.com

VOTED BEST

BUTCHER SHOP, BRATS & BLOODY MARY

Tues-Fri - 9a-5:30p
Sat - 9a-4p

815-384-3620

headons2go.com

103 N. Main Street | Creston



LIKE AND FOLLOW US ON
FACEBOOK



VOTED BEST

GAS STATION



**Thank you for voting us
Best Gas Station of Ogle County!**



VOTED BEST

PHYSICAL THERAPY OFFICE



Aaron, Janet
and Marshall
are here to help
you start feeling
better today!

Providing treatment for all
of your physical therapy
needs. No prescription
required. Choose
Northern Rehab
and get back
to the activities
you enjoy.

#CHOOSENORTHERNREHABFIRST

1211 Currency Ct., Suite C, Rochelle

815.562.3299 • www.northernrehabpt.com



VOTED BEST

BANK, CUSTOMER SERVICE, FINANCIAL PLANNING SERVICES, & MORTGAGE LENDING SERVICES

Stillman
BANK

Your Local, Independent
Community Bank
Since 1882.

- **Six locations** throughout Ogle & Winnebago Counties
- **Local lending** - decisions, processing, and servicing
- In-house Trust & Wealth Management team allows for **local investment opportunities**
- **Locally owned & headquartered** since 1882
- We develop banking solutions **that fit your needs**



Member
FDIC

www.stillmanbank.com



VOTED BEST

ALTERATIONS, SEWING & REPAIRS

Stitchery 815

Jen Gottschalk

815-601-0643

Change the Fabric,
Not You!



Alterations and Creations right in Rochelle!
No more traveling for alterations, mending and
whole sewing projects.
Wedding to hemming to memory items!



VOTED BEST

SERVICE CLUB

Floyd J. Tilton Post 3878

Where the community meets its veterans

Call to Discuss Eligibility Requirements



815-562-3878

318 4th Ave., Rochelle, IL 61068

Public is invited to participate:

Lunch Specials

Tues. - Fri. 11am to 1pm

Queen of Hearts

Tuesdays @ 7pm

No need to be present to win

6 Tickets for \$5

Lightning Bingo

Thursdays @ 6pm

Thank you for supporting us!

Check our website & facebook
for activities and details



Become a
Hubs Super Fan
today!

ROCHELLE
News-Leader



GO HUBS!



Contact your sales
representative today!
Christel Ackland
815-561-2153
cackland@rochellenews-leader.com



SUNDAY, APRIL 13, 2025

ROCHELLE NEWS-LEADER • SECTION 2 • PAGE 1

SPORTS



WARTBURG BOUND

RTHS senior Lauren Dyer will be playing collegiate softball at Wartburg College.

See page 8 for more details

RTHS Baseball

Rochelle rallies to beat Rockford Auburn

Hubs score five runs in sixth inning of 12-8 victory over Knights on Thursday

BY RUSSELL HODGES
SPORTS EDITOR

ROCHELLE — Facing a one-run deficit in the bottom of the sixth inning, the Rochelle Hubs came through with timely hits and capitalized on Rockford Auburn’s defensive miscues during their nonconference varsity baseball game against the Knights on Thursday evening.

A two-run single from senior lead-off hitter Carson Lewis, who reached base four times, capped off a stellar sixth inning for the Hubs, who scored five runs before retiring the Knights in order to close the game and secure a 12-8 victory. Rochelle (3-1, 0-0 Interstate 8) tallied 11 hits and took advantage of eight Auburn errors to win a back-and-forth battle that saw four lead changes. The Hubs will return to the diamond for a nonconference doubleheader at Streator on Saturday.

“I really liked the way we battled back and we had some difficult times defensively, but we were

able to overcome that and keep fighting in each and every inning,” head coach Jarrod Reynolds said. “Our at-bats were getting better as the game kept going and I was happy to see that.”

Auburn (0-7, 0-0 NIC-10) took a 1-0 lead on an RBI single from Jamar Reedy in the top of the first inning. Rochelle responded in the bottom of the second inning, where senior catcher Ryan Senne belted a two-out double to left field before scoring on a wild pitch three batters later. The Knights regained the lead after Walter Povalitis laced an RBI single in the top of the third inning.

Sophomore Brody Bruns slapped a one-out single and scored on an Auburn error in the bottom of the third inning to tie the game at 2-2. Bruns, who went 2 for 2 and reached base four times in the game, took the mound in relief and struck out three batters in the top of the seventh inning to preserve Rochelle’s win.

See **BASEBALL**
page 4



(PHOTO BY RUSSELL HODGES)

Senior Carson Lewis threw five and two-thirds innings while striking out nine batters during the Rochelle Hub baseball game against Rockford Auburn on Thursday. Lewis also went 2 for 4 and reached base four times in a 12-8 victory.

RTHS Softball



(PHOTOS BY RUSSELL HODGES)

The Rochelle Lady Hub softball team faced Rockford Auburn on Thursday evening, scoring two runs in the seventh inning of a 9-6 loss. At left, sophomore Camryn Metzger puts the ball in play. At right, freshman Mya Martinez throws a pitch. Martinez pitched a complete game and struck out six batters for the Lady Hubs.

Near comeback falls short against Rockford Auburn

Lady Hub offense records 13 hits in 9-6 loss to Knights on Thursday evening

BY RUSSELL HODGES
SPORTS EDITOR

ROCHELLE — The Rochelle Lady Hubs tallied two runs in the seventh inning and placed the tying runner on base during their varsity softball matchup against Rockford Auburn on Thursday.

Looking for some two-out magic, Rochelle loaded the bases in the bottom of the seventh inning, where the Lady Hubs smacked three singles and capitalized on both a walk and an error to bring Auburn within three runs. But a groundout to second baseman Bella De Soto led to the final out of the game for the Knights, who escaped the jam to hand

Rochelle a 9-6 defeat. The Lady Hubs (3-6, 0-1 Interstate 8) recorded 13 hits, including three extra-base hits, in the loss.

“I think our confidence at the plate has been huge this year,” head coach Deanna Jacobs said. “We were working really hard at practice on our two-strike swings and we really focused on what we can do to get our swings to where we can make contact at the plate. I thought we executed that today and if we can keep making that adjustment, we can continue to put the ball in play.”

Both teams drove home runs in the first inning, with Auburn (4-0, 0-0 NIC-10) striking first on an RBI

single from Lily Parr before Rochelle answered in the bottom half, where junior Madigan Williams belted a lead-off triple to center before scoring on an RBI groundout from freshman Mya Martinez. Williams went 3 for 4 and scored three runs in Thursday’s nonconference game.

“This is what we’ve been looking for from Madi,” Jacobs said. “We knew she had it and she’s been struggling a little bit with seeing the ball and finding her timing, but she was able to find it today. She’s phenomenal at reading the ball and telling her teammates where the pitcher is throwing the ball. It’s huge for us when we have her

hitting the ball well from the lead-off spot.”

Auburn surged ahead in the top of the second inning, slapping four singles and one double to drive home four runs and take a 5-1 lead. The Knights brought in two more runs in the top of the third inning, where KayKay Hudson drove an RBI single to score Charlotte Proper before Ava Johnson sent an RBI double into center in Auburn’s next at-bat to plate Natalee Jasso.

Three Rochelle players singled in the bottom of the third inning, with sophomore Camryn Metzger bringing Williams home on a run-scoring knock to right field to make the

score 7-2 in favor of the Knights. Among the players to single was freshman Audrina Rodriguez, who was a perfect 4 for 4 with one double out of the No. 5 hole for the Lady Hubs on Thursday evening.

“Audrina came in with a new approach and her swing was solid,” Jacobs said. “Her confidence has been huge and she’s learning and getting better every game, which has been fun to watch.”

Trailing 9-2 after Auburn scored twice in the top of the fourth inning, Rochelle slowly began to mount its rally over the later frames. Martinez ignited a two-out surge for the Lady Hubs in the bottom of the fifth

inning, powering a double to right field that preceded a run-scoring single from senior Lauren Dyer as well as a run-scoring double from Rodriguez. Rodriguez recorded her fourth hit of the game in the seventh inning, reaching on a single to load the bases for Rochelle.

With two outs and the bases juiced, Rochelle scored two runs after Williams touched home on a wild pitch and junior Keirra Clark reached base on an Auburn error at the short-stop position. Sophomore Briel Metzger entered the box as the potential winning run, but a ground ball to the second-base side allowed the Knights to escape with the narrow victory.

SPORTS

RTHS Boys Tennis



(PHOTOS BY RUSSELL HODGES)

The Rochelle Hub tennis team started Interstate 8 Conference play with a 6-3 home loss against Sycamore on Tuesday evening. Above, sophomore Noah McKinney (left) returns a serve and sophomore Derek Swartz (right) races to his left for a backhanded shot. Below, freshman David Eckardt goes to his left hand.

Hubs take three points in Interstate 8 loss to Sycamore

Green, Winters lead Rochelle with singles, doubles wins on Tuesday evening

BY RUSSELL HODGES
SPORTS EDITOR

ROCHELLE — Juniors Philip Winters and Mark Green combined to deliver three victories for the Rochelle Hubs during their Interstate 8 varsity tennis match against Sycamore on Tuesday.

Green and Winters showcased their skills in both singles and doubles action. The two juniors teamed up for a two-set doubles victory before taking the court in singles, where both netters locked down wins to lead Rochelle in its 6-3 loss to the Spartans. It was the first conference match of the season for the Hubs (1-2, 0-1 Interstate 8), who will compete under the Interstate 8's new format, which includes three varsity doubles matches and six varsity singles matches.

"I was really pleased with how we competed yesterday," head coach Kristy Eckardt said. "We had a lot of guys playing in singles for the first time in their high school careers, so there was a lot of learning going on, but I really love the opportunity for guys to get to play both

singles and doubles, as there are skills they can hone that apply to both. Being able to play one helps strengthen the other. I'm excited to see how the rest of the conference season goes."

The match opened with doubles play, where Green and Winters united for a 6-4, 6-0 win over Sycamore's Javier Lopez and Logan Person at the No. 1 court. Junior Caleb Mortensen and freshman David Eckardt played a close first doubles set at the No. 2 court, falling 4-6, 0-6 against Spartan netters Easton Schuld and Sam Eich. Sophomores Noah McKinney and Derek Swartz nearly swung the match in Rochelle's favor, taking the No. 3 doubles match to three sets but falling just short in a 6-2, 2-6, 3-10 loss against Sycamore's Evan Tonaki and Marty Eich.

While the Spartans won four of the six singles points to clinch the match, Rochelle emerged victorious at the No. 1 and No. 2 courts, where Green and Winters scored wins to finish the evening unbeaten. Green faced off against Sycamore's Luke

Curtis at the No. 1 court, taking a tough first set and controlling the second set to win 6-3, 6-1. After playing mostly doubles in his first two varsity seasons, Green has adjusted well to bring Rochelle's top singles player.

"With Mark, I really like his attitude and willingness to step into that top spot for our team," Eckardt said. "It is very hard to play No. 1 singles, as he's always going up against the best player on the other team, but he really loves the challenge and his athleticism and smart thinking make him a great choice for our team. Plus, he's such a strong doubles player, so the doubles skills he's learned will help make him an even more effective singles player."

At the No. 2 singles court, Winters engaged in a three-set match against Sycamore's Regan Ni, overcoming a close first-set loss to take the second set and dominate the third-set super tiebreaker for a 4-6, 6-3, 10-1 victory. Winters, who has emerged victorious in multiple three-set matches this season, has taken a significant step forward from his first



varsity season last year.

"Philip has put in so much time over the off-season to improve his game, but his mental game has also really improved," Eckardt said. "He stays calm, he plays smart in tough situations and his confidence is just continuing to build, which is a huge deal for a varsity tennis player. The fact that he has gone to a third-set super tiebreaker in all six

of his matches this season just shows that he is ready to fight and he doesn't give up, even if he's down in a match."

Mortensen took three games in a 2-6, 1-6 loss against Javier Lopez at the No. 3 court, while McKinney claimed two games during his 1-6, 1-6 loss against Easton Schuld at the No. 4 court. The No. 5 and No. 6 matches both went to the Spartans, as

Swartz fell 2-6, 0-6 against Sam Eich and junior Parker Slattengren conceded a 0-6, 0-6 sweep to James McConkie. Rochelle will be back in action for the annual Hubs Dubs Invitational at RTHS on Saturday.

In JV action, William Miller and Dawson Berg won 10-8 in doubles, while Parker Slattengren and Ben Foster won 8-6 and Elliot Peeling won 8-3 in singles.

COMMUNITY BOARD

Need to get the word out about a product or service you offer? Give us a call at 815-561-2153. We can reach over 9,000 homes!

Concrete

Bruns Construction, Inc.

- Residential & Commercial Concrete
- Additions

FREE ESTIMATES!

Tim & Roger Bruns, Owners
Established 1997

815-561-0099
Free Estimates • Fully Insured
www.brunsconstructioninc.com

Concrete

RUCKER

CONCRETE
779-771-2315

FREE ESTIMATES!
Call Mark

Gutters, Roofing & Siding

THEISEN ROOFING Free Estimates!

ROOFING
SIDING
GUTTERS

CONTACT US
815-758-8998
THEISENROOFING@COMCAST.NET
Family owned & operated for over 50 years

Heating & Air Conditioning

HULL HVAC
Heating, Cooling & Duct Cleaning Specialist

815-561-6551
www.HullHVAC.com

Air Conditioner Clean & Check
\$60.00
After \$35 rebate.
Promotion only available to RMU customers.

Ask about duct cleaning and protecting your home's air quality.

Plumbing, Heating & Cooling

ANDERSON PLUMBING & HEATING, INC.

Plumbing, Heating & Cooling
Water Heaters, Water Softeners,
Drinking Water Systems, Iron Filters,
Sewer Rodding & Jetting & More!

Since 1976

621 First Ave., Rochelle
(815) 562-8784

Storage Sheds

Rocky Ridge Structures

FREE
Sales Rep. Evaluation
At Your Site

We Deliver!
From Our Lot
To Your Site

We Specialize in Portable/Quality Built Storage Sheds

- Stock & Custom Design
- Competitive Pricing
- Many Options Available
- Site Preparation Available

See Displays at 3500 S. Chana Rd. Chana IL 61015
Call Norm or Albert for Free Literature packet
779.861.3542

Water Service

\$15 off Service Call
Mention This Ad

Same day service available or setup at your convenience for:

- Water Analysis
- System Flush, Clean & Check
- Optimize System Programming
- Inspect & Change Filters
- Check Salt Levels
- Inspect Vital System Components

TRI COUNTY DISCOUNT WATER
815.375.8274

info@tricitydiscountwater.com
For emergency service please contact us at 815.520.0197

Advertise Here

What Service Do You Offer?

562-4171

The Rochelle News-Leader

SPORTS

RTHS Track & Field



(COURTESY PHOTO)

The Rochelle Lady Hub track and field team earned an 85-57 win during its head-to-head meet against Morris on Tuesday. The Hubs won 107-39 as both teams opened the outdoor season with victories.

Rochelle teams take head-to-head meet with Morris

Hubs defeat Morris 107-39, Lady Hubs earn 85-57 victory on Tuesday evening

BY RUSSELL HODGES
SPORTS EDITOR

MORRIS — The Rochelle Hub and Lady Hub track and field teams opened the outdoor season with dual victories against Morris on Tuesday evening. The Hubs scored a 107-35 win, while the Lady Hubs emerged with an 85-57 win. Both Rochelle teams will be back in action on Saturday, when the Hubs and Lady Hubs are scheduled to head south for the LaSalle-Peru Invitational.

Lady Hubs

Rochelle won a total of 11 events during its head-to-head meet with Morris on Tuesday. Senior Dempsey Atkinson led the Lady Hubs in the field events, finishing first in the high jump with a clearance of 4 feet 8 inches and the triple jump with a new PR distance of 9.64 meters. Senior Erin Murphy set a new PR of 10.80 meters to finish first in the shot put competition, while senior Taelynn Rodeghero finished first in the long jump com-

petition with a PR of 3.77 meters.

“Although the meet was on the smaller side, we really valued the opportunity to prepare for outdoor conditions and to sharpen the team’s mental readiness,” head coach Colfay Pointer said. “We also made it a priority to give as many athletes as possible a chance to compete.”

Rochelle took three of the four relay races in its meet with Morris. The Lady Hubs won the 3200-meter relay (Arline Villanueva, Marley Cherry, Brisa Zepeda and Bridgett Ramirez) with a time of 12:35.56 before taking the 800-meter relay (Ryelee Bogle, Zoe Malley, Valerie Saldana and Marianna Saldana) with a time of 2:01.86. Rochelle won the 1600-meter relay (Carol Carpenter, Marley Cherry, Brisa Zepeda and Arline Villanueva) with a time of 5:09.20.

“I truly believe we are a stronger team than we were last year, which has us very excited for the rest

of the season,” Pointer said. “The girls genuinely enjoy competing with one another and their support for each other is remarkable. Overall, we have a well-rounded, cohesive team.”

Rochelle and Morris split the two hurdle events, with sophomore Jasmine Walsh claiming the 100-meter hurdles with a PR time of 18.96 seconds for the Lady Hubs. Sophomore Vivian Worthington led Rochelle in the distance events, winning both the 3200-meter run with a time of 14:49.51 and the 1600-meter run with a time of 7:02.18. Freshman Gwendolyn O’Dell delivered Rochelle’s lone victory in the sprints, winning the 100-meter dash with a time of 13.66 seconds.

Hubs

Rochelle recorded 15 event victories during its head-to-head meet against Morris. Five different athletes won events in the field, with senior Jack Tilton claiming the high jump behind a leap of 6 feet 2

inches while junior Andrew Nuyen took the pole vault with a clearance of 14 feet 6 inches. Junior Jonathan Bearrows and senior Virgil O’Dell shined in the jump pits, with Bearrows hitting 5.63 meters to win the long jump and O’Dell leaping 11.39 meters to finish first in the triple jump.

“It was great to finally get outside and compete,” head coach Dale Bergeson said. “The team has handled practices very well with the cold and wet weather. It’s not always the easiest being outside in subpar weather. Looking at how our athletes are competing so far, I’m confident in a great outdoor season. Our goal is to qualify as many athletes for the state meet as possible.”

Senior Jacob Ost led Rochelle in the throwing events, taking first in the shot put with a heave of 11.79 meters. The Hubs won all four relay races, opening the meet with a time of 9:02.84 to take the 3200-meter relay (Hunter Bivins, Tyler Johnson, Pedro Rosales, Declan

McGee). Rochelle won the 400-meter relay (Nathan Rosas, Jaden Martina, Richard Pierce and Caden Goodwin) with a time of 45.60 seconds and the 800-meter relay (Nathan Rosas, Virgil O’Dell, Richard Pierce and Caden Goodwin) with a time of 1:37.14. The Hubs ran a time of 3:50.76 to win the 1600-meter relay (Pedro Rosales, Aaron DeClerck, Justin DeClerck and Hunter Bivins).

“We have a great chance of qualifying the most events for state in school history this year,” Bergeson said. “With sectionals being hosted in Rochelle, it will be an exciting day for us. If everyone stays healthy and continues on their current trajectory, we will have a very successful year. Our sprinters and our jumpers have continued to improve, and I’m looking forward to seeing who will step up and get another event to state. Our goal is to not only qualify for state, but to get medals at the state meet. If we can do that, then we’ll have a shot at getting

a trophy. It took 33 points to get a trophy at the state meet last year. Our goal is to do that this year.”

Sophomore Hunter Bivins swept the hurdle events, winning both the 110-meter hurdles with a time of 17.94 seconds and the 300-meter hurdles with a time of 42.63 seconds. Freshman Eduardo Cisneros led the Hubs in the distance events, taking the 3200-meter run with a time of 12:26.68. Rochelle won all three sprinting events, as sophomore German Albertson claimed the 100-meter dash in 12.34 seconds before sophomore Pedro Rosales clocked in at 56.41 to win the 400-meter dash. Senior Jack Tilton won the 200-meter dash with a time of 24.22 seconds.

“Our coaching staff has been working really hard coaching and planning workouts to put our athletes in their best possible position to be successful,” Bergeson said. “If our athletes follow the plan and work hard, it will pay off for them.”

BASEBALL: Rochelle scores five sixth-inning runs in win over Rockford Auburn

From page 1

The seesaw affair continued into the top of the fourth inning, where Auburn took advantage of multiple fielding errors by the Hubs to regain control with a 4-2 lead.

The lead was short lived, however, as Rochelle rallied for four runs on two hits in the bottom of the fourth inning, where junior Gavin Neale pounded a lead-off triple from the No. 9 hole before scoring on a wild pitch. Senior Brandyn Metzger, who went 3 for 4 on Thursday night, delivered the big hit of the frame for the Hubs, smacking a two-run single to put Rochelle ahead 6-4. “Anytime we can hit some balls hard, it builds some confidence,” Reynolds said. “We saw some

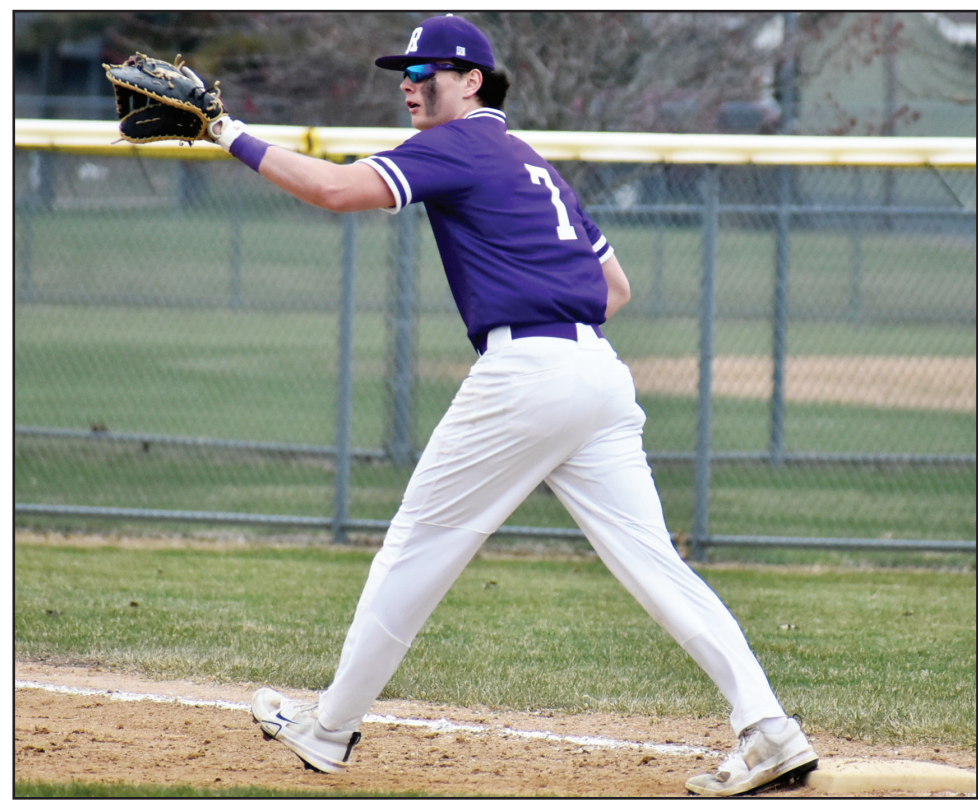
good things from a lot of guys today... We have a lot of guys who are swinging the bat well.”

An RBI single from Nolan Velez capped off a two-run spurt from the Knights in the top of the fifth inning, where Auburn once again evened the score before Rochelle tallied one run in the bottom of the fifth inning, scoring after back-to-back singles from Lewis and junior Brode Metzger. Metzger went 2 for 5 with two RBIs, while Lewis went 2 for 4 with one walk in Thursday’s win.

“Carson always has good at-bats and I think he does a really good job of putting the ball in play,” Reynolds said. “We’ve had him batting fourth because we feel that he’s going to make

contact and drive people in when they’re on base. We like him in the lead-off spot too and we know that he’s always going to give us a good at-bat and he’s going to make some solid contact.”

Trailing 8-7 after Auburn tacked on two runs in the top of the sixth inning, Rochelle grabbed control away from the Knights with an explosive bottom half, where the Hubs notched three singles and drew a pair of walks to earn a four-run lead. Lewis, who pitched five and two-thirds innings and struck out nine batters while allowing only two walks, helped Rochelle clinch its win with a two-run single to center. Bruns struck out four over the final one and one-third innings.



(PHOTO BY RUSSELL HODGES)

Junior Brode Metzger awaits a throw at first base during the Rochelle Hub baseball game against Rockford Auburn on Thursday evening.

RTHS Girls Soccer

(PHOTOS BY MARCY DELILLE)



Rochelle Lady Hubs continue Interstate 8 Conference action with road loss against Kaneland on Wednesday

The Rochelle Lady Hub varsity soccer team traveled for an Interstate 8 Conference road match against Kaneland on Wednesday, falling to the Knights 9-0 under cold and wet conditions. Rochelle (3-5, 0-2 Interstate 8) will return home for a nonconference match with Rockford Christian this weekend. Above, freshman Morgan DeLille (left) dribbles the ball past a Kaneland defender and senior Anahi Cervantes (right) battles for possession of the ball.

Who's Who in Insurance

Having the Right Insurance Matters.

Make sure you have the coverage you need to stay protected.
Call any of the agents listed for the insurance that best fits your needs.

- LIFE INSURANCE
- PROPERTY INSURANCE
- HEALTH INSURANCE
- AUTO INSURANCE
- TRAVEL

What homeowners should know about their insurance coverage

Some homeowners mistakenly believe that their home insurance covers all types of damage to their property and belongings. Although there are many

losses that your home insurance does protect you against, it's important to understand that it doesn't include everything.

WHAT YOUR POLICY COVERS

A standard home insurance policy will cover the most common types of claims. These include losses resulting from a fire, burglary or toilet backup. You can also opt for a comprehensive policy that protects you against less common losses. Some additional coverages include those for flood, sewer backup, windstorm and earthquake damage.

Furthermore, you may want to insure some of your more expensive belongings, such as jewelry and antiques, with

what's known as scheduled coverage. This can be a good idea as there are limits to how much you'll be reimbursed for the theft or loss of high-value items.

WHAT IT DOESN'T COVER

Some types of damage are never covered by insurance. Notably, your policy won't cover you for losses resulting from normal wear and tear. Also not covered are damages caused by pests, mold and neglecting to make needed repairs.

To avoid unpleasant surprises, and to ensure you have

ample coverage, review the details of your home insurance policy or talk with your insurance broker.



edwardjones.com

You can't predict the future, so plan for it.
We offer in-person guidance.



Jessica L Morris
Financial Advisor
P O Box 356
1214 Currency Court
Rochelle, IL 61068
815-561-4341



Eve Lassiter,
Lassiter Agency

Types of Insurance:

Auto, Home, Specialty, Life, Commercial, Semi & Tow Truck, Farm and Ranch IL / Certified Public Notary/ IL Mortgage Loan Originator

Personal or Family Info:

I have lived in Rochelle almost my whole life and am married with 4 beautiful children. Family is the most valuable thing we will have in our lifetime and I take pride in helping people understand the importance of protecting what means most to us. I am very fortunate and excited to come into this industry ready to learn and serve the community I have grown up with and also raising my own family in.

Lassiter Agency
1220 Currency Ct.
Rochelle, IL
815-787-8280
elassiter@farmersagent.com



04102024

Jennifer Farrall
MAPLE LEAF INSURANCE AGENCY

TYPES OF INSURANCE:
Auto, Home, Renter, Life, Business, Commercial Auto, Worker's Comp.

ABOUT US:
I've been a Rochelle Resident for 11 years. I have 3 adult children, and a labradoodle named Lenny. Our friendly staff are here for your needs and can help you compare apples-to-apples. Customer service is extremely important to us. We are proud to bring *Erie Insurance* to the Rochelle area. If you're shopping insurance, please give us a call!

1201 S. 7th Street
Rochelle IL
815-561-6008
www.mleafinsurance.com

04132025

JOSH MESSENGER
COUNTRY FINANCIAL

Education & Years of Experience:
Bachelor's degree from NIU.
16 experience as business owner.

Types of Insurance:
Auto, Home, Life, Health, Commercial, Retirement Planning, Investment Accounts

Personal or Family Info:
Married with 3 boys. Life-long area resident, very active coaching my boys, golfing, and being involved in the community.

Website: countryfinancial.com/josh.messenger
Josh.messenger@countryfinancial.com

04132025

Shane Huber,
SHANE HUBER STATE FARM

Education & Years of Experience:
BS of Business Administration from Minot State University. Minot, ND, 1990. 14 years experience.

Types of Insurance:
Auto, Home, Life, Health, Commercial/Business, Farm/Ranch

Other:
Disability Income, Annuities & Medicare Supplement and Humana Advantage

Personal or Family Info:
Wife Angie, 2 Children – Tyler 24 & Zander 14, Originally from North Dakota. Enjoys spending time with family, golfing, avid snowmobiler. He and his staff appreciates the opportunity to serve the Rochelle and surrounding communities with their insurance needs.

221 IL-38,
Rochelle, IL 61068
815-562-7011
ShaneHuber.com
Shane@ShaneHuber.com

Spanish Speaking

www.ShaneHuber.com to get a quote or
E-mail Shane@ShaneHuber.com Web: ShaneHuber.com

04132025

Jodie Hart
AMBA

TYPES OF INSURANCE:
Medicare and Medicare supplements, life, gap insurance, cancer, heart attack and stroke, dental and vision, health, short term and long term care, hospital, and emergency transport coverage.

EDUCATION/EXPERIENCE:
I have a bachelor's degree from NIU and have been a business owner and insurance agent for over 20 years. I am passionate about making sure you are properly covered, without being over insured. Contact me for a FREE benefit review.

PERSONAL / FAMILY INFORMATION:
I am a life long member of the Rochelle community. As a single mom to two amazing young men, I am very active in the community. I am an elected Park District Board Commissioner, youth sports coach, volunteer, and advocate. I love to be active, travel, bake and cook, as well as make sure my friends, family, and community members are cared for.

Licensed Insurance Representative
815-973-2376
jodie.hart@getamba.com

Greater Rochelle Area I come to you!

04132025

James E. "Spud" Supancic,
SUPANCIC INSURANCE

Education & Years of Experience:
Over 41 years

Types of Insurance:
All lines of insurance: Commercial, Home, Auto, Life, Health

Other:
License and Title Service
License Renewal Stickers
Notary

Open Monday-Friday 9am-5pm
Saturday 9am-12 noon

www.spudinsurance.org

04132025

Terri Schaefer,
STATE FARM INSURANCE

Education & Years of Experience:
Graduate of NIU School of Business with a Bachelor's Degree in Enterprise Management.

Types of Insurance:
Auto, Home, Life, Health & Bank

Personal or Family Info:
I have lived in Rochelle for 40 years and have been a State Farm Agent for 25 years. My staff and I enjoy serving the residents of Rochelle.

Schaefer Ins. and Financial Services, Inc.
603 Lincoln Hwy.
Rochelle, IL
815-562-7063

Web: TerriSchaefer.com
terri.schaefer.LLSN@statefarm.com

04132025

If you are anywhere in your journey with substance use disorder,

I want you to stop,
look around
and open your heart.

Revel in the abundance
of your existence.
See how small
substance use disorder
can be when sat next
to all that you are
or ever could be.

Fill your existence
with beauty, purpose
and a life of service.

And your substance
use disorder—
your history of addiction,
the things you
may have done
that you are not
proud of—will one day
be small enough
to deal with
while allowing you
space to live this life
of joy.

Hold on.

We are not the sum
of our scars but rather
a beautiful mosaic of the
life they hold together.

—Joseph
Washington, DC
In recovery from
substance use
disorder

**Learn how
substance use
recovery can**

StartWithHope.com



Classified Marketplace

BUY OR SELL
Place A Classified Ad



ROCHELLE • HILLCREST • CRESTON • STEWARD • KINGS • ASHTON

101 LEGAL NOTICE

IN THE CIRCUIT COURT OF THE FIFTEENTH JUDICIAL CIRCUIT OGLE COUNTY, ILLINOIS
IN THE MATTER OF THE ESTATE OF GARY L. CLARK, Deceased.
NO. 2025PR21
CLAIM NOTICE
Notice is given of the death of GARY L. CLARK, of Chana, Illinois. Letters of Office were issued on March 20, 2025, to RYAN L. CLARK, whose address is 3269 S. Rocky Hollow Rd., Chana, IL 61015, and whose attorneys are Fearer, Nye & Chadwick, 420 4th Avenue, PO Box 117, Rochelle, IL 61068.
Claims against the Estate may be filed in the office of the Circuit Clerk of the Court at Ogle County Courthouse, Oregon, IL 61061, or with the representative, or both, no later than September 30, 2025, and any claim not filed within that period is barred. Copies of a claim filed with the Clerk must be mailed or delivered to the representative and to the attorney within 10 days after it has been filed.
FEARER, NYE & CHADWICK, Attorneys for RYAN L. CLARK, Executor of the Estate of GARY L. CLARK, deceased
No. 0343
(Mar. 30, Apr. 6 and 13, 2025)

NOTICE OF PUBLIC HEARING
(Special Use within a Planned Unit Development for a Childcare Center)
PUBLIC NOTICE is hereby given to all persons in the City of Rochelle, Ogle County, Illinois, that a public hearing will be held by the Planning and Zoning Commission on Monday, May 5, 2025 at 6:00 p.m. in the Rochelle City Hall Council

Chambers, 420 North 6th Street relative to the following:
Petition of Elion Business Center LLC for a Special Use for a Childcare Center within a Planned Unit Development zoning district. The subject property is zoned PUD, Planned Unit Development, is located at 450 Coronado Drive, and has a legal description of:
Parcel #: 25-18-378-003
Lot 7 A as designated upon the Final Plat for "Resubdivision of Lot 7 in the Lighthouse Pointe Second Addition" Subdivision, located in Section 18, Township 40 North, Range 2 East of the Third Principal Meridian, in Ogle County, Illinois, according to the Plat thereof recorded in Plat File E on page 25 as Document No.202304666, in the Recorder's Office of Ogle County, Illinois, situated in the Township of Dement, the County of Ogle and State of Illinois.
The petition is on file and available for examination in the office of the Community Development Director, 420 N. 6th Street, Rochelle, Illinois during normal business hours.
All persons interested are invited to attend said hearing and be heard. Anyone interested in participating in public commentary remotely should contact Michelle Knight at mknight@rochelleil.us or call 815-562-6161 to make arrangements.
Rose Hueramo, City Clerk
City of Rochelle
No. 0409
(April 13, 2025)

NOTICE OF PUBLIC HEARING
(Variance of Code for Fence Setbacks and Vision Clearance)
PUBLIC NOTICE is hereby given to all persons in the City of Rochelle, Ogle County, Illinois, that a public hearing will be held by

the Planning and Zoning Commission on Monday, May 5, 2025 at 6:00 p.m. in the Rochelle City Hall Council Chambers, 420 North 6th Street relative to the following:
Petition of Willis Senior Lofts Limited Partnership for a variance of code of fence setbacks and vision clearance triangle for a corner lot with stormwater detention for the property located at 410 Willis Avenue in Rochelle, IL. The subject property is currently zoned R-5 Multi Family High Density Residential and has a legal description of: PIN No.: 24-36-127-019 LOT 1 IN FIRST RESUBDIVISION OF LAKE LIDA PHASE 1, BEING A SUBDIVISION OF PART OF THE NORTH HALF OF SECTION 36, TOWNSHIP 40 NORTH, RANGE 1 EAST OF THE THIRD PRINCIPAL MERIDIAN, ACCORDING TO THE PLAT THEREOF RECORDED SEPTEMBER 12, 2023 AS DOCUMENT NUMBER 202304028, IN OGLE COUNTY, ILLINOIS.
The petition is on file and available for examination in the office of the Community Development Director, 420 N. 6th Street, Rochelle, Illinois during normal business hours.
All persons interested are invited to attend said hearing and be heard. Anyone interested in participating in public commentary remotely should contact Michelle Knight at mknight@rochelleil.us or call 815-562-6161 to make arrangements.
Rose Hueramo, City Clerk
City of Rochelle
No. 0410
(April 13, 2025)

NOTICE OF PUBLIC HEARING
(SPECIAL USE FOR A SOLAR FARM)
PUBLIC NOTICE is hereby given to all persons in the City of Rochelle, Ogle Coun-

ty, Illinois, that a public hearing will be held by the Planning and Zoning Commission on Monday, May 5, 2025 at 6:00 p.m. in the Rochelle City Hall Council Chambers, 420 North 6th Street relative to the following:
Petition of Rochelle Solar, LLC for a Special Use for the construction and operation of a utility scale solar farm.
The subject property is located at the Southeast corner of Twombly Road and North Caron Road (future), Rochelle, Illinois 61068 and is legally described as:
Such tracts of land or farms, situated in Dement Township, Ogle County, Illinois (part of tax identification number: 25-18-100-009), comprised of 87.89+/- acres, bounded and described as follows:
PART OF THE NORTHEAST QUARTER AND PART OF THE NORTHWEST QUARTER OF SECTION 18, TOWNSHIP 40 NORTH, RANGE 2 EAST OF THE THIRD PRINCIPAL MERIDIAN, BOUNDED AND DESCRIBED AS FOLLOWS:
COMMENCING AT THE NORTHWEST CORNER OF THE NORTHWEST FRACTIONAL QUARTER OF SAID SECTION 18; THENCE NORTH 88 DEGREES 10 MINUTES 52 SECONDS EAST (GRID BEARING BASED ON THE ILLINOIS WEST STATE PLANE COORDINATE SYSTEM) ALONG THE NORTH LINE OF SAID NORTHWEST FRACTIONAL QUARTER, A DISTANCE OF 417.42 FEET TO THE POINT OF BEGINNING OF THE HEREINAFTER DESCRIBED TRACT OF LAND; THENCE SOUTH 01 DEGREES 37 MINUTES 09 SECONDS EAST PARALLEL WITH THE WEST LINE OF SAID NORTHWEST FRACTIONAL QUARTER, A DISTANCE OF 1417.42 FEET; THENCE SOUTH 88 DEGREES 10 MINUTES 52 SECONDS WEST PARALLEL WITH THE NORTH LINE OF SAID NORTHWEST FRACTIONAL QUARTER, A DISTANCE OF 402.42 FEET TO A POINT 15 FEET EAST OF, AS MEASURED PERPENDICULAR TO THE WEST LINE OF SAID NORTHWEST FRACTIONAL QUARTER; THENCE SOUTH 01 DEGREES 37 MINUTES 09 SECONDS EAST PARALLEL WITH SAID WEST LINE, A DISTANCE OF 2206.17 FEET TO THE SOUTH LINE OF SAID NORTHWEST FRACTIONAL QUARTER; THENCE NORTH 88 DEGREES 24 MINUTES 32 SECONDS EAST ALONG SAID SOUTH LINE AND THE SOUTH LINE OF THE NORTHEAST QUARTER OF SAID SECTION 18, A DISTANCE OF 1682.48 FEET TO A POINT, SAID POINT BEING 25.00 FEET WEST FROM THE EAST LINE OF THE WEST 13 1/3 RODS OF SAID NORTHEAST QUARTER; THENCE NORTH 01 DEGREES 24 MINUTES 33 SECONDS WEST, PARALLEL WITH THE WEST LINE OF SAID NORTHEAST QUARTER, A DISTANCE OF 1604.20 FEET; THENCE SOUTH 88 DEGREES 10 MINUTES 56 SECONDS WEST, A DISTANCE OF 275.00 FEET; THENCE NORTH 01 DEGREES 24 MINUTES 33 SECONDS WEST PARALLEL WITH THE WEST LINE OF SAID NORTHEAST QUARTER, A DISTANCE OF 1026.02 FEET TO A POINT ON THE NORTH LINE OF THE NORTHWEST FRACTIONAL QUARTER OF SAID SECTION 18, SAID POINT BEING 79.99 FEET WEST OF THE NORTHEAST CORNER OF SAID NORTHWEST FRACTIONAL QUARTER, A DISTANCE OF

1417.42 FEET; THENCE SOUTH 88 DEGREES 10 MINUTES 52 SECONDS WEST PARALLEL WITH THE NORTH LINE OF SAID NORTHWEST FRACTIONAL QUARTER, A DISTANCE OF 402.42 FEET TO A POINT 15 FEET EAST OF, AS MEASURED PERPENDICULAR TO THE WEST LINE OF SAID NORTHWEST FRACTIONAL QUARTER; THENCE SOUTH 01 DEGREES 37 MINUTES 09 SECONDS EAST PARALLEL WITH SAID WEST LINE, A DISTANCE OF 2206.17 FEET TO THE SOUTH LINE OF SAID NORTHWEST FRACTIONAL QUARTER; THENCE NORTH 88 DEGREES 24 MINUTES 32 SECONDS EAST ALONG SAID SOUTH LINE AND THE SOUTH LINE OF THE NORTHEAST QUARTER OF SAID SECTION 18, A DISTANCE OF 1682.48 FEET TO A POINT, SAID POINT BEING 25.00 FEET WEST FROM THE EAST LINE OF THE WEST 13 1/3 RODS OF SAID NORTHEAST QUARTER; THENCE NORTH 01 DEGREES 24 MINUTES 33 SECONDS WEST, PARALLEL WITH THE WEST LINE OF SAID NORTHEAST QUARTER, A DISTANCE OF 1026.02 FEET TO A POINT ON THE NORTH LINE OF THE NORTHWEST FRACTIONAL QUARTER OF SAID SECTION 18, SAID POINT BEING 79.99 FEET WEST OF THE NORTHEAST CORNER OF SAID NORTHWEST FRACTIONAL QUARTER, A DISTANCE OF

1417.42 FEET; THENCE SOUTH 88 DEGREES 10 MINUTES 52 SECONDS WEST PARALLEL WITH THE NORTH LINE OF SAID NORTHWEST FRACTIONAL QUARTER, A DISTANCE OF 402.42 FEET TO A POINT 15 FEET EAST OF, AS MEASURED PERPENDICULAR TO THE WEST LINE OF SAID NORTHWEST FRACTIONAL QUARTER; THENCE SOUTH 01 DEGREES 37 MINUTES 09 SECONDS EAST PARALLEL WITH SAID WEST LINE, A DISTANCE OF 2206.17 FEET TO THE SOUTH LINE OF SAID NORTHWEST FRACTIONAL QUARTER; THENCE NORTH 88 DEGREES 24 MINUTES 32 SECONDS EAST ALONG SAID SOUTH LINE AND THE SOUTH LINE OF THE NORTHEAST QUARTER OF SAID SECTION 18, A DISTANCE OF 1682.48 FEET TO A POINT, SAID POINT BEING 25.00 FEET WEST FROM THE EAST LINE OF THE WEST 13 1/3 RODS OF SAID NORTHEAST QUARTER; THENCE NORTH 01 DEGREES 24 MINUTES 33 SECONDS WEST, PARALLEL WITH THE WEST LINE OF SAID NORTHEAST QUARTER, A DISTANCE OF 1026.02 FEET TO A POINT ON THE NORTH LINE OF THE NORTHWEST FRACTIONAL QUARTER OF SAID SECTION 18, SAID POINT BEING 79.99 FEET WEST OF THE NORTHEAST CORNER OF SAID NORTHWEST FRACTIONAL QUARTER, A DISTANCE OF

1417.42 FEET; THENCE SOUTH 88 DEGREES 10 MINUTES 52 SECONDS WEST PARALLEL WITH THE NORTH LINE OF SAID NORTHWEST FRACTIONAL QUARTER, A DISTANCE OF 402.42 FEET TO A POINT 15 FEET EAST OF, AS MEASURED PERPENDICULAR TO THE WEST LINE OF SAID NORTHWEST FRACTIONAL QUARTER; THENCE SOUTH 01 DEGREES 37 MINUTES 09 SECONDS EAST PARALLEL WITH SAID WEST LINE, A DISTANCE OF 2206.17 FEET TO THE SOUTH LINE OF SAID NORTHWEST FRACTIONAL QUARTER; THENCE NORTH 88 DEGREES 24 MINUTES 32 SECONDS EAST ALONG SAID SOUTH LINE AND THE SOUTH LINE OF THE NORTHEAST QUARTER OF SAID SECTION 18, A DISTANCE OF 1682.48 FEET TO A POINT, SAID POINT BEING 25.00 FEET WEST FROM THE EAST LINE OF THE WEST 13 1/3 RODS OF SAID NORTHEAST QUARTER; THENCE NORTH 01 DEGREES 24 MINUTES 33 SECONDS WEST, PARALLEL WITH THE WEST LINE OF SAID NORTHEAST QUARTER, A DISTANCE OF 1026.02 FEET TO A POINT ON THE NORTH LINE OF THE NORTHWEST FRACTIONAL QUARTER OF SAID SECTION 18, SAID POINT BEING 79.99 FEET WEST OF THE NORTHEAST CORNER OF SAID NORTHWEST FRACTIONAL QUARTER, A DISTANCE OF

127 SERVICES AND REPAIRS
Furman's Lawn Care & Tree Service. 26 Years of Experience. Fully Insured. Weekly Mowing, Spring Clean Up & More. Call Jeremy 815-761-9619 (RNL04162025)

201 DOMESTIC/CHILD CARE
NO INDIVIDUAL, unless licensed or holding a permit as a childcare facility, may cause to be published any advertisement soliciting a child care service. A childcare facility that is licensed or operating under a permit issued by the Illinois Department of Children and Family Services may publish advertisements of the services for which it is specifically licensed or issued a permit. Your Hometown Newspaper strongly urges any parent or guardian to verify the validity of the license of any facility before placing a child in its care.

301 ANTIQUES
ANTIQUES WANTED: I pay cash for antiques; furniture, glassware, pottery & crocks, tin & iron toys, sterling silver, decoys. If it's antique, I'm interested in looking! Call 815-562-2928 or email dickharms@hotmail.com

307 MISCELLANEOUS FOR SALE
BUNDLED Newspaper - \$3 per Bundle. Available Monday-Thursday 815-562-4171 (9AM-3PM) Rochelle News Leader.

SPLIT Firewood For Sale. Contact 779-251-0254

405 HOUSES FOR SALE
ALL REAL ESTATE advertised herein is subject to the Federal Fair Housing Act, which makes it illegal to advertise any preference, limitation or discrimination based on race, color, religion, sex, handicap, familial status, or national origin, or intention to make any such preferences, limitation or discrimination. We will not knowingly accept any advertising for real estate which is in violation of the law. All persons are hereby informed that dwellings advertised are available on an equal opportunity basis.

HEALTH/PERSONAL/ MISCELLANEOUS
IF YOU HAD KNEE OR HIP REPLACEMENT SURGERY AND SUFFERED AN INFECTION DUE TO USE OF A BAIR HUGGER (BLUE BLANKET), between 2020 and the present time. You may be entitled to compensation. Call Attorney Charles H. Johnson 1-800-535-5727

203 HELP WANTED



START AN EXCITING NEW JOB WITH THE ROCHELLE NEWS-LEADER!

Multimedia Sales Consultant

If you have an outgoing personality, an energetic get-it-done approach, and enjoy helping clients build their business, then you may be a perfect fit for a sales position with the Rochelle News-Leader. This is a full-time position.

As a multimedia sales consultant, you will service current accounts and also cultivate new clients in the Rochelle/DeKalb region of northern Illinois, helping them market their products and services through a variety of highly visible, popular and effective local media vehicles.

If you have a passion to get out of the office on a regular basis to help clients grow their audience and reach new customers, then we would like to talk to you.

Applicants should possess excellent communication and organizational skills with a positive personality and team-player approach. Previous media sales or related marketing experience is a plus, including print, digital and social media advertising.

The sky is the limit on earning potential and career development in this position. We offer a competitive base salary plus commission.

Qualified applicants should mail or e-mail their resume to the following address:

**Multimedia Sales Position
Rochelle News-Leader
ATTN: Will McMacken
P.O. Box 46, Rochelle, IL 61068
or email to
bmcmacken@newsmediacorp.com**

ROCHELLE News-Leader
RNLHOUSE

ROCHELLE News-Leader

Part-time local delivery driver

The Rochelle News-Leader has an opening for a part-time newspaper bundle delivery driver who would load and deliver bundles to the post office, store racks and machines.

The daytime deliveries would be two or three days per week (including weekends) and consist of approximately 4-5 hours per shift depending on the route usually 10-15 hours per week.

Applicants must be at least 18 years old, possess a valid driver's license, proof of insurance and a safe driving record. Drivers will use company vehicles when delivering, and will be trained on the respective routes.

Candidates must be able to load, unload and carry multiple bundles of 5 to 10 pounds each. Driver applicants must be reliable, personable and have a general knowledge of area streets and roads.

This position is perfect for someone looking to supplement their income or retirement.

Interested individuals must fill out an application in person at the Rochelle News-Leader office at 211 Hwy. 38 E., Rochelle. No phone calls please.

Find | Sell | Buy

Consult our classified ads or place your own!

03262023

105 BUSINESS OPPORTUNITIES
"This publication does not knowingly accept fraudulent or deceptive advertising. Readers are cautioned to thoroughly investigate all ads, especially those asking for money in advance."

113 FINANCIAL
NOTICE Advance Fee Loans or Credit Offers Companies that do business by phone can't ask you to pay for credit before you get it. For more information, call toll-free 1-877-FTC-HELP. A public service message from your hometown newspaper and the Federal Trade Commission.

119 ANNOUNCEMENTS
"This publication does not knowingly accept fraudulent or deceptive advertising. Readers are cautioned to thoroughly investigate all ads, especially those asking for money in advance."

OPENING BID LIVE

Advertise in our

AUCTION SECTION

Deadlines
Wednesday
at 5 p.m.
Call 815-562-4171

307 MISCELLANEOUS FOR SALE

New Milford Refrigeration

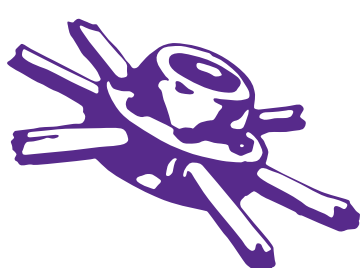
6331 11th Street | Rockford

New, Used, Scratch & Dent

Refrigerators
Freezers
Washers/Dryers
Stoves
Air Conditioners
Dehumidifiers

815-262-3900

We also carry a large selection of refurbished appliances with a warranty.



The businesses featured on this page are

"Hubs Super Fans"

They proudly support our local athletes and students.

Please show your appreciation by patronizing their businesses.

Let's Go!



WE SUPPORT OUR HUBS!

HUB SPOTLIGHT



(PHOTO BY RUSSELL HODGES)

Senior Lauren Dyer will be continuing her academics and her softball career at Wartburg College next year. Dyer is currently in her fourth varsity season at RTHS.

RTHS senior Dyer commits to play softball at Wartburg College

BY RUSSELL HODGES
SPORTS EDITOR

ROCHELLE — Lauren Dyer said the family-oriented and welcoming experience she felt while visiting Wartburg College played a major role in her commitment to continue her academics and her softball career with the Knights next year. Currently a senior, Dyer has played all four years of high school softball at the varsity level, where she's become a two-way standout at RTHS.

"They have a very competitive schedule and they play a lot of top teams at the Division III level," said Dyer, who pitches and plays first base. "I'm excited to learn more and to get better. Playing at RTHS has helped me to learn about myself and how to deal with challenges and setbacks."

A four-year varsity starter for the Lady Hubs, Dyer immediately took on a big role during her freshman season, when she posted a .365 batting average with 19 hits and eight RBIs while striking out nine batters over 25.2 innings pitched. Dyer became one of Rochelle's top hitters as a sophomore, recording a .468 average with 22 hits, nine doubles while scoring 15 runs. In the circle, Dyer threw 37.1 innings and struck out 44 batters while allowing only seven walks.

"I was a little nervous as a freshman," said Dyer, who credited former Lady Hub softball standout Jordin Dickey for her mentorship early in her high school career. "Jordin helped me through a lot of it and she taught me the dos and don'ts. I learned a lot from her and I looked up

to her. I've learned how to be a leader and how to support others when they're feeling down."

Although a back injury shortened Dyer's junior season to 11 games, she still managed to post a .355 batting average with 11 hits and seven RBIs while throwing 32 innings in the circle. Now fully healthy, Dyer is off to a scorching start to her senior season, notching 14 hits over the team's first eight games. Dyer, who plays travel softball with the Kishwaukee Valley Storm, has earned Academic All-Interstate 8 softball honors twice and was a Sportsmanship Award winner.

"I've been called the mom of the team," said Dyer, who's the only senior on the varsity team this season. "My teammates come to me for advice and I've been able to help them. I feel like we have started this season strong. We have a young team, but we have a lot of experience. We're all friends and we're all getting along in practice... It feels great because last year, I was so disappointed that I couldn't play, but my parents and my travel coaches really supported me."

A multi-sport athlete at RTHS, Dyer played volleyball for three years and tennis for one year, earning Academic All-Interstate 8 honors in both sports. Dyer, who has played travel softball with the Kishwaukee Valley Storm for two years, said she's considering studying nursing.

"I'm excited to see Lauren play at the next level," RTHS head coach Deanna Jacobs said. "I think Wartburg was a great choice and she will be able to continue pitching and doing damage with her bat."

EVE Lassiter HOME AUTO - LIFE BUSINESS
Go Hubs!
Lassiter Agency
1220 Currency Ct., Rochelle, IL
815-787-8280
elassiter@farmersagent.com
License IL, WI, & MI Insurance

CERTIFIED PUBLIC NOTARY MORTGAGE LOAN ORIGINATOR
NMLS: 2516202

JOHNSON TRACTOR
SALES • PARTS • SERVICE

200 Steward Road
800.262.1680
www.johnsontractor.com

Busy Schedule? Leave the cooking to us.

- Large menu of foods
- Rochelle's famous chicken by the dinner or bucket
- Hand dipped ice cream (16 flavors)

COUNTRY SCHOOL DRIVE-IN RESTAURANT
251 N. ROCHELLE • 562-6039

CENTRAL ILLINOIS LOAN
Loans For All Your Needs
Auto • Home Improvement • Vacation
Jami Rees • Tonia Holland

815★561★4035!

310 Eagle Drive, Rochelle
All loans subject to our normal credit requirements and policies.

Bruns Construction, Inc.
Tim & Roger Bruns, Owners
Established 1997

- Residential & Commercial
- Concrete
- Additions

815-561-0099
Free Estimates • Fully Insured
www.brunconstructioninc.com

"Proudly Serving the Rochelle Area Since 1945"

Berg-Johnson Electric
FREE ESTIMATES
Licensed and Insured

Residential • Commercial • Industrial

24 Hour Emergency Service
815-562-4937
500 Cleveland Avenue

ANDERSON PLUMBING & HEATING, INC.

Plumbing, Heating & Cooling
Water Heaters, Water Softeners,
Drinking Water Systems, Iron Filters,
Sewer Rodding & Jetting & More!

Since 1976

621 First Ave., Rochelle
(815) 562-8784

Alfano's Pizzeria and Italian Restaurant
Taste The TRADITION Taste The DIFFERENCE

- Best Pizza • Pasta
- Italian Restaurant
- Appetizer/small plate
- Family Restaurant • Local Business

Pizza • Pastas
Sandwiches • Salads and Lots More!

Dine-In • Carry Out • Home Delivery
1115 TURKINGTON TERRACE, ROCHELLE
815-562-3312

MEYERS FURNITURE & FLOORING

209 Powers Road, Hwy 251 N
Rochelle, IL 61068
(815) 562-8792
www.meyersfurniture.com

MORTON BUILDINGS
If you can dream it, we can build it.

Rochelle Sales Office • Hwy. 251 N. • 877-613-3050

QUEEN'S TRUCKING & CONSTRUCTION, INC.

Small or Big Construction Jobs, We Do Them All!

Queen's Trucking & Construction, Inc.
322 Errett Road, Rochelle
815-562-6064 | queens-trucking.com

Hiring Class A CDL Drivers

Rochelle Chiropractic Clinic
Dr. Chad M. Pillar

227 E. Rt 38 • Rochelle, IL
815-562-8706
www.rochellechiropractic.com
Now Accepting New Patients!

Rochelle Community Hospital
Your Local Healthcare Resource.

900 N. 2nd Street, Rochelle
815-562-2181
www.rochellehospital.com

Local People Providing Local Service

Rockelle MUNICIPAL UTILITIES

Water • Waste Water
Electric • Communications

Phone: 815-562-4155 333 Lincoln Highway
Fax: 815-562-5861 Rochelle, IL

www.rmuni.net

Home & auto. Easy & affordable.

Call me for a quote today

State Farm
Huber Ins and Fin Svcs Inc
Shareholders Agent
221 E. Route 38
Rochelle, IL 61068-2303
Bus: 815-562-7011
shareh@sharehuber.com
www.sharehuber.com

Stillman BANK
GO HUBS!

Earning Your Trust Since 1882
www.stillmanbank.com

GO,

Good luck to our local student athletes!

HUBS!

