



ROCHELLE News-Leader

MIDWEEK EDITION | WWW.ROCHELLENEWS-LEADER.COM

Today's RNL issue sponsored by Community Unity member:

Rochelle
Community Unity
Shop • Play • Stay

Liberty Village of Rochelle
A Division of Liberty Village

2203 E. Flagg Road
815-562-9800

Vol. 105 • No. 98

LOCAL NEWS... LOCAL VIEWS WEDNESDAY, APRIL 2, 2025 \$1.25

Helping you
create the life
you want.

Kish KISHWAUKEE COLLEGE
kish.edu

FEBRUARY
STUDENTS
OF THE
MONTH

Sponsored by Kishwaunee College

Students of the Month named

AFC recently named its February Students of the Month.
Page 5

WEATHER

WEDNESDAY
HIGH LOW
69 40

THURSDAY
HIGH LOW
54 43

FRIDAY
HIGH LOW
56 37

SATURDAY
HIGH LOW
52 39

Today's RNL issue sponsored by Community Unity member:

Rochelle
Community Unity
Shop • Play • Stay

Rochelle Veterinary Hospital

1381 N. 7th St.
815-562-5207

OBITUARIES

- BARRY LEE SANDERS SR.
- GARY LEE ISLEY
- RANDY P. MASTERSON
- RICHARD 'RICK' HENRY KURZ

See page 4

INSERTS

- FARM & FLEET
- RUNNINGS

INSIDE

Local News.....2, 3, 5
Obituaries.....4
Opinion.....6
Community.....7



City changes code to allow for data centers 'You're talking hundreds of millions of dollars in investment...'

BY JEFF HELFRICH
MANAGING EDITOR

ROCHELLE — At its March 10 meeting, the Rochelle City Council unanimously approved an ordinance amending its zoning code to allow for language on data centers and data warehousing.

Data center developments have become more prevalent recently and the city desired to be proactive in its zoning usage and requirements. The changes made data centers a permissible use in I-1 light industry, I-2 general industry and I-3 heavy industry zoning districts and defined data centers in the city's code. The change would streamline a potential data center's development process and developers will now not be required to go before the city's planning & zoning commission and council for a special use permit.

"We made that change to our code because we have data centers that are looking at locating in Rochelle and we want to make sure we streamline the process and ensure that they're able to actually locate in industrially-zoned areas," City Manager Jeff Fiegenschuh said. "We want to



(PHOTO BY JEFF HELFRICH)

At its March 10 meeting, the Rochelle City Council unanimously approved an ordinance amending its zoning code to allow for language on data centers and data warehousing.

make it as easy to develop in Rochelle as possible. The data center industry is exploding right now and there's a lot of interest in our area because of our proximity to power transmission lines and our substations. It just seemed to make sense to ensure that our code allowed for it. Our code shouldn't hinder data centers in Rochelle."

Fiegenschuh said March 27 that the city has had discussions with five data center developers about potentially locating in Rochelle, two of which are "extremely interested."

A data center is a building, a dedicated space within a building, or a group of buildings used to house computer systems and associated components, such as telecommunications and stor-

age systems. DeKalb recently saw the addition of a 2.3 million square feet, over \$1 billion Meta (Facebook) data center. Land near the Byron Nuclear Plant was also recently rezoned to industrial use with eyes on a data center development.

Rochelle Municipal Utilities, which is owned by the city, would provide electricity, water and other utilities to a potential data center.

"You're talking hundreds of millions of dollars in capital investment in land, buildings and equipment," Fiegenschuh said. "The thing I like about data centers is their large, consistent electric load. They typically run 24/7."

See DATA CENTERS page 2



New mural to be complete this month

BY JEFF HELFRICH
MANAGING EDITOR

ROCHELLE — After final approval at the March 24 city council meeting, the City of Rochelle will begin work on a new downtown mural during the second week in April, City Community Development Director Michelle Pease said.

The mural will be on the south side of the second story of ALM Fine Cabinetry. The location will enable traffic coming from the south on the overpass to see the mural.

"ALM Fine Cabinetry applied for a city facade grant," Pease said. "The wall was in disrepair and was crumbling and needed some tuck pointing done. That spot previously had a yellow wall that said Shop Rochelle on it. It was kind of fading."

See MURAL page 3

Ribbon cutting held for HitHub by Bennie Baseball 'We just wanted to give kids an affordable and accessible option to train'

BY JEFF HELFRICH
MANAGING EDITOR

ROCHELLE — On Thursday, March 27 a ribbon cutting was held at 506 Lincoln Ave. in Rochelle for HitHub By Bennie Baseball. The training facility offers batting cage, plyo wall and pitching machine rentals along with baseball/softball instruction and facility rentals for team practices and parties.

Bennie Baseball is a South Beloit, Wisconsin-based baseball academy for youth and high school players and has a travel program as well. More information including membership details can be found online at benniebaseball.com or by calling (815) 561-6567 or emailing hithub@benniebaseball.com.

"We just wanted to give kids an affordable and accessible option to train," Owner Joe Bennie said. "There are so many expenses with travel baseball. We run a business with travel baseball and we understand that. We just



(PHOTO BY JEFF HELFRICH)

On Thursday, March 27 a ribbon cutting was held at 506 Lincoln Ave. in Rochelle for HitHub By Bennie Baseball. The training facility offers batting cage, plyo wall and pitching machine rentals along with baseball/softball instruction and facility rentals for team practices and parties.

wanted a place that kids can go to and train year round every day. There are also benefits in camps that are offered here. They have a place they can actually afford and get a lot of work in at any time.

Hopefully everyone loves it."

The ribbon cutting was hosted by the Rochelle Chamber of Commerce. Speakers included Chamber Executive Director Tricia Herrera and City of Rochelle

Councilwoman Kate Shaw-Dickey.

Herrera welcomed HitHub on behalf of the chamber on March 27.

See HITHUB page 3

Stillman BANK

Estate Planning
Retirement Planning
Personal Trusts
Investment Management

We offer **no-obligation, complimentary** consultations!

Helping You Protect
What Matters Most!

www.stillmanbank.com | 815.332.8858

Investments offered through Stillman Trust & Wealth Management • Not FDIC Insured • No Bank Guarantee • May Lose Value

COME SEE YOUR FRIENDS

FIRST STATE BANK

Brent Ohlinger
Community President
NMLS #454385

David Eckhardt
Vice President/Loan Officer
NMLS #454387

304 East Highway 38
firststatebank.biz | 815.562.2200

Member FDIC

LOCAL NEWS



The Ogle County Republican Party recently hosted their Annual Draw Down at Kennay Farms Distillery in Rochelle.

(COURTESY PHOTOS)

Ogle County Republicans host annual draw down

ROCHELLE — The Ogle County Republican Party recently hosted their Annual Draw Down at Kennay Farms Distillery in Rochelle.

“We packed them in on Thursday night, March 20 to the first floor of Kennay Farms Distilling for our annual Ogle County GOP Draw Down, and it was a ton of fun, as always,” Mike Koolidge, chairman of the Ogle County Republican Central Committee, said. “We couldn’t ask for better hosts than Rick &

Doris Kennay, who’ve been huge supporters of Ogle County Republicans for years. In all, we gave away a total of over \$5,000 in winnings to raffle ticket purchasers, including the grand prize \$2,000 winner, Sylvia Garza of Rochelle.”

It was a fun and fast-moving event which occurred over an Italian-themed dinner of delicious pizza, caesar salad and dough nuggets. The tables were decorated, as was the venue with Republican paraphernalia, Trump signs,

and Ogle GOP-themed cookies. As was expected, all the Draw Down tickets sold out well in advance of the event.

“We sold out of draw down tickets again, as we always do, and it was overwhelmingly a group effort,” Koolidge said. “Our executive board, consisting of Kaleb Kennay - vice chairman, Kevin Colbert - treasurer, George Wilhelmssen - secretary, Karl Hanson - events coordinator, Tricia Goodwin - PC recruitment, and Joseph

Simms - PC recruitment all put in countless hours both selling tickets in the weeks prior and putting the night together. I could not ask for a better team.”

“This is our first big public event since Donald Trump has returned to the White House, and we’ve never seen such grassroots passion and enthusiasm from all the incredible things our new administration has been able to accomplish in such a short time. Trump’s early successes have definitely been

a huge reason why we have so many new faces joining our party,” Koolidge said. “We’ve doubled our number of precinct committeemen in just one year, but we still have some vacancies. I’d encourage anyone wanting to get involved to reach out to us right away if they want to keep Ogle County red and be a part of the statewide mission to turn Illinois into a swing state...and eventually red as well!”

In addition to Koolidge, other speakers in attendance

were State Senators Li Arelano and Andrew Chesney, and candidate for Rock Valley Board of Trustees Jermarrion Simmons.

The Ogle County Republicans meet the last Tuesday of every month in Memorial Hall on the third floor of Ogle County Courthouse in Oregon.

Organized in 1989, the organization’s website can be found at <https://www.oglecountygop.org/> or on Facebook at <https://www.facebook.com/OgleCountyRepublicans>.

DATA CENTERS: City Manager Fiegenschuh details changes to city codes

From page 1

That’s a nice base load of power. You know they’re going to be using power all the time rather than at specific times. That allows us to know what we’re dealing with when we’re buying power to sell them. They do employ people, but the largest part of it is the investment and property taxes they generate for school districts and other taxing economic benefits.”

Fiegenschuh believes a data center locating in Rochelle in the future would grow the city’s economic base and benefit RMU long term. The city manager did not disclose where potential data center developers are looking at locating, but industrial-zoned areas are in the east and west portions of the city’s southern corridors.

Along with power, data centers use a large amount of water for their operations. An agreement with

a data center could include on-site renewable energy and gas generation so generation could be done behind the meter to reduce the stress on RMU’s system and provide backup generation needed. A sustainability plan for water use could also be part of a development agreement.

“I know some data centers capture rainwater and utilize that,” Fiegenschuh said. “That’s a huge issue. Water is a very valuable commodity and resource and we’re very blessed to be where we are because we have significant water in the aquifer below us. It’s not just power, it’s water usage and making sure they have sustainable practices in place to reduce their water

consumption. The technology is changing with new data centers and they’re using less water than they have before and I think that will continue to improve.”

The City of Rochelle has previous experience with large development agreements, its most recent work being Zekelman Industries, the largest steel pipe and tube manufacturer in North America, which located in Rochelle in recent years and made a capital investment of over \$130 million. The city and RMU also had to work to meet Zekelman Industries’ power needs, which it would have to do for a data center.

Fiegenschuh said working with a data center developer would be “equally



(PHOTO BY JEFF HELFRICH)

City Manager Jeff Fiegenschuh believes a data center locating in Rochelle in the future would grow the city’s economic base and benefit RMU long term.

complex” compared to the work done to bring in Zekelman Industries. The most complex part of the work would be the city and RMU purchasing power to sell to a data center.

“Under contract we only have about 45-50 megawatts of power now,” Fiegenschuh said. “For more, we’d have to procure another contract or buy it on the market. If they come here, we’ll need assurances because we’re going to go out and buy that power. Once we do get a deal, we’ll have to time it correctly so we know that the customer will be paying for what we purchased whether they use it or not. All of these companies have been amenable to that. The other complexity is the amount of power they use. Zekelman Industries added about 10 megawatts. We have a data center looking at locating here that would add 90 megawatts.”

If RMU were to add a power amount like 90 megawatts to its system, Fiegenschuh that would almost max it out on power and it wouldn’t be able to take on any more large-scale expansions until it worked with ComEd to upsize transmission lines coming into town and built another substation.

“If you have a guaranteed 90-megawatt customer going forward for 10+ years, we’ll have the revenue to be able to make those upgrades,” Fiegenschuh said. “We think of Zekelman Industries as a large power user, but these data centers are in another league now. This could be a very large undertaking for us to work on in the next few years. But we have a great team in place working on it. In the next five years, people can expect to see a data center of some size somewhere in Rochelle.”

we insure your car. because accidents happen.

simple human sense.

Dimond Bros.
Insurance Since 1867

401 N. Main St. | Rochelle, IL
815.562.5596 | DimondBros.com

Auto-Owners
INSURANCE

LIFE • HOME • CAR • BUSINESS

\$9 per ticket

Children 14 and under with adults Free

Kiwanis Pancake Day
Saturday, April 5
7am-1pm

Contact your favorite member, call 815-884-9240 or email rochellegoldenk@gmail.com

(Tickets also available at door)

At First Presbyterian Church of Rochelle

LOCAL NEWS



Bennie Baseball is a South Beloit, Wisconsin-based baseball academy for youth and high school players and has a travel program as well. More information including membership details can be found online at benniebaseball.com or by calling (815) 561-6567 or emailing hithub@benniebaseball.com.

HITHUB: Ribbon cutting ceremony held on March 27 in Rochelle

From page 1

“We’re very excited to celebrate here today,” Herrera said. “Several months back, we started talking about this building and Joe reached out and we talked about what this location was going to be and all of the things that

it was going to offer. We were very excited. Any time you can add a business to Rochelle, we’re always excited by that. But any time you can add something that is going to help our youth and give them something to do, that’s an added bonus. On behalf of the chamber of

commerce, we welcome you and wish you many years of success here.”

Shaw-Dickey said March 27 that she was excited about the impact that HitHub will have on the youth baseball organizations in the community.

“I’m so excited to be here,” Shaw-Dickey said.



(PHOTOS BY JEFF HELFRICH)

“I’ve spent a lot of years in this building, before it looked like this, with baseball practices. The fact that you’re coming to the community and investing in the community and the kids is amazing. I’ve heard such great things from the kids and families who are already

participating. Thank you for that. We’re so excited to have you here. If there’s anything we can do for you, please reach out. Welcome to Rochelle. We couldn’t be happier to have you.”

Bennie Baseball Instructor Jaden Dixon said the facility will have 24/7

access.

“We want to make it accessible for everyone at any time, especially high school players with driver’s licenses,” Dixon said. “Or if kids just want to come here and hang out with their friends and get some hitting and work in. It’s great for everyone.”



After final approval at the March 24 city council meeting, the City of Rochelle will begin work on a new downtown mural during the second week in April, City Community Development Director Michelle Pease said. The mural will be on the south side of the second story of ALM Fine Cabinetry. The location will enable traffic coming from the south on the overpass to see the mural.

MURAL: Work on downtown art to begin in second week of April

From page 1

“They used a city facade grant to help them repair that wall and to clean up that space and make it a blank slate ready to go. They said if the city was interested in putting something up there, they’d be happy to offer it.”

The city shared a request for proposal to attract mural submissions from local and regional artists in 2024. A complete response was submitted by the deadline and the city’s arts committee began working with the artist.

The mural design depicts the words “Rochelle, Illinois: The Hub City!” with a train, skydiver, hub and corn also depicted. City council members chose a color scheme on March 24.

“It’s anticipated it will take 5-7 days to complete after starting during the

second week in April,” Pease said. “The cost will be \$10,000. We’ll pay \$5,000 out of the community development budget and \$5,000 out of the tourism budget.”

The artist for the mural will be Michael Ferrarell of Chicago, who has painted numerous murals across the country, many in a similar style to what will be painted in Rochelle. Ferrarell established himself as a street artist known as Left Handed Wave in Chicago and took his street

art from New York City to Los Angeles and many major cities in between.

“Working as Left Handed Wave was the perfect introduction to murals and public art,” Ferrarell said in his application to the city. “The aim is to spark community engagement and creative growth through imagery

that’s not just aesthetically pleasing, but also educational and representative of the positives within a community.”

Pease said the city was impressed with Ferrarell’s resume and the examples of work he provided. After reaching an agreement with him, Ferrarell researched the city and came up with mural concepts and the city council approved his fourth concept. Pease said she and the city are “very appreciative” to have an artist that has worked all over the country.

The mural will act as beautification to catch the eye of those traveling into and through Rochelle.

“I think once you come into the community and you’re coming over that overpass, you get a bird’s eye view of the community and if there’s something that is colorful and

catches your eye, I think that’s just more inviting for Rochelle,” Pease said.

Pease said she enjoyed getting feedback from the city council on the mural concepts and the city made sure to make them public before approval. The mural design has received positive comments from the community, she said.

The city is starting to see movement on a number of other downtown improvement projects besides the mural that will include new parking lots, the reconstruction of current parking lots, the addition of a bathrooms, storage and stage structure; a new urban park, and running electrical infrastructure underground.

“Those projects will be coming to fruition,” Pease said. “Getting that ball rolling is great and we can start focusing on our other corridors and gate-

ways. That beautification will spread outwards and continue to make things better.”

The new mural will be the city’s second downtown. The first was a large floral mural on the back of the Hub City Furniture building that was completed in recent years by Mat and Mandey Steder. City Manager Jeff Fiegenschuh said that the first mural received positive feedback and the city will be having ongoing discussions about more

murals in Rochelle.

“They just tie the community together, especially when there are common themes,” Fiegenschuh said. “I love public art. It makes an area feel open, welcome and inviting and it shows pride in your downtown. I want to continue to see more murals, as long as the council is willing to help fund it and as long as there’s community buy-in and support for them. I love seeing murals. They make you feel good.”

* FENCING *	* FENCING *
<p>Wood Fence Panels - Pre-Assembled - Treated Panels</p> <p>Dog Ear Tops 6x8 \$48 each</p> <p>Rough Sawn White Oak Lumber 8x8, 2x8, 2x10, 2x12 - 18ft. lengths</p> <p>Rough Sawn Fence Boards 1"x6" - 16' Pine - Treated Pine - Treated Poplar - White Oak</p> <p>* ROUND FENCE POSTS *</p> <p>Cedar - Pressure Treated - All Sizes in Stock!</p> <p>* Landscape Timber - 5x6 - 6x6 - 6x8 *</p>	<p>Steel Roofing & Siding</p> <p>38" Width, 36" Cover, New & Seconds!</p> <p>New Barn Boards / Rough Sawn Full 1" thick 1"x12" White Pine Also 1"x8", 1"x12" Ship Lap Rough Face</p> <p>* #1 Southern Yellow Pine Lumber *</p> <p>2x8 T/G Yellow Pine Good For Horse Stalls & Floors</p> <p>Red Cedar Dog Eared Pickets 3/4" thick 1"x6" - 6ft long \$3.89 each</p>
<p>262-495-4453</p>	
<p>Anich Lumber Co. 414 3rd Street • Palmyra www.palsteel.com</p>	

Fix your eyes on Jesus

Jane Reineck Crusader Dinner & Auction

Friday, April 11
Serving dinner 5-6:30pm

Pulled Pork Meal
(a meatless mostaccioli option will be available)
\$10

Silent Auction
during dinner
Live Auction begins at 6:30pm

Proceeds will benefit the educational needs at St. Paul Lutheran School.
Tickets available at St. Paul Lutheran School - 1415 Tenth Ave., Rochelle, IL • 815-562-6323

Who's Left in the Rochelle News-Leader's NCAA Contest?

Auburn
Ashton Animal Clinic

Florida
Prescott Brothers Ford

Duke
State Farm - Terri Schaefer

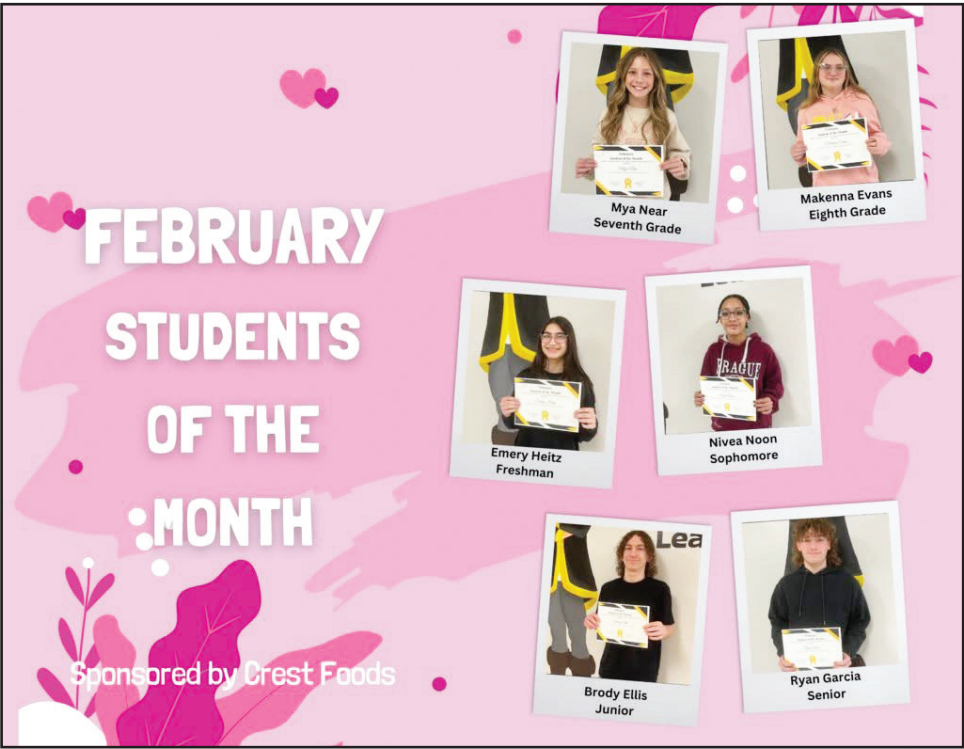
Houston
Prescott Brothers Ford

NCAA CHAMPION

AFC NEWS



AFC Lady Raiders earn All-Conference basketball awards
Ashton-Franklin Center High School recently congratulated Audree Dorn, Reese Polk, and Cameryn Winterland on their girls basketball all-conference awards. (Courtesy photo)



AFC School District names February Students of the Month
The Ashton-Franklin Center School District recently named its February Students of the Month. They include Mya Near (seventh grade), Makenna Evans (eighth grade), Emery Heitz (freshman), Nivea Noon (sophomore), Brody Ellis (junior) and Ryan Garcia (senior). Crest Foods sponsors the awards. (Courtesy photo)

AFC baseball team tees off new season

ASHTON — The Ashton-Franklin Center baseball team scored a 13-1 win at Earlville on Tuesday, March 18. Caleb Thomas went 3-for-4 with two runs and four RBIs, while Nolan Rueff went 2-for-2 with three RBIs and Aaron Lester struck out 10 batters over three and one-third innings pitched. Brock Lehman went 2-for-4 with one RBI.

AFC continued its strong start with a 17-0 win over West Carroll in four innings on Monday, March 24. Brock Lehman went 3-for-4 with three runs and seven RBIs for the Raiders, who scored 12 runs in the first inning. Caleb Thomas went 2-for-3 with two runs and three RBIs, while Logan O’Brien went 1-for-2 with three runs and two RBIs. Thomas pitched all four innings and struck out six batters while allowing only one hit.

AFC faced Alden-Helbron on Wednesday, March 26, winning 14-3. Logan O’Brien went 2-for-3 with two runs and four RBIs, while Barrett Becker went 2-for-3 with one RBI. Justin Henert went 1-for-3 with two RBIs and Nolan Rueff went 2-for-4 with two runs and one RBI for the Raiders, who saw Chase Hayes-Near strike out six batters over four innings on the mound.

Lee County Sheriff’s Office announces St. Patrick’s Day DUI enforcement results

DIXON – The Lee County Sheriff’s Office announced it made zero driving under the influence arrests and issued seven seat belt citations during the St. Patrick’s Day enforcement period. Deputies also issued three distracted driving citations.

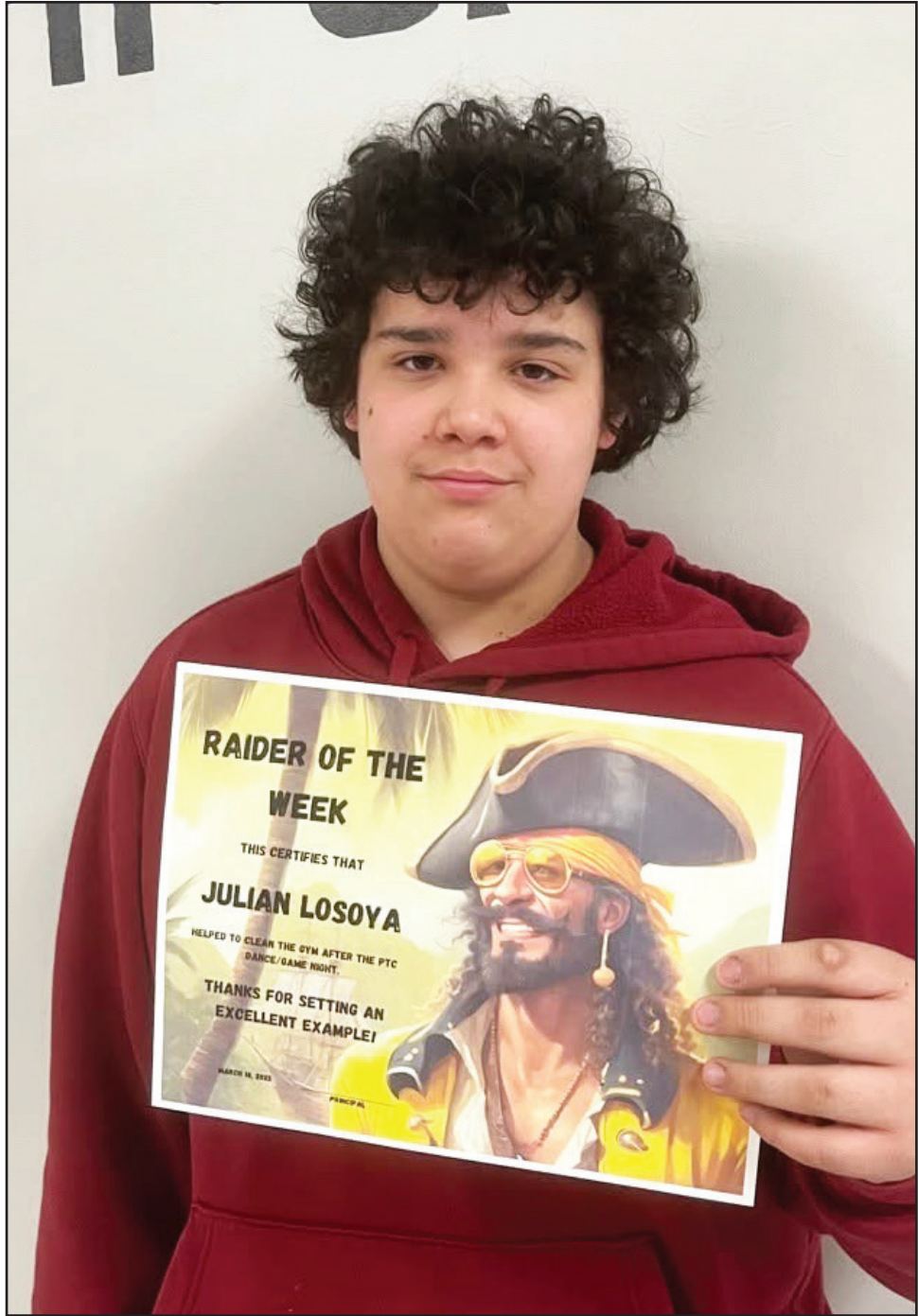
“We strongly enforce traffic laws for one reason – to save lives,” said Sheriff Clayton Whelan.

The Lee County Sheriff’s Office joined forces with state and local law enforcement and highway safety partners in the St. Patrick’s Day enforcement campaign.

The safety effort was funded by federal highway safety funds administered by the Illinois Department of Transportation.



Phillips named AFC Raider of the Week for March 7
Jeremy Phillips was recently selected as the Ashton-Franklin Center School District Raider of the Week for the week of March 7. “Jeremy was nominated for being super helpful after school hours!” a district Facebook post said. (Courtesy photo)



Losoya named Raider of the Week for March 14
Julian Losoya was recently selected as the Ashton-Franklin Center School District Raider of the Week for the week of March 14. Losoya was nominated for staying after the dance/game night to help clean up the gym. (Courtesy photo)

COMMUNITY MATTERS



LORI PATTERSON
Real Estate
(815) 562-7617 | 811 Main St., Ashton, IL
Let me put my 30+ years of real estate experience to work for you!
Lori Patterson
Designated Managing Broker/Owner
(815) 562-7617
loripatterson22@gmail.com
http://loripattersonrealestate.com

Electricians
Hilliker Electric LLC
1417 Franklin Rd.,
Franklin Grove, IL 61031
815-456-7036
office@hillikerelectric.com
Funeral Home
Beverage Lyons Funeral Home
601 Richardson Ave.,
Ashton, 815-453-2441
beveragefamilyfh.com

Real Estate
Lori Patterson Real Estate
811 Main St., Ashton
815-751-0510
Schools
Ashton-Franklin Center
CUSD #275
611 Western Ave., Ashton
815-453-7461

**Beverage Lyons
Funeral Home**
601 Richardson Ave., Ashton
815-453-2441
beveragefamilyfh.com

COMMUNITY

1st Annual Brandon Dodrill Memorial Tournament scheduled for April 12

ROCHELLE — The 1st Annual Brandon Dodrill Memorial Tournament will be held at Mardi Gras Lanes in DeKalb on Saturday, April 12 at 7 p.m. The entry fee will be \$50 per person and there are 80 slots available. The fundraiser will include ball raffles, drink specials and a 50/50 raffle.

Funds raised from the tournament will support the Brandon Dodrill Memorial Foundation, which raises money to support the Rochelle Township

High School bowling program. Bowlers will bowl four games of nine-pin no-tap and results will be total pin fall with handicap. All games will be capped at 300 and handicap will be based off 90% of 200, but may not exceed 50 pins per game. Handicap will be based off highest average of the 2023-24 bowling season (21 games).

If bowlers do not have 21 games, a composite average will be used. If there's no composite average for the 2023-24

season, bowlers will use a highest average from the 2022-23 season. If there is no average, men will use 170 and women will use 150. It's each bowler's responsibility to ensure the proper average verification. Tournament directors will have the final decision.

Youth are allowed to bowl. Winnings will be deposited into their SMART accounts. Anyone under 18 years of age must have a parent sign a form. Forms will be available on site.

Payout for the tournament will be a 1:5 spots paid out. The \$50 entry fee includes \$15 toward lineage, \$10 toward the foundation and \$25 toward the prize fund. A scratch division will be available for \$20 and all money collected will be paid back. Brackets and side pots will be available. There will be ball and jersey raffles. For questions or additional information, contact the foundation via email at info@brandondodrillmemorialfoundation.org.



- Mar. 7 - Pat Fletcher, Rochelle, \$25
- Mar. 8 - Brock Sutton, Mendota, \$25
- Mar. 9 - Kelly Johnson, Rochelle, \$50
- Mar. 10 - Joe McKinney, Rochelle, \$25
- Mar. 11 - John Conley, Waterman, \$25
- Mar. 12 - Deanne Ponto, Rochelle, \$25
- Mar. 13 - RMTD, \$25
- Mar. 14 - Larry Hageman, Rochelle, \$25
- Mar. 15 - Mariah Coffey, Dixon, \$25
- Mar. 16 - Rick McConaghie, Rochelle, \$50
- Mar. 17 - Jan Thompson, Rochelle, \$250
- Mar. 18 - Dale Galland, Rochelle, \$25
- Mar. 19 - Jeffrey J. Musselman, Rochelle, \$25
- Mar. 20 - Rick McBride, Rochelle, \$25
- Mar. 21 - Priscilla Escutia, Rochelle, \$25
- Mar. 22 - Connie Fallon, Rockton, \$25
- Mar. 23 - Jeff Bresson, Compton, \$50
- Mar. 24 - Dana LaTour, Rochelle, \$25
- Mar. 25 - Janeth Vazquez, Rochelle, \$25
- Mar. 26 - David Atkinson, Oregon, \$25
- Mar. 27 - Josh Carney, Rochelle, \$25
- Mar. 28 - Brice Hintzsche, Franklin Grove, \$25
- Mar. 29 - Kyle C. Bridgeman, Rochelle, \$25
- Mar. 30 - Zach Prewett, Rochelle, \$50
- Mar. 31 - Chris Haas, Rochelle, \$25
- Apr. 1 - Lorita Bertrand, Champaign, \$25
- Apr. 2 - Barbra Weist, Sycamore, \$25

Local agents honored by Weichert Real Estate Affiliates

DEKALB—Weichert, Realtors® - Signature Professionals is proud to announce that multiple agents from its brokerage were honored by the national franchise organization, Weichert Real Estate Affiliates, Inc., for their exceptional real estate performance in 2024.

The following agents

were recognized for their sales achievements in 2024, based on gross commission income or units closed: Kimberly Lancaste - Ambassador Club; Zachary Ottum - Executive Club; John Craig - Executive Club; Aaron Schwartz - President's Club (Gold).

"We are very proud of all our affiliates and their

agents for everything they were able to accomplish this past year," said Bill Scavone, president of Weichert Real Estate Affiliates, Inc. "We are extremely fortunate to have such dedicated and knowledgeable agents who went above and beyond to offer exceptional service to their clients."

Weichert, Realtors® -

Signature Professionals is an independently owned and operated Weichert® affiliate. For more information about Weichert, Realtors® - Signature Professionals, please contact Carrie Ottum at (815) 754-5050 or CARRIE@SIGNATUREREALESTATE-PRO.COM.

White Rock Cemetery Spring Cleanup is April 12


KINGS—The White Rock Cemetery will be having a spring cleanup on April 12. Any winter grave deco-

rations still there will be disposed of that day. Those with questions can contact Dale King at 815-761-7551.

BIRTHDAYS & ANNIVERSARIES

April 2 Zachery Smith	April 6 Stephen Avila Eddie Villalobos Josh & Sarah Kulwicki (anniversary)	April 8 Jodi Prosser Trevor Komadina Timothy Avila	April 12 Charles Peterman
April 3 Duane Aleman Dave Helfrich	April 7 Arianna Grana Anjelique Grana Beckham Stockton	April 10 Johnny Gonzales	April 16 Marissa Seldal James Doering
April 4 Clarissa Dodillet	April 11 Bev Wiginton Christine Doering Chris & Christine Doering (anniversary)	April 18 Millie Danekas	April 19 Pastor Angelo Bonacquisti

Call 815-561-2151 to submit names for birthdays and anniversaries



Coffee Break

King Crossword

ACROSS

1 "Li'l Abner" creator

5 Yellowstone grazer

8 Cymbal's kin

12 Petri dish gel

13 Sturgeon product

14 Ancient Dead Sea land

15 Fierceness

17 Milan money, once

18 PC alternative

19 Sheryl Sandberg best seller

21 Grating

24 Harangue

25 "Rhyme Pays" rapper

26 With passion

30 Monk's title

31 Piquant

32 Tic-tac-toe win

33 Hit song by ABBA

35 Friend

36 Curved lines

37 Jiggly dessert

38 Rum cocktail

41 Pear-shaped fruit

42 Spumante source

43 Agitates

48 Actor

Schreiber

1 2 3 4 5 6 7 8 9 10 11

12 13 14

15 16 17

18 19 20

21 22 23 24

25 26 27 28 29

30 31 32

33 34 35

36 37

38 39 40 41

42 43 44 45 46 47

48 49 50

51 52 53

49 Colorful card game

50 Sleek, in car lingo

51 Salinger girl

52 Journey part

53 Must have

DOWN

1 Half- (latte option)

2 Candle count

3 Standard

4 On time

5 Idle or Bana

6 Parcel of land

7 Bogart/Bacall classic

8 Trattoria deserts

9 Valhalla VIP

10 Sushi wrapper

11 Fed. agents

16 Low isle

20 Jealousy

21 Jazz phrase

22 Estate measure

23 Burn something

24 Tears apart

26 Imaginary

27 Toy store buy

28 Lounge

29 Cellist Ma

31 Actress Reid

34 Indigenous

35 Sea off Greece

37 Comic Carrey

38 Like ganders

39 Unrepaired

40 Detail

41 Toad's kin

44 Away from WSW

45 Formerly called

46 Three, in Rome

47 Turf

© 2025 King Features Synd., Inc.

Weekly SUDOKU

5	9					6	8	
	6			2				
	3	8			1	7		
						3		4
					3			6
9			4				2	1
1			7			4	6	
	4		8			2		
		5	1					7

Place a number in the empty boxes in such a way that each row across, each column down and each small 9-box square contains all of the numbers from one to nine.

DIFFICULTY THIS WEEK: ♦ ♦ ♦

♦ Moderate ♦ ♦ Challenging
♦ ♦ ♦ HOO BOY!

© 2025 King Features Synd., Inc.

CryptoQuip

This is a simple substitution cipher in which each letter used stands for another. If you think that X equals O, it will equal O throughout the puzzle. Solution is accomplished by trial and error.

Clue: Z equals G

BVSUL BO PWWPOUOS
WLUGUOSUC KU VLPK ZUSSJOZ
UGUO POU WPJOS, J NBC SP
ZJGU NJK B ENTSPPTS ENPTS-PTS.

©2025 King Features Synd., Inc.

6	8	5	1	4	2	9	3	7
3	4	7	8	6	9	2	1	5
1	2	9	3	7	6	5	4	8
4	1	2	5	6	9	8	7	3
9	7	8	3	6	5	2	1	4
4	6	3	7	1	2	9	5	8
6	5	9	8	3	7	1	4	2
3	5	1	2	6	4	9	7	8
5	9	1	3	7	4	6	8	2

Answer

ESME	LEG	ES	ME	ES	ME	ES	ME	ES	ME
ON	ON	ON	ON	ON	ON	ON	ON	ON	ON
AV	AV	AV	AV	AV	AV	AV	AV	AV	AV
FE	FE	FE	FE	FE	FE	FE	FE	FE	FE
MA	MA	MA	MA	MA	MA	MA	MA	MA	MA
LI	LI	LI	LI	LI	LI	LI	LI	LI	LI
ST	ST	ST	ST	ST	ST	ST	ST	ST	ST
AS	AS	AS	AS	AS	AS	AS	AS	AS	AS
TI	TI	TI	TI	TI	TI	TI	TI	TI	TI
FE	FE	FE	FE	FE	FE	FE	FE	FE	FE
RA	RA	RA	RA	RA	RA	RA	RA	RA	RA
SP	SP	SP	SP	SP	SP	SP	SP	SP	SP
OU	OU	OU	OU	OU	OU	OU	OU	OU	OU
LA	LA	LA	LA	LA	LA	LA	LA	LA	LA
AV	AV	AV	AV	AV	AV	AV	AV	AV	AV
FE	FE	FE	FE	FE	FE	FE	FE	FE	FE
MA	MA	MA	MA	MA	MA	MA	MA	MA	MA
LI	LI	LI	LI	LI	LI	LI	LI	LI	LI
ST	ST	ST	ST	ST	ST	ST	ST	ST	ST
AS	AS	AS	AS	AS	AS	AS	AS	AS	AS
TI	TI	TI	TI	TI	TI	TI	TI	TI	TI
FE	FE	FE	FE	FE	FE	FE	FE	FE	FE
RA	RA	RA	RA	RA	RA	RA	RA	RA	RA
SP	SP	SP	SP	SP	SP	SP	SP	SP	SP
OU	OU	OU	OU	OU	OU	OU	OU	OU	OU
LA	LA	LA	LA	LA	LA	LA	LA	LA	LA
AV	AV	AV	AV	AV	AV	AV	AV	AV	AV
FE	FE	FE	FE	FE	FE	FE	FE	FE	FE
MA	MA	MA	MA	MA	MA	MA	MA	MA	MA
LI	LI	LI	LI	LI	LI	LI	LI	LI	LI
ST	ST	ST	ST	ST	ST	ST	ST	ST	ST
AS	AS	AS	AS	AS	AS	AS	AS	AS	AS
TI	TI	TI	TI	TI	TI	TI	TI	TI	TI
FE	FE	FE	FE	FE	FE	FE	FE	FE	FE
RA	RA	RA	RA	RA	RA	RA	RA	RA	RA
SP	SP	SP	SP	SP	SP	SP	SP	SP	SP
OU	OU	OU	OU	OU	OU	OU	OU	OU	OU
LA	LA	LA	LA	LA	LA	LA	LA	LA	LA
AV	AV	AV	AV	AV	AV	AV	AV	AV	AV
FE	FE	FE	FE	FE	FE	FE	FE	FE	FE
MA	MA	MA	MA	MA	MA	MA	MA	MA	MA
LI	LI	LI	LI	LI	LI	LI	LI	LI	LI
ST	ST	ST	ST	ST	ST	ST	ST	ST	ST
AS	AS	AS	AS	AS	AS	AS	AS	AS	AS
TI	TI	TI	TI	TI	TI	TI	TI	TI	TI
FE	FE	FE	FE	FE	FE	FE	FE	FE	FE
RA	RA	RA	RA	RA	RA	RA	RA	RA	RA
SP	SP	SP	SP	SP	SP	SP	SP	SP	SP
OU	OU	OU	OU	OU	OU	OU	OU	OU	OU
LA	LA	LA	LA	LA	LA	LA	LA	LA	LA
AV	AV	AV	AV	AV	AV	AV	AV	AV	AV
FE	FE	FE	FE	FE	FE	FE	FE	FE	FE
MA	MA	MA	MA	MA	MA	MA	MA	MA	MA
LI	LI	LI	LI	LI	LI	LI	LI	LI	LI
ST	ST	ST	ST	ST	ST	ST	ST	ST	ST
AS	AS	AS	AS	AS	AS	AS	AS	AS	AS
TI	TI	TI	TI	TI	TI	TI	TI	TI	TI
FE	FE	FE	FE	FE	FE	FE	FE	FE	FE
RA	RA	RA	RA	RA	RA	RA	RA	RA	RA
SP	SP	SP	SP	SP	SP	SP	SP	SP	SP
OU	OU	OU	OU	OU	OU	OU	OU	OU	OU
LA	LA	LA	LA	LA	LA	LA	LA	LA	LA
AV	AV	AV	AV	AV	AV	AV	AV	AV	AV
FE	FE	FE	FE	FE	FE	FE	FE	FE	FE
MA	MA	MA	MA	MA	MA	MA	MA	MA	MA
LI	LI	LI	LI	LI	LI	LI	LI	LI	LI
ST	ST	ST	ST	ST	ST	ST	ST	ST	ST
AS	AS	AS	AS	AS	AS	AS	AS	AS	AS
TI	TI	TI	TI	TI	TI	TI	TI	TI	TI
FE	FE	FE	FE	FE	FE	FE	FE	FE	FE
RA	RA	RA	RA	RA	RA	RA	RA	RA	RA
SP	SP	SP	SP	SP	SP	SP	SP	SP	SP
OU	OU	OU	OU	OU	OU	OU	OU	OU	OU
LA	LA	LA	LA	LA	LA	LA	LA	LA	LA
AV	AV	AV	AV	AV	AV	AV	AV	AV	AV
FE	FE	FE	FE	FE	FE	FE	FE	FE	FE
MA	MA	MA	MA	MA	MA	MA	MA	MA	MA
LI	LI	LI	LI	LI	LI	LI	LI	LI	LI
ST	ST	ST	ST	ST	ST	ST	ST	ST	ST
AS	AS	AS	AS	AS	AS	AS	AS	AS	AS
TI	TI	TI	TI	TI	TI	TI	TI	TI	TI
FE	FE	FE	FE	FE	FE	FE	FE	FE	FE
RA	RA	RA	RA	RA	RA	RA	RA	RA	RA
SP	SP	SP	SP	SP	SP	SP	SP	SP	SP
OU	OU	OU	OU	OU	OU	OU	OU	OU	OU
LA	LA	LA	LA	LA	LA	LA	LA	LA	LA
AV	AV	AV	AV	AV	AV	AV	AV	AV	AV
FE	FE	FE	FE	FE	FE	FE	FE	FE	FE
MA	MA	MA	MA	MA	MA	MA	MA	MA	MA
LI	LI	LI	LI	LI	LI	LI	LI	LI	LI
ST	ST	ST	ST	ST	ST	ST	ST	ST	ST
AS	AS	AS	AS	AS	AS	AS	AS	AS	AS
TI	TI	TI	TI	TI	TI	TI	TI	TI	TI
FE	FE	FE	FE	FE	FE	FE	FE	FE	FE
RA	RA	RA	RA	RA	RA	RA	RA	RA	RA
SP	SP	SP	SP	SP	SP	SP	SP	SP	SP
OU	OU	OU	OU	OU	OU	OU	OU	OU	OU
LA	LA	LA	LA	LA	LA	LA	LA	LA	LA
AV	AV	AV	AV	AV	AV	AV	AV	AV	AV
FE	FE	FE	FE	FE	FE	FE	FE	FE	FE
MA	MA	MA	MA	MA	MA	MA	MA	MA	MA
LI	LI	LI	LI	LI	LI	LI	LI	LI	LI
ST	ST	ST	ST	ST	ST	ST	ST	ST	ST
AS	AS	AS	AS	AS	AS	AS	AS	AS	AS
TI	TI	TI	TI	TI	TI	TI	TI	TI	TI
FE	FE	FE	FE	FE	FE	FE	FE	FE	FE
RA	RA	RA	RA	RA	RA	RA	RA	RA	RA
SP	SP	SP	SP	SP	SP	SP	SP	SP	SP
OU	OU	OU	OU	OU	OU	OU	OU	OU	OU
LA	LA	LA	LA	LA	LA	LA	LA	LA	LA
AV	AV	AV	AV	AV	AV	AV	AV	AV	AV
FE	FE	FE	FE	FE	FE	FE	FE	FE	FE
MA	MA	MA	MA	MA	MA	MA	MA	MA	MA
LI	LI	LI	LI	LI	LI	LI	LI	LI	LI
ST	ST	ST	ST	ST	ST	ST	ST	ST	ST
AS	AS	AS	AS	AS	AS	AS	AS	AS	AS
TI	TI	TI	TI	TI	TI	TI	TI	TI	TI
FE	FE	FE	FE	FE	FE	FE	FE	FE	FE
RA	RA	RA	RA	RA	RA	RA	RA	RA	RA
SP	SP	SP	SP	SP	SP	SP	SP	SP	SP

ON THE FARM

Rural education programs getting help in comeback fight

BY PHYLLIS COULTER
FARMWEEK

THE long-held idea that a four-year university education was best for everyone is now recognized as flawed by many education advocates. Today, rural schools are bringing back displaced programs, but it will take time and resources.

"Career and Technical (CTE) programs, once called vocational programs, were a significant part of the fabric of rural schools across Illinois and the nation. Several decades ago, a huge pendulum swing took place across the country that all but wiped out this valuable CTE programming," said Patrick Twomey, superintendent of Macomb School District 185, and a longtime rural school advocate.

"The push was that every child needs a four-year college education and in the process of addressing that belief, vocational/CTE courses were eliminated one by one. As they say, hindsight is 20-20, and looking back, we all know that was a monumental mistake," Twomey said.

John Dunlap always saw the value of technical education. Directly after high school, he worked as an ag equipment technician and earned his certification, which eventually led him to the position of director of the AGCO Service Technician Program at Parkland Community College.

"Earn-while-you-learn programs are a perfect option for somebody who has to pay for their education. Most of the time they are guaranteed a job placement," Dunlap said. "Business and industry have jobs they need to fill,

and schools have a pool of students to draw from," he said of the model that has worked so well for him and his students.

However, rural schools struggle to gather resources to bring CTE programming back. "They lack the financial resources as well as the human capital necessary to tackle this issue and yet we all agree it is paramount that we find a way," said Twomey, who is on the executive board of the Association of Illinois Rural and Small Schools (AIRSS), one of the organizations leading the comeback.

John Glasgow, AIRSS program director, is spearheading the Rural Illinois Career and Technical Education Project, a joint effort between the Illinois State Board of Education and AIRSS, founded in 2023, to revive and advance career and tech education for Illinois students.

High school tech classes were once viewed as something for "kids who have nothing better to do." Attitudes are changing. "College is only one route to success today," Glasgow said, noting that college grads often earn less today than those in "the trades."

He and the team spent the first year of the Rural Illinois CTE mostly on research. Their study quickly revealed a priority: the need for direct and specific support for rural CTE programs. Glasgow and his colleagues created a web-based portal to share resources including webinars, newsletters and materials. Now, the site, airssedu.org/cte is live and provides centralized information from a respected source for rural districts, Glasgow said.

"We're slowly playing



(PHOTO BY PHYLLIS COULTER OF FARMWEEK)

(From left) John Glasgow, Association of Illinois Rural and Small Schools program director; Duane Price, Bureau Valley High School principal; and Jeff Harris, who heads the cooperative program at the school, discuss career training options for students.

catch up but there is still really a long way to go," said Glasgow of the team's effort to get more resources and funding for CTE.

Among other things, the Illinois Rural CTE Project is looking for ways to improve options for regional career and tech schools, which have long been underfunded.

In 2024, the IL Rural CTE Project team identified the highest-need rural school districts, noting their challenges and strengths. The biggest pocket of high-need schools is in the south including Jefferson, Clinton, Marion, and Franklin counties. Other areas are scattered throughout the state including LaSalle and Bureau counties in the north and parts of Champaign and Vermilion in the east.

The next step is to create pilot projects.

Some new pilot projects will come from adapting innovations in urban centers. One such idea is a pharmacy tech program that allows students to work in a hospital pharmacy. It is offered by a high school in Elgin, in a school district of more than 33,000 students in Kane County. "It offers a foundational knowledge base for every student wanting to go into a medical area. In rural areas that kind of medical experience may be hard to get," Glasgow said.

Glasgow is already working with schools in Tazewell and Peoria counties in central Illinois to see how they could use Elgin's idea as a model to get a pathway for medical careers in their rural schools.

In southern Illinois, Brooke May, co-director of the Southern Illinois Future

Teachers Coalition (SIFTC) and Leslie Bradley, director of student career services and co-director of SIFTC at Vienna High School District in Johnson County are leading a 25-school network of more than 400 high school students in technical programs.

CTE pathways have traditionally been seen as lacking in value, especially when compared to academic pathways that lead to perceived higher wages and benefits, said May, also a member of the AIRSS Rural CTE Advisory Council.

"It is challenging to showcase the value of high school CTE pathways when funding for required equipment is limited, an insufficient instructor pool exists and inequities in the access to programs is a hurdle that many students are unable to

overcome," May said.

Yet, even with the glaring challenges, groups such as SIFTC has at its helm two qualified CTE instructors, dual credit education programs in 14 of their schools, and a large budget to support high school students who wish to enter the CTE field of education, which continues to face a shortage," May said.

As the Illinois CTE Project and other efforts enter a new year, Glasgow said he hopes that all these actions will "help all rural districts enrich and grow their programming."

This story was distributed through a cooperative project between Illinois Farm Bureau and the Illinois Press Association. For more food and farming news, visit FarmWeekNow.com.

There are many jobs. And one tractor to do them all.

Kubota

Call today to schedule a demo of the versatile BX Series sub-compact tractor. Part of our under 100 HP tractor line-up rated #1 for reliability.*

- Variety of available attachments
- Easy-to-use hydrostatic transmission
- Swift-Tach Loader is easy to install and remove
- ROPS height fits easily in standard size garages

Together we do more.

JOHNSON TRACTOR

200 Steward Road
Rochelle, IL
800-262-1680

KubotaUSA.com
*2020 Progressive Farmer Reader Insights Award for Fewest Reported Problems Overall in the category of Small Tractor (Under 100 Horse Power). Award based on 2020 Progressive Farmer Readers Insights Tractors Study. © Kubota Tractor Corporation, 2021. This material is for descriptive purposes only. Kubota disclaims all representations and warranties, express or implied, or any liability from the use of this material. For complete warranty, safety and product information, consult your local Kubota dealer. For the complete disclaimer, go to KubotaUSA.com/disclaimers and see the posted disclaimer.

BUILT FOR GENERATIONS

- Residential • Farm • Equestrian
- Commercial • Community • Repairs

Discover The Difference. Call Today!

MORTON BUILDINGS

STORE HOURS:
M-F 8am-Noon,
1pm-5pm

877.613.3050 or 815-562-8777

104 Oak Ave., Rochelle, IL mortonbuildings.com

09042018

- Residential & Commercial Concrete Additions

Tim & Roger Bruns, Owners
Established 1997

Bruns Construction, Inc.

FREE ESTIMATES!

815-561-0099

Free Estimates • Fully Insured

www.brunsconstructioninc.com

04052023

With Many long-term employees both Union and Non-Union our customers are always in experienced hands!

QUEEN'S TRUCKING & CONSTRUCTION, INC.
ROCHELLE, IL
(815) 562-6064

We were voted Mid-West Truckers Association, Inc. Northern Region Trucking Company of the year 2022.

Small or Big Jobs, We Do Them All!

We Aim for On Time, Every Time!

The Trusted Trucking Company of Many Local Distributors and Manufacturers.

CONSTRUCTION:

- Union Construction & Deconstruction
- Excavation/Site Prep
- Drainage/Sewer/Water Repair & Replacement
- Union Heavy Hauling & Jobsite Hauling
- Emergency Work
- Restoration/Traffic Control
- Sidewalk/Curb
- Hourly or Bid Work (We can create a Specialized Rate for any Job)

TRUCKING:

- Non-Union Local Freight Hauling
- Van Trailer/Hopper/Flatbed/Dump
- Daily Loads on the Customers Time Schedule

Queen's Trucking & Construction, Inc.
322 Errett Road, Rochelle
815-562-6064 | queens-trucking.com

NOW HIRING CDL Drivers

Benefits Included. Be Home Every Night!

+ EASTER Worship & Celebrations

St. Paul Ev. Lutheran Church and School

1415 Tenth Ave.
Rochelle
stpaul2@rochelle.net

THE LUTHERAN CHURCH
Missouri Synod

Church
815-562-2744
stpaulv.org

April 17 Maundy Thursday Worship 6:00 p.m.

April 18 Good Friday Tenebrae Worship 6:00 p.m.

April 20 Easter Sunrise Worship 6:30 a.m.

"He Is Risen" Easter Breakfast between 6:30 a.m. & 9 a.m. Services includes Breakfast Casserole, Fruit Cup, Sweet Dessert & Beverage (no advance tickets needed)

April 20 Easter Celebration Worship 9:00 a.m.

Please join us for Holy Week and Resurrection Sunday

"Building Relationships in Christ, Now and Forever"

04022025

St. Patrick Catholic Church

Kelley Drive & Caron Rd.—Rochelle
(815) 562-2370

Rev. Jesus Dominguez – Pastor



Palm Sunday

April 13

Blessings of Palms & Solemn Entrance
Saturday, April 12
Vigil Mass at 5:00 pm
Vigil Mass at 7:00 pm in Spanish
Sunday Masses April 13 at 7:30 am,
9:00 am, 11:00 am in Spanish

EASTER TRIDUUM SCHEDULE

Holy Thursday

April 17 (No Daily Mass)

Church Offices Closed

Bilingual Mass of the Last Supper of the Lord
at 7:00 pm
Adoration in the Parish Center from
8:30 pm – 11:00 pm

Good Friday

April 18 (No Daily Mass)

Church Offices Closed

Liturgy of the Word, Communion and
Veneration of the Cross at 2:00 pm
3:00 pm Divine Mercy Chaplet and live stations
of the cross around our parking lot.
7:00 pm Spanish Rosario de Pésame.

Holy Saturday

April 19

Easter Vigil: 8:00 pm Bilingual

Easter Sunday

The Resurrection of the Lord

April 20, 2025

9:00 am

& 11:00 am in Spanish

Easter Egg Hunting After Masses

04022025

DO YOU BELIEVE?

Is this what we trust?



The truth that
changed everything



ONE EMPTY TOMB IS WORTH MORE THAN A THOUSAND THEORIES.

BEHOLD EASTER WEEK

WITH DR.
JAMES
HORVATH

@ CALVARY LIGHTHOUSE CHURCH

GOOD FRIDAY EASTER SUNDAY

APRIL 18TH APRIL 20TH

@ 7 PM @ 10 AM

LIVE PERFORMANCES EASTER EGG

14409 E HEMSTOCK HUNT AND

RD., ROCHELLE, IL BOUNCE HOUSES

Easter Sunday Service & Children's Cantata

**Sunday,
April 20
10 a.m.**



Upcoming Spring Events

Spring Revival with Pastor Greg Hurst of
Johnson Chapel Church in Washburn TN

4/27 Sunday - 10AM & 6PM

4/28 Monday - 7PM

4/29 Tuesday - 7PM

The Howell Family Concert

5/31 Saturday - 6PM

6/1 Sunday - 10AM

Harvest Baptist Church

Pastor Duane Boehm

241 Scott Avenue • Hillcrest, IL

815-757-3427



04022025

Faith Lutheran Church

14206 E. Flagg Road • Rochelle, IL
815-562-7575 • www.faithlrochelle.org
Pastor Joy Alsop

Come Worship With Us This Easter!

Sunday, April 13th

9am - Palm Sunday Service

Thursday, April 17th

7pm - Maundy Thursday Service with Holy Communion

Friday, April 18th

7pm - Good Friday Service

Sunday, April 20th

9am - Easter Worship with Holy Communion

03172-24

FIRST PRESBYTERIAN CHURCH

EASTER



Maundy Thursday: 6:30 p.m. Service

Good Friday: 12:00 Noon

Sunday: 6:30am Sunrise Service,
9:00 a.m. Traditional Service

Easter Breakfast following the Sunrise Service

9:00 service will be streamed on our
Facebook Page & YouTube Channel

Facebook: facebook.com/placeforgace
YouTube: First Pres Rochelle

1100 Calvin Rd,
Rochelle
815-562-7053

Join us for Easter Services



CALVARY
LUTHERAN
CHURCH

April 17

Maundy Thursday Service 7PM

April 18

Good Friday Service 7PM

April 20

Easter Sunday Breakfast 9:30AM

Easter Sunday Worship 10:30AM



19 Perry Road, Lee

815-824-2825

calvarychurchlee@gmail.com

calvarychurchlee.com

"Rooted in Scripture; Growing in Faith;
Feeding Souls & Sharing God's Grace."



Good Friday

Noon-3pm

Stations of the Cross.
(Walk Thru at your own
pace)

7pm Good Friday
Experience in Hicks
Hall for all ages

Easter

9am Worship

Celebration

with fellowship &
treats afterwards!

Rochelle United Methodist Church

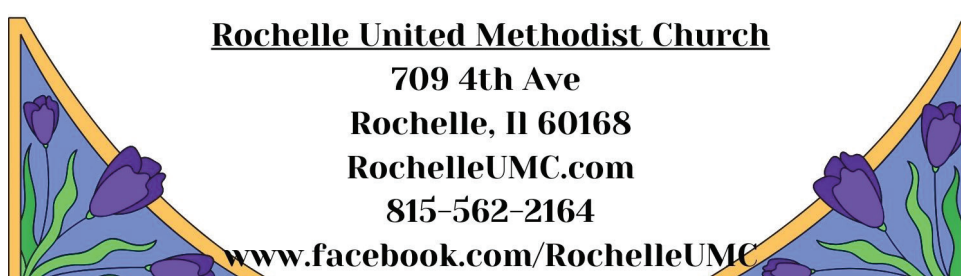
709 4th Ave

Rochelle, IL 60168

RochelleUMC.com

815-562-2164

www.facebook.com/RochelleUMC



National Autism Awareness Month

AUTISM, or autism spectrum disorder (ASD), refers to a broad range of conditions characterized by challenges with social skills, repetitive behaviors, speech and nonverbal communication. According to the Centers for Disease Control, autism affects an estimated 1 in 36 children and 1 in 45 adults in the United States today.

Autism looks different for everyone, and each person with autism has a distinct set of strengths and challenges. Some autistic people can speak, while others are nonverbal or minimally verbal and communicate in other ways. Some have intellectual disabilities, while some do not. Some require significant support in their daily lives, while others need less support and, in some cases, live entirely independently.

On average, autism is diagnosed around age 5 in the U.S., with signs appearing by age 2 or 3. Current diagnostic guidelines in the DSM-5-TR break down the ASD diagnosis into three levels based on the amount of support a person might need: level 1, level 2, and level 3.

Anybody can be autistic, regardless of sex, age, race or ethnicity. However, research from the CDC says that boys get diagnosed with autism four times more often than girls. According to the DSM-5-TR, the diagnostic manual for ASD, autism may look different in girls and boys. Girls may have more subtle presentation of symptoms, fewer social and communication challenges, and fewer repetitive behaviors. Their symptoms may go unrecognized by doctors, often leading to underdiagnosis or misdiagnosis. Getting a diagnosis is also harder for autistic adults, who often learn to “mask,” or hide, their autism symptoms.

Autism is a lifelong condition, and an autistic person’s needs, strengths and challenges may change over time. As they transition through life stages, they may need different types of support and accommodations. Early intervention and therapies can make a big difference in a person’s skills and outcomes later in life.

Age of autism diagnosis and early signs of autism can vary widely from child to child. Some children show early signs of autism within the first 12 months of life. In others, autism signs may not show up until 24 months of age or later. Importantly, some children with ASD gain new skills and meet

developmental milestones until around 18 to 24 months of age, and then they stop gaining new skills or lose the skills they once had.

The American Academy of Pediatrics (AAP), the leading pediatric health organization in the United States, recommends that all children be screened for autism at ages 18 months and 24 months, in addition to undergoing developmental and behavioral screenings during their regular well-child visits at 9 months, 18 months and 30 months. Research shows that by age 2, an ASD diagnosis by an experienced professional can be considered reliable.

One in 45 adults in the U.S. are diagnosed with autism spectrum disorder (ASD). While society is much more aware of autism today than ever before thanks to improved public health outreach and increased screening, advocacy and awareness efforts, there are likely many adults with autism who never received a diagnosis or were misdiagnosed.

You may have spent your entire life not recognizing the signs of autism or not realizing that some of the issues and feelings you have dealt with were related to autism. If you suspect you may be autistic or you know an adult who may be on the spectrum, learning about the common signs of autism is the first step to understanding whether you or your loved one may have undiagnosed ASD.

The hallmarks of autism are challenges with social communication skills and restricted and repetitive behaviors—and this is no different in adults. Below, you can find a list of some signs and symptoms of autism in adults.

As you age, you may experience changes in your behavior and interests. Additionally, a major life change, including transition in and out of college, job switches or change in family status (marriage/divorce, birth of children, loss of parent), can result in a change in these symptoms. The existence of co-occurring conditions like anxiety and ADHD might also affect the manifestation of your autism.

Many autistic adults choose to mask, or camouflage, their autism symptoms. Research shows that autistic people may engage in masking because they want to fit in, be accepted and avoid drawing attention to themselves in social situations. Others resort to masking as a means to avoid bullying, maintain friendships and succeed at



(COURTESY PHOTOS)

Autism, or autism spectrum disorder (ASD), refers to a broad range of conditions characterized by challenges with social skills, repetitive behaviors, speech and nonverbal communication.

work and school.

It’s possible to mask your autism without even realizing it. For some people, masking looks like adopting more “subtle” stimming behaviors, like using a fidget spinner instead of flapping their hands. Some might adopt a whole different persona, imitating the speech and body language of others during social interactions. Some force themselves to make eye contact or be more expressive with their facial expressions, even if doing so feels uncomfortable or unnatural.

While masking may help some autistic adults navigate social situations, jobs and relationships, research shows it can have negative effects on mental health. Some people find masking draining and exhausting, while others report feeling isolated and misunderstood as a result of their efforts to mask their autism.

Because their autism

symptoms tend to be more subtle, women and girls without intellectual disability (ID) or language delays often struggle to get an autism diagnosis, receive a diagnosis later in life, or get misdiagnosed. According to the CDC, girls are 4 times less likely to be diagnosed with autism than boys. On average, they also receive a diagnosis almost a year later than boys—at age 5.6 for girls versus 4.8 for boys. Those who do receive a diagnosis are more likely to have co-occurring ID, epilepsy and anxiety.

Research shows that women and girls are more likely to mask, or hide, their autism symptoms in order to fit in. This often happens when they are in spaces where they do not feel welcome or safe, or where they have not disclosed their diagnosis (like work or school).

Research shows that masking may be harmful to

mental health and well-being, causing anxiety, depression, stress and even suicidality. Masking can also lead to delayed diagnosis, preventing autistic people from getting the support they need until later in life.

There are many causes of autism. Research suggests that autism spectrum disorder (ASD) develops from a combination of: Genetic influences and Environmental influences, including social determinants. These factors appear to increase the risk of autism and shape the type of autism that a child will develop. However, it’s important to keep in mind that increased risk is not the same as a cause. For example, some gene changes associated with autism can also be found in people who don’t have the disorder. Similarly, not everyone exposed to an environmental risk factor for autism will develop the disorder. In fact, most will not.

Most appear to affect

crucial aspects of early brain development. Many autism risk genes influence other networks of genes, increasing or decreasing their expression. Some appear to affect how brain nerve cells, or neurons, communicate with each other. Others appear to affect how entire regions of the brain communicate with each other. Research continues to explore these differences with an eye to developing interventions and supports that can improve quality of life.

If you or your child has ASD, we recommend that you explore genetic testing. Genetic testing could show you the genetic cause of you or your child’s autism and reveal any genetic mutations that might be linked to serious co-occurring conditions like epilepsy. Genetic testing can give doctors useful information so they can provide better, more personalized interventions.

Preparing Students For Their Tomorrow

Rochelle Township High School District 212
1401 Flagg Road | 815-562-4161
rthsd212.org

ROCHELLE TOWNSHIP HIGH SCHOOL HUBS

Rochelle Foods

1001 S. Main Street | Rochelle
815-562-4141 | rochellefoodsjobs.com

CHECK OUT OUR JOB POSTINGS TODAY!

Precious Pastures Delicious, Quality Raw Milk Fresh at the farm!

Every Day 6:30 AM - 8:00 AM & 4:30 PM - 6:00 PM
(Please bring your own containers. 24 hours Notice Required.)

387 S. Malta Rd., Rochelle, IL 61068
815-762-6867 • PreciousPastures.com

Health Care, Community Strength

Rochelle Community Hospital
No Place Like It

rochellehospital.com

Changes Counseling, PLLC
Making Positive Changes Possible.

INDIVIDUAL | COUPLE | YOUTH | FAMILY COUNSELING

- Relieve Depression
- Calm Anxiety
- Improve Relationships
- Heal Trauma
- Encourage Your Children
- Empower Yourself

Convenient Hours and Locations in...

604 N. Main Street
Rochelle, IL 61068

400 5th Street, Suite 190
Peru, IL 61354

ChangesCounselingLLC.com | 815.501.2088

DISTRICT 231 NURTURES THE DIFFERENT ABILITIES OF EVERY STUDENT!

Stepping Stones Pre-K
Lincoln School K-1st
Central School 2nd-3rd
Tilton School 4th-5th
Rochelle Middle School 6th-8th

SPORTS



EAU CLAIRE BOUND

RTHS senior Grant Gensler will be playing football at UW-Eau Claire next year.

See page 2 for more details

RTHS Boys Tennis

Hub netters earn medalist honors

Winters takes second at No. 2 singles to lead Rochelle at Rock Island Invitational

BY RUSSELL HODGES
SPORTS EDITOR

ROCK ISLAND — Rochelle Hub netters combined for eight match victories during the Rock Island Invitational on Saturday afternoon, when the varsity tennis team landed a total of six medalists and finished tied for second place out of eight competing schools with 19 points.

Junior Philip Winters earned the highest medal honors for the Hubs, taking second place at No. 2 singles with two wins over three matches. Winters, who advanced to the tournament finals in his division, opened the meet with a hard-fought win over Geneseo's Dru Curcuru, taking the third set and the match 3-6, 6-3, 10-7. Winters pushed through another three-set match in the semifinals, overcoming a second-set loss to beat Moline's Brady Woodward 6-1, 3-6, 10-4.

"Everyone there was really good at their returns," Winters said. "Their hits weren't very strong, but they were consistent, so I played consistent with them. I was pretty confident to start so my confidence level hasn't changed much... Last year, I would hit the ball hard just to hit



(COURTESY PHOTO)

The Rochelle Hub tennis team tied for second place with 19 points during the Rock Island Invitational on Saturday. Medalists included David Eckardt, Caleb Mortensen, Amor Lara, Parker Slattengren, Mark Green and Philip Winters (left to right).

the ball hard, but I'm learning now that hitting angles and being consistent is a lot more important."

Winters faced Rock Island's Nathaniel Cruz-Oliveros for the No. 2 singles title, splitting the first two sets before falling just short in the super tiebreaker to concede the match 6-1, 3-6, 7-10. Despite losing in the final round, the runner-up finish was a significant con-

fidence boost for Winters, one of only a few returning varsity starters for the Rochelle Hub tennis team this spring.

"We lost a lot of seniors on the varsity team from last year, but this year, I think we'll still be pretty strong and we'll be even stronger next year," Winters said. "We have a lot of good players who are consistent and the key for

them will be to unlock their own unique play style. I want the team to do better in the conference this season and I'd personally like to go to state."

Junior Mark Green medaled in fifth place at No. 1 singles, bouncing back from a first-round loss to win consecutive matches. Green battled Rock Island's Lucien Tarrow in the opening round, fall-

ing 1-6, 0-6 before taking down Moline's Grant Dahlstrom 6-1, 6-4 in his next match. Green clinched fifth place with a 6-1, 7-5 victory against East Moline United's Mahmoud Yahya.

Junior Caleb Mortensen and freshman David Eckardt teamed up for a fifth-place medalist performance at No. 1 doubles on Saturday. Mortensen and Eckardt won two of their

three matches, recovering from an opening-round loss against East Moline United's Shwe Le and Gurlal Singh. The Hub duo defeated Harlem's Dom Coleta and Matt McElyea 6-2, 6-0 before cruising over Sterling Newman's Max Willar and James Stitt 6-1, 6-1 to seal a fifth-place finish.

See TENNIS page 4

RTHS Softball

Rochelle wins two games during spring tournament

Metzger hits for cycle as Lady Hubs compete at High School Jamboree in Jacksonville

BY RUSSELL HODGES
SPORTS EDITOR

JACKSONVILLE — Sophomore Camryn Metzger achieved a rare feat as the Rochelle Lady Hub varsity softball team opened its spring break tournament in Jacksonville, Illinois on Friday.

Metzger went 4 for 4 with three runs and five RBIs while hitting for the cycle as the Lady Hubs scored a 13-10 victory over Lexington/Ridgeview in the first of three tournament games over the weekend. Rochelle went 2-1 over three games, falling 17-6 against Hampshire in their second game on Friday before concluding the spring trip with a 16-9 victory over Pearl City on Saturday. The Lady Hubs moved to 2-2 on the season.

Lexington-Ridgeview

The Lady Hubs recorded 18 hits in their win over Lexington/Ridgeview on Friday. Trailing 1-0, Rochelle turned in a two-out rally in the bottom of the first inning, tying the game on an RBI single from freshman Audrina Rodriguez. Freshman Mya Martinez followed with an RBI double to left field and sophomore Camryn



(COURTESY PHOTO)

The Rochelle Lady Hub softball team traveled south for the High School Jamboree in Jacksonville, Illinois on Friday and Saturday. Rochelle defeated Lexington-Ridgeview 13-10 before beating Pearl City 16-9 to improve to 2-2 on the season.

Metzger reached on an RBI single to the second-base side.

Rochelle tallied two more runs in the bottom of the third inning, where Metzger belted an RBI triple into center field to achieve half of her cycle. Freshman Cheyenne

Somers kept the Lady Hub offense rolling, slapping an RBI single to left field in the team's next at-bat to put Rochelle ahead 5-1. Lexington/Ridgeview answered with a two-run single in the top of the fifth inning.

Metzger bashed her first home run of the season

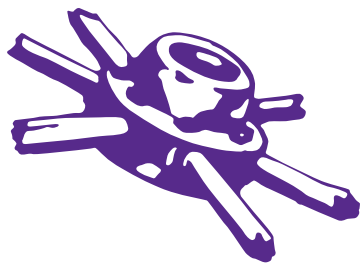
in the bottom of the fifth inning, sending a ball into deep right field to help Rochelle take a 6-3 lead over the Mustangs. Despite two runs for Lexington/Ridgeview in the top of the sixth inning, the Lady Hubs exploded for seven runs in the bottom of the sixth in-

ning, where Martinez and Camryn Metzger smacked back-to-back run-scoring doubles and sophomore Briel Metzger added an RBI single to second base.

Lexington/Ridgeview rallied for five runs on five hits in the top of the seventh inning, but the

Lady Hubs held a large enough lead to preserve the victory. Somers went 4 for 4 with four singles, while the freshmen Martinez and Rodriguez combined for four hits and five runs in the win.

See SOFTBALL pg 3



The businesses featured on this page are "Hubs Super Fans"

They proudly support our local athletes and students.

Please show your appreciation by patronizing their businesses.

Let's Go!



WE SUPPORT OUR HUBS!

HUB SPOTLIGHT



(PHOTO BY RUSSELL HODGES)

Rochelle Township High School senior Grant Gensler will be continuing his academics and his football career at the University of Wisconsin-Eau Claire next year. Gensler finished his high school career as a two-time IHSFCA All-State honoree.

Gensler commits to play football at UW-Eau Claire

BY RUSSELL HODGES
SPORTS EDITOR

ROCHELLE—Grant Gensler concluded his high school football career at Rochelle as one of the top players in the state, totaling over 2,000 all-purpose yards during his senior season. A three-time All-Conference and two-time IHSFCA All-State honoree, Gensler has committed to continuing his academics and his football career at the University of Wisconsin-Eau Claire.

"I chose Eau Claire because I felt it was a good fit," Gensler said. "The campus is really nice and their football coaches really care about every recruit they have. At the collegiate level, I'm looking forward to having another opportunity to showcase my skills. Football is a huge part of my life so being given the opportunity to continue to play after high school is super exciting."

Gensler earned All-State recognition during his senior season, when he rushed for 1,504 yards and 25 touchdowns at tailback while adding 37 total tackles, two interceptions and one fumble recovery at free safety. A three-year varsity starter for the Hubs, Gensler took over at free safety during his sophomore season, when he played alongside his older brother Garrett, a Northern Illinois University recruit and Rochelle's all-time career record holder for rushing touchdowns.

"Playing for the Rochelle football team and coach [Kyle] Kissack taught me to work hard and trust the process, two things that I think will translate really well to playing football at UW-Eau Claire," Gensler said. "Next year, I will be playing running back. I'm looking forward to learning a new offense. Hopefully,

I can give the guys a good look in practices and play in games."

Gensler took on a bigger role offensively as his career progressed, becoming a two-way starter during his junior season, when he took home an All-State Honorable Mention after rushing for 1,085 yards and 12 touchdowns. Gensler, who recorded 39 total tackles and one interception as a junior, helped the Hubs reach the postseason in each of his three years with the varsity team.

"My biggest strength as a player is having a natural instinct for the game," Gensler said. "I feel I am very coachable and I try to take in all information to make me a better player. One of my goals for next year is to get faster and stronger so I can be better while playing in college."

Gensler, who intends to study business at Eau Claire, led Rochelle to a 10-2 record, the team's first 10-win season since 2003, and a trip to the IHSA state quarterfinals in 2024. In addition to an outstanding football career, Gensler also shined on the wrestling mat, where he was an IHSA state qualifier three times and a fifth-place IHSA state medalist this season. Gensler compiled a 49-7 record during his senior wrestling season, setting a school record for wins in a season with teammate Kaiden Morris, who will be wrestling and studying physical education at Eau Claire.

"Grant has been a foundational piece for our program's success over the last few years," RTHS head football coach Kyle Kissack said. "Grant was always steady and reliable and delivering on a consistent basis. Guys like Grant sustain our athletic programs at RTHS. I had a blast working with him and I am excited for the next step in his journey."

"My biggest strength as a player is having a natural instinct for the game. I feel I am very coachable and I try to take in all information to make me a better player."

Grant Gensler

EVE Lassiter HOME AUTO - LIFE BUSINESS
Go Hubs!
Lassiter Agency
1220 Currency Ct., Rochelle, IL
815-787-8280
elassiter@farmersagent.com
License IL, WI, & MI Insurance

CERTIFIED PUBLIC NOTARY
MORTGAGE LOAN ORIGINATOR
NMLS: 2516202

JOHNSON TRACTOR
SALES • PARTS • SERVICE

200 Steward Road
800.262.1680
www.johnsontractor.com

Busy Schedule? Leave the cooking to us.

- Large menu of foods
- Rochelle's famous chicken by the dinner or bucket
- Hand dipped ice cream (16 flavors)

COUNTRY SCHOOL DRIVE-IN RESTAURANT
251 N. ROCHELLE • 562-6039

CENTRAL ILLINOIS LOAN
Loans For All Your Needs
Auto • Home Improvement • Vacation
Jami Rees • Tonia Holland

815★561★4035!

310 Eagle Drive, Rochelle
All loans subject to our normal credit requirements and policies.

Bruns Construction, Inc.
FREE ESTIMATES!
Tim & Roger Bruns, Owners
Established 1997

- Residential & Commercial Concrete Additions

815-561-0099
Free Estimates • Fully Insured
www.brunsconstructioninc.com

"Proudly Serving the Rochelle Area Since 1945"

Berg-Johnson Electric
FREE ESTIMATES
Licensed and Insured

Residential • Commercial • Industrial

24 Hour Emergency Service
815-562-4937
500 Cleveland Avenue

ANDERSON PLUMBING & HEATING, INC.

Plumbing, Heating & Cooling
Water Heaters, Water Softeners,
Drinking Water Systems, Iron Filters,
Sewer Rodding & Jetting & More!

Since 1976

621 First Ave., Rochelle
(815) 562-8784

Alfano's Pizzeria and Italian Restaurant
Taste The TRADITION Taste The DIFFERENCE

- Best Pizza • Pasta
- Italian Restaurant
- Appetizer/small plate
- Family Restaurant • Local Business

Pizza • Pastas
Sandwiches • Salads and Lots More!

Dine-In • Carry Out • Home Delivery
1115 TURKINGTON TERRACE, ROCHELLE
815-562-3312

MEYERS FURNITURE & FLOORING

209 Powers Road, Hwy 251 N
Rochelle, IL 61068
(815) 562-8792
www.meyersfurniture.com

MORTON BUILDINGS
If you can dream it, we can build it.

Rochelle Sales Office • Hwy. 251 N. • 877-613-3050

QUEEN'S TRUCKING & CONSTRUCTION, INC.

Small or Big Construction Jobs, We Do Them All!

Queen's Trucking & Construction, Inc.
322 Errett Road, Rochelle
815-562-6064 | queens-trucking.com

Hiring Class A CDL Drivers

Rochelle Chiropractic Clinic
Dr. Chad M. Piller

227 E. Rt 38 • Rochelle, IL
815-562-8706
www.rochellechiropractic.com
Now Accepting New Patients!

Rochelle Community Hospital
Your Local Healthcare Resource.

900 N. 2nd Street, Rochelle
815-562-2181
www.rochellehospital.com

Local People Providing Local Service

Rochelle MUNICIPAL UTILITIES

Water • Waste Water
Electric • Communications

Phone: 815-562-4155 333 Lincoln Highway
Fax: 815-562-5861 Rochelle, IL

www.rmumet.net

Home & auto. Easy & affordable.

Call me for a quote today

State Farm
Huber Inc and Fin Svcs Inc
Shane Huber, Agent
221 E. Route 38
Rochelle, IL 61068-2303
Bus: 815-562-7011
shane@shanehuber.com
www.shanehuber.com

Stillman BANK
GO HUBS!

Earning Your Trust Since 1882
www.stillmanbank.com

Good luck to our local student athletes!

GO, HUBS!

SPORTS

RTHS Track & Field Tilton leads RTHS athletes at Illinois Top Times Indoor State Meet Hub senior places eighth in high jump, four RTHS athletes compete over the weekend

BY RUSSELL HODGES
SPORTS EDITOR

BLOOMINGTON — Jack Tilton brought home a state medal for the first time in his track and field career this past weekend, when the Rochelle Township High School senior finished eighth in Class 2A during the high jump competition at the 2025 Illinois Top Times Indoor State Meet.

Tilton cleared 1.87 meters (6 feet 1 ½ inches) and was the only RTHS track and field athlete to earn a medal at the indoor state meet this season. Tilton, who qualified for the indoor state meet with a personal best of 1.94 meters (6 feet 4 ¼ inches) during the Warrior Invitational in Sterling, was one of four RTHS student-athletes who qualified to compete at indoor state this season.

“It was a great experience and the atmosphere was awesome,” said Tilton. “It was nice to see a track that I will probably see in college... It was a very fun experience and it means a lot to win a medal because I’ve put a lot of work in

over these last four years. Knowing that I could’ve done better and I still won a medal is very encouraging for the rest of the season. I feel great knowing that I’m about to reach my peak and I think I have a few more inches in the tank. I’m excited to see what I can do.”

Tilton, who has three high jump victories under his belt already this season, will look to carry his momentum over to the outdoor season, where he said his goals include qualifying for the IHSA State Championship. Tilton was one of two boys representing RTHS at the indoor state meet. Junior Andrew Nuyen qualified in the pole vault, but did not record a height in the competition.

“I’d like to go to the outdoor state meet,” Tilton said. “I’d like to medal there and maybe give myself a chance to win it. I want to keep improving, stay confident and do everything I can.”

Seniors Erin Murphy and Dempsey Atkinson also competed at the indoor state meet, with Murphy taking ninth in the Class 2A shot put competition



Seniors Jack Tilton, Dempsey Atkinson and Erin Murphy (left to right) each represented the Rochelle Hub and Lady Hub track and field teams during the 2025 Illinois Top Times Indoor State Meet on Friday and Saturday. Not pictured is junior Andrew Nuyen.

and Atkinson finishing 16th in the Class 2A high jump competition. Murphy recorded a heave of 10.63 meters (34 feet 10 ½ inches), while Atkinson cleared 1.47 meters (4 feet 9 ¾ inches). The indoor state meet, which was held at the Shirk Center in Bloomington, was Rochelle’s final indoor meet of the season.

SOFTBALL: Lady Hubs record wins over Lexington-Ridgeview, Pearl City

From page 1

Senior Lauren Dyer and sophomore Emma Heller each went 2 for 5, with Dyer scoring two runs. Dyer pitched the first five innings, striking out five batters and allowing two earned runs.

Hampshire

Rochelle held a 1-0 advantage over the Whip-Purs after sophomore Jaclynn Lira delivered an RBI single to score freshman Mya Martinez in the top of the second inning. But the Hampshire offense exploded for 10 runs in the bottom of the second inning, where the Whip-Purs totaled four hits and capitalized on five Rochelle fielding errors to take a nine-run lead in the game.

The Lady Hubs responded with two runs in the top of the third inning to make the score 10-3. Senior Lauren Dyer lined an RBI single to center and sophomore Camryn Metzger brought Dyer home with an RBI groundout three batters later. Three singles and two hit batters resulted in three more runs for the Whip-Purs in the bottom of the third inning. Trailing 13-3, Rochelle earned a run back on an RBI groundout from junior Madigan Williams in the top of the fourth.

Hampshire’s Lily Sipel belted a solo shot to center to spark a four-run surge for the Whip-Purs in the bottom of the fourth inning, where three more hits and another Rochelle error put the Lady Hubs behind 17-4. Freshman

Mya Martinez ripped a double to spark a two-run rally in the top of the fifth inning, where freshman Cheyenne Somers and Lira each delivered RBI knocks, but the 11-run deficit ended the game in the fifth inning. Martinez went 2 for 2 and Lira went 3 for 3 to lead the Lady Hubs, who finished with seven hits.

Pearl City

The Lady Hubs started strong in their tournament finale against Pearl City, tallying three runs in the top of the first inning, where senior Lauren Dyer opened the scoring with an RBI single to left field and sophomore Camryn Metzger delivered a two-RBI single to center three batters later. The Wolves,

who earned one run back in the bottom of the first inning, took a 4-3 lead over Rochelle after Natalie Lotz pounded a three-run homer to left in the bottom of the third inning.

The Lady Hubs tied the game in the top of the fourth inning, scoring after sophomore Briel Metzger reached on a Pearl City fielding error. An error on Rochelle led to a run for the Wolves, who held a brief lead before the Lady Hubs broke the game open with five runs in the top of the fifth inning, where Dyer belted a solo homer to center that evened the score at 5-5. Four straight walks, including a bases-loaded walk to freshmen Cheyenne Somers, put Rochelle up 6-5.

Sophomore Jaclynn Lira

came through with a clutch at-bat for the Lady Hubs, lacing a two-RBI double into left field to keep the Rochelle offense rolling. Junior Madigan Williams capped off the five-run frame, sending an RBI single into left field to give the Lady Hubs a 9-5 advantage.

A two-run double for Anna Dampman and a run-scoring double from Kylie Campbell brought Pearl City back within one after five innings of softball. The Wolves were unable to slow down the Lady Hub bats, however, with freshman Audrina Rodriguez bashing an inside-the-park home run to spark a three-run frame for Rochelle in the top of the sixth. Sophomore Briel Metzger delivered a clutch at-bat, slapping a

run-scoring double to left field with two outs.

Leading 12-8, Rochelle shut the Pearl City offense down in the sixth inning before adding four more runs on offense in the top of the seventh inning. Freshman Mya Martinez drove home Dyer with an RBI groundout and Camryn Metzger followed with an RBI single to center in the next at-bat. Somers reached on an error and Lira smacked an RBI triple to give the Lady Hubs an eight-run lead. Pearl City scratched one run on a double in the bottom of the seventh inning.

Dyer went 3 for 5 with three runs and two RBIs, while Camryn Metzger and Jaclynn Lira combined for four hits and six RBIs. Dyer pitched all seven innings and struck out five batters.

COMMUNITY BOARD

Need to get the word out about a product or service you offer? Give us a call at 815-561-2153. We can reach over 9,000 homes!

Concrete

Bruns
Construction, Inc.

- Residential & Commercial Concrete
- Additions

FREE ESTIMATES!

Tim & Roger Bruns, Owners
Established 1997

815-561-0099
Free Estimates • Fully Insured
www.brunsconstructioninc.com

Concrete

RUCKER
CONCRETE

779-771-2315

FREE ESTIMATES!
Call Mark

Gutters, Roofing & Siding

THEISEN ROOFING

Free Estimates!

ROOFING
SIDING
GUTTERS

CONTACT US
815-758-8998
THEISENROOFING@COMCAST.NET
Family owned & operated for over 50 years

Heating & Air Conditioning

HULL
HVAC & Household Services

Furnaces - Air Conditioners - Boilers
Duct Cleaning - Water Heaters

Precision Furnace Clean & Check
\$85.00
Includes FREE carbon monoxide test

24/7
Emergency Service
815-561-6551
www.HullHVAC.com

Plumbing, Heating & Cooling

ANDERSON
PLUMBING & HEATING, INC.

Plumbing, Heating & Cooling
Water Heaters, Water Softeners,
Drinking Water Systems, Iron Filters,
Sewer Rodding & Jetting & More!

Since 1976

621 First Ave., Rochelle
(815) 562-8784

Storage Sheds

Rocky Ridge
Structures

FREE Sales Rep. Evaluation At Your Site

We Deliver! From Our Lot To Your Site

We Specialize in Portable/Quality Built Storage Sheds

- Stock & Custom Design
- Many Options Available
- Competitive Pricing
- Site Preparation Available

See Displays at 3500 S. Chana Rd. Chana IL 61015
Call Norm or Albert for Free Literature packet
779.861.3542

Advertise Here

What Service Do You Offer?

815-561-2153

Call Christel to be included on our Service Directory.

SPORTS

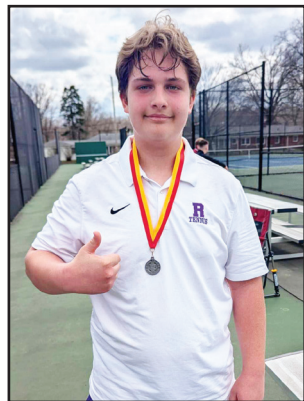
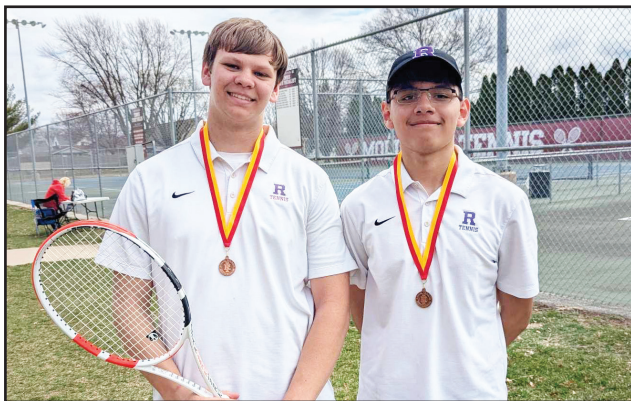
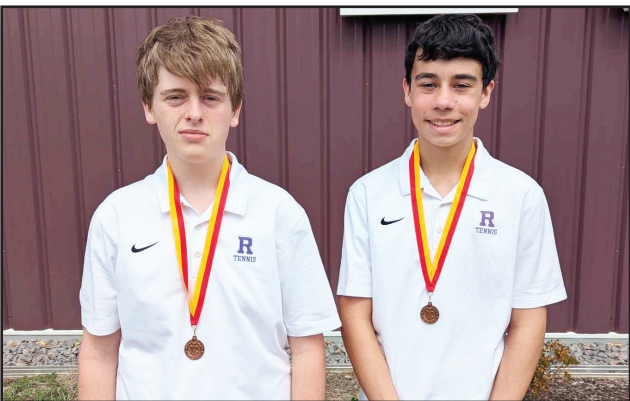
RTHS Girls Soccer

(PHOTOS BY MARCY DELILLE)



Rochelle Lady Hubs record shutout win over Sterling in nonconference action Thursday evening

The Rochelle Lady Hub varsity soccer team scored a 4-0 win over Sterling in nonconference action on Thursday evening. Senior midfielder Makayla Lara scored all four goals for the Lady Hubs (2-2, 0-0 Interstate 8), while sophomore goalkeeper Yana Bartkiv recorded four saves in the shutout win. Above, senior Emma Kennay (left) battles for possession and freshman Morgan DeLille (right) dribbles the ball up the field. Below, freshman Paige Harris (left) holds off a Sterling defender and senior Yasmin Bahena (right) attacks the ball.



(COURTESY PHOTOS)

The Rochelle Hub tennis team finished with six medalists during the Rock Island Invitational on Saturday. Junior Caleb Mortensen and freshman David Eckardt (far left) medaled in fifth at No. 1 doubles, while junior Parker Slattengren and sophomore Amor Lara (middle left) medaled in fifth at No. 2 doubles. Juniors Philip Winters (middle right) and Mark Green (far right) medaled in second and fifth at No. 2 singles and No. 1 singles, respectively.

TENNIS: Rochelle netters tie for second at Rock Island Invitational

From page 1 Junior Parker Slattengren and sophomore Amor Lara bounced back from a first-round loss against Moline's Jackson Smith and Henry Pottebaum, winning consecutive matches to finish in fifth place. The RTHS duo outlasted Harlem's Riley Carlson and Chase Liney 3-6, 6-4, 10-8 before clinching fifth place with a 6-3, 6-3 victory against Galesburg's Vincent Ikrami and Andrew Kennedy. Rochelle will face Streator on the road Thursday at 4:30 p.m.

Antiques & Collectibles

Belvidere Collectible Coins

www.goldsilverjewelrycoin.com

We Pay Highest Prices For Gold, Silver, Platinum, Jewelry, Coins, Flatware, Dental & Bullion

10% More For Jewelry With This Ad!

Hours: Mon.-Fri. 9:30am-5:00pm • Sat. 10:30am-2pm

~ Call For Directions ~ (815) 547-7111

880 Belvidere Road • Belvidere, IL

THIS & THAT

Collectibles

520 E. Lincoln Hwy., DeKalb, IL

815.909.1069

Open 7 days a week

Antiques, MCM, Primitives & Vintage
Dixie Belle Paint Company Elite Retailer
Redesign with Prima Retailer

SYCAMORE ANTIQUES

JAMES AND ANN TUCKER,
PROPRIETORS

321 WEST STATE STREET
SYCAMORE, ILLINOIS

OPEN
WEDNESDAY THROUGH SATURDAY
10:00 AM TO 5:30 PM, 7:00 PM FRIDAY
815-895-4720

Be included in the Antiques & Collectibles spotlight!

Call:

Christel Ackland 815-561-2153

Chris Grimm 815-561-2125

PLAY BALL!

2025 Chicago Cubs Schedule

Wed, Apr 2	@	Athletics	2:35 PM CDT	Tue, Jul 1	vs	Cleveland	7:05 PM CDT
Fri, Apr 4	vs	San Diego	1:20 PM CDT	Wed, Jul 2	vs	Cleveland	7:05 PM CDT
Sat, Apr 5	vs	San Diego	1:20 PM CDT	Thu, Jul 3	vs	Cleveland	7:05 PM CDT
Sun, Apr 6	vs	San Diego	1:20 PM CDT	Fri, Jul 4	vs	St. Louis	1:20 PM CDT
Mon, Apr 7	vs	Texas	6:40 PM CDT	Sat, Jul 5	vs	St. Louis	1:20 PM CDT
Tue, Apr 8	vs	Texas	6:40 PM CDT	Sun, Jul 6	vs	St. Louis	1:20 PM CDT
Wed, Apr 9	vs	Texas	1:20 PM CDT	Tue, Jul 8	@	Minnesota	6:40 PM CDT
Fri, Apr 11	@	LA Dodgers	9:10 PM CDT	Wed, Jul 9	@	Minnesota	6:40 PM CDT
Sat, Apr 12	@	LA Dodgers	8:10 PM CDT	Thu, Jul 10	@	Minnesota	12:10 PM CDT
Sun, Apr 13	@	LA Dodgers	6:10 PM CDT	Fri, Jul 11	@	NY Yankees	6:05 PM CDT
Mon, Apr 14	@	San Diego	8:40 PM CDT	Sat, Jul 12	@	NY Yankees	12:05 PM CDT
Tue, Apr 15	@	San Diego	8:40 PM CDT	Sun, Jul 13	@	NY Yankees	12:35 PM CDT
Wed, Apr 16	@	San Diego	3:10 PM CDT	Fri, Jul 18	vs	Boston	1:20 PM CDT
Fri, Apr 18	vs	Arizona	1:20 PM CDT	Sat, Jul 19	vs	Boston	6:15 PM CDT
Sat, Apr 19	vs	Arizona	1:20 PM CDT	Sun, Jul 20	vs	Boston	1:20 PM CDT
Sun, Apr 20	vs	Arizona	1:20 PM CDT	Mon, Jul 21	vs	Kansas City	7:05 PM CDT
Tue, Apr 22	vs	LA Dodgers	6:40 PM CDT	Tue, Jul 22	vs	Kansas City	7:05 PM CDT
Wed, Apr 23	vs	LA Dodgers	6:00 PM CDT	Wed, Jul 23	vs	Kansas City	1:20 PM CDT
Fri, Apr 25	vs	Philadelphia	1:20 PM CDT	Fri, Jul 25	@	White Sox	6:40 PM CDT
Sat, Apr 26	vs	Philadelphia	3:05 PM CDT	Sat, Jul 26	@	White Sox	6:10 PM CDT
Sun, Apr 27	vs	Philadelphia	6:10 PM CDT	Sun, Jul 27	@	White Sox	1:10 PM CDT
Tue, Apr 29	@	Pittsburgh	5:40 PM CDT	Mon, Jul 28	@	Milwaukee	6:40 PM CDT
Wed, Apr 30	@	Pittsburgh	5:40 PM CDT	Tue, Jul 29	@	Milwaukee	6:40 PM CDT
Thu, May 1	@	Pittsburgh	11:35 AM CDT	Wed, Jul 30	@	Milwaukee	1:10 PM CDT
Fri, May 2	@	Milwaukee	7:10 PM CDT	Fri, Aug 1	vs	Baltimore	1:20 PM CDT
Sat, May 3	@	Milwaukee	6:10 PM CDT	Sat, Aug 2	vs	Baltimore	1:20 PM CDT
Sun, May 4	@	Milwaukee	1:10 PM CDT	Sun, Aug 3	vs	Baltimore	1:20 PM CDT
Mon, May 5	vs	SF Giants	6:40 PM CDT	Mon, Aug 4	vs	Cincinnati	7:05 PM CDT
Tue, May 6	vs	SF Giants	6:40 PM CDT	Tue, Aug 5	vs	Cincinnati	7:05 PM CDT
Wed, May 7	vs	SF Giants	1:20 PM CDT	Wed, Aug 6	vs	Cincinnati	1:20 PM CDT
Fri, May 9	@	NY Mets	6:10 PM CDT	Fri, Aug 8	@	St. Louis	7:15 PM CDT
Sat, May 10	@	NY Mets	6:15 PM CDT	Sat, Aug 9	@	St. Louis	6:15 PM CDT
Sun, May 11	@	NY Mets	10:35 AM CDT	Sun, Aug 10	@	St. Louis	1:15 PM CDT
Mon, May 12	vs	Miami	6:40 PM CDT	Tue, Aug 12	@	Toronto	6:07 PM CDT
Tue, May 13	vs	Miami	6:40 PM CDT	Wed, Aug 13	@	Toronto	6:07 PM CDT
Wed, May 14	vs	Miami	6:40 PM CDT	Thu, Aug 14	@	Toronto	2:07 PM CDT
Fri, May 16	vs	White Sox	1:20 PM CDT	Fri, Aug 15	vs	Pittsburgh	1:20 PM CDT
Sat, May 17	vs	White Sox	1:20 PM CDT	Sat, Aug 16	vs	Pittsburgh	1:20 PM CDT
Sun, May 18	vs	White Sox	1:20 PM CDT	Sun, Aug 17	vs	Pittsburgh	1:20 PM CDT
Mon, May 19	@	Miami	5:40 PM CDT	Mon, Aug 18	vs	Milwaukee	7:05 PM CDT
Tue, May 20	@	Miami	5:40 PM CDT	Tue, Aug 19	vs	Milwaukee	7:05 PM CDT
Wed, May 21	@	Miami	12:10 PM CDT	Wed, Aug 20	vs	Milwaukee	7:05 PM CDT
Fri, May 23	@	Cincinnati	5:40 PM CDT	Thu, Aug 21	vs	Milwaukee	1:20 PM CDT
Sat, May 24	@	Cincinnati	3:10 PM CDT	Fri, Aug 22	@	LA Angels	8:38 PM CDT
Sun, May 25	@	Cincinnati	12:40 PM CDT	Sat, Aug 23	@	LA Angels	8:38 PM CDT
Mon, May 26	vs	Colorado	1:20 PM CDT	Sun, Aug 24	@	LA Angels	3:07 PM CDT
Tue, May 27	vs	Colorado	7:05 PM CDT	Tue, Aug 26	@	SF Giants	8:45 PM CDT
Wed, May 28	vs	Colorado	7:05 PM CDT	Wed, Aug 27	@	SF Giants	8:45 PM CDT
Fri, May 30	vs	Cincinnati	1:20 PM CDT	Thu, Aug 28	@	SF Giants	2:45 PM CDT
Sat, May 31	vs	Cincinnati	1:20 PM CDT	Fri, Aug 29	@	Colorado	7:40 PM CDT
Sun, Jun 1	vs	Cincinnati	1:20 PM CDT	Sat, Aug 30	@	Colorado	7:10 PM CDT
Tue, Jun 3	@	Washington	5:45 PM CDT	Sun, Aug 31	@	Colorado	2:10 PM CDT
Wed, Jun 4	@	Washington	5:45 PM CDT	Mon, Sep 1	vs	Atlanta	1:20 PM CDT
Thu, Jun 5	@	Washington	5:45 PM CDT	Tue, Sep 2	vs	Atlanta	6:40 PM CDT
Fri, Jun 6	@	Detroit	6:10 PM CDT	Wed, Sep 3	vs	Atlanta	6:40 PM CDT
Sat, Jun 7	@	Detroit	12:10 PM CDT	Fri, Sep 5	vs	Washington	1:20 PM CDT
Sun, Jun 8	@	Detroit	12:40 PM CDT	Sat, Sep 6	vs	Washington	1:20 PM CDT
Mon, Jun 9	@	Philadelphia	5:45 PM CDT	Sun, Sep 7	vs	Washington	1:20 PM CDT
Tue, Jun 10	@	Philadelphia	5:45 PM CDT	Mon, Sep 8	@	Atlanta	6:15 PM CDT
Wed, Jun 11	@	Philadelphia	12:05 PM CDT	Tue, Sep 9	@	Atlanta	6:15 PM CDT
Thu, Jun 12	vs	Pittsburgh	7:05 PM CDT	Wed, Sep 10	@	Atlanta	6:15 PM CDT
Fri, Jun 13	vs	Pittsburgh	1:20 PM CDT	Fri, Sep 12	vs	Tampa Bay	1:20 PM CDT
Sat, Jun 14	vs	Pittsburgh	1:20 PM CDT	Sat, Sep 13	vs	Tampa Bay	1:20 PM CDT
Sun, Jun 15	vs	Pittsburgh	1:20 PM CDT	Sun, Sep 14	vs	Tampa Bay	1:20 PM CDT
Tue, Jun 17	vs	Milwaukee	7:05 PM CDT	Mon, Sep 15	@	Pittsburgh	5:40 PM CDT
Wed, Jun 18	vs	Milwaukee	7:05 PM CDT	Tue, Sep 16	@	Pittsburgh	5:40 PM CDT
Thu, Jun 19	vs	Milwaukee	1:20 PM CDT	Wed, Sep 17	@	Pittsburgh	11:35 AM CDT
Fri, Jun 20	vs	Seattle	1:20 PM CDT	Thu, Sep 18	@	Cincinnati	6:15 PM CDT
Sat, Jun 21	vs	Seattle	1:20 PM CDT	Fri, Sep 19	@	Cincinnati	5:40 PM CDT
Sun, Jun 22	vs	Seattle	1:20 PM CDT	Sat, Sep 20	@	Cincinnati	5:40 PM CDT
Mon, Jun 23	@	St. Louis	6:45 PM CDT	Sun, Sep 21	@	Cincinnati	12:40 PM CDT
Tue, Jun 24	@	St. Louis	6:45 PM CDT	Tue, Sep 23	vs	NY Mets	6:40 PM CDT
Wed, Jun 25	@	St. Louis	6:45 PM CDT	Wed, Sep 24	vs	NY Mets	6:40 PM CDT
Thu, Jun 26	@	St. Louis	1:15 PM CDT	Thu, Sep 25	vs	NY Mets	6:40 PM CDT
Fri, Jun 27	@	Houston	7:10 PM CDT	Fri, Sep 26	vs	St. Louis	1:20 PM CDT
Sat, Jun 28	@	Houston	6:15 PM CDT	Sat, Sep 27	vs	St. Louis	1:20 PM CDT
Sun, Jun 29	@	Houston	1:10 PM CDT	Sun, Sep 28	vs	St. Louis	2:20 PM CDT

Be Ready for
Game Day
with Hormel
Gatherings
Party Trays!



Don't forget the
HORMEL® BLACK
LABEL® BACON FOR
YOUR BURGERS!



Rochelle Foods

1001 S. Main Street | Rochelle
815-562-4141 | rochellefoods.com

PLAY BALL!

2025 RTHS Baseball Schedules

Varsity

Date	Opponent	H/A	Time
March 26	Boylan	Home	4:30 p.m.
April 1	Belv. North	Away	4:30 p.m.
April 2	Freeport	Home	4:30 p.m.
April 4	Belvidere	Away	4:30 p.m.
April 5	Princeton (DH)	Home	10/12 p.m.
April 8	Marmion	Home	4:30 p.m.
April 10	Auburn	Home	4:30 p.m.
April 12	Streator (DH)	Away	10/12 p.m.
April 14	Sycamore	Away	4:30 p.m.
April 16	Sycamore	Home	4:30 p.m.
April 17	Sycamore	Away	4:30 p.m.
April 19	Guilford	Away	10 a.m.
April 21	Kaneland	Home	4:30 p.m.
April 23	Kaneland	Away	4:30 p.m.
April 24	Kaneland	Home	4:30 p.m.
April 25	Sterling (DH)	Away	4/6 p.m.
April 28	Morris	Away	4:30 p.m.
April 30	Morris	Home	4:30 p.m.
May 1	Morris	Away	4:30 p.m.
May 2	Forreston	Away	4:30 p.m.
May 5	LaSalle-Peru	Home	4 p.m.
May 6	LaSalle-Peru	Home	4:30 p.m.
May 7	LaSalle-Peru	Away	4:30 p.m.
May 9	Marengo	Away	4:30 p.m.
May 12	Ottawa	Away	4:30 p.m.
May 14	Ottawa	Home	4:30 p.m.
May 15	Ottawa	Away	4:30 p.m.
May 17	Dixon (DH)	Home	10/12 p.m.
May 22	Harvard	Away	4:30 p.m.
May 23	DeKalb	Home	4:30 p.m.

Sophomore

Date	Opponent	H/A	Time
March 26	Boylan	Away	4:30 p.m.
March 29	Marquette (DH)	Away	11/12:30 p.
April 1	Belv. North	Home	4:30 p.m.
April 4	Belvidere	Away	4:30 p.m.
April 14	Sycamore	Home	4:30 p.m.
April 16	Sycamore	Away	4:30 p.m.
April 17	Sycamore	Home	4:30 p.m.
April 21	Kaneland	Away	4:30 p.m.
April 23	Kaneland	Home	4:30 p.m.
April 24	Kaneland	Away	4:30 p.m.
April 25	Sterling	Home	4:30 p.m.
April 28	Morris	Home	4:30 p.m.
April 30	Morris	Away	4:30 p.m.
May 1	Morris	Home	4:30 p.m.
May 5	LaSalle-Peru	Away	4:30 p.m.
May 6	LaSalle-Peru	Away	4:30 p.m.
May 7	LaSalle-Peru	Home	4:30 p.m.
May 9	Marengo	Away	4:30 p.m.
May 12	Ottawa	Home	4:30 p.m.
May 14	Ottawa	Away	4:30 p.m.
May 15	Ottawa	Home	4:30 p.m.
May 22	Harvard	Home	4:30 p.m.

Junior Varsity

Date	Opponent	H/A	Time
April 2	Marmion	Home	4:30 p.m.
April 10	Auburn	Home	4:30 p.m.
April 12	Streator (DH)	Home	10/12 p.m.
April 19	Guilford	Away	12 p.m.
May 2	Forreston	Away	4:30 p.m.

Fresh/Soph

Date	Opponent	H/A	Time
April 2	Marmion	Away	4:30 p.m.
April 5	Princeton (DH)	Away	10/12 p.m.
April 8	Byron	Away	4:30 p.m.
May 17	Dixon (DH)	Away	10/12 p.m.

Freshman

Date	Opponent	H/A	Time
March 26	Boylan	Away	4:30 p.m.
April 1	Belv. North	Home	4:30 p.m.
April 4	Belvidere	Home	4:30 p.m.
April 5	Byron Jamboree	Away	9 a.m.
April 12	Kingdom (DH)	Home	10/12 p.m.
April 14	Sycamore	Home	4:30 p.m.
April 16	Sycamore	Away	4:30 p.m.
April 17	Sycamore	Home	4:30 p.m.
April 21	Kaneland	Away	4:30 p.m.
April 23	Kaneland	Home	4:30 p.m.
April 24	Kaneland	Away	4:30 p.m.
April 28	Morris	Home	4:30 p.m.
April 30	Morris	Away	4:30 p.m.
May 1	Morris	Home	4:30 p.m.
May 5	LaSalle-Peru	Away	4:30 p.m.
May 6	LaSalle-Peru	Away	4:30 p.m.
May 7	LaSalle-Peru	Home	4:30 p.m.
May 10	Dakota	Away	10 a.m.
May 12	Ottawa	Home	4:30 p.m.
May 14	Ottawa	Away	4:30 p.m.
May 15	Ottawa	Home	4:30 p.m.



**Advanced Technology,
Personalized Care,
Close to**



Home

No Place Like It

Rochelle Community Hospital Services:

- Cardiac Rehabilitation
- Convenient Care
- Imaging and Radiology

- Emergency Services
- Healthwork Fitness
- Home Health Services
- Infusion Services

- Laboratory
- Occupational Health
- XCEL Orthopedics
- Physical Therapy & Rehabilitation

- Pulmonary Rehabilitation & Respiratory Therapy
- Stroke Care
- Swing Bed Program

rochellehospital.com

900 N Second St, Rochelle, IL

815-562-2181

PLAY BALL!

2025 RTHS Softball Schedules

Varsity

Date	Opponent	H/A	Time
March 25	Belv. North	Home	4:30 p.m.
March 28-29	Jacksonville Spring Break Tourney		
March 31	Guilford	Home	4:30 p.m.
April 1	Stillman Valley	Home	4:30 p.m.
April 3	Mendota	Away	4:30 p.m.
April 4	Belvidere	Away	4:30 p.m.
April 7	Freeport	Away	4:30 p.m.
April 8	LaSalle-Peru	Home	4:30 p.m.
April 11	DeKalb	Away	4:30 p.m.
April 12	Boylan	Home	10 a.m.
April 14	Sycamore	Home	4:30 p.m.
April 16	Kaneland	Away	4:30 p.m.
April 17	Indian Creek	Away	4:30 p.m.
April 18	Somonauk	Home	4:30 p.m.
April 21	Morris	Away	4:30 p.m.
April 22	South Beloit	Home	4:30 p.m.
April 25	Rock. Lutheran	Home	4:30 p.m.
April 28	Ottawa	Home	4:30 p.m.
April 30	Sycamore	Away	4:30 p.m.
May 2	Oregon	Away	4:30 p.m.
May 5	Kaneland	Home	4 p.m.
May 7	Morris	Home	4:30 p.m.
May 9	Harv. Christian	Home	4:30 p.m.
May 10	Genoa-K (DH)	Home	10/12 p.m.
May 12	LaSalle-Peru	Away	4:30 p.m.
May 13	Forreston	Away	4:30 p.m.
May 14	Ottawa	Away	4:30 p.m.
May 17	AFC (DH)	Away	10/12 p.m.
May 20	Dixon	Away	4:30 p.m.
May 22	Plano	Away	4:30 p.m.

Junior Varsity

Date	Opponent	H/A	Time
March 25	Belv. North	Home	4:30 p.m.
March 31	Guilford	Home	4:30 p.m.
April 1	Stillman Valley	Home	4:30 p.m.
April 3	Mendota	Away	6 p.m.
April 4	Belvidere	Away	5:30 p.m.
April 7	Freeport	Away	4:30 p.m.
April 8	LaSalle-Peru	Home	4:30 p.m.
April 11	DeKalb	Away	4:30 p.m.
April 14	Sycamore	Home	4:30 p.m.
April 16	Kaneland	Away	4:30 p.m.
April 21	Morris	Away	4:30 p.m.
April 25	St. Bede	Home	4:30 p.m.
April 28	Ottawa	Home	4:30 p.m.
April 30	Sycamore	Away	4:30 p.m.
May 2	Oregon	Away	6 p.m.
May 5	Kaneland	Home	4:30 p.m.
May 7	Morris	Home	4:30 p.m.
May 9	Oregon	Home	4:30 p.m.
May 10	Genoa-K (DH)	Home	10/12 p.m.
May 12	LaSalle-Peru	Away	4:30 p.m.
May 13	Forreston	Away	6 p.m.
May 14	Ottawa	Away	4:30 p.m.
May 20	Dixon	Away	4:30 p.m.
May 22	Plano	Away	4:30 p.m.



**Advanced Technology,
Personalized Care,
Close to**



Home

No Place Like It

Rochelle Community Hospital Services:

- Cardiac Rehabilitation
- Convenient Care
- Imaging and Radiology

- Emergency Services
- Healthwork Fitness
- Home Health Services
- Infusion Services

- Laboratory
- Occupational Health
- XCEL Orthopedics
- Physical Therapy & Rehabilitation

- Pulmonary Rehabilitation & Respiratory Therapy
- Stroke Care
- Swing Bed Program

rochellehospital.com

900 N Second St, Rochelle, IL

815-562-2181

PLAY BALL!

2025 Chicago White Sox Schedule

Wed, Apr 2	vs	Minnesota	1:10 PM CDT	Tue, Jul 1	@	LA Dodgers	9:10 PM CDT
Fri, Apr 4	@	Detroit	12:10 PM CDT	Wed, Jul 2	@	LA Dodgers	9:10 PM CDT
Sat, Apr 5	@	Detroit	12:10 PM CDT	Thu, Jul 3	@	LA Dodgers	9:10 PM CDT
Sun, Apr 6	@	Detroit	12:40 PM CDT	Fri, Jul 4	@	Colorado	7:10 PM CDT
Tue, Apr 8	@	Cleveland	3:10 PM CDT	Sat, Jul 5	@	Colorado	8:10 PM CDT
Wed, Apr 9	@	Cleveland	5:10 PM CDT	Sun, Jul 6	@	Colorado	2:10 PM CDT
Thu, Apr 10	@	Cleveland	12:10 PM CDT	Mon, Jul 7	vs	Toronto	6:40 PM CDT
Fri, Apr 11	vs	Boston	6:40 PM CDT	Tue, Jul 8	vs	Toronto	6:40 PM CDT
Sat, Apr 12	vs	Boston	3:10 PM CDT	Wed, Jul 9	vs	Toronto	1:10 PM CDT
Sun, Apr 13	vs	Boston	1:10 PM CDT	Thu, Jul 10	vs	Cleveland	6:40 PM CDT
Tue, Apr 15	vs	Athletics	6:40 PM CDT	Fri, Jul 11	vs	Cleveland	7:10 PM CDT
Wed, Apr 16	vs	Athletics	6:40 PM CDT	Sat, Jul 12	vs	Cleveland	3:10 PM CDT
Thu, Apr 17	vs	Athletics	1:10 PM CDT	Sun, Jul 13	vs	Cleveland	1:10 PM CDT
Fri, Apr 18	@	Boston	6:10 PM CDT	Fri, Jul 18	@	Pittsburgh	5:40 PM CDT
Sat, Apr 19	@	Boston	3:10 PM CDT	Sat, Jul 19	@	Pittsburgh	5:40 PM CDT
Sun, Apr 20	@	Boston	12:35 PM CDT	Sun, Jul 20	@	Pittsburgh	12:35 PM CDT
Mon, Apr 21	@	Boston	10:10 AM CDT	Mon, Jul 21	@	Tampa Bay	6:35 PM CDT
Tue, Apr 22	@	Minnesota	6:40 PM CDT	Tue, Jul 22	@	Tampa Bay	6:35 PM CDT
Wed, Apr 23	@	Minnesota	6:40 PM CDT	Wed, Jul 23	@	Tampa Bay	6:35 PM CDT
Thu, Apr 24	@	Minnesota	12:10 PM CDT	Fri, Jul 25	vs	Chi Cubs	6:40 PM CDT
Fri, Apr 25	@	Athletics	9:05 PM CDT	Sat, Jul 26	vs	Chi Cubs	6:10 PM CDT
Sat, Apr 26	@	Athletics	3:05 PM CDT	Sun, Jul 27	vs	Chi Cubs	1:10 PM CDT
Sun, Apr 27	@	Athletics	3:05 PM CDT	Mon, Jul 28	vs	Philadelphia	6:40 PM CDT
Tue, Apr 29	vs	Milwaukee	6:40 PM CDT	Tue, Jul 29	vs	Philadelphia	6:40 PM CDT
Wed, Apr 30	vs	Milwaukee	6:40 PM CDT	Wed, Jul 30	vs	Philadelphia	1:10 PM CDT
Thu, May 1	vs	Milwaukee	1:10 PM CDT	Fri, Aug 1	@	LA Angels	8:38 PM CDT
Fri, May 2	vs	Houston	6:40 PM CDT	Sat, Aug 2	@	LA Angels	9:07 PM CDT
Sat, May 3	vs	Houston	1:10 PM CDT	Sun, Aug 3	@	LA Angels	3:07 PM CDT
Sun, May 4	vs	Houston	1:10 PM CDT	Tue, Aug 5	@	Seattle	8:40 PM CDT
Mon, May 5	@	Kansas City	6:40 PM CDT	Wed, Aug 6	@	Seattle	8:40 PM CDT
Tue, May 6	@	Kansas City	6:40 PM CDT	Thu, Aug 7	@	Seattle	3:10 PM CDT
Wed, May 7	@	Kansas City	6:40 PM CDT	Fri, Aug 8	vs	Cleveland	6:40 PM CDT
Thu, May 8	@	Kansas City	1:10 PM CDT	Sat, Aug 9	vs	Cleveland	6:10 PM CDT
Fri, May 9	vs	Miami	6:40 PM CDT	Sun, Aug 10	vs	Cleveland	1:10 PM CDT
Sat, May 10	vs	Miami	6:10 PM CDT	Mon, Aug 11	vs	Detroit	6:40 PM CDT
Sun, May 11	vs	Miami	1:10 PM CDT	Tue, Aug 12	vs	Detroit	6:40 PM CDT
Tue, May 13	@	Cincinnati	5:40 PM CDT	Wed, Aug 13	vs	Detroit	1:10 PM CDT
Wed, May 14	@	Cincinnati	6:14 PM CDT	Fri, Aug 15	@	Kansas City	7:10 PM CDT
Thu, May 15	@	Cincinnati	11:40 AM CDT	Sat, Aug 16	@	Kansas City	6:10 PM CDT
Fri, May 16	@	Chi Cubs	1:20 PM CDT	Sun, Aug 17	@	Kansas City	1:10 PM CDT
Sat, May 17	@	Chi Cubs	1:20 PM CDT	Mon, Aug 18	@	Atlanta	6:15 PM CDT
Sun, May 18	@	Chi Cubs	1:20 PM CDT	Tue, Aug 19	@	Atlanta	6:15 PM CDT
Mon, May 19	vs	Seattle	6:40 PM CDT	Wed, Aug 20	@	Atlanta	6:15 PM CDT
Tue, May 20	vs	Seattle	6:40 PM CDT	Fri, Aug 22	vs	Minnesota	6:40 PM CDT
Wed, May 21	vs	Seattle	1:10 PM CDT	Sat, Aug 23	vs	Minnesota	6:10 PM CDT
Fri, May 23	vs	Texas	6:40 PM CDT	Sun, Aug 24	vs	Minnesota	1:10 PM CDT
Sat, May 24	vs	Texas	3:10 PM CDT	Mon, Aug 25	vs	Kansas City	6:40 PM CDT
Sun, May 25	vs	Texas	1:10 PM CDT	Tue, Aug 26	vs	Kansas City	6:40 PM CDT
Mon, May 26	@	NY Mets	3:10 PM CDT	Wed, Aug 27	vs	Kansas City	6:40 PM CDT
Tue, May 27	@	NY Mets	6:10 PM CDT	Thu, Aug 28	vs	NY Yankees	6:40 PM CDT
Wed, May 28	@	NY Mets	6:10 PM CDT	Fri, Aug 29	vs	NY Yankees	6:40 PM CDT
Fri, May 30	@	Baltimore	6:05 PM CDT	Sat, Aug 30	vs	NY Yankees	6:10 PM CDT
Sat, May 31	@	Baltimore	3:05 PM CDT	Sun, Aug 31	vs	NY Yankees	1:10 PM CDT
Sun, Jun 1	@	Baltimore	12:35 PM CDT	Mon, Sep 1	@	Minnesota	1:10 PM CDT
Mon, Jun 2	vs	Detroit	6:40 PM CDT	Tue, Sep 2	@	Minnesota	6:40 PM CDT
Tue, Jun 3	vs	Detroit	6:40 PM CDT	Wed, Sep 3	@	Minnesota	6:40 PM CDT
Wed, Jun 4	vs	Detroit	6:40 PM CDT	Thu, Sep 4	@	Minnesota	6:40 PM CDT
Thu, Jun 5	vs	Detroit	1:10 PM CDT	Fri, Sep 5	@	Detroit	5:40 PM CDT
Fri, Jun 6	vs	Kansas City	6:40 PM CDT	Sat, Sep 6	@	Detroit	5:10 PM CDT
Sat, Jun 7	vs	Kansas City	3:10 PM CDT	Sun, Sep 7	@	Detroit	12:40 PM CDT
Sun, Jun 8	vs	Kansas City	1:10 PM CDT	Tue, Sep 9	vs	Tampa Bay	6:40 PM CDT
Tue, Jun 10	@	Houston	7:10 PM CDT	Wed, Sep 10	vs	Tampa Bay	6:40 PM CDT
Wed, Jun 11	@	Houston	7:10 PM CDT	Thu, Sep 11	vs	Tampa Bay	1:10 PM CDT
Thu, Jun 12	@	Houston	7:10 PM CDT	Fri, Sep 12	@	Cleveland	6:10 PM CDT
Fri, Jun 13	@	Texas	7:05 PM CDT	Sat, Sep 13	@	Cleveland	5:10 PM CDT
Sat, Jun 14	@	Texas	3:05 PM CDT	Sun, Sep 14	@	Cleveland	12:40 PM CDT
Sun, Jun 15	@	Texas	1:35 PM CDT	Mon, Sep 15	vs	Baltimore	6:40 PM CDT
Tue, Jun 17	vs	St. Louis	6:40 PM CDT	Tue, Sep 16	vs	Baltimore	6:40 PM CDT
Wed, Jun 18	vs	St. Louis	6:40 PM CDT	Wed, Sep 17	vs	Baltimore	1:10 PM CDT
Thu, Jun 19	vs	St. Louis	1:10 PM CDT	Fri, Sep 19	vs	San Diego	6:40 PM CDT
Fri, Jun 20	@	Toronto	6:07 PM CDT	Sat, Sep 20	vs	San Diego	6:10 PM CDT
Sat, Jun 21	@	Toronto	2:07 PM CDT	Sun, Sep 21	vs	San Diego	1:10 PM CDT
Sun, Jun 22	@	Toronto	12:37 PM CDT	Tue, Sep 23	@	NY Yankees	6:05 PM CDT
Mon, Jun 23	vs	Arizona	6:40 PM CDT	Wed, Sep 24	@	NY Yankees	6:05 PM CDT
Tue, Jun 24	vs	Arizona	6:40 PM CDT	Thu, Sep 25	@	NY Yankees	6:05 PM CDT
Wed, Jun 25	vs	Arizona	1:10 PM CDT	Fri, Sep 26	@	Washington	5:45 PM CDT
Fri, Jun 27	vs	SF Giants	6:40 PM CDT	Sat, Sep 27	@	Washington	3:05 PM CDT
Sat, Jun 28	vs	SF Giants	3:10 PM CDT	Sun, Sep 28	@	Washington	2:05 PM CDT
Sun, Jun 29	vs	SF Giants	1:10 PM CDT				

Make it a HOMERUN with

Everything you need to watch the games & grill this season!

Steaks, Chops, Burgers, Brats & Seasonings

Voted Best Bloody Mary, Brats, Butcher Shop, Steak & Butchers

2022 VOTED BEST OF WINNER OGLE COUNTY

2023 VOTED BEST OF WINNER OGLE COUNTY

2024 VOTED BEST OF WINNER OGLE COUNTY

Catering & Party Trays

Grab 'N Go

at Benny's Corner Market

Rochelle • Davis Junction

LIKE AND FOLLOW US ON FACEBOOK

For Summer Specials

Tues-Fri - 9a-5:30p
Sat - 9a-4p

815-384-3620
headons2go.com

103 N. Main Street | Creston

Classified Marketplace

BUY OR SELL
Place A Classified Ad



ROCHELLE • HILLCREST • CRESTON • STEWARD • KINGS • ASHTON

101 LEGAL NOTICE

**NOTICE
INVITATION FOR BIDS**
Rochelle Municipal Utilities, Ogle County, Illinois will receive sealed bids for:
Ritchie to CHS Line Installation Contract until 2:00 p.m. local time on April 10, 2025, at the City of Rochelle, 420 N. 6th Street, Rochelle, IL 61068.
The plans and specifications are on file with the said City of Rochelle for viewing purposes only. Copies of the documents may be acquired from BHMG Engineers, Inc., 9735 Landmark Parkway Suite 110A, St. Louis, Missouri 63127, Consulting Engineers for the said Board. Please email Amy Wooldridge, AWooldridge@bhmg.com with request.
Bids shall be received for the aforementioned items.
A certified check or bank draft on a responsible, solvent bank, or a satisfactory bid bond executed by the bidder and an

acceptable surety company, payable to the City of Rochelle, John Bearrows, Mayor or Government Bonds or cash in the amount of not less than five percent (5%) of bid, shall be submitted with each bid.
The bid shall be marked to identify bid package contents, reference specification 3422 K003. The successful bidder will be required to:
• Register as a bidder for this project.
• Furnish **in duplicate** the following executed documents:
• Non-Collusion Affidavit
• Bid Form
• Bid Bond, Certified Check or Money Order
• And any other documents as required by the specifications.
No bid shall be withdrawn after the opening of bids without the consent of the Utility for a period of sixty (60) days after the scheduled time of closing bids.
The said City of Rochelle reserves the right to reject any or all bids and to waive any informalities in bidding, and to deter-

mine and accept the bid most advantageous to the Utility.
Date: March 14, 2025
City of Rochelle, Illinois
John Bearrows, Mayor
No. 0321
(March 19, 26 and April 2, 2025)

NOTICE
A Mini Storage, LLC, A storage facility located at 117 Quarry Road Rochelle, IL hereby announces that the possessions of the following lessees will be disposed of by means of auction on April 17th 2025, at 9:00 AM. Disposal of personal property shall conform to the terms of the certified notice previously mailed to the lessee. The contents of the units can be previewed online at www.bid13.com The preview and sale will take place at each individual unit listed below; in the order they appear.
Unit# 302 Mario M Maradiaga
159 Golfview DR, Glendale Heights IL 60139
Tots, Mattress Set, Bed Frame, Boxes, Printer, Stool, TV Stand, Bag,

Golf Sets
No. 0401
(April 2 and 9, 2025)

101 LEGAL NOTICE

This publication does not knowingly accept fraudulent or deceptive advertising. Readers are cautioned to thoroughly investigate all ads, especially those asking for money in advance.

105 BUSINESS OPPORTUNITIES

"This publication does not knowingly accept fraudulent or deceptive advertising. Readers are cautioned to thoroughly investigate all ads, especially those asking for money in advance."

113 FINANCIAL

NOTICE Advance Fee Loans or Credit Offers Companies that do business by phone can't ask you to pay for

credit before you get it. For more information, call toll-free 1-877-FTC-HELP. A public service message from your hometown newspaper and the Federal Trade Commission.

119 ANNOUNCEMENTS

"This publication does not knowingly accept fraudulent or deceptive advertising. Readers are cautioned to thoroughly investigate all ads, especially those asking for money in advance."

127 SERVICES AND REPAIRS

Furman's Lawn Care & Tree Service. 26 Years of Experience. Fully Insured. Weekly Mowing, Spring Clean Up & More. Call Jeremy 815-761-9619 (RNL04162025)

201 DOMESTIC/CHILD CARE

NO INDIVIDUAL, unless licensed or holding a

permit as a childcare facility, may cause to be published any advertisement soliciting a child care service. A childcare facility that is licensed or operating under a permit issued by the Illinois Department of Children and Family Services may publish advertisements of the services for which it is specifically licensed or issued a permit. Your Hometown Newspaper strongly urges any parent or guardian to verify the validity of the license of any facility before placing a child in its care.

301 ANTIQUES

ANTIQUES WANTED: I pay cash for antiques; furniture, glassware, pottery & crocks, tin & iron toys, sterling silver, decoys. If it's antique, I'm interested in looking! Call 815-562-2928 or email dickharms@hotmail.com

307 MISCELLANEOUS FOR SALE

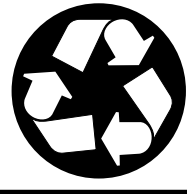
BUNDLED Newspaper

-\$3 per Bundle. Available Monday-Thursday 815-562-4171 (9AM-3PM) Rochelle News Leader.

SPLIT Firewood For Sale. Contact 779-251-0254

405 HOUSES FOR SALE

ALL REAL ESTATE advertised herein is subject to the Federal Fair Housing Act, which makes it illegal to advertise any preference, limitation or discrimination based on race, color, religion, sex, handicap, familial status, or national origin, or intention to make any such preferences, limitation or discrimination. We will not knowingly accept any advertising for real estate which is in violation of the law. All persons are hereby informed that dwellings advertised are available on an equal opportunity basis.



H.O.P.E

For Free Help or Information Call 815-562-8890 24 Hours

All Calls Are Confidential.

Support, Advocacy, Referral Services, Shelter for victims of domestic violence and their children.

HOPE of Ogle County



P.O. Box 131 Rochelle, IL 61068 Public Service Announcement

203 HELP WANTED



START AN EXCITING NEW JOB WITH THE ROCHELLE NEWS-LEADER!

Multimedia Sales Consultant

If you have an outgoing personality, an energetic get-it-done approach, and enjoy helping clients build their business, then you may be a perfect fit for a sales position with the Rochelle News-Leader. This is a full-time position.

As a multimedia sales consultant, you will service current accounts and also cultivate new clients in the Rochelle/DeKalb region of northern Illinois, helping them market their products and services through a variety of highly visible, popular and effective local media vehicles.

If you have a passion to get out of the office on a regular basis to help clients grow their audience and reach new customers, then we would like to talk to you.

Applicants should possess excellent communication and organizational skills with a positive personality and team-player approach. Previous media sales or related marketing experience is a plus, including print, digital and social media advertising.

The sky is the limit on earning potential and career development in this position. We offer a competitive base salary plus commission.

Qualified applicants should mail or e-mail their resume to the following address:

**Multimedia Sales Position
Rochelle News-Leader
ATTN: Will McMacken
P.O. Box 46, Rochelle, IL 61068
or email to
bmcacken@newsmediacorp.com**

ROCHELLE News-Leader

ROCHELLE News-Leader Part-time local delivery driver

The Rochelle News-Leader has an opening for a part-time newspaper bundle delivery driver who would load and deliver bundles to the post office, store racks and machines.

The daytime deliveries would be two or three days per week (including weekends) and consist of approximately 4-5 hours per shift depending on the route usually 10-15 hours per week.

Applicants must be at least 18 years old, possess a valid driver's license, proof of insurance and a safe driving record. Drivers will use company vehicles when delivering, and will be trained on the respective routes.

Candidates must be able to load, unload and carry multiple bundles of 5 to 10 pounds each. Driver applicants must be reliable, personable and have a general knowledge of area streets and roads.

This position is perfect for someone looking to supplement their income or retirement.

Interested individuals must fill out an application in person at the Rochelle News-Leader office at 211 Hwy. 38 E., Rochelle.

No phone calls please.

Find | Sell | Buy
Consult our classified ads or place your own!

Looking FOR WORK?
You're in the right place!

NEED A WELL-TARGETED AD?
Our sales reps would be glad to lend a helping hand!



ENTREPRENEURS!

ARE YOU TIRED OF TRYING TO DO IT ALL?

Need help creating ads, graphics or Facebook campaigns?

Our team of experts would be glad **TO LEND A HELPING HAND!**

ROCHELLE News-Leader
815-562-4171
rnlds@rochellenews-leader.com



Out of Sight, Out of Mind...
STAY TOP OF MIND With Local Consumers

It's a Smart Investment
Stay Top of Mind and Save With Our Monthly and Annual Ad Contract Specials!

Advertise With Us
ROCHELLE News-Leader
815.561.2153



Here's why consistent advertising with us is a great way to build top of mind awareness:

IT'S TIME TO ADVERTISE

Nearly 70% of U.S. adults read newspapers each month.

Print newspaper ads inspire action.

7 out of 10 newspaper readers report taking action after seeing an ad in a circular.



Your First & Foremost Local Advertising Solution

Let us help you promote your business.
Call 815.561.2153 or email clackland@rochellenews-leader.com

Here's why local newspaper advertising pays:

It's Cost-Effective. Newspaper advertising reaches a large number of potential consumers.

It Has Staying Power. A print newspaper ad doesn't disappear, meaning your audience will see it when they have time to focus.

It Reaches the Right Audience. Newspapers reach an affluent and engaged local audience.

It Gets Results. Newspaper ads increase marketing ROI by three times on average, according to a study from Newsworks.

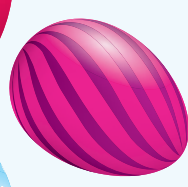
62% of consumers plan to shop more at local businesses according to Intuit Inc.

It's Flexible. With a variety of ad shapes, sizes, and niche sections, choose from several options to meet your goals and budget!

It's Trusted. Newspapers still rank highest among all media for consumer engagement and trust.



ROCHELLE News-Leader



Easter Ham

GIVEAWAY!



RULES

1. No purchase necessary, enter at as many participating businesses as you wish.
 2. One winner per family only.
 3. Official entry blanks and copies of official entry blanks only.
 4. All entries must be received by 9 am on Thursday, April 10.
- Winners will be notified by the participating businesses and also listed in the Rochelle News-Leader on Sunday, April 13.

Good Luck!

Davis Family Health LLC

We Fix Boo Boos

Kelly Ann Tonielli Davis
DNP, APRN, FNP-BC-CME

1212 Currency Court,
Rochelle, IL • 815-561-8500

Most insurances accepted.

Name: _____

Address: _____

Phone: _____

Hours: M & W 8-12 & 1-4 | Th. 8-11 | Fri. 9-11 & 2-5 | Closed Sat., Sun. & Tue.

Rochelle Community Hospital

No Place Like It

900 N 2nd St
Rochelle, IL
(815) 562-2181

Hours: M-F 9:30 - 1
rochellehospital.com

Name: _____

Address: _____

City: _____

Phone: _____

ENTER TO WIN! NEWS-LEADER HAM GIVEAWAY

Name: _____

Address: _____

City: _____

Phone: _____

PRESCOTT BROTHERS Ford

620 S. 7th • Rochelle
815-562-2177
prescottbrothersford.com

Hours: M-F 8-6 | Sat. 8-4 | Sun. Closed

ENTER TO WIN! NEWS-LEADER HAM GIVEAWAY

Name: _____

Address: _____

City: _____

Phone: _____

HUB CITY SENIOR CENTER

"ADDING LIFE TO YEARS"

Mon-Fri 7am-3pm
Call us for a ride:
815-562-5050

401 Cherry Ave.
Rochelle, IL 61068
hubcityseniorcenter.com

ENTER TO WIN! NEWS-LEADER HAM GIVEAWAY

Name: _____

Address: _____

City: _____

Phone: _____

ROCHELLE News-Leader

211 Hwy. 38 East, Rochelle, IL
Ph: 815-562-4171
www.rochellenews-leader.com
Mon-Thu 9-3 and Fri 9-12

ENTER TO WIN! NEWS-LEADER HAM GIVEAWAY

Name: _____

Address: _____

City: _____

Phone: _____

James E. Supancic Insurance

Call 'Spud' for all your insurance needs...

Auto • Home • Life • Health
License & Title Service
License Renewal Stickers
516 Lincoln Ave., Rochelle
815-562-7552 • Mon-Fri 9-5 & Sat 9-12

ENTER TO WIN! NEWS-LEADER HAM GIVEAWAY

Name: _____

Address: _____

City: _____

Phone: _____

ROCHELLE PHARMACY & WELLNESS CENTER

Hours: M-F 10-6 | Sat. 10-2 | Sun. 11-1

314 Lincoln Hwy • Rochelle
815-562-4444 • rochellerx.com

