



ROCHELLE News-Leader

WEEKEND EDITION | WWW.ROCHELLENEWS-LEADER.COM

Today's RNL issue
sponsored by
Community
Unity
member:

SURVEY-TECH
A Division of
C.E.S.
INC.

104 Maple Court
815-562-8771

Vol. 105 • No. 21

LOCAL NEWS... LOCAL VIEWS

SUNDAY, JULY 7, 2024

\$1.25

More coverage.
Less spendage.

Discounts up to 40%
Get more. Spend less. It's that simple
when you get car insurance from us.
Like a good neighbor, State Farm is
there! CALL FOR A QUOTE 24/7.
Terri Schaefer, Agent
Bus: 815-562-7063
terri.schaefer.115n@statefarm.com



KNOW IT
TODAY



Gonzales wins
scholarship

Perla Gonzales was named
the winner of the Kish
College Gandhi/King
Peace Scholarship. **Page 3**

WEATHER

SUNDAY	MONDAY
HIGH LOW	HIGH LOW
80 60	80 64
TUESDAY	WEDNESDAY
HIGH LOW	HIGH LOW
77 62	79 59

Today's RNL issue
sponsored by
Community
Unity
member:



1415 10th Ave.
815-562-6323

OBITUARIES

NONE

INSERTS

• RUNNINGS
• MENARDS
• OLLIE'S

INSIDE

Local News.....2, 3, 5, 8
Obituaries.....4
Opinion.....6
Community.....7



8 52078 00112 6

City's proposed urban park project on 4th Avenue could be completed by the end of this year

'I think it's just another piece of the puzzle to make downtown more appealing'

BY JEFF HELFRICH
MANAGING EDITOR

ROCHELLE — At its May 28 meeting, the Rochelle City Council discussed a potential urban park it may erect in the future at 517 W. 4th Ave., where it recently demolished a building that was the former site of Vinny's Barbershop.

The city acquired the building and demolished it due to structural issues. The council was presented with a concept design put together by Studio GWA for the urban park on May 28 that was received positively by council members. The concept plan includes a seat wall, native plantings and an asphalt area for a potential food truck or vendor space. A potential mural may be included in the plan.

"There's a lot happening," City Community Development Director Michelle Peasesaid. "There's a seat wall, a place for a food or drink truck or live music, seats, plantings, benches and all kinds of stuff. It could be an amazing space. When we have the Christmas walk or different events down-



(PHOTO BY JEFF HELFRICH)

At its May 28 meeting, the Rochelle City Council discussed a potential urban park it may erect in the future at 517 W. 4th Ave., where it recently demolished a building that was the former site of Vinny's Barbershop.

town, I think about those places where people can gather and enjoy and just be downtown."

City Manager Jeff Fiegenschuh said that the city council and staff did not want to have a condemned building in its downtown and the city worked with

the property owner to purchase it for demolition. The space didn't make sense for parking, so public open space was decided as the best use.

Studio GWA has designed properties in the city in the past, namely Kennay Farms Distilling. The city

recently received a cost estimate of about \$125,000 for the project. The project will still have to go out for bid and be approved by the city council.

"That's the estimated cost for everything," Fiegenschuh said. "It's taking a completely empty space

and turning it into a park where you have a concrete pad that will withstand a large vendor truck, plantings, landscaping, concrete and pavers. It will be a focal point of our downtown and we want it to look nice."

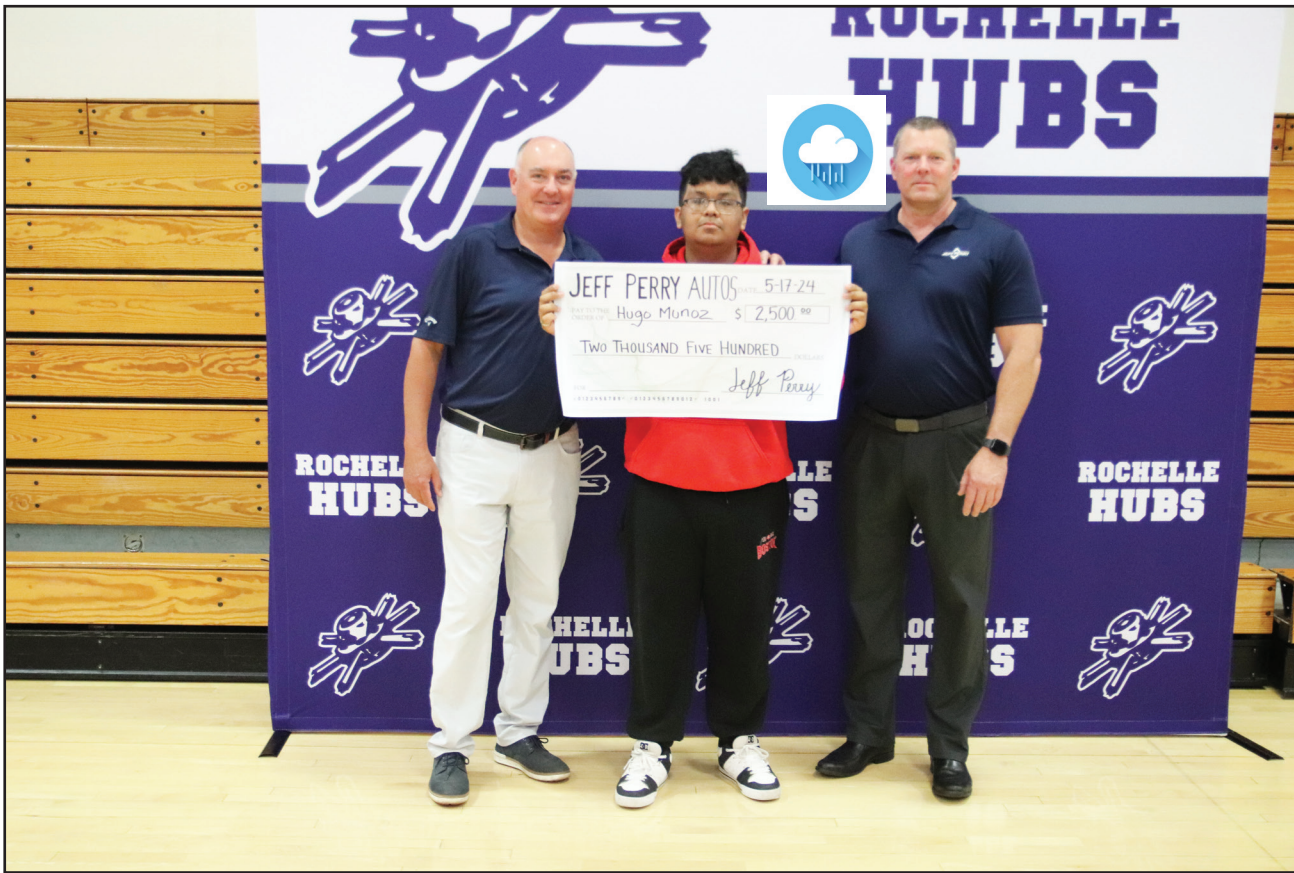
See CITY page 8

RTHS holds end-of-year assembly, thanks Renaissance supporters

ROCHELLE — The Rochelle Township High School end-of-year assembly was held May 17. Prizes were awarded to students with perfect attendance for at least one quarter of the school year.

Over 50 prizes were given away to eligible students. Hugo Munoz, with perfect attendance in the 2023-2024 school year, won the \$2,500 grand prize donated by Jeff Perry. Jeff Perry Automotive has been the annual supporter of the grand prize for the Renaissance program since taking over the dealership in Rochelle.

This assembly is a facet of the RTHS Renaissance Program, which has been in existence for over 20 years. The Renaissance program is an incentive-based program which promotes excellence, improvement and personal responsibility. A program such as this is only as successful as those that are willing to support it. Over the past two decades, the Rochelle area has been generous with both time and money in their investment in the RTHS Renaissance



(COURTESY PHOTO)

Hugo Munoz, with perfect attendance in the 2023-2024 school year, won the \$2,500 grand prize donated by Jeff Perry. Jeff Perry Automotive has been the annual supporter of the grand prize for the Renaissance program since taking over the dealership in Rochelle.

program. Due to the continued support of so many of you, RTHS has been able to tangibly reward students for their efforts.

Below is a list of supporters for the 2023-2024 RTHS Renaissance program. You have truly

made a difference and we thank you for your contribution to our program.

Jeff Perry Motors, Rochelle Area Community Foundation, Alfano's Pizzeria, Culver's, Rochelle News-Leader, Benny's, Hub Printing, Northern

Rehab & Sports Medicine, Country School, Fearer Nye & Chadwick, Dimond Bros. Insurance, Cypress House, Bee Designs, Petro Travel Plaza, Dunkin' Donuts, Wills Chiropractic, Flagg Rochelle Park District,

Arby's, Holcomb State Bank, RTHS Student Council, Taco Bell, First State Bank, El Senor de los Tacos Restaurant, Aldo's Pizzeria and Hormel Foods.

See RTHS page 3



Massbach Ridge
Winery Trip with
Shopping in Galena



Thursday, August 15th - \$57/person
Includes transportation & wine tasting

Contact Julie at 815.561.2627 for more information!

We do MORE than just
Plumbing, Heating & Cooling!
Ask about our Water Heaters, Water Softeners, Drinking Water Systems, Iron Filters, Sewer Rodding & Jetting Services!

ANDERSON
PLUMBING & HEATING, INC.

621 First Ave., Rochelle, IL
815-562-8784

LOCAL NEWS

Hard Rock Casino Rockford announces concert lineup for grand opening

ROCKFORD – Hard Rock Casino Rockford is ready to rock! The entertainment powerhouse invites you to experience an electrifying musical celebration as part of its grand opening Labor Day weekend celebration with concert performances scheduled Friday, Aug. 30- Sunday, Sept. 1 at its new, permanent casino location, 7801 E. State St. in Rockford.

The full score of musical talent lined up for the kick-off celebration includes:

Friday, Aug. 30: Artist to be announced soon.
Saturday, Aug. 31: Joan Jett and The Blackhearts.
Sunday, Sept. 1: Brad Paisley.

Tickets for Joan Jett and The Blackhearts go on sale at noon on Monday, June 17, and tickets for Brad Paisley go on sale at noon on Friday, June 21. Tickets can be purchased at [HardRock.com/Rockford/Entertainment](https://www.hardrock.com/Rockford/Entertainment) and at TicketMaster.com.

"Entertainment is at the heart of Hard Rock

Casino Rockford," says Geno Iafrate, president of Hard Rock Casino Rockford. "We're all about creating memorable experiences, and we're ready to showcase industry-leading musical acts to provide our guests with an unforgettable opening weekend and give them a taste of what's to come. Get ready to rock with us!"

At the core of the excitement lies the Hard Rock Live entertainment venue, spanning 23,000 square feet and accommodating up to 2,000 guests for concerts and performances. Guests can immerse themselves in the energy of the crowd and the music as they experience the state-of-the-art venue.

The new casino, located immediately off the Interstate 90 State Street exit in Rockford, boasts more than 175,000 square feet of gaming, entertainment and hospitality space, featuring a diverse array of attractions including nearly 1,300 slots, 50 live table games including a



(COURTESY PHOTO)

Hard Rock Casino Rockford is ready to rock! The entertainment powerhouse invites you to experience an electrifying musical celebration as part of its grand opening Labor Day weekend celebration with concert performances scheduled Friday, Aug. 30- Sunday, Sept. 1 at its new, permanent casino location, 7801 E. State St. in Rockford.

poker room, a sportsbook, seven unique restaurants, and a Rock Shop offering

authentic Hard Rock merchandise and more.

Hard Rock is hiring

more than 400 additional team members to staff the new facility, including the

concert venue. Interested in joining the band? Visit [GoToWorkHappy.com](https://www.hardrock.com/GoToWorkHappy.com).

Ogle County Supervisor of Assessments releases list of Homestead Exemptions

OREGON — Ogle County Supervisor of Assessments Tricia M. Black recently released the list of Homestead Exemptions for property owners.

Available property tax relief: In all cases, homestead exemptions apply only to the taxpayer's principal residence. The taxpayer must live at this property and be responsible for payment of taxes. Homestead Exemption Statutes are located within Article 15 of the property tax code 35 ILCS 200/15-175.

General Homestead Exemption: A reduction of up to \$6,000 off the assessed value of the residence. Amount varies based on any increase in value from 1977. One-time application due by Dec. 31.

Home Improvement Exemption: This exemption reduces the increase in assessed value attributed to a new improvement, for a four-year period. There is a maximum \$25,000 assessed value exempted.

Senior Citizen Homestead Exemption: A reduction of \$5,000 off

the assessed value of the residence, for homeowners aged 65 or older. Only one Senior exemption for a residence. One-time application due by Dec. 31.

Low-Income Senior Citizens Assessment Freeze: This exemption will "freeze" the assessed value of the residence at a certain value (the year prior to the first year of application). There is an income limit of \$65,000, must be age 65 or older and requires an application be filed by Dec. 31 every year.

Disabled Persons'

Homestead Exemption: A \$2,000 homestead exemption off the assessed value is available for disabled homeowners. Initial application required with proof of disability and must be renewed every year by Dec. 31.

Veterans with Disabilities: Veterans Special Adaptive Housing Exemption. Contact the Illinois Department of Veterans' Affairs for details.

Disabled Veterans' Standard Homestead Exemption: This Exemption is available with certifica-

tion of disability by the US Department of Veterans' Affairs. Amount of exemption varies based on certifications. Initial application required and may require yearly renewal.

Returning Veterans' Homestead Exemption: A \$5,000 homestead exemption for veterans returning from active duty in an armed conflict. The exemption is in place for 2 consecutive years, the year the veteran returns home from active duty and the following year. Application required.

General Homestead Exemption for Leasehold: For single family residence that is a leasehold, and is the lessee principal residence are able to receive the General and Senior (if age 65 or over) Homestead Exemption. Application required and must be submitted yearly by Sept. 1.

All forms are available on the county website; oglecountyil.gov under the Supervisor of Assessments department. Call the Supervisor of Assessments office at 815-732-1150 for further details.

FIND THE DRIVE TO SUCCEED

Discover Kishwaukee College

Ready to start your college or career path? Kish has the tools and resources to make your next step a success.

- Affordable Tuition with no hidden fees
- Close to Home
- Flexible Schedules
- Online Courses
- Support Services
- Transferable Credits
- And More

No fees. Easy planning.

With flexible course options and affordable tuition, Kish is a great opportunity for any situation.

Kish
KISHWAUKEE
— COLLEGE —

Helping you create the life you want.

KISH.EDU/REGISTER

LOCAL NEWS

State receives CCBHC grant, names Sinnissippi Centers as partner

DIXON — Sinnissippi Centers is now able to take the next step in an ongoing project to become a Certified Community Behavioral Health Clinic (CCBHC). Earlier this month the state of Illinois announced it had been selected as one of 10 states to participate in Department of Health and Human Services CCBHC Medicaid Demonstration Program designed to expand and improve access to coordinated mental health care and substance use services.

“Sinnissippi Centers was provisionally certified as a CCBHC earlier this year, dependent upon Illinois receiving the demonstration grant,” Stacie Kemp, Sinnissippi Centers president/CEO, said. “Now, we move forward as a partner with the state in paving the way for the CCBHC model in the state of Illinois.”

“This opportunity sets the stage for Sinnissippi

as a leader in the state of Illinois and also provides opportunities for us an organization, as we ensure that clients have access to the full array of services that are needed,” Kemp said.

“SAMHSA’s grant award designating Illinois as an CCBHC demonstration State will make behavioral health treatment more accessible and change the behavioral health system landscape for decades to come,” Illinois Chief Behavioral Health Officer David T. Jones said. HFS anticipates that this program will bring an additional \$150 million into Illinois’ behavioral health system.

CCBHCs were created to strengthen mental health and substance use treatment across the country through comprehensive community outpatient behavioral health treatment. Their services must meet federal standards,

and they must serve anyone who requests care for their mental health or substance use condition, regardless of age, ability to pay, or location. This model has been proven to significantly increase access to behavioral health care, including crisis care, for individuals who may otherwise have a difficult time accessing the services they need.

CCBHCs provide access to a range of services, including care coordination, and they incorporate evidence-based practices and other supports based on a community needs assessment. This includes crisis services that are available 24/7.

CCBHCs expand access to comprehensive mental health, substance use and crisis services; provide integrated care that focuses on the whole person; and closely partner with hospitals, law enforcement, and schools. CCBHCs help ensure

everyone in their communities has equitable access to high-quality care, when and where they need it.

Three million people are currently being served by CCBHCs in the U.S. 83% of CCBHCs provide services on-site in one or more schools, childcare centers or other youth-serving settings. 80% of CCBHCs offer one or more forms of medication-assisted recovery (MAR) for opioid use disorder. 98% of CCBHCs are actively engaged in one or more innovative activities in partnership with criminal justice agencies. 75% of CCBHCs increased outreach to people who have historically been underserved or underrepresented.

The Illinois Department of Healthcare and Family Services (HFS), which administers the Illinois Medicaid program identified 19 mental health and substance

use treatment providers, across the state, including Sinnissippi Centers, to participate in the demonstration program, which will build on the Department’s ongoing work to expand access to behavioral health services statewide.

“We are thrilled that our federal partners have chosen Illinois to participate in the CCBHC Demonstration Program, which will have a significant impact on increasing behavioral health and substance use treatment access across the state,” HFS Director Elizabeth Whitehorn said. “Behavioral healthcare faces major capacity challenges across the nation, and this program recognizes that we must find a way to serve individuals in crisis, regardless of where they live and whether they have the ability to pay. This program will expand access in critical ways for people who have struggled in the

past to find the services they need.”

Sinnissippi Centers has been laying the groundwork for this moment over the past three years.

“Sinnissippi Centers had received a grant from the Substance Abuse and Mental Health Services Administration to become a CCBHC in 2021, but at that time the state of Illinois was not part of the nationwide demonstration project,” Kemp said. “Now that Illinois has received their grant, we can begin to move forward for a fuller implementation of this model of care.”

If you or someone you know is struggling or in crisis, help is available by calling or texting 988 or via chat at 988lifeline.org. To learn how to get support for mental health or substance use issues, visit FindSupport.gov. Locate treatment providers by visiting FindTreatment.gov or calling 800-662-HELP (4357).

Kish names Gonzales winner of Gandhi/King Peace Scholarship

MALTA — Kishwaukee College named Perla Gonzales as the winner of the 2024 Gandhi/King Peace Scholarship. Gonzales was selected after submitting an essay where contestants outlined a plan for a nonviolent response to the problems of hate and discrimination and drew upon the lives and writings of Mahatma Gandhi and Dr. Martin Luther King Jr.

Gonzales, of Kirkland, received a scholarship for the spring 2024 semester and was recognized with a certificate of achievement at the April Board of Trustees meeting. Her entry was forwarded to the Illinois Community College Trustees Association (ICCTA) for consideration in the state-wide Gandhi/King Peace Scholarship competition.

In her essay, Gonzales focuses on providing education for the community and examining the issues of hate and discrimination through personal connec-

tions.

“The first step is acknowledging the scope of the problem. I propose initiating workshops and seminars that explore the historical context of discrimination, its present-day manifestations, and its impact on individuals and communities. We will bring light to the issue at hand. Incorporating the teachings of Gandhi and King will emphasize the connection between humanity and highlight the shared responsibility we bear in confronting discrimination,” Gonzales wrote in her essay.

Gonzales said she viewed the essay prompt as an opportunity to showcase the lessons and peaceful strategies she has learned to use against discrimination from personal experiences.

“My hope for readers of my essay is to understand that diversity does not equal inferiority. My essay was written to encourage individuals to embrace a

mindset of learning and understanding regarding various religions, cultures and spiritual beliefs they may not be familiar with. By learning to appreciate everyone’s differences, I aim to inspire people to peacefully support one another rather than remaining passive bystanders in the face of discrimination and hate,” Gonzales said.

Gonzales plans to graduate from Kish’s Registered Nursing program in May with an associate in applied science degree. Following her time at Kish, she plans to join the workforce at a regional hospital while continuing her education in pursuit of a bachelor’s degree in nursing and a Nurse Practitioner License.

Kishwaukee College is committed to a culture of diversity, equity, inclusion and belonging, focused on respect and fairness, in all aspects of the College experience.

To read Gonzales’s full essay, visit kish.edu/iccta.



(COURTESY PHOTO)

Perla Gonzales was named the winner of Kishwaukee College’s 2024 Gandhi/King Peace Scholarship. Gonzales was recognized at the April meeting of the Kishwaukee College Board of Trustees and is pictured with Bob Johnson, chair of the Board of Trustees, and Dr. Laurie Borowicz, president of Kishwaukee College.

Lincoln Manor

Owned and operated by Lutheran Social Services of Illinois (LSSI) offering apartment living for older adults in Rochelle and the surrounding communities.

Rent based on 30% of a Resident’s Adjusted Gross Income

- Secure Entry System
- Community room with kitchen
- Activities
- On-site coin operated laundry
- On-site management office
- Dependable 24/7 maintenance service
- On-site parking for residents

Full time Social Service Coordinator is available to assist residents

For more information, please call 815-562-1404

615 N. Lincoln Hwy.
Rochelle, IL 61068
TTY 847-390-1460

MANAGED BY:
Lutheran Social Services of Illinois
www.LSSI.org

07262023

RTHS: Prizes awarded to students at end-of-year assembly

From page 1

Additional supporters include Graber Financial Group, T-Byrd Lanes, City of Rochelle, Macklin Incorporated, Tecalitlan, Hayden Realty, New China Buffet, RTHS Junior Class, RTHS FFA, Sue Sawicki, Pepsi-Cola, Walmart, Rochelle Vet-

erinary Hospital, RTHS, Herff Jones, Rochelle Eye Care Clinic, RTHSEA, Central Bank, Edward Jones/Anthony Rowley, Arbor Management, Rochelle Rotary Club, Edward Jones/Bradley Stojan, Pizza Hut, Broome’s Barber Shop, Chicagoland Skydiving/Flight Deck, McDonald’s, Hub Ath-

letic Boosters, Hub Tech Dept/Dale Bergeson, Anytime Fitness, Kishwaukee College, and Rochelle Pharmacy.

The community was thanked for their 2024 work on the program by its organizers, RTHS Counselors Mike Dale, Natasha Hacaga, Colfay Pointer, and Javier Zepeda.

Serving Rochelle's Favorite Chicken for over 40 years!

By the Snack-Dinner-Bucket!

Enjoy 16 flavors of ice cream, soft serve, splits, sundaes, cones, malts & shakes

Call for our catering menu!

OUR MENU INCLUDES:

Hamburgers, Fries, Hot Dogs, Gyros, Italian Beef, Seafood, Sandwiches, Sausages, Shrimp, Homemade Soups

Breakfast: Sausage Gravy With Biscuits and Tater Tots

See us on Facebook for daily specials!

Open Daily at 9AM

COUNTRY SCHOOL DRIVE-IN RESTAURANT

Hwy 251 N. Rochelle • 815-562-6039

Stillman BANK

Local Lenders. Local Decisions.

Buying a new home?
Our experienced mortgage team is here to help!

- Our staff is professional, knowledgeable, and experienced
- Decisions are made locally - by us!
- We service our loans, so if you have a question, you can talk to us - not some out of state firm
- FREE pre-approvals
- Access to Stillman Mortgage Online - find a lender, apply online in less than 20 minutes, and more!
- Proud to be voted Ogle County's Best Mortgage Lending Services!

Member FDIC

815.562.7071 | www.stillmanbank.com

LOCAL NEWS

ROCHELLE POLICE REPORT

ROCHELLE — On June 25 at 11:17 a.m. Charles L. Coss, 75, of Crystal Lake was cited for overweight axle. He was released on a notice to appear with a July 26 Rochelle court date.

On June 25 at 9:08 a.m. Ronald A. Hargis, 64, of New Windsor was cited for violate/CDL suspended. He was released on a notice to appear with a July 26 Rochelle court date.

On June 25 at 3:10 p.m. Michael H. Feldmeier, 29, of Broadway, Virginia was cited for overweight gross and overweight registration. He was released on a notice to appear with a July 26 Rochelle court date.

On June 25 at 7:11 p.m. Ernan Martinez-Perez, 25, of Janesville was arrested for no valid driver's license. He signed a promise to comply and was given a July 26 Rochelle court date.

On June 25 at 7:47 p.m. Luke C. Furman, 27, of Rochelle was cited for expired registration. He signed a promise to comply and was given a July 26 Rochelle court date.

On June 25 at 7:50 p.m. Iverson Yojcom-Lopez, 21, of Rochelle was cited for speeding. He signed a promise to comply and was given a July 26 Rochelle court date.

On June 25 at 8:36 p.m. a 17-year-old juvenile of Rochelle was cited for disobeying a traffic control device. He signed a promise to comply and was given a July 26 Rochelle court date.

On June 25 at 10:26 p.m. Augustine G. Vowels, 27, of Rochelle was cited for speeding. He signed a promise to comply and was given a July 26 Rochelle court date.

On June 25 at 11:30 p.m. Joseph M. Vische, 56, of Metamora was cited for disobeying a traffic control device. He signed a promise to comply and was given a July 26 Rochelle court date.

On June 26 at 2:19 p.m. Everett J. Kasper, 24, of Creston was cited for disobeying a traffic control device. He signed a promise to comply and was given a July 26 Rochelle court date.

On June 26 at 2:43 p.m. Jesus Lara, 27, of Rochelle was arrested for no valid driver's license and cited for disobeying a traffic control device. He signed a promise to comply and was given a July 26 Rochelle court date.

On June 26 at 6:58 p.m. Trisha A. Booker, 44, of Rochelle was arrested on an outstanding Ogle County warrant and transferred.

On June 24 at 9:14 a.m. Valarie M. Hammann, 51, of Ashton was cited for overweight gross. She was released on a notice to appear with a July 12 Rochelle court date.

On June 27 at 11:32 a.m. Eldon T. King, 26, of Rochelle was cited for speeding 45 miles per hour in a 30 miles per hour zone. He signed a promise to comply and was given a July 26 Rochelle court date.

On June 27 at 7:43 p.m. Saw S.D. Wah, 42, of Rockford was cited for speeding 62 miles per hour in a 40 miles per hour zone. He signed a promise to comply and was given a July 26 Rochelle court date.

On June 27 at 10:17 p.m. Jesus M. Estrada Garcia, 44, of Rochelle was arrested for driving unlicensed. He signed a promise to comply and was given a July 26 Rochelle court date.

On June 27 at 8:19 p.m. Manuel Penaran, 41, of Rochelle was arrested on

an outstanding Ogle County warrant and transferred.

On June 28, Rochelle Police cited Keith R. Holland, 44, Rochelle, for suspended registration. Holland signed a promise to comply and a court date is set for July 26.

On June 28, Rochelle Police cited Trevor M. Kahl, 31, Chana, for failure to reduce speed. Kahl signed a promise to comply and a court date is set for July 26.

On June 28, Rochelle Police cited Rene Rodriguez Jr., 41, Rochelle for disregarding a stop sign. Rodriguez Jr. signed a promise to comply and a court date is set for July 26.

On June 28, Rochelle Police cited Nicholas C. Lindquist, 32, Rochelle, for speeding. Lindquist signed a promise to comply and a court date is set for July 26.

On June 28, Rochelle Police cited Tyrus J. Holland, 34, Rochelle, for driving with a suspended license. Holland signed a promise to comply and a court date is set for July 26.

On June 28, Rochelle Police cited Joannah C. Carrasco, 21, Ammon, Idaho, for no insurance. Carrasco signed a promise to comply and a court date is set for July 26.

On June 24, Rochelle Police arrested Breanna C. Hansen, 35, Rochelle, for criminal trespass to residence. Hansen signed a promise to comply and a court date is set for July 19.

On June 23, Rochelle Police cited Cody McCoy, 35, Rochelle, for speeding. McCoy signed a promise to comply and a court date is set for July 26.

On June 29, Rochelle Police cited Kathleen E. Russell, 65, Rochelle, for driving with an expired license of more than a year. Russell signed a promise to comply and a court date is set for July 26.

On June 29, Rochelle Police cited Bryan L. Ruiz, 42, Chicago, for speeding. Ruiz signed a promise to comply and a court date is set for July 26.

On June 29, Rochelle Police cited Jaime S. Chavez, 54, Rochelle, for no insurance. Chavez signed a promise to comply and a court date is set for July 26.

On June 29, Rochelle Police cited Dante L. Contreras, 25, Rochelle, for speeding. Contreras signed a promise to comply and a court date is set for July 26.

On June 29, Rochelle Police cited Omar Garcia Gonzalez, 30, DeKalb, for speeding. Garcia Gonzalez signed a promise to comply and a court date is set for July 26.

On June 30, Rochelle Police cited Michelle Ocampo, 20, Rochelle, for speeding. Ocampo signed a promise to comply and a court date is set for July 26.

On June 30, Rochelle Police arrested Kevin J. Manion, 45, Rochelle, for criminal damage to property. Manion signed a promise to comply and a court date is set for July 19.

On June 30, Rochelle Police cited Maria D. Herrera, 51, Rochelle, for failure to reduce speed. Herrera signed a promise to comply and a court date is set for July 26.

On June 30, Rochelle Police cited Elmogtaba

Fadelsied, 31, Iowa City, Iowa, for speeding. Fadelsied signed a promise to comply and a court date is set for July 26.

On June 30, Rochelle Police cited Ivan Munoz, 22, Rochelle, for speeding and no insurance. Munoz signed a promise to comply and a court date is set for July 26.

On June 30, Rochelle Police cited Lakee S. Ertel, 30, Rochelle, for expired registration. Ertel signed a promise to comply and a court date is set for July 26.

On June 30, Rochelle Police cited Nadine Kerwin-Dutka, 34, Rochelle, for disregarding a traffic control device. Kerwin-Dutka signed a promise to comply and a court date is set for July 26.

On June 30, Rochelle Police cited a 16-year-old juvenile for disregarding a traffic control device. The juvenile signed a promise to comply and a court date is set for July 26.

On July 1, Rochelle Police cited Manuel D. Diaz-Garcia, 20, Rochelle, for speeding and no valid driver's license. Diaz-Garcia signed a promise to comply and a court date is set for July 26.

On July 1, Rochelle Police cited Emma L. Hilleson, 18, Lee, for speeding. Hilleson signed a promise to comply and a court date is set for July 26.

On July 1, Rochelle Police arrested Kelly M. McCoy, 40, Rochelle, for battery. McCoy was issued a notice to appear and a court date is set for Aug. 1.

On July 1, Rochelle Police cited David M. Thick, 21, Mt. Morris, for speeding. Thick signed a promise to comply and a court date is set for July 26.

On July 1, Rochelle Police cited Joshua L. Welton, 20, DeKalb, for expired registration. Welton signed a promise to comply and a court date is set for July 26.

On July 1, Rochelle Police cited Cameron L. McGee, 28, Rockford, for operating a vehicle with suspended registration. McGee signed a promise to comply and a court date is set for July 26.

On July 1, Rochelle Police cited Ruben Herrera Jr., 22, Rochelle, for disregarding a traffic control device. Herrera signed a promise to comply and a court date is set for July 26.

On July 2, Rochelle Police arrested Paul A. Powers, 47, Rochelle, on an outstanding Lee County warrant. Powers was transferred to jail and bond was set at \$100 with a July 25 court date.

On July 2, Rochelle Police cited Thomas J. Price, 74, Rochelle, for speeding. Price signed a promise to comply and a court date is set for July 26.

On July 2, Rochelle Police cited Vanessa A. Avolio, 21, Rochelle, for disregarding a traffic control device. Avolio signed a promise to comply and a court date is set for July 26.

On July 2, Rochelle Police cited Amy L. Stewart, 40, Amboy, for disregarding a traffic control device. Stewart signed a promise to comply and a court date is set for July 26.

On July 2, Rochelle Police cited Kayliegh Dougherty, 27, Rochelle, for driving with a revoked license. Dougherty signed a promise to comply and a court date is set for July 26.

All individuals are considered innocent until proven guilty.

OGLE COUNTY SHERIFF'S REPORT

OREGON — On June 25, Ogle County Sheriff's Deputies conducted a traffic stop on a gray Ford Edge in the 12,000 block of N. Baileyville Road. The driver of the vehicle, Fredy N. Herrera Jr. (age 31 of Dixon) was cited for speeding and operating a motor vehicle without

insurance. Herrera was issued a warning for expired drivers license. He was taken into custody for an outstanding Lee County Warrant. Herrera was transported to the Ogle County Jail on that warrant. All subjects presumed innocent.

On June 29, at approximately 7:24 p.m. Deputies were dispatched to a two-vehicle crash at IL Rt 72 & Rural Road in Stillman Valley. It was determined that a 2014 Volkswagen Jetta, driven by Madelyn Adkins, age 18 of Monroe Center, was westbound on IL Rt 72, when the driver made an improper left turn, and collided with a Ford Explorer operated by Jessica Klecka, age 34 of Byron. Both drivers were treated at the scene by Stillman Fire/Ems for minor injuries. Deputies were assisted by Stillman Fire/Ems. Adkins was issued a citation for improper left turn. All suspects are presumed innocent.

On June 29 at 6:19 p.m., Deputies conducted a traffic stop in the 1000 block of South Illinois Route 251 for a traffic control violation. After a brief investigation, Deputies placed David Aarvig, age 51 of Byron, under arrest for Driving While License Revoked. Aarvig was additionally cited for the traffic control violation and was released with a Notice to Appear court date. All subjects are presumed innocent.

On June 29, at 8:04 p.m., Deputies conducted a traffic stop at Illinois Route 26 and Coffman Road. After a brief investigation, Deputies arrested Ryan Cushing, age 44 of

Clinton, Iowa, for driving while license revoked. Cushing was transported to the Ogle County Jail, processed and released with a notice to appear. Cushing was additionally issued a citation for expired registration. All subjects are presumed innocent.

On July 1, the following people were arrested on outstanding Ogle County Warrants:

Jasmine Benson, 26 of Freeport, for Operating a Vehicle with a Canceled, Revoked, or Suspended Registration. Benson had no bond and appeared in court where she was released with a return court date of 8-12-24 at 9 a.m.

Juwuane Parchman, age 27 of Rockford, for Driving While License Suspended. Parchman had no bond and appeared in court where he was released with a return court date of 08-23-24 at 9 a.m.

On July 1 at approximately 10:31 p.m., Deputies responded to the 7800 block of S. Rte. 2 and made contact with a male. The male was identified as Christopher Rasmussen, age 47 of Dixon, who was placed under arrest for a Lee County Contempt of Court warrant and FTA Ogle County warrant for a traffic violation. Rasmussen was transported to the Ogle County Jail where he was held in lieu of bond.

ROCHELLE WILDLIFE CONSERVATION CLUB



Monthly Steak Fry

\$30 per person
Starts at 6pm

Ribeye, baked potato, corn, beans and a salad

Porkchop or Hotdog
option at reservation

July 13th

Aug 10th

Sept 14th

Oct 12th

GRILL

YOUR OWN STEAK
over our charcoal pits!

Covered outdoor and indoor seating enjoy your meal surrounded by nature and good friends.



Please RSVP no later than 5pm the Friday before the steak fry and call Bob Grace - 815-622-8940

07082024

Kish College to offer summer, fall therapeutic massage continuing education units

MALTA — The Kishwaukee College Continuing Education department will offer seven Therapeutic Massage classes during the summer and fall 2024

semesters. The classes provide Continuing Education Units (CEUs), which measure professional development.

Each class is taught by Julie Kimpan-Freeman

at Kishwaukee College. Three-hour classes are \$75, four-hour classes are \$100, and six-hour classes are \$150.

Deep Pressure Massage Techniques for Low Back

Monday, July 8 (9 a.m. to noon) — Three CEUs. Learn to apply deep tissue pressure massage techniques to alleviate lower back pain.

Shoulder Massage

Monday, Aug. 12 (9 am. to noon) — Three CEUs. Learn effective shoulder massage techniques to relieve pain and improve range of motion.

Massage Cupping

Friday, Sept. 20 (9 a.m. to 1 p.m.) — Four CEUs. Discover how to use massage cupping to decompress and release tension in muscles and fascia.

Side-Lying Massage

Friday, Oct. 18 (9 a.m. to 4 p.m.) — Six CEUs. Learn how side-lying massage can benefit anyone, not just pregnant individuals.

Pregnancy Massage

Friday, Nov. 15 (9 a.m. to 4 p.m.) — Six CEUs. Enhance your knowledge and skills in the benefits, guidelines and precautions for prenatal and perinatal massage.

Stretching Your Client

Monday, Dec. 2 (9 a.m. to 4 p.m.) — Six CEUs. Study how to accelerate healing from injuries through proper stretching techniques.

For additional information, contact Melissa Gallagher at mgallagher1@kish.edu or 815-825-9466.

To register, visit kish.edu/massage.

ROCHELLE

News-Leader

211 IL Route 38 East, Rochelle, IL 61068
(815) 562-4171



USPS (467-820) ISSN (1075-2811)

Published every Wednesday and Sunday by Rochelle Newspapers Inc. at 211 E. State Route 38, Rochelle, IL 61068. Periodical postage paid at Rochelle, IL 61068. Postmaster send address changes to the Rochelle News-Leader, P.O. Box 46, Rochelle, IL 61068. Subscription rates are \$139.99 per year by mail in Ogle County. Outside county rate is \$149.99 per year. The circulation department is open Monday through Thursday from 9 a.m. to 3 p.m. and Friday from 9 a.m. to 1 p.m. For subscription information, contact Kelly White at 562-4171.

IN-COUNTY REGULAR SUBSCRIPTION RATES

- \$139.99 for one year • \$79 for six months
- \$34.99 for three months • \$13.99 for one month

Call (815) 562-4171 or Visit our website at www.rochellenews-leader.com



HOW TO CONTACT US

News-Leader Main Switchboard	(815) 562-4171
General Manager	(815) 561-2124
Newsroom Staff Jeff Helfrich, Managing Editor Russ Hodges, Sports	(815) 561-2151 rhodges@rochellenews-leader.com
To Place a Display Ad Chris Ackland	(815) 561-2153
To Place a Legal Ad Mike Feltes	mfeltes@oglecountylife.com
To Place a Classified Ad Chris Ackland	(815) 561-2153
Subscriptions and Delivery Kelly White	(815) 562-4171

LOCAL NEWS

Northern Rehab offers pediatric physical therapy

ROCHELLE—Physical therapists don't just help adults recover from injuries. Pediatric physical therapists are specially trained to help children of all ages overcome challenges and reach their full potential.

Whether your child has a developmental delay, a sports injury, or a chronic condition, a physical therapist can create a fun and effective program to get them moving.

Pediatric physical therapy sessions are tailored to your child's needs and interests. Physical therapists use specific exercises and activities to improve mobility and strength to help children meet their goals such as improving the child's physical in-

dependence, confidence, and participation to ease daily challenges. Examples might involve the following:

Building strength and coordination: Physical therapists use fun exercises and activities like animal walks, obstacle courses, and games to help children improve their balance, agility, and muscle control. The skills learned during these activities can be essential for everything from playing on the playground to keeping up with friends.

Addressing developmental delays: Physical therapy can be a game-changer for children experiencing delays in reaching milestones such as rolling over, crawling,

or walking. Your PT will assess your child to identify the areas holding them back and create a fun program to help them develop the necessary skills to progress toward the specific milestones.

Recovering from Injuries: Just like adults, young athletes can get hurt. PTs help children restore strength and flexibility to return to their favorite activities safely.

Managing chronic conditions: Children with conditions like cerebral palsy or muscular dystrophy can benefit from physical therapy to help manage their symptoms and improve their overall function and well-being. A physical therapist will assess your child to identify

areas of strength and areas that need improvement. They will develop an individualized program to help your child maximize their strength, range of motion, coordination, and endurance. Physical therapists work with the family to educate you and your child on things you can work on at home and can also assist in obtaining any special equipment needed such as wheelchairs, braces, or walkers.

Physical therapists play an essential role in promoting physical activity, improving movement and coordination, and general health. Additionally, physical therapists also help children with:

Self-confidence: As kids gain strength, coordi-

nation, and independence, they begin to meet their goals and their confidence soars. This can have a positive impact on all areas of their lives.

Pain management: Physical therapists can teach children techniques to manage pain and discomfort, improving their overall quality of life.

Socialization: Gross motor skills help children participate in play and games with peers, which help children develop social skills and build friendships.

If you feel your child may benefit from physical therapy, contact Northern Rehab for an evaluation with our pediatric specialist Janet Truckenbrod Sarver at our Rochelle

location.

Although it is important to keep your doctor informed about starting a new program, a physician's prescription is not required to begin physical therapy treatment. Northern Rehab, a locally and privately-owned physical therapy practice, has been voted Ogle County's "Best Physical Therapist" by our community for the past five years and provides quality, hands-on, one-on-one treatment options specific to your individual needs.

For more information, please visit www.northernrehabpt.com, or call our office at 815.562.3299 to schedule an appointment and start feeling better today.

CHURCH DIRECTORY

Ashton Bible Church, corner of Main and Paddock in Ashton. Pastor Farrel Stauffer, church phone is (815)453-2190, church website www.ashtonbible.org. Sunday School for all ages 9:00-10:00am, Morning Worship 10:15am, Wednesday Prayer Meeting/Bible Study 6:30-8:00pm.

Calvary Lighthouse Church, Assemblies of God, Senior Pastor, Dr. James Horvath. 14409 Hemstock Rd., Rochelle. Sunday Morning: Sunday Worship & Children's Church 10:00 A.M., Wednesday Evening 7:00 P.M. – Adult Teaching, Missionettes & Royal Rangers Children's Classes, Nursery available for all services. HE-Brews Cafe is open before and after services. For further information, please call the CLC office at 815-562-7701, or email us at staff@calvarylighthouse.com

Rochelle Church of Christ, Keeping Christ at the center in the Hub City. We meet Sundays at 9:00am for Bible Study and 10:00am for worship. We also have a Wednesday Bible Study at 7:00pm. 206 Erickson Rd, Rochelle, IL 61068. You can call us at (815) 562-6572 or visit us on the web at rochellechurch.com. We also have a radio program Sundays just after 8am on WRHL 1060AM. Minister Dominic Venuso.

Creston United Methodist Church and Steward United Methodist Church - Rev. Ilhan You, Creston: 126 West South Street, P.O. Box 209, Creston, Illinois 60113. Sunday morning worship 9:00am. Coffee fellowship at 10:15am. Steward: 507 Main Street, P.O. Box 80, Steward, IL 60553. Adult Sunday School, 10:00am. Sunday morning worship and Children's Sunday School 11:00am. Contact the church office at 847-730-4370 for more information. facebook.com/crestonumcil facebook.com/stewardilumc

Elim Reformed Church, 140 S. Church Road, Kings, IL 61068. Phone: 815-562-6811. Email goelimchurch@gmail.com Website www.goelimchurch.org Sunday Morning Worship 10:00 Rev. Marv Jacobs

Faith Lutheran Church – (14206 E. Flagg Rd.) – “Making Christ Known Through Lives of Faith.” In-person worship is available each Sunday at 9:00 a.m. or online at “Faith Lutheran Social” on YouTube. Worship resources are also available on our Facebook page - ‘Faith Lutheran Church ELCA.’ You may also e-mail Pastor Joy Alsop at Pastor@faithlchrochelle.org for more information. All are welcome to join us!


First General Baptist Church, 500 S. 12th St, Rochelle. Phone: 815-562-5221. Email: fgbcrochelle@gmail.com. Website: www.fgbcrochelle.org. Facebook: www.facebook.com/fgbcrochelle. Pastor: Rev. Angelo Bonacquisti. **Sunday worship services:** 8:30 am, 11:15 am and 6:00 pm. **Sunday school:** 10:00 am. We'd be honored to have you join us as we worship JESUS and continue to grow in truth and love for God and each other. A nursery, children's church, youth group and small groups are available. If you need a ride please contact our church bus driver, John, at (815) 262-4275 by 8:30 am on Sunday. “For if you confess with your mouth that Jesus is Lord and believe in your heart that God raised him from the dead, you will be saved.” Romans 10:9

First Presbyterian Church – An Amazing Place for Amazing Grace- Rev. Doug Forsberg, Senior Pastor. 1100 Calvin Road, Rochelle. Email: info@placeforgrace.com. Sunday morning worship 9:00am and 10:30am. In person or streamed online. On our Website and Facebook Live. www.placeforgrace.com/ www.facebook.com/placeforgrace

Grace Fellowship Church — Pastor Jeff Ardisson, 2128 Il Route 38, Ashton, 815-453-7464. Sunday School 8:30 a.m. Sunday Worship Service 9:45 a.m. www.graceisforyou.com

Harvest Baptist Church 241 Scott Ave. (Hillcrest). Rev. Duane Boehm, pastor. Email duane712@hotmail.com, cell 815-757-3427. Visit us on Facebook! Service times: Sunday morning worship with Children's Church at 10 am. Wednesday night worship at 7 pm.

Immanuel Lutheran Church Missouri Synod 16060 E. Lindenwood Road, Lindenwood, IL 61049. Rev. Dr. Matthew Rosebrock. Church Phone 393-4500. Church Worship 9:00 a.m. Sunday School Christian Education Hour at 10:30 a.m.

Living Water Community Church 405 N. Main St, Downtown Rochelle. Phone 815-561-6249, Website: www.lwccr.com, Like us on Facebook. We are Non-Denominational, Christ Centered, Casual dress, Christ Centered Live Band Worship. Mike Vogeler - Outreach and Seven C's Pastor, Chris Bender- Teaching Pastor and Doug Bunger - Missions and Children's Pastor. Sunday Worship Service- 10:00am. Nursery/Toddlers Ages 0-5 available during the service in the Splash building. Swim- Grades 1st-5th worship with the adults then break out for age appropriate teaching. Youth groups, Small groups, Life Groups and Workshops meet throughout the year for Bible teaching. 7C's Mission- serves the community physically & spiritually each month from 1135 Lincoln Hwy, providing lightly used clothing, Hygiene items, a light lunch and Elder Prayer open the second Saturday from 10am-2pm and the 4th Thursday from 4pm to 7:00pm and by appointment.. 

New Hope Fellowship (Church of God - Anderson, IN), 1501 10th Ave., Rochelle, IL 61068. Service: Sunday at 9 a.m. 10:30 a.m., (815)561-8400, www.NHFchurch.net Pastor: Dan Sergeant and Pastor Nick Tornabene. (Classes for children through age fifth grade during service.)

Rochelle United Methodist Church welcomes everyone to their worship service, and practices openness for all activities including communion. Worship is at 9:00 am. Sunday school for children begins around 9:15, following the Children's Time in worship. A fellowship time with food and space for conversation occurs in Hicks Hall every week following the worship service. We celebrate communion with an open table on the first Sunday of every month, and on other appropriate occasions. Youth group is on Sunday evenings from 5:30-7:30. Our youth program includes service projects, discussion topics, Bible Study, and lots of fun and fellowship together. Some of our activities include packing meals at Feed My Starving Children, helping at Rochelle Christian Food Pantry and 7C's, working with animals at Barn on Baseline, Mystery trips (Destination Unknown!), and Interactive experiences on Dating boundaries, refugees, and homelessness. Youth group is for grades 6-12 and friends are always welcome. Recorded services are available on our YouTube channel and our website at www.rochelleumc.com. Our services are on the radio (93.5 FM) on Sunday mornings at 9:00 am. Our Facebook page is www.facebook.com/rochelleumc. **Our pastor is the Rev. Dr. Katherine Thomas Paisley.** Our address is 709 Fourth Ave. (815) 562-2164. Email is admin@rochelleumc.com. At Rochelle United Methodist Church, everyone is welcome and loved!

St. John's Lutheran Church, 126 E. South Street, Creston. Phone 815-384-3720, Email: StJohnsLutheran@aol.com, members of NALC/LCMC. Worship is led by **Pastor Terese Whitten** 231-878-4150. St. John's Lutheran Church is a part of God's Family, planting hope, nurturing faith, and harvesting love. Fellowship time begins at 10:00 followed by worship at 10:45. Sunday school is conducted during worship service except during the summer.

St. Patrick Catholic Church Rev. Jesus Dominguez; Deacon Fermin Garcia; Deacon George Schramm; 244 Kelley Dr. (Corner of Kelley & Caron Rd.), PO Box 329, Rochelle, IL 61068. **Office Hours:** 9:00 AM- 4PM Monday-Thursday, Phone: 815-562-2370. **Mass times:** 8:00 AM Monday-Thursday, Saturday Vigil Mass 5:00 PM English, 7PM Spanish, Sunday Mass 7:30 AM, 9:00 AM in English and 11:00 AM in Spanish. **Confessions:** Monday 8:30AM & 6:30PM, Tuesday 8:30AM, Saturday 8:30am & 4:00-4:45 PM Or by appointment. **Religious Education:** Deacon George Schramm, Director of Religious Education. 903 Caron Road, Rochelle, IL 61068, 815-561-0079; Website: stpatricksrochelle.com Email: stpatrick-rochelle@rockforddiocese.org Facebook.com/StPatrickRochelle

St. Paul Lutheran Church “Building Relationships in Christ, Now and Forever!” Steven Hall, Principal, Parish Nurse-Marcia Schnorr. 1415 Tenth Ave., Rochelle. Church Office-562-2744. Worship times: 6:00 p.m. Saturday, 9:00 a.m. Sunday. Our service is broadcast over WRHL 1060AM at 10:00 a.m. Sunday. Sunday School 10:15-11:15 a.m. Call 562-6323 for more information about the school.



LOCAL VIEWS

Ron Kern: Crop insurance and farmers

CROP insurance remains a crucial safeguard for farmers, tracing back to the Great Depression and evolving into a vital tool amidst today's market and weather volatility. Supported by a partnership among the federal government, private insurers and farmers, it offers tailored protection against diverse risks for farmers across the nation. Farmers bear a significant part of the cost themselves, and on-going innovation in policy offerings allows more and more farmers to shield themselves from unexpected losses, bolstering the resiliency of the food system. Provisions that keep program costs in check and promote good farm practices optimize the return on investment for taxpayers. As the U.S. navigates an increasingly uncertain future, improving crop insurance through passage of a new five-year farm bill is essential for safeguarding the livelihoods of farmers, the stability of rural economies and the reliability of our food system.

Crop insurance is exactly like it sounds: an insurance product designed to help shield farmers against a myriad of potential risks, ranging from adverse growing conditions to market fluctuations. This coverage fills crucial gaps that private insurance

products may neglect or find impossible to address alone. Supported by the federal government, these policies provide financial stability for farmers, who can tailor coverage to suit their unique operational needs from a variety of policy options. Products are available for annual crops, perennial tree crops and livestock and may protect against the value of the commodity, the replacement value of a damaged or destroyed commodity, or the operating margin for a commodity.

Crop insurance has its roots as part of the policy response to the Great Depression and was permanently authorized under the Agricultural Adjustment Act of 1938 and the Federal Crop Insurance Act of 1980. The Risk Management Agency (RMA) has discretion over policy offerings, coverage and administration. The Congressional Budget Office (CBO) projects net spending each year and estimates the costs of supporting a portion of a farmers' policy premium, compensating private insurers for their administrative and operating expenses and reinsuring losses from policies sold. Projections depend partly on commodity prices. If commodity prices increase in the future, the expected value of insured crops would rise, leading

to higher anticipated values for insured liability and premium discounts compared to scenarios with lower commodity prices. For marketing year 2024, the CBO projects a total program cost of \$12.37 billion

Title XI of the farm bill supports new and continued insurance products farmers may purchase through a public-private partnership. Private-sector companies known as approved insurance providers sell and service crop insurance policies while USDA plays critical roles in financing, regulating and reinsuring the policies. Farmers work with their local crop insurance agent to select the base coverage policy that fits their farm or ranch. Additional products, or endorsements can be added to underlying policies for additional costs.

Crop insurance provides protection for a limited number of events or conditions. These are called "covered perils" or "causes of loss" and include adverse weather conditions; failure of irrigation water supply; fire from natural causes; plant diseases if the farmer applied the correct crop protectorant; and insect and wildlife damage. Certain policies also insure against

losses from market price declines. Crop insurance does not cover damage or loss of production due to the inability to market a crop for any reason other than actual physical damage for an insurable cause of loss.

Farmers have the flexibility to customize their crop insurance to align with their farm management objectives and practices. In many cases farmers can choose to insure based on a farm's average yield, its average crop revenue, the county's average yield or the county's average revenue. Revenue protection is usually more expensive due to the higher level of risk associated with market fluctuations. Using farm-level averages is also more expensive than using county options because of the smaller risk pool.

To begin, farmers must first select the level of coverage they want to purchase. The coverage level refers to the percentage of commodity value that is covered — referred to as the liability — and the corresponding loss that a farmer must incur before an indemnity payment will be made, much like a deductible. A coverage level of 80%, for example, would insure losses greater than 20% of the

liability but provide no protection for losses less than 20% of the liability. The lower the coverage level, the more extreme the losses have to be to trigger an indemnity, which lowers the associated risk of a plan. For this reason, farmers pay a higher cost for higher coverage levels.

Farmers participating in crop insurance are required to follow USDA's guidance on good farm practices while planting, growing and harvesting their crops. This reduces risk to the program related to operator-caused crop losses.

USDA's administrative burdens for the program are reduced by providing payments to AIPs to distribute, rather than the agency directly working with hundreds of thousands of crop insurance policy holders. AIPs receive payments from USDA on behalf of farmers to offset a portion of premium costs. For most acreage policies discount rates (the portion of a crop insurance premium paid for by the government) are set by statute set in the farm bill and may vary based on the coverage level a farmer selects.

In addition to premiums, farmers also pay administrative fees. Crop insurance policies are priced in a way that must be "actuarially fair" and USDA is statutorily required to

operate in ways that "improve the actuarial soundness of federal multiperil crop insurance coverage." This means the total value of premiums paid over many years should be about equal to the value of indemnity payments distributed. One way USDA measures success is through a financial performance indicator known as a loss ratio defined as the indemnities paid divided by the premiums collected for policies in a given year. As of March 2024, the loss ratio for 2023 policies is 0.86, meaning that more premiums were paid for policies than indemnities paid for losses incurred.

To encourage the conservation of wetlands and highly erodible lands, the Federal Crop Insurance Program requires participants to meet conservation compliance requirements. To comply, farmers must agree to maintain a minimum level of conservation on highly erodible lands and not convert wetlands to crop production. The 2014 farm bill included a provision that could eliminate crop insurance support for producers who are out of compliance with conservation requirements.

"Friends are like money; easier made than kept."

-Samuel Butler
Ron Kern is the manager of the Ogle County Farm Bureau.



Ron Kern

Six reasons why you should get help for your mental health

MANY people underestimate the impact that mental illness can have on an individual or family. It can be difficult to admit that you have a mental health problem in your life. Secondly, it can be just as difficult in getting the people you know to understand your situation without making any kinds of judgments.

As a result, here are six reasons why you should make your mental health an important priority in your life.

Your situation will improve if you get help: Your anxieties and fears

can be challenging to manage and more than likely you will need some help. Just as you talk to your doctor about your regular health, you should not be hesitant in seeking help for your mental health. If left untreated, your anxieties and fears may not go away.

Drugs and alcohol are not the answer: Drugs and alcohol can make your problems more complicated. Many people have said that drugs and alcohol will only add more problems to your situation. Be smart and learn how to cope with your mental health issues by talking to a qualified professional.

There are many health professionals in your area that can give you some ideas on where you can go for assistance.

You will save time and money: Eventually, you will have to confront your fears and mental health issues. Save yourself the time and heartache and confront your problems now rather than later. You will save months of struggling by getting help right away. The sooner you get assistance the faster you will start getting some relief.

You are not alone: Everyone deals with fear, stress, and anxiety in one's life whether your friends and others care to admit it. In addition, do not be embarrassed that you are getting help. We all learn



Stan Popovich

new things from others on a daily basis and learning how to manage your anxieties is no different. In addition, your goal is to get your life back on track and not to get everyone's approval. If people start asking you questions, just say you're dealing with stress. Most people

can relate to dealing with stress and anxiety!

Do not make the mistake of doing nothing: There are many people who struggled with anxiety and other mental health related issues, and they tried to ignore their problems. As a result, some of these people struggled on a daily basis and eventually things became more difficult. It can be scary asking for assistance, but the key is to take things one day at a time.

You have a variety of options: There are many mental health support groups, organizations, and counselors in your area

that can help get your life back on track. Talk to your doctor to get more details on where you can go for some assistance. Help is available but you must be willing to make the choice of getting better. Remember that every problem has a solution. You just have to make the effort to find the answers.

Stan Popovich is the author of "A Layman's Guide to Managing Fear" which covers a variety of techniques that can drastically improve your mental health. For more information, please visit Stan's website at <http://www.managingfear.com>

How to contact government officials

U.S. Con. Darin LaHood
1424 Longworth HOB
Washington, D.C.
20515
(202) 225-6201

IL Sen. Win Stoller
Stratton Office Bldg
Springfield, IL 62706
(217) 782-1942

IL Rep. Bradley Fritts
Stratton Office Bldg
Springfield, IL 62706
(217) 782-0535

Have a letter you want to submit to us? Send it to news@rochelle-news-leader.com

KEEPING YOU IN TOUCH WITH YOUR LOCAL LEADERS

* Denotes Chairman/President

Rochelle City Council

*John Bearrows	jbearrows@rochelleil.us
Kathryn Shaw-Dickey	kshaw@rochelleil.us
Bil Hayes	bhayes@rochelleil.us
Rosaelia Arteaga	rarteaga@rochelleil.us
Dan McDermott	dmcdermott@rochelleil.us
Tom McDermott	tmcdermott@rochelleil.us
Benjamin Valdivieso	bvaldivieso@rochelleil.us

Rochelle Elementary School Board

*Trisha Vaughn	tvaughn@d231.rochelle.net
Dave Casey	dcasey@d231.rochelle.net
Steve Baulta	sbaulta@d231.rochelle.net
Ashley Jackson	ajackson@d231.rochelle.net
Stephanie White	swhite@d231.rochelle.net
Javier Zepeda	jzepeda@d231.rochelle.net
Jennifer Thompson	jthompson@d231.rochelle.net

Rochelle Township High School Board

*Tom Huddleston	tom.huddleston@rthsd212.org
Bill Ravnaas	bill.ravnaas@rthsd212.org
Jeff Tilton	jeff.tilton@rthsd212.org
Bobby Chadwick	bobby.chadwick@rthsd212.org
Brent Ohlinger	brent.ohlinger@rthsd212.org
Laurie Pillen	laurie.pillen@rthsd212.org
Joel Thompson	joel.thompson@rthsd212.org

Flagg-Rochelle Park Board

Brent Carmichael	bcarmichael@rochelleparkdistrict.org
John Dobbs	jdobbs@rochelleparkdistrict.org
Dale Wells	dwells@rochelleparkdistrict.org
*Tim Hayden	thayden@rochelleparkdistrict.org
Jodie Hart	jhart@rochelleparkdistrict.org
Joe Lenkaitis	jlenkaitis@rochelleparkdistrict.org
Kristi Gonzales	kgonzales@rochelleparkdistrict.org

Ogle County Board Dist. 3

Austin Gillis	agillis@oglecounty.org
Dan Miller	dmiller@oglecounty.org
Joseph Simms	jsimms@oglecounty.org

Ogle County Board Dist. 4

Jackie Ramsey	jramsey@oglecounty.org
Skip Kenney	skenney@oglecounty.org
David Williams	dwilliams@oglecounty.org

Creston Village Board

*Tom Byro	tommyb_47@yahoo.com
Greg Hopkins	ghopkins522@comcast.net
Steve Katzman	skatzman@essex1.com
Mike Kern	ac.kerns@comcast.net
Curt Ward	caward92@comcast.net
Mark Hibshman	
Reid Elliot	
Jennifer Payton	

Hillcrest Village Board

*Richard Rhoads	rrhoads@hillcrestil.us
Pam Pittman	ppittman@hillcrestil.us
Dan Potter	dpotter@hillcrestil.us
Tim Ball	tball@hillcrestil.us
Jose Huerta	jhuerta@hillcrestil.us
Eileen Braski	ebraski@hillcrestil.us
Joe Thompson	jthompson@hillcrestil.us

Flagg Township

Sue Messer	flaggtwp@rochelle.net
Joanna Patrick	flaggtwpclerk@rochelle.net
Susan Rothenberger	assessor@rochelle.net
Scott Seebach	scottseebach@gmail.com

Board of Trustees

Lance Noggle	noggle62@gmail.com
Eric Gruben	egruben@comcast.net
Susan Hager	susanhager303@comcast.net
Jim Kenney	jimk@rocketsupply.com

Flagg-Rochelle Library

Jaqueline Dickow	dickow@comcast.net
*Teresa Haggstad	haggstad@comcast.net
Kelly Johnson	kellyjohnson0927@yahoo.com
Lanning Nicoloff	nicoloff118@comcast.net
Sheri Klindera	alwayslefty2@gmail.com
Susan Sevedge	nit1prl22@yahoo.com
Darci Waltrip	doobs12@comcast.net

LETTERS TO THE EDITOR POLICY

The Rochelle News-Leader encourages responsible letters to the editor on subjects of interest to our readers. Editing may be necessary for space, clarity or to avoid obscenity or libel, but ideas will not be altered. All letters must bear the handwritten signature of the writer and include address and phone number or e-mail address for verification purposes. Neither the street address nor phone number will be printed. Letters should be typed

or legibly handwritten, and no anonymous letters will be published. Any letters from boards or organizations must include at least one name of an individual. Any criticism of public officials should be limited to issues related strictly to their position or actions made in office, as personal attacks will not be published. Letters involving private disputes between the writer and a business will not be published. Political endorsements will be published,

however letters from candidates endorsing themselves will not be printed. Letters may be dropped at the News-Leader office (211 IL Route 38 East), mailed to the News-Leader (P.O. Box 46, Rochelle, IL 61068) or e-mailed (news@rochellenews-leader.com.) The News-Leader reserves the right to edit or reject any letter to the editor for any reason, and letters chosen for publication do not necessarily reflect the views of this newspaper.

COMMUNITY

Kinns win June 28 Chamber Lawn of the Week

ROCHELLE — The Rochelle Chamber of Commerce recently presented its Lawn of the Week award for the week of June 28 to Dave and Barb Kinn. They received a sign and a \$25 Rochelle ACE Hardware gift card, presented by Rochelle Ace Hardware Manager Jesse Lopez.

The chamber has partnered with Rochelle Ace Hardware to award gift cards to the winners.

The 2024 Lawn of the Week program has begun for the summer and will run through September. Nominate a neighbor/yard each week by submitting a name and address by emailing rochel-lechamber@gmail.com.

“We are proud to recognize our residents that display community pride in Rochelle,” Chamber Executive Director Tricia Herrera said. “We love



(COURTESY PHOTO)

The Rochelle Chamber of Commerce recently presented its Lawn of the Week award for the week of June 28 to Dave and Barb Kinn. They received a sign and a \$25 Rochelle ACE Hardware gift card, presented by Rochelle Ace Hardware Manager Jesse Lopez.

that this program gives us the chance to show- case the hard work and dedication they put in to making our city look great.”

Youth demonstrate equine knowledge, passion for horses in hippology contest

OREGON — In 4-H, learning about horses means much more than learning to ride. Young people passionate about horses participated in recent statewide educational contests related to the equine industry. 4-H’s educational programs enhance members’ knowledge of horse health, breed characteristics, management, and feeding. That knowledge and skills were tested during the State 4-H Hippology Contest held on April 13 on the University of Illinois campus.

In hippology, youths are asked a wide range of questions, ranging from breed identification, anatomy, tack identifi-

cation, and feed samples to disease management, parasite identification, and quality assessment. They also are given a timed problem-solving challenge they must solve on the spot in front of a panel of judges. Horse ownership is not a prerequisite in either educational programs or contests.

Ogle County Hippology team members did a great job! Intermediate Hippology results, fourth place was Addison Yordy, and 11th place was Adalyn Bocker. Junior Hippology results: fifth place was Addison Diehl, sixth place was Lily Hongsermeier, and 18th place was Kenzie Hongsermeier.



(COURTESY PHOTO)

Ogle County 4-H Hippology team members participated at the State 4-H Hippology Contest on April 13. Left to right: Kenzie Hongsermeier, Adalyn Bocker, Addison Diehl, Addison Yordy and Lily Hongsermeier.



- June 11 - Dorothy Bowers, Byron, \$25
- June 12 - Lane and Sheryl Albrecht, Lake Mills, WI, \$25
- June 13 - Marisol Esparza, Rochelle, \$25
- June 14 - Logan Frye, Steward, \$25
- June 15 - Christine Roberts, Lindenwood, \$25
- June 16 - Kishwaukee College Foundation, \$500
- June 17 - Jacquelyn Ackert, Dixon, \$25
- June 18 - Moncerat Rocha, Rochelle, \$25
- June 19 - Merrick Jacobs, Glendale, Arizona, \$25
- June 20 - From the Heart, \$25
- June 21 - From the Heart, \$25
- June 22 - Sherrie Welles, Rochelle, \$25
- June 23 - Megan Ryan, Glendale, Arizona, \$50
- June 24 - Timothy Moreland, Rochelle, \$25
- June 25 - Adeline Aubry, Whitefish Bay, WI, \$25
- June 26 - Angela Wyckoff, Davis Junction, \$25
- June 27 - RACF, \$25
- June 28 - First State Bank, \$25
- June 29 - Michael Fonfara, Rochelle, \$25
- June 30 - Kyle Elliott, Lakeside, California, \$50
- July 1 - Danielle Elston, Rochelle, \$25
- July 2 - Marshall Basler, Rochelle, \$25
- July 3 - Max Etheridge, Rochelle, \$25
- July 4 - William Fawkes, Sterling, \$1,000
- July 5 - Griffin Gabriel, Rochelle, \$25
- July 6 - Charlie and Jennifer True, Rochelle, \$25
- July 7 - Jill Schwartz, Rochelle, \$50

QUEEN FOR THE CAUSE

DRAWINGS THURSDAYS 7 P.M. @ LUNA
CURRENT WEEKLY PRIZE: \$1,000
CURRENT JACKPOT: \$11,422



Coffee Break

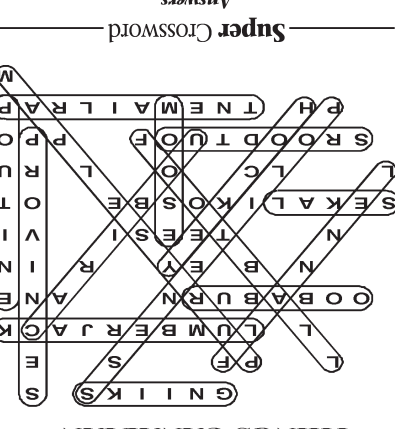
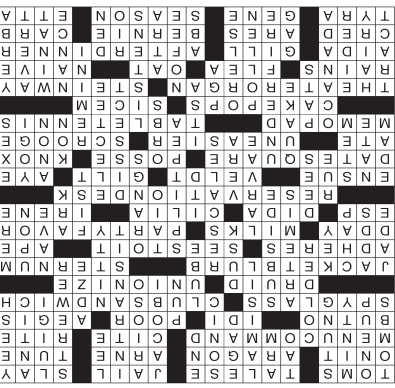
MAGIC MAZE • THINGS CANADIAN

D N L J G E G N I K S C S Z
X V L T R P F P N L S J H E E
C A Y L W L U M B E R J A C K
V O O B A B U R N E T R A N E
P N L N K B I E Y G A R E I N
C B N Z X W T E S I V U V I
S E K A L I K O S B E S E O T
L R P O L C M L O J I L G R U
E S R O O D T U O F D B P P O
A Y P H X T N E M A I L R A P
W U T S Q P O N L K J H G F M

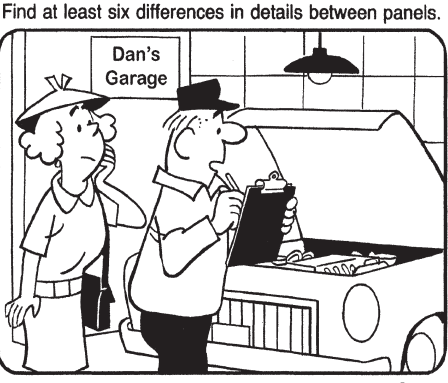
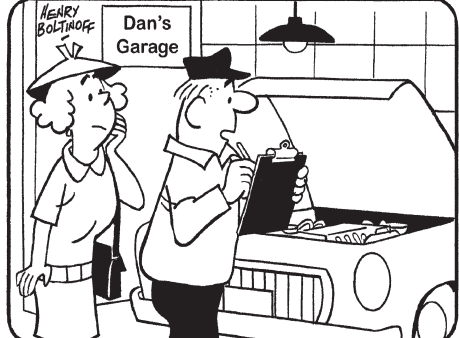
Find the listed words in the diagram. They run in all directions forward, backward, up, down and diagonally. Unlisted clue hint: FURRY DAM BUILDER

- Caribou
- Flannel
- Football
- Hockey
- Lakes
- Lumberjack
- Maple syrup
- Moose
- Outdoors
- Parliament
- Politeness
- Poutine
- Provinces
- Rubaboo
- Skiing

©2024 King Features Syndicate, Inc. All rights reserved.



HOCUS-FOCUS BY HENRY BOLTINOFF



Differences: 1. Light is moved. 2. Shape of grille is different. 3. Belt is higher. 4. Arm is moved. 5. License plate is smaller. 6. Cap is different.

Super Crossword

POSTPRANDIAL

- ACROSS
- 1 Male cats
- 5 "Unto the Sons" author
- 11 Perp's place
- 15 Overwhelm, as with humor
- 19 Getting the task done
- 20 Region next to Catalonia
- 21 Minnesota ex-governor
- 22 Something to belt out
- 23 "Save As," "Print" or "Select All"
- 25 Name as a source
- 26 Liturgical act
- 27 "Alas, it wasn't to be"
- 28 Africa's Amin
- 29 Destitute
- 30 Sponsorship
- 31 Small telescope
- 34 Diner classic
- 37 Ancient Celtic priest
- 39 Join together in a labor group
- 40 Message on a protective book cover
- 45 Breastbone
- 49 Holds fast (to)
- 50 Makes sure the task gets done
- 54 Kong or Koko
- 55 6/6/1944
- 56 Extracts via udders
- 58 Small gift for shindig guests
- 61 Purported psychic skill
- 62 — job on (messed up)
- 63 They propel paramedics
- 65 Actress Dunne
- 66 Spot in a hotel to book a room
- 70 Happen next
- 73 South African grassland
- 74 — edged pages
- 75 Positive vote
- 78 Certain fruit bar
- 81 Sheriff's aides
- 83 U.S. fort
- 84 Scarfed down
- 85 More restless
- 87 Miserly sort
- 89 Stationery store product
- 92 Ping-Pong
- 94 Sweet snacks on sticks
- 98 Cry to an attack dog
- 99 Source of music to accompany silent films
- 103 Big name in concert pianos
- 108 Drizzles or sprinkles
- 109 Dog
- 110 Cereal grain
- 112 Guileless
- 113 Verdi opera heroine
- 114 Fish's respiratory structure
- 115 Where the starts of eight answers in this puzzle might appear
- 118 Street — (rep in the city)
- 119 War god
- 120 Senator
- 121 Low — diet
- 122 Model Banks
- 123 Heredity unit
- 124 See 95-Down
- 125 Kett of old comics
- DOWN
- 1 Burial sites
- 2 Barely ahead
- 3 Like many toothpastes
- 4 Attacked like a bee
- 5 Confucian "way"
- 6 Upper limb
- 7 Antifungal brand
- 8 "Good grief!"
- 9 Part of SST
- 10 Put a stop to
- 11 British actor
- 12 Melodic passage
- 13 While being shipped
- 14 Film's director
- 15 Person scattering seeds, say
- 16 Brother of Nintendo's Mario
- 17 Shenanigan
- 18 "Good grief!"
- 24 More chilly
- 29 Play on words
- 30 Wood-dressing tool
- 32 Twin of Apollo
- 33 Diminish
- 35 Engine oil, for short
- 36 — gritty
- 38 Twilight time
- 40 Precious green stone
- 41 Tosses in
- 42 British fellow
- 43 Lock unlocker
- 44 Alters in size, as a photo
- 46 Church area with pews
- 47 Resting atop
- 48 Nothing more than
- 51 Cut and dried soup veggie
- 52 "Dynamite" singer Cruz
- 53 Chimps' cousins
- 57 Future pupae
- 59 Clenched hand
- 60 Genesis boat
- 62 Low grades
- 64 "— be a shame if ..."
- 66 Really regret
- 67 Wang of dress design
- 68 Examine minutely
- 69 Person voted in to a seat
- 70 Cheese from Holland
- 71 Statistics expert Silver
- 72 Goblet part
- 75 Auth.
- 76 Bear or Berra
- 77 Past partners
- 79 Seismic occurrence
- 80 Being harshly criticized
- 82 Balls
- 83 "— Tiki"
- 86 "— deal!"
- 88 Actress Leah
- 90 Quebecois' national anthem
- 91 Butter bits
- 93 Takes heed
- 95 With
- 124-Across, dreaded time of the year for many allergy sufferers
- 96 Last words of a threat
- 97 Links org.
- 99 Land parcel
- 100 Fur-covered
- 101 Duck variety
- 102 Charge-free
- 104 "Twin Peaks" actor Jack
- 105 Be the champion of
- 106 Ward off
- 107 — Buena Island
- 111 Gillette razor
- 114 Choke
- 115 Crunchable muscles
- 116 — de Janeiro
- 117 Lion locale

LOCAL NEWS

CITY: Rochelle officials discuss potential urban park project on 4th Avenue

From page 1

The city council recently approved restoration work on the adjoining walls of the two businesses that the demolition left bare. Pease said after that work is done, water and electric hookups will be installed. After going out to bid for the urban park project, her hope is to have it completed by Nov. 1. If that timeline isn't feasible, the project would be pushed to the spring.

The project will be paid for through the city's tourism fund, its Downtown tax-increment financing (TIF) District fund, and recent bond money issued for downtown public improvements.

Fiegenschuh said the urban park could allow the city to be a part of events that downtown businesses put on in the area where vendors could set up there. Pease envisions the space as a place for community members to gather and patronize downtown businesses.

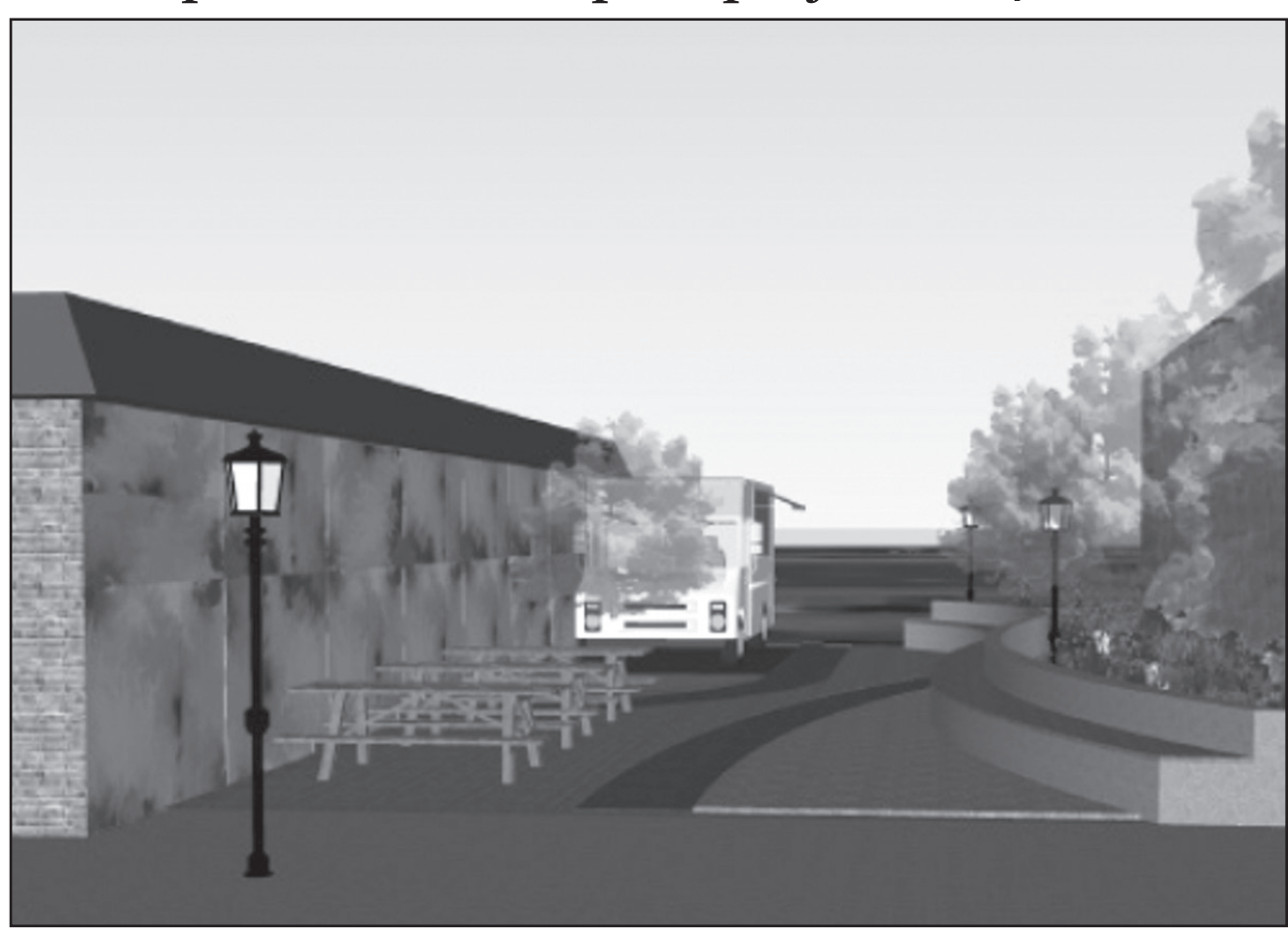
"We talk about our walkability downtown and how we want people to gather and come and stay downtown," Pease

said. "I envision someone with an acoustic guitar and a microphone performing there. You can get lunch from a business in the area and sit and enjoy the music. I think it's just another piece of the puzzle to make downtown more appealing."

In a separate project in the downtown area that's partially grant-funded, the city will be constructing a structure with public restrooms, a stage and storage, constructing two new parking lots, reconstructing seven existing parking lots, and doing major electrical service improvements including placing electric lines underground.

Pease said she's excited for the future of the downtown after all of the projects are wrapped up. Downtown business owners have shown their excitement upon learning of the work, she said.

"I'm very excited about it," Pease said. "I grew up here and we've seen many phases of the downtown area and we've seen businesses coming and going and being successful. I think this is all an opportunity for us



(COURTESY PHOTO)

The city acquired the building and demolished it due to structural issues. The council was presented with a concept design put together by Studio GWA for the urban park on May 28 that was received positively by council members. The concept plan includes a seat wall, native plantings and an asphalt area for a potential food truck or vendor space. A potential mural may be included in the plan.

to make our downtown a really special place where people gather. It's an exciting time. It feels really powerful. There's a lot of energy happen-

ing downtown right now. People want to be there. When I have retailers call with interest, they want to locate downtown. And that's huge because five or six years ago, it was a lot different. We didn't have that interest."

Fiegenschuh praised the business owners in the downtown area and

said the city's improvement wouldn't be possible without the private investment that's been seen in the area. He wants the city to serve its purpose of creating an environment conducive to private investment. The city manager said more work will be seen in not just the downtown, but

each corridor of Rochelle in coming years.

"We want to improve all of our corridors equally," Fiegenschuh said. "Downtown is the gathering place and the core of the community. I go to conferences and hear people with national retail experience say that you can tell a lot about a city by looking at its downtown. I think ours shows pride in our community and that we're happy with our community and that we love Rochelle. We're working on our other corridors too and over the next 5-6 years you're going to see a lot of improvements in every corridor in the community."

RALPHIE & LULU'S

July 19!

5PM-8PM

Pork Chop Dinners Served by Business Booster
Full Dinner Menu will be served at Ralphie & Lulu's

**Serving dinner Wednesday 5 - 8 p.m.
Friday and Saturday 5 - 8 p.m.**

812 Main St. - Ashton

07072024

Stillman Valley Nursery

9979 N. Kishwaukee Road
Stillman Valley, Illinois 61084

(815) 645-8113

Premium Hardwood • Designer Colored Mulches
Pulverised Dirt • Mushroom Compost • Straw Bales

Delivery Available

08032020

6th Annual Daylily Bloomfest 2024

July 13
9:00 a.m. - 5:00 p.m.

&

July 14
9:00 a.m. - 2:00 p.m.

*Award-Winning Daylilies
Local Vendors • Door Prizes
Raffles • Storewide Discounts*

462 S. Chana Rd., Chana, IL • Just North of Route 64 • 815-751-4162
Connect with us on facebook!
www.hiddentimbergardens.com

HIDDEN TIMBER GARDENS
PREMIUM PLANTS & TREES

SPORTS

TITLE: Rochelle 12U Softball All-Stars advance to state tournament

From page 12

Molly Whiting threw the final inning of relief for the 12U All-Stars, striking out two batters without allowing a hit.

Sterling 1

Rochelle reached the championship round with a 14-2 win against Sterling on Tuesday evening. Cali Metzger went 3-for-3 with two runs and one RBI, while Macey Gittleston went 3-for-3 with two runs and two RBIs. Tinley Tabor went 2-for-2 and scored one run for Rochelle in the win.

Cali Metzger pitched all five innings on the Rochelle

side, striking out 12 batters and allowing only two runs on one hit. Rochelle took a 2-0 lead over Sterling in the top of the second inning, where Macey Gittleston slapped a two-run single into center field to score Mayson Smardo and Berkeley Thompson, who each reached base on hit-by-pitches earlier in the frame.

Cali Metzger bashed an RBI double to spark a four-run surge for Rochelle in the top of the third inning. Hailey Chapman followed with an RBI single and Berkeley Thompson sent an RBI single to right field that gave Rochelle a 5-0

lead. The 12U All-Stars extended their lead in the top of the fourth inning, where Macey Gittleston and Helen Miller each scored on passed balls.

Sterling tallied two runs on a single and a groundout in the bottom of the fourth inning. Rochelle responded with six runs in the top of the fifth inning to seal the victory over Sterling. Mayson Smardo reached on an RBI infield single before scoring on a passed ball to put Rochelle ahead 12-2. After Macey Gittleston singled and Helen Miller drew a two-out walk, both runners came home on passed balls to cap off the

six-run frame for the 12U All-Stars.

Sterling 2

Rochelle won the district championship on Thursday evening, defeating Sterling 10-7 in a rematch from the semifinals. Mayson Smardo went 3-for-3 with three runs and one RBI, while Cali Metzger went 2-for-2 with two runs and two RBIs. Misha Krawecicz went 2-for-3 with one run scored and Jaelyn Gonzales went 2-for-3 with one run and two RBIs in the victory. Cali Metzger pitched all six innings for the Rochelle side, striking out nine batters in the win.

Rochelle held a 4-0 lead after the bottom of the first inning, where Cali Metzger laced a two-run double to right field and Mayson Smardo slapped an RBI single to the second-base side. Sterling earned one run back in the top of the second inning, but the 12U All-Stars extended their lead after Jaelyn Gonzales smacked a two-run double to the second-base side in the bottom of the second inning, allowing Sofia Reynolds and Makenzie Johnson to score.

Berkeley Thompson's RBI groundout gave Rochelle a 7-1 lead in the bottom of the third inning.

Sterling tallied three runs on two singles and one double in the top of the fourth inning before tying the game at 7-7 after plating three runs on three singles in the top of the fifth inning.

Undeterred by the Sterling rally, Rochelle answered with three runs in the bottom of the fifth inning to retake control of the championship game. Hailey Chapman's RBI single broke the tie and Mayson Smardo's RBI double put Rochelle ahead 9-7. Berkeley Thompson provided another run with an RBI groundout to the second-base side, her second RBI of the game.

Rochelle Little League

(PHOTOS BY RUSSELL HODGES)



Tee Ball League teams take the field at May School diamonds

Rochelle Little League's Coed Tee Ball League enjoyed a successful 2024 season at the May School fields this summer. The Tee Ball League fielded six teams this season including XCEL Foam & Packaging, Brown's Tire, Ralfie's BBQ & Catering, Northwoods Transit, Sondgeroth Pools and Little Hubs Learning Center. A total of 64 kids participated in the Tee Ball League during the 2024 season.

COMMUNITY BOARD

Need to get the word out about a product or service you offer?
Give us a call at 815-561-2153.
We can reach over 9,000 homes!



Advertise Here

What Service Do You Offer?

562-4171

The Rochelle News-Leader

Gutters, Roofing & Siding

THEISEN ROOFING *Free Estimates!*
 ROOFING
 SIDING
 GUTTERS
 CONTACT US
 815-758-8998
 THEISENROOFING@COMCAST.NET
 Family owned & operated for over 50 years

Plumbing, Heating & Cooling

ANDERSON PLUMBING & HEATING, INC.

Plumbing, Heating & Cooling
 Water Heaters, Water Softeners,
 Drinking Water Systems, Iron Filters,
 Sewer Rodding & Jetting & More!

Since 1976
 621 First Ave., Rochelle
 (815) 562-8784

Home Repair/Remodeling

ESTERDAY HOME REPAIR & REMODELING

Reasonable & Dependable Remodeling of:
 • Kitchens • Baths • Basements
 • Ceramic Tile
 • Installation of Hardwood Floors,
 Windows & Doors

Free Estimates
 GIVE US A CALL
 NO JOB TOO SMALL
562-7199
 Fully Insured

Concrete

Bruns Construction, Inc.

• Residential & Commercial Concrete
 • Additions

FREE ESTIMATES!
 Tim & Roger Bruns, Owners
 Established 1997

815-561-0099

Free Estimates • Fully Insured
www.brunsconstructioninc.com

Heating & Air Conditioning

HULL HVAC & Household Services
 Furnaces - Air Conditioners - Boilers
 Duct Cleaning - Water Heaters

Air Conditioner Clean & Check

\$45.00

After \$35 rebate.

Promotion only available to RMU customers.
 Expires: 08/31

Ask about duct cleaning and antimicrobial fogging.

815-561-6551

www.HullHVAC.com

Recipient of the 2020 BBB Complaint Free Award.

Storage Sheds

Rocky Ridge Structures
 FREE Sales Rep. Evaluation At Your Site
 We Deliver! From Our Lot To Your Site

We Specialize in Portable/Quality Built Storage Sheds

• Stock & Custom Design • Competitive Pricing
 • Many Options Available • Site Preparation Available

See Displays at 3500 S. Chana Rd. Chana IL 61015

Call Norm or Albert for Free Literature packet

779.861.3542

Advertise Here

What Service Do You Offer?

815-561-2153

Call Christel to be included on our Service Directory.

Classified Marketplace

BUY OR SELL
Place A Classified Ad



ROCHELLE • HILLCREST • CRESTON • STEWARD • KINGS • ASHTON

101 LEGAL NOTICE

This publication does not knowingly accept fraudulent or deceptive advertising. Readers are cautioned to thoroughly investigate all ads, especially those asking for money in advance.

105 BUSINESS OPPORTUNITIES

"This publication does not knowingly accept fraudulent or deceptive advertising. Readers are cautioned to thoroughly investigate all ads, especially those asking for money in advance."

113 FINANCIAL

NOTICE Advance Fee Loans or Credit Offers Companies that do business by phone can't ask you to pay for credit before you get it. For more information, call toll-free 1-877-FTC-HELP. A public service message from your hometown newspaper and the Federal Trade Commission.

119 ANNOUNCEMENTS

"This publication does not knowingly accept fraudulent or deceptive advertising. Readers are cautioned to thoroughly investigate all ads, especially those asking for money in advance."

201 DOMESTIC/CHILD CARE

NO INDIVIDUAL, unless licensed or holding a permit as a childcare facility, may cause to be published any advertisement soliciting a child care service. A childcare facility that is licensed or operating under a permit issued by the Illinois Department of Children and Family Services may publish advertisements of the services for which it is specifically licensed or issued a permit. Your Hometown Newspaper strongly urges any parent or guardian to verify the validity of the license of any facility before placing a child in its care.

301 ANTIQUES

ANTIQUES WANTED: I pay cash for antiques; furniture, glassware, pottery & crocks, tin & iron toys, sterling silver, decoys. If it's antique, I'm interested in looking! Call 815-562-2928 or email dickharms@hotmail.com

307 MISCELLANEOUS FOR SALE

BUNDLED Newspaper -\$3 per Bundle. End Roll- Cost Depends on Weight of Roll. Available Monday-Friday 815-562-4171 (8AM-NOON ONLY) Rochelle News Leader.

SPLIT Firewood For Sale. Contact 779-251-0254

305 GARAGE SALES

ROCHELLE - 1107 N. 3rd Street. Thur 7/11, Fri 7/12 & Sat 7/13 8AM - 5PM. Rain or Shine. Clothes (Adult Small-3XL, Girls 3T-10/12, Boys 3T-14/16), Toys, Little Tykes Kitchen Set, Kirby Vacuum, Dresser, Household Items, Miscellaneous Items & Much More. (07102024RNLONLY)

ROCHELLE - Garage/Estate Sale - 2645 Hwy 251 South. Fri 7/12, Sat 7/13 & Sun 7/14 9AM - 3PM. Nascar Memorabilia, TV's, Desks, Tables, Household Items & More (07102024RNLONLY)

309 PETS AND SUPPLIES

Free Kittens to give away to good homes. Very friendly & good mousers. Call Mike at 815-993-2234

405 HOUSES FOR SALE

ALL REAL ESTATE advertised herein is subject to the Federal Fair Housing Act, which makes it illegal to advertise any preference, limitation or discrimination based on race, color, religion, sex, handicap, familial status, or national origin, or intention to make any such preferences, limitation or discrimination. We will not knowingly accept any advertising for real estate which is in violation of the law. All persons are hereby informed that dwellings advertised are available on an equal opportunity basis.



Place an Ad:
Rochelle News-Leader
815-562-4171
Ogle County Life
815-732-2156



Subscribe:
Rochelle News-Leader
815-562-4171
Ogle County Life
815-732-2156

**All in the
Classifieds!**

Not sure why
business is slow?



is not just a saying in
business.

**Advertise today and let your
business be in sight and in the
minds of your customers.**

307 MISCELLANEOUS FOR SALE

New Milford Refrigeration

6331 11th Street | Rockford



New, Used, Scratch & Dent

Refrigerators
Freezers
Washers/Dryers
Stoves
Air Conditioners
Dehumidifiers

815-262-3900

We also
carry a large
selection of
refurbished
appliances
with a
warranty.

315 WANTED TO BUY

WANTED: RECORDS

33's, 45's and 78's

Rock, Blues, Jazz, Country,
Funk, Punk

(We will look at Anything!)



Contact Scott:
815-847-0382

PIA #81

Quitting smoking
was hard.
**Screening for lung
cancer is easy.**



If you smoked, you may still be at risk,
but early detection could save your life.

Get **SavedByTheScan.org**

American
Lung
Association.

ad
COUNCIL



The businesses featured on this page are

“Hubs Super Fans”

They proudly support our local athletes and students.

Please show your appreciation by patronizing their businesses.

WE SUPPORT OUR HUBS!



HUB SPOTLIGHT



(PHOTO COURTESY OF NIU ATHLETICS)

Former Rochelle football standout Garrett Gensler dressed for home games during his freshman season at NIU. Gensler is preparing for his second year with the team.

Gensler reflects on freshman season with NIU football team

BY RUSSELL HODGES
SPORTS EDITOR

FORMER Rochelle football star Garrett Gensler dressed for every home game during his freshman season at Northern Illinois University this past fall. Now a redshirt freshman gearing up for his second year with the Huskies, Gensler is motivated to continue proving himself and accomplishing his goals, which include making the travel roster for road games this season.

Gensler's collegiate career began right away, as the former Hub football standout joined the Huskies during the summer before the first semester started in the fall. Much of his first summer was spent on strength and conditioning, with team activities beginning as early as 6:45 a.m.

"Moving in was really exciting for me," Gensler said. "I met a lot of the guys and some of those guys are my best friends in college right now. My first year was a lot of fun. The coaches get the most out of you no matter what. It's really competitive and I'm being pushed every day."

Gensler started at running back and inside linebacker during his high school career, earning All-Conference First Team honors in the Interstate 8/Kishwaukee River Conference over his junior and senior seasons. A two-time IHSFCA All-State honoree, Gensler was recruited to play running back for the Huskies, who offered him a spot on the team as a preferred walk-on.

Since that time, Gensler has been working hard to earn his way onto the field. Although he didn't see game action during his freshman season, Gensler soaked in the Division I football experience, which included dressing and being on the sideline during home games against Southern Illinois, Tulsa, Akron, Ohio, Eastern Michigan, Ball State and Western Michigan.

"My role on the team is to be the guy who's there day in and day out looking to get better and find his way onto the field," Gensler said. "I'm not there yet offensively,

but I'm hoping to take some steps forward and to play on special teams this season... Being on the field during home games was a really cool experience. It's very different being out there. I look up and there are a lot of people in the stands. I really enjoyed it and I'm looking forward to this season."

Gensler is one of nine running backs listed on the NIU roster for the upcoming season. The Huskies went 7-6 and won the Camellia Bowl during the 2023 campaign, which was NIU's fifth under head coach Thomas Hammock. Of the nine running backs on the roster, six are either freshmen or redshirt freshmen, meaning Gensler could have a chance to break out this fall.

"The biggest difference between the summer and the fall is that the summer is very taxing on the body, but fall camp is much more challenging mentally," Gensler said. "We're at the team facilities for as many as 12 hours a day and we practice a lot... I think I've improved physically and mentally. I've put on some size and I've definitely gotten stronger. I've dealt with a few lower-body injuries, but I've picked things up this summer and I've become faster, too."

Gensler led Rochelle to an 8-3 season during his junior year and a 9-3 record during his senior year, when the Hubs reached the state quarterfinals for the first time since 2018. Gensler's outstanding high school career included 50 rushing touchdowns and 29 rushing touchdowns during his senior year, both of which are school records for a career and a single season. Gensler rushed for 1,727 yards and was an IHSFCA All-State First Team honoree as a senior.

"I want to put more work in to get bigger and faster," said Gensler, who's currently studying business management at NIU. "I want to make the travel roster and I'd like to see the field on special teams. Those are my goals for next season. I dealt with a lot of great coaches at Rochelle and they really instilled the values of working hard and being selfless."

VINCE'S PIZZA
SINCE 1967

Ordering Online is easy when you use our QR Code!

We are Proud to Support the Rochelle Hubs!

815.562.7300
Delivery & Curbside Pick Up
1071 N 7th St, Rochelle, IL • vinctspizzainrochelle.com

Hello, neighbor!

Huber Ins and Fin Svcs Inc
Shane B Huber, Agent
221 E. IL Rt. 38
Rochelle, IL 61068
Bus: 815-562-7011

Please stop by and say, "Hi!"
I'm looking forward to serving your needs for insurance and financial services.
Like a good neighbor, State Farm is there.
CALL ME TODAY!

State Farm

Local People Providing Local Service

Rochelle MUNICIPAL UTILITIES

Water • Waste Water
Electric • Communications

Phone: 815-562-4155 333 Lincoln Highway
Fax: 815-562-5861 Rochelle, IL

www.rmu.net

CENTRAL ILLINOIS LOAN

Loans For All Your Needs
Auto • Home Improvement • Vacation

Jami Hackman • Tonia Holland

815★561★4035!

310 Eagle Drive, Rochelle
All loans subject to our normal credit requirements and policies.

MORTON BUILDINGS

If you can dream it, we can build it.

Rochelle Sales Office • Hwy. 251 N. • 877-613-3050

Rochelle Community Hospital

Your Local Healthcare Resource.

900 N. 2nd Street, Rochelle
815-562-2181
www.rochellehospital.com

MEYERS FURNITURE & FLOORING

209 Powers Road, Hwy 251 N
Rochelle, IL 61068
(815) 562-8792
www.meyersfurniture.com

Bruns Construction, Inc.

Tim & Roger Bruns, Owners
Established 1997

• Residential & Commercial
• Concrete
• Additions

815-561-0099
Free Estimates • Fully Insured
www.brunsconstructioninc.com

ANDERSON PLUMBING & HEATING, INC.

Plumbing, Heating & Cooling
Water Heaters, Water Softeners,
Drinking Water Systems, Iron Filters,
Sewer Rodding & Jetting & More!

Since 1976

621 First Ave., Rochelle
(815) 562-8784

Rochelle Chiropractic Clinic
Dr. Chad M. Piller

227 E. Rt 38 • Rochelle, IL
815-562-8706
www.rochellechiropractic.com
Now Accepting New Patients!

DOUBLE BUTTERBURGER WITH CHEESE

FRESH, NEVER FROZEN
MIDWEST BEEF COOKED AFTER YOU ORDER.

Visit your local Culver's restaurant:
Culver's of Rochelle
1060 Dement Road, Rochelle, IL
(815) 561-9720
culvers.com

Culver's
Welcome to delicious!

Alfano's
Pizzeria and Italian Restaurant

Taste The TRADITION
Taste The DIFFERENCE

• Best Pizza • Pasta
• Italian Restaurant
• Appetizer/small plate
• Family Restaurant • Local Business

Pizza • Pastas
Sandwiches • Salads and Lots More!

Dine-In • Carry Out • Home Delivery
1115 TURKINGTON TERRACE, ROCHELLE
815-562-3312

JOHNSON TRACTOR

SALES • PARTS • SERVICE

200 Steward Road
800.262.1680
www.johnsontractor.com

HUB-REMSEN
PRINT GROUP

101 Maple Ave • Rochelle, IL 61068
815.562.7057 • hub-remsen.com

GO HUBS!

"Proudly Serving the Rochelle Area Since 1945"

Berg-Johnson Electric

FREE ESTIMATES
Licensed and Insured

Residential • Commercial • Industrial

24 Hour Emergency Service
815-562-4937
500 Cleveland Avenue

Busy Schedule? Leave the cooking to us.

• Large menu of foods
• Rochelle's famous chicken by the dinner or bucket
• Hand dipped ice cream (16 flavors)

COUNTRY SCHOOL DRIVE-IN RESTAURANT
251 N. ROCHELLE • 562-6039

Stillman BANK

GO HUBS!

Earning Your Trust Since 1882
www.stillmanbank.com Member FDIC

GOOD LUCK HUBS FROM YOUR FANS AT:

HAYDEN REAL ESTATE INC.

RESIDENTIAL
AGRICULTURAL
COMMERCIAL

815-562-2111 • hre@haydenreinc.com



GO HUBS!



Rochelle Little League

Softball team claims district crown

Rochelle's 12U All-Stars win Illinois District 19 Championship in Rock Falls

BY RUSSELL HODGES

SPORTS EDITOR

ROCK FALLS — Rochelle Little League's 12U Softball All-Stars captured the Illinois Little League District 19 Championship at Rocket Park in Rock Falls this past week, finishing 3-0 over three games to advance to the State Championship tournament at Scripps Park in Rushville. Rochelle dominated Rock Falls before scoring back-to-back wins against Sterling to seal the district championship.

The team includes Berkeley Thompson, Cali Metzger, Hailey Chapman, Helen Miller, Jaelyn Gonzales, Macey Gittleson, Makenzie Johnson, Mayson Smardo, Misha Krawcewicz, Molly Whiting, Sofia Reynolds, Tinley Tabor, Leni Haedt and Lylah Schacht. The team is coached by John Gonzales, Kristi Gonzales, Abby Reish, Allison Dobberstein and Bella Lodico.



Rochelle Little League's 12U Softball All-Stars won the District 19 Championship tournament at Rocket Park in Rock Falls. The team includes Berkeley Thompson, Cali Metzger, Hailey Chapman, Helen Miller, Jaelyn Gonzales, Macey Gittleson, Makenzie Johnson, Mayson Smardo, Misha Krawcewicz, Molly Whiting, Sofia Reynolds, Tinley Tabor, Leni Haedt and Lylah Schacht. The team is coached by John Gonzales, Kristi Gonzales, Abby Reish, Allison Dobberstein and Bella Lodico.

Rock Falls

Rochelle's tournament run started with a 22-1 thrashing against Rock Falls on Monday evening. Cali Metzger went 3-for-3 with two runs and three RBIs, while Molly Whiting and Berkeley Thompson each went 2-for-2 with two

runs and two RBIs. Hailey Chapman went 2-for-3 with two RBIs and Misha Krawcewicz went 2-for-2 with three runs scored in the win over Rock Falls.

Rochelle blew the game open with 12 runs in the bottom of the first inning. Cali Metzger delivered a

two-run double and Hailey Chapman followed with an RBI single to put Rochelle ahead 3-0. The frame continued with RBI singles from Molly Whiting and Berkeley Thompson that gave Rochelle an 8-0 advantage over Rock Falls with only one out. Misha

Krawcewicz hit an RBI single and Jaelyn Gonzales added an RBI groundout to cap off the 12-run frame.

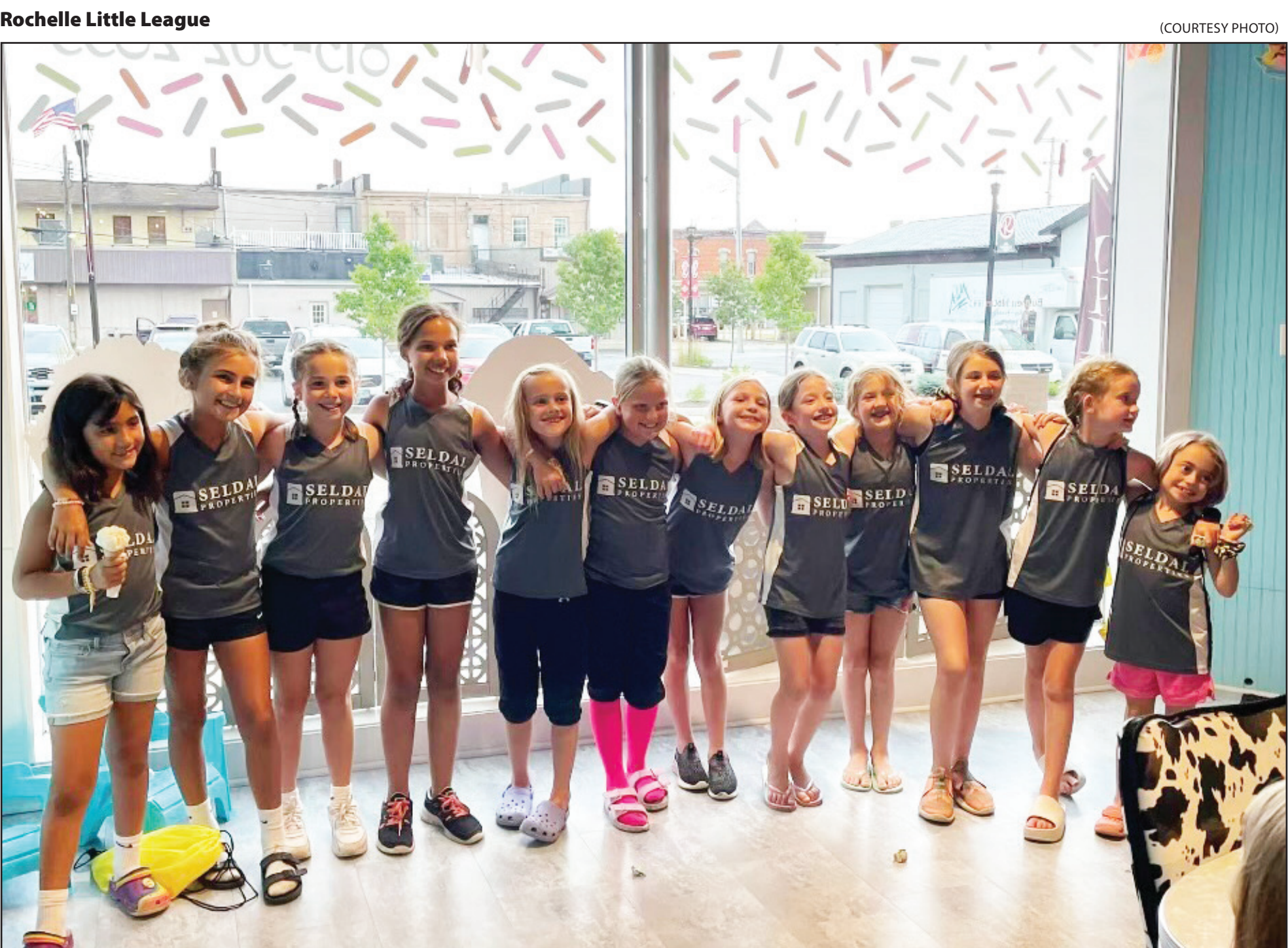
Rochelle exploded for 10 more runs in the bottom of the second inning, where Macey Gittleson's RBI single sparked a string of four run-scoring singles for

the 12U All-Stars. Berkeley Thompson, Makenzie Johnson and Tinley Tabor slapped three RBI singles in a row to give Rochelle a 16-0 lead in the game. Jaelyn Gonzales bashed an RBI single and Cali Metzger followed with an RBI double to left field

that wrapped up the 10-run frame for Rochelle.

Rock Falls tallied one run in the top of the third inning. Cali Metzger pitched two innings for the Rochelle side, striking out six batters while allowing only one hit.

See TITLE page 9



Seldal Properties wins Minor League Girls Division title for 2024 Rochelle Little League season

Seldal Properties won the Minor League Girls Division crown for the 2024 Rochelle Little League season. The team includes Isabel Jackson, Grace Olson, Afton Horner, Sophie Harper, Lucy Condon, Gwenevere Condon, Aubrey Burton, Joey Haedt, Stella Seldal, Oakley Gonzales, Zoey Harris and Gwentyth Stanfa. The team is coached by Erick Olson, James Jackson and Johnny Gonzales.