



# ROCHELLE News-Leader

WEEKEND EDITION | WWW.ROCHELLENEWS-LEADER.COM

**PINKSTON TADD**  
Roofing Services Inc.

COMMERCIAL & INDUSTRIAL  
FLAT AND LOW-SLOPE ROOFING  
CONTRACTOR

Certified in TPO, EPDM, and PVC

Call for **FREE** Estimate!  
**815-756-9700**

• Free Roof Inspections, Surveys & Estimates  
• 24 Hour Emergency Service  
• Tear-Offs, Re-Roofs, Maintenance, Repairs,  
Gutters/Downspouts & Drains, Roof Snow/  
Ice Removal

407 Industrial Dr., DeKalb, IL • pinkston-tadd.com

Today's RNL issue  
sponsored by  
Community  
Unity  
member:

FEARER, NYE & CHADWICK  
ATTORNEYS AND COUNSELORS SINCE 1870

420 4th Ave.  
815-562-2156

Vol. 104 • No. 99

\$1.25

LOCAL NEWS... LOCAL VIEWS

SUNDAY, APRIL 7, 2024

## Shining Star CAC serves Ogle and Lee Counties 'Everybody can speak up for kids. Everybody can watch for signs'

BY JEFF HELFRICH  
MANAGING EDITOR

DIXON — Last fiscal year, Shining Star Children's Advocacy Center conducted 219 forensic interviews with potential victims of child abuse in Ogle and Lee counties. The nonprofit organization has been in operation for over 20 years and has worked with over 3,000 children.

Shining Star, which is based in Dixon, works with the Illinois Department of Children and Family Services and law enforcement when there are issues of physical and sexual abuse of children. When there is an open case, Shining Star has its own location where children can be interviewed in a warm environment by trained staff. It also provides counseling, court advocacy, community resources and more.

April is Child Abuse Prevention and Awareness Month. This month, Shining Star will be leading the way locally raising awareness with events including National Wear Blue for Child Abuse Awareness Day on April 5, a Hands Around the Courthouse



(PHOTO BY JEFF HELFRICH)

Last fiscal year, Shining Star Children's Advocacy Center conducted 219 forensic interviews with potential victims of child abuse in Ogle and Lee counties. The nonprofit organization has been in operation for over 20 years.

event on the Old Lee County Courthouse lawn on April 19 at noon, and its yearly Crimes Against Children Conference on April 23 at the Dixon Elks Lodge at 1279 Franklin Grove Road in Dixon.

"One of our big focuses over the past couple of years is getting out into the community more,"

Shining Star Executive Director Jessica Cash said. "We've been at a lot of community events and talking to a lot of community groups just to get the word out about the work we do. Child abuse has no boundaries, no matter what county you're in or any discriminatory factors. We've been working to provide

education to parents on how to talk to their kids and report if disclosures do come out."

Cash said her organization works to raise awareness 12 months a year, but steps up efforts during the national month in April.

See SHINING STAR page 5



## Officials speak out about possible state legislation

BY JEFF HELFRICH  
MANAGING EDITOR

ROCHELLE — On March 20, City of Rochelle City Manager Jeff Fiegenschuh and Rochelle Municipal Utilities Superintendent of Electric Operations Blake Toliver made their thoughts known against potential state legislation that could impact electric public utilities like RMU.

Fiegenschuh said there is currently potential legislation in the works that includes possible impacts such as changes to how RMU bills customers with solar and wind power, the taking of authority over public utilities away from local government and giving it to the Illinois Commerce Commission, and requiring public utilities like RMU to increase the amount of renewable energy in their portfolios.

See CITY page 2

More coverage.  
Less spendage.

Discounts up to 40%  
Get more. Spend less. It's that simple when you get car insurance from us. Like a good neighbor, State Farm is there. CALL FOR A QUOTE 24/7.

Terri Schaefer, Agent  
Bus: 815-562-7063  
terri.schaefer.115n@statefarm.com



KNOW IT  
TODAY



## Welders provide demonstration

Enbridge welders recently provided a demonstration for students at Kishwaukee College. Page 4

## WEATHER

SUNDAY HIGH 50 LOW 37  
MONDAY HIGH 63 LOW 43  
TUESDAY HIGH 63 LOW 43  
WEDNESDAY HIGH 64 LOW 42

Today's RNL issue sponsored by Community Unity member:

Common Law, Uncommon Lawyers ©  
JAMES G. AHLBERG  
ATTORNEY AT LAW

501 6th Ave.  
815-562-4443

## OBITUARIES

• PATRICIA ANN MCADAM

See page 4

## INSERTS

• PLAY BALL GUIDE  
• GOLF GUIDE

## INSIDE

Local News.....2, 3, 5  
Obituaries.....4  
Opinion.....6  
Community.....7



**Holcomb Bank**  
MY BUSINESS, MY BANK  
**Headons Fine Meats**

Locally owned since 1970, new owners Mark Hibshman, and his son Justin, are growing the business with new & creative ideas.



Spring is in BLOOM!  
Be ready for the warmer temperatures and schedule a tune-up for your AC unit with

**ANDERSON**  
PLUMBING & HEATING, INC.  
621 First Ave. • Rochelle, IL 815-562-8784



# LOCAL NEWS

## CITY: Rochelle and RMU officials react to potential state legislation

From page 1

RMU currently works with its customers that have wind and solar power through a net metering policy. RMU customers that push solar or wind energy back out onto its grid receive a credit on their bills. The potential state legislation would hold RMU to the same requirements as a large private utility like ComEd.

RMU currently pays customers a lower avoided-cost rate and ComEd pays net metering customers a higher retail rate. "If this new legislation comes out, we would have to credit our customers at the full retail rate," Toliver said. "That means that the other customers on our system will have to subsidize the customers that have solar. And that's not fair to them either. We only have 7,500 customers in our territory, and ComEd has three million. It's a lot easier for ComEd to spread those costs out among that many customers than it is for us. If we're paying them the full retail rate, we still have to maintain our lines, pay our

linemen and do all of the things that keep the utility operating day in and day out. Those customers aren't relying on their solar power 24/7. It's only when it's producing. We still have to be there as their backup source of energy when it isn't."

Fiengenschuh stressed that public utilities like RMU are not profit-driven like private utilities such as ComEd. RMU reinvests excess revenue back into its system. RMU's policy decisions are currently set by the mayor and city council. The city manager wants to see it remain that way.

"Moving us in the direction of putting RMU under the Illinois Commerce Commission would take all of the authority away from us to do our own local ratemaking and take all the power and authority of the utility away from the mayor and council and put it in a bureaucrat's hands in Chicago at the ICC," Fiengenschuh said. "And we don't want that. We want to have a say over our utility."

For a potential renew-

ables portfolio percentage requirement, that possible legislation would cause RMU to have to hit 40 percent by 2026 and increase that number each year. RMU's current renewable percentage is near 10 percent and it is already locked in to purchase contracts of nonrenewable power well past 2026.

"That's impossible for us," Fiengenschuh said. "We'd be forced to go out and buy renewables we don't need just to meet their mandates. If we have to go out and take on other contracts just to meet a renewable standard, all that does is pass costs onto our customers. All of this potential legislation is eventually going to cost our customers more money. We want to do better with renewables, but we don't need the state telling us we need to do better. I think that's really up to our residents and our mayor and the city council."

RMU's renewable energy sources on its system currently include a solar field at the RMU wastewater treatment plant that's planned to double in size



(PHOTO BY JEFF HELFRICH)

**On March 20, City of Rochelle City Manager Jeff Fiengenschuh and Rochelle Municipal Utilities Superintendent of Electric Operations Blake Toliver made their thoughts known against potential state legislation that could impact electric public utilities like RMU.**

in the coming years, along with a methane gas plant at the Rochelle Landfill. The city has also considered a community solar project in the future that residents could buy into.

"As a whole, we purchase more renewables in our own territory than investor-owned utilities because our load is smaller," Toliver said. "With the percentage of renewables that we have online that we're net billing for already, we're well over the percentage of renewables that these investor-owned utilities are purchasing currently. It's not that we're against renewables at all, because we're purchasing more renewables than they are. It's just that we have to be smart about

it and make sure it fits into our portfolio to make sure that our rates stay stable for our ratepayers."

Toliver said that the biggest potential impact of all facets of the possible legislation would be needed rate increases to RMU customers to compensate for extra purchases of energy, which he would like to avoid.

The city pays a lobbying firm to work on its behalf at the state level on issues such as potential legislation that could change how RMU operates. In the past, its lobbying firm has gotten city officials in front of lawmakers to testify on RMU's behalf.

"We're trying to educate them on what a local-

ly-owned electric utility is and why it's so important to maintain local control," Fiengenschuh said. "We'll continue to advocate on behalf of RMU and other electric utilities like us. We believe adamantly in local control. If you're upset about your rate, a power outage or that your utilities were shut off, you have local people here who you can call. If you're upset that your rate might go up, you can come to a city council meeting and express that frustration. You have direct control over the utility through elected officials. With the ICC, those people aren't from Rochelle. People who live here should be the ones making the decisions for the utility."



**Join us on Friday nights for fish, chicken and more**

**Saturday we serve up Chicken Ralphie a fan favorite**

**The slots are hot and the beer is cold**

**Serving dinner Wednesday 5 - 8 p.m.**  
**Friday and Saturday 5 - 8 p.m.**

**812 Main St. - Ashton**

07272022



**Helping You Protect What Matters Most**

**Stillman Trust & Wealth Management** offers a complete line of services that will help give you peace of mind when planning your family's financial future.

- Trust Administration
- Investment Management

- Estate Planning
- Retirement Planning

Put your trust in us and schedule your **no-cost, no-obligation consultation** today!



**Keith Akre, CFA, CFP®**  
Vice President & Trust Officer



**J. Joseph McCoy, JD**  
Trust Officer



**Jeffrey Hartle**  
Senior Vice President




**Jessica Schrader**  
Trust Operations Officer



**Eric Haugdahl**  
Associate Portfolio Manager

**www.stillmanbank.com | 815.332.8850**

Investments offered through Stillman Trust & Wealth Management: Not FDIC Insured • No Bank Guarantee • May Lose Value



**Lincoln Manor**

*Owned and operated by Lutheran Social Services of Illinois (LSSI) offering apartment living for older adults in Rochelle and the surrounding communities.*


**Rent based on 30% of a Resident's Adjusted Gross Income**


- Secure Entry System
- Community room with kitchen
- Activities
- On-site coin operated laundry
- On-site management office
- Dependable 24/7 maintenance service
- On-site parking for residents

Full time Social Service Coordinator is available to assist residents

**For more information, please call 815-562-1404**

615 N. Lincoln Hwy.  
Rochelle, IL 61068  
TTY 847-390-1460

MANAGED BY:  
 **Lutheran Social Services of Illinois**  
www.LSSI.org



07262023

**Jane Reineck Crusader**

**Dinner & Auction**



**Friday, April 12**

**Serving dinner 5-6:30pm**

**Silent Auction during dinner**

**Live Auction begins at 6:30pm**

*I am the vine*

*I am the vine; you are the branches. John 15:5*

Proceeds will benefit the education needs at St. Paul Lutheran School.

Tickets available at St. Paul Lutheran School - 1415 Tenth Ave., Rochelle, IL • 815-562-6323

04032024

**Serving Rochelle's Favorite Chicken for over 40 years!**

**By the Snack-Dinner-Bucket!**



Enjoy 16 flavors of ice cream, soft serve, splits, sundaes, cones, malts & shakes



**OUR MENU INCLUDES:**

Hamburgers, Fries, Hot Dogs, Gyros, Italian Beef, Seafood, Sandwiches, Sausages, Shrimp, Homemade Soups

Breakfast: Sausage Gravy With Biscuits and Tater Tots

**Open Daily at 9AM**

**Call for our catering menu!**

 See us on Facebook for daily specials!



**COUNTRY SCHOOL**

**DRIVE-IN RESTAURANT**

**Hwy 251 N. Rochelle • 815-562-6039**

08302015



# LOCAL NEWS

## CRESTON: Trustees discuss sewer rates and updating village website

From page 1

Creston would have to buy into the organization, and there are a wide range of membership levels from \$30,000-\$300.

"I think one way or another, we need to join this to have our ear in there and receive their expertise, guidance and knowledge that we don't have," Village Trustee Reid Elliot said. "We don't know all of the questions to ask developers. Let's surround ourselves with some smarter people as stuff is coming this way. I think we're kind of unique with the ground we own. If someone wanted to come in and buy some of our land, what's the price tag?"

The OCEDC is made up of various officials from municipalities and the county. New officers elected at the July 20, 2023 meeting are Randy Schoon - president (Polo), Darin DeHaan - vice president (Oregon), Paula Diehl - secretary (Mt. Morris) and John Rickard - treasurer

(Byron). Each officer represents a community that has pledged startup funds for the new organization. Ogle County and the City of Rochelle have also pledged.

The OCEDC recently hired a new executive director in Charlene Coulombe. She has over 35 years of experience serving in economic and business development with a background of building a variety of communities from just outside of Chicago to Minnesota.

To start the OCEDC, \$300,000 was raised between the county and the five communities of Polo, Mt. Morris, Oregon, Byron and Rochelle. The governing bodies took a formula of each of their federal COVID-19 relief American Rescue Plan Act funds that they received.

"This would help solve a problem for our village," Village President Tom Byro said. "Nobody on this board knows about economic development. We'd have to hire somebody. We could

join this group. I think we need to continue with this and see what comes up."

The village board did not take a vote on membership or spending with the OCEDC but resolved to stay involved with the group going forward.

### Storm sewer

Village Engineer Kevin Bunge said that preliminary work on a storm sewer project in the village is ongoing and interconnection details are being worked out. The new storm sewer would run east and north from the culvert that runs under the train tracks on the north side of them. The northernmost part of the project will run to Cedarholm Street. The work was suggested due to issues with stormwater overflow. The work will require the village to talk to property owners to get easements.

### Website

Trustees again discussed the possibility of

updating Creston's website at the meeting after the topic was brought up last month. Village Clerk Jennifer Payton has been working with two companies to provide the service.

The new site may include information on other Creston-affiliated organizations, including the Creston Booster Club and Dement Township. The village's current site is in need of an update due to its age.

Dement Township has agreed to pay for half the cost of the new site in exchange for its information being included on it. Payton plans to make a presentation on the topic to Dement Township and a vote may be held on proposals next month.

### Sewer rates

The board discussed its sewer rates after it heard a presentation last month by Rochelle Municipal Utilities Superintendent of Water/Water Reclamation Adam Lanning.



(PHOTO BY JEFF HELFRICH)

The Creston board discussed its sewer rates after it heard a presentation last month by Rochelle Municipal Utilities Superintendent of Water/Water Reclamation Adam Lanning.

The RMU wastewater treatment plant services Creston and at its Feb. 26 meeting, the Rochelle City Council unanimously approved water reclamation rate increases on average per year over the next five years of three percent for Creston/Hillcrest customers. The rate increase will run through 2028 and will "ensure continued investment" in the city wastewater system.

Trustees resolved to

look into whether Creston has to raise its rates in kind with the RMU increase to reflect the new costs it will see, or whether the increase is already built into Creston's rate structure.

### Building

### inspector

The board voted unanimously to raise its fee paid to Village Building Inspector Casper Mannheim from \$850 to \$950.

# WANTED

## \$\$\$ WE BUY GUNS \$\$\$



## RAT WORX

### 112 E. Hitt St.

# MT. MORRIS, IL.

## ◀ 815-734-7346 ▶

## WE SELL GUNS, KNIVES & AMMO



WE BUY GUNS

**RAT WORX**

Research and Testing  
Worx Inc.

112 East Hitt St., Mt.  
Morris, IL

815-734-7346

guns@ratworxusa.com | www.ratworxUSA.com



# LOCAL NEWS

## OBITUARIES

### Patricia Ann McAdam

**FRANKLIN GROVE** — Patricia Ann McAdam, 90, formerly of Rochelle, passed away Wednesday, March 27, 2024 at Franklin Grove Living and Rehab Center in Franklin Grove, Illinois. Pat was born on November 10, 1933 to William M. and Priscilla (Rogan) Madden in Chicago, IL. On April 16, 1955, she married Robert D. McAdam in River Forest, IL. He preceded her in death on July 7, 2002.

Pat worked in the emergency room at the Rochelle Community Hospital as a registered nurse for many years. She was a member of St. Patrick Catholic Church in Rochelle where she volunteered in various capacities. Pat was always willing to help out wherever

she could. Her family and grandkids meant everything to her.

Pat is survived by her three children: Bruce (Marie) McAdam of Glendale, AZ, Brad (Amy) McAdam of Mt. Vernon, WA and Margaret McAdam of Rochelle, IL; ten grandchildren: Deanne, Gerald, Caytlyn, Devin, Shelly, Robert, Andy, Chris, Matt and Dustin and 15 great grandchildren.

In addition to her parents and husband, Bob, Pat was predeceased by her son, Gerald W.M. McAdam, in 1967.

The visitation will be from 10:00 - 11:00 A.M., Monday, April 15, 2024 at the Unger-Horner Funeral Home, 400 N. 6th St., Rochelle. The Forest City



Nurse Honor Guard will be present at the visitation. The funeral service will follow at 11:00 A.M., Monday with Pastor Joy Alsop officiating. Burial will be at St. Patrick Cemetery in Rochelle. Following the burial, there will be a luncheon at the Rochelle V.F.W. Post 3878, 318 4th Ave., Rochelle. A memorial will be established. Visit [www.ungerhorner.com](http://www.ungerhorner.com) to sign the online guest book.



(COURTESY PHOTO)

**For his March 2024 local business highlight, State Rep. Bradley Fritts (R-Dixon) chose to highlight Kennay Farms Distilling in Rochelle.**

### Rep. Fritts honors Kennay Farms Distilling for March Local Business Highlight

**DIXON** — For his March 2024 local business highlight, State Rep. Bradley Fritts (R-Dixon) chose to highlight Kennay Farms Distilling in Rochelle. Rep. Fritts spent time touring the business and presented the owners with a certificate of appreciation for their contributions to the community.

"This month, I chose to honor Kennay Farms Distilling because of their commitment to helping our local veterans, first responders, and other community organizations,"

Fritts said. "Kennay Farms hosted a Hops for Heroes event where they created a new beer and donated all proceeds to local veteran organizations. They also helped first responders with their Back the Blue bottles during the pandemic and continue donating items and baskets to local auctions and raffles."

Kennay Farms was founded in 2019 by owners Doris and Rick Kennay. The Kennay family has been farming for six generations.

Rep. Fritts concluded,

"I commend the Kennay family on their excellent products, hard work, and continued dedication to helping our community."

Kennay Farms Distilling is located at 416 Lincoln Highway in Rochelle. For more information about Kennay Farms, visit their website at [KennayFarms-Distilling.com](http://KennayFarms-Distilling.com).

To nominate a local business in District 74 for a future highlight, visit [RepFritts.com](http://RepFritts.com) and select Local Business Highlight Submission Form under Resources.



(COURTESY PHOTO)

**David Losiniecki, Enbridge Senior Equipment Operator, talks with Kishwaukee College welding students during a live welding demonstration. Enbridge provides support to Kish through classroom demonstrations, financial support and equipment donations.**

### Enbridge master welders provide demonstration at Kish College

**MALTA** — Master welders from Enbridge, Inc. provided a hands-on demonstration for students in Kishwaukee College's Welding Technology program Tuesday at the college.

In Kish's newly-renovated welding lab, Dan Morang, Enbridge senior welder, and David Losiniecki, Enbridge senior equipment operator, showcased different welding techniques while fielding questions about the profession from the Kish welding students.

"We are here to help. We are here to instruct. We are here to get you information

you might not have yet so we can help you get out in the welding field and get good-paying jobs," Morang said.

Kish students expressed appreciation for the Enbridge welders who offered their time and expertise to help them learn about the welding profession.

"This was an exciting opportunity. These professionals are what we are training to be. To have people in the industry sharing their experiences with us is fantastic. If you want to know how to do something, you go and ask the professionals who are doing it,"

John Rinkenberger, a Kish welding student, said.

Enbridge is a longtime partner of the college and the Kishwaukee College Foundation. Along with regularly providing professional demonstrations, Enbridge supports Kish's programs with financial and equipment donations. Every semester, the Enbridge Pipeline Industry Awareness Scholarship provides scholarship support to students studying engineering or welding-related programs.

To learn more about welding at Kish, visit [kish.edu/welding](http://kish.edu/welding).

## FIRE: Rochelle man dies from injuries suffered in Sunday blaze

**From page 1**

Arriving companies extinguished the fire and conducted searches of the building for fire extension and other victims. The fire reached the second-alarm level.

Companies completed overhaul operations to fully extinguish the fire and no further extension was found. Ventilation was completed and the building was cleared of smoke. Tenants of the building were assisted by

The Red Cross.

RFD was assisted at the scene by RPD, the Ogle-Lee Fire Protection District stations of Flag Center, Hillcrest, Creston and Steward; Ashton, DeKalb, Lynn-Scott-Rock, Oregon, Stillman,

the Office of the State Fire Marshal, Rochelle Municipal Utilities, Ogle County Emergency Management, the Ogle County Coroner's Office, RCH, and The Red Cross.

The cost of the damage from the fire is estimated

to be \$60,000. On Monday, RFD Lt. Jason Underwood said there was "substantial damage" to the apartment unit the fire took place in. Several residents were displaced due to the fire. Several residents stayed in the

apartment building. There was some smoke damage to other portions of the apartment complex and some portions were unaffected by the fire.

Fire officials were on scene for a total of three hours and 36 minutes.

**ROCHELLE News-Leader**  
211 IL Route 38 East, Rochelle, IL 61068  
(815) 562-4171

USPS (467-820) ISSN (1075-2811)

Published every Wednesday and Sunday by Rochelle Newspapers Inc. at 211 E. State Route 38, Rochelle, IL 61068. Periodical postage paid at Rochelle, IL 61068. Postmaster send address changes to the Rochelle News-Leader, P.O. Box 46, Rochelle, IL 61068. Subscription rates are \$139.99 per year by mail in Ogle County. Outside county rate is \$149.99 per year. The circulation department is open Monday through Thursday from 9 a.m. to 3 p.m. and Friday from 9 a.m. to 1 p.m. For subscription information, contact Kelly White at 562-4171.

#### IN-COUNTY REGULAR SUBSCRIPTION RATES

- \$139.99 for one year • \$79 for six months
- \$34.99 for three months • \$13.99 for one month

Call (815) 562-4171 or  
Visit our website at  
[www.rochellenews-leader.com](http://www.rochellenews-leader.com)



#### HOW TO CONTACT US

News-Leader Main Switchboard (815) 562-4171

**General Manager**  
Tonja Greenfield (815) 561-2124

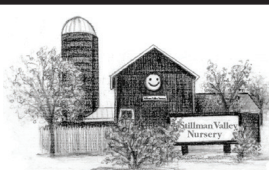
**Newsroom Staff**  
Jeff Helfrich, Managing Editor (815) 561-2151  
Russ Hodges, Sports [rhodges@rochellenews-leader.com](mailto:rhodges@rochellenews-leader.com)

**To Place a Display Ad**  
Andrew Heiserman (815) 561-2123  
Chris Ackland (815) 561-2153

**To Place a Legal Ad**  
Mike Feltes [mfeltes@oglecountylife.com](mailto:mfeltes@oglecountylife.com)

**To Place a Classified Ad**  
Andrew Heiserman (815) 561-2123  
Chris Ackland (815) 561-2153

**Subscriptions and Delivery**  
Kelly White (815) 562-4171



#### Stillman Valley Nursery

9979 N. Kishwaukee Road  
Stillman Valley, Illinois 61084

(815) 645-8113

Premium Hardwood • Designer Colored Mulches  
Pulverised Dirt • Mushroom Compost • Straw Bales

Delivery Available

08032020

#### Report policy

Any arrests listed in this paper are merely charges and the defendants are presumed innocent unless proven guilty in a court of law. Please note that all police reports received from the Rochelle Police,

the Ogle County Sheriff's Department and the Illinois State Police, will be printed without exception. Requests to omit particular reports will not be considered or honored at any time.



# LOCAL NEWS

## SHINING STAR: April recognized as Child Abuse Prevention and Awareness Month

From page 1

Mayors in Ogle and Lee counties will be making proclamations in honor of the month and Shining Star during April.

“It’s everyone’s job to help protect kids, not just the people employed to do it,” Cash said. “Everybody can speak up for kids. Everybody can watch for signs. We’ll have people wearing blue to spread awareness about child abuse and its prevalence in our communities. Some people think it’s kind of a bigger-city problem. It’s not. It’s everywhere. People read online stories from other places. It happens here too.”

If you suspect abuse of a child, you can report it to the DCFS hotline at 1-800-25-ABUSE. Cash said Shining Star always encourages people to also report possible abuse to local law enforcement as well due to the DCFS having certain parameters of cases they can take or not take. If it doesn’t fall into DCFS investigation parameters, local law enforcement will always investigate.

Shining Star works with 13 different local police agencies, two prosecutor’s

offices and two DCFS offices. It has also started working more with Homeland Security and the FBI on online cases in recent years.

“On a daily basis, we’re working with a wide network of professionals,” Cash said. “With our two counties, all of our police, prosecutors and DCFS officials work hard on these cases and are really dedicated to helping kids. I don’t always hear that from other child advocacy centers. I think we’re very fortunate in the team we do have and their dedication to helping kids.”

Cash said Shining Star has been seeing more online cases concerning child abuse and children going online and talking to strangers and it resulting in sexual assault or grooming. The local children’s advocacy center has also seen an uptick since COVID-19 in physical abuse of children by parents.

“We definitely saw an uptick since COVID-19 in physical abuse with parents being more stressed with things like jobs or resources, or just being home with their kids more,” Cash said. “What would normally be punishment turned

into abuse with different things. We have seen an uptick in that. We’ve also seen an uptick in sibling sexual abuse that involves kids against each other. We’ve been managing that and helping kids get resources for that.”

Shining Star recently saw its VOCA (Victim of Crime Act) funding cut in the amount of about \$20,000 and has been trying to make that money up through fundraising. The cut did cause the organization to have to reduce one counselor position, which it hopes to add back with new grants it’s requested for the future.

When it had two counselors, Shining Star was able to provide counseling for both parents and kids. It now has to refer parents to other agencies for counseling, which Cash said makes parents less likely to follow through with the service.

The work that those in the Shining Star office carry out for area children on a daily basis does not come without hard days, Cash said.

“Some days are much harder than others,” Cash said. “Not only for our staff, but law enforcement and prosecutors too. We



(PHOTO BY JEFF HELFRICH)

**Shining Star works with 13 different local police agencies, two prosecutor’s offices and two DCFS offices. It has also started working more with Homeland Security and the FBI on online cases in recent years.**

work with them all on the importance of self care and taking time to yourself. We have a peer support group where a clinician comes in and talks with us once a month about secondary trauma and things like that. We offer counseling for our staff if they need it. We give a generous amount of time off so that people aren’t getting burned out. If we have exceptionally-hard cases, we want to give people time off if they need it. It’s definitely something we manage on

an ongoing basis.”

Shining Star has a wish list of needed items on its website at shiningstarac.org. Needs include snacks and drinks for kids when they come for services, along with items that go home with kids in comfort bags such as stuffed animals, blankets, coloring books, journals and toys.

“They’re simple things that people can donate that really help us out a lot,” Cash said. “We are very fortunate that we have a lot of community support.

I still feel like there’s more work we could do to get our name and what we do out there. A lot of families don’t know about us until they have to use us. We’re trying to change that and be a resource for people even if they’re not going through an abuse situation. We can show people how to talk to their kids and things like that. We’re very fortunate with our board members and volunteers. The support we have in both counties is wonderful.”

# CHURCH DIRECTORY

**Ashton Bible Church**, corner of Main and Paddock in Ashton. Pastor Farrel Stauffer, church phone is (815)453-2190, church website [www.ashtonbible.org](http://www.ashtonbible.org). Sunday School for all ages 9:00-10:00am, Morning Worship 10:15am, Wednesday Prayer Meeting/Bible Study 6:30-8:00pm.

**Calvary Lighthouse Church, Assemblies of God**, Senior Pastor, Dr. James Horvath. 14409 Hemstock Rd., Rochelle. Sunday Morning: Sunday Worship & Children’s Church 10:00 A.M., Wednesday Evening 7:00 P.M. – Adult Teaching, Missionettes & Royal Rangers Childrens Classes, Nursery available for all services. HE-Brews Cafe is open before and after services. For further information, please call the CLC office at 815-562-7701, or email us at [staff@calvalrylighthouse.com](mailto:staff@calvalrylighthouse.com)

**Rochelle Church of Christ**, Keeping Christ at the center in the Hub City. We meet Sundays at 9:00am for Bible Study and 10:00am for worship. We also have a Wednesday Bible Study at 7:00pm. 206 Erickson Rd, Rochelle, IL 61068. You can call us at (815) 562-6572 or visit us on the web at [rochellechurch.com](http://rochellechurch.com). We also have a radio program Sundays just after 8am on WRHL 1060AM. Minister Dominic Venuso.

**Creston United Methodist Church and Steward United Methodist Church** - Rev. Ilhan You, Creston: 126 West South Street, P.O. Box 209, Creston, Illinois 60113. Sunday morning worship 9:00am. Coffee fellowship at 10:15am. Steward: 507 Main Street, P.O. Box 80, Steward, IL 60553. Adult Sunday School, 10:00am. Sunday morning worship and Children’s Sunday School 11:00am. Contact the church office at 847-730-4370 for more information. [facebook.com/crestonumcil](https://facebook.com/crestonumcil) [facebook.com/stewardilumc](https://facebook.com/stewardilumc)

**Elim Reformed Church**, 140 S. Church Road, Kings, IL 61068. Phone: 815-562-6811. Email [goelimchurch@gmail.com](mailto:goelimchurch@gmail.com) Website [www.goelimchurch.org](http://www.goelimchurch.org) Sunday Morning Worship 10:00 Rev. Marv Jacobs

**Faith Lutheran Church** – (14206 E. Flagg Rd.) – “Making Christ Known Through Lives of Faith.” In-person worship is available each Sunday at 9:00 a.m. or online at “Faith Lutheran Social” on YouTube. Worship resources are also available on our Facebook page - ‘Faith Lutheran Church ELCA.’ You may also e-mail Pastor Joy Alsop at [Pastor@faithlrochelle.org](mailto:Pastor@faithlrochelle.org) for more information. All are welcome to join us!

**First General Baptist Church**, 500 S. 12th St, Rochelle. Phone: 815-562-5221. Email: [fgbcrochelle@gmail.com](mailto:fgbcrochelle@gmail.com). Website: [www.fgbcrochelle.org](http://www.fgbcrochelle.org). Facebook: [www.facebook.com/fgbcrochelle](https://www.facebook.com/fgbcrochelle). Pastor: Rev. Angelo Bonacquisti. **Sunday worship services:** 8:30 am, 11:15 am and 6:00 pm. **Sunday school:** 10:00 am. We’d be honored to have you join us as we worship JESUS and continue to grow in truth and love for God and each other. A nursery, children’s church, youth group and small groups are available. If you need a ride please contact our church bus driver, John, at (815) 262-4275 by 8:30 am on Sunday. “For if you confess with your mouth that Jesus is Lord and believe in your heart that God raised him from the dead, you will be saved.” Romans 10:9

**First Presbyterian Church** – An Amazing Place for Amazing Grace- Rev. Doug Forsberg, Senior Pastor. 1100 Calvin Road, Rochelle. Email: [info@placeforgrace.com](mailto:info@placeforgrace.com). Sunday morning worship 9:00am and 10:30am. In person or streamed online. On our Website and Facebook Live. [www.placeforgrace.com/](http://www.placeforgrace.com/) [www.facebook.com/placeforgrace](https://www.facebook.com/placeforgrace)

**Grace Fellowship Church** — Pastor Jeff Ardisson, 2128 Il Route 38, Ashton, 815-453-7464. Sunday School 8:30 a.m. Sunday Worship Service 9:45 a.m. [www.graceisforyou.com](http://www.graceisforyou.com)

**Harvest Baptist Church** 241 Scott Ave. (Hillcrest). Rev. Duane Boehm, pastor. Email [duane712@hotmail.com](mailto:duane712@hotmail.com), cell 815-757-3427. Visit us on Facebook! Service times: Sunday morning worship with Children’s Church at 10 am. Wednesday night worship at 7 pm.

**Immanuel Lutheran Church** Missouri Synod 16060 E. Lindenwood Road, Lindenwood, IL 61049. Rev. Dr. Matthew Rosebrock. Church Phone 393-4500. Church Worship 9:00 a.m. Sunday School Christian Education Hour at 10:30 a.m.

**Living Water Community Church** 405 N. Main St, Downtown Rochelle. Phone 815-561-6249, Website: [www.lwccr.com](http://www.lwccr.com), Like us on Facebook. We are Non-Denominational, Christ Centered, Casual dress, Christ Centered Live Band Worship. Mike Vogeler - Outreach and Seven C’s Pastor, Chris Bender- Teaching Pastor and Doug Bunger - Missions and Children’s Pastor. Sunday Worship Service- 10:00am. Nursery/Toddlers Ages 0-5 available during the service in the Splash building. Swim- Grades 1st-5th worship with the adults then break out for age appropriate teaching. Youth groups, Small groups, Life Groups and Workshops meet throughout the year for Bible teaching. 7C’s Mission- serves the community physically & spiritually each month from 1135 Lincoln Hwy, providing lightly used clothing, Hygiene items, a light lunch and Elder Prayer open the second Saturday from 10am-2pm and the 4th Thursday from 4pm to 7:00pm and by appointment.. [f](#)

**New Hope Fellowship (Church of God - Anderson, IN)**, 1501 10th Ave., Rochelle, IL 61068. Service: Sunday at 9 a.m. 10:30 a.m., (815)561-8400, [www.NHFchurch.net](http://www.NHFchurch.net) Pastor: Dan Sergeant and Pastor Nick Tornabene. (Classes for children through age fifth grade during service.)

**Rochelle United Methodist Church welcomes everyone to their worship service, and practices openness for all activities including communion. Worship is at 9:00 am. Sunday school for children begins around 9:15, following the Children’s Time in worship.** A fellowship time with food and space for conversation occurs in Hicks Hall every week following the worship service. We celebrate communion with an open table on the first Sunday of every month, and on other appropriate occasions. Youth group is on Sunday evenings from 5:30-7:30. Our youth program includes service projects, discussion topics, Bible Study, and lots of fun and fellowship together. Some of our activities include packing meals at Feed My Starving Children, helping at Rochelle Christian Food Pantry and 7C’s, working with animals at Barn on Baseline, Mystery trips (Destination Unknown!), and Interactive experiences on Dating boundaries, refugees, and homelessness. Youth group is for grades 6-12 and friends are always welcome. Recorded services are available on our YouTube channel and our website at [www.rochelleumc.com](http://www.rochelleumc.com). Our services are on the radio (93.5 FM) on Sunday mornings at 9:00 am. Our Facebook page is [www.facebook.com/rochelleumc](https://www.facebook.com/rochelleumc). **Our pastor is the Rev. Dr. Katherine Thomas Paisley.** Our address is 709 Fourth Ave. (815) 562-2164. Email is [admin@rochelleumc.com](mailto:admin@rochelleumc.com). At Rochelle United Methodist Church, everyone is welcome and loved!

**St. Patrick Catholic Church** Rev. Jesus Dominguez; Deacon Fermin Garcia; Deacon George Schramm; 244 Kelley Dr. (Corner of Kelley & Caron Rd.), PO Box 329, Rochelle, IL 61068. **Office Hours:** 9:00 AM- 4PM Monday-Thursday, Phone: 815-562-2370. **Mass times:** 8:00 AM Monday-Thursday, Saturday Vigil Mass 5:00 PM English, 7PM Spanish, Sunday Mass 7:30 AM, 9:00 AM in English and 11:00 AM in Spanish. **Confessions:** Monday 8:30AM & 6:30PM, Tuesday 8:30AM, Saturday 8:30am & 4:00-4:45 PM Or by appointment. **Religious Education:** Deacon George Schramm, Director of Religious Education. 903 Caron Road, Rochelle, IL 61068, 815-561-0079; Website: [stpatriksrochelle.com](http://stpatriksrochelle.com) Email: [stpatrik-rochelle@rockforddiocese.org](mailto:stpatrik-rochelle@rockforddiocese.org) Facebook.com/StPatrickRochelle

**St. Paul Lutheran Church** “Building Relationships in Christ, Now and Forever!” Steven Hall, Principal, Parish Nurse-Marcia Schnorr. 1415 Tenth Ave., Rochelle. Church Office-562-2744. Worship times: 6:00 p.m. Saturday, 9:00 a.m. Sunday. Our service is broadcast over WRHL 1060AM at 10:00 a.m. Sunday. Sunday School 10:15-11:15 a.m. Call 562-6323 for more information about the school.



# LOCAL VIEWS

## Ron Kern: The farming picture in Illinois

THESE days with all the new pronouns, changing definitions of things I've known for decades and misinformation peddled by "social influencers" it's hard for anyone to define anything anymore. The only social influencer I ever knew in my life were called mom and dad, and dependent on their mood at the time or their answer truly influenced your social life. A resounding "NO" from pop when I asked to borrow the car usually signaled that my social life in the moment was going to be restricted. Believe it or not it's even becoming difficult to define what a "farm" is these days. I always thought it was any place

that someone grew food and fiber. Now we have solar farms, wind farms, technology farms and the list goes on. But let's look at farms in Illinois and see what the picture looks like. It might be familiar. 96% of Illinois' 70,900 farms are family owned. Illinois has 27 million acres of farmland – 24 million cropland acres, 824,100 pastureland acres, and 1.4 million forestland acres. In 2021, Illinois ranked: #1 in the nation in soybean and pumpkin production. #2 in the nation in corn production. #4 in the nation in pork production. #2 in the nation for

farmers markets. Renewable Fuels in Illinois: Illinois ranks third nationwide in ethanol production and fourth in the nation in biodiesel production. \$1 out of every \$10 generated in Illinois comes from agriculture. More than \$137 billion in Illinois' economic activity stems from production-agriculture-related industries. Illinois food and agriculture businesses account for more than \$359 billion in economic output in the state. Cook County derives \$17.8 million in economic activity from ag-

riculture and related industries. One in 17 Illinois jobs are related to agriculture; agriculture and related industries account for more than 482,000 jobs in Illinois. Illinois agriculture contributes \$25.1 billion in gross receipts from sales of crops & livestock. Pretty impressive numbers. For those of us who live in rural Illinois that economic activity derived from farms is usually the number one economic engine that drives our counties. So what the heck let's take a look at Ogle County shall we!



Ron Kern

Total jobs created from agriculture – 5,079 Added jobs from livestock production – 3,036 Total value added from agriculture - \$428 million Value added from livestock - \$237 million Added household income - \$208 million Market value of crops - \$208 million Market Value of livestock - \$68 million Total farms – 1,618 Farmland as a percentage of the property tax base – 15 percent Ogle County also ranks in production in the State of Illinois as Sixth in cattle and calves, seventh in nursery, greenhouse and floriculture, ninth in other crops and hay, 14<sup>th</sup> in

corn, eighth in total number of farms, 16<sup>th</sup> in beef cows, and eighth out of 102 counties for total number of farms. One definition I know hasn't changed is "rural" and here in Ogle County we fit that definition to a tee. So while you are trying to figure out if it's he or she, it or that, him or her, man or woman, mother or birthing parent as you drive through Ogle County look around. You just might see a farm, just like the old days. "Opportunity is missed by most people, because it is dressed in overalls and looks like work." -Thomas Edison Ron Kern is the manager of the Ogle County Farm Bureau.

## Chuck Roberts: Malicious prosecution

AN example of malicious prosecution is the Cusick v. Gualandi et al. case. Malicious prosecution is filing a lawsuit without probable cause, with fabricated evidence or plain malice. The following information was taken from a Memorandum Opinion and Order from a United States District Judge. On Jan. 17, 2006, Cusick found his wife unresponsive in their home, and she was pronounced dead. Cusick's wife had a history of drug use. Ottawa police found no evidence suggesting that Cusick murdered his wife. Further investigations showed no evidence of

Cusick being responsible for his wife's death, so the LaSalle County State's Attorney did not pursue charges against Cusick. Some members of the police department and relatives of the decedent thought that Cusick had murdered his wife. During an election, the then-current state's attorney was ousted by an election opponent who promised to pursue charges against Cusick as an election issue. The new state's attorney acted on her promise to pursue Cusick. A grand jury indicted Cusick based on questionable evidence, and a trial was held. (It should be noted that during a grand jury

hearing, the defense is not allowed to present opposing evidence.) The trial concluded on Dec. 13, 2016, and Cusick was acquitted. On Oct. 8, 2020, Cusick brought five claims against the defendants: the state's attorney, the Ottawa Police Department, the City of Ottawa and LaSalle County. The defendants were able to get some of the claims dismissed, but the claim of malicious prosecution survived, meaning that this case would go to trial and that malicious prosecution would be a central

theme at trial. There was evidence that the police had fabricated evidence harmful to Cusick. The election of the state's attorney after promising to charge Cusick suggests malice. The parties decided to settle the case. According to Shaw News, the City of Ottawa settled for \$30,000, LaSalle County settled for \$30,000, and the remaining defendants settled for around \$200,000. It does not take a genius to conclude that the current litigation aimed at the former president is a form of malicious prosecution.



Chuck Roberts

As an election issue, the current New York State Attorney General campaigned that she would pursue litigation against the former president. This is certainly a form of malice. There was no evidence of harm caused by the former president to any entity in the transactions cited, and every one of the parties made money, suggesting a lack of probable cause. The New York Rules of Professional Conduct (for lawyers) outlines ethical responsibilities, many of which deal with fairness and an absence of bias. Any attorney running for a prosecutorial office who states that "if elected, I will prosecute so and

so" is biased and is acting maliciously toward that individual and is guilty of malicious prosecution if the threat is carried out. This is often called creative prosecution, which has no place in the legal profession. Why the New York Bar Association has not stepped in to sanction the New York Attorney General for prosecuting the former president is beyond me. Apparently, the New York Rules of Professional Conduct (and ethics) are out the window. It gives the appearance that ethics in the New York legal community is a value set subject to change without notice.

### How to contact government officials

U.S. Con. Darin LaHood  
1424 Longworth HOB  
Washington, D.C.  
20515  
(202) 225-6201

IL Sen. Win Stoller  
Stratton Office Bldg  
Springfield, IL 62706  
(217) 782-1942

IL Rep. Bradley Fritts  
Stratton Office Bldg  
Springfield, IL 62706  
(217) 782-0535

Have a letter you want to submit to us? Send it to (news@rochelle-news-leader.com

### KEEPING YOU IN TOUCH WITH YOUR LOCAL LEADERS

\* Denotes Chairman/President

#### Rochelle City Council

*John Bearrows	jbearrows@rochelleil.us
Kathryn Shaw-Dickey	kshaw-dickey@rochelleil.us
Bil Hayes	bhayes@rochelleil.us
Rosaelia Arteaga	rarteaga@rochelleil.us
Dan McDermott	dmcdermott@rochelleil.us
Tom McDermott	tmcdermott@rochelleil.us
Benjamin Valdivieso	bvaldivieso@rochelleil.us

#### Rochelle Elementary School Board

*Trisha Vaughn	tvaughn@d231.rochelle.net
Dave Casey	dcasey@d231.rochelle.net
Steve Builta	sbuilta@d231.rochelle.net
Ashley Jackson	ajackson@d231.rochelle.net
Stephanie White	swhite@d231.rochelle.net
Javier Zepeda	jzepeda@d231.rochelle.net
Jennifer Thompson	jthompson@d231.rochelle.net

#### Rochelle Township High School Board

*Tom Huddleston	tom.huddleston@rthsd212.org
Bill Ravnaas	bill.ravnaas@rthsd212.org
Jeff Tilton	jeff.tilton@rthsd212.org
Bobby Chadwick	bobby.chadwick@rthsd212.org
Brent Ohlinger	brent.ohlinger@rthsd212.org
Laurie Pillen	laurie.pillen@rthsd212.org
Joel Thompson	joel.thompson@rthsd212.org

#### Flagg-Rochelle Park Board

Brent Carmichael	bcarmichael@rochelleparkdistrict.org
John Dobbs	jdobbs@rochelleparkdistrict.org
Dale Wells	dwells@rochelleparkdistrict.org
*Tim Hayden	thayden@rochelleparkdistrict.org
Jodie Hart	jhart@rochelleparkdistrict.org
Joe Lenkaitis	jlenkaitis@rochelleparkdistrict.org
Kristi Gonzales	kgonzales@rochelleparkdistrict.org

#### Ogle County Board Dist. 3

Austin Gillis	agillis@oglecounty.org
Dan Miller	dmiller@oglecounty.org
Joseph Simms	jsimms@oglecounty.org

#### Ogle County Board Dist. 4

Jackie Ramsey	jramsey@oglecounty.org
Skip Kenney	skenney@oglecounty.org
David Williams	dwilliams@oglecounty.org

#### Creston Village Board

*Tom Byro	tommyb_47@yahoo.com
Greg Hopkins	ghopkins522@comcast.net
Steve Katzman	skatzman@essex1.com
Mike Kerns	ac.kerns@comcast.net
Curt Ward	caward92@comcast.net
Mark Hibshman	
Reid Elliot	
Jennifer Payton	

#### Hillcrest Village Board

*Richard Rhoads	rrhoads@hillcrestil.us
Pam Pittman	ppittman@hillcrestil.us
Dan Potter	dpotter@hillcrestil.us
Tim Ball	tball@hillcrestil.us
Jose Huerta	jhuerta@hillcrestil.us
Eileen Braski	ebraski@hillcrestil.us
Joe Thompson	jthompson@hillcrestil.us

#### Flagg Township

Sue Messer	flaggtwp@rochelle.net
Joanna Patrick	flaggtwpcerk@rochelle.net
Susan Rothenberger	assessor@rochelle.net
Scott Seebach	scottseebach@gmail.com

#### Board of Trustees

Lance Noggle	noggle62@gmail.com
Eric Gruben	egruben@comcast.net
Susan Hager	susanhager303@comcast.net
Jim Kenney	jimk@rocketsupply.com

#### Flagg-Rochelle Library

*Jaqueline Dickow	dickow@comcast.net
Teresa Haggstad	haggstads@comcast.net
Michael Scanlan	scanlan@comcast.net
Lanning Nicoloff	nicoloff18@comcast.net
Sheri Klindera	alwayslefty2@gmail.com
Susan Sevedge	nit1prl22@yahoo.com
Darci Waltrip	doobs12@comcast.net

### LETTERS TO THE EDITOR POLICY

The Rochelle News-Leader encourages responsible letters to the editor on subjects of interest to our readers. Editing may be necessary for space, clarity or to avoid obscenity or libel, but ideas will not be altered. All letters must bear the handwritten signature of the writer and include address and phone number or e-mail address for verification purposes. Neither the street address nor phone number will be printed. Letters should be typed or

legibly handwritten, and no anonymous letters will be published. Any letters from boards or organizations must include at least one name of an individual. Any criticism of public officials should be limited to issues related strictly to their position or actions made in office, as personal attacks will not be published. Letters involving private disputes between the writer and a business will not be published. Political endorsements will be

published, however letters from candidates endorsing themselves will not be printed. Letters may be dropped at the News-Leader office (211 IL Route 38 East), mailed to the News-Leader (P.O. Box 46, Rochelle, IL 61068) or e-mailed (news@rochellenews-leader.com.) The News-Leader reserves the right to edit or reject any letter to the editor for any reason, and letters chosen for publication do not necessarily reflect the views of this newspaper.



# COMMUNITY

## Meetings planned for potential LOTS routes

**ROCHELLE** — The Lee-Ogle Transportation System (LOTS), a leading transportation organization, is excited to announce a series of public input meetings to study the feasibility of providing scheduled route public transit in Dixon and Rochelle. Community members are invited to attend one of four planned meetings hosted by LOTS to provide valuable input on the future of scheduled bus service in these cities. LOTS, in collaboration with public transportation consultant RLS & Associates, aims to evaluate options for fixed route bus service to enhance access to workplaces, medical care, education, shopping, recreation, and more for residents in Dixon and Rochelle.

The project team is eager to hear from a diverse range of stakeholders, including senior citizens, individuals with disabilities, transit riders and non-riders, students, and anyone who values transportation as a vital community resource.

Rochelle public meetings are scheduled for Wednesday, April 17 in the City of Rochelle Council Chambers at 420 N. 6<sup>th</sup> St. from 1-2:30 p.m. and 5:30-7 p.m.

Dixon public meetings are scheduled for Tuesday, April 16 at the Dixon Park District at 1312 Washington Ave. from 1-2:30 p.m. and 5:30-7 p.m.

Freerides on LOTS will be provided to and from public meetings during LOTS' hours of operation.

For accessibility or other meeting information, please contact Michelle Perales at (937) 299-5007 or via email at mperales@rlsandassoc.com.

Additionally, community members are encouraged to participate in a brief survey about the fixed route bus service by visiting [surveymonkey.com/r/LOTS](https://surveymonkey.com/r/LOTS).

Join us in shaping the future of public transit in Dixon and Rochelle. Your input matters.

## Chana Play Day scholarships available

**CHANA** — The Chana Play Day committee has announced competition for several scholarships. The candidates must be high school graduates or the equivalent with ties to the Chana area.

Applicants who are current or former residents of Chana or who have parents or grandparents who attended Chana School or participated in Chana Play Day may apply. Two-time recipients are not eligible to reapply.

The scholarships will be awarded to the candidates who best meet and complete the requirements listed in the application.

Scholarship forms may be picked up at the Oregon High School guidance office or Stocking Equipment, four miles east of Oregon on Illinois Route 64.

Please deliver or mail the applications to Ron Stocking, Stocking Equipment, 3749 E. Pine Rock Road, Oregon, IL 61061.

The completed application must be received by 5 p.m. on Friday, May 3.

## ISP announces results of distracted driving enforcement

**OGLE COUNTY** — Illinois State Police (ISP) Troop 1 Commander Captain Joseph Blanchette recently announced the results of the distracted driving enforcement program patrols held in Ogle and Winnebago counties during March. This program provided extra patrol coverage for ISP officers to focus on saving lives and reducing serious crashes by enforcing distracted driving laws.

Hand-held phone/device citations: 22. Texting while driving citations: Two. Other types of distracted driving citations: Zero. Total distracted driving citations: 24. Total distracted driving written warnings: Zero. Total of all citations: 65. Total of all written warnings: 20.

The extra enforcement patrols were made possible by federal traffic safety funds administered by the Illinois Department of Transportation.

### BIRTHDAYS & ANNIVERSARIES

April 7 Arianna Grana Anjelique Grana Beckham Stockton	April 11 Bev Wiginton Christine Doering Chris & Christine Doering (anniversary)	April 18 Millie Danekas	April 26 Evan Jones
April 8 Jodi Prosser Trevor Komadina Timothy Avila	April 12 Charles Peterman	April 19 Pastor Angelo Bonacquisti	April 30 Nora Bridgeman Oakley Gonzales
April 10 Johnny Gonzales	April 16 Marissa Seldal James Doering	April 21 Emma Waters	May 1 Jamey King
April 24 Jose Tlapa Lainie Arnold			

Call 815-561-2151 to submit names for birthdays and anniversaries



### 2024 From The Heart Calendar

Celebrating 16 Years of Giving

\$20

Mar. 12 - Ethan Etes, Rochelle, \$25

Mar. 13 - Danny Miller, Ashton, \$25

Mar. 14 - Allison Wagner-Huntley, Byron, \$25

Mar. 15 - Tiffany Meyers, Rochelle, \$25

Mar. 16 - From the Heart, \$25

Mar. 17 - From the Heart, \$250

Mar. 18 - Edith Yarbrough, Dixon, \$25

Mar. 19 - Caily Gustafson, Topeka, Kansas, \$25

Mar. 20 - Two Sisters on Main, Amboy, \$25

Mar. 21 - Elvis Banekski, Rochelle, \$25

Mar. 22 - From the Heart, \$25

Mar. 23 - From the Heart, \$25

Mar. 24 - Jan Thompson, Rochelle, \$50

Mar. 25 - From the Heart, \$25

Mar. 26 - Brian Vanderheyden, Sycamore, \$25

Mar. 27 - Rochelle Chamber, \$25

Mar. 28 - From the Heart, \$25

Mar. 29 - Mark Boehm, Rochelle, \$25

Mar. 30 - Chad Horner, Rochelle, \$25

Mar. 31 - Greg Duffy, Dixon, \$300

Apr. 1 - Mark Nink, Rochelle, \$25

Apr. 2 - Mike and Gabrielle Nachman, Madison, WI, \$25

Apr. 3 - Leslie Mann, Rochelle, \$25

Apr. 4 - Carol Pretzer, Lindenwood, \$25

Apr. 5 - From the Heart, Rochelle, \$25

Apr. 6 - HOPE of Ogle County, \$25

Apr. 7 - Ryan Thomas, Chana, \$50



### MAGIC MAZE

SEEN ALONG THE ROAD

M K I G H I T C H H I K E R S  
E D B Z S X F V S Q O M K E R  
I F G E C P A A Y W U S Q T E  
S B I L L B O A R D S C S T K  
P K N L S L E T O M L A R I R  
J H C F D E C O S A S T E L A  
Y X V E U L F S Q T P T P N M  
S K C U R T I M K J S L O H E  
C R O P S W F W E C B E O Z L  
Y X V A U T R S E G D I R B I  
Q P F O S E L C Y C R O T O M

Find the listed words in the diagram. They run in all directions forward, backward, up, down and diagonally. Unlisted clue hint: SCATTERED TRASH

Billboards	Farms	Motels	Trucks
Bridges	Fast food	Motorcycles	Wildlife
Cattle	Hitchhikers	Rest stops	Wrecks
Crops	Mile markers	Troopers	

©2024 King Features Syndicate, Inc. All rights reserved.

### SEEN ALONG THE ROAD

Answers:

1. HITCHHIKERS  
2. SCATTERED TRASH  
3. CROPS  
4. TROOPERS  
5. REST STOP  
6. BILLBOARDS  
7. FAST FOOD  
8. MILE MARKERS  
9. WRECK  
10. TRUCK  
11. MOTEL  
12. FARM  
13. CATTLE  
14. BRIDGE  
15. HIGHWAY  
16. ROAD  
17. TRAIL  
18. PATH  
19. DRIVE  
20. STREET  
21. AVENUE  
22. BOULEVARD  
23. PARKWAY  
24. TURNPIKE  
25. EXPRESSWAY  
26. INTERSTATE  
27. FREEWAY  
28. RAMP  
29. ON-RAMP  
30. OFF-RAMP  
31. EXIT  
32. ENTRANCE  
33. GATE  
34. TOLL  
35. FEE  
36. TAX  
37. LICENSE  
38. PERMIT  
39. TAG  
40. TAGS  
41. TAGS  
42. TAGS  
43. TAGS  
44. TAGS  
45. TAGS  
46. TAGS  
47. TAGS  
48. TAGS  
49. TAGS  
50. TAGS

### Super Crossword

CROSSWORD DIVERSION

#### ACROSS

1 Extreme self-deniers  
9 Common proof of age  
15 Plotting band  
20 Cousins of croci  
21 Worker whose job is fitting  
22 Nice smell  
23 Stylized bow that's a token of affection  
24 Godly  
25 Fragment  
26 Unwrap  
27 Put on fancy duds, with "up"  
29 Many Punjabi believers  
30 Take forcibly  
31 Mary  
32 Cultural  
35 Many August babies  
36 Ford bomb  
37 Writer Elinor or Philip  
39 Praise highly  
41 Toad feature  
43 Toppings for nachos  
45 "The King —"  
46 Shakes up

51 Entertainer Falana  
52 Nutrition std.  
54 "— Kapital"  
55 Tapering off  
56 Flying hooters  
57 They have depots: Abbr.  
58 Father of Beau Bridges  
60 Most bizarre  
61 Rugged truck, in brief  
62 Sandy islets  
63 Napoleon's isle of exile  
64 News anchor Huntley  
65 Hebrew holy scroll  
67 Plus others: Abbr.  
69 "Noah" actress Watson  
71 Chewed Andean stimulants  
75 Title for a fictional Southern rabbit  
77 Cowboys' city, informally  
79 Writer Dinesen

81 Suffix with Seattle  
82 Behind bars  
85 Bruno — (shoe brand)  
86 Moo — pork  
87 Be boastful  
88 Hurting from hiking, say  
90 Color tone  
91 Gridiron stats  
92 Pale brown  
93 Legume-family plant  
94 Incline  
96 "Not so!"  
98 PC memory units  
100 Chevy muscle car  
101 Farfalle, e.g.  
105 A8 carmaker  
107 Paige of "Evita"  
109 Gene-splicing need  
112 Trellis plants  
113 Current style  
115 Finale  
116 Colorado ski mecca  
117 Vetoed  
118 Early online protocol

120 Rip apart  
123 Justice Kagan  
124 Distinctive film director  
125 Ripped apart  
126 Impertinent  
127 Meager  
128 Jewel box holders ... or eight features of this puzzle?

#### DOWN

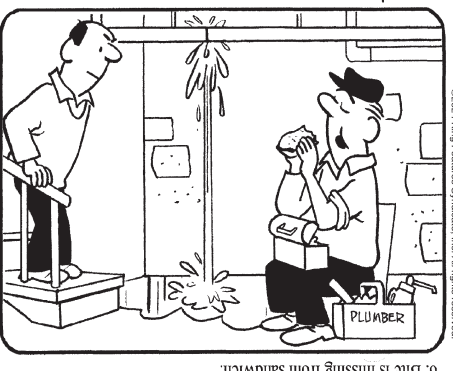
1 Radiant  
2 Incline  
3 Neanderthal, e.g.  
4 Eve's garden  
5 "— Tok" (Kesha hit)  
6 Electrojet bit  
7 Laundromat machine  
8 Make a chair of  
9 "— be an honor"  
10 Speaking stand  
11 Passive resistance to laws  
12 Quite similar  
13 "Apollo 13" director

14 Equestrian training  
15 Bit of outdated hi-fi equipment  
16 Traveled in a curved path  
17 Tennis' Becker  
18 Astonish  
19 Suit coat flap  
28 — monster (large lizard)  
32 Lofly trains  
33 — del Fuego  
34 Romantic evening meal  
38 In-favor votes  
40 Longtime politico Mo  
42 Rival of Xerox or Canon  
43 Political pull  
44 DIYer's book  
47 Build upon  
48 Deadlock  
49 Mil. officer  
50 Mil. officer's aide  
53 Mgr.'s aide  
59 Tasty tuber  
62 December 25  
64 Periodic payment to a stockholder  
66 Taper off  
68 Judges' org.  
70 Very fine rain

72 Hora or hokeypokey  
73 Classic arcade name  
74 Smooth transition  
76 31-Across on the sly  
78 Viscous  
80 Novelist Jane  
82 Possibilities  
83 This moment  
84 Java  
85 Fulfill expectations  
87 Really tired  
89 Sailing races  
95 "Take it out" mark  
97 Beatified Fr. woman  
101 Really years  
102 Teresa of —  
103 "Boxcars" roll  
104 Cold temps  
106 River mouth  
108 Silly prank  
110 Constituent of gunpowder  
111 At — for words  
114 — ex machina  
116 Observe  
119 III, to Italians  
121 Inclined  
122 '16 Olympics host



Find at least six differences in details between panels.



Differences: 1. Kailing is different. 2. Handle is added to lunch box. 3. Sleeve is rolled up. 4. Leak is moved. 5. Pipe is thinner. 6. Bite is missing from sandwich.





# National Autism Awareness Month



**Changes Counseling, LLC**  
Making Positive Changes Possible.

INDIVIDUAL | COUPLE | YOUTH | FAMILY COUNSELING

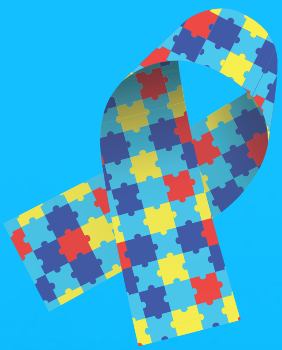
- Relieve Depression
- Calm Anxiety
- Improve Relationships
- Heal Trauma
- Encourage Your Children
- Empower Yourself

Convenient Hours and Locations in...

604 N. Main Street  
Rochelle, IL 61068

121 S. 4th St.  
Oregon, IL 61061

[ChangesCounselingLLC.com](http://ChangesCounselingLLC.com) | 815.501.2088



**PRECIOUS pastures** *Delicious, Quality Raw Milk Fresh at the farm!*

Every Day 6:30 AM - 8:00 AM & 4:30 PM - 6:00 PM  
(Please bring your own containers. 24 hours Notice Required.)

**387 S. Malta Rd., Rochelle, IL 61068**  
815-762-6867 • [PreciousPastures.com](http://PreciousPastures.com)

**Davis Family Health LLC** We Fix Boo Boos

*Kelly Ann Tonielli Davis*  
DNP, APRN, FNP-BC-CME

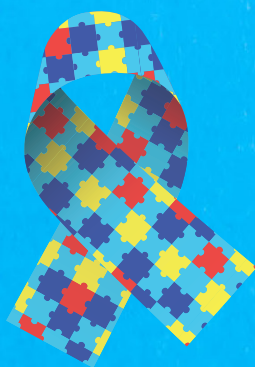
**2023 VOTED BEST OF ROCHELLE WINNER**

Voted BEST FAMILY PRACTICE & BEST DOCTOR!

1212 Currency Court, Rochelle, IL 815-561-8500  
1201 Meriden Street, Mendota, IL 815-538-1800

Primary Care, Physicals, Weight Loss, Dermal Fillers, Botox Injections, Suboxone Program

Veteran Owned and Operated • Most Insurances accepted




**Rochelle Foods**

CHECK OUT OUR JOB POSTINGS TODAY!

1001 S. Main Street | Rochelle  
815-562-4141 | [rochellefoodsjobs.com](http://rochellefoodsjobs.com)

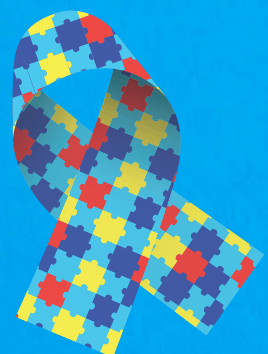
**1 FIRST STATE BANK**

CELEBRATING ALL OF OUR FRIENDS

304 E. Highway 38  
Rochelle, IL

[firststatebank.biz](http://firststatebank.biz)  
815.562.2200

FDIC



**Rochelle Community Hospital**  
Your Local Healthcare Resource.

900 N. 2nd St., Rochelle  
[rochellehospital.com](http://rochellehospital.com)

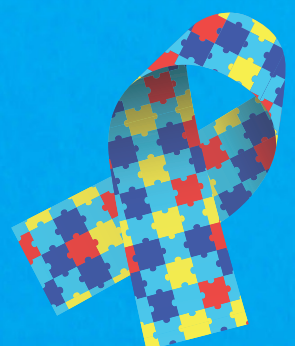
ROCHSIGS

**COUNTRYSIDE**  
LAND DRAINAGE SERVICES  
ROCHELLE, ILLINOIS

5180 S Queens Rd.  
Rochelle IL 61068

Mobile: 815.970.7358  
Office/Fax: 815.562.7942

[countrysidedrainage@gmail.com](mailto:countrysidedrainage@gmail.com)





RTHS Athletics



(PHOTOS BY RUSSELL HODGES)

Rochelle senior Kara Martinez has signed to play soccer and basketball at Kishwaukee College next year. Martinez has spent four years with both the Lady Hub soccer and basketball teams, earning All-Conference Honorable Mentions in the Interstate 8 for both sports.

# Martinez chooses Kishwaukee College

## RTHS senior to play soccer and basketball for Lady Kougars next school year

BY RUSSELL HODGES  
SPORTS EDITOR

**ROCHELLE** — Rochelle senior Kara Martinez has been a multi-sport athlete throughout her four years in high school, competing in three sports including tennis, basketball and soccer while earning varsity roles with all three teams. Martinez intends on remaining a multi-sport athlete at the collegiate level after signing to play basketball and soccer at Kishwaukee College.

“It’s close to home and I’ve wanted to start at a community college for a while,” Martinez said. “Kishwaukee

College seemed like a really good option and it has good benefits... I’m looking forward to meeting my new team and having new players around me. I’m excited about that.”

Martinez played four years of basketball at Rochelle, with two years coming at the varsity level. The senior guard was an Academic All-Conference honoree as well as an All-Conference Honorable Mention in the Interstate 8 during her senior season, averaging 6.3 points, 2.7 rebounds and 1.9 assists per game. Martinez helped lead the Lady Hub to a 13-18 overall

record and a win over the Plano Reapers in the IHSA 3A Regional tournament at RTHS.

“This year was where I improved the most as a player,” Martinez said. “Even though I had an injury, I grew a lot from last summer to now and I thought this was the best season I had in all four years. The coaches helped me a lot this year and my skills became a lot better... Our 6 a.m. practices over the summer really helped me and there were no excuses for us. We always had to try and give 100 percent and those are things that players in college

want to do.”

Martinez also played four years of soccer at Rochelle, spending all four years with the varsity team. The senior forward was an Academic All-Conference winner and an All-Conference Honorable Mention in the Interstate 8 during her junior season, where she scored six goals and added five assists. Martinez recorded two goals and two assists as a sophomore in 2022, when the Lady Hubs reached double figures in wins and enjoyed their best record in over a decade.

“There was a big change between my freshman year and my sophomore year

because our team improved tremendously,” Martinez said. “Our team has grown a lot and we have a lot more potential now, but my sophomore year was when we realized that Rochelle can compete. Coach [Male] has us run a lot and that’s something that will prepare me for college. He also expects the most out of me and I think that’s something that my college coach will expect too.”

Martinez played two years of varsity tennis at Rochelle, receiving Academic All-Conference recognition during both seasons. Martinez intends to study busi-

ness before continuing her education and her athletics at a four-year school.

“Kara was a huge part of our team,” RTHS girls basketball coach Jon Gehm said. “She was a vocal leader for us throughout the season and set the tone for us at the beginning. After returning from an early ankle injury, she really injected a lot of energy into the team and provided shooting and playmaking for us. She put constant pressure on the opponent and had some huge games for us. Her offensive skill set was key for us all season. She also stepped up defensively for us.”

RTHS Volleyball

# Adamski signs to play for Kishwaukee College

## Rochelle senior intending to study psychology while continuing athletic career

BY RUSSELL HODGES  
SPORTS EDITOR

**ROCHELLE** — Rochelle senior Kennedy Adamski said she’s excited to reunite with a former Lady Hub teammate next year, when she takes the floor with the Kishwaukee College women’s volleyball team. Adamski recently signed to continue her volleyball career with the Lady Kougars, who were led by former Rochelle outside hitter Addie Friestad this past season.

“I picked Kishwaukee College because of the local environment and the coaching staff,” Adamski said. “I’m excited to play with Addie again and continue playing for coach Zach [Salapatek]. I am looking forward to a quicker paced game with different opponents.”

Adamski has participated in three sports throughout her four years at Rochelle. The senior middle hitter spent four years with the Lady Hub volleyball program including three years with the varsity team, helping Rochelle to a 17-16 record during the 2023 season. Adamski totaled

94 kills and 18 blocks during her senior season after finishing with 116 kills and 31 blocks during her junior season. Adamski is a two-time Interstate 8 Academic All-Conference honoree.

“Playing at Rochelle has given me a sense of routine and time management that will help me tremendously at the college level,” Adamski said. “I improved in diversity and also specialization the most. I became good at my position and what I do, which will carry over into my college career. I picked up some other skills filling in positions when my teammates weren’t there.”

In addition to volleyball, Adamski spent four years with the Lady Hub basketball program including two years with the varsity team, earning Academic All-Conference honors in both her junior and senior seasons. Adamski is also in her third season with the Lady Hub track and field team, competing in multiple events including the high jump, long jump and triple jump. Adamski received Academic All-Conference honors twice in basketball and once in



(PHOTO BY MARCY DELILLE)

Rochelle senior Kennedy Adamski has signed to continue her academics and her volleyball career at Kishwaukee College next year. Adamski has spent three years with the Lady Hub varsity volleyball team.

track and field.

“Kennedy is such a great team leader,” RTHS volleyball

coach Molly Sly said. “She is a great competitor and she never lets up.”

Adamski said she intends to earn her associate’s degree in psychology while

attending Kishwaukee College. She hopes to pursue a career in psychology.



# SPORTS

## RTHS Boys Soccer

# Salazar to continue career at Kishwaukee College

## Rochelle forward earned Interstate 8 First Team honors during senior season

BY RUSSELL HODGES  
SPORTS EDITOR

**ROCHELLE** — The Rochelle Township High School soccer pipeline continues to grow, with senior forward Diego Salazar signing to continue his academics and his soccer career with the Kougars next year. An Interstate 8 All-Conference First Team honoree, Salazar scored 20 goals and dished out five assists for the Hubs during the 2023 season.

“I chose Kishwaukee College because it’s pretty close to home and it’s affordable,” Salazar said. “I also received a scholarship. I want to do my best and keep improving so I can get noticed by more scouts and hopefully keep my soccer career going. The biggest area where I improved was communicating with teammates and making sure they knew what to do on the field.”

Salazar played soccer at RTHS for four years, with all four years coming at the varsity level. The left-footed forward was an All-Conference Honorable Mention in the Interstate 8 during his junior season, where he scored 22 goals

and added four assists. Salazar recorded three goals and three assists as a sophomore as well as four goals and five assists as a freshman.

“Coach [Male] pushed all of us to be better players and I think that will help me during college,” Salazar said. “Remembering how he pushed me will motivate me to push harder in college. I want to be an outstanding college player as a freshman and playing forward is where I’m most comfortable because I’ve played that position ever since I started playing soccer.”

Salazar, who began playing soccer when he was 6 years old, said he hopes to continue his education and his athletic career at a four-year school after completing his studies at Kishwaukee College. Salazar is currently competing with the Rochelle Hub track and field team.

“I enjoy how intense soccer games can be when we’re playing a good team,” Salazar said. “It’s a sport that brings people together and it’s a way to meet new friends. I hope to be a good teammate with the Kishwaukee College team and I’ll do whatever they need me to do.”



(PHOTO BY RUSSELL HODGES)

Senior Diego Salazar will be continuing his academics and his soccer career with Kishwaukee College next year. Salazar was an Interstate 8 First Team honoree during the 2023 season.

## NIU Football

# Intense practices lead to competition at spring camp

## Head coach Hammock pleased with progress as Huskies prepare for 2024 season

**DEKALB**—The Northern Illinois University football team wrapped up its first week of spring practice Saturday with a two-hour workout in full pads in Huskie Stadium.

The practice included “live” 11-on-11 periods with the Huskie defense, which features nine returning players who started at least six games a year ago, challenging the NIU offense on every repetition.

“I like where we are,” said Thomas Hammock, who enters his sixth season as head coach at his alma mater in 2024. “The

guys are really competing. We’ve had intense practices every single day. Our defense is playing at a high level, really forcing our offense to execute and play physical. It’s a battle and I really love the competition. It was a long practice today and we got a lot of reps and a lot of quality reps in.”

With 100 players on the spring roster, the focus again this spring is on developing the less experienced players who have the ability to move into a starting or back-up role, strengthening the entire roster. As a result, multiple

players are receiving reps at every position throughout the practice.

“One thing we talk about a lot is developing the middle third of our football team, guys that are fighting for playing time, fighting for [a spot on] special teams and guys that may not have as much experience as guys that have started,” Hammock said. “If we can raise the floor with the middle third, that gives us an opportunity to be better as a football team. We have a lot of guys that have played, a lot of seniors that have been here and have investment

in the program. We have to keep raising the floor so that we can be as good as we can be.”

With seniors making up one-third of the spring roster (34 of 100), there is no shortage of experienced players to assist the newcomers and underclassmen in making that jump. Hammock has seen the seniors and members of the Leadership Council set the tone.

“Jashon Prophete has stepped up as a leader, Nate Valcarcel has stepped up as a leader, Ethan Hampton is doing a nice job and J.J. Lippe is probably the one

guy people wouldn’t think about, but he’s a guy that has really taken charge,” Hammock said. “We put a lot on our seniors, we put a lot on our Leadership Council and those guys have done a phenomenal job.”

The Huskies return to practice Tuesday morning for the fourth of 15 spring workouts. Spring practices conclude with the Spring Showcase on Saturday, April 27 at Huskie Stadium. For the complete schedule, see 2024 Spring Football Central on NIUHuskies.com.

NIU’s 2024 schedule includes six home games, five on Saturday, along with road games at Notre Dame (Sept. 7) and N.C. State (Sept. 28). Season ticket prices start at just \$105 or get reserved West Side seats starting at \$152. Discounts are available and parking is included. Season ticket members also receive additional benefits like invitations to special events and access to away game tickets. Go to NIUHuskies.com/myhuskies or call 815-753-PACK to create your account, renew or purchase new season tickets.

# COMMUNITY BOARD

**Need to get the word out about a product or service you offer?**  
**Give us a call at 815-562-4171.**  
**We can reach over 9,000 homes!**



**Gutters, Roofing & Siding**

**THEISEN** *Free Estimates!*  
**ROOFING**

ROOFING  
SIDING  
GUTTERS

CONTACT US  
815-758-8998  
THEISENROOFING@COMCAST.NET

Family owned & operated for over 50 years

**Plumbing, Heating & Cooling**

**ANDERSON**  
**PLUMBING & HEATING, INC.**

Plumbing, Heating & Cooling  
Water Heaters, Water Softeners,  
Drinking Water Systems, Iron Filters,  
Sewer Rodding & Jetting & More!

**Since 1976**

621 First Ave., Rochelle  
(815) 562-8784

**Lawn Care**

**Furman's Lawn Care**

**SPRING CLEAN-UP!**

- Weekly Mowing
- Bush Trimming & Removal
- Gutter Cleaning
- Much More!

In Business Since 1999  
Fully Insured • Free Estimates

**Call Jeremy Furman at 815-761-9619**  
Please leave message and I will return your call ASAP

**Storage Sheds**

**Rocky Ridge Structures**

*FREE Sales Rep. Evaluation At Your Site* *We Deliver! From Our Lot To Your Site*

We Specialize in Portable/Quality Built Storage Sheds

- Stock & Custom Design
- Many Options Available
- Competitive Pricing
- Site Preparation Available

See Displays at 3500 S. Chana Rd. Chana IL 61015  
Call Norm or Albert for Free Literature packet  
779.861.3542

**Heating & Air Conditioning**

**HULL**  
**HVAC & Household Services**

Furnaces - Air Conditioners - Boilers  
Duct Cleaning - Water Heaters

**Air Conditioner Clean & Check**  
**\$45.00**  
After \$35 rebate.

Promotion only available to RMU customers.  
Expires: 08/31

Ask about duct cleaning and antimicrobial fogging.  
**815-561-6551**  
**www.HullHVAC.com**

Recipient of the 2020 BBB Complaint Free Award.

**Concrete**

**Bruns**  
Construction, Inc.

- Residential & Commercial Concrete
- Additions

**FREE ESTIMATES!**

Tim & Roger Bruns, Owners  
Established 1997

**815-561-0099**  
Free Estimates • Fully Insured  
**www.brunconstructioninc.com**

**Advertise Here**

**What Service Do You Offer?**

**562-4171**

**The Rochelle News-Leader**



# Classified Marketplace

ROCHELLE • HILLCREST • CRESTON • STEWARD • KINGS • ASHTON

## 101 LEGAL NOTICE

**NOTICE**  
STATE OF ILLINOIS  
IN THE CIRCUIT  
COURT OF THE  
FIFTEENTH JUDICIAL  
CIRCUIT COUNTY OF  
OGLE  
IN THE MATIER OF  
THE ESTATE OF  
WYNNIE E. JOHN-  
SON, Deceased  
Case No. 2024PR5  
**CLAIM NOTICE**  
Notice is given of the  
death of WYNNIE E.  
JOHNSON of Rochelle,  
Ogle County, Illinois.  
Letters of Office were  
issued on February  
16th, 2024 to CARL  
JOHNSON whose ad-  
dress is 3199 W. Ra-  
majen Road, Oregon,  
IL 61061, and whose  
attorney is RUSSELL  
A. CRULL of TESS,  
CRULL & ARNQUIST,  
LLC, P.O. Box 68, Ro-  
chelle, Ogle County,  
Illinois 61068.  
Claims against the Es-  
tate may be filed in the  
Office of the Clerk of the  
Circuit Court of the Ogle  
County Courthouse, Or-  
egon, Illinois 61068, or  
with the representative,  
or both, within six (6)  
months from the date  
of the first publication  
of this claim notice and  
any claim not filed with-  
in that period is barred.  
Copies of a claim filed  
with the Clerk must be  
mailed or delivered to  
the representative and  
to the Attorney within  
ten (10) days after it has  
been filed.  
Witness, March 19,  
2024  
Russell A. Crull  
No. 0331  
(March 31, April 7 and  
14, 2024)

**NOTICE**  
STATE OF ILLINOIS  
SS  
COUNTY OF OGLE  
IN THE CIRCUIT  
COURT OF THE  
FIFTEENTH JUDICIAL  
DISTRICT  
IN THE MATTER OF  
THE ESTA TE OF  
CAROL WEIDMANN,  
Deceased.  
NO. 2024PR17  
**CLAIM NOTICE**  
Notice is hereby given  
of the death of CAROL  
WEIDMANN, of Ro-  
chelle, Illinois. Letters  
were issued on March  
25, 2024, to BARBA-  
RA WERNER, whose  
address is 21 W518  
Thorndale Avenue,  
Medinah, IL 60157,  
and whose attorney is  
James G. Ahlberg, P.O.  
Box 358, Rochelle, IL  
61068.  
Claims against the es-  
tate may be filed in the  
office of the Circuit Clerk  
of the Court at the Ogle  
County Courthouse, Or-  
egon, Illinois, or with the  
representative, or both,  
no later than October  
1, 2024 and any claim  
not filed within that pe-  
riod is barred. Copies  
of a claim filed with the  
Clerk must be mailed  
or delivered to the rep-  
resentative and to the  
attorney within 10 days  
after it has been filed.  
JAMES G. AHLBERG,  
Attorney for BARBARA  
WERNER, Executor of  
the Estate of CAR-  
OL WEIDMANN, De-  
ceased  
No. 0332  
(March 31, April 7 and  
14, 2024)

**PUBLIC NOTICE**  
Public Notice is hereby  
given that on March 25,  
2024 a certificate was  
filed in the Ogle Coun-  
ty Clerk's Office setting  
forth the names and  
post office address of  
all of the persons own-  
ing, conducting and  
transacting the busi-  
ness known as:  
Elite Auto Detailing  
214 Ramona Ave.  
Rochelle, IL 61068  
Dated March 25, 2024  
Laura J. Cook, Ogle  
County Clerk  
No. 0333  
(March 31, April 7 and  
14, 2024)

**PUBLIC NOTICE**  
Public Notice is hereby  
given that on March 25,  
2024 a certificate was  
filed in the Ogle Coun-  
ty Clerk's Office setting  
forth the names and  
post office address of  
all of the persons own-  
ing, conducting and  
transacting the busi-  
ness known as:  
Elite Auto Detailing  
214 Ramona Ave.  
Rochelle, IL 61068  
Dated March 25, 2024  
Laura J. Cook, Ogle  
County Clerk  
No. 0333  
(March 31, April 7 and  
14, 2024)

**NOTICE**  
Ashton-Franklin Center  
CUSD #275  
Invitation For Bid: Food  
Service  
Ashton-Franklin Center  
CUSD #275 is accept-  
ing bids for the man-  
agement of the food-  
service program for the  
2024-2025 school year.  
Instructions and spec-  
ifications are available  
at the District Adminis-  
trative Offices located  
at 611 Western Avenue  
Ashton, Il 61006. All  
bids are due May 6th at  
12:00pm at the above  
address at which time  
they will be open and  
read aloud.  
A pre-bid conference  
will be held on April  
17th at 2:00pm and  
conclude at 2:30pm at  
the District Administra-  
tive Offices. The pur-  
pose of this meeting will  
be to discuss the speci-  
fications and to address  
questions. Attendance  
at this meeting is man-  
datory for your bid to be  
considered.  
For additional informa-  
tion regarding this bid,  
please contact Michael,  
Superintendent, at 815-  
453-7263.  
No. 0408  
(April 7, 2024)

**PUBLIC NOTICE**  
Public Notice is hereby  
given that on April 1,  
2024 a certificate was  
filed in the Ogle Coun-  
ty Clerk's Office setting  
forth the names and  
post office address of  
all of the persons own-  
ing, conducting and  
transacting the busi-  
ness known as:  
Colonial Flowers & Gifts  
408 Lincoln Hwy  
Rochelle, IL 61068  
Dated April 1, 2024  
Laura J. Cook, Ogle  
County Clerk  
No. 0410  
(April 7, 14 and 21,  
2024)

**NOTICE**  
Rochelle Elementary  
School District #231  
is accepting bids for  
the management of  
the food service pro-  
gram for the 2024-2025  
school year. Instruc-  
tions and specifications  
are available at the  
District Administrative  
Offices located at 1401  
Flagg Rd. Rochelle,  
IL 61068. All bids are  
due May 20, 2024 at  
2:00PM CST at the  
above address at which  
time they will be open  
and read aloud.  
A pre-bid conference  
will be held on April  
18, 2024 at 2:00PM  
CST and conclude at  
3:00PM CST at the  
District Administrative  
Offices. The purpose  
of this meeting will be  
to discuss the speci-  
fications and to address  
questions. Attendance  
at this meeting is man-  
datory for your bid to be  
considered.  
For additional informa-  
tion regarding this bid,  
please contact Kevin  
Dale, Business Manag-  
er/CSBO, at 815-562-  
6363.  
No. 0411  
(April 07, 2024)

**NOTICE**  
IN THE CIRCUIT  
COURT OF THE  
FIFTEENTH JUDICIAL  
CIRCUIT COUNTY,  
ILLINOIS  
IN THE MATTER OF  
THE ESTATE OF  
BARBARAA. GREENE,  
Deceased  
NO. 2024PR19  
**CLAIM NOTICE**  
Notice is given of the  
death of BARBARA  
A. GREENE, of Ore-  
gon, Illinois. Letters  
of Office were issued  
on March 27, 2024, to  
ALAN GREENE, whose  
address is 577 West  
Jennie Lane, Oregon,  
IL 61061, and whose at-  
torneys are Fearer, Nye  
& Chadwick, 420 4th  
Avenue, PO Box 117,  
Rochelle, IL 61068.  
Claims against the  
Estate may be filed in

**NOTICE**  
IN THE CIRCUIT  
COURT OF THE  
FIFTEENTH JUDICIAL  
CIRCUIT COUNTY,  
ILLINOIS  
IN THE MATTER OF  
THE ESTATE OF  
BARBARAA. GREENE,  
Deceased  
NO. 2024PR19  
**CLAIM NOTICE**  
Notice is given of the  
death of BARBARA  
A. GREENE, of Ore-  
gon, Illinois. Letters  
of Office were issued  
on March 27, 2024, to  
ALAN GREENE, whose  
address is 577 West  
Jennie Lane, Oregon,  
IL 61061, and whose at-  
torneys are Fearer, Nye  
& Chadwick, 420 4th  
Avenue, PO Box 117,  
Rochelle, IL 61068.  
Claims against the  
Estate may be filed in

**NOTICE**  
IN THE CIRCUIT  
COURT OF THE  
FIFTEENTH JUDICIAL  
CIRCUIT COUNTY,  
ILLINOIS  
IN THE MATTER OF  
THE ESTATE OF  
BARBARAA. GREENE,  
Deceased  
NO. 2024PR19  
**CLAIM NOTICE**  
Notice is given of the  
death of BARBARA  
A. GREENE, of Ore-  
gon, Illinois. Letters  
of Office were issued  
on March 27, 2024, to  
ALAN GREENE, whose  
address is 577 West  
Jennie Lane, Oregon,  
IL 61061, and whose at-  
torneys are Fearer, Nye  
& Chadwick, 420 4th  
Avenue, PO Box 117,  
Rochelle, IL 61068.  
Claims against the  
Estate may be filed in

the office of the Circuit  
Clerk of the Court at  
Ogle County Court-  
house, Oregon, IL  
61061, or with the rep-  
resentative, or both,  
no later than October  
7, 2024, and any claim  
not filed within that pe-  
riod is barred. Copies  
of a claim filed with the  
Clerk must be mailed  
or delivered to the rep-  
resentative and to the  
attorney within 10 days  
after it has been filed.  
FEARER, NYE &  
CHADWICK, Attorneys  
for ALAN GREENE,  
Executor of the Es-  
tate of BARBARA A.  
GREENE, deceased  
No. 0412  
(April 7, 14 and 21,  
2024)

## 101 LEGAL NOTICE

This publication does  
not knowingly accept  
fraudulent or deceptive  
advertising. Readers are  
cautioned to thoroughly  
investigate all ads,  
especially those asking  
for money in advance.

## 105 BUSINESS OPPORTUNITIES

"This publication does  
not knowingly accept  
fraudulent or deceptive  
advertising. Readers are  
cautioned to thoroughly  
investigate all ads,  
especially those asking  
for money in advance."

## 113 FINANCIAL

**NOTICE** Advance Fee  
Loans or Credit Offers  
Companies that do  
business by phone  
can't ask you to pay for  
credit before you get it.  
For more information,  
call toll-free 1-877-FTC-  
HELP. A public service  
message from your  
hometown newspaper  
and the Federal Trade  
Commission.

## 119 ANNOUNCEMENTS

"This publication does  
not knowingly accept  
fraudulent or deceptive  
advertising. Readers are  
cautioned to thoroughly  
investigate all ads,  
especially those asking  
for money in advance."

## 127 SERVICES AND REPAIRS

Furman's Lawn Care.  
In business since  
1999, weekly mowing,  
bushes, spring clean  
up and much more.  
Fully Insured, Free  
Estimates, Call Jeremy  
Furman, 815-761-9619.  
Please leave message  
and I will return call  
ASAP.

## 201 DOMESTIC/CHILD CARE

NO INDIVIDUAL, unless  
licensed or holding a  
permit as a childcare  
facility, may cause  
to be published any  
advertisement soliciting  
a child care service. A  
childcare facility that is  
licensed or operating  
under a permit issued by  
the Illinois Department  
of Children and Family  
Services may publish  
advertisements of the  
services for which it is  
specifically licensed or  
issued a permit. Your  
Hometown Newspaper  
strongly urges any parent  
or guardian to verify the  
validity of the license of  
any facility before placing  
a child in its care.

## 301 ANTIQUES

WANTED TO BUY:  
Vintage Metal and Wood

Signs, Milk Bottles &  
Local Advertising, Oak  
Icebox, Iron Door Stop  
and Antique Lighting...  
Call Dick Harms at  
815-562-2928 or email  
dickharms@hotmail.com

**ANTIQUES WANTED:**  
I pay cash for antiques;  
furniture, glassware,  
pottery & crocks, tin &  
iron toys, sterling silver,  
decoys. If it's antique, I'm  
interested in looking! Call  
815-562-2928 or email  
dickharms@hotmail.com

## 307 MISCELLANEOUS FOR SALE

BUNDLED Newspaper  
-\$3 per Bundle. End  
Roll- Cost Depends on  
Weight of Roll. Available  
Monday-Friday 815-  
562-4171 (8AM-NOON  
ONLY) Rochelle News  
Leader.

SPLIT Firewood For  
Sale. Contact 779-251-  
0254

## 405 HOUSES FOR SALE

ALL REAL ESTATE  
advertised herein is  
subject to the Federal  
Fair Housing Act,  
which makes it illegal  
to advertise any  
preference, limitation  
or discrimination based  
on race, color, religion,  
sex, handicap, familial  
status, or national  
origin, or intention to  
make any such  
preferences, limitation  
or discrimination. We will  
not knowingly accept any  
advertising for real estate  
which is in violation of  
the law. All persons are  
hereby informed that  
dwellings advertised are  
available on an equal  
opportunity basis.

**Show & Sell**

**Place an Ad:**  
Rochelle News-Leader  
815-562-4171  
Ogle County Life  
815-732-2156

**Browse & Buy**

**Subscribe:**  
Rochelle News-Leader  
815-562-4171  
Ogle County Life  
815-732-2156

All in the  
*Classifieds!*

BUY OR SELL  
Place A Classified Ad



## 203 HELP WANTED

**HELP WANTED**  
COMMERCIAL ROOFING TECHNICIANS WANTED

**PINKSTON TADD Inc.**  
Roofing Services

- Must be a self-starter, reliable & punctual.
- Have a valid driver's license with good driving record.
- Pass a drug test and a background check.
- Occasional overnight travel will be required.
- Basic Computer skills.
- Experience in the installation of TPO, PVC & EPDM a must.
- Experience in modified bitumen, hot asphalt & metal roofing a plus.
- Must be able to repair roof leaks on flat roofs.
- Compensation commensurate with experience.

**COMMERCIAL ROOFING TECHNICIANS**

407 Industrial Drive, DeKalb IL | [danr@ptproofs.com](mailto:danr@ptproofs.com)  
Phone 815-756-9700 | [Pinkston-tadd.com](http://Pinkston-tadd.com)



## START AN EXCITING NEW JOB WITH THE ROCHELLE NEWS-LEADER!

**Multimedia Sales Consultant**

If you have an outgoing personality, an energetic get-it-done approach, and enjoy helping clients build their business, then you may be a perfect fit for a sales position with the Rochelle News-Leader. This is a full-time position.

As a multimedia sales consultant, you will service current accounts and also cultivate new clients in the Rochelle/DeKalb region of northern Illinois, helping them market their products and services through a variety of highly visible, popular and effective local media vehicles.

If you have a passion to get out of the office on a regular basis to help clients grow their audience and reach new customers, then we would like to talk to you.

Applicants should possess excellent communication and organizational skills with a positive personality and team-player approach. Previous media sales or related marketing experience is a plus, including print, digital and social media advertising.

The sky is the limit on earning potential and career development in this position. We offer a competitive base salary plus commission.

Qualified applicants should mail or e-mail their resume to the following address:

**Multimedia Sales Position  
Rochelle News-Leader  
ATTN: Tonja Greenfield  
P.O. Box 46, Rochelle, IL 61068  
or email to [tgreenfield@amboynews.com](mailto:tgreenfield@amboynews.com)**

**ROCHELLE News-Leader**  
RNLHOUSE

## 205 SITUATIONS WANTED

Looking for rhythm guitar player.  
Must have back up vocal harmonies.  
Some lead vocals is a plus.

**We play 50's/60's  
rock and roll,  
Beatles, CCR.**

Call Steve  
815-751-8719

Advertise today and let your  
business be in sight and in the  
minds of your customers.

## HELP WANTED

Rock River Center, Inc. is seeking an  
Information & Assistance Specialist  
to act as a liaison for older adults and  
caregivers. Responsibilities include  
identifying client needs and providing  
information regarding appropriate  
resources. Must possess problem  
solving skills, basic computer skills and  
have the ability to work independently  
with compassion and confidentiality.  
Must have a valid driver's license.  
Apply in person at Rock River Center,  
810 South 10th Street, Oregon, IL or  
send resume to [executivedirector@rockrivercenter.org](mailto:executivedirector@rockrivercenter.org) by April 22, 2024.

**An Advertising Proverb**

When Mark Twain was  
editing a newspaper in  
Missouri, one of his  
subscribers wrote in, saying  
that he had found a spider in  
his newspaper and wondered  
whether it was a sign of good  
or bad luck. Twain's  
response: "Finding a spider  
is neither good luck nor bad.  
The spider was merely  
looking over our newspaper  
to see which merchant was  
not advertising, so that he  
could go to that store, spin  
his web across the door, and  
lead a life of undisturbed  
peace ever afterward."

## 307 MISCELLANEOUS FOR SALE

**NEW MILFORD REFRIGERATION**

**NEW, USED  
SCRATCH & DENT**

- Refrigerators • Freezers
- Washers/Dryers • Stoves

We also carry a  
large selection  
of refurbished  
appliances with a  
warranty.

6331 11th Street, Rockford  
**815-262-3900**





The businesses featured on this page are

**"Hubs Super Fans"**

They proudly support our local athletes and students.

Please show your appreciation by patronizing their businesses.

**WE SUPPORT OUR HUBS!**

## HUB SPOTLIGHT



**Julian**

**Rodriguez**

*Year: Freshman*

*Sport: Baseball*

**Q: How many years have you been playing this sport?**

*A: Eight years.*

**Q: What do you enjoy most about this sport?**

*A: I get to be with my friends and make memories.*

**Q: What is your favorite school subject and why?**

*A: Study Hall because I get to finish my work and keep up with everything.*

**Q: Who is your biggest role model and why?**

*A: My parents because they push me to do my best at everything I*

*do.*

**Q: What is your dream job and why?**

*A: I want to be a chef because I'm really creative and I'm good at cooking.*

**Q: Where would your dream vacation be and why?**

*A: Arizona because I have family there.*

**Q: What is your favorite thing about being a student-athlete at RTHS?**

*A: I get to grow up with all of my friends and make new memories.*



**Bobby**

**Tourdot**

*Year: Freshman*

*Sport: Baseball*

**Q: How many years have you been playing this sport?**

*A: 10 years.*

**Q: What do you enjoy most about this sport?**

*A: The friendships you make and how challenging the game is. You fail a lot and you learn to get better.*

**Q: What is your favorite school subject and why?**

*A: Math because I'm good at it and my teacher is nice.*

**Q: Who is your favorite athlete and why?**

*A: Freddie Freeman because he's a great baseball player and a good person.*

**Q: Who is your biggest role**

**model and why?**

*A: My dad and my brother because they push me to be my best and to be a better person.*

**Q: What is your dream job and why?**

*A: To be either a lawyer, because they make good money, or someone who builds houses.*

**Q: Where would your dream vacation be and why?**

*A: Hawaii because the water is really nice and it's warm there.*

**Q: What is your favorite thing about being a student-athlete at RTHS?**

*A: The teachers are nice and they're willing to help you when you need it.*



# GO HUBS!



**VINCE'S PIZZA**  
SINCE 1967

Ordering Online is easy when you use our QR Code!

We are Proud to Support the Rochelle Hubs!

815.562.7300

Delivery & Curbside Pick Up

1071 N 7th St, Rochelle, IL • vincespizzainrochelle.com

**Hello, neighbor!**

Huber Ins and Fin Svcs Inc  
Shane B Huber, Agent  
221 E. IL Rt. 38  
Rochelle, IL 61068  
Bus: 815-562-7011

Please stop by and say, "Hi!"  
I'm looking forward to serving your needs for insurance and financial services.  
Like a good neighbor, State Farm is there.  
CALL ME TODAY!

**State Farm**

1001013.1 State Farm, Home Office, Bloomington, IL

**DLX Medical GROUP**

Caring for your family's health from infant to adults.

For appointment, please call  
**815-227-9594**

1212 Currency Ct, Rochelle, IL 61068  
Most Insurance Accepted

Diana Alanis, MD

Accepting New Patients

Local People Providing Local Service

**Rochelle MUNICIPAL UTILITIES**

Water • Waste Water  
Electric • Communications

Phone: 815-562-4155 333 Lincoln Highway  
Fax: 815-562-5861 Rochelle, IL

**www.rmu.net**

**CENTRAL ILLINOIS LOAN**

Loans For All Your Needs  
Auto • Home Improvement • Vacation

Jami Hackman • Tonia Holland

**815★561★4035!**

310 Eagle Drive, Rochelle  
All loans subject to our normal credit requirements and policies.

**MORTON BUILDINGS**

If you can dream it, we can build it.

Rochelle Sales Office • Hwy. 251 N. • 877-613-3050

**Rochelle Community Hospital**

Your Local Healthcare Resource.

900 N. 2nd Street, Rochelle  
815-562-2181  
**www.rochellehospital.com**

**MEYERS FURNITURE & FLOORING**

209 Powers Road, Hwy 251 N  
Rochelle, IL 61068  
(815) 562-8792  
**www.meyersfurniture.com**

**Bruns Construction, Inc.**

Tim & Roger Bruns, Owners  
Established 1997

• Residential & Commercial  
• Concrete  
• Additions

**815-561-0099**  
Free Estimates • Fully Insured  
**www.brunsconstructioninc.com**

**QUEEN'S TRUCKING & CONSTRUCTION, INC.**

Small or Big Construction Jobs, We Do Them All!

We Aim for On Time, Every Time!

We were Voted Mid-West Truckers Association, Inc. Northern Region Trucking Company of the year 2022

The Trusted Trucking Company of Many Local Distributors and Manufacturers.

**Queens Trucking & Construction Inc**  
322 Errett Road, Rochelle  
815-562-6064 | **queens-trucking.com**

**ANDERSON PLUMBING & HEATING, INC.**

Plumbing, Heating & Cooling  
Water Heaters, Water Softeners,  
Drinking Water Systems, Iron Filters,  
Sewer Rodding & Jetting & More!

Since 1976

621 First Ave., Rochelle  
(815) 562-8784

Lic# 055-013999

GOOD LUCK HUBS FROM YOUR FANS AT:

**HAYDEN REAL ESTATE INC.**

815-562-2111 ★ hre@haydenreinc.com

RESIDENTIAL  
AGRICULTURAL  
COMMERCIAL

**Rochelle Chiropractic Clinic**  
Dr. Chad M. Piller

227 E. Rt 38 • Rochelle, IL  
**815-562-8706**  
**www.rochellechiropractic.com**  
Now Accepting New Patients!

**Alfano's**  
Pizzeria and Italian Restaurant

Taste The TRADITION  
Taste The DIFFERENCE

• Best Pizza • Pasta  
• Italian Restaurant  
• Appetizer/small plate  
• Family Restaurant • Local Business

Pizza • Pastas  
Sandwiches • Salads and Lots More!

Dine-In • Carry Out • Home Delivery  
1115 TURKINGTON TERRACE, ROCHELLE  
**815-562-3312**

**JOHNSON TRACTOR**

SALES • PARTS • SERVICE

200 Steward Road  
**800.262.1680**  
**www.johnsontractor.com**

**HUB-REMSEN**  
PRINT GROUP

101 Maple Ave • Rochelle, IL 61068  
815.562.7057 • **hub-remsen.com**

**GO HUBS!**

"Proudly Serving the Rochelle Area Since 1945"

**Berg-Johnson Electric**

FREE ESTIMATES  
Licensed and Insured

Residential • Commercial • Industrial

24 Hour Emergency Service  
**815-562-4937**  
500 Cleveland Avenue

We are Ogle County's only GM Dealer!

• Collision Repair  
• 24 Hour Towing  
• New/Preowned Vehicles  
• Tires, Alignments, Brakes, Batteries

• Rental Cars  
• Maintenance On All Makes and Models

Auto Group  
**JEFF PERRY**

815-562-8787 **www.jeffperrychevrolet.com**

**Busy Schedule? Leave the cooking to us.**

• Large menu of foods  
• Rochelle's famous chicken by the dinner or bucket  
• Hand dipped ice cream (16 flavors)

**COUNTRY SCHOOL DRIVE-IN RESTAURANT**  
251 N. ROCHELLE • 562-6039

**Stillman BANK**

**GO HUBS!**

Earning Your Trust Since 1882  
**www.stillmanbank.com** Member FDIC