

Local

PROGRESS



2024

ROCHELLE
News-Leader

Sunday, March 31, 2024 • Section 3

PROGRESS



(COURTESY PHOTO)

Nine CHS Rochelle employees participated in the CHS Days of Service campaign by cleaning up trash along the bike path.

CHS invests in strengthening hometown communities

A LONGSIDE the railroad tracks, not far from the cloverleaf intersection of Interstates 39 and 88, you can spot the CHS Rochelle ethanol plant. Built in 2006, the facility has been part of the Rochelle community for 18 years.

farmers and agribusinesses deliver 48 million bushels of corn to our facility each year. This corn is processed on-site to produce 140 million gallons of ethanol for ethanol-based fuels, like the E85 you see when filling up at your local gas station. Distillers dried grains with soluble (DDGS), which are used to feed livestock, and

corn oil, which is used for biodiesel and renewable diesel, are also produced at the facility.

Community Involvement

In partnership with the 65 employees who work at CHS Rochelle, our company is committed to supporting the community in which we live and work. As

part of our comprehensive benefits package, eligible employees receive paid volunteer hours that can be used to benefit organizations and activities within our local community. Our employees participate in the Rochelle Chamber of Commerce, engage in the Rochelle Rotary Club, and help clean Steward Road

as part of the Adopt-A-Highway program. Each year, our employee-led committee organizes a charity golf outing. In 2023, this event raised \$20,000 that was donated to the Habitat for Humanity of Ogle County Brush With Kindness Program. Our 2024 event will benefit HOPE of Ogle County.

Who is CHS?

The facility is owned by CHS, a diversified global cooperative owned by farmers and local cooperatives across the United States. You can learn more about the company by visiting chsinc.com and following along with our local team on the CHS Rochelle Facebook page.

CHS Rochelle is strategically located with access to interstate highways, railways, and the Illinois River.

We are able to process 48 million bushels of corn annually, producing 140 million gallons of ethanol, and 360,000 tons of dried distillers.

Contact us today to set up an account.



1900 Steward Rd, Rochelle, IL
(815) 561-0650 



PROGRESS



(COURTESY PHOTOS)

With the increased demand for products and services, Silgan Containers in Rochelle will be looking to hire additional industrial press mechanics and industrial electricians as the company seeks to fulfill production requirements and grow its workforce.

Silgan Containers looking to hire additional workers

ROCHELLE — With the increased demand for products and services, Silgan Containers in Rochelle will be looking to hire additional industrial press mechanics and industrial electricians as the company seeks to fulfill production requirements and grow its workforce.

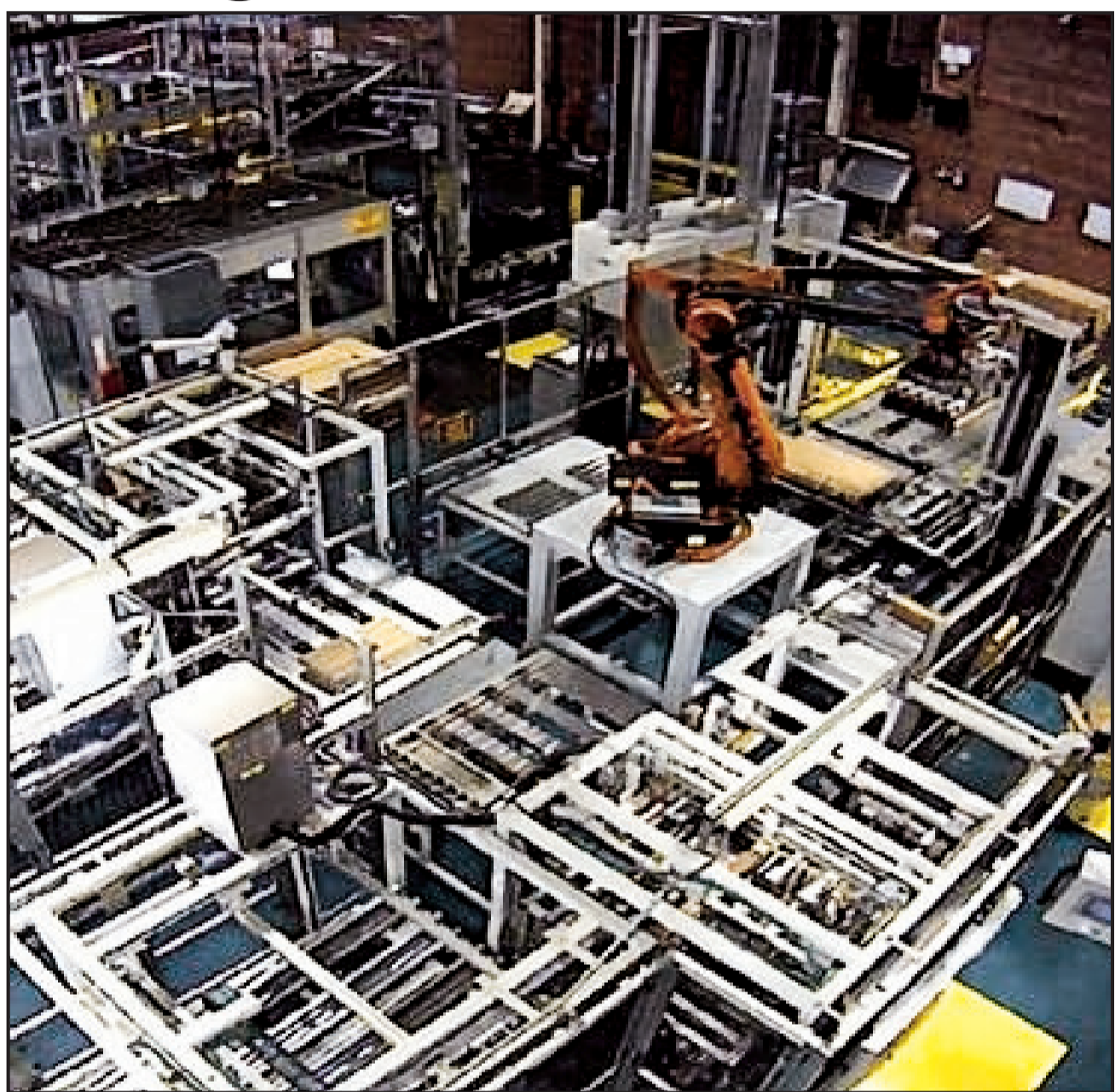
Silgan Containers is a stable, reliable and environmentally conscious company. Metal food cans are the most recyclable and efficient packaging available.”

Kelly, who began working with Silgan Containers in 2001 and has spent time at five manufacturing plants over the last 20 years, said the Rochelle facility employees have welcomed him in like family since he arrived in December 2020.

“I enjoy working with the team here,” Kelly said. “When I walk into a new facility, there’s always a family atmosphere and the employees here have welcomed me. We have one of the larger plants in the company and we’re going in a healthy direction at the plant here. Everybody in this building is dedicated to making quality products for our customers.”

Silgan Containers will be looking to sponsor the upcoming Cinco K event in Rochelle as well as additional community events in the future.

“We want to be involved in the community and we’re putting our ears out to the ground,” Kelly said.



NOW HIRING

SILGAN ROCHELLE PLANT

400 North 15th Street, Rochelle, IL 61068

Full-Time Positions with Competitive Pay and Benefits

MECHANICS

The Mechanic operates, troubleshoots, repairs, constructs, installs, overhauls and adjusts equipment related to production operations and helps the plant improve and run efficiently.

Pay rate is **\$27.03-\$29.07/hr.**, plus shift differential.

GENERAL LABOR

This position requires performing general labor functions. Responsibilities include clean-up tasks, end-sorting or plate-sorting activities, relieving other operations, and completing paperwork for proper documentation while following all safety and quality procedures.

Average starting pay is **\$21.94/hr.**, plus shift differential.

SILGAN CONTAINERS

We are the Leading Manufacturer of Metal Food Containers.



Over 20 Manufacturing Plants in the U.S.A.



Technology Center



Corporate Office

Follow us on



As the largest provider of metal food packaging in the U.S.A., America’s most respected brands trust Silgan Containers. Food processors use our steel and aluminum containers and ends to package fruit, vegetables, meat, coffee, soups, sauces, seafood, and pet food.

Join the Silgan Containers family. We are a stable, reliable, and environmentally conscious company. Our employees’ achievements are recognized, acknowledged, and celebrated!

LEARN MORE AND APPLY AT
www.silgancontainers.com/careers

Alternatively, send resumes to Marcie Garity at mgarity@silgancontainers.com.





9 Biggest Benefits Of Shopping Rochelle First

1 Youth programs, schools and non-profit groups look to our businesses first when fundraising. These community-minded businesses donate faithfully to local youth sports programs, community clubs, nonprofit groups and churches – just to name a few. Shouldn't we look to those same businesses first when we need goods and services? Of course we should!

2 High rate of return. For every \$100 spent in independently owned stores, \$68 returns to the community through payroll, taxes and other expenditures. Online orders return absolutely nothing to Rochelle, IL.

3 Seeking health care in your hometown brings the comforts of receiving qualified care from people you know and trust. Whether it be a trip to the dentist, regular health care screenings, a visit to a specialist or an emergency, you need not travel. It's all right here.

4 Banking with people who know you is a luxury found only in hometowns. You don't have to show your ID every time you go in. You can get a loan from people who know you and understand your needs, whether it be money for your first car or to help your business grow. Local banks believe in the value of community members helping one another.

5 No one wants to have to make an insurance claim, but it's painless when your agent is your neighbor. You don't have to convince them that there was a hail storm, or that the wind nearly took your roof off. They know because they live

here. Which do you want when you've had a bad day: A face-to-face meeting with your local agent, or a machine answering the phone at that big national insurer that advertises on TV?

6 Time is money. It's simple math (especially when you figure in gas mileage.) Shopping locally can actually save you both time and money!

7 Customer service after the sale is invaluable. Local retailers not only take responsibility for the product they sold, they will often fix it or replace it – no questions asked. Appliances, furniture, computers and electronics sometimes have glitches. Would you rather box yours up, send it to who knows where, and wait six to eight weeks, or just go back to the nice guy that helped you when you bought it?

8 Keeping it local encourages community growth. By choosing to do business locally, you help maintain Rochelle's diversity, charm and appeal; which attracts new community members.

9 One word: Jobs. When you do business of any kind in Rochelle, it creates and maintains jobs for others in our area. A healthy employment rate is the cornerstone of all economies. How can you help the economy recover? Start at home.