

ROCHELLE News-Le

WEEKEND EDITION | WWW.ROCHELLENEWS-LEADER.COM



Today's RNL issue sponsored by Community Unity member:

ClarkDietrich

501 S. Steward Road #100
815-561-2360

Vol. 104 • No. 87

\$1.25

LOCAL NEWS... LOCAL VIEWS

SUNDAY, FEB. 25, 2024

Longtime Foundation for Focus House scholarships honor Adams couple, Judge Lenz Applications now open for 2024 scholarship cycle

BY JEFF HELFRICH
MANAGING EDITOR

ROCHELLE—Foundation for Focus House has opened the application for its 2024 scholarships, Executive Director Jeni Hardin said.

The organization gives out two \$1,000 scholarships each year to Ogle County residents or past/current Focus House residents pursuing post-secondary or vocational education that have made a positive change in themselves or their community.

The first Foundation for Focus House scholarship is supported by the LaVerne & Margaret Franklin Adams Scholarship Fund. It was established in May 2002 following Mr. Adams' death. A longtime resident of Ogle County, Mr. Adams sat on the Ogle County Board from 1972 until 2002. At the time Focus House was established in 1975, Mr. Adams was appointed and served as the chairperson of the county committee that oversaw the operation of the program. Mrs.

Margaret Franklin Adams was also very dedicated to the community and the youth at Focus House. Their family added to the scholarship in LaVerne's name when Margaret passed away in 2020, to honor her commitment to the youth of Ogle County and the Focus House program.

The second Foundation for Focus House scholarship is supported by the F. Lawrence Lenz Scholarship Fund, established in April 2003 by his family following his death. As an Ogle County Circuit Judge, Judge Lenz elected to be the juvenile court judge. In this capacity he was one of the instrumental supporters of the opening of Focus House in 1975. From the bench he believed in the value of having community-based programs and was an advocate of Focus House until his death.

Foundation for Focus House Board Vice President Russ Crull is the grandson of LaVerne & Margaret Franklin Adams and is the president of the



(COURTESY PHOTO)

The first Foundation for Focus House scholarship is supported by the LaVerne & Margaret Franklin Adams Scholarship Fund. It was established in May 2002 following Mr. Adams' death.

Ogle County Bar Association. Two sides of his life have a lasting commitment and investment to students in Ogle County. "It's great to see the

amount that has been given back to students over the years," Crull said.

See SCHOLARSHIPS page 3



Enterprise zone amendment approved

BY JEFF HELFRICH
MANAGING EDITOR

OREGON — At its monthly meeting Tuesday, the Ogle County Board unanimously approved a resolution of support for an amendment to the Lee-Ogle Enterprise Zone that would see it grow in size.

The board heard a presentation by LOEZ Administrator Andy Shaw at the meeting, and he said an application will be sent to the state to allow access for additional sites in the enterprise zone. About a year ago, a state act was made to give enterprise zones about 3,200 acres of additional space to utilize.

The enterprise zone provides incentives for development projects in Lee and Ogle counties, primarily for construction and real estate improvements for businesses.

See COUNTY page 2

More coverage.
Less spendage.

Discounts up to 40%
Get more. Spend less. It's that simple when you get car insurance from us. Like a good neighbor, State Farm is there. CALL FOR A QUOTE 24/7.
Terri Schaefer, Agent
Bus: 815-562-7063
terri.schaefer.ilsn@statefarm.com



KNOW IT TODAY



Narcotics team makes arrest

The Rochelle Police Narcotics team executed a search warrant and arrest this week. **Page 2**

WEATHER

SUNDAY	MONDAY
HIGH LOW	HIGH LOW
57 31	64 35
TUESDAY	WEDNESDAY
HIGH LOW	HIGH LOW
66 46	48 25

Today's RNL issue sponsored by Community Unity member:



400 N. 15th St.
815-562-1250

OBITUARIES

• FLORENE HARROLLE

See page 4

INSERTS

NONE

INSIDE

Local News.....2, 3, 5, 8
Obituaries.....4
Opinion.....6
Community.....7
Pizza Tour.....10



8 52078 00112 6

RTHS Board: Hiring Expo set for March 7 Principal Lewis: Parent Communication Week held From Feb. 12-16

BY RUSSELL HODGES
SPORTS EDITOR

ROCHELLE—At its monthly meeting on Tuesday, the Rochelle School District 212 Board of Education received an update from Principal Chris Lewis about upcoming events at the high school as well as recent awards presented to Rochelle Township High School staff members.

Lewis said that Parent Communication Week was held from Feb. 12-16 this past week. Lewis said the goal of the week is for teachers to contact parents regarding students with either 'D' or 'F' grades and schedule potential conferences for those students. Lewis said the Parent Communication Week is designed to replace the school's old Parent Conference Model.

"We felt years ago that the old parent-teacher conference model was obsolete," Lewis said. "Nowadays, parents have instant access to grades and attendance. We've gone to a new model where I want to make sure that every student



(PHOTO BY RUSSELL HODGES)

At its monthly meeting on Tuesday, the Rochelle School District 212 Board of Education received an update from Principal Chris Lewis about upcoming events at the high school as well as recent awards presented to Rochelle Township High School staff members.

with a 'D' or a 'F' has been communicated to in person by the teacher. That's been our process and teachers have a few weeks to do this."

During his update to the board, Lewis said that

RTHS will once again be partnering with the City of Rochelle for its upcoming Hiring Expo, which will be held Thursday, March 7 from 10:30 to 11:30 a.m. for junior and senior students. The event will

be open to the public from 12 to 2 p.m.

"This was developed with the city during the pandemic, when there were tons and tons of jobs that businesses were looking to fill," Lewis said.

"We've also been using this as an opportunity for our juniors and seniors to take advantage of going to this and potentially finding a career."

See RTHS page 5

Holcomb Bank Rochelle | New Milford | Creston | Byron
Where Relationships Matter

Save the Date - 2024 Trips!

Grand Victoria Casino, Elgin IL - June 20th
Galena & Massbach Winery, Galena IL - August 15th
Columbia & Snake River Cruise - September 1-9
Reefs & Rhythms Oceania Cruise - December 3-13

Contact Julie at 815.561.2627 for more information!



February is cold but you don't have to be. Replace your furnace with Anderson.



ANDERSON
PLUMBING & HEATING, INC.
621 First Ave. • Rochelle, IL
815-562-8784

LOCAL NEWS

COUNTY: Ogle board votes to amend fee schedule for P&Z department

From page 1

Incentives include real estate tax abatement and building materials sales tax exemption for construction within the enterprise zone.

Amendments to the enterprise zone must be approved by governing bodies with property in it. The new areas in the enterprise zone would primarily be around Dixon and Rochelle, but smaller areas would also be added in all communities in the LOEZ.

“Some smaller places have been identified in some of the towns,” Shaw said. “And with the assistance of the county assessors, we have identified and also added several commercial-scale apartments in all of the communities and we hope that incentive can drive some improvements to those types of properties as well.”

The amendment will include 1,376 acres added around Rochelle, 707 acres around Dixon, 31 acres in Mt. Morris, 15 acres in Amboy, seven acres in Oregon,

one acre in Franklin Grove and one acre in Ashton for a total of 2,140 acres added. Prior to the amendment, the LOEZ had 3,656 acres of unallocated space available to it. After the amendment, which Shaw anticipates will be approved by the state, the LOEZ will have 1,517 acres unallocated for future amendments that could happen.

Fees

The board voted 14-7 to amend the fee schedule of its planning & zoning department. Changes included raising the fees for a dwelling from \$200 to \$400, an addition to a dwelling from \$100 to \$200, and private residential swimming pools from \$75 to \$200. It also includes raising the fee for an addition to a commercial/industrial building from \$150 to a \$1,000 flat fee up to \$1 million in value, or a \$2,000 flat fee up to \$2 million in value or .5 percent for values over \$2 million.

Multiple board members took issue with raising the

fees at Tuesday’s meeting, including Board Member Susie Corbitt (R, District 8, Polo)

“I think that some of these costs are extreme,” Corbitt said. “I understand this hasn’t been looked at in years. But that isn’t the citizens’ fault. To more than double some of these costs, the citizens right now are facing inflation and a potential sales tax increase for the schools if that passes at the election. To put this on top of all that, I can’t vote for it.”

Board Member Dan Janes (R, District 5, Stillman Valley) rebutted Corbitt’s comments and supported the change to the fee schedule.

“A lot of these fees have not been changed for up to 20 years,” Janes said. “We’re just trying to be proactive instead of reactive. We’re trying to cover our costs.”

Agriculture

The board unanimously approved a resolution supporting agriculture in Ogle County. The county is home to 1,011 farms, which support 5,079 jobs (22 percent



(PHOTO BY JEFF HELFRICH)

The board voted 14-7 to amend the fee schedule of its planning & zoning department. Changes included raising the fees for a dwelling from \$200 to \$400, an addition to a dwelling from \$100 to \$200, and private residential swimming pools from \$75 to \$200.

of total jobs). Agriculture and related industries generate a total sales or output in Ogle County estimated at \$665.8 million.

Approximately 354,587 acres in Ogle County are farmland, representing 73 percent of total county acres. Board Member Ryan Reeverts (R, District 6, Byron), a fifth-generation farmer, said Ogle County farmers are facing uncertainty with an upcoming

federal farm bill, regulatory concerns, and America being statistically the furthest it’s ever been generationally from the family farm in the history of the nation.

“I think now more than ever as a local government entity, we can show our support to the American farmer right here in Ogle County with this resolution,” Reeverts said. “I hope this can build a dialog with local government about the

issues that our farmers and ranchers are facing here and local government can have some sort of role to aid in some of the solutions we face.”

March

Due to election day taking place on Tuesday, March 19, the board’s meeting next month will be moved from Tuesday, March 19 to Wednesday, March 20 at 5:30 p.m.

30+ Vendors

Saturday, March 23, 2024
10 am – 3 pm
SPRING CRAFT & VENDOR SHOW
LOCATION: Mendota Civic Center
1901 TOM MERWIN DRIVE, MENDOTA, IL

0221024

RPD arrested man on narcotics charges Wednesday following search warrant

ROCHELLE — On Wednesday Feb. 21, the Rochelle Police Narcotics Team, assisted by patrol and detectives, executed a search warrant in the 800 block of 5th Avenue. The search warrant was executed based on information the Narcotics team has been gathering for several months.

While conducting the search, Dennis H. Thompson, 71, was arrested on charges of possession of a controlled substance (class

four felony), possession with intent to deliver (class three felony), and possession of a controlled substance with intent to deliver within 500 feet of a school (class one felony). The narcotics team also seized over \$1,000.

Thompson was booked at the Rochelle Police Department and transported to the Ogle County Jail. All defendants are innocent until proven guilty in a court of law.



(COURTESY PHOTO)

On Feb. 21, the Rochelle Police Narcotics Team, assisted by patrol and detectives, executed a search warrant in the 800 block of 5th Avenue.

ENJOY SOME COOL SAVINGS WITH THE NEWS-LEADER'S Subscription special

\$19 OFF (Regular Subscription Rates)

START OR RENEW A 52-WEEK SUBSCRIPTION FOR JUST \$120.00

Yes, please start or renew my subscription!

Enclosed is my \$_____ check for the option marked below.

☐ 12-Month Subscription for \$120.00

Name: _____ Address: _____

Phone: _____ Email: _____

Offer expires on February 28, 2024

Mail form & check to: P.O. Box 46, Rochelle, IL 61068 or drop off and pay at 211 Hwy 38 E, Rochelle, IL

SUMMERTIME in FEBRUARY

FREE* Furnace Safety Checks For Furnaces 10 Years or Older

Now is the perfect time to have your furnace's safety checked. And right now for FREE!

Act fast, call today!

815-562-4440

servicenowhomeservices.com

*Limited time offer. Subject to availability.

022524

LOCAL NEWS

SCHOLARSHIPS: Applications for 2024 cycle now available

From page 1

"It's great to know that a little farmer from Holcomb like my grandfather can still be making a difference in the world. And I like to see that our judges and our Bar Association have always taken this seriously and made a lasting commitment to the kids here. We've had judges that have given back and been supportive of things like Focus House. You don't see that in other counties. Judge Lenz didn't have to do that."

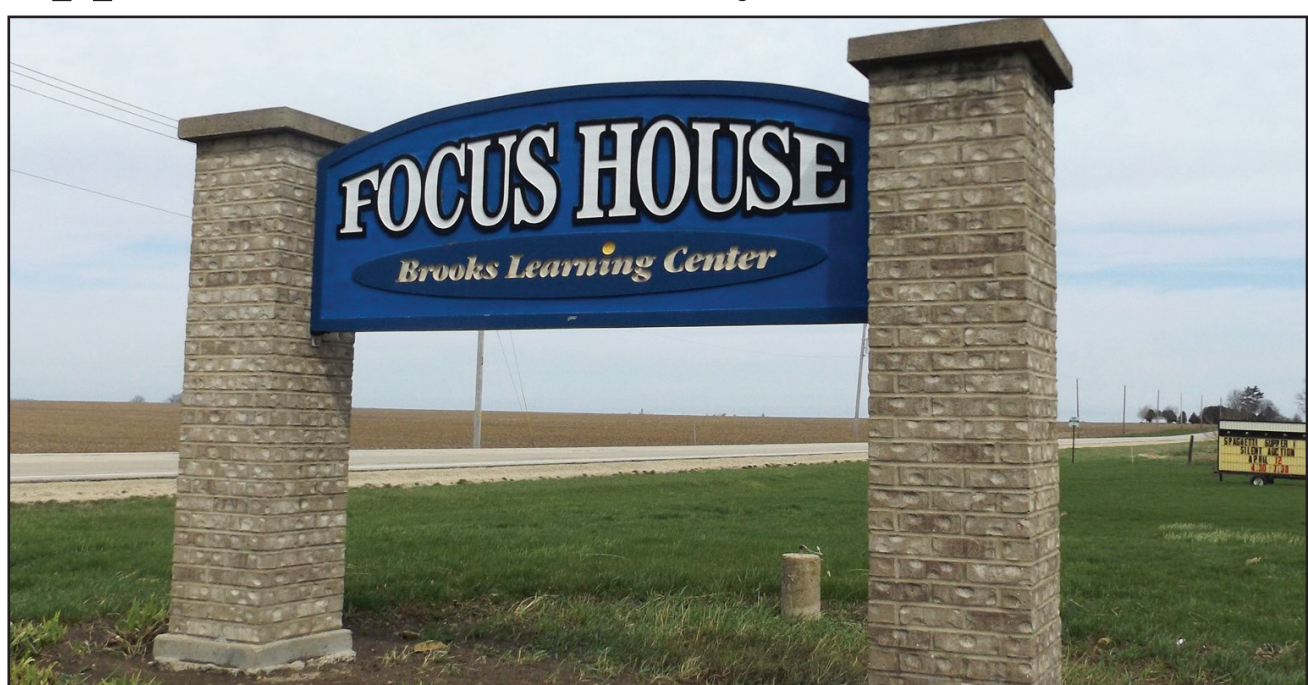
LaVerne Adams grew up in Holcomb as one of 11 children. He made it to ninth grade, before his brothers went off to war and he had to start working, before ultimately buying a farm in Byron in the early 1960s.

"He served on the Ogle County Board and did great things for our community, but he never got to go to high school, and he was always embarrassed by that," Crull said. "His thought with Focus House was, 'These kids are in trouble and maybe had a tough upbringing. How do we get them to a place where they can at the very least finish high school?'" To him, that was a really

big thing. My grandfather built the Focus House program with a lot of other people. His thought with the scholarship would be that those kids would get through the program and have some assistance moving forward."

The Foundation for Focus House scholarship program strives to see applications from current or former Focus House students and works to give preference to them, but those applications aren't common and sometimes those students are already having their future education supported by the foundation itself. The scholarships are open to students in the county that have not spent time at Focus House.

"We're blessed as a board to be able to have money to support our students," Crull said. "A lot of times if they're not applying for the scholarships, it's because we have the money to give them otherwise. This is a nice way for kids that maybe weren't in enough trouble to need to come live here, for them to have a chance. And sometimes it's just really good kids that need a little help financially to move forward. Every kid deserves



(COURTESY PHOTO)

The deadline for the application is March 22. If you have any questions about the application, please email Jeni Hardin at jhardin@oglecountyil.gov or call (815) 562-5881 ext 3433.

to go to college."

Crull never practiced law in front of Judge Lenz, but is well versed in his legacy of involvement in the juvenile justice system and bringing it to Ogle County. Focus House is juvenile justice system-based and caters to adolescents to divert them away from juvenile detention centers, which can be rougher environments than Focus House.

Crull has practiced law in 24 counties, and has not seen a program like Focus House in any others

besides Ogle County.

"With the Judge Lenz scholarship, just to have judges that actually care about it and want to do these things, we're tremendously blessed in this county," Crull said. "We currently have Judge Roe and Judge Peska. Judge Roe and his family have been advocates of Focus House and he works in the juvenile criminal aspect of it. We're so fortunate to have something like this. Focus House is so far ahead of its time, to think that we had something

like this in the 1980s and 1990s."

Hardin said she enjoys going through the scholarship process each year and reviewing the applications with the board and presenting checks to the recipients and notifying colleges. Each year, it reminds Crull of his grandparents.

"Every year when we go through it, I like to think about my grandparents' legacy and being from here," Crull said. "My grandfather died 22 years ago, and he's still

making a difference here where he's from."

The deadline for the application is March 22. If you have any questions about the application, please email Hardin at jhardin@oglecountyil.gov or call (815) 562-5881 ext 3433. The scholarship application can be found online at https://www.oglecountyil.gov/departments/focus_house_2/scholarship.php?fbclid=IwAR1PLZgN3c-gjKKxrMyCOg33yF6S-MaxUOMf8mVpt3k-cr7Oqi39D3IoVXXaGA

Agnitsch joins Stillman Bank as VP and commercial loan officer

ROCKFORD – Stillman Bank is pleased to welcome Chris Agnitsch as vice president and commercial loan officer, according to Thomas R. Hughes, president & CEO. With 15 years of experience in the banking industry, all in commercial banking, Chris will primarily be involved with new business development and commercial lending. He will work from the Rockford office at 8492 E. State St.

"We are excited to welcome Chris to the Stillman Bank commercial team," Hughes said. "His commercial banking background and com-

mitment to our communities makes him well positioned to continue to build relationships and grow our presence within our local markets."

Chris grew up on a family farm in Eastern Iowa and graduated from Northwestern University with a degree in communications and economics. Chris found his way to Rockford in the summer of 1996 as an intern for the Rockford Cubbies. He returned in 2000 to work for the Rockford Area Chamber of Commerce, where he worked his way up to vice president of government relations. After a 2.5-year stint

in Ohio as president of the Lancaster-Fairfield County Chamber of Commerce, Chris returned to Rockford in 2008 and began his commercial lending career.

A resident of Boone County, Chris currently serves as president of the EIGERlab Board of Directors and is vice president of the Scandinavian Cemetery Board. A long-time supporter of Women of Today's Manufacturing, Chris currently serves as a trustee of that organization.

Agnitsch can be reached directly at 815.332.8842 or chrisa@stillmanbank.com.

To learn more about Stillman Bank's products and services, please visit www.stillmanbank.com.

Stillman Bank is an

independently owned community bank founded in 1882. The bank has approximately \$579 million in assets and operates

full-service banking offices in Byron, Oregon, Rochelle, Rockford, Roscoe/Rockton, and Stillman Valley.

Join us on Friday nights for fish, chicken and more

Saturday we serve up Chicken Ralphie a fan favorite

The slots are hot and the beer is cold

Serving dinner Wednesday 5 - 8 p.m. Friday and Saturday 5 - 8 p.m.

812 Main St. - Ashton

TAX PREPARATION TIME

Brown's Tax Service

Carolyn Brown
Jade Brown
Marilyn Oropeza

Let the BEST TAX PROFESSIONALS in the BEST TAX OFFICE in OGLE COUNTY prepare your 2023 taxes!

Bookkeeping, Payroll & Tax Preparation Services

Contact Us For Your 1099 Forms

361 IL Route 38 | Rochelle, IL
815-561-6861 | carolyn@brownstaxoffice.com | www.brownstaxoffice.com

To be included in the Tax Preparation Time Guide call:

Chris Ackland 815-561-2153	Andrew Heiserman 815-561-2123	Chris Grimm 815-561-2125
-------------------------------	----------------------------------	-----------------------------

CARING FOR YOUR FAMILY'S HEALTH

Medical Care For Your Whole Family

- Infants to Adults
- Acute Care Visits
- Chronic Disease Management
- Wellness Visits

Diana Alanis, MD

Monday 7:30-6:00pm, Tuesday 1:30-7:30, Wednesday 7:30-6:00, Thursday 8:00-7:30, Friday 7:30-4:00, and some Saturdays 8:00-12:00

07/27/2022

DLX Medical GROUP

815-227-9594
1212 Currency Ct.
Rochelle IL
We Accept Most Insurances and Patients Without Insurance

06/27/2021

Kish

KISHWAUKEE COLLEGE

Helping you create the life you want.

kish.edu

LOCAL NEWS

OBITUARIES

Florene Harrolle

ISABELLA, M.O. — A viewing for Florene Harrolle, 86, of Isabella, MO was held February 19, 2024, at Clinkingbeard Funeral Home in Gainesville, MO. Florene passed away February 15 at Mercy Hospital in Springfield, MO. Florene was born January 29, 1938, in Squires, MO, and was the youngest of 11 siblings. She married her husband of 71 years, Richard (Dick) Harrolle, on January 9, 1953. Along with her husband, she

is survived by two children: Marie Klass of Theodosia, MO and Rich Harrolle of Isabella; four grandchildren: Chad and wife Angie Harrolle, Tanya (Harrolle) Cox and husband Neil, Dustin Harrolle and wife Heather, and Chet Harrolle; and 11 great grandchildren. She is also survived by one sister, Frances Wilhite, of Boise, ID and many nieces and nephews. Florene was a homemaker most of her years in Rochelle but was



also employed at Rochelle Printing and later worked alongside her husband, Dick at Maple Lanes in Rochelle for several years. She will be greatly missed.

ROCHELLE POLICE DEPARTMENT

ROCHELLE — On Feb. 17 at 10:07 a.m. Shane A. Carey, 38, of Rochelle was arrested for no valid driver's license and cited for no valid registration and operating an uninsured vehicle. He was released on a notice to appear with a March 15 Rochelle court date.

On Feb. 17 at 12:20 p.m. Regina T. Jacobs, 45, of Rochelle was cited for speeding 63 miles per hour in a 40 miles per hour zone. She signed a promise to comply and was given a March 15 Rochelle court date.

On Feb. 17 at 4:02 p.m. Jacob D. Warford, 89, of Rochelle was cited for speeding 64 miles per hour in a 40 miles per hour zone. He signed a promise to comply and was given a March 15 Rochelle court date.

On Feb. 17 at 2:45 p.m. Michael J. Rimkus, 61, of Machesney Park was cited for disobeying a stop sign and no valid registration. He signed a promise to comply and was given a March 15 Rochelle court date.

On Feb. 17 at 3:53 p.m. Christopher S. Clark, 34, of DeKalb was cited for speeding. He signed a promise to comply and was given a March 15 Rochelle court date.

On Feb. 17 at 2:12 p.m. Desiree L. Williams, 31, of Rockford was cited for speeding an operating an uninsured vehicle. She signed a promise to comply and was given a March 15 Rochelle court date.

On Feb. 17 at 12:19 p.m. Dinayja Ishmon, 22, of Rockford was cited for disobeying a stop sign. She signed a promise to comply and was given a March 15 Rochelle court date.

On Feb. 17 at 7:17 p.m. Gabrielle A. Carrell, 18, of Rochelle was arrested for domestic battery and transferred.

On Feb. 18 at 7:40 a.m. Gabriela E. Zepeda, 34, of Rochelle was cited for speeding 52 miles per hour in a 30 miles per hour zone. She signed a promise to comply and was given a March 15 Rochelle court date.

On Feb. 18 at 8:28 a.m. David L. Echelbarger, 33, of Rochelle was cited for speeding 63 miles per hour in a 40 miles per hour zone. He signed a promise to comply and was given a March 15 Rochelle court date.

On Feb. 18 at 12:13 p.m. Wayne R. Cliffe, 49, of Sycamore was cited for speeding 63 miles per hour in a 40 miles per hour zone. He signed a promise to comply and was given an

April 5 Rochelle court date.

On Feb. 18 at 11:07 a.m. Seriana Carpenter, 26, of Rochelle was cited for disobeying a stop sign. She signed a promise to comply and was given an April 5 Rochelle court date.

On Feb. 18 at 3:06 p.m. Roman Saldana Hernandez, 23, of Rochelle was cited for speeding 51 miles per hour in a 30 miles per hour zone. He signed a promise to comply and was given an April 5 Rochelle court date.

On Feb. 18 at 4:27 p.m. Manuel Arreguin, 44, of Rochelle was cited for no valid registration. He signed a promise to comply and was given an April 5 Rochelle court date.

On Feb. 18 at 3:50 p.m. Farmanullah Jangimir, 34, of Moline was cited for speeding 72 miles per hour in a 55 miles per hour zone. He signed a promise to comply and was given an April 5 Rochelle court date.

On Feb. 19 at 11:45 a.m. a 14-year-old juvenile of Byron was arrested for retail theft.

On Feb. 19 at 2:15 p.m. Vidal R. Mancilla, 31, of Rochelle was arrested on an outstanding Ogle County warrant. He paid \$121 and was released.

All individuals are considered innocent until proven guilty.

OGLE COUNTY SHERIFF'S DEPARTMENT

OREGON — On Feb. 15, the Special Operations Unit of the Ogle County Sheriff's Office conducted a search warrant at a residence located on 2940 S. Skare Road in rural Rochelle. The search warrant was executed based on information provided by federal partners about illegal activities taking place at the residence. During the search, Laurie A. Watson, the occupant of the residence, was arrested on charges related to drugs and firearms. Under the Pretrial Fairness Act, Ms. Watson was released on a future court date.

On Feb. 15 at approximately 6:24 p.m. deputies initiated a traffic stop near the intersection of Freeport Road and Illinois Route 64. After further investigation Nicholas Johnson, 30, of Freeport, was placed under arrest for an outstanding Stephenson County warrant. Johnson was transported to the Ogle County Jail where he was held in lieu of bond.

On Feb. 15 at approximately 3:15 p.m. Ogle County deputies conducted a traffic stop on a black Subaru at the intersection of West Illinois Route 72 and Pond Road. After an investigation the driver, Gaylen M. Zipse, 64, years of Leaf River was arrested for driving under the influence. Zipse was also cited for improper turn signal, no valid insurance, and illegal transportation of alcohol. After processing, Zipse was released with a notice to appear court date.

On Feb. 16 at approximately 10:19 p.m. deputies conducted a traffic stop in the 10,000 block of West Illinois Route 72. After a brief investigation, deputies arrested Savanna R. Sperling-Osterberg, 19, of Garden Prairie, for driving under the influence of alcohol. Sperling-Osterberg was additionally cited for improper lane usage and illegal transportation of alcohol. After processing, Sperling-Osterberg was released on a notice to appear.

On Feb. 18 at approximately 12:30 a.m. deputies conducted a traffic stop at the intersection of Freeport Road and Brick Church Road. After investigation, Deputies placed Stalena Yates, 43, of Freeport, under arrest for a valid failure to appear Ogle County Traffic warrant for suspended registration. Yates was transported to the Ogle County Jail where she was held pending a court appearance in front of a judge.

On Feb. 18 at approximately 2 p.m. deputies conducted a traffic stop on a white Chevrolet Impala in the 2,000 block of West Illinois Route 72. After conducting an investigation, Clint Salvesson, 45, of Watseka, Illinois was placed under arrest for an outstand-

ing Ogle County warrant for contempt of court and an outstanding Whiteside County Warrant for failure to appear. Salvesson was transported to the Ogle County Jail where he posted bond and was released. Salvesson was provided a future court appearance.

On Feb. 18 at approximately 8:59 a.m. deputies initiated a traffic stop at the intersection of East Illinois Route 72 and North Fair Oaks Drive. After further investigation, deputies arrested Charles Hicks, 56, of Chicago, for driving while license suspended. Hicks was additionally cited for operation of a vehicle with suspended registration. Hicks was released on a notice to appear with a future court date given.

On Feb. 18 at 2:08 a.m. deputies responded to the 11,000 block of East Lincoln Lane, Rochelle, for a verbal domestic. After investigation, deputies placed Trisha Booker, 43, of Rochelle, under arrest for an active DeKalb County retail theft warrant. Booker was released on a recognizance bond at the scene and given a future court date per DeKalb County Sheriff's Office.

On Feb. 18 at approximately 6:40 p.m. deputies conducted a traffic stop in the 2,500 block of East Montague Road. After investigation, deputies placed Jarrell Williams, 37, of Rockford under arrest for an active Rockford PD probation violation warrant. Williams was transported to the Ogle County Jail, where he was held in lieu of bond.

On Feb. 19 at approximately 12:34 a.m. deputies conducted a traffic stop on Illinois Route 38 near East Wood Road. After an investigation, Crescenciano Santos, 46, of Silvis, was placed under arrest for driving while license revoked. Santos was also cited for speeding and operating an uninsured motor vehicle. Santos was transported to the Ogle County Jail before being released on notice to appear.

On Feb. 19 at approximately 8:14 p.m. deputies investigated a disturbance in the 300 block of Chippewa Lane. After further investigation Albert Brooks, 40, of Dixon, was placed under arrest for outstanding Ogle and Lee County warrants. Brooks was transported to the Ogle County Jail where he was held pending an appearance before a judge.

On Feb. 19, deputies responded to the 3,000 block of North Brookville Road for the report of a physical domestic disturbance. After an investigation a 16-year-old female was arrested for domestic battery. The female was taken into limited custody and released back to parents.

On Feb. 20 at 6:38 a.m. deputies conducted a traffic

stop in the 7,000 block of North River Road. As a result, Bobby Jo Hamilton, 42, of Byron was arrested for driving on a revoked license, as well as a Stephenson County warrant. Hamilton was additionally issued citations for speeding 1-10 miles per hour, and operation of an uninsured motor vehicle. Hamilton was transported to the Ogle County Jail on the Stephenson County warrant and was issued a notice to appear with a future court date on his other charges. Deputies were assisted by the Byron Police Department.

On Feb. 21 at approximately 8:45 a.m. Yulisa Regalado-Lopez, 25, of Rochelle turned herself in to the Ogle County Jail for an outstanding Ogle County warrant for cancelled, revoked or suspended registration. She appeared in court on Feb. 21 at 1 p.m. and was released on a recognizance bond. Regalado-Lopez will return to court on April 8 at 9 a.m.

On Feb. 21 at approximately 11:15 a.m. deputies arrested Antonio Martinez, 31, of Rochelle at the Ogle County Courthouse. Martinez was arrested on an outstanding warrant for violation of an order of protection. No bond was set on the warrant, and he appeared in court on Feb. 21 at 1 p.m. Martinez remains in custody on no bond and will appear in court again on Feb. 28 at 10 a.m.

On Feb. 21 at approximately 8:43 p.m. deputies were advised of a violation of an order of protection that had just occurred within the city limits of Rochelle and near the intersection of Flagg Road and Queens Road. After investigation, deputies located the offender and his vehicle involved and conducted a traffic stop on it near the intersection of Flagg Road and 20th Street at approximately 8:49 p.m. After investigation, deputies placed Jerry Nantz, 53, of Rochelle under arrest for violation of an order of protection. Nantz was transported to the Ogle County Jail, where he was held pending a court appearance before a judge.

On Feb. 21 at approximately 1:49 p.m. Fabian J. Ruiz, 23, of Chicago Heights turned himself in on an outstanding Ogle County failure to appear warrant. Ruiz posted bond and was released with no return court date.

On Feb. 22 at approximately 12:30 p.m. deputies arrested Uredi Mulinga, 24, of Milwaukee, Wisconsin at the Ogle County Courthouse.

He was arrested on an outstanding warrant for speeding. Mulinga appeared in court and was released on a recognizance bond, and will return to court on April 8 at 9 a.m.



Owned and operated by Lutheran Social Services of Illinois (LSSI) offering apartment living for older adults in Rochelle and the surrounding communities.

Lincoln Manor

- Secure Entry System
- Community room with kitchen
- Activities
- On-site coin operated laundry
- On-site management office
- Dependable 24/7 maintenance service
- On-site parking for residents

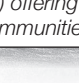
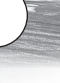
Rent based on 30% of a Resident's Adjusted Gross Income

Full time Social Service Coordinator is available to assist residents

For more information, please call 815-562-1404

615 N. Lincoln Hwy.
Rochelle, IL 61068
TTY 847-390-1460

MANAGED BY:
Lutheran Social Services of Illinois
www.LSSI.org

07262023

ROCHELLE News-Leader



211 IL Route 38 East, Rochelle, IL 61068
(815) 562-4171

USPS (467-820) ISSN (1075-2811)
Published every Wednesday and Sunday by Rochelle Newspapers Inc. at 211 E. State Route 38, Rochelle, IL 61068.
Periodical postage paid at Rochelle, IL 61068. Postmaster send address changes to the Rochelle News-Leader, P.O. Box 46, Rochelle, IL 61068. Subscription rates are \$139.99 per year by mail in Ogle County. Outside county rate is \$149.99 per year. No mail delivery in newspaper-carrier serviced areas. The circulation department is open Monday through Friday from 8 a.m. to 5 p.m. If you are a carrier subscriber and your paper does not arrive, contact Kelly White at 561-2112.

IN-COUNTY REGULAR SUBSCRIPTION RATES

- \$139.99 for one year • \$79 for six months
- \$34.99 for three months • \$13.99 for one month

Call (815) 561-2112 or Visit our website at www.rochellenews-leader.com

HOW TO CONTACT US

News-Leader Main Switchboard	(815) 562-4171
General Manager Tonja Greenfield	(815) 561-2124
Newsroom Staff Jeff Helfrich, Managing Editor Russ Hodges, Sports	(815) 561-2151 (815) 561-2152
To Place a Display Ad Andrew Heiserman Chris Ackland	(815) 561-2123 (815) 561-2153
To Place a Legal Ad Mike Feltes	(815) 561-2124
To Place a Classified Ad Andrew Heiserman Chris Ackland	(815) 561-2123 (815) 561-2153
Subscriptions and Delivery Kelly White	(815) 562-4171



Ready to Paint?

HIRE A PRO!

Veteran-Owned * Free Estimates * Insured

<ul style="list-style-type: none"> * Interior & Exterior Painting * Residential/Light Commercial * Cabinet Painting & Refinishing * Trim Finishing & Painting * Deck, Porch, Pergola, Fence & Playset Restoration & Staining * Agricultural Buildings & Barn Painting 	<ul style="list-style-type: none"> * Light Carpentry/Drywall Repair * Wallpaper Removal * New Construction & Remodel Painting Services * Pressure Washing Services * Concrete Staining, Coating and Sealing
---	--



Goodman
PAINTING LLC
Quality • Craftsmanship

815.222.9920
goodmanpainting.net

01072023

LOCAL NEWS

RTHS: SRO Jakymiw recognized for Critical Thinking Award

From page 1

Lewis said that planning for the 2024-25 school year will continue throughout this semester. Counselors and students met last month to begin signing up for classes. Counselors and students are meeting this month to review four-year plans and summer school sign-ups will start in March. Lewis said the master schedule will be created in April and disseminated

in May.

Awards

Two RTHS staff members were recognized for their service during Tuesday's meeting. AP Calculus teacher Tim Hill was honored for his reception of the ISBE Those Who Excel Award of Meritorious Service, while counselor Tasha Hacaga and school resource officer Jim Jakymiw were named RTHS Critical Thinking Award winners for the months of

January and February. Jakymiw was honored for his assistance during a medical incident involving senior student Alivia Henkel at RTHS earlier this month. Henkel and her family were in attendance during the board meeting, where Lewis thanked Jakymiw as well as Dean of Students Brett Zick and teacher Alison Vrana, who were also in attendance and assisted in the medical emergency.

"It was one of the scariest

days I've had here and it was truly a team effort," Lewis said. "It was truly a team effort and we have a lot of great people here. It feels really good to see you guys here and I want to express how appreciative I am of the team here."

Personnel

The board approved personnel changes including the resignations of Jeff Truckenbrod (assistant boys and girls tennis coach), Talina Nava (assistant softball coach), Haleigh Nelson (dance coach) and Nelson Baker (Interact Club advisor). Board members also approved the employment of Kyle Kissack (assistant girls track coach), Katie O'Rorke (assistant girls track coach), Kevin Hunt (assistant softball coach), John Michael Loggins (assistant boys tennis coach), Joseph Primrose (substitute bass driver), Mark Glosser (bass fishing coach), Ben Harvey (volunteer assistant wrestling coach) and

Landon Mosley (technology support specialist). Lastly, board members approved one transfer for Jennifer Howard (long-term substitute to substitute (full-time spring semester)).

Agenda Items

The board approved its 2023 fiscal year audit report as well as a 10-year health life safety survey, paving bids, a request to sell old equipment and a push coin agreement.

TOPS weight-loss support group to host open house May 18

ROCHELLE – TOPS Club Inc.® (Take Off Pounds SensiblySM), the nonprofit weight-loss support organization, will hold an open house on Monday, May 18 at 5 p.m. at Hub City Senior Center, located at 401 Cherry Ave., Rochelle.

The open house is free and open to the public and lasts about an hour.

Founded more than 70 years ago, TOPS is the only nonprofit, noncommercial weight-loss organization of its kind. TOPS offers an individual approach to

weight loss and overall wellness, with thousands of chapters in the U.S. and Canada. Members learn about nutrition, portion control, meal planning, exercise and more at weekly meetings. Consistent group support, health education

and recognition are all key components to successful weight management.

Visitors to a TOPS chapter are welcome to attend their first meeting free of charge. TOPS is open to men, women and children, ages seven and older. (No

childcare is provided at meetings.) New TOPS members may choose one of three discounted packages. Annual renewal dues are \$37 in the U.S. Chapters charge nominal fees to cover operating costs — usually \$5 per month or

less in the U.S.

For more details about the Open House, contact Cathy Scarbrough at 815-593-0054 or to find a local chapter in a neighboring community, visit www.tops.org or call (800) 932-8677.

CHURCH DIRECTORY

Ashton Bible Church, corner of Main and Paddock in Ashton. Pastor Farrel Stauffer, church phone is (815)453-2190, church website www.ashtonbible.org. Sunday School for all ages 9:00-10:00am, Morning Worship 10:15am, Wednesday Prayer Meeting/Bible Study 6:30-8:00pm.

The Bridge Church, Pastor Greg Duncan, 11038 E. IL Route 38, Rochelle, IL 61068. Phone: 815-562-7750. Sunday School: 9:00 am; Sunday Service: 10:00 am; Nursery & Children's ministry during am service; Bible Study Tuesday 10:00 am and Wednesday 7:00 pm. Web: thebridgechurchrochelle.com Email: thebridgechurchrochelle@gmail.com

Calvary Lighthouse Church, Assemblies of God, Senior Pastor, Dr. James Horvath. 14409 Hemstock Rd., Rochelle. Sunday Morning: Sunday Worship & Children's Church 10:00 A.M., Wednesday Evening 7:00 P.M. – Adult Teaching, Missionettes & Royal Rangers Children's Classes, Nursery available for all services. HE-Brews Cafe is open before and after services. For further information, please call the CLC office at 815-562-7701, or email us at staff@calvalrylighthouse.com

Rochelle Church of Christ, Keeping Christ at the center in the Hub City. We meet Sundays at 9:00am for Bible Study and 10:00am for worship. We also have a Wednesday Bible Study at 7:00pm. 206 Erickson Rd, Rochelle, IL 61068. You can call us at (815) 562-6572 or visit us on the web at rochellechurch.com. We also have a radio program Sundays just after 8am on WRHL 1060AM. Minister Dominic Venuso.

Creston United Methodist Church and Steward United Methodist Church - Rev. Ilhan You, Creston: 126 West South Street, P.O. Box 209, Creston, Illinois 60113. Sunday morning worship 9:00am. Coffee fellowship at 10:15am. Steward: 507 Main Street, P.O. Box 80, Steward, IL 60553. Adult Sunday School, 10:00am. Sunday morning worship and Children's Sunday School 11:00am. Contact the church office at 847-730-4370 for more information. facebook.com/crestonumcil facebook.com/stewardilumc

Elim Reformed Church, 140 S. Church Road, Kings, IL 61068. Phone: 815-562-6811. Email goelimchurch@gmail.com Website www.goelimchurch.org Sunday Morning Worship 10:00 Rev. Marv Jacobs

Faith Lutheran Church – (14206 E. Flagg Rd.) – “Making Christ Known Through Lives of Faith.” In-person worship is available each Sunday at 9:00 a.m. or online at “Faith Lutheran Social” on YouTube. Worship resources are also available on our Facebook page - ‘Faith Lutheran Church ELCA.’ You may also e-mail Pastor Joy Alsop at Pastor@faithlrochelle.org for more information. All are welcome to join us!

First General Baptist Church, 500 S. 12th St, Rochelle. Phone: 815-562-5221. Email: fgbcrochelle@gmail.com. Website: www.fgbcrochelle.org. Facebook: www.facebook.com/fgbcrochelle. Pastor: Rev. Angelo Bonacquisti. **Sunday worship services:** 8:30 am, 11:15 am and 6:00 pm. **Sunday school:** 10:00 am. We'd be honored to have you join us as we worship JESUS and continue to grow in truth and love for God and each other. A nursery, children's church, youth group and small groups are available. If you need a ride please contact our church bus driver, John, at (815) 262-4275 by 8:30 am on Sunday. “For if you confess with your mouth that Jesus is Lord and believe in your heart that God raised him from the dead, you will be saved.” Romans 10:9

First Presbyterian Church – An Amazing Place for Amazing Grace- Rev. Doug Forsberg, Senior Pastor. 1100 Calvin Road, Rochelle. Email: info@placeforgrace.com. Sunday morning worship 9:00am and 10:30am. In person or streamed online. On our Website and Facebook Live. www.placeforgrace.com/ www.facebook.com/placeforgrace

Grace Fellowship Church — Pastor Jeff Ardisson, 2128 Il Route 38, Ashton, 815-453-7464. Sunday School 8:30 a.m. Sunday Worship Service 9:45 a.m. www.graceisforyou.com

Harvest Baptist Church 241 Scott Ave. (Hillcrest). Rev. Duane Boehm, pastor. Email duane712@hotmail.com, cell 815-757-3427. Visit us on Facebook! Service times: Sunday morning worship with Children's Church at 10 am. Wednesday night worship at 7 pm.

Immanuel Lutheran Church Missouri Synod 16060 E. Lindenwood Road, Lindenwood, IL 61049. Rev. Dr. Matthew Rosebrock. Church Phone 393-4500. Church Worship 9:00 a.m. Sunday School Christian Education Hour at 10:30 a.m.

Living Water Community Church 405 N. Main St, Downtown Rochelle. Phone 815-561-6249, Website: www.lwccr.com, Like us on Facebook. We are Non-Denominational, Christ Centered, Casual dress, Christ Centered Live Band Worship. Mike Vogeler - Outreach and Seven C's Pastor, Chris Bender- Teaching Pastor and Doug Bunger - Missions and Children's Pastor. Sunday Worship Service- 10:00am. Nursery/Toddlers Ages 0-5 available during the service in the Splash building. Swim- Grades 1st-5th worship with the adults then break out for age appropriate teaching. Youth groups, Small groups, Life Groups and Workshops meet throughout the year for Bible teaching. 7C's Mission- serves the community physically & spiritually each month from 1135 Lincoln Hwy, providing lightly used clothing, Hygiene items, a light lunch and Elder Prayer open the second Saturday from 10am-2pm and the 4th Thursday from 4pm to 7:00pm and by appointment.. 

New Hope Fellowship (Church of God - Anderson, IN), 1501 10th Ave., Rochelle, IL 61068. Service: Sunday at 9 a.m. 10:30 a.m., (815)561-8400, www.NHFchurch.net Pastor: Dan Sergeant and Pastor Nick Tornabene. (Classes for children through age fifth grade during service.)

Rochelle United Methodist Church welcomes everyone to their worship service, and practices openness for all activities including communion. Worship is at 9:00 am. Sunday school for children begins around 9:15, following the Children's Time in worship. A fellowship time with food and space for conversation occurs in Hicks Hall every week following the worship service. We celebrate communion with an open table on the first Sunday of every month, and on other appropriate occasions. Youth group is on Sunday evenings from 5:30-7:30. Our youth program includes service projects, discussion topics, Bible Study, and lots of fun and fellowship together. Some of our activities include packing meals at Feed My Starving Children, helping at Rochelle Christian Food Pantry and 7C's, working with animals at Barn on Baseline, Mystery trips (Destination Unknown!), and Interactive experiences on Dating boundaries, refugees, and homelessness. Youth group is for grades 6-12 and friends are always welcome. Recorded services are available on our YouTube channel and our website at www.rochelleumc.com. Our services are on the radio (93.5 FM) on Sunday mornings at 9:00 am. Our Facebook page is www.facebook.com/rochelleumc. **Our pastor is the Rev. Dr. Katherine Thomas Paisley.** Our address is 709 Fourth Ave. (815) 562-2164. Email is admin@rochelleumc.com. At Rochelle United Methodist Church, everyone is welcome and loved!

St. Patrick Catholic Church Rev. Jesus Dominguez; Deacon Fermin Garcia; Deacon George Schramm; 244 Kelley Dr. (Corner of Kelley & Caron Rd.), PO Box 329, Rochelle, IL 61068. **Office Hours:** 9:00 AM- 4PM Monday-Thursday, Phone: 815-562-2370. **Mass times:** 8:00 AM Monday-Thursday, Saturday Vigil Mass 5:00 PM English, 7PM Spanish, Sunday Mass 7:30 AM, 9:00 AM in English and 11:00 AM in Spanish. **Confessions:** Monday 8:30AM & 6:30PM, Tuesday 8:30AM, Saturday 8:30am & 4:00-4:45 PM Or by appointment. **Religious Education:** Deacon George Schramm, Director of Religious Education. 903 Caron Road, Rochelle, IL 61068, 815-561-0079; Website: stpatricksrochelle.com Email: stpatrick-rochelle@rockforddiocese.org Facebook.com/StPatrickRochelle

St. Paul Lutheran Church “Building Relationships in Christ, Now and Forever!” Steven Hall, Principal, Parish Nurse-Marcia Schnorr. 1415 Tenth Ave., Rochelle. Church Office-562-2744. Worship times: 6:00 p.m. Saturday, 9:00 a.m. Sunday. Our service is broadcast over WRHL 1060AM at 10:00 a.m. Sunday. Sunday School 10:15-11:15 a.m. Call 562-6323 for more information about the school.



LOCAL VIEWS

Kern: Safety and anhydrous ammonia

AS I sit and shiver through the rest of winter, I know it will be only a few weeks into the distance that Spring planting season will be upon us. I'm sure in machine sheds across the corn belt that many farmers have already begun the process of getting equipment ready for the season. That means one thing for sure: Plenty of busted knuckles.

Sometimes it pays to take the time to locate the correct size wrench instead of reaching for the adjustable. This is called experience.

Part of the season too includes prepping the land for seed placement. Tillage work and fertilizer application will be the norm.

The unfortunate accident a few years ago that occurred with an accident

release of anhydrous ammonia in Lake County, Illinois has brought increased awareness to its safe transport and application. I want to be sure our Ogle County farmers are in the know when applying anhydrous.

Please understand your responsibility as a farmer while transporting anhydrous ammonia. If in the event of a release of 18 gallons or 100 pounds of Anhydrous Ammonia (NH3), you MUST make the following 4 phone calls within 15 minutes of the release:

911, Illinois Emergency Management Agency/State Emergency Response Commission 1-800-782-7860, National Response Center 1-800-424-8802, and Local Emergency Planning Committee Re-

lease Reporting (in Ogle County that is Tom Richter at 815-687-2041).

Also when transporting anhydrous ammonia the following regulations must be followed.

No liquid transfer hose shall be joined between any nurse tank and any toolbar upon a public right-of-way.

When nurse tanks are pulled in tandem a breakaway coupling device or other means of protection shall be installed at each point where the hose crosses a hitching point. Deployment of equipment designed to achieve this protection shall be installed and maintained in accordance with the manufacturer's

instructions.

The hose length from the towed implement mechanically secure point to the breakaway coupler on the towing implements shall have sufficient length to allow breakaway couplers to articulate freely but prevent the hose from contact with the nurse tank tongue. This shall be achieved without securing the hose mechanically through the use of chains, elastomeric straps, wire ties or other means.

Please adhere to all rules and regulations to safely transport anhydrous ammonia.

It won't just be equipment and land preparation that will be happening. Many farmers will be cleaning out their grain

bins from last year's harvest.

Traditional Spring rallies in the grain markets usually lead to farmers delivering on their grain contracts. Local road authorities will be posting roads for weight limits and you will start to see semi-trailer activity ramp up.

Many things in life are confusing and truck law would certainly fall into that category. When federal truck law dictates one set of rules and State law another it tends to lead to plenty of questions that need a definitive answer.

The Illinois Farm Bureau will be conducting On The Road seminars across the state the remainder of this month and into March. The seminars offer a comprehensive look at trucking

laws and your responsibilities in operating vehicles.

A workshop is scheduled for 6 p.m. March 14 at the DeKalb County Farm Bureau Building, in Sycamore. Rodney Knittle, Illinois Farm Bureau Transportation Specialist will facilitate the program.

Pre-registration is required and can be made through the County Farm Bureau by calling 815-732-2231 or email cfb@ogle.comcastbiz.net

The seminar is free of charge.

That's a lot cheaper than a ticket from a state trooper!

"Common sense is like deodorant. Those who need it the most never use it." -Anonymous

Ron Kern is the manager of the Ogle County Farm Bureau.



Ron Kern

Petrick: The mystery of Thomas More

LAST summer, I was among the cadre of American attorneys who accompanied the Most Reverend Edward J. Burns, Roman Catholic bishop of Dallas, on a pilgrimage to England centered on the life of St. Thomas More. The onetime chancellor of England and patron saint of lawyers, politicians, and statesmen, More is remembered nearly 500 years after his death for his defense of ecclesiastical independence from royal intrusion. The events preceding his martyrdom at the behest of King Henry VIII are well known thanks to the movie *A Man for All Seasons* (1966). While tracing More's personal and professional trajectory through London, Oxford, Windsor, and Canterbury, including experiencing the inside of his cell in the Tower of London, I learned a great deal about the Law Society of Great Britain's "Lawyer of the

Millennium." But what I did not learn troubled me.

Walking in More's footsteps prompted thoughts of what I would have done had I been in More's shoes. That's easy. I would have resigned as chancellor and fled the country. Why More did the former but not the latter puzzled me. Such course of action would have cost More significant money and property, but nothing he was not going to lose anyway. Moreover, More was among Europe's top legal minds. Lucrative work at the court of some Continental Catholic monarch or even the pope awaited him. The potentate with the greatest potential in this regard was Holy Roman Emperor Charles V who also ruled Spain as Charles I. Spain was then the world's most powerful country. Serving the House of Hapsburg would have been a plum position for More, enabling him to rebuild the lifestyle he

enjoyed in England.

If concerns about exposing relatives left behind to retribution kept More from crossing the Channel, his fears were likely misplaced. The rest of More's family evaded the Henrician persecution by taking the public oaths More refused. Perhaps Henry would have welcomed More's departure as it would have relieved him of having to kill a man he was fond of.

Undoubtedly, More considered leaving. Years earlier, More drew the ire of Henry's father, Henry VII, by leading the parliamentary opposition to a proposed tax increase. Henry VII retaliated by imprisoning More's father and the danger to More himself was such that he was preparing to flee his country when Henry VII's death obviated the need to do so.

Insight can be gleaned

from *The Sadness of Christ* (1535), which More wrote while incarcerated. When forced to "suffer torment or deny God," he reasoned, one may withdraw if it can be accomplished without "disgracing the cause." More cited the many occasions where St. Paul eluded harm.

Honorable is the one who "prudently avoids danger (provided he does not compromise himself)."

More's cause was the "Tudor Project," ending the cycle of war and dysfunction that plagued England during the preceding 400 years of Plantagenet rule, culminating in the Wars of the Roses. Life under the Plantagenets was characterized by bitter feuds among the nobility. To unite the nobles, kings embarked on prolonged invasions of France or futile crusades in the Holy

Land, all to the detriment of the English people.

Influenced by his mentor Chancellor John Cardinal Morton, More hoped the Tudors would end the internecine violence and foreign adventurism, prioritizing instead the interests of the people. More's distaste for the pre-Tudor era is visible in his treatment of the last Plantagenet king, *The History of King Richard III* (1513). The play on the same subject by William Shakespeare, another Tudor apologist, is derivative of More's work. The warlike Anchorians, in More's polemic *Utopia* (1516) also illustrate the Plantagenet folly.

But More became disillusioned when Henry VIII invaded France under the guidance of Chancellor Thomas Cardinal Wolsey, More's predecessor. More helped broker the peace treaty that ended the conflict and his hope that it would be a

lasting peace was the only sentence of his epitaph emphasized by indentation. However, More's cynicism is revealed in his words to his son-in-law William Roper, "For if my head could win him [Henry VIII] a castle in France it should not fail to go."

Why didn't More go work for Charles V or someone else?

Because they were not any better. Charles also had designs on France. And France's king had designs on Italy. Even the pope, who then possessed great temporal power, "is a prince . . . in league with all other Christian princes." The society that best exemplified the humane Tudor Project was "No Place" (Utopia). At least no place on Earth.

More willingly left Earth to join the One King Who would not disappoint him.

Paul F. Petrick is an attorney in Cleveland, Ohio.



Paul Petrick

How to contact government officials

U.S. Con. Darin LaHood
1424 Longworth HOB
Washington, D.C.
20515
(202) 225-6201

IL Sen. Win Stoller
Stratton Office Bldg
Springfield, IL 62706
(217) 782-1942

IL Rep. Bradley Fritts
Stratton Office Bldg
Springfield, IL 62706
(217) 782-0535

Have a letter you want to submit to us? Send it to news@rochelle-news-leader.com

KEEPING YOU IN TOUCH WITH YOUR LOCAL LEADERS

* Denotes Chairman/President

Rochelle City Council

*John Bearrows	jbearrows@rochelleil.us
Kathryn Shaw-Dickey	kshaw-dickey@rochelleil.us
Bil Hayes	bhayes@rochelleil.us
Rosaelia Arteaga	rarteaga@rochelleil.us
Dan McDermott	dmcdermott@rochelleil.us
Tom McDermott	tmcdermott@rochelleil.us
Benjamin Valdivieso	bvaldivieso@rochelleil.us

Rochelle Elementary School Board

*Trisha Vaughn	tvauhn@d231.rochelle.net
Dave Casey	dcasey@d231.rochelle.net
Steve Builta	sbuilt@d231.rochelle.net
Ashley Jackson	ajackson@d231.rochelle.net
Stephanie White	swwhite@d231.rochelle.net
Javier Zepeda	jzepeda@d231.rochelle.net
Jennifer Thompson	jthompson@d231.rochelle.net

Rochelle Township High School Board

*Tom Huddleston	tom.huddleston@rthsd212.org
Bill Ravnaas	bill.ravnaas@rthsd212.org
Jeff Tilton	jeff.tilton@rthsd212.org
Bobby Chadwick	bobby.chadwick@rthsd212.org
Brent Ohlinger	brent.ohlinger@rthsd212.org
Laurie Pillen	laurie.pillen@rthsd212.org
Joel Thompson	joel.thompson@rthsd212.org

Flagg-Rochelle Park Board

Brent Carmichael	bcarmichael@rochelleparkdistrict.org
John Dobbs	jdobbs@rochelleparkdistrict.org
Dale Wells	dwells@rochelleparkdistrict.org
*Tim Hayden	thayden@rochelleparkdistrict.org
Jodie Hart	jhart@rochelleparkdistrict.org
Joe Lenkaitis	jlenkaitis@rochelleparkdistrict.org
Kristi Gonzales	kgonzales@rochelleparkdistrict.org

Ogle County Board Dist. 3

Austin Gillis	agillis@oglecounty.org
Dan Miller	dmiller@oglecounty.org
Joseph Simms	jsimms@oglecounty.org

Ogle County Board Dist. 4

Jackie Ramsey	jramsey@oglecounty.org
Skip Kenney	skenney@oglecounty.org
David Williams	dwilliams@oglecounty.org

Creston Village Board

*Tom Byro	tommyb_47@yahoo.com
Greg Hopkins	ghopkins522@comcast.net
Steve Katzman	skatzman@csesx1.com
Mike Kerns	ac.kerns@comcast.net
Curt Ward	caward92@comcast.net
Mark Hibshman	
Reid Elliot	
Jennifer Payton	

Hillcrest Village Board

*Richard Rhoads	rrhoads@hillcrestil.us
Pam Pittman	ppittman@hillcrestil.us
Dan Potter	dpotter@hillcrestil.us
Tim Ball	tball@hillcrestil.us
Jose Huerta	jhuerta@hillcrestil.us
Eileen Braski	ebraski@hillcrestil.us
Joe Thompson	jthompson@hillcrestil.us

Flagg Township

Sue Messer	flaggtwp@rochelle.net
Joanna Patrick	flaggtwpclerk@rochelle.net
Susan Rothenberger	assessor@rochelle.net
Scott Seebach	scottseebach@gmail.com

Board of Trustees

Lance Noggle	noggle62@gmail.com
Eric Gruben	egruben@comcast.net
Susan Hager	susanhager303@comcast.net
Jim Kenney	jimk@rocketsupply.com

Flagg-Rochelle Library

*Jaqueline Dickow	dickow@comcast.net
Teresa Haggstad	haggstads@comcast.net
Michael Scanlan	scanlan@comcast.net
Lanning Nicoloff	nicoloff118@comcast.net
Sheri Klender	alwayslefty2@gmail.com
Susan Sevedge	nit1prl22@yahoo.com
Darci Waltrip	doobs12@comcast.net

LETTERS TO THE EDITOR POLICY

The Rochelle News-Leader encourages responsible letters to the editor on subjects of interest to our readers. Editing may be necessary for space, clarity or to avoid obscenity or libel, but ideas will not be altered. All letters must bear the handwritten signature of the writer and include address and phone number or e-mail address for verification purposes. Neither the street address nor phone number will be printed. Letters should

be typed or legibly handwritten, and no anonymous letters will be published. Any letters from boards or organizations must include at least one name of an individual. Any criticism of public officials should be limited to issues related strictly to their position or actions made in office, as personal attacks will not be published. Letters involving private disputes between the writer and a business will not be published. Political endorsements will be

published, however letters from candidates endorsing themselves will not be printed. Letters may be dropped at the News-Leader office (211 IL Route 38 East), mailed to the News-Leader (P.O. Box 46, Rochelle, IL 61068) or e-mailed (news@rochellenews-leader.com.) The News-Leader reserves the right to edit or reject any letter to the editor for any reason, and letters chosen for publication do not necessarily reflect the views of this newspaper.

COMMUNITY

Kish College announces Celebration of Black History Month events

MALTA — Kishwaukee College will celebrate Black History Month throughout February by hosting several events and discussions for students and the public. Black History Month is observed annually to recognize and honor the accomplishments Black people have made in the United States and across the world.

Step into a canvas of vibrant expressions as Kishwaukee College transforms its Student Center into a gallery of inspiration this Black History Month. Beginning Thursday, Feb. 1, Kish will proudly showcase Black artists whose brushstrokes tell stories of resilience, culture, and triumph.

Thursday, Feb. 29
Black Cinema Night — 2-5 p.m. in the Student Lounge, C1130 — Sponsored by the Black Student Union Club

Kishwaukee College is honored to celebrate Black History Month and aligns its programming based on the themes developed by the Association for the Study of African American Life and History. This year's theme is African Americans and the Arts. The College is committed to a culture of diversity, equity, inclusion and belonging, focused on respect and fairness in all aspects of the College experience.

To learn more, visit kish.edu/diversity.

Ogle County Agriculture in the Classroom taking orders for meal fundraiser

OREGON — An Agriculture in the Classroom program fundraiser is underway. Have you been searching for a way to make dinner preparation simple? We have an excellent opportunity for you to take a night off from cooking. This is also a great gift idea as well.

Order 10 delicious meals that have been prepared and frozen for your convenience. Each meal serves 3-5 people. Meals include: hickory smoked pulled pork, hickory smoked pork loin, smoked sausage with peppers and onions, chicken teriyaki, pork fritters with mixed vegetables, ham steak with mashed potatoes, sweet chili meatballs, mostaccioli with meat sauce, chicken cavatappi and pulled pork mac and cheese.

The cost for the ten meals is \$185 cash or check and \$190 with a credit card. Proceeds will benefit the Ogle-Carroll Ag in the Classroom Program. There are two ways to order:

1. Mail your name, phone number, number of meal sets (they come in a set of 10 meals), and payment to 811 S. Clay St., Mt. Carroll, IL 61053. Make checks payable to Ogle-Carroll Ag Partnership (OCAP).
2. You can order online at go.illinois.edu/oglecarrollfreezermeals

Place your order by Monday, March 11. Meal pick-up is March 22 from 3-5 p.m. at the University of Illinois Extension office, 421 W. Pines Road, Oregon. Don't hesitate to contact the office at 815-732-2191 or e-mail charbm@illinois.edu with any questions.

Agriculture in the Classroom (AITC) is a statewide educational program with lessons for kindergarten through 8th-grade students. Its goal is to help students, teachers, and the public gain greater awareness of the role of agriculture in the economy and society. Ag in the Classroom is offered through the University of Illinois Extension Ogle County in partnership with Ogle County Farm Bureau, Carroll County Farm Bureau, Ogle County Soil & Water, and Carroll County Soil & Water.

THE KITCHEN TABLE MENU

7034 S. Klondike Road | Rochelle, IL 61068 | 815-561-9074

If you would like to volunteer with us, please email us at kitchentablerochelle@gmail.com

February 27 – (Tuesday) – CLOSED

February 29 – (Thursday) – Spaghetti with Meat Sauce, Salad,

www.KitchenTableRochelle.org

KIDS MENU: Chicken Nuggets w/Fries OR Hot Dogs with Chips

**All menus are subject to change. If you would like to check before coming out, please call us at 815-561-9074

BIRTHDAYS & ANNIVERSARIES

Feb. 25 Wanda Usury	Feb. 27 Beth Bolhous	March 5 Briggs Bridgeman
Feb. 28 Ben Altice	Feb. 28 Lucas Donoho	March 6 Nicole King
Feb. 26 Natalie Powell	March 2 Addison Perkins	

Call 815-561-2151 to submit names for birthdays and anniversaries



- Jan. 30 - Joe Williams, Rochelle, \$25
- Jan. 31 - From the Heart, Rochelle, \$25
- Feb. 1 - Rochelle Area Community Foundation, \$25
- Feb. 2 - Melody Worthington, Rochelle, \$25
- Feb. 3 - Sofie Meyers, Rochelle, \$250
- Feb. 4 - Mercedes Barrientos, Rochelle, \$50
- Feb. 5 - Allison Wagner-Huntley, Byron, \$25
- Feb. 6 - From the Heart, \$25
- Feb. 7 - Judith Koelzer, Friena, Texas, \$25
- Feb. 8 - Nancy Meyers, Rochelle, \$25
- Feb. 9 - Kaylee Fowler, Rochelle, \$25
- Feb. 10 - Justin Adolph, Rochelle, \$25
- Feb. 11 - First State Bank, Rochelle, \$50
- Feb. 12 - John Gonzales, Rochelle, \$25
- Feb. 13 - Kathleen Lutz, Rochelle, \$25
- Feb. 14 - Ariana and Antonio Welle, Oregon, \$25
- Feb. 15 - From the Heart, \$25
- Feb. 16 - Shining Star, Dixon, \$25
- Feb. 17 - Michelle Ocampo, Rochelle, \$25
- Feb. 18 - RACF, \$25
- Feb. 19 - RACF, \$25
- Feb. 20 - Crystal Crom, Cloquet, Minnesota, \$25
- Feb. 21 - From the Heart, \$25
- Feb. 22 - Crystal Hueramo, Rochelle, \$25
- Feb. 23 - Christa Seebach, Rochelle, \$25
- Feb. 24 - Gus and Armande Vasilopolous, Rochelle, \$25
- Feb. 25 - Noel Allison, Rochelle, \$25



Coffee Break

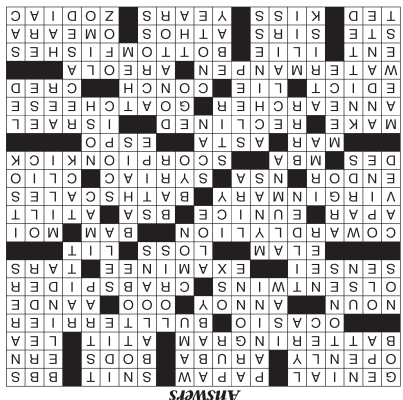
MAGIC MAZE • NORTHERN

A A I X V S T Q O M J H F C A
Y W R U R A S P N L J H F D B
Z X E V T R I O Q O M K I Y L
S N L H E F D S R B E Z C R O
Y A A C W C H V E C U A T O B
R Q N G A R N O K D R N L T S
K I D A I P H A C D O F D I T
C A Z K I H E M I S P H E R E
X W E K V R C N L L E U R R R
S R E Q O N A I F M L K J E I
S T H G I L H M M F E A D T B

Find the listed words in the diagram. They run in all directions forward, backward, up, down and diagonally. Unlisted clue hint: AURORA BOREALIS

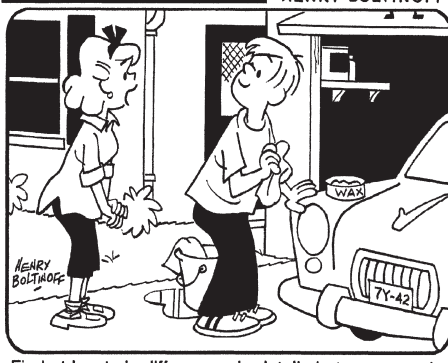
Alliance	Europe	Lobster	Rhodesia
Cape	Flicker	Marianas	Shrike
Cardinal	Hemisphere	Michigan	Territory
Cross	Ireland	Pike	

©2024 King Features Syndicate, Inc. All rights reserved.

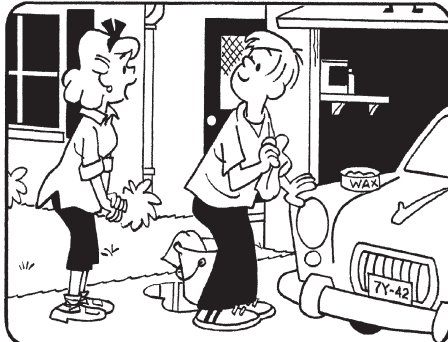


HOCUS-FOCUS

BY HENRY BOLTIKOFF



Find at least six differences in details between panels.



Differences: 1. Bumper is different. 2. Shelf is lower. 3. Window is added. 4. Wax is moved. 5. Neckline is different. 6. Door knob is added.

Super Crossword

INTERPRETING ALL THE SIGNS

- | |
|--|
| ACROSS
1 Friendly and cheerful
7 Custard apple relative
12 Peevish state
16 Air gun ammo
19 With no secrecy
20 Caribbean resort island
21 Physiques, for short
22 Suffix with east
23 Door-bashing device
25 Working hard
26 Grazing field
27 Politician Alexandria — Cortez
28 Bud Light mascot
31 A verb often follows it
34 Vex
36 Winning tic-tac-toe row
37 "Hoarders" channel
38 "Full House" acting pair
41 Sideways-moving arachnid
43 Judo teacher
44 Test taker
46 Sailors, informally
47 "The Villain" actor Jack
50 Gain's offset
51 Ignited
53 "If I Only Had the Nerve" singer
59 "Ka-POW!"
60 Me, in Lyon
63 On — with (equal to)
64 One of the Kennedys
65 Org. with merit badges
67 Leaning
69 Mother of Jesus
71 Things to step on in washrooms
73 Moon that's home to the Evoks
74 Top-secret U.S. org.
75 Dialect of Aramaic
76 Ad biz award
77 French article
78 CEO's deg.
80 Flashy, diving soccer move
82 Put a flaw in
83 Dog in "The Thin Man"
85 Hockey's Phil, to fans
86 Manufacture
89 Leaned back
93 Negev's land
98 "Fatal Attraction" Oscar nominee
100 Feta, for one
103 Official order
104 Prevarication
105 Spiral-shelled mollusk
106 Rep on the street
107 Luxury writing implement
110 Eye ring
113 Rhinoplasty doc
114 Nastase of tennis fame
115 Halibut, sole and flounder
120 Beatified Mile.
121 Madams' counterparts
122 Eldest of the Musketeers
123 1998 Masters champ Mark
124 One of the Kennedys
125 Hug's partner
126 Century's 100
127 All 12 of its symbols are featured in this puzzle
3 Court divider
4 Chants
5 Actor Baldwin
6 Vega's constellation
7 Grill-marked sandwiches
8 French forest region
9 Brand of faucet filters
10 Cry like —
11 Bank bought by Chase, for short
12 Govt. advances for mom-and-pops
13 Opposite of destined
14 "And When —" (1969 hit)
15 Certain high-heel feature
16 Go-Go's singer Carlisle
17 Offspring producer
18 Ones entrapping
24 "Vidi," in English
29 "Slow" primate
30 Bonnie of blues rock
31 Antis' votes
32 Corrida cry
33 Sailor's org.
35 It runs on a 52-Down
39 — do-well
40 Bill of tennis
41 "Hurry it up!"
42 Actress Ward
45 Balm additive
48 Female grad
49 Chatty birds
52 Apple buy
53 Went spelunking
54 Think aloud
55 Prison units
56 2012 Ben Affleck thriller
57 Turkish money unit
58 Bitterly cold
59 Adherents of an Iranian religion
60 Thousand: Prefix
61 — acid (fat product)
62 "There, there" Georgia politician Bob
66 Michael of the band R.E.M.
68 Small nail
70 "— la Douce"
71 Drink-related party abbr.
72 Suffix with micro- or kaleido-
75 Read quickly
79 "I'm c-c-cold!"
80 Start to wake
81 Light snack
82 Small rodents, jocularly
83 Sore feeling
84 Slumber
86 Star of "I'm No Angel"
87 Slower than allegretto
88 Like booties
90 Cream-filled pastries
91 Big head
92 Contributor
94 Covered anew, as a book
95 — Lingus
96 Suffix with Senegal
97 Guided
99 In harm's way
101 Transversely
102 Those people
105 100-buck bill
108 Roman 1,052
109 Auction website
111 "The Wizard —"
112 Celeb's ride
116 Radio host Charlamagne — God
117 "Bali —"
118 Epoch
119 Small pouch |
|--|

LOCAL NEWS

New design chosen for city's water tower after social media vote

ROCHELLE — A new design has been chosen for the City of Rochelle's water tower off the Illinois Route 251 overpass after a social media vote.

The new design received 81 percent of nearly 2,600 votes and mixes the city's new branding font with the current water tower design's color and depiction of the Rochelle Township High School Hub logo.

The city said in a Facebook post that the layout and spacing could change "a bit" for best visibility, but the color and "general look" will remain the same. The painting will take place later this year. The city will be repainting and performing maintenance on the water tower in a project that will exceed \$1 million in cost.



(COURTESY PHOTO)

A new design has been chosen for the City of Rochelle's water tower off the Illinois Route 251 overpass after a social media vote. The new design received 81 percent of nearly 2,600 votes and mixes the city's new branding font with the current water tower design's color and depiction of the Rochelle Township High School Hub logo.

AREA

GUIDE

Friday
5pm-9:30pm

RESTAURANT & BAR
EST. 1991

208 N. Walnut St.
Stillman Valley
815-645-9828

02122024

PUBLIC WELCOME, DINE IN OR CARRY OUT. CHECK FACEBOOK FOR UPDATES

CATCH OUR FISH FRY!

Friday Night Fish Fry!

Fish Fry Buffet
(All You Can Eat) - \$20

(Multiple dishes, Baked Cod, Pollock, Perch, homemade hush-puppies, shrimp fried rice, cheesy potatoes, soup and salad bar, vegetables and more!)

4-8 pm

Other seafood available / Full menu available

Win some money gaming!

Maxsons
Restaurant & Riverboat

1469 N. IL Rt 2
Oregon IL
815-732-6761
Maxsons.net

02122024

FISH FRIDAY

Every Friday night
Serving 5 - 8 p.m.

Homemade Soup and Salad Bar

Fried cod, baked cod, bluegill or shrimp

\$11.95 - \$12.95

Includes: choice or potato (baked, french fries or onion rings), homemade soup and salad bar and complimentary dessert

Dine-In or Carry-Out

02122024

812 Main St. - Ashton

2024 Lenten Fish Fry Dinners
St. Patrick Parish Center 236 Kelley Drive

March Friday's

MARCH 1, 8, 15, 22
5:00-7:00 PM

Fish Dinner

ADULT (11YRS+) \$15
SENIOR CITIZEN (65+) \$14
CHILDREN (4-10YRS) \$10

Includes 2-3 pieces of baked or hand breaded fried cod and everything on the menu excluding pizza

Pizza Dinner

ADULT (11YRS+) \$13
SENIOR CITIZEN (65+) \$12
CHILDREN (4-10YRS) \$8

Includes 2 slices of pizza (1 slice for children's dinner) and everything on the menu excluding fish

FAMILY RATE - \$50

Parent(s) and children 18-under - DINE IN ONLY

3-UNDER - FREE

50/50 RAFFLE - HANDICAP ACCESSIBLE - CARRY OUTS AVAILABLE

MENU

Baked & Hand Breaded
Deep Fried Cod
Tartar Sauce & Lemon Slices
Alfano's Cheese Pizza
Macaroni & Cheese
French Fries
Potatoes w/Parsley
Green Beans
Cole Slaw
Dessert & Beverages

Dinner proceeds support St. Patrick Youth Ministry.
A special thank you to Knights of Columbus for their support of our ministry!

02122024

VFW

Post 8739

1310 W. Washington St.
Oregon, IL
815-732-6851

Every Friday
Fish Fry
Cod, Catfish &
Shrimp Dinners

02122024

Served Fridays 4pm-8pm

Open to the Public, Dine-in or Carry-out.



Stop By These Businesses and see why they were VOTED #1 in Ogle County!

VOTED
BEST

AUTO DETAILING & CAR DETAILER

**A1 HOT BODY
DETAILING**

Voted Best
3 years in a
row!

Affordable
prices for all
your detailing
needs!

Open
Monday-Friday
6:30am to 4:00pm

FOLLOW US ON
f FACEBOOK

401 2nd Ave, Rochelle
815-562-6393

Cleaning ~ Detailing
Waxing ~ Ceramic Coating

VOTED
BEST

HVAC COMPANY & PLUMBING COMPANY

ANDERSON
PLUMBING & HEATING, INC.

LENNOX
HOME COMFORT SYSTEMS
Innovation never felt so good.™

815.562.8784
email: aphc621@yahoo.com

Lic. No.
058-08789-1

621 1st Ave. • Rochelle, IL 61068

VOTED
BEST

COFFEE

TIKI JAVA
Drive-Thru Coffee Service

BLACK PEARL
Coffee Shop

HOME DELIVERY AVAILABLE
@BLACKPEARLCOFFEESHOP

VOTED
BEST

TAX SERVICES & TAX PROFESSIONAL

Brown's Tax Service
Carolyn Brown

Our combined 50+ years of service
means great service for you. Make
an appointment today for Tax
Preparation, Payroll and/or Book-
keeping Services!

361 IL Route 38 | Rochelle, IL
815-440-1224 | 815-561-6861 | carolyn@brownstaxoffice.com

VOTED
BEST

CARPET CLEANING

ChemDry®
Drier. Cleaner. Healthier.™

Carpet & Upholstery Cleaning
209 Powers Road
Rochelle, IL 61068
815-762-7555
cdkishwaukee.com

VOTED
BEST

INSURANCE OFFICE & INSURANCE PROFESSIONAL

**COUNTRY
FINANCIAL®**

**AUTO | HOME | LIFE | HEALTH
COMMERCIAL | INVESTMENTS
BUSINESS | RETIREMENT**

countryfinancial.com/joshmessenger
josh.messenger@countryfinancial.com

Josh Messenger
Helping You Protect
What Matters Most

501 N 6th St., Rochelle, IL • (815) 562-8164

Auto, Home and Commercial policies issued by COUNTRY Mutual Insurance Company, COUNTRY Casualty Company, or COUNTRY Preferred Insurance Company. Life insurance policies issued by COUNTRY Life Insurance Company and COUNTRY Investors Life Assurance Company. Fixed annuities issued by COUNTRY Investors Life Assurance Company. All issuing companies are located in Bloomington, IL.

VOTED
BEST

FAMILY PRACTICE & DOCTOR

**Davis
Family
Health LLC**

Kelly Ann Tonielli Davis
DNP, APRN, FNP-BC-CME

Veteran Owned and Operated
Most insurances accepted

We Fix
Boo Boos

**1212 Curren Court,
Rochelle, IL • 815-561-8500**

**1201 Meriden Street,
Mendota, IL • 815-538-1800**

Primary Care, Physicals, Weight Loss, Dermal Fillers, Botox Injections, Suboxone Program

VOTED
BEST

BLOODY MARY, BRATS, BUTCHER SHOP, BUTCHERS, & STEAK

Tues-Fri - 9a-5:30p
Sat - 9a-4p

815-384-3620
headons2go.com
103 N. Main Street | Creston

HEADONS
FINE MEATS
EST. 1970
CRESTON, IL

— LIKE AND FOLLOW US ON —
FACEBOOK

VOTED
BEST

FURNITURE STORE, FLOORING STORE & SALES PEOPLE

MEYERS
FURNITURE & FLOORING

M-F 9-5 • Sat 10-5 • Sun Closed

209 Powers Road, Hwy 251 N
Rochelle, IL
meyersfurniture.com
(815) 562-8792

VOTED
BEST

BANK, FINANCIAL PLANNING SERVICES, MORTGAGE LENDING SERVICES & CUSTOMER SERVICE PEOPLE

**Stillman
BANK**

2023
BEST OF
OGLE COUNTY

- ✓ Best Bank
- ✓ Best Financial Planning Services
- ✓ Best Mortgage Lending Services
- ✓ Best Customer Service

Thank
You!

Member
FDIC

www.stillmanbank.com

PIZZA TOUR

Several tasty tidbits about pizza to eat up

THE calendar is dotted with various holidays that celebrate pizza. From National Pizza Pie Day in February to National Deep Dish Pizza Day in April to National Cheese Pizza Day in September, not to mention National Pizza Month in October, any time of year is the perfect opportunity to bite into a slice.

For most people, the best part of pizza is eating it, but that doesn't mean you can't still learn something about this all-time favorite food as well. The following are some tasty tidbits about pizza, courtesy of Fact City, Pizza Need and Facts Legend.

• Pizza is tied to Greece. Greeks are credited with creating the first pizza-like food. The Greeks used to bake flat, round large breads that were then topped with vegetables, potatoes, spices, and olive

oil. However, the first commercial pizza and pizzeria has been traced to the 19th century and the Italian city of Naples.

• Not all pizza is flat. While crispy, low-profile pies may be classic, other varieties of pizza have their fans. "Deep dish" pizza originated in 1943 in the Chicago eatery Pizzeria Uno. Sfinzione, or focaccia pizza, a type of pizza made in a sheet pan with thicker slices, was created in the mid-19th century in Sicily. It is popularly called Sicilian pizza.

• Pizza is even more popular on certain days of the year. Pizza can be enjoyed any day of the year, but Super Bowl Sunday, New Year's Eve, Halloween, Thanksgiving Eve, and New Year's Day are the top five days for pizza sales. In addition, pizza accounts for more than 10 percent of all food

service sales.

• Pizza is booming. In the United States, the pizza industry makes up 17 percent of all restaurants and grosses more than \$30 billion every year. The highest-grossing single-unit independent pizzeria in the United States is Moose's Tooth Pub and Pizzeria in Anchorage, Alaska. Its annual sales are approximately \$6 million.

• Pizza is popular everywhere. Around the world, about three billion pizzas are sold each year.

• Pizza is a weekend favorite. While Friday may be pizza night for many people, sales figures indicate that Saturday night is the most popular night to eat pizza.

• Pizza has a symbiotic relationship with certain foods. The pizza industry has helped propel both the cheese and pepperoni industry. Around 251 mil-



lion pounds of pepperoni are consumed each year in the United States.

• Hawaiian pizza is popular, though not accurately named. Ham

and pineapple are popular pizza toppings on the West coast of the United States, and this pizza is dubbed the Hawaiian pizza. However, it doesn't have any

connection to Hawaii. This pizza actually was invented in Canada.

Pizza is a perennial favorite and one of the most popular foods of all time.



Everyone's Favorite **PIZZA!**
& PUB

ALDO'S
PIZZERIA
&
The Red Brick
PUB

Longest running full service Restaurant in Rochelle History!

815-562-3456
418/420 Lincoln Hwy.
Downtown Rochelle

Online ordering at
<http://aldospizzaandpubrochelle.restaurant>



Monday, Wednesday, Thursday, Sunday 4-9PM
Tuesday Closed
Friday 11AM-2PM & 4-10PM
Saturday 4-10PM



Alfano's

Pizzeria and Italian Restaurant

Taste The **TRADITION**
Taste The **DIFFERENCE**

2023 VOTED BEST OF
OGLE COUNTY

Best Pizza | Pasta | Italian Restaurant |
Appetizer/small plate | Family Restaurant
& Local Business

Dine In • Carry Out • Home Delivery
Pizza • Pastas
Sandwiches • Salads and Lots More!

Dine-In • Carry Out • Home Delivery
1115 TURKINGTON TERRACE, ROCHELLE
815-562-3312





ROSATI'S

Authentic Chicago Pizza

MyRosatis.com

Free Dough Nuggets with ANY pizza purchase*

(*must mention coupon)

Sun - Thurs: 11:00 AM - 10:00 PM
Fri - Sat: 11:00 AM - 11:00 PM

DINE IN • PICKUP • DELIVERY

815-562-5000
Rochelle | 1233 N Caron Rd
ORDER ONLINE @ myrosatis.com/rochelle

SPORTS

RMS Girls Basketball

(PHOTOS BY ROBIN RETHWILL)



RMS eighth-graders score home win over Belvidere South

The Rochelle Middle School eighth-grade girls basketball team scored a 31-21 win over Belvidere South in North Central Junior Conference action on Tuesday evening. Above, Gianna Olguin (left) takes a shot and Zoe Norberto (right) dribbles down the floor. Below, Carol Carpenter (left) and Audrina Rodriguez (right) go for shots under the basket.

Brown's Tax Service

Carolyn Brown
Jade Brown
Marilyn Oropeza



**Bookkeeping,
Payroll & Tax
Preparation Services**



Let the **BEST TAX PROFESSIONALS**
in the **BEST TAX OFFICE** in
OGLE COUNTY prepare your **2023 taxes!**

Contact Us For Your 1099 Forms

361 IL Route 38 | Rochelle, IL
815-440-1224 | 815-561-6861 | carolyn@brownstaxoffice.com
www.brownstaxoffice.com

SPORTS

RMS Girls Basketball

(PHOTOS BY ROBIN RETHWILL)



Rochelle Middle School seventh-graders secure home win over Belvidere Central in NCJC action

The Rochelle Middle School seventh-grade girls basketball team scored a 36-14 home win against Belvidere Central in North Central Junior Conference action this past week. Above, Delani McGee (left) dribbles down the floor, Ariana Hueramo (middle) shoots a free throw and Alivia Law (right) puts up a shot.



NIU BASKETBALL

SINGLE GAME TICKETS

ON SALE NOW!

MEN'S BASKETBALL
PRICES START AT

\$8

WOMEN'S BASKETBALL
PRICES START AT

\$6

GET YOUR TICKETS TODAY!

815-753-7225 | NIUHUSKIES.COM





COMMUNITY BOARD

Need to get the word out about a product or service you offer?
Give us a call at 815-562-4171.
We can reach over 9,000 homes!



Gutters, Roofing & Siding

THEISEN ROOFING *Free Estimates!*

ROOFING
SIDING
GUTTERS

CONTACT US
815-758-8998
THEISENROOFING@COMCAST.NET
Family owned & operated for over 50 years

Plumbing, Heating & Cooling

ANDERSON PLUMBING & HEATING, INC.

Plumbing, Heating & Cooling
Water Heaters, Water Softeners,
Drinking Water Systems, Iron Filters,
Sewer Rodding & Jetting & More!

Since 1976

621 First Ave., Rochelle
(815) 562-8784

Lawn Care

Furman's Lawn Care

SPRING CLEAN-UP!

- Weekly Mowing
- Bush Trimming & Removal
- Gutter Cleaning
- Much More!

In Business Since 1999
Fully Insured • Free Estimates

Call Jeremy Furman at 815-761-9619
Please leave message and I will return your call ASAP

Heating & Air Conditioning

HULL HVAC & Household Services

Furnaces - Air Conditioners - Boilers
Duct Cleaning - Water Heaters

Precision Furnace Clean & Check
\$85.00
Includes FREE carbon monoxide test

24/7 Emergency Service

815-561-6551
www.HullHVAC.com

Concrete

Bruns Construction, Inc.

• Residential & Commercial Concrete
• Additions

FREE ESTIMATES!

Tim & Roger Bruns, Owners
Established 1997

815-561-0099
Free Estimates • Fully Insured
www.brunsconstructioninc.com

Storage Sheds

Rocky Ridge Structures

FREE Sales Rep. Evaluation At Your Site

We Deliver From Our Lot To Your Site

We Specialize in Portable/Quality Built Storage Sheds

- Stock & Custom Design
- Many Options Available
- Competitive Pricing
- Site Preparation Available

See Displays at 3500 S. Chana Rd. Chana IL 61015
Call Norm or Albert for Free Literature packet
779.861.3542

PRIME TIME

How to understand your osteoporosis risk

BONE is living, growing tissue that changes as a person ages. Although healthy bone can naturally diminish as a person gets older, seniors in particular are at elevated risk of osteoporosis, a bone disease marked by rapid bone deterioration.

Osteoporosis occurs when bone mineral density and bone mass decrease, or when the strength and structure of bone changes, according to the National Institute of Arthritis and Musculoskeletal and Skin Diseases. Bone is constantly being broken down and replaced. When a person has osteoporosis, creation of new bone cannot keep up with the loss of old bone.

Osteoporosis can make bones so brittle that even a seemingly innocuous movement, such as coughing, bumping into something or bending over, can cause bones to break, says the Mayo Clinic. These breaks commonly occur in the spine, wrist or hip.

Osteoporosis affects people of all genders, ages and races. However, white and Asian women, especially those past menopause, are at the highest risk.

The Bone Health & Osteoporosis Foundation says that osteoporosis is known as a silent disease because bone weakening is undetectable. Subtle signs, such as a stooped posture, a curved back or if someone seems to be getting shorter, may indicate osteoporosis. Breaking a bone is often the first sign of the disease.

There may be ways to prevent osteoporosis or alleviate its symptoms. A nutritious diet and regular exercise are essential for keeping bones healthy throughout life. This includes getting enough calcium through foods and possibly supplementation. Individuals should work with their doctors to get the right amount of calcium, as too much from supplements may cause kidney stones. Vitamin D also works in concert with calcium to



produce strong bones, and many people are deficient in vitamin D.

Exercise also is needed for strong bones. Strength training with weight-bearing and balance exercises enjoyed regularly throughout life can help

maintain healthy bones as one ages.

Additional lifestyle issues can increase risk for osteoporosis. These include long-term use of certain medications like glucocorticoids and adrenocorticotrophic hormones

to treat various conditions. Proton pump inhibitors, cancer medications and antiepileptic medicines also may increase risk for osteoporosis. Heavy alcohol consumption and smoking also can contribute to osteoporosis.

Osteoporosis is not something to take lightly. A bone-density test can indicate if bones are weakening and if intervention is necessary. However, measures should be taken early in life to prevent osteoporosis in the future.



Seniors can boost energy with the right foods

ANUTRITIOUS diet is a key component of a healthy lifestyle. And for seniors, the right diet can be a key part of treating any number of health issues. In fact, changing one's diet may be something seniors can consider if they are feeling sluggish.

Food can be a helpful ally for seniors dealing with fatigue and low energy. WebMD says eating a balanced diet is one of the ways to improve low energy levels, and that balanced diet should include certain foods that are natural energy boosters.

- Whole grains: Switching refined grains for whole grains is a good way to boost energy. These grains are full of complex carbohydrates that help boost metabolism and provide energy. They'll also work longer in the body than the more refined options. Swap out "white" products like breads and rice for whole wheat or brown rice.

- Lean protein sources: While protein does not

give the same quick boost of energy as a high carbohydrate meal, it will help fuel the body and keep a person feeling full longer. According to Discovery Senior Living, protein helps increase concentration levels, produces stronger muscles and helps maintain optimal blood sugar levels. Chicken, tuna and legumes are some notable protein

sources.

- Nuts: Most nuts are a complete package that provide healthy fats, proteins and amino acids that are good for the body. The fiber and carbohydrates in nuts digest more slowly and help provide a steady supply of energy throughout the day. Replace croutons in salads with nuts, or sprinkle some nuts on oat-

meal at breakfast.

- Fruits and vegetables: Berries, sweet potatoes, dark, leafy greens, and other produce are low-calorie, low-sugar options

for snacks and sides that boost health. They're full of fiber and antioxidants that can ward off illness, and they can provide an energy boost as well. Berries and

vegetables can be added to smoothies or salads.

The right foods can help seniors restore energy levels and promote overall health.



FEARER, NYE & CHADWICK
ATTORNEYS AND COUNSELORS SINCE 1878

420 Fourth Avenue
Rochelle, IL 61068
815-562-2156
www.fnclaw.com

01/25/2022

Lincoln Manor

Owned and operated by Lutheran Social Services of Illinois (LSSI) offering apartment living for older adults in Rochelle and the surrounding communities.

Rent based on 30% of a Resident's Adjusted Gross Income

- Secure Entry System
- Community room with kitchen
- Activities
- On-site coin operated laundry
- On-site management office
- Dependable 24/7 maintenance service
- On-site parking for residents

Full time Social Service Coordinator is available to assist residents

For more information, please call 815-562-1404

615 N. Lincoln Hwy.
Rochelle, IL 61068
TTY 847-390-1460

MANAGED BY:
Lutheran Social Services of Illinois
www.LSSI.org



07/26/2023

Classified Marketplace

BUY OR SELL
Place A Classified Ad



ROCHELLE • HILLCREST • CRESTON • STEWARD • KINGS • ASHTON

101 LEGAL NOTICE

NOTICE
SECTION 00 11 13 AD-
VERTISEMENT FOR
BIDS
CITY OF ROCHELLE
ROCHELLE, IL
WELL 4 SITE
ELEVATED TANK
PAINTING PROJECT
Sealed Bids for the con-
struction of the WELL 4
SITE ELEVATED TANK
PAINTING PROJECT
will be received by City
of Rochelle, at 420 N.
6th St., Rochelle, IL
61068, until 10:00 a.m.
local time on March 07,
2024, at which time the
Bids received will be
publicly opened and
read. The Project con-
sists of WELL 4 SITE
ELEVATED TANK
PAINTING AND RE-
HAB.
Bids shall be on a unit
price basis.

The Issuing Office for
the Bidding Documents is:

Fehr Graham
515 Lincoln Highway
Rochelle, IL 61068

Jason Stoll
jstoll@fehrgraham.com
Prospective Bidders
may examine the Bid-
ding Documents at the
Issuing Office on Mon-
days through Fridays
between the hours of
9:00 a.m. - 3:00 p.m.,
and may obtain copies
of the Bidding Docu-
ments from the Issuing
Office as described be-
low.

Bid documents may be
obtained from the Engi-
neer's website at www.fehrgraham.com. Upon
accessing the website,
Bidders will see a drop
down titled Connect.

Select, "Obtain Bidding
Documents" in that drop
down. Clicking this link
will take Bidders direct-
ly to the Quest Network
Service, and will display
all projects available
for bid through Fehr
Graham. On this page,
projects ads will be list-
ed in the left-hand col-
umn with project num-
bers assigned by Quest
displayed. Potential

Bidders can enter the
Quest project number
8202477 in the field
provided to view the
full ad for the CITY OF
ROCHELLE WELL 4
SITE ELEVATED TANK
PAINTING PROJECT,

and download a com-
plete set of bidding docu-
ments from this page
for a non-refundable
fee of \$25.00. Please
contact QuestCDN.
com at (952) 233-1632
or info@questcdn.com
for assistance in free
membership registra-
tion, downloading, and
working with this digital
project information.

This project is fund-
ed partly by an Illinois
DCEO Capital Grant
and the selected con-
tractor(s) must comply
with the regulations
of DCEO's Grant Pro-
grams, as indicated
in the City of Ro-
chelle's DCEO Cap-
ital Grant Agreement
#21-203249. All Illinois
DCEO Capital Grants
are subject to the fol-
lowing laws:

• Illinois Prevailing
Wage Act (820 ILCS
130/).

• Illinois Works Jobs
Program Act (30 ILCS
559/20).

• Business Enterprise
Program for Minorities,
Females, and Per-
sons with Disabilities
Act ("BEP") (30 ILCS
575/0.01 et seq.).

Rochelle's Grant Pro-
ject #21-203249 has
an overall Business
Enterprise Program
(BEP) Goal of 1%. This
combined MBE/WBE/
WMBE utilization goal
is based on the avail-
ability of State-certified
vendors to perform the
anticipated direct sub-
contracting opportuni-
ties of the Utilization
Plan (UP).

22-045 CITY OF RO-
CHELLE

WELL 4 SITE ELEVAT-
ED TANK PAINTING
PROJECT FEBRUARY
2024 FOR BIDS

Owner: City of Rochelle
By: Adam Lanning

Title: Superintendent
of Water/Water Recla-
mation

Date: Feb. 7, 2024
No. 0220
(Feb. 25, 2024)

101 LEGAL NOTICE

This publication does
not knowingly accept
fraudulent or deceptive
advertising. Readers
are cautioned to
thoroughly investigate
all ads, especially
those asking for money
in advance.

105 BUSINESS OPPORTUNITIES

"This publication does
not knowingly accept
fraudulent or deceptive
advertising. Readers are
cautioned to thoroughly
investigate all ads,
especially those asking
for money in advance."

113 FINANCIAL

NOTICE Advance Fee
Loans or Credit Offers
Companies that do
business by phone
can't ask you to pay for
credit before you get it.
For more information,
call toll-free 1-877-FTC-
HELP. A public service
message from your
hometown newspaper
and the Federal Trade
Commission.

119 ANNOUNCEMENTS

"This publication does
not knowingly accept
fraudulent or deceptive
advertising. Readers are
cautioned to thoroughly
investigate all ads,
especially those asking
for money in advance."

127 SERVICES AND REPAIRS

FURMAN'S Lawn
Care and Tree Work.
Mowing, bushes,
spring clean up,
weeding and much
more. Call Jeremy
Furman 815-761-
9619. Please leave a
message will return call
ASAP. Fully insured, in
business since 1999.
Servicing Rochelle and
surrounding areas.

201 DOMESTIC/CHILD CARE

NO INDIVIDUAL,
unless licensed or
holding a permit as a
childcare facility, may
cause to be published
any advertisement
soliciting a child care
service. A childcare
facility that is licensed
or operating under a
permit issued by the
Illinois Department of
Children and Family
Services may publish
advertisements of the
services for which it is
specifically licensed or
issued a permit. Your
Hometown Newspaper
strongly urges any
parent or guardian to
verify the validity of the
license of any facility
before placing a child
in its care.

203 HELP WANTED

Personal Assistant
needed for 30 year
old male with special
needs for laundry,
housework, errands
& socialization.
Call 815-988-6931.
(MR02282024)

301 ANTIQUES

WANTED TO BUY:
Vintage Metal and Wood
Signs, Milk Bottles &
Local Advertising, Oak
Icebox, Iron Door Stop
and Antique Lighting...
Call Dick Harms at
815-562-2928 or email
dickharms@hotmail.com

ANTIQUES WANTED:
I pay cash for antiques;
furniture, glassware,
pottery & crocks, tin &
iron toys, sterling silver,
decoys. If it's antique, I'm
interested in looking! Call
815-562-2928 or email
dickharms@hotmail.com

307 MISCELLANEOUS FOR SALE

BUNDLED Newspaper
-\$3 per Bundle. End
Roll- Cost Depends on
Weight of Roll. Available
Monday-Friday 815-
562-4171 (8AM-NOON
ONLY) Rochelle News
Leader.

SPLIT Firewood For
Sale. Contact 779-251-
0254

405 HOUSES FOR SALE

ALL REAL ESTATE
advertised herein is
subject to the Federal
Fair Housing Act,
which makes it illegal
to advertise any
preference, limitation
or discrimination based
on race, color, religion,
sex, handicap, familial
status, or national
origin, or intention
to make any such
preferences, limitation
or discrimination. We
will not knowingly
accept any advertising
for real estate which is
in violation of the law.
All persons are hereby
informed that dwellings
advertised are available
on an equal opportunity
basis.

517 WANTED TO RENT

Senior, Widowed, Male
1-2 BR Apartment.
Oregon or Mt. Morris.
Non-Smoker. No Pets.
Call 815-275-6239
(RNL03032024)

307 MISCELLANEOUS FOR SALE

NEW MILFORD REFRIGERATION

NEW, USED SCRATCH & DENT

- Refrigerators • Freezers
- Washers/Dryers • Stoves

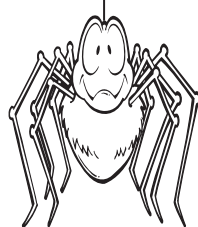
We also carry a
large selection
of refurbished
appliances with a
warranty.

6331 11th Street, Rockford
815-262-3900

04092023



ADVERTISE
WITH US



103 AUCTIONS

OGLE COUNTY LAND AUCTION TUESDAY, MARCH 12 - 1:00 PM



This land is located 2 miles N of Byron,
or 10 miles SW of Rockford, Illinois

THE LORANDA GROUP, INC
800.716.8189 Bloomington, IL loranda.com



Everybody hates you.

Not sure
why business
is slow?



is not just
a saying
in business.

Advertise today
and let your
business be in sight
and in the minds of
your customers.

You don't see
bullying like
this every day.
Your kids do.

Teach your kids how to
be more than
a bystander.

Learn how at
StopBullying.gov

Ad
Council

WI
WAITT INSTITUTE
FOR VIOLENCE PREVENTION

FREE TO BE...
YOU AND ME
FREE TO BE FOUNDATION INC.





The businesses featured on this page are

"Hubs Super Fans"

They proudly support our local athletes and students.

Please show your appreciation by patronizing their businesses.

WE SUPPORT OUR HUBS!



HUB SPOTLIGHT



(COURTESY PHOTO)

Rochelle wrestler Nehemiah Andronic shows off his first-place award from the 2024 Champaign Grappler tournament on Sunday, Feb. 18 at Centennial High School.

Junior Hub wrestlers clash at Champaign Grappler event

BY RUSSELL HODGES
SPORTS EDITOR

CHAMPAIGN — The Rochelle Wrestling Club sent five athletes to the 2024 Champaign Grappler at Centennial High School on Sunday. One athlete brought home a first-place finish, while two others secured second-place finishes and one took home a third-place finish.

Nehemiah Andronic finished first in the Bantam 65-69 Division with a 3-0 record. Andronic scored a 5-1 decision over Built by Brunson's Lincoln Projansky and a 4-3 decision over SJO Spartan YWC's Benson Damler. Andronic clinched the division championship in the final round, securing an 11-2 major decision against Wilmington

Wrestling Club's Lodi Morgan.

Wells Millard took second in the Bantam 50-54 Division with a 2-1 record, earning a 9-0 major decision over TJ Trained Wrestling's Zackary Vest and SJO Spartan YWC's Carson Gallo.

Elias Andronic took second in the Bantam 55-58 Division with a 2-1 record, notching a 15-0 technical fall over Mt. Zion Kids WC's Briggs Patrick and an 11-2 major decision over Olney's Jack Abell.

Teddy Millard placed third in the Novice 71-74 Division with a 2-2 record, securing a fall over Storm Youth WC's Drake Reed and a 15-2 major decision over Glenview Junior Titans Wrestling's Ryan Silver.

Landon Leigh took fifth in the Novice 97-99 Division.

VINCE'S PIZZA
SINCE 1967

Ordering Online is easy when you use our QR Code!

We are Proud to Support the Rochelle Hubs!

815.562.7300
Delivery & Curbside Pick Up
1071 N 7th St, Rochelle, IL • vinctspizzainrochelle.com

Hello, neighbor!

Huber Ins and Fin Svcs Inc.
Shane B Huber, Agent
221 E. IL Rt. 38
Rochelle, IL 61068
Bus: 815-562-7011

Please stop by and say, "Hi!"
I'm looking forward to serving your needs for insurance and financial services.
Like a good neighbor, State Farm is there.
CALL ME TODAY!

State Farm

DLX Medical GROUP

Caring for your family's health from infant to adults.

For appointment, please call
815-227-9594
1212 Currency Ct, Rochelle, IL 61068
Most Insurance Accepted

Local People Providing Local Service

Rochelle MUNICIPAL UTILITIES

Water • Waste Water
Electric • Communications

Phone: 815-562-4155 333 Lincoln Highway
Fax: 815-562-5861 Rochelle, IL

www.rmu.net

CENTRAL ILLINOIS LOAN

Loans For All Your Needs
Auto • Home Improvement • Vacation

Jami Hackman • Tonia Holland

815-561-4035!

310 Eagle Drive, Rochelle
All loans subject to our normal credit requirements and policies.

MORTON BUILDINGS

If you can dream it, we can build it.

Rochelle Sales Office • Hwy. 251 N. • 877-613-3050

Rochelle Community Hospital

Your Local Healthcare Resource.

900 N. 2nd Street, Rochelle
815-562-2181
www.rochellehospital.com

MEYERS FURNITURE & FLOORING

209 Powers Road, Hwy 251 N
Rochelle, IL 61068
(815) 562-8792
www.meyersfurniture.com

Bruns Construction, Inc.

Tim & Roger Bruns, Owners
Established 1997

• Residential & Commercial
• Concrete
• Additions

815-561-0099
Free Estimates • Fully Insured
www.brunsconstructioninc.com

Kish KISHWAUKEE COLLEGE

Helping you create the life you want.

kish.edu

QUEEN'S TRUCKING & CONSTRUCTION, INC.

Small or Big Construction Jobs, We Do Them All!

We Aim for On Time, Every Time!

Queens Trucking & Construction Inc
322 Errett Road, Rochelle
815-562-6064 | **queens-trucking.com**

ANDERSON PLUMBING & HEATING, INC.

Plumbing, Heating & Cooling
Water Heaters, Water Softeners,
Drinking Water Systems, Iron Filters,
Sewer Rodding & Jetting & More!

Since 1976

621 First Ave., Rochelle
(815) 562-8784

HAYDEN REAL ESTATE INC.

GOOD LUCK HUBS FROM YOUR FANS AT:

RESIDENTIAL
AGRICULTURAL
COMMERCIAL

815-562-2111 ★ hre@haydenreinc.com

GO HUBS!

Rochelle Chiropractic Clinic
Dr. Chad M. Piller

227 E. Rt 38 • Rochelle, IL
815-562-8706
www.rochellechiropractic.com
Now Accepting New Patients!

Alfano's Pizzeria and Italian Restaurant

Taste The TRADITION
Taste The DIFFERENCE

• Best Pizza • Pasta
• Italian Restaurant
• Appetizer/small plate
• Family Restaurant • Local Business

Pizza • Pastas
Sandwiches • Salads and Lots More!

Dine-In • Carry Out • Home Delivery
1115 TURKINGTON TERRACE, ROCHELLE
815-562-3312

JOHNSON TRACTOR

SALES • PARTS • SERVICE

200 Steward Road
800.262.1680
www.johnsontractor.com

HUB-REMSEN PRINT GROUP

101 Maple Ave • Rochelle, IL 61068
815.562.7057 • **hub-remsen.com**

GO HUBS!

"Proudly Serving the Rochelle Area Since 1945"

Berg-Johnson Electric

FREE ESTIMATES
Licensed and Insured

Residential • Commercial • Industrial

24 Hour Emergency Service
815-562-4937
500 Cleveland Avenue

JEFF PERRY

We are Ogle County's only GM Dealer!

• Collision Repair
• 24 Hour Towing
• New/Premowned Vehicles and Models
• Tires, Alignments, Brakes, Batteries

• Rental Cars
• Maintenance On All Makes and Models

Auto Group
JEFF PERRY
815-562-8787 **www.jeffperrychevrolet.com**

Busy Schedule? Leave the cooking to us.

• Large menu of foods
• Rochelle's famous chicken by the dinner or bucket
• Hand dipped ice cream (16 flavors)

COUNTRY SCHOOL DRIVE-IN RESTAURANT
251 N. ROCHELLE • 562-6039

Stillman BANK

GO HUBS!

Earning Your Trust Since 1882
www.stillmanbank.com Member FDIC