



ROCHELLE News-Letter

WEEKEND EDITION | WWW.ROCHELLENEWS-LETTER.COM

SUNDAY, FEB. 18, 2024

LOCAL NEWS... LOCAL VIEWS

\$1.25

Today's RNL issue
sponsored by
Community
Unity
member:

**PEMBERTON PLUMBING,
HEATING & COOLING INC.**

815-561-6119
pembertonplumbingheating.com

Vol. 104 • No. 85

Tilton School paving bid approved

Informational meeting on facilities sales tax is Feb. 26

BY JEFF HELFRICH
MANAGING EDITOR

ROCHELLE — At its monthly meeting Tuesday, the Rochelle Elementary School District Board of Education unanimously approved a \$437,000 paving bid for Tilton Elementary School.

District Business Manager Kevin Dale said the work will include expanding the parking lot to try to get buses off the road into the parking lot area, adding more parking, and improving drainage. Paving work will be done at Rochelle Township High School as well, but the elementary board only approved the Tilton portion.

"That \$437,000 portion is to tear out, redo and extend and add that additional parking including some of the water retention areas," Dale said. "That work will start as soon as school is out and will be done by July."

The district is currently in the process of working towards \$14-16 million worth of needed renovations at Tilton School after finding in a health life safety evaluation that an estimated \$7.8 million



(PHOTO BY JEFF HELFRICH)

At its monthly meeting Tuesday, the Rochelle Elementary School District Board of Education unanimously approved a \$437,000 paving bid for Tilton Elementary School.

worth of work is required at the school for those issues. Health life safety concerns the physical safety of the building for students and staff to occupy. The district plans to issue bonds for that money in the coming months and wants to utilize an additional \$6-8 million from its reserves for other improvements involving security and spatial concerns including its pick-up and drop-off areas.

The work will be done in a three-year plan, which would begin in 2024.

At its January meeting, the board held a public hearing concerning its intent to sell an amount not to exceed \$10 million in school fire prevention and safety bonds in the future for upcoming work at Tilton School.

At Tuesday's meeting, the board unanimously approved a bond resolution

to refund its 2015 bonds not to exceed \$600,000 as part of its future Tilton School project funding plans.

"We're trying to do health life safety funding, but the state has not finalized or approved the final health life safety survey yet, so we can't move ahead with that portion of the funding we talked about," Dale said.

See **SCHOOL** page 3

Bid awarded for water main project

BY JEFF HELFRICH
MANAGING EDITOR

HILLCREST — At its monthly meeting Wednesday, the Hillcrest Village Board of Trustees unanimously approved the awarding of a bid contract to Elliott & Wood, Inc. for \$1.037 million for its priority 1A water main project that will take place this year.

Elliott & Wood was the low bid of seven bids received. The project plans to replace mains along the full length of Scott Avenue, parts of Errett Road and Erickson Road from Scott Avenue to Jeffrey Avenue, and parts of Jeffrey Avenue from Errett Road to Erickson Road. Those streets are in the southern and oldest part of the village.

The board also approved a construction oversight agreement with Baxter & Woodman, its engineering firm, for the project at a cost of \$124,000.

See **HILLCREST** pg 3

More coverage.
Less spendage.

Discounts up to 40%
Get more. Spend less. It's that simple
when you get car insurance from us.
Like a good neighbor, State Farm is
there. CALL FOR A QUOTE 24/7.
Terri Schaefer, Agent
Bus: 815-562-7063
terri.schaefer.115n@statefarm.com



State Farm Mutual Automobile Insurance Company,
State Farm Indemnity Company, Bloomington, IL

KNOW IT TODAY



Car strikes Flagg Center homes

A vehicle struck two homes in Flagg Center after the driver suffered a medical emergency.
Page 2

WEATHER

SUNDAY	MONDAY
HIGH LOW	HIGH LOW
43 26	48 26
TUESDAY	WEDNESDAY
HIGH LOW	HIGH LOW
53 31	57 39

Today's RNL issue
sponsored by
Community
Unity
member:

Bruns
Construction, Inc.
PO Box 400
815-561-0099

OBITUARIES

NONE

INSERTS

• MENARDS
• KISHWAUKEE COLLEGE

INSIDE

Local News.....2, 3, 5, 8
Obituaries.....4
Opinion.....6
Community.....7



8 52078 00112 6

Ribbon cutting held for Rochelle Recovery Center

'We're just trying to let people know that there is hope'

BY JEFF HELFRICH
MANAGING EDITOR

ROCHELLE — On Tuesday, a ribbon cutting ceremony was held for the Rochelle Recovery Center at 242 May Mart Drive in Rochelle.

The Rochelle Recovery Center serves Ogle and DeKalb Counties as a Sauk Valley Voices of Recovery entity. It offers peer coaching, recovery meetings, a safe place for people who are on the verge of using, and recovery-related resources. The location opened in August 2023.

Sauk Valley Voices of Recovery is a recovery community based out of Dixon. For the past three years, it has covered Lee, Whiteside and Ogle counties and recently started coverage of addiction needs in DeKalb County. The Rochelle Recovery Center is also the hub for the Ogle-DeKalb counties recovery-oriented system of care (ROSC) council, which brings together a coalition of local stakeholders from hospitals, police departments, businesses and more to look at the area and its addiction needs to try to get it moving in a positive



(PHOTO BY JEFF HELFRICH)

On Tuesday, a ribbon cutting ceremony was held for the Rochelle Recovery Center at 242 May Mart Drive in Rochelle.

direction.

"We're just trying to make sure that everybody in the community is involved with the ROSC, anybody that has decision-making capability or that is a person of lived experience," Ogle/DeKalb ROSC Coordinator Heather Tomlinson said.

"We want to make sure that everybody's voice is heard and that the people that can solve the problems for the people whose voices need to be heard are there to do that."

SVVOR Executive Director Gerald Lott said he got involved with helping

those in the community with substance abuse issues after battling addiction of his own and noticing barriers to treatment when he tried to get substance abuse help for his daughter.

"At that point I realized I needed to do something to help," Lott said. "I quit

my other job and went into this full-time and took a leap of faith. I ended up with an amazing team. We're just keeping things going. We're just trying to let people know that there is hope."

See **RRC** page 8

Holcomb Bank Rochelle | New Milford | Creston | Byron
Where Relationships Matter

Save the Date - 2024 Trips!

Grand Victoria Casino, Elgin IL - June 20th
Galena & Massbach Winery, Galena IL - August 15th
Columbia & Snake River Cruise - September 1-9
Reefs & Rhythms Oceania Cruise - December 3-13

Contact Julie at 815.561.2627 for more information!



February is cold but you don't have to be. Replace your furnace with Anderson.



ANDERSON
PLUMBING & HEATING, INC.
621 First Ave. • Rochelle, IL
815-562-8784

LOCAL NEWS



Car struck pole on Illinois Route 38 on Wednesday afternoon

(PHOTOS BY JEFF HELFRICH)

On Wednesday at approximately 2 p.m., a vehicle struck a telephone pole in the 200 block of Illinois Route 38 in front of Dunkin' Donuts. The vehicle then traveled offroad into the parking lot of the Rochelle News-Leader before avoiding multiple vehicles and coming to a stop. The Rochelle Police and Fire Departments responded to the scene and tended to the driver, the lone occupant of the vehicle. The striking of the telephone pole knocked out power to parts of the north side of Rochelle, and Rochelle Municipal Utilities arrived following the crash and restored power after a short outage.

City releases 2024 events schedule

(PHOTOS BY JEFF HELFRICH)

ROCHELLE — The City of Rochelle recently released its 2024 events schedule.

March will see the city's hiring expo on March 7, the Lucky Hub Dash on March 9, and the Easter Eggstravaganza on March 30.

April will see the Fireman's Ball on April 13 and the CAN Food Truck Festival on April 13.

May will see the Cinco de Mayo Fiesta on May 4, and Railroad Days from May 18-19.

June will see the Movie in the Park on June 21 and the Outdoor Market on June 29.

July will see the Independence Day Celebration on July 5, Flight Deck Fireworks on July 6, and the Outdoor Market on July 27.

August will see National Night Out on Aug. 6, Lincoln Highway Heritage Festival from Aug. 16-18, and the Outdoor Market on Aug. 24.

September will see the Outdoor Market take place on Sept. 28.

Hay bales will be on display for the whole month of October. That month will also see the CAN Food Truck Festival on Oct. 19, Trick or Treat Safehouse on Oct. 24, the Outdoor Market on Oct. 26, the Vein Drain Blood Drive on Oct. 30, and Trick or Treat on Oct. 31.

November will see the Two-Ton Food Drive on Nov. 21 and Small Business Saturday on Nov. 30.

December will see Giving Tuesday on Dec. 3 and the Old-Fashioned Christmas Walk on Dec. 6.

For more information on events, visit cityofrochelle.net.



Car strikes two homes in Flagg Center after driver suffers medical emergency

On Feb. 13 at approximately 3 p.m. the Ogle County Sheriff's Office, Rochelle and Flagg Center Fire/EMS, Ogle County Emergency Management, and Flagg Township responded to the 15,000 block of East Flagg Road in rural Rochelle for the report of a car versus house accident. Upon conducting an investigation, it was determined Christopher Speiden, 55, of Ashton, suffered a medical emergency causing him to lose control of his vehicle where he proceeded off of the road before striking two houses. With the collective efforts of the local area residents, witnesses, first responders, township workers and Atlas Towing, the scene was secured and Speiden was safely assisted from the vehicle where he received medical treatment on scene.

UW-Platteville announces dean's list

PLATTEVILLE, Wis. — The University of Wisconsin-Platteville announces its dean's list, honoring those full-time students who earned high honors in the fall 2023 semester.

College of Business, Industry, Life Science and Agriculture and the College of Liberal Arts and Education require grade-point averages of 3.75 and above for dean's list honors, while the College of Engineering, Mathematics and Science requires students to reach at least a 3.5.

Students from this area on the dean's list include:

Chana: Rylee Jackson*, Animal Science BS, UW-Platteville.

Rochelle: John Green, Mechanical Engineering BS, UW-Platteville. Morgan Haas, Marketing BBA, UW-Platteville. Katie Van Hise, Biology BS, UW-Platteville.

Lincoln Manor



Owned and operated by Lutheran Social Services of Illinois (LSSI) offering apartment living for older adults in Rochelle and the surrounding communities.

Rent based on 30% of a Resident's Adjusted Gross Income

Full time Social Service Coordinator is available to assist residents

For more information, please call 815-562-1404

- Secure Entry System
- Community room with kitchen
- Activities
- On-site coin operated laundry
- On-site management office
- Dependable 24/7 maintenance service
- On-site parking for residents

615 N. Lincoln Hwy.
Rochelle, IL 61068
TTY 847-390-1460

MANAGED BY:
Lutheran Social Services of Illinois
www.LSSI.org

07262023

Locals named to WIU Dean's List

MACOMB/MOLINE — A total of 1,183 undergraduate students enrolled at Western Illinois University were named to the fall 2023 dean's List. The total includes 107 students at the WIU-Quad Cities Campus.

To receive this award, an undergraduate student must earn at least a 3.6 grade point average on a scale of 4.0, which equals an A in a minimum of 12 credit hours of graded courses; pass-fail hours are not counted (e.g., student teaching, internships).

Local honorees included: Diego A. Escobar (senior) of Rochelle, and Sierra Harris (senior) and Tyler D. Reyes (senior) of Franklin Grove.

ENJOY SOME **COOL SAVINGS** WITH THE NEWS-LEADER'S **Subscription special**

\$19 OFF (Regular Subscription Rates)

START OR RENEW A 52-WEEK SUBSCRIPTION FOR JUST **\$120.00**

Yes, please start or renew my subscription!

Enclosed is my \$_____ check for the option marked below.

☐ 12-Month Subscription for \$120.00

Name: _____ Address: _____

Phone: _____ Email: _____

Offer expires on February 28, 2024

Mail form & check to: P.O. Box 46, Rochelle, IL 61068 or drop off and pay at 211 Hwy 38 E, Rochelle, IL

LOCAL NEWS

HILLCREST: Village trustees discuss dedicated patrols

From page 1

The project is contingent on the receipt of an IEPA loan, which the village plans to receive for the project with 50 percent loan forgiveness. The debt service on the project would be \$35,000 paid annually over 20 years. The project could break ground in mid-April.

The project has been on the village's radar for a number of years. A greater water main replacement project was considered in the past, but was trimmed down to the areas of greatest need.

Policing

The board discussed the idea of dedicated patrols in Hillcrest by the Ogle County Sheriff's Office. Village President Rick Rhoads recently spoke with the Ogle County Sheriff's Office and obtained a quote of \$80 per hour. That would be the only cost to the village, besides paying deputies for their time in court on Hillcrest cases.

Rhoads said the hours would be part-time and on

a rotating basis. The village would be interested in having patrols during first and second shift times.

"When they're supplying everything including vehicles, insurance and all that, I think for \$80 an hour it would be a good deal," Rhoads said. "I'm thinking 10-12 hours a week to start."

Lead

The board unanimously approved a service agreement with Baxter & Woodman to assist with a state-required water service line inventory and a lead service line replacement plan if lead is found in Hillcrest. The village received a grant for \$30,000 to pay for the work.

Hillcrest must provide an inventory to the state on how many lead water service lines it has running into homes, if any. The work will involve sending surveys to residents who will be able to check their own water lines and provide information to the village. The village also received an extension from April to September for the



(PHOTO BY JEFF HELFRICH)

The board discussed the idea of dedicated patrols in Hillcrest by the Ogle County Sheriff's Office. Village President Rick Rhoads recently spoke with the sheriff's office and obtained a quote of \$80 per hour.

inventory submission to the state.

If lead is found in Hillcrest, the village will be required to put together a replacement plan, send out notifications and replace the lines.

Water operator

The village unanimously approved an agreement

with Test Inc. to become its new water operator firm for \$6,000 a year. The cost is the same as the village's previous water operator.

"They keep us in line with the EPA and IEPA and have a lot of new information on ways we can improve and be more efficient," Village Water Trustee Dan Potter said.

"Our previous operator has been falling off with what they've been doing and we'll be sending them a cancellation notice."

Chip seal

The board unanimously approved a plan for its 2024 chip seal program that will include Errett Road, Rosalind Road, Erickson

Road, Powers Road, and Linda Avenue. Trustees also approved a resolution to continue participating in the county's group bid program for chip seal work to obtain lower rates. Village Engineer Kaitlin Wright said the price will be higher than in years past, and Hillcrest's share is estimated to be \$33,543.

SCHOOL: Elementary board approves instructional coaching program

From page 1

"We don't want to lose the opportunity to have some savings on refunding. We will be doing a one-year refunding to save on interest and repayment. And then we'll come back once the state approves the health life safety to go

ahead with borrowing for Tilton School."

Sales tax

Superintendent Jason Harper said the district will be hosting an informational meeting on the county school facilities sales tax referendum item that will be appearing on

the March 19 election ballot on Monday, Feb. 26 at 5:30 p.m. at Lincoln School. The same presentation will be given in Spanish at 6:30 p.m. that same night.

The presentation will include the basics of the county school facilities sales tax, and answers to

frequently-asked questions. Information will also be put out to the community via social media.

A law passed in 2007 to allow for a county-wide sales tax in Illinois to benefit schools for expenses including facilities, security, mental health services and school resource officers. The sales tax must pass in a county by referendum during an election. That has not taken place in Ogle County, and the measure failed on the ballot locally back in 2013. There are 57 counties in Illinois that have the county schools facilities sales tax.

The referendum would have to pass on the ballot county-wide. The sales tax can be a maximum of one percent in quarter-percent increments.

The additional sales tax would apply to items that are already taxed, with the exception of vehicles and unprepared food. Based on the most recent numbers, a county schools facility sales tax could net the elementary district \$813,202 per year. Along with facilities, security, mental health services and school resource officers, the money can be used to abate property taxes and make rates lower for property owners within the district.

The elementary school district has seen large ex-

penses recently as it deals with aging buildings. Tilton Elementary School was built in 1949. Central Elementary School was built in 1939 and May Elementary School was built in 1959.

It was said at the Rochelle Elementary School District's November meeting that it could leverage that hypothetical \$813,202 a year in new sales tax funds into about \$8.8 million in projects.

RMS

The board heard an update on Rochelle Middle School from RMS Principal Jordan Young. The school's mid-year data is better than it was in 2022.

"It's much more positive," Young said. "One of the big challenges we see in our data from this point forward is keeping middle school kids motivated. Especially with some of our older kids. Assessments are taken in May when summer is coming and high school is around the corner and we need kids to buy into that. We've changed some things and we're talking more with kids about that and we're seeing better trends."

The RMS tutoring program with Northern Illinois University students has expanded into another classroom and more tutors are being recruited.

"Staff overall are see-

ing a boost in the self-esteem of those students," Young said. "They're raising their hands more in class and that's hopefully resulting in higher scores for them on assessments."

Funding for the next year of the program is expected, but a "wait-and-see" approach is being taken.

Instructional coaching

The board unanimously approved a new instructional coaching program for the district's teachers. Harper said the transition will take place next year and the purpose is to work alongside teachers in a non-evaluative manner. Teachers will have a trained coach to help them work through what's going on in classrooms.

"The point is to be focused on how we can create the conditions for more growth to be happening in the classroom," Harper said. "We feel the positions we've been dedicating as curriculum coaches can pivot their purpose to more of this instructional coaching."

The new instructional coaching program will now have the job position posted for applicants with plans to start in the fall. The program's effectiveness will be evaluated over three years.

VOTED BEST REAL ESTATE AGENCY

2022 VOTED BEST OF OGLE COUNTY

2023 VOTED BEST OF OGLE COUNTY

HAYDEN REAL ESTATE INC.

225 IL-38, Rochelle, IL | hre@haydenreinc.com | 815-562-2111

Hayden Real Estate, Inc. has served Ogle County for 50 over years!

We THANK YOU for your support!

Spencer Hayden

Tim Hayden

Sherry Murphy

Jeff Reif

Ron Frakes

Vicki Pemberton

Amy Hayden

We look forward to serving the community for many years to come!

02182024

TAX PREPARATION TIME

Brown's Tax Service

Carolyn Brown
Jade Brown
Marilyn Oropeza

2023 VOTED BEST OF OGLE COUNTY

Let the BEST TAX PROFESSIONALS in the BEST TAX OFFICE in OGLE COUNTY prepare your 2023 taxes!

Bookkeeping, Payroll & Tax Preparation Services

Contact Us For Your 1099 Forms

361 IL Route 38 | Rochelle, IL
815-561-6861 | carolyn@brownstaxoffice.com | www.brownstaxoffice.com

To be included in the Tax Preparation Time Guide call:

Chris Ackland
815-561-2153

Andrew Heiserman
815-561-2123

Chris Grimm
815-561-2125

Teach Kids about Electrical Safety!

Some important lessons include:

- Water and electricity do not mix
- The only objects that go into outlets are electric plugs
- Never stick fingers or objects in electrical appliances
- Electric cords should be left alone

Rochelle MUNICIPAL UTILITIES

Local People Providing Local Services

815-562-4155

333 Lincoln Hwy., Rochelle • www.rmu.net

01272019

LOCAL NEWS

(COURTESY PHOTO)



American Legion met Feb. 14

American Legion Post 403 had its first general meeting of the year on Feb. 14 at the Petro truck stop. Avalynda Casey, director of client relations of Castor Home Nursing, spoke on services for veterans including medical supplies, health maintenance and home nursing. From left to right: John Gruben (commander), Paul Bearrows (chaplain), Gary Tarvestad (sargent at arms), Casey, Chuck Roberts (senior vice-commander), Erick Welles (finance officer) and Steve Korth (adjutant).

Kish College Early Learning Center receives accreditation through 2027

MALTA — The Kishwaukee College Early Learning Center (ELC) has received continuing accreditation from the National Accreditation Commission for Early Care and Education Programs (NAC) through 2027. The Kish ELC provides high-quality early childhood care and education for children ages 1-5.

Serving more than 1,300 early learning programs in 35 states, NAC offers early childhood leaders the opportunity to demonstrate and document quality performance using research-based criteria and evidence-based practices. The Kish ELC last received accreditation in 2019 and has worked to complete an intensive program evaluation to maintain NAC accreditation standards.

Following its review, the NAC granted the Kish ELC continuing accreditation in November.

“The ELC staff works hard every day to make sure the quality measures outlined in the NAC standards are met, allowing us to provide high-quality care to children and their families. We work to create a welcoming, safe environment where we can foster the development of the children in our care,” Maria Lombardo, director of the Early Learning Center, said.

The ELC has undergone various improvements since its last accreditation in 2019. In 2020, the College received a grant from the Illinois Department of Commerce and Economic Opportunity to relocate the ELC. State Rep. Jeff Keicher (R-Sycamore)

and former state Rep. Tom Demmer (R-Dixon) were instrumental in helping the College secure funding to support the project. The center moved to a newly renovated space in the college’s campus operations building in 2021, allowing the ELC to increase enrollment, expand services and improve facilities.

Along with the NAC accreditation, the ELC has received the Gold Circle of Quality rating in the ExceleRate Illinois Quality Rating and Improvement System administered by the Illinois Department of Human Services.

The Kish ELC offers part-time and full-time enrollment options and is open to the public. To learn more about the ELC or enrolling a child in the program, visit kish.edu/elc.

City electronics recycling events set for 2024

ROCHELLE — The City of Rochelle recently announced its 2024 electronics and bulk trash drop-off events. An electronics & trash event will take place April 6. An electronics-only event will take place July 27. An electronics & trash event will take place on Nov. 2. The events will take place at the city’s street department, located at 251 E. 1st Ave. The events are limited to City of Rochelle residents only and proof of address is required.

A maximum of seven items per household will be accepted. No business items, please. A list of accepted items is as follows: Cable Receivers,

Cell Phones, Computer Cables, Computers (desktop, laptop, tablet), Digital converter boxes, DVD players & remotes, DVR consoles & remotes, Electronic keyboards & recorders, Electronic mice, Fax Machines, Answering Machines, FAX Machines, CD Players, CD ROM Drives, Copy Machines, Digital Clocks, Floppy disk, tape and hard drives, Microwaves, Pagers, Radios, Shredder (no paper tub), Telephones, Network Wires & Extension Cords, PDA Device, MP3/CD Players, Printers, Satellite Receivers, Scanners, Small-scale servers, Televisions (all types) & remotes, Video game

consoles & controllers, VCR Players, CDs, DVDs, Floppy Disks (no sleeves or cases), Zip drives, Adding machines/Calculators, Cameras & Camcorders, Electric Typewriters, Joysticks, Modems, routers, network switches, Projectors, Rechargeable Batteries, Stereo Equipment (no wood speakers) and UPS Battery Backups.

Not accepted: Single Use Batteries, Fryers, Mixers, Blenders, Smoke Detectors, Fluorescent tube bulbs, Vacuums, Air conditioners, Appliances, Ovens/toasters, Coffee Makers, Fans, Light Fixtures, Power tools, Electric razors & toothbrushes and Packing materials.

REPORT POLICY

Any arrests listed in this paper are merely charges and the defendants are presumed innocent unless proven guilty in a court of law. Please note that all police reports received from the Rochelle Police, the

Ogle County Sheriff’s Department and the Illinois State Police, will be printed without exception. Requests to omit particular reports will not be considered or honored at any time.

OGLE COUNTY SHERIFF’S DEPARTMENT

OREGON — On Feb. 13 at approximately 10:25 a.m. deputies initiated a traffic stop in the 19,000 block of East Illinois Route 72 in Monroe Center. After further investigation, deputies arrested Adam Malone, 33, of DeKalb, for driving while license suspended. Malone was additionally cited for failure to obey a stop sign. Malone was released on a notice to appear with a future court date given.

On Feb. 14 at approximately 2:41 a.m. deputies responded to a one-vehicle rollover accident with

an injury in the 2,000 block of North Meridian Road. After investigation, deputies learned a black Jeep Commander, driven by 18-year-old Marco Hernandez was traveling northbound in the 1,700 block of North Meridian Road. Hernandez then lost control of his vehicle and swerved off the west side of the roadway before returning to the roadway. Hernandez’s vehicle then overturned at least once before coming to rest upright in the middle of the roadway. The Jeep sustained heavy damage. Her-

nandez was transported to Swedish American Hospital for non-life-threatening injuries by Stillman Valley EMS and Fire. The accident remains under investigation.

On Feb. 14 at approximately 10:32 a.m. Juan G. Gutierrez, 29, of Rochelle turned himself in for an outstanding Ogle County traffic warrant. Gutierrez received a recognizance bond and was released with a return court date of March 11.

All individuals are considered innocent until proven guilty.

ROCHELLE POLICE DEPARTMENT

ROCHELLE — On Feb. 13 at 2:58 p.m. Tyron J. Moore, 27, of Rochelle was arrested on an outstanding DeKalb County warrant. He paid \$375 and was released with a Feb. 26 DeKalb County court date.

On Feb. 13 at 9:36 a.m. Tina L. Champlain, 52, of Stillman Valley was cited for speeding 48 miles per hour in a 30 miles per hour zone. She signed a promise to comply and was given a March 15 Rochelle court date.

On Feb. 13 at 10:18 a.m. Miriam E. Wagner, 20, of Esmond was cited for speeding 62 miles per hour in a 45 miles per hour zone. She signed a promise to comply and was given a

March 15 Rochelle court date.

On Feb. 13 at 12:49 p.m. David E. White, 20, of Elgin was cited for speeding 62 miles per hour in a 45 miles per hour zone. He signed a promise to comply and was given a March 15 Rochelle court date.

On Feb. 13 at 2:20 p.m. Clayton R. Lindgren, 24, of Sterling was cited for speeding 51 miles per hour in a 30 miles per hour zone and for no insurance. He signed a promise to comply and was given a March 15 Rochelle court date.

On Feb. 13 at 4:05 p.m. Matthew P. Meyer, 39, of Batavia was cited for disobeying a stop sign. He signed a promise to

comply and was given a March 15 Rochelle court date.

On Feb. 13 at 10:20 a.m. Brenda J. Wheeler, 44, of DeKalb was cited for speeding 51 miles per hour in a 30 miles per hour zone. She signed a promise to comply and was given a March 15 Rochelle court date.

On Feb. 13 at 1:45 p.m. Msughter Dzoho, 26, of DeKalb was cited for speeding 60 miles per hour in a 40 miles per hour zone. He signed a promise to comply and was given a March 15 Rochelle court date.

All individuals are considered innocent until proven guilty.

(COURTESY PHOTO)



Kings School Builders Club helps pack food

The Builders Club of Kings School took a trip to Aurora to help pack food for the organization Feed My Starving Children. The Builders Club helped to pack 78 boxes, which is 16,848 meals. Kings School had a “bring your quarters to school” drive, which helped the students make a donation of \$1,000.48 to the organization. Dennis Swinton and the Golden K made a donation as well. Thank you for your support.

ISP Troop 1 announces monthly activity for January 2024

STERLING—Illinois State Police Troop 1 Captain Joseph Blanchette has announced enforcement figures and activity for January.

Illinois State Police Troop 1 Troopers issued 726 citations, 997 written warnings, and made 26 criminal arrests during the month of January.

Troopers issued 241 citations for speeding, 18 citations for distracted driving violations and 17 citations for occupant restraint violations.

Troopers investigated 138 traffic crashes, assisted 612 motorists, and conducted 316 commercial motor vehicle inspections, 33 of which

were placed out-of-service for safety reasons. There were 22 arrests for driving under the influence.

Troop 1, which encompasses Boone, Carroll, Jo Daviess, Lee, Ogle, Stephenson, Whiteside and Winnebago counties, investigated one fatal traffic crash in January.

ROCHELLE News-Leader

211 IL Route 38 East, Rochelle, IL 61068
(815) 562-4171

USPS (467-820) ISSN (1075-2811)
Published every Wednesday and Sunday by Rochelle Newspapers Inc. at 211 E. State Route 38, Rochelle, IL 61068. Periodical postage paid at Rochelle, IL 61068. Postmaster send address changes to the Rochelle News-Leader, P.O. Box 46, Rochelle, IL 61068. Subscription rates are \$139.99 per year by mail in Ogle County. Outside county rate is \$149.99 per year. No mail delivery in newspaper-carrier serviced areas. The circulation department is open Monday through Friday from 8 a.m. to 5 p.m. If you are a carrier subscriber and your paper does not arrive, contact Kelly White at 561-2112.

IN-COUNTY REGULAR SUBSCRIPTION RATES

- \$139.99 for one year • \$79 for six months
- \$34.99 for three months • \$13.99 for one month

Call (815) 561-2112 or
Visit our website at
www.rochellenews-leader.com



HOW TO CONTACT US

News-Leader Main Switchboard (815) 562-4171

General Manager
Tonja Greenfield (815) 561-2124

Newsroom Staff
Jeff Helfrich, Managing Editor (815) 561-2151
Russ Hodges, Sports (815) 561-2152

To Place a Display Ad
Andrew Heiserman (815) 561-2123
Chris Ackland (815) 561-2153

To Place a Legal Ad
Mike Feltes (815) 561-2124

To Place a Classified Ad
Andrew Heiserman (815) 561-2123
Chris Ackland (815) 561-2153

Subscriptions and Delivery
Kelly White (815) 562-4171



Ready to Paint?

HIRE A PRO!

Veteran-Owned * Free Estimates * Insured

- * Interior & Exterior Painting
- * Residential/Light Commercial
- * Cabinet Painting & Refinishing
- * Trim Finishing & Painting
- * Deck, Porch, Pergola, Fence & Playset Restoration & Staining
- * Agricultural Buildings & Barn Painting
- * Light Carpentry/Drywall Repair
- * Wallpaper Removal
- * New Construction & Remodel Painting Services
- * Pressure Washing Services
- * Concrete Staining, Coating and Sealing



Goodman
PAINTING LLC
Quality • Craftsmanship

815.222.9920
goodmanpainting.net

LOCAL NEWS

Kishwaukee College Foundation announces local spring 2024 scholarship recipients

MALTA — The Kishwaukee College Foundation is pleased to announce the student scholarship recipients for the Spring 2024 semester. The foundation awarded 196 scholarship awards totaling \$181,972. Scholarship funds are made possible through generous gifts from members of the community, local businesses and industries, and area agencies and associations. Students are selected on a competitive basis, according to each scholarship’s specific requirements.

Kishwaukee College students from the local area received the following awards:
Altrusa International of DeKalb County Scholarship — Grace Barnes of Rochelle.
Beulah & Roberta Hackett Endowment — Humberto Valdez of Rochelle.
Bud & Kay Stocking Rochelle Rotary Endowment — Julia Berry of Rochelle.
Charles & Mary Roberts Memorial Endowment for Nursing — Michele Lidren of Rochelle.

Dean & Betty Burge-meister Endowment — Laura Valdez of Rochelle, Sarah Snow of Rochelle.
Diane McNeilly Education Endowment — Jessica Lechner of Holcomb.
Emma Anderson Fund — Ahtziri Zepeda of Rochelle.
Employee Give Scholarship Fund — Damian Nava-Barrientos of Rochelle.
Founder’s Endowment Fund — Sara Collins of Malta.
Jeremy “JD” Davis Memorial Endowment — Damen Harrington of

Rochelle.
Jesus Romero Hispanic Endowment — Damian Nava-Barrientos of Rochelle.
Kishwaukee College Alumni Association Scholarship — Grace Barnes of Rochelle.
LaVerne “Dutch” Johnson Memorial Fund — Julia Berry of Rochelle, Emily Frazier of Lee, Hannah Seaworth of Lindenwood.
Law Enforcement Lifelong Learning Scholarship — Damen Harrington of Rochelle.
Ruth Ashelford Pollock Horticulture Fund — Fran-

cis Vowels of Rochelle.
Ruth Ashelford Pollock Nursing Fund — Ceci Vargas of Rochelle, Rita Walsh of Rochelle, Sherlyn Rojas of Rochelle, Sydney Marshall of Lee.
Ruth I. Hall Nursing Endowment — Jessica Solis of Rochelle.
Stoltz-Caruthers Family Scholarship — Grace Barnes of Rochelle.
Tom & Nancy Roberts Endowment — Asher Wiegartz of Rochelle.
Vernon & Dorothy Smith Memorial Endowment — Tommy Kozioł of Rochelle, Kendal Ansteth

of Rochelle, Ceci Vargas of Rochelle.
Wayne McIlrath Family Scholarship — Laura Valdez of Rochelle.
Students who wished to remain anonymous are omitted from this list.
The Kishwaukee College Foundation scholarship application period for the Fall 2024 semester will be open from Thursday, Feb. 1, to Friday, March 1. For more information on Foundation scholarships, contact the Kishwaukee College Foundation at 815-825-9790 or visit kish.edu/kcfscholarships.

Northern Rehab to host food drive for area food pantries

ROCHELLE—Northern Rehab Physical Therapy Specialists is hosting a Food Drive Feb. 19-March 1 to collect non-perishable food items to benefit food pantries that serve the DeKalb, Sycamore, Genoa and Rochelle communities.

Donations will support Barb Food Mart, Spartan Food Pantry, Genoa Area Food Hub, and Rochelle Christian Food Pantry. Non-perishable items needed include canned meat (chicken, tuna), cereal, pasta, dry goods, canned

foods (soups, sauces, fruits, or vegetables), rice, beans, applesauce, paper goods, personal care items, diapers, cleaning products, or any non-perishable items that have a longer shelf life. Items may be dropped off at any Northern Re-

hab locations in DeKalb (3266 Sycamore Road), Genoa (540 E. Main St.), or Rochelle (1211 Currency Court). For more information, please visit northernrehabpt.com or call 815.756.8524. Thank you in advance for your

support and contribution!
Northern Rehab Physical Therapy Specialists, voted DeKalb County’s Best Physical Therapists for 12 consecutive years and Ogle County’s Best Physical Therapist for five years, is a physical thera-

pist owned and operated physical therapy practice dedicated to providing clients with the very best one-on-one customized care and has built a solid reputation and strong relationships within the communities they serve.

Rochelle Area CHURCH DIRECTORY

Ashton Bible Church, corner of Main and Paddock in Ashton. Pastor Farrel Stauffer, church phone is (815)453-2190, church website www.ashtonbible.org. Sunday School for all ages 9:00-10:00am, Morning Worship 10:15am, Wednesday Prayer Meeting/Bible Study 6:30-8:00pm.

The Bridge Church, Pastor Greg Duncan, 11038 E. IL Route 38, Rochelle, IL 61068. Phone: 815-562-7750. Sunday School: 9:00 am; Sunday Service: 10:00 am; Nursery & Children’s ministry during am service; Bible Study Tuesday 10:00 am and Wednesday 7:00 pm. Web: thebridgechurchrochelle.com Email: thebridgechurchrochelle@gmail.com

Calvary Lighthouse Church, Assemblies of God, Senior Pastor, Dr. James Horvath. 14409 Hemstock Rd., Rochelle. Sunday Morning: Sunday Worship & Children’s Church 10:00 A.M., Wednesday Evening 7:00 P.M. – Adult Teaching, Missionettes & Royal Rangers Childrens Classes, Nursery available for all services. HE-Brews Cafe is open before and after services. For further information, please call the CLC office at 815-562-7701, or email us at staff@calvarylighthouse.com

Calvary Lutheran Church, LCMC - “To Know Christ and to Proclaim Christ in Word and Deed” - 19 Perry Road, Lee, IL 60530 (the intersection of Perry Road and W. County Line Road). Rev. Martha Uecker Nelson, Pastor. Coffee Hour starts at 9:00 a.m., Sunday School, Confirmation, and Adult Bible Study are at 9:15 a.m. Worship is at 10:30 a.m. and is broadcast live on Facebook. Go to our website is at www.Calvarychurchlee.org and click on the link there. A Grief Support Group meets the third Tuesday of each month at 10:00 a.m. Call or text (815) 824-2825 or email CalvaryLeeIL@gmail.com with questions or for more information. Also check us out at www.facebook.com/Calvary-Lutheran-Church.

Rochelle Church of Christ, Keeping Christ at the center in the Hub City. We meet Sundays at 9:00am for Bible Study and 10:00am for worship. We also have a Wednesday Bible Study at 7:00pm. 206 Erickson Rd, Rochelle, IL 61068. You can call us at (815) 562-6572 or visit us on the web at rochellechurch.com. We also have a radio program Sundays just after 8am on WRHL 1060AM. Minister Dominic Venuso.

Creston United Methodist Church and Steward United Methodist Church - Rev. Ilhan You, Creston: 126 West South Street, P.O. Box 209, Creston, Illinois 60113. Sunday morning worship 9:00am. Coffee fellowship at 10:15am. Steward: 507 Main Street, P.O. Box 80, Steward, IL 60553. Adult Sunday School, 10:00am. Sunday morning worship and Children’s Sunday School 11:00am. Contact the church office at 847-730-4370 for more information. facebook.comcrestonumcil facecebook.com/stewardilumc

Elim Reformed Church, 140 S. Church Road, Kings, IL 61068. Phone: 815-562-6811. Email goelimchurch@gmail.com Website www.goelimchurch.org Sunday Morning Worship 10:00 Rev. Marv Jacobs

Faith Lutheran Church – (14206 E. Flagg Rd.) – “Making Christ Known Through Lives of Faith.” In-person worship is available each Sunday at 9:00 a.m. or online at “Faith Lutheran Social” on YouTube. Worship resources are also available on our Facebook page - ‘Faith Lutheran Church ELCA.’ You may also e-mail Pastor Joy Alsop at Pastor@faithlcrochelle.org for more information. All are welcome to join us!

First Baptist Church of Rochelle, First Baptist Church of Rochelle invites you to experience our practical Bible services which have nurseries provided in every service along with a wide range of children’s and teen ministries. Sunday School is at 9:30 am with regular church services at 10:30 am and 1:00 pm. Wednesday Family Night starts at 6:30 pm with AWANA for the 5 yr. olds thru 6th grade. The Omega Teen Ministry also starts at 6:30 pm for 7th – 12th grades and the Adult Bible Study at 7:00 pm. First Baptist Church is located 6 blocks west of Hwy 251 at the corner of Woolf Ct. and 8th Ave. in Rochelle. Call 562-4168 for more information . Listen at 8:30 am Sunday mornings on WRHL 1060 AM for the Sunday morning “Bible Message.” www.firstbaptistrochelle.org


First General Baptist Church, 500 S. 12th St, Rochelle. Phone: 815-562-5221. Email: fgbcrochelle@gmail.com. Website: www.fgbcrochelle.org. Facebook: www.facebook.com/fgbcrochelle. Pastor: Rev. Angelo Bonacquisti. **Sunday worship services:** 8:30 am, 11:15 am and 6:00 pm. **Sunday school:** 10:00 am. We’d be honored to have you join us as we worship JESUS and continue to grow in truth and love for God and each other. A nursery, children’s church, youth group and small groups are available. If you need a ride please contact our church bus driver, John, at (815) 262-4275 by 8:30 am on Sunday. “For if you confess with your mouth that Jesus is Lord and believe in your heart that God raised him from the dead, you will be saved” Romans 10:9

First Presbyterian Church – An Amazing Place for Amazing Grace- Rev. Doug Forsberg, Senior Pastor. 1100 Calvin Road, Rochelle. Email: info@placeforgrace.com. Sunday morning worship 9:00am and 10:30am. In person or streamed online. On our Website and Facebook Live. www.placeforgrace.com/ www.facebook.com/placeforgrace

Grace Fellowship Church — Pastor Jeff Ardissonne, 2128 Il Route 38, Ashton, 815-453-7464. Sunday School 8:30 a.m. Sunday Worship Service 9:45 a.m. www.graceisforyou.com

Harvest Baptist Church 241 Scott Ave. (Hillcrest). Rev. Duane Boehm, pastor. Email duane712@hotmail.com, cell 815-757-3427. Visit us on Facebook! Service times: Sunday morning worship with Children’s Church at 10 am. Wednesday night worship at 7 pm.

Immanuel Lutheran Church Missouri Synod 16060 E. Lindenwood Road, Lindenwood, IL 61049. Rev. Dr. Matthew Rosebrock. Church Phone 393-4500. Church Worship 9:00 a.m. Sunday School Christian Education Hour at 10:30 a.m.

Living Water Community Church 405 N. Main St, Downtown Rochelle. Phone 815-561-6249, Website: www.lwccr.com, Like us on Facebook. We are Non-Denominational, Christ Centered, Casual dress, Christ Centered Live Band Worship. Mike Vogeler - Outreach and Seven C’s Pastor, Chris Bender- Teaching Pastor and Doug Bunger - Missions and Children’s Pastor. Sunday Worship Service- 10:00am. Nursery/Toddlers Ages 0-5 available during the service in the Splash building. Swim- Grades 1st-5th worship with the adults then break out for age appropriate teaching. Youth groups, Small groups, Life Groups and Workshops meet throughout the year for Bible teaching. 7C’s Mission- serves the community physically & spiritually each month from 1135 Lincoln Hwy, providing lightly used clothing, Hygiene items, a light lunch and Elder Prayer open the second Saturday from 10am-2pm and the 4th Thursday from 4pm to 7:00pm and by appointment.. 

New Hope Fellowship (Church of God - Anderson, IN), 1501 10th Ave., Rochelle, IL 61068. Service: Sunday at 9 a.m. 10:30 a.m., (815)561-8400, www.NHFchurch.net Pastor: Dan Sergeant and Pastor Nick Tornabene. (Classes for children through age fifth grade during service.)

Rochelle United Methodist Church welcomes everyone to their worship service, and practices openness for all activities including communion. Worship is at 9:00 am. Sunday school for children begins around 9:15, following the Children’s Time in worship. A fellowship time with food and space for conversation occurs in Hicks Hall every week following the worship service. We celebrate communion with an open table on the first Sunday of every month, and on other appropriate occasions. Youth group is on Sunday evenings from 5:30-7:30. Our youth program includes service projects, discussion topics, Bible Study, and lots of fun and fellowship together. Some of our activities include packing meals at Feed My Starving Children, helping at Rochelle Christian Food Pantry and 7C’s, working with animals at Barn on Baseline, Mystery trips (Destination Unknown!), and Interactive experiences on Dating boundaries, refugees, and homelessness. Youth group is for grades 6-12 and friends are always welcome. Recorded services are available on our YouTube channel and our website at www.rochelleumc.com. Our services are on the radio (93.5 FM) on Sunday mornings at 9:00 am. Our Facebook page is www.facebook.com/rochelleumc. **Our pastor is the Rev. Dr. Katherine Thomas Paisley.** Our address is 709 Fourth Ave. (815) 562-2164. Email is admin@rochelleumc.com. At Rochelle United Methodist Church, everyone is welcome and loved!

St. Patrick Catholic Church Rev. Jesus Dominguez; Deacon Fermin Garcia; Deacon George Schramm; 244 Kelley Dr. (Corner of Kelley & Caron Rd.), PO Box 329, Rochelle, IL 61068. **Office Hours:** 9:00 AM- 4PM Monday-Thursday, Phone: 815-562-2370. **Mass times:** 8:00 AM Monday-Thursday, Saturday Vigil Mass 5:00 PM English, 7PM Spanish, Sunday Mass 7:30 AM, 9:00 AM in English and 11:00 AM in Spanish. **Confessions:** Monday 8:30AM & 6:30PM, Tuesday 8:30AM, Saturday 8:30am & 4:00-4:45 PM Or by appointment. **Religious Education:** Deacon George Schramm, Director of Religious Education. 903 Caron Road, Rochelle, IL 61068, 815-561-0079; Website: stpatricksrochelle.com Email: stpatrick-rochelle@rockforddiocese.org Facebook.com/StPatrickRochelle

St. Paul Lutheran Church “Building Relationships in Christ, Now and Forever!” Steven Hall, Principal, Parish Nurse-Marcia Schnorr. 1415 Tenth Ave., Rochelle. Church Office-562-2744. Worship times: 6:00 p.m. Saturday, 9:00 a.m. Sunday. Our service is broadcast over WRHL 1060AM at 10:00 a.m. Sunday. Sunday School 10:15-11:15 a.m. Call 562-6323 for more information about the school.



LOCAL VIEWS

Illinois volunteer firefighters excluded from cancer presumption laws

THE work firefighters do is among the most essential, needed, but hazardous jobs worldwide. Firefighters not only save lives when a fire breaks out but are often the first responders in other emergencies, too. The job comes with many risks to their life and health, such as heat stress and associated cardiovascular disease, accidents, exposure to various toxic chemicals, and consequently, an increased risk of developing certain job-related cancers.

Many may not know that most firefighters in the U.S. are volunteers. According to statistical data collected by the U.S. Fire Administration (USFA), almost 70% of the firefighters nationwide are volunteers. USFA's data also shows that in January 2024 in Illinois, 79.3% of the registered fire departments were volunteers, while only 20.7% were career fire departments.

As there is enough evidence by now that

firefighters are more at risk of developing certain job-related cancers than the population in general due to their exposure to toxic substances, some states adopted the Cancer Presumption Law that attributes the firefighter's cancerous condition to their job. However, most states did not include volunteer firefighters in their Cancer Presumption Laws. The National Volunteer Fire Council (NVFC) identified that more than half of the states in the U.S. are not legally bound to support volunteer firefighters who have cancer with any form of compensation or disability benefit. One such state is Illinois.

The Cancer Presumption Laws have been voted across the U.S. as there is plenty of evidence that cancer, in the case of firefighters, is a job-related illness. One of the reasons for developing cancer is that firefighters have been working for decades with aqueous film-forming foam (AFFF). This fire-

fighting foam has a large concentration of per- and polyfluoroalkyl substances (PFAS). PFAS are a group of toxic chemicals, often called "forever chemicals," because they are persistent and bioaccumulative once they enter the environment, especially groundwater. Studies show that long-term exposure to PFAS causes numerous health issues, including various types of cancers. On top of that, firefighters often use or wear protective gear that contains PFAS, as these "forever chemicals" have been widely used by manufacturers since the 1950s.

The results of a recent medical study published in 2023 demonstrate that the risk of skin, prostate, testicular, brain, nervous system, rectal cancers, and non-Hodgkin lymphoma is significantly higher among firefighters than among the general population. Another study published in 2020

by the National Institute for Occupational Safety and Health, Cincinnati, showed an elevated mortality rate from all cancers among firefighters compared to the general population. Finally, a study published in 2021 by the International Journal of Environmental Research & Public Health focused exclusively on volunteer firefighters' PFAS exposure and concluded that they have higher PFAS levels in their organisms compared to the general population. The researchers emphasized that even though volunteer firefighters represent a majority vis-

à-vis carrier firefighters, they are underrepresented in health and exposure studies. The Workers' Occupational Diseases Act of Illinois states that a firefighter disabled by cancer should receive an occupational disease disability benefit, which should be 65% of the previously received salary. Thus, only career firefighters can receive the most needed financial assistance.

Cancer does not differentiate between firefighters, though. On what basis can state officials then decide who may receive occupational disease disability benefits when there is evidence that all firefighters are

more prone to developing and dying of cancer than the average citizen due to their public safety duties and the dangerous conditions of their job? Cancer treatment costs are an immense financial burden on most individuals and their families. The initial care for one patient is around \$43,516 and can go up to \$109,727 in the last year of life on average, according to the National Cancer Institute. These are astonishing numbers. Illinois volunteer firefighters put their lives in danger for the public good and should receive the same treatment and financial benefits as employed firefighters.

Jonathan Sharp is a chief financial officer at the Environmental Litigation Group, P.C., based in Birmingham, Alabama. The firm is dedicated to assisting civilian and military firefighters exposed to toxic chemicals, especially PFAS. Jonathan is mainly responsible for case evaluation, financial analysis, and asset management.



Jonathan Sharp

Reducing ag greenhouse gas emissions

OVER the next five years, millions of dollars could be funneled into efforts to help farmers rotate their crops, preserve their soil, improve how their animals are fed and, along the way, significantly reduce the 10% of U.S. greenhouse gas emissions that come from agriculture.

If, that is, the 2023 Farm Bill actually gets passed and if, unlike last time around, it includes significant funding for climate-smart farming practices. Both are big ifs. Even before the actual text of the proposed Farm Bill is released, some in Congress are pushing to shift money away from conservation and climate change and instead make already high payments for rice, peanuts and cotton even higher.

It's also not clear if the Farm Bill, the now 90-year-old piece of legislation that is the basis for U.S. agricultural policy and which must be re-upped every five

years – will be passed this year in the face of Congressional dysfunction, a possible government shutdown and an upcoming presidential election.

Started in 1933 during the depths of the Depression as a way to support farmers, the Farm Bill has become the single largest piece of federal legislation that supports the livelihoods of farmers, ranchers and dairymen across the county.

It assists farmers with risks, provides payments for many crops – primarily corn, soy, wheat, and rice – and funds efforts to protect farm soil and water. A significant portion of the funding, about 80%, goes to low-income families to buy food through the Supplemental Nutrition Assistance Program known as SNAP.

What the next Farm Bill might include isn't yet known. Both the House and Senate committees on agriculture are working on versions but neither have been released and aren't likely to be until the House

and Senate are ready to move.

Agriculture accounts for about 10% of U.S. greenhouse gas emissions, according to the Environmental Protection Agency. That makes the Farm Bill, the United States' main food and farming legislation, a potentially critical part of the fight against climate change.

The continued investment in sustainability, be it conservation, nutrient management or climate smart agriculture ... is about the long-term viability of the American agricultural industry.

On a positive note, changes to the Farm Bill could help agriculture go from something that produces a significant amount of greenhouse gasses to something that's an important part of the solution.

There's already strong evidence for land management techniques farmers can use to produce fewer

emissions and keep carbon in the soil, including practices that improve soil health, reduce erosion and improve water quality. But given the razor-thin margins they operate under, it takes federal support to help the nation's food growers make the shift.

Some of those techniques include:

Planting cover crops and using crop rotation to keep soils healthy so they hold more carbon.

Timed and targeted to reduce nitrogen emissions into waterways and the atmosphere.

Researching feeding regimes and additives to keep livestock from producing as much methane in their burps.

Some of these practices are already becoming popular with farmers and the U.S. Department of Agriculture has programs to support them, funded in part by \$18 billion from the Inflation

Reduction Act.

On average, there are about twice as many farmers who want conservation assistance from USDA than there is funding available for. We have strong demand for these programs. Farmers understand the benefits and that they're investing in their farms and farmland.

To get every American farmer involved will require more money but it will be money well spent, say advocates.

We can sequester a lot of carbon in the soil. It takes time but it's a key solution to lowering carbon dioxide levels in the atmosphere. The nice thing is that it's a win-win – it improves the soil and helps us adapt to climate change.

Dysfunction in Congress is likely pushing off the legislation that cultivates the fields of American agriculture. The 2018 Farm Bill can be extended, but that means hopes for dramatic reforms that could help fight climate change won't come this

year, advocates say.

Whether or not an individual farmer or rancher even believes in climate change, overall they're eager to lower costs and strengthen their soil and waterways. In addition, there's a growing understanding that this is something the shoppers want.

Consumers are increasingly interested in both where their food comes from and the climate impact of what they eat. By helping America's farmers, ranchers, and growers continue adoption of more climate-friendly farming practices, the recommendations will help producers meet growing consumer preferences.

But also, farmers and ranchers are increasingly realizing that they have a positive role to play in mitigating and adapting to climate change.

"Agriculture not only gives riches to a nation, but riches she can call her own." -Samuel Johnson

Ron Kern is the manager of the Ogle County Farm Bureau.



Ron Kern

How to contact government officials

U.S. Con. Darin LaHood
1424 Longworth HOB
Washington, D.C.
20515
(202) 225-6201

IL Sen. Win Stoller
Stratton Office Bldg
Springfield, IL 62706
(217) 782-1942

IL Rep. Bradley Fritts
Stratton Office Bldg
Springfield, IL 62706
(217) 782-0535

Have a letter you want to submit to us? Send it to (news@rochelle-news-leader.com)

KEEPING YOU IN TOUCH WITH YOUR LOCAL LEADERS

* Denotes Chairman/President

Rochelle City Council

*John Bearrows	jbearrows@rochelleil.us
Kathryn Shaw-Dickey	kshaw-dickey@rochelleil.us
Bil Hayes	bhayes@rochelleil.us
Rosaelia Arteaga	rarteaga@rochelleil.us
Dan McDermott	dmcdermott@rochelleil.us
Tom McDermott	tomcdermott@rochelleil.us
Benjamin Valdivieso	bvaldivieso@rochelleil.us

Rochelle Elementary School Board

*Trisha Vaughn	tvaughn@d231.rochelle.net
Dave Casey	dcasey@d231.rochelle.net
Steve Builta	sbuilta@d231.rochelle.net
Ashley Jackson	ajackson@d231.rochelle.net
Stephanie White	swhite@d231.rochelle.net
Javier Zepeda	jzepeda@d231.rochelle.net
Jennifer Thompson	jthompson@d231.rochelle.net

Rochelle Township High School Board

*Tom Huddleston	tom.huddleston@rthsd212.org
Bill Ravnaas	bill.ravnaas@rthsd212.org
Jeff Tilton	jeff.tilton@rthsd212.org
Bobby Chadwick	bobby.chadwick@rthsd212.org
Brent Ohlinger	brent.ohlinger@rthsd212.org
Laurie Pillen	laurie.pillen@rthsd212.org
Joel Thompson	joel.thompson@rthsd212.org

Flagg-Rochelle Park Board

Brent Carmichael	bcarmichael@rochelleparkdistrict.org
John Dobbs	jdobbs@rochelleparkdistrict.org
Dale Wells	dells@rochelleparkdistrict.org
*Tim Hayden	thayden@rochelleparkdistrict.org
Jodie Hart	jhart@rochelleparkdistrict.org
Joe Lenkaitis	jlenkaitis@rochelleparkdistrict.org
Kristi Gonzales	kgonzales@rochelleparkdistrict.org

Ogle County Board Dist. 3

Austin Gillis	agillis@oglecounty.org
Dan Miller	dmiller@oglecounty.org
Joseph Simms	jsimms@oglecounty.org

Ogle County Board Dist. 4

Jackie Ramsey	jramsey@oglecounty.org
Skip Kenney	skkenney@oglecounty.org
David Williams	dwilliams@oglecounty.org

Creston Village Board

*Tom Byro	tommyb_47@yahoo.com
Greg Hopkins	ghopkins522@comcast.net
Steve Katzman	skatzman@essex1.com
Mike Kerns	ac.kerns@comcast.net
Curt Ward	caward92@comcast.net
Mark Hibshman	
Reid Elliot	
Jennifer Payton	

Hillcrest Village Board

*Richard Rhoads	rrhoads@hillcrestil.us
Pam Pittman	ppittman@hillcrestil.us
Dan Potter	dpotter@hillcrestil.us
Tim Ball	tball@hillcrestil.us
Jose Huerta	jhuerta@hillcrestil.us
Eileen Braski	ebraski@hillcrestil.us
Joe Thompson	jthompson@hillcrestil.us

Flagg Township

Sue Messer	flaggtwp@rochelle.net
Joanna Patrick	flaggtwpcerk@rochelle.net
Susan Rothenberger	assessor@rochelle.net
Scott Seebach	scottseebach@gmail.com

Board of Trustees

Lance Noggle	noggle62@gmail.com
Eric Gruben	egruben@comcast.net
Susan Hager	susanhager303@comcast.net
Jim Kenney	jimk@rocketsupply.com

Flagg-Rochelle Library

*Jaqueline Dickow	dickow@comcast.net
Teresa Haggstad	haggstads@comcast.net
Michael Scanlan	scanlan@comcast.net
Lanning Nicoloff	nicoloff118@comcast.net
Sheri Klindera	alwayslefty2@gmail.com
Susan Sevedge	nit1prl22@yahoo.com
Darci Waltrip	doobs12@comcast.net

LETTERS TO THE EDITOR POLICY

The Rochelle News-Leader encourages responsible letters to the editor on subjects of interest to our readers. Editing may be necessary for space, clarity or to avoid obscenity or libel, but ideas will not be altered. All letters must bear the handwritten signature of the writer and include address and phone number or e-mail address for verification purposes. Neither the street address nor phone number will be printed. Letters should be typed or

legibly handwritten, and no anonymous letters will be published. Any letters from boards or organizations must include at least one name of an individual. Any criticism of public officials should be limited to issues related strictly to their position or actions made in office, as personal attacks will not be published. Letters involving private disputes between the writer and a business will not be published. Political endorsements will be published, however

letters from candidates endorsing themselves will not be printed. Letters may be dropped at the News-Leader office (211 IL Route 38 East), mailed to the News-Leader (P.O. Box 46, Rochelle, IL 61068) or e-mailed (news@rochellenews-leader.com.) The News-Leader reserves the right to edit or reject any letter to the editor for any reason, and letters chosen for publication do not necessarily reflect the views of this newspaper.

COMMUNITY

Applications available for Northern Rehab scholarship for RTHS seniors

ROCHELLE—Northern Rehab Physical Therapy Specialists is pleased to announce scholarship applications are now being accepted for their annual Northern Rehab Health & Wellness Scholarship. The scholarship criteria are for Rochelle Township High School seniors that have participated in a sport or extracurricular activity in high school and will pursue a career in health-care. Applications are now available at the RTHS

Counselors Office, online at rths@rthsd212.org and on Northern Rehab's website at <https://northernrehabpt.com/scholarships/>. Completed applications are to be submitted to the athletic director by March 15. The scholarship recipient will be announced and awarded the scholarship at the RTHS 2024 Senior Awards Night. This annual scholarship has been awarded to RTHS seniors since 2017. Past recipients include

Christina Payton, Hannah Cruz, Alexander Harvey, Katherine Bakken, Kaylee Brown, Ayah Sbeith, Madison Ost, and Anastasia Harvey. Northern Rehab, voted Ogle County's Best Physical Therapists five consecutive years, is a local and privately-owned physical therapy practice that provides cost-effective, one-on-one physical therapy care. A doctor's prescription is not required for physical therapy, which means you can immediately begin treatment and start feeling better right away. You don't need to live in pain. Choose Northern Rehab for your physical therapy care and stop letting pain control your life. For more information about Northern Rehab please visit northernrehabpt.com or call 815.562.3299. Additionally, you may find Northern Rehab on Facebook, Instagram, Twitter, and LinkedIn.

Wisconsin-Platteville announces chancellor's list

PLATTEVILLE, Wis. — The University of Wisconsin-Platteville recently announced its

chancellor's list, honoring current students with perfect 4.0 grade-point averages for the fall 2023

semester. Students from this area who earned the 4.0 grade-point average include:

Chana: Rylee Jackson, Rochelle Township High School, Animal Science BS, UW-Platteville.

THE KITCHEN TABLE MENU

7034 S. Klondike Road | Rochelle, IL 61068 | 815-561-9074

If you would like to volunteer with us, please email us at kitchentablerochelle@gmail.com

February 20 – (Tuesday) – CLOSED

February 22 – (Thursday) – Chicken Fritters with Mashed Potatoes, Country Gravy, Green Beans, Corn

February 27 – (Tuesday) – CLOSED

February 29 – (Thursday) – Spaghetti with Meat Sauce, Salad, Bosco Sticks

KIDS MENU: Chicken Nuggets w/Fries OR Hot Dogs with Chips

**All menus are subject to change. If you would like to check before coming out, please call us at 815-561-9074

www.KitchenTableRochelle.org

BIRTHDAYS & ANNIVERSARIES

Feb. 2
Barb Breitlz
Rod & Pat Frye
(anniversary)

Feb. 5
Ken Wise

Feb. 7
Garry Adams

Feb. 11
Madrene Adams

Feb. 12
Barb Hintzsche
Frank & Barb
Hintzsche
(anniversary)

Feb. 15
Evelyn Baker
Matt Frye

Feb. 18
Sam & Jessica South
(anniversary)
Sven Norris
Joachim Lopez

Feb. 20
Christian Losoya

Feb. 21
Kris Oleson
Anna Sexton

Feb. 22
Jessica South
Lucy Hazlip
Greg Vant

Feb. 23
Valerie Newton

Feb. 25
Wanda Usury
Feb. 28
Ben Altice

Feb. 26
Natalie Powell

Feb. 27
Beth Bolhouso

Feb. 28
Lucas Donoho

March 2
Addison Perkins

March 5
Briggs Bridgeman

March 6
Nicole King

Call 815-561-2151 to submit names for birthdays and anniversaries



Coffee Break

MAGIC MAZE

GRAINS AND OILSEEDS

R W T Q N J G D A X U R O L J
S A F F L O W E R G D A X V S
P S N K I F C C A X V S Q O L
J H E E C A X A V T R P N L J
H S O R G H U M M U S T A R D
F D B Y C R Y E S E V I L O X
V T R P X Y E L R A B O O M K
I G E D A O N I U Q B Z N X W
U T R Q L O C N R O C N A L J
I G F D F E T A E H W K C U B
C A Y S T U N A E P X W V T S

Find the listed words in the diagram. They run in all directions forward, backward, up, down and diagonally. Unlisted clue hint: AND KETCHUP

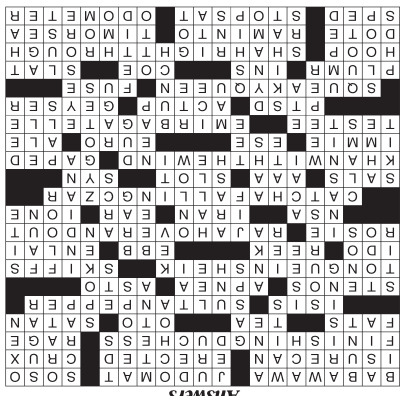
Barley
Buckwheat
Camelina
Canola

Corn
Flax
Olives
Peanuts

Pennycress
Quinoa
Rice
Rye

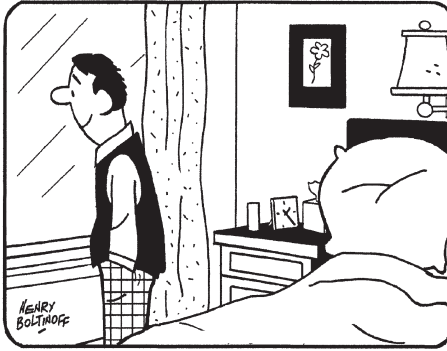
Safflower
Sorghum
Wheat

©2024 King Features Syndicate, Inc. All rights reserved.

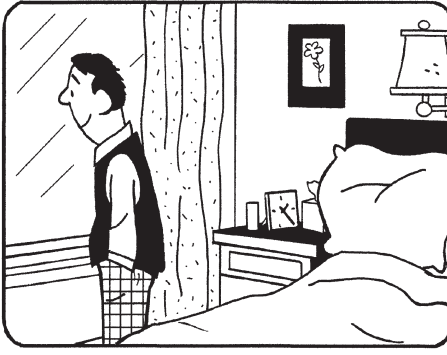


HOCUS-FOCUS

BY HENRY BOLTINOFF



Find at least six differences in details between panels.



Differences: 1. Flower picture is reversed. 2. Clock is larger. 3. Nose is different. 4. Pillow is different. 5. Curtain is wider. 6. Drawer is missing.

Super Crossword

RULING PARTY

ACROSS

1 Gilda Radner character on "Saturday Night Live"
9 Certain martial arts surface
16 Just OK
20 Enthusiastic reply to a request
21 Raised, as a building
22 Central point
23 British ruler applying veneer?
25 Violent anger
26 Nutrition Facts category
27 Brewed beverage
28 Great Plains tribe
29 The Devil
30 Nile goddess
33 Turkish ruler's pungent condiment?
38 Quaint office transcribers
41 Sleep study diagnosis
42 Regarding
43 Something a French-kissing Arab ruler has?

DOWN

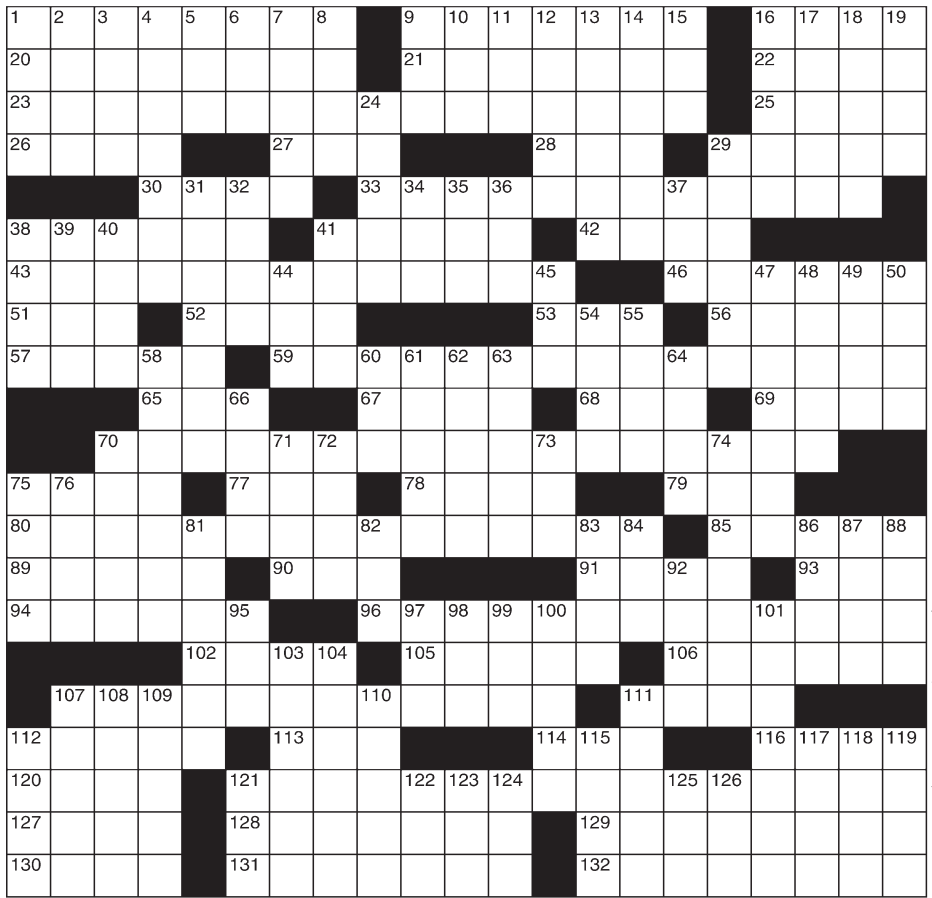
46 Small sailboats
51 Nuptial vow
52 Really smell
53 Kind of tide
56 China's Zhou —
57 Actress Perez
59 Hindu ruler's radio sign-off?
65 Secretive U.S. org.
67 Tehran's land
68 Jug handle
69 Sky of film
70 Save the Russian ruler from tumbling to the ground?
75 Actors Mineo and Landi
77 Car club initials
78 Coin-op hole
79 Thesaurus entry: Abbr.
80 Afghan ruler caught up in a tornado?
85 Stared in amazement
89 Agate playing marble, informally
90 Lingo suffix
91 Greek money
93 Brewed beverage

94 Exam taker
96 Very easy task for a Muslim ruler?
102 Many a war vet's affliction
105 Behave badly
106 Yellowstone gusher
107 English ruler making mouse sounds?
111 Bomb part
112 Liquid — (Drano rival)
113 Electees
114 Iowa college
116 Louver strip
120 Hula —
121 What's revealed by taking an X-ray of a Persian ruler?
127 Shower affection (on)
128 Butt forcefully
129 Waters north of Australia
130 Went swiftly
131 Visits during a trip
132 Car mileage recorder

2 Tibet locale
3 Bat very gently
4 Emerging
5 Actor Studi
6 Herr's "Alas!"
7 Sits tight
8 Writer Rice
9 Pa Clampett
10 Arg. neighbor
11 Last mo.
12 Goller Lorena
13 Volcano in E. Sicily
14 — Fables
15 Six-pt. plays
16 Shredded bit
17 Pontificate
18 Fructose, e.g.
19 Yoked yaks
24 Utters breathlessly
29 Oral
31 Most vinegary
32 "Understood"
34 Sch. in the Granite State
35 Director Ang
36 Mai — (drink)
37 UFO pilots
38 Commotion
39 Commotion
40 Actress Mireille —
41 Singer Paul

44 Ending for cash
45 Comedian Hart, casually
47 Hoosier State
48 Building story
49 Part-goat god
50 Where it's at
54 "It's — real!"
55 Boast
58 Irritated
60 Big name in peanut butter
61 Break out in —
62 Actress Berry
63 Set to a slow speed
64 Bow shapes
66 Berry of Brazil
70 Some mollusks
71 Loathe
72 Oohs and —
73 "Lord, is —?"
74 Precursors of embryos
75 Brief parody
76 Cry of woe
81 Person crying
82 Golf gizmo
83 Kind of tide
84 Used a spade
86 Cronies
87 Model Macpherson
88 Doe or stag

92 Spaghetti sauce brand
95 GPS calculation
97 Egyptian — (cat breed)
98 Cold cubes
99 GPS calculation
100 Grape cluster
101 Visual insult
103 Slope-hitter's headwear
104 Energetic sort
107 Small sailboat
108 Citation
109 Officiated on the diamond
110 Vessel used to lure U-boats
111 Foul-smelling
112 Profs' degs.
115 Maestro Klemperer
117 Strong desire
118 1940s film critic James
119 "— she blows!"
121 This yr.'s grads
122 Hosp. VIPs
123 "Give — try"
124 Obtained
125 Med. group
126 DVD —



LOCAL NEWS



The ribbon cutting was hosted by the Rochelle Chamber of Commerce and City of Rochelle. Speakers included Chamber Executive Director Tricia Herrera, Mayor John Bearrows, and State Rep. Bradley Fritts. Herrera welcomed the Rochelle Recovery Center on Tuesday.

RRC: Ribbon cutting ceremony for recovery center held Tuesday

From page 1

“Sometimes it’s not that we can help the person that’s suffering. Sometimes it’s the child of the person that’s suffering. When someone calls and says they want help, we go and help them find treatment or whatever may be the next step for them. Sometimes we can’t help that person. But there’s an entire family around them. If we can stop it from becoming intergenerational, we really hope to do that.”

The Rochelle Recovery Center is available for free to anyone in the community that wants to do substance abuse support meetings. Current Rochelle Recovery Center and SVVOR projects include working on a collegiate recovery community at Northern Illinois University, putting together a recovery farm, and working on a team text line.

“Please let people know that we’re here,” Lott said. “This isn’t just a place to send the people you’re tired of listening to and dealing with. It’s also a place to send somebody who wants to help and volunteer. I believe we all have a purpose and talent and those are where we connect with people. Anybody who is in recovery, send them over and we’ll find something to do with them.”

The ribbon cutting was hosted by the Rochelle Chamber of Commerce and City of Rochelle. Speakers included Chamber Executive Director Tricia Herrera, Mayor John Bearrows, and State Rep. Bradley Fritts. Herrera welcomed the Rochelle Recovery Center on Tuesday.

“A few months ago we met with the Rochelle Recovery Center and heard its story on services provided in other areas, the needs it saw in Rochelle and how it got here,” Herrera said. “We want to welcome and thank you. You have provided the service and you know that all of the people that come here and use your services are the most important part and piece of this. We thank you for that and for investing in our community. Anything we can do for you, please let us know.”

Fritts spoke about the work that the Rochelle Recovery Center does to fight the stigma of addiction and said he works with SVVOR at the state level to help the local community.

“It’s an illness just like anything else,” Fritts said. “I think you’ve done a phenomenal job, and everyone here is a testament to it, to take a little bit of the stigma away and say that there are resources and help. There’s not one of us in this room that hasn’t been touched by it in some way, shape or form. I can’t thank you enough for that and I look forward to continuing to be a resource for you at the state level.”

Bearrows thanked the Rochelle Recovery Center’s leaders for choosing Rochelle to provide its services to help city and area residents. He offered the city’s help with anything that the center needs in the future.

“We’ve had a lot of ribbon cuttings, and I’m here to say that you folks have made the biggest impact of any ribbon cutting I’ve ever seen,” Bearrows said. “You’re not selling products. You’re about the future of people, which is a product of our environment. The way you talk about being able to help them is amazing, and I thank you for that.”

NIU adds ‘Hydropod’ vertical farming system to Edible Campus project

DEKALB — In early December, a special delivery arrived behind Northern Illinois University’s Anderson Hall. The 40-foot-by-eight-foot box may look like a standard shipping container, but inside you’ll find a complete, self-contained hydroponic farming system.

Dubbed “the Hydropod,” this container garden was provided by ComEd and EPRI (the Electric Power Research Institute) as part of a collaboration to fight food insecurity. Data provided by NIU’s Hydropod and other container gardens across the country will help researchers learn to more efficiently grow nutritious food year-round. NIU is one of four organizations in Chicagoland currently participating in the project.

“We’re thrilled to be part of this collaboration between ComEd, EPRI and local nonprofits,” says Bryan Flower, NIU assistant director of food systems innovation, who coordinates the Edible Campus program.

“This unit affords us and research opportunities for NIU students and faculty, as well as the area high schools we partner with. The Hydropod is the perfect complement to NIU’s traditional gardens and will advance the university’s focus on improving food systems and fighting food insecurity.”

According to NIU Vice President and Chief Engagement Officer Rena Cotsones, Ph.D., this project is part of a series of collaborations between NIU and ComEd. “ComEd has been a long-term partner in our efforts to build a pipeline of STEM talent in our region and bring high-quality science, technology, engineering and math education to youth of all backgrounds. We’re pleased to collaborate now to address another pressing issue facing our region: the need for sustainable food systems to provide healthy food to all communities.”

“ComEd is proud to collaborate on this exciting project that will help sustainably increase access to healthy food in our communities and provide agricultural learning opportunities using this innovative farming method,” said Gil C. Quiniones, CEO of ComEd in a December 2023 press release. “By helping the agriculture industry understand how lighting, water use and other systems impact plant production, we can help expand food resource options for disadvantaged communities across the areas we serve.”

NIU and the other Chicagoland organizations will provide 16 months of data on growing conditions, energy use and produce yield that will help to inform future container gardening efforts. After that 16-month period, the Hydropod will remain at NIU. It will continue to provide food to the NIU dining halls and Huskie Food Pantry, as well as food- and nutrition-related research opportunities for faculty and students.

The Hydropod, which was built by the company Freight Farms, is equipped with LED lighting, a high-efficiency HVAC system, recirculating water pumps, a dehumidification system, and sensors. The pod’s embedded system allows farmers to remotely control the lighting, temperature and watering conditions to create the ideal setting for produce to thrive.

The custom monitoring and verification system continuously gathers real-time data on growing conditions, allowing researchers to evaluate each farm’s operations. This project is part of a nationwide study organized by EPRI in partnership with more than a dozen utility companies. The data and resulting analysis will be made available to the public to inform and improve indoor food production in a variety of climates.

“We’re excited to be in conversations with the other Chicago area organizations that will be managing their own hydropod systems,” Flower adds. “Organizations such as Grow Greater Englewood, the Emerald South Economic Development Collaborative and the Young Men’s Educational Network of Lawndale are working to fight food deserts in their neighborhoods. We’re excited to continue growing our connections to nonprofits in the region who share our mission to make nutritious, sustainably grown food accessible to all residents.”



In early December, a special delivery arrived behind Northern Illinois University’s Anderson Hall. The 40-foot-by-eight-foot box may look like a standard shipping container, but inside you’ll find a complete, self-contained hydroponic farming system.

NIU BASKETBALL SINGLE GAME TICKETS ON SALE NOW!

MEN'S BASKETBALL
PRICES START AT

\$8

WOMEN'S BASKETBALL
PRICES START AT

\$6

GET YOUR TICKETS TODAY!
815-753-7225 | NIUHUSKIES.COM

COMING SOON!

Kids Create an ad

National FFA WEEK

FEBRUARY 17-24, 2024

The FFA Creed

Believe in the future of Agriculture with a faith born not of words but of deeds. Achievements won by the present and past generations of agriculturists; in the promise of better days through better ways, even as the better things we now enjoy have come to us from the struggles of former years.

Believe that to live and work on a good farm or to be engaged in other agricultural pursuits is pleasant as well as challenging; for I know the joys and discomforts of agricultural life and hold an inborn fondness for those associations which even in the hours of discouragement, I can not deny.

Believe in leadership from ourselves and respect for others. I believe in my own ability to work efficiently and think clearly, with such knowledge and skill as I can secure, and to the ability of progressive agriculturists to serve our own and the public's interest in producing and marketing the product of our toil.

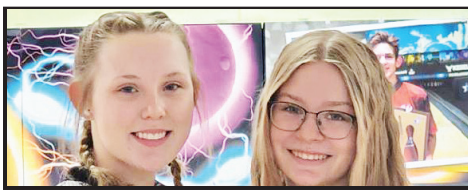
Believe in less dependence on begging and more power in bargaining; in life abundant and enough honest wealth to help make it so for others as well as myself; in less need for charity and more of it when needed. In being happy myself and playing square with those whose happiness depends upon me.

Believe that American agriculture can and will hold true to the best traditions of our national life and that I can exert an influence in my home and community which will stand solid for my part in that inspiring task.

SUNDAY, FEB. 18, 2024

ROCHELLE NEWS-LEADER • SECTION 2 • PAGE 1

SPORTS



GIRLS TAKE THE LANES

Rochelle's Cassidy Vincent and Kenzie Liezert competed at the IHSA Sectional.

See page 2 for more details

RTHS Girls Basketball

Rochelle shuts down Plano

Lady Hubs eliminate Reapers 52-33 in IHSA 3A Regional Quarterfinal game

BY RUSSELL HODGES
SPORTS EDITOR

ROCHELLE — Three Rochelle Lady Hub varsity basketball players scored in double figures on Saturday evening, when the sixth-seeded purple and white tipped off the IHSA 3A Rochelle Regional with a quarterfinal-round matchup against the eighth-seeded Plano Reapers.

Without senior guard and leading scorer Alivia Henkel, Rochelle has seen multiple players rise to the occasion on the offensive end of the floor. Senior guard Kara Martinez drilled three 3-point shots and scored a game-high 16 points, while junior forward Kendyl Darby and sophomore guard Jaydin Dickey each added 11 points as Rochelle downed the Reapers 52-33. The Lady Hubs (13-17, 2-8 Interstate 8) will face the second-seeded Rockford Boylan Titans on Monday.

“We talked as a team about how we don’t have our leading scorer right now,” head coach Jon Gehm said. “We told the girls that our offense has to come from all of us and we have to step up as a team. Kara has taken that to heart and she’s really stepped up, whether it’s been scoring or distributing the ball. We needed her to score tonight

and she got to the basket and hit some threes in big moments. Jaydin and Kendyl showed up and Kendyl was big for us down low.”

Much like they have in winning efforts this season, the Lady Hubs controlled the early portion of the game with their defense, holding Plano to just four points on two made baskets during the first quarter. Although the Reapers briefly held a lead after a 9-0 run in the second quarter, where guard Josie Larson got loose for a pair of layups, Rochelle recovered and retook control late in the second quarter, answering with a 12-3 run to earn a 22-16 halftime advantage.

“I thought we did a nice job of pressuring the ball up top,” Gehm said. “That’s been a big key for us all season. We have some decent length at the top with Jaydin and I thought we did a great job in our 1-2-2 press of getting deflections and forcing tougher passes. We forced them to the sideline where we were able to trap them. We were flying around and getting hands on the ball.”

The Lady Hubs maintained their lead with strong free-throw shooting in the third quarter, where Rochelle’s rebounding and dribble-drive penetration led to several fouls from the Reapers, who allowed the Lady Hubs into the bonus. Junior forward Abby



(PHOTO BY RUSSELL HODGES)

Senior Sydney Tabor drives around Plano’s Josie Larson during the Rochelle Lady Hub varsity basketball game against the Reapers on Saturday.

Metzger capitalized on the sloppy Plano defense, going 4-for-4 from the free-throw line in the third quarter while Dickey went 3-for-4. Five straight points from Martinez ended the quarter and put Rochelle up 35-28. With a regional semifinal

berth on the line, the Lady Hubs dominated the fourth quarter with their defense, limiting the Reapers to five points with their three-quarter-court pressure and stout half-court ball pressure. Five Rochelle players scored at least two fourth-

quarter points, enabling the Lady Hubs to coast over the Reapers in the final minutes and seal the quarterfinal win.

“Boylan’s very athletic and they’re very solid defensively,” Gehm said. “We have to take advantage of our size inside and be physical

down there. We also have to knock down shots. Defensively, we need to pressure the ball, fly around and make some plays. Hopefully we can add something that Boylan hasn’t seen yet and anything can happen in high school basketball.”

RTHS Boys Basketball

Shooting barrage leads to blowout loss at DeKalb

Barbs score 22 straight first-quarter points as Rochelle falls 94-49 on Saturday

BY RUSSELL HODGES
SPORTS EDITOR

DEKALB — A barrage of 3-pointers fueled a run of 22 consecutive points as the Rochelle Hub varsity basketball team found itself in an enormous early hole against DeKalb on Saturday.

The Barbs canned eight triples in the first quarter, with guard Unique Shaw drilling his first four of the contest including a buzzer-beater from nearly the half-court line. The 3-point onslaught ignited a 35-point opening quarter for the Barbs, who dominated Saturday’s game from start to finish and handed Rochelle a lopsided 94-49 loss. DeKalb drained 15 triples and six Barbs finished in double figures. The Hubs (10-20, 3-7 Interstate 8) trailed 35-8 after one quarter.

“It’s hard to take anything away from a game like this,” head coach Tim Thompson said. “We played two really tough teams and DeKalb is probably the best team we’ll play all season. When we’ve been getting beat the way we’ve been getting beat and DeKalb comes out and makes four 3-pointers in a row, it’s re-

ally discouraging for the kids. We’re trying to change things up on defense, but it was like a snowball rolling downhill. We weren’t able to stop anything.”

DeKalb guards Sean Reynolds and Brayson Barnhardt each knocked down three first-half triples for the Barbs, who added another 30 points in the second quarter to take a 65-22 lead at halftime. Shaw led all players with five 3-pointers made and finished with a game-high 17 points for the Barbs, who converted 11 triples over the first two quarters. Reynolds and Barnhardt each ended the game with 13 points, while Davon Grant added 12 and Justin O’Neal scored 10.

While the game was out of reach in the second half, Rochelle received an offensive boost from senior guard Eli Luxton, who scored 10 of his team-best 14 points while going 6-for-6 from the free-throw line in the third quarter. Junior guard Elijah Harley finished with nine points, while three players including Cayden Moore, Van Gerber and Jack Tilton each totaled five points. Freshman forward Brody Bruns recorded six points for the Hubs, who host Byron on Thursday.



(PHOTO BY RUSSELL HODGES)

Freshman Brody Bruns drives around DeKalb’s Justin O’Neal during the Rochelle Hub varsity basketball game against the Barbs on Saturday.



The businesses featured on this page are
"Hubs Super Fans"
 They proudly support our local athletes and students.



Please show your appreciation by patronizing their businesses.

WE SUPPORT OUR HUBS!

HUB SPOTLIGHT



(COURTESY PHOTO)

Junior Cassidy Vincent (left) and senior Kenzie Liezert (right) represented the Rochelle Lady Hub varsity bowling team at the IHSA Sycamore Sectional on Saturday.

Lady Hub duo bowls at IHSA Sycamore Sectional

BY RUSSELL HODGES
SPORTS EDITOR

DEKALB — Junior Cassidy Vincent and senior Kenzie Liezert represented the Rochelle Lady Hub varsity bowling team at the IHSA Sycamore Sectional on Saturday. Vincent rolled a 1,059 series over six games, while Liezert bowled out with a 914 series in the sectional tournament at Mardi Gras Lanes in DeKalb.

Vincent fired a 608 series over her final three games, shooting respective scores of 171, 231 and 206 to conclude the tournament. The junior rolled a 451 series with

scores of 153, 180 and 118 during the first half of the tournament.

Liezert threw a 461 series to start the tournament, bowling respective scores of 147, 173 and 141. The senior concluded the tournament with games of 150, 149 and 154 during the second half of the event. Neither bowler will advance to the IHSA State Championship meet.

Vincent wraps up her season as a three-time IHSA Sectional qualifier, reaching sectionals twice as an individual and once as a team member. Liezert ends her time with the Lady Hubs as a two-time sectional qualifier, once as an individual.

VINCE'S PIZZA
SINCE 1967

Ordering Online is easy when you use our QR Code!

We are Proud to Support the Rochelle Hubs!

815.562.7300
Delivery & Curbside Pick Up

1071 N 7th St, Rochelle, IL • vicespizzainrochelle.com

Hello, neighbor!

Huber Ins and Fin Svcs Inc
Shane B Huber, Agent
221 E. IL Rt. 38
Rochelle, IL 61068
Bus: 815-562-7011

Please stop by and say, "Hi!"
I'm looking forward to serving your needs for insurance and financial services.
Like a good neighbor, State Farm is there.
CALL ME TODAY.

State Farm

1001013.1 State Farm, Home Office, Bloomington, IL

DLX Medical GROUP

Caring for your family's health from infant to adults.

For appointment, please call
815-227-9594
1212 Currency Ct, Rochelle, IL 61068
Most Insurance Accepted

Diana Alanis, MD
Accepting New Patients

Local People Providing Local Service

Rochelle MUNICIPAL UTILITIES

Water • Waste Water
Electric • Communications

Phone: 815-562-4155 333 Lincoln Highway
Fax: 815-562-5861 Rochelle, IL

www.rmu.net

CENTRAL ILLINOIS LOAN

Loans For All Your Needs
Auto • Home Improvement • Vacation

Jami Hackman • Tonia Holland

815★561★4035!

310 Eagle Drive, Rochelle
All loans subject to our normal credit requirements and policies.

MORTON BUILDINGS
If you can dream it, we can build it.

Rochelle Sales Office • Hwy. 251 N. • 877-613-3050

Rochelle Community Hospital
Your Local Healthcare Resource.

900 N. 2nd Street, Rochelle
815-562-2181
www.rochellehospital.com

MEYERS FURNITURE & FLOORING

209 Powers Road, Hwy 251 N
Rochelle, IL 61068
(815) 562-8792
www.meyersfurniture.com

Bruns Construction, Inc.
Tim & Roger Bruns, Owners
Established 1997

• Residential & Commercial
• Concrete
• Additions

815-561-0099
Free Estimates • Fully Insured
www.brunsconstructioninc.com

GO HUBS!

Alfano's
Pizzeria and Italian Restaurant

Taste The **TRADITION**
Taste The **DIFFERENCE**

Dine In • Carry Out •
• Home Delivery • Pizza • Pastas •
• Sandwiches • Salads •
• and Lots More!

Dine-In • Carry Out • Home Delivery
1115 TURKINGTON TERRACE, ROCHELLE
815-562-3312

JOHNSON TRACTOR

SALES • PARTS • SERVICE

200 Steward Road
800.262.1680
www.johnsontractor.com

HUB-REMSEN PRINT GROUP

101 Maple Ave • Rochelle, IL 61068
815.562.7057 • hub-remsen.com

GO HUBS!

"Proudly Serving the Rochelle Area Since 1945"

Berg-Johnson Electric

FREE ESTIMATES
Licensed and Insured

Residential • Commercial • Industrial

24 Hour Emergency Service
815-562-4937
500 Cleveland Avenue

JEFF PERRY Auto Group

We are Ogle County's only GM Dealer!

• Collision Repair • Rental Cars
• 24 Hour Towing • Maintenance On All Makes and Models
• New/Preowned Vehicles • Tires, Alignments, Brakes, Batteries

815-562-8787 **www.jeffperrychevrolet.com**

Busy Schedule? Leave the cooking to us.

• Large menu of foods
• Rochelle's famous chicken by the dinner or bucket
• Hand dipped ice cream (16 flavors)

COUNTRY SCHOOL DRIVE-IN RESTAURANT
251 N. ROCHELLE • 562-6039

Stillman BANK

GO HUBS!

Earning Your Trust Since 1882
www.stillmanbank.com Member FDIC

GOOD LUCK HUBS FROM YOUR FANS AT:

HAYDEN REAL ESTATE INC.

815-562-2111 • hre@haydenreinc.com

Rochelle Chiropractic Clinic
Dr. Chad M. Piller

227 E. Rt 38 • Rochelle, IL
815-562-8706
www.rochellechiropractic.com
Now Accepting New Patients!

SPORTS

RMS Girls Basketball

(PHOTOS BY ROBIN RETHWILL)



Rochelle Middle School seventh-graders score home win over DeKalb Huntley on Monday

The Rochelle Middle School seventh-grade girls basketball team hosted DeKalb Huntley in North Central Junior Conference action on Monday, winning 24-7. Above, Ella Behrens (top left) avoids a contested shot, Ariana Hueramo (top right) battles for a loose ball, Delani McGee (bottom left) makes a pass and Makayla Waters (bottom right) takes a shot.

COMMUNITY BOARD

***Need to get the word out about a product or service you offer?
Give us a call at 815-562-4171.
We can reach over 9,000 homes!***



Gutters, Roofing & Siding

THEISEN *Free Estimates!*
ROOFING
SIDING
GUTTERS

CONTACT US
815-758-8998
THEISENROOFING@COMCAST.NET

Family owned & operated for over 50 years

Plumbing, Heating & Cooling

ANDERSON PLUMBING & HEATING, INC.

Plumbing, Heating & Cooling
Water Heaters, Water Softeners,
Drinking Water Systems, Iron Filters,
Sewer Rodding & Jetting & More!

Since 1976

621 First Ave., Rochelle
(815) 562-8784

Advertise Here

**What Service
Do You Offer?**

562-4171

The Rochelle News-Leader

Heating & Air Conditioning

HULL
HVAC & Household Services

Furnaces - Air Conditioners - Boilers
Duct Cleaning - Water Heaters

Precision Furnace
Clean & Check

\$85.00

Includes FREE carbon
monoxide test

24/7 Emergency
Service

815-561-6551
www.HullHVAC.com

Concrete

Bruns
Construction, Inc.

- Residential & Commercial Concrete
- Additions

**FREE
ESTIMATES!**



Tim & Roger Bruns, Owners
Established 1997

815-561-0099

Free Estimates • Fully Insured
www.brunsconstructioninc.com

Storage Sheds

Rocky Ridge Structures

FREE Sales Rep. Evaluation At Your Site

We Deliver! From Our Lot To Your Site

We Specialize in Portable/Quality Built Storage Sheds

- Stock & Custom Design
- Competitive Pricing
- Many Options Available
- Site Preparation Available

See Displays at 3500 S. Chana Rd. Chana IL 61015

Call Norm or Albert for Free Literature packet

779.861.3542

SPORTS

Fight or Flight Classic brings live USA boxing to airplane hangar

Lineup to feature national champion athletes at venue renowned internationally for skydiving

ROCKFORD — The inaugural Fight or Flight Classic debuts Saturday, February 24, 2024, at the Chicagoland Skydiving Center airplane hangar (1207 East Gurler Rd, Rochelle, IL 61068) with an impressive line-up, highlighted by 12 USA Boxing amateur bouts featuring Golden Gloves and national champions. Sanctioned by USA Boxing and the Illinois Local Boxing Committee, the program runs from 5-9 p.m. and features competitors from around the Midwest, music, food and beverages for sale, ringside tables, a trio of nonprofit raffle prizes, and more.

Doors open at 5 p.m. with a DJ and food and beverage services. Bouts begin at 6 p.m. and the co-main and main events are scheduled to close out the night by 9 p.m. (bout line-up and program times are subject to change). To help get prepped, some Fight or Flight Classic quick facts include:

National Champions: Of 12 scheduled bouts, the co-main and main events feature national champions. In the co-main event, Gavin Bernal (four-time Silver Gloves national champion; Rockford Patriots Boxing Club, Rockford, IL) faces Patrick Greda (former Silver Gloves state champion; Champions Factory Boxing Gym, Franklin Park, IL). And in the main event, Hulan Lugo (2023 Chicago Golden Gloves champion; Rockford Patriots Boxing Club,

Rockford, IL) will match up with Isaiah Steeno (2023 Wisconsin Golden Gloves champion; Soaring Eagles Boxing Club, Green Bay, WI).

International Sports and Entertainment Venue: The event's namesake stems from its venue setting – the Chicagoland Skydiving Center airplane hangar, which is renowned internationally as a skydiving destination. While the Fight or Flight Classic brings USA Boxing to the Rochelle, IL-based hangar for the first time, the venue has previously hosted a variety of prestigious championships including the U.S. National Skydiving Championships and Wingsuit National Championships, among others.

Premium Raffle Prizes for Good: Alongside Founders Commission (501(c)(3), the Fight or Flight Classic offers guests a trio of premium raffle prizes. Toward the conclusion of the night, winners will be announced for (1) the 50/50 cash prize raffle; (2) one (1) skydiving experience at Chicagoland Skydiving Center from 14,000 feet; and (3) one pair of ½ carat diamond earrings (G-H SI color, valued at \$1,500) courtesy of Zavivus Jewelers. Net proceeds from raffle prizes benefit Founders Commission (www.FoundersCommission.org), a legacy building nonprofit dedicated to amplifying the region.

Midwest Visitors: More than 75 percent of competitors and boxer



(COURTESY PHOTO)

The inaugural Fight or Flight Classic debuts Saturday, Feb. 24, 2024, at the Chicagoland Skydiving Center airplane hangar (1207 East Gurler Road, Rochelle, IL 61068) with an impressive line-up, highlighted by 12 USA Boxing amateur bouts featuring Golden Gloves and national champions.

supporters are making the trip to Rochelle from Chicago or beyond, including from as far as Iowa City, IA, and Green Bay, WI.

Vaccine Education and Pop-Up: Thanks to Coaching You Up, the Fight or Flight Classic will feature a vaccine education and pop-up vaccine clinic. That means flu and coronavirus vaccines will be free at the event. (Vaccine Note: Bring your insurance card if you have one. And for those with Medicare or private insurance, bring your insurance

card for authorization on eligibility and coverage).

Great Seats: Get a ringside table for the best seats in the house with one of two options – a standard ringside table of 8 for \$300 OR a premium ringside table of 8 with all-you-can-drink domestic keg beer/soda for \$500. Tables must be purchased in advance by Thursday, February 22. In addition, a block of general admission tickets are available for \$25 piece in advance online or at the door as available. To guarantee

your seats, attendees are encouraged to purchase tables and tickets ahead of time online at www.FightOrFlightClassic.com.

The Fight or Flight Classic would like to recognize the following partners for supporting the inaugural event:

Gold Level: Rock Valley Credit Union

Silver Level: City of Rochelle

Fight or Flight Grant Supporter: Coaching You Up

In-Kind Partners: Teron Clark Photography,

Zavivus Jewelers (se habla español)

Nonprofit Partner: Founders Commission

Sanctioned by: USA Boxing and the Illinois Local Boxing Committee

Plus Seven Company delivers winning sports and entertainment. Through its properties and services divisions, P7c's expertise covers events, branding, partnerships, public relations and tourism.

Visit www.PlusSevenCompany.com for more information.

Protect Your Home... And Save Big Doing It!!

\$50 VISA GIFT CARD
Upon completion of appointment

LeafGuard®
Get it. And forget it.®

\$50 VISA GIFT CARD
Upon completion of appointment

20% OFF TOTAL SALE*
Does not include cost of materials

- LIFETIME NO-CLOG WARRANTY
- MADE ONSITE SPECIFICALLY FOR YOUR HOME
- THE ONLY ONE-PIECE SEAMLESS DEBRIS SHEDDING GUTTER SYSTEM.
- SCRATCHGUARD® PAINT FINISH

*Guaranteed not to clog for as long as you own your home, or we will clean your gutters for free

Call Today for Your **FREE Estimate!**
815-673-7532

QUALITY TESTED
GOOD HOUSEKEEPING
Since 1909
LeafGuard
18 YEARS BACKED BY THE SEAL

BBB
ACCREDITED BUSINESS
A+ rating

SPECIAL FINANCING AVAILABLE

*All participants who attend an estimated 60-90 minute in-home product consultation will receive a \$50 Visa gift card. Retail value is \$50. Offer sponsored by LeafGuard Holdings Inc. Limit one per household. Company procures, sells, and installs seamless gutter protection. This offer is valid for homeowners over 18 years of age. If married or involved with a life partner, both cohabitating persons must attend and complete presentation together. Participants must have a photo ID and be legally able to enter into a contract. The following persons are not eligible for this offer: employees of Company or affiliated companies or entities, their immediate family members, previous participants in a Company in-home consultation within the past 12 months and all current and former Company customers. Gift may not be extended, transferred, or substituted except that Company may substitute a gift of equal or greater value if it deems it necessary. Gift card will be mailed to the participant via first class United States Mail within 10 days of receipt of the promotion form. Not valid in conjunction with any other promotion or discount of any kind. Offer not sponsored and is subject to change without notice prior to reservation. Except in the states of MD, NY and DC, where the gift card offer is limited to \$25. Offer not available in the states of CA, IN, PA and MI. Expires 2/29/24.

NORTH AMERICA'S

#1 Selling Walk-In Tub

Featuring our **Free Shower Package**

Now you can finally have all of the soothing benefits of a relaxing warm bath, or enjoy a convenient refreshing shower while seated or standing with Safe Step Walk-In Tub's **FREE Shower Package!**

- ✓ First walk-in tub available with a customizable shower
- ✓ Fixed rainfall shower head is adjustable for your height and pivots to offer a seated shower option
- ✓ High-quality tub complete with a comprehensive lifetime warranty on the entire tub
- ✓ Top-of-the-line installation and service, all included at one low, affordable price

Now you can have the best of both worlds—there isn't a better, more affordable walk-in tub!

FREE SHOWER PACKAGE
PLUS \$1600 OFF
FOR A LIMITED TIME ONLY
Call Toll-Free 815-660-0041

safestep

With purchase of a new Safe Step Walk-In Tub. Not applicable with any previous walk-in tub purchase. Offer available while supplies last. No cash value. Must present offer at time of purchase.

Call Today for Your Free Shower Package

1-815-660-0041

FINANCING AVAILABLE WITH APPROVED CREDIT

EASE OF USE CERTIFIED
Artistic Foundation

MADE IN TENNESSEE

BBB ACCREDITED BUSINESS

LIFETIME LIMITED WARRANTY

CSLB 1082185 NSCB 0082999 0083445 13VH11096000

SPORTS

RMS Girls Basketball

(PHOTOS BY ROBIN RETHWILL)



RMS eighth-graders fall to Sycamore on Tuesday

The Rochelle Middle School eighth-grade girls basketball team battled Sycamore in North Central Junior Conference action Tuesday, falling 44-19. Above, Audrina Rodriguez (left) blocks a shot and Gianna Olguin (right) battles for a loose ball.

Rochelle Little League

Tryouts for 2024 season to be held at the REC Center

ROCHELLE — Rochelle Little League will be holding tryouts for the 2024 season at The REC Center.

If you were on a Boys Major team last season you

do NOT need to attend a tryout, you will return to the same team. Players need to only attend ONE tryout date. ALL Boys Minor League players HAVE to try

out because teams are going to be completely redrafted.

Sunday February 25th, 1:00 pm - 5:00 pm; ALL Major & Minor Girls 1:00-2:00; ALL Boys Minor

2:00-4:00; Boys Major 4:00-5:00.

Sunday March 3rd, 1:00 pm - 5:00 pm; ALL Major & Minor Girls 1:00-2:00; ALL Boys Minor 2:00-

4:00; Boys Major 4:00-5:00.

Registrations are still open at www.rochellittleleague.com and we can accept walk-in registrations

at each tryout date with a cash/check payment. \$80 for Co-Ed T-Ball & Rookie League and \$100 for Boys/Girls Minor, Major, Junior and Senior League.

AREA FISH FRY GUIDE

Brookville UM Church

Fish Fry Supper

4:30-7:00 pm

Feb. 23, 2024

Adults \$15.00 Children 5-12 \$8.00
Children 4 & Under FREE

Carry Outs Welcome

Bake Sale

02122024

Junction of Rt. 52 & 64, Polo, IL

CATCH OUR FISH FRY!

Friday Night Fish Fry!

Fish Fry Buffet

(All You Can Eat) - \$20

(Multiple dishes, Baked Cod, Pollock, Perch, homemade hush-puppies, shrimp fried rice, cheesy potatoes, soup and salad bar, vegetables and more!)

4-8 pm

Other seafood available / Full menu available

Win some money gaming!

Maxsons
Restaurant & Riverboat

1469 N. IL Rt 2
Oregon IL
815-732-6761
Maxsons.net

02122024

Friday 5pm-9:30pm

2022 VOTED BEST OF OGLE COUNTY

2023 VOTED BEST OF OGLE COUNTY

FISH FRY FRIDAYS

RESTAURANT & BAR

EST. 1991

208 N. Walnut St.
Stillman Valley
815-645-9828

PUBLIC WELCOME, DINE IN OR CARRY OUT. CHECK FACEBOOK FOR UPDATES

02122024

453-2103 • Ashton, IL

RALPHIE & LuLu's Inc.

Est. 2001

FISH FRIDAY

Every Friday night
Serving 5 - 8 p.m.

Fried cod, baked cod, bluegill or shrimp

\$11.95 - \$12.95

Homemade Soup and Salad Bar

Includes: choice or potato (baked, french fries or onion rings), homemade soup and salad bar and complimentary dessert

Dine-In or Carry-Out

812 Main St. - Ashton

02122024

VFW Post 8739

1310 W. Washington St.
Oregon, IL
815-732-6851

Every Friday
Fish Fry
Cod, Catfish & Shrimp Dinners

Served Fridays 4pm-8pm

Open to the Public, Dine-in or Carry-out.

02122024

Classified Marketplace

BUY OR SELL
Place A Classified Ad



ROCHELLE • HILLCREST • CRESTON • STEWARD • KINGS • ASHTON

101 LEGAL NOTICE

PUBLIC NOTICE
Public Notice is hereby given that on January 30, 2024 a certificate was filed in the Ogle County Clerk's Office setting forth the names and post office address of all of the persons owning, conducting and transacting the business known as: Hopeful Buttercup Press 1100 N. Main St. Rochelle, IL 61068
Dated January 30, 2024
Laura J. Cook, Ogle County Clerk
No. 0203
(Feb. 4, 11 and 18, 2024)

101 LEGAL NOTICE

This publication does not knowingly accept fraudulent or deceptive advertising. Readers are cautioned to thoroughly investigate all ads, especially those asking for money in advance.

105 BUSINESS OPPORTUNITIES

"This publication does not knowingly accept fraudulent or deceptive advertising. Readers are cautioned to thoroughly investigate all ads, especially those asking for money in advance."

113 FINANCIAL

NOTICE Advance Fee Loans or Credit Offers Companies that do business by phone can't ask you to pay for credit before you get it. For more information, call toll-free 1-877-FTC-HELP. A public service message from your hometown newspaper and the Federal Trade Commission.

119 ANNOUNCEMENTS

"This publication does not knowingly accept fraudulent or deceptive advertising. Readers are cautioned to thoroughly investigate all ads, especially those asking for money in advance."

127 SERVICES AND REPAIRS

FURMAN'S Lawn Care and Tree Work. Mowing, bushes, spring clean up, weeding and much more. Call Jeremy Furman 815-761-9619. Please leave a message will return call ASAP. Fully insured, in business since 1999. Servicing Rochelle and surrounding areas.

201 DOMESTIC/CHILD CARE

NO INDIVIDUAL, unless licensed or holding a permit as a childcare facility, may cause to be published any advertisement soliciting a child care service. A childcare facility that is licensed or operating under a permit issued by the Illinois Department of Children and Family Services may publish advertisements of the services for which it is specifically licensed or issued a permit. Your Hometown Newspaper strongly urges any parent or guardian to verify the validity of the license of any facility before placing a child in its care.

203 HELP WANTED

Personal Assistant needed for 30 year old male with special needs for laundry, housework,

errands & socialization. Call 815-988-6931. (MR02282024)

301 ANTIQUES

WANTED TO BUY: Vintage Metal and Wood Signs, Milk Bottles & Local Advertising, Oak Icebox, Iron Door Stop and Antique Lighting... Call Dick Harms at 815-562-2928 or email dickharms@hotmail.com

ANTIQUES WANTED: I pay cash for antiques; furniture, glassware, pottery & crocks, tin & iron toys, sterling silver, decoys. If it's antique, I'm interested in looking! Call 815-562-2928 or email dickharms@hotmail.com

307 MISCELLANEOUS FOR SALE

BUNDLED Newspaper - \$3 per Bundle. End Roll- Cost Depends on Weight of Roll. Available Monday-Friday 815-562-4171 (8AM-NOON ONLY) Rochelle News Leader.

SPLIT Firewood For Sale. Contact 779-251-0254

405 HOUSES FOR SALE

ALL REAL ESTATE advertised herein is subject to the Federal Fair Housing Act, which makes it illegal to advertise any preference, limitation or discrimination based on race, color, religion, sex, handicap, familial status, or national origin, or intention to make any such preferences, limitation or discrimination. We will not knowingly accept any advertising for real estate which is in violation of the law. All persons are hereby informed that dwellings advertised are available on an equal opportunity basis.

517 WANTED TO RENT

Senior, Widowed, Male 1-2 BR Apartment. Oregon or Mt. Morris. Non-Smoker. No Pets. Call 815-275-6239 (RNL03032024)

307 MISCELLANEOUS FOR SALE

NEW MILFORD REFRIGERATION

NEW, USED SCRATCH & DENT
• Refrigerators • Freezers
• Washers/Dryers • Stoves

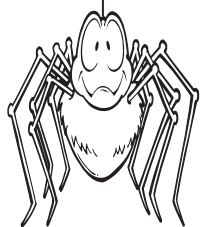
We also carry a large selection of refurbished appliances with a warranty.

6331 11th Street, Rockford
815-262-3900

04092023



ADVERTISE WITH US



Not sure why business is slow?

OUT OF SIGHT
OUT OF MIND...

is not just a saying in business.

Advertise today and let your business be in sight and in the minds of your customers.

OGLE COUNTY LAND AUCTION
TUESDAY, MARCH 12 - 1:00 PM



This land is located **2 miles N of Byron,** or **10 miles SW of Rockford, Illinois**

THE LORANDA GROUP, INC
800.716.8189 Bloomington, IL loranda.com



“La detección temprana nos permitió tomar control de la situación y poder planificar juntos.”

Si notan cambios, podría ser Alzheimer. Visiten un médico juntos.

ALZ.org/Tiempo



FFA WEEK



(COURTESY PHOTO)



(COURTESY PHOTO)

Lovett recommended for State FFA Degree

Congratulations to Emily Lovett. She interviewed and was recommended to receive the State FFA Degree.

RTHS FFA members attend Ground Zero Conference

Four RTHS FFA members are attending the Ground Zero Conference at Joliet Junior College. Ground Zero is a statewide conference that is open to freshmen and sophomore FFA members. Members are attending workshops about leadership, opportunities, and getting to meet FFA members from across the state.

Please join us in celebrating their accomplishments & bright futures.

RTHS FFA has had an FFA chapter for more than 90 years!



Megan Seebach



Logan Crawford



Magdalene Good



Alayna Smardo



Veronica Vaughn



Makayla Ludwig

6 FFA reps to compete at District level

Six members of the RTHS Chapter of FFA won the right to compete at the district level in March during the FFA Section Proficiencies competition on Feb. 7. Megan Seebach placed 1st and will compete in Equine Science Entrepreneurship. Veronica Vaughn placed 1st and will compete in Diversified Crop Production.

Alayna Smardo placed 1st in SOE Arts and Communications. Makayla Ludwig placed 1st and will compete in SOE Health Sciences. Magdalene Good placed 1st and will compete in Agricultural Processing. Logan Crawford placed 1st and will compete in Diversified Crop Production Entrepreneurship.

National
FFA WEEK
FEBRUARY 17-24, 2024

Support the local Rochelle Township High School FFA Chapter

Grain • Agronomy • Trucking
11 Locations to Serve You!

We proudly support all area FFA Chapters and their Members!

Maplehurst
Big enough to serve you, small enough to know you!

maplehurstfarms.com | (815) 562-8723

H. I. Stone & Sons, Inc.
Water Well Drillers
Pumps & Service

260 W. Lincoln Hwy.
Cortland, IL 60112-8420
815-756-5213
Fax: 815-756-6511

We proudly support all area youth involved in FFA!

We believe in the future of Agriculture

HEWITT - AND - WAGNER
ATTORNEYS AT LAW
1124 LINCOLN HIGHWAY, ROCHELLE
815-562-2704
WWW.HEWITT-WAGNER.COM

firststatebank.biz | 815.562.2200

We Support Our Future Farmers

304 E. Highway 38 | Rochelle

FIRST STATE BANK

Rochelle Foods

1001 S. Main Street | Rochelle
815-562-4141 | rochellefoodsjobs.com

DEDICATED TO TOMORROW'S LEADERS

The future of agriculture lies in the hands of the next generation. That's why we're happy to support local FFA chapters for their work in educating and empowering young leaders. Trust in Tomorrow.®

SCOTT JENSEN
815.562.5596 ext. 2106
scott.jensen@dimondpros.com
401 N. Main St. | Rochelle, IL

Dimond Bros. INSURANCE | **GRINNELL MUTUAL**

"Trust in Tomorrow." and "Grinnell Mutual" are registered trademarks of Grinnell Mutual Reinsurance Company. © Grinnell Mutual Reinsurance Company, 2024.

With Many long-term employees both Union and Non-Union our customers are always in experienced hands!

We Aim for On Time, Every Time!

QUEEN'S TRUCKING & CONSTRUCTION, INC.

We were voted Mid-West Truckers Association, Inc. Northern Region Trucking Company of the year 2022.

The Trusted Trucking Company of Many Local Distributors and Manufacturers.

TRUCKING:

- Non-Union Local Freight Hauling
- Van Trailer/Hopper/Flatbed/Dump
- Daily Loads on the Customers Time Schedule

CONSTRUCTION:

- Union Construction & Deconstruction
- Excavation/Site Prep
- Drainage/Sewer/Water Repair & Replacement
- Union Heavy Hauling & Jobsite Hauling
- Emergency Work
- Restoration/Traffic Control
- Sidewalk/Curb
- Hourly or Bid Work (We can create a Specialized Rate for any Job)

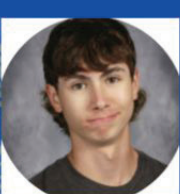
Small or Big Jobs, We Do Them All!

FFA WEEK

(COURTESY PHOTOS)

Congratulations!

The following Rochelle FFA members competed in the Section 2 proficiency awards on Wednesday, February 7th!



Magdalene Good - 1st place in Agricultural Processing

Logan Crawford - 1st place in Diversified Crop Production Entrepreneurship



Emily Lovett - 2nd place in Food Service Placement

Sawyer Stockton - Represented Rochelle in the area of Equine Science Placement

Samantha Overton - represented Rochelle in the area of Goat Production

The first place individuals will advance to the District I Proficiency competition in March.

Congratulations!

The following Rochelle FFA members competed in the Section 2 proficiency awards on Wednesday, February 7th!



Megan Seebach - 1st place in Equine Science Entrepreneurship

Veronica Vaughn - 1st place in Diversified Crop Production Placement and interviewed in Grain Production and Fiber and Oil Crop Production



Alayna Smardo - 1st place in SOE Arts and Communications and interviewed in Fruit Production

Makayla Ludwig - 1st place in SOE Health Sciences

The first place individuals will advance to the District I Proficiency competition in March.

RTHS FFA members compete in Section 2 Proficiency Interviews

Congratulations to the Rochelle FFA members who competed in Section 2 Proficiency Interviews! Students completed a record book of their Supervised Agriculture Experience or Supervised Occupational Experience and were interviewed by a panel of judges. Six of our members were selected as first place in their areas and will move on to district competition in March.



Pfeiffer Farms

FRESH MARKET

ALL LOCAL ITEMS & MEAT FRESH FROM OUR FARM!

Ground beef is always on special & kept at an affordable price to serve our local families better.

We stock:

locally grown & raised meats, fruits & vegetables (in season) as well as milk, eggs, honey, ice cream, yogurt, spices, pies, breads, and cookies.

Denny Pfeiffer

2511 Reynolds Rd. Ashton, IL • 815-761-6074

Hours: Thurs/Fri. 9-5:30 | Sat. 8:30-4:30

PFEIFFERFARMS.COM



Rochelle Vet supports all of our local Future Farmers of America



(815) 562-5207

Nutrien Ag Solutions™ **Steward** 815.396.2248 nutrienagsolutions.com

Profit from our experience

- Field Management Services
- Crop Protection Application
- Spring Planting Advice
- Identification of Insects & Weeds
- Crop Scouting
- Custom Spreading
- Soil Sampling
- Global Positioning Application

We support all FFA members in their journey to become our countries future farmers.



2025 Sublette Rd
Sublette, IL 61367

815-849-5223

CELEBRATING OVER 27 YEARS OF SUCCESS

SYSTEM DESIGN & SERVICE • DRYERS • PNEUMATIC SYSTEMS
DUMP PITS • BUCKET ELEVATORS • AUGERS • GRAIN BINS

A&P GRAIN SYSTEMS 888-414-2220 WWW.APGRAINSYSTEMS.COM
MAPLE PARK, IL

Vern's Farm Supply 815-948-2591 WWW.VERNSFARMSUPPLY.COM
HOOPPOLE, IL

THE DESIGN, THE BUILD, THE SERVICE... WE DO IT RIGHT!

Conserv FS is a proud supporter of the National & Local FFA Chapters.

CONSERV FS

Invest in Your Future WITH CONFIDENCE

O'RORKE CONSTRUCTION SERVICES, INC. RESIDENTIAL & COMMERCIAL BUILDING
104 Maple Court | Rochelle IL | 815-562-8254

Wick Buildings Authorized Wick Builder

- Agricultural
- Commercial
- Equestrian
- Residential & Suburban Buildings
- Pole Barn Homes

CHS Rochelle

Supports our future farmers

1900 Steward Rd, Rochelle, IL P: 815-561-0650

Find us on: [facebook](https://www.facebook.com/chsrochelle)

Delicious, Quality Raw Milk Fresh at the farm!

Every Day 6:30 AM - 8:00 AM & 4:30 PM - 6:00 PM

387 S. Malta Rd., Rochelle, IL 61068
815-762-6867 • PreciousPastures.com

PRECIOUS pastures

Please bring your own containers. 24 hours Notice Required.

National FFA WEEK FEBRUARY 17-24, 2024

Claire & Emily, founders and operators of Precious Pastures, were FFA members all 4 years of high school and both held the office of Secretary. Claire was Vice President during her Senior Year.