

Girls bowl at I- 8 Conference tournament

SEE SPORTS



Atkinson takes second at IHSA Regional meet

SEE SPORTS

ROCHELLE News-Leader

WEEKEND EDITION | WWW.ROCHELLENEWS-LEADER.COM

Today's RNL issue sponsored by Community Unity member:

HUB CITY FURNITURE

429 Lincoln Highway
815-562-8765

Vol. 103 • No. 81

LOCAL NEWS... LOCAL VIEWS

SUNDAY, FEB. 4, 2024

\$1.25

More coverage. Less spendage.

Discounts up to 40%
Get more. Spend less. It's that simple when you get car insurance from us. Like a good neighbor, State Farm is there. CALL FOR A QUOTE 24/7.
Terri Schaefer, Agent
Bus: 815-562-7063
terri.schaefer.115n@statefarm.com



KNOW IT TODAY



New sensory room unveiled

Sinnissippi Centers of Rochelle revealed its new sensory room.
Page 5

WEATHER

SUNDAY	MONDAY
HIGH LOW	HIGH LOW
44 29	45 29
TUESDAY	WEDNESDAY
HIGH LOW	HIGH LOW
46 26	45 31

Today's RNL issue sponsored by Community Unity member:



209 Powers Road
815-562-8792

OBITUARIES

• MARK ALLAN 'HULKSTER' SOLES
• CAROL L. WEIDMANN

See page 4

INSERTS

• MENARDS

INSIDE

Local News.....2, 3, 5, 8
Obituaries.....4
Opinion.....6
Community.....7



8 52078 00112 6

Cote presented with Quilt of Valor

102-year-old veteran was nominated by Rochelle DAR

BY JEFF HELFRICH
MANAGING EDITOR

ROCHELLE — On Tuesday at Rochelle VFW Post 3878, 102-year-old World War II veteran Bert Cote of Rochelle was presented a Quilt of Valor from the Illinois Valley Quilts of Valor Chapter. Cote was nominated by the Rochelle Chapter of the Daughters of the American Revolution.

Cote served in the U.S. Army from 1941-1946 and was in the Second Armored Division in Germany under Gen. Patton.

"We wish to recognize you for your service to our nation," Illinois Valley Quilts of Valor Group Leader Terry Johnson said Tuesday. "We consider it our privilege to do so. Though we may never know the extent of your sacrifice to protect and defend the United States, we award you this Quilt of Honor as an expression of gratitude from a grateful nation. Thank you for your service and welcome home."

The Quilts of Valor organization started in 2003 when a quilter named Catherine Roberts



(PHOTO BY JEFF HELFRICH)

On Tuesday at Rochelle VFW Post 3878, 102-year-old World War II veteran Bert Cote of Rochelle was presented a Quilt of Valor from the Illinois Valley Quilts of Valor Chapter.

started the movement when her son was deployed to Iraq. Since that time, the organization has awarded over 373,394 quilts. Its mission is to honor service members and veterans who have been touched by war with comforting and healing quilts.

Each quilt is unique and is usually worked on by about 3-4 quilters, Johnson said.

"A Quilt of Valor is

not a blanket," Johnson said. "Our quilts are awarded. A Quilt of Valor unequivocally says thank you for your service and your sacrifice in serving our nation. We like to explain that a quilt has many layers. The top of the quilt with its many colors, shapes and fabrics represents the community and many individuals we are. The center of the quilt represents our goal of the quilt bring-

ing warmth, comfort, peace and healing to the individual who receives it. The backing is the strength that supports the other layers, which represents the strength of the recipient, the support of his or her family, our communities and our nation. Each stitch that holds the layers together represents love, gratitude and sometimes tears."

See COTE page 2

Seed library kick-off event held Jan. 27

'People are really excited about something like this...'

BY JEFF HELFRICH
MANAGING EDITOR

ROCHELLE — On Saturday, Jan. 27, the Flagg-Rochelle Public Library hosted a kickoff event for its new seed library.

In an effort to educate the community about the rewards of gardening and seed saving, the library established the new seed library in conjunction with the Ogle County Master Gardeners program of the University of Illinois Extension. A seed library collects, stores and shares seeds with members of the community for free. To borrow seeds, area residents can visit the seed library next to the non-fiction section in the Flagg-Rochelle Public Library, choose 8-10 packets of seeds per fall and spring growing season, and write down choices in the seed check out list.

The plan is for the seed library to grow when participants donate back the seeds that they yield following planting and harvest. The library and the Ogle County Master Gardeners will offer seed saving workshops throughout



(PHOTO BY JEFF HELFRICH)

On Saturday, Jan. 27, the Flagg-Rochelle Public Library hosted a kickoff event for its new seed library.

the year. You do not need a library card to check out seeds or to attend any gardening programs.

The kick-off event included information on the seed library and how to use it, a seed swap, discussion on the dos and don'ts of winter sowing and planting winter greenhouses to take home, a seed bomb workshop, and germination tests of seeds.

The seed library is housed in a repurposed library card catalog and

divided into four seed categories: herbs, flowers, native plants and vegetables. Each seed packet is alphabetized by common name within their categories.

"Everything has gone great," Library Director Sarah Flanagan said. "We've had a great turnout. It's always exciting when you plan and plan for something and then it comes true. That's what today is. We've been talking about this for a long time.

It's a great day."

Seeds were donated to the program by Walmart, Ace Hardware, bbbseed, West Coast Seeds and Victory Seed Company. Library Outreach Clerk Ashley Capes said during the kick-off event that the community is excited about the program.

"The citizens in this town really rally when it comes to community events," Capes said.

See SEED page 3

School dismissed following medical emergency

BY JEFF HELFRICH
MANAGING EDITOR

ROCHELLE — Rochelle Township High School dismissed for the day after a serious medical emergency involving a student Thursday morning, a letter sent to parents by Superintendent Jason Harper said.

The medical emergency took place before the morning bell had rung. Paramedics and an ambulance were on site immediately, the letter said, and RTHS went into a hold protocol and required students to stay in classrooms and out of the hallways.

The decision was made to dismiss school for the day. Counselors were made available to students who wanted additional support due to the incident, even if students wanted to leave school and return to speak with a counselor later in the day.

All Thursday RTHS after-school activities were canceled and rescheduled. The Rochelle Elementary School District did not see any impact from the incident.

City's street department combating storms

BY JEFF HELFRICH
MANAGING EDITOR

ROCHELLE — The City of Rochelle Street Department combated two weeks of winter storms in January that yielded a number of school and business closures in the area.

The storms started with heavy, wet snow, and sub-zero temperatures, more snow, and high winds followed. City Street Department Superintendent Tim Isley said the order of the conditions made work difficult for his department.

"To start off we got that real wet, heavy snow, which is very difficult to work with," Isley said. "It's so heavy to plow off the road."

See CITY page 8



Where Relationships Matter

Local Lenders . Local Decisions . Local Support

Rochelle | New Milford | Creston | Byron

www.holcomb.bank

815.562.3838

Warm her heart and her feet with a new furnace this Valentine's Day.

ANDERSON
PLUMBING & HEATING, INC.
621 First Ave. • Rochelle, IL 815-562-8784

02042024

LOCAL NEWS



(PHOTOS BY JEFF HELFRICH)

During the ceremony, Rochelle's Bert Cote was also awarded a challenge coin by Rodney Johnson of the Flags of Freedom organization in Princeton. Cote, a known harmonica player in the community, played "America the Beautiful" on his harmonica to close the ceremony.

COTE: World War II veteran presented with Quilt of Valor

From page 1

During the ceremony, Cote was also awarded a challenge coin by Rodney Johnson of the Flags of Freedom organization in Princeton. Cote, a known harmonica player in the community, played "America the Beautiful" on his harmonica to close the ceremony.

Rochelle DAR Chapter Regent Debby Katzman said the idea to award Cote with the Quilt of Valor came about in the DAR and the Illinois Valley Quilts of Valor Chapter's work together. "We had sponsored a quilting for three Vietnam

War veterans last year," Katzman said. "At that quilting when I talked to Terry from Quilts of Valor, I mentioned that Rochelle had a 102-year-old WWII veteran in Bert Cote. She said he'd go to the top of their list because of his age and service. We decided to make it happen. I heard Bert playing the harmonica in one of the restaurants here in town and went and introduced myself. Bert wanted to do it here at the VFW because he's been a member here for over 75 years. All the stars aligned to make this work for him and we're really excited about it."



County residential electronics recycling event is Feb. 23

OREGON — The Ogle County Solid Waste Management Department (OCSWMD) will be hosting a residential electronics recycling event on Friday, Feb. 23 from 9 a.m. to 4 p.m. at 909 Pines Road in Oregon.

This event is for Ogle County residents only and

a free permit is required in advance of the event. To obtain a free permit call 815-732-4020 or email solidwaste@oglecountyil.gov and provide your name, address, phone number and email address by 4 p.m. on Thursday, Feb. 22.

Accepted items include all televisions and com-

puter monitors, computers, computer hardware and cables, laptops, tablets, cell phones, printers, FAX machines, scanners, shredders (no tubs), copiers, video gaming equipment, DVD/VCRs, cable/satellite boxes, stereo equipment, radios, digital clocks, cameras, calculators, phone

systems, holiday light strands, extension cords, rechargeable batteries, printer ink cartridges, CD/DVD's, and CFL bulbs. Microwave ovens accepted for \$5 per unit. Cash or check accepted.

Limit seven large or bulky items per permit and one permit per coun-

ty household per month. Business or institutional electronic materials not accepted at these events. Business or institutional electronics are accepted by the OCSWMD via a separate program. Call the number above for more information and pricing for business electronic

recycling, and to make an appointment for drop off of the materials to be recycled.

For more information about this recycling event call the OCSWMD at the number above, visit www.oglecountyil.gov, or on Facebook at Ogle County Solid Waste Management Dept.

ENJOY SOME COOL SAVINGS

WITH THE NEWS-LEADER'S Subscription Special

\$19 OFF

(Regular Subscription Rates)

START OR RENEW A 52-WEEK SUBSCRIPTION FOR JUST \$120.00

Yes, please start or renew my subscription!

Enclosed is my \$_____ check for the option marked below.

☐ 12-Month Subscription for \$120.00

Name: _____ Address: _____

Phone: _____ Email: _____

Offer expires on February 28, 2024

Mail form & check to: P.O. Box 46, Rochelle, IL 61068 or drop off and pay at 211 Hwy 38 E, Rochelle, IL

The Perfect Date for Valentine's Day at Maxxsons!

Appetizer

Bacon Wrapped Scallops
Presented on a Tomato béarnaise \$10

Entree

Comes with our soup and salad bar, choice of baked potato, twice baked potato, scallop potato, loaded baked potato, or french fries.

Filet and Shrimp
6-oz USDA Filet with 4 shrimp (Fried, Blackened, Grilled or Sauteed) \$27

Strip Steak Supreme
16-oz USDA Strip Sauteed with peppercorn Cognac cream sauce \$29

Amaretto Chicken
6-oz boneless breast sauteed with almonds and amaretto \$18

Surf and Turf
6-oz USDA Filet with 6-oz Canadian Lobster Tail \$45

Petite Surf and Turf
4-oz USDA Filet with 4-oz Canadian Lobster Tail \$35

Prime Rib Buffet
Soup, Salad, Fried Chicken, Pasta, Pot Roast, Vegetables, Mashed Potatoes and Gravy \$30

Prime Rib Buffet
Without Prime Rib \$20

Dessert

Hearts of Harmony
2 Brownie hearts with cream filling and topped with Ganache \$15

Check out our dessert tray!

Reservations Required

1469 IL RT 2
Oregon, IL
815-732-6761
www.maxxsons.net

February 14th AND February 17th

4PM to 8PM

Romantic ambiance, attentive service and delicious food you'll love!

Daily Specials

Thursdays: 11AM to 8PM
All you can eat soup and salad bar (6 different soup options!) for \$12

Fridays: 11AM to 8PM
Fish Fry (Regular Menu Available)

Saturday: 4PM to 8PM
Prime Rib Special

Sunday: 10AM to 2PM
Breakfast and Lunch Menu

Maxxsons Restaurant & Riverboat

Weddings • Receptions • Birthday Parties • Corporate Events
Come celebrate all stages of life with us

LOCAL NEWS

SEED: Kick-off event held at Flagg-Rochelle Public Library

From page 1

“People really come out. We have free programming for all ages and lots of family-friendly events. I think people like having a place to come together and do activities.”

The library will be hosting two different herb workshops in the coming months. The first will be March 19 at 6 p.m. focused on dandelions and nettles. The second will be May 20 at 6 p.m. focused on herb harvesting and preservation. The new Rochelle Green Thumbs 4-H Club has also been started in conjunction with the seed library, and the new horticulture club will meet the first Monday of each month at the library from 6-7 p.m. The group will be growing projects for the Ogle County 4-H Fair in late July.

“It’s great to see the support from the community,” Flanagan said. “We can’t function as a great library if we don’t have a great community behind us. It’s important to have

community support and people and networks.”

Flanagan said programs like the seed library help to get people into the library to see the other services it offers.

“You are not going to know what the library is about unless you come in the door and see what it’s about,” Flanagan said. “You don’t have to have a library card for a lot of things that we do. You can come to our programs and see what we’re all about. And maybe that entices you to come back and see us again. We’re excited about that and we welcome everyone here at the library.”

Capes believes the seed library is going to expand “very quickly” and said the kick-off event already saw seed donations and people bringing up ideas for its future.

Upcoming gardening and seed saving programs can be found at the www.rochellepubliclibrary.org or on its Facebook page at Flagg-Rochelle Public Library. Email a master gardener from



(PHOTO BY JEFF HELFRICH)

In an effort to educate the community about the rewards of gardening and seed saving, the library established the new seed library in conjunction with the Ogle County Master Gardeners program of the University of Illinois Extension.

April 1-Sept. 30 at uemg-ogle@illinois.edu.

“We want to see this become a full-circle pro-

gram,” Flanagan said. “You come in, you pick out your seeds, you go home and grow those

seeds, and then bring us back seeds so we can add them back into our seed library. That’s what this is

all about. Trying to keep this going by donations and having people participate.”

AFS Group announces acquisition of C&S Flooring Group of Rochelle

COLUMBUS, Ohio — AFS Group, a top-five independent flooring retailer, has acquired the assets and intellectual property of C&S Flooring, a leading e-commerce hard surface retailer based in Rochelle. C&S operates the Flooringmarket.com and Floorlife.com websites servicing 10,000+ customers a year.

As part of the acquisition, AFS will retain the entire C&S senior

management team and the operations will continue to be based in Rochelle.

Founded in 2005, by Roxanne Charnock and Robert Sandlin, Illinois-based Flooring Market.com and Floorlife.com offers LVT, laminate, hardwood, ceramic, accessories, and expertise to consumers and professionals across the country. The company has a strong reputation for service and exper-

tise. They offer leading brands such as Paramount, Mannington, Mohawk, Coretec, Daltile, Shaw, Laticrete, and Karndean, among others.

“We are excited to welcome the C&S team to our family,” Michel Vermette, CEO of AFS Group, said. “We look forward to helping them grow and expand their business.”

“FlooringMarket.com completes the last major

channel gap we have at AFS,” Jason Goldberg, founder and chairman of the AFS Group, said. “I believe the unique expertise that the C&S team has combined with our warehousing, procurement, marketing and information technology systems, combined with our growth initiatives will create an unrivaled nationwide provider for consumers and the pro customer alike.”

As part of the transaction, AFS will make investments in increased marketing, inventory, and technology.

“We are very proud of what our team has accomplished and are excited to be joining Jason, Michel and the AFS family. AFS has the vision, capital, and expertise to help us become the premier online destination for flooring products,” Charnock and Sandlin said.

C&S main websites are www.flooringmarket.com and www.floorlife.com.

AFS group is the fifth-largest independent flooring retailer in the country, selling and installing flooring to residential builders, consumers, local renovators, property managers, designers, and commercial property owners. AFS was founded in 2000 by Goldberg and operates 10 locations in the Midwest.

Stillman

BANK

Local Lenders. Local Decisions.

Buying a new home?
Our experienced mortgage team is here to help!

- Our staff is professional, knowledgeable, and experienced
- Decisions are made locally - by us!
- We service our loans, so if you have a question, you can talk to us - not some out of state firm
- FREE pre-approvals
- Access to Stillman Mortgage Online - find a lender, apply online in less than 20 minutes, and more!
- Proud to be voted Ogle County's Best Lender!

Member FDIC

815.562.7071 | www.stillmanbank.com

LENDER

Protect Your Home... And Save Big Doing It!!

Upon completion of appointment

LeafGuard
Get it. And forget it.®

\$50 VISA GIFT CARD
Upon completion of appointment

20% OFF TOTAL SALE*
Does not include cost of materials

- ✓ LIFETIME NO-CLOG WARRANTY
- ✓ MADE ONSITE SPECIFICALLY FOR YOUR HOME
- ✓ THE ONLY ONE-PIECE SEAMLESS DEBRIS SHEDDING GUTTER SYSTEM.
- ✓ SCRATCHGUARD® PAINT FINISH

*Guaranteed not to clog for as long as you own your home, or we will clean your gutters for free

*All participants who attend an estimated 60-90 minute in-home product consultation will receive a \$50 Visa gift card. Retail value is \$50. Offer sponsored by LeafGuard Holdings Inc. Limit one per household. Company procures, sells, and installs seamless gutter protection. This offer is valid for homeowners over 18 years of age. If married or involved with a life partner, both cohabitating persons must attend and complete presentation together. Participants must have a photo ID and be legally able to enter into a contract. The following persons are not eligible for this offer: employees of Company or affiliated companies or entities, their immediate family members, previous participants in a Company in-home consultation within the past 12 months and all current and former Company customers. Gift may not be extended, transferred, or substituted except that Company may substitute a gift of equal or greater value if it deems it necessary. Gift card will be mailed to the participant via first class United States Mail within 10 days of receipt of the promotion form. Not valid in conjunction with any other promotion or discount of any kind. Offer not sponsored and is subject to change without notice prior to reservation. Except in the states of MD, NY and DC, where the gift card offer is limited to \$25. Offer not available in the states of CA, IN, PA and MI. Expires 2/29/24.

Call Today for Your **FREE Estimate!**
815-673-7532

SPECIAL FINANCING AVAILABLE

Lincoln Manor

Owned and operated by Lutheran Social Services of Illinois (LSSI) offering apartment living for older adults in Rochelle and the surrounding communities.

Rent based on 30% of a Resident's Adjusted Gross Income

- Secure Entry System
- Community room with kitchen
- Activities
- On-site coin operated laundry
- On-site management office
- Dependable 24/7 maintenance service
- On-site parking for residents

Full time Social Service Coordinator is available to assist residents

For more information, please call 815-562-1404

615 N. Lincoln Hwy.
Rochelle, IL 61068
TTY 847-390-1460

MANAGED BY:
Lutheran Social Services of Illinois
www.LSSI.org

07262023

Protect Your Home... And Save Big Doing It!!

Upon completion of appointment

LeafGuard
Get it. And forget it.®

\$50 VISA GIFT CARD
Upon completion of appointment

20% OFF TOTAL SALE*
Does not include cost of materials

- ✓ LIFETIME NO-CLOG WARRANTY
- ✓ MADE ONSITE SPECIFICALLY FOR YOUR HOME
- ✓ THE ONLY ONE-PIECE SEAMLESS DEBRIS SHEDDING GUTTER SYSTEM.
- ✓ SCRATCHGUARD® PAINT FINISH

*Guaranteed not to clog for as long as you own your home, or we will clean your gutters for free

*All participants who attend an estimated 60-90 minute in-home product consultation will receive a \$50 Visa gift card. Retail value is \$50. Offer sponsored by LeafGuard Holdings Inc. Limit one per household. Company procures, sells, and installs seamless gutter protection. This offer is valid for homeowners over 18 years of age. If married or involved with a life partner, both cohabitating persons must attend and complete presentation together. Participants must have a photo ID and be legally able to enter into a contract. The following persons are not eligible for this offer: employees of Company or affiliated companies or entities, their immediate family members, previous participants in a Company in-home consultation within the past 12 months and all current and former Company customers. Gift may not be extended, transferred, or substituted except that Company may substitute a gift of equal or greater value if it deems it necessary. Gift card will be mailed to the participant via first class United States Mail within 10 days of receipt of the promotion form. Not valid in conjunction with any other promotion or discount of any kind. Offer not sponsored and is subject to change without notice prior to reservation. Except in the states of MD, NY and DC, where the gift card offer is limited to \$25. Offer not available in the states of CA, IN, PA and MI. Expires 2/29/24.

Call Today for Your **FREE Estimate!**
815-673-7532

SPECIAL FINANCING AVAILABLE

LOCAL NEWS

OBITUARIES

Mark Allan ‘Hulkster’ Soles

DEKALB — Mark Allan Soles, age 65 of DeKalb, formerly of Rochelle passed away on Sunday, October 1, 2023 at OSF St. Anthony Hospital, Rockford, after suffering a severe head trauma from an accident on his motorized bicycle in DeKalb.

Born October 29, 1957 in Carmichaels, PA to his parents, Susan Soles and Berl Pyles. In 1964 at age 7, Mark’s biological parents were tragically killed in West VA from a logging truck accident. Mark’s maternal Uncle and Aunt, Richard and Juanita Soles of Waukegan/Gurnee IL graciously adopted Mark and his 3 siblings and brought them back to Illinois.

Survived by his beautiful wife of only 15 months (6-13-22), Kimberly (Kleinfeldt) Durbin Soles of DeKalb, brother-in-law and his wife, Rev. Tom and Kathy Kleinfeldt of Elgin and their children, Bryan Kleinfeldt of Aurora, Jon and Anne Kleinfeldt of Huntley and their children, Leila Kleinfeldt of Plano, TX, Levi and Ivy of Huntley, Stephanie-daughters, Bethany LaRossa Odum of MO, Jordan Ferrell of Aurora, stepson Dave Durbin of Milwaukee WI, and Marks only child, his son Richard Allan Floyd and his clareet lilinois, his brother, Eugene Michael “Mike” Soles of WI, sister Michelle Inez Soles of Interlachen,

FL, step-mother Karen Soles of FL and also a very special step-granddaughter Madison Fore of Rochelle, plus several other step-grandchildren, cousins, nieces and nephews and their families.

Mark was predeceased by his biological parents, his Uncle and Aunt that raised him, and one brother, Mitchell “Mitch” Soles, a quadriplegic from Chicago.

Graduated from Warren Township High School, Gurnee IL in 1976 and immediately enlisted in the United States Navy stationed at Great Lakes Naval Base. He was a store keeper on the ship U.S.S. Pugent Sound out of WA which deployed from Norfolk, VA to Spain Italy and France.

After his discharge from the Navy, Mark travelled to California and then returned to Chicago. He was living at Jesus People USA (JPUSA) which serves the homeless population and then he was sent to the Wayside Cross Rescue Mission in Aurora in the year 2000. Unbeknownst to Mark, he met his future wife’s grandfather, Mr. M. Craig Phillips who taught the Master’s Touch Bible Program at Wayside. Mark’s favorite bible verse he memorized faithfully was 1 Corinthians 10:13. Mark also lived briefly in Dekalb, Compton, and Mendota IL before moving to Rochelle in 2009.

The “Hulkster” as



Mark was known because he looked like wrestler Hulk Hogan, was a very active 65 year old, still up on roofs, doing construction/siding/roofing/flooring/and remodeling, more recently for Riggs Construction (TJ Riggs) of Rochelle, A-1 Construction (Frank Schermerhorn) of Dekalb and Star Properties (Tiffany) of Dekalb.

Cremation rites were handled by Unger Horner Funeral Home in Rochelle.

A Celebration of Mark’s Life will be held on February 13, 2024 at the Rochelle Rec Center, 802 Jones Road (Behind Walgreens) in Rochelle from 5:00 to 8:00 p.m. with the memorial service at 6:15 p.m. to 6:45 p.m. Pastor Duane Boehm of Harvest Baptist Church, Rochelle will officiate. Sandwiches and cake will be provided prior to the memorial service.

Memorial gifts and donations are truly appreciated and can be made to the family or to The Gift of Hope Organ and Tissue Donor Network, Itasca IL

“I miss you so much Mark and I love you more!”

Village of Progress Foundation releases 2024 scholarship information

OREGON — The Village of Progress Foundation will offer two scholarships in 2024.

The first scholarship in the amount of \$1,000 is made possible through a joint effort between The Larry Young & Friends Charities and The Village of Progress Foundation. Larry Young & Friends Charities partner with The Village of Progress Foundation every year to help make our annual golf outing a success. Larry Young also serves on the foundation’s board of directors.

Our second scholarship in the amount of \$1,000 is made possible through the generosity of the Cacciatore Family. The Cacciatore’s have been long time supporters of the Village. Wanda served on the Village of Progress Board of Directors for 10 years beginning in 1988. She has served on the foundation’s board for almost 30 years.

The scholarship honors her husband, Pete, who was also an enthusiastic supporter of the Village. Pete passed

away in the fall of 2014, leaving behind a legacy of commitment to the Village and its mission.

To be eligible for either scholarship, the student must:

-Be a resident of Ogle County.

-Be either a high school senior who is disabled or is planning on attending college and majoring in an area related to the disabled, or a full-time undergraduate college student who is disabled or is majoring in an area related to the disabled.

Applications must be received by March 15, be completed on the foundation application form, and include at least two written references. The financial status of the applicant is not a consideration. Those wishing an application are encouraged to call the Village of Progress at 815-732-2126 or go to our website at www.villageofprogress.org and download a High School or College application.

Carol L. Weidmann

ROCHELLE — Carol L. Weidmann, of Rochelle, IL, passed away Monday evening, January 29, 2024, at The Moorings Nursing Home of Arlington Heights. Carol had just celebrated her 77th birthday, on January 13, 2024, surrounded by birthday cake, candles, and a loving family.

Carol was born to Erhardt Weidmann and Eileen (Schillaire) Weidmann at the Cuneo Hospital in Chicago, IL in 1947. The second of three children, she grew up in Chicago, but spent most of her time in Wood Dale when her family moved there when she was eight years old. She attended St. Paul Lutheran School in Addison and Fenton High School in Bensenville. While in high school she found her love for theater. She appeared in many plays while keeping a high scholastic grade level. Along with theater, she was in the National Honor Society, Pep Club, and Choir.

She went on to attend Western Illinois University to study English Education and Theater Arts, where she obtained her master’s degree. She taught at the primary school on Western’s campus for several years, and then she answered the call to teach high school in Rochelle, IL. Besides

teaching English, she was the Director of Theater at Rochelle Township High School. During her time there, she was selected to direct the Illinois High School Theater Festival All-State Performance and was awarded the Outstanding Contribution to Secondary Education by the Illinois Theater Association. This was just one of the many awards she received as an educator in Rochelle, but it was working with her students that was the most rewarding.

After Carol retired, she was active in bowling, enjoyed her book club, and loved to travel. She may have left the classroom but couldn’t stay away from the stage. She remained active in the Rochelle Community Theater Group where her love for acting, directing, singing, set design, and costume creation came to life once more.

After experiencing one of her shows, it was evident that her love for the theater shined bright. Whether it was watching her students find their voice on stage or taking pleasure in the audience uncovering a new world, she positively affected many in the theater programs she helped shape. Her light may now be dimmed, but the spark



she ignited in others will continue to spread her joy and passion on stage. Carol will truly be missed by all who have had the opportunity to know and love her.

Carol leaves behind her sister Barbara Werner; brother Dennis Weidmann; Niece Jonna (James) Hall; great-niece Harper; great-nephews Hudson and Harrison; Nephew Jon (Kyane Crane); and many other friends and family.

Visitation will be held on Saturday, February 10th, 2024, from 10:00 a.m. at The Oaks Funeral Home 1201 E. Irving Park Rd (at Prospect), Itasca, until time of Memorial Service, 11:00 a.m. Service officiated by Reverend Douglas Warmann of Trinity Lutheran Church. In lieu of flowers donations may be made to The Vince Carney Community Theater in Carol’s Honor, located at 108 S. Main St Rochelle, IL 61068 or at <http://www.vcetrochelle.org/get-involved.html>.

OGLE COUNTY SHERIFF’S DEPARTMENT

OREGON — On Jan. 30 at approximately 8:47 p.m. deputies responded to the intersection of Illinois Route 251 and Illinois Route 64 for a reported two-vehicle crash. After a brief investigation, it was determined that a Dodge Ram 1500 pickup, driven by Daniel Miller, 75, of Abbotsford, Wisconsin, was westbound on Illinois Route 64 and disregarded the stop sign at Illinois Route 251. A Chevrolet Tahoe, driven by Priscilla Rodriguez, 38, of Rockford, was southbound on Illinois Route 251 and was struck in the intersection on the driver’s side by the Ram pickup. Rodriguez was extricated from her vehicle and transported to a local hospital by Rochelle Fire for suspected non-life-threatening injuries. Miller was cited for failure to obey a stop sign and was released on scene by medical personnel. Miller shall appear in court at a later date. Ogle County Deputies were assisted by the Illinois State Police, Lynn-Scott-Rock Fire and Rochelle Fire.

On Jan. 30 at approximately 11:31 a.m. deputies placed Jeffrey Rose, 66, of Grand Detour under arrest for a Lee County failure to appear civil warrant in the 8,000 block of South Green Street in Grand Detour. Rose was relayed to Lee County Sheriff’s

deputies.

On Jan. 31 at 7 a.m. the Ogle County Sheriff’s Office received a driving complaint in the area of Kishwaukee Road and Illinois Route 72. The vehicle was located and stopped in the 4,000 block of North River Road. The driver, Lokana Kabagame, 57, from Rockford was taken into custody for no valid driver’s license. He was later released on a notice to appear and given a court date in Oregon. He was also issued a written warning for speeding.

On Jan. 31 at approximately 10:04 a.m. Emanuel Hernandez-Hernandez, 19, of DeKalb, was arrested for an outstanding no bond Ogle County warrant for reckless driving. Hernandez-Hernandez was transported to the Ogle County Jail where he was held pending an appearance before a judge.

On Jan. 31 at 10:08 p.m. deputies conducted a traffic stop in the 200 block of South 4th Street Oregon. After a brief investigation, James Westness, 55, of Davenport, Iowa, was arrested for driving while license revoked. Westness was transported to the Ogle County Jail, where he was released with a notice to appear.

On Jan. 31 at approximately 11:10 p.m. deputies responded to a single-vehicle accident on Illinois

Route 64 near the intersection with Pine Rock Road. After further investigation it was determined an east-bound vehicle being driven by Micah Coffman, 24, of Mt. Morris, lost control and drove off the roadway. The vehicle then struck a driveway, causing the vehicle to overturn. Coffman was evaluated by Oregon EMS for treatment of minor injuries.

On Feb. 1 at 6:06 a.m. deputies conducted a traffic stop in the 8,000 block of North Kishwaukee Road. As a result, Mark V. March, 58, of Byron was arrested for driving while license suspended. March was additionally issued citations for expired registration, failure to display two red tail lights, and operating an uninsured motor vehicle. March was released on a notice to appear with a future court date.

On Feb. 1 at 7:24 a.m. deputies were dispatched to Castle Rock State Park at 3100 S. Illinois Route 2 for a report of a car in the river. Through the course of the investigation, it was determined that a gray 2006 Saturn Ion was traveling southbound on South Illinois Route 2, when the driver, Douglas G. Hollister, 66, of Rockford lost control of the vehicle on the frost-covered pavement.

See SHERIFF page 8

ROCHELLE News-Leader

**211 IL Route 38 East, Rochelle, IL 61068
(815) 562-4171**

USPS (467-820) ISSN (1075-2811)
Published every Wednesday and Sunday by Rochelle Newspapers Inc. at 211 E. State Route 38, Rochelle, IL 61068. Periodical postage paid at Rochelle, IL 61068. Postmaster send address changes to the Rochelle News-Leader, P.O. Box 46, Rochelle, IL 61068. Subscription rates are \$139.99 per year by mail in Ogle County. Outside county rate is \$149.99 per year. No mail delivery in newspaper-carrier serviced areas. The circulation department is open Monday through Friday from 8 a.m. to 5 p.m. If you are a carrier subscriber and your paper does not arrive, contact Kelly White at 561-2112.

IN-COUNTY REGULAR SUBSCRIPTION RATES

• \$139.99 for one year • \$79 for six months
• \$34.99 for three months • \$13.99 for one month

Call (815) 561-2112 or
Visit our website at
www.rochellenews-leader.com



HOW TO CONTACT US

News-Leader Main Switchboard (815) 562-4171

General Manager
Tonja Greenfield (815) 561-2124

Newsroom Staff
Jeff Helfrich, Managing Editor (815) 561-2151
Russ Hodges, Sports (815) 561-2152

To Place a Display Ad
Andrew Heiserman (815) 561-2123
Chris Ackland (815) 561-2153

To Place a Legal Ad
Mike Feltes (815) 561-2124

To Place a Classified Ad
Andrew Heiserman (815) 561-2123
Chris Ackland (815) 561-2153

Subscriptions and Delivery
Kelly White (815) 562-4171



Ready to
Paint?

HIRE A PRO!

Veteran-Owned * Free Estimates * Insured

* Interior & Exterior Painting	* Light Carpentry/Drywall Repair
* Residential/Light Commercial	* Wallpaper Removal
* Cabinet Painting & Refinishing	* New Construction & Remodel Painting Services
* Trim Finishing & Painting	
* Deck, Porch, Pergola, Fence & Playset Restoration & Staining	* Pressure Washing Services
* Agricultural Buildings & Barn Painting	* Concrete Staining, Coating and Sealing



Goodman
PAINTING LLC
Quality • Craftsmanship

815.222.9920
goodmanpainting.net

LOCAL NEWS

Sinnissippi Centers unveils new sensory room at Rochelle office

ROCHELLE — Sinnissippi Centers' Rochelle office now has a sensory room that can be used for clients of all ages. Sensory rooms are spaces that have been specifically designed to give an immersive sensory experience for people with a variety of needs. The size and features of a sensory space will differ depending on the user and their needs. The main benefit of sensory rooms is that they are a humane and effective way for individuals to manage their stress levels and negative thoughts and emotions.

A sensory room typically uses lights, sound, colors, and other sensory cues to calm, engage, and help users to develop emotionally and cognitively. They are designed to help users engage with their senses, touch, sight, hearing, and reap the benefits of sensory stimulation in a safe and relaxed environment,

regardless of their age or ability.

"We created a sensory room based on my personal experience with my son's occupational therapy," Sarah Schulfer-Popp, area office manager at Sinnissippi Centers' Rochelle office, said. "It was created around the idea that many children and adults may be seeking sensory stimulation, and this makes it hard to concentrate on anything else internally. Once my son

started occupational therapy, his language started to develop rapidly as his sensory needs were being met. He is now a happy and extremely chatty five-year-old. By creating a place where clients can experience increased sensory input, controlled, they are better able to free up internal resources to work on attention, focus, social skills, anxiety and even other coping skills."

In addition, a sensory

room also creates a calm and safe environment for clients to have their sessions.

"Kids have loved it so far, and I have taken one adult into the sensory room and she opened up more than she had before," Schulfer-Popp said. "We had low lights, she sat on the bean bag, and had a weighted blanket on her. Her subjective report was that she feels safe in my office, but the sensory room

was a step above that."

The sensory room at the Rochelle Office features a Lycra swing, a crash pad, fiber optic lights, tap lights, wall panels, a felt story board, a bean bag to sit on, chairs with exercise balls in them, weighted blankets, weighted vests, social and emotional games, sensory bins, as well as some other things like a puppet theater, a calm down jar, a white noise machine with meditation exercises on it.

ROCHELLE POLICE DEPARTMENT

ROCHELLE — On Jan. 29, Caitlin L. Holt, 27, of Rochelle was cited for no valid registration. She signed a promise to comply and was given a March 1 Rochelle court date.

On Jan. 29, Gabriel M. Williams Torres, 29, of Rochelle was cited for a Scott's Law violation. He signed a promise to comply and was given a March 1 Rochelle court date.

On Jan. 29, Jesus M. Rea, 24, of Antioch was cited for speeding 56 miles per hour

in a 35 miles per hour zone. He signed a promise to comply and was given a March 1 Rochelle court date.

On Jan. 29, Antonio Hueramo, 19, of Rochelle was cited for expired registration. He signed a promise to comply and was given a March 1 Rochelle court date.

On Jan. 29, Paul Merritt, 40, of Rochelle was arrested for driving while license revoked. He was released on a notice to appear with a March 1 Rochelle court

date.

On Jan. 30, Silvia J. Sepulveda, 62, of Rochelle was arrested for no valid driver's license. She was released on a notice to appear with a March 1 Rochelle court date.

On Jan. 30, Christina M. Pelayo, 46, of Rochelle was arrested for criminal trespass to residence. She was released on a notice to appear with a Feb. 23 Ogle County court date.

On Jan. 30, Conlin B. Fifer, 22, of Rochelle was

cited for speeding 61 miles per hour in a 40 miles per hour zone. He signed a promise to comply and was given a March 1 Rochelle court date.

On Jan. 30, Paula Montanez, 50, of Rochelle was cited for speeding 56 miles per hour in a 30 miles per hour zone. She signed a promise to comply and was given a March 1 Rochelle court date.

On Jan. 30, Rueben C. Burgess, 33, of Rochelle was arrested for an out-

standing Ogle County failure to appear warrant and transferred.

On Jan. 31, Sherlyn C. Rojas, 19, of Rochelle was cited for speeding 64 miles per hour in a 40 miles per hour zone. She signed a promise to comply and was given a March 1 Rochelle court date.

On Jan. 31, Sonia Teutla, 33, of Rochelle was cited for no insurance. She signed a promise to comply and was given a March 1 Rochelle court date.

On Feb. 1, Brandon E. Anderson, 34, of Rochelle was arrested for possession of drug paraphernalia and for an outstanding Ogle County warrant. Anderson was transferred for the warrant and given a March 1 Ogle County court date.

On Feb. 1, Maria V. Oquendo, 59, of Rochelle was cited for speeding. She signed a promise to comply and was given a March 1 Rochelle court date.

All individuals are innocent until proven guilty.

Rochelle Area

CHURCH DIRECTORY

Ashton Bible Church, corner of Main and Paddock in Ashton. Pastor Farrel Stauffer, church phone is (815)453-2190, church website www.ashtonbible.org. Sunday School for all ages 9:00-10:00am, Morning Worship 10:15am, Wednesday Prayer Meeting/Bible Study 6:30-8:00pm.

The Bridge Church, Pastor Greg Duncan, 11038 E. IL Route 38, Rochelle, IL 61068. Phone: 815-562-7750. Sunday School: 9:00 am; Sunday Service: 10:00 am; Nursery & Children's ministry during am service; Bible Study Tuesday 10:00 am and Wednesday 7:00 pm. Web: thebridgechurchrochelle.com Email: thebridgechurchrochelle@gmail.com

Calvary Lighthouse Church, Assemblies of God, Senior Pastor, Dr. James Horvath. 14409 Hemstock Rd., Rochelle. Sunday Morning: Sunday Worship & Children's Church 10:00 A.M., Wednesday Evening 7:00 P.M. – Adult Teaching, Missionettes & Royal Rangers Childrens Classes, Nursery available for all services. HE-Brews Cafe is open before and after services. For further information, please call the CLC office at 815-562-7701, or email us at staff@calvalrylighthouse.com

Calvary Lutheran Church, LCMC - "To Know Christ and to Proclaim Christ in Word and Deed" - 19 Perry Road, Lee, IL 60530 (the intersection of Perry Road and W. County Line Road). Rev. Martha Uecker Nelson, Pastor. Coffee Hour starts at 9:00 a.m., Sunday School, Confirmation, and Adult Bible Study are at 9:15 a.m. Worship is at 10:30 a.m. and is broadcast live on Facebook. Go to our website is at www.Calvarychurchlee.org and click on the link there. A Grief Support Group meets the third Tuesday of each month at 10:00 a.m. Call or text (815) 824-2825 or email CalvaryLeeIL@gmail.com with questions or for more information. Also check us out at www.facebook.com/Calvary-Lutheran-Church.

Rochelle Church of Christ, Keeping Christ at the center in the Hub City. We meet Sundays at 9:00am for Bible Study and 10:00am for worship. We also have a Wednesday Bible Study at 7:00pm. 206 Erickson Rd, Rochelle, IL 61068. You can call us at (815) 562-6572 or visit us on the web at rochellechurch.com. We also have a radio program Sundays just after 8am on WRHL 1060AM. Minister Dominic Venuso.

Creston United Methodist Church and Steward United Methodist Church - Rev. Ilhan You, Creston: 126 West South Street, P.O. Box 209, Creston, Illinois 60113. Sunday morning worship 9:00am. Coffee fellowship at 10:15am. Steward: 507 Main Street, P.O. Box 80, Steward, IL 60553. Adult Sunday School, 10:00am. Sunday morning worship and Children's Sunday School 11:00am. Contact the church office at 847-730-4370 for more information. facebook.com/crestonumcil facebook.com/stewardilumc

Elim Reformed Church, 140 S. Church Road, Kings, IL 61068. Phone: 815-562-6811. Email goelimchurch@gmail.com Website www.goelimchurch.org Sunday Morning Worship 10:00 Rev. Marv Jacobs

Faith Lutheran Church - (14206 E. Flagg Rd.) - "Making Christ Known Through Lives of Faith" In-person worship is available each Sunday at 9:00 a.m. or online at "Faith Lutheran Social" on YouTube. Worship resources are also available on our Facebook page - 'Faith Lutheran Church ELCA.' You may also e-mail Pastor Joy Alsop at Pastor@faithlrochelle.org for more information. All are welcome to join us!

First Baptist Church of Rochelle, First Baptist Church of Rochelle invites you to experience our practical Bible services which have nurseries provided in every service along with a wide range of children's and teen ministries. Sunday School is at 9:30 am with regular church services at 10:30 am and 1:00 pm. Wednesday Family Night starts at 6:30 pm with AWANA for the 5 yr. olds thru 6th grade. The Omega Teen Ministry also starts at 6:30 pm for 7th - 12th grades and the Adult Bible Study at 7:00 pm. First Baptist Church is located 6 blocks west of Hwy 251 at the corner of Woolf Ct. and 8th Ave. in Rochelle. Call 562-4168 for more information. Listen at 8:30 am Sunday mornings on WRHL 1060 AM for the Sunday morning "Bible Message." www.firstbaptistrochelle.org

First General Baptist Church, 500 S. 12th St, Rochelle. Phone: 815-562-5221. Email: fgbcrochelle@gmail.com. Website: www.fgbcrochelle.org. Facebook: www.facebook.com/fgbcrochelle. Pastor: Rev. Angelo Bonacquisti. **Sunday worship services:** 8:30 am, 11:15 am and 6:00 pm. **Sunday school:** 10:00 am. We'd be honored to have you join us as we worship JESUS and continue to grow in truth and love for God and each other. A nursery, children's church, youth group and small groups are available. If you need a ride please contact our church bus driver, John, at (815) 262-4275 by 8:30 am on Sunday. "For if you confess with your mouth that Jesus is Lord and believe in your heart that God raised him from the dead, you will be saved." Romans 10:9

First Presbyterian Church - An Amazing Place for Amazing Grace- Rev. Doug Forsberg, Senior Pastor. 1100 Calvin Road, Rochelle. Email: info@placeforgrace.com. Sunday morning worship 9:00am and 10:30am. In person or streamed online. On our Website and Facebook Live. www.placeforgrace.com/ www.facebook.com/placeforgrace

Grace Fellowship Church — Pastor Jeff Ardisson, 2128 Il Route 38, Ashton, 815-453-7464. Sunday School 8:30 a.m. Sunday Worship Service 9:45 a.m. www.graceisforyou.com

Harvest Baptist Church 241 Scott Ave. (Hillcrest). Rev. Duane Boehm, pastor. Email duane712@hotmail.com, cell 815-757-3427. Visit us on Facebook! Service times: Sunday morning worship with Children's Church at 10 am. Wednesday night worship at 7 pm.

Immanuel Lutheran Church Missouri Synod 16060 E. Lindenwood Road, Lindenwood, IL 61049. Rev. Dr. Matthew Rosebrock. Church Phone 393-4500. Church Worship 9:00 a.m. Sunday School Christian Education Hour at 10:30 a.m.

Living Water Community Church 405 N. Main St, Downtown Rochelle. Phone 815-561-6249, Website: www.lwccr.com, Like us on Facebook. We are Non-Denominational, Christ Centered, Casual dress, Christ Centered Live Band Worship. Mike Vogeler - Outreach and Seven C's Pastor, Chris Bender- Teaching Pastor and Doug Bunger - Missions and Children's Pastor. Sunday Worship Service- 10:00am. Nursery/Toddlers Ages 0-5 available during the service in the Splash building. Swim- Grades 1st-5th worship with the adults then break out for age appropriate teaching. Youth groups, Small groups, Life Groups and Workshops meet throughout the year for Bible teaching. 7C's Mission- serves the community physically & spiritually each month from 1135 Lincoln Hwy, providing lightly used clothing, Hygiene items, a light lunch and Elder Prayer open the second Saturday from 10am-2pm and the 4th Thursday from 4pm to 7:00pm and by appointment.. [f](https://www.facebook.com/lwccr)

New Hope Fellowship (Church of God - Anderson, IN), 1501 10th Ave., Rochelle, IL 61068. Service: Sunday at 9 a.m. 10:30 a.m., (815)561-8400, www.NHFchurch.net Pastor: Dan Sergeant and Pastor Nick Tornabene. (Classes for children through age fifth grade during service.)

Rochelle United Methodist Church welcomes everyone to their worship service, and practices openness for all activities including communion. Worship is at 9:00 am. Sunday school for children begins around 9:15, following the Children's Time in worship. A fellowship time with food and space for conversation occurs in Hicks Hall every week following the worship service. We celebrate communion with an open table on the first Sunday of every month, and on other appropriate occasions. Youth group is on Sunday evenings from 5:30-7:30. Our youth program includes service projects, discussion topics, Bible Study, and lots of fun and fellowship together. Some of our activities include packing meals at Feed My Starving Children, helping at Rochelle Christian Food Pantry and 7C's, working with animals at Barn on Baseline, Mystery trips (Destination Unknown!), and interactive experiences on Dating boundaries, refugees, and homelessness. Youth group is for grades 6-12 and friends are always welcome. Recorded services are available on our YouTube channel and our website at www.rochelleumc.com. Our services are on the radio (93.5 FM) on Sunday mornings at 9:00 am. Our Facebook page is www.facebook.com/rochelleumc. **Our pastor is the Rev. Dr. Katherine Thomas Paisley.** Our address is 709 Fourth Ave. (815) 562-2164. Email is admin@rochelleumc.com. At Rochelle United Methodist Church, everyone is welcome and loved!

St. Patrick Catholic Church Rev. Jesus Dominguez; Deacon Fermin Garcia; Deacon George Schramm; 244 Kelley Dr. (Corner of Kelley & Caron Rd.), PO Box 329, Rochelle, IL 61068. **Office Hours:** 9:00 AM- 4PM Monday-Thursday, Phone: 815-562-2370. **Mass times:** 8:00 AM Monday-Thursday, Saturday Vigil Mass 5:00 PM English, 7PM Spanish, Sunday Mass 7:30 AM, 9:00 AM in English and 11:00 AM in Spanish. **Confessions:** Monday 8:30AM & 6:30PM, Tuesday 8:30AM, Saturday 8:30am & 4:00-4:45 PM Or by appointment. **Religious Education:** Deacon George Schramm, Director of Religious Education. 903 Caron Road, Rochelle, IL 61068, 815-561-0079; Website: stpatricksrochelle.com Email: stpatrick-rochelle@rockforddiocese.org Facebook.com/StPatrickRochelle

St. Paul Lutheran Church "Building Relationships in Christ, Now and Forever!" Steven Hall, Principal, Parish Nurse-Marcia Schnorr. 1415 Tenth Ave., Rochelle. Church Office-562-2744. Worship times: 6:00 p.m. Saturday, 9:00 a.m. Sunday. Our service is broadcast over WRHL 1060AM at 10:00 a.m. Sunday. Sunday School 10:15-11:15 a.m. Call 562-6323 for more information about the school.



LOCAL VIEWS

GUEST COLUMN

Trees – a critical material used for production

AMONG the four different types of technology, production technology is the knowledge, tools, machines, and processes that we humans use to produce the artifacts we need and want to improve our lives. We manufacture artifacts, called “products”, which are those artifacts which get transported from the location at which they are created, or we construct artifacts, called “structures”, which are those artifacts that remain at the location they are created. For all the time humans have existed, we surround ourselves in a safe cocoon of structures and products – such as the house or apartment or office where we live and work, and the countless products we need and want to be comfortable and entertained.

There are several Rochelle-area businesses who specialize in tree-related products and services including Fisher’s Hardwood, Wausau Supply, Hixson Lumber, Premier Forest Products, and Timberman Tree Service.

Because of the im-

portance and impact of production technology for all of us, understanding and managing it calls for education and the involvement of caring humans who will design and produce artifacts that not only benefit humans but also preserve our natural resources for the future. This column is about this education and this article will focus on the production of one important category of related products used in manufacturing and construction of all sorts of artifacts: lumber, plywood, and wood composites.

Trees are one of the first resources used by humans to make rudimentary tools and build shelter. Incredibly, trees can also be used to build fires which in turn can be used for heating and cooking. And, as if that was not enough, many trees provide delicious, edible fruit. Trees are truly amazing things! To add to the list of wonderful properties of trees, they typically float in water so they can be used to build boats for transportation, and since they can be bent

into a variety of shapes, wood was also used to build sleds and wagon wheels. It is no wonder that lumber from trees is still a critical material used to build artifacts.

Tree harvesting is part of broader science and craft known as “forestry” as well as part of the agricultural process of tree farming. A fantastic thing about trees is that they grow well in forests and on farms, so if managed properly they can essentially last forever. Illinois has a vibrant forestry industry, especially in the southern part of our state.

To turn trees into lumber, which is a flat, rectangular-shaped strip or slab of wood, trees are harvested by loggers who remove the limbs and cut them down. After harvesting, logs must be transported to sawmills using trucks, boats, or trains. At a sawmill, logs are sorted by their size and quality before the outer bark is removed with mechanical tools or liquid

chemicals. Once they have been “cleaned” the logs are sawn into lumber by a process called “milling”, though the overall process is far from over. Green (freshly-cut) lumber must be carefully dried to remove moisture without the lumber twisting or moving (warping) too much. Once dry the boards are graded according to quality and then a finishing cut, and sanding are done to create the final size and smoothness. The lumber is now ready to be packaged and transported to a manufacturing plant or construction site.



Kurt Wolter

Plywood is also a product, like lumber, which is manufactured from trees. But plywood is a composite material as opposed to pure wood. Whereas lumber is made from all wood, plywood is made from thin layers of wood and glue. After trees are cut down and their bark removed, they are superheated in steam rooms until they are so soft and pliable that very

thin layers of wood can be cut, or peeled, from them using very long and razor-sharp blades. This cutting, or peeling, or the wood creates a thin “veneer” of wood that is sort of like the way toilet paper is peeled off a roll. The veneers are also dried slowly and carefully before they are glued together in a crisscross wood grain pattern into large 4’ x 8’ or longer sheets of various thicknesses. Because of the composited wood and glue and the crisscross pattern, plywood is extremely strong compared to its thickness and weight. Plywood goes through a similar cutting and grading process before packaging and shipping.

A third category of wood products is wood composites. These are products made from small particles (sawdust) or scraps of wood and glue. The two are combined and heated to form all sorts and shapes of strong, durable, and lightweight products used in both manufacturing and construction. These products go by names like “Masonite”,

“particle board”, and “medium density fiberboard” (or MDF). When plastic or wood veneers are glued to the exposed surface of these composites, other laminated products commonly used in construction are produced, like kitchen countertops and engineer or laminated flooring.

Everything from the roofs, walls, and floors of houses are made mostly from these products made from trees, and countless types of home furnishings like sofas, desks, and chairs are also. We are lucky to have such versatile living things as trees so available to us, and with careful management and use we can count on them forever to continue to provide.

Kurt Wolter has studied and taught technology - including production, transportation, energy, and communication - for over 30 years. He enjoys trying to better understand technology’s past, present, and future while also attempting journalism. He can be reached at tech-nohistory100@gmail.com

Reed Harris — Consider this: Democracy

THE Republicans seem to be okay with Former President Trump saying that if he were elected president again, he wouldn’t be a dictator “other than day one”. Some believe that this was said in jest, a joke of some type, I guess. But if we believe he would do this, what would he be on day two through day whatever? Explicitly, there is no answer in his comment. Implicitly, if you are dictator on day one, then you are obviously a dictator.

The ‘Britannica’ defines a dictatorship as a “form of government in which one person or a small group possesses absolute power without effective constitutional limitations.” Over many, many years, the Republican party has been one to envision limited government. Yet a dictatorship would bring 100 percent government control. Quite an about face if they are okay with it.

Are we okay with

giving up our freedoms? We surely don’t have any if the government can override any local decisions. And how about the many other costs that concern personal lives? There will be no going back. Not without a huge struggle and even more costs of a very personal nature that we may not want to realize.

Now let’s look at a more optimistic view. One in which the Democracy stays intact and continues within our borders. If this occurs, will we be done in our work? Will this be our only accomplishment? Let’s look at some challenges. Take, for instance, the bill the Senate is trying to pass right now concerning the border and aid for Ukraine and Israel. As discussed on CBS’s “Face The Nation”, this bill has a chance to get passed. We can only bring it to a vote and see. The biggest challenge to this bill at the moment is Former President Trump and his pressure on the Republi-

cans to prevent a vote on this bill. The headline out of congress on the Politico website “politico.com/news/2024/01/27 / trump-mike-johnson-border-00138223” is “Trump vows to fight border deal ‘all the way,’ praises Johnson as ‘very tough’”.

Many in the Republican party are ready to take this bill on and see it through. Why would Trump then fight the bill? The only reason that comes to my mind is that it may make President Biden look good. If that is true, why would that be a problem? Is it because the former President has better ideas? Pass them along to the party while they are debating the bill. Is it because he feels voters will leave him and move to Biden? Is Trump really worried about votes?

If we are talking about the aid to Ukraine, and Israel, then I would think we are talking more about

humanitarian needs of others and not of the monetary stress to this country. Since there has been no aid for Ukraine in some time, it appears to me that Congress is more concerned about Russia and President Putin. As far as I see it, the only two benefits to Russia in winning against Ukraine are either more territory to expand the growth of Russia or to see the USSR reestablished.

With either of these scenarios, chances of additional conflicts rise dramatically with Ukraine’s takeover. Do we want a larger-scale war?

At least with democracy intact, we can do some things to limit any escalation. With Trump as a dictator, however, since he has always praised Putin and still does, we may find that he abandons Ukraine in its fight against Russia.

Yes, on the side of democracy, it seems like we



Reed Harris

can hardly get anything done. The partisanship seems to be so preserved that there is little we can do. Yet, as I have said in other articles, this is the voter’s fault. If we are locked in our perspectives and won’t change ourselves, this just becomes reflective in our choices when we are voting. We wonder why we don’t see anything getting done when the people we have voted in are just like us. Of course, some congress persons in office are there because of campaigns that led them astray. We must try and see through questionable actions when we go to the polls.

In a democracy, we have the power of term limits with our vote. If we feel someone is coming to the end of their “useful” service, we can vote them out. Just because someone has done a good job for many years, doesn’t mean they have lifetime tenure. They do, only if we want them to.

Though I have mentioned the Republican

Party specifically several times in previous paragraphs, this does not mean that I feel it’s only this party that is good enough to stay unchanged or bad enough to be the only one needing change. This, of course, is not my call. Only you, through your votes, have the power to make this determination. And this call must be made with the Democratic Party in mind also. What do you believe when looking at a candidate for the Democratic Party. Good? Bad? I feel it’s good to have a basic set of beliefs when it comes to politics, which will most likely lean towards one or the other Party. But I also feel we must be willing to vote for a candidate outside the party if your set of beliefs might be compromised with an in-party candidate.

Never forget that while democracy exists, you have the power to change course, change term limits, change your mind. America is your county. Keep it safe.

How to contact government officials

U.S. Con. Darin LaHood
1424 Longworth HOB
Washington, D.C.
20515
(202) 225-6201

IL Sen. Win Stoller
Stratton Office Bldg
Springfield, IL 62706
(217) 782-1942

IL Rep. Bradley Fritts
Stratton Office Bldg
Springfield, IL 62706
(217) 782-0535

Have a letter you want to submit to us? Send it to (news@rochelle-news-leader.com

KEEPING YOU IN TOUCH WITH YOUR LOCAL LEADERS

* Denotes Chairman/President

Rochelle City Council

*John Bearrows	jbearrows@rochelleil.us
Kathryn Shaw-Dickey	kshaw-dickey@rochelleil.us
Bil Hayes	bhayes@rochelleil.us
Rosaelia Arteaga	rarteaga@rochelleil.us
Dan McDermott	dmodermott@rochelleil.us
Tom McDermott	tmodermott@rochelleil.us
Benjamin Valdivieso	bvaldivieso@rochelleil.us

Rochelle Elementary School Board

*Trisha Vaughn	tv Vaughn@d231.rochelle.net
Dave Casey	dcasey@d231.rochelle.net
Steve Builta	sbuilta@d231.rochelle.net
Ashley Jackson	ajackson@d231.rochelle.net
Stephanie White	swhite@d231.rochelle.net
Javier Zepeda	jzepeda@d231.rochelle.net
Jennifer Thompson	jthompson@d231.rochelle.net

Rochelle Township High School Board

*Tom Huddleston	tom.huddleston@rthsd212.org
Bill Ravnaas	bill.ravnaas@rthsd212.org
Jeff Tilton	jeff.tilton@rthsd212.org
Bobby Chadwick	bobby.chadwick@rthsd212.org
Brent Ohlinger	brent.ohlinger@rthsd212.org
Laurie Pillen	laurie.pillen@rthsd212.org
Joel Thompson	joel.thompson@rthsd212.org

Flagg-Rochelle Park Board

Brent Carmichael	bcarmichael@rochelleparkdistrict.org
John Dobbs	jdobbs@rochelleparkdistrict.org
Dale Wells	dwells@rochelleparkdistrict.org
*Tim Hayden	thayden@rochelleparkdistrict.org
Jodie Hart	jhart@rochelleparkdistrict.org
Joe Lenkaitis	jlenkaitis@rochelleparkdistrict.org
Kristi Gonzales	kgonzales@rochelleparkdistrict.org

Ogle County Board Dist. 3

Austin Gillis	agillis@oglecounty.org
Dan Miller	dmiller@oglecounty.org
Joseph Simms	jsimms@oglecounty.org

Ogle County Board Dist. 4

Jackie Ramsey	jramsey@oglecounty.org
Skip Kenney	skenney@oglecounty.org
David Williams	dwilliams@oglecounty.org

Creston Village Board

*Tom Byro	tommyb_47@yahoo.com
Greg Hopkins	ghopkins522@comcast.net
Steve Katzman	skatzman@essex1.com
Mike Kerns	ac.kerns@comcast.net
Curt Ward	caward92@comcast.net
Mark Hibshman	
Reid Elliot	
Jennifer Payton	

Hillcrest Village Board

*Richard Rhoads	rrhoads@hillcrestil.us
Pam Pittman	ppittman@hillcrestil.us
Dan Potter	dpotter@hillcrestil.us
Tim Ball	tball@hillcrestil.us
Jose Huerta	jhuerta@hillcrestil.us
Eileen Braski	ebraski@hillcrestil.us
Joe Thompson	jthompson@hillcrestil.us

Flagg Township

Sue Messer	flaggtwp@rochelle.net
Joanna Patrick	flaggtwpcerk@rochelle.net
Susan Rothenberger	assessor@rochelle.net
Scott Seebach	scottseebach@gmail.com

Board of Trustees

Lance Noggle	noggle62@gmail.com
Eric Gruben	egruben@comcast.net
Susan Hager	susanhager303@comcast.net
Jim Kenney	jimk@rocketsupply.com

Flagg-Rochelle Library

*Jaqueline Dickow	dickow@comcast.net
Teresa Haggstad	haggstads@comcast.net
Michael Scanlan	scanlan@comcast.net
Lanning Nicoloff	nicoloff118@comcast.net
Sheri Klindera	alwayslefty2@gmail.com
Susan Sevedge	nit1pr22@yahoo.com
Darci Waltrip	doobs12@comcast.net

LETTERS TO THE EDITOR POLICY

The Rochelle News-Leader encourages responsible letters to the editor on subjects of interest to our readers. Editing may be necessary for space, clarity or to avoid obscenity or libel, but ideas will not be altered. All letters must bear the handwritten signature of the writer and include address and phone number or e-mail address for verification purposes. Neither the street address nor phone number will be printed. Letters should be typed or legibly

handwritten, and no anonymous letters will be published. Any letters from boards or organizations must include at least one name of an individual. Any criticism of public officials should be limited to issues related strictly to their position or actions made in office, as personal attacks will not be published. Letters involving private disputes between the writer and a business will not be published. Political endorsements will be published,

however letters from candidates endorsing themselves will not be printed. Letters may be dropped at the News-Leader office (211 IL Route 38 East), mailed to the News-Leader (P.O. Box 46, Rochelle, IL 61068) or e-mailed (news@rochellenews-leader.com.) The News-Leader reserves the right to edit or reject any letter to the editor for any reason, and letters chosen for publication do not necessarily reflect the views of this newspaper.

COMMUNITY

Jackson named to fall dean's list at Nebraska

LINCOLN, Neb. — Bailey Jackson of Rochelle has been named to the dean's list at the University of Nebraska-Lincoln for the fall semester of the 2023-24 academic year.

Jackson, a freshman pre-health student, was named to the dean's list for the Explore Center.

More than 6,800 students at Nebraska were named to the dean's list for the fall semester.

RACF announces grant applications open Feb. 1

ROCHELLE — The Rochelle Area Community Foundation (RACF) opens its 2024 Community Needs Grant Cycle on Feb. 1, 2024 for all qualified non-profit agencies, organizations, schools, churches, government and municipality partners who serve the Rochelle, Kings, Chana, Lindenwood, Esmond, Steward and Creston areas.

RACF is unable to provide funding to individuals, service organizations, and for-profit entities. To apply, simply visit RochelleFoundation.org, click on the "Grants" tab, and finally click on "Manage Grant". Applicants will be directed to the grant portal where they will use their previous login information or can create an account if they are new to the application process.

Applications will remain open until March 1, 2024 at 4 p.m. There will be two grant applicant zoom calls, Thursday, Feb. 8 (Meeting ID 826 8393 5827) at 10:00 a.m. and Tuesday, Feb. 27 (Meeting ID 836 1347 5708) at 10 a.m. The check-in zoom calls are not required but are encouraged as they offer an opportunity for applicants to ask questions about the application, processes, deadlines, and requirements. To receive a calendar invite please email director@rochellefoundation.org and the Executive Director, Emily Anaya, will make sure to add you to the list of attendees.

Approved grant requests will be announced to the public on Wednesday, April 24, 2024 at a community-wide event held at Salt 251 from 4-6 p.m. Tickets are not required and the event is free to the public. Be looking for more information on that event soon.

If you have specific questions about the grant application process or if you want to know more about the RACF, please call Emily or Stephanie at 815-561-3600 or email director@rochellefoundation.org.

Kish College to host home daycare provider workshop

MALTA — Kishwaukee College will host Maggie Fern for a workshop on how to become a home daycare provider as part of Kish's Early Childhood Education (ECE) professional development series.

The event is from 5:30-7 p.m. Thursday, Feb. 8, online via Zoom. The event is free and open to the public.

Fern is a Recruitment, Retention, Referral and Outreach Coordinator for 4-C: Community Coordinated Child Care of DeKalb. She has 10 years of experience in the Early Childhood Education field and works with providers who want to start childcare businesses in their homes.

The workshop will focus on the beginning steps of how to open a family childcare business, the requirements, and how 4-C can assist in the process. Those interested in a career in ECE are encouraged to attend. The event is supported by the Illinois Early Childhood Access Consortium for Equity (ECACE).

To learn more or register for the event, visit kish.edu/ece or call speakers. To learn more about ECE opportunities at Kish, visit kish.edu/ece.



- Jan. 5 - Nathan Thompson, Rochelle, \$25
- Jan. 6 - Audrey Summers, Rochelle, \$25
- Jan. 7 - Rochelle Area Community Foundation, \$50
- Jan. 8 - Kishwaukee College Foundation, \$25
- Jan. 9 - Katelyn Gabbard, Rochelle, \$25
- Jan. 10 - Focus House, Rochelle, \$25
- Jan. 11 - Rochelle Area Community Foundation, \$25
- Jan. 12 - Molly Sly, Rochelle, \$25
- Jan. 13 - Rochelle Area Community Foundation, \$25
- Jan. 14 - Rochelle Area Community Foundation, \$50
- Jan. 15 - Karen Anderson, Rochelle, \$25
- Jan. 16 - Tina Graber, Palatine, \$25
- Jan. 17 - Connie Manning, Rochelle, \$25
- Jan. 18 - Jordan Blume, Oregon, \$25
- Jan. 19 - Tim Isley, Rochelle, \$25
- Jan. 20 - Debbie Belmonte, Rochelle, \$25
- Jan. 21 - Shane Huber, Rochelle, \$50
- Jan. 22 - Focus House, \$25
- Jan. 23 - Amy Hayden, Rochelle, \$25
- Jan. 24 - Kyle Aldridge, Rochelle, \$25
- Jan. 25 - Hayat Taour, Oregon, \$25
- Jan. 26 - Ashley Bick, Rochelle, \$25
- Jan. 27 - Titus Williamson, Rochelle, \$25
- Jan. 28 - Aubrey Headon, Rochelle, \$50
- Jan. 29 - Mike Scott, Forreston, \$25
- Jan. 30 - Joe Williams, Rochelle, \$25
- Jan. 31 - From the Heart, Rochelle, \$25

BIRTHDAYS & ANNIVERSARIES

Feb. 1 Zach Prosser Luke Norris	Feb. 10 Gene & Judy Messer (anniversary)	Feb. 18 Sam & Jessica South (anniversary) Sven Norris Joachim Lopez	Feb. 26 Natalie Powell
Feb. 2 Domingo Mancilla	Feb. 11 Paige Donoho Samantha Donoho Darrell Bolhous	Feb. 20 Christian Losoya	Feb. 27 Beth Bolhous
Feb. 5 Hazel Nieves	Feb. 12 Jennifer Toppett	Feb. 21 Kris Oleson Anna Sexton	Feb. 28 Lucas Donoho
Feb. 7 Lydia Sherburne Alex Bonilla	Feb. 13 Gabby Villalobos	Feb. 22 Jessica South Lucy Hazlip	March 2 Addison Perkins
Feb. 8 Kaiyah Hayward	Feb. 16 Larry Baker	March 5 Briggs Bridgeman	March 6 Nicole King

Call 815-561-2151 to submit names for birthdays and anniversaries

Coffee Break

MAGIC MAZE

Find the listed words in the diagram. They run in all directions forward, backward, up, down and diagonally. Unlisted clue hint: CAPITAL OF GEORGIA

Albania	Essence	Sensors	Sunsets
Alfalfa	Expense	Smokestacks	Swimsuits
Copacetic	Gorging	Snapshots	Treatment
Dredged	Reservoir	Snowshoes	

©2024 King Features Syndicate, Inc. All rights reserved.

Super Crossword

STORYBOOK SENTIMENT

ACROSS

1 Auxiliary professor

8 Nickname for baseball great Ruth

15 Cultural value system

20 High-fashion clothing

21 Knows someone at the company, say

22 Reluctant (to)

23 "Wait, my rant isn't finished ..."

25 Private, as desires

26 Agnus — (lamb figure)

27 "Cool beans!"

28 Down dinner

30 Look lewdly

31 2018 war documentary directed by Peter Jackson

38 Composer — Sebastian Bach

40 Hamilton/Burr confrontation

41 Era upon era

42 Turned down

43 Stati — (America, in Italian)

44 Stage design

47 La — Tar Pits

49 Gp. opposed to leather

51 Made a habit of taking risks

54 Actress Cuthbert

57 French for "summers"

58 Bible book after Micah

59 Dwell at

61 —Ops (CIA mind games)

62 Coffee holder

63 In love

67 Big name in candy wafers

68 2011-13 Fran Drescher sitcom

71 Give it — (try)

74 Paris' Champs- —

75 Certain scanning device: Abbr.

76 St. crossers

79 First book section

81 Former U.N. chief Boutros Boutros- —

83 Stool or pew

84 Milk container

85 Just a tiny bit

90 Op-ed writer

91 Art of Erté

92 Once existed

93 Eldritch

94 Links gp.

96 Canon camera brand

98 — part (role-play)

100 1996-2002 sports sitcom

101 Song phrase following "See you later, alligator"

107 Amazes

108 Daddy's boy

109 Prague citizen

110 Victor's hand gesture

113 Prefix with type or plasm

115 What's spelled out by the starts of six answers in this puzzle

121 Lot units

122 Countering an attack by missile, e.g.

123 Pundit

124 Hockey feints

125 Fill with more inventory

126 Like soon-to-be-unveiled tech

1 Mil. school

2 Finished

3 She won a Tony for "Hurlyburly"

4 Stage actress

5 Pious sister

6 Actor Hume of "Cocoon"

7 Heads, to Henriette

8 Iota preceder

9 Novelist Robbins

10 N.Y. hours

11 Cranky cry

12 Singer DiFranco

13 Stanford- — test

14 Occupy

15 — Lilly & Co.

16 Until this time

17 "Just one moment"

18 Verdi opera

19 Tears to bits

24 "Told ya so!"

29 Recurring themes

32 Detests

33 Author Blyton

34 Oil, informally

35 Dweeb's kin

36 Cassini of 20-Across

37 Quick quip

38 Minty Kentucky Derby drink

39 — last legs (about to collapse)

44 Biting turtle

45 Ordinal suffix

46 Like so, informally

48 Correo — (Spanish airmail)

50 — over (satisfied for the moment)

52 "Movin' —" (sitcom theme song)

53 Tube prizes

55 Brand of fruit drinks

56 Year, in Brazil

60 Signs up

62 Multilevel structure for Fluffy

64 Suffix with chlor- or fluor-

65 Model Cheryl

66 "ER" or "CSI"

68 Get a move on

69 Lead-in to "So sue me!"

70 Caesar's 202

71 N.C. State's NCAA div.

72 "— Na Na"

73 Toiling away

76 Fetching

77 Certain surrealist paintings

78 Eye maladies

80 Funds

82 Sly — fox

83 Tortoise's top

86 Calf product

87 Caesar's "Behold!"

88 Campus mil. program

89 Singer Halliwell

94 Underside of a dog's foot

95 Liftoff stress

97 Hebrew horn

99 With 106-Down, North Pole surround

100 Cling (to)

102 Perfumer

103 Absurd

104 Missouri's — Mountains

105 Toon pic

106 See 99-Down

111 Kin of -ette

112 Novelist Jennifer

114 Pre-CIA gp. "— a girl!"

116 "— a girl!"

117 Fabric dye brand

118 Retired NBAer Ming

119 Vote down

120 "True —" ("Indeedy")

HOCUS-FOCUS

BY HENRY BOLTINOFF

Find at least six differences in details between panels.

Differences: 1. Burner is larger. 2. Hand is not showing. 3. Plate is moved. 4. Glass is moved. 5. Box is missing. 6. Hair is longer.

Super Crossword

Answers

ACROSS

1. Auxiliary professor

8. Nickname for baseball great Ruth

15. Cultural value system

20. High-fashion clothing

21. Knows someone at the company, say

22. Reluctant (to)

23. "Wait, my rant isn't finished ..."

25. Private, as desires

26. Agnus — (lamb figure)

27. "Cool beans!"

28. Down dinner

30. Look lewdly

31. 2018 war documentary directed by Peter Jackson

38. Composer — Sebastian Bach

40. Hamilton/Burr confrontation

41. Era upon era

42. Turned down

43. Stati — (America, in Italian)

44. Stage design

47. La — Tar Pits

49. Gp. opposed to leather

51. Made a habit of taking risks

54. Actress Cuthbert

57. French for "summers"

58. Bible book after Micah

59. Dwell at

61. —Ops (CIA mind games)

62. Coffee holder

63. In love

67. Big name in candy wafers

68. 2011-13 Fran Drescher sitcom

71. Give it — (try)

74. Paris' Champs- —

75. Certain scanning device: Abbr.

76. St. crossers

79. First book section

81. Former U.N. chief Boutros Boutros- —

83. Stool or pew

84. Milk container

85. Just a tiny bit

90. Op-ed writer

91. Art of Erté

92. Once existed

93. Eldritch

94. Links gp.

96. Canon camera brand

98. — part (role-play)

100. 1996-2002 sports sitcom

101. Song phrase following "See you later, alligator"

107. Amazes

108. Daddy's boy

109. Prague citizen

110. Victor's hand gesture

113. Prefix with type or plasm

115. What's spelled out by the starts of six answers in this puzzle

121. Lot units

122. Countering an attack by missile, e.g.

123. Pundit

124. Hockey feints

125. Fill with more inventory

126. Like soon-to-be-unveiled tech

1 Mil. school

2 Finished

3 She won a Tony for "Hurlyburly"

4 Stage actress

5 Pious sister

6 Actor Hume of "Cocoon"

7 Heads, to Henriette

8 Iota preceder

9 Novelist Robbins

10 N.Y. hours

11 Cranky cry

12 Singer DiFranco

13 Stanford- — test

14 Occupy

15 — Lilly & Co.

16 Until this time

17 "Just one moment"

18 Verdi opera

19 Tears to bits

24 "Told ya so!"

29 Recurring themes

32 Detests

33 Author Blyton

34 Oil, informally

35 Dweeb's kin

36 Cassini of 20-Across

37 Quick quip

38 Minty Kentucky Derby drink

39 — last legs (about to collapse)

44 Biting turtle

45 Ordinal suffix

46 Like so, informally

48 Correo — (Spanish airmail)

50 — over (satisfied for the moment)

52 "Movin' —" (sitcom theme song)

53 Tube prizes

55 Brand of fruit drinks

56 Year, in Brazil

60 Signs up

62 Multilevel structure for Fluffy

64 Suffix with chlor- or fluor-

65 Model Cheryl

66 "ER" or "CSI"

68 Get a move on

69 Lead-in to "So sue me!"

70 Caesar's 202

71 N.C. State's NCAA div.

72 "— Na Na"

73 Toiling away

76 Fetching

77 Certain surrealist paintings

78 Eye maladies

80 Funds

82 Sly — fox

83 Tortoise's top

86 Calf product

87 Caesar's "Behold!"

88 Campus mil. program

89 Singer Halliwell

94 Underside of a dog's foot

95 Liftoff stress

97 Hebrew horn

99 With 106-Down, North Pole surround

100 Cling (to)

102 Perfumer

103 Absurd

104 Missouri's — Mountains

105 Toon pic

106 See 99-Down

111 Kin of -ette

112 Novelist Jennifer

114 Pre-CIA gp. "— a girl!"

116 "— a girl!"

117 Fabric dye brand

118 Retired NBAer Ming

119 Vote down

120 "True —" ("Indeedy")

LOCAL NEWS

CITY: Street department details measures to combat winter storms

From page 1

“When the plows go down the road and take their cut out of the center to push it over to the end, there was so much, and it was so heavy that it tends to come off the plow in big chunks. And as you’re going around parked cars and things like that, it can leave a big ridge. The final pass we make leaves a ridge in front of driveways as well. That’s a problem. When you have a big, heavy snow like that it’s hard for people to move the snow. There’s not much we can do because we’re just pushing snow, not removing it.”

When temperatures dropped to near zero, the wet snow froze and a powdery snow followed and stuck to the roads, and applying salt to melt the snow became more difficult due to low temperatures. In situations like that, the street department switches from salt to mix, which also contains sand and rock chips to help with traction.

Wind then picked up and caused drifting, especially

on the outskirts of Rochelle. Drifting problem areas included 20th Street, Flagg Road, North Caron Road, Steward Road, South Caron Road, and Creston Road, Isley said.

“We have quite a few miles of outskirt roads in town that are prone to drifting,” Isley said. “It becomes difficult to keep up with. We heard some questions about why we don’t use snow fence on those roads, but we don’t have time to put up snow fence on every road that drifts. No matter what, we’re going to be out there plowing drifts. Usually, we don’t have a whole lot of drifting to deal with. But this time, we had about a week of drifting impacts.”

Isley said recent years have been quieter with winter weather events. After heavy snowfalls are seen, street department personnel spend a night cleaning snow out of the downtown-area roads and parking lots. He said this year saw the most snow removed in the past few years and crews only had time to clean the roads and are still working on

parking lot snow removal.

The city street department budgets for about 1,200 tons of salt per year. In recent years, it has used about 800 tons of salt per year. Isley estimated about 800-900 tons have been used already for the current winter.

“In that two-week period in January, we probably used 600-700 tons,” Isley said. “We kept getting bursts of snow and the drifting causes us to use more salt, especially when the snow sticks to the road. So, we basically used as much in that two-week period this year as we have in an entire winter recently.”

To completely plow the city, Isley said it takes about six hours with 10 operators. That includes the plowing of every city street, parking lot and alley plus the Rochelle Municipal Airport. Operators try to get out and start clearing the roads at 2 or 3 a.m. before the morning commute when it lines up with snowfall.

Street department operators work a regular shift from 7 a.m. to 3 p.m. If snow



(PHOTOS BY JEFF HELFRICH)

The City of Rochelle Street Department combated two weeks of winter storms in January that yielded a number of school and business closures in the area.

starts at or around 3 p.m., operators work until 9 or 10 p.m. The January winter weather events saw some days well over 15 hours long and one day was about 18 hours long for operators, Isley said.

“It’s very taxing on our operators,” Isley said. “With all the time they spent out in their trucks and everything, they did a great job. I was very happy with how we were able to keep up with the snow. I think our roads were as safe as they could have been during that

time. Especially with the heavy, wet snow. It becomes frustrating for the motoring public and homeowners. I think our operators did a great job keeping the roads as clear as possible.”

Isley praised his operators for their work with heavy snow, which causes snow plow trucks to have to drive slower due to the weight. The street department does what it can to not leave snow at the end of residents’ driveways in those situations.

“The tires will even spin

on our trucks when we’re doing something like that and pushing that amount of heavy snow,” Isley said. “We’re always conscious of plowing in driveways, but it’s difficult for us not to. The last thing we want to do is fill somebody’s driveway. But we’re moving the snow from the center of the road to the edge of it. It’s going to go in front of people’s driveways and there’s not much we can do about it. The clearer the roads are, the better it is for everybody.”

SHERIFF: Ogle County deputies dispatched for report of car in river

From page 4

The vehicle slid off the roadway, through the ditch, and entered the Rock River. The driver was able to exit both the vehicle and the river, prior to first responders arriving on scene, and was uninjured. Deputies were assisted on scene by the Oregon Fire Department, and Dixon Rural EMS. The vehicle was removed from the river, and no citations were issued.

On Feb. 1 at 9:05 p.m. deputies conducted a traffic stop at Illinois Route 38

and Main Street, Creston. After a brief investigation, deputies arrested Carlos De Los Reyes, 24, of Rochelle, for driving while license suspended, possession of cannabis more than 100 grams but less than 500 grams, and manufacture, deliver, possess with the intent to deliver cannabis more than 30 grams but less than 500 grams. De Los Reyes was transported to the Ogle County Jail and released with a notice to appear. De Los Reyes was also issued citations for suspended registration

and inoperable registration light.

On Feb. 1 at approximately 11:19 p.m. deputies conducted a traffic stop within the 6,000 block of East Montague Road. After the investigation, deputies placed Jose G. Fuentes-Santos, 30, of Chicago, under arrest for driving no valid license. Fuentes-Santos was additionally cited for illegally backing in a roadway and operating a vehicle with a suspended registration. Fuentes-Santos was transported to the Ogle County Jail, where he

was released with a notice to appear in court.

On Feb. 2 at approximately 1:21 a.m. deputies attempted to conduct a traffic stop in the 3,000 block of South Lowell Park Road on a black Chevy HHR that had previously fled from the Illinois State Police in Whiteside County and the Dixon Police Department in Lee County. After a brief pursuit the vehicle lost control in the 5,000 block of West Lowell Park Road and went into the ditch where it became stuck. The driver of the

vehicle identified as Adan Trujillo, 37, of Park Forest, Illinois. The passenger of the vehicle was identified as Demarious S. Gamill, 27, of Rockford. Gamill was placed under arrest for an outstanding Rockford PD warrant for failure to appear for a residential burglary. Gamill was transported to the Ogle County Jail where he was held in lieu of bond. Trujillo was transported by the Mt. Morris Ambulance to KSB Hospital to be treated for suspected minor injuries. While at the hospital Trujillo was issued

citations for driving under the influence of alcohol and an intoxicating compound, no registration light, improper traffic lane usage, and speeding 35 miles per hour over the speed limit. Trujillo was also issued a notice to appear for possession of controlled substance and aggravated fleeing to elude. Trujillo was released on a notice to appear, at the hospital, with a return court date for all charges.

All individuals are considered innocent until proven guilty.

There are many great reasons to attend Kishwaukee College.

Find your reason why at

VISIT DAY.

Monday, Feb. 19

See all Kish has to offer.

Visit Day topics and events include:

- Getting Started: College 101
- Career Technology Programs
- Financial Aid & Scholarships
- Student Involvement & Athletics
- Campus Tours
- Campus Resources at the Information Fair

Choose the session that's right for you.

Morning Session (9 am-12 pm)

For students pursuing a transfer degree

Afternoon Session (1-4 pm)

For students pursuing health or career technology (CTE) programs



Kish

**KISHWAUKEE
COLLEGE**


Helping you create the life you want.

**Learn more or register at
kish.edu/visitday**



Check out our NEXT
American Hero
page Feb. 14th!

ROCHELLE
News-Leader



**Drug & Alcohol
Awareness**
Sunday,
Feb. 11, 2024

SUNDAY, FEB. 4, 2024

ROCHELLE NEWS-LEADER • SECTION 2 • PAGE 1

SPORTS



HUBS DEFEAT OTTAWA

The Rochelle Hub basketball team won its Interstate 8 home game against Ottawa.

See page 3 for more details

RTHS Wrestling

Atkinson medals in second

Lady Hub wrestler earns runner-up finish in IHSA Minooka Regional event

BY RUSSELL HODGES
SPORTS EDITOR

MINOOKA — Junior Dempsey Atkinson reversed her fortunes, literally, as she faced off against Bloomington's Alicia Swank during the semifinal round of the 145-pound bracket at the IHSA Girls Wrestling Regional Championships at Minooka Community High School on Saturday.

Representing Rochelle as the lone Lady Hub athlete in the tournament, Atkinson entered her weight class as the No. 2 seed and showed dominance in her first match, using only 44 seconds to score a first-period fall over Sandwich's Jazmin Rios to reach the semifinals. Having clinched a top-6 finish with the victory, Atkinson moved within one match of the championship round, but fell behind against Swank, who took a 7-4 lead over Atkinson entering the third and final period.

Atkinson had scored all four of her points on reversals, but the junior pulled off her most pivotal reversal early in the third period, maneuver-

ing around Swank for two points before turning the 7-6 deficit into a fall that clinched her spot in the championship round. Atkinson ultimately took second in her weight class and will advance to the IHSA Geneseo Sectional from Feb. 9-10.

"I just had to focus on my attacks and my movement," Atkinson said. "If I was scored on, then I knew I had to keep the right mindset and get those reversals to win. It feels really great and I'm so happy that I got second and I can go to the next level at sectionals. I'm going to work really hard to improve over these next two weeks and hopefully finish first or second to go to state."

Atkinson (15-3) went 2-1 over three bouts at the regional tournament, finishing second after a loss in the championship match against Minooka's Bella Cyrkiel (34-4). In a battle between the No. 1 and No. 2 seeds in the weight class, Atkinson took command of the match early, holding a 4-0 lead after a takedown and a near fall during the first period. Electing the down position to start the



(COURTESY PHOTO)

Junior Dempsey Atkinson medaled in second place at the IHSA Minooka Regional on Saturday, earning a spot in the IHSA Geneseo Sectional.

second period, Atkinson looked to escape, but a half-nelson from Cyrkiel led to a pin.

"She ran a really heavy half so I need to work on defending that," Atkinson said. "I thought I hit my

peak at the sectional meet last year and I know I worked really hard to get there, so I think that continuing to work hard and get to my attacks will be the keys to my success at sectionals."

Atkinson took second at the IHSA Geneseo Sectional last season, winning three matches to clinch the first-ever IHSA State Championship berth in girls wrestling at Rochelle Township High School.

The junior will look to make even more history at the sectional tournament this season, as she would become the first back-to-back IHSA State Championship qualifier in RTHS history.

RTHS Girls Bowling

Lady Hubs finish fifth at Interstate 8 tournament

Vincent and McCullough receive All-Conference recognition for the season

BY RUSSELL HODGES
SPORTS EDITOR

DEKALB — Junior Cassidy Vincent secured All-Conference First Team honors for the third straight season Monday afternoon, when the Rochelle Lady Hub varsity bowling team competed in the six-team Interstate 8 Conference Championship tournament at Mardi Gras Lanes.

Vincent finished 12th in the tournament and led the Lady Hubs with a 1,047 series over six games, shooting a 576 series with a high score of 223 over the final three games of the meet. Rochelle (10-6, 6-4 Interstate 8) took fifth as a team in the tournament with a final score of 5,595 and brought home a fourth-place finish for the season. Sophomore Kylie McCullough rolled a 955 series and earned an All-Conference Honorable Mention for the second straight season.

"It was one of my goals for this year to keep up with the rest of the girls in our conference," Vincent said. "Every team has amazing bowlers and I knew that was where I wanted to stay... I was a lot more involved mechanically between last season and this season. I also feel like my attitude has changed a lot and I feel like I've been able to be with my team and enjoy it more."

McCullough rolled a



(COURTESY PHOTO)

The Rochelle Lady Hub bowling team traveled for the Interstate 8 Conference meet at Mardi Gras Lanes on Monday. Above from left to right are Ava Norris, Chloe Rodriguez, Karina Valdez, Lily Owen, Ronnie Anderson, Magaly Belmonte (front row), Faith Adams, Cassidy Vincent, Makenzie Liezert, Kylie McCullough, Dalila Garcia and Anahi Alanis (back row).

955 series over six games with a 503 series during the first half of the tournament. Senior Kenzie Liezert recorded a 972 series over six games, throwing a 537 series with a high score of 182 over the second half of the tournament. Senior Faith

Adams added a 922 series over six games, shooting a 487 series and a 184 high score over the second half.

Seniors Anahi Alanis and Dalila Garcia rounded out the Rochelle roster with six-game series scores of 865 and 834, respectively.

Alanis rolled a high score of 172 and Garcia followed with a high score of 167 for the Lady Hubs, who will travel for the IHSA Rockford East Regional at Don Carter Lanes on Saturday. Freshman Ava Norris led the Rochelle Lady Hub JV

bowling team in the conference tournament, rolling a 719 six-game series to place eighth as an individual.

"Knowing that we made it out of the regional last year, I think that will help us be in a better mood," Vincent said. "There might

be some pressure, but we have hope and a drive to keep going. We want to make it to sectionals as a team again and we all want to experience that again this year because we have so many seniors who are on the team this year."

SPORTS

RTHS Boys Basketball

Sterling offense overwhelms Hubs in home loss

Defensive woes continue as Rochelle falls to Golden Warriors 94-66 Tuesday

BY RUSSELL HODGES
SPORTS EDITOR

ROCHELLE — Defensive issues continued to mount for the Rochelle Hub varsity basketball team on Tuesday, when the purple and white found themselves behind early and unable to come back as the Sterling Golden Warriors nearly reached the century mark on the scoreboard.

Despite drilling eight 3-pointers in the opening half, the Hubs couldn't contain a potent Sterling offense, which thrived on transition scoring, outlet passes and 3-point shooting during Tuesday's 94-66 win over Rochelle. It's the fourth time over the last six games that the Hubs (10-17, 3-5 Interstate 8) have allowed 90 or more points in a game. Senior guard Eli Luxton led Rochelle with 14 points, while junior guard Carson Lewis added 12 points on four 3-pointers made.

"I think there's a little confusion in that we have young players and they aren't sure of what our defensive rotations should be," head coach Tim Thompson said. "We asked our kids flat out in the locker room if it's because of a lack of effort or because they don't understand the rotations or there's maybe some of both... We have to stop the first straight line drive and if they get to

that straight line drive, we have to make sure we help. We're doing better at helping, but we're not helping the helper and we're not rotating down. That's what happened to us right now."

Sterling forward Lucas Austin and guard Andre Klaver spearheaded the charge for the Golden Warriors early in the game, with the 6-foot-5 forward Austin working easily inside while Klaver successfully knifed through the Rochelle defense for layups at the rim. Klaver led all players with 25 points and Austin followed with 23 points for the Golden Warriors, who scored 28 points in the first quarter and held a commanding 51-35 lead over the Hubs at the halftime buzzer.

A barrage of 3-point shots helped the Hubs remain competitive during the second quarter, as Lewis buried a trio of triples while senior guard Austin Raleigh knocked down a pair of triples off the bench. Rochelle also received first-half 3-pointers from junior guard Cayden Moore, who finished with 12 points on Tuesday, and sophomore guard Van Gerber, who totaled nine points.

"We definitely value the 3-point shot in this program," Thompson said. "I felt that was the only thing that Sterling gave up tonight. They're good defensively in the one-on-



Junior Cayden Moore drives against Sterling's Kaedon Phillips during the Rochelle Hub varsity basketball game on Tuesday. (PHOTO BY RUSSELL HODGES)

one setting and we didn't have anybody who could go by them, so the kids felt more comfortable playing out by the 3-point line. I was discouraged with our ability to cut and push the tempo, so that's where a lot of our 3-point shots came from. Fortunately, we made them, but it was kind of by default."

Rochelle Wrestling Club

Junior Hubs earn honors at Ezra Hill Jr. Memorial Tournament

Rochelle club crowns four champions during Sunday meet at DeKalb High School

BY RUSSELL HODGES
SPORTS EDITOR

DEKALB — The Rochelle Wrestling Club sent 23 athletes to the 2024 Ezra Hill Jr. Memorial Tournament on Sunday. Four Rochelle athletes brought home first-place finishes, while seven additional athletes secured second-place finishes and six took home third-place finishes.

Wells Millard won the Bantam 53-56 Division with a 2-0 record, earning a fall over Mat Rat Wrestling Club's Alex Todd and scoring a 7-4 decision over Dundee Highlanders wrestler Cael Ciepley. Elias Andronic won the Bantam 55-56 A Division with a 2-0 record, notching two straight falls against DeKalb's Anthony Pennington and Sandwich Wrestling's Kolt Tornga.

Nehemiah Andronic won the Intermediate 67-71 Division with a 3-0

record. Andronic opened the tournament with a fall over Sycamore's Lennox Nelson before edging Alber's Jordy Teran for a 6-5 decision. Andronic earned a fall over DeKalb's Mason Smith to earn the tournament title.

Dominic Escatel won the Intermediate 75-81 Division with a 3-0 record, scoring a 6-3 decision over Yorkville's Liam Sondelski and a 3-2 decision against HWC's Kolten Lowe. Escatel clinched the division championship with an 11-0 major decision over Alber Athletics wrestler Gionni Zapf.

Olivia Lassiter took second in the Tots 41-42 Division with a 1-1 record, notching a fall over St. Charles' Michael Coronel. Jaxyn Manna took second in the Tots 43-44 Division with a 1-1 record, scoring a 16-8 major decision against Yorkville's Landon Riley. Easton Huff took

second in the Tots 67-68 Division with a 1-1 record, earning a fall over Sycamore's Prescott Palmer. Teddy Millard took second in the Novice 70-74 Division with a 2-1 record, scoring falls against DeKalb's Ryder Williams and St. Charles Wrestling Club's Frankie Villarreal. Cayson Oltman took second in the Bantam 60-63 Division with a 1-1 record, totaling an 11-2 major decision against Sycamore's Emmett Wise. Elijah Pacheco took second in the Intermediate 47-53 Division with a 1-1 record, bringing home a 10-3 decision against Sycamore's Everett Threewitt.

Colt Hensley took second in the Intermediate 113-123 Division with a 2-1 record, notching back-to-back falls over DeKalb's Kane Kopka and Lockport Junior Wrestling's Eli Potocsnak. Chase Marruffo finished

third in the Intermediate 85-87 with a 1-2 record, earning a 15-0 technical fall against DeKalb's Ryan Newsom. Freddie McBride finished third in the Intermediate 67-72 with a 1-2 record, scoring a 6-2 decision against Sycamore Wrestling Club's Archie Tadie.

Xander Gonzales finished third in the Bantam 114-115 Division and Eoghan Good finished third in the Bantam 46-50 Division. Andrew Eyster finished third in the Senior 142-147 Division with a 1-2 record, notching a 7-1 decision against Alber Athletics wrestler Brannick Alexander.

Brantley Koenig placed fourth in the Novice 86-89 Division and AJ Milan placed fourth in the Senior 95-103 Division. Axel Alsop placed fourth in the Senior 115-118 Division and Cheyanne McBride placed fourth in the Ban-



(COURTESY PHOTO) Dominic Escatel was one of four champions the Rochelle Wrestling Club crowned during the 2024 Ezra Hill Jr. Memorial Tournament on Sunday. tam 58-59 Division. Elliot Huff placed fourth in the Bantam 64-70 Division and Tate Bigelow placed fourth in the Intermediate 75-76 Division.

NIU BASKETBALL SINGLE GAME TICKETS ON SALE NOW!

MEN'S BASKETBALL PRICES START AT

\$8

WOMEN'S BASKETBALL PRICES START AT

\$6

GET YOUR TICKETS TODAY!
815-753-7225 | NIUHUSKIES.COM

SPORTS

RTHS Boys Basketball

Shooting surge sparks comeback win over Ottawa

Rochelle holds Pirates to 27 second-half points in 80-70 victory on Saturday

BY RUSSELL HODGES
SPORTS EDITOR

ROCHELLE — The Rochelle Hub varsity basketball team overcame its recent struggles on the defensive end during Saturday evening’s Interstate 8 Conference matchup against Ottawa.

While the Hubs faced a halftime deficit, Rochelle limited the Pirates to 27 second-half points and received an offensive outburst from junior guard Carson Lewis, who scored a game-high 26 points and drained five 3-pointers as the Hubs rallied for an 80-70 win. Rochelle (10-15, 3-5 Interstate 8) overcame a tough second quarter, where Ottawa outscored the Hubs 22-9 to take a 43-34 halftime lead. Rochelle forced 16 turnovers and scored 26 transition points in the win.

“I thought Carson had some trouble getting his legs underneath him earlier in the season, but he’s been getting to his spots and having good balance over the second half of the year,” head coach Tim Thompson said. “He shot the ball fantastically against both Ottawa. We’ve been really encouraged and we just need to make sure that he’s shooting shots where he’s getting his feet set. If we can keep getting him to move, we feel that he can knock down a bunch.”

Five Rochelle players reached double figures in the game, which the Hubs flipped after a strong performance in the third quarter, where the Hubs outscored the Pirates 23-11. Junior guard Cayden



(PHOTO BY MARCY DELILLE)
Sophomore Van Gerber keeps the ball away from an Ottawa defender during Saturday’s Rochelle Hub varsity basketball game.

Moore finished with 14 points and two rebounds, while freshman forward Brody Bruns added 12 points and seven rebounds in the game. Junior guard Elijah Harley recorded 12 points and five assists, with senior guard Eli Luxton adding 10 points, five assists and three blocks.

“We’ve really struggled to stop teams and play good, solid defense,” Thompson said. “Ottawa was out to a good, quick start and we didn’t make a tremendous amount of adjustments during the second half, but we started making shots and when our guys make shots, they feel good about themselves and they were locked in on the defensive end. I thought Van [Gerber] did a great job of guarding and we got rebounds and pushed the tempo. It was a big win for us.”

Sophomore guard Van Gerber chipped in six points and three steals for the Hubs, who scored 19 points off turnovers and dished out 19 assists as a team. Saturday’s win extended Rochelle’s Interstate 8 winning streak to three games and the Hubs have not lost a conference game since the start of the year, having beaten Sycamore 73-50 and Morris 73-57 earlier this month.

Rochelle drilled 11 3-pointers and shot nearly 50 percent from the field during Saturday’s victory over the Pirates. In addition to the first-half deficit, Rochelle also overcame a disadvantage in the rebounding category, where Ottawa outpaced the Hubs 35-25. Despite the Pirates scoring 48 points in the paint, Ottawa missed six free throws and was only 4-for-14 from

3-point range.

Plano

Three-point shots burned the Rochelle Hub varsity basketball team during Monday’s nonconference matchup against Plano. The Reapers drilled 16 triples and shot nearly 52 percent from beyond the arc, with Pryor Bode making eight of them and scoring a game-high 24 points as Plano beat the Hubs 90-67.

Junior guard Carson Lewis led Rochelle (10-16, 3-5 Interstate 8) with 14 points and five rebounds while sinking four 3-point shots in the loss. Senior guard Jack Tracey totaled 11 points and junior guard Cayden Moore recorded 10 points and five rebounds. Plano took control in the second half, where the Reapers outscored Rochelle 46-30 to seal the nonconfer-



(PHOTO BY MARCY DELILLE)
Junior Carson Lewis scored 26 points and hit five 3-pointers during the Rochelle Hub varsity basketball game against Ottawa on Saturday.

ence victory on Monday.

Sophomore guard Van Gerber chipped in eight points, three rebounds and two steals for the Hubs, while freshman forward Brody Bruns grabbed a team-leading 12 rebounds

and added six points in the game. Junior guard Elijah Harley contributed eight points as well as four rebounds and three assists for the Hubs, who outscored Plano 27-9 in transition despite the loss.

RTHS Girls Basketball

Lady Hubs concede two conference road losses

Rochelle finishes Interstate 8 schedule with defeats against L-P and Kaneland

BY RUSSELL HODGES
SPORTS EDITOR

LASALLE — The Rochelle Lady Hub varsity basketball team traveled for its Interstate 8 Conference rematch with

LaSalle-Peru on Friday evening. Senior Alivia Henkel led the girls with 16 points as Rochelle fell to the Cavaliers 54-44 to split the conference home-and-home series.

Junior Kendyl Darby

scored nine points and grabbed 11 rebounds in the game, while senior Loretta Atkinson totaled nine points on three 3-point baskets. The Lady Hubs (11-15, 2-7 Interstate 8) will conclude their confer-

ence schedule with a road game against Kaneland on Tuesday evening.

Kaneland

The Rochelle Lady Hub varsity basketball team capped off the Interstate

8 Conference schedule with a road game against Kaneland on Tuesday evening. Senior guard Alivia Henkel scored a team-high 19 points as the Lady Hubs fell to the Knights 64-46.

Sophomore guard Jay-

din Dickey and senior guard Kara Martinez each totaled nine points for the Lady Hubs (11-16, 2-8 Interstate 8), who will finish sixth in the Interstate 8 Conference standings with the loss on Tuesday.

COMMUNITY BOARD

Need to get the word out about a product or service you offer?
Give us a call at 815-562-4171.
We can reach over 9,000 homes!



Gutters, Roofing & Siding

THEISEN
Free Estimates!

ROOFING
SIDING
GUTTERS

CONTACT US
815-758-8998
THEISENROOFING@COMCAST.NET

Family owned & operated for over 50 years

Plumbing, Heating & Cooling

ANDERSON
PLUMBING & HEATING, INC.

Plumbing, Heating & Cooling
Water Heaters, Water Softeners,
Drinking Water Systems, Iron Filters,
Sewer Rodding & Jetting & More!

Since 1976

621 First Ave., Rochelle
(815) 562-8784

Advertise Here

What Service Do You Offer?

562-4171

The Rochelle News-Leader

Heating & Air Conditioning

HULL

HVAC & Household Services

Furnaces - Air Conditioners - Boilers
Duct Cleaning - Water Heaters

Precision Furnace
Clean & Check

\$85.00

Includes FREE carbon
monoxide test

24/7 Emergency
Service

815-561-6551

www.HullHVAC.com

Concrete



• Residential &
Commercial Concrete
• Additions

FREE
ESTIMATES!



Tim & Roger Bruns, Owners
Established 1997

815-561-0099

Free Estimates • Fully Insured

www.brunskonstructioninc.com

Storage Sheds



We Specialize in Portable/Quality Built Storage Sheds

• Stock & Custom Design • Competitive Pricing
• Many Options Available • Site Preparation Available

See Displays at 3500 S. Chana Rd. Chana IL 61015
Call Norm or Albert for Free Literature packet

779.861.3542

SPORTS

NIU Football

MAC announces home and road football opponents

New model eliminates divisions; Huskies to face Toledo and Bowling Green annually

DEKALB — Northern Illinois University will play host to Mid-American Conference opponents Central Michigan, Toledo, Akron and Buffalo in 2024 and will take on Western Michigan, Bowling Green, Miami and Ball State on the road as the MAC office released the home and road opponents for every league team for the next three seasons Thursday. “The MAC is a competitive conference year in and year out, and you have to play your best football to win in this league,” said NIU head coach Thomas Hammock. “It’s good to have this piece of the puzzle in terms of who we’re playing and where. Now, we’re looking forward to seeing how the full schedule lays out when that comes out next month.”

Exact dates for the Huskies’ 2024 conference schedule will be released at the end of February. NIU’s non-conference schedule for 2024 begins August 31 when the Huskies take on Western Illinois in Huskie Stadium. NIU will play Notre Dame in South Bend for the first time in school history on September 7 and will travel to Raleigh, N.C. to face N. C. State on September 28. NIU will also play Massachusetts on October 4 in non-conference play.

In November, the MAC announced that the league would be eliminating divisions and moving to a new scheduling model beginning in 2024. In the new model, NIU will face protected opponents Toledo and Bowling Green annually

and will face all 11 conference opponents home and away at least once during a three-year cycle.

“In the MAC, you never know which teams are going to be at the top,” Hammock said. “Overall, there is a lot of balance and I think that’s why this new scheduling model works. Next year will be new for everyone with the pods. Obviously, Toledo and Bowling Green already have a rivalry, so we’re excited to become a part of that and know that those teams will be on our schedule every year.”

The Huskies’ conference home and road conference opponents for 2025 and 2026 break down as follows:

2025 Home Games: Western Michigan, Bowling Green, Ohio, Miami
2025 Road Games:

Eastern Michigan, Toledo, Kent State, Buffalo

2026 Home Games: Eastern Michigan, Toledo, Kent State, Ball State

2026 Road Games: Central Michigan, Bowling Green, Akron, Ohio

The Huskies are currently accepting \$24 deposits toward 2024 season tickets with season ticket renewals set to go live on February 5th. Click here to make a deposit and become a Huskie season ticket member for 2024.

In addition to taking advantage of the lowest prices, season ticket members enjoy multiple benefits, including earning priority points to purchase away game tickets, like the 2024 contests at Notre Dame and N.C. State, as well as invitations to exclusive



season ticket member events featuring Huskie coaches and student-athletes. With the Build Your Membership Plan the already low price to see all six 2024 games can be paid all at once or over as many as nine months.

For more information on NIU Football season tickets, the Build Your Membership Plan as well as premium seating, parking and more, go to HuskieAthleticFund.com, email huskiestickets@niu.edu or call 815-753-PACK (7225).

WANTED

\$\$\$ WE BUY GUNS \$\$\$



RAT WORX

112 E. Hitt St. MT. MORRIS, IL.

◀ 815-734-7346 ▶

WE SELL GUNS, KNIVES & AMMO

WE ALSO BUY GOLD AND SILVER



**WE BUY GUNS
RAT WORX**

Research and Testing
Worx Inc.

112 East Hitt St., Mt.
Morris, IL

815-734-7346

guns@ratworxusa.com | www.ratworxUSA.com

RATWORXUSA.COM

Classified Marketplace

BUY OR SELL
Place A Classified Ad



ROCHELLE • HILLCREST • CRESTON • STEWARD • KINGS • ASHTON

101 LEGAL NOTICE

PUBLIC NOTICE
Public Notice is hereby given that on January 30, 2024 a certificate was filed in the Ogle County Clerk's Office setting forth the names and post office address of all of the persons owning, conducting and transacting the business known as:
Hopeful Buttercup Press
1100 N. Main St.
Rochelle, IL 61068
Dated January 30, 2024
Laura J. Cook, Ogle County Clerk
No. 0203
(Feb. 4, 11 and 18, 2024)

101 LEGAL NOTICE

This publication does not knowingly accept fraudulent or deceptive advertising. Readers are cautioned to thoroughly investigate all ads, especially those asking for money in advance.

105 BUSINESS OPPORTUNITIES

"This publication does not knowingly accept fraudulent or deceptive advertising. Readers are cautioned to thoroughly investigate all ads, especially those asking for money in advance."

113 FINANCIAL

NOTICE Advance Fee Loans or Credit Offers
Companies that do business by phone can't ask you to pay for credit before you get it. For more information, call toll-free 1-877-FTC-HELP. A public service message from your hometown newspaper and the Federal Trade Commission.

119 ANNOUNCEMENTS

"This publication does not knowingly accept fraudulent or deceptive advertising. Readers are cautioned to thoroughly investigate all ads, especially those asking for money in advance."

127 SERVICES AND REPAIRS

FURMAN'S Lawn Care and Tree Work. Mowing, bushes, spring clean up, weeding and much more. Call Jeremy Furman 815-761-9619. Please leave a message will return call ASAP. Fully insured, in business since 1999. Servicing Rochelle and surrounding areas.

201 DOMESTIC/CHILD CARE

NO INDIVIDUAL, unless licensed or holding a permit as a childcare facility, may cause to be published any advertisement soliciting a child care service. A childcare facility that is licensed or operating under a permit issued by the Illinois Department of Children and Family Services may publish advertisements of the services for which it is specifically licensed or issued a permit. Your Hometown Newspaper strongly urges any parent or guardian to verify the validity of the license of any facility

before placing a child in its care.

301 ANTIQUES

WANTED TO BUY:
Vintage Metal and Wood Signs, Milk Bottles & Local Advertising, Oak Icebox, Iron Door Stop and Antique Lighting...
Call Dick Harms at 815-562-2928 or email dickharms@hotmail.com

ANTIQUES WANTED:
I pay cash for antiques; furniture, glassware, pottery & crocks, tin & iron toys, sterling silver, decoys. If it's antique, I'm interested in looking! Call 815-562-2928 or email dickharms@hotmail.com

307 MISCELLANEOUS FOR SALE

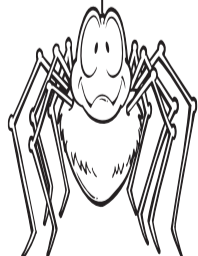
BUNDLED Newspaper
-\$3 per Bundle. End Roll- Cost Depends on Weight of Roll. Available Monday-Friday 815-562-4171 (8AM-NOON ONLY) Rochelle News Leader.

SPLIT Firewood For Sale. Contact 779-251-0254

405 HOUSES FOR SALE

ALL REAL ESTATE advertised herein is subject to the Federal Fair Housing Act, which makes it illegal to advertise any preference, limitation or discrimination based on race, color, religion, sex, handicap, familial status, or national origin, or intention to make any such preferences, limitation or discrimination. We will not knowingly accept any advertising for real estate which is in violation of the law. All persons are hereby informed that dwellings advertised are available on an equal opportunity basis.

ADVERTISE
WITH US



307 MISCELLANEOUS FOR SALE

NEW MILFORD REFRIGERATION

NEW, USED SCRATCH & DENT
• Refrigerators • Freezers
• Washers/Dryers • Stoves

We also carry a large selection of refurbished appliances with a warranty.
6331 11th Street, Rockford
815-262-3900
04092023

RISK OF LIGHTNING STRIKE:
1 IN 500,000



LIFE DOESN'T ALWAYS
GIVE YOU TIME TO
CHANGE THE OUTCOME.

PREDIABETES DOES.

RISK OF
PREDIABETES:
1 IN 3 ADULTS

TAKE THE RISK TEST TODAY AT
DolHavePrediabetes.org



Buy, Sell, Trade or Rent
through the
CLASSIFIEDS

www.rochellenews-leader.com



The businesses featured on this page are

"Hubs Super Fans"

They proudly support our local athletes and students.

Please show your appreciation by patronizing their businesses.

WE SUPPORT OUR HUBS!

HUB SPOTLIGHT



**Angel
Argueta**

Year: Freshman

Sport: Wrestling

Q: How many years have you been playing this sport?

A: I have been wrestling for two years now.

Q: What do you enjoy most about this sport?

A: I like the physicality of the sport.

Q: What is your favorite school subject and why?

A: Conditioning because I like to work out.

Q: Who is your favorite athlete and why?

A: Bo Jackson because he's the greatest athlete of all time.

Q: Who is your biggest role model and why?

A: My dad because he's always pushing me to do my best.

Q: What is your dream job and why?

A: I want to be an engineer.

Q: Where would your dream vacation be and why?

A: I would like to go to Italy because of all the good food.

Q: What is your favorite thing about being a student-athlete at RTHS?

A: I love being a part of the Rochelle community.

**Rafael
Herrera**

Year: Freshman

Sport: Wrestling



Q: How many years have you been playing this sport?

A: Two years.

Q: What do you enjoy most about this sport?

A: It's very competitive and physical.

Q: What is your favorite school subject and why?

A: Math because it's the only important one I'm good at.

Q: Who is your favorite athlete and why?

A: Dak Prescott because he's a really good quarterback and he won the title in the 2023 Herald Quarterback Rankings.

Q: Who is your biggest role model and why?

A: My uncle because he's really smart and successful.

Q: What is your dream job and why?

A: To be an electrical engineer, I've always wanted to be one.

Q: Where would your dream vacation be and why?

A: Mexico because I have family there.

Q: What is your favorite thing about being a student-athlete at RTHS?

A: You get a lot of support from the coaches and teachers.

VINCE'S PIZZA
SINCE 1967

Ordering Online is easy when you use our QR Code!

We are Proud to Support the Rochelle Hubs!

815.562.7300
Delivery & Curbside Pick Up
1071 N 7th St, Rochelle, IL • vinctspizzainrochelle.com

Hello, neighbor!

Huber Ins and Fin Svcs Inc.
Shane B Huber, Agent
221 E. IL Rt. 38
Rochelle, IL 61068
Bus: 815-562-7011

Please stop by and say, "Hi!"
I'm looking forward to serving your needs for insurance and financial services.
Like a good neighbor, State Farm is there.
CALL ME TODAY!

State Farm

1001013.1 State Farm, Home Office, Bloomington, IL

DLX Medical GROUP

Caring for your family's health from infant to adults.

For appointment, please call
815-227-9594
1212 Currency Ct, Rochelle, IL 61068
Most Insurance Accepted

Diana Alanis, MD
Accepting New Patients

Local People Providing Local Service

Rochelle MUNICIPAL UTILITIES

Water • Waste Water
Electric • Communications

Phone: 815-562-4155 333 Lincoln Highway
Fax: 815-562-5861 Rochelle, IL

www.rmu.net

CENTRAL ILLINOIS LOAN

Loans For All Your Needs
Auto • Home Improvement • Vacation

Jami Hackman • Tonia Holland

815★561★4035!

310 Eagle Drive, Rochelle
All loans subject to our normal credit requirements and policies.

MORTON BUILDINGS

If you can dream it, we can build it.

Rochelle Sales Office • Hwy. 251 N. • 877-613-3050

Rochelle Community Hospital

Your Local Healthcare Resource.

900 N. 2nd Street, Rochelle
815-562-2181
www.rochellehospital.com

MEYERS FURNITURE & FLOORING

209 Powers Road, Hwy 251 N
Rochelle, IL 61068
(815) 562-8792
www.meyersfurniture.com

Bruns Construction, Inc.

Tim & Roger Bruns, Owners
Established 1997

• Residential & Commercial
• Concrete
• Additions

815-561-0099
Free Estimates • Fully Insured
www.brunsconstructioninc.com

Kish KISHWAUKEE COLLEGE

Helping you create the life you want.

kish.edu



QUEEN'S TRUCKING & CONSTRUCTION, INC.

Small or Big Construction Jobs, We Do Them All!
We Aim for On Time, Every Time!

We were Voted Mid-West Truckers Association, Inc. Northern Region Trucking Company of the year 2022

The Trusted Trucking Company of Many Local Distributors and Manufacturers.

Queens Trucking & Construction Inc
322 Errett Road, Rochelle
815-562-6064 | **queens-trucking.com**

ANDERSON PLUMBING & HEATING, INC.

Plumbing, Heating & Cooling
Water Heaters, Water Softeners,
Drinking Water Systems, Iron Filters,
Sewer Rodding & Jetting & More!

Since 1976

621 First Ave., Rochelle
(815) 562-8784

MEXICAN FOOD

RESTAURANT TECALITLAN
Authentic Homemade Mexican Food
Carry-out & Catering Available
(815) 561-7576
1071 N. CARON RD. ROCHELLE, IL 61068

Rochelle Chiropractic Clinic
Dr. Chad M. Piller

227 E. Rt 38 • Rochelle, IL
815-562-8706
www.rochellechiropractic.com
Now Accepting New Patients!

Alfano's
Pizzeria and Italian Restaurant

Taste The **TRADITION**
Taste The **DIFFERENCE**

Dine In • Carry Out •
• Home Delivery • Pizza • Pastas •
• Sandwiches • Salads •
• and Lots More!

Dine-In • Carry Out • Home Delivery
1115 TURKINGTON TERRACE, ROCHELLE
815-562-3312

JOHNSON TRACTOR

SALES • PARTS • SERVICE

200 Steward Road
800.262.1680
www.johnsontractor.com

HUB-REMSEN PRINT GROUP

101 Maple Ave • Rochelle, IL 61068
815.562.7057 • **hub-remsen.com**

GO HUBS!

"Proudly Serving the Rochelle Area Since 1945"

Berg-Johnson Electric

FREE ESTIMATES
Licensed and Insured

Residential • Commercial • Industrial

24 Hour Emergency Service
815-562-4937
500 Cleveland Avenue

JEFF PERRY

We are Ogle County's only GM Dealer!

• Collision Repair • Rental Cars
• 24 Hour Towing • Maintenance On All Makes and Models
• New/Preworn Vehicles • Tires, Alignments, Brakes, Batteries

Auto Group
JEFF PERRY
815-562-8787 **www.jeffperrychevrolet.com**

Busy Schedule? Leave the cooking to us.

• Large menu of foods
• Rochelle's famous chicken by the dinner or bucket
• Hand dipped ice cream (16 flavors)

COUNTRY SCHOOL DRIVE-IN RESTAURANT
251 N. ROCHELLE • 562-6039

Stillman BANK

GO HUBS!

Earning Your Trust Since 1882
www.stillmanbank.com Member FDIC

GOOD LUCK HUBS FROM YOUR FANS AT:

HAYDEN REAL ESTATE INC.

RESIDENTIAL
AGRICULTURAL
COMMERCIAL

815-562-2111 ★ **hre@haydenreinc.com**

