

Established In 1854

The Amboy News

The Depot Museum

Amboy, Illinois

Volume 164 - Number 07

www.AmboyNews.com

\$1.00

Shrek The Musical to take the stage at AHS

AMBOY — “Due to the predicted freezing rain/inclement weather, we will be dismissing school early today and all evening extracurricular and athletic activities are canceled as well.”

“Due to the current road and weather conditions and the predicted severe cold weather, school is canceled for the next three days and all district home and away extracurricular and athletic events and practices are canceled as well.”

While announcements such as the above have been heard a little too much at Amboy High School this year, they certainly haven’t frozen the spirits of the talented students and adults who are busy preparing for the upcoming musical production of “Shrek The Musical.”

The musical, presented through special arrangement with Music Theatre International, tells the story of a swamp-dwelling ogre, played by AHS senior Lucas Blake, who goes on a lifechanging adventure to reclaim the deed to his land. Joined by a wise-cracking donkey, played by sophomore Dashad Greene, this unlikely hero fights a fearsome dragon, rescues the feisty Princess Fiona, portrayed by sophomore Erin Latta, and learns that real friendship and true love aren’t only found in fairy tales. Shrek, Donkey, and Fiona are joined onstage by a “short” tempered bad guy (Lord Farquaad, played by eighth grader Kelton Schamberger) and host of other fairy tale misfits, played by students from Amboy High School and Amboy Junior High School. The musical is directed on stage by Amy Schwamberger and the music director is Travis Kemmerer.

See **SHREK** page A2

Farm Bureau to host annual 50 cent breakfast

DIXON — The Lee County Farm Bureau will be hosting their annual Farmer’s Share Breakfast on Saturday, Feb. 23, at the Loveland Community House in Dixon. The breakfast will be served from 8 a.m. to 11 a.m. and costs only 50 cents per plate.

The Public Relations Committee will prepare a breakfast and for only 50 cents per plate, or the actual “farm” value of the breakfast. The menu will include pancakes, sausage, orange juice, milk, and coffee.

The purpose of this breakfast is to help demonstrate the amount of income the average farmer would receive from a meal like the one being prepared. On average, between breakfasts prepared at home and in a restaurant, the farmer receives 50 cents.

The Lee County Farm Bureau’s mission is to be a positive voice for agriculture through leadership and education to improve the quality of life and economic well-being of our members and community.

If you would like more information about the Farmer’s Share Breakfast or other programs and benefits offered by the Lee County Farm Bureau, contact us at 815-857-3531 or visit our website, www.leeafb.org.



The Amboy Lions Club donated AED’s to the to the First Baptist Church in Amboy and Immanuel Lutheran Church in Amboy. This was the second round of AED donations. More than 25 church members attended the training on Jan. 31. Photos submitted

Lions finish 2018 with caroling, start 2019 with AED donations and training

AMBOY — In December, the Amboy Lions and the Amboy Leo Clubs combined to go Christmas caroling at the Mabley Center in Dixon. The Leo Club also did caroling at Amboy Maple Crossing.

The Lions Club started the 2019 year with a real shocker by distributing two AED devices. In the Club’s second round of AED donations to the community, the Lions donated AED units to the First Baptist Church in Amboy and Immanuel Lutheran Church. More than 25 church members attended the Jan. 31 training meeting. Attendees were trained on how to use the AEDs in emergency situations and

were able to ask questions and get hands-on-experience with the device. The training was done by the AED supplier from Rockford.

On Jan. 24, Lion President Roger Wittenauer and Lion Jim Travi attended the Southeast and Southwest Zone Meeting at Barnacopia in Polo. They heard an excellent presentation on eye diseases and the effects of medications on the eye from Dr. Emily Richardson of the KSB Eye Care Clinic in Dixon. Dr. Kelly Klein will present a similar eye health talk at the Club’s March 11 meeting at the Community Center, 280 W. Wasson Road. The public is invited to join the Club for

the presentation at 7:30 p.m.

The Amboy Lions Club Scholarship applications are now available at Amboy High School. These scholarships are made available to Amboy Seniors. Applications may be picked up from AHS Counselor Rob Wissinger. Completed applications must be back to Wissinger by 3:30 p.m., on Friday, April 5.

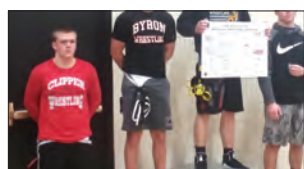
In other news, the Club will be sending members to the District 1-D Convention to be held in Freeport on March 8-9. A new Amboy Cub Scout Pack, which is being sponsored by the Amboy Lions, had poor parent attendance at the sign-up meeting due to inclement

weather. Parents interested in signing up their children should contact Amboy Central Elementary School for further information on dates and times of future meetings. Rose Day is being organized. Rose Day and the Lions Draw Down are the two big fundraisers that help the Lions support community projects throughout the year. Watch for more information on our Facebook page and the Amboy News.



CHAMPS

Lady Clippers named Regionals Champions. **PAGE B2**



STATE MEET

Amboy’s Avery Shaw will head to Champaign this weekend for the state wrestling meet. **PAGE B2**

Obituaries

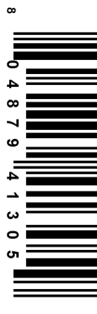
Ricky L Ketchum
Donald W. Carroll
Dennis M. Finn
Doris E. Ali

Index

Community Calendar.....A3
Church Directory.....A4
Obituaries.....A4
Social News.....A5
Opinion.....A6
Sports.....B2-3
Classifieds.....B4-8

Inserts

Snyders
Knie



Picture from left to right, Sheriff Neal Rohlfing, Officer Dallas, Sheriff Simonton.

Photo submitted

Officer Mark Dallas awarded Medal of Valor

DIXON — On Monday, Feb. 4, Lee County Sheriff John Simonton presented Dixon Police Officer Mark Dallas with the Illinois Sheriffs’ Association Medal of Valor award at the Illinois Sheriff’s Winter Conference in East Peoria.

The nomination is below:

**MEDAL OF VALOR
DIXON POLICE OFFICER MARK DALLAS**

On May 16, 2018 at 8:06 a.m., the Dixon Police Department received a report of an “Active Shooter” at the Dixon High School. The information was transmitted by the Dixon High School Resource Officer, Mark Dallas.

Officer Dallas was able to inform the responding officers that the suspect had fired several shots near the west gymnasium. At the time of the shots being fired, Officer Dallas was in the Athletic Director’s Office, which was in close proximity to the gymnasium.

At that point, Officer Dallas exited the office and confronted the suspect. When confronted, the suspect exited the school and began running westbound on Armory Drive. Officer Dallas pursued the suspect. During the pursuit, the suspect turned and fired several rounds towards Officer Dallas. Officer Dallas returned fire and struck the suspect. Shortly thereafter, the suspect was taken into custody just west of the Dixon High School by Lee County Sheriff’s Deputies and Officer Dallas. The suspect was transported to the local hospital and received medical attention for non-life threatening injuries.

From the first shots fired by the suspect, to the time he was taken into custody, took only one minute and thirty seconds. Because of Officer Dallas’ heroic actions, countless lives were saved.

I was very proud to have had the opportunity to present this award to Officer Dallas.

John Simonton – Lee County Sheriff

Board looks into selling pick-up truck

BY TONJA GREENFIELD

General Manager

SUBLETTE — A short agenda led to a short meeting in Sublette Monday night.

The Sublette Village Board met in regular session on Monday night in the Ellice Dinges Center in Sublette. Only one item was discussed under new business, and that was looking into selling/auctioning the village’s Chevy Pick-up Truck.

Sublette Village President Michael Vaessen said he didn’t think it was feasible to fix the truck and suggested selling it during the annual Sublette Farm Toy and Antique Tractor Show in March.

Sublette Village Trustee Jerry Leffelman said that Lee County uses an auction service to auction off their used equipment.

After some discussion, the matter was turned over to committee.

Boil Order

Sublette Village Trustee Richard Klaser said during the concerns portion of the agenda, that he didn’t think there was much communication about the recent boil order in the village. He said that if he wasn’t a trustee, he wouldn’t have known about the boil order.

Vaessen said the information was given to WGLC, also on Sublette 365’s Facebook page, and a notice was placed at Bonnell’s General Store and the Sublette Post Office.

Sublette Village Trustee Julie Kessel asked if there was a phone tree for the village. She added that there are people who are not on Facebook and may not have gone to Bonnell’s or the post office that day, and wouldn’t have seen the notice on the boil order.

Vaessen said it has been discussed about looking into doing a phone tree or something similar.

In other board news:

• Don Dinges reported that the annual toy show dinner has a good line-up for entertainment this year.

See **BOARD** page A2

Dinges Fire Co. to host Chamber event

AMBOY — Everyone is invited to the next Amboy Chamber Business After Hours mixer on Wednesday, Feb. 20, Dinges Fire Co., 243 East Main Street, Amboy.

The event will be held from 5:30 – 7:30 p.m.

This after hours mix n’ mingle is open to the public, not just the business owners. So, grab a friend and stop by to see some familiar faces while catching up on what’s going on around town.

LOCAL NEWS

Demmer legislative office moves to Dixon

DIXON—The 90th District office for State Representative Tom Demmer (R-Dixon) has moved to a new location at 105 E. First Street, Suite 110, in Dixon. The phone number will remain 815-561-3690, and office hours will still be 8:30 a.m. – 4:30 p.m., Monday through Thursday.

“For the last six years, my district office has been located in Rochelle, and it served us well. I had previously been able to host meetings in Dixon at the office of Senator Tim Bivins. With his retirement, I decided to relocate our principal office to Dixon,” said Demmer. “This new location will be a shared spot with Senator Brian Stewart, which will allow us both to serve our constituents well.”

To complement the new primary office location in Dixon, Demmer is also instituting mobile office hours throughout the 90th District starting in March.

“The 90th District includes all or parts of 32 different municipalities, and I am very

aware that many people would have to travel quite a ways for an appointment,” Demmer said. “Starting in March, a member of my staff will travel to a different 90th District Community one day each month so that our office’s resources can be brought to people in a location that is convenient for them. In addition, my staff is always available to travel to other communities for individual appointments with constituents.”

The 90th District is located in the northwestern Illinois counties of Ogle, Lee, DeKalb and LaSalle. The District includes all or portions of the following communities: Amboy, Ashton, Byron, Compton, Creston, Davis Junction, DeKalb, Dixon, Earlville, Franklin Grove, Grand Detour, Hillcrest, Lake Holiday, Lee, Leland, Lost Nation, Malta, Mendota, Monroe Center, Nelson, Oregon, Paw Paw, Polo, Rochelle, Sandwich, Shabbona, Somonauk, Steward, Stillman Valley, Sublette, Waterman and West Brooklyn.

Boys Science Siesta and Girls Science Siesta scheduled for April

ROCKFORD — “Science Siesta is once again being offered this year for both boys and girls,” said Johnna Jennings, University of Illinois Extension 4-H Youth Development Educator. “This year we will be offering a Science Siesta event just for boys on Friday, April 12 to Saturday, April 13, and another Science Siesta just for girls on Friday, April 26 to Saturday, April 27 both at the Discovery Center Children’s Museum in Rockford,” said Jennings. Both of these events are open to youth in fourth to sixth grades.

“Both events will be action-packed programs that combine hands-on science, an opportunity to meet real scientists, to learn about a particular field of science and to spend an awesome night in a museum. This is an excellent program and we are excited to have the opportunity to offer it once

again,” said Jennings.

At Science Siesta the participants will interact with scientists in science career fields from throughout northern Illinois. The scientists will share information about their background and involve the youth in activities that they might complete in their work every day.

Following the face-to-face interaction with the scientists, youth participate in activities based on the “Wonderwise” curriculum developed by the University of Nebraska, and from experts in the field. This curriculum highlights the work of scientists and then translates their work into hands-on science based activities, which are fun and engaging. Participants may choose one of three workshop tracks for breakout sessions. Their choices for this year

include activities related to Rainforest Ecologist, Space Geologist, or Technology Specialist.

Both events will begin with registration at 5 p.m. on Friday and will conclude with checkout at 8:30 a.m. on Saturday. The registration fee is \$40 per participant which covers pizza, snack, breakfast, admission to the Discovery Center Children’s Museum, a t-shirt and all hands-on activities.

The University of Illinois Extension is providing this program, which is open to all boys and girls in fourth-sixth grades.

For additional information, as well as to register for Science Siesta go to the University of Illinois Extension website at <https://go.illinois.edu/ScienceSiesta> or call 815-758-8194.

Writing your life story workshop offered

MOUNT CARROLL—Do you have treasured memories from your past you’d like to record? Have you written down the special moments of your life to share with your family? The University of Illinois Extension is pleased to offer the “Share Your Life Story” writing series on Mondays, beginning on March 11 in Thomson and Mount Carroll. This writing series for all abilities will explore how to get started in sharing your life story and will include writing sessions and activities. Previous writing experience is not required.

University of Illinois Extension offers programs create learning partnerships that put knowledge to work and aim to make life better, healthier, safer, and more profitable for individuals and their commu-

nities. Recording your life story, treasured memories, and special moments leaves a legacy for generations to come.

“Share Your Life Story: A Writing Series” will be held on Mondays at 10 a.m. at the Thomson Public Library and at 1 p.m. at the Mount Carroll Public Library. The series will meet weekly beginning on Monday, March 11 through Monday, April 29. Please note there is no writing class on in Mount Carroll on Monday, April 15; there will still be class in Thomson on this date. This writing series is free and open to the public.

Pre-register for the series at either library or online at go.illinois.edu/CLWfamilylife. For more information, contact Karla Belzer at 815-632-3611 or by email at kbelzer@illinois.edu.

Northern Illinois 4-H Summer Camp set for June 10-14 in Polo

POLO — Registration for 4-H Camp 2019 is open. 4-H Camp is set for June 10-14, at Rock River Christian Camp, Polo.

4-H Camp is a five-day, four-night residential camping experience that is conducted cooperatively by University of Illinois Extension staff in Boone, Carroll, DeKalb, Jo Daviess, Lee, Ogle, Stephenson, Whiteside and Winnebago Counties and the professional staff at RRCC.

Historically, parents have sent their children to 4-H Camp for a variety of reasons: to have fun, to make new friends, to develop new skills, to be physically active and to appreciate nature. 4-H Camp is about way more than one week of fun. Sending your child to 4-H Camp will allow them to create memories they will carry

with them through adulthood. 4-H camp teaches youth to make good decisions, build their self-confidence, become independent and gain the ability to work well with others. These skills will help youth develop into strong adult leaders. In addition, 4-H camp counselors devote much of their personal time to ensure today’s campers have the same great experience they did as children.

Campers at 4-H Camp will check-in from 6-6:30 p.m. on Monday, June 10, and checkout from 6-6:30 p.m. on Friday, June 14. During camp week, youth will engage in a variety of activities designed to challenge, educate and entertain. Two or three free-choice periods will be offered daily and will include options such as hiking, shooting sports, arts and crafts, crate stacking,

team building challenges, zip-lining, swimming, and more.

4-H Camp is open to all boys and girls, ages eight-14 by June 10. 4-H membership is not required; however, all participants will be expected to comply with the same high behavior standards expected of 4-H’ers.

Cost is \$250 for 4-H members and \$270 for non-4-H members until March 1. After that date, the price goes up to \$50. All camp fees must be paid in full by May 20. Download a camper application online at <http://web.extension.illinois.edu/bdo> or register online at <http://go.illinois.edu/4HSummerCamp>. You may also call the Extension Office in Jo Daviess County at 815-858-2273. Slots for boys and girls cabins will be filled on a first come, first serve basis.

CGH Birthing Center offers enhanced security

STERLING — Newborns at CGH are making their mark on the world one step at a time, but it’s no longer just a keepsake. The Birthing Center at CGH Medical Center recently installed a new and innovative Infant Safety System, developed by CertaScan Technologies (www.certascantek.com), that helps ensure baby’s safety from day one. The proprietary system allows the hospital to capture digital, high resolution newborn footprints which can be used for precise identification in emergency situations throughout the child’s life, like abduction, lost baby or natural disaster.

“The system is entirely safe for use on babies and provides outstanding digital footprint quality,” said Kathy Milby, CGH Director of Maternal-Child Services. “Ink and paper images often smudge because babies are always moving. Now we are able to capture a digital image of a baby’s footprint which is stored in the newborn’s electronic medical record and is linked to a picture of the baby and the mother’s fingerprint.”

The Newborn Safety System — which uses LiveScan Technology — has received attention and praise from the National Center for Missing and Exploited Children (NC-

MEC) and has been included as a recommendation for hospitals in its most recent Infant Security Guidelines.

“Much like fingerprints, footprints are unique to each baby, so they can be used for identification that will reinforce the baby’s safety for a lifetime,” added Dr. Paul Steinke, CGH President and CEO.

The CGH Birthing Center gives parents a compli-

mentary birth certificate with their newborn’s footprints, and families will have access online at www.firstfootprint.com to enhance the footprint certificate with colors, different fonts and borders after they go home.

For more information about newborn digital footprints, or about the Birthing Center at CGH Medical Center, please contact 815-625-0400, ext. 5504.

BOARD

continued from page A1

He said that the annual toy show is looking to be another good show too.

He is also working on a report that compares sales tax for the towns in Lee County, to show how Sublette rates. He said the numbers from some of the last quarter of 2018 are still not yet available, but up until then Sublette ranked second in Lee County in terms of retail sales.

The next Sublette Village Board meeting will be held at 7 p.m., on Monday, March 11, in the Ellice Dinges Center.

Amboy Police

Expired registration

On Feb. 5, at 7:12 p.m., Patrick C. Riley, 31, of Amboy, was issued a traffic citation for expired registration. He was issued a traffic citation and released after posting bond.

Domestic battery

On Feb. 8, at 3:25 p.m.,

Nathan S. Trujillo, Jr., 21, of Amboy, was arrested for domestic battery. He was taken to the Lee County Jail.

Retail theft

On Feb. 8, at 9:15 a.m., Brandon P. Meyers, 29, of Amboy, was arrested for retail theft. He was taken to the Lee County Jail.

SHREK continued from page A1

While the weather has certainly been a challenge for Schwamberger and Kemmerer on their first adventure as directors of an Amboy High School musical, the students and parents have all stepped up to help. Students have been busy practicing at home when they couldn’t be at school and sharing their performances and staying connected with each other through the wonders of technology.

The talented set creators have been busy coming in at all times to create wonderful backdrops for the production.

All of the dedication by all involved will be evident when the musical hits the stage on March 8, 9, and 10.

Stayed tuned for more royal decrees including ticket sales for this wonderful, family friendly production sure to have you rolling with laughter.



BY EMILY GOFF
Head Librarian

Come celebrate Year of the Pig at the Library. Join us in the Children’s Library, from 10-11 a.m., on Saturday, Feb. 23. There will be stories and a craft.

Hope to see you there.
Pankhurst Memorial Library
3 South Jefferson Avenue
Amboy IL 61310
815-857-3925



30th Anniversary Annual Lee County PHEASANTS FOREVER BANQUET

Saturday, March 9, 2019
Cocktails - 5:30 p.m. Dinner - 7 p.m.
Dixon Elks Club, Rt. 38, East of Dixon

MEMBERSHIP ONLY \$35
SINGLE MEMBERSHIP WITH DINNER \$55
COUPLE MEMBERSHIP WITH DINNER \$75
RINGNECK MEMBERSHIP WITH DINNER \$25
(youth 18 & under)

Tickets Available At:
• Jones-Berry Lumber, 1 S. Commercial, Amboy
• Raffles & Auctions of the following:
• Guns • Limited Edition Prints & Merchandise
• Youth Door Prizes

It's time to begin thinking about Spring!

Start your flowers and vegetables inside for a beautiful garden this year!

We have what you need!
New seeds have arrived
Potting soil
Containers



HARDWARE & BUILDING MATERIAL
1 South Commercial
Amboy • 815-857-2525

Serving The Amboy Area For Over 100 Years
Save Time, Save Money



Hours: Mon. - Fri. 8 - 5
Sat. 8 - 3 • Sun. 10 - 1



LOCAL NEWS

TEEN TURF

UP COMING EVENTS

Valentine's Dance 6-9 p.m., Friday, Feb. 15
Chili/Soup Supper Saturday, Feb. 23

CHILI/SOUP SUPPER

Our annual Super Bowl Chili/Soup supper will be from 4:30 – 7 p.m., on Friday, Feb. 23. We will have chili and all your favorite soups such as: chicken noodle, Italian sausage tortellini, beef barley, taco, and cheesy broccoli. There will be all the delicious desserts to finish the meal. The cost is by donation. All proceeds will help our free After School Homework Program. Teen Turf does not receive any state or federal money. We have been in existence for over 20 years due to the generosity of our community and the United Way of Lee County.

DANCE

The Valentine's Day Dance will be from 6 – 9 p.m., on Friday, Feb. 15. There will be a Balloon Drop and everyone in attendance will have a chance to win one of the many door prizes. There will be flowers and stuffed animals for sale for this special occasion. There will be a photo booth for a small price for the printed pictures. Come and spend some time with friends. Chaperones are needed so call 815-857-4800 or 815-440-8195 to help out.

SWIMMING AT NASH

A great group of the kids from the After School Program went swimming at the Nash Center in Oregon. What a great way to spend a cold winter day.

DONATIONS

Larry and Rose Leffelman memorial donation for Lois Day; Bob and Linda Cheeseman in memory of Emiline Rood; Tena Sadewater food; Ron and Chris Noble prizes; School for books; Dan and Laurie Nauman for snacks and prizes; Eileen and Irene Ramsdell for the meat, cheese, bread and the great decorated cupcakes; and Donna Wellman for all her homemade treats and helping daily.

We appreciate all donations but please call 815-440-8195 before dropping things off. When things are left out in the weather things get ruined.

CHAIR AEROBICS

A great group gets together at 10 a.m. every Tuesday and Thursday morning. The goal is to keep moving and healthy. There is no charge but a donation box is set out and the money goes toward the utility bills. The philosophy is pay or pray. If you can't afford to put some money in the box just say a prayer. Prayers are what have kept Teen Turf going all these years.

TAX FREE DONATIONS

There is an account set up at First Federal Savings and Loan, First National Bank of Amboy, and Pioneer State Bank (former Farmers State Bank of Sublette) if you would like to donate to our programs. All donations are tax deductible as we are a 501(c)3. Teen Turf has been in existence for over 20 years. Since we do not receive any state or federal money we survive on the generosity of the community. United Way has been a huge supporter for 15 years. If you are able to help us out please send your donations to Teen Turf P. O. Box 321 Amboy, Illinois 61310.

RECYCLED CANS

Yes, we are still recycling cans. Just put your bags behind the fence on the red trailer. The white wire rack is for plastic and paper recycle items. Be sure that all the RECYCLE materials are tied and secured in bags or boxes. High Fives to everyone that donates cans and to Leroy Dukes for elevating them. It helps our environment and our van upkeep. If you have cans that need to be picked up just call 815-857-4800.

SCHOOL SUPPLIES

If you are in need of a book bag or school supplies throughout the year please call 815-857-4800 and leave your name and number.


LOST & FOUND

Please call 815-857-4800 if you are missing any of the many coats, hats, and gloves that have been left at Teen Turf.

BOARD MEMBERS

Teen Turf is in need of two new board members. If you want to help make a difference in the lives of the youth of our community please call or stop and talk to us. Our current board members are Deb Albee, Kim Watley, Cindy Phillips, Scott and Janine Huffman, Kaylee Jones, and Mark Grossman. Please do not drop off TV's – we cannot recycle them.

Email calendar items to mmays@amboynews.com



**Crossroads
Coffee House**

The Road
Less Traveled

A non-denominational Christian coffee house providing fellowship, music, prayer & beverages in a safe relaxing environment.

**Friday,
February 15**

CHOSEN

Holy Ghost Inspired
Worship

Located at The Mendota Civic Center, 1901 Tom Merwin Drive
(North Rt. 251 by Lake Mendota)
www.crossroadsHOP.com • coffee@crossroadsHOP.com A 501c3 Charity



**Buy 1 Admission,
GET 1 FREE!**

FEBRUARY 22-24 • Renaissance Schaumburg Convention Center



**2019
National
PHEASANT
& Quail Classic**

FEDERAL

Daily admission: \$10.00 Adults • \$5.00 Ages 6-16 • 5 & under FREE!

No Cash Value. One coupon per person, per day. Coupon not valid for use with the membership/3-day admission package.

PheasantFest.org

COMMUNITY CALENDAR

AMBOY-The Board of Trustees of Amboy Township will meet at 7 p.m. on Wednesday, Feb. 13, at the Amboy Township Building, 106 S. Prospect.

AMBOY-Immanuel Lutheran Church, 960 US RT 52, will host Community Bingo at 10 a.m. on Thursday, Feb. 14. A light lunch will follow Bingo. Call the church at 815-857-2225 for more information.

DIXON-The Lee County Health Department, 309 S. Galena Ave., will have Childhood Immunization Clinics, by appointment only, on Feb. 14, 15, 19, 21, 22, 26, 27 and 28. Call 815-284-3371 to schedule an appointment or to find out about other services offered, like Flu and other Adult Vaccines, free radon test kits or the application process for medical cannabis.

AMBOY-The Amboy American Legion Post #453 will meet at 6:30 p.m. on Monday, Feb. 18, at the Amboy Family Restaurant community room, 211 E. Main St.

AMBOY-The City of Amboy Council will meet at 7 p.m. on Monday, Feb. 18, at the Community Center, 280 W. Wasson Rd.

AMBOY-The Lee County Health Department will hold a Blood Pressure Clinic from 10:30 to 11:30 a.m. on Wednesday, Feb. 20, at the Community Center, 280 W. Wasson Rd. Call 815-284-3371 for more information.

AMBOY-The Lee County Council on Aging will provide assistance with accessing services and benefits for seniors or disabled citizens at the Community Center, 280 W. Wasson Road, on Wednesday, Feb. 20, by appointment only. Call the LCCOA at 815-288-9236 to schedule an appointment.

ROCK FALLS-The American Red Cross, in coordination with Mayor William B. Wescott of Rock Falls and Bethany Bland, President/CEO of Rock Falls Chamber of Commerce, will hold two monthly Blood Drives on the first and third Wednesdays of each month at the Rock Falls

Community Building, 601 W. 10th St. The third Wednesday of the month drive, Feb. 20, will be from 9 a.m. until 2 p.m. The first Wednesday of the month drive will be held from 1 to 6 p.m. on Wednesday, March 6. Call 800-733-2767 or visit redcrossblood.org to make an appointment to donate.

SUBLETTE-The Lee County Council on Aging will provide assistance with accessing services and benefits for seniors or disabled citizens at Our Lady of Perpetual Help Church Hall on Wednesday, Feb. 20, by appointment only. Call the LCCOA at 815-288-9236 to schedule an appointment.

STERLING-Rock River Hospice & Home, 2706 Avenue E, will host Hospice Volunteer Training from 9 a.m. until 3 p.m. on Wednesday, Feb. 20. Call Stacey at 815-625-3858 or at her email staceynielsen@hospicerock-river.org for more information.

AMBOY-Business After Hours will be held at 5:30 p.m. on Wednesday, Feb. 20, at Dinges Fire Co., 243 E. Main St. All community members, local business owners and employees are invited to this mix 'n mingle.

AMBOY-The Amboy CUSD #272 Board of Education will meet at 7 p.m. on Thursday, Feb. 21, at Amboy High School, 11 E. Hawley.

SUBLETTE NEWS

MACHINE SHED MASTERS GOLF TOURNAMENT

The golf season starts early in Sublette. Sunday, Feb. 17 is the date of the 4th annual Machine Shed Masters Golf Tournament. Golfers travel from machine shed to machine shed in the area to try their luck playing holes set up by area farmers in their machine sheds.

The tournament is open to individuals or foursomes. The day starts with check-in at 12:30 p.m. at the Ellice Dinges Center. The shot gun start is at 1 p.m. Team registration is \$100 and individuals may register for \$25. Registration includes putters, balls, dinner, awards and prizes.

Awards and dinner will be at 5 p.m. at the Dinges Center. Those not wishing to play golf may purchase dinner tickets at the door for \$10. There will also be a silent auction and a 50/50 drawing.

Anyone wishing to donate items for the silent auction may call Laura Hicks at 815-440-5599.

Proceeds from the event will benefit the Amboy FFA Alumni. The Alumni sup-

ports FFA members with scholarships and attendance at conferences and conventions.

CANDIDATES FILE FOR VILLAGE ELECTION

Five candidates have filed petitions for the positions of village trustee in Sublette.

The following have declared themselves as candidates: John Stenzel, Robert Bulfer, Jeff Myers, Richard Klazer and Scott Hanson. Three positions will be filled in the April 2 election.

LOCAL CUP & CAKE LISTED ON CHOCOLATE TRAIL

It was recently announced that Sublette's Local Cup & Cake is now listed as a destination on the Blackhawk Chocolate Trail. Blackhawk Waterways Convention and Visitor Bureau has created the Chocolate Trail in Northwest Illinois designating locations featuring chocolate items on their menu.

The trail is a free self-guided trip through the area with locations in Sterling, Dixon, Oregon, Shannon, Lanark, Rochelle, Rock Falls, Mount Carroll and Sublette.

HOW TO MAKE A LEAK-PROOF ROOF



Industrial • Commercial • Residential

For Low-Pitched, Flat Roofs

• New Construction • Re-Roofing

The successful contractor of tomorrow... is installing Duro-Last today!

705 Illinois Ave., Mendota, IL
815-539-5142 • License #104005528



Established In 1854

The Amboy News

Serving the Heart of Lee County Since 1854

Kip Cheek, Publisher
Tonja Greenfield, General Manager
Bonnie Morris, Editor

Published weekly on Wednesday by The Amboy News
245 E. Main St., Amboy, IL 61310

Phone: 815-857-2311 Fax: 815-857-2517

Periodicals postage paid at Amboy, IL
Publication Number USPS 016820

POSTMASTER: Send address change to:
The Amboy News, PO Box 162, Amboy IL 61310

Subscriptions: \$37.25 yearly in Lee, LaSalle and Bureau counties.

\$42.00 yearly elsewhere in the United States.

Display Advertising Deadline: 10 a.m. Monday
Classified Advertising Deadline: 10 a.m. Monday
All Editorial Deadline: 4 p.m. Friday

Letters Policy: The Amboy News encourages letters from readers on current issues. Letters should be brief and must be signed, with a street address and daytime telephone number for verification purposes. The newspaper reserves the right to publish, edit, condense, revise or reject any submissions.

**Congratulations
Lady Clippers on
your Regional
Championship and
Sectional victory over
Aurora Christian.
Beat Newark!!**



• Auto • Home • Vacation Home • Farm
• Crop • Business • Life • Health



**LEFFELMAN
& ASSOCIATES INC.**

Our Family Protecting Your Family

Like us on facebook

P.O. BOX 349, Sublette, IL 61367
Sublette 849-5219
LaMoille 638-2171 • Amboy 857-2125

02132019

**INCOME TAX
PREPARATION**

• ELECTRONIC FILING
• FREE CONSULTATION
• REASONABLE RATES
• OVER 35 YEARS EXPERIENCE
• ADDITIONAL FINANCIAL ADVISING AVAILABLE

Call For An Appointment:

NEIL BRINKMEIER

IRS Registered Tax Practitioner

402 N. Jones • Amboy, IL 61310

Home Office (815) 857-2471

01302019



**STAY WARM
THIS WINTER**

Replace that old unit with an energy efficient Goodman Furnace.

Call today for a FREE estimate

Goodman
Air Conditioning & Heating

GRASSER'S
(State ID No. 58-100249)
PLUMBING & HEATING, INC.

404 W. Main St., McNabb
815-882-2111 or 815-875-2540
grassersplumbingheating.com

02132019

OBITUARIES

OBITUARIES

Ricky L. "Rick" Ketchum June 6, 1950 - Feb. 7, 2019

AMBOY — Ricky L. "Rick" Ketchum, 68, of Amboy, passed away on Thursday, Feb. 7, 2019.

He was born June 6, 1950, in Amboy, the son of Perry and Doris (McLindsay) Ketchum.

Rick liked to say he was a jack of all trades. He was a 45-year union member of Carpenters Local 790. During this time, he was a Journeyman Carpenter, Business Agent, and participated on many committees to ensure quality benefits for his fellow union members.

Rick was dedicated to community service and served on the Lee County Board for 16 years including four years as Finance Chair and four years as Board Chairman.

Rick spent several years as Amboy Building Inspector and used his carpentry skills on many community projects.

Rick was also a founding member of the Amboy Depot Days Car Show, which has raised hundreds of thousands of dollars for the Amboy community over the last 28 years.

Rick was a life-long farm-

er, and you could often find him in his machine shop. He retired in 2005 but had a full-time job building and racing drag cars, restoring street rods and antiques, rebuilding engines and tractors, and working on just about anything that came through the door.

Rick married Kathleen Mead on July 1, 1972 at St. Patrick Catholic Church in Amboy where he later became a member. She proved to be a valuable partner in life, farming, mechanics, and loving care through his battle with throat cancer.

He was preceded in death by his parents and his brother, Eugene Ketchum.

He will be forever loved and missed by his wife, Kathy; one daughter, Kristin (Jeremy) Tews, of Rockford, one son, Daniel (Alanna) Ketchum, of Amboy; grandchildren, Alexis, Olivia, Logan, and Liam Ketchum, Tamara Hiatt-Glenn, Tierny (Warren) Hindriks, and Dahlia Hiatt.

He is also survived by a large and loving extended family including many brothers and sisters in law, nieces,



and nephews.

Visitation was held from 2-7 p.m., on Sunday Feb. 10, 2019 in the Mihm-Jones Funeral Home in Amboy with a Scripture service at 6:30 p.m. Funeral services were held Monday beginning with a 10 a.m. prayer service in the funeral home followed by a 10:30 a.m. Mass of Christian Burial at St. Patrick Catholic Church in Amboy, with Rev. Richard Kramer, officiating.

Burial followed in St. Patrick Cemetery in Amboy. A memorial has been established.

Condolences may be sent online at www.thejonesfh.com.

Donald "Don" W. Carroll June 2, 1936 - Feb. 4, 2019

GENOA — Donald "Don" W. Carroll, 82, of Genoa, died Monday, Feb. 4, 2019.

He was born June 2, 1936, in Amboy.

Don was preceded in death by his parents, Harold and Georgia (Virgil) Carroll; his brother Harold ("Gene") Carroll; niece, Tracy Mihm and numerous beloved relatives.

He is survived by wife, of 57 years, Leota Jane (Halsey) Carroll (aka "Lee" or "Corky"); four children, Sean (Tamara) Carroll, of Atlanta, Ga., Heidi (Bud) Wilkinson, of Churchville, Penn., Amy (Andy McRoberts) Carroll, of Dallas, Texas and Christopher (Angie) Carroll, of Ft. Lauderdale, Fla.; 13 cherished grandchildren, Hailey, Meredith, Reilly, Audrey, Liam, Daniel, Donald, Kristin, Cory, Dominic, Ella, Zakary and Janie; his great-granddaughter, Nora, with more grandchildren on the way; and his sister, Nancy (Dr. Martin) Mihm, of Sarasota, Fla.

Don's faith was very strong. He worshiped faithfully with his fellow parishioners at Trinity Lutheran

Church in Genoa, and on his own in more recent months.

Professionally, Don worked for most of his career as an executive in the Insurance industry with large companies like General Adjustment Bureau in New York City as well as entrepreneurial endeavors like Royal Enterprise Management Company in Florida. He was always an engaged neighbor, friend and good Samaritan throughout his life wherever he lived.

Over the years he supported the Elk's Lodge wherever he lived. He gave to the less fortunate in consistently. He proudly served on the Board of Directors of Country Creek Townhome Association in Genoa.

Personally, he loved fishing, golf, music, friendship, the Cubs and a good meal with relatives or friends. Mostly though, caring for his wife, and shepherding his family through life was his beloved mission.

In most recent years, he became famous for his unique dance moves — imitated by many but perfected by only him.



We are all better having had you in our lives, Don.

Funeral services will be held at 3 p.m., on Saturday, Feb. 16, 2019, in the Mihm-Jones Funeral Home in Amboy with Rev. Jeremy Heilman officiating. Cremation will follow with burial of cremains at a later date in Prairie Repose Cemetery in Amboy. Visitation will be held from noon — 3 p.m., on Saturday, in the funeral home.

A memorial has been established to the Alzheimer's Association.

Condolences may be sent online at www.thejonesfh.com.

Dennis M. Finn

Jan. 18, 1954 - Feb. 3, 2019

DIXON — Dennis M. Finn, 65, of Dixon died Sunday, Feb. 3, 2019 at his home.

He was born Jan. 18, 1954 in Dixon the son of Francis "Mick" and JoAnne (Haley) Finn. He was a graduate of Amboy High School and a lifelong farmer.

He was preceded in death by his parents and sister, Colleen A. Oester.

Dennis is survived by his brother, Doug (Andrea) Finn, of Springfield and sister, Barbara Finn, of Freeport.

Cremation rites have been accorded and a private family

graveside service will be held at a later date at St. Patrick Cemetery in Amboy.

Arrangements by the Mihm-Jones Funeral Home in Amboy.

Condolences may be sent online at www.thejonesfh.com.

Amboy News Obituary Policy

The Amboy News will print DEATH NOTICES (approximately 50 words including name, age, date of death, time/date of services) free of charge. OBITUARIES will be printed at a cost of \$20 to be billed to the arranging funeral home or prepaid with cash, check or credit card. Please submit obituaries or death notices to tgreenfield@amboynews.com.

Amboy Young Seekers 4-H Club to hosting open house Feb 21

AMBOY — The Amboy Young Seekers 4-H club is hosting a 4-H Open House, from 6 — 7 p.m., on Feb. 21, at the Lee Co. 4-H Center & Fairgrounds, 1196 Franklin Road, Amboy.

4-H is open to youth ages eight to 19. At the Open House interested families can meet 4-H

members, see 4-H projects, discover what's fun in 4-H and enjoy some refreshments.

Information about all Lee County 4-H clubs will be available.

For more information call Katie Pratt at 815-857-2603.

AMBOY — Doris E. Ail, 86, of Amboy, died Wednesday, Feb. 6, 2019, at home of her daughter surrounded by her loving family.

She was born Feb. 10, 1932, in Amboy, the daughter of William and Laura (Rodgers) Glenn. Doris was a Certified Nurses Aid for Dixon State School and Mapleside Manor in Amboy. She had also been a Cook at Lamb's Tap in Amboy.

She was preceded in death by her son, John; granddaughter, Sara Lamb; four sisters, Leatha Poulos, Lola Ponto, Bonnie Ruble, and Opal Schaneberg; four brothers, Ralph, Alvin, Wilbur, and Gail Glenn.

Survivors include six daughters, Susan (Richard) Becker, of Rock Falls, Cheryl (Richard) Lamb, of Amboy, Cynthia (Gary) Noonan, of Amboy, Brenda

Payne, of Dixon, Laurie (Dennis) Krager, of Amboy, and Melissa Ail, of Amboy; and son, Kevin Ail, of Amboy; 15 grandchildren, 23 great-grandchildren, and one great-great-grandson; two brothers, Howard Glenn, of Amboy and Russell Glenn, of Dixon; and numerous nieces and nephews as well as those who called her 'Mom.'

They are blessed to remember her as the historian and heart of the family. A friend, protector, teacher, nurse, advisor, problem solver, and peacemaker. We are strong because she was strong first.

Funeral services were held at 11 a.m., on Saturday, Feb. 9, 2019 at the United First Church in Amboy with Reverend Frank Brozenec and Reverend Mark Glenn, co-officiating.

Burial followed in Prairie



Repose Cemetery in Amboy. Visitation was held from 2-4 p.m. and 6 — 8 p.m., Friday at the Mihm-Jones Funeral Home in Amboy, as well as Saturday from 10 to 11 a.m. at the church.

A memorial has been established.

Condolences can be sent online at www.thejonesfh.com.

Recycle! Recycle! Recycle!

CHURCH DIRECTORY

Your Guide To Local Houses of Worship

St. Patrick Church
Rev. Timothy Draper
32 N Jones, Amboy
815-857-2315 • www.stpatrickamboy.org
Masses: Monday, Wednesday & Friday 5 pm
Tuesday & Thursday 7 am
Saturday 4 pm • Sunday 9 am
Confessions: Saturday, 3-3:45 pm
Wednesday, 5:30-6:15 pm
Adoration of the Blessed Sacrament:
Friday, 8am-5 pm

St. Mary Church
Rev. Timothy Draper
912 Walton Rd., Walton
815-857-2670
Mass: Saturday, 5:30 pm

First Congregational United Church of Christ of Lee Center
Pastor Jack M. Briggs
1140 Inlet Road, Lee Center
www.LeeCenter-UCC.org
Phone 815-732-7032
Family Worship - 10:30 a.m.

St. Flannen Church
Rev. Timothy Draper
213 S Second St., Harmon
815-857-2670
Mass: Sunday, 7:30 am

United First Church of Amboy
Pastor Mark Glenn
East Main & Jefferson
815-440-0745
Sunday Worship - 9:00 a.m.
Bible Study Wednesday 6:00 p.m.

Grace Fellowship Church — Amboy
Pastor Brian McWethy
37 S. East Avenue, (Farm Bureau Bldg.)
815-857-3900
Sunday Worship Service 8:30 & 10:30 a.m.
www.graceisforyou.com

East Grove Union Church
Pastor Richard Wulf, 815-440-5321
449 Reuter Road, Amboy
Phone 815-376-6661
1/2 Mile East of Route 26 on Union Rd.
Sun., 9:00 a.m. Morning Service
Youth Church, ages 3-Grade 4
10:15 a.m. Sunday School, Ages 3 - Adult
6:00 p.m. Evening Service
Wed., 6:00 p.m. Prayer & Bible Study
First Sunday night of each month, 6:00p.m.
First Sunday Family Film Night
Fourth Saturday of each month, 6:00p.m.
"Fun & Fellowship Game Night for the Whole Family!"
Come as you are and join us on the journey!

First Baptist Church
Pastor Rocky Fritz
24 N. Mason Avenue
Church Phone 857-2682
www.fbcamboy.com
Sunday School for all ages - 9:30 a.m.
Morning Service - 10:30 a.m.
Evening Service - 6 p.m.
Wed. prayer meeting & Bible Study 6:30 p.m.
King's Kids program from 6:30-8 p.m. Friday
Reformers Unanimous addictions program from 7-9 p.m.

St. James Evangelical Congregational Church
Robert Dunbar, Pastor
US Route 52 & Red Brick Rd., Dixon
815-288-2447
Sunday 10:45 a.m. Worship
9:45 a.m. Sunday School
Ladies Bible Study, Wed. 9 a.m.

St. Mary's Church
Rev. Randy Fronek
West Brooklyn
Tuesday & Thursday - 7:30 a.m.
Saturday - 5:30 p.m.

St. Patrick Church
Rev. Randy Fronek - Maytown
Mass - Fri. 8 a.m., Sun, 8 a.m.

Immanuel Lutheran Church
Pastor Barb Otten
960 U.S. Route 52
Phone 857-2225
Sun. Worship - 9:00 a.m. Fellowship - 10:00 a.m.
Sunday School - 9:40-10:15 a.m.

Our Lady of Perpetual Help Church
Rev. Randy Fronek
Locust Street, Sublette
Phone 815-849-5412
Saturday Mass - 4:00 p.m.
Sunday Mass - 10:30 a.m.
Wednesday - 8:00 a.m.
Thursday - 8:30 a.m.

Refuge Church
Pastor John Kalebaugh
Mendota Hills Campground • 642 Rt. 52
Amboy, IL 61310 • 815-849-5930
10 a.m. Sunday, potluck follows

Harmon United Methodist Church
Pastor Leanne Keate
202 N. Grove, Harmon
Phone 359-7302
Worship - 8:30 a.m.

*The Following
Community
Businesses
Sponsor Area
Church News:*

Sensient Flavors, LLC.
815-857-3691

Gehant Bank
West Brooklyn
Member F.D.I.C.
815-628-3121

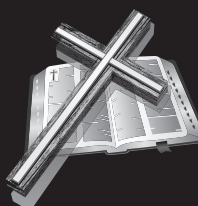
Mihm-Jones Funeral
Home
815-857-2611

Vaessen Brothers
Chevrolet
815-849-5232

First National Bank
in Amboy
Member F.D.I.C.
815- 857-3625

KSB Medical Center
815-857-3044

The Amboy News
815-857-2311



SOCIAL NEWS

The Book Nook

By:

Tatjana Kazan



THE PASTOR'S PEN

Enough love to throw our sin in the bin

BY PASTOR MARK GLENN

The Crime of the Century

Michael Crichton's "The Great Train Robbery" is a highly fictionalized account of what at the time the London newspapers sensationalized as the Crime of the Century. The time was Victorian England at mid-century, the British Empire was by then the greatest empire in history, London's population had swelled to 2 ½ million, new Victorian cities "glittered as no other cities before and stank as no other cities before." (In London, a million horses made sure of that.) In short, "progress was inevitable."

And it was the railroads that "were the most visible and striking proof of progress." Prior to 1830, there were no railroads, all traffic was by horse-drawn coach. By 1855, the year of the Great Train Robbery, trains and railroad stations – the cathedrals of their age – had taken over. The robbery was considered an attack on progress itself.

Crichton's novel is a classic heist caper. (Crichton said he did not want to be constrained by what actually happened.) Planning, which takes up most of the novel and which was as ingenious as it was audacious, provides most of the suspense and pleasure of the novel. The master thief or "putter-up" was Edward Pierce, a stylish London mobster who assembled an assortment of thieves for the ultimate score. Among others, there was Robert Agar, the screwsman, who picked locks and copied keys, Clean Willy was the snakeman who squirmed through tiny spaces, and scar-faced Barlow was the strongman. Opposing them were the "crushers" (policemen) and "jacks" (guards).

Pierce's target was a shipment of gold bars valued at £12,000 (equal to about \$1,500,000 today). It was sent by rail from London to Paris and on to Russia to pay for the British troops fighting in the Crimean war. The gold was stored in a custom-made safe which required four closely guarded keys to unlock.

Alfred Nobel will not invent dynamite for another ten years, so the only real requirement was that the safe was too heavy for thieves to carry off. The thieves struck on May 15, 1855, and when the French police discovered the theft, the British blamed them, but soon decided the theft was too clever for any Frenchman to pull off.

Aside from showing us how to rob an aged railroad train, Crichton paints a vivid picture of a Victorian world where great riches and squalor existed cheek to jowl, where Mr. Trent, the esteemed bank president responsible for the gold bullion, was obsessed with a blood sport called "ratting" in which bets were laid on how many rats a dog killed in 10 minutes.

Country rats were preferred to disease-ridden sewer rats. Crichton's ending is more satisfying than the actual events, but perhaps not as interesting: "The money from the Great Train Robbery was never recovered."

Spoiler alert: It was not Hallmark that created Valentine's Day. The back-story of Valentine's Day is simply about Valentine, the bishop of Terni in Umbria, in central Italy. Bishop Valentine managed to get on the wrong side of the emperor Claudis Gothicus II around 270 A.D. Valentine was known as a healer and had also been recently found out as one who would secretly marry Christian couples, in part to keep the new husbands from being required to go to war. After his arrest, Valentine prayed, and God healed his jailer's daughter of blindness, giving Emperor Claudis momentary pause.

However, the Roman ruler then demanded that in order for Valentine to be released, he must renounce his Christian faith. Valentine refused and thus condemned to being beaten with clubs and then beheaded. Before his death, however, tradition records that he sent a letter to the jailer's daughter he prayed for and God healed and signed it, "from your Valentine." It is from that humble, sad beginning that Valentine's Day finds its roots.

Unlike the sentimental little shoebox Valentine's and candy, we exchanged in grade school, the power of Jesus' love is so very strong—stronger than any Valentine note. Strong enough to soothe weary hearts and resurrect broken spirits. The power of Jesus is in restoration. Jesus is in the business of restoring broken spirits, unburdening overtaxed souls, and giving us the space to make things right within our trusting relationship with Him. And, boy are we burdened. Some more than others, but we all experience it.

What do we do when our nerves get overtaxed by too much

stress and too much busyness? We seek out a hot tub and sink ourselves into super relaxation. When our souls become overtaxed by our anger, or pain, grief, guilt, or duplicity, we need to sink ourselves into the loving arms of God, allowing God's refreshing Spirit to wash over us and cover us, renewing us, and redoing us. How does the 23rd Psalm go? "He leads me beside still waters." "He restores my soul."

An overtaxed soul is one steeped to the brim in regret and remorse. When our souls become overtaxed by the guilt and the shame we heap upon ourselves, we find ourselves in a tough spot. Whether it is anger or jealousy, sadness or fear, these are burdens that overtax our spirit in such a way that keeps us in chains. They keep us from showing our face in the world. We find ourselves unable to present ourselves authentically to others, unable to hold our heads high. Instead, we hide away and resist investing in anything except digging deeper into our own muck and mire. Slowly, slowly we sink until we have nearly disappeared.

The good news is this: Jesus invites us to revitalizing clean waters of fresh hope and a new start. He surprises each of us with His unprecedented love, confronts each of us with radically over the top acceptance, so much unconditional love that we almost cannot stand it or trust it because it is just so astounding. Enough love to throw our sin in the bin and follow Him.

And when we follow Him, everything we have been carrying around with us, all that has been dragging us down and burdening our souls falls away, and we are free. We are free to imagine a new and improved life, free to be the kind of person Jesus always knew we all could be.

Gardening Conference set for March 23 at Sauk Valley Community College

LEE COUNTY — On Saturday, March 23, the University of Illinois Extension Master Gardeners of Carroll, Lee, Ogle, and Whiteside Counties will be hosting the 2019 Ready...Set...Grow... garden conference day from 8 a.m. to 2:15 p.m. at Sauk Valley Community College.

This year's keynote address: The Shockingly Beautiful Way to Improve Water Quality, will focus on how homeowners can use strat-

egies such as nutrient loss reduction, green infrastructure, and sustainable lawn care practices to improve their lawns but also water quality in their area.

Horticulture experts will lead 15 workshops and participants will choose three sessions to attend. Workshops will share information everyone can use from the beginner to the most experienced gardener.

A vendor show, door prizes, and a Master Gardener Help Desk can be visited throughout the day. The fee for this program is \$45, and registrations will

be accepted until March 18. Fee includes a Continental breakfast & buffet lunch, a welcome bag, and handouts from educational sessions.

Please register by March 15. Register online or download the registration form at go.illinois.edu/ReadySetGrow

If you are interested in more information about

Ready...Set...Grow... or becoming a Master Gardener, please contact your local Extension office.

Carroll County: 815-244-9444

Lee County: 815-857-3525

Ogle County: 815-732-2191

Whiteside County: 815-632-3611

AFSCME retirees to host meeting

DIXON — AFSCME Retirees, Sub-Chapter 72, invites all State, County, Municipal retired employees from Lee, Ogle, and Whiteside Counties to join us on Wednesday, Feb. 20, to hear our new Retiree Coordinator, Maria Britton-Sipe bring us

news from Council 31 in Springfield.

She will answer your questions about frozen pay increases and other concerns about State and Federal laws.

The meeting begins at noon at the Union Hall located at 622 Palmyra Road in Dixon.

**Recycle!
Recycle!**



ART ESPE
Agent
221 N. Mason
Amboy, IL 61310
(815) 857-2624
art@artespe.com
1005000.1

Find your way to savings.

Stop here for great rates with America's #1 car insurance company. Give me a call today.

Like a good neighbor, State Farm is there.®

State Farm

BUSINESSES & SERVICES



REAL ESTATE

Your Local Realtor®

ISV Realty

Matt Willahan
106 S. Mason, Amboy
815-218-8858
www.ISVRealty.com

AUTO SALES/SERVICE/TOWING

Gerdes AUTO & TRUCK
Sales & Service, INC.
815-857-3722
"SINCE 1967"
Taking Service The... EXTRA MILE!
128 S Mason Ave, Amboy, IL

AVON

Avon Independent Sales Representative
Betty Mezmarich

576 N. 3859th Rd.
Rt. 2
Mendota, IL 61342
815.343.4750
mezandmezzie@gmail.com

To Buy or Sell. 28 Years as an Avon Lady.

REAL ESTATE

ERBES Realty LLC

Lori Erbes, GRI Owner/Managing Broker
lorierbes@gmail.com
Over 30 Years Experience
815-535-6295
1922 Tower Rd. • PO Box 92 • Sublette, IL 61367

COMMUNITY CENTER

AMBOY COMMUNITY CENTER

Available For
Receptions, Meetings, Fund-Raisers
280 W. Wasson Rd. • Amboy, IL 61310
(815) 440-5784 • (815) 857-2324
Julie DeArmitt - Manager

REAL ESTATE

Woodhaven Lakes Realty

Woodhaven Lakes Realty, Inc.
PO Box 110
Sublette, IL 61367
(W)1-800-849-9574
www.woodhavenlakes.com

INSURANCE

Baylor Insurance Agency

Insurance Service for the Home,
Farm & Business
Phone: 857-2716 or 453-7468
Jack S. Baylor, Agent
Ashton, IL 61006 • P.O. Box 3
Lee Center, IL 61331

SMALL ENGINE REPAIR

MAIN STREET REPAIR

Husqvarna
Snowblower Mail
In Rebates Through
December
Stop in for Details!
205 W. Main St. | Sublette, IL
815-849-5225
mainstreetrepair16@yahoo.com
STIHL® Husqvarna

ADVERTISING

Your Business in
this space for only
\$28.00 per month.
CALL
The Amboy News
at **815-857-2311.**

FUNERAL HOME

Mihm-Jones Funeral Home

Patrick Jones
303 E. Main Street • Amboy
815-857-2611
www.thejonesfh.com

PAINTING

Owner: Wallace Prater

Prater
Paint & Waterproofing
since 1973 Sterling, IL

- Painting • Sandblasting • Basement Waterproofing
- Pressure Washing • Crack Repairs • Mold Remediation
- EZ Breathe Ventilation • Graffiti Removal

P.O. Box 13 • Avenue G Island • Sterling, IL
815-625-5165 • prater@sbmconnect.com
www.praterpaintingandwaterproofing.com

FINANCIAL

Sublette Woodhaven
815.849.5242 815.849.5918

PIONEER STATE BANK

www.pioneerstatebank.com
Building the Path to
Your Success

Opinion

Lincoln becomes touchstone that joins Illinoisans

Tuesday is my birthday and it's also Abraham Lincoln's.

If you grow up in Illinois sharing a birthday with our state's martyred saint, expect to be thoroughly indoctrinated in Lincoln lore.

When I was a kid, I read every Lincoln biography in the school library, had a picture of Honest Abe thumb tacked to my bedroom bulletin board and could rattle off Lincoln trivia the way other boys can recite baseball statistics.

When I was 8, I wanted to go to Gettysburg - not Disney World.

Other states have nicknamed themselves after their crops, heritage or natural attributes.

Illinois, on the other hand, is the only one that identifies itself with a person - thanks to state Sen. Fred Hart of Streator who in 1955 sponsored legislation designating the state as the "Land of Lincoln."

Here in Springfield, Lincoln has been given almost messianic qualities - Preserver of the Union, Liberator of the Slaves.

In many ways, Lincoln is the glue that holds together the state's identity.

Guest Column
By Scott Reeder



I've visited 47 states and lived in six. Of all of the places I've been, Illinois' seems the most lacking in pride. That doesn't mean it isn't a nice place to live. It is just that our identity is more fragmented.

Symbols are an important part of identity. Texas has the Alamo. Pennsylvania has the Liberty Bell and Colorado the Rockies.

And Illinois? Well, we have Lincoln.

Ask a Texan where she's from and she'll say "Texas."

Ask the same question of an Illinoisan and you more than likely will hear: "Chicago," "the suburbs" or "downstate."

Illinois has long been a divided state with a political heritage that would make Al Capone blush.

And culturally the divide is even greater.

Folks in the northeastern part of the state live a life more akin to residents of New York City than their compatriots in Galesburg, Moline or Alton.

Deep Southern Illinois feels like rural Kentucky. And central Illinois has a culture akin to that of Indiana or Iowa.

The civic glue that binds the state is weak.

But Lincoln has become the touchstone that joins Illinoisans. His life reflects the contradictions of our state.

His most famous act - the Emancipation Proclamation - was the classic Illinois political move.

It freed slaves only in areas controlled by the Confederacy - but not in areas under union control.

It looked high-minded and statesman like. But the proclamation's immediate value was as a public relations ploy.

Secretary of State William Seward said, at the time, "We show our sympathy with slavery by emancipating slaves where we cannot reach them and holding them in bondage where we can set them free."

An Illinois politician motivated by public relations rather than public policy?

Tell us it is not true.

More than 150 years after Lincoln's death much of what happens in Springfield still has more to do with perception than reality. Look no further than Mike Madigan, Rod Blagojevich or Bruce Rauner.

But somehow, I don't think history will be as kind to them as it is to Lincoln.

Scott Reeder is a veteran statehouse journalist and a freelance reporter. He can be reached by email at ScottReeder1965@gmail.com.

On This Day in History

100 Years Ago Feb. 14, 1919

Misses Kathryn and Margaret Hayes went to Chicago Wednesday morning. Miss Vella Dishong is tending the store during their absence.

A. S. Berry has introduced the S and H Trading stamps into his business. The announcement of this appears on page 4 of this paper.

Mrs. B. F. Reinboth entertained a company of neighbors and friends at cards Monday evening.

75 Years Ago Feb. 10, 1944

The Pilgrim Daughters will gather at the local Congregational Church Friday afternoon, Feb. 11 and give it a thorough cleaning. Members of the organization

are requested to come with all equipment necessary to carry out the task.

Mr. and Mrs. Leslie Pankhurst entertained about 60 friends Monday evening in honor of their son James and his bride the former Connie Bonnell. A pleasant evening was enjoyed and ice cream and cake were service.

Miss Mary Jean Full was an over night guest Thursday of Miss May Ellen Hinkle.

50 Years Ago Feb. 13, 1969

Bishop and Mrs. Thomas M. Pryor will be honored at the Feb. 15 luncheon given by the Board of the Laity of the Northern Illinois Conference of the United Methodist Church.

"Papa is All," a comedy in three acts, will be presented as the entertainment feature of the annual Fireman's Ball

this year on Saturday evening, April 1.

Ronald Hargitt of North Jones Avenue filed nominating papers for Second Ward Alderman Monday, the final day to file for City of Amboy offices.

25 Years Ago Feb. 17, 1994

An informational meeting on the enhanced 911 emergency calling system for Lee County will be held at 7 p.m., Thursday, Feb. 17, in Amboy Fire Station.

Dennis Becker is not a quitter. With grit, determination, hard work and some good insurance, he has reopened Becker Auto Body after last spring's devastating fire.

The Clippers boys basketball team is seeded second behind Mendota in next week's Regional Tournament at LaMoille. Amboy's First game is Wednesday.

Make no mistake, a progressive tax is a tax hike on you

New Yorkers began this week with a dire announcement from Gov. Andrew Cuomo. Their state's highly progressive income tax and a federal tax change combined to blow a \$2.3 billion hole in the budget.

"[The revenue shortfall] at this point ... is as serious as a heart attack," Cuomo said in a press conference.

"Tax the rich, tax the rich, tax the rich. We did. Now, God forbid, the rich leave."

Listen up, Illinois.

A constitutional amendment filed Jan. 29 by state Sen. Don Harmon, D-Oak Park, would eliminate Illinois' flat income tax in exchange for a progressive income tax.

But he has not filed a bill telling Illinoisans what the rates would be. Gov. J.B. Pritzker backed a progressive tax throughout his campaign, but putting the amendment to voters would not require his signature. House Speaker Mike Madigan last year filed a resolution in favor of the progressive tax.

With the top 1 percent of earners providing nearly half the state's income tax revenue, New York serves as an example of what happens when a state bases its budget on contributions from just a handful of wealthy people.

It's volatile. And at the end of the day, the families who can't leave the state pick up the tab for those whose money is mobile. Calls for fairness are little consolation when you're wondering where \$2 billion to run the government went.

One reason for New York's budget crisis was a federal tax change as part of the 2018 tax cuts, which capped the state and local tax, or SALT, deduction at \$10,000. That meant high-income earners in high-tax states such as New York and Illinois could no longer use

Guest Column
By Austin Berg



high property and income tax payments to alleviate their federal tax bill.

New York Comptroller Thomas DiNapoli noted SALT was a prime factor for the budget hole. "We've all heard anecdotally ... of people who say they're going to change their legal address, and I think these numbers show that in fact that is probably a big part of the picture," he said.

Progressive tax proponents in Illinois talk a lot about "modernizing" the tax code. Is this the future Illinois wants?

The last state to swap its flat income tax for a progressive income tax - Connecticut in the 1990s - is another example of why Illinois should

avoid a progressive tax like the plague. (Two states, North Carolina and Kentucky, have ditched their progressive tax structures for a flat income tax since then. And Colorado voters rejected moving to progressive rates last year.)

Connecticut lawmakers made all the same progressive tax promises that Illinois lawmakers are making now, including that it would alleviate property taxes and serve as a middle class tax cut. Those promises were broken. And there's no reason to believe Illinois politicians can keep them either.

In the wake of its progressive tax experiment, Connecticut has continually raised taxes on the middle class, maintains a chronic outmigration problem, and finds itself in a financial situation that is just as dire as Illinois, running state budget deficits in 12 of the past 15 years and holding more debt per capita than almost any other state.

What does that look like for average Connecticut taxpayers?

Take a family of two teachers and two children, with the parents taking home the 2018 average Stamford Public

Schools elementary school salary of \$83,000 each. Assume their salaries have grown with inflation since 1999, when Connecticut's progressive tax rates were fully phased in. That family's statutory income tax bill is 17 percent higher today than it was then. So much for a cut.

What about property tax relief? Data from the Bureau of Economic Analysis show property taxes as a share of personal income in Connecticut have risen 35 percent since 1999. Another broken promise.

And remember that Connecticut state finances are in worse shape today. The higher tax burden didn't fix any budget problems.

Illinois lawmakers are selling a progressive income tax as a cure-all. But in states with overspending and debt problems, it just becomes part of the disease.

Political promises aren't much protection for middle class pocketbooks.

Austin Berg is a writer for the Illinois Policy Institute. He wrote this column for the Illinois News Network. Austin can be reached at aberg@illinoispolicy.org.



Established In 1854

The Amboy News

Publisher
Kip Cheek
kcheek@mendotareporter.com

General Manager/Advertising
Tonja Greenfield
tgreenfield@amboynews.com

Editor
Bonnie Morris
bmorris@mendotareporter.com

Reporter
Monetta Young
myoung@ashtongazette.com

Office Manager/Circulation/Commercial Printing
Mary Mays
mmays@amboynews.com

SOMETHING TO SAY?

The Amboy News encourages responsible letters to the editor on subjects of interest to our readers. Editing may be necessary for space, clarity or to avoid obscenity or libel, but ideas will not be altered.

The limit is 300 words. Letters exceeding this will either be edited to fit or not published. The deadline for letters is noon on Friday.

Letter writers may only have two letters published per month, and the letters will be published on non-consecutive weeks. Letters are printed on a space-available basis.

All letters must bear the handwritten signature of the writer and include address and phone number or e-mail address for verification purposes. Neither the street address nor phone number will be printed. Letters should be typed or legibly handwritten, and no anonymous letters will be published.

Any comments of public officials should be limited to issues related strictly to their position or actions made in office, as personal attacks will not be published. Letters involving private disputes between the writer and a business or individual will not be published.

Political endorsements will be published, however letters from candidates endorsing themselves will not be printed.

Letters may be dropped at the Amboy News office, 245 E. Main Street, mailed to the Amboy News at PO Box 162, Amboy, IL 61310, or emailed to tgreenfield@amboynews.com

The Amboy News reserves the right to edit or reject any letter to the editor for any reason, and letters chosen for publication do not necessarily reflect the views of this newspaper, its management and or ownership.

ADVERTISING POLICY

The Amboy News is in no way responsible for errors in copy furnished by the Customer. Adjustment or republication in the next available issue will be made for that amount of space involved in errors resulting from failure of the Amboy News to correct errors plainly noted on proof. Customers shall notify the Amboy News of errors in time for correction before the second insertion.

The Amboy News shall not be liable to the Customer for any loss that results from the incorrect publication of its advertising. The Customer agrees to assume responsibility for all errors in copy proofread by Customer when the advertisement printed corresponds to the returned proof.

SUBSCRIPTIONS			
<i>Lee, Bureau and LaSalle Counties</i>			
1 year	manual pay	\$37.25	
	auto pay	\$35.25	
10 weeks	manual pay	\$9.78	
	auto pay	\$9.33	
<i>Non-local</i>			
1 year	manual pay	\$42.00	
	auto pay	\$39.75	
10 weeks	manual pay	\$10.96	
	auto pay	\$10.51	

OFFICE HOURS
8 a.m. - noon and 1 p.m. - 5 p.m.,
Monday, Wednesday and Thursday

Tuesday and Friday by appointment only.
Closed Saturday, Sunday and major holidays.

Phone **815-857-2311**
Fax **815-857-2517**
Website **www.amboynews.com**

LOCAL NEWS

Posting Date February 11, 2019

Amber Waves

by Dave T. Phipps



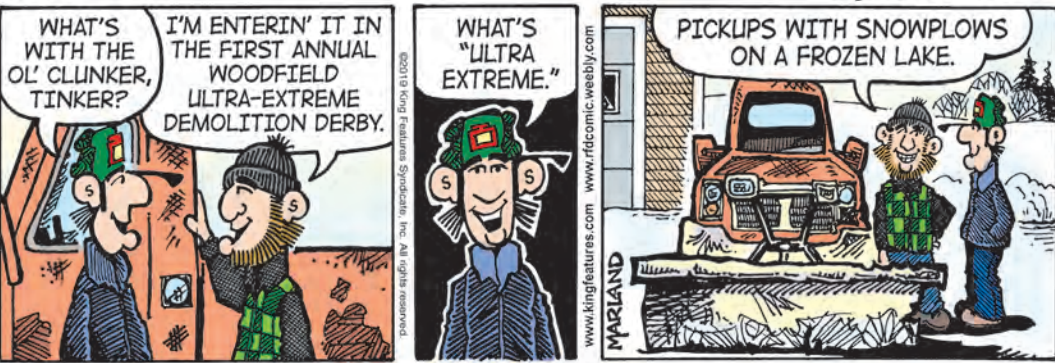
Out on a Limb

by Gary Kopervas



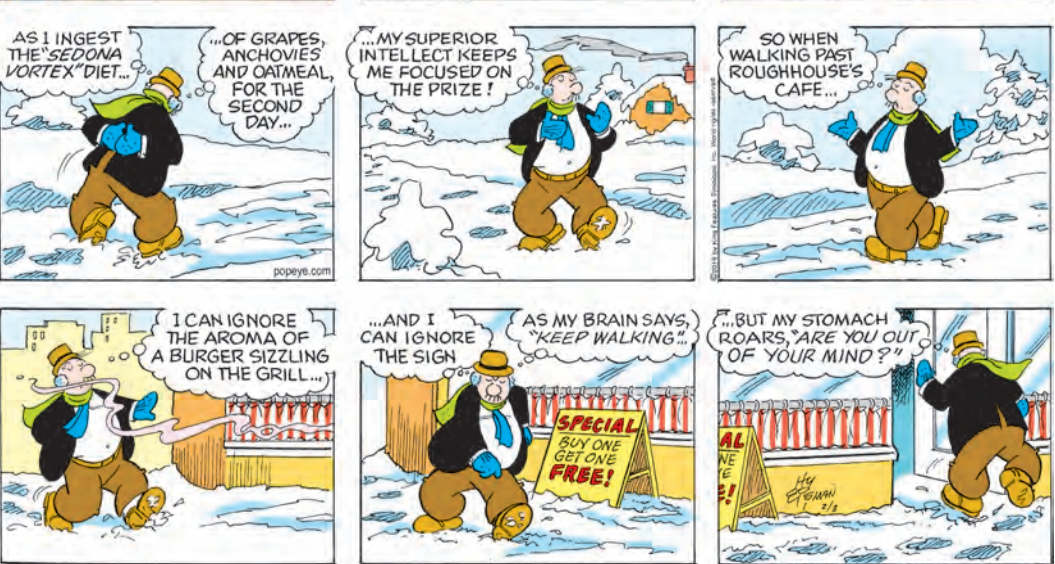
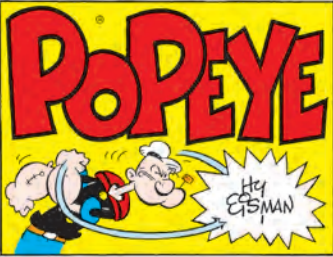
R.F.D.

by Mike Marland



The Spats

by Jeff Pickering

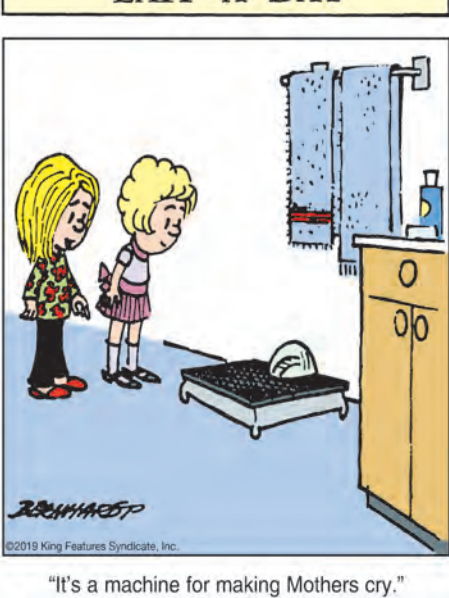


Just Like Cats & Dogs

by Dave T. Phipps



LAFF-A-DAY



SCRAMBLERS

Unscramble the letters within each rectangle to form four ordinary words. Then rearrange the boxed letters to form the mystery word, which will complete the gag!

Wary
TRALE
Ardor
LAZE
Strive
PRAISE
Layer
RITE

TODAY'S WORD

King Crossword

ACROSS

- 1 Departed
- 5 Id counterpart
- 8 Unclear view
- 12 Hebrew month
- 13 High-arc shot
- 14 Leak slowly
- 15 Wrinkly fruit
- 16 Biden, Cheney, etc.
- 17 Earth
- 18 Flood
- 20 Diner employee
- 22 Brains of the operation
- 26 Missteps
- 29 Individual
- 30 Neither mate
- 31 Apiece
- 32 Tin Man's prop
- 33 Old portico
- 34 Rd.
- 35 Nintendo console
- 36 Lost in reverie
- 37 Visa rival
- 40 Retain
- 41 Handy
- 45 Rivers or Collins
- 47 Make a choice
- 49 Oxen's onus
- 50 Doing
- 51 Pi follower
- 52 English river

1	2	3	4	5	6	7	8	9	10	11
12				13			14			
15				16			17			
18				19		20	21			
			22		23				24	25
26	27	28			29			30		
31				32			33			
34			35			36				
37			38			39				
		40			41			42	43	44
45	46			47	48		49			
50				51			52			
53				54			55			

- 53 Antelope's playmate
- 54 "— the sea-son ..."
- 55 Equal
- 10 Submachine gun
- 11 Kin (Abbr.)
- 19 Petrol
- 21 Raw rock
- 23 Poisonous
- 24 Midday
- 25 Small wagon
- 26 Line of fashion?
- 27 Volcanic out-flow
- 28 Emulate
- 32 Logan or LAX
- 33 Fizzy drink
- 35 Teensy
- 36 "— Doubtfire"
- 38 Barbershop quartet member
- 39 Cars
- 42 Sad
- 43 Misplace
- 44 Basin accessory
- 45 "Oklahoma!" baddie
- 46 Unclose, in verse
- 48 — Beta Kappa

DOWN

- 1 Praise highly
- 2 Lip
- 3 Autumn
- 4 Win
- 5 Pole staff?
- 6 Republicans
- 7 X-rated
- 8 — buddy (close pal)
- 9 Investigate

© 2019 King Features Synd., Inc.

Weekly SUDOKU

by Linda Thistle

		8	2			1	
	1			4			3
9			5		6		7
		4		8		7	
1	2			9		3	
3			7				6
	5			3			9
4			9	2		1	
		6			7		5

Place a number in the empty boxes in such a way that each row across, each column down and each small 9-box square contains all of the numbers from one to nine.

DIFFICULTY THIS WEEK: ♦♦

- ♦ Moderate
- ♦♦ Challenging
- ♦♦♦ HOO BOY!

© 2019 King Features Synd., Inc.

Trivia test

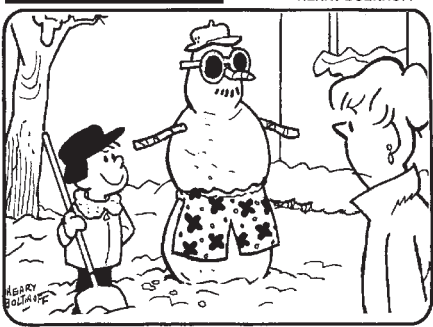
by Fifi Rodriguez

- 1. MEDICAL: What is the medical name for joints that pop and crack?
- 2. LITERATURE: What is the name of the annual award for the best science fiction or fantasy writing?
- 3. U.S. PRESIDENTS: What was the Secret Service's code name for President John F. Kennedy?
- 4. MOVIES: What was the name of the girl gang in the movie "Grease"?
- 5. GENERAL KNOWLEDGE: Which top college's motto is "duty, honor, country"?
- 6. PERSONALITIES: In which state was author Tennessee Williams born?
- 7. FOOD & DRINK: Which popular liquor is made from fermented and distilled sugar cane juice or molasses?
- 8. ANIMAL KINGDOM: What is a group of parrots called?
- 9. TELEVISION: What was the name of the detective agency in the 1980s comedy "Moonlighting"?
- 10. HISTORY: How wide is the Korean Demilitarized Zone?

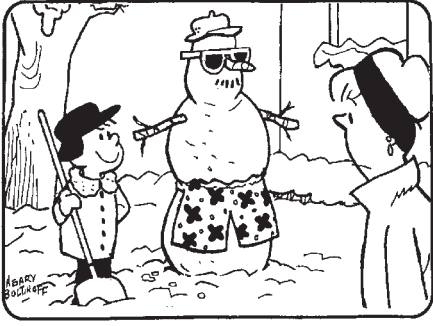
© 2018 King Features Synd., Inc.

HOCUS-FOCUS

BY HENRY BOLTINOFF



Find at least six differences in details between panels.



Differences: 1. Woman has headband. 2. Sunglasses are different. 3. Boy's shirt has buttons. 4. Tree is wider.

CryptoQuip

This is a simple substitution cipher in which each letter used stands for another. If you think that X equals O, it will equal O throughout the puzzle. Solution is accomplished by trial and error.

Clue: C equals L

DJX YZMK UJM KMGLMG PU ZQG

YWRMG PCDPXK EMU WCC?

W HMCWMLM WU SQKU HM

KZSMUJWRE WR UJM DPWUMG.

©2019 King Features Synd., Inc.

RAISE

Today's Word

3. Aspire; 4. Tier

1. Alert; 2. Zeal;

solution

SCRAMBLERS

DEER	TIS	PEER
UPT	HO	OUSE
JUAN	OPT	PLOW
KEE	US	ABLE
MAST	ER	CARD
NOY	MI	MO
AVE	MI	MO
EA	AX	ES
SLIP	NO	NO
ON	MI	MI
DEL	GO	CO
UG	LO	SO
AD	LO	OB
ZE	LO	OB
LEFT	EG	BLUR

Solution time: 25 mins.

Answers

8	6	9	4	1	7	3	5	2
4	7	3	6	2	5	1	8	8
2	5	1	8	3	6	4	7	6
3	6	8	6	7	4	1	5	2
1	2	7	5	6	9	8	3	4
5	4	3	8	2	7	6	9	1
6	3	2	1	5	8	6	9	4
7	1	5	6	6	4	2	8	3
6	4	8	2	7	3	9	1	5

Answer

Weekly SUDOKU

Why does the server at our diner always get ill?

Answer

something in the water.

CryptoQuip

AMBOY FOOD & LIQUOR

Grocery delivery for disabled & senior citizens - in town only.

Hours

Monday - Saturday

7 a.m. - 9 p.m.

Sunday 8 a.m. - 8 p.m.

242 E. Main Street, Amboy IL. 61310

815-857-7020

Now Accepting EBT
Link Cards and WIC

Drop-off and pick-up service available at the store on Mondays and Fridays for Sauk Valley Cleaners (815) 288-1322. Same price as Dixon location.

"The best and most beautiful things in the world cannot be seen or even touched - they must be felt with the heart." ~ Helen Keller

Sale Prices Valid Feb. 13-19, 2019 - Limited Quantities - While Supplies Last

PRODUCE

Romaine Hearts

3 ct package



\$1.89
ea.

Asparagus



\$2.49
lb.

Green Onion



2/\$1
Sleeve

Yams



59¢
lb.

West Pac Vegetables

Assorted 12 oz



99¢

Reg. Price 1.89 ea.

Heinz Relish

12.7 oz



\$1.89
ea.

Reg. Price \$2.39 ea.

Kind Bars

Assorted 4-6 pack



\$2.99
ea.

Reg. Price 3.39 ea.

Shurfine Pie Filling

Assorted 20-21 oz



2/\$3

Reg. Price \$2.19 ea.

HOT BUYS

Kemp's Ice Cream

Assorted 48 oz



\$3.99
ea.

Reg. Price \$5.29 ea.

Doritos

9-10 oz excludes Party or Family Size



2/\$6

Reg. Price \$4.29 ea.

Scott Comfort Plus Toilet Paper

12 rolls



\$4.99
ea.

Reg. Price \$6.99 ea.

Kellogg's Cereal

Assorted



2/\$6

Reg. Price \$3.89-\$4.69 ea.

Progresso Soup

Assorted 18-19 oz



2/\$4

Reg. Price \$2.99 ea.

T.G.I.Fridays Appetizers

Assorted 7.6-11 oz



2/\$6

Reg. Price \$4.09 ea.

WEEKLY SPECIALS

Shurfine Cream Cheese

Brick or Tub 8 oz



99¢
ea.

Reg. Price \$1.89 ea.

Pop Secret Popcorn

Assorted 16 oz



\$2.99
ea.

Reg. Price \$3.49 ea.

7-Up Products

12 pack cans



\$3.99
ea.

Reg. Price \$5.99 ea.

Shurfine Peanuts

16 oz



\$1.99
ea.

Reg. Price \$2.39 ea.

Nabisco Oreo Cookies

Assorted 10.1-15.35 oz



\$3.99
ea.

Reg. Price \$4.69 ea.

Shurfine Mustard

9 oz



79¢
ea.

Reg. Price \$1.29 ea.

Ocean Spray Juice

Assorted 64 oz



\$3.29
ea.

Reg. Price \$3.89 ea.

Shurfine Mac and Cheese

7.25 oz



2/\$1

Reg. Price 79¢ ea.

Jack's Pizza

Assorted



2/\$6

Reg. Price \$3.99 ea.

Heinz Ketchup

38 oz



\$2.99
ea.

Reg. Price \$3.79 ea.

Gatorade

8-Pack



\$5.99
ea.

Reg. Price 7.799 ea.

Sale goes through Feb. 19, 2019

02062019

CONGRATULATIONS TO THE LADY CLIPPERS ON THEIR REGIONAL CHAMPIONSHIP

GOOD LUCK AGAINST NEWARK IN THE SECTIONAL CHAMPIONSHIP ON THURSDAY!



Amboy Food and Liquor
242 E. Main Street, Amboy
815-857-7020

Sublette Farmer's Elevator
100 W Main St., Sublette
815-849-5222

Dimond Bros. Insurance
10 E. Division, Amboy
815-857-3966

Art Espe
State Farm Insurance
221 N Mason, Amboy
815-857-2624

Gehant Bank - Member FDIC
West Brooklyn
815-628-3121

Green River Chiropractic
35 E. Joe Dr., Amboy
815-857-2458

Erbes Realty
1922 Tower Road, Sublette
815-535-6295

The Last Alarm
43 S East Avenue, Amboy
815-857-3483

Main Street Hair Salon
245 E Main Street, Amboy
815-857-4140

Vaessen Bros Chevrolet
US Hwy. 52, Sublette
815-849-5232

Sensient Flavors, LLC
Amboy
815-857-4354

Woodhaven Lakes Realty
509 LaMoille Road, Sublette
815-849-5476

**The First National Bank in
Amboy - Member FDIC**
Amboy, Dixon, Franklin Grove
815-857-3625

Mihm-Jones Funeral Home
303 E Main Street, Amboy
815-857-2611

SPORTS



The Amboy Lady Clippers swept their way to two sizeable victories to claim the title of the Annawan Class 1A Girls' Regional Basketball Tournament.

Photos courtesy of Kirsten Donna

Lady Clippers win Regional title

ANNAWAN – The Amboy Lady Clippers swept their way to two sizeable victories to claim the title of the Annawan Class 1A Girls' Regional Basketball Tournament.

Amboy's opening-round game was a lopsided 63-30 triumph over Galva on Feb. 6.

Ten players scored for Amboy. Mallory Powers led the way with 13 points and nine assists. Abi Payne was next with 12 points and six assists. Kelsey Stewart also scored in double figures with 10 points while dishing out four assists. All three guards shot over 50 percent in the game.

Also contributing to the big win were Noelle Jones (seven points, three rebounds, two steals), Breanna Fisher (four points, 10

rebounds), Ashley Althaus (six points, seven rebounds), Olivia Dinges (four points), Madelyn McLaughlin (three points), Rachal Lachat (two points) and Eden Lindenmeyer (two points).

In the championship game, Amboy pulled away in the fourth quarter to post a 57-38 win over Annawan on Feb. 9.

The Lady Clippers sprinted out to a 9-2 lead and led 15-8 after the opening quarter. Annawan came back to cut the deficit to five (33-28) at halftime. Amboy opened the gap to 10 (48-38) after three frames, and then pulled away in the fourth to win by a comfortable margin.

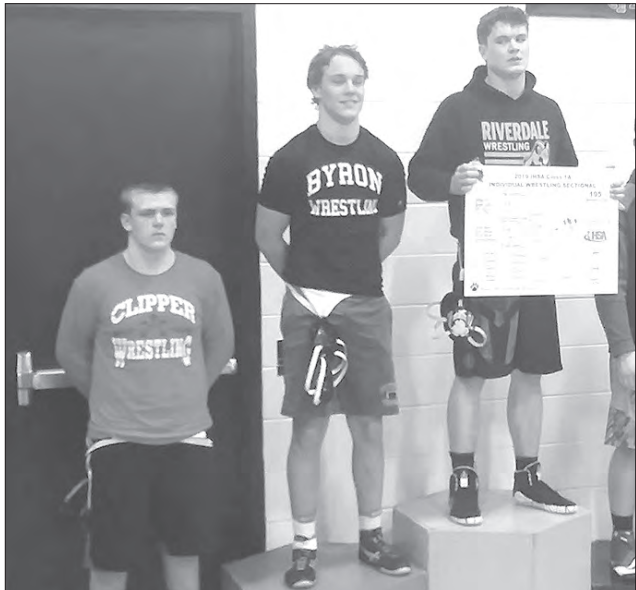
Balanced scoring was the story for Amboy. Powers topped the team with 13



points and she added six rebounds and four assists. Fisher had a great shooting game and finished with 12 tallies. She also had a career-high 15 rebounds and was a key factor in defending Annawan's post players. Payne contributed 10 points, 10 assists and four steals, while Donna had 10 points and eight rebounds and Jones chipped in with eight markers and six caroms. Jones and Donna also helped Fisher

limit Annawan's post players to a combined 10 points. Hope Sachs and Althaus came off the bench to help Amboy's defense and each scored a basket. Althaus also collected five rebounds.

It was Amboy's fourth regional championship in six years. The Lady Clippers (25-2) were able to end Annawan's streak of nine regional titles in a row.



Averey Shaw, a junior at Amboy High School, pictured left, placed fourth in the 195 pound weight class, which advances him to the state wrestling meet beginning on Thursday at the State Farm Center in Champaign. He will face Elliott Fox of Pittsfield, a senior, who has a record of 31-11.

Photo submitted

Shaw heads to state wrestling meet

BYRON – The road to the state tournament came to an end for three Amboy Clipper wrestlers at the Byron Class 1A Sectional on Feb. 9.

Averey Shaw finished in fourth place in the 195-pound weight class, narrowly missing a bid to the state tournament. Teammates Zach Wicaryus and Dorian Barlow did not place.

Shaw had a busy day, wrestling in five matches and winning three. He scored a pair of pin wins and a 5-1 decision, but his quest for a trip to the state tournament was halted when he was pinned in the third-place bout. The top three wrestlers in each weight class qualify for the state meet.

Wicaryus was beaten in his only two matches at 132 pounds, while Barlow won one of three matches in the 182-pound division.

Feb. 9 – Byron Sectional

132 pounds – Brad Wizceb (Johnsburg) pinned Zach Wicaryus (Amboy), 3:50; Hayden Faworski (Winnebago) dec. Wicaryus (A), 12-0

182 pounds – Logan Jennings (Stillman Valley) dec. Dorian Barlow (Amboy), 19-3; Barlow (A) dec. Zachary Crandall (Oregon), 7-6; Julian Jaimes (Aurora Christian) pinned Barlow (A), 1:17

195 pounds – Averey Shaw (Amboy) pinned Nick Upmann (Durand), 5:24; Shaw (A) pinned Nolan Swenson (Stillman Valley), 3:59; Bryan Caves (Riverdale) pinned Shaw (A), 1:02; Shaw (A) dec. Zach Pinc (Rock Island Alleman), 5-1; Dallas Hill (Princeton) pinned Shaw (A), 2:56



MCLAUGHLIN SIGNS TO PLAY BASEBALL IN WISCONSIN-PLATTEVILLE

On Feb. 6, Amboy High School senior Mitchell McLaughlin, signed a letter of intent to play baseball at the University of Wisconsin Platteville.

Photo submitted

Email calendar items to tgreenfield@amboynews.com

Amboy Community Unit School District #272	
Thurs., Feb. 14	AJHS Scholastic Bowl @ St. Mary's, Sterling – 4:00 p.m. AJHS Girls Basketball (H) Oregon – 4:00 p.m.
Fri., Feb. 15	AHS Boys Basketball (H) Oregon – 5:00 p.m.
Sat., Feb. 16	AJHS 8th Grade Girls Basketball @ Harding Tournament, Earlville- TBA FFA State Degree Interviews @ AFC High School
Sun., Feb. 17	FFA Machine Shed Masters
February 18-22	AHS Boys Basketball Regionals @ TBA

ATHLETES OF THE WEEK

Boys Basketball
Hunter Zimmerly

Girls Basketball
Breanna Fisher

Wrestling
Averey Shaw

The First National Bank in Amboy

Amboy • Dixon Franklin Grove
815-857-3625
www.fnbamboy.com

MEMBER FDIC

02132019

"Where you come first"

JR HIGH MENU

February 18-22

Low-fat chocolate, strawberry or unflavored white milk served at each meal. Choice of breakfast items from cart with juice and fruit. Warm breakfast choice on Wednesdays. Lunch option each day of the featured item or salad bar or yogurt with whole grain crackers or peanut butter & jelly or Grab&Go smoothie.	
Monday	- No School – No Meals Served
Tuesday	- President's Day Holiday - Choice of fresh pastry or pick two from breakfast cart - Two cheesy bosco breadsticks, dipping sauce cup, broccoli & cheese sauce, baby carrots, pineapple
Wednesday	- Breakfast pizza or pick two from breakfast cart - Nachos Grande, beef, salad, salsa, beans, rice, fresh cut veggies/ranch, mixed fruit, cupcake
Thursday	- Choice of fresh pastry or pick two from breakfast cart - Grilled chicken filet on bun, lettuce, tomato, sweet potato fries, broccoli & cheese, applesauce
Friday	- Choice of fresh pastry or pick two from breakfast cart - Breakfast for lunch-sausage patty, biscuit, scrambled egg, cheese, juice box, granola bar, dried mixed fruit

02132019

CENTRAL SCHOOL MENU

February 11 -15

Fat-free chocolate, strawberry or unflavored white milk are served at Breakfast and Lunch.
Choice of five 100% real fruit juice cups are served at Breakfast.
Warm breakfast choice on Wednesdays.

Monday	- No School – No Meals Served
Tuesday	- President's Day Holiday - Choice of fresh pastry or pick two from breakfast cart - Two cheesy bosco breadsticks, dipping sauce cup, broccoli & cheese sauce, baby carrots, pineapple
Wednesday	- Breakfast pizza or pick two from breakfast cart - Nachos Grande, beef, salad, salsa, beans, rice, fresh cut veggies/ranch, mixed fruit, cupcake
Thursday	- Choice of fresh pastry or pick two from breakfast cart - Grilled chicken filet on bun, lettuce, tomato, sweet potato fries, broccoli & cheese, applesauce
Friday	- Choice of fresh pastry or pick two from breakfast cart - Breakfast for lunch-sausage patty, biscuit, scrambled egg, cheese, juice box, granola bar, dried mixed fruit

02132019

LOCAL NEWS

Lady Clippers advance to Sectional championship game on Thursday

MARSEILLES—The Amboy Lady Clippers posted a 51-35 win over Aurora Christian in the semifinals of the Ottawa Marquette Class 1A Sectional on Feb. 11 at Marseilles.

The game was tied at 11-11 and then Amboy scored 16 of the next 22 points to grab a 27-17 halftime lead.

Mallory Powers led three Amboy players in double figures with 12 points, followed by

Kyleigh Donna with 11 and Noelle Jones with 10. Abi Payne chipped in with nine points and handed out nine assists.

The Lady Clippers (26-2) will battle Newark for the sectional championship at 7 p.m. Thursday, Feb. 14. The winners moves on to the Pontiac Supersectional to play the champion of the Decatur St. Teresa Sectional on Monday, Feb. 18 at 6 p.m.

Clippers to compete at Forreton Regionals on Feb. 19

FORRESTON — The Amboy Clippers will participate in the Forreton Class 1A Boys' Regional Basketball Tournament.

Amboy's first game will be Tuesday, Feb. 19 at 7:30 p.m. against Pecatonica.

If Amboy wins its first game, it will play the winner of the Dakota-Kirkland Hiawatha contest at 7:30 p.m.

Wednesday, Feb. 20.

The championship game is Friday, Feb. 22 at 7 p.m.

Forreton Class 1A Regional

Monday, Feb. 18

1 — Rockford Christian Life vs. Ashton-Franklin Center — 7 p.m.

Tuesday, Feb. 19

2 — Dakota vs. Kirkland Hiawatha — 6 p.m.

3 — Pecatonica vs. Amboy — 7:30 p.m.

Wednesday, Feb. 20

4 — Forreton vs. Winner 1 — 6 p.m.

5 — Winner 2 vs. Winner 3 — 7:30 p.m.

Friday, Feb. 22

6 — Winner 4 vs. Winner 5 — 7 p.m.

Educational Briefs

Local students named to Dean's List at Drake University

DES MOINES, Iowa — Mary Francque, of Dixon, has been named to the Dean's List at Drake University. This academic honor is achieved by earning a GPA of 3.5 or higher during the Fall 2018 semester at Drake.

Drake University is a midsize, private university in Des Moines, Iowa, enrolling more than 3,200 undergraduate and 1,700 graduate students from approximately 45 states and 42 countries. Students choose from over 70 majors, minors, and concentrations and 20 graduate degrees offered through six colleges and schools. Drake students, faculty, and staff take advantage of the wealth of cultural, recreational, and business opportunities found in Iowa's capital city. In return, Drake enriches the city through its own cultural offerings, considerable economic impact, and many service-learning endeavors, which channel the talent and energy of the Drake students toward meeting the needs of the community.

Local students named to the Dean's List at Aurora University

AURORA — Aurora University congratulates the more than 1,200 undergraduate students who earned Dean's List honors for the fall 2018 semester. The Dean's List recognizes students who have earned a 3.6 GPA or higher. Students recognized with high honors (*) have earned a perfect 4.0. Students included on the Dean's List completed a minimum of 12 semester hours for a letter grade in the term.

Aurora University is nestled in a tree-lined neighborhood in Aurora, the second largest city in Illinois, and located approximately 40 miles from Chicago.

Dixon

Mekayla Anderson, Junior, Bachelor of Soc Work

Kaitlyn Spencer*, Senior, Bachelor of Soc Work

Madalynn Wolfley*, Freshman, History, Pre-Secondary Education

Lee

Andrew Headley, Junior, Finance, BS, Criminal Justice

Paw Paw

Mitchell Lave*, Senior, Parks & Recreation Leader

Local Students named to Marquette University's Fall 2018 Dean's List

MILWAUKEE, Wis. — The following students have been named to the Dean's List for the Fall 2018 semester at Marquette University in Milwaukee, Wisconsin.

Local students include:

Amboy

Kaitlyn Liebing, Bachelor of Science, Nursing

Dixon

Justin Sherman, Bachelor of Science, Operations and Supply Chain Management
Anne Vits, Bachelor of Science, Human Resources

Marquette University is a Catholic, Jesuit university that draws its more than 11,500 students from all 50 states and more than 75 different countries.

In addition to its nationally recognized academic programs, Marquette is known for its service-learning programs and internships as students are challenged to use what they learn to make a difference in the world. Find out more about Marquette at marquette.edu.

UW-Platteville announces Dean's List

PLATTEVILLE, Wis. - The University of Wisconsin-Platteville announces its Dean's List, honoring those full-time students who earned high honors in their respective colleges in the fall 2018 semester.

The College of Business, Industry, Life Science and Agriculture and the College of Liberal Arts and Education require grade-point averages of 3.75 and above for Dean's List honors, while the College of Engineering, Mathematics and Science requires students to reach at least a 3.50.

UW-Platteville, founded in 1866 and located in Southwest Wisconsin, is home to more than 7,000 full-time undergraduate students. For more information on the university visit uwplatt.edu.

Students from this area on the Dean's List include:

Amboy

Garrett Liebing, Industrial Technology Management

Compton

Marie Barnickel, Undecided BILSA



3-Point Shooting Contest

Amboy Lady Clipper Mallory Powers is moving on to sectionals for the 3 point contest.

Photo courtesy of Kirsten Donna

Phidan Art Club to sponsor 72nd annual art show

DIXON — The Phidian Art Club is sponsoring the 72nd Annual Phidian Art Show on Tuesday, April 9, at the Loveland Community House located at 513 West Second Street in Dixon. The show and reception are open to the public and there is no charge for admission. Doors will open at 6 p.m. Peoples' Choice Award voting is from 6-6:30 p.m. The judge's critique and presentation of awards will begin at 7:00 pm.

The Phidian Art Club was founded in 1890 to promote visual art, literature, and music. The first Phidian Art Show was held in 1947. Last year over 70 artists submitted entries in the Phidian Art Show.

Artwork is critiqued by judges of unique backgrounds and qualifications, most of whom are artists themselves, and many with national reputations.

Awards are given in a variety of categories that

include: American, regional, realistic and nature scenes, as well as best floral, landscape, oil painting, watercolor painting and pen and ink entry.

All awards are monetary prizes. Phidian will be awarding more than \$3,500 in prizes donated by local business and individuals; many are memorial awards in remembrance of special people.

It is through their generous support that the art show continues to be a highlight of the year for the ever-growing artistic and cultural scene in the Sauk Valley area.

Artwork must be an original painting or drawing that has not been previously entered in a Phidian Art Show. The pieces must be ready for hanging by wire, not be

more than 48" in width, not exceed 25 pounds, and be suitable for family viewing. The artist must live within 35 driving miles of Dixon, and be 17 years or older.

No three-dimensional work, crafts, photography, computer-generated art or sculpture will be accepted.

The entry fee is \$15 for one artwork and \$25 for two artworks with a limit of two pieces per artist.


Artwork will be accepted at the Loveland Community House on Thursday, April 4 from 2-6 p.m., Friday, April 5 from 2-6 p.m. and Saturday, April 6 from 10 a.m.-1 p.m.


For more information, guidelines and entry forms, please contact Lynn Roe: 815-973-1050 or lynn-roe@gmail.com.

Email news items to tgreenfield@amboynews.com

1960 * * * 2019
Northern Illinois Antiques Dealers Association
presents its
59th Annual Antiques Show
Forest Hills Lodge
Rockford, Illinois
Saturday, Feb. 16, 2019
10:00 am - 5:00 pm
Sunday, Feb. 17, 2019
11:00 am - 4:00 pm
Located 1/2 mile east of
Route 251 on Route 173
(From I-90, exit Route 173 & head west)
1601 West Lane Road,
Loves Park, Illinois
Donation \$6 - \$5 with this ad
FREE PARKING
Email: NIADA@aol.com
www.NIADAAntiques.com

LEEESCAPE
COMMUNITY SERVICES, INC.
Senior Dining Menu
February 18-22
8 oz. of low-fat milk served with each meal
Monday – Hamburger patty, wheat bun, mac & cheese, Calif. blend veggies, diced pears
Tuesday – BBQ chicken breast, cheesy potatoes, seasoned green beans, dinner roll, jello w/fruit
Wednesday – Baked pork chop, mashed potatoes w/gravy, mixed veggies, tossed salad/drsg., dinner roll, apple crisp
Thursday – Sweet & sour meatballs, fluffy rice, blended veggies, wheat bread, apricots
Friday – A) Tuna noodle casserole, broccoli, carrots, pineapple tidbits, dinner roll B) Soup & Sandwich, tomato & chicken salad
Meals served Mon.-Fri. at 11:30 am
Reservations needed 10:00 am day before
Amboy Community Center
280 W. Wasson Road • 1-815-262-7516, reservations

CLIPPER kiddie 2
This Week's Star Student of the Week is:
Ella Jackson

Student's Favorites:
Favorite Color – Pink, Purple and Blue (Wow)
Favorite Animal – Zebra
Favorite Food – McDonald's
Favorite Book – Sea
Favorite Game – Scaring People
Favorite Song – High Hopes, Panic at the Disco

CLIPPER kiddie 2
This Week's Star Student of the Week is:
Abigail Parker

Student's Favorites:
Favorite Color – Pink and Purple
Favorite Animal – Cat and Dog
Favorite Food – Spaghtetti and Egg Roll
Favorite Book – All kids books and Solar System book
Favorite Game – Hide and Seek
Favorite Song – Let It Go

CLIPPER kiddie 2
This Week's Star Student of the Week is:
Griffin Ohlendorf

Student's Favorites:
Favorite Color – Darker Blue
Favorite Animal – Zebra
Favorite Food – Chicken Nuggets
Favorite Book – Daniel Tiger's 5-Minute Stories
Favorite Game – Hide and Seek
Favorite Song – Twinkle, Twinkle Little Star

MENDOTA MONUMENT CO.
606 S. Main St. • Mendota, IL 61342
1-800-845-5809 (815)539-7276

Steve Schmitt Family owned **Ron Schmitt**
(815)538-5276 since 1913 (815)539-7068

Thank You Neighbor

If someone has done something kind fo you, let them know by nominating them for the "Thank You Neighbor Rose. Send a brief description of their act of kindness to:
The Amboy News, P.O. Box 162, Amboy, IL 61310

Limit 40 Words Per Nomination • One Nomination Per Person Per Month

MARKETPLACE

101 LEGAL NOTICE

Todd Rd.
Township: East Grove
Legal Description: The South Half of the Northwest Quarter; the North half of the Southwest Quarter and the Northwest Quarter of the Southeast Quarter all in Section 26, Township 19 North, Range 9 East of the Fourth Principal Meridian, Lee County, Illinois, EXCEPTING THEREFROM the following described parcel being a part of the Northwest Quarter of Section 26, Township and Range aforesaid: commencing at the Northwest corner of said Section 26, thence South along the West line of said Section 26 a distance of 1330.5 feet to a point of beginning, said point being located on the North line of the South Half of the Northwest Quarter of said Section 26 a distance of 325 feet, thence West parallel with the North line of the South Half of the Northwest Quarter of said Section 26 a distance of 444 feet to the West line of the South Half of the Northwest Quarter of said Section 26, thence North on said West line a distance of 325 feet to the point of beginning, all in Lee County, Illinois.
Turbine: 76
Landowner: Brian D. Blaine and Blaine Investments, L.P.
Tax Parcel Identification Numbers: 08-20-36-300-006 and 08-20-36-300-007
Turbine Common Location: 505.38 ft East of Sheehan Rd and 3164.98 ft South of Todd Rd.
Township: East Grove
Legal Description: The South Half of the Northwest Quarter; the North half of the Southwest Quarter and the Northwest Quarter of the Southeast Quarter all in Section 26, Township 19 North, Range 9 East of the Fourth Principal Meridian, Lee County, Illinois, EXCEPTING THEREFROM the following described parcel being a part of the Northwest Quarter of Section 26, Township and Range aforesaid: commencing at the Northwest corner of said Section 26, thence South along the West line of said Section 26 a distance of 1330.5 feet to a point of beginning, said point being located on the North line of the South Half of the Northwest Quarter of said Section 26, thence South along the West line of said Section 26 a distance of 444 feet to the West line of the South Half of the Northwest Quarter of said Section 26, thence North on said West line a distance of 325 feet to the point of beginning, all in Lee County, Illinois.
Turbine: 77
Landowner: Henry W. Nichols and Coleta Nichols
Tax Parcel Identification Numbers: 13-21-31-400-003, 13-21-31-200-003 and 13-21-31-400-002
Turbine Common Location: 3418.63 ft East of Carter Rd and 530.07 North of County Rd.
Township: May
Legal Description: Parcel 1: The West Half of the Northeast Quarter

of Section 31, Township 19 North, Range 10 East of the Fourth Principal Meridian, Lee County, Illinois.
Parcel 2: The East Half of the Northeast Quarter of Section 31, Township 19 North, Range 10 East of the Fourth Principal Meridian, Lee County, Illinois.
Parcel 3: The Southeast Quarter of Section 31, Township 19 North, Range 10 East of the Fourth Principal Meridian, Lee County, Illinois, EXCEPTING THEREFROM a part of the Southeast Quarter of Section 31, Township 19 North, Range 10 East of the Fourth Principal Meridian, Lee County, Illinois and being described as follows: Commencing at the Southwest corner of the Southeast Quarter of said Section 31; thence East along the South line of said Section 31, 1070 feet to the point of beginning; thence continuing East along the said South line of said Section 31, 250 feet; thence North and parallel with the East line of said Section 31, 400 feet; thence West and parallel with the South line of said Section 31, 250 feet; thence South and parallel with the East line of said Section 31, 400 feet to the point of beginning.
Turbine: 78
Landowner: Henry W. Nichols and Coleta Nichols
Tax Parcel Identification Numbers: 13-21-31-400-003, 13-21-31-200-003 and 13-21-31-400-002
Turbine Common Location: 4646.51 ft East of Carter Rd and 2571.75 North of County Rd. 3000 N
Township: May
Legal Description: Parcel 1: The West Half of the Northeast Quarter of Section 31, Township 19 North, Range 10 East of the Fourth Principal Meridian, Lee County, Illinois.
Parcel 2: The East Half of the Northeast Quarter of Section 31, Township 19 North, Range 10 East of the Fourth Principal Meridian, Lee County, Illinois, EXCEPTING THEREFROM a part of the Southeast Quarter of Section 31, Township 19 North, Range 10 East of the Fourth Principal Meridian, Lee County, Illinois and being described as follows: Commencing at the Southwest corner of the Southeast Quarter of said Section 31; thence East along the South line of said Section 31, 1070 feet to the point of beginning; thence continuing East along the said South line of said Section 31, 250 feet; thence North and parallel with the East line of said Section 31, 400 feet; thence West and parallel with the South line of said Section 31, 250 feet; thence South and parallel with the East line of said Section 31, 400 feet to the point of beginning.
Turbine: 79
Landowner: Leroy H. Klein, as Trustee of the Leroy H. Klein Revocable Trust dated August 30, 2010, and Laverne M. Klein, as Trustee of the Laverne M. Klein Revocable Trust dated August , 2010
Tax Parcel Identification Numbers: 13-21-32-200-005, 13-21-32-200-003 and 13-21-32-200-004
Turbine Common Location: 2480.51 ft West of Van Orin Rd and 1240.8 South of St. Mary's Rd.
Township: May
Legal Description: Parcel 1: The East Half of the Northeast Quarter of Section 32, Township 19 North, Range 10

East of the Fourth Principal Meridian, Lee County, Illinois.
Parcel 2: The West Half of the Northeast Quarter of Section 32, Township 19 North, Range 10 East of the Fourth Principal Meridian, Lee County, Illinois EXCEPTING THEREFROM a part of the West Half of the Northeast Quarter of Section 32, Township 19 North, Range 10 East of the Fourth Principal Meridian, Lee County, Illinois and being described as follows: Commencing at the North corner of said Section 32; thence East along the North line of said Section 32, 820 feet to the point of beginning; thence continuing East along said North line of said Section 32, 250 feet; thence South and parallel with the East line of said Section 32, 300 feet; thence West and parallel with the North line of said Section 32, 250 feet thence North and parallel with the East line of said Section 32, 300 feet to the point of beginning.
Parcel 3: The East Half of the Northwest Quarter of Section 32, Township 19 North, Range 10 East of the Fourth Principal Meridian, EXCEPTING THEREFROM commencing at the Northeast corner of Section 32; thence Westerly along North line of Northwest Quarter of Section 32, 766.97 feet for a point of beginning; thence continue along aforementioned line 550.0 feet to Northwest corner of East Half of Northwest Quarter of Section 32; thence Southerly at an angle of 90°12'12" measured clockwise 400.00 feet along West line of East Half of Northwest Quarter of Section 32, 250 feet thence North and parallel with the East line of said Section 32, 300 feet to the point of beginning.
Turbine: 80
Landowner: Leroy H. Klein, as Trustee of the Leroy H. Klein Revocable Trust dated August 30, 2010, and Laverne M. Klein, as Trustee of the Laverne M. Klein Revocable Trust dated August , 2010
Tax Parcel Identification Numbers: 13-21-32-200-005, 13-21-32-200-003 and 13-21-32-200-004
Turbine Common Location: 537ft West of Van Orin Rd and 2068.93 ft South of St. Mary's Rd.
Township: May
Legal Description: Parcel 1: The East Half of the Northeast Quarter of Section 32, Township 19 North, Range 10 East of the Fourth Principal Meridian, Lee County, Illinois, EXCEPTING THEREFROM a part of the West Half of the Northeast Quarter of Section 32, Township 19 North, Range 10 East of the Fourth Principal Meridian, Lee County, Illinois and being described as follows: Commencing at the North corner of said Section 32; thence East along the North line of said Section 32, 820 feet to the point of beginning; thence continuing East along said North line of said Section 32, 250 feet; thence South and parallel with the East line of said Section 32, 300 feet; thence West and parallel with the North line of said Section 32, 250 feet thence North and

parallel with the East line of said Section 32, 300 feet to the point of beginning,
Parcel 3: The East Half of the Northwest Quarter of Section 32, Township 19 North, Range 10 East of the Fourth Principal Meridian, EXCEPTING T H E R E F R O M commencing at the Northeast corner of Northwest Quarter of Section 32; thence Westerly along North line of Northwest Quarter of Section 32, 766.97 feet for a point of beginning; thence continue along aforementioned line 550.0 feet to Northwest corner of East Half of Northwest Quarter of Section 32; thence Southerly at an angle of 90°12'12" measured clockwise 400.00 feet along West line of East Half of Northwest Quarter of Section 32; thence Easterly at an angle of 89°47'48" measured clockwise 550.0 feet; thence Northerly at an angle of 90° 12'12" measured clockwise 400.00 feet to point of beginning, all in Lee County, Illinois.
Turbine: 81
Landowner: Henry W. Nichols and Coleta Nichols
Tax Parcel Identification Numbers: 13-21-31-400-003, 13-21-31-200-003 and 13-21-31-400-002
Turbine Common Location: 3814.48 ft East of Carter Rd and 1443.77 ft South of St. Mary's Rd.
Township: May
Legal Description: Parcel 1: The West Half of the Northeast Quarter of Section 31, Township 19 North, Range 10 East of the Fourth Principal Meridian, Lee County, Illinois.
Parcel 2: The East Half of the Northeast Quarter of Section 31, Township 19 North, Range 10 East of the Fourth Principal Meridian, Lee County, Illinois, EXCEPTING THEREFROM a part of the Southeast Quarter of Section 31, Township 19 North, Range 10 East of the Fourth Principal Meridian, Lee County, Illinois and being described as follows: Commencing at the Southwest corner of the Southeast Quarter of said Section 31; thence East along the South line of said Section 31, 1070 feet to the point of beginning; thence continuing East along the said South line of said Section 31, 250 feet; thence North and parallel with the East line of said Section 31, 400 feet; thence West and parallel with the South line of said Section 31, 250 feet; thence South and parallel with the East line of said Section 31, 400 feet to the point of beginning.
Turbine: 83
Landowner: William F. Anderson, Jr., Lois M. Anderson, and William F. Anderson, III, Trustees under the William F. and Lois M. Anderson Living Trust dated November 9, 2012
Tax Parcel Identification Numbers: 08-20-34-300-004 and 08-20-34-300-005
Turbine Common Location: 694.49 ft East of State Rte 26 and 1551.12 ft North of County Rd. 3000 N
Township: East Grove
Legal Description: The Southwest Quarter of the Northwest Quarter of Section 34; the Southwest Quarter of Section 34; the Northeast Quarter of the Northwest Quarter of the Southeast Quarter of Section 34; and the West One Half of the West One Half of the Southeast Quarter of Section 34,

EXCEPTING a tract of land described as follows: Commencing at the Southwest corner of said Southeast Quarter, thence North 20 rods, thence East 40 rods, thence South 20 rods, thence West 40 rods to the place of beginning, all in Township 19 North, Range 9 East of the Fourth Principal Meridian, Lee County, Illinois, ALSO EXCEPTING THEREFROM a part of the Southwest Quarter of Section 34, Township 19 North, Range 9 East of the Fourth Principal Meridian, Lee County, Illinois and being described as follows: Commencing at the Southeast corner of the Southwest Quarter of said Section 34; thence West along the South line of said Section 34, approximately 900 feet to the centerline of Anderson Road; thence North along the said centerline of road, 600 feet to the point of beginning; thence continuing North along said centerline of road, 400 feet; thence running West and parallel with the South line of said Section 34, 300 feet; thence South and parallel with the West line of said Section 34, 400 feet thence East and parallel with the South line of said Section 34, 300 feet more or less to the point of beginning.
Turbine: 84
Landowner: Clarence D. Blaine, as Trustee of the Clarence D. Blaine Declaration of Trust dated the 18th day of December, 2000, and Marilyn Ann Blaine, as Trustee of the Marilyn Ann Blaine Declaration of Trust dated the 18th day of December, 2000
Tax Parcel Identification Numbers: 13-21-30-300-008, 13-21-15-300-005, 13-21-15-100-002, 13-21-15-300-006, 13-21-30-300-006, 13-21-30-300-007 and 13-21-15-300-007
Turbine Common Location: 1834.68 ft East of Carter Rd and 607.66 ft North of St. Mary's Rd.
Township: May
Legal Description: Parcel 1: The North Half of the Southwest Quarter and also the Southeast Quarter of the Southwest Quarter of Section 30 all in Township 19 North, Range 10 East of the Fourth Principal Meridian, Lee County, Illinois, EXCEPTING THEREFROM part of the Northwest Quarter of the Southwest Quarter of Section 30, Township 19 North, Range 10 East of the Fourth Principal Meridian, Lee County, Illinois, described as follows, to-wit: Beginning at the Southwest corner of the Northwest Quarter of the Southwest Quarter of said Section 30; thence Easterly, along the South line thereof, a distance of 767.63 feet thence Northeasterly at an angle of 112 degrees 27 minutes 13 seconds as measured clockwise from the last described course, a distance of 131.77 feet; thence Northerly, at an angle of 155 degrees 54 minutes 19 seconds as measured clockwise from the last described course, a distance of 272.71 fret; thence Northwesterly, at an angle of 116 degrees 57 minutes 14 seconds as measured clockwise from the last described course, a distance of 103.64 feet; thence Northerly, at an angle of 111 degrees 59 minutes 47 seconds as measured counterclockwise from the last described course, a distance of 283.47 feet; thence Northwesterly, at an angle of 100 degrees 27 minutes 14 seconds as measured clockwise from the last described course, a distance of 419.98 feet; thence Southerly, at an angle of 73 degrees 49 minutes 01 seconds, as measured

clockwise from the last described course, a distance of 448.26 feet; thence Westerly, at an angle of 92 degrees 19 minutes 46 seconds as measured counterclockwise from the last described course, a distance of 345.33 feet to a point on the West line of said Southwest Quarter; thence Southerly, along said West line, at an angle of 94 degrees 41 minutes 21 seconds as measured clockwise from the last described course, a distance of 345.25 feet to the point of beginning, all situated in Lee County, Illinois.
Parcel 2: The Southeast Quarter of the Northwest Quarter of Section 15 and the Southwest Quarter of Section 15, all in Township 19 North, Range 10 East of the Fourth Principal Meridian, Lee County, Illinois, EXCEPTING THEREFROM a part of the East Half of the Southwest Quarter of Section 15, Township 19 North, Range 10 East of the Fourth Principal Meridian, Lee County, Illinois and being described as follows: Commencing at the South corner of said Section 15; thence West along the South line of said Section 15, 750 feet; thence North and parallel with the East line of said Section 15, 2200 feet; thence West and parallel with the South line of said Section 15, 475 feet thence South along the East line of said Section 15, 2200 feet; thence East and parallel with the South line of said Section 15, 475 feet to the point of beginning.
Turbine: 85
Landowner: Dennis J. Bickett, as Trustee of the Dennis J. Bickett Trust under Declaration of Trust dated January 4, 2013, and Lori J. Bickett, as Trustee of the Lori L. Bickett Trust under Declaration of Trust dated January 4, 2013
Tax Parcel Identification Numbers: 13-21-28-200-003, 13-21-28-200-004, 13-21-28-400-006 and 13-21-28-400-005
Turbine Common Location: 1354.22 ft West of Kessel Rd and 910.49 ft North of St. Mary's Rd.
Township: May
Legal Description: The Southeast Quarter and the East Half of the Northeast Quarter of Section 28, Township 19 North, Range 10 East of the Fourth Principal Meridian, Lee County, Illinois, EXCEPTING THEREFROM a part of the Southeast Quarter of Section 29, Township 19 North, Range 10 East of the Fourth Principal Meridian, Lee County, Illinois, EXCEPTING THEREFROM a part of the Southwest Quarter of Section 30, Township 19 North, Range 10 East of the Fourth Principal Meridian, Lee County, Illinois, described as follows, to-wit: Beginning at the Southwest corner of the Northwest Quarter of the Southwest Quarter of said Section 30; thence Easterly, along the South line thereof, a distance of 767.63 feet thence Northeasterly at an angle of 112 degrees 27 minutes 13 seconds as measured clockwise from the last described course, a distance of 131.77 feet; thence Northerly, at an angle of 155 degrees 54 minutes 19 seconds as measured clockwise from the last described course, a distance of 272.71 fret; thence Northwesterly, at an angle of 116 degrees 57 minutes 14 seconds as measured clockwise from the last described course, a distance of 103.64 feet; thence Northerly, at an angle of 111 degrees 59 minutes 47 seconds as measured counterclockwise from the last described course, a distance of 283.47 feet; thence Northwesterly, at an angle of 100 degrees 27 minutes 14 seconds as measured clockwise from the last described course, a distance of 419.98 feet; thence Southerly, at an angle of 73 degrees 49 minutes 01 seconds, as measured

clockwise from the last described course, a distance of 448.26 feet; thence Westerly, at an angle of 92 degrees 19 minutes 46 seconds as measured counterclockwise from the last described course, a distance of 345.33 feet to a point on the West line of said Southwest Quarter; thence Southerly, along said West line, at an angle of 94 degrees 41 minutes 21 seconds as measured clockwise from the last described course, a distance of 345.25 feet to the point of beginning, all situated in Lee County, Illinois.
Parcel 2: The Southeast Quarter of the Northwest Quarter of Section 15 and the Southwest Quarter of Section 15, all in Township 19 North, Range 10 East of the Fourth Principal Meridian, Lee County, Illinois, EXCEPTING THEREFROM a part of the East Half of the Southwest Quarter of Section 15, Township 19 North, Range 10 East of the Fourth Principal Meridian, Lee County, Illinois and being described as follows: Commencing at the South corner of said Section 15; thence West along the South line of said Section 15, 750 feet; thence North and parallel with the East line of said Section 15, 2200 feet; thence West and parallel with the South line of said Section 15, 475 feet thence South along the East line of said Section 15, 2200 feet; thence East and parallel with the South line of said Section 15, 475 feet to the point of beginning.
Turbine: 87
Landowner: Leo E. Bushman and Norma J. Bushman
Tax Parcel Identification Numbers: 13-21-29-400-002 and 13-21-29-400-003
Turbine Common Location: 1325.85 ft West of Van Orin Rd and 1185.72 ft North of St. Mary's Rd.
Township: May
Legal Description: The Southeast Quarter of Section 29, Township 19 North, Range 10 East of the Fourth Principal Meridian, Lee County, Illinois, EXCEPTING THEREFROM a part of the Southeast Quarter of Section 29, Township 19 North, Range 10 East of the Fourth Principal Meridian, Lee County, Illinois and being described as follows: Commencing at the Southeast corner of said Section 29; thence West along the South line of said Section 29, 350 feet to the point of beginning; thence North and parallel with the East line of said Section 29, 350 feet; thence West and parallel with the South line of said Section 29, 400 feet; thence South and parallel with the East line of said Section 29, 350 feet to the point of beginning.
Turbine: 88
Landowner: Cardot Family Limited Partnership
Tax Parcel Identification Numbers: 13-21-22-300-004, 13-21-22-300-003, 13-21-27-100-004, 13-21-27-100-005, 13-21-27-300-006 and 13-21-27-300-007
Turbine Common Location: 2036.62 ft East of Kessel Rd and 1789.26 ft North of St. Mary's Rd.
Township: May
Legal Description: Parcel 1: The West Half of the Southwest Quarter of Section 22, Township 19 North, Range 10 East of the Fourth Principal Meridian, Lee County, Illinois.
Parcel 2: The Northwest Quarter of Section 27 and the North Half of the Southwest Quarter of said Section 27, all in Township 19 North, Range 10 East of the Fourth Principal Meridian, EXCEPTING THEREFROM part of the Northwest Quarter

of Section 27, Township 19 North, Range 10 East of the Fourth Principal Meridian bounded and described as follows: Commencing at the Northwest corner of the Northwest Quarter of Section 27; thence North 89 degrees 27 minutes 03 seconds East along the North line of said Section, a distance of 808.79 feet to the Point of Beginning of the hereinafter described tract of land; thence South 00 degrees 32 minutes 56 seconds East a distance of 456.87 feet; thence North 89 degrees 27 minutes 03 seconds East, a distance of 476.72 feet; thence North 00 degrees 32 minutes 56 seconds West a distance of 456.87 feet thence South 89 degrees 27 minutes 03 seconds West, along the North line of said Section, a distance of 476.72 feet to the Point of Beginning, all situated in Lee County, Illinois.
Turbine: 89
Landowner: Dennis J. Bickett, as Trustee of the Dennis J. Bickett Trust under Declaration of Trust dated January 4, 2013, and Lori J. Bickett, as Trustee of the Lori L. Bickett Trust under Declaration of Trust dated January 4, 2013
Tax Parcel Identification Numbers: 13-21-28-200-003, 13-21-28-200-004, 13-21-28-400-006 and 13-21-28-400-005
Turbine Common Location: 1982.67 ft West of Kessel Rd and 2013.37 ft North of St. Mary's Rd.
Township: May
Legal Description: The Southeast Quarter and the East Half of the Northeast Quarter of Section 28, Township 19 North, Range 10 East of the Fourth Principal Meridian, Lee County, Illinois, EXCEPTING THEREFROM a part of the Southeast Quarter of the Southeast Quarter of Section 28, Township 19 North, Range 10 East of the Fourth Principal Meridian, Lee County, Illinois and being described as follows: Commencing at the Southeast corner of said Section 28 also known as the point of beginning; thence West along the South line of said Section 28, 400 feet; thence North and parallel with the East line of said Section 28, 400 feet; thence South along the East line of said Section 28, 240 let to the point of beginning.
Turbine: 90
Landowner: John P. Bickett and Marian E. Bickett, as Trustees of the Marian E. Bickett Revocable Trust under Agreement dated January 25, 2012, and John P. Bickett and Marian E. Bickett, as Trustees of the John P. Bickett Revocable Trust under Agreement dated January 25, 2012
Tax Parcel Identification Numbers: 13-21-28-100-005, 13-21-28-100-006, 13-21-28-300-007 and 13-21-28-300-004
Turbine Common Location: 1703.64 ft East of Van Orin Rd and 2043.98 ft North of St. Mary's Rd.
Township: May
Legal Description: The Southwest Quarter of Section 28 and the Southwest Quarter of the Northwest Quarter of Section 28, all in Township 19 North, Range 10 East of the Fourth Principal Meridian, Lee County, Illinois, EXCEPTING THEREFROM part of the Southwest Quarter of Section 28, Township 19 North, Range 10 East of the Fourth Principal Meridian, Lee County, Illinois, described as follows, to-wit:

MARKETPLACE

101

LEGAL NOTICE

Beginning at a point on the West line of the Southwest Quarter of said Section 28, said point being 829.00 feet North of the Southwest corner thereof; thence Northerly, along said West line, a distance of 218.18 feet; thence Easterly perpendicular to the last described course, a distance of 199.65 feet; thence Southerly, perpendicular to the last described course, a distance of 218.18 feet; thence Westerly, perpendicular to the last described course, a distance of 199.65 feet to the point of beginning, ALSO EXCEPTING THEREFROM a part of the Northwest Quarter of the Southwest Quarter of Section 28, Township 19 North, Range 10 East of the Fourth Principal Meridian, Lee County, Illinois and being described as follows: Commencing at the West corner of said Section 28; thence South along the West line of said Section 28, 470 feet to the point of beginning; thence continuing South along said West line of said Section 28, 400 feet; thence East and parallel with the South line of said Section 28, 440 feet; thence West and parallel with the South line of said Section 28, 400 feet; thence South along the West line of said Section 28, 440 feet to the point of beginning.

Turbine: 92
Landowner: John P. Bickett and Marian E. Bickett, as Trustees of the Marian E. Bickett Revocable Trust under Agreement dated January 25, 2012, and John P. Bickett and Marian E. Bickett, as Trustees of the John P. Bickett Revocable Trust under Agreement dated January 25, 2012

Tax Parcel Identification Numbers: 13-21-28-100-005, 13-21-28-100-006, 13-21-28-300-007 and 13-21-28-300-004

Turbine Common Location: 701.99 ft East of Van Orin Rd and 1966.8 ft South of Todd Rd

Township: May

Legal Description:

The Southwest Quarter of Section 28 and the Southwest Quarter of the Northwest Quarter of Section 28, all in Township 19 North, Range 10 East of the Fourth Principal Meridian, Lee County, Illinois, EXCEPTING THEREFROM part of the Southwest Quarter of Section 28, Township 19 North, Range 10 East of the Fourth Principal Meridian, Lee County, Illinois, described as follows, to-wit:

Beginning at a point on the West line of the Southwest Quarter of said Section 28, said point being 829.00 feet North of the Southwest corner thereof; thence Northerly, along said West line, a distance of 218.18 feet; thence Easterly perpendicular to the last described course, a distance of 199.65 feet; thence Southerly, perpendicular to the last described course, a distance of 218.18 feet; thence Westerly, perpendicular to the last described course, a distance of 199.65 feet to the point of beginning, ALSO EXCEPTING THEREFROM a part of the Northwest Quarter of the Southwest Quarter of Section 28, Township 19 North, Range 10 East of the Fourth Principal Meridian, Lee County, Illinois and being described as follows: Commencing at the West corner of said Section 28; thence South along the West line of said Section 28, 470 feet to the point of beginning; thence continuing South along said West line of said

Section 28, 400 feet; thence East and parallel with the South line of said Section 28, 440 feet; thence North and parallel with the West line of said Section 28, 400 feet; thence West and parallel with the South line of said Section 28, 440 feet to the point of beginning.

Turbine: 93
Landowner: Dennis J. Bickett, as Trustee of the Dennis J. Bickett Trust under Declaration of Trust dated January 4, 2013, and Lori J. Bickett, as Trustee of the Lori L. Bickett Trust under Declaration of Trust dated January 4, 2013

Tax Parcel Identification Numbers: 13-21-28-200-003, 13-21-28-200-004, 13-21-28-400-006 and 13-21-28-400-005

Turbine Common Location: 732.17 ft West of Kessel Rd and 1609.29 ft South of Todd Rd

Township: May

Legal Description:

The Southeast Quarter and the East Half of the Northeast Quarter of Section 28, Township 19 North, Range 10 East of the Fourth Principal Meridian, Lee County, Illinois, EXCEPTING THEREFROM a part of the Southeast Quarter of the Southeast Quarter of Section 28, Township 19 North, Range 10 East of the Fourth Principal Meridian, Lee County, Illinois and being described as follows: Commencing at the Southeast corner of said Section 28 also known as the point of beginning; thence West along the South line of said Section 28, 400 feet; thence North and parallel with the East line of said Section 28, 240 feet; thence East and parallel with the South line of said Section 28, 400 feet; thence South along the East line of said Section 28, 240 let to the point of beginning.

Turbine: 94
Landowner: Cardot Family Limited Partnership

Tax Parcel Identification Numbers: 13-21-22-300-004, 13-21-22-300-003, 13-21-27-100-004, 13-21-27-100-005, 13-21-27-300-006 and 13-21-27-300-007

Turbine Common Location: 1655.27 ft East of Kessel Rd and 1498.81 ft South of Todd Rd

Township: May

Legal Description:

Parcel 1: The West Half of the Southwest Quarter of Section 22, Township 19 North, Range 10 East of the Fourth Principal Meridian, Lee County, Illinois. Parcel 2: The Northwest Quarter of Section 27 and the North Half of the Southwest Quarter of said Section 27, all in Township 19 North, Range 10 East of the Fourth Principal Meridian, Lee County, Illinois, EXCEPTING THEREFROM part of the Northwest Quarter of Section 27, Township 19 North, Range 10 East of the Fourth Principal Meridian bounded and described as follows: Commencing at the Northwest corner of the Southwest Quarter of Section 27; thence North 89 degrees 27 minutes 03 seconds East along the North line of said Section, a distance of 808.79 feet to the Point of Beginning of the hereinafter described tract of land; thence South 00 degrees 32 minutes 56 seconds East a distance of 456.87 feet; thence North 89 degrees 27 minutes 03 seconds East, a distance of 476.72 feet; thence North 00 degrees 32 minutes 56 seconds West a distance of 456.87 feet thence South 89 degrees 27 minutes 03 seconds East along the North line of said Section, a distance of 476.72

feet to the Point of Beginning, all situated in Lee County, Illinois. **Turbine: 95**
Landowner: Clarence D. Blaine, as Trustee of the Clarence D. Blaine Declaration of Trust dated the 18th day of December, 2000; Marilyn Ann Blaine, as Trustee of the Marilyn Ann Blaine Declaration of Trust dated the 18th day of December, 2000; Blaine Investments, L.P.; Brian D. Blaine and Amanda M. Blaine
Tax Parcel Identification Numbers: 08-20-25-400-011, 08-20-25-200-004, 08-20-25-400-007, 08-20-25-200-003, 08-20-25-400-008 and 08-20-25-400-010
Turbine Common Location: 608.72 ft West of Carter Rd and 575.86 ft South of Todd Rd
Township: East Grove
Legal Description:
Parcel 1: The East Half of the Northeast Quarter and the North Half of the Southeast Quarter of Section 25, Township 19 North, Range 9 East of the Fourth Principal Meridian, EXCEPTING THEREFROM: A part of the North Half of the Southeast Quarter of Section 25, Township 19 North, Range 9 East of the Fourth Principal Meridian bounded and described as follows: Commencing at the Southeast corner of Section 25; thence North (assumed direction) along East line of Southeast Quarter of Section 25, a distance of 1,674.92 feet for a point of beginning; thence South 89°35'04" West 360.76 feet; thence North 45°52'57" West 181.79 feet; thence North 87°45'47" West 295.91 feet; thence North 0°20'25" East 301.31 feet; thence North 9°54'29" East 295.37 feet; thence South 85°42'49" East 278.03 feet; thence South 3°29'55" West 251.71 feet; thence South 82°58'38" East 476.02 feet to the East line of Southeast Quarter of Section 25; thence South 22.40 feet; thence North 84°19'23" West 602.99 feet; thence South 49°04'51" West 74.32 feet; thence South 0°51'50" East 135.63 feet; thence South 60°57'30" East 154.78 feet; thence South 76°53'19" East 532.72 feet to East line of Southeast Quarter of Section 25; thence South 54.50 feet to the point of beginning, all in Lee County, Illinois. Parcel 2: A part of the North Half of the Southeast Quarter of Section 25, Township 19 North, Range 9 East of the Fourth Principal Meridian bounded and described as follows: Commencing at the Southeast corner of Section 25; thence North (assumed direction) along East line of Southeast Quarter of Section 25, a distance of 1,674.92 feet for a point of beginning; thence South 89°35'04" West 360.76 feet; thence North 45°52'57" West 181.79 feet thence North 87°45'47" West 295.91 feet thence North 0°20'25" East 301.31 feet; thence North 9°54'29" East 295.37 feet; thence South 85°42'49" East 278.03 feet; thence South 3°29'55" West 251.71 feet; thence South 82°58'38" East 476.02 feet to the East line of Southeast Quarter of Section 25; thence South 22.40 feet thence North 84°19'23" West 602.99 feet; thence South 49°04'51" West 74.32 feet thence South 0°51'50" East 135.63 feet; thence South 60°57'30" East 154.78 feet thence South 76°53'19" East 532.72 feet to East line of Southeast Quarter of Section 25; thence South 54.50 feet to the point of Beginning, all in Lee County, Illinois.

feet to the Point of Beginning, all situated in Lee County, Illinois.

Turbine: 95
Landowner: Clarence D. Blaine, as Trustee of the Clarence D. Blaine Declaration of Trust dated the 18th day of December, 2000; Marilyn Ann Blaine, as Trustee of the Marilyn Ann Blaine Declaration of Trust dated the 18th day of December, 2000; Blaine Investments, L.P.; Brian D. Blaine and Amanda M. Blaine

Tax Parcel Identification Numbers: 08-20-25-400-011, 08-20-25-200-004, 08-20-25-400-007, 08-20-25-200-003, 08-20-25-400-008 and 08-20-25-400-010

Turbine Common Location: 608.72 ft West of Carter Rd and 575.86 ft South of Todd Rd

Township: East Grove

Legal Description:

Parcel 1: The East Half of the Northeast Quarter and the North Half of the Southeast Quarter of Section 25, Township 19 North, Range 9 East of the Fourth Principal Meridian, EXCEPTING THEREFROM: A part of the North Half of the Southeast Quarter of Section 25, Township 19 North, Range 9 East of the Fourth Principal Meridian bounded and described as follows: Commencing at the Southeast corner of Section 25; thence North (assumed direction) along East line of Southeast Quarter of Section 25, a distance of 1,674.92 feet for a point of beginning; thence South 89°35'04" West 360.76 feet; thence North 45°52'57" West 181.79 feet; thence North 87°45'47" West 295.91 feet; thence North 0°20'25" East 301.31 feet; thence North 9°54'29" East 295.37 feet; thence South 85°42'49" East 278.03 feet; thence South 3°29'55" West 251.71 feet; thence South 82°58'38" East 476.02 feet to the East line of Southeast Quarter of Section 25; thence South 22.40 feet; thence North 84°19'23" West 602.99 feet; thence South 49°04'51" West 74.32 feet; thence South 0°51'50" East 135.63 feet; thence South 60°57'30" East 154.78 feet; thence South 76°53'19" East 532.72 feet to East line of Southeast Quarter of Section 25; thence South 54.50 feet to the point of beginning, all in Lee County, Illinois. Parcel 2: A part of the North Half of the Southeast Quarter of Section 25, Township 19 North, Range 9 East of the Fourth Principal Meridian bounded and described as follows: Commencing at the Southeast corner of Section 25; thence North (assumed direction) along East line of Southeast Quarter of Section 25, a distance of 1,674.92 feet for a point of beginning; thence South 89°35'04" West 360.76 feet; thence North 45°52'57" West 181.79 feet thence North 87°45'47" West 295.91 feet thence North 0°20'25" East 301.31 feet; thence North 9°54'29" East 295.37 feet; thence South 85°42'49" East 278.03 feet; thence South 3°29'55" West 251.71 feet; thence South 82°58'38" East 476.02 feet to the East line of Southeast Quarter of Section 25; thence South 22.40 feet thence North 84°19'23" West 602.99 feet; thence South 49°04'51" West 74.32 feet thence South 0°51'50" East 135.63 feet; thence South 60°57'30" East 154.78 feet thence South 76°53'19" East 532.72 feet to East line of Southeast Quarter of Section 25; thence South 54.50 feet to the point of Beginning, all in Lee County, Illinois.

Turbine: 96
Landowner: Brian Ronald Russell

Tax Parcel Identification Numbers: 13-21-19-400-005, 13-21-19-400-004 and 13-21-400-006

Turbine Common Location: 1110.46 ft West of Morgan Rd and 540.24 ft North of Todd Rd

Township: May

Legal Description:

The Southeast Quarter of Section 19 in Township 19 North, Range 10 East of the Fourth Principal Meridian, in the County of Lee and State of Illinois, EXCEPTING THEREFROM a part of the Southeast Quarter of Section 19, Township 19 North, Range 10 East of the Fourth Principal Meridian, Lee County, Illinois and being described as follows: Commencing at the Northeast corner of said Section 19; thence South along the East line of said Section 19, 730 feet to the point of beginning; thence continuing South along the said East line of said Section 19, 600 feet; thence West and parallel with the South line of said Section 19, 450 feet; thence North and parallel with the East line of said Section 19, 600 feet; thence East and parallel with the South line of said Section 19, 450 feet to the point of beginning.

Turbine: 97
Landowner: Mary Helen Leffelman, as Trustee of the Mary Helen Leffelman Revocable Trust under Agreement dated the 16th day of August, 1995

Tax Parcel Identification Numbers: 13-21-20-300-004, 13-21-20-400-006 and 13-21-20-400-007

Turbine Common Location: 2033.31 ft West of Van Orin Rd and 588 ft North of Todd Rd

Township: May

Legal Description:

The Southwest Quarter of the Southeast Quarter and the Southeast Quarter of the Southwest Quarter of Section 20, Township 19 North, Range 10 East of the Fourth Principal Meridian, Lee County, Illinois.

Turbine: 98
Landowner: AmeriMark Bank, as Trustee under the provisions of a Trust Agreement dated the 23rd day of February, 2004, known as Trust Number 04-538

Tax Parcel Identification Numbers: 13-21-20-100-003 and 13-21-20-300-006

Turbine Common Location: 2112.99 ft East of Morgan Rd and 1588.67 ft North of Todd Rd

Township: May

Legal Description:

The South Half of the Northwest Quarter and the Northeast Quarter of the Southwest Quarter of Section 20, Township 19 North, Range 10 East of the Fourth Principal Meridian, Lee County, Illinois, EXCEPTING THEREFROM a part of the Southwest Quarter of Section 20, Township 19 North, Range 10 East of the Fourth Principal Meridian, Lee County, Illinois, described as follows: Commencing at the Northwest corner of the Southwest Quarter of Section 20, Township 19 North, Range 10 East of the Fourth Principal Meridian, Lee County, Illinois, a distance of 1,674.92 feet for a point of beginning; thence South 89°35'04" West 360.76 feet; thence North 45°52'57" West 181.79 feet thence North 87°45'47" West 295.91 feet thence North 0°20'25" East 301.31 feet; thence North 9°54'29" East 295.37 feet; thence South 85°42'49" East 278.03 feet; thence South 3°29'55" West 251.71 feet; thence South 82°58'38" East 476.02 feet to the East line of Southeast Quarter of Section 25; thence South 22.40 feet thence North 84°19'23" West 602.99 feet; thence South 49°04'51" West 74.32 feet thence South 0°51'50" East 135.63 feet; thence South 60°57'30" East 154.78 feet thence South 76°53'19" East 532.72 feet to East line of Southeast Quarter of Section 25; thence South 54.50 feet to the point of Beginning, all in Lee County, Illinois.

Turbine: 99
Landowner: Brian Ronald Russell

Tax Parcel Identification Numbers: 13-21-19-400-005, 13-21-19-400-004 and 13-21-400-006

Turbine Common Location: 2092.7 ft West of Morgan Rd and 1850.84 ft North of Todd Rd

Township: May

Legal Description:

The Southeast Quarter of Section 19 in Township 19 North, Range 10 East of the Fourth Principal Meridian, in the County of Lee and State of Illinois, EXCEPTING THEREFROM a part of the Southeast Quarter of Section 19, Township 19 North, Range 10 East of the Fourth Principal Meridian, Lee County, Illinois, described as follows: Commencing at the Northeast corner of said Section 19; thence South along the East line of said Section 19, 730 feet to the point of beginning; thence continuing South along the said East line of said Section 19, 600 feet; thence West and parallel with the South line of said Section 19, 450 feet; thence North and parallel with the East line of said Section 19, 600 feet; thence East and parallel with the South line of said Section 19, 450 feet to the point of beginning.

Turbine: 100
Landowner: Ray A. Long, as Trustee of the Ray A. Long Revocable Living Trust dated April 6, 2006 and Carol A. Long, as Trustee of the Carol A. Long Revocable Living Trust dated April 6, 2006

Tax Parcel Identification Numbers: 13-21-19-200-009 and 13-21-19-200-008

Turbine Common Location: 730.77 ft West of Morgan Rd and 1872.73 ft South of Co. Hwy 12 (Maytown Rd)

Township: May

Legal Description:

Part of the East Half of the Northeast Quarter of Section 19, Township 19 North, Range 10 East of the Fourth Principal Meridian, described as follows: Beginning at a point on the East line of the Northeast Quarter of said Section 19, said point being 1337.09 feet South of the Northeast corner of said Northeast Quarter; thence Southerly along said East line a distance of 1289.64 feet to the Southeast corner of said Northeast Quarter; thence Westerly along the South line of said Northeast Quarter at an angle of 89 degrees 39 minutes 43 seconds as measured counterclockwise from the last described course, a distance of 1313.55 feet to the Southwest corner of the East Half of said Northeast Quarter; thence Northerly along the West line of said East Half at an angle of 90 degrees 17 minutes 28 seconds as measured counterclockwise from the last described course, a distance of 1289.63 feet to a point 1337.42 feet South of the Northwest corner of said East Half; thence Easterly parallel to the South line of said Northeast Quarter at an angle of 89 degrees 42 minutes 32 seconds as measured counterclockwise from the last described course, a distance of 1312.49 feet to the point of beginning, all situated in Lee County, Illinois.

Turbine: 101
Landowner: Lawrence J. Becker and Margie K. Becker

Tax Parcel Identification Numbers: 13-21-21-300-007, 13-21-21-300-006 and 13-21-21-300-005

Turbine Common Location: 1123.7 ft East of Van Orin Rd and 554.38 ft North of Todd Rd

Township: May

Legal Description:

The East Half of the Southwest Quarter and the Southwest Quarter of Section 21, Township 19 North, Range 10 East of the Fourth Principal Meridian, EXCEPTING THEREFROM a part of the Southwest Quarter of the Southwest Quarter of Section 21, Township 19 North, Range 10 East of the Fourth Principal Meridian, Lee County, Illinois, described as follows: Commencing at the Southwest corner of Section 21 for a point of beginning; thence Easterly along South

line of Southwest Quarter of said Section 21, 206.25 feet; thence Northerly at an angle of 89 degrees 51 minutes measured clockwise 264.00 feet; thence Westerly at an angle of 90 degrees 09 minutes measured clockwise 206.25 feet to West line of Southwest Quarter of Section 21; thence Southerly at an angle of 89 degrees 51 minutes measured clockwise 264.00 feet to point of beginning, all situated in Lee County, Illinois.

Turbine: 102
Landowner: Cecil E. Harrison; Shirley Harrison; Curt E. Harrison; and Linda K. Harrison

Tax Parcel Identification Numbers: 13-21-21-400-003 and 13-21-21-400-004

Turbine Common Location: 3417.47 ft East of Van Orin Rd and 845.11 ft North of Todd Rd

Township: May

Legal Description:

The West Half of the Southeast Quarter of Section 21, Township 19 North, Range 10 East of the Fourth Principal Meridian, Lee County, Illinois, described as follows: Beginning at a point on the East line of the Northeast Quarter of said Section 19, said point being 1337.09 feet South of the Northeast corner of said Northeast Quarter; thence Southerly along said East line a distance of 1289.64 feet to the Southeast corner of said Northeast Quarter; thence Westerly along the South line of said Northeast Quarter at an angle of 89 degrees 39 minutes 43 seconds as measured counterclockwise from the last described course, a distance of 1313.55 feet to the Southwest corner of the East Half of said Northeast Quarter; thence Northerly along the West line of said East Half at an angle of 90 degrees 17 minutes 28 seconds as measured counterclockwise from the last described course, a distance of 1289.63 feet to a point 1337.42 feet South of the Northwest corner of said East Half; thence Easterly parallel to the South line of said Northeast Quarter at an angle of 89 degrees 42 minutes 32 seconds as measured counterclockwise from the last described course, a distance of 1312.49 feet to the point of beginning, all situated in Lee County, Illinois.

Turbine: 103
Landowner: Cardot Family Limited Partnership

Tax Parcel Identification Numbers: 13-21-22-300-004, 13-21-22-300-003, 13-21-27-100-004, 13-21-27-100-005, 13-21-27-300-006 and 13-21-27-300-007

Turbine Common Location: 5749.52 ft East of Van Orin Rd and 1755.81 ft North of Todd Rd

Township: May

Legal Description:

Parcel 1: The West Half of the Southwest Quarter of Section 22, Township 19 North, Range 10 East of the Fourth Principal Meridian, Lee County, Illinois. Parcel 2: The Northwest Quarter of Section 27 and the North Half of the Southwest Quarter of said Section 27, all in Township 19 North, Range 10 East of the Fourth Principal Meridian, EXCEPTING THEREFROM part of the Northwest Quarter of Section 27, Township 19 North, Range 10 East of the Fourth Principal Meridian, Lee County, Illinois, described as follows: Commencing at the Northwest corner of the Northwest Quarter of said Section 27; thence North 89 degrees 27 minutes 03 seconds East along the North line of said Section, a distance of 808.79 feet to the Point of Beginning of the hereinafter described tract of land; thence South 00 degrees 32 minutes 56 seconds East a distance of 456.87 feet; thence North 89 degrees 27 minutes 03 seconds East, a distance of 476.72 feet; thence North 00 degrees 32 minutes 56 seconds West a distance of 456.87 feet thence South 89 degrees 27 minutes 03 seconds West, along the North line of said Section, a distance of 476.72 feet to the Point of Beginning, all situated in Lee County, Illinois.

Turbine: 104
Landowner: Lawrence J. Becker and Margie K. Becker

Tax Parcel Identification Numbers: 13-21-21-300-007, 13-21-21-300-006 and 13-21-21-300-005

Turbine Common Location: 1123.7 ft East of Van Orin Rd and 554.38 ft North of Todd Rd

Township: May

Legal Description:

The East Half of the Southwest Quarter and the Southwest Quarter of Section 21, Township 19 North, Range 10 East of the Fourth Principal Meridian, EXCEPTING THEREFROM a part of the Southwest Quarter of the Southwest Quarter of Section 21, Township 19 North, Range 10 East of the Fourth Principal Meridian, Lee County, Illinois, described as follows: Commencing at the Southwest corner of Section 21 for a point of beginning; thence Easterly along South

line of Southwest Quarter of said Section 21, 206.25 feet; thence Northerly at an angle of 89 degrees 51 minutes measured clockwise 264.00 feet; thence Westerly at an angle of 90 degrees 09 minutes measured clockwise 206.25 feet to West line of Southwest Quarter of Section 21; thence Southerly at an angle of 89 degrees 51 minutes measured clockwise 264.00 feet to point of beginning, all situated in Lee County, Illinois.

Turbine: 105
Landowner: Lawrence J. Becker and Margie K. Becker

Tax Parcel Identification Numbers: 13-21-21-300-007, 13-21-21-300-006 and 13-21-21-300-005

Turbine Common Location: 2012.05 ft East of Van Orin Rd and 2123.28 ft North of Todd Rd

Township: May

Legal Description:

The East Half of the Southwest Quarter and the Southwest Quarter of Section 21, Township 19 North, Range 10 East of the Fourth Principal Meridian, EXCEPTING THEREFROM a part of the Southwest Quarter of the Southwest Quarter of Section 21, Township 19 North, Range 10 East of the Fourth Principal Meridian, Lee County, Illinois, described as follows: Commencing at the Southwest corner of Section 21 for a point of beginning; thence Easterly along South

line of Southwest Quarter of said Section 21, 206.25 feet; thence Northerly at an angle of 89 degrees 51 minutes measured clockwise 264.00 feet; thence Westerly at an angle of 90 degrees 09 minutes measured clockwise 206.25 feet to West line of Southwest Quarter of Section 21; thence Southerly at an angle of 89 degrees 51 minutes measured clockwise 264.00 feet to point of beginning, all situated in Lee County, Illinois.

Turbine: 106
Landowner: Gilbert W. Leffelman, as Trustee of the Gilbert W. Leffelman Trust under Declaration of Trust dated January 12, 2011 and Linda L. Leffelman, as Trustee of the Linda L. Leffelman Trust under Declaration of Trust dated January 12, 2011

Tax Parcel Identification Numbers: 13-21-14-300-002, 13-21-22-200-011 and 13-21-22-200-012

Turbine Common Location: 5219.54 ft West of Co. Hwy 33 and 1830.1 ft South of Co. Hwy 12 (Maytown Rd)

Township: May

MARKETPLACE

101 LEGAL NOTICE

Township 19 North, Range 10 East of the Fourth Principal Meridian, EXCEPTING THEREFROM part of the Northwest Quarter of the Southwest Quarter of Section 30, Township 19 North, Range 10 East of the Fourth Principal Meridian, Lee County, Illinois, described as follows, to-wit: Beginning at the Southwest corner of the Northwest Quarter of the Southwest Quarter of said Section 30; thence Easterly, along the South line thereof, a distance of 767.63 feet thence Northeasterly at an angle of 112 degrees 27 minutes 13 seconds as measured clockwise from the last described course, a distance of 131.77 feet; thence Northerly, at an angle of 155 degrees 54 minutes 19 seconds as measured clockwise from the last described course, a distance of 103.64 feet; thence Northerly, at an angle of 111 degrees 59 minutes 47 seconds as measured counterclockwise from the last described course, a distance of 283.47 feet; thence Northwestery, at an angle of 100 degrees 27 minutes 14 seconds as measured clockwise from the last described course, a distance of 448.26 feet; thence Westerly, at an angle of 92 degrees 19 minutes 46 seconds as measured counterclockwise from the last described course, a distance of 345.33 feet to a point on the West line of said Southwest Quarter; thence Southerly, along said West line, at an angle of 94 degrees 41 minutes 21 seconds as measured clockwise from the last described course, a distance of 345.25 feet to the point of beginning, all situated in Lee County, Illinois.

Parcel 2: The Southeast Quarter of the Northwest Quarter of Section 15 and the Southwest Quarter of Section 15, all in Township 19 North, Range 10 East of the Fourth Principal Meridian, Lee County, Illinois, EXCEPTING THEREFROM a part of the East Half of the Southwest Quarter of Section 15, Township 19 North, Range 10 East of the Fourth Principal Meridian, Lee County, Illinois, and being described as follows: Commencing at the South corner of said Section 15; thence West along the South line of said Section 15, 750 feet; thence North and parallel with the East line of said Section 15, 100 feet to the point of beginning; thence continuing North and parallel with the East line of said Section 15, 2200 feet; thence West and parallel with the South line of said Section 15, 475 feet thence South along the East line of said Section 15, 2200 feet; thence East and parallel with the South line of said Section 15, 475 feet to the point of beginning.

Variation Request: The Lee County Ordinance requires a setback from property lines of 350 ft. This wind turbine could be as close as 295 feet from the property line. Petitioner is requesting a 55-foot variation.

Turbine: 115
Landowner: Melvin F. Leffelman
Tax Parcel Identification Numbers: 13-21-15-400-005, 13-21-15-400-006 and 13-21-15-400-004
Turbine Common Location: 516.36 ft West of May Rd and 1316.18 ft North of Co. Hwy 12 (Maytown Rd)
Township: May
Legal Description: The South 3/4 of the Southeast Quarter of Section 15, Township 19 North, Range 10 East of the Fourth Principal Meridian, Lee County, Illinois, EXCEPTING THEREFROM a part of the Southeast Quarter of Section 15, Township 19 North, Range 10 East of the Fourth Principal Meridian, Lee County, Illinois and being described as follows: Commencing at the Southeast corner of said Section 15; thence West along the South line of said Section 15, 1490 feet; thence North and parallel with the East line of said Section 15, 95 feet to the point of beginning; thence West and parallel with the South line of said Section 15, 400 feet; thence North and parallel with the East line of said Section 15, 605 feet; thence East and parallel with the South line of said Section 15, 400 feet; thence South and parallel with the East line of said Section 15, 605 feet to the point of beginning.

Turbine: 116
Landowner: Myron G. Leffelman; Janet Grady Leffelman; and Anthony J. Morgan
Tax Parcel Identification Numbers: 13-21-16-300-006, 13-21-16-300-007 and 13-21-16-300-005
Turbine Common Location: 1815.7 ft East of Van Orin Rd and 1131.36 ft North of Co. Hwy 12 (Maytown Rd)
Township: May
Legal Description: The Southwest Quarter of Section 16, Township 19 North, Range 10 East of the Fourth Principal Meridian, Lee County, Illinois, EXCEPTING THEREFROM: A part of the Southwest Quarter of Section 16, Township 19 North, Range 10 East of the Fourth Principal Meridian, Lee County, Illinois, and being described as follows: Commencing at the Northwest corner of the Northwest Quarter of said Section 16; thence South along the West line of said Section 16, 300 feet to the point of beginning; thence East and parallel with the South line of said Section 16, 900 feet; thence South and parallel with the West line of said Section 16, 200 feet; thence West and parallel with the South line of said Section 16, 900 feet thence North along the West line of said Section 16, 200 feet to the point of beginning; ALSO EXCEPTING THEREFROM: A part of the Southwest Quarter of Section 16, Township 19 North, Range 10 East of the Fourth Principal Meridian, Lee County, Illinois, and being described as follows,

to wit: Commencing at the Northwest corner of the Southwest Quarter of said Section 16; thence Southerly, along the West line thereof, a distance of 457.44 feet to a point on the centerline of an existing driveway; thence Easterly, along said centerline, at an angle of 92°27'16" as measured clockwise from the last described course, a distance of 186.26 feet; thence Easterly, along said centerline, at an angle of 180°04'49" as measured clockwise from the last described course, a distance of 211.33 feet; thence Northerly, at an angle of 92°34'30" as measured clockwise from the last described course, a distance of 5.98 feet to the Point of Beginning of the following described parcel; thence continuing Northerly, along an extension of the last described course, a distance of 17.22 feet; thence Northeasterly, at an angle of 136°30'39" as measured counterclockwise from the last describe course, a distance of 139.43 feet; thence Northeasterly, at an angle of 167°22'10" as measured counterclockwise from the last described course, a distance of 67.06 feet; thence Easterly, at an angle of 157°06'39" as measured counterclockwise from the last described course, a distance of 39.84 feet; thence Easterly, at an angle of 186°04'38" as measured clockwise from the last described course, a distance of 509.30 feet; the Southwesterly, at an angle of 80°27'15" as measured counterclockwise from the last described course, a distance of 152.94 feet; thence Westerly, at an angle of 99°35'35" as measured counterclockwise front the last described course, a distance of 266.25 feet; thence Westerly, at an angle of 179°43'44" as measured clockwise from the last described course, a distance of 219.07 feet; thence Westerly, at an angle of 181°58'15" as measured clockwise from the last described course, a distance of 202.73 feet to the Point of Beginning.

Turbine: 117
Landowner: Martin A. Montavon, as Trustee under the provisions of a Declaration of Trust designated as the Lynn E. Montavon Trust dated February 25, 2016
Tax Parcel Identification Numbers: 13-21-17-400-004, 13-21-17-400-005, 13-21-17-400-002 and 13-21-17-300-002
Turbine Common Location: 496.89 ft West of Van Orin Rd and 1404.42 ft North of Co. Hwy 12 (Maytown Rd)
Township: May
Legal Description: Parcel 1: The South 5/8 of the Southwest Quarter of Section 17, Township 19 North, Range 10 East of the Fourth Principal Meridian, Lee County,

Illinois, EXCEPTING THEREFROM the following 3 tracts:
Tract 1: Commencing at a point on the South line of said Section 17 which is 935.09 feet West of the Southeast corner of said Southwest Quarter; thence Northerly at an angle of 89 degrees 48 minutes measured counterclockwise on the said South line of Section 17, 362.24 feet; thence Westerly parallel with the South line of Section 17, 601.1 feet; thence Southerly at an angle of 90 degrees 12 minutes measured clockwise from the last described course, 362.34 feet to the South line of said Section 17; thence Easterly on said South line a distance of 601.1 feet to the point of beginning;
Tract 2: Commencing at a point on the South line of said Section 17 which is 871.86 feet West of the Southeast corner of the said Southwest Quarter; thence Northerly at an angle of 89 degrees 48 minutes measured counterclockwise from the said South line of Section 17, a distance of 165 feet; thence Westerly parallel with the South line of said Section 17, a distance of 43.23 feet; thence Southerly at an angle of 90 degrees 12 minutes measured clockwise from the last described course, 165 feet to the said South line of said Section 17; thence Easterly along and upon said South boundary line of said Section 17 to the point of beginning;
Tract 3: Commencing at the Quarter Section corner on the South line of Section 17, Township 19 North, Range 10 East of the Fourth Principal Meridian; thence West var. 6 degrees 40 minutes, 13 chains and 21 links; thence North 2 chains and 50 links to a stone; thence West 65 ¼ links; thence North 2 chains and 99 links to a stone; thence East var. 6 degrees 30 minutes, 13 chains and 86 links to a stone in hedge on Quarter Section line; thence South on Quarter Section line, 5 chains and 42 1/2 links to place of beginning;
Parcel 2: The Southeast Quarter of Section 17, Township 19 North, Range 10 East of the Fourth Principal Meridian, Lee County, Illinois, EXCEPTING THEREFROM a part of the Southeast Quarter of Section 17, Township 19 North, Range 10 East of the Fourth Principal Meridian, Lee County, Illinois and being described as follows: Commencing at the Southeast corner of said Section 17; thence West along the South line of said Section 17, 1000 feet to the point of beginning; thence continuing West along the said South line of said Section 17, 400 feet; thence North and parallel with the East line of said Section 17, 550 feet; thence East and parallel with the South line of said Section 17, 400 feet; thence South and parallel with the East line of said Section 17, 550 feet to the point of beginning.
Turbine: 118
Landowner: Martin A. Montavon, as Trustee under the provisions of a Declaration of Trust designated as the Martin A. Montavon

Trust dated February 25, 2016 and Lynn E. Montavon, as Trustee under the provisions of a Declaration of Trust designated as the Lynn E. Montavon Trust dated February 25, 2016
Tax Parcel Identification Numbers: 13-21-17-400-004, 13-21-17-400-005, 13-21-17-400-002 and 13-21-17-300-002
Turbine Common Location: 2172.94 ft West of Van Orin Rd and 1417.64 ft North of Co Hwy 12 (Maytown Rd)
Township: May
Legal Description: Parcel 1: The South 5/8 of the Southwest Quarter of Section 17, Township 19 North, Range 10 East of the Fourth Principal Meridian, Lee County, Illinois, EXCEPTING THEREFROM the following 3 tracts:
Tract 1: Commencing at a point on the South line of said Section 17 which is 935.09 feet West of the Southeast corner of said Southwest Quarter; thence Northerly at an angle of 89 degrees 48 minutes measured counterclockwise on the said South line of Section 17, 362.24 feet; thence Westerly parallel with the South line of said Section 17, 601.1 feet; thence Southerly at an angle of 90 degrees 12 minutes measured clockwise from the last described course, 362.34 feet to the South line of said Section 17; thence Easterly on said South line a distance of 601.1 feet to the point of beginning;
Tract 2: Commencing at a point on the South line of said Section 17 which is 871.86 feet West of the Southeast corner of the said Southwest Quarter; thence Northerly at an angle of 89 degrees 48 minutes measured counterclockwise from the said South line of Section 17, a distance of 165 feet; thence Westerly parallel with the South line of said Section 17, a distance of 43.23 feet; thence Southerly at an angle of 90 degrees 12 minutes measured clockwise from the last described course, 165 feet to the said South line of said Section 17; thence Easterly along and upon said South boundary line of said Section 17 to the point of beginning;
Tract 3: Commencing at the Quarter Section corner on the South line of Section 17, Township 19 North, Range 10 East of the Fourth Principal Meridian; thence West var. 6 degrees 40 minutes, 13 chains and 21 links; thence North 2 chains and 50 links to a stone; thence West 65 ¼ links; thence North 2 chains and 99 links to a stone; thence East var. 6 degrees 30 minutes, 13 chains and 86 links to a stone in hedge on Quarter Section line; thence South on Quarter Section line, 5 chains and 42 1/2 links to place of beginning;
Parcel 2: The Southeast Quarter of Section 17, Township 19 North, Range 10 East of the Fourth Principal Meridian, Lee County, Illinois, EXCEPTING THEREFROM a part of the Southeast Quarter of Section 17, Township 19 North, Range 10 East of the Fourth Principal Meridian, Lee County, Illinois and being described as follows: Commencing at the Southeast corner of said Section 17; thence West along the South line of said Section 17, 1000 feet to the point of beginning; thence continuing West along the said South line of said Section 17, 400 feet; thence North and parallel with the East line of said Section 17, 550 feet; thence East and parallel with the South line of said Section 17, 400 feet; thence South and parallel with the East line of said Section 17, 550 feet to the point of beginning.
Turbine: 119
Landowner: Martin A. Montavon, as Trustee under the provisions of a Declaration of Trust designated as the Lynn E. Montavon Trust dated February 25, 2016 and Lynn E. Montavon, as Trustee under the provisions of a Declaration of Trust designated as the Lynn E. Montavon Trust dated February 25, 2016
Tax Parcel Identification Numbers: 13-21-17-400-004, 13-21-17-400-005, 13-21-17-400-002 and 13-21-17-300-002
Turbine Common Location: 2172.94 ft West of Van Orin Rd and 1417.64 ft North of Co Hwy 12 (Maytown Rd)
Township: May
Legal Description: Parcel 1: The South 5/8 of the Southwest Quarter of Section 17, Township 19 North, Range 10 East of the Fourth Principal Meridian, Lee County, Illinois, EXCEPTING THEREFROM the following 3 tracts:
Tract 1: Commencing at a point on the South line of said Section 17 which is 935.09 feet West of the Southeast corner of said Southwest Quarter; thence Northerly at an angle of 89 degrees 48 minutes measured counterclockwise on the said South line of Section 17, 362.24 feet; thence Westerly parallel with the South line of said Section 17, 601.1 feet; thence Southerly at an angle of 90 degrees 12 minutes measured clockwise from the last described course, 362.34 feet to the South line of said Section 17; thence Easterly on said South line a distance of 601.1 feet to the point of beginning;
Tract 2: Commencing at a point on the South line of said Section 17 which is 871.86 feet West of the Southeast corner of the said Southwest Quarter; thence Northerly at an angle of 89 degrees 48 minutes measured counterclockwise from the said South line of Section 17, a distance of 165 feet; thence Westerly parallel with the South line of said Section 17, a distance of 43.23 feet; thence Southerly at an angle of 90 degrees 12 minutes measured clockwise from the last described course, 165 feet to the said South line of said Section 17; thence Easterly along and upon said South boundary line of said Section 17 to the point of beginning;
Tract 3: Commencing at the Quarter Section corner on the South line of Section 17, Township 19 North, Range 10 East of the Fourth Principal Meridian; thence West var. 6 degrees 40 minutes, 13 chains and 21 links; thence North 2 chains and 50 links to a stone; thence West 65 ¼ links; thence North 2 chains and 99 links to a stone; thence East var. 6 degrees 30 minutes, 13 chains and 86 links to a stone in hedge on Quarter Section line; thence South on Quarter Section line, 5 chains and 42 1/2 links to place of beginning;
Parcel 2: The Southeast Quarter of Section 17, Township 19 North, Range 10 East of the Fourth Principal Meridian, Lee County, Illinois, EXCEPTING THEREFROM a part of the Southeast Quarter of Section 17, Township 19 North, Range 10 East of the Fourth Principal Meridian, Lee County, Illinois and being described as follows: Commencing at the Southeast corner of said Section 17; thence West along the South line of said Section 17, 1000 feet to the point of beginning; thence continuing West along the said South line of said Section 17, 400 feet; thence North and parallel with the East line of said Section 17, 550 feet; thence East and parallel with the South line of said Section 17, 400 feet; thence South and parallel with the East line of said Section 17, 550 feet to the point of beginning.
Turbine: 120
Landowner: Steven M. Becker, as Trustee under the provisions of a Declaration of Trust designated as the Steven M. Becker Trust dated April 3, 2014
Tax Parcel Identification Numbers: 13-21-15-100-005, 13-21-15-100-006 and 13-21-15-100-007
Turbine Common Location: 4163.94 ft West of May Rd and 1602.82 ft South of Sublette Rd
Township: May
Legal Description: The North One-half of the Northwest Quarter of Section 15 EXCEPTING the Easterly 2 rods thereof and ALSO EXCEPTING part of the Northwest Quarter of Section 15 in Township 19 North, Range Ten 10 East of the Fourth Principal Meridian described as follows, to-wit: beginning at a point on the North line of the Northwest Quarter of said Section Fifteen 15, said point being 791.96 feet East of the Northwest corner of said Northwest Quarter; thence Easterly along said North line, a distance of 491.10 feet; thence Southerly at an angle of 89 degrees 47 minutes 26 seconds as measured counterclockwise from the last described course, a distance of 410.71 feet; thence Westerly at an angle of 89 degrees 42 minutes 05 seconds as measured counterclockwise from the last described course, a distance of 489.87 feet; thence Northerly at an angle of 90 degrees 28 minutes 23 seconds as measured counterclockwise from the last described course, a distance of 406.36 feet to the point of beginning, AND the Southwest Quarter of the Northwest Quarter of Section 15 all situated in Township 19 North, Range 10 East of the Fourth Principal Meridian in Lee County, Illinois.

Variation Request: The Lee County Ordinance requires a setback from property lines of 350 ft. This wind turbine could be as close as 207 feet from the property line. Petitioner is requesting a 143-foot variation.

Turbine: 121
Landowner: Michael County, Illinois and being described as follows: Commencing at the Southeast corner of said Section 17; thence West along the South line of said Section 17, 1000 feet to the point of beginning; thence continuing West along the said South line of said Section 17, 400 feet; thence North and parallel with the East line of said Section 17, 550 feet; thence East and parallel with the South line of said Section 17, 400 feet; thence South and parallel with the East line of said Section 17, 550 feet to the point of beginning.

Turbine: 120
Landowner: Steven M. Becker, as Trustee under the provisions of a Declaration of Trust designated as the Steven M. Becker Trust dated April 3, 2014
Tax Parcel Identification Numbers: 13-21-15-100-005, 13-21-15-100-006 and 13-21-15-100-007
Turbine Common Location: 4163.94 ft West of May Rd and 1602.82 ft South of Sublette Rd
Township: May
Legal Description: The North One-half of the Northwest Quarter of Section 15 EXCEPTING the Easterly 2 rods thereof and ALSO EXCEPTING part of the Northwest Quarter of Section 15 in Township 19 North, Range Ten 10 East of the Fourth Principal Meridian described as follows, to-wit: beginning at a point on the North line of the Northwest Quarter of said Section Fifteen 15, said point being 791.96 feet East of the Northwest corner of said Northwest Quarter; thence Easterly along said North line, a distance of 491.10 feet; thence Southerly at an angle of 89 degrees 47 minutes 26 seconds as measured counterclockwise from the last described course, a distance of 410.71 feet; thence Westerly at an angle of 89 degrees 42 minutes 05 seconds as measured counterclockwise from the last described course, a distance of 489.87 feet; thence Northerly at an angle of 90 degrees 28 minutes 23 seconds as measured counterclockwise from the last described course, a distance of 406.36 feet to the point of beginning, AND the Southwest Quarter of the Northwest Quarter of Section 15 all situated in Township 19 North, Range 10 East of the Fourth Principal Meridian in Lee County, Illinois.

Variation Request: The Lee County Ordinance requires a setback from property lines of 350 ft. This wind turbine could be as close as 207 feet from the property line. Petitioner is requesting a 143-foot variation.

Turbine: 121
Landowner: Michael Sutton
Tax Parcel Identification Numbers: 13-21-16-100-008 and 13-21-16-100-007
Turbine Common Location: 1877.67 ft East of Van Orin Rd and 1176.8 ft South of Sublette Rd
Township: May
Legal Description: The East Half of the Northwest Quarter of Section 16, Township 19 North, Range 10 East of the Fourth Principal Meridian, situated in the County of Lee and State of Illinois.
Turbine: 124
Landowner: Clarence D. Blaine, as Trustee of the Clarence D. Blaine Declaration of Trust dated the 18th day of December, 2000; Marilyn Ann Blaine, as Trustee of the Marilyn Ann Blaine Declaration of Trust dated the 18th day of December, 2000; Blaine Investments, L.P.; Brian D. Blaine and Amanda M. Blaine
Tax Parcel Identification Numbers: 08-20-25-400-011, 08-20-25-200-004, 08-20-25-400-007, 08-20-25-200-003, 08-20-25-400-008 and 08-20-25-400-010
Turbine Common Location: 1776.87 ft West of Carter Rd and 3473.59 ft South of Todd Rd
Township: East Grove
Legal Description: Parcel 1: The East Half of the Northeast Quarter and the North Half of the Southeast Quarter of Section 25, Township 19 North, Range 9 East of the Fourth Principal Meridian bounded and described as follows: Commencing at the Southeast corner of Section 25; thence North (assumed direction) along East line of Southeast Quarter of Section 25, a distance of 1,674.92 feet for a point of beginning; thence South 89°35'04" West 360.76 feet; thence North 45°52'57" West 181.79 feet; thence North 87°45'47" West 295.91 feet; thence North 0°20'25" East 301.31 feet; thence North 9°54'29" East 295.37 feet; thence South 85°42'49" East 278.03 feet; thence South 3°29'55" West 251.71 feet; thence South 82°58'38" East 476.02 feet to the East line of Southeast Quarter of Section 25; thence South 22.40 feet to the North 84°19'23" West 602.99 feet; thence South 49°04'51" West 74.32 feet; thence South 0°51'50" East 135.63 feet; thence South 60°57'30" East 154.78 feet; thence South 76°53'19" East 532.72 feet to East line of Southeast Quarter of Section 25; thence South 54.50 feet to the point of Beginning, all in Lee County, Illinois.

Turbine: 125
Landowner: Martin A. Montavon, as Trustee under the provisions of a Declaration of Trust designated as the Martin A. Montavon Trust dated February 25, 2016, and Lynn E. Montavon, as Trustee under the provisions of a Declaration of Trust designated as the Lynn E. Montavon Trust dated February 25, 2016
Tax Parcel Identification Numbers: 13-21-20-200-005, 13-21-20-200-004 and 13-21-20-200-006
Turbine Common Location: 533.47 ft West of Van Orin Rd and 622.09 ft South of Co Hwy 12 (Maytown Rd)
Township: May
Legal Description: The North Half of the Northeast Quarter of Section 20, Township 19 North, Range 10 East of the Fourth Principal Meridian, Lee County, Illinois. The Lee County Zoning Board of Appeals will hold a public hearing on this petition on March 7th, 2019 at 7:00 P.M. in the 3rd floor Boardroom of the Old Lee County Courthouse, 112 E. Second Street, Dixon, Illinois. The Applicant, BSW DevCo LLC is a Delaware limited liability company, whose sole member is EverPower Wind Holdings, Inc. The Officers of BSW DevCo LLC are the following individuals:

Lee County, Illinois. Parcel 2: A part of the North Half of the Southeast Quarter of Section 25, Township 19 North, Range 9 East of the Fourth Principal Meridian bounded and described as follows: Commencing at the Southeast corner of Section 25; thence North (assumed direction) along East line of Southeast Quarter of Section 25, a distance of 1,674.92 feet for a point of beginning; thence South 89°35'04" West 360.76 feet; thence North 45°52'57" West 181.79 feet thence North 87°45'47" West 295.91 feet thence North 0°20'25" East 301.31 feet; thence North 9°54'29" East 295.37 feet; thence South 85°42'49" East 278.03 feet; thence South 3°29'55" West 251.71 feet; thence South 82°58'38" East 476.02 feet to the East line of Southeast Quarter of Section 25; thence South 22.40 feet to the North 84°19'23" West 602.99 feet; thence South 49°04'51" West 74.32 feet thence South 0°51'50" East 135.63 feet; thence South 60°57'30" East 154.78 feet thence South 76°53'19" East 532.72 feet to East line of Southeast Quarter of Section 25; thence South 54.50 feet to the point of Beginning, all in Lee County, Illinois.

Turbine: 125
Landowner: Martin A. Montavon, as Trustee under the provisions of a Declaration of Trust designated as the Martin A. Montavon Trust dated February 25, 2016, and Lynn E. Montavon, as Trustee under the provisions of a Declaration of Trust designated as the Lynn E. Montavon Trust dated February 25, 2016
Tax Parcel Identification Numbers: 13-21-20-200-005, 13-21-20-200-004 and 13-21-20-200-006
Turbine Common Location: 533.47 ft West of Van Orin Rd and 622.09 ft South of Co Hwy 12 (Maytown Rd)
Township: May
Legal Description: The North Half of the Northeast Quarter of Section 20, Township 19 North, Range 10 East of the Fourth Principal Meridian, Lee County, Illinois. The Lee County Zoning Board of Appeals will hold a public hearing on this petition on March 7th, 2019 at 7:00 P.M. in the 3rd floor Boardroom of the Old Lee County Courthouse, 112 E. Second Street, Dixon, Illinois. The Applicant, BSW DevCo LLC is a Delaware limited liability company, whose sole member is EverPower Wind Holdings, Inc. The Officers of BSW DevCo LLC are the following individuals:

Individual	Title	Address
David Giordano	Officer	40 East 52 nd St, New York, NY 10022
Martin Torres	Officer	40 East 52 nd St, New York, NY 10022
Matthew Ptak	Officer	40 East 52 nd St, New York, NY 10022

For more information on the Project, or for any questions, please reach out to: David Smith BSW DevCo LLC
David.l.smith@blackrock.com (646) 231-8140
You are not obligated to respond to this notice, however, if you should have any questions or comments regarding this petition, please contact the Lee County Zoning Office at 815- 288-3643 within seven days.
Dee Duffy
Lee County Zoning Administrator

Classified MARKETPLACE

**If your item for sale
is \$200 or less
it runs for FREE!**

(15 words - one week - 7 publications -
price must be listed)

100'S GENERAL LISTINGS | 200'S EMPLOYMENT | 300'S ITEMS FOR SALE | 400-500'S REAL ESTATE | 600'S VEHICLE SALES

101 LEGAL NOTICE

This publication does not knowingly accept fraudulent or deceptive advertising. Readers are cautioned to thoroughly investigate all ads, especially those asking for money in advance.

105 BUSINESS OPPORTUNITIES

"This publication does not knowingly accept fraudulent or deceptive advertising. Readers are cautioned to thoroughly investigate all ads, especially those asking for money in advance."

113 FINANCIAL

NOTICE Advance Fee Loans or Credit Offers Companies that do business by phone can't ask you to pay for credit before you get it. For more information, call toll-free 1-877-FTC-HELP. A public service message from your hometown newspaper and the Federal Trade Commission.

119 ANNOUNCEMENTS

"This publication does not knowingly accept fraudulent or deceptive advertising. Readers are cautioned to thoroughly investigate all ads, especially those asking for money in advance."

127 SERVICES AND REPAIRS

LAWN WORK, Fall Cleanup, Gutter Cleaning, Tree Removal. Rochelle Area (10 Mile Radius) 815-761-9619 FREE Estimates. Fully Insured. In Business Since 1999.

JNJ JUMPERS Indoor/ Outdoor Bounce House Rentals Available Year Round. Please Call 815-784-4256 For Availability or Visit us on Facebook.

201 DOMESTIC/CHILD CARE

NO INDIVIDUAL, unless licensed or holding a permit as a childcare facility, may cause to be published any advertisement soliciting a child care service. A childcare facility that is licensed or operating under a permit issued by the Illinois Department of Children and Family Services may publish advertisements of the services for which it is specifically licensed or issued a permit. Your Hometown Newspaper strongly urges any parent or guardian to verify the validity of the license of any facility before placing a child in it's care.

203 HELP WANTED

NEWSPAPER CARRIERS Wanted. (Rochelle) Several Routes Open. Call 815-561-2112 For More Information.

301 ANTIQUES

WANTED TO BUY: Vintage Metal and Wood Signs, Milk Bottles & Local Advertising, Oak Icebox, Iron Door Stop and Antique Lighting... Call Dick Harms at 815-562-2928 or email dickharms@hotmail.com

ANTIQUES WANTED: I pay cash for antiques; furniture, glassware, pottery & crocks, tin & iron toys, sterling silver, decoys. If it's antique, I'm interested in looking! Call 815-562-2928 or email dickharms@hotmail.com

307 MISCELLANEOUS FOR SALE

BUNDLED Newspaper -\$3 per Bundle. End Roll- Cost Depends on Weight of Roll. Available Monday-Friday 8AM-NOON ONLY. SEE RECEPTIONIST AT FRONT COUNTER Rochelle News-Leader.

309 PETS AND SUPPLIES

FREE KITTENS to a Good Home. Call 815-213-5043. (02-17-19)

315 WANTED TO BUY

WANTED: Coin operated machines, slot machines, pinball, arcade, trade simulators, jukeboxes. Working or not working. 815-397-6586.

405 HOUSES FOR SALE

ALL REAL ESTATE advertised herein is subject to the Federal Fair Housing Act, which makes it illegal to advertise any preference, limitation or discrimination based on race, color, religion, sex, handicap, familial status, or national origin, or intention to make any such preferences, limitation or discrimination. We will not knowingly accept any advertising for real estate which is in violation of the law. All persons are hereby informed that all dwellings advertised are available on an equal opportunity basis.

501 APARTMENTS FOR RENT

ROCHELLE : 1 - BED ROOM . Heat, Sewer & Water Included. No Pets/Smoking. \$575/Month. 815-562-6150. (03-06-19)

505 BUSINESS PROPERTY FOR RENT

AVAILABLE Manufacturing & Warehouse Space. All Weather Access. 12,000 - 46,000 Sq. ft., 20 Cents per Sq. ft. Divisible. Lainco Inc. Ph. 815-538-5176. (03-20-19)

TO CONTACT US ABOUT CLASSIFIED ADVERTISING

815-857-2311 • FAX: 815-857-2517

EMAIL: MMAYS@AMBOYNEWS.COM

INFORMATION

Office Hours: 8 a.m. to noon, and 1 p.m. to 5 p.m. (Monday, Wednesday and Thursday. Tuesday and Friday are by appointment only)

Address: 245 E. Main Street, Amboy
Mail: P.O. Box 162, Amboy, IL 61310

AMBOY DEADLINES:

• Mondays at 10 a.m. to start in Wednesday's Amboy News

(Deadlines subject to change during holiday times)

DISCLAIMER: If your advertisement appears incorrectly, notify us immediately. We will not be responsible for more than one incorrect insertion, and will only credit customer for one insertion.

All classified marketplace line ads will appear in the following 7 print publications and on 5 high-traffic newspaper websites:
• Rochelle News-Leader • Ogle County Life • Rochelle Shopping News • Ashton Gazette • Amboy News • Mendota Reporter • Mendota Money Saver

**Call for pricing that starts at
\$32.99 for private party ads and
\$44.60 for commercial business ads
and \$7.50 for garage sale ads.**

509 HOUSES FOR RENT

ROCHELLE : 3 - BED ROOM , 2-Bath. 1-Car Garage, No Pets. \$900/Month. 815-509-5000. (02-24-19)

511 STORAGE UNITS

Amboy & Sublette
10 x 20 inside storage & outside storage for semi-trucks/trailers, boats, campers, etc
Call
815-857-2252
08172018

**ADVERTISE
WITH
US!**

601 VEHICLES FOR SALE

Don't Miss An Issue!

Have you moved? Are you planning a move?

Don't forget to call the Amboy News and let us know your new mailing address.

Call Mary at 815-857-2311

Established In 1854
The Amboy News
The Depot Museum

**235 E. Main Street
Amboy IL 61310**

815-857-2311 • 815-857-2517



04042018

ILLINOIS CLASSIFIED ADVERTISING NETWORK

HEALTH

Attention: Oxygen Users! Gain freedom with a Portable Oxygen Concentrator! No more heavy tanks and refills! Guaranteed Lowest Prices! Call the Oxygen Concentrator Store: 866-353-2806

Stay in your home longer with an American Standard Walk-In Bathtub. Receive up to \$1,500 off, including a free toilet, and a lifetime warranty on the tub and installation! Call us at 1-844-903-1192

INTERNET

Earthlink High Speed Internet. As Low As \$14.95/month (for the first 3 months.) Reliable High Speed Fiber Optic Technology. Stream Videos, Music and More! Call Earthlink Today 1-877-366-1349

LEGAL SERVICES

NEED LEGAL HELP?
Get a FREE referral to an attorney! Call the Illinois State Bar Association Illinois Lawyer Finder The advice you need 877-270-3855 or <https://www.isba.org/public/illinoislawyerfinder>

TV/INTERNET

DIRECTV & AT&T. 155 Channels & 1000s of Shows/Movies On Demand (w/SELECT Package.) AT&T Internet 99 Percent Reliability. Unlimited Texts to 120 Countries w/AT&T Wireless. Call 4 FREE Quote 1-855-894-0529

Spectrum Triple Play! TV, Internet & Voice for \$29.99 ea. 60 MB per second speed. No contract or commitment. More Channels. Faster Internet. Unlimited Voice. Call 1-855-383-6517

RETIRED DEMOS



2018 & 2019 Chevy Equinox LT AWD & FWD Models with up to \$7,200 off MSRP



**CERTIFIED
PRE-OWNED**

Limited Warranty
• 24/7 Roadside Assistance
• 172-Point Vehicle Inspection and Reconditioning Process
• 3-Day/150-Mile Customer Satisfaction Guarantee

• 2-Year/24,000-Mile Standard CPO Maintenance Plan
• 12-Month/12,000-Mile Bumper-to-Bumper Warranty
• 6-Year/100,000-Mile Powertrain

2018 Chevy Traverse AWD High Country Black\$44,900

2018 GMC Acadia SLT, AWD White\$32,500

2018 Chevy Malibu LT Silver\$20,900

2017 Chevy K-3500 Crew Cab, LTZ, Diesel, Silver\$53,300

2017 Chevy 1500 Crew Cab LTZ, 4x4, Maroon\$38,900

2017 Chevy 1500 Crew Cab 4x4, LTZ, Red\$36,900

2017 GMC Terrain SLE 2 AWD, Gray\$21,900

2016 Chevy 3500 Crew Cab LTZ, 4x4, Z71, Diesel White\$46,900

2016 Chevy K-1500 Crew Cab, LTZ, 4x4, Sunroof Z71, Blue\$36,900

2016 Chevy Equinox LTZ AWD V6, Loaded, Black\$22,900

2016 Chevy Malibu LT Gray\$15,900

2015 Chevy 1500 Crew Cab 4x4, Z71, Lt. Brown...\$26,500

2015 GMC Terrain SLT AWD V6, Silver\$19,500

2014 Chevy Traverse FWD LTZ, Loaded, White...\$20,500

2014 Chevy Traverse FWD 2LT, Leather, Maroon.\$18,900

QUALITY USED CARS, TRUCKS, SUV'S & VANS

2013 Ford F-150 Super Crew XLT Lariat 4x4, Sunroof, 42,000 Miles\$28,900

2010 Chevy K-1500 Crew Cab LT 4x4, Black\$15,900

2013 Chevy 1500 Crew Cab 4x4, LTZ, Z71 Black\$24,500

2011 Chevy Tahoe LT Loaded, Silver\$12,700

**VAESSEN
BROTHERS
CHEVROLET, INC.**
"Great Deals - Great Service Since 1926"

Ally Financing and
GMF Financing or Leasing

**HIGHWAY 52
SUBLETTE, IL**
www.vaessenbrothers.com

**(815) 849-5232
1-800-227-5203
OR AFTER 6 PM
(815) 849-5251**

FIND NEW ROADS™



CHEVROLET

02132019

www.amboynews.com