



ROCHELLE News-Leader

MIDWEEK EDITION | WWW.ROCHELLENEWS-LEADER.COM

Today's RNL issue sponsored by Community Unity member:

Rochelle
Community Unity
Shop • Play • Stay

Serving Rochelle for over 25 years
Colonial Flowers & Gifts Shoppe

408 Lincoln Highway
815-562-8101

Vol. 100 • No. 94

LOCAL NEWS... LOCAL VIEWS WEDNESDAY, MARCH 25, 2020 \$1

REASON NO. 3

Here is another great reason to come to Kish. **We love heavy metal!**

Diagnose and repair all types of vehicles in the **Automotive & Diesel Programs at Kish!**

KC KISHWAUKEE COLLEGE
www.kish.edu/reasons

KNOW IT TODAY

Honors

Kiwanians honored at annual banquet. **See page 3**

WEATHER

WEDNESDAY	THURSDAY
HIGH LOW	HIGH LOW
55 43	52 38
FRIDAY	SATURDAY
HIGH LOW	HIGH LOW
51 44	60 40

Today's RNL issue sponsored by Community Unity member:

Rochelle
Community Unity
Shop • Play • Stay

MEYERS
FURNITURE & FLOORING

209 Powers Road
IL Route 251 North
815-562-8792

OBITUARIES

- WAYNE FRIESTAD
- CAROL MIFFLIN
- MARIA M. GARCIA
- RUTH PEST
- OCIE SIEBERNS

See page 4

INSERTS

- SEVERE WEATHER PREPAREDNESS

INSIDE

Social News.....2, 3, 5, 7

Obituaries.....4

Community Calendar.....7

Opinion6



A layer of protection

BY ANDREW HEISERMAN
STAFF WRITER

AS healthcare facilities and providers across the country face a shortage of protective masks, one local seamstress is doing her part to help keep them supplied. Zoe Ujcic began sewing at a young age, but it was not until the end of high school when she began to take it seriously. After high school she went to the College of DuPage taking tailoring and alteration classes to become a fashion designer. Once she completed her classes, she worked as a seamstress focusing on alterations, fixing clothes to get away from fast fashion. Doing this

is more sustainable than always buying something new rather than repairing it. “If your zipper breaks, come to me and I will fix it, rather than buying a brand-new coat,” said Ujcic. “It is just a little bit more efficient.” Recently, Ujcic has seen the shortage of available protective masks on the news and decided she wanted to do something to help. She did research and learned that she did not have the resources necessary to make N95 respirator masks, but that did not stop her. After doing more research she learned that by using a three-layer blend of materials, she could make a reusable, surgical-like mask. The masks are made of two



layers of cotton, one layer of woven material, such as Kevlar and a wire to help keep it snug against the face. All masks are machine washed, dried and immediately put in Ziploc bags. While the masks are not manufactured in a medical facility, they protect against multiple substances.

See MASK page 2



Learning from a distance

BY ANDREW HEISERMAN
STAFF WRITER

ROCHELLE – With all K-12 schools in the state closed for the time being, teachers have resorted to alternative means to ensure learning continues from home. Due to the growing concern surrounding COVID-19, all students in both Rochelle’s elementary and high school districts were sent home on Friday, March 13. Each student was sent home with a packet containing five days of age and grade level appropriate work to do at home. The packets are printed English on one side, Spanish on the other and are available online for those with internet access. While this is a new experience for everyone involved, the student’s parents have expressed their appreciation for the school’s response of sending the packets home and keeping everyone updated. “We have heard feedback from parents that they were appreciative of us sending home five-days’ worth of work in such a short amount of time,” said Jason Harper, elementary and high school district superintendent.

“We have also heard positive feedback about us posting additional resources and updates through the district website and Facebook pages as well.” The school is offering additional alternative learning options for parents and students through the website and Facebook pages as well. They are encouraging students to take advantage of these resources, so they are still up to speed when school returns. For the time being, teachers are using alternative means to keep in touch with their students and continue the learning. Teachers with students who have internet access have been utilizing technology to keep them connected. “I’m checking in with my kids daily on assignments, which they are completing,” said Scott Campbell, science teacher at Rochelle Township High School. “I can also provide them instantaneous support via online platforms and even do video conferences or video lectures if I need to. I think that it is going very well, and I am comfortable learning will continue on pace of we have to extend absence longer.”

“It has brought me a great deal of pride to see my colleagues’ collaboration to provide our best.”

Kimberly Lumzy
Fourth grade bilingual teacher,
Central School

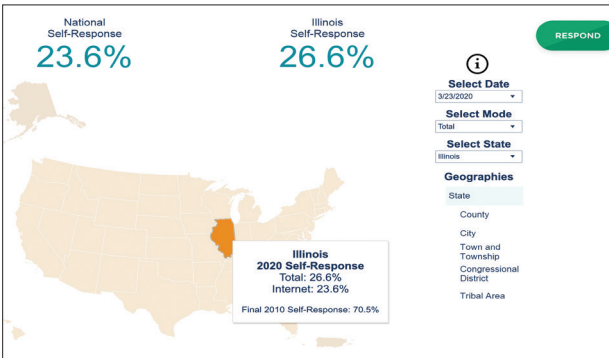
See LEARN page 4

Take time to take the Census

BY ANDREW HEISERMAN
STAFF WRITER

ROCHELLE – During hectic times like the country is currently facing, the City of Rochelle is reminding its residents of the importance of responding to the United States Census. With the entire state of Illinois practicing social distancing and many individuals either out of work or working from home, it is very easy to forget things like responding to the Census. But it is very important to the city because every response is worth approximately \$1,800 in federal funding per year for the next 10 years for Ogle County. Invitations for residents to self-respond are currently being sent out and should arrive between March 13-20, no later than April 1. Once received, people can respond online, over the phone, or request a paper copy to be mailed to their address. The invitations to respond are printed in English on one side and Spanish on the other. For anybody who needs help responding to their Census, they can call the City of Rochelle at 815-561-6161. “We can help people do it online and I have already helped several people,” said Sue Messer, city clerk and assistant to the city manager. “They call in, we go to the website and they give us their identifier number located on their form. Then we ask them the questions and enter in the responses as they tell them to us.” On average, it takes no more than 10 minutes to respond to the census, but it has a big effect on how funds are distributed. The city would like everyone to know that their responses and information is protected by federal law from being given to any other government agency or police station.

See CENSUS page 5



https://2020census.gov/en/response-rates.html?utm_campaign=20200323msc20s1ccalls&utm_medium=email&utm_source=govdelivery

Spring New Life Into Your Home!

Let us help you with your spring projects!

- Home Equity Lines of Credit
- Home Equity Loans
- Stillman Credit Card
- And More!

www.stillmanbank.com

Byron • Oregon • Rochelle • Rockford • Roscoe/Rockton • Stillman Valley

Stillman
Member FDIC
BANK

FIRST STATE BANK

Brent Ohlinger
Community President

David Eckhardt
Vice President/Loan Officer

304 East Highway 38 • Rochelle
firststatebank.biz • 815.562.2200

Member FDIC

LOCAL NEWS

Hospital provides COVID-19 updates

ROCHELLE — Rochelle Community Hospital continues to work closely with the Ogle County Health Department and the City of Rochelle to protect the health, safety and well-being of Ogle County residents. These are challenging times but RCH is

proud of the coordinated efforts of staff, the health department and our community to keep everyone healthy and informed.

Social distancing
Please practice the social distancing recom-

mendations listed from the Illinois Department of Public Health. These measures will help to prevent and slow the spread of COVID-19.

Triage Line
The RCH COVID-19 Triage Line is open to answer questions Monday

through Friday from 8 a.m. to 5 p.m. You will receive screening over the phone, followed by potential influenza and COVID-19 testing.

Staff cannot reiterate this enough. If you feel you have symptoms of COVID-19 or other respiratory illness and wonder if you should be tested or be seen, STAY HOME and call the COVID-19 Triage Informational Line at 815-561-8829. Do not go to the Emergency Room. Do not go to Convenient Care. Do not go to the doctor's office. If it is an emergency and you are in respiratory distress, please call 911 and share with them your symptoms.

Access restrictions
Only use the hospital's main entrance and emergency entrance. Access is limited to patients requiring:

Outpatient testing
Convenient Care Acute Visits only (these approved visits would be for minor illnesses and injuries including rash, sprains, UTIs, illness excluding fever and cough, etc.)

Infusion services
Emergency Department

No inpatient visitors will be allowed with the exception of a parent of a minor patient, a patient who is in hospice care or a patient's medical Power of Attorney who are asked to come in to make medical decisions. These

approved visitors must be symptom free/no fever. You may be screened prior to entry at the Emergency entrance. ALL non-essential visitors are restricted.

Scheduled Groups/Events

Cancellations at RCH now include all upcoming Auxiliary events:

Community Presentation with Dr. Swanson – March 31

Auxiliary Scholarship/Volunteer Brunch – April 13

Auxiliary "Rockin' the Runway" Style Show – April 25 at Salt 251

Auxiliary School Tours for April & May

Alcoholics Anonymous Support Group

Community CPR Classes

Grief Support Group

Group Hope Support Group

Narcotics Anonymous Support Group

Prediabetes Class

Blood drive

A new location for the RRVBC Blood Drive on March 31:

The RCH Blood Drive is still scheduled for Tuesday, March 31 from noon to 6 p.m. The location has been moved to the Firemen's Hall at 314 6th Ave.

The RRVBC Mobile Bus will be monitoring and following all social distancing and infection control protocol. Your screening will be done inside the Hall to start. Message from the

RRVBC: The time to donate is now. Blood shortages are occurring in the U.S. and we are working to prevent shortages locally. We are monitoring credible health agencies for updates on COVID-19 and are responding accordingly. There is no known risk to the safety of the nation's blood supply except for lack of donations and there are no reports of the spread of this respiratory virus, by blood transfusion. Giving blood is not a risk for donors to contract COVID-19. Giving blood is critical to ensure an adequate supply to meet patient needs.

Sign up today to give blood at – https://donor.rrvbc.org/donor/schedules/drive_schedule/53292 Scheduled appointments will be priority over walk-ins.

General information

For general questions about COVID-19, call the IDPH hotline 24/7 at 1-800-889-3931 or email dph.sick@illinois.gov.

Additional online resources

Rochelle Community Hospital: www.rochelle-hospital.com

Illinois Department of Public Health: www.dph.illinois.gov

City of Rochelle: www.cityofrochelle.net

Centers for Disease Control and Prevention: www.cdc.gov



COVID-19 TRIAGE LINE

Call: (815) 561-8829

Monday-Friday 8 a.m. - 5 p.m.

If you feel you have symptoms of COVID-19 or other respiratory illness and wonder if you should be tested or be seen:

STAY HOME and call the Triage Line.

DO NOT go to the Emergency Room.

DO NOT go to Convenient Care.

DO NOT go to the doctor's office.

After hours, stay home and call the Triage Line when it opens.

If you are experiencing a medical emergency, please call 911 or present to your local Emergency Department. We cannot reiterate this information enough.



COVID-19 Social Distancing: What does it mean?

Social distancing is the practice of reducing close contact between people to slow the spread of infections or diseases. Social distancing measures include limiting groups of people coming together, closing buildings or canceling events.

AVOID

- Group Gatherings
- Sleep Overs
- Playdates
- Concerts
- Theater Outings
- Church Services
- Athletic Events
- Crowded Retail Stores
- Malls
- Workouts in Gyms
- Visitors in Your Home
- Non-essential Workers in Your Home

USE CAUTION

- Mass Transit Systems
- Visiting a Grocery Store
- Getting Take Out
- Picking Up Medications
- Playing Tennis in a Park
- Visiting the Library

SAFE TO DO

- Take a Walk
- Go for a Hike
- Yard Work
- Playing in Your Yard
- Cleaning Out a Closet
- Reading a Good Book
- Listening to Music
- Cooking a Meal
- Family Game Night
- Going for a Drive
- Stream a Favorite Show
- Check on a Friend
- Check on Elderly Neighbor



MASK: Ujcic making masks for health professionals

From page 1

"I have so much extra fabric and will be home for the next two weeks just like everyone else, so why not do what I can to help," said Ujcic. "They are pretty heavy duty and protect against aerosols and liquid from getting in. It is much better than nothing."

Currently she is making them for those in need, such as medical facilities, nursing homes, and a few nurses that have reached out. She plans to continue making masks until either supplies run out or the demand is met.

If anybody has extra one-eighth-inch elastic or 20-gauge wire to donate to help continue making masks, reach out to cicalterations@gmail.com or Yvonne Brass on Facebook. All donations are greatly appreciated.

LOCAL NEWS

Kiwanis Golden K

Several Kiwanians awarded at annual banquet

Dennis Swinton receives prestigious Amador Medalion Award

ROCHELLE — The Rochelle Kiwanis Golden K held its annual awards banquet in February at the Hickory Grove Conference Center.

Dennis Swinton received the prestigious Amador Medalion Award because of his tireless work with the Golden K and the community of Rochelle.

Swinton has been honored many times by receiving awards such as Kiwanian of the Year, Legion of Honor, Hickson Award and Zeller Award. He recently received an award for 10 years of perfect service.

Swinton has helped other clubs to be successful by holding the



Dennis Swinton (left) received the Amador Award from Division Lt. Governor Ric Taylor at the Kiwanis Golden K annual banquet in February.

position of lieutenant governor and regularly attending inter-club meetings as well as divisional and district meetings.

His real love has always been supporting the Kiwanis youth by starting and supporting the local Key Club at the high school and

Builders Club in the Rochelle, Creston and Kings middle schools and the BUGS (Bringing Up Grades) program in the local elementary schools in and around Rochelle.

Besides his tireless work with the Kiwanis Club, Swinton is also well known in Rochelle for his work in the com-

munity. He received the Rochelle Gratitude Award for his dedication to the community – primarily with the youth. When Rochelle Mayor John Bearrows gave the award to Swinton he said “Dennis started and worked on many programs throughout our community, always being the first to step

up and volunteer...and following through from conception to the end of the project.”

Swinton is not only instrumental in the success of the Rochelle Kiwanis Golden K but also in working with the youth who will be the next generation of volunteers dedicated to improving the lives of children.



Dean Herrmann (pictured above far right) was named this year's Kiwanian of the Year. During the banquet it was said, “Sometimes we take our members for granted. They come to meetings; they work at the events and always have a way of leaving us feeling better for the time we spend with them. They become so much part of everything we do that they simply blend into the fabric of the organization. This year's Kiwanian of the Year, Dean Herrmann, is that member. Whether leading in song or telling that joke that we were never sure should be told, until it was too late. Dean, in his absence has left a hold in the fabric of our club and we are all counting the days until his return. I am privileged to award Herrmann the Kiwanian of the Year Award.”



Rochelle Kiwanis member Larry Wing (above right) recently received the George Hixson Award. This award was named in honor of George Hixson, the first president of the Kiwanis International. It is given out to honor a member who has demonstrated leadership through their participation in club activities and support of the organization and its members. This year's recipient not only participates in activities, but in an innovator of new idea. Whether it is leading the Salvation Army bell ringing or single handedly running sheet sales, Larry Wing is there week after week and year after year. Ric Taylor is pictured with Wing.



Local Kiwanis member and president Ralph Papke (at left, right) was awarded with the President's Award. Each week the organization meets, the president rings the Kiwanis bell to call the group's attention. Ringing the bell is also done to draw positive attention to the organization. Papke has set a new benchmark for ticket sales for both Pancake Day and Chili Day. For his superhuman efforts in fundraising, the Kiwanis presented him with the President's Award. The President Award is given to that member who rings the bell for the Kiwanis in the community. He is pictured with Ric Taylor.



CONGRATULATIONS, KIWANIANS

Rock River Valley
BLOOD CENTER

give

**AS IF HER LIFE
DEPENDS ON IT**
...because it did.

needed
plasma
during cardiac
surgery



SCAN
TO SCHEDULE
A DONATION

**ROCHELLE COMMUNITY HOSPITAL
BLOOD DRIVE**

MARCH 31 | 12 PM-6PM



FREE ESTIMATES

Residential & Commercial Roofing

**Residential, Concrete
Driveways, Flatwork
and Foundations**

- Shingled Roofs
- Flat Roofs
- Metal Roofs For Farm Facilities
- Custom Built Homes
- Additions

Tim & Roger
Bruns, Owners
Established 1997

815-561-0099

Licensed & Insured

HSF2015

LOCAL NEWS

LEARN: Parents urged to reach out for support

From page 1

The districts are currently scheduled to resume classes Wednesday, April 8. However, administrators are planning to extend closures longer if needed. The response on how learning would move forward will be determined by the length of any future extensions.

For the time being, the districts continue to encourage parents and students to reach out to their teachers or building administrators for any support they may need. They also plan to continue serving meals out of Rochelle Middle School starting the week of March 30.

Websites:
Freckle.com
Lexialearning.com
Starfall.com
MysteryScience.com
Readworks.org
STMath.com
KhanAcademy.org
Gonoodle.com
Abcya.com
Xtramath.org
Zearn.org
Apps:
RazKids

Seesaw
Epic
Vooks
Book Creator
Magnetic ABC
Ten Frames
ABCmouse
Monster Math
Scratch Jr
Starfall
Let's Read
Youtube:
Kids Learning Tube
Free School

Homeschool Pop
StoryBots
Khan Academy
Smithsonian Channel
The Brain Scoop
Word World PBS
TED-Ed
Sci Show Kids
National Geographic Kids
Peekaboo Kidz
Storyline Online
Story Time with Ms. Becky

KidTimeStoryTime
Podcasts:
Brains Out
Six Minutes But Why: A Podcast for Curious Kids
Story Pirates
Circle Round
Smash Boom Best
Wow in the World
Eleanor Amplified
The Two Princes
Ear Snacks
KidNuz

The meals are offered as a drive through service for as many kids as the family needs to feed. While these times have brought challenges to many families and teachers, it has shown many of them what can be done when everyone

works together. "It has brought me a great deal of pride to see my colleagues' collaboration to provide our best," said Kimberly Lumzy, fourth grade bilingual teacher at Central Elementary School. "Whether that

be a list of websites for parents, a kind post about positivity and patience or thousands of lunches to make sure our students are well-fed. We are doing our best and we know our parents, students and community is too."

Illinois Agriculture in the Classroom offers online lessons and resources

BLOOMINGTON — Illinois families doing their part to social distance during school and restaurant closures due to the COVID-19 pandemic can add additional

agriculture educational activities to the digital resources at their fingertips. Illinois Agriculture in the Classroom and the state agriculture education system

are offering online lessons and resources to help educators, parents and students, especially while schools statewide are closed.

An IAITC video lesson is a new addition to the program's selection of online ag-related lessons and resources. IAITC plans to provide videos at noon Monday through Friday featuring simple lesson demonstrations that link to a worksheet, website and other resources. A milk lesson video was first in the new lineup.

"We think many schools are looking to find alternative activities or e-learning activities," said Kevin Daugherty, Illinois Center for Agricultural Engagement director. Along with providing teachers and stu-

dents another educational option, "this helps integrate agriculture into curriculum," said Daugherty.

Second in the IAITC lineup is a 10 a.m. Monday through Friday poultry embryology activity featuring chickens being hatched.

Information and resources may be found on IAITC's website or Facebook page. County literacy coordinators will also share information through social media.

Video lesson one — Where does my milk come from? — can be accessed here.

Video lesson two — Illinois eggs in the classroom — can be accessed here.

For more information call 309-557-3334 or e-mail kdaugherty@ilfb.org.

BUSINESS SPOTLIGHT

PRESCOTT BROTHERS Ford

See us for all your tire needs!
Call Mel or Barb in our service department.
Service Department open Saturdays 7:30 a.m. to 12:30 p.m.

Semi-Synthetic Oil & Filter Change & FREE Tire Rotation

\$40 Plus tax & fees. Up to 5 quarts.

620 S. 7th • Rochelle, IL | 815-562-2177
www.Prescottbrothersford.com

ANDERSON Plumbing & Heating, Inc.

Plumbing, Heating, Air Conditioning, Drinking water systems, Water Heaters, Softeners, Iron Filters & More.

LENNOX
Since 1976 One Less Thing To Worry About

Like on on Facebook Lic# 055-013999 **621 First Ave., Rochelle (815) 562-8784**

You didn't work this hard to worry about the unexpected.

Let a local independent agent help you cover all you've built, so you can worry about your business.

Dimond Bros. Insurance Since 1867

ROCHELLE • 815-562-5596
www.DimondBros.com

Auto-Owners INSURANCE

LIFE • HOME • CAR • BUSINESS

01092019

ROCHELLE News-Leader

211 IL Route 38 East, Rochelle, IL 61068
(815) 562-4171

USPS (467-820) ISSN (1075-2811)
Published every Wednesday and Sunday by Rochelle News-papers Inc. at 211 E. State Route 38, Rochelle, IL 61068. Periodical postage paid at Rochelle, IL 61068. Postmaster send address changes to the Rochelle News-Leader, P.O. Box 46, Rochelle, IL 61068. Subscription rates are \$112 per year by mail in Ogle County. Outside county rate is \$134 per year. No mail delivery in newspaper-carrier serviced areas. The circulation department is open Monday through Friday from 8 a.m. to 5 p.m. If you are a carrier subscriber and your paper does not arrive, contact Wanda Brimhall at 561-2112.

IN-COUNTY REGULAR SUBSCRIPTION RATES

- \$114 for one year • \$64.99 for six months
- \$26.99 for three months • \$10.99 for one month

Call (815) 561-2112 or Visit our website at www.rochellenews-leader.com

HOW TO CONTACT US

News-Leader Main Switchboard (815) 562-4171

General Manager
Mike Feltes (815) 561-2124

Newsroom Staff
Jennifer Simmons, Managing Editor (815) 561-2151
Russ Hodges, Sports (815) 561-2152
Andrew Heiserman, Staff Writer (815) 561-2118

To Place a Display Ad
Lori Bearrows (815) 561-2123
Tiffany Smith (815) 561-2153

To Place a Legal Ad
Mike Feltes (815) 561-2124

To Place a Classified Ad
Kelly White (815) 562-4171

Subscriptions and Delivery
Wanda Brimhall (815) 561-2112

Obituaries

Carol Mifflin

ROCHELLE—Carol S. Mifflin, 72, of Rochelle, passed away peacefully on Wednesday, March 18, 2020 at her home.

Carol was a devoted mother of Kathy Davidson, Karen (Randy) Reints, Sherri (Ed) Roberts and Rob (Dana) Mifflin; proud grandmother to Amber (Wes) Barshinger, Brandon Lettette, Brittany Congleton, Micah Davidson, Breanna (Jeremy) Jones, Aaron Daugherty, Jacob Gomez, Amanda Gomez, Payton Mifflin and Bailey Mifflin; benevolent great-grandmother to Tripp, Crew and Jack Jones, Kendall Manley and Casen Pratt; cherished sister to John (Jonne) Gruben and Deb-

orah (William) Hunley; loving aunt of many nieces and nephews; and dearest friend to many.

Carol was born on June 21, 1947 in Rochelle, the daughter of Ellsworth and Lucille (Templeton) Swick. She married Raymond E. Mifflin in Kings in 1965. She had been employed at Tri County Opportunity Council for 32 years. Earlier in life she enjoyed ceramics, crafts and Bingo as a VFW auxiliary member.

She was preceded in death by her parents and two brothers, Dan (Sylvia) Gruben and Robert (Karen) Gruben; and two sisters, Patricia (James) Hunter, Victoria (Thomas) Stewart.

A Celebration of Life will be held for family at a date and time to be determined.



Ruth Pest

BYRON — Ruth A. Pest, 100, formerly of Rochelle, passed away on March 21, 2020 at the Neighbors Nursing Center in Byron. She was born on Jan. 14, 1920 in Chicago, the daughter of Walter and Anna (Kosbab) Lipske. She married James Pest on July 10, 1937 in Crown Point, Indiana; he preceded her on June 8, 1993.

She is also predeceased by her parents and brother, Melvin Lipske and sister, Esther Gitteson.

She was an expert seamstress and enjoyed dancing, painting, puz-

zles, playing games, especially scrabble and spending time with her family.

Ruth is survived by her five children, David (Paula) Pest of Rochelle, Ruthann Pest of Loves Park, Janice (Eugene) Cook of Rochelle, Marsha (Stephen) Lochrie of Baxter, Tennessee, and Nadine (Craig) Strawbridge of Monroe, Tennessee; eight grandchildren; and many great-grandchildren and great-great-grandchildren.

Private family only burial will be held at Trinity Memory Gardens on Wednesday, March 25, 2020.

An online guest book for condolences is available at www.UngerHorner.com.



Ocie Sieberns

ROCHELLE—Ocie Pearl Sieberns, 87, passed away peacefully Monday, March 23, 2020 at Prairie Crossing Living and Rehab in Shabbona. Ocie was born on July 11, 1932 to Okey L. and Sara A.

(Stevens) Higginbotham in Marion County, West Virginia. She married George E. Sieberns on Feb. 3, 1953 in Mannington, West Virginia. He preceded her in death on Jan. 1, 2002.

Ocie worked for the Eaton Corporation, retiring in 2001. She enjoyed sewing and making quilts.

Ocie is survived by her three children, Larry Sieberns and Gary Sieberns, both of Rochelle, and

JoAnna (Rodney) McKiness of DeKalb; son-in-law, Kevin Merlo of Joliet; two brothers, Ralph and Joe Higginbotham; sister, and Katherine Dingus; and grandson, Ryan McKiness.

In addition to her parents and husband, Ocie was predeceased by her daughter, Linda Merlo; three sisters, Marie Monroe, Icie Efaw and Jessie; and brother, Okey Higginbotham.

A private funeral service will be held on Thursday, March 26 at the Unger-Horner Funeral Home in Rochelle. Burial will follow the service at Lawnridge Cemetery. Memorials may be made in Ocie's memory to First Baptist Church.

Visit www.ungerhorner.com to sign the online guest book.



Maria M. Garcia

ROCHELLE — Maria M. Garcia, 89, passed away at the Rochelle Community Hospital on Tuesday, March 24, 2020.

Family funeral services will be held at St. Patrick Catholic Church.

Visit UngerHorner.com for a guestbook and online condolences.

Wayne Friestad

FRANKLIN GROVE — Wayne V. Friestad, 92, passed away at the Franklin Grove Nursing Center on Wednesday, March 25, 2020.

Family funeral services will be held at St. Paul Lutheran Church.

Visit UngerHorner.com for and online guestbook and to send condolences.

LOCAL NEWS

Rochelle Police

Man arrested on aggravated domestic battery charge

On March 21 at 7:07 p.m., Rochelle police arrested Travis Echelbarger, 30, of Rochelle, for aggravated domestic battery and domestic battery. He was transported to jail.

On March 17 at 9:05 a.m., Rochelle police cited Duane Jordan, 33, of Rochelle, for failure to signal. He posted a promise to comply and received a court date of April 24.

On March 17 at 12:15 p.m., Rochelle police cited Richard Hensley, 66, of Steward, for failure to reduce speed to avoid an accident. He posted a promise to comply and was given a court date of April 24.

On March 20 at 11:05 a.m., Rochelle police arrested Hayley Diane Christy, 36, of Rochelle, on three Ogle County warrants. She posted \$1,300 bond and was given an April 24 court date.

On March 23 at 9:51 a.m., Rochelle police arrested James Queen, 43, of Rochelle, for criminal trespass. He posted an I-bond and was given a court date of April 24.

Ogle County Sheriff

Man arrested for domestic battery

On March 20 at approximately 7:38 p.m., deputies responded to an address in the Mt. Morris Estates Trailer Park in reference to a domestic disturbance. After further investigation, Mark Denham, 56, of Mt. Morris, was placed under arrest for domestic battery. Denham was transported to the Ogle County Jail where he was held in lieu of bond.

On March 23 at ap-

proximately 4:47 p.m., Ogle County Sheriff's deputies responded to a suspicious subject call in the Village of Davis Junction. The subject, Jacob Patton, 19, of Rockford, was located in the 400 block of Heartland and subsequently arrested for possession of a controlled substance and three out of county warrants. Patton was transported the Ogle County Jail and held in lieu of bond.

Council approves right-of-way, easement agreement

BY JENNIFER SIMMONS
MANAGING EDITOR

ROCHELLE — Rochelle City Council members, several attending the meeting by phone Monday night, approved several projects in the city.

Due to efforts in keeping with social distancing practices in the wake of the COVID-19 outbreak globally, only Rochelle Mayor John Bearrows, City Manager Jeff Fiegenschuh, city clerk Sue Messer, and council members Tom McDermott and Don Burke were in attendance at council chambers while council members Kate Shaw-Dickey, Dan McDermott, Bil Hayes and John Gruben teleconferenced into the meeting Monday night.

Two weeks ago Governor J.B. Pritzker amended the Open Meetings Act to allow for members to participate remotely. The order remains in effect for 30 days from its issuance on March 9.

The top items approved by council members included construction work on South Main Street and an agreement with the city railroad and wind turbine materials.

S. Main Street project

It was recommended that council approve a resolution authorizing payment for right-of-way and temporary construction easement right pertaining to the South Main Street Project with DC Rochelle. This project allows for the purchase of right of way parcels and/or easements for the South Main Street Phase 1 reconstruction project. The subject site is owned by DC Rochelle LLC and is the former site of the Rochelle Truck Center.

"As a result of the final engineering plans it was determined that certain

additional right of way parcels and easements were necessary to complete the construction of the improvements. Appraisals were conducted on each property," city manager Fiegenschuh said. "After over a year of negotiations the property owner has agreed to the purchase of right of way and easements which will allow the enlarged signalized intersection improvements to be constructed as part of the S. Main Street/Steward Road project. Included in the price is the acquisition and removal of an existing 900 square foot building that was formerly used as a residence and office space."

Also approved as part of the S. Main Street project was a bid by Martin and Company Excavating for improvements on a two-year ongoing project.

A joint state/local agency agreement with the Illinois Department of Transportation for the South Main Street project was approved several years ago and since that time there has been additional funds awarded to the project. Over the past years plans have been developed, and recently approved by IDOT for moving forward to bidding and award. Right-of-way and easement acquisition have been ongoing for the past 2 years. The South Main Street project was anticipated to be bid and awarded in 2020 and subsequently included in the 2020 budget. The project extends along South Main Street, from Steam Plant Road to Steward Road and along Steward Road for approximately 1,700 feet.

Council members approved the bid from Martin and Company Excavating in the amount of \$2,476,941.72 for the project.

The project will be funded through the CIP fund with city sales tax funds, infrastructure bond revenues and IDOT

EDP funds which will account for approximately 50 percent of the project.

Transloader agreement

The council approved an agreement with Burlington Junction Railroad and a transloader to use the Rochelle Transloading Center to move windmill components.

"The recent opening of the Rochelle Transloading Center has begun to attract a number of rail to truck transloading opportunities. The Burlington Junction Railroad operates a number of transloading operations in other locations and is seeking to enter into this contract with a heavy equipment transloader who has extensive experience in transloading windmill blades, towers, hubs and nacells," Fiegenschuh explained. "The revenue derived from this project is significant. Switching windmill railcars generates \$415 per car with \$140 per rail car going to the city. The revenue for use of the RTC is \$75 per railcar and the unloading/staging of component ranges from \$300 to \$500 per component that is unloaded from a railcar. Depending on the number of windmills to be transloaded, the total revenue to the railroad for this project would range between \$100,000 to \$1.2 million."

Truckloads will travel from the RTC to Illinois Route 251 and Interstate 88. Additional revenue to the city will come in the form of overweight/oversized permitting which will be determined by the number of trucks required to move the components out of Rochelle.

"The only way to support this is if the cost will help maintain the roads," Fiegenschuh added.

CENSUS: Don't forget to complete Census

From page 1

Since counting began a week and a half ago, 29.9 percent of Ogle County has responded to the Census, which is good when compared to the national average of 19.2 percent. While this is a good start, the city is working with business and organizations to do everything they can to remind residents to respond.

"Everything people dealing with competes for everyone's attention, compared to the Census," said Messer. "We have reached out to the Rochelle Chamber of Commerce and some of their businesses are putting up posters, graphics and putting reminders on the TV. We will just have to find different ways to connect with people."

For people who do not respond in a

timely manner, Census takers will begin going door to door, and paper Census copies will be mailed out as well. Due to coronavirus concerns, Census takers will be going to doors between May 7 and Aug. 14. Census takers were originally planned to begin knocking on doors on April 9.

The City of Rochelle would like to remind their residents that Census takers should not be arriving at doors until May 7

and to be careful of any possible scams. All Census takers will have a unique identification badge they are required to display.

"Unfortunately, we are already hearing that there are scams as far as far as Census takers being out there," said Messer. "If people have any concerns about someone in the neighborhood or something that doesn't look right, call Rochelle Police Department and they can check on it."

COMMUNITY BOARD

Need to get the word out about a product or service you offer? Give us a call at 815-562-4171. We can reach over 9,000 homes!



Advertise Here

What Service Do You Offer?

562-4171

The Rochelle News-Leader

Gutters

THE SCEN
ROOFING & SIDING CO., INC.
SEAMLESS GUTTERS
ALL ALUMINUM
• Will Not Rust, Chip Or Peel
• Most Colors Available
• Manufactured On The Job
815-758-8998

257 W. Stephanie Dr., Cortland
www.thescenroofing.com

Advertise Here

What Service Do You Offer?

562-4171

The Rochelle News-Leader

Plumbing/Heating/Cooling

Anderson
Plumbing & Heating Inc.
Serving Rochelle For Over 40 Years

LENNOX

Quality Service • Free Estimates

Residential & Commercial

815-562-8784

Lic. #058-087891

Heating & Air Conditioning

HULL
HVAC & Household Services

Furnaces - Air Conditioners - Boilers
Duct Cleaning - Water Heaters

Precision Furnace
Clean & Check

\$70.00

plus
get a FREE carbon monoxide test.

Expires: 04/30

Ask about our complete
home duct cleaning and
fogging services.

815-561-6551

www.HullHVAC.com

Commercial & Residential Roofing

Bruns
Construction, Inc.

Residential
Concrete
Driveways, Flatwork
and Foundations

• Shingled Roofs • Flat Roofs
• Metal Roofs For Farm Facilities
• Custom Built Homes • Additions

FREE ESTIMATES

561-0099

Tim & Roger Bruns, Owners
Established 1997

www.brunsconstructioninc.com

Roofing & Construction

Like us

O'RORKE

Wick
Buildings
Authorized Wick Builder

Construction Services, Inc.

Residential & Commercial Building

✓ Your "Go-To" Contractor For Stamped concrete: patios, driveways, walks & more in the Rochelle Area
✓ Service from a local contractor with 25 years in business
✓ Licensed and insured services
✓ Superior workmanship and materials
✓ Enhanced lifetime limited transferable roofing warranty (covering materials & labor)
✓ NEW DELIVERY SERVICE: Rock & dirt upon request
✓ FLATWORK ✓ SIDING ✓ REMODELING ✓ ADDITIONS

815.562.8254

104 Maple Court, Rochelle

LOCAL VIEWS

Guest column

More important than ever to support small businesses

SOCIAL distancing is a sensible response to the spreading coronavirus, but it's taking a toll on Illinois' small businesses.

A new survey from my association, the National Federation of Independent Business, says that 76 percent of small businesses report being impacted by the response to COVID-19. Not surprisingly, most small businesses say sales are down because of government restrictions, while 23 percent say their supply chain has been disrupted.

Twenty percent of small businesses surveyed said the novel coronavirus hasn't affected them, but most think it will eventually. The survey was national in scope, so I have to think it's as bad or worse in Illinois.

As NFIB's state director for Illinois, this concerns me.

Small business is the foundation of Illinois' economy. According to the Small Business Administration, 99.6 percent of businesses in the state are small businesses, and they employ about 45 percent of the state's workforce.

And unlike chain stores and restaurants, which are owned by big corporations likely as not based someplace else, small businesses are owned by — and employ — our friends, family, and neighbors. Small businesses create jobs, and they sup-

port our schools, charities, and children's sports teams. Small business is the glue that holds our communities together, and we can't afford to lose them.

That's why NFIB is encouraging people to do what they can to support small businesses at this difficult time:

Get take-out or delivery. Restaurant dining rooms may be closed, but a lot of local restaurants' kitchens are still open. And be sure to tip your server or delivery driver.

Shop online. Stores may be closed, but local merchants may have their own websites where customers can place orders.

Buy gift cards or gift certificates to local businesses. Buy it today and spend it once the COVID-19 crisis is over.

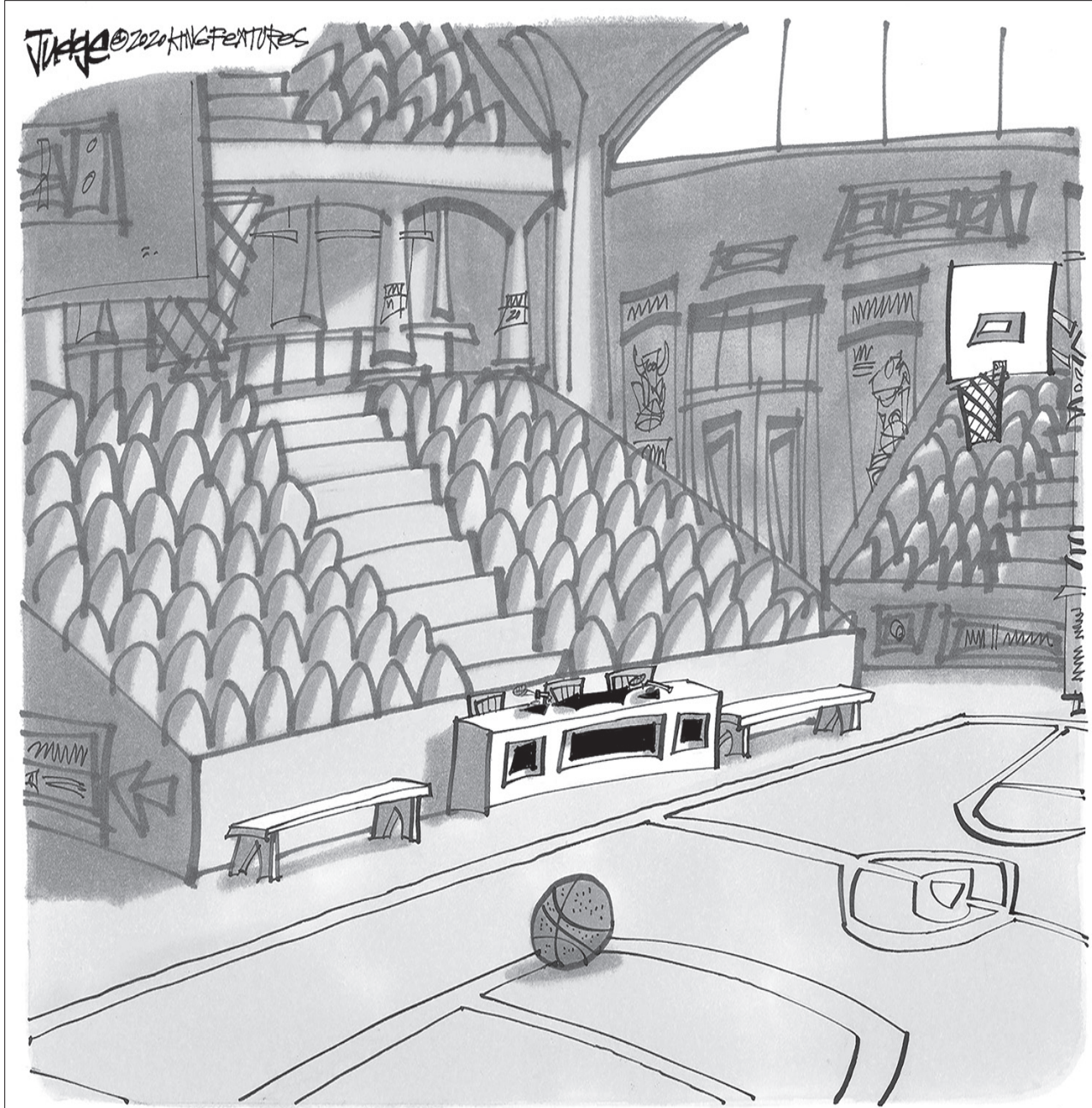
Small business owners are showing a real determination to get through this, but it will be a challenge. No one's coming in because of the coronavirus, but shops and restaurants are still obliged to pay their everyday expenses — rent, the light bill, taxes.

Illinois' small businesses are committed to following the rules while still providing the goods and services their customers need as safely as they can. Supporting them now will lessen the impact this unprecedented health crisis will have on their businesses — and our communities.

Mark Grant is the Illinois state director of the National Federation of Independent Business.



Mark Grant



MARCH SADNESS

VOICE ON THE STREET

Question:

In keeping with social distancing practices, we will not be asking the weekly Voice on the Street question in person; however, we will be posting the question on our Facebook page. This week's question is: What is the best movie, video game or board game for people to watch or play while sheltered at home?

"Rack-o and Sequence!"

Katherine Mosher

"We've been enjoying countless rounds of Uno attack."

Rachelle Phillips

"Rummy is always a good one - easy to learn and play."

Tammy Miller

"I have taught my grandkids Kings in the Corner (a card game) and they like Candyland, Monopoly Junior and the least favorite of mine, Uno."

Marilyn Overby

"Games: Bananagrams; card game: Four

Michele White

Kings in the Corner; and movies: "Sweet Home Alabama," "Steel Magnolias," "Fried Green Tomatoes," "The Heat."

Stephanie Estock

"I love a good game of Monopoly for families that are old enough to play the long-lasting game. My grandson, who is 4, we play Memory and Connect Four. We've been working on teaching him how to play Checkers. We don't have video games, so when weather permits, we have him outside in his personal park (spring horse, picnic table, play house with rock wall, slide and slide rope). As a child, I spent countless hours outside and thoroughly enjoyed it, and want this for him as well."

How to contact government officials

U.S. Con. Adam Kinzinger
1218 Longworth HOB
Washington, D.C.
20515
(202) 225-3635

IL Sen. Brian Stewart
M104A State House
Springfield, IL 62706
(217) 782-0180

IL Rep. Tom Demmer
314 Capitol
Springfield, IL 62706
(217) 782-0535

Have a letter you want to submit to us? Send it to (news@rochelle-news-leader.com)

KEEPING YOU IN TOUCH WITH YOUR LOCAL LEADERS

* Denotes Chairman/President

Rochelle City Council

*John Bearrows	jbearrows@rochelleil.us
Kathryn Shaw-Dickey	kshaw-dickey@rochelleil.us
Bil Hayes	bhayes@rochelleil.us
Don Burke	dburke@rochelleil.us
Dan McDermott	dmcdermott@rochelleil.us
Tom McDermott	tmcdermott@rochelleil.us
John Gruben	jgruben@rochelleil.us

Rochelle Elementary School Board

*Dave Casey	dcillini94@gmail.com
Steve Builta	sbuilt@gmail.com
Shirley Reif	sreif@crestfoods.com
Jean Tess	dtess503@comcast.net
Eric Van Hise	eric.vanhise@gmail.com
Trisha Vaughn	jrvtlv02@msn.com
Javier Zepeda	jzepeda@rthsd212.org

Rochelle Township High School Board

*Tom Huddleston	tom.huddleston@rthsd212.org
Carol Hayenga	carol.hayenga@rthsd212.org
Bill Ravnaas	bill.ravnaas@rthsd212.org
Robert Walsh	bob.walsh@rthsd212.org
Jeff Tilton	jeff.tilton@rthsd212.org
Brent Tracy	brent.tracy@rthsd212.org
Brian VanVickle	brian.vanvickle@rthsd212.org

Flagg-Rochelle Park Board

Mic Brooks	mbrooks@rochelleparkdistrict.org
Brent Carmichael	bcarmichael@rochelleparkdistrict.org
John Dobbs	jdobbs@rochelleparkdistrict.org
Dale Wells	dwells@rochelleparkdistrict.org
*Tim Hayden	thayden@rochelleparkdistrict.org
Jodi Hart	jhart@rochelleparkdistrict.org
Joe Lenkaitis	jlenkaitis@rochelleparkdistrict.org

Ogle County Board Dist. 3

Lloyd Droege	ldroege@oglecounty.org
Jamey Sulser	jsulser@oglecounty.org
Greg Sparrow	gsparrow@oglecounty.org

Ogle County Board Dist. 4

Bruce McKinney	bmckinney@oglecounty.org
Skip Kenney	skenney@oglecounty.org
Kim Whalen	kwhalen@oglecounty.org

Creston Village Board

*Wayne Williams	jwdw13@yahoo.com
Deanne Haub	hobnob67@comcast.net
Tom Byro	tommyb_47@yahoo.com
Greg Hopkins	ghopkins522@comcast.net
Steve Katzman	skatzman@essex1.com
Mike Kerns	ac.kerns@comcast.net
Mike Misch	mmfam@live.com
Curt Ward	caward92@comcast.net

Hillcrest Village Board

Randy Salsbury	rsalsbury@hillcrestil.us
Pam Pitman	ppittman@hillcrestil.us
Don Potter	dspotter@hillcrestil.us
Richard Rhoads	rrhoads@hillcrestil.us
*Jason Fore	jfore@hillcrestil.us
Tim Ball	tball@hillcrestil.us

Flagg Township

*Bob Withrow	flaggtwp@rochelle.net
Joanna Patrick	flaggtwpc@rochelle.net
Susan Rothenberger	assessor@rochelle.net
Scott Seebach	scottseebach@gmail.com

Board of Trustees

Lance Noggle	noggle62@gmail.com
Eric Gruben	egruben@comcast.net
Susan Hager	susanhager303@comcast.net
Jim Kenney	jimk@rocketsupply.com

Flagg-Rochelle Library

*Jaqueline Dickow	dickow@comcast.net
Teresa Haggstad	haggstads@comcast.net
Michael Scanlan	scanlan@comcast.net
Lanning Nicoloff	nicoloff118@comcast.net
Sheri Klindera	alwayslefty2@gmail.com
Susan Sevedge	nit1prl22@yahoo.com
Darci Waltrip	doobs12@comcast.net

LETTERS TO THE EDITOR POLICY

The Rochelle News-Leader encourages responsible letters to the editor on subjects of interest to our readers. Editing may be necessary for space, clarity or to avoid obscenity or libel, but ideas will not be altered. All letters must bear the handwritten signature of the writer and include address and phone number or e-mail address for verification purposes. Neither the street address nor phone number will be printed. Letters should be typed or legibly

handwritten, and no anonymous letters will be published. Any letters from boards or organizations must include at least one name of an individual. Any criticism of public officials should be limited to issues related strictly to their position or actions made in office, as personal attacks will not be published. Letters involving private disputes between the writer and a business will not be published. Political endorsements will be published,

however letters from candidates endorsing themselves will not be printed. Letters may be dropped at the News-Leader office (211 IL Route 38 East), mailed to the News-Leader (P.O. Box 46, Rochelle, IL 61068) or e-mailed (news@rochellenews-leader.com.) The News-Leader reserves the right to edit or reject any letter to the editor for any reason, and letters chosen for publication do not necessarily reflect the views of this newspaper.

COMMUNITY

“We continue to work for you, you stay home for all of us”

Americold teams up with local business to provide lunches for employees

ROCHELLE — “The President’s Coronavirus Guidelines for America” posted at coronavirus.gov instructs workers in Critical Infrastructure Industries — defined by the Department of Homeland Security to include healthcare services, pharmaceutical, and food supply — to maintain their normal work schedules.

Americold, one of the largest cold storage companies in the United States, provides critical infrastructure for the food supply chain through our network of temperature-controlled warehouses and transportation hubs. Americold’s facilities are essential in helping keep shelves and freezers stocked during crucial times like these.

“Americold is considered essential infrastructure because of our impact on the supply chain, as far as keeping the store shelves and freezers full,” said Americold general manager Dan Lundquist.

Americold owns and operates two facilities in Rochelle.

On Tuesday, at the 1010 Americold Drive facility, associates were recognized for their dedication while supporting locally owned business, through

a luncheon provided by Country School. More than 200 meals were provided to Americold employees.

Americold will continue to support and recognize our dedicated and hard - working associates by working with locally owned business providing a catered meal throughout these challenge times due to COVID-19.

Americold held this event to not only give back to its hardworking employees who continue to work during these challenging times, but as a way to support local business who may need the help as well. This was the first event of its kind, but Americold plans to continue hosting more with other local businesses.

“This gives us an opportunity to recognize our associates who continue to show up every day, while at the same time being able to support locally owned businesses when they may need a little boost to help them out through this time,” said Lundquist. “We plan to do more and already have three other businesses lined up. We are going to continue to do this during this period of time”

Americold challenges and encourages other industry partners within the Rochelle community to do the same, recognizing their associates, supporting locally owned business.



CALENDAR

Thu., March 26

4:30 to 7:30 p.m. — Dinner will be served at The Kitchen Table, 7034 E. Klondike Road. The menu is hamburgers, brats, baked beans and pasta salad. The kids menu is peanut butter and jelly, corn dog with chips or chicken nuggets. *Menu is subject to change. A \$5 donation is suggested. **Pick up or delivery. Call 815-561-9074.

Tue., March 31

4:30 to 7:30 p.m. — Dinner will be served at The Kitchen Table, 7034 E. Klondike Road. The menu is shrimp and cheese grits, creamed spinach toast or biscuits. The kids menu is peanut butter and jelly, corn dog with chips or chicken nuggets. *Menu is subject to change. A \$5 donation is suggested. **Pick up or delivery. Call 815-561-9074.

Sat., April 4

The annual Spring clean-up at the White Rock Cemetery will be held. Any decorations or accessories that you would like to keep must be removed before April 4.

Cancellations

• These support groups WILL NOT be meeting at Rochelle Community Hospital until further notice:
• Alcoholics Anonymous
• Group Hope
• Narcotics Anonymous
Also, the community presentation “Your Foot Health is Important” scheduled for Tuesday, March 31 has been canceled.

• Lodge rentals at the Rochelle Wildlife



FROM THE HEART DAILY CASH WINNERS

March 11 - Amy Ritter, Rochelle, \$25

March 12 - Mari Fout, Rochelle, \$25

March 13 - Melissa Stacy, Byron, \$25

March 14 - Tom Remsen, Rockford, \$25

March 15 - Gary Bunger, Ashton, \$50

March 16 - Steven Truckenbrod, Rochelle (CHS), \$25

March 17 - Robert Eckhardt, Rochelle, \$250

March 18 - Bettye Chadwick, Rochelle, \$25

March 19 - Glenda Bloomingdale, Davis Junction, \$25

March 20 - Madeline Hogan, Leaf River, \$25

March 21 - Cal Jacobs, Rochelle, \$25

March 22 - Martha Miller, Rochelle, \$50

March 23 - Angie Agnos, Rochelle, \$25

March 24 - Adam Burch, Rochelle, \$25

March 25 - Mike Dale, Edgerton, Wis., \$25

Checks to winners will be mailed out at the end of each month

Conservation Club will be suspended for the month of March and April.

• The monthly meeting the Rochelle Wildlife Conservation Club has been cancelled.

• The annual Creston St.

John’s Lutheran Church Kumla Supper has been cancelled.

Meetings

(Submit items for the Community Calendar to jsimmons@rochellenews-leader.com)

Birthdays & Anniversaries

March 25
Chaz & Kathy Conant
Liz Danekas
Shaun Rosenbach

March 26
LeeAnn Komadina

April 2
Zachery Smith

April 3
Dave Helfrich

April 4
Clarissa Dodillet

April 6
Stephen Avila
Eddie Villalobos

April 7
Arianna Grana
Anjelique Grana

April 8
Jodi Prosser
Trevor Komadina
Timothy Avila

April 10
Taylor Burger

April 11
Bev Wiginton
Christine Doering
Chris & Christine Doering

April 12
Amber Lopez
Charles Peterman

April 14
Kristyn Sulser

April 16
Marissa Gonzalez
James Doering

April 18
Millie Danekas

April 19
Pastor Angelo Bonacquisti

April 21
Emma Waters



Coffee Break

King Crossword

ACROSS

1 Sacred wading bird
5 Suitable
8 Morse "T"
12 Created
13 Meadow
14 Erstwhile
15 Series of missed calls
17 Celebrity
18 Pair
19 Consecrate with oil
21 Cognizant
24 Huffed and puffed
25 Shrewd
26 Lunch holder
30 Tokyo's old name

31 Canonized one
32 Beer-like brew
33 Joke that won't work on radio

35 On the briny
36 Thy
37 Theater staffer

38 Treeless tract
41 Blond shade
42 Ark builder
43 Long-popular jazz tune
48 Shrek, for one
49 Pirouette
pivot

50 Car
51 German city

8 Drop from a will
9 Opposed
10 Read cursorily
11 Rodgers collaborator
16 Lamb's mama
20 Salamander
21 Dogfight participants
22 Gully
23 Awestruck
24 Pipe type
26 Loaf of French bread
27 Wild party
28 Sheltered
29 Paraphernalia

31 Halt
34 It's handy if you have to break your word
35 Religious retreat
37 Handle
38 Uppity one
39 Takeout phrase
40 Deserve
41 On in years
44 Charged bit
45 Regret
46 Corroded
47 Obtained

50 Car
51 German city

8 Drop from a will
9 Opposed
10 Read cursorily
11 Rodgers collaborator
16 Lamb's mama
20 Salamander
21 Dogfight participants
22 Gully
23 Awestruck
24 Pipe type
26 Loaf of French bread
27 Wild party
28 Sheltered
29 Paraphernalia

31 Halt
34 It's handy if you have to break your word
35 Religious retreat
37 Handle
38 Uppity one
39 Takeout phrase
40 Deserve
41 On in years
44 Charged bit
45 Regret
46 Corroded
47 Obtained

© 2020 King Features Synd., Inc.

Weekly SUDOKU

by Linda Thistle

	3			8				5
1			7	2			8	
8		4			9	7		
5					8	3		
	7		6			1		
	4			3			6	
		3	2			5		
9	6				4			7

Place a number in the empty boxes in such a way that each row across, each column down and each small 9-box square contains all of the numbers from one to nine.

DIFFICULTY THIS WEEK: ◆

◆ Moderate ◆◆ Challenging
◆◆◆ HOO BOY!

© 2020 King Features Synd., Inc.

CryptoQuip

This is a simple substitution cipher in which each letter used stands for another. If you think that X equals O, it will equal O throughout the puzzle. Solution is accomplished by trial and error.

Clue: **U** equals **T**

UX VXGN EIYYQVD LNXLJN, LANVV
ZNTVXAVDQL GQYDU KN RNVZAQKNR
IV EAQUNA'V ZJIGL.

©2020 King Features Synd., Inc.

7	3	2	4	5	8	1	9	6
6	5	9	1	2	3	8	7	
1	9	8	7	3	6	5	2	4
4	2	1	5	4				
8	6	9	5	7	3	2	1	4
2	7	3	8	4	1	9	6	5
3	1	7	6	9	5	4	2	8
9	8	4	3	2	7	6	5	1
2	5	1	9	8	4	3	7	6

Answer

Weekly SUDOKU

T	E	E	M	E	N	D	E	N	N	O	B
O	A	U	T	O	E	T	O	E	G	O	
G	R	A	G	T	I	G	R	E	H	A	O

Answer

King Crossword

Cryptoquip

as writer's clasp.
to some waggyish people, press
censorship might be described
answer

Classified Marketplace

FREE!

Sell your household items for free.
Total value of item must be \$200 or less. (15 words
- one week - 7 publications - price must be listed)



ROCHELLE • HILLCREST • CRESTON • STEWARD • KINGS • ASHTON

101 LEGAL NOTICE

PUBLIC NOTICE
Public Notice is hereby given that on March 6, 2020, a certificate was filed in the Ogle County Clerk's Office setting forth the names and post office address of all of the persons owning, conducting and transacting the business known as: MNL Bookkeeping & Tax, 821 N. 11th St., Rochelle, IL 61068.
Dated: March 6, 2020
Laura J. Cook,
Ogle County Clerk
No. 0317 (Mar. 11, 18, 25)

PUBLIC NOTICE
Public Notice is hereby given that on March 6, 2020, a certificate was filed in the Ogle County Clerk's Office setting forth the names and post office address of all of the persons owning, conducting and transacting the business known as: Olivia's Veracruzanos Cuisine, 7161 S. Sunflower Ln., Rochelle, IL 61068.
Dated: March 6, 2020
Laura J. Cook,
Ogle County Clerk
No. 0318 (Mar. 11, 18, 25)

PUBLIC NOTICE
Public Notice is hereby given that on March 6, 2020, a certificate was filed in the Ogle County Clerk's Office setting forth the names and post office address of all of the persons own-

ing, conducting and transacting the business known as: Todd Talks Real Estate, 9501 E. Flagg Rd., Rochelle, IL 61068.
Dated: March 6, 2020
Laura J. Cook,
Ogle County Clerk
No. 0319 (Mar. 11, 18, 25)

PUBLIC NOTICE
TAX DEED NO.: 2017TX17
FILED: 2/28/2020
TAKE NOTICE
County of Ogle
Date Premises Sold: November 2, 2017
Certificate No.: 2016-00047
Sold for General Taxes of (Year): 2016
Sold for Special Assessment of (Municipality) and Special Assessment Number: N/A
Warrant No.: N/A
Installment No.: N/A
THIS PROPERTY HAS BEEN SOLD FOR DELINQUENT TAXES
Property Located at: 311 Errett Road, Rochelle, IL 61068-
Legal Description or Property Index No.: 24-12-304-009
This notice is to advise you that the above property has been sold for delinquent taxes and that the period of redemption from the sale will expire on August 12, 2020.
The amount to redeem is subject to increase at 6 month intervals

from the date of sale and may be further increased if the purchaser at the tax sale or his or her assignee pays any subsequently accruing taxes or special assessments to redeem the property from subsequent forfeitures or tax sales. Check with the County Clerk as to the exact amount you owe before redeeming. This notice is also to advise you that a petition has been filed for a tax deed which will transfer title and the right to possession of this property if redemption is not made on or before August 12, 2020.
This matter is set for hearing in the Circuit Court of Ogle County in 106 S. 5th Street, Room 302, Oregon, IL 61061 on August 20, 2020 at 9:00 AM.
You may be present at this hearing, but your right to redeem will already have expired at that time.
YOU ARE URGED TO REDEEM IMMEDIATELY TO PREVENT LOSS OF PROPERTY
Redemption can be made at any time on or before August 12, 2020 by applying to the County Clerk of Ogle County, Illinois at the Office of the County Clerk in Oregon, Illinois. FOR FURTHER INFORMATION CONTACT THE COUNTY CLERK

105 S. 5th Street
Suite 104
Oregon, IL 61061
815-732-1110
Equity One Investment Fund LLC
Purchaser or Assignee
2/28/2020
Catherine A. Lidinsky-Lang
Catherine A. Lidinsky-Lang Trustee
Catherine A. Lidinsky-Lang as Trustee of the Catherine A. Lidinsky-Lang Irrevocable Trust dated June 9, 2016
Robert Lang
Brian Posdal
Rodney Lent
Laura J. Cook, County Clerk of Ogle County, Illinois
Claimants, Judgment Creditors, and Decree Creditors, if any of the above described as "Unknown Owners"
"Unknown owners or parties interested in said land or lots"
No. 0321 (Mar. 11, 18, 25)

101 LEGAL NOTICE

This publication does not knowingly accept fraudulent or deceptive advertising. Readers are cautioned to thoroughly investigate all ads, especially those asking for money in advance.

105 BUSINESS OPPORTUNITIES

"This publication does not knowingly accept fraudulent or deceptive advertising. Readers are cautioned to thoroughly investigate all ads, especially those asking for money in advance."

113 FINANCIAL

NOTICE Advance Fee Loans or Credit Offers Companies that do business by phone can't ask you to pay for credit before you get it. For more information, call toll-free 1-877-FTC-HELP. A public service message from your hometown newspaper and the Federal Trade Commission.

119 ANNOUNCEMENTS

"This publication does not knowingly accept fraudulent or deceptive advertising. Readers are cautioned to thoroughly investigate all ads, especially those asking for money in advance."

127 SERVICES AND REPAIRS

LAWN SERVICE: Serving Ogle County for 21 Years. All Around Yard Maintenance, Spring Clean-up, Gutter Cleaning and More. Jeremy Furman 815-761-9619. Please Leave Message, Will Return Call ASAP.

JNJ JUMPERS Indoor/Outdoor Bounce House Rentals Available Year Round. Please Call 815-784-4256 For Availability or Visit us on Facebook.

201 DOMESTIC/CHILD CARE

NO INDIVIDUAL, unless licensed or holding a permit as a

201 DOMESTIC/CHILD CARE

childcare facility, may cause to be published any advertisement soliciting a child care service. A childcare facility that is licensed or operating under a permit issued by the Illinois Department of Children and Family Services may publish advertisements of the services for which it is specifically licensed or issued a permit. Your Hometown Newspaper strongly urges any parent or guardian to verify the validity of the license of any facility before placing a child in it's care.

203 HELP WANTED

NEWSPAPER CARRIERS Wanted. (Rochelle) Several Routes Open. Call 815-561-2112 For More Information.

301 ANTIQUES

WANTED TO BUY: Vintage Metal and Wood Signs, Milk Bottles & Local Advertising, Oak Icebox, Iron Door Stop and Antique Lighting... Call Dick Harms at 815-562-2928 or email dickharms@hotmail.com

ANTIQUES WANTED: I pay cash for antiques; furniture, glassware, pottery & crocks, tin & iron toys, sterling silver, decoys. If it's antique, I'm interested in looking! Call 815-562-2928 or email dickharms@hotmail.com

307 MISCELLANEOUS FOR SALE

MTD 21-inch Snowblower, End of the Season Sale. \$75 Call 815-764-1777. (03-25-20)

BUNDLED Newspaper -\$3 per Bundle. End Roll- Cost Depends on Weight of Roll. Available Monday-Friday 8AM-NOON ONLY. SEE RECEPTIONIST AT FRONT COUNTER Rochelle News-Leader.

315 WANTED TO BUY

WANTED: Coin operated machines, slot machines, pinball, arcade, trade simulators, jukeboxes. Working or not working. 815-397-6586.

405 HOUSES FOR SALE

ALL REAL ESTATE advertised herein is subject to the Federal Fair Housing Act, which makes it illegal to advertise any preference, limitation or discrimination based on race, color, religion, sex, handicap, familial status, or national origin, or intention to make any such preferences, limitation or discrimination. We will not knowingly accept any advertising for real estate which is in violation of the law. All persons are hereby informed that all dwellings advertised are available on an equal opportunity basis.

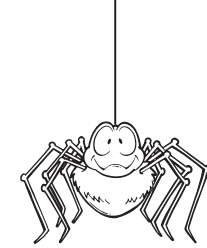
501 APARTMENTS FOR RENT

ROCHELLE: CLEAN, Quiet. No Pets/Smoking. Parking In-Rear. Coin Laundry. 630-858-4180. (03-25-

501 APARTMENTS FOR RENT

ROCHELLE PROPERTY MANAGEMENT
All size rental properties
Residential & Commercial
Rochelle, Ottawa and surrounding area.
Call 815-562-7368
www.rochelleproperty.com

ADVERTISE WITH US



Everybody hates you.

You don't see bullying like this every day.
Your kids do.
Teach your kids how to be more than a bystander.

Learn how at
StopBullying.gov



INFORMATION

Office Hours:
8 a.m. to 5 p.m. (Monday-Friday)
Phone:
815-562-4171
Fax:
815-562-2161
Email:
classifieds@rochellenews-leader.com
Address:
211 Hwy. 38 E., Rochelle
Mail:
P.O. Box 46
Rochelle, IL 61068

DEADLINES:

Sunday News-Leader:
Thursday, 2 p.m.
Tuesday Shopping News:
Friday, 10 a.m.
Wednesday News-Leader: Monday, 4 p.m.
(Deadlines subject to change during holiday times)

All classified marketplace line ads will appear in the following 7 print publications and on 5 high-traffic newspaper websites:
• Rochelle News-Leader • Ogle County Life • Rochelle Shopping News • Ashton Gazette • Amboy News • Mendota Reporter • Mendota Money Saver

Call for pricing that starts at \$32.99 for private party ads and \$44.60 for commercial business ads and \$19.99 for garage sale ads.

DISCLAIMER:

If your advertisement appears incorrectly, notify us immediately. We will not be responsible for more than one incorrect insertion, and will only credit customer for one insertion.

203 HELP WANTED

Want To Teach Your Kids About Responsibility? The Rochelle News-Leader has five openings for newspaper carriers.

- Must be 10 years or over
- 3 deliveries per week
- Most routes take less than 45 minutes
- No collecting
- A great place to teach your child about responsibility - and the rewards of earning their own spending money
- Adult carriers are welcome, too!

Contact Wanda at the Rochelle News-Leader office
211 E. Hwy. 38,
561-2112



ROUTE 13-14
NORTH 6TH ST & 7TH ST. AND AVENUES IN BETWEEN
ROUTE 24-25
SOUTH MAIN, SOUTH 1ST, SOUTH 2ND, SOUTH 3RD STREETS
ROUTE 16
CHERRY AVE., 200-700 BLOCK LINCOLN HWY., 100-700 BLOCK N. MAIN ST., WASHINGTON ST.
ROUTE 28
SOUTHVIEW DR., WILLIS AVE., LAKE LIDA LN.
ROUTE 37
MILL POND DR., BROOKSTONE DR., SUNSET LN., SHADY PASS, FLAGG CENTER

12082019

103 AUCTIONS

LEE COUNTY, ILLINOIS LAND AUCTION

142.191 SURVEYED ACRES • 2 TRACTS
THURSDAY, APRIL 9, 2020 AT 11:00 A.M.

Held at the Kapp's Banquet Facility, 201 W 1st St #12, Rock Falls, IL 61071



DETAILS,
MAPS & PHOTOS @
SullivanAuctioneers.com
or call for a brochure!

OPEN
HOUSE

SATURDAY, MARCH 28TH
9:00 - 10:00 A.M.

THE HERMES FARM IS LOCATED IN A SHORT DISTANCE
NORTHEAST OF STERLING-ROCK FALLS.

Tract 1 represents Class A, tillable farmland selling free & clear for the fast approaching 2020 crop year! Tract 2 represents a 2-story home, machine shed, detached heated truck garage, heated shop, and detached car garage situated on 5 acres.

Known Locally as the Ed Hermes Home Farm
NICK HERMES - SELLER

Attorney: Samuel J. Skorepa | Davenport, IA | Ph: 563-333-6646
Auction Manager: Kevin Haas (309) 264-7767 | kevin@sullivanauctioneers.com

SULLIVAN AUCTIONEERS, LLC • TOLL FREE (844) 847-2161
Details, Maps, Etc. @ www.SullivanAuctioneers.com • IL Lic. #444000107

TEXT AND WHATEVER JUST DON'T TEXT AND



STOPTEXTSSTOPWRECKS.ORG





The businesses featured on this page are
"Hubs Super Fans"

They proudly support our local athletes and students.

Please show your appreciation by patronizing their businesses.

WE SUPPORT OUR HUBS!

**GO
HUBS!**

HUB SPOTLIGHT

Match-clinching win highlights Griffith's sophomore season

BY RUSSELL HODGES
SPORTS EDITOR

While his sophomore season may have been cut short, former Rochelle Township High School standout Noah Griffith was able to crack the starting lineup and earn his first real taste of collegiate tennis with the Ottawa University Arizona men's program this year.

Griffith rotated anywhere from No. 4 to No. 6 singles for the Spirit this season, recording two victories including the match-deciding win against Western New Mexico on Feb. 14, when he rallied to defeat Erik Dallmann 2-6, 6-4, 6-3. Griffith's final match of the 2020 season, which was ultimately canceled due to coronavirus concerns, was a two-set victory against Marymount California's Andrew Herd, who Griffith topped 6-4, 6-2.

"This season was definitely fun while it lasted," Griffith said. "I was in the lineup for every match and I also played some doubles. One of my favorite moments was clinching the match against Western New Mexico. I pushed the match to a third set and my teammates rushed the court when I won, which was an unforgettable experience."

Despite a slow start to their season, the Spirit won their final two matches over Westmont and Marymount California before the remainder of the season was canceled. While disappointed, Griffith said the downtime from competing will motivate him to stay in shape and play as much tennis as possible before the Spirit return to the court for the 2021 campaign.

"It was definitely disappointing because as an athlete, not being able to finish out the season is heartbreaking," Griffith said. "We were coming off two big conference wins, but all we can do now is hope and pray that this virus clears and that we stand together and trust the Lord... My goals for next season are to win more matches, and I want to do as much as I can to contribute to the success of my team. Winning the conference and making nationals would be incredible."

Three of the first seven losses Ottawa University Arizona suffered this season



(PHOTO COURTESY OF OUAZ ATHLETICS)

Former Rochelle tennis standout Noah Griffith earned a starting singles spot in the Ottawa University Arizona lineup this season.

were against ranked opponents, which Griffith said have been positive learning experiences for he and his teammates. Griffith said he's continuing to improve in all facets of his game, and his goals for next season are to be sharper with his serves, volleys and staying on top of his points.

"I want to continue working on every aspect of my game and the little things," Griffith said. "I feel I've always had good energy and a good attitude... I had to adjust to being in the lineup every match and having a certain comfort level. We played a lot of tough ranked teams, but those matches were opportunities for us to learn and grow."

"My goals for next season are to win more matches, and I want to do as much as I can to contribute to the success of my team. Winning the conference and making nationals would be incredible."

Noah Griffith



We are
Ogle
County's
only
GM Dealer!

• Collision Repair
• 24 Hour Towing
• New/Preowned Vehicles
• Rental Cars
• Maintenance On All Makes and Models
• Tires, Alignments, Brakes, Batteries

JEFF PERRY

CHEVROLET • BUICK • CADILLAC • JEEP • CHRYSLER

815-562-8787 • www.jeffperrychevrolet.com



209 Powers Road, Hwy 251 N
Rochelle, IL 61068
(815) 562-8792
www.meyersfurniture.com



900 N. 2nd Street, Rochelle
815-562-2181
www.rochellehospital.com



SALES • PARTS • SERVICE

1030 South 7th Street
800.262.1680

www.johnsontractor.com



Residential & Commercial Roofing

• Shingled Roofs
• Flat Roofs
• Metal Roofs For Farm Facilities
• Custom Built Homes
• Additions

815-561-0099

Licensed & Insured



1161 S. 7th St., Rochelle, IL

www.cappelscompletecarcare.com

815-561-TIRE (8473)

Complete Car Care M-F 8am-5pm • Sat 8am-Noon



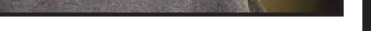
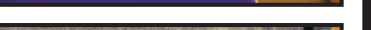
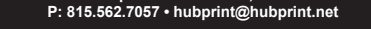
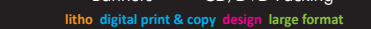
Best Price Around!

FULL SYNTHETIC OIL CHANGE

\$45.99

Up to 5 Quarts

Exp. 6/30/20



Custom Embroidery

- Custom Embroidery
- Direct to garment printing
- Custom Heat Transfer
- 1,000's of products available
- Fast Turn Around
- No Minimum Order



Rochelle's #1 Stop for all your Custom Logo Wear Needs.

Downtown Rochelle • 815-561-9500 • 926customembroidery@gmail.com

M-F 10-5, Sat. 9-12



Here is another great reason to come to Kish.

We love heavy metal!

You will be a rock star as you diagnose and repair all types of vehicles in the Automotive & Diesel Programs at Kish!

KC KISHWAUKEE COLLEGE

Find your reason - register today!

www.kish.edu/reasons



Highway 38
Rochelle, IL



MORTON BUILDINGS

If you can dream it, we can build it.



Kenny's Place

Sunday 11am-11pm • Monday-Wednesday 10am-1am
Thursday-Saturday 10am-2am

411 Cherry Ave. • Rochelle, IL • 815-562-6568

Busy Schedule? Leave the cooking to us.

- Large menu of foods
- Rochelle's famous chicken by the dinner or bucket
- Hand dipped ice cream (16 flavors)



251 N. ROCHELLE • 562-6039

HSF2016

Local People Providing Local Service



Water • Waste Water
Electric • Communications

Phone: 815-562-4155 333 Lincoln Highway

Fax: 815-562-5861 Rochelle, IL

www.rmu.net

HS2016



KISHWAUKEE COLLEGE

CAREER & TECHNICAL EDUCATION

Hospitality & Culinary



Feed your passion for cooking – start your career in Culinary Arts at Kish!

- Small class sizes and fully-stocked kitchen workstations
- Create delicious dishes – baking and cooking – plus learn proper food handling, kitchen and equipment safety, knife skills and more
- Earn ServSafe Manager Certification

Feed your passion at Kish. Visit www.kish.edu/culinary

Hosting Easter Dinner?

Be ready with a new dining room or kitchen table. We have buffets, hutches & servers, too!






HUB CITY FURNITURE

90 Days Same as Cash





Mon-Fri 9am-5:00 • Sat 9am-4pm • Sun Closed

429-433 Lincoln Hwy. Rochelle, Illinois 815-562-8765 hubcityfurniture.com

03/25/2020

WEDNESDAY, MARCH 25, 2020

ROCHELLE NEWS-LEADER • SECTION 1 • PAGE 10

SPORTS

SOPHOMORE SUCCESS

RTHS grad Noah Griffith earned a starting role with the OUAZ men's tennis team.

See page 9 for more details

RTHS Football

Defensive anchor

Harvey becoming prominent playmaker at WashU-St. Louis

BY RUSSELL HODGES
SPORTS EDITOR

FROM earning the Dean's Award as the Most Valuable Freshman to becoming a starting linebacker his sophomore season, former Rochelle Township High School standout Alex Harvey is becoming an anchor on defense for the WashU-St. Louis football program.

Harvey totaled 19 tackles in nine games as a freshman, but that production grew exponentially this past fall, when Harvey recorded 50 total tackles and appeared in all 10 games. His best effort came in a 35-10 victory over North Park on Oct. 5, 2019, when he compiled a career-high 10 tackles, including 1.5 tackles-for-loss, while adding one of his three sacks during the season. Harvey notched his first career sack in a 43-7 win against The University of Chicago on Sept. 7.

"From my freshman season, I was able to become a more physical

player while also understanding the defense more in depth," Harvey said. "Knowing the defense at a much deeper level let me play with much more intensity, and I want to carry that over to next season. Coming in as a sophomore, my biggest adjustment was going from a mentee as a freshman to someone the freshmen look to for advice. I enjoyed getting to know the new guys and I look forward to being back on the field with them next season."

Harvey's effort on defense has helped the Bears compile a 15-5 record over the last two seasons. His sophomore campaign included his first two collegiate fumble recoveries, with the second coming in a 21-0 road victory at Illinois Wesleyan on Oct. 26. He finished with four tackles for loss, and he recorded at least five total tackles in six of his games.

"I filled a much more active role and I played most of our snaps," Harvey said. "I was able to make my presence felt much more

than I did last season. I would like to continue that trend next season and provide more guidance for my teammates... This was a season of building and learning and I hope to take that knowledge into next season and continue improving."

WashU has barely missed the postseason in each of the last two years, but the Bears will look to make another run when they kick off the 2020 season against UC on Sept. 5. Harvey will not be the only RTHS alum suiting up for WashU, however, as he's expected to be joined by current Rochelle senior lineman Charlie Jandak, who committed to the program earlier this year.

"I've enjoyed playing at a high level across the country with people who I've become really close with," Harvey said. "This season, I really felt myself progress on the field and be able to work more seamlessly with my teammates. I was able to make a much larger impact and I was able to settle into my role on the field."

(PHOTO COURTESY OF WASHU ATHLETICS)

Former Rochelle standout Alex Harvey recorded 50 tackles while adding his first collegiate sacks and fumble recoveries for the WashU-St. Louis football team this season.

RTHS Baseball

Beck making adjustments at Western Illinois

Former Hub pitcher focusing on improving mental approach

BY RUSSELL HODGES
SPORTS EDITOR

JOHNNY Beck and his Western Illinois University teammates were on their way to a road game against Austin Peay State when they started hearing about collegiate athletics getting canceled to prevent the spread of coronavirus. Two days later, their 2020 season was over.

While Beck's freshman season with the Leathernecks was cut short, the former Rochelle Township High School pitching standout was able to throw roughly 11 innings and appear in five games, totaling nine strikeouts. The 6-foot-8 left-hander said he's added over 40 pounds to his frame since his arrival on campus, bulking up from 191 to 233 pounds.

"With this extended offseason, I'm going to do my best to take everything I've learned from college baseball and apply that to my training," Beck said. "There are so many little things that I never thought about while pitching in

high school that I can do in college. Physically, my main focus will be being quicker to the plate and healing the ankle I injured my senior year so that I can stay on my back side more easily. Mentally, I need to work on staying calm."

Beck's potential as an NCAA Division I prospect surfaced during his junior season with the Hubs, when he dominated opposing hitters with a 1.40 ERA and 100 strikeouts in 58 innings. While Beck posted strong numbers his senior season, he said that some setbacks with his mechanics made his initial adjustment to the collegiate level tough. However, Beck said he's enjoying his experience with the Western Illinois baseball program so far, and he said the knowledge he's absorbing from both his coaches and his teammates is helping him improve mentally.

"It's been a blast," Beck said. "I've learned a lot not only from the coaches, but also the older guys that have had the chance to gain a ton of experience...

(PHOTO COURTESY OF WESTERN ILLINOIS ATHLETICS)

Former Rochelle baseball player Johnny Beck will be aiming to sharpen his mental game and tweak his mechanics after a brief freshman season at Western Illinois University.

I came into Western Illinois with really bad mechanics that came out of nowhere. My junior year, my me-

chanics came naturally, so when they didn't come naturally my senior year, I freaked out. In college, I've

realized that pitching is not just about my body, but my mental game. It's taken me a lot to figure out how to

stay relaxed when things aren't going smoothly and realizing that it happens to the best of us."