



# ROCHELLE News-Leader

WEEKEND EDITION | WWW.ROCHELLENEWS-LEADER.COM

Today's RNL issue  
sponsored by  
Community  
Unity  
member:

**BODY  
WERKS**  
636 S. Seventh St.  
815-562-4747

Vol. 101 • No. 41

LOCAL NEWS... LOCAL VIEWS

SUNDAY, SEPTEMBER 20, 2020

\$1

More coverage.  
Less spendage.

Discounts up to 40%  
Get more. Spend less. It's that simple  
when you get car insurance from us.  
Like a good neighbor, State Farm is  
there! CALL FOR A QUOTE 24/7.  
**Terri Schaefer, Agent**  
Bus: 815-562-7063  
terri.schaefer.115n@statefarm.com



State Farm Mutual Automobile Insurance Company,  
State Farm Indemnity Company, Bloomington, IL

KNOW IT  
TODAY



Annual outing

Rochelle Community  
Hospital hosts annual golf  
outing. See page 2

## WEATHER



Today's RNL issue  
sponsored by  
Community  
Unity  
member:

**AtlasAuto**

1400 N. Seventh St.  
815-562-7433

## OBITUARIES

• MARIAN MIKITA

See page 4

## INSERTS

• SCHNUCKS  
• STOCK & FIELD  
• MENARDS

## INSIDE

Local News.....2, 3, 7 & 8  
Obituaries.....4  
Opinion .....6



8 52078 00112 6

## Staying strong during tough times

Rochelle Christian Food Pantry continues providing weekly for those who need it most

BY JENNIFER SIMMONS  
MANAGING EDITOR

A Friday afternoon donation made by the White Rock Township is just one of many that the Rochelle Christian Food Pantry receives regularly these days.

"The township tries to support different places in the community [especially since COVID] and so many not working...we decided to do this this year," White Rock Township trustee Lorraine Hubbard said.

Like most monetary donations, the funds are used to purchase pantry necessities when the demand arises. But monetary donations



(PHOTO BY JENNIFER SIMMONS)

Pictured left to right are White Rock Township Supervisor Thomas Smith, township trustee Jim Milligan, township trustee Lorraine Hubbard, Rochelle Christian Food Pantry board member Carol Hayenga and pantry board member Matt King. The township made a donation to the food pantry Friday morning.

aren't the only donations that the pantry receives.

"Once in a while semis will come in and drop off some food... [Recently] Rainwaters

brought in some sweet-corn, MightyVine brings in some tomatoes, Tyson helps by bringing some of their stuff - it's kind of a community effort

so we really appreciate that," Rochelle Christian Food Pantry board member Carol Hayenga said.

And, according to

food pantry manager TyAnne Unger, every donation has been a blessing.

See PANTRY page 4

## Drive-thru for FFA

Pork chop dinner fundraiser  
planned for Oct. 16

BY RUSSELL HODGES  
STAFF WRITER/SPORTS EDITOR

ROCHELLE — COVID-19 has forced Rochelle Township High School to go without many of its usual Homecoming festivities. One tradition that won't change, however, is the Rochelle FFA Chapter serving pork chops, and the chapter recently announced it will be hosting a drive-thru pork chop dinner for the community on Friday, Oct. 16.

While the Rochelle FFA Chapter normally serves pork chops during Friday night football games, students are changing course this year due to the ongoing pandemic. The dinner includes a pork chop, apple-sauce, chips and a cookie for \$10. Orders can be placed online at <https://rochelle-ffa-drive-thru-porkchop-sale.cheddarup.com>.

"We thought it would be a great way to generate some community involvement and celebrate what would have been our Homecoming weekend," Rochelle FFA Advisor Donna Page said. "We wanted to raise morale and do something nice for our community... It's been great to see the FFA members get excited about hosting an event that will feel close to normal."

The money raised from the drive-thru dinner will go toward the Rochelle FFA Chapter, which uses the money to fund supplies and chapter activities such as conferences. The money also goes toward providing goods and services including first-aid kits for local farmers. Those who place their orders online can add extra pork-chops and sandwiches to their meals for \$5 each.

"We're looking forward to seeing a great turnout," Page said. "We highly encourage using the link to order online so we can know how many chops we need to provide for Friday night."

\*RTHS officials changed the date of the event after an article was printed in a special edition printed Friday, Sept. 18. Please note new date of Oct. 16 for the event.



(FILE PHOTO)

Mary Coglianese promotes pork chops.



Patrick Keaty (center) and his sons Michael (left) and Jimmy (right). Patrick and his family have been a part of The Shed from the beginning. They are pictured here at the 5 year celebration.

## Celebrating five years

The Shed continues to help community

BY BRAD JENNINGS  
OGLE COUNTY LIFE EDITOR

OREGON — It was five years ago in August that Serenity Hospice and Home opened The Shed in Oregon.

The idea was to give grieving people a chance to get together and work on projects. It is now an important part of the community.

Cathy Warren, bereavement coordinator and manager of The Shed, recently sat down to answer some questions about its the past, present and future. Warren started at Serenity in April, 2008.

Question: What was the original idea of The Shed?

Answer: When people think of bereavement or grief groups, it seems that most of them picture very sad people sitting in a circle crying and sharing. And sometimes that is what a group is and that can be very effective, but some people are not comforted by this type of group. Actually many people find that they find comfort when busy or productive using their hands or being creative. With this in mind, a widower

in Australia started inviting the men from his hospice grief group to his garage to work on projects. Sometimes it was silent as then worked together on a project, but they worked together and that was what brought comfort. Sometimes while they worked they began to talk and share. That was how the first concept of a "shed" type therapeutic place was born. This story was on YouTube and an employee at Serenity Hospice saw it and shared it with our CEO. It became a vision and a goal to try and create this type of center here in Oregon free and open to the public.

Q: How has the reality been compared to the original idea?

A: I think the biggest surprise to us all was that we immediately saw that The Shed could help people experiencing any type of loss ... not just death. Loss of a job, a relationship, loss of a way of life, loss of their youth ... it became obvious from our first few encounters that this type of creative therapeutic work was healthy for anyone.

See SHED page 8

**FREE SHRED EVENT**  
SEPT 26 - 9am to 12 Noon 340 May Mart Dr, Rochelle

**Central Bank**  
ILLINOIS  
Our Central focus is YOU  
[central-bank.com](http://central-bank.com)

Member FDIC

Like us on facebook

**2018 GMC TERRAIN SLE**  
Low Miles, Bluetooth, GM Certified Warranty.  
**\$19,499\***  
\* Plus tax, title, license and doc fee. #7251A

**JEFF PERRY**  
CHEVROLET • BUICK • CADILLAC • JEEP • CHRYSLER

815-562-8787  
[JEFFPERRYAUTOS.COM](http://JEFFPERRYAUTOS.COM)

09202020

# LOCAL NEWS

## Annual hospital golf outing brings in \$25,000

**ROCHELLE** — The Rochelle Community Hospital Foundation held its 20th Annual Golf Outing at Fairway Golf Course on Monday, Sept. 14.

A total of 68 golfers were in attendance for golf, food from SALT251 and fun activities provided by RCH staff while they competed in the scramble.

The outing netted

\$25,000. Proceeds will be used to purchase new cardiac monitoring equipment for the hospital.

There were two teams tied for first place — Hub-Remsen Print Group and SBM Business Solutions. Players with the longest drives were David Gerrity and Ailani Thiravong. Closest to the pin for men and women were Tad Everett and Kris-

tine Chadwick.

Over 20 years, this event has raised more than \$500,000 for care and services at RCH that benefit the community.

For more information about the RCH Foundation, go to [rochellehospital.com/foundation](http://rochellehospital.com/foundation), contact Michelle LaPage at 815-561-3110 or e-mail [mlapage@rcha.net](mailto:mlapage@rcha.net).



Wayne Cherry hits his drive off of hole No. 13. Cherry played with the SBM Business Solutions team and tied with Hub-Remsen Print Group for first place.



(COURTESY PHOTO)

Gregg Olson, Rochelle Community Hospital chief executive officer, and Reed Harris, RCH Foundation President, welcome golfers to the annual golf outing on Tuesday.



Will McLachlan of Edward Jones and RCH Foundation Board member, donated this picnic table he built for the raffle.

*Join us for FREE ice cream in the Parks!*

We're serving up FREE Culver's Concrete Mixers and the opportunity to complete your 2020 Census!

Why is the 2020 Census important? For each person not counted, Rochelle we will lose approximately \$18,000 in federal funding for public services over the next ten years!

*Ice Cream in the Parks Schedule*  
*Every Tuesday in September 5:30-7pm*

September 1	Teen Town
September 8	Memorial Park
September 15	Cooper Park
September 22	Connolly Park
September 29	Sweeney Park

**Culver's CONCRETE MIXER**

**CITY OF ROCHELLE 2020 CENSUS**

Funded by the Illinois Department of Human Services.  
Contents are solely the responsibility of the author.

## Pride of Oregon Riverboat up & running

Lunch & Dinner Cruises - Reservations Required

**HALLOWEEN - OCTOBER 31**

**Children's Costume Boat Cruise!**  
11:15 a.m. - Make Reservations soon!  
2:15 p.m. - SOLD OUT!  
**\$20 PER PERSON!**

**FULL MOON CRUISE**

Boards 6 p.m. - Leave 6:30 p.m.  
Return 8:30 p.m.

**FISH FRY FRIDAYS** | **PRIME RIB SATURDAYS**

**Restaurant open any day for parties!**

**GAMING - NOW UP AND RUNNING!**

**Maxsons Restaurant & Riverboat**

**1469 N. IL Rt 2 Oregon IL 815-732-6761 Maxsons.net**

**Fri & Sat 11-8, Sun 10-2**

09212020

**ENGLERT LeafGuard** is the permanent, clog-free gutter solution!\*

\*Guaranteed not to clog for as long as you own your home, or we will clean your gutters for free

**LIFETIME NO-CLOG WARRANTY**

**MADE ONSITE SPECIFICALLY FOR YOUR HOME**

**THE ONLY ONE-PIECE SEAMLESS DEBRIS SHEDDING GUTTER SYSTEM.**

**SCRATCHGUARD® PAINT FINISH**

**ENGLERT LeafGuard**

**815-673-7532**

**Call Today for Your FREE Estimate!**

**\$99 DOWN PLUS \$99 INSTALLATION\*\* \$99 PER MONTH**

**RECEIVE A \$25 LOWE'S GIFT CARD**

**WITH FREE IN-HOME ESTIMATE!**

\*Does not include cost of material. Expires 9/30/20. \*\*To be eligible for this promotion, the participant's estimated job cost must be at least \$7883. The advertised payment of \$99 a month is an estimate only, and assumes that third-party financing is available for new customers at an estimated 9.99% annual percentage rate for 132 months. Promotion available to qualified buyers on approved credit with \$99 down payment. Not all buyers will qualify. Higher annual percentage rates apply for buyers with lower credit ratings. LeafGuard is neither a broker nor a lender. Financing is provided by third-party lenders unaffiliated with LeafGuard, under terms and conditions arranged directly between the customer and such lender, all of which are subject to credit requirements and satisfactory completion of finance documents. Any finance terms advertised are estimates only. LeafGuard does not assist with, counsel or negotiate financing, other than providing customers an introduction to lenders interested in financing its customers. Expires 9/30/20. †All participants who attend an estimated 60-90 minute in-home product consultation will receive a \$25 gift card. Retail value is \$25. Offer sponsored by LeafGuard Holdings Inc. Limit one per household. Company procures, sells, and installs seamless gutter protection. This offer is valid for homeowners over 18 years of age. If married or involved with a life partner, both cohabitating persons must attend and complete presentation together. Participants must have a photo ID, be able to understand English, and be legally able to enter into a contract. The following persons are not eligible for this offer: employees of Company or affiliated companies or entities, their immediate family members, previous participants in a Company in-home consultation within the past 12 months and all current and former Company customers. Gift may not be extended, transferred, or substituted except that Company may substitute a gift of equal or greater value if it deems it necessary. Gift card will be mailed to the participant via first class United States Mail or e-mailed within 21 days of receipt of the promotion form. Not valid in conjunction with any other promotion or discount of any kind. Offer not sponsored or promoted by Lowe's and is subject to change without notice prior to reservation. Expires 9/30/20.

# LOCAL NEWS

## County electronic recycling day set for Sept. 25

**OREGON** – Ogle County Solid Waste Management Department (OCSWMD) announces that the next Residential Electronics Recycling event will be held on Friday, Sept. 25, from 9 a.m. to 4 p.m. at the County Annex Building, 909 Pines Road in Oregon.

The parking lot will open at 9 a.m. for residential electronic recycling. OCSWMD asks that residents do not arrive prior to 9 a.m. and free permits are required in advance to participate.

The Aug. 28 event was the first residential electronics recycling event for which free permits were required. Over 110 residents acquired permits and were able to quickly and easily drop off their electronic items for recycling.

To register for the Sept. 25 event please call or email the OCSWMD before noon on Sept. 23 to request a free Electronics Recycling Permit. Information needed: your name, address, town, email, and phone number. Requests received after this time or when the permit limit has been filled, will have the option to be registered for the next monthly event.

A permit will be emailed or sent by mail to each approved household. Permits are limited to one residential address per month, and are valid for one specific event. Registration will be limited to Ogle County residents only, and addresses and identification will be verified.

Participants must show their permit and identification with proof of Ogle County residency when they arrive at the event. This event is for electronic items from Ogle County residents only; residents of other Illinois counties should check with their local government or electronic retailers for electronic recycling options where they reside. People without a valid permit will be denied service. Permits will not be available the day of the recycling event.

The Illinois Consumer Electronics Recycling Act limits the number of electronic items accepted up to seven, however, the OCSWMD will only allow up to five

(5) items to be brought in for recycling. Accepted electronic items which are counted each as one (1) item include all televisions, computer monitors, computer towers, laptop computers, printers, FAX machines, scanners, electric typewriters, DVD/VCR players, cable or satellite receivers, stereo equipment, video game consoles, and microwave ovens, which are \$5 per microwave.

Smaller items such as computer cables, e-mice, keyboards, tablets, cell phones, home phones, calculators, digital clocks, rechargeable batteries, CFL bulbs and printer cartridges may be bulked together and will count as one (1) item in the total of five accepted items. Please check with the OCSWMD to verify what items are accepted and what is not accepted if you are unsure.

Please call 815-732-4020 or email the OCSWMD at [solid-waste@oglecounty.org](mailto:solid-waste@oglecounty.org) to register for the Sept. 25 event, or future electronics recycling events, and check the county website at [www.oglecounty.org](http://www.oglecounty.org) or Facebook at Ogle County Solid Waste Management Dept. for more information about this recycling program.

Volunteers are always welcome, contact the OCSWMD for more information.

## Book carnival planned at Chana United Methodist Church Sept. 26

**CHANA** — Chana Library and Chana PROMISE are hosting a book carnival [The GREAT BOOK GIVEAWAY] on Saturday, Sept. 26 with registration beginning at 10 a.m. and running to 1 p.m.

The carnival will be housed at Chana United Methodist Church in Fellowship Hall. The fair is for ages zero through young adult and offers more than 2,000 new or slightly used books — all sanitized and all free. All participants will receive multiple books – consider it a book fair with no charge.

Entry to the fair is open to all local residents and requires a mask.



## Central Bank to host free shred day

**ROCHELLE** — Central Bank Illinois, in Rochelle, is hosting a free document shred day on Saturday, Sept. 26. This free event will be open to the public from 9 a.m. to 12 p.m. in the bank’s parking lot at 340 May Mart Drive in Rochelle.

“Identity theft is one of the fastest growing crimes around the world. It’s a crime that Central Bank takes seriously and works daily to ensure our customer’s financial information is safe and secure,” stated Shelley Haws, operations officer with Central Bank Rochelle. “Secure document shredding is a

good way to protect yourself from the growing risk of identity theft.”

A secure document destruction truck will be on site and the public is invited to stop by with personal documents to be shredded. You do not have to be a bank customer to participate in this free event. Bank staff will be available to assist and ensure documents are safely and securely destroyed. The bank does ask that individuals bringing documents to be shredded remain on-site until their items are destroyed.

**NOTICE OF VOTE BY MAIL AND SECURE DROP BOX LOCATION DUE TO COVID-19**

Laura J. Cook, Ogle County Clerk and Recorder announces that “Vote by Mail” is now being conducted in the Election Department of her office. Due to COVID-19 voters are being encouraged to request a “Vote by Mail” ballot early to reduce the risk of exposure.

Your “Vote by Mail” ballot can be returned using the following options:

- Secure drop box location at the Courthouse located at 105 S. 5<sup>th</sup> St in Oregon;
- Drop-off in the County Clerk’s Office in the Courthouse located at 105 S. 5<sup>th</sup> St in Oregon;
- Mail via USPS (ballot MUST be Postmarked by November 3, 2020)

“Vote by Mail” will take place until Thursday, October 29, 2020. To obtain a “Vote by Mail” Application you can call 815-732-1110, e-mail [elections@oglecounty.org](mailto:elections@oglecounty.org) or visit [www.oglecounty.org](http://www.oglecounty.org) to download an application.

Dated this 18<sup>th</sup> day of September, 2020  
Laura J. Cook, Ogle County Clerk

09232020

**H.O.P.E**

For Free Help or Information Call 815-562-8890 24 Hours

All Calls Are Confidential.

Support, Advocacy, Referral Services, Shelter for victims of domestic violence and their children.

HOPE of Ogle County

P.O. Box 131  
Rochelle, IL 61068  
Public Service Announcement

**GENERAL ELECTION NOTICE**

NOTICE is hereby given that on Tuesday, November 3, 2020, at the usual polling places in the various precincts in the County of Ogle and the State of Illinois, a General Election will be held for the purpose of electing candidates for the following offices:

TO BE ELECTED:

Illinois Constitutional Amendment  
President & Vice President  
U.S. Senator  
Representatives in Congress

State Senators  
Representatives in the General Assembly  
Circuit Clerk  
State’s Attorney

Coroner  
County Board Members  
Judges  
Judicial Retention

REFERENDA:

Meridian CUSD #223

Polo CUSD #222

Lost Nation – New Landing River Conservancy District

**OGLE COUNTY POLLING PLACES**

BROOKVILLE	GRACE UNITED METHODIST CHURCH, 17725 W. CHAMBERS STREET, POLO
BUFFALO 1	SENIOR SERVICES CTR, 101 E. MASON, POLO
BUFFALO 2	SENIOR SERVICES CTR, 101 E. MASON, POLO
BUFFALO 3	SENIOR SERVICES CTR, 101 E. MASON, POLO
BYRON 1	CITY HALL, 232 W. 2 <sup>ND</sup> ST, BYRON
BYRON 2	BYRON FIRE STATION, 123 N FRANKLIN ST, BYRON
BYRON 3	CITY HALL, 232 W. 2 <sup>ND</sup> ST, BYRON
BYRON 4	BYRON FIRE STATION, 123 N FRANKLIN ST, BYRON
DEMENT	MUNICIPAL BUILDING, 110 N. MAIN, CRESTON
EAGLE POINT	NEW TOWNSHIP BLDG, 3537 S. BROOKVILLE RD. (HAZELHURST), POLO
FLAGG 1	ST. PATRICK’S PARISH CTR, 244 KELLEY DR, ROCHELLE
FLAGG 2	ST. PATRICK’S PARISH CTR, 244 KELLEY DR, ROCHELLE
FLAGG 3	SPRING LAKE MARINA, AVENUE B & 8 <sup>TH</sup> AVE, ROCHELLE
FLAGG 4	FLAGG CTR FIRE STATION, 5288 S. CENTER RD, ROCHELLE
FLAGG 5 *	FIRST PRESBYTERIAN CHURCH, 1100 CALVIN RD, ROCHELLE
FLAGG 6	ST. PATRICK’S PARISH CTR, 244 KELLEY DR, ROCHELLE
FLAGG 7	SPRING LAKE MARINA, AVENUE B & 8 <sup>TH</sup> AVE, ROCHELLE
FLAGG 8	VILLAGE HALL, 204 HILLCREST AVE, ROCHELLE
FLAGG 9 *	FIRST PRESBYTERIAN CHURCH, 1100 CALVIN RD, ROCHELLE
FLAGG 10 *	FIRST PRESBYTERIAN CHURCH, 1100 CALVIN RD, ROCHELLE
FLAGG 11	FLAGG CTR FIRE STATION, 5288 S. CENTER RD, ROCHELLE
FORRESTON 1	TOWNSHIP BUILDING, 104 E. STATE ST, FORRESTON
FORRESTON 2	TOWNSHIP BUILDING, 104 E. STATE ST, FORRESTON
FORRESTON 3	TOWNSHIP BUILDING, 104 E. STATE ST, FORRESTON
GRAND DETOUR	TOWNSHIP BLDG, 8110 MAIN (CORNER OF MAIN ST & BROAD ST), GRAND DETOUR
LAFAYETTE	TOWN HALL, 7351 CHANA RD, ASHTON
LEAF RIVER	VILLAGE HALL, 12 MAIN ST, LEAF RIVER
LINCOLN	TOWN HALL, 12319 W. JEFFERSON, POLO
LYNNVILLE	TOWNSHIP BLDG, 108 1 <sup>ST</sup> ST, LINDENWOOD
MARION 1	SV FIRE DIST BLDG, 200 S. RURAL RD, STILLMAN VALLEY
MARION 2	SV FIRE DIST BLDG, 200 S. RURAL RD, STILLMAN VALLEY
MARION 3	SV FIRE DIST BLDG, 200 S. RURAL RD, STILLMAN VALLEY
MARYLAND	OLD STONE SCHOOL HOUSE, ADELINE VILLAGE HALL, 8763 N MAIN ST, LEAF RIVER
MONROE	FIRE STATION, 104 WEST, MONROE CENTER
MT. MORRIS 1	VILLAGE HALL, 105 W. LINCOLN ST, MT. MORRIS
MT. MORRIS 2	VILLAGE HALL, 105 W. LINCOLN ST, MT. MORRIS
MT. MORRIS 3	VILLAGE HALL, 105 W. LINCOLN ST, MT. MORRIS
MT. MORRIS 4	VILLAGE HALL, 105 W. LINCOLN ST, MT. MORRIS
OREGON-NASHUA 1 *	UNITED METHODIST CHURCH, 200 S. 4 <sup>TH</sup> ST, OREGON
OREGON-NASHUA 2 *	UNITED METHODIST CHURCH, 200 S. 4 <sup>TH</sup> ST, OREGON
OREGON-NASHUA 3 *	UNITED METHODIST CHURCH, 200 S. 4 <sup>TH</sup> ST, OREGON
OREGON-NASHUA 4	OREGON-NASHUA TOWNSHIP BLDG, 107 N ETNYRE AVE, OREGON
OREGON-NASHUA 5 *	UNITED METHODIST CHURCH, 200 S. 4 <sup>TH</sup> ST, OREGON
OREGON-NASHUA 6	CHURCH OF GOD, 860 W OREGON TRAIL RD, OREGON
PINE CREEK	TOWN HALL, 5527 W. PINES RD, OREGON
PINE ROCK	TOWNSHIP GARAGE, 210 WEST ST, CHANA
ROCKVALE 1	TOWNSHIP BLDG, 6057 IL RT 2, OREGON
ROCKVALE 2	TOWNSHIP BLDG, 5393 N RIVER RD, BYRON
SCOTT	DAVIS JUNCTION FIRE DEPT, 106 MAPLE/JUNCTION ST, DAVIS JCT
TAYLOR	TOWNSHIP BLDG, 280 W. FLAGG RD, OREGON
WHITE ROCK	TOWNSHIP BLDG, 404 THIRD ST, KINGS
WOOSUNG	EDWIN & MARY YINGLING GARAGE, 501 IL RT 26, WOOSUNG

LOCATIONS ARE SUBJECT TO CHANGE \* Temporary Polling Place Change due to COVID-19

The polls of said GENERAL ELECTION shall be open continuously from 6:00 a.m. to 7:00 p.m. on Tuesday, November 3, 2020.

Dated this 18<sup>th</sup> day of September, 2020  
Laura J. Cook  
Ogle County Clerk

05212020



# LOCAL NEWS

## Choose your words carefully

THE words we choose to speak matter more than we realize, because our attitudes and actions are greatly influenced by them. And sometimes when we open our mouth without thinking, we can bring ourselves down spiritually and hurt other people in the process. For example, how many times have you heard yourself say things like, “I’m sick of cleaning this house,” “You’re driving me nuts today,” or “This job is killing me”? Words like that don’t bring anything positive into our lives. And it’s important that we not take them lightly. Proverbs 21:23 (NIV) says, “Those who guard their mouths and their tongues keep themselves from calamity.” We need to practice saying things we really want to say and remember to be thankful for what we have. Because even when blessings are chasing us down, if we’re not careful, we can still find reasons to be negative and complain. It really is amazing how fast we can forget about the good things God has done for us. After He miraculously parted the Red Sea and delivered the people of Israel out of slavery in Egypt, “the whole community grumbled against Moses and Aaron” (Exodus 16:2). In other words, they forgot about the miraculous deliverance God provided for them and put their focus on the things they didn’t have. It’s so easy to complain when our circumstances aren’t



Joyce Meyer

exactly what we want them to be. But many times it’s our attitude that keeps us right where we are. Philippians 2:14 clearly tells us, “Do everything without grumbling or arguing.” Whenever you’re tempted to complain, just think about how much better it would be to remain thankful and say, “God, I remember the good things You’ve done for me and I’m thankful for the breakthrough that I know is on the way.” Whether we’re happy with our circumstances or not, giving God praise is so important. Psalm 91:2 says, “I will say of the Lord, ‘He is my refuge and my fortress, my God, in whom I trust.’” Being mindful to focus on God’s goodness and the many ways He helps us is a great way to stir our hearts up with praise every day. And it strengthens our faith when we declare that God is bigger than our problems and concerns. If there’s an area in your life that you’re having a hard time staying positive about, try doing a thirty-day fast from complaining. Replace any negative words with positive words and give God something to work with. You may still make mistakes from time to time, but God is faithful and you can trust that He’ll help you get your mouth into complete agreement with His Word if you won’t give up. You’ll find that when you are sincerely positive, it helps others be positive too, and people will come to you when they want to be encouraged. On top of that, you’ll be the kind

of person they won’t even bother coming to when they want to complain, because they’ll know you won’t put up with it. When we trust God more than our feelings, it confuses the devil. When he throws his best shot at you and he can’t budge you from believing God, he won’t know what to do with you anymore. King David learned that when he was just a boy. In 1 Samuel 17:45-46, David said to the giant Goliath, “You come against me with sword and spear and javelin, but I come against you in the name of the Lord Almighty... This day the Lord will deliver you into my hands....” And he followed up his words with bold action. David ran quickly toward the battle line, killed Goliath and won the victory. When we’re facing giants in our life, that’s exactly the way we need to behave. Don’t ever run at your enemy with a mixture of faith and doubt in your mouth. Let the devil know who he’s dealing with. God will give you the victory if you will keep on agreeing with Him and speaking His Word. Say what God would say even if it’s the hardest thing for you to do. Praise Him regardless of what’s happening around you. You don’t have to give way to careless speech or complaining. You don’t have to let your feelings get in the way of what God wants to do in your life. Starting today, you can choose to remember the many things He’s done for you and start speaking boldly about the breakthroughs that are yet to come.

## Rochelle Area CHURCH DIRECTORY

**Ashton Bible Church**, corner of Main and Paddock in Ashton. Pastor Farrel Stauffer, church phone is (815)453-2190, church website [www.ashtonbible.org](http://www.ashtonbible.org). Sunday School for all ages 9:00-10:00am, Morning Worship 10:15am, Wednesday Prayer Meeting/Bible Study 6:30-8:00pm.

**The Bridge Church**, Pastor Greg Duncan, 11038 E. IL Route 38, Rochelle, IL 61068. Phone: 815-562-7750. Sunday School: 9:00 am; Sunday Service: 10:00 am; Nursery & Children’s ministry during am service; Bible Study Tuesday 10:00 am and Wednesday 7:00pm. Web: [thebridgechurchrochelle.com](http://thebridgechurchrochelle.com) Email: [thebridgechurchrochelle@gmail.com](mailto:thebridgechurchrochelle@gmail.com)

**Calvary Lighthouse Church, Assemblies of God**, Senior Pastor, Dr. James Horvath. 14409 Hemstock Rd., Rochelle. Sunday Morning: Sunday School for Adult & Children 9:00 A.M., Sunday Worship & Children’s Church 10:00 A.M., Sunday Evening & Children’s Church 6:00P.M.. Wednesday Evening 7:00 P.M. – Adult Teaching, Missionettes & Royal Rangers Childrens Classes, The Last Stand Youth Group. Nursery available for all services. HE-Brews Cafe is open before and after services. For further information, please call the CLC office at 815-562-7701, or email us at [staff@calvarylighthouse.com](mailto:staff@calvarylighthouse.com)

**Calvary Lutheran Church, LCMC** - “To Know Christ and to Proclaim Christ in Word and Deed” – 19 Perry Road, Lee, IL 60530 (intersection of Perry Road and W. County Line Road) Worship on Sundays at 9:30 a.m. We are currently posting devotions on Tuesdays and Thursdays and our Sunday Worship on Facebook at [www.facebook.com/Calvary-Lutheran-Church-576481519413773](http://www.facebook.com/Calvary-Lutheran-Church-576481519413773). Starting with the first week in September we will be having service at 10:30am. And we are doing Facebook live now and then it is posted after the service for anyone to view. Rev. Martha Uecker Nelson, Pastor. A Grief Counseling group offered each third Tuesday of each month at 10:00 am. Call (815) 824-2825 or email [CalvaryLeeIL@gmail.com](mailto:CalvaryLeeIL@gmail.com) for more information. [www.facebook.com/Calvary-Lutheran-Church](http://www.facebook.com/Calvary-Lutheran-Church).

**Church of Christ**, Minister Dominic Venuso. Hillcrest Ave. and Erickson Rd. Sunday Morning Worship 10:30 a.m., Sunday Morning Bible Study 9:30 a.m., Wednesday Mid-Week Bible Study 7:00 p.m. Free Bible Correspondence Course (815) 562-6572.

**Church of God/Iglesia de Dios, Rochelle Church of God** invites you to its bilingual services every Sunday at 3pm. La iglesia de Dios en Rochelle te invita a sus servicios bilingues cada domingo a las 3pm. We hope to see you. Te esperamos. Iglesia de Dios Evangelio completo. 222 1st Ave., Rochelle, Illinois, 61068.

**Creston United Methodist Church and Steward United Methodist Church** - Rev. Megan Thompson, Creston: 126 West South Street, P.O. Box 209, Creston, Illinois 60113. Sunday morning worship 9:00am. Coffee fellowship at 10:15am. Steward: 507 Main Street, P.O. Box 80, Steward, IL 60553. Adult Sunday School, 10:00am. Sunday morning worship and Children’s Sunday School 11:00am. Contact the church office at 815-396-2250 for more information.

**Elim Reformed Church**, 140 S. Church Road, Kings, IL 61068. Phone: 815-562-6811. Email [goelimchurch@gmail.com](mailto:goelimchurch@gmail.com) Website [www.goelimchurch.org](http://www.goelimchurch.org) Sunday Morning Worship 10:00 a.m., Sunday School 9:00 a.m. Rev. Cary J. Winn.

**Faith Lutheran Church** – “Making Christ Known Through Lives of Faith.” Sunday worship resources are available on our Facebook page - ‘Faith Lutheran Church ELCA.’ You may also e-mail Pastor Joy Alsop at [Pastor@faithlcrochelle.org](mailto:Pastor@faithlcrochelle.org) for more information. Faith Lutheran Church offers their prayers and love to our community during this difficult time.

**First Baptist Church of Rochelle, First Baptist Church of Rochelle** invites you to experience our practical Bible services which have nurseries provided in every service along with a wide range of children’s and teen ministries. Sunday School is at 9:30 am with regular church services at 10:30 am and 6:00 pm. Wednesday Family Night starts at 6:30 pm with AWANA for the 5 yr. olds thru 6th grade. The Omega Teen Ministry also starts at 6:30 pm for 7th – 12th grades and the Adult Bible Study at 7:00 pm. First Baptist Church is located 6 blocks west of Hwy 251 at the corner of Woolf Ct. and 8th Ave. in Rochelle. Call 562-4168 for more information. Listen at 11:00 am Sunday mornings on WRHL 1060 AM for the Sunday morning “Bible Message.” [www.firstbaptistrochelle.org](http://www.firstbaptistrochelle.org)

**First General Baptist Church**, 500 S. 12th St, Rochelle. Phone: 815-562-5221. Email: [fgbcrochelle@gmail.com](mailto:fgbcrochelle@gmail.com). Website: [www.fgbcrochelle.org](http://www.fgbcrochelle.org). Facebook: [www.facebook.com/fgbcrochelle](http://www.facebook.com/fgbcrochelle). Pastor: Rev. Angelo Bonacquisti. **Sunday worship services:** 8:30 am, 11:15 am and 6:00 pm. **Sunday school:** 10:00 am. We’d be honored to have you join us as we worship JESUS and continue to grow in truth and love for God and each other. A nursery, children’s church, youth group and small groups are available. If you need a ride please contact our church bus driver, John, at (815) 262-4275 by 8:30 am on Sunday. “For if you confess with your mouth that Jesus is Lord and believe in your heart that God raised him from the dead, you will be saved.” Romans 10:9

**First Presbyterian Church** – An Amazing Place for Amazing Grace- Rev. Doug Forsberg, Senior Pastor. 1100 Calvin Road, Rochelle. Email: [info@placeforgrace.com](mailto:info@placeforgrace.com). Sunday morning worship on our Website and Facebook Live. [www.placeforgrace.com](http://www.placeforgrace.com) / [www.facebook.com/placeforgrace](http://www.facebook.com/placeforgrace)

**Flagg Center Community Church of God Faith of Abraham**, corner of Flagg and Center Road, Flagg Center. Pastor Ron Macy. Phone 815-899-6229. Thursday night Bible study 6:30 p.m. Sunday school 9:30 a.m.; Worship service 10:30 a.m. Preaching Jesus Christ crucified, buried, resurrected, ascended and returning to earth to establish God’s Kingdom. Also preaching the unity of God and the sleep of the dead.

**Harvest Baptist Church** 241 Scott Ave. (Hillcrest). Rev. Duane Boehm, pastor. Email [duane712@hotmail.com](mailto:duane712@hotmail.com), cell 815-757-3427. Visit us on Facebook! Service times: Sunday School for all ages 10 a.m., Sunday morning worship and children’s church 11 a.m. , Wednesday evening Bible study 7 p.m.

**Immanuel Lutheran Church** Missouri Synod 16060 E. Lindenwood Road, Lindenwood, IL 61049. Rev. Dr. Matthew Rosebrock. Church Phone 393-4500. Church Worship 9:00 a.m. Sunday School Christian Education Hour at 10:30 a.m.

**Living Water Community Church** 405 N. Main St, Rochelle. Phone: 815-561-6249, Website: [www.lwccr.com](http://www.lwccr.com), Like us on facebook, Non-Denominational, Casual, Christ Centered. Pastor Bobby Gardner, Worship Director, Wes Carr, Youth Director, Adrian Daugherty. Services: Saturday 5:00pm, Sunday 10am. Radio: 1060 WRHL every Sunday 8:30-9:00am. Nursery, Toddlers and Children’s Ministry 1st-5th meet during each weekend service. Small Groups, Life Groups and discipleship workshops available. 7C’s Mission- located at 1135 Lincoln Hwy, Light lunch, Hygiene & Clothing items available the last Saturday of each month from 10:00am-1:00pm. [www.facebook.com/lwccr](https://www.facebook.com/lwccr)

**New Hope Fellowship (Church of God - Anderson, IN)**, 1501 10th Ave., Rochelle, IL 61068. Service: Sunday at 9:00 a.m. and 10:45 a.m., (815)561-8400, [www.NHFchurch.net](http://www.NHFchurch.net) Pastor: Dan Sergeant. (Classes for children through age fifth grade during service.)

**Primitive Baptist Church**, services 3’d Sunday each month, at 10:30 a.m. and 1 p.m., in the meeting room of the Holiday Inn Express, 1240 N. Dement Road, Rochelle, Ill. Elder Robbie Webb, and other ministers preaching. Lunch and fellowship time between services. Contact Elder Rob Webb, 312-809-0871, or Elder Robert Webb, 217-357-3723, or email [bwebb9@juno.com](mailto:bwebb9@juno.com) for more information. Services sponsored by the Carthage Primitive Baptist Church for convenience of members and friends in northern Illinois and southern Wisconsin. Visitors are welcome.

**Rochelle United Methodist Church** Rob Hamilton, Pastor; 709 Fourth Avenue, (815) 562-2164. Traditional Worship and Children’s Church, 9 a.m. (traditional service is broadcast live on WRHL-1060 AM) and also available online at [rochelleumc.com](http://rochelleumc.com). Fellowship in Hicks Hall at 10 a.m. Contemporary (Coffee House Style) Worship and Children’s Church, 11 a.m. Nursery is provided at both services for children 2 and under. Handicap accessible. Come join us...open hearts, open minds, open doors.

**St. Patrick Catholic Church** Rev. Jesus Dominguez; Deacon Fermin Garcia; Deacon George Schramm; 244 Kelley Dr. (Corner of Kelley & Caron Rd.), PO Box 329, Rochelle, IL 61068. **Office Hours:** 9:00 AM-5PM Monday-Thursday, 9:00 AM - 3 PM Friday, 7 PM Saturday (Spanish). Phone: 815-562-2370. Fax: 815-562-5250. **Mass times:** Daily 8AM, Saturday Vigil Mass 5:00 PM, Sunday Mass 7:30 AM, 9:00 AM in English and 11:00 AM in Spanish. **Confessions:** Wednesday 8:30-9:00 AM, Thursday 6:00-6:45 PM, Saturday 4:00-4:45 PM Or by appointment. **Religious Education:** Mrs. Kalah Williams, Director of Religious Education. 903 Caron Road, Rochelle, IL 61068, 815-561-0079 Website: [stpatrickstrochelle.com](http://stpatrickstrochelle.com) Email: [stpatrick-rochelle@rockforddiocese.org](mailto:stpatrick-rochelle@rockforddiocese.org) Facebook.com/StPatrickRochelle

**St. Paul Lutheran Church** “Building Relationships in Christ, Now and Forever!” Pastor-Rev. Greg Hoffmann, Steven Hall, Principal, Parish Nurse-Marcia Schnorr. 1415 Tenth Ave., Rochelle. Church Office-562-2744. Worship times: 6:00 p.m. Saturday, 9:00 a.m. Sunday. Our service is broadcast over WRHL 1060AM at 10:00 a.m. Sunday. Sunday School 10:15-11:15 a.m. Call 562-6323 for more information about the school.

# LOCAL VIEWS

## Guest column

### Use the lines

LET'S travel back in time. Once a railroad line ran from Sycamore to Holcomb and beyond. It was one track, and was not being used. So the railroad abandoned it.

The land was sold to people adjacent to the railroad. If only we had thought ahead 50 years.

That abandoned railroad line would have made a great bike trail. Wisconsin has hundreds of miles of trails on abandoned railroad lines and those trails draw visitors, who often eat in the tiny towns the trails pass through or spend the night in motels or bed and breakfasts.

I think that was at the beginning of the rails to trails movement in this country. There must have been a reason the state did not take the abandoned line and develop it, but I don't know what that reason was.

I was thinking about that as I crossed the railroad tracks that run north out of Flagg Center. This spur line runs through Kings, Davis Junction and up to Rockford.

The grass is really tall on the line, leading me to believe it is not used, or used very little.

If that line ever is abandoned, I hope it can be turned into a bike trail. It would draw people to our area, and give local people another option in the recreation field.

I also thought hand cars or pedal cars would be a neat attraction on that line.

\*\*\*\*  
Do our leaders really want to put Rochelle on the map?

Christie's auction house will be selling one of the world's most complete T-Rex skeletons this October.

Stan is about 13 feet tall, 40 feet long, and weighs about 7 ton. Estimated winning bid is \$8 million.

Yes, that's a steep price... but wouldn't it look neat in one of our parks?

\*\*\*\*  
We the people will be voting on a Fair Tax Amendment this year. This would change the state's flat income tax rate into a progressive rate.

I have heard people say they won't vote for it because of Madigan, or Pritzker, or because the state doesn't spend money wisely.

To me, the logic should be you either accept the fair tax concept, or not. Don't confuse all the other issues with the question. It's not a referendum on Madigan, Pritzker, or anything else except how we tax residents.

Please do some reading about both sides and make an informed decision.

*Terry Dickow can be contacted at [terrydickow@gmail.com](mailto:terrydickow@gmail.com)*



Terry Dickow



### My work clothes are pretty casual now

I will be honest here. OK, I always try to be honest, but this one is bare bones honest – I wear shorts and a T-shirt at work pretty much every day.

It's true. As I sit here writing this column, I am in my trusty camo shorts, which probably have stains from that burrito I ate back in June on them somewhere. I also have on a random Harley-Davidson T-shirt today. If it is not a Harley shirt, it is a random rock band shirt.

I swear, I am not a bum. It's just this working from home thing has really killed my sense of fashion. Yes, to be fair, I have never been much of a trend setter in the fashion world. No one has ever waited patiently for the Brad Jennings Fall Collection. If there was one, it would be featured at the dollar store, trust me.

Well, maybe a shoe store.

Shoes are my one clothing obsession, as I have noted in the past. I now have so many Converse tennis shoes in nearly every color under the sun that I am embarrassed to give the total number. (It is north of 20 ... well north).

I have even been covering Ogle County Board meetings from home. I just call in and cover the meeting while wearing my shorts.

Sure, I can put myself together when I have to. When I have to go cover a court hearing, I wear a button up shirt. When I go to do an interview, I wear that same button up shirt. When I get home, I toss it aside, grab a T-shirt and slip back into my shorts.

Comfort has become very important to me.

But last week (which is

actually next week as I write this – I know, it's confusing), I was on vacation and my entire wardrobe was out the window. The reason is a friend and I are riding our motorcycles west through a number of states, so shorts are not an option.

OK, I know you see some people wearing shorts on a motorcycle, but I am not one of them. The reason? I am smart. Burn your leg on an exhaust pipe? No thanks. Hit some gravel going 10 m.p.h. wearing shorts and you will lose a layer of skin. Again, no thanks.

So the trip will be about wearing protective gear – boots, gloves, jackets, an assortment of leather meant to protect me and also make me think that I look cool. OK, mostly to protect.

When we are not riding and back at the hotel, I

will surely slip into my trust shorts and Converse. But most of the time it will be dressing for safety and not for comfort.

I bring all this up because it is very disturbing to me. I love to ride and am looking forward to the trip, but I am bummed I have to put on pants.

Let that sink in. See? Pretty pathetic.

As most of you read this, I am probably on the road somewhere in Minnesota, or South Dakota or possibly even Montana. I am not wearing shorts, but they are right behind me in my backpack, which is strapped to the bike. My Converse shoes are in a saddle bag.

After a day of riding, they will be most welcome. I must say, I sure do love the 2020 version of my work clothes.

*Brad Jennings is Editor of The Ogle County Life.*



Brad Jennings

## How to contact government officials

U.S. Con. Adam Kinzinger  
1218 Longworth HOB  
Washington, D.C.  
20515  
(202) 225-3635

IL Sen. Brian Stewart  
M104A State House  
Springfield, IL 62706  
(217) 782-0180

IL Rep. Tom Demmer  
314 Capitol  
Springfield, IL 62706  
(217) 782-0535

Have a letter you want to submit to us? Send it to [news@rochelle-news-leader.com](mailto:news@rochelle-news-leader.com)

## KEEPING YOU IN TOUCH WITH YOUR LOCAL LEADERS

\* Denotes Chairman/President

**Rochelle City Council**  
\*John Bearrows [jbearrows@rochelleil.us](mailto:jbearrows@rochelleil.us)  
Kathryn Shaw-Dickey [kshaw-dickey@rochelleil.us](mailto:kshaw-dickey@rochelleil.us)  
Bil Hayes [bhayes@rochelleil.us](mailto:bhayes@rochelleil.us)  
Don Burke [dburke@rochelleil.us](mailto:dburke@rochelleil.us)  
Dan McDermott [dmcdermott@rochelleil.us](mailto:dmcdermott@rochelleil.us)  
Tom McDermott [tmcdermott@rochelleil.us](mailto:tmcdermott@rochelleil.us)  
John Gruben [jgruben@rochelleil.us](mailto:jgruben@rochelleil.us)

**Rochelle Elementary School Board**  
\*Dave Casey [dcillini94@gmail.com](mailto:dcillini94@gmail.com)  
Steve Builta [sbuilt@gmail.com](mailto:sbuilta@gmail.com)  
Shirley Reif [sreif@crestfoods.com](mailto:sreif@crestfoods.com)  
Jean Tess [dtess503@comcast.net](mailto:dtess503@comcast.net)  
Eric Van Hise [eric.vanhise@gmail.com](mailto:eric.vanhise@gmail.com)  
Trisha Vaughn [jrvtlv02@msn.com](mailto:jrvtlv02@msn.com)  
Javier Zepeda [jzepeda@rthsd212.org](mailto:jzepeda@rthsd212.org)

**Rochelle Township High School Board**  
\*Tom Huddleston [tom.huddleston@rthsd212.org](mailto:tom.huddleston@rthsd212.org)  
Carol Hayenga [carol.hayenga@rthsd212.org](mailto:carol.hayenga@rthsd212.org)  
Bill Ravnaas [bill.ravnaas@rthsd212.org](mailto:bill.ravnaas@rthsd212.org)  
Robert Walsh [bob.walsh@rthsd212.org](mailto:bob.walsh@rthsd212.org)  
Jeff Tilton [jeff.tilton@rthsd212.org](mailto:jeff.tilton@rthsd212.org)  
Brent Tracy [brent.tracy@rthsd212.org](mailto:brent.tracy@rthsd212.org)  
Brian VanVickle [brian.vanvickle@rthsd212.org](mailto:brian.vanvickle@rthsd212.org)

**Flagg-Rochelle Park Board**  
Mic Brooks [mbrooks@rochelleparkdistrict.org](mailto:mbrooks@rochelleparkdistrict.org)  
Brent Carmichael [bcarmichael@rochelleparkdistrict.org](mailto:bcarmichael@rochelleparkdistrict.org)  
John Dobbs [jdobbs@rochelleparkdistrict.org](mailto:jdobbs@rochelleparkdistrict.org)  
Dale Wells [dwells@rochelleparkdistrict.org](mailto:dwells@rochelleparkdistrict.org)  
\*Tim Hayden [thayden@rochelleparkdistrict.org](mailto:thayden@rochelleparkdistrict.org)  
Jodie Hart [jhart@rochelleparkdistrict.org](mailto:jhart@rochelleparkdistrict.org)  
Joe Lenkaitis [jlenkaitis@rochelleparkdistrict.org](mailto:jlenkaitis@rochelleparkdistrict.org)

**Ogle County Board Dist. 3**  
Lloyd Droege [ldroege@oglecounty.org](mailto:ldroege@oglecounty.org)  
Jamey Sulser [jsulser@oglecounty.org](mailto:jsulser@oglecounty.org)  
Greg Sparrow [gsparrow@oglecounty.org](mailto:gsparrow@oglecounty.org)

**Ogle County Board Dist. 4**  
Bruce McKinney [bmckinney@oglecounty.org](mailto:bmckinney@oglecounty.org)  
Skip Kenney [skenney@oglecounty.org](mailto:skenney@oglecounty.org)  
Kim Whalen [kwhalen@oglecounty.org](mailto:kwhalen@oglecounty.org)

**Creston Village Board**  
\*Wayne Williams [jwdw13@yahoo.com](mailto:jwdw13@yahoo.com)  
Deanne Haub [hobnob67@comcast.net](mailto:hobnob67@comcast.net)  
Tom Byro [tommyb\\_47@yahoo.com](mailto:tommyb_47@yahoo.com)  
Greg Hopkins [ghopkins522@comcast.net](mailto:ghopkins522@comcast.net)  
Steve Katzman [skatzman@essex1.com](mailto:skatzman@essex1.com)  
Mike Kerns [ac.kerns@comcast.net](mailto:ac.kerns@comcast.net)  
Mike Misch [mmfam@live.com](mailto:mmfam@live.com)  
Curt Ward [caward92@comcast.net](mailto:caward92@comcast.net)

**Hillcrest Village Board**  
Randy Salsbury [rsalsbury@hillcrestil.us](mailto:rsalsbury@hillcrestil.us)  
Pam Pitman [ppittman@hillcrestil.us](mailto:ppittman@hillcrestil.us)  
Don Potter [dpotter@hillcrestil.us](mailto:dpotter@hillcrestil.us)  
Richard Rhoads [rrhoads@hillcrestil.us](mailto:rrhoads@hillcrestil.us)  
\*Jason Fore [jfore@hillcrestil.us](mailto:jfore@hillcrestil.us)  
Tim Ball [tball@hillcrestil.us](mailto:tball@hillcrestil.us)

**Flagg Township**  
\*Bob Withrow [flaggtwp@rochelle.net](mailto:flaggtwp@rochelle.net)  
Joanna Patrick [flaggtwpc@rochelle.net](mailto:flaggtwpc@rochelle.net)  
Susan Rothenberger [assessor@rochelle.net](mailto:assessor@rochelle.net)  
Scott Seebach [scottseebach@gmail.com](mailto:scottseebach@gmail.com)

**Board of Trustees**  
Lance Noggle [noggle62@gmail.com](mailto:noggle62@gmail.com)  
Eric Gruben [egruben@comcast.net](mailto:egruben@comcast.net)  
Susan Hagar [susanhager303@comcast.net](mailto:susanhager303@comcast.net)  
Jim Kenney [jimk@rocketsupply.com](mailto:jimk@rocketsupply.com)

**Flagg-Rochelle Library**  
\*Jaqueline Dickow [dickow@comcast.net](mailto:dickow@comcast.net)  
Teresa Haggstad [haggstad@comcast.net](mailto:haggstad@comcast.net)  
Michael Scanlan [scanlan@comcast.net](mailto:scanlan@comcast.net)  
Lanning Nicoloff [nicoloff18@comcast.net](mailto:nicoloff18@comcast.net)  
Sheri Klindera [alwayslefty2@gmail.com](mailto:alwayslefty2@gmail.com)  
Susan Sevedge [nit1prl22@yahoo.com](mailto:nit1prl22@yahoo.com)  
Darci Waltrip [doobs12@comcast.net](mailto:doobs12@comcast.net)

## LETTERS TO THE EDITOR POLICY

The Rochelle News-Leader encourages responsible letters to the editor on subjects of interest to our readers. Editing may be necessary for space, clarity or to avoid obscenity or libel, but ideas will not be altered. All letters must bear the handwritten signature of the writer and include address and phone number or e-mail address for verification purposes. Neither the street address nor phone number will be printed. Letters should be typed or legibly

handwritten, and no anonymous letters will be published. Any letters from boards or organizations must include at least one name of an individual. Any criticism of public officials should be limited to issues related strictly to their position or actions made in office, as personal attacks will not be published. Letters involving private disputes between the writer and a business will not be published. Political endorsements will be published,

however letters from candidates endorsing themselves will not be printed. Letters may be dropped at the News-Leader office (211 IL Route 38 East), mailed to the News-Leader (P.O. Box 46, Rochelle, IL 61068) or e-mailed ([news@rochellenews-leader.com](mailto:news@rochellenews-leader.com).) The News-Leader reserves the right to edit or reject any letter to the editor for any reason, and letters chosen for publication do not necessarily reflect the views of this newspaper.

# COMMUNITY

## Mobile food pantry is coming to Oregon

**OGLE COUNTY** — Lifeline Food & Self-Help Project in partnership with the Northern Illinois Food Bank is hosting two Mobile Food Pantries.

The Mobile Food Pantry will be in Oregon on Monday, Sept. 28 and again on Monday, Oct. 19. The truck will be parked in St. Mary's parking lot at 300 N. 3rd St.

The Oregon Lifeline Food & Self-Help Project is just one of over 800 food

pantries in 13 counties that partners with the Northern Illinois Food Bank to provide food for those in need. These two mobile food pantries are open to anyone in Ogle County who is in need of nutritious food. The mobile food pantry provides an extra distribution of food that does not effect a Lifeline client's eligibility to receive their normal monthly allotment of food.

The food pantry at Lifeline is open on Tuesdays from 1:30 p.m. to 4 p.m. and on Fridays from 1:30 p.m. to 4:30 p.m. In addition, clothing may be purchased at these same hours, plus on Thursdays from 1 p.m. to 4:30 p.m. and on Saturdays from 10:30 a.m. to 1:30 p.m. Both food and clothing are provided through the generous donations of many people in the area.

The proceeds from the clothing sales all benefit the food pantry.

Please be aware that clients need a picture ID each time they pick up food. Also, in accordance with Health Department restrictions, a properly worn face mask is required for anyone entering Lifeline.

You can follow us on Facebook at Lifeline Food & Self-Help Project, Oregon, IL.

## Serenity Hospice offering free course

**OREGON** — Serenity Hospice and Home is pleased to announce they will be starting an eight-week class entitled, "Understanding Your Grief."

This class will run each Tuesday evening from Sept. 29 through Nov. 17. The group will meet at The Serenity Hospice Home located at 1658 S. Illinois Route 2 just south of Oregon from 6 p.m. to 7:30 p.m.

The structure of the group will follow the book by Dr. Alan D. Wolfelt which covers 10 touchstones in the areas of physical, emotional, cognitive,

social, and spiritual growth to help you through the grief process. Wolfelt has written many books about healing after the loss of a loved one and is considered a leading grief educator.

The class will be facilitated by Cathy Warren, Serenity Hospice's Bereavement Coordinator.

"I am very excited to offer a class like this one," Warren said. "Our grief groups are usually open-ended and people come and go as they travel through their own journey of grief. This is a more structured approach and the participant will know exactly

when it will end."

Each participant will receive a free copy of the book by Dr. Wolfelt.

Be aware that in an effort to contain the spreading of the COVID-19 virus, participants will be asked to take your temperature upon entering the building. Social distancing will also be practiced as well as wearing facemasks.

Call Serenity Hospice at 815-732-2499 to find out more information about this class.

Class sizes are limited so call today.

### The Kitchen Table menu

Sept. 22 (Tuesday) Shredded pork over Hoe Cakes, baked beans, coleslaw  
Sept. 24 (Thursday) Lemony chicken over pasta with capers, salad, dinner rolls  
Sept. 29 (Tuesday) Balsamic pork with roasted carrots and potatoes, green bean and dinner rolls

\*The Kitchen Table is located at 7034 S. Klondike Road, Rochelle. The suggested donation is \$5 unless

otherwise stated. A kid's menu is available each serving date and includes peanut butter and jelly, corn dog with chips or chicken nuggets. Please note that all menus are subject to change. Serving is from 4:30 p.m. to 6:30 p.m. on Tuesday and Thursday. Sunday brunch is served from 11 a.m. to 2 p.m. The menu is always available on the answering machine by calling 815-561-9074 or visit [www.KitchenTableRochelle.org](http://www.KitchenTableRochelle.org).

### Birthdays & Anniversaries

**Sept. 19**  
Leland & Lucy Hazlip  
Madison Wooten  
Ben Shank  
**Sept. 22**  
Krew Sullivan

**Sept. 23**  
John Worley  
Chris Doering  
Maria Shank  
**Sept. 27**  
Ron & Freda Ankney (57)

**Sept. 28**  
Ashley Bunger  
**Sept. 29**  
Josh Walker



### FROM THE HEART DAILY CASH WINNERS

Aug. 27 - Denise Johnson, Rochelle, \$25

Aug. 28 - Emily Whitaker, Rochelle, \$25

Aug. 29 - Roger & Susie Ahlensdorf, Kings, \$25

Aug. 30 - Terry Harvell, Rochelle, \$25

Aug. 31 - Betty Dearth, Rochelle, \$50

Sept. 1 - Judy Etchason, St. Charles, \$25

Sept. 2 - Charley Boosta, Dixon, \$25

Sept. 3 - Taylor & Loren May, Westmintsier, Colo., \$50

Sept. 4 - Abigail Erwin, New York, New York, \$25

Sept. 5 - Dave & Judy Stadler, Forest, Virginia, \$25

Sept. 6 - Duane Alcock, Monroe Center, \$50

Sept. 7 - Sunshine Bakery, Rochelle, \$1,000

Sept. 8 - Gabe Garcia, Chana, \$25

Sept. 9 - Carol Koch, Rochelle, \$25

Sept. 10 - Sandra Chasm, Oregon, \$25

Sept. 11 - Ron Schabacker, Rochelle, \$25

Sept. 12 - Jackie Cutts, DeKalb, \$25

Sept. 13 - Linda Sanderson, Creston, \$50

Sept. 14 - Joe & Norma Thiele, \$25

Sept. 15 - From the Heart Auction, Rochelle, \$25

Sept. 16 - Jimmy Gilbert, Rochelle, \$25

Sept. 17 - David Sprung, LaMoille, \$25

Sept. 18 - Bobby Clausen, Rochelle, \$25

Checks to winners will be mailed out at the end of each month



## Coffee Break

### MAGIC MAZE • HERBIVORES

H O L D I F B C Z W T Q N K I  
F C Z I E I W E U R P M J H E  
C Z X N S U S F Q N L J G C E  
C T Z O R G X F V T R P A N L  
J H N S O E B A C A Y M W V T  
R P N A H R E R R E E D L K I  
G E T U H C A I H L A B Z X W  
U S S R R P V G I T L P O M L  
J I G S H E E P N T A E D B A  
Y T I B B A R L O A O P P I H  
X W U T S Q P O E C K N L K J

Find the listed words in the diagram. They run in all directions forward, backward, up, down and diagonally

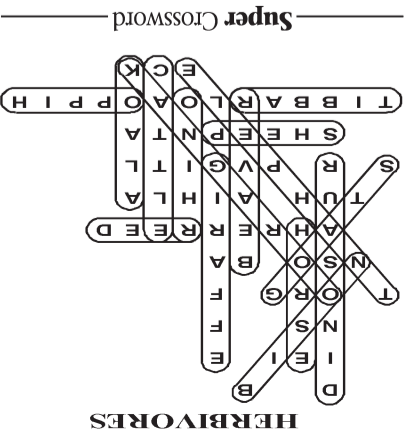
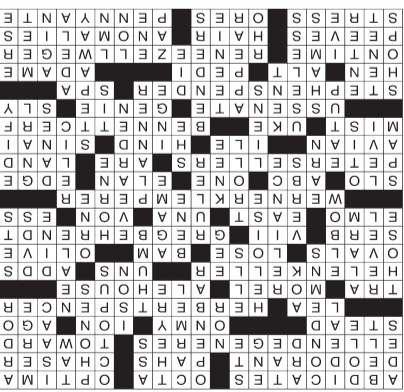
Beaver  
Bison  
Cattle  
Deer

Dinosaur  
Elephant  
Giraffe  
Goats

Hippo  
Horse  
Kangaroo  
Koala

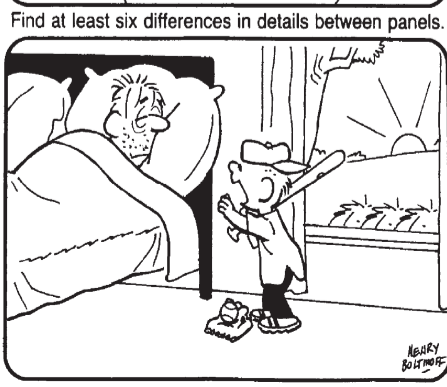
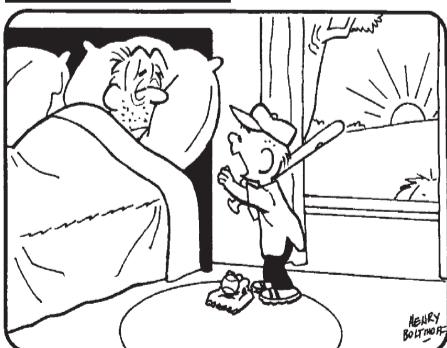
Rabbit  
Rhino  
Sheep

©2020 King Features Syndicate, Inc. All rights reserved.



### HOCUS-FOCUS

BY HENRY BOLTINGOFF



Differences: 1. Rug is missing. 2. Hat is backward. 3. Blanket is shorter. 4. Man's hair is different. 5. Sun has fewer rays. 6. Shrubs have been added.

## Super Crossword

### LIVING A LIFE OF E'S

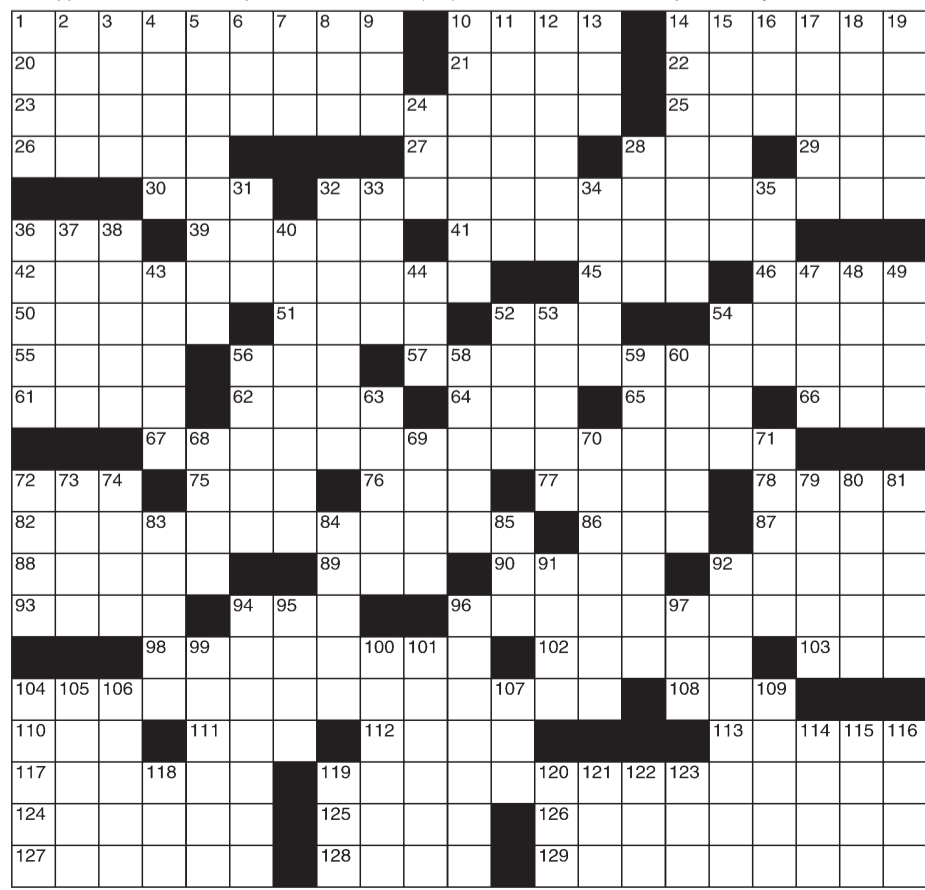
#### ACROSS

- 1 Renounces the throne  
10 Hexa- plus two  
14 Best results possible  
20 Right Guard, e.g.  
21 Oom- (polka sounds)  
22 Drink of beer after a shot  
23 2014 Oscar show host  
25 In a position facing  
26 Standing in good —  
27 "Put it — tab"  
28 Tiny charge carrier  
29 In times past  
30 Grazing site  
32 Sociologist who coined "survival of the fittest"  
36 La-la lead-in  
39 Mushroom variety  
41 Tavern  
42 Author and activist on Alabama's state quarter  
45 Little — (tots)  
46 Appends  
50 Egg shapes  
51 Get defeated  
52 "Kapow!"  
54 Bar garnish  
55 Kosovo citizen  
56 LXX / X  
57 He wrote "He's Just Not That Into You" with Liz Tuccillo  
61 Tickle red Muppet  
62 Dawn direction  
64 A, in Argentina  
65 Part of many German names  
66 Suffix with lion or seer  
67 Player of Colonel Klink on "Hogan's Heroes"  
72 — "pitch network"  
76 Wedded  
77 Verve  
78 Verge  
82 "The Pink Panther" co-star  
86 "— you with me?"  
87 End a flight  
88 Bird-related  
89 Tahiti, par example  
90 Posterior  
92 Egyptian peninsula  
93 Vapor  
94 Guitar's kin, for short  
96 Longtime "What's My Line?" panelist  
98 Amer. body with 100 members  
102 "Aladdin" figure  
103 Cagey  
104 1965-66 poet laureate  
108 Chichi retreat  
110 Coop cackler  
111 PC key  
112 Mani- —  
113 "There Is Nothin' Like —"  
117 Not tardy  
119 "Nurse Betty" star  
124 Vexes (storm type)  
125 A hat hides it  
126 Deviations  
127 Drive home  
128 Finds to be refined  
129 Small-stakes poker

#### DOWN

- 1 Fruit drinks  
2 Boxing prize  
3 Portion (out)  
4 Utopian  
5 Denounces  
6 Ending for dull or drunk  
7 — kwon do  
8 Mem. of the U.K.  
9 Canonized Fr. woman  
10 Where drinks are on the host  
11 Monterey County city  
12 "— playing our song"  
13 Balking beast  
14 Ink-squirting sea creature  
15 Gives a ring  
16 "I taut I — a puddy tat!"  
17 Newton who was knighted  
18 Come together  
19 Enthusiasm  
24 — easter (storm type)  
28 Currently has the stage  
31 Just fine  
32 Hint-offering columnist  
33 Architectural add-ons  
34 Twiddled digit  
35 Zora — Hurston

- 36 The ones there  
37 Make merry  
38 Make fearful  
40 Trust  
43 Bodily joint  
44 Brain wave test, for short  
47 Sup stylishly  
48 Blockbuster rented them  
49 Places  
52 Nota —  
53 Top competitive effort, informally  
54 Novelist Sarah — Jewett  
56 "Live" and "learn," e.g.  
58 Shah or czar  
59 She played Miss Brooks  
60 Lena of song  
63 Gremelin's kin  
68 Be worthy of  
69 Bodily joint  
70 Appointment calendar  
71 Vestige  
72 Inbox junk  
73 Jeans-maker Strauss  
74 Big elevator name  
79 Copenhagen citizens  
80 Make twisty  
81 Uplift morally  
83 Devour property  
84 Claims on  
85 That miss  
91 "Bus Stop" playwright William  
92 Move aside  
94 Of no help  
95 Smallville's Clark  
96 Drinking spree  
97 "— the season to be jolly"  
99 Dishonors  
100 Emerge  
101 — "weenie"  
104 Bazaar units  
105 Creed part  
106 PC key  
107 Fritz out  
109 Writer — Rogers St. Johns  
114 Not "fer"  
115 Come together  
116 Irish Gaelic tongue  
118 "— done it!"  
119 Frat letter  
120 Electric jolt  
121 Ending for ethyl  
122 Chaney of old chillers  
123 Run after K



# LOCAL NEWS

## SHED: Celebrating five years

From page 1

We now have regular volunteers that come in and haven't experienced any type of huge loss, they just enjoy the comradery and want to help Serenity Hospice. We try to make it a comfortable place to be. We have food and coffee and sitting areas that have nothing to do with working on a project. We have a retail room where the items are sold and we have a meeting room where we can talk privately with anyone.

Another big surprise is that the two of us who run The Shed, Denise Watts and myself, were never that crafty and we have learned to operate equipment, paint, have visions for donated furniture and our own creative sides have flourished! Another surprise has been the response to our classes, particularly Ladies Night Out and our kids programs and camps. We have been able to team up with the Oregon Park District and offer some camps for grieving kids. Our plan for 2020 was to expand the programming for kids and teens and unfortunately covid-19 put a halt to that, but we look forward to the future when more younger people can be served by The Shed.

Q: What has surprised you the most about The Shed, or the reaction to it?

A: People are continually surprised that something so innovative and yet quite simple is available right here in the

Oregon community and open to all the surrounding areas. The quality of our products are always surprising and once people purchase a piece of furniture or a decorative item or sign they always return for more. It's also nice to have an alternative place to offer our grief groups instead of the hospice home.

We also have had so many people stop by and say they have no creative spirit or craftiness, but it doesn't take long until we find what that person is good at and it always surprises us and them! Maybe they find out that their attention to detail makes them an excellent person to apply the top coat sealant or to do the initial sandpapering. Many people have surprised themselves by learning to use a handsaw to create stars or hats. We couldn't operate without the generous donations of items such as spray paint, paintbrushes, etc... The Shed has something for everyone and way for everyone to help.

We are also finding that the stuff we make which is almost always one-of-a-kind items sells well at other venues. Currently you can find our items at Berryview Orchards in Mt. Morris.

Q: What programs does The Shed offer, and what is most popular?

We have had a very positive response to our creative classes, particularly Ladies Night Out and our kids programs



The children's camp held in February for grieving children who recently lost a parent or sibling. They swam, played games, learned pickleball, ate pizza, made crafts and spent some time exploring their grief. Many volunteers train and work together to make this camp successful.

and camps. We have been able to team up with the Oregon Park District and offer some camps for grieving kids and we had two camps planned for the summer with Pegasus Special Riders which have had to be put on hold. Our plan for 2020 was to expand the programming for kids and teens and unfortunately covid-19 put a halt to that, but we look forward to the future when more younger people can be served by The Shed.

We have hosted many programs at The Shed as well over the years from interior design classes to travel experiences. We hosted a very popular program featuring James and Karen Brown after their

trip to Israel. We had food and wine tastings and they shared their experience. We have also been the meeting place for Girl Scout groups and other civic organizations. We have had Crest foods and other large corporations bring groups of employees and we have been a site for the Oregon High School service day.

We also host many grief groups at The Shed during the day and evenings along with an 8-week course based on Dr. Wolfelt's book which participants read at home and then discuss at our meetings. Many people like the idea of only committing to an 8-week group as opposed to an open-ended group.

The Shed also offers really impressive craftsmanship including beautiful wood urns for your pets or loved ones. These urns are made on-site from beautiful wood grains and to your specifications. We also love to refinish your solid wood projects and we are always busy making holiday decorations. The Shed could not operate without the generosity of those people who stop by for a cup of coffee and help out by sweeping the floor or donating a can of spray paint or paintbrush.

Q: What does the future hold for The Shed?

Serenity Hospice is committed to keeping this resource available and we find comfort and

motivation by the many lives impacted by The Shed. Sometimes people come and continue to come daily or weekly. Sometimes people stop by only once or maybe just a few times and that's ok too. We want to meet people where they are. There is no judgement at The Shed and people are accepted for who they are and where they are on their journey. The future at The Shed is exciting we have many great classes we are ready to host in the future. The Shed is a place for Oregon to be proud of and everyone should stop by, take a tour and be amazed by what is being accomplished right here in Northern Illinois.

**APARTMENT AVAILABLE**

## Lincoln Manor

Owned and operated by Lutheran Social Services of Illinois (LSSI) offering apartment living for older adults in Rochelle and the surrounding communities.

**Rent based on 30% of a Resident's Adjusted Gross Income**

- Secure Entry System
- Community room with kitchen
- Activities
- On-site coin operated laundry
- On-site management office
- Dependable 24/7 maintenance service
- On-site parking for residents

Full time Social Service Coordinator is available to assist residents

**For more information, please call 815-562-1404**

615 N. Lincoln Hwy.  
Rochelle, IL 61068  
TTY 847-390-1460

MANAGED BY:  
**Lutheran Social Services of Illinois**  
www.LSSI.org

01132019

## Man arrested for no valid driver's license following traffic stop

On Sept. 15 at approximately 2:10 a.m., deputies conducted a traffic stop in the 6000 block of North Illinois Route 251. After a brief investigation, deputies arrested Scott L. Thorne, 48, of Rockford, for no valid driver's license. Scott was also cited for no insurance, an equipment violation along with a valid Boone County Warrant. Thorne was transported to the Ogle County Jail where he was released to correctional staff and held in lieu of bond.

On Sept. 16, James Wilkow was taken into custody on an outstanding Ogle County warrant for aggravated battery with a bond of \$20,000/10 percent applies. Wilkow remains in the Ogle County Jail and was

scheduled to appear in court Sept. 17.

On Sept. 16 the following people were arrested for Ogle County outstanding warrants:

Jessica Erdman, 42, of Rochelle, for failure to appear. Erdman has a bond of \$4,635 and was scheduled to appear in court Sept. 16.

Vidal R. Mancilla, 28, of Rochelle, for failure to appear. Mancilla has a bond of \$11,448 and was scheduled to appear in court Sept. 16.

Darrell D. Reed, 32, of Byron, for domestic battery warrant. Reed has a bond of \$25,000/10 percent applies. Reed was scheduled to appear in court Sept. 16.

## Report policy

Any arrests listed in this paper are merely charges and the defendants are presumed innocent unless proven guilty in a court of law. Please note that all police reports received from the Rochelle Police, the

Ogle County Sheriff's Department and the Illinois State Police, will be printed without exception. Requests to omit particular reports will not be considered or honored at any time.

## Kenny's Place

**Where to be for good times with good friends!**

✓ Best Bar

✓ Best Karaoke

✓ Best Indoor Event

✓ Best Slot Machine

Location

**Free N' Fun BINGO**

**Wednesdays Nights!**

**Joker's Jackpot**

Drawing Each Wednesday at 7:30pm Sharp  
- Pot increases \$50.00 per week until a lucky winner draws the Joker  
Must be present to win, Must be 21, All courtesy of Kenny's Place

**SUNDAY TICKET**

**Exclusive Sunday Ticket Package!**

Fun @ Kenny's

Karaoke

Friday & Saturday  
9:00 p.m. - 1:30 a.m.

Video Gaming

Sunday 11am-11pm • Monday-Wednesday 10am-1am • Thursday-Saturday 10am-2am

**411 Cherry Ave. • Rochelle, IL • 815-562-6568**

09202020

## LOCAL SERVICE YOU CAN TRUST

**Count on us to provide honest service, great rates & quality results!**

**WE FINANCE REPAIRS & TIRES**

**Cappel's**  
Complete Car Care

1161 S. 7th St.  
Rochelle, IL  
www.cappelscompletecare.com  
**815-561-TIRE (8473)**  
M-F 8am-5pm • Sat 8am-Noon

**O'Reilly AUTO PARTS**

**Hankook**  
PERFORMANCE TIRES

**GOODYEAR**

Like us on facebook

09182019



# Tips for safer farming

**T**RACTOR accidents, grain entrapment and injuries from ornery livestock are just some of the dangers agricultural workers face every day.

In fact, the National Institute for Occupational Safety and Health says agriculture is one of the most hazardous industries in the United States.

In 2016, the agricultural industry had a rate of 21.4 deaths per 100,000 workers, and each day agricultural workers experienced 100 non-fatal, lost-work-time injuries.

Agricultural dangers are not limited to North America. In Ireland, farm accidents have increased by 13 percent in the last five years and by 31 percent in the last decade, according to a national survey of farm accidents conducted by the Teagasc National Farm Survey. Furthermore, 97 percent of all farm accident victims required medical treatment.

Farms are dangerous places, and while carelessness can and does contribute to many incidents, accidents also take place during routine, seemingly safe activities. These farm safety guidelines can help lower the risk of injuries.

Know farm equipment. Read and follow all instructions in the equipment operation manuals. In addition, attend local farm safety workshops to learn more about specific equipment and products.

Conduct routine safety checks. Look around buildings and grounds for obvious hazards, such as fire hazards and hazardous materials, including farm chemicals that are not stored correctly.

Practice cleanliness. Maintain clean and neat work areas with tools stored properly and out of the way after use.

Be mindful of your clothing and hair.



Many accidents involve a power take-off system, or PTO, which is a common component of large rotary mowers, tractors and forage choppers. Clothing can easily get caught in an engaged but unguarded PTO stub. It's easy for laces or coveralls to become wrapped around a spinning stub shaft. The PTO driveline and other protrusion points also can be dangerous if people

do not pay attention.

Use rollover protection structures. ROPS can be used on tractors and other equipment to prevent injuries. In addition, wear seat belts and employ other safety equipment as advised.

Avoid extra passengers. It can be tempting to take the kids for a spin, but do not allow additional passengers to ride on agricultural equipment.

Exercise caution when handling chemicals. Take extra precautions when handling any chemicals, including pesticides.

Wear protective gear. Wear appropriate gear and equipment as outlined by NIOSH or the Mine Safety and Health Administration. Make sure the skin, feet, ears, eyes, and hands are protected at all times.

Employ lock out/tag out control. This is a process where one can work on equipment only after every energy source has been controlled, such as hydraulic, pneumatic, mechanical, and electrical, according to Rural Mutual Insurance Company. Turning off equipment and using certain controls or locks on devices can prevent equipment from restarting before it is safe to do so.

Farm safety should be a priority for owners, their families and employees so that agricultural injuries can be reduced.

# Facts and figures on farm safety

**A**CCORDING to the Centers for Disease Control and Prevention, agriculture is among the most hazardous industries. Fatal and nonfatal injuries pose a significant threat to farmers, including the many young people who work on farms. The National Institute for Occupational Safety and Health, in an effort to promote productive and safe workplaces, supports programs that conduct research on injuries associated with agriculture as well as pesticide exposure, pulmonary disease, musculoskeletal disorders, hearing loss, and stress. Studying the results of such research, compiled by NIOSH, may compel veteran and novice farmers to further emphasize safety measures and promote practices that can reduce risk for accidents on the farm.

Estimates indicate that there were roughly 2.1 million full-time workers employed in production agriculture in 2017 and between 1.4 and 2.1 million hired crop workers employed annually on crop farms in the United States.

An estimated 893,000

young people under 20 years of age resided on farms in 2014. More than half of those young people performed farm work, and an additional 266,000 youth were hired to work on farms in 2014.

Each day, roughly 100 agricultural workers suffer injuries that cause them to miss time at work.

In 2014, 12,000 youth were injured on farms, and 4,000 of those youths could trace their injuries to farm work.

In 2016, 417 farmers and farm workers died from work-related injuries. Tractor over-

turns and other transportation incidents were the leading cause of death for these farmers and farm workers.

A rollover protection system, or ROPS, is a structure, similar to rollcages and rollbars in cars and trucks, intended to protect farm equipment operators from injuries caused by overturns or rollovers. NIOSH notes that an ROPS is the most effective way to prevent overturn deaths. Despite that, in 2014, only 62 percent of tractors used on farms in the U.S. were equipped with an ROPS.



**Schaefer Ins and Fin Svcs Inc**  
Terri Schaefer, Agent

603 Lincoln Highway  
Rochelle, IL 61068-1646  
Bus 815-562-7063 Fax 815-562-3829  
terri.schaefer.ill5n@statefarm.com

24 Hour Good Neighbor Service®



**Engineered Tarping Solutions**

"If it's canvas, it's at Cortland."

**When you need to be sure, make it Shur-Co®**

Authorized, Genuine Shur-Co® Dealer:



**815-756-2037**  
25 S. Somonauk Rd., Cortland, IL 60112  
www.johnsoncanvas.com

**When it's your livelihood that counts... count on me.**

Shane B Huber, Agent  
1211 Currency Ct.  
Rochelle, IL 61068  
Bus: 815-562-7011  
shane.huber.ugnd@statefarm.com

**When you run a farm, you invest more than money.**  
I get that. Let me give you a hand protecting what's important to your family with insurance from State Farm®.  
Like a good neighbor, State Farm is there.®  
CALL ME TODAY.

**State Farm**

**Diamond Western Store**

CLOTHING FOR THE ENTIRE FAMILY  
TACK & BITS  
HATS & BOOTS • HORSE CARE PRODUCTS  
BELTS, BUCKLES & JEWELRY

**In business since 1972!**

4565 Knoll Road • Rochelle, IL 61068  
815-562-4050 • www.diamondgranchandwesternstore.net

**COUNTRYSIDE**  
LAND DRAINAGE SERVICES  
ROCHELLE, ILLINOIS

**Contact:**  
Dave Casey or Gene Messer  
815-970-7358  
5180 S. Queens Rd., Rochelle, IL 61068  
countrysidedrainage@gmail.com

**CHS**

**CREATING CONNECTIONS TO EMPOWER AGRICULTURE**

Ethanol • DDGs • Wetcake • Corn Oil  
1900 Steward Rd., Rochelle, IL 61068  
(815)561-0650 www.chsinc.com  
www.facebook.com/chsrochelle

**ONE STOP SHOP, TRUCK, TRAILER, REEFER REPAIR**

8834 S. IL RT 251  
Rochelle, IL 61068  
**815-524-6100**  
Monday-Friday 8am-7pm  
Saturday 8am-12pm  
(by appointment only)  
Closed Sunday

- Roadside Assistance
- Custom Hydraulic Hose Repair
- Schedule Preventative Maintenance
- Computer Diagnostic
- Cross Dock Transfers
- Equipment Pick-Ups & Returns
- Truck/Trailer Repair
- Reefer Trailer Repair
- Motorcoach Repair
- Fabrication & Welding
- APU Maintenance
- Onsite/Offsite Repairs

**Alderks Tire**

311 N. 7th St., Rochelle  
**562-4644**  
Travis Brown, Mgr.

Your Independently Owned Community Bank Since 1882

**Stillman BANK**

Byron 815.234.5626	Oregon 815.732.7956	Rochelle 815.562.7071
Rockford 815.332.8100	Roscoe/Rockton 815.623.1800	Stillman Valley 815.645.2266

Member FDIC [www.stillmanbank.com](http://www.stillmanbank.com)

**FIRST STATE BANK**

[firststatebank.biz](http://firststatebank.biz) | 800.362.9623

Member FDIC

**Nutrien Ag Solutions**

**Steward**  
815.396.2248

**Profit from our experience**

- Field Management Services
- Crop Protection Application
- Spring Planting Advice
- Identification of Insects & Weeds
- Crop Scouting
- Custom Spreading
- Soil Sampling
- Global Positioning Application



Be safe on the roadways this harvest season! Travel safely when tractors and trucks are harvesting fields and traveling on the roadways.



11 locations to serve you.

**Grain - Agronomy - Trucking**

**"Big Enough To Serve You  
Small Enough To Know You"**

**Maplehurst Farms, Inc.**

936 Moore Road  
Rochelle, IL 61068

[www.maplehurstfarms.com](http://www.maplehurstfarms.com)

# LOCAL NEWS

## Surviving disaster includes using home generators safely

**OGLE COUNTY** — Hurricane Laura left many residents without power. Though the immediate danger has passed, deaths linked to improper use or installation of generators are still being reported.

Portable or permanent standby generators are used in millions of homes and small businesses. Without taking the proper precautions, incorrect installation or use of generators may create hidden dangers.

“We can’t emphasize this enough; never use a generator indoors or in an enclosed space, such as a garage (even if garage door is open), crawl space, or basement,” says Erin Hollinshead, University of Illinois Extension Energy Education Council executive director. Safe Electricity, EEC’s public outreach program, provides consumers these safety practices.

Generator should have 3 to 4 feet of clearance and be placed at least 20 feet from all doors and windows. The generator should not be used in an area that is wet or damp and should not be plugged into a wall outlet or directly to a home’s wiring.

“Carbon monoxide emitted from generators is an odorless, colorless, toxic gas, making it extremely dangerous,” Hollinshead warns. “Just a few minutes exposure may be fatal.”



### Portable generators

Many homeowners choose smaller, portable generators to power essential electrical equipment during outages. Safe Electricity offers these tips for the safe operation and use of portable generators:

Read and follow all manufacturer operating instructions to properly ground the generator prior to hooking up the generator.

Maintain adequate ventilation to avoid carbon monoxide poisoning. Never operate a generator in a home, garage, or other buildings.

Place a generator in a dry, outside location.

Never plug a portable electric generator into a wall outlet or connect directly to a home’s wiring. In addition to harming people, the back feed may damage the generator or other home electrical equipment.

Turn off a generator and allow to cool before refueling. Gasoline and its vapors may ignite if they contact hot components or an electrical spark. In addition, store fuel in an approved container in a secure location.

Protect your appliances. Turn off or disconnect all appliances and lights before you begin operating the portable generator. Once the generator is running, turn appliances and lights on one at a time to avoid overloading the unit.

Use proper extension cords. Use only safety-tested electrical cords designed and rated for heavy, outdoor use to connect appliances. Many generators are equipped with twist-lock connects to reduce the chance of accidental disconnections due to vibrations.

Before shutting down a generator, turn off and unplug all appliances and equipment powered by the generator.

To maintain a well-operating generator, drain the gasoline before storing. Before restarting, inspect the fuel and oil filters, spark plug, oil level, and fuel quality. Start the generator on a regular basis to guarantee operation when needed.

### Permanent standby generators

Properly connecting the generator into a home system is a critical step for safe, effective use. A licensed professional should install a permanent standby electric generator, Hollinshead says, which includes a transfer switch. High-end permanent generators powering some or all rooms of a home typically have the switch built into the system. Other generators require a user to manually throw the switch.

The transfer switch breaks the path of electricity between the power lines and the main electrical panel to prevent backfeed which pushes electricity “back” through the power lines, potentially harming homeowners, neighbors, or electric utility repair crews working to restore power.

“Consult a qualified electrician to ensure proper installation and electrical grounding, as well as to prevent circuit overloads and to meet local electrical code,” Hollinshead says.

## SPECIAL LIMITED TIME OFFER FOR NEW SUBSCRIBERS ONLY!



**\$19.99 for 3 months**  
Plus get a 4th month totally FREE!

That’s 34 issues of the News-Leader delivered to your door for less than 59¢ an issue!

We are offering this great deal because we want non-subscribers to give us a try, but don’t delay as this offer is only valid through Sept. 30, 2020.

May not be combined with other special offers. Current subscribers not eligible.

**ROCHELLE**  
**News-Leader**

P.O. Box 46 - 211 Hwy. 38 East | Rochelle, IL 61068 | 815-561-2112

# HELLO AUTUMN

Photo courtesy of  
Proven Winners  
- [www.provenwinners.com](http://www.provenwinners.com)



New Fall Annuals arriving daily including Mums in bushel baskets, 2 gallon and 4 inch containers, pansies, ornamental peppers, grasses and more!

*Fall Open House and  
Outdoor Market*

October 3rd 9am -5pm and  
October 4th 9am-3pm.

More information to follow!

**Hidden Timber  
Gardens**

Unique Trees, Shrubs, Perennials, Annuals, Mulch & More!

462 S. Chana Rd., Chana, IL, Just North of Route 64  
815-751-4162

Tuesday - Saturday 10:00am-6:00pm, Sundays Noon-6pm, Closed Monday



09072020



KISHWAUKEE COLLEGE

CAREER & TECHNICAL EDUCATION

Hospitality & Culinary



Feed your passion for cooking – start your career in Culinary Arts at Kish!

- Small class sizes and fully-stocked kitchen workstations
- Create delicious dishes – baking and cooking – plus learn proper food handling, kitchen and equipment safety, knife skills and more
- Earn ServSafe Manager Certification

Feed your passion at Kish. Visit [www.kish.edu/culinary](http://www.kish.edu/culinary)



Heating Season is right around the corner...

Call us for a furnace checkup!

ANDERSON

PLUMBING & HEATING, INC.

621 First Ave., Rochelle, IL • 815-562-8784

08302017

SUNDAY, SEPT. 20, 2020

ROCHELLE NEWS-LEADER • SECTION 2 • PAGE 1

# SPORTS



## GOLFERS TOP SANDWICH

The RTHS golf team defeated the Indians in Interstate 8 Conference play Tuesday.

See page 3 for more details

### RTHS Golf

# Thiravong breaks par

Rochelle senior shoots 1-under 35 in home meet against DeKalb

BY RUSSELL HODGES  
SPORTS EDITOR

**ROCHELLE** — Megan Thiravong walked onto the ninth tee box during Rochelle Township High School’s home golf match against DeKalb needing a birdie on her final hole to break par on the round, something the Lady Hub senior hadn’t done in her four years with the team.

Calm and collected, Thiravong fired her tee shot on the 170-yard par-3 ninth hole to within 5 feet of the pin. After marking her ball and watching the other three players in her group make their putts, it was her turn to address the ball and attempt to sink one last putt.

With her family watching from a distance, Thiravong putted the ball directly into the cup, sealing a 1-under-par 35 and her best score of the 2020 season. While the Barbs walked away from Rochelle’s Fairways Golf Course with a 167-176 win over the Hubs (6-3, 2-2 Interstate 8), it was Thiravong’s second straight meet breaking the 30s, a

positive sign of things to come.

“She took some more risks earlier in the season, but I think she’s really starting to settle in and be herself,” head coach Glen Mehrings said. “I’ve been coaching here for the last 20-plus years, and I always see the great players hit their stride around mid-September because they’ve made their adjustments and they’ve started to relax more. She doesn’t make too many physical mistakes, and she’s been in a really good place mentally over the last few meets.”

Thiravong outpaced all of the varsity players Thursday. Senior Reese Kirk carded 42 for the Hubs, while sophomores Damen Harrington and Griffin Ohlinger followed with 49 and 50, respectively. The Barbs rallied behind two top players who each carded scored in the 30s including Brett Paeglor, who led DeKalb’s varsity team with an even-par 36.

Rochelle will host the LaSalle-Peru Cavaliers for Senior Night on Monday at 4 p.m.



(PHOTO BY RUSSELL HODGES)

Rochelle senior Megan Thiravong gets a big hug from her mother, Watsana, and some applause from her sister, Ailani, after shooting a 1-under-par 35 during the golf team’s home match against DeKalb on Thursday.

### RTHS Girls Tennis

# Lady Hubs take doubles point from Sterling

Rochelle netters shut out in Tuesday loss against Sycamore

BY RUSSELL HODGES  
SPORTS EDITOR

**ROCHELLE** — The Lady Hub tennis team played its second match of the week Tuesday evening, with the Rochelle netters falling against Sycamore 5-0 to move to 1-5 overall and 0-2 in the Interstate 8 Conference.

The Spartans swept singles play, as Ella Sharp topped Rochelle senior Anna Guevara 6-0, 6-0 at No. 1 singles and Ashley Olson won 6-2, 6-4 over Lady Hub junior Megan Thompson at No. 2 singles.

Abby Golembiewski and Olivia King fought off Rochelle juniors Jordin Dickey and MeLisa Young 7-5, 6-0 at No. 1 doubles, while Emma Hardin and Abby Bourdage defeated Lady Hub senior Sawyer McGee and junior Sylvia Hasz 6-4, 6-1 at No. 2 doubles. Megan McConaughay and Jordyn Block topped Rochelle juniors Emma Hicks and Josie Lundquist 6-2, 6-0 at No. 3 doubles.



(PHOTO BY RUSSELL HODGES)

Junior Emma Hicks hits a forehand shot during Rochelle’s home tennis match against Sycamore.

## Sterling

Senior Sawyer McGee and junior Sylvia Hasz stepped up at No. 2 doubles during Rochelle Township High School’s home tennis match against the Sterling Golden Warriors on Wednesday. While the Lady Hubs fell 4-1, McGee and Hasz provided the team’s highlight performance, winning 6-7, 6-4,

10-7 over Olivia Pitkin and Amy Zeigler.

Sterling claimed the other two doubles matches Wednesday. Juniors Jordin Dickey and MeLisa Young fell 4-6, 6-7 against Lexi Rodriguez and Anna Meltzer at No. 1 doubles, while juniors Megan Thompson and Josie Lundquist fell 4-6, 3-6 to Madison Hubbs and Tori Stutzke at No. 3

doubles.

The Golden Warriors swept singles play, with Rochelle senior Anna Guevara retiring at No. 1 singles and junior Emma Hicks falling 1-6, 2-6 to Kaylee Martinez at No. 2 singles.

The Lady Hubs (1-6, 0-2 Interstate 8) will face Kaneland on the road next Tuesday at 4:30 p.m.



(PHOTO BY RUSSELL HODGES)

Junior Sylvia Hasz goes to her backhand during doubles play against Sterling on Wednesday.



The businesses featured on this page are  
**"Hubs Super Fans"**  
 They proudly support our local athletes and students.



Please show your appreciation by patronizing their businesses.

**WE SUPPORT OUR HUBS!**

## HUB SPOTLIGHT



**Wade  
Smith**

*Year: Sophomore*

*Sport: Golf*

**Q: How many years have you been playing this sport?**

*A: Two years.*

**Q: What do you enjoy most about this sport?**

*A: The hard work it takes to get better and the satisfaction of hitting a good shot.*

**Q: What is your favorite school subject and why?**

*A: Geometry because it comes easy to me and it's fun to learn.*

**Q: Who is your favorite athlete and why?**

*A: Kobe Bryant because of his skill and work ethic.*

**Q: Who is your biggest role**

**model and why?**

*A: My dad because he works harder than anyone I know.*

**Q: What is your dream job and why?**

*A: To be a biologist.*

**Q: Where would your dream vacation be and why?**

*A: The shores of Scotland because they're calm and serene.*

**Q: What is your favorite thing about being a student-athlete at RTHS?**

*A: The camaraderie, the teamwork and how my teammates and I have bonded so quickly.*

**Dylan**

**Whaley**

*Year: Freshman*

*Sport: Golf*



**Q: How many years have you been playing this sport?**

*A: This is my first year.*

**Q: What do you enjoy most about this sport?**

*A: Being with the team and improving while having fun.*

**Q: What is your favorite school subject and why?**

*A: Geometry because I catch on and learn the lessons quickly.*

**Q: Who is your favorite athlete and why?**

*A: Steph Curry because he taught me about trial and error as well as never giving up.*

**Q: Who is your biggest role**

**model and why?**

*A: My parents because they introduced me to sports and they motivate me to keep it up.*

**Q: What is your dream job and why?**

*A: A sports job because I've been around sports my whole life.*

**Q: Where would your dream vacation be and why?**

*A: California because I love the warm weather and the sports there.*

**Q: What is your favorite thing about being a student-athlete at RTHS?**

*A: I enjoy trying new things and working with the coaches.*

**562-3312**  
 Dine-in • Carry-out  
 Taste the difference  
**Alfano's**  
 Pizzeria and Italian Restaurant  
 2 Large, 2-Topping PIZZAS \$22.99  
 1115 Turkington Terrace  
 Rochelle, Illinois  
 Beer & Wine Dine In Only

**ANDERSON**  
 Plumbing & Heating, Inc.  
 Plumbing, Heating, Air Conditioning,  
 Drinking water systems, Water Heaters,  
 Softeners, Iron Filters & More.  
 Since 1976  
 Like us on Facebook  
 Lic# 055-013999  
**LENNOX**  
 One less thing to worry about  
 621 First Ave., Rochelle  
 815-562-8784



**Good Luck Hubs!**  
 from your fans at  
**HAYDEN**  
 REAL ESTATE INC.  
 815-562-2111  
 www.haydenreinc.com



**Hello, neighbor!**  
 Huber Ins and Fin Svcs Inc  
 Shane B Huber, Agent  
 1211 Currency Ct  
 Rochelle, IL 61068  
 Bus: 815-562-7011  
**State Farm**  
 1001013.1 State Farm, Home Office, Bloomington, IL

**CENTRAL ILLINOIS LOAN**  
 Loans For All Your Needs  
 Auto • Home Improvement • Vacation  
 Jami Hackman  
**815-561-4035!**  
 310 Eagle Drive, Rochelle  
 All loans subject to our normal credit requirements and policies.

**McDonald's**  
 892 Ranger Road, Rochelle  
 Hwy 251 N., Rochelle

**COMPLETE AUTOMOTIVE REPAIR**  
**WE DO IT ALL!**  
 • Oil Changes • Tires • Brakes  
 • Alignments • Exhaust • Tuneups  
 • Transmissions • Tie Rods • Engines  
 • Struts/Shocks • & More! • Ball Joints  
**MASTERBEND**  
 (815) 562-2465  
 Hwy 251 North (221 Powers Road)  
 1 Mile North of Rochelle in Hillcrest

**DLX Medical GROUP**  
 Caring for your family's health from infant to adults.  
 For appointment, please call  
**815-227-9594**  
 1118 Turkington Terrace, Rochelle, IL  
 Most Insurance Accepted

**AtlasAuto**  
**BUY HERE - PAY HERE**  
 You Work - You Drive  
**815-562-7433**  
 1400 N 7th St  
 Corner of Flagg Rd & Hwy 251 N

**HUB CITY SENIOR CENTER**  
 Mon-Fri 7am-3pm  
 Lunch Daily - 11:30am  
 Call us for a ride: 815-562-5050  
 401 Cherry Ave., Rochelle, IL 61068  
 hubcityseniorcenter.com

**Berg-Johnson Electric**  
 Residential • Commercial • Industrial  
**FREE ESTIMATES**  
 Licensed and Insured  
 24 Hour Emergency Service  
**815-562-4937**  
 500 Cleveland Avenue

**Rochelle Chiropractic Clinic**  
 Dr. Chad M. Piller  
 227 E. Rt 38 • Rochelle, IL  
**815-562-8706**  
 www.rochellecthiropractic.com  
 Now Accepting New Patients!



**926**  
**Custom Embroidery**

- Custom Embroidery
- Direct to garment printing
- Custom Heat Transfer
- 1,000's of products available
- Fast Turn Around
- No Minimum Order



**Rochelle's #1 Stop for all your Custom Logo Wear Needs.**  
 Downtown Rochelle • 815-561-9500 • 926customembroidery@gmail.com  
 M-F 10-5, Sat. 9-12

# SPORTS

RTHS Golf

## Thiravong shines as Hubs swing past Sandwich

Lady Hub senior cards season-low 38 in 176-204 victory



(PHOTO BY RUSSELL HODGES)

Junior Brett Ferguson was Rochelle's fourth-best golfer at Sandwich on Tuesday, shooting 49.

BY RUSSELL HODGES  
SPORTS EDITOR

**SANDWICH** — Rochelle senior Megan Thiravong has been spending extra time working on her short-game fundamentals, and that additional effort resulted in her lowest score of the season when the Hubs faced Sandwich at Edgebrook Golf Course on Tuesday.

With Edgebrook presenting a similar course layout to her home course in Rochelle, Thiravong relied on her short game to shave additional strokes off her score. The Lady Hub standout had been carding scores in the low 40s throughout the season, but that changed

"My chipping and putting were definitely on point during the meet. If I missed the fairway, I knew I could still get on the green and one-putt to save par."

**Megan Thiravong**

Tuesday, when she led all Rochelle players with 38 and propelled the Hubs to a 176-204 victory over the Indians.

"I've been practicing with my dad lately," Thiravong said. "We've been working on my short game and making sure I have those fundamentals down. My chipping and putting were definitely on point during the meet. If I missed the fairway, I knew I could still get on the green and

one-putt to save par. The course was very narrow and there were a lot of trees, much like Rochelle, so I knew that accuracy would be key. I knew I would be safe if I kept the ball in the fairway."

Tuesday marked Rochelle's sixth win of the season, tying the team's victory total over the past two seasons combined. Senior Reese Kirk aided the Hubs with 44 during the round, while sopho-

more Griffin Ohlinger recorded 45 and junior Brett Ferguson finished with 49. Rochelle (6-2, 2-2 Interstate 8) will host DeKalb on Thursday before facing LaSalle-Peru next Monday.

"It definitely shows how much our team has worked to stay in the game," Thiravong said. "Our scores show we're serious about golf and how much we enjoy being out here together."

### Huddle Café and Homemade Pizza

802 Main Street 815-453-2677



Tuesday - Saturday  
7 a.m. - 8 p.m.

Sunday  
7 a.m. - 2 p.m.  
We will be closed on Mondays

Daily specials

09022020

### PROTECT YOUR FAMILY!

Recycle  
**THIS.**



KEEP MERCURY OUT OF THE ENVIRONMENT  
BY SAFELY DISPOSING OF YOUR  
OLD MERCURY THERMOSTAT

TO FIND A RECYCLING LOCATION, VISIT:  
[thermostat-recycle.org/zipsearch](http://thermostat-recycle.org/zipsearch)



**Thermostat Recycling**  
CORPORATION

### MIMINI'S GENERAL STORE

602 Brown, Ashton, IL  
815-453-7500



9 a.m. - 9 p.m. Monday - Saturday  
9 a.m. - 5 p.m. Sunday

Video gaming machines are now open  
Shop our specials  
Stop in to meet our new staff

09022020

## COMMUNITY BOARD

**Need to get the word out about a product  
or service you offer?**

**Give us a call at 815-562-4171.**

**We can reach over 9,000 homes!**



Advertise Here

**What Service  
Do You Offer?**

**562-4171**

The Rochelle News-Leader

Gutters



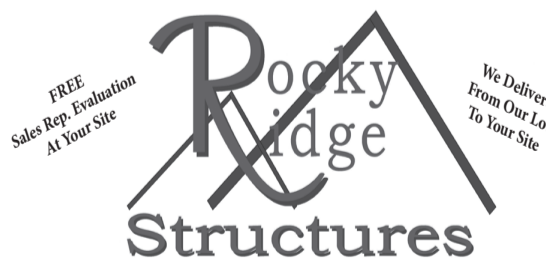
ALL ALUMINUM

- Will Not Rust, Chip Or Peel
- Most Colors Available
- Manufactured On The Job

**815-758-8998**

257 W. Stephenie Dr., Cortland  
[www.theisenroofing.com](http://www.theisenroofing.com)

Storage Sheds



We Specialize in Portable/Quality Built Storage Sheds

- Stock & Custom Design
- Competitive Pricing
- Many Options Available
- Site Preparation Available

See Displays at 3500 S. Chana Rd. Chana IL 61015

Call Norm or Albert for Free Literature packet

779.861.3542

Plumbing/Heating/Cooling

**Anderson  
Plumbing & Heating Inc.**  
Serving Rochelle For Over 40 Years

**LENNOX**

Quality Service • Free Estimates  
Residential & Commercial

**815-562-8784**

Lic. #058-087891

Heating & Air Conditioning

**HULL**  
HVAC & Household Services

Furnaces - Air Conditioners - Boilers  
Duct Cleaning - Water Heaters

Air Conditioner  
Clean & Check

**\$40.00**

After \$35 rebate.

Ask about duct cleaning  
and  
antimicrobial fogging.

**815-561-6551**

[www.HullHVAC.com](http://www.HullHVAC.com)

Promotion only available to Rochelle customers.

Expires: 08/31

Recipient of the 2019 BBB Complaint Free Award.

Commercial & Residential Roofing



**Residential  
Concrete  
Driveways, Flatwork  
and Foundations**

- Shingled Roofs • Flat Roofs
- Metal Roofs For Farm Facilities
- Custom Built Homes • Additions

**FREE  
ESTIMATES**

**561-0099**

Tim & Roger Bruns, Owners  
Established 1997

[www.brunsconstructioninc.com](http://www.brunsconstructioninc.com)

Logging

**POIGNANT LOGGING**

**BUYING  
STANDING TIMBER**

• FREE ESTIMATES • FULLY INSURED

Contact Billy Poignant

**309-238-3210**

# TV LISTINGS

## SOAP UPDATES

### THE BOLD AND THE BEAUTIFUL

Bill took control of his own destiny and professed his commitment to one special woman. Refusing to accept defeat, Quinn proposed the idea to Ridge that he give Shauna a “do-over.” Finn fueled Liam’s suspicions when he shut down the inquisition from Steffy’s ex. Unaware of the secret that lie within it, Thomas delivered a gift to Steffy from Vinny. Thomas needled Liam when he realized that his nemesis wanted the best of both worlds. Steffy and Finn got caught up in the surprising turn that their relationship had taken. Liam and Thomas gave Ridge an earful about Steffy and Finn. Wait to See: Thomas lashes out in anger at Liam. Steffy hides her stash of pain pills. Hope disagrees with Liam’s over-the-top reaction about Steffy moving on.



**Maurice Benard stars as “Sonny” on “General Hospital.”**

felt sympathetic. Sonny reminisced about what might have been. Carly gave Jason an update. Michael and Willow grew closer. Brando had a moment with Josslyn. Sonny received an unexpected gift. Michael reached out to Brook Lynn. Ava spent time with Avery. Nina felt hopeful. Ned offered to help Alexis. Robert was backed into a corner. Wait to See: Molly is caught off guard. Curtis loses his temper with Stella. Cyrus taunts Sam.

### THE YOUNG AND THE RESTLESS

Billy shared his revenge plot with Jack. Sharon dreamed about Adam. Nikki came to Victor’s defense. Victor questioned Kyle’s commitment to Summer. Nate delivered some shocking news. Phyllis gave Jack a reality check. Adam and Chelsea declared war. Traci uncovered a clue about Dina’s past. Amanda let her guard down with Devon. Chelsea set a trap. Elena lost patience with Amanda. Chance gave Adam an ultimatum. Wait to See: Billy gets the upper hand against Adam. Sharon questions Victoria’s intentions. Phyllis gives Nick a history lesson.

(c) 2020 King Features Syndicate, Inc.

### Top 10 Video Rentals

1. The King of Staten Island (R) Pete Davidson
2. The Outpost (R) Caleb Landry Jones
3. Hard Kill (R) Jesse Metcalfe
4. Scoob! (PG) animated
5. You Should Have Left (R) Kevin Bacon
6. Trolls World Tour (PG) animated
7. One Night in Bangkok (R) Mark Dacascos
8. Deep Blue Sea 3 (R) Tania Raymonde
9. The Invisible Man (R) Elisabeth Moss
10. Emperor (PG-13) Dayo Okeniyi

### WEEKDAY MORNING

	8 AM	8:30	9 AM	9:30	10 AM	10:30	11 AM	11:30
<b>2</b> WBBM	(7:00) CBS This Morning	Let's Make a Deal		The Price Is Right		News		The Young
<b>3</b> WIFR	(7:00) CBS This Morning	Morning		Paid Program		The Price Is Right		The Young and the Restless
<b>4</b> WTVO	Good Morning America	Live with Kelly and Ryan		The View		Rachael Ray		
<b>5</b> WMAQ	(7:00) Today	Today 3rd Hour		Today With Hoda & Jenna		NBC 5 News		Varied
<b>6</b> WQRF	Eyewitness News More	Joyce Meyer	Paid Program		Hatchett	Judge	Judge Mathis	
<b>7</b> WLS	Good Morning America	Live with Kelly and Ryan		The View		Eyewitness News		
<b>9</b> WGN	WGN Morning News	WGN Morning News		Rachael Ray		WGN Midday News		
<b>10</b> WGBO	(7:00) ¡Despierta América!			Simplemente María		Noticiero		Edición
<b>11</b> WTTW	Elementary	Xavier Riddle	Curious	Daniel Tiger		Daniel Tiger	Elinor	Sesame St.
<b>12</b> WCPX	Law & Order: Criminal Intent	Law & Order: Criminal Intent		Varied Programs				
<b>13</b> WREX	(7:00) Today	Today 3rd Hour		Today With Hoda & Jenna		The Doctors		
<b>19</b> TLN	Spain	Mexican	Celebrity	David Rocco	David Rocco	Stefano	Stefano	Spain
<b>29</b> TBS	M Friends	Friends	Friends	Friends	Friends	Friends	Friends	Friends
	T Seinfeld	Seinfeld	Friends	Friends	Friends	Friends	Friends	Friends
	W Seinfeld	Seinfeld	Friends	Friends	Friends	Friends	Friends	Friends
	Th Seinfeld	Seinfeld	Friends	Friends	Friends	Friends	Friends	Friends
<b>31</b> NICK	Team Umiz.	Team Umiz.	Bubble	Bubble	Blue's Clues	Blaze	PAW Patrol	PAW Patrol
	<b>33</b> DISN	T.O.T.S.	Ladybug	Ladybug	Ladybug	Ladybug	Amphibia	Big City
	<b>34</b> USA	Varied Programs						
	<b>35</b> TNT	Charmed		Supernatural		Supernatural		Supernatural
<b>37</b> NSCH	(6:00) MLB Baseball	Paid Program		Paid Program	Paid Program	Paid Program	Paid Program	Paid Program
<b>38</b> LIFE	The Closer	Varied	The Closer	Varied	Rizzoli	Varied	Rizzoli	Varied
<b>39</b> AMC	M Stogoes	Stogoes	*** "Bleed for This" (2016) Miles Teller, Aaron Eckhart.				*** Rudy	
	T * "Bride Wars" (2009) Kate Hudson.			[(45) * "Major League II" (1994) Charlie Sheen, Tom Berenger.				
	W Stogoes	Stogoes	*** "Black Mass" (2015) Johnny Depp, Joel Edgerton.				Jack Ryan	
	Th *** "Public Enemies" (2009, Crime Drama) Johnny Depp, Christian Bale.					"Rambo: First Blood Part II"		Predators
<b>40</b> FREE	F Stogoes	*** "The Matrix Revolutions" (2003) Keanu Reeves, Laurence Fishburne.						
	<b>42</b> TLC	Melissa	700 Club	The 700 Club		Movie		
	<b>43</b> DISC	Sweet Home Sextuplets	Extreme	Extreme	Extreme	Extreme	Four Weddings	
	Varied Programs							
<b>44</b> HIST	M Pawn Stars	Pawn Stars	Pawn Stars	Pawn Stars	Pawn Stars	Pawn Stars	Pawn Stars	Pawn Stars
	T Nostradamus Effect	Nostradamus Effect		Nostradamus Effect		Nostradamus Effect		Nostradamus Effect
	W (7:30) *** "Captain Phillips" (2013, Docudrama) Tom Hanks.			*** "Zero Dark Thirty" (2012)				
	Th American Pickers	American Pickers		American Pickers		American Pickers		American Pickers
<b>45</b> A&E	F Ancient Aliens	Ancient Aliens		Ancient Aliens		Ancient Aliens		Ancient Aliens
	Varied Programs							
	M Kardashian	The Kardashians	The Kardashians		The Kardashians		Daily Pop (N)	
	T Hamptons	Take the Hamptons	Take the Hamptons		Take the Hamptons		Daily Pop (N)	
<b>46</b> E!	W Kardashian	The Kardashians	The Kardashians		The Kardashians		Daily Pop (N)	
	Th Kardashian	The Kardashians	The Kardashians		The Bradshaw Bunch "Pilot"		Daily Pop (N)	
	F E! True	E! True Hollywood Story	NXIVM: Self Help-Cult		E! True Hollywood Story		Daily Pop (N)	
	M South Park	South Park	South Park	South Park	(:15) South Park	South Park		South Park
<b>47</b> COM	T Futurama	Futurama	Futurama	Futurama	(:15) Futurama	Futurama		Cleveland
	W South Park	South Park	South Park	South Park	(:15) South Park	South Park		South Park
	Th Futurama	Futurama	Futurama	Futurama	(:15) Futurama	Futurama		Cleveland
	F Futurama	Futurama	Futurama	Futurama	(:15) The Cleveland Show	Cleveland		Cleveland
<b>48</b> FX	Movie		Varied Programs					
<b>49</b> PARMT	Bar Rescue		Bar Rescue		Bar Rescue		Bar Rescue	
<b>51</b> ESPN	(7:00) Get Up	First Take				SportsCenter		
<b>52</b> ESPN2	SportsCenter	Varied		Get Up		First Take		
<b>53</b> FNC	America's Newsroom				Outnumbered			
<b>55</b> CNN	CNN Newsroom With Poppy		CNN Newsroom With Poppy		CNN Newsroom		CNN Newsroom	
<b>56</b> CNN2	Morning Express		Morning Express		Very Scary People		Very Scary People	
<b>58</b> MSNBC	MSNBC Live		MSNBC Live		MSNBC Live		Andrea Mitchell Reports	
<b>59</b> CNBC	Squawk on the Street		Squawk Alley		Fast Money Halftime Report			
<b>60</b> OXY	Varied Programs							
<b>63</b> FOOD	Varied Programs							
<b>65</b> TRUTV	Top Funniest	Top Funniest	Dumbest	Varied	Dumbest	Varied	World's Dumbest ...	
<b>66</b> ANPL	Varied Programs							
<b>67</b> BIGTEN	Varied Programs		BTN Football	Varied	BTN Football in 60	Varied Programs		
<b>70</b> TRAV	M My Haunted House	My Haunted House		My Haunted House		My Haunted House		My Haunted House
	T Paranormal Emergency	Paranormal Emergency		Paranormal Emergency		Paranormal Emergency		Paranormal Emergency
	W The Alaska Triangle	The Alaska Triangle		The Alaska Triangle		The Alaska Triangle		The Alaska Triangle
	Th Haunted Hospitals	Haunted Hospitals		Haunted Hospitals		Haunted Hospitals		Ghost Adventures
<b>71</b> BET	F Believers "Nervous Wreck"	Believers "House of Pain"		Believers		Believers "Blind Spot"		
	<b>72</b> H&G	Martin	Martin	Martin	Martin	The Parkers	The Parkers	The Parkers
	<b>73</b> H&G	Varied Programs						
	<b>131</b> HALL	Golden Girls	Golden Girls	Home & Family				Home & Family

### WEEKDAY AFTERNOON

	12 PM	12:30	1 PM	1:30	2 PM	2:30	3 PM	3:30	4 PM	4:30	5 PM	5:30	
2 WBBM	Young/Restless	Bold/Beautiful	The Talk		The Drew Barrymore Show		Dr. Phil		Judge Judy	Judge Judy	News	Evening News	
3 WIFR	News	Bold/Beautiful	The Talk		Let's Make a Deal		The Kelly Clarkson Show		News at Four	Inside Edition	23 News at Five	Evening News	
4 WTVO	GMA3: What You Need to Know		General Hospital		The Dr. Oz Show		Family Feud	Family Feud	Judge Judy	Judge Judy	Eyewitness	World News	
5 WMAQ	Days of our Lives		Access Daily		The Kelly Clarkson Show		The Ellen DeGeneres Show		NBC 5 News at 4pm		NBC 5 News	Nightly News	
6 WQRF	Divorce Court	Divorce Court	Judge Mathis		Maury		The Drew Barrymore Show		The Ellen DeGeneres Show		Mom	Mom	
7 WLS	GMA3: What You Need to Know		Windy City Live		General Hospital		Inside Edition	Jeopardy!	ABC7 Eyewitness News at 4pm		News at 5pm	World News	
9 WGN	WGN Midday News		Maury		Maury		DailyMailTV	DailyMailTV	WGN Early Evening News		WGN Evening News		
10 WGBO	Hoy		Papá a toda madre		Como dice el dicho		(2:59) El gordo y la flaca		(3:58) Primer impacto		Noticias Univisi	Noticiero Univ.	
11 WTTW	Dinosaur Train	Clifford-Dog	Sesame Street	Elinor Wonders	Hero Elementary	Let's Go Luna!	Nature Cat	Wild Kratts	Molly of Denali	Xavier Riddle	Odd Squad	Arthur	
12 WCPX	Varied Programs												
13 WREX	News	Days of our Lives		Tamron Hall		25 Words/Less		Dr. Phil		Jeopardy!		Nightly News	
19 TLN	M*A*S*H	M*A*S*H	Lidia's Kitchen	Lidia's Italy	Gino's Escape	David Rocco	Varied Programs	Made in Spain	Miguel's Feasts	Mexican Table	Magnifica Italia	Lidia's Kitchen	
29 TBS	M American Dad	American Dad	American Dad	American Dad	Bob's Burgers	Bob's Burgers	Bob's Burgers	Bob's Burgers	Bob's Burgers	Family Guy	Family Guy	Family Guy	
	T Friends	Friends	Friends	Friends	Friends	Friends	American Dad	American Dad	American Dad	American Dad	Family Guy (DVS)		
	W Friends	Friends	Friends	Friends	Friends	Friends	American Dad	American Dad	American Dad	American Dad	Family Guy (DVS)	Family Guy	
	Th Friends	Friends	Friends	Friends	Friends	Friends	American Dad	American Dad	American Dad	American Dad	Family Guy (DVS)	Family Guy	
31 NICK	F Friends	Friends	Friends	Friends	Friends	Friends	American Dad	American Dad	American Dad	American Dad	Family Guy	Family Guy	
	PAW Patrol	PAW Patrol	SpongeBob	SpongeBob	SpongeBob	SpongeBob	Alvin!!! and	Ollie's Pack	The Loud House	The Loud House	Casagrandes	The Loud House	
	DISN Bunk'd	Bunk'd	Raven's Home	Raven's Home	Bunk'd	Bunk'd	Ladybug & Cat	Ladybug & Cat	Big City Greens	Big City Greens	Jessie	(:45) Jessie	
	USA	Varied Programs											
35 TNT	Supernatural		Supernatural		Varied Programs								
37 NSCH	Varied Programs										Sox Pregame	MLB Baseball	Varied Programs
38 LIFE	Rizzoli & Isles	Varied Programs											
39 AMC	M (11:30) *** "Rudy" (1993, Drama) Sean Astin, Ned Beatty. [C]	Sean Astin, Ned Beatty. [C]				*** "The Hobbit: An Unexpected Journey" (2012, Fantasy) Ian McKellen, Martin Freeman, Richard Armitage. [C]							
	T (:15) ** "Night at the Museum: Secret of the Tomb" (2014, Children's) Ben Stiller. [C]	Ben Stiller. [C]				**** "Titanic" (1997, Historical Drama) Leonardo DiCaprio, Kate Winslet, Billy Zane. [C]							
	W (11:30) ** "Jack Ryan: Shadow Recruit" (2014) Chris Pine. [C]	Chris Pine. [C]				** "Bad Boys" (1995, Action) Martin Lawrence, Will Smith, Tea Leoni. [C]							
	Th ** "Rambo: First Blood Part II" ** "Bad Boys II" (2003, Action) Martin Lawrence, Will Smith, Jordi Mollà. [C]	Martin Lawrence, Will Smith, Jordi Mollà. [C]				** "U.S. Marshals" (1998) Tommy Lee Jones, Wesley Snipes. [C]							
	F (11:30) ** "Predators" (2010) Adrien Brody, Topher Grace. [C]	Adrien Brody, Topher Grace. [C]				* "Gone in 60 Seconds" (2000, Action) Nicolas Cage, Angelina Jolie. [C]							
40 FREE	Varied Programs												
42 TLC	Four Weddings		American Gypsy Wedding		American Gypsy Wedding		Varied Programs						
43 DISC	Varied Programs												
44 HIST	M Pawn Stars	Pawn Stars	Pawn Stars	Pawn Stars	Pawn Stars	Pawn Stars	Pawn Stars	Pawn Stars	Pawn Stars	Pawn Stars	Pawn Stars	Pawn of the Undead	
	T Nostradamus Effect	Nostradamus Effect	Nostradamus Effect "The Rapture"		Nostradamus Effect		Nostradamus Effect		Nostradamus: 21st Century Prophecies Revealed				
	W (10:30) *** "Zero Dark Thirty" (2012) Jessica Chastain. [C]	Jessica Chastain. [C]		Forged in Fire		Forged in Fire		Forged in Fire "Xiphos Sword"		Forged in Fire "Ngombe Ngulu"		Forged in Fire (DVS)	
	Th American Pickers	American Pickers	American Pickers (DVS)		American Pickers (DVS)		American Pickers (DVS)		American Pickers (DVS)		American Pickers (DVS)		
	F Ancient Aliens "Mysterious Relics"	Ancient Aliens		Ancient Aliens		Ancient Aliens		Ancient Aliens "The God Particle"		Ancient Aliens "The Visionaries"		Ancient Aliens "Aliens B.C." [C]	
45 A&E	Varied Programs				The First 48	Varied Programs	The First 48		The First 48	Varied Programs	The First 48		
46 E!	M Botched	Botched		Botched		Botched		Botched		Botched "Send Me A Mir-ear-acle"		Botched	
	T 10 Things-Know	Celebrity Game Face	Celebrity Game Face	Celebrity Game Face	Celebrity Game Face	Celebrity Game Face	Celebrity Game Face	Celebrity Game Face	Celebrity Game Face	Chrisley Knows	Chrisley Knows	Chrisley Knows	
	W The Bradshaw Bunch "Pilot"	Keeping Up With the Kardashians		Keeping Up With the Kardashians		Keeping Up With the Kardashians		Keeping Up With the Kardashians		Keeping Up With the Kardashians		Chrisley Knows	Chrisley Knows
	Th Keeping Up With the Kardashians	Keeping Up With the Kardashians		Keeping Up With the Kardashians		Keeping Up With the Kardashians		Keeping Up With the Kardashians		Keeping Up With the Kardashians		Keeping Up With the Kardashians	
47 COM	F Keeping Up With the Kardashians	Keeping Up With the Kardashians		Keeping Up With the Kardashians		Keeping Up With the Kardashians		Keeping Up With the Kardashians		Keeping Up With the Kardashians		Keeping Up With the Kardashians	
	M South Park	South Park	South Park	South Park	South Park	South Park	South Park	South Park	The Office	The Office	The Office	The Office	
	T Cleveland Show	Cleveland Show	Cleveland Show	Cleveland Show	Cleveland Show	Cleveland Show	The Office	The Office	The Office	The Office	The Office	The Office	
	W South Park	South Park	South Park "God God Go I & XII"		South Park	South Park	South Park	South Park	South Park	South Park	South Park	South Park	
	Th Cleveland Show	Cleveland Show	Cleveland Show	Cleveland Show	Cleveland Show	Cleveland Show	The Office	The Office	The Office	The Office	The Office	The Office	
48 FX	F Cleveland Show	Cleveland Show	Cleveland Show	Cleveland Show	South Park	South Park	South Park	South Park	South Park	South Park	South Park	South Park	
	(10:30) Movie	Varied Programs		Movie		Varied Programs							
49 PARMT	Bar Rescue		Mom		Mom		Two/Half Men	Two/Half Men	Two/Half Men	Two/Half Men	Two/Half Men	Two/Half Men	
50 ESPN	SportsCenter		Jalen & Jacoby	Questionable	NBA: The Jump		NFL Live		Around the Horn	Interruption	SportsCenter		
52 ESPN2	(8:00) First Take		SportsCenter		Varied Programs		Jalen & Jacoby	Questionable	Football Live	NFL Live	Varied Programs	Daily Wager	
53 FNC	Outnumbered Overtime With Harris		The Daily Briefing		Bill Hemmer Reports		Your World With Neil Cavuto		The Five		Special Report With Bret Baier		
54 CNN	CNN Newsroom		CNN Newsroom		CNN Newsroom		The Lead With Jake Tapper		Situation Room With Wolf		Situation Room With Wolf		
55 CNN2	Very Scary People		Very Scary People		Forensic Files	Forensic Files	Forensic Files	Forensic Files	Forensic Files	Forensic Files	Forensic Files	Forensic Files	
56 MSNBC	MTP Daily		MSNBC Live With Katy Tur		MSNBC Live w/Ayman Mohyeldin		Deadline: White House				The Beat With Ari Melber		
58 CNBC	The Exchange		Power Lunch		Closing Bell				Fast Money	Varied Programs	Mad Money		
59 OXY	Varied Programs												
60 FOOD	Varied Programs												
65 TRUTV	World's Dumbest ...		World's Dumbest ...		Varied Programs				Inside Jokes	Inside Jokes	Inside Jokes	Inside Jokes	
68 ANPL	Varied Programs												
70 BIGTEN	Varied Programs												
70 TRAV	M My Haunted House	My Haunted House		My Haunted House		My Haunted House		Beyond the Unknown		Beyond the Unknown			
	T Paranormal Emergency	Paranormal Emergency		Paranormal Emergency		Paranormal Emergency		The Dead Files		The Dead Files			
	W The Alaska Triangle	The Alaska Triangle		UFOs: The Lost Evidence		UFOs: The Lost Evidence		UFOs: The Lost Evidence		Paranormal Caught on Camera			
	Th Ghost Adventures	Ghost Adventures		Ghost Adventures "Hotel Metlen"		Ghost Adventures		Ghost Adventures		Ghost Adventures			
	F Believers "Paranormal Playdate"	Believers "The Slip Knot" [C]		Believers "Buyer Beware" [C]		Extreme Paranormal Witness		Extreme Paranormal Witness		Extreme Paranormal Witness			
71 BET	Meet the Browns		Varied Programs		Movie						Movie		
72 H&G	Varied Programs												
81 HALL	(11:00) Home & Family		Movie				Movie				Movie		



# TV LISTINGS

FRIDAY EVENING											
SEPTEMBER 25, 2020											
	6 PM	6:30	7 PM	7:30	8 PM	8:30	9 PM	9:30	10 PM	10:30	11 PM
2 WBBM	Hour 18: News	Ent. To-night	The Greatest AtHome Videos (N)		Love Island (N) (Live) (DVS)	Blue Bloods (N) (DVS)	News	Late Show-Colbert	James Corden		
3 WIFR	23 News at Six (N)	Last Man Standing	The Greatest AtHome Videos (N)		Love Island (N) (Live) (DVS)	Blue Bloods (N) (DVS)	News	Late Show-Colbert	James Corden		
4 WTVQ	Eyewitness	Bergstrom	America's Funniest Home Videos (N)		(:01) 20/20 (N) (Live) (DVS)		Eyewitness	Jimmy Kimmel	(:06) Nightline	Jimmy Kimmel	
5 WMAQ	NBC5 News	Ac. Hollywood	To Be Announced				Dateline NBC (Season Premiere) (N)	NBC 5 News	Tonight Show-J. Fallon	Seth Meyers	
6 WQRF	Big Bang Theory	Big Bang Theory	WWE Friday Night SmackDown (N) (Live)				Eyewitness News at Nine (N)	Modern Family	Modern Family	Overtime (N) (Live)	Two and Half Men
7 WLS	News at 6pm	Wheel of Fortune	America's Funniest Home Videos (N)		(:01) 20/20 (N) (Live) (DVS)			News at 10pm	Jimmy Kimmel	(:06) Nightline	Jimmy Kimmel
9 WGN	WGN Evening News (N)	black-ish (N)	black-ish "Hope"		Last Man Standing	Last Man Standing	WGN News at Nine (N) (Live) (DVS)	News at Ten	GN Sports	Goldbergs	Two and Half Men
10 WGBO	La Rosa de Guadalupe (SS)	Te doy la vida			Amor eterno (N)		Como tú no hay dos	Noticias Unision	Noticiero Uni		Contacto deportivo
11 WTTW	PBS NewsHour (N)	Chi. Tonight	Washington Wk		Check, Please!	Islands, Cars	Great Performances (N) (Live) (DVS)	Art in the Twenty-First Century (N) (Live)	World News	Amanpour-Co	
12 WCPX	Law & Order: Special Victims Unit (N)	Law & Order: Special Victims Unit (N)	Law & Order: Special Victims Unit (N)		Law & Order: Special Victims Unit (N)	Law & Order: Special Victims Unit (N)	Law & Order: Special Victims Unit (N)	Law & Order: Special Victims Unit (N)	Law & Order: Special Victims Unit (N)	Law & Order: Special Victims Unit (N)	
13 WREX	13 News at Six (N)	Wheel of Fortune	To Be Announced				Dateline NBC (Season Premiere) (N)	13 News at 10 (N)	Tonight Show-J. Fallon	Seth Meyers	
19 TLN	M*A*S*H	M*A*S*H	Silvia's	Tastes Li	*** "Snatch" (2000)	Dennis Farina	(:15) * "The Bounty Hunter" (2010)				
20 TBS	*** "Central Intelligence" (2016)	Dwayne Johnson, Kevin Hart. (DVS)			(:15) ** "Pain & Gain" (2013, Action)	Mark Wahlberg, Dwayne Johnson, Ed Harris. (DVS)			ELEAGUE Super Pung (N)		
31 NICK	Loud	Casa	Loud	Casa	Unfi	Group	Friends	Friends	Friends	Friends	Friends
33 DISN	(5:10) "Frozen" (N)	New York-Heroez	Ladybug	Ladybug	Ladybug	Ladybug	New York-Heroez	Bunk'd	Bunk'd		
34 USA	Chicago P.D. "An Honest Woman" (N)	Chicago P.D. "Prison Ball" (N)			Chicago P.D. (N) (DVS)	Chicago P.D. (N) (DVS)	Modern Family	Modern Family	Modern Family	Modern Family	
35 TNT	Bones (N)	*** "Captain America: Civil War" (2016, Action)	Chris Evans, Robert Downey Jr., Scarlett Johansson. (DVS)		(:15) ** "The Wolverine" (2013)	Hugh Jackman, Hiroyuki Sanada. (DVS)					
37 NSCH	White Sox Pregame	MLB Baseball	Chicago Cubs at Chicago White Sox. (N)		Post	Football	MLB Baseball				
38 LIFE	King of Queens	King of Queens	** "The Holiday" (2006, Romance-Comedy)	Cameron Diaz, Kate Winslet, Jude Law. (DVS)	(:03) ** "Where the Heart Is" (2000)	Natalie Portman, Ashley Judd. (DVS)					
39 AMC	(4:30) *** "Con Air" (1997) 'R' (DVS)	*** "The Goonies" (1985, Children's)	Sean Astin, Josh Brolin, Jeff Cohen. 'PG' (DVS)		*** "The Goonies" (1985, Children's)	Sean Astin, Josh Brolin, Jeff Cohen. 'PG' (DVS)					
40 FREE	*** "Brave" (2012) (N)				*** "Tangled" (2010) (N)		The 700 Club (N)	"Sister Act 2"			
42 TLC	90 Day Fiancé: Before the 90 Days	90 Day Fiancé: Happily Ever After? 'More to Love: Point of No Return' (N)			90 Day Fiancé	90 Day Fiancé: Happily Ever After?	90 Day Fiancé	90 Day Fiancé: Happily Ever After?			
43 DISC	Bering Sea Gold: Dredged Up (N) (N)	Bering Sea Gold: "Up in Flames" (N)	(:03) 100 Days Wild (N) (N)		(:05) Homestead Rescue (N) (N)	(:06) Homestead Rescue (N) (N)	Bering Sea Gold (N) (N)				
44 HIST	MonsterQuest: Fel-line Beasts (N)	MonsterQuest: Deadly Jellyfish (N)	MQ: Dangerous Primates		(:03) Ancient Aliens (N) (DVS)	(:05) Ancient Aliens "The Greys" (N)	MQ: Dangerous Primates				
45 A&E	The First 48 (N) (N)	First 48: Case-Haunts Me			Live Rescue "Live Rescue -- 09.25.20" (N) (N)		Live Rescue "Live Rescue -- 09.25.20"				
46 EI	** "He's Just Not That Into You" (2009) (N)		** "He's Just Not That Into You" (2009) (N)				Brad	Sex-City			
47 COM	South Pk	South Pk	South Pk	South Pk	South Pk	South Pk	South Pk	Kevin Hart: Laugh	Chap	Chap	
48 FX	(4:30) *** "Dead-pool 2" (N)	A Wilderness of Error "Girl in a Floppy Hat" (N) (N)	A Wilderness of Error "Girl in a Floppy Hat" (N) (N)		A Wilderness of Error "Girl in a Floppy Hat" (N) (N)	A Wilderness of Error "Girl in a Floppy Hat" (N) (N)	A Wilderness of Error "Girl in a Floppy Hat" (N) (N)				
49 PARMT	Two and Half Men	Two and Half Men	To Be Announced								
50 ESPN		NBA Countdown (N) (Live)	NBA Basketball Boston Celtics vs Miami Heat. (N) (Live)				SportsCenter With Scott Van Pelt (N) (Live)		SportsCenter (N) (Live)		
52 ESPN2	NFL Live (N) (N)	MLB Baseball	Chicago Cubs at Chicago White Sox. (N) (Live)				NFL Live (N)		To Be Announced		
53 FNC	The Story	Tucker Carlson	Hannity (N) (N)		Ingraham		Fox News at Night	Tucker Carlson			
55 CNN	Erin Burnett Out-Front (N) (N)	Anderson Cooper 360 (N) (Live) (N)	Cuomo Prime Time (N) (Live) (N)		CNN Tonight with Don Lemon (N)		CNN Tonight with Don Lemon (N)	Anderson Cooper 360 (N)			
56 CNN2	Forensic   Forensic	Forensic   Forensic	How It Really		How It Really	Forensic   Forensic	Forensic   Forensic	Forensic   Forensic			
58 MSNBN	The ReidOut (N) (Live)	All In With Chris Hayes (N) (N)	The Rachel Maddow Show (N) (Live)		The Last Word	The 11th Hour with Brian Williams (N)	The Rachel Maddow Show (N)				
59 CNBC	Undercover	Undercover Boss	Undercover Boss		Undercover Boss	Undercover Boss	Undercover Boss	Undercover Boss			
60 OXY	Dateline: Secrets	Dateline: Secrets	The Backyard		The Backyard	Dateline: Secrets	Snapped (N)				
62 FOOD	Diners	Diners	Diners		Diners	Diners	Diners, Drive	Snapped (N)			
63 TRUTV	Inside Jokes	Inside Jokes	Inside Jokes		Inside Jokes	Inside Jokes	* "Wild Wild West" (1999, Action) Will Smith, Kevin Kline. (DVS)	* "Wild Wild West" (1999)			
65 ANPL	River Monsters (N)	River Monsters: Deadliest Man-Eaters "Fatal Fish of the North" (N) (N)			Mysteries of the Deep (N)		Chasing Monsters (N) (N)	River Monsters: Deadliest			
67 BIGTEN	Women's College Volleyball (N)		Women's College Volleyball (N)				Penn State Football Classic (N)	Penn State Football Classic (N)			
70 TRAV	Extreme Paranormal Witness (N)	Extreme Paranormal Witness (N)	Extreme Paranormal Witness (N)		Paranormal Night-shift (N) (N)	Paranormal Night-shift (N) (N)	Extreme Paranormal Witness (N)				
71 BET	** "ATL" (2006) Tip Harris, Lauren London. (DVS)				Payne	Payne	As. Liv	As. Liv	Cleve	Cleve	
72 H&G	Fixer to Fabulous	Dream	Dream	Selling	Selling	Dream	Hunters	Hunters	Selling	Selling	
131 HALL	(5:00) "All of My Heart: Inn Love"	"Christmas in Rome" (2019, Romance)	Lacey Chabert, Sam Page. (DVS)		Golden Girls	Golden Girls	Golden Girls	Golden Girls	Golden Girls	Golden Girls	

SATURDAY AFTERNOON											
SEPTEMBER 26, 2020											
	12 PM	12:30	1 PM	1:30	2 PM	2:30	3 PM	3:30	4 PM	4:30	5 PM
2 WBBM	NWSL Soccer Washington Spirit at Chicago Red Stars. (N) (Live)				College Football	College Football	Mississippi State at LSU. (N) (Live) (DVS)				
3 WIFR	NWSL Soccer Washington Spirit at Chicago Red Stars. (N) (Live)				College Football	College Football	Mississippi State at LSU. (N) (Live) (DVS)				
4 WTVQ	(11:00) College Football Teams TBA. (N) (Live)				Coll. Football	College Football Teams TBA. (N) (Live)					Coll. Football
5 WMAQ	(11:30) Premier League Soccer Teams TBA. (N) (Live)	Goal Zone	PGA Tour	Golf Corales Puntacana Resort & Club Championship, Third Round. (N) (Live)							NBC 5 News
6 WQRF	(11:00) College Football Kansas State at Oklahoma. (N) (Live)				College Football	Texas at Texas Tech. (N) (Live)					
7 WLS	(11:00) College Football Teams TBA. (N) (Live)				Coll. Football	College Football Teams TBA. (N) (Live)					Coll. Football
9 WGN	Paid Pro-gram	Paid Pro-gram	Paid Pro-gram	Paid Pro-gram	Mom (N) (DVS)	Mom (N) (DVS)	Mom (N) (DVS)	Hous-eSmarts	Chic.Best	Living Healthy	WGN Weekend Evening News (N)
10 WGBO	Despierta América presenta: Sin rollo	Cuentame lo ya... al fin	Amor eterno		Amor eterno					Una familia de 10	Noticiero
11 WTTW	Cook's Country	Mexican Table	Simply Smiling	Project Fire	Test Kitchen	Test Kitchen	Greek Table	A Chef's Life (N)	Milk Street	Check, Please!	Stevens' Europe
12 WCPX	Law & Order: Special Victims Unit (N)	Law & Order: Special Victims Unit (N)	Law & Order: Special Victims Unit (N)	Law & Order: Special Victims Unit (N)	Law & Order: Special Victims Unit (N)	Law & Order: Special Victims Unit (N)	Law & Order: Special Victims Unit (N)	Law & Order: Special Victims Unit (N)	Law & Order: Special Victims Unit (N)	Law & Order: Special Victims Unit (N)	Law & Order: Special Victims Unit (N)
13 WREX	(11:30) Premier League Soccer Teams TBA. (N) (Live)	Goal Zone	PGA Tour	Golf Corales Puntacana Resort & Club Championship, Third Round. (N) (Live)							Nightly News
19 TLN	Italian Soccer	A Taste	Italian Serie A Soccer				M*A*S*H	M*A*S*H	Lidia	Lidia	
20 TBS	(11:30) *** "Rush Hour 2" (2001, Action) Jackie Chan.	*** "Rush Hour 2" (2001, Action) Jackie Chan, Chris Tucker. (DVS)					*** "Central Intelligence" (2016)	Dwayne Johnson, Kevin Hart. (DVS)		"Uncle Drew"	
31 NICK	Sponge.	Sponge.	Sponge.	Sponge.	Sponge.	Sponge.	Sponge.	Loud	Loud	Loud	Loud
33 DISN	(:15) *** "Frozen" (2013) 'PG' (DVS)	Ladybug	Ladybug	Ladybug	Ladybug	Ladybug	Ladybug	Ladybug	Ladybug	Ladybug	Heroez
34 USA	Chicago P.D. "A Little Devil Complex"	Chicago P.D. "Erin's Mom" (N)	** "The Proposal" (2009, Romance-Comedy)	Sandra Bullock, Ryan Reynolds. (DVS)			(:27) *** "Speed" (1994)	Keanu Reeves. (DVS)			
35 TNT	(11:00) ** "The Great Gatsby" (2013, Drama)	Leonardo DiCaprio. (DVS)	** "The Wolverine" (2013, Action)	Hugh Jackman, Hiroyuki Sanada, Famke Janssen. (DVS)			** "Ant-Man and The Wasp" (2018) Paul Rudd.				
37 NSCH	Ninja Warrior	Panthers	Motorcycle Race	Chasing Monsters	Close Proximity (N)		Football	White Sox Pregame			
38 LIFE	"The College Admissions Scandal"	Lombard, Ella Wahlestedt. (DVS)	"Homemaking Queen" (2019, Suspense)	Louise Lumsden, Ashley Jones, Kaitlyn Bernard. (DVS)			"Her Deadly Sugar Daddy" (2020) (DVS)				
39 AMC	(:15) *** "Rocky III" (1982, Drama)	Sylvester Stallone, Mr. T, Talia Shire. 'PG' (DVS)	(:45) *** "Rocky IV" (1985, Drama)	Sylvester Stallone, Talia Shire. 'PG' (DVS)			(:45) *** "Rocky Balboa" (2006) Sylvester Stallone. 'PG' (DVS)				
40 FREE	"Princess Diaries 2"	(:45) *** "Brave" (2012) Billy Connolly (N) (DVS)			(:35:00) *** "Tangled" (2010) (N) (DVS)						
42 TLC	90 Day Fiancé: Happily Ever After?	90 Day Fiancé: Happily Ever After? "Seeds of Discontent" (N)			90 Day Fiancé: Happily Ever After? "She's a Wolf" (N)						
43 DISC	Bad Chad Customs "Chad vs. Pinto"	Dirty Jobs "Special Effects Artist" (N)	Dirty Jobs "Reef Ball Maker" (N)		Dirty Jobs "Exotic Animal Keeper" (N)		Dirty Jobs (N) (DVS)	Dirty Jobs "Big Animal Vet" (N) (DVS)			
44 HIST	MonsterQuest: Deadly Jellyfish (N)	MonsterQuest: Serpentine Creatures	MQ: Dangerous Primates		Ancient Aliens (N) (DVS)		Ancient Aliens "Circles From the Sky" (N)				
45 A&E	(11:00) Live Rescue (N) (N)	Live Rescue "Live Rescue -- 09.04.20" (N) (N)			Live Rescue "Live Rescue -- 09.19.20" (N) (N)		Live Rescue "Live Rescue -- 09.18.20" (N) (N)				
46 EI	Kardash	*** "Forgetting Sarah Marshall" (2008) (DVS)			*** "Legally Blonde" (2001) (DVS)		*** "Fifty Shades" (2015) (DVS)				
47 COM	Office	Office	Office	Office	Office	* "Joe Dirt" (2001) David Spade. (DVS)		*** "The Longest Yard" (2005) Adam Sandler. (DVS)			
48 FX	(11:00) *** "Fast & Furious" (2009) Vin Diesel. (N) (DVS)	Josh Brolin, Zazie Beetz. (N) (DVS)			*** "The Equalizer 2" (2018, Action)	Denzel Washington, Martin Scorsese. (DVS)					
49 PARMT	"Han-cock" (N)	*** "Shooter" (2007, Suspense)	Mark Wahlberg, Michael Peña, Danny Glover. (N) (DVS)		*** "I Am Legend" (2007, Science Fiction)	Will Smith, Alice Braga, Dash Mihok. (N) (DVS)					
50 ESPN	(11:00) College Football Florida at Ole Miss. (N) (Live)		Score-board		College Football	Teams TBA.					Score-board
52 ESPN2	(11:00) College Football Teams TBA.		Score-board		College Football	Teams TBA.					TBA
53 FNC	News HQ	News HQ	Journal Editorial		America's News Headquarters (N) (DVS)		Fox Report				
55 CNN	CNN Newsroom	CNN Newsroom	CNN Newsroom With Ana Cabrera		CNN Newsroom With Ana Cabrera		CNN Newsroom With Ana Cabrera				
56 CNN2	Very Scary People	Very Scary People	Very Scary People		Very Scary People		How It Really	How It Really			
58 MSNBN	Weekends With Alex Witt (N) (N)	Weekends With Alex Witt (N) (N)	MSNBC Live		MSNBC Live		PoliticsNation (N) (Live)	Voices-Alicia Mendez			
59 CNBC	Paid Prg.   Paid Prg.	Paid Prg.   Paid Prg.	Undercover		Undercover		Undercover Boss	Undercover Boss			
60 OXY	Snapped (N)	Snapped (N)	Snapped (N)		Snapped (N)		License to Kill (N)				
62 FOOD	Guy's Games	Guy's Games	Guy's Games		Guy's Games		Guy's Games	Diners	Diners		
63 TRUTV	World's Dumbest	World's Dumbest	World's Dumbest		World's Dumbest		Inside Jokes	Inside Jokes	Inside Jokes	Inside Jokes	
65 ANPL	Dr. Jeff: Rocky Mountain Vet (N)	Dr. Jeff: Rocky Mountain Vet (N)	Dr. Jeff: Rocky Mountain Vet (N)		Dr. Jeff: Rocky Mountain Vet (N)		Dr. Jeff: Rocky Mountain Vet (N)	Dr. Jeff: Rocky Mountain Vet (N)			
67 BIGTEN	Ohio State Football Classic (N)	Michigan State Football Classic	Northwestern Football Classic		Wisconsin Football Classic		Indiana Football Classic	Maryland Football Classic			
70 TRAV	My Horror Story (N)	My Horror Story "Return to Horror"	My Horror Story "The Devil Inside"		My Horror Story "Encountering Evil"		My Horror Story "Night Terrors"	Ghost Adventures "Palomino Club" (N)			
71 BET	Martin	Martin	** "ATL" (2006) Tip Harris, Lauren London. (DVS)				"A Thin Line Between Love and Hate" (2019) (DVS)				
72 H&G	Home Town	Home Town	Home Town		Home Town		Home Town	Home Town			
131 HALL	"Winter in Valley" (2020, Drama)	Lacey Chabert, Tyler Hynes, Marla Renae. (DVS)	"A Harvest Wedding" (2017, Romance)	Jill Wagner, Victor Webster. (DVS)			"Follow Me to Daisy Hills" (2020) Cindy Busby, Marshall Williams. (DVS)				

SATURDAY MORNING							SEPTEMBER 26, 2020						
	6 AM	6:30	7 AM	7:30	8 AM	8:30	9 AM	9:30	10 AM	10:30	11 AM	11:30	
2 WBBM	CBS This Morning: Saturday (N) (DVS)				Lucky Dog	Innovation Nat	Mission Unstop	Pet Vet-Team	Hope in the Wild	Best Friends	Lucas Oil Off Road Racing Series (N)		
3 WIFR	CBS This Morning: Saturday (N) (DVS)				Lucky Dog	Innovation Nat	Mission Unstop	Pet Vet-Team	Hope in the Wild	Best Friends	Lucas Oil Off Road Racing Series (N)		
4 WTVQ	oh baby! (N) (DVS)	oh baby! (N) (DVS)	Good Morning America (N) (DVS)		Good Morning America (N) (DVS)		Jack Hanna	Ocean Treks	Hearts of Heroes	Rock the Park	College Football Teams TBA. (N)		
5 WMAQ	NBC 5 News at 6am (N) (DVS)		Today (N) (DVS)			NBC 5 News	Roots Less	Saving Pets	Earth Odyssey	Earth Odyssey	Consumer Soccer	Premier Soccer	
6 WQRF	Dog Tales	Wild America	Dr. Scott	Pets. TV (N) (DVS)	Wild Abt Animals	Ocean Mys.	Big Noon Kickoff (N) (Live)			College Football			
7 WLS	ABC7 Eyewitness News at 6am (N)		Good Morning America (N) (DVS)		ABC7 Eyewitness News at 8am (N) (DVS)				Good Morning America (N) (DVS)		College Football Teams TBA. (N)		
9 WGN	Paid Program	Adelante	WGN Weekend Morning News (N)		WGN Weekend Morning News (N)		WGN Weekend Morning News (N)		Living Healthy	At the Forefront	Ocean Mys.		
10 WGBO	Programa	Programa	Planeta de niños		Atención, Atención		Naturaleza humana		Programa	Programa	Programa	Programa	
11 WTTW	Sesame Street	Pinkalicious	Elinor Wonders	Daniel Tiger	Curious George	Clifford-Dog	Wild Kratts: Amazon		Ask This Old H'se	Mexico/ Bayless	Flavor of Poland	Lidia's Kitchen	
12 WCPX	Paid Program (N) (DVS)	Paid Program (N) (DVS)	Luminess	Paid Program (N) (DVS)	Law & Order: Special Victims Unit (N) (DVS)		Law & Order: Special Victims Unit (N) (DVS)		Law & Order: Special Victims Unit (N) (DVS)		Law & Order: Special Victims Unit (N) (DVS)		
13 WREX	Paid Program	Paid Program	Today (N) (DVS)			Champ Within	Earth Odyssey	Earth Odyssey	Consumer Less	Roots Less	Saving Pets	Premier Soccer	
19 TLN	Paid Prg.	Paid Prg.	Serie A	Inside	(7:55) Italian Serie A Soccer			Incredible Homes			Italian Soccer		
20 TBS	Imp. Jokers	Love-Raymond	Love-Raymond	Love-Raymond	Love-Raymond	Lost Resort "The End of the Road"		*** "Rush Hour" (1998, Action) Jackie Chan, Chris Tucker. (DVS)			"Rush Hour 2"		
31 NICK	Sponge.	Sponge.	Rangers	Sponge.	Sponge.	Sponge.	Loud	Loud	Loud	Casa	Sponge.	Sponge.	
33 DISN	Amphibia	Amphibia	Owl Hse.	Hotel	Big City		Ladybug	Ladybug	Jessie	Jessie	Jessie	Jessie	
34 USA	Paid Program	Paid Program	Paid Program	Paid Program	Chicago P.D. "Called in Dead"		Chicago P.D. (N) (DVS)		Chicago P.D. (N) (DVS)		Chicago P.D. "Discobob" (N) (DVS)		
35 TNT	NCIS: New Orleans "Watch Over Me"		NCIS: New Orleans "Love Hurts" (N) (DVS)		NCIS: New Orleans "Chasing Ghosts"		NCIS: New Orleans "Stolen Valor" (N) (DVS)		NCIS: New Orleans "Baitfish" (N) (DVS)		*** "The Great Gatsby" (2013)		
37 NSCH	Paid Prg.	Paid Prg.	Paid Prg.	Paid Prg.	Paid Prg.	Paid Prg.	Wisc.	Paid Prg.	DW-TV	Paid Prg.	Paid Prg.	Paid Prg.	
38 LIFE	Paid Program	Paid Program	Paid Program	Paid Program	Paid Program	Paid Program	Paid Program	Paid Program	Marrying Millions (N) (DVS) "The College Admissions Scandal"				
39 AMC	Two and Half Men	Two and Half Men	Two and Half Men	Two and Half Men	Two and Half Men	Two and Half Men	Two and Half Men	Two and Half Men	(4:45) * "Major League II" (1994, Comedy) Charlie Sheen, Tom Berenger, Corbin Bernsen. PG (N) (DVS)				
40 FREE	** "Alice Through the Looking Glass" (2016) (N) (DVS)				** "The Princess Diaries" (2001) Julie Andrews.				"Princess Diar. 2"				
42 TLC	Say Yes to the Dress (N) (DVS)		Say Yes to the Dress (N) (DVS)		Say Yes to the Dress (N) (DVS)		90 Day Fiancé: Happily Ever After? Goes Around, Comes Around" (N) (DVS)			90 Day Fiancé: Happily Ever After?" (N) (DVS)			
43 DISC	Major League Fishing (N) (N) (DVS)				Bad Chad Customs "Bad Chadillac"		Bad Chad Customs "Trucker's Dream"		Bad Chad Customs (N) (DVS)		Bad Chad Customs (N) (DVS)		
44 HIST	Swamp People (N) (DVS)		Swamp People "Click Click" (N) (DVS)		Swamp People "Leviathans" (N) (DVS)						MonsterQuest: Chasing Bigfoot (N) (DVS)		
45 A&E	Flipping Vegas "Reptile House" (N) (DVS)		Flipping Vegas "Haunted House"		Flipping Vegas (N) (DVS)			Zombie House Flipping		Sell This House!	Sell This House!	Live Rescue "Live Rescue - 08.22.20"	
46 E!	Kardash	The Kardashians	The Kardashians			The Kardashians		The Kardashians		The Kardashians		Kardash	
47 COM	Parks	Parks	Office	Office	Office	(4:45) The Office (N) (DVS)		Office	Office	Office	Office	Office	
48 FX	** "The Fast and the Furious" (2001, Action) Vin Diesel, Paul Walker, Michelle Rodriguez. (N) (DVS)						** "2 Fast 2 Furious" (2003, Action) Paul Walker, Tyrese, Eva Mendes. (N) (DVS)			** "Fast & Furious" (2009) (N) (DVS)			
49 PARMT	Paid Program (N) (DVS)	Paid Program (N) (DVS)	Paid Program (N) (DVS)	Paid Program (N) (DVS)	*** "Creed" (2015, Drama) Michael B. Jordan, Sylvester Stallone. (N) (DVS)				** "Hancock" (2008, Action) Will Smith, Charliz Theron. (N) (DVS)				
51 ESPN	SportsCenter (N) (Live) (DVS)		SportsCenter (N) (Live) (DVS)		College GameDay (N) (Live)							College Football Florida at Ole Miss.	
52 ESPN2	NFL Matchup		F1 eS-ports		Formula 1 Racing		SportsCenter (N) (Live) (DVS)		SportsCenter (N) (Live) (DVS)		SportsCenter (N) (Live) (DVS)		
53 FNC	(5:00) FOX and Friends Saturday (N) (Live) (DVS)						Cavuto Live (N) (Live) (DVS)		News HQ				
55 CNN	New Day Weekend With Victor		New Day Weekend With Victor		Smerconish (N) (Live) (DVS)		CNN Newsroom/Blackwell		CNN Newsroom		CNN Newsroom		
56 CNN2	Weekend Express		Weekend Express		Weekend Express		Weekend Express		Weekend Express		Very Scary People		
58 MSNBC	MSNBC Live with Kendis Gibson and		Velshi (N) (Live) (DVS)		Velshi (N) (Live) (DVS)		AM Joy (N) (Live) (DVS)		Weekends With Alex Witt (N) (DVS)				
59 CNBC	Paid Prg.	Paid Prg.	Paid Prg.	Paid Prg.	Paid Prg.	Paid Prg.	Paid Prg.	Paid Prg.	Paid Prg.	Paid Prg.	Paid Prg.	Paid Prg.	
60 OXY	Dateline: Secrets		Dateline: Secrets		Dateline: Secrets		License to Kill		License to Kill		License to Kill		
64 FOOD	Minute	Valerie's	The Kitchen		Trisha's Girl-Farm		Pioneer	Pioneer	The Kitchen		Delicious Trisha's		
65 TRUTV	truTV Top Funniest (N) (DVS)		truTV Top Funniest (N) (DVS)		truTV Top Funniest "Funny Falls 2"		Carbonaro Eff.	Carbonaro Eff.	Carbonaro Eff.	Carbonaro Eff.	Carbonaro Eff.	World's Dumbest ... (N) (DVS)	
66 ANPL	Dr. Jeff: Rocky Mountain Vet (N) (DVS)		Dr. Jeff: Rocky Mountain Vet (N) (DVS)		Dr. Jeff: Rocky Mountain Vet (N) (DVS)		Dr. Jeff: Rocky Mountain Vet (N) (DVS)		Dr. Jeff: Rocky Mountain Vet (N) (DVS)		Dr. Jeff: Rocky Mountain Vet (N) (DVS)		
67 BIGTEN	Ohio State Football Classic (N) (DVS)		Iowa Football Classic (N) (DVS)		Big Ten Elite (N) (DVS)		Purdue Football Classic (N) (DVS)		Penn State Football Classic (N) (DVS)		Iowa Football Classic (N) (DVS)		
70 TRAV	Terror in the Woods (N) (DVS)		Terror in the Woods (N) (DVS)		Terror in the Woods (N) (DVS)		Terror in the Woods (N) (DVS)		Terror in the Woods (N) (DVS)		My Horror Story (N) (DVS)		
71 BET	Payne	Payne	Prince	Prince	Prince	Prince	Prince	Prince	Martin	Martin	Martin	Martin	
72 H&G	Vacation House		Vacation House		Vacation House		Vacation House		Vacation House		Vacation House		
131 HALL	Golden Girls	Golden Girls	Golden Girls	Golden Girls	"Anything for Love" (2016) Erika Christensen, Paul Greene.			(2016) Erika Christensen, Antonio Cupo.		"Love Under the Stars" (2015) Ashley Newbrough, Wes Brown.			

# TV LISTINGS

SUNDAY MORNING												SEPTEMBER 27, 2020												
	6 AM	6:30	7 AM	7:30	8 AM	8:30	9 AM	9:30	10 AM	10:30	11 AM	11:30												
2 WBBM	CBS 2 Sunday Morning News (N) 0 0				CBS News Sunday Morning (N) 0 0				Face the Nation (N) 0 0		Fan Duel (N) 0 (Live) 0		The NFL Today (N) 0 (Live) 0											
3 WIFR	Paid Program	Paid Program	Home Re-model	Paid Program	CBS News Sunday Morning (N) 0 0				Face the Nation (N) 0 0		Paid Program		The NFL Today (N) 0 (Live) 0											
4 WTVQ	World's-Weather	Raw Travel	Good Morning America (N) 0		This Week With George ...				Good Day Stateline		Robert Jeffress		In Touch Kids News		Paid Program									
5 WMAQ	NBC 5 News at 6am (N) 0				Sunday Today With Willie Geist (N) 0				NBC 5 News at 8am (N) 0		Meet the Press (N) 0		NBC 5 News		Champ Within		2020 Roland-Garros Tennis (N) 0 (Live)							
6 WQRF	Paid Program	Animal Rescue	Sports Stars	Career Day	FOX News Sunday With Chris Wallace				Sports Connect		Chicago Football		FOX NFL Kickoff (N) 0 (Live) 0		FOX NFL Sunday (N) 0 (Live) 0									
7 WLS	ABC7 Eyewitness News at 6am (N)				Good Morning America (N) 0				ABC7 Eyewitness News at 8am (N) 0		Mass		This Week With George ...		Joel Osteen		Paid Program							
9 WGN	Paid Program	Singsa-tion 0	WGN Weekend Morning News (N)		WGN Weekend Morning News (N)				Political Report		Sunday Mass		Bill Winston		At the Forefront		Adventures Sports Stars							
10 WGB0	Rotorazor Programa				Programa				Como dice el dicho (SS)		Al punto (N)		Al punto Chicago		Abordo Chicago		Fútbol Central		Fútbol Mex.					
11 WTTW	Let's Go Luna!				Wild Kratts				Nature Cat		Molly of Denali		Molly of Denali		Hero El-emetary		Xavier Riddle		Odd Squad		Growing Bolder			
12 WCPX	David Jeremiah	Michael Youssef	In Touch	Paid Program 0	NCIS: Los Angeles "Endgame" 0				NCIS: Los Angeles "Recruit" 0		NCIS: Los Angeles "The Fifth Man" 0		NCIS: Los Angeles "Dead Body Politic" 0											
13 WREX	Real Faith	Sunday Mass	Think Big 0	Mountain Faith	Sunday Today With Willie Geist (N) 0				Meet the Press (N) 0		Paid Program		Paid Program		2020 Roland-Garros Tennis (N) 0 (Live)									
19 TLN	Opening	Paid Prg.	Opening	Paid Prg.	(7:55) Italian Serie A Soccer				Incredible Homes		Italian Soccer													
20 TBS	The Mis-ery Index				Love-Raymond				Lost Resort "The End of the Road" 0		*** "Dreamgirls" (2006, Musical) Jamie Foxx, Beyoncé Knowles, Eddie Murphy. 0		*** "Last Holiday" (2006) Queen Latifah, Gérard Depardieu. 0											
31 NICK	Sponge.	Sponge.	Rangers	Sponge.	Sponge.				Sponge.		Sponge.		Sponge.		Sponge.		Sponge.							
33 DISN	Amphibia				Amphibia				Big City		Big City		Ladybug		Ladybug		My Little Pony							
34 USA	Paid Program	David Jeremiah	In Touch	Joel Osteen	Law & Order: Special Victims Unit 0				Law & Order: Special Victims Unit 0		Law & Order: Special Victims Unit 0		Law & Order: Special Victims Unit 0		Law & Order: Special Victims Unit 0									
35 TNT	NCIS: New Orleans 0 0				NCIS: New Orleans 0 0				NCIS: New Orleans 0 0		NCIS: New Orleans 0 0		*** "Pirates of the Caribbean: Dead Men Tell No Tales" (2017) Johnny Depp. 0											
37 NSCH	Paid Prg.	Paid Prg.	Paid Prg.	Paid Prg.	Paid Prg.				Paid Prg.		Paid Prg.		Paid Prg.		Paid Prg.		Paid Prg.							
38 LIFE	In Touch	Truths That	Amazing Facts	David Jeremiah	Joel Osteen				"Deadly Sorority" (2017, Suspense) Greer Grammer, Chloe Babcock. 0		Football		Paid Prg.		Paid Prg.		Paid Prg.							
39 AMC	(5:15) *** "Casino" (1995, Crime Drama) Robert De Niro, Sharon Stone, Joe Pesci. "R" 0				Robert De Niro, Sharon Stone, Joe Pesci. "R" 0				(:15) *** "Rocky Balboa" (2006, Drama) Sylvester Stallone, Burt Young, Antonio Tarver. "PG" 0		Sylvester Stallone, Burt Young, Antonio Tarver. "PG" 0		Sylvester Stallone, Burt Young, Antonio Tarver. "PG" 0		Sylvester Stallone, Burt Young, Antonio Tarver. "PG" 0		Sylvester Stallone, Burt Young, Antonio Tarver. "PG" 0		Sylvester Stallone, Burt Young, Antonio Tarver. "PG" 0		Sylvester Stallone, Burt Young, Antonio Tarver. "PG" 0			
40 FREE	Simpson *** "The Princess Diaries" (2001) Julie Andrews. 0				Simpson *** "The Princess Diaries" (2001) Julie Andrews. 0				(:12) ** "The Princess Diaries 2: Royal Engagement" 0															
42 TLC	90 Day Fiancé: Happily Ever After? "Drawing the Line" 0				90 Day Fiancé: Happily Ever After? "Public Displays of Contention" 0				90 Day Fiancé: Happily Ever After? "Compromising Positions" 0		90 Day Fiancé: Happily Ever After? "Compromising Positions" 0													
43 DISC	Local Know	Locations	Ocean Legacy	Out Da Bayou	Expedition to the Edge 0 0				Expedition to the Edge 0 0		Homestead Rescue "Quake Shattered" 0		Homestead Rescue 0 0											
44 HIST	Counting Cars 0	Counting Cars 0	Counting Cars 0	Counting Cars 0	Counting Cars "Haunted Hog" 0 0								Counting Cars 0		Counting Cars 0									
45 A&E	Hoarders 0 0	Hoarders "Manuel & Carla" 0 0	Hoarders "Manuel & Carla" 0 0	Hoarders "Doug & Ruth" 0	Hoarders "Doug & Ruth" 0				Hoarders "Charles & Alvin" 0 0		Hoarders "Charles & Alvin" 0 0		Hoarders "Diana; Dolores" 0 0		Hoarders "Fuzzie & Fredd; Nancy" 0		*** "Salt" 0							
46 E!	Bradshaw				Brad				*** "Forgetting Sarah Marshall" (2008) 0		*** "Hitch" (2005) Will Smith. 0													
47 COM	Parks	Parks	Office	Office	Office				Office		Office		Office		Office		Office							
48 FX	Mike & Molly 0	Mike & Molly 0	Matthew McConaughey. 0 0		*** "The Dark Tower" (2017) Idris Elba, Matthew McConaughey. 0 0				*** "The Equalizer" (2014, Action) Denzel Washington, Martin Csokas, Chloë Grace Moretz. 0 0															
49 PARMT	Paid Program 0	Paid Program 0	Bar Rescue 0 0	Bar Rescue 0 0	Bar Rescue 0 0				Bar Rescue "Life's a Beach" 0 0		Bar Rescue "Pie Hard" 0 0		Bar Rescue "Mommster's Ball" 0											
51 ESPN	SportsCenter (N) (Live) 0				SportsCenter (N) (Live) 0				SportsCenter (N) (Live) 0		Sunday NFL Countdown (N) (Live) 0													
52 ESPN2	(:05) Formula 1 Racing Russian Grand Prix. (N) (Live)				Daily Wager (N) (Live)				Fantasy Football Now (N) (Live)															
53 FNC	(5:00) FOX and Friends Sunday (N) (Live) 0				Maria Bartiromo				MediaBuzz (N)		News HQ													
55 CNN	New Day Weekend With Victor				Inside Politics (N) 0				State of the Union With Jake Tapper		Fareed Zakaria GPS (N) 0		Reliable Sources with Brian Stelter		State of the Union With Jake Tapper									
56 CNN2	Weekend Express				Weekend Express				Weekend Express		Weekend Express		Weekend Express		Weekend Express		Weekend Express							
58 MSNBC	MSNBC Live with Kendis Gibson and				Velshi (N) (Live) 0				Velshi (N) (Live) 0		AM Joy (N) (Live) 0													
59 CNBC	Paid Prg.	Paid Prg.	Paid Prg.	Paid Prg.	Paid Prg.				Paid Prg.		Paid Prg.		Paid Prg.		Paid Prg.		Paid Prg.							
60 OXY	Dateline: Secrets				The Backyard				The Backyard		Snapped 0		Snapped 0		Snapped 0		Snapped 0							
61 FOOD	In Italy	Brunch	Contessa Valerie's	Pioneer	Pioneer	Pioneer	Pioneer	Pioneer	Pioneer	Girl-Farm Trisha's				The Kitchen 0										
62 TRUTV	Adam Ruins	Adam Ruins	World's Dumbest ... 0	World's Dumbest ... 0	World's Dumbest ... 0	World's Dumbest ... 0	World's Dumbest ... 0	World's Dumbest ... 0	World's Dumbest ... 0	World's Dumbest ... 0				World's Dumbest ... 0										
63 ANPL	North Woods Law "Over the Edge" 0				North Woods Law "Collision Course" 0				North Woods Law "The Hunt Begins" 0		North Woods Law "Boiling Point" 0		North Woods Law "Coastal Criminals" 0		North Woods Law "Turkey Trouble" 0									
67 BIGTEN	BTN Football in 60 0				BTN Football in 60 0				Big Ten Foot 0		Big Ten Foot 0		BTN Football in 60 0		Big Ten Foot 0		Big Ten Foot 0							
70 TRAV	The Osbournes Want to Believe				The Osbournes Want to Believe				The Osbournes Want to Believe		The Osbournes Want to Believe		The Osbournes Want to Believe		Paranormal Caught on Camera 0									
71 BET	Grier	Paid Prg.	Payne	Payne	Payne	Payne	Payne	Prince	Prince	"A Thin Line Between Love and Hate" 0														
72 H&G	Christina/Coast				Christina/Coast				Christina/Coast		Christina/Coast		Christina/Coast		Christina/Coast									
131 HALL	Golden Girls				Golden Girls				"One Winter Proposal" (2019, Romance-Comedy) Taylor Cole, Jack Turner. 0		"The Convenient Groom" (2016) Vanessa Marcil, David Sutcliffe. 0													

# Classified Marketplace

## FREE!

**Sell your household items for free.**  
Total value of item must be \$200 or less. (15 words  
- one week - 7 publications - price must be listed)



ROCHELLE • HILLCREST • CRESTON • STEWARD • KINGS • ASHTON

## 101 LEGAL NOTICE

**PUBLIC NOTICE**  
Public Notice is hereby given that on September 10, 2020, a certificate was filed in the Ogle County Clerk's Office setting forth the names and post office address of all of the persons owning, conducting and transacting the business known as: Wax Macabre, 803 N. 12th Street, Rochelle, IL 61068.  
Dated: September 10, 2020  
Laura J. Cook,  
Ogle County Clerk  
No. 0920 (Sept. 13, 20, 27)

**INVITATION FOR BIDS**  
Rochelle Municipal Utilities, Ogle County, Illinois will receive sealed bids for:

Prologis Park Substation Equipment Purchase until 11:00 a.m. local time on the 6th day of October 2020 at the Rochelle Municipal Utilities, 420 N 6th Street, Rochelle, Illinois 61068.

The plans and specifications are on file with the said Rochelle Municipal Utilities for viewing purposes only.

Copies of the documents may be acquired from BHMGE Engineers, Inc., 630 Jeffco Boulevard, Arnold, Missouri 63010, Consulting Engineers for said City. Please email Laura Stackle, Lstackle@bhmge.com with request.

Bids shall be received for the aforementioned items.

A certified check or bank draft on a responsible, solvent bank, or a satisfactory bid bond executed by the bidder and an acceptable surety company, payable to the Rochelle Municipal Utilities, Adam Lanning, Utility Manager, or Government Bonds or cash in the amount of not less than five percent (5%) of bid, shall be submitted with each bid.

The bid shall be marked to identify bid package contents, reference specification 2031 K003.

The successful bidder will be required to:

- Register as a bidder for this project.
- Furnish in duplicate the following executed documents:
- Non-Collusion Affidavit
- Bid Form
- Bid Bond, Certified Check or Money Order
- And any other documents as required by the specifications.

No bid shall be withdrawn after the opening of bids without the consent of the Utility for a period of sixty (60) days after the scheduled time of closing bids.

The said Rochelle Municipal Utilities re-

serves the right to reject any or all bids and to waive any informalities in bidding, and to determine and accept the bid most advantageous to the Utility.

Rochelle Municipal Utilities  
Adam Lanning, Utility Manager  
Date: September 15, 2020  
No.0924  
(September 20, 23, 27, 30, October 4, 7, 2020)

## NOTICE OF PUBLIC HEARING (PRELIMINARY & FINAL PLAT OF SUBDIVISION)

PUBLIC NOTICE is hereby given to all persons in the City of Rochelle, Ogle County, Illinois, that a public hearing will be held by the Planning and Zoning Commission on Monday, October 5, 2020 at 6:00 p.m. in the Rochelle City Hall Council Chambers, 420 North 6th Street relative to the following: Petition of Pipe 77, LLC for a preliminary & final plat of subdivision. The subject property is located at 1320 N. 7th Street and has a legal description of: PARCEL: 24-13-326-003

A Tract of land located in a part of the Southwest Quarter (1/4) of Section 13, Township 40 North, Range 1 East of the Third Principal Meridian, bounded and described as follows: Commencing at the Northwest Corner of the Southwest Quarter (1/4) of said Section 13; thence Easterly on the North line of said Southwest Quarter (1/4), 1258.0 feet; thence Southerly at an angle of 87 degrees 32 minutes measured counterclockwise from the last described course, 385.25 feet; thence Southerly at an angle of 179 degrees 59 minutes 58 seconds measured clockwise from the last described course, a distance of 209.49 feet, to the Point of Beginning of the hereinafter described tract of land; thence Northeasterly at an angle of 87 degrees 23 minutes 52 seconds measured clockwise from the last described course, a distance of 150.15 feet to a point; thence Southwesterly at an angle of 92 degrees 36 minutes 10 seconds measured counterclockwise from the last described course, a distance of 150.15 feet to the Point of Beginning of the hereinafter described tract of land; thence Northeasterly at an angle of 87 degrees 23 minutes 52 seconds measured counterclockwise from the last described course, a distance of 150.15 feet to a point; thence Southwesterly at an angle of 92 degrees 36 minutes 10 seconds measured counterclockwise from the last described course, a distance of 150.15 feet to the Point of Beginning; all situated in the

City of Rochelle, Township of Flagg, County of Ogle and State of Illinois.

A Tract of land located in part of the Southwest Quarter (1/4) of Section 13, Township 40 North, Range 1 East of the Third Principal Meridian, bounded and described as follows: Commencing at the Northwest corner of the Southwest Quarter (1/4) of said Section 13; thence Easterly on the North line of said Southwest Quarter (1/4), 1258.0 feet; thence Southerly at an angle of 87 degrees 32 minutes measured counterclockwise from the last described course, 385.25 feet; thence Southerly at an angle of 179 degrees 59 minutes 58 seconds measured clockwise from the last described course, a distance of 209.46 feet, to the Point of Beginning of the hereinafter described tract of land; thence Northerly along the last described course, a distance of 59.49 feet; thence Easterly at an angle of 89 degrees 59 minutes 58 seconds measured counterclockwise from the last described course, a distance of 360.00 feet to a point in the centerline of a public highway designated S.B.I. Route 70 ( U.S. Route 51), at an angle of 90 degrees 00 minutes 00 seconds, measured counterclockwise from the last described course, a distance of 43.12 feet; thence Southwesterly at an angle of 92 degrees 36 minutes 10 seconds measured counterclockwise from the last described course, a distance of 360.06 feet, to the Point of Beginning; situated in the Township of Flagg, County of Ogle and State of Illinois.

The petition is on file and available for examination in the office of the Community Development Director, 333 Lincoln Highway, Rochelle, Illinois during normal business hours. All persons interested are invited to attend said hearing and be heard. Anyone interested in participating in public commentary remotely should contact Michelle Knight at mknight@rochelleil.us or call 815-562-8717 to make arrangements. Commission members may participate in the Planning and Zoning Meeting remotely as a result of the Governor suspending the requirement for in-person attendance at Public Meetings. Sue Messer, City Clerk City of Rochelle No. 0926 (Sept. 20)

## 101 LEGAL NOTICE

This publication does not knowingly accept fraudulent or deceptive advertising. Readers are cautioned to thoroughly investigate all ads, especially those asking for money in advance.

## 105 BUSINESS OPPORTUNITIES

"This publication does not knowingly accept fraudulent or deceptive advertising. Readers are cautioned to thoroughly investigate all ads, especially those asking for money in advance."

## 113 FINANCIAL

NOTICE Advance Fee Loans or Credit Offers Companies that do business by phone can't ask you to pay for credit before you get it. For more information, call toll-free 1-877-FTC-HELP. A public service message from your hometown newspaper and the Federal Trade Commission.

## 119 ANNOUNCEMENTS

"This publication does not knowingly accept fraudulent or deceptive advertising. Readers are cautioned to thoroughly investigate all ads, especially those asking for money in advance."

## 127 SERVICES AND REPAIRS

JNJ JUMPERS Indoor/ Outdoor Bounce House Rentals Available Year Round. Please Call 815-784-4256 For Availability or Visit us on Facebook.

## 201 DOMESTIC/CHILD CARE

NO INDIVIDUAL, unless licensed or holding a permit as a childcare facility, may cause to be published any advertisement soliciting a child care service. A childcare facility that is licensed or operating under a permit issued by the Illinois Department of Children and Family Services may publish advertisements of the services for which it is specifically licensed or issued a permit. Your Hometown Newspaper strongly urges any parent or guardian to

**WANTED TO BUY**  
FREON WANTED: We pay \$\$\$ for cylinders and cans. R12 R500 R11 R113 R114. Convenient, Certified Professionals. Call 312-598-1758 or visit RefrigerantFinders.com

## 201 DOMESTIC/CHILD CARE

verify the validity of the license of any facility before placing a child in it's care.

## 203 HELP WANTED

CDL DRIVER and Farm Help Wanted For Fall Harvest. 10 Miles South of Rochelle. 815-716-6681. (10-11-20)

LOCAL COMPANY Looking for DRIVERS, Local, Regional & OTR Call 815-973-9366 for Information. (10-04-20)

N E W S P A P E R CARRIERS Wanted. (Rochelle) Several Routes Open. Call 815-561-2112 For More Information.

## 301 ANTIQUES

WANTED TO BUY: Vintage Metal and Wood Signs, Milk Bottles & Local Advertising, Oak Icebox, Iron Door Stop and Antique Lighting... Call Dick Harms at 815-562-2928 or email dickharms@hotmail.com

ANTIQUES WANTED: I pay cash for antiques; furniture, glassware, pottery & crocks, tin & iron toys, sterling silver, decoys. If it's antique, I'm interested in looking! Call 815-562-2928 or email dickharms@hotmail.com

## 307 MISCELLANEOUS FOR SALE

FOR SALE – 4-Drawer Dresser \$60, 2-Drawer Nightstand \$25, Glass Top End Tables \$25, End Table \$15, & 2-Basin Wash Tubs \$50. Call 815-677-5093. (09-20-20)

BMW Wheels & Tires. Four @ 15", Four @ 16". All \$175 Call 331-575-9355. (09-20-20)

BUNDLED Newspaper -\$3 per Bundle. End Roll- Cost Depends on Weight of Roll. Available Monday-Friday 8AM-NOON ONLY. SEE RECEPTIONIST AT FRONT COUNTER Rochelle News-Leader.

## 405 HOUSES FOR SALE

ALL REAL ESTATE advertised herein is subject to the Federal Fair Housing Act, which makes it illegal to advertise any preference, limitation or discrimination based

## 601 VEHICLES FOR SALE

## 405 HOUSES FOR SALE

on race, color, religion, sex, handicap, familial status, or national origin, or intention to make any such preferences, limitation or discrimination. We will not knowingly accept any advertising for real estate which is in violation of the law. All persons are hereby informed that all dwellings advertised are available on an equal opportunity basis.

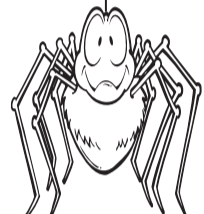
## 501 APARTMENTS FOR RENT

1&2-BEDROOM Apts. Clean, Quiet, Available Now. Some Utilities Included. Call For Showing. 815-762-6650 or 815-761-3968. (10-14-20)

## 509 HOUSES FOR RENT

3-BEDROOM House. No Pets, Country Home Near Franklin Grove, 815-456-2453. (09-23-20)

**ADVERTISE WITH US**



OREGON: 2765 W Pines Road. Huge Barn Sale. ANTIQUES, ANTIQUES... Thursday September 24th Friday September 25th and Saturday September 26th, 9am-5pm Each Day!! Cupboards, Tables, Ton of Chairs, Desks, Dressers, Beds and So Much More!!! Priced to Sell. Dick & Janaan Harms, Owners. (09-23-20)

## 203 HELP WANTED

## Want To Teach Your Kids About Responsibility?

The Rochelle News-Leader has two openings for newspaper carriers.

- Must be 10 years or over
- 2 deliveries per week
- Most routes take less than 45 minutes
- No collecting
- A great place to teach your child about responsibility - and the rewards of earning their own spending money
- Adult carriers are welcome, too!

Contact Wanda at the Rochelle News-Leader office  
211 E. Hwy. 38,  
561-2112



**ROUTE 24-25**  
SOUTH MAIN, SOUTH 1ST, SOUTH 2ND, SOUTH 3RD STREETS

**ROUTE 28**  
SOUTHVIEW DR., WILLIS AVE., LAKE LIDA LN.

08052020

## 307 MISCELLANEOUS FOR SALE

## 203 HELP WANTED

**NEW MILFORD REFRIGERATION**

**NEW, USED SCRATCH & DENT**  
• Refrigerators • Freezers • Washers/Dryers • Stoves  
**AIR CONDITIONERS**  
30,000; 28,000; 25,000; 23,000; 20,000; 18,000; 15,000; 12,000; 10,000; 8,000; 5,000; BTU  
**DEHUMIDIFIERS \$99 & UP**

We also carry a large selection of refurbished appliances with a warranty.  
6331 11th Street, Rockford  
**815-874-2257** 07122020

**Nutrien Ag Solutions™**

**Immediate Opening  
Compton Plant  
Fulltime/Seasonal/Paid Overtime**

Apply in person or Call  
Nutrien Ag Solutions  
1793 Steward Rd  
Steward, IL 60553  
815-396-2248 09132020

**TNT MOTOR SALES**

**2018 Chevy Malibu PRICE REDUCED, Low Miles, Warranty \$15,995**

**2012 Toyota Camry 7,500 miles, like new, clean \$14,500**

• **Guaranteed Financing** • **Poor Credit or No Credit**  
• **Low Interest Rates** • **\$50 Referral Program**  
• **Cash Income Accepted** • **Warrantees Available**

**800 S 4th St Oregon, IL 61061**  
**815-881-8287 • tntmotorsales.com**

Plus tax, title & doc fee. Offering Buy Here Pay Here Options on select Vehicles. We accept trade-ins & payment is based on approved credit. 09212020

# SPORTS

## NIU to the NFL

Huskies make season debuts

**DEKALB** — With the National Football League kicking off its 2020 season, Northern Illinois University football fans won't have to wait long to see some of their favorite former Huskies in action.



Max Scharping, a member of NIU's 2014 and 2018 MAC championship teams, took the field when his Houston Texans faced the defending Super Bowl champion Kansas City Chiefs. Scharping leads a contingent of six Huskies on NFL rosters this season. Jimmie Ward, who met Kansas City in last year's NFL title game, enters his seventh season in the league. He and the San Francisco 49ers took on Arizona Sunday. Wide receivers from the 2014 MAC Championship unit, Christian Blake and Chad Beebe begin their second

and third seasons, respectively. Blake, who spent the 2018 season on the Atlanta Falcons' practice squad, was elevated to the active roster in October of 2019, while Beebe spent the first eight weeks of 2018 on the Minnesota Vikings' practice squad before being elevated on Nov. 4 of that year to the active roster. The two will be reunited Week 6 when the Vikings host the Falcons. Two other former Huskie teammates will meet this season when Scharping and the Texans travel to Detroit to face Kenny Golladay and the Lions on Nov. 26 for a Week 12 tilt. Golladay, who enters his fourth season in the NFL, suited up when the Lions took on the Chicago Bears Sunday. Golladay and Scharping were teammates at NIU from 2014-16. Golladay will also see his former



(JEFFREY BEALL/WIKIMEDIA COMMONS)  
**Former NIU player Jimmie Ward, above, is now with the San Francisco 49ers.**

teammates Blake and Beebe this season as well. Rashaan Melvin, who signed with the Jacksonville Jaguars in the offseason, spent the previ-

ous seven seasons in the league with five different teams during that time span. Melvin starts the season on the Jaguars Reserve/Opt-Out list.

## Kougars take 12th at Duane Chanay Invite

RTHS grad Jones sees action

**SILVIS** — The Kishwaukee College men's golf team travelled to Silvis on Tuesday to compete at the 22nd Annual Duane Chanay Invitational at TPC Deere Run. The Kougars finished 12th as a team with a 341 team score. Aurora University took first place with a 294 followed by Heartland Community College with a score of 304.

Individually for Kishwaukee, Thomas O'Connor finished tied for 13th along with teammate Dyllon Davis who both posted a 76. Matthew Randall (87), Hayden Jones (102) and Noah Forsberg (108) had strong shots throughout the tourney on the same PGA course that hosts the PGA Tour - John Deere Classic annually since



**Jones**

2000. Kishwaukee will return to action on Monday, Sept. 21 at the IVCC Fall Classic at Senica's Oak Ridge Golf Course in LaSalle with tee time to start approximately 10 a.m.

# BEST OF OGLE COUNTY

# 2020

# VOTE NOW!\*



(\*You may vote only once per email address)

# Online voting only at bestofoglecounty.com

Voting ends September 24, 2020

# Be a force for safety in your community.

As a team member at Tyson Foods, you've seen all the steps your facility takes to prevent the spread of COVID-19. Here's how to use some of those same principles to help keep your family and community safe after your shift ends.

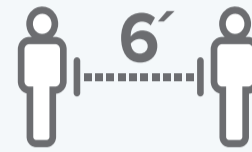
Most importantly, continue to



Wear a mask



Wash and sanitize your hands



Practice social distancing



## If you're hosting small gatherings, do it outside.

Instead of inviting people into your home, host a small gathering outside in the fresh air where everyone has six feet between them to spread out.



## When shopping, wear a mask and avoid crowds.

Instead of going to the grocery store at rush hour, try going in the early morning or just before the store closes. Your local grocery store may even have a delivery or curbside pickup option.



## When you eat out, eat outside.

Instead of getting a table inside a restaurant, have your meal outside. If the restaurant doesn't have a patio, take your dinner to go for an evening picnic at your favorite park.

Learn more about what we're doing to help keep each other safe.  
[tysonfoods.com/coronavirus](https://tysonfoods.com/coronavirus)

