



ROCHELLE News-Leader

MIDWEEK EDITION | WWW.ROCHELLENEWS-LEADER.COM

Today's RNL issue
sponsored by
Community
Unity
member:

Rochelle
Community Unity
Shop • Play • Stay

H Holiday Inn
Express

1240 N. Dement Road
815-562-9994

Vol. 101 • No. 78

LOCAL NEWS... LOCAL VIEWS

WEDNESDAY, JANUARY 27, 2021

\$1

Your life.
Your education.
Your way.

KC KISHWAUKEE COLLEGE

Enrolling Now for Fall!

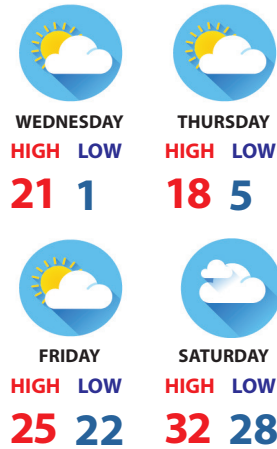
www.kish.edu/fall

KNOW IT TODAY



Deadlock
Appellate court decisions
conflict on juvenile issue.
See page 3

WEATHER



Today's RNL issue
sponsored by
Community
Unity
member:

Rochelle
Community Unity
Shop • Play • Stay

Bruns
Construction, Inc.
815-561-0099
brunsconstructioninc.com

OBITUARIES

• DUANE ACKLAND
• WILLARD DAVEY
• BERNIECE ESPE
• BARBARA LANDRY
• JAMES MOOREHEAD
• CONNIE RICHMOND

See page 4

INSERTS

• ALDI

INSIDE

Social News.....2, 4, 5, 7, 8
Obituaries.....4
Opinion6



8 52078 00112 6

School districts take part in Phase 1B vaccination

ROCHELLE — On Monday, Rochelle School Districts 212 and 231 collaborated with the Ogle County Health Department to administer 225 Moderna COVID-19 vaccinations at Rochelle Township High School for school employees of both districts.

This school vaccination program is part of Phase 1B of Illinois Department of Public Health's COVID-19 vaccination distribution plan. The second dose of the COVID-19 vaccination program for Rochelle school district employees will take place on Monday, Feb. 22. The vaccination was open on a voluntary basis for all school employees.

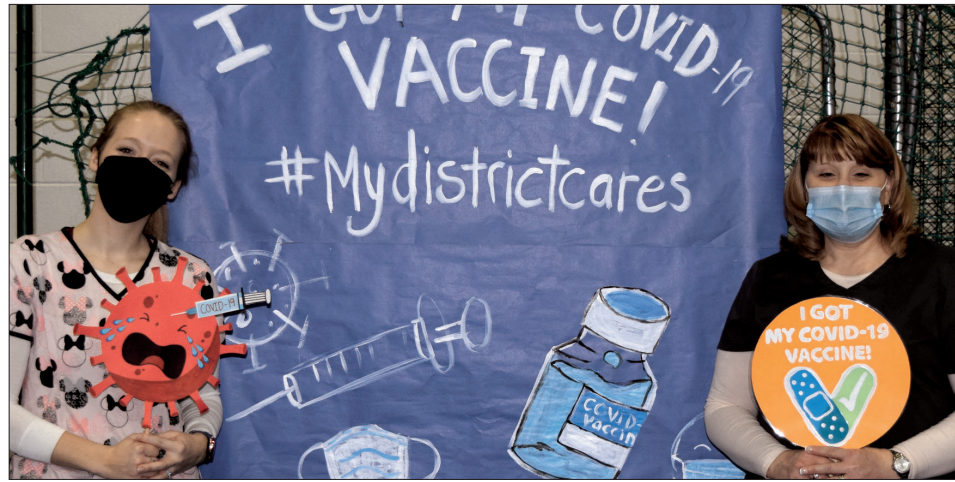
"The Rochelle school districts appreciate the OCHD prioritizing local educators as part of Phase 1B as we view the vaccination of school employees as one of many necessary steps in helping to mitigate the spread of COVID-19 in school settings," Rochelle Superintendent of



Schools Jason Harper said. "The Rochelle schools especially appreciate the partnership and collaboration of the Ogle County Health Department's Emergency Preparedness Coordinator, Mrs. Cherie Rucker. Mrs. Rucker's planning and communication throughout the process have been important to the success of the program."

The community is asked to continue to do its part in helping to mitigate the spread of COVID-19 throughout the community.

Nurses Jacque Johnson and Deborah Cicogna (below) received their first dose of the COVID-19 vaccination on Monday. The Rochelle school districts partnered with the Ogle County Health Department for Phase 1B of the vaccination program. On Monday, 225 school employees opted to be vaccinated.



(COURTESY PHOTOS)

City council approves take-out mixed drinks

BY RUSSELL HODGES
SPORTS EDITOR

ROCHELLE — Rochelle City Council members amended an ordinance that will permit certain licensed establishments in the Hub City to sell mixed drinks for delivery and carryout. Council members approved the amended ordinance with a 6-1 vote during their meeting on Monday.

The amended ordinance allows for the sale of a cocktail or mixed drink in a sealed container, with a secure, tamper-evident lid, by a retail licensee if the following requirements are met: The cocktail is transferred within the licensed premises, by a curbside pickup or by delivery by an employee of the licensee who has been trained in accordance with the provisions of Section 6-27.1 of the Illinois Liquor Control Act, is at least 21 years of age and upon delivery, verifies the age of the person to whom the cocktail is being delivered.

If the employee delivering the cocktail is not able to verify the person's age or level of intoxication, the employee shall cancel the sale of alcohol and return the product to the retail licenses. The sealed container must be placed in the trunk of the vehicle or, if there is no trunk, in the vehicle's rear compartment that is not readily accessible to the passenger area.

The sealed container must be affixed with a label or tag that contains the following information: The cocktail or mixed drink ingredients, type and name of alcohol, the name, license number and address of the retail licensee that filled the original container and sold the product and the date sold, the volume of cocktail or mixed drink in the seal container and the sealed container was filled less than seven days before the date of sale.

If there is an executive order in effect, the employee delivering the mixed drink or cocktail must comply with any requirements of that order, including but not limited to, wearing gloves and a mask and maintaining distancing requirements.



During the presentation involving the amendment to a city ordinance involving the sale of mixed drinks for delivery at Monday night's Rochelle City Council meeting, an example of sealed bottles used at a Dixon business (above) was used.

7th Avenue Bridge

Council members approved preliminary engineering and construction engineering services agreements with Wendler Engineering Services during Monday's meeting. The two approved agreements deal with the replacement of the nearly 55-year-old Seventh Avenue bridge. The project will be funded with the sales tax and utility tax funds and will cost around \$1.4 million.

Wendler Engineering Services has conducted routine bridge inspections and reports for the city over the past several years. Previous and current reports identified spalling of concrete, exposed reinforcement, wingwall tipping, deterioration of the deck slab, substructure and

the pedestrian walkway. The project has been identified as a multi-year capital improvement project and the engineering and construction is funded in the current fiscal year 2021 budget.

Construction on the Seventh Avenue bridge project is expected to be completed by the end of 2021. The new structure will be a traditional bridge with updated pedestrian crossings along the north and south sides that will connect into adjacent sidewalk systems. The new bridge will help increase the effective opening and improve conveyance through the area.

"We expect to begin construction in late May or early June and the bridge will be closed for the duration of the project," City Engineer Sam Tesreau said. "That should be around 3-to-4 months assuming we don't have any wet weather conditions or other issues during the summer."

COVID Vaccine Policy

Council members approved a City of Rochelle COVID-19 Vaccination Policy during Monday's meeting. The policy includes a provision that all full-time employees who receive the required COVID-19 vaccine doses will be eligible for a \$100 wellness incentive. The policy also states the vaccine is not mandatory and city employees will not be required to be vaccinated. The city will work with the Ogle County Health Department to offer vaccines to all city employees.

Other items

Council members approved the purchase of cobra head street lights from Wesco Distribution for \$71,280 during Monday's meeting. Council members also approved an ordinance granting variation of signage to allow the Flagg-Rochelle Community Park District to construct an electronic sign in front of the new recreation center at 802 Jones Road in Rochelle. The Planning & Zoning Commission voted 6-0 to approve the variance during its meeting on Dec. 7, 2020.

Helping You Protect *What Matters Most*

Stillman
BANK
Trust & Wealth Management

- Estate Planning
- Retirement Planning
- Personal Trusts
- Investment Management

Put your trust in us. Contact us to set up a
no-obligation, complimentary consultation.

www.stillmanbank.com | 815.332.8100

Investments offered through Stillman Trust & Wealth Management • Not FDIC Insured • No Bank Guarantee • May Lose Value

FIRST STATE BANK

Brent Ohlinger
Community President

David Eckhardt
Vice President/Loan Officer

304 East Highway 38 • Rochelle
firststatebank.biz • 815.562.2200

Member
FDIC

LOCAL NEWS

Big winner



Rochelle Foods was the winner of the Jan. 1 Rotary Cash Calendar drawing of \$1,000. Rochelle Foods has donated the money back to From The Heart which is raising money for seven not-for-profit groups in the area. Pictured left to right are Rochelle Foods plant manager Bill Rice, Dave Eckhardt, Rochelle Foods plant controller Matt Thimjon and City of Rochelle economic development director Jason Anderson. Anderson sold the Rochelle Rotary Cash Calendar to Rochelle Foods. The calendar sale proceeds are used in conjunction with the proceeds made during the annual From the Heart event to benefit the not-for-profit groups. Tickets for this year's Feb. 6 virtual event are currently available at www.fromtheheartrochelle.org.

Kishwaukee College partnership to provide COVID-19 grants to local small businesses

M A L T A — COVID-19 grants, in the amount of \$500, will soon be available to local small businesses thanks to a partnership between

Kishwaukee College, the Waubesa Community College Small Business Development Center and First Midwest Bank.

Funds are limited and

will be available on a first-come, first-served basis.

Information about the grant process can be found at www.kish.edu/sbdc or by contact-

ing LaCretia Konan, Kishwaukee College Director of Workforce & Community Education, at lkonan1@kish.edu.

Speech team takes second

ROCHELLE — The Rochelle Township High School speech team finished second at the 24-team DeKalb Invitational over the weekend. Speaker of the week was Paul Swartz.

Cary Grove edged the Hubs out as team champions. Individuals who earned finalist honors included:

Varsity

Megan Thiravong, first place in Extemporaneous Speaking. Paul Swartz/Mikayla Preston, first place in Humorous Duet Acting.

Ava Coglianese, second place in Special Occasion Speaking. Faith Worthington, second place in Informative Speaking. Bella Nauman, second place in Oratorical Declamation.

Ava Coglianese, fourth place for her Original Comedy. Faith Worthington, fourth place in Impromptu Speaking.

Morgan Haas, sixth place in Oratorical Declamation. Heidi Cruz, sixth place in Special Occasion Speaking.

Next in

Morgan Haas, first place in Oratory. Paul Swartz, first place in Humorous Interpretation.

Bella Nauman/Jenn Heinrich, third place in Humorous Duet Acting. Jenn Heinrich/Ariel Zuercher, third place in Dramatic Duet Acting. Jessica Nguyen, third place in Informative Speaking.

Ariel Zuercher, fifth place for Poetry Reading.

Matteo Hughes/Addison Stewart, sixth place for Humorous Duet Acting. Mikayla Preston, seventh place for Dramatic Interpretation.

Novice

Aiden Ramsey, first place in Impromptu Speaking and third place in Radio Speaking.

Lily Owen, third place in Poetry Reading. Dani Ward, third place in Prose Reading and fourth place in Radio Speaking.

Addison Stewart, fifth place in Oratorical Declamation. Ceci Vargas, fifth place for Oratory.



Your Health and Safety Is Our Priority

Rochelle Community Hospital remains dedicated to your health, wellness and—safety—especially now. Delaying care could impact your health. Learn more about our enhanced safety procedures, policies and modified hours at: rochellehospital.com.

RCH COVID-19 Triage Line:

CALL 815-561-8829

Monday-Friday

8:00 a.m. – 5:00 p.m.

RCH is taking these precautions:

- Using COVID-19 screening measures at entrances including temperature checks
- Requiring masks and social distancing 6-feet in all areas
- Diligently cleaning and disinfecting frequently touched surfaces
- Offering the COVID-19 triage line for questions and testing appointments



The right care, right here in Rochelle.



Huber Ins and Fin Svcs Inc
Shane B Huber, Agent
1211 Currency Ct
Rochelle, IL 61068
Bus: 815-562-7011

Hello, neighbor!

Please stop by and say, "Hi!"
I'm looking forward to serving your needs for insurance and financial services.

Like a good neighbor,
State Farm is there.®

CALL ME TODAY.



STATE NEWS

Regions 1 and 2 move to Phase 4

SPRINGFIELD—The Illinois Department of Public Health Tuesday announced Region 1 (Boone, Carroll, DeKalb, Jo Daviess, Lee, Ogle, Stephenson, Whiteside, Winnebago) and Region 2 (Bureau, Fulton, Grundy, Henderson, Henry, Kendall, Knox, La Salle, Livingston, Marshall, McDonough, McLean, Mercer, Peoria, Putnam, Rock Island, Stark, Tazewell, Warren, Woodford) are moving to Phase 4 of the Restore Illinois Plan effective Tuesday.

A Phase 4 Guidelines Overview can be found on the Illinois Department of Commerce and Economic Opportunity website.

Restaurants and bars

Indoor dining and drinking now permitted for parties of up to 10 people.

Seated areas should be arranged so that tables allow for 6 feet between parties; impermeable barriers may be installed between booths which are less than 6 feet apart.

Retail and service counter

Continue capacity limit of no more than 50 percent occupancy.

Personal care

Continue capacity limit of no more than 50 percent occupancy.

Indoor/outdoor recreation

Reopening select indoor recreation facilities (e.g., bowling alleys, skating rinks); indoor playgrounds and trampoline parks should remain closed.

Indoor recreation to operate at lesser of 50 customers or 50 percent of facility capacity.

Museums

Capacity limit of no more than 25 percent occupancy.

Guided tours should be limited to 50 or fewer people per group.

Meetings and social events

Limit to the lesser of 50 people or 50 percent

of room capacity.

Multiple groups may meet in the same facility if they are socially distanced and in separate rooms

IDPH will continue to closely monitor test positivity, ICU bed availability, and the number of people in the hospital with COVID-19. Should data show regions trending in the wrong direction, based on the established mitigation metrics, regions could once again find themselves in a higher tier with increased measures.

Metrics for moving from a higher to lower tier are as follows:

Moving from Tier 3 to Tier 2

Test positivity rate equals 8 percent and below 12 percent for three consecutive days (seven-day average).

Staffed ICU bed availability equals 20 percent for three consecutive days (seven-day average).

Sustained decline in COVID patients in hospital (seven-day average for seven of 10 days).

Moving from Tier 2 to Tier 1

Test positivity rate between 6.5 percent and 8 percent for three consecutive days (seven-day average).

Staffed ICU bed availability equals 20 percent for three consecutive days (seven-day average).

No sustained increase in COVID patients in hospital (seven-day average for seven of 10 days).

Moving from Tier 1 to Phase 4

Test positivity rate equals 6.5 percent for three consecutive days (seven-day average).

Staffed ICU bed availability equals 20 percent for three consecutive days (seven-day average).

No sustained increase in COVID patients in hospital (seven-day average for seven of 10 days).

Information about mitigation and resurgence metrics can be found on the IDPH website at <http://www.dph.illinois.gov/regionmetrics>.

High court deadlocks on how to interpret juvenile court law

Appellate court decisions conflict on the issue

BY SARAH MANSUR

CAPITOL NEWS ILLINOIS/
SMANSUR@CAPITOLNEWSILLINOIS.COM

SPRINGFIELD —

The state's highest court deadlocked Friday over how to interpret a state law that outlines the procedure judges must follow to sentence a minor who is found guilty of a crime to a state juvenile detention center.

The case, out of Rock Island County, raised the question of whether, under Illinois law, a judge must state directly in the court record that commitment to a juvenile detention facility is the "least restrictive" sentencing option.

The two-sentence opinion noted that Illinois Supreme Court Justice Robert Carter, who was appointed in November to replace former Justice Thomas Kilbride, recused himself, leaving only six justices to decide on the case.

When at least four justices of the Supreme Court cannot agree on a decision, the appellate court ruling being reviewed becomes the final decision. That means there is conflicting legal precedent in Illinois courts on this issue because two other appellate courts have ruled differently. The Supreme Court could rule on the precedent again in the future if a new case regarding the same issues comes before it.

In December 2019, the 3rd District Appellate Court ruled on the case that the Supreme Court was considering, which involved sentencing for a 14-year-old boy, referred to as J.M.A., who pleaded guilty to stealing a gun, a car and an iPhone. Carter, who served on the 3rd District Appellate Court before being appointed to the Supreme Court, participated in that decision, which is now the final decision in the case.

The Illinois General Assembly added language to the Illinois Juvenile Court Act in 2012 that a judge must find detention is "least restrictive," and provide "the reasons why efforts were unsuccessful in locating a less restrictive alternative to secure confinement."

The amendment from 2012 also requires that



Illinois Supreme Court building in Springfield.

(CAPITOL NEWS NETWORK PHOTO)

"before the court commits a minor to the (juvenile detention facility), it shall make a finding that secure confinement is necessary, following a review of the following individualized factors." Those seven individualized factors include age, criminal background and "physical, mental and emotional health of the minor."

Before that change passed, the state Juvenile Court Act only required the judge to consider whether the minor's parents are fit to discipline their child, and whether detaining the minor is in the best interest of the public.

In the December 2019 opinion, the 3rd District Appellate Court decided the judge who sentenced J.M.A. was not required to make a direct statement that juvenile detention was the "least restrictive" option because the judge in this case "explicitly contemplated a number of less restrictive options," the opinion states.

The appellate court found that this requirement amounted to a judge reciting "magic words," but a judge could still achieve the purpose of making this direct statement by evaluating other less restrictive options in the court record.

The 2019 appellate court ruling in the Rock Island County case conflicts with two other rulings on this question from two separate appellate court decisions in juvenile cases from 2016 and 2014.

In those two decisions, both the 1st District and 2nd District appellate courts found the language in the Illinois Juvenile Court Act requires a judge to make an

explicit verbal or written finding that detention in a juvenile facility is the least restrictive sentence.

In the 2019 ruling, the appellate court found that the case before them was different from the decisions in 2014 and 2016 because the judges in those two cases did not consider less restrictive sentencing options.

"Insofar as either (the 2014 and 2016 cases) may be read as requiring the explicit recitation of certain words — 'I find that a commitment to the (Illinois Department of Juvenile Justice) is the least restrictive alternative' — we disagree with those rulings," the 2019 opinion states.

"The court in this case provided a detailed explanation of less restrictive alternatives and the reasons they were inappropriate for (J.M.A.) Not only is this course acceptable under the Act, but we submit that it is actually preferable to a bare recitation of the 'magic words' without any further explanation."

Dimitrios Golfis, who represents J.M.A., argued in a court brief that the Illinois Supreme Court should hear this case despite the fact that his client has been released from a juvenile detention facility because the issue is a matter of public interest.

"It involves a dispute regarding the legal basis and procedure for committing children to the IDOJJ. It also involves the safety of both the public and children and the liberty, rehabilitation, and competency development of children in the juvenile justice system," wrote Golfis, an attorney with the State Appellate

Defender's Office.

Golfis wrote in the brief that the conflict among appellate courts on the issue is another reason the Illinois Supreme Court should hear the case. Golfis didn't respond to requests for comment.

Shobha L. Mahadev, a clinical professor at Northwestern University Pritzker School of Law, said it is disappointing that the Illinois Supreme Court did not take this opportunity to reaffirm the importance of the provisions of the Juvenile Court Act requiring that imprisonment be the sentence of last resort for Illinois youth.

"Research demonstrates that incarceration is particularly harmful for children, their families, and communities. It is also often costly and ineffective at addressing the root causes for why children sometimes commit crimes — for instance, because of untreated or undiagnosed mental health issues," Mahadev, who works at the law school's Children and Family Justice Center, said in an interview.

"In light of the growing recognition that a child's needs and community safety is rarely, if ever, met by incarceration, the Juvenile Court Act has been amended in recent years to require that no child be sent to prison unless a court has truly and expressly considered both the child's individual needs and whether they can be met by services in the community."

A spokesperson for Illinois Attorney General Kwame Raoul, who represents the state in this case, did not respond to a request for comment by deadline.

Antiques & Collectibles

Belvidere Collectible Coins

www.goldsilverjewelrycoin.com

We Pay Highest Prices For Gold, Silver, Platinum, Jewelry, Coins, Flatware, Dental & Bullion

10% More For Jewelry With This Ad!

Hours: Mon.-Sat. 9:30am-5:00pm (815) 547-7111
~ Call For Directions ~

880 Belvidere Road • Belvidere, IL

To advertise your business here contact
Tiffany Smith
815-561-2153

LOCAL NEWS

Obituaries

Willard Davey

SYCAMORE — Willard F. Davey, 91, formerly of Creston, passed away peacefully Friday, January 22, 2021 at the DeKalb County Nursing Home in DeKalb.



Willard was born on March 8, 1929 on the farm near Creston to William C. and Nellie S. (Newcomer) Davey. On June 25, 1950, he married Dorothy Mae Drewe in Creston. Willard spent his entire life farming in the area and worked for the Federal Crop Insurance Corporation for 30 years. He was a lifelong member of the United Methodist Church. Willard was Past Master of the Creston Masonic Lodge, Past Exalted Ruler of the Dekalb Elks Club, Past President of the Dekalb County Shrine Club and a member of the Ogle County Board.

Willard is survived by three children, William (Julenne) Davey of Sycamore, Jeffrey (Janice) Davey of Sterling, and Marjorie (Bruce) Brett of Franklinton, Louisiana; six grandchildren, Audra (Danny) Wilson, Drewe (Kevie) Davey, Joshua (Morgan) Davey, Carol (Chris) Jacob, Emily (Scott) Morgan and Jaclyn Davey; eight great-grandchildren, Julia and Henry Davey, Zoe, Reagan, Abigail and Samantha Jacobs, Quinn Morgan, Charlotte Wilson and one on the way. He was also survived by his brother, Norman (Sharon) Davey.

He was preceded in death by his beloved wife, Dorothy; brother, Clyde Davey; and sisters, Vergene (Harold) Berg and Florence ("Buck") Baker.

Willard was buried Monday, Jan. 25 at Woodlawn Cemetery in Creston. Memorials may be made in his memory to Shriners Hospitals for Children.

Visit www.ungerhorner.com to sign the online guest book.

ROCHELLE — Barbara Elayne Landry, 88, passed away Thursday, Jan. 21, 2021 at Manor Court in Rochelle. Barbara was born May 28, 1932 to Daniel C and Louise (Rubsaman) Kump in Oregon. On Jan. 28, 1949 she married Gordon Landry (Hammond, Louisiana) at the East Oregon Chapel. He preceded her in death on Jan. 25, 2017, three days short of their 68th wedding anniversary.



Barbara was a member of the Flag Center Church of God where her husband served as minister for more than 40 years. Through the years they served together in many pastorates including Arizona, Louisiana and Illinois. They attended many conferences together listening to country music as they travelled as well as listening morning, noon and night. They were able to travel to the Grand Ol Opry.

After the children were grown, Barbara went to work as a proofreader for religious publications. She still made time for crocheting and tea parties with the grandchildren.

Barbara is survived by her children, Daniel (Carola), Greenwell Springs, Louisiana; David (Tammy), Magnolia, Texas; Joel, Rochelle; Gretchen (Terry) Wight, Pecatonica; Jennifer (Daniel) Foster, Rochelle, and Barry, Baton Rouge, Louisiana; her sister, Jean Best, Pearl, Mississippi; 18 grandchildren, Greg (Susan) Landry, Sarah (Joe) Hood, Lori (Chuck) Yielding, Rebecca (Brad) Gibbs, Deanna (Daniel) Patterson, Shannon (Tyler) Livezey, Brooke Landry, Jessica (Mark) Robinson, Angie (Tim) Danielson, April Wight, Jeremy (Tamarah) Wight, Tyler Wight, Joshua (Sara) Foster, Caleb Foster, Micah (Jackie) Foster, Timothy (Veronica) Foster, Miranda Foster, Stephanie (John) Gibby; 33 great-grandchildren, Mason (Kelly)

Landry, Cameron (Makenna Cisler) Landry, Ashetyn, Noah Hood, Camden, Aiden Yielding, Haleigh, Blaine and Kamryn Gibbs, Modesto and Aloysius Livezey, Ashlyn, Brayden and Kianna Robinson, Makayla, Mason, and Madelyn Danielson, Kyren and Norvinah Wight, Alex, Ben, Natalie, Brooklyn Foster, Malachi, Jeremiah Foster, Michael, Olivia, Emma, Elliot, Matthew Foster and Elijah Foster, and Tallulah, Lilla Gibby.

In addition to her parents and husband, Barbara is predeceased by infant son, Scott; son Ric; brother, Louis Kump; infant grandson, Justin Landry; and daughter-in-law, Tabitha Landry.

A memorial service is being planned for May as well as burial in Greenlawn Cemetery in Hammond, Louisiana.

Cremation care has been provided by the Unger-Horner Funeral Home in Rochelle. Memorials may be made to Flagg Center Church of God nursery.

Visit www.ungerhorner.com to sign the online guest book.

Connie Richmond

ROCHELLE — Connie Lee Richmond, 84, passed away on Friday, Jan. 22, 2021 at Amita Health Adventist Medical Center in Bolingbrook.



Connie was born on April 10, 1936 to James and Violet (Holloway) Gilbert in Rochelle. She graduated from Rochelle Township High School. She married Larry E. Richmond on Oct. 5, 1957 in Rochelle.

She worked for Rochelle Community Hospital in the OB department for approximately 30 years.

Connie is survived by her two children, Todd Richmond, of Rochelle, and Cathy (Tom) Sampson of Palmetto, Florida; brother Don (Joyce) Gilbert of Kingwood, Texas; and two grandchildren, Zachary Richmond of Rochelle, and Justin Richmond of Rochelle.

In addition to her parents, Connie

was preceded in death by her husband, Larry; son, Kevin Richmond; and sister, Helen (Gilbert) Lee.

A private family service will be held at the Unger-Horner Funeral Home in Rochelle. Burial will be held at Lawnridge Cemetery in Rochelle.

Memorials may be made in Connie's memory to AMITA Health Hospice Care, Bolingbrook.

Visit www.ungerhorner.com to sign the online guest book.

Berniece Espe

ROCHELLE — Berniece "Burny" C. Espe, 98, passed away Tuesday, Jan. 26, 2021 at her home in Rochelle.

Services are pending with the Unger-Horner Funeral Home in Rochelle.

Duane Ackland

ROCHELLE — Duane H. Ackland, 85, passed away Wednesday, Jan. 27, 2021 at the Rochelle Community Hospital.

Services are pending with the Unger-Horner Funeral Home in Rochelle.

James Moorehead

ROCHELLE — James T. Moorhead, 100, of Rochelle, passed away Monday, Jan. 25, 2021 at the Franklin Grove Nursing Home.

Services are pending with the Unger-Horner Funeral Home in Rochelle. Call 815-562-4534 or visit www.ungerhorner.com.

Scholarships offered

ROCHELLE — Scholarships are available through the Rochelle Community Hospital Auxiliary to area students who are planning to pursue careers in the health-care field. Five scholarships are available in 2021 which include the Ward A. and Mabel T. Miller Scholarship.

The \$1,000 scholarships are available to those students who are currently attending or are graduates of Rochelle, Ashton-Franklin Center or the Oregon high school district, a current Rochelle area resident (living within 15 miles of Rochelle), an RCH employee or child of an RCH employee. If you have previously received an RCH scholarship, you may reapply after two years. Applicants should be currently enrolled or have been accepted into an accredited program.

An application form can be found on the hospital's Facebook page or website at www.rochellehospital.com/pressreleases/. Applications must be returned to Michelle LaPage, RCH Auxiliary Scholarship Chairman, at the hospital by Friday, March 5.

BUSINESS SPOTLIGHT

PRESCOTT BROTHERS Ford

See us for all your tire needs!
Call Mel or Barb in our service department.
Service Department open Saturdays 7:30 a.m. to 12:30 p.m.

Semi-Synthetic Oil & Filter Change & FREE Tire Rotation

\$40 Plus tax & fees. Up to 5 quarts.

620 S. 7th • Rochelle, IL | 815-562-2177
www.Prescottbrothersford.com

ANDERSON Plumbing & Heating, Inc.

Plumbing, Heating, Air Conditioning, Drinking water systems, Water Heaters, Softeners, Iron Filters & More.

LENNOX
Since 1976 One Less Thing To Worry About

Like on on Facebook
Lic# 055-013999

621 First Ave., Rochelle (815) 562-8784

Protection you need, service you deserve.

Since 1916, Auto-Owners has partnered with independent agents to provide local service and trusted protection.

Dimond Bros. Insurance Since 1867

ROCHELLE • 815-562-5596
www.DimondBros.com

Auto-Owners INSURANCE
LIFE • HOME • CAR • BUSINESS

01232019

ROCHELLE News-Leader

211 IL Route 38 East, Rochelle, IL 61068
(815) 562-4171

USPS (467-820) ISSN (1075-2811)
Published every Wednesday and Sunday by Rochelle News-papers Inc. at 211 E. State Route 38, Rochelle, IL 61068. Periodical postage paid at Rochelle, IL 61068. Postmaster send address changes to the Rochelle News-Leader, P.O. Box 46, Rochelle, IL 61068. Subscription rates are \$112 per year by mail in Ogle County. Outside county rate is \$134 per year. No mail delivery in newspaper-carrier serviced areas. The circulation department is open Monday through Friday from 8 a.m. to 5 p.m. If you are a carrier subscriber and your paper does not arrive, contact Wanda Brimhall at 561-2112.

IN-COUNTY REGULAR SUBSCRIPTION RATES

- \$114 for one year • \$64.99 for six months
- \$26.99 for three months • \$10.99 for one month

Call (815) 561-2112 or Visit our website at www.rochellenews-leader.com

HOW TO CONTACT US

News-Leader Main Switchboard (815) 562-4171

General Manager
Mike Feltes (815) 561-2124

Newsroom Staff
Jennifer Simmons, Managing Editor (815) 561-2151
Russ Hodges, Sports (815) 561-2152

To Place a Display Ad
Tiffany Smith (815) 561-2153
Andrew Heiserman (815) 561-2123

To Place a Legal Ad
Mike Feltes (815) 561-2124

To Place a Classified Ad
Kelly White (815) 562-4171

Subscriptions and Delivery
Wanda Brimhall (815) 561-2112

Ogle County COVID-19 Vaccination
As of Tuesday, January 26, 2021

Number Vaccinated: 2,930

Now in Phase 1b as of 1-25-21
This phase covers essential frontline workers and people ages 65+. Refer to the OCHD or RCH Facebook pages or websites for a definition of essential frontline workers.

Phase 1b includes about 22,000 people in Ogle County and will take time.

If you are age 65+, please pre-register online at www.health.oglecounty.org

We are all working together to vaccinate our county as quickly as we can. Please be patient as we work through this process.

Ogle County COVID-19 Statistics*

Positive Cases:	4,630
Recovered Cases:	4,023
Deaths:	64
Current Active Cases:	607
Positivity Rate:	5.5%

*Most current statistics available.

LOCAL NEWS

Officers issue citations for traffic violations

On Jan. 12 at 7:30 p.m., Rochelle police cited Charles Haub, 56, of Chana, for disobeying a traffic control device. He posted an I-bond.

On Jan. 12 at 11:42 a.m., Rochelle police cited a 17-year-old female, of Rochelle, for no valid license and improper use of communication device. She posted a promise to comply.

On Jan. 12 at 9:20 p.m., Rochelle police arrested Gabriel Val-
lor, 44, of DeKalb, for illegal transportation of alcohol. He posted a promise to comply.

On Jan. 13 at 1:49 p.m., Rochelle police cited Jonathan Franck, 36, of Rochelle, for disobeying a stop sign. He posted a promise to comply.

On Jan. 15 at 3:28 a.m., Rochelle police arrested Korbin Jackson, 34, of Woodridge, for driving while license suspended. He posted an I-bond.

On Jan. 15 at 10:34 a.m., Rochelle police cited Casey Isley, 27, of Rochelle, for speeding 62 m.p.h. in a 45 m.p.h. zone. She posted an I-bond.

On Jan. 15 at 1:07 p.m., Rochelle police cited Jeremiah Meisel, 47, of Rochelle, for speeding 60 m.p.h. in a 40 m.p.h. zone. He posted a promise to comply.

On Jan. 15 at 2:06 p.m., Rochelle police cited James Jones, 25, of Dixon, for speeding 75 m.p.h. in a 55 m.p.h. zone. He posted a promise to comply.

On Jan. 16 at 10:02 a.m., Rochelle police cited Keelyn Sarmiento, 20, of Rochelle, for operating an uninsured vehicle. She posted a promise to comply.

On Jan. 17 at 12 a.m., Rochelle police arrested Oscar Milan, 29, of Rochelle, on an Ogle County warrant. He was released on a recognizance bond.

On Jan. 17 at 8:03 p.m., Rochelle police arrested Ananias Fayne, 30, of Rockford, for driving while license revoked, revoked registration and no insurance. He posted an I-bond.

On Jan. 18 at 8:39 a.m., Rochelle police cited William Lovell,

54, of Wood Dale, for no valid registration. He posted a promise to comply.

On Jan. 18 at 2:28 p.m., Rochelle police cited Ivan Zwinklis, 22, of Rochelle, for no insurance. He posted a promise to comply.

On Jan. 18 at 2:47 p.m., Rochelle police cited Kaleb Simms, 18, of Rochelle, for no insurance. He posted a promise to comply.

On Jan. 18 at 1:11 p.m., Rochelle police cited Sir Reginald McGuire, 25, of DeKalb, for speeding 54 m.p.h. in a 30 m.p.h. zone. He posted a promise to comply.

On Jan. 19 at 8:34 a.m., Rochelle police cited Luis Herrera, 31, of Berwyn, for disobeying a stop sign. He posted a promise to comply.

On Jan. 19 at 3:50 p.m., Rochelle police cited Jaderi Ibarra, 18, of Rochelle, for failure to yield turning left. She posted a promise to comply.

On Jan. 19 at 7:20 p.m., Rochelle police arrested William Voigt, 51, of West Chicago, for DUI, driving without lights when required and driving in the wrong lane. He posted an I-bond.

On Jan. 20 at 3:43 p.m., Rochelle police cited Quinlin Tofa, 22, of Rochelle, for speeding 65 m.p.h. in a 40 m.p.h. zone. He posted a promise to comply.

On Jan. 21 at 12:59 p.m., Rochelle police arrested Gina Johnson, 28, of Rochelle, on a Lee County warrant, driving while license suspended, no insurance and speeding 50 m.p.h. in a 40 m.p.h. zone. She posted \$100 bond.

On Jan. 21 at 2:24 p.m., Rochelle police arrested James Queen, 44, of Rochelle, on an Ogle County warrant. He posted a recognizance bond.

On Jan. 21 at 10:31 a.m., Rochelle police cited Donna Hurst, 66, of Rochelle, for speeding 52 m.p.h. in a 30 m.p.h. zone. She posted a promise to comply.

On Jan. 22 at 1:57 a.m., Rochelle police cited Zachary Hoffman, 28, of Princeton, for disobeying a traffic control device. He posted a

promise to comply.

On Jan. 22 at 4 a.m., Rochelle police arrested Richard Gallagher, 37, of Oregon, for DUI and Driving while license suspended. He posted an I-bond.

On Jan. 22 at 9:25 a.m., Rochelle police arrested Misty Greenwalt, 38, of Franklin Grove, for driving while license suspended and speeding 49 m.p.h. in a 30 m.p.h. zone. She posted an I-bond.

On Jan. 22 at 10:43 a.m., Rochelle police arrested Patrick Dean, 37, of Rochelle, on an Ogle County and Boone County warrant. He posted a recognizance bond and \$300 bond.

On Jan. 23 at 4:20 p.m., Rochelle police arrested Randy Aters, 41, of Rochelle, for failure to register. He was transported to jail.

On Jan. 23 at 9:40 a.m., Rochelle police arrested Matthew Hurst, 36, of Rochelle, on an Ogle County warrant. He was released on a recognizance bond.

On Jan. 23 at 11:40 a.m., Rochelle police cited Christopher Reed, 46, of Chicago, for disobeying a stop sign. He posted a promise to comply.

On Jan. 24 at 9:52 a.m., Rochelle police arrested Adam Anderson, 25, of Rochelle, for domestic battery. He was transported to jail.

On Jan. 25 at 7:03 p.m., Rochelle police arrested Kyneate Thomas, 18, of Chicago, on an Ogle County warrant. He was released on a recognizance bond.

On Jan. 25 at 9:24 a.m., Rochelle police cited Daniel Brown, 38, of Rochelle, for speeding. He posted a promise to comply.

On Jan. 25 at 2:47 p.m., Rochelle police arrested Tommy Price, 32, of Rochelle, for failure to register. He was transported to jail.

On Jan. 25 at 2:16 p.m., Rochelle police cited Gonzalo Ramos, 69, of Rochelle, for speeding 61 m.p.h. in a 40 m.p.h. zone. He posted a promise to comply.

Arrest made after hit and run accident

On Jan. 22 at 10:54 p.m., Ogle County Sheriff's deputies, along with Rochelle Police Department were dispatched to Illinois Route 251 at Twombly Road in reference to a hit and run accident. After an investigation it was determined that Anselmo Carranza-Sanchez, 22, of Rockford, was driving southbound in the northbound lane on Illinois Route 251 just north of Twombly Road. Anselmo struck a vehicle while in the other lane and continued southbound. Anselmo was located driving southbound on Seventh Street in Rochelle and was arrested for driving on a revoked license, driving under the influence of alcohol, aggravated driving under the influence of alcohol, leaving the scene of a crash and other traffic citations. Anselmo was transported to the Ogle County Jail and held in lieu of bond. No injuries were reported in the crash. On Jan. 21, Ogle County Sheriff's deputies arrested Shayvonne Lewis, 27, of Rockford, for driving with no valid license. Lewis was arrested by Ogle County Sheriff's Deputies on Illinois Route 251 near Edson Road after being stopped for a lane violation. Lewis was released on an I-bond and will appear in court at a later date.

Jan. 21

On Jan. 21, Ogle County Sheriff's deputies arrested Nancy Lopez, 48, of Rockford, for driving while license suspended. Lopez was arrested by Ogle County Sheriff's deputies on Interstate 39 near Rochelle after being stopped for speeding. Lopez was released on an I-bond and will appear in court at a later date.

On Jan. 22 at 7:10 p.m., Ogle County Sheriff's deputies were dispatched to a check welfare in the 11000 block of East Illinois Route 72 for a vehicle parked on the side of the road with a woman walking in the area. After an investigation, Susan Buntjer, 50, of Oregon, was arrested for driving under the influence of alcohol. Buntjer was transported to the Ogle County Jail and held in lieu of bond.

Jan. 22

On Jan. 22 at approximately 11:22 a.m., Ogle County deputies performed a traffic stop in the 1,000 block of South Illinois Route 26. After investigation, deputies issued Charles Alba, 34, of Forreston, citations for driving while license suspended, no valid registration and operating an uninsured motor vehicle. Alba was released on an I-bond to appear in court at a later date. Also arrested was the passenger, Caitlynn Johnson, 24, of Forreston, on a Lee County contempt of court warrant. Johnson was transported to the Ogle County Jail.

Report policy

Any arrests listed in this paper are merely charges and the defendants are presumed innocent unless proven guilty in a court of law. Please note that all police reports received from the Rochelle Police, the

Ogle County Sheriff's Department and the Illinois State Police, will be printed without exception. Requests to omit particular reports will not be considered or honored at any time.

We are now offering
LIPO MINO MIX injections
Introductory price \$25
Call for an Appointment!

This lipotropic combination of B12 and methionine, an essential amino acid and other B vitamins can promote:

Increase Fat metabolism
Boost Energy Level Reduce appetite

Mon: 7:30 - 6pm, Wed: 7:30 - 6pm, Thurs: 8 - 1pm, Fri: 7:30 - 4pm
Some Saturday appointments available

DLX Medical GROUP
We Accept Most Insurances and Patients Without Insurance
12022020

815-227-9594
1212 Currency Ct.
Rochelle IL

We are now located at
136 May Mart Drive
Same Great Service at a New Location!

Jennie McLaughlin, Broker
(815) 561-9488
jlmnjm1953@yahoo.com
www.jenzhomes.com

Norm McLaughlin, Broker
815-901-2005
Normanmc123@yahoo.com

RE/MAX Hub City
Independently owned & operated.

WHO IS UNITY HOSPICE?

- Care provided by the entire hospice team: physician, nurse, social worker, certified nursing assistant, chaplain, dietitian, pharmacist, and volunteers.
- Care is individualized and based on the patient's and family's goals of comfort and quality of life.
- Supplies, equipment and medications.
- Service where the patient resides.
- Specialize in pain & symptom management.
- Spiritual enrichment and bereavement counseling.
- Ancillary Therapies: Music, Physical/Occupational, Speech, Massage, Pet, etc.
- Ability to provide education to caregivers and family members.

- On-call nurse available 24/7.
- Volunteers providing special attention and stimulation.
- Assistance with advance directives and community support.
- Provide Education to those we care for

CALL UNITY:
(815) 561-8866
915 N. Caron Rd.
Rochelle, IL

@unityhospice

ROSATI'S
Authentic Chicago Pizza
MyRosatis.com

DAILY SPECIALS DINE-IN, CARRYOUT OR DELIVERY

Sunday
50¢ Boneless Wings
75¢ Jumbo Bone-In Wings

Monday
25% off any pizza of your choice*

Tuesday
Buy one pizza & get the same size cheese pizza for FREE**

Wednesday
One 16" Thin Crust 1-Topping Pizza only \$10.99**

Thursday
Buy One Pasta Dinner, Get a 2nd for 1/2 Price*

Friday
Free dough nuggets with any order over \$20

Saturday
Free 12" cheese pizza with purchase of any 16" pizza.

*Limit 2 per customer per day some restrictions apply. Daily Specials not valid with other coupons/offers/catering
** Additional Toppings Extra

ROCHELLE | 1233 N. CARON RD. | 815.562.5000
ORDER ONLINE @ MYROSATIS.COM/ROCHELLE.COM

RJBowers DISTRIBUTORS, INC.

Special Discounts
Karcher Full Size 230V Motor with Fuel Burner
@ 3000 PSI-3.5 GPM Hot Pressure Washer
Get Additional \$500 Off (Ends 11-30-20)

N. Illinois Expert Supplier of Pressure Washers-Parts-Sweepers-Scrubbers
2003 Harrison Ave-Rockford-IL
800-383-6584 815-399-8839

Always Welcoming New Patients!

Kelly Ann Tonielli Davis
DNP, APRN, FNP-BC-CME

Davis Family Health LLC
1212 Currency Court
Rochelle, IL
815-561-8500

Appointments Available
Mon., Wed. & Thurs.
Most insurances accepted.

We Fix Boo Boos

LOCAL VIEWS

Guest column

Heiple was brilliant but lacked filter

JIM Heiple was one of the brightest people I've ever met who said some of the politically dumbest things I've ever heard.

The former Illinois Supreme Court Justice from Pekin died last week at age 87.

As I journalist, I always liked to talk to Heiple because he said whatever crossed his mind. He was brilliant but lacked the filter that most successful people in public life develop.

One time, the two of us were wandering through the Supreme Court building and he remarked that the Nuremberg War Crimes Trials should never have taken place. Why? Well, his contention was that the Nazi leaders didn't break the law.

Sure, the Holocaust was morally reprehensible but the Third Reich had no law prohibiting genocide. So, he contended the men hung at Nuremberg by the Allies were convicted of crimes that didn't exist at the time they were committed.

It's an interesting academic argument. But most politicians are savvy enough when they mention "Nazis" to follow it with something like, "may they rot in hell forever."

Not Jim Heiple. "When my Dad considered the law, it was not based on what the outcome should be, only on what the proper application of the law was," his son, Jonathan, a Peoria lawyer told me Monday.

Heiple was a judge for 30 years on all three levels of the Illinois judiciary. He left the state's top court 20 years ago. His opinions were razor sharp and his legal sparring partners occasionally bore scars.

And he had some self-inflicted scars of his own. He resigned as chief justice, but not from the court itself, when legislative committee looked into his behavior during police

traffic stops.

"He did things like not roll down his window when he got pulled over and drive away when the officer walked back to his police car," said Retired Justice Ben Miller, who served on the court with Heiple.

I remember visiting Heiple in the living quarters above the courtroom. As we stood before a dinner table, he explained that the jurists sat at the table in the order of their seniority.

"When I was chief justice, I sat at the head of the table but I had to give that up, so now I have to sit over there," he said a bit wistfully as he pointed to an empty chair further down the table.

Heiple is best known for his decision in the Baby Richard and Baby Joe cases.

The child known as Baby Richard was removed in 1995 from the home of his adoptive parents and transferred to his biological parents. In the opinion written by Heiple, the high court ruled the boy's biological father was entitled to custody because the boy's mother had lied to him, telling him the child died at birth.

Following this decision, Chicago Tribune columnist Bob Greene launched a journalism crusade against Heiple, authoring more than 50 columns critical of his handling of the case. Chicago anchorman Walter Jacobson called him "evil" and "dangerous," broadcast Heiple's home phone number and asked viewers to call and say, "We beg you, your honor Judge Heiple, please stop destroying the lives of children."

"That was a particularly hard time for my father," Jonathan Heiple said. "Our mother was dying and he was home caring for her."

Heiple told the Chicago Tribune he had no regrets about that opinion. "We don't decide cases on the basis of feeling sorry for somebody. We decide cases

on the basis of the law and the evidence."

In the Baby Joe case, a loving foster family, Craig and Karyl Findley, were rearing the 2-year-old who they hoped to adopt.

Instead, Heiple ordered the child returned to his previous family saying they shouldn't be denied the opportunity to rear the child because they weren't "picture perfect."

But Joe's court-ordered parents divorced and his adoptive father

was charged with beating his mother, and he allegedly exposed the boy to pornography. At age 8, Joe was charged with aggravated criminal sexual assault against his adoptive younger sister. The boy pleaded guilty to a lesser charge and was placed in the custody of the Department of Children and Family Services.

Craig Findley, a kind and decent man who I've known for decades, told me Sunday, "Heiple never understood that he should rule in the best

interest of the child."

Appellate Justice William Holdridge was a close friend of Heiple, and described him as a brilliant "renaissance man" who loved to learn and hated school.

"Jim viewed the law as a trade. He wasn't particularly impressed with someone who had a degree from Harvard or Yale. He was more impressed by what they knew and what they could do," he said. "A lot of people graduate from law school and don't even know how to file a deed."

In 1956, Heiple was kicked out of Indiana

University's law school after punching out a classmate's two front teeth and fracturing his jaw. He later obtained a law degree at the University of Louisville.

"Jim did not like bullies and he would stand up to them," Holdridge said.

Holdridge said of his friend, "I used to say he missed the course in 'salesmanship.' He just said whatever he was thinking."

Scott Reeder is a veteran statehouse journalist and a freelance reporter. ScottReeder1965@gmail.com



Scott Reeder



How to contact government officials

U.S. Con. Adam Kinzinger
1218 Longworth HOB
Washington, D.C.
20515
(202) 225-3635

IL Sen. Brian Stewart
M104A State House
Springfield, IL 62706
(217) 782-0180

IL Rep. Tom Demmer
314 Capitol
Springfield, IL 62706
(217) 782-0535

Have a letter you want to submit to us? Send it to (news@rochelle-news-leader.com

KEEPING YOU IN TOUCH WITH YOUR LOCAL LEADERS

* Denotes Chairman/President

Rochelle City Council
*John Bearrows jbearrows@rochelleil.us
Kathryn Shaw-Dickey kshaw-dickey@rochelleil.us
Bil Hayes bhayes@rochelleil.us
Don Burke dburke@rochelleil.us
Dan McDermott dmcdermott@rochelleil.us
Tom McDermott tmcdermott@rochelleil.us
John Grubena jgrubena@rochelleil.us

Rochelle Elementary School Board
*Dave Casey dcillini94@gmail.com
Steve Builta sbuiltta@gmail.com
Shirley Reif sreif@crestfoods.com
Jean Tess dtess503@comcast.net
Eric Van Hise eric.vanhise@gmail.com
Trisha Vaughn jrvtlv02@msn.com
Javier Zepeda jzepeda@rthsd212.org

Rochelle Township High School Board
*Tom Huddleston tom.huddleston@rthsd212.org
Carol Hayenga carol.hayenga@rthsd212.org
Bill Ravnaas bill.ravnaas@rthsd212.org
Robert Walsh bob.walsh@rthsd212.org
Jeff Tilton jeff.tilton@rthsd212.org
Brent Tracy brent.tracy@rthsd212.org
Brian VanVickle brian.vanvickle@rthsd212.org

Flagg-Rochelle Park Board
Mic Brooks mbrooks@rochelleparkdistrict.org
Brent Carmichael bcarmichael@rochelleparkdistrict.org
John Dobbs jdobbs@rochelleparkdistrict.org
Dale Wells dwells@rochelleparkdistrict.org
*Tim Hayden thayden@rochelleparkdistrict.org
Jodie Hart jhart@rochelleparkdistrict.org
Joe Lenkaitis jlenkaitis@rochelleparkdistrict.org

Ogle County Board Dist. 3
Lloyd Droege ldroege@oglecounty.org
Jamey Sulser jsulser@oglecounty.org
Greg Sparrow gsparrow@oglecounty.org

Ogle County Board Dist. 4
Bruce McKinney bmcinney@oglecounty.org
Skip Kenney skenney@oglecounty.org
Kim Whalen kwhalen@oglecounty.org

Creston Village Board
*Wayne Williams jwdw13@yahoo.com
Deanne Haub hobnob67@comcast.net
Tom Byro tommyb_47@yahoo.com
Greg Hopkins ghopkins522@comcast.net
Steve Katzman skatzman@essex1.com
Mike Kerns ac.kerns@comcast.net
Mike Misch mmfam@live.com
Curt Ward caward92@comcast.net

Hillcrest Village Board
Randy Salsbury rsalsbury@hillcrestil.us
Pam Pitman ppittman@hillcrestil.us
Don Potter dpotter@hillcrestil.us
Richard Rhoads rrhoads@hillcrestil.us
*Jason Fore jfore@hillcrestil.us
Tim Ball tball@hillcrestil.us

Flagg Township
*Bob Withrow flaggtwp@rochelle.net
Joanna Patrick flaggtwpc@rochelle.net
Susan Rothenberger assessor@rochelle.net
Scott Seebach scottseebach@gmail.com

Board of Trustees
Lance Noggle noggle62@gmail.com
Eric Gruben egruben@comcast.net
Susan Hager susanhager303@comcast.net
Jim Kenney jimk@rocketsupply.com

Flagg-Rochelle Library
*Jaqueline Dickow dickow@comcast.net
Teresa Haggstad haggstad@comcast.net
Michael Scanlan scanlan@comcast.net
Lanning Nicoloff nicoloff18@comcast.net
Sheri Klindera alwayslefty2@gmail.com
Susan Sevedge nit1prl22@yahoo.com
Darci Waltrip doobs12@comcast.net

LETTERS TO THE EDITOR POLICY

The Rochelle News-Leader encourages responsible letters to the editor on subjects of interest to our readers. Editing may be necessary for space, clarity or to avoid obscenity or libel, but ideas will not be altered. All letters must bear the handwritten signature of the writer and include address and phone number or e-mail address for verification purposes. Neither the street address nor phone number will be printed. Letters should be typed or legibly

handwritten, and no anonymous letters will be published. Any letters from boards or organizations must include at least one name of an individual. Any criticism of public officials should be limited to issues related strictly to their position or actions made in office, as personal attacks will not be published. Letters involving private disputes between the writer and a business will not be published. Political endorsements will be published,

however letters from candidates endorsing themselves will not be printed. Letters may be dropped at the News-Leader office (211 IL Route 38 East), mailed to the News-Leader (P.O. Box 46, Rochelle, IL 61068) or e-mailed (news@rochellenews-leader.com.) The News-Leader reserves the right to edit or reject any letter to the editor for any reason, and letters chosen for publication do not necessarily reflect the views of this newspaper.

COMMUNITY

Fundraiser event to benefit Serenity Hospice

OREGON — Karen Virnoche-Brown is organizing a fundraising sale at Neighbor's Antiques and all proceeds will benefit Serenity Hospice and Home. All items must go and the garage sale pricing will shock you.

The sale will be Jan. 28 through 30 from 9 a.m. to 5 p.m. each day. Neighbor's is located inside Conover

Square shopping center in downtown Oregon, 201 N. 3rd St.

Virnoche-Brown has hosted many local fundraisers for nonprofits including the Breast Yard Sale for the American Cancer Society and Jack of all Trades 'n Jill's Too also benefitting Serenity. Neighbor's has been in business for more than 25 years and its inven-

tory is varied and unique.

The sale will include furniture, dishes, teapots, vintage items including purses and kitchenware along with many collectibles. There is too much to mention, but all priced to sell.

Virnoche-Brown is happy to be able to help Serenity Hospice during these unprecedented times when

all of their other fundraisers have had to be canceled. Serenity is a nonprofit hospice serving nine counties in Northern Illinois and they have a hospice home located in Oregon.

For more information and to see some photos of the items, visit Serenity Hospice and Home's Facebook page or phone 815-732-2499.

Second quarter honor roll announced

ROCHELLE — St. Paul Lutheran School has announced its second quarter honor roll.

Dyer, Cambrey Rodeghero, Mina Trandinh, Taelynn Rodeghero, Ali Ohlinger, Erin Murphy, Abby Metzger and Emma Kennay

aney Heal, Dayton Mellor, Maggie Suneson, Ben Miller, Graham Hall, Bella Biggs, Meredith Bruns, Caden Goodwin, Bane Workman, Evan Patrick, Lydia Osborne, Naleia Fonfara, Olivia Faivre, David Bialas and Dempsey Atkinson.

Honor Roll

Jillian Bruns, Cohen Haedt, DeL-

The Kitchen Table menu

Jan. 28 – (Thursday) – Kielbasa with onions and green peppers over white rice, sauteed veggies
Feb. 7 – Sunday Brunch – Sausage gravy and biscuits, fried bologna or sausage, scrambled eggs

serving date and includes peanut butter and jelly, corn dog with chips or chicken nuggets. Please note that all menus are subject to change. Serving is from 4:30 p.m. to 6:30 p.m. on Tuesday and Thursday. Sunday brunch is served from 11 a.m. to 2 p.m. The menu is always available on the answering machine by calling 815-561-9074 or visit www.KitchenTableRochelle.org.

*The Kitchen Table is located at 7034 S. Klondike Road, Rochelle. The suggested donation is \$5 unless otherwise stated. A kid's menu is available each

Birthdays & Anniversaries

Jan. 28

Peggy Futrell

Jan. 29

Nayelia Ramirez

Mary Evans "Molly" Petry

Feb. 1

Zach Prosser

Feb. 2

Domingo Mancilla

Feb. 5

Hazel Nieves

Feb. 7

Lydia Sherburne

Alex Bonilla

Feb. 10

Gene & Judy Messer

Feb. 11

Darrell Bolhous

Feb. 12

Jennifer Curtis

Feb. 13

Gabby Villalobos

Feb. 16

Larry Baker

Feb. 18

Sam & Jessica South

Feb. 20

Christian Losoya

Feb. 21

Kris Oleson

Feb. 22

Jessica South

Lucy Hazlip

Feb. 26

Natalie Powell

Feb. 27

Beth Bolhous

Call 815-561-2151 to submit names for birthdays and anniversaries



FROM THE HEART DAILY CASH WINNERS

Jan. 5 - Rochelle Rotary Club, \$25

Jan. 6 - Larry & Bev Flanagan, Rochelle, \$25

Jan. 7 - Shane Ikens, Amboy, \$25

Jan. 8 - Rochelle Foods, \$25

Jan. 9 - Rochelle Rotary Club, \$25

Jan. 10 - Kevin Miller, Sublette, \$50

Jan. 11 - Stephen Liezert, Rochelle, \$25

Jan. 12 - Cathy King, DeKalb, \$25

Jan. 13 - Brittany Ludwig, Rochelle, \$25

Jan. 14 - Daneh Hines, Rochelle, \$25

Jan. 15 - Isaiah Harper, Rochelle, \$25

Jan. 16 - Watsana Thiravong, Rochelle, \$25

Jan. 17 - Simandhar Tobacco, Inc., Rochelle, \$50

Jan. 18 - Katlyn Long, Maple Park, \$25

Jan. 19 - Rosalle Berogan, Dixon, \$25

Jan. 20 - Nancy Adams, Rochelle, \$25

Jan. 21 - Thora Cliffe, Rochelle, \$25

Jan. 22 - Lea Logan, Oregon, \$25

Jan. 23 - Adam Gabany, Glen Arm, \$25

Jan. 24 - Kathy Wills, Rochelle, \$50

Jan. 25 - Rack Bar & Grill, Rochelle, \$25

Jan. 26 - Mabel Calderson, Rochelle, \$25

Jan. 27 - Peter Mangan, Elgin, \$25

Checks to winners will be mailed out at the end of each month

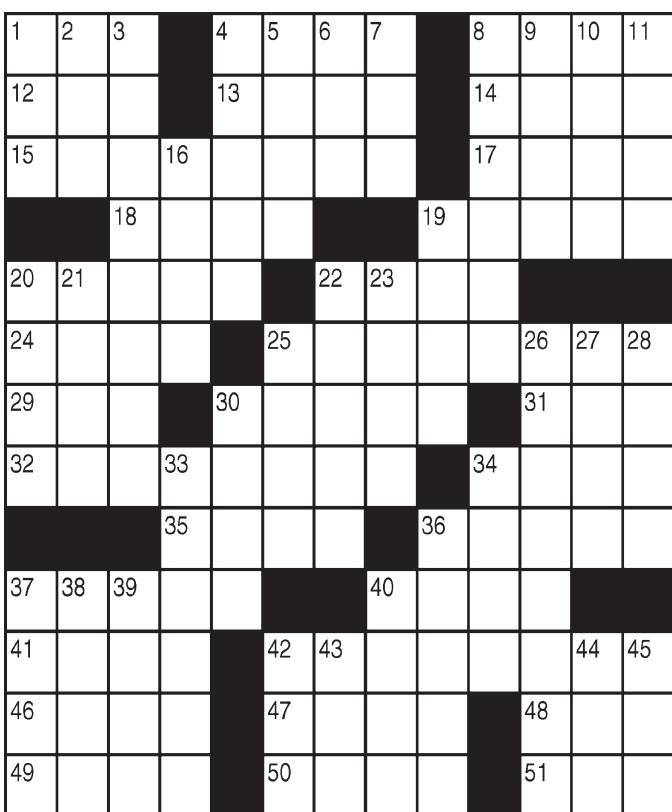


Coffee Break

King Crossword

ACROSS

- 1 Atlas page
- 4 Act of faith?
- 8 TV's "Warrior Princess"
- 12 Oklahoma city
- 13 Operatic solo
- 14 Sick as —
- 15 Newscast opener
- 17 Cathedral area
- 18 Vittles
- 19 Half of a '60s group
- 20 Sad song
- 22 Begged
- 24 Early Peruvian
- 25 Taylor Swift's genre, say
- 29 R-V link
- 30 Beetle



- | | | |
|---------------------|--------------------------|---------------------------|
| baseball | 7 Salary | 28 Mozart's "— fan tutte" |
| 48 Old Olds | 8 Idyllic place | 30 Whirl |
| 49 Auctioneer's cry | 9 Dutch cheese | 33 Stunned |
| 50 Citi Field team | 10 Bright star | 34 Sagan or Sandburg |
| 51 Society newbie | 11 Mellows | 36 Waikiki wingdings |
| | 16 Long tale | 37 Probability |
| | 19 Viral Web phenomenon | 38 Pisa farewell |
| | 20 Platter | 39 British noble |
| | 21 Division word | 40 Espy |
| | 22 Sweat outlets | 42 Deli meat |
| | 23 Women's links org. | 43 Flamenco cheer |
| | 25 Buddies | 44 Born abroad? |
| | 26 Silicon Valley school | 45 Sailor |
| | 27 Teeny bit | |

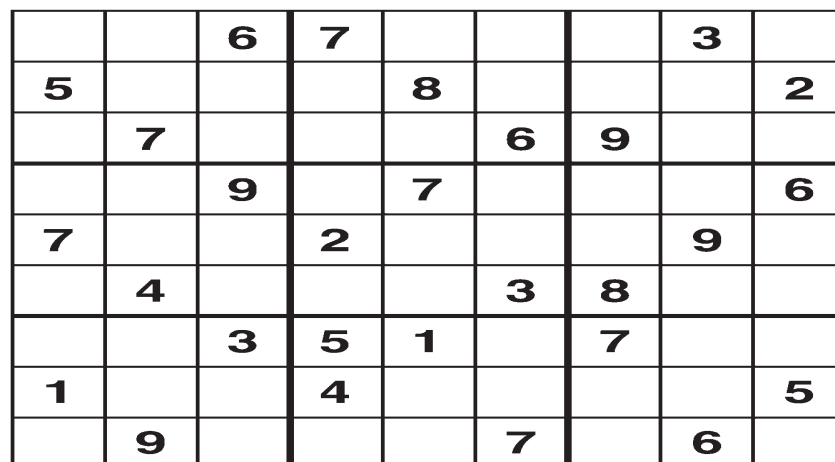
DOWN

- 1 Yoga pad
- 2 Hubbub
- 3 Drink-to-go holder
- 4 Coffee bar offering
- 5 Cupid's alias
- 6 Tire filler

© 2021 King Features Synd., Inc.

Weekly SUDOKU

by Linda Thistle



Place a number in the empty boxes in such a way that each row across, each column down and each small 9-box square contains all of the numbers from one to nine.

DIFFICULTY THIS WEEK: ♦♦

♦ Moderate ♦♦ Challenging
♦♦♦ HOO BOY!

© 2021 King Features Synd., Inc.

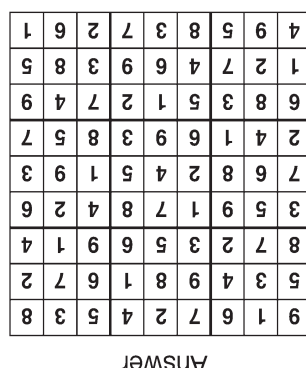
CryptoQuip

This is a simple substitution cipher in which each letter used stands for another. If you think that X equals O, it will equal O throughout the puzzle. Solution is accomplished by trial and error.

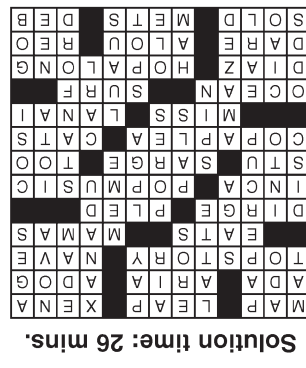
Clue: **H** equals **D**

DR TWZ VIIS HXDCDQF ICIQ BLWZFL
TWZX FEM BEQV DM QIEXKT
IPSBT, D'H MET BLEB'M E RZIKDML
PDMBEVI.

©2021 King Features Synd., Inc.



Answer



Answer

King Crossword

CryptoQuip
If you keep driving even though empty, I'd say that's a fuelish mistake.
your gas tank is nearly
Answers

LOCAL NEWS

ENGLERT LeafGuard® is the permanent, clog-free gutter solution!*

*Guaranteed not to clog for as long as you own your home, or we will clean your gutters for free



LIFETIME NO-CLOG WARRANTY

MADE ONSITE SPECIFICALLY FOR YOUR HOME

THE ONLY ONE-PIECE SEAMLESS DEBRIS SHEDDING GUTTER SYSTEM.

SCRATCHGUARD® PAINT FINISH

815-673-7532

Call Today for Your FREE Estimate!

INTEREST FREE FINANCING FOR 12 MONTHS**

RECEIVE A \$25 DARDEN GIFT CARD



WITH FREE IN-HOME ESTIMATE!†

* ALL PARTICIPANTS WHO ATTEND AN ESTIMATED 60-90 MINUTE IN-HOME PRODUCT CONSULTATION WILL RECEIVE A \$25 GIFT CARD. RETAIL VALUE IS \$25. OFFER SPONSORED BY LEAFGUARD HOLDINGS INC. LIMIT ONE PER HOUSEHOLD. COMPANY PROCURES, SELLS, AND INSTALLS SEAMLESS GUTTER PROTECTION. THIS OFFER IS VALID FOR HOMEOWNERS OVER 18 YEARS OF AGE. IF MARRIED OR INVOLVED WITH A LIFE PARTNER, BOTH COHABITATING PERSONS MUST ATTEND AND COMPLETE PRESENTATION TOGETHER. PARTICIPANTS MUST HAVE A PHOTO ID, BE ABLE TO UNDERSTAND ENGLISH, AND BE LEGALLY ABLE TO ENTER INTO A CONTRACT. THE FOLLOWING PERSONS ARE NOT ELIGIBLE FOR THIS OFFER: EMPLOYEES OF COMPANY OR AFFILIATED COMPANIES OR ENTITIES, THEIR IMMEDIATE FAMILY MEMBERS, PREVIOUS PARTICIPANTS IN A COMPANY IN-HOME CONSULTATION WITHIN THE PAST 12 MONTHS AND ALL CURRENT AND FORMER COMPANY CUSTOMERS. GIFT MAY NOT BE EXTENDED, TRANSFERRED, OR SUBSTITUTED EXCEPT THAT COMPANY MAY SUBSTITUTE A GIFT OF EQUAL OR GREATER VALUE IF IT DEEMS IT NECESSARY. GIFT CARD WILL BE MAILED TO THE PARTICIPANT VIA FIRST CLASS UNITED STATES MAIL OR E-MAILED WITHIN 30 DAYS OF RECEIPT OF THE PROMOTION FORM. NOT VALID IN CONJUNCTION WITH ANY OTHER PROMOTION OR DISCOUNT OF ANY KIND. OFFER NOT SPONSORED OR PROMOTED BY DARDEN AND IS SUBJECT TO CHANGE WITHOUT NOTICE PRIOR TO RESERVATION. EXPIRES 1/31/21. **ON PURCHASES WITH YOUR SYNCHRONY BANK CREDIT CARD. INTEREST WILL BE CHARGED TO YOUR ACCOUNT FROM THE PURCHASE DATE IF THE PROMOTIONAL PURCHASE IS NOT PAID IN FULL WITHIN 12 MONTHS. \$29 ACCOUNT ACTIVATION FEE WILL APPLY. FIXED MONTHLY PAYMENTS REQUIRED EQUAL TO 2.5% OF THE HIGHEST BALANCE APPLICABLE TO THIS PROMO PURCHASE UNTIL PAID IN FULL. OFFER APPLIES ONLY TO SINGLE-RECEIPT QUALIFYING PURCHASES. NO MONTHLY INTEREST WILL BE CHARGED ON THE PROMO PURCHASE IF YOU PAY THE PROMO PURCHASE AMOUNT IN FULL (WITHIN 12 MONTHS). IF YOU DO NOT, MONTHLY INTEREST WILL BE CHARGED ON THE PROMO PURCHASE FROM THE PURCHASE DATE. FIXED MONTHLY PAYMENTS ARE REQUIRED EQUAL TO 2.5% OF THE HIGHEST BALANCE APPLICABLE TO THIS PROMO PURCHASE UNTIL PAID IN FULL. THE FIXED MONTHLY PAYMENT WILL BE ROUNDED TO THE NEXT HIGHEST WHOLE DOLLAR AND MAY BE HIGHER THAN THE MINIMUM PAYMENT THAT WOULD BE REQUIRED IF THE PURCHASE WAS A NON-PROMOTIONAL PURCHASE. DEPENDING ON PURCHASE AMOUNT, PROMOTION LENGTH AND PAYMENT ALLOCATION, THE REQUIRED MINIMUM MONTHLY PAYMENTS MAY OR MAY NOT PAY OFF PURCHASE BY END OF PROMOTIONAL PERIOD. REGULAR ACCOUNT TERMS APPLY TO NON-PROMOTIONAL PURCHASES AND, AFTER PROMOTION ENDS, TO PROMOTIONAL PURCHASE, EXCEPT THAT THE FIXED MONTHLY PAYMENT WILL CONTINUE TO BE REQUIRED UNTIL THE PROMOTION IS PAID IN FULL. FOR NEW ACCOUNTS: PURCHASE APR IS 26.99% MINIMUM INTEREST CHARGE IS \$2. ONE-TIME ACCOUNT ACTIVATION FEE OF \$29 CHARGED AT TIME FIRST PURCHASE POSTS TO ACCOUNT. EXISTING CARDHOLDERS SHOULD SEE THEIR CREDIT CARD AGREEMENT FOR THEIR APPLICABLE TERMS. SUBJECT TO CREDIT APPROVAL. EXPIRES 1/31/21.

NIU announces fall 2020 Dean's List

DEKALB — Northern Illinois University announces its fall 2020 Dean's List students.

To earn this distinction, students must meet a minimum semester grade point average of 3.5 on a 4.0 scale in the College of Engineering and Engineering Technology or a minimum of 3.75 on a 4.0 scale in the Colleges of Business, Education, Health and Human Sciences, Liberal Arts and Sciences and Visual and Performing Arts.

Students from the Rochelle area who achieved this honor include:

Meredith Gelandner, History - B.A., Oregon High School, Mykayla Page, Business Administration - B.S., Oregon High School, and Mallory Ponto, Psychology - B.A., Rochelle Township High School, all of Chana; Christina Payton, Athletic Training, Rochelle Township High School, of Creston; Erika Cabral, Industrial Management and Technology, Ged Certificate, Jonathan Drilling, Accountancy, Rochelle Township High School, Sarah Fischer, English - B.A., Plainfield High School, Katelyn Gabbard, ELED-Reading Teacher, Rochelle Township High School, Gabrielle Gonzales, Accountancy, Rochelle Township High School, Annette Gonzalez, WLC: Spanish & Hispanic Studies, Rochelle Township High School, Caitlin Hensley, Actuarial Science, Rochelle Township High School, Cole Hensley, Engineering Management, Rochelle Township High School, Benjamin Hickey, Mechanical En-

gineering - B.S., Rochelle Township High School, Tyler Johnson, Accountancy, Rochelle Township High School, Amanda McCumsey, Nursing, Rochelle Township High School, Gwendolyn Papke, Nutrition, Dietetics, & Wellness, Rochelle Township High School, Justina Peck, Health Promotion, Forreston High School, Jocelyn Robles, Health Sciences-General, Rochelle Township High School, Juanita Saldana, Middle Level Teaching & Learning, Rochelle Township High School, Kyle Seebach, Computational Software, Probability & Statistics, Rochelle Township High School, Nedim Tefiku, Operations and Info Management, Rock Falls Township High School, and Carly Weiner, Nursing, Rochelle Township High School, all of Rochelle.

Locals graduate from NIU

DEKALB — Over 1,300 students received their degrees from Northern Illinois University in December. Included among the graduates were the following students from the Rochelle area:

Local students include: Mykayla Page, Bachelor of Science in Business Administration, of Chana; Efigenia Arguelles, Bachelor of Arts in Communication - Organizational - Corporate; Taylor Burger, Bachelor of Science in Marketing; Alec Burgess, Bachelor of Science in Accountancy; Damian Garcia, Bachelor of Science in Communication - Organizational - Corporate; Ethan Gruben, Bachelor of Science in Marketing; Brian Heinrich, Bachelor of Arts in English; Frank Moore, Bachelor

of General Studies in General Emphasis; Jade Parks, Bachelor of Science in Nursing; Matthew Plyman, Master of Public Admin in Public Administration-Fiscal Administration; Craig Ritchie, Bachelor of Science in Psychology; Hannah Saylor, Bachelor of Science in Nursing; Nedim Tefiku, Bachelor of Science in Operations & Information Management; Laura Vanous, Master of Science in Education in Special Education - Learning Behavior Specialist; Sydney Webster, Bachelor of Arts in Communication - Organizational - Corporate; and Briana Williams, Bachelor of Science in Accountancy, all of Rochelle.

Northern Illinois University is a student-cen-

tered, nationally recognized public research university, with expertise that benefits its region and spans the globe in a wide variety of fields, including the sciences, humanities, arts, business, engineering, education, health and law.

Through its main campus in DeKalb, Illinois, and education centers for students and working professionals in Chicago, Hoffman Estates, Naperville, Oregon and Rockford, NIU offers more than 100 courses of study while serving a diverse and international student body of about 19,000. The 17 NIU Huskie athletic teams compete in the Mid-American Conference at the highest NCAA Division I level.

For more information, visit www.niu.edu.

COMMUNITY BOARD

Need to get the word out about a product or service you offer?

Give us a call at 815-562-4171.

We can reach over 9,000 homes!



Advertise Here

What Service Do You Offer?

562-4171

The Rochelle News-Leader

Gutters

THEISEN
ROOFING & SIDING CO., INC.

SEAMLESS GUTTERS

ALL ALUMINUM

- Will Not Rust, Chip Or Peel
- Most Colors Available
- Manufactured On The Job

815-758-8998

257 W. Stephanie Dr., Cortland
www.theiscnroofing.com

Storage Sheds

Rocky Ridge Structures

FREE Sales Rep. Evaluation At Your Site

We Deliver From Our Lot To Your Site

We Specialize in Portable/Quality Built Storage Sheds

- Stock & Custom Design
- Many Options Available
- Competitive Pricing
- Site Preparation Available

See Displays at 3500 S. Chana Rd. Chana IL 61015
Call Norm or Albert for Free Literature packet
779.861.3542

Plumbing/Heating/Cooling

Anderson Plumbing & Heating Inc.
Serving Rochelle For Over 40 Years

LENNOX®

Quality Service-Free Estimates
Residential & Commercial
815-562-8784

Lic.#058-087891

Heating & Air Conditioning

HULL
HVAC & Household Services

Furnaces - Air Conditioners - Boilers
Duct Cleaning - Water Heaters

Precision Furnace Clean & Check

\$70.00

plus
get a FREE carbon monoxide test.
Expires: 04/30

Ask about our complete home duct cleaning.

815-561-6551
www.HullHVAC.com

Commercial & Residential Roofing

Bruns Construction, Inc.

Residential Concrete Driveways, Flatwork and Foundations

- Shingled Roofs • Flat Roofs
- Metal Roofs For Farm Facilities
- Custom Built Homes • Additions

FREE ESTIMATES

561-0099 Tim & Roger Bruns, Owners
Established 1997
www.brunsconstructioninc.com

Advertise Here

What Service Do You Offer?

562-4171

The Rochelle News-Leader

Classified

Marketplace

FREE!

Sell your household items for free.
Total value of item must be \$200 or less. (15 words
- one week - 7 publications - price must be listed)



ROCHELLE • HILLCREST • CRESTON • STEWARD • KINGS • ASHTON

101

LEGAL NOTICE

PUBLIC NOTICE
NOTICE TO BIDDERS
SEALED BIDS will be received by the City of Rochelle, Illinois until 10:00 a.m., February 23, 2021, for the City of Rochelle's 2021 Sidewalk Capital Improvements Program, which will consist of the removal and replacement of approximately 24,000 square feet of sidewalk, 1,500 square feet of accessibility ramps, 1,600 linear feet of combination concrete curb and gutter as well as other associated work located at various locations throughout the City of Rochelle.

Specifications and/or plans may be obtained at the Office of the City Engineer, Engineering Department, located at 333 Lincoln Highway, Rochelle, Illinois. The Office is currently closed to the public.

Prospective bidders may email cward@rochelleil.us to schedule an appointment to obtain a bid packet.

Bidders will be required to sign for the specifications and/or plans before they are released. A fee of \$100.00 will be required for any specifications and/or plans that are mailed to prospective Bidders.

THE CITY OF ROCHELLE PREFERS THE SEALED BID BE HAND DELIVERED TO THE OFFICE OF THE CITY CLERK, CITY HALL, 420 NORTH SIXTH STREET, ROCHELLE, ILLINOIS BEFORE 10:00 A.M., February 23, 2021; HOWEVER, BIDS MAY ALSO BE MAILED.

ANY BID RECEIVED AFTER 10:00 A.M., February 23, 2021, WILL BE RETURNED, UNOPENED.

ALL completed bids will be publicly opened and read aloud at a bid opening at 10:00 a.m., February 23, 2021, in the Council Chambers at City Hall in Rochelle, Illinois.

ANY OBJECTIONS, QUESTIONS OR COMMENTS on the City's specifications shall be submitted in writing on or before 1 p.m. February 17, 2021.

If deemed necessary by the City, an addendum will be distributed to all prospective bidders by facsimile transmission at least two (2) business days prior to the bid opening date. The decisions of the City shall be final.

THE CITY OF ROCHELLE is an equal opportunity employer. All Contracts for Construction of Public Works are subject to the Illinois Prevailing Wage Act (820 ILCS 130/1-12).

A CONTRACT may be awarded to the lowest responsible bidder whose bid is found to be in the best interest of the City of Rochelle. The City of Rochelle reserves the right to reject any and all bids and to waive any informalities or irregularities in the bidding. The City further reserves the right to review and study any and all bids and to make a contract award within forty-five (45) days after the bids have been opened.

A Hold Harmless Agreement and a Non-Collusion Affidavit of Compliance must be submitted with the bid. The City of Rochelle does not discriminate on the basis of handicapped status in the admission or access to, or treatment or employment in, its programs or activities. Each BID must be accompanied by a BID BOND payable to the CITY OF ROCHELLE in the amount of Seven Thousand Five Hundred Dollars (\$7,500.00). The City of Rochelle will decide within 45 days if it intends to proceed with the project and award the contract. Written Notice of Award and instructions for the execution of the Agreement will be issued to the Selected Bidder. The BID BOND of all BIDDERS will be retained until the agreement has been executed and approved, after which all BID BONDS will be returned. A certified cashier's check may be used in lieu of a BID BOND.

A Performance Surety

will be required as specified in the contract documents and specifications.
No. 0123 (Jan. 24, 27)

PUBLIC NOTICE
STATE OF ILLINOIS
IN THE CIRCUIT
COURT OF THE 15TH
JUDICIAL CIRCUIT
OGLE COUNTY
PROBATE DIVISION
IN THE)
MATTER)
OF THE)No.
ESTATE)2021
OF)P 6
MARLENE)
A. SPRING,) Deceased)
CLAIM NOTICE
Notice is given of the death of MARLENE A. SPRING. Letters of Office were issued on January 19, 2021, to Bryan J. Spring, 4639 E. Woodbine Rd., Byron, IL 61010, who is the Executor of the Estate. The attorney for the Estate is Amanda J. Martinez, The Law Office of Amanda Adams Martinez LLC, 5732 E. Riverside Blvd., #201, Loves Park, IL 61111.

Claims against the Estate may be filed on or before July 27, 2021, that date being at least six (6) months from the date of first publication, or within three (3) months from the date of mailing or delivery of Notice to creditors, if mailing or delivery is required by Section 18-3 of the Illinois Probate Act, 1975 as amended, whichever date is later. Any claim not filed by the requisite date stated above shall be barred.

Claims against the Estate may be filed in the office of the Ogle County Circuit Clerk - Probate Division, at 106 S. 5th Street, Suite 300, Oregon, Illinois 61061, or with the Estate legal representative, or both. Copies of claims filed with the Circuit Clerk's Office - Probate Division must be mailed or delivered to the Estate legal representative and to his attorney within ten (10) days after it has been filed.

BRYAN J. SPRING, Executor of the Estate of Marlene A. Spring, Deceased AMANDA ADAMS MARTINEZ #6287970
a.martinez@adamsmartinezlaw.com
The Law Office of Amanda Adams Martinez LLC
5732 E. Riverside Blvd. #201
Loves Park, IL 61111
p. (815) 491-8065
No. 0124 (Jan. 27, Feb. 3, 10)

101

LEGAL NOTICE

This publication does not knowingly accept fraudulent or deceptive advertising. Readers are cautioned to thoroughly investigate all ads, especially those asking for money in advance.

113

FINANCIAL

NOTICE Advance Fee Loans or Credit Offers
Companies that do business by phone can't ask you to pay for credit before you get it. For more information, call toll-free 1-877-FTC-HELP. A public service message from your hometown newspaper and the Federal Trade Commission.

119

ANNOUNCEMENTS

"This publication does not knowingly accept fraudulent or deceptive advertising. Readers are cautioned to thoroughly investigate all ads, especially those asking for money in advance."

127

SERVICES AND REPAIRS

JNJ JUMPERS Indoor/Outdoor Bounce House Rentals Available Year Round. Please Call 815-784-4256 For Availability or Visit us on Facebook.

201

DOMESTIC/CHILD CARE

NO INDIVIDUAL, unless licensed or holding a permit as a childcare facility, may cause to be published any advertisement soliciting a child care service. A childcare facility that is licensed or operating under a permit issued by the Illinois Department of Children and Family Services may publish advertisements of the services for which it is specifically licensed or issued a permit. Your Hometown Newspaper strongly urges any parent or guardian to verify the validity of the license of any facility before placing a child in it's care.

203

HELP WANTED

NEWSPAPER CARRIERS Wanted. (Rochelle) Several Routes Open. Call 815-561-2112 For More Information.

301

ANTIQUES

WANTED TO BUY: Vintage Metal and Wood Signs, Milk Bottles & Local Advertising, Oak Icebox, Iron Door Stop

303

APPLIANCES

NEW MILFORD REFRIGERATION

NEW, USED SCRATCH & DENT

• Refrigerators • Freezers • Washers/Dryers • Stoves

We also carry a large selection of refurbished appliances with a warranty.

6331 11th Street, Rockford 815-874-2257

11222020

301

ANTIQUES

and Antique Lighting... Call Dick Harms at 815-562-2928 or email dickharms@hotmail.com

ANTIQUES WANTED: I pay cash for antiques; furniture, glassware, pottery & crocks, tin & iron toys, sterling silver, decoys. If it's antique, I'm interested in looking! Call 815-562-2928 or email dickharms@hotmail.com

307

MISCELLANEOUS FOR SALE

BEDROOM Set - Chest of Drawers and Dresser W/Mirror. Excellent Condition. \$200 Call 815-857-2149 McCracken (01-31-21)

FOR SALE: Steel Wood Burning Stove with Pipes. 25 1/2" x 28", \$200 Call 815-539-6942. (01-27-21)

BUNDLED Newspaper -\$3 per Bundle. End Roll- Cost Depends on Weight of Roll. Available Monday-Friday 8AM-NOON ONLY. SEE RECEPTIONIST AT FRONT COUNTER Rochelle News-Leader.

405

HOUSES FOR SALE

ALL REAL ESTATE advertised herein is subject to the Federal Fair Housing Act, which makes it illegal to advertise any preference, limitation or discrimination based on race, color, religion, sex, handicap, familial status, or national origin, or intention to make any such preferences, limitation or discrimination. We will not knowingly accept any advertising for real estate which is in violation of the law. All persons are hereby informed that all dwellings advertised are available on an equal opportunity basis.

501

APARTMENTS FOR RENT

ROCHELLE : BEAUTIFUL Large 2-BEDROOM, 1-Bath. All Utilities Included. Washer/Dryer in Unit. Off Street/Parking. 1-Garage/Space. Senior Citizen Discount. Email or Call for Showing rentals464@gmail.com or 815-762-6440. (01-31-21)

1&2-BEDROOM Apts. Clean, Quiet. Available Now. Some Utilities Included. Call For Showing 815-762-6650 or 815-761-3968. (02-03-21)

ROCHELLE: Clean, Quiet. No Pets/Smoking. Parking in-Rear. Coin Laundry. 630-858-4180. (02-07-21)

203

HELP WANTED

CNA STAFF - CERTIFIED

OAK CREST

DeKalb Area Retirement Center

Oak Crest is seeking full & part time

CNA Staff - Certified to work in the State of Illinois

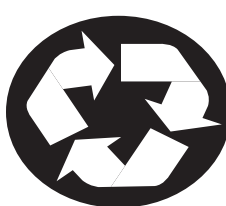
Benefits include competitive wages, flexible scheduling, time off with pay, Health Insurance/Dental/Vision/Life Insurance, 403B Retirement, On Site Gym

Ideal candidates will have a strong interest in geriatric nursing, be dedicated to quality care, and motivated to become part of our exceptional health care team.

To provide resume, fax to 815-756-6515 or E-mail to scox@oakcrestdekalb.org

Equal Opportunity Employer

12062020



Want To Teach Your Kids About Responsibility?

The Rochelle News-Leader has four openings for newspaper carriers.

• Must be 10 years or over
• 2 deliveries per week
• Most routes take less than 45 minutes
• No collecting
• A great place to teach your child about responsibility - and the rewards of earning their own spending money
• Adult carriers are welcome, too!

Contact Wanda at the Rochelle News-Leader office
211 E. Hwy. 38, 561-2112

HW

ROUTE 13-14
NORTH 6TH STREET AND NORTH 7TH STREET AND AVENUES IN BETWEEN

ROUTE 16-17
200-1000 BLOCK LINCOLN HWY., N. MAIN STREET, N. 2ND STREET, N. 3RD STREET AND AVENUES IN BETWEEN

ROUTE 24-25
SOUTH 1ST, 2ND 3RD STREETS & AVENUE IN BETWEEN

ROUTE 28
SOUTHVIEW DR., WILLIS AVE., LAKE LIDA LANE AREA

CLASSIFIEDS

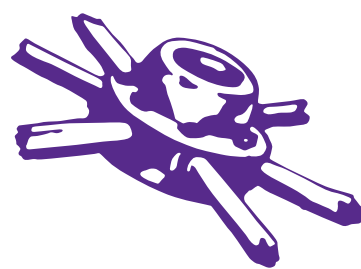
Rochelle News-Leader



The businesses featured on this page are

"Hubs Super Fans"

They proudly support our local athletes and students.



Please show your appreciation by patronizing their businesses.

WE SUPPORT OUR HUBS!

HUB SPOTLIGHT

Zepeda zooms to new PRs with Lady Hubs

BY RUSSELL HODGES
SPORTS EDITOR

AHTZIRI Zepeda earned the full varsity experience with the Lady Hub cross country team during her freshman season, cutting three minutes off her personal-best time and competing alongside her Rochelle teammates in all three postseason meets including the Interstate 8 Conference Championships, the IHSA 2A Sterling Regional and the IHSA 2A Belvidere Sectional.

Zepeda returned to the Lady Hubs for her sophomore season this past fall, becoming Rochelle's No. 3 varsity runner before an injury slowed her progress late in the season. Despite the injury, Zepeda helped the Lady Hubs to three victories and lowered her personal record even further, breaking the 24-minute mark for the first time in her high school career during Rochelle's four-team meet with Genoa-Kingston, North Boone and West Carroll at Walcamp Park.

"I felt very strong during my sophomore season," Zepeda said. "I had been training during the summer, even though most of our summer training was at home. I felt like most of my practices were very successful in getting me toward my goals. I definitely want to train harder next year and focus more on small things like my form and stretching. One of my main goals for my junior season is to focus more on endurance training while preventing any types of injuries."

After running a 24:22 at Walcamp Park, Zepeda improved her PR once again during Rochelle's victory over Plano, clocking in at 24:15 despite rainy racing conditions. Zepeda, who has been running cross country since she was in middle school, finished with a 24:21 against Sandwich before recording her fastest time of the season at Morris, entering the 23-minute range for the first time with a 23:54. Zepeda will look to further improve that time during her junior season.

"The whole team did very well this season," Zepeda said. "We gave it our all on race days and we always strived to improve. I hope we can have a few more runners qualify for sectionals next year. My role on the team this year was to motivate



(PHOTO BY RUSSELL HODGES)

Sophomore Ahtziri Zepeda has stepped up for the Lady Hubs over the last two cross country seasons.

some of the girls to push harder and I hope it will be the same way next year... I've always loved competing, even outside of sports."

"I felt very strong during my sophomore season... I felt like most of my practices were very successful in getting me toward my goals. I definitely want to train harder next year and focus more on small things like my form and stretching."

Ahtziri Zepeda



Local People Providing Local Service

Rochelle
MUNICIPAL UTILITIES

Water • Waste Water
Electric • Communications

Phone: 815-562-4155 333 Lincoln Highway
Fax: 815-562-5861 Rochelle, IL

www.rmu.net

Wendy's

Highway 38
Rochelle, IL

MORTON BUILDINGS

If you can dream it, we can build it.

Rochelle Sales Office • Hwy. 251 N. • 877-613-3050



Busy Schedule?
Leave the cooking to us.

- Large menu of foods
- Rochelle's famous chicken by the dinner or bucket
- Hand dipped ice cream (16 flavors)

COUNTRY SCHOOL
DRIVE-IN RESTAURANT

251 N. ROCHELLE • 562-6039



CHEVROLET

We are Ogle County's only GM Dealer!

- Collision Repair
- 24 Hour Towing
- New/Preworn Vehicles
- Tires, Alignments, Brakes, Batteries
- Rental Cars
- Maintenance On All Makes and Models

JEFF PERRY

CHEVROLET • BUICK • CADILLAC • JEEP • CHRYSLER

815-562-8787 • www.jeffperrychevrolet.com

MEYERS
FURNITURE & FLOORING

209 Powers Road, Hwy 251 N
Rochelle, IL 61068
(815) 562-8792
www.meyersfurniture.com

Rochelle
Community Hospital

Your Local Healthcare Resource.

900 N. 2nd Street, Rochelle
815-562-2181
www.rochellehospital.com

JOHNSON TRACTOR

SALES • PARTS • SERVICE

1030 South 7th Street
800.262.1680
www.johnsontractor.com

Bruns
Construction, Inc.

Residential & Commercial Roofing

- Shingled Roofs
- Flat Roofs
- Metal Roofs For Farm Facilities
- Custom Built Homes
- Additions

Tim & Roger
Bruns, Owners
Established 1997

815-561-0099
Licensed & Insured

GO HUBS!

HUB-REMSEN
PRINT GROUP

101 Maple Ave • Rochelle, IL 61068
815.562.7057 • hub-remsen.com

GO HUBS!

R



926

Custom Embroidery

- Custom Embroidery
- Direct to garment printing
- Custom Heat Transfer
- 1,000's of products available
- Fast Turn Around
- No Minimum Order



Rochelle's #1 Stop for all your Custom Logo Wear Needs.

Downtown Rochelle • 815-561-9500 • 926customembroidery@gmail.com

M-F 10-5, Sat. 9-12

SPORTS

Illinois High School Association

IHSA provides second update

Meeting set for Jan. 27

BLOOMINGTON — Below is a summary of the items IHSA Executive Director Craig Anderson sent to member high schools on Friday clarifying the impact of Friday's announcement by Governor Pritzker on IHSA sports:

"The most significant update today involves high-risk sports in Regions that have improved from Tier 1 to Phase 4," Anderson said. "Schools within a Phase 4 Region can now conduct intra-conference and intra-region contests in high-risk sports. Moderate-risk sports competing outdoors in Phase 4 also received expanded scheduling opportunities, including tournaments and out-of-state contests."

The Board of Directors will set season dates for the remainder of the school year when they meet again this Wednesday, Jan. 27. Updated mitigation table (including Phase 4), sports schedules, risk levels, and other pertinent information can be found at www.ihsa.org/Resources/COVID-19.

All low-risk winter sports must conduct practices on seven days prior to their first contest. Basketball teams must conduct 12 days of practice prior to their first contest. Fall, spring, and summer sports can begin contact days on Monday based on the allowances of your EMS Region and local school district approval.

Masks must be worn in practice and competition. Social distancing should be adhered to for bench players and game personnel. Schools must follow the mitigations and guidelines established by the IHSA.

With contests now on the horizon, a reminder of IDPH's guidance for spectators at contests. There is no differentiation in the numbers below regardless of whether the sport is indoors or outdoors. The numbers below do not include players, coaches, officials and other necessary game personnel, the spectators are in addition to them.

In Phase 4 Regions, schools can have a maximum of 50 spectators. In Tier 1 Regions, schools can have a maximum of 25 spectators. In Tier 2 Regions, schools cannot have spectators. Host schools may choose to be more restrictive in their spectator policies.

Finally, an important clarification regarding football contact days. Football contact days that are permitted in some regions beginning Jan. 25 will be limited to the provisions of IHSABY-law 3.157. Please follow these guidelines that would have a build-up acclimatization to maximum equipment of helmet and shoulder pads with no live contact or tackling to the ground during the contact day period.

Healthy Hand Hygiene Habits



Protect yourself against COVID-19 and other diarrheal and respiratory illnesses, and help prevent the spread of germs to others, by following these simple hand hygiene guidelines:

- 1. Wash your hands with soap and warm water, lathering for at least 20 seconds.**
- 2. If soap is unavailable, use a hand sanitizer containing at least 60 percent alcohol to clean your hands.**

Wash your hands throughout the day, and particularly under these circumstances:

- Before preparing food
- Before eating
- After using the toilet
- After changing a diaper or helping a child use the toilet
- Before and after exposure to someone who is sick
- After coughing, sneezing or blowing your nose
- After touching an animal or picking up animal waste
- After handling pet food or treats
- After handling garbage or garbage cans
- Before and after attending to a cut or wound

Information resource: Centers for Disease Control and Prevention

ROCHELLE
News-Leader

Proper handwashing helps all of us stay healthy, so remember to be aware and do your part to help protect yourself and others!

Kish Spring 2021 Relief Scholarship

Go full-time.
Get \$500.

Paying for college is not easy right now.

Kish is here to help.

The Kish Spring 2021 Relief Scholarship can help offset financial hardships caused by Covid-19.

Here's how:

- **New and returning students — Register for 12 or more credit hours by January 18, 2021**

No Scholarship Application Required



For details, visit —
kish.edu/spring21relief

KC KISHWAUKEE COLLEGE



2021 FROM THE HEART VIRTUAL EVENT

7 p.m., Saturday, Feb. 6, 2021
on our From The Heart Facebook Page
PLUS Online Auction at www.Bearows.Hibid.Com - Auction ends on Thursday, Feb. 4, 2021

Featured Auction items include:

- 26 Centerpieces created by Rochelle florists Colonial Flowers and Cypress House. Winner of each centerpiece auction will be entered into a separate drawing for the Centerpiece Necklace which is a 4 Kt White Gold Diamond Fashion Necklace .95ct., exclusively designed by Busch Jewelers in Rockford, and valued at \$3,000. The drawing for the Centerpiece Necklace will take place during our Virtual Event.
- Elvis limited edition numbered collector photographs from concert in LaCrosse, Wis., on May 14, 1956
- Chicago Bears framed photo montage of Dick Butkus and Gale Sayers, autographed by both players
- Framed photo montage of former Chicago Cub Ryne Sandberg, featuring his autograph
- Ladies 10kt White Gold Dancing Shimmering Diamond Pendant .90ctw, retailed at \$2,400
- Ladies 10 kt Yellow Gold Diamond Fashion Heart Pendant .95ctw, retailed at \$1,500
- Mac Sport Utility Wagon filled with white wine
- Mac Sport Utility Wagon filled with red wine
- Yeti Tundra 65 Cooler filled with craft beer

This is just a taste of the auction items up for grabs
Visit bearows.hibid.com to see the full list of items available

From The Heart is still accepting tickets for its Virtual Event. For \$100 per ticket, you will have an entry into a drawing to win one of five Virtual Event Prizes: 1/2 Hog and Processing; 1/4 Beef and Processing; LG UHD 75 Inch TV; Apple Watch Series 6; and a KitchenAid 5 Quart Bowl Lift Stand Mixer. Plus you will receive a \$25 voucher for the Flight Deck. Additional chances to win one of the five prizes are available for \$20 each, once the initial \$100 ticket is purchased.

Please mail your Virtual Ticket payment to From The Heart, PO Box 202, Rochelle, IL 61068.

For more information, call Dave at 815-562-2220.

Online purchases of Virtual Tickets can be made at fromtheheartrochelle.org.



VOTE FOR YOUR...
TEACHER OF THE MONTH
Nominate Your Favorite Teacher!
<https://rochellenews-leader.secondstreetapp.com/Teacher-of-the-Month/gallery>

10112020

Serta
1931
85
years of comfort
2016

Serta perfect sleeper
Anniversary Special Edition

HUB CITY FURNITURE
429-433 Lincoln Hwy., Rochelle, Illinois
815-562-8765 • hubcityfurniture.com
90 Days Same As Cash
VISA MasterCard DISCOVER
Mon-Fri 9am-5:00 • Sat 9am-4pm • Sun Closed

03/28/2017

WEDNESDAY, JAN. 27, 2021

ROCHELLE NEWS-LEADER • SECTION 1 • PAGE 12

SPORTS



PUSHING HER LIMITS

Ahtziri Zepeda's summer training leads to multiple PRs during sophomore season.

See page 10 for more details

RTHS Boys Basketball

Returning to the court

Hubs hold first practice in two months with potential season looming

BY RUSSELL HODGES
SPORTS EDITOR

ROCHELLE — A winter without basketball is something Hub varsity coach Tim Thompson hasn't experienced in the four decades he's been involved with the sport. The COVID-19 pandemic changed that, however, and over the last two-plus months since the IHSA halted athletic activities, Rochelle Township High School's main gymnasium has been void of any basketball-related events.

With the winter months winding down, Thompson wondered whether or not he or his student-athletes would have another opportunity to compete or even practice this year. That door slowly crept open when IDPH Director Dr. Ngozi Ezike revealed Friday afternoon that high-risk sports including basketball, football and wrestling would be allowed to compete in any healthcare regions that return to Phase 4 of the Restore Illinois reopening guidelines.

More good news came Monday morning, when the IDPH returned Region 1 to Phase 4 for the first time since early October. Rochelle and other Ogle

County athletic programs fall under Region 1, meaning Hub basketball players can not only resume practices, but play games once the IHSA reveals the revised start for winter sports after its board meeting Wednesday.

"It's all about the kids and how stressful it's been on them, whether it's academically, physically, socially or emotionally," Thompson said. "The kids I have this year really love basketball and they've been dying to play. I'm so excited they're going to have an opportunity and I think they're at a point where they'll take anything they can get, regardless of how long the season is or how many games they play. They won't let this opportunity pass and they're going to play so hard."

The Hub basketball program had been conducting contact days during the fall before Illinois Gov. J.B. Pritzker moved the state into Tier 3 mitigations, which required all athletic activities to be suspended, on Nov. 20. Since that date, Thompson and his coaching staff have been maintaining contact with players through Google Classroom. Additionally,



(PHOTO BY RUSSELL HODGES)

Junior Noah Brown (left) dribbles around teammates Cooper Hasz and Daniel Monfils (right) during a Rochelle Hub basketball team contact day in October. After two months away, high-risk sports like basketball were recently given new clearance to not only practice, but play games in regions that return to Phase 4.

Hub players have also taken advantage of the Flagg-Rochelle Community Park District recreation center, using the brand-new facility to get shots up and workout either on their own or in small groups.

"We've used the Google Classroom to keep their spirits up and make sure they're keeping their grades up," Thompson said. "I have to give my se-

nior captain Garrett Burdin a lot of credit. He organizes team functions, getting kids to the rec center and encouraging kids to keep their grades up because he knew there was a possibility we could start up again pretty soon."

While the length of the winter season won't be revealed until Wednesday's IHSA board meeting, IHSA officials have

mandated that basketball programs conduct at least 12 practices before games can begin. With such a short timeframe for players to be conditioned and ready for varsity action, Thompson said the Hubs will use their contact days this week to run full practices, as opposed to open gyms, and install as many in-game scenarios as possible.

"We're going to use our

first few practices and go one-and-a-half hours with one hour of true practice," Thompson said. "That includes conditioning and shooting. We'll then have a half hour of breakdowns in terms of getting our offense in, our out-of-bounds plays in, our sideline out-of-bounds plays in and last-second plays. We want all of those in by the end of this week."

RTHS Girls Basketball

Lady Hubs back on the hardwood

Conditioning highlights short-term goals for varsity team

BY RUSSELL HODGES
SPORTS EDITOR

ROCHELLE — Remote learning has provided many challenges for students and teachers throughout this school year. Those challenges have also impacted coaches like Tony Rowan, who admitted the last few months without athletic participation have made it tougher for he and his staff at Rochelle Township High School to make a difference for student-athletes.

Rowan and the Lady Hub basketball team reunited for practice Monday afternoon, coming together for the first time since the program's fall contact days in November. The return to play marked a step in the right direction as Illinois continues making progress in its recovery from the ongoing COVID-19 pandemic. With Region 1 returning to Phase 4, high-risk sports like basketball can not only practice, but compete against conference and intraregional opponents.

"Getting back to competition will be huge for us," Rowan said. "We're happy to be face-to-face with the kids again and we want to compete. We've interacted with the kids through posts on social media or our Google Classroom and we've shared workouts they could do on their own. We had some competitions that we'll be able to give our prizes for as well. We've also been texting and emailing with the kids so we could let them know we're thinking about them."

The IHSA will hold a board meeting on Wednesday to release a revised calendar for the remainder of the 2020-21 school year. Under current reacclimation guidelines, basketball programs must conduct 12 practices before playing their first games, meaning the Lady Hub varsity team could return to the court against local opponents as early as February.

"Getting conditioned is going to be huge," Rowan said. "Having a long layoff and then having to wear a

mask while running is going to be a huge difference for the kids. We're going to do a lot of skill development during our contact days and our practices and we really want to keep things simple. We don't want to throw too many plays at them and we know our season will be pretty short, so we want to make the most out of the time we have with each other."

The Lady Hubs will field a roster this coming season filled with multiple upperclassmen including seniors Sofia Lenkaitis, Afi Gati and Alexis Sanford. Juniors like Lucy Bunger, Zoey Tabor and Josie Lundquist are entering their third varsity seasons as well. Despite roughly two months of inactivity and lingering unknowns regarding the season, Rowan said the experience Rochelle's varsity players are returning with this season will help the team get back on track quickly.

"It's definitely going to be interesting," Rowan said. "Our girls know what



(PHOTO BY RUSSELL HODGES)

Sophomore Miraya Montes (left) drives against teammate Grace Luxton (right) during a Rochelle Lady Hub basketball team contact day this past October.

to expect in terms of the competition and a lot of programs are in the same position we are in terms of the long layoff. If we com-

mit ourselves over the next few weeks, we can really jump ahead of some teams. I still want the girls to come in, work as hard as they can

and treat everyone with respect. Those standards haven't changed and our goals are still to come in and get better every single day."