



ROCHELLE News-Leader

MIDWEEK EDITION | WWW.ROCHELLENEWS-LEADER.COM



JEFF PERRY
Chevrolet • Buick • Cadillac

1260 N 7th St.
815-562-8787

Vol. 102 • No. 24

LOCAL NEWS... LOCAL VIEWS

WEDNESDAY, JULY 21, 2021

\$1

Your life.
Your education.
Your way.

KC KISHWAUKEE COLLEGE

Enrolling Now for Fall!

www.kish.edu/fall

KNOW IT
TODAY



Blood drive set
for Aug. 2

The fourth Flip Flops & Blood Drops event will be held at the REC Center in Rochelle. **Page 2**

WEATHER



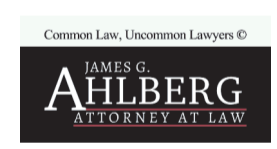
WEDNESDAY
HIGH LOW
79 61

THURSDAY
HIGH LOW
84 61



FRIDAY
HIGH LOW
86 66

SATURDAY
HIGH LOW
84 70



501 6th Ave.
815-562-4443

OBITUARIES

NONE

See page 4

INSERTS

• ALDI
• FARM & FLEET

INSIDE

Local News.....2, 3, 5
Obituaries.....4
Opinion.....6
Community.....7



8 52078 00112 6

RTHS board hears masking concerns

‘We’re being very cautious in putting together the right policies’

BY JEFF HELFRICH
MANAGING EDITOR

ROCHELLE — The Rochelle Township High School Hub Gallery room was full Monday with parents and community members that pleaded with District 212 board during its monthly meeting to make masks optional for the upcoming school year.

The board heard numerous public comments as the Illinois Department of Public Health recently adopted guidance from the CDC that states masks should be worn by all individuals ages 2 and older who are not fully vaccinated against COVID-19.

The CDC also recommends maintaining at least 3 feet of physical distance between students in classrooms.

Colleen Esterday, a parent of an incoming freshman, asked the board to adopt an optional mask policy for this fall.

“As parents, we have the responsibility to make the best choice we feel is right for our children’s physical, mental and emotional health,” Esterday



Local parent Colleen Esterday addresses the Rochelle School District 212 Board of Education during its monthly meeting at Rochelle Township High School on Monday.

said. “Our teachers need to get back to teaching and not have to spend unnecessary time playing mask police. Our students need to get back to normalcy, learning and socializing. A mask optional choice for students left up to parents

is the way to make this happen.”

Angie McGough has four children in Rochelle schools including two in high school.

“For kids in high school who are learning to go out on their own, they have to

be able to read emotions and react appropriately,” McGough said. “I feel we should all be informed about what is right for ourselves and our children and we should have the ability to make that decision for ourselves.”

Board President Tom Huddleston said the board is “getting real close” to making a decision and is waiting for additional guidance to come from the state.

See RTHS page 3

CDC: Nine illnesses linked to BrightFarms

Rochelle facility conducting internal investigation

BY JEFF HELFRICH
MANAGING EDITOR

ROCHELLE — Nine illnesses and one hospitalization across two states have been linked to a salmonella outbreak from BrightFarms brand Sunny Crunch salad produced in Rochelle, the Centers for Disease Control and Prevention site said.

An announcement came Friday that any BrightFarms brand Sunny Crunch salad produced in Rochelle should not be eaten and should be thrown out, even if some of it was eaten and no one has gotten sick. Surfaces and containers and containers that may have touched the contaminated products should be washed with hot and soapy water.

Salmonella symptoms usually appear 6-to-72 hours after being exposed to the bacteria which include: diarrhea, fever, abdominal cramps, headache, muscle aches, vomiting, chills, dehydration and nausea.

Those that have developed symptoms after



Nine illnesses and one hospitalization across two states have been linked to a salmonella outbreak from BrightFarms brand Sunny Crunch salad produced in Rochelle, the CDC site said.

eating the salad are asked to contact their healthcare provider or local health department and not to report to work if they work in food service, healthcare or child care.

The CDC site said the investigation is still active and the products have been recalled. They include 50/50

Spring & Spinach, Butter Crisp, Harvest Crunch, Lakeside Crunch, Mighty Romaine, Nutrigreens, Spring Crunch, Spring Mix and Sunny Crunch. They are packaged in clear, plastic clamshell containers and labeled “fresh from Rochelle, IL” with “best by” dates through July 29.

The products are distributed to at least four states (Illinois, Indiana, Iowa and Wisconsin).

In a frequently asked questions page on its site about the situation, BrightFarms said the recall was voluntary and is limited to its Rochelle facility.

The recalled products

were sold in Illinois at select Walmart stores, Mariano’s Fresh Markets, Strack Van Till, Sullivan’s Foods, Caputo’s, Jewel-Osco and Wisconsin stores including Pick ‘n Save, Metro Market, Copps, Tadych’s and Walmart (select stores).

See CDC page 5

Stillman BANK

Buying a Home or Refinancing?
We Can Help!

FREE Pre-Approvals
COMPETITIVE Rates
LOCAL Servicing
EXPERIENCED Lenders

www.stillmanbank.com

FIRST STATE BANK

Brent Ohlinger
Community President

David Eckhardt
Vice President/Loan Officer

304 East Highway 38 • Rochelle
firststatebank.biz • 815.562.2200

Member FDIC

LOCAL NEWS



(COURTESY PHOTO)

For the fourth year, the Flip Flops and Blood Drops blood drive will be held on Monday, Aug. 2 from 1-6 p.m. It will be hosted at The REC Center in Rochelle.

Flip Flops and Blood Drops set for Aug. 2

ROCHELLE — For the fourth year, the Flip Flops and Blood Drops blood drive will be held on Monday, Aug. 2 from 1-6 p.m. at The REC Fieldhouse multi-purpose room at 802 Jones Road in Rochelle.

Twin sisters Lana and Ellie were born prematurely, weighing just over one pound each. While in the hospital, both girls received blood transfusions. Sadly, Ellie passed away at five days old. Her sister,

Lana, received eight units of blood within the first five months of her life.

For three years, Lana's parents have partnered with the American Red Cross to host a blood drive in honor of her life and in memory of Ellie.

They want to make sure there is blood available to other families who need it and invite you to donate blood to help save lives.

For appointments, contact Gabby at (815) 501-9899 or Derek at (815) 792-

9148 or gabrielletroha@gmail.com or 1-800-RED CROSS (1-800-733-2767 or visit redcrossblood.org.

You can save up to 15 minutes when you donate blood by using RapidPass. Visit redcrossblood.org/RapidPass for more information.

Come to give blood and you'll be sent a \$10 gift card via email, courtesy of Suburban Propane.

Appointments are preferred, but walk-ins are welcome.

Rochelle actor Worthington starring in musical 'Grimm'

BY VICKI SNYDER-CHURA
SPECIAL TO THE NEWS-LEADER

ROCHELLE — *Grimm* is a mixed-up musical adventure, featuring many familiar fairy tale characters in a way you've never seen.

It's a show Rochelle Township High School stage veteran Joe Worthington was born for. See it this week at The Studio Rockford Wednesday through Saturday. Tickets and more information can be found online at tickets.thestudiorockford.com.

The musical's story revolves around if the magic of Grimm's fairy tales fell into the wrong hands and all the stories were rewritten. What if the happy endings were in danger and it was up to one little red-cloaked girl to assemble a crew to help defeat four evil villains and make everything alright?

And what if that little girl's story was being written in front of your very eyes as she not only



(COURTESY PHOTO)

works to save the town of Happily Ever After, but also to discover who she is and what she's capable of in the process?

Grimm takes everything you thought you knew about your favorite fairy tales and turns it all upside-side down.

With the magic-stealers on the loose, working hard to rewrite the endings

to such timeless stories, you'll find a Cinderella who can't dance, a Big, Bad Wolf who doesn't eat meat, a Rapunzel who can't carry a tune, not to mention a trio of "Prince Charmings" who are anything but.

These characters, along with so many others, will spring to life in a way you've never seen before.



(COURTESY PHOTO)

An event for Rochelle residents new and old is scheduled to take place Saturday, July 24. "Reconnecting in Rochelle" will take place at VFW Park, 915 S. Main St.

'Reconnecting in Rochelle' event scheduled Saturday

BY JEFF HELFRICH
MANAGING EDITOR

ROCHELLE — An event for Rochelle residents new and old is scheduled to take place Saturday, July 24.

"Reconnecting in Rochelle" will take place

at VFW Park at 915 S. Main St. from noon to 4 p.m. The event will include food, games, special guests including Rochelle Mayor John Bearrows and surprises.

The event and a committee came to be after conversations among a

Facebook group. There will be information packets for new residents.

Attendees are asked to bring lawn chairs and RSVP for the event. To RSVP, visit the Rochelle, IL Friends and Neighbors Facebook page and press events near the top of the page.

FALL@KISH

SAVE BIG with FREE

- Textbooks
- Transportation
- Childcare

**EARN your degree.
ENTER the workforce.
TRANSFER credits easily
to your next step.**

Register today!
kish.edu/fall

KC KISHWAUKEE COLLEGE

KIDS NEED KIWANIS

Friday, July 23

10:00 a.m. - 3:00 p.m.

Saturday, July 24

10:00 a.m. - 3:00 p.m.

Ace Hardware

Hwy. 251 & Flagg Rd.

**Hot Dog or Brat
with Pop & Chips**

***\$5.00**

KIWANIS GOLDEN "K"

*100% of the funds raised will be used to support youth activities in Rochelle

LOCAL NEWS



(PHOTOS BY JEFF HELFRICH)

Several local parents attended the Rochelle School District 212 Board of Education meeting Monday evening to address concerns about masking when the 2021-22 school year begins next month. Below, local parent Angie McGough speaks to members of the board.

RTHS: Parents voice concerns about mask guidelines

From page 1

He said Superintendent Jason Harper told him his goal is to have "some sort" of definitive policy statement out by Friday.

"We probably share a lot of the same opinions you all do," Huddleston said. "Although we're being very cautious in putting together the right policies. We don't start school for several weeks so we have a bit of time to make sure we get this exactly right. But I think that everybody will be happy that we're doing things in everybody's best interest."

Harper told the board in his monthly report that he'd hoped to have more information and guidance to share by the meeting. He said guidance hasn't been updated since July 9.

Harper said he'd continue to update the board on changes and associate

with the RTHS teacher's association, the school's nurse, the Ogle County Health Department, the Illinois State Board of Education, IDPH, legal counsel and the legal counsel that represents the school via insurance in regards to liability.

Jackie Ramsey, an instructional support teacher at Rochelle Middle School, said at the meeting during public comment that she represents a local group against masks being mandatory.

"I'm watching all of these kids all over the city travel to different states and everywhere without masks," Ramsey said. "They've been together all year. They've been close together. I know there's no social distancing going on. I realize the school has to protect everybody. But we're a year-and-a-half into this and that's why we're asking for optional

masking now."

Trevor Goodwin, a graduate of the RTHS class of 2021, spoke at the meeting from a student's perspective.

"Having a mask last year really made learning uncomfortable and more difficult," Goodwin said. "You couldn't really hang out with friends anymore. I don't think it's safe, especially for classes like PE. Why are we talking about masks being optional when nobody in this room is wearing a mask?"

Huddleston closed the public comment portion by thanking the audience for its input and said the plan all summer long was to watch what other districts do, see what models are available and to listen to constituents.

He said it's "very important" to the board to have its consensus be based on what local residents believe needs to



be done.

"A lot of your opinions coincide with my opinion," Huddleston said. "But to make the right decision takes a

little bit of thought. I can make a decision at home very easily. Making a decision on a board is for everybody. We've got to get it right and make sure

everybody is in line with that decision.

"I think everybody here will be very happy and proud with the way we move into next year."

Nominations open for Best of Ogle County 2021

OGLE COUNTY — The nomination phase for Best of Ogle County 2021 has begun.

Nominate your favorite county businesses by Aug. 1. Categories include best bakery, best family restaurant, best pharmacy, best local bank, best gift shop, best slot machine location, best hair salon, best auto body shop, best bartender

and best local business.

Nominations are being taken for over 60 awards.

To make a nomination, use the QR code or visit <https://rochelle-news-leader.secondstreetapp.com/Best-of-Ogle-County-2021-2/>.

Voting will begin during August following the nomination period.

Best of Ogle County



2021 is presented by the Rochelle News-Leader and the Ogle County Life.

Teach Kids about Electrical Safety!

Some important lessons include:

- Water and electricity do not mix
- The only objects that go into outlets are electric plugs
- Never stick fingers or objects in electrical appliances
- Electric cords should be left alone



Local People Providing Local Services

815-562-4155

333 Lincoln Hwy., Rochelle • www.rmu.net



Tails Humane Society **PET OF THE WEEK**
815.758.2457
www.tailshumanesociety.org



Sadie

Hi! My name is Sadie and I'm an 8 year old gal who loves adventure. I'm a big, tall girl at 53lbs. I've never been homeless before so shelter life is rather scary and, frankly, no place for a lady of my age. I'm pretty sad not having a home of my very own. I'm a friendly and loyal gal and smart as a whip! I know "sit, lay down, stay" and I'll even shake hands with you! I'm an amazing dog who loves to go on walks and also loves praise and affection. I would dearly love to find a calm and consistent home, one without a lot of young visitors, as little ones make me very nervous. Yes, I am on the shy side, but do warm up quickly. I am crate trained and also potty trained. I walk nicely on leash too and long walks are my absolute favorite. Please stop by and visit with me soon! I might even roll over and ask for belly rubs! Remember Senior Dogs are the Best!!

ROCHELLE VETERINARY HOSPITAL

Compassionate, quality care for your companion.

Dr. Nicole Marquardt
Dr. Lynn Deets

A Full-Service Clinic

- Experienced Groomer
- Boarding and Daycare
- Surgical Laser
- X-ray

- Gas Anesthetic
- On-site Laboratory
- Geriatric Care
- Dentistry

www.rochellevet.com

Lobby Hours:
 Mon-Fri 8-5
 Sat 8-noon

(815) 562-5207
1381 N. 7th St., Rochelle

Did you know?

Be aware of human foods that are **poisonous to dogs and cats.**

- Watch out for raisins, grapes, macadamia nuts, onions, garlic, unbaked yeast bread dough, fatty foods and chocolate.

24/7 ANIMAL POISON CONTROL CENTER: 855-764-7661

Grooming

Trust with a Groomer is important - our Groomer has over 10 years experience & expertise.

Please call for appointments

dachshies to DANES

Boarding And Grooming
815-453-2843

1751 Melugins Grove Rd Steward, IL 60553

Now is a great time to adopt a pet! Call Tails today!

LOCAL NEWS

Rochelle Police Department

Four arrested on outstanding warrants

ROCHELLE — On July 17 at midnight Alyssa N. Retuerto, 21, of Sycamore was cited for no insurance. She signed a promise to comply and was given a Rochelle court date of Aug. 27.

On July 16 at midnight Daniel L. Aspengren, 37, of DeKalb was arrested on an outstanding DeKalb County warrant. He was released on an I-Bond and was given a DeKalb County court date of Aug. 20.

On July 16 at 11:30 p.m. Ellis J. Anderson, 21, of DeKalb was cited for speeding. He signed a promise to comply and was given a Rochelle court date of Aug. 27.

On July 16 at 10:31 a.m. Jared S. Norris, 33, of Rochelle was cited for failure to yield. He was released on an I-Bond and given a Rochelle court date of Aug. 27.

On July 17 at 2:10 a.m. Leonardo R. Mon-

talvo, 23, of Rochelle was arrested for an outstanding DeKalb County warrant, possession of a controlled substance and illegal transportation of alcohol and transferred.

On July 17 at 11:27 p.m. Trisha A. Booker, 41, of Rochelle was arrested on an outstanding Lee County warrant and transferred.

On July 17 at 9:39 p.m. Kevin J. Paxton, 37, of Rochelle was arrested for driving while license suspended and possession of a controlled substance and transferred.

On July 18 at 3:18 a.m. Chiffon S. Felix, 42, of Rochelle was cited for driving while license suspended. She signed a promise to comply and was given a Rochelle court date of Aug. 27.

On July 17 at 2:30 a.m. Nyasi Kayindo, 40, of Rockford was cited for no valid driver's license, no insurance and

failure to dim headlights. She signed a promise to comply and was given a Rochelle court date of Aug. 27.

On July 17 at 7:43 p.m. Juan A. Martinez, 23, of Rochelle was cited for speeding and no insurance. He signed a promise to comply and was given a Rochelle court date of Aug. 27.

On July 18 at 2:56 p.m. Cecilia C. Seier, 24, of Rochelle was arrested for retail theft. She was released on an I-Bond and given an Ogle County court date of Aug. 20.

On July 18 at 7:43 p.m. Jose Calzada, 21, of Rochelle was arrested on an outstanding Ogle County warrant and he paid \$451.

On July 19 at 2:02 a.m. Cole H. Smith, 33, of Rochelle was cited for no insurance. He signed a promise to comply and was given a Rochelle court date of Aug. 27.

Ogle County Sheriff's Department

One arrest made

OREGON — On July 16 deputies arrested Tya Ru, 24, of Milwaukee, Wisconsin for driving while license revoked after being stopped for unsafe passing on Illinois Route 251 near Davis Junction. Ru was held in lieu of bond.



(PHOTO BY RUSSELL HODGES)

Executive Director Jackee Ohlinger speaks to the Flagg-Rochelle Community Park District Board of Commissioners during their monthly meeting on Monday.

Park board approves security system additions

BY RUSSELL HODGES
SPORTS EDITOR

ROCHELLE — The Flagg-Rochelle Community Park District Board of Commissioners approved additions to the REC Center security system during their monthly meeting Monday evening. Commissioners also approved a final pay-

ment to Sjostrom & Sons for the Spring Lake Improvement Project as well as the 2021-22 Fiscal Year Budget in Tentative Form.

Executive Director Jackee Ohlinger said that vinyl will need to be added to curtains around the fieldhouse in order to prevent further damage including tears. Because the vinyl will reduce transparency of the curtains, Ohlinger said the park district plans to move five cameras located around the perimeter of the fieldhouse to other areas of the recreation center. Ohlinger said the park district will then purchase fish-eye cameras to be installed at the top of the ceiling.

Ohlinger said the cost to

purchase the fish-eye cameras from Seico and install them in the fieldhouse will be about \$15,000. Ohlinger also said the cost to move the five cameras from the fieldhouse and install two new receivers in the recreation center will be about \$5,600.

Commissioners approved an amount not to exceed \$62,401.39 for a final payment to Sjostrom & Sons. Ohlinger said the park district will consider withholding \$5,000 from the payment until minor repair work, including small cracks and bubbling paint, on the pool is completed. Ohlinger said the minor repairs are expected to be completed during the fall.

Kish announces part-time student honors winners

MALTA — Kishwaukee College is pleased to announce its part-time student honors List for spring 2021. To be eligible for this honor, a student must have completed a minimum of six (but less than 12) semester hours of college-level courses at Kish with a grade point average of 3.5 or higher.

The following students have been named to the list:

Rochelle: Garrett Berg, Lizbeth Ugalde, Katelyn Ackland, Erica Miller, Jennifer Froehlig, Judith Fulgencio, Aman-

da Headon, Kevin South, Tiffany Hardcastle, Kassandra Kirk, Courtney South, Diana Penaran, Humberto Vasquez, Alexandre Greer, Taylor Kreider, Raul Escutia, Ericka Biekert, Hannah Eldred, Tristan Rogers, Micah Koziol, Arlette Garcia, Ethan Burgholzer, Sterling Devers, Tatnai Carcasses Suarez, Cheyenne Horne, Savannah Sutton and Brandon Dunphy.

Creston: Mary Wall. Esmond: Cody Grzywa. Kings: Sarah Kanas and Elise Hayenga. Lindenwood: Karyssa Dale.

Report policy

Any arrests listed in this paper are merely charges and the defendants are presumed innocent unless proven guilty in a court of law. Please note that all police reports received from the

Rochelle Police, the Ogle County Sheriff's Department and the Illinois State Police, will be printed without exception. Requests to omit particular reports will not be considered or honored at any time.



PRESCOTT BROTHERS

See us for all your tire needs!

Call Mel or Barb in our service department.

Service Department open Saturdays 7:30 a.m. to 12:30 p.m.

Semi-Synthetic Oil & Filter Change & FREE Tire Rotation

\$40 Plus tax & fees. Up to 5 quarts.

620 S. 7th • Rochelle, IL | 815-562-2177
www.Prescottbrothersford.com

ANDERSON
Plumbing & Heating, Inc.

Plumbing, Heating, Air Conditioning, Drinking water systems, Water Heaters, Softeners, Iron Filters & More.

LENNOX
Since 1976

One Less Thing To Worry About
621 First Ave., Rochelle
(815) 562-8784

Like on on Facebook
Lic# 055-013999

we insure your car. because accidents happen.

simple human sense

Dimond Bros.
Insurance Since 1867

Rochelle, IL | 815-562-5596
DimondBros.com

Auto-Owners
INSURANCE
LIFE • HOME • CAR • BUSINESS

ROCHELLE News-Leader

211 IL Route 38 East, Rochelle, IL 61068
(815) 562-4171

USPS (467-820) ISSN (1075-2811)
Published every Wednesday and Sunday by Rochelle Newspapers Inc. at 211 E. State Route 38, Rochelle, IL 61068. Periodical postage paid at Rochelle, IL 61068. Postmaster send address changes to the Rochelle News-Leader, P.O. Box 46, Rochelle, IL 61068. Subscription rates are \$112 per year by mail in Ogle County. Outside county rate is \$134 per year. No mail delivery in newspaper-carrier serviced areas. The circulation department is open Monday through Friday from 8 a.m. to 5 p.m. If you are a carrier subscriber and your paper does not arrive, contact Wanda Brimhall at 561-2112.

IN-COUNTY REGULAR SUBSCRIPTION RATES

- \$114 for one year • \$64.99 for six months
- \$26.99 for three months • \$10.99 for one month

Call (815) 561-2112 or Visit our website at
www.rochellenews-leader.com

HOW TO CONTACT US

News-Leader Main Switchboard (815) 562-4171

General Manager
Mike Feltes (815) 561-2124

Newsroom Staff
Jeff Helfrich, Managing Editor (815) 561-2151
Russ Hodges, Sports (815) 561-2152

To Place a Display Ad
Tiffany Smith (815) 561-2153
Andrew Heiserman (815) 561-2123

To Place a Legal Ad
Mike Feltes (815) 561-2124

To Place a Classified Ad
Kelly White (815) 562-4171

Subscriptions and Delivery
Wanda Brimhall (815) 561-2112

LOCAL NEWS



(PHOTO BY JEFF HELFRICH)

The Rochelle Area Community Foundation celebrated its 15th anniversary of operation in its 16th year on Monday with a golf outing at Fairways Golf Course. Seventy-two golfers took to the course, which featured tables with representatives from several community nonprofits.

RACF celebrates 15 years with golf outing

‘It’s about the nonprofit partners that contribute to the Rochelle community’

BY JEFF HELFRICH
MANAGING EDITOR

ROCHELLE — The Rochelle Area Community Foundation celebrated its 15th anniversary of operation in its 16th year on Monday with a golf outing at Fairways Golf Course.

The event, originally scheduled for last year during the COVID-19 pandemic, had to wait a year. 72 golfers took to the course that had tables with representatives from community nonprofits represented.

“On behalf of the foundation, we thank everyone for their participation,” RACF Board Vice President Dennis Berg said. “We were going to have one last year, but we had to postpone it. As you’re playing, there’s 10 nonprofits out there. Make sure you engage with them and thank them for what they do. Without them, we don’t have the community we have. We appreciate all the work they do.”

RACF Executive Director Emily Anaya said the outing was for more than just the foundation. It’s about the nonprofit partners that contribute to

the community, she said.

“It’s a way to honor them and represent them and show the collaboration between the good the donors do through the community foundation to the nonprofit partners,” Anaya said.

The event was not set up as a fundraiser, but Anaya said RACF received \$6,000 in unsolicited donations alone stemming from the outing. The event was set up as a “friendraiser” to familiarize community members with nonprofit partners.

“This gives our partners the opportunity to come out here and educate those other community leaders that maybe don’t know exactly what they do or where they’re at or who to contact or why,” Anaya said. “It’s another way for them to have outreach to communicate their mission and what they do for the people in Rochelle.”

Anaya called the support for the event “amazing” and said the response to the event touched her heart. Slots for the event filled up fast, she said.

The lasting effects of the event will be seen by those in need in the community, Anaya said.



(PHOTO BY JEFF HELFRICH)

RACF Board Vice President Dennis Berg speaks to guests at the community foundation’s golf outing on Monday.

“Think of all the people who will be touched by this today,” Anaya said. “This could open up doors for the people who are supported by the nonprofits. The youth, people who are

hungry, Serenity Hospice & Home, there’s just so much more. The chain reaction from what today can bring.”

Anaya, who came on board as executive direc-

tor in recent months, said her board did a lot of the work on putting on the outing, which she called “amazing.”

“They got the information out and contacted partners,” Anaya said. “This was their idea to celebrate. For me, it shows our RACF board members are in it and want to see

Rochelle grow and thrive.

“If people do have more interest in RACF and what we’re doing, talk to a board member. Come and see me in the office. We’re happy to talk to companies or donors. We want everyone to know how important RACF is and the impact the donors make. Let us know how we can help.”

CDC: Salmonella outbreak linked to BrightFarms in Rochelle

From page 1

Additional retailers may also be affected, BrightFarms said. Other varieties produced at the Rochelle facility (such as: Baby Spinach and Baby Arugula, among others) are not affected.

“We are taking this action out of an abundance of caution after being notified of illnesses among eight consumers, some of whom purchased or consumed the above products during the month of June,” the BrightFarms site said. “It has not been confirmed that BrightFarms products

were, in fact, the source of these illnesses. We are continuing to conduct our own thorough investigation with the assistance of a team of outside experts, and we have also assured the FDA and CDC of our full cooperation as they continue their own investigations.”

Less than 24 hours elapsed between when BrightFarms discovered products might be contaminated and when it began contacting retailers, its site said.

BrightFarms said it has previously never had any report of Salmonella

attributed to its Rochelle facility in five years of operation

“Growing produce in a contained greenhouse environment under stringent food safety and sanitation standards minimizes any possibility of contamination,” the BrightFarms site said. “The reports that are currently under investigation are highly unusual and receiving our full and undivided attention.”

If you purchased an affected product, BrightFarms asked that you discard it or return it to its place of purchase for a full refund. Those with

questions can email info@brightfarms.com with the subject line: Recall or call 1-866-857-8745 between 8 a.m. and 8 p.m. ET.

“BrightFarms is committed to providing wholesome products, and the health and safety of consumers is the company’s number one priority,” the BrightFarms site said. “In addition to today’s voluntary recall, the company has already begun taking steps to enhance our already rigorous food safety protocols, and testing all products produced in the Rochelle facility for exposure to Salmonella.”

Country Meadows APARTMENTS

466 Western Ave.
Ashton, Illinois

Housing complex for persons with very low to moderate income who are 62 years of age or older; disabled regardless of age is accepting applications for one bedroom apartments. Rent may be based on income. Income limits apply. Onsite laundry, community room, off-street parking, spacious rooms. Appliances, water, sewer, garbage, heat furnished.

PLEASE CALL (815) 339-2140
For an application or information.



This institution is an equal opportunity provider



*Always Welcoming
New Patients!*

Kelly Ann Tonielli Davis
DNP, APRN, FNP-BC-CME

Davis Family Health LLC
1212 Currency Court
Rochelle, IL
815-561-8500

Appointments Available
Mon., Wed. & Thurs.
Most insurances accepted.



We Fix Boo Boos

WHO IS UNITY HOSPICE?

- Care provided by the entire hospice team: physician, nurse, social worker, certified nursing assistant, chaplain, dietitian, pharmacist, and volunteers.
- Care is individualized and based on the patient's and family's goals of comfort and quality of life.
- Supplies, equipment and medications.
- Service where the patient resides.
- Specialize in pain & symptom management.
- Spiritual enrichment and bereavement counseling.
- Ancillary Therapies: Music, Physical/Occupational, Speech, Massage, Pet, etc.
- Ability to provide education to caregivers and family members.
- On-call nurse available 24/7.
- Volunteers providing special attention and stimulation.
- Assistance with advance directives and community support.
- Provide Education to those we care for

Unity
Hospice and Palliative Care

@unityhospice

CALL UNITY:
(815) 561-8866
915 N. Caron Rd.
Rochelle, IL

**We are now offering
LIPO MINO MIX injections
Introductory price \$25**

Call for an Appointment!

This lipotropic combination of B12 and methionine, an essential amino acid and other B vitamins can promote:

Increase Fat metabolism
Boost Energy Level
Reduce appetite

Mon: 7:30 - 6pm, Wed: 7:30 - 6pm, Thurs: 8 - 1pm, Fri: 7:30 - 4pm
Some Saturday appointments available

DLX Medical GROUP

815-227-9594
1212 Currency Ct.
Rochelle IL
We Accept Most
Insurances and
Patients Without
Insurance

LOCAL VIEWS

Guest column

Hector McDaniel

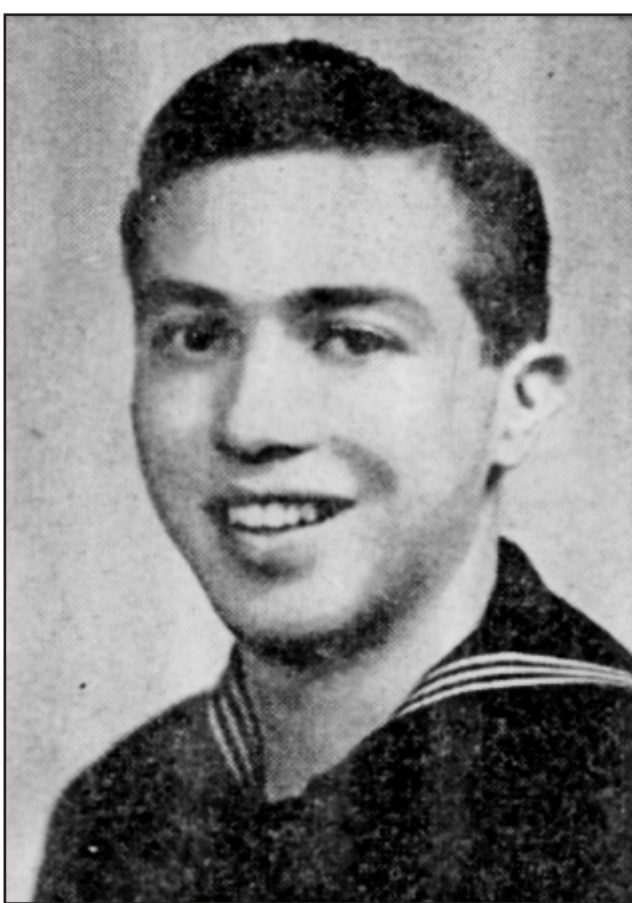
AFTER earning his wings Hector McDaniel took to the air flying scouting and patrol missions in a Catalina PBV. The PBV was an amphibious patrol bomber with a ten member crew.

McDaniel served as co-pilot. Initially Hector served in the central pacific and later moved to the Solomons to co-pilot a B24 bomber. His outfit, VB101 was the first Navy squadron to fly the B24 Liberator.

By 1944 Hector had more than 700 hours of combat flight. He spent his days locating and harassing enemy ships and airfields. It was in 1944 that Hector McDaniel raised the bar and marked himself as a true warrior, and recognized hero. Back in a PBV and flying scouting and patrol missions around the Philippine Islands.

"The President of the United States of America takes pleasure in presenting the Navy Cross to Lieutenant Junior Grade (Ensign) Hector Singleton McDaniel, United States Navy, for extraordinary heroism in operations against the enemy while serving as Co-pilot of a Navy PBV Patrol Plane in Patrol-Bombing Squadron ONE HUNDRED ONE (VPB-101), in action against enemy Japanese during an armed reconnaissance mission over Puerto Princessa and the surrounding areas in the Philippine Islands on 19 October 1944. Boldly sweeping over a concentrated area in a series of devastating runs, Lieutenant, Junior Grade, McDaniel contributed materially to the sinking of two cargo vessels and the destruction of 10 hostile planes on an enemy airstrip despite a deadly barrage of anti-aircraft fire."

Destroying two ships and 10 aircraft is impressive, but it takes more to earn the second highest



award for bravery that the Navy awards.

"Then, in a second attack, he aided in the destruction of three seaplanes and the damaging of three others before his own plane sustained severe damage which made necessary a dangerous crash landing at sea." To fly into heavy enemy fire once was brave, but they returned for a second strike disabling three more enemy aircraft. Then in a heavily damaged plane of their own the PBV crew broke off and headed for their home base. They did not make it. The plane crash landed in the sea.

"With his pilot and three crewmen seriously injured in the landing, Lieutenant, Junior Grade, McDaniel rescued them from the water and got them ashore". After getting four injured crew members to shore the battle was not over. They had come ashore on a Japanese controlled island. The crew of the PBV hid from the enemy. At one time a Japanese bomber crashed near their

hiding spot. The Navy men ensured that the Japanese crew of 14 was eliminated and secured all edibles from the plane.

With this little bit of rice, fish and candy mints added to their supply of coconuts the Americans survived for two months in enemy territory. On the night of Oct. 27 Hector and another crew member slipped of the island on a crudely made raft and took to the open sea. They made their way to another island and reached Filipino Guerillas.

On Dec. 2 the remaining crew members were rescued. "He was largely instrumental in obtaining aid from the Philippine Guerillas, thereby assisting in saving the lives of his six comrades. His airman-ship, exceptional courage and unwavering devotion to duty were in keeping with the highest traditions of the United States Naval Service."

The Navy Cross, Distinguished Flying Cross, Air Medal, Purple Heart, and Gold Star (second Purple Heart). Hector McDaniel was awarded each for his amazing display of courage.



Tom McDermott

Guest column

The ripples of electric vehicles

Iwas wondering what the city was installing in the parking lot on Main Street at Fourth Avenue. Now I know: Electric vehicle charging stations

Electric vehicle sales seem to be on the rise. Charging stations will be a welcome addition to public parking lots and stores. It's pretty progressive thinking on the city's part.

Electric vehicles are becoming popular as people look for ways to cut down on carbon dioxide emissions, one of the major causes of climate change.

Remember throwing a stone into water and watching ripples form?

Electric vehicles can cause ripples. How far can you travel on a charge? How common will chargers be in public parking lots and hotel lots? What do you do when the batteries no longer charge?

All ripples.

One other ripple: how

do we pay for highways?

Currently roads are financed mainly through taxes on gasoline sales. If the sales drops, the revenue drops. If the revenue drops, the taxes will go up to compensate.

Also, as revenue drops roads will deteriorate, and in Illinois they are already pretty bad.

I suppose you could hike the income tax rate, eliminate gas taxes and fund roads that way. But then people who drive from out of state to Illinois don't share the financial pain a good road system requires.

In some European countries, limited access highways require a sticker to use. Even if you don't live in that country, but drive there, you have to buy a sticker. Not having a sticker could result in a huge fine.

Illinois leaders need to start thinking about a plan now. And they have to accept that nobody will be happy with what they

decide.

Weather

I saw a weather map last week that listed Ogle County as one of the top 500 counties in the US for dryness. DeKalb was in the top 250. The west and southwest had some of the driest areas, as we know.

With all the rain we have had, I wonder if that has changed?

COVID

Tennessee is experiencing an increase in Covid cases. Only 38 percent of the population has been vaccinated, and the state health director was recently ousted for encouraging teens to get the jab.

We have to remember that this is a deadly disease that can have long lasting effects on survivors. Heart, lung, and cognitive issues...all are being reported as after effects.

Be safe. For your family, neighbors, and friends.

Terry Dickow can be contacted at terrydickow@gmail.com



Terry Dickow

VOICE ON THE STREET

Question:

With the demolition of the Hickory Grove building recently green-lighted and slated for this fall, what sort of business would you like to see the site developed into in the future?

"A grocery store. PLEASE!"

Emily Page

"Family fun center!! Arcade, roller rink, bounce houses, huge play place. SOMETHING for kids for once!! The REC Center is NOT enough."

Krynn Sage-Hayward

"Total wine and more store and or grocery chain."

Terri J. Yordy

"Something like the tilted in Rockford but something for kids and adults for family."

Shannon Lee MacTaggart-Belmonte

"They should just tear the hotel down too because all the mold and it's falling apart can't be good for the people that live there and start there. They should have tore it down when it was the vagabond."

Rob Sanders

"An arcade/mini golf/fun center for families or teens to do. Being next to the hotel would give an advantage to people who are visiting. Enough stores, enough food joints, enough alcohol stores in this town already."

Tori Rene

"I visited Carmel, Indiana for a basketball tournament this past weekend and visited the midtown plaza. They had a few classy restaurants with a cool outdoor space with pool tables, ping pong tables etc."

Matthew D. Darby

Buy, Sell, Trade or Rent through the CLASSIFIEDS

How to contact government officials

U.S. Con. Adam Kinzinger
1218 Longworth HOB
Washington, D.C.
20515
(202) 225-3635

IL Sen. Brian Stewart
M104A State House
Springfield, IL 62706
(217) 782-0180

IL Rep. Tom Demmer
314 Capitol
Springfield, IL 62706
(217) 782-0535

Have a letter you want to submit to us? Send it to (news@rochelle-news-leader.com)

KEEPING YOU IN TOUCH WITH YOUR LOCAL LEADERS

* Denotes Chairman/President

Rochelle City Council

*John Bearrows jbearrows@rochelleil.us
Kathryn Shaw-Dickey kshaw-dickey@rochelleil.us
Bil Hayes bhayes@rochelleil.us
Rosaelia Arteaga rarteaga@rochelleil.us
Dan McDermott dmcdermott@rochelleil.us
Tom McDermott tmcdermott@rochelleil.us
John Gruben jgruben@rochelleil.us

Rochelle Elementary School Board

*Dave Casey dcillini94@gmail.com
Steve Builta sbuilt@gmail.com
Ashley Jackson
Stephanie White
Eric Van Hise eric.vanhise@gmail.com
Trisha Vaughn jrvtlv02@msn.com
Javier Zepeda jzepeda@rthsd212.org

Rochelle Township High School Board

*Tom Huddleston tom.huddleston@rthsd212.org
Carol Hayenga carol.hayenga@rthsd212.org
Bill Ravnaas bill.ravnaas@rthsd212.org
Jacky Aguilera jacky.aguilera@rthsd212.org
Jeff Tilton jeff.tilton@rthsd212.org
Bobby Chadwick bobby.chadwick@rthsd212.org
Brian VanVickle brian.vanvickle@rthsd212.org

Flagg-Rochelle Park Board

Brent Carmichael bcarmichael@rochelleparkdistrict.org
John Dobbs jdobbs@rochelleparkdistrict.org
Dale Wells dwells@rochelleparkdistrict.org
*Tim Hayden thayden@rochelleparkdistrict.org
Jodie Hart jhart@rochelleparkdistrict.org
Joe Lenkaitis jlenkaitis@rochelleparkdistrict.org

Ogle County Board Dist. 3

Lloyd Droege ldroege@oglecounty.org
Jamey Sulser jsulser@oglecounty.org
Greg Sparrow gsparrow@oglecounty.org

Ogle County Board Dist. 4

Bruce McKinney bmcKinney@oglecounty.org
Skip Kenney skenney@oglecounty.org
Kim Whalen kwhalen@oglecounty.org

Creston Village Board

Wayne Williams jwdw13@yahoo.com
Jennifer Payton
*Tom Byro tommyb_47@yahoo.com
Greg Hopkins ghopkins522@comcast.net
Steve Katzman skatzman@essex1.com
Mike Kerns ac.kerns@comcast.net
Mark Hibshman
Curt Ward caward92@comcast.net

Hillcrest Village Board

Randy Salsbury rsalsbury@hillcrestil.us
Pam Pittman ppittman@hillcrestil.us
Dan Potter dpotter@hillcrestil.us
Richard Rhoads rrhoads@hillcrestil.us
*Jason Fore jfore@hillcrestil.us
Tim Ball tball@hillcrestil.us
Renee Kerwin rkerwin@hillcrestil.us

Flagg Township

*Bob Withrow flaggtwp@rochelle.net
Joanna Patrick flaggtwpcerk@rochelle.net
Susan Rothenberger assessor@rochelle.net
Scott Seebach scottseebach@gmail.com

Board of Trustees

Lance Noggle noggle62@gmail.com
Eric Gruben egruben@comcast.net
Susan Hagar susanhager303@comcast.net
Jim Kenney jimk@rocketsupply.com

Flagg-Rochelle Library

*Jaqueline Dickow dickow@comcast.net
Teresa Haggstad haggstads@comcast.net
Michael Scanlan scanlan@comcast.net
Lanning Nicoloff nicoloff118@comcast.net
Sheri Klindera alwayslefty2@gmail.com
Susan Sevedge nit1prl22@yahoo.com
Darci Waltrip doobs12@comcast.net

LETTERS TO THE EDITOR POLICY

The Rochelle News-Leader encourages responsible letters to the editor on subjects of interest to our readers. Editing may be necessary for space, clarity or to avoid obscenity or libel, but ideas will not be altered. All letters must bear the handwritten signature of the writer and include address and phone number or e-mail address for verification purposes. Neither the street address nor phone number will be printed. Letters should be typed or legibly

handwritten, and no anonymous letters will be published. Any letters from boards or organizations must include at least one name of an individual. Any criticism of public officials should be limited to issues related strictly to their position or actions made in office, as personal attacks will not be published. Letters involving private disputes between the writer and a business will not be published. Political endorsements will be published,

however letters from candidates endorsing themselves will not be printed. Letters may be dropped at the News-Leader office (211 IL Route 38 East), mailed to the News-Leader (P.O. Box 46, Rochelle, IL 61068) or e-mailed (news@rochellenews-leader.com.) The News-Leader reserves the right to edit or reject any letter to the editor for any reason, and letters chosen for publication do not necessarily reflect the views of this newspaper.

COMMUNITY

Van Hise makes Wisconsin-Platteville chancellor's list

PLATTEVILLE, Wis. — The University of Wisconsin-Platteville announced its chancellor's list, honoring those with perfect 4.0 grade-point averages for the spring 2021 semester. Included on the list was Katelyn M. Van Hise of Rochelle, who is majoring in biology.

Kish debuts agriculture workshop series

MALTA — Kishwaukee College's Community Education program has launched a new agriculture workshop series that highlights various aspects of farming and food production.

The new series features several different classes this summer that will teach participants self-sustaining farming practices, which can be turned into entrepreneurial opportunities. Local experts will explore topics such as vegetable gardening, raising sheep, beekeeping and more. All courses will take place virtually.

"Food and farming offer a lot of opportunities for our local community," LaCretia Konan, dean of workforce & community education, said. "These courses allow anyone with an interest in agriculture to take initiative and create a positive impact for themselves and their environment."

The following courses will be available in the coming weeks:

Start your edible garden: learn how to grow fruits and vegetables in your own backyard. Landscape designer and gardener Katie Powell-Lee will teach the instructor-led courses, which begin Aug. 18, Sept. 15 or Oct. 13. Additionally, a self-paced course can be started at any time. The cost is \$126.

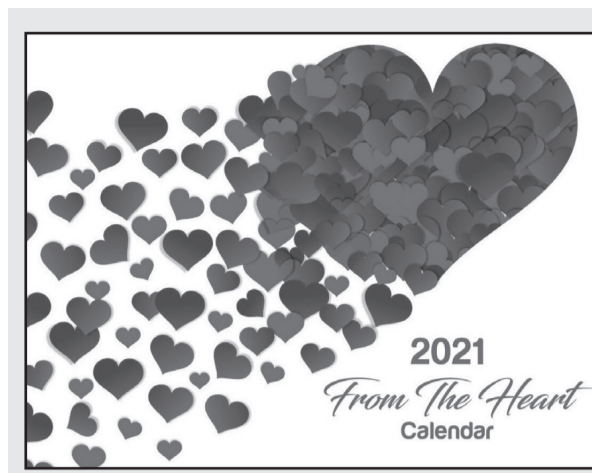
Hobby farming: raising sheep: learn the basics of raising sheep on a small-scale farm from instructor Nicole Speizio-DePaz. The class takes place from 6-7 p.m. Tuesday, Aug. 3, via Zoom. The cost is \$8 per person.

Why homegrown and handmade: instructor Deborah Niemann will demonstrate the benefits of having a garden, milking goats and cooking from scratch. The class takes place from 6-7 p.m. Tuesday, Aug. 17, via Zoom. The cost is \$8 per person.

Hobby farming: goat milk soap — Jill Franke of Tin Shed Farm in Sycamore will teach the benefits of using and making your own goat milk soap. The class takes place from 6-7 p.m. Wednesday, Aug. 18, via Zoom. The cost is \$8 per person.

The bees and me: local expert Larry Kregel will provide insights on beekeeping and how to start your own colony. The class takes place from 7-8 p.m. Wednesday, Aug. 18 via Zoom. The cost is \$8 per person.

For more information on Kishwaukee College's Agriculture Workshop Series, or to register, visit www.kish.edu/ag-workshops or contact Melissa Gallagher, director of short-term training & continuing education, at 815-825-9466 or mgallagher1@kish.edu. Additional classes may be added to the series.



- June 26 - Diane May, Volvo, \$25
- June 27 - Emily Shrimplin, West Brooklyn, \$50
- June 28 - Cheri McGee, Rochelle, \$25
- June 29 - Rochelle Area Community Foundation, \$25
- June 30 - Tom Ellis, Steward, \$25
- July 1 - Colette Eckhardt, Rochelle, \$25
- July 2 - Peggy Nowicki, Madison, Wis., \$25
- July 3 - Johnson Tractor, Rochelle, \$25
- July 4 - Gabriela Ortiz, Rochelle, \$1,000
- July 5 - Rotary, Rochelle, \$25
- July 6 - Rex Renner, Rochelle, \$25
- July 7 - Mungor - ClarkDietrich, Rochelle, \$25
- July 8 - Arlyn VanDyke, Rochelle, \$25
- July 9 - Don Stevens, Oregon, \$25
- July 10 - Mindy Venners, Rochelle, \$25
- July 11 - Robinson Scheider (ClarkDietrich), Rochelle, \$50
- July 12 - Steve's Complete Automotive, Rochelle, \$25
- July 13 - Tiffany Smith, Rochelle, \$25
- July 14 - Rochelle Area Community Foundation, \$25
- July 15 - Rochelle Foods (Matt Thimjon), \$25
- July 16 - Chad Wilcor, Franklin Grove, \$25
- July 17 - Hourselt - ClarkDietrich, Rochelle, \$25
- July 18 - David Swanson, Fitchburg, Wis., \$50
- July 19 - Vicki Langholf, Yellville, Ark., \$25
- July 20 - Lisa Dyer, Rochelle, \$25
- July 21 - Carrie Mairs, Ashton, \$25
- Checks to winners will be mailed out at the end of each month

Birthdays & Anniversaries

July 21 Gavin Arnold	July 24 Paige Komadina Juliana Kann Jackson Kann	Bonacquisti Brian & Kelly Smith
July 22 Kayla Peterman John & Deb Wooten Alexie Smith	July 26 James Friestad	July 28 Marisa McGuire
July 23 Elmer Lopez	July 27 Pastor Angelo & Debbie	

THE KITCHEN TABLE MENU

July 22 (Thursday) - Stir Fry: chicken, carrots, celery, onions, broccoli, cauliflower over rice

July 27 (Tuesday) - Thanksgiving Dinner: Shredded turkey, mashed potatoes, gravy, green beans, corn, dinner rolls

July 29 (Thursday) - Pork medallions with roasted carrots and thyme potatoes

Aug. 1 (Sunday) - Brunch: Sausage gravy and biscuits, blueberry oatmeal,

ham, egg and cheese sandwich

KIDS MENU: Chicken Nuggets w/Fries

**All menus are subject to change. If you would like to check before coming out, please call us at 815-561-9074 as we will put the menu on the answering machine.

www.KitchenTableRochelle.org

Coffee Break

King Crossword

ACROSS

1 Circulate

5 Jolly laugh

9 Lustrous black

12 Zero, in tennis

13 Scent

14 — glance

15 Border on

16 Reply to "Shall we?"

17 Rug cleaner, briefly

18 Gestation location

19 Goat's plaint

20 Roman censor

21 Fib

23 Medit. nation

25 Cellist Pablo

28 Keep perusing

32 Muscat resident

33 Sky blue

34 Lively dances

36 "Be that as it may ..."

37 Sch. URL ender

38 Atty.'s title

39 Libretto

42 Plead

44 "Oops!"

48 Priestly garment

49 Competent

50 Tiny bit

51 2016

1 2 3 4 5 6 7 8 9 10 11

12 13 14

15 16 17

18 19 20

21 22 23 24

25 26 27 28 29 30 31

32 33

34 35 36

37 38

39 40 41 42 43 44 45 46 47

48 49 50

51 52 53

54 55 56

6 Classic theaters

7 Empty talk

8 Hosp. areas

9 Coffee

10 Coup d'—

11 Mexican entree

20 Hodgepodge

22 Homer classic

24 Penn and Connery

25 Police officer

26 "I love," to Livy

27 Bando of baseball

29 "Gee, ya think?"

30 Spanish gold

31 Just out

35 Filled in

36 Sea off Greece

39 Old salts

40 Author Wiesel

41 PlayStation alternative

43 Vogue rival

45 60 minutes

46 "Beetle Bailey" dog

47 Vague

49 Lawyers' org.

© 2021 King Features Synd., Inc.

Weekly SUDOKU

by Linda Thistle

9					6		3	
		8		7				2
	3		9			4		
		4			5		9	
2			3		9			6
	6			1		8		
		2			4			1
	7		5			3		
1				6			7	

Place a number in the empty boxes in such a way that each row across, each column down and each small 9-box square contains all of the numbers from one to nine.

DIFFICULTY THIS WEEK: ♦♦

♦ Moderate ♦♦ Challenging
♦♦♦ HOO BOY!

© 2021 King Features Synd., Inc.

CryptoQuip

This is a simple substitution cipher in which each letter used stands for another. If you think that X equals O, it will equal O throughout the puzzle. Solution is accomplished by trial and error.

Clue: **C** equals **L**

F C B H W T F I C C O C H X F P J H W W Z F I X
W A M Z . O A S ' B F J F I T P J H W M I E A S W
Z S V F " C A B F E F I Z Z F V P F T . "

©2021 King Features Synd., Inc.

6 7 5 2 6 8 3 4 1

2 2 1 3 6 5 9 8

4 2 4 1 8 9 4 3 7 2 2 6 5

5 4 4 5 8 4 7 1 2 2 6 9 3

9 1 7 1 6 4 3 5 8 2

3 6 2 5 2 8 9 4 1 7

7 4 5 4 8 4 2 6 1 3 9

2 9 6 3 7 1 8 5 4

8 1 3 6 5 4 7 2 9

Answer

O O U T I R Y

Z I U L A

A T O I

H O H

M O H A N

N O O U R E

3 O S E

7 O T

2 C A T

6 O

5 E

4 A

3 B

2 E

1 X

8 I

9 R

6 S

5 E

4 T

3 A

2 O

1 W

Answer

Solution time: 21 mins.

King Crossword

Weekly SUDOKU

CryptoQuip

Answer

Solution time: 21 mins.

Elvis really liked his steak

soft. You've heard his famous

tune "Love Meat Tender."

SPORTS

Rochelle Little League

11U Baseball All-Stars qualify for state tourney

Rochelle beats Ottawa, falls to Bartlett-HP at Peru Sub-State Tournament

BY RUSSELL HODGES
SPORTS EDITOR

PERU—The Rochelle Little League 11U Baseball All-Stars battled in the Peru Sub-State tournament over the weekend, finishing 1-1 with an 8-0 victory over Ottawa on Saturday and a 5-4 loss against Bartlett-Hanover Park on Sunday. Rochelle will advance to the Illinois Little League State Championship tournament in Moline beginning Saturday, July 24.

Ottawa

Holden Liebhaber tossed a complete game for Rochelle, striking out three batters and allowing only two hits in six innings. Luke Chadwick went 2-for-3 with one triple and two runs scored to lead the Rochelle offense, while Brayden Harley singled and recorded one RBI. Elijah Schweitzer doubled and totaled one RBI. Liebhaber, Dayton Mellor and John Williams each had one RBI.

Rochelle took a 1-0 lead in the bottom of the second inning after Williams drew a bases-loaded walk to score Liebhaber. Schweitzer's RBI double plated Luke Chadwick in the bottom of the third inning, putting Rochelle ahead 2-0 before Liebhaber's RBI single scored Schweitzer.

Leading 3-0, Rochelle added five runs in the bottom of the fourth inning. With the bases loaded, Williams scored on a



(COURTESY PHOTO)

The Rochelle Little League 11U Baseball All-Stars went 1-1 at the Peru Sub-State Tournament over the weekend. Rochelle qualified for the Illinois Little League State Championship in Moline later this week. The team includes Luke Chadwick, Bo Lundquist, Elijah Schweitzer, Brayden Harley, Holden Liebhaber, Jace Spears, Dayton Mellor, Aidan Lopez, John Williams, Joey Chadwick, Mikey Chadwick, Gabe Bybee, Korbin Milos and Riley Smith. The boys are coached by Corey Kreider, Dave Williams and Mike Chadwick.

passed ball before Harley's RBI groundout scored Bo Lundquist, who singled earlier in the frame. Luke Chadwick scored on a passed ball to make it a 6-0 game before Mellor plated Mikey Chadwick with an RBI single and Jace Spears stole home plate.

B-HP

Holden Liebhaber

threw the first two innings for Rochelle, striking out four batters and allowing one hit and zero runs. Elijah Schweitzer struck out four batters in two innings of relief before Luke Chadwick pitched the final two innings, striking out six batters. Chadwick doubled, singled and totaled one RBI on offense, while Dayton Mellor and

Korbin Milos each recorded one RBI.

Bartlett-Hanover Park went ahead 1-0 with one run on one walk and one single in the top of the third inning. Rochelle fell behind 2-0 in the top of the fourth inning after Bartlett-Hanover Park drew a walk and scored on an error. Back-to-back fielder's choice grounders

from Mellor and Milos plated Schweitzer and Liebhaber to tie the game 2-2 in the bottom of the fourth inning.

Luke Chadwick doubled and scored on an error to give Rochelle a 3-2 lead in the bottom of the fifth inning. Bartlett-Hanover Park rallied for three runs in the top of the sixth inning, though,

putting Rochelle behind 5-3 entering the bottom of the sixth inning. Aidan Lopez reached on a hit-by-pitch and scored on Luke Chadwick's RBI single, but a groundout ended the frame.

The 11U team is 3-1 through four postseason games. The state tournament will run through Friday, July 30.

COMMUNITY BOARD

**Need to get the word out about a product
or service you offer?**

Give us a call at 815-562-4171.

We can reach over 9,000 homes!



Advertise Here

**What Service
Do You Offer?**

562-4171

The Rochelle News-Leader

Gutters



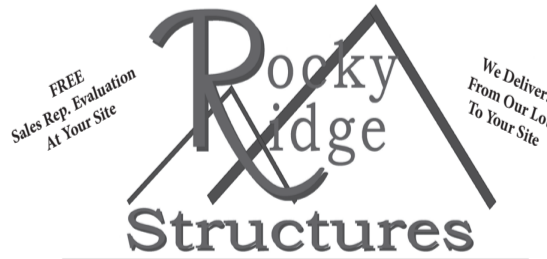
ALL ALUMINUM

- Will Not Rust, Chip Or Peel
- Most Colors Available
- Manufactured On The Job

815-758-8998

257 W. Stephanie Dr., Cortland
www.theisenroofing.com

Storage Sheds



We Specialize in Portable/Quality Built Storage Sheds

- Stock & Custom Design
- Many Options Available
- Competitive Pricing
- Site Preparation Available

See Displays at 3500 S. Chana Rd. Chana IL 61015

Call Norm or Albert for Free Literature packet

779.861.3542

Plumbing/Heating/Cooling

**Anderson
Plumbing & Heating Inc.**
Serving Rochelle For Over 40 Years

LENNOX

Quality Service • Free Estimates
Residential & Commercial

815-562-8784

Lic.#058-087891

Heating & Air Conditioning

**HULL
HVAC & Household Services**

Furnaces - Air Conditioners - Boilers
Duct Cleaning - Water Heaters

Air Conditioner
Clean & Check

\$45.00

After \$35 rebate.

Promotion only available to RMU customers.

Expires: 08/31

Ask about duct cleaning
and
antimicrobial fogging.

815-561-6551

www.HullHVAC.com

Recipient of the 2020 BBB Complaint Free Award.

Commercial & Residential Roofing



**Residential
Concrete
Driveways, Flatwork
and Foundations**

- Shingled Roofs • Flat Roofs
- Metal Roofs For Farm Facilities
- Custom Built Homes • Additions

**FREE
ESTIMATES**

561-0099

Tim & Roger Brun's, Owners
Established 1997

www.brunconstructioninc.com

Antiques & Collectibles

- ★ Retro
- ★ Vintage
- ★ Collectibles
- ★ Antiques



- ★ Consignments
- ★ Crafts
- ★ Furniture
- ★ Booth Space Available

Closed
Sunday &
Monday

Flea Market Saturday, Aug. 21 8a-2p

708 Lincoln Ave., Rochelle, IL • 815-562-7915

Follow us on Facebook for all updates



Classified Marketplace

ROCHELLE • HILLCREST • CRESTON • STEWARD • KINGS • ASHTON



NEW MILFORD REFRIGERATION

NEW, USED SCRATCH & DENT

- Refrigerators • Freezers
- Washers/Dryers • Stoves

We also carry a large selection of refurbished appliances with a warranty.

6331 11th Street, Rockford
815-874-2257

11222020

240 ACRES* FARM EQUIPMENT & DEKALB COUNTY LAND AUCTION *240 ACRES

Having decided to retire from farming I will sell my Late model Line of Farm Equipment at no reserve to the highest bidder at our farm Located 1 mile East of Waterman, Illinois on US Rt. 30 to Crego Road, Then north on Crego Road 1.5 Miles to farm

SATURDAY JULY 31st @ 10:30 a.m.

Auctioneers Note: Most of the equipment was bought new by Roger and was just used on their 320 farm. A Super Clean line of equipment used on small family farm acreage. All Tractors and Combine will be fully service with oil changes and filters and will be field ready!

TRACTORS

2010 Versatile 2375 4WD, 12 spd. trans., 2548 hours, AC, AM-FM-WB-CD radio, 1000 PTO, 4 hyd. outlets, 20.8X42 tires & duals, 2012 Kubota M-135X, FWA, 16 spd. powershift, 1512 hours, AC, AM-FM-WB-CD radio, 540 & 1000 PTO, 3 hyd. outlets, 9400 lb. 3pt. Complete ft wts, bought New.2005.

Kubota M-7040, FWA, 8 spd. hyd. shuttle, 1688 hours, 540 PTO, 1 hyd. outlet, 3 pt., Sells Kubota LA1153 loader. Bought new.

1965 John Deere 4020, synchro, 9185 hours, 540-1000 PTO, single hyd. outlet, 900 hours on complete engine overhaul.

GRAIN HANDLING EQUIPMENT

2001 CIH 2366 combine, 3043 eng. hours, 2333 rotor hours, AC, AM-FM radio, 600 series grain monitor, 30X32 tires, Rock Trap, hyd. reverser, 2 spd. rotor, Mauer foldable bin ext., 2 spd. Chopper. Selling after the combine; CIH 1063 6 row 30"corn head with transport trailer. IH model 820 20' grain head, pipe reel with a 672 EZ Trail 21' head trailer (Youngs Agri Service style head) 2-1055 Killbros 550 bushel wagons, lights, brakes, super single tires; 3-EZ Trail 400 bushel wagons on 1374 EZ Trail gears, 16.5X16.1 tireS; 2-Bradford 316 bushel wagons on 1074 EZ Trail gears Barge box with hyd. lift; Farm King 10"X80' hyd. lift auger with swing away hopper; Farm King 10"X70' hyd. lift auger with low profile swing away hopper (2010) Feterl 10"X72' hyd. lift auger with swing away hopper (2012) Hutchinson 8"X32' electric 3 phase auger, 7 1/2 hp., (2007) Feterl 10"X44' auger with hopper; Farm Fans Inc 2007 model CF/AB 460 bushel grain dryer, 3 phase, LP burner, with inline Kleen Air grain cleaner, 1900 hours; Brock Wet Bin 2007 model 3500 bu. w/ 8" auger, 10 hp 3 phase motor; 20' silo conversion kit, aeration floor, 27' unload auger/w 5 hp. motor, 5 hp. fan, 10' bin sweep, kit includes 190 cement blocks & 2"x8"s, 63' of flashing;

TILLAGE & FARM EQUIPMENT

2016 Kinze 3200 12 row Econo Fold planter, KPM 3 monitor, Kinze bean meters & corn fingers, hyd. fold markers, no-till lead coulters, row cleaners, 1/2 planter electric shutoffs, center flex frame, Only 612 acres of corn & 918 acres of beans planted! CIH 530 B Ecolo Tiger disc ripper with 2" straight points, 7" & 10" wing points, rear mounted leveling disks; John Deere 726 soil finisher, 21'9" width, 10" sweeps, 5 bar mounted spike drag; Hardi Navigator 1000 gallon sprayer, 60' booms with hyd. tilt, triple nozzle bodies, chemical inductor, foam markers, Hardi 2500 controller, Hardi diaphragm pump, 540 PTO, 12.4X42 tires; Blue Jet ST2 5 shank inline ripper with spring & fall points; Unverferth model 300 3 pt. implement caddy; Land Pride Rear Blade model RB55120, hyd. tilt, hyd. swing, turns 180 degrees; Woods 2012 Batwing model BX180XQ 15' mower, foam filled tires, chain shielding 1000 PTO. Brand New Never used or mounted a Woods 2011 Backhoe model 1050, 18" bucket, 3 pt. hitch mount, PTO run hyd. Pump;

FARM & SHOP TOOLS

2007 KatoLight 85 KW 3 phase Generator with 50' of #4/0 AWG electrical cable, 1000 PTO; Winco 15 KW single phase generator, 540 PTO; 100 gallon portable fuel tank with 12 volt pump & filter on a 3pt hitch carrier; older woodworking equipment: table saw, band saw, misc. hand saws & drills, screws & nails; misc. shop tools, wrenches, jacks, bolts etc. 1-Lincoln 225 amp AC welder & 1-Westinghouse 300 amp AC welder with 100% duty cycle1-60 gallon air compressor & 1 portable 30 gallon compressor. **TERMS:**Cash, Checks, Credit Cards w/ 3% convenient fee added. Not Responsible For Accidents, Injury or Theft. Announcements made day of sale take precedence over all other advertisement. Inspection and Viewing of equipment July 29-30 10a.m.-5p.m. Bring your trailers and a friend. We will provide loader on site. Lunch on site by BIG D'S. Make plans to join us for this great Land & Equipment Auction

ROGER THORPE, Owner.
240 ACRES THORPE FARM LAND AUCTION
STARTING AT 3:00 P.M. Same Location

THIS HIGHLY PRODUCTIVE FARM HAS AND AVERAGE CROP PRODUCTIVITY INDEX OF 141. LOCATED IN SECTION 24 OF CLINTON TWP., WITH FRONTAGE ON CREGO AND BASTIAN ROADS.

THE FARM IS BEING SOLD AS 2 PARCELS EACH CONTAINING 120 ACRES M.O.L. AND WILL BE OFFERED BY THE SURVEYED ACRE PREPARED IN MAY OF 2021.

PARCEL #1 CONTAINS 120 ACRES, IMPROVED WITH A 1,975 sq.ft. HOUSE, FARM BUILDINGS, SILO AND GRAIN BINS. PARCEL #2 CONTAINS 120 ACRES OF BARE FARM LAND.

THE FARM HAS 230.13 M.O.L. TILLABLE ACRES WITH 10 ACRES M.O.L. OF NON TILLABLE LAND WHICH CONTAINS THE BUILDINGS, HOUSE AND ROADWAYS.

TERMS on Real Estate: \$20,000 DOWN ON AUCTION DAY ON EACH PARCEL. BALANCE DUE AUGUST 31 2021. SELLERS WILL PROVIDE GUARANTEE TITLE COMMITMENT AND SURVEY. ANNOUNCEMENTS MADE DAY OF SALE TAKE PRECEDENCE OVER ALL OTHER ADVERTISEMENT. PROPERTY BEING SOLD AS-IS WITH NO CONTINGENCIES. CALL STEVE ALMBURG ANY TIME TO INSPECT HOUSE AND BUILDING SITE. LAND BIDDERS PACKETS AVAILABLE ON SALE DAY TO REGISTERED BIDDERS OR ON OUR WEBSITE. CONTACT STEVE ALMBURG AT 815-739-3703.

COLOR PICTURES AND MAPS ON OUR WEB SITE
www.almburgauctions.com

CLARENCE W. THORPE TRUST 101, owner
James Stoddard, Attorney for seller 815-748-0380
Almburg Auctioneering Malta, Illinois 815-739-3703

ALMBURG AUCTIONEERING

ILLINOIS AUCTIONEERS

815-739-3703

Illinois Auction License #040009209

CLARENCE W. THORPE TRUST 101, owner
James Stoddard, Attorney for seller 815-748-0380
Almburg Auctioneering Malta, Illinois 815-739-3703

All Our Auctions With Pictures Are Advertised Worldwide @ www.almburgauctions.com

APPRAISALS
REAL ESTATE
LIQUIDATORS

19, 2021 at the Ogle County Educational Cooperative office building located at the above address, within the boundaries of this Joint Agreement. By the Executive Board of the Ogle County Educational Cooperative, District SEJA/801, in the County of Ogle, State of Illinois.
No. 0712 (July 19, 21)

101 LEGAL NOTICE

This publication does not knowingly accept fraudulent or deceptive advertising. Readers are cautioned to thoroughly investigate all ads, especially those asking for money in advance.

105 BUSINESS OPPORTUNITIES

"This publication does not knowingly accept fraudulent or deceptive advertising. Readers are cautioned to thoroughly investigate all ads, especially those asking for money in advance."

113 FINANCIAL

NOTICE Advance Fee Loans or Credit Offers Companies that do business by phone can't ask you to pay for credit before you get it. For more information, call toll-free 1-877-FTC-HELP. A public service message from your hometown newspaper and the Federal Trade Commission.

203 HELP WANTED

The Rochelle News-Leader has an opening for:

OFFICE SUBSTITUTE FOR PAPER ROUTES

This position requires flexibility for when a route opens up or carrier is not able to deliver, that this person would stop in and deliver that route. In Rochelle area only. Must be at least 18 years old, must also possess a valid drivers license, proof of insurance and safe driving record. Have reliable transportation and a flexible schedule. Pay is hourly plus mileage.

For more information contact Wanda at

ROCHELLE News-Leader
211 Hwy. 38 E. 815-561-2112

2112019

Want To Teach Your Kids About Responsibility?

The Rochelle News-Leader has five openings for newspaper carriers.

- Must be 10 years or over
- 2 deliveries per week
- Most routes take less than 45 minutes
- No collecting
- A great place to teach your child about responsibility - and the rewards of earning their own spending money
- Adult carriers are welcome, too!

Contact Wanda at the Rochelle News-Leader office
211 E. Hwy. 38, 561-2112

ROUTE 16-17
200-1000 BLOCK LINCOLN HWY., N. MAIN STREET, N. 2ND STREET, N. 3RD STREET AND AVENUES IN BETWEEN

ROUTE 24-25
SOUTH 1ST, 2ND 3RD STREETS & AVENUE IN BETWEEN

ROUTE 28
SOUTHVIEW DR., WILLIS AVE., LAKE LIDA LANE AREA

ROUTE 07-08
N. 8TH STREET, N. 9TH STREET, N. 10TH STREET, N. 11TH STREET, N. 12TH STREET, 800-1100 BLOCK & AVENUES IN BETWEEN

ROUTE 11-12
N. 9TH, 10TH, 11TH & 12TH STREET AND AVENUES IN BETWEEN

HW

119 ANNOUNCEMENTS

"This publication does not knowingly accept fraudulent or deceptive advertising. Readers are cautioned to thoroughly investigate all ads, especially those asking for money in advance."

127 SERVICES AND REPAIRS

JNJ JUMPERS Indoor/ Outdoor Bounce House Rentals Available Year Round. Please Call 815-784-4256 For Availability or Visit us on Facebook.

201 DOMESTIC/CHILD CARE

NO INDIVIDUAL, unless licensed or holding a permit as a childcare facility, may cause to be published any advertisement soliciting a child care service. A childcare facility that is licensed or operating under a permit issued by the Illinois Department of Children and Family Services may publish advertisements of the services for which it is specifically licensed or issued a permit. Your Hometown Newspaper strongly urges any parent or guardian to verify the validity of the license of any facility before placing a child in it's care.

Recycle

203 HELP WANTED

N E W S P A P E R CARRIERS Wanted. (Rochelle) Several Routes Open. Call 815-561-2112 For More Information.

ASHTON - Bartenders and Waitresses Needed, Apply in Person at Ralphie and Lulu's. 812 Main Street in Ashton or call 815-453-2103. (TFN)

301 ANTIQUES

WANTED TO BUY: Vintage Metal and Wood Signs, Milk Bottles & Local Advertising, Oak Icebox, Iron Door Stop and Antique Lighting... Call Dick Harms at 815-562-2928 or email dickharms@hotmail.com

ANTIQUES WANTED: I pay cash for antiques; furniture, glassware, pottery & crocks, tin & iron toys, sterling silver, decoys. If it's antique, I'm interested in looking! Call 815-562-2928 or email dickharms@hotmail.com

305 GARAGE/RUMMAGE SALES

ROCHELLE : 251 South (1020 S 7th St. North of Johnson Tractor) Thursday July 22 8am-5pm. One Day Only. Multi Family Yard Sale. Handcrafted Woodworking Items, Including Buckets and Barrels, Railroad Crossing Lights, Antiques, 1969 John Deere Patio Tractor, Tons of Tools (Power, Woodworking and Hand Tools) Bolts of Upholstery Fabric, Antique Wheels, Household Items and Much More. (07-21-21)

307 MISCELLANEOUS FOR SALE

LIFT Chair Some Wear, Works Great \$150, Kimball Organ, Needs Tuning \$150 Call 815-734-6597. (07-21-21)

PUSH Lawn Mower Runs Good, \$50 Call 815-762-5644. (07-21-21)

405 HOUSES FOR SALE

ALL REAL ESTATE advertised herein is subject to the Federal Fair Housing Act, which makes it illegal to advertise any preference, limitation or discrimination based on race, color, religion, sex, handicap, familial status, or national origin, or intention to make any such preferences, limitation

405 HOUSES FOR SALE

or discrimination. We will not knowingly accept any advertising for real estate which is in violation of the law. All persons are hereby informed that all dwellings advertised are available on an equal opportunity basis.

ADVERTISE WITH US

INFORMATION

Office Hours:
8 a.m. to 5 p.m. (Monday-Friday)
Phone:
815-562-4171
Fax:
815-562-2161
Email:
classifieds@rochellenews-leader.com
Address:
211 Hwy. 38 E., Rochelle
Mail:
P.O. Box 46
Rochelle, IL 61068

DEADLINES:

Sunday News-Leader:
Thursday, 2 p.m.
Tuesday Shopping News:
Friday, 10 a.m.
Wednesday News-Leader: Monday, 4 p.m.
(Deadlines subject to change during holiday times)

All classified marketplace line ads will appear in the following 7 print publications and on 5 high-traffic newspaper websites:
• Rochelle News-Leader • Ogle County Life • Rochelle Shopping News • Ashton Gazette • Amboy News • Mendota Reporter • Mendota Money Saver

Call for pricing that starts at \$32.99 for private party ads and \$44.60 for commercial business ads and \$19.99 for garage sale ads.

DISCLAIMER:

If your advertisement appears incorrectly, notify us immediately. We will not be responsible for more than one incorrect insertion, and will only credit customer for one insertion.

CLASSIFIEDS
Rochelle News-Leader



The businesses featured on this page are
"Hubs Super Fans"
 They proudly support our local athletes and students.



Please show your appreciation by patronizing their businesses.

WE SUPPORT OUR HUBS!

**GO
HUBS!**

Local People Providing Local Service

Rockelle
MUNICIPAL UTILITIES

Water • Waste Water
Electric • Communications

Phone: 815-562-4165 333 Lincoln Highway
Fax: 815-562-6861 Rochelle, IL
www.rmu.net



MORTON BUILDINGS

If you can dream it, we can build it.



Rockelle Sales Office • Hwy. 251 N. • 877-613-3050



Busy Schedule?
Leave the cooking to us.

- Large menu of foods
- Rochelle's famous chicken by the dinner or bucket
- Hand dipped ice cream (16 flavors)

COUNTRY SCHOOL
DRIVE-IN RESTAURANT
251 N. ROCHELLE • 562-6039



HUB SPOTLIGHT



(PHOTO COURTESY OF CENTRAL COLLEGE ATHLETICS)

Former Rochelle football player **Greg Ricketts** went from the scout team as a freshman to becoming a starting outside linebacker for Central College this season.

Ricketts shines during short sophomore season

BY **RUSSELL HODGES**
SPORTS EDITOR

FOR Rochelle Township High School graduate Greg Ricketts, two football games were better than none. While several colleges and universities across the country canceled their entire 2020 football seasons because of the COVID-19 pandemic, Ricketts had an opportunity to compete in a condensed two-game spring season for Central College in Pella, Iowa earlier this year.

Ricketts made the most of his brief time on the gridiron, earning a starting role at outside linebacker and helping lead the Dutch to victories over Simpson and Nebraska Wesleyan. After serving as a scout team player during his freshman season, Ricketts elevated his game as a sophomore, totaling seven tackles, two pass breakups and one-half tackles for loss. With his junior season only weeks away, Ricketts has stayed in Iowa to continue his training.

"I thought I made some big strides during the pandemic and I was able to start on defense while also playing a lot of special teams during our spring season," Ricketts said. "I think I'm going to have a very similar role going into my junior season and I think I'll see a significant amount of snaps. I'm looking

forward to competing in the fall and playing at a high level... My football experience has been fantastic and I'm so glad I chose Central College. I've created relationships with both my coaches and my teammates that I wouldn't trade for anything."

The Dutch are now 12-2 in the two seasons Ricketts has suited up for the football program. After winning a conference championship during his freshman season, Ricketts said he and his teammates have lofty expectations for the 2021 campaign. Feeling faster and stronger than he's ever felt, Ricketts said the consistent training he and his teammates have completed throughout the offseason will be a key factor in how Central College will fare this fall.

"We want to repeat as conference champions and that's our focus right now," Ricketts said. "I want to give everything I can to this team and I want my teammates to see me as the guy who gives everything he has during practice and in games... I've always been a football player who stays in the right spot and doesn't miss assignments. I felt like I did that well this past season, but I think I'm ready to take my game to the next level and really start making some plays. Where I want to improve most is making the unexpected plays and elevating my game."



We are
Ogle
County's
only
GM Dealer!

- Collision Repair
- 24 Hour Towing
- New/Pre-owned Vehicles
- Tire Alignments, Brakes, Belts
- Rental Cars
- Maintenance On All Makes and Models

JEFF PERRY

CHEVROLET • BUICK • CADILLAC • JEEP • CHRYSLER
815-562-8787 • www.jeffperrychevrolet.com



209 Powers Road, Hwy 251 N
Rochelle, IL 61068
(815) 562-8792
www.meyersfurniture.com



900 N. 2nd Street, Rochelle
815-562-2181
www.rochellehospital.com



SALES • PARTS • SERVICE

1030 South 7th Street
800.262.1680

www.johnsontractor.com



Residential, Concrete
Driveways, Flatwork
and Foundations

815-561-0099
Licensed & Insured



HUB-REMSEN
PRINT GROUP

101 Maple Ave • Rochelle, IL 61068
815.562.7057 • hub-remsen.com



926
Custom Embroidery

- Custom Embroidery
- Direct to garment printing
- Custom Heat Transfer
- 1,000's of products available
- Fast Turn Around
- No Minimum Order



Rochelle's #1 Stop for all your Custom Logo Wear Needs.

Downtown Rochelle • 815-561-9500 • 926customembroidery@gmail.com

M-F 10-5, Sat. 9-12

SPORTS

Rochelle Little League

10U Softball All-Stars secure win over Freeport

Rochelle team forces rematch for District 19 title with 28-17 victory

BY RUSSELL HODGES
SPORTS EDITOR

FREEPORT — The Rochelle Little League 10U Softball All-Stars outlasted Freeport 28-17 in a wild back-and-forth affair on Saturday to force a rematch for the District 19 Championship title. The winner will advance to the Illinois Little League State Championship tournament. Ella Behrens threw two and two-thirds innings, striking out six batters and allowing three hits. Mya Martinez closed the game out, striking out two batters in one and one-third innings. Chloe Escatel went 5-for-5 with four runs scored and one RBI, while Martinez and Braley McGee each recorded two RBIs. Martinez finished 4-for-4 and scored four runs in the victory.

Rochelle took a 1-0 lead in the top of the first inning after Escatel singled and scored on Martinez's RBI single. Freeport bounced back with three runs on three walks in the bottom of the first inning. Trailing 3-1, Rochelle scored three runs in the top of the second inning to take a 4-3 lead. Neveah Rodriguez slapped an RBI double to plate Jamie Riddell before Rodriguez stole home to tie the game. Isadora Hueramo walked and stole home to put Rochelle ahead.

Freeport went ahead with five runs on four walks and two singles in the bottom of the second inning. Down 8-4, Rochelle exploded for nine

runs in the top of the third inning. McGee singled and Martinez doubled before both players stole home. Elise Hardcastle dished out an RBI single to plate Rodriguez and make it an 8-7 game. Hueramo and Hardcastle both stole home to put Rochelle ahead before Escatel's RBI single to second brought Misha Krawcewicz home.

Escatel and Ariana Hueramo both stole home, giving Rochelle a 12-8 lead before Riddell scored Martinez with an RBI single to third. Freeport recovered with six runs on five walks and one single in the bottom of the third inning to slip ahead 14-13. Rochelle exploded for 15 runs on nine walks, six singles, one double and one hit-by-pitch in the top of the fourth inning to take a 28-14 lead before Freeport tallied three runs in the bottom of the fourth inning.



Chloe Escatel hits a single during the Rochelle Little League 10U Softball All-Star team's game against Freeport on Saturday. Escatel totaled five hits to lead the Rochelle offense in a 28-17 victory.

(PHOTO BY ROBIN RETHWILL)



PANDUIT®

WE'RE HIRING!

APPLY AT:
www.panduit.com/careers

Enjoy the ease of
Showering Safely
So you can stay in the home you love!



Introducing the
ALL NEW
Walk-In Shower!

Call today and receive
exclusive savings of up to

\$750 OFF

FOR A LIMITED TIME ONLY

Call 815-660-0041

SAFE STEP
WALK-IN SHOWER
www.SafeStepShower.com

With purchase of a new Safe Step Walk-In Shower.
Not applicable with any previous walk-in shower purchase.
No cash value. Must present offer at time of purchase.

Upgrade your bathroom, upgrade your life. With a new walk-in shower, you can make sure your bathroom ages as gracefully as you do. This shower was designed by experts, with you in mind, focusing on safety and convenience when it matters most. Discover how a walk-in shower can help reduce the risk of falling, giving you the freedom to enjoy your bathroom again.

- ✓ Commercial Grade Non-Slip Floor
- ✓ Luxurious 8" Rainfall Shower Head
- ✓ Professionally Installed in 1 day
- ✓ Optional Barrier Free Wheelchair Accessible
- ✓ Easy-to-reach Shower Wand
- ✓ Fold Down Safety Seat
- ✓ Ergo L Shaped Grab Bar
- ✓ Lifetime Warranty

for more information and ask about our Senior Discounts

FINANCING
AVAILABLE
WITH APPROVED
CREDIT

Artistic Foundation
Ease of
Use

LIFETIME
LIMITED WARRANTY

BBB
ACCREDITED
BUSINESS

CSLB 983603 F13000002885 13HV08744300

ENGLERT LeafGuard®
is the permanent, clog-free gutter solution!*

*Guaranteed not to clog for as long as you own your home, or we will clean your gutters for free

QUALITY TESTED
GOOD HOUSEKEEPING
Since 1909
LIMITED WARRANTY - ghsenal.com for details

LeafGuard
16 YEARS BACKED BY THE SEAL

A+
BBB
ACCREDITED BUSINESS

\$99 DOWN
\$99 PER MONTH
\$99 INSTALLATION

815-673-7532

PLUS
RECEIVE A \$25
AMAZON GIFT CARD
WITH FREE IN-HOME
ESTIMATE!**

\$25
a

CALL TODAY FOR YOUR FREE ESTIMATE!

- THE ONLY ONE-PIECE SEAMLESS DEBRIS SHEDDING GUTTER SYSTEM.
- SCRATCHGUARD® PAINT FINISH
- LIFETIME NO-CLOG WARRANTY
- MADE ONSITE SPECIFICALLY FOR YOUR HOME

This promotion assumes an estimated job cost of \$7883. The advertised payment of \$99 a month is an estimate only, and assumes that third-party financing is available for new customers at an estimated 9.99% annual percentage rate for 132 months. Promotion available to qualified buyers on approved credit with \$99 down payment. Not all buyers will qualify. Higher annual percentage rates apply for buyers with lower credit ratings. LeafGuard is neither a broker nor a lender. Financing is provided by third-party lenders unaffiliated with LeafGuard, under terms and conditions arranged directly between the customer and such lender, all of which are subject to credit requirements and satisfactory completion of finance documents. Any finance terms advertised are estimates only. LeafGuard does not assist with, counsel or negotiate financing, other than providing customers an introduction to lenders interested in financing its customers. Expires 7/31/2021. All participants who attend an estimated 60-90 minute in-home product consultation will receive a \$25 gift card. Retail value is \$25. Offer sponsored by LeafGuard Holdings Inc. Limit one per household. Company procures, sells, and installs seamless gutter protection. This offer is valid for homeowners over 18 years of age. If married or involved with a life partner, both cohabitating persons must attend and complete presentation together. Participants must have a photo ID, be able to understand English, and be legally able to enter into a contract. The following persons are not eligible for this offer: employees of Company or affiliated companies or entities, their immediate family members, previous participants in a Company in-home consultation within the past 12 months and all current and former Company customers. Gift may not be extended, transferred, or substituted except that Company may substitute a gift of equal or greater value if it deems it necessary. Gift card will be mailed to the participant via first class United States Mail or e-mailed within 30 days of receipt of the promotion form. Not valid in conjunction with any other promotion or discount of any kind. Offer not sponsored or promoted by Amazon and is subject to change without notice prior to reservation. 7/31/2021.

NOMINATE NOW!

BEST OF OGLE COUNTY 2021



HUB CITY FURNITURE

RECLINERS
RECLINING SOFAS
RECLINING LOVESEATS
RECLINING SECTIONALS

**ALL SALE
PRICED!**

429-433 Lincoln Hwy.
Rochelle, Illinois
815-562-8765
hubcityfurniture.com

90 Days Same as Cash

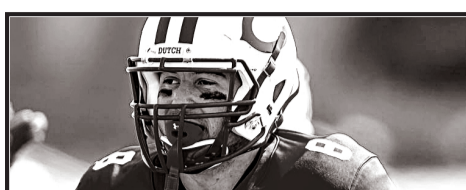


Mon-Fri 9am-5:00 • Sat 9am-4pm • Sun Closed

WEDNESDAY, JULY 21, 2021

ROCHELLE NEWS-LEADER • SECTION 1 • PAGE 12

SPORTS



SOPHOMORE SURGE

RTHS alum Greg Ricketts makes impact with Central College football team.

See page 10 for more details

Rochelle Little League

District dominance

12U Baseball All-Stars defeat Freeport 17-3 to win District 19 Championship

BY RUSSELL HODGES
SPORTS EDITOR

ROCHELLE — The Rochelle Little League 12U Baseball All-Stars beat down Freeport 17-3 on Saturday to win the Illinois Little League District 19 Championship tournament. Rochelle will advance to the Moline Sectional Championship tournament beginning Thursday, July 22.

Connor Hunley started on the mound, throwing two innings and recording one strikeout. Jonathan Andrist hurled the final four innings, totaling eight strikeouts and allowing only three hits. Connor Lewis doubled, singled and compiled four RBIs to lead the offense, while Andrist doubled, singled and added three RBIs. Luke Dickey and Warren Schweitzer each had two RBIs.

Rochelle took the lead with two runs in the top of the second inning after Schweitzer stole home and Bobby Tourdot scored on a wild pitch. Freeport tied the game at 2-2 on two runs, two walks and one single in the bottom of the third



(PHOTO BY RUSSELL HODGES)

The Rochelle Little League 12U Baseball All-Stars crushed Freeport on Saturday to win the Illinois Little League District 19 Championship. The team includes Andrew Eyster, John Chadwick, Jonathan Andrist, Trenton Cunningham, Warren Schweitzer, Bobby Tourdot, Connor Hunley, Luke Dickey, Connor Lewis, Tyler Gensler, Alex Dyer, Angel Argueta, Graham Hall and Andrew Huerta. The boys are coached by Jared Hunley, Joe Tourdot and Henry Bunger.

inning. Rochelle answered with three runs in the top of the fourth inning. Dickey's fielder's choice grounder plated Tyler Gensler before Lewis drilled a two-RBI single through the infield to score both Dickey and Tourdot.

Leading 5-2, Rochelle added two runs in the top of the fifth inning. Tourdot singled to score Graham Hall and Gensler scored on a wild pitch after hitting a single earlier in the frame. Freeport responded with one run in the bottom

of the fifth inning, but Rochelle put Freeport away with 10 runs in the top of the sixth inning. Andrew Huerta reached on an error before scoring on Andrist's sacrifice fly to begin the rally. Schweitzer delivered a two-RBI double two at-

bats later, bringing Andrew Eyster and John Chadwick home to make it a 10-3 game.

Hunley and Dickey drew bases-loaded walks to score Hall and Schweitzer before Lewis belted a two-RBI double to left that plated

Tourdot and Hunley. Chadwick drew a hit-by-pitch with the bases loaded to score Dickey, giving Rochelle a 15-3 lead. Andrist closed out the Rochelle rally with a two-RBI double to right that brought Lewis and Eyster across home plate.

Rochelle Little League

10U Baseball All-Stars earn District 19 title

Rochelle cruises over Rock Falls 13-1 to reach Elgin Sub-State Tournament

BY RUSSELL HODGES
SPORTS EDITOR

ROCHELLE — The Rochelle Little League 10U Baseball All-Stars dominated Rock Falls 13-1 on Saturday to win the Illinois Little League District 19 Championship tournament. Rochelle will advance to compete in the Elgin Sub-State tournament beginning Friday, July 23.

Bentley Sveta threw three and one-third innings for Rochelle, striking out six batters and allowing one run. Quentin Ansteth entered in relief, tossing one and two-thirds innings with two strikeouts and no hits or runs allowed. Teddy Millard tripled and totaled three RBIs, while Vaughn Manning singled and recorded two RBIs while scoring two runs in the victory.

Rochelle took a 1-0 lead in the top of the second inning after Ansteth singled and scored on an RBI groundout from Axel Alsop. Rock Falls tied the game at 1-1 with one run on three singles and a walk in the bottom of the second inning, but Rochelle responded with one run in the top of the third inning to go



(PHOTO BY RUSSELL HODGES)

The Rochelle Little League 10U Baseball All-Stars topped Rock Falls on Saturday to win the Illinois Little League District 19 Championship. The team includes Teddy Millard, Maddex Jackson, Bentley Sveta, Quentin Ansteth, Vaughn Manning, Steel Manning, Axel Alsop, Jaxon Quinonez, Sergio Cervantes, Jasper Macklin, Nolan Zick, Carson Smith and Kamden Kessen. The boys are coached by Corey Ansteth, James Jackson and Noah Millard.

ahead 2-1. Sergio Cervantes walked and stole home to put Rochelle up.

Rochelle went ahead 3-1 after Manning singled and

stole home for Rochelle in the top of the fourth inning. Rochelle sealed its victory with a 10-run outburst in the top of the fifth inning. Sveta,

Ansteth and Manning each drew walks and stole home to make it a 6-1 game before Cervantes drew a bases-loaded walk to plate Jasper

Macklin. Millard smacked a three-RBI triple to right field in the next at-bat, scoring Kamden Kessen, Jaxon Quinonez and Cervantes.

Rochelle added to its advantage after Millard stole home and Manning hit a two-RBI groundout to score Nolan Zick and Sveta.