



ROCHELLE News-Leader

MIDWEEK EDITION | WWW.ROCHELLENEWS-LEADER.COM

Today's RNL issue sponsored by Community Unity member:

Rochelle Community Unity Shop • Play • Stay

ALDO'S PIZZERIA & Italian Ristorante

418 Lincoln Highway
815-562-3456

Vol. 102 • No. 88

LOCAL NEWS... LOCAL VIEWS WEDNESDAY, MARCH 2, 2022 \$1

Your life.
Your education.
Your way.

KC KISHWAUKEE COLLEGE

Enrolling Now for Fall!

www.kish.edu/fall

KNOW IT TODAY



Critical Thinking winners named

RTHS presented the January Critical Thinking Awards recently.

WEATHER

WEDNESDAY HIGH 56 LOW 29

THURSDAY HIGH 34 LOW 23

FRIDAY HIGH 42 LOW 25

SATURDAY HIGH 55 LOW 37

Today's RNL issue sponsored by Community Unity member:

Rochelle Community Unity Shop • Play • Stay

Alfano's Pizzeria and Italian Restaurant

1115 Turkington Terrace
815-562-3312

OBITUARIES

- ANGELA MARIE WINTERS
- FRANK SMITH
- REGINALD JOHN KOOISTRA

See page 4

INSERTS

- ALDI
- LIFELINE
- FARM & FLEET

INSIDE

Local News.....2, 3, 5, 8
Obituaries.....4
Opinion.....6
Community.....7



City hears apartment presentation

Council members approve demolition of Cherry Avenue building

BY JEFF HELFRICH
MANAGING EDITOR

ROCHELLE — A new apartment building is planned to come to the south side of the City of Rochelle. At Monday's Rochelle City Council meeting, city officials heard a presentation and had their first introduction to New Directions Housing Corporation and its president, Rodger Brown. NDHC wants to put a three-story, 30-unit workforce housing apartment building at Willis Avenue and Randall Road in town which will have family housing of two and three-bedroom apartments. Rents will be from \$500 to \$1,180. It will have a community room, library, exercise room and laundry facilities. Apartments will have full kitchens and bathrooms and on-site parking. Workforce housing is for households with income between 60-120 percent of the area median income. Rochelle's median income is \$50,000. 60 percent of that is \$30,000 and 120 percent is \$60,000. The proposed apartment building will go before the city's planning and zoning

commission on Monday and will come before the city council after that. Brown said he and NDHC are not asking for any incentives from the city. Brown said engineering and architectural documents were submitted to the city and state this week and he hopes to start construction early in the summer and it will take about a year to complete. NDHC is a nonprofit and has built and rehabilitated more than 500 multi-family and single-family units since its inception in 1994. According to Brown's presentation at the meeting, its sole purpose is to provide high-quality affordable housing to households who would otherwise be unable to afford safe and decent housing without undue hardship.

Demolition

The council unanimously approved an ordinance waiving the competitive bidding requirements and authorized City Manager Jeff Fiegenschuh to accept a proposal from Bruns Construction, Inc. for the demolition of 300 Cherry Ave. for no more than



(PHOTO BY JEFF HELFRICH)

John Kaltenbach was sworn in as the Rochelle Police Department's new detective sergeant during the meeting. He's been with the department since 2004.

\$60,150. The city obtained a demolition order for the building on Dec. 9, 2021 and an asbestos inspection was conducted and was found negative. Bids were sought from several demolition companies and two quotes were obtained. The Bruns Construction proposal was the lowest.

Solar

The council unanimously approved a resolution adopting a customer self-

generation net metering policy and an interconnection and net metering program for renewable energy for Rochelle Municipal Utilities customers. The Climate and Equitable Jobs Act was recently signed into law and required the city to develop a policy for small commercial and residential customers that want to self-generate with solar panels. RMU customers with solar panels will get a credit back onto their bills for power generation

that they put back onto the grid if they don't use it all. "Net metering is when someone has a solar array on their house and their array is producing more than they are using," RMU Superintendent of Electric Operations Blake Toliver said. "They're putting energy back onto the grid. We'll be giving them a credit for those kilowatt hours that are being pushed back into the system."

See CITY page 5

Daycare facility listed for \$399,900

Kishwaukee Family YMCA Child Care Center closed in 2020

BY JEFF HELFRICH
MANAGING EDITOR

ROCHELLE — The former Kishwaukee Family YMCA Child Care Center building at 1010 N. 15th St. that closed in 2020 has been listed for sale for \$399,900. The Hayden Real Estate, Inc. listing said the 12,000 square foot childcare facility sits on 2.73 acres and includes eight classrooms, a sprinkler system, commercial kitchen and outdoor space. The building was built in 1993. The 1010 N. 15th St. property also includes approximately 50 parking stalls and a security system with cameras in place and a front door with a key card system. Rooms of the building include a reception area, a private office, a common area, a laundry room, bathrooms in all but two rooms, two school rooms and a room each for ages infant through six. The city has been without a daycare center since the facility closed. The City of Rochelle took on

preliminary work last year to bring a daycare back to town. It put out a survey to residents that came back with overwhelming results in favor of a daycare with 72 percent of respondents saying they're in need of a daycare and 71 percent saying their children would be likely to attend a daycare if it opened in town. The city received a \$10,000 grant from the Rochelle Area Community Foundation to start the process of a separate 501c3 nonprofit daycare board that has since been established and has taken on the task of bringing a daycare to Rochelle. The city will have no more direct involvement in a daycare. The board includes Mayor John Bearrows (chairman), Jenny Thompson, Jillian Condon, Jessica Rogers, Edgar Lopez, Rosie Arteaga, Kevin Crandall, Brittany Boardman, Kim Montgomery, Becky Huntley, Will McLachlan and Jessica Morris. The board will be in



(PHOTO BY JEFF HELFRICH)

The former Kishwaukee Family YMCA Child Care Center building at 1010 N. 15th St. that closed in 2020 has been listed for sale for \$399,900.

charge of raising funds and making future decisions such as a location and who will manage the potential daycare facility. It will have different committees including one for fundraising. Late last year Rochelle City Manager Jeff Fiegen-

schuh said he was unsure what kind of funds the board would have to raise to open a daycare, but guessed the number could be over \$1 million to get a building bought and the facility off the ground and running. Bearrows declined

comment Thursday when asked about the listing of the daycare property. Talks did occur last year between the city and the YMCA and city officials toured the facility and Fiegenschuh said it was in "great shape" and still set up for a daycare service.

Helping You Protect *What Matters Most*

Stillman BANK
Trust & Wealth Management

- Estate Planning
- Retirement Planning
- Personal Trusts
- Investment Management

Put your trust in us. Contact us to set up a **no-obligation, complimentary consultation.**

www.stillmanbank.com | 815.332.8100

Investments offered through Stillman Trust & Wealth Management • Not FDIC Insured • No Bank Guarantee • May Lose Value

COME SEE YOUR FRIENDS

Brent Ohlinger
Community President
NMLS#454385

**304 EAST HIGHWAY 38
ROCHELLE**
firststatebank.biz | 815.562.2200

David Eckhardt
Vice President/Loan Officer
NMLS#454387

FIRST STATE BANK

LOCAL NEWS

RTHS presents January Critical Thinking Awards

BY VICKI SNYDER-CHURA
SPECIAL TO THE NEWS-LEADER

ROCHELLE — Rochelle Township High School Biology teacher Nelson Baker nominated two students for the school's January Critical Thinking award. He said, "These two, independently, worked at home on an extension to our cladograms portion of biology class. Our assignment only required them to do two missions (approximately 1.5 hours of work).

A cladogram (from Greek *clados* 'branch' and *gramma* 'character') is a diagram used in cladistics to show relations among organisms. (Thank you Wikipedia).

Baker went on to say, "Both Trent Kreider and Kenny Overton returned the next day having completed all six missions. That extended far past what they needed to know for the course. It had to have taken them both several hours at home, outside of class for no additional gains, other than

knowledge. This shows that they are taking initiative in their learning and allowing themselves to be interested in the course material, rather than just completing it to check a box. Very impressive."

Each of the boys said they completed all the missions because they enjoyed the science and the challenge. Kreider is contemplating a science-based career. Overton isn't quite ready to commit, but said he really enjoys Mr. Baker's class.

According to RTHS Athletic Director Rich Harvey, his assistant Ronda Poliska, "is unbelievable at critical thinking and multitasking."

"She has created a system that allows her to organize schedules, buses, forms, eligibility, assigning official and many more tasks. She then communicates all the information and makes sure everyone is taken care of."

"Ronda is proud of RTHS and is always striving to make sure we are represented in a positive



Rochelle Township High School students Kenny Overton and Trent Kreider pose for a photo with biology teacher Mr. Nelson Baker, who nominated the pair for RTHS's January Critical Thinking award.

(COURTESY PHOTO)

manner by making sure all details are covered. On top of that she does it with a smile or a giggle. I can't thank her enough for all that she does for

our school, students, and staff."

Thanks to a generous donation from the RTHS Class of 1961, RTHS is able to recognize and

reward critical thinkers every month this school year. Recipients receive a \$100 reward. They are asked to designate half to a local non-profit or

organization.

Poliska designated \$50 to Miss Carly's Rescue Mission. Overton chose TAILS Humane Society. Kreider has yet to decide.

RTHS chemistry students take on Cheetos snacks

BY VICKI SNYDER-CHURA
SPECIAL TO THE NEWS-LEADER

ROCHELLE — In James Jackson's Rochelle Township High School chemistry classes last week, he had students burn Flaming Hot Cheetos, using the fire to heat water.

The students explained that by measuring the change in temperature of the water, they calculated the energy or calories the water absorbed.

To measure the water temperature change, they used digital temperature probes.

Students Lenna Drew and Sierra Ramos ex-

plained: "We put water inside of an aluminum can and then recorded the temperature," they said, adding, "You need to measure the mass of the water + can and the mass of the empty aluminum can to determine the mass of the water."

As Lenna and Max Orlikowski set to work, Sierra recorded the masses and temperatures called out by her lab partners.

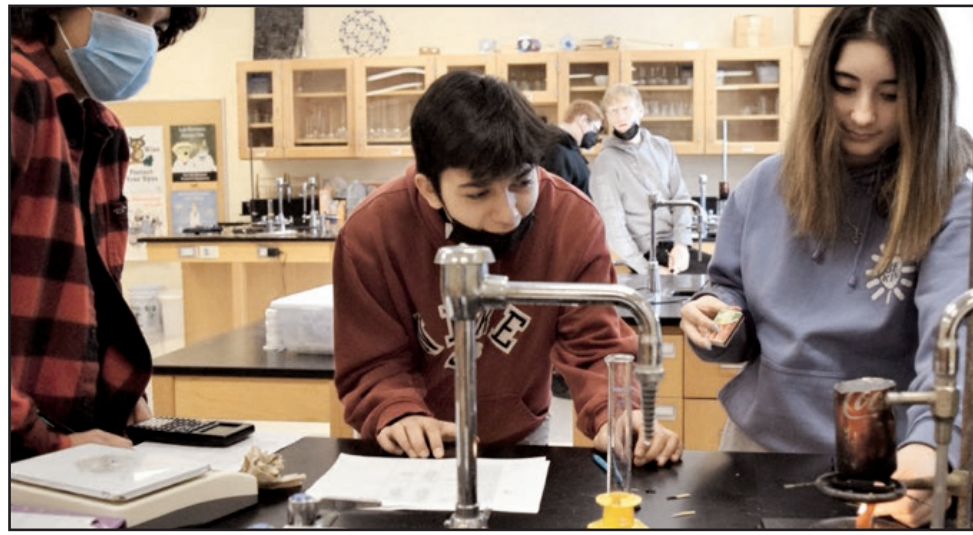
The experiment uses an open flame. The students used wooden matches to ignite the Flaming Cheetos which had been skewered on an unfolded paper clip and secured underneath the

elevated soda can.

Ava McGee and Ava Albers explained, "We measured the mass of the Cheeto before we burned it, too. Afterwards, you should also measure the mass of whatever ash remains when the fire goes out."

Jackson instructed the students, all engrossed in their work, to record their observations in detail and show their calculations in their laboratory notebooks.

While they hadn't quite gotten around to conclusions, Jackson told them it would be important to compare the results to the results they might



RTHS students Emil Rodriguez, Abel Huerta and Maddie Aylsworth ignite a Flaming Hot Cheeto.

(COURTESY PHOTO)

expect if the heat transfer was ideal (no heat lost to the surroundings). They

were also to write about any aspects of this experiment that would affect

the results. Each team ran two trials during the experiment.

Ogle County offering 2022 waste reduction grants

OREGON — Waste reduction/recycling Grants for 2022 are available to Ogle County businesses, schools, churches and non-profit groups wanting to establish or improve on waste reduction and recycling programs and services.

The grants are up to \$2,000, and funds are limited, so they will be awarded on a competitive basis in amounts from

\$100-2,000, in three rounds or until funds are depleted. The matching fund grant pays 80 percent of the total project cost up to \$2,000, and the applicant must provide a minimum 20 percent match of the total project cost. Example: Total project cost - \$2,500; grant amount \$2,000; applicant matching amount \$500.

The deadline for sub-

mittal of applications for the first round of grants is 4 p.m. Thursday, April 7.

The application for the grants is simple and flexible. Businesses could use grant funds to help purchase waste reduction and recycling materials and equipment such as collection bins, carts, balers and storage containers. Equipment needed to switch from disposable packaging to reusable packaging for products and supplies could also be consid-

ered. Businesses are encouraged to consider projects to reduce food waste or implement food waste recycling programs.

Waste hauling companies could use grant funds to improve the quantity and quality of materials collected in their curbside recycling collection programs. This could be done through promotional efforts, instructional stickers for carts and bins, direct mail and other educational efforts.

Schools may seek funds for special projects that will further a student's understanding of how to reduce the amount of trash sent to the landfill. The requests may be for materials and equipment, such as recycling bins/carts, videos, books, worm (vermicomposting) bins, composters or other waste reduction or recycling equipment.

Municipalities seeking to improve commercial, curbside or multifamily recycling pro-



grams are encouraged to apply. Grant applications for equipment and materials needed to improve electronics recycling options in Ogle County are also encouraged since most electronics have been banned from landfills since 2012.

These are just examples, and applicants are encouraged to find innovative ways to reduce waste and increase what is recycled. The grants may not be used to pay for ongoing expenses such as staffing, collection and hauling costs. Priority will be given to new applicants.

All applications will be reviewed by the Ogle County Solid Waste Management Department and the Ogle County Board HEW/Solid Waste Committee.

For more information or to request an application, please contact the Ogle County Solid Waste Management Department at 815-732-4020, solidwaste@oglecounty.org or visit www.oglecounty.org to download the application.

we protect your business. because you've worked hard to build it.

simple human sense.

Dimond Bros.
Insurance Since 1867

401 N. Main St. | Rochelle, IL
815.562.5596 | DimondBros.com

Auto-Owners
INSURANCE
LIFE • HOME • CAR • BUSINESS

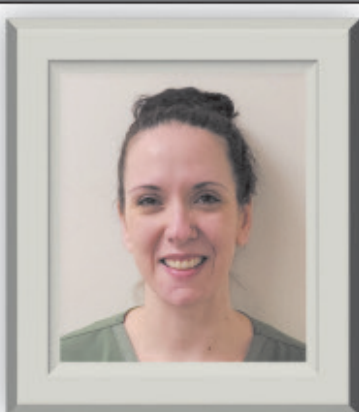
One Stop Financial, Inc. Income Tax Service

Larry and Teresa Anderson

808 Main Street, PO Box 224, Ashton, IL 61006
1500 W. Lincoln Hwy., Suite 5A, Rochelle, IL 61068

Income Tax Service
Call or text Teresa at 815-440-2678
OR Ashton at 815-453-2678

01052022



Tina Neale, RN
Medical/Surgical
Length of Service: 7 Years

Rochelle
Community Hospital

High Performer
March 2022

To read Tina's nomination, go to the RCH Facebook page or rochellehospital.com

LOCAL NEWS

Mask mandates come down in schools, most public places

Pritzker issues new executive order in light of updated CDC guidance

BY PETER HANCOCK
CAPITOL NEWS ILLINOIS

SPRINGFIELD—Facial coverings are now optional in most public places in Illinois, including schools, after Gov. JB Pritzker issued new guidance Monday to comply with new U.S. Centers for Disease Control and Prevention guidelines.

“Across the state, Illinoisans are taking their masks off today knowing that most eligible adults are boosted, and our hospitals have much more capacity to save lives,” Pritzker said in a statement Monday. “I’m proud that Illinoisans have done the hard work that has made our state a leader in the Midwest, with more of our residents vaccinated than any other state in the region.”

Under a new executive order issued by Pritzker on Monday, masks are no longer required in most indoor public places, including K-12 schools and day cares. But schools and private businesses can continue to require masks at their own discretion.

Face masks are still required in health care settings and on public transportation such as buses, trains and airplanes, as well as transportation hubs like airports and bus stations.

Those developments

came after the Illinois Supreme Court on Friday declined to hear the state’s appeal of a temporary restraining order issued Feb. 4 by a Sangamon County judge, calling the issue “moot.”

In its ruling late Friday, the court, in a 5-2 vote, echoed a 4th District Court of Appeals decision from a week earlier that said the issue of the TRO was moot because the emergency rules that the Illinois Department of Public Health had issued in September had expired and the legislative Joint Committee on Administrative Rules voted Feb. 15 not to renew them.

Because the issue of the TRO was moot, the state’s high court said Friday, the order itself was vacated and the case was remanded back to Sangamon County to be heard in its entirety.

Justices Michael J. Burke and David K. Overstreet dissented in the decision. The court said a written dissenting opinion would be forthcoming.

“We are pleased the court acted quickly to vacate the TRO, as the state requested,” Attorney General Kwame Raoul’s office said in a statement. “However, as the case is returned to the circuit court, we will continue to defend the governor’s executive orders to protect

all Illinois residents and mitigate the spread of COVID-19.”

The Supreme Court’s ruling, however, was one that left both sides in the dispute claiming victory.

“I’m gratified that the Supreme Court vacated the lower court’s restraining order, meaning that if a school mask mandate needs to go into effect in the future, we continue to have that authority,” Pritzker said in a statement released by his press secretary.

But Republican lawmakers who have questioned Pritzker’s use of executive orders and criticized the Democratic majority in the General Assembly for not exercising oversight, said the ruling will serve as a check on the governor’s powers.

“The Illinois Supreme Court found the governor’s mask mandate moot and not enforceable thanks to a bipartisan group of legislators who decided to strike it down earlier this month,” Senate GOP Leader Dan McCortie, of Hawthorn Woods, said in a statement.

“Pritzker will now have to go back to those same legislators if he wishes to issue a similar order, where he is likely to meet the same fate,” he added. “The governor should accept defeat and allow us to begin to govern the



(CAPITOL NEWS ILLINOIS FILE PHOTO)

Gov. JB Pritzker is pictured in a file photo at the Illinois Emergency Management Agency building in Springfield.

way we ought to be — through collaboration of the legislature and local stakeholders.”

Pritzker had previously announced that the general statewide mask mandate would expire Monday if the state’s hospitalization usage and other metrics continued on a downward trend. He had previously planned to leave school mask mandates in place, however.

Since he made the announcement at the beginning of the month, the governor’s office said in a statement Friday, the number of people in the hospital with COVID-19 has been cut in half and the

number of intensive care beds available increased by 24 percent, while the state’s weekly COVID-19 case rate has also decreased by 70 percent.

While previous guidelines were based on metrics such as case counts and test positivity rates, the new guidelines are based on factors such as the number of hospital beds being used, hospital admissions, and the total number of new COVID-19 cases in an area.

According to CDC data, most counties in Illinois are considered low or moderate transmission areas. Counties designated as high trans-

mission areas are located mainly in southern Illinois and in pockets along the state’s eastern and western borders.

The status of individual counties throughout the United States is available on the CDC’s website, [cdc.gov/coronavirus/2019-ncov/your-health/covid-by-county.html](https://www.cdc.gov/coronavirus/2019-ncov/your-health/covid-by-county.html).

Capitol News Illinois is a nonprofit, nonpartisan news service covering state government and distributed to more than 400 newspapers statewide. It is funded primarily by the Illinois Press Foundation and the Robert R. McCormick Foundation.

RVCU employees spread kindness at Cypress House

BY JEFF HELFRICH
MANAGING EDITOR

ROCHELLE—Rock Valley Credit Union employees were on hand Feb. 18 at The Cypress House giving away one free drink to anybody that stopped in as part of Random Acts of Kindness Week.

RVCU spent last week surprising area nonprofits and organizations with donations and more. The program is in its third year.

“On Monday, we started with donations at Rock House kids to benefit inner city kids in Rockford,” RVCU Director of Community Outreach Ana Montoya said. “On Tuesday we were at the Veterans Home. We dropped off hats, blankets and socks.

On Wednesday we went to Rockford Sexual Assault Counseling Center to drop off toys for the children that they serve. Yesterday we were at the Goldie B. Floberg Center dropping off sporting goods

and things for disabled children to do during the summer months.”

The week ended with spreading community cheer at The Cypress House. Owner Krista Stewart enjoyed having RVCU on hand Friday.

“It’s a tremendous help,” Stewart said. “We’ve had people call from Belvidere this morning that didn’t know we’re here. Just getting people in the door that maybe weren’t planning to stop today. They come in and see all the other items we have to offer.”

Early in the day Friday, Stewart said she’s already seen about 30 customers and had no idea how many more the day would bring.

“We appreciate something like this after all the difficulties that have been going on in the last couple of years with all the COVID-19 restrictions and things like that,” Stewart said. “I feel like our community has really



(COURTESY PHOTO)

Rock Valley Credit Union employees were on hand Feb. 18 at The Cypress House giving away one free drink to anybody that stopped in as part of Random Acts of Kindness Week.

come together and supported one another during that time.”

RVCU also spent the week challenging others in the community to do a random act of kindness for somebody else.

“It could be something like holding the door open for someone, giving a smile back, a thank you, paying for the person behind you in the drive thru,” Montoya said. “Just one kind gesture

really goes a long way. You never know what that person is going through. You might be that person that changes their whole day.”

Montoya called the week humbling and heart-

warming and was thankful to the nonprofits for their work and being able to be a part of it.

“Just do one kind thing today, whatever that looks like in your capacity, just do it,” Montoya said.



Clark Dietrich
BUILDING SYSTEMS

Maintenance Mechanic

SUMMARY

- The overall role of a Mechanic is to ensure that all machines and equipment in the facility are working properly and safe to operate.
- They perform preventative maintenance on all equipment to minimize machine down time.

ESSENTIAL DUTIES AND RESPONSIBILITIES

- Ensure that all machines and equipment in the facility are working properly and safe to operate.
- Must be able to troubleshoot, diagnose and repair the equipment.
- Must be able to build gearboxes
- Must be able to have the knowledge of each part to be able to communicate with the supplier.
- Responsible for keeping the down time for each machine to a minimal and perform preventative maintenance on all equipment and tools.
- May be responsible for ordering the parts that are necessary for each machine to operate if a purchase is necessary.

Requirements

QUALIFICATIONS

- Must have their own tools.
- Must have knowledge in electrical install, troubleshooting, hydraulics, and pneumatics.
- Must be able to operate Lathe machine, End Mill Machine, Drill Press, Surface Grinders, Grinders, Sanders, Hand Tools, CNC Machines, Cutting Torch, Welding Machines and Brake Presses.
- Able to work with people, strong work ethic, must be capable of multi-tasking in a fast paced environment, strong communication skills, must be able to read and write and be able to stay focused.

EDUCATION AND/OR EXPERIENCE

- At least 5 years of experience in an environment with high tech machines.
- Prior manufacturing experience preferred.
- High school/GED or Trade school in machines.
- The military equivalent will be recognized in lieu of education and/or experience.

MATHEMATICAL SKILLS

- Basic mathematical skills, addition, subtraction, multiplication and converting fractions into decimals.
- Must be able to use and read a tape measure, caliper, and micrometer, dial bore gauge, and various other precision measurement equipment.

Competitive Wages and Benefits included

Apply at
www.clarkdietrich.com/about-us/careers

03/02/2022

Alfano's
Pizzeria and Italian Restaurant

Taste The **TRADITION**
Taste The **DIFFERENCE**

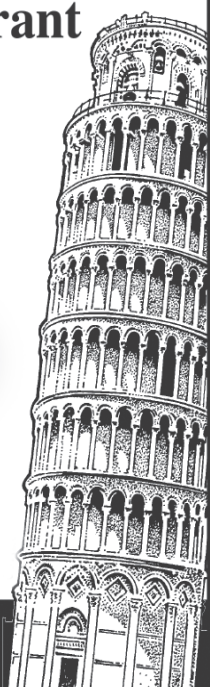
Two for Tuesday
2 Large, 2-Topping

PIZZAS

\$24⁹⁹
(With Coupon)

Dine-In • Carry Out • Home Delivery
1115 TURKINGTON TERRACE, ROCHELLE

815-562-3312



LOCAL NEWS

Obituaries

Angela Marie Winters

CHANA — Angela Marie Winters, 54, Chana, joined her many family members in heaven on Feb. 18. She was born on Nov. 19, 1967, in Rockford, the daughter of James (Daveen) Winters and Margaret (Stephen) Archer.

Angie was a graduate of Rockford Auburn High School, class of 1988. She was a movie and music lover. Angie never missed the chance to listen and sing along to one of her favorite songs. Movies were a great pastime for her and always a topic for

discussion. The love and memories of Angie will never be forgotten. She will be forever missed.

Survived by her daughter, Laura Hoffman; her father, James Winters; her mother, Margaret Monaco Archer; her sisters, Diane Winters and Jacqueline (Jeremy) Fallis and many nieces and nephews, aunts, uncles and cousins. Predeceased by Stephen Archer, Daveen Winters, grandparents, aunts, uncles and cousins.

A celebration of life will be held at 5 p.m. on Sat-



urday, March 12 at Lino's Italian Restaurant, 5611 E. State St. in the lower level. Fitzgerald Funeral Home and Crematory assisted the family. Share online condolences at www.fitzgeraldfh.com.

Frank Smith

ROCHELLE — Frank Smith, 80, of Rochelle passed away peacefully on Feb. 25 while holding the hand of his wife, Betsy and embraced by the prayers of many.

He was born in Rochelle on June 7, 1941, to proud parents Victor and Ellen Smith, graduated from Stillman Valley High School and lived in the surrounding farm communities his entire life.

Frank worked tirelessly for his family at Larson's farm and Del Monte, but found his place, being his own boss, at Frank's Goodyear in Rochelle. He had the reputation of being an honest auto mechanic with storytelling, kittens and fresh produce from his garden included for free with repair services.

When he wasn't telling everyone else to, "stay out of trouble," he could be found behind the wheel of any type of vehicle, with his favorite being the lawnmower. Through extensive "tinkering," he was proud to rig several mowers together to get the job done. Gardening, with a philosophy of "the more varieties of vegetables, the better" was another enjoyable way to spend time outside.

Camping with his friends in the *Kings of the Road* camping club was his favorite way to spend a

weekend. Sitting around a good campfire, talking the night away after a great potluck dinner, was one of his favorite pastimes. He loved the different campgrounds, and the lifelong friendships.

Rare was a time when he didn't know the weather forecast or would pass up a good dessert. He enjoyed knocking down pins in a bowling league along with playing golf and driving the golf cart. Watching westerns was his most recent hobby and he knew them all.

In his 80 years, Frank never backed away from a cat. He loved house cats, barn cats and the cats that found a home at Frank's Goodyear. The parts-room at the shop became a warm, safe place for stray mama cats to have kittens. He facilitated many kitten adoptions with customers or even an occasional salesman that stopped by.

His good deeds, stories and friendships are the legacy of a life well lived.

He is survived by his wife of 23 years, Betsy Smith; children: Shane (Noel) Smith, Terri (Kevin) Cork, Kelli Cotrell, Matthew (Jennifer) Smith, Jennifer (Steve) Lavoie, Emily Egeland; daughter-in-law Dawn Smith, and his sister Betty (Jason) Dietrich. Frank was the very proud grandpa to Megan, Heidi,



Chris, Taylor, Christopher, Nicole, Andrew, Chandler, Kaitlyn, Hailey, Joshua, Corey, Amanda, Patrik, Jacob, Mary, Katherine, 10 great-grandchildren along with many nieces, nephews, and countless friends.

He is preceded in death by his parents: Victor and Ellen Smith; his son, Todd Smith; the mothers of his children: Carol Hermann and Susan Smith; siblings: Bob Weeks, John Weeks, Bill Weeks, Victor Smith and Anabelle Weeks.

His family will host a memorial visitation 4-7 p.m. on Wednesday, March 2 at Beverage-Lyons Family Funeral Home, 704 N 6th St. Rochelle, IL 61068. Funeral arrangements were entrusted to Beverage-Lyons Family Funeral Home. Online condolences may be made at www.beveragelyonsfamilyfh.com.

In lieu of flowers, memorials may be directed to the Serenity Hospice and Home, 1658 Illinois Route 2, Oregon, IL 61061.

Reginald John Kooistra

ROCHELLE — Reginald John Kooistra passed away on Feb. 22 in Rochelle. Reg or Reggie, as he was known, was born Oct. 15, 1938 in Rochelle. He is preceded in death by his father, Donovan; mother, Amelia; brother, Tom and sister, Connie. He is survived by nephews, Shawn Kooistra and Kevin Kooistra.

Reg went to elementary and high schools in Ashton and graduated from Rochelle Township High School. He attended the University of Illinois and Bradley University and served in the United States Army.

While working for several engineering firms in the area over the years, Reg lived most of his life in Ashton.

During his life he continuously read and postulated about many things and wrote about his opinions. He was a gentle fellow, good in heart and sense of humor, who liked people and enjoyed talking with all who were interested in listening. He will be missed by many.

Memorial visitation will be held on March 12 from 10 a.m. to noon at Beverage-Lyons Family Funeral Home, 601 Richardson Ave. Ashton, IL 61006. A memorial service will be held at noon. Cremation rites were accorded. Funeral arrangements were entrusted to Beverage-Lyons Family Funeral Home. Online condolences may be made online at www.beveragelyonsfamilyfh.com



Rochelle Police Department

Officers arrest three on county warrants

ROCHELLE — On Feb. 25 at 10:50 p.m. Jonathan S. Early, 28, of Davis Junction was arrested for an outstanding warrant in both Ogle County and Rockford and transferred. He was cited by Rochelle Police for disobeying a stop sign.

On Feb. 27 at 1:47 a.m. Travis L. Adams, 38, of Rochelle was arrested on an outstanding Ogle County warrant and transferred.

On Feb. 27 at 9:01 a.m. Frank B. Gatza Jr., 49, of Rochelle was arrested on an outstanding Lee County warrant and transferred.

On Feb. 27 at 9:55 p.m. Mitchell B. Zepeda, 27, of Rochelle was arrested for driving while license suspended. He was released on an I-Bond and given a March 25 Rochelle court date.

On Feb. 28 at 10:40 a.m. Stacy Gebhart, 44, of Earlville was cited for failure to reduce speed. She signed a promise to comply and was given an April 22 Rochelle court date.

On Feb. 28 at 6:30 p.m. Barry Brown, 56, of Rochelle was arrested for aggravated domestic battery and interference with emergency communication and transferred.

On Feb. 28 at 8:34 p.m. Victoria Rodriguez, 40, of Rochelle was cited for failure to yield turning left. She was released on an I-Bond and given an April 22 Rochelle court date.



1120 Westview Dr., Rochelle IL.
4 Bedroom,
2 Bath, 2-car
Detached Garage,
Full Basement
and additional room with Wood
Burning Fireplace.

\$500 signing bonus and a 3% commission
for any realtor bringing their clients.

Call 815.558.5671

Report policy

Any arrests listed in this paper are merely charges and the defendants are presumed innocent unless proven guilty in a court of law. Please note that all police reports received from the

Rochelle Police, the Ogle County Sheriff's Department and the Illinois State Police, will be printed without exception. Requests to omit particular reports will not be considered or honored at any time.

**We are now offering
LIPO MINO MIX injections
Introductory price \$25**

Call for an Appointment!

This lipotropic combination of B12 and methionine, an essential amino acid and other B vitamins can promote:

Increase Fat metabolism
Boost Energy Level
Reduce appetite

Mon: 7:30 - 6pm, Wed: 7:30 - 6pm, Thurs: 8 - 1pm, Fri: 7:30 - 4pm
Some Saturday appointments available

DLX Medical
GROUP

815-227-9594
1212 Currency Ct.
Rochelle IL
We Accept Most
Insurances and
Patients Without
Insurance

11/04/2020

WHO IS UNITY HOSPICE?

- Care provided by the entire hospice team: physician, nurse, social worker, certified nursing assistant, chaplain, dietitian, pharmacist, and volunteers.
- Care is individualized and based on the patient's and family's goals of comfort and quality of life.
- Supplies, equipment and medications.
- Service where the patient resides.
- Specialize in pain & symptom management.
- Spiritual enrichment and bereavement counseling.
- Ancillary Therapies: Music, Physical/Occupational, Speech, Massage, Pet, etc.
- Ability to provide education to caregivers and family members.
- On-call nurse available 24/7.
- Volunteers providing special attention and stimulation.
- Assistance with advance directives and community support.
- Provide Education to those we care for

Unity
Hospice and
Palliative Care

@unityhospice

CALL UNITY:
(815) 561-8866

915 N. Caron Rd.
Rochelle, IL

07012020

HOW TO CONTACT US

News-Leader Main Switchboard (815) 562-4171

General Manager
Mike Feltes (815) 561-2124

Newsroom Staff
Jeff Helfrich, Managing Editor (815) 561-2151
Russ Hodges, Sports (815) 561-2152

To Place a Display Ad
Andrew Heiserman (815) 561-2123

To Place a Legal Ad
Mike Feltes (815) 561-2124

To Place a Classified Ad
Jordyn Johnson (815) 562-4171

Subscriptions and Delivery
Kelly White (815) 561-2112

ROCHELLE News-Leader

211 IL Route 38 East, Rochelle, IL 61068
(815) 562-4171

USPS (467-820) ISSN (1075-2811)

Published every Wednesday and Sunday by Rochelle News-papers Inc. at 211 E. State Route 38, Rochelle, IL 61068. Periodical postage paid at Rochelle, IL 61068. Postmaster send address changes to the Rochelle News-Leader, P.O. Box 46, Rochelle, IL 61068. Subscription rates are \$112 per year by mail in Ogle County. Outside county rate is \$134 per year. No mail delivery in newspaper-carrier serviced areas. The circulation department is open Monday through Friday from 8 a.m. to 5 p.m. If you are a carrier subscriber and your paper does not arrive, contact Kelly White at 561-2112.

IN-COUNTY REGULAR SUBSCRIPTION RATES

- \$114 for one year • \$64.99 for six months
- \$26.99 for three months • \$10.99 for one month

Call (815) 561-2112 or
Visit our website at
www.rochellenews-leader.com



**BUSINESS
SPOTLIGHT**

**ANDERSON
Plumbing & Heating, Inc.**

Plumbing, Heating, Air
Conditioning, Drinking water
systems, Water Heaters,
Softeners, Iron Filters & More.

Since 1976

LENNOX

One Less Thing To Worry About

Like on on Facebook
Lic# 055-013999

621 First Ave., Rochelle
(815) 562-8784

LOCAL NEWS



(COURTESY PHOTO)

Spring is just around the corner, which means live music is back in style. Come and help the Rochelle Township High School Music Department kick off this concert season this week.

RTHS hosting Spring Band Concert on Thursday

ROCHELLE — Spring is just around the corner, which means live music is back in style. Come and help the Rochelle Township High School Music Department kick off this concert season this week.

The Spring Band Concert is Thursday, March 3, and the Spring Choir Concert is Tuesday, March 8 in the RTHS auditorium. Concerts start at 7 p.m., seating starts at 6:30 p.m. and admission is \$1. Seventeen RTHS band

students participated in the Interstate 8 Band Festival Feb. 24. Students were nominated and selected to spend a day at Ottawa Township High School practicing four pieces to perform later that evening with other

students from Interstate 8 schools. The freshmen-sophomore group was conducted by Dr. Melissa Gustafson-Hinds of O'Fallon Township High School and the junior senior group was conducted by Dr. Alicia

Neal of Eastern Illinois University. RTHS frosh/soph musicians include Jonathan Alanis, Anahi Alanis, Haley Bozinovich, Makenzie Liezert, Jessica Nyguen, Aiden Ramsey, Noe Valdez and Liam

Wise. Junior and senior musicians include William Drobick, Jonathan Hansen, Jennifer Heinrich, Jaela Ludwick, Levi Lawhorn, Devansh Patel, Mikayla Preston, Allica Price and Carly Summers.

CITY: Hawkins retires after 23 years with water department

From page 1

"A dollar amount will be credited onto their bill for that generation. Every meter we have has bidirectional capability." Fiegenschuh said the process will now begin with interested customers being able to connect onto RMU's system. The city's expenses for maintaining the power grid are calculated into the policy.

TIF

The council unanimously approved a resolution opposing state Senate Bill 2298, which would change the city's ability to utilize tax increment financing to stimulate redevelopment. The city's meeting agenda packet said the proposed bill "attempts to eliminate the effectiveness of the most important tool available to municipalities to enhance positive economic change." "We've instituted one TIF since I've been here and before that, the downtown TIF was put in," Fiegenschuh said. "I think we use them according to what the statute intends. If you look at Hickory Grove and Kennay Farms Distilling, these projects wouldn't have happened and that's what it's there for. If you want a true definition of blight, look at what Hickory Grove was."

Electric study

BHMG Engineers Project Manager Jason Jackson presented a review of a system planning study of the city and RMU's electric system. The presentation included potential future improvements totaling \$25.5 million that included another new substation, new overhead high capacity power lines across town, transformer work and distribution line upgrades.

"The majority of these improvements are to keep up with an aggressive business development that you guys have been experiencing with heavy power load growth coming into town," Jackson said.

Swearing in

John Kaltenbach was sworn in as the Rochelle Police Department's new detective sergeant during the meeting. He's been with the department since 2004. "John brings much-needed enthusiasm and wit to a difficult job," RPD Chief Eric Higby said. "He's a high performer at his job, but his best work has been setting an example for the rest of us to follow as an honest, wholesome individual."

Retirement

The city council recognized the retirement of Sharon Hawkins from its



(PHOTO BY JEFF HELFRICH)

The city council recognized the retirement of Sharon Hawkins from its Water Department lab after 23 years at the meeting.

Water Department lab after 23 years at the meeting. "Sharon is well-known by Rochelle schools and

Kishwaukee College for hosting tours of the wastewater treatment plant," RMU Utilities Superin-

tendent Adam Lanning said. "Sharon prided herself on keeping her lab in perfect order and

always meeting all quality control criteria set by the Environmental Protection Agency."

Tails Humane Society
PET OF THE WEEK
815.758.2457
www.tailshumanesociety.org



Strawberry Shortcake

Strawberry Shortcake is the name and I am just as sweet as I sound! I'm not going to lie, I'm not a huge fan of other animals! So ideally, a home where I can be the center of your attention would be fantastic. If you spend a little time with me you'll discover that I have a lovely, soft coat and that I like people very, very much. I definitely should go home with an experienced and confident dog owner as I am still working on my manners (no children, please). I LOVE spending time with my people and I enjoy learning new commands especially when tasty treats are involved! When I can't be with those I love, I enjoy chewing on Kongs and bones or any other sort of chew toy and I take afternoon snoozes all curled up in my soft blankets, I love my naps. Tails doesn't know anything about my past, but they've quickly discovered that I'm smart and am a dream to walk on leash! I even know how to sit and keep my kennel pretty clean! And even better, my adoption fee has been sponsored by a wonderful volunteer! Please stop in and visit with me soon!

ROCHELLE VETERINARY HOSPITAL

Compassionate, quality care for your companion.

Dr. Nicole Marquardt
Dr. Lynn Deets

A Full-Service Clinic

- Experienced Groomer
- Boarding and Daycare
- Surgical Laser
- X-ray
- Gas Anesthetic
- On-site Laboratory
- Geriatric Care
- Dentistry

www.rochellevet.com

Lobby Hours:
Mon-Fri 8-5
Sat 8-noon

(815) 562-5207
1381 N. 7th St., Rochelle

Grooming

Trust with a Groomer is important - our Groomer has over 10 years experience & expertise.

Please call for appointments

dachsies to DANES
Boarding And Grooming
815-453-2843
1751 Melugins Grove Rd Steward, IL 60553

BROUGHT TO YOU BY:

Space Available
Advertise With Us
Call Andrew
815-561-2123

Now is a great time to adopt a pet! Call Tails today!

LOCAL VIEWS

Guest column

Livestock farmers support food security in Illinois

If you’ve ever driven through the Illinois countryside, you’ve likely seen a herd of cattle dotting the landscape. You might have wondered whether the animals that farmers raise benefit businesses and residents in our state.

They do. Livestock farms offer important sources of revenue for local businesses, strengthen the food supply, and continue to reduce impacts on the environment.

With livestock on 1 in 3 Illinois farms, animal agriculture is an economic engine for our state.

In 2019, livestock farms and related meat and dairy processors contributed more than \$31.8 billion in economic activity, supported more than 91,000 jobs, and accounted for \$4.7 billion in household income.

When many meat packing plants shuttered due to worker safety concerns at the height of the pandemic, the backlog of orders and limited processing capacity highlighted the critical role of food processors. Disruptions also demonstrated the need for investments in small and medium-sized meat packers, many of which stepped up to fill the supply chain gap.

Thanks to their efforts, Illinois’ state licensed meat establishments processed more than 31 million pounds of meat to feed families across the state in 2020.

Illinois Farm Bureau recently partnered with Texas A&M University to offer Hazard Analysis Critical Control Points (HACCP) certification – a prevention-based approach to the safe production, handling and preparation of foods – to support the continued development of local meat packing companies.

As important as food processing facilities are, it’s also important to remember that production starts on the farm.

More than 96% of the 71,000 farms in Illinois are family-owned and operated. For these farm families, producing quality meat and dairy products means providing nutritious protein sources for the community.

In 2020, Illinois farm families donated more than 250,000 pounds of food to local food pantries. Donations of pork, beef and dairy products offered resources to those in need, while also benefiting food processors in the community.

In addition to providing a steady supply of food for American families, farmers also continue to produce more with less.

Pig farmers today use 75% less land and 25% less water than they did 60 years ago, cattle farmers are producing 60% more beef with 40% fewer carbon emissions than 50 years ago, and each gallon of milk produced by dairy farmers creates 63% fewer carbon emissions than in 1944.

Innovative barn construction, rotational grazing on cover crops and manure management as fertilizer applications are among the practices farmers use to continuously improve soil and water quality on their farms.

By caring for animals in ways that also benefit the environment, farmers ensure a bright future for agricultural production on family farms and a steady food supply for all.

The next time you find yourself driving past a herd of cattle, or picking out food at the grocery store, I encourage you to think about the many ways livestock farms and related industries add value in our state.

Richard Guebert Jr. is the Illinois Farm Bureau president. This op-ed was distributed through a cooperative project between Illinois Farm Bureau and the Illinois Press Association. For more food and farming news, visit FarmWeekNow.com.



Richard Guebert Jr.

VOICE ON THE STREET

Question:

Do you still carry cash or have you opted to start paying with a card more as many have?

“Mostly card but keep some cash.”

Julie Reinick

“I keep a few hundred tucked away for garage sales and flea markets. Other than that, it’s all plastic.”

John Elliott

“Both.”

Mark G Schabacker

“Amazon takes cash? Card.”

Allen Huhn

“Both.”

Kay Beguin McGrath

“Both.”

Dawn Estes Johnson

“Both. Technology isn’t as reliable as people think.”

Cindy Foster Knight

“Cash, card for emergency and no debit. Hate paying charges to get my own money.”

Karen Bauer

“My preference is to ‘forget’ my money at home so the people I’m with have to cover the tab. A new trick I’ve learned from family.”

Scott Carlson

“Both.”

Katie Paulsen

“Mostly my card but I keep some cash on me.”

Deborah Schuler Beck

“I carry both.”

Denise Montgomery

“Cash so the business doesn’t have to pay the bank fees.”

Laurie Heltness Russell

“Cash.”

Marilynn Bulthaus Roberson

“Almost entirely card.”

Steve Frye

“Before kids it was almost all card. But now if I need something from the store I send them in with cash.”

Valerie Stasch Kingsbury

Metaverse: The alternate reality

MANY of us have been hearing the buzzword “Metaverse” and wonder what this is all about? According to the high priests of the digital world, the Metaverse is a completely alternative universe in the digital world (Internet) where users, through their digital, self-designed robots (avatars), can move around and interact with this alternative environment.

Meta Platforms Inc. (Facebook), Microsoft, Unity, Epic Games and Roblox are some of the companies that are important entities in the Metaverse, all attempting to make their participation profitable.

In order to participate, you need a VR (virtual reality) headset and in some cases a hand controller for each hand. The VR headset is essentially a set of goggles with a small TV set inside that allow you to view the Metaverse. The hand controls help you navigate through the Metaverse.

You get onto the Metaverse through a portal such as Sanbox or Decentraland. You will usually have to set up an account (crypto

wallet) through a vendor such as Meta Mask. Looking into your VR headset, you enter the Metaverse and control your avatar much like a video game. You, through your avatar, can navigate through the Metaverse (alternative digital universe) doing various things such as traveling, interacting with other users, engaging in sports, playing games and making money such as buying and selling Metaverse land. Some have purchased land in the Metaverse for thousands of crypto coins hoping to sell it at a higher price in the future.

You can also trade in stock attributed to Metaverse companies such as Meta Platforms (NASDAQ:FB), Boeing (NYSE:BA), Roblox (NYSE:RBLX) or Microsoft (NASDAQ:MSFT). Investment in these companies, solely based on their participation in the Metaverse, is still considered risky.

If you wish to purchase Metaverse real estate you must use Metaverse crypto money in the form of non-fungible tokens (NFT’s). These are digital coins that, when a sale oc-

curs, the Metaverse platform checks out the sale and transfer of ownership to make sure it is legitimate. Once you own the Metaverse land, you can build on it, rent it or sell it, hopefully at a profit.

You keep your NFT’s in your digital cryptocurrency wallet. You can also use your NFT’s for other things such as clothing and other appurtenances for your avatar. NFT’s are divisible and can be exchanged for other forms of currency. The ownership of some cryptocurrencies allows one to vote within a Metaverse platform on decisions regarding where NFT’s should be invested or on the expected release of new features.

Several companies are spending millions of dollars in the Metaverse hoping to convince society that this is a development akin to sliced bread. Will there be mass acceptance of the Metaverse like the acceptance of the Internet by society or will it be a passing fad that disappears like large fins on automobiles?

Many are betting on the alternate reality (Metaverse), but personally, I prefer regular reality.



Chuck Roberts

How to contact government officials

U.S. Con. Adam Kinzinger
1218 Longworth HOB
Washington, D.C.
20515
(202) 225-3635

IL Sen. Brian Stewart
M104A State House
Springfield, IL 62706
(217) 782-0180

IL Rep. Tom Demmer
314 Capitol
Springfield, IL 62706
(217) 782-0535

Have a letter you want to submit to us? Send it to (news@rochelle-news-leader.com

KEEPING YOU IN TOUCH WITH YOUR LOCAL LEADERS

* Denotes Chairman/President

Rochelle City Council

| | |
|---------------------|----------------------------|
| *John Bearrows | jbearrows@rochelleil.us |
| Kathryn Shaw-Dickey | kshaw-dickey@rochelleil.us |
| Bil Hayes | bhayes@rochelleil.us |
| Rosaelia Arteaga | rarteaga@rochelleil.us |
| Dan McDermott | dmcdermott@rochelleil.us |
| Tom McDermott | tmcdermott@rochelleil.us |
| John Gruben | jgruben@rochelleil.us |

Rochelle Elementary School Board

| | |
|-----------------|----------------------------|
| *Dave Casey | dcillini94@gmail.com |
| Steve Builta | sbuilt@gmail.com |
| Ashley Jackson | ajackson@d231.rochelle.net |
| Stephanie White | swhite@d231.rochelle.net |
| Eric Van Hise | eric.vanhise@gmail.com |
| Trisha Vaughn | jrvtlv02@msn.com |
| Javier Zepeda | jzepeda@rthsd212.org |

Rochelle Township High School Board

| | |
|-----------------|------------------------------|
| *Tom Huddleston | tom.huddleston@rthsd212.org |
| Carol Hayenga | carol.hayenga@rthsd212.org |
| Bill Ravnaas | bill.ravnaas@rthsd212.org |
| Jacky Aguilera | jacky.aguilera@rthsd212.org |
| Jeff Tilton | jeff.tilton@rthsd212.org |
| Bobby Chadwick | bobby.chadwick@rthsd212.org |
| Brian VanVickle | brian.vanvickle@rthsd212.org |

Flagg-Rochelle Park Board

| | |
|------------------|--------------------------------------|
| Brent Carmichael | bcarmichael@rochelleparkdistrict.org |
| John Dobbs | jdobbs@rochelleparkdistrict.org |
| Dale Wells | dwells@rochelleparkdistrict.org |
| *Tim Hayden | thayden@rochelleparkdistrict.org |
| Jodie Hart | jhart@rochelleparkdistrict.org |
| Joe Lenkaitis | jlenkaitis@rochelleparkdistrict.org |

Ogle County Board Dist. 3

| | |
|--------------|-------------------------|
| Lloyd Droege | ldroege@oglecounty.org |
| Jamey Sulser | jsulser@oglecounty.org |
| Greg Sparrow | gsparrow@oglecounty.org |

Ogle County Board Dist. 4

| | |
|----------------|--------------------------|
| Bruce McKinney | bmckinney@oglecounty.org |
| Skip Kenney | skenney@oglecounty.org |
| Kim Whalen | kwhalen@oglecounty.org |

Creston Village Board

| | |
|-----------------|-------------------------|
| Wayne Williams | jwdw13@yahoo.com |
| Jennifer Payton | |
| *Tom Byro | tommyb_47@yahoo.com |
| Greg Hopkins | ghopkins522@comcast.net |
| Steve Katzman | skatzman@essex1.com |
| Mike Kerns | ac.kerns@comcast.net |
| Mark Hibshman | |
| Curt Ward | caward92@comcast.net |

Hillcrest Village Board

| | |
|-----------------|--------------------------|
| *Randy Salsbury | rsalsbury@hillcrestil.us |
| Pam Pittman | ppittman@hillcrestil.us |
| Dan Potter | dpotter@hillcrestil.us |
| Richard Rhoads | rrhoads@hillcrestil.us |
| Tim Ball | tball@hillcrestil.us |
| Renee Kerwin | rkerwin@hillcrestil.us |

Flagg Township

| | |
|--------------------|------------------------|
| *Bob Withrow | flaggtwp@rochelle.net |
| Joanna Patrick | flaggtwpc@rochelle.net |
| Susan Rothenberger | assessor@rochelle.net |
| Scott Seebach | scottseebach@gmail.com |

Board of Trustees

| | |
|--------------|---------------------------|
| Lance Noggle | noggle62@gmail.com |
| Eric Gruben | egruben@comcast.net |
| Susan Hagar | susanhager303@comcast.net |
| Jim Kenney | jimk@rocketsupply.com |

Flagg-Rochelle Library

| | |
|-------------------|-------------------------|
| *Jaqueline Dickow | dickow@comcast.net |
| Teresa Haggstad | haggstad@comcast.net |
| Michael Scanlan | scanlan@comcast.net |
| Lanning Nicoloff | nicoloff118@comcast.net |
| Sheri Klindera | alwayslefty2@gmail.com |
| Susan Sevedge | nit1prl22@yahoo.com |
| Darci Waltrip | doobs12@comcast.net |

LETTERS TO THE EDITOR POLICY

The Rochelle News-Leader encourages responsible letters to the editor on subjects of interest to our readers. Editing may be necessary for space, clarity or to avoid obscenity or libel, but ideas will not be altered. All letters must bear the handwritten signature of the writer and include address and phone number or e-mail address for verification purposes. Neither the street address nor phone number will be printed. Letters should be typed or legibly

handwritten, and no anonymous letters will be published. Any letters from boards or organizations must include at least one name of an individual. Any criticism of public officials should be limited to issues related strictly to their position or actions made in office, as personal attacks will not be published. Letters involving private disputes between the writer and a business will not be published. Political endorsements will be published,

however letters from candidates endorsing themselves will not be printed. Letters may be dropped at the News-Leader office (211 IL Route 38 East), mailed to the News-Leader (P.O. Box 46, Rochelle, IL 61068) or e-mailed (news@rochellenews-leader.com.) The News-Leader reserves the right to edit or reject any letter to the editor for any reason, and letters chosen for publication do not necessarily reflect the views of this newspaper.

COMMUNITY

RTHS Key Club visits RMS Builders Club

Bench collaboration planned

ROCHELLE—On Feb. 14, the Rochelle Township High School Key Club visited the Rochelle Middle School Builders Club. Kiwanis Golden K sponsors both clubs.

Madison Ost, Key Club president, presented a program about the Key Club and its projects and talked about the possibility of a collaboration and eighth grade Builders Club members joining the Key Club next year.

It has been decided that the two clubs will work together on a “plastic bottle caps for a bench” project going forward. Together they will collect, sort, weigh, bag and manifest the plastic caps. The Golden K will store, transport, pay the \$250 manufacturing expense and install the bench.

“It’s good for the kids, it’s good for the community and it’s good for the landfill,” Kiwanis Golden K Member and Key Club Advisor Dennis Swinton said. “It’s good for everything.”

Key Club officers include Ost, Vice President Ella McKinney, Secretary Marlen Hueramo, Online Editor Jessica Nguyen and Past President Riley Flanagan. Mr. Howard is the Key Club’s advisor.

Builders Club officers are Co-Presidents Addison Bingham and Elly Dalen, Secretary Jonathan Hernandez, Treasurer Alondra Rojas and Class Representatives Abigail Dougherty and Liliana Lawrence.



Rochelle Middle School Builders Club officers include Co-Presidents Addison Bingham and Elly Dalen, Secretary Jonathan Hernandez and Treasurer Alondra Rojas.



Feb. 4 - From the Heart, Rochelle, \$25

Feb. 5 - Noel Allison, Rochelle, \$250

Feb. 6 - Luisa Nambo, Rochelle, \$50

Feb. 7 - Foundation for Focus House, Rochelle, \$25

Feb. 8 - Ashley Hoffman, Rochelle, \$25

Feb. 9 - Rylen Ramos, Rochelle, \$25

Feb. 10 - Rochelle Rotary Club, \$25

Feb. 11 - Stephanie Bailey, Oregon, \$25

Feb. 12 - Melinda Vickrey, Rochelle, \$25

Feb. 13 - Becky Anderson, Rochelle, \$50

Feb. 14 - Alan Durbin, Rochelle, \$250

Feb. 15 - Kim Crull, Byron, \$25

Feb. 16 - Hope of Ogle County, \$25

Feb. 17 - Blake Tollwer, Rochelle, \$25

Feb. 18 - Rochelle Area Community Foundation, \$25

Feb. 19 - Rochelle Rotary Club, \$25

Feb. 20 - From the Heart, \$50

Feb. 21 - Mario Pineada, Rochelle, \$25

Feb. 22 - Brett Johnson, Rockford, \$25

Feb. 23 - From the Heart, \$25

Feb. 24 - Foundation for Focus House, \$25

Feb. 25 - Debby Ramsey, Rochelle, \$25

Feb. 26 - From the Heart, \$25

Feb. 27 - From the Heart, \$50

Feb. 28 - Sharon Watkins, DeKalb, \$25

March 1 - Maggie Williams, Rochelle, \$25

March 2 - Ava - Meyers Furniture, Rochelle, \$25

Birthdays & Anniversaries

March 2

Addison Perkins

March 5

Briggs Bridgeman

March 6

Nicole King

March 8

Chaz Conant

Donna Sassaman

March 9

Minia Waters

March 12

Troy Komadina

March 13

Veronica Lopez

March 16

Christy Oleson

March 19

John Overstreet

March 20

Jesse Lopez

Rachelle Phillips

March 22

Wakely Peterman

March 23

Kristi Gonzales

March 24

John Wooten

Lanie McPhearson

March 25

Chaz & Kathy Conant

Liz Danekas

Shaun Rosenbach

March 26

LeeAnn Komadina

Kim Dougherty

Bernie & Anna Sexton

Call 815-561-2151 to submit names for birthdays and anniversaries

THE KITCHEN TABLE MENU

March 6 – (Sunday Brunch) – Waffles with Eggs, Sausage Patties, Sausage Gravy and Biscuits

**All menus are subject to change.

If you would like to check before coming out, please call us at 815-561-9074 as we will put the menu on the answering machine. www.KitchenTableRochelle.org

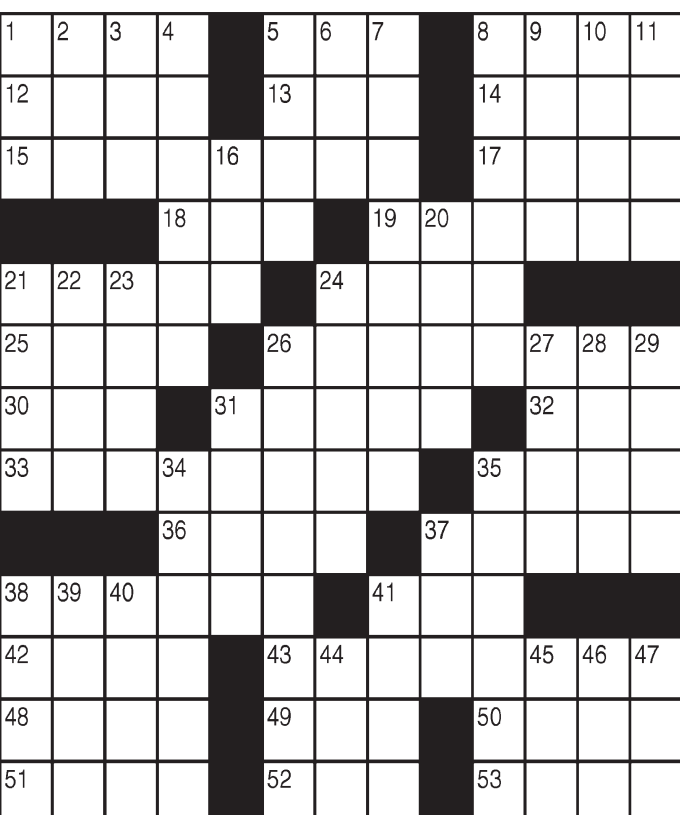


Coffee Break

King Crossword

ACROSS

- 1 Offend
- 5 Vegas lead-in
- 8 Biting remark
- 12 Jacob's twin
- 13 Antlered animal
- 14 Latin love
- 15 Printout
- 17 Earring site
- 18 Roscoe
- 19 More slothful
- 21 Filled fully
- 24 — colada
- 25 Cupid's alias
- 26 Street vendor's vehicle
- 30 Sawbuck
- 31 Attorney's load
- 32 Bee follower
- 33 Barber's offerings
- 35 Panache
- 36 Aachen article
- 37 Utter impulsively
- 38 Architectural style
- 41 Hero sandwich
- 42 Actress Perlman
- 43 Ski lodge cupful
- 48 "A Room of — Own"
- 49 Prior night
- 50 Not so hot?



DOWN

- 1 "I'm not impressed"
- 2 "This — recording"
- 3 Distant
- 4 Fakes, as figures
- 5 Author Uris
- 6 Jungfrau, for one
- 7 Urban silhouettes
- 8 French novelist
- 9 Mine, to Marcel
- 10 Judicial garb
- 11 Rabbit's title
- 16 Cow's chaw
- 20 &&&&
- 21 Actor Rogen
- 22 Location
- 23 Singer Braxton
- 24 Stickum
- 26 Hindquarters
- 27 Rights advocacy org.
- 28 Bring up
- 29 Bivouac shelter
- 31 Roman 202
- 34 Go over again
- 35 Macaroni shapes
- 37 Tampa Bay NFLer
- 38 Pirate's drink
- 39 "It can't be!"
- 40 Golf props
- 41 Dance move
- 44 Eggs
- 45 Cornfield noise
- 46 Mouths (Lat.)
- 47 Music booster

© 2022 King Features Synd., Inc.

Weekly SUDOKU

by Linda Thistle

| | | | | | | | | |
|---|---|---|---|---|---|---|---|---|
| | | 9 | | 4 | | 2 | | |
| 3 | | | | | 1 | | | 6 |
| | 6 | | 8 | | 7 | | 3 | |
| 8 | | 5 | | | 4 | 1 | | |
| | | 7 | 3 | | | | | 2 |
| | 2 | | | 9 | | | 4 | |
| | 5 | | | | 2 | | 9 | |
| 9 | | | | 8 | | | | 7 |
| | | 8 | 1 | | | 3 | 6 | |

Place a number in the empty boxes in such a way that each row across, each column down and each small 9-box square contains all of the numbers from one to nine.

DIFFICULTY THIS WEEK: ♦♦

♦ Moderate ♦♦ Challenging
♦♦♦ HOO BOY!

© 2022 King Features Synd., Inc.

CryptoQuip

This is a simple substitution cipher in which each letter used stands for another. If you think that X equals O, it will equal O throughout the puzzle. Solution is accomplished by trial and error.

Clue: **G** equals **F**

AFJK FJ WLC YMRJT CL VMJ Y
MOJIBYN LGG-QJKV CLOOBKW, CFJ
KBIJ QITLKYNT'M ALHRJH HJONBJT
"GLH SLVH GHBJM LKNS."

©2022 King Features Synd., Inc.

| | | | | | | | | | |
|---|---|---|---|---|---|---|---|---|---|
| 5 | 9 | 3 | 6 | 9 | 7 | 1 | 8 | 4 | 2 |
| 7 | 4 | 2 | 9 | 8 | 5 | 3 | 3 | 1 | 6 |
| 1 | 6 | 8 | 2 | 3 | 4 | 9 | 5 | 7 | 7 |
| 3 | 5 | 4 | 8 | 6 | 7 | 1 | 2 | 2 | 9 |
| 2 | 8 | 9 | 5 | 1 | 3 | 7 | 6 | 4 | 4 |
| 6 | 9 | 1 | 7 | 4 | 9 | 2 | 5 | 3 | 8 |
| 4 | 3 | 6 | 9 | 7 | 5 | 8 | 2 | 9 | 1 |
| 6 | 8 | 4 | 7 | 1 | 7 | 5 | 6 | 3 | 8 |
| 2 | 1 | 8 | 3 | 2 | 4 | 6 | 9 | 7 | 5 |

Answer

Weekly SUDOKU

| | | | | | | | | | |
|---|---|---|---|---|---|---|---|---|---|
| G | O | S | H | S | A | P | S | A | P |
| N | O | E | S | E | V | E | S | E | V |
| R | H | E | A | T | O | C | O | C | O |
| I | C | I | C | I | C | I | C | I | C |
| E | I | N | E | B | L | U | E | R | T |
| H | A | I | R | C | A | S | E | S | E |
| T | E | N | O | C | A | S | E | S | E |
| E | R | O | S | H | A | N | D | C | A |
| S | A | T | E | D | P | I | N | A | |
| H | A | B | O | P | Y | L | A | Z | E |
| E | S | A | U | E | L | K | A | M | O |
| M | I | F | F | L | A | S | B | A | R |

Answers

King Crossword

“For your times only.”
nice McDonald's worker replied
special off-menu topping, the
When he got asked to use a
answer
Cryptoquip

LOCAL NEWS

Sheriff's Office raises funds for cancer fight

'I didn't expect the mass amounts of generosity and time and effort'

BY JEFF HELFRICH
MANAGING EDITOR

OREGON—The Ogle County Sheriff's Office drew names Friday for a raffle benefiting the family of one of its detectives.

On Jan. 1, 2022, Amber Most, wife of Detective Kevin Most, suddenly became ill. Over the following two weeks, Amber underwent a series of tests and was ultimately diagnosed with stage 4 metastatic cancer.

Amber, Kevin and their 7-year-old daughter, Addi, have a long road ahead. The sheriff's office started a raffle to help cover medical costs. What began as a raffle for three guns at the start of the year grew to include 12 prizes after donations from various county businesses.

The raffle drawing was moved up to Friday after being originally planned for March 1 due to Amber starting another round of treatment on March 1.

Ogle County Sheriff Brian VanVickle said he wanted Amber and Kevin there for the drawing.

The couple drew 12 names and spoke to the community and thanked it for its support during a Facebook live video. Amber expressed gratitude for those who bought and sold tickets and donated items for the drawing.

"We're so grateful and so thankful to everyone who has donated and helped through this," Amber said. "We also want to thank the Ogle County Sheriff's Office for being our family. Law enforcement is extremely important to us and we couldn't do this without them. I want to thank everyone here who has sold tickets and done this for us. We love them very much and we're very gracious."

In a Friday press release, the sheriff's office called the response to the raffle "overwhelming," and said that it demonstrates the kindness and generosity of the citizens of Ogle County and the surrounding communities.

The release mentioned the following businesses that helped with the raffle: Hub-Remsen Printing in

Hillcrest, Mel's Custom Graphics in Mt. Morris, Rat Worx in Mt. Morris, Tim Ponder, Headon's Fine Meats in Creston, Turf RX in Stillman Valley, Calhoun Plumbing in Oregon, Patchwork Inn in Oregon, Tease Salon in Stillman Valley, Bad Ash Cigars in Oregon, Black Rifle Coffee and Goodman Painting.

Car magnets were also made by Mel's Custom Graphics with all proceeds going to the Most family. They're for sale for \$10 each at the Ogle County Sheriff's Office, 202 S. 1st St in Oregon.

VanVickle spoke during the drawing on Facebook live and said he enjoyed seeing the support for the Most family from the community.

"We're fortunate to live in the community we live in," VanVickle said. "Because they truly do support law enforcement. This is a shining example of not only supporting law enforcement, but supporting your neighbor and families and the community."

Kevin thanked the sher-



(COURTESY PHOTO)

On Jan. 1, 2022, Amber Most, wife of Detective Kevin Most, suddenly became ill. Over the following two weeks, Amber underwent a series of tests and was ultimately diagnosed with stage 4 metastatic cancer.

iff's office for organizing the raffle and selling tickets and putting manpower towards it. He said there have also been multiple other police and fire departments that have done similar things for his family. He

thanked the businesses for donating the prizes, magnets and selling tickets.

"You never expect cancer to come your way," Kevin said. "But I guess I didn't expect the mass amounts of generosity and

time and effort that everybody has put into this. I just want to thank everybody in our community and many communities in the state of Illinois. The outreach from far distances has been just amazing."

Ogle County Sheriff's Report

Deputies make arrest after theft response in Stillman Valley

OREGON — On Feb. 22 at 3:10 p.m. deputies conducted a traffic stop at 3rd Street and Franklin Street in Byron. After a short investigation, deputies arrested James Turcato, 27, of Byron for driving under the influence of alcohol. Turcato was transported to Ogle County Jail and was also

issued citations for expired registration and no front registration.

On Feb. 24 at approximately 1:13 a.m. deputies conducted a traffic stop on Interstate 39 at mile marker 108. After a brief investigation, deputies arrested Cristian Menjivar-Alvarenga, 28, of Rockford, for no valid driver's license.

Menjivar-Alvarenga was also issued citations for no front registration and operating an uninsured motor vehicle. Menjivar-Alvarenga was given an I-Bond with a return court date later next month and released on scene.

On Feb. 24 at approximately 2:40 a.m. deputies conducted a traffic stop on

Interstate 39 at mile marker 113. After investigation, Deputies placed Damontre Turner, 28, of Rockford under arrest for driving while license suspended. Turner was released on an I-Bond at the scene and given a future court date.

On Feb. 24 at approximately 10:03 p.m. deputies responded to a theft on

North Highland Court in Stillman Valley. After investigation, deputies placed Dustin Gray, 34, of Stillman Valley under arrest for possession of a stolen firearm (class two felony), no FOID card (class three felony), and theft under \$500. Gray was transported to the Ogle County Jail where

he was held pending a court appearance in front of a judge.

On Feb. 24, Christopher Taylor, 33, was placed under arrest for violation of the sex offender registration act (class three felony). Taylor was transported to the Ogle County Jail where he was held pending an appearance before a judge.

LeafGuard®

Get it. And forget it.®

*Guaranteed not to clog for as long as you own your home, or we will clean your gutters for free

Call Today for Your **FREE** Estimate!

815-673-7532

RECEIVE A \$50 DARDEN GIFT CARD

- LIFETIME NO-CLOG WARRANTY
- MADE ONSITE SPECIFICALLY FOR YOUR HOME
- THE ONLY ONE-PIECE SEAMLESS DEBRIS SHEDDING GUTTER SYSTEM.
- SCRATCHGUARD® PAINT FINISH

ONLY

\$99

INSTALLATION*

*Does not include cost of material. Expires 3/31/22. All participants who attend an estimated 60-90 minute in-home product consultation will receive a \$50 gift card. No purchase is necessary. Retail value is \$50. Offer sponsored by LeafGuard Holdings, Inc. Limit one gift card per household. LeafGuard procures, sells, and installs seamless gutter protection. This offer is valid for homeowners over 18 years of age. If married or have a life partner, both cohabitating persons must attend and complete presentation together. Participants must have a valid photo ID, understand English, and be legally able to enter into a contract. The following persons are not eligible for this offer: employees of LeafGuard or affiliated companies or entities, their immediate family members, previous participants in a LeafGuard in-home consultation within the past 12 months and all current and former LeafGuard customers. Promotion may not be extended, transferred, or substituted except that LeafGuard may substitute a gift card of equal or greater value if it deems it necessary. Gift card and terms and conditions (https://www.darden.com/gift-cards/terms-and-conditions) of such gift card will be mailed to the participant via first class US Mail within 21 days of receipt of promotion form provided at consultation. Not valid in conjunction with any other promotion or discount of any kind. Offer not sponsored or promoted by Darden Restaurants and is subject to change without notice prior to reservation. Offer ends 3/31/22.

NORTH AMERICA'S

#1 Selling Walk-In Tub

Featuring our *Free Shower Package*

Now you can finally have all of the soothing benefits of a relaxing warm bath, or enjoy a convenient refreshing shower while seated or standing with Safe Step Walk-In Tub's **FREE Shower Package!**

- ✓ First walk-in tub available with a customizable shower
- ✓ Fixed rainfall shower head is adjustable for your height and pivots to offer a seated shower option
- ✓ High-quality tub complete with a comprehensive lifetime warranty on the entire tub
- ✓ Top-of-the-line installation and service, all included at one low, affordable price

Now you can have the best of both worlds—there isn't a better, more affordable walk-in tub!

Call today and receive a

FREE SHOWER PACKAGE

PLUS \$1600 OFF

FOR A LIMITED TIME ONLY

Call Toll-Free 815-660-0041

SAFE STEP WALK-IN TUB

www.BuySafeStep.com

With purchase of a new Safe Step Walk-In Tub. Not applicable with any previous walk-in tub purchase. Offer available while supplies last. No cash value. Must present offer at time of purchase.

CSLB 1082165 NSCB 0082999 0083445

Call Today for Your Free Shower Package

815-660-0041

FINANCING AVAILABLE WITH APPROVED CREDIT

EASE OF USE CERTIFIED Arthritis Foundation

MADE IN TENNESSEE

BBB ACCREDITED BUSINESS

LIFETIME LIMITED WARRANTY

ADVERTISE YOUR BUSINESS HERE!

Great Rate - Great Spot!

Call Mike @ 815-561-2124 or email mfeltes@oglecountylife.com

01252021

Monkeys a little rough on your furniture?

Come see us!

HUB CITY FURNITURE

90 Days Same as Cash

Tue-Fri 9am-4:00 • Sat 9am-1pm • Closed Sun & Mon

429-433 Lincoln Hwy. Rochelle, Illinois 815-562-8765 hubcityfurniture.com

10162019

SPORTS



KINGS COMETS WIN TITLE

Kings won the Meridian Conference Girls Basketball championship this past week.

See page 8 for more details

RTHS Boys Basketball

Hubs make history

No. 5 Rochelle knocks off No. 2 Sterling 84-70 to win regional title

BY JEFF HELFRICH
MANAGING EDITOR

ROCHELLE — Not only did the Rochelle Hub varsity basketball team win its first regional championship since 2009 on Friday night, it did so on its home floor with a full gym of fans.

The Hubs defeated Sterling 84-70 in the IHSA 3A Regional tournament, hosting it for the first time in five seasons.

“It couldn’t be more special,” Rochelle head coach Tim Thompson said. “My first year as head coach we played Kaneland and lost a tough one here. We’ve always told our ADs we want to host games like this. We need to be here, we need to give ourselves another chance. The community came out to support these kids and it was fantastic.”

Rochelle was led in scoring by senior Noah Brown (21 points), junior Raul Aguirre (17 points), senior Adam Kemp (17 points) and senior Ryan Simmons (16 points).

The Hubs overcame a slow start and trailed 18-10 after one quarter. Rochelle outscored Sterling 22-12 in the second quarter and built a lead steadily afterwards, scoring 26 points in both the third and fourth quarters.



(PHOTO BY JEFF HELFRICH)

The Rochelle Hub varsity basketball team took down Sterling 84-70 on Friday to win the IHSA 3A Rochelle Regional championship. It’s the first regional title since the 2008-09 season for the Hubs, who will advance to compete in the IHSA 3A Peoria Sectional this week.

“I just don’t think we shot the ball well in the first quarter and we kind of hung tough,” Thompson said. “I knew the guys weren’t going to give up or give in. We’ve been shooting the ball way too well

lately. There were just a couple of adjustments we had to make. Finally, things started to click. We took that little lead at half. Coming out in the third quarter, we shoot in this gym all the time. We knew we were

going to shoot better in the second half.”

Rochelle knocked down 10 3-pointers in the game, five of which came from Brown.

The Golden Warriors got the bulk of their scor-

ing from junior John Paul Schilling, who put up 39 points. Rochelle (22-10, 11-3 Interstate 8) lost both of its earlier matchups to Sterling back in November. The Hubs have won 17 of their past 19 games.

“We lost to them twice in a matter of three days early in the year and we always want our team playing its best in February,” Thompson said.

See HUBS page 8

RTHS Wrestling

Hubs battle in IWCOA Fresh-Soph Rochelle Regional

Rochelle qualifies six individuals for sectional tournament at Sterling HS

ROCHELLE — The Rochelle Hub varsity wrestling team competed in the IWCOA Fresh-Soph Rochelle Regional on Saturday, with six individuals qualifying for the sectional including three regional champions.

Sophomore Tommy Tourdot won the 101-pound regional title with a 2-0 record. Tourdot scored back-to-back falls over Richmond-Burton’s Kyan Gunderson and Harlem’s Justin Lewis to win the tournament.

Freshman Joseph Nadig won the 113-pound regional title with a 3-0 record. Nadig held off Harlem’s Koletyn Zaroni 8-5 before pinning North Boone’s Gavin Ekberg and Stillman Valley’s Henry Hildreth for the title.

Freshman Kaiden Morris won the 220-pound regional title with a 3-0 record. Morris cruised over Stillman Valley’s Blake Mollett 18-2 before pinning Hononegah’s Isaak Smith and Stillman Valley’s Braxton Jennings.

Freshman Jack Pavlak took second in the

170-pound regional bracket. Pavlak took down Burlington Central’s Brandon Mancera 8-1 and edged Stillman Valley’s Brock Needs with a 5-3 sudden victory in overtime to win the semifinal bout. Pavlak fell against Byron’s Kyle Jones for the championship.

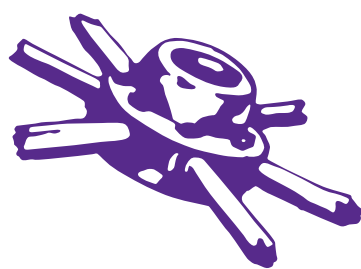
Sophomore Leo Stoffel finished fourth in the 170-pound bracket, scoring an 11-8 decision over Burlington Central’s Alan Perez to earn a sectional berth. Sophomore Riley Damask finished fourth in the 120-pound regional bracket, defeating Oregon’s Ethan Mowry 8-5 and pinning Durand’s Evie Anderson before conceding a 4-0 loss to Burlington Central’s Austin Lee. Damask faced Mowry again in the consolation semifinal round, winning with an 11-4 decision to earn his berth in the sectional tournament.

Other Rochelle athletes who participated in the regional include freshman 113-pounder Weylin Nay (1-2), freshman 132-pounder Santiago Pacheco (1-2) and sophomore 138-pounder Alex Burke (0-2).

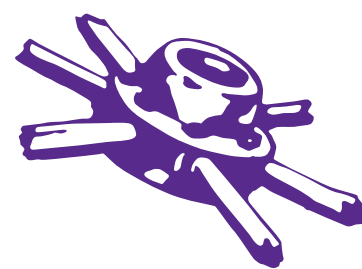


(COURTESY PHOTO)

Sophomore Riley Damask raises his hand in victory during the IWCOA Fresh-Soph Rochelle Regional this past weekend. Six individuals advanced to the IWCOA Fresh-Soph Sterling Sectional this coming weekend.



The businesses featured on this page are
"Hubs Super Fans"
 They proudly support our local athletes and students.



Please show your appreciation by patronizing their businesses.

WE SUPPORT OUR HUBS!

HUB SPOTLIGHT



Jayden Johnson
 Year: *Freshman*
 Sport: *Track*

Q: How many years have you been playing this sport?
A: Four years.

Q: What do you enjoy most about this sport?
A: The teamwork.

Q: What is your favorite school subject and why?
A: P.E. because I get to move around and I enjoy the team bonding.

Q: Who is your biggest role model and why?

A: My uncle.

Q: What is your dream job and why?
A: To be a coach because I enjoy physical activity.

Q: Where would your dream vacation be and why?
A: Hawaii because it's the place I feel the most free.

Q: What is your favorite thing about being a student-athlete at RTHS?
A: It's a great experience.



Makayla Ludwig
 Year: *Freshman*
 Sport: *Track*

Q: How many years have you been playing this sport?
A: Two years.

Q: What do you enjoy most about this sport?
A: Meeting new friends and working out.

Q: What is your favorite school subject and why?
A: Ag because I really love the teacher and it's enjoyable.

Q: Who is your favorite athlete and why?
A: Jonathan Toews because he's hot.

Q: Who is your biggest role model and why?

A: My parents because they always push me to reach my full potential.

Q: What is your dream job and why?
A: To be an athletic trainer because it sounds fun to do.

Q: Where would your dream vacation be and why?
A: Hawaii because it's warm there and I've never been there before.

Q: What is your favorite thing about being a student-athlete at RTHS?
A: I enjoy playing sports with friends.

Rochelle Chiropractic Clinic
 Dr. Chad M. Piller



227 E. Rt 38 • Rochelle, IL
815-562-8706
 www.rochellechiropractic.com
 Now Accepting New Patients!

JOHNSON TRACTOR

SALES • PARTS • SERVICE

1030 South 7th Street
800.262.1680

www.johnsontractor.com

AtlasAuto

BUY HERE – PAY HERE
 You Work - You Drive

Se Habla Español 815-562-7433

1400 N 7th St
 Corner of Flagg Rd & Hwy 251 N

HUB CITY SENIOR CENTER



Mon-Fri 7am-3pm
 Lunch Daily - 11:30am
Call us for a ride: 815-562-5050
 401 Cherry Ave., Rochelle, IL 61068
 hubcityseniorcenter.com

HUB-REMSEN PRINT GROUP

101 Maple Ave • Rochelle, IL 61068
 815.562.7057 • hub-remsen.com

GO HUBS!



"Proudly Serving The Rochelle Area Since 1945"

Berg-Johnson Electric

Residential • Commercial • Industrial

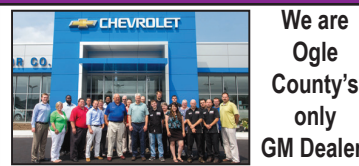
FREE ESTIMATES

Licensed and Insured

24 Hour Emergency Service

815-562-4937

500 Cleveland Avenue



We are
 Ogle
 County's
 only
 GM Dealer!

• Collision Repair • Rental Cars
 • 24 Hour Towing • Maintenance On All Makes and Models
 • New/Preowned Vehicles • Tires, Alignments, Brakes, Batteries

JEFF PERRY

CHEVROLET • BUICK • CADILLAC • JEEP • CHRYSLER
 815-562-8787 • www.jeffperrychevrolet.com

Busy Schedule? Leave the cooking to us.

• Large menu of foods
 • Rochelle's famous chicken by the dinner or bucket
 • Hand dipped ice cream (16 flavors)

COUNTRY SCHOOL DRIVE-IN RESTAURANT
 251 N. ROCHELLE • 562-6039

ANDERSON Plumbing & Heating, Inc.

Plumbing, Heating, Air Conditioning,
 Drinking water systems, Water Heaters,
 Softeners, Iron Filters & More.

LENNOX

Since 1976 One less thing to worry about
 Like us on Facebook
621 First Ave., Rochelle
815-562-8784



Hello, neighbor!

Huber Insurance and Financial Services Inc.
 Shane B. Huber, Agent
 1211 Currency Ct
 Rochelle, IL 61068
 Bus: 815-562-7011

Please stop by and say, "Hi!"
 I'm looking forward to serving your needs for insurance and financial services.
 Like a good neighbor, State Farm is there.
CALL ME TODAY.

State Farm

1001013.1 State Farm, Home Office, Bloomington, IL

DLX Medical GROUP



Caring for your family's health from infant to adults.

Accepting New Patients

For appointment, please call

815-227-9594

1212 Currency Ct, Rochelle, IL 61068
 Most Insurance Accepted

Local People Providing Local Service

Rochelle MUNICIPAL UTILITIES

Water • Waste Water
 Electric • Communications

Phone: 815-562-4155 333 Lincoln Highway
 Fax: 815-562-5861 Rochelle, IL

www.rmu.net

CENTRAL ILLINOIS LOAN

Loans For All Your Needs
 Auto • Home Improvement • Vacation

Jami Hackman

815★561★4035!

310 Eagle Drive, Rochelle
 All loans subject to our normal credit requirements and policies.

MORTON BUILDINGS

If you can dream it, we can build it.



Rochelle Sales Office • Hwy. 251 N. • 877-613-3050

Rochelle Community Hospital
 Your Local Healthcare Resource.

900 N. 2nd Street, Rochelle
 815-562-2181
 www.rochellehospital.com

MEYERS FURNITURE & FLOORING

209 Powers Road, Hwy 251 N
 Rochelle, IL 61068
 (815) 562-8792
 www.meyersfurniture.com

We're tuned in to your financial needs!

- Six locations
- 25,000+ ATMs across the U.S.¹
- Free checking account options including Student Checking
- Stillman Mobile App featuring mobile deposit²
- Free Pre-approvals
- Local lenders, local decisions



Stillman BANK

Earning Your Trust For 135 Years
 www.stillmanbank.com



562-3312

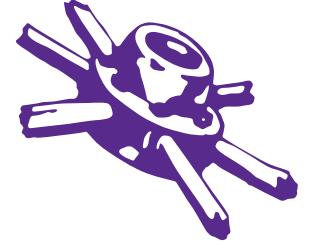
Dine-in • Carry-out

Taste the difference
Alfano's
 Pizzeria and Italian Restaurant

Two for Tuesday
 2 Large, 2-Topping
PIZZAS \$24.99 (With Coupon)

1115 Turkington Terrace
 Rochelle, Illinois
 Beer & Wine Dine In Only

GO HUBS!



Bruns Construction, Inc.
 Residential & Commercial Roofing

Residential, Concrete Driveways, Flatwork and Foundations
 • Shingled Roofs
 • Flat Roofs
 • Metal Roofs For Farm Facilities
 • Custom Built Homes
 • Additions

815-561-0099
 Licensed & Insured

SPORTS

Fader earns NWCA Coach of the Year honors

EAU CLAIRE, Wis. — Tim Fader (RTHS 1987) is the Wrestling Coach at University of Wisconsin Eau Claire and he recently earned Coach of the Year accolades from the National Wrestling Coaches Association.

Fader wrestled for his father Pete in high school at RTHS. He wrestled collegiately at Augustana College, graduating Summa Cum Laude with a degree in Accounting and Finance-Business Administration. He earned a master's degree in Sports Administration from UW-La Crosse in 1997.

At Augustana, Fader was a two-time team MVP, two-time conference champion, three-time national qualifier, two-time NCAA Division III All-American and twice was named a First Team

Academic All-American by the College Sports Information Directors of America (CoSIDA).

Fader was UW-Whitewater head coach for a decade, the UW-La Crosse head coach for six and a LaCrosse assistant for three seasons. Fader won conference championships all six years as head coach at LaCrosse and his last three seasons at Whitewater. He was WIAC Coach of the Year four times: 1999, 2001, 2002, and 2014 and NWCA Coach of the Year in 2001 and 2012 and the d3Wrestler.com National Coach of the Year in 2014 with a national runner-up finish at Whitewater.

Fader's teams have had eight Top 10 finishes at nationals. His 2000 LaCrosse squad won the national dual meet cham-

pionship. He has coached more than 40 All-Americans and 55 Scholastic All-Americans. Fader was inducted into the NWCA D3 Coaches Hall of Fame in 2017. He wrestlers for HoF Coach Kevin Puebla at Augustana. At LaCrosse, he coached with HoF Coach Greg Lonning. At Whitewater, he took over for HoF Coach Wilie Meyers.

Fader is the father of son Rye and daughters Molly and Shae. Fader's Blugold wrestling program has been climbing the rankings. The final dual meet ranking put UW Eau Claire at No. 15 nationally. UW Eau Claire is proud to host the 2022 NCAA Upper Midwest Regionals today. The top three in each bracket qualify for the Division III National Championships.



(COURTESY PHOTO)
Rochelle Township High School alum Tim Fader recently received the 2022 NWCA Coach of the Year Award. Fader currently coaches wrestling at UW-Eau Claire.

T-Byrd Lanes



(COURTESY PHOTOS)

Local league bowlers take home Bowler of the Month honors

T-Byrd Lanes recognized three local league bowlers with special awards recently. Jaxon Breit (left) was named Bowler of the Month for a 474 high series, 185 high game and bowling 50 pins over his average. JJ Groves (middle) was also named Bowler of the Month for a 125 high game and 341 high series. Levi Waddle (right) earned Bowler of the Month recognition as well for a 196 high game, 457 high series and bowling 75 pins over average.

COMMUNITY BOARD

Need to get the word out about a product or service you offer?
Give us a call at 815-562-4171.
We can reach over 9,000 homes!



Gutters


**THEISEN**
ROOFING & SIDING CO., INC.
SEAMLESS GUTTERS

**ALL ALUMINUM**

- Will Not Rust, Chip Or Peel
- Most Colors Available
- Manufactured On The Job

815-758-8998
257 W. Stephenie Dr., Cortland
www.theiscnroofing.com

Storage Sheds

**Rocky Ridge Structures**

FREE Sales Rep. Evaluation At Your Site

We Deliver! From Our Lot To Your Site

We Specialize in Portable/Quality Built Storage Sheds

- Stock & Custom Design
- Many Options Available
- Competitive Pricing
- Site Preparation Available

See Displays at 3500 S. Chana Rd. Chana IL 61015
Call Norm or Albert for Free Literature packet
779.861.3542

Plumbing/Heating/Cooling

Anderson Plumbing & Heating Inc.
Serving Rochelle For Over 40 Years

LENNOX
Quality Service • Free Estimates
Residential & Commercial
815-562-8784

Lic. #058-087891

Heating & Air Conditioning

HULL
HVAC & Household Services

Furnaces - Air Conditioners - Boilers
Duct Cleaning - Water Heaters

Precision Furnace Clean & Check
\$75.00
plus
get a FREE carbon monoxide test.

Ask about our complete home duct cleaning.

815-561-6551
www.HullHVAC.com

Expires: 04/30

Commercial & Residential Roofing

**Bruns Construction, Inc.**

Residential Concrete Driveways, Flatwork and Foundations

- Shingled Roofs
- Flat Roofs
- Metal Roofs For Farm Facilities
- Custom Built Homes
- Additions

FREE ESTIMATES

561-0099 Tim & Roger Bruns, Owners
Established 1997
www.brunsconstructioninc.com

Advertise Here

What Service Do You Offer?

562-4171

The Rochelle News-Leader

LIQUOR 'n' WINE

Enjoy the difference!

1140 N. 7th St.
 Rochelle, IL
 815-561-2337



firststatebank.biz

**SILGAN**
CONTAINERS CORPORATION

400 N. 15th St.
 Rochelle IL 61068
 815-562-1250

ROCHELLE
News-Leader



Rochelle
 Community Unity

Shop • Play • Stay

AGRICULTURE**Johnson Tractor**

200 S. Steward Rd.
 815.562.2135
 johnsontractorrochelle.stihldealer.net

ANIMAL HEALTH SERVICE**Rochelle Veterinary Hospital**

1381 N 7th, Ste. a
 815.562.5207
 rochellevet.com

ANTIQUES & COLLECTIBLES**Pickin' Station**

708 Lincoln Ave.
 815.562.7915

ASSISTED LIVING**Liberty Village of Rochelle**

2203 East Flagg Rd.
 Rochelle IL 61068

ATTORNEYS**James G. Ahlberg**

501 6th Ave.
 815.562.4443
 ahlberglaw.net

Hewitt & Wagner - Attorneys at Law

1124 Lincoln Hwy
 815.562.2704
 hewitt-wagner.com

Tess & Crull Law - Attorneys at Law

1090 N 7th St
 815.562.8754
 tesscrulllaw.com

AUTOMOTIVE**Jeff Perry of Rochelle**

1260 N 7th St,
 815.562.8787 • jeffperryauto.com

Prescott Brothers Ford

620 S 7th St,
 815.562.2177 • prescottbrothersford.com

Zip's Auto Body, Inc

1033 S 7th St
 815.562.5133 • zipsautobody.com

COMMUNITY SERVICES**Flagg Township Museum**

518 4th Ave
 815.562.3040

Hub City Senior Center

401 Cherry Ave
 815.562.5050
 hubcityseniorcenter.com

Rochelle Chamber Of Commerce

1221 Currency Ct Suite A
 815.562.4189
 therochellechamber.com

V.F.W Post 3878

318 4th Ave
 815.562.3878
 www.vfw.org

COUNSELING**Braden Counseling**

2600 DeKalb Ave, Suite 3
 Sycamore IL 60178

DINING & ENTERTAINMENT**Aldo's Pizzeria and The Red Brick Pub**

418 Lincoln Hwy
 815.562.3456 • aldospizzaandpubrochelle.restaurant

Alfano's Pizzeria & Italian Restaurant

1115 Turkington Terrace
 815.562.3312 • alfanospizza.com

Kenny's Place

411 Cherry Ave
 815.562.6568

T-Byrd Lanes

1172 Lincoln Hwy • 815.562.4822 • tbyrdlanes.com

Tecalitlan Restaurant

1071 N Caron Rd
 815.561.7576 • restauranttecarochelle.com

Vince's Pizza & Family Restaurant

1071 North 7th st.
 Rochelle IL 61068

FINANCIAL SERVICES**Central Illinois Loans**

310 Eagle Dr
 815.561.4035
 centralillinoisloans.com

Central Bank

340 May Mart Dr
 815.562.5571
 central-bank.com

First State Bank

304 E Hwy 38
 815.562.2200
 firststatebank.biz

John Vandre, Associate

409 4th Ave.
 815.562.7139

Stillman Bank

455 IL-38
 815.562.7071
 stillmanbank.com

Edward Jones - Will McLachlan

1122 Lincoln Highway
 815.562.5563
 EdwardJones.com

Holcomb Bank

233 IL-38
 815.562.3838
 holcomb.bank

JEFFPERRY

CHEVROLET • BUICK • CADILLAC • JEEP • CHRYSLER

815-562-8787
 JEFFPERRYAUTOS.COM



*Liberty Village
 of Rochelle*

2203 East Flagg Rd.
 Rochelle IL 61068
 NOT-FOR-PROFIT PROVIDER

**JOHNSON
 TRACTOR**

200 S. Steward Rd.
 Rochelle IL 61068

Rochelle Foods

1001 S. Main Street
Rochelle, IL 61068



Ashton | Rochelle | Oregon
815.562.5571



Allstate
You're in good hands.

FLOWERS AND GIFTS

Colonial Flower Shoppe & Gifts

408 Lincoln Hwy
815.562.8101
floristrochelleil.com

RCH Auxiliary Gift Shop

900 N 2nd St
815.562.2181 • rochellehospital.com

FUNERAL SERVICES

Beverage Lyons Family Funeral Home & Cremation Services

704 6th St
815.562.6872
beveragelyonsfamilyfh.com

FURNITURE

Hub City Furniture

429 Lincoln Hwy
815.562.8765
hubcityfurniture.com

Meyers Furniture

209 Powers Road Hwy 251 North
815.562.8792
meyersfurniture.com

HEALTH SERVICES

Changes Counseling, LLC

604 N Main St
815.501-2088
changescounselingllc.com

Rochelle Chiropractic - Dr. Chad Piller

227 E. Hwy 38
815.562.8706
rochellechiropractic.com

Rochelle Community Hospital

900 N 2nd St
815.562.2181 • rochellehospital.com

Salinas Chiropractic

1381 N 7th St., Suite C
815.562.6661 • salinaschiroandwellness.com

HOME IMPROVEMENTS & CONTRACTORS

Anderson Plumbing & Heating

621 1st Ave
815.562.8784 • andersonplumbingheatingcooling.com

Bruns Construction, Inc.

PO Box 400
815.561.0099 • brunsconstructioninc.com

B&W Appliance Repair LLC

567 W. IL Route 38
815.562.6253

Pemberton Plumbing, Heating & Cooling, Inc.

815.561.6119
pembertonplumbingheating.com

HOTEL & TRAVEL

Holiday Inn Express

1240 N Dement Rd
815.562.9994
ihg.com

INDUSTRIES

ClarkDietrich

501 S Steward Rd # 100
815.561.2360
clarkdietrich.com

Silgan Containers

400 N. 15th St.
815-562-1250
silgancontainers.com

Rochelle Foods

1001 S Main St
815.562.4141
hormelfoods.com

INSURANCE

Allstate

Dement Rd

Country Financial

519 4th Ave
815.562.8164
countryfinancial.com

Dimond Bros. Insurance

401 N Main St
815.562.5596
dimondbros.com

Graber Financial Group

409 4th Ave.
815.562.7139

State Farm Insurance - Shane Huber

1211 Currency Ct
815.562.7011
shanehuber.com

State Farm Insurance - Terri Schaefer

603 Lincoln Hwy
815.562.7063
terrishaefer.com

PEST CONTROL

Omega Pest Control

815.562.2005
omegapestcontrol-il.com

PHOTOGRAPHY

Lifeworks Photography

6342 South Westwood Ave.
Rochelle IL 61068

PRINTING AND/OR WEB DESIGN

Hub-Remsen Print Group

101 Maple Ave
815.562.7057
hub-remsen.com

Rochelle News-Leader

211 Hwy 38
815.562.4171 • rochellenews-leader.com • newsmediadigital.com

REAL ESTATE

Hayden Real Estate

221 E. Hwy 38
815.562.2111
haydenreinc.com

REAL ESTATE & AUCTIONS

Bearrows Real Estate & Auction Co.

361 W. IL Route 38
815.562.5113
bearrows.com

RENTAL PROPERTIES

Lida Lake Estates

433 Willis Ave., Apt. #11
815.561.0526
lidalakeestates.wixsite.com/lidalakeestates

RETAIL/ SPECIALTY SHOPS

Liquor 'N' Wine

1140 N 7th St,
815.561.2337
liquornwine.net

SURVEY

Survey Tech

104 Maple Ct
815.562.8771

TIRES

Alderks Tire Service

311 N 7th St,
815.562.4644
alderkstireservice.business.site

Tire Tracks

1320 N 7th St
815.562.7777
tiretracksusa.com

TOBACCO & ALCOHOL

Rochelle Tobacco "N" Liquor

222 May Mart Drive
815.561.9571
rochelletobacco.com

Rocky's Smoke Shop

132 May Mart Drive
815.888-7107

Support Your Community
By Supporting These *Local* Businesses



Local People Providing Local Services
333 Lincoln Highway • P.O. Box 456
Rochelle, IL 61068
815-562-4155 • www.rmu.net

ROCHELLE News-Leader

211 Hwy. 38 E., Rochelle
815-562-4171
www.rochellenews-leader.com



ON THE FARM

Understanding smart farm automation

MODERN agriculture looks little like the early days of farming. All aspects of farming have been modified by the access farmers now have to technologies to meet the demands of their work and the pressure a growing population places on farmers to produce quality food.

Farm automation, precision farming and smart farming are strategies utilized by today's farmers. These technologies have become important ways for farmers to optimize the production of food and improve its quality. According to the Food and Agriculture Organization of the United Nations, agricultural production must increase by 70 percent in order to meet global food demand by 2050, by which time the population could be 9.7 billion persons.

Smart farming can make raising livestock more accurate and con-



trolled. While farm automation is a broad term, precision smart farming zeroes in on exact measurements between variations in land conditions and livestock, according to Techie Loops, a technology information website. Examples of farming automation technology include:

- autonomous vehicles and machines
- drones
- robotics
- GPS guidance
- micro-forecasting and weather forecasting
- soil sampling
- yield mapping
- use of artificial intelligence
- geomatics

- statistical processes, and more.

Farmers can employ these technologies to save time and also manage labor shortages. Robot-assisted irrigation systems, for example, can maximize efficiency of water distribution where it is needed the most. Weeding robots can use artificial intelligence

and computer vision to target field areas and reduce use of pesticides. Driverless tractors can make labor cheaper for farmers by plotting the machine's route and letting it run the course automatically. Harvest robots also exist to grab crops gently (some with vacuum technology) and reduce reliance on field

workers. Some harvesters can determine ripeness of fruit via AI technology, according to Eastern Peak, a provider of custom hardware and software solutions for businesses.

Technology is changing farming in many ways. Innovations in automation can make operations more efficient and less costly.

Advancements in livestock technology

CONSUMER demand drives changes in industry, and the agricultural sector is no exception. Consumer demands for improved animal welfare have led to changes in the livestock sector, and various technologies have been developed and are in development to help this particular segment of the agricultural industry thrive.

According to the Animal AgTech Innovation Summit, various startups have developed technologies that can make the livestock industry more sustainable and efficient. The Israeli firm Ar-

menta has developed a non-antibiotic treatment for bovine mastitis that utilizes acoustic pulse technology. The treatment has a 70 percent cure rate.

Another firm working to treat livestock is the United States-based General Probiotics. Animal AgTech reports that General Probiotics develops cellbots and antimicrobial probiotics that eliminate harmful pathogens in livestock. That can reduce dependency on antibiotics and make food production safer.

Faromatics, a firm based in Spain, has combined robotics, artificial

intelligence and big data to improve animal welfare and farm productivity. One Faromatics product utilizes a robot suspended from a ceiling to monitor certain variables, including equipment function and health and welfare, that affect broiler chickens.

The American firm Swinotech utilizes voice recognition and computer

vision technology in its SmartGuard product to prevent piglet deaths from crushing and starvation. The product also makes it possible to track and facilitate obstetrical assistance.

Based in Uganda, Jaguza Tech has developed a livestock management system that utilizes sensors, data science and machine learning to improve

the efficiency, productivity and sustainability of modern farm operations. Farmers can utilize Jaguza to perform a host of functions, including monitoring their animals' health and identifying their livestock.

The Netherlands-based H2Oalert is a water control management system that checks the quality and quantity of cattle drinking

water in real time. The management system also checks for pollution and malfunctions in the water supply.

Livestock technology continues to advance, and firms across the globe are developing new products and platforms to help livestock farmers make their operations more efficient, sustainable and productive.



Avoid Down Times

Brouns
TIRE
(815)-562-4644

Auto | Truck | Tractor

- On The Farm Service
- New & Used Tires
- Wheel Balancing

Firestone is the **First one** for **Service**

TIRE SERVICE
311 N. 7th St., Rochelle
562-4644
Travis Brown, Owner
01052021

FROM LAND...

340 N. METCALF AVE
AMBOY, IL 61310
1-800-957-2513

JOHNSON
TRACTOR

1030 S. 7TH ST
ROCHELLE, IL 61068
1-800-262-1680

...TO LAWN

KUBOTA

BUILT FOR GENERATIONS

Residential • Farm • Equestrian
Commercial • Community • Repairs

Discover The Difference. Call Today!

MORTON
BUILDINGS

STORE HOURS:
M-F 8am-Noon,
1pm-5pm

877.613.3050 or 815-562-8777
104 Oak Ave., Rochelle, IL mortonbuildings.com

09042018

Classified Marketplace

FREE!

Sell your household items for free.
Total value of item must be \$200 or less. (15 words
- one week - 7 publications - price must be listed)



ROCHELLE • HILLCREST • CRESTON • STEWARD • KINGS • ASHTON

PUBLIC NOTICE IN THE CIRCUIT COURT OF THE FIFTEENTH JUDICIAL CIRCUIT OGLE COUNTY, ILLINOIS

IN THE)
MATTER)NO.
OF THE)2022
ESTATE)PR 9
OF)
JENNIE L.)
BOHANNON,)
Deceased.)

CLAIM NOTICE

Notice is given of the death of JENNIE L. BOHANNON, of Rochelle, Illinois. Letters of Office were issued on February 18, 2022, to VIRGINIA L. BOHANNON, whose address is 112 S. 10th Street, Rochelle, IL 61068, and whose attorneys are Fearer, Nye & Chadwick, 420 4th Avenue, PO Box 117, Rochelle, IL 61068. Claims against the Estate may be filed in the office of the Circuit Clerk of the Court at Ogle County Courthouse, Oregon, IL 61061, or with the representative, or both, no later than September 2, 2022, and any claim not filed within that period is barred. Copies of a claim filed with the Clerk must be mailed or delivered to the representative and to the attorney within 10 days after it has been filed.

FEARER, NYE & CHADWICK, Attorneys for VIRGINIA L. BOHANNON, Independent Administrator of the Estate of JENNIE L. BOHANNON, deceased No. 0302 (Mar. 2, 9, 16)

101 LEGAL NOTICE

This publication does not knowingly accept fraudulent or deceptive advertising. Readers are cautioned to thoroughly investigate all ads, especially those asking for money in advance.

105 BUSINESS OPPORTUNITIES

"This publication does not knowingly accept fraudulent or deceptive advertising. Readers are cautioned to thoroughly investigate all ads, especially those asking for money in advance."

113 FINANCIAL

NOTICE Advance Fee Loans or Credit Offers Companies that do business by phone can't ask you to pay for credit before you get it. For more information, call toll-free 1-877-FTC-HELP. A public service message from your hometown newspaper and the Federal Trade Commission.

119 ANNOUNCEMENTS

"This publication does not knowingly accept fraudulent or deceptive advertising. Readers are cautioned to thoroughly investigate all ads, especially those asking for money in advance."

127 SERVICES AND REPAIRS

Furman Lawn Care and Tree Service. Mowing, Hedge Trimming, Painting, Interior and Exterior. Gutter Cleaning, Storm Damage Clean up, Spring and Fall and Much More. In Business Since 1999. Call Jeremy Furman 815-761-9619. Please Leave Message Will Return Call ASAP. Fully Insured. (TFN)

JNJ JUMPERS Indoor/ Outdoor Bounce House Rentals Available Year Round. Please Call 815-784-4256 For Availability or Visit us on Facebook.

201 DOMESTIC/CHILD CARE

NO INDIVIDUAL, unless licensed or holding a permit as a childcare facility, may cause to be published any advertisement soliciting a child care service. A childcare facility that is licensed or operating under a permit issued by the Illinois Department of Children and Family Services may publish advertisements of the services for which it is specifically licensed or issued a permit. Your Hometown Newspaper strongly urges any parent or guardian to verify the validity of the license of any facility before placing a child in its care.

203 HELP WANTED

ASHTON - Bartenders and Waitresses Needed, Apply in Person at Ralphie and Lulu's. 812 Main Street in Ashton or call 815-453-2103. (TFN)

301 ANTIQUES

WANTED TO BUY: Vintage Metal and Wood Signs, Milk Bottles & Local Advertising, Oak Icebox, Iron Door Stop and Antique Lighting... Call Dick Harms at 815-562-2928 or email dickharms@hotmail.com

ANTIQUES WANTED: I pay cash for antiques; furniture, glassware, pottery & crocks, tin & iron toys, sterling silver, decoys. If it's antique, I'm interested in looking! Call 815-562-2928 or email dickharms@hotmail.com

307 MISCELLANEOUS FOR SALE

BUNDLED Newspaper - \$3 per Bundle. End Roll- Cost Depends on Weight of Roll. Available Monday-Friday 8AM-NOON ONLY. SEE RECEPTIONIST AT FRONT COUNTER Rochelle News-Leader.

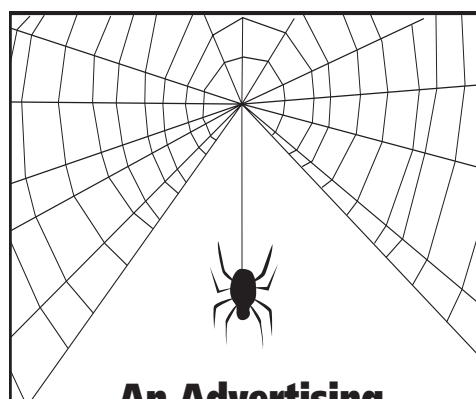
405 HOUSES FOR SALE

House For Sale: 4 bedroom 2 bathroom, Full Basement, Fenced in Yard, 2 Car Unattached Garage. 1120 Westview Dr. Call Russ (815) 558-5671 (2-27-22)

ALL REAL ESTATE advertised herein is subject to the Federal Fair Housing Act, which makes it illegal to advertise any preference, limitation or discrimination based on race, color, religion, sex, handicap, familial status, or national origin, or intention to make any such preferences, limitation or discrimination. We will not knowingly accept any advertising for real estate which is in violation of the law. All persons are hereby informed that all dwellings advertised are available on an equal opportunity basis.

501 APARTMENTS FOR RENT

Large 2 bedroom Northside of Rochelle. FREE heat and water. NO PETS! Available Now at \$750/month. Security Deposit, Credit Report, and Job Verification needed. Call (815) 919-9015



An Advertising Proverb

When Mark Twain was editing a newspaper in Missouri, one of his subscribers wrote in, saying that he had found a spider in his newspaper and wondered whether it was a sign of good or bad luck. Twain's response: "Finding a spider is neither good luck nor bad. The spider was merely looking over our newspaper to see which merchant was not advertising, so that he could go to that store, spin his web across the door, and lead a life of undisturbed peace ever afterward."



**Read and
Recycle**

INFORMATION

Office Hours:
8 a.m. to 5 p.m. (Monday Friday)
Phone:
815-562-4171
Fax:
815-562-2161
Email:
classifieds@rochellenews-leader.com
Address:
211 Hwy. 38 E., Rochelle
Mail:
P.O. Box 46
Rochelle, IL 61068

DEADLINES:

Sunday News-Leader:
Thursday, 2 p.m.
Tuesday Shopping News:
Friday, 10 a.m.
Wednesday News-Leader: Monday, 4 p.m.
(Deadlines subject to change during holiday times)

All classified marketplace line ads will appear in the following 7 print publications and on 5 high-traffic newspaper websites:
• Rochelle News-Leader • Ogle County Life • Rochelle Shopping News • Ashton Gazette • Amboy News • Mendota Reporter • Mendota Money Saver

Call for pricing that starts at \$32.99 for private party ads and \$44.60 for commercial business ads and \$19.99 for garage sale ads.

DISCLAIMER:

If your advertisement appears incorrectly, notify us immediately. We will not be responsible for more than one incorrect insertion, and will only credit customer for one insertion.

307 MISCELLANEOUS FOR SALE

NEW MILFORD REFRIGERATION

**NEW, USED
SCRATCH & DENT**
• Refrigerators • Freezers
• Washers/Dryers • Stoves

We also carry a large selection of refurbished appliances with a warranty.
6331 11th Street, Rockford
815-874-2257 11222020



Everybody hates you.

**You don't see
bullying like
this every day.
Your kids do.**

**Teach your kids how to
be more than
a bystander.**

**Learn how at
StopBullying.gov**



**FREE TO BE...
YOU AND ME**
FREE TO BE FOUNDATION INC.



103 AUCTIONS

REAL ESTATE AUCTION Saturday March 19th, 2022 10 AM

We will offer at Public Auction the following described Real Estate at Public Auction. This auction will be **held on site** at **10411 E Kyte Rd., Rochelle IL 61068**. On Auction Day, watch for Bearrows Real Estate & Auction signs From Skare Rd. & Flagg Blacktop, West of Rochelle on Flagg. **Contact Auctioneer John Bearrows at 815-739-9150 for a private viewing or visit our web site at www.bearrows.com** for further information & pictures.

DESCRIPTION OF REAL ESTATE: This auction will feature a 5.88 Acre tract of land with a very large (3144 sq ft) 4 Plus bedroom 2-story home, complete with 3 full bathrooms. The home has 2-furnaces, 1 being newer, (Natural Gas) and 2 central air units. Home features a 26'x24' master bedroom suite with walk in closet & full bath, Gas fireplace, hardwood floors, and a family room addition that has an office or extra bedroom and so much more. Large walk-in attic, and a partially finished basement with wet bar. The outbuildings include a 54'x 42' cold storage pole barn with concrete floor, another 90' x 42' pole barn with a heated 42'x 30' garage/rec room. Other buildings include a large barn with a newer horse barn attached, and a lean-to horse pen area. There is a large machine shed and smaller garden shed as well. This truly is a spectacular offering. Contact Auctioneer John Bearrows at 815-739-9150 for full details. **REAL ESTATE TERMS:** \$10,000.00 down the day of the auction, with the balance due on or before April 29th, 2022, at which time full possession will be given. Seller to provide an appropriate executed deed as well as a merchantable Title Policy in the amount of the purchase price. This property is being conveyed in its "As-Is" condition without any contingencies with regard to financing and/or the sale of another piece of property. All announcements made the day of auction take precedence over all prior advertising.

Holcomb Bank – Owner

Auctioneer: John Bearrows – 815-739-9150
Bearrows Real Estate & Auction Co.

361 W IL Rt#38
Rochelle IL 61068

BEARROWS
REAL ESTATE & AUCTION CO.
(815) 562-5113
Visit our website www.bearrows.com

AUCTIONEER:
JOHN BEARROWS, Rochelle, IL
(815) 739-9150
IL Lic. #440000243

SPORTS



(PHOTO BY JEFF HELFRICH)

The Rochelle Hub varsity basketball team gathered with the SuperFans for a group photo after securing the IHSA 3A Rochelle Regional championship on Friday. Rochelle improved to 22-10 overall with the victory. The Hubs will face No. 1 seed Metamora in the semifinal round of the IHSA 3A Peoria Sectional this week.

HUBS: Rochelle wins first regional title since 2009

From page 1

“And we were tonight. November was a long time ago.”

Thompson said winning big games comes down to senior leadership. Early in the year, he said the team wasn’t playing good basketball and had some issues with injuries and wasn’t shooting the ball well.

In the second half of the year, the team made a commitment, Thompson said. The Hubs took six days off and came back with a new attitude.

“We said, ‘OK seniors, what do you want this to be?’” Thompson said. “We weren’t even talking about conference championships or regionals at that point. We just wanted to start putting wins together. They came out and beat

LaSalle-Peru and had 30 points in the first quarter and that set the tone. And we just started playing good basketball from there on out.”

Thompson said the task of winning a regional has been a grind over the years. He’s been in three other regional championship games and has fallen short. You can only win regional championships by getting to them, he said.

“Tonight these guys were ready to play,” Thompson said. “They shot the ball fantastically. It means the world to Rochelle basketball to have all of our traveling teams and RYBA players around to make sure they saw this. It makes them want to work hard to get to the same point that these kids are at.”

Leading up to Friday

night’s game, players on the team spoke about wanting to win the regional championship for Thompson. It was his first as head coach. He took pride in that and has taken pride over the years in building relationships with players.

“You coach to help them in the game of basketball and in the game of life,” Thompson said. “I want to build relationships with kids and for them to respect me at the end of the day. I wanted to build on the culture that Russ Zick started with open gyms and have guys want to come back. I saw so many of my former players here tonight. It means a lot to me that this team wanted to do it for me.”

Rochelle’s next game will be against No. 1 sub-sectional seed Metamora on Tuesday at 7 p.m. at



(PHOTO BY JEFF HELFRICH)

Senior Adam Kemp (left) will represent the Rochelle Hub varsity basketball team in the IHSA 3A Sectional 3-Point Shootout at Bradley University on Friday.

Bradley University in the IHSA 3A Peoria Sectional Semifinals.

Senior Adam Kemp advanced to the sectional round of the 3-point

shooting contest Friday night, making nine shots. He advanced along with Dixon’s Sky Goral and LaSalle-Peru’s Michael Jereb and Seth Adams. Ro-

chelle’s Cooper Hasz (six), Tanner Lager (seven) and Ryan Simmons (six) also competed Friday but did not advance. The sectional shootout is Friday night.

Meridian Conference



(COURTESY PHOTO)

Kings Comets win 2021-22 Meridian Conference Girls Basketball Championship

Steward Elementary School hosted the 2021-22 Meridian Conference Girls Basketball Championship tournament, with the Kings Comets defeating the Creston Colts 24-14 and avenging two regular-season losses against the Colts to win the postseason title. Kings went 8-2 during the regular season and Creston finished 9-1 during the regular season. Pictured above from left to right are Kiera Hopp, Emma Osborne, MaKenzie Peterson, Abbi Andrews (front row), Laila Maples, Natalie Foster, Katie Toczylowski, Kenna Beck, Sophia Barnes (middle row), Mackenzie Taylor, Preslee Sanders, Rose Luxton, Kylie Maples and coach Jason Hickman (back row).