

40th Annual Farm Toy Show

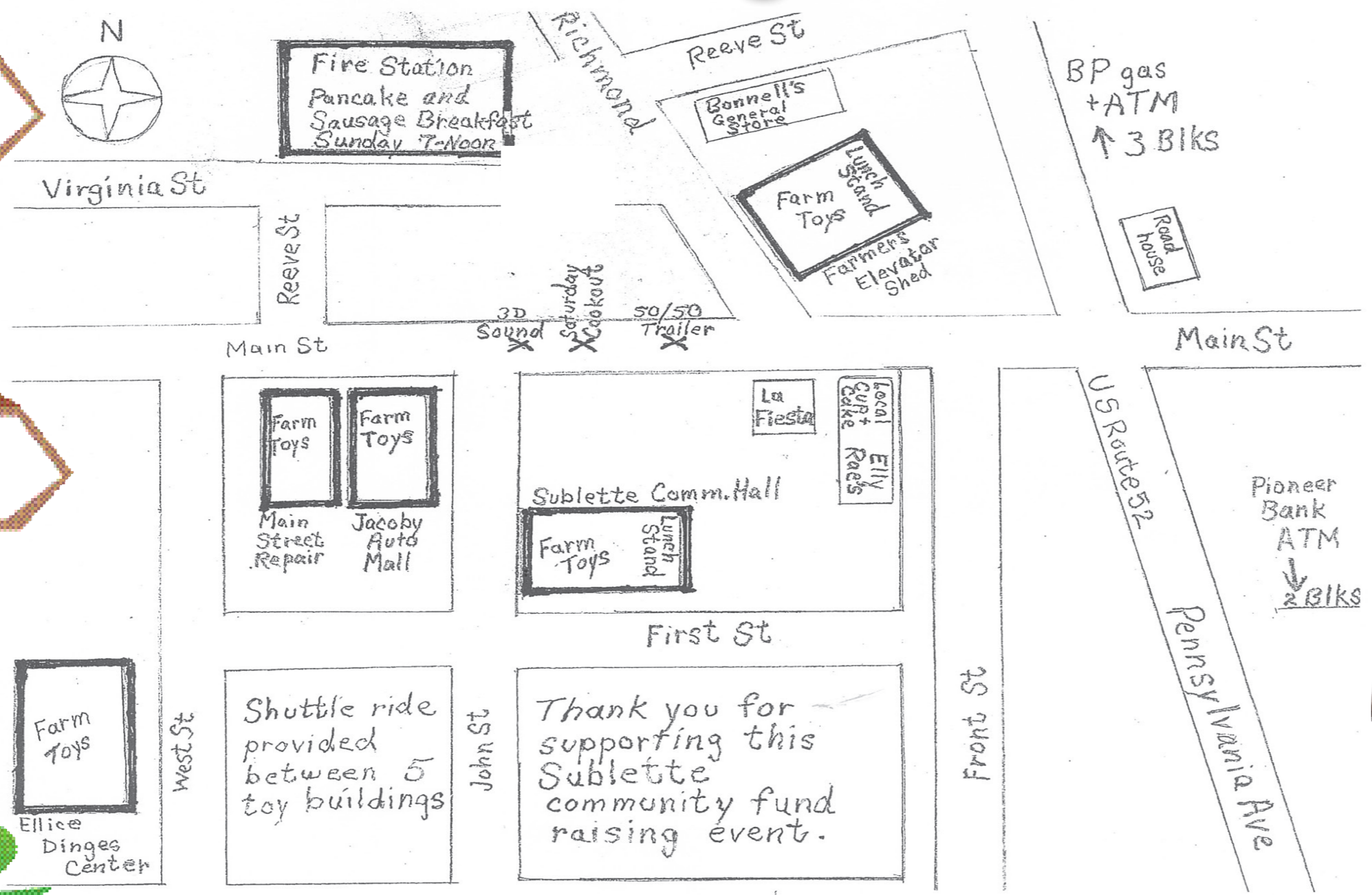
Farm Toy Show

Bake Sale

Pancake Breakfast

Craft Show

Antique Cars



40TH Annual Farm Toy Show Schedule of Events

Saturday, March 19, 2022

9 a.m. to 3 p.m. Antique Tractor & Farm Machinery Show Downtown Sublette
Toy Show Vendors will be open

Sunday, March 20, 2022

7 a.m. to noon Sublette Firemen's Pancake and Sausage Breakfast At the Sublette Fire Station

9 a.m. to 3 p.m. Farm Toy Show
Main Street Repair
Jacoby Building
Sublette Farmers Elevator
Sublette Community Building
Ellice Dinges Center

9 a.m. to 3 p.m. Bake Sale at Main Street Repair

9 a.m. to 3 p.m. Semi-Tractor, Antique Truck, Antique Tractor & Farm Machinery Show in Downtown Sublette

9 a.m. to 3 p.m. Miniature Farm Layouts
Ellice Dinges Center

Sub-Let Indians and Maytown Comets 4-H Food Stands at Community Building and Sublette Elevator



40TH ANNUAL

SUBLETTE

ANTIQUE TRACTOR AND TOY SHOW

**SATURDAY, MARCH 19
& SUNDAY, MARCH 20, 2022**

A SUPPLEMENT TO

The Mendota Reporter

Established in 1854

The Amboy News

The Ashton
GAZETTE



ROCHELLE
News-Leader

Wednesday, March 9, 2022

- 2 • The Mendota Reporter
- 2 • The Amboy News
- 2 • The Ashton Gazette
- 2 • Rochelle News-Leader

Sublette Farm Toy & Antique Tractor Show

Wednesday, March 9, 2022
 Wednesday, March 9, 2022
 Wednesday, March 9, 2022
 Wednesday, March 9, 2022

'The Little Town with the Big Toy Show'
40th Annual

Sublette Antique Tractor and Toy Show
Saturday, March 19 & Sunday, March 20
9 a.m.-3 p.m. both days



Village of Sublette
 PO Box 86
 Sublette IL 61367-0086
www.subletteweb.com

Welcome to Sublette's "Annual Antique Tractor and Toy Show." On behalf of the Village of Sublette, we are happy to see our returning friends, and to make new friends.

During the past couple of years, the effects of the pandemic have been felt everywhere. As we begin rebounding, taking a moment to recognize our volunteers, exhibitors, organizations and visitors who are the foundation of the Toy Show's longstanding success, is vitally important. Because of your unwavering loyalty, Sublette remains "The little town with the BIG toy show!"

While you are here, enjoy the warmth and hospitality of our beautiful village. Be sure to visit our businesses ranging from restaurants with home cooking, to unique shops and more! We are happy to see you!

Best wishes for an enjoyable and successful toy show!
 Stay awhile and come back often!

Sincerely,

John R. Stenzel
 Village President of Sublette

ERBES

Realty

Over 30 Years Experience

1922 Tower Road,
Sublette, IL 61367

Lori Erbes, GRI

Designated Managing Broker/Owner
 lorierbes@gmail.com
 815-535-6295

Abigail Vaessen
Broker
815-508-9715
abbivaessen@erbesrealty.com

Marcia Kosowski
Broker
779-423-5947
mkosowski@erbesrealty.com

WWW.ERBES-REALTY.COM

Welcome to the Sublette Farm Toy Show

March 19th & 20th



Amboy Shell Express Lane
 342 N Mason Ave., Amboy

JOHNSON OIL COMPANY



Sublette BP Gas
 508 N Pennsylvania St., Sublette

Wednesday, March 9, 2022
Wednesday, March 9, 2022
Wednesday, March 9, 2022
Wednesday, March 9, 2022

Sublette Farm Toy & Antique Tractor Show

The Mendota Reporter • 3
The Amboy News • 3
The Ashton Gazette • 3
Rochelle News-Leader • 3

40 years of keeping the tradition alive

By **GEORGE HOWE**
Amboy News Reporter

For as far back as you can remember as kid if you were on, near, or around a farm, you dreamed of one day sitting behind the wheel of an International Harvester Super C, or perhaps a John Deere LT Series 155 heading down the road to tend to crops. Maybe Grandpa or Dad shared the seat and took you for a ride. Many boys also jumped on a tractor pedal car and pretended to be like the big dogs.

Some things have changed over the years; nowadays many of the pedal cars are electric. If you have an appreciation for the history and preservation of tractors and farming toys, you have to head out to the Sublette Toy and Antique Tractor Show on March 19 and 20 from 9 a.m. to 3 p.m. both days.

The featured brand this

year is International Harvester, which will be well represented featuring over 180 pieces of equipment including; tractors, trucks, wagons, and plows. Not to mention toys, T-shirts and memorabilia. IH Northern Illinois Chapter President for the last 15 years, Ken Wolf, said that it's a labor of love but hard work getting set up.

"It takes us a full day from morning till night the day before to be ready to go," he explained.

Other models to be on display include Allis Chalmers, Case, Ford, John Deere, New Holland, Oliver, and a few surprises. Since 1982 the tractors have been proudly displayed outside on Sublette Main Street, and farmers and collectors are readily available to share the history and stories of the machine that first helped revolutionize farming back in 1812. If you are looking

for that special toy tractor, old farm literature, crafts, or a keepsake, wander into five buildings loaded with items from vendors locally as well as Kentucky, Missouri, and Wisconsin.

After a solid run, like so many other events, the indoor part of the show was cancelled due to COVID mandate restrictions back in 2020. The original committee of Dean Stephenitch, Tom and Don Dinges, and Dan Tastad decided to step down, and the future of the show was uncertain. Sublette Village President/Mayor John Stenzel felt that it was his duty to carry on the successful tradition of the event.

"I just couldn't let it end that way," he said. "I got a few community-minded men together and we started meeting last fall to keep it going."

Stenzel, along with Mark Henkel, Anthony Morgan,

"I just couldn't let it end that way. I got a few community-minded men together and we started meeting last fall to keep it going."
-John Stenzel, Sublette Village President/Mayor

Jeremy Zapf and Maurice Zimmerlein started meeting last fall to plan and organize.

"Besides providing an enjoyable weekend for everyone, this show is a very good fundraiser for the community," said Zimmerlein,

who has had a table selling toys since 1985.

Over the years, if the weather cooperates, the show can draw between 5,000-6,000 people. Lunch stands will be available and provided by the Sub-

let Indians and Maytown Comets 4-H clubs. The annual Fireman's Pancake Breakfast will be held on Sunday from 7 a.m. to noon. Free shuttle bus service to the display buildings will be provided.

Sponsored by Sublette Firemen

PANCAKE & SAUSAGE BREAKFAST

Sunday, March 20

Serving from 7 a.m. - Noon

Carryouts Available

Sublette Fire Department

*Come Support
Their Fundraiser!*



03092022

**Stop by and See our Unique Shops during the
40th Annual Sublette Farm Toy Show
March 19 and 20**

Local Cup & Cake

Serving you the best coffee
and baked goods in the town of Sublette



Ellie Rae's

* Unique Boutique * Home Decor * Handmade Soaps & Lotions * Candles * Women's and Children's Clothing and Accessories



Furniture Overload

Recycled furniture for any home.
Excellent quality at a reasonable price

Suds Yer Duds

Sublette's Laundromat "We're Cleaning Up the Town!"

**All four conveniently located in the
Village Mall, 100 S Front Street, Sublette, IL**

03092022

- 4 • The Mendota Reporter
- 4 • The Amboy News
- 4 • The Ashton Gazette
- 4 • Rochelle News-Leader

Sublette Farm Toy & Antique Tractor Show

Wednesday, March 9, 2022
 Wednesday, March 9, 2022
 Wednesday, March 9, 2022
 Wednesday, March 9, 2022

Fire Department cooking up breakfast

One of the popular events of the Sublette Toy Show is the annual Pancake and Sausage Breakfast served by the Sublette Volunteer Fire Department. The breakfast is served on the Sunday of the show from 7 a.m. until noon at the Sublette Fire Department. It's a great opportunity to start your day with a good breakfast and help out the local fire department.



Sublette Community Building

Many buildings used for toy show

Many buildings around Sublette will be utilized for the Toy Show. They include:

- Sublette Community Building – toys, 4-H food stand
- Ellice Dinges Center – toys
- Main Street Repair Building – toys, bake sale
- Jacoby Building – toys

• Sublette Elevator Building – toys, 4-H food stand

- Sublette Mall – Ellie Rae's Boutique, Furniture Overload, Local Cup and Cake
- Craft show items will be located at numerous buildings throughout the show.

- Fire Department - breakfast

WELCOME!

to everyone attending the

Sublette Farm Toy Show!

Please join us for these & other upcoming events!

- Fly-In Drive-In Breakfast – May 29, 7 am-noon
- Sweet Corn Festival Golf Outing – June 5
- Fireworks at Lake Mendota – June 25
- 75th annual

Mendota Sweet Corn Festival – Aug. 11-14

www.sweetcornfestival.com

Mendota Restaurants & Lodging

Chamber Member Restaurants & Lodging open to serve you in Mendota - just 7 miles east of Sublette on IL Rt. 52

- | | | |
|--|---|---|
| • Beck's Oil Co.
Rt. 251 & Meriden St. | • Main Street Station
714 Main St. | • Rosati's Sports Pub
801 Sixth St. |
| • Casey's General Store
801 Meriden St. | • McDonald's
1503 13th Ave. | • Subway
Rt. 251 North |
| • Cindy's On 34
Rt. 34 East | • U.S. 34 East | • Super 8 Motel
Rt 34 East at I-39 |
| • El Rey Del Taco
604 Sixth St. | • Mendota Moose Lodge
211 E. 12th St. | • Taco Madre
604 6th Ave |
| • El Zarape
Rt. 251 | • Pizzas by Marchelloni
1210 Meriden St. | • Ziggie's Family Restaurant
Rt. 34 East |
| | • Quality Inn & Suites
Rt. 34 East at I-39 | |

MENDOTA AREA CHAMBER OF COMMERCE
 800 Washington St. • Mendota • 815-539-6507
www.mendotachamber.com

03092022

Try a Shamrock Shake today!

Cool, minty & full of luck!

Shamrock Shake®

Available for a limited time.



\$1 OFF

SMALL McCAFE

Including Milkshakes & Hot Chocolate
 (excluding hot tea & drip coffee)

Coupon required. Not good with any other offer. Limit one coupon per customer. Value 1/20th of 1¢. Exp. 5/30/22.

TWO MENDOTA LOCATIONS - 2701 12th St. • 1503 13th Ave.



i'm lovin' it®

Locally owned and operated by Paul and Mary Breznay.

NOW HIRING - EOE

03022022

Wednesday, March 9, 2022
Wednesday, March 9, 2022
Wednesday, March 9, 2022
Wednesday, March 9, 2022

Sublette Farm Toy & Antique Tractor Show

The Mendota Reporter • 5
The Amboy News • 5
The Ashton Gazette • 5
Rochelle News-Leader • 5

Funds from 50/50 ticket sales help local projects

Each year the Sublette Toy Show committee sells 50/50 tickets to help fund local community projects. They are sold by committee members and at local businesses prior to the show. Then on toy show days, tickets are sold at a trailer located at the corner of Main and Richmond streets. The winner of the drawing will receive one-half of the money taken in. Each year the fund reaches a higher level. Be sure to get your tickets so you have a chance at being the big winner.



Don't miss out on your chance to be the big winner of the 50/50 drawing at this year's show.



Toy Show coincides with National Ag Week

Since 1973, the United States has set one week aside and designated it National Agriculture Week. Ag Week is a celebration to honor the millions of men and women responsible for producing the most abundant, highest quality and most reasonably priced food and fiber in the world.

Since Sublette lies in one of the richest

agriculture regions in the Midwest, it is fitting that the Sublette Toy Show is always held during Ag Week.

This year is also the 40th anniversary of the show and the 30th anniversary of Chapter 2 of the International Harvester Collectors' Club. The IH Collectors celebrate their anniversary every five years in Sublette.

UPCOMING EVENTS

Welcome To
SUBLETTE



OUR BIT OF THE
U.S.A.

March 19 & 20

40TH SUBLETTE ANTIQUE TRACTOR AND TOY SHOW

April 29

SIP AND STROLL

May 21

CRUISE 'N SHOW

May 30

MEMORIAL DAY SERVICE

June 25

DRIVE YOUR OLD TRUCK TO TOWN

Aug. 3

ONE DAY TRACTOR RIDE

Sept. 3

HOPS & HARMONY

Sept. 11

PULLIN' IN THE PARK

Sept. 17

COUNTRY CAR SHOW

Oct. 31

TRICK OR TREAT

December

CHRISTMAS IN THE VILLAGE

03092022

www.subletteweb.com



To be a part of the monthly
Farmer's Report, contact
your ad representative at
The Mendota Reporter
or **The Amboy News**

The Mendota Reporter

703 Illinois Ave. • Mendota IL 61342
Ph: (815) 539-9396 • Fax: (815) 539-7862
www.mendotareporter.com

The Amboy News

245 E. Main St. • Amboy, IL 61310
Ph: (815) 857-2311 • Fax: (815) 857-2517
www.amboynews.com

09282016

6 • The Mendota Reporter
 6 • The Amboy News
 6 • The Ashton Gazette
 6 • Rochelle News-Leader

Sublette Farm Toy & Antique Tractor Show

Wednesday, March 9, 2022
 Wednesday, March 9, 2022
 Wednesday, March 9, 2022
 Wednesday, March 9, 2022



Left to right
 L.J. Stephenitch, Jack Fischer

L.J. Stephenitch, left, took over the International Harvester store in Sublette in 1934. His dad, Paul, opened the store in the late 1800s.

International Harvester is featured line of farm equipment for show

This year's featured line of farm equipment for the Sublette Farm Toy Show is International Harvester.

International Harvester has deep roots in Sublette. Paul Stephenitch opened a hardware store in the late 1800s and soon became an International Harvester dealer. Upon his death in 1934, his son, Leroy, continued the hardware and implement dealership until 1948 when the business moved to Mendota.

A new building was constructed on the north edge of Mendota accord-

ing to plans drawn by Harvester. The building was state-of-the-art and served as an IH dealership under the name L.J. Stephenitch and Sons.

After Leroy's death, Don and Rich Stephenitch continued the business. After a number of years, the IH line was discontinued and the business became a hardware store.

The store is still operating as a hardware store by Gene and John Stephenitch. The business recently celebrated its 125th anniversary.



Specializing in On Farm Repair

- Complete Hydraulic Cylinder Repair

- Parker Hose Doctor (On-site hose repair)

- Repair of all Major Brands of Farm Machinery

- On-site Repair Services & Welding

- Outback Guidance Systems

- TL Irrigation sales/service

- Troubleshooting

- Maintenance Programs

SUBLETTE MECHANICAL

2025 Sublette Road, Sublette
 MICHAEL VAESSEN

815-849-5223 • Cell: 815-994-7543

www.sublette-mechanical.com

03092022

It's Time To Grow Together...

We understand the importance of experience, growth, local decisions and longevity in your farming business.

Community Banking since 1934.



Susan Gomez
 NMLS#1027602
 Amboy



David Lloyd
 NMLS#1069858
 Franklin Grove



Chas Cross
 NMLS#1846547
 Monroe Center



Sarah Wiersema
 NMLS#2041883
 Amboy



Mandy Sandrock
 NMLS#1393799
 Dixon North



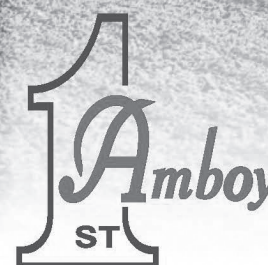
Todd Muir
 NMLS#591637
 Dixon North



The First National Bank in Amboy

Where you come first

Amboy • Dixon
 Franklin Grove • Monroe Center
 815-857-3625
 www.fnbamboy.com



03092022

Wednesday, March 9, 2022
Wednesday, March 9, 2022
Wednesday, March 9, 2022
Wednesday, March 9, 2022

Sublette Farm Toy & Antique Tractor Show

The Mendota Reporter • 7
The Amboy News • 7
The Ashton Gazette • 7
Rochelle News-Leader • 7

◆ Scenes from past Toy Shows ◆



Mass Schedule

Come for Worship, Stay for the Show.

SATURDAY

4:00 pm Our Lady of Perpetual Help, Sublette

5:30 pm St. Mary of the Assumption, West Brooklyn

SUNDAY

8:00 am St. Patrick, Maytown

10:30 am Our Lady of Perpetual Help, Sublette

Welcome to the 40th annual Sublette Farm Toy & Antique Tractor Show!

While in town, visit our many shops and restaurants!!

Sublette Business Association

03022022



03092022

10 • The Mendota Reporter
 10 • The Amboy News
 10 • The Ashton Gazette
 10 • Rochelle News-Leader

Sublette Farm Toy & Antique Tractor Show

Wednesday, March 9, 2022
 Wednesday, March 9, 2022
 Wednesday, March 9, 2022
 Wednesday, March 9, 2022

◆ Scenes from past Toy Shows ◆



BUILD IT ONCE - BUILD IT RIGHT



FIREPLACES



DECKING & FLOORING



INTERIOR DOORS



BATHROOMS



EXTERIOR DOORS



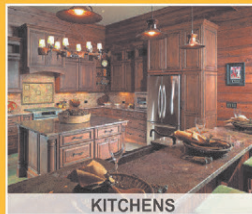
CABINETS & COUNTERTOPS



WINDOWS



STONE, SIDING & ROOFING



KITCHENS

Illinois' longest operating lumberyard continues to thrive along Peru's historic riverfront. Maze Lumber has been providing top quality building materials to Illinois Valley contractors and homeowners for 174 years, still owned by the founding fathers (Maze).

Located in a 15,000-square foot showroom and office, we offer building materials for the modern home as well as a full line of the traditional lumber items used in home building, commercial construction, and industrial applications. Our experienced sales staff takes pride in their ability to provide knowledgeable assistance along with prompt delivery at reasonable prices.



mazelumber.com
 Water Street, Peru | 815-223-1742



509 LaMoille Road, Sublette, IL 61367
 (815)849-5476 • www.woodhavenassociation.com

CUSTOM CRAFTED MEATS & BUTCHER SHOP
 WHOLE ANIMAL PROCESSING



401 N. Pennsylvania Ave., Sublette • CountryVillageMeats.com • 815-849-5532

Wednesday, March 9, 2022
Wednesday, March 9, 2022
Wednesday, March 9, 2022
Wednesday, March 9, 2022

Sublette Farm Toy & Antique Tractor Show

The Mendota Reporter • 11
The Amboy News • 11
The Ashton Gazette • 11
Rochelle News-Leader • 11

Many Sublette shops are open for business during the toy show weekend

The Sublette Mini Mall as well as numerous other Sublette businesses will be open during the Sublette Toy Show. This is a great opportunity to explore the many businesses that make up the community.

In the Mini Mall, Ellie Rae's is a quaint boutique offering gifts and clothing. Furniture Overload is a shop offering repurposed furniture. The store specializes in unique refinished and repurposed pieces of furniture. Then, Local Cup and Cake is the place to get your special cup of coffee along with cupcakes and muffins. The shop is listed on the Blackhawk Chocolate Trail, so you may find some special chocolate items on the menu.

Show profits are invested back into the area for scholarships and other projects

Each year the Sublette Toy Show awards five scholarships using some of the funds generated at the show. One scholarship is awarded to a member of the two local 4-H clubs – the Sub-Let Indians and the Maytown

Comets. One scholarship is given to a member of the Amboy FFA Chapter and one scholarship is given to a member of the Mendota FFA Chapter in memory of Dan Tastad, one of the original toy show promoters. The last

scholarship is given in the name of Max Armstrong to a member of either the Amboy or Mendota FFA chapter.

All of the remaining money from the toy show is used for local community projects and charities.

WE HELP YOU GROW

FIRST STATE BANK

Production Loans • Equipment Loans • Livestock Loans • Real Estate Loans
Appraisal • Estate Planning • Farm Management Services

VAESSEN

IMPLEMENT REPAIR

Peter Vaessen, Owner

542 US Hwy 52 • Sublette, IL 61367

(815) 849-9010



Serving All Makes & Models of Farm Equipment 03142018

Seneca FFA's 33rd Annual Farm Toy Show & Auction and Antique Tractor Show

Sunday, March 27, 2022
9 am - 2 pm
Auction at 2pm

Held at
Seneca High School
307 E. Scott St.
Seneca, Illinois

Admission: \$2 (under 10 is FREE)

- Public Consignments Welcome
- Door Prizes Every Hour
- Pedal Pull Competition at Noon
- Food Available All Day



Hosted by The Seneca FFA and The Seneca FFA Alumni

Auction conducted by
Jim Hintze and James Dresen

For more Info: Kent Weber 815-357-5024 (work) 815-252-2749 (cell)
or kweber@senecahs.org
Find us on Facebook @ "The Seneca FFA"



BRENT OHLINGER
Community President
Rochelle
815.562.2200
NMLS #464385



BRADLEY PILLER
Loan Officer
Mendota
815.539.3834
NMLS #477895



WILLIAM DAVEY
President - North Operations
Sycamore
815.752.2265
NMLS #939133



EVAN WIXOM
Loan Officer
Mendota
815.539.3834

firststatebank.biz
800.362.9623



Sublette Farm Toy & Antique Tractor Show

Looking for something to do?

Here's just a few of the FUN things going on in Lee County, IL!

May 7

Lincoln Highway Car Show
Franklin Grove

June 12

Ashton Lions Club
Car Show

June 30 -

July 3

58th Annual Dixon
Petunia Festival

July 28-31

Lee County 4-H Fair
& Jr. Show, Lee County
4-H Center, Amboy

Aug. 6

Harvest Festival
& Big Rig Show of
Franklin Grove

Aug. 6-7

Living History Antique
Equipment Association
Show

Aug. 25-28

Amboy Depot Days
& Car Show

Sept. 4-5

Paw Paw Lions Club
Labor Day Celebration &
Car Show

Sept. 17

Autumn on the Prairie
Nachusa Grasslands

*Dates may be
subject to change.*

 **Find us on Facebook!**

"Lee County Illinois Tourism"

Call us for more information
at **815-288-1840** or visit us
online for a full,
up-to-date listing of events.
leecountyfun.com


LEE COUNTY
TOURISM COUNCIL

03/09/2022

Author of International Harvester books to have book signing at Sublette Elevator

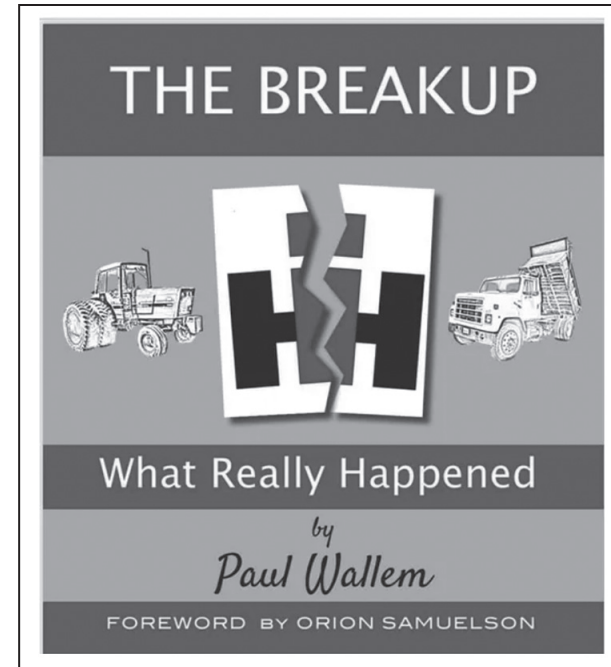
Paul Wallem, author of the book, "The Breakup-What Really Happened," will be signing books at the Sublette Farm Toy Show. The book delves into the causes of the dissolution of the International Harvester Company.



Wallem

How did one of the biggest selling brands in history go under? Wallem spent 13 years as an IHC executive and another 17 years owning two International Harvester dealerships. He spent two years interviewing dealers, farmers, restorers and collectors as well as former IH executives involved in the merger of IH with Case Company.

Anyone interested in International Harvester or



even interested in farming in general will want to read this book. Wallem will be signing books in the Sublette Elevator truck building on

Saturday, March 19 during the toy show.

The forward for the book was written by Orion Samuelson.

Lots of food available at show

The Sublette Toy and Antique Tractor Show is one of the longest-running shows in the Midwest. It will be celebrating its 40th anniversary this year.

The first show was held in just one building and drew over 600 visitors. From there, the show has continued to grow to where it covers five buildings and displays throughout the town.

The show includes toys, crafts, an outdoor tractor show, a semi-tractor show and

plenty of food. The Maytown Comets 4-H Club and the Sub-Let Indians 4-H Club will both have food stands, and the volunteer fire department will be serving a pancake breakfast at the fire station on Sunday of the show.

Food is also available at local establishments: Rt. 52 Roadhouse, La Fiesta, Local Cup and Cake, Sublette BP, Bonnell's General Store and Sublette Saloon, located three miles northwest of town on Tower Road.



Churches welcome visitors

The local churches welcome visitors to worship during the Toy Show weekend.

Grace Fellowship Church has Sunday School at 8:30 a.m. and morning worship at 10:30

a.m. Our Lady of Perpetual Help Catholic Church has Mass at 4 p.m. on Saturday and at 10:30 a.m. on Sunday. St. Patrick Catholic Church in Maytown has Sunday Mass at 8 a.m.



Wednesday, March 9, 2022
Wednesday, March 9, 2022
Wednesday, March 9, 2022
Wednesday, March 9, 2022

Sublette Farm Toy & Antique Tractor Show

The Mendota Reporter • 13
The Amboy News • 13
The Ashton Gazette • 13
Rochelle News-Leader • 13

Toy Show has grown from hundreds of attendees to thousands in 40 years

It has been 40 years since the first Sublette Farm Toy Show was hosted in the village.

Several people were discussing the possibility of having a toy show in Sublette. No one was quite sure if it was a good idea as no one had any experience in planning a show.

Finally, Dan Tastad said, "You will never know unless you try it."

That is what set the ball rolling. The group made plans for a one-day show at the community building. When over 600 people attended, it was deemed a success and from

there the show has continued to grow. It has spread over eight buildings and another building houses a craft show. Other events that have taken place over the years include a farm tractor show, a semi-tractor show and an operating train layout.

Visitors usually represent about 15 states. Many travel for many hours to attend. The show has become one of the largest shows in the Midwest.

The show usually has over 150 volunteers helping to make it a huge success.



Volunteerism shines through during show

An event as large as the Sublette Toy Show could not be done without a lot of volunteers. It takes volunteers to plan, volunteers to set up, volunteers to work at the show and volunteers to clean up.

It is estimated between 150 and 200 volunteers are involved annually in staging the show. These volunteers are not just from Sublette, but many of the neighboring communities, and some even travel for many miles to help with the show as they enjoy the small town atmosphere and farm-related activities.

These helping hands are greatly appreciated for their efforts in promoting the show.

Leffelman & Associates Invites You To Sublette For A Great Toy Show!



LEFFELMAN

& ASSOCIATES INC.

Our Family Protecting Your Family



P.O. BOX 349, Sublette, IL 61367
Sublette 849-5219
LaMoille 638-2171 • Amboy 857-2125

03092022

Serving the Local Community for Over 100 Years!



- We Offer Grain Storage & Marketing
- Seed • Grain • Feed
- Fertilizer • Chemicals • Lumber
- Building Materials

Sublette Farmers Elevator Co.

100 W. Main St. • Sublette, IL 61367

(815) 849-5222

03042020



42nd Annual Spring Consignment Auction

505 S. East St. • Annawan, Illinois
www.hatzernordstrom.com

Friday, March 18, 2022

STARTING TIME 8:30 A.M. WITH SMALL ITEMS & OLDER MACHINERY - 9:30 A.M. REGULAR SALE



Link to bidding site from www.hatzernordstrom.com or www.andersonenterpriseseq.com

Tractors

1995 Case IH 7240 (4375 Hours, Front Weights, Duals), 2003 Case IH MX285 (MFWD, 3pt, PTO, 4 Remotes, Quick Hitch), 1999 CAT 85E (5358 Hours), Case 2590 (3 Remotes), Case 2670, 1939 Cletrac (Gas, 540 PTO, 4 Speed), Ford 8670 (3 Remotes, 1000 PTO, PS, Radio), International 254 (Gas, WF, 3pt, PTO, 1407 Hours), International H, 1970 International 574, International 1066 (Hydro), International 1206 (One Owner), John Deere 4450 (8000 Hours, 3pt, FWA, 3 Remotes, PTO, Front Weights), John Deere A (1 Remote, 540 PTO, Gear Drive, NF), John Deere 50 (3pt, Gear Drive, 540 PTO, NF), John Deere 1530 w/ Loader (Diesel), John Deere 3010 (Diesel, NF), John Deere 4020 (Diesel, WF, 2 Remotes, PS), John Deere 4555 (7773 Hours, 1000 PTO, 3 Remotes), John Deere 6200 (5319 Hours, 540 PTO, 3 Remotes), New Holland TG255

Compact Tractors

2010 Cub Cadet Yanmar SX1300 w/ Loader (262 Hours, 3pt, PTO), Ford 1710 (Diesel), IH 235 (1549 Hours, Diesel, 3pt, ROPS, 540 PTO), John Deere 4210 (2434 Hours, MFWD, 3pt, PTO), John Deere 655 (50" Deck, 3pt, ROPS, PTO), Kubota B3300 w/ LA504 Loader (Diesel, 343 Hours, 3pt, ROPS, PTO), 2016 Mahindra 1535 w/ Loader & Mahindra 1538 Backhoe (1150 Hours, 4WD, Diesel), 2007 Tractor King 200 (243 Hours, 3pt, ROPS, PTO)

Construction & Skidloaders

ASV SR70 Track Skidloader (Cab, AC/Heat, Power Attach, High Flow, 1060 Hours, Joystick Control), 2003 Bobcat T300 Skidsteer (High Flow, New Tracks & Sprockets), CAT 8" Pull Scraper w/ Dolly, CAT 304C CR Mini Excavator (4500 Hours, Needs Engine), Gehl Max- IH 55 UX-2, E-Ject/17 Pull Scraper with Brand New Cutting Edge, John Deere 555A Crawler (7535 Hours, Runs & Operates Well), J&B 12" Scraper, Johnson Manufacturing Co 80B Yard Pan Scraper (Byd, 7), Johnson 4 Yard Dirt Pan, 1999 LinkBelt 2650 Series II Excavator, Michigan Self Propelled Loader, 2004 Moffett 5500 Piggyback Forklift (Diesel), 2005 Princeton Piggyback Forklift (Diesel, 4059 Hours), Stone 1 1/4 Ton Roller Cart

Rotary Cutters & Shredders

Bushhog 2615L Batwing, John Deere HX15 Batwing, Landpride RCM5015 15" Batwing, Rhino 4150 15" Batwing, Woods 3180 15" Batwing, Frontier 60" Mower, John Deere 609 6" 3pt Mower, John Deere 1018 10" Cutter, MowMaster 60" Ditch Bank Mower, Woods RM660-1 6" Finish Mower, Woods 72" 3pt Mower, Woods RC6 6" Rotary Cutter (Never Used), Woods RC5 5" Rotary Cutter, Woods S106 Ditch Mower 3pt, 6", 540 PTO, Woods 7" 3pt Mower, Woods RM500 3pt Mower

Attachments

3pt Backhoe w/ 24" Bucket, 3pt Backhoe w/ PTO Pump & Hyd Thumb, John

Deere Model 8 3pt Backhoe, 2021 Titan LW6A 3pt Backhoe w/ Thumb & 14" Bucket, 2021 Titan BK215 Backhoe 3pt w/ 12" Bucket, Woods 6500 Backhoe, Kubota Euro Hookup 7" Grapple, Frontline RB200-72SD Blade, Frontier BB2072 Box Blade, Gannon 66" Box Blade, 3pt Landpride RB3584 7" Blade, 3pt Rhino 1400 Blade w/ Hyd Turn, 3pt Rhino R950 10" Blade w/ Manual Turn, Hyd Tilt, 3pt Rhino SR 9" Manual Blade, Rhino 800 Rear Blade, John Deere Worksite Pro L72 72" HD Material Bucket, 78" Skidsteer Bucket, 60" Skidsteer Bucket w/ Teeth, 3pt 5" Disk, 3pt 9" Offset Disk, Dearborn 3pt 6" Disc, King Cutter 3pt 5" Disk (Ripped Front Blades, Straight Back Blades), 6" Gravel Leveler, Danhauser Skidsteer Mount Posthole Digger w/ 12" Auger, FarmKing 84" Snowblower, John Deere 3pt Snowblower, Tartar 7" Snow Pusher, Skid Attach 7" Snow Pusher, 8" Snow Pusher, Landpride RTR1274 Tiller, Never Used 5" Tiller, Titan 3pt 6" Tiller w/ PTO (New), 3pt Huskey Seeder, Dearborn 3pt 2 Row Cultivator, 3pt Boom, Shopbuilt 3pt Bale Spear, Shopbuilt 3pt Stack Mover

Tillage Equipment

Pottinger 6001T Terraced 20" High Speed Disk (Used 1 Season), Drain To Go Tile Plow w/ 4" Boot and Extra Boots, Power Feeder, Intelleslope Monitor, Case IH 4200 24" Soil Finisher, Krause Soil Finisher, Kewanee Cultimulcher, Case IH 4800 24" Field Cultivator w/ Walking Tandems, Vibra Shank, 5 Bar Spike Tooth Drag, John Deere 3pt Field Cultivator w/ Harrow, John Deere 22" Field Cultivator w/ Harrow, Sunflower 5033 29" Field Cultivator, Wilrich 48" Quad X Field Cultivator, International 700 7BTM Onland Plow, International 720 Moldboard Plow, John Deere 2600 6BTM Plow w/ Hyd Lift, Variable Width, DMI 5 Shank Ripper w/ Disk Leveler, Front Disk Blades, Rear Hyd Hook-Ups, DMI 5 Shank Ripper, DMI 50 5 Shank Ripper w/ 22" Front Blades, Disc Leveler, M&W EcoChamp 1300 9 Shank Mulch Ripper w/ Spring Shanks, Leveler, 16" Front Disc, Glencoe 10 Shank Ripper, John Deere E1600 7 Shank Chisel Plow, Krause 4850 Dominator 9 Shank Ripper w/ Rolling Baskets, 23" Blades, Krause 9 Shank Ripper, Krause 2860 Chisel Plow, Case IH 6500 9 Shank Disc Chisel, Krause Disc Chisel w/ Leveler, M&W EM1708 5 Shank Ripper w/ 21" Disc Blades, John Deere 400 Rotary Hoe, John Deere 235 20" Rotary Hoe w/ Walking Tandems, Rear Hitch & Hydraulics, John Deere 30" Rotary Hoe, John Deere 400 15" Rotary Hoe, Case IH 496 32" Disk, Hitchhiker 15" Harrow for Chisel Plow, Kewanee 4 Section Harrow on Cart, Glencoe 6 Row 30" 3pt Cultivator, Glencoe 6 Row Cultivator, John Deere 825 4 Row Rear Mount Cultivator, 2002 Imants 10" Rotary Spader

Fertilizer Equipment & Sprayers

2005 Bestway Field Pro III 90' Boom 1600 Gallon Tank w/ Raven 550 Controller, Hardi 500 Gallon w/ Hyd 60' Booms, 800 Gallon Pull Type Sprayer w/ 60' Booms, Larson 400 Gallon Sprayer, Top Air Sprayer w/ 50' Booms, 150 Gallon 3pt Sprayer w/ 15' Boom, DMI 4250 13 Knife

Antiques

1960's Ford 4000 (Runs Well), 1990, JI Case L Tractor, John Deere 50 Tractor, John Deere 290 Planter, John Deere LUC Engine, Antique Loader for Case, McCormick Deering 1020 Tractor, Road Maintainer

Building Materials & Shop Equipment

Portercable 120/240 Generator (800W Briggs 14hp Vanguard Twin), Allpower 3500W Generator (6.5hp), Hobart 7001 Plasma Cutter, Hobart 3 Phase Stick Welder on Cart, Kohler #30RH261 Generator (Engine Leaks Oil, Generator Doesn't Maintain Consistent Hertz), Senco 15 Gallon Air Compressor, Sanborn 60 Gallon 230 Volt Air Compressor, Snap On Tool Chest, 2 Wheel Cement Mixer, (2) 4" Pipe Wrenches, Pipe Threading Stand w/ 3/4"-2" Dyes, Pipe Cutter, Dayton Speed Air 60 Gallon Tank Air Compressor, Bottle Jacks, Engine Stands & Hoist, Tow Cables, 4 Spools of 1" Cable, US Craftmaster 40 Gallon Water Heater (Never Used),

NH3 Bar w/ Hinerick Controller, Dempster Clipper 560S Fertilizer Buggy, Larson 5' Fertilizer Spreader

Hay & Forage Equipment

Claas Jaguar 850 Self-Propelled Forage Harvester w/ Mercedes Diesel, Claas Bi-Directional RU450Xtra, Claas Direct Disk 520 Centaur Head, Claas PU300HD Hayhead, John Deere 4995 Windrower (1953 Hours) w/ John Deere 995 Rotary Head, RotoGrind 1090 Tub Grinder, Anderson RBM 1400 Self Loading Round Bale Wagon, H&S Round Bale Trailer, Vermeer 604Pro Round Baler (Very Low Bales), Hesston 5580 Round Baler, International Baler, International 37 Square Baler, Case IH 3650 Round Baler, John Deere 328 Square Baler, Tub Line TL1000R Bale Wrapper (Used 1 Season), John Deere 820 Mower Conditioner w/ HYD Swing, New Holland 489 9' Mower Conditioner, M&W 797 Disc Mower, Meyers Wide Body Silage Wagon, Meyer 4120 Silage Wagon, Meyer 4220 Silage Wagon, Meyer 4220 Silage Wagon, Meyer 4220 Silage Wagon, Rhino PT405 Hay Tedder, Sitrex Wheel Rake, Vermeer VR2040 V Rake, John Deere 660 Hay Rake, John Deere Hay Rake, H&S 8 Wheel Bi-Folding Hay Rake, 8 Wheel Hay Rake, Kuhn Skidsteer Square Bale Accumulator, New Holland 455 7' Sickle Mower, IH Farmall 27-V 7' Sickle Mower, Gehl 1540 Silage Baler, Hayrack, 16' Hayrack

Grain Handling Wagons

Bradford 528 Graincart, Bradford 895 Graincart, Brent 420 Graincart, Brent 620 Graincart, Demco 650 Graincart, Demco 950 Graincart (New Tarp Bows), Kinze 1050 Graincart w/ Walking Tandems, DMI 350 Bushel Center Dump Wagon, J&M 540 Wagon, (2) M&W 350 Bushel Little Red Wagons, Parker 2000 250 Bushel Gravity Wagon, Farm & Fleet 200 Bushel Gravity Box, Barge Box on John Deere Gear, 300 Bushel Gravity Wagon on Gear

Grain Handling Equipment

2017 Brandt 10"x70" Swing Away Auger, FarmKing 10"x31" Auger, FarmKing 10"x60" Swing Away Auger, FarmKing 10"x80" Swing Away Auger, FarmKing 13'x70" Swing Away Auger, Hutchinson 8' Auger, Mayrath 10"x62" Swing Away Auger, Mayrath 10"x35" Electric Truck Auger, Sudenga 10"x70" Swing Away Auger, Speed King 60' Belt Conveyor, 4"x12" Auger w/ Motor, Bin Spreader

Trucks & Trailers

1964 Chevy C-50 w/ Ether Distributor, Ford F700 (Showing 248000 Miles, Diesel, 5 Speed, Elec Hyd Brakes), 1997 Ford F Series Grain Truck, 1999 Freightliner FLD120, 1999 Freightliner FLD112 w/ 16 Ton Dry Tender Box & Rear Discharge Auger, 1993 GMC Carry All Box Truck, 2011 International TranStar (Automatic, 41340 Miles, 13 Liter Maxxforce Engine), 1990 Mack CH612 (Single Axle), Chandler 16 Ton Dry Tender Box w/ Rear Auger, Chandler 16 Ton Dry Tender Box w/ Rear Auger, 2020 Wilson 24'

STARTING TIME 8:30 A.M. (Machinery not sold Fri.)

(20) 50lb Cans of Welding Rod, (2) Garage Door Openers, Concrete Pavers, Large Selection of New Steel, Pallets of Misc. Engines, Assorted Lumber, Landscape Rocks & Stone, Selection of Trees & Bushes, Greenhouse Hoop Frames (22' Wide, 20 Sections), Greenhouse Cold Frame (22' Wide, 80 Long), 5th Wheel Plate, Large Selection of Weights, Tires, and Rims

Livestock Equipment

Betterbuilt 3350 Liquid Manure Spreader (540 PTO, 2 Shank), Heider 60 Bushel Feed Wagon, Heider 40 Bushel Feed Wagon, John Deere L Spreader, 1977 Shelby Livestock Trailer, Ag Mister, 90" Cattle Feeder, (2) Behlen Cattle Creep Feeders, (2) 10' Horse Stall Panels, (2) 50 Gallon Stock Tanks, Cattle Gates, Cattle Panels, Smedley Range Portable Livestock Scale, Hog Tube Gates, Large Selection of Feeders & Waters, Assortment of Wire Panels & Gates

Vehicles & Trailers

2006 Chevy Impala (223000 Miles), 1996 Chevy K3500 Silverado (1 Ton Dually, 178000 Miles), 1975 Chevy C10 Cheyenne (2WD, 89000 Miles, Long Bed), 1999 Chevy Prism (253000 Miles, Runs Good, New Tires & Batteries), 1992 Dodge Dakota, 2003 Ford F250 Powerstroke (Diesel, 4 Door, 180000 Miles), 2011 Ford F250 (4x4, Extended Cab), 2014 Ford F250 (4x4, Extended Cab), 2011 Ford Escape (158000 Miles, Runs Good), 2006 GMC 2500 (4x4, Extended Cab), 1996 GMC Sierra (Extended Cab, 4x4, Snowplow, 230000 Miles), 2008 GMC Sierra 2500 Dually Van (6.0 Gas, 16" Box, Liftgate), 2008 Nissan Centra (103000 Miles), 2008 Pontiac G6 (200000 Miles), 2008 Saturn Aura (215000 Miles), 20' Pontoon Boat (Yamaha 4 Stroke 50hp Motor), ATV Cart, Boat & Trailer, Shopbuilt 2 Wheel Utility Trailer, Hard Tonneau Cover for 1997 Short Bed Chevy (Maroon)

Saturday, March 19, 2022

Lawn & Garden

Bushhog w/ 48" Deck, Craftsman 6000 Series w/ 54" Deck, Cub Cadet 7232 Mower, Cub Cadet 1042, Cub Cadet 1042, John Deere 748 Diesel Garden Tractor (4059 Hours), John Deere 345, John Deere 345, John Deere 425 w/ 60" Deck (778 Hours), John Deere 2445 w/ 54" Deck (277 Hours), John Deere 2445 w/ 54" Deck (168 Hours), John Deere 500 w/ 48" Deck, John Deere D110, John Deere 112, John Deere 60, John Deere 70, John Deere 62C Mower Deck, John Deere 700 Series Angle Attachment & 54 Snow Blade, John Deere 48" Snow Blade (Like New w/ Frame Attachment), 2003 Kubota ZD21 w/ 60" Deck, Diesel, 1452 Hours, Simplicity Conquest Mower, Simplicity Broadmoor w/ 44" Deck (20hp, 821 Hours), Pulan Pro 27" 2 Stage Snowblower, Husqvarna ST224 2 Stage Snowblower, 2006 Yamaha Rhino 660 UTV, Agri Fab 55 Gallon Pull Sprayer

STILL ACCEPTING CONSIGNMENTS ——— MANY MORE ITEMS BY SALE DAY

TERMS & CONDITIONS (Important, Please Read): All items subject to prior sale - nothing will be sold two days prior to sale. Consignments are welcome any time, but will be closed after the lot is full or at 4 p.m. Saturday, March 12th, whichever comes first. Anderson Enterprises & Equipment, LLC will not be responsible for lost or stolen items. All tires, tanks, fuel barrels, and a few other items must be saleable or you will be asked to take them back home. Titles must accompany vehicles at consignment time. Some tractors will be mixed with machinery. Trucking is available. Parking is limited to one side of the street near dealership, come early. Consignors' checks will be ready on April 1st, 2022. ALL ITEMS MUST BE REMOVED BY April 29th. CALL OUR LOCAL BEST WESTERN ANNAWAN FOR ROOM RESERVATIONS. SPECIAL SALE RATE - (309) 935-6565.



owned and operated by

Anderson Enterprises & Equipment, LLC

Route 78 South • Annawan, Illinois • Business phone 309/935-6700 or FAX 309/935-6702

info@andersonenterpriseseq.com
www.andersonenterpriseseq.com
www.hatzernordstrom.com

Illinois Auction License #0440000363. . . Fall Sale August 19th & 20th, 2022

Wednesday, March 9, 2022
 Wednesday, March 9, 2022
 Wednesday, March 9, 2022
 Wednesday, March 9, 2022

Sublette Farm Toy & Antique Tractor Show

The Mendota Reporter • 15
 The Amboy News • 15
 The Ashton Gazette • 15
 Rochelle News-Leader • 15

❖ International Harvester featured at 40th annual show ❖



Burma Shave signs are the welcome mat to Sublette

When approaching Sublette on U.S. 52 from either direction, be sure to watch for the "Next 4 Exits" signs. These tongue-in-cheek signs were erected years ago for a community celebration and have been so popular that they are left up all year long. The signs have brought smiles to many travelers as they approach Sublette. So when you get to Sublette, be

sure to take the correct exit. You will also notice the recreated Burma Shave signs that are located one-half mile southeast of town along U.S. 52. These signs are the only "official" set of Burma Shave signs in Illinois. They were awarded to Sublette by Reminiscence magazine following a contest held a number of years ago.

33 S. East Ave.
 Amboy
 beckerautobody1@gmail.com
Family owned & operated
 By Joe and Jen Dewey

815.857.2632
 Amboy, Illinois

03022022

BONNELL'S GENERAL STORE INC.

200 N. Reeve St. • Sublette • 815-849-5522

WELCOME TO THE 40th ANNUAL
 SUBLETTE TOY SHOW!

** Video Gaming **

- Groceries - Hardware - Liquor -

03042020

Revolution Wellness offers a variety of things, but our main things are :

- Meal Replacement Shakes
- Boosted Teas
- Coffees

DAILY DRINK SPECIALS

205 E. Main St., Amboy
 815-857-7021
 Regular hours: Mon-Fri 6 am - 4 pm,
 Sat 7 am - noon

Like us on Facebook

Becker Detailing welcomes you to the **Sublette Farm Toy Show!**
 Call us to schedule your *spring cleaning!*

We have Gift Cards available and offer Weather Tech, Truxedo and P&S detailing products.

204 N Jefferson Ave
 Suite A, Amboy, IL
 815-823-7697

On Facebook & Instagram @BeckerDetailing

03092022

NEW

Rock Falls - River View, Beautiful well built home in Como, Very Large Main Floor rooms, 5 bedrooms, possible 6, 2 Car Garage, 2 patios, partial basement, and partial fence, very large lot, more than half an acre! Many surprising features, come take a look! (Sorry, No showings on Saturdays) \$128,000

Princeton - 5 Bedroom, 2 Bathroom, Beauty, Childs playland in yard. Enclosed back porch with laundry hook-ups, Just about a third of an acre. Very spacious home with large bedrooms. 2.5 Garage detached. Come to your affordable home of dreams and add your own special touch! \$93,000

Amboy - Main Level Master Bedroom, Main Level Laundry, Main Level Bathroom, Enclosed Porch, 3 Bed, 2 Bath home, larger yard, Walking distance to downtown. \$66,000

Rock Falls ***OWNER FINANCING AVAILABLE*** with 30% down *** (for \$12,000) or \$10,000 cash. Nice 2 Bed, 1 Bath includes shed and deck. Some work needs to be done in one of the bedrooms. Small Park neighborhood watch.

RIVER COUNTRY PROPERTIES
 Living In & Serving your community for 20+ years

JORI MCRAE | DESIGNATED MANAGING BROKER
 815-973-1197
 www.rivercountryproperties.net | jorie@rivercountryproperties.net

16 • The Mendota Reporter
 16 • The Amboy News
 16 • The Ashton Gazette
 16 • Rochelle News-Leader

Sublette Farm Toy & Antique Tractor Show

Wednesday, March 9, 2022
 Wednesday, March 9, 2022
 Wednesday, March 9, 2022
 Wednesday, March 9, 2022

◆ Scenes from past Toy Shows ◆



We look forward to seeing you at the Toy Show

"GREAT DEALS - GREAT SERVICE
 SINCE 1926"



**VAESSEN
 BROTHERS
 CHEVROLET, INC.**

HIGHWAY 52
 SUBLETTE, IL 61367
 800-227-5203



WWW.VAESSENBROTHERS.COM

Welcome to the 40th Annual
 Sublette Farm Toy & Antique Tractor Show

**LEFFELMAN
 AUTOMOTIVE**

Car Repair & Services

Chris Leffelman, Owner

815.849.5171

301 N Richmond St., Sublette
 Monday-Friday, 8 a.m.-Friday 5 p.m.



03042020

03022022