



ROCHELLE News-Leader

MIDWEEK EDITION | WWW.ROCHELLENEWS-LEADER.COM

Today's RNL issue sponsored by Community Unity member:

Shop • Play • Stay

401 N. Main St.
815-562-5596

Vol. 102 • No. 102

LOCAL NEWS... LOCAL VIEWS

WEDNESDAY, APRIL 20, 2022

\$1

Your life. Your education. Your way.

Enrolling Now for Fall!

www.kish.edu/fall

KNOW IT TODAY



Critical Thinking Awards given

RTHS recognized its student and faculty winners of the April Critical Thinking awards. **Page 2**

WEATHER

WEDNESDAY HIGH 51 LOW 39

THURSDAY HIGH 67 LOW 43

FRIDAY HIGH 60 LOW 46

SATURDAY HIGH 79 LOW 57

519 4th Ave.
815-562-8164

OBITUARIES

- LINDA M. (JONES) SLAGER
- TOBY LARSON
- DEBRA R. MAYER
- JOHN HARMON PIERCE JR.

See page 4

INSERTS

- ALDI
- FARM & FLEET

INSIDE

- Local News.....2, 3, 5, 8
- Obituaries.....4
- Opinion.....6
- Community.....7



Renewables in Rochelle

City looking at community solar, rooftop panels

BY JEFF HELFRICH
MANAGING EDITOR

ROCHELLE — Since the Rochelle City Council approved a resolution adopting a residential and small business customer self-generation net metering policy and interconnection program in February for residents that want solar at their homes, Rochelle Municipal Utilities Superintendent of Electric Operations Blake Toliver said last week that he's already had 15-20 inquiries.

The state's Climate and Equitable Jobs Act signed last year required the city to get a policy on its books. RMU customers with solar panels will get a credit back onto their bills for power generation that they put back onto the grid if they don't use it all. The city's expenses for maintaining the power grid are calculated into the policy.

"It's been a lot of people asking questions about how the policy actually works and rightsizing and the difference between having battery storage and not having that," Toliver said. "For the most part,



(PHOTO BY JEFF HELFRICH)

The Rochelle City Council recently approved a resolution adopting a residential and small business customer self-generation net metering policy and interconnection program for residents that want solar at their homes.

all of the calls have been positive and people just want to get more information. I think we got a fair amount of calls."

Toliver said he believes interest will increase more in the future due to lead times for solar panels and power inverters being high right now. It has been mostly residential customers that have reached out so far, he said.

Once customers do get involved with the program, they hire an installer to do the work and RMU goes to do an inspection of that installation afterwards.

The real work for the city-owned utility will come when its billing department has to subtract usage off their bill and give them credits for the power they're producing.

City Manager Jeff Fiegenschuh said at this point, the city is just focusing on customers having solar and hasn't had any residents inquire about putting something in like a wind turbine.

"I think that's definitely something communities are going to be facing in the future as we move more in the direction of renewables," Fiegenschuh said.

"Renewables encompasses more than just solar. How do we handle that just on a zoning level? At this time we're only focusing on solar and that's what all of our inquiries have been related to."

The city manager also said that the city wants to move towards more renewables in its own power profile. The city's renewables currently include a solar field at its wastewater treatment plant and a methane gas plant at the Rochelle Landfill.

See CITY page 3

VCCT's 'Our Town' opens April 29

Audience invited 'to remember what life is all about'

BY JEFF HELFRICH
MANAGING EDITOR

ROCHELLE — The second production of its 2022 season, "Our Town" will be on the stage at the Vince Carney Community Theatre starting April 29.

The Pulitzer Prize-winning play written by Thornton Wilder will be directed at VCCT by Carol Weidmann, assistant directed by Zach Crabtree and produced by Jane Prunty. April 29's show is at 7 p.m. followed by a 7 p.m. showing April 30, a May 1 show at 2 p.m., 7 p.m. shows May 5-7 and a 2 p.m. show May 8.

"Our Town" presents the small town of Grover's Corners in three acts: "Daily Life," "Love and Marriage" and "Death and Eternity." Narrated by a stage manager and performed with minimal props and sets, the play depicts the simple daily lives of the Webb and Gibbs families as their children fall in love, marry and eventually — in one of the most famous scenes in American theater — die.

"It's going to offer



(PHOTO BY JEFF HELFRICH)

The second production of its 2022 season, "Our Town" will be on the stage at the Vince Carney Community Theatre starting April 29.

many opportunities and challenges for our members and patrons alike," Weidmann said. "The first thing I realized while searching for a play to direct was that "Our Town" is highly diversified. Characters range in age from eight years old to senior citizens. The male and female leads carry the play,

but they are supported with walk-ons, a church choir, a congregation at a wedding and a cemetery with inhabitants who offer thoughts about the afterlife. I just can't wait for this performance."

Since being written in 1938, "Our Town" has been the most-produced play in European and

American theaters. Weidmann said when it became her turn to direct at the VCCT, she had three criteria.

"It had to have a large cast so we could provide acting opportunities for people of all ages," Weidmann said.

See VCCT page 8

Park district preparing for summer

BY JEFF HELFRICH
MANAGING EDITOR

ROCHELLE — At Monday night's meeting of the Flagg-Rochelle Community Park District Board, district Executive Director Jackee Ohlinger said work is underway to get facilities ready for summer operations.

Ohlinger said her crews have been busy with several projects at Spring Lake pool including on showers and landscaping. Pool drains will be reinstalled in early May ahead of opening. At that time, the pools will be filled up and kept filtered and prepared for the season.

"It's a little unusual to be preparing for Spring Lake pool's opening with snow on the ground this morning," Ohlinger said. "The crew and I were out there today working on different things. We'll have it all ready to go."

Work on the Spring Lake dock has also been completed and Ohlinger said she was satisfied with that work. Staffing efforts have already started for the outdoor aquatic facility this summer and lifeguarding classes are underway.

"We did a lifeguarding class and will be offering another," Ohlinger said. "Along with our current lifeguarding staff and some of the new staff and some that will return from Spring Lake last year, we should be filled with great staff down at Spring Lake."

Aquatic offerings inside The REC Center have been filled up in every session, Ohlinger said, with 87 kids currently in its swim lesson program. Park district Recreation Superintendent TC Hager said The REC as a whole is transitioning to its summer programs, which will include a version of summer camp for kids this summer.

The REC's membership numbers as a whole are still "gradually increasing," Ohlinger said.

See PARK page 5

Helping You Protect *What Matters Most!*

- Estate Planning
- Retirement Planning
- Personal Trusts
- Investment Management

Contact us to set up a **no-obligation, complimentary consultation!**

www.stillmanbank.com | 815.332.8850

Investments offered through Stillman Trust & Wealth Management • Not FDIC Insured • No Bank Guarantee • May Lose Value

COME SEE YOUR FRIENDS

304 EAST HIGHWAY 38
ROCHELLE
firststatebank.biz | 815.562.2200

FIRST STATE BANK

Brent Ohlinger
Community President
NMLS#454385

David Eckhardt
Vice President/Loan Officer
NMLS#454387

Member FDIC

LOCAL NEWS

North Main Street portion to be closed April 21-27

ROCHELLE — North Main Street, between 10th Avenue and McCaughy Avenue, will be closed to traffic on April 21-27 for storm sewer replacement.



Residents north of 1015 N. Main Street will be able to access their property from McCaughy Avenue. Residents south of 1015 N. Main will be able to access their property from 10th Avenue.

Advance warning, detour and other temporary traffic control devices will be posted near the affected area. Please use caution while traveling in this area and pay special attention to the advanced warning signage, road closed signage and other temporary traffic control devices within or in advance of the work zone.

The city appreciates residents' patience during the project.



(COURTESY PHOTOS)

Aaliyah Losoya (above) and Trinity Hendrickson (below) were two of the Critical Thinking Award winners honored at RTHS during the month of April.

RTHS presents April Critical Thinking Awards

BY VICKI SNYDER-CHURA
SPECIAL TO THE NEWS-LEADER

ROCHELLE — According to Rochelle Township High School Librarian Ann Marie Jinkins, "Trinity Hendrickson was a breath of fresh air at the January meeting of Fiction Addiction, where we discussed *Dig*, by A.S.King. Trinity found profound meaning and value in this book about the generations of a white family coming to terms with privilege, poverty, and other social issues.

"The way she presents her opinions with supporting facts and encourages other students to speak leads me to believe that Trinity (a sophomore) will be a leader at RTHS in the years to come," Jinkins said. "She values students (people) coming together to work on difficult problems. She is the same when talking one-to-one about books as we have done for several months now."

"I agree," English II Teacher Kristin Flanagan said, "In class I can sometimes see her wheels turning while she works out a question or challenge. She always comes up with novel ways of looking at what we're reading,

finding ways to connect to the text and helping others find ways to relate to the text.

"For example when others are confused, Trinity will often remind them of a shared experience from middle school or freshman year that helps them understand or relate," Flanagan said. "She is inquisitive and curious. That's refreshing!"

The RTHS Renaissance Program Critical Thinker award recipients receive a \$100 cash gift and they are asked to invest half of it in a local not-for-profit. Trinity chose to direct her gift to HOPE of Ogle County.

"The student I would recognize (as an emerging Critical Thinker) is Aaliyah Losoya," Spanish teacher Hannah Busching wrote. "Aaliyah is in my Spanish I class. The questions she asks show that she is thinking critically about Spanish and how it 'fits' with what she already knows about English.

"Her ability to make these connections has resulted in great growth in Spanish. Aaliyah is a truly curious student. Her curiosity and the way she thinks outside of the box will take her far," Busching said.



Teachers awarded

For five years, Ms. Hannah Busching has been the Spanish I teacher at RTHS. Many prefer to teach upper-level classes, but Ms. Busching's passion is teaching freshmen. She loves being a part of their journey, like the one on which she embarked as a student in the RTHS Foreign Language program."

Nominator/Principal Dr. Chris Lewis said, "I think Hannah may be even more passionate about helping people and that makes her an excellent fit for freshmen. She has provided substantial support during freshman seminar classes, focusing on academic as well as social-emotional learning behaviors.

"Any time you walk by, her class is engaged," he continued. "Students are actively practicing Spanish with smiles on their faces. While not all students enjoy learning Spanish, I would say all students enjoy her class."

When it comes to critical thinking - many teachers seek out mathematics teacher John Pfaff. Lewis said, "John has that calming ability to listen to your concerns and offer meaningful resolutions. Mr. Pfaff's influence is strong because he is approachable, likable, he listens and has reasonable answers to your questions. John is a positive role model offering students another positive adult mentor they can reach out to if they need help. His students enjoy his classes. He makes math fun. When you watch John teach, it's apparent that he's having fun and that is infectious."

Like the students, teachers earning the \$100 CT award, thanks to a grant from the RTHS Class of 1961, are asked to invest 50 percent in a local non-profit.

SURPRISE!



Happy 93rd Birthday Rose Anne Kersten!

Today, April 20th

Love from your Daughters Janet, Donna, Sara and all of your family♥



You're Invited to a

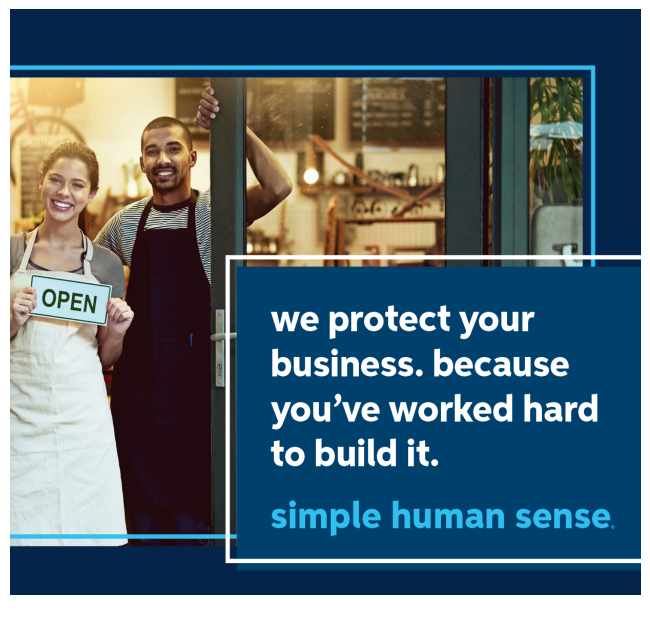
Garden Party

April 21st-23rd
Thu & Fri 9-5
Sat 9-3

Door Prizes, Store-Wide Discounts & Food Samplings



Merlin's Greenhouse and Flowers
The Other Side Boutique and Hagemann Horticulture
300 Mix Street • Oregon, IL 61061
815-732-2969



we protect your business. because you've worked hard to build it.

simple human sense.

Dimond Bros.
Insurance Since 1867

401 N. Main St. | Rochelle, IL
815.562.5596 | DimondBros.com

Auto-Owners
INSURANCE
LIFE • HOME • CAR • BUSINESS

2022 FOOTBALL SEASON TICKETS ON SALE NOW!

CALL 815-753-PACK(7225) OR VISIT NIU HUSKIES.COM



LOCAL NEWS

CITY: Local officials discuss renewable energy in Rochelle

From page 1

Adding more renewables in the future will be a balancing act, Fiegenschuh said. The city purchases 30 megawatts of power through the Prairie State Energy Campus in Marissa, Illinois and will be required to until at least 2042. It also buys 15 megawatts of power through NextEra and will through 2028.

"I would like to see more solar and more renewables, but we want to make sure we do it in a way that's sustainable and affordable and we're not producing more power than we need," Fiegenschuh said. "Because we do have a lot we're purchasing already. My top priority is making sure we can afford it."

The city's 300-kilowatt solar facility at its wastewater treatment plant shaves power load off that facility. It has looked at expanding that in the future, Fiegenschuh said. Toliver said the city is also looking into putting rooftop solar on its other existing facilities to help with their power load.

Toliver said the city is also looking at starting a community solar program for people that don't have enough roof space or have a highly-shaded yard.

"They'd be able to buy into it in this program," Toliver said. "The city would build the solar array and the customer would own a portion of it and get the credits for that portion of the solar array."

A private company named Enel Energy plans to put solar panels on almost half of a 90-acre area near Rochelle and the southwest corner of Twombly Road and the North Caron Road proposed extension and have it operational in November 2024.

Fiegenschuh said that won't impact RMU or the city much, as that eventual power will tie into ComEd's transmission system. The city manager said he did approach Enel about purchasing some of the power, but it had all been sold off already. He wants to look at buying renewable power in the future, but only if it's needed and in the city's best interest.

"Buying power we don't need will lead to higher rates because we might not be able to sell it back into the market for the same price we got it for," Fiegenschuh said. "I'd love to see us do more of what Blake has talked about in community solar that's RMU-owned and operat-



(PHOTO BY JEFF HELFRICH)

City Manager Jeff Fiegenschuh said that the city wants to move towards more renewables in its own power profile. The city's renewables currently include a solar field at its wastewater treatment plant and a methane gas plant at the Rochelle Landfill.

ed and we can allow our customers to get credits directly off of that for that solar field."

When and if it gets into more business with solar panels in the future, Toliver thinks it's in the best interest of the city to do its own project or be involved with a partnership so RMU has control.

"That way the city has more say and can benefit our customers more by

having more control of the project," Toliver said. "Enel's project is a great one and it's going to put a lot of renewable energy on the grid, but the city had no control of what was going to go on and no discussions on purchasing power off of it or any of the aspects of the project. If we partnered with somebody we'd have a say in how and when it was built and how it can best benefit our

customers."

The city recently completed an electrical substation project near Ritchie Road south of Interstate 88 and is looking at building another in the near future near Centerpoint Drive near MightyVine. That, and other aspects of future infrastructure will be looked at for the inclusion of possible renewables.

"If we do that, should we include some kind of

solar or wind turbine or some kind of renewables out by that substation?" Fiegenschuh said. "As we plan our growth and update our infrastructure, I think part of those conversations always should be, 'Is this a time that we can include renewables if we're going to spend the money?' So as we grow, we'll continue to look at renewables and if it makes sense financially to move forward with them."

General primary election scheduled June 28

OREGON — Ogle County Clerk Laura J. Cook announces that her office complies with the Federal Voting Accessibility for the Elderly and Handicapped Act.

The Ogle County Courthouse is accessible to disabled citizens for voter registration. If you are unable to go to a deputy registrar, we will send a deputy registrar to the residence of any person who wishes to register to vote. For information on this service, please call the county clerk's Office at 815-732-1110.

Any Ogle County resident who has never registered in Ogle County, has moved within the county,

or has had a change of name since the last election must be registered with the correct name and address if they wish to vote in this election. First time registrants shall (by Nov. 8 general election) have resided in their precinct for 30 days and must be 18 years of age on or before the Nov. 8 general election.

The last day to register to vote or change your address for the June 28 general primary election is May 31 (with the exception of grace period voter registration beginning June 1 and ending June 28 in the office of the Ogle County Clerk.)

All properly registered voters are eligible to vote

by mail. An application to "vote by mail" can be downloaded by visiting the Ogle County Official website at www.oglecounty.org. This application must be filled out and mailed or hand delivered to the county clerk's office, who will then mail the vote by mail ballot to the voter. After voting the vote by mail ballot it must be mailed or hand delivered back to the county clerk's office so it can be counted on election day.

The first day to apply for a vote by mail ballot March 30 for the June 28 general primary election. The first day to mail a vote by mail ballot is May 19 with the last day for mailing

a ballot from the county clerk's office being June 23. Early voting in person at the county clerk's office may be done through June 27 until 4:30 p.m.

Early voting will be conducted at the Ogle County Clerk's Office located at the Ogle County Courthouse, 105 S. 5th St., Oregon, May 19 through June 27, for all Ogle County precincts. Voting hours are Monday-Friday 8:30 a.m. to 4:30 p.m. and Saturday, June 25 from 9 a.m. to noon.

Early voting will be conducted at the Flagg Township Building located at 303 W. Illinois Route 38 in Rochelle June 22 through June 24 from 9 a.m. to 4

p.m. and June 25, 2022, from 9 a.m. to noon, for Flagg and Dement precincts only.

If there are any voters in Ogle County who cannot get into the polling place, we can send two judges of election within 50 feet of the polling place with the

ballot. A request should be made prior to the election on a form provided by the county clerk's office. If the clerk's office can help or assist you in any way, our regular office hours are 8:30 a.m. to 4:30 p.m., Monday through Friday, telephone 815-732-1110.

PAW PAW ANNUAL TOWN WIDE GARAGE SALES

Some on Friday 5/22 8am-3pm
All on Saturday 5/23 8am-3pm

TOWN-WIDE GARAGE SALE

Nearly 50 sales & Balloons mark the sales
Maps Available

RNL04202022

RALPHIE & LULU'S

Rib Night

Enjoy our famous ribs on
Wednesday, April 27, 5 - 8 p.m.
Carry out available

Serving dinner Wednesday,
Friday and Saturday 5 - 8 p.m.

812 Main St. - Ashton

04/20/2022

10th Annual

LINCOLN HWY CAR SHOW

Franklin Grove, Illinois
Saturday, May 7, 2022
9:00 am - 3:00 pm

7 CLASSES!

- Car 1900 - 1949
- Car 1950 - 1973
- Car 1974 - 1999
- Car 2000 - Present
- Rat Rod
- Truck
- People's Choice

3 AWARDS PER CLASS!

(awards based on point judging)

- *50/50 Drawing*
- *Music by 3-D Sound*

Company Vendor Booths Available

Vendor Spots Still Available

* SHOW SPONSORS *

- Ken Nelson Auto Group & Rock Auto and Car Guy Garage

Registration

By April 8, 2022 - \$10
Day of Show - \$12
Day of Show Registration 9-12.
Judging begins at 12:00.

04/20/2022

Teach Kids about Electrical Safety!

Some important lessons include:

- Water and electricity do not mix
- The only objects that go into outlets are electric plugs
- Never stick fingers or objects in electrical appliances
- Electric cords should be left alone

Rochelle

MUNICIPAL UTILITIES

Local People Providing Local Services

815-562-4155

333 Lincoln Hwy., Rochelle • www.rmu.net

01272019

NORTHERN ILLINOIS CARRY

CERTIFIED PROFESSIONAL TRAINING

April 23 & 24 Concealed Carry/Home Defense Class, 8am-4pm both days

April 30 Introduction to Handguns 8a-12pm

May 14 Concealed Carry Permit Renewal, 8am-1pm - 3 hours

May 21 & 22 Concealed Carry/Home Defense Course, 8am-4pm both days

May 29 Defensive Handgun Techniques 9a-3pm

Private Concealed Carry/Home Defense classes can be arranged but a minimum of 5 students is required.

We are offering "Countering The Mass Shooter Threat" classes which are designed for every House of Worship, School, Business and Family. Please contact us for further information and/or scheduling dates. These classes can be taught at any location.

Please call or email for further information.
See website for detailed description of all classes

CALL TO REGISTER & FOR COURSE INFORMATION

(815) 501-9421 | NORTHERNILLINOISCARRY.COM

NORTHERNILLINOISCARRY@GMAIL.COM

NORTHERN ILLINOIS CARRY

DENNY LEIFHEIT

04/20/2022

LOCAL NEWS

Obituaries

Linda M. (Jones) Slager

OSHKOSH, Wis. — Linda M. (Jones) Slager, 84, peacefully passed away at her home on April 17. Linda was born May 1, 1937, to the late Elmer and Marion (Safford) Walters, Omro, Wisconsin.

On Sept. 26, 1956 at Oshkosh Baptist Temple, Linda married Richard Jones I and together they had four children: Julia, Richard II, Teresa "Terry" and Theresa "Tracy".

Linda leaves behind a strong beautiful legacy with her music. Her love for Christ can clearly be heard in the songs that she wrote over the years. It was one of her greatest pleasures to sing in the church choir.

Linda was forever the gracious hostess. She loved to have her family and church family over

and gathered around her. You would never see Linda sitting down but instead always moving around making sure everyone was fed, smiles on their faces and a clean kitchen.

Linda is survived by her two daughters: Julia (Ron) Fleener and Teresa (Leonard) Schmick; her daughter-in-law, Tristie (Jeff) Ludwig; son-in-law, Jeffrey (Sheri) Prellwitz; 13 grandchildren; 16 great-grandchildren; and one sister, Beverly Moriearty.

Along with her parents, Linda was preceded in death by her first husband, Richard Jones I and her second husband, Clarence Slager; a son and daughter, Richard Jones II and Theresa "Tracy" Prellwitz; a great-grand-



son; and sister Mildred McKey.

A celebration of Linda's life will be held on Friday, April 22 at Wyldeewood Baptist Church, 3030 Witzel Ave., Oshkosh. Visitation will start at 9 a.m. followed by a memorial service at 10 a.m.

In lieu of flowers, please consider donating to the "Bearing Precious Seed" Ministry. Donations can be sent directly to Wyldeewood Baptist Church.

Debra R. Mayer

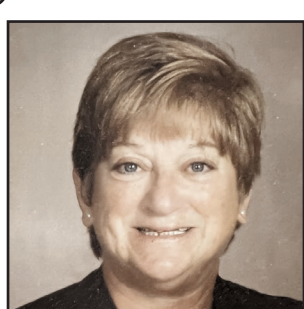
ROCHELLE—Debra R. Mayer, 66, of Rochelle, passed away peacefully in her sleep on Monday, April 18 at OSF St. Anthony Medical Center in Rockford. She was born April 26, 1955, in Rockford, the daughter of Frank and Edna (Olivier) Alfano. She married Paul H. Mayer on June 27, 1992 in Rochelle.

Deb lived most of her life in Rochelle. She graduated from RTHS in 1973. She worked as a bus driver, first for the Hauser-Ross Eye Institute and then for the Rochelle Schools. Deb cared deeply about the students and patients she drove. She loved to garden, paying special attention to her flowers. She loved being outdoors, especially by the swimming pool, and loved spending time with family and friends. Deb was a true matriarch of the family. She enjoyed making crafts and was well known for "craft day." Deb was an excellent cook who was also well known for "ravioli day," which she and loved ones would

make from scratch. She enjoyed cooking for family around the holidays and cherished everyone being together. Family meant everything to her and she particularly doted on her grandkids, nieces, and nephews.

Deb is survived by her husband, Paul; three children, Alex (Crystal) Dodson, Matthew Dodson, and David (Lorri) Mayer; five grandchildren, Courtney Dodson, Brooke Dodson, Amber (Matthew) Wittenauer, Ally (Jeremy) Bagg and Paige Meyer; four great-grandchildren, Autumn, Bentley, Chesney and Hayden; seven siblings, Rod (Karen) Alfano, Dana (Renee) Alfano, Dina (John) Bearrows, Gary Isley, Doug (Connie) Wood, Julie (Bill) Fox, and Cathy (Jim) Watson; numerous nieces and nephews; and step-father, Ralph Papke.

Deb is preceded in death by her father, Frank Alfano; mother, Edna Papke; step-mother Hazel Alfano; step-father, Lee Isley,



daughter, Nicole Mayer and grandson, Kyle Mayer.

Visitation will be from 5-8 p.m. Friday, April 22 at the Unger-Horner Funeral Home, 400 N. 6th St. in Rochelle.

Funeral service will be at 11 a.m. Saturday, April 23 at St. Paul Evangelical Lutheran Church in Rochelle with Pastor Matthew Rosebrock officiating. Additional visitation will be from 10 a.m. until the time of the service at the church. Cremation care will be provided after the services. In lieu of flowers, contributions in Deb's memory may be directed to the family for a memorial to be established.

Please visit www.ungerhorner.com to sign the online guest book.

Toby Larson

ROCHELLE—Toby Larson, 81, passed away peacefully on Saturday, April 16 at Bria of Geneva, after a seven-year battle with Lewy Body Dementia. Born to Louis and Hilda (Trothing) Larson on Oct. 13, 1940, he grew up, attended school in Rochelle, became a farmer with his partner, Stan Magnusson, married Sandra and had five children.

Spending most of his life in Rochelle, he loved this town. He attended St. Paul Lutheran Church. A perfect family man, he worked hard to provide and give his children a good education. When Sandra passed, he spent his time with family activities, working and his hobby of shooting trap. He could also be found with other farmers at the Sunrise, Butterfly or Moore's Hardware store, until he met and married his current wife, Doris. They enjoyed a wonderful marriage and when

they retired, they moved to Florida and traveled. Three years into his illness, he returned to the area and entered memory care closer to his home and children. He passed with his wife, daughter, Susie and her husband at his bedside.

Toby's humor, kindness, gentle spirit and love of family will be greatly missed by his wife, Doris Larson; children: Shelly Barkei, Sherry (Robert) Thompson, Todd (Melaney) Larson, Susan (Dan) Hanlin and Troy (Julie) Larson; step sons: Christopher (Megan) Miller and Scott (Jackie) Miller; grandchildren: Brandon Barkei, Kelsey (Garrett) Koch, Blake Toliver, Conner Burger, Taylor Burger, Austin Loyd, Nolan Larson and Bailey Larson; step grandchildren: Brennan Miller, Keegan Miller, Kylie Miller, Morgan Miller, Brooke Miller and Trenton Miller; great grandchildren: Dani Loyd



and Harper Koch; sister, Louise Doner and niece, Julie Ellis and nephew, Joey Doner.

In addition to his parents, he is preceded in death by his first wife, Sandra.

There will be a graveside service at 11 a.m., Monday, April 22 at Lawnridge Cemetery in Rochelle with Joy Alsop officiating. In lieu of flowers, donations in Toby's memory may be made to L.B.D.A. (Lewy Body Dementia Association), 912 Killian Hill Road S.W., Lilburn, GA 30047 or donate online at www.lbda.org.

Visit www.ungerhorn.com to sign the online guest book.

John Harmon Pierce Jr.

SPRING, Texas — John H. Pierce Jr., 84, of Spring, Texas passed away April 10. He was born on May 23, 1937 in Rochelle. He was a husband, father, grandfather and the eldest child of Shirley Pierce and John H. Pierce.

A graduate of Rochelle High School, he earned a bachelor's degree from the University of Dubuque. On Nov. 1, 1959, John and Diane were married in Rochelle.

He was a proud member of the U.S. Army who served in Germany between 1957 and 1958. He held the rank of Specialist Four. When John was stationed in Europe, he met Diane in Brussels while on a weekend leave. In Brussels at the World's Fair, Diane served as an interpreter and spoke many

languages fluently.

John often tells how the night he met Diane, he knew she was the one. She knew he was a young GI far from home. Upon their return to the US, they began a long distance courtship, with him living in Illinois and Diane in Ohio. They fell in love and soon married.

John worked primarily in sales during his career, spending time with Barwick & Galaxy Carpeting. John started Right Way Landscaping in the 1970s and had many clients in Houston and the surrounding areas. He later joined Continental Airlines' Cargo Shipping division in the 1980s. By 1992, he had retired from the airline. As a retiree, he enjoyed spending time with his family and being outside, usually on his front porch talking to neighbors.

He attended North Central Church in Spring, Texas.

John was kind, loving and caring. He devoted himself to his family and faith. He loved and served people well and he was a great believer, Christ follower, husband, father, grandparent and great grandfather. He was an



active member both of the Kiwanis and Toastmasters organizations during his free time.

Among his favorite pastimes were watching sports, spending time with Diane, and having meaningful conversations with friends. Among his greatest joys in life were his relationship with Jesus, his marriage to Diane, and the birth of his children.

Services will be held in early May at Houston National Cemetery in Houston, Texas.

John Pierce was predeceased by his mother, Shirley Mae Pierce, and father, John Pierce.

He is survived by his loving wife, Diane Pierce; sister, Susan Pierce; son, David Pierce (Elizabeth); daughter, Deborah Evans (Robert); and grandchildren, Glenn Evans (Allison), Karin Coelho (Joe), Michael Pierce and Matthew Pierce.

WHO IS UNITY HOSPICE?

- Care provided by the entire hospice team: physician, nurse, social worker, certified nursing assistant, chaplain, dietitian, pharmacist, and volunteers.
- Care is individualized and based on the patient's and family's goals of comfort and quality of life.
- Supplies, equipment and medications.
- Service where the patient resides.
- Specialize in pain & symptom management.
- Spiritual enrichment and bereavement counseling.
- Ancillary Therapies: Music, Physical/Occupational, Speech, Massage, Pet, etc.
- Ability to provide education to caregivers and family members.
- On-call nurse available 24/7.
- Volunteers providing special attention and stimulation.
- Assistance with advance directives and community support.
- Provide Education to those we care for

Unity Hospice and Palliative Care
CALL UNITY: (815) 561-8866
 915 N. Caron Rd. Rochelle, IL
 @unityhospice 07012020

We are now offering LIPO MINO MIX injections

Introductory price \$25

Call for an Appointment!

This lipotropic combination of B12 and methionine, an essential amino acid and other B vitamins can promote:

- Increase Fat metabolism
- Boost Energy Level
- Reduce appetite

Mon: 7:30 - 6pm, Wed: 7:30 - 6pm, Thurs: 8 - 1pm, Fri: 7:30 - 4pm
 Some Saturday appointments available

DLX Medical GROUP
 815-227-9594
 1212 Currency Ct. Rochelle IL
 We Accept Most Insurances and Patients Without Insurance
 11042020

ROCHELLE News-Leader

211 IL Route 38 East, Rochelle, IL 61068
(815) 562-4171

USPS (467-820) ISSN (1075-2811)
 Published every Wednesday and Sunday by Rochelle Newspapers Inc. at 211 E. State Route 38, Rochelle, IL 61068.
 Periodical postage paid at Rochelle, IL 61068. Postmaster send address changes to the Rochelle News-Leader, P.O. Box 46, Rochelle, IL 61068. Subscription rates are \$112 per year by mail in Ogle County. Outside county rate is \$134 per year. No mail delivery in newspaper-carrier serviced areas. The circulation department is open Monday through Friday from 8 a.m. to 5 p.m. If you are a carrier subscriber and your paper does not arrive, contact Kelly White at 561-2112.

IN-COUNTY REGULAR SUBSCRIPTION RATES

- \$114 for one year • \$64.99 for six months
- \$26.99 for three months • \$10.99 for one month

Call (815) 561-2112 or Visit our website at www.rochellenews-leader.com

HOW TO CONTACT US

News-Leader Main Switchboard (815) 562-4171

General Manager
 Mike Feltes (815) 561-2124

Newsroom Staff
 Jeff Helfrich, Managing Editor (815) 561-2151
 Russ Hodges, Sports (815) 561-2152

To Place a Display Ad
 Andrew Heiserman (815) 561-2123

To Place a Legal Ad
 Mike Feltes (815) 561-2124

To Place a Classified Ad
 (815) 562-4171

Subscriptions and Delivery
 Kelly White (815) 561-2112

BUSINESS SPOTLIGHT

ANDERSON Plumbing & Heating, Inc.

Plumbing, Heating, Air Conditioning, Drinking water systems, Water Heaters, Softeners, Iron Filters & More.

LENNOX
 One Less Thing To Worry About

Since 1976
 Like on Facebook Lic# 055-013999

621 First Ave., Rochelle (815) 562-8784

LOCAL NEWS

PARK: Board approves safety contract for The REC

From page 1

Maintenance staff has been working to prepare parks in the district for summer, including opening water valves. Vandalism continues to be an issue at Cooper Park, Ohlinger said.

"We finished the Cooper Park bathroom on Tuesday and by Thursday it was completely vandalized," Ohlinger said. "We've had problems for the last two summers with vandalism in those restrooms. I had some scheduled locks installed on those doors so they'll

only be open from 6 a.m. to 9 p.m. every day.

The driving range at Skare Park opened at the beginning of the month and has been off to "a great start" despite cold weather, Ohlinger said.

Safety contract

The board unanimously voted to approve a future fieldhouse safety inspection contract for The REC not to exceed \$13,327 with a company that Ohlinger will choose.

The executive director will decide between annual agreements with BR Bleachers (\$13,327) or

Carroll Seating (\$9,300). The latter company installed equipment initially at The REC. It's also possible another company could do the work.

Safety inspection will include the eventual company chosen doing inspections and repairs. They would check aspects of equipment like bolts, straps and do any minor repairs in the field.

Insurance

Following time in executive session, the board voted to approve the renewal of its employee health insurance plan.



(PHOTO BY JEFF HELFRICH)

The Flagg-Rochelle Community Park District Board of Commissioners unanimously voted to approve a future fieldhouse safety inspection contract for The REC not to exceed \$13,327.

Tails PET OF THE WEEK
Humane Society
815.758.2457
www.tailshumanesociety.org



Kitty Boo

Hiya, I'm Kitty Boo! My fabulous self is

currently on the hunt for my furr-ever home and I will not

stop 'til I find it! I appreciate the finer things in life such as a comfy bed, fun

toys, and delicious meals. And, seriously, how can you resist this face? I'm

9 years old and ready for my furrever home! I enjoy being around all my

people friends, but not so much my feline friends. So I'd really enjoy a house

where I can be the queen of my castle. My adoption fee has been fully

sponsored by a kind soul. So hey, what do ya say? Can I join your family?

BROUGHT TO YOU BY:

ROCHELLE VETERINARY HOSPITAL

Compassionate, quality care for your companion.

Dr. Nicole Marquardt
Dr. Lynn Deets

A Full-Service Clinic

- Experienced Groomer
- Boarding and Daycare
- Surgical Laser
- X-ray

- Gas Anesthetic
- On-site Laboratory
- Geriatric Care
- Dentistry

www.rochellevet.com

Lobby Hours:
Mon-Fri 8-5
Sat 8-noon

(815) 562-5207

1381 N. 7th St., Rochelle

Did you know?

Dalmatians are born without spots! They are born with plain white coats with their first spots appearing after they are 1 week old.



Grooming

Trust with a Groomer is important - our Groomer has over 10 years experience & expertise.

Please call for appointments

dachshies to **DANES**
Boarding And Grooming
815-453-2843
1751 Melugins Grove Rd Steward, IL 60553

Now is a great time to adopt a pet! Call Tails today!



nicorgas.com/safety

Smell Gas? Act Fast!

Natural gas is a colorless and odorless fuel. For safety reasons, a chemical odorant called mercaptan is added for easy detection of a suspected natural gas leak. This odorant has a distinctive "rotten egg" type odor. Natural gas odors should be reported immediately.

¿Hay olor a gas? ¡Actué rápido! El gas natural es un combustible incoloro e inodoro. Por razones de seguridad, se le agrega un aromatizante químico llamado mercaptano para que se pueda detectar fácilmente. Este aromatizante tiene un olor característico a "huevo podrido." Los olores a gas natural deben informarse de inmediato.

If you detect even a small amount of this odor in the air:

Si detecta este olor en el aire, por mínimo que sea:

- Do not try to locate the source of the smell.
No intente localizar la fuente del olor.
- Leave the area immediately and alert others.
Abandone el área inmediatamente y alerte a los demás.
- Avoid using any sources of ignition, such as cell phones, cigarettes, matches, flashlights, electronic devices, motorized vehicles, light switches or landlines.
Evite usar cualquier fuente de ignición, por ejemplo, teléfonos celulares, cigarrillos, fósforos, linternas, aparatos electrónicos, vehículos a motor, interruptores de luz o teléfonos fijos.
- Call Nicor Gas at **888.Nicor4U (642.6748)** or **911** once you are out of the area and in a safe place.
*Llame a Nicor Gas at **888.Nicor4U (642.6748)** o al **911** una vez que esté fuera del área y en un lugar seguro.*

LOCAL VIEWS

Guest column

Spring at the library

SPRING is here! I am hopeful when I walk out to my car at night and see tiny blue flowers peeking out of the flower beds near our building.

The library staff has been busy putting their minds to work and planning for our Summer Reading program. Summer will be here before we know it! We are excited to try some new programs and “Read Beyond the Beaten Path!”



Sarah Flanagan

typeDTB2.jpg). We have examples of the players and books at the library for you to examine. We also have applications for you to fill out and take to your physician to sign. Once this information is signed and sent in you will be all set to choose your books and be ready to start listening. These digital books are mailed to you and returned at no cost to you.

The library offers many services. If you have a question about something, do not hesitate to contact us. Our Talking Book and Braille Service program is a hidden gem at our Library. This program helps the visually impaired and the physically handicapped.

“My parents were always avid readers. When my dad’s eyesight no longer allowed him to continue reading it was a sad realization. Thanks to our conversation one day at the library, he was able to go on enjoying a good book with the help of the State of Illinois Talking Book and Braille Service which serves the blind or print disabled which you introduced us to. With your help he was able to get the player and start receiving audio books. We were able to help dad choose from the collection of over 70,000 audio books from a bi-monthly publication that was mailed to him. Besides books, they also have magazines and music scores that they continually add to which can also be downloaded now and are available in a range of formats. I cannot convey how pleasing this option was for my dad. I am always wondering how many other people in Rochelle or the surrounding area could benefit from this program but are not aware it exists and that it is even free. Our family is very grateful and we hope that others can benefit from this program as well.” -Janet Stewart, Rochelle.

“The Talking Book and Braille Service provides a tax-supported audio and braille library service via mail or digital download to any Illinois resident who is unable to read standard print material due to a permanent or temporary visual or physical disability. The Library of Congress provides free braille and audiobooks and playback equipment. More than 154,000 titles — some in foreign languages — are available, including bestsellers, light fiction, westerns, classics and nonfiction. Over 100 magazine titles are also available with new titles continually added to the collection. More than 16,000 patrons in Illinois will read nearly 700,000 books this year. Anyone who is permanently or temporarily unable to hold or read regular print material comfortably due to a physical or visual disability is eligible for the service, regardless of age. Registered patrons also may borrow descriptive videos and old-time radio shows” (https://www.ilsos.gov/publications/pdf_publications/ld_bph2.pdf).

Come to the library to learn more about this service. “The only thing you absolutely have to know is the location of the library.” —Albert Einstein (<https://darlingquote.com/library-quotes/>) See you soon!

The player and digital books look like the picture shown (<https://www.loc.gov/nls/wp-content/uploads/2016/04/Proto->

Sarah Flanagan is the director of the Flag-Rochelle Public Library District.

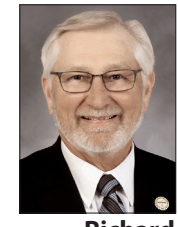
Sustainable solutions start in the field

IF you’ve ever planted a seed in your garden to watch it grow, you know how difficult it can be to create the right conditions to help it thrive. Maybe the plant needs more water, or has too much. Maybe the soil around your house isn’t fertile enough, so you add potting soil.

domestic fuel supply in the U.S., a fact highlighted by supply chain disruptions in recent years.

More biofuel production means more affordable, environmentally friendly solutions Americans can depend on.

Farmers make similar decisions while planting new crops each spring. Just like the choices you make from season to season impact how plants grow in your garden, the stewardship practices we use on our farms matter, too.



Richard Guebert

In agriculture, a sustainable future intertwines with environmental stewardship. Farmers improve soil health and water quality using innovative solutions on their farms. They support clean energy solutions that benefit air quality and produce more with fewer resources.

Growing a bright future with fewer resources

Protecting the environment also means growing more food and raising more livestock with fewer resources than ever before.

Without the technological advancement and climate-smart practices used in modern agriculture, farmers in 1990 would require more than 100-million more acres to grow what we do today.

Farmers invest in soil health, water quality

One way Illinois farmers explore new crop production techniques is through work with researchers, universities and industry partners.

Each year, farmers host on-farm trials through the Illinois Farm Bureau Nutrient Stewardship Grant Program to develop new management practices that protect the land. These studies help growers in each county learn more about the production capabilities of soil in their regions.

That’s significant because the number of acres used in production agriculture decreases each year, while demand for food, fuel and fiber increases exponentially.

Livestock farmers have also found new ways to do more with less by improving barn construction and reimagining waste management.

Farmers who raise pigs, dairy and beef cattle often recycle the nutrients found in animal manure back into crop production on their farm. Many growers have also tapped into the benefits of using cover crops by using them to replenish their soils between corn and soybean rotations and repurposing them as forage for livestock.

In its seventh year, the program has committed over \$150,000 to support more than 20 projects across Illinois. Based on voluntary efforts, such as planting cover crops to replenish nutrients in the soil and reduce surface runoff, farmers continue to make increasingly positive impacts on our natural resources.

The goal is to balance maximum crop, and ultimately food and fuel, production with land management decisions that safeguard farmland for future generations of farm families.

Agriculture, environmental needs are connected

As Illinois farmers take to the fields to plant fresh crops this spring, it’s only fitting that Earth Day is also right around the corner.

While this year’s celebration officially takes place on April 22, farmers make decisions every day to balance the needs of crops and livestock on their farms. Their work supports a steady supply of ag products that people rely on and protects the integrity of farmland they hope to one day pass on to the next generation.

Renewable fuels benefit consumers, environment

While stewardship is important, so is agriculture’s contribution to cleaner energy solutions like biofuels.

Illinois farmers produce millions of gallons of corn-based ethanol and soy-based biodiesel annually. The supply of these alternative fuels is essential to a strong

Richard Guebert Jr. is the Illinois Farm Bureau president. This op-ed was distributed through a cooperative project between Illinois Farm Bureau and the Illinois Press Association. For more food and farming news, visit FarmWeekNow.com.

VOICE ON THE STREET

Question:

With Starbucks opening up last week, what is the next national chain you want to see open a location in town?

<p>“Texas Roadhouse, Best Buy, Kohl’s, Walmart Neighborhood Market and Target.” Francisco Antonio Montelongo</p>	<p>“Hooters, a bigger thrift store, Target and a movie theatre/drive in.” Kassandra Kirk</p>	<p>“Texas Roadhouse or Valli Produce.” Marilynn Bulthaus Roberson</p>
<p>“Cracker Barrel, Kroger, Save A Lot.” Jason Blackwood</p>	<p>“Panda Express, Panera, Target and Texas Roadhouse.” Alyssa Brynn Mickley</p>	<p>“Chipotle.” Amanda Swinson</p>
<p>“Something like Sullivan’s or County Market again, or a Buffalo Wild Wings or some kind of different restaurant.” Cyndi Cunningham</p>	<p>“Meijer or Costco.” Wenda E. Camacho</p>	<p>“Grocery store and a steak house.” Sandy Buchholz</p>
<p>“Another grocery store or something for kids to do.” Jamie Fletcher</p>	<p>“How about a Texas Roadhouse or a Cracker Barrel.” Dave Phillips</p>	<p>“Home Depot/Lowe’s/Menard’s.” Christina ‘Martinez’ Pearson</p>
	<p>“A different grocery store.” Teresa Josephsen</p>	<p>“Texas Roadhouse, Target, Meijer.” Krynn Sage-Hayward</p>

How to contact government officials

U.S. Con. Adam Kinzinger
1218 Longworth HOB
Washington, D.C.
20515
(202) 225-3635

IL Sen. Brian Stewart
M104A State House
Springfield, IL 62706
(217) 782-0180

IL Rep. Tom Demmer
314 Capitol
Springfield, IL 62706
(217) 782-0535

Have a letter you want to submit to us? Send it to (news@rochelle-news-leader.com)

KEEPING YOU IN TOUCH WITH YOUR LOCAL LEADERS

* Denotes Chairman/President

Rochelle City Council
*John Bearrows jbearrows@rochelleil.us
Kathryn Shaw-Dickey ksdaw-dickey@rochelleil.us
Bill Hayes bhayes@rochelleil.us
Rosaelia Arteaga rarteaga@rochelleil.us
Dan McDermott dmcdermott@rochelleil.us
Tom McDermott tmcdermott@rochelleil.us
John Gruben jgruben@rochelleil.us

Rochelle Elementary School Board
*Dave Casey dcillini94@gmail.com
Steve Builta [sbuilt@gmail.com](mailto:sbuilta@gmail.com)
Ashley Jackson ajackson@d231.rochelle.net
Stephanie White swhite@d231.rochelle.net
Eric Van Hise eric.vanhise@gmail.com
Trisha Vaughn jrvtlv02@msn.com
Javier Zepeda jzepeda@rthsd212.org

Rochelle Township High School Board
*Tom Huddleston tom.huddleston@rthsd212.org
Carol Hayenga carol.hayenga@rthsd212.org
Bill Ravnaas bill.ravnaas@rthsd212.org
Jacky Aguilera jacky.aguilera@rthsd212.org
Jeff Tilton jeff.tilton@rthsd212.org
Bobby Chadwick bobby.chadwick@rthsd212.org
Brian VanVickle brian.vanvickle@rthsd212.org

Flagg-Rochelle Park Board
Brent Carmichael bcarmichael@rochelleparkdistrict.org
John Dobbs jdobbs@rochelleparkdistrict.org
Dale Wells dwells@rochelleparkdistrict.org
*Tim Hayden thayden@rochelleparkdistrict.org
Jodie Hart jhart@rochelleparkdistrict.org
Joe Lenkaitis jlenkaitis@rochelleparkdistrict.org

Ogle County Board Dist. 3
Lloyd Droege ldroege@oglecounty.org
Jamey Sulser jsulser@oglecounty.org
Greg Sparrow gsparrow@oglecounty.org

Ogle County Board Dist. 4
Bruce McKinney bmckinney@oglecounty.org
Skip Kenney skkenney@oglecounty.org
Kim Whalen kwhalen@oglecounty.org

Creston Village Board
Wayne Williams jwdw13@yahoo.com
Jennifer Payton
*Tom Byro tommyb_47@yahoo.com
Greg Hopkins ghopkins522@comcast.net
Steve Katzman skatzman@essex1.com
Mike Kerns ac.kerns@comcast.net
Mark Hibshman
Curt Ward caward92@comcast.net

Hillcrest Village Board
*Randy Salsbury rsalsbury@hillcrestil.us
Pam Pittman ppittman@hillcrestil.us
Dan Potter dpotter@hillcrestil.us
Richard Rhoads rroads@hillcrestil.us
Tim Ball tball@hillcrestil.us
Renee Kerwin rkerwin@hillcrestil.us

Flagg Township
*Bob Withrow flaggtwp@rochelle.net
Joanna Patrick flaggtwpc@rochelle.net
Susan Rothenberger assessor@rochelle.net
Scott Seebach scottseebach@gmail.com

Board of Trustees
Lance Noggle noggle62@gmail.com
Eric Gruben egruben@comcast.net
Susan Hager susanhager303@comcast.net
Jim Kenney jimk@rocketsupply.com

Flagg-Rochelle Library
*Jaqueline Dickow dickow@comcast.net
Teresa Haggstad haggstads@comcast.net
Michael Scanlan scanlan@comcast.net
Lanning Nicoloff nicoloff118@comcast.net
Sheri Klindera alwayslefty2@gmail.com
Susan Sevedge nit1prl22@yahoo.com
Darci Waltrip doobs12@comcast.net

LETTERS TO THE EDITOR POLICY

The Rochelle News-Leader encourages responsible letters to the editor on subjects of interest to our readers. Editing may be necessary for space, clarity or to avoid obscenity or libel, but ideas will not be altered. All letters must bear the handwritten signature of the writer and include address and phone number or e-mail address for verification purposes. Neither the street address nor phone number will be printed. Letters should be typed or legibly

handwritten, and no anonymous letters will be published. Any letters from boards or organizations must include at least one name of an individual. Any criticism of public officials should be limited to issues related strictly to their position or actions made in office, as personal attacks will not be published. Letters involving private disputes between the writer and a business will not be published. Political endorsements will be published,

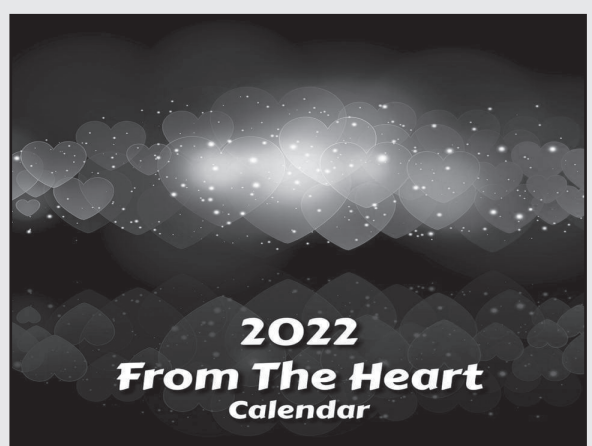
however letters from candidates endorsing themselves will not be printed. Letters may be dropped at the News-Leader office (211 IL Route 38 East), mailed to the News-Leader (P.O. Box 46, Rochelle, IL 61068) or e-mailed (news@rochellenews-leader.com) The News-Leader reserves the right to edit or reject any letter to the editor for any reason, and letters chosen for publication do not necessarily reflect the views of this newspaper.

COMMUNITY



RCH donates to Rochelle Rescue Mission

In recognition of National Volunteer Week, April 17 through April 23, Rochelle Community Hospital thanks all volunteers who share their time to help RCH provide the very best care and service to patients and visitors. To honor their volunteers, Rochelle Community Hospital made a donation to the Rochelle Rescue Mission this week. Pictured above from left to right are Rhonda Marks, RCH chief nursing officer and Karen Tracy, RCH chief operating officer present a donation to Michele Glen, president of the Rochelle Rescue Mission and board members Pat Zilm, secretary and Joel Thompson, vice president.



- March 25 - Sarah Pillen, Ballwin, Missouri, \$25
- March 26 - Jackie Sanders, Rochelle, \$25
- March 27 - Rebecca Huntley, Chana, \$50
- March 28 - Sheri Klindera, Rochelle, \$25
- March 29 - Rochelle Rotary Club, \$25
- March 30 - Mary Sage, Rochelle, \$25
- March 31 - From the Heart, \$25
- April 1 - Amber & James Schuster, Ortonville, Mich., \$25
- April 2 - Ralfie's BBQ & Catering, \$25
- April 3 - Maureen Decker, Rochelle, \$50
- April 4 - Marcee Collier, Rochelle, \$25
- April 5 - Tyler Christopherson, Rochelle, \$25
- April 6 - Karen Marsh, Stillman Valley, \$25
- April 7 - Mia Lord, Rochelle, \$25
- April 8 - Michelle Gittleson, Rochelle, \$25
- April 9 - Debbi Ramsey, Rochelle, \$25
- April 10 - John Slattengren, Rochelle, \$50
- April 11 - Chuck Watkins, Rochelle, \$25
- April 12 - Ashley Peck, Rochelle, \$25
- April 13 - Zech VanVickle, Rochelle, \$25
- April 14 - Jessica Johnson, Rochelle, \$25
- April 15 - Mary Gensler, Rochelle, \$25
- April 16 - Betty Henley, Rochelle, \$25
- April 17 - Rochelle Hospitality, \$50
- April 18 - Sarah Flanagan, Rochelle, \$25
- April 19 - Karen Marsh, Stillman Valley, \$25
- April 20 - Kathleen Fuller, Rochelle, \$25

Birthdays & Anniversaries

- | | | |
|---|---|--|
| <p>April 20
Pauline Cultra
Rose Anne Kersten
April 21
Emma Waters</p> | <p>April 24
Lainie Arnold
Jose Tlapa
April 25
Kim & Dane Duval (35)</p> | <p>April 26
Evan Jones
April 30
Oakley Gonzales
May 1
Bob Caron</p> |
|---|---|--|

THE KITCHEN TABLE MENU

April 21 - (Thursday) - Chicken Spaghetti, Salad, Garlic Bread
 Pancakes, Sausage Patties,
 **All menus are subject to change.

April 22 - (Friday) - BBQ Ribs, Coleslaw, Baked Beans
 If you would like to check before coming out, please
 call us at 815-561-9074 as we will put the menu on the
 answering machine.

April 28 - (Tuesday) - Chicken Alfredo with Broccoli,
 Garlic Bread, Salad
 Visit www.KitchenTableRochelle.org

May 1 - (Sunday Brunch) - Sausage Gravy and Biscuits,



Coffee Break

King Crossword

ACROSS

1	2	3	4	5	6	7	8	9	10	11	
12				13			14				
15			16				17				
18						19	20				
		21				22					
23	24	25		26		27	28		29	30	
31			32		33		34		35		
36			37		38		39		40		
		41		42		43	44				
45	46					47			48	49	50
51				52	53						
54				55				56			
57				58				59			

- | | | | | | | | | | | | | | | | | | |
|---------------------|---------------------|-------------------|---------------------|----------------------|-------------------|--------------------|--------------------|----------------------------|----------------------------|----------------------------|----------------------------|--------------------|----------------------------|--------------------|--------------------|--------------------|--------------------|
| 1 Facts and figures | 5 Bygone jet | 9 Son of Seth | 13 Latin love | 17 "Peter Pan" pooch | 21 "No problem!" | 25 Darkens | 29 Skip | 33 "Delicious" crop | 37 Three, in Rome | 41 Hold sway | 45 Zsa Zsa's sister | 49 Stitch | 53 Justice Ruth - Ginsburg | 57 Missing | 61 title (Abbr.) | 65 Early Mongolian | 69 Bridge supports |
| 2 Pouch | 6 Breaks down | 10 Bridge tactic | 14 Short snoozes | 18 Super Bowl stats | 22 Unruly kid | 26 Cut lumber | 30 Of service | 34 Scent | 38 Nitwit | 42 Author Dinesen | 46 Tarzan's commuter line? | 50 LAX guesses | 54 Med. plan | 58 Actress Turner | 72 Mongolian | 76 Bridge supports | |
| 3 Shrill barks | 7 Coifs | 11 Aced a test | 15 Super Bowl stats | 19 Unruly kid | 23 Cut lumber | 27 Of service | 31 Scent | 35 Nitwit | 39 Author Dinesen | 43 Tarzan's commuter line? | 47 LAX guesses | 51 Med. plan | 55 Actress Turner | 73 Mongolian | 77 Bridge supports | 81 Bridge supports | |
| 4 Toy (with) | 8 Stretches (out) | 12 "My treat" ... | 16 Unruly kid | 20 Cut lumber | 24 Of service | 28 Scent | 32 Nitwit | 36 Author Dinesen | 40 Tarzan's commuter line? | 44 LAX guesses | 48 Med. plan | 52 Actress Turner | 56 Mongolian | 78 Bridge supports | 82 Bridge supports | 86 Bridge supports | |
| 5 Prattle | 9 Mine, in Montreal | 13 Witty one | 17 Cut lumber | 21 Of service | 25 Scent | 29 Nitwit | 33 Author Dinesen | 37 Tarzan's commuter line? | 41 LAX guesses | 45 Med. plan | 49 Actress Turner | 53 Mongolian | 57 Bridge supports | 79 Bridge supports | 83 Bridge supports | 87 Bridge supports | |
| 6 Make lace | 10 Talk up | 14 Clean air org. | 18 LAX guesses | 22 Med. plan | 26 Actress Turner | 30 Mongolian | 34 Bridge supports | 38 Bridge supports | 42 Bridge supports | 46 Bridge supports | 50 Bridge supports | 54 Bridge supports | 58 Bridge supports | 80 Bridge supports | 84 Bridge supports | 88 Bridge supports | |
| 7 Beer, slangily | 11 Lingo | 15 Clean air org. | 19 Med. plan | 23 Actress Turner | 27 Mongolian | 31 Bridge supports | 35 Bridge supports | 39 Bridge supports | 43 Bridge supports | 47 Bridge supports | 51 Bridge supports | 55 Bridge supports | 59 Bridge supports | 81 Bridge supports | 85 Bridge supports | 89 Bridge supports | |
| 8 Capote nickname | 12 Small sofas | 16 Clean air org. | 20 Med. plan | 24 Actress Turner | 28 Mongolian | 32 Bridge supports | 36 Bridge supports | 40 Bridge supports | 44 Bridge supports | 48 Bridge supports | 52 Bridge supports | 56 Bridge supports | 60 Bridge supports | 82 Bridge supports | 86 Bridge supports | 90 Bridge supports | |
| 9 Indigenous | 13 Lana lead-in | 17 Clean air org. | 21 Med. plan | 25 Actress Turner | 29 Mongolian | 33 Bridge supports | 37 Bridge supports | 41 Bridge supports | 45 Bridge supports | 49 Bridge supports | 53 Bridge supports | 57 Bridge supports | 61 Bridge supports | 83 Bridge supports | 87 Bridge supports | 91 Bridge supports | |
| 10 Accomplishes | 14 Lana lead-in | 18 Clean air org. | 22 Med. plan | 26 Actress Turner | 30 Mongolian | 34 Bridge supports | 38 Bridge supports | 42 Bridge supports | 46 Bridge supports | 50 Bridge supports | 54 Bridge supports | 58 Bridge supports | 62 Bridge supports | 84 Bridge supports | 88 Bridge supports | 92 Bridge supports | |
| 11 "Yes?" | 15 Small sofas | 19 Clean air org. | 23 Med. plan | 27 Actress Turner | 31 Mongolian | 35 Bridge supports | 39 Bridge supports | 43 Bridge supports | 47 Bridge supports | 51 Bridge supports | 55 Bridge supports | 59 Bridge supports | 63 Bridge supports | 85 Bridge supports | 89 Bridge supports | 93 Bridge supports | |
| 12 Garfield's pal | 16 Lana lead-in | 20 Clean air org. | 24 Med. plan | 28 Actress Turner | 32 Mongolian | 36 Bridge supports | 40 Bridge supports | 44 Bridge supports | 48 Bridge supports | 52 Bridge supports | 56 Bridge supports | 60 Bridge supports | 64 Bridge supports | 86 Bridge supports | 90 Bridge supports | 94 Bridge supports | |
| 13 Napoleon's | 17 Small sofas | 21 Clean air org. | 25 Med. plan | 29 Actress Turner | 33 Mongolian | 37 Bridge supports | 41 Bridge supports | 45 Bridge supports | 49 Bridge supports | 53 Bridge supports | 57 Bridge supports | 61 Bridge supports | 65 Bridge supports | 87 Bridge supports | 91 Bridge supports | 95 Bridge supports | |

© 2022 King Features Synd., Inc.

Weekly SUDOKU

by Linda Thistle

8			5			3		
		7			8			9
	1		3			4		
	8			1				6
		3		4	9	1		
6			8					7
4		6			7	8		
		9	5					4
	2			6				7

Place a number in the empty boxes in such a way that each row across, each column down and each small 9-box square contains all of the numbers from one to nine.

DIFFICULTY THIS WEEK: ◆◆◆

◆ Moderate ◆◆ Challenging
◆◆◆ HOO BOY!

© 2022 King Features Synd., Inc.

CryptoQuip

This is a simple substitution cipher in which each letter used stands for another. If you think that X equals O, it will equal O throughout the puzzle. Solution is accomplished by trial and error.

Clue: N equals R

VUYGPU CMEC JEO KGYUX CZ
 EVEI CZ MUBR MGI JGCM OZGB
 IEGXCUXEXPU GX CMU KENVUX ZA
 UVUX: E AGNOC-RUNOZX EUNECZN.

©2022 King Features Synd., Inc.

1	2	3	4	5	6	7	8	9	10	11	12	13	14	15	16	17	18	19	20	21	22	23	24	25	26	27	28	29	30	31	32	33	34	35	36	37	38	39	40	41	42	43	44	45	46	47	48	49	50	51	52	53	54	55	56	57	58	59	60	61	62	63	64	65	66	67	68	69	70	71	72	73	74	75	76	77	78	79	80	81	82	83	84	85	86	87	88	89	90	91	92	93	94	95	96	97	98	99	100
---	---	---	---	---	---	---	---	---	----	----	----	----	----	----	----	----	----	----	----	----	----	----	----	----	----	----	----	----	----	----	----	----	----	----	----	----	----	----	----	----	----	----	----	----	----	----	----	----	----	----	----	----	----	----	----	----	----	----	----	----	----	----	----	----	----	----	----	----	----	----	----	----	----	----	----	----	----	----	----	----	----	----	----	----	----	----	----	----	----	----	----	----	----	----	----	----	----	----	-----

Answers
 King Crossword
 Weekly SUDOKU

Eden: A first-person aerator.
 maintenance in the Garden of
 Adam to help him with soil.
 Device that was given to
 answer
 Cryptoquip

LOCAL NEWS

VCCT: 'Our Town' opens April 29 at community theatre

From page 1

"And we have that in this. The second is I wanted to evoke emotion in the audience. The third was that the cast and audience become aware of the original writer's theme. And this one is kind of like, 'Stop and smell the roses,' I think it's more than that."

Prunty said the cast is the biggest VCCT has seen in recent memory and includes Yeretzi Brizuela, Todd Burkhardt, Grayson Campbell, Crabtree, Terry Dickow, Dave Holden, Beth Hahn, Marilyn Janssen, Cheryl Johnson, Ellen O'Malley, Renee Page, Norm Read, Leah Van Stone, Bill Van Stone, Jacob Waddle, Zachary Waddle, Benjamin Webster, Sydney Webster, Dean Wren and Walt Zimmer.

The unique production of the play will include no curtains or furniture and patrons will be able to see the back of the stage before a man comes and looks the audience right in the eye and talks about a little town in New Hampshire.

"Like many of the artists of the 1930's, creative minds were changing the common forms of American art and experimenting with absurdity, impressionism, expressionism and cubism," Weidmann said. "Thornton Wilder joined in by successfully rearranging the more common style of American theater."

Weidmann said "Our Town" invites the audiences to remember what life is all about. The production has some nostalgia for her as she's directing two actors

— O'Malley and Zimmer — whom she directed while they were in high school.

Prunty said it's been enjoyable to prepare the costume aspects of the play, which will include hats and long skirts.

"I don't think we've done a period piece for a long time," Prunty said. "We're thrilled to have the space here for costumes after we used to store them all over the place in basements and garages in boxes. It's much easier to do this here. Now we need people to work and buy tickets."

VCCT opened its newly-renovated Lincoln Arts Center in the former Lincoln School, located at 108 S. Main St. last year.

"I think the community has really paid attention to us since we've been in



(PHOTO BY ELLEN O'MALLEY)

Rochelle's VCCT group will put on 'Our Town' later this month at the Lincoln Arts Center. The show depicts life in a small town around the turn of the 20th century. Pictured are Walt Zimmer, left, and Ben Webster rehearsing a scene.

this building," Weidmann said. "It is nice, but we're still renovating. In the past, we've always done three shows a year and now we're doing five per year. We're

trying to figure out how it's all going to work, and one of the things I wanted to do was get new people involved."

For tickets for shows

and more information, visit www.vcctrochelle.org. Show dates are April 29-30, 7 p.m., Sunday, May 1 at 2 p.m.; as well as May 5-7 at 7 p.m. and May 8 at 2 p.m.

Ogle County Sheriff's Department

Deputies respond to disturbance in Holcomb

OREGON — On April 15 at approximately 10:44 p.m. deputies conducted a traffic stop in the 4,000 block of North Illinois Route 2. After a brief investigation, Isabella R. Mclester, 23, of Rockford, was placed under arrest for the driving under the influence of alcohol. Additionally, Mclester was cited for speeding (35+ m.p.h. over the posted speed limit). Mclester was transported to the Ogle County Jail and held in lieu of bond.

On April 15 at approximately 9:20 p.m. deputies responded to the 200 block of Main Street in Holcomb in reference to a disturbance. After investigation, deputies arrested Makenzee A-A. Scofield, 18, of Machesney Park for battery. Scofield was transported to the Ogle County Jail, where she was released

to correctional staff and held in lieu of bond.

On April 16 at 5:51 p.m. deputies conducted a traffic stop in the 19,000 block of East Illinois Route 64 for a speeding violation. After an investigation, Rufino Reyes Flores, 35, of DeKalb was arrested for no valid driver's license. Rufino was also cited for speeding. Rufino was released from the scene on a signature I-bond.

On April 16 at approximately 10:48 p.m. deputies conducted a traffic stop on Interstate 39 near mile marker 102. After investigation, Deputies arrested Jose F. Becerra-Gonzalez, 44, of Oakland, California for driving under the influence of alcohol and improper container of cannabis/driver. Becerra-Gonzalez was also issued citations for open container/alcohol, expired registration and op-

erating an uninsured motor vehicle. Becerra-Gonzalez was transported to the Ogle County Jail, where he was released to correctional staff and held in lieu of bond.

On April 16 at approximately 5 a.m. deputies located a vehicle parked and running in the roadway while in the 10,000 block of North Conger Road. After investigation, deputies placed Ian Lundstrom, 26, of Leaf River under arrest for driving under the influence of alcohol. Lundstrom was additionally issued a citation for Improper parking on the Roadway. Lundstrom was transported to the Ogle County Jail where he was held in lieu of bond.

On April 18 at approximately 12:16 a.m. deputies initiated a traffic stop on Canada Road near the intersection with Freeport

Road. After further investigation James Wetzell, 48, of Savanna, was placed under arrest for possession of methamphetamine, possession of a controlled substance-cocaine, driving while license revoked, an outstanding Ogle County warrant and two outstanding Carroll County warrants. Wetzell was also cited for operating an uninsured motor vehicle, driving left of center, loud exhaust and unlawful use of registration. Wetzell was transported to the Ogle County Jail where he is being held pending an appearance before a judge. Wetzell is also the suspect in at least six burglaries throughout the county. Those charges are pending.

On April 18 deputies arrested Daniel Hess, 37, of Gilbert, Arizona for driving while license revoked. Hess

was arrested by deputies on Interstate 39 near Monroe Center after being stopped for speeding. Hess was held in lieu of bond at the Ogle County Jail.

On April 18 at approximately 10:30 a.m. deputies responded to the 18,000 block of East Illinois Route 64 for a one-vehicle roll-over accident. After an investigation it was determined that a green Subaru Outback being driven by Richard A. Hoyt, 77, of Rochelle, drove off of the roadway striking a culvert. The vehicle was then rolled onto the driver's side because of the steep ditch embankment at that location. Hoyt was transported to St. Anthony Hospital in Rockford for injuries sustained.

On April 19 at approximately 12 a.m. deputies responded to a driving complaint on South Illinois

Route 251 of a silver Ford F-150 all over the road. Deputies initiated a traffic stop at East Flagg Road and Illinois Route 251. After a brief investigation, deputies with the assistance of Rochelle Police Department, arrested James C. Simmons, 46, of Blanket, Texas for driving under the influence of alcohol. Simmons was additionally issued a citation for failure to signal when turning. Simmons was transported to Ogle County Jail where he was held in lieu of bond.

On April 19 deputies arrested Kayla McManus, 23, of Esmond for driving while license suspended. McManus was arrested by deputies on Lindenwood Road after being stopped for speeding. McManus was released on a I-bond and will appear in Ogle County court at a later date.

NORTH AMERICA'S

#1 Selling Walk-In Tub

Featuring our *Free Shower Package*

SPECIAL OFFER



Now you can finally have all of the soothing benefits of a relaxing warm bath, or enjoy a convenient refreshing shower while seated or standing with Safe Step Walk-In Tub's **FREE Shower Package!**

- ✓ First walk-in tub available with a customizable shower
- ✓ Fixed rainfall shower head is adjustable for your height and pivots to offer a seated shower option
- ✓ High-quality tub complete with a comprehensive lifetime warranty on the entire tub
- ✓ Top-of-the-line installation and service, all included at one low, affordable price

Now you can have the best of both worlds—there isn't a better, more affordable walk-in tub!

Call today and receive a **FREE SHOWER PACKAGE**

PLUS \$1600 OFF

FOR A LIMITED TIME ONLY

Call Toll-Free **815-660-0041**

SAFE STEP WALK-IN TUB
www.BuySafeStep.com

With purchase of a new Safe Step Walk-In Tub. Not applicable with any previous walk-in tub purchase. Offer available while supplies last. No cash value. Most presents offer at time of purchase.

CSLB 1082165 NSCB 0082999 0083445

Call Today for Your Free Shower Package

815-660-0041

FINANCING AVAILABLE WITH APPROVED CREDIT









ROCHELLE News-Leader

Follow The Leader



Stay in the loop with the latest and most accurate local news by following the Rochelle News-Leader on Facebook and link to our website at rochellenews-leader.com

Keep informed of all the happenings as we specialize in bringing you Local News... Local Views.

More than 6,200 followers on RNL's Facebook page!

211 Hwy. 38 East, Rochelle, IL 61068

Phone: 815-562-4171

www.rochellenews-leader.com

 Rochelle News-Leader
 03132022



ADVERTISE YOUR BUSINESS HERE!
Great Rate - Great Spot!

Call Mike @ 815-561-2124 or email
mfeltes@oglecountylife.com

01252021

HUB CITY FURNITURE

SOFAS, LOVESEATS, CHAIRS!

We have the latest styles and color trends!

429-433 Lincoln Hwy., Rochelle, Illinois
815-562-8765 • hubcityfurniture.com



90 Days Same As Cash



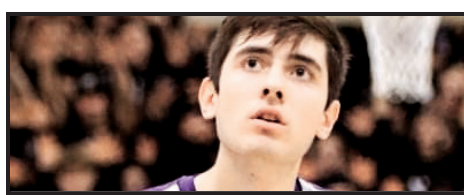
Tues-Fri 9-4pm, sat 9-1, Sun & Mon closed

02/28/21

WEDNESDAY, APRIL 20, 2022

ROCHELLE NEWS-LEADER • SECTION 2 • PAGE 1

SPORTS



KEMP TO CARTHAGE

RTHS senior Adam Kemp will play basketball at Carthage College next year.

See page 2 for more details

RTHS Boys Track

Race to the finish

Rochelle varsity team takes third at 45th Annual Hub Relays on Saturday

BY RUSSELL HODGES
SPORTS EDITOR

ROCHELLE — The Rochelle Hub varsity track and field team hosted the 45th Annual Hub Relays on Saturday, finishing third out of eight schools with 83 points. Schools that competed in the meet included Harlem, Sandwich, Boylan, Princeton, Dixon, Erie-Prophetstown and Oregon.

Rochelle's 6400-meter relay team (Thomas Koziol, Alex Burke, Hayden Smith and Luis Hernandez) took sixth with a time of 23:57.97. Rochelle's 3200-meter relay team (Chris Hickey, Wade Smith, Abel Huerta and Josue Huerta) finished fifth with a time of 10:43.07.

"I thought the kids had a great day," head coach Dale Bergeson said. "The Hub Relays give us a complete picture of what our team looks like and I think we have some very strong relay teams right now. Our fresh-soph runners scored 24 points for us and having that strong group of freshmen and sophomores really helped us out. We had a lot of new personal records set."

Rochelle's 400-meter relay team (Ethan Wells, Ryan Simmons, Trey Taft

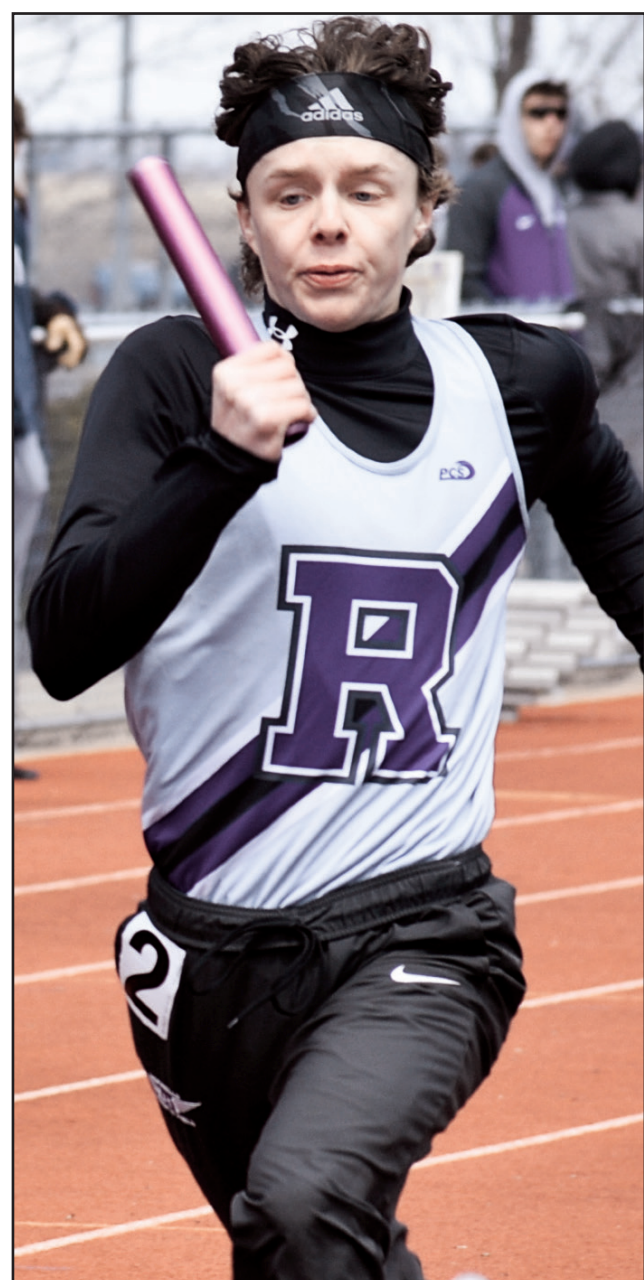
and Griffin Ohlinger) placed fourth with a time of 47.70 seconds. Rochelle's 440-meter shuttle hurdle relay team (Hayden Inman, Kenny Overton, Alex Burke and Ethan Bergeson) took third in 1:23.63.

Rochelle's 4000-meter distance medley relay team (Josue Huerta, Anlun Meyers, Hayden Smith and Abel Huerta) finished fourth with a time of 13:58.84. Rochelle's 1600-meter sprint medley relay (Landon DeLille, Ryan Simmons, Caleb Wyssbrod and Chris Hickey) took sixth in 4:26.84.

"I think the kids are getting better every time they're out on the track," Bergeson said. "They're focused and ready to compete. We focus a lot on our field events and our sprints and I think that work has started paying off during our meets. We've had some really good hand-offs in our relays this season and I'm looking forward to seeing our times continue to drop moving forward."

Rochelle's 800-meter relay team (Ethan Wells, Trey Taft, Luke Orlikowski and Griffin Ohlinger) placed fourth with a time of 1:40.56.

See HUBS page 3



(PHOTOS BY RUSSELL HODGES)

The Rochelle Hub varsity track and field team scored 83 points to finish third out of eight schools in the 45th Annual Hub Relays on Saturday. At left, sophomore Caleb Wyssbrod runs the 400-meter leg of the 1600-meter sprint medley relay. At right, junior Griffin Ohlinger sprints the final leg of the 400-meter relay.

RTHS Boys Tennis

Rochelle places second at Hubs Dubs Tournament

Three doubles combos take home runner-up finishes Friday afternoon

BY RUSSELL HODGES
SPORTS EDITOR

ROCHELLE — The Rochelle Hub varsity tennis team hosted the Inaugural Hubs Dubs Tournament on Friday, finishing second out of four schools with 13 points. Dixon won the tournament with 20 points, while DeKalb took third with 12 points and Belvidere finished fourth with five points.

Juniors David Wanner and Owen Haas took second at No. 1 doubles with a 2-1 record. Wanner and Haas shut out Belvidere's Jonathan Myszka and Travis Onley 10-0 before conceding a 5-10 loss against Dixon's Lucas Healy and Logan Moeller. Wanner and Haas closed out the No. 1 doubles tournament with a 10-4 win over DeKalb's Hayden Hess and Hunter Davis.

Seniors Alex Gilbert and Jason Zheng placed second at No. 2 doubles with a 2-1 record. Gilbert and Zheng shut down Belvidere's Gabriel Inniss and Gabriel Yates 10-0 before falling 1-10 against Dixon's Leith Elbzour and

Bashar Elbzour. Gilbert and Zheng concluded the No. 2 doubles tournament with a 10-7 win against DeKalb's Panagioti Tsiftilis and Ben Grych.

Junior John Green and sophomore Parker Lenkaitis finished second at No. 3 doubles with a 2-1 record. Green and Lenkaitis cruised over Belvidere's Eric Castanon and Caiden Cabangal 10-0 before falling just short in a 10-11 loss to Dixon's Grant Boss and Kaiser Khawaja. Green and Lenkaitis finished strong with a 10-3 win over DeKalb's Jared Trejo and Sean Kolkebeck.

Junior Nolan Fonfara and senior Devansh Patel took third at No. 4 doubles with a 1-2 record. Fonfara and Patel defeated Dixon's Derek Miller and Ray Lohse 10-1 before falling 8-10 against Dixon's Owen Winters and Alex Ullrich. In their final match of the tournament, Fonfara and Patel fought hard but lost in a 9-11 contest against DeKalb's Matthew Williams and Rylan Lottes.

Juniors Evin Odle and Ryan Ward placed third at No. 5 doubles with a 2-1



(PHOTOS BY RUSSELL HODGES)

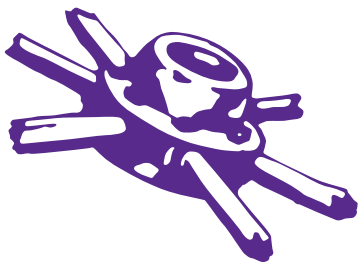
The Rochelle Hub varsity tennis team finished second in the Inaugural Hubs Dubs Tournament on Friday. At left, junior David Wanner prepares to serve. At right, sophomore Parker Lenkaitis makes a play at the net.

record. Odle and Ward took down DeKalb's Billy Jasso and Jeremy Villan-

ueva 10-2 before defeating DeKalb's Caleb Diefenderfer and Michael Kowal-

czyk 10-8. Odle and Ward fell in their final match of the tournament, conceding

a 5-10 loss against Dixon's Damien Beck and Zachariah Fazekas.



The businesses featured on this page are

“Hubs Super Fans”

They proudly support our local athletes and students.



Please show your appreciation by patronizing their businesses.

WE SUPPORT OUR HUBS!

ANDERSON
Plumbing & Heating, Inc.

Plumbing, Heating, Air Conditioning, Drinking water systems, Water Heaters, Softeners, Iron Filters & More.

LENNOX
Since 1976 One less thing to worry about

Like us on Facebook
Lic# 055-013999

621 First Ave., Rochelle
815-562-8784

Hello, neighbor!

Huber Ins and Fin Svcs Inc
Shane B Huber, Agent
1211 Currency Ct
Rochelle, IL 61068
Bus: 815-562-7011

Please stop by and say, “Hi!”
I’m looking forward to serving your needs for insurance and financial services.
Like a good neighbor, State Farm is there.
CALL ME TODAY!

State Farm

1001013.1 State Farm, Home Office, Bloomington, IL

DLX Medical
GROUP

Caring for your family’s health from infant to adults.

For appointment, please call
815-227-9594
1212 Currency Ct, Rochelle, IL 61068
Most Insurance Accepted

Diana Alanis, MD
Accepting New Patients

Local People Providing Local Service

Rochelle
MUNICIPAL UTILITIES

Water • Waste Water
Electric • Communications

Phone: 815-562-4155 333 Lincoln Highway
Fax: 815-562-5861 Rochelle, IL

www.rmu.net

CENTRAL ILLINOIS LOAN

Loans For All Your Needs
Auto • Home Improvement • Vacation

Jami Hackman

815-561-4035!

310 Eagle Drive, Rochelle
All loans subject to our normal credit requirements and policies.

MORTON BUILDINGS

If you can dream it, we can build it.

Rochelle Sales Office • Hwy. 251 N. • 877-613-3050

Rochelle
Community Hospital

Your Local Healthcare Resource.

900 N. 2nd Street, Rochelle
815-562-2181
www.rochellehospital.com

MEYERS
FURNITURE & FLOORING

209 Powers Road, Hwy 251 N
Rochelle, IL 61068
(815) 562-8792
www.meyersfurniture.com

Bruns
Construction, Inc.

Residential & Commercial Roofing

Residential, Concrete Driveways, Flatwork and Foundations

- Shingled Roofs
- Flat Roofs
- Metal Roofs For Farm Facilities
- Custom Built Homes
- Additions

Tim & Roger Bruns, Owners
Established 1997
815-561-0099
Licensed & Insured

HUB SPOTLIGHT

Kemp commits to Carthage College basketball team

BY RUSSELL HODGES
SPORTS EDITOR

ROCHELLE senior Adam Kemp felt welcomed when he recently visited the Carthage College campus in Kenosha, Wisconsin. After making a connection with head men’s basketball coach Steve Djurickovic and enjoying his experience on campus, Kemp announced on his social media that he’s committed to continuing his academics and his basketball career with the Firebirds.



(PHOTO BY MARCY DELILLE)

Senior Adam Kemp will continue his academics and his basketball career at Carthage College next year.

“Carthage College seems like the right fit for me and on top of that, the facilities are great and the campus is awesome,” Kemp said. “I’m looking forward to having the opportunity to play the game I love for another four years, becoming a better basketball player and meeting new people on the basketball team. Carthage will be getting a dedicated player and a hard worker. I think I’ll continue to be a wing shooter but I’m looking forward to expanding my game as well.”

Kemp spent four years with the Rochelle Hub basketball program, earning occasional varsity minutes during his sophomore season before ending his high school career as a two-year varsity starter. Kemp helped lead the sophomore team to a 24-5 record and an Interstate 8 Conference title during the 2019-20 season. During his senior season this winter, Kemp guided Rochelle to a 22-11 record as well as Interstate 8 Conference and IHSA 3A Regional titles.

“I’m so happy that Adam will be able to live out his dream,” Rochelle head coach Tim Thompson said. “Adam’s wanted to play college basketball from the start and Carthage is a great place to further his career. I’m really proud of him and the way he played this season. He was steady in all that he did and he shot the ball outstandingly. His hard work and consistency led to our success and his unanimous All-Conference selection. I wish him the absolute best.”

Kemp received First-Team All-Conference honors from the Interstate 8 this season, averaging 9.6 points, 4.7 rebounds and 3.7 assists per game while shooting 40.7 percent from the field and 36.5 percent from 3-point range. Rochelle’s Hall Free Throw Award honoree this winter, Kemp said he

plans to study finance at Carthage College, but he’s undecided on a career path.

“Playing at RTHS has been a great experience,” Kemp said. “Playing with the guys I’ve known for so long and having the success we had this year was awesome. I think it’s prepared me for the college level because we went through some rough times but we worked our way out of them.”

“Carthage College seems like the right fit for me and on top of that, the facilities are great and the campus is awesome. I’m looking forward to having the opportunity to play the game I love for another four years, becoming a better basketball player and meeting new people on the basketball team. Carthage will be getting a dedicated player and a hard worker...”

Adam Kemp

Rochelle
Chiropractic
Clinic
Dr. Chad M. Piller

227 E. Rt 38 • Rochelle, IL
815-562-8706
www.rochellechiropractic.com
Now Accepting New Patients!

JOHNSON TRACTOR

SALES • PARTS • SERVICE

1030 South 7th Street
800.262.1680
www.johnsontractor.com

AtlasAuto

BUY HERE – PAY HERE
You Work - You Drive

Se Habla Español **815-562-7433**

1400 N 7th St
Corner of Flagg Rd & Hwy 251 N

HUB CITY SENIOR CENTER

Mon-Fri 7am-3pm
Lunch Daily - 11:30am

Call us for a ride: **815-562-5050**
401 Cherry Ave., Rochelle, IL 61068
hubcityseniorcenter.com

HUB-REMSEN
PRINT GROUP

101 Maple Ave • Rochelle, IL 61068
815.562.7057 • hub-remsen.com

GO HUBS!

“Proudly Serving The Rochelle Area Since 1945”

Berg-Johnson Electric

Residential • Commercial • Industrial

FREE ESTIMATES
Licensed and Insured
24 Hour Emergency Service
815-562-4937
500 Cleveland Avenue

CHEVROLET

We are Ogle County’s only GM Dealer!

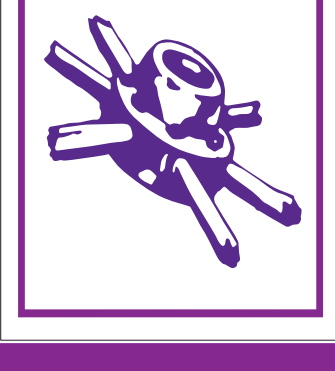
- Collision Repair
- 24 Hour Towing
- New/Preowned Vehicles
- Tires, Alignments, Brakes, Batteries
- Rental Cars
- Maintenance On All Makes and Models

JEFF PERRY
CHEVROLET • BUICK • CADILLAC • JEEP • CHRYSLER
815-562-8787 • www.jeffperrychevrolet.com

We’re tuned in to your financial needs!

- Six locations
- 25,000+ ATMs across the U.S.¹
- Free checking account options including Student Checking
- Stillman Mobile App featuring mobile deposit²
- Free Pre-approvals
- Local lenders, local decisions

Stillman BANK
Earning Your Trust For 135 Years
www.stillmanbank.com



562-3312
Dine-in • Carry-out

Taste the difference
Alfano’s
Pizzeria and Italian Restaurant

Two for Tuesday
2 Large, 2-Topping
PIZZAS \$24.99 (With Coupon)

1115 Turkington Terrace
Rochelle, Illinois
Beer & Wine Dine In Only

Busy Schedule?
Leave the cooking to us.

- Large menu of foods
- Rochelle’s famous chicken by the dinner or bucket
- Hand dipped ice cream (16 flavors)

COUNTRY SCHOOL
DRIVE-IN RESTAURANT
251 N. ROCHELLE • 562-6039

GO HUBS!



SPORTS

RTHS Baseball

Hubs split home doubleheader

BY RUSSELL HODGES
SPORTS EDITOR

ROCHELLE — The Rochelle Hub varsity baseball team hosted a non-conference doubleheader against Guilford and Niles West on Saturday, splitting the two games and moving to 2-5 overall. The Hubs defeated Guilford 15-7 in the morning opener before falling 14-3 against Niles West in the afternoon finale.

earned runs. Rochelle took a 3-0 lead in the bottom of the first inning on RBI singles from seniors Andy Buskohl and Owen Angell as well as a sacrifice fly from Lloyd. The Vikings answered with three runs on two hits, two walks and an error in the top of the second inning.

The Hubs regained the lead in the bottom of the second inning, where junior Aidan Rodriguez singled and scored on a passed ball before senior Eric Briseno's sacrifice fly plated senior Grant Messer, who reached on a walk.

Guilford

Senior Josh Lloyd threw all seven innings for the Hubs, striking out two batters and allowing only two

See BOYS page 8



(PHOTO BY RUSSELL HODGES)

Junior Aidan Rodriguez digs in at the plate during the Rochelle Hub varsity baseball team's doubleheader with Guilford and Niles West.



(PHOTOS BY RUSSELL HODGES)

The Rochelle Hub varsity track and field team scored 83 points to finish third out of eight schools in the 45th Annual Hub Relays on Saturday. At left, freshman Anlun Meyers runs the 400-meter leg of the 4000-meter distance medley relay. At right, junior Hayden Inman takes the first leg of the 440-meter shuttle hurdle relay.

HUBS: Track team takes third at Hub Relays

From page 1

Junior Thomas Koziol finished fifth in the 3200-meter run with a time of 12:27.70 and junior Ethan Bergeson took sixth place in the 300-meter hurdles with a time of 48.93.

"I think our 400 and 800-meter relay teams have been really strong this year," Bergeson said. "We've seen some of our fresh-soph runners step up in the 1600-meter relay as well and their times are

continuing to drop there. I'm happy to see the effort our kids have shown in the relays and I think our distance runners are improving. They're better than I expected them to be."

Rochelle's 1600-meter relay team (Max Orlikowski, Troy Papke, Josue Huerta and Luke Orlikowski) placed seventh with a time of 4:23.00. Senior Zach Sanford finished sixth in the shot put with a distance of 14.03 meters and eighth in the discus with a distance of

33.37 meters.

Senior Ryan Simmons finished fourth in the high jump with a clearance of 1.68 meters. Juniors Hayden Inman, Bergeson and freshman Kenny Overton placed second, third and fourth in the pole vault with respective clearances of 3.3 meters, 2.8 meters and 2.5 meters. Junior Trey Taft and sophomore Nathan Sergeant took sixth and seventh in the triple jump with respective distances of 11.35 meters and 11.24 meters.

Fresh/Soph

Rochelle's 400-meter relay team (Irving Escalante, Jackson Smith, Nathan Sergeant, Caleb Wyssbrod) finished second with a time of 49.19 seconds. Rochelle's 800-meter relay team (Irving Escalante, Jackson Smith, Nathan Sergeant, Caleb Wyssbrod) took first with a time of 1:42.63. Rochelle's 1600-meter relay team (Irving Escalante, Jackson Smith, Anlun Meyers and Chris Hickey) placed third with a time of 4:04.89.

COMMUNITY BOARD

Need to get the word out about a product or service you offer?

Give us a call at 815-562-4171.

We can reach over 9,000 homes!



Gutters

THE SCENIC
ROOFING & SIDING CO., INC.

SEAMLESS GUTTERS

ALL ALUMINUM

- Will Not Rust, Chip Or Peel
- Most Colors Available
- Manufactured On The Job

815-758-8998

257 W. Stephenie Dr., Cortland
www.theiscenicroofing.com

Storage Sheds

Rocky Ridge Structures

FREE Sales Rep. Evaluation At Your Site

We Deliver! From Our Lot To Your Site

We Specialize in Portable/Quality Built Storage Sheds

- Stock & Custom Design
- Many Options Available
- Competitive Pricing
- Site Preparation Available

See Displays at 3500 S. Chana Rd. Chana IL 61015
Call Norm or Albert for Free Literature packet
779.861.3542

Plumbing/Heating/Cooling

Anderson Plumbing & Heating Inc.
Serving Rochelle For Over 40 Years

LENNOX

Quality Service • Free Estimates
Residential & Commercial

815-562-8784

Lic. #058-087891

Advertise Here

What Service Do You Offer?

562-4171

The Rochelle News-Leader

Heating & Air Conditioning

HULL HVAC & Household Services

Furnaces - Air Conditioners - Boilers
Duct Cleaning - Water Heaters

Air Conditioner Clean & Check

\$50.00

After \$35 rebate.
Promotion only available to RMU customers.
Expires: 08/31

Ask about duct cleaning and protecting your home's air quality.

815-561-6551
www.HullHVAC.com

Commercial & Residential Roofing

Bruns Construction, Inc.

Residential Concrete Driveways, Flatwork and Foundations

- Shingled Roofs • Flat Roofs
- Metal Roofs For Farm Facilities
- Custom Built Homes • Additions

FREE ESTIMATES

561-0099 Tim & Roger Bruns, Owners
Established 1997
www.brunskonstructioninc.com

L'QUOR 'n' WINE
 Enjoy the difference!
 1140 N. 7th St.
 Rochelle, IL
 815-561-2337

FIRST STATE BANK
 firststatebank.biz
 Member FDIC EQUAL HOUSING LENDER

SILGAN
 CONTAINERS CORPORATION
 400 N. 15th St.
 Rochelle IL 61068
 815-562-1250



ROCHELLE
News-Leader

Rochelle
 Community Unity

Shop • Play • Stay

AGRICULTURE

Johnson Tractor
 200 S. Steward Rd.
 815.562.2135
 johnsontractorrochelle.stihldealer.net

ANIMAL HEALTH SERVICE

Rochelle Veterinary Hospital
 1381 N 7th, Ste. a
 815.562.5207
 rochellevet.com

ANTIQUES & COLLECTIBLES

Pickin' Station
 708 Lincoln Ave.
 815.562.7915

ASSISTED LIVING

Liberty Village of Rochelle
 2203 East Flagg Rd.
 Rochelle IL 61068

Lincoln Manor

615 Lincoln Highway
 815.562.1404

ATTORNEYS

James G. Ahlberg
 501 6th Ave.
 815.562.4443
 ahlberglaw.net

Hewitt & Wagner - Attorneys at Law

1124 Lincoln Hwy
 815.562.2704
 hewitt-wagner.com

Tess & Crull Law - Attorneys at Law

1090 N 7th St
 815.562.8754
 tesscrulllaw.com

Fearer, Nye & Chadwick

420 Fourth Avenue
 815.562.2456
 fnclaw.com

AUTOMOTIVE

Jeff Perry of Rochelle
 1260 N 7th St,
 815.562.8787 • jeffperryauto.com

Prescott Brothers Ford

620 S 7th St,
 815.562.2177 • prescottbrothersford.com

Zip's Auto Body , Inc

1033 S 7th St
 815.562.5133 • zipsautobody.com

COMMUNITY SERVICES

Flagg Township Museum

518 4th Ave
 815.562.3040

Hub City Senior Center

401 Cherry Ave
 815.562.5050
 hubcityseniorcenter.com

Rochelle Chamber Of Commerce

501 Sixth Avenue
 815.562.4189
 therochellechamber.com

V.F.W Post 3878

318 4th Ave
 815.562.3878
 www.vfw.org

RMU

333 Lincoln Highway
 815.562.4155
 www.rmu.net

COUNSELING

Braden Counseling
 2600 DeKalb Ave, Suite 3
 Sycamore IL 60178

DINING & ENTERTAINMENT

Aldo's Pizzeria and The Red Brick Pub
 418 Lincoln Hwy
 815.562.3456 • aldospizzaandpubrochelle.restaurant

Alfano's Pizzeria & Italian Restaurant

1115 Turkington Terrace
 815.562.3312 • alfanospizza.com

Kenny's Place

411 Cherry Ave
 815.562.6568

T-Byrd Lanes

1172 Lincoln Hwy • 815.562.4822 • tbyrdlanes.com

Tecalitlan Restaurant

1071 N Caron Rd
 815.561.7576 • restauranttecarochelle.com

Vince's Pizza & Family Restaurant

1071 North 7th st.
 Rochelle IL 61068

FINANCIAL SERVICES

Central Illinois Loans

310 Eagle Dr
 815.561.4035
 centralillinoisloans.com

Central Bank

340 May Mart Dr
 815.562.5571
 central-bank.com

First State Bank

304 E Hwy 38
 815.562.2200
 firststatebank.biz

JEFFPERRY
 CHEVROLET • BUICK • CADILLAC • JEEP • CHRYSLER
 815-562-8787
 JEFFPERRYAUTOS.COM

Liberty Village of Rochelle
 2203 East Flagg Rd.
 Rochelle IL 61068
 NOT-FOR-PROFIT PROVIDER

JOHNSON TRACTOR
 200 S. Steward Rd.
 Rochelle IL 61068



Rochelle Foods
1001 S. Main Street
Rochelle, IL 61068



Central Bank
ILLINOIS
central-bank.com
Ashton | Rochelle | Oregon
815.562.5571



Allstate
You're in good hands.

John Vandre, Associate
409 4th Ave.
815.562.7139

Stillman Bank
455 IL-38
815.562.7071
stillmanbank.com

Edward Jones - Will McLachlan
1122 Lincoln Highway
815.562.5563
EdwardJones.com

Holcomb Bank
233 IL-38
815.562.3838
holcomb.bank

Graber Financial Group
Sam Graber
409 4th Ave.
815.562.7139

Edward Jones - Jessica Morris
1214 Currency Ct.
815.561.4341

FLOWERS AND GIFTS

Colonial Flower Shoppe & Gifts
408 Lincoln Hwy
815.562.8101
floristrochelleil.com

RCH Auxiliary Gift Shop
900 N 2nd St
815.562.2181 • rochellehospital.com

FUNERAL SERVICES

Beverage Lyons Family Funeral Home & Cremation Services
704 6th St
815.562.6872
beveragelyonsfamilyfh.com

FURNITURE

Hub City Furniture
429 Lincoln Hwy
815.562.8765
hubcityfurniture.com

Meyers Furniture
209 Powers Road Hwy 251 North
815.562.8792
meyersfurniture.com

HEALTH SERVICES

Changes Counseling, LLC
604 N Main St
815.501-2088
changescounselingllc.com

Rochelle Chiropractic - Dr. Chad Piller
227 E. Hwy 38
815.562.8706
rochellechiropractic.com

Rochelle Community Hospital
900 N 2nd St
815.562.2181 • rochellehospital.com

Salinas Chiropractic
1381 N 7th St., Suite C
815.562.6661 • salinaschiroandwellness.com

HOME IMPROVEMENTS & CONTRACTORS

Anderson Plumbing & Heating
621 1st Ave
815.562.8784 • andersonplumbingheatingcooling.com

Bruns Construction, Inc.
PO Box 400
815.561.0099 • brunsconstructioninc.com

B&W Appliance Repair LLC
567 W. IL Route 38
815.562.6253

Pemberton Plumbing, Heating & Cooling, Inc.
815.561.6119
pembertonplumbingheating.com

HOTEL & TRAVEL

Holiday Inn Express
1240 N Dement Rd
815.562.9994
ihg.com

INDUSTRIES

ClarkDietrich
501 S Steward Rd # 100
815.561.2360
clarkdietrich.com

Silgan Containers
400 N. 15th St.
815-562-1250
silgancontainers.com

Rochelle Foods
1001 S Main St
815.562.4141
hormelfoods.com

INSURANCE

Allstate
Dement Rd

Country Financial
519 4th Ave
815.562.8164
countryfinancial.com

Dimond Bros. Insurance
401 N Main St
815.562.5596
dimondbros.com

Graber Financial Group
409 4th Ave.
815.562.7139

State Farm Insurance - Shane Huber
1211 Currency Ct
815.562.7011
shanehuber.com

State Farm Insurance - Terri Schaefer
603 Lincoln Hwy
815.562.7063
terrischaefer.com

Edward Jones - Jessica Morris
1214 Currency Ct.
815.561.4341

PEST CONTROL

Omega Pest Control
815.562.2005
omegapestcontrol-il.com

PHOTOGRAPHY

Lifeworks Photography
6342 South Westwood Ave.
Rochelle IL 61068

PRINTINT AND/OR WEB DESIGN

Hub-Remsen Print Group
101 Maple Ave
815.562.7057
hub-remsen.com

Rochelle News-Leader
211 Hwy 38
815.562.4171 • rochellenews-leader.com • newsmediadigital.com

REAL ESTATE

Hayden Real Estate
221 E. Hwy 38
815.562.2111
haydenreinc.com

REAL ESTATE & AUCTIONS

Bearrows Real Estate & Auction Co.
361 W. Il Route 38
815.562.5113
bearrows.com

RENTAL PROPERTIES

Lida Lake Estates
433 Willis Ave., Apt. #11
815.561.0526
lidalakeestates.wixsite.com/lidalakeestates

RETAIL/ SPECIALTY SHOPS

Liquor 'N' Wine
1140 N 7th St,
815.561.2337
liquornwine.net

SURVEY

Survey Tech
104 Maple Ct
815.562.8771

TIRES

Browns Tire Service Inc.
311 N 7th St,
815.562.4644
alderkstireservice.business.site

Tire Tracks
1320 N 7th St
815.562.7777
tiretrackusa.com

TOBACCO & ALCOHOL

Rochelle Tobacco "N" Liquor
222 May Mart Drive
815.561.9571
rochelletobacco.com

Rocky's Smoke Shop
132 May Mart Drive
815.888-7107

Support Your Community
By Supporting These Local Businesses



Rochelle Community Hospital
Your Local Healthcare Resource.



Rochelle MUNICIPAL UTILITIES
Local People Providing Local Services
333 Lincoln Highway • P.O. Box 456
Rochelle, IL 61068
815-562-4155 • www.rmu.net



ROCHELLE News-Leader
211 Hwy. 38 E., Rochelle
815-562-4171
www.rochellenews-leader.com

Classified Marketplace

FREE!

Sell your household items for free.
Total value of item must be \$200 or less. (15 words - one week - 7 publications - price must be listed)



ROCHELLE • HILLCREST • CRESTON • STEWARD • KINGS • ASHTON

PUBLIC NOTICE
There will be a public hearing May 23, 2022, at 6:45 PM at the Creston # 161 Business Office regarding the Application for Modification of Section 5/10-20.12(a), of the School Code as it relates to tuition waiver.
No. 0425 (April 20)

101 LEGAL NOTICE
This publication does not knowingly accept fraudulent or deceptive advertising. Readers are cautioned to thoroughly investigate all ads, especially those asking for money in advance.

105 BUSINESS OPPORTUNITIES

"This publication does not knowingly accept fraudulent or deceptive advertising. Readers are cautioned to thoroughly investigate all ads, especially those asking for money in advance."

PUBLIC NOTICE
A Mini Storage, LLC, a storage facility located at 117 Quarry Road, Rochelle, IL hereby announces that the possessions of the following lessees will be disposed of by means of auction on May 6th 2022 at 9:00 AM. Disposal of personal property shall conform to the terms of the certified notice previously mailed to the lessee.
The contents of the units can be previewed immediately prior to the sale. The preview and sale will take place at each individual unit listed below; in the order they appear.
UNIT # 235 Cobrin McNally- TV, Fan,

109 CEMETERIES AND LOTS
FOR SALE - One Cemetery Plot. Trinity Memory Gardens. \$600 Call 815-562-4015. (04-24-22)

113 FINANCIAL
NOTICE Advance Fee Loans or Credit Offers Companies that do business by phone can't ask you to pay for credit before you get it. For more information, call toll-free 1-877-FTC-HELP. A public service message from your hometown newspaper and the Federal Trade Commission.

119 ANNOUNCEMENTS
"This publication does not knowingly accept fraudulent or deceptive advertising. Readers are cautioned to thoroughly investigate all ads, especially those asking for money in advance."

127 SERVICES AND REPAIRS

Furman Lawn Care and Tree Service. Mowing, Hedge Trimming, Painting, Interior and Exterior. Gutter Cleaning, Storm Damage Clean up, Spring and Fall and Much More. In Business Since 1999. Call Jeremy Furman 815-761-9619. Please Leave Message Will Return Call ASAP. Fully Insured. (TFN)

JNJ JUMPERS Indoor/ Outdoor Bounce House Rentals Available Year Round. Please Call 815-784-4256 For Availability or Visit us on Facebook.

201 DOMESTIC/CHILD CARE
NO INDIVIDUAL, unless licensed or holding a permit as a childcare facility, may cause to be published any advertisement soliciting a child care

203 HELP WANTED

HELP WANTED

Position available in Oregon for person working with adults with developmental disabilities. Monday through Friday 8 a.m. - 3 p.m. Primary responsibilities include assisting in daily living skills, recreation, instruction/supervision of men and women involved in different packaging and light assembly work, etc. Occasional driving of 14 passenger van to and from local outings. DSP training desired. Competitive wages with liberal fringe benefits. EOE.

Send resume and letters of reference to Village of Progress, PO Box 418, Oregon IL 61061

04182022

NOW HIRING

Office Admin
NIU Lorado Taft
seeking office support specialist.
Full-time, weekday hours, full benefit package
Apply at:
<https://employment.niu.edu/postings/62652>

201 DOMESTIC/CHILD CARE
service. A childcare facility that is licensed or operating under a permit issued by the Illinois Department of Children and Family Services may publish advertisements of the services for which it is specifically licensed or issued a permit. Your Hometown Newspaper strongly urges any parent or guardian to verify the validity of the license of any facility before placing a child in it's care.

203 HELP WANTED
ASHTON - Bartenders and Waitresses Needed, Apply in Person at Ralpie and Lulu's. 812 Main Street in Ashton or call 815-453-2103. (TFN)

301 ANTIQUES
WANTED TO BUY: Vintage Metal and Wood Signs, Milk Bottles & Local Advertising, Oak Icebox, Iron Door Stop and Antique Lighting... Call Dick Harms at 815-562-2928 or email dickharms@hotmail.com

307 MISCELLANEOUS FOR SALE
Electric Train New Haven Powered Twin "A" Alcos Engine Units 0-27 Gauge. Also, New Haven Caboose, Never Used, Still in Boxes. "K-Line" Call (815) 562-2582, Leave Message. (4-27-22)

FREE Well Seasoned Ash Firewood. You Cut. You Haul. 815-562-7826. (4-20-22)

BEAUTIFUL Fireplace Mantel. Excellent Condition. 6ft 7" Long.

307 MISCELLANEOUS FOR SALE
Asking \$150 815-871-8063. (04-20-22)

BUNDLED Newspaper -\$3 per Bundle. End Roll- Cost Depends on Weight of Roll. Available Monday-Friday 8AM-NOON ONLY. SEE RECEPTIONIST AT FRONT COUNTER Rochelle News-Leader.

405 HOUSES FOR SALE
ALL REAL ESTATE advertised herein is subject to the Federal Fair Housing Act, which makes it illegal to advertise any preference, limitation or discrimination based on race, color, religion, sex, handicap, familial status, or national origin, or intention to make any such preferences, limitation or discrimination. We will not knowingly accept any advertising for real estate which is in violation of the law. All persons are hereby informed that all dwellings advertised are available on an equal opportunity basis.

501 APARTMENTS FOR RENT
ROCHELLE: NICE Modern 2-BEDROOM, 1-BATH. North-Side. Available Immediately. No Pets/Smoking. Appliances Included. 815-739-3619. (04-24-22)

Large 2 Bedroom Northside of Rochelle. FREE heat and water. NO PETS! Available Now at \$750/month. Security Deposit, Credit Report, and Job Verification needed. Call (815) 919-9015

Everybody hates you.

You don't see bullying like this every day. Your kids do.

Teach your kids how to be more than a bystander.

Learn how at StopBullying.gov

NEW MILFORD REFRIGERATION

NEW, USED SCRATCH & DENT

- Refrigerators • Freezers
- Washers/Dryers • Stoves

We also carry a large selection of refurbished appliances with a warranty.

6331 11th Street, Rockford
815-874-2257

11222020

203 HELP WANTED

Part-time mailroom position

The Rochelle News-Leader has a part-time mailroom position open that would include inserting flyers, banding bundles and occasionally help stacking papers coming off the press.

The position typically calls for 24-28 hours per week over four or five days per week, and includes mandatory shifts on Fridays and Saturdays when work load is heaviest. Applicants must be able to quickly insert advertising flyers into newspapers, strap and lift medium-sized bundles onto a delivery truck, and work well as a team with others to follow instructions, pay attention to detail and get newspapers out the door. Mailroom staff members are also asked to perform other basic duties in the department as needed, and may be trained to drive a fork lift.

Anyone (18 years or older) interested in this position should apply in person at the Rochelle News-Leader office, 211 Hwy. 38 E., Rochelle, IL 61068.

HW

Now Interviewing

Dental office in Rochelle is looking to fill a Dental Assistant position. Must be self-motivated, reliable, personable and works well with other team members. Certification is helpful but not required. We are willing to train the right individual. Position will be 24-26 hours per week, Mondays, Tuesdays and Thursdays. Send Resumes to P.O. Box 46 Drawer #3 Rochelle, IL 61068

04112022



SKIP THE SWEATING BUCKETS DURING AN INTERVIEW DRAMA

FINISH YOUR HIGH SCHOOL DIPLOMA

Find free adult education classes near you
FinishYourDiploma.org or text SKIP to 97779

Ad Council DOLLAR GENERAL LITERACY FOUNDATION

Message & Data Rates May Apply. Reply STOP to opt out. We'll text you a few times a month. No purchase necessary. Terms and Privacy: FinishYourDiploma.org/privacy-policy



ROCHELLE
News-Leader

Rochelle

Community Unity

Shop • Play • Stay

9 Biggest Benefits Of Shopping Rochelle First



Youth programs, schools and non-profit groups look to our businesses first when fundraising.

These community-minded businesses donate faithfully to local youth sports programs, community clubs, nonprofit groups and churches – just to name a few. Shouldn't we look to those same businesses first when we need goods and services? Of course we should!



Banking with people who know you is a luxury found only in hometowns.

You don't have to show your ID every time you go in. You can get a loan from people who know you and understand your needs, whether it be money for your first car or to help your business grow. Local banks believe in the value of community members helping one another.



Customer service after the sale is invaluable. Local retailers not only take responsibility for the product

they sold, they will often fix it or replace it – no questions asked. Appliances, furniture, computers and electronics sometimes have glitches. Would you rather box yours up, send it to who knows where, and wait six to eight weeks, or just go back to the nice guy that helped you when you bought it?



High rate of return. For every \$100 spent in independently owned stores,

\$68 returns to the community through payroll, taxes and other expenditures. Online orders return absolutely nothing to Rochelle, IL.



No one wants to have to make an insurance claim, but it's painless when your agent is your neighbor.

You don't have to convince them that there was a hail storm, or that the wind nearly took your roof off. They know because they live here. Which do you want when you've had a bad day: A face-to-face meeting with your local agent, or a machine answering the phone at that big national insurer that advertises on TV?



Keeping it local encourages community growth. By choosing to do business locally,

you help maintain Rochelle's diversity, charm and appeal; which attracts new community members.



Seeking health care in your hometown brings the comforts of receiving qualified

care from people you know and trust. Whether it be a trip to the dentist, regular health care screenings, a visit to a specialist or an emergency, you need not travel. It's all right here.



Time is money.

It's simple math (especially when you figure in gas mileage.) Shopping locally can actually save you both time and money!



One word: Jobs.

When you do business of any kind in Rochelle, it creates and maintains jobs for others in our area. A healthy employment rate is the cornerstone of all economies. How can you help the economy recover? Start at home.

SPORTS

NIU Football

Huskies wrap up 2022 spring practices

Head coach Hammock expresses pleasure with progress at annual showcase

DEKALB — The Northern Illinois University football team wrapped up 2022 spring football practices on a chilly Saturday morning in front of a crowd of family, friends and alumni in attendance at the Spring Showcase.

The Huskies worked out for almost two hours in pads with most of the final 1:15 spent in full team scrimmage action. After practice, NIU head coach Thomas Hammock said he was pleased with the progress his team made during the spring, especially on defense, an area prior to practices that he had emphasized.

“We’re good on defense,” Hammock said. “We have depth. After each spring, we rank the top 30 [players] and normally, you feel good about 16, 17 guys. We feel good about 28 guys on defense. These guys are immature, they’ve grown up, they’ve developed, they have a better understanding of the schemes, and they can go out there and make plays, and that is exciting. We can play a different style of game come this fall with a defense like that.”

With 27 letterwinners returning on defense, including 14 different players who started at least four games in either of the last two seasons, even NIU’s sophomores can be considered veterans, Hammock said, and he expects to see a more confident mentality on that side of the ball.

“Defensively is where

you’ll see the biggest jump on our team with young guys that now have confidence to go out there and be dominant,” Hammock said. “We have young veterans. We have guys that have played multiple years now and are still sophomores [in eligibility]. It’s exciting. On the defensive line, we’ve got James Ester, Ray Thomas, Demond Taylor, Devonte O’Malley—we are deep. Then you look at the linebackers like Jaden Dolphin and Davern Rayner and in the secondary, we have some young safeties and corners like JaVaughn Byrd, he played the second half of the season last year and has been a lockdown guy this spring.”

Offensively, the breakout star of spring has been wide receiver turned running back Billy Dozier and the sophomore from New Lenox, Illinois did not disappoint in front of the fans, breaking through for several long runs, including one of 90-plus yards.

“He has had a tremendous spring,” Hammock said of Dozier. “That’s his most natural position and today he showed what he can do and the dimension that he can add to our offense. We’ve got to have a role for him, we think he can do multiple things with his versatility. We’re going to use him as a chess piece in our offense.”

Leading the way on offense Saturday and throughout the spring was senior quarterback Rocky Lombardi (Clive, Iowa/Valley HS), who earned the spring offensive MVP honor from Hammock following the workout.

“He’s been phenomenal,” Hammock said. “He’s making all the checks, he’s telling the receivers where to get lined up, who to block. His leadership matters. When you have a quarterback that can lead like that, it gives you a chance to be very, very dynamic on offense.”

Hammock handed out a series of spring awards following the practice, with the announcement that three players — tight end George Gumbs (Chicago,



(PHOTO BY SCOTT WALSTROM/NIU PHOTOGRAPHY)

The Northern Illinois University football team wrapped up 2022 spring football practices on a chilly Saturday morning in front of a crowd of family, friends and alumni in attendance at the Spring Showcase.

Ill./Simeon HS), fullback Brock Lampe (Kenosha, Wis./Bradford HS) and linebacker Ryan King (Wildwood, Mo./Chaminade College Prep) — had earned scholarships for 2022-23 getting the biggest cheer as the players were mobbed by their teammates after receiving T-shirts that read “Earned — The Hard Way”.

King and defensive tackle Jalonn Williams (Milwaukee, Wis./Greenfield HS) were named the Most Improved Players on defense, while Dozier collected that honor for the Huskie offense. Sophomore linebacker Dolphin was named the spring Defensive

MVP.

Hammock also presented the “Hard Hat” Awards to tailback Harrison Waylee (Johnston, Iowa/Urbandale HS) and safety Devin Lafayette (Brunswick, Ga./Brunswick HS). Waylee took nearly all of the reps with the first team at tailback during the spring with several running backs limited by injury, while Lafayette returned after suffering an injury in the season opener at Georgia Tech last year to participate in every practice this spring.

Earning the Huskie Heart awards were redshirt freshman center Pete Nygra (North Indianapolis, Ind./

Brownsburg HS), who Hammock dubbed as a future leader of that group and newcomer Izayah Green-May (Bolingbrook, Ill./Bolingbrook HS), a defensive end who came to NIU from Wisconsin and did not miss a practice despite going through nearly all of spring with a cast on his hand.

Following practice, approximately 100 young Huskies took part in the Victor E. Huskie Egg Hunt, collecting plastic eggs that the Huskie players helped spread across Brigham Field and then collected autographs on 2022 schedule posters.

BOYS: Rochelle varsity team moves to 2-5 overall

From page 3

A double and two errors led to one Guilford run in the top of the fourth inning, but the Hubs retaliated with nine runs on five walks, two doubles, two reaches on hit-by-pitches, a single and an error in the bottom of the fourth inning to surge ahead 14-4.

The Vikings scratched one run on a single and a walk in the top of the fifth inning. Guilford added two runs on a triple, an error and a groundout in the top of the sixth inning. Lloyd singled and scored on Messer’s sacrifice fly in the bottom of the sixth inning for Rochelle’s final run. Buskohl finished 2-for-3 with four RBIs in the win, while Briseno and Messer each recorded two RBIs. Junior Garrett Gensler and Rodriguez each scored three runs in the home win.



(PHOTO BY RUSSELL HODGES)

Senior Owen Angell makes a play at second base during the Rochelle Hub varsity baseball team’s doubleheader with Guilford and Niles West.

Niles West

The Wolves went ahead 2-0 with two runs on two hit batters, two errors and one single in the top of the second inning. Niles West extended its lead to 8-0 in the top of the third inning, bringing home six runs on two doubles, two singles, one walk, one error and one hit batter.

The Wolves continued to strike in the top of the fourth inning, tallying five runs on two doubles, two singles, two walks and one hit batter to move ahead 13-0. Rochelle avoided the shutout with three runs in the bottom of the fourth inning. Juniors Alex Burnette and Garrett Gensler delivered RBI doubles

to begin the rally. Junior Colton O’Rourke followed with a sacrifice fly.

Niles West sealed its win with one run on a triple and a double in the top of the fifth inning. Senior

Owen Angell went 2-for-3 and scored one run for the Hubs, while seniors Nate Burdin and Andy Buskohl each went 1-for-3. Senior Jacob Andrist went 1-for-2 with one run scored.

LeafGuard®

Get it. And forget it.®

*Guaranteed not to clog for as long as you own your home, or we will clean your gutters for free

A+
rating

QUALITY TESTED

GOOD HOUSEKEEPING

Since 1909

LIMITED WARRANTY - ghsreal.com for details

LeafGuard

18

YEARS BACKED BY THE SEAL

Call Today for Your FREE Estimate!

815-673-7532

RECEIVE A \$50 DARDEN GIFT CARD

*Does not include cost of material. Expires 4/30/22. All participants who attend an estimated 60-90 minute in-home product consultation will receive a \$50 gift card. No purchase is necessary. Retail value is \$50. Offer sponsored by LeafGuard Holdings, Inc. Limit one gift card per household. LeafGuard procures, sells, and installs seamless gutter protection. This offer is valid for homeowners over 18 years of age. If married or have a life partner, both cohabitating persons must attend and complete presentation together. Participants must have a valid photo ID, understand English, and be legally able to enter into a contract. The following persons are not eligible for this offer: employees of LeafGuard or affiliated companies or entities, their immediate family members, previous participants in a LeafGuard in-home consultation within the past 12 months and all current and former LeafGuard customers. Promotion may not be extended, transferred, or substituted except that LeafGuard may substitute a gift card of equal or greater value if it deems it necessary. Gift card and terms and conditions (https://www.darden.com/gift-cards/terms-and-conditions) of such gift card will be mailed to the participant via first class US Mail within 21 days of receipt of promotion form provided at consultation. Not valid in conjunction with any other promotion or discount of any kind. Offer not sponsored or promoted by Darden Restaurants and is subject to change without notice prior to reservation. Offer ends 4/30/22.

- LIFETIME NO-CLOG WARRANTY
- MADE ONSITE SPECIFICALLY FOR YOUR HOME
- THE ONLY ONE-PIECE SEAMLESS DEBRIS SHEDDING GUTTER SYSTEM.
- SCRATCHGUARD® PAINT FINISH

ONLY \$99 INSTALLATION*