



ROCHELLE News-Leader

MIDWEEK EDITION | WWW.ROCHELLENEWS-LEADER.COM

Today's RNL issue
sponsored by
Community
Unity
member:

Rochelle
Community Unity
Shop • Play • Stay

Rochelle
Community Hospital
Your Local Healthcare Resource

900 N. 2nd St.
815-562-2181

Vol. 103 • No. 20

Your life.
Your education.
Your way.

KC KISHWAUKEE COLLEGE
Enrolling Now for Fall!

www.kish.edu/fall

**KNOW IT
TODAY**

**St. John's hosting
ice cream social**

St. John's Lutheran Church
will host its annual ice
cream social and talent
show on July 17. **Page 7**

WEATHER

WEDNESDAY	THURSDAY
HIGH LOW	HIGH LOW
88 68	85 68
FRIDAY	SATURDAY
HIGH LOW	HIGH LOW
83 65	84 63

Today's RNL issue
sponsored by
Community
Unity
member:

Rochelle
Community Unity
Shop • Play • Stay

Serving Rochelle for
over 52 years

**Colonial Flowers
& Gifts Shoppe**

408 Lincoln Highway
815-562-8101

OBITUARIES

- JUANITA "NITA" JEAN OSBORNE
- MADELINE ELAINE "LOVIE" VINCENT

See page 4

INSERTS

- ALDI
- FARM & FLEET
- HOT DOG DAYS

INSIDE

Local News.....2, 3, 8
Obituaries.....4
Opinion.....6
Community.....7



City looking for third budget award

Rochelle received honor for the first time in 2020

BY JEFF HELFRICH
MANAGING EDITOR

ROCHELLE — City of Rochelle staff recently submitted their application to the Government Finance Officers Association (GFOA) in an attempt to win the organization's Distinguished Budget Presentation Award for the third time.

The city received the award in 2020 and 2021. It applied for the first time in 2020. City Finance Director Chris Cardott said May 15 that there's 1,297 municipalities in Illinois and 87 of them have won the award. Only 6.7 percent of the communities that have applied have received it.

"I think it's fantastic to have been recognized," City Manager Jeff Fiegenschuh said. "Because it shows that we really are transparent. I'm very happy because we have a very dedicated staff that spends so much time putting it together."

It takes about six months to get a response after submitting the budget award application. The process involves more than just the budget itself and expands to commentary, pictures,



(PHOTO BY JEFF HELFRICH)

City of Rochelle staff recently submitted their application to the Government Finance Officers Association (GFOA) in an attempt to win the organization's Distinguished Budget Presentation Award for the third time. The city received the award in 2020 and 2021. It applied for the first time in 2020.

goals and information about the community. Cardott said instead of just numbers, the budget award application gives the reader a bigger picture and provides more transparency about the city. The application is graded

by three different reviewers over 14 required points and 27 points altogether. Each point is graded as proficient or above and comments are provided so the city knows what to improve on in the next year.

"It just gives us something to think about and reflect on when we're doing our budget," Cardott said. "Instead of just looking at, 'Well last year we budgeted \$100, so we should probably up that by three percent.'"

We actually look into why things change and what the trends are. It gives us a better idea of what we're doing and where we're going for future planning."

See CITY page 8

Area farmers seeing costs increase

'That's the cost of farming. You don't have a choice'

BY JEFF HELFRICH
MANAGING EDITOR

ROCHELLE — Fuel costs have risen around \$2 per gallon between just before spring planting and now for Steward-area corn, soybean and cattle farmer Dean Sveta. Fuel tanks on tractors can range between 250-425 gallons.

"That adds up a lot when you're filling up a tractor," Sveta said. "\$5 a gallon for fuel, that's about \$1,000 every time you fuel up. You try not to think about it."

Fuel prices aren't the only input expense that farmers have seen rise. Prices of chemicals like fertilizer, anhydrous ammonia and weed control have skyrocketed and have been in shorter supply. Oil and any oil-based products are up in price. Sveta said seed costs increased by just a little, and he was surprised that they didn't increase more.

"Anything that goes into our everyday lifestyle as far as building a crop for the fall," Sveta said. "All of our inputs have seen prices rise."



(PHOTO BY JEFF HELFRICH)

Fuel costs have risen around \$2 per gallon between just before spring planting and now for Steward-area farmer Dean Sveta (above). Fuel tanks on tractors can range between 250-425 gallons.

The lowest percentage increase that Rochelle-area sweet corn, corn and soybean farmer Jeff Rainwater has seen on an input from last year to this year is six percent. The highest

he's seen is a 19 percent increase.

Farmers often utilize fuel contracts that can get them ahead of the game if prices rise afterwards. But Rainwater's contract

expired at the end of 2021 and by then, prices were already higher and have gone up since.

"Fuel prices are ridiculous compared to a year ago," Rainwater said. "It's

been going in this direction for a while now. It's troublesome when you're trying to run a business. And it's for no real good reason."

See PRICES page 8

Stillman BANK

CELEBRATING **140**

Still Local. Still Solid. Still Here For You.

1882 - 2022

Byron • Oregon • Rochelle
Rockford • Roscoe/Rockton • Stillman Valley

Proud To Be Your Local,
Independent Community Bank for

140 years!

www.stillmanbank.com

Member FDIC

COME SEE YOUR FRIENDS

**304 EAST HIGHWAY 38
ROCHELLE**

firststatebank.biz | 815.562.2200

FIRST STATE BANK

Brent Ohlinger
Community President
NMLS#454385

David Eckhardt
Vice President/Loan Officer
NMLS#454387

Member FDIC

LOCAL NEWS

RCH staff plays vital role in caring for stroke patients

Astle: ‘A lot of it is recognition, diagnosis and quick transfer’

BY JEFF HELFRICH
MANAGING EDITOR

ROCHELLE — Rochelle Community Hospital recently had its designation as an acute, stroke-ready hospital (ASRH) renewed by the Illinois Department of Public Health.

“That designation requires us to show that we provide certain aspects of stroke care,” RCH Emergency Services Manager Janis Astle said. “And we’re small of course, however, we’re good at what we do. A lot of it is recognition, diagnosis and quick transfer. It’s an important service that we offer the community.”

Those that want to remember stroke warning signs can follow the FAST acronym: If there’s Facial droop, Arm weakness or Speech difficulty, it’s Time to call 911 or go to the hospital, RCH Emergency Services Medical Director Dr. Matthew Nitsche said.

When a patient gets to RCH with those symptoms, they’re immedi-

ately taken to get a CAT scan on site, which is 15 yards away from its emergency room. If a patient comes in by ambulance and symptoms are known ahead of time, usually staff doesn’t even stop in an emergency room first.

A CAT scan takes a few minutes and a technician is designated to immediately send the scan with a note to the radiologist stating that it’s a stroke study. Nitsche said those readings come in “very quickly.” From there, the patient undergoes a more formal evaluation and if it does appear to be an acute stroke and they need to be transferred, RCH has a relationship with OSF Saint Anthony Medical Center, the main stroke center in Rockford.

“We call them and get on the phone with the interventional neurologist and they help us guide care, which often involves transferring the patient there as soon as possible,” Nitsche said.

Astle said as a small hospital, RCH is “extremely nimble” and can



Rochelle Community Hospital emergency staff members from left to right: Danielle Foster, RN; Jeremy Mumm, emergency technician; Matthew Nitsche, MD, emergency services medical director; Janis Astle, MSN, RN, CEN, emergency services manager and Kellie Downing, RN.

respond quickly in ways a large facility can’t.

“We meet our ambulances at the door and don’t even take the patients off the ambulance cart,” Astle said. “We just go straight to the CAT scan. We work together as a team so tightly, and patients get super-fast care here. The fact that there’s a hospital here in town saves a lot of patients in terms of keeping their post-stroke deficits to a minimum. Because we can get them quickly to where they need to go as opposed to them getting into a car with a family member and driving to a farther away hospital.”

See RCH page 3



Carol Lapinski, RN
Surgery
Length of Service: 21 Years



High Performer
July 2022

To read Carol’s nomination, go to the RCH Facebook page or rochellehospital.com



Happy Birthday

Johnny

Johnny Roe is Turning **70**
on **July 8th**



Congrats from your T-Byrd family!

A celebration will be held on
Thursday, August 25th 7-9 p.m.
at T-Byrd Lanes (Save the Date)

Stop by & wish **Johnny** a

Happy Birthday



(COURTESY PHOTO)

COUNTRY Financial in cooperation with the Ogle County Farm Bureau recently donated grain bin rescue augers to the Byron, Rochelle and Rural Dixon Fire Protection Districts. Pictured in the back row from left: Josh Williams, Phil Hasz, Chief Phil DeMik of the Byron Fire District, Chief Rob Hough of the Mt. Morris Fire Department and Nathan Dahlstrom of the Rural Dixon Fire Department. In the front row from left: Josh Messenger, Kerry Wickler, Bill Dean, Larry Farley, Ryan Reeverts and Josh Bolen of the Ogle County Farm Bureau Young Leaders committee.

County fire departments receive life-saving equipment

OREGON — The Ogle County Farm Bureau Young Leaders through financial support from COUNTRY Financial recently donated grain bin rescue augers to three area fire departments serving Ogle and Lee counties.

Augers were purchased by COUNTRY Financial and distributed to the Byron, Rochelle and Rural Dixon Fire Departments.

The augers are used in conjunction with grain bin rescue tubes in extracting individuals trapped in collapsed grain inside of grain bins. The rescue augers allow first responders to extricate grain more rapidly saving vital minutes in life saving situations.

“This effort is one that COUNTRY Financial has dedicated itself to over decades providing necessary equipment to local communities to assist them in emergency response situations. As someone who lost a family member in a grain bin accident I’m glad to see that this donation may save other families from that tragedy,” said COUNTRY Financial’s Phil Hasz. “We’re proud to be a part of this effort to support and serve the communities that we serve.”

The three fire districts were chosen as they were to only ones serving Ogle County that did not currently have a rescue auger on-site.

“This was an activity our entire committee was committed to, to assist our first responders in saving lives on the farm,” said Ryan Reeverts, Ogle County Farm Bureau Young Leaders chairman. “Each year we tragically lose farmers to grain bin entrapment accidents and hopefully by having this equipment available our local fire districts can prevent fatalities from occurring.”

COUNTRY Financial is a group of US insurance and financial services companies with customers in 19 states. The group of companies offers a range of insurance and financial products and services, including auto, home, life, farm, commercial insurance, retirement planning, investment management and trust services, with offices in communities across Illinois.

The COUNTRY Financial group is ranked annually in the Fortune 1000 list.


The Ogle County Farm Bureau Young Leaders are a Farm Bureau members between the ages of 18-34 with an invested interest in agriculture and community service.



Buy, Sell, Trade or Rent

through the

CLASSIFIEDS



LOCAL NEWS

RCH: Hospital staff members discuss stroke patient care

From page 2

If there was anything she wanted to educate the public about regarding stroke, Astle said it would be that when someone is seeing possible stroke symptoms, don't ignore them and get help as quickly as they're noticed.

The main ways to prevent stroke are managing blood pressure and diabetes, exercising, eating properly and not smoking along with visits to a medical provider and preventative care as far as hypertension and diabetes, Nitsche said.

Stroke care has improved over the years, Astle and Nitsche said. Clot busting drugs have been developed that can sometimes be utilized to help treat stroke. There's also interventional neurology where clots can be removed from vessels.

Nitsche called the developments in stroke care during his time practicing since the 1990s "huge." Astle said medical personnel used to have to "just wait" to see how bad stroke-caused deficits were going to be and worked with physical or occupational therapy to get a patient's function back as much as possible. But now, the process can be stopped so that injury to the brain can be prevented.

"We're able to give the



(PHOTO BY JEFF HELFRICH)

RCH Emergency Services Manager Janis Astle said as a small hospital, RCH is "extremely nimble" and can respond quickly in ways a large facility can't. If there was anything she wanted to educate the public about regarding stroke, Astle said it would be that when someone is seeing possible stroke symptoms, don't ignore them and get help as quickly as they're noticed.

clot busting drug here," Nitsche said. "It doesn't all have to be done in Rockford. We can still make a difference here before we transfer them if they come in fast enough. That's the

whole idea, to come in fast. Everything has a time limit. The clot busting drugs, the interventional neurology where they remove the clots, everything has a time frame. They just need to

come in as soon as possible and not wait."

Astle said she's always thought of nursing and ER work as a job where she doesn't ever wonder at the end of the day whether

she's helped somebody,

"I think we always do something helpful for people," Astle said. "If we can get a patient transferred quickly to the tertiary center that can actually get rid

of a stroke clot, then we've done something fantastic. We're one little piece of the pie, but they had to start somewhere. If we can be quick and thorough, that's fantastic."

Excitement bristles at Waterman Summer Fest

WATERMAN—Fireworks lovers should be prepared to ooh and aah at the evening display at Waterman Lions Club Park at 9:15 p.m. on July 16. The event is the grand finale of the 22nd Annual Summer Festival and Antique Tractor and Truck Show sponsored by Waterman Lions Club. The festival is held at 420 S. Birch St. in Waterman.

Summer Fest Chairman Shawn Blobaum says, "I look forward to seeing the smiles on faces and knowing we are able to provide a community event while at the same time raise funds for so many important Lions projects and missions."

The club sponsors college scholarships, improvements at Waterman Lions Park, help with eye examinations and cost of glasses and activities for mentally and physically-challenged individuals.

The daylong event

begins at 7 a.m. with a country farm breakfast put on by the United Neighborhood Center. Then, at 9 a.m. begins the Weak End Antique Pullers tractor pull. Throughout the day visitors will see exhibits of antique tractors and trucks, crafts, Civil War Encampment and kid friendly activities. At noon, exhibitors will parade their antique tractors and trucks through the park. Farm Broadcaster Max Armstrong will take the stage to announce the tractor drivers.

Highlighting kids' entertainment is Mr. Steve, sponsored by Clinton Township Library. He will entertain starting at 11 a.m. in the pavilion. In other activities, children can learn how to drive a farm tractor, participate in kiddie train rides, compete in the toy tractor pedal pull and touch animals in the farm petting zoo.

Unique attractions in-



(COURTESY PHOTO)

Kids and adults can learn to drive a farm tractor at the Summer Festival sponsored by Waterman Lions Club at Lions Park in Waterman on Saturday, July 16. The day's events begin early and concludes after dark with a fireworks display, beer garden and live band.

clude, for the first time, Cow Pie Bingo at the petting zoo. Pony and camel rides and Fly a Model Airplane will stir further excitement.

For adults, starting at 3 p.m., the Pub West beer garden will open. At 5 p.m. it will feature classic rock and blues music from The 5 'N' Time Band. Later, at

7:30 p.m. Sojourn Rocs will engage their audience with rock and country music from the 1960s through today.

To satisfy appetites, the

Lions Club will offer pop and sandwiches from the concession stand and at 4 p.m. the Waterman Fire Department will sell barbecued pork chop dinners.

Tails **PET OF THE WEEK**
Humane Society
815.758.2457
www.tailshumanesociety.org



Milo

Hi, I'm Milo. I'm a male, neutered mixed breed pup. I will be a large dog when fully grown - more than 44 pounds! I'm 4 years old now and would love to be a part of your family!

ROCHELLE VETERINARY HOSPITAL
Compassionate, quality care for your companion.
Dr. Nicole Marquardt
Dr. Lynn Deets
A Full-Service Clinic

- Experienced Groomer
- Boarding and Daycare
- Surgical Laser
- X-ray

- Gas Anesthetic
- On-site Laboratory
- Geriatric Care
- Dentistry

Lobby Hours:
Mon-Fri 8-5
Sat 8-noon

(815) 562-5207
1381 N. 7th St., Rochelle

Grooming
Trust with a Groomer is important - our Groomer has over 10 years experience & expertise.
Please call for appointments

dachshies to DANES
Boarding And Grooming
815-453-2843
1751 Melugins Grove Rd Steward, IL 60553

Did you know?
Cats have no collarbone, which is one reason they are so flexible.



Call Andrew Heiserman at 815-561-2123 to advertise on the Pet of the Week Page!

LOCAL NEWS

Obituaries

Juanita 'Nita' Jean Osborne

ROCHELLE — Juanita "Nita" Jean Osborne, 93, passed away peacefully Sunday, July 3, 2022 at Serenity Hospice and Home in Oregon. Nita was born on Sept. 20, 1928 to James W. and Maybelle (Nettz) Pettitt in Dixon. On March 8, 1947, she married John "Jack" E. Osborne in Rochelle. He preceded her in death on April 17, 2001.

Nita is survived by her two children: Debbie (Jeff) Kamps of Highland, AR and Steve (Ann) Osborne of Rochelle; five grandchildren: Melissa (Jim) Hill, Sarah Lowe, Aaron (Sara) Kamps, Chelsea (Josiah) Christensen and S. Tyler (Alex Ethridge) Osborne; ten great grandchildren: Hunter Schreurs, Isaac Lowe, Noah, Eden and Lily Kamps, Jocelyn, Jotham, Joanna and Jovia Christensen and Ivorie Osborne and two great great grandsons: Mason



and Austin Lowe.

In addition to her parents and husband, she was predeceased by her sister, Virginia Hicks.

The visitation will be from 10-11 a.m., Wednesday, July 6, 2022 at the Unger-Horner Funeral Home, 400 N. 6th St., Rochelle. The funeral will follow at 11 a.m. with Chaplain Judy Williams officiating. Burial is at the Lawnridge Cemetery in Rochelle.

In lieu of flowers, memorials may be made in Nita's memory to Serenity Hospice and Home. Visit www.ungerhorner.com to sign the online guest book.

Madeline Elaine 'Lovie' Vincent

ROCHELLE — Madeline Elaine "Lovie" Vincent, 85, of Rochelle, passed away Wednesday, June 29, 2022, at Serenity Hospice and Home in Oregon. She was born March 2, 1937, in Moline, the daughter of Ross and Virginia (Shull) Harmon. She married James A. "Jim" Vincent on June 3, 1961, in Milan.

Lovie worked at McCabe's Department Store in Rock Island for many years before she met Jim. After they married, she stayed at home and raised her son. She was a wonderful cook and baker. Everyone liked whatever she would make, especially her famous coconut cream pies. She enjoyed spending time outdoors gardening, being with her animals, and riding horses, especially trail riding with her husband and son. Lovie was renowned for her black walnut harvest, which she would use to bake and give as gifts to other members of the family for baking.

Lovie is survived by her



son, Dan (Tina) Vincent of Rochelle; granddaughter, Cassidy Vincent of Rochelle; a brother, Don (Gerry) Harmon of Aledo; a sister, Beverly Salmonson of Moline and several nieces.

Lovie is preceded in death by her parents, Ross and Virginia Harmon; her husband, Jim Vincent; and a brother-in-law, Don Salmonson.

Cremation care has been provided by the Unger-Horner Funeral Home in Rochelle. Contributions in Lovie's memory may be directed to Serenity Hospice and Home, 1658 Illinois Route 2, Oregon, IL 61061. Please visit www.ungerhorner.com to sign the online guest book.

Rochelle Police Report

Officers make arrests

ROCHELLE — On July 1, 2022, Rochelle Police arrested Arturo P. Pena, 22, Rochelle, on an outstanding Ogle County warrant. Pena's bail was set at \$500 and his court date was scheduled for Friday, July 22, 2022 at the Ogle County Courthouse in Oregon.

On July 2, 2022, Rochelle Police arrested Tandre J. Felix, 22, Rochelle,

on an outstanding Ogle County warrant. Felix was transferred

On July 3, 2022, Rochelle Police arrested Timothy J. Odell, 26, Rochelle, on an outstanding Ogle County warrant. Odell was transferred.

On July 4, 2022, Rochelle Police arrested Rosa Gomez, 56, Rochelle, for domestic battery. Gomez was transferred.

Ogle County Sheriff's Report

Deputies respond to two-vehicle accident

OREGON — On July 1, 2022 at approximately 6:37 p.m. Ogle County Deputies conducted a traffic stop at Illinois Route 64 and Limekiln Road. After a brief investigation, Deputies arrested Randi M. Suter, age 34 of Oregon, was arrested for Unlawful Possession of Cannabis (Improper Container/Driver). Suter was taken into custody and released on the scene on an individual bond with a return court date set. Suter was additionally cited for Operating Uninsured Motor Vehicle. All subjects are presumed innocent.

On July 1, 2022 at approximately 9:31 p.m. Ogle County Deputies conducted a traffic stop on State Highway 251 near State Route 72. After an investigation, Deputies arrested Shelby Gasior, age 29 of Davis Junction, for Driving While License Suspended. Gasior was given an I-Bond on the scene with a return court date later next month. All subjects are presumed innocent.

On July 2, 2022 at 3:22 p.m. Deputies responded to a two-vehicle accident in the 13,000 block of East Illinois Route 72. After a brief investigation William Holden of Davis Junction was issued a citation for failure to reduce speed to avoid an accident with a future court date. Holden was transported to an area hospital for non-life threatening injuries. All subjects are presumed innocent.

On July 2, 2022 at approximately 12:30 p.m. Ogle County deputies conducted a traffic stop within the 9000 block of North Mulford Road. After an investigation, Deputies arrested Cyrus M. Willard, age 21, of Rockford for Driving while license suspended. Willard was released from the scene on a I-Bond, with a return court date of later next month. Additionally, Willard was issued a citation for speeding. All subjects are presumed innocent.

On July 2, 2022 at approximately 7:39 p.m. Ogle County Deputies conducted a traffic stop in the 7,400 block of South Illinois Route 26. After a brief investigation, Deputies arrested Marqwan X. Monroe, age 25 of Freeport, for Unlawful Possession of Cannabis (Improper Container/Driver). Monroe was taken into custody and transported to the Ogle County Jail where he was held in lieu of bond. Monroe was given a written warning for Illegal Window Tint. All subjects are presumed innocent.

On July 2, 2022 at 4:08 p.m. Deputies responded to the 8000 block of East Cardinal Lane, for a reported Domestic Battery. As a result of the investigation, Deputies arrested Christopher C. Forman, age 50, of Stillman Valley, for aggravated domestic battery. Forman was transported to the Ogle County Jail pending an appearance before a judge. All subjects are presumed innocent.

On July 2, 2022 at approximately 1:41 a.m. Ogle County Deputies conducted a traffic stop at Pilgrim Road and Sugar Grove Road. After investigation, Deputies arrested David W. Bellows, age 57 of Sterling, for Driving Under the Influence of Alcohol. Bellows was taken into custody without incident and transported to the Ogle County Jail where he was held in lieu of bond. Bellows was additionally cited for Speeding 74 mph in a 55 mph speed zone. All subjects are presumed innocent.

On July 2, 2022 at 12:32 a.m. Deputies conducted a traffic stop in the 1300 block of east Flagg road. After a short investigation Deputies arrested Sonya L. Cherry 51 of Davis Junction for Driving under the influence of alcohol. Cherry also received citations for failure to obey a stop sign, failure to stop at an intersection, and driving on the shoulder.



Cherry was transported to the Ogle County Jail and held in lieu of bond. All subjects are presumed innocent.

On July 3, 2022, Ogle County Sheriff's Deputies arrested Jacob Doane age 23 of Davis Junction for DUI. Doane was arrested by deputies on Holcomb Road after he was observed by a Deputy driving in the wrong lane of traffic. Doane was held in lieu of bond at the Ogle County Jail. All subjects are presumed innocent.

On July 4, 2022, at approximately 11:30 a.m. Deputies conducted a traffic stop in the 14,000 block of East State Route 64. After an investigation, Deputies arrested Anthony Marco, age 40 of Aurora for driving while license revoked. Marco was transported to the Ogle County Jail where he is being held in lieu of bond. All subjects are presumed innocent.

On July 4, 2022 at approximately 1:39 p.m., Deputies conducted a traffic stop on I-39 at the mile marker 99 exit. After investigation, Deputies placed Derius Needham, age 30 of Dekalb under arrest for

Driving While License Suspended. Needham was released on an I-Bond at the scene and given a future court date. All subjects are presumed innocent.

On July 4, 2022 at 8:03 p.m. Ogle County Sheriff's Deputies conducted a traffic stop on Interstate 39 near mile marker 112 Northbound. After an investigation, Kamaria Tusa, age 40 from Kansas City, MO was arrested for driving while license suspended. Tusa was also cited for improper lane usage and no valid registration. Tusa was released on a signature I-Bond with a return court date. All subjects are presumed innocent.

On July 4, 2022 at approximately 8:11 p.m. Deputies initiated a traffic stop in the 9000 block of North Illinois Route 2. After further investigation Quenet Sabillon, age 21 of Rockford, was placed under arrest for No Valid Driver's License. Sabillon was also cited for Loud Exhaust and Improper Lane Usage. Sabillon was released on an Individual Bond and will appear in court at a later date. All subjects are presumed innocent.

**We are now offering
LIPO MINO MIX injections
Introductory price \$25**

Call for an Appointment!

This lipotropic combination of B12 and methionine, an essential amino acid and other B vitamins can promote:

Increase Fat metabolism
Boost Energy Level
Reduce appetite

Mon: 7:30 - 6pm, Wed: 7:30 - 6pm, Thurs: 8 - 1pm, Fri: 7:30 - 4pm
Some Saturday appointments available

DLX Medical
GROUP

815-227-9594
1212 Currency Ct.
Rochelle IL
We Accept Most
Insurances and
Patients Without
Insurance

11042020

ROCHELLE News-Leader

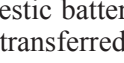
211 IL Route 38 East, Rochelle, IL 61068
(815) 562-4171

USPS (467-820) ISSN (1075-2811)
Published every Wednesday and Sunday by Rochelle Newspapers Inc. at 211 E. State Route 38, Rochelle, IL 61068. Periodical postage paid at Rochelle, IL 61068. Postmaster send address changes to the Rochelle News-Leader, P.O. Box 46, Rochelle, IL 61068. Subscription rates are \$119 per year by mail in Ogle County. Outside county rate is \$134 per year. No mail delivery in newspaper-carrier serviced areas. The circulation department is open Monday through Friday from 8 a.m. to 5 p.m. If you are a carrier subscriber and your paper does not arrive, contact Kelly White at 561-2112.

IN-COUNTY REGULAR SUBSCRIPTION RATES

• \$119 for one year • \$69.99 for six months
• \$29.99 for three months • \$11.99 for one month

Call (815) 561-2112 or Visit our website at www.rochellenews-leader.com



HOW TO CONTACT US

News-Leader Main Switchboard (815) 562-4171

General Manager
Mike Feltes (815) 561-2124

Newsroom Staff
Jeff Helfrich, Managing Editor (815) 561-2151
Russ Hodges, Sports (815) 561-2152

To Place a Display Ad
Andrew Heiserman (815) 561-2123

To Place a Legal Ad
Mike Feltes (815) 561-2124

To Place a Classified Ad
(815) 562-4171

Subscriptions and Delivery
Kelly White (815) 561-2112

BUSINESS SPOTLIGHT

ANDERSON
Plumbing & Heating, Inc.

Plumbing, Heating, Air
Conditioning, Drinking water
systems, Water Heaters,
Softeners, Iron Filters & More.

Since 1976

Like on Facebook
Lic# 055-013999

LENNOX

One Less Thing To Worry About

621 First Ave., Rochelle
(815) 562-8784

WHO IS UNITY HOSPICE?

- Care provided by the entire hospice team: physician, nurse, social worker, certified nursing assistant, chaplain, dietitian, pharmacist, and volunteers.
- Care is individualized and based on the patient's and family's goals of comfort and quality of life.
- Supplies, equipment and medications.
- Service where the patient resides.
- Specialize in pain & symptom management.
- Spiritual enrichment and bereavement counseling.
- Ancillary Therapies: Music, Physical/Occupational, Speech, Massage, Pet, etc.
- Ability to provide education to caregivers and family members.
- On-call nurse available 24/7.
- Volunteers providing special attention and stimulation.
- Assistance with advance directives and community support.
- Provide Education to those we care for

Unity
Hospice and
Palliative Care

CALL UNITY:
(815) 561-8866
915 N. Caron Rd.
Rochelle, IL

@unityhospice

ON THE FARM

The various benefits of farm-to-table

FEW things are more satisfying than biting into a fresh tomato right from the garden or seasoning a meal with herbs picked from a windowsill greenhouse. Restaurants recognize the value of such experiences, and more and more are relying on locally sourced products in their kitchens.

The farm-to-table movement is not new, but it has gained momentum as consumers become increasingly enamored with the flavor and environmental impact of locally sourced foods. The National Restaurant Association found that farm-to-table food was one of its top 10 trends for 2015. Furthermore, the group says that one in five consumers are willing to pay more for local food, and 41 percent admit that locally sourced ingredients influence their decisions when choosing where to dine.

Newcomers to the farm-to-table dining experience may not understand all the fuss surrounding this popular

trend. The following are some of the key benefits of farm-to-table.

Peak freshness and ripeness: Local produce ripens on the plant and can be harvested at the last possible minute before it turns up on a plate. This helps ensure that it contains the highest amount of nutrients and flavor, according to the Harvard T.H. Chan School of Public Health. Food that has to travel further is often picked well before it is ready, ripening on the way to stores or other vendors.

Better for the environment: Food that needn't travel far before reaching diners' plates saves roughly 500 gallons of diesel fuel to haul produce a distance of 1,500 miles. This conserves fossil fuels and prevents harmful emissions from entering the atmosphere.

Supports neighboring farms: Supporting farm-to-table restaurants and other eateries keeps business local in two different ways. It not only benefits local restaurants, but it also directly supports



neighboring farms, fisheries and other suppliers.

Accessibility to seasonal choices: Farm-to-table eating provides a wide variety of in-season foods. This can translate into tastier foods because they are grown and harvested during their optimal growing season.

Reduces factory farming: According to O.info, the informational resource powered by Overstock.com, farm-to-table and local farming can reduce reliance on large, profit-driven corporations that may focus on maximum production over animal health and

welfare. Local farms may be more inclined to treat their animals well and institute sustainable practices.

Learn about the community: A person might live in an area and never know that a local vineyard is in the vicinity or that a producer of straight-

from-the-hive honey is nearby. Exploring farm-to-table resources can open people's eyes to local businesses doing great work in and around their communities.

Farm-to-table is a popular movement that people are embracing for various reasons.

Maintenance key to functioning farms

THE family automobile is not the only piece of equipment that requires routine upkeep to ensure it is operating properly.

Life on a farm can come to a screeching halt if farm equipment is not properly maintained. Farmers invest hundreds of thousands of dollars on agricultural equipment, such as tractors, tillers, hoppers, and dozers. Adhering to maintenance schedules can prevent breakdowns and decrease the need for potentially costly emergency repairs.

Cleaning the surface of equipment can go a long way toward keeping it operating smoothly. Use a pressure washer to remove caked-on mud and other debris. Titan iron suppliers recommend quickly washing equipment after usage so that substances do not have the chance to harden.

Over time, it is possible to employ your



senses of sight, sound and even smell to determine if equipment is working properly. Familiarize yourself with the owner's manual so you can troubleshoot minor problems. Any unusual sounds, odors or responses from the gear should be noted. Routinely inspect hoses,

fittings, and seals to ensure they are in good working condition. Be sure fluids, such as coolant and oil, are at the proper levels. Check and replace filters as needed. Tires need to be properly inflated, and inspect the battery for corrosion or other signs that it may need to be

replaced. Check belts for cracks. Tour the exterior of the equipment looking at signals and lights to ensure they are in proper working order. Hardware should be tightened and any missing pieces replaced.

Heavy farm equipment needs motor oil, hydraulic oil and filters changed

more frequently than automobiles. Such equipment also may need more frequent lubrication of chains and cables. Always check and inspect equipment prior to jobs requiring heavy and extended usage.

Have a knowledgeable welder on call to make repairs as needed,

or develop your skills to a point where you feel comfortable making your own spot repairs. The experts at Miller, producers of welding equipment, say cleaning the surface area and removing any paint, oil or corrosion from the metal area that needs repairing can make

for smooth, durable welds. Multi-process welding generators and accessories can ensure the right welds for repairs in the field or in the shop.

Maintenance on farm equipment helps keep operations running along and protects expensive investments.



There are many jobs. And one tractor to do them all.



Call today to schedule a demo of the versatile BX Series sub-compact tractor. Part of our under 100 HP tractor line-up rated #1 for reliability.*

- Variety of available attachments
- Easy-to-use hydrostatic transmission
- Swift-Tach Loader is easy to install and remove
- ROPS height fits easily in standard size garages

Together we do more.®

JOHNSON TRACTOR

200 Steward Road
Rochelle, IL
800-262-1680

KubotaUSA.com

*2020 Progressive Farmer Reader Insights Award for Fewest Reported Problems Overall in the category of Small Tractor (Under 100 Horse Power). Award based on 2020 Progressive Farmer Reader Insights Tractor Study. © Kubota Tractor Corporation, 2021. This material is for descriptive purposes only. Kubota disclaims all representations and warranties, express or implied, or any liability from the use of this material. For complete warranty, safety and product information, consult your local Kubota dealer. For the complete disclaimer, go to KubotaUSA.com/disclosures and see the posted disclaimer.

BUILT FOR GENERATIONS



- Residential • Farm • Equestrian
- Commercial • Community • Repairs

Discover The Difference. Call Today!



MORTON BUILDINGS

877.613.3050 or 815-562-8777

104 Oak Ave., Rochelle, IL mortonbuildings.com

STORE HOURS:
M-F 8am-Noon,
1pm-5pm

09042018

LOCAL VIEWS

Guest column

Gladys Meister made a choice to serve

THE 1931 Rochelle Tatler featured the usual “class prophecy.”

“Ahoy! Stop the boat, I am coming.” Immediately a rope was dropped to the outstretched, anxious arms of Gladys, and hand over hand she climbed, soon to find herself safely landed on the deck with the rest of us. I rushed up to Gladys and asked her why she was late. She replied that she had been detained by a very urgent emergency case, because she was now the superintendent of nurses at the Presbyterian Hospital in Chicago.

Gladys Meister was an active member of the senior class at Rochelle High School. Gladys kept busy with pep club, Latin club, civics club, glee club, orchestra, intra-mural sports and on the athletic board of control. Gladys was born in Ashton in 1913, the daughter of Ernest and Elizabeth Meister. She later attended school in Rochelle and graduated Rochelle High School in 1931.

After graduation, Gladys entered nurse training in Chicago and entered into the home nursing field administering aid to sick and elderly in their own homes. When America entered into World War II, casualties began rising and the need for qualified medical assistance became obvious.

Gladys enlisted in 1942 and

became a lieutenant in the United States Army. Gladys was assigned to the U.S.A.H.S. Acadia. The Acadia was the first army hospital ship commissioned in WWII. Acquired through the US Maritime Administration in 1941 the Acadia’s first run was to deliver 1,000 troops to various overseas destinations.

On the return voyage, the Acadia carried 530 wounded servicemen. The United States recognized the danger of transporting injured on a transport ship. There was no protection from enemy attack for an armored military “ambulance ship.”

The Acadia was brought in for a makeover. The grey paint was removed, and white and green paint took its place. Anti-aircraft and other guns were removed, as were the U.S. Navy crews. Clearly marked as a hospital ship, the Acadia was now protected by the Hague Convention. Gladys Meister was now a lieutenant in the army nurse corps, serving with the 204th Medical Hospital Ship Company. The Acadia’s medical staff consisted of 18 officers, 37 nurses and 94 enlisted men.

When American troops began their press into Africa, the Acadia stood ready. The Acadia carried 788 wounded servicemen from

overseas back to the United States and Walter Reed Hospital in Washington D.C.

Gladys was interviewed by Dorothy Dunbar Bromely of the New York Herald Tribune and on a separate occasion by Jack Mahan of the International News Service. Her responses are from their interviews.

“I have learned a lot about war by taking care of the wounded,” said Lt. Meister. She also learned to overcome seasickness, and how techniques of nursing. Giving bedside care to a patient in an upper bunk presents difficulties. “You stand on a ladder, and if the sea gets rough you hook your leg over one rung and bathe the patient and dress his wounds,” she explained.

Once when a navy ship nearby was attacked, the Acadia sent out a boat with two nurses and a medical officer, she disclosed. They brought badly burned sailors. “We saw then,” she said, “What blood plasma can do.” Gladys served in the African Theater, Italian Theater and the Pacific Theater. “How am I going to brush my teeth when I get home?” asked a patient who had lost one arm and had another in a cast. “How do they go for cripples in the United States?” another boy with both legs in a cast bluntly



Tom McDermott

asked Lt. Meister.

The soldier’s alarm over facing the folks at home, Lt. Meister said, “is typical reaction of men who are returning not so whole in mind or body as they were when they left. As they are brought on the hospital ship,” she explained, “they are a cheerful lot of boys – enthusiastic about hitting the United States. But as we near port they freeze up. They seem frightened.” “You have to treat the injury with respect. Remember that the soldier got it fighting for the rest of us. You realize he is going to have to bear it for a long time, perhaps the rest of his life, and you hope the people at home will help him make a difficult adjustment.”

Gladys served for three years as an army nurse tending to the physical and emotional needs of her patients.

“Ahoy! Stop the boat, I am coming.” The high school prophecy was pretty accurate.

Gladys Meister passed away at the young age of 44. In her short time on this earth, she made a choice to serve. Wars are fought for power, for land and for resources. Gladys went to war for life, the lives of those wounded in combat, and she fought brilliantly.

Tom McDermott is a Flag Township Museum historian and Rochelle city councilman.

A new program and climate rule

A new program from the Department of Agriculture will help cover losses stemming from natural disasters in 2020 and 2021.

The new Emergency Relief Program announced this week by the Department of Agriculture will help cover the billions of dollars in losses from natural disasters in recent years.

This new ERP program is basically a revamped version of the old WHIP+ program and will provide \$6 billion in ad hoc disaster assistance for producers who experienced qualifying losses from severe weather events in 2020 and 2021. ERP includes losses from events like wildfires, hurricanes, flooding, freezes, derechos, and also drought under the D3 and D4 categories, as well as D2 after

eight consecutive weeks. It also covers losses from related conditions that occurred concurrently to major disasters like smoke exposure during wildfires.

Under phase one of the program, USDA will be sending prefilled applications to eligible producers.

This is supposed to happen within the next few weeks. Producers will then have to return their completed and signed prefilled applications to their local FSA office and should expect to receive payments in June-July. Producers who did not have crop insurance or NAP coverage, did not receive an indemnity, or had an area-based policy, will not be sent a prefilled application.

If you don’t receive a prefilled application, you’ll

have to wait for Phase Two of the program.

Again, for those that qualify under phase one of ERP, they will be sent prefilled applications based on their existing FSA information. For those that don’t get a prefilled application, they unfortunately will have to wait for information on Phase Two of the program to be announced.



Ron Kern

Climate rule

The Securities and Exchange Commission is proposing a new climate rule that might reach from Wall Street to America’s farms.

A proposal by the SEC would require reporting of climate-related disclosures throughout the supply chain. Farm groups including the American Farm Bureau Federation have concerns

regarding the proposal but need more time to review the rule. The SEC granted an extension this week.

It provides us 30 more days to review this rule and figure out what the impacts could be. it’s still significantly less than the 180 days farm bureaus asked for, but again, 30 days will be helpful to give us time to look through it.

The SEC world is new to farm groups. We’re used to dealing with EPA and USDA. But in talking with dozens of folks that are a specialist in the SEC over the past few weeks, one thing they did tell us is that we would not be getting extension, so this is certainly a nice one for us.

The AFBF is concerned about how the rule will impact farmers and ranchers. It seems to redefine what public companies need to

give to investors by including emissions about farms and ranches. Our concern is that the only way that the public companies will get this information is by requiring it from the farmers and ranchers themselves. This will be wildly burdensome and make it much more difficult for farmers and ranchers to do the job they need to do at a time when food prices are going up significantly and it’s hard enough to manage your operations.

“My parents took me to the beach and I got lost. I asked the policeman to help me find them. He said, ‘Gee kid that’s gonna be tough. There’s so many places they could hide.’”

-Rodney Dangerfield

Ron Kern is the manager of the Ogle County Farm Bureau.

How to contact government officials

U.S. Con. Adam Kinzinger
1218 Longworth HOB
Washington, D.C.
20515
(202) 225-3635

IL Sen. Brian Stewart
M104A State House
Springfield, IL 62706
(217) 782-0180

IL Rep. Tom Demmer
314 Capitol
Springfield, IL 62706
(217) 782-0535

Have a letter you want to submit to us? Send it to (news@rochelle-news-leader.com

KEEPING YOU IN TOUCH WITH YOUR LOCAL LEADERS

* Denotes Chairman/President

Rochelle City Council
*John Bearrows jbearrows@rochelleil.us
Kathryn Shaw-Dickey kshaw-dickey@rochelleil.us
Bil Hayes bhayes@rochelleil.us
Rosaelia Arteaga rarteaga@rochelleil.us
Dan McDermott dmcdermott@rochelleil.us
Tom McDermott tmcdermott@rochelleil.us
John Gruben jgruben@rochelleil.us

Rochelle Elementary School Board
*Dave Casey dcillini94@gmail.com
Steve Builta sbuilt@gmail.com
Ashley Jackson ajackson@d231.rochelle.net
Stephanie White swhite@d231.rochelle.net
Eric Van Hise eric.vanhise@gmail.com
Trisha Vaughn jrvtlv02@msn.com
Javier Zepeda jzepeda@rthsd212.org

Rochelle Township High School Board
*Tom Huddleston tom.huddleston@rthsd212.org
Carol Hayenga carol.hayenga@rthsd212.org
Bill Ravnaas bill.ravnaas@rthsd212.org
Jacky Aguilera jacky.aguilera@rthsd212.org
Jeff Tilton jeff.tilton@rthsd212.org
Bobby Chadwick bobby.chadwick@rthsd212.org
Brian VanVickle brian.vanvickle@rthsd212.org

Flagg-Rochelle Park Board
Brent Carmichael bcarmichael@rochelleparkdistrict.org
John Dobbs jdobbs@rochelleparkdistrict.org
Dale Wells dwells@rochelleparkdistrict.org
*Tim Hayden thayden@rochelleparkdistrict.org
Jodie Hart jhart@rochelleparkdistrict.org
Joe Lenkaitis jlenkaitis@rochelleparkdistrict.org

Ogle County Board Dist. 3
Lloyd Droege ldroege@oglecounty.org
Dan Miller dmiller@oglecounty.org
Greg Sparrow gsparrow@oglecounty.org

Ogle County Board Dist. 4
Bruce McKinney bmckinney@oglecounty.org
Skip Kenney skenney@oglecounty.org
David Williams dwilliams@oglecounty.org

Creston Village Board
Wayne Williams jwdw13@yahoo.com
Jennifer Payton
*Tom Byro tommyb_47@yahoo.com
Greg Hopkins ghopkins522@comcast.net
Steve Katzman skatzman@essex1.com
Mike Kerns ac.kerns@comcast.net
Mark Hibshman
Curt Ward caward92@comcast.net

Hillcrest Village Board
*Randy Salsbury rsalsbury@hillcrestil.us
Pam Pittman ppittman@hillcrestil.us
Dan Potter dpotter@hillcrestil.us
Richard Rhoads rroads@hillcrestil.us
Tim Ball tball@hillcrestil.us
Renee Kerwin rkerwin@hillcrestil.us

Flagg Township
*Bob Withrow flaggtwp@rochelle.net
Joanna Patrick flaggtwpcerk@rochelle.net
Susan Rothenberger assessor@rochelle.net
Scott Seebach scottseebach@gmail.com

Board of Trustees
Lance Noggle noggle62@gmail.com
Eric Gruben egruben@comcast.net
Susan Hager susanhager303@comcast.net
Jim Kenney jimk@rocketsupply.com

Flagg-Rochelle Library
*Jaqueline Dickow dickow@comcast.net
Teresa Haggstad haggstads@comcast.net
Michael Scanlan scanlan@comcast.net
Lanning Nicoloff nicoloff118@comcast.net
Sheri Klindera alwayslefty2@gmail.com
Susan Sevedge nit1pr122@yahoo.com
Darci Waltrip doobs12@comcast.net

LETTERS TO THE EDITOR POLICY

The Rochelle News-Leader encourages responsible letters to the editor on subjects of interest to our readers. Editing may be necessary for space, clarity or to avoid obscenity or libel, but ideas will not be altered. All letters must bear the handwritten signature of the writer and include address and phone number or e-mail address for verification purposes. Neither the street address nor phone number will be printed. Letters should be typed or legibly

handwritten, and no anonymous letters will be published. Any letters from boards or organizations must include at least one name of an individual. Any criticism of public officials should be limited to issues related strictly to their position or actions made in office, as personal attacks will not be published. Letters involving private disputes between the writer and a business will not be published. Political endorsements will be published,

however letters from candidates endorsing themselves will not be printed. Letters may be dropped at the News-Leader office (211 IL Route 38 East), mailed to the News-Leader (P.O. Box 46, Rochelle, IL 61068) or e-mailed (news@rochellenews-leader.com.) The News-Leader reserves the right to edit or reject any letter to the editor for any reason, and letters chosen for publication do not necessarily reflect the views of this newspaper.

COMMUNITY

St. John's Church ice cream social and talent show is July 17



St. John's Lutheran Church, 126 E. South St. in Creston, will host its annual ice cream social with homemade pies, sandwiches, and a talent show on Sunday, July 17. The social runs from 5:30-7 p.m. with the talent show beginning at 7 p.m. You're invited for a great Sunday night of entertainment.

Birthdays & Anniversaries

July 6
Billie Bonilla
Dena Koker

July 7
Tarah Wooten
Vallory Lopez
Xander Gonzales

July 8
Jazmene Carpenter

July 9
Josh Kulwicki

July 12
Zach Walker
Gene Messer
Thayde Sullivan
Danica Thompson

July 13
Landon Dubourg

July 14
Eli Jones
Peggy Messer

July 15
Seriana Carpenter
Julia Jackson
Courtney Jones

July 17
Carolyn Overstreet

July 19
Katie & Eric Johnson

July 20
Courtney South
Corey Lawrence
Zack Lawrence
Aaron Doering

July 21
Gavin Arnold

July 22
Kayla Peterman
Alexie Smith
John & Deb Wooten

July 23
Elmer Lopez

July 24
Paige Komadina
Juliana Kann
Jackson Kann

July 26
James Friestad

July 27
Pastor Angelo & Debbie Bonacquisti
Brian & Kelly Smith

July 28
Marisa McGuire

June 10 - Francely Vazquez, Rochelle, \$25

June 11 - Lubos Andel, Dixon, \$25

June 12 - Caleb and Canyon Ritter, Rochelle, \$50

June 13 - From the Heart, Rochelle, \$25

June 14 - Presleigh Belt, Rochelle, \$25

June 15 - LOTS, Rochelle, \$25

June 16 - Steve Woita, Rochelle, \$25

June 17 - Rochelle Rotary Club, \$25

June 18 - Jason Diehl, Oregon, \$25

June 19 - Christopher R. Lewis, Rochelle, \$500

June 20 - From the Heart, \$25

June 21 - Rachel Geske, Rochelle, \$25

June 22 - Lester O. Davis, Rochelle, \$25

June 23 - Rochelle Rescue Mission, \$25

June 24 - Denise Orlikowski, Rochelle, \$25

June 25 - Andrea Baumann, Rochelle, \$25

June 26 - Ashlyn Hayes, Rochelle, \$50

June 27 - Ryan Stevens, High Ridge, Mo., \$25

June 28 - Anlun Meyers, Rochelle, \$25

June 29 - Nancy Williams, Rochelle, \$25

June 30 - Jonathan Gehm, Rochelle, \$25

July 1 - Karen Kulas, Oregon, \$25

July 2 - Mary Sage, Rochelle, \$25

July 3 - Dave & Judy Stadler, Forest, Va., \$50

July 4 - Adlai Shaeffer, Rochelle, \$1,000

July 5 - Ralfie's BBQ & Catering, Oregon, \$25

July 6 - Kathy Countryman, Sycamore, \$25

THE KITCHEN TABLE MENU

July 5 (Tuesday) - Chicken breasts over pasta with lemon sauce, peas, garlic bread	July 21 (Thursday) - Shredded brisket over potatoes, carrots and onions with gravy
July 7 (Thursday) - Lil smokies with roasted potatoes, cabbage and carrots, cornbread and green beans	July 26 (Tuesday) - Pulled pork on pancakes, baked beans and coleslaw
July 12 (Tuesday) - Baked chicken over herbed rice, corn, peas, dinner rolls	July 28 (Thursday) - Thanksgiving in July - Sliced or shredded turkey, mashed potatoes, gravy, corn casserole, green beans, dinner rolls, 7-layer salad
July 14 (Thursday) - Lasagna, salad and garlic bread	Aug. 7 (Sunday Brunch) - Serving time changed to 9am to noon - Sausage gravy and biscuits, cinnamon rolls, breakfast casserole, sausage patties
July 15 (Friday) - BBQ baby back ribs, coleslaw, baked beans, mac n cheese	All menus subject to change.
July 19 (Tuesday) - Grilled shrimp pasta with green peppers, tomatoes and cream sauce with garlic toast	Visit www.KitchenTableRochelle.org



Coffee Break

King Crossword

ACROSS

1 River blocker

4 Locate

8 Cherry type

12 Hearty quaff

13 Notion

14 Manual reader

15 Asian holiday

16 Brando role

18 Glorify

20 Make lace

21 Formerly, once

24 Ballpark winner

28 Child star's parent, maybe

32 Zilch

33 Hosp. sec-tions

34 Continental cash

36 Caustic solu-tion

37 Bulb measure

39 Pop's pop

41 Covert agents

43 Summers in Paris

44 Vichy water

46 Patriot Allen

50 Cub Scout leader

55 Rock's Brian

56 Curved mold-ing

57 Roof over-hang

58 Scratch the surface

59 Suitable

60 Roe provider

12

15

18

21

24

28

31

33

37

41

44

47

50

53

56

59

61

11 Dog's warn-ing

17 Foot rub response

19 Race seg-ment

22 Overconfident

23 Baseball's Joe

25 Aspic form

26 "May It Be" singer

27 Oboe insert

28 Gives a darn?

29 Snare

30 Wine region

31 Castle defense

35 Showed scorn

38 Overflowed

40 "Spring ahead" hrs.

42 — Paulo, Brazil

45 Western tribe

47 Rope fiber

48 Scrambled wd.

49 Asta's mis-tress

50 Pooch

51 Swelled head

52 Opposite of paleo-

53 Taunting laugh

54 Actress Mendes

DOWN

1 Social appointment

2 "Roots" author Haley

3 Transcending (Pref.)

4 Greek orchard planting

5 Wedding words

6 Homer's neighbor

7 Loony

8 Frosty's nose

9 Somewhat (Suff.)

10 Born abroad?

© 2022 King Features Synd., Inc.

Weekly SUDOKU

by Linda Thistle

	5			8				1
		4	7	9			2	
7					3	6		
		9			7	8		3
6				2				7
5	8		1				4	
	3		9					5
		1	4		5	9		
2				7			1	

Place a number in the empty boxes in such a way that each row across, each column down and each small 9-box square contains all of the numbers from one to nine.

DIFFICULTY THIS WEEK: ♦

♦ Moderate ♦♦ Challenging
♦♦♦ HOO BOY!

© 2022 King Features Synd., Inc.

CryptoQuip

This is a simple substitution cipher in which each letter used stands for another. If you think that X equals O, it will equal O throughout the puzzle. Solution is accomplished by trial and error.

Clue: X equals T

VLXXLSI ILZX XP NMSR QULVVLSI
MAPBX WPSILI XWMX IXPJ MZQ
SLNBIL XP FLLJ UMFVHZT:
AMVF RMHV.

©2022 King Features Synd., Inc.

Answer

9	1	4	8	7	3	5	6	2
2	3	6	5	9	4	1	7	8
5	8	7	2	1	6	9	3	4
6	2	4	9	3	1	7	8	5
1	5	7	6	2	8	3	4	9
3	9	8	7	4	5	6	2	1
4	6	9	3	5	2	8	1	7
8	5	2	1	6	4	7	9	3
3	7	1	4	3	8	6	2	5

Answers

9	1	4	8	7	3	5	6	2
2	3	6	5	9	4	1	7	8
5	8	7	2	1	6	9	3	4
6	2	4	9	3	1	7	8	5
1	5	7	6	2	8	3	4	9
3	9	8	7	4	5	6	2	1
4	6	9	3	5	2	8	1	7
8	5	2	1	6	4	7	9	3
3	7	1	4	3	8	6	2	5

Solution time: 24 mins.

CryptoQuip
answer
Letters sent to farm dwellers
about horses that stop and
refuse to keep walking:
balk mail.

LOCAL NEWS

PRICES: Local farmers detail current impact of inflation

From page 1

Rainwater has seen fuel double or more than double in price in a year. A lot of the fertilizer and chemicals he uses are derived from oil base and he's dealt with the same issues with other non-fuel inputs that Svela has.

"You always hope the market price for the crop you're selling will go up to cover increased costs like that," Rainwater said. "Fuel is required for every part of the growing process. There's no right answer to how to combat it. I can't really slow down or cut back. You try not to have your tractor run for more than it should. I operated the engine at the lowest percentage level I could this year to try to save fuel."

Commodity prices are up for crops right now. But Svela said the reason for that is because of the rise of expenses that go into growing them. Prices of products at supermarkets are up because of things like the transportation it takes to get them there.

Both Svela and Rainwater said that the weather this year has been good and is set up nice for harvest so far, outside of the need for some rain. Rainwater has recently told area residents to expect sweet corn around July 25, depending on how much the hot days move that date up.

Svela said he doesn't mind dry weather early in the year because it



(PHOTO BY JEFF HELFRICH)

Local farmer Jeff Rainwater has seen fuel double or more than double in price in a year. A lot of the fertilizer and chemicals he uses are derived from oil base and he's dealt with the same issues with other non-fuel inputs that another local farmer, Dean Svela, has.

makes the crop work for nutrients, which causes deeper roots.

"We could have a very good crop this year," Svela said. "It looks good now. But we definitely need moisture. If we have a good crop this year, it should be a status quo year just because the commodity prices are up and inputs are up. You're not going to make any more money at it than you would've a couple

years ago. Everything is just inflated."

With input prices up and supply down, Rainwater said he's tried to get ahead of the game by stocking up on products like grease and parts. Svela believes availability issues could be "the greatest evil" in the current economic situation for farmers.

"Some people wait 4-5 months for parts for something," Svela said. "People

can't get something like a new field cultivator because manufacturers aren't producing them fast enough. But can they at least get the parts to fix the one they have?"

Svela said he doesn't like seeing higher prices for inputs, but he deals with them. Because he has to.

"That's the cost of farming," Svela said. "You don't have a choice. You

buy things for what everybody else wants to sell them for. And you sell your crop for whatever they want to buy it for. You have very little leeway in there. I can't just keep holding on to my crop."

Rainwater looks at things like rising fuel prices, product inflation and being at the mercy of Mother Nature as a whole, not separately.

"To me, everything is

all wrapped into one big uncertainty," Rainwater said. "You can try to look at each part of the equation, but a lot of it you can't control. Some things you can't foresee or know. I just lump everything into one. There's just too many risks to look at. We bet on Mother Nature and won't know until the year is over. Farming is a risky business. You gamble every single day."

Kishwaukee College resuming veterinary assistant program

MALTA — The Kishwaukee College Continuing Education department will offer the fall 2022 veterinary assistant program from July 24 through Dec. 16.

The course will take place both online and in-person.

Instruction is provided online in an asynchronous format. In-person lecture/practice will be conducted from 5-8 p.m. on Wednesdays at Ashton Animal Clinic in Kaneville and from 4:30-7:30 p.m. on Fridays at Ashton Animal

Clinic in Ashton.

Veterinary assistants are critical members of a veterinary staff and assist veterinarians and veterinary technicians with medical procedures. Veterinary assistants also are trained in examinations, customer



relations and veterinary hospital office procedures. Contact Melissa Gal-

lagher at 815-825-9466 or mgallagher1@kish.edu to discuss the program

and how to register. For more program information, visit kish.edu/vetassistant.

CITY: Rochelle staff shooting for third budget award

From page 1

The award application is put together mostly by Cardott and Industrial Development Manager Peggy Friday. During the first year the city applied, Fiegenschuh said Friday spent about six months altogether working to pull information together from various departments before sending it in.

The city has around a \$90 million budget. Each year it starts a new budget on Jan. 1. City staff starts work on the next year's budget in July to make sure it's balanced and resources are allocated in the best way possible, Fiegenschuh said.

The budget preparation process starts with department heads reviewing their past and what they project for the next year and they do a department-specific budget that is reviewed by Cardott and Fiegenschuh and meetings with department heads are held.

When the entire budget is put together, a committee of the whole meeting is held with the city council, which reviews it as well. A capital improvement plan also goes along with the budget, which projects out 20 years of expenditures showing priorities and funding sources. Approval by the mayor and council comes in December. After that, work starts on the

budget award application.

"Peggy and I work behind the scenes," Cardott said. "I verify that all the information in our software is correct and that the graphs are correct and it shows what we want to show. She pulls together pictures and Jeff has a 15-page summary we put in there as well. We look through what's coming to council in the future as far as our goals and add that in. It's a lot of work that people don't know about."

Fiegenschuh said the budget is the most important

policy document that the mayor and city council approve, due to the fact that nothing can be done without resources of revenue. When using taxpayer money, the city needs to be "very cognizant" of that, and that doesn't end after the budget is approved, the city manager said.

Revenue must first come in before it can be spent, and every two weeks Fiegenschuh approves a list of bills before it goes to council to be approved.

"Even though they

approved the budget, on the back end they have to approve every expenditure before they make it," Fiegenschuh said. "So there's a lot of checks and balances. We're always working on the budget. We review it every two weeks even after it's approved and six months later we start working on the new one."

The GFOA Distinguished Budget Presentation Award won last year is available on the city's site.

"It really does show we're a transparent com-

munity, and any question you have on our organization, other organizations we help fund, all of the projects we're doing and all of the goals the mayor and council have set for the community," Fiegenschuh said. "It's all right there for people to read. It really shows we have nothing to hide. If there's anything you want to know about our organization, it's in that budget award."



Jeff Fiegenschuh

Stillman BANK

We're Growing to Better Serve You

We are pleased to welcome

DERRICK JOHNSTON

as Vice President/Chief Credit Officer and Director of Ag Lending

- Experienced Lender
- Personalized Service
- Local Decision Making

815.645.2007 derrickj@stillmanbank.com

www.stillmanbank.com

we insure your car. because accidents happen.

simple human sense

Dimond Bros.

Insurance Since 1867

401 N. Main St. | Rochelle, IL
815.562.5596 | DimondBros.com

Auto-Owners INSURANCE

LIFE • HOME • CAR • BUSINESS



ADVERTISE YOUR BUSINESS HERE!

Great Rate - Great Spot!

Call Mike @ 815-561-2124 or email mfeltes@oglecountylife.com

01252021

Star-Spangled SAVINGS

Throughout the Store!

HUB CITY FURNITURE





Tue-Fri 9am-4pm • Sat 9am-1pm • Closed Sun & Mon



429-433 Lincoln Hwy.
Rochelle, Illinois
815-562-8765
hubcityfurniture.com

09012021

SPORTS



SETTING THE TONE

RTHS alum Clare Green totals over 1,000 assists during freshman season at Cornell.

See page 2 for more details

Rochelle Little League

Lions win tournament title

No. 1 seed takes two-game set over No. 2 seed Firemen for city championship

BY RUSSELL HODGES
SPORTS EDITOR

ROCHELLE — Rochelle Little League’s Major League Boys City Championship tournament finals teed off on Wednesday, with No. 1 seed Lions beating No. 2 seed Firemen 14-5 in Game 1. Lions then won Game 2 over Firemen 10-0 on Thursday to claim this year’s championship.

Game 1

Firemen (11-4) scored the first run of the evening, taking a 1-0 lead after Jace Spears singled and scored on an RBI single from Declan McKinney in the top of the first inning. Joey Chadwick singled and Zachary Johnson tied the score with an RBI triple for Lions (14-3) in the bottom of the second inning before scoring on Jasper Macklin’s RBI groundout to put Lions ahead 2-1.

The back-and-forth battle continued in the top of the third inning, where Firemen tallied three runs to surge ahead 4-2. Spears singled and scored on McKinney’s RBI groundout, while Bentley Sveta and Korbin Milos both scored on passed balls after reaching base on walks. Lions gained the lead in the bottom of the third inning, where Bo



(PHOTO BY RUSSELL HODGES)

Lions defeated Firemen to take home the 2022 Rochelle Little League Major League Boys City Championship title. The team includes Luke Chadwick, Mikey Chadwick, Joey Chadwick, Bo Lundquist, Brayden Harley, Zachary Johnson, Jasper Macklin, Kamden Kessen, Chase Atkinson, Landon Simental and Wyatt Battershell. The boys are coached by Paul Chadwick, Mike Chadwick and Bob Chadwick.

Lundquist’s RBI single and Johnson’s two-RBI single brought Brayden Harley and Chadwick

home to give Lions the 5-4 advantage.

After a shutout fourth inning from both teams,

Firemen tied the game in the top of the fourth inning, making the score 5-5 when Chase Brown drew a bases-

loaded walk with two outs to bring McKinney home. Lions exploded in the bottom of the fifth inning,

recording nine runs to seal the Game 1 win.

See **BOYS** page 8

RTHS Football

Hubs battle Raiders in 7-on-7 scrimmage workout

Rochelle varsity, fresh-soph players compete against Ashton-Franklin Center

BY RUSSELL HODGES
SPORTS EDITOR

ROCHELLE — The Rochelle Hub varsity football team earned its first taste of live action on Wednesday, hosting the Ashton-Franklin Center Raiders for its first 7-on-7 scrimmage at the Rochelle Township High School football facility. The Hubs will travel for additional scrimmages at Kaneland, Sterling and Byron later this month as the march toward the 202 season continues.

Rochelle’s skill players on both sides of the ball took the field, with the offense working through a variety of passing plays while the defense battled through individual pass-coverage matchups. The Hubs are returning several seniors at the skill positions including quarterback Hayden Inman as well as two-way starters Garrett Gensler, Cody Stover-Cullum and Trey Taft.

“It’s a great time to be out here working with the boys,” Inman said. “I think our offensive line is going to be really big this season and I’m really excited about that. Having Trey,

Cody and Garrett back will be huge for our offense too. Our goal is to be better than we were last season.”

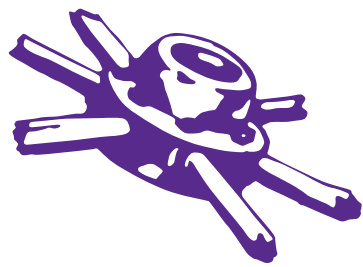
Rochelle and A-FC each took three turns on offense and defense during Wednesday’s scrimmage, which kicked off around 5 p.m. and ran for about one-and-a-half hours. The Hubs will have one week off before resuming off-season activities on Monday, July 11. In addition to the scheduled 7-on-7 scrimmages, Rochelle will host its annual two-week padded camp, one-week youth camp and Lift-A-Thon as well as a dual camp with Forrester later this month.

“Practices have been really competitive recently and everybody has been fighting for their spots,” Taft said. “Getting everybody out here and competing against another team is so much fun and it feels great to go against another team. I think we’re off to a good start this summer, but we have a lot of room to improve. We definitely have the potential to be better than we were last season, but our coaches always tell us about the importance of putting in the work.”



(PHOTO BY RUSSELL HODGES)

Junior Brock Metzger (right) and senior Hayden Inman (left) throw warm-up passes before the Rochelle Township High School football team’s 7-on-7 scrimmage against Ashton-Franklin Center this past Wednesday.



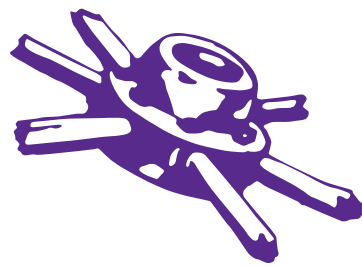
The businesses featured on this page are

"Hubs Super Fans"

They proudly support our local athletes and students.

Please show your appreciation by patronizing their businesses.

WE SUPPORT OUR HUBS!



HUB SPOTLIGHT

Green setting the tone for Cornell College

BY RUSSELL HODGES
SPORTS EDITOR

FORMER Rochelle Lady Hub student-athlete Clare Green recorded over 1,400 assists during her stellar four-year varsity career with the volleyball team. Green's energy and effort have transitioned seamlessly to the NCAA Division III level, where the talented setter assisted on over 1,000 balls during only her first season as a freshman at Cornell College in Iowa.

Green immediately earned the starting setter role with the Rams, appearing in 112 sets across 32 matches and finishing her freshman campaign with 1,098 assists. Green, who received Second-Team All-Midwest Conference honors, was one of four Cornell College players to take the floor for all 32 matches during the 2021 season, where the Rams finished 20-12 overall.

"My freshman volleyball season was amazing," Green said. "I couldn't be more proud of our team and how well our season went. Everyone was so welcoming and we really became a team of best friends. I've enjoyed the opportunity to continue playing the sport I love and our team plays at an elite level. I stepped into my role and took on a lot of responsibilities as a freshman."

Green's freshman season included MWC Offensive Performer of the Week honors in late October, when the Rochelle Township High School alum led the Rams over Grinnell College with a double-double performance that included 41 assists and 14 digs. Green also totaled a season-best 52 assists in a close win over Dubuque University during that same week. Green was named Team Newcomer of the Year and Cornell's First-Year Female Athlete of the Year.

"I think I've become a better teammate by listening and forming strong connections with my teammates," Green said. "I've become stronger physically, which has helped my overall play as well. I want to improve my speed and my court awareness for next season. I'd also like to become a more aggressive setter to score points for my team and attack the ball. My main goal for next season is to



(PHOTO COURTESY OF CORNELL COLLEGE)

Former Rochelle Lady Hub volleyball standout Clare Green dished out over 1,000 assists during her freshman season at Iowa's Cornell College.

help my team reach nationals and go as far as we can at the tournament."

An Academic All-MWC honoree, Green stepped up for the Rams during conference play, leading the team to an 8-0 regular-season conference record before helping the Rams defeat Monmouth College and Grinnell College to take home the MWC Tournament title. Green, who's currently studying Spanish along with mathematics and finance, said the team's conference tournament victory on home court was one of the best moments of her freshman season.

"The energy was insane throughout the entire match and when we scored our final point, our entire team ran on the court and we had a giant group hug," Green said. "I smile every time I watch the video."

"I couldn't be more proud of our team and how well our season went. Everyone was so welcoming and we really became a team of best friends. I've enjoyed the opportunity to continue playing the sport I love and our team plays at an elite level. I stepped into my role and took on a lot of responsibilities as a freshman."

Clare Green

GO HUBS!



ANDERSON
Plumbing & Heating, Inc.

Plumbing, Heating, Air Conditioning,
Drinking water systems, Water Heaters,
Softeners, Iron Filters & More.

LENNOX

Since 1976 One less thing to worry about
Like us on Facebook
Lic# 055-013999

621 First Ave., Rochelle
815-562-8784



Hello,
neighbor!

Huber Insurance and Financial Services Inc.
Shane B. Huber, Agent
1211 Currency Ct
Rochelle, IL 61068
Bus: 815-562-7011

Please stop by and say, "Hi!"
I'm looking forward to serving your needs for insurance and
financial services.
Like a good neighbor, State Farm is there.
CALL ME TODAY.

State Farm

1001013.1 State Farm, Home Office, Bloomington, IL

DLX Medical
GROUP



Caring for your
family's health from
infant to adults.

Accepting
New Patients

For appointment, please call

815-227-9594

1212 Currency Ct, Rochelle, IL 61068
Most Insurance Accepted

Local People Providing Local Service

Rochelle
MUNICIPAL UTILITIES

Water • Waste Water
Electric • Communications

Phone: 815-562-4155 333 Lincoln Highway
Fax: 815-562-5861 Rochelle, IL

www.rmu.net

CENTRAL
ILLINOIS
LOAN

Loans For All Your Needs
Auto • Home Improvement • Vacation

Jami Hackman

815★561★4035!

310 Eagle Drive, Rochelle
All loans subject to our normal credit requirements and policies.

MORTON
BUILDINGS

If you can dream it, we can build it.



Rochelle Sales Office • Hwy. 251 N. • 877-613-3050

Rochelle
Community Hospital
Your Local Healthcare Resource.

900 N. 2nd Street, Rochelle
815-562-2181

www.rochellehospital.com

MEYERS
FURNITURE & FLOORING

209 Powers Road, Hwy 251 N
Rochelle, IL 61068
(815) 562-8792
www.meyersfurniture.com

Bruns
Construction, Inc.

Residential & Commercial Roofing

Residential, Concrete
Driveways, Flatwork
and Foundations

Shingled Roofs
Flat Roofs
Metal Roofs For Farm Facilities
Custom Built Homes
Additions

Tim & Roger
Bruns, Owners
Established 1997
815-561-0099
Licensed & Insured

Rochelle
Chiropractic
Clinic
Dr. Chad M. Piller



227 E. Rt 38 • Rochelle, IL

815-562-8706

www.rochellechiropractic.com

Now Accepting New Patients!

JOHNSON
TRACTOR

SALES • PARTS • SERVICE

200 Steward Road

800.262.1680

www.johnsontractor.com

AtlasAuto

BUY HERE – PAY HERE
You Work - You Drive

Se Habla Español **815-562-7433**

1400 N 7th St
Corner of Flagg Rd & Hwy 251 N

HUB-REMSEN
PRINT GROUP

101 Maple Ave • Rochelle, IL 61068

815.562.7057 • hub-remsen.com

GO HUBS!



"Proudly Serving The Rochelle Area Since 1945"

Berg-Johnson
Electric

Residential • Commercial • Industrial

FREE ESTIMATES

Licensed and Insured

24 Hour Emergency Service

815-562-4937

500 Cleveland Avenue

CHEVROLET

• Collision Repair • Rental Cars
• 24 Hour Towing • Maintenance On All Makes
• New/Preowned Vehicles and Models
• Tires, Alignments, Brakes, Batteries

JEFFPERRY

CHEVROLET • BUICK • CADILLAC • JEEP • CHRYSLER

815-562-8787 • www.jeffperrychevrolet.com

Busy Schedule?
Leave the cooking to us.

• Large menu of foods
• Rochelle's famous chicken
by the dinner or bucket
• Hand dipped ice cream
(16 flavors)

COUNTRY SCHOOL
DRIVE-IN RESTAURANT
251 N. ROCHELLE • 562-6039

We're tuned in to your
financial needs!

• Six locations
• 25,000+ ATMs across the U.S.¹
• Free checking account options
including Student Checking
• Stillman Mobile App
featuring mobile deposit²
• Free Pre-approvals
• Local lenders, local decisions

Stillman
BANK
Earning Your Trust For 135 Years
www.stillmanbank.com

ATM must be a part of the MoneyPass® Network. Funds are verified. A \$3.50 fee will apply to each mobile check deposit. Certain state rules may apply. Check with your provider for details.

562-3312
Dine-in • Carry-out

Taste the difference **Alfano's**
Pizzeria and Italian Restaurant

Two for Tuesday
2 Large, 2-Topping
PIZZAS \$24.99
(With Coupon)

1115 Turkington Terrace
Rochelle, Illinois
Beer & Wine Dine In Only

SPORTS

RTHS Boys & Girls Soccer

Rochelle athletes return for summer conditioning

Hub and Lady Hub players rounding into form for upcoming school year

BY RUSSELL HODGES
SPORTS EDITOR

ROCHELLE — The Rochelle Township High School soccer program held its first summer conditioning session of the offseason Tuesday evening, with returning and incoming Hub and Lady Hub players lacing up their cleats and getting a head start on the upcoming school year.

Summer conditioning workouts will be held every Tuesday and Thursday from 5:30-7 p.m. at the RTHS soccer fields. Head varsity coach Brad Male said the summer workouts provide an opportunity for new and returning players to get in shape and improve their skills for the fall.

"It's always nice to come back out and see what we'll have for the upcoming school year," Male said. "It's a good time to see what we've lost and what we have come back. It's all about effort and the more effort our kids put in now, the easier it'll be for them later on. We have kids at different levels in terms of their conditioning, but it's all about their effort at the end of the day."

Girls and boys are invited to attend the summer workouts, which combine skill work such as passing, dribbling and shooting with regular conditioning exercises. The Hubs are



(PHOTO BY RUSSELL HODGES)

Senior Evin Odle works through a passing drill during the Rochelle Township High School soccer program's summer conditioning workout on Tuesday. The summer conditioning workouts will be held on Tuesdays and Thursdays from 5:30-7 p.m. at RTHS.

less than two months away from their season opener this fall, while the Lady Hubs have an opportunity to build on their strong performance during the spring season, where the girls went 10-10 overall.

"It's all about condition-

ing during the summer, but we also work to build our team chemistry," Male said. "We have a few younger players out here and we're eager to see how they fit into our mix. It's a team sport and I always look for our players to compete with a

team mentality."

The Hubs will look to improve on a 9-12 finish during the 2021 season, where Rochelle took fourth in the Interstate 8 Conference and fell against Kaneland in the IHSA 2A Regional Semifinals.

Several returning seniors including Jace Whitehead and Christian Harding, who Male said will step into leadership roles this fall, participated in conditioning on Tuesday.

"Jace and Christian are two players who played a

key role for us last season," Male said. "I'm looking for them to lead our team during the summer because we have a lot of young guys out here. I'm excited to see how the summer progresses and where we'll be when the fall comes"

Victor E. Bash supports Huskie student-athletes

DEKALB — With a combination of in-person and virtual activities, Northern Illinois University Athletics' 2022 Victor E. Bash established a new fundraising record for the event as donors, alumni and fans across the country contributed a total of \$251,725 in support of Huskie student-athletes between June 6-10, NIU Vice President and Director of Athletics and Recreation Sean T. Frazier announced Wednesday.

The 2022 Victor E. Bash combined the popular on-

line elements and YouTube video presentations of the past two all virtual Victor E. Bashes, with the return of in-person Huskie Summer Circuit stops in St. Charles and Rockford, in coordination with the NIU Alumni Association. During the Huskie Summer Circuit stop at Pollyanna Brewing in St. Charles, NIU broadcast the in-person appearance by Frazier and Huskie head coaches on its YouTube Channel, where fans were able to enjoy programming all week long.

"Once again, Huskie Nation stepped up in record-setting fashion to support NIU student-athletes during the 2022 Victor E. Bash," Frazier said. "It was truly amazing to see the support generated this year, and to see the growth of this event over the past eight years. We are truly thankful to everyone who contributed in any way. Congratulations also, to the athletics staff who work so hard to put all the different elements together, and to Patrick Gorman, Kevin Meyer and the team

at Huskie Vision for producing all of the video content, including the live Huskie Summer Circuit broadcast."

The live Huskie Summer Circuit from Pollyanna Brewing and special presentation of "NIU Football 2012: A Season to Remember" highlighted the YouTube content available during the 2022 Victor E. Bash. All of the Huskie head coaches provided updates on their programs during the Summer Circuit, while players from the 2012 Huskie team that played in

the Orange Bowl, including Jordan Lynch, Jimmie Ward and Tommy Lee Lewis, take viewers game by game through the magical season in their own words. Both videos, as well as the Thank You Finale video featuring Frazier and the Huskie head coaches, and the Victor E. Bash preview video, are still available to view.

Meanwhile, the popular online auction attracted fans who won items from autographed jerseys to trips with Huskie teams, football sideline passes,



unique experiences, golf, NIU gear and more. The Wine and Spirits Pull saw record donations from local distributors and donors, allowing more fans than ever before to participate in the game where everyone wins.

COMMUNITY BOARD

Need to get the word out about a product or service you offer?

Give us a call at 815-562-4171.

We can reach over 9,000 homes!



Gutters

THE SEN
ROOFING & SIDING CO., INC.

SEAMLESS GUTTERS

ALL ALUMINUM

- Will Not Rust, Chip Or Peel
- Most Colors Available
- Manufactured On The Job

815-758-8998

257 W. Stephenie Dr., Cortland
www.theisenroofing.com

Storage Sheds

Rocky Ridge Structures

FREE Sales Rep. Evaluation At Your Site

We Deliver! From Our Lot To Your Site

We Specialize in Portable/Quality Built Storage Sheds

- Stock & Custom Design
- Many Options Available
- Competitive Pricing
- Site Preparation Available

See Displays at 3500 S. Chana Rd. Chana IL 61015
Call Norm or Albert for Free Literature packet
779.861.3542

Plumbing/Heating/Cooling

Anderson Plumbing & Heating Inc.
Serving Rochelle For Over 40 Years

LENNOX

Quality Service • Free Estimates
Residential & Commercial
815-562-8784

Lic. #058-087891

Heating & Air Conditioning

HULL
HVAC & Household Services

Furnaces - Air Conditioners - Boilers
Duct Cleaning - Water Heaters

Air Conditioner Clean & Check
\$50.00
After \$35 rebate.
Promotion only available to RMU customers.
Expires: 08/31

Ask about duct cleaning and protecting your home's air quality.

815-561-6551
www.HullHVAC.com

Commercial & Residential Roofing

Bruns Construction, Inc.

Residential Concrete Driveways, Flatwork and Foundations

- Shingled Roofs • Flat Roofs
- Metal Roofs For Farm Facilities
- Custom Built Homes • Additions

FREE ESTIMATES

561-0099 Tim & Roger Bruns, Owners
Established 1997
www.brunsconstructioninc.com

Advertise Here

What Service Do You Offer?

562-4171

The Rochelle News-Leader

LIQUOR 'n' WINE

Enjoy the difference!

1140 N. 7th St.
Rochelle, IL
815-561-2337

**FIRST
STATE
BANK**

firststatebank.biz

**SILGAN**
CONTAINERS CORPORATION

400 N. 15th St.
Rochelle IL 61068
815-562-1250

**ROCHELLE**
News-Leader

Rochelle

Community Unity

Shop • Play • Stay

AGRICULTURE**Johnson Tractor**

200 S. Steward Rd.
815.562.2135
johnsontractorrochelle.stihldealer.net

ANIMAL HEALTH SERVICE**Rochelle Veterinary Hospital**

1381 N 7th, Ste. a
815.562.5207
rochellevet.com

ANTIQUES & COLLECTIBLES**Pickin' Station**

708 Lincoln Ave.
815.562.7915

ASSISTED LIVING**Liberty Village of Rochelle**

2203 East Flagg Rd.
Rochelle IL 61068

Lincoln Manor

615 Lincoln Highway
815.562.1404

ATTORNEYS**James G. Ahlberg**

501 6th Ave.
815.562.4443
ahlberglaw.net

Hewitt & Wagner - Attorneys at Law

1124 Lincoln Hwy
815.562.2704
hewitt-wagner.com

Tess & Crull Law - Attorneys at Law

1090 N 7th St
815.562.8754
tesscrulllaw.com

Fearer, Nye & Chadwick

420 Fourth Avenue
815.562.2456
fnclaw.com

AUTOMOTIVE**Jeff Perry of Rochelle**

1260 N 7th St,
815.562.8787 • jeffperryauto.com

Prescott Brothers Ford

620 S 7th St,
815.562.2177 • prescottbrothersford.com

Zip's Auto Body , Inc

1033 S 7th St
815.562.5133 • zipsautobody.com

COMMUNITY SERVICES**Flagg Township Museum**

518 4th Ave
815.562.3040

Hub City Senior Center

401 Cherry Ave
815.562.5050
hubcityseniorcenter.com

Rochelle Chamber Of Commerce

501 Sixth Avenue
815.562.4189
therochellechamber.com

V.F.W Post 3878

318 4th Ave
815.562.3878
www.vfw.org

RMU

333 Lincoln Highway
815.562.4155
www.rmu.net

COUNSELING**Braden Counseling**

2600 DeKalb Ave, Suite 3
Sycamore IL 60178

DINING & ENTERTAINMENT**Aldo's Pizzeria and The Red Brick Pub**

418 Lincoln Hwy
815.562.3456 • aldospizzaandpubrochelle.restaurant

Alfano's Pizzeria & Italian Restaurant

1115 Turkington Terrace
815.562.3312 • alfanospizza.com

Kenny's Place

411 Cherry Ave
815.562.6568

T-Byrd Lanes

1172 Lincoln Hwy • 815.562.4822 • tbyrdlanes.com

Tecalitlan Restaurant

1071 N Caron Rd
815.561.7576 • restauranttecarochelle.com

Vince's Pizza & Family Restaurant

1071 North 7th st.
Rochelle IL 61068

FINANCIAL SERVICES**Central Illinois Loans**

310 Eagle Dr
815.561.4035
centralillinoisloans.com

Central Bank

340 May Mart Dr
815.562.5571
central-bank.com

First State Bank

304 E Hwy 38
815.562.2200
firststatebank.biz

JEFFPERRY

CHEVROLET • BUICK • CADILLAC • JEEP • CHRYSLER

815-562-8787
JEFFPERRYAUTOS.COM

*Liberty Village
of Rochelle*

2203 East Flagg Rd.
Rochelle IL 61068
NOT-FOR-PROFIT PROVIDER

**JOHNSON
TRACTOR**

200 S. Steward Rd.
Rochelle IL 61068

Rochelle Foods

1001 S. Main Street
Rochelle, IL 61068



Ashton | Rochelle | Oregon
815.562.5571



Allstate
You're in good hands.

John Vandre, Associate

409 4th Ave.
815.562.7139

Stillman Bank

455 IL-38
815.562.7071
stillmanbank.com

Edward Jones - Will McLachlan

1122 Lincoln Highway
815.562.5563
EdwardJones.com

Holcomb Bank

233 IL-38
815.562.3838
holcomb.bank

Graber Financial Group

Sam Graber

409 4th Ave.
815.562.7139

Edward Jones - Jessica Morris

1214 Currency Ct.
815.561.4341

FLOWERS AND GIFTS

Colonial Flower Shoppe & Gifts

408 Lincoln Hwy
815.562.8101
floristrochelleil.com

RCH Auxiliary Gift Shop

900 N 2nd St
815.562.2181 • rochellehospital.com

FUNERAL SERVICES

Beverage Lyons Family Funeral Home & Cremation Services

704 6th St
815.562.6872
beveragelyonsfamilyfh.com

FURNITURE

Hub City Furniture

429 Lincoln Hwy
815.562.8765
hubcityfurniture.com

Meyers Furniture

209 Powers Road Hwy 251 North
815.562.8792
meyersfurniture.com

HEALTH SERVICES

Changes Counseling, LLC

604 N Main St
815.501-2088
changescounselingllc.com

Rochelle Chiropractic - Dr. Chad Piller

227 E. Hwy 38
815.562.8706
rochellechiropractic.com

Rochelle Community Hospital

900 N 2nd St
815.562.2181 • rochellehospital.com

Salinas Chiropractic

1381 N 7th St., Suite C
815.562.6661 • salinaschiroandwellness.com

HOME IMPROVEMENTS & CONTRACTORS

Anderson Plumbing & Heating

621 1st Ave
815.562.8784 • andersonplumbingheatingcooling.com

Bruns Construction, Inc.

PO Box 400
815.561.0099 • brunsconstructioninc.com

B&W Appliance Repair LLC

567 W. IL Route 38
815.562.6253

Pemberton Plumbing, Heating & Cooling, Inc.

815.561.6119
pembertonplumbingheating.com

HOTEL & TRAVEL

Holiday Inn Express

1240 N Dement Rd
815.562.9994
ihg.com

INDUSTRIES

ClarkDietrich

501 S Steward Rd # 100
815.561.2360
clarkdietrich.com

Silgan Containers

400 N. 15th St.
815-562-1250
silgancontainers.com

Rochelle Foods

1001 S Main St
815.562.4141
hormelfoods.com

INSURANCE

Allstate

Dement Rd

Country Financial

519 4th Ave
815.562.8164
countryfinancial.com

Dimond Bros. Insurance

401 N Main St
815.562.5596
dimondbros.com

Graber Financial Group

409 4th Ave.
815.562.7139

State Farm Insurance - Shane Huber

1211 Currency Ct
815.562.7011
shanehuber.com

State Farm Insurance - Terri Schaefer

603 Lincoln Hwy
815.562.7063
terrishaefer.com

Edward Jones - Jessica Morris

1214 Currency Ct.
815.561.4341

PEST CONTROL

Omega Pest Control

815.562.2005
omegapestcontrol-il.com

PHOTOGRAPHY

Lifeworks Photography

6342 South Westwood Ave.
Rochelle IL 61068

PRINTINT AND/OR WEB DESIGN

Hub-Remsen Print Group

101 Maple Ave
815.562.7057
hub-remsen.com

Rochelle News-Leader

211 Hwy 38
815.562.4171 • rochellenews-leader.com • newsmediadigital.com

REAL ESTATE

Hayden Real Estate

221 E. Hwy 38
815.562.2111
haydenreinc.com

REAL ESTATE & AUCTIONS

Bearrows Real Estate & Auction Co.

361 W. Il Route 38
815.562.5113
bearrows.com

RENTAL PROPERTIES

Lida Lake Estates

433 Willis Ave., Apt. #11
815.561.0526
lidalakeestates.wixsite.com/lidalakeestates

RETAIL/ SPECIALTY SHOPS

Liquor 'N' Wine

1140 N 7th St,
815.561.2337
liquornwine.net

SURVEY

Survey Tech

104 Maple Ct
815.562.8771

TIRES

Browns Tire Service Inc.

311 N 7th St,
815.562.4644
alderkstireservice.business.site

Tire Tracks

1320 N 7th St
815.562.7777
tiretracksusa.com

TOBACCO & ALCOHOL

Rochelle Tobacco "N" Liquor

222 May Mart Drive
815.561.9571
rochelletobacco.com

Rocky's Smoke Shop

132 May Mart Drive
815.888-7107

Support Your Community
By Supporting These Local Businesses



MARKETPLACE

I, Christina Cardott, Treasurer of the City of Rochelle, Ogle County, Illinois, affirm that the following is a correct statement of the revenues and expenditures of the City of Rochelle for the fiscal year ending December 31, 2021.

CITY OF ROCHELLE, ILLINOIS TREASURER'S REPORT					
	GENERAL FUND	OTHER GOVERNMENTAL FUNDS	ENTERPRISE FUNDS	PENSION FUNDS	GOVERNMENTAL INTERNAL SERVICE FUNDS
OPERATING REVENUES:					
Taxes	6,044,790	3,911,605	59,398		
Licenses & Permits	197,454	48,915			
Intergovernmental Revenue	1,329,583	745,450			
Charges for Services	1,318,800	1,112,719	45,098,708		1,930,577
Fines & Forfeitures	94,335	-			
Investment Income	(15,983)	35,003	99,271	2,191,097	
Miscellaneous	61,081	62,183	89,833		2,164
Insurance Premiums					
Member Contributions				285,377	
Employer Contributions				1,607,386	
Other Revenue					
Gain On Fixed Assets					
Amortization of Bond Premium					
TOTAL REVENUE	9,029,860	5,915,875	45,347,210	4,083,860	1,932,741
DISBURSEMENTS:					
General Government	1,886,558	453,172			2,058,371
Public Safety	6,691,523	303,684			
Public Works	1,778,344	772,166	572,646		
Conservation & Development	5,172	395,404			
Public Service Enterprise	179,904	7,204			
Environment			555,521		
Capital Outlay		3,425,846			
Utilities			43,206,451		
Pension Benefits				1,497,767	
Loss on Disposal of Capital Assets					
Debt Service					
Principal	81,662	852,476			
Interest	5,103	257,944	362,451		
Administrative				37,911	
Other					
TOTAL EXPENSES	10,628,266	6,467,896	44,697,069	1,535,678	2,058,371
OTHER FINANCING SOURCES (USES)					
Debt issued					
Loss of Defeasance of Debt					
Grants			54,167		
Capital Contributions					
Transfers In	2,774,071	1,651,285	87,000		
Transfers Out	(180,000)	(1,843,946)	(2,488,410)		
Proceeds on Sale of Capital Assets					
Issuance of Contractual Commitment		659,750			
INCREASE (DECREASE) IN FUND BALANCE	995,665	(84,932)	(1,697,102)	2,548,182	(125,630)
FUND BALANCE-BEGINNING OF YEAR	\$ 8,436,031	\$ 8,663,557	\$ 114,989,960	\$ 24,323,523	\$ 132,730
FUND BALANCE-END OF YEAR	\$ 9,431,696	\$ 8,578,625	\$ 113,292,858	\$ 26,871,705	\$ 7,100

Subscribed and sworn to this 28th day of June, 2021. *Christina Cardott*

I, Rose Hueramo, Clerk of the City of Rochelle, Ogle County, Illinois, do hereby certify that the above is a true copy of the Annual Treasurer's Report for the fiscal year ending December 31, 2021.

Rose Hueramo
Rose Hueramo, City Clerk

TREASURER'S VENDOR REPORT - JAN-DEC 2021

8390 - DIMOND BROS - ROCHELLE	\$ 7,886.00	KOMLINE-SANDERSON	\$ 7,461.90
926 CUSTOM EMBROIDERY	\$ 8,297.09	L&K ELECTRONICS	\$ 9,947.54
ABC SUPPLY CO., INC.	\$ 13,627.25	LARGE CAR REBUILDERS, INC.	\$ 20,271.14
ACCUCWEATHER ENTERPRISE SOLUTIONS, LLC	\$ 4,300.00	LARSON & LARSON BUILDERS, INC.	\$ 348,236.54
ACRES BISTRO	\$ 4,000.00	LAUTERBACH & AMEN, LLP	\$ 12,980.00
ACUSHNET COMPANY	\$ 7,482.50	LAWN CARE SERVICE, INC.	\$ 10,741.00
ADVANCE AUTO PARTS	\$ 5,322.87	LAWSON PRODUCTS, INC.	\$ 8,172.49
ADVANCED TURF SOLUTIONS	\$ 11,434.41	LEGAL SHIELD	\$ 4,680.00
AED ESSENTIALS, INC.	\$ 9,519.00	LEXIPOL LLC	\$ 21,761.20
AIR ONE EQUIPMENT, INC.	\$ 28,885.23	LINCOLN HWY HERITAGE FESTIVAL	\$ 6,000.00
AIRGAS USA, LLC	\$ 19,358.98	LOVE'S TRAVEL STOPS & COUNTRY STORES	\$ 125,000.00
ALDERKIS TIRE SERVICE, INC.	\$ 10,908.48	LUPE LANDSCAPING & LAWN CARE	\$ 4,795.00
ALDO'S PIZZA & PASTA	\$ 4,000.00	MACKLIN INCORPORATED	\$ 35,690.61
ALEXIS FIRE EQUIPMENT CO.	\$ 3,686.79	MACON COUNTY LAW ENFORCEMENT TRAINING	\$ 7,008.00
ALFA LAVAL INC.	\$ 10,500.96	MAPLEHURST FARMS INC	\$ 158,789.52
ALTORFER INDUSTRIES, INC	\$ 14,763.44	MARTIN & CO EXCAVATING	\$ 429,598.20
ALTORFER, INC.	\$ 268,535.26	MASTERBLEND INTERNATIONAL	\$ 3,914.00
AMAZON CAPITAL SERVICES	\$ 53,603.95	MCCL, LLC	\$ 5,128.50
AMERICAN BANKERS COMPANY OF FLORIDA	\$ 17,037.00	MCDERMOTT, DAN	\$ 4,636.64
AMERICAN PUBLIC POWER ASSOCIATION	\$ 6,058.36	MCMMASTER-CARR SUPPLY CO	\$ 8,303.43
ANDERSON PLUMBING & HTG, INC	\$ 33,563.44	METROPOLITAN INDUSTRIES INC	\$ 8,579.00
ANIXTER, INC	\$ 138,813.90	MICHLIG ENERGY, LTD.	\$ 337,054.08
AQUA-AEROBIC SYSTEMS, INC.	\$ 9,400.96	MID-CONTINENT SALES	\$ 2,755.33
AQUAFIX INC	\$ 7,341.46	MIDWEST ENGINEERING CONSULTANTS, LTD.	\$ 76,303.61
ARCHIVE SOCIAL, INC.	\$ 4,788.00	MIDWEST LEADERSHIP INSTITUTE	\$ 6,750.00
ASCENT AVIATION GROUP, INC.	\$ 199,400.46	MIDWEST MAILWORKS, INC	\$ 44,468.10
ASTRO OPTICS, LLC	\$ 3,523.59	MILLENNIUM	\$ 4,055.52
AUTOMATIC FIRE SYSTEMS, INC.	\$ 4,668.00	MILTON PROPANE	\$ 2,569.94
AZTECA SYSTEMS, LLC	\$ 9,000.00	MORTON SALT	\$ 11,423.95
BAECORE GROUP, INC.	\$ 221,043.00	MOTION INDUSTRIES, INC.	\$ 6,105.09
BANK OF NEW YORK	\$ 206,850.00	MOTOROLA SOLUTIONS - STARCOM	\$ 13,974.00
BARBECK COMMUNICATIONS	\$ 12,089.74	MR. OUTHOUSE	\$ 6,350.00
BARNHART	\$ 9,205.00	MUNICIPAL WELL & PUMP	\$ 9,468.38
BAXTER & WOODMAN, INC.	\$ 53,580.87	MUNICODE	\$ 6,883.06
BERG'S MOBILE FABRICATION	\$ 3,655.00	NADLER GOLF	\$ 21,605.92
BHMG ENGINEERS	\$ 634,529.71	NAPA AUTO PARTS ROCHELLE	\$ 10,764.76
BINGHAM COMMERCIAL CONSTRUCTION	\$ 25,335.00	NEWKIRK & ASSOCIATES	\$ 4,454.02
BLACKHAWK HILLS REGIONAL COUNCIL	\$ 24,957.77	NEXT MOVE GROUP, LLC	\$ 19,500.00
BLACKHAWK WATERWAYS	\$ 8,000.00	NEXTERA ENERGY MARKETING, LLC	\$ 2,350,108.70
BLAKE OIL COMPANY	\$ 62,171.21	NICOR	\$ 150,759.79
BOBCAT OF ROCKFORD	\$ 2,672.78	NIMPA	\$ 14,191,586.20
BONNELL INDUSTRIES INC.	\$ 26,876.08	NORTHERN IL AMBULANCE BILLING, INC.	\$ 56,632.60
BOUND TREE MEDICAL	\$ 17,496.92	NORTHERN ILLINOIS DISPOSAL SVCS	\$ 306,691.08
BRIDGEWELL RESOURCES LLC	\$ 13,195.00	NORTHERN ILLINOIS SERVICE CO	\$ 2,778.00
BRUNS CONSTRUCTION, INC.	\$ 503,082.50	NSI LAB SOLUTIONS	\$ 2,815.83
BRUSH GROVE DRAINAGE DISTRICT	\$ 2,500.00	N-TRAK	\$ 28,815.83
BURLINGTON JUNCTION RAILWAY	\$ 20,400.00	OGLE COUNTY COLLECTOR	\$ 3,805.90
BUSS BOYZ CUSTOMS, INC.	\$ 27,295.20	OGLE COUNTY GIS	\$ 4,913.00
C&C PLUMBING, HEATING AND COOLING INC.	\$ 3,864.50	OMEGA PEST CONTROL, INC.	\$ 5,900.00
C.C.S. GOLF, LLC	\$ 20,000.00	OPEN SYSTEMS INTERNATIONAL, INC	\$ 48,992.49
C.E.S. INC.	\$ 49,297.50	ORR PROTECTION SYSTEMS INC	\$ 5,384.26
C.S.R. BOBCAT, INC	\$ 69,369.40	PARKER FABRICATION, INC.	\$ 71,816.47
CAHOY PUMP SERVICE	\$ 176,896.23	PAYMENT SERVICE NETWORK, INC.	\$ 94,297.93
CAPPEL'S COMPLETE CAR CARE	\$ 16,513.18	PDC LABORATORIES, INC	\$ 25,255.00
CARDMEMBER SERVICE	\$ 68,965.95	PEAKER SERVICES, INC.	\$ 8,822.50
CARGILL, INC.	\$ 52,467.08	PETERSON, JOHNSON & MURRAY	\$ 189,150.06
CARROLL CONSTRUCTION SUPPLY	\$ 13,695.00	PHENOVA, INC.	\$ 3,072.26
CARUS LLC	\$ 152,250.80	PHILLIPS, VERONICA	\$ 31,185.00
CATERPILLAR, INC.	\$ 4,500.00	PICKIN STATION	\$ 5,138.00
CDS OFFICE TECHNOLOGIES	\$ 2,542.86	PITNEY BOWES	\$ 12,537.96
CDW GOVERNMENT	\$ 40,857.52	PJM INTERCONNECTION, LLC.	\$ 4,951,313.35
CGS-NIU	\$ 11,750.00	POLLARD WATER	\$ 6,823.93
CHEM DRY KISHWAUKEE	\$ 3,607.80	POLYDYNE INC.	\$ 82,685.00
CINTAS	\$ 29,748.03	PORTER BROTHERS	\$ 818,365.71
CITY OF ODESSA	\$ 4,500.00	POWER SYSTEM ENGINEERING, INC.	\$ 94,337.49
CIVIC SYSTEMS, LLC	\$ 41,654.00	POWERCON CORPORATION	\$ 109,831.00

CLEAN SWEEP	\$ 7,020.00	PRESCOTT BROS. FORD	\$ 62,257.59
CLEARGOV INC.	\$ 9,500.00	PRINTING ETC., INC.	\$ 8,240.50
CONSERV FS	\$ 20,420.36	PROFESSIONAL VEGETATION MANAGEMENT	\$ 6,385.00
CONSTELLATION NEWENERGY - GAS DIVISION	\$ 31,316.63	PROGRESSIVE PARK ROCHELLE LLC	\$ 19,999.99
COOPERATIVE RESPONSE CENTER, INC.	\$ 30,484.08	PROGRESSIVE PARK ROCHELLE SERIES POND	\$ 4,657.67
CORE & MAIN LP	\$ 86,201.25	QUEENS TRUCKING & CONSTRUCTION	\$ 149,074.94
COUNTRYMAN, INC.	\$ 23,512.63	R&R PRODUCTS, INC.	\$ 3,369.26
CRESCENT ELECTRIC SUPPLY	\$ 61,054.61	R.N.O.W., INC.	\$ 7,150.00
CROSSROADS MOBILE MAINTENANCE	\$ 66,568.59	RAY O'HERRON CO. INC	\$ 6,678.24
CRYSTAL PAINTING & DECORATING	\$ 4,000.00	RED WING SHOE STORE	\$ 3,446.56
CULTIVATE GEOSPATIAL SOLUTIONS, LLC	\$ 84,900.00	REDFORD DATA SERVICES LLC	\$ 6,300.00
CURRAN MATERIALS CO.	\$ 9,301.09	REGIONAL READY MIX LLC	\$ 3,192.50
CURRIER APPRAISAL SERVICES, LLC	\$ 3,000.00	REINDERS, INC.	\$ 2,505.20
CUSTOM FAB CO	\$ 6,060.00	RFMS INC - CONSTRUCTION	\$ 5,000.00
CUTTING GREEN LLC	\$ 19,800.00	RK DIXON CO.	\$ 10,583.49
DA PLACE BAR	\$ 6,000.00	RKM FIREWORKS COMPANY	\$ 14,000.00
DATA CENTER SERVICES	\$ 2,790.00	ROCHELLE ACE HARDWARE	\$ 31,196.09
DATA VOICE INTERNATIONAL, INC.	\$ 46,223.54	ROCHELLE CHAMBER/	\$ 10,000.00
DECATUR INDUSTRIAL ELECTRIC	\$ 12,467.89	ROCHELLE COMMUNITY HOSPITAL	\$ 7,228.00
DELL MARKETING L.P.	\$ 35,169.53	ROCHELLE ELEMENTARY SCHOOL	\$ 115,802.86
DENNIS W. MARTINEZ	\$ 37,749.06	ROCHELLE ENERGY LLC	\$ 1,502,822.67
DFC FENCE, INC.	\$ 32,489.00	ROCHELLE FIRE PENSION FUND	\$ 217,871.25
DINGES FIRE COMPANY	\$ 8,313.82	ROCHELLE HOSPITALITY, LLC	\$ 50,000.00
DIS-TRAN PACKAGED SUBSTATIONS LLC	\$ 595,210.97	ROCHELLE IL CHAMBER OF COMMERCE	\$ 12,195.00
DIXON PAINT COMPANY	\$ 16,070.24	ROCHELLE JANITORIAL SUPPLY	\$ 8,559.48
DLT SOLUTIONS, LLC.	\$ 7,714.47	ROCHELLE MOOSE LODGE 903	\$ 4,000.00
DPS EQUIPMENT SERVICES, INC	\$ 120,000.00	ROCHELLE NEWS-LEADER	\$ 18,345.81
DTS	\$ 2,592.58	ROCHELLE POLICE PENSION FUND	\$ 270,412.20
DUAL, RONALD L.	\$ 10,545.00	ROCHELLE RESCUE MISSION INC	\$ 5,000.00
EHS ENVIRONMENTAL CONTRACTOR	\$ 416,236.66	ROCHELLE RTC (REEFERS, TRUCKS & COACHES)	\$ 21,882.08
EJ EQUIPMENT, INC.	\$ 4,000.00	ROCHELLE TOWNSHIP HIGH SCHOOL	\$ 89,558.49
EL SENOR DE LOS TACOS	\$ 4,000.00	ROCK RENTAL	\$ 4,000.00
EL SOL MEXICAN RESTAURANT	\$ 4,000.00	ROCK RIVER WATERSHED GROUP	\$ 7,354.00
EL TAPATIO	\$ 5,845.00	ROCK VALLEY INDUSTRIES, LLC	\$ 9,564.00
ELAN CITY, INC.	\$ 11,782.45	ROGERS READY-MIX & MATERIALS	\$ 48,028.78
ELECTRIC PUMP	\$ 6,838.30	RONDO ENTERPRISES, INC.	\$ 11,947.33
ELLEN BURGESSON, INC	\$ 34,184.00	ROSATI'S PIZZA	\$ 6,400.00
ELSTER SOLUTIONS, LLC	\$ 2,514.00	ROWLEY, ANTHONY	\$ 5,000.00
EMPOWER HEALTH SERVICES	\$ 146,330.67	S&P GLOBAL RATINGS	\$ 21,750.00
ENTERPRISE FM TRUST	\$ 158,097.88	SALT 251	\$ 10,000.00
ERRETT WAREHOUSING LLC - SERIES TWO	\$ 25,000.00	SA-SO	\$ 29,298.59
ESRI, INC.	\$ 25,000.00	SCHINDLER ELEVATOR CORP.	\$ 2,895.76
EVOQUA WATER TECHNOLOGIES LLC	\$ 10,449.30	SCHOENHOLZ, MATT	\$ 3,100.00
FAIRBANKS MORSE ENGINE	\$ 911,578.41	SECURITY LOCK INC.	\$ 7,135.00
FARWEST LINE SPECIALTIES	\$ 3,189.89	SERVICE CONCEPTS, INC.	\$ 24,393.26
FASTENAL	\$ 7,805.53	SHERWIN-WILLIAMS CO.	\$ 8,350.95
FEHR-GRAHAM & ASSOC.	\$ 273,356.99	SIKICH LLP	\$ 62,860.00
FERGUSON WATERWORKS #2516	\$ 513,324.71	SISSY'S WILD CARD SALOON, INC	\$ 4,000.00
FISCHERS, INC.	\$ 34,793.87	SMITH & LOVELESS, INC	\$ 2,788.94
FISHER SCIENTIFIC	\$ 3,432.82	SNAP-ON INDUSTRIAL	\$ 5,174.00
FLAGG TOWNSHIP	\$ 12,000.00	SOLAR TURBINES	\$ 3,311.00
FLAGG TWP MUSEUM & HISTORICAL SOCIETY	\$ 8,000.00	SOLOMON CORPORATION	\$ 7,010.00
FLOW-TECHNICS, INC	\$ 10,606.00	ST. AUBIN NURSERY	\$ 7,023.00
FROM THE HEART	\$ 2,550.00	STANDARD EQUIPMENT COMPANY	\$ 5,847.04
FRONTIER	\$ 16,992.61	STAPLES BUSINESS CREDIT	\$ 20,612.70
FRONTIER NORTH INC	\$ 13,664.21	STARK SERVICE INC.	\$ 20,000.00
FS.COM INC.	\$ 9,808.72	STARNET TECHNOLOGIES	\$ 5,824.92
GARRATT-CALLAHAN COMPANY	\$ 9,099.61	STEPTOE & JOHNSON LLP	\$ 2,935.32
GASVODA & ASSOCIATES, INC.	\$ 70,026.78	STETSON BUILDING PRODUCTS, LLC	\$ 28,447.50
GOVHR USA	\$ 10,298.50	STUART C IRBY CO	\$ 5,507.23
GRAINGER, INC.	\$ 14,583.00	SUAREZ, JOSEPH	\$ 3,000.00
GRECO	\$ 487,770.71	SUBSURFACE SOLUTIONS	\$ 9,082.00
GROVERS SERVICES, LLC	\$ 209,321.25	SUNBELT TRANSFORMER, LTD	\$ 102,860.00
HABITAT FOR HUMANITY OF OGLE COUNTY	\$ 3,500.00	SWIFT FUELS, LLC	\$ 7,465.35
HACH COMPANY	\$ 38,641.43	SYNDEO NETWORKS, INC.	\$ 124,867.79
HAGEMANN HORTICULTURE LLC	\$ 49,432.28	TALLMAN EQUIPMENT COMPANY, INC.	\$ 8,756.38
HANSON PROFESSIONAL SERVICES	\$ 51,322.83	TAPCO-TRAFFIC & PARKING CONTROL CO.	\$ 12,008.94
		TDG COMMUNICATIONS, INC.	\$ 4,592.50

HARRINGTON ENVIRONMENTAL SVCS	\$	5,490.00	TESKA ASSOCIATES, INC.	\$	14,463.85
HART & SONS, LLC	\$	4,950.00	THE BURTON FOUNDATION	\$	5,000.00
HELM CIVIL	\$	130,930.70	THE RABBITS FOOT	\$	4,000.00
HELM SERVICE	\$	30,124.03	THOMPSON, JENNIFER	\$	3,045.73
HEPLER BROOM LLC	\$	12,087.50	TIMBERMEN TREE SERVICE	\$	9,875.00
HEWITT & WAGNER, ATTORNEYS AT LAW	\$	45,000.00	TREASURER, STATE OF ILLINOIS	\$	48,101.01
HFS BUREAU OF FISCAL OPERATIONS - GEMT	\$	71,677.16	TREE CARE ENTERPRISES, INC.	\$	2,950.00
HINCKLEY SPRINGS	\$	5,810.78	TRI-CITY ELECTRIC COMPANY OF IOWA	\$	4,875.13
HP ROCHELLE REAL ESTATE LLC	\$	24,213.48	TRI-COUNTY OPPORTUNITIES	\$	2,700.75
HUB CITY SENIOR CENTER	\$	25,000.00	TRIHEDRAL, INC.	\$	6,432.01
HUB-REMSEN PRINT GROUP	\$	14,914.56	TRUGREEN PROCESSING CENTER	\$	5,831.56
HUPP ELECTRIC MOTORS INC.	\$	19,366.39	TURNER, DEBBIE	\$	33,960.00
IDEXX DISTRIBUTION, INC	\$	4,867.95	TYLER TECHNOLOGIES, INC	\$	94,564.83
IEPA	\$	590,106.07	UMB BANK NA	\$	1,089,672.75
IKANO DSL	\$	3,000.00	UNITED RENTALS	\$	5,117.94
IL DEPT OF PUBLIC HEALTH	\$	15,312.00	UNIVERSAL UTILITY SUPPLY CO	\$	358,777.31
IL MUNICIPAL INSURANCE COOPERATIVE	\$	453,895.00	UNUM LIFE INS CO. OF AMERICA	\$	2,700.24
IL MUNICIPAL UTILITIES ASSOC	\$	4,729.75	US BANK	\$	220,185.00
IL PUBLIC RISK FUND	\$	253,797.00	USA BLUEBOOK	\$	35,693.70
IL PUBLIC SAFETY AGENCY NETWORK	\$	4,560.00	UTILITY DYNAMICS CORPORATION	\$	105,434.00
IL SECTION AWWA	\$	3,771.00	UTILITY FINANCIAL SOLUTIONS, LLC	\$	57,236.25
IL STATE POLICE	\$	3,747.53	VALDIVIESO, LARISSA	\$	5,000.00
ILLINOIS FINANCE AUTHORITY	\$	23,784.25	VAN BUREN CONSULTING GROUP, LLC	\$	45,000.00
ILLINOIS METROPOLITAN INVESTMENT FUND	\$	9,345,283.49	VERIZON CONNECT NWF, INC.	\$	4,078.52
ILLINOIS MUNICIPAL RETIREMENT	\$	1,143,015.40	VERIZON WIRELESS	\$	76,510.26
INDEVCOR, INC.	\$	6,300.00	VERTIV CORPORATION	\$	12,042.00
INMAN ELECTRIC MOTORS	\$	2,653.20	VFW POST #3878	\$	4,112.00
INMAN, TERRY	\$	13,100.00	VIKING CHEMICAL COMPANY	\$	55,334.99
INNOVATIVE CONSTRUCTION & RENOVATION	\$	8,952.03	VILLAGE OF CRESTON	\$	24,281.85
INSIGHT MOBILE DATA INC.	\$	5,091.96	VILLAGE OF HILLCREST	\$	34,330.71
INTERSTATE POWER SYSTEMS, INC	\$	14,968.78	VILLAGE OF ROMEVILLE FIRE ACADEMY	\$	2,775.00
IP COMMUNICATIONS, INC.	\$	13,211.03	WEG TRANSFORMERS USA, LLC	\$	1,918,152.50
IPKEYS POWER PARTNERS, INC	\$	7,500.00	WELCH BROS., INC	\$	20,718.42
ISC, INC	\$	271,700.00	WENDLER ENGINEERING SERVICES	\$	26,334.50
ITRON, INC.	\$	4,750.82	WESCO RECEIVABLES CORP	\$	642,638.52
J.F. AHERN CO.	\$	3,700.46	WESTERN REMAC INC.	\$	9,302.47
JEFF PERRY CHEVROLET	\$	8,397.53	WEX BANK	\$	105,823.61
JM TEST SYSTEMS	\$	6,995.50	WHEELER WORLD, INC.	\$	19,675.40
JOE COOLING & SONS, INC.	\$	4,617.00	WHITTAKER CONSTRUCTION & EXCAVATING	\$	4,431,497.98
JOHNSON TRACTOR	\$	80,034.09	WILKENS-ANDERSON CO	\$	2,568.65
JOHNSON, BENJAMIN	\$	6,100.00	WILLETT, HOFMANN & ASSOC., INC	\$	304,379.82
JULIE, INC.	\$	2,954.94	WILLIAM CHARLES ELECTRIC	\$	18,766.54
KALEEL'S CLOTHING	\$	20,953.50	WRHL	\$	13,325.62
KENNAY FARMS DISTILLING	\$	20,480.99	WYATT PAVEMENT MAINTENANCE INC	\$	26,404.00
KIRBY CABLE SERVICE INC	\$	18,360.00	ZARNOTH BRUSH WORKS, INC	\$	4,187.20
KISTLER INSTRUMENT CORPORATION	\$	4,398.00	ZOLL MEDICAL CORP	\$	30,387.70
KOENIG BODY AND EQUIPMENT, INC.	\$	3,800.37			

Classified Marketplace

FREE!

Sell your household items for free.

Total value of item must be \$200 or less. (15 words - one week - 7 publications - price must be listed)



ROCHELLE • HILLCREST • CRESTON • STEWARD • KINGS • ASHTON

103 AUCTIONS

Real Estate & Personal Property AUCTION

Having made her home in a retirement center, we will offer at Public Auction the following described Real Estate and Personal Property at Public Auction. This auction will be **held on site at 628 N 10th St., Rochelle IL. 61068** On Auction Day, watch for Bearrows Real Estate & Auction signs at the corner of 7th Ave. & 9th Street in Rochelle IL. Contact Auctioneer John Bearrows at 815-739-9150 for a private viewing or visit our web site at www.bearrows.com for further information & pictures.

Saturday July 23rd, 2022 - 10:00 AM
(Auction Held Live & On Site)

Auctioneers Note: Bill & Carole spent decades collecting glassware and Antiques of all types. Therefore, the following list is extremely condensed. There will be antiques, furniture, and other items for everyone. This auction also features a super clean, well-cared for home. Real Estate will be offered at 10AM followed by the personal property. Plan now to attend.

DESCRIPTION OF REAL ESTATE: This is a well-cared for, 1526 sq ft 3-bedroom home in a very well-established quiet neighborhood. It features 2 bedrooms on the first floor. Full bath, living room with masonry fireplace, formal dining room & updated kitchen. (First floor features 9ft ceilings) Upstairs has the large 3rd bedroom. The full partially finished basement also features a family room, and laundry hookups. The home has natural gas FA furnace and central air, updated vinyl windows and vinyl siding. It also has a 40-gal gas water heater, and the house roof has been updated as well as the electric panel. There is also a 2-car detached garage (with new overhead doors) included, and all sitting on a large 66x123' corner lot. Amazing natural Oak woodwork and hardwood floors; This home is a must see! **REAL ESTATE TERMS:** \$5,000.00 down the day of the auction, with the balance due on or before August 31st, 2022, at which time full possession will be given. Seller to provide a stamped deed as well as a merchantable Title Policy in the amount of the purchase price. This property is being conveyed in its "As-Is" condition without any contingencies with regard to financing and/or the sale of another piece of property. All announcements made the day of auction take precedence over all prior advertising.

Personal Property: Edison wind-up upright Victrola; Platform Rockers; Antique Oak club chair; 2-Knee hole desk's w/chairs; 30" gas stove, self-cleaning; Amana Refrigerator w/ice maker; Micro-Wave; Roper Ref/Freezer; Small upright freezer; Kitchenette set; Glider rocker w/ottoman; Flat Top & Hump back trunks; Jewelry armoire; Antique bird cage; Assorted collectible glassware including but not limited to Metlox Poppy Trail (peach blossom), dishes, tumblers and matching pitcher; Pink & Green Depression; American Heisey; Pineapple plantation cake plate & other assorted; Blue Ridge; S&P shakers; set of 4 Charmin Tissue girls posters; Costume jewelry; Dining room table w/leaves & 6 chairs and matching lighted hutch; buffet; Bible type table; Blonde dresser/mirror; Oak Commode w/ towel bar; Desk w/chair; queen size bed, dresser w/mirror and night stands; 6 drawer chest of drawers; 2-4 drawer chest of drawers; Sofa; Occasional Chairs; Love Seat; Electric lift chair; Marble top coffee and end tables; record albums, pictures, puzzles & games, linens and dry goods; Holiday decorations including blow molds; World book encyclopedia's; what-knot shelves; Folding metal tables; Aladin Kerosene lamp and others; Tupperware; Usual kitchen items including small appliances; Turkey Roasters; Childs rocking horse, chair and rocker; assorted children's toys; National Geographic collection from 1933 and up; Retro couch; sewing machine in cabinet; 3-Organs; 3-smaller safes (with combo's); Metal cabinets; Ping pong Table; card table & chairs; Web Lawn Furniture; Hand tools; 6HP Johnson Outboard motor; Croquet set; Lawn & Garden items; Step Ladders; Coolers & luggage; Roll-A-Way bed; antique adding machines; Antique movie projectors; wire lid fruit jars; Western Flyer 1960's women's bike & men's bike; TORO Wheel horse riding mower (Needs work); Radio flyer wagon; 2-Grills; Leaf Blower; Lawn cart; Hose & reels; Lawn Glider;

PERSONAL PROPERTY TERMS: Cash or Check w/ driver's license I.D., 3% fee for VISA, MasterCard or American Express. Electronic clerking system used. Announcements made the day of auction take precedence over all prior advertising. Not responsible for accidents or items after sold.

Carole J. Zimmerman – Owner
Attorney for the Estate – Brent Wagner – 815-562-2704
Hewitt & Wagner - Rochelle IL 61068

BEARROWS
REAL ESTATE & AUCTION CO.
(815) 562-5113
Visit our website www.bearrows.com

AUCTIONEERS:
JOHN BEARROWS, Rochelle, IL
(815) 739-9150
IL Lic. #440000243
JOSH HICKEY, Steward, IL
(815) 739-1030
IL Lic. #441001092

LAND AUCTION

750 Acres MOL

(6 parcels)

Ogle County Farm Land

Saturday August 13th, 2022

10:00 AM

Land Location: All parcels are located just to the North of Leaf River IL on N. Leaf River Rd. For more information, contact Auctioneer John Bearrows at 815-739-9150.

Auction Location: This auction will be held on off site at the **River Valley Complex**, Located at **605 Main Street, Leaf River IL 61047** Watch for Bearrows Real Estate & Auction signs.

Visit our web site at www.bearrows.com for further information & full color pictures, or Contact Auctioneer John Bearrows for more information.

Auctioneers Note: These 6 parcels will be offered separately, followed by the combination of 1 & 2, 3&4, 5&6 then 3 through 6, then all tracts. There are no building or home improvements included in this auction. All announcements made day of the auction take precedence over any and all prior statements and or advertising. For further information or to request full color brochure, Contact Auctioneer John Bearrows at 815-739-9150 or E-Mail Questions to bearrows@rochelle.net

Parcel 1 Description: This parcel is a bare land parcel containing 119 Acres M.O.L.. Tillable Acres: TBD. Pl# 131 (Estimated) **Parcel 2 Description:** This parcel is a bare land parcel containing 55 Acres M.O.L.. Tillable Acres: TBD Acres. Pl# 114 (Estimated)(Combined Pl for parcel's 1 & 2 = 128.6) **Parcel 3 Description:** This parcel is a bare land parcel containing 155 Acres M.O.L.. Tillable Acres: TBD Acres. Pl# 125 (Estimated) **Parcel 4 Description:** This parcel is a bare land parcel containing 160 Acres M.O.L.. Tillable Acres: TBD Acres. Pl# 108 (Estimated) **Parcel 5 Description:** This parcel is a bare land parcel containing 134 Acres M.O.L.. Tillable Acres: TBD Acres. Pl# 119 (Estimated) **Parcel 6 Description:** This parcel is a bare land parcel containing 145 Acres M.O.L.. Tillable Acres: TBD Acres. Pl# 119 (Estimated) **All acreages are estimated, seller will provide full survey with final sale price based upon surveyed acres.

TERMS: A minimum deposit of 10% of the purchase price in the form of cash, certified check, bank draft or personal check shall be made by the successful Bidder(s) on the day of a Auction, at such time, the successful Bidder(s) shall enter into purchase contract. The balance of the purchase price is due on or before October 3rd 2022, in which the Buyer(s) shall pay the balance of the purchase price in full. A copy of the purchase contract will be available for inspection prior to the auction, and at the closing desk on the day of the auction as well. **POSSESSION:** Buyer(s) to receive full possession upon closing for the 2023 crop year, and have access following the removal of 2022 crops. **TAXES:** Seller(s) pays all 2022 Taxes due in 2023, in the form of credit at closing based upon the latest available information. 2023 taxes and beyond are the responsibility of the buyer(s) No further pro-rations will be made after closing. Seller to retain Cash Rent income for 2022. **SURVEY & DEED:** Seller(s) will provide certified survey, commitment letter of title insurance in the amount of the purchase price and stamped deed to Buyer(s) at time of closing.

NOTE: All announcements given on the day of sale shall take precedence over any, and/or all previous advertising or descriptions. The method, order of sale and bidding increments shall be at the sole discretion of the auctioneer. This auction will be recorded.

Owners: Fillip Farms Limited Partnership
Attorney for the Seller's: Tess, Crull & Arnquist—Rochelle IL
Attorney Russell A. Crull - 815-562-8754

BEARROWS
REAL ESTATE & AUCTION CO.
(815) 562-5113
Visit our website www.bearrows.com

AUCTIONEERS:
JOHN BEARROWS, Rochelle, IL
(815) 739-9150
IL Lic. #440000243
JOSH HICKEY, Steward, IL
(815) 739-1030
IL Lic. #441001092

101 LEGAL NOTICE

This publication does not knowingly accept fraudulent or deceptive advertising. Readers are cautioned to thoroughly investigate all ads, especially those asking for money in advance.

105 BUSINESS OPPORTUNITIES

"This publication does not knowingly accept fraudulent or deceptive advertising. Readers are cautioned to thoroughly investigate all ads, especially those asking for money in advance."

113 FINANCIAL

NOTICE Advance Fee Loans or Credit Offers Companies that do business by phone can't ask you to pay for credit before you get it. For more information, call toll-free 1-877-FTC-HELP. A public service message from your hometown newspaper and the Federal Trade Commission.

119 ANNOUNCEMENTS

"This publication does

203 HELP WANTED

Hixson Lumber Company

300 E. Avenue G

Rochelle, IL

**Hiring Fence Panel Makers
And Material Handlers.**

\$14.00 per Hour
Apply Within

Looking for a position that allows flexibility in your schedule with the ability to help others?

Home assistance – Provide light housekeeping, run errands or provide transportation if needed. Accompany my Mother to appointments and assist with medications. I am looking for a caring & compassionate person to Care for my Mother. Work Schedule is 5 days a week and 5 hours per day.

Salary is \$25/hr.

Forward your email to
William (yolielloyq@gmail.com)
for more details.

SPEC2022

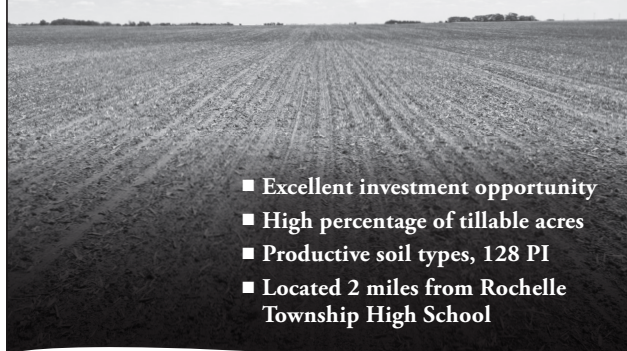
103 AUCTIONS

OGLE COUNTY, ILLINOIS 81⁺ ACRE LAND AUCTION

ONLINE AUCTION

THE BAUER FARM
mgw.us.com/bauer

Bidding Ends: Thursday, July 14, 2022
beginning at 1 p.m. CT



- Excellent investment opportunity
- High percentage of tillable acres
- Productive soil types, 128 PI
- Located 2 miles from Rochelle Township High School

MGW
MARTIN, GOODRICH & WADDELL, INC.
REAL ESTATE SERVICES

www.mgw.us.com • (815) 756-3606
Call or visit our website for a detailed color brochure.

203 HELP WANTED

ASHTON - Bartenders and Waitresses Needed, Apply in Person at Ralphie and Lulu's. 812 Main Street in Ashton or call 815-453-2103. (TFN)

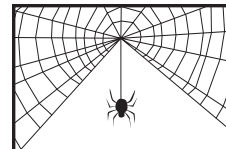
301 ANTIQUES

WANTED TO BUY: Vintage Metal and Wood Signs, Milk Bottles & Local Advertising, Oak Icebox, Iron Door Stop and Antique Lighting... Call Dick Harms at 815-562-2928 or email dickharms@hotmail.com

ANTIQUES WANTED: I pay cash for antiques; furniture, glassware, pottery & crocks, tin & iron toys, sterling silver, decoys. If it's antique, I'm interested in looking! Call 815-562-2928 or email dickharms@hotmail.com

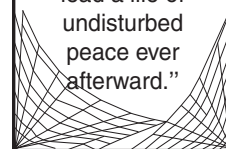
305 GARAGE/ RUMMAGE SALES

ROCHELLE: 10023
E Flagg Rd. (at the



An Advertising Proverb

When Mark Twain was editing a newspaper in Missouri, one of his subscribers wrote in, saying that he had found a spider in his newspaper and wondered whether it was a sign of good or bad luck. Twain's response: "Finding a spider is neither good luck nor bad. The spider was merely looking over our newspaper to see which merchant was not advertising, so that he could go to that store, spin his web across the door, and lead a life of undisturbed peace ever afterward."



Corner of Flagg & Skare Rd) Huge Vintage Collectibles Garage Sale. Thursday July 7th & Friday July 8th, 8am-5pm. Large Amount of Vintage Glassware, Dolls, Pez Collection also. Rain or Shine. (07-06-22)

ROCHELLE: 10963 S Woodlawn Drive July 8 & 9th 9am-2pm. Clothes - Girls Baby, Some Women's, Baby Items, Some Household Items. (07-06-22)

307 MISCELLANEOUS FOR SALE

Hay for Sale, Mostly Grass, \$4/bale Oregon 815-440-4940. (07-06-22)

FOR SALE Blue Electric Lift Chair, \$50 call 815-732-2895. (07-06-22)

BUNDLED Newspaper -\$3 per Bundle. End Roll- Cost Depends on Weight of Roll. Available Monday-Friday 8AM-NOON ONLY. Rochelle

News-Leader.

309 PETS AND SUPPLIES

Free kittens to give away to good homes. Very friendly & good mousers. Call Mike at 815-993-2234. (07-06-22)

405 HOUSES FOR SALE

ALL REAL ESTATE advertised herein is subject to the Federal Fair Housing Act, which makes it illegal to advertise any preference, limitation or discrimination based on race, color, religion, sex, handicap, familial status, or national origin, or intention to make any such preferences, limitation or discrimination. We will not knowingly accept any advertising for real estate which is in violation of the law. All persons are hereby informed that all dwellings advertised are available on an equal opportunity basis.

INFORMATION

Office Hours:

8 a.m. to 5 p.m. (Monday-Friday)

Phone:

815-562-4171

Fax:

815-562-2161

Email:

classifieds@rochellenews-leader.com

Address:

211 Hwy. 38 E., Rochelle

Mail:

P.O. Box 46
Rochelle, IL 61068

DEADLINES:

Sunday News-Leader: Thursday, 2 p.m.

Tuesday Shopping News: Friday, 10 a.m.

Wednesday News-Leader: Monday, 4 p.m.

(Deadlines subject to change during holiday times)

All classified marketplace line ads will appear in the following 7 print publications and on 5 high-traffic newspaper websites:
• Rochelle News-Leader • Ogle County Life • Rochelle Shopping News • Ashton Gazette • Amboy News • Mendota Reporter • Mendota Money Saver

Call for pricing that starts at \$32.99 for private party ads and \$44.60 for commercial business ads and \$19.99 for garage sale ads.

DISCLAIMER:

If your advertisement appears incorrectly, notify us immediately. We will not be responsible for more than one incorrect insertion, and will only credit customer for one insertion.

Not sure
why business
is slow?



is not just
a saying
in business.

**Advertise today
and let your
business be in sight
and in the minds of
your customers.**

307 MISCELLANEOUS FOR SALE

NEW MILFORD REFRIGERATION

**NEW, USED
SCRATCH & DENT**
• Refrigerators • Freezers
• Washers/Dryers • Stoves

We also carry a large selection of refurbished appliances with a warranty.



6331 11th Street, Rockford
815-874-2257

SPORTS



(PHOTO BY RUSSELL HODGES)

The Firemen roster includes Teddy Millard, Jace Spears, Bentley Svela, Korbin Milos, Declan McKinney, Edwin Cervantes, Logan Brandt, Mason Lopez, Chase Brown, Esam Farraj and Landon DuBourg. The boys are coached by Henry Bunger, Nick Spears and Kris Milos.

BOYS: Lions defeat Firemen for Major League title

From page 1

RBI singles from Johnson and Macklin put Lions ahead 7-5 before Kamden Kessen reached on a hit-by-pitch and Chase Atkinson singled to plate two more runs.

With Lions ahead 9-5, Mikey Chadwick belted a two-RBI double and Lundquist smacked an RBI single during the next at-bat. Harley sealed the Lions victory with a two-RBI double

of his own. Joey Chadwick scored three runs for Lions, while Johnson went 3-for-4 with four RBIs. Spears went 3-for-4 with two runs and McKinney totaled two RBIs to lead the Firemen offense.

Lundquist started on the mound for Lions, while Milos earned the start for Firemen. Lundquist threw three and one-third innings, striking out five batters. Milos struck out five batters over four innings. Luke Chadwick added four strike-

outs in one and one-third innings of relief for Lions.

Game 2

Lions (15-3) opened the scoring with three runs in the top of the first inning. Luke Chadwick led off with a triple before coming home on Mikey Chadwick's RBI groundout. Joey Chadwick gave Lions a 3-0 lead on a two-run, inside-the-park home run to left field after Bo Lundquist doubled earlier in the frame. Bentley

Svela singled in the bottom of the first inning for Firemen (11-5).

Jasper Macklin walked and scored on a dropped third strike for the first of two Lions runs in the top of the second inning. Luke Chadwick scored the second run, reaching on a single before touching home plate on an RBI single from Lundquist. Joey Chadwick doubled to lead off the top of the third inning before scoring on Zachary John-

son's RBI single to make the score 6-0.

Lions sealed the win with four runs in the top of the fourth inning. After Luke Chadwick tripled and Mikey Chadwick walked, Lundquist belted a two-RBI double to left-center field, making the score 8-0. Brayden Harley's RBI single scored Lundquist before Macklin reached on an error, allowing Harley to score the 10th run of the evening for Lions. Harley

started on the mound for Lions, throwing all four innings and striking out four batters with no walks and no runs allowed.

Luke Chadwick and Lundquist each went 3-for-3 to lead the Lions offense, with Lundquist recording three RBIs and Chadwick scoring three runs. Joey Chadwick and Johnson each went 2-for-3 in the win, with Chadwick totaling two RBIs and two runs while Johnson added one RBI.

EXCLUSIVE 4TH OF JULY SAVINGS



QUALITY TESTED
GOOD HOUSEKEEPING
Since 1909
LIMITED WARRANTY - gheer.com for details

LeafGuard
18 YEARS BACKED BY THE SEAL

BBB ACCREDITED BUSINESS **A+ rating**



\$75 VISA GIFT CARD

LeafGuard
Get it. And forget it.®

*Guaranteed not to clog for as long as you own your home, or we will clean your gutters for free

- ✓ **LIFETIME NO-CLOG WARRANTY**
- ✓ **MADE ONSITE SPECIFICALLY FOR YOUR HOME**
- ✓ **THE ONLY ONE-PIECE SEAMLESS DEBRIS SHEDDING GUTTER SYSTEM.**
- ✓ **SCRATCHGUARD® PAINT FINISH**

ONLY \$99 INSTALLATION*

Call Today for Your **FREE Estimate!** **815-673-7532**

All participants who attend an estimated 60-90-minute in-home product consultation will receive a \$75 Visa gift card. Retail value is \$75. Offer sponsored by LeafGuard Holdings Inc. Limit one per household. Company procures, sells, and installs seamless gutter protection. This offer is valid for homeowners over 18 years of age. If married or involved with a life partner, both cohabitating persons must attend and complete presentation together. Participants must have a photo ID and be legally able to enter into a contract. The following persons are not eligible for this offer: employees of Company or affiliated companies or entities, their immediate family members, previous participants in a Company in-home consultation within the past 12 months and all current and former Company customers. Gift may not be extended, transferred, or substituted except that Company may substitute a gift of equal or greater value if it deems it necessary. Gift card will be mailed to the participant via first class United States Mail within 10 days of receipt of the promotional form. Not valid in conjunction with any other promotion or discount of any kind. Offer not sponsored and is subject to change without notice prior to reservation. Offer not available in the states of CA, IN, PA and MI. Expires 7/31/22.

North America's #1 Selling Walk-In Tub

Featuring our Free Shower Package



For a limited time only with purchase of a new Safe Step Walk-In Tub.
Not applicable with any previous walk-in tub purchase.
Offer available while supplies last. No cash value. Must present offer at time of purchase. **Financing available with approved credit.**

safestep

Now you can finally have all of the soothing benefits of a relaxing warm bath, or enjoy a convenient refreshing shower while seated or standing with Safe Step Walk-In Tub's **FREE Shower Package!**

- ✓ First walk-in tub available with a **customizable shower**
- ✓ Fixed rainfall shower head is **adjustable for your height and pivots** to offer a seated shower option
- ✓ High-quality tub complete with a comprehensive **lifetime warranty** on the entire tub
- ✓ Top-of-the-line installation and service, all included at one **low, affordable price**

Now you can have the best of both worlds—there isn't a better, more affordable walk-in tub!

Backed by a lifetime guarantee.

Buy Now, Pay Later!

NO PAYMENTS FOR 18 MONTHS!*

plus a **Free Shower Package**

815-660-0041

or visit **BuySafeStep.com**



Scan me






*Subject to credit approval, with the purchase of a new Safe Step Walk-In Tub or Shower. Interest is billed during the promotional period but all interest is waived if the purchase amount is paid before the expiration of the promotional period. There is no minimum monthly payment required during the promotional period. Safe Step Walk-In Tub is neither a broker nor a lender. Financing is provided through third-party lenders unaffiliated with Safe Step Walk-In Tub, LLC under terms and conditions arranged directly between the customer and such lender. All subject to credit requirements and satisfactory completion of finance documents. Any finance terms advertised are estimates only. Offer available in select markets, not available in Canada. Participating dealers only. Other restrictions may apply.