



# ROCHELLE News-Leader

WEEKEND EDITION | WWW.ROCHELLENEWS-LEADER.COM

Today's RNL issue  
sponsored by  
Community  
Unity  
member:

Liberty Village of Rochelle  
A Division of Car Camp

2203 E. Flagg Road  
Rochelle, IL, 61068

Vol. 103 • No. 37

LOCAL NEWS... LOCAL VIEWS

SUNDAY, SEPT. 4, 2022

\$1.25

## May School could see future use 'We continue to want to serve as many students as we can'

BY JEFF HELFRICH  
MANAGING EDITOR

ROCHELLE — May School could again be used in the future if a possible state mandate requires the implementation of universal preschool, Rochelle Elementary School District Superintendent Jason Harper said Aug. 19.

The elementary school at 1033 N. 2nd St. was closed by the school board before the 2021-2022 school year as the district shifted to an attendance center model due to declining enrollment and an increase in the district's dual language program, which was previously only offered at Lincoln and Central Elementary Schools. The district was facing a half-full May School before the decision was made.

Preschoolers, kindergartners and first-graders now attend Lincoln School, while second and third-graders attend Central School and fourth and fifth-graders attend Tilton School.

"As we said at the start of this transition to attendance centers, the elementary school district



(PHOTO BY JEFF HELFRICH)

May School could again be used in the future if a possible state mandate requires the implementation of universal preschool, Rochelle Elementary School District Superintendent Jason Harper said Aug. 19.

could potentially use May School in the future in the event that our enrollment increases," Harper said. "This would be a welcome problem as it would be a sign that our community is experiencing renewed growth."

A "great unknown" for the elementary district and the situation of May School is what the state's approach and/or mandates will be in regard to expansion of birth to five-year-

old preschool options for communities, Harper said.

Federal funds have been allotted to increase educational services for preschool-aged students and districts like Rochelle are waiting to hear from the state on what requirements will be. If Illinois mandates that schools expand those services, the Rochelle elementary district would need more staff and space, the latter of which it has at May School.

The district's Stepping Stones Preschool, which is located at Lincoln School, has six classrooms and currently can't accommodate more students, Harper said. Morning and afternoon classes are held for a total of 12. Each year, it has a waiting list, so the district knows there's a demand "to some degree" for at least 3-5-year-old services.

See MAY page 8



## Rochelle PD releases statement

ROCHELLE — In a Thursday Facebook post, the Rochelle Police Department released a statement responding to multiple local social media posts concerning an incident that happened at Starbucks in town on Monday where residents voiced concerns about possible human trafficking activity.

The Rochelle Police Department statement is as follows:

"On Monday, Aug. 29, RPD responded to a report of employees at Starbucks being photographed in the drive thru by a male in a red Dodge Charger. An investigation into this matter was initiated.

See RPD page 8

More coverage.  
Less spendage.

Discounts up to 40%  
Get more. Spend less. It's that simple  
when you get car insurance from us.  
Like a good neighbor, State Farm is  
there. CALL FOR A QUOTE 24/7.

Terri Schaefer, Agent  
Bus: 815-562-7063  
terri.schaefer.115n@statefarm.com



KNOW IT  
TODAY

Rochelle  
Community Hospital  
Your Local Healthcare Resource.

RCH Recruitment  
Tab inside

Rochelle Community  
Hospital is hiring for  
multiple positions in  
several departments.  
See inserts

### WEATHER



SUNDAY MONDAY  
HIGH LOW HIGH LOW  
78 57 80 57



TUESDAY WEDNESDAY  
HIGH LOW HIGH LOW  
80 58 80 59

Today's RNL issue  
sponsored by  
Community  
Unity  
member:



708 Lincoln Ave.  
815-562-7915

### OBITUARIES

• LOWELL LATHROP  
HAYES  
• LORETTA ANN ZILIS

See page 4

### INSERTS

• SCHNUCKS  
• MENARDS  
• RCH JOB TAB

### INSIDE

Local News.....2, 3, 5, 8  
Obituaries.....4  
Opinion.....6  
Community.....7



## Semi trailer catches fire Tuesday afternoon Rochelle Fire Department responds to blaze on Interstate 88

BY JEFF HELFRICH  
MANAGING EDITOR

ROCHELLE — A semi trailer is a complete loss after a Tuesday afternoon fire on Interstate 88, Rochelle Fire Department Lt. Zach Prewett said.

Rochelle Fire was called to the eastbound lane of Interstate 88 at mile marker 74 at 2:25 p.m. for a semi-truck and trailer fire with potential issues of a grass fire and hazardous materials, Prewett said. Ogle-Lee Fire Protection District departments in Steward and Flagg Center responded as well.

Prewett said the driver of the semi-truck told fire officials that she was flagged down by a passerby and alerted to the fire in the trailer and was able to disconnect the truck from the trailer. When fire crews arrived, only the trailer was on fire and it was fully-engulfed with flames.

Fire crews extinguished the fire in the trailer and left it on the tollway in the possession of the Illinois State Police, which helped with traffic control. Local



(PHOTO BY CHUCK ROBERTS)

A semi trailer is a complete loss after a Tuesday afternoon fire on Interstate 88, Rochelle Fire Department Lt. Zach Prewett said. Rochelle Fire was called to the eastbound lane of Interstate 88 at 2:25 p.m.

fire crews were on-scene until 4:17 p.m.

Prewett said there was a "very small amount" of hazardous materials in the trailer, including propane gas cylinders and some corrosive home-use chemicals. The trailer was a Do It Best Hardware supply

trailer and it was pulled by a Ryder semi-truck.

"We weren't able to tell what the cause of the fire may have been," Prewett said. "The trailer was essentially burned completely and the driver didn't know anything about the situation until

she was told. We left the estimated damage as undetermined due to the fact that we didn't know much about what cargo there was before it burned."

Prewett said that on Tuesday and with any incident on the interstates, traffic hazards are a con-

cern and the ISP helped with that. No access to hydrants can be a complication as well with a fully-engulfed trailer, which was why an extra 2,500-gallon water tender truck from Flagg Center was dispatched to the scene.

Exclusively at the Jeff Perry Auto Group | Peru-Rochelle

**SUMMIT**  
CERTIFIED PRE-OWNED

WHAT YOUR SUMMIT CERTIFIED PRE-OWNED WARRANTY OFFERS:

WE DARE YOU TO COMPARE

6 - MONTH/6,000 MILE\* BUMPER-TO-BUMPER

126 POINT INSPECTION

CERTIFIED TECHNICIANS

MOST MAKES AND MODELS

PEACE OF MIND PRE-OWNED CAR BUYING

**2009 CADILLAC CTS AWD**  
Premium Collection

**\$14,234\***  
ONLY 34,116 Miles!

Auto Group  
**JEFF PERRY**  
Auto Group  
Jeep

815-562-8787 JEFFPERRYAUTOS.COM

Stock # S0268A  
plus tax, title, license and doc fee.



# LOCAL NEWS



(PHOTOS BY JEFF HELFRICH)

The facilities at Pegasus Special Riders sustained storm damage on Aug. 28 for the second time this year, PSR Board President Donna Fellows said Tuesday. The nonprofit, located at 6668 S. Carthage Road near Oregon, has been operating since 1997.

## Pegasus Special Riders sustains storm damage

### Board President: 'Our riders and families have been without a place to go'

BY JEFF HELFRICH  
MANAGING EDITOR

**OREGON** — The facilities at Pegasus Special Riders sustained storm damage on Aug. 28 for the second time this year, PSR Board President Donna Fellows said Tuesday.

The nonprofit, located at 6668 S. Carthage Road near Oregon, has been operating since 1997. It's a therapeutic riding program for children and adults with special needs. Volunteers perform all of the required duties, such as working with the riders, caring for the horses and facilities, raising funds and providing the

necessary administrative support.

The damage on Aug. 28 included the facility's loafing shed for its horses and severe damage to a storage building. Back on March 5 of this year, a windstorm severely damaged the main arena building. High winds tore off about 120 feet of canopy, twisted the steel frame and the large front door was blown off and landed inside of the arena.

Pegasus Special Riders has been unable to perform any rides this year due to the original storm, and the recent damage set recovery efforts back. The nonprofit is still working

with its insurance provider for the March 5 storm.

Dave Diveley, the property manager at Pegasus Special Riders, said the damage in March was over \$300,000. The cost of the most recent damages that he knows of so far includes \$6,500 and around \$8,000 for two structures.

Pegasus Special Riders has a contractor set up for repairs and is waiting on insurance funds, which will likely start to be disbursed soon from the March 5 storm.

"Our contractor needs 20-25 percent down to order the parts," Diveley said. "Without the insurance money, we don't have

the funds to do that."

Fellows said the nonprofit plans to rebuild and start rides and lessons as soon as reconstruction allows.

"We will go forward," Fellows said. "We've lost a whole year of lessons. And that isn't where we get any money. We get 99 percent of our money from donations. We'll somehow make it work. We always have. This is our 25th year of business. And this is what we had. No business. We haven't been able to do any rides or anything. The bad part is, this is like a ghost town. Usually we have volunteers out here. And

because of the damage, we were afraid to have anyone in the buildings because you never know what's going to happen. We're out of commission. Hopefully if we can get everything organized, we can start in the spring. That's our goal. But that depends on the weather for reconstruction."

Throughout its years when possible, PSR has held two annual fundraisers. Its family picnic is held in June or July and riders show their relatives and friends what they can do on a horse. On July 23 of this year it was held for the first time since the COVID-19 pandemic,

but no demonstration was able to be held due to the storm damage. Pegasus Special Riders also holds an annual fundraiser in October called the Mane Event, but that will have to be put off this year due to the storm recovery.

PSR is accepting donations to help with the storm recovery and they can be made at <https://pegasusspecialriders.org/>. Fellows said if knowledgeable and capable members of the community want to help with the cleanup and reconstruction as volunteers, they can reach out as well.

See RIDERS page 5

## Birsa joins Rochelle Township HS foreign language staff

BY VICKI SNYDER-CHURA  
SPECIAL TO THE NEWS-LEADER

**ROCHELLE** — Anna

Birsa is a fresh new face who brings an interesting backstory to the foreign language department at

Rochelle Township High School where she is teaching Spanish I and native speaker Spanish. She grew

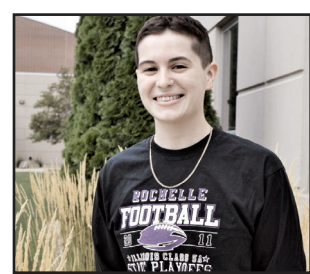
up downstate in the Bloomington area, attending college at Southern Illinois University in Carbondale.

This is her first teaching position.

"I love getting to know students and seeing them learn new things for the first time," Birsa said. "It's also so great to see them grow as people, both from the beginning to the end of each year, and in between grade levels."

Birsa wants students to know that high school takes 708 days.

"Whether you love it



Anna Birsa

or can't wait to leave it, eventually you'll make it through," Birsa said. "Take advantage of the good things at school and try to leave behind the negatives."

## RPD: Statement released regarding possible human trafficking incident

From page 1

Social media posts mentioned other sightings of this individual and vehicle (and possibly other individuals and vehicles) in other locations around Rochelle along with concerns of this being a human trafficking situation, however, these instances have not been reported to the police department directly. At this point in the investigation, RPD has no information to support the concern for human trafficking.

The Rochelle Police Department does believe it is a good practice to remain vigilant of your surroundings as you go about your daily activities and report any suspicious activity to the Rochelle Police Department. We understand the desire to alert friends and neighbors through social media, however, we ask that your first call is to the police department. If anyone has information about this matter, please contact Rochelle Police at (815) 562-2131."



### Fall Revival

September 11<sup>th</sup>-14<sup>th</sup>

Sunday, Sept. 11<sup>th</sup> 10am & 6pm  
Mon, Sept. 12<sup>th</sup> - Wed, Sept. 14<sup>th</sup> 7pm

Harvest Baptist Church

241 Scott Ave  
Hillcrest, IL

Pastor Donnie Shumate

Bethel Baptist Church North Wilesboro, NC

Questions call Pastor Boehm 815-757-3427

# FIND YOUR healthy

at Rochelle Community Hospital

At Rochelle Community Hospital, we believe care is more than helping you heal—it's partnering with you throughout life to help you protect your health, meet your goals and live your best life.

Trusted care from your RCH team—caring for your health for life.



The Right Care, Right Here.

Find your healthy at Rochelle Community Hospital. Call 815-562-2181 to learn about a wellness approach to care or visit [rochellehospital.com](http://rochellehospital.com).





# LOCAL NEWS

## RACF's Planes, Trains & Automobiles event scheduled for Sept. 10

**ROCHELLE**—Please put your trays and seats in the upright and locked positions...because Planes, Trains & Automobiles is ready for takeoff! The Rochelle Area Community Foundation (RACF) along with its presenting sponsor – Zekelman Industries – would like to personally invite the community to attend a family friendly event on Saturday, Sept. 10 at the Rochelle Municipal Airport from 9 a.m. to 2 p.m. Proceeds from the event will support the RACF and its mission as it looks forward to strengthening its community impact.

Along with unique aircraft and a train exhibit, the event will feature cars from each decade going back an entire century including select vehicles from The Hamilton Collection, whose mission is "To enrich the lives of others by providing unparalleled access to unique and exotic vehicles and to have a lot of fun while doing it." THC will be exhibiting several hyper cars from its \$30-million collection and will also be taking over the runway to race the spectacular machines from 10-11 a.m.

Gate open at 9 a.m. and breakfast will start to be served. At 11 a.m. lunch will be served and there will be an RACF presentation. At noon a wingsuit drop from a trike at 8,000 feet will take place weather-permitting. At 1 p.m. the silent auction closes and checkout begins. At 1:30 p.m. the car show awards including the Carmichael Cup, Director's Choice



and Presenter's choice will take place ahead of the event ending at 2 p.m.

Ashley Jackson, event chair and RACF board member said, "Since Rochelle's history is so intertwined with the evolution of transportation, RACF felt that it only made sense that our inaugural event pay homage to that relationship. This event will be the perfect opportunity to whip out your 'Kentucky Derby best' and enjoy a day celebrating Rochelle and the modes of transportation that have helped put it on the map over the last century."

"We are excited to offer an event that appeals to all ages," said Emily Anaya, executive director. "We foresee a day full of fun for families and friends. There is an invite-only car show, hyper car races, planes and trains on display, an online only silent auction (galabid.com/RACF2022), whiskey tastings for those 21 years of age or older, and some amazing food."

RACF is grateful to our sponsors and guests who have already purchased tickets to the event."

Tickets for the event are on sale now. You can purchase tickets online at RochelleFoundation.org until Thursday, Sept. 8. You can also call the office to reserve your tickets at 815-561-3600. You may come into the RACF Office, located at 350 May Mart Drive, to purchase tickets or you may get them at the event gate. Tickets are \$30 per person, \$50 a couple, kids ages 11-17 are \$10 and anyone younger is free. You will be required to wear your ticket (wristband) that day, allowing you to come and go as you please.

If you are looking for more information about the event, or just have questions, please call the RACF at 815-561-3600, email director@rochellefoundation.org, visit the website at rochellefoundation.org or visit the events section of our Facebook page.

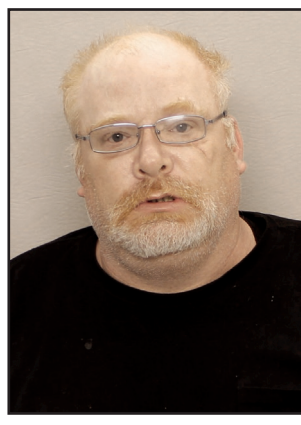
## Rochelle man sentenced for child pornography

**OREGON** — Ogle County State's Attorney Mike Rock announced Aug. 31 that Douglas D. Mitchell of Rochelle was sentenced to 10 years in the Illinois Department of Corrections by the Honorable Judge John C. Redington for the offense of child pornography.

In 2021, the Rochelle Police Department and the FBI conducted an investigation regarding child pornography being downloaded on the internet from

a location in Rochelle. During the investigation, the defendant was developed as a suspect. The case was reviewed by the Ogle County State's Attorney's Office and charges were authorized.

Child pornography with the intent to disseminate is a class X felony that is punishable by a term of 6-30 years in the Illinois Department of Corrections. The defendant will have to register as a sex offender upon his release



Douglas D. Mitchell

from the department of corrections.



### Bumgarner wins VFW Commander's Award

On Aug. 31, the Floyd J. Tilton VFW Post 3878 Board of Directors in Rochelle presented Past Commander William L. "Bill" Bumgarner with the Veterans of Foreign Wars Commander's Award for his many years of dedicated service to the organization. He served as post commander from 1995 to 1997 and from 2015 to 2022. He also served as commander of District 6 from 2002 to 2003. He continues to serve as a trustee at the post and district levels.

## Alfano's

Pizzeria and Italian Restaurant

Taste The **TRADITION**  
Taste The **DIFFERENCE**

Two for Tuesday  
2 Large, 2-Topping

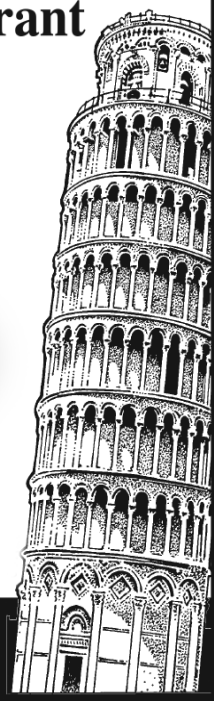
**PIZZAS**

**\$24<sup>99</sup>**

(With Coupon)

Dine-In • Carry Out • Home Delivery  
1115 TURKINGTON TERRACE, ROCHELLE

**815-562-3312**



## AtlasAuto

"Quality Used Cars Since 2007"



- No Credit Checks
- Buy Here Pay Here
- Low Down Payments
- Flexible Payment Plans

Complete your **ONLINE** application **TODAY!**

1400 N. 7th Street  
Corner of Flagg Rd & Hwy. 251 N.

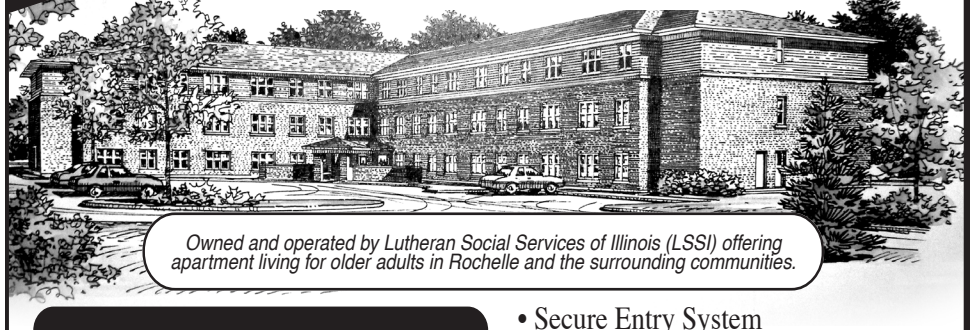
**815-562-7433**

www.atlasautoinc.com

11032021

APARTMENT AVAILABLE

## Lincoln Manor



Owned and operated by Lutheran Social Services of Illinois (LSSI) offering apartment living for older adults in Rochelle and the surrounding communities.

Rent based  
on 30% of a  
Resident's Adjusted  
Gross Income

- Secure Entry System
- Community room with kitchen
- Activities
- On-site coin operated laundry
- On-site management office
- Dependable 24/7 maintenance service
- On-site parking for residents

Full time Social Service Coordinator is available to assist residents

For more information, please call 815-562-1404

615 N. Lincoln Hwy.  
Rochelle, IL 61068  
TTY 847-390-1460



MANAGED BY:  
Lutheran Social Services of Illinois  
www.LSSI.org



01132019



# LOCAL NEWS

## Obituaries

## Lowell Lathrop Hayes

**KINGS** — Lowell Lathrop Hayes, 93, of Kings passed away peacefully at home on Aug. 30. Born in Kings on June 18, 1929, he was the son of Earl Hayes and Amy (Lathrop) Hayes and brother to Adelaide (Pablo) Chavez, Emery (Jeanine Tegner) Hayes and LaVonne (Earl) Huebner. Lowell graduated with a BA from the University of Illinois at Urbana-Champaign in economics and was one of a select few students who worked The Morrow Plots. He often reflected on his time hitchhiking from Kings to Champaign, as well as his time as a dishwasher for one of the sororities on campus as his way to pay for school. His fondness of the university was always present as he was often seen sporting his Fighting Illini gear and watching their football games.

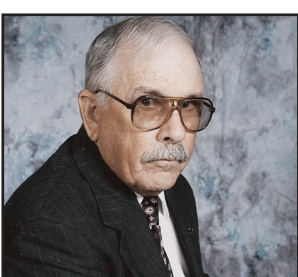
One of the most impactful parts of Lowell's life was his patriotism and love of country. He served in the United States Army from 1951 to 1954 as combat infantry during the Korean War (October 1952 to July 1953) in the 7th Infantry Division, 32nd Regiment, Companies A and D. Lowell was the machine gun section leader on Old Baldy, Iron Triangle and Pork Chop Hill and received two Purple Hearts and a Bronze Star with a V device for Valor. In 2013, Lowell and his wife, along with his son and daughter-in-law, traveled to Seoul, South Korea to participate in the Revisit Korea Program put on by

the Republic of Korea (ROK) government as a means to say thank you to all UN veterans of the Korean War and their family members. Lowell was quite surprised when he was welcomed into ROK and constantly given thanks for his service.

As a life-long farmer, Lowell always believed hard work and dedication will take you far. He began farming with his father from a very young age, raising oats, corn, hay and beef cattle. Lowell then went on as an adult to farm Hayes and Hayes Farms with his son, Mark, where the tradition of hard work and dedication continued to the next generation, farming corn and soybeans and raising hogs, eventually focusing on no-till crops and ground conservation.

Lowell continued his education throughout his years as an avid reader and researcher of economics, farming, politics and history. In addition to being a farmer, he was the patriarch of the Hayes clan, raising two generations of kids with his wife, Jeanne, and instilled the importance of family and taking care of one another in each of his children, grandchildren and great-grandchildren.

Lowell and Jeanne volunteered for many years at Iron Mountain Hospital where they would take other veterans to physical therapy and bring them lunch; he would spend much of that time talking with the veteran patients who often had no one else to talk to, a cause to which he was deeply committed.



Lowell is survived by his loving wife of 57 years, Jeanne (Lasher, Hubbard) Hayes, his son, Mark (Danette) Hayes and daughters, Jodi Appel and Viki (Larry) Bigelow, his grandchildren, Amanda (Isaac) Rudolph, Laura (Richard) Hines, Nicholas (Michelle Brackey) Fry, Thomas (Alma) Bigelow, and Amy (Jason) Bigelow-Rybacki, and his many beloved great-grandchildren. Lowell was also a mentor to many local "kids" in the community, including his "second son" Lynn Blackmore, always sharing his life, experiences and strength with them.

Lowell would always tell people, "I'm just an old soldier; I try to serve where I can." He may have thought of himself as "just an old soldier," but to his family, friends and community, he was a true hero.

The visitation will be from 4-7:30 p.m. Friday, Sept. 9 at the Unger-Horner Funeral Home, 400 N. 6th St., Rochelle. A service will be held at a future time with interment following in Arlington National Cemetery. Memorials may be made to OSF St. Anthony Hospital in Lowell's memory.

Visit [www.ungerhorn.com](http://www.ungerhorn.com) to sign the online guest book.

## Ogle County Sheriff's Department

## Deputies respond to report of suspicious person

**OREGON** — On Aug. 30 at approximately 3:13 p.m. deputies conducted a traffic stop in the 8,000 block of South Illinois Route 38. Deputies attempted to make contact with the driver of a green Pontiac Grand Prix, but the male driver refused to cooperate before leaving the scene and traveling eastbound on Illinois Route 38. Deputies pursued the vehicle before losing sight of the vehicle in Rochelle. A short time later, deputies located the driver, Steven Baldwin, 59, of Rochelle and vehicle in the 400 block of North 6th Street. Baldwin was taken into custody and charged with aggravated fleeing to elude, obstructing a police officer and fleeing to elude a police officer. Baldwin was additionally issued citations for operating an uninsured vehicle, improper lane usage, speeding over 26-34 m.p.h. over the speed limit, use of headset receivers, expired registration and use of an electronic communications device. Baldwin was transported to the Ogle County Jail where he was held pending a court appearance in front of a judge.

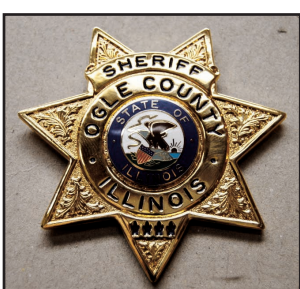
On Aug. 30 at approximately 12:07 a.m. deputies responded to the 8,000 block of South Illinois Route 251 in reference to a suspicious person. Upon contact with deputies, the offender fled southbound in his vehicle. Deputies pursued the vehicle, which eventually was stopped at 14th Street and Sunset Terrace in Rochelle. The driver, identified as Joshua Cruz, 34, of

Rochelle, was taken into custody for driving under the influence of alcohol with the assistance of the Ogle County K9. Deputies were also assisted by the Lee County Sheriff's Office, the Illinois State Police and Rochelle Police and EMS. The incident remains under investigation with further charges pending.

On Aug. 31 at approximately 12:49 a.m. deputies initiated a traffic stop on Illinois Route 64 near German Church Road. After further investigation, Jared Portwood, 46, of Lindenwood was placed under arrest for driving under the influence of alcohol. Portwood was also cited for speeding. Portwood was transported to the Ogle County Jail where he was held in lieu of bond.

On Aug. 31 at 4:35 p.m. deputies conducted a traffic stop near the intersection of East Big Mound Road and North Junction Road. After a brief investigation, deputies arrested Lorenzo Glenn of Yorkville for aggravated driving under the influence of alcohol. Glenn was transported to the Ogle County Jail and held in lieu of bond. Lorenzo was also issued citations for equipment and moving violations. Additionally, Anthony Glenn of Radcliff, Kentucky was arrested for an outstanding warrant. Glenn was transported to the Ogle County Jail and awaits extradition.

On Sept. 2 at approximately 1:18 a.m. deputies attempted to conduct a traffic stop on Interstate



39 near mile marker 105. The offending vehicle failed to stop, at which time deputies pursued the vehicle. The pursuit came to rest at mile marker 112, at which time the driver, identified as Patrick Larson, 22, of Rochelle was placed under arrest for aggravated fleeing to elude a peace officer. Larson was additionally charged with possession of methamphetamine with intent to distribute, possession of methamphetamine, possession of crack/cocaine with intent to distribute, possession of crack/cocaine, possession of LSD with intent to distribute, possession of LSD, possession of a controlled substance (Clonazepam), unlawful possession of a firearm as a felon, possession of a firearm without a FOID, possession of stolen plates, driving while license revoked and possession of drug paraphernalia. Larson was issued citations for reckless driving, speeding, improper lane usage and operating an uninsured motor vehicle. Larson was subsequently transported to the Ogle County Jail where he was held in lieu of bond. Ogle County was assisted by Illinois State Police District One.

All subjects are considered innocent until proven guilty.

**SYCAMORE** — Loretta Ann Zilis, 92, formerly of Naperville, passed away peacefully Thursday, Sept. 1 at Lincolnshire Place in Sycamore.

Services are pending with the Unger-Horner Funeral Home [www.ungerhorn.com](http://www.ungerhorn.com).

Services are pending with the Unger-Horner Funeral Home [www.ungerhorn.com](http://www.ungerhorn.com).

## Rochelle Police Department

## Officers make several arrests

**ROCHELLE** — On Aug. 30 at 7:10 p.m. Jeremy R. Kuri, 35, of

Rochelle was arrested for domestic battery and transferred.

On Aug. 31 at 8 a.m. Fortunata Cassola, 87, of Rochelle was cited for improper backing. She signed a promise to comply and was given an Oct. 7 Rochelle court date.

On Sept. 1 at 12:14 a.m. Jignasha I. Patel, 37, of Rochelle was cited for

no insurance. He signed a promise to comply and was given an Oct. 7 Rochelle court date.

On Sept. 1 at 12:15 p.m. Steven D. Farmer, 60, of Rochelle was arrested on an outstanding Ogle County warrant and transferred.

All subjects are considered innocent until proven guilty.

## CUSTOM COWHIDE

404 Cherry Avenue., Rochelle

- Full Service Leather Shop
- Custom Leather Work & Hand Tooling
- Custom Made Gun Holsters, Knife Cases, Belts & More
- Antique Leather Restoration
- Leather & Garment Repair
- All Zipper Repairs
- Comforter, Garment & Rug Cleaning

**Shop Hours:**  
Monday-Friday 11am-6pm  
Saturday 11am-5pm  
Sunday Closed

**185-761-4325**

FIND US ON

instagram.com/customcowhide

etsy.com/shop/customcowhide13

## Camp Lejeune Toxic Water Claims

IF YOU OR A FAMILY MEMBER LIVED OR WORKED AT CAMP LEJEUNE AT ANY TIME BETWEEN 1953 – 1987, AND SUBSEQUENTLY SUFFERED A SERIOUS HEALTH PROBLEM OR ILLNESS YOU MAY BE ENTITLED TO SIGNIFICANT COMPENSATION. SURVIVING FAMILY MEMBERS MAY RECOVER.

Many Illnesses, Diseases and Deaths Qualify

**CALL NOW FOR A FREE CASE REVIEW:**  
**(815) 201-1547** WEBSITE: [www.fmcolaw.com](http://www.fmcolaw.com)  
EMAIL: [cljustice@fmcolaw.com](mailto:cljustice@fmcolaw.com)

THIS IS ATTORNEY ADVERTISING sponsored by Foote, Mielke, Chavez & O'Neil, LLC ("FMCO"), 10 W. State Street, Geneva, Illinois 60134. FMCO helps consumers nationwide. The information contained herein is provided as general reference not intended to be legal advice. Past performance not an indication of future results. Attorney-client relationship is not formed until a fee agreement is signed by you and the law firm.

## PROTECT YOUR FAMILY

Recycle THIS.

Keep mercury out of the environment by safely disposing of your old mercury thermostat.

To find a recycling location, visit:  
[thermostat-recycle.org/zipsearch](http://thermostat-recycle.org/zipsearch)

**Thermostat Recycling CORPORATION**

## ROCHELLE News-Leader

211 IL Route 38 East, Rochelle, IL 61068  
**(815) 562-4171**

USPS (467-820) ISSN (1075-2811)  
Published every Wednesday and Sunday by Rochelle News-Leader Inc. at 211 E. State Route 38, Rochelle, IL 61068.  
Periodical postage paid at Rochelle, IL 61068. Postmaster send address changes to the Rochelle News-Leader, P.O. Box 46, Rochelle, IL 61068. Subscription rates are \$139 per year by mail in Ogle County. Outside county rate is \$149 per year. No mail delivery in newspaper-carrier serviced areas. The circulation department is open Monday through Friday from 8 a.m. to 5 p.m. If you are a carrier subscriber and your paper does not arrive, contact Kelly White at 561-2112.

**IN-COUNTY REGULAR SUBSCRIPTION RATES**

- \$139 for one year • \$79 for six months
- \$34.99 for three months • \$13.99 for one month

Call (815) 561-2112 or Visit our website at [www.rochellenews-leader.com](http://www.rochellenews-leader.com)

MasterCard VISA

## HOW TO CONTACT US

News-Leader Main Switchboard (815) 562-4171

**General Manager**  
Mike Feltes (815) 561-2124

**Newsroom Staff**  
Jeff Helfrich, Managing Editor (815) 561-2151  
Russ Hodges, Sports (815) 561-2152

**To Place a Display Ad**  
Andrew Heiserman (815) 561-2123  
Chris Ackland (815) 561-2153

**To Place a Legal Ad**  
Mike Feltes (815) 561-2124

**To Place a Classified Ad**  
(815) 562-4171

**Subscriptions and Delivery**  
Kelly White (815) 561-4171

## Report policy

Any arrests listed in this paper are merely charges and the defendants are presumed innocent unless proven guilty in a court of law. Please note that all police reports received from the

Rochelle Police, the Ogle County Sheriff's Department and the Illinois State Police, will be printed without exception. Requests to omit particular reports will not be considered or honored at any time.



# LOCAL NEWS

## RIDERS: Oregon business seeking donations after storm damage

From page 2

Before the March 5 damage, Pegasus Special Riders conducted its lessons inside the arena. It planned on doing some outside lessons this year, but due to the recent damage, that can't happen.

"Every time we've thought we had a handle on things moving forward, something like this happens and we're pushed two steps back," Diveley said. "The work will be ongoing through the winter. Work will have to be done on construction of the new building and things that have been exposed to the weather will have to be replaced."

In years past, Pegasus Special Riders has served riders from Rockford, Rochelle, Dixon, Rock



(PHOTO BY JEFF HELFRICH)

Before the March 5 damage, Pegasus Special Riders conducted its lessons inside the arena. It planned on doing some outside lessons this year, but due to the recent damage, that can't happen.

Falls, Sterling, Belvidere and other area communities. Fellows is excited to see them again after reconstruction.

"Our riders and families have been without a place to go," Fellows said. "I still get calls and have to tell people because they don't know we're not up and running this year. I have them on a waiting list for when we know we can do it."

## Rochelle Area CHURCH DIRECTORY

**Ashton Bible Church**, corner of Main and Paddock in Ashton. Pastor Farrel Stauffer, church phone is (815)453-2190, church website [www.ashtonbible.org](http://www.ashtonbible.org). Sunday School for all ages 9:00-10:00am, Morning Worship 10:15am, Wednesday Prayer Meeting/Bible Study 6:30-8:00pm.

**The Bridge Church**, Pastor Greg Duncan, 11038 E. IL Route 38, Rochelle, IL 61068. Phone: 815-562-7750. Sunday School: 9:00 am; Sunday Service: 10:00 am; Nursery & Children's ministry during am service; Bible Study Tuesday 10:00 am and Wednesday 7:00pm. Web: [thebridgechurchrochelle.com](http://thebridgechurchrochelle.com) Email: [thebridgechurchrochelle@gmail.com](mailto:thebridgechurchrochelle@gmail.com)

**Calvary Lighthouse Church, Assemblies of God**, Senior Pastor, Dr. James Horvath. 14409 Hemstock Rd., Rochelle. Sunday Morning: Sunday Worship & Children's Church 10:00 A.M., Wednesday Evening 7:00 P.M. – Adult Teaching, Missionettes & Royal Rangers Childrens Classes, Nursery available for all services. HE-Brews Cafe is open before and after services. For further information, please call the CLC office at 815-562-7701, or email us at [staff@calvarylighthouse.com](mailto:staff@calvarylighthouse.com)

**Calvary Lutheran Church, LCMC** - "To Know Christ and to Proclaim Christ in Word and Deed" -19 Perry Road, Lee, IL 60530 (the intersection of Perry Road and W. County Line Road). Rev. Martha Uecker Nelson, Pastor. Coffee Hour starts at 9:00 a.m., Sunday School, Confirmation, and Adult Bible Study are at 9:15 a.m. Worship is at 10:30 a.m. and is broadcast live on Facebook. Go to our website is at [www.Calvarychurchlee.org](http://www.Calvarychurchlee.org) and click on the link there. A Grief Support Group meets the third Tuesday of each month at 10:00 a.m. Call or text (815) 824-2825 or email [CalvaryLeeIL@gmail.com](mailto:CalvaryLeeIL@gmail.com) with questions or for more information. Also check us out at [www.facebook.com/Calvary-Lutheran-Church](https://www.facebook.com/Calvary-Lutheran-Church).

**Rochelle Church of Christ**, Keeping Christ at the center in the Hub City. We meet Sundays at 9:00am for Bible Study and 10:00am for worship. We also have a Wednesday Bible Study at 7:00pm. 206 Erickson Rd, Rochelle, IL 61068. You can call us at (815) 562-6572 or visit us on the web at [rochellechurch.com](http://rochellechurch.com). We also have a radio program Sundays just after 8am on WRHL 1060AM. Minister Dominic Venuso.

**Creston United Methodist Church and Steward United Methodist Church** - Rev. Ilhan You, Creston: 126 West South Street, P.O. Box 209, Creston, Illinois 60113. Sunday morning worship 9:00am. Coffee fellowship at 10:15am. Steward: 507 Main Street, P.O. Box 80, Steward, IL 60553. Adult Sunday School, 10:00am. Sunday morning worship and Children's Sunday School 11:00am. Contact the church office at 847-730-4370 for more information. [facebook.com/crestonumcil](https://facebook.com/crestonumcil) [facebook.com/stewardilumc](https://facebook.com/stewardilumc)

**Elim Reformed Church**, 140 S. Church Road, Kings, IL 61068. Phone: 815-562-6811. Email [goelimchurch@gmail.com](mailto:goelimchurch@gmail.com) Website [www.goelimchurch.org](http://www.goelimchurch.org) Sunday Morning Worship 10:00 Rev. Marv Jacobs

**Faith Lutheran Church** - (14206 E. Flagg Rd.) - "Making Christ Known Through Lives of Faith." In-person worship is available each Sunday at 9:00 a.m. or online at "Faith Lutheran Social" on YouTube. Worship resources are also available on our Facebook page - 'Faith Lutheran Church ELCA.' You may also e-mail Pastor Joy Alsop at [Pastor@faithlcrochelle.org](mailto:Pastor@faithlcrochelle.org) for more information. All are welcome to join us!


**First Baptist Church of Rochelle, First Baptist Church of Rochelle** invites you to experience our practical Bible services which have nurseries provided in every service along with a wide range of children's and teen ministries. Sunday School is at 9:30 am with regular church services at 10:30 am and 6:00 pm. Wednesday Family Night starts at 6:30 pm with AWANA for the 5 yr. olds thru 6th grade. The Omega Teen Ministry also starts at 6:30 pm for 7th – 12th grades and the Adult Bible Study at 7:00 pm. First Baptist Church is located 6 blocks west of Hwy 251 at the corner of Woolf Ct. and 8th Ave. in Rochelle. Call 562-4168 for more information. Listen at 11:00 am Sunday mornings on WRHL 1060 AM for the Sunday morning "Bible Message." [www.firstbaptistrochelle.org](http://www.firstbaptistrochelle.org)

**First General Baptist Church**, 500 S. 12th St, Rochelle. Phone: 815-562-5221. Email: [fgbcrochelle@gmail.com](mailto:fgbcrochelle@gmail.com). Website: [www.fgbcrochelle.org](http://www.fgbcrochelle.org). Facebook: [www.facebook.com/fgbcrochelle](https://www.facebook.com/fgbcrochelle). Pastor: Rev. Angelo Bonacquisti. **Sunday worship services:** 8:30 am, 11:15 am and 6:00 pm. **Sunday school:** 10:00 am. We'd be honored to have you join us as we worship JESUS and continue to grow in truth and love for God and each other. A nursery, children's church, youth group and small groups are available. If you need a ride please contact our church bus driver, John, at (815) 262-4275 by 8:30 am on Sunday. "For if you confess with your mouth that Jesus is Lord and believe in your heart that God raised him from the dead, you will be saved." Romans 10:9

**First Presbyterian Church** – An Amazing Place for Amazing Grace- Rev. Doug Forsberg, Senior Pastor. 1100 Calvin Road, Rochelle. Email: [info@placeforgrace.com](mailto:info@placeforgrace.com). Sunday morning worship 9:00am & 11:00am. In person or streamed online. On our Website and Facebook Live. [www.placeforgrace.com](http://www.placeforgrace.com) / [www.facebook.com/placeforgrace](https://www.facebook.com/placeforgrace)

**Harvest Baptist Church** 241 Scott Ave. (Hillcrest). Rev. Duane Boehm, pastor. Email [duane712@hotmail.com](mailto:duane712@hotmail.com), cell 815-757-3427. Visit us on Facebook! Service times: Sunday morning worship with Children's Church at 10 am. Wednesday night worship at 7 pm.

**Immanuel Lutheran Church** Missouri Synod 16060 E. Lindenwood Road, Lindenwood, IL 61049. Rev. Dr. Matthew Rosebrock. Church Phone 393-4500. Church Worship 9:00 a.m. Sunday School Christian Education Hour at 10:30 a.m.

**Living Water Community Church** 405 N. Main St, Downtown Rochelle. Phone 815-561-6249, Website: [www.lwccr.com](http://www.lwccr.com), Like us on Facebook. We are Non-Denominational, Christ Centered, Casual dress, Christ Centered Live Band Worship. Chris Bender- Teaching Pastor, Brent Braski- Administrative Pastor, Adrian Daugherty- Lead Worshipper, Joe Mortimer- Youth Director, Amanda Barnes- Office Manager. Sunday Worship Service- 10:00am. Nursery/Toddlers Ages 0-5 available during the service in the Splash building. Swim- Grades 1st-5th worship with the adults then break out for age appropriate teaching. Youth groups, Small groups, Life Groups and Workshops meet throughout the year for Bible teaching. 7C's Mission-serves the community physically & spiritually each month from 1135 Lincoln Hwy, providing lightly used clothing, Hygiene items, a light lunch and Elder Prayer open the second Saturday from 10am-2pm and the 4th Thursday from 4pm to 7:00pm and by appointment. 

**New Hope Fellowship (Church of God - Anderson, IN)**, 1501 10th Ave., Rochelle, IL 61068. Service: Sunday at 10 a.m., (815)561-8400, [www.NHFchurch.net](http://www.NHFchurch.net) Pastor: Dan Sergeant and Pastor Nick Tornabene. (Classes for children through age fifth grade during service.)

**Primitive Baptist Church**, services 3'd Sunday each month, at 10:30 a.m. and 1 p.m., in the meeting room of the Holiday Inn Express, 1240 N. Dement Road, Rochelle, Ill. Elder Robbie Webb, and other ministers preaching. Lunch and fellowship time between services. Contact Elder Rob Webb, 312-809-0871, or Elder Robert Webb, 217-357-3723, or email [bwebb9@juno.com](mailto:bwebb9@juno.com) for more information. Services sponsored by the Carthage Primitive Baptist Church for convenience of members and friends in northern Illinois and southern Wisconsin. Visitors are welcome.

**Rochelle United Methodist Church, where everyone is welcome!** We believe that everyone is created in the image of God, and we are all beloved and forgiven by God. We invite you to be a part of a welcoming and accepting community where we celebrate the differences among us as gifts from God. We support and encourage each other – so that we all know that we are beloved children of God. . Come love God and neighbor with us. Rev. **Dr. Katherine Thomas Paisley**, Lead Pastor. 709 Fourth Ave. (815) 562-2164. [admin@rochelleumc.com](mailto:admin@rochelleumc.com). **Sunday worship** is at 9:00 am in the sanctuary. Children leave worship for a Sunday School lesson after the Children's Sermon. Recorded services are available on our YouTube channel and our website at [www.rochelleumc.com](http://www.rochelleumc.com). Our services are on the radio (93.5 FM) on Sunday mornings at 9:00 am. Stay up to date on our **Facebook page** [www.facebook.com/rochelleumc](https://www.facebook.com/rochelleumc) and website [www.rochelleumc.com](http://www.rochelleumc.com). Everyone is always welcome to our worship, Bible studies and events. See our website for more information. September 4 is a HymnSing and then for September we focus for three weeks on RESET. Are you ready for a RESET? God specializes in resetting God's people. Resets are not about going back to how things used to be – they help us set things the way they SHOULD be!

**St. Patrick Catholic Church** Rev. Jesus Dominguez; Deacon Fermin Garcia; Deacon George Schramm; 244 Kelley Dr. (Corner of Kelley & Caron Rd.), PO Box 329, Rochelle, IL 61068. **Office Hours:** 9:00 AM-4PM Monday-Thursday, Phone: 815-562-2370. **Mass times:** 8:00 AM Monday-Thursday, Saturday Vigil Mass 5:00 PM English, 7PM Spanish, Sunday Mass 7:30 AM, 9:00 AM in English and 11:00 AM in Spanish. **Confessions:** Monday 8:30AM & 6:30PM, Tuesday 8:30AM, Saturday 8:30am & 4:00-4:45 PM Or by appointment. **Religious Education:** Deacon George Schramm, Director of Religious Education. 903 Caron Road, Rochelle, IL 61068, 815-561-0079 Website: [stpatrickstrochelle.com](http://stpatrickstrochelle.com) Email: [stpatrick-rochelle@rockforddiocese.org](mailto:stpatrick-rochelle@rockforddiocese.org) Facebook.com/StPatrickRochelle

**St. Paul Lutheran Church** "Building Relationships in Christ, Now and Forever!" Pastor-Rev. Greg Hoffmann, Steven Hall, Principal, Parish Nurse-Marcia Schnorr. 1415 Tenth Ave., Rochelle. Church Office-562-2744. Worship times: 6:00 p.m. Saturday, 9:00 a.m. Sunday. Our service is broadcast over WRHL 1060AM at 10:00 a.m. Sunday. Sunday School 10:15-11:15 a.m. Call 562-6323 for more information about the school.



# LOCAL VIEWS

Guest column

## Today's childcare costs

I still remember the day both of my children were old enough to start school. It was like getting the biggest raise ever.

Why? Daycare. We had two kids going to daycare and it cost hundreds a week, even in the mid-90s. That was a ton of money for a journalist and a teacher to afford.

And it has only gotten worse. The cost of childcare has actually risen quickly over the last couple of years. Some families, I have read, are paying more than 20 percent of their household income on childcare.

I don't care who you are, that is expensive.

That is one reason why many younger people, Generation Z and Millennials, are choosing to not have children. I, for one, can't blame them.

In 2020, the birth rate fell 4 percent, which was the largest single-year decrease in nearly 50 years.

That might not seem like a lot, but over the years it is a lot fewer babies being born.

There will always be people who want to have babies and a lot of them. Often, the reason is religious. Or people just want to have babies. There is nothing wrong with that.

But there is also nothing wrong with not wanting to have children, and the number choosing not to is growing steadily. Even people who are choosing to have children are not having as many, maybe just one or two.

Childcare costs are just one part of the reason many are choosing to not have children. Many younger couples are both professionals who are career oriented and a kid just doesn't fit in with their plans. That is something we have seen in society for years.

But something that many people mention in the materials I have read is the current state of the world. Who would want to bring a child into a world of raging anger and violence? Seriously, look at the signs some people have displayed at their homes. Do you want your

impressionable children exposed to that? Do you want the rantings and ravings of people everywhere from social media to the grocery store to be in your kid's face daily?

Many people don't, and it is it hard to blame them. Our country is a cesspool of division right now, and I can only see it getting worse.

There is also the planet itself, which we are slowly killing. Man has done a lot of damage to the planet and environment. And with climate change, the future is simply not looking that great. Heat, yes, but also more storms and floods. There are a lot of unknowns, so why risk bringing a child into it, some might ask.

And if that child gets sick? Well, get ready for the bills to pile up. As we know, the healthcare system in the U.S. is difficult to navigate and very, very expensive. A struggling young family might not be able to afford simple medications.

Most developed countries in the world have universal healthcare, but we do not. We do it the old-fashioned way — make people broke trying to stay healthy. Even those with good medical insurance take to social media for GoFundMe money. It is pathetic we have to do that in this country.

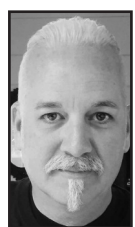
Finally, some people just don't like kids. And that number also seems to be growing. Look, I love my kids (especially now that they are adults), but they can be gross little things. That is fine for most people, me included, but not for everyone.

Let's face it, kids can be whiny, needy little balls of difficulty. Not everyone wants to deal with that. I get it.

We are in no danger of people stopping having children all together, of course. But a slowdown will be felt at schools, in taxes collected and fewer screaming kids at local restaurants to ruin your meal.

Hey, I think I just found the silver lining.

*Brad Jennings is the editor of the Ogle County Life.*



**Brad Jennings**

## Labor Day 2022: America's workforce is stronger than ever

ON Labor Day we honor the achievements of America's workers, and in 2022 we have a historic victory to celebrate. Our nation's working people have come all the way back from the depths of a global pandemic, regaining every job lost and more.

This milestone seemed impossible to reach on Labor Day two years ago. The pandemic was out of control. Millions of Americans were out of work, and economic forecasters said unemployment could remain elevated for years to come.

Some commentators even lost faith in our national work ethic. Even today, some still say that Americans "don't want to work anymore."

What nonsense. This sour view of workers seems rooted in the belief that they should be happy with whatever they get. A deadly pandemic exposed the limits — and the disrespect — of that attitude.

The truth is, Americans were eager and ready to get back to work. They just needed the right opportunities, the kind President Biden's American Rescue Plan delivered. It got vaccines to the people, relief to families and support for schools and businesses to reopen safely. With these conditions in place, America got back to work — and in a big way.

Since President Biden took office, we've added 9.5 million jobs to the

economy. The unemployment rate has plunged to 3.5 percent, matching a 53-year low.

I visited Illinois last week and met with workers, business and union leaders, and elected officials to discuss progress vital to the state's economy and well-being. I enjoyed the chance to visit Sugar Grove, Chicago and other Illinois locations where I talked with people who are seizing opportunities to take advantage of our nation's growing economy, including trainees at Chicago Women in Trades who are building new careers for themselves and spearheading an industry movement.

It's hardworking people like these who are helping to empower our economy and build a dedicated workforce that has lowered the state unemployment rate to 4.4 percent.

This job growth has been broad and widely shared. Some said construction would be slow to return. As of July, there were 82,000 more construction jobs than before the pandemic.

Healthcare workers battled bravely through the pandemic and, by this summer, nearly every single job in that vital sector was recovered.

Some said thinking we could restore America's

manufacturing was naïve. Well, manufacturing has more than fully recovered — and with the new CHIPS and Science Law, we are set to lead the world in the industries, and good jobs, of the future.

Ours is a remarkable story of resilience and recovery. I must say, as a former construction worker, I'm not surprised. Working people are proud of their work and who they are. That hasn't changed.

As I travel the country as labor secretary, I talk to workers and jobseekers — everywhere I go — Americans want a fair chance to earn decent wages, support their families, make meaningful contributions and achieve financial security.

Consider the Bipartisan Infrastructure Law. It's creating thousands of good-paying jobs that don't need a college degree. America's workers are doing what they do best — rebuilding their communities, revitalizing our industries and securing a healthy future for our children.

Another Biden-Harris administration effort, the American Rescue Plan contained many benefits for workers, including many who no longer need to worry about the security of the retirement benefits. At the Laborers' International Union of North America's Laborers

Training Center in Chicago last week, I joined elected officials to discuss the president's commitment to protecting the solvency of the Pension Benefit Guaranty Corp.'s multiemployer insurance program. Thanks to the American Rescue Plan, we've ensured that millions of families who once faced benefit cuts will now receive the full benefits they earned, their retirement assets are protected and their futures are less uncertain.

We're also reducing inequality. In this recovery, wages have gone up the fastest for workers of color and workers with less than a high school diploma. We are determined to continue this progress. To unlock the full potential in our economy, we must empower all of our nation's workers, especially those who got shut out in the past.

We advance all our goals now from a position of strength. The Inflation Reduction Act will not only lower costs for working families; it's also going to create good jobs for years to come. America's workers — diverse and determined — are going to win our clean energy future.

Every recovery has a lesson to teach. Here's one for this Labor Day: Never bet against America's workers.

*Martin J. Walsh was sworn in as the 29th U.S. Secretary of Labor on March 23, 2021.*



**Martin J. Walsh**

## Send a letter to the News-Leader

The News-Leader would like to remind the public and our readers that responsible letters to the editor on subjects of interest to our readers are encouraged.

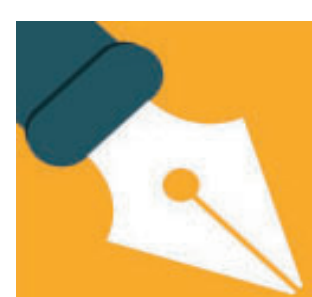
Letters to the editor

must abide by the guidelines that you will find at the bottom of this page. Those that want to make their voice heard can send their letters via email to [news@rochelle-news-leader.com](mailto:news@rochelle-news-leader.com), in the mail to PO Box 46, Ro-

chelle, IL 61068 or drop them off at 211 Illinois Route 38 East, Rochelle, IL 61068.

Questions about letters to the editor? Call 815-561-2151.

**Jeff Helfrich**  
Managing Editor



### How to contact government officials

U.S. Con. Adam Kinzinger  
1218 Longworth HOB  
Washington, D.C.  
20515  
(202) 225-3635

IL Sen. Brian Stewart  
M104A State House  
Springfield, IL 62706  
(217) 782-0180

IL Rep. Tom Demmer  
314 Capitol  
Springfield, IL 62706  
(217) 782-0535

Have a letter you want to submit to us? Send it to [news@rochelle-news-leader.com](mailto:news@rochelle-news-leader.com)

### KEEPING YOU IN TOUCH WITH YOUR LOCAL LEADERS

\* Denotes Chairman/President

**Rochelle City Council**  
\*John Bearrows [jbearrows@rochelleil.us](mailto:jbearrows@rochelleil.us)  
Kathryn Shaw-Dickey [kshaw-dickey@rochelleil.us](mailto:kshaw-dickey@rochelleil.us)  
Bil Hayes [bhayes@rochelleil.us](mailto:bhayes@rochelleil.us)  
Rosaelia Arteaga [rarteaga@rochelleil.us](mailto:rarteaga@rochelleil.us)  
Dan McDermott [dmcdermott@rochelleil.us](mailto:dmcdermott@rochelleil.us)  
Tom McDermott [tmcdermott@rochelleil.us](mailto:tmcdermott@rochelleil.us)  
John Gruben [jgruben@rochelleil.us](mailto:jgruben@rochelleil.us)

**Rochelle Elementary School Board**  
\*Dave Casey [dcillini94@gmail.com](mailto:dcillini94@gmail.com)  
Steve Builta [sbuilt@gmail.com](mailto:sbuilta@gmail.com)  
Ashley Jackson [ajackson@d231.rochelle.net](mailto:ajackson@d231.rochelle.net)  
Stephanie White [swhite@d231.rochelle.net](mailto:swhite@d231.rochelle.net)  
Eric Van Hise [eric.vanhise@gmail.com](mailto:eric.vanhise@gmail.com)  
Trisha Vaughn [jrvtlv02@msn.com](mailto:jrvtlv02@msn.com)  
Javier Zepeda [jzepeda@rthsd212.org](mailto:jzepeda@rthsd212.org)

**Rochelle Township High School Board**  
\*Tom Huddleston [tom.huddleston@rthsd212.org](mailto:tom.huddleston@rthsd212.org)  
Carol Hayenga [carol.hayenga@rthsd212.org](mailto:carol.hayenga@rthsd212.org)  
Bill Ravnaas [bill.ravnaas@rthsd212.org](mailto:bill.ravnaas@rthsd212.org)  
Jacky Aguilera [jacky.aguilera@rthsd212.org](mailto:jacky.aguilera@rthsd212.org)  
Jeff Tilton [jeff.tilton@rthsd212.org](mailto:jeff.tilton@rthsd212.org)  
Bobby Chadwick [bobby.chadwick@rthsd212.org](mailto:bobby.chadwick@rthsd212.org)  
Brian VanVickle [brian.vanvickle@rthsd212.org](mailto:brian.vanvickle@rthsd212.org)

**Flagg-Rochelle Park Board**  
Brent Carmichael [bcarmichael@rochelleparkdistrict.org](mailto:bcarmichael@rochelleparkdistrict.org)  
John Dobbs [jdobbs@rochelleparkdistrict.org](mailto:jdobbs@rochelleparkdistrict.org)  
Dale Wells [dwells@rochelleparkdistrict.org](mailto:dwells@rochelleparkdistrict.org)  
\*Tim Hayden [thayden@rochelleparkdistrict.org](mailto:thayden@rochelleparkdistrict.org)  
Jodie Hart [jhart@rochelleparkdistrict.org](mailto:jhart@rochelleparkdistrict.org)  
Joe Lenkaitis [jlenkaitis@rochelleparkdistrict.org](mailto:jlenkaitis@rochelleparkdistrict.org)

**Ogle County Board Dist. 3**  
Lloyd Droegge [ldroegge@oglecounty.org](mailto:ldroegge@oglecounty.org)  
Dan Miller [dmiller@oglecounty.org](mailto:dmiller@oglecounty.org)  
Greg Sparrow [gsparrow@oglecounty.org](mailto:gsparrow@oglecounty.org)

**Ogle County Board Dist. 4**  
Bruce McKinney [bmckinney@oglecounty.org](mailto:bmckinney@oglecounty.org)  
Skip Kenney [skenney@oglecounty.org](mailto:skenney@oglecounty.org)  
David Williams [dwilliams@oglecounty.org](mailto:dwilliams@oglecounty.org)

**Creston Village Board**  
Wayne Williams [jwdw13@yahoo.com](mailto:jwdw13@yahoo.com)  
Jennifer Payton  
\*Tom Byro [tommyb\\_47@yahoo.com](mailto:tommyb_47@yahoo.com)  
Greg Hopkins [ghopkins522@comcast.net](mailto:ghopkins522@comcast.net)  
Steve Katzman [skatzman@essex1.com](mailto:skatzman@essex1.com)  
Mike Kerns [ac.kerns@comcast.net](mailto:ac.kerns@comcast.net)  
Mark Hibshman  
Curt Ward [caward92@comcast.net](mailto:caward92@comcast.net)

**Hillcrest Village Board**  
\*Randy Salsbury [rsalsbury@hillcrestil.us](mailto:rsalsbury@hillcrestil.us)  
Pam Pittman [ppittman@hillcrestil.us](mailto:ppittman@hillcrestil.us)  
Dan Potter [dpotter@hillcrestil.us](mailto:dpotter@hillcrestil.us)  
Richard Rhoads [rrhoads@hillcrestil.us](mailto:rrhoads@hillcrestil.us)  
Tim Ball [tball@hillcrestil.us](mailto:tball@hillcrestil.us)  
Renee Kerwin [rkerwin@hillcrestil.us](mailto:rkerwin@hillcrestil.us)

**Flagg Township**  
\*Bob Withrow [flaggtwp@rochelle.net](mailto:flaggtwp@rochelle.net)  
Joanna Patrick [scanlan@comcast.net](mailto:scanlan@comcast.net)  
Susan Rothenberger [assessor@rochelle.net](mailto:assessor@rochelle.net)  
Scott Seebach [scottseebach@gmail.com](mailto:scottseebach@gmail.com)  
**Board of Trustees**  
Lance Noggle [noggle62@gmail.com](mailto:noggle62@gmail.com)  
Eric Gruben [egruben@comcast.net](mailto:egruben@comcast.net)  
Susan Hagar [susanhager303@comcast.net](mailto:susanhager303@comcast.net)  
Jim Kenney [jimk@rocketsupply.com](mailto:jimk@rocketsupply.com)

**Flagg-Rochelle Library**  
\*Jaqueline Dickow [dickow@comcast.net](mailto:dickow@comcast.net)  
Teresa Haggstad [haggstad@comcast.net](mailto:haggstad@comcast.net)  
Michael Scanlan [nicoloff118@comcast.net](mailto:nicoloff118@comcast.net)  
Lanning Nicoloff [alwayslefty2@gmail.com](mailto:alwayslefty2@gmail.com)  
Sheri Klindera [nit1prl22@yahoo.com](mailto:nit1prl22@yahoo.com)  
Susan Sevedge  
Darci Waltrip [doobs12@comcast.net](mailto:doobs12@comcast.net)

### LETTERS TO THE EDITOR POLICY

The Rochelle News-Leader encourages responsible letters to the editor on subjects of interest to our readers. Editing may be necessary for space, clarity or to avoid obscenity or libel, but ideas will not be altered. All letters must bear the handwritten signature of the writer and include address and phone number or e-mail address for verification purposes. Neither the street address nor phone number will be printed. Letters should be typed or legibly

handwritten, and no anonymous letters will be published. Any letters from boards or organizations must include at least one name of an individual. Any criticism of public officials should be limited to issues related strictly to their position or actions made in office, as personal attacks will not be published. Letters involving private disputes between the writer and a business will not be published. Political endorsements will be published,

however letters from candidates endorsing themselves will not be printed. Letters may be dropped at the News-Leader office (211 IL Route 38 East), mailed to the News-Leader (P.O. Box 46, Rochelle, IL 61068) or e-mailed ([news@rochellenews-leader.com](mailto:news@rochellenews-leader.com)). The News-Leader reserves the right to edit or reject any letter to the editor for any reason, and letters chosen for publication do not necessarily reflect the views of this newspaper.



# COMMUNITY



## American Legion, Rochelle VFW brave the rain at car show

Despite the heavy rain at the Lincoln Highway Festival Car Show, the Pledge of Allegiance proceeded on schedule. Shown preparing for the ceremony from left to right: Paul Hardcastle (junior vice-commander, American Legion Post 403), David Palmer (announcer), Joe Drought (commander, VFW Post 3878) and John Gruben (commander, American Legion Post 403).

## Birthdays & Anniversaries

<b>Sept. 4</b> Jeff & Michelle Larsen (anniversary) Micah Coffman <b>Sept. 6</b> Melissa Villalobos Greg & Liz Danekas (anniversary) <b>Sept. 7</b> Kyleigh-Ann McPherson <b>Sept. 9</b> Georgia Rogers <b>Sept. 11</b> Melinda Pourchot Sam Oymaian Wyatt Sexton <b>Sept. 12</b> Ianna Smith	<b>Sept. 14</b> Alivia Law Blakely Avila <b>Sept. 15</b> Emily Lopez Robert Lee <b>Sept. 17</b> David Jones Jenny Rosenbach Richard & Beverly Hermann (anniversary) <b>Sept. 18</b> Amie Eggenburg Terry & Teresa Dodillet (anniversary) <b>Sept. 19</b> Leland & Lucy Hazlip (anniversary)	Madison Wooten <b>Sept. 20</b> Jon & Carolyn Bieck (anniversary) <b>Sept. 22</b> Krew Sullivan <b>Sept. 23</b> John Worley Chris Doering Jeff & Diana Dickey (anniversary) <b>Sept. 28</b> Ashley Burger <b>Sept. 29</b> Josh Walker Sarah Kulwicki Lyndsey OBrien
--	---	--

Call 815-561-2151 to submit names for birthdays and anniversaries



# Coffee Break

**MAGIC MAZE**

GNKIFCZWURPMJHE  
CZXUSQNLJGECZXV  
TORPNLJHECRLAYW  
VTNSSYRPNELLKIG  
ECBIREHCNOVAKZX  
WUWRTASIRAPVOML  
JEEIGNERRIMUEDB  
LPAYXRAPWUADNOF  
T**PLUMMER**SSKOORB  
SQNOTSINALOPPOC  
PONLRELLITSKJHG

Find the listed words in the diagram. They run in all directions forward, backward, up, down and diagonally  
Unlisted clue hint: CARL AND ROB —

Aniston	Duvall	Mirren	Spears
Brooks	Fonda	Novak	Stiller
Cher	Goodman	Perry	Tarantino
Coppola	Lewis	Plummer	

**FOOTPRINTS AT GRAUMAN'S CHINESE THEATRE SINCE 2010**

Answers:

RELLITS  
NOTSINALOPPOC  
PLUMMERSSKOORB  
ADNOF  
NERIMU  
V  
A  
K  
L  
CHNOVAK  
NSV  
L

**FOOTPRINTS AT GRAUMAN'S CHINESE THEATRE SINCE 2010**

## Super Crossword

GIFTS OF THE YEAR

**ACROSS**

1 First scale syllables  
7 Gyrilling tool  
11 Arid expanse in Mongolia  
15 Move like a grasshopper  
19 "Not Afraid" rapper  
20 Affirmation of self-ability  
21 De-wrinkle  
22 Giant fair  
23 Stocks and shares [1st]  
25 Stand-up comedian Richard  
26 Super serves  
27 Low digit  
28 Play starter  
29 American robin's close relative [5th]  
31 Figure on a kid's toy battleground [10th]  
35 Revolutionary War mercenaries  
36 Wed. follows it  
37 Yellow-disked flower  
39 "Zine  
40 Canon camera line  
43 Rapping noise

47 She sang "Don't It Make My Brown Eyes Blue" [15th]  
51 Online selling  
52 Driver's license, SSN, etc.  
55 Determined to accomplish  
56 Living space  
57 1988-91 war drama series [20th]  
60 Earth's heater  
61 Bluegrass fiddler Alison  
62 Longtime ISP option  
63 Laundry receptacle  
65 &&&&  
66 "Hey, over here ..."  
68 Tree of eastern North America [25th]  
72 Lid fastener  
76 Infamous  
78 Very small minority  
80 Mineral spring  
81 Taxi driver  
84 Angry

87 Small, pungent pickling vegetable [30th]  
89 Player's top effort, informally  
90 Literary leaf  
92 Part of IPA  
93 Slow a car down  
94 Dorothy's magical shoes [40th]  
97 Filleted  
99 Cough up  
100 Low digit  
101 Rascalion  
104 PC key abbr.  
105 Daughter of JFK  
109 Half-million-selling album [50th]  
114 Mae West play [60th]  
116 "Dies —" (hymn)  
117 Dog coater  
118 "Eso Beso" singer Paul  
119 Revered sort  
120 Occasion associated with the starts of 10 answers in this puzzle  
124 Salt Lake City NCAA team

125 Soothe  
126 Profit  
127 Actor Steven  
128 Work honcho  
129 Deli breads  
130 Possesses  
131 Attractive

**DOWN**

1 Bus station  
2 Neighbor of a Yemeni  
3 Get mature  
4 Ending for propyl  
5 Sea, to Henri  
6 "— big boy now"  
7 Glutinous  
8 Cold drink, informally  
9 Like biting writing  
10 U.S. Navy off.  
11 Toy for a boy, traditionally  
12 Longtime cookies  
13 Bail provider  
14 Part of IPO  
15 Find out  
16 "How rude!"  
17 Gorillas, e.g.  
18 Opulent  
24 Tearful  
29 "As a matter of fact, I do!"  
30 Hollow-eyed  
32 Sully  
33 Ban

34 Grazing area  
38 Near-grads: Abbr.  
41 Part of 122-Down  
42 Beholds  
43 Quick review  
44 Eldest  
45 Kite features  
46 Has a link (with)  
48 Actor Erwin  
49 Whole lot  
50 Disconcert  
53 Author Roald  
54 1976-81 skit series  
58 Sink bowl  
59 Color shade  
61 Get down to propose  
64 "It's freezing!"  
65 Filmmaker  
67 Singer  
69 See 70-Down  
70 With 69-Down, tourist's printed guide  
71 Ring, as bells  
73 Nepali, e.g.  
74 Said words  
75 Sectioned, as a window  
77 Conductor  
79 Teeter  
81 Be a kvetch

82 Juan's water  
83 Sweetums  
84 Swabby's tool  
85 High mount  
86 Semi fuel  
88 College org. for sailors-to-be  
90 Occasion for unrestricted amusement  
91 Tolkien terror  
95 More silly  
96 Eastern Michigan city  
98 Corn serving  
102 "Top o' the — to ya!"  
103 Prairies, e.g.  
106 Accrue  
107 "Victory is yours"  
108 Brother on "Frasier"  
110 Actor Patel of "Lion"  
111 No longer a minor  
112 Countryish  
113 In a deadpan manner  
114 Smear on, as paint  
115 Crazy about  
120 Past  
121 PC key abbr.  
122 Speed Wagon maker  
123 Golfer Snead

**HOCUS-FOCUS**

BY HENRY BOLTINOFF

Find at least six differences in details between panels.

Differences: 1. Bow is smaller. 2. Bat is moved. 3. Cake is different. 4. Cap is reversed. 5. Shirt is different. 6. Sneaker is different.



# LOCAL NEWS



(PHOTO BY JEFF HELFRICH)

A “great unknown” for District 231 and the situation of May School is what the state’s approach and/or mandates will be in regard to expansion of birth to 5-year-old preschool options for communities, Superintendent Jason Harper said.

## MAY: Harper discusses future of school building

From page 1

“In the event that school districts must provide services for all students older than 3 years old, we will need more space as our current footprint of Stepping Stones Preschool cannot accommodate more students at this time,” Harper said. “If the state comes back and says we must expand our birth-to-five-year-old services, then right now we’d have to totally take another look at how we’d set everything up in our district. That’s why this birth-five-year-old or preschool potential change in the future becomes a major concern to us.” Harper said the district has not been told by the state about what is to come. “We know that funds were passed at the federal level and typically those funds then flow to the state level on however the federal government decides that’s going to work,” Harper said. “And then from the state it flows

into our communities. Are those going to be things that we must do? We must provide school and transportation and those types of things for every student as part of compulsory education. If that age drops down, that means we need to service more students. If we’re servicing more students, we need more staff and classrooms.” Harper said he’s not sure what the elementary school district’s model would look like if the preschool expansion changes were to occur. Unknowns include whether there would be a mandate or optional approach along with what funding will be tied to the changes. “We’re waiting to learn more,” Harper said. “I’m not saying May School is going to become the new preschool. I’m just saying that in our current approach to having three buildings cover preschool all the way up to fifth graders, we’re just going to need to reexamine what the next-

best approach will be if we need to expand the number of students we’re serving.” The district continues to hold onto May School building because it gives it options in the future, especially a future with “so many unknowns,” Harper said. The current costs to the district related to May School include “basic maintenance” of the building. In closing it and shifting to the attendance center model, the district avoided costs such as having another principal and staff associated with an operational school. “We continue to maintain the building so it’s a viable option for the future,” Harper said. “For both districts, we continue to want to serve as many students as we can. It’s no secret that our enrollments in both districts have gone down in the past decade. If they were to go up, we’d welcome that. We continue to want to serve as many students as we can.”

### The 2023 From The Heart Cash Calendars are NOW AVAILABLE!!

The proceeds of the sale of the calendars benefit our From The Heart recipients: Pegasus Special Riders, Rochelle Christian Food Pantry, HOPE, Focus House, Shining Star Children's Advocacy Center, CASA, Rochelle Area Community Foundation, Hub City Senior Center & Rochelle Rotary.

**OUR CHARITIES NEED OUR SUPPORT NOW MORE THAN EVER!**

For Just \$20 you have a chance to be one of **365 DAILY WINNERS TOTAL CASH PRIZES \$18,250** PLUS Each Calendar Has VALUABLE LOCAL COUPONS

### Here are 3 Ways to Purchase Your 2023 From The Heart Cash Calendar!

- **ONLINE:** Go to <http://fromtheheartrochelle.org> and click on **CASH CALENDARS**. Once the calendar is purchased we will mail it out to you! Shipping and processing fees will be added to cost.
- **IN PERSON:** You can pick up a 2023 From The Heart Cash Calendar **TODAY** at the following locations:  
In Rochelle at: First State Bank, Stillman Bank, HOPE Chest, Dimond Bros. Insurance and Hub City Senior Center  
In Oregon at: Merlin's  
In Dixon at: Shining Star
- **BY MAIL:** Fill out the form below and send it in to us and we will mail a 2023 From The Heart Cash Calendar to you! Shipping fees are added to cost.

**YES! Send me my 2023 From The Heart Cash Calendar!**  
(Please Print)

NAME: \_\_\_\_\_

ADDRESS: \_\_\_\_\_

CITY, STATE, ZIP: \_\_\_\_\_

PHONE: \_\_\_\_\_

NUMBER OF CALENDARS: \_\_\_\_\_

Clip and mail this form along with \$23 (\$20 per calendar plus \$3 per calendar postage) to:  
Rotary Calendar, PO BOX 372, Rochelle, IL 61068



## VOTE TODAY!

# OVER 17,000 VOTES CAST TO DATE!!

\* 1 VOTE PER EMAIL ADDRESS



SCAN TO VOTE NOW



Voting Ends  
Thursday, September 15th

☒ **Vote for Your Favorite Business**

☒ **Vote for Your Favorite People**

### CORE SPONSORS





BO2022





# VOTE NOW!

Vote until Sept. 15, 2022 . One vote per email address.

## BEST OF OGLE COUNTY 2022



# Anderson Plumbing is Now Hiring an Experienced HVAC Tech

Great Pay & Benefits

## ANDERSON PLUMBING & HEATING, INC.

621 First Ave., Rochelle, IL • 815-562-8784

RTHS Boys Soccer

# Hubs shut out Plano

Casillas, Salazar score twice as Rochelle opens conference slate with 7-0 win

BY RUSSELL HODGES  
SPORTS EDITOR

**PLANO** — Junior forward Diego Salazar has been an offensive catalyst for the Rochelle Hub varsity soccer team this season. The left-footed striker found the net twice on Monday, when the Hubs battled the Plano Reapers in search of their first Interstate 8 Conference win of the fall.

Five different athletes scored goals for the Hubs, who turned in a strong first half and cruised to a 7-0 win over the Reapers to kick off the conference slate with a victory. Sophomore forward Alberto Casillas scored twice in the win, while freshman forward Kevin Orozco, freshman midfielder Heilly Zepeda and sophomore forward Fernando Diaz each added one goal. Rochelle (3-2, 1-0 Interstate 8) continued its conference schedule with a home match against Sandwich on Wednesday. “It feels good to earn our first conference win,” Salazar said. “We played well as a team and we moved the ball well. We communicated well with each other and we need to continue that communication so we can keep sending through balls to the top and keep our offense rolling.”

The Hubs outshot Plano 29-11 and 21-10 in shots on goal. Rochelle controlled the match from the opening kick, with senior midfielder Jared Montano assisting Salazar in the first minute to give the Hubs a 1-0 advantage. Rochelle extended its lead during the 10th minute, where senior midfielder Jace Whitehead connected with Casillas for the first of his two goals. Montano recorded his second assist in the 18th minute, hitting Zepeda for a goal to put the Hubs up 3-0.

“I think we have a more talented team than we did last season,” Salazar said. “We have more size and we have more confidence in each other. We aren’t afraid to be ourselves and we’re confident that we can win. We need to continue to be better in the middle so our defenders can bring the ball up more often and we can hit on more through balls on the offensive end.”

Goals from Casillas and Salazar in the 23rd and 24th minutes, or assists from Salazar and Orozco, propelled the Hubs to a 5-0 halftime lead. Rochelle iced the win in the second half, where Diaz and Orozco struck on unassisted goals to seal the road victory. Senior keeper Jarret Milan finished with seven saves.



(PHOTO BY RUSSELL HODGES)  
**Freshman midfielder Heilly Zepeda (right) battles Plano’s Anthony Vitro for the ball during the Rochelle Hub varsity soccer match against the Reapers on Monday. Rochelle shut out Plano 7-0.**

RTHS Volleyball

# Defense fuels comeback effort against Oregon

## Lady Hubs rally to secure 25-20, 27-25 nonconference victory over Hawks

BY RUSSELL HODGES  
SPORTS EDITOR

**ROCHELLE** — With the Oregon Hawks only one point away from sending Tuesday evening’s varsity volleyball match into a third set, senior Isela Vasquez and the Rochelle Lady Hubs rallied together and turned around a tremendous comeback to clinch their first home win this season.

Trailing 24-19 late in the second set, Rochelle found a sideout to put Vasquez behind the service line in a must-score situation. The senior delivered a series of strong serves, pressuring the Oregon defense into multiple free balls that the Lady Hubs turned into points, ultimately resulting in an 8-1 Rochelle run that allowed the Lady Hubs to secure the match 25-20, 27-25.

“We all went into the middle and told each other that we could do this,” Vasquez said. “We knew we had to shake the last one off and focus on getting the next point. It feels really nice to win our first home match of the season. Serving has definitely been a point of emphasis for us

this season. We take about 20 minutes in each practice to focus on serving and serve-receives.”

Rochelle (2-2-3, 0-0 Interstate 8) held a 13-10 advantage early in the first set before the Hawks scored six consecutive points to take over control and force a timeout from the Lady Hubs. With Vasquez and sophomore Dempsey Atkinson on the serve, Rochelle quickly turned the first set around, stringing together a 12-4 run to win the set. Atkinson finished with three digs and two service aces in the match, while Vasquez recorded a team-leading 10 digs in the victory.

“I’ve been really focusing on reading the hitters and finding the seam between the hitters and my blockers,” Vasquez said. “I want to stay on my toes and I want to be sure I’m there if the ball comes through the block. I think our team has a chance to win a lot of matches this season. We all get along well with each other and our relationships outside of practice have helped a lot.”

With senior libero Macy Ramos on the serve, Rochelle snuck ahead mid-



(PHOTOS BY RUSSELL HODGES)  
**The Rochelle Lady Hub varsity volleyball team defeated Oregon 25-20, 27-25 at home on Tuesday. At left, senior Isela Vasquez passes the ball forward. At right, senior Payton Hale readies a serve.**

way through the second set, snapping a 9-9 tie with four unanswered points to force an Oregon timeout. Hitting errors proved costly for the Lady Hubs late in the second set, as the

Hawks managed to rally for an 8-2 run that required Rochelle to use two timeouts. The Lady Hubs found their offense near the end of the set, however, with sophomore Taelynn Rode-

ghero (five total kills) and senior Addie Friestad (four total kills) delivering key strikes from the outside to help secure the match.

Sophomore Ali Ohlinger totaled 11 assists

and senior Payton Hale led the front line with three blocks. The Lady Hubs continued nonconference play with a home match against Stillman Valley on Thursday.





The businesses featured on this page are  
**"Hubs Super Fans"**  
 They proudly support our local athletes and students.



Please show your appreciation by patronizing their businesses.

**WE SUPPORT OUR HUBS!**

## HUB SPOTLIGHT

### Gould continuing basketball career at Judson University

BY RUSSELL HODGES  
SPORTS EDITOR

**R**EBOUNTING and athleticism on defense are how former Rochelle student-athlete Seth Gould earned his starting role with the Kishwaukee College men's basketball team this past season. Gould will look to take on a similar role when he continues his academics and his basketball career at Judson University in Elgin. Gould intends to study health promotion and performance.

"I chose Judson because it's a great university and the style of play they run will be great for me," Gould said. "I love the game of basketball and I want to continue playing as long as I can. I'm looking forward to seeing how I contribute to the team and building new relationships."

Gould appeared in 28 games with 25 starts for the Kishwaukee College team this past season, averaging 5.6 points, 5.2 rebounds, 2.5 assists and 1.3 steals per game for the Kougars. His highlights include a do-it-all effort against Wilbur Wright College on Feb. 22, when the RTHS alum totaled six points, five steals, four rebounds and four assists in a 68-52 Kougars victory.

"Playing at Kishwaukee College was an amazing experience," said Gould, whose older brother Caleb played for the Kougars and whose older sister Abby played for Judson University. "I received great coaching which has prepared me for the next level of basketball. Our coach really changed how I look at the game and how I play the game. I felt that I did really well playing defense and doing the little things at Kishwaukee College and I'm hoping that I can improve on becoming more reliable in those areas with the Judson University team."

Gould exceeded double digits in scoring three times during the 2021-22 season at Kishwaukee College, recording a season-best 11 points against Olive-Harvey College on Jan. 22. The former Hub basketball standout compiled a season-best 11 rebounds against Illinois Valley Community College on Jan. 18 and dished out a season-best six assists against Black Hawk College on Feb. 1 and Kennedy-King College on Feb. 19. Gould shot just under 41 percent from the field.

"We are excited to have Seth on the team this season," Judson University head coach Bruce Fields said. "His character, leadership and experience will be a great



(PHOTO COURTESY OF KISHWAUKEE COLLEGE)

**Former RTHS and Kishwaukee College student-athlete Seth Gould will continue his basketball career and his academics at Judson University in Elgin.**

addition to our team's culture and what we are looking to achieve."

Gould was also recognized for his academic achievement during his time at Kishwaukee College. The RTHS alum was named to the Arrowhead Conference Bob Bopp Academic Excellence Team and was a regular participant in various student activities and clubs.

"Seth is a competitor who has a fantastic feel for the game," Kishwaukee College head coach Joe Conroy said. "Defensively he can guard any position and on offense is an excellent rebounder and finisher around the basket."

"I chose Judson because it's a great university and the style of play they run will be great for me. I love the game of basketball and I want to continue playing as long as I can. I'm looking forward to seeing how I contribute to the team and building new relationships."

**Seth Gould**

**GO HUBS!**



#### ANDERSON Plumbing & Heating, Inc.

Plumbing, Heating, Air Conditioning,  
Drinking water systems, Water Heaters,  
Softeners, Iron Filters & More.

**LENNOX**

Since 1976 One less thing to worry about  
Like us on Facebook  
Lic# 055-013999 **621 First Ave., Rochelle**  
**815-562-8784**



Hello,  
neighbor!

Huber Leo and Fin Svec Inc.  
Shane B Huber, Agent  
1211 Currency Ct  
Rochelle, IL 61068  
Bus: 815-562-7011

Please stop by and say, "Hi!"  
I'm looking forward to serving your needs for insurance and  
financial services.  
Like a good neighbor, State Farm is there.  
**CALL ME TODAY!**

**State Farm**

1001013.1 State Farm, Home Office, Bloomington, IL

#### DLX Medical GROUP

Caring for your  
family's health from  
infant to adults.



Diana Alaris, MD  
Accepting  
New Patients

For appointment, please call

**815-227-9594**

1212 Currency Ct, Rochelle, IL 61068  
Most Insurance Accepted

Local People Providing Local Service



Water • Waste Water  
Electric • Communications

Phone: 815-562-4155 333 Lincoln Highway  
Fax: 815-562-5861 Rochelle, IL

**www.rmu.net**

#### CENTRAL ILLINOIS LOAN

Loans For All Your Needs  
Auto • Home Improvement • Vacation

Jami Hackman

**815★561★4035!**

310 Eagle Drive, Rochelle  
All loans subject to our normal credit requirements and policies.



If you can dream it, we can build it.



Rochelle Sales Office • Hwy. 251 N. • 877-613-3050

#### Rochelle Community Hospital

Your Local Healthcare Resource.

900 N. 2nd Street, Rochelle  
815-562-2181

**www.rochellehospital.com**



209 Powers Road, Hwy 251 N  
Rochelle, IL 61068  
(815) 562-8792

**www.meyersfurniture.com**



Residential & Commercial Roofing  
• Shingled Roofs  
• Flat Roofs  
• Metal Roofs For Farm Facilities  
• Custom Built Homes  
• Additions

Tim & Roger  
Bruns, Owners  
Established 1997 **815-561-0099**  
Licensed & Insured

#### Rochelle Chiropractic Clinic

Dr. Chad M. Piller



227 E. Rt 38 • Rochelle, IL

**815-562-8706**

**www.rochellechiropractic.com**

Now Accepting New Patients!

#### JOHNSON TRACTOR

SALES • PARTS • SERVICE

200 Steward Road

**800.262.1680**

**www.johnsontractor.com**

#### AtlasAuto

BUY HERE - PAY HERE  
You Work - You Drive

Se Habla Español **815-562-7433**

1400 N 7th St  
Corner of Flagg Rd & Hwy 251 N

#### HUB-REMSEN

101 Maple Ave • Rochelle, IL 61068

815.562.7057 • **hub-remsen.com**

**GO HUBS!**



"Proudly Serving The Rochelle Area Since 1945"

#### Berg-Johnson Electric

Residential • Commercial • Industrial

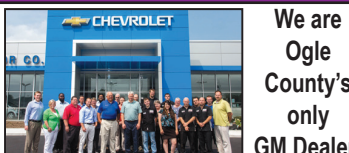
**FREE ESTIMATES**

Licensed and Insured

24 Hour Emergency Service

**815-562-4937**

500 Cleveland Avenue



We are  
Ogle  
County's  
only  
GM Dealer!

- Collision Repair
- 24 Hour Towing
- New/Preowned Vehicles
- Tires, Alignments, Brakes, Batteries
- Rental Cars
- Maintenance On All Makes and Models

#### JEFFPERRY

CHEVROLET • BUICK • CADILLAC • JEEP • CHRYSLER

**815-562-8787 • www.jeffperrychevrolet.com**

**Busy Schedule?**  
Leave the cooking to us.

- Large menu of foods
- Rochelle's famous chicken by the dinner or bucket
- Hand dipped ice cream (16 flavors)

**COUNTRY SCHOOL**  
DRIVE-IN RESTAURANT  
251 N. ROCHELLE • 562-6039

We're tuned in to your  
financial needs!

- Six locations
- 25,000+ ATMs across the U.S.<sup>1</sup>
- Free checking account options including Student Checking
- Stillman Mobile App featuring mobile deposit<sup>2</sup>
- Free Pre-approvals
- Local lenders, local decisions

**Stillman**  
BANK

Earning Your Trust For 135 Years

**www.stillmanbank.com**

ATM must be a part of the MoneyPass Network. Funds are verified. A \$3.50 fee will apply to each mobile check deposit. Certain state rules may apply. Check with your provider for details.

**562-3312**

Dine-in • Carry-out

Taste the difference **Alfano's**  
Pizzeria and Italian Restaurant

Two for Tuesday  
2 Large, 2-Topping  
**PIZZAS \$24.99**  
(With Coupon)

1115 Turkington Terrace  
Rochelle, Illinois  
Beer & Wine Dine In Only



# SPORTS

RTHS Volleyball

## Third-set surge pushes Lady Hubs past Stillman Valley

### Late 12-3 run secures 22-25, 25-22, 25-13 nonconference win over Cardinals

BY RUSSELL HODGES  
SPORTS EDITOR

**ROCHELLE** — A 12-3 run near the end of the third set allowed the Rochelle Lady Hub varsity volleyball team to close out a competitive match against Stillman Valley on Thursday.

With senior Addie Friestad on the serve and senior middle blocker Payton Hale stopping multiple shot attempts at the net, Rochelle surged ahead after gaining a slim lead midway through the third set, finishing strong in a 22-25, 25-22, 25-13 win over the Cardinals. The Lady Hubs (3-2-3, 0-0 Interstate 8) hung tough

on defense, with Hale and sophomore Dempsey Atkinson each totaling 13 digs. Rochelle recorded only five reception errors on 53 attempts.

“We’ve been working hard all week and it feels good to pull out this win, even though we struggled during the beginning,” senior libero Macy Ramos said. “We’ve been working on our defense a lot and it’s been showing during our matches. I think we’ve really improved in that area and I think we’re going to continue getting stronger in that area as the season progresses.”

The Lady Hubs had an opportunity to take the first set, stringing together

a 7-1 run in which Ramos recorded two service aces to erase a four-point Stillman Valley lead. The Cardinals excelled at finding the open space, however, using soft touches to keep the Rochelle defense off balance and close the opening set on an 11-6 run that saw the Lady Hubs burn two timeouts.

Rochelle started strong again in the second set, where Atkinson took the serve and rallied off five service aces to fuel an 8-2 run. Despite two short runs where the Cardinals scored on hitting errors from the Lady Hubs, Rochelle’s front line ultimately came through, with Friestad delivering

multiple key kills to seal the set win. Friestad led the offense with 11 kills in the win, while sophomore Taelynn Rodeghero totaled 10 kills. Sophomore Ali Ohlinger dished out 28 assists.

“I think we have a very good team this season and I think we can go very far,” Ramos said. “We have a promising future together. We work together well and we’ve found our chemistry quickly.”

Rochelle will host the Lady Hub Varsity Invitational this weekend before beginning the Interstate 8 Conference schedule with a home match against Plano on Tuesday, Sept. 6 at 6 p.m.



(PHOTO BY RUSSELL HODGES)  
**Senior Macy Ramos passes the ball during the Rochelle Lady Hub varsity volleyball match Thursday.**

RTHS Boys Soccer

## Rochelle offense explodes in win over Sandwich

### Orozco, Salazar score three times as Hubs cruise to 11-2 conference victory

BY RUSSELL HODGES  
SPORTS EDITOR

**ROCHELLE** — There was little that could hold back the Rochelle Hub varsity soccer team’s offense from a dominant performance on Wednesday, when six players found the net and two players recorded hat tricks in a decisive Interstate 8 Conference win over the Sandwich Indians.

Junior forward Diego Salazar and freshman forward Kevin Orozco each scored three goals for the Hubs, who controlled the match from the first kick and saw several reserves earn playing time in an 11-2 win. It’s the first time Rochelle (4-2, 2-0 Interstate 8) has scored at least 10 goals in a game since the Hubs defeated Ottawa 10-0 in the conference tournament on April 12, 2021.

“I think we’re starting off really strong and I think we have better things to come in the future,” sophomore defender Bryan Garcia said.

“Our chemistry has really improved and we’ve been working on different scoring techniques during practice. I think we have a really good team this season. We have players with a lot of skills and I think we can go pretty far this season.”

The Hubs controlled the ball for nearly the entire match, outshooting the Indians 19-2 and 13-2 in shots on goal while earning five corner kicks. Sophomore forward Alberto Casillas scored two goals in the win, finding his first in the opening minute before scoring again in the sixth minute on an assist from Salazar. Senior midfielder Jace Whitehead rolled a through ball to Salazar during the 11th minute for the first of his three goals to give Rochelle a 3-0 advantage.

Orozco and Salazar connected for a goal in the 16th minute, with the freshman setting up the junior to put the Hubs ahead 4-0. Rochelle continued to fire shortly after, with freshman

midfielder Heilly Zepeda assisting Salazar for his third goal during the 17th minute. Unassisted goals from Orozco in the 25th and 37th minutes helped Rochelle earn a 7-1 halftime lead.

With Rochelle ahead 7-2 late in the second half, Garcia moved forward from his usual defense position, scoring his first goal of the season in the 64th minute off an assist from senior midfielder Jared Montano. Sophomore forward Fernando Diaz found the net off a pass from senior midfielder Diego Cincire during the 69th minute, while senior defender Christian Harding blasted a ball into the Sandwich net during the 70th minute for his first goal of the season.

“It was definitely fun to score and it was all thanks to Jared with an amazing assist,” Garcia said.

Orozco completed his hat trick in the 74th minute, scoring an unassisted goal to seal the win.



(PHOTO BY RUSSELL HODGES)  
**Sophomore midfielder Adan Argueliez races Sandwich’s Ethan Rome for the ball during the Rochelle Hub varsity soccer match against the Indians on Wednesday.**

# COMMUNITY BOARD

***Need to get the word out about a product or service you offer?***

***Give us a call at 815-562-4171.***

***We can reach over 9,000 homes!***



**Gutters**

**THE SENT**  
ROOFING & SIDING CO., INC.

**SEAMLESS GUTTERS**

**ALL ALUMINUM**

- Will Not Rust, Chip Or Peel
- Most Colors Available
- Manufactured On The Job

**815-758-8998**

257 W. Stephanie Dr., Cortland  
www.thesentroofing.com

**Storage Sheds**

**Rocky Ridge Structures**

FREE Sales Rep. Evaluation At Your Site

We Deliver! From Our Lot To Your Site

We Specialize in Portable/Quality Built Storage Sheds

- Stock & Custom Design
- Many Options Available
- See Displays at 3500 S. Chana Rd. Chana IL 61015
- Call Norm or Albert for Free Literature packet
- Competitive Pricing
- Site Preparation Available

779.861.3542

**Plumbing/Heating/Cooling**

**Anderson Plumbing & Heating Inc.**  
Serving Rochelle For Over 40 Years

**LENNOX**

Quality Service-Free Estimates  
Residential & Commercial

**815-562-8784**

Lic. #058-087891

**Advertise Here**

**What Service Do You Offer?**

**562-4171**

**The Rochelle News-Leader**

**Heating & Air Conditioning**

**HULL**  
HVAC & Household Services

Furnaces - Air Conditioners - Boilers  
Duct Cleaning - Water Heaters

Air Conditioner Clean & Check

**\$50.00**

After \$35 rebate.  
Promotion only available to RMU customers.  
Expires: 08/31

Ask about duct cleaning and protecting your home's air quality.

**815-561-6551**  
www.HullHVAC.com

**Commercial & Residential Roofing**

**Bruns Construction, Inc.**

**Residential Concrete Driveways, Flatwork and Foundations**

- Shingled Roofs
- Flat Roofs
- Metal Roofs For Farm Facilities
- Custom Built Homes
- Additions

**FREE ESTIMATES**

**561-0099** Tim & Roger Bruns, Owners  
Established 1997  
www.brunsconstructioninc.com



# SPORTS

RTHS Golf

## Hubs take home match against Oregon, North Boone

### Rochelle begins Interstate 8 schedule with loss at LaSalle-Peru on Tuesday

BY RUSSELL HODGES  
SPORTS EDITOR

**ROCHELLE** — Hub senior Griffin Ohlinger earned his par on the second hole at Fairways Golf Course the hard way when the Rochelle Township High School varsity golf team hosted its triangular nonconference match against North Boone and Oregon on Wednesday evening.

After his first tee shot went out of bounds, Ohlinger re-teed on the par-3 second hole, which was playing around 130 yards during Wednesday’s meet.

With his pitching wedge in hand, Ohlinger blasted the ball directly at the flag, with the ball landing just short of the hole before bouncing forward and falling into the cup for his first-ever first-hole-in-one.

The well-earned par highlighted a team-low round of 43 as the Hubs scored 184 to beat Oregon (193) and North Boone (198).

“It was a surreal feeling,” Ohlinger said. “Hitting a hole-in-one is something that’s on my bucket list as far as things I want to do in my life. It’s not

something that happens every day and to see it happen was an amazing feeling... We’re starting to get into the rhythm of the season and we’re figuring out where we need to improve and what scores we need to shoot in order to win.”

Senior David Wanner landed one stroke behind Ohlinger, finishing his round with a 44 while senior Damen Harrington followed with a 48. The Hubs (3-5, 0-1 Interstate 8) have defeated three of their last five opponents after starting the season 0-3 and going winless last season.

“It definitely felt better to come out and win,” Harrington said. “I think it’s definitely possible for us to finish with an even record this season. We just have to continue working hard in practice. We’re definitely off to a more promising start and it’s been nice to have new players come out and contribute on varsity right away. Our goal is to knock our scores down into the lower 40s.”

The Hubs will travel this weekend to compete



(PHOTOS BY RUSSELL HODGES)

**The Rochelle Township High School golf team defeated Oregon and North Boone at Fairways on Wednesday. At left, senior Griffin Ohlinger hits from the fairway. At right, junior Cale Workman readies for a putt.**

at the Rocket Invitational in Rock Falls.

**LaSalle-Peru**  
The Rochelle Town-

ship High School varsity golf team faced LaSalle-Peru on the road Tuesday evening, falling 163-176 to start the Interstate 8

Conference schedule with a loss. Senior Griffin Ohlinger led the Hubs with a 39 and freshman Ian Metzger followed with a

44. Seniors Damen Harrington and David Wanner scored 46 and 47 to round out the top four varsity players.

RTHS Girls Tennis

## Lady Hubs dominate DeKalb for nonconference win

### Rochelle netters sweep four doubles matches in 6-1 road victory over Barbs

BY RUSSELL HODGES  
SPORTS EDITOR

**DEKALB** — The Rochelle Lady Hub varsity tennis team swept all four doubles matches in a 6-1 nonconference win over DeKalb on Wednesday. Rochelle went 2-for-3 on the singles courts, with junior Elin Zheng defeating Aubree Judkins 6-1, 6-1 while senior Abby

Tarvestad took down Amira Shafir 6-3, 6-1. Ilanie Castorena beat Rochelle senior Sammy Sanford 6-1, 6-1 for DeKalb’s lone point in the match.

Seniors Torrin Nantz and Francesca Williams downed Margarita Ponce and Krystal Baggett 6-2, 6-4 at the No. 1 doubles court, while seniors Marisa Whaley and Bailey Jackson held off Eesha Faisal and Sa-

mantha Schwartz 6-1, 6-4 at the No. 2 doubles court. Senior Maleah Pointer and sophomore Riley Doyle finished strong in a 6-4, 6-2 win over Safiya Barahaoua and Alissa Kocjan at the No. 3 doubles court.

Junior Allie Dickey and sophomore Annaleigh McKinney completed the doubles sweep for the Lady Hubs, outlasting Nina Christopherson and Preeti

Islam 6-1, 4-6, 10-8 at the No. 4 doubles court. Rochelle (2-2, 0-1 Interstate 8) will compete at the Harlem Invitational this weekend.

**Kaneland**  
The Rochelle Lady Hub varsity tennis team faced Kaneland on the road Tuesday, falling 4-1 to start the Interstate 8 Conference schedule. Senior Abby Tarvestad scored Rochelle’s

lone point in the match, defeating Kaneland’s Annika Salchert 6-2 6-2 on the No. 2 singles court while Anelle Dominguez took down junior Elin Zheng 6-2, 6-4 at the No. 1 singles court.

The Knights took all three doubles points from the Lady Hubs (1-2, 0-1 Interstate 8) on Tuesday, with Lexi Mabery and Anna Bischoff outlasting Rochelle seniors Torrin

Nantz and Francesca Williams 3-6, 6-4, 6-4 at the No. 1 doubles court while Nola Noring and Kace Randall downed Rochelle seniors Marisa Whaley and Bailey Jackson 6-0, 6-1 at the No. 2 doubles court.

Lauren Andrews and Skylar Cadwallader took the No. 3 doubles match over Rochelle senior Maleah Pointer and sophomore Riley Doyle 6-3, 6-1.

# KICKOFF THE SEASON

## With The Best Sale of The Year

**\$100 VISA GIFT CARD**

Upon completion of appointment

**ONLY \$99 Installation\***

# LeafGuard®

## Get it. And forget it.®

\*Guaranteed not to clog for as long as you own your home, or we will clean your gutters for free

- LIFETIME NO-CLOG WARRANTY
- MADE ONSITE SPECIFICALLY FOR YOUR HOME
- THE ONLY ONE-PIECE SEAMLESS DEBRIS SHEDDING GUTTER SYSTEM.
- SCRATCHGUARD® PAINT FINISH

**SPECIAL FINANCING AVAILABLE**

**815-673-7532**

Call Today for Your **FREE Estimate!**

\*All participants who attend an estimated 60-90-minute in-home product consultation will receive a \$100 VISA Gift Card. Retail value is \$100. Offer sponsored by LeafGuard Holdings Inc. Limit one per household. Company procures, sells, and installs seamless gutter protection. This offer is valid for homeowners over 18 years of age. If married or involved with a life partner, both cohabitating persons must attend and complete presentation together. Participants must have a photo ID and be legally able to enter into a contract. The following persons are not eligible for this offer: employees of Company or affiliated companies or entities, their immediate family members, previous participants in a Company in-home consultation within the past 12 months and all current and former Company customers. Gift may not be extended, transferred, or substituted except that Company may substitute a gift of equal or greater value if it deems it necessary. Gift card will be mailed to the participant via first class United States Mail within 10 days of receipt of the promotion form. Not valid in conjunction with any other promotion or discount of any kind. Offer not sponsored and is subject to change without notice prior to reservation. Offer not available in the states of CA, IN, PA and MI. Expires 9/30/22.

# North America's #1 Selling Walk-In Tub

## Featuring our Free Shower Package

**For a limited time only** with purchase of a new Safe Step Walk-In Tub. Not applicable with any previous walk-in tub purchase. Offer available while supplies last. No cash value. Must present offer at time of purchase. **Financing available with approved credit.**

Now you can finally have all of the soothing benefits of a relaxing warm bath, or enjoy a convenient refreshing shower while seated or standing with Safe Step Walk-In Tub's **FREE Shower Package!**

- First walk-in tub available with a **customizable shower**
- Fixed rainfall shower head is **adjustable for your height and pivots** to offer a seated shower option
- High-quality tub complete with a comprehensive **lifetime warranty** on the entire tub
- Top-of-the-line installation and service, all included at one **low, affordable price**

Now you can have the best of both worlds—there isn't a better, more affordable walk-in tub!

**Backed by a lifetime guarantee.**

**Buy Now, Pay Later!**

**NO PAYMENTS FOR 18 MONTHS!\***

plus a **Free Shower Package**

**815-660-0041**

or visit **BuySafeStep.com**

\*Subject to credit approval, with the purchase of a new Safe Step Walk-In Tub or Shower. Interest is billed during the promotional period but all interest is waived if the purchase amount is paid before the expiration of the promotional period. There is no minimum monthly payment required during the promotional period. Safe Step Walk-In Tub is neither a broker nor a lender. Financing is provided through third-party lenders unaffiliated with Safe Step Walk-In Tub, LLC under terms and conditions arranged directly between the customer and such lender. All subject to credit requirements and satisfactory completion of finance documents. Any finance terms advertised are estimates only. Offer available in select markets, not available in Canada. Participating dealers only. Other restrictions may apply.



## RTHS Cross Country

**BY RUSSELL HODGES**  
SPORTS EDITOR

Junior Luis Hernandez took 56th out of 152 ath-



**Senior Yuelma Ortiz earned medalist honors at the Sycamore Invitational on Tuesday.**

Additional finishers for the Hub and Lady Hub varsity teams on Tuesday

The Rochelle teams will compete in the Oregon Invitational at Oregon Park West this weekend.

## RTHS Boys Soccer



**Sophomore Luis Milan makes a play for the ball during the Rochelle Hub varsity soccer match against Sterling on Thursday.**

## Second-half score lifts Hubs over Sterling

Casillas, Diaz net goals in 2-1 win

**BY RUSSELL HODGES**  
SPORTS EDITOR

"It was unreal," Diaz said. "I couldn't believe I scored that goal. It was an amazing feeling and it gave me goosebumps. It's a huge confidence builder for our team because we know Sterling has a really tough team. I think we have one of the best teams in the

After seeing several shots on goal stopped by the Sterling defense, Rochelle finally broke through during the 24th minute, where freshman midfielder Heilly Zepeda took possession and sent a ball through the middle to sophomore forward Alberto Casillas, who bent a right-footed blast into the net to even the score. The Hubs outshot Sterling 18-14 and 11-10 in shots on goal.

"Our communication was the key in this match," Milan said. "I think we defend really well and we know each other really well which makes it much easier for us to play good defense."

## 03132022



# Classified Marketplace

## FREE!

Sell your household items for free.

Total value of item must be \$200 or less. (15 words - one week - 7 publications - price must be listed)



ROCHELLE • HILLCREST • CRESTON • STEWARD • KINGS • ASHTON

### PUBLIC NOTICE

A Mini Storage, LLC, a storage facility located at 117 Quarry Road, Rochelle, IL hereby announces that the possessions of the following lessees will be disposed of by means of auction on September 16th 2022at 9:00 AM. Disposal of personal property shall conform to the terms of the certified notice previously mailed to the lessee. The contents of the units can be previewed immediately prior to the sale. The preview and sale will take place at each individual unit listed below; in the order they appear.

UNIT# 73 Eliseo Hueramo Jr - Bed frame, Dresser, chairs, sofa chair, tables, crib, vacuum, miscellaneous.

UNIT# 26 Christopher Donaldson Microwave, bags of clothes, boxes Maria T. Garcia A Mini Storage, LLC 815-562-2266 No. 0837 (Aug. 28, Sept. 4)

### 101 LEGAL NOTICE

This publication does not knowingly accept fraudulent or deceptive advertising. Readers are cautioned to thoroughly investigate all ads, especially those asking for money in advance.

### 105 BUSINESS OPPORTUNITIES

"This publication does not knowingly accept fraudulent or deceptive advertising. Readers are cautioned to thoroughly investigate all ads, especially those asking for money in advance."

### 113 FINANCIAL

NOTICE Advance Fee Loans or Credit Offers Companies that do business by phone can't ask you to pay for credit before you get it. For more information, call toll-free 1-877-FTC-HELP. A public service message from your hometown newspaper and the Federal Trade Commission.

### 119 ANNOUNCEMENTS

"This publication does not knowingly accept fraudulent or deceptive advertising. Readers are cautioned to thoroughly investigate all ads, especially those asking for money in advance."

### 127 SERVICES AND REPAIRS

JNJ JUMPERS Indoor/ Outdoor Bounce House Rentals Available Year Round. Please Call 815-784-4256 For Availability or Visit us on Facebook.

### 201 DOMESTIC/CHILD CARE

NO INDIVIDUAL, unless licensed or holding a permit as a childcare facility, may cause to be published any advertisement soliciting a child care service. A childcare facility that is licensed or operating under a permit issued by the Illinois Department of Children and Family Services may publish advertisements of the services for which it is specifically licensed or issued a permit. Your Hometown Newspaper strongly urges any parent or guardian to verify the validity of the license of any facility before placing a child in it's care.

### 301 ANTIQUES

WANTED TO BUY: Vintage Metal and Wood Signs, Milk Bottles & Local Advertising, Oak Icebox, Iron Door Stop and Antique Lighting... Call Dick Harms at 815-562-2928 or email dickharms@hotmail.com

ANTIQUES WANTED: I pay cash for antiques; furniture, glassware, pottery & crocks, tin & iron toys, sterling silver, decoys. If it's antique, I'm interested in looking!

### 301 ANTIQUES

Call 815-562-2928 or email dickharms@hotmail.com

### 305 GARAGE/RUMMAGE SALE

MONROE CENTER Sept. 8th, 9th and 10th 8am to 5pm. Follow the Signs at Mulford Road & Rt. 72. All Must go. Carpentry Tools, Cable Saw, Miter Saws, Antiques, Household Items, Bedroom Sets. (09-7-22)

1238 Fairview Rd. MALTA Saturday September 3rd & Sunday September 4th, 9am-4pm. Barn Sale! Antiques, Miscellaneous Lighting, Kid's, Some Tools, Men's and Household. (09-04-22)

### 405 HOUSES FOR SALE

ALL REAL ESTATE advertised herein is subject to the Federal Fair Housing Act, which makes it illegal to advertise any preference, limitation or discrimination based on race, color, religion, sex, handicap, familial status, or national origin, or intention to make any such preferences, limitation or discrimination. We will not knowingly accept any advertising for real estate which is in violation of the law. All persons are hereby informed that all dwellings advertised are available on an equal opportunity basis.

ROCHELLE: 1003 Lakeview Dr, 3-Bedroom, 2-Bath Ranch. Finished Basement, Corner Lot. Owner Pays Closing Cost. \$140,000 Call 815-558-5671. (09-07-22)

### 307 MISCELLANEOUS FOR SALE

## OUTDOOR WOOD FURNACE

Exceptional performance and value. EPA certified Central Boiler Classic Edge Titanium HDX OUTDOOR WOOD FURNACE. 26% Tax Credit on furnace and installation.



CentralBoiler.com

Call Pete Central Wood Boilers 815-509-7805

### 303 APPLIANCES

## NEW MILFORD REFRIGERATION

NEW, USED SCRATCH & DENT • Refrigerators • Freezers • Washers/Dryers • Stoves

We also carry a large selection of refurbished appliances with a warranty.



6331 11th Street, Rockford 815-874-2257

11222020



### 203 HELP WANTED

## Maintenance Repair Worker NIU Lorado Taft

Full-time, Wed-Sun, 3-11pm

Full benefit package

Apply at:

<https://employment.niu.edu/postings/65751>

## Cook NIU Lorado Taft

Full time, Tues-Sat, 11am-7pm

Full benefit package

Apply at:

<https://employment.niu.edu/postings/65756>

### Maintenance Position Rochelle, Oregon & Ashton Branches

Seeking qualified candidates for a Maintenance Position. This is a non-exempt part-time hourly position serving our Rochelle, Oregon and Ashton branches. This individual provides general maintenance and related duties ensuring facilities are well maintained, in good working order and have a clean internal and external appearance. Completes minor plumbing and electrical repairs as needed and assists staff when requested.

The successful candidate should be a self-starter with the ability to work with minimal supervision, have a good working relationship with employees, be dependable, have the ability to prioritize duties and perform tasks on a timely basis. Reliable transportation is required.

Currently scheduled hours are Monday through Friday from 7:00am to 11:00am. Hours can be subject to change depending upon weather related needs and/or assistance with bank sponsored events.

Qualified and interested applicants should send resume and cover letter to:

Central Bank Illinois  
Attn: Jeff Glen  
340 May Mart Drive  
Rochelle, IL 61067

Or email recruiter@central-bank.com.



Equal Opportunity Employer

08142022



## YOUR BIKE CAN HELP OTHERS MOVE FORWARD.

YOUR DONATIONS TO GOODWILL® HELP FUND JOB PLACEMENT AND TRAINING FOR PEOPLE IN YOUR COMMUNITY.



**DONATE STUFF. CREATE JOBS.**

TO FIND YOUR NEAREST DONATION CENTER GO TO [GOODWILL.ORG](https://www.goodwill.org)



### 103 AUCTIONS

## Retirement Auction of Farm Machinery & Shop Tools

**Saturday September 10, 2022 at 10:00 AM**  
1070 N. 48th Rd., Earlville, IL 60518

From junction of 1-39 and Rt. 34 go East approximately 6.5 miles to E 9th Rd. go North 3.5 miles to N 48th Rd. then East 1.5 miles to sale site. (watch for signs)

**Online bidding starts at Noon CST**

**Combine:** Case IH 2166 AFS Ser#JJC0180754 Eng. Hrs. 4483 Sep. Hrs. 3257; Case IH 1020 20' platform bean head PTO hookup; Case IH 1063 corn head, steel with side rolls for down corn; Lindsey head cart

**Tractors:** Case IH 275 MFWD Ser#BEG0029204 Hrs. 4160 Under 1,000 hrs on an overhaul; International 1086 Model CH-7 Ser#7R12658 800 hrs on overhaul newer clutch and TA. Set of 18.4-38 duals sold separately; Kubota L 175 Ser#11178 Hrs. 1459

**Tillage:** Landoll 2320 Ripper with mounted drag; Case IH 496 30' disc; Great Plains no-till drill model GP 1614P; Bestway pull sprayer with 60' boom and foam markers Ser#1617

**Support:** 4-Unverferth 325 wagons with extensions 400Bu and roll tarps; 2-DMI 350Bu center dump wagons; 2-M&W 300Bu side dump wagons; Killbros 200Bu Auger wagon; assortment of spare tires on rims for wagons; 20' flatbed trailer with flip-up ramps (fenders missing); Rhino 7' 3pt blade; Lundell 3pt snow blower model 8400; JD 850 D Gator with 714 hrs; 4' King Cutter 3pt roto tiller like new, model TG- 48-XB-OK; 50 gal 3pt 6' sprayer, Fimco yard sprayer, Poly water tank; Aluminum transfer tank with electric pump

**Shop:** Stihl TS 766 demolition saw w/diamond cut blade; 2-drill presses 1-floor, 1-bench; Chop saw 2" gas powered trash pump; Bosch skill saw; 1" air impact and sockets;

Torch set with tanks and cart; 20 ton floor jack; Lincoln Ac225 arc welder; Large pipe wrenches; Battery charger; 3-handly man jacks; several large bolt cutters; Dewalt 1/2" drill; gas hose and nozzles; saw horses; LP Pro Temp bullet heater; Vanguard w/6.5 Briggs and Stratton blue pump; pully pullers; many sets of drill bits; 1/2" air hoses and reel; bench vices; timing light; tarps; jack stands; jumper cables; car ramps; organizers; round bolt bin; oil and transmission treatments; 5' industrial shelving units; 8' aluminum ramps; large assortment of fiberglass ladders; 7-32' garage trusses; yard tools and shovels; large assortment of hand tools consistent with farming

**Sold Live & Online - Consigned by Neighbors:** JD 7200 8 36' row wing fold Vac planter; JD 494 4-36 poly corn head (nice); Parker 350Bu Gravity box wagon

**Terms:** Cash or good check, photo ID required to register. All items sold to the best and highest bidder, no property to be removed until settled for. Not responsible for accidents or items once sold, all sales are final.

**Note:** No buyers premium for the attending live. A 5% buyers premium for online purchases.

For more information go to [www.mcconvillerealty.com](https://www.mcconvillerealty.com)  
To bid online go to [Auctiontime.com](https://www.auctiontime.com) (then search Mcconville)

**Owner: Jerry Anderson**

**Mcconville Realty & Auctioneering**  
Joe Mcconville 815/910-5673 | Marty Mcconville 815/200-2233

ADVERTISE WITH US





# LABOR DAY SALUTE



## THANK YOU FOR YOUR HARD WORK

### Thank You

**A special thanks  
to the employees  
and families of  
Swenson Spreader!**

Your hard work and dedication  
is very much appreciated.

**Happy Labor Day.**

**swenson**

a brand of aebi schmidt

127 North Walnut St.  
Lindenwood, IL  
www.swensonproducts.com

**Heritage Woods  
of DeKalb**  
Affordable Assisted Lifestyle Community  
for Adults 65 & Older of All Incomes

Private, Studio  
& One-Bedroom  
Apartments

24-Hour  
C.N.A Staffing

Restaurant  
Style Dining

Housekeeping  
& Laundry  
Services

Recreational  
Programming

On-site Salon

Financial  
Assistance

09052021

**"We thank all of the  
workers who keep  
America running and  
all our employees who  
make Heritage Woods  
of DeKalb such a joy to  
both work and live at."**

2626 N Annie Glidden Road | DeKalb, IL. 60115  
P: 815-787-6500 | www.hw-dekalb-slf.com

Managed by Gardant Management Solutions

*The City of Rochelle  
thanks our dedicated  
staff for their  
commitment to our  
community!*

**City of  
ROCHELLE**  
ILLINOIS

**Rochelle**  
Community Hospital  
Your Local Healthcare Resource.

*Thank you to all  
RCH providers and staff  
for the wonderful care  
you provide every day.*

*Have A Safe And  
Happy Labor Day!*

815/562-2181 • 900 N. 2nd St. • Rochelle, IL



**4525 Boeing Drive • Rockford, IL 61109 • (815)397-0350**

*Plumbers & Pipefitters Local 23 salutes the hard-working  
men and women of organized Labor.*

*We wish everyone a safe and happy Labor Day!*



**Timothy Huff • Business Manager**  
**Ryan Marshall • Business Agent**  
**Ryan Tracey • B.A./Organizer**

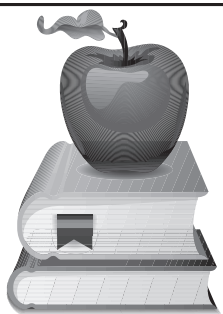


**FixItForMe23.com**

**For all your HVAC Service & Plumbing needs!**



# LABOR DAY SALUTE



*Thanks to our  
dedicated staff  
and teachers.  
You all make a  
difference.*

**ROCHELLE  
ELEMENTARY  
SCHOOL DISTRICT**



**The RTHS Board of  
Education salutes its  
dedicated staff.**

**Thank you for your  
inspiration and  
dedication to all our  
students!**



**CHS Rochelle**

Thank you to those who  
work from sun up to sun  
down and all the time in  
between! You are the  
reason we succeed!  
Happy Labor Day!

1900 Steward Rd, Rochelle, IL 61068  
(815) 561-0650

**Rochelle Foods**

*We Salute America's  
Working People  
And Thank Our  
Employees For All  
Their Hard Work This  
LABOR DAY!*

*South Main Street  
Rochelle, IL*



**Boise Cascade gives a  
special thanks to our  
valued employees! Your  
dedication is greatly  
appreciated!  
Enjoy Labor Day!**



**Boise Cascade**  
Building Materials Distribution

600 Timber Lane, Rochelle, IL  
Online @ [www.bc.com](http://www.bc.com)

09042022



**SILGAN CONTAINERS-ROCHELLE**  
**THANKS** our dedicated staff for the  
excellence and commitment to  
manufacturing the most sustainable  
food package in the world!



**WE ARE AN ESSENTIAL BUSINESS  
AND ARE PROUD OF OUR STAFF  
AND WHAT WE DO!**



For more information about us,  
scan the QR code or visit  
[www.silgancontainers.com](http://www.silgancontainers.com)