



ROCHELLE News-Leader

MIDWEEK EDITION | WWW.ROCHELLENEWS-LEADER.COM

Today's RNL issue
sponsored by
Community
Unity
member:

Rochelle
Community Unity
Shop • Play • Stay

Rochelle
Community Hospital
Your Local Healthcare Resource.

900 N. 2nd St.
815-562-2181

Vol. 103 • No. 52

LOCAL NEWS... LOCAL VIEWS

WEDNESDAY, OCT. 26, 2022

\$1.25

Your life.
Your education.
Your way.

KC KISHWAUKEE COLLEGE
Enrolling Now for Fall!
www.kish.edu/fall

KNOW IT
TODAY



Rochelle VFW gets donations

The Rochelle VFW Post 3878 received donations from the Rotary Club and the RACF. **Page 7**

WEATHER

WEDNESDAY
HIGH LOW
55 33

THURSDAY
HIGH LOW
57 32

FRIDAY
HIGH LOW
60 36

SATURDAY
HIGH LOW
63 34

Today's RNL issue
sponsored by
Community
Unity
member:

Rochelle
Chiropractic
Clinic
Dr. Chad M. Pillar

227 E. Illinois Route 38
815-562-8706

OBITUARIES

• RONALD 'SOD' WILLIAM
DAVIDSON
• DAISY A. RUSSELL
• JAMES 'JIM' SHEEHY

See page 4

INSERTS

• ALDI
• FARM & FLEET

INSIDE

Ashton News.....Section 2
Local News.....2, 3, 5, 8
Obituaries.....4
Opinion.....6
Community.....7



Stillman
BANK

We are proud to be voted Ogle County's

- ✓ Best Local Bank
- ✓ Best Lender
- ✓ Best Financial Planner

2022 BEST OF OGLE COUNTY

www.stillmanbank.com

Member FDIC

Council discusses tax levy

Contract for Route 38 street lights approved

BY JEFF HELFRICH
MANAGING EDITOR

ROCHELLE — At its meeting Monday, the Rochelle City Council heard a presentation on its 2022 tax levy by City Manager Jeff Fiegenschuh.

The state requires cities like Rochelle to annually adopt and file a property tax levy ordinance on or before the last Tuesday in December.

Last year, the city's equalized assessed valuation (EAV) was \$268,100,764 and its property tax rate was 1.043070 per \$100 of EAV. The city collected \$2,796,479 in property taxes. For 2022, Ogle County has estimated the city's EAV at \$281,938,536 which is an increase of over \$13 million.

During the meeting, Fiegenschuh suggested the city adopt an increase of two percent (\$2,849,772 total collected in property taxes) for the upcoming year, which is below the maximum increase it's allowed of three percent. Based on the estimated EAV, the



(PHOTO BY JEFF HELFRICH)

At its meeting Monday, the Rochelle City Council heard a presentation on its 2022 tax levy by City Manager Jeff Fiegenschuh.

tax rate would decrease .032292 per \$100 EAV for the two percent option.

Nobody on the council objected to moving forward with the two percent option.

"I appreciate that we're not constantly going to the maximum if there isn't a need for it," Councilwoman Kate Shaw-Dickey said. "I think it's nice for people to hear that we're trying to be responsible with the dollars and not doing the maximum just because we can. I appreciate that we're only levying for what we need."

Fiegenschuh said the city has seen a steady increase in EAV since 2014. Sales tax collections have been up "pretty significantly" for the city lately and Rochelle is "not as reliant" on property taxes as a lot of other communities are, he said.

With the two percent increase, a Rochelle home with a market value of \$100,000 will see a decrease in city property taxes from \$347.69 in

2021 to \$336.93.

"The city does a fantastic job of where we levy," Fiegenschuh said. "We don't levy the maximum amount. We really try to keep room in case there's ever an emergency. We'll actually have a decrease in the city's overall levy and the amount people pay towards the city property tax. I think we're about 13 percent of the overall property tax that people pay in Rochelle."

See CITY page 5

No injuries or charges after police standoff

Large response from Rochelle PD, Sheriff's Office and state police

BY JEFF HELFRICH
MANAGING EDITOR

ROCHELLE — No injuries or charges resulted from a two-hour police standoff situation on Saturday evening in Rochelle at a home in the 200 block of School Avenue, Rochelle Police Chief Eric Higby said.

Police were called to the home around 5:30 p.m.

"A couple at this residence had a nonphysical argument," Higby said. "The male, who has a valid FOID card, started walking around at one point with a handgun. Some of the other family members there and the female left. The male was left with a child. The female called us and that's how we got involved. Our officers made contact with the male. He said nothing was going on and we could see via FaceTime that the child was OK."

Higby said the male refused to come out of the home to talk with police and "out of an abundance of caution" the area tactical team was activated and a large response was



(COURTESY PHOTO)

No injuries or charges resulted from a two-hour police standoff situation on Saturday evening in Rochelle at a home in the 200 block of School Avenue, Rochelle Police Chief Eric Higby said.

seen from RPD, the Ogle County Sheriff's Office, Illinois State Police and Rochelle Fire Department.

After talking with the Ogle County Sheriff's Office negotiator, the male

subject eventually came out of the home and was taken into custody and transported to Rochelle Community Hospital for an evaluation. The child in the home was reunited

with their mother.

"He didn't make any threats or threaten to hurt anyone," Higby said. "It was a man in his own home with a FOID card carrying a weapon, which

isn't illegal. We couldn't identify a criminal act. There are no charges filed at this time. We had a lot of response. But when there's a child involved, we use an abundance of caution."

COME SEE YOUR FRIENDS



Brent Ohlinger
Community President
NMLS#454385

304 EAST HIGHWAY 38
ROCHELLE
firststatebank.biz | 815.562.2200

FIRST STATE BANK



David Eckhardt
Vice President/Loan Officer
NMLS#454387



LOCAL NEWS

Ribbon cutting held for Rise Up Dance Center

Owner McGrath: 'Thank you all so much for helping to make this happen'



(PHOTO BY JEFF HELFRICH)

On Friday, a ribbon cutting was held for Rise Up Dance Center and its new location at 126 May Mart Drive in Rochelle.

BY JEFF HELFRICH
MANAGING EDITOR

ROCHELLE — On Friday, a ribbon cutting was held for Rise Up Dance Center and its new location at 126 May Mart Drive in Rochelle.

RUDC is a family-focused studio offering classes in dance, tumbling and cheer for ages 12 months through adult. Its director, Christa McGrath, said the space had been vacant for about 10 years. She thanked the families and dancers in attendance on Friday.

"We've given it some new life," McGrath said. "Thank you all so much for coming. I'm going to try not to get emotional, but I might. This has been a crazy few months with

lots of changes. I feel like anybody can have a dream and an idea, but it takes people to make it happen. Thank you all so much for believing in me and lifting me up and helping to make this happen. Because this isn't about me, it's about you guys. So thank you. I love you all so much."

Rochelle Chamber of Commerce Executive Director Tricia Herrera welcomed McGrath and RUDC on behalf of the chamber.

"We want to thank Christa," Herrera said. "At the chamber, we're fortunate that Christa has been a part of our group for a long time now. She was a graduate last year of our leadership academy. She's always known the importance of the

chamber and the chamber membership. We know when you start a business, you can put it anywhere. We're always very thankful when people choose Rochelle."

Mayor John Bearrows was unable to attend the event on behalf of the city, but Herrera conveyed a message from the mayor.

"He wanted to express his congratulations to you and as he always says, you now have two new partners in the chamber and the city and they're there to help in any way," Herrera said. "He wanted to welcome you to your new space on behalf of the city. We always like when someone chooses to renovate an empty space and make it part of the community."

UNDERSTANDING YOUR SOCIAL SECURITY OPTIONS

WEDNESDAY, NOVEMBER 2ND, 2022 5PM - 6PM

Hosted by:

Edward Jones

Jessica L. Morris
Financial Advisor

Presented by:

COLUMBIA THREADNEEDLE
INVESTMENTS

Justin Knowles
Regional Advisor Consultant

Salt 251 Banquet Room

531 S 7th St.
Rochelle, IL 61068

Member SIPC

PLEASE RSVP:
815-561-4341

• Light Refreshments Provided

RTHS marching band tradition continues on

BY VICKI SNYDER_CHURA
SPECIAL TO THE NEWS-LEADER

ROCHELLE — What a weekend it was to be a Rochelle Hub marching band senior. Oct. 21 was a perfect autumn evening. It was the last home football game with the conference championship hanging in the balance. It was senior night and as the senior members of the drumline have been doing for decades, following the half-time show, they exited the field leaving their shoes behind. Former Band Di-

rector Ron Duval said he began working with drumlines back in the 1970s and when he arrived at Rochelle Township High School, it was a tradition he brought with him. "It's the seniors' way of leaving their mark on the upcoming band members."

After the football game last week, RTHS music boosters supervised a lock-in because the band had an especially early departure for Illinois State University Saturday where they competed in the Red Bird Invitational. Some members caught shut eye in the commons, but many others, particularly the seniors, stayed awake, reminiscing and reveling in the fellowship, catching catnaps when and where they could.

If Baylie Sutton was

dragging Monday, she didn't show it. Friday night she performed between games with the Lil RaHS which she helps coach, cheered on the sidelines of the first half of the varsity game, performed the halftime show as a member of the Hub marching band drumline, and then resumed her duties as cheerleader before marching in Saturday's invitational.

Be sure to keep an eye out for her and the other seniors during the Fall Marching Band and Jazz Concert at 7:30 p.m. Thursday in the auditorium.

Let's not forget that Thursday is also the last day to shop the band's online fundraiser. Click the link to shop <https://register.cw.com/iDceQuChAc>



(COURTESY PHOTO)

Coach, cheerleader and drummer Baylie Sutton leaves it all on the field. Even her shoes.

Medicare & Medicare Advantage:

Get Ready for Open Enrollment



We'll cover:

- Making Informed Decisions About Your Health Coverage
- Getting Ready for Open Enrollment
- What Changes Should You Expect



900 North 2nd Street, Rochelle, IL 61068 | (815) 562-2181 | www.rochellehospital.com

Choose A Session

Thursday, November 3, 2022

In the RCH Auxiliary Room

Session One—2:30—4:00 p.m.

Or

Session Two—5:30—7:00 p.m.

Presentation is FREE & being presented by Managed Care Partners, Inc.

Please register ASAP as seating is limited.

Register online at
Rochellehospital.com/events
Or Call Michelle at 815-561-3110

Welcome Mike Myers !!



Everyone at Bearrows Real Estate & Auction Co. are very happy to announce our newest Team member, Mike Myers. Mike brings with him many years of trusted sales experience, as well as his knowledge of the local area. Now, Mike can assist you with all of your real estate transactions. Whether buying or selling, let Mike guide you through the process. Call Mike today at 815-275-6956 - When buying or selling, you have many choices, make the right one today!!

BEARROWS
REAL ESTATE & AUCTION CO.
(815) 562-5113
361 W. Hwy. #38 • PO Box 420 • Rochelle IL 61068
www.bearrows.com



LOCAL NEWS

RCH awaiting guidance on healthcare mask mandate

CEO Olson: 'We're going to look at masking real closely if things change'

BY JEFF HELFRICH
MANAGING EDITOR

ROCHELLE — On Oct. 14, Rochelle Community Hospital Chief Executive Officer Gregg Olson said his organization is awaiting potential guidance from the CDC and the Illinois Department of Public Health about the possibility of masking no longer being mandated in healthcare facilities.

While mask mandates have been removed in most public places, things have remained unchanged in healthcare facilities since the beginning of the COVID-19 pandemic.

"There's been a lot of talk," Olson said. "Right now things are somewhat vague. We are going to wait for some direction from the CDC and the IDPH on what to do with the masking. There was some excitement here a few weeks ago when there were some vague comments made about potentially doing away with the masks. Nothing has happened yet. We still have our same protocols and processes in place, as do other hospitals."

Olson said that RCH is "in no hurry" to make any mask-related changes and will stay the course and reassess once/if national and state guidance changes.

The RCH CEO mentioned getting into flu season as another consideration for upcoming masking. He's heard talk that this year's flu season "could be harsh." Last year, RCH saw around nine cases of flu in patients when it would normally have around 300. Health officials attributed that to masking.

"Because of masking, washing hands, social distancing and all that being followed, we didn't see a lot of flu," Olson said. "There will always be traffic of people that are ill here. We're going to always take the more conservative approach. We don't want our staff to get ill or our patients to get more ill. And of course the general community coming in and out of here, we just have to be careful."

Ogle County has seen moderate-to-low COVID-19 transmission levels in the past few weeks. Olson said the only measure that currently triggers is unvaccinated staff not being required to test weekly due to a state mandate. Weekly testing for those staff members is only required if a county is in high-transmission status.

While masking has stayed in place since March 2020, tempera-



(PHOTO BY JEFF HELFRICH)

On Oct. 14, Rochelle Community Hospital Chief Executive Officer Gregg Olson said his organization is awaiting potential guidance from the CDC and the Illinois Department of Public Health about the possibility of masking no longer being mandated in healthcare facilities.

ture checks for people entering the hospital are not currently being done at this time as they were previously.

If masking mandates for healthcare facilities do change, Olson said RCH would look at masking "real closely" and work with its medical staff as it has thus far.

"If that were the case,

as we're caring for patients up on the medical floor, should our team be masked?" Olson said. "In some situations, absolutely. Obviously you have masking in surgery and always will. I think it's very possible that we could choose what we think is the safest route to go with the help of our providers and physicians.

I could see the day where that could be a question for us to discuss."

Regardless of what happens with the mask mandate and the future of COVID-19, RCH will continue to err on the side of caution, Olson said.

"Clearly, the pandemic is not over and there's going to be ups and downs," Olson said. "I think we're

always going to take the side of caution to make sure our patients, staff and community are safe. We're in no hurry to make any changes, so we're just kind of sitting back and staying with what we've been doing. Until that changes, we're going to stay the course. It will be national and state guidance."

Down Range LLC receives City of Rochelle facade grant

BY JEFF HELFRICH
MANAGING EDITOR

ROCHELLE — On Friday morning, the City of Rochelle presented a \$4,233.88 check to Down Range, LLC Owner Matt Gerard as part of its facade grant program.

The program covers half the cost of any improvements made to business fronts in town with a limit of \$5,000. The business at 303 Cherry Ave. is the most recent recipient. Improvements included all the windows and glass and a new sign.

The gunshop opened as a storefront location earlier this year. Gerard, who also works as a Rochelle Police Department officer, has offered a variety of firearm training courses through the business for years and wants the shop to continue to promote firearm safety.

"Ultimately, the shop isn't necessarily about retail sales," Gerard said at the ribbon cutting for the business earlier this year. "It's about good training,

information and safe, responsible gun handling. Everything we're going to offer is going to be geared towards responsible gun ownership and

spreading the word that you can be a responsible and mature gun owner and you're going to get good information from us as a resource."



(PHOTO BY JEFF HELFRICH)

On Friday morning, the City of Rochelle presented a \$4,233.88 check to Down Range, LLC Owner Matt Gerard as part of its facade grant program.

CARING FOR YOUR FAMILY'S HEALTH



Diana Alanis, MD

Medical Care For Your Whole Family

- Infants to Adults
- Acute Care Visits
- Chronic Disease Management
- Wellness Visits



Melissa Inman
Nurse Practitioner

Starting date of May 4th...

Monday 7:30-6:00pm, Tuesday 1:30-7:30, Wednesday 7:30-6:00, Thursday 8:00-7:30, Friday 7:30-4:00, and some Saturdays 8:00-12:00

DLX Medical GROUP

Accepting New Patients!

815-227-9594
1212 Currency Ct.
Rochelle IL
We Accept Most Insurances and Patients Without Insurance

06272021

Stillman BANK Helping You Protect What Matters Most

At *Stillman Trust & Wealth Management*, we offer a full range of trust and investment services to individuals and businesses and we are conveniently located throughout the Stateline area. And because we are a local community bank, we will work with you one-on-one to develop a strategy that is customized to your unique financial goals.

- Trust Administration
- Estate Planning
- Investment Management
- Retirement Planning

Put your trust in us and schedule your no-cost, no-obligation consultation today!



Keith Akre, CFA, CFP®
Vice President & Trust Officer



Jeff Hartle
Senior Vice President



Adam Talbert
Trust Officer



J. Joseph McCoy, JD
Trust Officer

815.562.7071 | 815.332.8100

www.stillmanbank.com

Investments offered through Stillman Trust & Wealth Management: Not FDIC Insured • No Bank Guarantee • May Lose Value



Tim & Roger Bruns, Owners
Established 1997

RESIDENTIAL & COMMERCIAL ROOFING

RESIDENTIAL FLATWORK, CONCRETE DRIVEWAYS AND FOUNDATIONS

- Shingled Roofs
- Flat Roofs
- Metal Roofs For Farm Facilities
- Additions
- Custom Built Homes

FREE ESTIMATES

815-561-0099

Licensed & Insured
www.brunskonstructioninc.com

09262022

LOCAL NEWS

Obituaries

James 'Jim' Sheehy

ROCHELLE — James "Jim" Sheehy, 42, of Rochelle, passed away Sunday, Oct. 23 at home surrounded by his loving family. Jim was born Feb. 14, 1980, in Des Plaines, Illinois, the son of Raymond and Edna (Burnheimer) Sheehy.

Jim worked for the Rochelle News-Leader for over 15 years. He loved to fish and play video games. Jim loved his family, especially his two children. He had an affinity for cats. It was one of his last requests, to be at home during his final days with his two cats.

Jim is survived by his significant other and mother of his children, Annette Chu, of Rochelle; two children, Victoria and Eamon Sheehy of Rochelle; sister, Carol (Charlie) Bengé of Rochelle; nephews and niece, Brandon, Ashley, and Dylan Bengé; special friends, John and Cheryl; and his two cats, Max and Bandit.

Jim is preceded in death by his father and mother, Raymond and Edna Sheehy, and a brother, Dan Sheehy.

Cremation care has been provided by the Ung-



er-Horner Funeral Home. A memorial service will be held at a later date. Contributions in Jim's memory may be directed to the Unger Horner Funeral Home to help the family with funeral expenses. Please visit www.ungerhorner.com to sign the online guest book.

Ronald 'Sod' William Davidson

CAPE CORAL, Fla. — Ronald "Sod" William Davidson 72, formerly of Creston passed away Thursday, Oct. 20 in Cape Coral, Florida. Ron was born on March 10, 1950, the son of John and Juanita (Stone) Davidson in Rochelle.

He was a third generation farmer, farming the same ground has his father, John and grandfather, William. In addition to farming, Ron owned Davidson Grain Inc., Davidson Farms Inc. and Davidson Farm's Trucking. After wintering in Cape Coral, Florida for 10 years, he and his wife, Carol, moved there in 2020.

Ron is survived by his

wife of 30 years, Carol of Cape Coral; son, John Davidson of Creston; daughter, Tammy Davidson of Cookville, Tennessee; two step children: Joe (Jeannette) Forbes of Effingham, Illinois and Hadley Forbes of Cape Coral; sister, Karna (Jim) Gross of Rochelle; nine grandchildren; several great grandchildren and his dearly loved puppies, Ruby and Diamond.

He was preceded in death by his parents, John and Juanita Davidson, his grandma, Vicki and his grandma and grandpa Davidson.

The visitation will be from 4-8 p.m. Friday, Oct. 28 at the Unger-Horner



Funeral Home, 400 N. 6th St., Rochelle. The funeral service will be at 9:30 a.m. Saturday, Oct. 29 at the funeral home with Chaplain Judy Williams officiating. The burial will follow at Woodlawn Cemetery in Creston. Memorials may be made in Ron's memory to Woodlawn Cemetery. Visit www.ungerhorner.com to sign the online guest book.

Daisy A. Russell

ROCHELLE — Daisy A. Russell, 99, passed away Saturday, Oct. 22 at Liberty Village of Rochelle. Daisy was born on March 23, 1923 to Conrad C. and Elsie W. (Lambke) Koch in Steward. On March 30, 1946, she married P.D. Russell in Rochelle.

Daisy retired at age 72 after owning her own business as a hairdresser in Rochelle for 50 years. Previously, she was employed by Caron Spinning, Pepsi Cola and Del Monte. She was a member of the Rochelle United Methodist Church and Women of the Moose. Daisy was known as a hardworking, caring and generous person by all those who knew her.

Daisy is survived by her children: Genevieve Rains of Rochelle, June (Robert) Leprich of Cortland, Connie (William) Curths of Trinity, Florida, Debra (Randy) Wenckens and Brian (Rhonda) Russell both of Odessa, Florida; nine grandchildren: Russell Rains, Dawn (Bob)



Pittman, Korrena Sutron, Megan (Jeff) Aiken, Lisa (Mike) Johnson, Michelle (Josh) Lamb, Natalie (Doug) Neps, Alexis (Ryan) Beery and Cassidy (Tyler Vogt) Russell; 24 great grandchildren and 21 great great-grandchildren.

In addition to her parents and husband, P.D., she was also predeceased by three sisters: Helen Swope, Luella Rainwater and Mildred Carlson; brother, Glenn Koch, son-in-law, Raymond Rains; two grandsons Raymond Dale Rains and Mark Daniel Rains; grandson-in-law, Woody Sutron; one great-grandchild and one great great-grandson.

The visitation will be from 2-4 p.m. Sunday, Oct. 30 at the Unger-Horn-



er Funeral Home, 400 N. 6th St., Rochelle. The funeral service will be held at 10 a.m. Monday, Oct. 31, at the Rochelle United Methodist Church, 709 4th Ave., Rochelle with Pastor Katherine Paisley and Chaplain Judy Williams officiating. Burial will follow at the Lawnridge Cemetery in Rochelle. After the burial, there will be a luncheon at the Moose Club, 311 N. Main St., Rochelle. Flowers are appreciated and memorials may be made in Daisy's memory to the Rochelle United Methodist Church, Moose Club or the Hub City Senior Center, 401 Cherry Avenue, Rochelle. Visit www.ungerhorner.com to sign the online guest book.

Ogle County Sheriff's Report

Deputies respond to two-vehicle crash

OREGON — On Oct. 21 at approximately 10:34 p.m. deputies conducted a traffic stop in the 3,700 block of West Illinois Route 64. After a brief investigation, Matthew Trump, 19, of Mt. Morris, was arrested for no valid driver's license. Trump was released on scene with a return court date. Trump was also cited for two equipment violations.

On Oct. 21 at approximately 11 a.m. deputies conducted a traffic stop on Interstate 39 near Illinois Route 64. After investigation, deputies arrested Erick Garcia, 20, of Aurora for no valid driver's license. Garcia was also cited for speeding and was given an I-Bond with a return court date later next month and released on scene.

On Oct. 22 deputies along with the Monroe Center, Lynn Scott Rock and New Milford fire departments responded to a two-vehicle injury crash on Interstate 39 near Monroe Center. Investigation by deputies revealed that a northbound Cadillac operated by John Johnson, 55,

of Rockford struck a deer and then was rear ended by a northbound Honda operated by Pa No, 25, of Rock Island. As a result both vehicles left the east side of the roadway where the Honda overturned onto its side. Four passengers in the Honda including three children were transported by ambulance to Javon Bea Hospital for treatment of minor injuries. Johnson was cited for operating an uninsured motor vehicle and No was cited for failure to reduce speed to avoid an accident.

On Oct. 22 at 2:03 p.m. deputies along with the Monroe Center and Kirkland Fire departments responded to a two-vehicle crash with injuries at the intersection of Illinois Route 72 and Mulford Road. Investigation by deputies revealed that a northbound vehicle on Mulford Road operated by Juanita Gross, 52, of Rockford failed to yield the right away to an eastbound vehicle operated by Kadie Kelly, 34, of Davis Junction. As a result the vehicles collided in the intersection. Kelly and an infant in her vehicle were transported to Swedish American Hospital by the Kirkland Fire ambulance with what appeared to be minor injuries. Gross was

cited for failure to yield the right away at an intersection.

On Oct. 22 at 1:18 a.m. deputies conducted a traffic stop on Interstate 39 southbound mile marker 100. After a brief investigation, Andre Sanders of Decatur was arrested for driving while their license was suspended. Sanders was released on a \$2,500 individual bond with a return court date. Sanders was also issued citations for suspended registration and traveling in the left lane when not passing. Additionally, a passenger, Steven Wilcox Jr., was arrested for an outstanding warrant. Wilcox was transported to the Ogle County Jail and released to corrections personnel.

On Oct. 23 at approximately 12:08 a.m. deputies responded to the 200 block of East First Street in Leaf River regarding criminal damage to property. After a brief investigation, Bradley Fogle, 58, of Leaf River, was arrested for criminal damage to property over \$500 (Class 4 felony). Fogle was transported to the Ogle County Jail pending an appearance before a judge.

All individuals are considered innocent until proven guilty.

Rochelle Police Report

Officers make arrests

ROCHELLE — On Oct. 24 at 8:40 a.m. Matthew Sharp, 36, of Rochelle was arrested for warrant service-failure to register and transferred.

On Oct. 24 at 2:46 p.m. Jose Galdamez-Galda-

mez, 46, of Rochelle was arrested for aggravated assault. He was released on an I-Bond with a Dec. 2 Ogle County court date.

All individuals are considered innocent until proven guilty.

★ **Buy, Sell, Trade or Rent** through the **CLASSIFIEDS** ★

We are now offering LIPO MINO MIX injections
Introductory price \$25
Call for an Appointment!
 This lipotropic combination of B12 and methionine, an essential amino acid and other B vitamins can promote:

- Increase Fat metabolism
- Boost Energy Level
- Reduce appetite

Mon: 7:30 - 6pm, Wed: 7:30 - 6pm, Thurs: 8 - 1pm, Fri: 7:30 - 4pm
 Some Saturday appointments available

DLX Medical GROUP
 815-227-9594
 1212 Currency Ct.
 Rochelle IL
 We Accept Most Insurances and Patients Without Insurance
 11042020

WHO IS UNITY HOSPICE?

- Care provided by the entire hospice team: physician, nurse, social worker, certified nursing assistant, chaplain, dietitian, pharmacist, and volunteers.
- Care is individualized and based on the patient's and family's goals of comfort and quality of life.
- Supplies, equipment and medications.
- Service where the patient resides.
- Specialize in pain & symptom management.
- Spiritual enrichment and bereavement counseling.
- Ancillary Therapies: Music, Physical/Occupational, Speech, Massage, Pet, etc.
- Ability to provide education to caregivers and family members.
- On-call nurse available 24/7.
- Volunteers providing special attention and stimulation.
- Assistance with advance directives and community support.
- Provide Education to those we care for

Unity Hospice and Palliative Care
CALL UNITY: (815) 561-8866
 915 N. Caron Rd.
 Rochelle, IL
 @unityhospice
 07012020

ROCHELLE News-Leader
 211 IL Route 38 East, Rochelle, IL 61068
 (815) 562-4171

USPS (467-820) ISSN (1075-2811)
 Published every Wednesday and Sunday by Rochelle Newspapers Inc. at 211 E. State Route 38, Rochelle, IL 61068.
 Periodical postage paid at Rochelle, IL 61068. Postmaster send address changes to the Rochelle News-Leader, P.O. Box 46, Rochelle, IL 61068. Subscription rates are \$139.99 per year by mail in Ogle County. Outside county rate is \$149.99 per year. No mail delivery in newspaper-carrier serviced areas. The circulation department is open Monday through Friday from 8 a.m. to 5 p.m. If you are a carrier subscriber and your paper does not arrive, contact Kelly White at 561-2112.

IN-COUNTY REGULAR SUBSCRIPTION RATES

- \$139.99 for one year • \$79 for six months
- \$34.99 for three months • \$13.99 for one month

Call (815) 561-2112 or Visit our website at www.rochellenews-leader.com

MasterCard VISA

HOW TO CONTACT US

News-Leader Main Switchboard (815) 562-4171

General Manager
 Mike Feltes (815) 561-2124

Newsroom Staff
 Jeff Helfrich, Managing Editor (815) 561-2151
 Russ Hodges, Sports (815) 561-2152

To Place a Display Ad
 Andrew Heiserman (815) 561-2123
 Chris Ackland (815) 561-2153

To Place a Legal Ad
 Mike Feltes (815) 561-2124

To Place a Classified Ad
 Andrew Heiserman (815) 561-2123
 Chris Ackland (815) 561-2153

Subscriptions and Delivery
 Kelly White (815) 562-4171

BUSINESS SPOTLIGHT

ANDERSON Plumbing & Heating, Inc.

Plumbing, Heating, Air Conditioning, Drinking water systems, Water Heaters, Softeners, Iron Filters & More.

LENNOX
 One Less Thing To Worry About
621 First Ave., Rochelle
(815) 562-8784

Since 1976
 Like on Facebook
 Lic# 055-013999

LOCAL NEWS

AIRPORT: City in process of purchasing property

From page 1

City Economic Development Director Jason Anderson said due to the Large Car Rebuilders facility being in such close proximity to the airport, it's been in the city's 20-year Airport Layout Plan for some time to acquire.

When/if the city acquires the Large Car Rebuilders property, the business will continue to stay in operation. The city would lease the property back to the business's owner until the airport is in a position to run a taxiway over to the building and convert some of it into hangar space.

"But that's not in our immediate plans," Anderson said. "Because the FAA controls when we're going to expand. The FAA and IDOT are willing to find 95 percent of the purchase. It's time for us to go through the process of making the purchase. We will not be turning Large Car operation into airport use now, but it will be in our future plans to do so. Because it's a part of the ALP, the federal and state government are willing to fund 95 percent of it. We want to go forward with the idea of getting it purchased in the next 12 months."

Anderson said additional hangar space is needed for the airport to grow. The city has also had conversations with Large Car Rebuilders Owner Dale Jump about an eventual airplane maintenance and restoration business in the Large Car Rebuilders facility in the long-term future.

Large Car Rebuilders currently details, paints and services semi trucks and has the infrastructure for such an operation already in place.

"We would like to have an opportunity to service airplanes by having them reupholstered, repainted and reconditioned there," Anderson said. "We could set up a business in this facility to not just store airplanes, but we could also do work on restoring airplanes. We think this could be another business like skydiving and the community hangar that we already have out there. We've been given permission to lease the property to the current user with a plan in 5-7 years to convert that into airport use."

Anderson with "any luck," the property acquisition could be completed in the next 9-12 months.

A recent economic impact study on the Ro-



(PHOTO BY JEFF HELFRICH)

The Rochelle City Council approved a consultant services agreement with Hanson Professional Services Inc. for work on the acquisition of property adjoining the Rochelle Municipal Airport/Koritz Field. The property in question is currently owned by Large Car Rebuilders Inc..

chelle Municipal Airport found that it has a \$17.1 million per year impact on the local economy, Anderson said.

"That's jobs that have been created, sales and hotel tax and all the things that are collected as a result of people coming and going at the airport,"

Anderson said. "The airport is a growing entity that has a huge economic development impact. Barry Zekelman of Zekelman Industries has an \$80 million plane he brings and lands at our airport quite often now that we have a 5,500-foot airstrip. The airport is just a tremendous

economic development engine."

City Manager Jeff Fiegenschuh echoed Anderson's sentiments and said the eventual purchase of the property would help the airport financially to do additional things in the future. The city's airport and railroad revenues are used

to fund city improvements.

"We've used rail money in the past to fund some of the capital improvements at the airport, so it's just another reason that we're blessed to have the airport and rail in our community," Fiegenschuh said. "They're great assets to the community."

CITY: Veterans Day ceremony scheduled for Nov. 11 at 11 a.m.

From page 1

"We're recommending the two percent increase in the dollar amount levied. I think we're in really good shape financially, but we want to be vigilant and prepared in case our economy goes into a recession."

The proposed 2022 levy includes funding police and fire pension funds as recommended by the pension boards' actuarial studies. The ordinance levying taxes for the city for 2022 will be included as a business item on the Nov. 14 city council meeting.

Fiegenschuh also said the city's newest proposed budget will be sent out to council members in the next week and a budget hearing will be held Nov. 7 at 6:30 p.m.

Lighting

The council unanimous-

ly approved a contract for its Illinois Route 38 street light installation project with Utility Dynamics Corporation for \$166,475 with possible change orders for other improvements and upgrades to streets adjacent to the project not to exceed \$28,575.

A total of three bids for the work were received by the city and the one approved was the lowest. The other two included Engel Electric (\$287,960.31) and William Charles Electric (\$275,584.20).

The lighting fixtures were purchased earlier this year for the project and the city has received its Illinois Department of Transportation permit to install over 35 lighting fixtures along Illinois Route 38 from Caron Road to east of Northpointe Drive. The bid is for the installation of the polyduct underground pipe,

wire, and light foundations to facilitate the installation of the street lighting fixtures by Rochelle Municipal Utilities crews. The work is part of an ongoing project to enhance the gateways into the community and will be funded through the Lighthouse Pointe TIF.

"We've had this project on the radar for a couple of years," Fiegenschuh said. "But because of shortages and supply chain issues, we've been able to finally get it started now."

Veterans Day

Mayor John Bearrows said the city will be hosting a Veterans Day ceremony at Lawnridge Cemetery on Nov. 11 at 11 a.m.

"It's always a good ceremony and we'll have several speakers between the American Legion, VFW and the city," Bearrows said.



(PHOTO BY JEFF HELFRICH)

Mayor John Bearrows said the city will be hosting a Veterans Day ceremony at Lawnridge Cemetery on Nov. 11 at 11 a.m.

Antiques & Collectibles

Belvidere Collectible Coins

www.goldsilverjewelrycoin.com

We Pay Highest Prices For Gold, Silver, Platinum, Jewelry, Coins, Flatware, Dental & Bullion

**10% More For Jewelry
With This Ad!**

Hours: Mon.-Fri. 9:30am-5:00pm • Sat. 10:30am-2pm

~ Call For Directions ~ **(815) 547-7111**

880 Belvidere Road • Belvidere, IL

SYCAMORE ANTIQUES

**JAMES AND ANN TUCKER,
PROPRIETORS**

**321 WEST STATE STREET
SYCAMORE, ILLINOIS**

OPEN
WEDNESDAY THROUGH SATURDAY
10:00 AM TO 5:30 PM, 7:00 PM FRIDAY
815-895-4720

Our House Antiques

Antiques - Primitives - Folk Art

Thursday - Friday 10 - 7
Saturday 10 - 5



815.441.1263

510 E King St Polo IL



THIS & THAT Collectibles

109 N 7th Street
Dekalb, IL 60115
815.909.1069

Open 7 days a week

Antiques, MCM, Primitives & Vintage
Dixie Belle Paint Company Elite Retailer
Redesign with Prima Retailer

LOCAL VIEWS

Guest column

How did Rochelle receive her name?

AT the end of the 1962 movie, “The Man Who Shot Liberty Valance,” Ransom Stoddard (played by Jimmy Stewart) says, “You’re not going to use the story, Mr. Scott?” Maxwell Scott (played by Carleton Young) replies, “No, sir. This is the west, sir. When the legend becomes fact, print the legend.”

The same has become true for the naming of Rochelle. In the early 1800s, the area was commonly known as Hickory Grove, because there was a fairly large grove of Hickory trees. When the railroad arrived, a group of investors led by R.P. Lane bought a sizable tract of land in the area and began laying out a community, which they named Lane’s Village,

after one of the leading investors. The village was started, and the name twisted to Village of Lane.

Things went smoothly until 1860, when there were a series of large fires. The fires were believed to be the work of an incendiary, or arsonist, and the blame fell upon a southern sympathizer named Thomas Burke. Mr. Burke was publicly lynched, and the Village of Lane suffered from a new nickname, Hang Town. Up to this point, the story follows historical data fairly well. It is here that the legend begins.

As the stigma of the hanging grew to more and more of a public embarrassment, the community began the search for a new name. Popular lore says that a committee of local dignitaries met in the

basement of Barkers Drug Store and upon seeing a container of Rochelle Salts (a laxative) decided that Rochelle would be an excellent name for the community. Seems simple enough, and as time passed the legend spread from generation to generation.

Today, if a person has an opinion as to the naming of Rochelle, the Barkers basement and Rochelle Salts are almost always mentioned.

Let’s take a look at the data.

It was in 1865 that the Village of Lane changed its name to Rochelle. It was six months later that Franklin Barker arrived in Rochelle. In 1866, Franklin Barker partnered with George Clark in the drug

store. Now, one can justify the idea that the Rochelle Salts were espied in the basement of Clarks Drug Store and the story simply mentions it as Barkers because that is the name that we associate with the building today. But the problems continue.

In 1870, the block containing the Clark and Barker building burned from the corner of 4th Avenue to three buildings south of Clark and Barkers. The wooden building where the salts were seen no longer existed. Maybe the new brick building was built in exactly the same location.

News articles from 1871 tell of the excavation of the cellar for

Rae’s Fruit and Grocery. This store was one building north of Clark and Barkers.

The article also mentions that the digging of a cellar for Clark and Barker was well underway. Now we draw into question as to how the basement of Barkers could provide the origins of the naming of Rochelle if the building does not exist nor does the basement.

Once the brick buildings went up, Clark and Barker re-opened at 316 Lincoln Highway. It was a few years later that they moved into the building at 314 Lincoln Highway where the business stayed throughout the rest of its days. There we have it. Six months before Franklin Barker came to Rochelle, one year before

he joined into business with Clark, six years before a basement was excavated, six years before the current buildings were erected, more than 10 years before Clark and Barker moved into the current address, a group of prominent businessmen sat in the basement of Barkers and named the town after a bottle of Rochelle Salts.

“This is the West, sir. When the legend becomes fact, print the legend.”

How did Rochelle receive her name? Sometimes I don’t know is the best answer we have. Stories will continue, and historians will keep digging to separate the fact from the fiction.

Tom McDermott is a Flagg Township Museum historian and Rochelle city councilman.



Tom McDermott

The state of the cattle world

THE year kicked off with a cattle inventory estimated to be down two percent, thanks to a 2021 calf crop down 2.3 percent from the previous year, due largely to the pressures brought on by drought and high input costs for feed, fuel, fertilizer and labor.

Drought and high input costs are impacting the marketing and processing of cattle. Drought had a significant impact on pasture and rangeland this summer, especially in the West and the Southern Plains. High input costs have been another obstacle to farm profitability and have incentivized cattle producers to market more cattle.

Rain has improved pasture and rangeland conditions in some areas in recent days. This should provide incentive for some farmers and ranchers to hold onto calves for replacements. However, it is important to note

that pasture conditions will take some time to recover to pre-drought conditions.

Beef production in August 2022 was a record 2.51 billion pounds, six percent above the same time last year. Cattle slaughter totaled 3.08 million head, up seven percent from August 2021. Total cattle slaughter for 2022 came in at 22.49 million head, 1.8 percent ahead of 2021. Heifer slaughter accounts for over 30 percent of the total at 905,000 head, 9.3 percent more than August 2021 and 6.2 percent above the five-year average. Cow slaughter is estimated to be 6.8 million head, six percent ahead of last year. Cow and heifer slaughter are particularly important because these female cattle are responsible for the future calf crop. Cow and heifer slaughter combined account for nearly 51 percent of all cattle processed between

January and August 2022. The growth in rate of cow and heifer slaughter is leading to a smaller calf crop and lower future cattle supplies.

High beef production has led to a rise in beef in cold storage. In the September Cold Storage report, USDA estimates that beef in freezers was a record 515.67 million pounds, growing by one percent in August. This is 24 percent greater than the same time in 2021. The U.S. Bureau of Labor and Statistics released the August 2022 Consumer Price Index on Sept. 13. The Consumer Price Index for all food increased 0.8 percent between July and August 2022 and all food prices were 11.4 percent higher than August 2021.

Total beef export sales as of Sept. 15, 2022, were 682,600 metric tons,

up 1.8 percent from last year. Estimated at 35,800 metric tons, beef exports to China sky-rocketed during this week. U.S. beef exports to China total 116,000 metric tons, 6.7 percent higher than this time last year. Beef has been China’s largest imported meat since 2021, with record levels of beef entering the country over several weeks.

While exports are slightly above last year, they may begin to slow. One of the reasons for this is strength in the U.S. dollar. The U.S. Federal Reserve increased base interest rates by 75 basis points on Sept. 21 and signaled more increases by the end of the year. This news caused the U.S. dollar value to strengthen in comparison to other foreign currencies such as the euro, Canadian dollar, or Japanese yen.

USDA’s Septem-

ber Cattle On Feed report, released on Sept. 23, 2022, showed cattle and calves on feed on Sept. 1 totaled 11.3 million. This is up only slightly from last month but is the second highest month on record since the report began in 1996. Placements of cattle into feedlots in August was slightly greater than last month at 2.11 million head. Marketings are the biggest story of this month’s report, coming in at 2 million head, six percent above this time in 2021. Continued high inventories of cattle in feedlots paired with high levels of marketed fed cattle will be a factor in the overall cattle inventory and calf crop when USDA’s National Agricultural Statistics Service releases the biannual cattle inventory near the end of January 2023.

August 2022 proved to be a record-setting month for beef. Record monthly production driv-

en by a growing slaughter pace resulted in a record amount of beef in cold storage. Slaughter during August 2022 came in seven percent above the same time in 2021. USDA is forecasting total cattle slaughter for 2022 1.8 percent above 2021. Fourth-quarter production is expected to slow but will likely be offset by higher-than-expected production in the first three quarters of 2023. Cow and heifer slaughter has continued to grow from stress caused by drought and high costs for supplies such as feed and fertilizer. This continued growth of female cattle being placed on feed for processing will result in tighter cattle inventories for years to come. This is a strong indicator that the cattle industry is continuing in the contraction phase of the cattle cycle.

Ron Kern is the manager of the Ogle County Farm Bureau.



Ron Kern

Send a letter to the News-Leader

THE News-Leader would like to remind the public and our readers that respon-

sible letters to the editor on subjects of interest to our readers are encouraged. Letters to the editor must

abide by the guidelines that you will find at the bottom of this page.

Those that want to make

their voice heard can send their letters via email to news@rochellenews-leader.com, in the mail to

PO Box 46, Rochelle, IL 61068 or drop them off at 211 Illinois Route 38 East, Rochelle, IL 61068. Ques-

tions? Call 815-561-2151

Jeff Helfrich
Managing Editor

How to contact government officials

U.S. Con. Adam Kinzinger
1218 Longworth HOB
Washington, D.C. 20515
(202) 225-3635

IL Sen. Brian Stewart
M104A State House
Springfield, IL 62706
(217) 782-0180

IL Rep. Tom Demmer
314 Capitol
Springfield, IL 62706
(217) 782-0535

Have a letter you want to submit to us? Send it to news@rochelle-news-leader.com

KEEPING YOU IN TOUCH WITH YOUR LOCAL LEADERS

* Denotes Chairman/President

Rochelle City Council

*John Bearrows	jbearrows@rochelleil.us
Kathryn Shaw-Dickey	kshaw-dickey@rochelleil.us
Bill Hayes	bhayes@rochelleil.us
Rosaelia Arteaga	rarteaga@rochelleil.us
Dan McDermott	dmcdermott@rochelleil.us
Tom McDermott	tmcdermott@rochelleil.us
John Gruben	jgruben@rochelleil.us

Rochelle Elementary School Board

*Dave Casey	dcillini94@gmail.com
Steve Builta	sbuilt@gmail.com
Ashley Jackson	ajackson@d231.rochelle.net
Stephanie White	swhite@d231.rochelle.net
Eric Van Hise	eric.vanhise@gmail.com
Trisha Vaughn	jrvtlv02@msn.com
Javier Zepeda	jzepeda@rthsd212.org

Rochelle Township High School Board

*Tom Huddleston	tom.huddleston@rthsd212.org
Carol Hayenga	carol.hayenga@rthsd212.org
Bill Ravnaas	bill.ravnaas@rthsd212.org
Jacky Aguilera	jacky.aguilera@rthsd212.org
Jeff Tilton	jeff.tilton@rthsd212.org
Bobby Chadwick	bobby.chadwick@rthsd212.org
Brian VanVickle	brian.vanvickle@rthsd212.org

Flagg-Rochelle Park Board

Brent Carmichael	bcarmichael@rochelleparkdistrict.org
John Dobbs	jdobbs@rochelleparkdistrict.org
Dale Wells	dwells@rochelleparkdistrict.org
*Tim Hayden	thayden@rochelleparkdistrict.org
Jodie Hart	jhart@rochelleparkdistrict.org
Joe Lenkaitis	jlenkaitis@rochelleparkdistrict.org

Ogle County Board Dist. 3

Lloyd Droege	ldroege@oglecounty.org
Dan Miller	dmiller@oglecounty.org
Greg Sparrow	gsparrow@oglecounty.org

Ogle County Board Dist. 4

Bruce McKinney	bmckinney@oglecounty.org
Skip Kenney	skkenney@oglecounty.org
David Williams	dwilliams@oglecounty.org

Creston Village Board

Wayne Williams	jwdw13@yahoo.com
Jennifer Payton	
*Tom Byro	tommyb_47@yahoo.com
Greg Hopkins	ghopkins522@comcast.net
Steve Katzman	skatzman@essex1.com
Mike Kerns	ac.kerns@comcast.net
Mark Hibshman	
Curt Ward	caward92@comcast.net

Hillcrest Village Board

*Randy Salsbury	rsalsbury@hillcrestil.us
Pam Pittman	ppittman@hillcrestil.us
Dan Potter	dpotter@hillcrestil.us
Richard Rhoads	rrhoads@hillcrestil.us
Tim Ball	tball@hillcrestil.us
Renee Kerwin	rkerwin@hillcrestil.us

Flagg Township

*Bob Withrow	flaggtwp@rochelle.net
Joanna Patrick	flaggtwpc@rochelle.net
Susan Rothenberger	assessor@rochelle.net
Scott Seebach	scottseebach@gmail.com

Board of Trustees

Lance Noggle	noggle62@gmail.com
Eric Gruben	egruben@comcast.net
Susan Hagar	susanhager303@comcast.net
Jim Kenney	jimk@rocketsupply.com

Flagg-Rochelle Library

*Jaqueline Dickow	dickow@comcast.net
Teresa Haggstad	haggstads@comcast.net
Michael Scanlan	scanlan@comcast.net
Lanning Nicoloff	nicoloff118@comcast.net
Sheri Klindera	alwayslefty2@gmail.com
Susan Sevedge	nit1prl22@yahoo.com
Darci Waltrip	doobs12@comcast.net

LETTERS TO THE EDITOR POLICY

The Rochelle News-Leader encourages responsible letters to the editor on subjects of interest to our readers. Editing may be necessary for space, clarity or to avoid obscenity or libel, but ideas will not be altered. All letters must bear the handwritten signature of the writer and include address and phone number or e-mail address for verification purposes. Neither the street address nor phone number will be printed. Letters should be typed or legibly

handwritten, and no anonymous letters will be published. Any letters from boards or organizations must include at least one name of an individual. Any criticism of public officials should be limited to issues related strictly to their position or actions made in office, as personal attacks will not be published. Letters involving private disputes between the writer and a business will not be published. Political endorsements will be published,

however letters from candidates endorsing themselves will not be printed. Letters may be dropped at the News-Leader office (211 IL Route 38 East), mailed to the News-Leader (P.O. Box 46, Rochelle, IL 61068) or e-mailed (news@rochellenews-leader.com). The News-Leader reserves the right to edit or reject any letter to the editor for any reason, and letters chosen for publication do not necessarily reflect the views of this newspaper.

Weekly SUDOKU



HAPPY HALLOWEEN



City of Rochelle Trick-or-Treating Hours

**Saturday, Oct. 29
from 5-8 p.m.**

Bruns Construction, Inc.
Tim & Roger Bruns, Owners
Established 1997

**RESIDENTIAL
FLATWORK,
CONCRETE
DRIVEWAYS &
FOUNDATIONS**

- Shingled Roofs
- Flat Roofs
- Metal Roofs for Farm Facilities
- Residential & Commercial Roofing

FREE ESTIMATES

815-561-0099
Licensed & Insured
www.brunsconstructioninc.com

**Drivers - Please
watch for Children
on Halloween night**

 Non-Emergency
815-562-2131
Emergency
911

416 North 6th Street

**Rochelle
News-Leader**
We Deliver!

211 Hwy. 38 East
Rochelle, IL 61068
Phone: 815-562-4171
www.rochellenews-leader.com


Rochelle
Community Hospital
Your Local Healthcare Resource.

900 N. 2nd St., Rochelle
www.rochellehospital.com



**Rochelle
Pharmacy**
and Wellness Center

 **We Deliver!**
815-562-4444

**Please put
safety first!!
Warm wishes for a
Happy Halloween!!**

FREE!!!!
**Get a FREE slider &
a FREE snack size pop for
any child in a costume.**

 **WE
HAVE
THE
MEATS™**

*14 & under, one offer per child
must be accompanied by an adult.
All day Halloween 10/31/2022

328 Hwy 38,
Rochelle

10262022

**ANDERSON
PLUMBING & HEATING, INC.**

- Plumbing
- Cooling
- Heating

LENNOX

621 First Ave., Rochelle, IL
815-562-8784

**ROCHELLE
ELEMENTARY
SCHOOL
DISTRICT
#231**

Rochelle Foods

**Have a Safe
& Happy
Halloween!**

1001 S. Main St., Rochelle
815-562-4141
rochellefoodsjobs.com

Breast Cancer
Awareness
Month



Frightened?

We can help...
Stop in soon!



HUB CITY FURNITURE

429-433 Lincoln Hwy.
Rochelle, Illinois
815-562-8765
hubcityfurniture.com



Tuesday through Friday 9-4 Saturday 9-1 Sunday through Monday Closed.

WEDNESDAY, OCT. 26, 2022

ROCHELLE NEWS-LEADER • SECTION 2 • PAGE 1

SPORTS



LADY HUBS AWARDED

The Rochelle Lady Hub tennis team held its season ending awards banquet.

See page 3 for more details

RTHS Football



(PHOTO BY RUSSELL HODGES)

The Rochelle Township High School varsity football team recognized its seniors before Friday's game against Richmond-Burton. Rochelle fell 41-20 to end the regular season with a 7-2 overall record. Above from left to right are Felix Schlenbecker, Aidan Rodriguez, Kyce Jaradat, Hayden Inman, Jaden Cook, Garrett Gensler, David Gerber, John Green, Aidan Darby, Raul Aguirre, Bradley Cooney, Cody Cullum, Landon DeLille and Trey Taft.

Hub seniors honored

Rochelle falls to Richmond-Burton 41-20 in Senior Night season finale Friday

BY RUSSELL HODGES
SPORTS EDITOR

ROCHELLE—Senior Garrett Gensler cemented his place in the record books as the Rochelle Hub varsity football team hosted unbeaten Richmond-Burton in its season finale on Friday.

Gensler rushed for a team-leading 93 yards and three touchdowns as the Hubs fell 41-20 against the Rockets, who entered as the No. 2 ranked team in Class 4A and clinched the Interstate 8/Kishwaukee

River Conference Blue Division crown with the victory. With 25 rushing touchdowns this season and 46 touchdowns for his varsity career, Gensler now holds the Rochelle Township High School career and single-season rushing touchdown records.

"Garrett is the consummate high school football player," head coach Kyle Kissack said. "Garrett is the most humble kid on our team and while the records are awesome, he'll be the first to credit the kids he plays with and point to

those kids as the reason for his success. He's extremely humble and I'm really proud of his effort and what he's accomplished, but I'm even more proud of him for his character. It's really important for our program to have guys like him. Garrett would rather win than have a record."

The Rockets (9-0, 5-0 I-8/KRC Blue) stymied Rochelle's rushing attack over the team's first two drives on Friday, forcing a turnover on downs as well as a three-and-out on consecutive possessions.

Richmond-Burton leaned on running back Steven Siegel, who rushed for a 7-yard touchdown and a 2-yard touchdown in the first quarter to help the Rockets take a 14-0 lead. Siegel carried the ball 27 times for 193 yards and five touchdowns to lead the R-B offense.

"We have a really good football team," Kissack said. "We lost to arguably the best team in Class 4A tonight. We have to continue finding ways to get better because we'll face teams like Richmond-Burton in

the playoffs. I thought we played better tonight than we did against Sycamore earlier this season. We fell behind in the first half and it's tough to make those kinds of mistakes and come back against a good football team like Richmond-Burton."

Sophomore Grant Gensler sparked the Hub offense early in the second quarter, taking a carry 13 yards off the left side before older brother Garrett Gensler broke loose off the right side for a 30-yard touchdown run on the next

snap. Despite trailing 14-6, Rochelle was unable to contain Siegel and the Rocket offense, which averaged 6.5 yards per rushing attempt and totaled 352 yards. A 51-yard Siegel scamper set up a 12-yard score that gave the Rockets a 21-6 lead.

Richmond-Burton forced the first turnover of the night on Rochelle's next possession, with linebacker Zachary Smith intercepting senior quarterback Hayden Inman's fourth-down pass near the Rocket sideline.

See HUBS page 8

RTHS Cross Country

Rochelle teams battle at IHSA 2A Sterling Regional

Hernandez, Ortiz earn at-large individual qualifying berths for sectional meet

BY RUSSELL HODGES
SPORTS EDITOR

STERLING — Junior Luis Hernandez and senior Yuelma Ortiz each earned at-large individual qualifying berths during the IHSA 2A Sterling Regional at Hoover Park on Saturday, when the Rochelle Hub and Lady Hub varsity cross country teams raced against 10 other schools for the opportunity to continue their season at the IHSA 2A Kaneland Sectional in Maple Park.

Ortiz led the Lady Hubs in varsity race, finishing 16th out of 65 athletes and earning the No. 1 at-large qualifying berth for the sectional meet, which will be held on Saturday, Oct. 29. Ortiz clocked in with a time of 20:21.40 to lead the Lady Hubs to a ninth-place team performance. An Interstate 8 All-Conference runner, Ortiz will race at sectionals for the second straight season.

"I was having a tough time setting PRs during the season and I wasn't sure whether or not I was going to make the sectional meet," Ortiz said. "It felt really good when I found out I made the sectional meet... I think I'm going to be more prepared this time around and I know



(PHOTO BY RUSSELL HODGES)

The Rochelle Township High School varsity cross country team raced in the IHSA 2A Sterling Regional at Hoover Park on Saturday. Above from left to right are head coach Mark Zilis, Isabella Biggs, Rose Luxton, Declan McGee, Luis Hernandez, Elijah Mayen, Kenny Overton, Cash Budde, coach Dale Bergeson (back row), Gisselle Robles, Bridgett Ramirez, Yuelma Ortiz, Chris Hickey and Aaliyah Losoya (front row). Not pictured are Emely Hernandez and Mary Chadwick.

what to expect. There will be more runners there too so I won't feel too overwhelmed by that."

Freshmen Rose Luxton (57th in 24:38.40), Emely Hernandez (61st in 26:09.50), Mary Chadwick (63rd in 26:35.50) and sophomore Bridgett Ramirez (59th in 24:53.40) rounded out the top five scoring runners for the

Lady Hubs. Hernandez led the Hubs in the varsity race, finishing 26th out of 76 athletes and earning the No. 5 at-large qualifying berth with a time of 16:54.40.

"The Sterling course is one of my favorites," Ortiz said. "The incline that we run through isn't too bad the first time around, but it's challenging the second

time around because we're a little tired and we have to push ourselves because if we slow down, that's going to lead to a slower time."

Freshmen Declan McGee (51st in 17:50.80) and Elijah Mayen (68th in 19:54.90) as well as sophomores Chris Hickey (60th in 18:39.40) and Kenny Overton (74th in 22:22.90) rounded out the

top five scoring runners for the Hubs, who finished 11th in the team standings on Saturday. Also an Interstate 8 All-Conference runner, Hernandez will race at sectionals for the first time.

"I was nervous at first because I didn't feel like I had a very good race," Hernandez said. "I was really relieved and happy

when I found out I made it. I knew I had to finish strong and that's what I did. I'm going to do the best I can at the sectional meet and my goals are to place in the top 50 and possibly qualify for state. There was a decline at the start of the course that was difficult because it messed with my stride, but I thought I handled the course well."



The businesses featured on this page are

"Hubs Super Fans"

They proudly support our local athletes and students.

Please show your appreciation by patronizing their businesses.

WE SUPPORT OUR HUBS!



ANDERSON Plumbing & Heating, Inc.

Plumbing, Heating, Air Conditioning,
Drinking water systems, Water Heaters,
Softeners, Iron Filters & More.

LENNOX

Since 1976

Like us on
Facebook
Lic# 055-013999

One less thing to worry about
621 First Ave., Rochelle
815-562-8784

HSF2016



Hello,
neighbor!

Huber Inc and Fin Svcs Inc
Shane B Huber, Agent
1211 Currency Ct
Rochelle, IL 61068
Bus: 815-562-7011

Please stop by and say, "Hi!"
I'm looking forward to serving your needs for insurance and
financial services.
Like a good neighbor, State Farm is there.
CALL ME TODAY.

State Farm

1001013.1

State Farm, Home Office, Bloomington, IL

DLX Medical GROUP

Caring for your
family's health from
infant to adults.

For appointment, please call
815-227-9594
1212 Currency Ct, Rochelle, IL 61068
Most Insurance Accepted

Diana Alanis, MD
Accepting
New Patients

Local People Providing Local Service

Rochelle MUNICIPAL UTILITIES

Water • Waste Water
Electric • Communications

Phone: 815-562-4155 333 Lincoln Highway
Fax: 815-562-5861 Rochelle, IL

www.rmu.net

CENTRAL ILLINOIS LOAN

Loans For All Your Needs
Auto • Home Improvement • Vacation

Jami Hackman

815★561★4035!

310 Eagle Drive, Rochelle
All loans subject to our normal credit requirements and policies.

MORTON BUILDINGS

If you can dream it, we can build it.

Rochelle Sales Office • Hwy. 251 N. • 877-613-3050

Rochelle Community Hospital

Your Local Healthcare Resource.

900 N. 2nd Street, Rochelle
815-562-2181
www.rochellehospital.com

MEYERS FURNITURE & FLOORING

209 Powers Road, Hwy 251 N
Rochelle, IL 61068
(815) 562-8792
www.meyersfurniture.com

Bruns Construction, Inc.

Residential & Commercial Roofing

• Shingled Roofs
• Flat Roofs
• Metal Roofs For Farm Facilities
• Custom Built Homes
• Additions

815-561-0099
Licensed & Insured

Batavia Builders & Remodelers, LLC

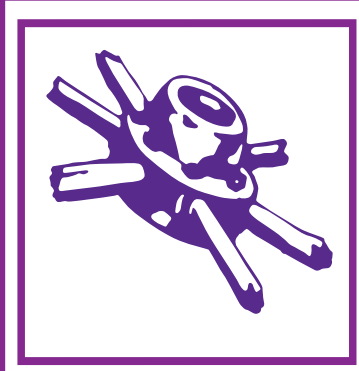
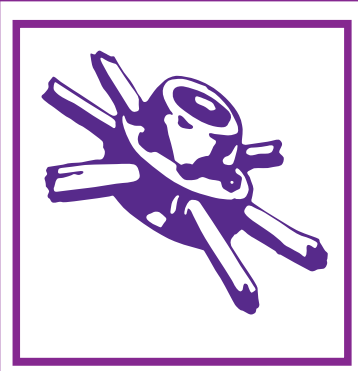
Debbie Foster,
Owner

(815) 501-8946
www.bataviabuilders.com

Serving Illinois & the Surrounding Area

Specializing in Walk-In Tubs
& Acrylic Showers

Additions ~ Bathrooms ~ Kitchens
Accessibility Remodeling



HUB SPOTLIGHT



(PHOTO BY RUSSELL HODGES)

Rochelle senior Garrett Gensler will continue his academics and his football career at Northern Illinois University next year. Gensler said he intends to study business.

Gensler commits to NIU

WITH over 2,500 rushing yards and almost 100 tackles on his resume, Rochelle senior Garrett Gensler has been a cornerstone athlete for the RTHS varsity football team over the last three seasons. Gensler will look to become a building block for the Northern Illinois University football program after announcing his commitment to the Huskies on social media Sunday evening.

"NIU is somewhere I feel really comfortable," Gensler said. "I grew up around here and I think NIU has a great culture with good coaches and good people. I'm really excited to go and play there next year. They're going to get an athlete who's willing to put the work in and I'm going to get stronger over the years. I'm looking forward to building relationships with my teammates."

Gensler worked his way onto the collegiate scouting radar last season, when the two-way football standout rushed for 942 yards and 20 touchdowns while adding 34 tackles to earn IHSFCA 5A First-Team All-State honors. Gensler has continued to shine this season, rushing for 1,453 yards and becoming Rochelle's all-time record holder for career rushing touchdowns (46) and rushing touchdowns in a season (25). Gensler said he intends to study business at NIU.

"I'm going to play my hardest," Gensler said. "The coaches at RTHS have done an excellent job of preparing me for the next

level. They talk about the right things and they teach the right lessons that have prepared me for my future and the rest of my life after football."

Gensler has played tailback and line-backer for the Hubs in each of the last three seasons. The 6-foot-1, 200-pounder said he intends to play running back for the Huskies, whose 2023 recruiting class includes Johnsburg offensive lineman Jacob Welch. Gensler and the Hubs (7-2, 4-1 Interstate 8/Kishwaukee River Blue) are preparing for their first-round matchup against Dixon in the IHSAA 4A Playoffs, which will kick off at RTHS on Friday, Oct. 28 at 7 p.m.

"I talked with coach [McKissic-Luke] and coach [Thomas] Hammock and they really like what they've seen from me," Gensler said. "They wanted a physical runner and a blocker and that's what I can do. I'm looking forward to all of the new memories I can create and meeting new teammates. I'm excited for all of the new places I'll see and it's a great opportunity for my life."

An Interstate 8 All-Conference First Team honoree in football last season, Gensler has played three sports throughout his high school career including football, basketball and baseball. Gensler, who was an Interstate 8 All-Conference Honorable Mention as a sophomore, earned the football team's Hackett Award as Rochelle's Most Valuable Player last season.

Rochelle Chiropractic Clinic
Dr. Chad M. Piller



227 E. Rt 38 • Rochelle, IL

815-562-8706

www.rochellechiropractic.com

Now Accepting New Patients!

JOHNSON TRACTOR

SALES • PARTS • SERVICE

200 Steward Road

800.262.1680

www.johnsontractor.com

AtlasAuto

BUY HERE – PAY HERE
You Work - You Drive

Se Habla Español **815-562-7433**

1400 N 7th St
Corner of Flagg Rd & Hwy 251 N

HUB-REMSEN

101 Maple Ave • Rochelle, IL 61068

815.562.7057 • **hub-remsen.com**

GO HUBS!



"Proudly Serving The Rochelle Area Since 1945"

Berg-Johnson Electric

Residential • Commercial • Industrial

FREE ESTIMATES

Licensed and Insured

24 Hour Emergency Service

815-562-4937

500 Cleveland Avenue

CHEVROLET

We are
Ogle
County's
only
GM Dealer!

- Collision Repair
- 24 Hour Towing
- New/Preowned Vehicles
- Tires, Alignments, Brakes, Batteries
- Rental Cars
- Maintenance On All Makes and Models

JEFF PERRY

CHEVROLET • BUICK • CADILLAC • JEEP • CHRYSLER

815-562-8787 • **www.jeffperrychevrolet.com**

Busy Schedule? Leave the cooking to us.

- Large menu of foods
- Rochelle's famous chicken by the dinner or bucket
- Hand dipped ice cream (16 flavors)

COUNTRY SCHOOL DRIVE-IN RESTAURANT
251 N. ROCHELLE • 562-6039

We're tuned in to your
financial needs!

- Six locations
- 25,000+ ATMs across the U.S.¹
- Free checking account options including Student Checking
- Stillman Mobile App featuring mobile deposit²
- Free Pre-approvals
- Local lenders, local decisions

Stillman BANK
Earning Your Trust For 135 Years
www.stillmanbank.com

ATM must be a part of the MoneyPass® network. *Not be enrolled. A \$5.00 fee will apply to each mobile check deposit. Center state may vary, check with your provider for details.

562-3312
Dine-in • Carry-out

Taste the difference **Alfano's**
Pizzeria and Italian Restaurant

Two for Tuesday
2 Large, 2-Topping
PIZZAS \$24.99
(With Coupon)

1115 Turkington Terrace
Rochelle, Illinois
Beer & Wine Dine In Only

SPORTS

RTHS Girls Tennis

(COURTESY PHOTOS)



Lady Hubs take home RTHS, Interstate 8 Conference awards during team banquet Monday evening

The Rochelle Lady Hub tennis team celebrated its season with an awards banquet on Monday. Seven Lady Hub student-athletes earned Interstate 8 Academic All-Conference honors including Marisa Whaley, Kara Martinez, Torrin Nantz (Honorable Mention), Annaleigh McKinney (Honorable Mention), Allison Dickey (Honorable Mention), Abby Tarvestad (Honorable Mention) and Elin Zheng (above left to right). Teagan Auld (bottom left) was named the Fresh-Soph Most Improved Player and Catherine Williams (middle left) was named the Fresh-Soph High Point Award winner. Francesca Williams (middle right) earned the Varsity Most Improved Player Award and doubles teammates Marisa Whaley and Bailey Jackson (bottom right) took home the Varsity High Point Award. Rochelle finished 5-10 overall this season.

COMMUNITY BOARD

Need to get the word out about a product or service you offer?
Give us a call at 815-562-4171.
We can reach over 9,000 homes!



Gutters

THE SCEN
ROOFING & SIDING CO., INC.

SEAMLESS GUTTERS

ALL ALUMINUM

- Will Not Rust, Chip Or Peel
- Most Colors Available
- Manufactured On The Job

815-758-8998

257 W. Stephanie Dr., Cortland
www.theiscenroofing.com

Storage Sheds

Rocky Ridge Structures

FREE Sales Rep. Evaluation At Your Site

We Deliver! From Our Lot To Your Site

We Specialize in Portable/Quality Built Storage Sheds

- Stock & Custom Design
- Many Options Available
- Competitive Pricing
- Site Preparation Available

See Displays at 3500 S. Chana Rd. Chana IL 61015
Call Norm or Albert for Free Literature packet
779.861.3542

Plumbing/Heating/Cooling

Anderson Plumbing & Heating Inc.
Serving Rochelle For Over 40 Years

LENNOX

Quality Service • Free Estimates
Residential & Commercial

815-562-8784

Lic. #058-087891

Heating & Air Conditioning

HULL
HVAC & Household Services

Furnaces - Air Conditioners - Boilers
Duct Cleaning - Water Heaters

Air Conditioner Clean & Check

\$50.00

After \$35 rebate.
Promotion only available to RMU customers.
Expires: 08/31

Ask about duct cleaning and protecting your home's air quality.

815-561-6551
www.HullHVAC.com

Commercial & Residential Roofing

Bruns Construction, Inc.

Residential Concrete
Driveways, Flatwork and Foundations

- Shingled Roofs
- Flat Roofs
- Metal Roofs For Farm Facilities
- Custom Built Homes
- Additions

FREE ESTIMATES

561-0099 Tim & Roger Bruns, Owners
Established 1997
www.brunsconstructioninc.com

Advertise Here

What Service Do You Offer?

562-4171

The Rochelle News-Leader

PRIME TIME

How to include giving in your estate plan

CHARITABLE giving is the lifeblood of many nonprofit organizations. The generosity of donors helps charities meet their missions and provide vital services to people facing disease, financial hardship and other situations they cannot overcome on their own.

Many donors make sacrifices to support their favorite causes and charities. Forgoing certain luxuries so money can be donated to charity illustrates the selfless nature of charitable giving, which can even continue after death. Estate planning is a complicated process that details exactly how a person wants their assets divvied up after death. But an estate plan also can go into effect while individuals are still alive.

Each year, millions of people across the globe choose to include charitable giving in their estate plans, and that can benefit charities and donors. The following are a handful of the many ways charitable men and women can incorporate giving into their estate plans.

Bequest giving in a will or living trust. Perhaps the most widely known way to include charitable giving in an estate plan is to bequeath money in a will or living will. The Community Foundation Alliance notes that bequests typically allow donors to define how their donations will be spent or utilized. That benefits charitable organizations, but surviving family members also can benefit from such arrangements. According to LawDepot.com, individuals may be able to lower the estate taxes on their estates at their time of death if they bequeath money to an eligible charitable organization in their wills.

Consider a charitable rollover. The Internal Revenue Service notes that individuals with an IRA, SEP IRA, Simple IRA, or retirement plan account generally must begin withdrawing money from these accounts when they reach age 72. These withdrawals are called required minimum distributions and they are considered taxable income. However, individuals who want to give to charity can



opt for a Qualified Charitable Distribution, or QCD. A QCD counts toward the minimum distribution from retirement accounts and individuals will not be taxed on the money they donate to charity. That's a win-win for charities and individuals 72 and over who do not need to

withdraw money from their IRAs to meet daily living expenses.

Donate via a charitable remainder trust. A charitable remainder trust, or CRT, allows individuals to set up a trust that benefits both a designated beneficiary and a charity or charities

of their choosing. When a CRT is set up, a beneficiary will receive annual payments from the trust until it terminates, at which time the remaining funds in the trust are donated to charity. The philanthropy experts at Fidelity Charitable note that individuals can name them-

selves as the beneficiaries of the trust, which ensures they will have an income during retirement and that their favorite charities will be supported when the trust expires. Individuals who want to make charitable giving part of their estate plan can do so in various ways.

Individual needs should inform emergency plans

STORMS, natural disasters and other emergency situations are unpredictable. Planning for the unpredictable is no small task, but emergency response professionals and public health agencies emphasize the importance of having a plan in place should disaster strike.

The National Centers for Environmental Information reported there were a record 22 separate billion-dollar weather and climate disasters across the United States in 2020. That shattered the previous annual record and led

to \$95 billion in damages, marking a bookend to a five-year period between 2016 and 2020 that saw the total cost of a billion-dollar disasters exceed \$600 billion. Such figures illustrate that while the disasters themselves may be unpredictable, it's not hard to conclude that they're going to come and they're going to be costly.

When planning for disasters, families are urged to consider the specific needs of each person in their household. Ready.gov, a disaster preparedness public service campaign sponsored by the

U.S. government, urges families to keep the following factors in mind as they prepare disaster response plans for their households.

Ages of members within your household: The ages of individuals within the household merit consideration. Young children or seniors may not be able to navigate the household in emergency situations, and it may take longer for heads of household to get everyone out if some people need assistance. Emergency plans can be altered as children grow older and can take on more responsibility.

Responsibilities for assisting others: Assign older children and adults specific responsibilities if anyone in the household will require assistance. For example, adolescents can help a live-in grandparent get out of the house.

Locations frequented: Defining the locations household members frequent can make it easier to find everyone in the case of emergency.

Dietary needs: Document the unique dietary needs, including food allergies, of each person in the household so no one has an adverse reaction to food during or after



evacuating.

Medical needs: Document each individual's medical needs, including their prescriptions and any equipment they need.

Disabilities: Include individual's disabilities-related needs or access and functional needs, including devices and equipment.

Languages spoken: This information can

help emergency response personnel communicate with anyone who does not speak the native tongue.

Cultural and religious considerations: Document individuals' cultural and religious considerations so anyone trying to help them can do so while respecting their beliefs.

Pets or service animals: Emergency assistance shelters admit only service

animals, so anyone traveling with animals will need to provide proof that the animal is recognized as a service animal. Families should plan ahead and arrange for housing for pets in the case they have to evacuate their homes.

No two families are the same, so it's a must that disaster preparedness plans take each individual's needs into consideration.

FEARER, NYE & CHADWICK

ATTORNEYS AND COUNSELORS SINCE 1878

420 Fourth Avenue
Rochelle, IL 61068
815-562-2156
www.fnclaw.com

01252022

Batavia Builders & Remodelers, LLC

Serving Illinois & the Surrounding Area

Debbie Foster, Owner
(815) 501-8946
www.bataviabuilders.com

Specializing in Walk-In Tubs & Acrylic Showers

Accessibility Remodeling ~ Additions ~ Bathrooms ~ Kitchens

10262022

APARTMENT AVAILABLE

Lincoln Manor

Owned and operated by Lutheran Social Services of Illinois (LSSI) offering apartment living for older adults in Rochelle and the surrounding communities.

Rent based on 30% of a Resident's Adjusted Gross Income

Full time Social Service Coordinator is available to assist residents

For more information, please call 815-562-1404

615 N. Lincoln Hwy.
Rochelle, IL 61068
TTY 847-390-1460

MANAGED BY:
Lutheran Social Services of Illinois
www.LSSI.org

01132019



ASHTON NEWS



Ashton-Franklin Center Elementary School celebrates Unity Week

(COURTESY PHOTOS)

This past week, Ashton-Franklin Center Elementary School celebrated Unity Week. On Thursday, the theme was “stop bullying by working together,” where students were invited to find a partner or partners and dress up as twins. On Friday, the theme was “team up against bullying” where students were invited to wear clothing that represented their favorite sports team. Students and staff gathered in the court yard and took a school photo.



Ashton-Franklin Center FFA Chapter delivers lunches to area farmers

On Thursday, Ashton Franklin Center FFA members delivered almost 50 lunches yesterday to area farmers. The AFC FFA thanked area farmers for their work.



Presbyterian Church of Franklin Grove hosting garage sale event

FRANKLINGROVE — The Presbyterian Church of Franklin Grove, at the corner of Walnut and South Streets, is preparing for their “garage sale” in the basement. This sale includes a large selection of clothing, many with original tags. Some featured items include Avon collections, scarves, belts, boots, coats, purses, jewelry, home and fall décor, Christmas décor, kitchen items and small appliances, two sets of dishes, picture frames, linens, many books, stuffed animals, puzzles and much more. There is something for everyone. Store prices have gone up but our prices have not. Sale dates are Oct. 28 and 29. Friday hours are 8 a.m. to 4 p.m. Saturday hours are 8 a.m. to at least 1 p.m. The members and friends of the church would like to thank the many who donate and/or purchase items at their biannual sales.

The Assemblymen Gospel Quartet performing Oct. 30

ASHTON — The Assemblymen Gospel Quartet will perform at the Grace Fellowship Church at 2128 Illinois Route 38 in Ashton on Sunday, Oct. 30 at 6 p.m. A free will offering will be taken and there will be snacks after the performance. The quartet is from Rockford and is led by Dave and Paul Nelson.

AFC Raider football team wins over Christian Life

ASHTON — The Ashton-Franklin Center varsity eight-man football team scored a 44-16 win over Rockford (Christian Life) to close out the regular season with a 6-3 record. AFC will face Milford in the first round of the playoffs this weekend. Quarterback Carson Rueff completed 10-of-15 passes for 212 yards and five touchdowns while adding 48 rushing yards and one touchdown on the ground. Zane Murphy totaled 122 receiving yards and one touchdown as well as two interceptions on defense. Lane Koning recorded 98 receiving yards, four touchdowns and one interception on defense. Levi Near threw a 20-yard touchdown pass for the Raider offense in the win. Auden Polk ran for 50 yards and caught a 9-yard touchdown pass, while Logan Mershon rushed for 44 yards in the game. AFC is the No. 13 seed in the Illinois 8-Man Football Association Playoffs. Milford is the No. 4 seed.

COMMUNITY MATTERS



BAR/RESTAURANT

Ralphie and Lulu’s
812 Main St., Ashton
815-453-2103

Huddle Cafe
802 Main Street, Ashton
815-453-2677

COMMUNITY BUILDING

Mills and Petrie Memorial Building
Hourly, daily rentals for your event
815-973-8397

CONSTRUCTION

Don Ross Jr. Construction
PO 96, Ashton
815-677-3774

GROCERY/GAMING

Mimini’s General Store
602 Brown Street, Ashton
815-453-7500

FUNERAL HOME

Beverage Lyons Funeral Home
604 Richardson Ave., Ashton 815-453-2441

HAIR SALON

Shear Delight
1873 Ashton Road, Ashton
815-453-2331

Beverage Lyons Funeral Home

604 Richardson Ave., Ashton
815-453-2441

Support Our Local Community

BRADFORD VICTOR-ADAMS
MUTUAL INSURANCE COMPANY

120 W. South St., Franklin Grove
815-456-2334

INSURANCE

Bradford Victor-Adams Mutual Insurance Company
120 W. South St., Franklin Grove
815-456-2334

MUNICIPALITIES

Village of Franklin Grove
105 E. S. South Street, Franklin Grove
815-456-2131

NEWSPAPERS/PRINTING

Ashton Gazette
815-453-2551

PLUMBING

Richter Plumbing and More
402 Western Ave., Ashton
815-453-2361

PUBLIC LIBRARY

Franklin Grove Library
112 S. Elm Street
815-456-2823

Mills and Petrie Memorial Library
704 First Street
815-453-2213

Classified Marketplace

FREE!

Sell your household items for free.
Total value of item must be \$200 or less. (15 words
- one week - 7 publications - price must be listed)



ROCHELLE • HILLCREST • CRESTON • STEWARD • KINGS • ASHTON

101 LEGAL NOTICE

PUBLIC NOTICE
A Mini Storage, LLC, a storage facility located at 117 Quarry Road, Rochelle, IL hereby announces that the possessions of the following lessees will be disposed of by means of auction on November 18th 2022 at 9:00 AM. Disposal of personal property shall conform to the terms of the certified notice previously mailed to the lessee. The contents of the units can be previewed immediately prior to the sale. The preview and sale will take place at each individual unit listed below; in the order they appear.
UNIT # 217 Rick Jacobs- printers, paint cans, boxes, bags, metal rack.
Unit # 211 Richard A Maginnis - Boxes, Bags, clothes.
Maria T. Garcia
A Mini Storage, LLC
815-562-2266
No. 1032
(Oct. 26 and Oct. 30, 2022)

101 LEGAL NOTICE

This publication does not knowingly accept fraudulent or deceptive advertising. Readers are cautioned to thoroughly investigate all ads, especially those asking for money in advance.

105 BUSINESS OPPORTUNITIES

"This publication does not knowingly accept fraudulent or deceptive advertising. Readers are cautioned to thoroughly investigate all ads, especially those asking for money in advance."

203 HELP WANTED

Truck Wash Manager / Maintenance Technician

NEW POSITION!

- Oversee truck wash & drivers in DeKalb, IL location
- Assist maintenance team with upkeep of exterior of barns

Apply online at: www.PIPESTONE.com
or call 866-918-7378



Maintenance Position

Rochelle, Oregon & Ashton Branches

Seeking qualified candidates for a Maintenance Position. This is a non-exempt part-time hourly position serving our Rochelle, Oregon and Ashton branches. This individual provides general maintenance and related duties ensuring facilities are well maintained, in good working order and have a clean internal and external appearance. Completes minor plumbing and electrical repairs as needed and assists staff when requested.


The successful candidate should be a self-starter with the ability to work with minimal supervision, have a good working relationship with employees, be dependable, have the ability to prioritize duties and perform tasks on a timely basis. Reliable transportation is required.

Currently scheduled hours are Monday through Friday from 7:00am to 11:00am. Hours can be subject to change depending upon weather related needs and/or assistance with bank sponsored events.

Qualified and interested applicants should send resume and cover letter to:

Central Bank Illinois
Attn: Jeff Glen
340 May Mart Drive
Rochelle, IL 61067

Or email recruiter@central-bank.com.



Equal Opportunity Employer 08142022

113 FINANCIAL

NOTICE Advance Fee Loans or Credit Offers
Companies that do business by phone can't ask you to pay for credit before you get it. For more information, call toll-free 1-877-FTC-HELP. A public service message from your hometown newspaper and the Federal Trade Commission.

119 ANNOUNCEMENTS

"This publication does not knowingly accept fraudulent or deceptive advertising. Readers are cautioned to thoroughly investigate all ads, especially those asking for money in advance."

123 MOVING AND STORAGE

1500 sq ft machine shed with high ceilings in rural Steward for rent. Call 815-298-9300. (11-02-22)

127 SERVICES AND REPAIRS

JNJ JUMPERS Indoor/Outdoor Bounce House Rentals Available Year Round. Please Call 815-784-4256 For Availability or Visit us on Facebook.

201 DOMESTIC/CHILD CARE

NO INDIVIDUAL, unless licensed or holding a permit as a childcare facility, may cause to be published any advertisement soliciting

a child care service. A childcare facility that is licensed or operating under a permit issued by the Illinois Department of Children and Family Services may publish advertisements of the services for which it is specifically licensed or issued a permit. Your Hometown Newspaper strongly urges any parent or guardian to verify the validity of the license of any facility before placing a child in it's care.

301 ANTIQUES

WANTED TO BUY: Vintage Metal and Wood Signs, Milk Bottles & Local Advertising, Oak Icebox, Iron Door Stop and Antique Lighting... Call Dick Harms at 815-562-2928 or email dickharms@hotmail.com

ANTIQUES WANTED: I pay cash for antiques; furniture, glassware, pottery & crocks, tin & iron toys, sterling silver, decoys. If it's antique, I'm interested in looking! Call 815-562-2928 or email dickharms@hotmail.com

305 GARAGE/ RUMMAGE/ESTATE SALES

FRANKLIN GROVE - Oct. 28 & 29, FRI 8-4, SAT 8 to at least 1. Presbyterian Church Basement, 106 S. Walnut. Men's, Women's, Kids' clothing, (5+ racks Name Brands, many with tags), Avon Collections, Boots, Scarves, Coats, Household, Christmas decor, Books, Small appliances, 2 sets of dishes, And much more. Unlike the stores, our prices haven't gone up! (10-26-22)

307 MISCELLANEOUS FOR SALE


FALL DECORATIONS. White Birch Branches \$4 Each. Cork Screw Willow Branches \$2 Each. 815-393-4670

BUNDLED Newspaper - \$3 per Bundle. End Roll- Cost Depends on Weight of Roll. Available Monday-Friday 815-562-4171 (8AM-NOON ONLY) Rochelle News Leader.

307 MISCELLANEOUS FOR SALE

OUTDOOR WOOD FURNACE

Exceptional performance and value. EPA certified Central Boiler Classic Edge Titanium HDX OUTDOOR WOOD FURNACE. **26% Tax Credit on furnace and installation.**



CentralBoiler.com 08312022

Call Pete Central Wood Boilers
815-509-7805

NEW MILFORD REFRIGERATION

NEW, USED SCRATCH & DENT

- Refrigerators • Freezers
- Washers/Dryers • Stoves

We also carry a large selection of refurbished appliances with a warranty.

6331 11th Street, Rockford
815-874-2257

11222020

Jackson guitar for sale in Rochelle area. Call 630-822-4534. (11-02-22)

309 PETS AND SUPPLIES

Free kittens & cats to good and loving homes. Call 815-503-1881. (11-02-22)

Puppy for Sale. Jack Russell/Rat Terrier Mix. Born July 29th. One Boy and One Girl. Call 815-501-2718. (11-02-22)

Free Barn Cats. Contact Martha 815-558-7001. (10-31-22)

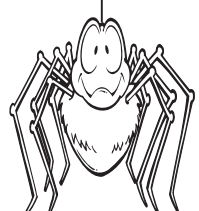
311 FARM EQUIPMENT

Looking to buy Farm Machinery, Cars, Trucks, and Old Tractors. Call 815-761-2803 (11-16-22)

405 HOUSES FOR SALE

ALL REAL ESTATE advertised herein is subject to the Federal Fair Housing Act, which makes it illegal to advertise any preference, limitation or discrimination based on race, color, religion, sex, handicap, familial status, or national origin, or intention to make any such preferences, limitation or discrimination. We will not knowingly accept any advertising for real estate which is in violation of the law. All persons are hereby informed that all dwellings advertised are available on an equal opportunity basis.

ADVERTISE
WITH US



It's not easy being a parent, but here's something simple you can do. Spend two minutes twice a day making sure they brush; it could help save them from a lifetime of tooth pain. Make it fun, text MOUTH to 97779 to join the 2MIN2X Challenge.



2MIN 2XDAY



Easier than explaining where the goldfish went.



Buy! Buy! Buy!

SELL! SELL! SELL!

Recycle



INFORMATION

Office Hours:
8 a.m. to 5 p.m. (Monday-Friday)
Phone:
815-562-4171
Fax:
815-562-2161
Email:
classifieds@rochellenews-leader.com
Address:
211 Hwy. 38 E., Rochelle
Mail:
P.O. Box 46
Rochelle, IL 61068

DEADLINES:

Sunday News-Leader:
Thursday, 2 p.m.

Tuesday Shopping News:
Friday, 10 a.m.

Wednesday News-Leader: Monday, 4 p.m.
(Deadlines subject to change during holiday times)

All classified marketplace line ads will appear in the following 7 print publications and on 5 high-traffic newspaper websites:

- Rochelle News-Leader
- Ogle County Life
- Rochelle Shopping News
- Ashton Gazette
- Amboy News
- Mendota Reporter
- Mendota Money Saver

Call for pricing that starts at \$32.99 for private party ads and \$44.60 for commercial business ads and \$19.99 for garage sale ads.

DISCLAIMER:

If your advertisement appears incorrectly, notify us immediately. We will not be responsible for more than one incorrect insertion, and will only credit customer for one insertion.

SPORTS

NIU Football

Huskies concede late score in loss against Ohio

Running back Brown rushes for 160 yards to lead NIU in 24-17 road defeat

ATHENS, Ohio — The Northern Illinois University Huskies went toe-to-toe with the Ohio Bobcats for 60 minutes, holding one of the Mid-American Conference's most potent offenses below its season averages for points and passing yards before falling to the Bobcats, 24-17, Saturday at Peden Stadium.

With the loss, NIU fell to 2-6 on the season, 1-3 in the Mid-American Conference, while the Bobcats improved to 5-3 overall, 3-1 in the MAC. "I'm proud of the effort of the young men in our program," said NIU head coach Thomas Hammock.

"They played as hard as they can play. They made a couple more plays than we did, but we played a team game. I thought Justin Lynch did a great job managing the game early and we had a chance to win the game but we came up a couple of plays short."

Ohio quarterback Kurtis Rourke connected with Sam Wiglus for a 22-yard touchdown pass with seven minutes to play, capping an 11-play, 90-yard drive that put the Bobcats ahead 24-17. Wiglus caught six passes for 69 yards and two touchdowns on the day to lead the Bobcats.

On its ensuing possession, the Huskies drove to the Ohio 36, but turned the ball over on downs when quarterback Justin Lynch's fourth down pass was batted down. NIU got the ball back with 1:04 on the clock after the defense forced an OU punt, but four straight passes fell incomplete.

Running backs Antonio Brown and Harrison Waylee once again provided a potent one-two punch for the Huskie offense, rushing for 160 and 97 yards, respectively. Brown recorded his first 100-yard game of the season, with many of his yards gained on the direct snap, including runs of 45 and 49 yards. In his second consecutive start, Lynch completed 9-of-18 passes for 110 yards.

"We have to be able to run the ball and stay in normal down and distance situations to give ourselves a chance," Hammock said. "I thought the backs broke some tackles, we had some second and long situations that they were able to get the first down. But we have to finish drives in the red zone with touchdowns

and that's really what was our Achilles heel today."

Trailing 10-6 at halftime, the Huskies made it a one-point game on the opening drive of the second half with a nine-play, 48-yard drive. Waylee accounted for 38 yards with runs of 21 and 17 yards before the drive stalled at the Ohio 22 and, after a false start penalty pushed NIU back five yards, John Richardson made the third of his three field goals on the day, a 45-yarder.

Ohio came right back with a 13-play, 81-yard drive, with Rourke scrambling to find tight end Will Kacmarek for 20 yards to the NIU four-yard line, before scoring himself from one-yard out to give the Bobcats a 17-10 lead.

NIU tied the game at 17 with 1:25 to play in the third quarter with a six-play, 75-yard drive that ended with its lone touchdown of the game. One play after Brown's 45-yard run to the Ohio 11, receiver Kacper Rutkiewicz got the handoff on the end around and scored from 11 yards out. Trailing 17-15, wide receiver Shemar Thornton caught a lateral from Lynch and his pass to Cole Tucker was good for two points and the tie.

Ohio scored on the opening possession of the game, driving 84 yards on nine plays and 3:49 to take a 7-0 lead on an eight-yard pass from Rourke to Sam Wiglus at the 11:05 mark of the first quarter. Rourke opened the drive with a 38-yard completion to the NIU 46 and hit Wiglus for 20 yards to convert a third and seven from the NIU 30-yard line to set up the scoring play.

NIU played the field position game in the first quarter as two Tom Foley punts forced the Bobcats to start from inside their 20-yard line, with the Huskie defense stepping up to force OU punts on both occasions. After the second Bobcat punt, NIU began a drive on its 46 and quickly advanced to the Bobcat 37 on three Brown runs. Lynch hit Tucker for seven yards to convert a fourth-and-three and four more running plays put the Huskies at the OU 10. Brown then fell on a bobbled snap for a 10-yard loss and the Huskies settled for a 38-yard Richardson field goal.

Richardson made a 27-yard field goal with 4:07 to play in the first half to complete a 10-play, 67-



(COURTESY PHOTO)

yard drive. Rutkiewicz had the big play on the drive, as he took a pass from Lynch and turned it into a 41-yard pass play to the OU 15-yard line.

Ohio came into the game averaging more than 33 points, 324 passing yards and 436 total yards per game but finished with just 24 points, 200 passing yards and 354 total yards. NIU had a pair of sacks on the day, while Daven Rayner led the way for the defense with seven tackles and half a sack.

"I think the defense is gaining more and more confidence," Hammock said. "I think they are playing together; I think that they are communicating better. They believe in one another and that goes a long way to being able to play team defense. To hold that offense to that amount of yardage, they gave us a great chance to win the football game."

NIU plays at home for the first time in nearly a month when they play host to Central Michigan on Wednesday, Nov. 2. Kickoff for the first of two weeknight MACtion contests in November is at 6 pm and the game will air on ESPN. Tickets for all three remaining home games are on sale anytime at NIUHuskies.com.

Get a half-price ticket for any remaining game with the donation of a canned good on game day or in advance at the NIU Athletics Ticket Office in the NIU Convocation Center.

The 2023 From The Heart Cash Calendars are NOW AVAILABLE!!

The proceeds of the sale of the calendars benefit our From The Heart recipients: Pegasus Special Riders, Rochelle Christian Food Pantry, HOPE, Focus House, Shining Star Children's Advocacy Center, CASA, Rochelle Area Community Foundation, Hub City Senior Center & Rochelle Rotary.

OUR CHARITIES NEED OUR SUPPORT NOW MORE THAN EVER!



For Just \$20 you have a chance to be one of **365 DAILY WINNERS TOTAL CASH PRIZES \$18,250** PLUS Each Calendar Has VALUABLE LOCAL COUPONS

Here are 3 Ways to Purchase Your 2023 From The Heart Cash Calendar!

• **ONLINE:** Go to <http://fromtheheartrochelle.org> and click on **CASH CALENDARS**. Once the calendar is purchased we will mail it out to you! Shipping and processing fees will be added to cost.

• **IN PERSON:** You can pick up a 2023 From The Heart Cash Calendar **TODAY** at the following locations:
In Rochelle at: First State Bank, Stillman Bank, HOPE Chest, Dimond Bros. Insurance and Hub City Senior Center
In Oregon at: Merlin's
In Dixon at: Shining Star

• **BY MAIL:** Fill out the form below and send it in to us and we will mail a 2023 From The Heart Cash Calendar to you! Shipping fees are added to cost.

YES! Send me my 2023 From The Heart Cash Calendar!
(Please Print)

NAME: _____

ADDRESS: _____

CITY, STATE, ZIP: _____

PHONE: _____

NUMBER OF CALENDARS: _____

Clip and mail this form along with \$23 (\$20 per calendar plus \$3 per calendar postage) to:
Rotary Calendar, PO BOX 372, Rochelle, IL 61068

SPECIAL LIMITED TIME OFFER FOR NEW SUBSCRIBERS ONLY!



\$29.99 for 3 months
Plus get a 4th month totally FREE!

That's 34 issues of the News-Leader delivered to your door for less than 59¢ an issue!

We are offering this great deal because we want non-subscribers to give us a try, but don't delay as this offer is only valid through Oct. 31, 2022.

May not be combined with other special offers. Current subscribers not eligible.

ROCHELLE News-Leader
P.O. Box 46 - 211 Hwy. 38 East | Rochelle, IL 61068 | 815-561-2112

SPORTS



(PHOTO BY RUSSELL HODGES)

The Rochelle Hub fresh-soph football team defeated Richmond-Burton 50-8 on Friday to finish the season with a 9-0 record. The team includes Freddie Hernandez, Carson Lewis, Van Gerber, Elijah Harley, Mark Green, Colten Manning, Keagan Albers, Levi Waddle, Tony Milburn, Cayden Moore, Jordan Bly, Andrew Johnson, Roman Villalobos, Riley Vondergathen, Jordan Spears, Mason Moore, Jack Tilton, Brode Metzger, Jackson Smith, Leon Combs, Frank Nasca, Antonio Hueramo, Ethan Goodwin, Jorge Martinez, Brandon Cortes, Brandyn Metzger, Francisco Martinez, Gavin Neale, Wyatt Worthington, Brenden Voight, Reece Harris, Marco Belmonte, Alex Foster, Ryan Senne, Gabe Montes, Ryder Stombaugh, Damon Cagle, Davian Vidals, Markell Pogue, Martiese Pogue, Krew Sullivan, Liam Hardcastle, Corbin Harris, Josue Albanil, Dalton Merriman, Troy Martinez, Marc Guzman, Nicholas Novak, Jack Carmichael, Matthew Lynn, Frankie Pelan, Parker Slattengren and Nolan Johnson. The team is coached by Johnny Gonzales, Brian Worthington, Richard Harvey, Kent Lodico, Max Basler and Mike Dale.

HUBS: Fresh-soph team wins to finish undefeated

From page 1

Richmond-Burton cashed in on the Hub mistake, with Siegel punching in a 1-yard touchdown to cap off an eight-play, 81-yard scoring drive for the Rockets.

Trailing 28-6 after halftime, Rochelle found another spark early in the third quarter, with junior Riley Damask recovering an onside kick for the Hubs, who made the score 28-14 after Gensler bulldozed a Richmond-Burton defender for a 5-yard touchdown and added the 2-point conversion. Faced with a second-and-8 situation, Rocket quarterback Joe Miller fired a 29-yard touchdown pass over the middle to a wide open Smith to bring momentum back to the R-B side.

The Hubs continued to find holes in the Rocket defense late in the third quarter, where senior Trey Taft escaped defenders for a 37-yard run that set up a 1-yard touchdown run from Gensler to keep Rochelle within striking distance. Richmond-Burton methodically carved the Rochelle defense up on its final offensive drive of the night, however, using 14 rushing plays to move the ball 53 yards over almost nine minutes and score on a 2-yard touchdown plunge from Siegel.

"I'm really happy with the way our kids responded after halftime and the way our kids played during the second half," Kissack said. "We were able to execute and stay on the field. We were able to do the things we couldn't during the

first half, which include winning on first down and converting on third and short. I thought it was really important that our kids finished well tonight."

Taft and Grant Gensler combined for 120 rushing yards on 12 carries for the Hubs (7-2, 4-1 I-8/KRC Blue), who will await their seed and first-round match-up for the IHSA Playoffs next week. Junior Brock Metzger and sophomore Kaiden Morris each totaled six tackles to lead the defense, while junior Tommy Tourdot finished with three tackles including a tackle for loss. Sophomore Erich Metzger rushed for 46 yards on 10 carries and added four tackles.

Senior Night

Rochelle honored its senior players before kick-

off on Friday. The seniors include Felix Schlenbecker, Aidan Rodriguez, Kyce Jaradat, Hayden Inman, Jaden Cook, Garrett Gensler, David Gerber, John Green, Aidan Darby, Raul Aguirre, Bradley Cooney, Cody Cullum, Landon DeLille and Trey Taft.

Fresh/Soph

The Rochelle Hub fresh-soph football team completed a perfect season Friday evening, throttling Richmond-Burton 50-8 to end the season with a 9-0 overall record and clinch the Interstate 8/Kishwaukee River Conference Blue Division title with a 5-0 record. Rochelle averaged 41.9 points per game and exceeded 50 points on three separate occasions.

"I couldn't be happier

for our kids," head coach Johnny Gonzales said. "They really bought into our football program and the work they put in over the offseason has translated into success at the fresh-soph level. One of my favorite things to see this season was the team buying into the next-man-up mentality. When someone went down, the next player was always ready to go."

Sophomore Carson Lewis threw two touchdown passes of 21 yards and 39 yards to sophomore Cayden Moore, while freshman Roman Villalobos rushed for three touchdowns of 4 yards, 4 yards and 40 yards in the win. Sophomore Ethan Goodwin added a touchdown run of 4 yards and freshman Brode Metzger

scored on a 1-yard touchdown run to help spark the offense.

"We talked all season about this year being one chapter of our kids' football careers here at RTHS," Gonzales said. "We'll need to continue putting in work over the offseason and we'll need to bring everyone back next year if we want to have success over the next few chapters."

Sophomore Ryan Senne recorded a sack and a tackle for loss to lead the Rochelle defense, while sophomore Brandyn Metzger finished with two tackles for loss and sophomore Matthew Lynn intercepted a pass in the second half to help seal the win. Sophomore Jackson Smith totaled a team-high three tackles for loss and Metzger blocked a punt on special teams.

KICKOFF THE SEASON

With The Best Sale of The Year

ONLY \$99 Installation*

\$100 VISA GIFT CARD
Upon completion of appointment

LeafGuard®
Get it. And forget it.®

*Guaranteed not to clog for as long as you own your home, or we will clean your gutters for free

- LIFETIME NO-CLOG WARRANTY
- MADE ONSITE SPECIFICALLY FOR YOUR HOME
- THE ONLY ONE-PIECE SEAMLESS DEBRIS SHEDDING GUTTER SYSTEM.
- SCRATCHGUARD® PAINT FINISH

SPECIAL FINANCING AVAILABLE

Call Today for Your **FREE Estimate!**

BBB ACCREDITED BUSINESS **A+** rating

QUALITY TESTED **GOOD-HOUSEKEEPING** Since 1999

LeafGuard **18 YEARS BACKED BY THE SEAL**

815-673-7532

*All participants who attend an estimated 60-90-minute in-home product consultation will receive a \$100 VISA Gift Card. Retail value is \$100. Offer sponsored by LeafGuard Holdings Inc. Limit one per household. Company procures, sells, and installs seamless gutter protection. This offer is valid for homeowners over 18 years of age. If married or involved with a life partner, both cohabitating persons must attend and complete presentation together. Participants must have a photo ID and be legally able to enter into a contract. The following persons are not eligible for this offer: employees of Company or affiliated companies or entities, their immediate family members, previous participants in a Company in-home consultation within the past 12 months and all current and former Company customers. Gift may not be extended, transferred, or substituted except that Company may substitute a gift of equal or greater value if it deems it necessary. Gift card will be mailed to the participant via first class United States Mail within 10 days of receipt of the promotion form. Not valid in conjunction with any other promotion or discount of any kind. Offer not sponsored and is subject to change without notice prior to reservation. Offer not available in the states of CA, IN, PA and MI. Expires 10/31/22.

North America's #1 Selling Walk-In Tub

Featuring our Free Shower Package

For a limited time only with purchase of a new Safe Step Walk-In Tub. Not applicable with any previous walk-in tub purchase. Offer available while supplies last. No cash value. Must present offer at time of purchase. **Financing available with approved credit.**

safestep®

Now you can finally have all of the soothing benefits of a relaxing warm bath, or enjoy a convenient refreshing shower while seated or standing with Safe Step Walk-In Tub's **FREE Shower Package!**

- ✓ First walk-in tub available with a **customizable shower**
- ✓ Fixed rainfall shower head is **adjustable for your height and pivots** to offer a seated shower option
- ✓ High-quality tub complete with a comprehensive **lifetime warranty** on the entire tub
- ✓ Top-of-the-line installation and service, all included at one **low, affordable price**

Now you can have the best of both worlds—there isn't a better, more affordable walk-in tub!

Backed by a lifetime guarantee.

Buy Now, Pay Later!

NO PAYMENTS FOR 18 MONTHS!*

plus a **Free Shower Package**

815-660-0041

or visit **BuySafeStep.com**

Scan me

LIFETIME LIMITED WARRANTY **BBB ACCREDITED BUSINESS** **MADE IN THE USA** **EASE OF USE**

*Subject to credit approval, with the purchase of a new Safe Step Walk-In Tub or Shower. Interest is billed during the promotional period but all interest is waived if the purchase amount is paid before the expiration of the promotional period. There is no minimum monthly payment required during the promotional period. Safe Step Walk-In Tub is neither a broker nor a lender. Financing is provided through third-party lenders unaffiliated with Safe Step Walk-In Tub, LLC under terms and conditions arranged directly between the customer and such lender. All subject to credit requirements and satisfactory completion of finance documents. Any finance terms advertised are estimates only. Offer available in select markets, not available in Canada. Participating dealers only. Other restrictions may apply.