



ROCHELLE News-Leader

WEEKEND EDITION | WWW.ROCHELLENEWS-LEADER.COM

Today's RNL issue sponsored by Community Unity member:
Rochelle Community Unity Shop • Play • Stay

SURVEY-TECH
A Division of
C.E.S. INC.
104 Maple Court
815-562-8771

Vol. 103 • No. 63

LOCAL NEWS... LOCAL VIEWS

SUNDAY, DEC. 4, 2022

\$1.25

More coverage. Less spendage.

Discounts up to 40%
Get more. Spend less. It's that simple when you get car insurance from us. Like a good neighbor, State Farm is there. **CALL FOR A QUOTE 24/7.**

Terri Schaefer, Agent
Bus: 815-562-7063
terri.schaefer.115n@statefarm.com



KNOW IT TODAY



VanVickle sworn in for third term

Ogle County Sheriff Brian VanVickle was recently sworn in for his third term.
Page 3

WEATHER



SUNDAY
HIGH LOW
40 16



TUESDAY
HIGH LOW
33 16



Today's RNL issue sponsored by Community Unity member:
Liquor 'n' Wine
Enjoy the difference!

1140 N. 7th St.
815-561-2337

OBITUARIES

• JUANITA MANLEY

See page 4

INSERTS

• SCHNUCKS
• MENARDS
• SCHOOL TIMES

INSIDE

Local News.....2, 3, 5
Obituaries.....4
Opinion.....6
Community.....7



8 52078 00112 6

Funding received for fire training facility

Facility slated for use by multiple regional entities

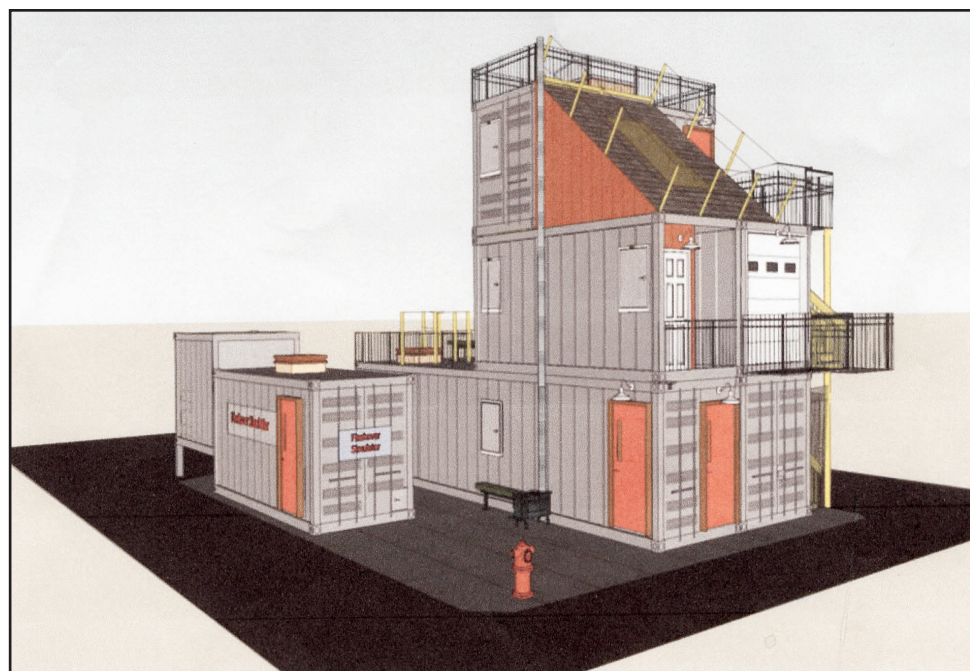
BY JEFF HELFRICH
MANAGING EDITOR

ROCHELLE — At its November meeting, the Ogle County Board awarded the Rochelle Fire Department and the Ogle-Lee Fire Protection District \$50,000 in American Rescue Plan Act funds for a planned multi-disciplinary training facility project to serve local and regional public safety personnel.

The joint project between the City of Rochelle and the OLFPD started to see movement in the past year. The facility is planned to be located at 920 S. Main St. in Rochelle, a 12-acre property that was donated to the city in 2020.

Along with serving local fire personnel that struggle at times to find good training locations, the facility is planned to serve other entities in the region including law enforcement, electrical lineman, other City of Rochelle departments and possibly railroad personnel, Rochelle Fire Chief Dave Sawlsville said.

“Our hope is that having so many uses opens it up to many different avenues for funding,” Sawlsville said. “The mayor plans



(COURTESY PHOTO)

Rochelle Fire and the Ogle-Lee Fire Protection District put together drawings of what they were looking for in a fire training facility that include shipping containers for training and a hypothetical layout that includes a classroom.

to talk to elected officials about fundraising. If you can make it multi-jurisdictional and multi-disciplined, hopefully you'll increase your funding capabilities too.”

The project will be done in phases as money becomes available. Sawlsville called the \$50,000 a “huge shot in the arm” for the project's progress. The first phase is a small initial facility for firefighters to start training on.

The ARPA money will offset “a lot of” that initial cost and was needed especially due to prices of building materials continuing to rise. The initial structure has about 300 days of lead time and upfront money could help it to get delivered sooner, Sawlsville said.

The project's initial construction will also include a concrete pad and spring of 2023 is the plan for construction of facets

of it to begin.

“We have prevailing wages in this state and that adds huge costs to any project that you're trying to do,” Sawlsville said. “You couple that with what we're seeing in high construction costs, this is huge. This money will shore up any kind of shortcoming we would've had for phase one. It's huge. I can't overstate it.”

See FIRE page 5

VCCT 2022 Winter Gala set for Dec. 10

Theatre event will feature ‘Miracle on 34th Street: A Radio Play’

BY JEFF HELFRICH
MANAGING EDITOR

ROCHELLE — The Vince Carney Community Theatre will host its 2022 Winter Gala fundraising event on Saturday, Dec. 10.

The event, in its seventh year, will feature the show “Miracle on 34th Street: A Radio Play,” along with a silent auction with more than two dozen items and a four-course meal catered by Flight Deck Bar & Grill. Doors open at 5:30 p.m., dinner begins at 6 p.m. and the show starts at 7 p.m.

Tickets are \$60 each and can be purchased at www.vcctrochelle.org/. Tickets won't be sold after Dec. 6 and will not be sold at the door. The dinner menu includes a charcuterie board, garlic roasted pork loin, grilled chicken, roasted potatoes, chef vegetables, salad & rolls and a dessert bar.

The proceeds from the fundraiser will help VCCT to continue to bring quality live entertainment to Rochelle and the surrounding area. VCCT Board



(PHOTO BY JEFF HELRICH)

The Vince Carney Community Theatre will host its 2022 Winter Gala fundraising event on Saturday, Dec. 10. Tickets are \$60 each and can be purchased at www.vcctrochelle.org/.

Member Heather Arreguin said the nonprofit wants to thank its supporters with a show for their support.

“This is our big fundraiser for the year,” Arreguin said. “This helps us fund everything we do throughout the year. We rely very heavily on donors from the community. Rather than just having a

fundraiser or sending a letter asking for money, we do this. Yeah, we're raising funds, but people get to come see a show and have dinner. One of my favorite parts of this is that back in the 1940s, that's what families did for fun. They'd get all dressed up and go and watch a live radio program. We have

some older people that come and it takes them back to their childhood. I just think it's a fun way to raise money rather than just asking for it.”

The semi-formal event will provide for an elegant evening for attendees, the show's Director, Kimberly Ekes, said. A quintet with five members of the city's

Municipal Band will play during the dinner. “Miracle on 34th Street: A Radio Play” will be set in a 1948 radio studio and the studio actors will be portraying the movie.

A sound person will do all of the sound effects on the stage.

See VCCT page 3

Exclusively at the Jeff Perry Auto Group | Peru-Rochelle

SUMMIT

CERTIFIED PRE-OWNED

WHAT YOUR SUMMIT CERTIFIED PRE-OWNED WARRANTY OFFERS:

- WE DARE YOU TO COMPARE
- 6 - MONTH/6,000 MILE BUMPER-TO-BUMPER
- 126 POINT INSPECTION
- CERTIFIED TECHNICIANS
- MOST MAKES AND MODELS
- PEACE OF MIND PRE-OWNED CAR BUYING

2022 ACADIA DENALI ULTIMATE

SUMMIT CERTIFIED

\$49,535*

All Wheel Drive - LOADED!

Auto Group
JEFF PERRY
815-562-8787 JEFFPERRYAUTOS.COM

Stock #P0185A
*Plus tax, title, license and doc fee. MSRP \$48,115

LOCAL NEWS



RCH hosting holiday drive-thru dinner

ROCHELLE — Rochelle Community Hospital is hosting a holiday drive thru dinner for anyone in need on Wednesday, Dec. 21. The dinners are free for the first 200 reserved. The menu includes a choice of ham or turkey, mashed potatoes & gravy, vegetable medley, a dinner roll and cheese cake.

To reserve your dinner, call Michelle at 815-561-3110 or email mlapage@rcha.net. The deadline for reservations is Friday, Dec. 16. Pickup is on

Wednesday, Dec. 21 at the hospital's main entrance at 900 N. 2nd St. from 3-5 p.m. The hospital sends a special thanks to the RCH food and nutrition department and the RCH Foundation for making the dinner possible.

edwardjones.com | Member SIPC

Compare our CD Rates

Bank-issued, FDIC-insured

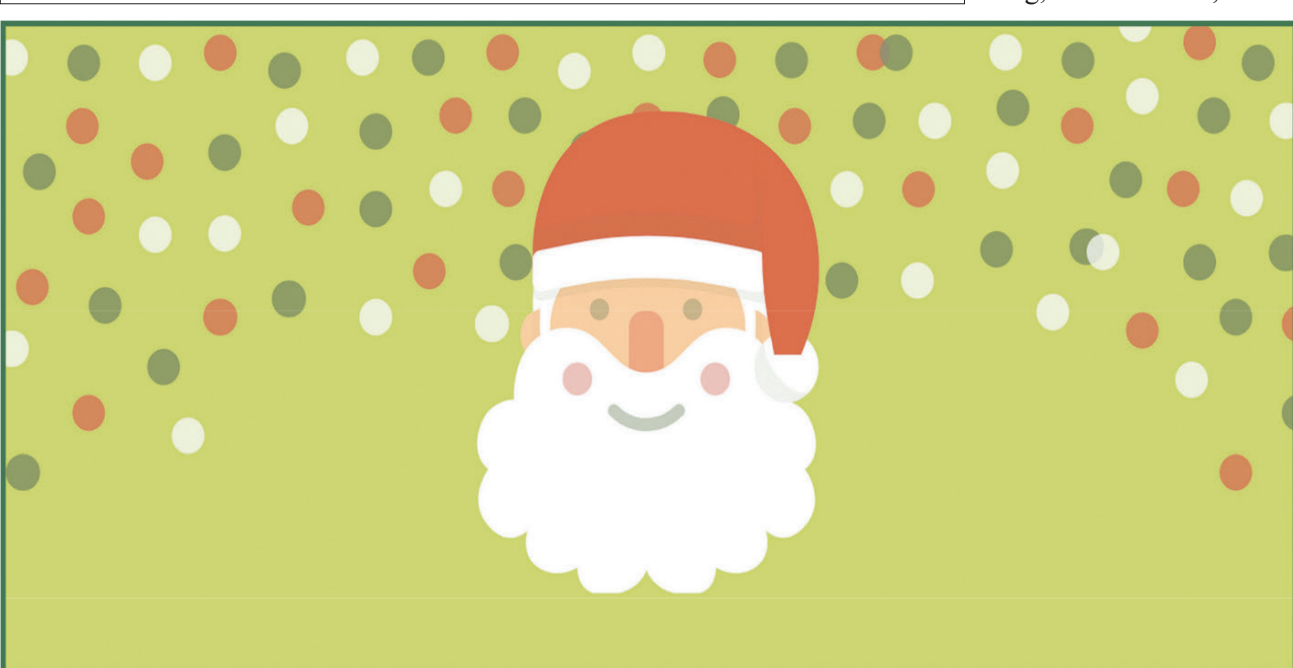
6-month	1-year	2-year
4.50 % APY*	4.75 % APY*	4.85 % APY*

Call or visit your local financial advisor today.

Jessica L. Morris
Financial Advisor
1214 Currency Ct
Rochelle, IL 61068-2321
815-561-4341

* Annual Percentage Yield (APY) effective 11/29/2022. CDs offered by Edward Jones are bank-issued and FDIC-insured up to \$250,000 (principal and interest accrued but not yet paid) per depositor, per insured depository institution, for each account ownership category. Please visit www.fdic.gov or contact your financial advisor for additional information. Subject to availability and price change. CD values are subject to interest rate risk such that when interest rates rise, the prices of CDs can decrease. If CDs are sold prior to maturity, the investor can lose principal value. FDIC insurance does not cover losses in market value. Early withdrawal may not be permitted. Yields quoted are net of all commissions. CDs require the distribution of interest and do not allow interest to compound. CDs offered through Edward Jones are issued by banks and thrifts nationwide. All CDs sold by Edward Jones are registered with the Depository Trust Corp. (DTC).

FDI-1867L-A © 2022 EDWARD D. JONES & CO., L.P. ALL RIGHTS RESERVED. AECSPAD



Rochelle Community Hospital
Is Hosting A Holiday Drive-Thru Dinner
For Anyone In Need On Wednesday, December 21, 2022

Free For First 200 Dinners Reserved

Menu:
Choice of Ham or Turkey,
Mashed Potatoes & Gravy, Vegetable Medley,
Dinner Roll & Cheese Cake

To reserve your dinner, please call Michelle at 815-561-3110
Or email mlapage@rcha.net
Deadline for reservations is Friday, December 16th

Pickup on Wednesday, December 21st at the hospital's main entrance
at 900 North 2nd Street from 3:00-5:00 p.m.



*Special Thanks to The RCH Food and Nutrition Department
& RCH Foundation for making this dinner possible.*

Ogle County 4-H Achievement Day winners announced

OREGON — Ogle County 4-H'ers were recognized for excellence in 4-H project work at the recent county 4-H Achievement Celebration. Held Nov. 13 at the Byron Junior High School Theatre, the program featured the presentation of numerous awards, including the "County Project Honor Award."

An unlimited number of awards are given to all 4-Hers who obtain a score of 30 or greater on the County Project Honor Award Application (20 or greater for 8-11 years old). 4-Hers may only be recognized in one project area annually. The award consists of a plaque and silver/gold discs. (* indicates 1st time winner)

This year's winners were as follows:

Gold: Kaitlyn Adams, Child Development; Immanuel Arellano, Food & Nutrition; Lauren Carlson, Floriculture; Nicholas Cassens, Food & Nutrition; Carson Conderman, Woodworking; *Harmony Coy, Public Speaking; *Alayna Doane, Photography; Maggie Eden, Visual Arts; *Trinity Feltz, Visual Arts; Colton Gehrke, Geology; Alex Grygiel, Woodworking; Cian Grygiel, Beef; Andrew Hickman, Cats; AJ Hinrichs, Sportsfishing; *Mallory King, Visual Arts; *Aubrey Kusnierz, Food & Nutrition; *Madeline Kusnierz, Visual Arts; Eli Lotz, Woodworking; Allissa Martin, Beef; Clare Montavon, Visual Arts; *Parker Morss, Electricity; Josie Pals, Child Development; Dylan Reimer, Woodworking; Hazel Reimer, Visual

Arts; *Jaxson ReVelle, Food & Nutrition; Alyse Rogers, Horse & Pony; Braden Rogers, Dairy Goats; *Madisyn Ruthe, Natural Resources; Lydia Sherburne, Robotics; *Lily Smith, Weather; Joshua Snow, Visual Arts; Kathryn Snow, Food & Nutrition; *Alivia Thies, Public Presentations; *Elliott Thies, Rabbits; David Wehler, Forestry; *Briannah West, Visual Arts; Zakkary West, Leadership; Alexander Williams, Goats; Lacie Williams, Dairy Cattle; Makayla Williams, Dogs; *Emma Wissinger, Visual Arts; *Madilynn Woods, Geology; *Adelaide Zimmerman, Clothing & Textiles; *Orion Zimmerman, Public Presentations and *Phoenix Zimmerman, Food & Nutrition.

Silver: Adrien Booker, Food & Nutrition; Grace Costello, Leadership; *Ali Danekas, Rabbits; *Kamryn Feltz, Robotics; *Roselyn Goldstick, Rabbits; Zachary Goldstick, Swine; *Josie Hammond, Shooting Sports; Shelby Harbaugh, Dairy Cattle; Jenna Heller, Food & Nutrition; Trent Heller, Visual Arts; *Cora Herring, Tractor; Jacob Hickman, Photography; Grant Johnson, Welding; Natalie Johnson, Vet Science; *Nicolette Koziol, Visual Arts; Kaden Lingbeck, Cats; *Haven Marks, Photography; *Savannah Marks, Rabbits; *Lucia Miller, Rabbits; Kaeden Motszko, Welding; *Jaxson Thies, Woodworking; *Kailee Thies, Rabbits; Tristin Williams, Shooting Sports and *Raiden Zimmerman, UAV: Drones.

Ogle County 4-H'ers between the ages of five and seven years old are known as Cloverbuds. Cloverbuds who obtain a score of 40 or above on the Cloverbud County Project Honor Award Application are recipients of the Cloverbud Project Honor award. This year's Cloverbud winners were as follows:

Nolan Adams, Ogle Jolly; Lilian Anderson, Blackhawk Crossing; Delaney Byers, Summerhill Huskies; Hayden Capes, Hub Hickory Nuts; Owen Collins, Ogle Jolly; Joslyn Countryman, Summerhill Huskies; Declan Franks, By-Y-Badgers; Luke Gehrke, By-Y-Badgers; Ashley Harbaugh, Carefree; Emily Harbaugh, Carefree; Anna Herring, Ogle County Clovers; Julia Herring, Ogle County Clovers; Lauren Hickman, By-Y-Badgers; Kenzie Hongsermeier, Leaf River Busy Beavers; Zeke Janoski, Ogle Jolly; Reese Johnson, Ogle Jolly; Kaylee King, Mighty Clovers;

Hunter Kremske, Blackhawk Crossing; Phinehas Nadig, Ogle County Clovers; Josanna ReVelle, Blackhawk Crossing; Noah Richardson, Ogle County Clovers; Alana Smith, Summerhill Huskies; Gunnar Swank, Byron Emerald Eagles; Emersyn Thies, Blackhawk Crossing and Drake Woods, Blackhawk Crossing.

A percentage of 4-Hers were selected from among the silver and gold County Project Honor winners to receive the Top 30 Award. This award is given to 4-Hers for thoroughness of records; comprehensiveness of project coverage; appropriateness of goals set; learning documented; overall size and scope of 4-H experience; educational experiences, community service efforts, and leadership efforts in project areas; involvement in club and beyond; and record book organization and appearance enhancements.

Kaitlyn Adams, Child Development; Immanuel Arellano, Food & Nutrition; Ella Beran, Vegetable Gardening; Lauren Carlson, Floriculture; Nicholas Cassens, Food & Nutrition; Carson Conderman, Woodworking; Grace Costello, Leadership; Alayna Doane, Photography; Maggie Eden, Visual Arts; Trinity Feltz, Visual Arts; Colton Gehrke, Geology; Brooke Hammond, Visual Arts; Andrew Hickman, Cats; Jacob Hickman, Photography; Grant Johnson, Welding; Natalie Johnson, Vet Science; Mallory King, Visual Arts; Kaden Lingbeck, Cats; Eli Lotz, Woodworking; Allissa Martin, Beef; Clare Montavon, Visual Arts; Parker Morss, Electricity; Alyse Rogers, Horse & Pony; Madisyn Ruthe, Natural Resources; Lydia Sherburne, Robotics; Joshua Snow, Visual Arts; David Wehler, Forestry; Makayla Williams, Dogs; Tristin Williams, Shooting Sports and Emma Wissinger, Visual Arts.

4-H is an informal youth education program conducted by University of Illinois Extension. U of I Extension provides equal opportunities in programs and employment. If you need reasonable accommodations to participate in 4-H, contact the Ogle County Extension staff at 815-732-2191.

If you need reasonable accommodations to participate in programming, contact the Ogle County Extension office, 815-732-2191. Early requests are strongly encouraged to allow sufficient time for meeting your needs.

State troopers make stops

OGLE COUNTY — Shawn K. Reynolds, 47, of Oregon was stopped for improper lane usage on Nov. 22 at 8:26 p.m. on Interstate 88 at milepost 35 in Whiteside County. Reynolds was charged with improper lane usage, driving under the influence of alcohol and illegal transportation of alcohol. Reynolds was released after posting bond.

Brandon S. Turnure, 30, of Machesney Park was stopped for speeding on Nov. 25 at 9:24 p.m. on Interstate 39 southbound milepost 110 in Ogle County. Turnure was charged with speeding 100 m.p.h. in 70-m.p.h. zone, driving while license suspended and no exhaust. Turnure was released on an I-bond.

Malana R. Ricks, 32, of Rockford was stopped for speeding on Nov. 25 at 10:22 p.m. on Interstate 39 southbound at milepost 101 in Ogle County. Ricks was charged with speeding 92 m.p.h. in 70-m.p.h. zone, improper use of left lane and driving under the influence of alcohol. Ricks was released after posting bond.

Jesus A. Cabanas, 24, of Rochelle was stopped for failing to signal on Nov. 26 at

1:40 a.m. at Illinois Route 251 and Twombly Road in Rochelle. Cabanas was charged with driving while license suspended, operating an uninsured motor vehicle and failure to signal. Cabanas was released on an I-bond.

LOCAL NEWS

CITY: Plans made to improve second floor of hall building

From page 1

There will be a total of five offices on our second floor that will be used for community development and human resources.”

The city has budgeted \$125,000 for the project and two contractors are currently working on estimates and Thompson said she hopes to get a third estimate. The project is slated to get started “as soon as possible” in 2023 and funds are budgeted for the project within that year. Employees are currently working in temporary workspaces.

The last time City Hall was significantly renovated was in 1995, Thompson said.

“We’ve done things over the years just to

keep the building in great shape,” Thompson said. “We put a new roof on several years ago and replaced all the windows. We’ve made quite an investment in our mechanical system in the building. Now it’s time to build out that space and really maximize it to fit as many of our staff in one building.”

Some city staff were recently relocated in an effort to build more efficiencies to better serve residents. The renovation work will make it easier for residents, contractors and developers to stop in and get building permits and work with the community development department, which includes the city building inspector.

“Having everybody in the same building is giving us some opportunities to cross train staff in different areas, which is also a bonus,” Thompson said.

City Manager Jeff Fiegenschuh said the current open space on the second isn’t conducive to having a lot of staff in.

“I think we’re utilizing the space that’s there to have greater efficiencies with our staffing,” Fiegenschuh said. “There was a time when a lot of the upstairs wasn’t being used. We’ve got a lot of space to use and consolidation of staff is important to me. Getting everybody together so we can better serve our customers is the top priority. There’s a lot of space up there to use, and now we’re using it.”



(PHOTO BY JEFF HELFRICH)

VCCT is going on its second year in its new building at 108 S. Main St. in the former Lincoln Elementary School. It has its 2023 season set and plans to announce it at the gala.

VCCT: 2022 Winter Gala scheduled for Saturday, Dec. 10

From page 1

“Everyone is running up to the microphones and chaos is happening on the stage,” Ekes said. “But everything you’ll hear is Miracle on 34th Street. What you’re seeing is the madness of a radio show. That’s what the world was like before television. You sat around the living room with everyone and that was the entertainment. Only what you heard. It’s all about the voices. We have several people playing 3-4 different parts. They change their voices to be different characters.”

Dec. 10 will be the sixth time Ekes has directed a radio play. Last year, she opted to listen to the show from outside the theater and found that it sounded like a real radio show. She

chose “Miracle on 34th Street” this year because it’s one of her favorite Christmas movies.

The members of VCCT are hoping the radio play will take viewers back in time.

“That was my childhood,” Ekes said. “We’d go to downtown Chicago and see the Nutcracker every year. I’d like that to be the tradition here locally with our gala. This is the seventh year we’ve done it and I hope it is turning into a tradition.”

Arreguin said VCCT believes it’s important to give the community something unique to do around the holiday season to get into the spirit.

“Especially the last few years with everything going on with COVID-19 and the economy,” Arre-

guin said. “It’s been hard for a lot of people. Every town has a Christmas parade and tree lighting and they’re great. But this is something special to take your family or significant other to. It’s a nice, unique night to feel that holiday atmosphere.”

VCCT is going on its second year in its new building at 108 S. Main St. in the former Lincoln Elementary School. It has its 2023 season set and plans to announce it at the gala. Arreguin said things have been going well at VCCT and Ekes said it has been bringing in new cast members for shows.

“This will be the very first show for some of our cast,” Ekes said. “We have a whole range of people. And once you’re a part of this group, you’re family.”

Over 250 attend Ag Career Exploration Fair

OREGON — The successful Ag Career Exploration Fair on Nov. 17 allowed high school students to network with colleges and employers in attendance. Colleges shared information on the many majors in agriculture and what it takes to get a degree and answered questions. Agriculture-related employers had representatives there to offer career

knowledge and discuss the skills that are needed to perform specific jobs.

Melinda Colbert, University of Illinois Extension Ag in the Classroom program coordinator, said that the target audience is high school students, and sometimes ag teachers or guidance counselors bring the students. She also said that the home school population that attends

continues to grow, along with students that come with their parents.

The event was open to the public.

Ag in the Classroom is offered through the University of Illinois Extension in partnership with Ogle County Farm Bureau, Carroll County Farm Bureau, Ogle County Soil & Water and Carroll County Soil & Water.



VanVickle sworn in for third term as sheriff

On Thursday, Brian VanVickle was sworn in for his third term as Ogle County Sheriff by Judge John B. Roe at the Ogle County Courthouse in Oregon.

★ **Buy, Sell, Trade or Rent through the CLASSIFIEDS** ★

APARTMENT AVAILABLE

Lincoln Manor

Owned and operated by Lutheran Social Services of Illinois (LSSI) offering apartment living for older adults in Rochelle and the surrounding communities.

- Secure Entry System
- Community room with kitchen
- Activities
- On-site coin operated laundry
- On-site management office
- Dependable 24/7 maintenance service
- On-site parking for residents

Full time Social Service Coordinator is available to assist residents

Rent based on 30% of a Resident's Adjusted Gross Income

For more information, please call 815-562-1404

615 N. Lincoln Hwy.
Rochelle, IL 61068
TTY 847-390-1460

MANAGED BY:
Lutheran Social Services of Illinois
www.LSSI.org

EQUAL HOUSING OPPORTUNITY

AtlasAuto

“Quality Used Cars Since 2007”

- No Credit Checks
- Buy Here Pay Here
- Low Down Payments
- Flexible Payment Plans

Complete your ONLINE application TODAY!

1400 N. 7th Street
Corner of Flagg Rd & Hwy. 251 N.

815-562-7433

www.atlasautoinc.com

11032021

Alfano's

Pizzeria and Italian Restaurant

Taste The **TRADITION**
Taste The **DIFFERENCE**

- Dine In • Carry Out •
- Home Delivery • Pizza • Pastas •
- Sandwiches • Salads •
- and Lots More!

Dine-In • Carry Out • Home Delivery

1115 TURKINGTON TERRACE, ROCHELLE

815-562-3312

LOCAL NEWS

Museum hosting school bell dedication event Dec. 11

ROCHELLE — Come to the dedication and ringing of the Flagg Center School Bell.

A gift to the museum in 1972 from Mr. and Mrs. John Barry Hayes brought the school bell to the museum, but it wasn't until Flagg Township provided funding for a way to display the school bell that the bell was put on view properly.

For several years it was stored in one of the jail cells in the museum and then it was moved to the second floor in the school exhibit area but was displayed on its side, not a proper way at all.

Today the Flagg Center School Bell has a permanent home that is



(COURTESY PHOTO)

Today the Flagg Center School Bell has a permanent home that is to be dedicated and the bell to be rung on Sunday, Dec. 11 at 1 p.m.

to be dedicated and the bell to be rung on Sunday, Dec. 11 at 1 p.m.

Plans were initially developed by local artist Fran Volz in collaboration with former Museum Director Sarah Koepke.

The plan was revised and construction of the current structure began in the fall by Volz. A builder talk by Volz will be part of the dedication with discussion about the planning and building of the current structure, a replica of a cupola. Light refreshments will also be available.

The mission of the Flagg Township Historical Society and Museum is to stimulate interest in Flagg Township history through education, research, collection and preservation of information for the benefit of the public of today and in the future.

Costa Rica
9 Day Tour. **\$995**
Includes All Meals,
All Hotels, and All Activities.

Hike in jungle rainforests, view volcanoes, soak in hot springs, cruise biological reserves and relax on tropical ocean beaches. Join the smart shoppers and experienced travelers.

1-800-CARAVAN
Caravan.com

Choose a Guided Tour +tax, fees
Costa Rica 9 days **\$995**
Panama 8 days **\$995**
Guatemala 8 days **\$995**
Mexico 9 days **\$995**
- Ancient Civ. 8 days **\$1295**
- Copper Canyon

"Brilliant, Affordable Pricing"
Arthur Frommer,
Travel Editor

Caravan
Fully Guided Tours Since 1952

Do you have a loved one in a NURSING HOME?

Worried about losing their life savings?

You can still protect much, and maybe all, of their assets for the family.

Call for Free Consultation 217-726-0176

Protecting Families from the DEVASTATING Cost of Nursing Homes for 30 Years!

www.Lighthouse-Financial.com



Sales • Farm Management • Market Evaluations

Ogle County:

Carroll County:

98 +/- Acres, Scott Twp. 90 +/- tillable, just SW of Davis Junction.

263 +/- Acres, Thomson Rd. in York Twp. Approx. 90% Tillable

117 +/- Acres, Very Scenic & Private, 3+ Acre stocked pond & 93 +/- Ac CRP

Whiteside County:

715,000 bushel grain storage setup in great location!

Carroll & Ogle Co:

215 +/- Ac in Elkhorn Grove (Carroll) & Eagle Point (Ogle), 141.5 +/- tillable.

Heartland REALTY



Matt Hermes,
Designated Managing Broker

815-288-4648

www.heartlandrealty.info

12052022

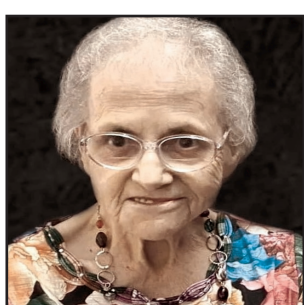
Obituaries

Juanita Manley

DEKALB — Juanita Manley, 88, of DeKalb passed away peacefully surrounded by her loving family Tuesday, Nov. 29 at St. Anthony Hospital in Rockford. Born Feb. 10, 1934 in Vanndale, Arkansas, the daughter of Lawrence Edward and Mammie Canzada Robertson (Woolbright). Juanita was a faithful member of Grace Family Church and raised her family in the ways of the Lord. She loved her family and spending time with her grandchildren. She lived at Heritage Woods in DeKalb and received exceptional care and her caregivers became a part of her family.

She is survived by her beloved children, Brenda (Blaine) Hicks, Joan (Roger) Woods, Keith (Cathy) Manley and Teresa (Rick) Summers; sisters, Veda Catlett and Wanda Beeson; grand-

children, Richard (Stacey) Hicks, Chris (Cara) Woods, Angie (Bruce) Seldal, Jeremy (Erica) Hicks, Brandon Woods, Ben (Courtney) Manley, Melissa (Josh) Wyzard, Tara (Rob) Shedden, Sarah (Daniel) Judkins and Michelle Manley; great-grandchildren, Corrin (Colt) Preston, Cole (Larissa) Hicks, Jacob (Marissa), Mak, Bailey, Aiden & Stella Seldal, Ciera & Cashton Woods, Laney & Emma Hicks, Ella & Madison Wyzard, Chloe, Colette & Conner Shedden and Silas Judkins; great great grandchildren, Aspen, Ryker & River Preston, Raelynn & Hunter Hicks and Oliver & Avery Seldal; numerous nieces & nephews; and many dear friends. She is predeceased by her beloved husband, William Manley; brothers, Edward Robertson, sisters, Virginia Spen-



cer and Maxine Robbins; grandson, Gregory Blaine Hicks; and her parents.

Funeral Services will be held Monday, Dec. 5 at 11 a.m. at Grace Family Church, 3202 Pleasant Valley Boulevard, Rockford, conducted by Pastor Keith Manley & Pastor Jerry Whitener. Visitation held from 9:30 a.m. until the time of services at 11:00 a.m. Interment at Trinity Memorial Gardens, Rochelle, at 3 p.m. Christenson Funeral Home is assisting with arrangements. Memorials to Grace Family Church.



(COURTESY PHOTO)

The Unitarian Universalist Fellowship of DeKalb, 158 N. 4th St., will be hosting a Winter Farmers' Market from 9 a.m. to 3 p.m. on Dec. 10. Admission is \$1.

UUFD Winter Farmers Market set for Dec. 10

DEKALB — The Unitarian Universalist Fellowship of DeKalb, 158 N. 4th St., will be hosting a Winter Farmers' Market from 9 a.m. to 3 p.m. on Saturday, Dec. 10. Admission is \$1.

"After a long hiatus due to COVID-19, we are very excited to be back hosting this annual community event. It has always been a popular holiday shopping experience that supports local vendors offering a wide variety of products," Dorothy Coleman, UUFD market coordinator, said. "It's also a festive and fun atmosphere with great food and local musicians performing throughout the day. Come and stay for lunch. Homemade soup, bread, sweets and drinks will be available for purchase."

Locally-made arts and crafts typically include

jewelry, ceramics, woodwork, fabric art, hand-made soaps, photography, drawing and much more. Many of the local farmers and artisans who have participated in previous years are returning this year. One of the popular market highlights is the fresh grass fed beef, pork, poultry, eggs, sausage and cheese from Hasselmann Family Farm — all organically and humanely raised. Other crowd favorites include locally-raised honey from Charter Grove Honey Farm, delicious French pastries from the nuns of the Fraternite' Notre Dame, and baked goods from the local Greek Orthodox Church. We also have several vendors who are joining us for the first time.

The Used Book Sale is a great place to buy hardcover and paperback books for \$2 or less!

"This year we have lots of new inventory in a variety of categories for all ages and interests, so if you've visited the sale in the past, you will not see the same books on the tables this year," Danica

Lovings, UUFD book sale coordinator, said.

"It is important to shop local," Coleman said. "When you buy directly from a local farmer or artist, the money you spend multiplies throughout the community instead of leaving the county. It supports and helps build a strong local DeKalb County economy."

Studies show that when you spend money with a locally owned and operated business, 60 percent of the money stays and is circulated in the community; and when you spend money at a chain store, only 40 percent or less stays in the area.

There is still room for a few more vendors at our Dec. 10 and Feb. 11 markets. Local farmers and artisans who are interested should contact the Unitarian Universalist Fellowship of DeKalb Church Office at 815-756-7089 or office@uufdekalb.org to request a registration form. You can also contact the UUFD Market Coordinator for further information at dcoleman405@gmail.com.

Report policy

Any arrests listed in this paper are merely charges and the defendants are presumed innocent unless proven guilty in a court of law. Please note that all police reports received from the

Rochelle Police, the Ogle County Sheriff's Department and the Illinois State Police, will be printed without exception. Requests to omit particular reports will not be considered or honored at any time.

ROCHELLE News-Leader

211 IL Route 38 East, Rochelle, IL 61068
(815) 562-4171

USPS (467-820) ISSN (1075-2811)

Published every Wednesday and Sunday by Rochelle Newspapers Inc. at 211 E. State Route 38, Rochelle, IL 61068. Periodical postage paid at Rochelle, IL 61068. Postmaster send address changes to the Rochelle News-Leader, P.O. Box 46, Rochelle, IL 61068. Subscription rates are \$139.99 per year by mail in Ogle County. Outside county rate is \$149.99 per year. No mail delivery in newspaper-carrier serviced areas. The circulation department is open Monday through Friday from 8 a.m. to 5 p.m. If you are a carrier subscriber and your paper does not arrive, contact Kelly White at 561-2112.

IN-COUNTY REGULAR SUBSCRIPTION RATES

• \$139.99 for one year • \$79 for six months
• \$34.99 for three months • \$13.99 for one month

Call (815) 561-2112 or
Visit our website at
www.rochellenews-leader.com



HOW TO CONTACT US

News-Leader Main Switchboard (815) 562-4171

General Manager
Mike Feltes (815) 561-2124

Newsroom Staff
Jeff Helfrich, Managing Editor (815) 561-2151
Russ Hodges, Sports (815) 561-2152

To Place a Display Ad
Andrew Heiserman (815) 561-2123
Chris Ackland (815) 561-2153

To Place a Legal Ad
Mike Feltes (815) 561-2124

To Place a Classified Ad
Andrew Heiserman (815) 561-2123
Chris Ackland (815) 561-2153

Subscriptions and Delivery
Kelly White (815) 562-4171

LOCAL NEWS

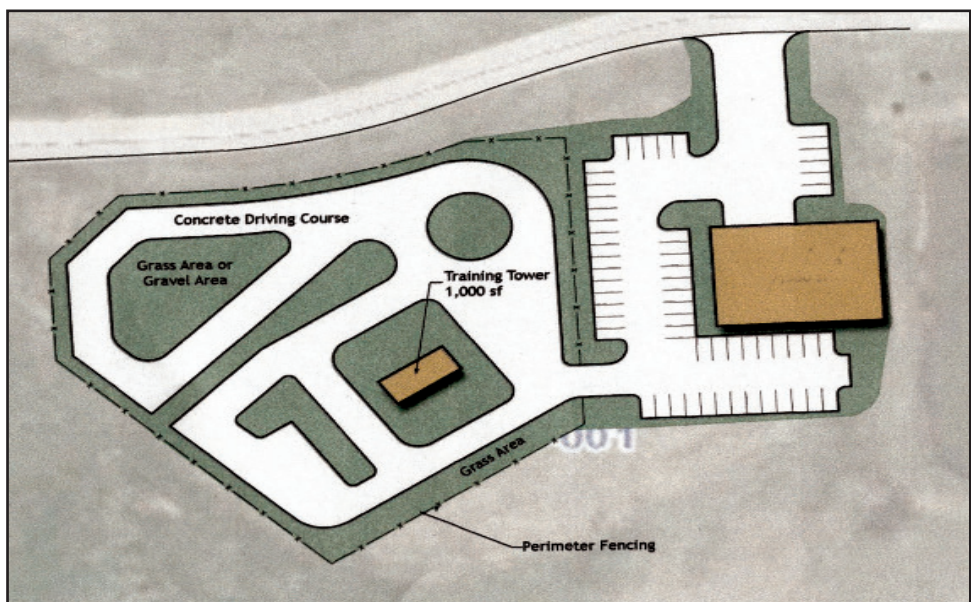
FIRE: ARPA funds approved for local training facility

From page 1

Sawlsville has said in the past that conversations have been ongoing for a few years about a potential training facility. Most training is currently done at the Rochelle and OLFPD fire stations and is limited due to fear of damaging buildings. Local fire departments train at acquired training sites such as the recently-demolished Hickory Grove facility in Rochelle when it was vacant and at abandoned homes slated for demolition when access to them can be received. Another benefit of the planned facility is its potential to lower homeowner's

insurance rates for area residents. The Insurance Service Organization rates fire departments and that plays into residents' insurance costs. Rochelle and Ogle-Lee having access to a fire training facility would give them a better rating. Local training facilities are more common in the firefighting industry in recent years due to added benefits. It will provide local training access for both full-time and paid on-call staff and longer distances won't have to be traveled. The City of Rochelle has discussed a partnership with the Tennessee Valley Authority and the American Public Power Association

to utilize the location for a midwestern pole climbing school and lineman training center. Rochelle City Manager Jeff Fiegenschuh said in the past that he's most excited by the facility's potential to provide training for all city departments, especially the utility side and added there's a "real good chance" it could be home to a pole climbing or line training school for national organizations. When Rochelle Municipal Utilities employees go to pole climbing school, they go down to Tennessee. The Rochelle facility could be the only one or one of the few in the Midwest.



(COURTESY PHOTO)

The joint project between the City of Rochelle and the OLFPD started to see movement in the past year. The facility is planned to be located at 920 S. Main St. in Rochelle, a 12-acre property that was donated to the city in 2020.

Rochelle Area CHURCH DIRECTORY

Ashton Bible Church, corner of Main and Paddock in Ashton. Pastor Farrel Stauffer, church phone is (815)453-2190, church website www.ashtonbible.org. Sunday School for all ages 9:00-10:00am, Morning Worship 10:15am, Wednesday Prayer Meeting/Bible Study 6:30-8:00pm.

The Bridge Church, Pastor Greg Duncan, 11038 E. IL Route 38, Rochelle, IL 61068. Phone: 815-562-7750. Sunday School: 9:00 am; Sunday Service: 10:00 am; Nursery & Children's ministry during am service; Bible Study Tuesday 10:00 am and Wednesday 7:00pm. Web: thebridgechurchrochelle.com Email: thebridgechurchrochelle@gmail.com

Calvary Lighthouse Church, Assemblies of God, Senior Pastor, Dr. James Horvath. 14409 Hemstock Rd., Rochelle. Sunday Morning: Sunday Worship & Children's Church 10:00 A.M., Wednesday Evening 7:00 P.M. – Adult Teaching, Missionettes & Royal Rangers Childrens Classes, Nursery available for all services. HE-Brews Cafe is open before and after services. For further information, please call the CLC office at 815-562-7701, or email us at staff@calvarylighthouse.com

Calvary Lutheran Church, LCMC - "To Know Christ and to Proclaim Christ in Word and Deed" -19 Perry Road, Lee, IL 60530 (the intersection of Perry Road and W. County Line Road). Rev. Martha Uecker Nelson, Pastor. Coffee Hour starts at 9:00 a.m., Sunday School, Confirmation, and Adult Bible Study are at 9:15 a.m. Worship is at 10:30 a.m. and is broadcast live on Facebook. Go to our website is at www.Calvarychurchlee.org and click on the link there. A Grief Support Group meets the third Tuesday of each month at 10:00 a.m. Call or text (815) 824-2825 or email CalvaryLeeIL@gmail.com with questions or for more information. Also check us out at www.facebook.com/Calvary-Lutheran-Church.

Rochelle Church of Christ, Keeping Christ at the center in the Hub City. We meet Sundays at 9:00am for Bible Study and 10:00am for worship. We also have a Wednesday Bible Study at 7:00pm. 206 Erickson Rd, Rochelle, IL 61068. You can call us at (815) 562-6572 or visit us on the web at rochellechurch.com. We also have a radio program Sundays just after 8am on WRHL 1060AM. Minister Dominic Venuso.

Creston United Methodist Church and Steward United Methodist Church - Rev. Ilhan You, Creston: 126 West South Street, P.O. Box 209, Creston, Illinois 60113. Sunday morning worship 9:00am. Coffee fellowship at 10:15am. Steward: 507 Main Street, P.O. Box 80, Steward, IL 60553. Adult Sunday School, 10:00am. Sunday morning worship and Children's Sunday School 11:00am. Contact the church office at 847-730-4370 for more information. facebook.com/crestonumcil facebook.com/stewardilumc

Elim Reformed Church, 140 S. Church Road, Kings, IL 61068. Phone: 815-562-6811. Email goelimchurch@gmail.com Website www.goelimchurch.org Sunday Morning Worship 10:00 Rev. Marv Jacobs

Faith Lutheran Church – (14206 E. Flagg Rd.) – "Making Christ Known Through Lives of Faith." In-person worship is available each Sunday at 9:00 a.m. or online at "Faith Lutheran Social" on YouTube. Worship resources are also available on our Facebook page - 'Faith Lutheran Church ELCA.' You may also e-mail Pastor Joy Alsop at Pastor@faithlrochelle.org for more information. All are welcome to join us!

First Baptist Church of Rochelle, First Baptist Church of Rochelle invites you to experience our practical Bible services which have nurseries provided in every service along with a wide range of children's and teen ministries. Sunday School is at 9:30 am with regular church services at 10:30 am and 6:00 pm. Wednesday Family Night starts at 6:30 pm with AWANA for the 5 yr. olds thru 6th grade. The Omega Teen Ministry also starts at 6:30 pm for 7th – 12th grades and the Adult Bible Study at 7:00 pm. First Baptist Church is located 6 blocks west of Hwy 251 at the corner of Woolf Ct. and 8th Ave. in Rochelle. Call 562-4168 for more information. Listen at 11:00 am Sunday mornings on WRHL 1060 AM for the Sunday morning "Bible Message." www.firstbaptistrochelle.org


First General Baptist Church, 500 S. 12th St, Rochelle. Phone: 815-562-5221. Email: fgbcrochelle@gmail.com. Website: www.fgbcrochelle.org. Facebook: www.facebook.com/fgbcrochelle. Pastor: Rev. Angelo Bonacquisti. **Sunday worship services:** 8:30 am, 11:15 am and 6:00 pm. **Sunday school:** 10:00 am. We'd be honored to have you join us as we worship JESUS and continue to grow in truth and love for God and each other. A nursery, children's church, youth group and small groups are available. If you need a ride please contact our church bus driver, John, at (815) 262-4275 by 8:30 am on Sunday. "For if you confess with your mouth that Jesus is Lord and believe in your heart that God raised him from the dead, you will be saved." Romans 10:9

First Presbyterian Church – An Amazing Place for Amazing Grace- Rev. Doug Forsberg, Senior Pastor. 1100 Calvin Road, Rochelle. Email: info@placeforgrace.com. Sunday morning worship 9:00am & 11:00am. In person or streamed online. On our Website and Facebook Live. www.placeforgrace.com / www.facebook.com/placeforgrace

Grace Fellowship Church — Pastor Jeff Ardissonne, 2128 Il Route 38, Ashton, 815-453-7464. Sunday School 8:30 a.m. Sunday Worship Service 9:45 a.m. www.graceisforyou.com

Harvest Baptist Church 241 Scott Ave. (Hillcrest). Rev. Duane Boehm, pastor. Email duane712@hotmail.com, cell 815-757-3427. Visit us on Facebook! Service times: Sunday morning worship with Children's Church at 10 am. Wednesday night worship at 7 pm.

Immanuel Lutheran Church Missouri Synod 16060 E. Lindenwood Road, Lindenwood, IL 61049. Rev. Dr. Matthew Rosebrock. Church Phone 393-4500. Church Worship 9:00 a.m. Sunday School Christian Education Hour at 10:30 a.m.

Living Water Community Church 405 N. Main St, Downtown Rochelle. Phone 815-561-6249, Website: www.lwccr.com, Like us on Facebook. We are Non-Denominational, Christ Centered, Casual dress, Christ Centered Live Band Worship. Chris Bender- Teaching Pastor, Brent Braski- Administrative Pastor, Adrian Daugherty- Lead Worshipper, Joe Mortimer- Youth Director, Amanda Barnes- Office Manager. Sunday Worship Service- 10:00am. Nursery/Toddlers Ages 0-5 available during the service in the Splash building. Swim- Grades 1st-5th worship with the adults then break out for age appropriate teaching. Youth groups, Small groups, Life Groups and Workshops meet throughout the year for Bible teaching. 7C's Mission-serves the community physically & spiritually each month from 1135 Lincoln Hwy, providing lightly used clothing, Hygiene items, a light lunch and Elder Prayer open the second Saturday from 10am-2pm and the 4th Thursday from 4pm to 7:00pm and by appointment.. 

New Hope Fellowship (Church of God - Anderson, IN), 1501 10th Ave., Rochelle, IL 61068. Service: Sunday at 9 a.m. 10:30 a.m., (815)561-8400, www.NHFchurch.net Pastor: Dan Sergeant and Pastor Nick Tornabene. (Classes for children through age fifth grade during service.)

Primitive Baptist Church, services 3'd Sunday each month, at 10:30 a.m. and 1 p.m., in the meeting room of the Holiday Inn Express, 1240 N. Dement Road, Rochelle, Ill. Elder Robbie Webb, and other ministers preaching. Lunch and fellowship time between services. Contact Elder Rob Webb, 312-809-0871, or Elder Robert Webb, 217-357-3723, or email bwebb9@juno.com for more information. Services sponsored by the Carthage Primitive Baptist Church for convenience of members and friends in northern Illinois and southern Wisconsin. Visitors are welcome.

Rochelle United Methodist Church, Rochelle United Methodist Church invites everyone to come and look for the angels with us this Advent and Christmas season. There are angels among us that may not meet the eye; There are messages of hope coming from a choir on high; But don't just look up; for the way God works is to plant more [hope] right here on earth just like it was with Jesus birth. There are angels among us... (Chuck Bell). You are invited to come and hear with us the messages of advent that so often come with the words of angels saying, "Do not be afraid." **Sunday worship is at 9:00 am** with Sunday School for children after the Children's Message. Recorded services are available on our YouTube channel and our website at www.rochelleumc.com. Our services are on the radio (93.5 FM) on Sunday mornings at 9:00 am. **Our Facebook page** is www.facebook.com/rochelleumc. Our Wednesday Bible Study is studying, "The Angels of Christmas," by Susan Robb beginning on Wednesday, November 30 at 6:00 pm. As always here, everyone is welcome! **Rev. Dr. Katherine Thomas Paisley, Pastor.** 709 Fourth Ave. (815) 562-2164. admin@rochelleumc.com. Everyone is welcome and loved!

St. Patrick Catholic Church Rev. Jesus Dominguez; Deacon Fermin Garcia; Deacon George Schramm; 244 Kelley Dr. (Corner of Kelley & Caron Rd.), PO Box 329, Rochelle, IL 61068. **Office Hours:** 9:00 AM-4PM Monday-Thursday, Phone: 815-562-2370. **Mass times:** 8:00 AM Monday-Thursday, Saturday Vigil Mass 5:00 PM English, 7PM Spanish, Sunday Mass 7:30 AM, 9:00 AM in English and 11:00 AM in Spanish. **Confessions:** Monday 8:30AM & 6:30PM, Tuesday 8:30AM, Saturday 8:30am & 4:00-4:45 PM Or by appointment. **Religious Education:** Deacon George Schramm, Director of Religious Education. 903 Caron Road, Rochelle, IL 61068, 815-561-0079 Website: stpatrickstrochelle.com Email: stpatrick-rochelle@rockforddiocese.org Facebook.com/StPatrickRochelle

St. Paul Lutheran Church "Building Relationships in Christ, Now and Forever!" Pastor-Rev. Greg Hoffmann, Steven Hall, Principal, Parish Nurse-Marcia Schnorr. 1415 Tenth Ave., Rochelle. Church Office-562-2744. Worship times: 6:00 p.m. Saturday, 9:00 a.m. Sunday. Our service is broadcast over WRHL 1060AM at 10:00 a.m. Sunday. Sunday School 10:15-11:15 a.m. Call 562-6323 for more information about the school.

LOCAL VIEWS

Highlights from the 2023 fiscal year budget

IT is my pleasure to offer highlights for the City of Rochelle's operating and capital improvement budgets for the fiscal year (FY) beginning Jan. 1, 2023. The numbers reflected below were part of my PowerPoint presentation at the Nov. 7 budget workshop. The presentation and budget are available for public viewing on the city's website.

Proposed general fund revenues for FY 2023 are estimated to be \$13,405,888. Expenditures for the new fiscal year total approximately \$14,702,934 with general fund capital outlays of approximately \$1,010,000. The projected deficit, which is actually spending of funds we have on hand, of \$1,297,406 includes additional capital, spending ARPA funds (received in 2022 and spent in 2023) and hiring additional police staff to cover further anticipated retirements. Projects funded by transfers from the landfill, the non-home rule sales tax, utility tax and motor fuel tax are included in the

capital improvement fund and not part of the general fund balance. The utilities (electric, water, water reclamation, advanced communications & technology center, railroad, landfill, golf course and airport) proposed budgeted expenses are \$68,816,595 of which \$17,143,391 is for capital outlays. All other Funds, including special, capital improvement, downstate police and fire pensions and internal service total \$23,081,950.

The FY 2023 budget represents the City of Rochelle's ongoing mission to provide a safe, connected and innovative community with professional, personalized and impartial services. The spending, specifically all capital expenditures, falls in line with the 2022 strategic planning document that has been adopted by the full city council. Our team worked to ensure that all spending can be tied back to the six core areas approved by the city council.

Strategic plan goals: Economic & business de-

velopment, financial & management stability, quality of life, community inclusiveness & engagement, infrastructure effectiveness & improvement, and core service delivery.

This budget reflects the priorities of our elected officials. The key priorities that have guided efforts in developing the budget include the following:

Revenues have been estimated at realistic and conservative levels based on estimates due to inflationary pressures and other increased costs. Basic services are financed at appropriate levels, with an emphasis on hiring in the police department.

Numerous staffing positions could become vacant due to retirements (outside of the police department). Due to the uncertain economic climate, these positions will not be filled.

Investment in infrastructure continues to be a priority. This includes projects funded with utility rates, the non-home rule sales tax, utility taxes, motor fuel taxes, rail revenues,

transfers from the landfill fund and the general fund cash balance.

Incentives to expand the local tax base to encourage growth include a property tax rebate program for new and redeveloped housing and the waiver of building permits for small businesses. Other incentives include the Lee/Ogle Enterprise Zone, the city's three TIF districts, the opportunity zone, foreign trade zone #176, the downtown historic district & the façade improvement program. A continuation to improve the city's overall appearance is being supported through renewed investments in all major corridors of the community. This includes promotion of the three TIF districts, continued infrastructure improvements including drainage improvements and beautification efforts. The city has a renewed interest in investment on and near Illinois Route 251 south of the overpass. The redevelopment of the Hickory Grove property continues to be a top priority in 2023.

Continued investments in the city's utility infrastructure including funding for the completion of major electric distribution upgrades, significant upgrades at the diesel generation plant, phase two of upgrades at the waste water treatment plant, a new iron removal plant at Well eight, lining within the sanitary sewer system and other equipment upgrades. These projects are being funded through 2021/2022 alternate revenue bonds (electric), utility rates and several grants, including Economic Development Administration and Community Development Block Grant.

The budget includes funding for phase two renovations for new Rochelle Municipal Utilities location on South 7th Street and building improvements at city hall, the police department, fire station and utility billing office. The key priority for 2022 was to consolidate most utility operations. This was completed, including moving engineering to the RMU

location. Administrative services moved to the utility billing office and community development moved to city hall.

The city continues to address fiscal pressures presented by the following issues:

Initiatives by the legislature to prematurely close the Prairie State generating plant. This could have long-term negative impacts on utility rates. Increasing inflationary pressures and borrowing costs and the possibility of economic recession. Continued regulations forcing further upgrades to water and water reclamation treatment facilities. Airport revenues continue to lag operational and capital expenses. State of Illinois business climate and budget deficits. Possible funding cuts in the Local Government Distributive Fund (LGDF). Potential for significant revenue increase through a new rail transload center.

Jeffrey A. Fiegenschuh, ICMA-CM, MPA, is the city manager of the City of Rochelle.

Use communication technology wisely

COMMUNICATION technology is one of four types of technology that impact our lives in profound ways — shaping how we interact with our world and other people near and far. To improve our lives we need to learn and understand communication technology so we have some measure of control over it instead of it over us, and so we can choose appropriately when balancing its positive and negative characteristics.

In general, communication can be classified into four different types: human-to-human, human-to-machine, machine-to-human, and machine-to-machine. So, when using communication technology, one of the first things to know is what we are communicating with — a human or a machine.

Sometimes is very obvious when we communicate with a machine. Programming a microwave oven is a great example of this. If you know what you are doing it is easy, and a microwave oven can be an amazing kitchen machine used to prepare foods. But if you don't know how to

communicate with a microwave it can be a confusing nightmare. Microwaves are machines and are typically very logical — this is what makes them predictable and reliable to use over and over again. But it can also make communicating with a machine painfully frustrating if you don't know their "logic." Now that machines are taking on a more human-like façade, the skills needed to communicate with a machine are changing, and logic may become less of a prerequisite. For example, many machines can understand voice commands, so no matter how logical we think we are talking to the machine it may not have any idea what we are saying. Having patience with the machine you need to communicate with, and knowing its language, just like having patience and knowledge when communicating to people, is a valuable asset. Another asset is being aware that machines can "listen" to what you are saying when you are not talking directly to them. I've noticed many times that my phone seems to be listening in on my conversations, and later

offering suggestions about questions or topics that I have discussed.

More often than not, when technology is involved, we are communicating with a machine even when it feels like we are communicating with another person. This fact can be subtle or very obvious but nonetheless is important to realize. For example, when talking to someone on the telephone, we are communicating with a machine first (the phone), which in turn is communicating with other machines (cell phone towers and switches and eventually the other person's phone), which is finally communicating to the other person. Usually it's not noticeable, but becomes very apparent when your call is dropped, has an annoying echo, or suffers from some other technological issue. What an absolutely amazing, positive thing a telephone conversation can be when you realize that you can speak with someone far, far away as if they are sitting next to you in the same room. But when those machines break down, or the unexpected occurs, telephone conversations can be unreliable

and disappointing. Taking telephone conversations for granted can be a mistake, especially when emergencies come up.

A hand-written, or typed letter mailed to another person also gets passed along and handled by machines (like a mail sorting machine) as well as other humans (like a letter carrier) but does not suffer from problems like echoes, drops or bad coverage. And hand-written words may convey some emotion even better than spoken words. While hearing another person's voice on the phone is immediate and direct, written words have a delayed aspect to them that may enhance the message.

Using a similar argument, when watching a person on television we are not watching a person at all but rather a machine that shows an image of a person. There are many machines involved along the communication channel (like cables, or satellites, satellite dishes and antennas) that string together the two people involved and this can create images that are nearly magical. I remember sitting in my elementary school gymnasium watch-

ing the first moon landing and moon walks. Currently we may be captivated by live sports coverage from people playing a game halfway around the globe. In some ways it is just like having that person right there in the same room, but in other ways it is very removed and remote. We have the power to simply turn "off" the person on the TV, but that is not the case with another person in the same room. So, a positive aspect of television is that it conveys the comfort of being with another person, but in other ways it is very passive.

Internet communication technology brings new and more complex means of sending and receiving messages, especially as more and more internet devices crowd into our lives. Email and texting is a perfect example of human-to-machine communication in which a simple mistake like a "Reply-All" operation may become embarrassing at the least, or one of the biggest mistakes you've ever made at the worst. Anonymously leaving a gift on someone's porch may be a live streaming video event if there are surveillance

cameras involved, with the homeowner monitoring their front door while they are at work or away on vacation. Ding, dong, ditch may become a game of the past! In this case there are machines communicating with other machines to constantly monitor what is happening. With the addition of facial recognition you may be identified the minute you walk into a store, or onto someone's front lawn.

This same analysis can be applied to any communication technology we choose — there are positive and negative aspects for each. Remembering that while we use and select technology for communicating to other people is always important for having control and satisfaction in getting our messages across.

Kurt Wolter has studied and taught technology — including production, transportation, energy, and communication — for over 30 years. He enjoys trying to better understand technology and its past, present and future while also attempting journalism. He can be reached at technohistory100@gmail.com.

How to contact government officials

U.S. Con. Adam Kinzinger
1218 Longworth HOB
Washington, D.C.
20515
(202) 225-3635

IL Sen. Brian Stewart
M104A State House
Springfield, IL 62706
(217) 782-0180

IL Rep. Tom Demmer
314 Capitol
Springfield, IL 62706
(217) 782-0535

Have a letter you want to submit to us? Send it to (news@rochelle-news-leader.com)

KEEPING YOU IN TOUCH WITH YOUR LOCAL LEADERS

** Denotes Chairman/President*

Rochelle City Council *John Bearrows Kathryn Shaw-Dickey Bil Hayes Rosaelia Arteaga Dan McDermott Tom McDermott John Gruben	Rochelle Elementary School Board *Dave Casey Steve Builta Ashley Jackson Stephanie White Eric Van Hise Trisha Vaughn Javier Zepeda	Rochelle Township High School Board *Tom Huddleston Carol Hayenga Bill Ravnaas Jacky Aguilera Jeff Tilton Bobby Chadwick Brian VanVickle	Flagg-Rochelle Park Board Brent Carmichael John Dobbs Dale Wells *Tim Hayden Jodie Hart Joe Lenkaitis	Ogle County Board Dist. 3 Lloyd Droege Dan Miller Greg Sparrow	Ogle County Board Dist. 4 Bruce McKinney Skip Kenney David Williams	Creston Village Board Wayne Williams Jennifer Payton *Tom Byro Greg Hopkins Steve Katzman Mike Kerns Mark Hibshman Curt Ward	Hillcrest Village Board *Randy Salsbury Pam Pittman Dan Potter Richard Rhoads Tim Ball Renee Kerwin	Flagg Township *Bob Withrow Joanna Patrick Susan Rothenberger Scott Seebach Board of Trustees Lance Noggle Eric Gruben Susan Hagar Jim Kenney	Flagg-Rochelle Library *Jaqueline Dickow Teresa Haggstad Michael Scanlan Lanning Nicoloff Sheri Klindera Susan Sevedge Darci Waltrip
jbearrows@rochelleil.us kshaw-dickey@rochelleil.us bhayes@rochelleil.us rarteaga@rochelleil.us dmcdermott@rochelleil.us tmcdermott@rochelleil.us jgruben@rochelleil.us	dcillini94@gmail.com sbuilt@gmail.com ajackson@d231.rochelle.net swhite@d231.rochelle.net eric.vanhise@gmail.com jrvtlv02@msn.com jzepeda@rthsd212.org	tom.huddleston@rthsd212.org carol.hayenga@rthsd212.org bill.ravnaas@rthsd212.org jacky.aguilera@rthsd212.org jeff.tilton@rthsd212.org bobby.chadwick@rthsd212.org brian.vanvickle@rthsd212.org	bcarmichael@rochelleparkdistrict.org jdobbs@rochelleparkdistrict.org dwells@rochelleparkdistrict.org thayden@rochelleparkdistrict.org jhart@rochelleparkdistrict.org jlenkaitis@rochelleparkdistrict.org	ldroege@oglecounty.org dmiller@oglecounty.org gsparrow@oglecounty.org	bmckinney@oglecounty.org skkenney@oglecounty.org dwilliams@oglecounty.org	jwdw13@yahoo.com tommyb_47@yahoo.com ghopkins522@comcast.net skatzman@essex1.com ac.kerns@comcast.net caward92@comcast.net	rsalsbury@hillcrestil.us ppittman@hillcrestil.us dpotter@hillcrestil.us rrhoads@hillcrestil.us tball@hillcrestil.us rkerwin@hillcrestil.us	flaggtwp@rochelle.net flaggtwpc@rochelle.net assessor@rochelle.net scottseebach@gmail.com noggle62@gmail.com egruben@comcast.net susanhager303@comcast.net jimk@rocketsupply.com	dickow@comcast.net haggstad@comcast.net scanlan@comcast.net nicoloff118@comcast.net alwayslefty2@gmail.com nit1prl22@yahoo.com doobs12@comcast.net

LETTERS TO THE EDITOR POLICY

The Rochelle News-Leader encourages responsible letters to the editor on subjects of interest to our readers. Editing may be necessary for space, clarity or to avoid obscenity or libel, but ideas will not be altered. All letters must bear the handwritten signature of the writer and include address and phone number or e-mail address for verification purposes. Neither the street address nor phone number will be printed. Letters should be typed or legibly handwritten, and no anonymous letters will be published. Any letters from boards or organizations must include at least one name of an individual. Any criticism of public officials should be limited to issues related strictly to their position or actions made in office, as personal attacks will not be published. Letters involving private disputes between the writer and a business will not be published. Political endorsements will be published, however letters from candidates endorsing themselves will not be printed. Letters may be dropped at the News-Leader office (211 IL Route 38 East), mailed to the News-Leader (P.O. Box 46, Rochelle, IL 61068) or e-mailed (news@rochellenews-leader.com). The News-Leader reserves the right to edit or reject any letter to the editor for any reason, and letters chosen for publication do not necessarily reflect the views of this newspaper.

COMMUNITY

2022 Ogle County tentative multiplier announced

SPRINGFIELD — Ogle County has been issued a tentative property assessment equalization factor of 1.0000, according to David Harris, director of the Illinois Department of Revenue.

The property assessment equalization factor, often called the “multiplier,” is the method used to achieve uniform property assessments among counties, as required by law. This equalization is particularly important because some of the state’s 6,600 local taxing districts overlap into two or more counties (e.g. school districts, junior college districts, fire protection districts). If there were no equalization among counties, substantial inequities among taxpayers with comparable properties would result.

State law requires property in Illinois to be assessed at one-third of its market value. Farm property is assessed differently, with farm homesites and dwellings subject to regular assessing and equalization procedures, but with farmland and farm buildings assessed according to standards based on productivity.

The equalization factor is determined annually for each county by comparing the sales price of individual properties sold over the past three years to the assessed value placed on those properties by the county supervisor of assessments/county assessor.

If this three-year average level of assessment is one-third of market value, the equalization factor will be one. If the average level of assessment is greater than one-third of market value, the equalization factor will be less than one. And if the

average level of assessment is less than one-third of market value, the equalization factor will be greater than one.

Assessments in Ogle County are at 33.29 percent of market value, based on sales of properties in 2019, 2020, and 2021.

The equalization factor currently being assigned is for 2022 taxes, payable in 2023.

Last year’s equalization factor for the county was 1.0000.

The tentative factor is subject to change if the County Board of Review takes actions which significantly affect the county assessments or if local officials or others can present data showing that the Department of Revenue’s estimates of the average level of assessments in the county should be adjusted. A public hearing on the tentative multiplier will be held between 20 and 30 days after the tentative factor is published in a newspaper of general circulation within the county.

A change in the equalization factor does not mean total property tax bills will increase or decrease. Tax bills are determined by local taxing bodies when they request money each year to provide services to local citizens. If the amount requested by local taxing districts is not greater than the amount received in the previous year, then total property taxes will not increase even if assessments may have increased.

The assessed value of an individual property determines what portion of the tax burden a specific taxpayer will assume. That individual’s portion of tax responsibility is not changed by the multiplier.

2022 From The Heart Calendar

Nov. 8 - Sharon Watkins, DeKalb, \$25

Nov. 9 - Rachel Huff, Rochelle, \$25

Nov. 10 - Pastor Greg & Tina Hoffman, Rochelle, \$25

Nov. 11 - Foundation for Focus House, Rochelle, \$250

Nov. 12 - Nancy Pfab, Lindenwood, \$25

Nov. 13 - Rochelle Area Community Foundation, \$50

Nov. 14 - Michael Shumack, Amboy, \$25

Nov. 15 - From the Heart, Rochelle, \$25

Nov. 16 - Rochelle Area Community Foundation, \$25

Nov. 17 - Patty Rudolphi, Dixon, \$25

Nov. 18 - Justin Hutchinson, Sterling, \$25

Nov. 19 - Adam Heal, Rochelle, \$25

Nov. 20 - Dale Galland, Rochelle, \$50

Nov. 21 - Gary and Sharon Olszewski, Rochelle, \$25

Nov. 22 - Colby Capes, Chicago, \$25

Nov. 23 - From the Heart, Rochelle, \$25

Nov. 24 - Adam Heal, Rochelle, \$500

Nov. 25 - Rochelle Rescue Mission, \$25

Nov. 26 - Sharlene Meadows, Rochelle, \$25

Nov. 27 - From the Heart, Rochelle, \$50

Nov. 28 - Fran Robertson, Sycamore, \$25

Nov. 29 - Debra R. Mayer, Rochelle, \$25

Nov. 30 - Rochelle Foods, Rochelle, \$25

Dec. 1 - Glenda Vivian, Amboy, \$25

Dec. 2 - Morgan Baker, Rochelle, \$25

Dec. 3 - Ren Alde, Rochelle, \$25

Dec. 4 - Jonathan Shippert, Oregon, \$25

THE KITCHEN TABLE MENU

Dec. 4 – (Sunday Brunch) – Sausage Gravy and Biscuits, Oatmeal, Meat Skillets over Diced Potatoes
KIDS MENU: Chicken Nuggets w/Fries

**All menus are subject to change. If you would like to check before coming out, please call us at 815-561-9074
www.KitchenTableRochelle.org

Birthdays & Anniversaries

Dec. 4 Teresa Dodillet	Dec. 13 Kellen Eggenburg Kenlee Hayward Jeff Dickey	Dec. 24 Luke Gilliam
Dec. 6 Kelly Smith	Dec. 20 Amanda Avila Emilyn Voight	Dec. 25 Maribel Ortiz
Dec. 9 Claire Johnson	Dec. 21 Jacob King Bill Patrick Angie Mitchell	Dec. 26 Annette Sulser
Dec. 10 Mary Helfrich	Dec. 22 Deb Wooten	Dec. 28 Chris Prosser
Dec. 11 Samantha Johnson	Dec. 23 Tristen McGuire Bailey Dolister	Dec. 29 Kelsey Rogers
Dec. 12 Tim & Megan South (anniversary) Jax Sullivan		Dec. 31 Jamey & Nicole King (anniversary) Ruth Allen Hayleigh Jones

Coffee Break

MAGIC MAZE

E T H E B Y V S P M J H E B Y
V T A Q D O L I G D B G Y W T
R P R L M K I F D B H Y W U S
Q T O O K M K E I O F D B Z X
W U U W S O Y H S Q O N L J H
F D N O C S F T A R Y W C V T
S Q D C B M P T N N O A N L F
K T E K R A M N H A P H A I O
H F E C B L N I Z E H Y E W T
V U S S E L R A H C R S B N U
Q P N M L J I P M O O B H F O

Find the listed words in the diagram. They run in all directions forward, backward, up, down and diagonally
Unlisted clue hint: DESERTED SETTLEMENT

Around
Bean
Boom
Cape

Charles
Cow
Man about
Market

Old
One-horse
Out of
Paint the

Shanty
Small
Talk of the

TOWN

Find the listed words in the diagram. They run in all directions forward, backward, up, down and diagonally
Unlisted clue hint: DESERTED SETTLEMENT

Around
Bean
Boom
Cape

Charles
Cow
Man about
Market

Old
One-horse
Out of
Paint the

Shanty
Small
Talk of the

Super Crossword

WAX SHADES

ACROSS
1 Played golf on the green
7 Baseball card company
12 Indy sponsor
15 Andy's pal
19 Ryan and Tatum
20 Little Mermaid's name
21 Superman's love interest
23 Kitschy lawn adornment (1997)
25 Rotating part in a water pump
26 Chicago-to-Atlanta dir.
27 Fraternal org. with lodges
28 Canine with gray brindled fur (1993)
30 Carnival treat on a stick (1998)
35 Loch monster, informally
36 Shoe parts
37 Piccolo's kin
39 Skin art
43 Retail store's beginning?
44 Rice — (food brand)
46 Iowa college

DOWN
1 "Nova" genre, for short
2 Togetherness
3 Doctrines
4 "... we'll — a cup o' kindness ..."
5 Pixieish sort
6 WWW access inits.
7 Florida port
8 Sky hunter
9 Missed badly
10 Wooden pin
11 Vegas fixture
12 Gloppy stuff
13 Burial places
14 Calumet part
15 100% wrong
16 St. — (French resort)
17 Like Nash's "lama"
18 Feudal slave
22 Opera — (many a Handel work)
24 Basic skills
29 Suffix with hero
31 Smallish city
32 Royal Norse name
33 Little — (Dickens girl)
34 Yang go-with
38 Tried to hit, as a lay target
40 British trolley

ACROSS
48 Woman on "Frasier"
49 Plant also called bachelor's button (1958)
53 Glitzy display (1993)
57 Verse tribute
58 Counterpart of masc.
59 Test versions
60 Old- — (quaint)
61 Sky, to the U.S. Air Force (2003)
66 Tax-deferred svgs. plan
67 Nestlé movie theater treats
68 Zadora of "Butterfly"
69 "That's a big yes from me!"
73 "Criminal Minds" aier
74 Grassland on the slope of a peak (1998)
78 Pond growth
81 Curt
82 P.O. arrival
83 Hip-hop "Dr."
84 Plant rolled about by the wind (1993)
86 Makeup of many dunes (1998)
90 Deg. for a future exec
92 Novelist Jong
94 Often-refined resource
95 Capitol group
98 Life story: Abbr.
99 Gets by
103 Lose all feeling
106 Both pleasant and sad (1958)
109 "The final frontier" (1998)
113 See 54-Down
114 Caustic alkali
115 Muscle rotating the forearm to a palm-down position
116 What each of this puzzle's featured answers is (with the year it was introduced)
121 Lily Tomlin's little girl persona
122 Confine
123 Spelunking chamber
124 Pecans, e.g.
125 "Norma —"
126 Hops-drying ovens
127 Sports deals

DOWN
41 Leak slowly
42 Rocker
43 Osbourne
44 — bit (just slightly)
45 — Martin (cognac)
46 Energy mogul
47 Pound divs.
49 Dairy animals
50 Norse god
51 Move, in Realtor lingo
52 "Just the Two —" (1981 hit)
54 With 113-Across, had some humble pie
55 Based on — story
56 Fancy crown
59 Square in the first bingo-card column
62 Mr. T movie
63 Biblical tower setting
64 Old hi-fi buys
65 "The Da Vinci Code" group
66 Suffix with hero
69 Apropos of
70 Old Icelandic saga
71 Michael who played Worf
72 Had liabilities
74 Confront
75 Often-refined resource

ACROSS
76 Sir Guinness
77 "— boy!"
78 S&L devices
79 Garage job
80 Certain Fed
81 Pan Am rival
85 Planet seen at sunset, old-style
86 Canon or Sony products, for short
87 Wave sound
88 Baking pans
89 Deli dish
93 Steal from
96 Go-between
97 Yeshiva text
98 Telly network
99 Cry feebly
100 Solidified
101 Pal of Pooh
102 Ships' backs
104 "Once — midnight dreary ..."
105 Seine feeder
107 "Taste this"
108 Cel figures
109 Not closed
110 Language of Pakistan
111 "Snap —!"
112 Canyon effect
117 Actor Stephen
118 Be a thespian
119 Road vehicle
120 Eggs

HOCUS-FOCUS

BY HENRY BOLTIHOFF

Find at least six differences in details between panels.

1. Neckline is different

2. Lamp is missing

3. Table leg is different

4. Tape is missing

5. Stripes are missing

6. Number is missing

Super Crossword

Across

Down

1 2 3 4 5 6 7 8 9 10 11 12 13 14 15 16 17 18

19 20 21 22 23 24 25 26 27 28 29 30 31 32 33 34 35 36 37 38 39 40 41 42

43 44 45 46 47 48 49 50 51 52 53 54 55 56 57 58 59 60 61 62 63 64 65 66 67 68 69 70 71 72

73 74 75 76 77 78 79 80 81 82 83 84 85 86 87 88 89 90 91 92 93 94 95 96 97 98 99 100 101 102

103 104 105 106 107 108 109 110 111 112 113 114 115 116 117 118 119 120 121 122 123 124 125 126 127

Eat • Drink • Shop • Live

Local

Homemade Holidays **Catering & Party Trays**

2022 VOTED BEST OF WINNER
OGLE COUNTY

Tues-Fri - 9a-5:30p
Sat - 9a-4p

- Beer
- Wine
- Seasonings
- Prime Rib Roasts
- Turkey
- Ham
- Holiday Favorites

Gift Certificates Available

815-384-3620
headons2go.com
103 N. Main Street | Creston

HEADONS
FINE MEATS
EST. 1970 CRESTON, IL

FOLLOW US ON FACEBOOK

Proudly Serving The Rochelle Area since 1968

Colonial Flowers & Gifts
408 Lincoln Hwy., Rochelle, IL 61068
(815)-562-8101

Thank you for shopping local!
We greatly appreciate the support of our community!

Come visit us and enjoy 55 years of traditional and unique vignettes.
Christmas Open House happening all month long with extended Holiday Hours.

408 Lincoln Hwy., Rochelle • 815-562-8101
Order online at: floristrochelleil.com

Christmas Decor Galore!

12554 IL-64, Kings, IL 61068
phone: (815) 761-5643

Wednesday 10AM-5PM
Thursday 10AM-5PM
Friday 10AM-5PM
Saturday 10AM-5PM
Sunday Closed
Monday Closed
Tuesday Closed

sweet revival
ANTIQUES AND MORE

\$10 ANY Haircut

SOS

108 N Chestnut St.
Byron, IL 61010
815-234-5992

"Spice up your holidays at your local Salon & Spa!"

*Please present this coupon at check-out. Feel free to check-in online, walk-in or call

THERE'S NO PLACE LIKE HOME for the Holidays

MEYERS
FURNITURE & FLOORING

2022 VOTED BEST OF WINNER
OGLE COUNTY

209 POWERS RD ROCHELLE, IL • (815)562-8792

HOURS:
M-F 9-5, SAT 10-5, CLOSED SUNDAY

Little Blue COTTAGE

HOME DÉCOR GIFTS

ELITE DIXIE BELLE PAINT RETAILER

502 Franklin St., Oregon, IL
Mon-Fri 10AM to 5PM • Saturday 9AM to 2PM • Sunday Closed

CELESTIAL SUN WELLNESS SPA

Red Light Therapy Bed
Versa Spray Tan
High Quality CBD

Four Levels of UV Tanning
Cocoon Wellness Pod
Unique Boutique for great Christmas Gifts!

Monday-Thursday 8-8 • Friday 8-7 • Saturday 8-4

8725 N. IL RT. 2, BYRON
815-234-5588

Diamond G Western Store.

We welcome you to Diamond G Western Store.

We are celebrating our 50th year in business.

We have a large selection of western hats, boots, clothes, belts, and buckles, horse care products, tac and much more!

815-562-4050
4564 S. Knoll Rd
Rochelle IL

HUB CITY FURNITURE

Tuesday through Friday 9-4 Saturday 9-1 Sunday - Monday Closed

429-433 Lincoln Hwy, Rochelle, Illinois
815-562-8765 | hubcityfurniture.com

THE DOG HUB
GYROS • HOT DOGS • ITALIAN BEEF • BURGERS

DINE-IN PICK-UP DELIVERY

View the menu:
Dog-Hub.com
ONLINE ORDERING NOW AVAILABLE!

Monday-Saturday 10:30AM-9PM
Sunday Closed

134 MAY MART DR
ROCHELLE
815-561-0001

Precious Pastures

Delicious, Quality Raw Milk
Fresh at the farm!

Monday - Saturday 6:30 - 8:00 am & 4:30 - 6 pm
Sunday 6:30 - 8:00 am & 5 - 6:30 pm

(Please bring your own containers. 24 hours Notice Required.)

387 S. Malta Rd., Rochelle, IL 61068
815-762-6867 • PreciousPastures.com

MERRY Christmas!

Don't miss out on your chance to be added to this page!

The Shop Local page will run every Sunday in the Rochelle News-Leader and every Monday in the Ogle County Life up until Christmas!

Contact your sales representative today to be included!



ADVERTISE YOUR BUSINESS HERE!

Great Rate - Great Spot!

Call Mike @ 815-561-2124 or email mfeltes@oglecountyilife.com

01252021



Happy Holidays!

From all of us at:

ANDERSON PLUMBING & HEATING, INC.

621 First Ave., Rochelle, IL • 815-562-8784

RTHS Boys & Girls Bowling

Doubleheader at home

Lady Hubs face Morris as Hubs battle Sterling at T-Byrd Lanes on Thursday

BY RUSSELL HODGES
SPORTS EDITOR

ROCHELLE — Back-to-back wins are how the Rochelle Lady Hub varsity bowling team concluded the first week of its season. After defeating Ottawa on the road Tuesday evening, Rochelle hosted Morris for an Interstate 8 Conference match at T-Byrd Lanes on Thursday.

Sophomore Cassidy Vincent rolled a team-high 531 series as the Lady Hubs took all three games in their 2,203-1,885 series sweep over the Redskins. Junior Faith Adams threw a 399 series score, while freshman Kylie McCullough followed with a 369 series for the Lady Hubs.

“It’s the first time we’ve been 2-0 since I started coaching here,” head coach Eric Widick said. “Our girls are fighters and they fight through their struggles. We’ve had some nerves over these first few matches, but I think our team scores increased from the start of each match to the end. We’ll need to rest up because we’re going to have a lot of matches in the next few weeks. It’ll also be important for our girls to focus on maintaining their consistency and their ball speed.”

Vincent led the Lady Hubs (2-0, 2-0 Interstate 8) over Morris 677-633 in the first game, shooting a series-best 200 score. Rochelle extended its lead in the second game, winning 767-629 behind a 191 from Vincent and a 138 from Adams. The Lady Hubs completed the three-game sweep with a 759-623 victory over the Redskins in the third game, where McCullough fired a series-high 154 and junior Anahi Alanis recorded a series-high 161 to end with a 367 series.

“Cassidy’s really confident and she was throwing the ball really well early in the match,” Widick said. “I’m very impressed with how Kylie has come in as a freshman. She was able to pick our team up later in the match when we were struggling and I’m glad that we’ve had multiple girls contributing. Our focus moving forward will be having Cassidy and Kylie bowling well together.”

Rochelle will bowl in the Jefferson J-Hawk Invitational at Rockford’s Cherry Bowl on Saturday.

Sterling

A season-high series score wasn’t enough for the Rochelle Hub varsity bowling team during Thursday evening’s



Junior Faith Adams (left) and freshman Owen Tooley (right) look for their marks down lane during the Rochelle Township High School varsity bowling matches on Thursday. The Lady Hubs faced Morris in Interstate 8 Conference action, while the Hubs took on Sterling in nonconference play.

nonconference rematch against Sterling at T-Byrd Lanes.

Senior Evin Odle and freshman Andrew Powell each eclipsed the 600-se-

ries mark as the Hubs maintained a slim lead over the Golden Warriors after two games. Although Rochelle bowled well in the third game, where

three players rolled scores over 195, Sterling emerged victorious with a strong third game of its own to win the series count by a final total of 3,325-3,279.

Odle led the Hubs (3-5, 2-2 Interstate 8) with a 658 series and Powell followed with a 631 series.

See BOWLING pg 5

RTHS Wrestling

Perfect score highlights unbeaten start for Hubs

Rochelle moves to 4-0 after home wins over Rock Falls, Erie-Prophetstown

BY RUSSELL HODGES
SPORTS EDITOR

ROCHELLE — A flawless score from the Rochelle Hub varsity wrestling team capped off a dominant nonconference meet against Erie-Prophetstown and Rock Falls on Wednesday.

After recording six falls in a 59-18 win over the Panthers to start the evening, Rochelle showcased its skills against the Rockets, notching a season-high 10 falls in one match as the Hubs blanked Rock Falls with a perfect 84-0 victory. Rochelle (4-0, 0-0 Interstate 8) will continue nonconference action against Lena-Winslow/Stockton and the Stillman Valley Cardinals.

E-P

Junior Leo Stoffel scored the first points of the dual against the Panthers, recording a first-period takedown and fall over Aeden Thompson in the 160-pound bout. Junior Brock Metzger was all over Jordae Crow in the 182-pound bout, earning three near falls and a takedown in the first period before a reversal and near

fall in the second period led to a 15-0 win by technical fall.

“We’re expecting to do really well this season and we want to keep winning,” Metzger said. “We have one win over a ranked team already and we’re getting ready to face another ranked team in Lena-Winslow so we know we’re going to have some really tough matches. We have a lot of young guys and we’re going to keep getting better and better over these next few years. We’ve really come together as a group and we all support each other during every single match.”

Freshman Roman Villalobos as well as sophomore Kaiden Morris and senior Jaden Cook received forfeits from the Panthers for the 170-pound, 220-pound and 285-pound bouts. Erie-Prophetstown’s first win came in the 195-pound bout, where Luke Otten went ahead 4-1 on two takedowns before winning by first-period fall against sophomore Alexander McBride.

Freshmen Freddie Hernandez and Anthony Milburn each delivered victories in the 106-pound



Sophomore Xavier Villalobos puts the finishing move on Erie-Prophetstown’s Samuel Kilker during the Rochelle Hub varsity wrestling match against the Panthers and Rock Falls on Wednesday.

and 113-pound bouts, with Hernandez scoring a first-period fall over Samantha Kilker before Milburn took down Connor Johnson and earned a first-period fall in only 36 seconds.

Sophomore Xavier Villalobos totaled three first-

period takedowns in the 120-pound bout, winning by fall over Samuel Kilker to give the Hubs a 47-6 lead in the nonconference match.

Erie-Prophetstown took the next two head-to-head matchups, with Wy-

att Goosens holding off sophomore Joseph Nadig for a 3-1 decision in the 126-pound bout and Aidan Jepson taking a 5-0 lead before finishing off the 132-pound bout with a fall over sophomore Weylin Nay.

Senior Weldon Nay scored a bounce-back win for the Hubs in the 138-pound bout, taking down and defeating Jayda Rosenow with a first-period fall.

See HUBS page 3



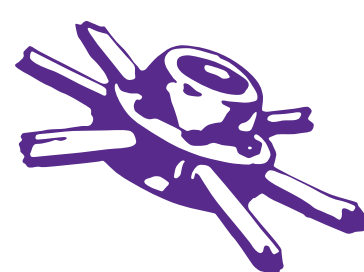
The businesses featured on this page are

"Hubs Super Fans"

They proudly support our local athletes and students.

Please show your appreciation by patronizing their businesses.

WE SUPPORT OUR HUBS!



HUB SPOTLIGHT



**Mark
Green**

Year: Freshman

Sport: Basketball

Q: How many years have you been playing this sport?

A: Nine years.

Q: What do you enjoy most about this sport?

A: I enjoy playing the games and the competitive atmosphere.

Q: What is your favorite school subject and why?

A: Math because I'm good at it.

Q: Who is your favorite athlete and why?

A: Ed Reed because he worked hard and became great.

Q: Who is your biggest role

model and why?

A: My dad because he coached me for many years.

Q: What is your dream job and why?

A: To be an athlete or a coach.

Q: Where would your dream vacation be and why?

A: Florida because I like warm weather.

Q: What is your favorite thing about being a student-athlete at RTHS?

A: All of the opportunities that RTHS provides.



Caden

Goodwin

Year: Freshman

Sport: Basketball

Q: How many years have you been playing this sport?

A: Four years.

Q: What do you enjoy most about this sport?

A: I enjoy the excitement and that you can come back from anything to win the game.

Q: What is your favorite school subject and why?

A: English because it's fun.

Q: Who is your favorite athlete and why?

A: Jerry Rice because he's one of the best football players ever.

Q: Who is your biggest role

A: My dad because he teaches me how to do things and be a better man.

Q: What is your dream job and why?

A: To be a forensic scientist because anatomy always fascinates me.

Q: Where would your dream vacation be and why?

A: Antarctica because not many people get to go there.

Q: What is your favorite thing about being a student-athlete at RTHS?

A: I have a lot of friends here and I have a lot of fun.

GO HUBS!

VINCE'S PIZZA

Vince's Pizza Family and staff are always ready to serve you, 55 years and counting! Without compromise we will continue to serve the Best Pizza and Italian dishes with only the highest quality ingredients from start to finish!

We are proud to support Rochelle Hubs!

815.562.7300
Delivery & Curbside Pick Up
1071 N 7th St, Rochelle, IL
vincepizzainrochelle.com

Hello, neighbor!

Huber Ins and Fin Svcs Inc
Shane B Huber, Agent
1211 Currency Ct
Rochelle, IL 61068
Bus: 815-562-7011

Please stop by and say, "Hi!"
I'm looking forward to serving your needs for insurance and financial services.
Like a good neighbor, State Farm is there.
CALL ME TODAY!

State Farm

1001013.1 State Farm, Home Office, Bloomington, IL

DLX Medical GROUP

Caring for your family's health from infant to adults.

For appointment, please call
815-227-9594
1212 Currency Ct, Rochelle, IL 61068
Most Insurance Accepted

Diana Alanis, MD
Accepting New Patients

Local People Providing Local Service

Rochelle MUNICIPAL UTILITIES

Water • Waste Water
Electric • Communications

Phone: 815-562-4155 333 Lincoln Highway
Fax: 815-562-5861 Rochelle, IL

www.rmu.net

CENTRAL ILLINOIS LOAN

Loans For All Your Needs
Auto • Home Improvement • Vacation

Jami Hackman

815★561★4035!

310 Eagle Drive, Rochelle
All loans subject to our normal credit requirements and policies.

MORTON BUILDINGS

If you can dream it, we can build it.

Rochelle Sales Office • Hwy. 251 N. • 877-613-3050

Rochelle Community Hospital

Your Local Healthcare Resource.

900 N. 2nd Street, Rochelle
815-562-2181
www.rochellehospital.com

MEYERS FURNITURE & FLOORING

209 Powers Road, Hwy 251 N
Rochelle, IL 61068
(815) 562-8792
www.meyersfurniture.com

Bruns Construction, Inc.

Residential & Commercial Roofing

Shingled Roofs
Flat Roofs
Metal Roofs For Farm Facilities
Custom Built Homes
Additions

815-561-0099
Licensed & Insured

Batavia Builders & Remodelers, LLC

Debbie Foster, Owner
(815) 501-8946
www.bataviabuilders.com

Serving Illinois & the Surrounding Area

Specializing in Walk-In Tubs & Acrylic Showers

Additions ~ Bathrooms ~ Kitchens
Accessibility Remodeling

ANDERSON Plumbing & Heating, Inc.

Plumbing, Heating, Air Conditioning,
Drinking water systems, Water Heaters,
Softeners, Iron Filters & More.

Since 1976
Like us on Facebook
Lic# 055-013999

LENNOX
One less thing to worry about
621 First Ave., Rochelle
815-562-8784

Rochelle Chiropractic Clinic
Dr. Chad M. Piller

227 E. Rt 38 • Rochelle, IL
815-562-8706
www.rochellechiropractic.com
Now Accepting New Patients!

Alfano's
Pizzeria and Italian Restaurant

Taste The **TRADITION**
Taste The **DIFFERENCE**

Dine In • Carry Out •
• Home Delivery • Pizza • Pastas •
• Sandwiches • Salads •
• and Lots More!

Dine-In • Carry Out • Home Delivery
1115 TURKINGTON TERRACE, ROCHELLE
815-562-3312

JOHNSON TRACTOR

SALES • PARTS • SERVICE

200 Steward Road
800.262.1680
www.johnsontractor.com

AtlasAuto

BUY HERE - PAY HERE
You Work - You Drive

Se Habla Español **815-562-7433**

1400 N 7th St
Corner of Flagg Rd & Hwy 251 N

HUB-REMSEN PRINT GROUP

101 Maple Ave • Rochelle, IL 61068
815.562.7057 • hub-remsen.com

GO HUBS!

"Proudly Serving The Rochelle Area Since 1945"

Berg-Johnson Electric

Residential • Commercial • Industrial

FREE ESTIMATES
Licensed and Insured
24 Hour Emergency Service
815-562-4937
500 Cleveland Avenue

JEFF PERRY

CHEVROLET • BUICK • CADILLAC • JEEP • CHRYSLER

815-562-8787 • **www.jeffperrychevrolet.com**

Busy Schedule? Leave the cooking to us.

• Large menu of foods
• Rochelle's famous chicken by the dinner or bucket
• Hand dipped ice cream (16 flavors)

COUNTRY SCHOOL DRIVE-IN RESTAURANT
251 N. ROCHELLE • 562-6039

We're tuned in to your financial needs!

• Six locations
• 25,000+ ATMs across the U.S.¹
• Free checking account options including Student Checking
• Stillman Mobile App featuring mobile deposit²
• Free Pre-approvals
• Local lenders, local decisions

Stillman BANK
Earning Your Trust For 135 Years
www.stillmanbank.com

GOOD LUCK HUBS FROM YOUR FANS AT:

HAYDEN REAL ESTATE INC.

RESIDENTIAL
AGRICULTURAL
COMMERCIAL

815-562-2111 ★ hre@haydenreinc.com

SPORTS



(PHOTOS BY RUSSELL HODGES)

Sophomores Joseph Nadig (left) and Kaiden Morris (right) each recorded falls for the Rochelle Hub varsity wrestling team during Wednesday evening's dual match against Rock Falls. After winning 59-18 over Erie-Prophetstown, Rochelle totaled 10 falls over 14 bouts in a perfect 84-0 victory over the Rockets.

HUBS: Rochelle records perfect score against Rock Falls

From page 1

The final two matches occurred in the 145-pound and 152-pound bouts, where freshman Brenden Voight used only 26 seconds to record a fall over Victor Bonnell before sophomore Grant Gensler fought hard but fell just short against Jace Grunder, earning two escapes but conceding the loss by 8-2 decision.

Rock Falls

Brock Metzger and Alexander McBride received forfeits for the 182-pound and 195-pound bouts to start the match against the Rockets. Kaiden Morris and Jaden Cook recorded Rochelle's first two falls of the match, with both wrestlers earning two takedowns as Morris defeated Pablo Cid in the 220-pound bout and Cook cruised over Jacob Hosler to claim the 285-pound bout.

"Our whole team has picked up the intensity

and the atmosphere in the practice room has been amazing this season," Cook said. "We have a lot of wrestlers who love the grind and it's fun to see everyone go out there and leave everything they have on the mat. It's really putting Rochelle on the map as a wrestling school. The work we've been doing with our coaches is showing up on the mat and I feel like we're continuing to get sharper with our techniques."

Freddie Hernandez and Anthony Milburn took forfeits for the 106-pound and 113-pound bouts. Xavier Villalobos and Joseph Nadig each took just over a minute to win their respective matches, with Villalobos earning a fall over Aaron Meenen at the 34-second mark and Nadig recording a fall over Adan Oquendo at the 43-second mark. Weylin Nay held an 11-3 lead against Logan Williamson before securing a second-period fall to



(PHOTO BY RUSSELL HODGES)

Sophomore Grant Gensler works to turn over Rock Falls 152-pounder Ryan McCord during the Rochelle Hub varsity wrestling match against the Rockets and Erie-Prophetstown on Wednesday.

win the 132-pound bout.

With Rochelle more than halfway to earning a perfect score, Weldon Nay continued the team's dominant stretch of wins,

recording a fall at the 26-second mark in the 138-pound bout. Brenden Voight and Grant Gensler followed with a first-period fall over Korbin Oligney

and a second-period fall over Ryan McCord to win the 145-pound and 152-pound bouts.

Leo Stoffel and Roman Villalobos each recorded

falls to close out the dual match, which ended with a string of eight consecutive falls for the Hubs. Rochelle totaled 16 takedowns in the match.

COMMUNITY BOARD

Need to get the word out about a product or service you offer?

Give us a call at 815-562-4171.

We can reach over 9,000 homes!



Gutters

THESEN
ROOFING & SIDING CO., INC.

SEAMLESS GUTTERS

ALL ALUMINUM

- Will Not Rust, Chip Or Peel
- Most Colors Available
- Manufactured On The Job

815-758-8998

257 W. Stephenie Dr., Cortland
www.theisenroofing.com

Storage Sheds

Rocky Ridge Structures

FREE Sales Rep. Evaluation At Your Site

We Deliver! From Our Lot To Your Site

We Specialize in Portable/Quality Built Storage Sheds

- Stock & Custom Design
- Many Options Available
- Competitive Pricing
- Site Preparation Available

See Displays at 3500 S. Chana Rd. Chana IL 61015
Call Norm or Albert for Free Literature packet

779.861.3542

Plumbing/Heating/Cooling

Anderson Plumbing & Heating Inc.
Serving Rochelle For Over 40 Years

LENNOX

Quality Service • Free Estimates
Residential & Commercial

815-562-8784

Lic. #058-087891

Heating & Air Conditioning

Keep your family safe and warm!

HULL HVAC
Heating, Cooling & Duct Cleaning Specialist

815-561-6551
www.HullHVAC.com

527 2nd Ave Rochelle, IL 61068

Precision Furnace Clean & Check
\$85.00
Includes FREE carbon monoxide test

24/7 Emergency Service

Commercial & Residential Roofing

Bruns Construction, Inc.

Residential Concrete Driveways, Flatwork and Foundations

- Shingled Roofs • Flat Roofs
- Metal Roofs For Farm Facilities
- Custom Built Homes • Additions

FREE ESTIMATES

561-0099 Tim & Roger Bruns, Owners
Established 1997
www.brunsconstructioninc.com

Advertise Here

What Service Do You Offer?

562-4171

The Rochelle News-Leader

Classified Marketplace

FREE!

Sell your household items for free.
Total value of item must be \$200 or less. (15 words
- one week - 7 publications - price must be listed)



ROCHELLE • HILLCREST • CRESTON • STEWARD • KINGS • ASHTON

101 LEGAL NOTICE

ANNUAL STATEMENT OF AFFAIRS SUMMARY FOR FISCAL YEAR ENDING JUNE 30, 2022
Copies of the detailed Annual Statement of Affairs for the Fiscal Year Ending June 30, 2022, will be available for public inspection in the school district/joint agreement administrative office by November 30, annually. Individuals wanting to review this Annual Statement of Affairs should contact: Eswood CCSD 269, 304 Main St, Lindenwood, IL 61049-7700, 815-393-4477, Mon.-Fri. 8 a.m. - 4:00 p.m.
Also by January 15, annually the detailed Annual Statement of Affairs for the **Fiscal Year Ending June 30, 2022**, will be posted on the Illinois State Board of Education's website at www.isbe.net
SUMMARY: The following is the Annual Statement of Affairs Summary that is required to be published by the school district/joint agreement for the past fiscal year.

STATEMENT OF OPERATIONS AS OF JUNE 30, 2022										
	Educational	Operations & Maintenance	Debt Services	Transportation	Municipal Retirement/ Social Security	Capital Projects	Working Cash	Tort	Fire Prevention & Safety	
Local Sources	1000									
Flow-Through Receipts/Revenues from One District to Another District	2000	801,642	178,281	0	37,763	34,080	0	15,736	128,463	0
State Sources	3000	0	0	0	0	0	0	0	0	0
Federal Sources	4000	97,252	35,000	0	56,538	0	0	0	0	0
		208,993	0	0	0	0	0	0	0	0
Total Direct Receipts/Revenues		1,107,887	213,281	0	94,301	34,080	0	15,736	128,463	0
Total Direct Disbursements/Expenditures		899,140	185,427	0	85,623	36,127	0	60,077	60,077	0
Other Sources/Uses of Funds		0	0	0	0	0	0	0	0	0
Beginning Fund Balances - July 1, 2019		1,277,228	924,854	104,404	365,179	735,624	0	3,766,850	415,017	964,709
Other Changes in Fund Balances		0	0	0	0	0	0	0	0	0
Beginning Fund Balances w/out Student Activity Funds - July 1, 2021		1,291,419	631,388	0	201,182	63,463	0	80,389	78,888	0
Other Changes in Fund Balances		0	0	0	0	0	0	0	0	0
Ending Fund Balances w/out Student Activity Funds - June 30, 2022		1,500,166	699,242	0	209,860	61,416	0	96,125	147,274	0
Ending Fund Balances (all sources) w/Student Activity Funds - June 30, 2022		1,505,095	659,242	0	209,860	61,416	0	96,125	147,274	0
GROSS PAYMENT FOR CERTIFICATED PERSONNEL										
\$0 through \$24,999: Janet Eden, Ann Ganong, Michael Hynek, Janet Kacvinsky, Deanna Lange, Patricia Price, Lori Principe										
\$25,000 through \$39,999: Shannon Cooley, Kelsey Garrett, Thomas O'Neill, Michelle Tofte, Benjamin Ward, Linda Wills										
\$40,000 through \$59,999: Debra DeHahn, Dr. James Hammack, Dr. Michael Shapiro, Philip Winters										
\$60,000 through \$89,999:										
\$90,000 and over:										
GROSS PAYMENT FOR NON-CERTIFICATED PERSONNEL										
\$0 through \$24,999: Stephanie Avila, Lynne Jokers, Heather Schueller, Norna Seaworth, Michele Swanson, Richard Taylor										
\$25,000 through \$39,999: Chad Kacvinsky										
\$40,000 through \$59,999: Erin Whitehead										
\$60,000 and over:										
PAYMENTS OVER \$2,500, EXCLUDING WAGES AND SALARIES.										
Person, Firm, or Corporation		Aggregate Amount								
Andy's Professional Landscaping		22,443								
BCBS						25,714				6,345
BMO Harris Bank						10,276				3,712
BrainPop						2,681				5,600
CDW-G						3,633				10,605
CMS Communication						3,809				4,160
Conserv FS						11,069				110,388
Constellation						9,333				3,561
EMS Linq Inc						4,400				4,408
ENGIE Resources						16,966				7,556
Gehrke Construction Inc						61,400				3,398
Houghton Mifflin Harcourt						31,299				4,983
IASB						7,391				
Illinois Counties Risk Management						37,634				
Kings School						3,067				
Kohl Wholesale						4,143				
McDermid Roofing						38,352				
Midwest Bus Leasing LLC						29,732				
Miller Engineering Co										
Muller Pinehurst Dairy										
Newkirk & Associates										
Newman Architecture										
Newsela Inc										
OCEC										
School Specialty										
Amazon										
SYNDEO										
Unique Paper Products										
Wells Fargo										
								No. 1205 (Dec. 4, 2022)		

203 HELP WANTED

NOW HIRING

Maintenance Position Rochelle, Oregon & Ashton Branches

Seeking qualified candidates for a Maintenance Position. This is a non-exempt part-time hourly position serving our Rochelle, Oregon and Ashton branches. This individual provides general maintenance and related duties ensuring facilities are well maintained, in good working order and have a clean internal and external appearance. Completes minor plumbing and electrical repairs as needed and assists staff when requested.

The successful candidate should be a self-starter with the ability to work with minimal supervision, have a good working relationship with employees, be dependable, have the ability to prioritize duties and perform tasks on a timely basis. Reliable transportation is required.

Currently scheduled hours are Monday through Friday from 7:00am to 11:00am. Hours can be subject to change depending upon weather related needs and/or assistance with bank sponsored events.

Qualified and interested applicants should send resume and cover letter to:

Central Bank Illinois
Attn: Jeff Glen
340 May Mart Drive
Rochelle, IL 61067

Or email recruiter@central-bank.com.



Equal Opportunity Employer

12052022

ROCHELLE News-Leader

Part-time local delivery driver

The Rochelle News-Leader has an opening for a part-time newspaper bundle delivery driver who would load and deliver bundles to the post office, store racks and machines.

The daytime deliveries would be two or three days per week (including Sundays) and consist of approximately 4-5 hours per shift depending on the route.

Applicants must be at least 18 years old, possess a valid driver's license, proof of insurance and a safe driving record. Drivers will use company vehicles when delivering, and will be trained on the respective routes.

Candidates must be able to load, unload and carry multiple bundles of 5 to 10 pounds each. Driver applicants must be reliable, personable and have a general knowledge of area streets and roads.

This position is perfect for someone looking to supplement their income or retirement.

Interested individuals must fill out an application in person at the Rochelle News-Leader office at 211 Hwy. 38 E., Rochelle. No phone calls please.

12042022

101 LEGAL NOTICE

This publication does not knowingly accept fraudulent or deceptive advertising. Readers are cautioned to thoroughly investigate all ads, especially those asking for money in advance.

105 BUSINESS OPPORTUNITIES

"This publication does not knowingly accept fraudulent or deceptive advertising. Readers are cautioned to thoroughly investigate all ads, especially those asking for money in advance."

113 FINANCIAL

NOTICE Advance Fee Loans or Credit Offers Companies that do business by phone can't ask you to pay for credit before you get it. For more information, call toll-free 1-877-FTC-HELP. A public service message from your hometown newspaper and the Federal Trade Commission.

119 ANNOUNCEMENTS

"This publication does not knowingly accept fraudulent or deceptive advertising. Readers are cautioned to thoroughly investigate all ads,

especially those asking for money in advance."

121 LOST AND FOUND

LOST. 7 Month Old, Female Cat. Gray with a Brown Belly & White Spots on Each Side. Last Seen Wearing a Pink Harness. Lost around Rochelle Gardens on Caron Road. Call 815-503-3654. \$100 Reward.

127 SERVICES AND REPAIRS

FURMAN'S Lawn Care and Tree Work. Fall clean up, gutters and more. Fully insured. In business since 1999. Rochelle and surrounding areas. Call Jeremy Furman at 815-761-9619. Please leave a message, will return call ASAP.

201 DOMESTIC/CHILD CARE

NO INDIVIDUAL, unless licensed or holding a permit as a childcare facility, may cause to be published any advertisement soliciting a child care service. A childcare facility that is licensed or operating under a permit issued by the Illinois Department of Children and Family Services may publish advertisements of the services for which it is specifically licensed or issued a permit. Your

Hometown Newspaper strongly urges any parent or guardian to verify the validity of the license of any facility before placing a child in it's care.

301 ANTIQUES

WANTED TO BUY: Vintage Metal and Wood Signs, Milk Bottles & Local Advertising, Oak Icebox, Iron Door Stop and Antique Lighting... Call Dick Harms at 815-562-2928 or email dickharms@hotmail.com

ANTIQUES WANTED: I pay cash for antiques; furniture, glassware, pottery & crocks, tin & iron toys, sterling silver, decoys. If it's antique, I'm interested in looking! Call 815-562-2928 or email dickharms@hotmail.com

307 MISCELLANEOUS FOR SALE

BUNDLED Newspaper -\$3 per Bundle. End Roll- Cost Depends on Weight of Roll. Available Monday-Friday 815-562-4171(8AM-NOON ONLY) Rochelle News Leader.

SPLIT firewood for sale. Contact 779-251-0254. (12-17-22)

309 PETS AND SUPPLIES

FREE Kittens to good and loving homes. Call 815-503-1881. (12-12-22)

405 HOUSES FOR SALE

ALL REAL ESTATE advertised herein is subject to the Federal Fair Housing Act, which makes it illegal to advertise any preference, limitation or discrimination based on race, color, religion, sex, handicap, familial status, or national origin, or intention to make any such preferences, limitation or discrimination. We will not knowingly accept any advertising for real estate which is in violation of the law. All persons are hereby informed that all dwellings advertised are available on an equal opportunity basis.

TEXT AND WHATEVER JUST DON'T TEXT AND



STOPTEXTSSTOPWRECKS.ORG



The Latest NEWS

is available at

www.rochellenews-leader.com

NEW MILFORD REFRIGERATION

NEW, USED SCRATCH & DENT

• Refrigerators • Freezers
• Washers/Dryers • Stoves

We also carry a
large selection
of refurbished
appliances with a
warranty.



6331 11th Street, Rockford
815-874-2257

11222020

SPORTS

RTHS Girls Basketball

Turnovers hurt Lady Hubs in loss to Rock Falls

Nantz, Darby combine for five 3-pointers as Rochelle suffers 54-35 defeat

BY RUSSELL HODGES
SPORTS EDITOR

ROCHELLE — Turnovers have held the Rochelle Lady Hub varsity basketball team back from finding success at the start of this season. Currently averaging 30 turnovers per game, Rochelle struggled with giveaways once again on Wednesday, when the Lady Hubs faced Rock Falls.

Two 8-0 runs from the Rockets when the score was tight allowed Rock Falls to build a double-digit lead during the second half. Despite a combined five 3-pointers from senior Torrin Nantz and sophomore Kendyl Darby, Rochelle was unable to come back from the early deficit, falling 54-35 and suffering a fifth consecutive loss. The Lady Hubs (1-7, 0-0 Interstate 8) will host the Kaneland Knights for their first conference matchup of the season this weekend.

“We had two moments in the game where we could make a run, but they came out on 8-0 runs in both cases and they were able to put us away,” head coach Ryan McQuade said. “We need to buckle down and focus in those situations because more of the pressure is on our opponents, but we weren’t able to take advantage. Turnovers have been a huge deal for us throughout this season and they’re a huge reason why we’re 1-7 right now. We need to play with confidence.”

Nantz swished all three of her 3-pointers in the first half to give the Lady Hubs an early spark. Rock Falls

leaned on guard Brooke Howard, who managed to drive through the Rochelle man-to-man defense for a handful of first-half layups. Howard led the Rockets with 13 points, while Nantz finished as the leading scorer for the Lady Hubs with nine points on Wednesday.

“It was nice to see Torrin get going and it was the best she’s looked all season in terms of her shooting,” McQuade said. “We struggled at the start of the game with our man-to-man defense and our 2-3 zone didn’t work either. We had some success in our 1-2-2 zone toward the end of the second quarter and throughout the third quarter, but we ran out of gas near the end of the game because we were playing from behind and we’ve played from behind quite a bit this year.”

Rock Falls entered the double bonus late in the first half, capitalizing on their aggressive drives to the basket with multiple free-throw opportunities. Rochelle trailed 33-23 entering the third quarter, where Darby converted the second of her two 3-pointers in the game. The Rockets held the Lady Hubs to four second-half field goals, however, building a 47-31 lead after the third quarter and limiting Rochelle to one fourth-quarter field goal from senior Miraya Montes.

“Our struggles have been a culmination of factors from our lack of experience to our struggles when handling the ball,” McQuade said. “I think our girls are confident in their ability to run the offense and it’ll be a key for us to raise the



(PHOTO BY RUSSELL HODGES)

Junior Sydney Tabor dribbles through Rock Falls defenders Brooke Howard and Rylee Johnson during the Rochelle Lady Hub varsity basketball game against the Rockets on Wednesday.

confidence of our girls to limit those turnovers.”

Darby totaled eight points in the game, while junior Alivia Henkel finished with four points.

DeKalb

The Rochelle Lady Hub varsity basketball team faced DeKalb on the road Monday evening, falling 49-25 in nonconference action. Junior Alivia Henkel scored

six points and grabbed eight rebounds, while junior Kara Martinez added six points and two steals for the Lady Hubs (1-6, 0-0 Interstate 8).

Sophomore Kendyl Darby totaled five points, four rebounds and two assists for the Lady Hubs against the Barbs. Junior Megan Seebach and senior Bailey Jackson each finished with four rebounds, while senior Torrin Nantz notched two

steals.

Stillman Valley

The Rochelle Lady Hub varsity basketball team concluded the Forreston Thanksgiving Tournament on Tuesday, Nov. 22 with a 47-29 loss against Stillman Valley. Junior Kennedy Adamski scored six points on 3-of-3 shooting from the field with five rebounds, while sophomore Kendyl

Darby added six points and three rebounds.

Three players including seniors Torrin Nantz and Francesca Williams as well as junior Kara Martinez scored four points in the loss against Stillman Valley. Junior Sydney Tabor recorded two points and two steals, while junior Alivia Henkel compiled three points and four rebounds for the Lady Hubs (1-5, 0-0 Interstate 8).

BOWLING: Rochelle teams score wins Tuesday afternoon

From page 1

Rochelle took the lead early in the match, claiming the first game 1,012-957. Odle fired a 199 for the Hubs, while Powell recorded a 175. Juniors Sam Tracey and Jonathan Alanis totaled scores of 172 and 170 for Rochelle, with Mikah Hernandez shooting a 178 to lead the Golden Warriors.

Sterling’s comeback effort began with a 1,147-1,116 win over the Hubs in the second game, where Powell shined with a series-best 258 and Odle followed with a series-best 245. Bryce Kooy and Dylan Doss were the high rollers for the Golden Warriors, shooting 2221 and 203.

Rochelle held a 24-pin series lead entering the third game, where the Hubs bowled admirably but fell just short in a 1,219-1,151 loss. Freshman Owen Tooley emerged with a 225 on the Rochelle side, while Odle threw a 214 and Tracey added a 200. Hernandez led the Golden Warriors with a 224, while Tristan Oelrichs recorded a 223.

Ottawa Boys

Sophomore Logan Frye has more confidence on the lanes and his improved spare shooting enabled him to record another 600-plus series Tuesday evening, when the Rochelle Hub varsity bowling team hosted an Interstate 8 Conference match with Ottawa.

Frye fired a team-high 621 series with two scores over 200 as the Hubs cruised over the Pirates 3,157-2,670

for a three-game conference sweep.

“I feel great right now,” Frye said. “I averaged over 200 tonight and that’s all I can ask for. My main focus has been on spare shooting and not missing my spares. I think we have a much stronger team this season and we have two freshmen who are bowling really well right now.”

The Hubs crushed Ottawa in the first game, winning 1,137-884 as five bowlers recorded scores over 180. Frye led Rochelle Rochelle (3-4, 2-2 Interstate 8) with a 213, while junior Sam Tracey rolled a 192 and senior Evin Odle followed with a 190. Freshmen Andrew Powell and Owen Tooley fired respective scores of 183 and 182. Nelson Brandt totaled a 220 to lead the Pirates in the opening game Tuesday.

“Andrew’s an amazing bowler and Owen has really surprised me with his averages,” Frye said. “They’re both really good players. We’d like to continue raising our averages and we want to go farther than we did last season. A few of us came close to advancing out of the regional last season and we’re hoping that we can make it beyond the regional as a team this season.”

The Hubs took the second game 960-845 behind 197 from Frye and 177 from Powell. Junior Christian Thorne added a 175 before throwing a 190 in the third game, where Rochelle downed Ottawa 1,061-941 to seal the conference sweep. Thorne finished with

a 542 series score, while Powell landed four pins behind with a 538. Brandt recorded a team-high 576 series for Ottawa.

“I think we’re bowling pretty well right now,” Frye said. “We need to focus on picking up our spares, especially our corner pins. We lost a match against Sterling earlier this season because we missed a lot of spares on corner pins. I thought we made more of those spares tonight.”

Ottawa Girls

The Rochelle Lady Hub varsity bowling team threw its first shots of the 2022-23 season on Tuesday, scoring a 2,204-2,151 road win over Ottawa in Interstate 8 Conference action. Sophomore Cassidy Vincent rolled a team-high 520 series for the Lady Hubs (1-0, 1-0 Interstate 8).

The Pirates took a slim lead early in the match, winning the first game 778-760 behind 167 from Ana Zeglis. Vincent led Rochelle with a series-best 205 score before firing a 167 in the second game, which the Lady Hubs claimed 742-723 to sneak ahead of Ottawa with a one-pin advantage entering the third game.

Rochelle delivered in the third game, defeating the Pirates 702-650 to claim the series victory. Freshman Kylie McCullough bowled scores of 162 and 136 over her final two games to finish with a 418 series, while junior Faith Adams recorded a 380 series with individual scores of 127, 132 and 121 on Tuesday. Zeglis led Ottawa with a 442 series score.

The 2023 From The Heart Cash Calendars are NOW AVAILABLE!!

The proceeds of the sale of the calendars benefit our From The Heart recipients: Pegasus Special Riders, Rochelle Christian Food Pantry, HOPE, Focus House, Shining Star Children's Advocacy Center, CASA, Rochelle Area Community Foundation, Hub City Senior Center & Rochelle Rotary.

OUR CHARITIES NEED OUR SUPPORT NOW MORE THAN EVER!



For Just \$20 you have a chance to be one of 365 DAILY WINNERS TOTAL CASH PRIZES \$18,250 PLUS Each Calendar Has VALUABLE LOCAL COUPONS

Here are 3 Ways to Purchase Your 2023 From The Heart Cash Calendar!

• **ONLINE:** Go to <http://fromtheheartrochelle.org> and click on **CASH CALENDARS**. Once the calendar is purchased we will mail it out to you! Shipping and processing fees will be added to cost.

• **IN PERSON:** You can pick up a 2023 From The Heart Cash Calendar **TODAY** at the following locations:
In Rochelle at: First State Bank, Stillman Bank, HOPE Chest, Dimond Bros. Insurance and Hub City Senior Center
In Oregon at: Merlin's
In Dixon at: Shining Star

• **BY MAIL:** Fill out the form below and send it in to us and we will mail a 2023 From The Heart Cash Calendar to you! Shipping fees are added to cost.

YES! Send me my 2023 From The Heart Cash Calendar!
(Please Print)

NAME: _____

ADDRESS: _____

CITY, STATE, ZIP: _____

PHONE: _____

NUMBER OF CALENDARS: _____

Clip and mail this form along with \$23 (\$20 per calendar plus \$3 per calendar postage) to:
Rotary Calendar, PO BOX 372, Rochelle, IL 61068

GET **TWO** GREAT GIFTS IN **ONE** BUY!

**Start or Renew a 52-Week
News-Leader
Subscription for just**

\$139*

**and receive a Rotary
Cash Calendar**

FREE!

(a \$159 total value!)

* Offer expires December 31, 2022



**ROCHELLE
News-Leader**

211 Hwy. 38 E., Rochelle, IL 61068
815.562.4171 | www.rochellenews-leader.com