

ROCHELLE News-Leader

WEEKEND EDITION | WWW.ROCHELLENEWS-LEADER.COM

Today's RNL issue
sponsored by
Community
Unity
member:

Edward Jones
MAKING SENSE OF INVESTING

1122 Lincoln Highway
815-562-5563

Vol. 103 • No. 77

LOCAL NEWS... LOCAL VIEWS

SUNDAY, JAN. 22, 2023

\$1.25

More coverage.
Less spendage.

Discounts up to 40%
Get more. Spend less. It's that simple
when you get car insurance from us.
Like a good neighbor, State Farm is
there. CALL FOR A QUOTE 24/7.

Terri Schaefer, Agent
Bus: 815-562-7063
terri.schaefer.115n@statefarm.com

State Farm
State Farm Mutual Automobile Insurance Company,
State Farm Indemnity Company, Bloomington, IL

KNOW IT
TODAY



Byron museum
hosting art show

The Byron Museum of
History will host an art
show on Saturday, Feb. 4.
Page 3

WEATHER

SUNDAY
HIGH LOW
34 27

MONDAY
HIGH LOW
37 26

TUESDAY
HIGH LOW
35 26

WEDNESDAY
HIGH LOW
30 23

Today's RNL issue
sponsored by
Community
Unity
member:

Rochelle
Community Unity
Shop • Play • Stay

Stillman
BANK

455 Illinois Route 38
815-562-7071

OBITUARIES

• CECIL BRUCE
• REUBEN 'PETE' LEE
CAPES
• BRUCE 'BRUISER'
EDWARD DAVIDSON

See page 4

INSERTS

• SCHNUCKS
• MENARDS
• BRIDAL GUIDE

INSIDE

Local News.....2, 3, 5
Obituaries.....4
Opinion.....6
Community.....7



Exclusively at the Jeff Perry Auto Group | Peru-Rochelle

SUMMIT
CERTIFIED PRE-OWNED

WHAT YOUR SUMMIT CERTIFIED
PRE-OWNED WARRANTY OFFERS:

WE DARE YOU TO COMPARE

6 - MONTH/6,000 MILE*
BUMPER-TO-BUMPER

126 POINT INSPECTION

CERTIFIED TECHNICIANS

MOST MAKES AND MODELS

PEACE OF MIND
PRE-OWNED CAR BUYING

NEW 2022 CHEVY TRAX LT

Sale Price
\$22,965*

MSRP
\$25,465

Auto Group
JEFF PERRY

815-562-8787 JEFFPERRYAUTOS.COM

Bond abatement for new jail approved Resolution opposing state gun bill also approved

BY JEFF HELFRICH
MANAGING EDITOR

OREGON — At its monthly meeting Monday, the Ogle County Board unanimously approved an ordinance abating taxes to pay for the recently-constructed new Ogle County Jail.

The ordinance abated taxes levied for the year 2022 to pay debt service on \$9,705,000 general obligation bonds (alternate revenue source), series 2018; \$4,760,000 general obligation bonds (alternate revenue source), series 2019 and \$6,523,000 general obligation bonds (alternate revenue source), series 2020.

The jail was completed in late 2020 and inmates moved to it in February 2021.

The 42,000 square-foot, 154-bed facility consists of multiple housing blocks utilizing direct supervision methods for both males and females in custody. Areas in the building include public waiting and visitation, video visitation, facility administration, holding and intake, medical, kitchen, laundry, inmate property storage and a vehicular "sally port" for bringing in



Ogle County Board Chairman John Finrock presented a plaque to former Board Member Bruce McKinney (Rochelle), whose time on the board ended recently.

and moving inmates safely. The project came in \$800,000 under budget with no delays. The previous Ogle County Jail was demolished in recent months.

HB 5471

The board unanimously passed a resolution opposing House Bill 5471, a recently passed and signed state legislation that bans

the sale and manufacture of assault weapons in Illinois.

Current owners of high-power assault weapons, .50 caliber rifles and ammunition, and large-capacity magazines will be allowed to keep them, but will be required to register them with the Illinois State Police prior to Jan. 1, 2024 or face a Class A misdemeanor, punishable by up to 364 days in prison and

the degree of charges could increase based on number of unregistered weapons.

On Jan. 11, Ogle County Sheriff Brian VanVickle and approximately 80 other sheriffs in the state issued statements saying they'll refuse to enforce a provision of the bill that requires current owners to register their weapons.

See COUNTY page 2

Gift shop improvements slated for spring 'We welcome visitors from all over the region and more'

BY JEFF HELFRICH
MANAGING EDITOR

ROCHELLE — The City of Rochelle's improvements to the Railfan Park gift shop are slated to begin in coming weeks with completion planned for the spring.

At its Jan. 9 meeting, the city council unanimously approved an ordinance accepting and approving a proposal from Bruns Construction for the work.

Bruns Construction was the low bid at \$167,175. As part of the American Rescue Plan Act (ARPA), federal funds designated to communities were eligible for tourism-related expenditures due to pandemic-related impacts on the industry. As a result, various improvements to the gift shop were identified by city staff. The project includes the addition of a handicap ramp entrance, bathroom remodels, addition of a front window and new siding, gutters and soffit.

The city's 2023 hotel/motel budget includes \$135,000 in ARPA funds for the project and \$32,175



The City of Rochelle's improvements to the Railfan Park gift shop are slated to begin in coming weeks with completion planned for the spring.

in hotel/motel cash reserves and an additional \$17,000 as a project contingency were approved Jan. 9.

"It's exciting because these are some projects we had on our radar before

COVID-19 and to be able to complete them with grant funds is always helpful for our budget and we can allocate other money to other improvements at the park and other community events," City Director of

Community Engagement Jenny Thompson said. "We've had some challenges there with pipes freezing and things like that with the cold winter months. We're looking forward to correcting some

of those issues. We're re-siding the building and it'll look really nice once it's complete. We're putting some more retail-style doors on. We're excited."

See RAILFAN page 2



Administrators
present update
to RTHS board

BY RUSSELL HODGES
SPORTS EDITOR

ROCHELLE — Rochelle Township High School Assistant Principal David Perrin and Dean of Students Brett Zick presented an update on academic performance and disciplinary trends to members of the District 212 Board of Education during its monthly meeting on Tuesday evening.

Perrin said that 14 students graduated from RTHS after the first semester of the 2022-23 school year. Of those graduating students, Perrin said one student will be continuing at Kishwaukee College, while nine will be entering the workforce and four are currently undecided. Final exams were held from Dec. 20-22, 2022 and teachers returned for an institute day in early January.

See RTHS page 5

LOCAL NEWS

COUNTY: McKinney presented with award plaque for service

From page 1

"I, among many others, believe that HB 5471 is a clear violation of the Second Amendment to the U.S. Constitution," VanVickle's statement said. "Therefore, as the custodian of the jail and chief law enforcement official for Ogle County, proclaim that neither myself or my office will be checking to ensure that lawful gun owners register their weapons with the state, nor will we be arresting or housing individuals that have been charged solely with non-compliance of this act."

Board Member Thomas K. Smith thanked the sheriff for speaking out during Monday's meeting. "I stand to thank Ogle County Sheriff Brian VanVickle for coming out publicly and telling the legislature where to put it and protecting my second amendment rights," Smith said. "Thank you."

CEJA

The board also unani-

mously passed a resolution opposing House Bill 4412, the Climate and Equitable Jobs Act.

"This is basically about whether the state would take over doing our zoning for us for solar panels and wind power," Board Chairman John Finfrock said. "We have basically nothing to say about it at this point and it hasn't been signed yet. But I think we should still take a stance that they're taking away from our citizens and our authority to do our job."

Lowell Park Road

The board unanimously passed two measures to allow for resurfacing of Lowell Park Road from the Lee County line to Pines Road. The first was a joint funding agreement with the Illinois Department of Transportation for the use of \$784,000 in federal funds on the project.

The remainder of the project's cost will be

covered by \$196,000 in Ogle County funds out of its federal aid matching fund, which was the second measure the board approved.

Hiring freeze

The board unanimously passed a resolution extending its hiring freeze on county employment for five years that became effective as of its passing Monday.

McKinney

Finfrock presented a plaque to former Board Member Bruce McKinney (Rochelle), whose time on the board ended recently. McKinney was a board member for 10 years and served on the zoning committee. Prior to that, he was on the County Zoning Board of Appeals for over 15 years.

"We will miss you being on the board," Finfrock said. "He always came to the meetings ready and we appreciated that. I want to present you



(PHOTO BY JEFF HELFRICH)

At its meeting Monday, the Ogle County Board unanimously approved an ordinance abating taxes to pay for the recently-constructed new Ogle County Jail.

with this plaque for your years of dedication to the county and the people in it."

Board Member Susie Corbitt also spoke during the presentation. She

worked with McKinney, a former Rochelle city clerk, for about 25 years in that profession.

"He was very involved with the Northwest Illinois Municipal Clerks

Association and worked his way up on the board there," Corbitt said. "I want Bruce to know that I so personally appreciate everything that you gave to your profession."

RAILFAN: Park improvements scheduled for spring completion

From page 1

Railfan Park welcomes several thousand visitors each year from around the region and more. The city recently put together a map of all visitors that signed in during the past year and where they reside. The map included international visitors, which occurred

for the first time since the COVID-19 pandemic.

"It's exciting to see that picking up again," Thompson said. "We just want to offer a nice space for the rail fans to enjoy the facilities, to be able to have good, clean working restrooms and keep our building up and keep the railroad park a nice place to visit."

The train park and gift shop have seen a number of improvements over the years, including a new roof, flooring and windows, cleanup around the grounds and the addition of shelters and benches by community organizations. The exterior gift shop improvements will be the first in 6-7 years.

Thompson hopes to have the latest project wrapped up by Railroad Days in May.

"It's been a lot of small things here and there, but this will be a nice, big project to get crossed off the list," Thompson said.

The city conducted a survey a few years ago and asked park attendees what else they do during their time in Rochelle. They found that railfans patronize local restaurants, shops, hotels and gas stations.

"Those are all dollars spent in our community that come from outside of our community," Thompson said. "That's always a benefit to have that. And then it's people visiting our town who can spread the word about Rochelle being a nice place to visit. That's always a positive, too."

Thompson said that longtime Rochelle residents don't always realize the tourist attraction that Railfan Park can be. Its uniqueness includes "the

diamond" where two railroads intersect and trains change tracks. The park also has webcams where fans can watch the trains online. That was utilized during COVID-19 and viewership has reached 300,000 views a month at times.

Back in 2019 the park attracted thousands of visitors when Big Boy No. 4014, a rare train, came through town.

"It was the perfect example of capitalizing on what we have here," Thompson said. "It's actually a very unique experience for rail fans and it's always interesting to hear from the fans who come from all over the country and say, 'We love Rochelle. It's the best place we visit and we go to a lot of different train parts.' That's always exciting to me."

The city recently went through an engineering process on Railfan Park after surveying visitors on improvements they'd like to see. That process yielded three phases of potential improvement, the first of which is the current gift shop upgrades.

The second phase would be extending the viewing platform on the west side of the park to add more space and a better view of the diamond.

"The third would be sort of a very long-range plan of adding some additional parking to the south," Thompson said. "The city owns the grassy lots there to the south and we've looked at adding some additional parking and perhaps even a camper hookup someday. Just some more space to grow and keep inviting new visitors."

RVC announces fall 2022 president's and dean's list

ROCKFORD — The following students have earned recognition on Rock Valley College's fall 2022 president's and dean's lists.

Students must have taken at least 12 credit hours during the semester to qualify for the president's

or dean's lists.

Dean's list: Students named to the Dean's List achieved at least a 3.25-semester grade point average.

Kings - Levi R. Patrick. Rochelle - Onessa Hueramo and Christopher J. Sedlock

NORTHERN ILLINOIS FEDERAL CREDIT UNION
sharing knowledge & wealth

817 W Lincoln Hwy Suite E
DeKalb, IL 60115
815-669-1599

NCUA

Debt Free in '23!
We saved consumers a lot of money by refinancing higher interest rate obligations. We helped our members pay off \$669,705.19 in high interest debt in 2022! Find out how much our debt consolidation loans can save you in 2023.

Call & ask about our program that will beat any verified loan rate by .10% for qualified borrowers down to a floor of 3.50%.

Visit our website to apply.
www.mynifcu.com

Is your discomfort getting OUT OF HAND?



Gadini O. Delisca, MD

Is hand pain interfering with your activities?

If you experience numbness, weakness or clicking sensations in your wrists, fingers or hands, XCEL Orthopedics can help you get back to what you enjoy – without the discomfort!

Dr. Delisca leads our expert team, providing you with complete care and customized solutions for:

- Carpal tunnel syndrome
- Trigger finger
- Hand injuries
- Arthritis



Live life to the fullest – with XCEL Orthopedics at Rochelle Community Hospital, where we provide laboratory, imaging, surgical and rehab services.
Call **815-561-2774** or visit us online at rochellehospital.com/orthopedics.

LOCAL NEWS



(COURTESY PHOTOS)

The Byron Museum of History will host an art exhibit of work by members of the Eagle's Nest Art Group. The show will begin with an opening reception on Saturday, Feb. 4 from 1-3 p.m. Several artists will be on hand to welcome visitors. This year's Eagle's Nest Art Group show features oil, watercolor, and acrylic paintings as well as photography and 3-D art. It will be an extensive show of the work of local artists from Oregon, Byron, Rockford, Rock Falls, Dixon, Forreston, Mt. Morris, Ashton and Polo.

Art Show Hosted by Byron Museum of History

BYRON—The Byron Museum of History will host an art exhibit of work by members of the Eagle's Nest Art Group. The show will begin with an opening reception on Saturday, Feb. 4 from 1-3 p.m. Several artists will be on hand to welcome visitors.

The exhibit will remain on display through Saturday, April 1. The museum, located at 110 N. Union Street in Byron, is open Wednesdays through Saturdays from 10 a.m. to 3 p.m. The museum's exhibits and the two-month long art show are open to the public free of charge.

This year's Eagle's Nest Art Group show features oil, watercolor, and acrylic paintings as well as photography and 3-D art. It will be an extensive

show of the work of local artists from Oregon, Byron, Rockford, Rock Falls, Dixon, Forreston, Mt. Morris, Ashton and Polo.

ENAG, founded in 1957, has a full schedule of art events, workshops and shows and will have materials available at the museum for all who are interested in learning more about this community of artists and its activities. The group welcomes artists of any level of experience. There are Thursday sessions at the ENAG studio in Conover Square and summer outdoor painting sessions offered to all members.

For more information about ENAG, call (815) 732-7783 or visit Facebook at *Eagle's Nest Art Group, Oregon, Illinois*. The permanent col-



lections of the Byron Museum of History as well as the historic Read House, which is a listed Underground Railroad

site on the National Park Service's Network of Freedom, are open to the public throughout the year. The museum

is dedicated to preserving the rich history of the Byron area through exhibits, programs, and artifact preservation.

To learn more about the museum and its events, call (815) 234-5031 or visit their website www.byronmuseum.org.



Kiwanis Golden K inducts Patel and donates to RTHS Key Club

(COURTESY PHOTOS)

Kiwanis Golden K was happy to induct Devanshi Patel (right) into our club. She has already been active in many activities in our club and we are excited to have her help our community. Pictured is: Tim Huber, Patel, President Ric Taylor and President-Elect Will McLachlan. The Kiwanis Golden K Club also recently donated \$500 to the Rochelle Township High School Key Club (left). Due to the fundraising efforts of the club, we were able to donate additional funds to our Key Club. This is all possible by our members volunteering and the generous support of our community. Pictured are: President Ric Taylor, John Gruben, Dalila Garcia and Jenny Howard.

APARTMENT AVAILABLE

Lincoln Manor

Owned and operated by Lutheran Social Services of Illinois (LSSI) offering apartment living for older adults in Rochelle and the surrounding communities.

- Secure Entry System
- Community room with kitchen
- Activities
- On-site coin operated laundry
- On-site management office
- Dependable 24/7 maintenance service
- On-site parking for residents

Rent based on 30% of a Resident's Adjusted Gross Income

Full time Social Service Coordinator is available to assist residents

For more information, please call 815-562-1404

615 N. Lincoln Hwy.
Rochelle, IL 61068
TTY 847-390-1460

MANAGED BY:
Lutheran Social Services of Illinois
www.LSSI.org

01132019

Stillman BANK

Helping You Protect What Matters Most

At *Stillman Trust & Wealth Management*, we offer a full range of trust and investment services to individuals and businesses and we are conveniently located throughout the Stateline area. And because we are a local community bank, we will work with you one-on-one to develop a strategy that is customized to your unique financial goals.

- Trust Administration
- Estate Planning
- Investment Management
- Retirement Planning

Put your trust in us and schedule your no-cost, no-obligation consultation today!

Keith Akre, CFA, CFP®
Vice President & Trust Officer
 Jeff Hartle
Senior Vice President
 Adam Talbert
Trust Officer
 J. Joseph McCoy, JD
Trust Officer

815.562.7071 | 815.332.8100

www.stillmanbank.com

Investments offered through Stillman Trust & Wealth Management: Not FDIC Insured • No Bank Guarantee • May Lose Value

LOCAL NEWS

RTHS: Perrin, Zick provide academic, disciplinary updates

From page 1

“We often see kids graduate early for personal reasons,” Perrin said. “They plan ahead and they work to earn all of their credits before the end of the semester. Six of the graduating students were RTHS students in the Class of 2023, two were ReStart students through KEC and one was at Chana. Two were in our FLEX program held after school and three were fifth-year students.”

Zick discussed ongoing disciplinary trends at RTHS. Zick said that, although there have been increases in cell phone us-

ages and tardiness among students, there have been decreases in classroom disruptions as well as defiance and disrespect toward teachers. Zick also said that fewer kids have been cutting class. The focus for the second semester, Zick said, will be on limiting tardiness and cell phones as well as continued enforcement of dress code policies.

“The cell phone usage wasn’t a shocker but we’re trying to cut down on cell phones, especially in the classroom,” Zick said. “We have some students we’re working with to cut down on tardiness as well. I wanted

to highlight our decreased instances of defiance, disrespect and disruption in the classroom as well as how students are cutting less class than they have in the past. We’re seeing more kids in the classroom as well as more kids staying in the classroom.”

Personnel

The board unanimously approved the resignation of Jonathan Sandoval (second-shift custodian) as well as the hiring of Carly Watson (para-professional), Meagan Stoops (substitute teacher), Gregory Ricketts (substitute as needed) and Jennifer Scholl (substi-

tute as needed).

IHSA

Superintendent Jason Harper notified the board of a policy change implemented by the IHSA regarding homeschooled students participating in IHSA sanctioned athletic competitions.

The IHSA approved a policy change in December that will require homeschooled students participating in IHSA sanctioned events to attend at least one class at the member school.

February

Harper notified the board that next month’s



(PHOTO BY RUSSELL HODGES)

The Rochelle School District 212 Board of Education held its monthly meeting Tuesday evening.

meeting will be held on Tuesday, Feb. 21 at 5:30 p.m. rather than Monday, Feb. 20 due to the upcoming Presidents’ Day holiday.

Rochelle Area CHURCH DIRECTORY

Ashton Bible Church, corner of Main and Paddock in Ashton. Pastor Farrel Stauffer, church phone is (815)453-2190, church website www.ashtonbible.org. Sunday School for all ages 9:00-10:00am, Morning Worship 10:15am, Wednesday Prayer Meeting/Bible Study 6:30-8:00pm.

The Bridge Church, Pastor Greg Duncan, 11038 E. IL Route 38, Rochelle, IL 61068. Phone: 815-562-7750. Sunday School: 9:00 am; Sunday Service: 10:00 am; Nursery & Children’s ministry during am service; Bible Study Tuesday 10:00 am and Wednesday 7:00pm. Web: thebridgechurchrochelle.com Email: thebridgechurchrochelle@gmail.com

Calvary Lighthouse Church, Assemblies of God, Senior Pastor, Dr. James Horvath. 14409 Hemstock Rd., Rochelle. Sunday Morning: Sunday Worship & Children’s Church 10:00 A.M., Wednesday Evening 7:00 P.M. – Adult Teaching, Missionettes & Royal Rangers Childrens Classes, Nursery available for all services. HE-Brews Cafe is open before and after services. For further information, please call the CLC office at 815-562-7701, or email us at staff@calvarylighthouse.com

Calvary Lutheran Church, LCMC - “To Know Christ and to Proclaim Christ in Word and Deed” -19 Perry Road, Lee, IL 60530 (the intersection of Perry Road and W. County Line Road). Rev. Martha Uecker Nelson, Pastor. Coffee Hour starts at 9:00 a.m., Sunday School, Confirmation, and Adult Bible Study are at 9:15 a.m. Worship is at 10:30 a.m. and is broadcast live on Facebook. Go to our website is at www.Calvarychurchlee.org and click on the link there. A Grief Support Group meets the third Tuesday of each month at 10:00 a.m. Call or text (815) 824-2825 or email CalvaryLeeIL@gmail.com with questions or for more information. Also check us out at www.facebook.com/Calvary-Lutheran-Church.

Rochelle Church of Christ, Keeping Christ at the center in the Hub City. We meet Sundays at 9:00am for Bible Study and 10:00am for worship. We also have a Wednesday Bible Study at 7:00pm. 206 Erickson Rd, Rochelle, IL 61068. You can call us at (815) 562-6572 or visit us on the web at rochellechurch.com. We also have a radio program Sundays just after 8am on WRHL 1060AM. Minister Dominic Venuso.

Creston United Methodist Church and Steward United Methodist Church - Rev. Ilhan You, Creston: 126 West South Street, P.O. Box 209, Creston, Illinois 60113. Sunday morning worship 9:00am. Coffee fellowship at 10:15am. Steward: 507 Main Street, P.O. Box 80, Steward, IL 60553. Adult Sunday School, 10:00am. Sunday morning worship and Children’s Sunday School 11:00am. Contact the church office at 847-730-4370 for more information. facebook.com/crestonumcil facebook.com/stewardilumc

Elim Reformed Church, 140 S. Church Road, Kings, IL 61068. Phone: 815-562-6811. Email goelimchurch@gmail.com Website www.goelimchurch.org Sunday Morning Worship 10:00 Rev. Marv Jacobs

Faith Lutheran Church – (14206 E. Flagg Rd.) – “Making Christ Known Through Lives of Faith.” In-person worship is available each Sunday at 9:00 a.m. or online at “Faith Lutheran Social” on YouTube. Worship resources are also available on our Facebook page - ‘Faith Lutheran Church ELCA.’ You may also e-mail Pastor Joy Alsop at Pastor@faithlcrochelle.org for more information. All are welcome to join us!

First Baptist Church of Rochelle, First Baptist Church of Rochelle invites you to experience our practical Bible services which have nurseries provided in every service along with a wide range of children’s and teen ministries. Sunday School is at 9:30 am with regular church services at 10:30 am and 6:00 pm. Wednesday Family Night starts at 6:30 pm with AWANA for the 5 yr. olds thru 6th grade. The Omega Teen Ministry also starts at 6:30 pm for 7th – 12th grades and the Adult Bible Study at 7:00 pm. First Baptist Church is located 6 blocks west of Hwy 251 at the corner of Woolf Ct. and 8th Ave. in Rochelle. Call 562-4168 for more information . Listen at 11:00 am Sunday mornings on WRHL 1060 AM for the Sunday morning “Bible Message.” www.firstbaptistrochelle.org

First General Baptist Church, 500 S. 12th St, Rochelle. Phone: 815-562-5221. Email: fgbcrochelle@gmail.com. Website: www.fgbcrochelle.org. Facebook: www.facebook.com/fgbcrochelle. Pastor: Rev. Angelo Bonacquisti. **Sunday worship services:** 8:30 am, 11:15 am and 6:00 pm. **Sunday school:** 10:00 am. We’d be honored to have you join us as we worship JESUS and continue to grow in truth and love for God and each other. A nursery, children’s church, youth group and small groups are available. If you need a ride please contact our church bus driver, John, at (815) 262-4275 by 8:30 am on Sunday. “For if you confess with your mouth that Jesus is Lord and believe in your heart that God raised him from the dead, you will be saved.” Romans 10:9

First Presbyterian Church – An Amazing Place for Amazing Grace- Rev. Doug Forsberg, Senior Pastor. 1100 Calvin Road, Rochelle. Email: info@placeforgrace.com. Sunday morning worship 9:00am & 11:00am. In person or streamed online. On our Website and Facebook Live. www.placeforgrace.com / www.facebook.com/placeforgrace

Grace Fellowship Church — Pastor Jeff Ardissonne, 2128 Il Route 38, Ashton, 815-453-7464. Sunday School 8:30 a.m. Sunday Worship Service 9:45 a.m. www.graceisforyou.com

Harvest Baptist Church 241 Scott Ave. (Hillcrest). Rev. Duane Boehm, pastor. Email duane712@hotmail.com, cell 815-757-3427. Visit us on Facebook! Service times: Sunday morning worship with Children’s Church at 10 am. Wednesday night worship at 7 pm.

Immanuel Lutheran Church Missouri Synod 16060 E. Lindenwood Road, Lindenwood, IL 61049. Rev. Dr. Matthew Rosebrock. Church Phone 393-4500. Church Worship 9:00 a.m. Sunday School Christian Education Hour at 10:30 a.m.

Living Water Community Church 405 N. Main St, Downtown Rochelle. Phone 815-561-6249, Website: www.lwccr.com, Like us on Facebook. We are Non-Denominational, Christ Centered, Casual dress, Christ Centered Live Band Worship. Chris Bender- Teaching Pastor, Brent Braski- Administrative Pastor, Adrian Daugherty- Lead Worshipper, Joe Mortimer- Youth Director, Amanda Barnes- Office Manager. Sunday Worship Service- 10:00am. Nursery/Toddlers Ages 0-5 available during the service in the Splash building. Swim- Grades 1st-5th worship with the adults then break out for age appropriate teaching. Youth groups, Small groups, Life Groups and Workshops meet throughout the year for Bible teaching. 7C’s Mission-serves the community physically & spiritually each month from 1135 Lincoln Hwy, providing lightly used clothing, Hygiene items, a light lunch and Elder Prayer open the second Saturday from 10am-2pm and the 4th Thursday from 4pm to 7:00pm and by appointment..



New Hope Fellowship (Church of God - Anderson, IN), 1501 10th Ave., Rochelle, IL 61068. Service: Sunday at 9 a.m. 10:30 a.m., (815)561-8400, www.NHFchurch.net Pastor: Dan Sergeant and Pastor Nick Tornabene. (Classes for children through age fifth grade during service.)

Rochelle United Methodist Church invites everyone to come and hear the good news that YOU are Beloved by God! New Year’s Day will be a musical celebration with Bruce Poulter and Linda Lennon. Our January and February series is called “Beloved!” and we will hear scriptures from both testaments that discuss God’s great love for us. On January 8 we will focus on the story of the travelers who followed a star as we share at an open communion table, a feast of love. On January 15 we will remember our baptisms, and hear those words that God spoke to Jesus as if they were for us, “This is my beloved, with whom I am pleased.” Through January and February we will hear the ways that we are beloved and the ways God offers forgiveness and restoration to ALL of us. Everyone is always welcome to all of our services. **Sunday worship is at 9:00 am** with Sunday School for children after the Children’s Message. Recorded services are available on our YouTube channel and our website at www.rochelleumc.com. Our services are on the radio (93.5 FM) on Sunday mornings at 9:00 am. **Our Facebook page is** www.facebook.com/rochelleumc. **Rev. Dr. Katherine Thomas Paisley, Pastor.** 709 Fourth Ave. (815) 562-2164. admin@rochelleumc.com. Everyone is welcome and loved!

St. Patrick Catholic Church Rev. Jesus Dominguez; Deacon Fermin Garcia; Deacon George Schramm; 244 Kelley Dr. (Corner of Kelley & Caron Rd.), PO Box 329, Rochelle, IL 61068. **Office Hours:** 9:00 AM- 4PM Monday-Thursday, Phone: 815-562-2370. **Mass times:** 8:00 AM Monday-Thursday, Saturday Vigil Mass 5:00 PM English, 7PM Spanish, Sunday Mass 7:30 AM, 9:00 AM in English and 11:00 AM in Spanish. **Confessions:** Monday 8:30AM & 6:30PM, Tuesday 8:30AM, Saturday 8:30am & 4:00-4:45 PM Or by appointment. **Religious Education:** Deacon George Schramm, Director of Religious Education. 903 Caron Road, Rochelle, IL 61068, 815-561-0079; Website: stpatricksrochelle.com Email: stpatrick-rochelle@rockforddiocese.org Facebook.com/StPatrickRochelle

St. Paul Lutheran Church “Building Relationships in Christ, Now and Forever!” Pastor-Rev. Greg Hoffmann, Steven Hall, Principal, Parish Nurse- Marcia Schnorr. 1415 Tenth Ave., Rochelle. Church Office-562-2744. Worship times: 6:00 p.m. Saturday, 9:00 a.m. Sunday. Our service is broadcast over WRHL 1060AM at 10:00 a.m. Sunday. Sunday School 10:15-11:15 a.m. Call 562-6323 for more information about the school.

LOCAL VIEWS

Guest column

Early transportation history

TRANSPORTATION technology involves human-built systems that move people and cargo over and under the land, through the air, over and under water, and through space. It is one of the four main types of technology systems that greatly influence our lives. These systems consist of vehicles, pathways and support structures (buildings) which are used to service and maintain the systems. Common examples include personal transportation systems, public systems, private systems, government systems and systems which combine more than one. Understanding transportation technology systems as well as their positive and negative impacts enables us to make better choices for our own lives as well as for the collective good. After all, we are not alone out there when using transportation systems!

Whereas water transportation is just as ancient as land transport and developed simultaneously, there were places that water and therefore early water vehicles just could not travel. Land transportation was the only option. The history of land transportation is interesting, fundamental to

transportation as a whole, and vital to human history. And because of America's love affair with farming, trains and automobiles it is implicitly woven into our own country's history.

The earliest form of land transportation simply involved people walking where they wanted to travel while carrying their goods in their arms. Of course, carrying any load like this for any distance becomes next to impossible, and if there is much weight, forget about it! Primitive woven fabrics were developed to make carrying devices and they could be dragged behind on the ground to relieve the burden.

Around the Mediterranean, approximately 7000 BC, humans began using sledges (or sleds) to transport goods. These devices had rails which slid over ground relatively easily and transferred the heavy load. Around 3000 BC the invention of the wheel and axle and machines such as carts and wheelbarrows drastically changed transportation technology. Built from just mechanical levers and wheels, they greatly reduce the amount of force and work needed to move heavy loads over long distance. For over 5,000 years now humans have transported loads

large and small using carts and wheelbarrows, and they continue to be just as common today. The adage, "if it ain't broke, don't fix it!" may not apply any better than to these sturdy and reliable transportation machines.

As humans domesticated beasts of burden and trained draft animals such as oxen, mules, horses, camels and elephants, heavier loads could be transported and farther distances crossed. With a yoke attached around the necks of strong ox or mules, wheeled vehicles combined with suspension system technology allowed humans to move themselves and their goods great distances.

As early as 300 BC, dirt pathways were converted into paved roads by the young and growing Roman Empire and around 450 BC specific rules were developed to standardize three types of roadways and their construction. Much remained the same in Europe, and throughout the rest of the world, as land transportation technology only slowly developed for hundreds of years – there just wasn't that much advancement to land-based

technology, although great change happened in water transport to sailing ships. Although steam engines as a novelty were invented during the first century AD, it was not until the development of useful steam engines in Europe during the late 1600s that land transportation began to drastically change.

In the ancient pre-Columbian Americas, development occurred in a similar but fundamentally different fashion because the use of the wheel and axle was not known. Whereas paved roadways and extensive trail systems were created, there were not wheeled vehicles as in the Middle East. The Inca Empire built the most advanced road system

in South America – estimated to be 25,000 miles in total length. The network contained paved roads, bridges, stairways and support structures such as earth retaining walls.

Here in the ancient Midwestern United States and in Illinois, migrating herds of bison created major pathways through the thick prairies, and deer did the same in the forests. Native Americans followed these paths,

creating trails needed to move to better weather and sources of food and shelter. These trails also led to and from their villages and the numerous large population centers throughout the state and our Midwest neighbors. Sprawling trade routes created a network of pathways that relied primarily on water routes but also depended on land ways to reach landlocked destinations.

As time moved relentlessly forward, these primitive pathways systems became routes for European missionaries and explorers, who established new and different population centers and the need for more advanced vehicle technology. Horse and ox-drawn vehicles began to permeate the Midwest as more settlers moved west away from the crowded cities and civilization on the east coast. Trails began to take on common names of identification so explorers and settlers could communicate about the pathways used. Peoria, St. Louis, Galena, Rock Island, Kankakee, Joliet, Rockford, Danville, Centralia and many others were all connected by some means of transportation typically involving land travel along the way. Major water routes were also connected. The "Portage

Path" was originally a Native American trail that connected the Chicago and Illinois rivers, ultimately connecting Lake Michigan to the Mississippi River. It was via this pathway that the historical French missionaries, explorers and fur traders Pere Marquette, Louise Joliet, René-Robert Cavelier, Sieur de La Salle (wow, what a name!), and others "discovered" Illinois for future European settlers. Imagine the scene as these first Europeans came into these lands previously inhabited only by Native American tribes of the Midwest. It is all important to understand, and to realize how transportation technology can influence our lives!

Stay tuned for more transportation history! Hopefully you find it as fascinating as I. We need to move into the age of the stagecoach next! Thanks for reading.

Kurt Wolter has studied and taught technology - including production, transportation, energy, and communication - for over 30 years. He enjoys trying to better understand technology and its past, present, and future while also attempting journalism. He can be reached at technohistory100@gmail.com.



Kurt Wolter

Consider this: Congress

METAL detectors were removed from the entrance to the House of Representatives Chamber in Washington on Jan. 3 of this year to little fanfare. This is something to think about.

Now that you know this, I'm not sure how you would (or should) feel. I know that this makes me a bit uneasy. Not that I am for delaying the members of Congress any further than they delay themselves, nor because I am for or against pistol-packing Congresspersons. Though I fail to see the reason to carry in the House.

No, it's more an issue of trust for me. Maybe this doesn't bother you, but it sure bothers me. A certain Representative named George Santos has

been voted and sworn into Congress this year. What are his qualifications? Can you name one? From all my research, and that of many others, we have not found a qualification he gave his constituents that has been truthful. Some say these are lies, oh, excuse me, "embellishments." So where does that leave us?

Well, we could ignore it like many of his colleagues by putting the burden back on the voter and say they voted him in. Though he's not our Representative, we could call on him to resign like some of his other colleagues and, hopefully, many of his constituents. Flood his office phone with these requests. But let's think for a minute. Why did he lie as we've been told? What reason would anyone want to lie so completely to

obtain a seat? Or, better yet, what could he be hiding? It is my hope that somebody or group finds out soon. I would like to know if these lies were of a nefarious nature. And, if so, should we be wondering what that could mean to us?

Are there any other in Congress where this is the case? I do believe that there probably aren't because we do have a media in this country that likes to get to the bottom of things. But can we be sure?

Let's go back two years to Jan. 6, 2021. Not only should this have never happened, but the persons involved should never have gotten in the Congressional Building and so close to the people we

rely on to carry out our business. So, in retrospect, should we be pulling out the metal detectors? In my mind, with everything I see going on, it's not whether Jan. 6 will happen again, but when.

We need to be vigilant. We need to be aware of what happens in our country. Taking down electrical grids should be on our radar. Mass shootings should be on our minds, for empathy's sake and for the sake of

our neighbors' families. Shouldn't we be fighting to see that these incidents are reduced and eventually eliminated? As I have said in past articles, we need to take time and research those running for all of-

fices, local and above, to make sure they are doing those things we elected them to do. Whatever that is to you individually.

Now that we are thinking about those that represent us, how can we keep them safe? I look at the federal government first for obvious reasons. The government is fixated on division. I say this because when you look at the House of Representatives, the Republicans are on one side and the Democrats on the other. Why is this? Why does one party have to "reach across the aisle" to work with the other? Wouldn't it be a shorter reach if they were next to each other? Wouldn't it be better to seat them Republican, Democrat, Republican, etc.?

Now, I know, they will

say but we need to work within our party much more often than with the other party. Couldn't group mentality be the problem? Why can't they be seated that way and, in group meetings, do what they need to do? This may make for additional work, but they may accomplish more. They may bring ideas from others to their group meetings. Is this a bad thing? Isn't being intermingled a better way to keep one party from taking total control over a session?

Yes, this could cause problems. But we have those already so it's nothing new. And this may work for any of the states that are divided. One thing is for sure, without socializing, we're pretty much assured of discord for years to come.



Reed Harris

How to contact government officials

U.S. Con. Adam Kinzinger
1218 Longworth HOB
Washington, D.C.
20515
(202) 225-3635

IL Sen. Brian Stewart
M104A State House
Springfield, IL 62706
(217) 782-0180

IL Rep. Tom Demmer
314 Capitol
Springfield, IL 62706
(217) 782-0535

Have a letter you want to submit to us? Send it to (news@rochelle-news-leader.com)

KEEPING YOU IN TOUCH WITH YOUR LOCAL LEADERS

* Denotes Chairman/President

Rochelle City Council

*John Bearrows	jbearrows@rochelleil.us
Kathryn Shaw-Dickey	kshaw-dickey@rochelleil.us
Bil Hayes	bhayes@rochelleil.us
Rosaelia Arteaga	rarteaga@rochelleil.us
Dan McDermott	dmcdermott@rochelleil.us
Tom McDermott	tmcdermott@rochelleil.us
John Gruben	jgruben@rochelleil.us

Rochelle Elementary School Board

*Dave Casey	dcaillini94@gmail.com
Steve Builta	sbuilt@gmail.com
Ashley Jackson	ajackson@d231.rochelle.net
Stephanie White	swhite@d231.rochelle.net
Eric Van Hise	eric.vanhise@gmail.com
Trisha Vaughn	jrvtlv02@msn.com
Javier Zepeda	jzepeda@rthsd212.org

Rochelle Township High School Board

*Tom Huddleston	tom.huddleston@rthsd212.org
Carol Hayenga	carol.hayenga@rthsd212.org
Bill Ravnaas	bill.ravnaas@rthsd212.org
Jacky Aguilera	jacky.aguilera@rthsd212.org
Jeff Tilton	jeff.tilton@rthsd212.org
Bobby Chadwick	bobby.chadwick@rthsd212.org
Brian VanVickle	brian.vanvickle@rthsd212.org

Flagg-Rochelle Park Board

Brent Carmichael	bcarmichael@rochelleparkdistrict.org
John Dobbs	jdobbs@rochelleparkdistrict.org
Dale Wells	dwells@rochelleparkdistrict.org
*Tim Hayden	thayden@rochelleparkdistrict.org
Jodie Hart	jhart@rochelleparkdistrict.org
Joe Lenkaitis	jlenkaitis@rochelleparkdistrict.org

Ogle County Board Dist. 3

Lloyd Droege	ldroege@oglecounty.org
Dan Miller	dmiller@oglecounty.org
Greg Sparrow	gsparrow@oglecounty.org

Ogle County Board Dist. 4

Bruce McKinney	bmckinney@oglecounty.org
Skip Kenney	skkenney@oglecounty.org
David Williams	dwilliams@oglecounty.org

Creston Village Board

Wayne Williams	jwdw13@yahoo.com
Jennifer Payton	
*Tom Byro	tommyb_47@yahoo.com
Greg Hopkins	ghopkins522@comcast.net
Steve Katzman	skatzman@essex1.com
Mike Kerns	ac.kerns@comcast.net
Mark Hibshman	
Curt Ward	caward92@comcast.net

Hillcrest Village Board

*Randy Salsbury	rsalsbury@hillcrestil.us
Pam Pittman	ppittman@hillcrestil.us
Dan Potter	dpotter@hillcrestil.us
Richard Rhoads	rrhoads@hillcrestil.us
Tim Ball	tball@hillcrestil.us
Renee Kerwin	rkerwin@hillcrestil.us

Flagg Township

*Bob Withrow	flaggtwp@rochelle.net
Joanna Patrick	flaggtwpc@rochelle.net
Susan Rothenberger	assessor@rochelle.net
Scott Seebach	scottseebach@gmail.com

Board of Trustees

Lance Noggle	noggle62@gmail.com
Eric Gruben	egruben@comcast.net
Susan Hagar	susanhager303@comcast.net
Jim Kenney	jimk@rocketsupply.com

Flagg-Rochelle Library

*Jaqueline Dickow	dickow@comcast.net
Theresa Haggstad	haggstads@comcast.net
Michael Scanlan	scanlan@comcast.net
Lanning Nicoloff	nicoloff118@comcast.net
Sheri Klender	alwayslefty2@gmail.com
Susan Seavage	nit1prl22@yahoo.com
Darci Waltrip	doobs12@comcast.net

LETTERS TO THE EDITOR POLICY

The Rochelle News-Leader encourages responsible letters to the editor on subjects of interest to our readers. Editing may be necessary for space, clarity or to avoid obscenity or libel, but ideas will not be altered. All letters must bear the handwritten signature of the writer and include address and phone number or e-mail address for verification purposes. Neither the street address nor phone number will be printed. Letters should be typed or legibly handwritten, and no anonymous letters will

be published. Any letters from boards or organizations must include at least one name of an individual. Any criticism of public officials should be limited to issues related strictly to their position or actions made in office, as personal attacks will not be published. Letters involving private disputes between the writer and a business will not be published. Political endorsements will be published, however letters from candidates endorsing themselves will not be printed. Letters

may be dropped at the News-Leader office (211 IL Route 38 East), mailed to the News-Leader (P.O. Box 46, Rochelle, IL 61068) or e-mailed (news@rochellenews-leader.com.) The News-Leader reserves the right to edit or reject any letter to the editor for any reason, and letters chosen for publication do not necessarily reflect the views of this newspaper.

COMMUNITY

Three from RTHS speech team named conference champions

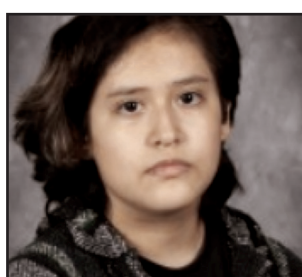
BY VICKI SNYDER-CHURA
SPECIAL TO THE NEWS-LEADER

ROCHELLE — The Rochelle Township High School Speech team can boast five conference champion designations which were determined at the Jan. 14 tournament RTHS hosted and took second place in.

The 2023 I-8 Conference Speech Champions included: Paul Swartz/Mikayla Preston in Dramatic Duet Acting, Mikayla Preston in Dramatic Interpretation, Paul Swartz for Informative Speaking and Z Brizuela for Oratorical Declamation.

Other team members earning medals included: Aiden Ramsey 2nd Place Radio Speaking, Bella Nauman 2nd Place Oratory and Vi Hull 2nd Place Prose Reading.

Third place: Aiden Ramsey



(COURTESY PHOTOS)

The 2023 I-8 Conference Speech Champions included: Paul Swartz/Mikayla Preston in Dramatic Duet Acting, Mikayla Preston in Dramatic Interpretation, Paul Swartz for Informative Speaking and Z Brizuela for Oratorical Declamation.

sey Impromptu Speaking, Jessica Nguyen Oratory, Vi Hull Special Occasion Speaking and Bella Nauman 3rd Place Oratorical Declamation.

Fourth place: Pigeon Burgholzer/Brooklyn Hull Humorous Duet Acting, Z Brizuela Dramatic Interpretation, Jessica Nguyen Informative Speaking and Tilly Gonser Special Occasion Speaking,

Fifth place: Ashes Glover Poetry Reading, Lucas Smardo Radio Speaking, Paul Swartz Extemporaneous Speaking, Sienna Seebach Original Comedy and Karma Lidren Humorous Interpretation

Sixth place: Jimmy Chavez Extemporaneous Speaking, Alayna Smardo Oratorical Declamation, Pigeon Burgholzer/Mae Owen Dramatic Duet Acting, Liam

Wise Informative Speaking, Liam Wise Impromptu Speaking, Alayna Smardo Oratorical Declamation and Karma Lidren Original Comedy.

Seventh place: Hailey Bunker/Alayna Smardo Humorous Duet Acting.

The speaker of the week was Mikayla Preston. Morris High School's Speech Team earned the I-8 championship title.

Schabacker makes fall 2022 dean's list at Iowa State

AMES, Iowa — More than 10,200 Iowa State University students have been recognized for outstanding

academic achievement by being named to the fall semester 2022 dean's list. Students named to the

dean's list must have earned a grade point average of at least 3.5 on a 4.0 scale while carrying a minimum

of 12 credit hours of graded course work.

Rochelle: Morgan Rae Schabacker, 4, Ag-

THE KITCHEN TABLE MENU

January 24 – (Tuesday) – Stuffed Chicken Breasts, Roasted Potatoes, Green Beans
January 26 – (Thursday) – Lasagna, Salad, Garlic Bread
January 31 – (Tuesday) – Teriyaki Chicken, Fried Rice, Egg Rolls
February 5 – (Sunday Brunch) – Serving from 9 to 12 –

Sausage Gravy and Biscuits, Breakfast Casserole, Oatmeal, Sausage Links or Country Ham

7034 S. Klondike Road | Rochelle, IL 61068 | 815-561-9074
If you would like to volunteer with us, please email us at volunteer@kitchentablerochelle.org

Birthdays & Anniversaries

Jan. 23
Michele Perez
Victoria Lopez
Odessa Waters

Jan. 24
Terry Dodillet
Kelly Arnold

Jan. 28
Peggy Futrell

Jan. 25
Nikki Greenfield
Ashton Arwood

Jan. 29
Nayeli Ramirez

Call 815-561-2151 to submit names for birthdays and anniversaries



Coffee Break

MAGIC MAZE — INJURY

L B Y V S P M J H E B Y V T Q
O T L U S N I L I G P D B Y W
T R H A P M K I F D E B Y W U
S Q O S T R E S S M R K I F D
B Z X H A N Y L W U S U S Q T
T D E T A L E R K R O W O N H
L A J K H A P D F N N I D C G
D A B Y C T W I I V A T R S I
Q P N M L A K I H C L H F E L
E C B Z O F B Y L W C W V U S
S R Q P N C I T A M U A R T M

Find the listed words in the diagram. They run in all directions forward, backward, up, down and diagonally. Unlisted clue hint: ADDING — TO INJURY

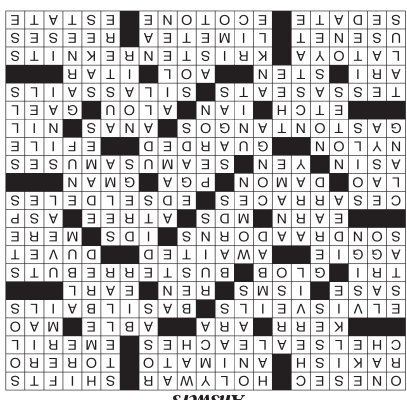
Accidental
ACL
Ankle
Back

Combat
Eye
Fatal
Head

Personal
Serious
Slight
Stress

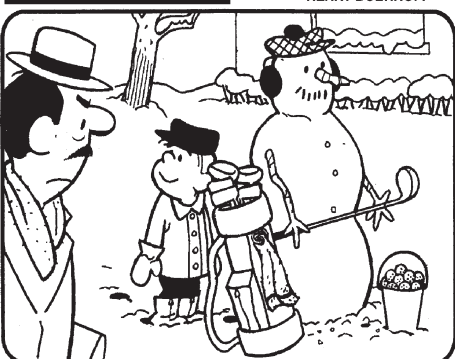
Traumatic
Whiplash
Work related

©2023 King Features Syndicate, Inc. All rights reserved.

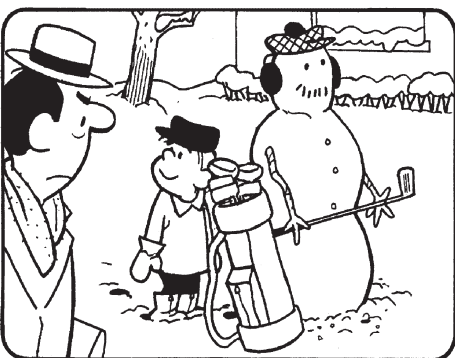


HOCUS-FOCUS

BY HENRY BOLTINOFF



Find at least six differences in details between panels.



Differences: 1. Mustache is missing; 2. Buttons are missing; 3. Towel is missing; 4. Canoe is missing; 5. Club is different; 6. Pal is missing.

Super Crossword

SCRAMBLING TO GET THINGS DONE

ACROSS

1 "Just a moment!"
7 Crusade
14 Changes gears
20 Debonair
21 Spiritually, in music
22 Bull brawler
23 Clinton drains material away by percolation?
25 Celebrity chef
26 Deborah of "Separate Tables"
27 Coach
28 Competent
30 "Red Book" chairman
31 Presley wears a disguise?
35 Rathbone jumps ship?
38 RSVP encl.
39 Ideologies
40 Kyo — (Darth Vader's grandson)
41 British peer
42 Prefix with angle
43 Liquid lump
44 Keaton argues back in a debate?

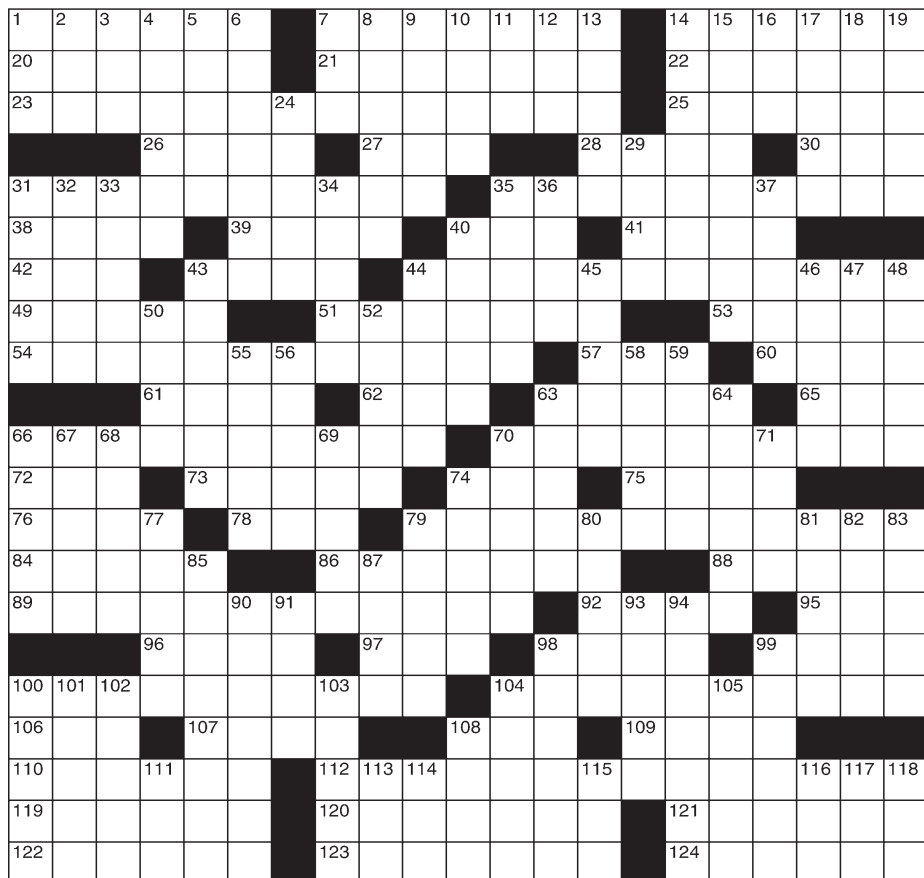
49 Longhorn's gridiron rival
51 Anticipated
53 Downy quilt
54 Locke adds decorations?
57 Carders' demands
60 Nothing more than
61 Work for
62 "ER" roles
63 Up — (cornered)
65 Cobra variety
66 Romero competes in a relay?
70 Ford marks a word for omission?
72 "7 Faces of Dr. —" (Tony Randall film)
73 Matt of "Good Will Hunting"
74 Links org.
75 FBI guy, e.g.
76 Words clarifying a spelling
78 Osaka money
79 Heaney makes people smile?
84 Fiber for hose
86 Kept safe
88 Submit taxes paperlessly

89 Leroux does a ballroom dance?
92 Santa — (desert winds)
95 Zero
96 Engrave
97 Singer Janis
98 Baseball's Felipe or Moises
99 Scottish Celt
100 Thompson works as an usher?
104 Deane goes on a cruise?
106 Bush press secretary
107 Old British gun
108 Alternative to Yahoo
109 Russia's — -Tass
110 One of Janet Jackson's sisters
112 Wiig mends a sweater?
119 Precursor to web forums
120 Tartish brew
121 Peanut butter cup brand
122 Composed
123 Transition zone between plant communities

124 Will subject
1 Ogre of myth
2 "Uh-uh"
3 Scratch (out)
4 Chicken with long, soft plumage
5 Curvy letters
6 Herb of the parsley family
7 Actor Linden
8 Ryan and Tatum of film
9 Fib tellers
10 Family rec facility
11 Infant cry
12 Lunched, e.g.
13 Lovers' flowers, in Spain
14 Superb
15 Native
16 Wrath
17 Physicist
18 Case hearing
19 Goes it alone
24 "Am not!" comeback
29 Funeral stand
31 These, in Mexico
32 Slowly, musically
33 Winner's hand gesture

34 Tough dude's self-assertion
35 Surpasses
36 Cost of cards
37 Picture book
40 Devastates
43 Actor
44 Depardieu
45 Poet-singers
46 Tweaks text
47 Of the middle eye layer
48 Concise
49 Footfalls
50 Mental flash
52 Part of NOW
55 Matrix
56 Jim Croce's "I Got —"
58 Wine barrel residue
59 Actress Blair
63 "There Is Nothin' Like —"
64 "Daniel Boone" actor
66 Trolley sound
67 Cushy course
68 Stains
69 Winding-line dance
70 "Yipes!"
71 Adequate, to Li'l Abner
74 Argentina's Juan or Eva
77 Lecture jottings
79 Long stories

80 Politico Mo
81 Exodus peak
82 Architect
83 Peddles
85 "So far, no"
87 Army group
90 Univ. in Raleigh
91 Fare-well link
93 Condition in outer space
94 Morally strict
98 Actress
99 Precious red stone
100 Bone of the 103-Down
101 Scratch out
102 Located
103 Foot-leg joint
104 — voce (softly)
105 "— alive!"
108 At — time (prearranged)
111 Words before dare or diet
113 Rocker
114 "I believe," to a texter
115 Scot's denial
116 "There — god!"
117 New Year in Vietnam
118 MI-to-SC dir.



©2023 King Features Syndicate, Inc. All rights reserved.

**Wheatland Tube****Western Tube**

OPPORTUNITY IS CALLING YOU AT WHEATLAND TUBE AND WESTERN TUBE.

Make your career an exciting one.

Give yourself the chance to grow.

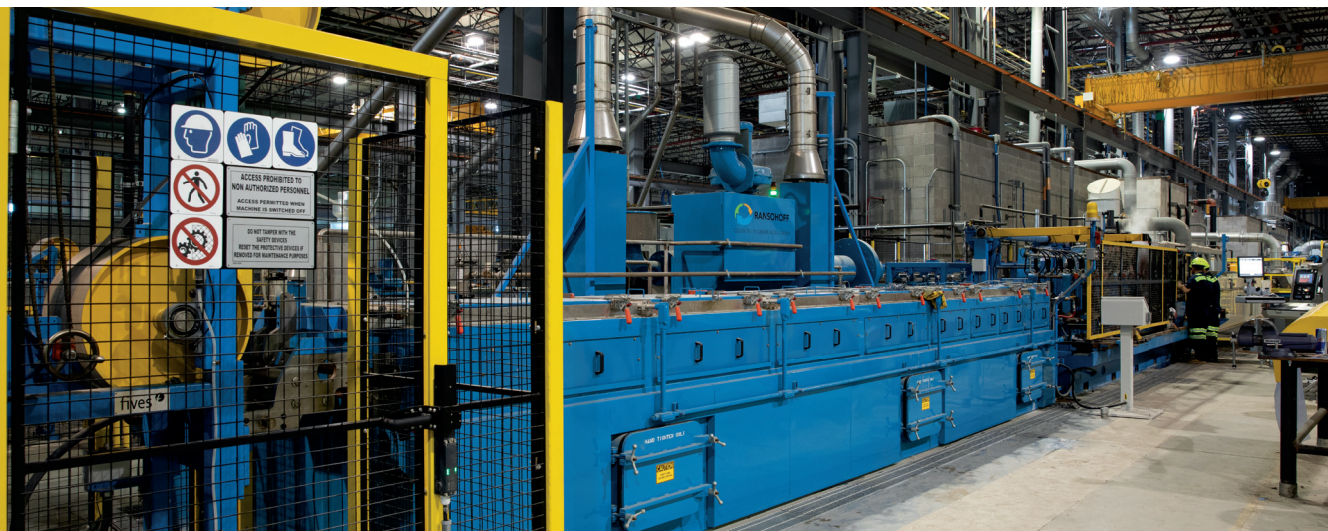
Be at the forefront of technology and innovation.

Become part of a new era in domestic manufacturing.

Help our economy bounce back better than ever.

Build a brighter future for our community.

**DO IT ALL RIGHT HERE, RIGHT
NOW IN ROCHELLE, ILLINOIS.**



Start at \$24/hr and up | \$500 sign-on bonus | Competitive benefits | All levels
Schedule your interview today at wheatland.com/rochelle



ADVERTISE YOUR BUSINESS HERE!

Great Rate - Great Spot!

Call Mike @ 815-561-2124 or email mfeltes@oglecountylife.com

01252021

Anderson Plumbing is Now Hiring an Experienced HVAC Tech

Great Pay & Benefits

ANDERSON PLUMBING & HEATING, INC.

621 First Ave., Rochelle, IL • 815-562-8784

RTHS Wrestling

Hubs set school record

Rochelle matmen eclipse historic mark for single-season dual victories

BY RUSSELL HODGES
SPORTS EDITOR

ROCHELLE — Rochelle Township High School’s winningest varsity wrestling team wants even more victories on its record-setting resume as the Hubs continue their march toward the Interstate 8 Conference Championship and the start of the IHSA Individual State Series.

Six Rochelle wrestlers scored bout wins and five others received forfeits as the Hubs cruised over the Harvard Hornets 57-18 in nonconference action Wednesday evening. The victory came after Rochelle (24-1, 5-0 Interstate 8) went on the road and defeated Freeport for its 23rd dual win of the season, breaking the school record set during the 1984-85 season and tied during the 2015-16 season. The Hubs have four dual-meet opponents remaining in the regular season.

“Breaking the school record is a motivator and it helps us continue to push for more,” freshman Roman Villalobos said. “We have the record now and we want to keep adding onto that record. We’re always



(PHOTO BY RUSSELL HODGES)

Sophomore Robert Stoffel works to turn over Harvard’s Yair Morales during the Rochelle Hub varsity wrestling match against the Hornets on Wednesday. Rochelle defeated Harvard 57-14 and improved its overall record to 24-1 on the season.

filling in spots throughout our lineup and even though it’s been a scramble, we’ve found ways to make it work and I think that’s what’s been so great about our team this season.”

Junior Tommy Tourdot and sophomore Xavier Villalobos received forfeits

for the 113-pound and 120-pound bouts to start the dual on Wednesday. Rochelle took an 18-0 lead after sophomore Joseph Nadig controlled the 126-pound bout against Oscar Villegas, surging ahead 6-0 on a takedown, a near fall and a reversal before

securing the fall during the second period.

Harvard earned its first points of the dual during the 132-pound bout, where Marques Merida defeated sophomore Weylin Nay with a 15-0 technical fall. Freshmen Frank Nasca and Brenden Voight took

forfeits for the 138-pound and 145-pound bouts, while sophomore Erich Metzger received a forfeit for the 160-pound bout. Between freebies, sophomore Grant Gensler notched three near falls before recording a first-period fall over Jose Cardenas in the 152-pound

bout.

With the Hubs leading the Hornets 42-5, Roman Villalobos entered the circle against Charly Tolentino, scoring a takedown and a near fall to hold a 4-0 advantage after the first period.

See HUBS page 4

RTHS Cheerleading

(COURTESY PHOTO)



Varsity and Junior Varsity teams compete at Interstate 8 Conference Championship meet

Sycamore High School hosted the 2022-23 Interstate 8 Conference and Kishwaukee River Conference Championship meets on Wednesday. The Rochelle Township High School varsity and JV cheerleading teams each competed in the event, with the varsity team finished fourth out of eight schools in the Interstate 8 Conference while the JV team participated in an exhibition format. The varsity team will compete in the IHSA Belvidere North Sectional on Saturday, Jan. 28. The varsity team is coached by Trish Rodeghero and includes Ava Lynn, Baylie Sutton, Rylee Jackson, Rivers Estock, Ava Albers, McKenna Cook, Anna Harvey, Ayla Walker, Lauryn Akey, Morgan Smardo, Zoe White, Jasmynn Lipscomb and Riley White. The JV team is coached by Mychaela Hurst and includes Julia Livingston, Maycie Powell, Ryelee Bogle, Madigan Williams, Cambrey Rodeghero, Marianna Saldana, Ashley Dickey, Naleia Fonfara, Sophia Favela, Jocelyn Cervantes and Lydia Osborne.



The businesses featured on this page are

"Hubs Super Fans"

They proudly support our local athletes and students.

Please show your appreciation by patronizing their businesses.

WE SUPPORT OUR HUBS!



HUB SPOTLIGHT



**Madilyn
Olson**

Year: Freshman

Sport: Dance

Q: How many years have you been playing this sport?

A: Eight years.

Q: What do you enjoy most about this sport?

A: When I'm dancing, I can let go and get my emotions out.

Q: What is your favorite school subject and why?

A: Art because it's fun.

Q: Who is your biggest role model and why?

A: Addison Stewart and Abby Dall because they are both very hard working and dedicated and they know how to be team leaders.

Q: What is your dream job and why?

A: To be either a marine biologist, to work with fossils or to do something with dance.

Q: Where would your dream vacation be and why?

A: Colorado because I've always wanted to visit the mountains and see the changing weather.

Q: What is your favorite thing about being a student-athlete at RTHS?

A: I can rely on all of the girls on our team and I love our team bond.

**Alayna
Smardo**

Year: Freshman

Sport: Dance



Q: How many years have you been playing this sport?

A: Eight years.

Q: What do you enjoy most about this sport?

A: I enjoy getting to show my personality.

Q: What is your favorite school subject and why?

A: Ag because we have a lot of fun activities.

Q: Who is your favorite athlete and why?

A: Stephen Curry because he's so kind to people.

Q: Who is your biggest role model and why?

A: My family because they have taught me everything.

Q: What is your dream job and why?

A: To be a sports play-by-play commentator because you get to tell people what's happening.

Q: Where would your dream vacation be and why?

A: Australia because they have pretty beaches.

Q: What is your favorite thing about being a student-athlete at RTHS?

A: I enjoy the awesome teachers and getting to be involved with sports.

GO HUBS!

VINCE'S PIZZA
Since 1967

Order online and receive
15% off entire bill!

We are proud to support
Rochelle Hubs!

Visit us at vinspizzainrochelle.com
815-562-7300

Hello, neighbor!

Huber Leo and Fin Svcs Inc.
Shane B. Huber, Agent
221 E. IL Rt. 38
Rochelle, IL 61068
Bus: 815-562-7011

Please stop by and say, "Hi!"
I'm looking forward to serving your needs for insurance and financial services.
Like a good neighbor, State Farm is there.
CALL ME TODAY.

State Farm

DLX Medical GROUP

Caring for your family's health from infant to adults.

For appointment, please call
815-227-9594
1212 Currency Ct, Rochelle, IL 61068
Most Insurance Accepted

Local People Providing Local Service

Rochelle MUNICIPAL UTILITIES

Water • Waste Water
Electric • Communications

Phone: 815-562-4155 333 Lincoln Highway
Fax: 815-562-5861 Rochelle, IL

www.rmu.net

CENTRAL ILLINOIS LOAN

Loans For All Your Needs
Auto • Home Improvement • Vacation

Jami Hackman

815★561★4035!

310 Eagle Drive, Rochelle
All loans subject to our normal credit requirements and policies.

MORTON BUILDINGS

If you can dream it, we can build it.

Rochelle Sales Office • Hwy. 251 N. • 877-613-3050

Rochelle Community Hospital

Your Local Healthcare Resource.

900 N. 2nd Street, Rochelle
815-562-2181
www.rochellehospital.com

MEYERS FURNITURE & FLOORING

209 Powers Road, Hwy 251 N
Rochelle, IL 61068
(815) 562-8792
www.meyersfurniture.com

Bruns Construction, Inc.

Residential & Commercial Roofing

Shingled Roofs
Flat Roofs
Metal Roofs For Farm Facilities
Custom Built Homes
Additions

815-561-0099
Licensed & Insured

Batavia Builders & Remodelers, LLC

Debbie Foster, Owner
(815) 501-8946
www.bataviabuilders.com

Serving Illinois & the Surrounding Area

Specializing in Walk-In Tubs & Acrylic Showers

Additions ~ Bathrooms ~ Kitchens
Accessibility Remodeling

ANDERSON Plumbing & Heating, Inc.

Plumbing, Heating, Air Conditioning,
Drinking water systems, Water Heaters,
Softeners, Iron Filters & More.

Since 1976
Like us on Facebook
Lic# 055-013999

LENNOX
One less thing to worry about
621 First Ave., Rochelle
815-562-8784

Rochelle Chiropractic Clinic
Dr. Chad M. Piller

227 E. Rt 38 • Rochelle, IL
815-562-8706
www.rochellechiropractic.com
Now Accepting New Patients!

Alfano's
Pizzeria and Italian Restaurant

Taste The **TRADITION**
Taste The **DIFFERENCE**

Dine In • Carry Out •
• Home Delivery • Pizza • Pastas •
• Sandwiches • Salads •
• and Lots More!

Dine-In • Carry Out • Home Delivery
1115 TURKINGTON TERRACE, ROCHELLE
815-562-3312

JOHNSON TRACTOR

SALES • PARTS • SERVICE

200 Steward Road
800.262.1680
www.johnsontractor.com

AtlasAuto

BUY HERE - PAY HERE
You Work - You Drive

Se Habla Español **815-562-7433**

1400 N 7th St
Corner of Flagg Rd & Hwy 251 N

HUB-REMSEN PRINT GROUP

101 Maple Ave • Rochelle, IL 61068
815.562.7057 • hub-remsen.com

GO HUBS!

"Proudly Serving The Rochelle Area Since 1945"

Berg-Johnson Electric

Residential • Commercial • Industrial

FREE ESTIMATES
Licensed and Insured
24 Hour Emergency Service
815-562-4937
500 Cleveland Avenue

CHEVROLET

We are Ogle County's only GM Dealer!

• Collision Repair • Rental Cars
• 24 Hour Towing • Maintenance On All Makes and Models
• New/Preowned Vehicles • Tires, Alignments, Brakes, Batteries

JEFFPERRY
CHEVROLET • BUICK • CADILLAC • JEEP • CHRYSLER
815-562-8787 • www.jeffperrychevrolet.com

Busy Schedule? Leave the cooking to us.

• Large menu of foods
• Rochelle's famous chicken by the dinner or bucket
• Hand dipped ice cream (16 flavors)

COUNTRY SCHOOL DRIVE-IN RESTAURANT
251 N. ROCHELLE • 562-6039

We're tuned in to your financial needs!

• Six locations
• 25,000+ ATMs across the U.S.¹
• Free checking account options including Student Checking
• Stillman Mobile App featuring mobile deposit²
• Free Pre-approvals
• Local lenders, local decisions

Stillman BANK
Earning Your Trust For 135 Years
www.stillmanbank.com

GOOD LUCK HUBS FROM YOUR FANS AT:

HAYDEN REAL ESTATE INC.

RESIDENTIAL
AGRICULTURAL
COMMERCIAL

815-562-2111 ★ hre@haydenreinc.com

SPORTS

RTHS Girls Basketball

Slow start leads to lopsided loss against Sycamore

Darby scores team-high 12 points for Lady Hubs in 55-35 defeat Wednesday

BY RUSSELL HODGES
SPORTS EDITOR

ROCHELLE — A crushing run during the first quarter was all the Sycamore Spartans needed to create early distance from the Rochelle Lady Hubs varsity basketball team during Wednesday evening’s Interstate 8 Conference contest. Despite a second-quarter rally led by sophomore Kendyl Darby, Rochelle was unable to overcome the first-quarter hole, ultimately falling 55-35.

Sycamore’s combination of full-court pressure on defense and 3-point shooting from the corners ignited a 16-2 run that gave the Spartans command early in the game. Sycamore guards Sophia Klacik and Lexi Carlsen each converted two triples in the first quarter, where the Spartans earned a 21-6 lead entering the second quarter, where the tempo began shifting toward the Lady Hubs, who moved to a zone and showed quick hands to force turnovers by Sycamore.

“We talked during practice about not starting out flat against this team because we knew if that happened, we would be in a hole just like that,” head coach Ryan McQuade said. “I thought our girls showed resilience during the second quarter and we were able to bring

them within six points. They were able to make one more run after that and I thought we took a few plays off. What we discussed at halftime is that we can’t take plays off against a team of that caliber.”

With Rochelle needing an offensive spark, Darby found her shooting rhythm from range, hitting two 3-pointers and making a pair of tough shots around the rim including a reverse layup and a short runner from the baseline. Darby scored 10 of her 12 points during the second quarter, where a late run from the Spartans elevated Sycamore’s lead to 36-20 at the halftime buzzer.

“Kendyl’s still a very young player, but I think she’s definitely started coming into her own over our last few games including our win over Kaneland,” McQuade said. “I don’t think she knows how good she can be. Our challenge now is figuring out how we can unleash that on every single play. She’s shown flashes at times and I’m looking forward to seeing it more consistently.”

Carlsen commanded the Sycamore offense, finishing with a team-high 17 points and dishing out several assists to teammates including Monroe McGhee, who sank three layups in the third quarter and finished with 12 points for the Spartans. Sycamore



(PHOTO BY RUSSELL HODGES)

Junior Alivia Henkel drives against Sycamore’s Evyn Carrier during the Rochelle Lady Hub varsity basketball team’s game against the Spartans on Wednesday. Sycamore defeated Rochelle 55-35.

more led 50-27 entering the fourth quarter, where 6-foot-4 forward Evyn Carrier sank a triple and a putback shot to cap off a 10-point outing. Junior Alivia Henkel had eight points for Rochelle (6-18, 4-5 Interstate 8).

“I thought we controlled the pace of the game when we made our run during the

second quarter,” McQuade said. “They dictated play early on and I thought we ran into a wall in that we were unable to get defensive rebounds, which led to them taking a 16-point lead at halftime.”

Kaneland

Three Rochelle Lady Hub varsity basketball

players reached double figures in scoring on Saturday, when the purple and white knocked off the Kaneland Knights 59-56 for an Interstate 8 Conference victory. Junior Alivia Henkel led the Lady Hubs (6-17, 4-4 Interstate 8) with 21 points, nine rebounds and four assists, while sophomore Kendyl Darby recorded 12

points and seven rebounds.

Senior Torrin Nantz converted five 3-pointers in the game, finishing with 15 points as well as two assists and three steals. Junior Sydney Tabor compiled seven points, five assists, five rebounds and a team-leading six deflections for Rochelle in the win.

RTHS Girls Bowling

McCullough leads Rochelle to win over DeKalb

Lady Hub freshman rolls 495 series in 2,584-2,445 victory Tuesday evening

BY RUSSELL HODGES
SPORTS EDITOR

DEKALB — The Rochelle Lady Hub varsity bowling team defeated

DeKalb 2,584-2,445 on the road Tuesday evening. Freshman Kylie McCullough led the Lady Hubs (8-5, 5-3 Interstate 8) with a 495 series, while

sophomore Cassidy Vincent recorded a 481 series and junior Anahi Alanis followed with a 445 series. Juniors Faith Adams and Makenzie Liezert totaled

respective series scores of 413 and 412.

Rochelle downed DeKalb 918-828 in the first game, where Liezert fired a series-best 174 and Vincent

scored a series-best 168. Alanis led the Lady Hubs with a series-best 168 and Vincent added a 165 during the second game, where Rochelle held off the Barbs

868-850. The Lady Hubs clinched the nonconference sweep with a 798-767 win in the third game, where McCullough’s series-best 194 propelled Rochelle.

COMMUNITY BOARD

Need to get the word out about a product or service you offer?

Give us a call at 815-562-4171.

We can reach over 9,000 homes!



Gutters

SEAMLESS GUTTERS

ALL ALUMINUM

- Will Not Rust, Chip Or Peel
- Most Colors Available
- Manufactured On The Job

815-758-8998

257 W. Stephanie Dr., Cortland
www.theisenroofing.com

Storage Sheds

FREE Sales Rep. Evaluation At Your Site

We Deliver! From Our Lot To Your Site

We Specialize in Portable/Quality Built Storage Sheds

- Stock & Custom Design
- Many Options Available
- Competitive Pricing
- Site Preparation Available

See Displays at 3500 S. Chana Rd. Chana IL 61015
Call Norm or Albert for Free Literature packet
779.861.3542

Plumbing/Heating/Cooling

Anderson Plumbing & Heating Inc.
Serving Rochelle For Over 40 Years

LENNOX

Quality Service • Free Estimates
Residential & Commercial

815-562-8784

Lic. #058-087891

Heating & Air Conditioning

Keep your family safe and warm!

HULL HVAC
Heating, Cooling & Duct Cleaning Specialist

815-561-6551
www.HullHVAC.com
527 2nd Ave Rochelle, IL 61068

Precision Furnace Clean & Check
\$85.00
Includes **FREE** carbon monoxide test

24/7 Emergency Service

Commercial & Residential Roofing

Residential Concrete Driveways, Flatwork and Foundations

- Shingled Roofs
- Flat Roofs
- Metal Roofs For Farm Facilities
- Custom Built Homes
- Additions

FREE ESTIMATES

561-0099 Tim & Roger Bruns, Owners
Established 1997
www.brunsconstructioninc.com

Advertise Here

What Service Do You Offer?

562-4171

The Rochelle News-Leader

SPORTS

HUBS: Rochelle breaks school record with win over Freeport

From page 1

After a second-period reversal made the score 6-0, Villalobos escaped early in the third period before notching another takedown and near fall to surge ahead 11-0, Villalobos pinned Tolentino with 14 seconds remaining in the match to seal the 170-pound bout and put Rochelle ahead 48-5.

“Our strengths are that we work hard in the wrestling room and when we lose our matches, we figure out what went wrong so we can correct our mistakes,” Villalobos said. “Our goals are to win a conference championship and make it down to the dual state tournament. We have to keep working hard during practice and we have to continue pushing ourselves and each other.”

Harvard’s Gabriel Sanchez erased a 3-2 deficit in the 182-pound bout, where a cradle attempt from junior Brock Metzger resulted in a self-pin and six points for the Hornets. Harvard added another win during the 195-pound bout, where Edgar Hernandez overcame a 3-0 deficit with a takedown and a near fall during the third period to earn a victory over senior Jorge Driggs.

Rochelle won the final three contests of the



(PHOTO BY RUSSELL HODGES)

Freshman Roman Villalobos looks for the pin against Harvard’s Charly Tolentino during the Rochelle Hub varsity wrestling match against the Hornets on Wednesday. Villalobos won the bout by fall as the Hubs took down the Hornets 57-14 in nonconference action.

dual against the Hornets. Sophomore Kaiden Morris totaled three takedowns in a 9-4 decision over Riley Vest in the 220-pound bout and sophomore Robert Stoffel rode out Yair Morales for a 1-0 decision in the 285-pound bout.

Freshman Keagan Albers brought the dual victory home for the Hubs, taking an early lead with a takedown and overcoming a third-period penalty for a 3-2 decision over Owen Vail in the 106-pound bout.

Freeport

The Rochelle Hub varsity wrestling team broke the school record for most dual victories in a single season, defeating Freeport 60-19 in nonconference action on Tuesday to eclipse the record of 22 victories set during the 1984-85 and 2015-16 seasons.

Junior Tommy Tourdot (113) as well as freshmen Keagan Albers (106) and Deegan Schabacker (120) each received forfeits to begin the dual match

against the Pretzels. Freshman Frank Nasca extended the Rochelle lead to 24-0 after recording a second-period fall against Anton Young at the 126-pound class. Sophomore Weylin Nay took a forfeit for the Hubs in the 132-pound bout.

Freeport earned its first win of the dual in the 138-pound bout, where Dayvion Fernandez outlasted junior Riley Damask for a 10-2 major decision. Freshman Brenden Voight

brought the Hubs back with a second-period fall over Maddox Olsen in the 145-pound bout before sophomore Jordan Bly received a forfeit in the 152-pound bout. Sophomore Erich Metzger followed with a first-period fall against Donavyn Fernandez in the 160-pound bout.

Sophomore Matthew Lynn took a forfeit in the 170-pound bout to give Rochelle a 54-4 lead in the dual match. Freeport’s

Michael Tillmon notched a first-period fall over junior Mateo Hughes in the 182-pound bout before senior Jorge Driggs received a forfeit for the Hubs in the 195-pound bout.

The Pretzels won the final two contests, with Dawson Holland scoring a second-period fall over sophomore Colton Czeka in the 220-pound bout and Sami Odeh holding off sophomore Robert Stoffel for a 3-2 tiebreaker win in the 285-pound bout.

RTHS Boys Basketball

Luxton scores 31 points as Hubs fall at Kaneland

Junior guard finishes 14-of-21 from the field in 86-64 defeat Tuesday night

BY RUSSELL HODGES
SPORTS EDITOR

MAPLE PARK — Junior Eli Luxton’s 31 points on 14-of-21 shooting and seven rebounds weren’t enough for the Rochelle Hub varsity basketball

team during Tuesday evening’s Interstate 8 Conference matchup against Kaneland.

Four Knights finished in double figures as Kaneland outpaced Rochelle 86-64. Parker Violett and Gevon Grant each

scored 18 points for the Knights, while Troyer Carlson added 17 points and Johnny Spallasso totaled 15 points. Sophomore Cayden Moore chipped in 13 points with three rebounds and two assists for the Hubs (6-12,

2-7 Interstate 8), who will face Morris on the road before hosting Streator this weekend.

Rochelle struggled with ball control in the game against the Knights, committing 24 turnovers which led to 37 points

for Kaneland. Both teams finished with 19 offensive rebounds, but the Knights held the slight advance in defensive rebounds, outworking Rochelle to a 17-11 margin.

Junior Jack Tracey finished with nine points,

five rebounds, three deflections and two assists for the Hubs in the loss. Sophomore Carson Lewis recorded six points and three assists, while Luxton led the Rochelle defense with three steals and four deflections.

RMS Wrestling

(PHOTOS BY MICHAEL PRICE)



Rochelle Middle School hosts nonconference dual match against Kaneland Harter

The Rochelle Middle School wrestling team held a nonconference dual match against Kaneland Harter on Tuesday, finishing with a 13-7 record over 20 individual bouts. Several Royals recorded falls including Tyson Pavlak (bottom left), Eliud Lombardia (top right), Angel Hernandez (top left) and Brandin Kirk (bottom right) as well as Hadley Losoya, Aaron Hernandez, Rafael Herrera, Chris O’Neil, Blake Shelby, Wilson Nay and Benjamin Morris. Rochelle faced DeKalb Huntley and DeKalb Rosette on the road Tuesday, Jan. 10 before battling Sycamore on the road Thursday, Jan. 12 in North Central Junior Conference action.



ROCHELLE
News-Leader

Rochelle
Community Unity

Shop • Play • Stay

9 Biggest Benefits Of Shopping Rochelle First



Youth programs, schools and non-profit groups look to our businesses first when fundraising.

These community-minded businesses donate faithfully to local youth sports programs, community clubs, nonprofit groups and churches – just to name a few. Shouldn't we look to those same businesses first when we need goods and services? Of course we should!



High rate of return. For every \$100 spent in independently owned stores,

\$68 returns to the community through payroll, taxes and other expenditures. Online orders return absolutely nothing to Rochelle, IL.



Seeking health care in your hometown brings the comforts of receiving qualified

care from people you know and trust. Whether it be a trip to the dentist, regular health care screenings, a visit to a specialist or an emergency, you need not travel. It's all right here.



Banking with people who know you is a luxury found only in hometowns.

You don't have to show your ID every time you go in. You can get a loan from people who know you and understand your needs, whether it be money for your first car or to help your business grow. Local banks believe in the value of community members helping one another.



No one wants to have to make an insurance claim, but it's painless when your agent is your neighbor.

You don't have to convince them that there was a hail storm, or that the wind nearly took your roof off. They know because they live here. Which do you want when you've had a bad day: A face-to-face meeting with your local agent, or a machine answering the phone at that big national insurer that advertises on TV?



Time is money.

It's simple math (especially when you figure in gas mileage.) Shopping locally can actually save you both time and money!



Customer service after the sale is invaluable. Local retailers not only take responsibility for the product

they sold, they will often fix it or replace it – no questions asked. Appliances, furniture, computers and electronics sometimes have glitches. Would you rather box yours up, send it to who knows where, and wait six to eight weeks, or just go back to the nice guy that helped you when you bought it?



Keeping it local encourages community growth. By choosing to do business locally,

you help maintain Rochelle's diversity, charm and appeal; which attracts new community members.



One word: Jobs.

When you do business of any kind in Rochelle, it creates and maintains jobs for others in our area. A healthy employment rate is the cornerstone of all economies. How can you help the economy recover? Start at home.

Classified Marketplace

FREE!

Sell your household items for free.
Total value of item must be \$200 or less. (15 words - one week - 7 publications - price must be listed)



ROCHELLE • HILLCREST • CRESTON • STEWARD • KINGS • ASHTON

101 LEGAL NOTICE

PUBLIC NOTICE
Public Notice is hereby given that on January 13, 2023, a certificate was filed in the Ogle County Clerk's Office setting forth the names and post office address of all of the persons owning, conducting and transacting the business known as: Hub City Tax Prep Solutions, 11141 E Fisher Rd, Rochelle, IL 61068
Dated: January 13, 2023
Laura J. Cook, Ogle County Clerk
No. 0114
(Jan. 15, 22 and 29, 2023)

PUBLIC NOTICE
Ogle County Housing Authority has developed paperwork related to its Annual Agency Plan process and Five-year Capital Fund Program budgets for Fiscal Year beginning July 1, 2023 in compliance with current HUD regulations. They are available for review at the Authority's Office located at 1001 Pines Road, Suite A, Oregon, IL. The office is open Monday through Friday between 8:00AM and 4:30PM. A public hearing will be held on March 8, 2023 at 12:00 PM.
No. 0117
(Jan. 22, 2023)

PUBLIC NOTICE
The City of Rochelle is proposing to borrow funds from the Illinois Environmental Protection Agency Public Water Supply Revolving Fund Loan Program for improvements to the City's water system. The water system improvements include the construction of a new water treatment plant at the existing Well No. 8 property located at 1015 South Caron Road, Rochelle, IL. The City received the Project Summary and Notice of Intent to Issue a Categorical Exclusion from Detailed Environmental Review from the Illinois Environmental Protection Agency for the water system improvements, and the City is required to notify the public of the project in accordance with the Illinois Environmental Protection Agency Public Water Supply Revolving Fund Loan Program rules. The Project Summary and Notice of Intent to Issue a Categorical Exclusion from Detailed Environmental Review document will be available for inspection by the public for a period of 10 days from the date of this notice at the City Hall located at 420 North 6th Street, Rochelle, IL 61068 from 8:30 am to 3:30 pm Monday through Thursday and 8:30 am to 11:30 am on Friday.

Public comments are encouraged, and the City of Rochelle and the Illinois Environmental Protection Agency will accept written comments on the project during a 10 day comment period following the publication of this notice. Written comments can be made to Mr. Adam Lanning, Water/Water Reclamation Superintendent, Rochelle Municipal Utilities, PO BOX 456, Rochelle, IL 61068, or to Mr. George Lambert, Illinois Environmental Protection Agency, Bureau of Water, Infrastructure Financial Assistance Section, P.O. Box 19276, Springfield, Illinois 62794-9276.
Date: January 22, 2023
Rose Huérano, City Clerk
No. 0118
(Jan. 22, 2023)

STATE OF ILLINOIS, CIRCUIT COURT, OGLE COUNTY
Request for Name Change, Minor Child Case No. 23 M3 000279
Request of Isabella Johanna Nunez to appear in court March 14, 2023, Room 205, Ogle County Courthouse, 106 S. 5th

Street, Oregon, IL, at 9 a.m.
Proposed name change of minor child from Isabella Johanna Nunez to Isabella Johanna Clavellina Nunez
Requested by Blanca Araceli Nunez on January 13, 2023
No. 0121
(Jan. 22, 29 and Feb. 5, 2023)

101 LEGAL NOTICE

This publication does not knowingly accept fraudulent or deceptive advertising. Readers are cautioned to thoroughly investigate all ads, especially those asking for money in advance.

105 BUSINESS OPPORTUNITIES

"This publication does not knowingly accept fraudulent or deceptive advertising. Readers are cautioned to thoroughly investigate all ads, especially those asking for money in advance."

BE YOUR OWN BOSS!
Health & Wellness Industry. No experience necessary. Flexible Hours. Start Your Future Today! Call Now! Rick 630-965-1470. (01-25-23)

113 FINANCIAL

NOTICE Advance Fee Loans or Credit Offers
Companies that do business by phone can't ask you to pay for credit before you get it. For more information, call toll-free 1-877-FTC-HELP. A public service message from your hometown newspaper and the Federal Trade Commission.

119 ANNOUNCEMENTS

"This publication does not knowingly accept fraudulent or deceptive advertising. Readers are cautioned to thoroughly investigate all ads, especially those asking for money in advance."

127 SERVICES AND REPAIRS

Furman's Lawn Care and Tree Work. Fall clean up, gutters and more. Fully insured. In business since 1999, Rochelle and surrounding areas. Call Jeremy Furman at 815-761-9619. Please leave a message, will return call ASAP.

201 DOMESTIC/CHILD CARE

NO INDIVIDUAL, unless licensed or holding a permit as a childcare facility, may cause to be published any advertisement soliciting a child care service. A childcare facility that is licensed or operating under a permit issued by the Illinois Department of Children and Family Services may publish advertisements of the services for which it is specifically licensed or issued a permit. Your Hometown Newspaper strongly urges any parent or guardian to verify the validity of the license of any facility before placing a child in its care.

301 ANTIQUES

WANTED TO BUY:
Vintage Metal and Wood Signs, Milk Bottles & Local Advertising, Oak Icebox, Iron Door Stop and Antique Lighting... Call Dick Harms at 815-562-2928 or email dickharms@hotmail.com

ANTIQUES WANTED: I pay cash for antiques; furniture, glassware, pottery & crocks, tin & iron toys, sterling silver, decoys. If it's antique, I'm interested in looking! Call 815-562-2928 or email dickharms@hotmail.com

307 MISCELLANEOUS FOR SALE

BUNDLED Newspaper
-\$3 per Bundle. End Roll-Cost Depends on Weight of Roll. Available Monday-Friday 815-562-4171 (8AM-NOON ONLY) Rochelle News Leader.

SPLIT firewood for sale.
Contact 779-251-0254. (02-13-23)

405 HOUSES FOR SALE

ALL REAL ESTATE advertised herein is subject to the Federal Fair Housing Act, which makes it illegal to advertise any preference, limitation or discrimination based on race, color, religion, sex, handicap, familial status, or national origin, or intention to make any such preferences, limitation or discrimination. We will not knowingly accept any advertising for real estate which is in violation of the law. All persons are hereby informed that all dwellings advertised are available on an equal opportunity basis.

505 BUSINESS PROPERTY FOR RENT

Office Spaces for Rent. 1054 Lincoln Hwy., Rochelle. Call 630-544-9673

INFORMATION

Office Hours:
8 a.m. to 5 p.m. (Monday-Friday)
Phone:
815-562-4171
Fax:
815-562-2161
Email:
classifieds@rochellenews-leader.com
Address:
211 Hwy. 38 E., Rochelle
Mail:
P.O. Box 46
Rochelle, IL 61068

DEADLINES:
Sunday News-Leader:
Thursday, 2 p.m.
Tuesday Shopping News:
Friday, 10 a.m.
Wednesday News-Leader:
Monday, 4 p.m.
(Deadlines subject to change during holiday times)

All classified marketplace line ads will appear in the following 7 print publications and on 5 high-traffic newspaper websites:
• Rochelle News-Leader • Ogle County Life • Rochelle Shopping News • Ashton Gazette • Amboy News • Mendota Reporter • Mendota Money Saver

Call for pricing that starts at \$32.99 for private party ads and \$44.60 for commercial business ads and \$19.99 for garage sale ads.

DISCLAIMER:
If your advertisement appears incorrectly, notify us immediately. We will not be responsible for more than one incorrect insertion, and will only credit customer for one insertion.

307 MISCELLANEOUS FOR SALE

NEW MILFORD REFRIGERATION

NEW, USED SCRATCH & DENT
• Refrigerators • Freezers
• Washers/Dryers • Stoves

We also carry a large selection of refurbished appliances with a warranty.
6331 11th Street, Rockford
815-874-2257

11222020



IWantToBeRecycled.org



KEEP AMERICA BEAUTIFUL



Your Local Newspaper:

A Great Learning Tool for Young Readers!

WINTER SURVIVAL

How to make driving in inclement weather more safe

IMPAIRED visibility can be a safety hazard while driving. Everything from sun glare to hail can affect a driver's ability to see the road and navigate it effectively. Before drivers get behind the wheel, they should make note of their local forecast and make a plan for what to do if rain, snow or other conditions make it challenging to drive.

The International Association of Traffic and Safety Sciences indicates that, based on an examination of crash test data conducted by the National Oceanic and Atmospheric Administration, the "likelihood of a crash increases during periods of low visibility, despite the tendency for less traffic and for lower speeds to prevail during these times."

Drivers can take several steps to improve their visibility when driving in poor weather conditions.

Inspect and change windshield wiper blades. Wipers are instrumental in clearing precipitation away from the windshield. If they're not functioning properly, wipers cannot do their jobs. Drivers should replace their wipers at the first indication that they are no longer effective. In



some conditions, wipers can freeze or stick. Drivers should then pull over and clean the wipers manually.

Clear obstructions. Always make sure the windshield is clear before driving. This can include removing ice and snow in the winter and cleaning off mud or bug splatter in the spring and summer. Use the front and rear defrost

if condensation fogs up windshields and windows.

Slow down. Foul weather can reduce drivers' ability to see far into the distance. Drivers should always drive slower in inclement weather in order to improve reaction time.

Top off fluids. Always keep the windshield washer reservoir full and keep

extra fluid in the trunk. In addition, look for a fluid that does not freeze in very cold temperatures.

Learn how to drive in fog. Each year, more than 38,700 vehicle crashes occur in fog, states the Federal Highway Administration. Travelers Insurance recommends slowing down, staying focused and using regular headlights

and not high beams when driving in fog.

Go out only if necessary. In snowy or icy conditions, drive only if it's absolutely necessary, as snow and ice can impair visibility and make roads slick, says AAA.

Avoid driving at dusk and dawn. The human eye can have trouble adjusting to rapidly changing light

and darkness conditions, which are common at dusk and dawn. If possible, drivers should make trips during the heart of the day, especially if poor lighting conditions typically make it difficult for them to drive.

Drivers can take steps to improve visibility when inclement weather makes roadways hard to navigate.

Four factors to consider to maintain winter safety

MANY changes are to be expected as fall gives way to winter. Temperatures drop for much of the country, and depending on where one lives, snow, wind and ice are to be expected.

As beautiful as snow-covered landscapes can be, winter presents unique hazards, notably slippery roads and surfaces. Chilly temperatures also can put people at risk if they spend prolonged periods outdoors unprotected.

According to the insurance company Carsurance, more than 156,000 crashes occur annually due to icy roads. Roughly 17 percent of all vehicle crashes happen in winter conditions. Winter hazards are not exclusive to driving, however. That means winter safety involves a consideration of a host of factors.

While slippery surfaces may contribute to some accidents, visibility can quickly change with winter weather. Blowing snow can contribute to whiteout conditions. In addition, fog can be hazardous to drivers, aviators and mariners and contributes to thousands of travel accidents every year, advises the National Weather Service. It's important to slow down, leave plenty of distance, use your low-beam headlights, and recognize when it may be safest to pull over, such as when visibility is significantly compromised.

Shoveling snow or using a snowblower are common wintertime activities. Yet strenuous levels of activity in cold temperatures could put people at risk of heart attack, particularly if they are not acclimated to physical activity. Always warm up prior to shoveling snow to prepare the body for exercise. Go slowly and take frequent breaks. Avoid twisting and tossing snow over your shoulder, which can contribute to back injuries.

Winter weather means turning up the heat or doing more indoor cooking. Carbon monoxide is produced through the burning of fuel in various forms, including stoves, engines, gas ranges, portable generators, and grills. The National Safety Council says carbon monoxide is an odorless, colorless gas that can go undetected as it builds up in enclosed spaces. Never warm up the

car inside of a contained garage. Do not use portable flameless chemical heaters indoors, and have furnaces, water heaters and other fuel-burning appliances checked and serviced by a qualified technician annually. Be sure that carbon monoxide alarms are on every floor of the home, and take it seriously if the alarm goes off.

Black ice is a common

winter foe. Black ice forms when temperatures rise above freezing during the day, melting any snow on the ground and causing surfaces to become wet. If the temperature drops once more while the ground is wet, a thin, transparent sheet of ice can form. Black ice also may

occur if moisture in the air condenses and forms dew or fog, and then the temperature drops below freezing, says the National Weather Service. Black ice gets its name because it looks black on asphalt roads. However, it also can form on sidewalks and overpasses, or spots

shaded by trees or other objects. Slowing down and exercising extreme caution are essential.

Winter is a beautiful season. But it can be just as hazardous as it is awe-inspiring. Taking steps to stay safe in unpredictable conditions is a necessity each winter.

Bushman's Service
On Farm Tire Service
Milledgeville, IL
815-225-7411

HANK'S REPAIR
Hank Kaiser, Owner
General Automotive Repair
54 Stephenson St.
German Valley
362-3451

Full-Service Auto Repair & Maintenance

From factory-schedule maintenance to emergency repairs and towing, we offer trusted service and great rates for unbeatable value.

Blake Automotive
3678 IL 64, Mt. Morris
815-734-7228

**Happy New Year from
all of us at R&R!**



815-406-8345

**To say THANK YOU we are
giving 25% off all alignments
thru the month of January!!**

**Schedule your
appointment today!!**

WINTER SURVIVAL

Signs of winter lawn damage

MOTHER Nature can be harsh on a lawn, and it's up to homeowners to nurse their lawns back to health after they endure the elements. That's often the case when winter ends and homeowners uncover signs of damage to their lawns.

Homeowners cannot begin to repair winter lawn damage until they learn to identify it, and the following are some telltale signs that winter took a harsh toll on a landscape.

Wilted grass: Many things can cause grass to wilt over the course of winter, so homeowners may have to put on their sleuth's cap to de-

termine why grass that was healthy as recently as late fall is now wilted as the spring bloom begins. Grass that's adjacent to walkways and driveways might have wilted due to the application of de-icing solutions. Such products can prevent the formation of ice on driveways and walkways. However, when they're tracked onto the grass by people or animals or blown there by winter winds, grass can wilt. A deep watering in spring can flush any lingering solution from the lawn. In future winters, homeowners can be as careful as possible when applying de-icing solutions, making a concerted effort to avoid spreading

any onto the grass and limited applications to areas of the driveway and walkways that are not close to the grass.

Brown patches: The National Association of Landscape Professionals notes that brown patches in a lawn often develop after heavy snowfall. Such patches tend to develop where large piles of shoveled snow were deposited, so homeowners can inspect alongside driveways and walkways.

The NALP advises homeowners to rake away part of the brown patches first. If green tissue is emerging beneath, then the lawn will likely be fine in due time. However, if the area

beneath is not green and surrounding areas are already turning green, homeowners may need to rake up dead tissue before applying topsoil to the affected spots. Once topsoil is spread, some grass seed can be spread and the grass should regain its green glory.

Gray or pink grass: Another indicator of winter lawn damage linked to snow is gray or pink grass. The NALP reports that this is a byproduct of snow mold caused by lingering snow. Action may be unnecessary, as the NALP notes these circular patterns often go away on their own. If not, raking the affected areas might be enough to get the lawn on the road to recovery. If the issue continues to linger after raking, a topsoil application and subsequent seeding may be necessary.

These are three common signs of winter lawn damage in areas where snowfall is significant during the coldest months of the year. Homeowners

concerned about their damaged lawns are urged to contact a local landscape professional to correct any issues that linger into spring.



Understanding R-Values

INSULATION recommendations are based on certain factors that coordinate with regional climate zones to increase energy efficiency. These factors are known as R-values.

The R in R-value stands for "resistance," and refers to how certain products resist the flow of heat through walls, floors and ceilings. Products should reduce heat escape so heat is kept on the right side of the wall. In summer this means outdoors, in winter it means indoors. R-values relate not only to insulation, but also to walls, windows and other barriers. R-values also coordinate to the type, thickness and density of the material being used.

The higher the R-value, the more resistant to heat the product is. The U.S. Department of Energy coordinates R-value to climate zones 1 through 7 (1: Tip of Florida; 7: Canadian border). A higher R-value is needed in Zone 7 and a lower R-value is necessary in Zone 1.

Those embarking on home improvement projects that involve choosing between R-values are urged to speak with

a professional or to visit the Department of Energy website (www.energy.gov) to determine which R-Value is ideal for their homes.

DAN'S AUTO REPAIR
Complete Auto & Truck Services
Locally Owned & Operated for 28 Years
Time to get your vehicles ready for Fall & Winter!

- Minor to Major • Brakes
- Oil Change • Complete Diagnostics
- Engine/Transmission
- Domestic & Most Foreign Cars

815-734-6267

4377 E. Rt. 64 Dan Raney
Mt. Morris, IL Owner/Operator

Service Now Heating
Helping **16** Homeowners
by "giving away"
FURNACES FOR \$941

If you qualify, local utilities may offer up to \$650 in rebates towards your new system**

Dear Neighbor:

I have great news for your wallet if your furnace is over 12 years old. Allow me to explain...Every year, the months of January, February, & March can be slow for my business. I employ great people and want to keep them working during these long, slow months. That is why I've come up with a Win Win Situation for both of us.

Every year, the big manufacturers of furnaces & air conditioners guess how many to build to meet the demand. Of course, they're never exactly right. So, they always have some inventory that they must hold over until the next summer season. I went to one of these companies and contracted for the purchase of sixteen Deluxe furnaces and air conditioners in the four most popular sizes used in Kane County. And, because of the quantity and time of year, I was able to buy them at drastically reduced prices.

They are brand-new Deluxe Models. They are NOT the seconds or "blends" or standard "builder" models. They are factory-fresh furnaces and air conditioners and have a full 10-year factory warranty.

How To Get A Furnace For Peanuts

If you are interested in a new heating/cooling system (but only if one of the four sizes I have will fit your house, of course), I am "giving" you the furnace and all I ask for is the \$941 in labor & material costs for installation along with the purchase of your air conditioner.

Perfect Fit For Your Home

I will come out and measure your home (and determine the availability of the proper size). Don't forget, I only have

16 matched Deluxe Systems in four sizes. When they are gone, this remarkable offer ends also. Just call 815-758-8484.

Absolutely No Obligation

After I completely explain the installation, there is absolutely no obligation. If you decide you don't want to take advantage of the spectacular savings... That's OK.

You Can Buy With NO Cash*

You don't even have to pay me right away. I have set up a terrific 0%* payment plan.

Fuel Efficiency Guarantee**

I'm so confident that you will save at least 25% on your heating and cooling bills (I'm projecting more like 30%), that I will pay you the difference for a year if you don't! I'll show you exactly how this works. If these heating and air conditioning systems were not among the best on the market, I couldn't afford to make such a promise.

Why This Offer Can't Last

I only have a few of each of the four sizes. When all of the air conditioners are sold and all the furnaces are "given" away, that's it. There are no more at this price. Call Bre now at 815-758-8484 to set up an appointment for your no-obligation survey.

Warmly,

Chris Carpenter



*With approved credit. Ask for Details. **With high efficiency upgrade.

Service Now
HOME SERVICES
PLUMBING • SEWER
HVAC • ELECTRICAL
815-562-4440



Archer
ALIGNMENT, INC.
COMPLETE AUTO REPAIR

Your NAPA Auto Care Center

Jacob Schneider
Owner-Operator
ASE Certified



Christie Gabriel
Service Advisor
Office Manager

Dana Doty
Retired

424 1/2 E. Lincoln Hwy. • DeKalb
(815)756-6246



INSTANT \$1,400
ComEd UTILITY REBATE
WITH THE PURCHASE OF A YORK
HMH7 16 SEER HEAT PUMP SYSTEM

10 YEAR
10 YEAR
*Product Registration Required

The YORK® HMH7 Heat Pump is the ideal solution for spaces that require a compact design and a higher level of comfort. All with standard 10-year Compressor Limited Warranty, 10-year Parts Limited Warranty and available extended warranties for up to a full system replacement.

Exceptional Comfort, Value & Flexibility

- ▶ 16 SEER high-quality, efficient comfort
- ▶ 40% smaller footprint compared to traditional units
- ▶ 36% quieter operating sound
- ▶ Snow and organic debris don't hamper operation

Loescher
HEATING AND AIR CONDITIONING
*The single source.
The right choice.*

1 855 499 HEAT www.LoescherHVAC.com
Top-Rated Local HVAC Pros, Trusted For Over 50 Years!

Freeport, IL Sterling, IL Lena, IL Monroe, WI

Service Now Heating
Helping **16** Homeowners
by "giving away"
FURNACES FOR \$941

If you qualify, local utilities may offer up to \$650 in rebates towards your new system**

Dear Neighbor:
I have great news for your wallet if your furnace is over 12 years old. Allow me to explain...Every year, the months of January, February, & March can be slow for my business. I employ great people and want to keep them working during these long, slow months. That is why I've come up with a Win Win Situation for both of us.

Every year, the big manufacturers of furnaces & air conditioners guess how many to build to meet the demand. Of course, they're never exactly right. So, they always have some inventory that they must hold over until the next summer season. I went to one of these companies and contracted for the purchase of sixteen Deluxe furnaces and air conditioners in the four most popular sizes used in Kane County. And, because of the quantity and time of year, I was able to buy them at drastically reduced prices.

They are brand-new Deluxe Models. They are NOT the seconds or "blends" or standard "builder" models. They are factory-fresh furnaces and air conditioners and have a full 10-year factory warranty.

How To Get A Furnace For Peanuts
If you are interested in a new heating/cooling system (but only if one of the four sizes I have will fit your house, of course), I am "giving" you the furnace and all I ask for is the \$941 in labor & material costs for installation along with the purchase of your air conditioner.

Perfect Fit For Your Home
I will come out and measure your home (and determine the availability of the proper size). Don't forget, I only have

16 matched Deluxe Systems in four sizes. When they are gone, this remarkable offer ends also. Just call 815-758-8484.

Absolutely No Obligation
After I completely explain the installation, there is absolutely no obligation. If you decide you don't want to take advantage of the spectacular savings... That's OK.

You Can Buy With NO Cash*
You don't even have to pay me right away. I have set up a terrific 0%* payment plan.

Fuel Efficiency Guarantee**
I'm so confident that you will save at least 25% on your heating and cooling bills (I'm projecting more like 30%), that I will pay you the difference for a year if you don't! I'll show you exactly how this works. If these heating and air conditioning systems were not among the best on the market, I couldn't afford to make such a promise.

Why This Offer Can't Last
I only have a few of each of the four sizes. When all of the air conditioners are sold and all the furnaces are "given" away, that's it. There are no more at this price. Call Bre now at 815-758-8484 to set up an appointment for your no-obligation survey.

Warmly,
Chris Carpenter



Service Now
HOME SERVICES
PLUMBING • SEWER
HVAC • ELECTRICAL
815-562-4440