



# ROCHELLE News-Leader

WEEKEND EDITION | WWW.ROCHELLENEWS-LEADER.COM

Today's RNL issue  
sponsored by  
Community  
Unity  
member:

VINCE'S PIZZA

1071 N. 7th St.  
815-562-7300

Vol. 103 • No. 75

LOCAL NEWS... LOCAL VIEWS

SUNDAY, JAN. 15, 2023

\$1.25

## District facilities update presented Middle school tutoring program discussed Tuesday

BY JEFF HELFRICH  
MANAGING EDITOR

**ROCHELLE** — At Tuesday's meeting of the Rochelle Elementary District Board of Education, Superintendent Jason Harper provided an update on district facilities and future projects.

He said that in recent years, facility plans have shifted and have been reshaped due to supply chain issues and "all sorts of things across the board." Administration wanted to give an update to the board on where various facilities projects stand. In no order of priority and importance, Harper listed current and future projects at elementary district properties.

A multi-year effort is ongoing to upgrade lighting at district facilities to more-efficient LED lighting. Rochelle Middle School recently had HVAC work done to increase climate-controlled spaces and improve existing climate-controlled areas. RMS has also seen work on its locker rooms and gyms. "A lot" of outside exterior concrete work has been done at various district properties, Harper said.



(PHOTO BY JEFF HELFRICH)

**At Tuesday's meeting of the Rochelle Elementary District Board of Education, Superintendent Jason Harper provided an update on district facilities and future projects.**

During the upcoming summer, the roof at Central School will be replaced and the district will review safety and security measures at all of its buildings to make them as safe as possible.

As far as future projects, Harper mentioned that the district's maintenance building on Cherry Avenue is in "a state of disrepair." The "older building" has

a few maintenance staff members in and out of it each day.

"It has major structural issues and we're coming up with some possibilities for improving that building, which would be costly, or modifying our approach with some other type of maintenance building at one of our properties," Harper said.

A project at Tilton School involving windows, HVAC and geothermal work is earmarked for a future summer, Harper said. That school is also being looked at for work to help improve its drop off and pickup situation, which Harper said is a "constant concern" of parents and the public.

See D231 page 3

## Water main project update presented

BY JEFF HELFRICH  
MANAGING EDITOR

**HILLCREST** — At its monthly meeting Wednesday, the Hillcrest Village Board heard an update from Baxter & Woodman on water and street projects.

The majority of the update involved the village's priority 1A water main project that trustees unanimously approved an engineering agreement for in December. In November, the board voted unanimously to approve a \$2.54 million loan application to the Illinois Environmental Protection Agency for the project.

Baxter & Woodman representatives said Wednesday that due to rises in construction costs in the market, the project's loan amount is now slated to be just shy of \$2.7 million.

Baxter & Woodman is aiming for \$1.25 million in principal forgiveness on the loan.

See HILLCREST pg 5

More coverage.  
Less spendage.

Discounts up to 40%  
Get more. Spend less. It's that simple when you get car insurance from us. Like a good neighbor, State Farm is there. CALL FOR A QUOTE 24/7.  
Terri Schaefer, Agent  
Bus: 815-562-7063  
terri.schaefer.115n@statefarm.com

State Farm

KNOW IT  
TODAY



## Moose holds Christmas party

The Rochelle Moose recently held its Kids Christmas Party.  
Page 7

## WEATHER

SUNDAY	MONDAY
HIGH LOW	HIGH LOW
42 30	51 41
TUESDAY	WEDNESDAY
HIGH LOW	HIGH LOW
41 33	40 28

Today's RNL issue  
sponsored by  
Community  
Unity  
member:

Brouns  
TIRE  
(815)-562-4644

516 4th Ave.  
815-561-6861

## OBITUARIES

• LISA DIANE HOLBY

See page 4

## INSERTS

• SCHNUCKS  
• MENARDS

## INSIDE

Local News.....2, 3, 5  
Obituaries.....4  
Opinion.....6  
Community.....7



8 52078 00112 6

## Park district sees new year's influx of REC users 'It's been great meeting new members... we're excited to witness their progress'

BY JEFF HELFRICH  
MANAGING EDITOR

**ROCHELLE** — In recent weeks, the Flagg-Rochelle Community Park District and The REC Center have seen an increase in members amid the new year and resolutions by members of the community, Superintendent of Recreation Andrew Murray said.

"We see our peak membership for the REC Center hit around 2,400 members during the new year," Murray said. "Our membership in previous years has had the same trend. It's been great meeting new members and we're excited to witness their progress over the next few months."

Murray said the park district was excited to increase its group fitness class offerings from December and made them all free for qualifying members in January.

"We felt it was important that our members get to try a fun fitness option while they strive to improve their health," Murray said. "These group fitness classes are great



(PHOTO BY JEFF HELFRICH)

**In recent weeks, the Flagg-Rochelle Community Park District and The REC Center have seen an increase in members amid the new year and resolutions by members of the community, Superintendent of Recreation Andrew Murray said.**

ways to connect and almost create a 'buddy system' for those trying to accomplish their goals. In addition, our great staff continue to work hard each day ensuring the facility maintains our cleanliness

standards during this higher-usage time."

Murray said that group fitness plays a large part in the park district's efforts to encourage new users to continue their membership. Those programs

provide opportunities for socializing, creating accountability networks, building connections with staff and members having more fun while working out, he said.

The park district offers

various youth and adult programs that can be found on its site to help those with new year's resolutions to continue working on their goals.

See REC page 2

Exclusively at the Jeff Perry Auto Group | Peru-Rochelle

SUMMIT  
CERTIFIED PRE-OWNED

WHAT YOUR SUMMIT CERTIFIED PRE-OWNED WARRANTY OFFERS:

WE DARE YOU TO COMPARE

6 - MONTH/6,000 MILE BUMPER-TO-BUMPER

126 POINT INSPECTION

CERTIFIED TECHNICIANS

MOST MAKES AND MODELS

PEACE OF MIND PRE-OWNED CAR BUYING

NEW 2022 CHEVY TRAX LT

Sale Price  
\$23,965\*

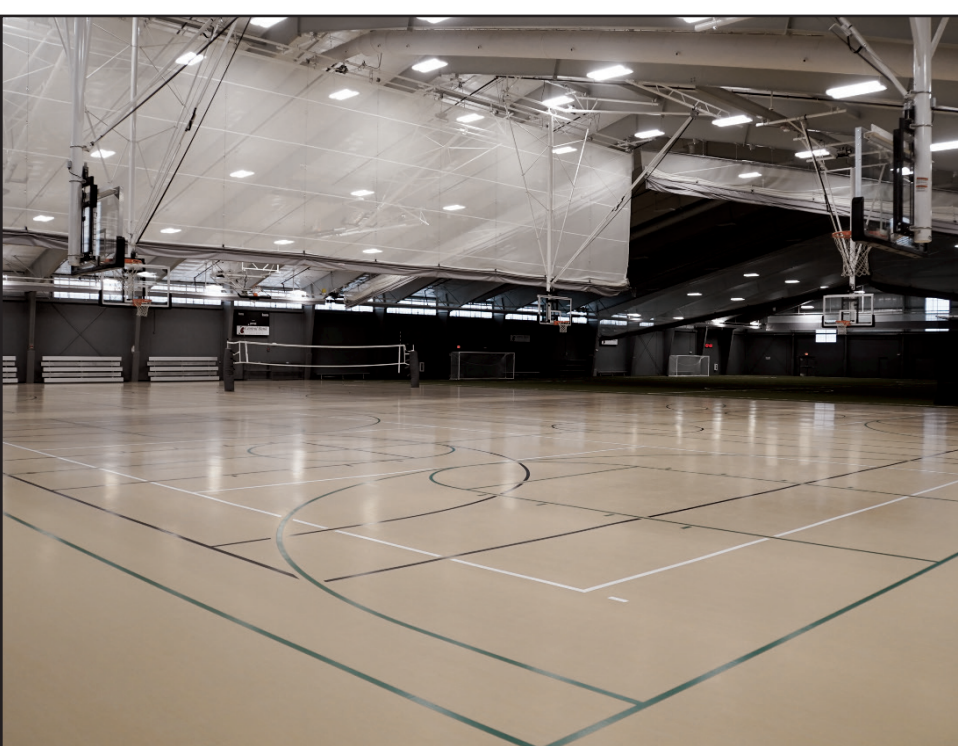
4.9% financing available!

Auto Group  
JEFF PERRY

815-562-8787 JEFFPERRYAUTOS.COM



# LOCAL NEWS



(PHOTOS BY JEFF HELFRICH)

Flagg-Rochelle Community Park District Superintendent of Recreation Andrew Murray said the park district was excited to increase its group fitness class offerings from December and made them all free for qualifying members in January. Murray said that group fitness plays a large part in the park district's efforts to encourage new users to continue their membership.

## REC: Superintendent Murray discusses influx of new members

From page 1

"Our group fitness instructors and personal trainers are constantly glowing with reports of progress being made each

week by various district residents," Murray said. "We have one member who started his journey at the REC last January, and has lost over 100 pounds to date. He is just one

amazing example of the success stories that are happening here each day." Murray said it's "always exciting" to see the community enjoy the REC and the start to 2023

has been no different for him. "Whether that's new faces using our fitness center, kids starting swim lessons for the first time, larger participation in our

group fitness classes, or those using our fieldhouse walking track during these winter months," Murray said. "Our travel basketball league also started this month, which

brought a crowd of over 400 people on the first gameday. It's easy to feel a sense of pride when outside communities continue to be amazed by what the REC Center offers."

HEY, PARENTS  
AND GRANDPARENTS!

The ROCHELLE NEWS-LEADER'S

# BABY PRAGGER

Photos of babies born in 2022 will run on Wednesday, Feb. 8th, 2023

**\$20**  
prepaid

Deadline:  
Wednesday,  
Feb. 1st

Photos can be returned by mail if you provide a self-addressed, stamped envelope. Please write all information legibly and put the name of the baby on the back of the photo.

High quality photos and information can be emailed to [mfeltes@oglecountyilife.com](mailto:mfeltes@oglecountyilife.com)

**Lorelai LaVonne Grayson**  
January 8



Kaie & Jay Grayson

Grandparents:  
Kirk & Tammy Wiles

## 2023 BABY PRAGGER

BABY'S NAME

, 2022

BABY'S BIRTHDAY

PARENTS

GRANDPARENTS

Send a photo and payment (\$20) along with this completed form to:

**ROCHELLE News-Leader**

211 Hwy. 38 E., PO Box 46  
Rochelle, IL 61068  
815-562-4171

Person Submitting Photo:

Name

Address

Phone

EMAIL (optional)



(COURTESY PHOTO)

Stillman Bank Vice President Retail Banking Kathy Yocum (left) and Stillman Bank Retail Officer Manager Ryan Spradlin (right) present the \$2,500 donation check to Jeni Hardin, executive director - Foundation for Focus House and Brenda Mason, Focus House director.

## Stillman Bank donates \$15,000 with 'purchase with a purpose' campaign

**STILLMAN VALLEY** – Stillman Bank recently ended their "Purchase with a Purpose" debit card campaign in which a \$1 donation was made to local charities with every Stillman Bank debit card transaction up to \$15,000.

Six local, non-profit organizations from the Rock River Valley re-

ceived \$2,500 from this promotion: Habitat for Humanity of Ogle County, Rockford Area Habitat for Humanity, Focus House, Rock River Valley Pantry, Veterans Drop-In Center and Village of Progress.

For more information about this campaign or Stillman Bank's products and services, visit [www.stillmanbank.com](http://www.stillmanbank.com).

Stillman Bank is an independently owned community bank founded in 1882.

The bank has approximately \$600 million in assets and operates full-service banking offices in Byron, Oregon, Rochelle, Rockford, Roscoe/Rockton and Stillman Valley.

## Museum hosting salute to Heaton on Sunday, Jan. 15

**ROCHELLE** – For someone who was told she would never walk, talk, or do well in school, Rochelle Township High School alum Aubrey Heaton has proved them all wrong.

She weighed only one pound at birth and was born with a mild form of cerebral palsy that affected her arms and legs. But that didn't stop her. She has accomplished much in her life and the museum will unveil a new framed poster that recognizes Aubrey's athletic accomplishments on Sunday, Jan. 15 at 1 p.m. at the museum.

As early as 2006 she was winning medals and setting records participating in the National Junior Disability Championships. Most recently she competed in three events

at the 2022 International Wheelchair and Amputee Sports Federation (IWASF) World Games in Portugal, winning a Bronze Medal in the 200-meter dash.

Her mother Cass has always cheered Aubrey on. She shared her thoughts in 2016.

"I think Aubrey gets her strength from all the troubles she's endured. She has straight As. She talks, walks and runs. I think with her determination, she can accomplish anything. To see Aubrey succeed after all the work she has put in and to never quit is inspiring."

In 2022 Aubrey graduated from Carroll University in Wisconsin and has been accepted in the master of arts in military history program at The Citadel University in



South Carolina. She has always had an intense interest in the military and is continuing to pursue her passion in the military and military history through the online program offered at The Citadel University. Aubrey's determination is destined to take her far.

The mission of the Flag Township Historical Society and Museum is to stimulate interest in Flag Township history through education, research, collection and preservation of information for the benefit of the public of today and in the future.



# LOCAL NEWS



## Rochelle VFW Post 3878 presents Queen of Hearts donation checks

(COURTESY PHOTOS)

Rochelle VFW Post recently presented five \$3,120 donation checks totaling \$15,600 from the proceeds from its Queen of Hearts drawing. Recipients included HOPE of Ogle County, the Rochelle Police Department K9 Program, Rockford Sexual Assault Counseling, Pegasus Special Riders and the Village of Progress.

## D231: RMS update presented to elementary board

From page 1

"We've talked about an easement with the city on the southwest corner of our property there, and we've talked about expanding that teacher parking lot to have either a bigger parking lot or a drop off area for parents on the southernmost portion by the sidewalk there," Harper said. "We'll continue to give updates on that when we have a better scope of what's happening there."

The district is currently looking at the future use of a computer lab at Lincoln School that was built for that purpose before each student had their own personal computer device.

At the vacant May School, a portable building on the property has reached the end of its useful life and Harper said the plan is to remove it from the property in the year to come. The portable building may be sold in the future.

"All of these items are things we're looking at and were presented in no order of priority, im-

portance or cost," Harper said. "We want to do these projects in a financially-responsible way. We don't want to get too far behind on these things."

### Tutoring

RMS sixth grade math teacher Jason Deutsch presented an update on the Huskie/Hub Tutoring Program that began at the school this year. The program involves after-school tutoring for middle school students by Northern Illinois University college of education students.

There is no cost to the district for the program other than paying its site coordinator. NIU pays for the supplies and the elementary district keeps any supplies NIU purchases.

Data is the first thing to determine which students are good fits for the program along with teacher recommendations. The program began in October with 17 students.

"It's been going pretty well," Deutsch said. "NIU staff have been great partners. They've brought us a lot of materials and smart tutors. We meet on

Tuesdays and Thursdays and starting next week we'll be meeting four days a week. Mondays and Wednesdays we'll be doing English language arts and Tuesdays and Thursdays will be math, which we started with. We've had some good kids in the program and they've had a lot of fun."

Deutsch said he's noticed positive changes from the tutoring program in his own classroom such as students opening up more, asking questions and being more of a part of the class. The school is tracking the program based on Star testing scores.

"The program has been going very well," Deutsch said. "We've expanded it and we're looking forward to that. And the kids are having fun. We're currently one-to-one with students and tutors. We recently got 10 more kids enrolled and have 27 students on the current roster. NIU has over 100 tutors ready to go. We go from 3:30-4:30 p.m. Parents are responsible for transportation and a few students take the HUB

Program bus home."

### RMS

RMS Principal Jordan Young and Assistant Principal Katie Smith presented an update to the board regarding their school.

RMS is in the process of work on social emotional learning (SEL) goals and is in year two of an advisory time program where students meet with various teachers in the building to build a sense of community and make connections with students and peers across all grade levels, Smith said.

"We've also added some fun activities to this like bingo and escape rooms," Smith said.

"There's been great feedback from students and staff. We also have some SEL activities that we've been doing with our staff. Earlier this year, we had the Chana Education Center come over and talk to us about strategies that teachers could be using in their classroom, that's been really effective. We look forward to some of our staff sharing their strategies that they're using with each other at our

next school improvement day this month."

Young said the school is continuing work on implementing standards-based grading schoolwide. Sixth grade is in the second year of that practice and seventh grade is in its first year. Eighth grade will start next year.

"We're working towards improving parent communication with that, including in class syllabi and sharing information in the parent handbook," Young said. "This spring, we're shifting our focus to work on building performance descriptors and involving eighth grade teachers in that process ahead of the fall of 2023."

RMS is continuing to use its positive referral program and as of Jan. 1 has seen nearly 600 positive referrals.

"That allows us to get all the great things that happen inside the walls of RMS out into the homes of our students and families," Young said. "We love to read those."

### Audit

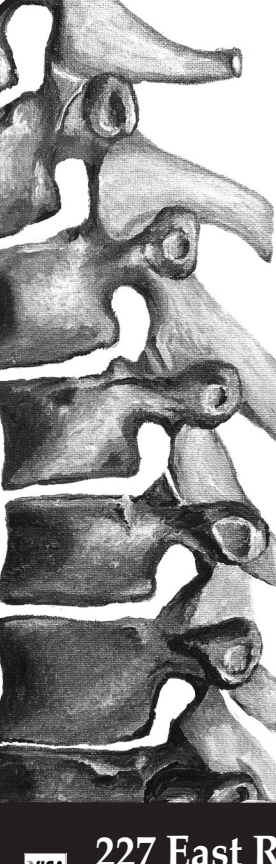
The board heard a report from WIPFLI on its

fiscal year 2022 audit and unanimously accepted it as presented. The district has a total profile score of 3.9 out of four, the same it received last year. It had 340 days cash on hand in fiscal year 2022, compared to 298 the year before.

### Employment

The board unanimously approved certificated employment changes including the resignation of Sarah Lavieri (speech language pathologist at Tilton and RMS), the transfer of Katie Sullivan (long-term substitute at Central to second grade teacher at Central) and the employment of Priscilla Escatel (paraprofessional at HUB Program at Lincoln), Gregory Ricketts (substitute teacher as-needed) and Sadie Matura (substitute teacher as-needed).

Support staff changes were also unanimously approved including the resignation of Jennifer Brown (tech support specialist) and the employment of Moncerat Rocha (paraprofessional, Stepping Stones Preschool) and Lori Reish (cafeteria, Lincoln and Tilton).



## Your Spine... The Backbone of Good Health

- Neck, Shoulder & Arm Pain
- Lower Back, Hip & Leg Pain
- Tingling or Numbness
- Joint Pain
- Headaches
- Dizziness

### Dr. Chad Piller

ROCHELLE CHIROPRACTIC CLINIC

*New Patients Welcome.*

227 East Rte. 38, Rochelle • 815-562-8706  
www.rochellechiropractic.com

Most Insurances Accepted

## Lincoln Manor

APARTMENT AVAILABLE

Owned and operated by Lutheran Social Services of Illinois (LSSI) offering apartment living for older adults in Rochelle and the surrounding communities.

**Rent based on 30% of a Resident's Adjusted Gross Income**

- Secure Entry System
- Community room with kitchen
- Activities
- On-site coin operated laundry
- On-site management office
- Dependable 24/7 maintenance service
- On-site parking for residents

Full time Social Service Coordinator is available to assist residents

**For more information, please call 815-562-1404**

615 N. Lincoln Hwy.  
Rochelle, IL 61068  
TTY 847-390-1460

MANAGED BY:  
**Lutheran Social Services of Illinois**  
www.LSSI.org

EQUAL HOUSING OPPORTUNITY



# LOCAL NEWS

## Obituaries

### Lisa Diane Holby

**DAVIS JUNCTION** — Lisa Diane Holby, 60, passed away Wednesday, Jan. 11 at her home in Davis Junction. Arrangements are pending with the Unger-Horner Funeral Home in Rochelle. [www.ungerhorner.com](http://www.ungerhorner.com)

## Stillman Bank promotes Hughes to president and CEO

**ROCKFORD** — On behalf of the Stillman BancCorp N.A. Board of Directors, Chairman Martin C. Larson is pleased to announce that Thomas R. Hughes has been promoted to president and chief executive officer. In his new position, Tom will be responsible for the overall strategic direction of the bank.

Tom earned his degree in agribusiness from the University of Wisconsin-Platteville and his MBA from Lewis University. He is also a graduate of the Graduate School of Banking in Madison, Wisconsin. Tom joined the bank in 1995 and has over 35 years of banking experience.

Tom has always been very active in the local communities. He has served as a board member for the Ogle County Habitat for Humanity, Stillman Valley Economic Development Committee, Ogle County Fair Association



Thomas R. Hughes

and the Oregon Chamber of Commerce. He has also served as chairperson for the American Cancer Society's Relay for Life and was a member of the capital campaign committee for Rock River Center, Inc.

"Congratulations to Tom on this well-deserved promotion," Larson said. "Over the last 28 years, his leadership skills and passion for banking have been obvious to all of us."

We are very proud of Tom and all of his accomplishments and look forward to seeing his leadership take us to the next level."

Tom currently resides in Stillman Valley with his wife Kathleen. They have three daughters and two granddaughters.

For more information about Stillman Bank, please contact (815) 645-2266 or visit [www.stillmanbank.com](http://www.stillmanbank.com).



(COURTESY PHOTO)

**Rochelle Community Hospital has named Jennifer Finkboner as its' 2022 high performer of the year.**

## Finkboner named RCH high performer of the year for 2022

**ROCHELLE** — Rochelle Community Hospital has named Jennifer Finkboner as its' 2022 high performer of the year. Jen was selected among the 12 high performers of the month in 2022. She has been employed at the hospital for three years in its food and nutrition department.

"Over the past several months, the food & nutrition department was hit hard with staff testing positive for COVID-19. During these unfortunate times, Jennifer picked up eight-hour shifts, worked holidays, weekends and continued to perform her daily task without a complaint or frown. Despite being short staffed for long periods of time, the

department was able to provide excellent service to our patients and staff, because of Jennifer's ability to delegate and lead. I am very lucky to have an employee with such compassion and commitment. The department has come such a long way and Jennifer's contributions have been vital to our success."

"I would like to nominate Jen Finkboner for the honor of high performer of the month. Jen is a role model and the definition of a servant leader in the dietary department. When there are shifts to cover, Jen doesn't wait for someone else to step up, she just volunteers to cover. Her abilities in the kitchen always produce exceptional results wheth-

er it is breakfast, lunch, dinner or a catering order. She helps keep Ross well stocked with food and the necessary supplies to keep the dining room hopping. She is truly one of those people that fills so many different roles within her department. If she sees a need, like the serving line getting backed up, she just jumps in to help. She is efficient and pays attention to even the smallest details. When faced with stressful situations, Jen is calm and focused and helps others to be that way as well. She is a wealth of knowledge and talent and she provides services and products that are second to none. Thank you Jen, for all your efforts in keeping RCH staff, patients and visitors well fed!"

## Kishwaukee College announces fall 2022 graduates

**MALTA** — Kishwaukee College is proud to announce the graduates

for the fall 2022 semester. Graduation honors are divided into three

categories based on final cumulative grade point average (GPA) on a 4.0 scale: summa cum laude indicates a cumulative GPA between 3.75-4.0; magna cum laude indicates a cumulative GPA between 3.5-3.749; and cum laude indicates a cumulative GPA between 3.25-3.499. Students who fulfill requirements for a certificate and have a final cumulative GPA of 3.25

or higher are awarded a certificate with distinction. Students who are members of the Phi Theta Kappa honor society are recognized as PTK.

The graduate total for the semester is 145 students who completed a total of 162 degrees and certificates for fall 2022.

The following students completed the requirements for graduation from Kishwaukee College:

Creston — Ariel Janae Zuercher, Associate in Arts, Cum Laude.

Esmond — Carly C. Summers, CERT, Basic Nurse Assisting.

Kings — Keri Jean Creason, CERT, Medical

Billing and Coding, With Distinction; Sara R. Sanderson, Associate in Arts, Summa Cum Laude, PTK.

Rochelle — Kyle Daniel Aldridge, AAS, Registered Nursing, Cum Laude; Kaitlynn M. Cook, CERT, Medical Assistant, With Distinction; Angel Cruz, Associate in Arts; Rhyllie Erdman, Associate in Science; Edgar Javier Garcia, Associate in Arts; Arlette Garcia, Associate in Science; Ahllam Khattab, Associate in Arts; Mandi Faith Lamb, AAS, Registered Nursing, Associate in Science, Summa Cum Laude, PTK; Ryan Patrick Mickey, Associate in Arts;

Ilse Mariana Molina, Associate in Science, Magna Cum Laude; Jose A. Morales, CERT, EMT, With Distinction; Chelsea Nicole Nally, Associate in Arts; Gabriel S. Neece, CERT, Google IT Support; Johnathan Vaughn Nguyen, Associate in Science, Magna Cum Laude; Tanner Peterson, Associate in Arts; Nicole Marie Sheets, AAS, Registered Nursing, Magna Cum Laude, PTK; Kevin Daniel South, AAS, Marketing and Management; Erika Marcela Villalobos-Miller, Associate in Arts; Kayla Elizabeth Wiedemann, Associate in Science.

**PEOPLES COMPANY**  
700 6th Ave.  
DeWitt, Iowa • 563.659.8185

**LAND FOR SALE**  
**BOONE COUNTY, IL**

**NEW LISTING - 150 Acres, 148.67 tillable, with 119.1 Pl.**  
Located in Belvidere, IL. Agent owned.

Doug Yegge 563.320.9900 • [Doug@peoplescompany.com](mailto:Doug@peoplescompany.com)  
Alan McNeil 563.321.1125 • [Alan@peoplescompany.com](mailto:Alan@peoplescompany.com)  
[peoplescompany.com](http://peoplescompany.com)

**VOTED BEST REAL ESTATE AGENCY**

**HAYDEN REAL ESTATE INC.**

221 IL-38, Rochelle, IL | [hre@haydenreinc.com](mailto:hre@haydenreinc.com) | 815-562-2111

Hayden Real Estate, Inc. has served  
Ogle County for 50 over years!  
We THANK YOU for your support!

Spencer Hayden  
Tim Hayden  
Sherry Murphy  
Jeff Reif

Ron Frakes  
Vicki Pemberton  
Stephanie Williams  
Amy Hayden

We look forward to serving the  
community for many years to come!

11202022

## ROCHELLE News-Leader

211 IL Route 38 East, Rochelle, IL 61068  
(815) 562-4171

USPS (467-820) ISSN (1075-2811)  
Published every Wednesday and Sunday by Rochelle News-Leader Inc. at 211 E. State Route 38, Rochelle, IL 61068.  
Periodical postage paid at Rochelle, IL 61068. Postmaster send address changes to the Rochelle News-Leader, P.O. Box 46, Rochelle, IL 61068. Subscription rates are \$139.99 per year by mail in Ogle County. Outside county rate is \$149.99 per year. No mail delivery in newspaper-carrier serviced areas. The circulation department is open Monday through Friday from 8 a.m. to 5 p.m. If you are a carrier subscriber and your paper does not arrive, contact Kelly White at 561-2112.

### IN-COUNTY REGULAR SUBSCRIPTION RATES

- \$139.99 for one year • \$79 for six months
- \$34.99 for three months • \$13.99 for one month

Call (815) 561-2112 or  
Visit our website at  
[www.rochellenews-leader.com](http://www.rochellenews-leader.com)



### HOW TO CONTACT US

News-Leader Main Switchboard (815) 562-4171

**General Manager**  
Mike Feltes (815) 561-2124

**Newsroom Staff**  
Jeff Helfrich, Managing Editor (815) 561-2151  
Russ Hodges, Sports (815) 561-2152

**To Place a Display Ad**  
Andrew Heiserman (815) 561-2123  
Chris Ackland (815) 561-2153

**To Place a Legal Ad**  
Mike Feltes (815) 561-2124

**To Place a Classified Ad**  
Andrew Heiserman (815) 561-2123  
Chris Ackland (815) 561-2153

**Subscriptions and Delivery**  
Kelly White (815) 562-4171

### Rochelle Police Department

## Officers make several arrests

**ROCHELLE** — On Jan. 6 at 7:54 a.m. Julie A. Cole, 75, of Rochelle was cited for failure to yield turning left. She signed a promise to comply and was given a Feb. 10 Rochelle court date.

On Jan. 6 at 8 a.m. Corbin C. McAnally, 25, of Rochelle was arrested for domestic battery and transferred.

On Jan. 6 at 3:34 p.m. Ramiro Aguelles, 41, of Rochelle was arrested for an outstanding Ogle County warrant for contempt of court. He paid \$652 and was released.

On Jan. 7 at 3:38 p.m. Alissa E. Dugan, 42, of Chicago was arrested for battery and transferred.

On Jan. 7 at 6 p.m. Corbin McAnally, 25, of Rochelle was arrested for violation of bail bond, resisting and aggravated battery on a peace officer and transferred.

On Jan. 8 at 12:28 a.m. Alex Daly, 31, of Rochelle was arrested for no valid driver's license. He was released on an I-Bond with a Feb. 10 Rochelle court date.

On Jan. 8 at 4:19 p.m. Lisa R. Rogers, 57, of Rochelle was cited for disobeying a traffic control device. She signed a promise to comply and was given a Feb. 10 Rochelle court date.

On Jan. 9 at 1:54 p.m. Annmarie R. Kuntz, 32, of Rochelle was arrested on an outstanding DeKalb County warrant and transferred.

On Jan. 9 at 8:43 p.m.

a 17-year-old juvenile of Rochelle of Rochelle was arrested for no valid driver's license and cited for improper lane usage. She was released on an I-Bond with a Feb. 19 Rochelle court date.

On Jan. 12 at 4:03 p.m. Markell D. Rollins, 23, of Rochelle was arrested on two outstanding DeKalb County warrants. He paid \$2,075 and was released with a Jan. 25 DeKalb County court date.

On Jan. 12 at 5:01 p.m. Marcus A. Klein, 29, of Rochelle was arrested on an outstanding Ogle County warrant and transferred.

On Jan. 12 at 10:52 p.m. Randy Nambo, 33, of Rochelle was arrested on an outstanding Ogle County warrant and transferred.

All individuals are considered innocent until proven guilty.

### Report policy

Any arrests listed in this paper are merely charges and the defendants are presumed innocent unless proven guilty in a court of law. Please note that all police reports received from the

Rochelle Police, the Ogle County Sheriff's Department and the Illinois State Police, will be printed without exception. Requests to omit particular reports will not be considered or honored at any time.



# LOCAL NEWS

## HILLCREST: Trustees discuss solar fee structure ordinance

**From page 1**

The village would have to pay back the remainder of the project at an interest rate of .93 percent. Hillcrest recently raised its service fees each month from \$5 to \$10 for the application and that and the work will require a future increase in water rates.

The first 1,000 gallons used would go from \$4.41 per gallon to \$5.70 per gallon in 2023 and \$6.98 in 2024. A Baxter & Woodman representative said last year that the average water bill would need to go from \$31 per month to \$38 in 2023 and \$45 in 2024.

It was noted Wednesday that Baxter & Woodman is still waiting to hear if the village will be receiving bypass funding for the project from the IEPA and that's anticipated to be known by late February.

If that occurs, the IEPA would authorize bidding the project within a week or two of receipt. Bids would open late April and the project could be awarded in May and construction could begin in July or August and be complete by December 2023.

On a separate note, work is ongoing on a new national requirement that requires the village to have to take inventory of what material makes up water service lines to each home and business in Hillcrest to determine if there are lead service lines.

Lead use in water service lines was banned in 1988. Most village homes were built in the 1950s. The Windover Park subdivision was built in 1992 and that time of build will make those homes exempt from inspection for lead lines. Hillcrest has 405 homes and 450 buildings total.

The village's lead service lines report is due to the state on April 15. The final deadline is April 15, 2024. If lead service lines are found, replacement will be required in the future and there are some grants currently available for that work. Baxter & Woodman representatives said Wednesday that they're able to help the village with the project in coming months.

**Solar**

The board resolved to have a first reading of a fee structure on commercial and residential solar permits in the village at its February meeting and instructed Village Attorney Paul Chadwick to draft an ordinance for that meeting.

In December, Village Building Inspector Casper Manheim presented the village with information on fee structures used by other municipalities in the region. A fee structure would allow the village to charge permit fees for residents that install solar along with a large commercial solar development planned for the future within village limits.

**Sealcoating**

After unanimously approving a resolution for its 2023 sealcoating program at last month's meeting, it was mentioned Wednesday that Scott Avenue, River Road and Ramona Avenue will be chip sealed this year. The village chip seals one fifth of the streets in Hillcrest each year.

**Hydrants**

The board voted unanimously to purchase three fire hydrants and valves from Elliott & Wood, Inc. for a total of \$9,000. The hydrants are slightly used and are half the price of new hydrants. The village is currently in need of two hydrants.

**Water tower**

Village Trustee Dan Potter said Hillcrest's water tower was recently looked at by a repair company and he expects a report in the next week on what maintenance is needed.

"I don't know what we're going to need to have done, but I do know some things are going to need to be done," Potter said. "There's quite a few issues."

## Rochelle Area CHURCH DIRECTORY

**Ashton Bible Church**, corner of Main and Paddock in Ashton. Pastor Farrel Stauffer, church phone is (815)453-2190, church website [www.ashtonbible.org](http://www.ashtonbible.org). Sunday School for all ages 9:00-10:00am, Morning Worship 10:15am, Wednesday Prayer Meeting/Bible Study 6:30-8:00pm.

**The Bridge Church**, Pastor Greg Duncan, 11038 E. IL Route 38, Rochelle, IL 61068. Phone: 815-562-7750. Sunday School: 9:00 am; Sunday Service: 10:00 am; Nursery & Children's ministry during am service; Bible Study Tuesday 10:00 am and Wednesday 7:00pm. Web: [thebridgechurchrochelle.com](http://thebridgechurchrochelle.com) Email: [thebridgechurchrochelle@gmail.com](mailto:thebridgechurchrochelle@gmail.com)

**Calvary Lighthouse Church, Assemblies of God**, Senior Pastor, Dr. James Horvath. 14409 Hemstock Rd., Rochelle. Sunday Morning: Sunday Worship & Children's Church 10:00 A.M., Wednesday Evening 7:00 P.M. – Adult Teaching, Missionettes & Royal Rangers Childrens Classes, Nursery available for all services. HE-Brews Cafe is open before and after services. For further information, please call the CLC office at 815-562-7701, or email us at [staff@calvarylighthouse.com](mailto:staff@calvarylighthouse.com)

**Calvary Lutheran Church, LCMC** - "To Know Christ and to Proclaim Christ in Word and Deed" -19 Perry Road, Lee, IL 60530 (the intersection of Perry Road and W. County Line Road). Rev. Martha Uecker Nelson, Pastor. Coffee Hour starts at 9:00 a.m., Sunday School, Confirmation, and Adult Bible Study are at 9:15 a.m. Worship is at 10:30 a.m. and is broadcast live on Facebook. Go to our website is at [www.Calvarychurchlee.org](http://www.Calvarychurchlee.org) and click on the link there. A Grief Support Group meets the third Tuesday of each month at 10:00 a.m. Call or text (815) 824-2825 or email [CalvaryLeeIL@gmail.com](mailto:CalvaryLeeIL@gmail.com) with questions or for more information. Also check us out at [www.facebook.com/Calvary-Lutheran-Church](http://www.facebook.com/Calvary-Lutheran-Church).

**Rochelle Church of Christ**, Keeping Christ at the center in the Hub City. We meet Sundays at 9:00am for Bible Study and 10:00am for worship. We also have a Wednesday Bible Study at 7:00pm. 206 Erickson Rd, Rochelle, IL 61068. You can call us at (815) 562-6572 or visit us on the web at [rochellechurch.com](http://rochellechurch.com). We also have a radio program Sundays just after 8am on WRHL 1060AM. Minister Dominic Venuso.

**Creston United Methodist Church and Steward United Methodist Church** - Rev. Ilhan You, Creston: 126 West South Street, P.O. Box 209, Creston, Illinois 60113. Sunday morning worship 9:00am. Coffee fellowship at 10:15am. Steward: 507 Main Street, P.O. Box 80, Steward, IL 60553. Adult Sunday School, 10:00am. Sunday morning worship and Children's Sunday School 11:00am. Contact the church office at 847-730-4370 for more information. [facebook.com/crestonumcil](http://facebook.com/crestonumcil) [facebook.com/stewardilumc](http://facebook.com/stewardilumc)

**Elim Reformed Church**, 140 S. Church Road, Kings, IL 61068. Phone: 815-562-6811. Email [goelimchurch@gmail.com](mailto:goelimchurch@gmail.com) Website [www.goelimchurch.org](http://www.goelimchurch.org) Sunday Morning Worship 10:00 Rev. Marv Jacobs

**Faith Lutheran Church** - (14206 E. Flagg Rd.) - "Making Christ Known Through Lives of Faith." In-person worship is available each Sunday at 9:00 a.m. or online at "Faith Lutheran Social" on YouTube. Worship resources are also available on our Facebook page - 'Faith Lutheran Church ELCA.' You may also e-mail Pastor Joy Alsop at [Pastor@faithlcrochelle.org](mailto:Pastor@faithlcrochelle.org) for more information. All are welcome to join us!

**First Baptist Church of Rochelle, First Baptist Church of Rochelle** invites you to experience our practical Bible services which have nurseries provided in every service along with a wide range of children's and teen ministries. Sunday School is at 9:30 am with regular church services at 10:30 am and 6:00 pm. Wednesday Family Night starts at 6:30 pm with AWANA for the 5 yr. olds thru 6th grade. The Omega Teen Ministry also starts at 6:30 pm for 7th – 12th grades and the Adult Bible Study at 7:00 pm. First Baptist Church is located 6 blocks west of Hwy 251 at the corner of Woolf Ct. and 8th Ave. in Rochelle. Call 562-4168 for more information. Listen at 11:00 am Sunday mornings on WRHL 1060 AM for the Sunday morning "Bible Message." [www.firstbaptistrochelle.org](http://www.firstbaptistrochelle.org)

**First General Baptist Church**, 500 S. 12th St, Rochelle. Phone: 815-562-5221. Email: [fgbcrochelle@gmail.com](mailto:fgbcrochelle@gmail.com). Website: [www.fgbcrochelle.org](http://www.fgbcrochelle.org). Facebook: [www.facebook.com/fgbcrochelle](http://www.facebook.com/fgbcrochelle). Pastor: Rev. Angelo Bonacquisti. **Sunday worship services:** 8:30 am, 11:15 am and 6:00 pm. **Sunday school:** 10:00 am. We'd be honored to have you join us as we worship JESUS and continue to grow in truth and love for God and each other. A nursery, children's church, youth group and small groups are available. If you need a ride please contact our church bus driver, John, at (815) 262-4275 by 8:30 am on Sunday. "For if you confess with your mouth that Jesus is Lord and believe in your heart that God raised him from the dead, you will be saved." Romans 10:9

**First Presbyterian Church** – An Amazing Place for Amazing Grace- Rev. Doug Forsberg, Senior Pastor. 1100 Calvin Road, Rochelle. Email: [info@placeforgrace.com](mailto:info@placeforgrace.com). Sunday morning worship 9:00am & 11:00am. In person or streamed online. On our Website and Facebook Live. [www.placeforgrace.com](http://www.placeforgrace.com) / [www.facebook.com/placeforgrace](http://www.facebook.com/placeforgrace)

**Grace Fellowship Church** — Pastor Jeff Ardissonne, 2128 Il Route 38, Ashton, 815-453-7464. Sunday School 8:30 a.m. Sunday Worship Service 9:45 a.m. [www.graceisforyou.com](http://www.graceisforyou.com)

**Harvest Baptist Church** 241 Scott Ave. (Hillcrest). Rev. Duane Boehm, pastor. Email [duane712@hotmail.com](mailto:duane712@hotmail.com), cell 815-757-3427. Visit us on Facebook! Service times: Sunday morning worship with Children's Church at 10 am. Wednesday night worship at 7 pm.

**Immanuel Lutheran Church** Missouri Synod 16060 E. Lindenwood Road, Lindenwood, IL 61049. Rev. Dr. Matthew Rosebrock. Church Phone 393-4500. Church Worship 9:00 a.m. Sunday School Christian Education Hour at 10:30 a.m.

**Living Water Community Church** 405 N. Main St, Downtown Rochelle. Phone 815-561-6249, Website: [www.lwccr.com](http://www.lwccr.com), Like us on Facebook. We are Non-Denominational, Christ Centered, Casual dress, Christ Centered Live Band Worship. Chris Bender- Teaching Pastor, Brent Braski- Administrative Pastor, Adrian Daugherty- Lead Worshipper, Joe Mortimer- Youth Director, Amanda Barnes- Office Manager. Sunday Worship Service- 10:00am. Nursery/Toddlers Ages 0-5 available during the service in the Splash building. Swim- Grades 1st-5th worship with the adults then break out for age appropriate teaching. Youth groups, Small groups, Life Groups and Workshops meet throughout the year for Bible teaching. 7C's Mission- serves the community physically & spiritually each month from 1135 Lincoln Hwy, providing lightly used clothing, Hygiene items, a light lunch and Elder Prayer open the second Saturday from 10am-2pm and the 4th Thursday from 4pm to 7:00pm and by appointment.. 

**New Hope Fellowship (Church of God - Anderson, IN)**, 1501 10th Ave., Rochelle, IL 61068. Service: Sunday at 9 a.m. 10:30 a.m., (815)561-8400, [www.NHFchurch.net](http://www.NHFchurch.net) Pastor: Dan Sergeant and Pastor Nick Tornabene. (Classes for children through age fifth grade during service.)

**Primitive Baptist Church**, services 3'd Sunday each month, at 10:30 a.m. and 1 p.m., in the meeting room of the Holiday Inn Express, 1240 N. Dement Road, Rochelle, Ill. Elder Robbie Webb, and other ministers preaching. Lunch and fellowship time between services. Contact Elder Rob Webb, 312-809-0871, or Elder Robert Webb, 217-357-3723, or email [bwebb9@juno.com](mailto:bwebb9@juno.com) for more information. Services sponsored by the Carthage Primitive Baptist Church for convenience of members and friends in northern Illinois and southern Wisconsin. Visitors are welcome.

**Rochelle United Methodist Church invites everyone to come and hear the good news that YOU are Beloved by God! New Year's Day** will be a musical celebration with Bruce Poulter and Linda Lennon. Our January and February series is called "Beloved!" and we will hear scriptures from both testaments that discuss God's great love for us. On January 8 we will focus on the story of the travelers who followed a star as we share at an open communion table, a feast of love. On January 15 we will remember our baptisms, and hear those words that God spoke to Jesus as if they were for us, "This is my beloved, with whom I am pleased." Through January and February we will hear the ways that we are beloved and the ways God offers forgiveness and restoration to ALL of us. Everyone is always welcome to all of our services. **Sunday worship is at 9:00 am** with Sunday School for children after the Children's Message. Recorded services are available on our YouTube channel and our website at [www.rochelleumc.com](http://www.rochelleumc.com). Our services are on the radio (93.5 FM) on Sunday mornings at 9:00 am. **Our Facebook page is** [www.facebook.com/rochelleumc](http://www.facebook.com/rochelleumc). **Rev. Dr. Katherine Thomas Paisley, Pastor.** 709 Fourth Ave. (815) 562-2164. [admin@rochelleumc.com](mailto:admin@rochelleumc.com). Everyone is welcome and loved!

**St. Patrick Catholic Church** Rev. Jesus Dominguez; Deacon Fermin Garcia; Deacon George Schramm; 244 Kelley Dr. (Corner of Kelley & Caron Rd.), PO Box 329, Rochelle, IL 61068. **Office Hours:** 9:00 AM- 4PM Monday-Thursday, Phone: 815-562-2370. **Mass times:** 8:00 AM Monday-Thursday, Saturday Vigil Mass 5:00 PM English, 7PM Spanish, Sunday Mass 7:30 AM, 9:00 AM in English and 11:00 AM in Spanish. **Confessions:** Monday 8:30AM & 6:30PM, Tuesday 8:30AM, Saturday 8:30am & 4:00-4:45 PM Or by appointment. **Religious Education:** Deacon George Schramm, Director of Religious Education. 903 Caron Road, Rochelle, IL 61068, 815-561-0079; Website: [stpatrickstrochelle.com](http://stpatrickstrochelle.com) Email: [stpatrick-rochelle@rockforddiocese.org](mailto:stpatrick-rochelle@rockforddiocese.org) Facebook.com/StPatrickRochelle

**St. Paul Lutheran Church** "Building Relationships in Christ, Now and Forever!" Pastor-Rev. Greg Hoffmann, Steven Hall, Principal, Parish Nurse-Marcia Schnorr. 1415 Tenth Ave., Rochelle. Church Office-562-2744. Worship times: 6:00 p.m. Saturday, 9:00 a.m. Sunday. Our service is broadcast over WRHL 1060AM at 10:00 a.m. Sunday. Sunday School 10:15-11:15 a.m. Call 562-6323 for more information about the school.



# LOCAL VIEWS

Guest column

## New year underway for Rochelle

I trust everyone had a great holiday season, and probably are enjoying a little breather as we head towards spring of 2023. The last two months of 2022 were extremely busy here within all city departments. The new year is well underway in the city, and with the mild winter weather, I hope it gives a break to our overtime, snow plow and salt budget. Currently, city council made several moves at the first meeting in January. New, or continued projects on the horizon include the continuation of the sewer lining projects,

remodeling the Rail Fan Park, finishing the Rochelle Municipal Utilities campus offices, and lastly, we are closer to having the upper level of city hall ready to shift the entire HR department into one area.

In December, we had the resignation of Mitch Montgomery from the Police & Fire Board, which left us with one vacancy of the three positions. Jan. 9, an interview process for applicants was held, and Gregg Olson, CEO of Rochelle Community Hospital, will fill that position. Congratulations and we welcome Gregg to the

board, and also a big thank you to Mitch, who served the P&F Board for many years. We wish him all the best in his retirement.

Currently, we are actively planning the next hiring event for the community, which will be held on Friday, March 10. The hours for the public will be from noon to 2 p.m. This year, I am happy to see that with the relief from the pandemic, juniors & seniors alike will be able to attend the event in the morning, with there

also being seasonal work as well as full-time jobs available. We here at the city are super excited about the continued support and collaboration with Rochelle Township High School, as well as Kishwaukee College. We are blessed to be able to grow these relationships for the benefit of all. Also, a big thank you to Rochelle Foods for being an event sponsor this year, and they truly have always been a great partner in Rochelle.



John Bearrows

Although the weather has stopped construction on the transload/intermodal yard project, internally the excitement and interest from companies that will utilize this facility continues to come in. Many thanks to GREDCO (Greater Rochelle Economic Development Group), and the city economic development department for making this happen. These two groups working together is an amazing example of a successful public/private partnership that benefits the city of Rochelle. I would be remiss if I didn't

also say thank you to our city manager and our very supportive city council, because without their continued guidance and support, many projects would never get off the ground. Lastly, I am very anxious to see what further great news and projects will bless our community in 2023.

I will finish today's article with a great quote from an anonymous author:

"The past is your lesson. The present is your gift. The future is your motivation."

John Bearrows is the mayor of the City of Rochelle.

## Reflecting on seven years at Kish

ON Jan. 11, I celebrated seven years of leading Kishwaukee College.

In January 2016, when my family moved to the area and I started in this role, my son was in fifth grade. In May, he will graduate from high school. Time goes by quickly.

During the past seven years, Kishwaukee College has changed in many ways:

For the first time since 2011, we have experienced an increase in student enrollment. The college continues to serve nearly 4,000 students a year. They come to us from multiple starting points in their learning journey. We are proud to serve everyone wanting an education.

Where our students are educated has shifted significantly, with more

than half of current students taking online classes. Fewer than 20 percent of students were taking online classes in 2016. The additional flexibility has made it easier for people to attend college.

The number of degrees and certificates awarded by the college has increased over the last seven years. The college has developed more options for students to earn a college credential in addition to the traditional two-year degree. We have enhanced our support services, which have helped students complete their programs.

The diversity of our student body continues to increase each year, especially in the number of Hispanic/LatinX students the college serves. Our student population is nearing

50 percent diverse. We are proud to be the recipient of the 2022 Equity and Diversity award from the Illinois Community College Trustees Association for our work to eliminate the college achievement gap for students of color.

Increasingly more businesses have been served by the college. In 2018, we served 62 businesses. Last year, it was 297.

The number of high school students earning college credit from Kish before graduating from high school has increased. We continue to focus on helping our young people be college and career ready when they leave high school, and we will launch a new "Early

College" program in 2023 in partnership with our local high schools. This work is incredibly important, as earning college credit while in high school has demonstrated results for students in college completion.

Successful organizations recognize that partnerships are the key to success, and Kish is no exception. We have expanded our external partnerships with educators, businesses, and area services, such as the Kishwaukee Water Reclamation District/Village of Malta sewer project launched in 2022. When we work together, we all rise together.

Our internal partnerships are also critical to



Laurie S. Borowicz

the success of our organization. The Board of Trustees and their ability to work together and make decisions in the best interest of the College is impressive. Thank you, Bob Johnson, Dr. Bob Hammon, Kathy Spears, Linda Mason, Kathy Watkins, Kathy Countryman and Geri Dee-Hayden for your commitment to Kish and leading together.

We have worked over the years on employee relationships, recognizing the constant change we have faced with the multiple forces upon us, including a two-year state budget impasse, a pandemic and enrollment decline. These challenges all required transformative changes in our organization and how we do the business of serving our students. I am proud

of how we have worked through issues. Thank you to everyone who has chosen to work at Kish and dedicate themselves to improving the lives of others.

Thank you to the students who have attended Kish. We recognize there are many higher education options. Our students have shared thoughts and ideas over the years on how we continue to evolve as a college and meet their needs. At the end of the day, it is all about our students. They are the future of our communities.

I look forward to continuing this important work, embracing together the future and what comes next.

Dr. Laurie S. Borowicz is the president of Kishwaukee College.

## Letter: CAN sends thanks for shopping trip help

DEAR editor, The Rochelle Community Action Network (CAN) would like to extend a heartfelt thank you to the Rochelle community for their continued loyalty in supporting the CAN Children's Christmas Shopping Trip. This year, because of the generosity of local individuals, civic groups, businesses and community groups, we were able to provide a \$75 gift card for approximately 2225 Rochelle children. Along with our donated used coats, again this year

we were able to buy new coats through Operation Warm Coats.

Again this year, we celebrated the season by providing a spaghetti dinner and a fresh salad with local produce. Thank you, Alfano's Pizza and Mighty Vine Tomatoes for the donations that created a healthy family dinner. Lee/Ogle Transportation System provided a fun and safe shuttle service for our children and the adult shoppers. Thank you LOTS for a successful event.

It is wonderful to see

those who had enough provide for those who did not. This is the community spirit of Rochelle! We could not offer this program without the generous commitment of financial support and volunteers who make it possible. Thank you all for your giving spirit. You have made Christmas brighter for many Rochelle children.

Special thanks to: Walmart, Hub City Cruisers, City of Rochelle, Lee/Ogle Transportation System – LOTS, CAN Elves Gwen Marie, Sandy Mace & Lisa Andrews, Joy Phil-

lips, Casey Farms, Rochelle Chiropractic Clinic, Joanne Mayes, T-Byrd Lanes, Shane Huber State Farm, Steve and Mary Merema, Richard and Marilyn Overby, Helen Worley, Harold and Bettie Helm, Dennis and Kathy Connor, Cheri McGee, David Hakanson, Arlen and Barbara Harms, Shirley Lemar, Jon Bieck, Karen and Daniel Goff, Susan Barkman, JoAnn and David Orr, Lloyd Ackland, Tim and Karen Cech, Susan Sawicki, Ronald and Gail Schabacker, Roger and Carol Hayenga, Robert and

Janice Aubry, Wendy Horn, Carol Stockton Pluemer, Joe and Dawn Peters, Dale Meyers, Paul Lower, Bart and Laurie Piller, Marilyn Johnson, Linda Whitener, Nancy Henna, Robert and Jeri Johns, Lynette Burch, Kris Pierce, Kiwanis Golden K, Donna Shaw, Terry and Jacqueline Dickow, Holcomb Bank, Brian and Dawn Johnson, Judith Connolly, Central Bank, Gloria and Craig Rand, Kathy Pfeiffer, Jerry and Eva Medine, Carol Elliot, First State Bank, James and Linda Crouch, Rochelle

Lions Club, Jim Hart, Anderson Plumbing and Heating, Friendly Society, Linda Ohlinger, Jimmy and Paula Combs, Dale and Patricia Carroll, Ed Rice, Sam Graber Insurance, Debbie and Kevin Howard, Pat Burch, Rochelle Rotary Club, Al and Holli Duthie, and Faith Lutheran Church.

Most sincerely,

Rochelle CAN Board President Michelle Pease, Vice President Eva Chu, Treasurer Mike Dale, Secretary Connie Avery, Director Pat Burch and Director Kristin Bigelow.

### How to contact government officials

U.S. Con. Adam Kinzinger  
1218 Longworth HOB  
Washington, D.C.  
20515  
(202) 225-3635

IL Sen. Brian Stewart  
M104A State House  
Springfield, IL 62706  
(217) 782-0180

IL Rep. Tom Demmer  
314 Capitol  
Springfield, IL 62706  
(217) 782-0535

Have a letter you want to submit to us? Send it to (news@rochelle-news-leader.com

### KEEPING YOU IN TOUCH WITH YOUR LOCAL LEADERS

\* Denotes Chairman/President

#### Rochelle City Council

\*John Bearrows jbearrows@rochelleil.us  
Kathryn Shaw-Dickey kshaw-dickey@rochelleil.us  
Bil Hayes bhayes@rochelleil.us  
Rosaelia Arteaga rarteaga@rochelleil.us  
Dan McDermott dmcdermott@rochelleil.us  
Tom McDermott tmcdermott@rochelleil.us  
John Gruben jgruben@rochelleil.us

#### Rochelle Elementary School Board

\*Dave Casey dcillini94@gmail.com  
Steve Builta sbuilt@gmail.com  
Ashley Jackson ajackson@d231.rochelle.net  
Stephanie White swwhite@d231.rochelle.net  
Eric Van Hise eric.vanhise@gmail.com  
Trisha Vaughn jrvtlv02@msn.com  
Javier Zepeda jzepeda@rthsd212.org

#### Rochelle Township High School Board

\*Tom Huddleston tom.huddleston@rthsd212.org  
Carol Hayenga carol.hayenga@rthsd212.org  
Bill Ravnaas bill.ravnaas@rthsd212.org  
Jacky Aguilera jacky.aguilera@rthsd212.org  
Jeff Tilton jeff.tilton@rthsd212.org  
Bobby Chadwick bobby.chadwick@rthsd212.org  
Brian VanVickle brian.vanvickle@rthsd212.org

#### Flagg-Rochelle Park Board

Brent Carmichael bcarmichael@rochelleparkdistrict.org  
John Dobbs jdobbs@rochelleparkdistrict.org  
Dale Wells dwells@rochelleparkdistrict.org  
\*Tim Hayden thayden@rochelleparkdistrict.org  
Jodie Hart jhart@rochelleparkdistrict.org  
Joe Lenkaitis jlenkaitis@rochelleparkdistrict.org

#### Ogle County Board Dist. 3

Lloyd Droege ldroege@oglecounty.org  
Dan Miller dmiller@oglecounty.org  
Greg Sparrow gsparrow@oglecounty.org

#### Ogle County Board Dist. 4

Bruce McKinney bmckinney@oglecounty.org  
Skip Kenney skkenney@oglecounty.org  
David Williams dwilliams@oglecounty.org

#### Creston Village Board

Wayne Williams jwdw13@yahoo.com  
Jennifer Payton  
\*Tom Byro tommyb\_47@yahoo.com  
Greg Hopkins ghopkins522@comcast.net  
Steve Katzman skatzman@essex1.com  
Mike Kerns ac.kerns@comcast.net  
Mark Hibshman  
Curt Ward caward92@comcast.net

#### Hillcrest Village Board

\*Randy Salsbury rsalsbury@hillcrestil.us  
Pam Pittman ppittman@hillcrestil.us  
Dan Potter dpotter@hillcrestil.us  
Michael Rhoads rrhoads@hillcrestil.us  
Tim Ball tball@hillcrestil.us  
Renee Kerwin rkerwin@hillcrestil.us

#### Flagg Township

\*Bob Withrow flaggtwp@rochelle.net  
Joanna Patrick flaggtwpc@rochelle.net  
Susan Rothenberger assessor@rochelle.net  
Scott Seebach scottseebach@gmail.com

#### Board of Trustees

Lance Noggle noggle62@gmail.com  
Eric Gruben egruben@comcast.net  
Susan Hagar susanhager303@comcast.net  
Jim Kenney jimk@rocketsupply.com

#### Flagg-Rochelle Library

\*Jaqueline Dickow dickow@comcast.net  
Teresa Haggstad haggstads@comcast.net  
Michael Scanlan scanlan@comcast.net  
Lanning Nicoloff nicoloff118@comcast.net  
Sheri Klindera alwayslefty2@gmail.com  
Susan Sevedge nit1pr122@yahoo.com  
Darci Waltrip doobs12@comcast.net

### LETTERS TO THE EDITOR POLICY

The Rochelle News-Leader encourages responsible letters to the editor on subjects of interest to our readers. Editing may be necessary for space, clarity or to avoid obscenity or libel, but ideas will not be altered. All letters must bear the handwritten signature of the writer and include address and phone number or e-mail address for verification purposes. Neither the street address nor phone number will be printed. Letters should be typed or legibly

handwritten, and no anonymous letters will be published. Any letters from boards or organizations must include at least one name of an individual. Any criticism of public officials should be limited to issues related strictly to their position or actions made in office, as personal attacks will not be published. Letters involving private disputes between the writer and a business will not be published. Political endorsements will be published,

however letters from candidates endorsing themselves will not be printed. Letters may be dropped at the News-Leader office (211 IL Route 38 East), mailed to the News-Leader (P.O. Box 46, Rochelle, IL 61068) or e-mailed (news@rochellenews-leader.com) The News-Leader reserves the right to edit or reject any letter to the editor for any reason, and letters chosen for publication do not necessarily reflect the views of this newspaper.



# COMMUNITY



## Rochelle Moose Kids Christmas Party takes place

Santa's Helpers were at the Rochelle Moose Kids Christmas Party recently including Nancy Dodson, Mr. & Mrs. Claus (Marisol and Kevin Luxton), Pat Maronde, Sonja Byars, Julie Laws and Donna Durham. The tradition of a Kids Christmas Party at the Moose goes back as long as can be remembered.

### THE KITCHEN TABLE MENU

January 17 – (Tuesday) – Beef Taco Salad, w/Lettuce, Tomatoes, Onions, Jalapenos, Salsa, Sour Cream

January 19 – (Thursday) – Chicken and Sausage Gumbo over Rice

January 20 – (Friday) – BBQ Baby Back Ribs, Coleslaw, Macaroni and Cheese

January 24 – (Tuesday) – Stuffed Chicken Breasts, Roasted Potatoes, Green Beans

January 26 – (Thursday) – Lasagna, Salad, Garlic Bread

January 31 – (Tuesday) – Teriyaki Chicken, Fried Rice, Egg Rolls

February 5 – (Sunday Brunch) – Serving from 9 to 12 – Sausage Gravy and Biscuits, Breakfast Casserole, Oatmeal, Sausage Links or Country Ham

7034 S. Klondike Road | Rochelle, IL 61068 | 815-561-9074  
If you would like to volunteer with us, please email us at [volunteer@kitchentablerochelle.org](mailto:volunteer@kitchentablerochelle.org)

### Birthdays & Anniversaries

**Jan. 15**  
Kami South  
Trenton South

**Jan. 19**  
Kevin South

**Jan. 20**  
Noelia Lopez  
Harold & Kathy Sanders (anniversary)  
Hailey Losoya

**Jan. 23**  
Michele Perez  
Victoria Lopez  
Odessa Waters

**Jan. 24**  
Terry Dodillet  
Kelly Arnold

**Jan. 25**  
Nikki Greenfield  
Ashton Arwood

**Jan. 28**  
Peggy Futrell

**Jan. 29**  
Nayeli Ramirez

Call 815-561-2151 to submit names for birthdays and anniversaries



- Dec. 20 - Berta Arreguin, Davis Junction, \$25
- Dec. 21 - Kathy Yocum, Franklin Grove, \$25
- Dec. 22 - Nena Stewart, Rochelle, \$25
- Dec. 23 - Rochelle Rescue Mission, \$25
- Dec. 24 - Kathy Prestegaard, Rochelle, \$25
- Dec. 25 - Lindsay Sweckard, Rochelle, \$1,000
- Dec. 26 - Bridget Blaine, Dixon, \$25
- Dec. 27 - Rochelle Foods, \$25
- Dec. 28 - From the Heart, Rochelle, \$25
- Dec. 29 - Bill Hahn, Rochelle, \$25
- Dec. 30 - Nick Smallwood, Montgomery, \$25
- Dec. 31 - Greg Hackbarth, Lindenwood, \$25
- Jan. 1 - Beth Mock, Rochelle, \$1,000
- Jan. 2 - Michele M. Horvath, Rochelle, \$25
- Jan. 3 - Autumn Hernandez, Rochelle, \$25
- Jan. 4 - Zekelman Employee, Wheatland, PA, \$25
- Jan. 5 - Darlene Reynolds, Rochelle, \$25
- Jan. 6 - Patricia Burkholder, Loves Park, \$25
- Jan. 7 - Lori Kersten, Dixon, \$25
- Jan. 8 - Oliva White, Rochelle, \$50
- Jan. 9 - Holly Kubale, Rochelle, \$25
- Jan. 10 - ALM Fine Cabinetry, Rochelle, \$25
- Jan. 11 - Anita Bowers, Byron, \$25
- Jan. 12 - Melissa Villalobos, Rochelle, \$25
- Jan. 13 - Cheri Divine, Frisco, CO, \$25
- Jan. 14 - Zekelman Employee, Rochelle, \$25
- Jan. 15 - Kyle Kissack, Rochelle, \$50



## Coffee Break

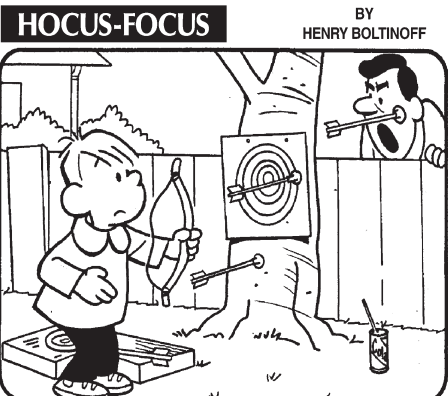
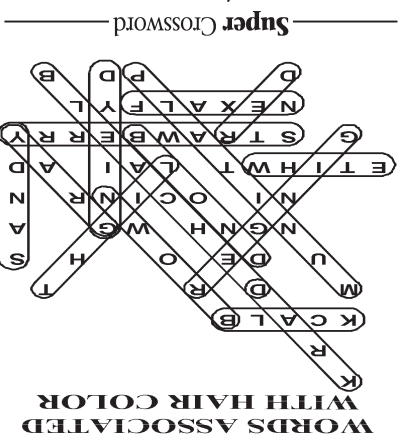
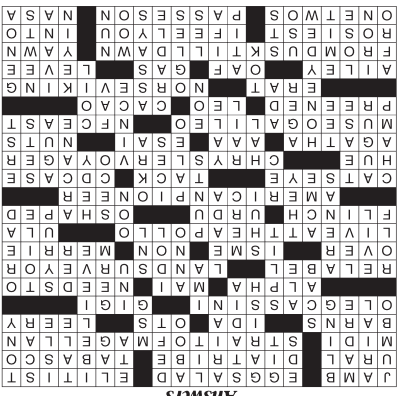
### MAGIC MAZE • WORDS ASSOCIATED WITH HAIR COLOR

N K E B Y V R N O L I F C Z W  
T Q R N K I F C R Z W U R P M  
J K C A L B H E C U Z X U S Q  
N M L J D G R E C Z B T X V T  
R P U N D E L O J H H U S E C  
A Y W N G N H V W G T R A P N  
L K I N I G O C I N R E N C B  
E T I H W T Z L A I X A D W U  
S G R S T R A W B E R R Y P O  
M L J N E X A L F Y L I G E D  
B A Y D X W U T P D S B Q P O

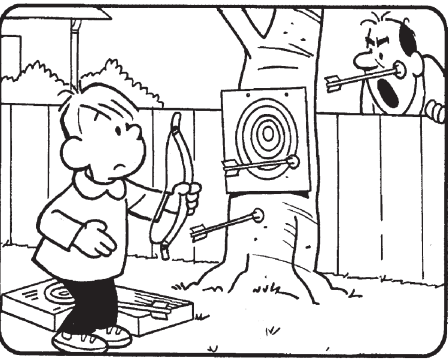
Find the listed words in the diagram. They run in all directions forward, backward, up, down and diagonally  
Unlisted clue hint: REDDISH-BROWN HAIR

Black	Dark	Gray	Sandy
Bleached	Dyeing	Light	Strawberry
Blond	Flaxen	Platinum	White
Brown	Ginger	Red	

©2023 King Features Syndicate, Inc. All rights reserved.



Find at least six differences in details between panels.



Differences: 1. Fence board is moved. 2. Collar is different. 3. Bow string is different. 4. Arrow is missing. 5. Hair is moved. 6. Can is missing. 7. Hat is different. 8. Bow string is different. 9. Hat is different. 10. Hat is different.

## Super Crossword ON A MISSION

- ACROSS**

1 Doorway part

5 Mix for a deli sandwich

13 Snooty sort

20 River in Europe and Asia

21 Long, bitter speech

22 Popular hot sauce brand

23 Calf-length skirt

24 Navigable sea route in southern Chile

26 Hayloft sites

28 Home to Boise: Abbr.

29 Extra game periods, for short

30 Distrustful

31 Designer for Jackie Kennedy

35 1958 Leslie Caron film

38 Head dog

39 — tai (drink)

42 Really must

47 Tag again

51 One mapping terrain

53 In excess of

54 "Woe —!"

57 Prefix with sense
- 58 — Melodies (old cartoon series)

59 Stand-up comedy TV series

64 Ending for form

65 Wince

66 Pakistani's language

67 Like circles

71 Daniel Boone or Johnny Appleseed

76 Lustrous gem

79 Pushpin's kin

80 Jewel box for music

84 Color

85 Kia Sedona competitor

90 Mystery's Christie

94 Org. offering tows

95 Actor Morales

96 Sundae toppings

97 Florence institute near the Uffizi Gallery

100 New York Giants' div.

103 Gussied up

104 MGM's lion

105 Tree yielding chocolate

107 "QED" center

109 Eric the Red, for one
- 115 Alvin of choreography

119 Klutz

122 Pumped stuff

123 Flood stopper

124 All through the dark hours

130 Show sleepiness

131 Most promising

132 "Been there myself, man"

133 Really liking

134 Combination punches

135 Sends along

136 Org. associated with the nine missions featured in this puzzle
- 9 Suffix with sect

10 Illuminated

11 "Peek- —!"

12 Skillful and clever

13 JFK datum

14 Fall behind

15 Religious convert's cry

16 Anecdote

17 Atoll part

18 Wound result

19 Actor Danza

25 Soup additive, for short

27 Strikebreaker

32 Bar drink

33 Skedaddle

34 "— little teapot ..."

36 Shiba — (Japanese dog breed)

37 Virus, e.g.

40 A.D. part

41 False god

43 German "the"

44 Sundae topping

45 Sheer linen fabric

46 Greek mountain nymph

47 Use deep message on

48 Blackhearted

49 Strauss of jeans
- 50 Sports venues

51 — double life

52 TV show since fall '75

55 Feng —

56 Old Ford make, in brief

60 Pinnacle

61 Those people

62 Kicks on

63 Suffix with football fields

68 Spanish for ball or bass

69 Lamarr of "Boom Town"

70 Esoteric

72 Camcorder button abbr.

73 Primitive kind of diet

74 Freezes

75 Creole veggie

76 Winner, informally

77 Foretell

78 Razz

81 Water, to Juanita

82 Mounts, as a gemstone

83 Formerly, formerly

86 "2001" computer

87 Train support

88 Harvard rival

89 Singer Gill

91 Golf peg
- 92 Melon variety

93 Golden — (senior)

98 Cavity fillers'

99 Mega years

101 Most preferred: Abbr.

102 Corkscrew

105 Baby bed

106 Analyzes in a lab

108 "TIK —"

110 Stares at creepily

111 Enter, as to a database

112 An ex-Trump

113 Lizardlike amphibians

114 Port of Italy

115 "Hair" hairdo

116 Pumped stuff

117 Suffer defeat

118 Discharge

120 Leave — (reward the server)

121 World Cup gp.

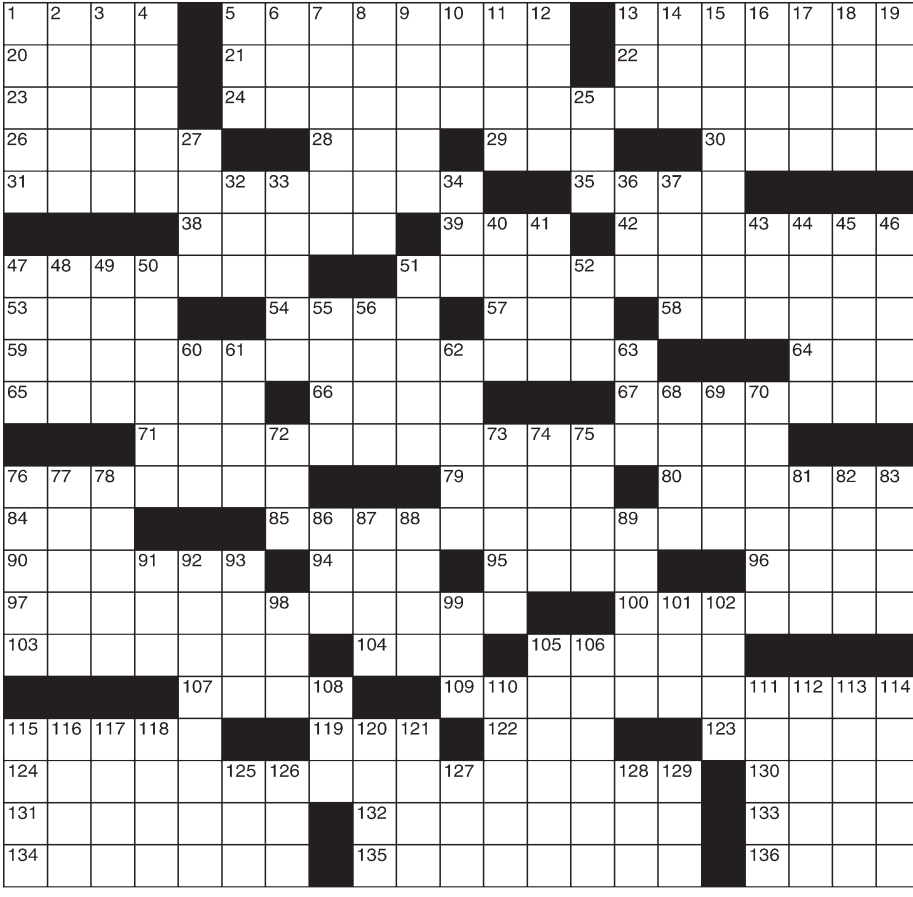
125 GI tour gp.

126 Intersectors of aves.

127 French "the"

128 Vie for the affection of

129 "Sister Act" figure





# FINANCIAL PLANNING

## Several easy ways to cut grocery costs

CONSUMERS might not think it, but eggs are an expensive commodity. As of August 2022, the U.S. Bureau of Labor Statistics reported the average price of a dozen Grade A, large eggs was \$3.12.

Eggs are just one example of foods that have become significantly more costly over the last year or more. Flour, butter/margarine and dairy products also have become more expensive.

According to CNBC, food prepared at home now costs 10 percent more than it did a year ago. Comparatively speaking, restaurant prices have risen by 6.9 percent, making it more affordable for some people to eat out than prepare meals at home.

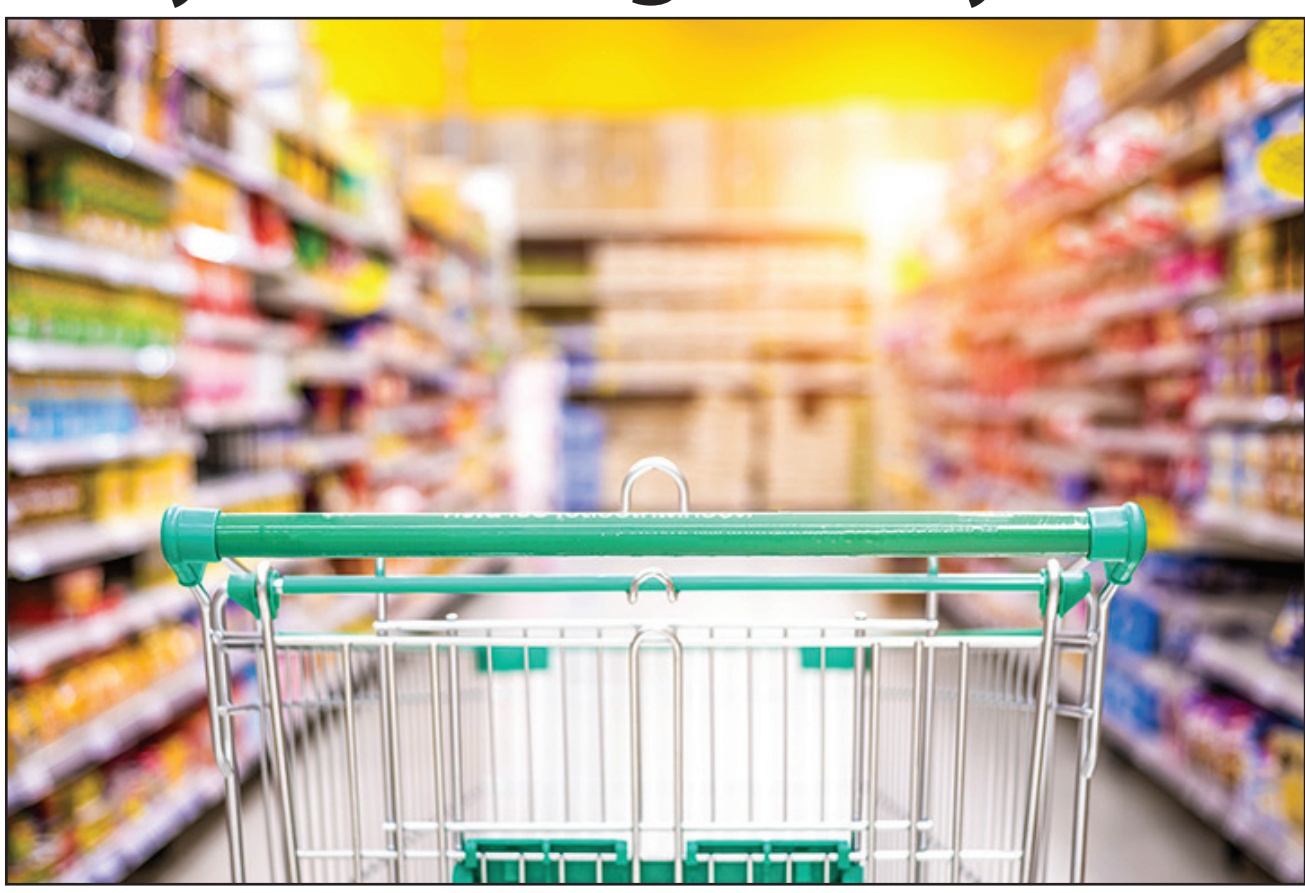
Despite rising food costs, it is possible to save money by cooking at home.

Switching to generic brands can immediately bring about savings over “premium” counterparts. Generics cost less because

manufacturers don’t have to offset the cost of advertising. Many generic brands are made in the same facilities that produce name brand items.

Take a few moments to jot down meal ideas for the week. This can streamline the process of buying meals and help a person use fewer ingredients. Plus, meal plans can be based around which items are on sale. One can meal plan from scratch, or utilize a meal plan from a website that helps utilize all ingredients in various ways, such as turning leftover meatloaf from one night into sloppy Joes on another.

When meal planning, check out the pantry first to see what’s on hand, and then mark down the items needed. Buy only what is listed, resisting the urge to make impulse purchases. For those who can’t avoid throwing a few extra items in the wagon, utilize stores’ shop from home services, where it’s possible to keep track of



what’s being spent in real time. Simply check out and then do a curbside pickup.

When comparing prices, be sure to check out the net item, net pound or net ounce price. This enables shoppers to see if a sale is

really a value, including whether it’s best to buy pre-packaged products or individual items.

Make the bulk of meals with less expensive ingredients, such as beans, whole grains and vegeta-

bles. Chicken drumsticks or thighs are generally cheaper than steaks or even chicken breasts and cutlets.

Opt for water at home rather than bottled, if possible. Purchase iced

tea powder or tea bags and whip up brews. Water with lemon juice can replace lemonade.

These are just a few ways to save money on groceries as prices continue to rise.

## Considerations for retirees thinking of working part-time

RETIREMENT is an opportunity to wave goodbye to the daily grind. Retirees may focus on rest and relaxation, and many make travel a major component of their lifestyle.

According to a 2022 Gallup poll, Americans expect to retire at an average age of 66, up from 62 in 2022. However, most do not hold out that long; the average actual retirement age is 61. Canada used to have a mandatory retirement age of 65, but that mandate was overturned in 2009. Today, the average retirement age for Canadians is 64.4 for men and 63.8 for women, according to Statistics Canada.

Upon retiring, many retirees discover that they sorely miss getting out of the house and being productive through some sort of employment. Others may find it necessary to supplement their retirement incomes. There are a few things to know about working during retirement, particularly if a person is collecting government benefits.

According to the Social Security Administration, those falling under full retirement age for the entire year (which was raised to age 67 for those born in 1960 or later) will be subjected to an SSA deduction of \$1 from your benefit payments for every \$2 you earn above the annual limit. For 2022, that limit is \$19,560. In the year you reach full retirement age, SSA deducts \$1 in benefits for every

\$3 you earn above a different limit, but they only count earnings before the month you reach your full retirement age. For full retirement age reached in 2022 your limit on earnings for the months before full retirement age is \$51,960. After full retirement age, there is no limit on earnings.

The Financial Consumer Agency of Canada reports that individuals between the ages of 60 and 65 who continue to work while receiving a Canadian Pension Plan (CPP) retirement benefit must still contribute to the CPP. Your CPP contributions will go toward post-retirement benefits. These benefits increase your retirement income

contributions.

Keep in mind that if you are on Medicare, extra income could potentially trigger surcharges for parts B and D. It’s beneficial to speak with a financial consultant to weigh the pros and cons of part-time work during retirement.

Part-time work does not need to be daily work. Many retirees work according to how they feel. Some options include seasonal jobs, such as driving shuttles in national parks or working during the holidays in retail stores. Or you may use your expertise to consult or start a business.

A number of people work part-time during retirement simply to get

out of the house. Jobs that help you interact with a number of people can be beneficial, as socializa-

tion has been shown to benefit the mental health of seniors.

Working during retire-

ment can supplement savings and provide structure that some retirees may be missing.



when you stop working. However, if you continue to work while getting a CPP retirement pension and are between the ages of 65 and 70 years old, you can choose not to make any more CPP

**Currently Paying 4.4 Percent**

**CURRENTLY PAYING 4.4 PERCENT**

Do you have a Certificate of Deposit, annuity or mutual fund? Are you tired of the market swings? Do you want to earn more on your money? Would you like to have your estate paid to your heirs tax free?

If you have answered “Yes” to any of these questions, then this single premium life plan is the one for you. Only one premium is paid during the lifetime of the insured and the coverage is fully paid-up for life.

In addition to receiving outstanding insurance protection, you will also be able to enjoy the various fraternal activities sponsored by the Western Catholic Union.

**Western Catholic Union**  
A Fraternal Benefit Society Since 1877  
www.wculife.org

**Features:**

- Only one premium payment
- Certificate is fully paid-up for life
- Gain high cash values that increase annually
- Eligible to receive dividends (not guaranteed)
- Optional Riders available
- Issue ages 0-85

**TAX BENEFITS – AN ADDED PLUS\***

- Your cash value will accumulate on a tax-deferred basis as long as your certificate is in force.
- Your certificate loans may not be taxed as income as long as your certificate is in force.
- The death benefit paid to a named beneficiary will be income tax free.

\*Many of the tax and legal matters discussed are complex. Please rely on a competent tax and legal counsel when making financial decisions. This is an outline of benefits only and not a contract. Details are contained in the certificate issued to each member.

For details, contact your local WCU representative:  
**Sam Graber**

**815-562-7139**  
sam@graberfinancialgroup.com  
409 4th Ave, Rochelle IL



**Josh Williams**



**AUTO | HOME | LIFE | BUSINESS  
| RETIREMENT | HEALTH | COMMERCIAL  
| INVESTMENTS**



**Josh Messenger**

**501 N. 6th Avenue, Rochelle, IL  
(815) 562-8164**

Auto, Home and Commercial policies issued by COUNTRY Mutual Insurance Company\*, COUNTRY Casualty Company\*, or COUNTRY Preferred Insurance Company\*. Life insurance policies issued by COUNTRY Life Insurance Company\* and COUNTRY Investors Life Assurance Company\*. Fixed annuities issued by COUNTRY Investors Life Assurance Company\*. All issuing companies are located in Bloomington, IL.  
0117-545HO





ADVERTISE YOUR BUSINESS HERE!

Great Rate - Great Spot!

Call Mike @ 815-561-2124 or email mfeltes@oglecountylife.com

01252021

Anderson Plumbing is Now Hiring an Experienced HVAC Tech

Great Pay & Benefits

ANDERSON PLUMBING & HEATING, INC.

621 First Ave., Rochelle, IL • 815-562-8784



SUNDAY, JAN. 15, 2023

ROCHELLE NEWS-LEADER • SECTION 2 • PAGE 1

# SPORTS



## DANCERS FINISH FIFTH

The RTHS dance team took fifth in the Interstate 8 Conference Championship.

See page 5 for more details

## RTHS Boys Bowling

# Third in the Interstate 8

Powell wins conference tournament as four Rochelle bowlers earn honors

BY RUSSELL HODGES  
SPORTS EDITOR

**DEKALB** — Pure focus allowed freshman standout Andrew Powell to overcome a slow start and lead the Rochelle Hub varsity bowling team during Tuesday evening's Interstate 8 Conference Championship at Mardi Gras Lanes. The two-hander averaged 224.6 over his final five games after opening the tournament with a 160, winning the tournament with a 1,283 series total.

"It felt really good and I was happy that I pulled it off because I didn't think I would have a chance," Powell said. "I just went out there and bowled. I didn't think about my scores. I focused in and I did my best to not become frustrated. My confidence is really high going into the regional tournament in Dixon and I performed really well the last time we bowled out there."

Powell's individual effort led the Rochelle Hub varsity bowling team to a third-place finish in the Interstate 8 Conference this season. Junior Sam Tracey and sophomore Logan Frye each recorded top-12 indi-



(COURTESY PHOTO)

The Rochelle Hub varsity bowling team took third out of five schools in the Interstate 8 Conference meet on Tuesday. Freshman Andrew Powell and sophomore Logan Frye (above) each earned All-Conference First Team honors for the season.

vidual performances in the tournament, with Tracey rolling a 1,136 series for 12th overall and Frye shooting an 1,138 series for 11th overall. Powell and Frye were each recognized as two of the eight First-Team All-Conference bowlers in the Interstate 8 this season.

"It felt great to be named

All-Conference this season, especially because last season was a struggle," Frye said. "I wasn't able to bowl at the conference meet last season because of COVID-19, so it was nice to be there this season and I thought I bowled really well. My rev rate has improved a lot since last

season and I can hook the ball a lot more than I could last season. It's a huge confidence booster for me and I know I can be a threat at the regional tournament."

Rochelle recorded a 6,514 series total to finish third in the conference tournament. Junior Jonathan Alanis finished with a

1,021 series, while senior Evin Odle and freshman Levi Waddle totaled series scores of 983 and 953. Odle and Alanis were two of the six All-Conference Honorable Mentions for the season who were recognized after the tournament. The Hubs (8-7, 5-3 Interstate 8) will bowl in the IHSA

Dixon Regional at Plum Hollow on Saturday at 9 a.m.

"I think we could've bowled a little better, but we still placed in the top-3 and I think we can do better if we communicate with each other more," Powell said.

See HUBS page 3

## RTHS Girls Basketball

# Defensive effort highlights loss to LaSalle-Peru

Henkel and Darby reach double figures in 55-44 defeat Tuesday evening

BY RUSSELL HODGES  
SPORTS EDITOR

**ROCHELLE** — Head coach Ryan McQuade was thrilled with the Rochelle Lady Hub varsity basketball team's defensive effort during Tuesday's Interstate 8 matchup against LaSalle-Peru.

Junior Sydney Tabor spent most of the evening

**"Our confidence has grown over the last few games and that's something we didn't really see at the beginning of the season."**

Ryan McQuade

"The effort from Sydney and from all of our girls on defense put us in a position to win tonight. Unfortunately, they were able to hit shots at the end of the game when they needed to. I really liked the way we played tonight and LaSalle-Peru has a lot of talented scorers. I'm not disappointed at all."

The Lady Hubs found success with their pick-and-roll offense early, with junior forward Kennedy Adamski screening and scoring on a pair of layups at the rim. Junior Alivia Henkel continued to be the catalyst for the Rochelle offense, knocking down mid-range shots and attacking the rim with her speed and athleticism to convert three first-quarter field goals. Henkel finished with a team-high 21 points for the Lady Hubs, who led the Cavaliers 15-14 after the first quarter.

"Our confidence has grown over the last few

games and that's something we didn't really see at the beginning of the season," McQuade said. "We're starting to see the girls play with more confidence and if we can continue to build on that newfound confidence, I like our chances against nearly every team on our schedule as we move toward the end of the season."

LaSalle-Peru found most of its first-half offense from the perimeter, where guard Taylor Martyn sank four of her five 3-pointers in the game, with nearly all of them coming from the corners.

The Cavaliers snuck ahead 27-24 entering the third quarter, where LaSalle-Peru received an unexpected spark from guard Jasmine Garman, who knocked down two triples and recorded 16 of her team-leading 20 points in the game during the second half to ignite the Cavalier attack.

"The next step for us will be winning tight games," McQuade said. "Newark has been extremely competitive and going to their place will be tough, but I like how we're playing right now."

Down 37-30 entering the fourth quarter, the Lady Hubs found open looks from the 3-point line and the



(PHOTO BY RUSSELL HODGES)

Junior Kara Martinez dribbles around LaSalle-Peru's Taylor Martyn during the Rochelle Lady Hub varsity basketball game against the Cavaliers on Tuesday.

mid-range area, but were unable to sink enough shots to stay within range of the Cavaliers, who earned their first double-digit lead of the

night midway through the fourth quarter.

A last-ditch effort from Henkel and sophomore Kendyl Darby, who made

two 3-pointers on Tuesday and scored five of her 11 points in the fourth quarter, wasn't enough for Rochelle to rally back in the game.





The businesses featured on this page are

**"Hubs Super Fans"**

They proudly support our local athletes and students.

Please show your appreciation by patronizing their businesses.

**WE SUPPORT OUR HUBS!**



## HUB SPOTLIGHT



**Macy**

**Lewis**

*Year: Freshman*

*Sport: Dance*

**Q: How many years have you been playing this sport?**

*A: I have been dancing since I was about 3 years old.*

**Q: What do you enjoy most about this sport?**

*A: I enjoy how there are different types of dance.*

**Q: Who is your biggest role model and why?**

*A: My parents because they are always there for me and they help me make big decisions.*

**Q: What is your dream job and why?**

*A: To be a first-grade teacher because I love and adore kids.*

**Q: Where would your dream vacation be and why?**

*A: Colorado because I love the mountains and I've never been there.*

**Q: What is your favorite thing about being a student-athlete at RTHS?**

*A: The friendships I have made.*



**Peyton**

**Raymond**

*Year: Freshman*

*Sport: Dance*

**Q: How many years have you been playing this sport?**

*A: Eight years.*

**Q: What do you enjoy most about this sport?**

*A: Bonding with my coaches and each of my teams.*

**Q: What is your favorite school subject and why?**

*A: Any art class because I enjoy doing projects.*

**Q: Who is your biggest role model and why?**

*A: Abby Dall because she's taught me so much and she's been there*

*for me throughout the year. I feel like I have grown as a dancer because of her.*

**Q: What is your dream job and why?**

*A: A CPS worker so I can help any kids in need.*

**Q: Where would your dream vacation be and why?**

*A: Maine to visit more of my family.*

**Q: What is your favorite thing about being a student-athlete at RTHS?**

*A: Practicing with my teammates.*

# GO HUBS!

**VINCE'S PIZZA**  
Since 1967

Order online and receive  
**15% off entire bill!**

We are proud to support  
Rochelle Hubs!



Visit us at [vinespizzainrochelle.com](http://vinespizzainrochelle.com)

815-562-7300

Like our Facebook page



**Hello,  
neighbor!**

Huber Ins and Fin Svcs Inc.  
Shane B. Huber, Agent  
221 E. IL Rt. 38  
Rochelle, IL 61068  
Bus: 815-562-7011

Please stop by and say, "Hi!"  
I'm looking forward to serving your needs for insurance and financial services.  
Like a good neighbor, State Farm is there.  
**CALL ME TODAY!**

**State Farm**

1001013.1 State Farm, Home Office, Bloomington, IL

**DLX Medical GROUP**



Diana Alanis, MD

Caring for your  
family's health from  
infant to adults.

Accepting  
New Patients

For appointment, please call

**815-227-9594**

1212 Currency Ct, Rochelle, IL 61068  
Most Insurance Accepted

Local People Providing Local Service

**Rochelle**  
MUNICIPAL UTILITIES

Water • Waste Water  
Electric • Communications

Phone: 815-562-4155 333 Lincoln Highway  
Fax: 815-562-5861 Rochelle, IL

[www.rmu.net](http://www.rmu.net)

HS2016

**CENTRAL ILLINOIS LOAN**

Loans For All Your Needs

Auto • Home Improvement • Vacation

Jami Hackman

**815★561★4035!**

310 Eagle Drive, Rochelle  
All loans subject to our normal credit requirements and policies.

HS2016

**MORTON BUILDINGS**

*If you can dream it, we can build it.*



Rochelle Sales Office • Hwy. 251 N. • 877-613-3050

HSF2016

**Rochelle**  
Community Hospital  
Your Local Healthcare Resource.

900 N. 2nd Street, Rochelle  
815-562-2181  
[www.rochellehospital.com](http://www.rochellehospital.com)

HSF2017

**MEYERS**  
FURNITURE & FLOORING

209 Powers Road, Hwy 251 N  
Rochelle, IL 61068  
(815) 562-8792  
[www.meyersfurniture.com](http://www.meyersfurniture.com)

HSF2016

**Bruns**  
Construction, Inc.  
Residential & Commercial Roofing

Residential, Concrete  
Driveways, Flatwork  
and Foundations

• Shingled Roofs  
• Flat Roofs  
• Metal Roofs For Farm Facilities  
• Custom Built Homes  
• Additions

**815-561-0099**  
Licensed & Insured

HSF2015

**Batavia Builders & Remodelers, LLC**

Debbie Foster,  
Owner

(815) 501-8946

[www.bataviabuilders.com](http://www.bataviabuilders.com)

Serving Illinois & the Surrounding Area

Specializing in Walk-In Tubs  
& Acrylic Showers

Additions ~ Bathrooms ~ Kitchens  
Accessibility Remodeling



**ANDERSON**  
Plumbing & Heating, Inc.

Plumbing, Heating, Air Conditioning,  
Drinking water systems, Water Heaters,  
Softeners, Iron Filters & More.

Since 1976

Like us on  
Facebook

Lic# 055-013999

**LENNOX**

One less thing to worry about

621 First Ave., Rochelle

815-562-8784

HSF2013

**Rochelle**  
Chiropractic  
Clinic  
Dr. Chad M. Piller



227 E. Rt 38 • Rochelle, IL

**815-562-8706**

[www.rochellechiropractic.com](http://www.rochellechiropractic.com)

Now Accepting New Patients!

**Alfano's**  
Pizzeria and Italian Restaurant

Taste The **TRADITION**  
Taste The **DIFFERENCE**

Dine In • Carry Out •  
• Home Delivery • Pizza • Pastas •  
• Sandwiches • Salads •  
• and Lots More!

Dine-In • Carry Out • Home Delivery  
1115 TURKINGTON TERRACE, ROCHELLE

**815-562-3312**



**JOHNSON TRACTOR**

SALES • PARTS • SERVICE

200 Steward Road

**800.262.1680**

[www.johnsontractor.com](http://www.johnsontractor.com)

HSF2022

**AtlasAuto**

**BUY HERE - PAY HERE**  
You Work - You Drive

Se Habla Español **815-562-7433**

1400 N 7th St  
Corner of Flagg Rd & Hwy 251 N

**HUB-REMSEN**  
PRINT GROUP

101 Maple Ave • Rochelle, IL 61068

815.562.7057 • [hub-remsen.com](http://hub-remsen.com)

**GO HUBS!**



"Proudly Serving The Rochelle Area Since 1945"

**Berg-Johnson Electric**

Residential • Commercial • Industrial

**FREE ESTIMATES**

Licensed and Insured

24 Hour Emergency Service

**815-562-4937**

500 Cleveland Avenue

HSF2014

**CHEVROLET**

• Collision Repair • Rental Cars  
• 24 Hour Towing • Maintenance On All Makes  
• New/Preowned Vehicles • and Models  
• Tires, Alignments, Brakes, Batteries

**JEFFPERRY**

CHEVROLET • BUICK • CADILLAC • JEEP • CHRYSLER

815-562-8787 • [www.jeffperrychevrolet.com](http://www.jeffperrychevrolet.com)

**Busy Schedule?**  
*Leave the cooking to us.*

• Large menu of foods  
• Rochelle's famous chicken  
by the dinner or bucket  
• Hand dipped ice cream  
(16 flavors)



**COUNTRY SCHOOL**  
DRIVE-IN RESTAURANT  
251 N. ROCHELLE • 562-6039

HSF2016

We're tuned in to your  
**financial needs!**

• Six locations  
• 25,000+ ATMs across the U.S.<sup>1</sup>  
• Free checking account options  
including Student Checking  
• Stillman Mobile App  
featuring mobile deposit<sup>2</sup>  
• Free Pre-approvals  
• Local lenders, local decisions



**Stillman BANK**

Earning Your Trust For 135 Years  
[www.stillmanbank.com](http://www.stillmanbank.com)

ATM must be a part of the MoneyPass® Network. Funds are verified. A \$2.50 fee will apply to each mobile check deposit. Customer data must meet applicable check with your provider for details.

**GOOD LUCK HUBS**  
FROM YOUR FANS AT:

**HAYDEN REAL ESTATE INC.**

815-562-2111 ★ [hre@haydenreinc.com](mailto:hre@haydenreinc.com)

RESIDENTIAL  
AGRICULTURAL  
COMMERCIAL



# SPORTS



The Rochelle Hub varsity bowling team took third in the Interstate 8 Conference tournament on Tuesday. Freshman Andrew Powell (left) finished first in the tournament, while senior Evin Odle and junior Jon Alanis (right) were each named All-Conference Honorable Mentions for the season.



(COURTESY PHOTOS)

## HUBS: Rochelle bowlers earn Interstate 8 Conference honors

From page 1

"We need to cheer each other on and throw good shots if we want to achieve our goals at the regional this weekend."

Rochelle opened the conference tournament on Tuesday with team scores of 1,031, 1,010 and 1,097 over the first three games. Tracey rolled his series-best 213 in the first game, while Powell fired a 227 in the second game and Frye notched a series-best 235 during the third game.

The Hubs finished strong, recording team scores of 1,149, 1,110 and 1,157 over the final three games. Powell shot a series-best 267 and Tracey added a 204 during the fourth game, while three bowlers including Waddle (225), Frye (215) and Powell (209) earned top scores in the fifth game. Powell's 224 and Odle's series-best 201 highlighted Rochelle's effort in the sixth game.

LaSalle-Peru won the tournament and Sycamore earned the conference title for the season.

### RTHS Girls Bowling

## Lady Hubs battle against Belvidere, Streator

Rochelle rollers set to compete at Morris, Sterling tournaments this weekend

BY RUSSELL HODGES  
SPORTS EDITOR

**ROCHELLE** — Sophomore Cassidy Vincent shined for the Rochelle Lady Hub varsity bowling team on Thursday, firing a match-best 670 series to lead the purple and white over Streator 2,519-2,028 in nonconference action. Rochelle (7-5, 5-3 Interstate 8) will compete in two tournaments over the holiday weekend including the Charles Butterfield Invitational in Morris and the Sterling MLK Invitational.

The Lady Hubs took a commanding series lead in the first game, where Rochelle defeated Streator 855-658 behind a 224 from Vincent. Freshman Kylie McCullough rolled a 149 and junior Faith Adams added a 146 for the Lady Hubs, who won the second game 794-697 behind 220 from Vincent. Lyla Gengler

shot a 141 for the Bulldogs in the second game.

Rochelle clinched the nonconference sweep with a 870-673 victory during the third game, where Vincent threw a series-best 226 and McCullough followed with a series-best 162 for the Lady Hubs. McCullough finished with a 438 series for Rochelle in the win.

**Belvidere**

The Rochelle Lady Hub varsity bowling team battled Belvidere in nonconference action Wednesday evening, hanging tough over all three games but falling short in a 2,693-2,548 loss. Sophomore Cassidy Vincent led the Lady Hubs (6-5, 5-3 Interstate 8) with a 539 series, while freshman Kylie McCullough added a 471 series in the match.

Belvidere edged the Lady Hubs 876-845 in the first game to take the series lead. Mia Quin-

tero led the Bucs with a 179, while Vincent fired a 161 and junior Makenzie Liezert added a 151 for the Rochelle side. Belvidere extended its series count with a 899-817 win in the second game, where Riley Freeman shot a 181 for the Bucs. Vincent's 169, McCullough's 163 and a 149 from junior Anahi Alanis were the top scores for the Lady Hubs in the second game.

Belvidere clinched the series sweep with a 918-886 victory in the third game, where Eliza Guarnevia recorded a 192 for the Bucs, who saw five of their six starters finish with 400-plus series scores. Vincent rolled her series-best 209 in the third game, while McCullough added her series-best 170 and junior Faith Adams fired a series-best 171. Adams ended the evening with a 427 series for the Lady Hubs.



(PHOTO BY RUSSELL HODGES)

Junior Faith Adams strides to the foul line during the Rochelle Lady Hub varsity bowling match against Belvidere on Wednesday.

# COMMUNITY BOARD

***Need to get the word out about a product or service you offer?***

***Give us a call at 815-562-4171.***

***We can reach over 9,000 homes!***



Gutters

**SEAMLESS GUTTERS**

**ALL ALUMINUM**

- Will Not Rust, Chip Or Peel
- Most Colors Available
- Manufactured On The Job

**815-758-8998**

257 W. Stephenie Dr., Cortland  
www.theiscnroofing.com

Storage Sheds

FREE Sales Rep. Evaluation At Your Site

We Deliver! From Our Lot To Your Site

**Rocky Ridge Structures**

We Specialize in Portable/Quality Built Storage Sheds

- Stock & Custom Design
- Many Options Available
- Competitive Pricing
- Site Preparation Available

See Displays at 3500 S. Chana Rd. Chana IL 61015

Call Norm or Albert for Free Literature packet

**779.861.3542**

Plumbing/Heating/Cooling

**Anderson Plumbing & Heating Inc.**

Serving Rochelle For Over 40 Years

**LENNOX**

Quality Service-Free Estimates Residential & Commercial

**815-562-8784**

Lic. #058-087891

Advertise Here

**What Service Do You Offer?**

**562-4171**

The Rochelle News-Leader

Heating & Air Conditioning

**Keep your family safe and warm!**

**HULL HVAC**

Heating, Cooling & Duct Cleaning Specialist

**815-561-6551**

www.HullHVAC.com

527 2nd Ave Rochelle, IL 61068

Precision Furnace Clean & Check

**\$85.00**

Includes FREE carbon monoxide test

24/7 Emergency Service

Commercial & Residential Roofing

**Residential Concrete Driveways, Flatwork and Foundations**

- Shingled Roofs
- Flat Roofs
- Metal Roofs For Farm Facilities
- Custom Built Homes
- Additions

**FREE ESTIMATES**

**561-0099**

Tim & Roger Bruns, Owners Established 1997

www.brunsconstructioninc.com



# Classified Marketplace

## FREE!

**Sell your household items for free.**  
Total value of item must be \$200 or less. (15 words  
- one week - 7 publications - price must be listed)



ROCHELLE • HILLCREST • CRESTON • STEWARD • KINGS • ASHTON

## 101 LEGAL NOTICE

### VILLAGE OF ASHTON ANNUAL TREASURERS REPORT FISCAL YEAR ENDING APRIL 30, 2022

#### Revenue Summary:

Property Taxes - \$131,550; Licenses \$7,025; Franchise Income \$11,955; Building Permits \$2,905; State Income Tax \$139,607; Replacement Tax \$25,887; Sales & Use Tax \$80,993; Cannabis Tax \$1,520; Video Gaming \$35,179; Fines \$577; Penalties \$4,140; Infrastructure Maintenance Fees (Excise) \$9,853; Interest \$1,523; Summer Camp \$2,745; Donations \$2,977; Golf Outing \$2,000; Grants \$111,979; Library State Grant \$4,653; Library Fines \$438; Library Card Fees \$570; Rental Income \$5,613; Garbage Fees \$69,336; Water and Sewer Sales \$154,323; Debt Service Fees \$112,538; Cemetery Lot Sales \$5,700; Grave Openings \$10,350; Miscellaneous Income \$289,277; Motor Fuel Tax Allotment \$38,689; Old National Investments Gains \$241,116; Interfund Transfers \$214,538; Other proceeds \$125,220

Total Revenues: \$1,844,926

#### Expenditure Summary:

##### Compensation:

\$0.00 to \$2,000; Susan Larson, Martha Holder, Charles Ellis, Ermir Ramadani, Dorthy Van Dam, Dustin Seeley, Terry Stinnett, Rhonda Cardot, David Chapman, Steve Garrison, Brady Young, Jayson Long, Carson Rueff, Kyle Ranken; \$2,000 to \$5,000; Tim Henert, Rodney Young, Meghan Clark, David Glessner; \$5,000 to \$10,000; Jakiah Muntean, Cassandra Dempsey, Janet Arroyo, Jared Yater, Nathan Hollinger, Koltan Morgan; \$10,000 to \$20,000; Nathan McBride, Jeff Larson, Monetta Young; \$20,000 to \$30,000 Linda Dallam, Catherine Koks; \$30,000 to \$40,000; none; \$40,000 to \$50,000; Blair Crum

**Total Compensation: \$164,882**

##### Vendors Paid over \$2,500

AEP Energy \$39,569; Aquafix \$5,202; Ashton Auto Repair \$3,877; Ashton Gazette \$2,929; Baker & Taylor \$7,295; Buckeye Power Sales \$2,960; Card Services \$14,042; Casey's General Stores \$9,169; Casper's Home Inspection \$11,255; Central Bank Loans \$82,813; ComEd \$19,093; Comcast \$4,668; Constellation Newenergy \$4,933; Crum-Halsted Agency \$26,674; Fehr Graham \$19,242; Ferguson Waterworks \$109,162; Helm \$39,412; IEPA \$67,713; Illinois Municipal Retirement Fund \$21,094; Illinois Public Risk Fund \$14,457; Internal Revenue Service \$15,758; Catherine Koks \$8,220; Dena McCoy \$11,054; Newkirk & Associates \$25,850; Nicor Gas \$14,489; Northern Illinois Disposal \$52,969; O'Brien Civil Works \$30,000; Reliable Garage Door \$2,696; Richter Plumbing \$2,644; Ron Miller \$2,800; Smith Ecological Systems \$6,191; Standard Equipment Company \$6,237; Sterling Vault \$6,692; Tess & Crull \$4,578; Test Inc \$3,174; United States Treasury \$22,370; Vaessen Implement Repair \$10,844; Dorthy Van Dam \$18,600; Viking Chemical \$8,817. Old National Investment Loss \$579,703. Interfund Transfers \$214,538; Other Expenditures 218,095 All other vendors less than \$2,500 - \$80,377

**Total Vendors: \$1,852,255**

**Total Expenditures: \$2,017,137**

	General	Special Revenue	Capital Projects	Enterprise	Internal Service	Fiduciary	Total
Beginning Fund Balance	18,097	2,724,597	0	133,176	0	0	2,875,870
Revenue	700,004	592,387	0	552,535	0	0	1,844,926
Expenditures	-597,371	-971,684	0	-448,082	0	0	-2,017,137
Other Financing Source (revenue)	0	0	0	0	0	0	0
Other Financing Uses (expense)	0	0	0	0	0	0	0
Ending Fund Balance	120,730	2,345,300	0	237,629	0	0	2,703,659

I, Catherine G. Koks, certify that I am duly acting municipal clerk of the Village of Ashton, Lee County, Illinois. I further certify that the above is a true copy of the Annual Treasurer's Report for the fiscal year ending April 30, 2022. This report was presented to the Village Board of Trustees January 9, 2023.

Subscribed and sworn to this 9th day of January, 2023

Catherine G. Koks, Village Clerk

No. 0111

(Jan. 15, 2023)

## 101 LEGAL NOTICE

### PUBLIC NOTICE

Public Notice is hereby given that on January 13, 2023, a certificate was filed in the Ogle County Clerk's Office setting forth the names and post office address of all of the persons owning, conducting and transacting the business known as: Hub City Tax Prep Solutions, 11141 E Fisher Rd, Rochelle, IL 61068 Dated: January 13, 2023 Laura J. Cook, Ogle County Clerk No. 0114 (Jan. 15, 22 and 29, 2023)

## 101 LEGAL NOTICE

This publication does not knowingly accept fraudulent or deceptive advertising. Readers are cautioned to thoroughly investigate all ads, especially those asking for money in advance.

## 105 BUSINESS OPPORTUNITIES

"This publication does not knowingly accept fraudulent or deceptive advertising. Readers are cautioned to thoroughly investigate all ads, especially those asking for money in advance."

BE YOUR OWN BOSS! Health & Wellness Industry. No experience necessary. Flexible Hours. Start Your Future Today! Call Now! Rick 630-965-1470. (01-25-23)

## 113 FINANCIAL

NOTICE Advance Fee Loans or Credit Offers Companies that do business by phone can't ask you to pay for credit before you get it. For more information,

call toll-free 1-877-FTC-HELP. A public service message from your hometown newspaper and the Federal Trade Commission.

## 119 ANNOUNCEMENTS

"This publication does not knowingly accept fraudulent or deceptive advertising. Readers are cautioned to thoroughly investigate all ads, especially those asking for money in advance."

## 127 SERVICES AND REPAIRS

Furman's Lawn Care and Tree Work. Fall clean up, gutters and more. Fully insured. In business since 1999. Rochelle and surrounding areas. Call Jeremy Furman at 815-761-9619. Please leave a message, will return call ASAP.

## 201 DOMESTIC/CHILD CARE

NO INDIVIDUAL, unless licensed or holding a permit as a childcare facility, may cause to be published any advertisement soliciting a child care service. A childcare facility that is licensed or operating under a permit issued by the Illinois Department of Children and Family Services may publish advertisements of the services for which it is specifically licensed or issued a permit. Your Hometown Newspaper strongly urges any parent or guardian to verify the validity of the license of any facility before placing a child in its care.

## 301 ANTIQUES

WANTED TO BUY:

Vintage Metal and Wood Signs, Milk Bottles & Local Advertising, Oak Icebox, Iron Door Stop and Antique Lighting... Call Dick Harms at 815-562-2928 or email dickharms@hotmail.com

ANTIQUES WANTED: I pay cash for antiques; furniture, glassware, pottery & crocks, tin & iron toys, sterling silver, decoys. If it's antique, I'm interested in looking! Call 815-562-2928 or email dickharms@hotmail.com

## 307 MISCELLANEOUS FOR SALE

Brand new, still in box glass top coffee table and 2 end tables. \$150 cash only. 815-761-6576.

BUNDLED Newspaper -\$3 per Bundle. End Roll- Cost Depends on Weight of Roll. Available Monday-Friday 815-562-4171 (8AM-NOON ONLY) Rochelle News Leader.

SPLIT firewood for sale. Contact 779-251-0254. (02-13-23)

## 405 HOUSES FOR SALE

ALL REAL ESTATE advertised herein is subject to the Federal Fair Housing Act, which makes it illegal to advertise any preference, limitation or discrimination based on race, color, religion, sex, handicap, familial status, or national origin, or intention to make any such preferences, limitation or discrimination. We will not knowingly accept any advertising for real estate which is in violation of the law. All persons are hereby informed that all dwellings advertised are available on an equal opportunity basis.

## INFORMATION

### Office Hours:

8 a.m. to 5 p.m. (Monday-Friday)

### Phone:

815-562-4171

### Fax:

815-562-2161

### Email:

classifieds@rochellenews-leader.com

### Address:

211 Hwy. 38 E., Rochelle

### Mail:

P.O. Box 46

Rochelle, IL 61068

### DEADLINES:

**Sunday News-Leader:**

Thursday, 2 p.m.

**Tuesday Shopping News:**

Friday, 10 a.m.

**Wednesday News-Leader:** Monday, 4 p.m.

(Deadlines subject to change during holiday times)

All classified marketplace line ads will appear in the following 7 print publications and on 5 high-traffic newspaper websites:

• Rochelle News-Leader • Ogle County Life • Rochelle Shopping News • Ashton Gazette • Amboy News • Mendota Reporter • Mendota Money Saver

**Call for pricing that starts at \$32.99 for private party ads and \$44.60 for commercial business ads and \$19.99 for garage sale ads.**

### DISCLAIMER:

If your advertisement appears incorrectly, notify us immediately. We will not be responsible for more than one incorrect insertion, and will only credit customer for one insertion.

## 501 APARTMENTS FOR RENT

ROCHELLE. Two Units for Rent. Available February 1st. All Utilities Included. One Bed and One Bath on First Floor. Two Bed and One Bath on Second Floor. Call 815-762-6440 or Email rentals464@gmail.com. (01-18-23)



**Learn Something NEW Every Day!**

## 103 AUCTIONS

VIRTUAL ONLINE | LEE COUNTY, ILLINOIS



## LAND & REAL ESTATE AUCTION

FRIDAY, FEBRUARY 03, 2023 AT 10:00 AM<sup>CT</sup>



197.83 ACRES± • 2 TRACTS

OPEN HOUSE: SAT., JAN. 21 • 10:00 AM - 12:00 PM

The Erdmann farm is located approximately 12 miles northeast of Dixon, Illinois or 16 miles southwest of Rochelle, Illinois. The property is further described as being located in Section 24, T22N-R10E, Franklin Grove township, Lee County, Illinois. The real estate contains a total of 197.83 acres (subject to survey) and will be sold in 2 tracts. Tract 1 represents productive tillable cropland while Tract 2 represents a beautiful country home improved with multiple buildings and grain storage.

Farmers and country enthusiast, be sure to check out this Lee County, Illinois auction.

**ELIZABETH V. ERDMANN TRUST & PETER M. ERDMANN TRUST**

Representing Attorney: Steve Weeks

Weeks, Brucker & Coleman, Ltd | (815) 692-2302

606 W Oak St., Fairbury IL 61739

Auction Manager: Kevin Haas (309) 264-7767



**SULLIVAN AUCTIONEERS**  
a Biglron company

(844) 847-2161

www.SullivanAuctioneers.com

License #444000107

# STOPTEXTSSTOPWRECKS.ORG



## 307 MISCELLANEOUS FOR SALE

## OUTDOOR WOOD FURNACE

Exceptional performance and value. EPA certified Central Boiler Classic Edge Titanium HDX OUTDOOR WOOD FURNACE. 26% Tax Credit on furnace and installation.



CentralBoiler.com

08312022

Call Pete Central Wood Boilers  
**815-509-7805**

## NEW MILFORD REFRIGERATION

NEW, USED SCRATCH & DENT  
• Refrigerators • Freezers  
• Washers/Dryers • Stoves

We also carry a large selection of refurbished appliances with a warranty.



6331 11th Street, Rockford  
**815-874-2257**

11222020



# SPORTS

## RTHS Dance

(PHOTO BY RUSSELL HODGES)



### Rochelle Chellettes finish fifth at Interstate 8 Conference Championship on Wednesday

Rochelle Township High School hosted the Interstate 8 Conference and Kishwaukee River Conference Dance Championships on Wednesday. The Rochelle Chellettes finished fifth out of five schools in the Interstate 8 Conference, competing against LaSalle-Peru (fourth), Sycamore (third), Ottawa (second) and Morris (first). Rochelle will dance in the IHSA 1A South Elgin Sectional on Saturday, Jan. 21 at South Elgin High School. The competitive team includes Abby Dall, Kylie Davis, Miranda Dubek, Alexis Huerta, Audyn Kemp, Macy Lewis, Damaris Macias, Kayla Ortega, Macy Ramos, Peyton Raymond and Addison Stewart. The team is coached by Haleigh Nelson.

## RTHS Boys Basketball

# Hubs emerge with overtime victory over Ottawa

## Aguirre scores 20 points, Luxton grabs 13 rebounds in 72-67 win on Tuesday

BY RUSSELL HODGES  
SPORTS EDITOR

**OTTAWA** — Back-to-back tough losses in the Interstate 8 Conference didn't prevent the Rochelle Hub varsity basketball team from staying together as the purple and white sought to snap a three-game losing streak against the Ottawa Pirates on the road Tuesday evening.

Senior forward Raul Aguirre scored a team-high 20 points and knocked down a crucial 3-pointer late in the game for the Hubs, who rallied for a 72-67 win over the Pirates in overtime to end a three-game conference skid. Rochelle (6-10, 2-5 Interstate 8) overcame 23 turnovers in the game with a dominant effort on the boards, where the Hubs outrebounded Ottawa 49-38.

"It was a team effort for us to be controlled and be strong with the ball during crunch time," Aguirre said. "We took a couple of timeouts toward the end of the game and our coaches encouraged us to be strong with the ball. Our young guys took those words to heart and I was really proud of how we finished the game. This is a huge win for us and for our confidence."

The Hubs started fast on the offensive end, surging ahead 23-14 after the first quarter. The 6-foot-5 forward Aguirre, who grabbed nine rebounds in the game, was the go-to player for Rochelle early in the game, scoring on several low-post shots and finishing 7-for-11 from the field. Aguirre was also

2-for-2 from 3-point range and 4-for-4 on free throws in the victory.

"Ottawa was 5-1 entering the game and we made it a lot tougher for them to win the conference this season," Aguirre said. "There are a lot of games we can win if we play our style of basketball. It was great that my coaches and teammates trusted me to make shots during difficult stretches of the game. Carson [Lewis] made a great pass to me late

in the game for a 3-pointer and my teammates made great passes to me early in the game so I could score."

Junior Eli Luxton was active on the boards throughout the game, finishing with a team-high 13 rebounds while adding eight points. The Pirates worked their way back into the game during the second quarter, making the score 35-34 Rochelle at the half. Levi Sheehan and Cooper Knoll fueled

the offense for the Pirates, with Sheehan totaling 14 points and Knoll adding 13 points.

The Hubs leaned on their defense during the third quarter, where the purple and white held Ottawa to only eight points and surged ahead 51-42 entering the fourth quarter. Sophomore Cayden Moore recorded 11 points and notched a team-leading four steals, while Luxton and sophomore Carson

Lewis each had three deflections in the win. Lewis totaled 10 points for the Hubs, who outscored the Pirates 11-6 during the overtime period to secure the victory.

"We switched our defensive scheme during the game," Aguirre said. "Our zone defense gave them trouble because Ottawa runs an offense with a lot of motion and it can be troublesome for our man-to-man defense to keep

up. But our zone defense forced them into looks they weren't used to and I thought we did a great job of adjusting from our press-man defense to our zone."

Junior Jack Tracey finished with eight points, while junior Jack Lodico compiled seven points, two steals and four rebounds. Senior David Gerber chipped in five points and senior Colton O'Rorke dished out four assists in the win.

**Service Now Heating**  
**Helping 16 Homeowners**  
**by "giving away"**  
**FURNACES FOR \$941**

If you qualify, local utilities may offer up to \$650 in rebates towards your new system\*\*

#### Dear Neighbor:

I have great news for your wallet if your furnace is over 12 years old. Allow me to explain...Every year, the months of January, February, & March can be slow for my business. Of course, they're never exactly right. So, they always have some inventory that they must hold over until the next summer season. I went to one of these companies and contracted for the purchase of sixteen Deluxe furnaces and air conditioners in the four most popular sizes used in Kane County. And, because of the quantity and time of year, I was able to buy them at drastically reduced prices.

They are brand-new Deluxe Models. They are NOT the seconds or "blemis" or standard "builder" models. They are factory-fresh furnaces and air conditioners and have a full 10-year factory warranty.

#### How To Get A Furnace For Peanuts

If you are interested in a new heating/cooling system (but only if one of the four sizes I have will fit your house, of course), I am "giving" you the furnace and all I ask for is the \$941 in labor & material costs for installation along with the purchase of your air conditioner.

#### Perfect Fit For Your Home

I will come out and measure your home (and determine the availability of the proper size). Don't forget, I only have

16 matched Deluxe Systems in four sizes. When they are gone, this remarkable offer ends also. Just call 815-758-8484.

#### Absolutely No Obligation

After I completely explain the installation, there is absolutely no obligation. If you decide you don't want to take advantage of the spectacular savings... That's OK.

#### You Can Buy With NO Cash\*

You don't even have to pay me right away. I have set up a terrific 0%\* payment plan.

#### Fuel Efficiency Guarantee\*\*

I'm so confident that you will save at least 25% on your heating and cooling bills (I'm projecting more like 30%), that I will pay you the difference for a year if you don't! I'll show you exactly how this works. If these heating and air conditioning systems were not among the best on the market, I couldn't afford to make such a promise.

#### Why This Offer Can't Last

I only have a few of each of the four sizes. When all of the air conditioners are sold and all the furnaces are "given" away, that's it. There are no more at this price. Call Bre now at 815-758-8484 to set up an appointment for your no-obligation survey.

Warmly,

*Chris Carpenter*



\*With approved credit. Ask for Details. \*\*With high efficiency upgrade.

**ServiceNow**  
**HOME SERVICES**  
PLUMBING • SEWER  
HVAC • ELECTRICAL  
**815-562-4440**



**Wheatland Tube****Western Tube**

# OPPORTUNITY IS CALLING YOU AT WHEATLAND TUBE AND WESTERN TUBE.

Make your career an exciting one.

Give yourself the chance to grow.

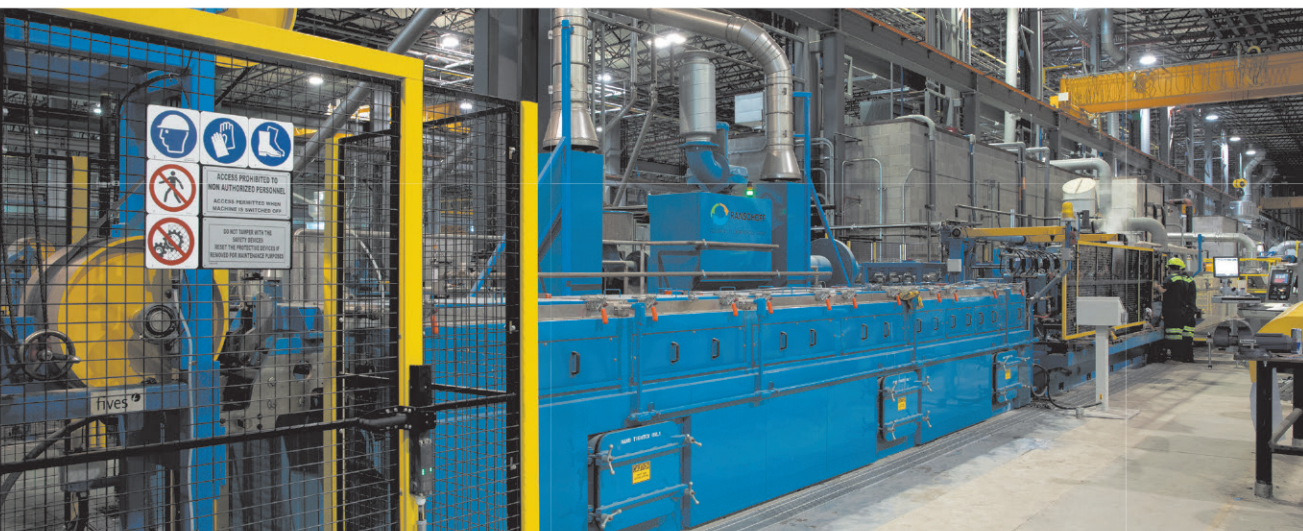
Be at the forefront of technology and innovation.

Become part of a new era in domestic manufacturing.

Help our economy bounce back better than ever.

Build a brighter future for our community.

**DO IT ALL RIGHT HERE, RIGHT  
NOW IN ROCHELLE, ILLINOIS.**



Start at \$24/hr and up | \$500 sign-on bonus | Competitive benefits | All levels  
Schedule your interview today at [wheatland.com/rochelle](https://wheatland.com/rochelle)