



**41ST ANNUAL**  
**SUBLETTE**  
**FARM TOY & ANTIQUE TRACTOR SHOW**  
**SATURDAY, MARCH 18**  
**& SUNDAY, MARCH 19, 2023**

A SUPPLEMENT TO  
**The Mendota Reporter**  
Established in 1854  
**The Amboy News**  
ROCHELLE  
**News-Leader**  
Wednesday, March 8, 2023

- 2 • The Mendota Reporter
- 2 • The Amboy News
- 2 • Rochelle News-Leader



# Sublette Farm Toy & Antique Tractor Show



Wednesday, March 8, 2023  
 Wednesday, March 8, 2023  
 Wednesday, March 8, 2023

## Leffelman & Associates Invites You To Sublette For A Great Toy Show!



# LEFFELMAN

& ASSOCIATES INC.

*Our Family Protecting Your Family*



P.O. BOX 349, Sublette, IL 61367  
 Sublette 849-5219  
 LaMoille 638-2171 • Amboy 857-2125

03092022

Welcome To  
**SUBLETTE**



OUR BIT OF THE  
**U.S.A.**

Village of Sublette  
 PO Box 86  
 Sublette IL 61367-0086  
 www.subletteweb.com

On behalf of the Village of Sublette, it gives me great pleasure to welcome everyone back to Sublette's "Annual Antique Tractor and Toy Show."

The 'toy show' is made possible by the work and generosity of our committee, volunteers, exhibitors, and organizations who give their time, energy, ideas, and creativity to produce an enjoyable experience for an afternoon - or perhaps the entire weekend!

Our beautiful, little village has plenty to offer! While you are here, I encourage you to visit our businesses - ranging from restaurants with home cooking, to unique shops and more!

We are happy to see you again! Because of your unwavering loyalty, Sublette remains "The little town with the BIG toy show!"

Best wishes for an enjoyable and successful toy show!  
 Stay awhile and come back often!

Sincerely,

John R. Stenzel  
 Village President of Sublette

# Welcome to the Sublette Farm Toy Show

## March 18th & 19th



Amboy Shell Express Lane  
 342 N Mason Ave., Amboy

# JOHNSON OIL COMPANY



Sublette BP Gas  
 508 N Pennsylvania St., Sublette

03082023



# Sublette Farm Toy & Antique Tractor Show



## Toy Show to keep doing what it's been doing for 40 years

By **BRANDON LaCHANCE**  
Staff writer

SUBLETTE – Last year's Sublette Farm Toy & Antique Tractor Show was the first full show in two years because of COVID-19.

With the initial return to the promised land trial run out of the way, the 41st annual toy and tractor show looks to be in its normal fashion of large crowds, big tractors, and enormous fun. "It's varied from year to

year with some years better than others. Last year we thought we had a successful show," Sublette Farm Toy & Antique Tractor Show President Maurice Zimmerlein said. "We were shut down by COVID-19 for the

two years (2020 and 2021) before we were able to have last year's show.

"We had an outdoor tractor show in 2021 and it was used as a fundraiser to start up the full toy show in 2022."

The event's committee saw an overhaul last year as Zimmerlein was joined by five new members in John Stenzel (Sublette's mayor), Anthony Morgan, Jeremy Zapf, Mark Henkel, and Evan Bickett.

Not only is the aftermath of the pandemic trial run over, but so is the newness of the roles of the committee members.

Now, it's back to the normal, every year concerns such as volunteer and tractor numbers.

"We depend a lot on the locals for volunteerism. It takes a lot of volunteers to bring in the local tractors," Zimmerlein said. "We usually get 100-200 tractors and 6-10 semi-tractors on

the Sublette streets; Main Street mostly. We have a lot of local farmers that bring equipment to town.

"We get support from local dealerships. We get monetary support from a lot of the local businesses."

The volunteers and committee members set up and take down tables and take money at the doors of the five different buildings

See Show, Page 4



Siblings and friends from Orangeville, Jessica and Nicholas Velch, and friend Jack Harris, enjoyed the day, hanging out on their grandfather and uncle's tractor, at the 25th Toy Show in 2007.

Sponsored by Sublette Firemen

## PANCAKE & SAUSAGE BREAKFAST

Sunday, March 19

Serving from 7 a.m. - Noon

Carryouts Available  
Sublette Fire Department

Come Support  
Their Fundraiser!



03082023

## UPCOMING EVENTS

Welcome To  
SUBLETTE



OUR BIT OF THE  
U.S.A.

- March 18 & 19  
41ST SUBLETTE ANTIQUE TRACTOR AND TOY SHOW
- April 29  
SIP AND STROLL - DOWNTOWN
- May 26  
DOWNTOWN CRUISE NIGHT
- May 29  
MEMORIAL DAY SERVICE
- June 24  
OLD TRUCK SHOW
- June 30  
MAYBE BAND SHOW ON MAIN STREET
- July  
FARMER'S MARKET - TUESDAY EVENINGS 5-7PM  
DOWNTOWN
- Aug. 2  
TRACTOR RIDE START TIME 8AM - MEET IN THE PARK
- Sept. 2  
HOPS N HARMONY - COUNTRY MUSIC
- Sept. 10  
PULLIN IN THE PARK 10AM-3PM
- Sept. 16  
CAR SHOW DOWNTOWN 10AM-3PM
- Oct. 31  
HALLOWEEN 5-7PM
- November  
GIRLS NIGHT OUT - DATE TO BE DETERMINED
- Dec. 3  
CHRISTMAS WALK AND PARADE
- Dec. 16  
CHRISTMAS DECORATING CONTEST JUDGING

03082023

www.subletteweb.com



# Sublette Farm Toy & Antique Tractor Show



## Many Sublette stores will be open for business during Toy Show



The Sublette Mini Mall as well as numerous other Sublette businesses will be open during the Sublette Toy Farm Toy & Antique Tractor Show. This is a great opportunity to explore the many businesses that make up the community.

In the Mini Mall, Ellie Rae's is a quaint boutique offering gifts and clothing. Then,

Local Cup and Cake is the place to get your special cup of coffee along with cupcakes and muffins. The shop is listed on the Blackhawk Chocolate Trail, so you may find some special chocolate items on the menu. Suds Yer Duds, Sublette's laundromat, is also located in the Mini Mall and vows that "we're cleaning up the town."

### Show

Continued from Page 3

housing the show, which are Main Street Repair, Jacoby Building, Sublette Farmers Elevator, Sublette Community Building, and the Ellice Dinges Center.

Zimmerlein and the committee are thrilled the show is back to normal and are happy to present the annual spectacle to Sublette residents and everyone from the area who has had it marked on the calendar every year for the last 41 years.

"When it first started, it was back in the 1980s and toy shows were a fairly new thing. There were a lot of guys that collected

farm toys years ago," Zimmerlein said. "I think it's a little more family orientated now.

"I'm a vendor myself. I've been setting up a table, buying, and selling at the toy show since 1985. What I like to see is a lot of families come through with younger kids. It's good to see younger people getting involved with it because there are a lot of older collectors."

Zimmerlein mentioned there are a lot of avid collectors who have cast iron toys that were made in the 1800s, and added, those are worth some money if you have them.

The committee president is always interested in what

everyone brings to the toy show.

He checks out Facebook pages of other toys shows in the state and around the country to see if he should be looking for new ideas to keep Sublette fresh, entertaining, and prosperous to the crowd and the vendors.

According to his sources, the show meets and exceeds standards.

"We handed out questionnaires to our vendors last year to get an opinion on what we should do different," Zimmerlein said. "Everyone likes what we have. They like coming to the show. We're going to try to not change anything and keep it going the way it is."

*Serving  
the Local  
Community  
for Over  
100 Years!*



- We Offer Grain Storage & Marketing
- Seed • Grain • Feed
- Fertilizer • Chemicals • Lumber
- Building Materials

**Sublette Farmers Elevator Co.**  
100 W. Main St. • Sublette, IL 61367  
**(815) 849-5222**

03042020

Stop by and See our Unique Shops during the  
41st Annual Sublette Farm Toy Show March 18 and 19

*Local Cup & Cake*

Serving you the best coffee and baked goods in the town of Sublette

*Ellie Rae's*

\* Unique Boutique \* Home Decor \* Handmade Soaps & Lotions  
\* Candles \* Women's and Children's Clothing and Accessories

*Suds Yer Duds*

Sublette's Laundromat "We're Cleaning Up the Town!"

All three conveniently located in the  
Village Mall, 100 S Front Street, Sublette, IL

03082023

Wednesday, March 8, 2023  
Wednesday, March 8, 2023  
Wednesday, March 8, 2023



# Sublette Farm Toy & Antique Tractor Show



The Mendota Reporter • 5  
The Amboy News • 5  
Rochelle News-Leader • 5

## Illinois J.I. Case Collectors tour includes stop in Sublette

By **BRANDON LaCHANCE**  
Staff writer

J.I. Case Company and the tractors it produced in the 1800s and 1900s have been linked to many farms in the Illinois Valley throughout the generations.

But the reach of the tractors extends throughout the entire state.

The Illinois J.I. Case Collectors tour the state and all of its toy and farm shows to share the history of the iconic company, but also to see what kind of tractors and equipment are still out there.

“It’s a club that is dedicated to the preservation of J.I. Case tractors and collecting those tractors and equipment,” said Stuart Thomas, president of Illinois J.I. Case Collectors. “When J.I. Case merged with International Harvesters in 1985, they changed some of the models and the paint schemes.

“The focus of our group are the tractors

### Illinois J.I. CASE COLLECTORS

that were made prior to 1985 when the merger happened.”

Thomas, 27, from Benton, has been involved with the collectors for five years and has been the president for the last year.

He and other members will have a table at the 41<sup>st</sup> Annual Sublette Farm Toy & Antique Tractor Show. They will also bring items for show and tell, which could be J.I. Case original steam engines, tractors from the mid 1980s, other equipment as Jerome Increase Case created his company to have its hands in every machinery basket.

The Illinois J.I. Case Collectors have 150

*“Case was always looking for new ideas. They came out with the eagle-hitch system and it was one of the revolutionary items that Case had produced. There are a lot of creations that came from Case that created change for our society, but that’s one that stands out to me.”*

—Stuart Thomas, president of Illinois J.I. Case Collectors

members and plan to go to five to six shows this year including Sublette, Collectors Tour Weekend the weekend after Sublette, Pinckneyville, and in the Peoria area.

It was natural for Thomas to join the club. “My uncle started collecting some of the J.I. Case tractors. There is a history in our family that Case tractors was a thing for many years and I just kind of fell into the family deal,” Thomas said. “I was not born on a farm or raised on a farm.

“I helped my uncle farm after I graduated high school and I had an interest in the history. We used a few of the tractors and it made us want to add to the collection.”

The collectors will bring both toys and

real-size versions of tractors, engines, and even lawn mowers and garden tractors.

Showing what J.I. Case was able to do for the industry and society during its time is the fun and purpose of the Illinois J.I. Case Collectors.

“Case was always looking for new ideas. They came out with the eagle-hitch system and it was one of the revolutionary items that Case had produced,” Thomas said. “It worked as somewhat of a quick hitch where people were able to change implements faster than they could previously.

“There are a lot of creations that came from Case that created change for our society, but that’s one that stands out to me.”

**Congratulations  
on 40 years of  
outstanding  
toys shows!!  
Wishing all  
the best for a  
successful 41st!**

**The Mendota Reporter**

Established in 1854

**The Amboy News**

WE UNDERSTAND THE IMPORTANCE OF EXPERIENCE, GROWTH,  
LOCAL DECISIONS AND LONGEVITY IN YOUR FARMING BUSINESS.



Todd Muur - NMLS#591637 - Dixon  
Susan Gomez - NMLS#1027602 - Amboy  
Chas Cross - NMLS#1846547 -  
Monroe Center

Sarah Wiersema - NMLS#2041883 - Amboy  
David Lloyd - NMLS#1069858 -  
Franklin Grove

### What can we do for you?

- Land Purchase
- Operating
- Equipment
- Risk Management Crop Insurance

**815-857-3625, ext. 5306**



The First National Bank in Amboy

Amboy • Dixon  
Franklin Grove • Monroe Center  
[www.fnbamboy.com](http://www.fnbamboy.com)



*Where you come first*



# Sublette Farm Toy & Antique Tractor Show



## Looking for something to do?

### Here's just a few of the FUN things going on in Lee County, IL!

**May 13**

Lincoln Highway Car Show  
Franklin Grove

**June 11**

Ashton Lions Club  
Car Show

**June 30 -  
July 4**

59th Annual Dixon  
Petunia Festival

**July 27-30**

Lee County 4-H Fair  
& Jr. Show, Lee County  
4-H Center, Amboy

**Aug. 4-6**

Harvest Festival

**Aug. 5**

Big Rig Show of  
Franklin Grove

**Aug. 5-6**

Living History Antique  
Equipment Association  
Show

**Aug. 24-27**

Amboy Depot Days  
& Car Show

**Sept. 3-4**

Paw Paw Lions Club  
Labor Day Celebration  
& Car Show

**Sept. 16**

Autumn on the Prairie  
Nachusa Grasslands

*Dates may be  
subject to change.*

Find us on   

**"Lee County Illinois Tourism"**



Call us for more information  
at **815-288-1840** or visit us  
online for a full,  
up-to-date listing of events.  
**leecountyfun.com**

03082023

## International J.I. Case Foundation promotes company throughout the U.S., including in Sublette

By **BRANDON LaCHANCE**  
Staff writer

Amongst the vendor trucks and tables at the 41<sup>st</sup> Annual Sublette Farm Toy & Antique Tractor Show, there are a few organizations that are quite familiar with shows featuring J.I. Case equipment.

The International J.I. Case Heritage Foundation can be found behind tables and walking the streets of toy and farm shows all across the United States and Canada.

Actually the 11 International J.I. Case Heritage Foundation board members can't regularly meet for a Saturday morning cup of coffee as they're located in Canada, Minnesota (president John Ahlers), Oklahoma (two), Illinois (two), New Mexico, Texas, Indiana, Kansas, and Iowa.

But wherever you spot them, members of the foundation will be sharing history and promoting J.I. Case.

"We try to promote the history of J.I. Case throughout the country," said Russ Rowley, the foundation's treasurer. "We put out a quarterly magazine called, 'The Heritage Eagle.'" It's usually stories about people who collect J.I. Case tractors and

the history of the company in different locations in the country.

"With the magazine, we have an opportunity for people to advertise Case-related equipment. We promote businesses at the back of the magazine that sell Case items whether they're remanufactured, new old equipment, and service repair work."

Rowley has been involved with the international foundation since 1999 and has been on the board of the non-profit organization since 2008.

Rowley will be in Sublette talking about the J.I. Case Company and its gambit of machines including steam engines, Chase cars, gas and diesel tractors, military tractors, and more.

He'll also share more insight on the Illinois J.I. Case International Foundation and how you can be involved.

"Since the show in Sublette is featuring J.I. Case Company and I live in Illinois, president John Ahlers asked me if I would go since it's an opportunity to promote and get members," Rowley said. "We'll be at a table and we'll have T-shirts and caps.

"I may bring a couple of toys to display, but the primary reason is to promote the foundation."

## Volunteers numbering 150-200 are what make the toy show a success

An event as large as the Sublette Toy Show could not be done without a lot of volunteers. It takes volunteers to plan, volunteers to set up, volunteers to work at the show and volunteers to clean up.

It is estimated between 150 and 200 volunteers are involved annually in staging the show. These volunteers are not just from Sublette, but many of the neighboring communities, and some even travel for many miles to help with the show as they enjoy the small town atmosphere and farm-related activities.

These helping hands are greatly appreciated for their efforts in promoting the show.



Wednesday, March 8, 2023  
Wednesday, March 8, 2023  
Wednesday, March 8, 2023



# Sublette Farm Toy & Antique Tractor Show



The Mendota Reporter • 7  
The Amboy News • 7  
Rochelle News-Leader • 7



## J.I. Case tractor legacy to be featured at Toy Show

By **BRANDON LaCHANCE**  
Staff writer

In the 1800s and 1900s, there wasn't a farmer, a construction worker, or anyone else who used heavy machinery that hadn't heard of the J.I. Case Threshing Machine Company or the J.I. Case Company.

And more than likely, used J.I. Case products.

Maybe you'll see a tractor a family member of yours once bought from J.I. Case dealerships that were located in Walnut, Compton, and Mendota during the 41st Annual Sublette Farm Toy & Antique Tractor Show on March 18-19 as J.I. Case is this year's featured tractor.

Jerome Increase Case, born Dec. 11, 1819 in New York and passed away Dec. 22, 1891 in Racine, Wis., transcended the way work was completed in the United States of America with his machines.

Case – who served three terms as Racine mayor, represented Racine County in the Wisconsin State Senate (1865-1866), and raised champion racehorses – founded the J.I. Case Threshing Machine Company in 1842 as he made a living building and improving threshing machines.

In 1869, the company began building steam engines and it made its first steam engine tractor in 1876.

In its heyday, the J.I. Case Company (which became the name in 1863 when the company officially organized) was one of the largest builders of steam tractors, steam engines, producing self-propelled portable engines, and traction engines.

Case also produced machinery for the U.S. military including combat engineer equipment for the United States Marine Corps and full-tracked tractors and scoop loaders for the U.S. Army.

In 1985, Tenneco (J.I. Case's parent company) bought International Harvester's agricultural equipment division and merged J.I. Case and International Harvester into Case IH.

Today, Case IH is owned by CNH (Community Newspaper Holdings, Inc.) Industrial.

Although there will be 100-200 tractors of all brands, names, shapes, and sizes, the Sublette Farm Toy & Antique Tractor Show plans to have a full street lined with J.I. Case tractors to show the importance of the machinery and what it once meant to local farmers.

## We look forward to seeing you at the Toy Show

"GREAT DEALS - GREAT SERVICE  
SINCE 1926"



VAESSEN  
BROTHERS  
CHEVROLET, INC.

HIGHWAY 52  
SUBLETTE, IL 61367  
800-227-5203



[WWW.VAESSENBROTHERS.COM](http://WWW.VAESSENBROTHERS.COM)

03022022

*Welcome to the 41st  
annual Sublette Farm Toy  
& Antique Tractor Show!  
While in town, visit our many  
shops and restaurants!!*

*Sublette Business Association*

03082023



# Sublette Farm Toy & Antique Tractor Show



## Toy Show co-founding father, Dean Stephenitch, passes away

By **BRANDON LaCHANCE**  
Staff writer

SUBLETTE – The foundation of the Sublette Antique Tractor and Toy Show was shaken on Feb. 26, 2023, as one of the five original founders of the event, Dean Stephenitch, passed away.

“He was a big contributor to the community. He was always up for any fundraisers. He set up quite a bit of the entire toy show. He spent a lot of hours on the set up every year,” said current toy show president Maurice Zimmerlein. “They used to do a silent auction.

He went to all the businesses in the area to try to get items to give away or auction off. He would go to Wal-Mart and any big store.

“It was a real good fundraiser because he was able to get something from every business. We haven’t been able to do it since he hasn’t

been with us because it is a lot of work.”

Stephenitch, born in Sublette on Oct. 8, 1954, was part of the toy show’s founding fathers along with Don Dinges, Tom Dinges, Dan Tastad (deceased), and Paul Henkel, and was part of the first 38 toy shows.

During toy show planning and setting up, he made it his No. 1 priority over his other endeavors such as his mowing business, his snow mobile shop – Dean’s Sports Center – and his own toy collecting as he was an avid collector of Oliver Farm Equipment Company tractors and Artic Cat snow-mobile toys.

Actually, a part of Ste-

phenitch’s collection remains on a shelf along the raised ceiling at Pioneer State Bank.

“Dean was such an avid toy fan,” Don Dinges said. “He did so much for the toy show. He really put his heart into the toy show. It was amazing how much work he put into the show and how many things he was able to bring in for the silent auction.

“He took care of all of the table arrangements for vendors. He was integral part of the show; the key person.”

Zimmerlein said they plan on having a special display at this year’s show in honor of Dean Stephenitch.



## WELCOME!

to everyone attending the

## Sublette Farm Toy Show!

Please join us for these & other upcoming events!

- Mendota Easter Hop - April 1, 9am-11am
- Sweet Corn Festival Golf Outing - June 4
- Fireworks at Lake Mendota - June 24
- 76th annual

Mendota Sweet Corn Festival - Aug. 10-13

[www.sweetcornfestival.com](http://www.sweetcornfestival.com)

### Restaurants, Food Trucks and Lodging

Chamber Member Restaurants, Food Trucks and Lodging open to serve you in Mendota - just 7 miles east of Sublette on IL Rte. 52

#### RESTAURANTS

- Beck’s Oil Co.  
Rt. 251 & Meriden St.
- Casey’s General Store  
801 Meriden St.
- Cindy’s On 34  
Rt. 34 East
- Diaz Grocery and Taco  
(not serving until April)  
1314 Meriden St.
- El Rey Del Taco  
604 Sixth St.
- El Zarape  
Rt. 251
- Main Street Station  
714 Main St.
- McDonald’s  
1503 13th Ave.  
U.S. 34 East
- Mendota Moose Lodge  
211 E. 12th St.
- Pizzas by Marchelloni  
1210 Meriden St.
- Rosati’s Sports Pub  
801 Sixth St.

- Subway  
Rt. 251 North
- Ziggy’s Family Restaurant  
Rt. 34 East

#### Food Trucks

- (locations may vary)
- Salinas Mexican Food Truck
  - Tacos Guzman

#### Lodging

- Quality Inn & Suites  
Rt. 34 East at I-39
- Super 8 Motel  
2601 E. 12th St.

### MENDOTA AREA CHAMBER OF COMMERCE

800 Washington St. • Mendota • 815-539-6507

[www.mendotachamber.com](http://www.mendotachamber.com)

03082023



**Lori Erbes, GRI**  
Designated Managing  
Broker  
Over 30 years experience  
815-535-6295  
[lorierbes@gmail.com](mailto:lorierbes@gmail.com)



**Marcia Kosowski**  
Broker  
815-582-2381



**Lisa Maher**  
Broker  
773-459-5472

# ERBES Realty

815-535-6295

[www.Erbes-Realty.com](http://www.Erbes-Realty.com)

LLC



03082023



Wednesday, March 8, 2023  
Wednesday, March 8, 2023  
Wednesday, March 8, 2023



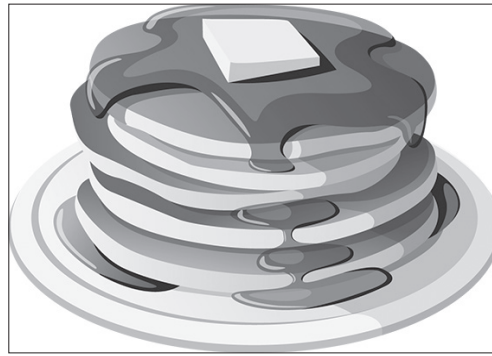
# Sublette Farm Toy & Antique Tractor Show



The Mendota Reporter • 11  
The Amboy News • 11  
Rochelle News-Leader • 11

## Sublette Fire Dept. to cook up pancakes & sausage

One of the popular events of the Sublette Toy Show is the annual Pancake and Sausage Breakfast served by the Sublette Volunteer Fire Department. The breakfast is served on the Sunday of the show from 7 a.m. until noon at the Sublette Fire Department. It's a great opportunity to start your day with a good breakfast and help out the local fire department.



## Did you miss your exit? Not to worry. Look for Sublette's "Next 4 Exit" signs

When approaching Sublette on U.S. 52 from either direction, be sure to watch for the "Next 4 Exits" signs. These tongue-in-cheek signs were erected years ago for a community celebration and have been so popular that they are left up all year long. The signs have brought smiles to many travelers as they approach Sublette. So when you get

to Sublette, be sure to take the correct exit.

You will also notice the recreated Burma Shave signs that are located one-half mile southeast of town along U.S. 52. These signs are the only "official" set of Burma Shave signs in Illinois. They were awarded to Sublette by Reminisce magazine following a contest held a number of years ago.



## Plenty of food is on the menu at the toy show

The Sublette Toy and Antique Tractor Show is one of the longest-running shows in the Midwest. It will be celebrating its 41st anniversary this year.

The first show was held in just one building and drew over 600 visitors. From there, the show has continued to grow to where it covers five buildings and displays throughout the town.

The show includes toys, crafts, an outdoor tractor show, a semi-tractor show and plenty of food. The Maytown Comets 4-H Club and the Sub-Let Indians 4-H

Club will both have food stands, and the volunteer fire department will be serving a pancake breakfast at the fire station on Sunday of the show.

Food is also available at local establishments: Rt. 52 Roadhouse, La Fiesta, Local Cup and Cake, Sublette BP, Bonnell's General Store and Sublette Saloon, located three miles northwest of town on Tower Road.

At noon on Saturday of the show, local pork producers will grill brats, burgers and bologna, with proceeds from the sales going to two local food pantries.

**WE HELP YOU GROW**

**FIRST STATE BANK**

Production Loans • Equipment Loans • Livestock Loans  
Real Estate Loan Appraisals • Estate Planning • Farm Management Services



**DAN STEPHENITCH**  
Community  
President  
West Brooklyn  
815.628.3121  
NMLS # 764558



**JOHN THEISINGER**  
Vice President,  
Ag/Commercial  
Lending  
Mendota  
815.539.3834



**JOHN GEHANT**  
Vice President  
West Brooklyn  
815.628.3121  
NMLS # 764557



**EVAN WIXOM**  
Loan Officer  
Mendota  
815.539.3834

**firststatebank.biz**  
**800.362.9623**





# Sublette Farm Toy & Antique Tractor Show



## 5 scholarships derived from toy show funds

Each year the Sublette Toy Show awards five scholarships using some of the funds generated at the show. One scholarship is awarded to a member of the two local 4-H clubs – the Sub-Let Indians and the Maytown Comets. One scholarship is given to a member of the Amboy FFA Chapter and one scholarship is given to a member of the

Mendota FFA Chapter in memory of Dan Tastad, one of the original toy show promoters. The last scholarship is given in the name of Max Armstrong to a member of either the Amboy or Mendota FFA chapter.

All of the remaining money from the toy show is used for local community projects and charities.

## Churches welcome visitors

The local churches welcome visitors to worship during the Toy Show weekend.

Grace Fellowship Church has Sunday School at 8:30 a.m. and morning worship

at 10:30 a.m. Our Lady of Perpetual Help Catholic Church has Mass at 4 p.m. on Saturday and at 10:30 a.m. on Sunday. St. Patrick Catholic Church in Maytown has Sunday Mass at 8 a.m.

## Toys, other items fill many Sublette buildings



Sublette Community Building

Many buildings around Sublette will be utilized for the Toy Show. They include:

- Sublette Community Building – toys, 4-H food stand
- Ellice Dinges Center – pancake breakfast, toys
- Main Street Repair Building – toys, bake sale
- Jacoby Building – toys
- Sublette Elevator Building – toys, 4-H food stand
- Sublette Mall – Ellie Rae's Boutique, Furniture Overload, Local Cup and Cake
- Craft show items will be located at numerous buildings throughout the show.

It is anticipated that there will be 180 tables of toys and other merchandise utilized at this year's show, up four from 2022.



**SALES & SERVICE | SNOWBLOWER REPAIR**  
205 W. Main St. | Sublette, IL | 815-849-5225  
mainstreetrepair16@yahoo.com

35TH ANNUAL

## SENECA FFA Farm Toy Show, Silent Auction, and Antique Tractor Show

**SUNDAY,  
MARCH 26,  
2023**

9 A.M. - 2 P.M.

Seneca High School  
307 E. Scott Street  
Seneca, IL 61360

**ADMISSION**  
\$2.00  
Tractor owners free  
Under 10 Free

**10 A.M. - 2:00 P.M.** ..... CONSIGNED TOY AND  
DONATION SILENT AUCTION

**NOON** ..... PEDAL PULL COMPETITION

- Public Consignment Welcome
- Over 100 Tables
- Antique Tractors on Display!
- Food Available All Day
- Door Prizes Every Hour



For More Information Call  
Ag Dept Office: 815-357-5024  
Advisor, Mitch Miller  
Cell: 779-879-0101  
jeffmaerhofer@senecahs.org  
miller@senecahs.org

SPONSORED BY  
THE SENECA FFA  
AND ALUMNI



## SUBLETTE GENERAL STORE INC.

200 N. Reeve St. • Sublette • 815-849-5522



**Hunt Brothers Pizza,**  
**Hot Wings and Wing Bites!**  
Homemade Hot Lunches 10-2 Monday-Friday

WELCOME TO THE 41st ANNUAL  
SUBLETTE TOY SHOW!

\* **Video Gaming** \*

- Groceries - Hardware - Liquor -



33 S.E. 1st Ave.  
Amboy, IL  
beckerautobody1@gmail.com  
**Family owned &  
operated**  
By Joe and  
Jen Dewey

Wednesday, March 8, 2023  
Wednesday, March 8, 2023  
Wednesday, March 8, 2023



# Sublette Farm Toy & Antique Tractor Show



The Mendota Reporter • 13  
The Amboy News • 13  
Rochelle News-Leader • 13

## Toy Show continues to be one of the largest shows in Midwest

It has been 41 years since the first Sublette Farm Toy Show was hosted in the village.

Several people were discussing the possibility of having a toy show in Sublette. No one was quite sure if it was a good idea as no one had any experience in planning a show.

Finally, Dan Tastad said, "You will never know unless you try it."

That is what set the ball rolling. The group made plans for a one-day show at the community building.

When over 600 people attended, it was deemed a success and from

there the show has continued to grow. It has spread over eight buildings and another building houses a craft show. Other events that have taken place over the years include a farm tractor show, a semi-tractor show and an operating train layout.

Visitors usually represent about 15 states. Many travel for many hours to attend. The show has become one of the largest shows in the Midwest.

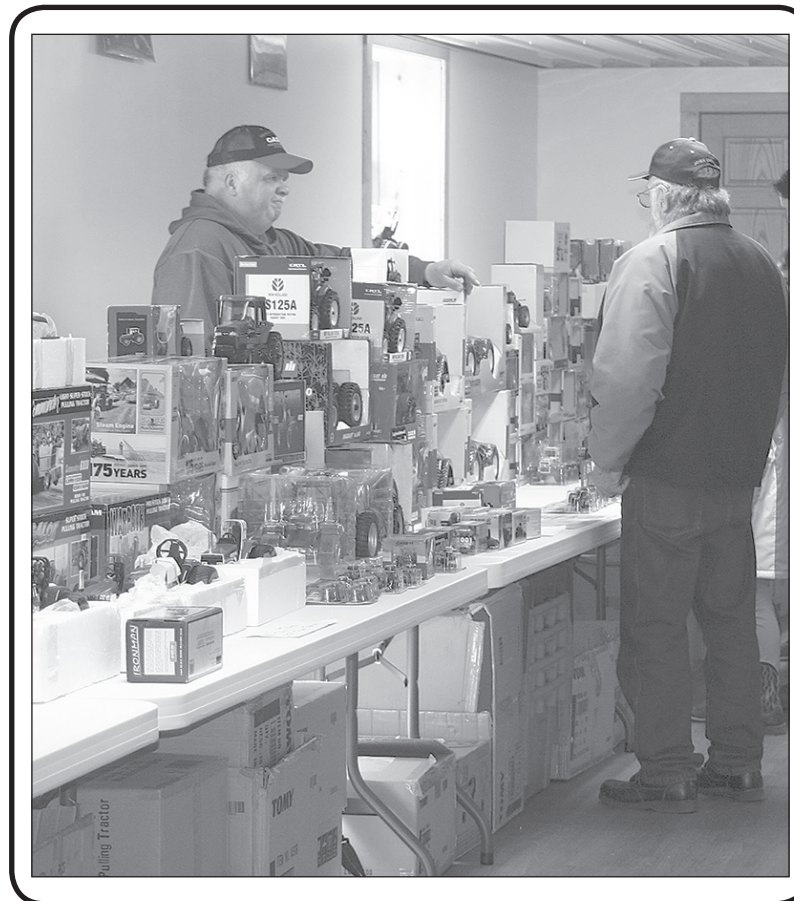
The show usually has over 150 volunteers helping to make it a huge success.

## Get your 50/50 tickets!

Each year the Sublette Toy Show committee sells 50/50 tickets to help fund local community projects. They are sold by committee members and at lo-

cal businesses prior to the show. Then on toy show days, tickets are sold at a trailer located at the corner of Main and Richmond streets. The winner of the

drawing will receive one-half of the money taken in. Each year the fund reaches a higher level. Be sure to get your tickets so you have a chance at being the big winner.



## Show coincides with Ag Week

Since 1973, the United States has set one week aside and designated it National Agriculture Week. Ag Week is a celebration to honor the millions of men and women responsible for producing the most abundant, highest quality and most reasonably priced food and fiber in the world.

Since Sublette lies in one of the richest agriculture regions in the Midwest, it is fitting that the Sublette Toy Show is always held during Ag Week.

This year is also the 41<sup>st</sup> anniversary of the show, and as usual, is expected to draw people to the tiny community of Sublette from all over the Midwest.

# VAESSEN

## IMPLEMENT REPAIR

Peter Vaessen, Owner

542 US Hwy 52 • Sublette, IL 61367



**(815) 849-9010**



Serving All Makes & Models of Farm Equipment

03142018

Becker Detailing welcomes you to the  
**Sublette Farm Toy Show!**  
Call us to schedule your *spring cleaning!*



204 N Jefferson Ave  
Suite A, Amboy, IL  
815-823-7697

We have Gift Cards available and offer Weather Tech, Truxedo and P&S detailing products.

On Facebook & Instagram  
@BeckerDetailing

Revolution Wellness offers a variety of things,  
but our main things are:

- Meal Replacement Shakes
- Boosted Teas
- Coffees

**DAILY DRINK SPECIALS**



205 E. Main St., Amboy

815-857-7021

Regular hours: Mon-Fri 6 am - 4 pm,  
Sat 7 am - noon



# DINGEFIRE

COMPANY

TRUCKS. TOOLS. TRADITION.

**815-857-2000**

**info@dingefire.com**

03072018

# Woodhaven Lakes Realty



509 LaMoille Road, Sublette, IL 61367  
**(815)849-5476 • www.woodhavenassociation.com**

03062019



Schedule an appointment or stop in.

For all your diesel engine needs think KERR DIESEL SERVICE!

134 East US Hwy 34  
Mendota, IL • 815-780-7396  
Like and follow us on

Enjoy the Sublette Antique Tractor and Toy Show!

14 • The Mendota Reporter  
14 • The Amboy News  
14 • Rochelle News-Leader



# Sublette Farm Toy & Antique Tractor Show



Wednesday, March 8, 2023  
Wednesday, March 8, 2023  
Wednesday, March 8, 2023



**To be a part of the monthly  
Farmer's Report, contact  
your ad representative at  
The Mendota Reporter  
or The Amboy News**

**The Mendota Reporter**

703 Illinois Ave. • Mendota, IL 61342  
Ph: (815) 539-9396 • Fax: (815) 539-7862  
[www.mendotareporter.com](http://www.mendotareporter.com)

Established In 1854  
**The Amboy News**

703 Illinois Ave. • Mendota, IL 61342  
Ph: (815) 857-2311  
[www.amboynews.com](http://www.amboynews.com)

09282016

Wednesday, March 8, 2023  
 Wednesday, March 8, 2023  
 Wednesday, March 8, 2023



# Sublette Farm Toy & Antique Tractor Show



The Mendota Reporter • 15  
 The Amboy News • 15  
 Rochelle News-Leader • 15

## ❖ Scenes From The Past ❖



**SUBLETTE MECHANICAL**



2025 Sublette Rd. • Sublette, IL 61367  
**HOSE DOCTOR**  
 On-Site Hose Repair

**Parker** **T.L.**

Specializing in On Farm Repair  
 Call 815-849-5223 or Cellular 815-994-7543  
 www.sublette-mechanical.com 05272020

Welcome to the 41st Annual  
 Sublette Farm Toy & Antique Tractor Show

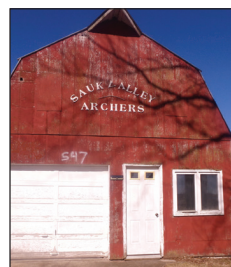
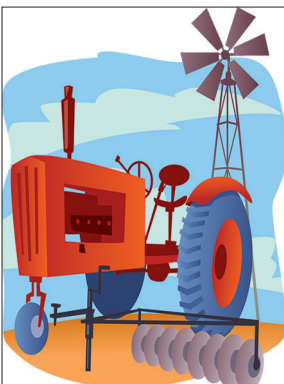
**LEFFELMAN  
 AUTOMOTIVE**

Car Repair & Services

Chris Leffelman, Owner  
**815.849.5171**  
 301 N Richmond St., Sublette  
 Monday-Friday, 8 a.m.-Friday 5 p.m.



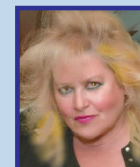
03042020



24.85 Acres Ag, and 0.80 Zoned res, one cabin on total 25.65 Acres. Pin's 18-08-09-100-019 & 18-08-09-200-014, with small cabin/shed, one bedroom, etc. Well & Septic, Camper and riding lawnmower negotiable with offer. Walk to strip mall and Walmart.



Beautiful 9.12 Acre property, build a dream home. \$89,000  
 Sec 30 Plum Hollow Ln, Dixon, IL 61021  
 Directions: Located just off Route 26 Galena, turn onto Plum Hollow Court right before Plum Hollow Bowling Alley, (part of property), also go left on Gearhart Ln, (also part of property).



**JORI MCRAE**  
 DESIGNATED  
 MANAGING BROKER  
**815-973-1197**



Living In & Serving your community for 20+ years

www.rivercountryproperties.net | jori@rivercountryproperties.net



# Sublette Farm Toy & Antique Tractor Show



## ❖ Scenes From The Past ❖



### BUILD IT ONCE - BUILD IT RIGHT

**MAZE LUMBER**  
 BUILD IT ONCE. BUILD IT RIGHT. SINCE 1848

Illinois' longest operating lumberyard continues to thrive along Peru's historic riverfront. Maze Lumber has been providing top quality building materials to Illinois Valley contractors and homeowners for 175 years, still owned by the founding fathers (Maze).

Located in a 15,000-square foot showroom and office, we offer building materials for the modern home as well as a full line of the traditional lumber items used in home building, commercial construction, and industrial applications. Our experienced sales staff takes pride in their ability to provide knowledgeable assistance along with prompt delivery at reasonable prices.



FIREPLACES



DECKING & FLOORING



INTERIOR DOORS



BATHROOMS



EXTERIOR DOORS



CABINETS & COUNTERTOPS



WINDOWS



STONE, SIDING & ROOFING



KITCHENS



[mazelumber.com](http://mazelumber.com)  
 Water Street, Peru | 815-223-1742



Welcome to the Sublette Farm Toy & Tractor Show

**Sublette Collision Center**

Brian Florschuetz, Owner  
 344 US Rt. 52, Sublette, IL 61367  
 Shop: 815-849-9090 Cell: 815-739-8121  
 Email: [sublettecollisioncenter@yahoo.com](mailto:sublettecollisioncenter@yahoo.com)

# 41st Annual Farm Toy Show

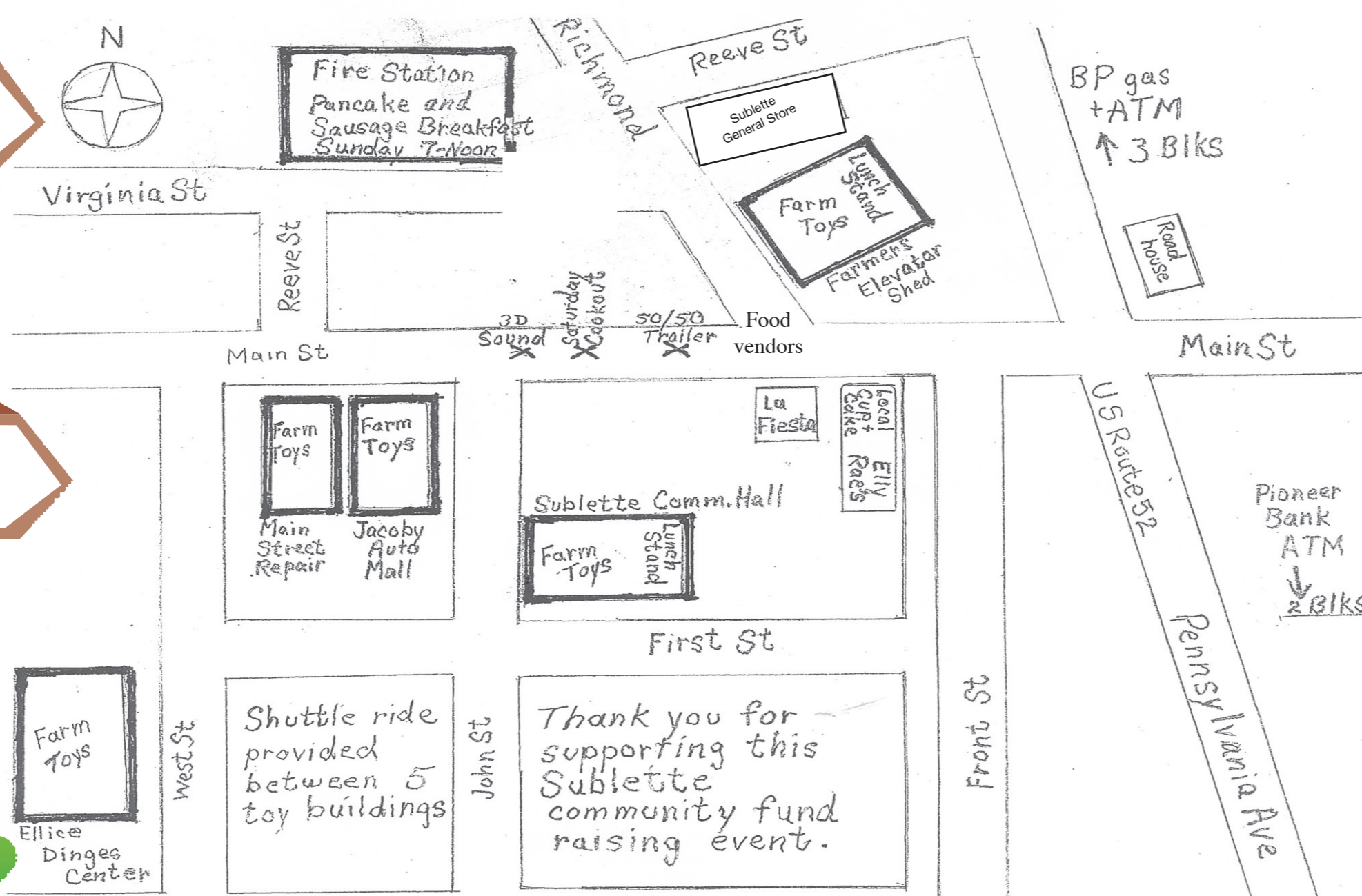
Farm Toy Show

Bake Sale

Pancake Breakfast

Craft Show

Antique Cars



## 41st Annual Farm Toy Show Schedule of Events

Saturday, March 18, 2023

9 a.m. to 3 p.m. Farm Toy Show  
Main Street Repair  
Jacoby Building  
Sublette Farmers Elevator  
Sublette Community Building  
Ellice Dinges Center  
Antique & Farm Machinery

Sunday, March 19, 2023

7 a.m. to noon Sublette Firemen's Pancake and Sausage  
Breakfast At the Sublette Fire Station

9 a.m.-noon Bake Sale at Main St. Repair  
9 a.m. to 3 p.m. Farm Toy Show  
Semi-Tractor, Antique Tractor & Farm  
Machinery Show in Downtown Sublette

*Sub-Let Indians and Maytown Comets 4-H Food Stands at  
Community Building and Sublette Elevator  
Ellice Dinges Center*