

More bottle cap benches coming to Rochelle

PAGE 7



Hub baseball team wins over Sandwich

SEE SPORTS

ROCHELLE News-Leader

WEEKEND EDITION | WWW.ROCHELLENEWS-LEADER.COM



Today's RNL issue sponsored by Community Unity member:



333 Lincoln Highway
815-562-4155

Vol. 103 • No. 101

LOCAL NEWS... LOCAL VIEWS

SUNDAY, APRIL 16, 2023

\$1.25

More coverage. Less spendage.

Discounts up to 40%
Get more. Spend less. It's that simple when you get car insurance from us. Like a good neighbor, State Farm is there. CALL FOR A QUOTE 24/7.
Terri Schaefer, Agent
Bus: 815-562-7063
terri.schaefer.115n@statefarm.com



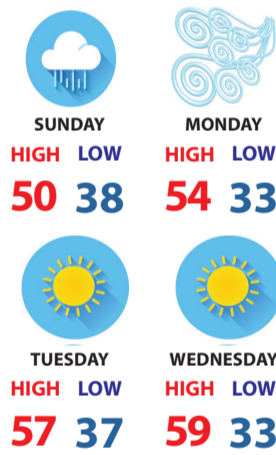
KNOW IT TODAY



RMS secretaries recognized

Rochelle Middle School Secretaries Laurie Haub and Susan Dalen were given School Staff Super Star Awards. **Page 2**

WEATHER



Today's RNL issue sponsored by Community Unity member:



Changes Counseling, LLC
604 N. Main St.
815-501-2088

OBITUARIES

•Thomas Edward Hauser
•Claud (Jinx) Ray Hord
•Mary Louise Davis

See page 4

INSERTS

•SCHNUCKS
•MENARDS

INSIDE

Local News.....2, 3, 5
Obituaries.....4
Opinion.....6
Community.....7



Bearrows looking forward to second term

Rochelle Mayor: 'I'm really excited about the next four years'

BY JEFF HELFRICH
MANAGING EDITOR

ROCHELLE — After running unopposed in the April 4 consolidated election, John Bearrows officially began his second term as mayor of the City of Rochelle. Bearrows spoke with the News-Leader April 7 about what can be expected from his second term and reflected on his first four years.

"My first term was very difficult with COVID-19 and we dealt with the pandemic for over two years of my first term," Bearrows said. "It just brought on a whole new set of complications. It was very difficult to deal with some of it. But I'm really excited about the next four years. I think we're going to see much more growth in the community."

The rest of the city council positions up for grabs on April 4 saw incumbents Tom McDermott and Bil Hayes elected, along with new challenger Ben Valdivieso, who replaced John Gruben. Bearrows praised Gruben for his service on the council and said he believes Valdivieso



(PHOTO BY JEFF HELFRICH)

After running unopposed in the April 4 consolidated election, John Bearrows officially began his second term as mayor of the City of Rochelle. Bearrows spoke with the News-Leader April 7 about what can be expected from his second term and reflected on his first four years.

will do "a great job." The mayor said continuity on the council will allow the community to keep moving forward.

When asked about successes of the past four years in Rochelle, Bearrows mentioned a day-care center returning the

community after it spent years without one, Johnson Tractor building a new facility in Rochelle rather than leaving the area, new truck stops in Love's and Pilot on the southern and eastern gateways to town, and Zekelman Industries moving into the city and

filling the vacant Nippon Sharyo buildings and making a large investment and adding a large number of jobs.

Bearrows said that Zekelman Industries has been "great for the community," and has also made commitments to

local nonprofits to be "deep seated" into the community.

"It was our interstates and rail that brought them here," Bearrows said. "That's why we're always called 'The Hub City.'"

See BEARROWS p. 3

District 231 to ask for early facilities review of Tilton School

Update given on district and RTHS SRO situation

BY JEFF HELFRICH
MANAGING EDITOR

ROCHELLE — At its monthly meeting Tuesday, the Rochelle Elementary School District Board of Education gave the administration its approval to pursue the moving up of Tilton School's 10-year health/life safety review by the Regional Office of Education.

All district buildings are scheduled to have a 10-year health/life safety review by the ROE in summer 2024. Due to anticipated renovation projects at Tilton that are coming up, the district desires to have it reviewed this summer a year early by the ROE so it knows the full extent of what work needs to be done.

Health/life safety reviews are mandatory and are "exhaustive" assessments on buildings and facilities, Superintendent Jason Harper said.

"Our ad-hoc facilities committee has been meeting recently to review some of our facility needs



(PHOTO BY JEFF HELFRICH)

At its monthly meeting Tuesday, the Rochelle Elementary School District Board of Education gave the administration its approval to pursue the moving up of Tilton School's 10-year health/life safety review by the Regional Office of Education.

and come up with a bigger, broader plan," Harper said. "One of the buildings we know needs work is Tilton School. We'll get a list of fixes and they'll be rated on the state scale of urgency. The positive is if we are to do some work at Tilton, then we would know what's waiting be-

hind that survey and we wouldn't be formulating plans and putting things in motion only to find out next summer that there might be more or other problems or recommendations. Our architect and engineers would be participants in this process."

Harper said the moving

up of an ROE review for a single building is unique. The other three buildings in the district would not be evaluated until summer 2024 as scheduled, even though Tilton's would take place in summer 2023 if the ROE agrees to moving it up.

See SCHOOL page 5



Village board hires new treasurer

BY JEFF HELFRICH
MANAGING EDITOR

HILLCREST — At its monthly meeting Wednesday, the Hillcrest Village Board heard an update from its engineering firm, Baxter & Woodman, on various ongoing village projects.

Engineer Kaitlin Wright said the village still has time before July 1 to decide whether it wants to go out for bid for its priority 1A water main project. The current construction estimate on the project is \$2.68 million. Hillcrest's debt limit on the project is roughly \$2.7 million. Wright said the village is no longer eligible for principal forgiveness on the project's loan through the IEPA due to requirements involving the village's median household income.

See HILLCREST pg 3

NATIONAL

VOLUNTEER WEEK

LOCAL NEWS

RTHS board votes to conditionally expel two students

Superintendent Harper declines comment on relation to March 20 stabbing incident

BY JEFF HELFRICH
MANAGING EDITOR

ROCHELLE — The Rochelle Township High School Board of Education held a special meeting Tuesday morning for a student discipline issue. Following discussion in executive session during the meeting, the board voted to conditionally expel two students, who will not be named.

Superintendent Jason Harper declined to comment on whether the expulsions were related to the March 20 stabbing incident that saw two 17-year-old male students injured and the school dismissed early following a lockdown. The incident was isolated to the two students involved.

At 9:24 a.m. on March 20 an Ogle County Sheriff's Office deputy requested an ambulance to RTHS

in reference to a student that had been stabbed, a sheriff's office release said. RTHS immediately initiated planned protocols locking the building down and requiring students to stay in classrooms. RTHS's on-site school resource officer, school nurse and other personnel handled the student situation until paramedics from the Rochelle Fire Department and additional law enforcement arrived.

The Rochelle Fire Department transported both juveniles to Rochelle Community Hospital, one with minor injuries and one with significant injuries, who was later flown to an outside hospital.

Law enforcement conducted an investigation of the incident and charges related to it have not yet been filed.



(PHOTO BY JEFF HELFRICH)

The RTHS Board of Education held a special meeting for a student discipline issue. Following discussion in executive session, the board voted to conditionally expel two students, who will not be named.

Haub, Dalen named school staff superstars

ROCHELLE — Wills Chiropractic, along with other businesses in the community, recently named Rochelle Middle School Secretaries Laurie Haub and Susan Dalen as its School Staff Super Stars for the week. Both received flowers, goodies and gift certificates from local businesses.

"Laurie brings positivity to the front office of Rochelle Middle School every day. She makes all visitors feel welcome and if she doesn't have an answer, she goes above and beyond to find out. Laurie always is interacting with students and making them laugh or smile!"

"Susan is new here at RMS. She is a very wel-

comed addition to our front office. She is compassionate, friendly and really cares about the wellbeing of our students. We love her sense of humor and beautiful smile. We appreciate you Susan and all the sunshine you bring to Rochelle Middle School!"

The School Staff Super Stars award wouldn't be possible without Bennys Corner Market, Brandi's Berries, Bruns Construction, Colonial Flowers And Gifts, Josh Messenger - COUNTRY Financial, Essential Infusions, Fairways Golf Course, Lifeworks Photography Studio, Lizzy Delights, Power Combat Fitness, The Fit Hub - Rochelle, Wills Chiropractic and Kind Creations.



(COURTESY PHOTO)

Rochelle Middle School Secretaries Laurie Haub and Susan Dalen were named School Staff Super Stars.

Prom 2023 Headquarters

\$50 OFF PROM RENTAL

Duckysdekalb.com
SEE STORE FOR DETAILS

DUCKY'S
FORMAL WEAR

250 East Lincoln Hwy.
Downtown DeKalb
815-754-7703 www.duckysdekalb.com

Mark Your Calendar!
Spring Open House
Saturday, May 6 & Sunday, May 7

Let us help make your yard *Beautiful*

Open for the Season
4/18/23
9:00AM

Premium Mulch • Trees • Shrubs • Perennials • Annuals • Display Gardens • Landscape Design & Installation


HIDDEN TIMBER GARDENS
PREMIUM PLANTS & TREES

462 S. Chana Rd., Chana, IL • 815-751-4162
Just North of Route 64
Tue-Sat 9am-6pm • Sun Noon-5 • Closed Mondays
(& Sundays after July 1)
www.hiddentimbergardens.com

LOCAL NEWS



A priority for Rochelle Mayor John Bearrows and the city has been pushing for more development, both economic and residential. Bearrows said that overall, he believes the city is doing "very well," and praised city staff, council members and City Manager Jeff Fiegenschuh for their work in recent years.

BEARROWS: Rochelle mayor highlights goals for next term

From page 1

That's really why they located here, the transportation aspect and the building was suited for them, although they made a huge investment. I think they made \$130 million in upgrades to rehab and retrofit that building to their needs. It's an amazing, highly-technical facility."

A priority for Bearrows and the city has been pushing for more development, both economic and residential. Pilot and Love's resulted in the city extending its infrastructure under Interstates 88 and 39, which could open the door for more development in those areas.

During Bearrows' first term, the city also started the process of opening its own intermodal transload center after working to reestablish the service locally since the Global III intermodal in Rochelle closed in 2019.

"In the short-term, our focus is to get that intermodal transload facility open probably by July 1," Bearrows said. "Oddly enough, July 1 was the date in 2019 when Global III closed. My hats off to our economic development team and the local Greater Rochelle Economic Development Corporation (GREDCO) group. They worked very hard to make this happen and it's an excellent thing

for our local businesses that utilize the intermodal service. They were driving to Joliet and the cost was so terrible for them compared to being able to do it locally like before."

Bearrows hosted a number of meet and greets with residents in recent months, and said the primary thing he's asked for most is another grocery store in town. The mayor said that issue is one that the city has "tried very hard on," but it hasn't yet found a chain grocery store willing to locate in a smaller town like Rochelle with the number of grocery stores in the city already.

Another priority for Bearrows in his second



(PHOTOS BY JEFF HELFRICH)

term is the expansion of housing and development in Rochelle.

"That's something I really want to focus on in the next four years," Bearrows said. "We need more housing here. We need more affordable housing. Something that the working class family can afford to get into and make their home. I have some ideas that we'll be running by the city council this year. I think housing will probably be the city's main focus in the next four years."

The city is also working on ways to help those that are homeless in Rochelle, Bearrows said.

"We're trying to get a handle on that," Bear-

rows said. "Many times there are homeless people that want to remain that way and don't want any help. However, there are those that are homeless that need help. I feel we're a better community than that. We need to help the homeless that want the help. We're pulling some people together now to try to help with that. That's another big focus."

Bearrows said that overall, he believes the city is doing "very well," and praised city staff, council members and City Manager Jeff Fiegenschuh for their work in recent years. He also thanked his wife and family for their support

and patience in his time as mayor.

"When I ran the first time, I was just really excited about it," Bearrows said. "It's very gratifying when you can help various groups. We do a lot with nonprofits. I just love people and helping. I've really enjoyed what I do. I've gotten so much support from my wife and kids and my family. It takes a lot of time. People say being mayor is a part-time job, but it's definitely full-time. It could be part-time, but I don't elect to make it that way. I want to be involved and hands-on and I want to make sure things keep moving in the right direction."

HILLCREST: Engineering firm presents project updates

From page 1

Baxter & Woodman previously planned to receive as much as \$1.25 million in principal forgiveness.

The village's yearly payment on the loan for the project would be \$163,242, which would equate to an average water bill increase of roughly \$30 per month.

"At this time, the village needs to make a decision on if it wants to continue to move forward and pursue that loan or if it is not something it wants to entertain," Wright said. "That would be a considerable increase for users. If the village does intend to pursue funding, it's still in line to receive those funds for fiscal year 2023 and 2024."

Wright said that Baxter & Woodman would look into appealing to the IEPA on the principal forgiveness issue due to being close on the requirements.

On a separate note,

work has been ongoing between Baxter & Woodman and the village on a lead service line material inventory that needs to be submitted to the state by April 15 due to a new state requirement. In the coming years, the village will need to determine whether any water service lines going into homes in Hillcrest are made of lead and create a plan to replace them.

"There's a lot of work that needs to be completed for next year's April 15, 2024 submittal where they want a detailed inventory completed and there's a variety of requirements for lead services that are determined and replacement is required starting in 2027," Wright said.

Wright said the village has received a price for its chip seal program of roads for the year, which is \$25,181. The estimate for the work was over \$28,000. Streets in Hillcrest that will be chip sealed this year include

Scott and Ramona Avenues and River Road.

Treasurer

Following meeting in executive session, the board unanimously approved the hiring of Carolyn Brown as village treasurer. She replaces Debra Argetsinger, who resigned following the March board meeting.

Brown spoke with the board during Wednesday's meeting. She's worked as an accountant for over 25 years and has experience working with Newkirk & Associates, the village's auditor.

Maintenance

Trustee Rick Rhoads said the village is still searching for a maintenance employee and has tried different avenues to hire someone. He asked anyone in the community looking for a maintenance job to call Village Hall.

Hillcrest is set to receive its new plow/maintenance truck in the com-

ing weeks and trustees got a chance to see the truck on Wednesday.

"It still needs undercoating done, and after that is done we should have it ready to go," Rhoads said.

Properties

Village Trustee Jose Huerta said Wednesday that's been noticing ordinance violations of vehicles parked off hard surfaces and non-running vehicles in the village as of late. He talked with the board about getting them removed in the future. The village is allowed to tow abandoned cars on the street, but must do legal work to have them removed from private property.

"I'd like to start working on getting rid of those with it being nicer outside," Huerta said. "There are some cars that have to be removed."

Village Attorney Paul Chadwick said work is ongoing on properties in



(PHOTO BY JEFF HELFRICH)

The Hillcrest Village Board heard an update from its engineering firm, Baxter & Woodman, on various ongoing village projects.

the village that are in disrepair and he has started on ordering demolition for one property and has two others that are planned to go out for serving of owners.

Powers Park

During his health & welfare portion of the meeting, Trustee Tim Ball took issue with people being at Powers Park in Hillcrest after hours.

"Powers Park is becoming a major problem," Ball said. "It's the park district's facility, but it's

a problem for us. We've been running people out of there at 11 p.m. or later and the neighbors that live near it call me and say there's a car back there. I walk back there with a flashlight and ask them to leave. Something should be put up at night to say it's closed."

Egg hunt

Village Trustee Renee Kerwin said Hillcrest's Easter egg hunt event on April 9 was "a success" and saw around 200 kids attend.

APARTMENT AVAILABLE

Lincoln Manor

Owned and operated by Lutheran Social Services of Illinois (LSSI) offering apartment living for older adults in Rochelle and the surrounding communities.

- Secure Entry System
- Community room with kitchen
- Activities
- On-site coin operated laundry
- On-site management office
- Dependable 24/7 maintenance service
- On-site parking for residents

Full time Social Service Coordinator is available to assist residents

Rent based on 30% of a Resident's Adjusted Gross Income

For more information, please call 815-562-1404

615 N. Lincoln Hwy.
Rochelle, IL 61068
TTY 847-390-1460

MANAGED BY:
Lutheran Social Services of Illinois
www.LSSI.org

EQUAL HOUSING OPPORTUNITY

01132019

DOUBLE BUTTERBURGER WITH CHEESE

FRESH, NEVER FROZEN MIDWEST BEEF COOKED AFTER YOU ORDER.

Visit your local Culver's restaurant:

Culver's of Rochelle
1060 Dement Road, Rochelle, IL
(815) 561-9720
culvers.com

Culver's
Welcome to delicious®

06262019

LOCAL NEWS

Obituaries

Thomas Edward Hauser

KERRVILLE, Tex. — Thomas Edward Hauser was called by the heavenly Father on April 6, 2023. He passed away peacefully at his home in Kerrville, TX. ‘Tom’, as many knew him was born April 19, 1956 in Frankfort, Indiana to Joseph and Mary (Flood) Hauser. He was the oldest of seven children and a graduate of Rochelle Township High School in Rochelle, Illinois - Class of ’74. In his early years Tom worked in the plant for Del Monte Corporation, Country School Chicken, Eagle Discount Supermarket, and Crest Foods. In the late 1970’s he made his way down to Texas in the Dallas area where he did mechanic work and small engine repair. In the early 1990’s he finally made his way to Kerrville where he worked for Ferris Rental and DA Small Engine Re-

pair before finding his place with the Fritz family at their Mini Marts - for close to nine years he worked at every location at one time or another. He went where he was needed and did what needed to be done. While in Kerrville he met the love of his life, Janet Reither. They married in 2012 and lived happily together until her passing in 2019. Tom’s family and friends would describe him as a loving and caring man. He was a friend to everyone and an avid storyteller. He loved reading, bowling, and dining at the Cowboy Steak House. He is now resting peacefully, enjoying a little downtime for all the work he did over the years. He is preceded in death by his parents, his brother, Jimmy, and his wife, Janet. He is survived by his sisters Marie Bowman of San Antonio, Cathy Scozzari (and



Mark) of Mountain Home, TX, Theresa Byfield of San Marcos, TX and brothers Dave Hauser (and Susan) of Kerrville, TX and Pat Hauser (and Julie) of Springfield, IL; His stepson, Richard Reither; sister-in-law, Tyla Caldwell; grand-daughters Elizabeth and Rayna; and many nieces and nephews - all of whom brought him great joy and happiness. “Friendship is the source of the greatest pleasures, and without friends even the most agreeable pursuits become tedious.” -St. Thomas

Mary Louise Davis

ROCHELLE — Mary Louise Davis, 82, passed away Thursday, April 13, 2023 at OSF St. Anthony Medical Center in Rockford, Illinois. Mary was born on September 6, 1940 to James “Jeff” J. and Dorothea “Dot” M. (Wirth) Allen in Rockford, IL. On July 20, 1963, she married Donald E. Olson, who predeceased her on March 24, 1987. She later married John “Jack” R. Davis on June 23, 1990 in Rochelle. He preceded her in death

on December 8, 2001. She was also preceded in death by an infant brother, James Henry Allen. Mary is survived by her three children: Mike (Lynne) Olson of Rockford, IL, Holly (Bill) Kubale and Kate (Dave) Friestad both of Rochelle; brother, David Allen of Rochelle; two sisters: Lynn (Matthew) Biros of San Diego, CA and Joan Allen of Weston, CT and six grandchildren: Grace, Michaela (Ronald Keller) and Ian Olson, Max Kubale and



Ryan and Addison Friestad. Mary always considered her children and grandchildren to be her greatest accomplishment and biggest source of joy. In lieu of flowers, memorials may be made in Mary’s memory to Memorial Sloan Kettering Cancer Center or the Rockford Rescue Mission. Cremation care has been provided by the Unger-Horner Funeral Home in Rochelle. Visit www.ungerhorner.com to sign the online guest book.



Stillman Valley Nursery

9979 N. Kishwaukee Road
Stillman Valley, Illinois 61084

(815) 645-8115

Premium Hardwood • Designer Colored Mulches
Pulverised Dirt • Mushroom Compost • Straw Bales

Delivery Available

08032020

VOTED BEST REAL ESTATE AGENCY

2022 VOTED BEST OF OGLE COUNTY

HAYDEN REAL ESTATE INC.

221 IL-38, Rochelle, IL | hre@haydenreinc.com | 815-562-2111

Hayden Real Estate, Inc. has served Ogle County for 50 over years!

We THANK YOU for your support!

Spencer Hayden
Tim Hayden
Sherry Murphy
Jeff Reif

Ron Frakes
Vicki Pemberton
Stephanie Williams
Amy Hayden

We look forward to serving the community for many years to come!

11202022

Claud (Jinx) Ray Hord

ROCHELLE — On Wednesday, April 12, 2023, surrounded by his loved ones, Jinx passed, peacefully at home, from this life into eternal life after a long, hard battle with COPD. He was born June 1, 1946, in Ava, Missouri to Ameal and Clara Belle (Adamson) Hord. Jinx moved to Rochelle, IL in 1966 where he met the love of his life, Bonnie (Russell) Hord and they wed six months later. They just celebrated 56 years on December 3, 2022. They welcomed their first daughter, Christine (Todd) Brazeal on their first anniversary, followed soon by son, Timothy (Betty) Hord, and later daughter, Paula (Scott Rockstead) Hord. After 29 years, he retired from DeKalb Ag Seed Company and returned to his birthplace to spend his golden years with his beloved wife. Even in his retirement years, the hard-working man continued to work laborious jobs to provide for his family. In his free time, he was often

found fishing, camping, gardening, and sitting on the porch watching the beauty of God’s work. He was an avid John Deere collector and loved to listen to gospel bluegrass music on Sunday mornings with his cup of coffee. He is survived by his wife, children, grandchildren: Tiffani (Joshua) Medema, Alexis (Rob) Charbonneau, Dylan Brazeal, Devin Brazeal, Melissa (Jamie) Garza, Junior (Nicole) Garza, Alyssa (Samuel) Navejas, Cruz (Andrea) Hord, Jasmyn (Joe) Maxwell, Grant Maxwell, Haylee Maxwell, and Keira Maxwell along with 18 great-grandchildren, and sister, Pat Butts. He was preceded in death by his parents, and three siblings: Richard Hord, Wanda Hathcock, and Reggie Hord. The family would like to give a special thanks to Unity Hospice for making his final days calm and peaceful. They would also like to thank Pastor Rick Eldred for blessing him and



bringing comfort to his family in his final hours and the support of numerous kind neighbors who were able to be there for him when family could not. A celebration of life will be held at a later time. Memorials, in Jinx’s name, can be sent to either St. Jude Children’s Research Hospital or the American Lung Association. His final wish was that he would be remembered as a hard worker who loved his family with all his heart. He wanted them to know he was very proud of all of them and “they have all did good”. Cremation care has been provided by the Unger-Horner Funeral Home. Visit www.ungerhorner.com to sign the online guest book.

Kishwaukee College offering five short-term training programs in summer 2023

MALTA — The Kishwaukee College Continuing Education department is offering five short-term training programs during the summer 2023 semester. Kish short-term programs provide students with the skills and training needed to meet local workforce demands. The programs range from 11-20 weeks and allow students to immediately start a career or build upon their skills with additional training. Summer 2023 classes will be offered in online, in-person and hybrid formats. Participants will need access to a computer and the internet to participate in programs with an online component. Some programs include an externship/clinical. The short-term training programs offered in summer 2023 are:

Dental assistant: May 7-Aug. 4 (online lecture/in-person practice)

Dental assistants are skilled health care professionals who work closely with dentists and dental hygienists to provide quality preventive and corrective dental care and

administrative support in dental offices. In-person practice will be conducted from 6-9 p.m. on Tuesdays in a local dental office.

Pharmacy technician: May 7-Aug. 19 (online)

Pharmacy technicians assist pharmacists with dispensing prescription medication while performing various other duties in a pharmacy setting. Workforce Innovation and Opportunity Act (WIOA) funding is available to those who qualify.

Phlebotomy technician: June 12-Sept. 1 (in-person)

Phlebotomists are skilled health care professionals trained to collect, transport, handle, and process blood and other specimens for laboratory analysis using venipuncture and micro-collection techniques. Instruction and in-person practice will be conducted from 9:30 a.m. to noon on Mondays, Tuesdays and Thursdays at Kishwaukee College.

Sterile processing technician: May 7-Aug. 11 (online)

Sterile processing technicians provide support to all patient care services in a health care facility. They are responsible for decontaminating, cleaning, processing, assembling, sterilizing, storing and distributing the medical devices and supplies needed in patient care, especially during surgery.

Veterinary assistant: July 23-Dec. 22 (online lecture/in-person practice)

Veterinary assistants are critical members of a veterinary staff trained to assist veterinarians and veterinary technicians with medical procedures on sick and injured animals. In-person lecture/practice will be conducted from 5-8 p.m. on Wednesdays at Ashton Animal Clinic in Kaneville and from 4:30-7:30 p.m. on Fridays at Ashton Animal Clinic in Ashton.

Registration for the summer 2023 session opens online Monday, April 3. For more information on short-term training at Kish, visit kish.edu/shortterm.

Rochelle Police Department

Officers make arrest

ROCHELLE — On April 12 at 6:43 p.m. Giovanni Romero, 19, of Rochelle was arrested for driving while license suspended and possession of a controlled substance and cited for illegal win-

dow tint, failure to signal, unlawful delivery of cannabis and unlawful possession of cannabis and transferred. All individuals are considered innocent until proven guilty.



ROCHELLE News-Leader

211 IL Route 38 East, Rochelle, IL 61068
(815) 562-4171

USPS (467-820) ISSN (1075-2811)
Published every Wednesday and Sunday by Rochelle News-Leader, Inc. at 211 E. State Route 38, Rochelle, IL 61068.
Periodical postage paid at Rochelle, IL 61068. Postmaster send address changes to the Rochelle News-Leader, P.O. Box 46, Rochelle, IL 61068. Subscription rates are \$139.99 per year by mail in Ogle County. Outside county rate is \$149.99 per year. No mail delivery in newspaper-carrier serviced areas. The circulation department is open Monday through Friday from 8 a.m. to 5 p.m. If you are a carrier subscriber and your paper does not arrive, contact Kelly White at 561-2112.

IN-COUNTY REGULAR SUBSCRIPTION RATES

- \$139.99 for one year • \$79 for six months
- \$34.99 for three months • \$13.99 for one month

Call (815) 561-2112 or Visit our website at www.rochellenews-leader.com



HOW TO CONTACT US

News-Leader Main Switchboard	(815) 562-4171
General Manager Mike Feltes	(815) 561-2124
Newsroom Staff Jeff Helfrich, Managing Editor Russ Hodges, Sports	(815) 561-2151 (815) 561-2152
To Place a Display Ad Andrew Heiserman Chris Ackland	(815) 561-2123 (815) 561-2153
To Place a Legal Ad Mike Feltes	(815) 561-2124
To Place a Classified Ad Andrew Heiserman Chris Ackland	(815) 561-2123 (815) 561-2153
Subscriptions and Delivery Kelly White	(815) 562-4171

RCH lifts mask mandate

ROCHELLE — In anticipation of the end of the Federal Public Health Emergency (PHE) and the State of Illinois Disaster Proclamation on May 11, the Rochelle Community Hospital masking policy will change effective Monday, April 17, a press release said. Masking will no longer be required in the hospital or in the clinics, except for certain circumstances. These circumstances include if one is experiencing signs and symptoms of a respiratory illness, including

fever, sore throat, cough or difficulty breathing. “We are looking forward to providing the same great service to our community, now you will also get see our smiles!” said Michelle LaPage, RCH marketing & foundation manager. RCH will continue to provide masks at main entrances to the hospital and clinics for those that choose to continue to mask, or are experiencing symptoms. For more information, visit www.RochelleHospital.com.

LOCAL NEWS

SCHOOL: Elementary board discusses resource officer situation

From page 1

Harper and District Business Manager Kevin Dale will be reaching out to the ROE about the possibility of moving up the review and said they would report back to the board.

“I think one of the reasons we were talking about this is that there are several things that look like they need to be done at Tilton and if there’s more, it would be more cost effective to do it all at the same time,” Board President Dave Casey said. “We’d like to know everything. I think it’d be a good thing to do.”

SRO

District Assistant Superintendent Tony Doyle provided an update on the school resource officer situation in the district. Rochelle Police Department Officer Jim Jakymiw has been the SRO for the elementary district for the

past four years and Doyle said he’ll become the SRO at Rochelle Township High School starting April 14.

Former RTHS SRO Pete Pavia was recently promoted to RPD interim chief, leaving the high school without an SRO. For the past 2-3 weeks, the RTHS SRO position has been covered by Jakymiw and deputies from the Ogle County Sheriff’s Office. Starting on April 14, RPD Officer Cassie Rogers will be covering the elementary school district SRO position and will have a home base at Rochelle Middle School.

“Chief Pavia is working on getting a permanent SRO for the elementary district next year,” Doyle said. “It might be Officer Rogers and it might not be. We will communicate details once we know more.”

Doyle thanked Jakymiw for his service over the past four years, and Jakymiw

responded with thanks for the board.

“I just wanted to say thank you for implementing the SRO program,” Jakymiw said. “I hope that you’ve seen the positives it’s had. We still strive for the betterment of our community and education in the elementary district. Safety has always been our priority and we’re doing everything we can to get everything staffed and good to go for the public.”

SIP

Doyle also provided a follow-up update on the district/school improvement plan. The district’s priority has been to increase and strengthen existing practices coming out of COVID-19 and the continued implementation of standards-based grading in the district.

Doyle said the district has “a small team” that’s been going to training at the

ROE to help gain a better understanding of how it can improve instruction for its diverse learners.

“We’ve started adding some people to that and next year we’re going to add more teachers and staff members to it,” Doyle said. “It’s not just students with individualized education plans. The ROE has done a great job on this with how we can revamp how we do special education in our district. It’s expanded now to more instruction. It’s good to get out and hear other schools talk about what they’re doing. For a couple of years we were honed into our own district. That training has gone well.”

A district goal has also been to increase its knowledge of professional learning communities (PLCs) for staff. PLCs are used widely in education and staff collaboration correlates to student and school success.

The shortage of substitute teachers has caused the district to have to change its model to allow for staff time for PLCs.

“We know that’s needed and we need that targeted time for them to grow in this ever-changing education that we’re dealing with,” Doyle said.

Land

The board unanimously approved a cash rent agreement extension with Jim Gensler of Rochelle to farm district land near Lincoln School. Gensler has been farming the land on a cash rent agreement since the district purchased it. The terms of the agreement remain the same as last year, with the tenant agreeing to pay \$275 per acre for the 14 tillable acres. The district raised the amount last year.

Personnel

The board unanimously approved personnel changes

including the retirement of RMS School Nurse Joelle Builta (effective end of 2026-2027 year), the employment of Anna Kray (fifth grade teacher at Tilton starting 2023-2024) and Danielle Carmichael (substitute paraprofessional), the transfer of Christina Calvey (kindergarten to first grade at Lincoln, 2023-2024) and the retirement of Michael DePriester (custodian at Lincoln School, effective April 13).

Reorganization

The board will host a reorganization meeting on Tuesday, April 25 at 6 p.m. in the RTHS boardroom to begin business of the board following the April 4 consolidated election, which saw Board Members Javier Zepeda and Steve Builta reelected to their seats. Jennifer Thompson was elected to the seat opened by Eric Van Hise, who did not seek reelection.

Rochelle Area CHURCH DIRECTORY

Ashton Bible Church, corner of Main and Paddock in Ashton. Pastor Farrel Stauffer, church phone is (815) 453-2190, church website www.ashtonbible.org. Morning School for all ages 9:00-10:00am, Morning Worship 10:15am, Wednesday Prayer Meeting/Bible Study 6:30-8:00pm.

The Bridge Church, Pastor Greg Duncan, 11038 E. IL Route 38, Rochelle, IL 61068. Phone: 815-562-7750. Sunday School: 9:00 am; Sunday Service: 10:00 am; Nursery & Children’s ministry during am service; Bible Study Tuesday 10:00 am and Wednesday 7:00pm. Web: thebridgechurchrochelle.com Email: thebridgechurchrochelle@gmail.com

Calvary Lighthouse Church, Assemblies of God, Senior Pastor, Dr. James Horvath. 14409 Hemstock Rd., Rochelle. Sunday Morning: Sunday Worship & Children’s Church 10:00 A.M., Wednesday Evening 7:00 P.M. – Adult Teaching, Missionettes & Royal Rangers Childrens Classes, Nursery available for all services. HE-Brews Cafe is open before and after services. For further information, please call the CLC office at 815-562-7701, or email us at staff@calvarylighthouse.com

Calvary Lutheran Church, LCMC - “To Know Christ and to Proclaim Christ in Word and Deed” -19 Perry Road, Lee, IL 60530 (the intersection of Perry Road and W. County Line Road). Rev. Martha Uecker Nelson, Pastor. Coffee Hour starts at 9:00 a.m., Sunday School, Confirmation, and Adult Bible Study are at 9:15 a.m. Worship is at 10:30 a.m. and is broadcast live on Facebook. Go to our website is at www.Calvarychurchlee.org and click on the link there. A Grief Support Group meets the third Tuesday of each month at 10:00 a.m. Call or text (815) 824-2825 or email CalvaryLeeIL@gmail.com with questions or for more information. Also check us out at www.facebook.com/Calvary-Lutheran-Church.

Rochelle Church of Christ, Keeping Christ at the center in the Hub City. We meet Sundays at 9:00am for Bible Study and 10:00am for worship. We also have a Wednesday Bible Study at 7:00pm. 206 Erickson Rd, Rochelle, IL 61068. You can call us at (815) 562-6572 or visit us on the web at rochellechurch.com. We also have a radio program Sundays just after 8am on WRHL 1060AM. Minister Dominic Venuso.

Creston United Methodist Church and Steward United Methodist Church - Rev. Ilhan You, Creston: 126 West South Street, P.O. Box 209, Creston, Illinois 60113. Sunday morning worship 9:00am. Coffee fellowship at 10:15am. Steward: 507 Main Street, P.O. Box 80, Steward, IL 60553. Adult Sunday School, 10:00am. Sunday morning worship and Children’s Sunday School 11:00am. Contact the church office at 847-730-4370 for more information. facebook.com/crestonumcil facebook.com/stewardilumc

Elim Reformed Church, 140 S. Church Road, Kings, IL 61068. Phone: 815-562-6811. Email goelimchurch@gmail.com Website www.goelimchurch.org Sunday Morning Worship 10:00 Rev. Marv Jacobs

Faith Lutheran Church – (14206 E. Flagg Rd.) – “Making Christ Known Through Lives of Faith.” In-person worship is available each Sunday at 9:00 a.m. or online at “Faith Lutheran Social” on YouTube. Worship resources are also available on our Facebook page - ‘Faith Lutheran Church ELCA.’ You may also e-mail Pastor Joy Alsop at Pastor@faithlcrochelle.org for more information. All are welcome to join us!

First Baptist Church of Rochelle, First Baptist Church of Rochelle invites you to experience our practical Bible services which have nurseries provided in every service along with a wide range of children’s and teen ministries. Sunday School is at 9:30 am with regular church services at 10:30 am and 6:00 pm. Wednesday Family Night starts at 6:30 pm with AWANA for the 5 yr. olds thru 6th grade. The Omega Teen Ministry also starts at 6:30 pm for 7th – 12th grades and the Adult Bible Study at 7:00 pm. First Baptist Church is located 6 blocks west of Hwy 251 at the corner of Woolf Ct. and 8th Ave. in Rochelle. Call 562-4168 for more information. Listen at 11:00 am Sunday mornings on WRHL 1060 AM for the Sunday morning “Bible Message.” www.firstbaptistrochelle.org


First General Baptist Church, 500 S. 12th St, Rochelle. Phone: 815-562-5221. Email: fgbcrochelle@gmail.com. Website: www.fgbcrochelle.org. Facebook: www.facebook.com/fgbcrochelle. Pastor: Rev. Angelo Bonacquisti. **Sunday worship services:** 8:30 am, 11:15 am and 6:00 pm. **Sunday school:** 10:00 am. We’d be honored to have you join us as we worship JESUS and continue to grow in truth and love for God and each other. A nursery, children’s church, youth group and small groups are available. If you need a ride please contact our church bus driver, John, at (815) 262-4275 by 8:30 am on Sunday. “For if you confess with your mouth that Jesus is Lord and believe in your heart that God raised him from the dead, you will be saved.” Romans 10:9

First Presbyterian Church – An Amazing Place for Amazing Grace- Rev. Doug Forsberg, Senior Pastor. 1100 Calvin Road, Rochelle. Email: info@placeforgrace.com. Sunday morning worship 9:00am & 11:00am. In person or streamed online. On our Website and Facebook Live. www.placeforgrace.com / www.facebook.com/placeforgrace

Grace Fellowship Church — Pastor Jeff Ardissonne, 2128 Il Route 38, Ashton, 815-453-7464. Sunday School 8:30 a.m. Sunday Worship Service 9:45 a.m. www.graceisforyou.com

Harvest Baptist Church 241 Scott Ave. (Hillcrest). Rev. Duane Boehm, pastor. Email duane712@hotmail.com, cell 815-757-3427. Visit us on Facebook! Service times: Sunday morning worship with Children’s Church at 10 am. Wednesday night worship at 7 pm.

Immanuel Lutheran Church Missouri Synod 16060 E. Lindenwood Road, Lindenwood, IL 61049. Rev. Dr. Matthew Rosebrock. Church Phone 393-4500. Church Worship 9:00 a.m. Sunday School Christian Education Hour at 10:30 a.m.

Living Water Community Church 405 N. Main St, Downtown Rochelle. Phone 815-561-6249, Website: www.lwccr.com, Like us on Facebook. We are Non-Denominational, Christ Centered. Casual dress, Christ Centered Live Band Worship. Chris Bender- Teaching Pastor, Brent Braski- Administrative Pastor, Adrian Daugherty- Lead Worshipper, Joe Mortimer- Youth Director, Amanda Barnes- Office Manager. Sunday Worship Service- 10:00am. Nursery/Toddlers Ages 0-5 available during the service in the Splash building. Swim- Grades 1st-5th worship with the adults then break out for age appropriate teaching. Youth groups, Small groups, Life Groups and Workshops meet throughout the year for Bible teaching. 7C’s Mission-serves the community physically & spiritually each month from 1135 Lincoln Hwy, providing lightly used clothing, Hygiene items, a light lunch and Elder Prayer open the second Saturday from 10am-2pm and the 4th Thursday from 4pm to 7:00pm and by appointment.. 

New Hope Fellowship (Church of God - Anderson, IN), 1501 10th Ave., Rochelle, IL 61068. Service: Sunday at 9 a.m. 10:30 a.m., (815) 561-8400, www.NHFchurch.net Pastor: Dan Sergeant and Pastor Nick Tornabene. (Classes for children through age fifth grade during service.)

Rochelle United Methodist Church invites everyone to enter into the passion of Jesus. Our Bible Study and worship series will be focused on the last week of Jesus’ life through Lent.

As we enter the story of Jesus’ passion, we come to it with our own eyes, our own humanity, our own experience. That gets all wrapped up in our interpretation.... that is how faith works! That is how we makes sense of things, and how we come to greater awareness, understanding, insight and compassion for our own stories and for those of others. So this Lent, this time of preparation for Easter, we will enter the passion of Jesus. Let us freeze frame a moment, so that we might dwell.... and become not just story tellers, but story dwellers. (Adapted from a poem by Marcia McFee.) **Maundy Thursday and Good Friday** services are at 7:00 pm. The church will be open from noon-3 on Good Friday for the public to walk the Stations of the Cross. Devotional guide provided – come and go at your convenience. Everyone is always welcome to all of our services.

Sunday worship is at 9:00 am with Sunday School for children after the Children’s Message. Recorded services are available on our YouTube channel and our website at www.rochelleumc.com. Our services are on the radio (93.5 FM) on Sunday mornings at 9:00 am. Our Facebook page is www.facebook.com/rochelleumc. Rev. Dr. Katherine Thomas Paisley, Pastor. 709 Fourth Ave. (815) 562-2164. admin@rochelleumc.com. Everyone is welcome and loved!

St. Patrick Catholic Church Rev. Jesus Dominguez; Deacon Fermin Garcia; Deacon George Schramm; 244 Kelley Dr. (Corner of Kelley & Caron Rd.), PO Box 329, Rochelle, IL 61068. **Office Hours:** 9:00 AM- 4PM Monday-Thursday, Phone: 815-562-2370. **Mass times:** 8:00 AM Monday-Thursday, Saturday Vigil Mass 5:00 PM English, 7PM Spanish, Sunday Mass 7:30 AM, 9:00 AM in English and 11:00 AM in Spanish. **Confessions:** Monday 8:30AM & 6:30PM, Tuesday 8:30AM, Saturday 8:30am & 4:00-4:45 PM Or by appointment. **Religious Education:** Deacon George Schramm, Director of Religious Education. 903 Caron Road, Rochelle, IL 61068, 815-561-0079; Website: stpatrickstrochelle.com Email: stpatrick-rochelle@rockforddiocese.org Facebook.com/StPatrickRochelle

St. Paul Lutheran Church “Building Relationships in Christ, Now and Forever!” Pastor-Rev. Greg Hoffmann, Steven Hall, Principal, Parish Nurse-Marcia Schnorr. 1415 Tenth Ave., Rochelle. Church Office-562-2744. Worship times: 6:00 p.m. Saturday, 9:00 a.m. Sunday. Our service is broadcast over WRHL 1060AM at 10:00 a.m. Sunday. Sunday School 10:15-11:15 a.m. Call 562-6323 for more information about the school.

LOCAL VIEWS

Guest column

Artificial intelligence and how it may affect jobs

I refuse to use self-checkout lanes at the grocery store. This isn't a new thing. I just don't like the technology. It's not that I find it too complicated. My objection is that when I use it, I'm contributing to someone losing their job. Low-skill, repetitive jobs like those of check-out clerks are on the chopping blocks as technology marches onward. Perhaps I'm overly nostalgic. But I like chatting with the checkout clerks as I'm buying my milk and vegetables. A machine has never given me a smile or suggested a less-expensive brand of flour. But some well-intentioned folks working the checkout lane have done just that. Truck drivers may soon face a similar threat as artificial intelligence is perfected and self-driving vehicles become com-

monplace. I was reading a *Wall Street Journal* article that said the future of truck stops is imperiled. They may just become automatic fueling stations with no need to serve coffee, beef jerky and donuts. Showers and restrooms will become a thing of the past. Robots, after all, don't need such things. A whole industry scattered across rural America may atrophy away. When I read predictions like this, it's easy to become smug and self-congratulatory. I can applaud myself for pursuing college degrees and choosing a profession that requires thinking and creativity. Writing, after all, isn't something that can be outsourced to a machine. Or can it? This past week, I've been experimenting with artificial intelligence chatbots. I grew up in

Galesburg, a railroad town that was the home of the poet Carl Sandburg. So just for fun, I asked a chatbot to write a poem about hometowns and railroads in Carl Sandburg's style. In less than three seconds, it composed this poem:
H o m e t o w n
Train: I hear the train that comes from far, The one that brings me back to home, I see the smoke that trails the sky, The one that marks the way I roam, I feel the rumble and the roar, The one that shakes me to the bone, I smell the iron and the steel, The one that makes me not alone, I taste the dust and sweat and tears, The one that tells me what I've done, I touch the ticket and the rail, The one that shows me where I'm from.



Scott Reeder

If I were a high school English teacher, I'd give a student who turned that in an "A." And frankly I couldn't have come up with a title for the poem in the time it took my cell phone to compose it. That's intimidating. Last month, I spent hours writing a sermon. (I occasionally volunteer as a lay preacher.) Just curious about the limits of artificial technology, two weeks later I asked my chatbot to compose a sermon on the same topic in the Rev. Billy Graham's style. Three seconds later, a full sermon appeared on my computer screen. It had the rhythm and meter of something Rev. Graham might have written. It stayed true to his Evangelical theology and emphasized Bible passages

that would have been dear to one of history's most successful evangelists. I sat there quietly intimidated. Could the work I do someday be outsourced to a machine? More importantly, will human beings lose their ability to compose literature on their own? I foresee a lot of high school and college students turning to artificial intelligence – rather than their own – to write poems and compositions. It's unlikely a teacher grading papers would know the difference. With such a convenient crutch, will youngsters give up on the agonizing trial and error necessary to learn to write? When I asked the chatbot to write a news story on a topic I had written about the previous week, the story it wrote was a disaster. I breathed a sigh of relief.

Why did it fail? Well, a machine can only work with the body of information that is available to it. It can scour the internet for answers. But it can't pick up a phone and drag answers out of a politician reluctant to give them or interview a sobbing crime victim who needs the prompting of a reassuring voice to tell her story. A friend who is a Canadian journalist puts it this way: Artificial intelligence plagiarizes – it doesn't generate new information. Artificial intelligence lacks basic desires such as empathy, love and justice. It can only mimic those human attributes and not particularly well – for now. *Scott Reeder, a staff writer for Illinois Times, can be reached at sreeder@illinoistimes.com.*

Ron Kern: Tax time has arrived

“The only two sure things in life are death and taxes.” -Benjamin Franklin
“The only difference between a taxidermist and a tax collector is that the taxidermist only takes your skin.” -Mark Twain
“Be thankful you're not getting all the government you pay for.” -Will Rogers
Ah yes, as I gaze at the calendar the 15th of April is but a mere few days in the offing. Tax time has arrived! You know, that time of year when most of us think it's okay to lie. After all, the politicians do it all the time. One issue I can tell you that has been on the forefront of Farm Bureau for the four decades I've worked for the organization has been taxes. So let's look at where the organization sees the most need for reform and repeal: While important strides, such as the 2017 passage of the Tax Cut and Jobs Act, have been made in recent

years, Farm Bureau supports a number of changes to help provide stability and security for America's farms and ranches. Estate taxes should be permanently eliminated. At the very least, Farm Bureau believes that the \$11 million per person/\$22 million per couple indexed estate tax exemption that was passed as part of the Tax Cuts and Jobs Act should be made permanent and that unlimited stepped-up basis should continue. The limitation on the amount that property values can be reduced under Special Use Valuation Section 2032A should be removed. Timber harvesting or the sale of a conservation easement should not trigger a recapture of estate taxes. The capital gains tax rate should be reduced and assets should be indexed for inflation. Capital gains should not be collected at death and there should be an

exclusion for agricultural land that remains in production, for transfers of farm business assets between family members, for farmland preservation easements and development rights, and for land taken by eminent domain. Passage of the Tax Cuts and Jobs Act in 2017 benefits most farm and ranch businesses and has allowed them to build their operations and stimulate the agricultural economy. Important provisions include reduced tax rates, the new business income deduction, provisions to allow the matching of income and expenses, immediate cost recovery and an increase in the estate tax exemption. USDA Economic Research Service documented the expected benefits of the tax reform in its June 2018 publication “Estimated Effects of the Tax Cuts



Ron Kern

and Jobs Act on Farms and Farm Households.” The Tax Cuts and Jobs Act contains many new, permanent provisions that help agriculture: Sect. 179 Small Business Expensing Increased to \$1 million. Indefinite Carry Forward of Deductions Indexed for Inflation. Depreciation for Farm Equipment Shortened from 7 to 5 Years. New Flat 21 percent Corporate Tax Rate and Repeal of the Corporate Alternative Minimum Tax (AMT). Many of the pass-through business provisions in the Tax Cuts and Jobs Act are temporary and should be made permanent. More the 98 percent of farm and ranches operate as “pass-through businesses:” sole proprietorships, partnerships and Sub S corporations. Failure to extend these important

provisions will result in a tax increase for farmers and ranchers and leave them without ways to deal with the cyclical and unpredictable nature of their businesses. Reduced Pass-Through Tax Rates and Expanded Brackets: If not extended, higher tax rates will increase taxes on the majority of farm and ranch businesses. New 20 percent Business Income Deduction (phase-out starts when taxable income exceeds \$315,000/joint): Allowing the business income deduction to expire would expand the tax base of pass-through businesses, erasing much of the benefit of tax reform legislation. Unlimited Bonus Depreciation (Expensing): If not continued, farmers and ranchers will be unable to offset income with deductions for their business expenses. This is especially critical because like-kind exchanges for equipment

and livestock are repealed. Doubled Estate Tax Exemption to \$11 million per person/\$22 million couple: If the exemption is allowed to revert back more farms and ranches will be subject to estate taxes. And, as long as the exemption level is temporary money must be spent on estate tax planning rather than on growing farm and ranch businesses. Increased Alternative Minimum Tax Threshold for Individuals: Rollback of the higher AMT threshold will cancel out important deductions and credits put in place by tax reform. Only time will determine our success. “Government's view of the economy could be summed up in a few short phrases: If it moves, tax it. If it keeps moving, regulate it. And if it stops moving, subsidize it.” -Ronald Reagan *Ron Kern is the manager of the Ogle County Farm Bureau.*

How to contact government officials

U.S. Con. Darin LaHood
1424 Longworth HOB
Washington, D.C. 20515
(202) 225-6201

IL Sen. Win Stoller
Stratton Office Bldg
Springfield, IL 62706
(217) 782-1942

IL Rep. Bradley Fritts
Stratton Office Bldg
Springfield, IL 62706
(217) 782-0535

Have a letter you want to submit to us? Send it to (news@rochelle-news-leader.com)

KEEPING YOU IN TOUCH WITH YOUR LOCAL LEADERS

* Denotes Chairman/President

Rochelle City Council
*John Bearrows jbearrows@rochelleil.us
Kathryn Shaw-Dickey kshaw-dickey@rochelleil.us
Bil Hayes bhayes@rochelleil.us
Rosaelia Arteaga rarteaga@rochelleil.us
Dan McDermott dmcdermott@rochelleil.us
Tom McDermott tmcdermott@rochelleil.us
Benjamin Valdivieso

Rochelle Elementary School Board
*Dave Casey dcellini94@gmail.com
Steve Builta sbuilta@gmail.com
Ashley Jackson ajackson@d231.rochelle.net
Stephanie White swwhite@d231.rochelle.net
Trisha Vaughn jrvtlv02@msn.com
Javier Zepeda jzepeda@rthsd212.org
Jennifer Thompson

Rochelle Township High School Board
*Tom Huddleston tom.huddleston@rthsd212.org
Bill Ravnaas bill.ravnaas@rthsd212.org
Jacky Aguilera jacky.aguilera@rthsd212.org
Jeff Tilton jeff.tilton@rthsd212.org
Bobby Chadwick bobby.chadwick@rthsd212.org
Laurie Pillen lpillen@rthsd212.org
Brent Ohlinger

Flagg-Rochelle Park Board
Brent Carmichael bcarmichael@rochelleparkdistrict.org
John Dobbs jdobbs@rochelleparkdistrict.org
Dale Wells dwells@rochelleparkdistrict.org
*Tim Hayden thayden@rochelleparkdistrict.org
Jodie Hart jhart@rochelleparkdistrict.org
Joe Lenkaitis jlenkaitis@rochelleparkdistrict.org

Ogle County Board Dist. 3
Austin Gillis agillis@oglecounty.org
Dan Miller dmiller@oglecounty.org
Joseph Simms jsimms@oglecounty.org

Ogle County Board Dist. 4
Jackie Ramsey jramsey@oglecounty.org
Skip Kenney skenney@oglecounty.org
David Williams dwilliams@oglecounty.org

Creston Village Board
*Tom Byro tommyb_47@yahoo.com
Wayne Williams jwdw13@yahoo.com
Greg Hopkins ghopkins522@comcast.net
Steve Katzman skatzman@essex1.com
Mike Kerns ac.kerns@comcast.net
Curt Ward caward92@comcast.net
Mark Hibshman
Jennifer Payton

Hillcrest Village Board
*Richard Rhoads rrhoads@hillcrestil.us
Randy Salsbury rsalsbury@hillcrestil.us
Pam Pittman ppittman@hillcrestil.us
Dan Potter dpotter@hillcrestil.us
Tim Ball tball@hillcrestil.us
Renee Kerwin rkerwin@hillcrestil.us
Jose Huerta jhuerta@hillcrestil.us

Flagg Township
Sue Messer flaggtwp@rochelle.net
Eric Gruben flaggtwpclerk@rochelle.net
Susan Rothenberger assessor@rochelle.net
Scott Seebach scottseebach@gmail.com

Board of Trustees
Lance Noggle noggle62@gmail.com
Eric Gruben egruben@comcast.net
Susan Hager susanhager303@comcast.net
Jim Kenney jimk@rocketsupply.com

Flagg-Rochelle Library
*Jaqueline Dickow dickow@comcast.net
Teresa Haggstad haggstads@comcast.net
Michael Scanlan scanlan@comcast.net
Lanning Nicoloff nicoloff118@comcast.net
Sheri Klindera alwayslefty2@gmail.com
Susan Sevedge nit1prl22@yahoo.com
Darci Waltrip doobs12@comcast.net

LETTERS TO THE EDITOR POLICY

The Rochelle News-Leader encourages responsible letters to the editor on subjects of interest to our readers. Editing may be necessary for space, clarity or to avoid obscenity or libel, but ideas will not be altered. All letters must bear the handwritten signature of the writer and include address and phone number or e-mail address for verification purposes. Neither the street address nor phone number will be printed. Letters should

be typed or legibly handwritten, and no anonymous letters will be published. Any letters from boards or organizations must include at least one name of an individual. Any criticism of public officials should be limited to issues related strictly to their position or actions made in office, as personal attacks will not be published. Letters involving private disputes between the writer and a business will not be published. Political endorsements will be

published, however letters from candidates endorsing themselves will not be printed. Letters may be dropped at the News-Leader office (211 IL Route 38 East), mailed to the News-Leader (P.O. Box 46, Rochelle, IL 61068) or e-mailed (news@rochellenews-leader.com.) The News-Leader reserves the right to edit or reject any letter to the editor for any reason, and letters chosen for publication do not necessarily reflect the views of this newspaper.

COMMUNITY



(COURTESY PHOTO)

Two more benches made from bottle caps donated to the Rochelle Kiwanis Golden K family of school organizations and community donations will soon be coming to sites in town.

Two more Kiwanis family bottle cap benches coming to Rochelle

ROCHELLE — Two more benches made from bottle caps donated to the Rochelle Kiwanis Golden K family of school organizations and community donations will soon be coming to sites in town. The benches are now on display in front of the home of Dennis

Swinton, who heads up the bottle cap program, on School Avenue across from Rochelle Middle School.

Each six-foot bench weighs 180 pounds and is made from 200 bottle caps/lids. One bench will be placed at the dog park and one will be placed at

Lake Sule.

Plates will be engraved in the honor of the groups that worked on the project, including the Rochelle Township High School Key Club, the Rochelle Middle School Builders Club, the Creston Elementary School Builders Club,

the Kings Elementary School Builders Club and Rochelle Kiwanis Golden K.

Swinton thanked bottle cap collectors, including Walgreens, the Moose Lodge and Heritage Village and the many residents of Rochelle who have donated their caps.

Birthdays & Anniversaries

April 16
Marissa Seldal
James Doering

April 18
Millie Danekas

April 19
Pastor Angelo Bonacquisti

April 21
Emma Waters

April 24
Lainie Arnold
Jose Tlapa

April 26
Evan Jones

April 30
Oakley Gonzales
Nora Bridgeman

Call 815-561-2151 to submit names for birthdays and anniversaries



Coffee Break

MAGIC MAZE

ENDING IN "AX"

I H E B Y V S P M J H E B Y V
T Q O L S X I G D B Y W T R P
M K I F U D A B Y W U S Q O M
K I F D P B Z F X W U X X S Q
O P O L E A X X I X N A A L J
H F D C R A A A A L T R K O Y
X W V T M D S W Q R A O C P H
N A L I A X R K U I H H I H F
E C L O X A W S E E B T P B Z
Y C R E E L W V U X A T N Y S
S B R Q R F P N M L X A J A J

Find the listed words in the diagram. They run in all directions forward, backward, up, down and diagonally. Unlisted clue hint: CAPITAL OF NOVA SCOTIA

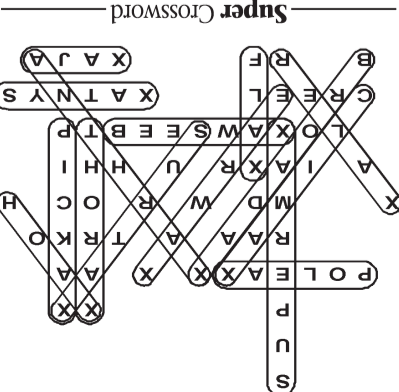
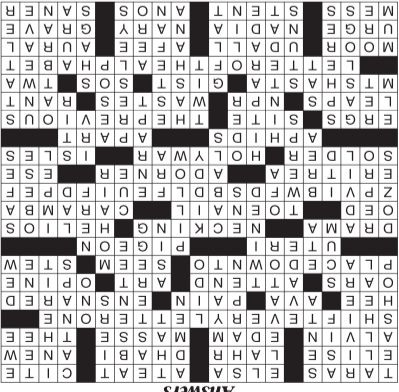
Ajax
Anthrax
Beeswax
Broadax

Climax
Earwax
Flax
Hoax

Pickax
Poleax
Relax
Supermax

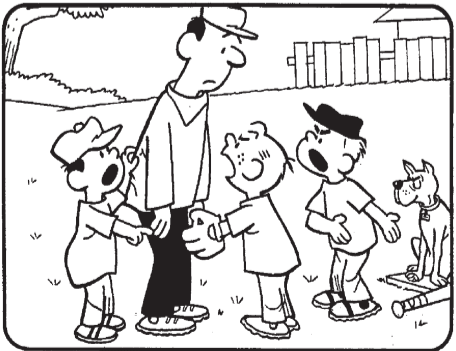
Surtax
Syntax
Thorax

©2023 King Features Syndicate, Inc. All rights reserved.

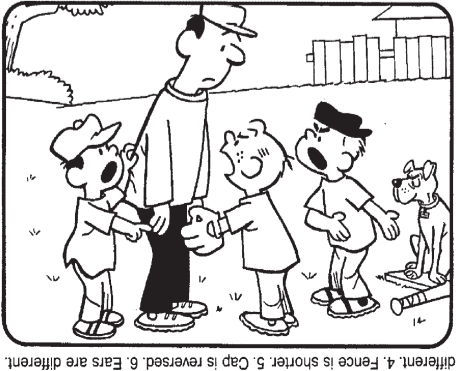


HOCUS-FOCUS

BY HENRY BOLTINOFF



Find at least six differences in details between panels.



Differences: 1. Shrubbery is shorter. 2. Fence is shorter. 3. Collar is different. 4. Fence is shorter. 5. Cap is reversed. 6. Ears are different.

Super Crossword

"TAKE IT BACK"

ACROSS

1 Reid and Lipinski
6 "Born Free" lioness
10 Really bothered
15 Refer to as an example
19 Beethoven's "Für —"
20 "The Wizard of Oz" actor Bert
21 Abu — (Persian Gulf emirate)
22 Over again
23 Alley of choreography
24 Mild Dutch cheese
25 Tricky billiards shot
26 Fare — -well
27 Start of instructions for making sense of 67-Across
31 "— Haw"
32 "A Wrinkle in Time" director DuVernay
33 Aleve may relieve it
34 Got in a trap
37 Rowing blades
39 Be present
41 Renoir's skill
42 Vent views
43 Part 2 of instructions
45 Appear to be lioness
47 Goulash, e.g.
48 Fetal homes
49 Cooing park scavenger
51 Genre of serious films
54 Kissing and caressing
58 Greek god of the sun
63 Huge Brit. lexicon
64 Pedicured body part
66 "Ay, —!" (cry on "The Simpsons")
67 Message to congratulate solvers who figure out this answer
72 Northeast African nation
73 Decorator
74 Suffix with Gabon
75 Welding alloy
76 Jihad
78 Capri and Aruba
80 Plant lice
82 Disconnected
85 Units of work
89 Locale

DOWN

1 Cousin of a coffeehouse
2 Curative plant
3 Monte Carlo setting
4 "Yeah, right!"
5 Actress Berger of "De Sade"
6 Brits call it a "lift"
7 Put freight on
8 Make pointy, as a pencil
9 Hostile insect in a swarm
10 Guys writing slogans, maybe
11 This and —
12 Item dyed for a spring holiday
13 One who fails to show up
14 Stadium rows
15 Sleeps lightly
16 Get via will
17 Simple shirt
18 Baaing "ma" (no one)
19 Headstone locale
120 Disarray
121 Artery-opening tube
122 Portuguese for "years"
123 More rational

ACROSS

96 Ballet moves
98 "Planet Money" ailer
99 Misspends
100 Spout off
101 Calif. volcano
103 Basic idea
104 "We need assistance!"
106 Onetime Pan Am rival
107 End of instructions
111 Heath
113 Former congressman Mo
114 For — (not gratis)
115 Acoustic
116 Push along
117 Gymnastics legend
118 — a soul (no one)
119 Headstone locale
120 Disarray
121 Artery-opening tube
122 Portuguese for "years"
123 More rational

DOWN

1 Cousin of a coffeehouse
2 Curative plant
3 Monte Carlo setting
4 "Yeah, right!"
5 Actress Berger of "De Sade"
6 Brits call it a "lift"
7 Put freight on
8 Make pointy, as a pencil
9 Hostile insect in a swarm
10 Guys writing slogans, maybe
11 This and —
12 Item dyed for a spring holiday
13 One who fails to show up
14 Stadium rows
15 Sleeps lightly
16 Get via will
17 Simple shirt
18 Baaing "ma" (no one)
19 Headstone locale
120 Disarray
121 Artery-opening tube
122 Portuguese for "years"
123 More rational

ACROSS

44 Zeta follower
46 Fine goat coat
49 What a head rests on in bed
50 Brand of spongy balls
51 Sleeps lightly
52 Printing proof, for short
53 Aleve alternative
55 Naval acad. grad's rank
56 Groups devising plots
57 Tyeke
59 Tyeke
60 Push along for valuables
61 Like Santa, weight-wise
62 Strongboxes for valuables
64 Pipsqueaks
65 Three — kind
66 Pool stick
68 "— be my pleasure!"
69 La — Tar Pits
70 Title for a monk
71 Mesmerized
76 List of currently popular songs
77 Polish river
78 Hip-hop mogul Gotti

DOWN

79 Mix together
81 Suggested subtly
83 Elvis and Priscilla
84 Fable writer by bark
85 Tree infested by beetles
86 No longer active: Abbr.
87 Fake hearth items
88 Balls, geometrically
90 Taunt in fun
91 Rosh —
92 "Here We Are" singer Gloria
93 Fiber source in some muffins
94 Disentangle
95 Country music's — Brothers
97 Used a chair
102 Shell-shocks
103 Note a half step above F
105 Thick rugs
108 Actress Lena of "Chocolat"
109 Streamlined, informally
110 Ambience
111 Not saying a word
112 Metal in rocks

WHO'S WHO IN INSURANCE

RYAN HAEDT

ECKBURG INSURANCE GROUP

TYPES OF INSURANCE:
Auto, Home, Business, Farm & Life

PERSONAL:
I lost my home in the 2015 Rochelle tornado. I know, first hand, the importance of having the right coverage.

604 N. Main St.
Rochelle, IL
815-888-3030
ryan@eckburg.com

04162023

Terri Schaefer,
STATE FARM INSURANCE

Education & Years of Experience:
Graduate of NIU School of Business with a Bachelor's Degree in Enterprise Management.

Types of Insurance:
Auto, Home, Life, Health & Bank.

Personal or Family Info:
I have lived in Rochelle for 38 years and have been a State Farm Agent for 23 years. My staff and I enjoy serving the residents of Rochelle.

Web: TerriSchaefer.com
terri.schaefer.LLSN@statefarm.com

04162023

ANGIE BURKHART

ECKBURG INSURANCE GROUP

TYPES OF INSURANCE: Auto, Home, Business, Farm & Life

604 N. Main St.
Rochelle, IL
815-888-3030
angie@eckburg.com

04162023

Shane Huber,
SHANE HUBER STATE FARM

Education & Years of Experience:
BS of Business Administration from Minot State University. Minot, ND, 1990. 12 years experience.

Types of Insurance:
Auto, Home, Life, Health, Commercial/Business, Farm/Ranch

Other:
Disability Income, Annuities & Med Sup.

Personal or Family Info:
Wife Angie, 2 Children – Tyler 22 & Zander 12, Originally from North Dakota. Enjoys spending time with family, golfing, avid snowmobiler. He and his staff appreciates the opportunity to serve the Rochelle and surrounding communities with their insurance needs.

www.ShaneHuber.com to get a quote or
E-mail Shane@ShaneHuber.com Web: ShaneHuber.com

04162023

SUSAN YOUNG

ECKBURG INSURANCE GROUP

TYPES OF INSURANCE: Auto, Home, Business, Farm & Life

604 N. Main St.
Rochelle, IL
815-888-3030
susan@eckburg.com

04162023

JOSH MESSENGER
COUNTRY FINANCIAL

Education & Years of Experience:
Bachelors degree from NIU. 15 years experience as a business owner.

Types of Insurance:
Auto, Home, Life, Health, Commercial, Retirement Planning, Investment Accounts

Personal or Family Info:
Married with 3 boys. Life-long area resident, very active coaching my boys, golfing, and being involved in the community.

Website: countryfinancial.com/josh.messenger
Josh.messenger@countryfinancial.com

04102022

James E. "Spud" Supancic
SUPANCIC INSURANCE

Education & Years of Experience:
39 Years

Types of Insurance:
All lines of insurance: Commercial, Home, Auto, Life, Health

Other:
License and Title Service
License Renewal Stickers
Notary

Open Monday-Friday 9am-5pm
Saturday 9am-12 noon

www.spudinsurance.org

04102022

Jennifer Farrall
MAPLE LEAF INSURANCE AGENCY

TYPES OF INSURANCE:
Auto, Home, Life, Business, Medicare Supplements

PERSONAL / FAMILY INFORMATION:
I was born in Canada and have been a Rochelle resident for 9 years. You might see me in town driving a school bus! I have 3 adult children and a labradoodle named Lenny! Family, friends, and cruising are my greatest joys.

1201 S. 7th Street
Rochelle IL
815-561-6008
mapleleaf.com

04162023

SAM GRABER
Registered Representative
GRABER FINANCIAL GROUP

Education & Years of Experience:
Bachelor degree from Lakeland College in Sheboygan, WI and Masters at University of Wisconsin. Approaching 50 years.

Types of Insurance: Life Insurance, Term, Permanent and Indexed Universal Life, Final Expense and Whole Life

Types of Investment: Fixed Annuities

Personal or Family Info: Sam and Sandi recently celebrated 52 years and have lived in Rochelle since 1968. They have three sons, Greg, Matt and Andy, and two grandsons Jackson and Jamison

Graber Financial Group
409 4th Avenue
Rochelle, IL
815-562-7139
or
815-751-4411

samgraber@dnacom.com

04112017

JOHN VANDRE
Registered Representative
Vandre Investments

Education & Years of Experience:
Graduated from Rochelle Township High School and NIU with a degree in Elementary Education. Have 35 years experience with insurance and investments.

Types of Insurance: Life and Long Term Care.

Types of Investments: 401k Rollovers, IRA's, Annuities, and Mutual Funds

Fixed Investment Rates:
4.25% to 5.20%

Graber Financial Group
409 4th Avenue
Rochelle, IL
815-757-1829
or
815-562-7139

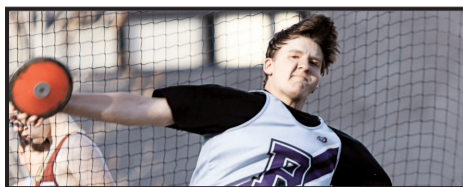
jvandre@sagepointadvisor.com

04162023

SUNDAY, APRIL 16, 2023

ROCHELLE NEWS-LEADER • SECTION 2 • PAGE 1

SPORTS



ATHLETES LACE UP

The RTHS Hub and Lady Hub track and field teams competed Tuesday evening.

See page 4 for more details

RTHS Boys Tennis

Netters take down Kaneland

Rochelle scores road wins over Rockford Lutheran and Rockford Christian

BY RUSSELL HODGES
SPORTS EDITOR

ROCHELLE — Senior John Green hasn't lost a doubles match this season. Green's success on the court continued Wednesday evening, when the Rochelle Hub varsity tennis team hosted the Kaneland Knights in search of the program's first Interstate 8 Conference victory of the season.

Looking for a bounce-back win after conceding a 4-1 loss against Sycamore on Tuesday, Rochelle returned to action in dominant fashion, sweeping all three doubles matches and splitting the two singles points to secure a 4-1 win over the Knights. Working alongside junior teammate Parker Lenkaitis on the No. 2 doubles court, Green remained unbeaten on the season, helping take down Kaneland netters Noah Pawlak and Luke McEvoy 6-0, 6-2.

“Coach [Kristy] Eckardt gave us a really good pep talk today and we really banded together,” Green said. “The winds made it really tough today, but we kept playing and we kept hitting our shots. Communication with my partner has been huge because I’ve had differ-

ent partners this season, but we're always talking and we're always staying positive and picking each other up."

Seniors David Wanner and Owen Haas cruised over Lucas Johnson and Alan Tapia at the No. 1 doubles court, dropping only two games in a 6-1, 6-1 victory. Seniors Paul Swartz and Evin Odle fared even better at the No. 3 doubles court, conceding just one game in a 6-1, 6-0 win against Ryan Bicker and Jaden Schneider. Rochelle (6-2, 1-2 Interstate 8) split the two singles points, with freshman Mark Green defeating Wilson Love 6-1, 6-2 at the No. 2 singles court.

"We have a really good group that's hungry and we have a lot of new players," Green said. "It's fun watching how the new players fit into the puzzle and how they keep getting better. We're always pushing each other during practice and our doubles teams play really well together because we're always talking and we're always working through drills. I think we can make a run at a conference title this season. Our goal is to make that run and see what's next."

Junior Jimmy Chavez
faced Matt Managus at



(PHOTO BY RUSSELL HODGES)

Senior Paul Swartz high-fives freshman Mark Green after scoring a point during the Rochelle Hub varsity tennis match against Sycamore on Tuesday.

the No. 1 singles court, taking one game in a 0-6, 1-6 loss. The Hubs will

battle Freeport on the road in nonconference play Monday evening before

continuing Interstate 8 Conference play with a road match against Morris on Tuesday evening.

See TENNIS page 10

See TENNIS page 3

RTHS Baseball

Hubs hold off Sandwich for Interstate 8 win

Rochelle launches four home runs in 7-4 victory over Indians on Monday

BY RUSSELL HODGES
SPORTS EDITOR

ROCHELLE—Brandyn Metzger is one of only two underclassmen on the Rochelle Hub varsity baseball team this season. Despite his youth, the sophomore showed maturity on the mound Monday evening, working around multiple jams and helping secure a 7-4 win over Sandwich.

Metzger tossed the final two and one-third innings against the Indians, allowing one inherited runner to score before escaping the sixth and seventh innings unscathed. Sandwich threatened on several occasions, loading the bases on two hits and a walk in the top of the seventh inning. But Metzger remained focused on the mound, inducing a flyout to left field that ended the game.

"I went in with the mindset of throwing strikes and my teammates had my back," Metzger said. "It's been fun moving up to the varsity team and it's been a great experience. It's a completely different game at this level. I think we have a good group that can do a lot this season."

Sandwich took a 2-0 lead during the first of the

home-and-home series against Rochelle, scoring twice in the top of the first inning after Austin Marks hit a lead-off home run and Chris Barbor reached on an error to bring Taylor Adams home. Senior Noah Lara made the score 2-1 in the bottom of the first inning, sending an opposite-field double into the right-center gap before coming home on a wild pitch. Lara went 3-for-4 with two home runs and four RBIs in the win.

The first of Lara's two long balls tied the game in the bottom of the third inning, with the senior catcher belting a fastball over the left-field fence. The Indians regained the lead after Hunter Pavia drew a bases-loaded walk in the top of the fourth inning, but the Hubs answered when freshman Brode Metzger, Rochelle's second underclassman, pounded a ball well beyond the left-center-field fence for a solo shot that evened the score in the bottom of the fourth inning.

"My dad was working with me on my swing the other day," Metzger said. "I've been struggling a little bit this season, but I took a hard swing like my coaches have been telling us to do. The experience



(PHOTO BY RUSSELL HODGES)

Freshman Brode Metzger gives head coach Jarrod Reynolds a fist bump at third base after hitting a home run during the Rochelle Hub varsity baseball game against Sandwich on Monday.

playing on varsity has been great and the guys are really nice to me, even though I'm a freshman. I'm trying my best and working

hard in practice. We've really gotten the bats going over our last few games and I feel like we've had a lot more players hitting

Sandwich scored its final run of the game in the top of the fifth inning, where Marks drew a hit-

by-pitch with the bases loaded to put the Indians ahead 4-3.

See *BASEBALL* pg 6

SPORTS

TENNIS: Rochelle nets two nonconference wins on Monday

From page 1

Sycamore

The Rochelle Hub varsity tennis team had a three-match winning streak snapped on Tuesday, with the purple and white falling 4-1 against the Sycamore Spartans in Interstate 8 Conference play. Junior Parker Lenkaitis and senior John Green secured Rochelle's lone win, defeating Alex Jenkin and Josh Plagakis 6-3, 6-4 at the No. 2 doubles court.

Sycamore claimed both singles points over the Hubs (5-2, 0-2 Interstate 8) on Tuesday. Junior Jimmy Chavez was shut out 0-6, 0-6 against Steven Chen on the No. 1 singles court, while senior Evin Odle took four games in a 2-6, 2-6 loss to Regan Ni on the No. 2 singles court.

The Spartans clinched their win with two doubles victories. Seniors David Wanner and Owen Haas fell 6-7(9), 1-6 against Jonathan Locascio and Liam Kerbel on the No. 1 doubles court, while senior Paul Swartz and freshman Mark Green fell 6-7(3), 3-6 against Jacob Plagakis and Joe Culotta on the No. 3 doubles court.

Rockford

The Rochelle Hub var-

sity tennis team extended its winning streak with two nonconference victories over Rockford Lutheran and Rockford Christian on Monday evening. Rochelle (5-1, 0-1 Interstate 8) shut out the Crusaders 9-0 before defeating the Royal Lions 4-1.

Rochelle took all six singles points against the Crusaders on Monday. Senior David Wanner took down Visvai Subramanian 8-3 at No. 1 singles and senior Owen Haas bested Gregory Julius 8-2 at No. 2 singles.

Senior John Green won 8-2 over Jake Gustafson at No. 3 singles and junior Parker Lenkaitis had limited trouble in an 8-1 win over Hayden Schuster at No. 4 singles. Freshman Mark Green and senior Paul Swartz helped spark the sweep with an 8-0 victory over Matt Fee and an 8-1 victory over Dade Robinson at No. 5 and No. 6 singles.

The Hubs showed similar dominance during doubles play, where Wanner and Haas teamed up for an 8-3 win over Subramanian and Julius at No. 1 doubles while John Green and Lenkaitis combined for an 8-1 win over Gustafson and Fee at No. 2 doubles. Mark Green and Swartz scored a shutout victory for Rochelle, defeating Schuster and Robinson 8-0 at No. 3 doubles.

Rochelle saw its doubles duos take all three points against the Royal Lions on Monday, with John Green and Lenkaitis taking the No. 1 doubles court and winning 8-2 over Gianni Racanelli and Mats Tuneberg. Junior Jimmy Chavez and senior Evin Odle shut out Calvin Raj and Luke Frazier 8-0 on the No. 2 doubles court, while Mark Green and Swartz swept Raj and Frazier 8-0 as well.

The Hubs halved the two singles points with Rockford Christian on Monday evening. Odle emerged victorious with an 8-3 win over Tuneberg at the No. 2 singles court, while Chavez took three games in a 3-8 loss against Racanelli on the No. 1 singles court.



(PHOTO BY RUSSELL HODGES)

Senior John Green hits a forehand shot during the Rochelle Hub varsity tennis match against Sycamore on Tuesday. Green helped secure Rochelle's lone doubles point in a 4-1 loss against the Spartans.

RTHS Softball Rochelle falls in I-8 matchups with Morris, Sycamore

Lady Hub record moves to 3-6 overall after two conference losses this week

BY RUSSELL HODGES

SPORTS EDITOR

MORRIS — The Rochelle Lady Hub varsity softball team continued Interstate 8 Conference play against Morris on Monday evening, falling 11-2 in the first of a home-and-home set. Sophomore Lauren Dyer went 3-for-3 with three singles to lead the Rochelle offense, while senior Morgan Smardo totaled two RBIs and senior Layla Pelan went 2-for-3 at the plate.

Morris took a 2-0 lead in the bottom of the first inning, where Addison Stacy singled and scored on a wild pitch before Alyssa Jepson stole home after reaching on a no-out walk. The Redskins surged ahead in the bottom of the second inning, tallying five runs on four singles, three walks and one error to command a 7-0 advantage over the Lady Hubs (3-5, 1-2 Interstate 8).

Rochelle recorded two runs in the top of the third inning, where Smardo delivered a two-run triple to bring home Dyer and junior Ella Alfano, who drew a lead-off walk to start the frame. The Redskins responded in the bottom of the third inning, slapping six consecutive singles to score four more runs and take an 11-2 lead. Rochelle finished with eight hits in the loss on Monday.

Sycamore

The Rochelle Lady Hub varsity softball team avoided a shutout on Wednesday, when the purple and white faced the talented Sycamore Spartans in Interstate 8 Conference play.

Senior Morgan Smardo singled and scored on an error in the top of the second inning for the Lady Hubs, who were held to three hits on offense in an 18-1 loss against the Spartans. Senior Adamaris Betancourt doubled in the top of the fourth inning and freshman Madigan Williams singled in the top of the second inning for the Lady Hubs (3-6, 1-3 Interstate 8).


Sycamore tallied three runs in the bottom of the first inning, with two runs coming home on a pair of defensive errors. The Spartans took a 3-1 lead into the bottom of the second inning, where Sycamore's offense added one run on two hits and an error before exploding for 14 runs in the bottom of the third inning. The Spartans compiled six singles, four doubles, two home runs and one walk in the frame.

COMMUNITY BOARD

Need to get the word out about a product or service you offer?

Give us a call at 815-562-4171.

We can reach over 9,000 homes!



Gutters, Roofing & Siding

THEISEN ROOFING *Free Estimates!*

ROOFING
SIDING
GUTTERS

CONTACT US
815-758-8998
THEISENROOFING@COMCAST.NET

Family owned & operated for over 50 years

Storage Sheds

FREE Sales Rep. Evaluation At Your Site

Rocky Ridge Structures

We Deliver! From Our Lot To Your Site

We Specialize in Portable/Quality Built Storage Sheds

- Stock & Custom Design
- Competitive Pricing
- Many Options Available
- Site Preparation Available

See Displays at 3500 S. Chana Rd. Chana IL 61015
Call Norm or Albert for Free Literature packet
779.861.3542

Plumbing, Heating & Cooling

ANDERSON PLUMBING & HEATING, INC.

Plumbing, Heating & Cooling
Water Heaters, Water Softeners,
Drinking Water Systems, Iron Filters,
Sewer Rodding & Jetting & More!

Since 1976

621 First Ave., Rochelle
(815) 562-8784

Advertise Here

What Service Do You Offer?

562-4171

The Rochelle News-Leader

Heating & Air Conditioning

Keep your family safe and warm!

HULL HVAC
Heating, Cooling & Duct Cleaning Specialist

815-561-6551
www.HullHVAC.com
527 2nd Ave Rochelle, IL 61068

Precision Furnace Clean & Check
\$85.00
Includes FREE carbon monoxide test

24/7 Emergency Service

Concrete

Bruns Construction, Inc.

- Residential & Commercial Concrete
- Additions

FREE ESTIMATES!

Tim & Roger Bruns, Owners
Established 1997

815-561-0099
Free Estimates • Fully Insured
www.brunsconstructioninc.com

Custom Construction

Residential & Commercial Roofing

Shingle Roofing, Metal Roofing & Flat Roofing

Custom Construction Systems
customsteelroofing.com
Call & Text 815-871-7835

SPORTS

RTHS Track & Field



(PHOTOS BY MARCY DELILLE)

Sophomores Jack Tarvestad (left) and Aaliyah Losoya (right) compete in the throwing events during the Rochelle Township High School track and field team's meet against Morris and LaSalle-Peru on Tuesday. The Lady Hubs won the meet with 66.5 points and the Hubs took second place with 86.5 points.

Rochelle teams face Interstate 8 schools in midweek action

Lady Hubs finish first and Hubs take second against Morris, LaSalle-Peru

BY RUSSELL HODGES
SPORTS EDITOR

MORRIS — The Rochelle Hub and Lady Hub track and field teams faced off against Morris and LaSalle-Peru in an Interstate 8 Conference triangular meet on Tuesday evening. The Lady Hubs emerged victorious with 66.5 points and the Hubs finished in second place with 86.5 points.

Lady Hubs

Senior Samantha Sanford finished first both the shot put with a distance of 9.15 meters and the discus throw with a distance of 24.54 meters. Rochelle saw three athletes (Carmela Bright, Macy Ramos

and Savanna Wilson) tie for first in the high jump with a clearance of 4 feet 4 inches. Junior Alivia Henkel finished first in the long jump with a distance of 15 feet 7 inches and junior Kennedy Adamski finished first in the triple jump with a distance of 30 feet 6 ½ inches.

Rochelle's 1600-meter relay team (Alivia Henkel, Arline Villanueva, Rylee Jackson and Kylie Smith) finished first with a time of 4:27.44. Rochelle's 400-meter relay team (Rylee Jackson, Alex Neece, Rylee Bogle and Alivia Henkel) and 800-meter relay team (Rylee Jackson, Alex Neece, Kylie Smith and Alivia Henkel) took sec-

ond with respective times of 54.14 and 1:54.38.

Rochelle's 3200-meter relay team (Rose Luxton, Bridgett Ramirez, Emely Hernandez and Mary Chadwick) placed fourth with a time of 12:42.47. Freshman Kyrie Cragin finished first in the 300-meter hurdles with a time of 55.39 seconds and placed third in the 100-meter hurdles with a time of 20.67 seconds. Freshman Annaliese Koziol took second place in the 3200-meter run with a time of 14:56.21 and third place in the 400-meter dash with a time of 1:16.28.

Junior Kylie Smith took second in the 100-meter dash with a time of 14.49

seconds and sophomore Alex Neece finished fifth in the 200-meter dash with a time of 29.70 seconds.

Hubs

Junior Landon Mickley finished first in the shot put with a distance of 12.78 meters and second in the discus with a distance of 26 meters. Sophomore Jack Tilton finished first in the high jump with a clearance of 5 feet 8 inches and sophomore Kenny Overton finished first in the pole vault with a clearance of 9 feet 3 inches. Junior Nathan Sergeant took second in the triple jump (38 feet 2 inches) and sophomore Virgil

O'Dell placed fourth in the long jump (16 feet 10 ½ inches).

Rochelle's 400-meter (Jack Tilton, Miles Hunley, Caden Goodwin and Gabriel Montes) and 800-meter relay teams (Bruno Fernandez, Caden Goodwin, Miles Hunley and Jack Tilton) took second with times of 49.41 and 1:45.50. Rochelle's 1600-meter (Jackson Smith, Nathan Sergeant, Elijah Mayen and Chris Hickey) and 3200-meter relay teams (Declan McGee, Luis Hernandez, Chris Hickey and Elijah Mayen) took second with times of 3:56.33 and 9:42.27.

Freshman Wyatt Worthington took sec-

ond in the 300-meter hurdles with a time of 47.02 seconds and third in the 110-meter hurdles with a time of 18.47 seconds. Senior Thomas Koziol finished first in the 3200-meter run with a time of 12:13.11 and junior Luis Hernandez took second in the 1600-meter run with a time of 4:58.53.

Freshman Johnny Morales finished first in the 800-meter run with a time of 2:45.84. Junior Irving Escalante placed third in the 400-meter dash with a time of 58.12 seconds and fifth in the 200-meter dash with a time of 25.38 seconds. Freshman Reece Harris finished fourth in the 100-meter dash with a time of 12.28 seconds.

RTHS Girls Soccer

Lady Hubs shut out in home loss to Sycamore

Lara nets four goals as Rochelle scores 8-2 win at Plano on Wednesday night

BY RUSSELL HODGES
SPORTS EDITOR

ROCHELLE — The Rochelle Lady Hub varsity soccer team turned in an admirable defensive effort during the first half of Monday afternoon's Interstate 8 Conference matchup against Sycamore. Despite holding the Spartans to a 1-0 halftime advantage, Sycamore's talented offensive attack ultimately wore down the Lady Hub defense, with the Spartans scoring six second-half goals to hand Rochelle a 7-0 loss.

Sycamore held a sizeable shooting advantage over the Lady Hubs (3-5, 1-1 Interstate 8), outshooting Rochelle 34-4 and 16-1 in shots on goal. Junior Danica Ward finished with seven saves for the Lady Hubs, who held Sycamore scoreless over the first 30 minutes of regulation time before the Spartans broke through with a goal during the 31st minute. Rochelle will continue conference play with a road match against the Plano Reapers on Wednesday.

Sophomore midfielder Makayla Lara totaled three shots and one shot on goal for the Lady Hubs,

who conceded second-half goals during the 45th, 46th and 52nd minutes and fell behind the Spartans 4-0. Sycamore sealed the win with additional goals during the 70th, 77th and 79th minutes. Senior midfielder Mavi Avila added one shot in the loss to the Spartans.

Plano

The Rochelle Lady Hub varsity soccer team bounced back from a tough loss against Sycamore earlier this week, dominating the Plano Reapers 8-2 on the road Wednesday evening. Sophomore midfielder Makayla Lara spearheaded the charge for the Lady Hubs (4-5, 2-1 Interstate 8), scoring a team-high four goals on nine shots and six shots on goal.

Senior midfielder Mavi Avila added two goals on eight shots and five shots on goal, while sophomore forward Evileth Mendez and junior forward Sydney Thorne each scored one goal. Junior Danica Ward finished with three saves for the Lady Hubs, who saw junior forward Kara Martinez and senior forward Cass Garcia each record assists to help facilitate the offense.



The Rochelle Lady Hub varsity soccer team fell 7-0 against Sycamore on Monday. At left, junior Sydney Thorne challenges Sycamore defender Hailey Clawson. At right, junior Danica Ward rolls the ball away from the net.

Rochelle outshot Plano 27-13 and 15-6 in shots on goal during the victory. The Reapers took the early lead on Wednesday, scoring in the ninth minute and holding a 1-0 advantage before the Lady Hubs fired back in

the 28th minute, when Lara connected on the first of her four goals to tie the score. Both teams added goals late in the first half, with Lara hitting in the 35th minute and Plano responding during the 40th minute to make the



(PHOTOS BY RUSSELL HODGES)

score 2-2 after one half of regulation.

Rochelle's offense caught fire midway through the second half, where goals from Lara and Thorne during the 58th and 60th minutes gave the Lady Hubs a 4-2

advantage. Avila followed with back-to-back goals during the 62nd and 64th minutes, further extending Rochelle's lead before Lara and Mendez sealed the win with goals in the 70th and 75th minutes of regulation.

Classified

Marketplace

FREE!

Sell your household items for free.

Total value of item must be \$200 or less. (15 words - one week - 7 publications - price must be listed)



ROCHELLE • HILLCREST • CRESTON • STEWARD • KINGS • ASHTON

101

LEGAL NOTICE

PUBLIC NOTICE
A Mini Storage, LLC, a storage facility located at 117 Quarry Road, Rochelle, IL hereby announces that the possessions of the following lessees will be disposed of by means of auction on April 28th 2023 at 8:00 AM. Disposal of personal property shall conform to the terms of the certified notice previously mailed to the lessee. The contents of the units can be previewed immediately prior to the sale. The preview and sale will take place at each individual unit listed below; in the order they appear.

Unit#148 Aaron Brenneka: PLASTIC BOXES, WOOD BOX, Totes, Moving carts.
Unit#132 Bernard S Enriquez: boxes with documents, tates, bike, folding chairs, window AC.
No. 0425 (April 9, 16)

PUBLIC NOTICE
Public Notice is hereby given that on April 10, 2023, a certificate was filed in the Ogle County Clerk's Office setting forth the names and post office address of all of the persons owning, conducting and transacting the business known as: Raven Trucking, 821 N. 6th Street, Rochelle, IL 61068.
Dated: April 10, 2023
Laura J. Cook, Ogle County Clerk
No. 0429 (April 16, 23, 30)

PUBLIC NOTICE
Public Notice is hereby given that on April 11, 2023, a certificate was filed in the Ogle County Clerk's Office setting forth the names and post office address of all of the persons owning, conducting and transacting the business known as: Upscale Portables, 9880 E. Hemstock Rd., Rochelle, IL 61068.
Dated: April 11, 2023.
Laura J. Cook, Ogle County Clerk
No. 0430 (April 16, 23, 30)

PUBLIC NOTICE
The Commissioners of the KYTE RIVER DRAINAGE DISTRICT NO. 2 OF OGLE COUNTY, ILLINOIS will meet on Monday, May 1, 2023, at 4:00 p.m. at the offices of Fearer, Nye & Chadwick, 420 Fourth Avenue, Rochelle, Illinois, for the purpose of discussing drainage issues associated with the solar panel project of ENEL Power Company on district land.
No. 0431
(April 16, 2023)

PUBLIC NOTICE
NOTICE OF SPECIAL REORGANIZATIONAL MEETING OF THE BOARD OF TRUSTEES OF COMMUNITY COLLEGE DISTRICT NO. 523, COUNTIES OF DEKALB, KANE, LASALLE, LEE, OGLE, WINNEBAGO AND BOONE AND STATE OF ILLINOIS

PUBLIC NOTICE IS HEREBY GIVEN that a special reorganizational meeting of the Board of Trustees of Community College District No. 523, Counties of DeKalb, Kane, LaSalle, Lee, Ogle, Winnebago and Boone and State of Illinois, has been scheduled for the 25th day of April 2023, at the Kishwaukee College Boardroom, Malta, Illinois, at 8:30 am.
DATED the 11th day of April 2023
Kathleen Spears
Secretary, Board of Trustees, Community College District No. 523, Counties of DeKalb, Kane, LaSalle, Lee, Ogle, Winnebago and Boone and State of Illinois
No. 0432
(April 16, 2023)

101

LEGAL NOTICE

This publication does not knowingly accept fraudulent or deceptive advertising. Readers are cautioned to thoroughly investigate all ads, especially those asking for money in advance.

105

BUSINESS OPPORTUNITIES

"This publication does not knowingly accept fraudulent or deceptive advertising. Readers are cautioned to thoroughly investigate all ads, especially those asking for money in advance."

113

FINANCIAL

NOTICE Advance Fee Loans or Credit Offers Companies that do business by phone can't ask you to pay for credit before you get it. For more information, call toll-free 1-877-FTC-HELP. A public service message from your hometown newspaper and the Federal Trade Commission.

119

ANNOUNCEMENTS

"This publication does not knowingly accept fraudulent or deceptive advertising. Readers are cautioned to thoroughly investigate all ads, especially those asking for money in advance."

127

SERVICES AND REPAIRS

FURMAN'S Lawn Care and Tree Work. Mowing, bushes, spring clean up, weeding and much more. Call Jeremy Furman 815-761-9619. Please leave a message will return call ASAP. Fully insured, in business since 1999. Servicing Rochelle and surrounding areas.

CUSTOM Construction Systems. Residential/Commercial Roofing. Shingles/Metal/Flat. 815-871-7835. (05-24-23)

201

DOMESTIC/CHILD CARE

NO INDIVIDUAL, unless licensed or holding a permit as a childcare facility, may cause to be published any advertisement soliciting a child care service. A childcare facility that is licensed or operating under a permit issued by the Illinois Department of Children and Family Services may publish advertisements of the services for which it is specifically licensed or issued a permit. Your Hometown Newspaper strongly urges any parent or guardian to verify the validity of the license of any facility before placing a child in its care.

307

MISCELLANEOUS FOR SALE

203

HELP WANTED

Americold Logistics, LLC, Rochelle, IL & any unanticipated locations T/O the U.S. has an opening for a Business Process Eng. (Job Code SK0330). Use Ind. Eng. & Business Process/Continuous Imp. tech. to improve facility ops. Req: MS ISE, IE or related & one yr. exp. in job offered or as a Process Engineer. Pos. reqs. approx. 40% travel, poss. of working remotely W/occ. Business travel. \$90,730 to \$104,437. Mail resume to Barbara Bishop, 10 Glenlake Pkwy NE, S. Tower, Ste. 600, Atlanta, GA 30328.

301

ANTIQUES

WANTED TO BUY: Vintage Metal and Wood Signs, Milk Bottles & Local Advertising, Oak Icebox, Iron Door Stop and Antique Lighting... Call Dick Harms at 815-562-2928 or email dickharms@hotmail.com

ANTIQUES WANTED: I pay cash for antiques; furniture, glassware, pottery & crocks, tin & iron toys, sterling silver, decoys. If it's antique, I'm interested in looking! Call 815-562-2928 or email dickharms@hotmail.com

307

MISCELLANEOUS FOR SALE

BUNDLED Newspaper -\$3 per Bundle. End Roll- Cost Depends on Weight of Roll. Available Monday-Friday 815-562-4171 (8AM-NOON ONLY) Rochelle News Leader.

405

HOUSES FOR SALE

ALL REAL ESTATE advertised herein is subject to the Federal Fair Housing Act, which makes it illegal to advertise any preference, limitation or discrimination based on race, color, religion, sex, handicap, familial status, or national origin, or intention to make any such preferences, limitation or discrimination. We will not knowingly accept any advertising for real estate which is in violation of the law. All persons are hereby informed that all dwellings advertised are available on an equal opportunity basis.

ADVERTISE WITH US

NEW MILFORD REFRIGERATION

NEW, USED SCRATCH & DENT

• Refrigerators • Freezers • Washers/Dryers • Stoves

We also carry a large selection of refurbished appliances with a warranty.

6331 11th Street, Rockford 815-262-3900

04092023

TEXT AND WHATEVER JUST DON'T TEXT AND

STOPTEXTSSTOPWRECKS.ORG

ad COUNCIL

SPORTS

BASEBALL: Hubs clinch I-8 sweep with win on Wednesday

From page 1

Rochelle capitalized on two defensive miscues from Sandwich in the bottom of the fifth inning, where junior Brock Metzger and senior Colton O'Rorke both reached on errors, setting the table for a three-run bomb from Lara that once again soared over the left-field fence to give the Hubs a 6-4 advantage.

Senior Bradley Cooney delivered another long ball for the Hubs (4-6, 2-1 Interstate 8) two batters later, crushing a fastball beyond the left-field fence to cap off a four-home-run outing for the Rochelle offense. Brandy Metzger and Brock Metzger connected on back-to-back singles in the bottom of the sixth inning, but a lineout to first base and a strikeout ended the threat.

Brock Metzger started on the mound, throwing four and two-thirds innings with four strikeouts.

Wednesday

The Rochelle Hub varsity baseball team broke out in a big way on Wednesday, totaling 20 hits and clinching an Interstate 8 Conference series sweep with an 18-7 win over Sandwich. Junior Brock Metzger went 4-for-5 with a home run and three RBIs for the Hubs (5-6, 3-1 Interstate 8), while senior Aidan Rodriguez doubled twice and added three RBIs in the win.

Metzger doubled and scored on senior Noah Lara's RBI groundout to give the Hubs a 1-0 lead in the top of the first inning. Sandwich surged ahead after scoring three runs on three singles and two walks in the bottom of the first inning. Trailing 3-1, Rochelle fired off four runs in the top of the second inning, where Rodriguez belted a two-run double to right-center and senior Colton O'Rorke followed with a two-run single two batters later. O'Rorke recorded three RBIs in the win.

The Indians earned one run back on Chance Lange's RBI single in the bottom of the second inning. Freshman Brode Metzger delivered an RBI single for the Hubs in the top of the third inning, making the score 6-4 before older brother Brock Metzger pounded a two-run homer to left-center field in the top of the fourth inning that put Rochelle ahead 8-4. Sandwich rallied for three runs on two singles, one triple and one defensive error in the bottom of the fifth inning.

Rochelle exploded for eight runs in the top of the sixth inning, where O'Rorke slapped an RBI single and senior Garrett Gensler drew a bases-loaded walk to bring two runs home. Senior Bradley Cooney drew a hit-by-pitch and Brode Metzger smacked a two-run single to plate three more runs, giving the Hubs a 13-7 lead. Rochelle closed out the eight-run frame with RBI singles from Brock Metzger and senior Dylan Gapski as well as an RBI double from Rodriguez.

The Hubs iced the victory with two runs in the top of the seventh inning, where Gensler and junior Braden Behrens each notched RBI singles. Junior Dylan Whaley started on the mound, throwing four and one-third innings and recording two strikeouts. Senior Alex Burnette finished on the mound, tossing two and two-thirds innings of scoreless relief with two strikeouts.



(PHOTO BY RUSSELL HODGES)

Senior Noah Lara (right) is greeted by teammate Alex Burnette (left) after one of his two home runs during Wednesday's Rochelle Hub varsity baseball game.





SEASON TICKETS ON SALE!

NIUHUSKIES.COM/MYHUSKIES

2023 HOME OPPONENTS





Get it today. Protected for life.



LeafGuard has been awarded the Good Housekeeping Seal of Approval for 16 straight years.

Say goodbye to gutter cleaning for good

No clogging, No cleaning
No leaking, No water damage
No ladder accidents



Call now for your free estimate!
Financing available 815-673-7532

20% off total purchase*
Does not include cost of material. Offer expires 4/30/23



Receive a \$50 Visa Gift Card with your free in-home estimate

*All participants who attend an estimated 60-90-minute in-home product consultation will receive a \$50 Visa gift card. Retail value is \$50. Offer sponsored by LeafGuard Holdings Inc. Limit one per household. Company procures, sells, and installs seamless gutter protection. This offer is valid for homeowners over 18 years of age. If married or involved with a life partner, both cohabitating persons must attend and complete presentation together. Participants must have a photo ID and be legally able to enter into a contract. The following persons are not eligible for this offer: employees of Company or affiliated companies or entities, their immediate family members, previous participants in a Company in-home consultation within the past 12 months and all current and former Company customers. Gift may not be extended, transferred, or substituted except that Company may substitute a gift of equal or greater value if it deems it necessary. Gift card will be mailed to the participant via first class United States Mail within 10 days of receipt of the promotion form. Not valid in conjunction with any other promotion or discount of any kind. Offer not sponsored and is subject to change without notice prior to reservation. Offer not available in the states of CA, IN, PA and MI. Expires 4/30/23. Receive a \$50 Visa Gift Card with your free in-home estimate

*Guaranteed not to clog for as long as you own your home, or we will clean your gutters for free.

NORTH AMERICA'S

#1 Selling Walk-In Tub

Featuring our *Free Shower Package*



*Now you can finally have all of the soothing benefits of a relaxing warm bath, or enjoy a convenient refreshing shower while seated or standing with Safe Step Walk-In Tub's **FREE Shower Package!***

- ✓ First walk-in tub available with a customizable shower
- ✓ Fixed rainfall shower head is adjustable for your height and pivots to offer a seated shower option
- ✓ High-quality tub complete with a comprehensive lifetime warranty on the entire tub
- ✓ Top-of-the-line installation and service, all included at one low, affordable price

Now you can have the best of both worlds—there isn't a better, more affordable walk-in tub!

FREE SHOWER PACKAGE PLUS \$1500 OFF
FOR A LIMITED TIME ONLY
Call Toll-Free 1-800-000-0000


www.BuySafeStep.com

With purchase of a new Safe Step Walk-In Tub. Not applicable with any previous walk-in tub purchase. Offer available while supplies last. No cash value. Must present offer at time of purchase.

CSLB 1082165 NSCB 0082999 0083445

Call Today for Your Free Shower Package

1-815-660-0041



Scan me

FINANCING AVAILABLE WITH APPROVED CREDIT



EASE OF USE CERTIFIED
Arthritis Foundation



MADE IN TENNESSEE



BBB ACCREDITED BUSINESS



LIFETIME LIMITED WARRANTY