



ROCHELLE News-Leader

MIDWEEK EDITION | WWW.ROCHELLENEWS-LEADER.COM

Today's RNL issue sponsored by Community Unity

Rochelle Community Unity Shop • Play • Stay

CENTRAL ILLINOIS LOAN

310 Eagle Drive
815-561-4035

Vol. 104 • No. 2

LOCAL NEWS... LOCAL VIEWS WEDNESDAY, MAY 3, 2023 \$1.25

Your life.
Your education.
Your way.

KC KISHWAUKEE COLLEGE

Enrolling Now for Fall!

www.kish.edu/fall

KNOW IT TODAY



Seebach elected to officer position

Megan Seebach was elected to her new position as the Section 2 FFA reporter. **Page 7**

WEATHER

WEDNESDAY HIGH 60 LOW 35

THURSDAY HIGH 70 LOW 39

FRIDAY HIGH 72 LOW 47

SATURDAY HIGH 73 LOW 49

Today's RNL issue sponsored by Community Unity

Rochelle Community Unity Shop • Play • Stay

1 FIRST STATE BANK

304 E. Illinois Route 38
815-562-2200

OBITUARIES

NONE

INSERTS

• FARM & FLEET

INSIDE

Local News.....2, 3, 5, 8
Obituaries.....4
Opinion.....6
Community.....7



You make the memories.
We help make them possible.

At Stillman Bank, we offer:

- Professional, knowledgeable, and experienced staff
- Local lenders and local decision-making
- Competitive rates on all types of mortgage loans
- Free pre-approvals
- Stillman Mortgage Online at stillmanbank.com

Find a lender and apply online in less than 20 minutes!

Stillman BANK

Byron 815.234.5626 Oregon 815.732.7956
Rochelle 815.562.7071 Rockford 815.332.8100
Roscoe/Rockton 815.623.1800 Stillman Valley 815.645.2266

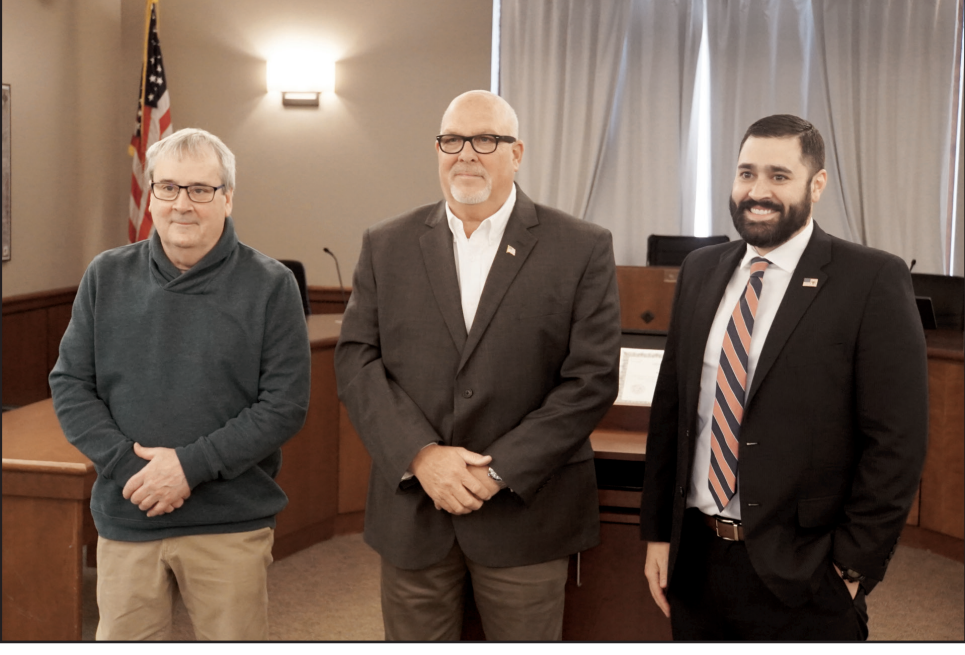
New council members sworn in Gruben recognized for years of service

BY JEFF HELFRICH
MANAGING EDITOR

ROCHELLE — On Monday, a swearing-in ceremony was held at City Hall for Mayor John Bearrows, City Councilman Bil Hayes and City Councilman Ben Valdivieso for the start of their new terms. City Councilman Tom McDermott was unable to attend and was sworn in earlier in the day.

McDermott, Hayes and Valdivieso prevailed in the April 4 consolidated election over John Gruben, Lance Charnock, Jason Goodwin and Juan Martinez Jr. McDermott and Hayes ran as incumbents and Valdivieso is new to the council. Rochelle Mayor John Bearrows ran unopposed for reelection.

“I’m very proud of what the city has done over the past four years and I’m really excited about the next four,” Bearrows said. “Things are really heading in the right direction. The cooperation between the city council, city manager and staff has been incredible. There have been so many things that have happened. People ask how Rochelle does it. My response is that Rochelle is a big team and that’s how



(PHOTO BY JEFF HELFRICH)

On Monday, a swearing-in ceremony was held at City Hall for Mayor John Bearrows, City Councilman Bil Hayes and City Councilman Ben Valdivieso for the start of their new terms. City Councilman Tom McDermott was unable to attend and was sworn in earlier in the day.

we get things done. At one point I was being sworn in as a council member, and that seems like eons ago, because there’s so much stuff that goes on. It’s very exciting.”

Bearrows welcomed Valdivieso to the council and said he looked forward to working with him. The mayor also praised city staff for their work during his time in office.

“The council, mayor and city manager can come up with all kinds

of ideas,” Bearrows said. “But our staff is absolutely amazing at carrying those things out. The way the staff works together is just amazing and I couldn’t be happier about it. Everybody is on board. Transparency has been a huge thing in the last six years.”

Bearrows and City Manager Jeff Fiegenschuh recognized Gruben upon his departure from the council and thanked him for his time and efforts as a city councilman.

Bearrows called him “a great asset” to the city and praised him for his research. Fiegenschuh agreed.

“John is one of the best council members I’ve ever worked with,” Fiegenschuh said. “And I mean that from the bottom of my heart. He is a very diligent and thoughtful individual. I hope you stop by so we can continue to have our good conversations. Every time he left my office, I felt that I was smarter.”

City working to help Rochelle’s homeless population ‘This is an issue you don’t often think about in a small city like ours’

BY JEFF HELFRICH
MANAGING EDITOR

ROCHELLE — The City of Rochelle is currently working on building communication and collaboration with different organizations in the community to help Rochelle’s homeless population, City Human Resource Coordinator Jillian Condon said April 17.

A mental health task-force has been established in Rochelle including representatives from the city and organizations with skills and resources to help the homeless and is meeting once a month and discussing what’s happened recently and targeted goals.

“This week I’m attending a conference on homelessness hoping to get more information,” Condon said. “It’s a complicated issue. There’s transient and transitional homelessness and there is chronic homelessness. You have to address both of those differently. I feel like our community has a lot of resources for transitional homelessness and we’re



(PHOTO BY JEFF HELFRICH)

The City of Rochelle is currently working on building communication and collaboration with different organizations in the community to help Rochelle’s homeless population, City Human Resource Coordinator Jillian Condon said April 17.

trying to build on that and collaborate with one another. Chronic homelessness is more complicated.”

The mental health task force is modeled after Lee County’s, which Condon

said has been operating successfully for a number of years. The participants on Rochelle’s include Rochelle Community Hospital, the Rochelle Rescue Mission, Sinissippi Cen-

ters, Rochelle Police and Fire and local churches.

City Manager Jeff Fiegenschuh said that homelessness in Rochelle became a bigger concern of the city’s when he started to

hear more and more about increases from area groups and in concerned calls from downtown business owners.

See CITY page 3

COME SEE YOUR FRIENDS



Brent Ohlinger
Community President
NMLS#454385

304 EAST HIGHWAY 38
ROCHELLE

firststatebank.biz | 815.562.2200

FIRST STATE BANK



David Eckhardt
Vice President/Loan Officer
NMLS#454387



LOCAL NEWS



(PHOTOS BY JEFF HELFRICH)

Rochelle Rotary Club visits Roberts Armory on April 25

On April 25, the Rochelle Rotary Club spent its weekly meeting at the Roberts Armory World War II Museum in Rochelle. Chuck Roberts, the museum's owner, started collecting WWII memorabilia in 1987. The museum participates in WWII-related displays, parades, motion pictures and reenactments throughout the United States. The purpose of the museum is to preserve the history of World War II and to honor those who served. Exhibits at the Roberts Armory include tanks, armored cars, tractors, staff cars, motorcycles, a Higgins boat and an amphibian truck. Roberts works on the vehicles himself and they're all operable. Roberts made a presentation during the meeting and showcased photos and information of the museum's involvement in the community and events across the country over the years.

Meeting on improvements to Illinois 38 at I-39 interchange is May 3

DIXON – The Illinois Department of Transportation will host a virtual public meeting at 6 p.m. Wednesday, May 3, to present information and seek input on the Illinois Route 38 over Interstate 39 interchange project in

Rochelle in Ogle County. The public meeting will be held online at: <https://us06web.zoom.us/j/84951580688>. Call in to the meeting at: 309-205-3325. The webinar ID is: 849 5158 0688. The meeting is part of

the ongoing Phase I Engineering and Environmental Study to identify and examine potential improvements to the interchange. At the public meeting, the project team will present a project overview, discuss im-

provements and receive public feedback. The meeting will conclude with a question-and-answer session with IDOT representatives and the project team.

Meeting materials and a recording of the public meeting will be posted to the project website at <https://idot.illinois.gov/projects/illinois-38-over-interstate-39-interchange-project.html>. Comments and questions are encouraged at any time. Comments received by May 17 will be included in the public meeting record. People with limited internet access and/or who require special accommodations under the Americans with Disabilities Act should contact Steven Robery by telephone at (815) 284-5958 or by email at Steven.Robery@illinois.gov.

gov for further assistance.

IDOT launched the Illinois Route 38 over Interstate 39 interchange project study in late 2020 to improve safety, mobility, condition and design of the interchange. The study limits extend from the Illinois Route 38 at Dement Road intersection to the Illinois Route 38 at Interstate 39 interchange (exit 99), within the city of Rochelle and Dement Township.

The interchange was constructed in the early 1980s and provides access to the City of Rochelle, the Village of Creston, and numerous industrial, agricultural and commercial properties in the area. Since the construction of the interchange, traffic volumes have increased, leading to safety and mobility concerns. In addition,

portions of the structure need repair, replacement or modernization.

Over the next six years, IDOT is planning to improve more than 2,500 miles of highway and nearly 10 million square feet of bridge deck as part of the Rebuild Illinois capital program, which is investing \$33.2 billion into all modes of transportation. Accomplishments through Year Three of Rebuild Illinois included approximately \$8.6 billion of improvements statewide on 4,422 miles of highway, 412 bridges, and 621 additional safety improvements.

For IDOT District 2 updates, follow us on Twitter at @IDOT-District2 or view area construction details on IDOT's traveler information map on GettingAroundIllinois.com.



Linette Feltes
MEDICAL STAFF
COORDINATOR



Rochelle
Community Hospital


Positively
RECOGNIZED

To read Linette's nomination, go to the RCH Facebook page or RochelleHospital.com

CLASS OF 2023 | CLASS OF 2023 | CLASS OF 2023 YOU'VE COME A LONG WAY, BABY!


**ATTENTION
FAMILY AND
FRIENDS OF THE
CLASS OF 2023!**

KONNOR MCCLAIN



Congratulations
Konnor!
We are so proud
of you.

Love,
Mom, Dad, Kelly, and Pip



Submit a high quality, scannable baby photo and senior photo of your favorite graduating senior, a message with up to 15 words and a \$10 placement fee to the Rochelle News-Leader office at: 211 Hwy 38 E or mail to PO Box 46, Rochelle, IL 61068.

Emailed photos* can be sent to cackland@rochellenews-leader.com.

Deadline is 2:00PM on Monday, May 15.

This special feature will be published on Wednesday, May 24, 2023.

Photos may be picked up at the Rochelle News-Leader office after the May 24th publication date or we can mail back to you in a self-addressed stamped envelope.

*Make sure emailed photos are at least 200dpi.

ENTRY FORM

GRADUATE'S FIRST/LAST NAME

15-WORD MESSAGE (PLEASE PRINT CLEARLY):

Person submitting photo:

NAME

PHONE

EMAIL

Photos may be picked up after May 24, 2023. Entries must be received by 2:00pm on Monday, May 15, 2023. Mail a high quality, scannable photo and payment (\$10) along with this completed form to:

Rochelle News-Leader • PO Box 46 • Rochelle, IL 61068

815-561-2153

Emailed photos* can be sent to cackland@rochellenews-leader.com

ROCHELLE NEWS-LEADER OFFICE HOURS : M-F 8AM-5PM

Ricketts recognized during Central College Scholarship Dinner

PELLA, Iowa—Central College's 23rd annual Scholarship Dinner April 20 honored donors, students and families who were seated together to share a meal, conversation and program. Over 500 attended the event.

Gregory Ricketts of

Rochelle received the Orville & Ermina Dykstra Scholarship for the 2022-23 academic year from Central College for a high commitment to academic achievement.

Ricketts is a member of the Class of 2023 at Central.



we insure your car. because accidents happen.

simple human sense.



Dimond Bros.
Insurance Since 1867

401 N. Main St. | Rochelle, IL
815.562.5596 | DimondBros.com



Auto-Owners
INSURANCE

LIFE • HOME • CAR • BUSINESS

FAX-IT TO US!

562-2161

News-Leader

211 Hwy. 38 East
Rochelle

LOCAL NEWS

P&Z: Commission discusses future land use plan Monday

From page 1

The city is again working with Teska & Associates to update the plan and the process is being led by its representative, Pete Iosue, who attended Monday's meeting.

Outside of planning & zoning meetings, the city has also established a committee to update the comprehensive plan that includes Mayor John Bearrows, City Councilwoman Kate Shaw-Dickey, Planning & Zoning Commissioner Claude McKibben, City Manager Jeff Fiegenschuh, Sustainability Coordinator Molly Sedig, GIS Coordinator Casey Heuer and city community development department members. Other city staff members are lending expertise to the committee on their specialized areas.

The committee is making suggested revisions to each chapter of the 2016 plan before they go to the planning & zoning commission workshops for

review and input.

Monday's meeting consisted of going through updates to the fourth and fifth chapters of the city's previous comprehensive plan including its future land use plan and transportation plan.

In the future land use plan portion, sub areas for revitalization and redevelopment opportunities included the areas of Caron and Flagg Road, between the railroad tracks downtown, Illinois Route 251 south of 1st Avenue, continued downtown advancement and 20th Street from Flagg Road to 8th Avenue.

Bearrows discussed the idea of a public-private partnership with developers to facilitate more housing in the community, possibly in the above areas.

"By the time a developer buys the land, puts curb and gutter and street lights and sidewalks and all the infrastructure, there's no money in it for them," Bearrows said. "If there

was money in it, they'd be building right now. There's all kinds of places to build, but there's no money in it because of all the restrictions we put on it. You have to pay to put all of the Rochelle Municipal Utilities infrastructure in at the start. We recently met with our legislators in Springfield and this is one of the things we talked about. There needs to be state money, city money and private developer money."

Bearrows said that northwest and southeast areas in and just outside of town would lend themselves best to residential growth.

The future land use plan did not change much outside of a few areas for potential future residential development, Iosue said.

The comprehensive plan stated a hope to see an increase in population between 750 and 2,000 people by 2030, which Bearrows suggested should be lowered to be more realistic.



(PHOTO BY JEFF HELFRICH)

At its monthly meeting Monday, the City of Rochelle Planning & Zoning Commission held its second workshop amid the ongoing process of updating the city's comprehensive plan.

"We talked about maybe 500-1,000 might be more realistic," Bearrows said. "And I think that's even a reach. I think maybe 500-700 might be best. Considering we've only gone up by probably 1,000 in the past 30 years."

In the transportation

plan portion, discussion was held on making pedestrian and bike paths more of a priority in future planning along streets and adding more overpasses over railroad tracks should funds become available.

Next month's meeting will cover community

facilities & services and public utilities. The meetings will occur on the first Monday of each month at 6 p.m. at city hall. The city encourages members of the public to attend the meetings and provide input on Rochelle's future direction.



(PHOTO BY JEFF HELFRICH)

A mental health taskforce has been established in Rochelle including representatives from the city and organizations with skills and resources.

CITY: Rochelle partnering with local organizations to help the homeless

From page 1

"I think probably over the past couple of years we've seen an increase in our homeless population in the community," Fiegenschuh said. "The library sees it daily. Several downtown businesses have expressed some concerns about it. There are different populations and ways to address it effectively. And we're a small community, so how do we afford to address it?"

Condon said she hasn't seen evidence that the city's homeless population is localized to any one specific area of town, and that getting accurate statistics on the homeless population can be "very challenging." The city has seen "a few" members of its homeless population reach out for support that have received it.

City Community Development Director Michelle Pease said there is no mechanism in place to track Rochelle's homeless locally, but she and Condon are both part of a group of nonprofit

organizations including Habitat for Humanity of Ogle County and Sinitissippi Centers that assist those populations and can provide information.

Fiegenschuh said that reducing and helping the city's homeless population will be a team effort with the greater community.

"I would say everybody has a duty to help those who need help for whatever reason, not just the city," Fiegenschuh said. "I'm very proud of Jillian and Michelle for the amount of work they've done on this. This is an issue you don't often think about in a small city like ours. We talk about things like infrastructure and bringing in business, but this is an issue that's come onto our radar. I commend our staff for taking a lead on this and prioritizing this as an important issue and working to bring people and other groups together. It's not just the city, it's nonprofits and churches. It's many hands working on this important topic and we'll continue to work on it."

First General Baptist Church's Stellar VBS set for June 12-16

ROCHELLE—A free summer kids' event called Stellar VBS will be hosted at First General Baptist Church from June 12 to June 16.

At Stellar, kids discover how they can shine Jesus' love and hope in everyday life! Kids participate in memorable Bible-learning activities, sing catchy songs, make and devour yummy treats, experience one-of-a-kind

Bible Adventures, collect Bible Memory Buddies to remind them of Jesus' light, and test out Sciency-Fun Gizmos they'll take home and play with all summer long.

Plus, kids will learn to look for evidence of God all around them through something called God Sightings. Each day concludes with a Cosmic Closing that gets everyone involved in living what

they've learned.

Kids at Stellar VBS will join a missions effort to provide Bibles for families in Africa, Latin America and the Middle East.

Stellar is for kids from kindergarten to fifth grade and will run from 6 p.m. to 8 p.m. each day. For more information or to pre-register, visit our website (www.fgbcrochelle.org) or call (815-562-5221). Transportation is available

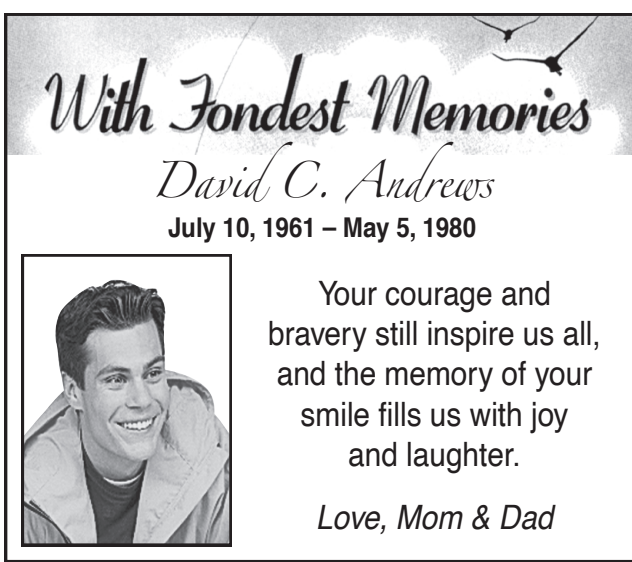
by calling the church.

Family members and friends are encouraged to join us on Sunday for the conclusion of VBS and a special time to worship Jesus at Atwood Park at 10 a.m.

John 8:12 (NKJV) Then Jesus spoke to them again, saying, "I am the light of the world. He who follows Me shall not walk in darkness, but have the light of life."

Gone, But Not Forgotten

Remember your loved one with a special tribute this Memorial Day.



In Honor of Memorial Day

The Rochelle News-Leader will publish memorials of those who are gone but not forgotten. This is a wonderful way to remember those dear to us, and share memories.

Tributes include your choice of verse from the right, and an optional photo if submitted.

To remember your loved one in this special way, send this form, a photo and \$15.00 per listing.

Deadline is Tue., May 23rd at 4 p.m.

If you wish, select one of the following verses below to accompany your tribute.

1. We hold you in our thoughts and memories forever.
2. May God cradle you in His arms, now and forever.
3. Forever missed, never forgotten. May God hold you in the palm of His hand.
4. Thank you for the wonderful days we shared together. My prayers will be with you until we meet again.
5. The days we shared were sweet. I long to see you again in God's heavenly glory.
6. Your courage and bravery still inspire us all, and the memory of your smile fills us with joy and laughter.
7. Though out of sight, you'll forever be in my heart and mind.
8. The days may come and go, but the times we shared will always remain.
9. May the light of peace shine on your face for eternity.
10. May God's angels guide you and protect you throughout time.
11. You were a light in our life that burns forever in our hearts.
12. May God's graces shine over you for all time.
13. You are in our thoughts and prayers from morning to night and from year to year.
14. We send this message with a loving kiss for eternal rest and happiness.
15. May the Lord bless you with His graces and warm, loving heart.

Fill out the form below and drop off or mail to:

Rochelle News-Leader, (Gone, But Not Forgotten), 211 Hwy. 38 East, Rochelle, IL 61068

Please Publish My Tribute In The Special Memorial Day Section On May 28, 2023

Name Of Deceased: _____ Verse Number: _____

Relationship To Me: _____ Birth Date: ____/____/____ Passing Date: ____/____/____

Additional Information _____

Your Name _____

Address _____ Phone Number _____

City _____ State: _____ Zip: _____

Deadline is Tue., May 23 at 4 p.m.

WHO IS UNITY HOSPICE?

- Care provided by the entire hospice team: physician, nurse, social worker, certified nursing assistant, chaplain, dietitian, pharmacist, and volunteers.
- Care is individualized and based on the patient's and family's goals of comfort and quality of life.
- Supplies, equipment and medications.
- Service where the patient resides.
- Specialize in pain & symptom management.
- Spiritual enrichment and bereavement counseling.
- Ancillary Therapies: Music, Physical/ Occupational, Speech, Massage, Pet, etc.
- Ability to provide education to caregivers and family members.

CALL UNITY:
(815) 561-8866
915 N. Caron Rd.
Rochelle, IL

Unity
Hospice and Palliative Care
@unityhospice

LOCAL NEWS

Prose earns RTHS critical thinking award

BY VICKI SNYDER-CHURA
SPECIAL TO THE NEWS-LEADER

ROCHELLE—Mathematics teacher Charity Prose is the recipient of the April Rochelle Township High School Faculty Critical Thinking award.

In addition to her geometry and honors geometry classes, Prose created what has become the annual BTS Welcome Back Hubs on the first day of school. It has been a fun addition to day one. Prose recruits the jazz band, drumline and colleagues to stand at the student entrance and front doors welcoming kids back with balloons, cow bells and in many cases, hugs.

As advisor of the National School's National Honor Society Chapter, she pushes her members to recruit donors for the semi-annual Rock River Valley Blood Center drives and fulfill the NHS service obligation by taking on the school's weekly paper

recycling collection drive.

Prose is the senior class advisor who shepherds her charges through homecoming season, academic eligibility, senioritis and graduation, keeping a Senior-to-do list and checking in with her students regularly.

She also manages the Purple Closet where new employees can find Hub wear to help them feel a part of our school community.

Principal Dr. Chris Lewis characterized Prose as a problem solver who is practical and tenacious with a touch of creative perspective. She does an outstanding job organizing many large events. He said this recognition is well deserved.

Thanks to a grant from the RTHS Class of 1961 and the RTHS Alumni Association, Prose wins a \$100 cash award, half of which she will direct towards a local non-profit of her choosing.



(COURTESY PHOTO)

Mathematics teacher Charity Prose is the recipient of the April Rochelle Township High School Faculty Critical Thinking award.

Ogle County files brief with state supreme court to overturn weapon ban

OREGON — In an April 12 press release, Ogle County State's Attorney Mike Rock announced that Ogle County has joined 31 other Illinois counties in filing a brief with the Illinois Supreme Court seeking to overturn the state's ban on certain types of weapons.

The Amicus Curiae brief, also known as a "friend of the court" asks the Supreme Court to strike down the state's so-called Assault Weapons Ban, the release said. The legislature passed the ban in January during a lame duck

session, and Governor JB Pritzker signed it into law.

The brief states in part: "Many Americans of good will continue to debate the merits of our country's broad-based culture of gun ownership. Some fear that broad gun rights facilitate violence by criminals. Others contend that while the law should take aggressive steps to stop criminals, it must also respect responsible citizens' right to own commonplace firearms as an effective means of self-defense against those very same criminals, making the public more secure,

not less. While this debate will undoubtedly endure, at least this much has been settled since 1791: The Second Amendment — 'the very product of an interest balancing by the' Founding generation, which ratified it — 'elevates above all other interests the right of law-abiding, responsible citizens to use arms' for self-defense. Bruen, 142 S.Ct. at 2131 (citing Heller, 554 U.S. at 635). Therefore, no state may 'prohibit[] ... an entire class of 'arms' that is overwhelmingly chosen by American society for

[a] lawful purpose.' Heller, 554 U.S. at 628. Yet the [Assault Weapons Ban] bans entire categories of firearms and firearm components (i.e., magazines) obviously in common use for lawful purposes today. It is unconstitutional under the Second Amendment, as authoritatively read by Heller and Bruen both.

Certain firearms — like the AR-15 — may seem strange and menacing to those with little experience with firearms, but they are quite normal and valuable to many millions of responsible, law-abiding

Americans. In fact, it is the experience of Amici as the chief law enforcement officers of our respective counties that the typical use of such firearms is self-defense and recreation — for which they are quite well-suited — and not violent crime.

Like all Americans, Amici are horrified by the mass shootings and urban violence our nation has experienced. These are heartbreaking reminders of how much pain and sorrow violent individuals with evil intentions can cause. As prosecutors, we

go to work every day to deter such crimes, do justice for victims, put those who would do harm to our communities behind bars, and protect everyone by strengthening the justice system and the rule of law.

It is in service to that same rule of law that we urge this Honorable Court to support all the rights enshrined in our Constitution, including the right of the people to own commonplace firearms so they can defend hearth and home and live freely with the means to secure their own ultimate safety."



(COURTESY PHOTOS)

Fehr Graham plants tree for Earth Day, 50th anniversary

Fehr Graham's Rochelle office recently planted a tree at Sweeney Park on Earth Day (Saturday, April 22), as it celebrates 50 years of improving the communities where its clients live and work. Fehr Graham is a provider of engineering, environmental and funding solutions for commercial, industrial, institutional and government clients with office locations in Illinois, Iowa and Wisconsin. The tree planted was a black tupelo (similar to a maple tree). The planting was attended by Fehr Graham owners and employees and their families, the tree nursery's owner and Jackee Ohlinger of the Flagg-Rochelle Community Park District.

Antiques & Collectibles

Belvidere Collectible Coins

www.goldsilverjewelrycoin.com

We Pay Highest Prices For Gold, Silver, Platinum, Jewelry, Coins, Flatware, Dental & Bullion

**10% More For Jewelry
With This Ad!**

Hours: Mon.-Fri. 9:30am-5:00pm • Sat. 10:30am-2pm

~ Call For Directions ~ **(815) 547-7111**
880 Belvidere Road • Belvidere, IL

New
Location
Beginning
June 1, 2023

THIS & THAT Collectibles

109 N 7th Street
Dekalb, IL 60115
815.909.1069

Open 7 days a week
Antiques, MCM, Primitives & Vintage
Dixie Belle Paint Company Elite Retailer
Redesign with Prima Retailer

520 E.
Lincoln
Hwy.,
DeKalb

Our House Antiques

Antiques - Primitives - Folk Art

Thursday - Friday 10 - 7
Saturday 10 - 5



815.441.1263

510 E King St Polo IL



Be included in the Antiques & Collectibles spotlight!

Call:

Andrew Heiserman 815-561-2123 • Christel Ackland 815-561-2153 • Chris Grimm 815-561-2125

LOCAL VIEWS

Guest column

Absolute power prevents lawmakers from addressing important state issues

RUNNING for office last year, I knew Illinois was broken. But I have come to realize in just the few short months of serving as the state representative in the 75th District that the problems are much greater than I ever imagined as a candidate. I have found that there are many good ideas that have both Democrat and Republican support, but these bills never see the light of day because the House leadership refuses to allow them to move forward. For instance, I am a co-sponsor of House Bill 1079, which ends the 35-year moratorium on new nuclear power plant construction in Illinois. This legislation has strong bipartisan support, but it has never been called for a vote on the House floor despite overwhelming

support in committee. The reason legislation such as House Bill 1079 does not come up for a vote is because the House leadership won't allow it. Power in Springfield is absolute and unfortunately wielded not by the body as a whole but by the individuals who control the House and Senate chambers. Former House Speaker Michael Madigan may no longer be in charge of the House but the rules he used to control the process are very much intact. The rights of individual members are almost non-existent. What has this top-down approach gotten us? Are we tackling the big issues? Are we solving the state's problems? We could not take a few moments to vote on important bipartisan legisla-

tion to end the moratorium on nuclear power plants and ultimately address the rising cost of electricity in Illinois and to ensure we do not have rolling brownouts. Instead, we spent time considering legislation to ban the use of pronouns "boy" and "girl" referring to children in statute (HB1596), require menstrual products be put in *all* public restrooms (HB 3093), and ban cat declawing (HB 3093). I talked to a lot of voters in the 2022 election cycle and not once did I hear anyone bring up the need to put feminine hygiene products in every public restroom. People want lower utility bills. They want better schools. They

want more jobs and more opportunities. Instead of addressing these central, core issues our leaders are focused on banning cat declawing and other mind-numbingly inane ideas. It would be one thing to entertain legislation like this if we were considering the important issues facing our state, but we are not. One of my bills (HB 2609) requires price transparency at hospitals. It has bipartisan support and would go a long way toward stabilizing the price of health care in our state. It never got called and was never even heard in committee. I understand that time is a factor. There are thousands and thousands

of bills introduced every year, and it is difficult to give them all a fair hearing. But why wasn't a bill requiring price transparency at hospitals called for a vote when a bill banning cat declawing was called? We wonder why we have the fifth-highest unemployment rate in the nation. We wonder why we lost more than 100,000 people last year and we wonder why we pay some of the highest taxes in the nation. Our state is in serious trouble, and it is being run by unserious people. If I learned anything as a freshman legislator, it is that the go-along-to-get-along politics lead only to a permanent minority that constantly is forced to cede power to people who think the most pressing issue facing Illinois is the

availability of tampons in the men's room. I may be a small voice in a big pond but all it takes to begin the process of change is for people like me to point out the obvious. There are some of us who are doing just that, and our numbers and influence are growing because the thing the political elites have forgotten is that they have built a house of cards that will all come crashing down once their incompetence and poor leadership is exposed. We deserve better. What we need is strong leaders who will stand up and declare the "emperor has no clothes" and that is exactly what I intend to do every day I am in Springfield. *State Rep. Jed Davis is a Republican from New- man who was elected to his first term in 2022.*



State Rep. Jed Davis

Kern: Golf anecdotes and rules

AH it's golf season. The smell of freshly mown grass, the perfectly manicured greens, the whispering wind through the trees and in my case the sand traps and water hazards. As a younger man I used to play a round every chance I could find, but alas, old age and a broken-down body have ended those days. Two bum knees, a bad shoulder and a balky elbow prompted me to give my clubs away five years ago. I only miss my Taylor Made putter as that was the only club I could still swing, and not very well. But for all those who still enjoy a game of

"pasture pool" I will honor you this week with a few humorous anecdotes to help when the ball won't fly straight, and you get the yips. Golfer: Think I'm going to drown myself in the lake. Caddy: Think you can keep your head down that long? Golfer: I'd move heaven and earth to break 100 on this course. Caddy: Try heaven, you've already moved most of the earth. Golfer: Do you think my game is improving? Caddy: Yes sir, you miss the ball much closer now. Golfer: Do you think I can get there with a five

iron? Caddy: Eventually. Golfer: You've got to be the worst caddy in the world! Caddy: I don't think so sir. That would be too much of a coincidence. Golfer: Please stop checking your watch all the time. It's a great distraction! Caddy: It's not a watch, it's a compass. Golfer: How do you like my game? Caddy: Very good sir, but personally I prefer golf. Golfer: Do you think it's a sin to play on Sunday?

Caddy: The way you play sir, it's a sin any day. Golfer: This is the worst course I've ever played. Caddy: This isn't the golf course. We left that an hour ago. Golfer: That can't be my ball, it's too old! Caddy: It's been a long time since we teed off. Six tin rules: A ball sliced or hooked into the rough shall be lifted and placed in the fairway equal to the distance it carried into the rough. It is hardly fair to penalize the player for the erratic flight of the ball. A ball hitting a tree shall be deemed not to have hit



Ron Kern

the tree. Hitting a tree is incredibly bad luck, a phenomenon which obviously has no place in a scientific game. The player shall estimate the distance the ball would have traveled under reasonable circumstances and play the ball from that point, preferably from a nice tuft of grass. There shall be no such thing as a lost ball. The missing ball will be eventually found by another player and pocketed, in which case it becomes a stolen ball. There is no room in the game for thievery. A ball landing in a sand trap may be lifted, cleaned and dropped in the fairway. No penalty shall be assessed. If you wanted

to play in the sand, you would have gone to the beach. The same applies to water hazards for similar reasons. If a putt passes over a hole without dropping in, it shall be deemed to have dropped. The law of gravity takes precedence over the law of golf. A putt that comes to a stop close enough to the hole to inspire comments like "You could blow it in from there" maybe blown in. The rule does not apply if the ball rests more than three inches from the hole. We have no wish to make a travesty of the game. **FORE!** *Ron Kern is the manager of the Ogle County Farm Bureau.*

Letter to the Editor: Rose Day thanks

DEAR editor, The Rochelle Lions

would like to thank Naomi Baldwin, volunteers, Lion members and

the public for making our annual Rose Day a success. Lions provide

programs and services in Illinois for people with vision and hearing

needs. Thank you for your contribution towards this mission.

Lion Tom Hill
President

How to contact government officials

U.S. Con. Darin LaHood
1424 Longworth HOB
Washington, D.C.
20515
(202) 225-6201

IL Sen. Win Stoller
Stratton Office Bldg
Springfield, IL 62706
(217) 782-1942

IL Rep. Bradley Fritts
Stratton Office Bldg
Springfield, IL 62706
(217) 782-0535

Have a letter you want to submit to us? Send it to (news@rochelle-news-leader.com)

KEEPING YOU IN TOUCH WITH YOUR LOCAL LEADERS

* Denotes Chairman/President

Rochelle City Council
*John Bearrows jbearrows@rochelleil.us
Kathryn Shaw-Dickey kshaw-dickey@rochelleil.us
Bil Hayes bhayes@rochelleil.us
Rosaelia Arteaga rarteaga@rochelleil.us
Dan McDermott dmcdermott@rochelleil.us
Tom McDermott tmcdermott@rochelleil.us
Benjamin Valdivieso

Rochelle Elementary School Board
Dave Casey dcillini94@gmail.com
Steve Buitla sbuitla@gmail.com
Ashley Jackson ajackson@d231.rochelle.net
Stephanie White swhite@d231.rochelle.net
*Trisha Vaughn jrvtlv02@msn.com
Javier Zepeda jzepeda@rthsd212.org
Jennifer Thompson

Rochelle Township High School Board
*Tom Huddleston tom.huddleston@rthsd212.org
Bill Ravnaas bill.ravnaas@rthsd212.org
Jacky Aguilera jacky.aguilera@rthsd212.org
Jeff Tilton jeff.tilton@rthsd212.org
Bobby Chadwick bobby.chadwick@rthsd212.org
Laurie Pillen lpillen@rthsd212.org
Brent Ohlinger

Flagg-Rochelle Park Board
Brent Carmichael bcarmichael@rochelleparkdistrict.org
John Dobbs jdobbs@rochelleparkdistrict.org
Dale Wells dwells@rochelleparkdistrict.org
*Tim Hayden thayden@rochelleparkdistrict.org
Jodie Hart jhart@rochelleparkdistrict.org
Joe Lenkaitis jlenkaitis@rochelleparkdistrict.org

Ogle County Board Dist. 3
Austin Gillis agillis@oglecounty.org
Dan Miller dmiller@oglecounty.org
Joseph Simms jsimms@oglecounty.org

Ogle County Board Dist. 4
Jackie Ramsey jramsey@oglecounty.org
Skip Kenney skenney@oglecounty.org
David Williams dwilliams@oglecounty.org

Creston Village Board
*Tom Byro tommyb_47@yahoo.com
Wayne Williams jwdw13@yahoo.com
Greg Hopkins ghopkins522@comcast.net
Steve Katzman skatzman@essex1.com
Mike Kerns ac.kerns@comcast.net
Curt Ward caward92@comcast.net
Mark Hibshman
Jennifer Payton

Hillcrest Village Board
*Richard Rhoads rrhoads@hillcrestil.us
Randy Salsbury rsalsbury@hillcrestil.us
Pam Pittman ppittman@hillcrestil.us
Dan Potter dpotter@hillcrestil.us
Tim Ball tball@hillcrestil.us
Renee Kerwin rkerwin@hillcrestil.us
Jose Huerta jhuerta@hillcrestil.us

Flagg Township
Sue Messer flaggtwp@rochelle.net
Joanna Patrick flaggtwpcerk@rochelle.net
Susan Rothenberger assessor@rochelle.net
Scott Seebach scottseebach@gmail.com

Board of Trustees
Lance Noggle noggle62@gmail.com
Eric Gruben egruben@comcast.net
Susan Hager susanhager303@comcast.net
Jim Kenney jimk@rocketsupply.com

Flagg-Rochelle Library
*Jaqueline Dickow dickow@comcast.net
Teresa Haggstad haggstads@comcast.net
Michael Scanlan scanlan@comcast.net
Lanning Nicoloff nicoloff118@comcast.net
Sheri Klindera alwayslefty2@gmail.com
Susan Sevedge nit1prl22@yahoo.com
Darci Waltrip doobs12@comcast.net

LETTERS TO THE EDITOR POLICY

The Rochelle News-Leader encourages responsible letters to the editor on subjects of interest to our readers. Editing may be necessary for space, clarity or to avoid obscenity or libel, but ideas will not be altered. All letters must bear the handwritten signature of the writer and include address and phone number or e-mail address for verification purposes. Neither the street address nor phone number will be printed. Letters should be

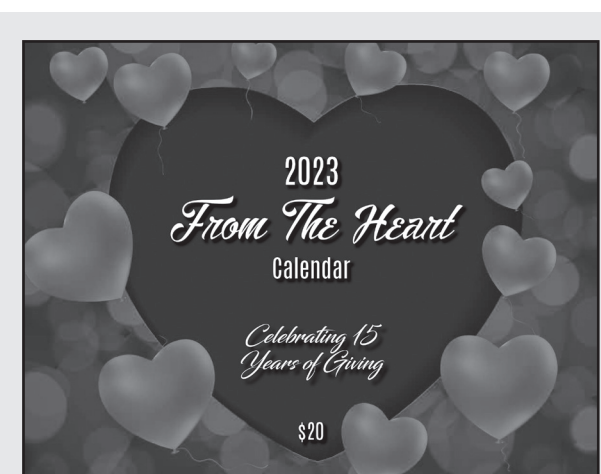
typed or legibly handwritten, and no anonymous letters will be published. Any letters from boards or organizations must include at least one name of an individual. Any criticism of public officials should be limited to issues related strictly to their position or actions made in office, as personal attacks will not be published. Letters involving private disputes between the writer and a business will not be published. Political endorsements will

be published, however letters from candidates endorsing themselves will not be printed. Letters may be dropped at the News-Leader office (211 IL Route 38 East), mailed to the News-Leader (P.O. Box 46, Rochelle, IL 61068) or e-mailed (news@rochellenews-leader.com.) The News-Leader reserves the right to edit or reject any letter to the editor for any reason, and letters chosen for publication do not necessarily reflect the views of this newspaper.

COMMUNITY



Rochelle FFA's Seebach elected to Section 2 FFA officer position
On the night of Wednesday, April 19, Megan Seebach of the Rochelle FFA and Rochelle Township High School was elected to office as Section 2 FFA reporter. Seebach joined the rest of the new Section 2 officer team to pose for a photo following the election.



- Apr. 7 - Crystal Carswell, Rochelle, \$25
- Apr. 8 - Liquor N Wine, Rochelle, \$25
- Apr. 9 - Pete Pavia, Rochelle, \$300
- Apr. 10 - Brandon Schaneberg, Steward, \$25
- Apr. 11 - Rochelle Christian Food Pantry, \$25
- Apr. 12 - Justin Medine, Rochelle, \$25
- Apr. 13 - Alfano's, Rochelle, \$25
- Apr. 14 - HOPE of Ogle County, \$25
- Apr. 15 - Luci Powell, Rochelle, \$25
- Apr. 16 - Karen Cech, Rochelle, \$50
- Apr. 17 - Keith Pontnack, Rochelle, \$25
- Apr. 18 - Mike Wetzel, Algonquin, \$25
- Apr. 19 - Julia Faber, Compton, \$25
- Apr. 20 - Zekelman Employee, \$25
- Apr. 21 - Gabi Jabis, Panama City, FL, \$25
- Apr. 22 - Zekelman Employee, \$25
- Apr. 23 - Araceli Flores, Rochelle, \$50
- Apr. 24 - HOPE of Ogle County, \$25
- Apr. 25 - Rochelle Area Community Foundation, \$25
- Apr. 26 - Comfort Inn & Suites, Rochelle, \$25
- Apr. 27 - Sallie Lord, Fishers, Indiana, \$25
- Apr. 28 - Deanna Hill, Rochelle, \$25
- Apr. 29 - Chris Sawlsville, Rochelle, \$25
- Apr. 30 - Sherri Salsbury, Oregon, \$50
- May 1 - Chuck Kessen, Rochelle, \$25
- May 2 - Alex Dyer, Rochelle, \$25
- May 3 - Zekelman Employee, \$25

Birthdays & Anniversaries

May 1 Jamey King	May 7 Barb Aleman Darah Bridgeman	May 18 Arianna Thompson	May 24 Katie Sherburne Dave & Mary Helfrich (anniversary)
May 4 Susan Morris	May 8 Ashley Martinez	May 20 Darrell & Beth Bolhous (anniversary)	May 25 John & Kristi Gonzales (anniversary)
May 5 John & Kris Oleson (anniversary) Diana Dickey Troy & Minia Waters (anniversary) Abigail Norris	May 10 Dominic Lopez	May 21 Heather Flores Heidi Bonilla Brad & Kelly Arnold (anniversary)	May 27 Leland Hazlip
May 6 Abbie Overstreet Kane Cromwell Kevin & Courtney South (anniversary)	May 16 Kathy Conant	May 22 John Gonzales	May 29 Tristan Perkins Kathy Marchesi
	May 17 Krynn Hayward		

Call 815-561-2151 to submit names for birthdays and anniversaries

Coffee Break

King Crossword

ACROSS

1 Cuts off

5 Cookout, briefly

8 Gridlock sound

12 Jacob's brother

13 Actress Lucy

14 In — land

15 Goatee's spot

16 Here (Fr.)

17 Saharan

18 Submit

20 Give temporarily

22 Blue blood

26 Tour vehicles

29 Toe count

30 Actress Hagen

31 Sciences' partner

32 Auction signal

33 Urban haze

34 Vitamin stat

35 Architect I.M. —

36 Stinging insects

37 Administrative worker

40 Lean to one side

41 Redacted

45 Poker variety

47 — Victor

49 Art Deco master

50 Carton sealer

12

15

18

22

26

31

34

37

40

45

50

53

51 Texas tea

52 Albacore, e.g.

53 Cold War initials

54 '60s war zone

55 Once around the sun

DOWN

1 Nobelist

2 Job-safety org.

3 Ache

4 Ice cream parlor orders

5 Russian pancakes

6 Pen name

7 Took part in a bee

8 Mel of many voices

9 Hearing aids?

10 Inventor Whitney

11 Knee protector

19 1040 org.

21 Many millenia

23 Unemotional

24 Perched on

25 Labels

26 Biting remark

27 Pakistani

28 New companies

32 Uncharged particle

33 Full feeling

35 Crony

36 Bankroll

38 Duck down

39 Kingdom

42 Loyal

43 Sicilian spouter

44 Beloved

45 R-V link

46 Prof's helpers

48 Spy org.

© 2023 King Features Synd., Inc.

Weekly SUDOKU

by Linda Thistle

	1		2			8		
3				9			4	
		2			7			5
2	9				4		1	
		5		3		2		
1			6					9
	8				5		2	
		6	3					4
5				8		6		

Place a number in the empty boxes in such a way that each row across, each column down and each small 9-box square contains all of the numbers from one to nine.

DIFFICULTY THIS WEEK: ♦♦♦

♦ Moderate ♦♦ Challenging
♦♦♦ HOO BOY!

© 2023 King Features Synd., Inc.

CryptoQuip

This is a simple substitution cipher in which each letter used stands for another. If you think that X equals O, it will equal O throughout the puzzle. Solution is accomplished by trial and error.

Clue: A equals P

HDXC GKV AKAVFWEX WC XIAEG
IXWQKH HNED FKEL KT IWFX
LDXXA, N'Q BKCLNQXU EDWE
UWI-NTNBWENKC.

©2022 King Features Synd., Inc.

King Crossword

Answers

Solution time: 25 mins.

Weekly SUDOKU

Answer

CryptoQuip

answer

When you populate an empty meadow with lots of male sheep, I'd consider that ram-ification.

ASHTON NEWS



Ashton and Franklin Grove Fire Departments hold joint training at burn house

On Saturday, April 29, the Ashton and Franklin Grove Fire Departments had a joint training at a burn house. They trained on many things, such as search and rescue, communication and teamwork.



(COURTESY PHOTOS)

Ashton-Franklin Center student volunteer Andrea Buhrow (left) waters seeds that each of the students had planted as part of the horticulture workshop. Nancy Wodsworth (right), University of Illinois Extension Master Gardener, talked gardening with the students during the Ag Expo.

Ag Expo teaches students about agriculture

AMBOY — On Friday, April 21, 335 Lee County fifth grade students from Amboy, Ashton-Franklin Center, Dixon, Paw Paw, Steward, St. Anne's, and St. Mary's converged on the Lee County 4-H Center & Fairgrounds for the 16th Annual Ag Expo, presented

by the Lee County Farm Bureau, Lee County Ag in the Classroom, Lee County Soil & Water Conservation District, and University of Illinois Extension-Lee County. The goal of the event is to make agriculture relevant to today's youth through

discussion of science, technology and careers as it relates to bringing food and fiber into consumers' homes. This event began in 2008 and continues to create learning opportunities for students, teachers and parents about agriculture, food and natural resources.

Students enjoyed their day out of the classroom learning about many agricultural topics. Presenters from local agri-businesses, agencies, farms and student volunteers were on hand to discuss topics ranging from livestock (beef, swine, equine, and

goats) to pollinators and gardening. Other presentations focused on butterflies, water, energy, mushrooms, bees, 4-H, prairies, corn, dairy, horticulture, ag careers, rabbits and general agriculture. Culver's spoke to the students about how the food we eat starts at

the farm and generously provided custard for all of the students. Through the efforts of many volunteers and the cooperation of Mother Nature, we wrapped another Ag Expo field trip packed with agriculture knowledge and fun.

COMMUNITY MATTERS



Mills and Petrie Memorial Building

Call 815-973-8762 for building rental information

Basketball, volleyball and pickle ball courts
Great for birthday parties, bridal showers, family reunions etc.

Bar/Restaurant
Ralphie and Lulu's
812 Main St., Ashton
815-453-2103

Community Building
Mills and Petrie Memorial Building
Hourly, daily rentals for your event
815-973-8397

Funeral Home
Beverage Lyons Funeral Home
601 Richardson Ave., Ashton, 815-453-2441
beveragefamilyfh.com

Insurance
Bradford Victor-Adams Mutual Insurance Company
120 W. South St., Franklin Grove
815-456-2334

Public Library
Mills and Petrie Memorial Library
704 First Street
815-453-2213

We **LIBRARIES**

Mills and Petrie Memorial Library
704 First Street
815-453-2213

STOP BY THESE BUSINESSES

and see why they were **VOTED #1 in Ogle County!**



Voted Best: Pizza, Family Restaurant, Italian Restaurant, Pasta, & Appetizer

Alfano's Taste The TRADITION Taste The DIFFERENCE
Pizzeria and Italian Restaurant

Dine In • Carry Out •
• Home Delivery • Pizza • Pastas •
• Sandwiches • Salads •
• and Lots More!

Dine-In • Carry Out • Home Delivery
1115 TURKINGTON TERRACE, ROCHELLE
815-562-3312



Voted Best: Plumbing Company & HVAC Company

ANDERSON
PLUMBING & HEATING, INC.

LENNOX
HOME COMFORT SYSTEMS
Innovation never felt so good.™

815.562.8784
email: aphc621@yahoo.com

621 1st Ave. • Rochelle, IL 61068



Voted Best: Tax Service

Brown's Tax Service
Carolyn Brown

516 Fourth Ave. | Rochelle, IL
815-440-1224 | 815-561-6861 | carolyn@brownstaxoffice.com



Voted Best: Carpet Cleaning Business

ChemDry®
Drier. Cleaner. Healthier.™

Carpet & Upholstery Cleaning
209 Powers Road
Rochelle, IL 61068
815-762-7555



Voted Best: Butcher Shop, Steak, & Brat

Tues-Fri - 9a-5:30p
Sat - 9a-4p

HEADONS
FINE MEATS
EST. 1970 CRESTON, IL

103 N. Main Street | Creston
815-384-3620
headons2go.com

— LIKE AND FOLLOW US ON —
FACEBOOK



Voted Best: Karaoke Bar

Kenny's Place

Best Karaoke in Ogle County

• Karaoke • Video Gaming • Game Room • Daily Drink Specials

Sun 11am-11pm • Mon-Wed 10am-1am • Thurs-Sat 10am-2am
411 Cherry Ave. • Rochelle, IL • 815-562-6568



Voted Best: Non-Profit

THE KITCHEN Table

Donation & Volunteer-Based Eatery and Community Pay-What-You-Can Cafe

7034 S. Klondike Road, Rochelle • 815-561-9074
kitchentablerochelle@gmail.com • volunteer@kitchentablerochelle.org
kitchentablerochelle.org



Voted Best: Furniture Store & Moving Service

MEYERS
FURNITURE & FLOORING

209 Powers Road, Hwy 251 N
Rochelle, IL
www.meyersfurniture.com
(815) 562-8792



Voted Best: Bank, Local Lender & Financial Advisor

Stillman BANK

✓ Best Local Bank
✓ Best Lender
✓ Best Financial Planner

Thank You!

www.stillmanbank.com

Byron • Oregon • Rochelle • Rockford • Roscoe/Rockton • Stillman Valley



Voted Best: Attorney Office

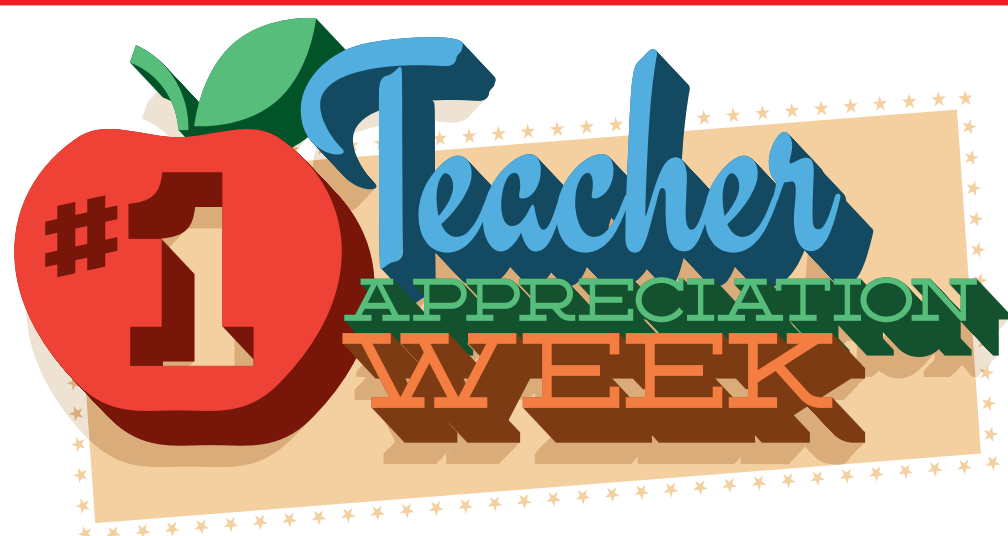
Tess, Crull & Arnquist
Attorneys At Law

www.tesscrulllaw.com
815-562-8754

1090 N. 7th St.
Rochelle

Eric Arnquist, Russell Crull & David Tess





MAY 8-12, 2023

Rochelle Township High School Staff

AGRICULTURE

Donna Page

ART DEPARTMENT

Andrea DeKing

Beth Mock - Dept. Chair

COUNSELING DEPARTMENT

Mike Dale

Tasha Hacaga

Laurie Pillen, Dept. Chair

Javier Zepeda

DRIVER EDUCATION

Erick Olson

ENGLISH DEPARTMENT

Anna Adolph

Kristin Flanagan, Dept. Chair

Matt Hagemann

Jodi Hill

Scott Swartz

Alison Vrana

David Welle

Danae White

Brian Worthington

ENGLISH LANGUAGE LEARNERS

Ida Maciel

FOCUS HOUSE

Kim Dewey

Sue Sage

Tony Wyatt

FOREIGN LANGUAGE

Anna Birsá

Lizzie Cartwright

Aby Guerrero

Eva Lenkaitis, Dept. Chair

LIBRARY MEDIA

Ann Marie Jinkins,

Dept. Chair

MATHEMATICS

Mike Fonfara

Tim Hill

Glen Mehrings

John Pfaff, Dept. Chair

Rachel Plock

Charity Prose

Lindsay Suess

Ryne Vrana

MUSIC

Cory Ellis - Vocal

Keaton Shumard -

Instrumental

PHYSICAL EDUCATION

Bethany Dufoe

Josh Fagan

Kyle Kissack

Amy Schweitzer, Dept. Chair

Molly Sly

SCIENCE

Nelson Baker

Anna Criswell

Deanna Jacobs

Jackson James

Justin Otte

Adrian Smith

Tim Thompson

SOCIAL STUDIES

Dave Cartwright, Dept. Chair

Holly Karner

Ryan McQuade

Jerrod Reynolds

Alphonso Vruno

SPECIAL EDUCATION

Max Basler

Erin Bergeson, Dept. Chair

Joe Howard

Sidney Lippens

Susan Naylor

TECHNOLOGY

Dale Bergeson, Dept. Chair

Rochelle Elementary School District Staff

CENTRAL SCHOOL

Kristen Barco-Kiola

Chris Bogle

Melissa Bowers

Sheryl Casey

Yuliana Cintora

Melissa Deutsch

Yensy Garcia

Lisa Gineman

Susana Guzman-

Holland

Dana Hardenbergh

Arley Hickey

Stacy Horstmeier

MiKayla Hussey

Jessica Kiesling

Samantha Lower

Candace Meiners

Noah Mershon

Peyton Lumzy

Tammy Mellor

Ruby Nambo

Kelly Polz

Angie Primrose

Tara Roman

Morgan Sarver

Katie Sullivan

Darcie Waltrip

LINCOLN ELEMENTARY SCHOOL

Dani Alfano

Tracy Alford

Rosie Arteaga

Brandi Casey

Deb DaCosta

Kim Davidson

Stephanie Dillon

Dana Ferguson

Lisa Friday

Katelyn Gabbard

Karen Hall

Alyssa Hansen

Dhana Hansen

Eryn Harper

Amanda Hunley

Sarah Kennay

Amber Kreiser

Kent Lodico

John Michael

Loggins

Maria Lopez-

Guzman

Peyton Lumzy

Melissa Messer

Jocelyn Ortiz

Tara Roman

Tiffany Siebrasse

Julie Slack

Erin Strouss

Lisa Sutton

Margaret Taylor

Nicole Tobler

Edna Vazquez

Carmen Vogeler

Andrea Young-

Hernandez

ROCHELLE MIDDLE SCHOOL

Karen Anderson

Lillian Andrew

Christie Billeter

Marcy Bruhn

Theresa Crystal

Carol Deutsch

Jason Deutsch

Rick Dornink

Brooke Freeman

Bryan Garcia-

Belmonte

Jonathon Gehm

John Gonzales

Beth Hahn

Julia Harding

Jessica Hickey

Trace Hippen

Phoebe Hughes

Jennifer Hunley

Katelyn Kalata

Sheri Klindera

Cathy Larkin

Tracy Lawton

Jayne McCombs

Paul Madere

Jeannie Matura

Kathy Prestegaard

Katie Queller-Zilis

Desiree Rones

Benjamin

Sondergren-Baar

Kristine Speece

Chad Stewart

Chelsey Stolte

Stephanie Tepinski

Chris Underwood

Hayley Wendling

Melody

Worthington

Victor Worthington

TILTON ELEMENTARY SCHOOL

Jackie Brown

Eva Chu

Jackie Cruz

Sara Daugherty

Holli Duthie

Melissa Frankfother

Melissa Gensler

Jodi Hayes

Jennifer Hernandez

Mattie Hoiness

Cassie Inman

John Loggins

Kim Lumzy

Shannon McGraw

Joe McKinney

Will McKinney

Mark Mathieu

Angela Meyer

Jeannette Mingus

Denise Orlikowski

Dede Ponto

Holly Schatz

Jennifer Siebert

Amy Springmire

Alexandria

Vanderkolk

Eswood School Staff

Eswood Community CSD#269

Shana Bell

Deb DeHahn

Janet Eden

Susan Hammack

Kylie Hosick

Emily Reed

Lisa Rittmeyer

Shannon Rogers

Michelle Tofte

Linda Wills

Phil Winters

Creston School Staff

Creston CSD #161

Mrs. Breneisen

Mrs. Ryan

Mrs. C. Larsen

Mrs. Young

Mrs. Stachlewitz

Mrs. Messenger

Mrs. Samp

Ms. Byrne

Mrs. Samo

Mrs. Hohlfield

Mrs. H. Larsen

Ms. Weber

Mrs. Percovich

Kings School Staff

Kings School District #144

Hannah Anderson

Antonina Croke

Kimberly Dewey

Amy Eldred

Nancy Elson

Tammy Greene

Kerri Hall

Jason Hickman

Vanessa Hopp

Susan Hunter

Cheyane Merz

Maylissa Nalley

Alyssa O'Dell

Melissa Ost

Steven Steiner

Steward School Staff

Steward Elementary School District #220

Mrs. Michelle

Esposito

Mrs. Rebekah Hayes

Mrs. Betsie Swartz

Ms. Melissa Dietze

Mrs. Erin Odle

Mrs. Calla Stroh

Mr. David Hanes

Mrs. Deanne

Aldridge

Mrs. Sarah

Loeffelholz

Mr. Christopher

Groth

Mrs. Lisa Johnson

Mr. Chris Roberts

Mrs. Brittany

Santopoalo

Mrs. Brittany Drozd

Mrs. Heather Dewey

Teachers play an enormously important role in the development of our nation's youth. They teach and inspire, guiding our kids toward bright, successful futures. They act as educators, role models and coaches, broadening minds and encouraging achievement. During Teacher Appreciation Week, we recognize teachers for their dedication to helping our children, our nation's future leaders, succeed.

ADVERTISE YOUR BUSINESS HERE!

Great Rate - Great Spot!

Call Mike @ 815-561-2124 or email mfeltes@oglecountylife.com

01252021

Surprise Mom on Mother's Day

With new dining room furniture

HUB CITY FURNITURE

429-433 Lincoln Hwy. Rochelle, Illinois • 815-562-8765 | hubcityfurniture.com

Tue-Fri 9am-4pm • Sat 9am-1pm • Sun & Mon Closed

WEDNESDAY, MAY 3, 2023

ROCHELLE NEWS-LEADER • SECTION 2 • PAGE 1

SPORTS



HENKEL SETS RECORD

RTHS hurdler Alivia Henkel set a new school record in Sterling on Friday night.

See page 2 for more details

RTHS Girls Soccer

I-8 tournament kicks off

LaSalle-Peru edges Rochelle 4-3 after last-second goal on Monday evening

BY RUSSELL HODGES
SPORTS EDITOR

ROCHELLE — A last-second goal resulted in a heartbreaking loss for the Rochelle Lady Hub varsity soccer team during Monday's Interstate 8 tournament opener against LaSalle-Peru.

With the match tied and the final seconds winding down, Lady Hub goalkeeper Danica Ward appeared to have control of a save near the top of the Rochelle penalty box. But the Cavaliers successfully jarred the ball from the junior goalkeeper's grasp and no call was made on the field, allowing LaSalle-Peru to roll the deciding goal into the back of the Lady Hub net with 5.3 seconds remaining in regulation. The play ultimately resulted in a 4-3 loss for Rochelle.

"It was a tough loss," head coach Brad Male said. "We had to move some players around during the second half and they were forced into positions they weren't familiar with, but we have to continue working together as a team. My message to the girls was to use this loss as a learning experience and to remember this feeling so we can play our hearts out from

here on out."

With howling winds gusting toward the south end of the field, Rochelle (5-9, 3-3 Interstate 8) capitalized on the weather conditions early, scoring two first-half goals and taking a 2-0 lead over the Cavaliers. Junior forward Kara Martinez struck first for the Lady Hubs, taking a pass from sophomore defender Betty Flores and sending a shot into the net during the 23rd minute.

Rochelle added another goal during the 26th minute after a foul occurred inside the Cavalier penalty area. Sophomore midfielder Makayla Lara easily cashed in the penalty kick, giving the Lady Hubs a 2-0 advantage. After both teams changed sides, LaSalle-Peru began generating more of an attack, ultimately breaking through after a corner kick into the Rochelle penalty area was deflected into the back of the Lady Hub net during the 61st minute of the match.

"I thought we moved the ball well early," Male said. "We still have some work to do as far as moving into open positions, but I thought we possessed the ball well during the first half. We just weren't able



(PHOTO BY RUSSELL HODGES)

Junior Sydney Thorne battles for possession during the Rochelle Lady Hub varsity soccer match against LaSalle-Peru on Monday. Rochelle conceded a last-second goal to fall 4-3 in the Interstate 8 tournament.

to maintain that positive momentum throughout the second half."

The tide briefly turned for the Lady Hubs during the 67th minute, when

freshman Abbey Bozinovich came off the bench and lofted a shot over the

Cavalier goalkeeper.

See **SOC CER** page 3

RTHS Baseball

Hubs hold off Freeport for nonconference win

Rochelle snaps five-game losing streak with victory over Forreston on Friday

BY RUSSELL HODGES
SPORTS EDITOR

ROCHELLE — The Rochelle Hub varsity baseball team scored its second straight nonconference victory on Saturday, holding on for an 8-6 win against Freeport. Rochelle (8-12, 3-7 Interstate 8) will begin an Interstate 8 home-and-home series with LaSalle-Peru on Monday.

Senior Colton O'Rorke went 2-for-3 with two RBIs to lead the Rochelle offense, while senior Alex Burnette and junior Brock Metzger each finished with three hits. Sophomore Brandyn Metzger earned the win on the pitcher's mound, throwing four and one-third innings with two strikeouts and four earned runs allowed. Senior Noah Lara fired the final two and two-thirds innings for the Hubs, holding Freeport to one unearned run and three hits to preserve the win.

Rochelle exploded for six runs in the bottom of the second inning to take a commanding lead over the Pretzels. Senior Aidan Rodriguez sparked the rally with a bases-loaded RBI single from the No. 9 hole in the batting order. The Hubs brought runners home over the next three at-bats, which included RBI singles from O'Rorke and Metzger along with a sacrifice fly from

Lara. An RBI single from Burnette and a Freeport error allowed two more runners to cross home plate.

Coen Stewart belted a two-run double to ignite a three-run Pretzel rally in the top of the third inning, where Zac Matz notched an RBI single to make the score 6-3. Rochelle added a run in the bottom of the third inning, scoring after O'Rorke reached on an infield single to plate senior Garrett Gensler, who singled earlier in the frame. RBI knocks from Payton Woker and Carson Price brought home two Freeport runners and made the score 7-5 in the top of the fifth inning.

Both teams traded runs over the final two frames, with Gensler reaching on an infield single to score Metzger in the bottom of the sixth inning before Freeport's Cam Verner singled and scored on an error in the top of the seventh inning. Needing two outs to secure the win, Lara induced a flyout to right field and a groundout to the pitcher's mound for the final two outs.

Forreston

The Rochelle Hub varsity baseball team snapped a five-game losing streak on Friday, defeating Forreston 6-2 in nonconference play. Senior Colton O'Rorke went 3-for-4 from the lead-



The Rochelle Hub varsity baseball team defeated Freeport 8-6 on Saturday. At left, senior Colton O'Rorke prepares for a ground ball at second base. At right, sophomore Brandyn Metzger fires a pitch to home plate.

off hole for the Hubs (7-12, 3-7 Interstate 8), while brothers Brock Metzger and Brode Metzger each recorded two hits. O'Rorke threw five innings with five strikeouts for the win.

Rochelle took a 2-0 lead in the top of the first inning, scoring after senior Bradley Cooney reached

on a fielder's choice and senior Garrett Gensler followed with an RBI single to the shortstop two batters later. Brendan Greenfield's double-play flyout allowed one Forreston run to score in the bottom of the first inning. The Hubs held a 3-1 advantage after junior Brock Metzger's RBI single



(PHOTOS BY RUSSELL HODGES)

up the middle brought O'Rorke home in the top of the second inning.

Senior Alex Burnette slapped an RBI single to spark a two-run frame for Rochelle in the top of the fifth inning, where freshman Brode Metzger followed with an RBI double to give the Hubs a 5-1 lead. Cooney

delivered an RBI single in the top of the sixth inning, allowing senior Noah Lara to score and put Rochelle ahead 6-1. Forreston earned one run back in the bottom of the sixth inning, where Carson Akins plated Kendall Erdmann with an RBI groundout to the pitcher's mound.



The businesses featured on this page are

"Hubs Super Fans"

They proudly support our local athletes and students.

Please show your appreciation by patronizing their businesses.

WE SUPPORT OUR HUBS!



HUB SPOTLIGHT

Henkel sets new school record in 300 hurdles

BY RUSSELL HODGES
SPORTS EDITOR

STERLING — Junior Alivia Henkel entered the 2023 track and field season less than one-half of a second behind Brooke Hatfield's school-record time in the 300-meter hurdles. Motivated to write her name into the record books at Rochelle Township High School, Henkel felt confident after winning her heat in dominant fashion during the Sterling Night Relays on Friday evening.

Finishing nearly four full seconds ahead of runner-up athlete Anessa Johnson of Sterling, Henkel clocked in with a personal-record time of 46.09 seconds, shattering Hatfield's 12-year-old RTHS school-record time of 46.28 seconds established during the 2011 season. The record-setting performance was the highlight of the evening for the Lady Hubs, who saw their varsity team finish seventh out of eight teams with 14 points in the competition.

"I finished that race and I felt like it was unlike any other race I had run before," Henkel said. "I felt really fast and I felt really good after the race was over, so I was really happy to hear my time. I had known the school record because I ran a 46.6-second time last season and I knew I was less than a second away. I knew I could break that record this season and it's an amazing feeling to see my ranking improve going into the conference meet and the sectional meet."

Currently ranked No. 5 in the state in the 300-meter hurdles, Henkel also competed in the 400-meter, 800-meter and 1600-meter relays during Friday's meet at Sterling High School. The Lady Hubs finished seventh in the 400-meter relay (Henkel, Miranda Dubek, Rylee Jackson and Rylee Bogle) with a time of 54.95 seconds and eighth in the 1600-meter relay (Arline Villanueva, Zoe White, Henkel and Rylee Jackson) with a time of 4:51.22.

"We've had a lot of improvements this season and we're setting a lot of PRs," Henkel said. "We're building a lot of confidence and we're learning new techniques. I think we're looking good for the conference and sectional meets, especially in the 4x4 because we've been working really hard there. I'm excited to see how well we compete against the other teams at those meets."

Rochelle's 3200-meter relay team (Rose Luxton, Bridgett Ramirez, Ailyn Miranda and Emely Hernandez) placed eighth with a time of 12:29.31. Freshman Kyrie Cragin took fourth in the 300-meter hurdles with a time of 52.64 seconds and senior Samantha Sanford finished 10th in the shot put with a heave of 8.73 meters. Junior Kennedy Adamski took 13th in the triple jump (9.08 meters) and freshman Rose Luxton finished 16th in the long jump (3.81 meters).



(COURTESY PHOTO)

Junior Alivia Henkel set a new RTHS record in the 300-meter hurdles at the Sterling Night Relays on Friday.

Luxton also finished 16th in the 1600-meter run with a time of 6:26.93. Junior Kyra Bivins placed 17th in the discus with a throw of 22.27 meters.

Fresh/Soph

Rochelle's 400-meter relay team (Carmela Bright, Arline Villanueva, Zoe White and Kyra Bivins) placed sixth with a time of 57.73 seconds. Rochelle's 800-meter relay team (Arline Villanueva, Carmela Bright, Kyrie Cragin and Zoe White) finished fifth with a time of 1:59.44 and Rochelle's 1600-meter sprint medley relay team (Carmela Bright, Rylee Bogle, Arline Villanueva and Mary Chadwick) took sixth with a time of 5:08.96.

VINCE'S PIZZA
SINCE 1967

Enjoy a **15% Discount** when Ordering Online at VincesPizzainRochelle.com

815.562.7300
Delivery & Curbside Pick Up
1071 N 7th St, Rochelle, IL

Hello, neighbor!

Haber Ins and Fin Svcs Inc.
Shane B Haber, Agent
221 E. IL Rt. 38
Rochelle, IL 61068
Bus: 815-562-7011

Please stop by and say, "Hi!"
I'm looking forward to serving your needs for insurance and financial services.
Like a good neighbor, State Farm is there.
CALL ME TODAY!

State Farm

DLX Medical GROUP

Caring for your family's health from infant to adults.

For appointment, please call
815-227-9594
1212 Currency Ct, Rochelle, IL 61068
Most Insurance Accepted

Diana Alaris, MD
Accepting New Patients

Local People Providing Local Service

Rochelle MUNICIPAL UTILITIES

Water • Waste Water
Electric • Communications

Phone: 815-562-4155
Fax: 815-562-5861
333 Lincoln Highway
Rochelle, IL

www.rmu.net

CENTRAL ILLINOIS LOAN

Loans For All Your Needs
Auto • Home Improvement • Vacation

Jami Hackman • Tonia Holland

815-561-4035!

310 Eagle Drive, Rochelle
All loans subject to our normal credit requirements and policies.

MORTON BUILDINGS

If you can dream it, we can build it.

Rochelle Sales Office • Hwy. 251 N. • 877-613-3050

Rochelle Community Hospital

Your Local Healthcare Resource.

900 N. 2nd Street, Rochelle
815-562-2181
www.rochellehospital.com

MEYERS FURNITURE & FLOORING

209 Powers Road, Hwy 251 N
Rochelle, IL 61068
(815) 562-8792
www.meyersfurniture.com

Bruns Construction, Inc.

Tim & Roger Bruns, Owners
Established 1997

• Residential & Commercial
• Concrete
• Additions

815-561-0099
Free Estimates • Fully Insured
www.brunsconstructioninc.com

MAINLINE'S GENERAL STORE
800 BROWN AVE. ARROWHEAD
Shop Local

- Groceries,
- Hand Cut Meats,
- Deli & Produce
- Liquor, Wine & Beer
- Cigarettes & More
- Bar with Video Gaming & Slot Machines

815-453-7500

Open Mon-Sat 9AM-9PM & Sun 9AM-5PM

THE HUDDLE CAFE
802 Main Street • 815-453-2677

Homemade Cooking, Small Town Atmosphere
Daily Specials

- Breakfast Served All Day
- Beer & Wine Served All Day
- Free Wi-Fi

Dine-In & Carryout

Open Tues-Sat 7AM-8PM, Sun 7AM-2PM, Monday Closed

Davis Family Health LLC

We Fix Boo Boos

Kelly Ann Tonielli Davis
DNP, APRN, FNP-BC-CME

"Veteran Owned and Operated"

1212 Currency Court, Rochelle, IL • 815-561-8500
1201 Meriden Street, Mendota, IL • 815-538-1800

Primary Care, Physicals, Weight Loss, Dermal Fillers, Botox Injections, Suboxone Program

Most insurances accepted

ANDERSON PLUMBING & HEATING, INC.

Plumbing, Heating & Cooling
Water Heaters, Water Softeners,
Drinking Water Systems, Iron Filters,
Sewer Rodding & Jetting & More!

Since 1976

621 First Ave., Rochelle
(815) 562-8784

Rochelle Chiropractic Clinic
Dr. Chad M. Piller

227 E. Rt 38 • Rochelle, IL
815-562-8706
www.rochellechiropractic.com
Now Accepting New Patients!

Jeff Perry
Auto Group

815-562-8787
www.jeffperrychevrolet.com

Alfano's
Pizzeria and Italian Restaurant

Taste The **TRADITION**
Taste The **DIFFERENCE**

Dine In • Carry Out •
• Home Delivery • Pizza • Pastas •
• Sandwiches • Salads •
• and Lots More!

Dine-In • Carry Out • Home Delivery
1115 TURKINGTON TERRACE, ROCHELLE
815-562-3312

JOHNSON TRACTOR

SALES • PARTS • SERVICE

200 Steward Road
800.262.1680
www.johnsontractor.com

AtlasAuto

BUY HERE - PAY HERE
You Work - You Drive

Se Habla Español **815-562-7433**

1400 N 7th St
Corner of Flagg Rd & Hwy 251 N

HUB-REMSEN
PRINT GROUP

101 Maple Ave • Rochelle, IL 61068
815.562.7057 • hub-remsen.com

GO HUBS!

"Proudly Serving the Rochelle Area Since 1945"

Berg-Johnson Electric

FREE ESTIMATES
Licensed and Insured

Residential • Commercial • Industrial

24 Hour Emergency Service
815-562-4937
500 Cleveland Avenue

Jeff Perry
Auto Group

815-562-8787
www.jeffperrychevrolet.com

Busy Schedule? Leave the cooking to us.

- Large menu of foods
- Rochelle's famous chicken by the dinner or bucket
- Hand dipped ice cream (16 flavors)

COUNTRY SCHOOL DRIVE-IN RESTAURANT
251 N. ROCHELLE • 562-6039

Stillman BANK

GO HUBS!

Earning Your Trust Since 1882
www.stillmanbank.com Member FDIC

HAYDEN REAL ESTATE INC.

GOOD LUCK HUBS FROM YOUR FANS AT:

- RESIDENTIAL
- AGRICULTURAL
- COMMERCIAL

815-562-2111 • hre@haydenreinc.com

SPORTS

RTHS Softball Stillman Valley takes Saturday game over Rochelle Smardo strikes out 13 batters, records two hits in 2-1 loss to Oregon on Friday

BY RUSSELL HODGES
SPORTS EDITOR

ROCHELLE — The Rochelle Lady Hub varsity softball team hosted a non-conference matchup against Stillman Valley on Saturday, falling 12-2 after six innings of play. Rochelle (4-13, 2-7 Interstate 8) will host South Beloit for a nonconference game on Tuesday.

Senior Morgan Smardo and freshman Madigan Williams each went 1-for-3 with an RBI in the game. Stillman Valley held a 1-0 lead after Ellie Larson singled and scored in the top of the first inning. Rochelle answered in the bottom of the first inning, tying the game after Smardo's RBI double to left field plated sophomore Lauren Dyer, who hit a two-out single in the prior at-bat.

The Cardinals took control of the game over the next two frames, tallying five runs on two doubles, two singles and four errors in the top of the second inning before adding three runs on five more Rochelle errors in the top of the third inning. Williams made the score 9-2 in the bottom of the fourth inning, where Dyer reached on a dropped third strike and Williams sent an RBI single to the left side of the infield that allowed Dyer to cross home plate.

Larson and Maddie Smith both scored on errors to give Stillman Valley an 11-2 advantage in the top of the fifth inning. The Cardinals clinched their win with one run in the top of the sixth inning, where Ellie Bussan smacked an RBI single to left field that scored Kaelyn Williams.

Oregon

The Rochelle Lady Hub varsity softball team went down to the wire against the Oregon Hawks in non-conference action on Friday evening. Despite a strong performance from senior pitcher Morgan Smardo, who struck out 13 batters and held Oregon to two runs on three hits, Rochelle was unable to get its offense going, totaling only four hits in a 2-1 defeat.

Smardo went 2-for-3 in the game and hit an RBI double in the top of the first inning, where sophomore Lauren Dyer reached on an error and scored to give the Lady Hubs (4-12, 2-7 Interstate 8) a 1-0 lead. The Hawks tied the score in the bottom of the fifth inning, where Ella Dannhorn hit a one-out double and crossed home on one of five Rochelle errors in the loss.

Oregon added its second run of the game in the bottom of the sixth inning, scoring after Reilly Suter drew a lead-off walk and Madison Shaffer reached on another Lady Hub error. Seniors Adamaris Betancourt and Layla Pelan each singled for the Rochelle offense in the loss.



(PHOTO BY RUSSELL HODGES)
Freshman Madigan Williams went 1-for-3 with an RBI during the Rochelle Lady Hub varsity softball game against Stillman Valley on Saturday.

SOCCKER: Lady Hubs win over LaSalle-Peru on Friday evening

From page 1

LaSalle-Peru refused to back down, however, taking advantage of the gusty winds as well as a series of injuries to key defenders on the Rochelle side. The Cavaliers scored consecutive goals after a pair of defensive breakdowns by the Lady Hubs during the 69th and 73rd minutes, tying the score before taking the lead with only seconds remaining.

Ward finished with 10 saves for the Lady Hubs, who will conclude the conference tournament later this week.

Friday

Three different players scored goals for the Rochelle Lady Hub varsity soccer team during Friday evening's Interstate 8 Conference finale against LaSalle-Peru.

Looking to secure a home seed for the opening round of the conference tournament, Rochelle took the early lead and overcame a second-half goal from the Cavaliers to secure a 3-2 victory. Rochelle (5-8, 3-3 Interstate 8) earned the No. 4 seed in the conference tournament with the win and the Lady Hubs will rematch with the No. 5 seed LaSalle-Peru at RTHS on Monday.

"It's always a key for us when we can have multiple players involved," head coach Brad Male said. "We don't want to rely on one player and we always emphasize teamwork. We need to continue moving the ball and moving players into the right spots so we can earn quality shots."

Sophomore midfielder Makayla Lara gave the Lady Hubs the lead during the seventh minute, converting an assist from senior midfielder Mavi Avila to make the score 1-0. LaSalle-Peru answered with an equalizer during the 17th minute, but the Lady Hubs retook control after Avila booted an assist from junior forward Kara Martinez into the Cavalier net during the 25th minute.

"I rarely ever have a sophomore captain, but Makayla has really stepped up for our team and I think she's one of our leaders," Male said. "I'm hoping to see her continue to progress in that role and I'm also hoping to see our team progress with her in that leadership role."

Rochelle took a 3-1 lead over the Cavaliers after Martinez cashed in an assist from sophomore defender Betty Flores during the 49th minute. Despite conceding a late goal to the Cavaliers during the 67th minute, Rochelle successfully kept LaSalle-Peru at bay for the remainder of the contest to secure the Interstate 8 victory.

Junior goalkeeper Danica Ward totaled 10 saves in the victory.



(PHOTO BY RUSSELL HODGES)
Sophomore Makayla Lara races Brooklyn Fick down the sideline during the Rochelle Lady Hub varsity soccer match against LaSalle-Peru on Friday.

COMMUNITY BOARD

Need to get the word out about a product or service you offer?
Give us a call at 815-562-4171.
We can reach over 9,000 homes!



Gutters, Roofing & Siding

THEISEN ROOFING *Free Estimates!*

ROOFING
SIDING
GUTTERS

CONTACT US
815-758-8998
THEISENROOFING@COMCAST.NET

Family owned & operated for over 50 years

Storage Sheds

Rocky Ridge Structures

FREE Sales Rep. Evaluation At Your Site

We Deliver! From Our Lot To Your Site

We Specialize in Portable/Quality Built Storage Sheds

- Stock & Custom Design
- Many Options Available
- Competitive Pricing
- Site Preparation Available

See Displays at 3500 S. Chana Rd. Chana IL 61015
Call Norm or Albert for Free Literature packet 779.861.3542

Plumbing, Heating & Cooling

ANDERSON PLUMBING & HEATING, INC.

Plumbing, Heating & Cooling
Water Heaters, Water Softeners,
Drinking Water Systems, Iron Filters,
Sewer Rodding & Jetting & More!

Since 1976

621 First Ave., Rochelle
(815) 562-8784

Advertise Here

What Service Do You Offer?

562-4171

The Rochelle News-Leader

Heating & Air Conditioning

Keep your family safe and warm!

HULL HVAC
Heating, Cooling & Duct Cleaning Specialist

Precision Furnace Clean & Check
\$85.00
Includes FREE carbon monoxide test

815-561-6551
www.HullHVAC.com
527 2nd Ave Rochelle, IL 61068

24/7 Emergency Service

Concrete

Bruns Construction, Inc.

- Residential & Commercial Concrete
- Additions

FREE ESTIMATES!

Tim & Roger Bruns, Owners
Established 1997

815-561-0099
Free Estimates • Fully Insured
www.brunsconstructioninc.com

Custom Construction

Residential & Commercial Roofing

Shingle Roofing, Metal Roofing & Flat Roofing

Custom Construction Systems
customsteelroofing.com
Call & Text 815-871-7835



ClarkDietrich
501 S. Steward Rd. #100
Rochelle, IL 61068
815-561-2360



**FIRST
STATE
BANK**
firststatebank.biz
Member FDIC 



SILGAN
CONTAINERS CORPORATION
400 N. 15th St.
Rochelle IL 61068
815-562-1250



ROCHELLE
News-Leader

Rochelle

Community Unity

Shop • Play • Stay

AGRICULTURE

Johnson Tractor

200 S. Steward Rd.
815.562.2135
johnsontractorrochelle.stihldealer.net

ANIMAL HEALTH SERVICE

Rochelle Veterinary Hospital

1381 N 7th, Ste. a
815.562.5207
rochellevet.com

ASSISTED LIVING

Liberty Village

2203 East Flagg Rd.
815.562.9800
libertyvillageofrochelle.com

Lincoln Manor

615 Lincoln Highway
815.562.1404

ATTORNEYS

James G. Ahlberg

501 6th Ave.
815.562.4443
ahlberglaw.net

Hewitt & Wagner - Attorneys at Law

1124 Lincoln Hwy
815.562.2704
hewitt-wagner.com

Fearer, Nye & Chadwick

420 Fourth Avenue
815.562.2456
fnclaw.com

AUTOMOTIVE

Atlas Auto

1400 N 7th St.
815.562.7433

Jeff Perry of Rochelle

1260 N 7th St.
815.562.8787 • jeffperryauto.com

Prescott Brothers Ford

620 S 7th St.
815.562.2177 • prescottbrothersford.com

Zip's Auto Body , Inc

1033 S 7th St.
815.562.5133 • zipsautobody.com

COMMUNITY SERVICES

Flagg Township Museum

518 4th Ave
815.562.3040

Hub City Senior Center

401 Cherry Ave
815.562.5050
hubcityseniorcenter.com

Rochelle Chamber Of Commerce

501 Sixth Avenue
815.562.4189
therochellechamber.com

V.F.W Post 3878

318 4th Ave
815.562.3878
www.vfw.org

RMU

333 Lincoln Highway
815.562.4155
www.rmu.net

COUNSELING

Changes Counseling, LLC

604 N Main St
815.501-2088
changescounselingllc.com

DINING & ENTERTAINMENT

Acres Bistro & Scalehouse Lounge

407 Lincoln Hwy
815.762.8212 • acresbistro.com

Aldo's Pizzeria and The Red Brick Pub

418 Lincoln Hwy
815.562.3456 • aldospizzaandpubrochelle.restaurant

Alfano's Pizzeria & Italian Restaurant

1115 Turkington Terrace
815.562.3312 • alfanospizza.com

Grubsteakers Restaurant

14698 IL-64
815.562.3430 • grubsteakers-restaurant.business.site

Kenny's Place

411 Cherry Ave
815.562.6568

Rosati's

1233 N. Caron Rd.
815.562.5000

T-Byrd Lanes

1172 Lincoln Hwy • 815.562.4822 • tbyrdlanes.com

Vince's Pizza & Family Restaurant

1071 North 7th st.
815.562.7300
vincespizzainrochelle.com

FINANCIAL SERVICES

Brown's Tax Service

516 4th Ave.
Carolyn Brown • Jade Brown • Marilyn Oropeza
815.561.6861

Central Illinois Loans

310 Eagle Dr
815.561.4035
centralillinoisloans.com

First State Bank

304 E Hwy 38
815.562.2200
firststatebank.biz

Grant Cooper CPA

418 Cherry Ave., Rochelle
815.562.7083
115 N. 1st St., DeKalb
815.756.4440
grantcoopercpa.com

Stillman Bank

455 IL-38
815.562.7071
stillmanbank.com

Edward Jones - Will McLachlan

1122 Lincoln Highway
815.562.5563
EdwardJones.com

Holcomb Bank

233 IL-38
815.562.3838
holcomb.bank



Rochelle
Community Unity
Shop • Play • Stay



Auto Group
JEFF PERRY
815-562-8787
JEFFPERRYAUTOS.COM

**JOHNSON
TRACTOR**
200 S. Steward Rd.
Rochelle IL 61068

Rochelle Foods

1001 S. Main Street
Rochelle, IL 61068


Allstate
You're in good hands.


Rochelle
Community Unity
Shop • Play • Stay

Graber Financial Group

Sam Graber

409 4th Ave.
815.562.7139

Edward Jones - Jessica Morris

1214 Currency Ct.
815.561.4341

FLOWERS AND GIFTS

Colonial Flower Shoppe & Gifts

408 Lincoln Hwy
815.562.8101
floristrochelleil.com

RCH Auxiliary Gift Shop

900 N 2nd St
815.562.2181 • rochellehospital.com

FUNERAL SERVICES

Beverage Lyons Family Funeral Home & Cremation Services

704 6th St
815.562.6872 • beveragelyonsfamilyfh.com

Unger Horner Funeral Home

400 N. 6th St.
815.562.4534 • ungerhorner.com

FURNITURE

Hub City Furniture

429 Lincoln Hwy
815.562.8765
hubcityfurniture.com

Meyers Furniture

209 Powers Road Hwy 251 North
815.562.8792
meyersfurniture.com

HEALTH SERVICES

Davis Family Health LLC

Kelly Davis
1212 Currency Ct.
815.561.8500
1201 Meriden St., Mendota
815.539.3739

Midwest Physical Therapy

513 4th Ave.
815.561.8786

Rochelle Chiropractic - Dr. Chad Piller

227 E. Hwy 38
815.562.8706
rochellechiropractic.com

Rochelle Community Hospital

900 N 2nd St
815.562.2181 • rochellehospital.com

Salinas Chiropractic

1381 N 7th St., Suite C
815.562.6661 • salinaschiroandwellness.com

HOME IMPROVEMENTS & CONTRACTORS

Anderson Plumbing & Heating

621 1st Ave
815.562.8784 • andersonplumbingheatingcooling.com

Bruns Construction, Inc.

PO Box 400
815.561.0099 • brunsconstructioninc.com

Pemberton Plumbing, Heating & Cooling, Inc.

815.561.6119
pembertonplumbingheating.com

Theisen Roofing & Siding Co.

257 W. Stephanie Dr., Cortland
815.758-8998 • theisenroofing.com

INDUSTRIES

ClarkDietrich

501 S Steward Rd # 100
815.561.2360
clarkdietrich.com

Silgan Containers

400 N. 15th St.
815-562-1250
silgancontainers.com

Rochelle Foods

1001 S Main St
815.562.4141
hormelfoods.com

INSURANCE

Allstate

1425 Dement Rd.
815.561.2901
allstate.com

Country Financial

501 N. 6th St.
815.562.8164
countryfinancial.com

Dimond Bros. Insurance

401 N Main St
815.562.5596
dimondbros.com

Graber Financial Group

409 4th Ave.
815.562.7139

State Farm Insurance - Shane Huber

1211 Currency Ct
815.562.7011
shanehuber.com

State Farm Insurance - Terri Schaefer

603 Lincoln Hwy
815.562.7063
terrishaefer.com

Edward Jones - Jessica Morris

1214 Currency Ct.
815.561.4341

PRINT AND/OR WEB DESIGN

Hub-Remsen Print Group

101 Maple Ave
815.562.7057
hub-remsen.com

Printing Etc.

1135 Lincoln Hwy.
815.562.6151

Rochelle News-Leader

211 Hwy 38
815.562.4171 • rochellenews-leader.com • newsmediadigital.com

REAL ESTATE

Hayden Real Estate

221 E. IL Route 38
815.562.2111
haydenreinc.com

RE/MAX Hub City

136 May Mart Dr.
815.562.7588
remax.com

REAL ESTATE & AUCTIONS

Bearrows Real Estate & Auction Co.

361 W. IL Route 38
815.562.5113
bearrows.com

RENTAL PROPERTIES

Lida Lake Estates

433 Willis Ave., Apt. #11
815.561.0526
lidalakeestates.wixsite.com/lidalakeestates

RETAIL/ SPECIALTY SHOPS

The Artists' Garden

407 Lincoln Hwy.
815.762-8212
artistsgardenbeyondcanvas.com

Pfeiffer Farms Fresh Market

2511 Reynolds Road, Ashton
815-761-6074
pfeifferfarms.com

SURVEY

Survey Tech

104 Maple Ct
815.562.8771
civilideas.com

TIRES

Tire Tracks

1320 N 7th St
815.562.7777
tiretracksusa.com

TOBACCO & ALCOHOL

Rochelle Tobacco "N" Liquor

222 May Mart Drive
815.561.9571
rochelletobacco.com

TOBACCO

Johnny Smoke Shop

132 May Mart Drive
815.888-7107

Support Your Community


Rochelle
Community Hospital
Your Local Healthcare Resource.


Rochelle
MUNICIPAL UTILITIES
Local People Providing Local Services
333 Lincoln Highway • P.O. Box 456
Rochelle, IL 61068
815-562-4155 • www.rmu.net

ROCHELLE
News-Leader
211 Hwy. 38 E., Rochelle
815-562-4171
www.rochellenews-leader.com
 

Classified Marketplace

BUY OR SELL
Place A Classified Ad



ROCHELLE • HILLCREST • CRESTON • STEWARD • KINGS • ASHTON

101 LEGAL NOTICE

NOTICE TO BIDDERS
SEALED BIDS will be received by the City of Rochelle, Illinois until 10:30 a.m., May 16, 2023, for the City of Rochelle - 2023 14th Street/8th Ave Pavement Improvements - Phase 2, which will consist removal and disposal of 5424+-square yards of existing HMA pavement and aggregate base course, limited removal and replacement of combination concrete curb and gutter as directed by the Engineer, HMA base and surface courses, storm sewer structures, pavement markings, landscape restoration, traffic control and protection, as well as other associated work located in the City of Rochelle. An alternate bid for an additional 1450+- square yards of improvements is also included in this project.

Specifications and/or plans may be obtained at the Office of the City Engineer, Engineering Department, located at 1030 S. 7th Street, Rochelle, Illinois. The office is open by appointment only by emailing cward@rochelleil.us. Bidders will be required to sign for the specifications and/or plans before they are released. There is no cost for specifications and/or plans picked up at the Engineering Office. A fee of \$100.00 will be required for any specifications and/or plans that are mailed to prospective Bidders. Bids will be mailed USPS First Class mail only. All bids are to be returned to the Office of the City Clerk, 420 N. 6th Street, Rochelle, IL 61068.

THE CITY OF ROCHELLE PREFERS THE SEALED BID BE HAND DELIVERED TO THE OFFICE OF THE CITY CLERK, CITY HALL, 420 NORTH SIXTH STREET, ROCHELLE, ILLINOIS BEFORE 10:30 A.M., MAY 16, 2023; HOWEVER, BIDS MAY ALSO BE MAILED. ANY BID RECEIVED AFTER 10:30 A.M., MAY 16, 2023, in the Council Chambers at City Hall in Rochelle, Illinois.

ANY OBJECTIONS, QUESTIONS OR COMMENTS on the City's specifications shall be submitted in writing on or before 1 p.m. May 11, 2023. If deemed necessary by the City, an addendum will be distributed to all prospective bidders by facsimile transmission at least two (2) business days prior to the bid opening date. The decisions of the City shall be final.

THE CITY OF ROCHELLE is an equal opportunity employer. All Contracts for Construction of Public Works are subject to the Illinois Prevailing Wage Act (820 ILCS 130/1-12). A CONTRACT may be awarded to the lowest responsible bidder whose bid is found to be in the best interest of the City of Rochelle. The City of Rochelle reserves the right to reject any and all bids and to waive any informalities or irregularities in the bidding. The City further reserves the right to review and study any and all bids and to make a contract award within forty-five (45) days after the bids

have been opened. A Hold Harmless Agreement and a Non-Collusion Affidavit of Compliance must be submitted with the bid. The City of Rochelle does not discriminate on the basis of handicapped status in the admission or access to, or treatment or employment in, its programs or activities. Each BID must be accompanied by a BID BOND payable to the CITY OF ROCHELLE. The City of Rochelle will decide within 45 days if it intends to proceed with the project and award the contract. Written Notice of Award and instructions for the execution of the Agreement will be issued to the Selected Bidder. The BID BOND of all BIDDERS will be retained until the agreement has been executed and approved, after which all BID BONDS will be returned. A certified cashier's check may be used in lieu of a BID BOND. A Performance Surety will be required as specified in the contract documents and specifications.

No. 0508
(April 30 and May 3, 2023)

NOTICE
TAKE NOTICE
County of OGLE
Date Premises Sold
November 4, 2020
Certificate No. 2019-00087

Sold for General Taxes of (year) 2019
Sold for Special Assessment of (Municipality)
and Special Assessment Number N/A
Warrant Number N/A
Installment Number N/A
THIS PROPERTY HAS BEEN SOLD FOR DELINQUENT TAXES
Property Located at 121 South 6th Street, Rochelle, Illinois
Legal Description or Property Index No.: 24-25-127-003
This notice is to advise you that the above property has been sold for delinquent taxes and that the period of redemption from the sale will expire on September 5, 2023.

The amount to redeem is subject to increase at 6 month intervals from the date of sale and may be further increased if the purchaser at the tax sale or his assignee pays any subsequently accruing taxes or special assessments to redeem the property from subsequent forfeitures or tax sales. Check with the county clerk as to the exact amount you owe before redeeming. This notice is also to advise you that a petition has been filed for a Tax Deed which will transfer title and the right to possession of this property if redemption is not made on or before September 5, 2023.

This matter is set for hearing in the Circuit Court of Ogle County on October 5, 2023 at 9:00am with Judge Roe via Zoom hearing, Meeting Link <https://us02web.zoom.us/j/84329706072#success>.

You may be present at this hearing but your right to redeem will already have expired at that time. YOU ARE URGED TO REDEEM IMMEDIATELY TO PREVENT LOSS OF PROPERTY
Redemption can be made at any time on or before September 5, 2023 by applying to the County Clerk of Ogle County, Illinois at the Office of the County Clerk in Rochelle, IL. For further information contact the County clerk ADDRESS: 105 South 5th Street, Suite 104,

Oregon, IL 61061
TELEPHONE: (815) 732-1110
P&N PROPERTIES, INC.
Purchaser or Assignee
Dated: 4/28/2023
CASE NUMBER: 2023TX14
Jaime Salazar, City of Rochelle, Occupants, Ogle County Clerk, Claimants, Judgment Creditors and Decree Creditors, if any of the above described as "unknown owners" "Unknown owners or parties interested in said land or lots"
No. 0509
(May 3, 10 and 17, 2023)

PUBLIC NOTICE
STATE OF ILLINOIS,
CIRCUIT COURT
OGLE COUNTY
PUBLICATION
NOTICE OF COURT
DATE FOR REQUEST
OF NAME CHANGE
(ADULT)

By the Request of Michele Dianna Perez, aka Michelle Deanna Perez, Case Number 2023 MR 17
There will be a court date on the request of Michele Dianna Perez, aka Michelle Deanna Perez, on June 21, 2023 at 9 am at 106 S. 5th Street, Oregon, Ogle County, in courtroom #304.
No. 0513
(May 3, 10 and 17, 2023)

H.O.P.E
For Free Help
or
Information
Call
815-562-8890
24 Hours
All Calls Are
Confidential.
Support,
Advocacy, Referral
Services,
Shelter for victims
of domestic
violence and their
children.
HOPE
of Ogle County

P.O. Box 131
Rochelle, IL 61068
Public Service
Announcement

101 LEGAL NOTICE

ANNUAL TREASURER'S REPORT FOR ALTO TWP. - 3.31.23

	ROAD/BRIDGE	TOWN	BLDG. & EQUIP.	ROW	SPL. BRIDGE	GEN. ASST.	TOTALS
BEG. BAL.	213,794	63,383	35,162	9,376	6,311	1,967	329,993
Transfer In/Transfer Out	0	0	0	0	0	0	0
REVENUES	89,502	85,049	8,117	6	0	0	182,674
EXPENDITURES	-88,940	-51,838	-4,590	0	0	0	-145,368
\$ END OF YR.	214,356	96,594	38,689	9,382	6,311	1,967	367,299

REVENUE SUMMARY
Township and Road District

	R/E, P.P & REPL. TAX	INTEREST INCOME	MISCELLANEOUS
	179,786	1,140	1,748
TOTALS	182,674		

COMPENSATION SUMMARY
Township and Road District

	Over \$25,000.	Under \$25,000.
EMPLOYEES	38,000 *	

EXPENDITURE SUMMARY
VENDORS Over \$ 2500.

	TOIRMA	FLEECE OIL	MARK BROWN	HART & SONS	NICOR	BONNELL IND
	7,162	7,445	4,431	7,380	4,026	15,450
TOTALS	-145,368					

J.Erickson
D.Burkhart,
H.McKiski
Z.FULLER

J.O'Rourke,
D.Svela
R.BAYES

C.Hopwood,
B.Herrmann
M.Brown
VENDORS OVER 2500.

J.Thompson
D.Tarvested

Dennis E. Burkhart Alto Twp. Supervisor
certify this to be a true statement.
As of: 4/3/2023

No. 0514 (May 3, 2023)

101 LEGAL NOTICE

This publication does not knowingly accept fraudulent or deceptive advertising. Readers are cautioned to thoroughly investigate all ads, especially those asking for money in advance.

**105
BUSINESS
OPPORTUNITIES**

"This publication does not knowingly accept fraudulent or deceptive advertising. Readers are cautioned to thoroughly investigate all ads, especially those asking for money in advance."

**113
FINANCIAL**

NOTICE Advance Fee Loans or Credit Offers
Companies that do business by phone can't ask you to pay for credit before you get it. For more information, call toll-free 1-877-FTC-HELP. A public service

message from your hometown newspaper and the Federal Trade Commission.

**119
ANNOUNCEMENTS**

"This publication does not knowingly accept fraudulent or deceptive advertising. Readers are cautioned to thoroughly investigate all ads, especially those asking for money in advance."

**127
SERVICES AND
REPAIRS**

FURMAN'S Lawn Care and Tree Work. Mowing, bushes, spring clean up, weeding and much more. Call Jeremy Furman 815-761-9619. Please leave a message will return call ASAP. Fully insured, in business since 1999. Servicing Rochelle and surrounding areas.

CUSTOM Construction Systems. Residential/Commercial Roofing. Shingles/Metal/Flat.

815-871-7835. (05-24-23)

Local Advertising, Oak Icebox, Iron Door Stop and Antique Lighting... Call Dick Harms at 815-562-2928 or email dickharms@hotmail.com

(8 available). Call 630-803-7146 (05-14-23)

**201
DOMESTIC/CHILD
CARE**

NO INDIVIDUAL, unless licensed or holding a permit as a childcare facility, may cause to be published any advertisement soliciting a childcare facility that is licensed or operating under a permit issued by the Illinois Department of Children and Family Services may publish advertisements of the services for which it is specifically licensed or issued a permit. Your Hometown Newspaper strongly urges any parent or guardian to verify the validity of the license of any facility before placing a child in its care.

**301
ANTIQUES**

WANTED TO BUY: Vintage Metal and Wood Signs, Milk Bottles &

FOR SALE: Lawn Mower- runs great \$60.00. Florescent Light Fixtures & bulbs 4 foot sections- \$5.00 each (8 available) 8 foot sections- \$10.00 each

**307
MISCELLANEOUS
FOR SALE**

BUNDLED Newspaper - \$3 per Bundle. End Roll- Cost Depends on Weight of Roll. Available Monday-Friday 815-562-4171 (8AM-NOON ONLY) Rochelle News Leader.

FOR SALE: Lawn Mower- runs great \$60.00. Florescent Light Fixtures & bulbs 4 foot sections- \$5.00 each (8 available) 8 foot sections- \$10.00 each

**405
HOUSES FOR SALE**

ALL REAL ESTATE advertised herein is subject to the Federal Fair Housing Act, which makes it illegal to advertise any preference, limitation or discrimination based on race, color, religion, sex, handicap, familial status, or national origin, or intention to make any such preferences, limitation or discrimination. We will not knowingly accept any advertising for real estate which is in violation of the law. All persons are hereby informed that dwellings advertised are available on an equal opportunity basis.

**509
HOUSES FOR RENT**

3 BEDROOMS with garage. Franklin Grove area. No pets. 815-456-2453. (05-03-2023)

**307
MISCELLANEOUS FOR SALE**

NEW MILFORD REFRIGERATION

NEW, USED SCRATCH & DENT

- Refrigerators • Freezers
- Washers/Dryers • Stoves

We also carry a large selection of refurbished appliances with a warranty.

6331 11th Street, Rockford
815-262-3900

04092023

EVERY MORNING MY HUMAN SHAVES OFF HIS FACE FUR, HE'S FUNNY LIKE THAT.

-TUCK adopted 05-04-11

ADOPT
theshelterpetproject.org

A PERSON IS THE BEST THING TO HAPPEN TO A SHELTER PET

Subscribe Today!

ON THE FARM

Green farming continues to grow

FARMERS have been pressured to increase production to meet the demand of a growing population. This may require employing more efficient measures to ensure maximum output. Unfortunately, efficiency doesn't always mesh with sustainability, so commercial operations have had to make some modifications to find a balance between serving the public and protecting the planet.

Green farming utilizes different technology and practices in order to decrease detrimental impact on the environment. According to the farming resource NuFarming, agricultural operations have a significant impact on climate change. Simply adopting some new practices can lessen that impact.

Growing plants are not the only thing on a farm that can benefit from the sun. Farmers can convert a portion or all of their power needs to solar. According to the U.S. Department of Energy, there are benefits when solar companies and farmers work together.

Solar developers reduce installation costs and up-front risk by placing solar modules on previously tilled agricultural land. Vegetation under modules also can contribute to lower soil temperatures and increased solar performance. Agricultural land managers can reduce energy costs and diversify their revenue streams with solar. Plus, they can market products to sustainability-minded customers.

Solar is not the only renewable energy option. Farmers can incorporate wind and hydroelectric power as well.

This farming technique has been used for thousands of years and involves growing different crops in different seasons over a period of time. Farmers reduce the chances for pests and diseases becoming problems in the soil because frequent crop changes prevent invaders from gaining a foothold. Farmers use fewer fertilizers and pesticides as a result.

Farmers can improve productivity while also reducing environmental



impact with these two growing methods. NuEnergy states that hydroponic systems grow plants in mineral solutions or in materials like perlite or gravel. Aquaponics involves raising aquatic animals in addition to growing crops. The waste from the fish and other marine life is used to offer nutrients to the plants by growing them in this nutrient-rich water. Both methods remove the

need for soil.

Drip irrigation methods deliver water to the roots of plants through a series of pipes or tubes. Because water is not being sprayed into the air through sprinklers and other methods, less is lost to evaporation, and less water overall may be needed to provide for crops.

Plastic seems like it may not have a purpose on the farm, but recycled plastic, which is used in plastic mulch, can help produce plentiful crops with less water. Plastic mulches raise soil temperatures and insulate against evaporation so plants can grow faster and mature sooner. Invasive weeds also may be less likely to take root in plastic mulch or when crops are grown on black plastic.

Farmers can introduce plants that pests tend not to like to reduce reliance on chemical pesticides. For example, interspersing crops with natural bug repellants, such as basil, lavender and lemongrass, may keep insects at bay. Alliums, chrysanthemums, marigolds, and other flowers planted nearby also may deter bugs.

Green farming is something more agricultural operations may want to adopt.

The link between agriculture and food security

THE world faces many unique challenges in the decades to come, including a rapidly expanding global population. The United Nations estimates that the global population will reach 9.71 billion in 2050. That's an increase of more than 1.7 billion people between 2023 and 2050.

Food security is among the more significant challenges the world will face as the population increases. The United States Agency for International Development notes that food security means all individuals, regardless of their physical or economic circumstances, have ac-

cess to sufficient food to meet the dietary needs for a productive, healthy life. Food security is a more significant issue than people may recognize, even in first world, fully developed countries. For example, the United States Department of Agriculture's Economic Research Service indicates that slightly more than 10 percent of U.S. households were food insecure at some point during 2021. In fact, estimates suggest more than 800 million people across the globe go to bed hungry every night, which underscores the seriousness of the issue.

Food security and the agricultural industry are inextricably linked. The

USAID indicates that most of the people who go to bed hungry at night are smallholder farmers who depend on agriculture to make a living and feed themselves and their families. Supporting efforts to strengthen the agricultural industry can help to combat food security, as the USAID reports that growth within that sector has been found to be at least twice as effective at reducing poverty as growth in other sectors. Much of that can be traced to the disproportionate percentage of poor people who live in rural rather than urban areas. For example, the USAID reports that 75 percent of poor people in developing

nations live in rural areas. But the poverty rate is higher in rural areas than urban areas in the United States as well. Data from the 2019 American Community Survey indicates the poverty rate in rural areas was 15.4 percent in 2019 compared to 11.9 percent in urban areas. Though recent data regarding rural poverty rates in Canada is unavailable,

a 2013 discussion paper on the topic from the Government of Canada noted that the country's rural residents earned less and had lower levels of education than residents in urban areas, suggesting that poverty is likely more prevalent in the Canadian countryside than in the country's cities.

Though food security poses a significant global

challenge, lack of access to healthy foods is preventable. Individuals in rural and urban communities can voice their support for efforts to strengthen the agricultural sector. A thriving agricultural sector can ensure fewer people go to bed hungry each night and bolster the economies of rural communities that are disproportionately affected by poverty.





There are many jobs. And one tractor to do them all.



Call today to schedule a demo of the versatile BX Series sub-compact tractor. Part of our under 100 HP tractor line-up rated #1 for reliability.

- Variety of available attachments
- Easy-to-use hydrostatic transmission
- Swift-Tach Loader is easy to install and remove
- ROPS height fits easily in standard size garages

Together we do more.®

JOHNSON TRACTOR

200 Steward Road
Rochelle, IL
800-262-1680



• Residential & Commercial Concrete Additions

Tim & Roger Bruns, Owners
Established 1997

Bruns Construction, Inc.

FREE ESTIMATES!

815-561-0099
Free Estimates • Fully Insured
www.brunsconstructioninc.com

04052023

BUILT FOR GENERATIONS



• Residential • Farm • Equestrian
• Commercial • Community • Repairs

Discover The Difference. Call Today!



MORTON BUILDINGS

STORE HOURS:
M-F 8am-Noon,
1pm-5pm

877.613.3050 or 815-562-8777
104 Oak Ave., Rochelle, IL mortonbuildings.com

09042018

SPORTS

RTHS Boys Track

Hubs tie for 12th at Art Carlson Hawk Classic

Hernandez records top top-6 finishes including PR in 1600-meter run Friday

BY RUSSELL HODGES
SPORTS EDITOR

OREGON — The Rochelle Hub varsity track and field team tied for 12th place with 18 points in the Art Carlson Hawk Classic at Oregon High School on Friday. Rochelle will host the annual Ogle County Championship meet at Rochelle Township High School on Tuesday evening.

Junior Luis Hernandez took sixth in the 1600-meter run with a personal-record time of

4:49.74 and third in the 3200-meter run with a time of 10:52.08. Junior Landon Mickley finished fourth in the shot put with a personal-record heave of 13.53 meters and senior Ethan Bergeson placed sixth in the pole vault with a clearance of 3.20 meters. Rochelle's 3200-meter relay team (Thomas Koziol, Declan McGee, Chris Hickey and Elijan Mayen) took eighth in 9:26.85.

Freshman Wyatt Worthington took 12th in the 300-meter hurdles

with a personal-record time of 46.37 seconds and Bergeson placed 12th in the 110-meter hurdles with a time of 18.42 seconds. Freshman Reece Harris finished 14th in the 100-meter dash with a time of 12.21 seconds and 19th in the 200-meter dash with a time of 25.07 seconds. Senior Thomas Koziol finished 16th in the 800-meter run with a time of 2:17.96 and junior Nathan Sergeant recorded top-20 finishes in the triple jump (11th in 11.49 meters) and the

long jump (17th in 5.24 meters).

Rochelle's 1600-meter relay team (Nathan Sergeant, Jackson Smith, Caden Goodwin and Wyatt Worthington) placed 13th with a time of 3:52.86 and Rochelle's 800-meter relay team (Jackson Smith, Nathan Sergeant, Caden Goodwin and Reece Harris) took 16th in 1:40.06. Rochelle's 400-meter relay team (Landon DeLille, Jackson Smith, Reece Harris and Bruno Fernandez) finished 15th with a time of 48.22 seconds.



RMS Track & Field

Middle-schoolers shine at Rochelle Invitational

Eighth-grade teams earn third-place finishes in six-team meet on Thursday

BY RUSSELL HODGES
SPORTS EDITOR

ROCHELLE — The Rochelle Middle School track and field team held its annual Rochelle Invitational at Rochelle Township High School on Thursday. The seventh-grade girls finished fifth with 67 points and the eighth-grade girls took fourth with 91 points. The seventh-grade boys placed third with 112 points and the eighth-grade boys placed third with 81.5 points in the six-team meet that included Sycamore, Belvidere Central, Huntley, St. Paul and Indian Creek.

7th Girls

Kaliyah Cathina took second in the 100-meter dash with a time of 15.23 seconds and Evelyn Garcia placed third in the 1600-meter run with a time of 6:43.75. Emely Mandujano finished third in the 100-meter hurdles with a time of 20.77 seconds and Madison Ludwig took fourth in the shot put with a heave of 20 feet as well as fifth in the discus with a heave of 46 feet 3 inches.

Rochelle's 1600-meter relay team (Neyli Brown, Kaliyah Cathina, Josselyn Ortega and Allisson Cortes) finished third with a time of 5:17.16. Rochelle's 400-meter relay team (Neyli Brown, Kaylee Watson, Anna Hernandez and Josselyn Ortega) and 800-meter relay team (Jehan Jaradat, Brissa Garcia, Emely Mandujano and Lily Wengelewski) each placed fifth with respective times of 1:04.05 and 2:21.60.

7th Boys

Jay Hylton took first in the 100-meter dash with a time of 12.44 seconds, first in the 110-meter hurdles with a time of 19.62 seconds and first in the long jump with a distance of 17 feet 4 1/2 inches. Caiden Redlarczyk placed first in the triple jump with a distance of 33 feet 5 inches, second in the long jump with a distance of 16 feet 5 1/2 inches and second in the 100-meter dash with a time of 13.32 seconds. Miguel Carrillo finished fourth in the 200-meter dash with a time of 29.80 seconds and Jon Hernandez finished fourth in the 400-meter dash with a time of 1:07.22.

Riley Smith placed fourth in the 800-meter run with a time of 2:41.24 and Rochelle's 400-meter relay team (Jay Hylton, Caiden Redlarczyk, Riley Smith and Ethan Sturges) won with a time of 53.74 seconds. Rochelle's

1600-meter relay team (Christopher Lawrence, Jon Hernandez, Ethan Sturges and Mason Lopez) took third with a time of 5:04.74. Rochelle's 800-meter relay team (Sami Aljabari, Kolton Cragin, Nolan Zick and Saul Avila) placed fifth in 2:19.61.

8th Girls

Ashley Christy took third in the 100-meter dash with a time of 15.43 sec-

onds and Vivian Worthington finished third in the 1600-meter run with a time of 7:13.93. Jasmine Walsh placed second in the 100-meter hurdles with a time of 19.87 seconds and fourth in the long jump with a distance of 13 feet 2 1/2 inches. Sawyer Stockton finished first in the shot put with a distance of 23 feet 11 inches and fourth in the discus throw with a distance of 60 feet 5 inches.

Briel Metzger took third in the high jump with a clearance of 4 feet and Aiyana Mashaw finished fourth in the 800-meter run with a time of 3:07.00. Rochelle's 800-meter relay team (Emy Cacique, Elena Daugherty, Ashley Christy and Phelisy Lopez) placed third in 2:12.78 and Rochelle's 1600-meter relay team (Elena Daugherty, Camryn Metzger, Briel Metzger and Jasmine

Walsh) took second with a time of 5:21.19.

8th Boys

Alejandro Pellicer finished first in the shot put with a heave of 36 feet 4 inches, fourth in the 100-meter dash with a time of 13.59 seconds and fourth in the 200-meter dash with a time of 27.40 seconds. German Albertson took second in the 400-meter dash with a

time of 1:02.37 and Angel Hernandez placed fourth in the 1600-meter run with a time of 5:54.43.

Rochelle's 1600-meter relay team (German Albertson, Brandin Kirk, Angel Hernandez and Alejandro Pellicer) placed second with a time of 4:24.14 and Rochelle's 800-meter relay team (Joseph Beckman, Owen Miller, Adrian Dobberstein and Brandin Kirk) took fourth in 2:02.45.

Act by June 30, 2023 for this special subscription offer.

Get a FREE Gas Card when you renew or start a News-Leader Subscription!



\$129 Plus
for 52 Weeks
(\$10 Discount)

...Get a Gas Gift Card
from Clark gas station
Random amounts
ranging from \$5 to \$20



Clip the form below and mail it in with your check, or stop in our office to pay in person, or call in and pay with credit card over the phone.

Name: _____
Address: _____
City: _____ State: _____ Zip: _____
Telephone: _____
Email: _____

Offer valid for both new starts and renewals.
Offer expires on Wednesday, June 30, 2023

ROCHELLE
News-Leader
P.O. Box 46 - 211 Hwy. 38 East
Rochelle, IL 61068
815-561-2112