



# ROCHELLE News-Leader

WEEKEND EDITION | WWW.ROCHELLENEWS.COM

**It's an ALL THINGS & sale!**

Featuring a Wide Selection of Vintage Furniture, Clothes, Antiques, Toys, Home & Yard Decor

**Thursday, Friday & Saturday**

**June 22-24 10AM-5PM**

**Vendors Needed! Call 815-562-2855 or 815-561-6837**

**Zig Zag Antiques & More**

Consignment

1054 Lincoln Hwy., Rochelle

815-562-2456

Today's RNL issue sponsored by Community Unity member:

**Rochelle Community Unity**

**Play • Stay**

**ARER, NYE & CHADWICK**

ATTORNEYS AND COUNSELORS SINCE 1974

420 4th Ave.  
815-562-2456

**Vol. 104 • No. 15**

**\$1.25**

LOCAL NEWS... LOCAL VIEWS

**SUNDAY, JUNE 18, 2023**

**More coverage. Less spendage.**

Discounts up to 40% Get more. Spend less. It's that simple when you get car insurance from us. Like a good neighbor, State Farm is there. **CALL FOR A QUOTE 24/7.**

**Terri Schaefer, Agent**

Bus: 815-562-7063  
terri.schaefer.115n@statefarm.com

**State Farm**

State Farm Mutual Automobile Insurance Company, 030129 State Farm Indemnity Company, Bloomington, IL

**KNOW IT TODAY**

**Svela wins Lawn of the Week award**

DJ Svela received the Rochelle Chamber's most recent Lawn of the Week award. **Page 3**

**WEATHER**

**SUNDAY**  
HIGH LOW  
**86 58**

**MONDAY**  
HIGH LOW  
**87 61**

**TUESDAY**  
HIGH LOW  
**91 63**

**WEDNESDAY**  
HIGH LOW  
**89 65**

Today's RNL issue sponsored by Community Unity member:

**Rochelle Community Unity**

Shop • Play • Stay

Common Law, Uncommon Lawyers ©

**JAMES G. AHLBERG**  
ATTORNEY AT LAW

501 6th Ave.  
815-562-4443

**OBITUARIES**

NONE

**INSERTS**

- SCHNUCKS
- MENARDS
- BRIDAL GUIDE

**INSIDE**

Local News.....	2, 3, 5, 8
Obituaries.....	4
Opinion.....	6
Community.....	7



## Chamber hosts 53rd Annual Play Day

‘We could not put one more golfer on this course if we tried’

BY JEFF HELFRICH  
MANAGING EDITOR

**ROCHELLE** — On Tuesday, the Rochelle Chamber of Commerce hosted its 53rd Annual Chamber Play Day golf outing at Fairways Golf Course in Rochelle.

The presenting sponsor of the event was Burlington Junction Railway, which operates the City of Rochelle railroad. The play day featured a 1980s theme. Chamber Executive Director Tricia Herrera said the day was sold out with 38 foursomes.

“We could not put one more golfer on this course if we tried,” Herrera said. “It’s great. And it’s people from surrounding areas. It’s Rochelle, but it’s also Oregon, Rockford, Davis Junction and Stillman Valley and all those people that know this is the Chamber Play Day and you want to have a great time. It’s exciting to me to get a turnout like this. I always say we can’t do anything without sponsorship and support of the chamber. To have that great showing tells me that there is support of the chamber.”

The winning team of the play day was Liquor ‘n’ Wine, which came in first



On Tuesday, the Rochelle Chamber of Commerce hosted its 53rd Annual Chamber Play Day golf outing at Fairways Golf Course in Rochelle.

place with a score of -13 (53). Yatin Patel of the team was also the winner of the closest-to-the-pin contest on hole 14 sponsored by Rochelle Foods/Hormel, winning a year’s supply of bacon. Patel chose to donate the prize to The Kitchen Table.

Herrera said the chamber outing had a waiting list this year, which she called “exciting” to see after slower years due to the

COVID-19 pandemic and restrictions. The chamber director said it’s beneficial to the community to have a lot of its stakeholders in the same place at the same time at the play day each year.

“We always say that there is a lot of business done at the Chamber Play Day,” Herrera said. “We always like to facilitate those relationships between businesses and services and that happens here. Yes,

there is a little bit of golf that’s played as well, but there’s a lot of camaraderie and pride people take in their businesses. They’re wearing their logos and sharing their stories among the other players. They’re playing games at their holes and proudly displaying their products. Getting that all concentrated in one area, you can’t beat that.”

See CHAMBER pg 3

## New Hillcrest trustees, treasurer sworn in

Rezoning for bowling alley property approved Wednesday night

BY JEFF HELFRICH  
MANAGING EDITOR

**HILLCREST** — At its monthly meeting Wednesday, the Hillcrest Village Board of Trustees voted unanimously to appoint three trustees to the board and a new treasurer. All four appointed village officials along with recently-reelected Trustee Tim Ball were sworn in Wednesday.

New trustees are Eileen Braski and Joe Thompson. Trustee Jose Huerta was appointed as well, but he has served two years on the board previously.

Braski has lived in Hillcrest 28 years and Thompson has lived in the village for 29 years. The village board now has a full seven members.

“I think they’re both going to be a great fit for the village,” Village President Rick Rhoads said. “It’s nice to see full seats.”

Appointed as treasurer Wednesday was Penny Payton, who has served in the same position for the Village of Creston since 1995. Payton was also Hillcrest’s treasurer up until five years ago.

“She’s somebody who



At its monthly meeting Wednesday, the Hillcrest Village Board of Trustees voted unanimously to appoint three trustees to the board and a new treasurer. All four appointed village officials along with recently-reelected Trustee Tim Ball were sworn in Wednesday.

can step right into the job that the village has needed,” Rhoads said. “We have tax stuff that needs to be done. We need a treasurer with experience dealing with payroll and the federal and state governments and I

think Penny would be a great addition to our village family.”

### Rezoning

The board held a public hearing for and unanimously approved a zoning

change from light commercial to industrial for the former bowling alley and antique shop properties at 201 and 203 Powers Road.

The zoning change was desired by the owners, MSPM Properties, for

their planned future use of demolishing the current structures on the property and constructing buildings with storage units that could be utilized by businesses.

See HILLCREST pg 5

**Holcomb Bank** Member

Earn more with your money!

**12-month CD\***

**at 4.45% APY\***

\*CD (Certificate of Deposit) requires \$1,000 minimum balance to earn APY. \*Annual Percentage Yield (APY) is effective as of 3/23/23. Penalty for early withdrawal. Any fees may reduce earnings. For further information about fees and terms call or visit a Holcomb Bank location.

[www.holcomb.bank](http://www.holcomb.bank)

**Happy FATHER'S DAY**

From **ANDERSON PLUMBING & HEATING, INC.**

621 First Ave., Rochelle, IL

815-562-8784



# LOCAL NEWS

## Implementing California's Prop 12 comes with challenges, expenses for Illinois hog farmers

### Ogle County's Brian Duncan: 'We're just not sure what happens now'

BY TIMOTHY EGGERT  
FARMWEEK

ILLINOIS pork farmers say a litany of uncertainties remain about how California's Proposition 12 will be implemented or enforced after the U.S. Supreme Court found the law constitutional.

Led by Justice Neil Gorsuch, the court recently upheld the state's animal welfare law, ruling 5-4 that "while the Constitution addresses many weighty issues, the type of pork chops California merchants may sell is not on that list."

But according to Illinois livestock producers, preserving the law could spell major costs for farmers, leading to higher pork prices for consumers, and might cause more negative health outcomes for hogs raised under its standards.

"There's some big macro, even global, consequences to this, and then there's consequences that impact day-to-day pork production and pig farmers like myself," said Illinois Farm Bureau Vice President Brian Duncan, who raises hogs in Ogle County. "We're just not sure what happens now."

Adopted by 63% of California voters as a 2018 ballot initiative and set to take effect July 1, Prop 12 prohibits sales in the state of pork, veal

and eggs from livestock whose confinement do not meet certain minimum space rules.

Those rules mandate hog spaces be large enough for an animal to turn around, lie down, stand up and extend its limbs. They specifically set sow confinement dimensions at 24 square feet, which is 7 square feet larger than the industry standard.

The National Pork Producers Council and American Farm Bureau Federation contend the requirements violate the Commerce Clause because California represents less than one-sixth of domestic demand and sources most of its pork from other state producers.

The organizations also argued the law would compel farmers to adopt group housing and open pen gestation, which in turn would result in worse health outcomes for sows.

"There's a higher cull rate due to injury," said Duncan, who, with certified veterinarians, manages a sow farm that uses pen gestation.

"There's more abrasions, there's more fighting, there's more biting," Duncan said of open pen gestation systems. "All the things you would expect when you have animals that are aggressive let loose with each other."



(PHOTO BY CATRINA RAWSON)

California's Proposition 12 prohibits sales in the state of pork, veal and eggs from livestock whose confinement do not meet certain minimum space rules.

To meet the law's space requirements, hog farmers will likely need to cull as many as 30% of their sows, according to Chad Leman, president of the Illinois Pork Producers Association. He owns Leman Farms

Inc. in Woodford County.

"This alone will come at a significant cost," Leman told FarmWeek, adding he has no immediate plans to change any of his hog barns or production systems until there's more direction

within the industry.

The law's mandates are estimated to increase production costs at the farm level by 9.2%, with producers expected to spend between \$290 million and \$348 million to update sow housing to comply with the law, according to NPPC and AFBF.

"Currently with building and construction costs and the dynamic of our farm, it'd be very cost prohibitive and hard to justify making those changes for an unpromised premium," said Thomas Titus, a former IPPA president who manages Tri Pork Inc., a farrow-to-finish farm in Logan County.

There are also questions around how California regulators will enforce the rules in other states. Do packers certify the pork product came from an animal housed according to the law? Will there be third-party audits and inspections?

While farmers might be tasked with tracking Prop 12-compliant hogs on their farms, Titus said packers might also have to keep pigs segregated when they come in, separated in freezers and coolers and affixed with specific labels.

"(The law) definitely adds not just another layer of compliance challenges for the producer, but also for the processor, too," Titus said. "Labor around that is also a concern."

And there's uncertainty whether the market will even offer more for pork raised in the environment the law mandates.

Duncan, Leman and Titus said the farmers who implement changes to comply should be compensated more for their meat products, such as a per-head premium.

"We have no problem if there's some sort of voluntary program where producers who choose to raise pigs this way would be paid a premium for their products and could make a business decision to try to capture that market," Leman said. "What we've got a real problem with is this involuntary regulation being forced on all of us who raise pigs."

Illinois hog farmers are further concerned the ruling on the law will empower "states with high people populations and low pig populations" to craft similar regulations, Leman added.

Duncan agreed, forecasting consequences that a patchwork of U.S. laws could have on international trade.

"What good is an agreement that I may negotiate ... if I can't assure (a trade partner) the access to my markets is going to be uniform across the country?" Duncan said. "It raises all sorts of questions about what trade agreements look like going forward if a state can slap extra burdens on an importer."

*FarmWeek's Daniel Grant and RFD Radio contributed to this story. This story was distributed through a cooperative project between Illinois Farm Bureau and the Illinois Press Association. For more food and farming news, visit FarmWeekNow.com*

## Forsberg named to William & Mary spring dean's list

WILLIAMSBURG, VA—Peter Forsberg from Rochelle was recently named to the dean's list at the College of William & Mary for the spring 2023 semester.

In order to achieve dean's list status, a full-

time degree seeking undergraduate student must take at least 12 credit hours and earn a 3.6 quality point average during the semester. William & Mary is the second-oldest institution of higher learning in the United States.



QUIT TIP

# Take a breath

Three actually. Hold the last for a few seconds, then exhale slowly. You'll relax and exercise muscles used for clear breathing.

STRESS LESS. QUIT YES.

1-866-Quit-Yes



ILLINOIS TOBACCO  
QUITLINE  
ILLINOIS DEPARTMENT OF PUBLIC HEALTH  
AMERICAN LUNG ASSOCIATION IN ILLINOIS

*This message is funded by the Illinois Department of Public Health through funds received from the Centers for Disease Control and Prevention (CDC)*



DeKalb  
County Health Department  
Prevent • Protect • Promote



Public Health  
Prevent. Promote. Protect.  
Boone County Health Department



OGLE COUNTY  
HEALTH DEPARTMENT



LEE COUNTY  
HEALTH  
Department



# LOCAL NEWS

## Rochelle man arrested stemming from February home invasion

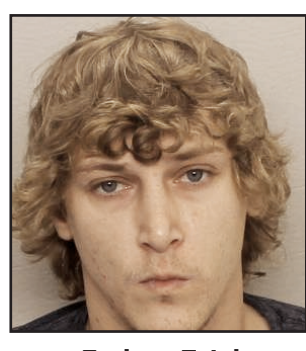
**ROCHELLE** — On June 8, the Ogle County Sheriff's Office made an arrest stemming from a Feb. 19 home invasion call just outside Rochelle where a man was shot while allegedly entering a residence unlawfully.

On Feb. 19 at 1:11 a.m., deputies responded to a residence in the 9,000 block of East Fowler Road in reference to a home invasion in progress. Prior to their arrival, deputies were updated with information that a male offender had been shot by someone living at

the property.

The investigation of the alleged home invasion revealed that Zachary T. Johnson, 28, of Rochelle, first attempted to enter a residence in the 9,000 block of East Oak Ridge Drive. Johnson then entered the residence on East Fowler Road and was subsequently shot.

On June 5, an arrest warrant was issued for Johnson for the charges of criminal trespass to residence, a class four felony and two charges of aggravated battery, class three felonies. On June 8,



Zachary T. Johnson

Johnson was arrested, posted bond and he will appear in Ogle County Court on June 30. All suspects are presumed innocent until proven guilty in a court of law.

## Hillcrest residents arrested on battery charges

**HILLCREST** — The Ogle County Sheriff's Office recently arrested two Hillcrest residents on battery charges following the investigation of a child abuse incident in March, a June 14 press release said.

On March 21 at approximately 1:21 p.m., deputies investigated a child abuse incident involving a 12-year-old female and a 4-year-old female, which occurred in the Village of Hillcrest. After a lengthy investigation with the assistance of Shining Star Children's Advocacy Center, James R. Jones III, 33, of Hillcrest, was charged with



Ayonna S. Jones

two counts of domestic battery, unlawful restraint, two counts of aggravated battery of a child, and aggravated battery. Ayonna S. Jones, 32, of Hillcrest was charged with two counts of domestic battery. Both James Jones and Ayonna Jones were lodged



James R. Jones III

in the Ogle County Jail on June 13 in lieu of bond. Ayonna Jones posted bond and was released pending a future court date. James Jones appeared in court on June 14 and subsequently posted bond, and was released pending a future court date.



(PHOTO BY JEFF HELFRICH)

The chamber begins planning for the play day in January. Executive Director Tricia Herrera called it a lot of work, but said it's a labor of love.

## CHAMBER: Annual play day held at Fairways Golf Course

From page 1

The chamber begins planning for the play day in January. Herrera called it a lot of work, but said it's a labor of love. She thanked staff, chamber board members and sponsors for their help with the event.

"I certainly could not do this by myself," Herrera said. "It is great to have sponsors here and participating on holes and my board of directors helps and people are

running back and forth. Businesses provide raffle baskets, which is another way for them to promote their businesses and display their products."

Golfers were treated to a meal at Salt 251 before golf began. As Herrera spoke before the shotgun start, she thanked those that chose to participate and the chamber's premier sponsors: Gold Rush Gaming, Rochelle Community Hospital, Prescott Brothers Ford, Central Bank, Wheatland Tube

Western Tube and Northern Illinois Disposal.

"This is our largest fundraiser that we do at the chamber," Herrera said. "We're always excited about it. It definitely helps us in our budget to plan our programs out. It supports programs like Lawn of the Week, Curb Appeal, the delegates group, Leadership Academy and all of those things that help us add value to a chamber membership. It's just a great day."



(COURTESY PHOTO)

DJ Svela was recently named the Rochelle Chamber of Commerce's Lawn of the Week winner. The chamber has partnered with Rochelle Ace Hardware to award gift cards to the winners.

## Svela earns Rochelle Chamber's Lawn of the Week award

**ROCHELLE** — DJ Svela was recently named the Rochelle Chamber of Commerce's Lawn of the Week winner. The chamber has partnered with Rochelle Ace Hardware to award gift cards to the winners.

The 2023 Lawn of the Week program has begun

for the summer and will run through September. Nominate a neighbor/yard each week by submitting a name and address on the Rochelle chamber's website, <http://therochellechamber.com/lawn-of-the-week>. Submissions can also be made by emailing [rochel-lechamber@gmail.com](mailto:rochel-lechamber@gmail.com).

"We are proud to recognize our residents that display community pride in Rochelle," Chamber Executive Director Tricia Herrera said. "We love that this program gives us the chance to showcase the hard work and dedication they put in to making our city look great."

## Secretary of State mobile unit coming to Rochelle July 19

**ROCHELLE** — The Illinois Secretary of State mobile unit is coming to Rochelle on July 18 from 10 a.m. to 1:30 p.m. at Rochelle City Hall at 420 N. 6th St.

The mobile unit will be hosted by State Sen. Win Stoller. Attendees can save themselves a trip to the DMV as it comes to town. Services provided include driver's license renewals, replacements and corrections; State ID card renewals, replacements and

corrections; license plate renewal stickers, organ & tissue donor registration (only with license or ID application), motor voter registration (only with license or ID application) and seniors age 65 and older (no charge for state ID).

Seniors age 78 and older must visit a Secretary of State Driver Services facility to renew driver's license. Please visit [www.ilsos.gov](http://www.ilsos.gov) for identification requirements. All payments must be made by check, credit

card, debit card or money order. No cash accepted.

To renew a current Illinois driver's license or ID card, a valid driver's license or ID must be presented. To apply for a duplicate driver's license or ID card, a signature is required. To apply for a corrected driver's license or ID card, one form of identification must be presented.

Please sign up to reserve your spot at the Rochelle City Hall or call 815-562-6161.

## Teach Kids about Electrical Safety!

Some important lessons include:

- Water and electricity do not mix
- The only objects that go into outlets are electric plugs
- Never stick fingers or objects in electrical appliances
- Electric cords should be left alone



Local People Providing Local Services  
**815-562-4155**  
333 Lincoln Hwy., Rochelle • [www.rmu.net](http://www.rmu.net)



APARTMENT AVAILABLE

Lincoln Manor

Owned and operated by Lutheran Social Services of Illinois (LSSI) offering apartment living for older adults in Rochelle and the surrounding communities.

Rent based on 30% of a Resident's Adjusted Gross Income

- Secure Entry System
- Community room with kitchen
- Activities
- On-site coin operated laundry
- On-site management office
- Dependable 24/7 maintenance service
- On-site parking for residents

Full time Social Service Coordinator is available to assist residents

For more information, please call 815-562-1404

615 N. Lincoln Hwy.  
Rochelle, IL 61068  
TTY 847-390-1460

MANAGED BY:  
Lutheran Social Services of Illinois  
[www.LSSI.org](http://www.LSSI.org)

EQUAL HOUSING OPPORTUNITY

01132019

VOTED BEST REAL ESTATE AGENCY

2022 VOTED BEST OF OGLE COUNTY

HAYDEN REAL ESTATE INC.

221 IL-38, Rochelle, IL | [hre@haydenreinc.com](mailto:hre@haydenreinc.com) | 815-562-2111

Hayden Real Estate, Inc. has served Ogle County for 50 over years!

We THANK YOU for your support!

Spencer Hayden  
Tim Hayden  
Sherry Murphy  
Jeff Reif

Ron Frakes  
Vicki Pemberton  
Stephanie Williams  
Amy Hayden

We look forward to serving the community for many years to come!

11202022



# LOCAL NEWS

## Rochelle Police Department

### Officers issue several arrests

**ROCHELLE** — On June 9 at 3:07 p.m. Alex C. Anderson, 20, of Rochelle was arrested for disorderly conduct. He was released on an I-Bond with a July 7 Ogle County court date.

On June 8 at 11:15 a.m. Marc J. Gallinar, 19, of Rochelle was cited for speeding. He signed a promise to comply and was given a July 7 Rochelle court date.

On June 11 at 8:37 a.m. Allyssa Rains, 23, of Rockford was arrested for an outstanding Lee County warrant for failure to appear on a contempt of court charge. She paid \$300 and was released with a June 27 Lee County court date.

On June 11 at 10:53 a.m. Andrew Whiting, 41, of Rochelle was arrested for disorderly conduct and transferred.

On June 13 at 12:42 p.m. Jennifer R. Stark, 37, of Rochelle was arrested for criminal damage to property and transferred.

On June 13 at 2:55 p.m. Rochelle was cited for speeding. He signed a promise to comply and was given a July 7 Rochelle court date.

On June 9 at 11:54 p.m. Jimmie L. Boatman, 41, of Milwaukee, Wisconsin was arrested for violation of an order of protection and domestic battery and transferred.

On June 10 at 9:24 a.m. Nisan J. Dean, 28, of Rochelle was cited for operating a vehicle with suspended registration. He signed a promise to comply and was given a July 21 Rochelle court date.

On June 10 at 10:40 a.m. Juan G. Garcia, 23, of Rochelle was cited for operating a vehicle with suspended registration. He signed a promise to comply and was given a July 21 Rochelle court date.

On June 9 at 2:09 p.m. Allen W. Butz, 41, of Ro-



Wendell E. Lewis, 43, of Rochelle was arrested on an outstanding Ogle County warrant and for possession of a controlled substance and transferred.

On June 13 at 11:12 p.m. Jeremy R. Phillips, 33, of Davis Junction was arrested on an outstanding Ogle County warrant and transferred.

On June 13 at 5:47 p.m. a 13-year-old male juvenile of Rochelle was arrested for battery and released on an I-Bond.

All individuals are considered innocent until proven guilty.

## Interstate 39 work in Ogle County begins June 19

**DIXON** — The Illinois Department of Transportation announced June 12 that weather-permitting, construction on southbound Interstate 39 in Ogle County will begin Monday, June 19. The work zone is south of the Illinois 64 interchange (exit 104).

Work will install new weigh-in-motion sensors in the road. One lane of

traffic will be open during the \$1.1 million project. In-roadway work is expected to be completed by mid-July.

Motorists can expect delays and should allow extra time for trips through this area. To avoid the work area, when feasible, use of alternate routes should be considered. Drivers are urged to pay close attention to changed conditions and signs in the work zones, obey the posted speed limits, refrain from using mobile devices and be alert for workers and equipment.

Over the next six years, IDOT is planning to improve more than 2,500 miles of highway and nearly 10 million square feet of bridge deck as part of the Rebuild Illinois capital program, which is investing \$33.2 billion into all modes of transportation. Accomplishments through Year Three of Rebuild Illinois included approximately \$8.6 billion of improvements statewide on 4,422 miles of highway, 412 bridges, and 621 additional safety improvements.

For IDOT District two updates, follow us on Twitter at @IDOT-District2 or view area construction details on IDOT's traveler information map on Getting-AroundIllinois.com.

*Sue & Elmer Hudson*

**Celebrating 60 YEARS**

Sue & Elmer Hudson are celebrating their 60th wedding anniversary this month. They were married on June 22, 1963 in Wise, Virginia. They have two sons: Steve (Suzanne) Hudson and David (Noemi) Hudson, 4 grandchildren: Sarah (Shaun) Chapman, Sean (Brittany) Hudson, Keaton Hudson and Logan Hudson, 4 great-grandchildren: Gracie & Presley Chapman and Wesley & Cooper Hudson. They are formerly of Rochelle. Sue owned & operated The London Styling Salon & Elmer worked at Rochelle Stone. They now share their time between Oregon, IL and Englewood, FL.

06182023

**HAPPY Anniversary**

**Soil and Water Outcomes Fund**

**Financial Incentives for New Conservation Ag Practices**

- No-till/reduced tillage
- Cover crops
- Extended crop rotations

**Illinois Enrollment Open**

Enroll your acres now at [www.theoutcomesfund.com/il-news](http://www.theoutcomesfund.com/il-news).

**Look! 4 corners!**

Everyday moments can be learning moments with your kids. For more tips, visit [bornlearning.org](http://bornlearning.org)

## Ogle County Sheriff's Department

### Deputies respond to car-versus-pedestrian crash

**OREGON** — On June 8 at 9:04 a.m. deputies conducted a traffic stop in the 3,000 block of North River Road for expired registration. During the stop it was learned the driver did not possess a valid driver's license. The driver, Luis A. Arvizo-Florez, 31, of Rockford was taken into custody and cited for no valid registration, no valid license and operating an uninsured motor vehicle. Arvizo-Florez was also charged with unlawful possession of a controlled substance-cocaine. He was logged at the Ogle County Jail without incident.

On June 8 at approximately 8:33 p.m. deputies responded to the 100 block of Main Street in Leaf River regarding a reported battery. After an investigation, deputies placed Stasha D. Helms, 38, of Leaf River, under arrest for aggravated battery of a senior citizen (class two felony) and aggravated battery (class three felony). Helms was transported to the Ogle County Jail pending an appearance before a judge.

On June 8 at approximately 5:21 p.m. deputies responded to a car-versus-pedestrian crash in the 100 block of South 1st Avenue in Forresteron. Upon investigation, it was learned a pedestrian, Nickole M Butler, 39, of Forresteron, was in the roadway when she was struck by a vehicle in traffic. Butler was transported to Freeport Memorial Hospital by Forresteron EMS. Butler suffered no injuries due to the crash. Butler was issued a citation for pedestrians under influence of alcohol or drugs in the roadway.

On June 8 at approximately 8:05 p.m. deputies arrived in the 11,000 block of West Illinois Route 72 in response to a single-vehicle rollover. Upon investigation, it was discovered the vehicle, driven by Jacob D. Boudrie, 40, of Hampshire, Illinois, lost control and rolled over in the north ditch. Boudrie was examined by Forresteron EMS and released on a refusal. Boudrie was placed under arrest for driving under the influence of drugs. Boudrie was also issued citations for improper lane usage, failure to reduce speed to prevent an accident, and operating a motor vehicle with no insurance. Boudrie was transported to the Ogle County Jail where he was held in lieu of bond.

On June 9 at approximately 1:52 a.m. deputies

conducted a traffic stop in the 6,000 block of West Illinois Route 64. After an investigation, Colleen A. Quinn, 31, of Rockford, was placed under arrest for driving under the influence of alcohol. Quinn was also cited for speeding. Quinn was transported to the Ogle County Jail where she was held in lieu of bond.

On June 10 at 8:26 p.m. deputies responded to the 4,400 block of South Chana Road for the report of a single-vehicle rollover. After an investigation, it was learned a vehicle operated by Orlando Cruz, 28, of Chana, was traveling northbound when the vehicle left the roadway and overturned. Cruz was transported to a KSB hospital for minor injuries. After receiving medical treatment, Cruz was arrested for aggravated driving under the influence of alcohol (license suspended), driving under the influence of alcohol, driving while license suspended and an Ogle County warrant. Cruz was additionally issued citations for failure to reduce speed to avoid an accident, improper lane usage and a seat belt violation. Cruz was transported to the Ogle County Jail pending an appearance before a Judge.

On June 10 at approximately 1:34 p.m. deputies conducted a traffic stop in the 13,000 block of East Illinois Route 72. After an investigation, deputies cited Adam Hill, 32, of Davis Junction for driving while license suspended. Hill was additionally issued citations for no insurance and suspended registration.

On June 11 at approximately 2:21 a.m. deputies conducted a traffic stop in the 7,000 block of South Illinois Route 52. After investigation, deputies placed Joshua Cramer, 34, of Sterling under arrest for driving while license revoked. Cramer was additionally issued a citation for the Scott's Law violation. Cramer was transported to the Ogle County Jail where she was held in lieu of bond.

On June 11 at 8:56 p.m. deputies conducted a traffic stop in the 6,000 block of North Illinois Route 2 for an equipment violation. After a brief investigation, it was learned that the driver of the vehicle, Payton Wisman, 20, of Byron, was operating the vehicle with no valid license. Wisman was arrested for no valid license and was released on an Individual bond. Wisman was also issued a citation for an inoperable head light.

On June 12 at approximately 12:58 a.m. deputies conducted a traffic stop on Interstate 39 near mile marker 97. After investigation, deputies

arrested Charles Farris, 32, of Chicago, for driving while license revoked. Farris was issued additional citations for illegal window tint and an equipment violation. Farris was transported to the Ogle County Jail where he was held in lieu of bond.

On June 12 at 10:06 p.m. deputies were dispatched to a single-vehicle rollover accident with injuries in the 8,000 block of East Flagg Road. Through the course of the investigation, it was determined a silver Chevrolet Equinox driven by Kelsey L. Swanson, 25, of Morrison, was westbound on East Flagg Road when it exited the south side of the roadway and entered the ditch. The silver Chevrolet then struck a field entrance, became airborne, and overturned, coming to a rest on its driver's side. Swanson was transported to KSB Hospital in Dixon with serious injuries. Deputies were assisted on scene by Ashton Fire/EMS.

On June 13 at 12:21 p.m. deputies investigated a minor two-vehicle accident in the 10,000 block of North Girl Scout Road. After a brief investigation, it was learned that a Chevy Trailblazer driven by Andrew Lane, 21, of Rockford, had run into the front of a Toyota truck driven by Alvin Winstead, 54, of Stillman Valley. No injuries were sustained as a result of this accident. Lane was arrested for driving while license suspended and also cited for no valid insurance. Lane was released on an I-Bond at the scene and provided a return court date.

On June 13 at approximately 5:29 p.m. deputies responded to the 4,500 block of East Marrill Road in reference to a single-motorcycle accident. An initial investigation revealed an eastbound motorcycle being driven by Pablo Alcaraz, 50, of Byron, lost control and came to rest in the south ditch. Alcaraz was transported to Swedish American Hospital by Byron EMS for treatment of injuries. The accident remains under investigation.

On June 15 at 12:44 a.m. deputies conducted a traffic stop in the area of East Illinois Route 38 and South Mulford Road. After an investigation, the driver Zana L. Bell, 28, of DeKalb, was placed under arrest for driving under the influence of drugs. Bell was taken into custody without incident and transported to the Ogle County Jail, where she was held in lieu of bond. Bell was additionally charged with reckless driving, disregarding an official traffic control device and speeding 35+ miles over the speed limit.

All individuals are considered innocent until proven guilty.

**ROCHELLE News-Leader**

**211 IL Route 38 East, Rochelle, IL 61068**

**(815) 562-4171**

USPS (467-820) ISSN (1075-2811)

Published every Wednesday and Sunday by Rochelle Newspapers Inc. at 211 E. State Route 38, Rochelle, IL 61068. Periodical postage paid at Rochelle, IL 61068. Postmaster send address changes to the Rochelle News-Leader, P.O. Box 46, Rochelle, IL 61068. Subscription rates are \$139.99 per year by mail in Ogle County. Outside county rate is \$149.99 per year. No mail delivery in newspaper-carrier serviced areas. The circulation department is open Monday through Friday from 8 a.m. to 5 p.m. If you are a carrier subscriber and your paper does not arrive, contact Kelly White at 561-2112.

**IN-COUNTY REGULAR SUBSCRIPTION RATES**

- \$139.99 for one year • \$79 for six months
- \$34.99 for three months • \$13.99 for one month

Call (815) 561-2112 or Visit our website at [www.rochellenews-leader.com](http://www.rochellenews-leader.com)

**HOW TO CONTACT US**

News-Leader Main Switchboard	(815) 562-4171
<b>General Manager</b> Mike Feltes	(815) 561-2124
<b>Newsroom Staff</b> Jeff Helfrich, Managing Editor Russ Hodges, Sports	(815) 561-2151 (815) 561-2152
<b>To Place a Display Ad</b> Andrew Heiserman Chris Ackland	(815) 561-2123 (815) 561-2153
<b>To Place a Legal Ad</b> Mike Feltes	(815) 561-2124
<b>To Place a Classified Ad</b> Andrew Heiserman Chris Ackland	(815) 561-2123 (815) 561-2153
<b>Subscriptions and Delivery</b> Kelly White	(815) 562-4171

**Report policy**

Any arrests listed in this paper are merely charges and the defendants are presumed innocent unless proven guilty in a court of law. Please note that all police reports received from the

Rochelle Police, the Ogle County Sheriff's Department and the Illinois State Police, will be printed without exception. Requests to omit particular reports will not be considered or honored at any time.



# LOCAL NEWS

## HILLCREST: Village board raises ordinance concerns Wednesday

From page 1

One of the owners, Cory Myers, attended Wednesday's meeting and said the plan is to start demolition as soon as possible and clear and combine the properties. The group would then acquire permits and start building, possibly in the fall. The buildings will be single-story and there is a plan for a fence around part of the property. Larger storage units would first be built on Powers Road and additional smaller units would potentially be built closer to Erickson Road afterwards.

"The Powers Road frontage will be more for

businesses to rent, like if a plumbing company wanted a rental spot to run their business out of and they wanted some frontage where people driving by on Illinois Route 251 could see a sign they put up," Myers said. "As long as that goes well, then we'll continue building back towards Erickson Road."

Myers said the plans for the project have not yet been finalized.

"We've had engineers lay out the lot and do all that, but we haven't actually ordered anything or put down what we're exactly going to do on paper," Myers said. "We were waiting on this zoning change."

### Water tower

The village has experienced a leak in its water tower that will require upcoming work by Pittsburg Tank & Tower Group. The cost for the leak repair will be \$26,605 and Pittsburg will be performing some of the other work to the tower it recommended in the past. The estimate on the total amount of the rest of the work needed for the water tower is \$384,370, but not all of it will be done by Pittsburg.

The leak repair work will require a bladder truck to maintain pressure in the village system while the tower is emptied to do the

work. Village Water Trustee Dan Potter said he hopes the work will be done in the next month. The village approved money for water tower repairs at its April board meeting.

### Engineering

The board heard an update on projects from its engineering firm, Baxter & Woodman. Engineer Kaitlin Wright said that the village now has better conditions for its priority 1A water main project's ability to receive principal forgiveness on an IEPA loan.

The current construction estimate on the project is \$2.68 million and that loan amount is being reserved

for the village. Hillcrest is now eligible for 50-percent principal forgiveness of as much as \$1.25 million.

The plan is now to go out for bid for the project in November due to current high prices and busy contractors. The project still needs to be approved to go ahead by the board. The water main improvement process started in 2018. Wright plans to present a detailed report on the project and its history next month. Wright said that sealcoating in the village is expected to take place in the next two weeks, but that timeframe is not a guarantee. Hillcrest streets to be sealcoated this summer include Ramona

Avenue, Scott Avenue and River Road.

### Ordinances

Trustees raised concerns Wednesday regarding ordinance violations including parking, abandoned cars, people driving UTVs and overgrown grass and their potential enforcement. Rhoads said he's been in conversations with multiple law enforcement agencies about getting someone to police the village and enforce ordinances.

The village is also looking into having its ordinance codes evaluated by a company that deals with municipal governments and provides feedback.

## Rochelle Area CHURCH DIRECTORY

**Ashton Bible Church**, corner of Main and Paddock in Ashton. Pastor Farrel Stauffer, church phone is (815)453-2190, church website [www.ashtonbible.org](http://www.ashtonbible.org). Sunday School for all ages 9:00-10:00am, Morning Worship 10:15am, Wednesday Prayer Meeting/Bible Study 6:30-8:00pm.

**The Bridge Church**, Pastor Greg Duncan, 11038 E. IL Route 38, Rochelle, IL 61068. Phone: 815-562-7750. Sunday School: 9:00 am; Sunday Service: 10:00 am; Nursery & Children's ministry during am service; Bible Study Tuesday 10:00 am and Wednesday 7:00 pm. Web: [thebridgechurchrochelle.com](http://thebridgechurchrochelle.com) Email: [thebridgechurchrochelle@gmail.com](mailto:thebridgechurchrochelle@gmail.com)

**Calvary Lighthouse Church, Assemblies of God**, Senior Pastor, Dr. James Horvath. 14409 Hemstock Rd., Rochelle. Sunday Morning: Sunday Worship & Children's Church 10:00 A.M., Wednesday Evening 7:00 P.M. – Adult Teaching, Missionettes & Royal Rangers Children's Classes, Nursery available for all services. HE-Brews Cafe is open before and after services. For further information, please call the CLC office at 815-562-7701, or email us at [staff@calvarylighthouse.com](mailto:staff@calvarylighthouse.com)

**Calvary Lutheran Church, LCMC** - "To Know Christ and to Proclaim Christ in Word and Deed" -19 Perry Road, Lee, IL 60530 (the intersection of Perry Road and W. County Line Road). Rev. Martha Uecker Nelson, Pastor. Coffee Hour starts at 9:00 a.m., Sunday School, Confirmation, and Adult Bible Study are at 9:15 a.m. Worship is at 10:30 a.m. and is broadcast live on Facebook. Go to our website is at [www.Calvarychurchlee.org](http://www.Calvarychurchlee.org) and click on the link there. A Grief Support Group meets the third Tuesday of each month at 10:00 a.m. Call or text (815) 824-2825 or email [CalvaryLeeIL@gmail.com](mailto:CalvaryLeeIL@gmail.com) with questions or for more information. Also check us out at [www.facebook.com/Calvary-Lutheran-Church](http://www.facebook.com/Calvary-Lutheran-Church).

**Rochelle Church of Christ**, Keeping Christ at the center in the Hub City. We meet Sundays at 9:00am for Bible Study and 10:00am for worship. We also have a Wednesday Bible Study at 7:00pm. 206 Erickson Rd, Rochelle, IL 61068. You can call us at (815) 562-6572 or visit us on the web at [rochellechurch.com](http://rochellechurch.com). We also have a radio program Sundays just after 8am on WRHL 1060AM. Minister Dominic Venuso.

**Creston United Methodist Church and Steward United Methodist Church** - Rev. Ilhan You, Creston: 126 West South Street, P.O. Box 209, Creston, Illinois 60113. Sunday morning worship 9:00am. Coffee fellowship at 10:15am. Steward: 507 Main Street, P.O. Box 80, Steward, IL 60553. Adult Sunday School, 10:00am. Sunday morning worship and Children's Sunday School 11:00am. Contact the church office at 847-730-4370 for more information. [facebook.com/crestonumcil](http://facebook.com/crestonumcil) [facebook.com/stewardilumc](http://facebook.com/stewardilumc)

**Elim Reformed Church**, 140 S. Church Road, Kings, IL 61068. Phone: 815-562-6811. Email [goelimchurch@gmail.com](mailto:goelimchurch@gmail.com) Website [www.goelimchurch.org](http://www.goelimchurch.org) Sunday Morning Worship 10:00 Rev. Marv Jacobs

**Faith Lutheran Church** - (14206 E. Flagg Rd.) - "Making Christ Known Through Lives of Faith." In-person worship is available each Sunday at 9:00 a.m. or online at "Faith Lutheran Social" on YouTube. Worship resources are also available on our Facebook page - 'Faith Lutheran Church ELCA.' You may also e-mail Pastor Joy Alsop at [Pastor@faithlrochelle.org](mailto:Pastor@faithlrochelle.org) for more information. All are welcome to join us!

**First Baptist Church of Rochelle, First Baptist Church of Rochelle** invites you to experience our practical Bible services which have nurseries provided in every service along with a wide range of children's and teen ministries. Sunday School is at 9:30 am with regular church services at 10:30 am and 1:00 pm. Wednesday Family Night starts at 6:30 pm with AWANA for the 5 yr. olds thru 6th grade. The Omega Teen Ministry also starts at 6:30 pm for 7th - 12th grades and the Adult Bible Study at 7:00 pm. First Baptist Church is located 6 blocks west of Hwy 251 at the corner of Woolf Ct. and 8th Ave. in Rochelle. Call 562-4168 for more information. Listen at 8:30 am Sunday mornings on WRHL 1060 AM for the Sunday morning "Bible Message." [www.firstbaptistrochelle.org](http://www.firstbaptistrochelle.org)


**First General Baptist Church**, 500 S. 12th St, Rochelle. Phone: 815-562-5221. Email: [fgbcrchelle@gmail.com](mailto:fgbcrchelle@gmail.com). Website: [www.fgbcrchelle.org](http://www.fgbcrchelle.org). Facebook: [www.facebook.com/fgbcrchelle](http://www.facebook.com/fgbcrchelle). Pastor: Rev. Angelo Bonacquisti. **Sunday worship services:** 8:30 am, 11:15 am and 6:00 pm. **Sunday school:** 10:00 am. We'd be honored to have you join us as we worship JESUS and continue to grow in truth and love for God and each other. A nursery, children's church, youth group and small groups are available. If you need a ride please contact our church bus driver, John, at (815) 262-4275 by 8:30 am on Sunday. "For if you confess with your mouth that Jesus is Lord and believe in your heart that God raised him from the dead, you will be saved." Romans 10:9

**First Presbyterian Church** - An Amazing Place for Amazing Grace-Rev. Doug Forsberg, Senior Pastor. 1100 Calvin Road, Rochelle. Email: [info@placeforgrace.com](mailto:info@placeforgrace.com). Sunday morning worship 9:00am & 11:00am. In person or streamed online. On our Website and Facebook Live. [www.placeforgrace.com](http://www.placeforgrace.com) / [www.facebook.com/placeforgrace](http://www.facebook.com/placeforgrace)

**Grace Fellowship Church** — Pastor Jeff Ardisson, 2128 Il Route 38, Ashton, 815-453-7464. Sunday School 8:30 a.m. Sunday Worship Service 9:45 a.m. [www.graceisforyou.com](http://www.graceisforyou.com)

**Harvest Baptist Church** 241 Scott Ave. (Hillcrest). Rev. Duane Boehm, pastor. Email [duane712@hotmail.com](mailto:duane712@hotmail.com), cell 815-757-3427. Visit us on Facebook! Service times: Sunday morning worship with Children's Church at 10 am. Wednesday night worship at 7 pm.

**Immanuel Lutheran Church** Missouri Synod 16060 E. Lindenwood Road, Lindenwood, IL 61049. Rev. Dr. Matthew Rosebrock. Church Phone 393-4500. Church Worship 9:00 a.m. Sunday School Christian Education Hour at 10:30 a.m.

**Living Water Community Church** 405 N. Main St, Downtown Rochelle. Phone 815-561-6249, Website: [www.lwccr.com](http://www.lwccr.com), Like us on Facebook. We are Non-Denominational, Christ Centered, Casual dress, Christ Centered Live Band Worship. Chris Bender- Teaching Pastor, Brent Braski- Administrative Pastor, Adrian Daugherty- Lead Worshipper, Joe Mortimer- Youth Director, Amanda Barnes- Office Manager. Sunday Worship Service- 10:00am. Nursery/Toddlers Ages 0-5 available during the service in the Splash building. Swim- Grades 1st-5th worship with the adults then break out for age appropriate teaching. Youth groups, Small groups, Life Groups and Workshops meet throughout the year for Bible teaching. 7C's Mission- serves the community physically & spiritually each month from 1135 Lincoln Hwy, providing lightly used clothing, Hygiene items, a light lunch and Elder Prayer open the second Saturday from 10am-2pm and the 4th Thursday from 4pm to 7:00pm and by appointment.. 

**New Hope Fellowship (Church of God - Anderson, IN)**, 1501 10th Ave., Rochelle, IL 61068. Service: Sunday at 9 a.m. 10:30 a.m., (815)561-8400, [www.NHFchurch.net](http://www.NHFchurch.net) Pastor: Dan Sergeant and Pastor Nick Tornabene. (Classes for children through age fifth grade during service.)

**Rochelle United Methodist Church invites everyone to come and be celebrate the gifts of God's family in our series, "The Gifts of Encanto."** Inspired by the music, story, and variety of gifts in the Madrigal family, we will find ways to work together here and now to strengthen the family and serve the community. In the movie, the Encanto is a place of wonder, a refuge and shelter in a frightening world. The family's gifts serve the community, providing a model for us as well. Worship will include some of the color, music, and joy of the story as we celebrate the blessings that are among our community and consider ways to value the variety of our gifts. The themes of the movie will help us see how God gifts us and invites us to share those gifts together in a caring community! **Sunday worship is at 9:00 am** with Sunday School for children after the Children's Message. Recorded services are available on our YouTube channel and our website at [www.rochelleumc.com](http://www.rochelleumc.com). Our services are on the radio (93.5 FM) on Sunday mornings at 9:00 am. **Our Facebook page is** [www.facebook.com/rochelleumc](http://www.facebook.com/rochelleumc). **Rev. Dr. Katherine Thomas Paisley, Pastor.** 709 Fourth Ave. (815) 562-2164. [admin@rochelleumc.com](mailto:admin@rochelleumc.com). Everyone is welcome and loved!

**St. Patrick Catholic Church** Rev. Jesus Dominguez; Deacon Fermin Garcia; Deacon George Schramm; 244 Kelley Dr. (Corner of Kelley & Caron Rd.), PO Box 329, Rochelle, IL 61068. **Office Hours:** 9:00 AM-4PM Monday-Thursday, Phone: 815-562-2370. **Mass times:** 8:00 AM Monday-Thursday, Saturday Vigil Mass 5:00 PM English, 7PM Spanish, Sunday Mass 7:30 AM, 9:00 AM in English and 11:00 AM in Spanish. **Confessions:** Monday 8:30AM & 6:30PM, Tuesday 8:30AM, Saturday 8:30am & 4:00-4:45 PM Or by appointment. **Religious Education:** Deacon George Schramm, Director of Religious Education. 903 Caron Road, Rochelle, IL 61068, 815-561-0079; Website: [stpatricksrochelle.com](http://stpatricksrochelle.com) Email: [stpatrick-rochelle@rockforddiocese.org](mailto:stpatrick-rochelle@rockforddiocese.org) Facebook.com/StPatrickRochelle

**St. Paul Lutheran Church** "Building Relationships in Christ, Now and Forever!" Pastor-Rev. Greg Hoffmann, Steven Hall, Principal, Parish Nurse-Marcia Schnorr. 1415 Tenth Ave., Rochelle. Church Office-562-2744. Worship times: 6:00 p.m. Saturday, 9:00 a.m. Sunday. Our service is broadcast over WRHL 1060AM at 10:00 a.m. Sunday. Sunday School 10:15-11:15 a.m. Call 562-6323 for more information about the school.





# LOCAL VIEWS

Guest column

## Ron Kern: Supply and demand expectations

THE May World Agricultural Supply and Demand Estimates gives the first look at USDA's supply and demand expectations for the new-est marketing year since the USDA Agricultural Outlook Forum in February. This is the highlight of USDA's spring reports as it incorporates farmer planting decisions from the March Prospective Plantings report and adapts supply estimates to reflect weekly planting progress reports.

This was a bearish report for corn. USDA estimates corn planted for the 2023-2024 marketing year will be 92 million acres, up four percent from 2022-2023, when 88.6 million acres of corn were planted. USDA forecasts farmers will harvest 84.1 million acres of corn in 2023 with a trendline yield of 181.5 bushels per acre. This puts corn production projections in 2023 at 15.26 billion bushels, up 1.5 billion bushels, or 11 percent, from 2022's 13.7 billion bushels. This would be seven percent above the five-year average of 14.2 billion bushels and would be a record high. Something to consider will be how growing conditions

affect yield. Higher than expected yields would make an already record crop bigger, while lower yields could bring corn back below record production levels.

On the demand side, for the new 2023-2024 marketing year, USDA estimates ethanol use will be up slightly this year at 5.3 billion bushels. Corn export estimates for the newest marketing year are projected up 325 million bushels to 2.1 billion bushels, after an estimated 696-million-bushel decline this year from 2.47 billion bushels in 2021-2022.

Despite lower exports and steady ethanol use, next year's projected production decline would lead to an 805-million-bushel increase in ending stocks in September 2024, to 1.36 billion bushels. Of course, these early 2023-2024 demand projections could change considerably over the next 15 months.

USDA estimates put the 2022-2023 (ending) stocks-to-use ratio at 15.3 percent, up from the current year's estimated 9.7 percent, and the highest since 2020. USDA projects the 2023-2024 corn price at \$4.80 per bushel, down \$1.80 from this year's estimate; this would

be the lowest price since \$4.53 in 2020-2021, and USDA tends to be conservative when projecting big price changes. This would be a bad day to be a corn farmer if the futures market had not already built this news into prices. December corn futures reached session highs up about six cents at \$5.19 per bushel before closing off session lows at \$5.08 after the report.

Soybean farmers are expected to plant 87.5 million acres of soybeans in 2023-2024, unchanged from 2022. This was up nearly five percent from 2020. Soybean yields are projected at 52 bushels per acre for 2023-2024 (up 2.5 bushels from the latest estimate for 2022-2023) on 86.7 million acres harvested (up slightly). As a result, U.S. soybean farmers are projected to produce 4.51 billion bushels in the new marketing year, five percent above the current year's latest estimate of 4.28 billion bushels, and seven percent above the five-year average. These are bearish numbers for soybeans.

The continuing increase in soybean production for

2022-2023 follows rising crush demand to meet a rapidly rising demand for soy-based diesel fuels. Though export demand dipped in 2021-2022 to 2.14 billion bushels, it is projected to fall again in 2023-2024 to 1.98 billion bushels, which is above the five-year average of 1.96 billion bushels. Demand for soybeans is expected to be up 56 million bushels for 2023-2024.

Production increases in 2023-2024 are expected to be partially offset by increased crushings but will still drive a projected 125-million-bushel increase in ending stocks to 335 million bushels. The stocks-to-use ratio for 2023-2024 is projected to be 7.6 percent, well above the estimated 4.8 percent ratio for 2022-2023.

This increase in supply is projected to outweigh the small increase in demand in the new marketing year. For the 2022/23 marketing year, the average farm price for soybeans is estimated at \$14.30 per bushel; and the price for 2023-2024 is projected down about 15 percent, at \$12.10.

Wheat planted acres in

2023-2024 are estimated at 49.9 million acres, up nine percent from 2022-2023's 45.7 million acres. Yield is forecasted down 1.8 bushels per acre due to high levels of abandonment in Texas, Kansas and Oklahoma. The projected yield would generate wheat production of 1.66 billion bushels, a very slight increase on last year's wheat crop, but about seven percent below the five-year average of 1.79 billion bushels.

Estimated wheat demand in 2022-2023 is down two percent from 2021-2022, and 2023-2024 demand is expected to drop another two percent, to 1.84 billion bushels, largely the result of reduced exports. Stocks at the end of 2023-2024 are projected at 556 million bushels, down seven percent from this year and down nearly 34 percent from the end of 2020-2021. Feed use of wheat for 2022-2023 is expected to increase by 15 million bushels in 2023-2024 to 70 million bushels, while exports are anticipated to fall 50 million bushels in 2023-2024. The resulting stocks-to-use ratio for wheat in 2023/24 is expected at 30.3.

USDA estimates the av-

erage farm price of wheat for the 2023/24 marketing year to be \$8 per bushel, a 10 percent decrease from USDA's record-high projection of \$8.90 per bushel this time last year. There is a great deal of uncertainty surrounding grain movement through the Black Sea: if Russia lets the current agreement expire, grain movement by sea from Ukraine to other countries could shut down, with the potential to have a major impact on wheat prices.

The May WASDE is the long-awaited first look at the upcoming marketing year for corn, soybeans, wheat and cotton. There is a lot of room for changes over the coming months, but this was a bearish report, especially for corn and soybeans. USDA projected record-high production for corn, and above average production for soybeans. Strong domestic demand for wheat and tight ending stocks should provide market support.

"Remember that creating a successful marriage is like farming: you have to start over again every morning." -H. Jackson Brown Jr.

Ron Kern is the manager of the Ogle County Farm Bureau.



Ron Kern

## Reed Harris: Consider this — Pride Month

PRIDE month. What does it mean to you? There are many that may want to control how others look, feel and behave. Can this even be possible, and even more, should this be possible if we believe in the words "love thy neighbor"? After all, the people that walk in the parades, perform in drag on stage, and wear clothes that make them comfortable are only letting us know that they are proud of being able to show to the world the people they always were, right?

Didn't we, as parents, always encourage our young, adult children to follow their dreams? Were we sincere about that comment, or did we put qualifications on it? Because, if we did put

qualifications on it, how could we sell this as following one's dreams? You can become anything you want if you don't become a lawyer, I don't like lawyers. Is this the type of caveat we placed on our wisdom?

I have been binging a series called "Air Disasters". Probably not something positive to most for their viewing pleasure. Yet as I watched this series, episode after episode, there was one theme that kept me wanting more. That, simply, was how the crew of those aircraft were doing everything in their power to keep those planes in the air and get their passengers to their destination. And as most of the crew and some of the passengers relayed, the crew all worked tire-

lessly towards this end. Not always successful but forever trying.

Some might say that the crew were only trying to save themselves. Do you think this could be the only motive? Perhaps. However, on those flights that made it to the ground, whether everyone was saved or not, the pilots were always the last ones out. After the rest of the crew had stayed back and made sure all living people were evacuated, whether the plane was on fire or not, the pilots left the cockpit and checked again for survivors. And, sometimes, not all the crew made it out.

But the bigger ques-

tion here is did they save only white people, black people, Asian, European, American, dressed up, dressed down, in plain colored clothes, or in colorful garb? No, they saved all the passengers they could.

They always referred to the people on board as their passengers or their crew. No distinction.

So, should we as inhabitants of this Earth, care for all our neighbors? Be helpful to all people who need help? Do we really need disasters to realize that all people belong to this planet? Are we not all just fulfilling the life we envision, we want, we need to survive?

When German immi-



Reed Harris

### How to contact government officials

U.S. Con. Darin LaHood  
1424 Longworth HOB  
Washington, D.C.  
20515  
(202) 225-6201

IL Sen. Win Stoller  
Stratton Office Bldg  
Springfield, IL 62706  
(217) 782-1942

IL Rep. Bradley Fritts  
Stratton Office Bldg  
Springfield, IL 62706  
(217) 782-0535

Have a letter you want to submit to us? Send it to [news@rochellenews-leader.com](mailto:news@rochellenews-leader.com)

### KEEPING YOU IN TOUCH WITH YOUR LOCAL LEADERS

\* Denotes Chairman/President

#### Rochelle City Council

*John Bearrows	jbearrows@rochelleil.us
Kathryn Shaw-Dickey	kshaw-dickey@rochelleil.us
Bil Hayes	bhayes@rochelleil.us
Rosaelia Arteaga	rarteaga@rochelleil.us
Dan McDermott	dmcdermott@rochelleil.us
Tom McDermott	tmcdermott@rochelleil.us
Benjamin Valdivieso	

#### Rochelle Elementary School Board

*Trisha Vaughn	tvaughn@d231.rochelle.net
Dave Casey	dcasey@d231.rochelle.net
Steve Buita	sbuita@d231.rochelle.net
Ashley Jackson	ajackson@d231.rochelle.net
Stephanie White	swhite@d231.rochelle.net
Javier Zepeda	jzepeda@d231.rochelle.net
Jennifer Thompson	jthompson@d231.rochelle.net

#### Rochelle Township High School Board

*Tom Huddleston	tom.huddleston@rthsd212.org
Bill Ravnaas	bill.ravnaas@rthsd212.org
Jeff Tilton	jeff.tilton@rthsd212.org
Bobby Chadwick	bobby.chadwick@rthsd212.org
Brent Ohlinger	bohlinger@rthsd212.org

#### Flagg-Rochelle Park Board

Brent Carmichael	bcarmichael@rochelleparkdistrict.org
John Dobbs	jdobbs@rochelleparkdistrict.org
Dale Wells	dwells@rochelleparkdistrict.org
*Tim Hayden	thayden@rochelleparkdistrict.org
Jodie Hart	jhart@rochelleparkdistrict.org
Joe Lenkaitis	jlenkaitis@rochelleparkdistrict.org

#### Ogle County Board Dist. 3

Austin Gillis	agillis@oglecounty.org
Dan Miller	dmiller@oglecounty.org
Joseph Simms	jsimms@oglecounty.org

#### Ogle County Board Dist. 4

Jackie Ramsey	jramsey@oglecounty.org
Skip Kenney	skenney@oglecounty.org
David Williams	dwilliams@oglecounty.org

#### Creston Village Board

*Tom Byro	tommyb_47@yahoo.com
Greg Hopkins	ghopkins522@comcast.net
Steve Katzman	skatzman@essex1.com
Mike Kerns	ac.kerns@comcast.net
Curt Ward	caward92@comcast.net
Mark Hibshman	
Reid Elliot	
Jennifer Payton	

#### Hillcrest Village Board

*Richard Rhoads	rrhoads@hillcrestil.us
Pam Pittman	ppittman@hillcrestil.us
Dan Potter	dpotter@hillcrestil.us
Tim Ball	tball@hillcrestil.us
Jose Huerta	jhuerta@hillcrestil.us
Eileen Braski	
Joe Thompson	

#### Flagg Township

Sue Messer	flaggtwp@rochelle.net
Joanna Patrick	flaggtwpc@rochelle.net
Susan Rothenberger	assessor@rochelle.net
Scott Seebach	scottseebach@gmail.com

#### Board of Trustees

Lance Noggle	noggle62@gmail.com
Eric Gruben	egruben@comcast.net
Susan Hager	susanhager303@comcast.net
Jim Kenney	jimk@rocketsupply.com

#### Flagg-Rochelle Library

*Jaqueline Dickow	dickow@comcast.net
Teresa Haggstad	haggstads@comcast.net
Michael Scanlan	scanlan@comcast.net
Lanning Nicoloff	nicoloff118@comcast.net
Sheri Klendera	alwayslefty2@gmail.com
Susan Sevedge	nit1prl22@yahoo.com
Darci Waltrip	doobs12@comcast.net

### LETTERS TO THE EDITOR POLICY

The Rochelle News-Leader encourages responsible letters to the editor on subjects of interest to our readers. Editing may be necessary for space, clarity or to avoid obscenity or libel, but ideas will not be altered. All letters must bear the handwritten signature of the writer and include address and phone number or e-mail address for verification purposes. Neither the street address nor phone number will be printed. Letters should be typed

or legibly handwritten, and no anonymous letters will be published. Any letters from boards or organizations must include at least one name of an individual. Any criticism of public officials should be limited to issues related strictly to their position or actions made in office, as personal attacks will not be published. Letters involving private disputes between the writer and a business will not be published. Political endorsements will be published,

however letters from candidates endorsing themselves will not be printed. Letters may be dropped at the News-Leader office (211 IL Route 38 East), mailed to the News-Leader (P.O. Box 46, Rochelle, IL 61068) or e-mailed ([news@rochellenews-leader.com](mailto:news@rochellenews-leader.com).) The News-Leader reserves the right to edit or reject any letter to the editor for any reason, and letters chosen for publication do not necessarily reflect the views of this newspaper.



# COMMUNITY



## Mehrings graduates from Marquette University

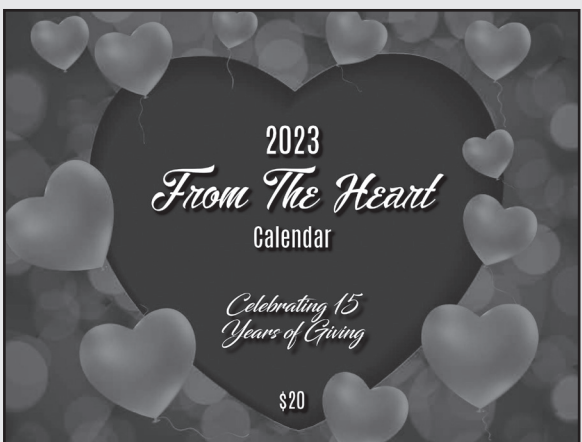
**MILWAUKEE** — This past spring, the following students graduated from Marquette University in Milwaukee, Wisconsin: Emma Mehrings of Rochelle, master of science, accounting. 3,143 students graduated from Marquette in May. The university celebrated its 142nd Commencement with a series of events, including Graduate Recognition Ceremonies at Fiserv Forum and a Baccalaureate Mass on campus.

## Sbeih named to Marquette University's spring dean's list

**MILWAUKEE** — Ayah Sbeih of Rochelle has been named to the dean's list for the spring 2023 semester at Marquette University in Milwaukee. Sbeih is pursuing a bachelor of science in biomedical sciences.

To make the dean's list, students must have earned at least 12 credits for the spring 2023 semester and have no disqualifying grades. The GPA threshold varies by college - for the College of Education and the Klingler College of Arts and Sciences, undergraduate students must have at least a 3.7 to be named to the dean's list.

The undergraduate GPA requirement is 3.5 for the following colleges: the Diederich College of Communication, the College of Business Administration, the College of Health Sciences, the Opus College of Engineering and the College of Nursing. All other programs have a 3.75 GPA minimum.



- May 23 - Merrick Jacobs, Glendale, AZ, \$25
- May 24 - Dustin Shafer, Rochelle, \$25
- May 25 - Justin May, Byron, \$25
- May 26 - Zekelman Employee, \$25
- May 27 - Judy Connolly, Rochelle, \$25
- May 28 - Robert Thompson, Rochelle, \$50
- May 29 - Louise Reinke, Rochelle, \$1,000
- May 30 - Kevin Reilly, Hoffman Estates, \$25
- May 31 - Chicagoland Skydiving, \$25
- June 1 - Hannah Payne, Rochelle, \$25
- June 2 - First State Bank Employee, Rochelle, \$25
- June 3 - Marsha Miller, Rochelle, \$25
- June 4 - Liquor 'n' Wine, Rochelle, \$25
- June 5 - The Kitchen Table, Rochelle, \$25
- June 6 - Erica Sachs, Rochelle, \$25
- June 7 - Zekelman Employee, \$25
- June 8 - Britt Zick, Rochelle, \$25
- June 9 - Lindsey Miller, Steward, \$25
- June 10 - From the Heart, \$25
- June 11 - RACF, \$25
- June 12 - Rebecca Milburn, Rochelle, \$25
- June 13 - Gwen Marie, Rochelle, \$25
- June 14 - John Hueramo, Rochelle, \$25
- June 15 - Christina Neale, Rochelle, \$25
- June 16 - From the Heart, \$25
- June 17 - Matt Mom's, Kingston, \$25
- June 18 - Zekelman Employee, \$500

### THE KITCHEN TABLE MENU

7034 S. Klondike Road | Rochelle, IL 61068 | 815-561-9074  
If you would like to volunteer with us, please email us at [volunteer@kitchentablerochelle.org](mailto:volunteer@kitchentablerochelle.org)

- June 20** - (Tuesday) - Spaghetti and Meatballs, Salad, Garlic Bread
- June 22** - (Thursday) - Ham Steaks, Potato Wedges, Baked Cabbage Wedges, Dinner Rolls
- June 27** - (Tuesday) - Burgers, Fries
- June 29** - (Thursday) - Mesquite and Lime Marinated

- Chicken Breasts, Brussel Sprouts, Corn, Bread (donated by Jen's Artisan Breads)
- July 2** - (Sunday Brunch) - Enjoy Your Fourth of July Holiday Weekend!!!! No Brunch Today!!!
- KIDS MENU: Chicken Nuggets w/Fries

\*\*All menus are subject to change. If you would like to check before coming out, please call us at 815-561-9074

[www.KitchenTableRochelle.org](http://www.KitchenTableRochelle.org)

### Birthdays & Anniversaries

- |  |   |
|--|---|
| <b>June 19</b><br>Eddie Villalobos   | <b>June 27</b><br>Brittany Sullivan<br>Gary & Rachelle Phillips (anniversary) |
| <b>June 22</b><br>Betty Armstrong<br>Isaac Bonilla   | <b>June 28</b><br>Grace Sherburne<br>Greg Danekas<br>Harold Sanders           |
| <b>June 25</b><br>Chyanne Bozek<br>Cruz Hord<br>Teresa Baker<br>Treavon Huff<br>David & Courtney Jones (anniversary) | <b>June 29</b><br>Derek Oleson  |

Call 815-561-2151 to submit names for birthdays and anniversaries



## Coffee Break

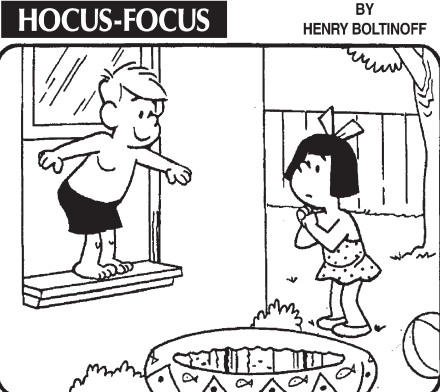
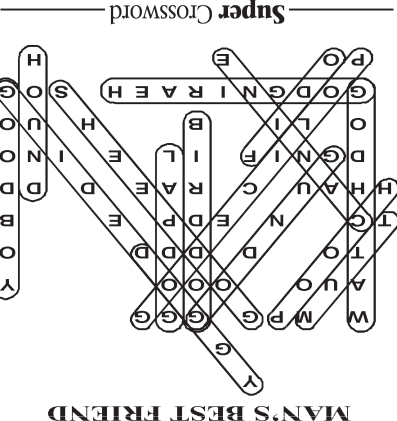
### MAGIC MAZE • MAN'S BEST FRIEND

S N Y K H Y E B Y V S P M J H  
E B Y P V T G Q O L I G D B Y  
W W T M P G R G G G P M K I F  
D A U O B U O O O Y W U S Q Y  
O T O M K D P D D D I F D B O  
T C Z X N W E D P U E S Q O B  
H H A U N C L R A E J D H D D  
F D G N I F D I L C E A I N O  
Y O W L I V T B S Q P H N U O  
L G O D G N I R A E H K S O G  
I P O H F E E C B Z Y W V H U

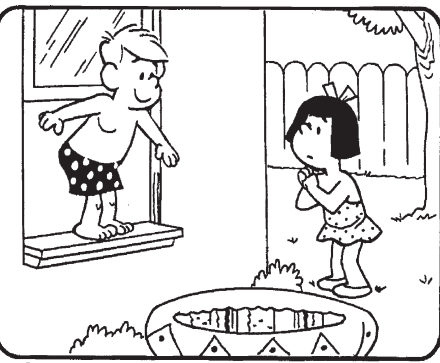
Find the listed words in the diagram. They run in all directions forward, backward, up, down and diagonally  
Unlisted clue hint: A YOUNG DOG

- |          |             |            |          |
|----------|-------------|------------|----------|
| Bird dog | Good boy    | Hound      | Pooch    |
| Canine   | Guide dog   | Lap dog    | Sheepdog |
| Doggy    | Gun dog     | Mutt       | Watchdog |
| Fido     | Hearing dog | Police dog |          |

©2023 King Features Syndicate, Inc. All rights reserved.



Find at least six differences in details between panels.

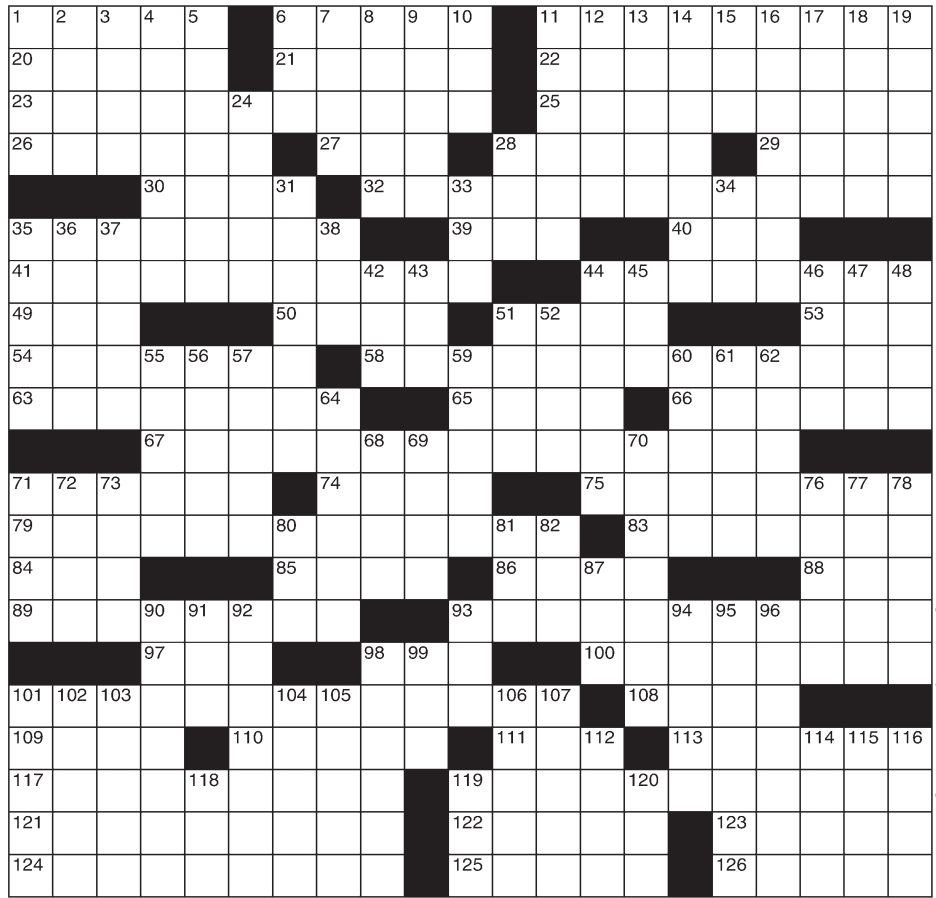


Differences: 1. Trunks are different. 2. Arm is moved. 3. Pool design is different. 4. Fence is different. 5. Boy is smaller. 6. Ball is missing.

## Super Crossword

### INTERPLANETARY

- |  |
|--|
| <b>ACROSS</b><br>1 Flip out<br>6 City in Florida<br>11 Nerve-racking<br>20 Rock guitarists, slangily<br>21 After-bath garments<br>22 What a dipstick is dipped into<br>23 Rip open eagerly<br>25 Budapest native<br>26 Put up with<br>27 Actor Erwin<br>28 Chocolate syrup brand<br>29 Bone-dry<br>30 Je ne — quoi (elusive quality)<br>32 Tools facilitating weapon-launching<br>35 Asset of Hercules and Samson<br>39 Road coating<br>40 Young miss<br>41 Aerobic exercise promotes it<br>44 Greek region<br>49 Work unit, in physics<br>50 Morales of "La Bamba"<br>51 Infant<br>53 Drain cleaner<br>54 Hiker's printed guide<br>58 Result of a lucid mind<br>63 Like scalawags<br>65 Prefix with commuting<br>66 Making haste<br>67 Aid in diagnosing an injured meniscus<br>71 In dreamland<br>74 Dragon killer, say<br>75 Some pudding bases<br>79 "Hamilton" duet sung by Burr and Hamilton to their children<br>83 Literary alias<br>84 Big cat's lair<br>85 Beet or turnip<br>86 "I don't give —!"<br>88 Olympic runner Sebastian<br>89 Ghosts<br>93 Paul Lynde's role on "Bewitched"97 What a dipstick is dipped into<br>98 Faux —<br>100 Diner patrons choosing dishes<br>101 Danger of atomic weapons<br>108 Drink mixer<br>109 Just slightly<br>110 Trembled<br>111 Victory sign<br>113 "Au —" ("So long for now")<br>117 Wedding party<br>119 Tolkien's imaginary world (that hints at this puzzle's theme)<br>121 Rear-end or sideswipe<br>122 Hit of the past<br>123 Prefix with fiche<br>124 Quality of a dirty chimney<br>125 Howled wolfishly<br>126 Does in, as a dragon<br>3 "Diary of — Housewife"<br>4 Careful reader<br>5 Race joiner<br>6 Bruin Bobby<br>7 Pigeon calls<br>8 Sits next to<br>9 Helpful boost<br>10 Oar wood<br>11 NPR journalist Daniel<br>12 Depend on<br>13 Cattle home<br>14 Congest with fluid<br>15 Kin of reggae<br>16 Prints messily<br>17 Savoir —<br>18 Onetime TWA rival<br>19 Gives temporarily<br>24 "— -Ho" ("Snow White" song)<br>28 Sheep call<br>31 Church tower<br>33 Archaic verb ending<br>34 Alliance of the W. Hemisphere<br>35 Clip, as wool<br>36 On — firma<br>37 Is furious<br>38 Possesses<br>42 Fond du —, Wisconsin<br>43 Up to, in ads<br>44 Med. exam involving a forearm jab<br>45 Sneaky laugh<br>46 Et — (and others, in footnotes)<br>47 "First City" singer Loretta<br>48 Safecracker, slangily<br>51 Boxer Max<br>52 Guthrie of folk<br>55 "Angle" actress Amy<br>56 French artist Edouard<br>57 First Hebrew letter<br>59 Set of values<br>60 "Would that it were true!"<br>61 — the bud (forestall)<br>62 Single out as especially important<br>64 Boorish types<br>68 Make over<br>69 Race pace<br>70 Ones<br>71 Append<br>72 Flow slowly<br>73 Race space<br>76 Secret stash<br>77 Love, to Celine<br>78 Foretellers<br>80 Botch it up<br>81 Bond creator Fleming<br>82 Circle portion<br>87 Nobel-winning U.N. agcy.<br>90 Most frigid<br>91 Put a knot in<br>92 Skin protein<br>93 Draw upon<br>94 Venerate<br>95 Makes good<br>96 Hard work<br>98 Players of LPs and 45s<br>99 Noah's boat<br>101 DEA agents<br>102 In — (not yet born)<br>103 Tree that's a chocolate source<br>104 Mannheim's river<br>105 Horn sounds<br>106 Home to St. Teresa<br>107 Soft toy bear<br>112 Emmy winner Falco<br>114 Bicolor whale<br>115 Possible response to "Good job!"<br>116 Greek consonants<br>118 Greek consonant<br>119 Rowdy crowd<br>120 Conducted |
|--|



©2023 King Features Syndicate, Inc. All rights reserved.



# LOCAL NEWS

## SCHOOL: Elementary board holds public budget hearing

From page 1

District bank depositories will continue to be Central Bank, Stillman Bank, Holcomb Bank, First State Bank and the Illinois School District Liquid Asset Fund.

The board tabled action on a district health insurance renewal plan due to the fact that it has not yet received final information on a dental plan. The July meeting will see the health insurance renewal plan up for approval.

The board unanimously approved a milk bid from Prairie Farms for the 2024 fiscal year. Prairie Farms submitted the sole bid for

milk for the 2023-2024 school year. They bid 65,000 one-percent milks for \$0.3130 per unit and 230,000 skim chocolate milks for \$0.3264 per unit. The bids are based on USDA federal order price for June 2023.

The board unanimously approved fiscal year 2024 Hub Program site coordinator position contracts for Breyann Baiocco (Central), Roxanna Contreras (Lincoln) and Phoebe Hughes (RMS). All three were site coordinators in the program last year. The positions are being paid for out of HUB Program grant funds.

The board also unani-

mously approved a contract for Jodee Craven to continue as the district's HUB Program grant evaluator. The position is required by the grant that funds the HUB Program and the position is paid for by the grant funds. The district is entering year two of a three-year cycle with the 21st Century Learning grant that funds the Hub before and after school program.

### Budget

The board held a public hearing for and unanimously approved an amendment to its fiscal year 2023 budget at the meeting.

District Business Manager Kevin Dale said at the end of the fiscal year, the budget needed to be updated due to deficits in education (-\$708,705), orientation & mobility (-\$8,817), debt services (-\$40,284), transportation (-\$230,595) and tort (-\$55,764) funds.

"With transportation, we did a transfer a few years ago, but we've always had issues trying to keep up with the transportation budget because it starts to run a deficit every year and you have to do borrowing through the years," Dale said. "The other issues this year have been bus lease costs going

through the roof with steel prices increasing for manufacturing."

Dale said tax levy money will make up the difference for where the district was short in revenue money this year and the district is on pace to spend its COVID-19 aid Elementary and Secondary School Emergency Relief (ESSER) money by its deadlines.

### Personnel

The board unanimously approved personnel changes including the resignation of Melissa Gensler (counselor, Tilton), the transfers of Kelly Polz (counselor at Central

to counselor at Tilton) and Jeannette Mingus (fourth grade teacher to academic interventionist, Tilton) and the employment of Aleigha Lampson (counselor, Central) and Justine Pater (eighth grade PE teacher, RMS).

### Schedule

The board unanimously approved its fiscal year 2024 meeting schedule and will continue to meet on the second Tuesday of each month at the Lincoln Elementary School cafeteria, but starting next month, meeting time will be moved from 7 p.m. to 6 p.m. for the entirety of fiscal year 2024.



(COURTESY PHOTOS)

Woodlawn Cemetery held its Memorial Day services on Monday, May 29 at 10:30 a.m. Woodlawn President-Lyle Headon welcomed the group and recognized attending veterans.

## Woodlawn Cemetery holds 2023 Memorial Day services

CRESTON — Woodlawn Cemetery held its Memorial Day services on Monday, May 29 at 10:30 a.m.

Woodlawn President-Lyle Headon welcomed the group and recognized attending veterans. Lyle also read the

names from the Avenue of Flags. Veteran Dan Graber recognized flag donors for the service memorial.

Pastor Judy Williams gave the invocation and closing prayers. Veteran Paul Erickson and area youth led the attendees in the pledge of allegiance,

followed by a solo from Deb Katzman, and The Memorial Day Poem by veteran Kevin Johnson.

The main speaker was Laurie Carlin Perry, US Army Veteran and National Society DAR member. She spoke on five area veterans that were killed

in action. DAR members Perry, Katzman, Linda Graber and Judy Williams presented the Vietnam veterans with a pin representing 50 years since the end of the Vietnam War when the last troops left and the final group of American prisoners of

war were freed and left Hanoi.

Dorothy Lockard, daughter of World War I veteran Clair Stocking, read the roll call of the deceased veterans buried in Woodlawn Cemetery. This was followed by Taps played by Rochelle

Township High School graduate Tommy Koziol, and the closing prayer.

The Woodlawn Cemetery board would like to thank everyone for attending, participating, placing and removing the Avenue of Flags, as well as the grave flags.

## Theft and fraud prevention seminar scheduled for July 26 in Rochelle

ROCHELLE — A theft and fraud prevention seminar will take place July 26 from 5-6:30 p.m. at the Hub City Senior Center at 401 Cherry Ave. in Rochelle.

The event will be hosted by the HCSC and Habitat for Humanity of Ogle County.

Join the event to learn from local experts on how to prevent fraud attempts. This

will be a brief presentation followed by a Q&A period. Presenters include Ogle County State's Attorney Mike Rock, Stillman Bank Compliance & BSA Officer

Brad Hertzner and Rochelle Police Department Sgt. John Kaltenbach.

Losing money or possessions to scams, fraud, and exploitation can be

especially devastating to older adults, who may not be able to earn back what they've lost. Experts say that in most cases, fraud can be prevented before it starts.

This event is open to individuals of all ages, as everyone is a potential victim to scams and fraudulent attempts. Light refreshments will be served.



## Come Grow With Us!



# Home Instead®

*To us, it's personal*

Dependable & Compassionate Home Care Services in the Comfort of Your Home

### Now Accepting New Clients

in Dixon Oregon and Byron and the surrounding areas

### Coming to Dixon this summer.

121 W First St, Suite #2  
Dixon, IL 61021

### Now Hiring

Full-time and part-time caregivers, flexible hours, benefits, 401K, days, nights and weekends in Lee and Ogle Counties

We are here for all of your loved ones needs.

Contact us today for a consultation (815) 754-1300

2585 Sycamore Rd. DeKalb | [homeinstead.com/location/718](https://homeinstead.com/location/718)



RTHS Boys Basketball

# Back on the hardwood

Incoming freshmen and returning players lace up for summer skills camp

BY RUSSELL HODGES  
SPORTS EDITOR

ROCHELLE — The 2023-24 season may be several months away, but the Rochelle Hub basketball team tipped off its annual summer skills camp earlier this month as returning players and incoming freshmen shake off the rust and sharpen their skills for the upcoming season.

The summer skills camp began on Monday, June 5. The camp will run Tuesday through Thursday from 4-6 p.m. at the Rochelle Township High School gymnasium for the remainder of the month. While players improve their strength and conditioning through the RTHS Hub Power program, Rochelle's summer skills camp allows players to work on their fundamental abilities including shooting, dribbling and passing as well as team offensive and defensive drills.

"We talked to our kids after last season about what we need to improve on and it's exciting to see them back in the gym," coach Jared Johnson said. "We talked about where we need to be better individually and as a team, so we're excited to see where the kids are at. We're also eager to see our incoming freshmen and we're



(PHOTO BY RUSSELL HODGES)

Junior Elijah Harley works through a drill with coach Matt Rosenwinkel during the Rochelle Hub basketball team's summer skills camp on Tuesday. The camp will be held every Tuesday, Wednesday and Thursday from 4-6 p.m. at Rochelle Township High School this month.

pretty high on them. Our biggest key right now is our defense, especially in the half court. We told our kids that if we want to win games, we have to be able to

stop people in the half court and we really struggled to do that last season."

In addition to the skills camp this month, Rochelle's varsity team will

play in the Rockford East Summer League on Mondays and the sophomore team will compete in the Sycamore Summer League on Thursdays. The Hubs,

who are looking to improve on their 10-19 overall record from last season, will have several varsity players including seniors Eli Luxton, Jack Lodico,

Jack Tracey and Cayden Moore as well as juniors Carson Lewis and Elijah Harley eligible to return.

See HUBS page 3

RTHS Volleyball

## Lady Hubs return for open gyms

Rochelle teams begin Summer League play in July

BY RUSSELL HODGES  
SPORTS EDITOR

ROCHELLE — After holding a small number of open gym sessions during the spring semester, the Rochelle Lady Hub volleyball team is working out twice a week this month, with returning players as well as incoming freshmen lacing up and honing their skills for the 2023 season.

Rochelle will hold open gym sessions every Monday and Wednesday from 12:30 to 1:30 p.m. throughout the month of June. The Lady Hubs will then return for their annual summer skills camp from July 10-13 before beginning league action at the varsity and fresh-soph levels. The 2023 season will begin with the team's first practice on Monday, Aug. 7 from 9 to 11 a.m.

"It's exciting to see the new freshman faces and to see the juniors become senior leaders," head coach Molly Sly said. "The kids are excited to represent Rochelle and it's exciting to feed off of their energy."



(PHOTO BY RUSSELL HODGES)

Senior Kendell Frankenberry passes the ball forward during the Rochelle Lady Hub volleyball team's open gym session on Wednesday afternoon.

Ogle County All Stars

(COURTESY PHOTO)



### Gapski medals at 2023 Special Olympics Illinois Summer Games

Rochelle 10-year-old Madeline Gapski competed in the 2023 Special Olympics Illinois Summer Games at Illinois State University on June 10. Gapski earned a third-place medal in the 50-yard dash for her age division after qualifying out of the Region A meet on May 13, where she represented the Ogle County All Stars and took first place in the event.

See GIRLS page 5





## The businesses featured on this page are "Hubs Super Fans"

They proudly support our local athletes and students.

Please show your appreciation by patronizing their businesses.

# WE SUPPORT OUR HUBS!



### VINCE'S PIZZA

Enjoy a **15% Discount**  
when Ordering Online at  
[VincesPizzainRochelle.com](http://VincesPizzainRochelle.com)

**815.562.7300**  
Delivery & Curbside Pick Up  
1071 N 7th St, Rochelle, IL



Hello,  
neighbor!

Huber Ins and Fin Svcs Inc  
Shane B. Huber, Agent  
221 E. IL Rt. 38  
Rochelle, IL 61068  
Bus: 815-562-7011

**State Farm**  
1001013.1 State Farm, Home Office, Bloomington, IL

### DLX Medical GROUP

Caring for your  
family's health from  
infant to adults.

For appointment, please call  
**815-227-9594**  
1212 Currency Ct, Rochelle, IL 61068  
Most Insurance Accepted

### Local People Providing Local Service

### Rochelle MUNICIPAL UTILITIES

Water • Waste Water  
Electric • Communications

Phone: 815-562-4155 333 Lincoln Highway  
Fax: 815-562-5861 Rochelle, IL  
[www.rmu.net](http://www.rmu.net)

### CENTRAL ILLINOIS LOAN

Loans For All Your Needs  
Auto • Home Improvement • Vacation  
Jami Hackman • Tonia Holland

**815-561-4035!**  
310 Eagle Drive, Rochelle  
All loans subject to our normal credit requirements and policies.

### MORTON BUILDINGS

If you can dream it, we can build it.



Rochelle Sales Office • Hwy. 251 N. • 877-613-3050

### Rochelle Community Hospital

Your Local Healthcare Resource.

900 N. 2nd Street, Rochelle  
815-562-2181  
[www.rochellehospital.com](http://www.rochellehospital.com)

### MEYERS FURNITURE & FLOORING

209 Powers Road, Hwy 251 N  
Rochelle, IL 61068  
(815) 562-8792  
[www.meyersfurniture.com](http://www.meyersfurniture.com)

### Bruns Construction, Inc.

• Residential  
& Commercial  
Concrete  
• Additions

**815-561-0099**  
Free Estimates • Fully Insured  
[www.brunsconstructioninc.com](http://www.brunsconstructioninc.com)

**THE HUDDLE CAFE**  
802 Main Street • 815-453-2677  
Homemade Cooking, Small Town Atmosphere  
Daily Specials  
• Breakfast Served All Day  
• Beer & Wine Served All Day  
• Free Wi-Fi  
Dine-In & Carryout  
Open Tues-Sat 7AM-8PM, Sun 7AM-2PM, Monday Closed

**ANDERSON PLUMBING & HEATING, INC.**  
Plumbing, Heating & Cooling  
Water Heaters, Water Softeners,  
Drinking Water Systems, Iron Filters,  
Sewer Rodding & Jetting & More!  
Since 1976  
621 First Ave., Rochelle  
(815) 562-8784  
Lic# 055-013999

**Rochelle Chiropractic Clinic**  
Dr. Chad M. Piller  
227 E. Rt 38 • Rochelle, IL  
**815-562-8706**  
[www.rochellechiropractic.com  
Now Accepting New Patients!](http://www.rochellechiropractic.com)

**GOOD LUCK HUBS FROM YOUR FANS AT:**  
**HAYDEN REAL ESTATE INC.**  
• RESIDENTIAL  
• AGRICULTURAL  
• COMMERCIAL  
815-562-2111 [hre@haydenreinc.com](mailto:hre@haydenreinc.com)

## HUB SPOTLIGHT



(PHOTO COURTESY OF USF ATHLETICS)

Former RTHS student-athlete Katherine Bakken earned All-American cross country honors after an 11th place finish during the 2022 NAIA National Championship.

## Bakken concludes NAIA All-American career at St. Francis

KATHERINE Bakken's success in cross country carried over to the track, where she returned for her senior season in the winter after earning NAIA All-American honors in both the 10,000-meter run and the 3200-meter relay as a junior. Bakken started her indoor season strong, winning the 3000-meter run at the Windy City Classic and the 5000-meter run at the GVSU Holiday Open with personal-record times. She then won the CCAC Indoor Conference Championship in the 3000-meter run and took third in the 1600-meter run with a personal record of 5:14.32.

"I thought I became mentally stronger during the cross country season," Bakken said. "Having to do so much academically and athletically created a lot of pressure, but competing was a relief and it allowed me to exercise how strong I felt mentally compared to last season. . . I also thought I got more of the jitters out before my races during the track season. I realized this year that, at the end of the day, it's just a race and as much as I want to go out and get first every time, doing the best I can is all I'm going to get and easing into it gives me my best shot."

Bakken's indoor season concluded at the NAIA Indoor National Championship, where she qualified in the 5000-meter run and finished fourth to earn NAIA All-American honors once again. Bakken then made history during the spring, winning the 5000-meter run at the 2023 CCAC Outdoor Conference Championship with a new conference-record time of 17:45.97.

"That day was really special to me because it was also my graduation day and it was a fun way to leave my mark," Bakken said. "It symbolized the end of my career at

the University of St. Francis and my time academically as well. . . After my run in cross country, I wanted to keep up my work ethic and end on a high note, but I also wanted to focus on doing my best and enjoying the track season as much as I could. Even if I didn't do as well as I wanted to, I knew I was still doing my best and I also knew that I could still enjoy my last couple of runs as an athlete."

Bakken capped off her senior track season in the 2023 NAIA Outdoor National Championship, where she once again raced in the 10,000-meter run and placed fifth to conclude her collegiate athletic career as a seven-time NAIA All-American across both sports. With her athletic career completed, Bakken is now preparing for the next chapter of her life as a healthcare professional in Aurora. The Rochelle Township High School alum and NAIA Scholar Athlete will graduate summa cum laude and receive her bachelor's degree in medical laboratory science next Friday.

"I was really excited to get out there and see what I could do because I was ranked highly going into the race," Bakken said. "I have a special place in my heart for the 10,000-meter run. It's not a race that can be done over and over again because it's so long. I could run the 5000-meter run every week, but I could only run the 10,000-meter race once or twice without my body breaking down. It was also fun since it was the last race for my head coach and he's the only head coach I've had, so it symbolized the end of his career at St. Francis as well as my own."

*Author's Note: This story is the second of a two-part series on former RTHS student-athlete Katherine Bakken. The first part was published in the Wednesday, June 14 edition of the Rochelle News-Leader.*

### Alfano's Pizzeria and Italian Restaurant

Taste The **TRADITION**  
Taste The **DIFFERENCE**  
Dine In • Carry Out •  
• Home Delivery • Pizza • Pastas •  
• Sandwiches • Salads •  
• and Lots More!  
Dine-In • Carry Out • Home Delivery  
1115 TURKINGTON TERRACE, ROCHELLE  
**815-562-3312**

### JOHNSON TRACTOR

SALES • PARTS • SERVICE

200 Steward Road  
**800.262.1680**  
[www.johnsontractor.com](http://www.johnsontractor.com)

### AtlasAuto

BUY HERE - PAY HERE  
You Work - You Drive

Se Habla Español **815-562-7433**  
1400 N 7th St  
Corner of Flagg Rd & Hwy 251 N

### HUB-REMSEN PRINT GROUP

101 Maple Ave • Rochelle, IL 61068  
815.562.7057 • [hub-remsen.com](http://hub-remsen.com)

### GO HUBS!

### Berg-Johnson Electric

FREE ESTIMATES  
Licensed and Insured  
Residential • Commercial • Industrial  
24 Hour Emergency Service  
**815-562-4937**  
500 Cleveland Avenue

### We are Ogle County's only GM Dealer!

• Collision Repair • Rental Cars  
• 24 Hour Towing • Maintenance On All Makes  
• New/Preowned Vehicles • and Models  
• Tires, Alignments, Brakes, Batteries  
**JEFF PERRY** Auto Group  
815-562-8787 [www.jeffperrychevrolet.com](http://www.jeffperrychevrolet.com)

### Busy Schedule? Leave the cooking to us.

• Large menu of foods  
• Rochelle's famous chicken by the dinner or bucket  
• Hand dipped ice cream (16 flavors)  
**COUNTRY SCHOOL DRIVE-IN RESTAURANT**  
251 N. ROCHELLE • 562-6039

### Stillman BANK

GO HUBS!

Earning Your Trust Since 1882  
[www.stillmanbank.com](http://www.stillmanbank.com) Member FDIC

### GOOD LUCK HUBS FROM YOUR FANS AT:

**HAYDEN REAL ESTATE INC.**  
• RESIDENTIAL  
• AGRICULTURAL  
• COMMERCIAL  
815-562-2111 [hre@haydenreinc.com](mailto:hre@haydenreinc.com)



# SPORTS

## RTHS Tennis

(PHOTOS BY RUSSELL HODGES)



### Rochelle Township High School tennis program holds annual summer youth camp this past week

The Rochelle Hub and Lady Hub tennis teams held their annual summer youth camp for grade-schoolers and middle-schoolers this past week. Campers took the court from Monday through Thursday, with grade-schoolers playing from 8 to 9:30 a.m. and middle-schoolers going from 9:30 to 11 a.m. Roughly 25 players participated in the camp, which emphasizes skill development in areas such as serving, forehand strokes, backhand strokes, net play and other fundamental skills. The annual camp is run by Rochelle Township High School tennis coaches as well as current and former RTHS student-athletes.

## HUBS: Basketball team returns for summer skills camp

From page 1

"We're looking to get back to playing Rochelle

basketball," Johnson said. "That means getting out on the fastbreak, pressing on defense and shooting

3-pointers. We're really focusing on cutting down our turnovers because those will really hurt us on the

offensive end. We want to be smart with the ball and we want to be patient, work together and do whatever

we can to win. Eli's an All-Conference player and we're looking for him to be a leader for our team this

year. We're expecting big things out of Cayden and we like what we've seen from Carson and Elijah."

## COMMUNITY BOARD

**Need to get the word out about a product or service you offer?**  
**Give us a call at 815-562-4171.**  
**We can reach over 9,000 homes!**



### Gutters, Roofing & Siding

**THEISEN ROOFING**  
*Free Estimates!*

ROOFING  
 SIDING  
 GUTTERS

CONTACT US  
 815-758-8998  
 THEISENROOFING@COMCAST.NET

Family owned & operated for over 50 years

### Storage Sheds

**Rocky Ridge Structures**

FREE Sales Rep. Evaluation At Your Site

We Deliver! From Our Lot To Your Site

We Specialize in Portable/Quality Built Storage Sheds

- Stock & Custom Design
- Many Options Available
- Competitive Pricing
- Site Preparation Available

See Displays at 3500 S. Chana Rd. Chana IL 61015  
 Call Norm or Albert for Free Literature packet 779.861.3542

### Plumbing, Heating & Cooling

**ANDERSON PLUMBING & HEATING, INC.**

Plumbing, Heating & Cooling  
 Water Heaters, Water Softeners,  
 Drinking Water Systems, Iron Filters,  
 Sewer Rodding & Jetting & More!

**Since 1976**

621 First Ave., Rochelle  
 (815) 562-8784

### Advertise Here

**What Service Do You Offer?**

**562-4171**

The Rochelle News-Leader

### Heating & Air Conditioning

**HULL HVAC & Household Services**

Furnaces - Air Conditioners - Boilers  
 Duct Cleaning - Water Heaters

Air Conditioner Clean & Check

**\$50.00**

After \$35 rebate.  
 Promotion only available to RMU customers.  
 Expires: 08/31

Ask about duct cleaning and protecting your home's air quality.

**815-561-6551**  
**www.HullHVAC.com**

### Concrete

**Bruns Construction, Inc.**

• Residential & Commercial Concrete  
 • Additions

**FREE ESTIMATES!**

Tim & Roger Bruns, Owners  
 Established 1997

**815-561-0099**  
 Free Estimates • Fully Insured  
**www.brunsconstructioninc.com**

### Custom Construction

Residential & Commercial Roofing

**Shingle Roofing, Metal Roofing & Flat Roofing**

**Custom Construction Systems**  
 customsteelroofing.com  
 Call & Text 815-871-7835



Act by June 30, 2023 for this special subscription offer.

**Get a FREE Gas Card when you renew  
or start a News-Leader Subscription!**



**\$129 Plus**

**for 52 Weeks**  
(\$10 Discount)

...Get a Gas Gift Card  
from Clark gas station  
**Random amounts**  
**ranging from \$5 to \$20**

Clip the form below and mail it in with your check, or stop in our office to pay in person, or call in and pay with credit card over the phone.

Name: \_\_\_\_\_

Address: \_\_\_\_\_

City: \_\_\_\_\_ State: \_\_\_\_\_ Zip: \_\_\_\_\_

Telephone: \_\_\_\_\_

Email: \_\_\_\_\_

Offer valid for both new starts and renewals.  
Offer expires on Wednesday, June 30, 2023

**ROCHELLE**  
**News-Leader**

P.O. Box 46 - 211 Hwy. 38 East  
Rochelle, IL 61068  
815-561-2112



# SPORTS



(PHOTO BY RUSSELL HODGES)

Junior Dempsey Atkinson passes the ball forward during the Rochelle Lady Hub volleyball team's open gym session on Wednesday afternoon.

## GIRLS: Volleyball team back for open gyms

From page 1

"We're installing a new defense this year so we're looking to break some of our old habits and I'm looking for our players to encourage each other and pick each other up."

The open gym sessions, which began in early April and continued through May and into this month, allow players to scrimmage and improve techniques including passing,

hitting and blocking. The Lady Hubs, who are seeking to build on an 18-15-3 record from last season, will have multiple players including seniors Kennedy Adamski and Kendell Frankenberg as well as juniors Ali Ohlinger, Taelynn Rodeghero, Dempsey Atkinson and more eligible to return this fall.

"I'm hoping that we have somewhat of a rotation set by the end of our

summer league matches," Sly said. "The kids know where we're looking to fill spots after losing five seniors from last year's team and I'm hoping to see our kids fight for those spots. I want them to see the competition on the other side of the court and I hope that will motivate them..." Taelynn and Dempsey have been playing up on varsity for two years and they've been leading the show at our open gyms."

## The Invention of the Year

The world's lightest and most portable mobility device

Once in a lifetime, a product comes along that truly moves people. Introducing the future of battery-powered personal transportation... **The Zinger.**

Throughout the ages, there have been many important advances in mobility. Canes, walkers, rollators, and scooters were created to help people with mobility issues get around and retain their independence. Lately, however, there haven't been any new improvements to these existing products or developments in this field. Until now. Recently, an innovative design engineer who's developed one of the world's most popular products created a completely new breakthrough... a personal electric vehicle. It's called the **Zinger**, and there is nothing out there quite like it.

*"What my wife especially loves is it gives her back feelings of safety and independence which has given a real boost to her confidence and happiness! Thank You!"*

—Kent C., California

The first thing you'll notice about the **Zinger** is its unique look. It doesn't look like a scooter. Its sleek, lightweight yet durable frame is made with aircraft grade aluminum so it weighs only 47.2 lbs. It features one-touch folding and unfolding - when folded it can be wheeled around like a suitcase and fits easily into a



Available in Green, Black and Blue (shown)



The Zinger folds to a mere 10 inches.

backseat or trunk. Then, there are the steering levers. They enable the **Zinger** to move forward, backward, turn on a dime and even pull right up to a table or desk. With its compact yet powerful motor it can go up to 6 miles an hour and its rechargeable battery can go up to 8 miles on a single charge. With its low center of gravity and inflatable tires it can handle rugged terrain and is virtually tip-proof. Think about it, you can take your **Zinger** almost anywhere, so you don't have to let mobility issues rule your life.

Why take our word for it? Call now, and find out how you can get a **Zinger** of your very own.

**journey**  
**zinger**

Call now and receive a utility basket absolutely FREE with your order.

**855-331-319**

Please mention code 601449 when ordering



mobility | sleep | comfort | safety

enjoying life never gets old™

**journey**  
HEALTH & LIFESTYLE

The Zinger and Zoomer Chairs are personal electric vehicles and are not medical devices nor wheelchairs. They are not intended for medical purposes to provide mobility to persons restricted to a sitting position. They are not covered by Medicare nor Medicaid.  
© 2022 Journey Health and Lifestyle

ACCREDITED BUSINESS A+

**Leafguard**  
Get it today. Protected for life.



LeafGuard has been awarded the Good Housekeeping Seal of Approval for 16 straight years.

## Say goodbye to gutter cleaning for good

No clogging, No cleaning  
No leaking, No water damage  
No ladder accidents



Call now for your free estimate!  
Financing available 815-673-7532

**75% off of Labor\***

\*Offer does not include cost of material. Discount applied by representative at time of contract execution. Offer ends 6/30/2023.



Receive a \$50 Visa Gift Card with your free in-home estimate

\*All participants who attend an estimated 60-90-minute in-home product consultation will receive a \$50 Visa gift card. Retail value is \$50. Offer sponsored by LeafGuard Holdings Inc. Limit one per household. Company procures, sells, and installs seamless gutter protection. This offer is valid for homeowners over 18 years of age. If married or involved with a life partner, both cohabitating persons must attend and complete presentation together. Participants must have a photo ID and be legally able to enter into a contract. The following persons are not eligible for this offer: employees of Company or affiliated companies or entities, their immediate family members, previous participants in a Company in-home consultation within the past 12 months and all current and former Company customers. Gift may not be extended, transferred, or substituted except that Company may substitute a gift of equal or greater value if it deems it necessary. Gift card will be mailed to the participant via first class United States Mail within 10 days of receipt of the promotion form. Not valid in conjunction with any other promotion or discount of any kind. Offer not sponsored and is subject to change without notice prior to reservation. Offer not available in the states of CA, IN, PA and MI. Expires 6/30/23. Receive a \$50 Visa Gift Card with your free in-home estimate

\* Guaranteed no to clog for as long as you own your home, or we will clean your gutters for free.

NORTH AMERICA'S

**#1 Selling** Walk-In Tub

Featuring our Free Shower Package

Now you can finally have all of the soothing benefits of a relaxing warm bath, or enjoy a convenient refreshing shower while seated or standing with Safe Step Walk-In Tub's **FREE Shower Package!**

- ✓ First walk-in tub available with a customizable shower
- ✓ Fixed rainfall shower head is adjustable for your height and pivots to offer a seated shower option
- ✓ High-quality tub complete with a comprehensive lifetime warranty on the entire tub
- ✓ Top-of-the-line installation and service, all included at one low, affordable price

Now you can have the best of both worlds—there isn't a better, more affordable walk-in tub!

**FREE SHOWER PACKAGE**

**PLUS \$1500 OFF**

FOR A LIMITED TIME ONLY

Call Toll-Free 1-800-000-0000

**safestep**

[www.BuySafeStep.com](http://www.BuySafeStep.com)

With purchase of a new Safe Step Walk-In Tub. Not applicable with any previous walk-in tub purchase. Offer available while supplies last. No cash value. Must present offer at time of purchase.

CSLB 1082165 NSCB 0082999 0083445

Call Today for Your Free Shower Package

**1-815-660-0041**



FINANCING AVAILABLE WITH APPROVED CREDIT





# Classified Marketplace

BUY OR SELL  
Place A Classified Ad



ROCHELLE • HILLCREST • CRESTON • STEWARD • KINGS • ASHTON

## 101 LEGAL NOTICE

**NOTICE TO BIDDERS**  
SEALED BIDS/PROPOSALS will be received by the City of Rochelle, Illinois until 10:00 a.m., June 26, 2023, for the **CITY OF ROCHELLE 2023 VARIOUS STREETS SEAL COAT PROGRAM SECTION NO. 23-00000-00-GM.**

Proposal, Specifications and/or plans may be obtained at the Office of the City Engineer, Engineering Department, located at 1030 S. 7th Street Rochelle, Illinois. The office is open by appointment by emailing [cward@rochelleil.us](mailto:cward@rochelleil.us). Bidders will be required to sign for the specifications and/or plans before they are released. There is no cost for specifications and/or plans picked up at the Engineering Office. A fee of \$100.00 will be required for any specifications and/or plans that are mailed to prospective Bidders. Bids will be mailed USPS First Class mail only. All bids are to be returned to the Office of the City Clerk, 420 N. 6th Street, Rochelle, IL 61068.

THE CITY OF ROCHELLE PREFERS THE SEALED BID BE HAND DELIVERED TO THE OFFICE OF THE CITY CLERK, CITY HALL, 420 NORTH SIXTH STREET, ROCHELLE, ILLINOIS BEFORE 10:00 A.M., JUNE 26, 2023; HOWEVER, BIDS MAY ALSO BE MAILED.

ANY BID RECEIVED AFTER 10:00 A.M., JUNE 26, 2023, WILL BE RETURNED, UNOPENED. ALL completed bids will be publicly opened and read aloud at the office of the City Clerk at 10:00 a.m., June 26, 2023, in the Council Chambers at City Hall located at 420 N. 6th Street in Rochelle, Illinois. ANY OBJECTIONS, QUESTIONS OR COMMENTS on the City's specifications shall be submitted in writing on or before 1 p.m. June 21, 2023. If deemed necessary by the City, an addendum will be distributed to all prospective bidders by email or facsimile transmission at least two (2) business days prior to the bid opening date. The decisions of the City shall be final. All Contracts for Construction of Public Works are subject to the Illinois Prevailing Wage Act (820 ILCS 130/1-12) and other requirements as listed in the specifications and proposal forms.

This Project is being funded in whole or in part with Illinois Motor Fuel Tax funds. All bidders must be pre-qualified by the Illinois Department of Transportation. The Bidder will be required to comply with all requirements listed in the Local Agency Material Proposal or Deliver and Install Proposal, Standard Specifications, Special provisions and other Bid Documents. The City of Rochelle reserves the right to reject any and all bid proposals and to waive any technicalities, informalities or irregularities in the bidding. No. 0627 (June 18, 2023)

## HEADING

NOTICE PURSUANT TO the Self Storage Facility Act, 770 ILCS 95/4, Notice is hereby given as follows: Certain personal property generally described as miscellaneous per-

sonal and household items currently located in:

storage unit #5, Austin Cantrell;  
storage unit #52, Caesar Ciseros;  
storage unit #80, 83, 161, David Kniec;  
storage unit #71, Patric Kallas;  
storage unit #39 and 40, Lee Rhea;  
storage unit #29 and 49, Ashley Jones;  
storage unit #186, Connie Bohannon  
at the Maple Avenue Self Storage, Hillcrest, Rochelle, Illinois. The items will be held in our possession fifteen (15) days, at which time they will be disposed of unless tenant pays the landlord in full, in accordance with the Self Storage Facilities Act. Balance of account must be paid in full by July 3, 2023.

Maple Avenue Self Storage  
Hillcrest, Rochelle, Illinois  
Mary Ann Carmichael, Owner  
No. 0628  
(June 18 and 25, 2023)

## 101 LEGAL NOTICE

This publication does not knowingly accept fraudulent or deceptive advertising. Readers are cautioned to thoroughly investigate all ads, especially those asking for money in advance.

## 105 BUSINESS OPPORTUNITIES

"This publication does not knowingly accept fraudulent or deceptive advertising. Readers are cautioned to thoroughly investigate all ads, especially those asking for money in advance."

## 113 FINANCIAL

**NOTICE Advance Fee Loans or Credit Offers**  
Companies that do business by phone can't ask you to pay for credit before you get it. For more information, call toll-free 1-877-FTC-HELP. A public service message from your hometown newspaper and the Federal Trade Commission.

## 119 ANNOUNCEMENTS

"This publication does not knowingly accept fraudulent or deceptive advertising. Readers are cautioned to thoroughly investigate all ads, especially those asking for money in advance."

## 127 SERVICES AND REPAIRS

**FURMAN'S Lawn Care and Tree Work.**  
Mowing, bushes, spring clean up, weeding and much more. Call Jeremy Furman 815-761-9619. Please leave a message will return call ASAP. Fully insured, in business since 1999. Servicing Rochelle and surrounding areas.

## 201 DOMESTIC/CHILD CARE

NO INDIVIDUAL, unless licensed or holding a permit as a childcare facility, may cause to be published any advertisement soliciting a child care service. A childcare facility that is licensed or operating under a permit issued by the Illinois Department of Children and Family Services may publish advertisements of the services for which it is

specifically licensed or issued a permit. Your Hometown Newspaper strongly urges any parent or guardian to verify the validity of the license of any facility before placing a child in its care.

## 203 HELP WANTED

**DEKALB** — part-time driver/crew. Mostly weekends, taking animals to events. Drivers \$22/hr with pickup/trailer exp. Crew \$15/hr no exp. Needed, min 14 yr old. Call Steve 815-756-7773. [www.friendlyfarmsltd.com](http://www.friendlyfarmsltd.com). (07-05-23)

## 301 ANTIQUES

**WANTED TO BUY:** Vintage Metal and Wood Signs, Milk Bottles & Local Advertising, Oak Icebox, Iron Door Stop and Antique Lighting... Call Dick Harms at 815-562-2928 or email [dickharms@hotmail.com](mailto:dickharms@hotmail.com)

**ANTIQUES WANTED:** I pay cash for antiques; furniture, glassware, pottery & crocks, tin & iron toys, sterling silver, decoys. If it's antique, I'm interested in looking! Call 815-562-2928 or email [dickharms@hotmail.com](mailto:dickharms@hotmail.com)

## 305 GARAGE SALES

**ROCHELLE 5245 S. Mill Pond Rd., Friday, June 23 8AM-5PM.** Home Decor, Baby Gear, Kitchen Cookware, Exercise Tapes, DVDs, Golf Clubs, Women's Plus Size Clothing and Shoes, Men's Jeans, Garden Pots, Entertainment Center, Hand Drill, Circular Saw, Vintage Items, Hosta Plants and More. (06-21-23)

**ROCHELLE 323 Southview Drive, Thursday, June 22 and Friday, June 23 8:30AM - 5:30PM, Saturday, June 24 8:30AM-3:30PM.** Clothing, Furniture, Household Goods, Knick Knacks and Much More. (06-21-23)

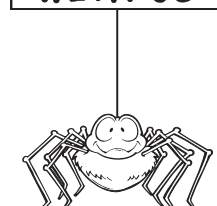
## 307 MISCELLANEOUS FOR SALE

**BUNDLED Newspaper** - \$3 per Bundle. End Roll- Cost Depends on Weight of Roll. Available Monday-Friday 815-562-4171 (8AM-NOON ONLY) Rochelle News Leader.

## 405 HOUSES FOR SALE

ALL REAL ESTATE advertised herein is subject to the Federal Fair Housing Act, which makes it illegal to advertise any preference, limitation or discrimination based on race, color, religion, sex, handicap, familial status, or national origin, or intention to make any such preferences, limitation or discrimination. We will not knowingly accept any advertising for real estate which is in violation of the law. All persons are hereby informed that dwellings advertised are available on an equal opportunity basis.

ADVERTISE  
WITH US



Not sure why  
business is slow?



is not just a saying in  
business.

Advertise today and let your  
business be in sight and in the minds  
of your customers.

## 307 MISCELLANEOUS FOR SALE

### NEW MILFORD REFRIGERATION

#### NEW, USED SCRATCH & DENT

- Refrigerators • Freezers
- Washers/Dryers • Stoves

We also carry a large selection of refurbished appliances with a warranty.



6331 11th Street, Rockford  
**815-262-3900**

04092023

## H.O.P.E

**For Free Help or Information Call 815-562-8890 24 Hours**

**All Calls Are Confidential.**

Support, Advocacy, Referral Services, Shelter for victims of domestic violence and their children.

**HOPE of Ogle County**



P.O. Box 131  
Rochelle, IL 61068  
Public Service Announcement

## 103 AUCTIONS

### REAL ESTATE AUCTION

Having made her home in a retirement center, Donna L. Challand and her children will offer the following described Real Estate and Personal Property at public auction on site and live located at **1490 German Rd., Steward, IL 60553.**

**Saturday, July 22nd, 2023**

**10:00 a.m.**

**Directions:** I-39 at Steward, go West through town to Steward Rd, then South approximately 3 miles to German road, then East ¼ mile around the curve to the property. Or from Rt 30 go North on German Rd. approx. 3 miles.

**Auctioneers Note:** Personal property will begin at 10AM, with the Real Estate being offered at 11:00 AM - This auction features a large farmhouse with attached garage situated on 1.5 acres. At the same time, we will be conducting a personal property auction featuring clean household items & furniture, as well as antiques, collectibles, toys, vehicles and mower. There will be something for everyone, so plan to spend the day with us! There will be lunch onsite and a comfort station.

**Real Estate: (To be offered at 11:00 a.m.)** This 1.5 acre rural property features a large, approx. 2100 +/- sq ft., 2 story farm house with attached 32x24 garage and full basement. Property also has a 24x10 chicken / hog shed, and a 10x12 garden shed, both with concrete floors. The home features 4 bedrooms, 1 ½ Baths, eat in kitchen, formal dining room, family room, and fully enclosed front porch / entry room. Private well and septic. All appliances are included with the home. There are several mature trees on the property and the lot is located on a quiet sealed road with vast country views. Steward Elementary and Rochelle High Schools. For viewing, or more information, contact the Auctioneers, Josh Hickey or John Bearrows

**Real Estate Terms:** \$5,000 down the day of the auction with the balance due at closing on or before September 8th 2023. Property is being offered in AS-IS condition with no contingencies, and with no warranties expressed or implied. All announcements made day of auction take precedence over all printed material.

**Personal Property:** Full list to follow in future papers, or visit [www.bearrows.com](http://www.bearrows.com)

**Donna L. Challand Trust and Others – Owners**

Attorney for the seller: Paul Chadwick - Fearer, Nye & Chadwick - Rochelle

**BEARROWS**  
REAL ESTATE & AUCTION CO.  
(815) 562-5113



Visit our website [www.bearrows.com](http://www.bearrows.com)

**AUCTIONEERS:**  
JOHN BEARROWS, Rochelle, IL  
(815) 738-9150  
IL Lic. #440000243  
JOSH HICKEY, Steward, IL  
(815) 738-1030  
IL Lic. #441001092

You don't see  
bullying like  
this every day.

Your kids do.

Teach your kids how to  
be more than  
a bystander.

Learn how at

[StopBullying.gov](http://StopBullying.gov)



**FREE TO BE...  
YOU AND ME**  
FREE TO BE FOUNDATION INC.





# DRIVE TIME

## What to do after an auto accident

CAR accidents occur every day. According to data from the National Highway Traffic Safety Administration, there are more than five million car accidents in the United States every year. Forty-three percent of car accidents resulted in injuries in 2020.

No one wants to get into an automobile accident, which can be stressful and even fatal. Even accidents that do not result in any major injuries can be traumatizing. Knowing what to do in the immediate aftermath of an accident may make such instances less stressful.

The insurance experts at GEICO® advise individuals involved in an accident to first determine if any of the involved parties suffered an injury. If you are injured, stay put. If not, check on the condition of the other driver. At this point do not admit any fault or reveal any policy limits.

Next, make a call to

emergency services to request assistance from the police and an ambulance, if necessary.

If possible, pull the vehicle over to a safe, well-lit public location. This is especially important if you believe you were the victim of a staged accident, says the Insurance Information Institute. If the car will cause another road hazard, it is best to move it over to the side and use flashers to alert oncoming traffic. It is important that you don't leave the scene, according to American Property Casualty Insurance Association.

Have the police write up an accident report. You should take pictures of the damage to your vehicle, the other vehicle, if possible, and the scene of the accident, including any skid marks, debris and/or property damage. If there are any witnesses to the accident, get their names and contact information. You'll need this information when filing an insurance claim.



ance claim.

Collect the names, phone numbers, addresses and email addresses of other drivers and vehicle occupants and exchange insurance information

with all drivers involved. That includes the insurance company name, policy number and the name of the insured.

Even if the accident is not serious, you may want

to call a friend or family member to provide emotional support. If you've been injured, a friend or family member can meet you at the hospital and/or arrange to have your

vehicle towed or returned home while you get the care you need.

Automotive accidents can be nerve-wracking. Knowing the steps to take can alleviate some stress.

## Maintenance intervals drivers should know

VEHICLES are among the most costly expenses individuals have. According to data from Kelley Blue Book, the average price paid for a new vehicle in the United States in September 2022 was \$48,094. Canadian car buyers face an equally expensive reality in their country, where the average MSRP for a new car is more than \$45,000.

Since vehicles are such sizable investments, it behooves motorists to do as much as they can to keep their cars and trucks running smoothly. Vehicle owner's manuals typically recommend maintenance intervals and should be drivers' first resource for information regarding how to take care of their cars and trucks. But the following are some standard maintenance intervals drivers can keep in mind.

The 3,000-mile marker used to be the benchmark for changing oil, but modern vehicles can now go longer between oil changes. However, it's still a good idea to check other fluid levels every 3,000 miles. Windshield washer fluid, coolant, brake fluid, transmission fluid, and power steering fluid should all be checked every

3,000 miles and topped off if levels are low.

It's wise for drivers to perform some additional maintenance checkups every 3,000 miles. Check tire pressure, inspect hoses (which should not be leaking or bulging) and clean the interior of the vehicle every 3,000 miles.

Many vehicle manufacturers now recommend oil changes every 5,000 miles. Tire rotations also can be part of service visits at this interval, and drivers can ask their mechanic to check their fuel filters and batteries every 5,000 miles as well. Many may already do this as part of their comprehensive maintenance packages, but it's still good to confirm if they do and request they do so if it's not part of the plan.

Drivers also can request that cabin air filters are inspected at this point, though they can generally last a year before they need to be replaced.

Around the 5,000-mile mark, wiper blades also may begin to show signs of wear and tear, including streaking on the windshield or scratching noises when in use. Each of those signs indicates the wipers need to be replaced. However, driv-



ers should take note of these signs regardless of when they appear. Some may not make it 5,000 miles before they begin to wear down. In such instances, they should be replaced immediately regardless of how many miles it's been since they were installed.

Some vehicles may only

require oil changes every 10,000 miles. That's not uncommon in vehicles that use synthetic oil, though drivers are urged to consult their owner's manuals.

Brake pads also may need to be replaced around this time, and one telltale sign of that is a squeaking noise whenever the brakes

are applied.

Drivers can ask their mechanics to check the alignment of their vehicles around this interval as well. Though many vehicles won't develop alignment issues, it's best to check for such issues every 10,000 miles or whenever a vehicle feels as though it's pulling in

one specific direction.

Maintenance intervals are created to serve as a guideline for drivers. Any issues that arise should still be brought to the attention of a mechanic regardless of how many miles have been added to the odometer since the most recent trip to the garage. installed.

**BARB CITY  
AUTOMOTIVE**

Complete Automotive Repair - Foreign & Domestic  
John Volkert & Bobby Leon of Rochelle - Owners  
1150 S. 4th St. DeKalb  
756-3898

06192023

**Full-Service  
Auto Repair &  
Maintenance**

From factory-schedule maintenance to emergency repairs and towing, we offer trusted service and great rates for unbeatable value.

**Blake Automotive**  
3678 IL 64, Mt. Morris 815-734-7228

03112019

Call "Spud" for all your insurance needs...James E. "Spud" Supancic

We carry a wide variety of insurance providers including  
Mexico Insurance • Auto • Home • Life • Health  
LICENSE • TITLE • STICKERS

**James E. Supancic Insurance**

Hours  
Mon.-Fri. 9am-5pm  
Sat. 9am-12 Noon

516 Lincoln Ave., Rochelle  
815-562-7552  
www.spudinsurance.com

James E. "Spud" Supancic  
06192023

**Stan's Performance  
FULL SERVICE GARAGE**

- Computer Diagnostics
- Brakes • Tires
- Oil Change • Transmission Care
- Air Conditioning
- Tune Up & Repair

**We Do It All – Give Us A Try!**

815-734-4272

409 E. Hitt St • Mt. Morris

06192023

**Bushman's Service**

**On Farm Tire Service**

Milledgeville, IL

**815-225-7411**

**Surprisingly great rates  
right around the corner.**

Schaefer Ins and Fin Svcs Inc  
Terri Schaefer, Agent  
603 Lincoln Highway  
Rochelle, IL 61068  
Bus: 815-562-7063  
Se habla Español

I'm your one-stop shop for the service you deserve at a price you want. Call me for surprisingly great rates and Good Neighbor service right in your neighborhood.

**State Farm**  
Like a good neighbor,  
State Farm is there.®  
Individual premiums will vary by customer.  
All applicants subject to State Farm®  
underwriting requirements.

State Farm  
Bloomington, IL  
2001878



# SPORTS

## Rochelle Little League

(PHOTOS BY RUSSELL HODGES)



### Rookie League action continues at May School and Rochelle Middle School fields

The 2023 Rochelle Rookie League season continued at the May School and Rochelle Middle School baseball diamonds this week. There are 71 Rookie League players participating across eight teams (Auto Hub, Helfrich Trucking, Lifeworks Photography Studio, Majeski Motors, Midwest Signs & Designs, Shane Huber State Farm, The Fit Hub and Weichart Realtors) this summer. Rookie League games are held every Monday and Wednesday at 6 p.m. through June 21 with a Championship Game at the Minor League field set on Friday, June 22 at 7:30 p.m.

## Majeski Motors

SALES AND SERVICE

**ROCHELLE**  
**MAJESKIMOTORS.COM**



Stock # 11492M

**2011 Ford F-150 XLT**

\* SPECIAL FINANCING AVAILABLE

**\$14,995**

Stock # 11608A

**2018 GMC Acadia Denali**

\* LOADED - Under 40K Miles

**\$32,900**

Stock # 11176B

**2020 Ford F-150 XLT**

\* Limited Color - Lead Foot Gray

**\$43,995**

Stock # 11438A

**2019 Cadillac Escalade Luxury**

\* 6.2 Liter \* Only 57K Miles

**\$49,272**

Stock # 11468

**2018 Nissan NVS**

\* Hightop

**\$16,995**

## Majeski Motors

Your Local Resource For Quality Pre-Owned Vehicles

### Call Today or Stop In

### 815-562-9000

### 1010 S. 7th St., Rochelle, IL