



ROCHELLE News-Leader

MIDWEEK EDITION | WWW.ROCHELLENEWS-LEADER.COM

Today's RNL issue sponsored by Community Unity member:
Rochelle Community Unity
Shop • Play • Stay
JEFF PERRY Auto Group
1260 N. 7th St.
815-562-8787
Vol. 104 • No. 16

LOCAL NEWS... LOCAL VIEWS

WEDNESDAY, JUNE 21, 2023

\$1.25

Ogle County residents impacted by SNAP thefts

Northern Illinois Food Bank offers tips, food for those affected

BY JEFF HELFRICH
MANAGING EDITOR

OGLE COUNTY — Northern Illinois Food Bank serves the residents of 13 counties in the region, which it refers to as neighbors.

NIFB SNAP Outreach Manager Melanie Craigs-Ingram said neighbors in each of those 13 counties, including Ogle County, have been victims of SNAP theft. SNAP stands for supplemental nutrition assistance program. It's funded by the federal government and administered by organizations like NIFB. SNAP benefits are given to neighbors that are eligible and provided on a card each month. It can be for individuals or families.

"There are some scammers who are putting point of service-like devices at checkouts and when neighbors swipe their SNAP cards and put their PINs in, information is being stolen along with their benefit funds," Craigs-Ingram said. "It's very sophisticated. Dummy LINK cards are being made with that information. It started happening last year and is still hap-



(COURTESY PHOTO)

Northern Illinois Food Bank serves the residents of 13 counties in the region, which it refers to as neighbors. NIFB SNAP Outreach Manager Melanie Craigs-Ingram said neighbors in each of those 13 counties, including Ogle County, have been victims of SNAP theft.

pening now."

NIFB is offering information to help neighbors protect themselves. They can download apps to monitor SNAP deposits

and their spending habits. NIFB asks that SNAP users change their PIN numbers frequently, at least monthly, and never share their PIN numbers

with anyone. Neighbors should be aware of suspicious calls asking for PIN numbers, and no legitimate organization will ever call and ask for

that, Craigs-Ingram said.

Neighbors should check their online accounts often.

See FOOD page 3

Enterprise zone legislation signed into law

State bill will prevent solar and wind siting in 2,000-acre area

BY JEFF HELFRICH
MANAGING EDITOR

ROCHELLE — On Friday, June 9, Senate Bill 1127 was signed into law by Gov. JB Pritzker after passing both the state House and Senate without any opposition. The new law will protect the Lee-Ogle Enterprise Zone in and south east of Rochelle from future solar and wind developments.

Senate Bill 1127 was filed by Rochelle's State Senator, Win Stoller (R-Germantown Hills), in response to House Bill 4412, which was passed and signed earlier this year and sets statewide standards for wind and solar farm siting and takes away previous local controls such as at the county level. The state would effectively be able to greenlight large solar or wind developments without the say of local governing bodies.

City of Rochelle officials and Stoller took issue with HB 4412's potential impact on the Lee-Ogle Enterprise Zone earlier this year. The Lee-Ogle Enterprise Zone is a 2,000-acre



(PHOTO BY JEFF HELFRICH)

On Friday, June 9, Senate Bill 1127 was signed into law by Gov. JB Pritzker after passing both the state House and Senate without any opposition. Senate Bill 1127 was filed by Rochelle's State Senator, Win Stoller, in response to House Bill 4412, which was passed and signed earlier this year and sets statewide standards for wind and solar farm siting and takes away previous local controls such as at the county level.

designated area along Interstate 39 and Interstate 88 stretching from Rochelle's industrial district area into Lee County.

Since its inception,

that area has seen major investment by the city, county and state in an effort to attract industrial development. Local officials did not want to see a large

solar or wind development greenlit in the area without local say and make that investment for naught. SB 1127 exempts the Lee-Ogle Enterprise Zone from

the state's new siting rules within a four-mile radius of the intersection of Interstates 39 and 88.

See ZONE page 5

Helping you create the life you want.

Kish KISHWAUKEE COLLEGE
kish.edu

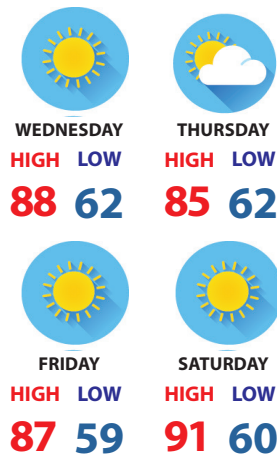
KNOW IT TODAY



Quinonez earns scholarship

Julissa Quinonez earned the Dean's Scholarship from the SIU School of Dental Medicine. **Page 7**

WEATHER



Today's RNL issue sponsored by Community Unity member:
Rochelle Community Unity
Shop • Play • Stay

AtlasAuto

1400 N. 7th St.
815-562-7433

OBITUARIES

• CHARLES 'CHUCK' LEROY MCGRATH
• LILLIAN ROSE ATCHLEY
• MARK LEE ALTENBURG

See page 4

INSERTS

• LITTLE LEAGUE GUIDE
• FARM & FLEET

INSIDE

Local News.....2, 3, 5, 8
Obituaries.....4
Opinion.....6
Community.....7



Stillman BANK

We are proud to be voted Ogle County's

- ✓ Best Local Bank
- ✓ Best Lender
- ✓ Best Financial Planner

2022 BEST OF OGLE COUNTY

www.stillmanbank.com

COME SEE YOUR FRIENDS



Brent Ohlinger
Community President
NMLS#454385

304 EAST HIGHWAY 38
ROCHELLE
firststatebank.biz | 815.562.2200

FIRST STATE BANK



David Eckhardt
Vice President/Loan Officer
NMLS#454387

Member FDIC

LOCAL NEWS

Park district board: Backhoe purchase approved

Superintendent of Recreation Murray discusses start of Spring Lake season

BY JEFF HELFRICH
MANAGING EDITOR

ROCHELLE — At its monthly meeting Monday, the Flagg-Rochelle Community Park District Board of Commissioners unanimously approved the purchase of a new 2024 CAT 416 backhoe at a cost not to exceed \$138,000.

The park district's current model is over 30 years old. The new model will be delivered before the end of the year. Park District Executive Director Jackee Ohlinger said the backhoe plays a large part in park district maintenance operations.

"It's a very big part of the outdoor season," Ohlinger said. "Summer and winter. We move snow with it, dig trenches, build playgrounds and more. Having that piece of equipment over 30 years old, it's the backbone of our department for the most part and it's very important and essential for us to have one."

The park district got an offer from the dealer to trade in its current backhoe for \$5,000 and will assess whether it could sell it for more on its own. The park district planned to purchase a new backhoe in its 2021 capital plan.

Spring Lake
Superintendent of Rec-

reation Andrew Murray said Spring Lake Pool opened for the season June 3 to a "great turnout." The facility has seen 600 drop-in visits and 96 passes of different types purchased since opening. The drop-in rate at Spring Lake has been raised to \$8 due to the cost of labor, Murray said.

The Rochelle Rays swim team has 58 kids on it this year, Murray said. It will have a four-meet schedule this summer with three taking place at home.

Ohlinger said the facility was recently inspected for safety twice by PDRMA, a park district risk management and insurance organization. Ohlinger said the inspections yielded "great reports" and involved review of lifeguards and equipment.

"I was really thankful," Ohlinger said. "The amount of time that our aquatics department spends on training and preparing for Spring Lake's season of 2.5 months is incredible. They work really hard to keep the public safe and to have an excellent grade from PDRMA, which is very thorough, was quite an accomplishment."

Budget

The board unanimously approved a draft budget for 2023-2024. The budget will be finalized with a



(PHOTO BY JEFF HELFRICH)

At its monthly meeting Monday, the Flagg-Rochelle Community Park District Board of Commissioners unanimously approved the purchase of a new 2024 CAT 416 backhoe at a cost not to exceed \$138,000.

public hearing and approval on July 24 at 6:15 p.m. The meeting will be moved back a week later than its usual monthly date to allow for the draft budget to be posted publicly for a month before approval.

A large aspect of the budget involves a potential capital improvement project that will change Helms Park, Board President Tim Hayden said. The budget will include

a placeholder for project funds as the park district looks at options for what the project will look like.

"The discussion from a capital standpoint has been centered around a budget for Helms depending on how things look and what things cost with some of these things costing potentially \$1 million. Some of these funds have accrued from capital and will have a timeline that they need to be spent on.

It's not set in stone. It's really not the best timing forming a number because it's kind of putting the cart before the horse with the planning and getting budgetary figures for some of this stuff."

The budget also includes a new shelter at VFW Park and a new truck for the maintenance department.

REC
The Flagg Rochelle

Community Park District REC Center will see its yearly closure for cleaning and maintenance for two weeks in July, Ohlinger said. REC Center membership numbers have increased in the past month, Ohlinger said Monday evening.

"We're also planning on rolling out a couple of changes and fun things for our members to see when we open back up in August," Ohlinger said.

Rochelle Community Hospital re-designated acute stroke ready hospital

ROCHELLE — Per the Illinois Department of Public Health (IDPH), effective May 30, 2023,

Rochelle Community Hospital will continue to be recognized as an Acute Stroke Ready Hospital

(ASRH) within the State of Illinois. This designation assures that all stroke patients have access to

rapid care.

To obtain this certification, RCH completed and sent the IDPH application along with supporting documentation to the Department. The designation remains valid for three years with yearly submission of required attestation documentation.

"Remaining a Certified Stroke Ready Hospital as a small rural hospital means our community can rest assured they will be in the best care during a very time-sensitive emergency," RCH Emergency Services Manager Janis Astle said.

RCH's participation in the Illinois Stroke program is an example of the hospital's continued commitment to quality stroke care in our community and the State of Illinois. To learn more about RCH Stroke Care and identification and instructions regarding a stroke, visit our website: www.RochelleHospital.com.

agency," RCH Emergency Services Manager Janis Astle said.

RCH's participation in the Illinois Stroke program is an example of the hospital's continued commitment to quality stroke care in our community and the State of Illinois. To learn more about RCH Stroke Care and identification and instructions regarding a stroke, visit our website: www.RochelleHospital.com.

The Invention of the Year

The world's lightest and most portable mobility device

Once in a lifetime, a product comes along that truly moves people. Introducing the future of battery-powered personal transportation... **The Zinger.**

Throughout the ages, there have been many important advances in mobility. Canes, walkers, rollators, and scooters were created to help people with mobility issues get around and retain their independence. Lately, however, there haven't been any new improvements to these existing products or developments in this field. Until now. Recently, an innovative design engineer who's developed one of the world's most popular products created a completely new breakthrough... a personal electric vehicle. It's called the **Zinger**, and there is nothing out there quite like it.



Available in Green, Black and Blue (shown)

The Zinger folds to a mere 10 inches.

backseat or trunk. Then, there are the steering levers. They enable the **Zinger** to move forward, backward, turn on a dime and even pull right up to a table or desk. With its compact yet powerful motor it can go up to 6 miles an hour and its rechargeable battery can go up to 8 miles on a single charge. With its low center of gravity and inflatable tires it can handle rugged terrain and is virtually tip-proof. Think about it, you can take your **Zinger** almost anywhere, so you don't have to let mobility issues rule your life.

Why take our word for it? Call now, and find out how you can get a **Zinger** of your very own.

journey
zinger

Call now and receive a utility basket absolutely FREE with your order.

855-331-319

Please mention code 601449 when ordering

journey
HEALTH & LIFESTYLE



Now available in a Joystick model (Zoomer Chair)

Joystick can be mounted on the right or left side for rider's comfort

The Zinger and Zoomer Chairs are personal electric vehicles and are not medical devices nor wheelchairs. They are not intended for medical purposes to provide mobility to persons restricted to a sitting position. They are not covered by Medicare nor Medicaid.

© 2022 Journey Health and Lifestyle

Sue & Elmer Hudson

Celebrating 60 YEARS

Sue & Elmer Hudson are celebrating their 60th wedding anniversary this month. They were married on June 22, 1963 in Wise, Virginia. They have two sons: Steve (Suzanne) Hudson and David (Noemi) Hudson, 4 grandchildren: Sarah (Shaun) Chapman, Sean (Brittany) Hudson, Keaton Hudson and Logan Hudson, 4 great-grandchildren: Gracie & Presley Chapman and Wesley & Cooper Hudson. They are formerly of Rochelle. Sue owned & operated The London Styling Salon & Elmer worked at Rochelle Stone. They now share their time between Oregon, IL and Englewood, FL.

06182023

HAPPY Anniversary

we protect your business. because you've worked hard to build it.

simple human sense.

Dimond Bros.
Insurance Since 1867

401 N. Main St. | Rochelle, IL
815.562.5596 | DimondBros.com

Auto-Owners
INSURANCE
LIFE • HOME • CAR • BUSINESS

Bagshot Row playing June 23

MT. MORRIS — Retro pop/rock band Bagshot Row return to the Mt. Morris Band Shell on June 23 at 7 p.m. Performing the fun sounds from the 50s through the 70s, Bagshot Row adds its own identities to the best music of all time, including favorites from The Beatles, The Monkeys and The Rolling Stones all the way up to Cheap Trick. If you enjoy catchy, bouncy melodies with power pop chords and three part harmony, all driven by a powerful backbeat, you'll love Bagshot Row.

Always a crowd favorite and family-run business in Oregon's Historic Conover Square, Hector's Cocina has a food trailer and will be serving tacos, nachos (on their home made chips), taco salads, burritos and more, starting at 6 p.m.. A local Ice cream vendor will be there, too.

Please bring a blanket or chair, or enjoy the new benches and join the fun on our beautiful, historic campus in the center of Mt. Morris, two blocks south of Illinois Route 64 on Wesley Avenue and enjoy the free rock & roll concert. In the event of rain, please check for an alternate location on one of our websites: Facebook.com/mtmorrisjambo-ree, mtmorrisil.net, mound-ertown.com

LOCAL NEWS

FOOD: Local organizations working to combat SNAP theft

From page 1

NIFB can help with all of these processes over the phone or face-to-face. Neighbors can call the SNAP Outreach Team with questions at 844-600-7627. The line is manned 8:30 a.m. to 6:30 p.m. Monday through Friday.

Craigs-Ingram said the SNAP thefts have occurred nationwide. NIFB has not seen a total theft amount due to scams, but said the number of people impacted is in the thousands. She asked those that have been impacted to report the thefts to be reimbursed for their lost funds.

NIFB is experiencing historically-high numbers of neighbors coming to it and its network due to inflation, increased expenses for food, fuel, utilities and the recent ending of SNAP emergency benefits. For those in need, local food pantries are available. NIFB works with a network of more than 900 food pantries, soup kitchens and feeding programs to provide 80 million meals a year to neighbors across its 13 counties. Last year, 6,400 neighbors in Ogle County experienced food insecurity.

NIFB also offers mobile markets for those in need, where a mobile food truck arrives on location to distribute free food in communities. Everyone who needs groceries is welcome – no ID, proof of income or referral is needed. Food is distributed in a drive-thru model while supplies last. Mobile markets typically provide individuals with common grocery items such as breads, cereals, meat and dairy.

A mobile market will be held locally on Thursday, June 29 from 10-11:30 a.m. at Mt. Morris Church of the Brethren, 409 W. Brayton Road, Mt. Morris, IL 61054.

Mobile market and food resource information is updated on a regular basis and located at [https://solvehungertoday.org/get-groceries-resources/#googletrans\(en|en\)](https://solvehungertoday.org/get-groceries-resources/#googletrans(en|en))

Craigs-Ingram called seeing those in need preyed on with SNAP theft “disheartening.”

“It makes you feel as if people are using their skills to be deceptive and malicious,” Craigs-Ingram said. “We’ve come a long way through COVID-19 and people lost a lot and suffered. And then benefits have decreased since COVID-19 and people have struggled more and now people are stealing their benefits. It is disheartening, but it makes us want to advocate and help even more. We want to make sure everyone knows what is happening and that there is help out there.”



(COURTESY PHOTO)

Northern Illinois Food Bank can help with all of these processes over the phone or face-to-face. Neighbors can call the SNAP Outreach Team with questions at 844-600-7627. The line is manned 8:30 a.m. to 6:30 p.m. Monday through Friday.

Former Rochelle resident killed in murder-suicide in Geneva

GENEVA—A former Rochelle resident was killed on June 14 in a murder-suicide, a Geneva Police Department press release said. Amanda R. Dockery (maiden name Ramsey) was 48 years old. She was a Rochelle Township High School graduate.

On June 14, at 5:22 p.m., Geneva Police responded to a residence in the 1,000 block of Pebble Beach Court, following a 911 call made from the home. Chad L. Dockery, 49, of Hinsdale, Illinois contacted 911 to report he murdered his former wife, Amanda R. Dockery, 48, a resident of the Pebble Beach Court home. At the time of the call Chad informed police dispatchers he was armed with a pistol.

Upon the arrival of the first responding officer, Chad was observed inside a vehicle at the end of the home’s driveway. As the officer approached, a gun was fired. Chad was found to be suffering from a self-inflicted gunshot wound inside the vehicle. A 9mm pistol was recovered from the scene.

Geneva Police officers entered the residence and found Amanda suffering from two apparent gunshot wounds. Geneva and Batavia Fire Department personnel transported Amanda and Chad to Northwestern Medicine Delnor Hospital in Geneva. Amanda was pronounced deceased at 6:06 p.m. Chad was pronounced deceased at 7:30 p.m. No other people were inside the home, and no other parties were injured.

The incident remains under investigation by the Geneva Police Department and members of the Kane County Major Crimes Task Force as additional facts are gathered. Autopsies of the deceased by the Kane County Coroner’s Office are pending.

Geneva Police, the Kane County Major Crimes Task Force, and the Kane County Coroner’s Office worked collaboratively to investigate the shooting. Geneva Police and Geneva Fire personnel were assisted by Tri-Com Central Dispatch, Saint Charles Police, Batavia Police, the Kane County Sheriff’s Office, Saint Charles Fire Department, and Batavia Fire Department. Geneva Emergency Management and Kane County Emergency Management also assisted with movement of vehicular and pedestrian traffic while the scene was being investigated.

Sundog, Kishwaukee College highlight success of internship program

MALTA—When Sundog IT partnered with Kishwaukee College’s Workforce and Community Education department to participate in the college’s internship program, Dale Boughton didn’t hesitate to start the conversation.

“Initially, the internship program seemed too good to be true,” said Boughton, Sundog’s service manager. “When we agreed to take part, I was always waiting for the catch.”

Boughton is no longer waiting.

“There is no catch,” he said. “It’s all upside.”

Sundog hired its first intern from Kish, Cole Kelly, in 2021 and continued the intern program with Ben Heinisch in 2022 and Tyler Butler in 2023. Through federal and state grants, Kish covered 50 percent of the interns’ wages as they received on-the-job training at the DeKalb-based IT company. All three former interns have been hired as full-time level II engineers.

“The quality of the students made it an easy decision to hire all three full-time. They are eager to learn and present themselves well,” Boughton said.

Internships are just one focus of Kish’s Workforce and Community Education department. The college collaborates with many local employers as a partner in workforce development, offering customized training, short-term training programs, career services, internships, apprenticeships and advisory committees.

Sundog serves on Kish’s Computer Information Systems Advisory Committee. Together, employers and faculty share information and ideas to ensure that programs and curricula are responsive to real-world workforce experiences and needs.

Kelly, Heinisch and Butler all offered strong approval for Kish’s Computer Information Systems program, noting the many industry certifications allow students to quickly gain relevant skills and knowledge.

“I ended up at Kish because I had a plan in my head not to take out any loans, and I wasn’t sure I wanted to go to a four-year college right away,” Kelly said. “It was something I could find work in without much experience. And it is exactly what I want to be doing and exactly where I want to be.”

For Heinisch, CIS courses allowed him to discover his career interest after initially being unsure of what program he wanted to pursue when enrolling at Kish. He highlighted the hands-on lab work offered in the courses.

“I wanted to be doing something a little more involved,” Heinisch said. “Kish gives you an actual environment to work in. You are doing real configuration.”

Along with Kish’s quality instruction and course structure, Butler commended how simple Kish’s Career Services made finding work opportunities, especially through the Handshake app.

“It’s very easy to work with and showed me all the different opportunities in the area,” Butler said. “It’s how I was able to find the internship at Sundog.”

From an employer perspective, Boughton said working with Kish has been smooth and straightforward as Sundog has developed its intern program.

“They really drive the student coordination and make it easy for the students to juggle their educational obligations with getting hands-on, real-world experience — while letting me know of any grants or assistance to really make it a win-win,” Boughton said.

And that is a main focus of Kish’s Workforce and Community Education department.

“You look for ways to support one another. This is one way our students can connect their classroom experience with real-world applications,” LaCretia Konan, dean of workforce & community education, said. “It’s the ideal time to train a student your way and open up the pathway to increasing your talent pipeline. Kish truly is preparing our future workforce.”

To learn more about Kish’s workforce development opportunities, including internships, customized training and more, visit kish.edu/workforcepartnerships. To learn more about Kish’s Computer Information Systems program, visit kish.edu/cis.

“Proudly Serving the Rochelle Area Since 1945”

Berg-Johnson

Electric



FREE ESTIMATES
Licensed and Insured

Residential • Commercial • Industrial

24 Hour Emergency Service

815-562-4937

500 Cleveland Avenue

NORTHERN ILLINOIS CARRY

CERTIFIED PROFESSIONAL TRAINING

Aug. 5.....	IL Concealed Carry Permit Renewal, 8am-11am (3 hours)
Aug. 23.....	Defensive Handgun Technique, 9am-3pm (weather permitting)
Aug. 26 & 27.....	Concealed Carry/Home Defense, 8am-4Pm (both days)
Sept. 2.....	IL Concealed Carry Permit Renewal, 8am-11am (3 hours)

Private Concealed Carry/Home Defense classes can be arranged but a minimum of 5 students is required.

We are offering “Countering The Mass Shooter Threat” classes which are designed for every House of Worship, School, Business and Family. Please contact us for further information and/or scheduling dates. These classes can be taught at any location.

Please call or email for further information.

See website for detailed description of all classes

CALL TO REGISTER & FOR COURSE INFORMATION
(815) 501-9421 | NORTHERNILLINOISCARRY.COM
NORTHERNILLINOISCARRY@GMAIL.COM



NORTHERN ILLINOIS CARRY

DENNY LEIFHEIT

LOCAL NEWS

Obituaries

Charles 'Chuck' Leroy McGrath

ROCHELLE — Charles "Chuck" Leroy McGrath, 82, passed away Sunday, June 18, 2023 at Serenity Hospice and Home in Oregon, Illinois. Chuck was born on Aug. 9, 1940 to Walter M. and Pauline M. (McNutt) McGrath in Homer Township, Ohio. He proudly served with the United States Air Force during the Vietnam War. On April 9, 1983, he married Kathryn "Kay" Beguin in Rochelle.

He was a member of the Rochelle Kiwanis Golden K, American Legion and a lifetime member of the Moose earning his Pilgrim Degree. For 57 years, Chuck worked at the DeKalb 188 Business Park, formerly Spaulding Composites.

Chuck is survived by his wife, Kay of Rochelle; five

children: Charles (Kelly) McGrath of Parrish, Florida, Christina (Mark) Robb of Pierson, Florida, Lorrie (Bill) Nesemeier of Rockford, Jeannine (Paul) Hope of Orange Park, Florida, and Barbara (Mark) Engelkes of Jacksonville, Florida; three step children: Shane (Rhonda) Clark, Christopher (Melanie) Clark both of Rochelle and Rhonda (Art) Cardot of Ashton; numerous grandchildren and great grandchildren.

In addition to his parents, Chuck was preceded in death by two grandsons: Aaron Walter McGrath and Bruce Charles Robb; sister, Thelma; daughter-in-law, Pamela McGrath.

The visitation will be from 4 to 7 P.M., Wednesday, June 21, 2023 at the Unger-Horner Funeral Home, 400 N. 6th St., Rochelle,



with a Moose service at 7. The funeral service will be held at 1 P.M., Thursday, June 22 at Faith Lutheran Church, 14206 E. Flagg Road, Rochelle, with Pastor Joy Alsop officiating. The burial will follow the service at Trinity Memory Gardens in Rochelle with military services provided by the Eastern Lee-Ogle Honor Guard and the United States Air Force.

Memorials may be made in Chuck's memory to Serenity Hospice and Home, Mooseheart or to the family. Visit www.ungerhorner.com to sign the online guest book.

Three named to Iowa spring dean's list

IOWA CITY, Iowa — More than 7,100 undergraduate students at the University of Iowa were named to the dean's list for the 2023 spring semester. They include Rochelle residents Alexander Gilbert (first year, College of Liberal Arts and Sciences), Josephine Lundquist (first year, College of Nursing) and Joshua Lloyd (first year, College of Liberal Arts and Sciences).

Dean's list status was earned by 968 first-year undergraduates during the 2023 spring semester at Iowa, only 1,604 second-year students, only 1,922 third-year students, and 2,630 fourth-year students.

Lillian Rose Atchley

ROCHELLE — Lillian Rose Atchley, 83, passed away Monday, June 19, 2023 at Franklin Grove Living and Rehabilitation Center in Franklin Grove. Lillian was born on June 29, 1939 to James E. and Lavilla R. (Wright) Leigh in Rochelle. In 1958, she graduated from Rochelle Township High School. On June 27, 1959, she married Frank H. Atchley in Rochelle.

Lillian worked for the Rochelle Municipal Utilities for 21 years, retiring in 1998. She was a member of the Women of the Moose. She has always been a faithful church goer. Recently, she and Frank joined New Hope Fellowship, which they love and their Tennessee church, Willow Springs Baptist Church, with daughter, Linda.

Lillian lived a full life for sure! After retirement, she and her husband, Frank, enjoyed being "Winter Texans" in Donna, Texas at the Lil Bit O' Heaven RV Resort for 18 years. There they met wonderful friends whom they enjoyed spending time with. In addition to Texas, they enjoyed traveling to Mexico, Florida, New York and many trips to Tennessee to spend a few weeks with their youngest daughter, Linda. They loved this special time with Linda and two grandsons, Michael and Justin. After their winter travels, they always

looked forward to coming back home to be with their three other daughters and grandchildren. Family time was always a priority in their lives, making sure they went to as many grandkids' sporting events as possible.

Frank and Lillian enjoyed camping, raising their daughters with many wonderful memories from local weekend trips to amazing camping vacations to Yellowstone National Park in Wyoming and the Smokey Mountains in Tennessee. A wonderful family tradition was the famous wiener roasts in their backyard, nothing fancy just hot dogs and s'mores. As a family, we all enjoyed playing games, one in particular, 1-1 2-2, so much fun!

Lillian always loved spending time on her backyard deck watching the birds and "Charlie" the squirrel. They lived in their home for 50+ years having many wonderful neighbors. For many years, their neighbors, Ralph and Terre became like family. Their daughters will be forever grateful for the love and care Ralph and Terre showed them.

Lillian is survived by her husband of almost 64 years, Frank Atchley of Franklin Grove; four daughters: Pam Baker, Lisa (Kevin) Chidley both of Rochelle, Judy (Dan) Piecha, of Delavan, Wisconsin and Linda Nave of Bristol, Tennessee; 11 grandchildren: Doug (Me-



gan) Baker, Leann (Andy) DeWitt, Rachel Huff, Matt (Josie) Mitchell, Sara (Josie) Mitchell, Andrew (Danielle) Chidley, Kendra (Jeff Holden) Eglund, Brad (Jayme) Eglund, Shannon Piecha, Justin (Sarah) Nave and Michael Nave; 18 great grandchildren and many friends in Illinois, Donna, Texas and Elizabethton, Tennessee.

In addition to her parents, she is preceded in death by five brothers: Max, Gene, Bob, James E., Jr. and Dan Leigh.

The visitation will be from 9:30 - 11:30 A.M., Saturday, June 24, 2023 at the Unger-Horner Funeral Home, 400 N. 6th St., Rochelle. The funeral will follow at 11:30 A.M., Saturday at the funeral home with Pastor Nick Tornabene officiating. Cremation care will be provided after the funeral.

Burial will be at a later date at the Lawnridge Cemetery in Rochelle. Memorials may be made in Lillian's memory to the American Cancer Society. Visit www.ungerhorner.com to sign the online guest book.

Mark Lee Altenburg

WINCHESTER, Calif. — Mark Lee Altenburg, 70, of Winchester, CA, passed away from cancer on June 4, 2023, surrounded by his family.

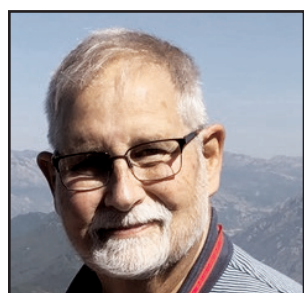
Mark was a kind and thoughtful soul with an adventurous spirit who will be missed by those whose lives he touched. He was born in Oregon, Illinois on Aug. 2, 1952 to Murray and Agnes (nee Landaker) Altenburg. He grew up in Kings with his brother, and graduated from Rochelle Township High School (class of 1971). While there, he developed a lifelong appreciation of woodworking and tinkering with machines. Mark then attended Kishwaukee College.

Mark's professional life was defined by many years of service as a Tool and Die Maker (Clark Dietrich Building Systems),

and as an Industrial Mechanic. He was highly respected and admired by his colleagues and clients for his skill and dedication.

Mark was dedicated to his family and to providing for them, at times working two jobs at once. He was very proud to watch his two sons grow up, and was active in their lives, participating in 4-H projects, Boy Scouts, never missing band concerts, tennis matches, or other events in his sons' lives. Mark loved sailboats, and he restored several old wooden and fiberglass boats, sailing them on Lake Michigan with his family.

Mark is survived and missed by his loving wife, Cynthia (nee Manring) of 47 years, and two sons David (Allyson) and Derek (Felicia). He was



a beloved grandfather to Susan, Kayden and Luke. Mark will also be fondly remembered by his brother, Roger; mother-in-law, Kay, sister-in-law, Donna (Tom), and many other family members and friends.

Services to commemorate Mark's life will be held on Saturday, July 1 at 10 am in Steward. In lieu of flowers, donations may be given to St Jude's Hospital. Though he has left this world, his memory will continue to live on in the hearts and minds of those who knew him.

Rochelle Police Department

Officers issues three arrests

ROCHELLE — On June 16 at 9:17 p.m. Domingo C. Mancilla, 46, of Rochelle was arrested for an outstanding warrant in Ogle County and an outstanding warrant in Lee County. He paid \$1,300 and was

released with a July 6 Lee County court date.

On June 17 at 1:16 a.m. Michelle M. Krall, 46, of Rochelle was arrested for aggravated battery and transferred.

On June 17 at 7:06 p.m.

an 18-year-old homeless juvenile was arrested on a Houghton County Sheriff's Office juvenile warrant and transferred.

All individuals are considered innocent until proven guilty.

BUSINESS SPOTLIGHT
Support Community & Shop Local

To be included, contact Chris Ackland at 815.561.2153 or Andrew Heiserman at 815.561.2123

ANDERSON PLUMBING & HEATING, INC.

Plumbing, Heating & Cooling
Water Heaters, Water Softeners,
Drinking Water Systems, Iron Filters,
Sewer Rodding & Jetting & More!

Since 1976

621 First Ave., Rochelle
(815) 562-8784

Lic# 055-013999

BROC RAY MOHLER
10/29/1990 - 06/21/2021

"And in the silence I suddenly understood the many ways a person can die but still be alive."
You are the missing piece to our broken hearts. You should be here.

*Love - Mama Sue, Al Behrends,
Wife & Sons - Jaimie, Oliver &
Aiden, Sisters - Tiffany (Todd),
Brittany (Max) & Natasha (Josh)
and all of the nieces & nephews*

Forever Missed
Forever Loved
Broc "Forever 30"

**Start Seeing Motorcycles
Look Twice - Save a Life**

06/21/2023

ROCHELLE News-Leader

211 IL Route 38 East, Rochelle, IL 61068
(815) 562-4171

USPS (467-820) ISSN (1075-2811)
Published every Wednesday and Sunday by Rochelle Newspapers Inc. at 211 E. State Route 38, Rochelle, IL 61068.
Periodical postage paid at Rochelle, IL 61068. Postmaster send address changes to the Rochelle News-Leader, P.O. Box 46, Rochelle, IL 61068. Subscription rates are \$139.99 per year by mail in Ogle County. Outside county rate is \$149.99 per year. No mail delivery in newspaper-carrier serviced areas. The circulation department is open Monday through Friday from 8 a.m. to 5 p.m. If you are a carrier subscriber and your paper does not arrive, contact Kelly White at 561-2112.

IN-COUNTY REGULAR SUBSCRIPTION RATES

- \$139.99 for one year • \$79 for six months
- \$34.99 for three months • \$13.99 for one month

Call (815) 561-2112 or
Visit our website at
www.rochellenews-leader.com

MasterCard VISA

HOW TO CONTACT US

News-Leader Main Switchboard	(815) 562-4171
General Manager Mike Feltes	(815) 561-2124
Newsroom Staff Jeff Helfrich, Managing Editor Russ Hodges, Sports	(815) 561-2151 (815) 561-2152
To Place a Display Ad Andrew Heiserman Chris Ackland	(815) 561-2123 (815) 561-2153
To Place a Legal Ad Mike Feltes	(815) 561-2124
To Place a Classified Ad Andrew Heiserman Chris Ackland	(815) 561-2123 (815) 561-2153
Subscriptions and Delivery Kelly White	(815) 562-4171

**We are now offering
LIPO MINO MIX injections
Introductory price \$25
Call for an Appointment!**

This lipotropic combination of B12 and methionine, an essential amino acid and other B vitamins can promote:

- Increase Fat metabolism
- Boost Energy Level
- Reduce appetite

Mon: 7:30 - 6pm, Wed: 7:30 - 6pm, Thurs: 8 - 1pm, Fri: 7:30 - 4pm
Some Saturday appointments available

DLX Medical GROUP

815-227-9594
1212 Currency Ct.
Rochelle IL
We Accept Most
Insurances and
Patients Without
Insurance

10/4/2020

LOCAL NEWS

ZONE: State legislation protecting Lee-Ogle Enterprise area passed

From page 1

“Since its inception, the Lee-Ogle Enterprise Zone has been a catalyst for industrial development, increased equalized assessed value (EAV), jobs and \$100 million of utility, road and rail infrastructure,” Mayor John Bearrows said in response to the new bill in recent months. “SB 1127 will protect the major investments made by the City of Rochelle and the State of Illinois over the past decade. As the city works to attract new industrial and manufacturing opportunities, we remain committed to business retention and expanding our utility portfolio in renewable/green energy. We appreciate Sen. Stoller, who introduced SSB 1127, and others in Springfield who supported it and worked diligently to preserve the spirit and incentives provided by the Lee-Ogle Enterprise Zone.”

City officials such as Bearrows and Economic Development Director Jason Anderson worked with former State Rep. and now Lee County Industrial

Development Association Executive Director Tom Demmer and Stoller on the legislation.

“After the passage of the state’s new and controversial renewable siting rules, the Enterprise Zone in the Lee-Ogle area faced the real and potential threat of having years of planning and millions of dollars’ worth of investment uprooted and undone,” Stoller said in a statement. “I filed Senate Bill 1127 in order to protect and preserve this Enterprise Zone and to ensure that local officials’ years of hard work weren’t in vain.”

An enterprise zone is a specifically-defined area where incentives are available to businesses that locate there, most notably a tax abatement on real estate taxes. That same area on the south east side of Rochelle recently attracted Wheatland Tube-Western Tube (Zekelman Industries), which made a capital investment of over \$100 million in the former Nippon Sharyo facility and brought at least 125 jobs paying an average pay rate of \$50,000 or more



(COURTESY PHOTO)

City officials such as Mayor John Bearrows and Economic Development Director Jason Anderson worked with former State Rep. and now Lee County Industrial Development Association Executive Director Tom Demmer and State Sen. Win Stoller on the legislation.

per year before benefits.

The enterprise zone area would have been attractive to solar and wind power developers due to its proximity to Rochelle Municipal Utilities’ and ComEd’s new Ritchie Road substation, where they could potentially tie into a transmission line

to send power onto the grid. Anderson said earlier this year that he knew of solar developers that were talking to landowners in the enterprise zone to get them to sign onto a project.

SB1127 passed the House with a vote of 101-0. State Rep. Bradley Fritts (R-Dixon) also

released a statement when SB 1127 passed the house and thanked city officials, Stoller and Demmer for their work on the bill.

“Thanks to many years and millions of dollars of investment from federal, state and local government, the dual-rail megasite in northeast Lee

County is a prime spot for industrial development and job creation,” Demmer said of the enterprise zone in a release. “This bill helps ensure we can make the most of those infrastructure investments and attract projects that will add jobs to our local economy.”

OCSWMD releases recycling guidelines and information

OREGON—The recycling of materials is nothing new and has been around for quite a while now. Recycling, like everything, changes and evolves, and it is difficult to stay “in the know” in terms of what is recyclable and what cannot be recycled, even for those in the waste and recycling business.

The Ogle County Solid Waste Management Department (OCSWMD) attempts to stay one step ahead of changes in the recycling industry and tries to disseminate quality information to local residents as to what can, and what cannot be, recycled.

Recycling is too often thought of as part of the regular waste stream, however, waste is material that no longer has any use and will undergo final disposal in a landfill. Recyclable materials are processed into new items and re-enter the economic stream. Proper recycling requires us to view recyclables as a valuable resource, not as a waste material. It is imperative that your waste is separate from your recycling stream, and that all waste is kept out of the recycling bin.

In terms of single-stream residential recycling, the list of accepted materials is not that lengthy. The items that are actually recycled when you place them into your curb-side bin or a public residential drop-off container include the following: steel and aluminum food/beverage cans, unbroken glass bottles and jars, plastic jugs, bottles, jars, and tubs (plastics #1-5, #7), and clean paper products such as clean cardboard (flattened), paper, newspaper, catalogs, junk mail, paperboard boxes, greeting cards, simple gift wrap, and food/beverage cartons.

The materials mentioned above should be clean, rinsed out, and lids replaced. Flatten cardboard boxes and plastic bottles and jugs to preserve space in the containers. Place materials loose into the bins, plastic bags and garbage bags are detrimental to the recycling process and are a major cause of contamination in the recycling stream.

Contamination, when waste is combined with recyclable materials, is the major problem nationwide with recycling programs. Contamination of the re-

cycling stream hinders or stops the recycling process, devalues what recycled materials will be worth, can cause fires and/or damage at recycling centers, and can lead to recycling loads having to be disposed of into landfills.

Major sources of contamination in recycling include plastic/garbage bags, food/liquid waste, Styrofoam, soiled cardboard (pizza boxes), plastic pack-

aging, bubble wrap, shredded paper, broken glass, electronics and batteries, vehicle parts, hangars, hoses, wires, demolition debris such as windows, shower doors, vinyl siding and gutters, pool covers/liners, fish tanks, paint/fuel cans, plastic furniture, and clothing, textiles, and shoes. These items are not recyclable in these programs and can fatally flaw the recycling process.

It is important to keep in mind the recycling stream is not waste. This material can be processed into new materials. By keeping it as clean and as pure as possible the recycling process is safer, more profitable, and sustainable. Contamination

can lead to reduced material value, higher processing costs, damaged equipment, and cancellation of recycling programs.

Call the OCSWMD at 815-732-4020 or visit the county website for more information.

WHO IS UNITY HOSPICE?

- Care provided by the entire hospice team: physician, nurse, social worker, certified nursing assistant, chaplain, dietitian, pharmacist, and volunteers.
- Care is individualized and based on the patient's and family's goals of comfort and quality of life.
- Supplies, equipment and medications.
- Service where the patient resides.
- Specialize in pain & symptom management.
- Spiritual enrichment and bereavement counseling.
- Ancillary Therapies: Music, Physical/ Occupational, Speech, Massage, Pet, etc.
- Ability to provide education to caregivers and family members.

- On-call nurse available 24/7.
- Volunteers providing special attention and stimulation.
- Assistance with advance directives and community support.
- Provide Education to those we care for

CALL UNITY:

(815) 561-8866

915 N. Caron Rd.
Rochelle, IL

Unity
Hospice and Palliative Care

@unityhospice

Surprisingly great rates that fit any budget.

Get great rates and a good neighbor. Call me today.

Like a good neighbor, State Farm is there.*

Individual premiums and budgets will vary by customer. All applicants subject to State Farm underwriting requirements.

Huber Ins and Fin Svcs Inc
Shane B Huber, Agent
221 E. IL Rt. 38, Rochelle, IL 61068
Bus: 815-562-7011
Shane@ShaneHuber.com
Mon-Fri, 8:30a-5:00p
Scheduled Appointments

State Farm
Bloomington, IL 2101554

PET OF THE WEEK
815.758.2457
www.tailshumanesociety.org

Kaiser

Malinois lover?? I'm Kaiser, a 4 1/2 year old guy looking for a special forever home. You see I'm a working breed, so I need to live and love an experienced dog owner, one who would like to work with me and that understands Malinois, Shepherd or other working dog types. I'm a great boy who loves belly rubs, ear scratches and people! For fun I like playing, cuddling, and going for walks. I'd love to find an active person or family who will keep my super brain working as well as having good time. I already know a whole lot, in fact a volunteer nicknamed me Kaiser Von Smartipants! I've spent time playing with other dogs here and enjoy a good game of chase! Please come in and meet me...or tell your friends about me! I miss having a family of my own.

ROCHELLE VETERINARY HOSPITAL

Compassionate, quality care for your companion.

Dr. Nicole Marquardt
Dr. Lynn Deets

A Full-Service Clinic

- Experienced Groomer
- Boarding and Daycare
- Surgical Laser
- X-ray
- Gas Anesthetic
- On-site Laboratory
- Geriatric Care
- Dentistry

www.rochellevet.com

Lobby Hours:
Mon-Fri 8-5
Sat 8-noon

(815) 562-5207
1381 N. 7th St., Rochelle

BROUGHT TO YOU BY:

How are cats so flexible?

Cats' bodies have over 230 bones (humans only have about 206)! Additionally, their pelvis and shoulders are loosely attached to their spine, adding to their ability to squeeze into very tight places.

Grooming

Trust with a Groomer is important - our Groomer has over 10 years experience & expertise.

Please call for appointments

dachsies to DANES
Boarding And Grooming
815-453-2843
1751 Melugins Grove Rd Steward, IL 60553

Call:
Andrew Heiserman 815-561-2123
Christel Ackland 815-561-2153
or
Chris Grimm 815-561-2125

to advertise on the Pet of the Week Page!

LOCAL VIEWS

Guest column

Kern: Successful legislation in Springfield

THE Illinois General Assembly wrapped up a couple of weeks ago and as usual, farm bureau was in Springfield working the Capitol halls. Let's look at some of the legislation we were successful in passing.

The omnibus tax bill included language that allows energy generation equipment used directly for the raising of crops and livestock to be treated like 'farm equipment and machinery' for production which are not subject to state sales tax. Power equipment will include items like generators, solar panels, wind turbines or other forms of generation equipment. The equipment must be necessary for the actual growing of a crop or livestock. This is modeled after the current farm equipment exemptions also equipment that is primarily used for powering a machine shed, your

house, electric fence, etc. will not be exempt.

This provision establishes a sales tax incentive on E-15 equal to 10 percent; creates a 20 percent sales tax break on mid-range ethanol (20 percent to 51 percent ethanol-blended fuel), and the current E-85 sales tax exemption of 100 percent will be extended. All three exemptions sunset on Dec. 31, 2028. The original bill introduced would have let the exemptions run until 2030, but there were concerns of the legislators that the exemptions could have a larger fiscal impact in future years, so the shorter sunset will require a review sooner. The only group that opposed this provision was ABATE. Their feeling was this was somehow going to mandate the elimination of E-10.

Diseased animals prohibition
Allows the director

of the department of agriculture to declare a temporary (30-day or longer) prohibition on the sale, movement, or exhibition of certain animals in order to prevent or reduce the spread of any contamination or disease in the state.

School code FFA & 4H absences

This bill allows schools to support FFA and 4-H students attending competitions or exhibitions. This also benefits the school by counting these students as in attendance while participating in the events. High school agricultural education and the FFA and 4-H are vital programs for development of the talent and leadership needed in farming and agricultural service industries. Students benefit from participating in competitions and exhibitions held by

these organizations.

Soil & water conservation districts

IFB worked diligently with the Illinois Association of Soil and Water Districts (IASWCD) and American Farmland Trust (AFT) to focus this legislation on providing practical soil health authority for soil and water conservation districts (SWCD) and continue farmers involvement in state and federal conservation. SB 1701 allows SWCDs the ability to better leverage



Ron Kern

federal funds; continues the Partners for Conservation program; and provides more direction to SWCDs on soil health duties. In this long-haul conservation effort, this legislation will help farmers continue to find the best sustainable soil practices for their fields and

make steady progress in this space.

Modular nuclear reactors

Repeals language prohibiting approval and construction of new nuclear facilities and requires the ICC to provide a certificate of public convenience and necessity to modular nuclear reactors.

Food labeling standardization

The department of agriculture in consultation with the department of health shall publish information to encourage food manufacturers, processors and retailers responsible for the labeling of food products to voluntarily use specified uniform terms on food product labels to communicate quality dates and safety dates.

Trailer bill clean-up for county siting of wind & solar facilities per PA 102-1123

Changes to public act passed in January

include: Require a wind/solar facility to file a farmland drainage plan with the county and any impacted drainage districts.

Clarify that a vegetative ground cover and management plan shall follow provisions outlined in the Agricultural Impact Mitigation Agreement (AIMA) unless the landowner negotiates a more stringent standard by agreement.

Clarify that a wind/solar facility shall compensate landowners of repair the damage for crop losses and other agricultural damage caused by drainage issues during construction. Restore a provision that keeps the financial protections for decommissioning a facility consistent with requirements of the AIMA and at a more stable protective level.

Ron Kern is the manager of the Ogle County Farm Bureau.

McDermott: The music makers of Rochelle

THE year was 1838 and two new settlers were interested in homesteading in Hickory Grove (Rochelle). Sheldon Bartholomew and Willard Flagg approached John Randall and offered to buy this land claim along the Kyte Creek near an established Indian trail (South Main Street). The Randall cabins sat just north of Kyte Creek and east of today's South Main Street. For a short time, Bartholomew and Flagg lived in the Randall cabin together. In 1839, they split the claim. Bartholomew took all of the land north of the creek and Flagg took the land to the south.

In the cool of the evening Willard Flagg would take his bugle down to the creek. He would stand beneath the canopy of trees and play into the night. The sound echoed down the creek and reverberated beneath the trees. If the neighbors, the few there were, so desired they could listen for free and escape the worries of

the day.

This was the first mention of music found for the community, but far from the last. As the population grew so did the number of musicians. First a bugle, then a fiddle, flutes, drums and others arrived with each new batch of settlers.

Music became more of a shared experience. No longer one man beneath the trees, the days of square dances and cotillions had arrived. As the wagons headed to the center of town they would invite musicians and the whole community would gather.

Rochelle enjoyed a few musical composers. In 1866, John Butterfield composed the music and lyrics for, "When You and I Were Young Maggie". This song has been recorded by such artists as Slim Whitman, Perry Como, Gene Autry and Fats Waller to name only a few. "Don't You Hear Dem Bells" by D.M. McCosh, "Your Mine in My Heart" lyrics by Ms. Anna Nelson, "I'm Afraid

to Go Home in the Dark", "Pony Boy", and "Where Do You Work John" sheet music, by Bert Vanelstine, all Rochelle area residents.

By 1872, there is mention of the Rochelle Brass Band playing for campaigns and parades. The Fourth of July and Farmers Picnic were two annual events where the band could actually receive compensation for their efforts. The band was re-organized in 1878 as the Rochelle Band under the direction of Robert Rae, musical director, and George Unger, band leader. Earl Chapman became the band director in 1885. The local band became known as the Rochelle Kid Band, because of their young age, and later (1890's) was called the Silver Cornet Band.

Area notables, such as Ed Cleveland (tuba), Clint Hartong (barytone), George England (trombone), John Bain and Wilbur McHenry (altos), El-

mer Countryman, Arthur Lazier, Lloyd Ingraham and Earl May (cornets), Fernando Palmer and Will Gage (clarinets), Willis Calkins and Clam Oyster (drums) all sought to bring the joys of music to Rochelle.

Like the band, time marched on. The Silver Cornet Band became the Rochelle Military Band and in 1910 the band was again renamed The Rochelle Concert Band. Flagg Center Band was formed in 1898. Unfortunately there were more and more bands and only a limited number of paying

venues. For bands there were only a few paying events, the Farmers Picnic, Fourth of July, and political rallies. With all of the competition, bands would come and go at a fairly rapid rate, Allegro, so to speak. It was in 1927 that the City of Rochelle created a Municipal Band Tax. For the first time

music in Rochelle had a source of funding, albeit small, it was guaranteed.

With the wide spread growth of bands came the need for musical equipment. Brewen Music Store opened in 1910 on 4th Avenue. Diehl Music Shop on Lincoln Highway welcomed customers from 1922 through 1924. Lewis & Palmer Music opened in 1925. Elliot Music Center, Barnes Music and Knay Music Store all opened, and eventually closed, between 1950 and 2010. If it could be played, it was available in Rochelle from pianos to piccolos, to organs to oboes.

Initially the bands played on the streets of the business district. For major holidays, a bandstand was erected at Cherry Avenue and Lincoln Highway. When the Fair Grounds were constructed on the south side of town, a band pavilion was erected and local events such as the farmers picnic had a new home. Memorial Park was donated to the city in 1922 by the Rochelle Women's

Club. It was 1953 before the bandshell was erected. Willard Gieske was the band director and led the first performance at the Memorial Park Bandshell. In the 1980s a new bandshell was constructed at Atwood Park on the northwest corner of Rochelle.

Through the years music has seen many changes, from Willard Flagg's bugle to the electric guitar. The Lafayette Industrial Band joined ranks with the Rochelle Municipal Band in 1927. In the 1950s women were allowed in the municipal band. Year after year, the band has expanded and contracted as interests and concerns change. But one thing is assured, on a hot summer's evening, on almost any given Wednesday, you and your family can go to Atwood Park and listen to live music played by your neighbors, and escape the worries of the day, just like in 1838.

Tom McDermott is a Flagg Township Museum historian and Rochelle city councilman.

How to contact government officials

U.S. Con. Darin LaHood
1424 Longworth HOB
Washington, D.C.
20515
(202) 225-6201

IL Sen. Win Stoller
Stratton Office Bldg
Springfield, IL 62706
(217) 782-1942

IL Rep. Bradley Fritts
Stratton Office Bldg
Springfield, IL 62706
(217) 782-0535

Have a letter you want to submit to us? Send it to (news@rochelle-news-leader.com)

KEEPING YOU IN TOUCH WITH YOUR LOCAL LEADERS

* Denotes Chairman/President

Rochelle City Council

*John Bearrows	jbearrows@rochelleil.us
Kathryn Shaw-Dickey	kshaw-dickey@rochelleil.us
Bil Hayes	bhayes@rochelleil.us
Rosaelia Arteaga	rarteaga@rochelleil.us
Dan McDermott	dmcdermott@rochelleil.us
Tom McDermott	tmcdermott@rochelleil.us
Benjamin Valdivieso	bvaldivieso@rochelleil.us

Rochelle Elementary School Board

*Trisha Vaughn	trvaughn@d231.rochelle.net
Dave Casey	dcasey@d231.rochelle.net
Steve Builta	sbuilta@d231.rochelle.net
Ashley Jackson	ajackson@d231.rochelle.net
Stephanie White	swhite@d231.rochelle.net
Javier Zepeda	jzepeda@d231.rochelle.net
Jennifer Thompson	jthompson@d231.rochelle.net

Rochelle Township High School Board

*Tom Huddleston	tom.huddleston@rthsd212.org
Bill Ravnaas	bill.ravnaas@rthsd212.org
Jeff Tilton	jeff.tilton@rthsd212.org
Bobby Chadwick	bobby.chadwick@rthsd212.org
Brent Ohlinger	bohlinger@rthsd212.org

Flagg-Rochelle Park Board

Brent Carmichael	bcarmichael@rochelleparkdistrict.org
John Dobbs	jdobbs@rochelleparkdistrict.org
Dale Wells	dwells@rochelleparkdistrict.org
*Tim Hayden	thayden@rochelleparkdistrict.org
Jodie Hart	jhart@rochelleparkdistrict.org
Joe Lenkaitis	jlenkaitis@rochelleparkdistrict.org

Ogle County Board Dist. 3

Austin Gillis	agillis@oglecounty.org
Dan Miller	dmiller@oglecounty.org
Joseph Simms	jsimms@oglecounty.org

Ogle County Board Dist. 4

Jackie Ramsey	jramsey@oglecounty.org
Skip Kenney	skenney@oglecounty.org
David Williams	dwilliams@oglecounty.org

Creston Village Board

*Tom Byro	tommyb_47@yahoo.com
Greg Hopkins	ghopkins522@comcast.net
Steve Katzman	skatzman@csesx1.com
Mike Kerns	ac.kerns@comcast.net
Curt Ward	caward92@comcast.net
Mark Hibshman	
Reid Elliot	
Jennifer Payton	

Hillcrest Village Board

*Richard Rhoads	rrhoads@hillcrestil.us
Pam Pittman	ppittman@hillcrestil.us
Dan Potter	dpotter@hillcrestil.us
Tim Ball	tball@hillcrestil.us
Jose Huerta	jhuerta@hillcrestil.us
Eileen Braski	ebraski@hillcrestil.us
Joe Thompson	jthompson@hillcrestil.us

Flagg Township

Sue Messer	flaggtwp@rochelle.net
Joanna Patrick	flaggtwpclerk@rochelle.net
Susan Rothenberger	assessor@rochelle.net
Scott Seebach	scottseebach@gmail.com

Board of Trustees

Lance Noggle	noggle62@gmail.com
Eric Gruben	egruben@comcast.net
Susan Hager	susanhager303@comcast.net
Jim Kenney	jimk@rocketsupply.com

Flagg-Rochelle Library

*Jaqueline Dickow	dickow@comcast.net
Teresa Haggstad	haggstads@comcast.net
Michael Scanlan	scanlan@comcast.net
Lanning Nicoloff	nicoloff118@comcast.net
Sheri Klindera	alwayslefty2@gmail.com
Susan Sevedge	nit1prl22@yahoo.com
Darci Waltrip	doobs12@comcast.net

LETTERS TO THE EDITOR POLICY

The Rochelle News-Leader encourages responsible letters to the editor on subjects of interest to our readers. Editing may be necessary for space, clarity or to avoid obscenity or libel, but ideas will not be altered. All letters must bear the handwritten signature of the writer and include address and phone number or e-mail address for verification purposes. Neither the street address nor phone number will be printed. Letters should be typed

or legibly handwritten, and no anonymous letters will be published. Any letters from boards or organizations must include at least one name of an individual. Any criticism of public officials should be limited to issues related strictly to their position or actions made in office, as personal attacks will not be published. Letters involving private disputes between the writer and a business will not be published. Political endorsements will be published,

however letters from candidates endorsing themselves will not be printed. Letters may be dropped at the News-Leader office (211 IL Route 38 East), mailed to the News-Leader (P.O. Box 46, Rochelle, IL 61068) or e-mailed (news@rochellenews-leader.com.) The News-Leader reserves the right to edit or reject any letter to the editor for any reason, and letters chosen for publication do not necessarily reflect the views of this newspaper.

COMMUNITY



Stillman Bank donates \$10,000 for new OHS scoreboards

Stillman Bank recently donated \$10,000 to Oregon High School for the purchase of two new scoreboards for their gymnasium. Pictured from left: Stillman Bank Executive Vice President & COO David Mecklenburg, OHS Athletic Director Mike Lawton and Stillman Bank Senior Vice President Pat Donahue.

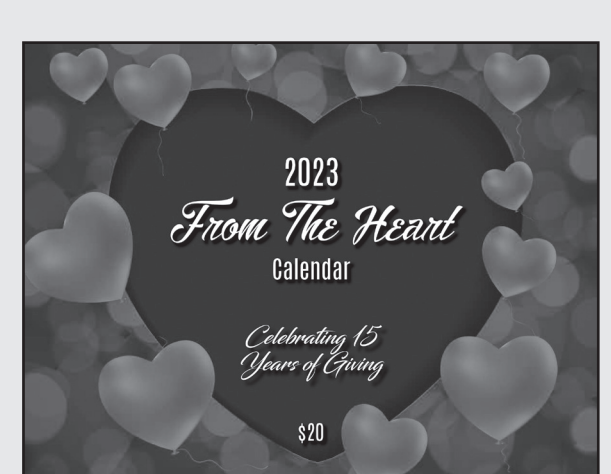


Julissa Quinonez of Rochelle was recently named a recipient of The Southern Illinois University School of Dental Medicine (SIU SDM) annual Dean's Scholarship.

Quinonez receives SIU School of Dental Medicine scholarship

EDWARDSVILLE – Julissa Quinonez of Rochelle was recently named a recipient of The Southern Illinois University School of Dental Medicine (SIU SDM) annual Dean's Scholarship.

The Dean's Scholarship was created to reward academic merit, assist with financial aid, and increase student diversity within the SIU SDM. Each recipient was awarded \$10,000 for the 2023-24 academic year.



- May 26 - Zekelman Employee, \$25
- May 27 - Judy Connolly, Rochelle, \$25
- May 28 - Robert Thompson, Rochelle, \$50
- May 29 - Louise Reinke, Rochelle, \$1,000
- May 30 - Kevin Reilly, Hoffman Estates, \$25
- May 31 - Chicagoland Skydiving, \$25
- June 1 - Hannah Payne, Rochelle, \$25
- June 2 - First State Bank Employee, Rochelle, \$25
- June 3 - Marsha Miller, Rochelle, \$25
- June 4 - Liquor 'n' Wine, Rochelle, \$25
- June 5 - The Kitchen Table, Rochelle, \$25
- June 6 - Erica Sachs, Rochelle, \$25
- June 7 - Zekelman Employee, \$25
- June 8 - Britt Zick, Rochelle, \$25
- June 9 - Lindsey Miller, Steward, \$25
- June 10 - From the Heart, \$25
- June 11 - RACF, \$25
- June 12 - Rebecca Milburn, Rochelle, \$25
- June 13 - Gwen Marie, Rochelle, \$25
- June 14 - John Hueramo, Rochelle, \$25
- June 15 - Christina Neale, Rochelle, \$25
- June 16 - From the Heart, \$25
- June 17 - Matt Mom's, Kingston, \$25
- June 18 - Zekelman Employee, \$500
- June 19 - Tyler Jahn, Rochelle, \$25
- June 20 - Tina Fletcher, Westville, IN, \$25
- June 21 - HOPE of Ogle County, \$25

THE KITCHEN TABLE MENU

7034 S. Klondike Road | Rochelle, IL 61068 | 815-561-9074
If you would like to volunteer with us, please email us at volunteer@kitchentablerochelle.org

- June 22** - (Thursday) - Ham Steaks, Potato Wedges, Baked Cabbage Wedges, Dinner Rolls
June 27 - (Tuesday) - Burgers, Fries
June 29 - (Thursday) - Mesquite and Lime Marinated Chicken Breasts, Brussel Sprouts, Corn, Bread (donated by

Jen's Artisan Breads)
July 2 - (Sunday Brunch) - Enjoy Your Fourth of July Holiday Weekend!!!! No Brunch Today!!!
KIDS MENU: Chicken Nuggets w/Fries

****All menus are subject to change. If you would like to check before coming out, please call us at 815-561-9074**

www.KitchenTableRochelle.org

Birthdays & Anniversaries

- | | |
|--|---|
| June 22
Betty Armstrong
Isaac Bonilla | June 27
Brittany Sullivan
Gary & Rachelle Phillips (anniversary) |
| June 25
Chyanne Bozek
Cruz Hord
Teresa Baker
Treavon Huff
David & Courtney Jones (anniversary) | June 28
Grace Sherburne
Greg Danekas
Harold Sanders |
| | June 29
Derek Oleson |

Call 815-561-2151 to submit names for birthdays and anniversaries



Coffee Break

King Crossword

ACROSS
1 Fireplace residue
4 Height of fashion?
7 "Serpico" director
12 Scary cry
13 Oklahoma city
14 Sports venue
15 Takes too much, briefly
16 First-rate
18 Mafia boss
19 "Once upon —"
20 Send forth
22 Author Umberto
23 Hardly hirsute
27 Do sums
29 Composer Prokofiev
31 New Zealand native
34 Daydreamer Walter
35 Hansel's sister
37 Center
38 Round Table titles
39 Jargon suffix
41 Winds up
45 Michelangelo masterpiece
47 Have the flu
48 First-rate
52 Bikini top
53 Worth
54 Samovar

12

15

18

20

31

35

38

48

53

56

55

56

57

58

4

13

16

19

21

22

27

28

29

30

32

33

36

37

39

40

41

42

43

44

45

46

47

49

50

51

54

57

7

14

17

23

24

25

26

34

37

41

42

43

44

46

47

52

55

58

10

11

14

17

23

24

25

26

34

37

41

42

43

44

46

47

52

55

58

10 Em halves
11 Prof's helpers
17 Med. plan options
21 Small fruit pies
23 Illegal payment
24 Literary rep
25 Allow
26 Hobbyist's abbr.
28 Conk out
30 Outback bird
31 Brit. sports cars
32 Onassis nickname
33 Not 'neath air

DOWN
1 Home
2 Sin city
3 Egypt's Mubarak
4 "Funny!"
5 Redacted
6 Wizardry
7 Chantilly, e.g.
8 Web address
9 "Give — break!"

© 2023 King Features Synd., Inc.

Weekly SUDOKU

by Linda Thistle

5		9	3			1		
8					4			2
	7			1			6	
4				6		7		
	5				2		8	9
		3	1				2	
	3		8			4		
2					7			3
		1	6	9			5	

Place a number in the empty boxes in such a way that each row across, each column down and each small 9-box square contains all of the numbers from one to nine.

DIFFICULTY THIS WEEK: ♦

♦ Moderate ♦♦ Challenging
♦♦♦ HOO BOY!

© 2023 King Features Synd., Inc.

CryptoQuip

This is a simple substitution cipher in which each letter used stands for another. If you think that X equals O, it will equal O throughout the puzzle. Solution is accomplished by trial and error.

Clue: H equals S

UWMB RL WI VWMG FVRFP
UMRSoftIQ BZY HROISH RL
LRVPH HZRRBTIQ BZY EMYKY:
BZY HFZGRRKY EOBRI.

©2023 King Features Synd., Inc.

King Crossword

Solution time: 26 mins.

Answers

Answers

Weekly SUDOKU

ASHTON NEWS



AFC FFA members attend state convention

Ashton-Franklin Center FFA members attended the 95th Illinois State FFA Convention from June 13-15. FFA members Andrea Buhrow and Mallory Henert received their state degrees. Lane Koning received the Bronze Chapter President award. The chapter was the Harvest for All section winner and also received Bronze for the National Chapter Award.

Lee County Sheriff's Office begins Independence Day safety campaign

DIXON — Lee County Sheriff's Office announced plans for stepped-up July 4 traffic enforcement with a focus on impaired and unbuckled drivers. The safety campaign will run from June 16 through the early-morning hours of July 5 to encompass three summer weekends leading up to and after Independence Day.

Lee County will join the Illinois State Police and more than 200 local police and sheriff's departments for the increased statewide enforcement effort.

Use these tips to help ensure a happy and safe holiday:

Designate a sober driver and give them your keys before you go out.

Don't let friends or family members drive under the influence.

If you are drunk or impaired by marijuana or other drugs, call a taxi, or call a sober friend or family

member to get home safely.

Promptly report drunk drivers to law enforcement by pulling over and dialing 911.

Make sure everyone in your vehicle wears their seat belt. It's not only the law, but also your best defense against an impaired driver.

The "Drive Sober or Get Pulled Over," "Drive High Get a DUI" and "Click It or Ticket" programs are made possible by federal highway safety funds administered by the Illinois Department of Transportation. The enforcement period runs concurrently with a media campaign reminding motorists that "It's Not a Game" to drive impaired.

Click It

The Lee County Sheriff's Office today announced it issued four citations during the recent Memorial Day "Click It

or Ticket" enforcement period.

While Illinois' 2022 seat belt compliance rate was 93%, unbelted occupants still account for more than half of those killed in traffic crashes. The "Click It or Ticket" campaign aims to change the behavior of the millions of people who don't buckle up. Thousands of lives could be saved each year if every vehicle occupant was properly restrained when traveling.

During the enforcement period, Lee County Sheriff's Deputies wrote one (1) citation for seat belt violations and took the following additional actions: Three distracted driving citations and one speeding warning.

The Illinois "Click It or Ticket" campaign is administered by the Illinois Department of Transportation with federal highway safety funds.

LCFB Foundation to host 30th Anniversary Cash Bash

DIXON — 2023 marks the 30th anniversary for the Lee County Farm Bureau (LCFB) Foundation. The LCFB Foundation humbly started 30 years ago with the goal of awarding local agriculture students with scholarships. In the past 30 years, they have expanded the scholarship program to reach more students and are proud to have awarded 100 scholarships to local youth pursuing higher education in agriculture.

The LCFB Foundation has expanded over the years to additional youth agricultural education programs including the Lee County Ag in the Classroom program and the Books by the Bushel

grant program.

The LCFB Foundation is celebrating this milestone with a Cash Bash Celebration featuring entertainment by Burn N Bush. The Cash Bash will be held on Friday, Aug. 18 at the Elks Lodge #779 in Dixon. A dinner and raffle will be held, awarding \$8,750 in prizes! The grand prize ticket will receive \$5,000 and the individual who sells the grand prize ticket will also win \$500. \$1,500, \$1,000, \$500, and \$250 will also be awarded to lucky second through fifth-place prize winners. Tickets cost \$100 and will admit two, however, you do not need to be present to win. Doors

open at 5:30 p.m., dinner will be served at 6 p.m. and Burn N Bush is scheduled to play at 7:30 p.m.

All proceeds benefit the LCFB Foundation. Tickets can be purchased at the Lee County Farm Bureau, through volunteers or online, www.lcfbfoundation.org. If you would like to purchase a ticket or volunteer to help sell tickets, please contact the office, (815) 857-3531.

The mission of the LCFB Foundation is to encourage and fund agricultural related educational opportunities for the youth of Lee County.

For more information, visit www.lcfbfoundation.org

Illinois State Police announces results of nighttime enforcement patrols

STERLING — Illinois State Police (ISP) Troop 1 Commander Captain Joseph Blanchette recently announced the results of nighttime enforcement (NITE) patrols in Lee and Winnebago County during May. These NITE patrols allowed the ISP to focus on preventing, detecting and taking enforcement action in response to impaired driving and occupant restraint violations especially between the hours of 7 p.m. and 6 a.m.

Driving under the influence (DUI) citations: two. Other alcohol/drug citations: six. Occupant restraint offenses: 19. Registration offenses: 17. Driver's license offenses: 13. Insurance violations: eight. Total citations/arrests: 122/16. Total written warnings: 29.

Alcohol and drug impairment is a factor in more than 30 percent of all fatal motor vehicle crashes in Illinois. Over half of all fatal crashes in Illinois occur at night. The NITE program allows officers to work even harder at removing dangerous impaired drivers from the road and making sure ev-

eryone is buckled up. This project is funded through the Illinois Department of Transportation.

Occupant

Illinois State Police (ISP) Troop 1 Commander Captain Joseph Blanchette recently announced the results of occupant restraint enforcement patrols (OREP) held in Lee, Stephenson, Whiteside and Winnebago Counties during May. These OREPs provided extra patrol coverage for the ISP so officers could focus on saving lives by making sure all vehicle occupants were buckled up.

Safety belt citations: 91. Child restraint citations: nine. Total citations: 143. Total written warnings: 41.

Most motorists know safety belts save lives, but some ignore their safety and that of their families by neglecting to use safety belts and child restraint devices. These patrols reinforce the occupant protection message by focusing on those who ignore the law. Lives can be saved if people simply "buckle up!" This project

is funded through the Illinois Department of Transportation.

Traffic

Illinois State Police (ISP) Troop 1 Commander Captain Joseph Blanchette announces the results of special traffic enforcement patrols (sTEP) in Lee, Whiteside and Winnebago Counties during May. These sTEPs allowed the ISP to provide increased enforcement for impaired driving, occupant restraint, speeding, and distracted driving violations during the National "Click It or Ticket" Campaign.

Occupant restraint violations: 17. Driving under the influence and drug/alcohol-related citations: seven. Speeding citations and warnings: 155. Distracted driving citations and warnings: six. Total citations: 239. Total written warnings: 59.

Driving the posted speed limit, sober, not distracted and buckled up will save your life and the lives of many others. This project is funded through the Illinois Department of Transportation.

Dinges Fire Company hires new chief integration officer

AMBOY — Dinges Fire Company is pleased to announce the hiring of Carl Butzine as chief integration officer. Carl will oversee the integration of new acquisitions and product categories. Carl will also be a part of the Dinges Fire Company Executive Team and integrate new products and services for the company, help train and hire personnel and work with online direct sales for all Midwest states.

With an impressive track record, Carl brings more than 35 years of executive management and sales experience to Dinges Fire Company. He has overseen personnel from four to 450 people and has managed retail sales from \$40 million to \$115 million per year, working with big accounts such as Walmart and Target.

"We are thrilled to have Carl on the Dinges Fire Company Team," Dinges Fire Company CEO Nick Dinges said. "Carl is a standout guy with years of experience and years of proven success. He is the

perfect person to oversee our strategic initiatives and we are confident he will continue to accelerate what is already shaping up to be a strong 2023 for the Dinges Fire Company."

Dinges Fire Company (formerly E&B Fire and Safety, Inc.) was founded in 2001 to service local Fire and EMS agencies in Northern Illinois. The company acquired Time Emergency Equipment in Michigan, Safety First in Wisconsin, and Fox Apparatus Repair in Iowa, growing its footprint to four states in the Midwest and doubling the size of its team to nearly 30 members.

Today, the firm has grown six times since 2016. The company has also developed product lines such as Leatherhead Metals.com and Vanguard Safety Wear.com along with developing world class game-changing technology. Dinges Fire Company has also grown to 100+ members across the entire Midwest with the goal of being the largest and most progressive distribu-



Carl Butzine

tor in the USA.

"I am so glad to be on the Dinges Fire Company team and can't wait to continue to grow the business and get the word out to Fire Departments about the great products we provide," Butzine said. "My brother has been in the fire industry for 45 years and I have the utmost respect for everyone involved. I also want to help firefighters stay safe and protected in any way that I can. The people and the atmosphere at Dinges Fire Company is second to none and I am so grateful to be here!"

★ **Buy, Sell, Trade or Rent through the CLASSIFIEDS** ★

COMMUNITY MATTERS



**BRADFORD
VICTOR-ADAMS**

MUTUAL INSURANCE COMPANY

120 W. South St.,
Franklin Grove
815-456-2334

Bar/Restaurant

Ralphie and Lulu's
812 Main St., Ashton
815-453-2103

Community Building

Mills and Petrie Memorial

Building

Hourly, daily rentals for
your event
815-973-8397

Funeral Home

Beverage Lyons Funeral
Home

601 Richardson Ave.,
Ashton, 815-453-2441
beveragefamilyfh.com

Insurance

Bradford Victor-Adams
Mutual Insurance
Company

120 W. South St., Franklin
Grove
815-456-2334

Public Library

Mills and Petrie Memorial

Library

704 First Street
815-453-2213

Mills and Petrie Memorial Building

Call 815-973-8762 for building
rental information

Basketball, volleyball and pickle ball courts
Great for birthday parties, bridal showers,
family reunions etc.



SPORTS



HASZ TAKES TO SAND

RTHS alum Sylvia Hasz played indoor and beach volleyball at EIU this past year.

See page 2 for more details

RTHS Girls Basketball

Back on the hardwood

Lady Hubs return for start of summer skills camp and shooting sessions

BY RUSSELL HODGES
SPORTS EDITOR

ROCHELLE — New head coach Jon Gehm and the Rochelle Lady Hub basketball team are back in the gymnasium for the start of the program's annual high school summer skills camp, which tipped off earlier this month and will continue through the end of June. The summer camp was held four days a week from June 5-15 and will run three days a week from June 19-29.

The summer camp runs from 6:30-8 a.m. at Rochelle Township High School, where returning players as well as incoming freshmen have laced up their shoes and shaken off the rust as the team looks to build toward a successful 2023-24 season. It will be the first season for the Lady Hubs under Gehm, who takes over as head coach after Ryan McQuade resigned in the spring.

"The girls have been

great and I couldn't have asked for a much better start to the summer," Gehm said. "Our attendance has been great and we have girls who are showing up early to get some extra shots up. They're working hard and that's what we're trying to instill with them early on. They're enjoying their summer and they're getting better, which has been exciting to see."

In addition to the summer skills camp and the Hub Power strength and conditioning program, Rochelle has been competing in both the Plano Summer League (varsity) and the Byron Summer League (JV) this offseason. As the Lady Hubs continue building toward the winter, Gehm said that energy and shooting have been two main points of emphasis this summer.

"We've done a lot of shooting and we want to develop more shooters here," Gehm said. "We told the girls that if they can shoot,

they can play. We want to have good energy from the get-go and we want to work hard everyday. We want to see our girls run the floor and work hard defensively, even when they're tired. Even though we aren't necessarily in basketball shape right now, I want to see us implement what we've been working on during summer camp."

Rochelle's summer program will continue into July, where girls will have the chance to attend open shooting workouts every Monday, Tuesday and Thursday from 7-8 a.m. The Lady Hubs, who finished 8-24 during the 2022-23 season, will have several varsity players including seniors Alivia Henkel, Kennedy Adamski and Kara Martinez as well as juniors Kendyl Darby, Abby Metzger and Sydney Tabor who are eligible to return for the upcoming 2023-24 campaign.

See **GIRLS** page 3



(PHOTO BY RUSSELL HODGES)

Junior Payton Cesarone (right) and head coach Jon Gehm (left) work through a ball handling drill during the Rochelle Lady Hub basketball team's summer skills camp Monday morning.

Rochelle Little League

(PHOTOS BY RUSSELL HODGES)



Major League baseball teams continue regular season action at Joe Doner Field

Rochelle Little League continued its Major League baseball season at Floyd J. Tilton Park's Joe Doner Field this past week. There are 66 players participating across six teams including Central Bank, Firemen, Kiwanis, Lions, Rotary and VFW. Major League baseball games are played Monday through Friday at 5:30 and 7:30 p.m. Central Bank and Firemen are currently tied for first with 11-3 records, while Lions holds an 8-5 record and VFW sits in fourth at 7-6 overall.



The businesses featured on this page are

"Hubs Super Fans"

They proudly support our local athletes and students.

Please show your appreciation by patronizing their businesses.

WE SUPPORT OUR HUBS!



VINCE'S PIZZA
SINCE 1967

Enjoy a **15% Discount**
when Ordering Online at
VincesPizzainRochelle.com

815.562.7300
Delivery & Curbside Pick Up
1071 N 7th St, Rochelle, IL



Hello,
neighbor!

Huber Inc and Fin Svcs Inc
Shane B Huber, Agent
221 E. IL Rt. 38
Rochelle, IL 61068
Bus: 815-562-7011

Please stop by and say, "Hi!"
I'm looking forward to serving your needs for insurance and
financial services.
Like a good neighbor, State Farm is there.
CALL ME TODAY.

State Farm

1001013.1 State Farm, Home Office, Bloomington, IL

DLX Medical GROUP

Caring for your
family's health from
infant to adults.



Diana Alanis, MD

Accepting
New Patients

For appointment, please call

815-227-9594

1212 Currency Ct, Rochelle, IL 61068
Most Insurance Accepted

Local People Providing Local Service

Rochelle
MUNICIPAL UTILITIES

Water • Waste Water
Electric • Communications

Phone: 815-562-4155 333 Lincoln Highway
Fax: 815-562-5861 Rochelle, IL

www.rmu.net

HS2016

CENTRAL ILLINOIS LOAN

Loans For All Your Needs
Auto • Home Improvement • Vacation
Jami Hackman • Tonia Holland

815-561-4035!

310 Eagle Drive, Rochelle
All loans subject to our normal credit requirements and policies.

MORTON BUILDINGS
If you can dream it, we can build it.



Rochelle Sales Office • Hwy. 251 N. • 877-613-3050

Rochelle
Community Hospital
Your Local Healthcare Resource.

900 N. 2nd Street, Rochelle
815-562-2181
www.rochellehospital.com

MEYERS
FURNITURE & FLOORING

209 Powers Road, Hwy 251 N
Rochelle, IL 61068
(815) 562-8792
www.meyersfurniture.com

Bruns Construction, Inc.
Tim & Roger Bruns, Owners
Established 1997

• Residential
& Commercial
Concrete
• Additions

815-561-0099

Free Estimates • Fully Insured
www.brunsconstructioninc.com

HUB SPOTLIGHT



(PHOTO COURTESY OF EIU ATHLETICS)

Former Rochelle student-athlete Sylvia Hasz played indoor and beach volleyball for Eastern Illinois University this past school year.

RTHS alum Hasz takes her talents to the sand

BY RUSSELL HODGES

SPORTS EDITOR

SYLVIA Hasz received a scholarship to play indoor volleyball at Eastern Illinois University, but the former RTHS student-athlete had a chance to take on a new sport during her spring semester.

A former three-time Interstate 8 All-Conference honoree for the Lady Hubs, Hasz took her talents outdoors as a member of the Eastern Illinois University beach volleyball team earlier this year. The 2023 season was only the second season of beach volleyball at the university and after the team went winless during its inaugural season last year, Hasz helped the Panthers secure home victories over McKendree University and Lindenwood University this spring.

"I really enjoyed beach volleyball," Hasz said. "It was definitely a change of pace because it's much more difficult moving on sand, but it was really cool because you get to work on all of your skills including passing, defense, setting and hitting. It was really fun to work on my all-around skills and having only two players on one side of the court, we really worked on team bonding and improving our communication skills. I learned how to read the other players better and how to make smarter plays. Beach volleyball has helped me improve my IQ and find ways to score."

Hasz earned ample playing time during her freshman season with the indoor volleyball team, appearing in 36 sets across 21 matches and helping the Panthers to a 16-16 overall record and a 10-8 record in the Ohio Valley Conference. The former Lady Hub standout compiled 92 assists and 31 digs at the setter

position, recording a season-best in multiple categories including sets (four), service aces (four), assists (24) and digs (nine) against Morehead State on Oct. 21.

"Our team focuses on culture and our coach has only been here for a few years, so we're really trying to rebuild our program and our culture," Hasz said. "We tied for third in the conference after the team barely made the conference tournament during the previous season, so it's been cool to trust the process and know we have the chance to win an OVC championship. I wasn't a starter, but I earned my chances to go in and I even had the chance to serve on game points later in the season, which was amazing because it meant that my coaches trusted me."

Hasz totaled double-digit assists in five of her 21 matches during her freshman season, where she chipped in 12 service aces. The 6-foot setter, who's currently studying business at Eastern Illinois, said she aims to take on more of a leadership role as she prepares for her sophomore season this fall. Hasz also intends to play beach volleyball once again during the spring.

"I think I'll be getting some more time next season and I want to be confident enough to lead the team and help everybody play their best volleyball," Hasz said. "I think I've grown as a person and as a player, but I've grown the most mentally and I've become more confident in myself. I've learned how to engage with my hitters and help them perform well. Having the physical aspect of the game down is important, but having it mentally is just as important and that's what I've learned the most. The game is a lot faster and players are making smarter plays."

Alfano's
Pizzeria and Italian Restaurant

Taste The **TRADITION**
Taste The **DIFFERENCE**

Dine In • Carry Out •
• Home Delivery • Pizza • Pastas •
• Sandwiches • Salads •
• and Lots More!

Dine-In • Carry Out • Home Delivery
1115 TURKINGTON TERRACE, ROCHELLE

815-562-3312

JOHNSON TRACTOR

SALES • PARTS • SERVICE

200 Steward Road

800.262.1680

www.johnsontractor.com

AtlasAuto

BUY HERE – PAY HERE
You Work - You Drive

Se Habla Español **815-562-7433**

1400 N 7th St
Corner of Flagg Rd & Hwy 251 N

HUB-REMSEN
PRINT GROUP

101 Maple Ave • Rochelle, IL 61068

815.562.7057 • hub-remsen.com

GO HUBS!



"Proudly Serving the Rochelle Area Since 1945"

Berg-Johnson Electric



FREE ESTIMATES
Licensed and Insured

Residential • Commercial • Industrial

24 Hour Emergency Service

815-562-4937

500 Cleveland Avenue

CHEVROLET
We are
Ogle
County's
only
GM Dealer!

• Collision Repair • Rental Cars
• 24 Hour Towing • Maintenance On All Makes
• New/Preowned Vehicles • and Models
• Tires, Alignments, Brakes, Batteries

JEFF PERRY
Auto Group

815-562-8787 www.jeffperrychevrolet.com

Busy Schedule?
Leave the cooking to us.

• Large menu of foods
• Rochelle's famous chicken
by the dinner or bucket
• Hand dipped ice cream
(16 flavors)



COUNTRY SCHOOL
DRIVE-IN RESTAURANT
251 N. ROCHELLE • 562-6039

Stillman BANK

GO HUBS!



Earning Your Trust Since 1882

www.stillmanbank.com Member FDIC

MIMI'S GENERAL STORE
2200 W. 1st St. • 815-562-7500
#ShopLocal

• Groceries,
• Hand Cut Meats,
Deli & Produce
• Liquor, Wine & Beer
• Cigarettes & More
• Bar with Video Gaming
& Slot Machines

Open Mon-Sat 9AM-9PM & Sun 9AM-5PM

Davis Family Health LLC
We Fix
Boo Boos
Kelly Ann Tonielli Davis
DNP, APRN, RNP-BC-CME

"Veteran Owned and Operated"

1212 Currency Court,
Rochelle, IL • 815-561-8500

1201 Meriden Street,
Mendota, IL • 815-538-1800

Primary Care, Physicals, Weight Loss, Dermal Fillers, Botox Injections, Suboxone Program
Most insurances accepted

MEXICAN FOOD
RESTAURANT TECALITLAN
Authentic Homemade Mexican Food
Carry-out & Catering Available
(815) 561-7576
1071 N. CARON RD. ROCHELLE, IL 61068

ANDERSON PLUMBING & HEATING, INC.

Plumbing, Heating & Cooling
Water Heaters, Water Softeners,
Drinking Water Systems, Iron Filters,
Sewer Rodding & Jetting & More!

Since 1976
621 First Ave., Rochelle
(815) 562-8784

Lic# 055-013999

Rochelle Chiropractic Clinic
Dr. Chad M. Piller

227 E. Rt 38 • Rochelle, IL

815-562-8706

www.rochellechiropractic.com
Now Accepting New Patients!

GOOD LUCK HUBS
FROM YOUR FANS AT:

HAYDEN REAL ESTATE INC.
• RESIDENTIAL
• AGRICULTURAL
• COMMERCIAL

815-562-2111 hre@haydenreinc.com

SPORTS

RTHS Girls Basketball

(PHOTOS BY RUSSELL HODGES)



Lady Hubs hold annual summer youth camp for elementary and middle-school players

The Rochelle Lady Hub basketball team tipped off its annual summer youth camp for fifth, sixth, seventh and eighth-grade players this past week. The skills camp is led by RTHS coaches as well as current RTHS student-athletes. The camp emphasizes skill development in areas such as shooting, dribbling, passing, footwork and other fundamentals. Campers are practicing every Monday, Tuesday and Thursday from 9:45-11:15 a.m. at Rochelle Township High School through June 22.

GIRLS: Lady Hubs return for start of summer skills camp

From page 1

“Kara’s been a leader from the first day and she leads all of our drills from the start of camp,” Gehm said. “Abby’s played really well this

summer and she really gets after it. Kendyl’s done some nice things on the offensive side and even though Alivia’s out with an injury right now, she’s showing up and encouraging the girls as

much as she can. She’s also been really involved with our youth camp. I’ve been really impressed with the effort that our returning varsity players have shown and they’ve shown it everyday.”

“The girls have been great and I couldn’t have asked for a much better start to the summer. Our attendance has been great and we have girls who are showing up early to get some extra shots up.”

Jon Gehm

COMMUNITY BOARD

Need to get the word out about a product or service you offer?
Give us a call at 815-562-4171.
We can reach over 9,000 homes!



Gutters, Roofing & Siding

THEISEN ROOFING
Free Estimates!

ROOFING
SIDING
GUTTERS

CONTACT US
815-758-8998
THEISENROOFING@COMCAST.NET

Family owned & operated for over 50 years

Storage Sheds

Rocky Ridge Structures

FREE Sales Rep. Evaluation At Your Site

We Deliver! From Our Lot To Your Site

We Specialize in Portable/Quality Built Storage Sheds

- Stock & Custom Design
- Many Options Available
- Competitive Pricing
- Site Preparation Available

See Displays at 3500 S. Chana Rd. Chana IL 61015
 Call Norm or Albert for Free Literature packet 779.861.3542

Plumbing, Heating & Cooling

ANDERSON PLUMBING & HEATING, INC.

Plumbing, Heating & Cooling
 Water Heaters, Water Softeners,
 Drinking Water Systems, Iron Filters,
 Sewer Rodding & Jetting & More!

Since 1976

621 First Ave., Rochelle
 (815) 562-8784

Advertise Here

What Service Do You Offer?

562-4171

The Rochelle News-Leader

Heating & Air Conditioning

HULL HVAC & Household Services

Furnaces - Air Conditioners - Boilers
 Duct Cleaning - Water Heaters

Air Conditioner Clean & Check

\$50.00
 After \$35 rebate.
 Promotion only available to RMU customers.
 Expires: 08/31

Ask about duct cleaning and protecting your home's air quality.

815-561-6551
www.HullHVAC.com

Concrete

Bruns Construction, Inc.

• Residential & Commercial Concrete
 • Additions

FREE ESTIMATES!

Tim & Roger Bruns, Owners
 Established 1997

815-561-0099
 Free Estimates • Fully Insured
www.brunsconstructioninc.com

Custom Construction

Residential & Commercial Roofing

Shingle Roofing, Metal Roofing & Flat Roofing

Custom Construction Systems
 customsteelroofing.com
 Call & Text 815-871-7835

Classified Marketplace

BUY OR SELL
Place A Classified Ad



ROCHELLE • HILLCREST • CRESTON • STEWARD • KINGS • ASHTON

101 LEGAL NOTICE

**NOTICE
STATE OF ILLINOIS
IN THE CIRCUIT
COURT OF THE
FIFTEENTH
JUDICIAL CIRCUIT
OGLE COUNTY**
IN THE MATTER OF
THE ESTATE OF
ROBERT T. FARRIS,
Deceased, No. 2023-
PR-32

CLAIM NOTICE
Notice is given of the
death of ROBERT T.
FARRIS, of Creston, Il-
linois. Letters of Office
were issued on June 8,
2023, to ELIZABETH J.
WREATH, whose ad-
dress is 6842 Hwy DD,
Festus, MO 63028, and
whose attorneys are
Fearer, Nye & Chad-
wick, 420 4th Avenue,
PO Box 117, Rochelle,
IL 61068.

Claims against the
Estate may be filed in
the office of the Circuit
Clerk of the Court at
Ogle County Court-
house, Oregon, IL
61061, or with the rep-
resentative, or both, no
later than December
14, 2023, and any claim
not filed within that pe-
riod is barred. Copies
of a claim filed with the
Clerk must be mailed
or delivered to the rep-
resentative and to the
attorney within 10 days
after it has been filed.
FEARER, NYE &
CHADWICK, Attor-
neys for ELIZABETH J.
WREATH, Executor of
the Estate of ROBERT
T. FARRIS, deceased
No. 0623
(June 14, 21 and 28,
2023)

PUBLIC NOTICE
Public Notice is hereby
given that on June 12,
2023 a certificate was
filed in the Ogle County
Clerk's Office setting
forth the names and
post office address of
all of the persons own-
ing, conducting and
transacting the busi-
ness known as:
Laura's Paper Garden
13570 E. Lindenwood
Rd.
Kings, IL 61068
Dated June 12, 2023
Laura J. Cook, Ogle
County Clerk
No. 0624
(June 14, 21 and 28,
2023)

PUBLIC NOTICE
Public Notice is hereby
given that on June 9,
2023 a certificate was
filed in the Ogle County
Clerk's Office setting
forth the names and
post office address of
all of the persons own-
ing, conducting and
transacting the busi-
ness known as:
Thompson Sewer &
Drain
610 1st Ave.
Rochelle, IL 61068
Dated June 9, 2023
Laura J. Cook, Ogle
County Clerk
No. 0625
(June 14, 21 and 28,
2023)

**NOTICE OF
ESTABLISHMENT
OF PREVAILING
WAGE**
TAKE NOTICE that the
Board of Library Trust-
ees of the Flagg-Ro-
chelle Public Library
District, pursuant to "An
Act regulating wages
of laborers, mechan-
ics and other workers
employed in any pub-
lic works by the state,
county, city or any
public body or any po-
litical subdivision or by
anyone under contract
for public works", ap-
proved June 26, 1941,
as amended, has deter-
mined on, and as effec-
tive from, June 15, 2023
that the general prevail-
ing rate of wages in this
locality for laborers,
mechanics and other
workers engaged in the
construction of public
works coming under
the jurisdiction of the
Library District, is the
same as determined

by the Department of
Labor of the State of
Illinois for Ogle County
as of May 2023. A copy
of the full resolution
and the Department of
labor determination is
available for inspec-
tion by any interested
party in the main office
of the Library District
at 619 Fourth Avenue,
Rochelle, Illinois, and to
any employer or associ-
ation of employers and
any person or associa-
tion of employees who
have filed, or file their
names and addresses,
requesting copies of the
same.
Flagg-Rochelle Pub-
lic Library District 619
Fourth Avenue
Rochelle, Illinois 61068-
1512
Ogle County
By Susan Sevedge,
Secretary, Board of
Trustees
No. 0630
(June 21, 2023)

101 LEGAL NOTICE

This publication does
not knowingly accept
fraudulent or deceptive
advertising. Readers
are cautioned to
thoroughly investigate
all ads, especially those
asking for money in
advance.

105 BUSINESS OPPORTUNITIES

"This publication does
not knowingly accept
fraudulent or deceptive
advertising. Readers
are cautioned to
thoroughly investigate
all ads, especially those
asking for money in
advance."

113 FINANCIAL

**NOTICE Advance Fee
Loans or Credit Offers**
Companies that do
business by phone
can't ask you to pay for
credit before you get it.
For more information,
call toll-free 1-877-FTC-
HELP. A public service
message from your
hometown newspaper
and the Federal Trade
Commission.

119 ANNOUNCEMENTS

"This publication does
not knowingly accept
fraudulent or deceptive
advertising. Readers
are cautioned to
thoroughly investigate
all ads, especially those
asking for money in
advance."

127 SERVICES AND REPAIRS

**FURMAN'S Lawn
Care and Tree Work.**
Mowing, bushes, spring
clean up, weeding
and much more. Call
Jeremy Furman 815-
761-9619. Please leave
a message will return
call ASAP. Fully insured,
in business since 1999.
Servicing Rochelle and
surrounding areas.

201 DOMESTIC/CHILD CARE

NO INDIVIDUAL,
unless licensed or
holding a permit as a
childcare facility, may
cause to be published
any advertisement
soliciting a child care
service. A childcare
facility that is licensed
or operating under a
permit issued by the
Illinois Department of
Children and Family
Services may publish
advertisements of the
services for which it is
specifically licensed or
issued a permit. Your
Hometown Newspaper

strongly urges any
parent or guardian to
verify the validity of the
license of any facility
before placing a child in
its care.

203 HELP WANTED

DEKALB - part-time
driver/crew. Mostly
weekends, taking
animals to events.
Drivers \$22/hr with
pickup/trailer exp. Crew
\$15/hr no exp. Needed,
min 14 yr old. Call
Steve 815-756-7773.
www.friendlyfarmsltd.
com. (07-05-23)

301 ANTIQUES

WANTED TO BUY:
Vintage Metal and Wood
Signs, Milk Bottles &
Local Advertising, Oak
Icebox, Iron Door Stop
and Antique Lighting...
Call Dick Harms at
815-562-2928 or email
dickharms@hotmail.
com

ANTIQUES WANTED:
I pay cash for antiques;
furniture, glassware,
pottery & crocks, tin &
iron toys, sterling silver,
decoys. If it's antique,
I'm interested in looking!
Call 815-562-2928 or
email dickharms@
hotmail.com

305 GARAGE SALES

**STEWARD - HUGE
GARAGE SALE 506
John St. Many men's
and ladies Harley
clothing L-XXL, also
accessories. Toys,
games, bikes, scooters,
Cdd, many household
decor and kitchen
items. Clothing up to
XXL. Too much to list.
(06-21-23RNLL)**

**ROCHELLE - 1091
Page Way (Squire's
Landing) Thursday,
June 22 and Friday,
June 23 8AM-
4PM. Home decor,
weedeater, clothing,
shoes, purses, etc. Lots
of miscellaneous items!
(06-21-23RNLL)**

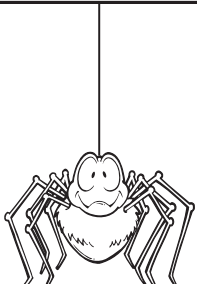
307 MISCELLANEOUS FOR SALE

BUNDLED Newspaper
-\$3 per Bundle. End
Roll- Cost Depends on
Weight of Roll. Available
Monday-Friday 815-
562-4171 (8AM-NOON
ONLY) Rochelle News
Leader.

405 HOUSES FOR SALE

ALL REAL ESTATE
advertised herein is
subject to the Federal
Fair Housing Act,
which makes it illegal
to advertise any
preference, limitation
or discrimination based
on race, color, religion,
sex, handicap, familial
status, or national
origin, or intention
to make any such
preferences, limitation
or discrimination. We
will not knowingly
accept any advertising
for real estate which is
in violation of the law.
All persons are hereby
informed that dwellings
advertised are available
on an equal opportunity
basis.

**ADVERTISE
WITH US**



**TEXT AND
WHATEVER
JUST
DON'T
TEXT
AND**



STOPTEXTSSTOPWRECKS.ORG



305 GARAGE SALES

VILLAGE WIDE GARAGE SALE
Steward
Thu 6/22 thru Sat 6/24
8 AM - 3 PM
Maps Available at Each Location
Saturday Only
Steward UMC Bake Sale 9a-11a
Steward Fire Dept Drive Thru
Lunch 11a-1:30p
Sage's Sweet Treats 8a-3p

**Buy, Sell, Trade or Rent
through the
CLASSIFIEDS**

307 MISCELLANEOUS FOR SALE

**NEW MILFORD
REFRIGERATION**

**NEW, USED
SCRATCH & DENT**
• Refrigerators • Freezers
• Washers/Dryers • Stoves

We also carry a
large selection
of refurbished
appliances with a
warranty.



6331 11th Street, Rockford
815-262-3900

04092023

H.O.P.E

**For Free Help
or
Information
Call
815-562-8890
24 Hours**

**All Calls Are
Confidential.**

Support,
Advocacy, Referral
Services,
Shelter for victims
of domestic
violence and their
children.

**HOPE
of Ogle County**



P.O. Box 131
Rochelle, IL 61068
Public Service
Announcement

SPORTS

Rochelle Little League

(PHOTOS BY RUSSELL HODGES)



Junior League Baseball & Softball seasons continue at Floyd J. Tilton Park diamonds

Rochelle Little League continued its Junior League baseball and softball seasons at Floyd J. Tilton Park this past week. There are 56 players participating in the Junior League this season, with 44 players competing across four baseball teams (Moose Knuckle, Police, Schweitzer Farms and Tyson Foods) and 12 players competing for one softball team (Stillman Bank). The Junior League teams compete against each other as well as local teams from Freeport, Sterling and Rock Falls.



LeafGuard
Get it today. Protected for life.



LeafGuard has been awarded the Good Housekeeping Seal of Approval for 16 straight years.

Say goodbye to gutter cleaning for good

No clogging, No cleaning
No leaking, No water damage
No ladder accidents



Call now for your free estimate!
Financing available 815-673-7532

75% off of Labor*

*Offer does not include cost of material. Discount applied by representative at time of contract execution. Offer ends 6/30/2023.



Receive a \$50 Visa Gift Card with your free in-home estimate

*All participants who attend an estimated 60-90-minute in-home product consultation will receive a \$50 Visa gift card. Retail value is \$50. Offer sponsored by LeafGuard Holdings Inc. Limit one per household. Company procures, sells, and installs seamless gutter protection. This offer is valid for homeowners over 18 years of age. If married or involved with a life partner, both cohabitating persons must attend and complete presentation together. Participants must have a photo ID and be legally able to enter into a contract. The following persons are not eligible for this offer: employees of Company or affiliated companies or entities, their immediate family members, previous participants in a Company in-home consultation within the past 12 months and all current and former Company customers. Gift may not be extended, transferred, or substituted except that Company may substitute a gift of equal or greater value if it deems it necessary. Gift card will be mailed to the participant via first class United States Mail within 10 days of receipt of the promotion form. Not valid in conjunction with any other promotion or discount of any kind. Offer not sponsored and is subject to change without notice prior to reservation. Offer not available in the states of CA, IN, PA and MI. Expires 6/30/23. Receive a \$50 Visa Gift Card with your free in-home estimate

* Guaranteed no to clog for as long as you own your home, or we will clean your gutters for free.

NORTH AMERICA'S

#1 Selling Walk-In Tub

Featuring our *Free Shower Package*

Back by Popular Demand!
FREE SHOWER PACKAGE!



Now you can finally have all of the soothing benefits of a relaxing warm bath, or enjoy a convenient refreshing shower while seated or standing with Safe Step Walk-In Tub's **FREE Shower Package!**

- ✓ First walk-in tub available with a customizable shower
- ✓ Fixed rainfall shower head is adjustable for your height and pivots to offer a seated shower option
- ✓ High-quality tub complete with a comprehensive lifetime warranty on the entire tub
- ✓ Top-of-the-line installation and service, all included at one low, affordable price

Now you can have the best of both worlds—there isn't a better, more affordable walk-in tub!

FREE SHOWER PACKAGE
PLUS \$1500 OFF
FOR A LIMITED TIME ONLY
Call Toll-Free 1-800-000-0000

safestep
www.BuySafeStep.com

With purchase of a new Safe Step Walk-In Tub. Not applicable with any previous walk-in tub purchase. Offer available while supplies last. No cash value. Must present offer at time of purchase.

CSLB 1082165 NSCB 0082999 0083445

Call Today for Your Free Shower Package

1-815-660-0041

Scan me



FINANCING AVAILABLE WITH APPROVED CREDIT






Act by June 30, 2023 for this special subscription offer.

**Get a FREE Gas Card when you renew
or start a News-Leader Subscription!**



\$129 Plus

for 52 Weeks
(\$10 Discount)

...Get a Gas Gift Card
from Clark gas station
Random amounts
ranging from \$5 to \$20

Clip the form below and mail it in with your check, or stop in our office to pay in person, or call in and pay with credit card over the phone.

Name: _____
Address: _____
City: _____ State: _____ Zip: _____
Telephone: _____
Email: _____

Offer valid for both new starts and renewals.
Offer expires on Wednesday, June 30, 2023

ROCHELLE
News-Leader
P.O. Box 46 - 211 Hwy. 38 East
Rochelle, IL 61068
815-561-2112