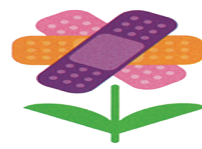




ROCHELLE News-Leader

WEEKEND EDITION | WWW.ROCHELLENEWS-LEADER.COM

Today's RNL issue
sponsored by
Community
Unity
member:



1212 Currency Court
815-561-8100

Vol. 103 • No. 35

LOCAL NEWS... LOCAL VIEWS

SUNDAY, AUG. 27, 2023

\$1.25

More coverage.
Less spendage.

Discounts up to 40%
Get more. Spend less. It's that simple
when you get car insurance from us.
Like a good neighbor, State Farm is
there! CALL FOR A QUOTE 24/7.
Terri Schaefer, Agent
Bus: 815-562-7063
terri.schaefer.115n@statefarm.com



KNOW IT
TODAY



Legion Post
holds banquet

The American Legion Post recently held its summer banquet earlier this month. **Page 3**

WEATHER

SUNDAY	MONDAY
HIGH LOW	HIGH LOW
81 59	81 57
TUESDAY	WEDNESDAY
HIGH LOW	HIGH LOW
75 53	79 53

Today's RNL issue
sponsored by
Community
Unity
member:



209 Powers Road
815-562-8792

OBITUARIES

• PATRICIA DARLEEN BEST
• SANDRA 'SANDY'
(TROTHING)
HARDCASTLE

See page 4

INSERTS

• SCHNUCKS
• MENARDS

INSIDE

Local News.....2, 3, 5, 10
Obituaries.....4
Opinion.....6
Community.....7



8 52078 00112 6

OCEDC established by county officials 'We're working together and have become more unified...'

BY JEFF HELFRICH
MANAGING EDITOR

OREGON — On Aug. 17, a meeting was held by the Ogle County Economic Development Corporation, where the newly-established organization officially announced that it is open for business.

The OCEDC is incorporated as a not-for-profit, representing all of Ogle County, its communities, employers and citizens. The OCEDC's vision statement is "Ogle County, Illinois: An economic destination for growth and prosperity." Since 2019, more than a dozen communities, utility companies, state and regional economic agencies have come together to make the OCEDC a reality.

The OCEDC is made up of various officials from municipalities and the county. New officers elected at the July 20 meeting are Randy Schoon - president (Polo), Darin DeHaan - vice president (Oregon), Paula Diehl - secretary (Mt. Morris) and John Rickard - treasurer (Byron). Each officer represents a community that has pledged startup funds for the new organization. Ogle County



(PHOTO BY JEFF HELFRICH)

On Aug. 17, a meeting was held by the Ogle County Economic Development Corporation, where the newly-established organization officially announced that it is open for business.

and the City of Rochelle have also pledged.

"The key message is that Ogle County as a whole is now coming together for this effort," DeHaan said. "I think it's something we've always needed. The foundation is in place and I think we're going to see some good things happening for all of our communities."

At the meeting, the OCEDC board approved resolutions to set up the organization, and discussed options for paying a hiring

firm to secure an executive director. Its next meeting will be held Sept. 28.

The mission statement for the OCEDC is to, "Provide leadership, advocacy and economic opportunities through the collaboration with private and public resources while promoting the county's existing high quality of life." The mission statement was adopted at last fall's countywide economic development retreat.

Currently, the OCEDC

has committees working to grow the organization into the "private-public partnership" originally envisioned by former County Board Member Gregory Sparrow. It will now begin conducting a search for its first full-time director and will soon begin a campaign to recruit stakeholders from the utilities, employers and anyone with an interest in the growth of Ogle County's economy.

See OCEDC page 10

New RRVBC mobile makes first stop in Rochelle RCH and its foundation donate to RRVBC, hospital hosts blood drive

BY JEFF HELFRICH
MANAGING EDITOR

ROCHELLE — On Wednesday, Rochelle Community Hospital hosted a blood drive, with the Rock River Valley Blood Center's new Blood Mobile making its first stop.

The hospital and the RCH Foundation presented a donation of \$5,000 to RRVBC to offset costs from the purchase of the new Blood Mobile. RRVBC is the sole supplier of blood to RCH. The blood drive was held from noon to 6 p.m. and all donors received a coupon for a free pint of Culver's custard courtesy of Rochelle Culver's.

"So far it's been really busy," RCH Marketing, Foundation & Organizational Development Manager Michelle LaPage said. "I think we had 23 donors registered coming into it. And then I know they said they had quite a few walk-ins already too. Usually our goal is around 50. And we usually do pretty well. You just have to be aware of events that have happened locally in our community where we've needed blood and I think that brings



(PHOTO BY JEFF HELFRICH)

On Wednesday, Rochelle Community Hospital hosted a blood drive, with the Rock River Valley Blood Center's new Blood Mobile making its first stop. The hospital and the RCH Foundation presented a donation of \$5,000 to RRVBC to offset costs from the purchase of the new Blood Mobile.

awareness to people that this is really important that they do donate blood. Because sometimes it might affect somebody right in our community."

Wednesday saw temperatures approaching tri-

ple digits, and both LaPage and RRVBC CEO Lisa Entrikin enjoyed the fact that donors still came out to the blood drive.

"It's amazing to still see the support from the community on a day like

today when it's so hot," Entrikin said. "I really thought nobody would come to a blood drive today. I understand, you're being drained and it's hot. When I got here at 3:30 p.m., they had already

registered over 20 people. They had 23 on the schedule and we had walk-ins and it's been a wonderful time. We're so in need of blood right now."

See BLOOD page 2

HOLCOMB INVESTMENT SERVICES

Review your investment accounts with Greg!
Call today!

Greg Folmar
LPL Financial Advisor
815.561.2603
gfolmar@holcomb.bank
www.holcomb.bank

Securities offered through LPL Financial, Member FINRA/SIPC.
Insurance products offered through LPL Financial or its licensed affiliates. Holcomb Bank & Holcomb Investment Services are not registered broker/dealers & are not affiliated with LPL Financial.
Not FDIC Insured | Not Bank guaranteed | May Lose value | Not insured by any Federal Government Agency | Not a Bank Deposit

ANDERSON PLUMBING & HEATING, INC.

Service or Replace AC & get \$\$\$ Back!

621 First Ave., Rochelle, IL
815-562-8784

LOCAL NEWS

BLOOD: RCH and foundation present donation to RRVBC

From page 1

LaPage said “a steady stream” of RCH employees came out to donate during the drive as well. “They take their time out or they schedule it for when they’re off their shift and come out here and donate blood,” LaPage said. “Consistently, we probably have about 15 people in a rotation that always donate blood if they can.”

The new RRVBC Blood Mobile utilizes cutting-edge mobile donation technology that enhances the convenience and efficiency of blood collection. Since the RRVBC’s purchase of their first Blood Mobile in 2000, mobile drives increased from 100 drives per year to more than 500 drives per year.

Entrikin said RRVBC’s existing buses are 23 and 21 years old.

“Three weeks ago when it was 90 degrees we had to cancel two blood drives because they couldn’t hold temperature,” Entrikin said. “This is such a God send for us. 45 percent of everything we collect comes from mobiles, because we only have four fixed sites to serve all of the hospitals. Ogle County is such a huge supporter and so is Rochelle specifically. We have blood drives all the time down here and a wonderful donor base. RCH has been a wonderful supporter of both drives and others. For them to gift us \$5,000 towards this bus is just huge.”

A nationwide blood shortage has been seen in

recent years. Entrikin has been in the industry for 28 years, and said the current shortage is the worst she’s ever seen. This August is the lowest month that RRVBC has seen for collections in six years.

“It’s hard,” Entrikin said. “We’re trying to get our message out. There’s no substitute for blood. It’s super easy to do. We go to organizations and schools. We have our fixed sites in Rockford, Belvidere and Freeport. It takes an hour of time and it’s so simple. A lot of people are afraid of needles, but I would say so are patients. It’s a 10-minute donation process. It’s so simple. If you’ve never tried it, I would strongly encourage you to. I have people tell me all the time how afraid they are, and once they do it, they say,



(PHOTO BY JEFF HELFRICH)

The new RRVBC Blood Mobile utilizes cutting-edge mobile donation technology that enhances the convenience and efficiency of blood collection.

‘Oh, that wasn’t bad.’”

The community can learn more about how to donate with RRVBC at www.rrvbc.org/. RRVBC will also accept monetary

donations, allowing the blood bank to extend its Blood Mobile services to more locations.

“We have such a heartfelt appreciation for RCH

and the RCH Foundation,” Entrikin said. “The donation is so generous and we’re thrilled to come down here and be with them today.”



MINI PLANS & SINGLE GAME

TICKETS ON SALE NOW

**SATURDAYS
GAME PACK**

\$150

**MACTION
GAME PACK**

\$115

WEEKEND SINGLE GAME TICKETS **\$33**

WEEKDAY SINGLE GAME TICKETS **\$18**

2023 HOME SCHEDULE

SEP. 9 SOUTHERN ILLINOIS	SEP. 23 TULSA	OCT. 14 OHIO	OCT. 21 EASTERN MICHIGAN	NOV. 7 BALL STATE	NOV. 14 WESTERN MICHIGAN
------------------------------------	-------------------------	------------------------	------------------------------------	-----------------------------	------------------------------------

815-753-7225
NIUHUSKIES.COM

5th Annual



Voting Ends

Wednesday, September 13th at 10am



☒ **Vote for Your Favorite Business**

☒ **Vote for Your Favorite People**

Get ready to **VOTE** for your favorites!

Special Thanks to our

CORE Sponsors



SCAN TO VIEW AND VOTE







Brought to you by:



ROCHELLE

News-Leader

LOCAL NEWS

University of Illinois Extension announces upcoming events in Ogle County

OREGON – University of Illinois Extension serving Ogle County will be offering upcoming programs in Rochelle and Oregon. Join Extension educator, Kara Schweitzer, as she leads these free sessions which are open to the public. Register by calling 815-632-3611.

Penning the Past
10:15-11:15 a.m.
Thursday, Sept. 14 at Hub City Senior Center, 401 Cherry Ave., Rochelle. Have you thought about writing your own life story to share with others, or perhaps to leave a legacy? Come and explore ways to preserve your individual and family stories for future generations. No prior

writing skills are needed!
Don't Go It Alone: Improving Your Social Connections
10-11 a.m. Wednesday, Oct. 11 at Rock River Center, 810 S. 10th St., Oregon. Learn the difference between social isolation and loneliness, identify risk factor for both, and gain strategies for staying connected with others.

Looking for the Funny Side: The Value of Humor
10-11 a.m. Monday, Nov. 6 at Rock River Center, 810 S. 10th St., Oregon. This program will help you look at ways humor can help when dealing with stress and change, and the benefits of humor will be identified.

Wits Fitness Rochelle
10:15-11:15 a.m.
Thursdays, Sept. 28, Oct. 26 and Nov. 30 at Hub City Senior Center, 401 Cherry Ave., Rochelle. Engage in interactive activities designed to enhance cognitive function and memory with Wits Fitness Brain exercises.

University of Illinois Extension offers programs that put knowledge to work and aim to make life better, healthier, safer, and more profitable for individuals and their communities. The University of Illinois Extension provides equal opportunities in programs and employment. For reasonable accommodations to participate, please call 815-632-3611.

Rochelle's Pauleova graduates from Clarke University

DUBUQUE, Iowa — Clarke University in Dubuque, Iowa recently

extended a warm congratulations to its Class of 2023 May graduates. Graciela

Pauleova of Rochelle graduated with a bachelor of arts in accounting.



American Legion Post summer banquet held

Members of the American Legion Post 403 attended the August banquet at Storybook Gardens. Lydia Roberts gave a presentation on the role of women in the military during World War II. Also Lee Gibbs (district commander) acted as the installing officer for the new officers of 2023-2024. From left to right: Steve Korth (adjutant), Paul Hardcastle (junior vice-commander), Lee Gibbs, John Gruben (commander), Roberts (speaker), Paul Bearrows (chaplain), Gary Tarvestad (sergeant at arms), Chuck Roberts (senior vice-commander) and Eric Wells (finance officer).

Lee County deputies arrest man for DUI

DIXON — On Saturday, Aug. 19, Lee County Sheriff's deputies arrested 46-year-old William H. Westmorland of Dixon after conducting a traffic stop for a traffic violation, an Aug. 21 press release said.

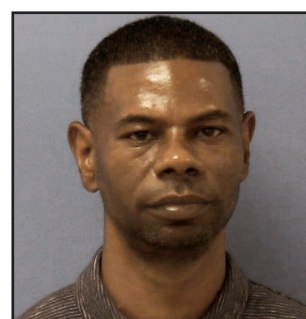
After a brief investigation, deputies found probable cause to believe that Westmorland was driving under the influence of cannabis.

Westmorland was charged with the following: driving under the influence of drugs (class A misdemeanor), possession of cannabis (class A

misdemeanor), speeding 26-34 miles per hour over (class B misdemeanor and operating an uninsured motor vehicle (business offense).

Westmorland was taken to the Lee County Jail, processed and released to appear in court at a later date. It was further learned that this is Westmorland's third arrest for driving under the influence.

Citizens are reminded to call the Lee County Sheriff's Office at (815) 284-6631 or Crime Stoppers at 1-888-Caught-U to report criminal activ-



William H. Westmorland

ity. Callers can remain anonymous and receive rewards of up to \$1,000 if their information leads to an arrest.

All charges are merely an allegation, and the defendant is presumed innocent until proven guilty.



New Rotary Club board members announced

The Rochelle Rotary Club recently named its board members for the year. **2023-2024 Officers include President: Michelle Pease, President Elect: Lance Charnock (C&S Flooring), Immediate Past President: Adam Heal (Crum Halsted), Secretary: Sarah Flanagan, Treasurer: Chuck Watkins and Member at Large: Greg Folmar (Holcomb Bank). Committee chairs include Public Relations: Jeni Hardin (Focus House), Service: Josh Carney (Sumitomo Machinery), Foundation: Emily Anaya (Rochelle Area Community Foundation) and Club Administration: Jeff Fiegenschuh (Rochelle city manager).** "I'm excited to represent our local Rochelle Rotary board as the president," Pease said. "Rotary has been a staple in our community for many years. I look forward to increasing our membership, completing some important community service projects, and providing an opportunity where community members can network and build strong relationships that benefit our community."

Understanding your Grief Group starts on Sept. 11

OREGON — Serenity Hospice and Home will facilitate a free, six-week grief support group that is open to the public. Based on the book "Understanding Your Grief: Ten Essential Touchstones for Finding Hope and Healing Your Heart" by Dr. Alan Wolfelt, this

group is designed to help individuals along their grief journeys by connecting them with a supportive community and providing helpful resources.

The group will be facilitated at Serenity Hospice and Home, 1658 S. Illinois Route 2, Oregon.

Upcoming programs will be on Mondays, Sept. 11 to Oct. 16 from 1-2:30 p.m. and Wednesdays, Sept. 13 to Oct. 18 from 5-6:30 p.m. at the Serenity Home. If you would like to register for this group, please call Cathy Warren or Denise Watts at 815-732-2499.

Kish
KISHWAUKEE
COLLEGE

Helping you create the life you want.

kish.edu

Alfano's

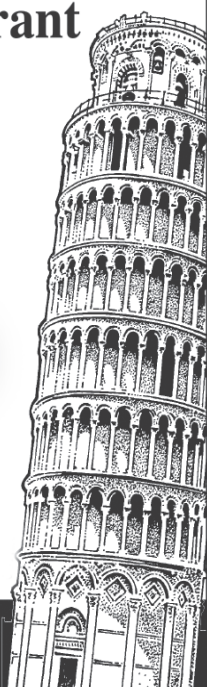
Pizzeria and Italian Restaurant

Taste The **TRADITION**
Taste The **DIFFERENCE**

Dine In • Carry Out •
• Home Delivery • Pizza • Pastas •
• Sandwiches • Salads •
• and Lots More!

Dine-In • Carry Out • Home Delivery
1115 TURKINGTON TERRACE, ROCHELLE

815-562-3312



Lincoln Manor



Owned and operated by Lutheran Social Services of Illinois (LSSI) offering apartment living for older adults in Rochelle and the surrounding communities.

Rent based
on 30% of a
Resident's Adjusted
Gross Income

Full time Social Service Coordinator is available to assist residents

For more information, please call 815-562-1404

615 N. Lincoln Hwy.
Rochelle, IL 61068
TTY 847-390-1460



MANAGED BY:
Lutheran Social Services of Illinois
www.LSSI.org



(COURTESY PHOTO)

Rochelle Police, the Ogle County Sheriff's Department and the Illinois State Police, will be printed without exception. Requests to omit particular reports will not be considered or honored at any time.

LOCAL NEWS

RMU: Rochelle utility service working to promote online portal

From page 1

“We’ve had a lot of customers that have signed up for e-billing that were previously having issues with their statements getting lost in the mail or not receiving them in a timely manner,” Hernandez said. “And the autopay allows customers to really look at their budget and understand when they want that payment to come out as long as it’s before their due date each month. And people can see their bills sooner on the portal. They can also look at their usage there. There’s a lot of really great features on the portal that I don’t think enough customers are really being able to utilize because it’s so new. We’re

really trying to encourage people to get on there.” Another drawing will be held at the end of RMU’s marketing program in November. One winner will receive their choice of an Apple Watch, an iPad or a FitBit. Each month a customer is enrolled in both e-billing and auto pay is another entry customers can get towards that final drawing. Hernandez said right now “not quite half” of RMU customers are using the online portal. It’s her goal to see that number get closer to 75 percent of customers. She said the new system has saved time for RMU and made things easier, along with bringing about more transparency

for the utility and its customers. “It really gives more power to the customer,” Fiegenschuh said. “They can always check their usage down to 15-minute increments on power and water. A lot of people complain about their RMU bill being high and sometimes they forget that it’s water, waste water, garbage and electric if they live in town. It gives you the ability to control your usage and the tools to monitor it. You can see why your bill is going up or down with your usage. It’s all based on consumption. The rates don’t change. If the consumer has the knowledge, they have the ability to change their habits if they choose to.”

Another effort for RMU in recent years has been replacing all water meters in town, RMU Assistant Superintendent of Water/Water Reclamation Jay Mulholland said. The utility spent four years changing meters and now only 13 old meters remain out of 4,000. It is the first time the city has ever done a complete water meter exchange program. Water meters are now uniform with make, model and reading method. In the past, readings made their way to RMU through a variety of different mediums. All of the work was done by RMU employees. It’s recommended that water meters be changed every 10-15 years, Mulholland

said. “I’ve been doing this for 20 years and they did a very efficient, fantastic job,” Fiegenschuh said. “Water meter change out is the hardest of any utility, because you have to get in the house and it’s typically in the basement. And this was started during COVID-19 when our people and customers weren’t comfortable being around others. It was all done internally by our employees. It’s been a fantastic job. I’d guess by doing it in-house we saved hundreds of thousands of dollars.” The original plan for RMU was to change 1,200 meters a year, which was slowed down by COVID-19. Due to

supply chain issues brought about by the pandemic, the city purchased all the water meters it would need ahead of time when it saw supply issues start to change. The same 2-3 RMU employees changed 7-10 water meters per day in the process and scheduled appointments with customers to go into their homes. “Meters become older and less effective,” Mulholland said. “There were meters we weren’t communicating with anymore. Throughout all the ones we changed, we found 17 different styles of meters including eight different brands and seven different ways to read them. Now we are all one brand with one way to read them.”

Rochelle Area

CHURCH DIRECTORY

Ashton Bible Church, corner of Main and Paddock in Ashton. Pastor Farrel Stauffer, church phone is (815)453-2190, church website www.ashtonbible.org. Sunday School for all ages 9:00-10:00am, Morning Worship 10:15am, Wednesday Prayer Meeting/Bible Study 6:30-8:00pm.

The Bridge Church, Pastor Greg Duncan, 11038 E. IL Route 38, Rochelle, IL 61068. Phone: 815-562-7750. Sunday School: 9:00 am; Sunday Service: 10:00 am; Nursery & Children’s ministry during am service; Bible Study Tuesday 10:00 am and Wednesday 7:00 pm. Web: thebridgechurchrochelle.com Email: thebridgechurchrochelle@gmail.com

Calvary Lighthouse Church, Assemblies of God, Senior Pastor, Dr. James Horvath. 14409 Hemstock Rd., Rochelle. Sunday Morning: Sunday Worship & Children’s Church 10:00 A.M., Wednesday Evening 7:00 P.M. – Adult Teaching, Missionettes & Royal Rangers Childrens Classes, Nursery available for all services. HE-Brews Cafe is open before and after services. For further information, please call the CLC office at 815-562-7701, or email us at staff@calvarylighthouse.com

Calvary Lutheran Church, LCMC - “To Know Christ and to Proclaim Christ in Word and Deed” - 19 Perry Road, Lee, IL 60530 (the intersection of Perry Road and W. County Line Road). Rev. Martha Uecker Nelson, Pastor. Coffee Hour starts at 9:00 a.m., Sunday School, Confirmation, and Adult Bible Study are at 9:15 a.m. Worship is at 10:30 a.m. and is broadcast live on Facebook. Go to our website is at www.Calvarychurchlee.org and click on the link there. A Grief Support Group meets the third Tuesday of each month at 10:00 a.m. Call or text (815) 824-2825 or email CalvaryLeeIL@gmail.com with questions or for more information. Also check us out at www.facebook.com/Calvary-Lutheran-Church.

Rochelle Church of Christ, Keeping Christ at the center in the Hub City. We meet Sundays at 9:00am for Bible Study and 10:00am for worship. We also have a Wednesday Bible Study at 7:00pm. 206 Erickson Rd, Rochelle, IL 61068. You can call us at (815) 562-6572 or visit us on the web at rochellechurch.com. We also have a radio program Sundays just after 8am on WRHL 1060AM. Minister Dominic Venuso.

Creston United Methodist Church and Steward United Methodist Church - Rev. Ilhan You, Creston: 126 West South Street, P.O. Box 209, Creston, Illinois 60113. Sunday morning worship 9:00am. Coffee fellowship at 10:15am. Steward: 507 Main Street, P.O. Box 80, Steward, IL 60553. Adult Sunday School, 10:00am. Sunday morning worship and Children’s Sunday School 11:00am. Contact the church office at 847-730-4370 for more information. facebook.com/crestonumcil facebook.com/stewardilumc

Elim Reformed Church, 140 S. Church Road, Kings, IL 61068. Phone: 815-562-6811. Email goelimchurch@gmail.com Website www.goelimchurch.org Sunday Morning Worship 10:00 Rev. Marv Jacobs

Faith Lutheran Church – (14206 E. Flagg Rd.) – “Making Christ Known Through Lives of Faith.” In-person worship is available each Sunday at 9:00 a.m. or online at “Faith Lutheran Social” on YouTube. Worship resources are also available on our Facebook page - ‘Faith Lutheran Church ELCA.’ You may also e-mail Pastor Joy Alsop at Pastor@faithlcrchelle.org for more information. All are welcome to join us!

First Baptist Church of Rochelle, First Baptist Church of Rochelle invites you to experience our practical Bible services which have nurseries provided in every service along with a wide range of children’s and teen ministries. Sunday School is at 9:30 am with regular church services at 10:30 am and 1:00 pm. Wednesday Family Night starts at 6:30 pm with AWANA for the 5 yr. olds thru 6th grade. The Omega Teen Ministry also starts at 6:30 pm for 7th – 12th grades and the Adult Bible Study at 7:00 pm. First Baptist Church is located 6 blocks west of Hwy 251 at the corner of Woolf Ct. and 8th Ave. in Rochelle. Call 562-4168 for more information. Listen at 8:30 am Sunday mornings on WRHL 1060 AM for the Sunday morning “Bible Message.” www.firstbaptistrochelle.org


First General Baptist Church, 500 S. 12th St, Rochelle. Phone: 815-562-5221. Email: fgbcrochelle@gmail.com. Website: www.fgbcrochelle.org. Facebook: www.facebook.com/fgbcrochelle. Pastor: Rev. Angelo Bonacquisti. **Sunday worship services:** 8:30 am, 11:15 am and 6:00 pm. **Sunday school:** 10:00 am. We’d be honored to have you join us as we worship JESUS and continue to grow in truth and love for God and each other. A nursery, children’s church, youth group and small groups are available. If you need a ride please contact our church bus driver, John, at (815) 262-4275 by 8:30 am on Sunday. “For if you confess with your mouth that Jesus is Lord and believe in your heart that God raised him from the dead, you will be saved.” Romans 10:9

First Presbyterian Church – An Amazing Place for Amazing Grace- Rev. Doug Forsberg, Senior Pastor. 1100 Calvin Road, Rochelle. Email: info@placeforgace.com. Sunday morning worship 9:00am & 11:00am. In person or streamed online. On our Website and Facebook Live. www.placeforgace.com / www.facebook.com/placeforgace

Grace Fellowship Church — Pastor Jeff Ardissonne, 2128 Il Route 38, Ashton, 815-453-7464. Sunday School 8:30 a.m. Sunday Worship Service 9:45 a.m. www.graceisforyou.com

Harvest Baptist Church 241 Scott Ave. (Hillcrest). Rev. Duane Boehm, pastor. Email duane712@hotmail.com, cell 815-757-3427. Visit us on Facebook! Service times: Sunday morning worship with Children’s Church at 10 am. Wednesday night worship at 7 pm.

Immanuel Lutheran Church Missouri Synod 16060 E. Lindenwood Road, Lindenwood, IL 61049. Rev. Dr. Matthew Rosebrock. Church Phone 393-4500. Church Worship 9:00 a.m. Sunday School Christian Education Hour at 10:30 a.m.

Living Water Community Church 405 N. Main St, Downtown Rochelle. Phone 815-561-6249, Website: www.lwccr.com, Like us on Facebook. We are Non-Denominational, Christ Centered, Casual dress, Christ Centered Live Band Worship. Mike Vogeler - Outreach and Seven C’s Pastor, Chris Bender- Teaching Pastor and Doug Bunger - Missions and Children’s Pastor. Sunday Worship Service- 10:00am. Nursery/Toddlers Ages 0-5 available during the service in the Splash building. Swim- Grades 1st-5th worship with the adults then break out for age appropriate teaching. Youth groups, Small groups, Life Groups and Workshops meet throughout the year for Bible teaching. 7C’s Mission- serves the community physically & spiritually each month from 1135 Lincoln Hwy, providing lightly used clothing, Hygiene items, a light lunch and Elder Prayer open the second Saturday from 10am-2pm and the 4th Thursday from 4pm to 7:00pm and by appointment.. 

New Hope Fellowship (Church of God - Anderson, IN), 1501 10th Ave., Rochelle, IL 61068. Service: Sunday at 9 a.m. 10:30 a.m., (815)561-8400, www.NHFchurch.net Pastor: Dan Sergeant and Pastor Nick Tornabene. (Classes for children through age fifth grade during service.)

Rochelle United Methodist Church welcomes everyone to their worship service, and practices openness for all activities including communion. Worship is at 9:00 am. Sunday school for children begins around 9:15, following the Children’s Time in worship. A fellowship time with food and space for conversation occurs in Hicks Hall every week following the worship service. We celebrate communion with an open table on the first Sunday of every month, and on other appropriate occasions. Youth group is on Sunday evenings from 5:30-7:30. Our youth program includes service projects, discussion topics, Bible Study, and lots of fun and fellowship together. Some of our activities include packing meals at Feed My Starving Children, helping at Rochelle Christian Food Pantry and 7C’s, working with animals at Barn on Baseline, Mystery trips (Destination Unknown!), and Interactive experiences on Dating boundaries, refugees, and homelessness. Youth group is for grades 6-12 and friends are always welcome. Recorded services are available on our YouTube channel and our website at www.rochelleumc.com. Our services are on the radio (93.5 FM) on Sunday mornings at 9:00 am. Our Facebook page is www.facebook.com/rochelleumc. **Our pastor is the Rev. Dr. Katherine Thomas Paisley.** Our address is 709 Fourth Ave. (815) 562-2164. Email is admin@rochelleumc.com. At Rochelle United Methodist Church, everyone is welcome and loved!

St. Patrick Catholic Church Rev. Jesus Dominguez; Deacon Fermin Garcia; Deacon George Schramm; 244 Kelley Dr. (Corner of Kelley & Caron Rd.), PO Box 329, Rochelle, IL 61068. **Office Hours:** 9:00 AM- 4PM Monday-Thursday, Phone: 815-562-2370. **Mass times:** 8:00 AM Monday-Thursday, Saturday Vigil Mass 5:00 PM English, 7PM Spanish, Sunday Mass 7:30 AM, 9:00 AM in English and 11:00 AM in Spanish. **Confessions:** Monday 8:30AM & 6:30PM, Tuesday 8:30AM, Saturday 8:30am & 4:00-4:45 PM Or by appointment. **Religious Education:** Deacon George Schramm, Director of Religious Education. 903 Caron Road, Rochelle, IL 61068, 815-561-0079; Website: stpatrickrochelle.com Email: stpatrick-rochelle@rockforddiocese.org Facebook.com/StPatrickRochelle

St. Paul Lutheran Church “Building Relationships in Christ, Now and Forever!” Steven Hall, Principal, Parish Nurse-Marcia Schnorr. 1415 Tenth Ave., Rochelle. Church Office-562-2744. Worship times: 6:00 p.m. Saturday, 9:00 a.m. Sunday. Our service is broadcast over WRHL 1060AM at 10:00 a.m. Sunday. Sunday School 10:15-11:15 a.m. Call 562-6323 for more information about the school.



LOCAL VIEWS

Guest column

Charles Gordon Bearrows and Admiral Halsey's typhoon

“Eternal Father, strong to save; Whose hand does bind the restless wave; Who bidst the mighty ocean deep; Its own appointed limits keep; Oh, hear us when we cry to Thee; For those in peril on the sea.” -Navy hymn

Charles G. Bearrows was a 1943 graduate of Rochelle High School. A small-town boy that loved his Future Farmers of America (FFA) club, his community and his country. Charles enlisted in the Navy Reserve shortly after graduation and was a seaman first class in the Illinois Naval Reserve. This level is the third-lowest rank in the United States Navy. Only seaman recruit and seaman apprentice were lower. Charles was a newbie with less than six months of service when he was assigned in December of 1943 to serve aboard the U.S.S. Spence, a navy destroyer.

The U.S.S. Spence was a Fletcher class destroyer built in Maine. Charles was on the crew of the Spence when it was commissioned in January 1943. From half a country apart they were destined to serve

their country together. Halfway across the world they would face a fate that would join them for eternity.

The U.S.S. Spence served as an escort in the Atlantic and Caribbean. By July she was moved to Pearl Harbor for service in the Pacific. The Spence was part of the task group supporting the troops which took possession of the Baker Islands. The Spence was responsible for the sinking of many Japanese transport ships and barges.

The U.S.S. Spence was on patrol at the beginning of 1944. She aided the landings on Emirau Island and participated in the “Marianas Turkey Shoot” during the Battle of the Philippine Sea. In August of 1944 the Spence was ordered back to the United States for upgrades and maintenance. She stayed in dry dock through September.

On Oct. 5 the Spence returned to duty. It was Oct. 31 that the Spence was assigned to Task Group 38.1, the support unit for the fast carriers of Task Force 38. Staging for the Third Fleet was Uhili Atoll. General Douglas MacAr-

thur was ready to start his push across the Pacific. With Admiral William (Bull) Halsey and the Third Fleet keeping the Japanese aircraft at bay, MacArthur planned to move island to island pushing the Japanese back to their homeland. Seaman First Class Charles Bearrows was on the U.S.S. Spence as part of Task Group 38.1 attached to Task Force 38. The Third Fleet was gathered at Ulithi Atoll. The task force included 17 fleet carriers, six battleships, 13 cruisers, 58 destroyers and 1,100 aircraft.

As the ground troops attacked Luzon the aircraft from the Third Fleet bombed Japanese airfields on nearby islands, ships shelled, aircraft staffed and the navy ensured that the air was clear of enemy crafts. The battle for Luzon stretched from November into December. Kamikazes attempted to attack the fleet but were too few to have an impact. The United States Navy appeared unstoppable. As the Third Fleet prepared to move on

to new targets, nature was preparing to accomplish that which the Japanese could not.

The Third Fleet was gathering to refuel on Dec. 16, 1944. The battle to retake islands across the Philippine Sea was hard fought but going well. Weather was a concern as storm clouds were forming quickly over the Pacific Ocean. With rough seas, refueling was put on hold.

By Dec. 17, the weather had worsened and the fleet moved to avoid a direct hit from the storm front.

Dec. 18 found Charles Bearrows and the U.S.S. Spence, together as they had been since the beginning, in

the middle of Typhoon Cobra later referred to as “Halsey’s Typhoon.” The typhoon had shifted course and followed the fleet. Heavy rains driven by winds in excess of 120 miles per hour pounded the ships. Waves rose so high that they washed aircraft from the decks of carriers. Reports of 70-foot waves were common. An added concern was the inability to

refuel. Without the weight of the fuel, the ships rode high in the water and were more susceptible to damage from the raging storm.

Our journey is with Charles and the Spence. Light on fuel, the Spence rode very high. Waves pushed the destroyer into more than 30-degree rolls. Waves in excess of 70 feet pounded the vessel. After hours of pounding, the U.S.S. Spence rolled 70 degrees to the port side and water flooded into the stacks, taking out the engines and transformers. The ship lost all power, electricity, radio and steering. Dead in the water, the destroyer fell prey to the storm and was capsized. The officers and crew of 340 were at the mercy of the seas. Many never made it off the ship, they died quickly. Those that escaped the sinking faced the winds and waves with no protection. By the next morning the sharks appeared, adding a new level of terror. The final tally for the Spence was 317 souls lost and 23 rescued. The Third Fleet lost 146 aircraft, three destroyers and 790 sailors.

A fourth destroyer, the

U.S.S. Tabberer, lost her mast and all radio communications. Radioman Ralph Tucker was ordered to erect a temporary antennae the next morning. As Ralph secured the new mast he noticed a light out on the open sea. The light was from a small flashlight attached to the life vest of a U.S.S. Hull survivor. The Tabberer was unaware that other ships had sunk until they started taking on survivors. When ordered to return to Uhili Atoll Lt. Commander Henry Lee Plage refused and continued his rescue efforts. The Tabberer rescued 55 sailors, 14 from the U.S.S. Spence. Despite disobeying orders, Lt. Commander Plage was awarded the Legion Of Merit and his crewmembers were awarded the first Navy Unit Commendation Ribbons.

We will never know if Charles Bearrows went down with the ship or cast his fate with the open sea. We do know that the U.S.S. Spence and Charles Bearrows began and ended their military service together.

Tom McDermott is a Flagg Township Museum historian and Rochelle city councilman.

OCFB's Kern: You can't fix stupid

As I approach my 67th birthday I have almost too many things to look back on. Memories, people, events and where I'm headed today sayings.

We've all heard some of the most popular adages from the past like:

All that glitters is not gold.

A picture is worth a thousand words.

All good things come to an end.

Beggars can't be choosers.

A journey of a thousand miles begins with a single step.

A bird in the hand is worth two in the bush.

Actions speak louder than words.

But I must admit my all-time favorite is “You can't fix stupid.”

With that in mind let's prove this old adage correct.

An Illinois man, pretending to have a gun, kidnapped a motorist and forced him to drive to two different loca-

tions with automated teller machines; then proceeded to withdraw money from his own account.

Police in Los Angeles had good luck with a robbery suspect who just couldn't control himself during the suspect lineup. When detectives asked each man in the lineup to repeat the words “give me all your money or I'll shoot” the man shouted “That's not what I said.”

A man spoke frantically into the phone, “My wife is pregnant and her contractions are only two minutes apart!” The doctor asked, “Is this her first child?” To which the man replied, “No, this is her husband.”

In Modesto, California, a man attempted to hold up a local bank without a weapon. He used his thumb and finger to simulate a gun, but unfortunately he pulled his hand out of his pocket.

Near Bakersfield, California on Lake Isabella some folks who were new to boating were experienc-

ing a problem. No matter what they did or tried they could not get their new 22-foot Bayliner to perform. It wouldn't get on a plane in the water, was very sluggish during every maneuver and seemed to lack power. After about an hour of trying to get the boat to go, they headed back to the marina hoping someone there could diagnose their problem. One of the folks at the marina agreed to help out and did a topside check revealing nothing was wrong. The engine ran fine, the prop and outdrive were fine. So he then jumped into the water to check the underside. He came up choking on water he was laughing so hard. Under the boat, still strapped firmly in place was the trailer.

In Kalamazoo, Michigan, a man was killed trying to repair a farm truck. The man, a mechanic, got a friend to drive the truck down the road while he hung underneath to find the problem. The man was

killed when he got wrapped in the driveshaft.

A lawyer in Toronto fell to his death demonstrating the safety of windows in a skyscraper. The man was explaining the strength and safety of the building's windows to a group of law students when he lunged at the window with his shoulder, the pane broke and he plunged 24 stories down. According to the law firm's senior partner, the lawyer had done this several times before. The senior partner was quoted as saying the lawyer “was one of the best and brightest” in the 200-member firm.

A gentleman waiting for many years for execution in South Carolina stemming from a murder conviction had his sentence changed to life in prison. Lo and behold a month later he was sitting on the metal toilet in his cell and was attempting to fix his small television set when he bit into a wire and electrocuted himself.

And finally from the Ar-

kansas Democrat Gazette:

Two local men were injured when their pick-up truck left the road and struck a tree near Cotton Patch, Arkansas. The county deputy investigating the incident reported it around midnight. The driver from Des Arc and his passenger from Little Rock were treated and released at the local hospital.

The accident occurred as the men were returning to Des Arc after a frog gigging trip. On an overcast night the pick-up truck's headlights started malfunctioning. After inspection the men determined the fuse for the headlights had burned out. Having no replacement, one of the gentlemen determined that a round from his .22 caliber pistol fit perfectly in the fuse box. In it went and the headlights came on with the men proceeding down the highway.

After traveling 20 miles and just before crossing a bridge the round heated up

and discharged, striking the driver in the groin. The vehicle swerved sharply off the road through the ditch and hit a tree.

The driver suffered only bruises and cuts from the accident, but will require surgery on his groin. The passenger suffered a broken collar bone and various cuts. The passenger was quoted as telling the deputy at the scene, “Thank God we weren't on that bridge when my buddy shot his balls off or we might both be dead.”

The deputy in his report listed, “I've been a deputy for 10 years in this county but this is a first for me. I can't believe those two would admit too how stupid they were.”

When the deputy called the driver's wife to inform her of the accident she only asked, “how many frogs the boys had caught and did anyone get them from the truck?”

Ron Kern is the manager of the Ogle County Farm Bureau.

How to contact government officials

U.S. Con. Darin LaHood
1424 Longworth HOB
Washington, D.C.
20515
(202) 225-6201

IL Sen. Win Stoller
Stratton Office Bldg
Springfield, IL 62706
(217) 782-1942

IL Rep. Bradley Fritts
Stratton Office Bldg
Springfield, IL 62706
(217) 782-0535

Have a letter you want to submit to us? Send it to news@rochelle-news-leader.com

KEEPING YOU IN TOUCH WITH YOUR LOCAL LEADERS

** Denotes Chairman/President*

Rochelle City Council

*John Bearrows	jbearrows@rochelleil.us
Kathryn Shaw-Dickey	kshaw-dickey@rochelleil.us
Bil Hayes	bhayes@rochelleil.us
Rosaelia Arteaga	rarteaga@rochelleil.us
Dan McDermott	dmcdermott@rochelleil.us
Tom McDermott	tmcdermott@rochelleil.us
Benjamin Valdivieso	bvaldivieso@rochelleil.us

Rochelle Elementary School Board

*Trisha Vaughn	tvaughn@d231.rochelle.net
Dave Casey	dcasey@d231.rochelle.net
Steve Builta	sbuilt@d231.rochelle.net
Ashley Jackson	ajackson@d231.rochelle.net
Stephanie White	swhite@d231.rochelle.net
Javier Zepeda	jzepeda@d231.rochelle.net
Jennifer Thompson	jthompson@d231.rochelle.net

Rochelle Township High School Board

*Tom Huddleston	tom.huddleston@rthsd212.org
Bill Ravnaas	bill.ravnaas@rthsd212.org
Jeff Tilton	jeff.tilton@rthsd212.org
Bobby Chadwick	bobby.chadwick@rthsd212.org
Brent Ohlinger	bhohlinger@rthsd212.org
Laurie Pillen	lpillen@rthsd212.org
Joel Thompson	jthompson@rthsd212.org

Flagg-Rochelle Park Board

Brent Carmichael	bcarmichael@rochelleparkdistrict.org
John Dobbs	jdobbs@rochelleparkdistrict.org
Dale Wells	dwells@rochelleparkdistrict.org
*Tim Hayden	thayden@rochelleparkdistrict.org
Jodie Hart	jhart@rochelleparkdistrict.org
Joe Lenkaitis	jlenkaitis@rochelleparkdistrict.org
Kristi Gonzales	kgonzales@rochelleparkdistrict.org

Ogle County Board Dist. 3

Austin Gillis	agillis@oglecounty.org
Dan Miller	dmiller@oglecounty.org
Joseph Simms	jsimms@oglecounty.org

Ogle County Board Dist. 4

Jackie Ramsey	jramsey@oglecounty.org
Skip Kenney	skenney@oglecounty.org
David Williams	dwilliams@oglecounty.org

Creston Village Board

*Tom Byro	tommyb_47@yahoo.com
Greg Hopkins	ghopkins522@comcast.net
Steve Katzman	skatzman@essex1.com
Mike Kerns	ac.kerns@comcast.net
Curt Ward	caward92@comcast.net
Mark Hibshman	
Reid Elliot	
Jennifer Payton	

Hillcrest Village Board

*Richard Rhoads	rrhoads@hillcrestil.us
Pam Pittman	ppittman@hillcrestil.us
Dan Potter	dpotter@hillcrestil.us
Tim Ball	tball@hillcrestil.us
Jose Huerta	jhuerta@hillcrestil.us
Eileen Braski	ebraski@hillcrestil.us
Joe Thompson	jthompson@hillcrestil.us

Flagg Township

Sue Messer	flaggtwp@rochelle.net
Joanna Patrick	flaggtwpclerk@rochelle.net
Susan Rothenberger	assessor@rochelle.net
Scott Seebach	scottseebach@gmail.com

Board of Trustees

Lance Noggle	noggle62@gmail.com
Eric Gruben	egruben@comcast.net
Susan Hager	susanhager303@comcast.net
Jim Kenney	jimk@rocketsupply.com

Flagg-Rochelle Library

*Jaqueline Dickow	dickow@comcast.net
Teresa Haggstad	haggstads@comcast.net
Michael Scanlan	scanlan@comcast.net
Lanning Nicoloff	nicoloff118@comcast.net
Sheri Klindera	alwayslefty2@gmail.com
Susan Sevedge	nit1prl22@yahoo.com
Darci Waltrip	doobs12@comcast.net

LETTERS TO THE EDITOR POLICY

The Rochelle News-Leader encourages responsible letters to the editor on subjects of interest to our readers. Editing may be necessary for space, clarity or to avoid obscenity or libel, but ideas will not be altered. All letters must bear the handwritten signature of the writer and include address and phone number or e-mail address for verification purposes. Neither the street address nor phone number will be printed. Letters should be typed or legibly

handwritten, and no anonymous letters will be published. Any letters from boards or organizations must include at least one name of an individual. Any criticism of public officials should be limited to issues related strictly to their position or actions made in office, as personal attacks will not be published. Letters involving private disputes between the writer and a business will not be published. Political endorsements will be published,

however letters from candidates endorsing themselves will not be printed. Letters may be dropped at the News-Leader office (211 IL Route 38 East), mailed to the News-Leader (P.O. Box 46, Rochelle, IL 61068) or e-mailed (news@rochellenews-leader.com.) The News-Leader reserves the right to edit or reject any letter to the editor for any reason, and letters chosen for publication do not necessarily reflect the views of this newspaper.

COMMUNITY

Frakes win Aug. 18 Chamber Lawn of the Week

ROCHELLE — The Rochelle Chamber of Commerce recently presented its Lawn of the Week award for the week of Aug. 18 to Jeff and Denise Frakes. The couple received a sign and a \$25 Rochelle ACE Hardware gift card, presented by Chamber Executive Assistant Kelly Helfrich. The chamber has partnered with Rochelle Ace Hardware to award gift cards to the winners.

The 2023 Lawn of the Week program has begun for the summer and will run through September. Nominate a neighbor/yard each week by submitting a name and address on the Rochelle chamber's website, <http://therochellechamber.com/lawn-of-the-week>. Submissions can also be made by emailing rochellechamber@gmail.com. "We are proud to recognize our residents that display community pride in Rochelle," Chamber Executive Director Tricia Herrera said. "We love that this program gives us the chance to showcase the hard work and dedication they put in to making our city look great."



The Rochelle Chamber recently presented its Lawn of the Week award for the week of Aug. 18 to Jeff and Denise Frakes. The couple received a sign and a \$25 Rochelle ACE Hardware gift card.

(COURTESY PHOTO)

THE KITCHEN TABLE MENU

- Aug. 29** – (Tuesday) – Beef and Broccoli over Rice, Potstickers, Egg Rolls

Aug. 31 – (Thursday) – BBQ Chicken (Breast, Leg Or Thigh), Coleslaw,

Sept. 3 – (Sunday Brunch) – No Sunday Brunch – Enjoy
- Labor Day Weekend
KIDS MENU: Chicken Nuggets w/Fries

****All menus are subject to change. If you would like to check before coming out, please call us at 815-561-9074**
www.KitchenTableRochelle.org

Birthdays & Anniversaries

- Aug. 27**
Quade Dickey
- Aug. 29**
Brad Arnold
- Aug. 31**
James O'Brien

Call 815-561-2151 to submit names for birthdays and anniversaries



- Aug. 1 - Tracey Johnson, Rochelle, \$25
- Aug. 2 - Aubrey Meinen, Davis Junction, \$25
- Aug. 3 - Zekelman Employee, \$25
- Aug. 4 - The Kitchen Table, \$25
- Aug. 5 - Jesse Johnson, Cambridge, \$25
- Aug. 6 - James Stuckey, Rochelle, \$50
- Aug. 7 - Margaret Villatoro, Rochelle, \$25
- Aug. 8 - HOPE of Ogle County, \$25
- Aug. 9 - Bob Aubry, Rochelle, \$25
- Aug. 10 - Trevor Owen, Rochelle, \$25
- Aug. 11 - Matthew Browder, Waterman, \$25
- Aug. 12 - Zekelman Employee, \$25
- Aug. 13 - Benjamin O'Rorke, Rochelle, \$50
- Aug. 14 - Lucas Dobson, Davis Junction, \$25
- Aug. 15 - Rebecca Berkeley, Rochelle, \$25
- Aug. 16 - Joan Bakken, Rochelle, \$25
- Aug. 17 - James Ptucha, Dix Hills, \$25
- Aug. 18 - Ed Messenger, Oregon, \$25
- Aug. 19 - Roberto Olazagasti, Rochelle, \$25
- Aug. 20 - Judy Erickson, Rochelle, \$50
- Aug. 21 - Brandon and Julia Nalley, Dubuque, \$25
- Aug. 22 - HOPE of Ogle County, \$25
- Aug. 23 - Genevieve Stoll, Rochelle, \$25
- Aug. 24 - FTH Event Auction, \$25
- Aug. 25 - City of Rochelle, \$25
- Aug. 26 - Cahoy Pump, \$25
- Aug. 27 - Karen Marsh, Stillman Valley, \$50



Coffee Break

MAGIC MAZE

S T Q O L A I G D B Y W U T A
R M P M K S T I F D B M Y Z L
W U A S Q I E O K O U M E K A
I F D N B N B A G S R L A Z P
X W U S T G N O I O A Q K O M
O N L E J A A K R T B H A Y A
F D B C I P A Y R I N W D A K
V B T T A O S O Q U A P N M N
E L N C K R F I H Q K N A S F
E O A C B E L L I V E R B I L
P M Z Y W G N A D A P V M K U

Find the listed words in the diagram. They run in all directions forward, backward, up, down and diagonally
Unlisted clue hint: CAPITAL OF COLOMBIA

Entebbe
Fortaleza
Kampala
Kismayo

Kisumu
Libreville
Macapá
Mantá

Mbandaka
Nairobi
Padang
Pekanbaru

Pontianak
Quito
Singapore

©2023 King Features Syndicate, Inc. All rights reserved.

Super Crossword

Find at least six differences in details between panels.

1. Sign is missing. 2. Pen is missing. 3. Hand is moved. 4. Sleeve is shorter. 5. Number is different. 6. Hair is different.

CITIES NEAR THE EQUATOR

Find the listed words in the diagram. They run in all directions forward, backward, up, down and diagonally
Unlisted clue hint: CAPITAL OF COLOMBIA

Entebbe
Fortaleza
Kampala
Kismayo

Kisumu
Libreville
Macapá
Mantá

Mbandaka
Nairobi
Padang
Pekanbaru

Pontianak
Quito
Singapore

Super Crossword

MILK-AND-HONEY POOCHES

- ACROSS**

1 Web page directories

9 Espressos, e.g.

16 Basic lessons

20 Open to suggestion

21 Solar or lunar phenomenon

22 U.S. island territory

23 Start of a riddle

25 Paree "to be"

26 Tar's "Help!"

27 Wrinkly tangelo

28 Cavaliers' org.

29 Stuff expelled from a volcano

31 West Aleutian island

33 Brand of contact lens solution

35 Outbreak of zits

37 Reply to "Which girl?"

38 Mom on "The Cosby Show"

41 Riddle, part 2

45 Old-style "Yay!"

47 Voguish Christian

48 — kwon do

49 Was the father of

50 — Lady of Guadalupe

51 Eager kids' question

53 Pinkish red

55 Not even one

56 Riddle, part 3

61 Aykroyd of film

62 Favorite son of Isaac

63 Beard on grain

64 Eyes lewdly

65 Fissure

67 Great joy

69 Remedies

70 Cross the mind of

74 — T (exactly)

75 Boring carpentry tool

76 Otology subject

77 Bert who played a lion

78 Spike on a film set

81 Riddle, part 4

85 Grease-laden

87 Diarist Nin

88 Snarers, e.g.

89 Previous to, in verse

90 Canonized fifth-cen. pope

92 Barely manage, with "out"

93 Canadian gas brand

95 Ancient Greek lyric poet

97 End of the riddle

101 Campus complexes

102 Commanded

103 — Mawr College

104 — a one (zilch)

105 Rival of Lyft

107 Threat ender

109 Windows 10 runners, e.g.

110 A few

112 Ewe noise

115 Viva —

116 Riddle's answer

122 Slaughter of baseball

123 Racked up

124 Anticlimactic happening

125 Muralist José María —

126 Rodent-catching cats

127 With two-channel sound

DOWN

1 Plank cutters

2 Modest "I think," online

3 Alternatives to 9-Across

4 Suffix with absorb

5 Bucko

6 In re

7 Put a stopper in

8 Vend

9 Ron of the 1970s

10 Dodgers

11 First female Supreme Court justice

12 It funds Soc. Security

13 Pollution-control gp.

14 U.S. immigrants' class

15 Gomez of "Getaway"

16 Old Time film critic James

17 Totally bungled

18 The late 1970s, politically

19 Applied, as finger paint

24 Makes soiled

30 787s, e.g.

31 Lung filler

32 Pamphlet

34 Old name for Tokyo

35 Classic game consoles

36 Bamboozle

38 Had grub

39 Thelma's film sidekick

40 Of a major blood vessel

42 Astronomer

43 Furry scarves

44 Musical set in Oz, with "The"

46 "Ver-r-ry funny"

52 Salamander

53 V8 vegetable

54 Charley horse, e.g.

57 French for "eight"

58 Areas on a golf course

59 Be in accord

60 Bodily pouch

66 Pooch with a corded coat

68 Pai — poker (casino game)

69 Adorable kids

70 Waikiki's island

71 Like many gory movies

72 Constellation

73 Aries

73 Mandates

75 Skywalker of "Star Wars"

76 Scandalous corporation of 2001

78 Old sweeties

79 Whichever of the two

80 Alternative magazine to House Beautiful

82 Rival

83 "Sounds right to me"

84 Back of a 45 record

86 "Darn tootin'!"

91 Poetic eyes

93 "Roots" Emmy winner

94 35mm camera inits.

96 Fish-fowl linkup

98 Coal mine vehicle

99 Put in a crate

100 Burden with one's problems

106 Pintos, e.g.

108 For fear that

109 Bygone

111 Bygone Dodge

112 Dutch South African

113 Novelist Rice

114 In re

117 Doc's org.

118 Rebel Turner

119 Jewel box inserts

120 Tennis barrier

121 "Now — seen it all!"

1 2 3 4 5 6 7 8 9 10 11 12 13 14 15 16 17 18 19

20 21 22 23 24 25 26 27 28 29 30 31 32 33 34 35 36 37 38 39 40 41 42 43 44 45 46 47 48 49 50 51 52 53 54 55 56 57 58 59 60 61 62 63 64 65 66 67 68 69 70 71 72 73 74 75 76 77 78 79 80 81 82 83 84 85 86 87 88 89 90 91 92 93 94 95 96 97 98 99 100 101 102 103 104 105 106 107 108 109 110 111 112 113 114 115 116 117 118 119 120 121 122 123 124 125 126 127

DISCOVER ROCHELLE



(PHOTOS BY JEFF HELFRICH)

Longtime downtown businesses and their owners were recognized July 11 at the annual meeting of the Downtown Rochelle Association. The night at VFW Post 3878 featured dinner and special guest speakers including Rochelle Mayor John Bearrows.

Longtime businesses honored at annual Downtown Rochelle Association meeting

‘As you get into business, you just keep going. You take the good with the bad’

BY JEFF HELFRICH
MANAGING EDITOR

ROCHELLE—Longtime downtown businesses and their owners were recognized July 11 at the annual meeting of the Downtown Rochelle Association. The night at VFW Post 3878 featured dinner and special guest speakers.

DRA President Nathan Uhl of blueflamedecor,

LLC led the meeting. Five businesses were honored July 11 and photos and memorabilia were provided by the Flag Township Museum on their history and history of the downtown as a whole.

Aldo's Pizzeria and Italian Restaurant was established in 1979. Owner Aldo Barone received a plaque July 11 and he made a speech. He spoke about the importance of

experienced small business owners and called it an honor to be among them on July 11.

“The downtown is a big ship,” Barone said. “I’ve learned that it takes more than one anchor to hold down a big ship. We’re very proud to be a part of that. What an amazing achievement for all of these people and all of the decades that they’ve been here. It’s just an honor to

be friends and neighbors with them.”

Colonial Flowers and Gifts was established in 1968. Owner Naomi Baldwin played a large part in organizing the event July 11 and has worked over decades on improving and promoting Rochelle’s downtown. Uhl said she’s held the downtown and the DRA together over the years.

“I started working at

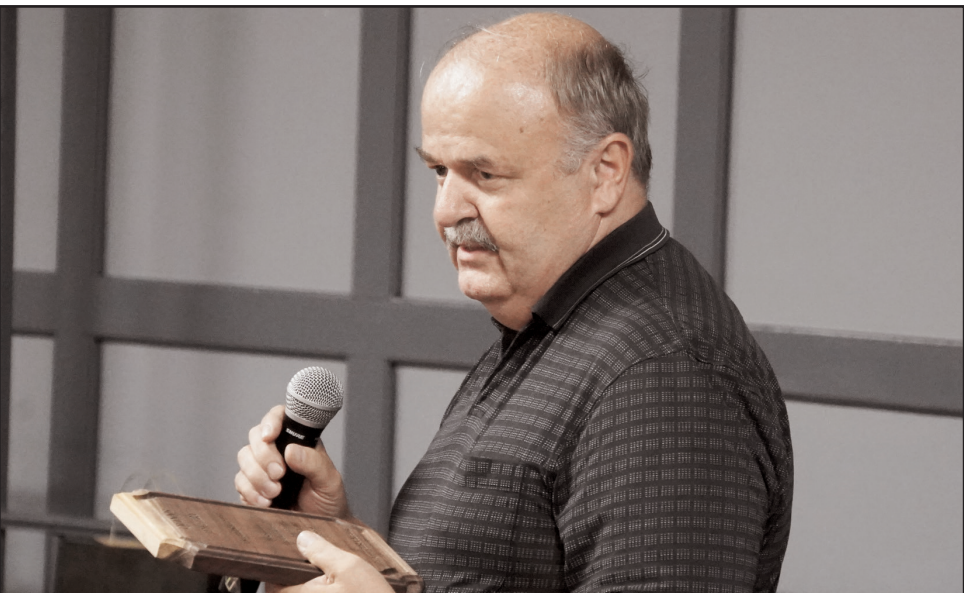
Colonial Flowers in November 1968 and I’ve been there ever since,” Baldwin said. “I love the downtown. I thank the city because the downtown the last couple of years has been absolutely beautiful. I’m always trying to get more and more people to join the downtown and our association is great and I love seeing everybody here.”

Quinn’s Jewelry was established in 1963. Own-

er Marvin Quinn spoke July 11 and said it takes everyone to stick together for a downtown to be successful. He talked about sharing advice with and collaborating with owner downtown business owners over the years.

“It takes going to other businesses downtown and talking with them,” Quinn said.

See page 9



STOP IN AND SEE THE LATEST STYLES IN FURNITURE!

Bedroom Sets | Mattresses
Dining Tables & Chairs | Buffets | Hutches
Servers | Recliners | Chairs | Loveseats
Sofas Sectionals

HUB CITY FURNITURE

Tuesday-Friday 9am-4pm • Saturday 9am-1pm • Sunday & Monday Closed
 429-433 Lincoln Hwy. Rochelle, IL 815-562-8765
 hubcityfurniture.com

Call “Spud” for all your insurance needs...

Auto • Home • Life • Health

We also offer:

- License & title services
- License renewal stickers
- Notary

James E. Supancic Insurance

Hours
 Mon.-Fri. 9am-5pm
 Sat. 9am-12 Noon

516 Lincoln Ave., Rochelle
 815-562-7552
 www.spudinsurance.com

James E. “Spud” Supancic

We carry a wide variety of insurance providers including Mexico Insurance

DISCOVER ROCHELLE

From page 8

"I had people that helped me. It takes everybody. Lou Moore of True Value told me once that business owners need to stick together and help one another to have a downtown. That's what it takes, all of us to work together."

Velma Quinn was also honored for her years working in retail at the shop. Quinn said she worked in retail all her life up until her retirement. She is 95 years old.

Bill's Trading Post was established in 1943. Owner Frank Smardo spoke July 11.

"It's quite an honor to receive this, but I haven't done much to deserve it," Smardo said. "As you get into business, you just keep going. You take the good with the bad and hope

you'll be there tomorrow. And hopefully all of you will be there for many years to come. Never give up, just keep going. It always gets better."

Hub City Furniture was established in 1979 and the business was honored as well July 11.

The guest speakers portion of the meeting followed a "past, present and future" theme. Speakers included David Guest (past), Mayor John Bearrows (present) and Down Range, LLC Owner Matt Gerard (future).

Guest, a longtime attorney in the city, told stories about the downtown and happenings in the city. Bearrows talked about the work that the city did during the COVID-19 pandemic to help its businesses including giving grants to small businesses

and starting Rochelle Municipal Utilities' Stop Local program to encourage residents to support local businesses by giving them discounts on their electric bills.

"We went out on a limb, and we did it because we knew we had to," Bearrows said. "We were not going to let our small businesses die. And that's exactly what was going to happen if we didn't step up. Behind the scenes, I will work every day to make sure we as a city can do whatever we can to help each and every one of your small businesses. Because they're the backbone of our community."

Gerard served as a Rochelle Police Department officer in the past for 15 years and spent much of that time patrolling the downtown area, where his business now resides.



Gerard said he wants to see involvement and collaboration by downtown business owners going forward.

"We are friends and we are family," Gerard said. "And that's one of the things that makes the downtown great and why we love our downtown."

Because we have these connections to each other. And we want to see more growth going forward and continue to help each other out and offer support."

Uhl ended the meeting with closing remarks. He thanked those in attendance and said the annual meeting was "a big improvement"

on last year's. Uhl said the DRA organization is looking forward to the future with a board of younger business owners.

"We're looking forward to having an organization that is functional and works really well and that is truly able to operate according to our purpose," Uhl said.

MIDWEST PHYSICAL THERAPY & REHABILITATION

Providing Out Patient & Home Therapy Services



Riaz Khan, PT, DPT

- Low Back Pain
- Balance & Falls
- Work Injury
- Whiplash
- Post Operative Rehab
- General Weakness
- Joint Replacement
- Fractures
- Arthritis Pain
- Parkinson's
- Stroke
- ACL Repairs
- Shoulder Pain
- Knee Pain
- MS

**Emphasis on
manual therapy**

Accepting Most Insurances Including Medicare & BCBS

(815) 561-8786

513 4th Ave. – Rochelle, IL

Same Day Appointment If Needed

www.midwest-physicaltherapy.com

08/29/2021



*Proud to be your Partner in Downtown Rochelle's
Community Events & Business Development!*

WWW.CITYOFROCHELLE.NET

LOCAL NEWS

OCEDC: County officials collaborating for economic development

From page 1

“We’re hiring The Next Move Group to search for an executive director,” DeHaan said. “It’s just finding that person that’s a great communicator that’s driven that will make those connections that we need and move us forward. I think we’re all facing the sands in the hour glass with population fleeing the state. We want to solidify ourselves in Ogle County as a place that will continue to grow and see our population, offerings to our communities, workforce and housing availability increase.”

The OCEDC is modeled after other economic development public-private partnerships across the country. In northern Illinois, other EDCs include the DeKalb County EDC, Growth Dimensions in Boone County, and the Grundy Economic Development Council. Schoon said that the efforts to establish the OCEDC began years ago but were delayed due to COVID-19. He said that local officials from the county and municipalities inside it meeting regularly together has already been beneficial.

“Each of our towns has gotten something out of this already,” Schoon said. “We all have something to

offer. We all exist in this county in maybe a different light, but I think we’re all going to benefit from this, without a doubt. It’s all connected, so we need to all be in this together.”

To start the OCEDC, \$300,000 was raised between the county and the five communities of Polo, Mt. Morris, Oregon, Byron and Rochelle. The governing bodies took a formula of each of their federal COVID-19 relief American Rescue Plan Act funds that they received. Those funds are able to be used for redevelopment, and the group felt it would be an efficient use for them, DeHaan said. Schoon said needs the OCEDC would like to see addressed include improving housing, tourism, industry and brick-and-mortar businesses. Each town has its own needs and economic development plans, and they’re being pulled together so the future OCEDC executive director knows that information. DeHaan and Oregon Mayor Ken Williams noted that development in one town of the county helps the other towns.

“We’ve discovered that if Rochelle gets a business, those workers may end up living in Oregon,” Williams said. “Whatever comes to one town ben-



(PHOTO BY JEFF HELFRICH)

The OCEDC is modeled after other economic development public-private partnerships across the country. In northern Illinois, other EDCs include the DeKalb County EDC, Growth Dimensions in Boone County, and the Grundy Economic Development Council.

efits other communities because people choose to live in different parts of the county. We build on each other that way.”

DeHaan said he’s seen how the lack of a county-wide economic development organization has made for missed opportunities in the past. If a developer calls a municipality in one town with specific needs that aren’t available there, that

project could have been missed out on in the past due to there being a lack of knowledge of a property that would work in another nearby county town.

“If I have someone that calls me and says they need a 10,000-square foot warehouse and I say we don’t have that available, a lot of times it would just kind of die out because I don’t know if Byron or Mt. Morris or another county

town has that,” DeHaan said. “So having a central person as a contact for the entire county is beneficial because they’ll know where a desired property is. It’s connecting those individuals and not letting some of these potential projects fall through the cracks.”

Diehl recalled what it was like years ago to see the impact on all county towns when a number of

industrial jobs were lost. She hopes the OCEDC will bring growth in the future.

“Now we’re actually communicating and working together to bolster and beef up our county,” Diehl said. “We all want to grow from it. Not just Oregon or Mt. Morris or Byron or Polo. We’re working together and have become more unified in our efforts.”

BEAT THE HEAT

Subscription Special

Our Subscription Special is HOTTER than our Temperature!

WE HAVE A DEAL FOR YOU!

You can renew your subscription for up to two years for only **\$200** thru the month of August 2023!

That’s \$39 per year savings off regular rate and \$78 savings over 2 years!

☐ Sign me up for 2 years of the Rochelle News-Leader print plus digital e-edition subscription for \$200

☐ Sign me up for 1 year of the Rochelle News-Leader print plus digital e-edition subscription for \$129

☐ Sign me up for 6 months of the Rochelle News-Leader print plus digital e-edition subscription for \$69

Make checks payable to The Rochelle News-Leader. Send payment to P.O. Box 46, Rochelle, IL 61068.

You can also give us a call at 815-562-4171.

2023

BEST OF

OGLE COUNTY

VOTE NOW!

Voting Ends
Sept. 13th
@ 10am!

Vote for your favorites!

women's
equality day

august 26

SPORTS



GOLFERS HIT THE ROAD

The RTHS golf team played a head-to-head match against G-K on Tuesday.

See page 5 for more details

RTHS Volleyball

Girls strike down Belvidere

Rochelle totals 11 service aces during 25-12, 25-12 win over Bucs on Tuesday

BY RUSSELL HODGES
SPORTS EDITOR

ROCHELLE — Services aces were coming left and right for the Rochelle Lady Hub varsity volleyball team during Tuesday evening's season-opening match against Belvidere.

The Lady Hubs controlled the match from start to finish, showing tremendous consistency on the serve to keep pressure on the Belvidere defense. Rochelle totaled 11 service aces in the match, which the Lady Hubs claimed 25-12, 25-12 to start the season with a win. Junior libero Dempsey Atkinson led the team with five aces, while junior setter Ali Ohlinger had four.

"We played Belvidere last season and it was a tight match," Ohlinger said. "We knew they would be even better this season, but I thought we played much better than we did last season. Our ball control was amazing and I was able to run a good offense for our hitters. Coach [Molly] Sly has had us focusing on our serves during practice and I think that's helped us a lot. Serving wins



Senior Kennedy Adamski blocks a shot during the Rochelle Lady Hub varsity volleyball match against Belvidere on Tuesday. Rochelle defeated the Bucs 25-12, 25-12 to start the season with a 1-0 record.

Rochelle (1-0, 0-0 Interstate 8) began pulling away from Belvidere midway through the first set, where the Lady Hubs broke off a 6-0 run with Atkinson on the serve to take an 18-11 lead. The short scoring burst featured a batch of kills from junior hitter Taelynn Rodeghero, who led the Lady Hubs with 12 kills in the match.

See VBALL page 3

RTHS Girls Tennis

Lady Hubs hold off Rockford Lutheran for first win

Rochelle scores two doubles points to secure 3-2 victory against Crusaders

BY RUSSELL HODGES
SPORTS EDITOR

ROCHELLE — Experience and teamwork allowed the Rochelle Lady Hub varsity tennis team to score its first victory of the 2023 fall season on Tuesday, when the purple and white took two doubles points and one singles point to win 3-2 over Rockford Lutheran in nonconference play.

Looking to bounce back from a hard-fought loss against Harlem, Rochelle (1-1, 0-0 Interstate 8) claimed the first point of the match on the No. 2 singles court, where senior Kara Martinez showed dominance in a 6-1, 6-2 win over Lutheran's Selah Schauer. The Crusaders took the No. 1 singles match, with Melissa Hillman defeating Rochelle senior Elin Zheng 6-2, 6-3.

Action shifted over to the doubles courts, where Lutheran and Rochelle split the first two points with only one match left to play. Lutheran held a 2-1 lead in the match after Megan Hillman and Kate-lynn de Guzman took down Rochelle juniors Riley Doyle and Kitty Williams 6-1, 6-0 at No. 1 doubles. The Lady Hubs evened the score when seniors Annaleigh McKinney and

Macenzie Glosser won over Lutheran's Violet Sjostrom and Charlotte Wilhelm 6-0, 6-3 at No. 2 doubles.

"It was great to come back and win after the Harlem match," McKinney said. "Macenzie and I have been learning how to play with each other and I thought we worked together really well. We're learning how to flow together and after we played our first few points, we were on the same wavelength and that really helped us... This season has been going pretty well and I like the group of girls we have on the varsity team. I've played with many of them since my freshman year and I think we'll do really well if we keep playing hard and working together."

The match came down to the No. 3 doubles contest, which featured Rochelle seniors Allie Dickey and Adamaris Betancourt as well as Lutheran netters Ava Buckiewicz and Emily Sluis. After a dominant first-set win, Dickey and Betancourt were tested during the second set, but the seniors held strong and emerged with a 6-2, 7-5 victory to clinch the match for the Lady Hubs.

See TENNIS page 3



(PHOTOS BY RUSSELL HODGES)

The Rochelle Lady Hub varsity tennis team defeated Rockford Lutheran 3-2 in a nonconference home match Tuesday evening. Seniors Allie Dickey (left) and Macenzie Glosser each helped secure doubles points for the Lady Hubs, with Dickey winning at No. 3 doubles and Glosser winning at No. 2 doubles.



The businesses featured on this page are

"Hubs Super Fans"

They proudly support our local athletes and students.

Please show your appreciation by patronizing their businesses.

WE SUPPORT OUR HUBS!



VINCE'S PIZZA
SINCE 1967

Enjoy a **15% Discount**
when Ordering Online at
VincesPizzainRochelle.com



815.562.7300

Delivery & Curbside Pick Up

1071 N 7th St, Rochelle, IL



Hello,
neighbor!

Huber Ins and Fin Svcs Inc
Shane B Huber, Agent
221 E. IL Rt. 38
Rochelle, IL 61068
Bus: 815-562-7011

Please stop by and say, "Hi!"
I'm looking forward to serving your needs for insurance and
financial services.
Like a good neighbor, State Farm is there.
CALL ME TODAY!

State Farm

1001013.1 State Farm, Home Office, Bloomington, IL

DLX Medical GROUP

Caring for your
family's health from
infant to adults.



Diana Alanis, MD

Accepting
New Patients

For appointment, please call

815-227-9594

1212 Currency Ct, Rochelle, IL 61068
Most Insurance Accepted

Local People Providing Local Service

Rochelle
MUNICIPAL UTILITIES

Water • Waste Water
Electric • Communications

Phone: 815-562-4155 333 Lincoln Highway
Fax: 815-562-5861 Rochelle, IL

www.rmu.net

HS2016

CENTRAL ILLINOIS LOAN

Loans For All Your Needs
Auto • Home Improvement • Vacation
Jami Hackman • Tonia Holland

815★561★4035!

310 Eagle Drive, Rochelle
All loans subject to our normal credit requirements and policies.

MORTON BUILDINGS

If you can dream it, we can build it.



Rochelle Sales Office • Hwy. 251 N. • 877-613-3050

Rochelle
Community Hospital

Your Local Healthcare Resource.

900 N. 2nd Street, Rochelle
815-562-2181
www.rochellehospital.com

HSF2017

MEYERS
FURNITURE & FLOORING

209 Powers Road, Hwy 251 N
Rochelle, IL 61068
(815) 562-8792
www.meyersfurniture.com

Bruns
Construction, Inc.

• Residential
& Commercial
Concrete
• Additions

815-561-0099

Free Estimates • Fully Insured

www.brunsconstructioninc.com

FREE
ESTIMATES!

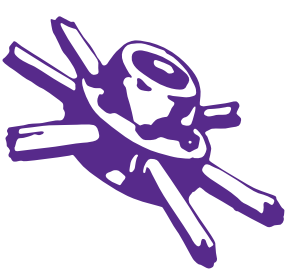
Tim & Roger Bruns,
Owners
Established 1997



Kish
KISHWAUKEE
COLLEGE

Helping you create the life you want.

kish.edu



QUEEN'S TRUCKING & CONSTRUCTION, INC.

Small or Big Construction Jobs, We Do Them All!
We Aim for On Time, Every Time!

We were Voted Mid-West Truckers
Association, Inc. Northern Region
Trucking Company of the year 2022

Queens Trucking & Construction Inc
322 Errett Road, Rochelle
815-562-6064 | queens-trucking.com

ANDERSON
PLUMBING & HEATING, INC.

Plumbing, Heating & Cooling
Water Heaters, Water Softeners,
Drinking Water Systems, Iron Filters,
Sewer Rodding & Jetting & More!

Since 1976

621 First Ave., Rochelle
(815) 562-8784

Local 055-013999

MEXICAN FOOD

RESTAURANT TECALITLAN
Authentic Homemade Mexican Food
Carry-out & Catering Available

(815) 561-7576

1071 N. CARON RD. ROCHELLE, IL 61068

Rochelle
Chiropractic
Clinic

Dr. Chad M. Piller

227 E. Rt 38 • Rochelle, IL

815-562-8706

www.rochellechiropractic.com

Now Accepting New Patients!

Alfano's
Pizzeria and Italian Restaurant

Taste The **TRADITION**
Taste The **DIFFERENCE**

Dine In • Carry Out •
• Home Delivery • Pizza • Pastas •
• Sandwiches • Salads •
• and Lots More!

Dine-In • Carry Out • Home Delivery

1115 TURKINGTON TERRACE, ROCHELLE

815-562-3312

JOHNSON
TRACTOR

SALES • PARTS • SERVICE

200 Steward Road

800.262.1680

www.johnsontractor.com

AtlasAuto

BUY HERE - PAY HERE
You Work - You Drive

Se Habla Español **815-562-7433**

1400 N 7th St

Corner of Flagg Rd & Hwy 251 N

HUB-REMSEN
PRINT GROUP

101 Maple Ave • Rochelle, IL 61068

815.562.7057 • hub-remsen.com

GO HUBS!

R

"Proudly Serving the Rochelle Area Since 1945"

Berg-Johnson
Electric

FREE ESTIMATES
Licensed and Insured

Residential • Commercial • Industrial

24 Hour Emergency Service

815-562-4937

500 Cleveland Avenue

CHEVROLET

We are
Ogle
County's
only
GM Dealer!

• Collision Repair • Rental Cars
• 24 Hour Towing • Maintenance On All Makes
• New/Preowned Vehicles • Models
• Tires, Alignments, Brakes, Batteries

JEFF PERRY
Auto Group

815-562-8787 www.jeffperrychevrolet.com

Busy Schedule?
Leave the cooking to us.

• Large menu of foods
• Rochelle's famous chicken
by the dinner or bucket
• Hand dipped ice cream
(16 flavors)

COUNTRY SCHOOL
DRIVE-IN RESTAURANT

251 N. ROCHELLE • 562-6039

Stillman
BANK

GO HUBS!

Earning Your Trust Since 1882

www.stillmanbank.com Member FDIC

GOOD LUCK HUBS
FROM YOUR FANS AT:

HAYDEN
REAL ESTATE INC.

815-562-2111 hre@haydenreinc.com

SPORTS

VBALL: Rochelle wins season-opening match over Belvidere

From page 1

A timeout from the Bucs didn't stop the Lady Hubs, who scored five consecutive points with Atkinson, who had two assists and two digs, still on serve.

"We've been working really hard and I thought we implemented everything that we had worked on during practice," Atkinson said. "We have such great energy and our team bond is really strong. We're always fired up before matches and it's been a really great environment. I'm really hoping we can win a regional and I think we're capable of doing that with the team we have."

A block from Ohlinger capped off a first-set win for the Lady Hubs, who exploded early in the second set with an 11-3 run highlighted by a series of aces from Ohlinger, who paced the Rochelle offense with 13 assists while adding five kills and five digs on defense. The Bucs attempted to regain control with a pair of time-

outs late in the second set, but Belvidere was unable to stop Rodeghero, who smashed down multiple kills to help Rochelle clinch the win.

"I think we're going to make it farther than we did last season," Ohlinger said. "We all work really well together and I thought we put the ball away pretty well tonight. Our energy will take us pretty far and I'm excited for the rest of the season. I think we can serve well and I thought our defense played well tonight. When we serve and pass well, it makes my job as a setter easier."

It was fittingly an ace from Ohlinger that ultimately sealed the victory for the Lady Hubs, who will continue nonconference action against Dixon on the road Thursday evening before traveling for the Jefferson Invitational on Saturday. Junior Lauren Dyer compiled a team-high eight digs on defense, while junior Emma Kennay added four digs and senior Alivia Henkel totaled two kills.



(PHOTOS BY RUSSELL HODGES)

Junior Emma Kennay (left) recorded four digs and junior teammate Ali Ohlinger (right) compiled 13 assists and four services aces during the Rochelle Lady Hub varsity volleyball match against Belvidere on Tuesday.

TENNIS: Lady Hubs win home opener against Rockford Lutheran

From page 1

"It felt really good to win against Rockford Lutheran because we lost against them last season," Dickey said. "Ada and I have been working on our communication over the last week and it felt good to come back and win after a tough loss against Harlem. Coach [John Michael] Loggins talked with us after the first set and he pushed us to talk to each other and call out any switches. I thought that got us back in our rhythm and we were able to come out on top with a 7-5 win."

Rochelle's Thursday road match against Belvidere was canceled due to the excessive heat. The Lady Hubs will travel for the Guilford JV Quadrangular meet on Saturday

afternoon before opening Interstate 8 Conference action with a home match against Kaneland on Tuesday. With six new varsity starters on the roster, Rochelle will look to improve on a five-win season last fall.

"We're all really good friends and I think it should be a fun season," Dickey said. "We're going to try and get as many wins as we can. We only have Elin and Riley returning from the varsity team last season, so we're looking for them to help us out with their experience. I think we're going to improve our leadership and our communication so we can be louder on the court. We're also looking to improve our mechanics, especially our forehands and our backhands."



(PHOTO BY RUSSELL HODGES)

Senior Annaleigh McKinney hits a return shot for the Rochelle Lady Hub varsity tennis team during Tuesday's match against Rockford Lutheran.

COMMUNITY BOARD

Need to get the word out about a product or service you offer?
Give us a call at 815-562-4171.
We can reach over 9,000 homes!



Gutters, Roofing & Siding

THEISEN ROOFING
Free Estimates!

ROOFING
 SIDING
 GUTTERS

CONTACT US
 815-758-8998
 THEISENROOFING@COMCAST.NET

Family owned & operated for over 50 years

Plumbing, Heating & Cooling

ANDERSON PLUMBING & HEATING, INC.

Plumbing, Heating & Cooling
 Water Heaters, Water Softeners,
 Drinking Water Systems, Iron Filters,
 Sewer Rodding & Jetting & More!

Since 1976

621 First Ave., Rochelle
 (815) 562-8784

Advertise Here

What Service Do You Offer?

562-4171

The Rochelle News-Leader

Heating & Air Conditioning

HULL

HVAC & Household Services

Furnaces - Air Conditioners - Boilers
 Duct Cleaning - Water Heaters

Air Conditioner
 Clean & Check

\$50.00

Ask about duct cleaning and protecting your home's air quality.

815-561-6551

www.HullHVAC.com

Concrete

Bruns Construction, Inc.

• Residential & Commercial Concrete
 • Additions

FREE ESTIMATES!

Tim & Roger Bruns, Owners
 Established 1997

815-561-0099

Free Estimates • Fully Insured

www.brunsconstructioninc.com

Storage Sheds

Rocky Ridge Structures

We Specialize in Portable/Quality Built Storage Sheds

• Stock & Custom Design • Competitive Pricing
 • Many Options Available • Site Preparation Available

See Displays at 3500 S. Chana Rd. Chana IL 61015

Call Norm or Albert for Free Literature packet

779.861.3542

Classified Marketplace

BUY OR SELL
Place A Classified Ad



ROCHELLE • HILLCREST • CRESTON • STEWARD • KINGS • ASHTON

101 LEGAL NOTICE

NOTICE

Notice is hereby given by the Board of Education of Eswood Community Consolidated School District No. 269 in the counties of Ogle and DeKalb, State of Illinois, that a Public Hearing regarding the 2023 – 2024 school district budget will be held at 5:45'clock p.m. on the 25th day of September 2023, at Eswood Elementary School, Lindenwood, Illinois 61049. A copy of the proposed budget will be available for public inspection in the school district office located at 304 N. Main Street, Lindenwood, Illinois from August 22nd, 2023 – September 25th, 2023 during regular business hours. Dated this 22nd Day of August, 2023. Board of Education of Eswood Community Consolidated School District No. 269 in the counties of Ogle and DeKalb, State of Illinois. No. 0830 (Aug. 27, 2023)

PUBLIC NOTICE
STATE OF ILLINOIS, CIRCUIT COURT, OGLE COUNTY
Request of Alexandre Robert Greer
Case Number 2023 MR32
File Aug. 21, 2023
There will be a court date on my Request to change my name from Alexandre Robert Greet to the new name of Alexandre Reed
The court date will be held on Oct. 18, 2023 at 9:00 a.m. at 106 5th St., Oregon, Ogle County, in Courtroom #304. No. 0832 (Aug. 27, Sept. 3 and 10, 2023)

NOTICE
A Mini Storage, LLC, a storage facility located at 117 Quarry Road, Rochelle, IL hereby announces that the possessions of the following lessees will be disposed of by means of auction on September 21st, 2023 at 8:00 AM. Disposal of personal property shall conform to the terms of the certified notice previously mailed to the lessee. The contents of the units can be previewed immediately

prior to the sale. The preview and sale will take place at each individual unit listed below; in the order they appear. Unit#220 Micheal Williams: Home items, Bed frame, table, cooler, chair, tool box, mattress, boxes, speaker box. Unit#34 Laura Dauenhaut: boxes, chairs, totes, tables. Unit# 156 Amandamarie Sarabia: kids motorcycle Unit#98 Richard Eraas: Rocking wood horse, lamps, boxes, gaming chair, dresser, bed frame. No. 0837 (Aug. 27 and Sept. 3, 2023)

101 LEGAL NOTICE

This publication does not knowingly accept fraudulent or deceptive advertising. Readers are cautioned to thoroughly investigate all ads, especially those asking for money in advance.

105 BUSINESS OPPORTUNITIES

"This publication does not knowingly accept fraudulent or deceptive advertising. Readers are cautioned to thoroughly investigate all ads, especially those asking for money in advance."

113 FINANCIAL

NOTICE Advance Fee Loans or Credit Offers
Companies that do business by phone can't ask you to pay for credit before you get it. For more information, call toll-free 1-877-FTC-HELP. A public service message from your hometown newspaper and the Federal Trade Commission.

119 ANNOUNCEMENTS

"This publication does not knowingly accept fraudulent or deceptive advertising. Readers are cautioned to thoroughly investigate all ads, especially those asking for money in advance."

127 SERVICES AND REPAIRS

FURMAN'S Lawn Care and Tree Work. Mowing, bushes, spring clean up, weeding and much more. Call Jeremy Furman 815-761-9619. Please leave a message will return call ASAP. Fully insured, in business since 1999. Servicing Rochelle and surrounding areas.

201 DOMESTIC/CHILD CARE

NO INDIVIDUAL, unless licensed or holding a permit as a childcare facility, may cause to be published any advertisement soliciting a child care service. A childcare facility that is licensed or operating under a permit issued by the Illinois Department of Children and Family Services may publish advertisements of the services for which it is specifically licensed or issued a permit. Your Hometown Newspaper strongly urges any parent or guardian to verify the validity of the license of any facility before placing a child in its care.

301 ANTIQUES

WANTED TO BUY:
Vintage Metal and Wood Signs, Milk Bottles & Local Advertising, Oak Icebox, Iron Door Stop and Antique Lighting... Call Dick Harms at 815-562-2928 or email dickharms@hotmail.com

ANTIQUES WANTED:
I pay cash for antiques; furniture, glassware, pottery & crocks, tin & iron toys, sterling silver, decoys. If it's antique, I'm interested in looking! Call 815-562-2928 or email dickharms@hotmail.com

305 GARAGE SALE

ROCHELLE - Multi-Family. 627 S. 2nd Street (in Alley). Thursday 8/31 - Saturday 9/2 9 AM - 5 PM.

307 MISCELLANEOUS FOR SALE

BUNDLED Newspaper -\$3 per Bundle. End Roll- Cost Depends on Weight of Roll. Available Monday-Friday 815-562-4171 (8AM-NOON ONLY) Rochelle News Leader.

405 HOUSES FOR SALE

ALL REAL ESTATE advertised herein is subject to the Federal Fair Housing Act, which makes it illegal to advertise any preference, limitation or discrimination based on race, color, religion, sex, handicap, familial status, or national origin, or intention to make any such preferences, limitation or discrimination. We will not knowingly accept any advertising for real estate which is in violation of the law. All persons are hereby informed that dwellings advertised are available on an equal opportunity basis

501 APARTMENTS FOR RENT

NEWLY REMODELED. One bedroom apartment for rent, furnished with full basement. 815-751-4792

H.O.P.E

For Free Help or Information Call
815-562-8890
24 Hours

All Calls Are Confidential.

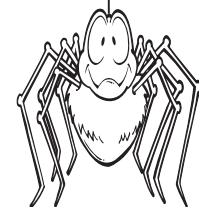
Support, Advocacy, Referral Services, Shelter for victims of domestic violence and their children.

HOPE of Ogle County



P.O. Box 131
Rochelle, IL 61068
Public Service Announcement

ADVERTISE WITH US



307 MISCELLANEOUS FOR SALE

NEW MILFORD REFRIGERATION

NEW, USED SCRATCH & DENT
• Refrigerators • Freezers
• Washers/Dryers • Stoves

We also carry a large selection of refurbished appliances with a warranty.



6331 11th Street, Rockford
815-262-3900

04092023

TEXT AND WHATEVER JUST DON'T TEXT AND



STOPTEXTSSTOPWRECKS.ORG



Buy! Buy! BUY! SELL! SELL! Sell!

ANNUAL TREASURER'S REPORT LYNNVILLE TOWNSHIP & ROAD DISTRICT FISCAL YEAR ENDING MARCH 31, 2023

TOWNSHIP---REVENUESUMMARY:

Property Taxes – 64,657; Replacement Tax -7,693; Interest -160; Truck Loan – 20,000; Miscellaneous – 2,746. TOTAL REVENUES: \$95,256

TOWNSHIP – EXPENDITURE SUMMARY:

Toirma - 3051; IRS –3252
All other disbursements less than (\$2,500) - \$20,354. TOTAL EXPENDITURES: \$26,657

TOWNSHIP – COMPENSATION SUMMARY:

Range: Under \$25,000: Marilyn Schlaf, Kathryn Korth, Walter Roush, Juanita Milton, Ali Harms, Glenn Hansen, David Mayer; Range: \$25,000-\$49,999: Richard Drendel
TOTAL COMPENSATION: \$42,505

ROAD DISTRICT --- REVENUE SUMMARY:

Property Taxes – 102,006; Replacement Taxes – 16,102; Interest Income – 177; Miscellaneous Income – 9,729; Dividend – 519. TOTAL REVENUES: \$128,533

ROAD DISTRICT --- EXPENDITURE SUMMARY:

Alta Equip – 4,146; Conser -4,807; Macklin Inc. – 16,041; Ogle Co. Hwy. Dept.- 4,491; Truck loan repayment – 20,000; All other disbursements less than (2,500) – 33,788
TOTAL VENDORS: \$83,273

SUMMARY STATEMENT OF CONDITION SPECIAL Capital Debit GENERAL Project Service

Beginning Fund Balance	\$301,628
REVENUE	223,789
Expenditures	152,435
Ending Fund Balance	\$372,982

Subscribed and sworn to this 8th day of August 2023

Marilyn Schlaf
Marilyn Schlaf, Treasurer

I, Ali Harms, Clerk of Lynnville Township, Ogle County, Illinois, do hereby certify that the above is a true copy of The Annual Treasurer's Report for the fiscal year ending March 31, 2023.

Ali Harms
Ali Harms - Clerk

No. 0829
(Aug. 27, 2023)

SPORTS

RTHS Golf

(COURTESY PHOTOS)



Rochelle faces Genoa-Kingston in nonconference match at Swanhills Golf Course

The Rochelle Hub varsity golf team went head-to-head against Genoa-Kingston at Swanhills Golf Course in Belvidere on Tuesday evening. Sophomore Ian Metzger led the Hubs with a nine-hole score of 40, while freshman Alex Dyer fired a 44 as the Cogs edged Rochelle 175-179. Freshman Owen Carmichael and senior Owen Messer carded nine-hole scores of 47 and 48 to round out Rochelle’s top-four varsity players in the meet. Senior Cale Workman recorded a 53 and junior Jacob Ost followed with a 58 to finish as the No. 5 and No. 6 players for the Hubs (0-4, 0-1 Interstate 8). Genoa-Kingston’s Landon Ritchie led all golfers with a 36.

NIU Football

Legendary Huskie play-by-play voice Bill Baker to retire

DEKALB—Bill Baker, the legendary “Voice of the Huskies” who has become synonymous with Northern Illinois University Athletics since becoming NIU’s football and basketball radio play-by-play announcer in 1980, will retire following the 2023 football season. The news was announced during NIU Athletics’ DeKalb Media Day Tuesday.

“There are only 133 jobs like this one in FBS level football in the entire country,” Baker said. “I have had the privilege of knowing, working with and for the absolute finest group of coaches, student athletes, administrators, support staff and fans you could ever hope for. There are no words to describe my love for this place and for the time I have been able to serve as ‘the Voice of the Huskies’.

“I have absolutely no idea as to the number of games I’ve called for NIU,” he continued. “Between football, men’s and women’s basketball, some baseball, softball and even a little soccer, it has to be well into several thousand [games] and that’s not counting coaches’ shows and emceeing various events and banquets. The Huskies have been the biggest part of my working

lifetime.” NIU Vice President and Director of Athletics Sean T. Frazier lauded Baker’s professionalism, his passion and most of all, his ability to connect fans to NIU games, teams and student-athletes, through his broadcasts. “Bill is the ultimate pro and the ultimate Huskie,” Frazier said of the NIU Hall of Famer. “Coaches, student-athletes, even ath-

letic directors have come and gone, and Bill has been the one constant over the last 43 years. He has been the familiar voice of the Huskies, bringing to life the greatest games, plays and players in our football and basketball history to NIU fans around the world. It’s an amazing legacy and we will celebrate him throughout this football season.” Baker will call his 44th season of Huskie Football

in 2023. He has been behind the mic for 507 NIU football games since that initial game between the Huskies and Long Beach State in Anaheim, Calif. on September 5, 1980, missing just one game since that day. His basketball total – including several years when he called both men’s and women’s games – exceeds 1,200 games.

See BAKER page 6

EMPIRE TODAY®

CARPET & FLOORING

We Make Getting Beautiful New Floors Easy

GET FLOORS NOW, PAY OVER TIME™

OUR BIGGEST SALE

50% OFF*

CARPET & FLOORING

50% OFF*

PADDING & MATERIALS

50% OFF*

PROFESSIONAL INSTALLATION

Select styles

You Can Save Thousands!

Schedule a FREE In-Home Estimate!

Call 855-272-9908

or visit Empiretoday.com/save

Make the smart and **ONLY CHOICE** when tackling your roof!

Before

After

Limited Time offer! **SAVE!**

up to **50% OFF** + **10% OFF**

ON YOUR INSTALLATION

TAKE AN ADDITIONAL

Additional savings for military, health workers and first responders

Erie Metal Roofs is trusted by homeowners nationwide to provide a level of value on new roofing that other home improvement companies simply can't match. Erie Metal Roofs are designed to provide the ultimate defense against everything from hurricane-force winds to hail while also boosting energy efficiency and curb appeal. It's not only the best protection you can get for your home, but it's also designed to last a lifetime.

Choose from 3 styles with multiple color options:

WOODEN SHAKE

DIMENSIONAL SHINGLES

SPANISH TILE

ERIE Metal Roofs

FREE ESTIMATE

855-261-6005

Expires 9/30/2023

*Discount is applied to the regular price of select styles of carpet, hardwood, tile, vinyl, and laminate, basic installation, standard padding, and materials. Excludes upgrades, stairs, take-up of permanently affixed flooring, non-standard furniture moving, other miscellaneous charges, and prior purchases. Product may not be sold separately from installation. Residential installations only. Promotion is not valid in AL, AR, MN, MS and TN. Not available in all areas. Valid through 08/20/2023. Subject to change. Details at EmpireToday.com.

**With approved credit. Details at EmpireToday.com/financing.

Sales (except AZ, CA, MA, ME, NH, RI, UT) and installation provided by independent contractors

Licensure at EmpireToday.com. CSLB 1047108

© 2023 Empire Today, LLC

New orders only. Does not include material costs. Cannot be combined with any other offer. Minimum purchase required. Other restrictions may apply. This is an advertisement placed on behalf of Erie Construction Mid-West, Inc ("Erie"). Offer terms and conditions may apply and the offer may not be available in your area. If you call the number provided, you consent to being contacted by telephone, SMS text message, email, pre-recorded messages by Erie or its affiliates and service providers using automated technologies notwithstanding if you are on a DO NOT CALL list or register. Please review our Privacy Policy and Terms of Use on homeservicescompliance.com. All rights reserved. License numbers available at eriehome.com/erie-licenses/

Q

BBB

A+ rating

MADE IN THE U.S.A.

SPORTS

BAKER: Longtime NIU football play-by-play voice retiring after 2023

From page 1

“When the late [NIU Athletic Director] Dr. Bob Brigham and his assistant, Jerry Ippoliti, hired me in May of 1980, they both emphasized that they were looking for stability and longevity in their broadcast voice,” Baker said. “Gentlemen, I think you got your money’s worth.”

Except for conflicts between football and basketball season, which have become more frequent this century with the success of the Huskie Football team, Baker can remember missing just one game, for the graduation of one of his two daughters in December 2002. His friends and broadcast partners alike know that family is the only thing that tops the Huskies on Baker’s priority list.

“My wife, Karen, and I just celebrated our 50th Anniversary and to think I’ve been with the Huskies, traveling to or through every state in the union with them for nearly all of those years; I never would have been able to do it without her love and total support, as well as that of my two daughters, Kim and Julie,” Baker said.

In addition to his play-by-play duties with NIU

football and basketball, Baker, who was inducted into the NIU Athletics Hall of Fame in 2009, has served as emcee for that event as well as team banquets, kickoff and tipoff events and more. He has hosted Huskie football and basketball coaches shows on both radio and television, and interviewed head coaches from every NIU sport program, as well as NIU student-athletes as part of those shows. Years ago, his play-by-play duties extended to Huskie baseball, softball — including NIU’s 1998 Women’s College World Series run — and soccer.

Over the years, Baker has seen — and described — it all. From a 97-yard kickoff return by NIU’s Mike Pinkney on the very first play from scrimmage he ever called in 1980, to three NCAA Basketball appearances by the NIU men’s team, to the magical 2003 football season and, more recently, to five MAC Championships at Detroit’s Ford Field and the Huskies’ historic appearance in the 2013 Orange Bowl.

“The old saying is that time flies when you’re having fun,” Baker said. “Those 44 years sort of snuck up on me and if I

could go back, I’d do it all over again. Let’s just say that I’ve never ‘worked’ a day during my time with the Huskies.”

Baker, who is also the media placement coordinator for the Kane County Cougars, was inducted into the media wing of the Illinois Basketball Coaches Association Hall of Fame in April 2009. He earned the Illinois High School Association Distinguished Service Award for Broadcasting in 1989.

A U.S. Air Force veteran (1969-73), he returned to his native Chicago from Vietnam to begin a broadcasting career as a reporter, calling thousands of high school games before signing on with NIU.

NIU will honor Baker with an on-field presentation during the home opening football game versus Southern Illinois on September 9.

Fans will also have a chance to show their appreciation to Baker later in the season. He will share some of his favorite moments, memories and more on “NIU Weekly,” the Huskies YouTube show, throughout the season, and on the WDKB Pre-Game Tailgate show that airs prior to NIU game day broadcasts.



(PHOTO COURTESY OF NIU ATHLETICS)

“Voice of the Huskies” Bill Baker will retire following the 2023 football season, his 44th behind the mic for NIU Athletics.

Kishwaukee College



(COURTESY PHOTO)

Rochelle Township High School alum Addie Friestad totaled 12 kills and eight digs for Kishwaukee College during a 3-1 victory over Elgin CC on Tuesday.

RTHS alum Friestad leads Kougars over Elgin CC

MALTA — The Kishwaukee College Women’s Volleyball team played their first match of the season at home in Malta against Elgin Community College Tuesday night. Kish would take the match 3 sets to 1 with scores of 25-16, 24-26, 26-19 and 25-13.

The Kougars played solid as a team. Freshmen Mady Lavender (Genoa Kingdon HS) with 7 kills and 10 digs, Avery Salisbury (Oregon HS) with 15 digs, Julie Leon (DeKalb HS) with 8 digs and Kaylee Akers (Hiawatha HS) with 12 digs all played solid all around.

Freshmen teammates Addie Friestad (Rochelle Township HS) led the Kougars with 12 kills to go along with 8 digs followed closely by Natalie Buchanan (DeKalb HS) with 11 kills and multiple assists.

Kishwaukee (1-0 overall) will travel to Arrowhead Conference rival

Illinois Valley Community College on Tuesday, August 29 before returning

home Thursday, August 31 against Kankakee Community College.



CO-TENANT WANTED!

1,000 SF - 4,500 SF OF OFFICE SPACE

Move-in Ready with Furniture!

211 IL-38, Rochelle, Illinois 26068

- Building Size: 12,150 SF
- Year Built: 1985
- Lot Size: 1.30 AC



LoopNet

<https://www.loopnet.com/Listiang/211-IL-38-Rochelle-IL/28326715/>

BELLCORNERSTONE
Commercial Real Estate

BRIAN ROSSI

(315) 935-3162

Email: brossi@bellcornerstone.com