



# ROCHELLE News-Leader

WEEKEND EDITION | WWW.ROCHELLENEWS-LEADER.COM

Today's RNL issue sponsored by Community Unity member:  
**Rochelle**  
Community Unity  
Shop • Play • Stay

**VINCE'S PIZZA**

1071 N. 7th St.  
815-562-7300

Vol. 103 • No. 41

LOCAL NEWS... LOCAL VIEWS

SUNDAY, SEPT. 17, 2023

\$1.25

More coverage. Less spendage.

Discounts up to 40%  
Get more. Spend less. It's that simple when you get car insurance from us. Like a good neighbor, State Farm is there. CALL FOR A QUOTE 24/7.  
**Terri Schaefer, Agent**  
Bus: 815-562-7063  
terri.schaefer.115n@statefarm.com



KNOW IT TODAY



Thursday car fire in Hillcrest

No injuries were reported after a car fire at the Casey's in Hillcrest on Thursday.  
**Page 2**

WEATHER

SUNDAY	MONDAY
HIGH LOW	HIGH LOW
74 51	78 50
TUESDAY	WEDNESDAY
HIGH LOW	HIGH LOW
81 58	82 58

Today's RNL issue sponsored by Community Unity member:  
**Rochelle**  
Community Unity  
Shop • Play • Stay



1172 Lincoln Highway  
815-562-4822

OBITUARIES

• MYRA ELLEN BISHIR-OLSON  
• LEON GENE CAPES SR.  
• JUDITH (JUDY) M. HOKANSON  
• JOAN L. DEWEERTH  
• JOAN LUCILLE (WEISHAAR) LOHRMANN

See page 4

INSERTS

• MENARDS

INSIDE

Local News.....2, 3, 5  
Obituaries.....4  
Opinion.....6  
Community.....7



8 52078 00112 6

## District to pursue Tilton School work Alternatives decided against due to high costs

BY JEFF HELFRICH  
MANAGING EDITOR

ROCHELLE — At its monthly meeting Monday, the Rochelle Elementary School District Board of Education resolved to pursue \$14-16 million worth of needed renovations at Tilton Elementary School.

The district recently found in a health life safety evaluation that an estimated \$7.8 million worth of work is required at the school for those issues. Health life safety concerns the physical safety of the building for students and staff to occupy. The district plans to issue bonds for that money in the coming months and wants to utilize an additional \$6-8 million from its reserves for other improvements involving security and spatial concerns including its pick up and drop off areas. The work will be done over “several years” with the most important health life safety issues being completed first. Work could start next summer, District Business Manager Kevin Dale said.

The board established a facilities committee to evaluate the needed improvements. It also considered alternatives



(PHOTO BY JEFF HELFRICH)

At its monthly meeting Monday, the Rochelle Elementary School District Board of Education resolved to pursue \$14-16 million worth of needed renovations at Tilton Elementary School.

to fill the needs of Tilton School students including additions at other district locations (\$25-30 million cost estimate) and a new school (\$30-35 million cost estimate).

The district’s current bond capacity is about \$17 million and any cost higher than that would have required a referendum to be voted on by district residents.

“We had discussion and considered all of these factors and we think and recommend that to be

most fiscally responsible and not go to referendum, that we go ahead with giving Tilton the complete facelift to satisfy everything in the health life safety survey, bond out for that approximately \$8 million and then use an additional \$6-8 million from our reserves to address the security and spatial concerns that we have, maybe including some additional space for offices or classrooms,” Board President and Facilities Committee Member

Trisha Vaughn said. “This would total about \$14-16 million for the total project and wouldn’t max us out on what we’re able to bond out and we’d also plan to complete this project over several years.”

Board Member Dave Casey said he believes the \$30-35 million number for a new school is “low” and the cost if that path was taken could be higher than that as construction costs have risen recently.

See SCHOOL page 5

## Historic District available to businesses and developers ‘There are tools out there that can help businesses be successful...’

BY JEFF HELFRICH  
MANAGING EDITOR

ROCHELLE — Back in 2018, the City of Rochelle’s National Register nomination for Rochelle’s Downtown Historic District was approved by the Illinois Historic Sites Advisory Council.

Historic districts act as a way of maintaining the history and telling the story of the community while providing access to a key financing tool in historic tax credits. The credits act as a key for struggling downtowns where property values sometimes do not justify the cost to improve historic buildings. The tax credits act as gap fillers and make projects less risky for financing and more attractive for investment. In order to access credits, redevelopment projects must honor the architecture and history of buildings.

Currently, the city is trying to raise awareness of the downtown historic district designation and available tax credits for current business owners and potential future developers, City Community Development



(PHOTO BY JEFF HELFRICH)

Back in 2018, the City of Rochelle’s National Register nomination for Rochelle’s Downtown Historic District was approved by the Illinois Historic Sites Advisory Council.

Director Michelle Pease said.

“If someone were to do a \$1 million project downtown, they could submit for up to 45 percent reimbursement,” Pease said. “It’s 25 percent from the state and

20 percent from the federal government. There are stipulations that have to be followed. If there’s a building within the historic district and somebody wanted to file and get those historic tax credits, they have to

follow specific guidelines within the building. They couldn’t take walls down or change the whole front facade. They’d have to follow the guidelines within that historical perspective of that building.”

Pease said the downtown historic district tax credits have not yet been utilized in Rochelle, and that the process can be lengthy and detailed.

See DOWNTOWN p. 3

**Holcomb Bank** Rochelle | New Milford | Creston | Byron  
Where Relationships Matter  
**Holcomb Bank presents:**  
Columbia & Snake River Cruise with American Queen Voyages aboard the American Empress Steamboat 5/19/24-5/27/24. Packages starting at \$4,928/person including roundtrip airfare from Chicago.  
Contact Julie at 815.561.2627 for more information! FDIC

Is Your Home Ready for the Falling Temperatures?  
Call us for a furnace checkup!  
**ANDERSON**  
PLUMBING & HEATING, INC.  
621 First Ave., Rochelle, IL • 815-562-8784



# LOCAL NEWS

## HILLCREST: Village board votes to increase permit fee rates

From page 1

“All of the work that has been done just needs to be buttoned up, and then we can get rid of the pressure tanks and go back to business as usual,” Potter said. “It’s just tying up loose ends now and it should be all good for the next 10 years at least. They did everything that needed to be done to it.”

Village Trustee Tim Ball praised the work on the tower that he said didn’t cause any impact to residents.

“No one ever even knew that their water was turned off then started on those tanks,” Ball said. “Nobody felt anything that happened with the cleaning of the tower. I can’t thank you enough as a resident. That transition was one of the most impressive things I’ve seen in my 18 years here. Thank you.”

### Permits

Trustees voted unanimously to increase permit

fee rates in the village for the first time in 15 years. Minimum fees were previously \$50 for residential, \$75 for commercial and \$75 for industrial. Those fees have been changed to \$75 for residential, \$150 for commercial and \$150 for industrial. Village President Rick Rhoads said that previous fees were not covering the costs of the village’s building inspector.

“We’ve looked at what we’re paying the building inspector and what we’re charging and the last time we raised them,” Rhoads said. “I think this is an appropriate amount. It costs us money to have this service. This is just to cover what we’re already paying.”

### Engineering

Village Engineer Kaitlin Wright of Baxter & Woodman presented an engineering update at the meeting. She said final plans for Hillcrest’s Priority 1A Water Main project



(PHOTO BY JEFF HELFRICH)

**At its monthly meeting Wednesday, the Hillcrest Village Board of Trustees discussed ongoing water tower repair work and Water Trustee Dan Potter said the work is nearing completion.**

will be sent to trustees by early October and the bidding process is planned for the start of November.

Trustees approved the project to move forward last month.

The project plans to replace mains along portions of Scott Avenue, Errett Road and Erickson Road in the southern and oldest part of the village.

The cost estimate is currently roughly \$2.3 million. An IEPA loan is being reserved for the village and Hillcrest is eligible for 50-percent principal forgiveness. The work could be completed

by fall of 2024. The project has been on the village’s radar for a number of years. A greater water main replacement project was considered in the past, but was trimmed down to the areas of greatest need.

### Ordinances

Rhoads said the village is currently looking at hiring a part-time ordinance enforcement officer to address ordinance violations in the village.

Issues he mentioned

Wednesday included the burning of garbage and construction waste (yard waste is the only allowable burnable material) and campers that are illegally parked.

“Ashton just hired somebody to enforce ordinances and we’re looking at what they’re doing so we can maybe model it,” Rhoads said. “There’s no need to reinvent the wheel if a village like us has already done it. We’re looking around for that.”

**Edward Jones**

> edwardjones.com | Member SIPC

**When it comes to your to-do list, put your future first.**

There may be opportunities for your investments to be working harder for you. Let's work together to make sure your financial strategy is optimized. Contact us today for a complimentary review.



**Jessica L. Morris**  
Financial Advisor

1214 Currency Ct  
Rochelle, IL 61068-2321  
815-561-4341

## The 2024 From The Heart Cash Calendars are NOW AVAILABLE!!

The proceeds of the sale of the calendars benefit our From The Heart recipients: Pegasus Special Riders, Rochelle Christian Food Pantry, HOPE, Focus House, Shining Star Children's Advocacy Center, CASA, Rochelle Area Community Foundation, Hub City Senior Center & Rochelle Rotary.

**OUR CHARITIES NEED OUR SUPPORT NOW MORE THAN EVER!**



**For Just \$20 you have a chance to be one of 365 DAILY WINNERS TOTAL CASH PRIZES \$18,250 PLUS Each Calendar Has VALUABLE LOCAL COUPONS**

## Here are 3 Ways to Purchase Your 2024 From The Heart Cash Calendar!

• **ONLINE:** Go to <http://fromtheheartrochelle.org> and click on **CASH CALENDARS**. Once the calendar is purchased we will mail it out to you! Shipping and processing fees will be added to cost.

• **IN PERSON:** You can pick up a 2024 From The Heart Cash Calendar **TODAY** at the following locations:  
**In Rochelle at:** First State Bank, Stillman Bank, HOPE Chest, Colonial Flower Shoppe and Hub City Senior Center  
**In Oregon at:** Merlin's  
**In Dixon at:** Shining Star  
**In Mendota at:** The Mendota Reporter/Amboy News office

• **BY MAIL:** Fill out the form below and send it in to us and we will mail a 2024 From The Heart Cash Calendar to you! Shipping fees are added to cost.

**YES! Send me my 2024 From The Heart Cash Calendar!**  
(Please Print)

NAME: \_\_\_\_\_  
ADDRESS: \_\_\_\_\_  
CITY, STATE, ZIP: \_\_\_\_\_  
PHONE: \_\_\_\_\_  
NUMBER OF CALENDARS: \_\_\_\_\_

Clip and mail this form along with \$23 (\$20 per calendar plus \$3 per calendar postage) to:  
Rotary Calendar, PO BOX 372, Rochelle, IL 61068



(PHOTO BY JEFF HELFRICH)

**There were no injuries after a car fire on Thursday afternoon at the Casey's General Store in Hillcrest, Rochelle Fire Department Chief Dave Sawlsville said.**

## No injuries after Thursday car fire at Casey's in Hillcrest

BY JEFF HELFRICH  
MANAGING EDITOR

**ROCHELLE**—There were no injuries after a car fire on Thursday afternoon at the Casey's General Store in Hillcrest, Rochelle Fire Department Chief Dave Sawlsville said.

Fire crews were dispatched to the business at 215 Powers Road just before 3 p.m. for the report of a car fire. First responders arrived on scene to find that the fire had spread from the front of a 2018 Chrysler Pacifica to its passenger compartment. The car was parked about four feet from the building, Sawlsville said.

“The owners had left it running while they ran in and they came back out and it was smoking under the hood,” Sawlsville said. “And then shortly thereafter they could see flames under the hood and called 911. The car was a total loss. The building sustained minor damage and the fire melted some of the brick veneer off the front of it. There was smoke damage inside the building, but the fire never got into the building.”

Casey's General Store employees utilized the stop button on the gas pumps to prevent flow to the pumps

when the fire started. They also attempted to put out the flame with fire extinguishers but were unable to get it fully extinguished, Sawlsville said. Fire crews evacuated the building upon arrival.

Firefighters faced a number of hazards with the Thursday car fire.

“It’s at a gas station, so that obviously adds a hazard,” Sawlsville said. “And with newer cars, once the fire is out there is always the danger of the airbags still deploying while you’re inside trying to put out hot spots. Shock-absorbing bumpers are filled with hydraulic fluid and when they get hot, they explode. We’ve seen those fly 50 feet before. When we approach car fires we’re in full turnout gear because of all of those different hazards. And various parts on cars are made of magnesium, which burns very hot and reacts with water. There are all kinds of hazards with vehicle fires. And cars today are made of mostly plastic and petroleum products, so we have to protect our respiratory tracts with self-contained breathing apparatuses.”

Responding departments with Rochelle Fire included the Ogle-Lee Fire Protection District stations

of Hillcrest, Flagg Center and Steward along with the Ogle County Sheriff’s Office.

Sawlsville said the awning around the building having a place for smoke and heat to escape at the top saved the building from a lot more potential damage. The chief estimated the building sustained \$3,000-5,000 in damage and the car was a total loss with value estimated at about \$20,000.

The cause of the fire was likely electrical in nature, Sawlsville said.

“In those Chrysler Pacificas, everything on them is electric,” Sawlsville said, “It was probably caused by an electrical issue. The fire didn’t start back by the gas tank or in the motor. It started off to the passenger side of the motor.”

Casey's General Store was closed for about an hour due to the fire.

“We set some fans up to clear some smoke out of the building and they were advised to dispose of any unsealed food,” Sawlsville said. “It was just one of those crazy things. I don’t necessarily think anyone was doing anything wrong. They hadn’t noticed any mechanical difficulty or problems with the car beforehand.”



# LOCAL NEWS



(PHOTOS BY JEFF HELFRICH)

Rochelle Community Development Director Michelle Pease said the downtown area currently has 6-7 vacant business spaces and she would like to see them all filled in the coming years to create more foot traffic downtown. Four of those vacancies are in the former Moore's Hardware that was recently renovated by Seldal Properties.

## DOWNTOWN: City offering incentives to develop Historic District

From page 1

Kennay Farms Distilling did consider it when it converted the former Hub Theater for its current use, but opted not to due to modifications the business had to make to accommodate its brewery and distilling process. The city has looked at buildings' potential for use with the program in the past and plans to again in the future.

"We did a financial pro forma on the savings and loan building on one of the corners downtown," Pease said. "We shared the pro forma with local and regional developers, but nobody took advantage of that. I'm working with Studio GWA out of Rockford, which designed Kennay Farms Distilling. I'm hoping to plan and be part of a developers' summit in the fall and have them present this information to local and regional developers to see if this is something we could assist them with for any projects downtown."

Pease said the downtown area currently has 6-7 vacant business spaces and she would like to see them all filled in the coming years to create more foot traffic downtown. Four of

those vacancies are in the former Moore's Hardware that was recently renovated by Seldal Properties.

"Those will be filled up soon," Pease said. "I'd love to see parts of Cherry Avenue kind of revamped. One of the big things that's been really helpful for us is our facade grant program. That has helped those businesses immensely. Just to be able to put \$10,000 into your building and get \$5,000 back from your city. That's huge for a small business and it goes a long way to making it look nicer. 926 Embroidery painted the front of its building and got a new sign. And it looks like a new building. I want to fill all of those vacancies and address any blight that we have. If it's a building that's able to be rehabilitated, that would be our top priority to rehab it to use the space. If that's not possible, it'd be looking at what would fit that space better. That's pretty important."

Along with the downtown historic district tax credits and facade grant program, the city also offers a signage program and has worked with businesses in the past on tax-increment financing (TIF) and Lee-Ogle Enterprise Zone



development agreements.

If a business is interested in the city's facade grant program, it can contact the city's community development department and the next application process starts Jan. 1. If a developer or business owner is interested in the downtown historic district tax credits, they can reach out to Pease directly for more information.

"There are tools out there that can help businesses be

successful and get going," Pease said. "I think with COVID-19, people kind of slowed down and backed off, but now I think things are starting to pick up again and I want people to be aware of all the tools and resources that are here lo-

cally and at the federal and state level to be able to help with that."

Pease said she's enjoyed seeing new businesses and improvements downtown in recent years. The city has added to that with improvements of its own including

flowers, plantings, benches and murals.

"When we're having people that want to open up a business, people want to be downtown," Pease said. "That's what they're asking about is downtown, which is great."

## Country Road Greenhouses to host 1<sup>st</sup> Annual Fall Plant Sale Sept. 30-Oct. 1

ROCHELLE — Country Road Greenhouses will host its First Annual Fall Plant Sale on Saturday, Sept. 30 and Sunday, Oct. 1 from 8 a.m. to 2 p.m. at the Greenhouses, located at 19561 E. Twombly Road, Rochelle (one mile north of Casey's in Creston). Over 200 varieties of native plants, shrubs, trees, grasses and sedges and will be offered in individual pots or plugs (starting at \$4, also offered in quarts and gallons), and we are offering a wide variety of

native shrubs and trees in three-gallon pots for \$30. This will be our only offering to the retail market this fall (cash and credit cards accepted).

Peggy and Bryan Redington, co-owners of CRG, are excited to invite the local community to share in this event, and will also have food and drink offerings available at the sale.

Country Road Greenhouses has been in business for over 40 years, focusing on supplying native perennial plants,

grasses, rushes, sedges, shrubs and trees to landscapers and the restoration industries, and are diversifying and expanding their offerings via this special fall sale!

If you would like more information, please contact Bryan or Peggy Redington at 815-384-3311, e mail CRGINC@PrairiePlugs.com, or visit our website — www.PrairiePlugs.com or Like us on Facebook: www.Facebook.com/CRGreenhouses (updates posted on Facebook)

**VOTED BEST REAL ESTATE AGENCY**

2022 VOTED BEST OF OGLE COUNTY

**HAYDEN REAL ESTATE INC.**

225 IL-38, Rochelle, IL | hre@haydenreinc.com | 815-562-2111

Hayden Real Estate, Inc. has served Ogle County for 50 over years! We THANK YOU for your support!

Spencer Hayden  
Tim Hayden  
Sherry Murphy  
Jeff Reif

Ron Frakes  
Vicki Pemberton  
Stephanie Williams  
Amy Hayden

We look forward to serving the community for many years to come!

07162023

## Lincoln Manor

Owned and operated by Lutheran Social Services of Illinois (LSSI) offering apartment living for older adults in Rochelle and the surrounding communities.

**Rent based on 30% of a Resident's Adjusted Gross Income**

- Secure Entry System
- Community room with kitchen
- Activities
- On-site coin operated laundry
- On-site management office
- Dependable 24/7 maintenance service
- On-site parking for residents

Full time Social Service Coordinator is available to assist residents

**For more information, please call 815-562-1404**

615 N. Lincoln Hwy.  
Rochelle, IL 61068  
TTY 847-390-1460

MANAGED BY:  
**Lutheran Social Services of Illinois**  
www.LSSI.org

EQUAL HOUSING OPPORTUNITY

07262023

## Teach Kids about Electrical Safety!

**Some important lessons include:**

- Water and electricity do not mix
- The only objects that go into outlets are electric plugs
- Never stick fingers or objects in electrical appliances
- Electric cords should be left alone

**Rochelle MUNICIPAL UTILITIES**

Local People Providing Local Services

**815-562-4155**

333 Lincoln Hwy., Rochelle • www.rmu.net

01272019



# LOCAL NEWS

## Obituaries

### Myra Ellen Bishir-Olson

**BOZEMAN, MT.** — Myra Ellen Bishir-Olson, 70, of Bozeman, formerly of Rochelle, passed away on July 28, 2023.

Myra was born on Sept. 24, 1952, in Rochelle to Myron and Margaret (Graf) Davis. She was brought up in Rochelle, graduated from Rochelle Township High School in 1971 and then attended Robert Morris College.

Myra was married to John Greene, Ralph Bishir and Brent Olson.

She always enjoyed a visit to Caviar Lake Lodge in Canada. Her parents obtained the camp when Myra was only six years old. She loved motorcycles, fishing, her pets and her family. Often, she would crochet blankets for them, but their

fondest memories are of the Christmas parties she hosted where they would play dice games. She worked as a bartender at the Owl Bar in Livingston, and the Filling Station VFW and Haufbrau in Bozeman.

Myra will be missed by all that knew her but especially her son, Benjamin James Greene; sister, Margaret "Peg" Allison; and former husband, Brent Olson.

She was preceded in death by her parents, Myron and Margaret (Graf) Davis; sister, Patricia Sanderson; and husband, Ralph Bishir.

Funeral service will be held at 10 A.M., Saturday, September 23, 2023 at St. Patrick Catholic Church, 244 Kelley Drive, Ro-



chelle with Father Robert Gonnella officiating. There will be a visitation prior to the service from 9 - 10 A.M., Saturday at the church. Burial will follow the service at Woodlawn Cemetery in Creston. Memorials may be made in Myra's memory to the charity of donor's choice. Services were held in Bozeman, Montana at an earlier date. Please visit [www.ungerhorner.com](http://www.ungerhorner.com) to sign the online guest book.

### Leon Gene Capes Sr.

**ROCKFORD** — Leon Gene Capes, Sr., 86, passed away Tuesday, Sept. 12, 2023 at OSF St. Anthony's Medical Center in Rockford. Leon was born on Sept. 3, 1937 to Lorenzo and Mabel (Shelton) Capes in Flagg Center. He proudly served with the United States Army after graduating from the Rochelle Township High School. He worked for Chrysler for over 30 years.

Leon enjoyed snowmobiling, fishing, going to supper clubs and attending car and truck shows. He especially enjoyed the time he spent with his family and grandchildren.

Leon is survived by his seven children: Teresa (Homer) Barefield of Belvidere, Diane Disch of

Kirkland, Leon Jr. (Sheryl) Capes of Kingston, Daryl (Angela) Capes of Rockford, David Capes of Galva, Danny (Dawn) Capes of Belvidere and Tim (Jackie) Capes of Arkansas; two brothers: Lorenzo Capes of Rockford and Duane (Nancy) Capes of Rochelle; three sisters: Norma Atkinson of Ashton, Leona Tapp of Lindenwood and Judy Zarr of Bethalto; 18 grandchildren and numerous great grandchildren.

In addition to his parents, he is preceded in death by his three wives: Eleanor (Schreiber) Capes, Lois (Steel) Capes and Norma (Fredin) Capes; five brothers: Orville, Lawrence, Ray, Emmett and Reuben "Pete" Capes and his sister,



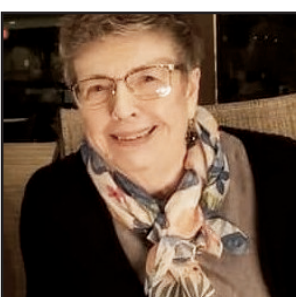
Laura Swick. The visitation will be from 5 - 7 P.M., Thursday, Sept. 21, 2023 at Faith Lutheran Church, 14206 E. Flagg Road, Rochelle. The funeral service will be held at 10 A.M., Friday, Sept. 22 at Faith Lutheran Church with Pastor Joy Alsop officiating. Burial will follow the service at White Rock Cemetery in Kings. Visit [www.ungerhorner.com](http://www.ungerhorner.com) to sign the online guest book.

### Judith (Judy) M. Hokanson

**ROCHELLE** — Judith (Judy) M Hokanson, age 79, of Rochelle, passed away on Sunday, Sept. 3, 2023, at Serenity Hospice and Home in Oregon after a courageous battle with pancreatic cancer.

Judy was born to Lawrence and Edith (Gregg) Pugh, Feb. 9, 1944 in Kansas City, Missouri. Judy called Rochelle her home. She graduated from Jasper High School in 1961 and from Calvary Bible College in Kansas City in 1966. She began her teaching career at Kansas City Christian School in 1966. She married Holmfred (Fred) Hokanson on Dec. 27, 1969, also in Kansas City. They then made their way to Illinois where she taught in Rockford for just over a year. She was a substitute teacher for several years. In 1979, she began teaching 2nd grade in the Eswood School District until 1999. She also taught K-3 music for 15 years during her time at Eswood. She ended her teaching career at Hinkley Big Rock School District as a Title 1 reading specialist in 2010.

Judy's most cherished moments were those spent with her grandchildren, Eric and Sara (her sweetie girl). Her world revolved around them. She loved watching them in all their activities from football to FFA Banquets to the county fair and everything in between. She lit up even in her last days when hearing their voices. She was a true believer in Jesus Christ and loved to share with others what the Lord had blessed her with and could do for them. She loved spending time leading Bible Studies, attending Tres Dias events, gospel music concerts and going on cruises, traveling with her closest friends. She loved attending her class reunions and cherished her many friendships from her school years. There wasn't a person who met Judy who didn't love her. She attended Maywood Evangelical Free Church where she greeted people, sang in the choir, played the piano, and was a true prayer warrior. The last ten years she shared her home with her beloved felines, Lucy and Ethel. They loved Judy dearly as she did them.



one daughter, Debi (Ben) Heisner of Mineral Point Wisconsin. Immediate survivors are her daughter, Debi (Ben); her grandchildren: Eric of Mineral Point, and Sara of Platteville, Wisconsin; her sisters: Marilyn (Don) Meier of Lee's Summit, Missouri, Joyce (Terry, deceased) Maneval of Jasper, Missouri, Becky (Tony) Elliott of Jasper and a brother, Fred (Joy) Pugh of Cleveland, many nieces and nephews and grand nieces and nephews. Judy is preceded in death by her parents, her husband, Fred, her in-laws, Fred Sr. and Vivian Hokanson, her brothers-in-law, Ken Hokanson and Terry Maneval.

A memorial visitation will be held Thursday, Sept. 21, 2023, at the Unger Horner Funeral Home, 400 N. 6th St., Rochelle, IL from 5 - 8 P.M. A Celebration of Life will be held on Sept. 22, 2023 at Maywood Evangelical Free Church, 3621 Samuelson Rd, Rockford, IL at 11 A.M. with Pastors Gary Kniseley and Dave Currie officiating with a visitation from 10 - 11 A.M. prior to the service. The service will be live streamed and available to view at [live.mefc.us](http://live.mefc.us). Burial will be at a later date at Lawnridge Cemetery in Rochelle.

In lieu of flowers, memorials can be made to the Serenity Hospice and Home or Maywood Evangelical Free Church in Judy's memory. Please visit [www.ungerhorner.com](http://www.ungerhorner.com) to sign the online guest book.

### Joan L. DeWeerth

**MENDOTA** — Joan L. DeWeerth, 88, formerly of Mendota, passed away peacefully on Sept. 10, 2023 at Serenity Hospice in Oregon.

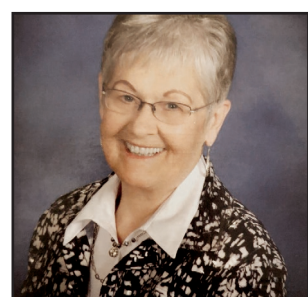
Joan was born on March 16, 1935, in Sterling, to Herman H. and Lucille I. (Lickhard) Olman. She attended Rock Falls High School. She graduated in 1957 with a bachelor's degree from Wartburg College in Waverly, Iowa. She married E. Allen DeWeerth on Dec. 30, 1956. They lived in the Chicago suburbs, where she taught first grade. They moved to Mendota in 1961. Their son, Steve, was born in 1963, and their daughter, Suzie, was born in 1968.

Joan is survived by her identical twin sister, Jean (Art) Margheim, and her children Steve (Valerie) DeWeerth and Suzie Archer. She is also survived by eight grandchildren — Emily (Robert) Painter, Erik (Kimberly) Patterson, Allison Archer,

Matthew (Emily) Archer, Hannah (Miguel) DeWeerth, Jesse DeWeerth, Alexa (Justin) Archer, and Abigail DeWeerth — and five great-grandchildren — Hayden Painter, Jack Painter, Aubrey Patterson, Penny Archer, and Lily Patterson.

She was preceded in death by her husband, Al DeWeerth in 2010, her sister, Carol Proeger, and her great-granddaughter, River Patterson.

Joan participated enthusiastically in a number of volunteer and charitable organizations. She was deeply involved in St. John's Lutheran Church in Mendota: she served as an organist for 50 years, played with the praise band, sang in the choir, taught youth Sunday school, and led the Singing Mothers group. She was the chair of the local Christian Women's Club and the President of the local Women of the Evangelical Lutheran Church



in America (WELCA). She also served as the office manager for Al's dental practice for almost 20 years.

There will be a small graveside service held at 11 a.m. on Friday, Sept. 15, 2023 at Restland Cemetery in Mendota with Rev. Leo Patterson officiating. The Celebration of Joan's life — followed by a luncheon — will be held at 11 a.m. on Saturday, Oct. 14, 2023 at St. John's Lutheran Church in Mendota. Merritt Funeral Home, Mendota is assisting the family.

Memorials may be directed to St. John's Lutheran Church. Online condolences may be left at [www.merrittfh.com](http://www.merrittfh.com)

### Joan Lucille (Weishaar) Lohrmann

**NAPERVILLE** — Joan Lucille (Weishaar) Lohrmann, born Dec. 18, 1928, died peacefully at her home Sunrise Senior Living in Naperville, surrounded by family, on Sunday, Sept. 10, 2023, at age 94.

Joan is survived by four daughters and sons-in-law Kathleen and Mike Hammock, Patricia and Glenn Baldwin, Elizabeth and Bruce Bockelman, and Valerie and Dean Snyder. She is also survived by seven grandchildren Sarah, Matthew, Emily, Megan, Stephanie, Evan, and Thea; thirteen great grandchildren Austin, Peyton, Dylan, Hannelore, Caroline, Logan, Fiona, Decker, Ryker,

Rebecca, Timothy, Stephen, and Anna; her sister Mary and many nieces and nephews. Joan is preceded in death by her husband Edwin A. Lohrmann and her parents Ernest and Virginia Weishaar.

Joan had a wonderful life. Joan studied one year at Northern Illinois University before marrying Edwin on May 4, 1951. She was a practiced artist creating over 200 works of art; the family seamstress making most of her daughters' clothes; accomplished hostess; avid gardener; designer of two homes with an eye for interior design; loving wife, mother, grandmother and great-grandmother.

Although a self-declared "country girl," Joan experienced living in over 12



different places—from small to large—including Lee; DeKalb; Rantoul; Denver; Rochelle; Crystal City, Texas; Walnut Creek, California; Hendersonville, North Carolina; Naples, Florida; Aurora; Naperville; and the Philippines.

A natural "thinker" about the many puzzles of life, Joan believes with great conviction that Jesus Christ is her Savior and without doubt that "God is in charge."

#### Snyder Family Farm

**For Sale**  
117 Acres

**Section 29 of the Willow Creek Township, Paw Paw, Lee County, Illinois**  
**Asking \$12,500 per acre.**

- 92 Tillable Acres
- 27 Acres Recreational Woodlands
- Productivity Index (PI) 129
- Potential Cash Rent - \$315-\$390
- Potential Rec. Rent - \$35-\$55
- 2022 Taxes - \$4097
- Zoned Ag-1

CALL

**954-554-5612**

Steven Massey P.A.

## ROCHELLE News-Leader

211 IL Route 38 East, Rochelle, IL 61068  
(815) 562-4171

USPS (467-820) ISSN (1075-2811)

Published every Wednesday and Sunday by Rochelle Newspapers Inc. at 211 E. State Route 38, Rochelle, IL 61068. Periodical postage paid at Rochelle, IL 61068. Postmaster send address changes to the Rochelle News-Leader, P.O. Box 46, Rochelle, IL 61068. Subscription rates are \$139.99 per year by mail in Ogle County. Outside county rate is \$149.99 per year. No mail delivery in newspaper-carrier serviced areas. The circulation department is open Monday through Friday from 8 a.m. to 5 p.m. If you are a carrier subscriber and your paper does not arrive, contact Kelly White at 561-2112.

#### IN-COUNTY REGULAR SUBSCRIPTION RATES

- \$139.99 for one year • \$79 for six months
- \$34.99 for three months • \$13.99 for one month

Call (815) 561-2112 or  
Visit our website at  
[www.rochellenews-leader.com](http://www.rochellenews-leader.com)



#### HOW TO CONTACT US

News-Leader Main Switchboard (815) 562-4171

**General Manager**  
Mike Feltes (815) 561-2124

**Newsroom Staff**  
Jeff Helfrich, Managing Editor (815) 561-2151  
Russ Hodges, Sports (815) 561-2152

**To Place a Display Ad**  
Andrew Heiserman (815) 561-2123  
Chris Ackland (815) 561-2153

**To Place a Legal Ad**  
Mike Feltes (815) 561-2124

**To Place a Classified Ad**  
Andrew Heiserman (815) 561-2123  
Chris Ackland (815) 561-2153

**Subscriptions and Delivery**  
Kelly White (815) 562-4171

#### Rockford Area Coin Club

**FREE ADMISSION**

134th Semi-Annual Coin Show

For info call Chris Huttner  
(815) 601-9944

**Sunday, Sept. 24, 2023**

9:00am - 3:00pm

Located at:

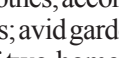
IBEW Local 364 Banquet Facility  
6820 Mill Rd.  
Rockford, IL 61108



09042023

#### FAX-IT TO US!

**562-2161**



**News-Leader**

**211 Hwy. 38 East  
Rochelle**



# LOCAL NEWS

## SCHOOL: Elementary board pursuing around \$16 million in work at Tilton

**From page 1**

“I think a new school would be more than that,” Casey said. “With the health life safety being able to extend those out over several years, that allows us to also be able to keep the kids there and try to do more of that work during the summers and off times over several years. And with potential additional space, we’re busting at the seams at that school. That would allow for more classroom space. Cost-wise and for the taxpayers, it seems to make the most sense.”

The facilities committee also discussed the asset of Tilton’s School’s ease of walkability when considering options.

Dale said the goal of the planned renovation work is to get “at least another 20 years” out of the Tilton School building.

“This way we are able to actually do a complete face lift and try to repair everything that was listed that includes asbestos tiles, roofing and windows,” Dale said. “It involves painting and redoing the interiors of classrooms so it looks like a brand new, nice, fresh look. It will take multiple years. We don’t want to have to displace students and a project that size could take more than one summer.”

Superintendent Jason Harper said next month’s meeting will see the district bring a “sharper financial outlook” on the issue to the board. The borrowing process could start in October or November.

**Budget**

The board held a public hearing for and unanimously approved its fiscal year 2024 budget.

During the hearing, Dale walked the board through the budget’s numbers.

In the education fund, there is an estimated fund balance of \$7.968 million with revenue of \$18.26 million and expenditures of \$17.809 million. In operations and maintenance, there is a fund balance of \$6.879 million with revenue of \$1.941 million and expenditures of \$1.933 million. The debt service fund has a fund balance of \$905,264 with revenue of \$1.349 million and expenditures of \$1.361 million. The transportation fund has a fund balance of \$478,253 with revenue of \$956,593 and expenditures of \$1.340 million. The IMRF/social security fund has a fund balance of \$798,153 with revenue of \$467,395 and expenditures of \$361,402.

**New teachers**

The board heard new teacher introductions at the meeting from all of the district’s building principals. Lincoln School has two new teachers, Central School has five new teachers, Tilton School has five new teachers and Rochelle Middle School has four new teachers. Stepping Stones Preschool does not currently have any new teachers.

“It’s a big group of teachers who have come in,” Harper said. “We’re excited to have them with us. I’d also like to celebrate Mrs. Prestegard from the middle school who leads our mentor and new teacher program. Last year we overhauled our onboard-

ing program and she’s had a huge hand in that along with instructional support, curriculum support, our administrators and teachers who have an interest in this. It’s been a really robust program that these teachers have gone through and will continue to go through throughout the school year.”

**Personnel**

The board unanimously approved personnel changes including the resignation of Lindsay Ditmars (speech language pathologist) and the transfer of Angel Cruz (paraprofessional at Tilton to part-time substitute teacher).

Rochelle Area

# CHURCH DIRECTORY

- Ashton Bible Church**, corner of Main and Paddock in Ashton. Pastor Farrel Stauffer, church phone is (815)453-2190, church website [www.ashtonbible.org](http://www.ashtonbible.org). Sunday School for all ages 9:00-10:00am, Morning Worship 10:15am, Wednesday Prayer Meeting/Bible Study 6:30-8:00pm.

**The Bridge Church**, Pastor Greg Duncan, 11038 E. IL Route 38, Rochelle, IL 61068. Phone: 815-562-7750. Sunday School: 9:00 am; Sunday Service: 10:00 am; Nursery & Children’s ministry during am service; Bible Study Tuesday 10:00 am and Wednesday 7:00 pm. Web: [thebridgechurchrochelle.com](http://thebridgechurchrochelle.com) Email: [thebridgechurchrochelle@gmail.com](mailto:thebridgechurchrochelle@gmail.com)

**Calvary Lighthouse Church, Assemblies of God**, Senior Pastor, Dr. James Horvath. 14409 Hemstock Rd., Rochelle. Sunday Morning: Sunday Worship & Children’s Church 10:00 A.M., Wednesday Evening 7:00 P.M. – Adult Teaching, Missionettes & Royal Rangers Childrens Classes, Nursery available for all services. HE-Brews Cafe is open before and after services. For further information, please call the CLC office at 815-562-7701, or email us at [staff@calvarylighthouse.com](mailto:staff@calvarylighthouse.com)

**Calvary Lutheran Church, LCMC** - “To Know Christ and to Proclaim Christ in Word and Deed” -19 Perry Road, Lee, IL 60530 (the intersection of Perry Road and W. County Line Road). Rev. Martha Uecker Nelson, Pastor. Coffee Hour starts at 9:00 a.m., Sunday School, Confirmation, and Adult Bible Study are at 9:15 a.m. Worship is at 10:30 a.m. and is broadcast live on Facebook. Go to our website is at [www.Calvarychurchlee.org](http://www.Calvarychurchlee.org) and click on the link there. A Grief Support Group meets the third Tuesday of each month at 10:00 a.m. Call or text (815) 824-2825 or email [CalvaryLeeIL@gmail.com](mailto:CalvaryLeeIL@gmail.com) with questions or for more information. Also check us out at [www.facebook.com/Calvary-Lutheran-Church](https://www.facebook.com/Calvary-Lutheran-Church).

**Rochelle Church of Christ**, Keeping Christ at the center in the Hub City. We meet Sundays at 9:00am for Bible Study and 10:00am for worship. We also have a Wednesday Bible Study at 7:00pm. 206 Erickson Rd, Rochelle, IL 61068. You can call us at (815) 562-6572 or visit us on the web at [rochellechurch.com](http://rochellechurch.com). We also have a radio program Sundays just after 8am on WRHL 1060AM. Minister Dominic Venuso.

**Creston United Methodist Church and Steward United Methodist Church** - Rev. Ilhan You, Creston: 126 West South Street, P.O. Box 209, Creston, Illinois 60113. Sunday morning worship 9:00am. Coffee fellowship at 10:15am. Steward: 507 Main Street, P.O. Box 80, Steward, IL 60553. Adult Sunday School, 10:00am. Sunday morning worship and Children’s Sunday School 11:00am. Contact the church office at 847-730-4370 for more information. [facebook.com/crestonumcil](https://facebook.com/crestonumcil) [facebook.com/stewardilumc](https://facebook.com/stewardilumc)

**Elim Reformed Church**, 140 S. Church Road, Kings, IL 61068. Phone: 815-562-6811. Email [goelimchurch@gmail.com](mailto:goelimchurch@gmail.com) Website [www.goelimchurch.org](http://www.goelimchurch.org) Sunday Morning Worship 10:00 Rev. Marv Jacobs

**Faith Lutheran Church** – (14206 E. Flagg Rd.) – “Making Christ Known Through Lives of Faith.” In-person worship is available each Sunday at 9:00 a.m. or online at “Faith Lutheran Social” on YouTube. Worship resources are also available on our Facebook page - ‘Faith Lutheran Church ELCA.’ You may also e-mail Pastor Joy Alsop at [Pastor@faithlrochelle.org](mailto:Pastor@faithlrochelle.org) for more information. All are welcome to join us!

**First Baptist Church of Rochelle, First Baptist Church of Rochelle** invites you to experience our practical Bible services which have nurseries provided in every service along with a wide range of children’s and teen ministries. Sunday School is at 9:30 am with regular church services at 10:30 am and 1:00 pm. Wednesday Family Night starts at 6:30 pm with AWANA for the 5 yr. olds thru 6th grade. The Omega Teen Ministry also starts at 6:30 pm for 7th – 12th grades and the Adult Bible Study at 7:00 pm. First Baptist Church is located 6 blocks west of Hwy 251 at the corner of Woolf Ct. and 8th Ave. in Rochelle. Call 562-4168 for more information . Listen at 8:30 am Sunday mornings on WRHL 1060 AM for the Sunday morning “Bible Message.” [www.firstbaptistrochelle.org](http://www.firstbaptistrochelle.org)

**First General Baptist Church**, 500 S. 12th St, Rochelle. Phone: 815-562-5221. Email: [fgbcrochelle@gmail.com](mailto:fgbcrochelle@gmail.com). Website: [www.fgbcrochelle.org](http://www.fgbcrochelle.org). Facebook: [www.facebook.com/fgbcrochelle](https://www.facebook.com/fgbcrochelle). Pastor: Rev. Angelo Bonacquisti. **Sunday worship services:** 8:30 am, 11:15 am and 6:00 pm. **Sunday school:** 10:00 am. We’d be honored to have you join us as we worship JESUS and continue to grow in truth and love for God and each other. A nursery, children’s church, youth group and small groups are available. If you need a ride please contact our church bus driver, John, at (815) 262-4275 by 8:30 am on Sunday. “For if you confess with your mouth that Jesus is Lord and believe in your heart that God raised him from the dead, you will be saved.” Romans 10:9

**First Presbyterian Church** – An Amazing Place for Amazing Grace- Rev. Doug Forsberg, Senior Pastor. 1100 Calvin Road, Rochelle. Email: [info@placeforgrace.com](mailto:info@placeforgrace.com). Sunday morning worship 9:00am. In person or streamed online. On our Website and Facebook Live. [www.placeforgrace.com/](http://www.placeforgrace.com/) [www.facebook.com/placeforgrace](https://www.facebook.com/placeforgrace)

**Grace Fellowship Church** — Pastor Jeff Ardissonne, 2128 Il Route 38, Ashton, 815-453-7464. Sunday School 8:30 a.m. Sunday Worship Service 9:45 a.m. [www.graceisforyou.com](http://www.graceisforyou.com)

**Harvest Baptist Church** 241 Scott Ave. (Hillcrest). Rev. Duane Boehm, pastor. Email [duane712@hotmail.com](mailto:duane712@hotmail.com), cell 815-757-3427. Visit us on Facebook! Service times: Sunday morning worship with Children’s Church at 10 am. Wednesday night worship at 7 pm.

**Immanuel Lutheran Church** Missouri Synod 16060 E. Lindenwood Road, Lindenwood, IL 61049. Rev. Dr. Matthew Rosebrock. Church Phone 393-4500. Church Worship 9:00 a.m. Sunday School Christian Education Hour at 10:30 a.m.

**Living Water Community Church** 405 N. Main St, Downtown Rochelle. Phone 815-561-6249, Website: [www.lwccr.com](http://www.lwccr.com), Like us on Facebook. We are Non-Denominational, Christ Centered, Casual dress, Christ Centered Live Band Worship. Mike Vogeler - Outreach and Seven C’s Pastor, Chris Bender- Teaching Pastor and Doug Bunger - Missions and Children’s Pastor. Sunday Worship Service- 10:00am. Nursery/Toddlers Ages 0-5 available during the service in the Splash building. Swim- Grades 1st-5th worship with the adults then break out for age appropriate teaching. Youth groups, Small groups, Life Groups and Workshops meet throughout the year for Bible teaching. 7C’s Mission- serves the community physically & spiritually each month from 1135 Lincoln Hwy, providing lightly used clothing, Hygiene items, a light lunch and Elder Prayer open the second Saturday from 10am-2pm and the 4th Thursday from 4pm to 7:00pm and by appointment.. 

**New Hope Fellowship (Church of God - Anderson, IN)**, 1501 10th Ave., Rochelle, IL 61068. Service: Sunday at 9 a.m. 10:30 a.m., (815)561-8400, [www.NHFchurch.net](http://www.NHFchurch.net) Pastor: Dan Sergeant and Pastor Nick Tornabene. (Classes for children through age fifth grade during service.)

**Rochelle United Methodist Church welcomes everyone to their worship service, and practices openness for all activities including communion. Worship is at 9:00 am. Sunday school for children begins around 9:15, following the Children’s Time in worship.** A fellowship time with food and space for conversation occurs in Hicks Hall every week following the worship service. We celebrate communion with an open table on the first Sunday of every month, and on other appropriate occasions. Youth group is on Sunday evenings from 5:30-7:30. Our youth program includes service projects, discussion topics, Bible Study, and lots of fun and fellowship together. Some of our activities include packing meals at Feed My Starving Children, helping at Rochelle Christian Food Pantry and 7C’s, working with animals at Barn on Baseline, Mystery trips (Destination Unknown!), and Interactive experiences on Dating boundaries, refugees, and homelessness. Youth group is for grades 6-12 and friends are always welcome. Recorded services are available on our YouTube channel and our website at [www.rochelleumc.com](http://www.rochelleumc.com). Our services are on the radio (93.5 FM) on Sunday mornings at 9:00 am. Our Facebook page is [www.facebook.com/rochelleumc](https://www.facebook.com/rochelleumc). **Our pastor is the Rev. Dr. Katherine Thomas Paisley.** Our address is 709 Fourth Ave. (815) 562-2164. Email is [admin@rochelleumc.com](mailto:admin@rochelleumc.com). At Rochelle United Methodist Church, everyone is welcome and loved!

**St. Patrick Catholic Church** Rev. Jesus Dominguez; Deacon Fermin Garcia; Deacon George Schramm; 244 Kelley Dr. (Corner of Kelley & Caron Rd.), PO Box 329, Rochelle, IL 61068. **Office Hours:** 9:00 AM- 4PM Monday-Thursday, Phone: 815-562-2370. **Mass times:** 8:00 AM Monday-Thursday, Saturday Vigil Mass 5:00 PM English, 7PM Spanish, Sunday Mass 7:30 AM, 9:00 AM in English and 11:00 AM in Spanish. **Confessions:** Monday 8:30AM & 6:30PM, Tuesday 8:30AM, Saturday 8:30am & 4:00-4:45 PM Or by appointment. **Religious Education:** Deacon George Schramm, Director of Religious Education. 903 Caron Road, Rochelle, IL 61068, 815-561-0079; Website: [stpatricksrochelle.com](http://stpatricksrochelle.com) Email: [stpatrick-rochelle@rockforddiocese.org](mailto:stpatrick-rochelle@rockforddiocese.org) Facebook.com/StPatrickRochelle

**St. Paul Lutheran Church** “Building Relationships in Christ, Now and Forever!” Steven Hall, Principal, Parish Nurse-Marcia Schnorr. 1415 Tenth Ave., Rochelle. Church Office-562-2744. Worship times: 6:00 p.m. Saturday, 9:00 a.m. Sunday. Our service is broadcast over WRHL 1060AM at 10:00 a.m. Sunday. Sunday School 10:15-11:15 a.m. Call 562-6323 for more information about the school.
-



# LOCAL VIEWS

Guest column

## Wheat and The Great Chatfield Hog War

IN the early days of Hickory Grove (Rochelle), agriculture was the mainstay of the economy. Early settlers like Jephtha Noe and Willard Flagg found countless miles of prairie grass as far as the eye could see. The grasses on the prairie would range from four to eight foot tall. The land had to be cleared before farming could begin. Frequently fire was used to burn off the grasses.

By 1837, John Deere had just perfected the self-cleaning plow so a man with some oxen and a plow could break up a field much faster than would have been believed only a short time earlier. Jephtha is credited with bringing in the first wheat harvest in the area. In the 1830s corn and oats were not worth enough to take them to market.

With wheat production at almost 40 bushel per acre, a landowner could raise enough for personal use as well as some to

take to market. The trip to market was the stuff of legend. The nearest markets were Rockford, Peru and St. Charles. Ottawa had the nearest grist mill for refining wheat into flour. Generally the best-paying market was Chicago. The Chicago Grain Market would pay from .40 to \$1.20 per bushel with the usual rate around 50 cents a bushel. So it was the norm to load 40 bushels of wheat onto the wagon hitch up the ox team and head off to the big city.

There were few hotels on the way to Chicago so the traveler would pack enough bread, bacon and coffee to make the six-day trip. There were some stopovers of note: Huntley's in DeKalb, Brodies Grove, Hubbard's in Babcock's Grove and Chatfield's all received high praise. Once in Chicago, the Old American House and Lake Street Hotel were considered top drawer.

The folks from Hickory Grove and the surrounding

area were referred to as the "Rock River Boys" as transport drivers from around the Rock River would meet in Hickory Grove and join forces with our local drivers before heading toward Chicago.

It was around 1847 that a group of the Rock River Boys stopped off for the night at Chatfield's. During the evening meal a couple of the boys did a nose count and quickly surmised that there were more wagon drivers than rooms at the inn. John Collier, Willard Flagg and a couple others rushed through their meals and secured comfortable lodging. The rest of the crew were forced to sleep on their wagons. During the night the outside sleepers found themselves under attack. It seems that the hogs in Chatfield had become used to biting the corners off of wheat bags and feasting on

the contents. The boys set up quite the ruckus. Mills Stewart was heard yelling, "Eat John Collier's wheat will ya?"

The boys protested to the owner of the inn who denied any knowledge of who owned the hogs. There was only one recourse, if the wheat was to be saved, the hogs must die. The nine Rock River Boys grabbed any weapon they could find and set after their porker foes. Mr. McCracken chased a hog into a house and followed it all the way to the bedroom. The swine was dragged from beneath the bed

and was soon good only for bacon and ham. Mr. Reynolds noticed a 180-pound porker headed straight for him and decided his best option was to jump on the piggy and force it to the ground. The swift swine was still making good time with Mr. McCracken (legs

around the pigs' neck and facing south on a north bound hog) regretting his decision. It was Willard Flagg to the rescue. Ax in hand Willard dropped the swine at full speed without damaging the rider. Needless to say the boys cut a hasty leave from Chatfield, whose residents were no longer nearly as welcoming as they had been.

When one calculates 40 bushels an acre at 50 cents a bushel, the average wagon load of wheat brought about \$20. Plowing, planting, harvesting and transporting to Chicago for \$20 in an average year to \$48 in a very good year.

It was in 1854 that the train line reached Hickory Grove. This changed the grain business overnight. Farmers from within 10 miles of Dekalb and Rockford would bring their crops to Rochelle.

Initially farmers bagged their grain and delivered it to the train depot. The grain was taken to Chicago and payment arrived with

the returning train. Local investors erected several grain elevators and would pay the farmers upon delivery of the wheat. The elevator owner then would play the market hoping to make more than they paid. With the arrival of the Civil War, wheat prices skyrocketed. Profits were so good that Dr. McConaughy erected a stone elevator. Many questioned the expense until 1861 when an arsonist set fire to the grain elevators and all were destroyed except the stone elevator. Dr. McConaughy successfully cornered the local grain market.

By the end of the Civil War so much wheat had been grown that the land lacked the nutrients needed to produce a decent crop. Wheat was no longer king and the crops of preference became corn and oats.

*Tom McDermott is a Flagg Township Museum historian and Rochelle city councilman.*

## Consider this: In short, it's up to us

I'm guessing that there are a lot of people frustrated with our Federal Government and how things are trudging along. We seem to move at a pace that would make sloths, slugs, turtles and other animals' movements appear to be lightning fast. Then, when they do decide on passing a bill or setting priorities, we don't agree with what they have done.

Not only do we disagree with what Congress has done, but we appear to be pushing more and more for one person to control everything. We are so sick of hearing about what isn't working or doesn't work, we are happy to give it up to one person or if that is not quite how you feel, then to one party. We don't think that a constitution designed for "we, the people" is right anymore. Yet the key to why we feel that way is in that phrase "we, the people".

Congress is filled to the brim with Representatives and Senators that when chewing on a bill or other

document chew so hard and long that what is spit out is meaningless dust. But wait, didn't we elect those people? Aren't they the ones who are getting reelected every term? Yes, "we, the people" are getting tired of ourselves. Of our failures to change our votes when we know we should. And we seem to be afraid to vote for someone else in our party's primary when an incumbent is running, or even afraid to change parties.

Are we worried someone may find out? Are we worried that we may lose our long, long friends? Are we worried that we have been wrong in the past and so we must keep up the status quo? Maybe we are worried that we might make a wrong decision? Well, we all have made wrong decisions in the past, have lived with them, and the world is still here. Our lives still move along.

There are people who vote the way their spouses do no matter what. There are people who vote the way their family always

has, no matter what. So, when we are told that at 18, we'll be on our own, what does that mean? Yes, we have been taught values by our parents. Yes, we love our parents very much. But when you go out in the world on your own, that means fending, providing and thinking for ourselves. Of course, we value what our parents say and do, but we are on our own now. Now it's up to us alone.

Let's look at that Government that some of us feel would work. One that is controlled by a single person or party. What would that mean to us? Well, we wouldn't have to think anymore. No more decisions on what pay we will receive, what property we will own, who will we vote for, and what's in our future. No more worry about what books we read, what schools and courses will be available to us, what states and countries we can visit since all this

will have been decided.

What party will you be affiliated with? It really won't matter since the only party structure will be at the very top. Yes, we may be able to vote for other party's but, low and behold, the party in power will always win. Who is the president you will vote for? If we still have voting and a president, there will be more than one candidate. Sure, the one in power will stay in power, so what will be done with those votes that may be counted for the other candidates. They will be tallied. Will there be any chance that they know who cast those votes?

I previously mentioned no more worry about what property we will own. Take, for instance, you are a farmer that owns the land you farm. If a corporation or well-to-do person thinks your land is a great piece of property, will they be able to take

it from you? Today, there are a few blocks that must be removed before anything you have can be taken. Will the future be the same?

I'm not trying to be a negative person, but with a former President who has now been indicted multiple times, but who has lost few supporters, it is hard to see where we could end up. No one is guilty until proven so, but I did see the Jan. 6, 2021 riot at the Capital and the rally that happened just before. This makes me wonder where we are heading.

Interestingly, the rioters that are members of militias of varying types, probably have no idea what would happen if they had obtained what they were fighting for. More than likely, they would have been shut down by the very people they kept in office. After all, if they could live the riot, what else were they capable of?

So maybe it behooves us to do something for ourselves. Elect people that vote in a way that helps

everyone in our country. If our current electors are of this category, then keep them in office. If not, elect someone else. No one knows how you vote unless you tell them. At least in our current framework. Remember what you were told, when you became 18, and make up your own mind. Our system works when everyone does their job. Especially the voters.

We may lose an election once or twice, but our system is based on the greatest number of votes. If we think that something went wrong, then we must push for stricter voter laws that allow all of us to vote and have those votes count. We must get rid of gerrymandering for the sake of electing specific people. We must also get rid of the Electoral College. It was used for its purpose many years ago, but has no business being used in our current elections.

In short, it's up to us. You and me. The voters in this great country of OURS!

### How to contact government officials

**U.S. Con. Darin LaHood**  
1424 Longworth HOB  
Washington, D.C.  
20515  
(202) 225-6201

**IL Sen. Win Stoller**  
Stratton Office Bldg  
Springfield, IL 62706  
(217) 782-1942

**IL Rep. Bradley Fritts**  
Stratton Office Bldg  
Springfield, IL 62706  
(217) 782-0535

Have a letter you want to submit to us? Send it to [news@rochelle-news-leader.com](mailto:news@rochelle-news-leader.com)

### KEEPING YOU IN TOUCH WITH YOUR LOCAL LEADERS

*\* Denotes Chairman/President*

**Rochelle City Council**  
\*John Bearrows [jbearrows@rochelleil.us](mailto:jbearrows@rochelleil.us)  
Kathryn Shaw-Dickey [kshaw-dickey@rochelleil.us](mailto:kshaw-dickey@rochelleil.us)  
Bil Hayes [bhayes@rochelleil.us](mailto:bhayes@rochelleil.us)  
Rosaelia Arteaga [rarteaga@rochelleil.us](mailto:rarteaga@rochelleil.us)  
Dan McDermott [dmcdermott@rochelleil.us](mailto:dmcdermott@rochelleil.us)  
Tom McDermott [tmcdermott@rochelleil.us](mailto:tmcdermott@rochelleil.us)  
Benjamin Valdivieso [bvaldivieso@rochelleil.us](mailto:bvaldivieso@rochelleil.us)

**Rochelle Elementary School Board**  
\*Trisha Vaughn [tvahgn@d231.rochelle.net](mailto:tvahgn@d231.rochelle.net)  
Dave Casey [dcasey@d231.rochelle.net](mailto:dcasey@d231.rochelle.net)  
Steve Bault [sbault@d231.rochelle.net](mailto:sbault@d231.rochelle.net)  
Ashley Jackson [ajackson@d231.rochelle.net](mailto:ajackson@d231.rochelle.net)  
Stephanie White [swhite@d231.rochelle.net](mailto:swhite@d231.rochelle.net)  
Javier Zepeda [jzepeda@d231.rochelle.net](mailto:jzepeda@d231.rochelle.net)  
Jennifer Thompson [jthompson@d231.rochelle.net](mailto:jthompson@d231.rochelle.net)

**Rochelle Township High School Board**  
\*Tom Huddleston [tom.huddleston@rthsd212.org](mailto:tom.huddleston@rthsd212.org)  
Bill Ravnaas [bill.ravnaas@rthsd212.org](mailto:bill.ravnaas@rthsd212.org)  
Jeff Tilton [jeff.tilton@rthsd212.org](mailto:jeff.tilton@rthsd212.org)  
Bobby Chadwick [bobby.chadwick@rthsd212.org](mailto:bobby.chadwick@rthsd212.org)  
Brent Ohlinger [bohlinger@rthsd212.org](mailto:bohlinger@rthsd212.org)  
Laurie Pillen [lpillen@rthsd212.org](mailto:lpillen@rthsd212.org)  
Joel Thompson [jthompson@rthsd212.org](mailto:jthompson@rthsd212.org)

**Flagg-Rochelle Park Board**  
Brent Carmichael [bcarmichael@rochelleparkdistrict.org](mailto:bcarmichael@rochelleparkdistrict.org)  
John Dobbs [jdobbs@rochelleparkdistrict.org](mailto:jdobbs@rochelleparkdistrict.org)  
Dale Wells [dwells@rochelleparkdistrict.org](mailto:dwells@rochelleparkdistrict.org)  
\*Tim Hayden [thayden@rochelleparkdistrict.org](mailto:thayden@rochelleparkdistrict.org)  
Jodie Hart [jhart@rochelleparkdistrict.org](mailto:jhart@rochelleparkdistrict.org)  
Joe Lenkaitis [jlenkaitis@rochelleparkdistrict.org](mailto:jlenkaitis@rochelleparkdistrict.org)  
Kristi Gonzales [kgonzales@rochelleparkdistrict.org](mailto:kgonzales@rochelleparkdistrict.org)

**Ogle County Board Dist. 3**  
Austin Gillis [agillis@oglecounty.org](mailto:agillis@oglecounty.org)  
Dan Miller [dmiller@oglecounty.org](mailto:dmiller@oglecounty.org)  
Joseph Simms [jsimms@oglecounty.org](mailto:jsimms@oglecounty.org)

**Ogle County Board Dist. 4**  
Jackie Ramsey [jramsey@oglecounty.org](mailto:jramsey@oglecounty.org)  
Skip Kenney [skenney@oglecounty.org](mailto:skenney@oglecounty.org)  
David Williams [dwilliams@oglecounty.org](mailto:dwilliams@oglecounty.org)

**Creston Village Board**  
\*Tom Byro [tommyb\\_47@yahoo.com](mailto:tommyb_47@yahoo.com)  
Greg Hopkins [ghopkins522@comcast.net](mailto:ghopkins522@comcast.net)  
Steve Katzman [skatzman@essex1.com](mailto:skatzman@essex1.com)  
Mike Kerns [ac.kerns@comcast.net](mailto:ac.kerns@comcast.net)  
Curt Ward [caward92@comcast.net](mailto:caward92@comcast.net)  
Mark Hibshman  
Reid Elliot  
Jennifer Payton

**Hillcrest Village Board**  
\*Richard Rhoads [rrhoads@hillcrestil.us](mailto:rrhoads@hillcrestil.us)  
Pam Pittman [ppittman@hillcrestil.us](mailto:ppittman@hillcrestil.us)  
Dan Potter [dpotter@hillcrestil.us](mailto:dpotter@hillcrestil.us)  
Tim Ball [tbball@hillcrestil.us](mailto:tbball@hillcrestil.us)  
Jose Huerta [jhuerta@hillcrestil.us](mailto:jhuerta@hillcrestil.us)  
Eileen Braski [ebraski@hillcrestil.us](mailto:ebraski@hillcrestil.us)  
Joe Thompson [jthompson@hillcrestil.us](mailto:jthompson@hillcrestil.us)

**Flagg Township**  
Sue Messer [flaggtwp@rochelle.net](mailto:flaggtwp@rochelle.net)  
Joanna Patrick [flaggtwpcerk@rochelle.net](mailto:flaggtwpcerk@rochelle.net)  
Susan Rothenberger [assessor@rochelle.net](mailto:assessor@rochelle.net)  
Scott Seebach [scottseebach@gmail.com](mailto:scottseebach@gmail.com)

**Board of Trustees**  
Lance Noggle [noggle62@gmail.com](mailto:noggle62@gmail.com)  
Eric Gruben [egruben@comcast.net](mailto:egruben@comcast.net)  
Susan Hager [susanhager303@comcast.net](mailto:susanhager303@comcast.net)  
Jim Kenney [jimk@rocketsupply.com](mailto:jimk@rocketsupply.com)

**Flagg-Rochelle Library**  
\*Jaqueline Dickow [dickow@comcast.net](mailto:dickow@comcast.net)  
Teresa Haggstad [haggstads@comcast.net](mailto:haggstads@comcast.net)  
Michael Scanlan [scanlan@comcast.net](mailto:scanlan@comcast.net)  
Lanning Nicoloff [nicoloff118@comcast.net](mailto:nicoloff118@comcast.net)  
Sheri Klindera [alwayslefty2@gmail.com](mailto:alwayslefty2@gmail.com)  
Susan Sevedge [nit1prl22@yahoo.com](mailto:nit1prl22@yahoo.com)  
Darci Waltrip [doobs12@comcast.net](mailto:doobs12@comcast.net)

### LETTERS TO THE EDITOR POLICY

The Rochelle News-Leader encourages responsible letters to the editor on subjects of interest to our readers. Editing may be necessary for space, clarity or to avoid obscenity or libel, but ideas will not be altered. All letters must bear the handwritten signature of the writer and include address and phone number or e-mail address for verification purposes. Neither the street address nor phone number will be printed. Letters should be typed

or legibly handwritten, and no anonymous letters will be published. Any letters from boards or organizations must include at least one name of an individual. Any criticism of public officials should be limited to issues related strictly to their position or actions made in office, as personal attacks will not be published. Letters involving private disputes between the writer and a business will not be published. Political endorsements will be published,

however letters from candidates endorsing themselves will not be printed. Letters may be dropped at the News-Leader office (211 IL Route 38 East), mailed to the News-Leader (P.O. Box 46, Rochelle, IL 61068) or e-mailed ([news@rochellenews-leader.com](mailto:news@rochellenews-leader.com).) The News-Leader reserves the right to edit or reject any letter to the editor for any reason, and letters chosen for publication do not necessarily reflect the views of this newspaper.



# COMMUNITY

## Bakers win Sept. 8 Chamber Lawn of the Week

**ROCHELLE** — The Rochelle Chamber of Commerce recently presented its Lawn of the Week award for the week of Sept. 8 to Michael and Marie Baker. The couple received a sign and a \$25 Rochelle ACE Hardware gift card.

The chamber has partnered with Rochelle Ace Hardware to award gift cards to the winners.

The 2023 Lawn of the Week program has begun for the summer and will run through September. Nominate a neighbor/yard each week by submitting a name and address on the Rochelle chamber's website, <http://therochellechamber.com/lawn-of-the-week>.

Submissions can also be made by emailing [rochellechamber@gmail.com](mailto:rochellechamber@gmail.com). "We are proud to recognize our residents that



(COURTESY PHOTO)

**The Rochelle Chamber of Commerce recently presented its Lawn of the Week award for the week of Sept. 8 to Michael and Marie Baker. The couple received a sign and a \$25 Rochelle ACE Hardware gift card.**

display community pride in Rochelle," Chamber Executive Director Tricia

Herrera said. "We love that this program gives us the chance to showcase the

hard work and dedication they put in to making our city look great."

### THE KITCHEN TABLE MENU

7034 S. Klondike Road | Rochelle, IL 61068 | 815-561-9074  
If you would like to volunteer with us, please email us at [volunteer@kitchentablerochelle.org](mailto:volunteer@kitchentablerochelle.org)

- September 19** – (Tuesday) – Taco Salad or Taco, Beef with lettuce, tomatoes, onion, jalapenos, cheese, black beans  
**September 21** – (Thursday) – BBQ Baby Back Ribs, Baked Beans,  
**September 26** – (Tuesday) – Chicken Pot Pie – Homemade

- September 28** – (Thursday) – Corned Beef and Cabbage with Carrots and Potatoes, Cornbread  
**October 1** – (Sunday Brunch) – Bacon Egg and Cheese Muffins, Grits,

KIDS MENU: Chicken Nuggets w/Fries  
\*\*All menus are subject to change. If you would like to check before coming out, please call us at 815-561-9074  
[www.KitchenTableRochelle.org](http://www.KitchenTableRochelle.org)

### BIRTHDAYS & ANNIVERSARIES

**Sept. 17**  
David Jones  
Jenny Rosenbach  
Richard & Beverly  
Herrmann (anniversary)

**Sept. 18**  
Amie Eggenburg  
Terry & Teresa Dodillet  
(anniversary)

**Sept. 19**  
Leland & Lucy Hazlip  
(anniversary)  
Madison Wooten

**Sept. 20**  
Jon & Carolyn Bieck  
(anniversary)

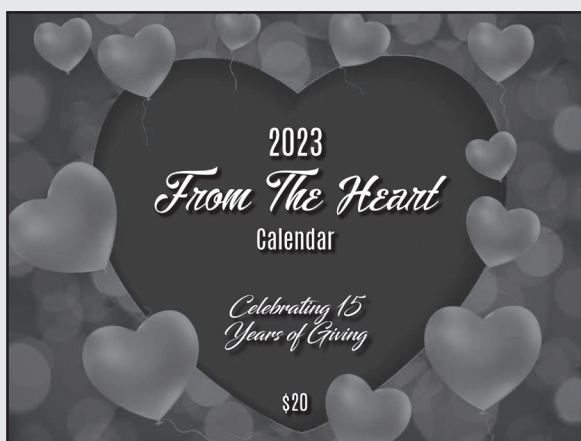
**Sept. 22**  
Krew Sullivan

**Sept. 23**  
Chris Doering  
John Worley  
Jeff & Diana Dickey  
(anniversary)

**Sept. 28**  
Ashley Bunker

**Sept. 29**  
Josh Walker  
Sarah Kulwicki  
Lyndsey O'Brien

**Call 815-561-2151 to submit names for birthdays and anniversaries**



- Aug. 22 - HOPE of Ogle County, \$25  
Aug. 23 - Genevieve Stoll, Rochelle, \$25  
Aug. 24 - FTH Event Auction, \$25  
Aug. 25 - City of Rochelle, \$25  
Aug. 26 - Cahoy Pump, \$25  
Aug. 27 - Karen Marsh, Stillman Valley, \$50  
Aug. 28 - Terry Hatfield, Rochelle, \$25  
Aug. 29 - Steve Barron, Rochelle, \$25  
Aug. 30 - Debby Ramsey, Rochelle, \$25  
Aug. 31 - Zekelman Employee, \$25  
Sept. 1 - Rochelle Area Community Foundation,  
Sept. 2 - Emily Lopez-Perez, Rochelle, \$25  
Sept. 3 - Mandi Morris, Rochelle, \$50  
Sept. 4 - Brittany Olszewski, Rochelle, \$1,000  
Sept. 5 - Ben Heck, Chana, \$25  
Sept. 6 - Mariah Wyrobek, Rochelle, \$25  
Sept. 7 - Linda Schreiber, Leaf River, \$25  
Sept. 8 - Jason Burdin, Rochelle, \$25  
Sept. 9 - Zekelman Employee, Rochelle, \$25  
Sept. 10 - Rochelle Area Community Foundation, \$50  
Sept. 11 - Alexis Barbosa, Newark, \$25  
Sept. 12 - Zekelman Employee, Rochelle, \$25  
Sept. 13 - Rochelle Area Community Foundation, \$25  
Sept. 14 - Rochelle Area Community Foundation, \$25  
Sept. 15 - Katherine Slattengren, Rochelle, \$25  
Sept. 16 - David Bills, Port Byron, \$25  
Sept. 17 - Norna Seaworth, Lindenwood, \$50



## Coffee Break

### MAGIC MAZE

### MUSIC GENRES

ODPAXVSQNKIFDAX  
VOTOQOMJHFFCAYW  
URGPHCNLJLCEEHF  
DBZNXPACVALAVTR  
QODMAKIJIMAGAHF  
DBOZYTWHEESGWVZ  
TROQSEULBNSSEWOZ  
NLWUKIANACIREMA  
HPOPYRTNUOCFNDJ  
CCPLATEMYVAEHAZ  
AXWVURSEIDLQSRQ

Find the listed words in the diagram. They run in all directions forward, backward, up, down and diagonally. Unlisted clue hint: RHYTHM AND —

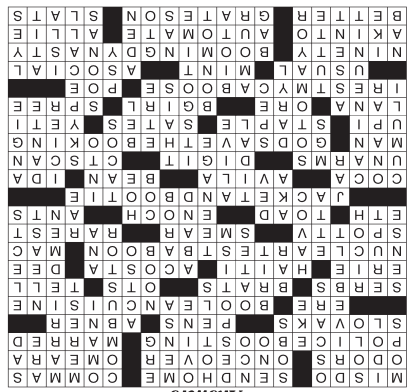
Acoustic  
Americana  
Cajun  
Classical

Country pop  
Doo-wop  
Flamenco  
Heavy metal

Hip-hop  
Jazz  
New wave  
Oldies

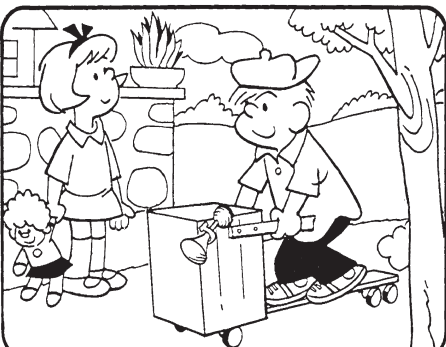
Rap  
Reggae  
Tango

©2023 King Features Syndicate, Inc. All rights reserved.

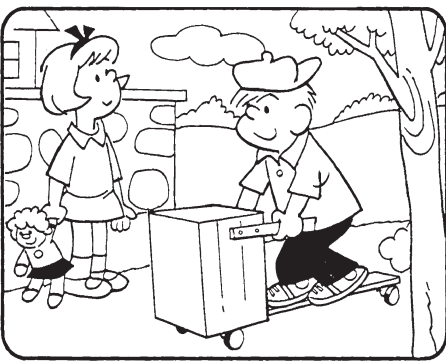


### HOCUS-FOCUS

BY HENRY BOLTINOFF



Find at least six differences in details between panels.



4. Horn is missing. 5. Shirttail is different. 6. Wheel is missing. 7. Doll's hair is shorter. 8. Socks are shorter.

## Super Crossword

### SCARE TACTICS

#### ACROSS

- 1 Mess up on  
6 Dismiss, as  
an ill student  
14 Pause-  
causing  
marks  
20 Skunks'  
defenses  
21 Quick size-up  
22 1998 Masters  
winner Mark  
23 Giving an  
officer a leg  
up?  
25 Defaced  
26 Neighbors of  
Czechs  
27 Composes  
28 "Li'l" fellow  
29 Previous to  
30 Food favored  
by logicians?  
35 Belgrade  
citizens  
38 Impish kids  
39 Extra NFL  
periods  
40 Spill a secret  
41 Lake fed by  
the Huron  
42 Port-au-  
Prince's place  
43 2017-19 labor  
secretary  
Alexander  
46 Poor grade  
47 Monkey  
setting off big  
experimental  
blasts?

- 50 — 'n' cheese  
51 Airing of ads  
on the tube  
52 Eyeliner flaw  
53 Least plentiful  
55 Archaic verb  
suffix  
56 Warty hopper  
59 Son of Cain  
62 Busy insects  
63 Two things a  
baby might  
be wearing  
in cold  
weather?  
68 — Cola  
71 St. Teresa's  
birthplace  
72 Chili bit  
73 Neighbor of  
Wash.  
76 Leaves  
weaponless  
79 Finger or toe  
82 MRI  
83 alternative  
84 Winnipeg's  
province:  
Abbr.  
85 "I pray our  
reservation  
doesn't get  
canceled!"  
90 News agcy.  
founded in  
1958  
91 Fastener for  
paper sheets  
92 Totally fills  
93 Fabled snow  
humanoid

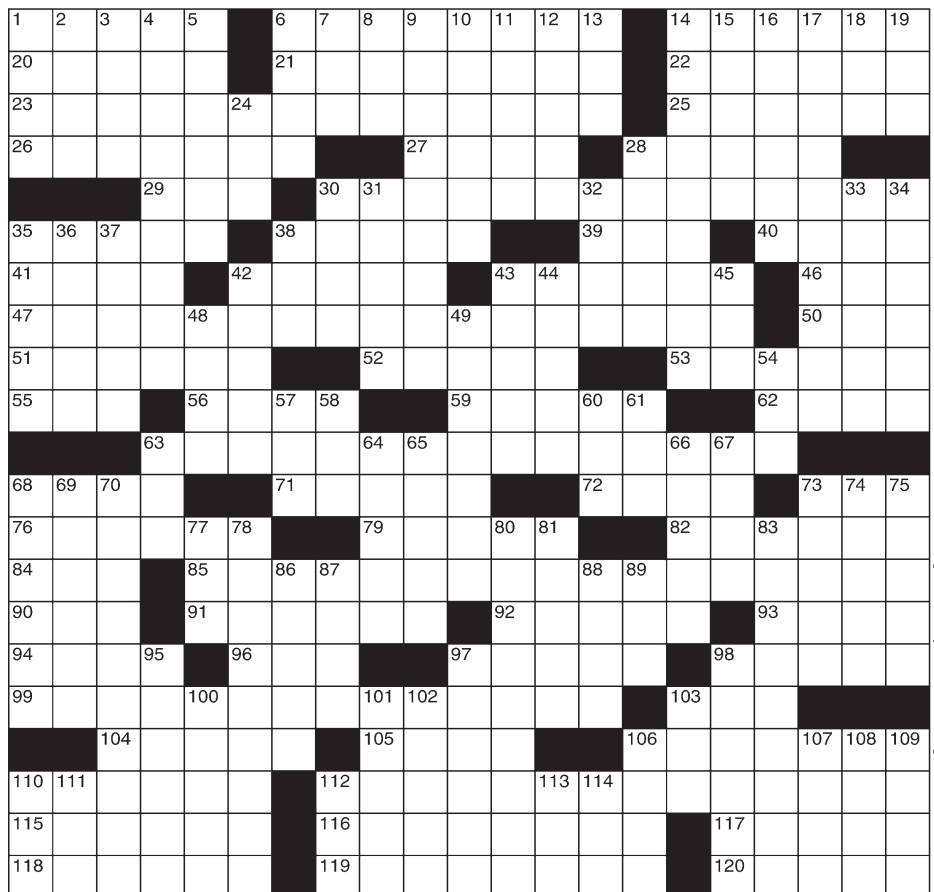
- 94 Actress  
Turner  
96 Mined stuff  
97 Female  
hip-hopper  
98 Self-indulgent  
outing  
99 Comment  
upon finally  
getting a  
chance to sit  
down?  
103 "The Raven"  
writer  
104 Typical  
105 In perfect  
condition  
106 Not mixing  
well with  
others  
110 Thirty tripled  
112 Ruling house  
enjoying  
great  
prosperity?  
115 Comparable  
with  
116 Get robots  
to do  
117 Kate's mate  
on 1980s TV  
118 Part of BBB  
119 Rubs the  
wrong way  
120 Bed boards

#### DOWN

- 1 Janitorial  
tools  
2 Reversed sort  
3 Unassisted  
4 Torque  
transmitter in  
a motor  
5 "Star Wars"  
won seven  
of them  
6 Weeps noisily  
7 Musician  
Brian  
8 S.Sgt. or  
M.Sgt.  
9 Tyranny  
10 Pay-to-stay  
places  
11 Sheep-  
related  
12 High-IQ club  
13 Minuscule bit  
of work  
14 Jet engine  
part that  
includes the  
igniter  
15 Muscat-ear?  
16 Most trifling  
17 Guys wearing  
wedding rings  
18 "My lips —  
sealed!"  
30 Londoner,  
e.g.  
31 Author Joyce  
Carol —  
32 Unskilled PC  
gamer, say

- 33 Marlins' and  
Mets' div.  
34 Decides (to)  
35 Pick up on  
36 Blow up  
37 Big name in  
photocopiers  
38 Happy hour  
locale  
42 Great  
devastation  
43 — of angels  
coming after  
me ("Swing  
Low, Sweet  
Chariot" line)  
44 Chocolate  
substitute  
45 Santa —,  
California  
48 Comics' Kett  
49 Like Mutant  
Ninja Turtles  
54 Actress Issa  
57 Alias letters  
58 Actor Patel  
60 Corn holder  
61 Garden tool  
63 Jelly holder  
64 Like some  
waves  
65 Full of energy  
66 Tijuana treats  
67 Wild about  
68 Fluffy clouds  
69 Comparable  
(with)  
70 Team of dogs  
on the force  
73 Less genial  
74 "Inferno" poet

- 75 Dickinson of  
"Rio Bravo"  
77 Sporty  
English  
autos  
78 Supreme  
Court's Sonia  
80 "Let's move!"  
81 Natives of  
Bangkok  
83 Many a video  
chat  
86 Hannah of  
"Roxanne"  
87 District detail  
88 Reason d'—  
89 — Paese  
(cheese type)  
95 Thumbs-up  
97 Witticism  
98 Part of ASAP  
100 Mozart's  
"Così fan —"  
101 Love, to Gigi  
102 Regional flora  
and fauna  
103 — Ops (CIA  
tactics)  
106 Yemeni city  
107 Dot in the  
sea, to  
Juanita  
108 Toiling away  
109 Strong alkalis  
110 Collar  
111 Singer Turner  
112 Grocery  
holder  
113 "Illmatic"  
rapper  
114 '60s Pontiac





# WHO'S WHO IN HEALTHCARE

## Seven lifestyle choices to reduce cancer risk

To date there is no definitive cure for cancer, nor any one preventative treatment. But individuals should not resign themselves to the fact that cancer is inevitable. There are plenty of lifestyle modifications that can go a long way toward reducing cancer risk. Here's a deeper look at some of the more effective.

Not only does smoking cause between 80 and 90 percent of lung cancer deaths, according to the Centers for Disease Control and Prevention, it also contributes to many other forms of the disease, including cancers of the pancreas, liver, bladder, and cervix. Quitting smoking and avoiding secondhand smoke can reduce cancer risk.

Physical activity can lower estrogen levels, reduce levels of insulin in the blood, help a person lose weight, and reduce inflammation—all factors that contribute to the formation of cancer. Experts recommend 150 minutes of moderate-intensity or 75 minutes of vigorous-intensity exercise a week.

The American Institute for Cancer Research indicates certain minerals, vitamins and phytochemicals can produce anti-cancer effects. Many foods, name-



ly fruits, vegetables, whole grains, and legumes, can boost health and contribute to lower cancer risk.

Drinking alcohol regularly increases the risk of cancers to the mouth, voice box and throat, according to the CDC. Furthermore, alcohol consumption is a primary risk factor for liver cancer. By limiting alcohol consumption, individuals can reduce their cancer risk.

Individuals should avoid behaviors that put them at risk of contracting hepatitis C, which causes inflammation of the liver. Hepatitis C can be contracted by receiving a piercing or tattoo in an unsanitary environment, through injecting or inhaling illicit drugs, through unsafe sex, or if you are a healthcare worker exposed to infected blood through an accidental needle prick.

Protect the skin from exposure to ultraviolet rays from the sun and tanning beds, as skin cancer is the most common form of the disease in the United States. Simply reducing exposure can help prevent skin cancers and other damage. This includes wearing wide-brimmed hats, applying sunscreen with an SPF of at least 30, avoiding the sun between 10 a.m. and 4 p.m., and wearing sun-protective clothing. Tanning beds are not safer for the skin than being out in the sun, so they should be avoided.

The importance of sleep to overall health is easily overlooked. Lancaster General Health says, while there is no specific data for sleep on cancer prevention, sleep deprivation can lead to harmful behaviors, such as overeating, drinking too much alcohol or being too tired to exercise, each of which increases cancer risk.



### Janet Truckenbrod Sarver, P.T., D.P.T.

#### Physical Therapist

##### Northern Rehab Physical Therapy Specialists

**Education & Experience:** Janet graduated with a Doctorate of Physical Therapy in May 2013 from Northern Illinois University. She also received a Bachelor degree at NIU, majoring in Biology with a minor in Chemistry in 2007.

**Specialty/Focus:** Janet enjoys treating a variety of caseloads including pediatrics, orthopedics and sports related injuries through use of manual therapy and therapeutic exercises, and also provides aquatic physical therapy at The REC Center in Rochelle. She has taken several courses on pediatrics focusing on torticollis, developmental milestones, and gait analysis and training. Janet is a Rochelle High School alumni and athlete. She continues to live and work in Rochelle, and enjoys serving and being a part of the community in which she was born and raised.

**NORTHERN REHAB**  
PHYSICAL THERAPY  
Specialists

1211 Currency Court, Suite C  
Rochelle, IL  
815-562-3299  
www.northernrehabpt.com

**Services:** Manual physical therapy, pediatric physical therapy, aquatic physical therapy, sports therapy, strength training, spine, back & neck pain, joint replacements, ankle & knee, shoulder pain, rotator cuff, osteoarthritis, tennis elbow, sciatica, Plantar Fasciitis, Sacroiliac Joint Pain, repetitive use injuries, Torticollis, gait analysis, gait training

**Accepting New Patients:** Yes

09172023



### Aaron Nevdal, P.T., D.P.T.

#### Board Certified in Orthopaedic Physical Therapy

##### Northern Rehab Physical Therapy Specialists

**Education & Experience:** Aaron earned a Master of Physical Therapy Degree from Northern Illinois University in the spring of 2002. In 2008, Aaron earned a Doctor of Physical Therapy degree from Regis University in Denver, CO. In 2009, he completed board certification in orthopedic physical therapy. Aaron has also completed various courses focusing on evaluation and treatment of the spine, hip, foot and ankle, knee and shoulder.

**NORTHERN REHAB**  
PHYSICAL THERAPY  
Specialists

1211 Currency Court, Suite C  
Rochelle, IL  
815-562-3299  
www.northernrehabpt.com

**Specialty/Focus:** Aaron enjoys seeing a varied caseload of orthopaedic conditions. His main professional interests lie in using exercise, manual therapy, and dry needling in the treatment of patients with spinal and extremity disorders.

**Services:** Manual physical therapy, sports therapy, strength training, spine, back & neck pain, joint replacements, ankle & knee, shoulder pain, rotator cuff, Osteoarthritis, tennis elbow, sciatica, Plantar Fasciitis, Sacroiliac Joint Pain, repetitive use injuries.

**Accepting New Patients:** Yes

09172023



601 N. Main Street  
Suite 4  
Rochelle

121 S. 4th Street, Oregon

400 5th Street  
Suite 197,  
Peru

815-501-2088  
changescounselingllc.com



**Specialty/Focus:** Mental Health

**Services:** Individual, Youth, Couples & Family Counseling

**Accepting new patients at this location**

"Life is full of changes.  
Let's make the next change a good one."

09172023



### Kelly Tonielli Davis, DNP, APRN, FNP-BC, CMEWCN

#### Davis Family Health

**Education:** 23 yrs. beginning as a CNA, achieved Masters in Nursing Education 2011; Family Nurse Practitioner-Certified 2016; Doctorate in Nursing 2018.

**Areas of Focus:** Family, Drug Treatment, Diabetes, Wound, DOT

**Services Offered:** DOT Physicals, Drug Treatment, Weight Loss Solutions Pediatrics-Elderly. End of life coordination, Wound Treatment, Minor office surgical procedures, overall wellness

**Personal or Family Info:** Married 26 yrs., 2 children, 2 grandchildren. Served in the USAF for 7 years from 1986-1993 as a Security Specialist (Security Police). Served during Desert Storm and achieved many awards.

**Accepting New Patients:** Yes



### Rupesh Manek, R. Ph.

#### Rochelle Pharmacy

**Education:** Graduate of Midwestern University (Chicago College of Pharmacy). Retail Community experience since 1997

**Areas of Focus:** Geriatric Care, Diabetes, Asthma & Durable Medical Equipment

**Services Offered:** Diabetes Education & Medicare Billing for Diabetes Supplies & Asthma/COPD Supply Compliance Packaging; CONVENIENCE PACKAGING FOR SENIORS; Durable Medical Equipment; Full Line of Incontinence products and billing service; flavoring for kids' Medication

**Visit our sister stores in Kirkland and Amboy.**

**FREE home deliveries and pick up.**

09252019





# FARM SAFETY

## Disaster assistance resources for farmers

NATURAL disasters are often devastating, resulting in losses of life, livelihood and homes, among other effects. If it seems as though weather-related disasters have risen in frequency in recent decades, that's because they have. In fact, a 2021 report from the World Meteorological Organization indicated that the number of disasters has increased by a factor of five over the last half-century.

Weather-related disasters do not discriminate, and people from all walks of life and corners of the globe can be affected by such catastrophes. The agricultural sector is especially vulnerable to natural disasters, as farmers can lose their homes and their livelihoods in what feels like the blink of an eye. But farmers should know that various support programs are in place to provide assistance should they need it in the aftermath of a natural disaster.

- **Livestock Forage Disaster Program (LFP):** The Farm Service Agency of the U.S. Department of Agriculture notes that this program provides compensation to eligible livestock producers who have suffered grazing losses due to drought or fire on land that is native or improved pastureland with permanent vegetative cover. Assistance also is available when land planted specifically for grazing has been af-



fectured by drought or fire.

- **Livestock Indemnity Program (LIP):** This provides benefits to livestock producers for livestock deaths in excess of normal mortality caused by adverse weather or by attacks by animals reintroduced into the wild by the federal government.

- **Emergency Loan Program:** This program provides loans to producers as they seek to

recover from production and physical losses due to drought, flooding and other natural disasters. Loans also may be available after losses due to quarantine or by animal quarantine laws imposed in accordance with the Plant Protection Act.

- **Emergency Conservation Program (ECP):** This program helps farmers and ranchers repair damage to farmlands

caused by natural disasters. The program also helps put in place water conservation methods during severe drought.

- **Noninsured Disaster Assistance Program (NAP):** This program pays covered producers of noninsurable crops when low yields, loss of inventory or prevented planting occur due to natural disasters.

- **AgriStability:** Ac-

cording to Public Safety Canada, this program provides support when a producer experiences larger farm income losses.

- **Farm Credit Canada:** Flexible payment arrangements and government-backed loan guarantees may be available to agricultural producers to support recovery from disasters.

- **Industry Canada:**

This is a loan guarantee program to secure small business loans against inadvertent noncompliance with payment terms for a range of reasons, including natural disasters.

More information about cited programs in the U.S. can be found at [fsa.usda.gov](https://fsa.usda.gov). Additional information on Canadian assistance programs can be found at [publicsafety.gc.ca](https://publicsafety.gc.ca).

**COUNTRYSIDE**  
LAND DRAINAGE SERVICES  
ROCHELLE, ILLINOIS

Contact:  
Dave Casey or Gene Messer  
815-970-7358  
5180 S. Queens Rd., Rochelle, IL 61068  
[countrysidedrainage@gmail.com](mailto:countrysidedrainage@gmail.com)

**Engineered Tarping Solutions**

"If it's canvas, it's at Cortland."

When you need to be sure, make it Shur-Co®

- Grain Carts & Grain Wagons
- Farm Bodies
- Fertilizer Tenders & Spreaders
- Semi Grain Trailers

Authorized, Genuine Shur-Co® Dealer:

**JOHNSON**  
SEAT & CANVAS  
Established 1946

**815-756-2037**  
25 S. Somonauk Rd., Cortland, IL 60112  
[www.johnsoncanvas.com](http://www.johnsoncanvas.com)

**ROCHELLE News-Leader**

211 Hwy. 38 East, Rochelle, IL 61068  
Phone: 815-562-4171  
[www.rochellenews-leader.com](http://www.rochellenews-leader.com)

**NEW HOLLAND**  
AGRICULTURE

**R-EQUIPMENT**  
8789 IL ROUTE 64 SYCAMORE  
815-899-8998  
[WWW.REQUIPMENT.COM](http://WWW.REQUIPMENT.COM)

**Rochelle Foods**

1001 S. Main Street | Rochelle  
815-562-4141 | [rochellefoodsjobs.com](http://rochellefoodsjobs.com)

**Your Hometown Trusted Legal Experts**

**Tess, Crull & Arnquist**

David Tess    Eric Arnquist  
Russell Crull    Brandon Gecan

[www.tesscrulllaw.com](http://www.tesscrulllaw.com)  
**815-562-8754**  
1090 N. 7th St., Rochelle

**Nutrien**  
Ag Solutions

**Steward**  
815-396-2248  
Profit from our experience

**PRECIOUS PASTURES**

**Delicious, Quality Raw Milk**  
**Fresh at the farm!**

Monday - Saturday 6:30 - 8:00 am & 4:30 - 6 pm  
Sunday 6:30 - 8:00 am & 5 - 6:30 pm  
(Please schedule an appointment. 24 hours Notice Required.)

387 S. Malta Rd., Rochelle, IL 61068  
815-762-6867 • [PreciousPastures.com](http://PreciousPastures.com)

**QUEEN'S TRUCKING & CONSTRUCTION, INC.**

We Aim for On Time, Every Time!

The Trusted Trucking Company of Many Local Distributors and Manufacturers.

<b>TRUCKING:</b> <ul style="list-style-type: none"> <li>• Non-Union Local Freight Hauling</li> <li>• Van Trailer/Hopper/Flatbed/Dump</li> <li>• Daily Loads on the Customers Time Schedule</li> </ul>	<b>CONSTRUCTION:</b> <ul style="list-style-type: none"> <li>• Union Construction &amp; Deconstruction</li> <li>• Excavation/Grading/Prep</li> <li>• Drainage/Sewer/Water Repair &amp; Replacement</li> <li>• Union Heavy Hauling &amp; Jobsite Hauling</li> </ul>	<ul style="list-style-type: none"> <li>• Emergency Work</li> <li>• Restoration/Traffic Control</li> <li>• Sidewalk/Curb</li> <li>• Hourly or Bid Work (We can create a Specialized Rate for any Job)</li> </ul>
---	---	---

**Queens Trucking & Construction Inc**  
322 Errett Road, Rochelle  
815-562-6064 | [queens-trucking.com](http://queens-trucking.com)

**FIRST STATE BANK**

304 E. Highway 38, Rochelle  
[firststatebank.biz](http://firststatebank.biz) | 815.562.2200

**HEADONS**  
FINE MEATS

EST. 1970 CRESTON, IL

**Deer Processing Begins 10/01/23**

— LIKE AND FOLLOW US ON —  
**FACEBOOK**

Tues-Fri - 9a-5:30p  
Sat - 9a-4p

815-384-3620  
[headons2go.com](http://headons2go.com)  
103 N. Main Street | Creston

**Grain • Agronomy • Trucking**  
11 Locations to Serve You!

**Maplehurst**

Big enough to serve you, small enough to know you!

[maplehurstfarms.com](http://maplehurstfarms.com) | (815) 562-8723

**Bruns**  
Construction, Inc.

• Residential & Commercial Concrete  
• Additions

**FREE ESTIMATES!**

815-561-0099  
Free Estimates • Fully Insured  
[www.brunsconstructioninc.com](http://www.brunsconstructioninc.com)

**CHS**

**CREATING CONNECTIONS TO EMPOWER AGRICULTURE**

Ethanol • DDGs • Wetcake • Corn Oil

1900 Steward Rd., Rochelle, IL 61068  
(815)561-0650 [www.chsinc.com](http://www.chsinc.com)  
[www.facebook.com/chsrochelle](http://www.facebook.com/chsrochelle)

**Diamond G Western Store**  
815-562-4050  
4564 S. Knoll Rd, Rochelle IL



# Majeski Motors

**SALES AND SERVICE**

**ROCHELLE**  
**MAJESKIMOTORS.COM**



Stock # 11558  
**2020 GMC Savanna**  
 Work van  
 \* Only 22K Miles

**\$37,900**



Stock # 11896  
**2020 Nissan Armada SL**  
 \* FULLY LOADED

**\$36,900**



Stock # 11931  
**2021 Toyota Camry**  
 TRD V6  
 \*300+HP

**\$35,900**



Stock # 11848  
**2015 Kia Sol**  
 \* 1 Owner

**\$14,900**



Stock # 11937  
**2009 Lexus GX470**  
 \* Capable 4x4

**\$12,995**



Stock # 11934A  
**2015 Ford Fiesta**  
 \* Budget Vehicle

**\$4,995**

## Majeski Motors

Your Local Resource For Quality Pre-Owned Vehicles

815-562-9000 | 1010 S. 7th St., Rochelle, IL

*All prices plus tax, title, license and fees*

**Call  
 or Stop In  
 Today**



# Best of Ogle County

## Voting has Ended

Look for the Winners' Section in our Oct. 8th edition

# NATIONAL FARM SAFETY & HEALTH WEEK

SEPTEMBER 17-23, 2023

RTHS Cross Country

# Harriers take on Skare Park

## Hub and Lady Hub runners race in annual Rochelle Invitational on Thursday

BY RUSSELL HODGES

SPORTS EDITOR

ROCHELLE — Senior Luis Hernandez was motivated to defend his title as the Rochelle Hub and Lady Hub varsity cross country teams hosted the Rochelle Invitational at Skare Park.

With beautiful weather providing perfect running conditions Thursday, which featured DeKalb, Genoa-Kingston, Hinckley-Big Rock and Camanche, Hernandez toed the starting line with a second consecutive race win on his mind. The senior harrier was at the top of the pack for the first half of the race before hitting another gear over the second half, taking over the lead and ultimately winning with a final time of 18:23.31 to beat DeKalb's Riley Collins by 16 seconds.

"It's been a bumpy start to the season since I came back from the summer, so it feels good to win," Hernandez said. "I had a hard summer because of an injury from the track season, but coming out and winning today felt really good. I've raced at this course since my sophomore year, so I knew how tough it was going to be and it felt good to race here one last time."

Hernandez's first-place finish propelled the Hubs to a second-place team finish on Thursday. Sophomore Declan McGee took third overall with a time of 19:24.63, while sophomore Elijah Mayen finished 11th out of 34 runners with a time of 21:10.24. Now healthy from his track injury, Hernandez said his goals for the rest of the season include qualifying for the state meet.

"I was about 30 seconds away from qualifying last year," Hernandez said. "Making it to state is my biggest goal because it would be really awesome if I could do that. I also want to lead my team to sectionals. My shin feels healthy and I feel better than ever. I feel like our season has gone really well. We beat 10 teams at our last meet and I think we're going to do really well."

Sophomore Annaliese Koziol led the Lady Hubs on Thursday, finishing fourth out of 38 runners with a time of 23:37.06. Sophomores Rose Luxton and Mary Chadwick weren't far behind, taking 15th and 17th with respective times of 27:04.40 and 27:13.73. Junior Brisa Zepeda crossed the finish line in 16th with a time of 27:08.25 to help the girls take third place.

See RACE page 5

(PHOTO BY RUSSELL HODGES)

The Rochelle Hub varsity cross country team breaks away from the starting line during the Rochelle Invitational at Skare Park on Thursday. Senior Luis Hernandez won the race for the second straight season, while sophomore Declan McGee took third place overall.

RTHS Boys Soccer

# Near comeback falls short against LaSalle-Peru

## Casillas, Orozco each score last-minute goals as Cavaliers edge Rochelle 4-3

BY RUSSELL HODGES

SPORTS EDITOR

ROCHELLE — Junior Alberto Casillas and sophomore Kevin Orozco each scored last-minute goals as the Rochelle Hub varsity soccer team fought to pull off a miraculous comeback and avoid an Interstate 8 Conference loss against LaSalle-Peru on Wednesday evening.

Casillas cashed in on a penalty kick during the 54th minute before Orozco maneuvered through the LaSalle-Peru defense and scored in the 60th minute to bring Rochelle within one goal of the Cavaliers. But the Hubs ran out of time and were unable to complete their comeback, falling 4-3 after conceding four consecutive goals midway through the second half. Rochelle (3-5-2, 1-3 Interstate 8) will return home for a nonconference match against Belvidere on Saturday.

"The bottom line for us is that we have to put a solid 80 minutes together," head coach Brad Male said. "I thought we played a solid first half, but we have to learn how to recover from our mistakes when we make them. I thought we picked our intensity up at the end of the second half, but we came out slow to start the second half and that ultimately hurt us. If we played the match how we played over the last 10 minutes, I think we'll have more opportunities to win."

A defensive battle in the first half saw the Hubs strike first, with sophomore midfielder Heilly Zepeda scoring in the 19th minute to give Rochelle a 1-0 advantage, which held at halftime. LaSalle-Peru had chances to threaten throughout the first half, but a stout defensive effort from a short-handed Hubs, who were without junior center back Bryan Garcia, enabled Rochelle to hold its advantage until a corner kick led to a header and a goal for the Cavs in the 34th minute.

"Bryan was injured today so we made some changes to our defense and I thought we were looking good at first," Male said. "They were able to get some balls through on us during the second half... We've worked with Heilly during practice on getting in the right spots and he knows that he can't be afraid to take shots. We have to take advantage of our opportunities."

LaSalle-Peru's equalizer led to a series of goals for the Cavaliers, who followed with a go-ahead goal on a pass deep inside the Rochelle box during the 35th minute. LaSalle-Peru added two more goals during the 40th and 49th minutes, capitalizing on a pair of through balls that beat the middle of the Rochelle defensive line. Junior Fernando Diaz drew a foul inside the LaSalle-Peru box during the 54th minute, which allowed Casillas to score and cut the Cavalier lead to 4-2.

Casillas found Orozco on a pass in the final minute, with Orozco navigating through two defenders and sending a right-footed shot into the LaSalle-Peru net as the final seconds of the match wound down. But the Hubs ran out of time to tie the score, with the Cavaliers sending the ensuing kickoff back and then deep into the Rochelle end of the field to seal the match.

The match was shortened due to a scheduling issue beforehand, with each half consisting of only 30 minutes as opposed to the standard 40 minutes.

(PHOTO BY RUSSELL HODGES)

Junior Fernando Diaz challenges for possession during the Rochelle Hub varsity soccer match against LaSalle-Peru on Wednesday.





The businesses featured on this page are

**"Hubs Super Fans"**

They proudly support our local athletes and students.

Please show your appreciation by patronizing their businesses.

**WE SUPPORT OUR HUBS!**



## HUB SPOTLIGHT



**Aaron**

**Hernandez**

*Year: Freshman*

*Sport: Football*

**Q: How many years have you been playing this sport?**

*A: Three years.*

**Q: What do you enjoy most about this sport?**

*A: Getting to hang out with my friends and hitting other kids.*

**Q: What is your favorite school subject and why?**

*A: Math because it's always been my favorite subject.*

**Q: Who is your biggest role model and why?**

*A: My dad because he's taught me*

*a lot of what I know.*

**Q: What is your dream job and why?**

*A: Going to the NFL because I would like to play professionally.*

**Q: Where would your dream vacation be and why?**

*A: Going to Spain because it looks like a cool place to visit.*

**Q: What is your favorite thing about being a student-athlete at RTHS?**

*A: Getting to be involved in a good program.*

**Mason**

**Ludwig**

*Year: Freshman*

*Sport: Football*



**Q: How many years have you been playing this sport?**

*A: I've been playing for eight years.*

**Q: What do you enjoy most about this sport?**

*A: The people I get to play with are like brothers to me.*

**Q: What is your favorite school subject and why?**

*A: Biology because Mr. Smith is the best teacher.*

**Q: Who is your favorite athlete and why?**

*A: Michael Jordan because of how he pushes through and never gives up.*

**Q: Who is your biggest role**

**model and why?**

*A: My dad because he pushes me to get better and work harder.*

**Q: What is your dream job and why?**

*A: A dentist because I think it would be a fun job.*

**Q: Where would your dream vacation be and why?**

*A: A cruise to the Bahamas because of the water and I love the beach.*

**Q: What is your favorite thing about being a student-athlete at RTHS?**

*A: It feels like a job and it takes hard work. I feel like I get better everyday from working hard.*

**VINCE'S PIZZA**  
SINCE 1967

Enjoy a **15% Discount**  
when Ordering Online at  
[VincesPizzainRochelle.com](http://VincesPizzainRochelle.com)



**815.562.7300**

Delivery & Curbside Pick Up

1071 N 7th St, Rochelle, IL



**Hello,  
neighbor!**

Huber Ins and Fin Svcs Inc  
Shane B Huber, Agent  
221 E. IL Rt. 38  
Rochelle, IL 61068  
Bus: 815-562-7011

Please stop by and say, "Hi!"  
I'm looking forward to serving your needs for insurance and financial services.  
Like a good neighbor, State Farm is there.  
**CALL ME TODAY.**

**State Farm**

1001013.1 State Farm, Home Office, Bloomington, IL

**DLX Medical GROUP**

Caring for your  
family's health from  
infant to adults.



Diana Alanis, MD

Accepting  
New Patients

For appointment, please call

**815-227-9594**

1212 Currency Ct, Rochelle, IL 61068  
Most Insurance Accepted

Local People Providing Local Service

**Rochelle**  
MUNICIPAL UTILITIES

Water • Waste Water  
Electric • Communications

Phone: 815-562-4155 333 Lincoln Highway  
Fax: 815-562-5861 Rochelle, IL

[www.rmu.net](http://www.rmu.net)

HS2016

**CENTRAL ILLINOIS LOAN**

Loans For All Your Needs  
Auto • Home Improvement • Vacation  
Jami Hackman • Tonia Holland

**815★561★4035!**

310 Eagle Drive, Rochelle  
All loans subject to our normal credit requirements and policies.

**MORTON BUILDINGS**  
*If you can dream it, we can build it.*



Rochelle Sales Office • Hwy. 251 N. • 877-613-3050

**Rochelle**  
Community Hospital  
Your Local Healthcare Resource.

900 N. 2nd Street, Rochelle  
815-562-2181  
[www.rochellehospital.com](http://www.rochellehospital.com)

HSF2017

**MEYERS**  
FURNITURE & FLOORING

209 Powers Road, Hwy 251 N  
Rochelle, IL 61068  
(815) 562-8792  
[www.meyersfurniture.com](http://www.meyersfurniture.com)

**Bruns**  
Construction, Inc.

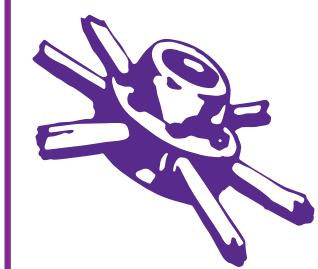
• Residential  
& Commercial  
Concrete  
• Additions

**815-561-0099**

Free Estimates • Fully Insured

[www.brunsconstructioninc.com](http://www.brunsconstructioninc.com)

**FREE ESTIMATES!**  
Tim & Roger Bruns,  
Owners  
Established 1997



**QUEEN'S TRUCKING & CONSTRUCTION, INC.**

Small or Big Construction Jobs, We Do Them All!

We Aim for On Time, Every Time!

We were Voted Mid-West Truckers Association, Inc. Northern Region Trucking Company of the year 2022

The Trusted Trucking Company of Many Local Distributors and Manufacturers.

Queens Trucking & Construction Inc  
322 Errett Road, Rochelle  
815-562-6064 | [queens-trucking.com](http://queens-trucking.com)

HS2022

**MEXICAN FOOD**

**RESTAURANT TECALITLAN**

Authentic Homemade Mexican Food  
Carry-out & Catering Available

**(815) 561-7576**

1071 N. CARON RD. ROCHELLE, IL 61068

**ANDERSON PLUMBING & HEATING, INC.**

Plumbing, Heating & Cooling  
Water Heaters, Water Softeners,  
Drinking Water Systems, Iron Filters,  
Sewer Rodding & Jetting & More!

Since 1976

621 First Ave., Rochelle  
(815) 562-8784

Lic# 055-013999

**Rochelle**  
Chiropractic  
Clinic  
Dr. Chad M. Piller

227 E. Rt 38 • Rochelle, IL

**815-562-8706**

[www.rochellechiropractic.com](http://www.rochellechiropractic.com)

Now Accepting New Patients!

HS2023

**Alfano's**  
Pizzeria and Italian Restaurant

Taste The **TRADITION**  
Taste The **DIFFERENCE**

Dine In • Carry Out •

• Home Delivery • Pizza • Pastas •

• Sandwiches • Salads •

• and Lots More!

Dine-In • Carry Out • Home Delivery

1115 TURKINGTON TERRACE, ROCHELLE

**815-562-3312**

**JOHNSON TRACTOR**

SALES • PARTS • SERVICE

200 Steward Road

**800.262.1680**

[www.johnsontractor.com](http://www.johnsontractor.com)

**AtlasAuto**

**BUY HERE - PAY HERE**

You Work - You Drive

Se Habla Español **815-562-7433**

1400 N 7th St

Corner of Flagg Rd & Hwy 251 N

**HUB-REMSEN**  
PRINT GROUP

101 Maple Ave • Rochelle, IL 61068

815.562.7057 • [hub-remsen.com](http://hub-remsen.com)

**GO HUBS!**

**R**

"Proudly Serving the Rochelle Area Since 1945"

**Berg-Johnson**

**Electric**

FREE ESTIMATES  
Licensed and Insured

Residential • Commercial • Industrial

24 Hour Emergency Service

**815-562-4937**

500 Cleveland Avenue

**JEFF PERRY**  
Auto Group

815-562-8787 [www.jeffperrychevrolet.com](http://www.jeffperrychevrolet.com)

• Collision Repair • Rental Cars  
• 24 Hour Towing • Maintenance On All Makes  
• New/Preworn Vehicles and Models  
• Tires, Alignments, Brakes, Batteries

**JEFF PERRY**

815-562-8787 [www.jeffperrychevrolet.com](http://www.jeffperrychevrolet.com)

HS2016

**Busy Schedule?**  
**Leave the cooking to us.**

• Large menu of foods

• Rochelle's famous chicken  
by the dinner or bucket

• Hand dipped ice cream  
(16 flavors)

**COUNTRY SCHOOL**  
DRIVE-IN RESTAURANT

251 N. ROCHELLE • 562-6039

HS2016

**Stillman**  
BANK

**GO HUBS!**

**R**

Earning Your Trust Since 1882

[www.stillmanbank.com](http://www.stillmanbank.com)

Member FDIC

HS2016

**GOOD LUCK HUBS**  
FROM OUR FANS AT:

**HAYDEN**  
REAL ESTATE INC.

815-562-2111 [hre@haydenreinc.com](mailto:hre@haydenreinc.com)

• RESIDENTIAL  
• AGRICULTURAL  
• COMMERCIAL



# SPORTS

RTHS Volleyball

## Sycamore survives third-set rally from Rochelle

### Lady Hubs nearly knock off Spartans in 25-22, 11-25, 20-25 loss Tuesday night

BY RUSSELL HODGES  
SPORTS EDITOR

**ROCHELLE**—A loud crowd was on hand as the Rochelle Lady Hub varsity volleyball team fought to the finish during Tuesday’s Interstate 8 Conference opener against Sycamore. It seemed that the Spartans were well on their way to a dominant third-set win over the Lady Hubs. But with Sycamore holding a 15-6 lead midway through the set, Rochelle rallied for eight consecutive points with senior Alivia Henkel on the serve, eventually tying the match at 18-18 on an emphatic kill from junior Taelynn Rodeghero, who had 11 to lead the Lady Hub offense.

Sycamore’s quick serving caught Rochelle off balance over the final few points, however, with the Spartans ultimately clinching the set with a 7-2 run and handing the Lady Hubs a 25-22, 11-25, 20-25 loss to start the Interstate 8 schedule. Junior Ali Ohlinger distributed 19 assists for the Lady Hubs (11-7, 0-1 Interstate 8), who will host LaSalle-Peru next Tuesday evening.

“I thought we took a lot of things out of this match from a mental standpoint,” head coach Molly Sly said. “There were some calls during the second set that didn’t go our way and took the momentum away from us and we weren’t able to move on from those. We have to learn how to bounce back and get the momentum back in our favor faster, which we did during the third set.”

Rochelle and Sycamore went point-for-point throughout most of the first set, with each team exchanging brief scoring

runs before the Spartans managed to slip ahead with an 18-14 advantage late in the set. The Lady Hubs brought Sycamore within one point near the end of the first set, making the score 22-21 after aces from junior Sydney Carmichael and Henkel along with a crushing block from senior Kennedy Adamski, who had three in the match.

“We were down by four or five points, but we regrouped and we put some balls away,” Sly said. “We had some really good touches at the net and Dempsey ran our back row really well and had some great digs. I thought that flipped the momentum and we took that and ran with it.”

Rochelle closed the set with four straight points, sealing the set with another strong block from Ohlinger to take a 1-0 match lead. The Lady Hubs fell behind and had minimal answers for the Spartans during the second set, however, with Sycamore successfully navigating around the Lady Hub blocks on the front line. The Spartans also utilized tips to their advantage, catching Rochelle’s defense off guard for multiple points to eventually even the match at 1-1.

Sycamore opened the third set on a 9-4 run and appeared primed for another easy set victory, but the Lady Hubs fought back as the home crowd grew louder inside the Rochelle Township High School gymnasium. The rally was sparked by a strong back-row defensive effort from multiple players including junior Dempsey Atkinson, who led the Lady Hubs with eight digs. Rodeghero totaled three blocks and Henkel added seven digs



(PHOTO BY RUSSELL HODGES)

The Rochelle Lady Hubs celebrate a point during Tuesday’s Interstate 8 Conference varsity volleyball match against Sycamore. The Spartans held on for a three-set win over the Lady Hubs.

to aid the Rochelle defense.

“I told the girls that it’s always a roller coaster, but we can’t let our lows be as low as they were tonight,” Sly said. “We have to bounce back sooner and we have to get that momentum back in our favor, so hopefully the girls learn from that and the next time we

see Sycamore, we’ll move right along from whatever call didn’t go our way or whatever play we weren’t happy with.”

Henkel and Atkinson each finished with three aces, while Ohlinger recorded six digs and junior Lauren Dyer totaled four kills. Junior Emma Kennay

had four digs.

### G-K

The Rochelle Lady Hub varsity volleyball team faced Genoa-Kingston on the road Monday evening, conceding a two-set loss against the Cogs in non-conference action. Junior Ali Ohlinger finished with

11 assists and three kills as Rochelle fell 15-25, 21-25.

Junior Taelynn Rodeghero finished with six kills and junior Dempsey Atkinson led the defense with six digs in the match. Senior Alivia Henkel totaled four digs and two kills for the Lady Hubs (11-6, 0-0 Interstate 8).

# COMMUNITY BOARD

***Need to get the word out about a product or service you offer?***  
***Give us a call at 815-562-4171.***  
***We can reach over 9,000 homes!***



Gutters, Roofing & Siding

**THEISEN** *Free Estimates!*  
**ROOFING**  
SIDING  
GUTTERS  
CONTACT US  
815-758-8998  
THEISENROOFING@COMCAST.NET  
Family owned & operated for over 50 years

Plumbing, Heating & Cooling

**ANDERSON**  
**PLUMBING & HEATING, INC.**  
Plumbing, Heating & Cooling  
Water Heaters, Water Softeners,  
Drinking Water Systems, Iron Filters,  
Sewer Rodding & Jetting & More!  
**Since 1976**  
621 First Ave., Rochelle  
(815) 562-8784

Advertise Here

**What Service  
Do You Offer?**

**562-4171**

The Rochelle News-Leader

Heating & Air Conditioning

**HULL**  
**HVAC & Household Services**  
Furnaces - Air Conditioners - Boilers  
Duct Cleaning - Water Heaters  
Precision Furnace  
Clean & Check  
**\$85.00**  
Includes FREE carbon  
monoxide test  
**24/7 Emergency  
Service**  
**815-561-6551**  
**www.HullHVAC.com**

Concrete

**Bruns**  
Construction, Inc.  
• Residential & Commercial Concrete  
• Additions  
**FREE ESTIMATES!**  
Tim & Roger Bruns, Owners  
Established 1997  
**815-561-0099**  
Free Estimates • Fully Insured  
**www.brunsconstructioninc.com**

Storage Sheds

**Rocky Ridge**  
**Structures**  
We Specialize in Portable/Quality Built Storage Sheds  
• Stock & Custom Design  
• Many Options Available  
• Competitive Pricing  
• Site Preparation Available  
See Displays at 3500 S. Chana Rd. Chana IL 61015  
Call Norm or Albert for Free Literature packet  
**779.861.3542**



# Classified Marketplace

**BUY OR SELL**  
Place A Classified Ad



**ROCHELLE • HILLCREST • CRESTON • STEWARD • KINGS • ASHTON**

## 101 LEGAL NOTICE

### NOTICE

APC Towers IV, LLC is proposing to construct a 199-foot monopole telecommunications tower near 4140 S. Knoll Rd., Rochelle, Ogle Co., IL 61068 (41 57 41.4 N / 89 10 10.3 W). The tower is anticipated to have no lights. Interested persons may review the application for this project at [www.fcc.gov/asr/applications](http://www.fcc.gov/asr/applications) and entering Antenna Structure Registration (ASR) Form 854 File Number "A1252538" and may raise environmental concerns about the project by filing a Request for Environmental Review with the Federal Communications Commission. Requests for Environmental Review must be filed within 30 days of the date that notice of the project is published on the FCC's website. The FCC strongly encourages interested parties to file Requests for Environmental Review online at [www.fcc.gov/asr/environmentalrequest](http://www.fcc.gov/asr/environmentalrequest). Parties wishing to submit the request by mail may do so by addressing the request to: FCC Requests for Environmental Review, Attn: Ramon Williams, 45 L Street NE, Washington, DC 20554. Public comments regarding potential effects on historic properties may be submitted within 30 days from the date of this publication to: EBI Consulting, % Project #6123006299 EG, 6876 Susquehanna Trail S, York, PA 17403, or via telephone at (781) 552-3062.

No. 0912  
(Sept. 17, 2023)

### NOTICE

PUBLIC NOTICE is hereby given to all persons in the City of Rochelle, Ogle County, Illinois, that a public hearing will be held by the Rochelle Planning and Zoning Commission on Monday, October 2, 2023 at 6:00 p.m. in the Rochelle City Hall Council Chambers, 420 North 6th Street relative to the following:

To consider proposed amendments to the City of Rochelle Comprehensive Plan, including a transportation plan, community facilities and services plan, utility plan, watershed management plan, economic development plan, plan implementation, appendixes, maps, tables, and figures originally adopted in 2009 and updated in 2016. A copy of the amended Comprehensive plan is on file and available for examination in the office of the Community Development Director, 420 N 6th St., Rochelle IL during normal business hours. All persons interested are invited to attend said hearing and be heard. Anyone interested in participating in public commentary remotely should contact Michelle Knight at [mknight@rochelleil.us](mailto:mknight@rochelleil.us) or call 815-562-6161 to make arrangements. Commission members may participate in the Planning and Zoning Meeting remotely as a result of the Governor suspending the requirement for in-person attendance at Public Meetings. Rose Hueramo, City Clerk  
City of Rochelle  
No. 0913  
(Sept. 17, 2023)

### NOTICE

NOTICE OF PUBLIC HEARING  
(Preliminary & Final Plat of Subdivision)  
PUBLIC NOTICE is hereby given to all persons in the City of

Rochelle, Ogle County, Illinois, that a public hearing will be held by the Planning and Zoning Commission on Monday, October 2, 2023 at 6:00 p.m. in the Rochelle City Hall Council Chambers, 420 North 6th Street relative to the following:

Petition of Rochelle Crossings LLC for a preliminary & final plat of subdivision. The petitioner is requesting to subdivide one parcel into two. The subject property to be subdivided is zoned PUD, Planned Unit Development, is located at 450 E. Coronado Drive, Parcel 25-18-378-001 and has the following legal description: Part of the Southwest Fractional Quarter and the Southeast Quarter of Section 18, Township 40 North, Range 2 East of the Third Principal Meridian, described as follows: Beginning at the Northeast Corner of Lot B of the Final PUD Plat of Lighthouse Pointe Wal-Mart Addition as recorded in Book D of Plats Page 36 as Document Number 0911104; thence South 88 degrees 21 minutes 28 seconds West a distance of 488.28 feet; thence North 01 degrees 44 minutes 39 seconds West a distance of 182.19 feet; thence North 88 degrees 22 minutes 19 seconds East a distance of 6.69 feet to a point on a curve; thence Easterly on a curved path concave to the North having a radius of 462.00 feet, a length of 140.26 feet, a chord bearing of North 79 degrees 40 minutes 28 seconds East and a chord length of 139.72 feet; thence North 70 degrees 58 minutes 38 seconds East a distance of 198.85 feet to a point on a curve; thence Easterly on a curve path concave to the South having a radius of 338.00 feet, a length of 102.03 feet, a chord bearing of North 79 degrees 37 minutes 28 seconds East and a chord length of 101.64 feet; thence North 88 degrees 16 minutes 19 seconds East a distance of 54.19 feet; thence South 01 degrees 30 minutes 48 seconds East a distance of 278.20 feet to the Point of Beginning; situated in the Township of Dement, the County of Ogle and the State of Illinois. Lot Seven (7) as designated upon the Final Plat for "Lighthouse Pointe Second Addition" Subdivision, located in Section 18, Township 40 North, Range 2 East of the Third Principal Meridian in Ogle County, Illinois, according to the Plat thereof recorded in Plat File Don Page 23 as Document No. 201201200498, in the Recorder's Office of Ogle County, Illinois; situated in the Township of Dement, the County of Ogle and the State of Illinois. The petition is on file and available for examination in the office of the Community Development Director, 420 N. 6th Street, Rochelle, Illinois during normal business hours. All persons interested are invited to attend said hearing and be heard. Anyone interested in participating in public commentary remotely should contact Michelle Knight at [mknight@rochelleil.us](mailto:mknight@rochelleil.us) or call 815-562-6161 to make arrangements. Commission members may participate in the Planning and Zoning Meeting remotely as a result of the Governor suspending the requirement for in-person attendance at Public Meetings.

Rose Hueramo, City Clerk  
City of Rochelle  
No. 0914  
(Sept. 17, 2023)

### NOTICE

On August 14th the Village of Ashton Board of Trustees passed and approved Ordinance 081423A Amending Chapter 18- Building and Building Regulations- House Numbering. The Ordinance is available in pamphlet form at the Village Office, 810 Main St., Ashton.

No. 0917  
(Sept. 17, 2023)

### NOTICE

On August 17th the Village of Ashton Board of Trustees passed and approved Ordinance 081423B Modifying the previous ordinance Authorizing the operation of Non-Highway Vehicles on streets under jurisdiction of the Village of Ashton. The Ordinance is available in pamphlet form at the Village Office, 810 Main St., Ashton.

No. 0918  
(Sept. 17, 2023)

**PUBLIC NOTICE**  
STATE OF ILLINOIS,  
CIRCUIT COURT,  
OGLE COUNTY  
Request of Troy James Bantz

Case Number 2023 MR35  
File Sept. 13, 2023  
There will be a court date on my Request to change my name from Troy James Bantz to the new name of Victoria Emilia Madison Bantz  
The court date will be held on Oct. 25, 2023 at 8:45 a.m. at 106 5th St., #203E, Oregon, Ogle County, in Courtroom #304.  
No. 0919  
(Sept. 17, 24 and Oct. 1, 2023)

### NOTICE OF PUBLIC HEARING

The City of Rochelle will hold a public hearing at 6:30 p.m. on Monday, September 25th, 2023 in the City Council chambers of Rochelle's City Hall, 420 N. 6th St, Rochelle, Illinois to review the City's program activities and performance under CDBG grant 20-242016 which provided funding to line sanitary sewers in a northeast Rochelle neighborhood. The purpose of the public hearing is to give citizens an opportunity to express their views on the City of Rochelle's performance under CDBG grant 20-242016.  
John Bearrows, Mayor  
City of Rochelle  
Sunday, September 17, 2023  
No. 0921  
(Sept. 17, 2023)

## 101 LEGAL NOTICE

This publication does not knowingly accept fraudulent or deceptive advertising. Readers are cautioned to thoroughly investigate all ads, especially those asking for money in advance.

## 105 BUSINESS OPPORTUNITIES

"This publication does not knowingly accept fraudulent or deceptive advertising. Readers are cautioned to thoroughly investigate all ads, especially those asking for money in advance."

## 113 FINANCIAL

NOTICE Advance Fee Loans or Credit Offers Companies that do business by phone

can't ask you to pay for credit before you get it. For more information, call toll-free 1-877-FTC-HELP. A public service message from your hometown newspaper and the Federal Trade Commission.

## 119 ANNOUNCEMENTS

"This publication does not knowingly accept fraudulent or deceptive advertising. Readers are cautioned to thoroughly investigate all ads, especially those asking for money in advance."

## 127 SERVICES AND REPAIRS

FURMAN'S Lawn Care and Tree Work. Mowing, bushes, spring clean up, weeding and much more. Call Jeremy Furman 815-761-9619. Please leave a message will return call ASAP. Fully insured, in business since 1999. Servicing Rochelle and surrounding areas.

Experienced Housekeeper Wanted with References. Call 815-561-0021. (09182023)

## 201 DOMESTIC/CHILD CARE

NO INDIVIDUAL, unless licensed or holding a permit as a childcare facility, may cause to be published any advertisement soliciting a child care service. A childcare facility that is licensed or operating under a permit issued by the Illinois Department of Children and Family Services may publish advertisements of the services for which it is specifically licensed or issued a permit. Your Hometown Newspaper strongly urges any parent or guardian to verify the validity of the license of any facility before placing a child in its care.

## 301 ANTIQUES

WANTED TO BUY: Vintage Metal and Wood Signs, Milk Bottles & Local Advertising, Oak Icebox, Iron Door Stop and Antique Lighting... Call Dick Harms at 815-562-2928 or email [dickharms@hotmail.com](mailto:dickharms@hotmail.com)

ANTIQUES WANTED: I pay cash for antiques; furniture, glassware, pottery & crocks, tin & iron toys, sterling silver, decoys. If it's antique, I'm interested in looking! Call 815-562-2928 or email [dickharms@hotmail.com](mailto:dickharms@hotmail.com)

## 307 MISCELLANEOUS FOR SALE

BUNDLED Newspaper -\$3 per Bundle. End Roll- Cost Depends on Weight of Roll. Available Monday-Friday 815-562-4171 (8AM-NOON ONLY) Rochelle News Leader.

2022 TROY-BILT Bronco Tiller 14 Inches. \$500 or Best Offer. Call 815-562-6974 (10/11/23ALL)

## 405 HOUSES FOR SALE

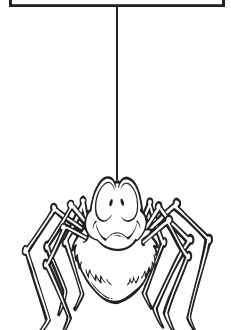
ALL REAL ESTATE advertised herein is subject to the Federal Fair Housing Act, which makes it illegal to advertise any preference, limitation

or discrimination based on race, color, religion, sex, handicap, familial status, or national origin, or intention to make any such preferences, limitation or discrimination. We will not knowingly accept any advertising for real estate which is in violation of the law. All persons are hereby informed that dwellings advertised are available on an equal opportunity basis

## 509 HOUSE FOR RENT

3-Bedroom Home for rent in Franklin Grove Area, with Garage, no pets. Call 815-456-2453.

**ADVERTISE WITH US**



## 103 AUCTIONS

**'Tobe' Hagemann Estate Vintage Oliver Tractor & Machinery Auction**  
SAT., SEPT. 30th, 2023 - 10 A.M.  
8251 Quail Ridge Rd., Leaf River, IL 61047  
Live On-Site Auction!  
Located at the Leonard & Donna Hagemann Farm  
Antique & Collector Oliver Farm Tractors - 1937 Oliver Hart-Parr & Standard-Oliver 60-70-80 Row Crop & Standards-Super 77-Standard 88 & 1750 Tractors; Nice Selection of Fleetline Models; Early Horse Drawn Implements; Walking Plows-Seeders-Drills-Planters; Mowers & Corn Picker; Superior #7 Manure Spreader; Reversible Sulky; Mounted Plows & Farm Machinery; Trucks; Trailers; Shop Equipment-Tools-Restoration; 1929 Chevrolet Automobile; Adv. & Collectibles; Oliver Keystone Metal Signs; Farm Primitives; JD 70 Skid Loader; '80 Chevrolet K-20 Pickup & Plow; 1967 Ford 700 Dump Truck; '90 Chevy GEO Tracker SUV; Suzuki 4WD Quad Runner; 1984 Yamaha 180 Motor Bike; Many More Old Oliver Items.

Hack's Auction & Realty Service  
Greg & Swan Hachmeister, Auctioneers  
Pecatonica, IL 815-239-1436  
[www.hacksauction.com](http://www.hacksauction.com)  
I.A.F.L. #44000128

# LAND AUCTION

**79.94 AC± | 1 TRACT**  
**OGLE CO, IL**

**AUCTION: LIVE AND ONLINE AT**  
**RANCHANDFARMAUCTIONS.COM**

**AUCTION DATE: 9/28/23**  
**AUCTION TIME: 1:00 PM**  
**AUCTION LOCATION:**  
**DAVIS JUNCTION**  
**FIRE DEPARTMENT**  
**106 S MAPLE ST**  
**DAVIS JUNCTION, IL 61020**

**IN COOPERATION WITH WHITETAIL**  
**PROPERTIES REAL ESTATE, LLC**  
**TODD HENRY, AGENT: 815.997.2256**

**RANCHANDFARMAUCTIONS.COM**

WHITETAIL PROPERTIES REAL ESTATE, LLC DBA RANCH & FARM AUCTIONS | 15 West Washington, Ste 300, Peotone, IL 60468  
Debbie S. Lewis, Designated Managing Broker, License # 471.0355-41 | Joe Gledic, Director, Ranch & Farm Auctions, 207.298.0332  
Todd Henry, Elite Land Specialist, Whitetail Properties Real Estate, LLC, 815.997.2256 | Cindy Linderman, S. Auctioneer, 441.002325

## 307 MISCELLANEOUS FOR SALE

# NEW MILFORD REFRIGERATION

**NEW, USED**  
**SCRATCH & DENT**

- Refrigerators • Freezers
- Washers/Dryers • Stoves

We also carry a large selection of refurbished appliances with a warranty.

**6331 11th Street, Rockford**  
**815-262-3900**

04092023

Not sure why business is slow?

**OUT OF SIGHT OUT OF MIND...**

is not just a saying in business.

Advertise today and let your business be in sight and in the minds of your customers.

## H.O.P.E

For Free Help or Information Call  
**815-562-8890**  
**24 Hours**

All Calls Are Confidential.

Support, Advocacy, Referral Services, Shelter for victims of domestic violence and their children.

**HOPE**  
of Ogle County



P.O. Box 131  
Rochelle, IL 61068  
Public Service Announcement

**An Advertising Proverb**

When Mark Twain was editing a newspaper in Missouri, one of his subscribers wrote in, saying that he had found a spider in his newspaper and wondered whether it was a sign of good or bad luck.

Twain's response: "Finding a spider is neither good luck nor bad. The spider was merely looking over our newspaper to see which merchant was not advertising, so that he could go to that store, spin his web across the door, and lead a life of undisturbed peace ever afterward."



# SPORTS



(PHOTO BY RUSSELL HODGES)

The Rochelle Lady Hub varsity cross country team breaks away from the starting line during the Rochelle Invitational at Skare Park on Thursday. Sophomore Annaliese Koziol led the girls with a fourth-place finish.

## RACE: Cross country teams compete at Skare Park

From page 1

“Annaliese is determined to do well and she trained a lot over the summer,” head coach Mark Zilis said. “She put in a ton of miles and she’s very confident when she steps up to the starting line. She wants to win and that’s a sign of a champion. I keep track of all of our times from year to year and every single one of our girls is 2-to-3 minutes faster than they were last season.”

Other notable finishers for the Hubs on Thursday include sophomore Levi Waddle and freshman Hadley Losoya, who placed 18th and 19th with respective times of 23:14.02 and 23:19.82. Junior Cash Budde took 25th with a time of 25:51.94 and junior Chris Beckman finished 28th with a time of 27:08.07.

Other notable finishers for the Lady Hubs on Thursday include freshman Vivian Worthington and junior Bridgett Ramirez, who placed 22nd and 24th with respective times of 28:54.68 and 30:01.50. Sophomore Isabella Biggs took 33rd with a time of 33:01.11.

“I know that our kids are improving and we’re hoping that we can make it to the sectional at the end of the season,” Zilis said. “We want to see continued improvement. We’ve pushed fairly hard in training, but I don’t want to see too many injuries. Our goals is to improve in every race.”

Rochelle will travel for the Larry Eddington Invitational at Kaneland High School on Saturday before hitting the road once again for the Byron Invitational on Wednesday, Sept. 20.



(PHOTO BY RUSSELL HODGES)

Senior Luis Hernandez won the Rochelle Invitational at Skare Park for the second straight year.

### RTHS Golf



(PHOTO BY RUSSELL HODGES)

Senior Chandler Cunningham hits a chip shot during the Rochelle Hub varsity golf match against DeKalb on Wednesday.

## Hubs handed close loss from DeKalb

BY RUSSELL HODGES  
SPORTS EDITOR

**ROCHELLE** — The Rochelle Hub varsity golf team hosted a non-conference match against DeKalb at Fairways Golf Course on Wednesday. Freshman Alex Dyer led the Hubs with a nine-hole round of 40, while sophomore Ian Metzger followed with a 41 as the Barbs edged Rochelle 174-179.

Seniors Owen Messer and Chandler Cunningham each carded scores of 49 for the Hubs (1-8, 0-3 Interstate 8) in the match. Junior Jacob Ost and freshman Owen Carmichael

rounded out the varsity lineup with scores of 61 and 63, respectively.

Rochelle will travel for the ACC Charger Invitational at Phillips Park this weekend.

### Kaneland

The Rochelle Hub varsity golf team continued Interstate 8 Conference play with a road match against Kaneland at Hughes Creek on Thursday evening. The Knights defeated the Hubs 158-179.

Freshman Alex Dyer led Rochelle (1-9, 0-4 Interstate 8) with a nine-hole round of 39, while sophomore Ian Metzger carded a 43.

### RTHS Football

(PHOTOS BY ROBIN RETHWILL)



## Freshman Hubs face off against Belvidere North in nonconference action Monday evening

The Rochelle Hub freshman football team traveled for a nonconference game against Belvidere North on Monday evening. The Hubs fell to the Blue Thunder 28-20 to move to 1-1 over two games this season. The freshmen will play next against Sycamore on the road Friday, Sept. 22. Pictured above are tight ends Warren Schweitzer (left) and Mason Ludwig (right) making leaping grabs over Belvidere North defenders.



# SPORTS

## RTHS Girls Tennis

# Lady Hubs snap losing streak with win at Sterling

## Rochelle netters concede road losses against Ottawa and Dixon to start week

BY RUSSELL HODGES  
SPORTS EDITOR

**STERLING** — The Rochelle Lady Hub varsity tennis team snapped its three-match losing streak on the road Wednesday evening, edging Sterling 5-4 in nonconference action. The match featured six singles matches and three doubles matches, with Rochelle (3-5, 0-3 Interstate 8) winning three singles points and two doubles points to earn the team victory.

Senior Elin Zheng conceded a loss at No. 1 singles, while senior Kara Martinez notched

a 6-1, 6-0 win at No. 2 singles and senior Macenzie Glosser recorded a 6-3, 6-3 win at No. 3 singles. Junior Riley Doyle emerged with a 6-1, 6-1 win at No. 4 singles and junior Kitty Williams fell just short with a 3-6, 4-6 loss at No. 5 singles. Senior Annaleigh McKinney played a tough second set in a 1-6, 4-6 loss at No. 6 singles.

Zheng and Martinez teamed up to play a tight match at No. 1 doubles, coming just short in a 4-6, 6-7 loss.

Glosser and McKinney won the No. 2 doubles match 6-4, 6-3,

while Doyle and Williams notched a 6-1, 6-3 win at No. 3 doubles to help Rochelle secure the team victory.

### Ottawa

The Rochelle Lady Hub varsity volleyball team conceded a 5-0 shutout loss against Ottawa during Interstate 8 Conference action Tuesday evening.

Senior Elin Zheng claimed one game in a 1-6, 0-6 loss against Layne Krug at No. 1 singles, while senior Kara Martinez fell 0-6, 0-6 against Mika Moreland at No. 2 singles. Juniors

Riley Doyle and Kitty Williams conceded a 0-6, 0-6 loss to Emma Cushing and Rylee O'Fallon at No. 1 doubles.

Seniors Macenzie Glosser and Annaleigh McKinney took three games in their 2-6, 1-6 loss against Makenzie Eichelkraut and Maura Condon at No. 2 doubles, while seniors Allie Dickey and Adamaris Betancourt earned two game victories in their 2-6, 0-6 loss to Peyton Bryson and Zulee Moreland at No. 3 doubles.

### Dixon

The Rochelle Lady

Hub varsity tennis team played the Dixon Duchesses on the road Monday evening, falling 5-0 in nonconference action.

Dixon swept both singles matches, with senior Elin Zheng falling 0-6, 0-6 against Grace Ferguson at No. 1 singles and senior Kara Martinez conceding a 0-6, 0-6 loss to Addison Arjes at No. 2 singles. Juniors Riley Doyle and Kitty Williams played a strong second set during their 0-6, 4-6 loss against Leah Stees and Arielle Tefiku at No. 1 doubles.

Rochelle's No. 2 and No. 3 doubles duos



each took four games in two-set losses on Monday. Seniors Annaleigh McKinney and Macenzie Glosser fell 2-6, 2-6 against Rachel Lance and Brooklyn Arjes at No. 2 doubles, while seniors Allie Dickey and Adamaris Betancourt conceded a 1-6, 3-6 loss to Lily Herrera and Siena Kemmerer at No. 3 doubles.

**NIU HUSKIES**

815-753-7225  
[NIUHUSKIES.COM](http://NIUHUSKIES.COM)

## MINI PLANS & SINGLE GAME

### TICKETS ON SALE NOW

**SATURDAYS  
GAME PACK**

**\$150**

**MACTION  
GAME PACK**

**\$115**

**WEEKEND SINGLE GAME TICKETS**

**\$33**

**WEEKDAY SINGLE GAME TICKETS**

**\$18**

### 2023 HOME SCHEDULE

SEP. 9  
SOUTHERN ILLINOIS

SEP. 23  
TULSA

OCT. 14  
OHIO

OCT. 21  
EASTERN MICHIGAN

NOV. 7  
BALL STATE

NOV. 14  
WESTERN MICHIGAN

Join millions of older Americans who are rediscovering the joy of walking

## "I'm on the move again with my UPWalker!"

**FREE Shipping!**

The **UPWalker** is a revolutionary new mobility device that can change your life by changing the way you walk. It enables you to stand upright when you walk— with your spine straight and your eyes looking straight ahead. Your weight is supported by your upper arms and shoulders, some of the strongest parts of your body. Traditional walkers and rollators force you to put the pressure of your body weight on your hands and wrists. You push them in front of you, looking at the ground instead of where you going. The **UPWalker** moves with you, with your body perfectly aligned and your feet free to walk in a normal fashion. Its easy-adjust height system allows it to be the perfect fit/height for anyone from 4'10" to 6'1" and supports up to 300 pounds. The new stand-assist handles enable you to distribute your weight across your arms and shoulders, not your hands and wrists to help reduce back, neck, wrist pain and discomfort. It features comfortable arm pads, hand brakes, a fold-down seat, a backrest and two storage bags. It's built with aircraft-grade aluminum to be sturdy yet lightweight, and its sleek design and oversized wheels make it perfect for tight spots in the house or walking in the yard.



From the makers of the original UPWalker®

- Stand-Assist Handles
- Comfortable Seat
- Folds Easily
- Adjustable Backrest
- Optimized Center of Gravity
- Easy-Brake Wheels

Plus, now you can choose between dark luster silver or champagne

Why spend another day bent over and shuffling around— or worse yet, plopped in front of the TV all day. Pick up the phone and take back your life. Call now.



**UPWalker® Premium Lite**  
from Journey Health & Lifestyle

Call now Toll-Free  
**855-425-3844**

Please mention promotion code 601943.

© 2023 Journey Health & Lifestyle



8-4531

# FALL SUPER SALE

**KICKOFF THE BIGGEST SAVINGS OF THE YEAR!!**

**20% OFF EVERYTHING**

Upon completion of appointment

**Leafguard**

Get it today. Protected for life.

\*Guaranteed not to clog for as long as you own your home, or we will clean your gutters for free

- ✓ LIFETIME NO-CLOG WARRANTY
- ✓ MADE ONSITE SPECIFICALLY FOR YOUR HOME
- ✓ THE ONLY ONE-PIECE SEAMLESS DEBRIS SHEDDING GUTTER SYSTEM.
- ✓ SCRATCHGUARD® PAINT FINISH

Call Today for Your **FREE Estimate!**

**815-673-7532**

**SPECIAL FINANCING AVAILABLE**

\*All participants who attended an estimated 60-90 minute in-home product consultation will receive a \$50 VISA Gift Card. Retail value is \$50. Offer sponsored by Leafguard Holdings Inc. Limit one per household. Company purchases, sells, and resells securities gathering protection. This offer is void for homeowners over 18 years of age. If married or involved with a life partner, both cohabiting persons must attend and complete presentation together. Participants must have a photo ID and be legally able to enter into a contract. The following persons are not eligible for this offer: employees of Company or affiliated companies or entities, their immediate family members, previous participants in a Company in-home consultation within the past 12 months and all current and former Company customers. Gift may not be extended, transferred, or substituted except that Company may substitute a gift of equal or greater value if it deems it necessary. Gift card will be mailed to the participant via first class United States Mail within 10 days of receipt of the promotional form. Not valid in conjunction with any other promotion or discount of any kind. Offer not sponsored and is subject to change without notice prior to expiration. Offer not available in the states of CA, HI, PA and MD. Expires 9/30/23. Leafguard operates as Leafguard LLC in Maryland under registration number WIRE License #116692.