



# ROCHELLE News-Le

WEEKEND EDITION | WWW.ROCHELLENEWS-LE.COM

LOCAL NEWS... LOCAL VIEWS

SUNDAY, SEPT. 10, 2023

\$1.25

More coverage.  
Less spendage.



Discounts up to 40%  
Get more. Spend less. It's that simple  
when you get car insurance from us.  
Like a good neighbor, State Farm is  
there. CALL FOR A QUOTE 24/7.

Terri Schaefer, Agent  
Bus: 815-562-7063  
terri.schaefer.115n@statefarm.com



KNOW IT  
TODAY



Poultry winners  
awarded at fair

The Ogle County 4-H Fair  
poultry award winners  
were recently honored.  
Page 5

## WEATHER

SUNDAY	MONDAY
HIGH LOW	HIGH LOW
79 51	69 59
TUESDAY	WEDNESDAY
HIGH LOW	HIGH LOW
69 53	64 46



FIRST STATE BANK

304 E. Illinois Route 38  
815-562-2200

## OBITUARIES

- HELEN MARY MONTGOMERY
- JERRY EDWARD NEECE SR.
- SONJA L. BYARS

See page 4

## INSERTS

- MENARDS
- FINANCIAL MATTERS
- STILLMAN VALLEY FALL FESTIVAL MAGAZINE

## INSIDE

Local News.....2, 3, 5, 8  
Obituaries.....4  
Opinion.....6  
Community.....7



8 52078 00112 6

## Do Art Productions starts in Rochelle 'This summer... we've traveled 23,000 miles so far'

BY JEFF HELFRICH  
MANAGING EDITOR

ROCHELLE — After getting into the swing of holding comic book workshops in and around the area early this year, Do Art Productions has seen growth in recent months.

Do Art Productions was established by Rochelle native Jerry Moffitt and his best friend, Chester Roush. The business creates comics and art and offers a variety of art mediums to inspire community members.

Moffitt said that this summer, Do Art Productions hosted 50-60 workshops and has traveled over 23,000 miles so far this year in the Midwest alone. Workshops have been done in six states.

"The summer was crazy," Moffitt said. "We already have 32 workshops scheduled for next year. We're booked every Tuesday and Thursday now for the rest of the year. We've been at YMCAs and schools. On Sept. 19, we'll have our first comic workshop with the Flagg-Rochelle Community Park District. They've asked to have us back at least once every month



After getting into the swing of holding comic book workshops in and around the area early this year, Do Art Productions has seen growth in recent months.

for the next four months. We'll continue to build our name here in Rochelle. After so much traveling, it will be nice to see a lot of familiar faces. I'm very excited for the workshops with the park district and becoming a bigger part of our community. It's hard to

even know what's coming next because it's been a tremendous roller coaster that doesn't seem to be going down yet. It just keeps going up."

Do Art Productions took time during the summer to attend comic conventions on weekends after notic-

ing a lack of activities for children at them. Moffitt and Roush decided to host workshops while at conventions. They've been to comic cons in Indianapolis, Omaha, Minnesota and Iowa.

See ART page 3

## New library plans being scaled back

BY JEFF HELFRICH  
MANAGING EDITOR

CRESTON — At its monthly meeting Tuesday, the Creston Village Board of Trustees heard an update from Creston-Dement Public Library Board President Doug Kroupa on the status of the planned new library in the village.

A referendum passed last June that allowed the Creston-Dement Public Library District to issue \$2.2 million in bonds to build a new library building at the corner of Main and Cederholm Streets on land that was donated years ago for a new library.

The library district went out for bids for the project in April and received bids of around \$3.1 million, Kroupa said.

See LIBRARY page 8

## City presents facade grant to Blackstone Bar & Grill 'It's a really important partnership for us and our local small businesses'

BY JEFF HELFRICH  
MANAGING EDITOR

ROCHELLE — On Thursday, the City of Rochelle presented a check for \$5,000 to The Blackstone Bar & Grill owners Shane Erdman and Jim Withers as part of its facade grant program. The program covers half the cost of any improvements made to business fronts in town with a limit of \$5,000. The bar & grill at 406 Cherry Ave. is the most recent recipient. Facade improvements included a new sign, painting of trim and the installation of a brick facial.

"It made a huge difference," Erdman said. "It drew a lot of clientele that we didn't expect, which we were happy about."

The business opened earlier this year in the space that was formerly Brewski's and The Rack Bar & Grill. Withers said The Blackstone Bar & Grill's branding has fit their vision for the building since purchasing it and opening the business.

"Getting the Blackstone name on there was great," Withers said of the new sign. "When people think



On Thursday, the City of Rochelle presented a check for \$5,000 to The Blackstone Bar & Grill owners Shane Erdman and Jim Withers as part of its facade grant program.

of Blackstone, it's a little bit more like steaks and an elevated food level, that it's not just your traditional pub food. It lent a class of distinction and what we're doing with the ambience. It's kind of new and fresh and it went with everything inside. Once people were inside, the food and everything wowed them. It was a great rebranding initiative."

City Community Devel-

opment Director Michelle Pease spoke at the check presentation about the importance of working with local businesses.

"It's a really important partnership for us and our local small businesses, because if they're not here, then what options do we have?" Pease said. "And it's important that we support them in good times and in bad times. It's very import-

ant to partner with our local small businesses. They are really the backbone of our community. We need to shop local and shop often."

Erdman and Withers are also owners of Salt 251 and The End Zone Sports Bar in Rochelle. Erdman said he's enjoyed working with the city since purchasing and starting operation of those businesses.

"It's amazing," Erdman

said. "It's nice to see the city working with the community and the community working with the city to do both sides. The business owners working with the city to make the city look better and the city willing to come to the table and help with the clients down here and the people that own the businesses that want to do something with the buildings. It's great."

**Holcomb Bank** Rochelle | New Milford | Creston | Byron  
Where Relationships Matter  
**Holcomb Bank presents:**

Columbia & Snake River Cruise with American Queen Voyages aboard the American Empress Steamboat 5/19/24-5/27/24. Packages starting at \$4,928/person including roundtrip airfare from Chicago.

Contact Julie at 815.561.2627 for more information!

FDIC

**We Remeber**  
September 11, 2001

**ANDERSON**  
PLUMBING & HEATING, INC.  
621 First Ave., Rochelle, IL  
815-562-8784



# LOCAL NEWS

## 2023 Ogle County 4-H Fair beef department winners named

**OREGON** — 2023 Ogle County 4-H Fair beef department winners were recently named during the Ogle County Fair from Aug. 2-6. The winners were as follows: Champion Junior Showmanship: Kodi Hubbard, Chana. Champion Intermediate Showmanship: Lucas Thurow, Davis Junction. Champion Senior Showmanship: Brooke Allen, Leaf River. Champion Angus Steer: Allissa Martin, Oregon. Champion Hereford Steer: Gretchyn Dunbar, Leaf River. Reserve Champion Hereford Steer: Alex Grygiel, Oregon. Champion Shorthorn Female: Wyatt Swanson, Byron. Reserve Champion Shorthorn Female: Allissa Martin, Oregon. Champion Purebred Other Breeds Female: Brooke Allen, Leaf River. Reserve Champion Purebred Other Breeds Female: Jenna Alexander, Forreton. Champion Crossbred Female: Joey Thurow, Davis Junction. Reserve Champion Crossbred Female: Max Thurow, Davis Junction. Grand Champion Female Overall: Jaxon Alderks, Monroe Center. Reserve Grand Champion Female Overall: Brooke Allen, Leaf River. Champion Pair of Steers: Allissa Martin, Oregon. Reserve Grand Champion Pair of Steers: Jackson Glendenning, Oregon. Champion Pair of Heifers: Ayden Alderks, Monroe Center. Reserve Champion Pair of Heifers: Allissa Martin, Oregon. Champion Bred & Owned Heifer: Max Thurow, Davis Junction. Reserve Champion Bred & Owned Heifer: Alex Grygiel, Oregon. Champion Production Cow/Calf: Joey Thurow, Davis Junction. Reserve Champion Production Cow/Calf: Lacie Williams, Leaf River. Rate of Gain: Nolan Adams, Stillman Valley. Quality Beef 2000: (1st)

Reserve Grand Champion Market Beef: Cooper Alderks, Chana. Champion Bred & Owned Steer All Breeds: Allissa Martin, Oregon. Reserve Champion Bred & Owned Steer All Breeds: Bruce Gehrke, Byron. Champion Angus Female: Jaxon Alderks, Monroe Center. Reserve Champion Angus Female: Allissa Martin, Oregon. Champion Hereford Female: Katelyn Rockwood, Polo. Reserve Champion Hereford Female: Alex Grygiel, Oregon. Champion Shorthorn Female: Wyatt Swanson, Byron. Reserve Champion Shorthorn Female: Allissa Martin, Oregon. Champion Purebred Other Breeds Female: Brooke Allen, Leaf River. Reserve Champion Purebred Other Breeds Female: Jenna Alexander, Forreton. Champion Crossbred Female: Joey Thurow, Davis Junction. Reserve Champion Crossbred Female: Max Thurow, Davis Junction. Grand Champion Female Overall: Jaxon Alderks, Monroe Center. Reserve Grand Champion Female Overall: Brooke Allen, Leaf River. Champion Pair of Steers: Allissa Martin, Oregon. Reserve Grand Champion Pair of Steers: Jackson Glendenning, Oregon. Champion Pair of Heifers: Ayden Alderks, Monroe Center. Reserve Champion Pair of Heifers: Allissa Martin, Oregon. Champion Bred & Owned Heifer: Max Thurow, Davis Junction. Reserve Champion Bred & Owned Heifer: Alex Grygiel, Oregon. Champion Production Cow/Calf: Joey Thurow, Davis Junction. Reserve Champion Production Cow/Calf: Lacie Williams, Leaf River. Rate of Gain: Nolan Adams, Stillman Valley. Quality Beef 2000: (1st)



Ogle County 4-H member, Lucas Thurow receiving show award from Elizabeth Armbruster, Ogle County 4-H Ambassador.

(COURTESY PHOTO)

Allissa Martin, Oregon. Reserve Champion Pair of Steers: Jackson Glendenning, Oregon. Champion Pair of Heifers: Ayden Alderks, Monroe Center. Reserve Champion Pair of Heifers: Allissa Martin, Oregon. Champion Bred & Owned Heifer: Max Thurow, Davis Junction.

Reserve Champion Bred & Owned Heifer: Alex Grygiel, Oregon. Champion Production Cow/Calf: Joey Thurow, Davis Junction. Reserve Champion Production Cow/Calf: Lacie Williams, Leaf River. Rate of Gain: Nolan Adams, Stillman Valley. Quality Beef 2000: (1st)

Gretchen Dunbar, Leaf River. (2nd) Joseph Nadig, Rochelle. (3rd) Kodi Hubbard, Chana. (4th) Ellie Schier, Mount Morris. (5th) Jackson Glendenning, Oregon. (6th) Joseph Nadig, Rochelle. (7th) Addison Yordy, Leaf River. (8th) Katelyn Rockwood, Polo. (9th) Jackson Glen-

denning, Oregon. (10th) Benjamin Nadig, Rochelle. Dr. John Clayton 4-H Herdsman Award: Bruce Gehrke, Byron. Champion Jr. Bucket Calf: Luke Gehrke, Byron. Reserve Champion Jr. Bucket Calf: Sophia Ebert, Oregon. Champion Sr. Bucket Calf: Addison Yordy, Leaf River.

**Tony Tuttle, RN**  
HOUSE SUPERVISOR

To read Tony's nomination, go to the RCH Facebook page or RochelleHospital.com

## Fehr Graham's Dinwiddie passes Associate Safety Professional exam

**ROCHELLE** — Fehr Graham, a leading Midwest engineering and environmental firm, announced that Environmental Health and Safety (EHS) Scientist Marie Dinwiddie passed the Associate Safety Professional (ASP) exam to earn the designation of Associate Safety Professional by the Board of Certified Safety Professionals.

As part of the requirement to become certified, Dinwiddie needed more than two years of professional experience and an associate degree, which she got in Occupational Health and Safety from Waldorf University.

To pass the ASP exam, candidates must demonstrate knowledge and understanding of various aspects of safety, including hazard identification, risk assessment, safety management systems,

regulatory compliance, emergency planning and more.

The exam assesses competency in applying safety principles in a professional setting. This is a sign of Dinwiddie's commitment to maintaining high standards of safety and protecting the well-being of workers. Dinwiddie is the acting EHS manager for Maplehurst Farms in Rochelle.

She works on health and safety compliance and environmental management for the agribusiness. She implements safety programs, conducts safety training and audits, and provides general safety consulting, job safety analysis and incident investigation.

She also ensures compliance with local, state and federal regulations for grain handling and agronomy industries.



Marie Dinwiddie

Dinwiddie, who joined Fehr Graham in 2020, also holds an associate degree in Economics and Accounting from Indian Hills Community College in Ottumwa, Iowa.

She is an authorized Occupational Safety and Health Administration General Industry Outreach instructor through the National Safety Education Center at Northern Illinois University.

**COME ONE COME ALL!**  
**LET'S CELEBRATE FALL AT**

**HIDDEN TIMBER GARDENS**

**FALL FESTIVAL**

**SEPTEMBER 16TH 9AM-5PM**  
**462 CHANA RD, CHANA IL**

**MUMS, COURDS, FALL DECOR.**  
**FOOD & CRAFT VENDORS,**  
**BUILD YOUR OWN SCARECROW**  
**40% OFF CONTAINER TREES,**  
**SHRUBS & PRENNIALS**

For more info call 815-751-4162  
hiddentimbergardens.com

## County recycling event is Sept. 29

**OREGON** — The Ogle County Solid Waste Management Department (OCSWMD) will be hosting a residential electronics recycling event on Friday, Sept. 29 from 9 a.m. to 4 p.m. at 909 Pines Road in Oregon.

This event is for Ogle County residents only and a free permit is required in advance of the event. To obtain a free permit call 815-732-

4020 or email solidwaste@oglecountyl.gov and provide your name, address, phone number and email address by 4 p.m. on Thursday, Sept. 28.

Accepted items include all televisions and computer monitors, computers, computer hardware and cables, laptops, tablets, cell phones, printers, FAX machines, scanners, shredders (no tubs),

copiers, video gaming equipment, DVD/VCRs, cable/satellite boxes, stereo equipment, radios, digital clocks, cameras, calculators, phone systems, holiday light strands, extension cords, rechargeable batteries, printer ink cartridges, CD/DVDs, and CFL bulbs. Microwave ovens accepted for \$5 per unit. Cash or check accepted.

Limit seven large or bulky items per permit and one permit per county household per month. Business or institutional electronic materials not accepted at these events. Business or institutional electronics are accepted by the OCSWMD via a separate program. Call the number above for more information and pricing for business electronic recycling, and to make an appointment for drop off of the materials to be recycled.

For more information about this recycling event call the OCSWMD at the number above, visit [www.oglecountyl.gov](http://www.oglecountyl.gov), or on Facebook at Ogle County Solid Waste Management Dept.

**Snyder Family Farm**

**For Sale**

**117 Acres**

---

**Section 29 of the Willow Creek Township, Paw Paw, Lee County, Illinois**  
**Asking \$12,500 per acre.**

- 92 Tillable Acres
- 27 Acres Recreational Woodlands
- Productivity Index (PI) 129
- Potential Cash Rent - \$315-\$390
- Potential Rec. Rent - \$35-\$55
- 2022 Taxes - \$4097
- Zoned Ag-1

**CALL**  
**954-554-5612**  
**Steven Massey P.A.**



# LOCAL NEWS

## ART: Local business seeing growth over last several months

From page 1

Moffitt said he's been striving to make his workshops more interactive for kids in the audience. He'll ask kids to draw him while he's juggling, on a unicycle or playing the guitar. He's made an effort to learn a new skill each month, to give kids more inspiration and show them they can learn things when they put their mind to it.

"We've progressed and evolved the workshops to get kids engaged and out of their shells and to be creative," Moffitt said. "I feel like one of the main areas I thought I was doing was teaching art. I found I was trying more to create confidence in kids. Being able to see their energy and their light after that engagement with me was what I realized what I was actually doing. They're getting more comfortable and familiar expressing themselves to someone else. By the end of the session, I can guarantee that almost every kid I've had a workshop with has come out of their shell."

Moffitt said seeing the response from and demand for Do Art's workshops has been like "living in a dream come true." He's enjoyed seeing his energy reciprocated by crowds.



(COURTESY PHOTO)

**Do Art Productions was established by Rochelle native Jerry Moffitt and his best friend, Chester Roush. The business creates comics and art and offers a variety of workshops in a variety of art mediums to inspire community members.**

"We open up every workshop with an affirmation," Moffitt said. "I have them repeat after me, 'I am amazing. I am creative. I am an artist.' And then we chant Do Art. I want them to be comfortable expressing themselves and know that their creativity has to do with their own uniqueness. I feel so much gratitude that

I'm able to do this. There's been a tremendous amount of growth and evolution in such a short amount of time. All I can do is be grateful."

Upcoming changes for Do Art will include a re-branding. Moffitt said new banners are being created with drawings kids have made. Two more large banners are being created

with drawings of different animals done by Moffitt, so kids will know what an animal looks like when they're asked to draw it in workshops.

Moffitt called the recent traveling "super exhausting," but said it brought a sense of adventure. His family has started to get more involved in work-

shops.

"We ran a big comic book workshop at a convention for three straight days in Indianapolis," Moffitt said. "To see my family come out of their shells and work together was a peak life experience for me. I didn't think it would grow and turn into this. I don't even know why I thought to start

the comic book workshops. Six months have blown by. I wanted people to look at my art and be inspired. Now we have thousands of artworks inspired and boxes of art that people have given me. I'm just grateful it's still going. I would have never believed this was going to happen months ago. It's just a crazy, crazy experience."

## NIU STEM Café explores hearing and balance health

**DEKALB**—Northern Illinois University invites the public to a STEM Café on Wednesday, Sept. 13 at 6:30 p.m. to learn about hearing and balance health from experts in audiology. The STEM Café will take place at Fatty's Pub and Grille in DeKalb and is free and open to the public, with food and drinks available for purchase from Fatty's.

More information and registration at [go.niu.edu/stemcafe](http://go.niu.edu/stemcafe).

NIU Audiology Clinical Associate Professor Blythe Kitner says that hearing loss, loss of balance and resulting falls are not the inevitable

results of aging. Instead, she notes that hearing and balance are affected by external factors such as diet, medication, exercise and noise exposure—all of which affect the cochlea and vestibular system of the inner ear.

At this STEM Café Dr. Kitner and her graduate student of audiology, Emily Kopperund, will introduce the audience to the hearing and balance systems of the inner ear, explain how to spot the signs of declining hearing or balance, and let people know when to follow up with a physician or audiologist.

The speakers aim to

give the audience practical tips to preserve balance and hearing health—including tips on how to make your summer BBQs healthier for hearing and balance.

About the speakers:

Blythe Kitner, Au.D. received her doctorate of audiology in 2009 from Rush University, Chicago, Illinois. Prior to earning her doctorate in audiology, she worked and published in the field of pharmacology and genetics. She has worked in a variety of audiology settings including National Institutes of Health, VA and children's hospitals, private practice and education. Currently,

she is a clinical associate professor at Northern Illinois University where she teaches, sees patients, completes research on balance and does outreach. Her specialty is balance and rehabilitation for balance disorders.

Emily Kopperund is a third-year graduate stu-

dent pursuing her doctorate of audiology. She's currently on rotation at the NIU Speech-Language-Hearing Clinic evaluating and treating balance and vestibular issues.

Northern Illinois University STEM Cafés are part of NIU STEM and

are designed to increase public awareness of the critical role that STEM fields play in our everyday lives. They are offered in partnership with the NIU Alumni Association and made possible with support from Bayer Fund.

Learn more at [go.niu.edu/stemcafe](http://go.niu.edu/stemcafe).

### RALPHIE & LULU's



Join us on Friday nights for fish, chicken and more

Saturday we serve up Chicken Ralphie a fan favorite

The slots are hot and the beer is cold

Serving dinner Wednesday 5 - 8 p.m.  
Friday and Saturday 5 - 8 p.m.

812 Main St. - Ashton

07272022



15% Off Your Entire Bill When Ordering Online!

We are Proud to Support Rochelle Hubs!

815.562.7300

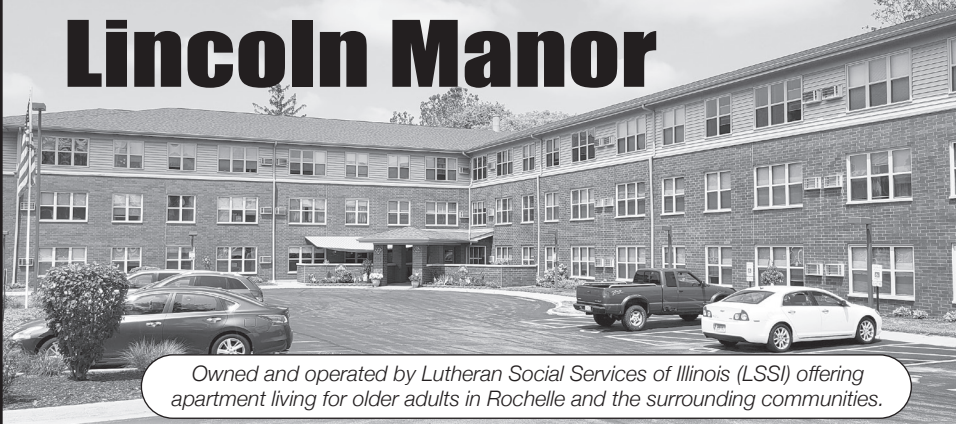
Delivery & Curbside Pick Up

1071 N 7th St, Rochelle, IL • [vincespizzainrochelle.com](http://vincespizzainrochelle.com)



11132022

### Lincoln Manor



Owned and operated by Lutheran Social Services of Illinois (LSSI) offering apartment living for older adults in Rochelle and the surrounding communities.

Rent based on 30% of a Resident's Adjusted Gross Income

- Secure Entry System
- Community room with kitchen
- Activities
- On-site coin operated laundry
- On-site management office
- Dependable 24/7 maintenance service
- On-site parking for residents

Full time Social Service Coordinator is available to assist residents

For more information, please call 815-562-1404

615 N. Lincoln Hwy.  
Rochelle, IL 61068  
TTY 847-390-1460



MANAGED BY:  
Lutheran Social Services of Illinois  
[www.LSSI.org](http://www.LSSI.org)



07262023

Serving Rochelle's Favorite Chicken for over 40 years!

By the Snack-Dinner-Bucket!



Enjoy 16 flavors of ice cream, soft serve, splits, sundaes, cones, malts & shakes



Call for our catering menu!

OUR MENU INCLUDES:

Open Daily at 9AM

Hamburgers, Fries, Hot Dogs, Gyros, Italian Beef, Seafood, Sandwiches, Sausages, Shrimp, Homemade Soups  
Breakfast: Sausage Gravy With Biscuits and Tater Tots



See us on Facebook for daily specials!



COUNTRY SCHOOL  
DRIVE-IN RESTAURANT

Hwy 251 N. Rochelle • 815-562-6039

08302015



# LOCAL NEWS

## Obituaries

### Helen Mary Montgomery

SYCAMORE—Helen Mary Montgomery, 99, of Sycamore, died Tuesday, Sept. 5, 2023, at home.

Born Aug. 30, 1924, in Gary, Ind., the daughter of Christ and Evanthis (Sauli) Skurte, Helen married Wilbur Woodrow Montgomery on June 26, 1949; he predeceased her in 2016.

A 1946 graduate of Northern Illinois University, DeKalb, where she earned a Bachelor of Arts, Helen was a physical education teacher at Streator High School from 1946 until her marriage. She was a member of Home Extension, various card clubs and her bowling league until 2020. Helen taught Sunday school and served as a 4-H leader for many years. She volunteered with the swim unit for the kids at Eswood Elementary. Helen loved using family photography to chronicle events.

Helen was a great cook, especially when making cookies and pies from her Albanian heritage, which

have become family traditions. She loved knitting and was constantly making various craft projects, too. She was very independent, had a wry sense of humor, and nothing could make her face light up more than her grandkids and great-grandkids.

Helen is survived by her sons, Dale (Tammy) Montgomery of Malta and Don (Mary) Montgomery of Bennet, Neb.; daughters, Nancy (Doug) Fike of North Aurora and Judy (Mark) Dreska of Lakewood, Colo.; nine grandchildren; and 20 great-grandchildren and another on the way, all of whom she loved, loved, loved!

She was predeceased by her husband, Wilbur; parents; and sisters, Sophie, Ethel and Pauline.

The family thanks the staff at the Grand Victorian of Sycamore, Home Instead, and Northern Illinois Hospice for their compassionate care of Helen.



In lieu of flowers, memorials can be made in her name to Greenview Cemetery, 25456 Esmond Road, Malta, IL 60150.

Funeral Service will be held at 11 am Friday, Sept. 15, 2023, at Esmond United Methodist Church, 675 Main St, Esmond, IL 60129, following a visitation from 10-11 am at the church. Visitation also will be from 4-7 pm Thursday, Sept. 14, at Olson's Quiram Sycamore Chapel, 1245 Somonauk St., Sycamore, IL 60178. Burial will be at Greenview Cemetery, Esmond.

For information, 815-895-6589. Visit [www.olsonfh.com](http://www.olsonfh.com) to leave a condolence.

### Jerry Edward Neece Sr.

FESTUS, MO.—Jerry Edward Neece Sr., 66, of Festus, Missouri, passed away, Friday, Sept. 1, 2023 in Festus, Missouri.

He was born May 25, 1957 in Columbus, Ohio, son of the late John Dudley Neece Sr. and Edith Mae Shemwell (Jones).

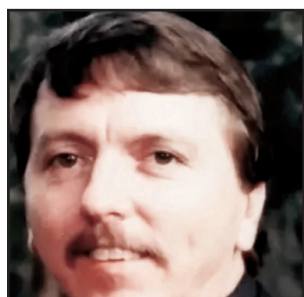
Jerry entered into Everlasting Life on Aug. 5, 2007 when he and his wife Carol, were baptized together by Pastor Chris Shurills at Harvest Baptist Church in Rochelle. He became a member of Charter Baptist. Most of all Jerry loves God Almighty, his son Jesus Christ and the Holy Spirit.

Surviving are wife, Carol L. Neece (Carnell)

of Festus, Missouri, sons, Jerry E. Neece Jr., Jeffrey A. Neece and Michael (Annie Turner) Lee, grandchildren, Jayden, Gabirel and Alexandra Neece, Asher Fitzpatrick and Meredith Turner, nephews, Scott (Denise) Simms and Carl "Pete" (Annette) Matthews Jr. and niece, Erin "Sissy" Dryden.

Jerry was preceded in death by father, John Dudley Neece, Sr., mother, Edith Mae Shemwell, stepfather, Robert Shemwell, brothers, Carl Lee Matthews Sr. and John Dudley Neece Jr.

Services will be held at Charter Baptist Church, Friday, Sept. 15, 2023 at 12



pm with Rev. Chris Goodwin officiating. Interment will follow in the Charter Memorial Garden Cemetery, Festus, Missouri.

Friends will be received at Charter Baptist Church, Festus, Missouri, Friday, Sept. 15, 2023, 10 am until time of service.

Arrangements under the direction of Mahn Twin City Chapel.

### Sonja L. Byars

ROCHELLE — Sonja L. Byars, 75, passed away Wednesday, Sept. 6, 2023 at Unity Point Health - Mariter Hospital in Madison, Wisconsin. Sonja was born on June 29, 1948 to William Oscar and Arlene (Englin) Franzene in Rockford. After 41 years, she retired from working at Rochelle Foods. She was a proud lifetime member of the Rochelle Moose Lodge.

Sonja is survived by two sons: Bret (Tracey) Johnson and Jerritt Boehle both of Rochelle; brother, Ed (Jan) Kissick of Rochelle; four grandchildren: Bailey (Scott) Stevens, Broc

Johnson, Denton Johnson and Gabe Boehle; great grandchild, Asher Stevens and one more arriving soon; nieces: Krista (Eric Cech) Kissick, Erica Kissick and Tara (Grant) Manning and several great nieces and nephews.

In addition to her parents, she is preceded in death by her brother, Dennis Kissick in 1975.

There will be a memorial visitation from 2 - 4 P.M., Saturday, Sept. 16, 2023 at the Unger-Horner Funeral Home, 400 N. 6th St., Rochelle. A Celebration of Life gathering will follow the visitation at 5 P.M., Saturday at



the Rochelle Moose Lodge, 311 N. Main St., Rochelle. Burial will be at a later date at Steward Cemetery in Steward. In lieu of flowers, memorials may be made in Sonja's memory to Kreider Services or the Rochelle Moose Lodge. Visit [www.ungerhorner.com](http://www.ungerhorner.com) to sign the online guest book.

## Rochelle Police Department

### Officers issue citations

ROCHELLE — On Sept. 5 at 7:59 a.m. Alfredo Bazan Reyes, 19, of Rochelle was cited for failure to reduce speed to avoid an accident. He signed a promise to comply and was given an Oct. 6 Rochelle court date.

On Sept. 5 at 7:59 a.m. Jose A. Martinez-Baron, 35, of Rochelle was arrested for no valid driver's license. He was released on an I-Bond with an Oct. 6 Rochelle court date.

On Sept. 6 at 4:46 p.m.

Juan Rodriguez, 45, of Rochelle was cited for suspended registration. He was released on an I-Bond with an Oct. 6 Rochelle court date.

All individuals are considered innocent until proven guilty.

## OCSWMD resumes drop-off recycling program

OREGON — The Ogle County Solid Waste Management Department (OCSWMD) has resumed the drop-off recycling program. The program has returned on a trial basis, in the hope that the bins and the host locations are not misused. The program restarted on July 10, with two locations for county residents to drop-off their recyclables, and has been running successfully so far. The recycling bins are located at the Ogle County Farm Bureau parking lot, 421 W. Pines Road, Oregon, and at the Byron Forest Preserve Maintenance Facility parking lot, 6845 N. German Church Road, Byron.

There are also two other recycling bins in the County, Waste Management provides one at the Orchard Hills Landfill, 8290 Illinois Route 251,

Davis Junction. Republic/Moring also provides a recycling bin in Polo, at the lot on the corner of North Franklin Avenue and East Locust Street. Both of these recycling bins are free for county residents to use. Residents do not need to drive over the scale at Orchard Hills to use the recycling bin however, the bin is for recyclables only. Residents who wish to dispose of garbage at the landfill will have to pay the disposal fee and use the scale.

Materials accepted at the bins include: Clean and dry paper products, including newspapers, magazines, office paper, cardboard, and paperboard (e.g., cereal boxes). No items contaminated by food (e.g. pizza boxes).

Plastic containers labeled with recycling symbols #1 through #5 & #7, such as beverage bottles, milk jugs, detergent bottles, and plastic food containers. Glass bottles and jars, which should be rinsed and free of any lids or caps.

Metal cans, including aluminum and steel cans, and aluminum foil. The recycling guidelines are also posted on the decks, next to the bins. To ensure the success of the program, flatten cardboard boxes,

rinse containers, and place the materials into the bin loose, not in plastic bags. Items that are not listed on the recycling guidelines should not be placed in the bin. While an item may have a recycling symbol on it, it does not guarantee that it is able to be recycled in this program. An example of this would be used motor oil containers, while a plastic container can be recycled, the residual oil left in the container will contaminate the other recyclables in the bin, so they should not be recycled in these bins.

Reducing the amount of contamination in the recycling bins from garbage will help maintain the integrity of the recycling process and keep this program sustainable. Ogle County residents are encouraged to come together as a community to embrace this program and make a positive impact on the environment through responsible recycling. Together we can build a brighter, more sustainable future for Ogle County.

For more information about the Drop-Off Recycling Program, including specific guidelines and updates, please visit [www.oglecountyil.gov](http://www.oglecountyil.gov) or contact our office at 815-732-4020.

## Report policy

Any arrests listed in this paper are merely charges and the defendants are presumed innocent unless proven guilty in a court of law. Please note that all police reports received from the Rochelle

Police, the Ogle County Sheriff's Department and the Illinois State Police, will be printed without exception. Requests to omit particular reports will not be considered or honored at any time.

## The 2024 From The Heart Cash Calendars are NOW AVAILABLE!!

The proceeds of the sale of the calendars benefit our From The Heart recipients: Pegasus Special Riders, Rochelle Christian Food Pantry, HOPE, Focus House, Shining Star Children's Advocacy Center, CASA, Rochelle Area Community Foundation, Hub City Senior Center & Rochelle Rotary.

OUR CHARITIES NEED OUR SUPPORT NOW MORE THAN EVER!



For Just \$20 you have a chance to be one of 365 DAILY WINNERS TOTAL CASH PRIZES \$18,250 PLUS Each Calendar Has VALUABLE LOCAL COUPONS

## Here are 3 Ways to Purchase Your 2024 From The Heart Cash Calendar!

• **ONLINE:** Go to <http://fromtheheartrochelle.org> and click on **CASH CALENDARS**. Once the calendar is purchased we will mail it out to you! Shipping and processing fees will be added to cost.

• **IN PERSON:** You can pick up a 2024 From The Heart Cash Calendar **TODAY** at the following locations:  
In Rochelle at: First State Bank, Stillman Bank, HOPE Chest, Colonial Flower Shoppe and Hub City Senior Center  
In Oregon at: Merlin's  
In Dixon at: Shining Star  
In Mendota at: The Mendota Reporter/Amboy News office

• **BY MAIL:** Fill out the form below and send it in to us and we will mail a 2024 From The Heart Cash Calendar to you! Shipping fees are added to cost.

**YES! Send me my 2024 From The Heart Cash Calendar!**  
(Please Print)

NAME: \_\_\_\_\_

ADDRESS: \_\_\_\_\_

CITY, STATE, ZIP: \_\_\_\_\_

PHONE: \_\_\_\_\_

NUMBER OF CALENDARS: \_\_\_\_\_

Clip and mail this form along with \$23 (\$20 per calendar plus \$3 per calendar postage) to:  
Rotary Calendar, PO BOX 372, Rochelle, IL 61068

## ROCHELLE News-Leader

211 IL Route 38 East, Rochelle, IL 61068  
(815) 562-4171

USPS (467-820) ISSN (1075-2811)

Published every Wednesday and Sunday by Rochelle Newspapers Inc. at 211 E. State Route 38, Rochelle, IL 61068. Periodical postage paid at Rochelle, IL 61068. Postmaster send address changes to the Rochelle News-Leader, P.O. Box 46, Rochelle, IL 61068. Subscription rates are \$139.99 per year by mail in Ogle County. Outside county rate is \$149.99 per year. No mail delivery in newspaper-carrier serviced areas. The circulation department is open Monday through Friday from 8 a.m. to 5 p.m. If you are a carrier subscriber and your paper does not arrive, contact Kelly White at 561-2112.

### IN-COUNTY REGULAR SUBSCRIPTION RATES

- \$139.99 for one year • \$79 for six months
- \$34.99 for three months • \$13.99 for one month

Call (815) 561-2112 or Visit our website at [www.rochellenews-leader.com](http://www.rochellenews-leader.com)



## HOW TO CONTACT US

News-Leader Main Switchboard (815) 562-4171

**General Manager**  
Mike Feltes (815) 561-2124

**Newsroom Staff**  
Jeff Helfrich, Managing Editor (815) 561-2151  
Russ Hodges, Sports (815) 561-2152

**To Place a Display Ad**  
Andrew Heiserman (815) 561-2123  
Chris Ackland (815) 561-2153

**To Place a Legal Ad**  
Mike Feltes (815) 561-2124

**To Place a Classified Ad**  
Andrew Heiserman (815) 561-2123  
Chris Ackland (815) 561-2153

**Subscriptions and Delivery**  
Kelly White (815) 562-4171



# LOCAL NEWS

## Ogle County 4-H Fair 2023 poultry department winners named

**OREGON** — Ogle County 4-H Fair 2023 poultry department winners were recently named at the Ogle County Fair from Aug. 2-6. Winners were as follows:

### Showmanship

Champion Junior Showmanship: Landon Zabran, Byron. Champion Intermediate Showmanship: Kailee Miller, Leaf River. Champion Senior Showmanship: Grant Johnson, Forreston.

### Large Fowl

#### Classes

Top of Class American Hen: Kate Costello, Stillman Valley. Top of Class American Pullet: Delaney Byers, Forreston. Top of Class American Cockerel: Lucas Armbruster, Polo. Grand Champion American: Delaney Byers, Forreston. Reserve Grand Champion American: Kate Costello, Stillman Valley. Top of Class Asiatic Hen: Grace Costello, Stillman Valley. Top of Class Asiatic Pullet: Tylar Groth, Forreston. Grand Champion

Asiatic: Grace Costello, Stillman Valley. Reserve Grand Champion Asiatic: Tylar Groth, Forreston. Top of Class English Hen: Kate Costello, Stillman Valley. Top of Class English Pullet: Preston Borris, Rochelle. Grand Champion English: Kate Costello, Stillman Valley. Reserve Grand Champion English: Preston Borris, Rochelle. Top of Class Mediterranean Hen: Trent Heller, Dixon. Top of Class Mediterranean Cockerel: Preston Borris, Rochelle. Top of Class Mediterranean Pullet: Landon Zabran, Byron. Top of Class Mediterranean Cockerel: Katelynn Alexander, Forreston. Grand Champion Mediterranean: Landon Zabran, Byron. Reserve Grand Champion Mediterranean: Preston Borris, Rochelle. Top of Class Continental Hen: Levi Eden, Oregon. Top of Class Continental Pullet: Levi Eden, Oregon. Top of Class Continental Cockerel: Levi Eden, Oregon. Grand Champion Continental: Levi Eden, Oregon. Reserve Grand Champion Continental:

Levi Eden, Oregon. Top of Class Other Standard Breeds Hen: Brylee Weaver, Polo. Top of Class Other Standard Breeds Cockerel: Paityn VanBriesen, Stillman Valley. Grand Champion Other Standard Breeds: Paityn VanBriesen, Stillman Valley. Reserve Grand Champion Other Standard Breeds: Brylee Weaver, Polo.

### Bantam Classes

Top of Class All Other Bantam Hen: Levi Eden, Oregon. Top of Class All Other Bantam Cockerel: Levi Eden, Oregon. Top of Class All Other Bantam Cockerel: Paityn VanBriesen, Stillman Valley. Grand Champion All Other Bantam: Levi Eden, Oregon. Reserve Grand Champion All Other Bantam: Levi Eden, Oregon. Top of Class Feather Legged Bantam Hen: Levi Eden, Oregon. Top of Class Feather Legged Bantam Pullet: Jenna Heller, Dixon. Top of Class Feather Legged Bantam Cockerel: Kodi Hubbard, Chana. Grand Champion Feather Legged Bantam: Levi

Eden, Oregon. Reserve Grand Champion Feather Legged Bantam: Jenna Heller, Dixon

### Egg Production

#### & Meat Pen

#### Classes

Top of Class Production/Commercial/Hybrid Female: Jenna Heller, Dixon. Grand Champion Production Pen: Jenna Heller, Dixon. Reserve Grand Champion Production Pen: Shelby Harbaugh, Chana. Top of Class Broiler/Fryer Pen of 3: Kailee Miller, Leaf River. Top of Class Roaster Market Pen of 3: Carson Conderman, Byron. Grand Champion Meat Pen: Carson Conderman, Byron. Reserve Grand Champion Meat Pen: Kailee Miller, Leaf River.

### Duck Classes

Top of Class Heavy Weight Old Hen: Isaiah Akins, Polo. Top of Class Heavy Weight Old Drake: Grant Johnson, Forreston. Top of Class Medium Weight Young

Hen: Anna Marquardt, Oregon. Top of Class Medium Weight Young Drake: Anna Marquardt, Oregon. Top of Class Light Weight Young Hen: Anna Marquardt, Oregon. Top of Class Light Weight Young Drake: Mason Zabran, Byron. Top of Class Bantam Ducks Old Hen: Levi Eden, Oregon. Top of Class Bantam Ducks Old Drake: Levi Eden, Oregon. Grand Champion Duck: Levi Eden, Oregon. Reserve Grand Champion Duck: Anna Marquardt, Oregon.

### Geese Classes

Top of Class Heavy Weight Old Hen: Grant Johnson, Forreston. Top of Class Heavy Weight Old Gander: Grant Johnson, Forreston. Grand Champion Goose: Grant Johnson, Forreston. Reserve Grand Champion Goose: Grant Johnson, Forreston. Champion Pair of Other Fowl: Mason Zabran, Byron. Reserve Champion Pair of Other Fowl: Landon Zabran, Byron. Champion Hatched Pen: Lucas Armbruster, Polo. Champion Backyard Bird: Brylee

Weaver, Polo. Reserve Champion Backyard Bird: Katelynn Alexander, Forreston. Champion Costume Class: Lucas Armbruster, Polo. Reserve Champion Costume Class: Shelby Harbaugh, Chana. Top of Class White Chicken Eggs: Grace Costello, Stillman Valley. Top of Class Brown Chicken Eggs: Preston Borris, Rochelle. Top of Class All Other Eggs: Grace Manning, Monroe Center. Grand Champion Egg Exhibit: Grace Costello, Stillman Valley. Reserve Grand Champion Egg Exhibit: Preston Borris, Rochelle. Top of Class Decorated Eggs (Youth age 8-11 by 9/1/2020): Brylee Weaver, Polo. Top of Class Decorated Eggs (Youth age 12-14 by 9/1/2020): Brooke Hammond, Oregon. Top of Class Decorated Eggs (Youth age 15-18 by 9/1/2020): Logan Armbruster, Polo. Grand Champion Decorated Egg Exhibit: Brylee Weaver, Polo. Reserve Grand Champion Decorated Egg Exhibit: Brooke Hammond, Oregon. Best of Show: Levi Eden, Oregon.

## Rochelle Area

# CHURCH DIRECTORY

**Ashton Bible Church**, corner of Main and Paddock in Ashton. Pastor Farrel Stauffer, church phone is (815)453-2190, church website [www.ashtonbible.org](http://www.ashtonbible.org). Sunday School for all ages 9:00-10:00am, Morning Worship 10:15am, Wednesday Prayer Meeting/Bible Study 6:30-8:00pm.

**The Bridge Church**, Pastor Greg Duncan, 11038 E. IL Route 38, Rochelle, IL 61068. Phone: 815-562-7750. Sunday School: 9:00 am; Sunday Service: 10:00 am; Nursery & Children's ministry during am service; Bible Study Tuesday 10:00 am and Wednesday 7:00 pm. Web: [thebridgechurchrochelle.com](http://thebridgechurchrochelle.com) Email: [thebridgechurchrochelle@gmail.com](mailto:thebridgechurchrochelle@gmail.com)

**Calvary Lighthouse Church, Assemblies of God**, Senior Pastor, Dr. James Horvath. 14409 Hemstock Rd., Rochelle. Sunday Morning: Sunday Worship & Children's Church 10:00 A.M., Wednesday Evening 7:00 P.M. - Adult Teaching, Missionettes & Royal Rangers Childrens Classes, Nursery available for all services. HE-Brews Cafe is open before and after services. For further information, please call the CLC office at 815-562-7701, or email us at [staff@calvarylighthouse.com](mailto:staff@calvarylighthouse.com)

**Calvary Lutheran Church, LCMC** - "To Know Christ and to Proclaim Christ in Word and Deed" - 19 Perry Road, Lee, IL 60530 (the intersection of Perry Road and W. County Line Road). Rev. Martha Uecker Nelson, Pastor. Coffee Hour starts at 9:00 a.m., Sunday School, Confirmation, and Adult Bible Study are at 9:15 a.m. Worship is at 10:30 a.m. and is broadcast live on Facebook. Go to our website is at [www.Calvarychurchlee.org](http://www.Calvarychurchlee.org) and click on the link there. A Grief Support Group meets the third Tuesday of each month at 10:00 a.m. Call or text (815) 824-2825 or email [CalvaryLeeIL@gmail.com](mailto:CalvaryLeeIL@gmail.com) with questions or for more information. Also check us out at [www.facebook.com/Calvary-Lutheran-Church](http://www.facebook.com/Calvary-Lutheran-Church).

**Rochelle Church of Christ**, Keeping Christ at the center in the Hub City. We meet Sundays at 9:00am for Bible Study and 10:00am for worship. We also have a Wednesday Bible Study at 7:00pm. 206 Erickson Rd, Rochelle, IL 61068. You can call us at (815) 562-6572 or visit us on the web at [rochellechurch.com](http://rochellechurch.com). We also have a radio program Sundays just after 8am on WRHL 1060AM. Minister Dominic Venuso.

**Creston United Methodist Church and Steward United Methodist Church** - Rev. Ilhan You, Creston: 126 West South Street, P.O. Box 209, Creston, Illinois 60113. Sunday morning worship 9:00am. Coffee fellowship at 10:15am. Steward: 507 Main Street, P.O. Box 80, Steward, IL 60553. Adult Sunday School, 10:00am. Sunday morning worship and Children's Sunday School 11:00am. Contact the church office at 847-730-4370 for more information. [facebook.com/crestonumcil](http://facebook.com/crestonumcil) [facebook.com/stewardilumc](http://facebook.com/stewardilumc)

**Elim Reformed Church**, 140 S. Church Road, Kings, IL 61068. Phone: 815-562-6811. Email [goelimchurch@gmail.com](mailto:goelimchurch@gmail.com) Website [www.goelimchurch.org](http://www.goelimchurch.org) Sunday Morning Worship 10:00 Rev. Marv Jacobs

**Faith Lutheran Church** - (14206 E. Flagg Rd.) - "Making Christ Known Through Lives of Faith." In-person worship is available each Sunday at 9:00 a.m. or online at "Faith Lutheran Social" on YouTube. Worship resources are also available on our Facebook page - 'Faith Lutheran Church ELCA.' You may also e-mail Pastor Joy Alsop at [Pastor@faithlcrochelle.org](mailto:Pastor@faithlcrochelle.org) for more information. All are welcome to join us!

**First Baptist Church of Rochelle, First Baptist Church of Rochelle** invites you to experience our practical Bible services which have nurseries provided in every service along with a wide range of children's and teen ministries. Sunday School is at 9:30 am with regular church services at 10:30 am and 1:00 pm. Wednesday Family Night starts at 6:30 pm with AWANA for the 5 yr. olds thru 6th grade. The Omega Teen Ministry also starts at 6:30 pm for 7th - 12th grades and the Adult Bible Study at 7:00 pm. First Baptist Church is located 6 blocks west of Hwy 251 at the corner of Woolf Ct. and 8th Ave. in Rochelle. Call 562-4168 for more information. Listen at 8:30 am Sunday mornings on WRHL 1060 AM for the Sunday morning "Bible Message." [www.firstbaptistrochelle.org](http://www.firstbaptistrochelle.org)


**First General Baptist Church**, 500 S. 12th St, Rochelle. Phone: 815-562-5221. Email: [fgbcrochelle@gmail.com](mailto:fgbcrochelle@gmail.com). Website: [www.fgbcrochelle.org](http://www.fgbcrochelle.org). Facebook: [www.facebook.com/fgbcrochelle](http://www.facebook.com/fgbcrochelle). Pastor: Rev. Angelo Bonacquisti. **Sunday worship services:** 8:30 am, 11:15 am and 6:00 pm. **Sunday school:** 10:00 am. We'd be honored to have you join us as we worship JESUS and continue to grow in truth and love for God and each other. A nursery, children's church, youth group and small groups are available. If you need a ride please contact our church bus driver, John, at (815) 262-4275 by 8:30 am on Sunday. "For if you confess with your mouth that Jesus is Lord and believe in your heart that God raised him from the dead, you will be saved." Romans 10:9

**First Presbyterian Church** - An Amazing Place for Amazing Grace- Rev. Doug Forsberg, Senior Pastor. 1100 Calvin Road, Rochelle. Email: [info@placeforgrace.com](mailto:info@placeforgrace.com). Sunday morning worship 9:00am & 11:00am. In person or streamed online. On our Website and Facebook Live. [www.placeforgrace.com](http://www.placeforgrace.com) / [www.facebook.com/placeforgrace](http://www.facebook.com/placeforgrace)

**Grace Fellowship Church** — Pastor Jeff Ardisson, 2128 Il Route 38, Ashton, 815-453-7464. Sunday School 8:30 a.m. Sunday Worship Service 9:45 a.m. [www.graceisforyou.com](http://www.graceisforyou.com)

**Harvest Baptist Church** 241 Scott Ave. (Hillcrest). Rev. Duane Boehm, pastor. Email [duane712@hotmail.com](mailto:duane712@hotmail.com), cell 815-757-3427. Visit us on Facebook! Service times: Sunday morning worship with Children's Church at 10 am. Wednesday night worship at 7 pm.

**Immanuel Lutheran Church** Missouri Synod 16060 E. Lindenwood Road, Lindenwood, IL 61049. Rev. Dr. Matthew Rosebrock. Church Phone 393-4500. Church Worship 9:00 a.m. Sunday School Christian Education Hour at 10:30 a.m.

**Living Water Community Church** 405 N. Main St, Downtown Rochelle. Phone 815-561-6249, Website: [www.lwccr.com](http://www.lwccr.com), Like us on Facebook. We are Non-Denominational, Christ Centered, Casual dress, Christ Centered Live Band Worship. Mike Vogeler - Outreach and Seven C's Pastor, Chris Bender- Teaching Pastor and Doug Bunker - Missions and Children's Pastor. Sunday Worship Service- 10:00am. Nursery/Toddlers Ages 0-5 available during the service in the Splash building. Swim- Grades 1st-5th worship with the adults then break out for age appropriate teaching. Youth groups, Small groups, Life Groups and Workshops meet throughout the year for Bible teaching. 7C's Mission- serves the community physically & spiritually each month from 1135 Lincoln Hwy, providing lightly used clothing, Hygiene items, a light lunch and Elder Prayer open the second Saturday from 10am-2pm and the 4th Thursday from 4pm to 7:00pm and by appointment.. 

**New Hope Fellowship (Church of God - Anderson, IN)**, 1501 10th Ave., Rochelle, IL 61068. Service: Sunday at 9 a.m. 10:30 a.m., (815)561-8400, [www.NHFchurch.net](http://www.NHFchurch.net) Pastor: Dan Sergeant and Pastor Nick Tornabene. (Classes for children through age fifth grade during service.)

**Rochelle United Methodist Church welcomes everyone to their worship service, and practices openness for all activities including communion. Worship is at 9:00 am. Sunday school for children begins around 9:15, following the Children's Time in worship.** A fellowship time with food and space for conversation occurs in Hicks Hall every week following the worship service. We celebrate communion with an open table on the first Sunday of every month, and on other appropriate occasions. Youth group is on Sunday evenings from 5:30-7:30. Our youth program includes service projects, discussion topics, Bible Study, and lots of fun and fellowship together. Some of our activities include packing meals at Feed My Starving Children, helping at Rochelle Christian Food Pantry and 7C's, working with animals at Barn on Baseline, Mystery trips (Destination Unknown!), and Interactive experiences on Dating boundaries, refugees, and homelessness. Youth group is for grades 6-12 and friends are always welcome. Recorded services are available on our YouTube channel and our website at [www.rochelleumc.com](http://www.rochelleumc.com). Our services are on the radio (93.5 FM) on Sunday mornings at 9:00 am. Our Facebook page is [www.facebook.com/rochelleumc](http://www.facebook.com/rochelleumc). **Our pastor is the Rev. Dr. Katherine Thomas Paisley.** Our address is 709 Fourth Ave. (815) 562-2164. Email is [admin@rochelleumc.com](mailto:admin@rochelleumc.com). At Rochelle United Methodist Church, everyone is welcome and loved!

**St. Patrick Catholic Church** Rev. Jesus Dominguez; Deacon Fermin Garcia; Deacon George Schramm; 244 Kelley Dr. (Corner of Kelley & Caron Rd.), PO Box 329, Rochelle, IL 61068. **Office Hours:** 9:00 AM- 4PM Monday-Thursday, Phone: 815-562-2370. **Mass times:** 8:00 AM Monday-Thursday, Saturday Vigil Mass 5:00 PM English, 7PM Spanish, Sunday Mass 7:30 AM, 9:00 AM in English and 11:00 AM in Spanish. **Confessions:** Monday 8:30AM & 6:30PM, Tuesday 8:30AM, Saturday 8:30am & 4:00-4:45 PM Or by appointment. **Religious Education:** Deacon George Schramm, Director of Religious Education. 903 Caron Road, Rochelle, IL 61068, 815-561-0079; Website: [stpatrickrochelle.com](http://stpatrickrochelle.com) Email: [stpatrick-rochelle@rockforddiocese.org](mailto:stpatrick-rochelle@rockforddiocese.org) Facebook.com/StPatrickRochelle

**St. Paul Lutheran Church** "Building Relationships in Christ, Now and Forever!" Steven Hall, Principal, Parish Nurse-Marcia Schnorr. 1415 Tenth Ave., Rochelle. Church Office-562-2744. Worship times: 6:00 p.m. Saturday, 9:00 a.m. Sunday. Our service is broadcast over WRHL 1060AM at 10:00 a.m. Sunday. Sunday School 10:15-11:15 a.m. Call 562-6323 for more information about the school.





# LOCAL VIEWS

Guest column

## Celebrating public power and municipal-owned electric utilities

ONE of the favorite parts of my job is over-seeing RMU and our municipal electric utility. This year national public power week is being celebrated from Oct. 2-6. The city will be celebrating this by giving tours of the power plant, offering public demonstrations of our new electric safety trailer, giving away smart thermostats, and profiling our employees who work daily to provide our community with reliable and affordable power. There will

be more to come through our local news outlets and social media.

The City of Rochelle has operated an electric and light department since the spring election of 1893 when newly-sworn-in Mayor Edward Gardner made a firm commitment that if elected, the city would build an electric and light plant. Gardner was elected and that August the city council accepted a bid of \$10,972 from Consolidated Engineering Co. to install the complete plant. In three

short months, on Nov. 28, 1893, the first plant was put into action, lighting the streets of Rochelle. RMU has been offering reliable, low-cost power ever since.

Rochelle is one of 2,000 communities in 49 states and five U.S. territories that have a public power utility. As a whole, public power utilities have lower rates than other types of electric utilities across the country. On average, residential

customers served by public power pay monthly bills that are four percent less than those served by investor-owned utilities and 16 percent less than customers served by cooperatives. In fact, based on May data from the U.S. Department of Energy, the average residential rate across the US was 17.86 cents per kWh. This is the highest on record. RMU's summer residential summer rate is well below



Jeff Fiegenschuh

this at 13.5 cents per kWh. We can maintain lower rates due to long-term, low-cost energy purchase contracts, the implementation of demand response programs and our ability to lower transmission capacity costs through RMU's behind-the-meter generation facilities.

I would like to thank all our staff at RMU for their years of dedication and service. Rochelle and our surrounding service territory has the best public power employees in the country. You help make

my job fun and fulfilling. "Great things in business are never done by one person. They are done by a team of people." -Steve Jobs "Talent wins games, but teamwork and intelligence wins championships." -Michael Jordan "No matter how brilliant your mind or strategy, if you're playing a solo game, you'll always lose out to the team." -Reid Hoffman *Jeffrey A. Fiegenschuh, ICMA-CM, MPA, is the city manager of the City of Rochelle.*

## Joe Biden and our crisis of trust

PRESIDENT Biden is the second-most unpopular president in modern history, when compared to others at this point in their first terms. This at least is the verdict from a survey of polls reported on July 18 by Andrew Romano at yahoo.com.

There have indeed been many mistakes, missteps and questionable policies so far. This survey, however, says as much or more about where we are as a nation as they do about Joe Biden's performance as President.

As Mr. Romano observes, the President has, for all his shortcomings, had some remarkable successes. He's pushed major laws through a polarized and almost evenly-divided Congress. Unemployment and inflation are down, while millions of new jobs have come

into being. Illegal border crossings and murder rates have also declined lately.

This is hardly a picture of a hopelessly-failing Presidency. We have to look beyond Joe Biden, the man and the President, to fully understand our discontent. When we do, we find that he's not alone in his failure to gain the trust and approval of the American people.

Confidence in today's Supreme Court is, according to a 6-23-22 Gallup report, at a 50-year low. Only 25 percent of respondents had "a great deal" or "quite a lot" of confidence in the Court, down from an average of 47 percent from 1973 to 2006. Congress fared worst of all, with only 19 percent saying that they approve of how it's handling its job.

A different Gallup sur-

vey of public confidence in 20 American institutions within and outside of government, including organized religion, banks, newspapers and the medical system, presents an equally bleak picture. "Most of the institutions rated this year are," it reports, "within three points of their all-time-low confidence score..." The police, public schools, large technology companies, and big business, it adds, "are at or tied with their record lows."

Our spiral into suspicion and disapproval reaches even farther. Columnist David Brooks, in a 10-5-22 Atlantic article, declares that, "In America, interpersonal trust is in catastrophic decline." He cites a 2015 survey, in

which only 33.3 percent of respondents agreed that "most people can be trusted," the lowest figure since it first asked the question in 1972. "Today," he adds, "a majority of Americans say they don't trust other people when they first meet them."

Robert D. Putnam explored this trend in a different context 23 years ago with his book, "Bowling Alone." He revealed that bowling, which used to bring friends



Lowell Harp

and acquaintances together, had become instead something that couples or families do in isolation. This fact represents for Mr. Putnam a larger pattern of withdrawal from participation in groups and activities that used to hold us together, including

churches, PTAs, clubs and charitable organizations.

We're more than ever a nation of strangers, one in which people don't know the names of their neighbors and rarely if ever speak to them. A fragmented and distrustful society can't sustain the thriving democracy and strong nation that we want to be and used to represent. There are nevertheless reasons for hope, in our winter of discontent.

Mr. Brooks, Mr. Putnam, and others have observed that we've been through similar periods in the past, and that they seem to run in cycles. The years before and after 1900 is one example. The 1960s, with its political and social upheavals, is another.

America overcame all these crises, each time with the arrival of a new generation of reformers,

and a renewed sense of shared purpose. Mr. Brooks predicts, or rather hopes, that the children and grandchildren of my generation, the distrustful and disengaged baby boomers, will bring about a similar rebirth. He and Mr. Putnam agree that, for this to happen, we must learn again how to trust, form social bonds, and participate, face to face, in civic, religious and political organizations.

Until then, it's unlikely that Joe Biden or any other president, no matter how honest and able, will be able to win the support of the American people.

*Lowell Harp is a retired school psychologist who served school districts in Ogle County. His column runs periodically in The Ogle County Life. For previous articles, you can follow him on Facebook at <http://fb.me/lowellharp>.*

### How to contact government officials

U.S. Con. Darin LaHood  
1424 Longworth HOB  
Washington, D.C.  
20515  
(202) 225-6201

IL Sen. Win Stoller  
Stratton Office Bldg  
Springfield, IL 62706  
(217) 782-1942

IL Rep. Bradley Fritts  
Stratton Office Bldg  
Springfield, IL 62706  
(217) 782-0535

Have a letter you want to submit to us? Send it to [news@rochellenews-leader.com](mailto:news@rochellenews-leader.com)

### KEEPING YOU IN TOUCH WITH YOUR LOCAL LEADERS

\* Denotes Chairman/President

#### Rochelle City Council

*John Bearrows	<a href="mailto:jbearrows@rochelleil.us">jbearrows@rochelleil.us</a>
Kathryn Shaw-Dickey	<a href="mailto:kshaw-dickey@rochelleil.us">kshaw-dickey@rochelleil.us</a>
Bil Hayes	<a href="mailto:bhayes@rochelleil.us">bhayes@rochelleil.us</a>
Rosaelia Arteaga	<a href="mailto:rarteaga@rochelleil.us">rarteaga@rochelleil.us</a>
Dan McDermott	<a href="mailto:dmcdermott@rochelleil.us">dmcdermott@rochelleil.us</a>
Tom McDermott	<a href="mailto:tmcdermott@rochelleil.us">tmcdermott@rochelleil.us</a>
Benjamin Valdivieso	<a href="mailto:bvaldivieso@rochelleil.us">bvaldivieso@rochelleil.us</a>

#### Rochelle Elementary School Board

*Trisha Vaughn	<a href="mailto:tvaughn@d231.rochelle.net">tvaughn@d231.rochelle.net</a>
Dave Casey	<a href="mailto:dcasey@d231.rochelle.net">dcasey@d231.rochelle.net</a>
Steve Builta	<a href="mailto:sbuilta@d231.rochelle.net">sbuilta@d231.rochelle.net</a>
Ashley Jackson	<a href="mailto:ajackson@d231.rochelle.net">ajackson@d231.rochelle.net</a>
Stephanie White	<a href="mailto:swhite@d231.rochelle.net">swhite@d231.rochelle.net</a>
Javier Zepeda	<a href="mailto:jzepeda@d231.rochelle.net">jzepeda@d231.rochelle.net</a>
Jennifer Thompson	<a href="mailto:jthompson@d231.rochelle.net">jthompson@d231.rochelle.net</a>

#### Rochelle Township High School Board

*Tom Huddleston	<a href="mailto:tom.huddleston@rthsd212.org">tom.huddleston@rthsd212.org</a>
Bill Ravnaas	<a href="mailto:bill.ravnaas@rthsd212.org">bill.ravnaas@rthsd212.org</a>
Jeff Tilton	<a href="mailto:jeff.tilton@rthsd212.org">jeff.tilton@rthsd212.org</a>
Bobby Chadwick	<a href="mailto:bobby.chadwick@rthsd212.org">bobby.chadwick@rthsd212.org</a>
Brent Ohlinger	<a href="mailto:bohlinger@rthsd212.org">bohlinger@rthsd212.org</a>
Laurie Pillen	<a href="mailto:lpillen@rthsd212.org">lpillen@rthsd212.org</a>
Joel Thompson	<a href="mailto:jthompson@rthsd212.org">jthompson@rthsd212.org</a>

#### Flagg-Rochelle Park Board

Brent Carmichael	<a href="mailto:bcarmichael@rochelleparkdistrict.org">bcarmichael@rochelleparkdistrict.org</a>
John Dobbs	<a href="mailto:jdobbs@rochelleparkdistrict.org">jdobbs@rochelleparkdistrict.org</a>
Dale Wells	<a href="mailto:dwells@rochelleparkdistrict.org">dwells@rochelleparkdistrict.org</a>
*Tim Hayden	<a href="mailto:thayden@rochelleparkdistrict.org">thayden@rochelleparkdistrict.org</a>
Jodie Hart	<a href="mailto:jhart@rochelleparkdistrict.org">jhart@rochelleparkdistrict.org</a>
Joe Lenkaitis	<a href="mailto:jlenkaitis@rochelleparkdistrict.org">jlenkaitis@rochelleparkdistrict.org</a>
Kristi Gonzales	<a href="mailto:kgonzaes@rochelleparkdistrict.org">kgonzaes@rochelleparkdistrict.org</a>

#### Ogle County Board Dist. 3

Austin Gillis	<a href="mailto:agillis@oglecounty.org">agillis@oglecounty.org</a>
Dan Miller	<a href="mailto:dmiller@oglecounty.org">dmiller@oglecounty.org</a>
Joseph Simms	<a href="mailto:jsimms@oglecounty.org">jsimms@oglecounty.org</a>

#### Ogle County Board Dist. 4

Jackie Ramsey	<a href="mailto:jramsey@oglecounty.org">jramsey@oglecounty.org</a>
Skip Kenney	<a href="mailto:skenney@oglecounty.org">skenney@oglecounty.org</a>
David Williams	<a href="mailto:dwilliams@oglecounty.org">dwilliams@oglecounty.org</a>

#### Creston Village Board

*Tom Byro	<a href="mailto:tommyb_47@yahoo.com">tommyb_47@yahoo.com</a>
Greg Hopkins	<a href="mailto:ghopkins522@comcast.net">ghopkins522@comcast.net</a>
Steve Katzman	<a href="mailto:skatzman@essex1.com">skatzman@essex1.com</a>
Mike Kerns	<a href="mailto:ac.kerns@comcast.net">ac.kerns@comcast.net</a>
Curt Ward	<a href="mailto:caward92@comcast.net">caward92@comcast.net</a>
Mark Hibshman	
Reid Elliot	
Jennifer Payton	

#### Hillcrest Village Board

*Richard Rhoads	<a href="mailto:rrhoads@hillcrestil.us">rrhoads@hillcrestil.us</a>
Pam Pittman	<a href="mailto:ppittman@hillcrestil.us">ppittman@hillcrestil.us</a>
Dan Potter	<a href="mailto:dpotter@hillcrestil.us">dpotter@hillcrestil.us</a>
Tim Ball	<a href="mailto:tball@hillcrestil.us">tball@hillcrestil.us</a>
Jose Huerta	<a href="mailto:jhuerta@hillcrestil.us">jhuerta@hillcrestil.us</a>
Eileen Braski	<a href="mailto:ebraski@hillcrestil.us">ebraski@hillcrestil.us</a>
Joe Thompson	<a href="mailto:jthompson@hillcrestil.us">jthompson@hillcrestil.us</a>

#### Flagg Township

Sue Messer	<a href="mailto:flaggtwp@rochelle.net">flaggtwp@rochelle.net</a>
Joanna Patrick	<a href="mailto:flaggtwpclerk@rochelle.net">flaggtwpclerk@rochelle.net</a>
Susan Rothenberger	<a href="mailto:assessor@rochelle.net">assessor@rochelle.net</a>
Scott Seebach	<a href="mailto:scottseebach@gmail.com">scottseebach@gmail.com</a>

#### Board of Trustees

Lance Noggle	<a href="mailto:noggle62@gmail.com">noggle62@gmail.com</a>
Eric Gruben	<a href="mailto:egruben@comcast.net">egruben@comcast.net</a>
Susan Hager	<a href="mailto:susanhager303@comcast.net">susanhager303@comcast.net</a>
Jim Kenney	<a href="mailto:jimk@rocketsupply.com">jimk@rocketsupply.com</a>

#### Flagg-Rochelle Library

*Jaqueline Dickow	<a href="mailto:dickow@comcast.net">dickow@comcast.net</a>
Teresa Haggstad	<a href="mailto:haggstads@comcast.net">haggstads@comcast.net</a>
Michael Scanlan	<a href="mailto:scanlan@comcast.net">scanlan@comcast.net</a>
Lanning Nicoloff	<a href="mailto:nicoloff118@comcast.net">nicoloff118@comcast.net</a>
Sheri Klindera	<a href="mailto:alwayslefty2@gmail.com">alwayslefty2@gmail.com</a>
Susan Sevedge	<a href="mailto:nit1prl22@yahoo.com">nit1prl22@yahoo.com</a>
Darci Waltrip	<a href="mailto:doobs12@comcast.net">doobs12@comcast.net</a>

### LETTERS TO THE EDITOR POLICY

The Rochelle News-Leader encourages responsible letters to the editor on subjects of interest to our readers. Editing may be necessary for space, clarity or to avoid obscenity or libel, but ideas will not be altered. All letters must bear the handwritten signature of the writer and include address and phone number or e-mail address for verification purposes. Neither the street address nor phone number will be printed. Letters should

be typed or legibly handwritten, and no anonymous letters will be published. Any letters from boards or organizations must include at least one name of an individual. Any criticism of public officials should be limited to issues related strictly to their position or actions made in office, as personal attacks will not be published. Letters involving private disputes between the writer and a business will not be published. Political endorsements will be

published, however letters from candidates endorsing themselves will not be printed. Letters may be dropped at the News-Leader office (211 IL Route 38 East), mailed to the News-Leader (P.O. Box 46, Rochelle, IL 61068) or e-mailed ([news@rochellenews-leader.com](mailto:news@rochellenews-leader.com).) The News-Leader reserves the right to edit or reject any letter to the editor for any reason, and letters chosen for publication do not necessarily reflect the views of this newspaper.

Top local stories • Sports • Associated Press • Daily weather updates • Obituaries • Classified • Display advertising • Special sections

Stay Connected Wherever You Go!

[www.rochellenews-leader.com](http://www.rochellenews-leader.com)

Top local stories • Sports • Associated Press • Daily weather updates • Obituaries • Classified • Display advertising • Special sections



# COMMUNITY

## Rep. Fritts to host hunter safety course Sept. 23-24

**ROCHELLE** — State Rep. Bradley Fritts (R-Dixon) is hosting an upcoming hunter safety course. This two-day event will take place on Sept. 23 and 24 from 8 a.m. to 1 p.m. Both days are required.

“With hunting season approaching, I wanted to offer my constituents a way to learn more about how to keep themselves, and others, safe while enjoying the outdoors,” Fritts said. “This course also offers a space for fellow hunters to come together as a community and discuss the sport that they are passionate about.”

The event will take place at the Rochelle Masonic Lodge located at 500 Lincoln Highway, Rochelle. Reservations are required and spots are limited. To secure your spot, contact Rep. Fritts’ office at 815-561-3690.

For more information about Rep. Fritts, visit RepFritts.com.

## Free coin appraisal at the Rochelle Moose Sept. 17

**ROCHELLE** — On Sunday, Sept. 17, the Rochelle Moose will have a free coin appraisal in the dining room from 1-5 p.m. This event is open to the public. So bring in you coins foreign or domestic to be appraised. To appraisers, John Gruben and Dave Schabacker, can handle just about anything, even currency! It might take some time, but it can be done. Any questions, call Dave at 815-761-3042.

### THE KITCHEN TABLE MENU

7034 S. Klondike Road | Rochelle, IL 61068 | 815-561-9074  
If you would like to volunteer with us, please email us at [volunteer@kitchentablerochelle.org](mailto:volunteer@kitchentablerochelle.org)

**September 3** – (Sunday Brunch) – No Sunday Brunch – Enjoy the Holiday Weekend

**September 5** – (Tuesday) – Chicken Frittlers with Country Gravy, Peas, Corn, Mashed Potatoes

**September 7** – (Thursday) – BBQ Pulled Pork Sandwich with Fries, Baked Beans

**September 12** – (Tuesday) – Pollock Fish, Coleslaw,

**September 14** – (Thursday) – Spaghetti, Salad, Bosco Sticks

**September 19** – (Tuesday) – Taco Salad or Taco, Beef with lettuce, tomatoes, onion, jalapenos, cheese, black beans

**September 21** – (Thursday) – BBQ Baby Back Ribs, Baked Beans,

**September 26** – (Tuesday) – Chicken Pot Pie – Homemade

**September 28** – (Thursday) – Corned Beef and Cabbage with Carrots and Potatoes, Cornbread

**October 1** – (Sunday Brunch) – Bacon Egg and Cheese Muffins, Grits,

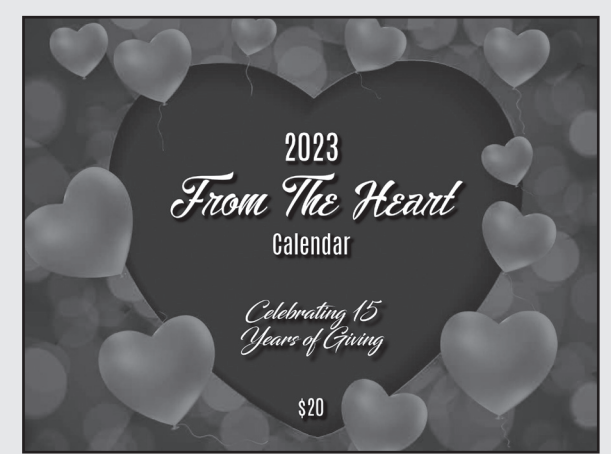
KIDS MENU: Chicken Nuggets w/Fries

\*\*All menus are subject to change. If you would like to check before coming out, please call us at 815-561-9074 [www.KitchenTableRochelle.org](http://www.KitchenTableRochelle.org)

### BIRTHDAYS & ANNIVERSARIES

<b>Sept. 11</b> Sam Oyman Melinda Pourchot Wyatt Sexton	<b>Sept. 18</b> Amie Eggenburg Terry & Teresa Dodillet (anniversary)	<b>Sept. 23</b> Chris Doering John Worley Jeff & Diana Dickey (anniversary)
<b>Sept. 12</b> Ianna Smith	<b>Sept. 19</b> Leland & Lucy Hazlip (anniversary) Madison Wooten	<b>Sept. 28</b> Ashley Bunker
<b>Sept. 14</b> Alivia Law Blakely Avila	<b>Sept. 20</b> Jon & Carolyn Bieck (anniversary)	<b>Sept. 29</b> Josh Walker Sarah Kulwicki Lyndsey O'Brien
<b>Sept. 15</b> Robert Lee	<b>Sept. 22</b> Krew Sullivan	
<b>Sept. 17</b> David Jones Jenny Rosenbach Richard & Beverly Herrmann (anniversary)		

Call 815-561-2151 to submit names for birthdays and anniversaries



- Aug. 15 - Rebecca Berkeley, Rochelle, \$25
- Aug. 16 - Joan Bakken, Rochelle, \$25
- Aug. 17 - James Ptucha, Dix Hills, \$25
- Aug. 18 - Ed Messenger, Oregon, \$25
- Aug. 19 - Roberto Olazagasti, Rochelle, \$25
- Aug. 20 - Judy Erickson, Rochelle, \$50
- Aug. 21 - Brandon and Julia Nalley, Dubuque, \$25
- Aug. 22 - HOPE of Ogle County, \$25
- Aug. 23 - Genevieve Stoll, Rochelle, \$25
- Aug. 24 - FTH Event Auction, \$25
- Aug. 25 - City of Rochelle, \$25
- Aug. 26 - Cahoy Pump, \$25
- Aug. 27 - Karen Marsh, Stillman Valley, \$50
- Aug. 28 - Terry Hatfield, Rochelle, \$25
- Aug. 29 - Steve Barron, Rochelle, \$25
- Aug. 30 - Debbi Ramsey, Rochelle, \$25
- Aug. 31 - Zekelman Employee, \$25
- Sept. 1 - Rochelle Area Community Foundation,
- Sept. 2 - Emily Lopez-Perez, Rochelle, \$25
- Sept. 3 - Mandi Morris, Rochelle, \$50
- Sept. 4 - Brittany Olszewski, Rochelle, \$1,000
- Sept. 5 - Ben Heck, Chana, \$25
- Sept. 6 - Mariah Wyrobek, Rochelle, \$25
- Sept. 7 - Linda Schreiber, Leaf River, \$25
- Sept. 8 - Jason Burdin, Rochelle, \$25
- Sept. 9 - Zekelman Employee, Rochelle, \$25
- Sept. 10 - Rochelle Area Community Foundation, \$50



## Coffee Break

### MAGIC MAZE • NO REVERSE

I Y W T B R P M K I F D B Y W  
U S E T U H C A R A P Q O M C  
K W K A N G A R O O I F D B O  
Z X A A G I N G Y W U S S Q A  
O N L T E N J I H R T F U P S  
E L O P E R I F V E O W D M T  
C M A Y J R W D K I O T V U E  
T S I Q U P F C D R D N S J R  
L K I T M H O A R E F Y E I C  
E N A L P R I A L B L Z K K H  
Y W V U S R Q P N L M S L S J

Find the listed words in the diagram. They run in all directions forward, backward, up, down and diagonally. Unlisted clue hint: AMUSEMENT PARK ROLLER —

Aging	Emus	Parachute	Sledding
Airplane	Fire pole	Rocket	Time
Arrow	History	Ski jump	Waterfall
Bungee jump	Kangaroo	Sky diving	

©2023 King Features Syndicate, Inc. All rights reserved.

### Super Crossword

Answers

Across: 1. Towel is smaller. 2. Number is missing. 3. Arm is moved. 4. Sailboat is missing. 5. Sign is smaller. 6. Dock is missing.

Down: 1. Towel is smaller. 2. Number is missing. 3. Arm is moved. 4. Sailboat is missing. 5. Sign is smaller. 6. Dock is missing.

### HOCUS-FOCUS

BY HENRY BOLTINOFF

Find at least six differences in details between panels.

©2023 King Features Syndicate, Inc.

### Super Crossword

#### NATIONAL DATA

<b>ACROSS</b>	<b>DOWN</b>
1 Bumper-car carnival ride	1 Tip politely, as one's hat
7 TV title alien	2 Human face's shape
10 Garden pond fish	3 Whoop- (extravagant fanfare)
13 Cause to blunder	4 Expanded
19 Cook too long	5 Sedgwick of Warhol films
20 Ned of NASCAR	6 Marilyn of "Niagara"
22 Ned of "The D.A."	7 In — (pronto)
23 Appear gradually, as a scene	8 Desktop illuminator
24 "No, seriously!"	9 No longer being detained
25 Surrounded by	10 Sax celebrity
26 Mountain laurel	11 Soufflé
29 Clumsy type	12 Really tiny
30 Stocking stuffer	13 "Saturday Night Fever" star
31 It's charged	14 Hard Italian cheese
32 Alternative to ChapStick	15 "Sure, put me down"
37 "Old Folks at Home"	16 Toenail treatment, informally
44 Vital artery	17 Astral bear
45 Spellbound	18 Coffee holder
47 1989-2007 senator Trent	21 Rambled
48 Stein fillers	22 Mexican city due south of Dallas
49 Blue spruce	23 Elevated
53 Propose a date to	24 Waiting with — breath
55 Author Ferber	25 2013 Grammy winner for "Royals"
56 Pro — (in proportion)	26 Dunne of classic films
57 "— a customer"	27 Lie
59 Joe of "GoodFellas"	28 Chinese ideal
60 Clinton aide Myers	29 California county whose seat is Fairfield
62 Susan of "Goldengirl"	30 Sign word after "Ye"
64 Eurasian animal with antlers	31 Stocking stuffer
66 "North to the Future"	32 Worked on a leaf collection?
70 Used up	33 "You beat me"
74 118-Across was one	34 Tennis tie
75 Printing goofs	35 Up and about
80 Humdinger	36 Gained access to
81 Reformer Ralph	37 Refrigeration fluid
84 "OK" from Tom Sawyer to Aunt Polly	38 Workers with shingles, maybe
86 Workplace welfare org.	39 Kofi, once of the U.N.
87 Fuddy-duddies	40 Caveman's weapon
89 Topaz	41 Scrub nurses' sites, in brief
92 Relative of a lutz	42 Be hammy
93 Bullfight yells	43 Tribal pole emblem
95 Israeli airline	44 Mountain (Vermont ski resort)
96 Right wrongs	45 Two fives
97 Cactus wren	46 — Marymount
101 Went in	47 University
103 To the — power	48 Stadium's kin
104 Savings acct. accrual	49 Britcom of the '90s
105 Hail, basically	50 Pope before Paul V
	51 Coors offering
	52 Trade group
	53 GPS calculation
	54 insect
	55 One way to fry food
	56 Chunky slice
	57 Garr of films
	58 Spellbound
	59 Flair
	60 Cocooned
	61 Son of Seth
	62 Head, in Haiti
	63 Classroom
	64 Apple, often
	65 Glen
	66 Bard's Ireland
	67 Revue sketch
	68 Pill-OK'ing agcy.

©2023 King Features Syndicate, Inc. All rights reserved.



# LOCAL NEWS

## LIBRARY: Board president Kroupa details new plans for project

From page 1

The library was unable to accept any of those bids due to an \$800,000 grant from the State of Illinois that it planned on receiving that won't be funded by the state, Kroupa said. The library district is currently scaling back its plans for the new library and doing redesigns that will make the project about a third smaller. Kroupa said another bidding process is planned for October or November. Library officials originally hoped to start work during early summer 2023.

"We're pinching pennies in every way, shape and form that we can to make sure that we're still meeting the functions that we need," Kroupa said. "We've completely excluded any of the money

that would be coming from the state. If they fund it, fine. If they don't, we really don't care anymore. We're going with the \$2.2 million that the referendum passed for and making sure we can construct everything."

Redesigns have included less parking, less signage and the possibility for future expansion being left open. Kroupa said nothing in the plans that has to do with safety or security will be altered in redesigns. The library's land footprint will stay the same.

The price of the library is expected to cost \$275-325 per square foot.

"That sounds like a lot of money, but a typical library is ranging from \$750-1,000 per square foot," Kroupa said. "If you go to Rockford, they're a little bit higher than that."

Kroupa asked the vil-

lage board for possible variances on the new library including waiving a requirement for a dumpster enclosure, and some electric and parking issues along with waiving building permit fees. Village President Tom Byro said Creston's engineer and building inspector would look at the redesigns and come up with answers, but no problems with those requests are foreseen.

Kroupa said it's possible construction on the new library could start in November if the process moves fast enough.

### Fireworks

The board voted unanimously to donate \$3,000 for the Creston Booster Days fireworks this year. Booster Days is scheduled to take place in the village Sept. 15-17.

Last year, the village donated \$2,500 for the fireworks. The total cost of the fireworks this year will be \$6,000, which is \$500 more than last year. The fireworks show will be the same as last year.

"I heard a lot of comments from especially out-of-town people on how good they were last year," Village Trustee Curt Ward said.

### Development

Byro said a developer is looking at land along Illinois Route 38 within village limits to put up four warehouses. The village has had conversations with the developer already.

Byro said Creston has been trying to get ahold of representatives from the Lee-Ogle Enterprise Zone to see what incentives could be available for the

developer.

"There's money there," Byro said. "These people are interested in getting something going out there. We are working on that."

### Water leak

Byro said the village is currently working to determine the source of a large water leak near the Creston Commons subdivision. The village is using 20,000-30,000 more gallons of water per day as it was at this time last year, almost twice as much as last year. American Leak Detection and village officials plan to work to locate and remedy the leak. The cost to locate the leak will probably be around \$2,000.

"Hopefully we can get this thing figured out," Byro said. "We're losing water. How long we've been losing it, I don't know.

I sure hope we can figure out something."

### Properties

Village Attorney Russell Crull provided an update on the six properties that the village is trying to get cleaned up. Two of the six properties brought themselves into compliance to have litigation dismissed and another will come into the village's ownership once the village pays to have buildings on it demolished. Two other property owners have had default judgments against them in court and demolitions can occur at the village's expense for those as well. One property remains active in court, Crull said.

Demolitions would be done at the village's expense and it would look to recoup those costs through liens on the properties.

# Phillips Family Benefit

October 14th 1PM-6PM at the Opera House, 204 S Main St., Creston

AN EVENT TO HELP FINANCIALLY SUPPORT GARY PHILLIPS & HIS FAMILY AFTER BEING DIAGNOSED WITH LEUKEMIA.

Meal Tickets  
\$15/Adult  
\$8/Child

To purchase a meal ticket, contact  
Marissa Seldal  
(310) 936-3993



To join the bags tournament, contact John Gonzales (815) 757-2955

## Join Us for a Bags Tournament, Raffles, Taco Dinner & Much More!

The bags tournament will help the Phillips family with financial costs during this difficult time.



1st Place Prize - \$250  
2nd Place Prize - \$150  
3rd Place Prize - \$100  
Admission is \$50/Team

\*There will be a children's tournament for ages 8-18. \$10/person. Gift prizes for 1st, 2nd and 3rd place.

## 5th Annual



Voting Ends

Wednesday, September 13th at 10am



Over 23,000 Votes Cast To Date!

\* 1 Vote per Email Address

- ☒ **Vote for Your Favorite Business**
- ☒ **Vote for Your Favorite People**

Get ready to  
**VOTE** for  
*your favorites!*



SCAN TO  
VIEW AND VOTE

**Alfano's**  
Pizzeria and Italian Restaurant

Special Thanks to our

**CORE**  
Sponsors



**State Farm**  
TERRI SCHAEFER

Brought to you by:

**OGLE COUNTY**  
**LIFE**  
ROCK VALLEY SHOPPER

**ROCHELLE**  
**News-Leader**



2023

BEST OF

OGLE COUNTY

ONLY 3 DAYS

LEFT

TO VOTE!

Make Your Vote Count!

2023

BEST OF

OGLE COUNTY

VOTE NOW!

Voting Ends

Sept. 13<sup>th</sup>

@ 10am!

Vote for your favorites!

SUNDAY, SEPT. 10, 2023

ROCHELLE NEWS-LEADER • SECTION 2 • PAGE 1

# SPORTS



## FRESHMAN HUBS WIN

The RTHS freshman football team won 38-22 over Belvidere on Monday night.

See page 5 for more details

## RTHS Volleyball

# Girls let loose in win

Rochelle cruises for 25-8, 25-13 win over North Boone on Tuesday evening

BY RUSSELL HODGES  
SPORTS EDITOR

**ROCHELLE** — Celebrations were happening early and often for the Rochelle Lady Hub varsity volleyball team Tuesday evening, when the purple and white showed dominance on both offense and defense during their non-conference battle against the North Boone Vikings.

Looking to bounce back from three consecutive losses to close out the Lady Hub Invitational over the weekend, Rochelle controlled Tuesday's match from the start and carried their momentum through to the finish, cruising over North Boone for a 25-8, 25-13 win. The Lady Hubs, who totaled 23 digs in the match, went the entire first set without committing a single receive error.

"It feels amazing to come back and win after losing to a few teams that we should have beaten," senior Kennedy Adamski said. "This was a good win after we had a little bit of a losing streak. Our serve receive was really good tonight and we put the ball away."



(PHOTO BY RUSSELL HODGES)

Members of the Rochelle Lady Hub varsity volleyball team celebrate a point during the team's home match against North Boone on Tuesday. Rochelle cruised over the Vikings 25-8, 25-13 to improve to 10-5 overall this season.

See VBALL page 5

## RTHS Golf

# Dyer fires season-best round as Hubs host Ottawa

## Freshman cards 3-over-par 39 to lead Rochelle in 147-180 loss against Pirates

BY RUSSELL HODGES  
SPORTS EDITOR

**ROCHELLE** — Freshman Alex Dyer fired a season-best 3-over-par 39 to lead the Rochelle Hub varsity golf team during Tuesday's Interstate 8 Conference match against the Ottawa Pirates.

Dyer is one of three underclassmen who have been regular varsity starters for the Hubs this fall. Sophomore Ian Metzger finished with a nine-hole round of 41 on Tuesday, while freshman Owen Carmichael carded a 51 as the Pirates defeated the Hubs 147-180. Ottawa's Colt Bryson earned medalist honors with a 1-under-par 35 and Drake Kaufman inked an even-par 36.

"Alex's really competitive and he's played sports for most of his life," head coach Glen Mehrings said. "He doesn't want to lose and he knows he can come back from a bad shot like most good players. Alex has the instinct to fight through adversity. He had some trouble with a loose tee shot on the first hole, but he fought back and chipped the ball in to save his score. The ceiling on him is really high and it's great that he has a friend like Ian to play with and compete with."

Ottawa saw five play-

ers shoot in the 30s on Tuesday, with Seth Cooper and Chandler Creedon each notching scores of 38 while Alex Billings had a 39 and Jacob Armstrong totaled a 42. While the Hubs received low scores from their underclassmen, Rochelle had two seniors step up as first-year golfers on the varsity team. Owen Messer was the third-lowest scorer with a 49, while Obie Nava recorded a 51 during the nine-hole match at Fairways Golf Course in Rochelle.

"Ian and Alex have been carrying us in every match and they enjoy the pressure of knowing they need to shoot a low score in order for us to win," Mehrings said. "It's great to see our young players take responsibility during practice and on their own time because their success comes from their hard work. Owen stepped up for us and Obie hit the ball really well. They just need to get more comfortable by playing more matches. We're hoping to find our top six players soon."

Senior Cale Workman carded a 63 to round out the varsity lineup for the Hubs (1-7, 0-3 Interstate 8) on Tuesday evening.

See GOLF page 3



(PHOTOS BY RUSSELL HODGES)

Freshmen Alex Dyer (left) and Owen Carmichael (right) carded three of the Rochelle Hub varsity golf team's best scores during Tuesday's match against Ottawa. Dyer fired a season-best 3-over-par 39 in the match.





The businesses featured on this page are

**"Hubs Super Fans"**

They proudly support our local athletes and students.

Please show your appreciation by patronizing their businesses.

**WE SUPPORT OUR HUBS!**



**VINCE'S PIZZA**  
SINCE 1967

Enjoy a **15% Discount**  
when Ordering Online at  
[VincesPizzainRochelle.com](http://VincesPizzainRochelle.com)

**815.562.7300**  
Delivery & Curbside Pick Up  
1071 N 7th St, Rochelle, IL



Hello,  
neighbor!

Huber Ins and Fin Svcs Inc  
Shane B Huber, Agent  
221 E. IL Rt. 38  
Rochelle, IL 61068  
Bus: 815-562-7011

Please stop by and say, "Hi!"  
I'm looking forward to serving your needs for insurance and  
financial services.  
Like a good neighbor, State Farm is there.  
**CALL ME TODAY!**

**State Farm**

1001013.1 State Farm, Home Office, Bloomington, IL

**DLX Medical**  
GROUP



Diana Alanis, MD

Accepting  
New Patients

Caring for your  
family's health from  
infant to adults.

For appointment, please call

**815-227-9594**

1212 Currency Ct, Rochelle, IL 61068  
Most Insurance Accepted

Local People Providing Local Service

**Rochelle**  
MUNICIPAL UTILITIES

Water • Waste Water  
Electric • Communications

Phone: 815-562-4155 333 Lincoln Highway  
Fax: 815-562-5861 Rochelle, IL

[www.rmu.net](http://www.rmu.net)

HS2016

**CENTRAL  
ILLINOIS  
LOAN**

Loans For All Your Needs  
Auto • Home Improvement • Vacation  
Jami Hackman • Tonia Holland

**815★561★4035!**

310 Eagle Drive, Rochelle  
All loans subject to our normal credit requirements and policies.

**MORTON  
BUILDINGS**  
If you can dream it, we can build it.



Rochelle Sales Office • Hwy. 251 N. • 877-613-3050

**Rochelle**  
Community Hospital  
Your Local Healthcare Resource.

900 N. 2nd Street, Rochelle  
815-562-2181  
[www.rochellehospital.com](http://www.rochellehospital.com)

HSF2017

**MEYERS**  
FURNITURE & FLOORING

209 Powers Road, Hwy 251 N  
Rochelle, IL 61068  
(815) 562-8792  
[www.meyersfurniture.com](http://www.meyersfurniture.com)

**Bruns**  
Construction, Inc.

• Residential  
& Commercial  
Concrete  
• Additions

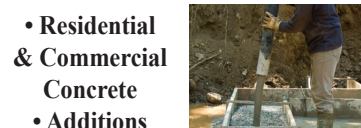
**815-561-0099**

Free Estimates • Fully Insured

[www.brunsconstructioninc.com](http://www.brunsconstructioninc.com)

FREE  
ESTIMATES!

Tim & Roger Bruns,  
Owners  
Established 1997



**Kish**  
KISHWAUKEE  
COLLEGE

Helping you create the life you want.

**kish.edu**



**QUEEN'S TRUCKING  
& CONSTRUCTION, INC.**

Small or Big Construction Jobs, We Do Them All!  
We Aim for On Time, Every Time!

We were Voted Mid-West Truckers  
Association, Inc. Northern Region  
Trucking Company of the year 2022

Queens Trucking & Construction Inc  
322 Errett Road, Rochelle  
815-562-6064 | [queens-trucking.com](http://queens-trucking.com)

**ANDERSON  
PLUMBING & HEATING, INC.**

Plumbing, Heating & Cooling  
Water Heaters, Water Softeners,  
Drinking Water Systems, Iron Filters,  
Sewer Rodding & Jetting & More!

Since 1976

621 First Ave., Rochelle  
(815) 562-8784

Lic# 055-013999

**MEXICAN FOOD**  
**RESTAURANT TECALITLAN**  
Authentic Homemade Mexican Food  
Carry-out & Catering Available

(815) 561-7576

1071 N. CARON RD. ROCHELLE, IL 61068

**Rochelle**  
Chiropractic  
Clinic  
Dr. Chad M. Piller

227 E. Rt 38 • Rochelle, IL

**815-562-8706**

[www.rochellechiropractic.com](http://www.rochellechiropractic.com)  
Now Accepting New Patients!



**Alexis**

**Nava**

*Year: Freshman*

*Sport: Soccer*

**Q: How many years have you  
been playing this sport?**

*A: I've been playing for 10 years.*

**Q: What do you enjoy most  
about this sport?**

*A: I love to play with my friends  
and family.*

**Q: What is your favorite school  
subject and why?**

*A: Math because I'm very  
good at it.*

**Q: Who is your favorite  
athlete and why?**

*A: Lionel Messi because he's very  
good at soccer and I just love how  
he plays the game.*

**Q: Who is your biggest role  
model and why?**

*A: My dad and brother because*

**model and why?**

*A: My dad because he helps me  
practice and he tells me what I  
can improve on.*

**Q: What is your dream job  
and why?**

*A: To be an electrical engineer  
because I like to work with  
electricity.*

**Q: Where would your dream  
vacation be and why?**

*A: Paris, France because I want  
to see the Eiffel Tower.*

**Q: What is your favorite thing  
about being a student-athlete at  
RTHS?**

*A: That I can get out early of class  
for away games.*



*they both help me with my soccer  
journey.*

**Q: What is your dream job  
and why?**

*A: To go pro, but if that doesn't  
work out when I'd like to be a  
welder because I want to be like  
my brother.*

**Q: Where would your dream  
vacation be and why?**

*A: Florida because I want to go to  
the beach and have fun.*

**Q: What is your favorite thing  
about being a student-athlete at  
RTHS?**

*A: I like to be in the sports I love  
and I also like to be around my  
friends. I also like the teachers  
that I have.*

**Alfano's**  
Pizzeria and Italian Restaurant

Taste The **TRADITION**  
Taste The **DIFFERENCE**

Dine In • Carry Out •  
• Home Delivery • Pizza • Pastas •  
• Sandwiches • Salads •  
• and Lots More!

Dine-In • Carry Out • Home Delivery

1115 TURKINGTON TERRACE, ROCHELLE

**815-562-3312**

**JOHNSON  
TRACTOR**

SALES • PARTS • SERVICE

200 Steward Road

**800.262.1680**

[www.johnsontractor.com](http://www.johnsontractor.com)

**AtlasAuto**

**BUY HERE - PAY HERE**  
You Work - You Drive

Se Habla Español **815-562-7433**

1400 N 7th St  
Corner of Flagg Rd & Hwy 251 N

**HUB-REMSEN**  
PRINT GROUP

101 Maple Ave • Rochelle, IL 61068

815.562.7057 • [hub-remsen.com](http://hub-remsen.com)

**GO HUBS!**



"Proudly Serving the Rochelle Area Since 1945"

**Berg-Johnson  
Electric**



FREE ESTIMATES  
Licensed and Insured

Residential • Commercial • Industrial

24 Hour Emergency Service

**815-562-4937**

500 Cleveland Avenue



We are  
Ogle  
County's  
only  
GM Dealer!

• Collision Repair • Rental Cars  
• 24 Hour Towing • Maintenance On All Makes  
• New/Preowned Vehicles and Models  
• Tires, Alignments, Brakes, Batteries

**JEFF PERRY**  
Auto Group

815-562-8787 [www.jeffperrychevrolet.com](http://www.jeffperrychevrolet.com)

**Busy Schedule?**  
Leave the cooking to us.

• Large menu of foods  
• Rochelle's famous chicken  
by the dinner or bucket  
• Hand dipped ice cream  
(16 flavors)

**COUNTRY SCHOOL**  
DRIVE-IN RESTAURANT  
251 N. ROCHELLE • 562-6039

**Stillman  
BANK**

**GO HUBS!**



Earning Your Trust Since 1882

[www.stillmanbank.com](http://www.stillmanbank.com) Member FDIC



GOOD LUCK HUBS  
FROM YOUR FANS AT:

**HAYDEN**  
REAL ESTATE INC.

815-562-2111 [hre@haydenreinc.com](mailto:hre@haydenreinc.com)

RESIDENTIAL  
AGRICULTURAL  
COMMERCIAL



# SPORTS

## RTHS Cross Country

## Harriers race at Oregon Invitational

### Koziol and McGee record fastest times for RTHS

BY RUSSELL HODGES  
SPORTS EDITOR

**OREGON** — The Rochelle cross country teams raced at the Oregon Invitational on Saturday. The Hubs finished 17th out of 22 teams in the varsity race and the Lady Hubs took 16th

out of 16 teams.

Sophomore Declan McGee led the Hubs in the 5,000-kilometer varsity competition, finishing 34th out of 160 runners with a time of 18:43.3. Sophomore Elijah Mayen took 92nd with a time of 20:43.5 and sophomore Levi Waddle

placed 119th with a time of 22:37.6. Freshman Hadley Losoya rounded out the top four varsity runners for the Hubs, finishing 126th in 23:10.8.

Sophomore Annaliese Koziol led the Lady Hubs in the 5,000-kilometer varsity competition, taking 12th

out of 122 runners with a time of 22:30.0. Juniors Brisa Zepeda and Bridgett Ramirez placed 92nd and 101st with respective times of 27:52.9 and 29:04.3. Sophomore Rose Luxton finished 73rd with a time of 26:00.0 to round out the top four Lady Hub runners.



Sophomores Annaliese Koziol (left) and Declan McGee (right) ran the fastest times for the Rochelle Hub and Lady Hub cross country teams during the Oregon Invitational on Saturday.



(COURTESY PHOTOS)

## RTHS Boys Soccer

## Hubs roll for road win at Ottawa

### Salazar scores twice as Rochelle nets 5-3 victory

BY RUSSELL HODGES  
SPORTS EDITOR

**OTTAWA** — Four Rochelle Hub varsity soccer players found the back of the net on Wednesday evening, when the purple and white traveled for a 5-3 road win over Ottawa in Interstate 8 Conference action. Senior

Diego Salazar recorded two goals, while junior Alberto Casillas collected three assists along with one goal. Junior Fernando Diaz and sophomore Heilly Zepeda each added goals for the Hubs (3-4-1, 1-2 Interstate 8) in the victory.

Sophomore Antonio Hueramo compiled six

saves for the Hubs, who struck first when Zepeda cashed in an assist from Casillas during the second minute of regulation. Casillas then connected with Diaz for a goal in the 24th minute before completing his hat trick of assists with a pass to Salazar for a goal in the 35th minute.

Ottawa evened the score in the second half, scoring three consecutive goals over the 48th, 51st and 59th minutes to tie the match at 3-3. Rochelle clinched the match over the final minutes of regulation, with Casillas scoring in the 70th minute and Salazar finding the net in the 75th minute.

## RTHS Girls Tennis

## Doubles duo nets victory at Morris

### Dickey and Betancourt win as Lady Hubs fall 4-1

BY RUSSELL HODGES  
SPORTS EDITOR

**MORRIS** — Seniors Allie Dickey and Adamaris Betancourt combined to score a straight-set win over Morris netters Miranda Muffler and Faith Ragan during the Rochelle Lady

Hub varsity tennis team's match against the Redskins on Tuesday. Dickey and Betancourt cruised over Muffler and Ragan 6-1, 6-1 at No. 3 doubles as Rochelle (2-3, 0-2 Interstate 8) conceded a 4-1 team loss.

Seniors Elin Zheng and Kara Martinez were each

shut out in singles play, with Zheng falling 0-6, 0-6 against Julia Borgstrom at No. 1 singles and Martinez conceding a 0-6, 0-6 defeat against Skyler Saelens at No. 2 singles. Juniors Kitty Williams and Riley Doyle faced Shreya Patel and Meghan Bzdill at No.

1 doubles, playing a close second set but falling short in a 2-6, 4-6 loss.

Seniors Macenzie Glosser and Annaleigh McKinney also battled during their second set against Ava Conley and Callie Fulkerson at No. 2 doubles, taking four games in a 1-6, 4-6 defeat.



(PHOTO BY RUSSELL HODGES)

Senior Owen Messer recorded a 49 during the Rochelle Hub varsity golf team's match against Ottawa on Tuesday.

## GOLF: Hubs face Ottawa at Fairways Golf Course

From page 1

Rochelle will travel north for the E-Rab Invitational at Aldeen on Saturday before returning home for a nonconference match against Mendota on Monday. Senior Elise Horner led the JV team with a 53 on Tuesday, while seniors Parker Lenkaitis and Alex McBride each followed with 57 and senior Haley Bozinovich totaled a 66 for her round.

"We've been shooting in the 175-to-180 range and we'd like to be more com-

petitive," Mehrings said. "We'd like to shoot below the 170s and I think we're capable of doing that by regionals... We had David Wanner come around as a first-year senior last season and he surprised us by qualifying for sectionals. It takes a while for our new players to be comfortable in a competitive format and we need our third, fourth, fifth and sixth players to keep pushing because they will make strides like David, who went from shooting in the 100s to the low 90s consistently."

# COMMUNITY BOARD

**Need to get the word out about a product or service you offer?**  
**Give us a call at 815-562-4171.**  
**We can reach over 9,000 homes!**



Advertise Here

## What Service Do You Offer?

### 562-4171

The Rochelle News-Leader

Gutters, Roofing & Siding

**THEISEN** *Free Estimates!*  
**ROOFING**

ROOFING  
SIDING  
GUTTERS

CONTACT US  
815-758-8998  
THEISENROOFING@COMCAST.NET

Family owned & operated for over 50 years

Plumbing, Heating & Cooling

**ANDERSON**  
**PLUMBING & HEATING, INC.**

Plumbing, Heating & Cooling  
Water Heaters, Water Softeners,  
Drinking Water Systems, Iron Filters,  
Sewer Rodding & Jetting & More!



621 First Ave., Rochelle  
(815) 562-8784

Heating & Air Conditioning

**HULL**  
HVAC & Household Services

Furnaces - Air Conditioners - Boilers  
Duct Cleaning - Water Heaters

Air Conditioner  
Clean & Check

**\$50.00**

After \$35 rebate.

Promotion only available to RMU customers.  
Expires: 08/31

Ask about duct cleaning and protecting your home's air quality.

815-561-6551

www.HullHVAC.com

Concrete



• Residential & Commercial Concrete  
• Additions

FREE ESTIMATES!

Tim & Roger Bruns, Owners  
Established 1997

815-561-0099

Free Estimates • Fully Insured  
www.brunsconstructioninc.com

Storage Sheds

FREE  
Sales Rep. Evaluation  
At Your Site

**Rocky Ridge**  
**Structures**

We Specialize in Portable/Quality Built Storage Sheds

• Stock & Custom Design • Competitive Pricing  
• Many Options Available • Site Preparation Available

See Displays at 3500 S. Chana Rd. Chana IL 61015

Call Norm or Albert for Free Literature packet  
779.861.3542



# Classified Marketplace

BUY OR SELL  
Place A Classified Ad



ROCHELLE • HILLCREST • CRESTON • STEWARD • KINGS • ASHTON

## 101 LEGAL NOTICE

**PUBLIC NOTICE**  
STATE OF ILLINOIS,  
CIRCUIT COURT,  
OGLE COUNTY

Request of Alexandre Robert Greer  
Case Number 2023 MR32  
File Aug. 21, 2023  
There will be a court date on my Request to change my name from Alexandre Robert Greet to the new name of Alexandre Reed. The court date will be held on Oct. 18, 2023 at 9:00 a.m. at 106 5th St., Oregon, Ogle County, in Courtroom #304.  
No. 0832  
(Aug. 27, Sept. 3 and 10, 2023)

## 101 LEGAL NOTICE

This publication does not knowingly accept fraudulent or deceptive advertising. Readers are cautioned to thoroughly investigate all ads, especially those asking for money in advance.

## 105 BUSINESS OPPORTUNITIES

"This publication does not knowingly accept fraudulent or deceptive advertising. Readers are cautioned to thoroughly investigate all ads, especially those asking for money in advance."

## 113 FINANCIAL

NOTICE Advance Fee Loans or Credit Offers Companies that do business by phone can't ask you to pay for credit before you get it. For more information, call toll-free 1-877-FTC-HELP. A public service message from your hometown newspaper and the Federal Trade Commission.

## 119 ANNOUNCEMENTS

"This publication does not knowingly accept fraudulent or deceptive advertising. Readers are cautioned to thoroughly investigate all ads, especially those asking for money in advance."

## 127 SERVICES AND REPAIRS

FURMAN'S Lawn Care and Tree Work. Mowing, bushes, spring clean up, weeding and much

more. Call Jeremy Furman 815-761-9619. Please leave a message will return call ASAP. Fully insured, in business since 1999. Servicing Rochelle and surrounding areas.

## 201 DOMESTIC/CHILD CARE

NO INDIVIDUAL, unless licensed or holding a permit as a childcare facility, may cause to be published any advertisement soliciting a child care service. A childcare facility that is licensed or operating under a permit issued by the Illinois Department of Children and Family Services may publish advertisements of the services for which it is specifically licensed or issued a permit. Your Hometown Newspaper strongly urges any parent or guardian to verify the validity of the license of any facility before placing a child in its care.

## 301 ANTIQUES

WANTED TO BUY: Vintage Metal and Wood Signs, Milk Bottles & Local Advertising, Oak Icebox, Iron Door Stop and Antique Lighting... Call Dick Harms at 815-562-2928 or email dickharms@hotmail.com

ANTIQUES WANTED: I pay cash for antiques; furniture, glassware, pottery & crocks, tin & iron toys, sterling silver, decoys. If it's antique, I'm interested in looking! Call 815-562-2928 or email dickharms@hotmail.com

## 305 GARAGE SALES

ROCHELLE - 911 N. 8th Street. Saturday

## 307 MISCELLANEOUS FOR SALE

9/16 7 am to 6 pm. Drapery Buckram, (2) Vintage Trolling Motors, Electric Anchor, Bird Feeders, (2) 30" Wrought Iron Window Planters, 50's Green Elger Sink, 25" White Sink, Gun Rack, Portable Sewing Cabinet, 50's Wood Ironing Board, Room Humidifier, 5 Level Corner Shelf, L Shaped Office Desk, Shelving Units, Table Desk, Boat Cover, Marine Battery Charger, Canoe Seat Cushions, Beanie Babies, Queen Sheets, Pillows, Large Women's Tops & Many Miscellaneous Items (09132023RNL)

## 307 MISCELLANEOUS FOR SALE

BUNDLED Newspaper -\$3 per Bundle. End Roll- Cost Depends on Weight of Roll. Available Monday-Friday 815-562-4171 (8AM-NOON ONLY) Rochelle News Leader.

2022 TROY-BILT Bronco Tiller 14 Inches. \$500 or Best Offer. Call 815-562-6974 (10/11/23ALL)

## 405 HOUSES FOR SALE

ALL REAL ESTATE advertised herein is subject to the Federal Fair Housing Act, which makes it illegal to advertise any preference, limitation or discrimination based on race, color, religion, sex, handicap, familial status, or national origin, or intention to make any such preferences, limitation or discrimination. We will not knowingly accept any advertising for real estate which is in violation of the law. All persons are hereby informed that dwellings advertised are available on an equal opportunity basis

## NEW MILFORD REFRIGERATION

**NEW, USED  
SCRATCH & DENT**  
• Refrigerators • Freezers  
• Washers/Dryers • Stoves

We also carry a large selection of refurbished appliances with a warranty.

6331 11th Street, Rockford  
815-262-3900

04092023



## 103 AUCTIONS

## LAND AUCTION



79.94 AC± | 1 TRACT  
OGLE CO, IL

AUCTION: LIVE AND ONLINE AT  
RANCHANDFARMAUCTIONS.COM

AUCTION DATE: 9/28/23

AUCTION TIME: 1:00 PM

AUCTION LOCATION:

DAVIS JUNCTION  
FIRE DEPARTMENT  
106 S MAPLE ST  
DAVIS JUNCTION, IL 61020

IN COOPERATION WITH WHITETAIL  
PROPERTIES REAL ESTATE, LLC  
TODD HENRY, AGENT: 815.997.2256

RANCHANDFARMAUCTIONS.COM

WHITETAIL PROPERTIES REAL ESTATE, LLC DBA: RANCH & FARM AUCTIONS | 105 West Washington, Ste 300, Pittsfield, IL 62453  
Debbie S. Lewis, Designated Managing Broker, License # 471.028541 | Jose Garcia, Director, Ranch & Farm Auctions, 207.209.0332  
Todd Henry, Real Estate Specialist, Whitetail Properties Real Estate, LLC 815.997.2256 | Cindy Lowderman, IL Auctioneer, 440.002055

TEXT AND  
WHATEVER  
JUST  
DON'T  
TEXT  
AND



STOPTEXTSSTOPWRECKS.ORG





# SPORTS

## VBALL: Rochelle takes Interstate 8 match over Sandwich

From page 1

“We continued to put the ball away and they weren’t able to put up a good enough block, so we kept hammering the ball.”

While Rochelle recorded five service aces in the match, North Boone struggled with service errors all evening, which allowed the Lady Hubs to command an early lead in the opening set. Rochelle held a 13-6 advantage midway through the first set, with several kills coming from junior outside hitter Taelynn Rodeghero, who had a team-leading nine kills on Tuesday. With the Vikings unable to break the Lady Hub defense, Rochelle closed the first set with a 12-2 run.

“I think we’ve started the season off really well,” Adamski said. “I wasn’t sure what to expect because we lost so many seniors, but I think we’ve done really well and we’ve filled all of our spots. I think we can win a lot of games and my goal is to prepare our juniors for their senior year. I want to lead the younger kids and show them what it means to be a Lady Hub.”

The late first-set run featured emphatic kills from

Rodeghero and senior right side Alivia Henkel, who had five kills in the match. Junior defensive specialist Emma Kennay took the serve to open the second set, compiling two aces during an 8-1 run that enabled the Lady Hubs to once again grab control of the match. The Vikings showed some life midway through the second set, pulling off a 7-2 run as the Lady Hubs started emptying their bench to play some of their reserves.

But the rally wouldn’t be enough to upend the Lady Hubs, who saw junior Makenzie Liezert net an ace off the bench and junior Lauren Dyer notch one of her two kills to preserve the Rochelle lead. A booming kill from Adamski, who had five kills on Tuesday, and an ace from junior Sydney Carmichael concluded the second set and sealed the nonconference win for Rochelle.

Junior setter Ali Ohlinger recorded 19 assists, while Kennay totaled seven digs and junior libero Dempsey Atkinson added four digs for the Lady Hubs (10-5, 0-0 Interstate 8).

### Sandwich

The Rochelle Lady Hub



(PHOTOS BY RUSSELL HODGES)

The Rochelle Lady Hub varsity volleyball team defeated North Boone 25-8, 25-13 at home on Tuesday. At left, junior Sydney Carmichael prepares to serve. At right, senior Alivia Henkel passes the ball forward.

varsity volleyball team tipped off the Interstate 8 Conference schedule on Thursday with an emphatic victory over Sandwich. Junior Taelynn Rodeghero totaled seven kills and three

aces, while senior Alivia Henkel followed with six kills and six digs as the Lady Hubs coasted over the Indians 25-17, 25-9 to start the conference slate with a 1-0 record.

Junior Ali Ohlinger finished with 15 assists and four kills to command the Rochelle offense on Thursday. Junior Lauren Dyer chipped in four kills, while junior Emma Ken-

nay served three aces and notched three digs on defense. Junior Dempsey Atkinson compiled four digs and one ace for the Lady Hubs (11-5, 1-0 Interstate 8) in the win.

### RTHS Football

(PHOTOS BY ROBIN RETHWILL)



### Freshman Hubs score 38-22 road win over Belvidere on Monday

The Rochelle Hub freshman football team traveled for a nonconference game against Belvidere on Monday evening. Rochelle emerged with a 38-22 win over the Bucs to improve to 1-0 as a freshman group. The freshmen will return to action with a road game against Belvidere North on Sept. 11. Above at left, Keegan Cathina shakes off a Belvidere tackler. At right, Aaron Hernandez (left) looks to make a block for teammate Joshua Lassiter (right). Below at left, Tyler Gensler (middle) runs behind blocker Warren Schweitzer (left).



# MINI PLANS & SINGLE GAME

## TICKETS ON SALE NOW

**SATURDAYS  
GAME PACK**

**\$150**

**MACTION  
GAME PACK**

**\$115**

WEEKEND SINGLE GAME TICKETS

**\$33**

WEEKDAY SINGLE GAME TICKETS

**\$18**

## 2023 HOME SCHEDULE



SEP. 9  
SOUTHERN ILLINOIS



SEP. 23  
TULSA



OCT. 14  
OHIO



OCT. 21  
EASTERN MICHIGAN



NOV. 7  
BALL STATE



NOV. 14  
WESTERN MICHIGAN

**815-753-7225**

**NIUHUSKIES.COM**

NIU FOOTBALL

HUSKIES

NIU HUSKIES

SCAN FOR TICKETS



# PATRIOT DAY

## How to honor America on Patriot Day this year

SEPT. 11, 2001, was a tragic day in American history. On that day, nearly 3,000 innocent lives were lost due to the terrorist attacks in New York City and Washington, D.C. as well as in rural Pennsylvania, where another plane en route for more destruction crash-landed.

While buildings have been repaired and new sites erected in the wake of the attacks, there are many ways to continue to honor the fallen. Patriot Day,

which takes place each year on September 11 to honor those who lost their lives in the 9-11 attacks, is one such example. The following are a handful of ways that people can honor 9-11 victims and their families.

- Celebrate local heroes by visiting or making donations of food or supplies to local firehouses and police stations.

- Commemorate the events of 9-11 by observing moments of silence at key times throughout the day:

8:46 a.m., 9:03 a.m., 9:37 a.m., 9:59 a.m., 10:03 a.m., and 10:28 a.m.

- Engage in service projects that can help your community, including its underserved individuals, like veterans. National Day of Service, which is the same day as Patriot Day, asks people to do at least one good deed in honor of those who died on 9-11.

- Make a trip to New York City and visit the National September 11 Memorial & Museum.

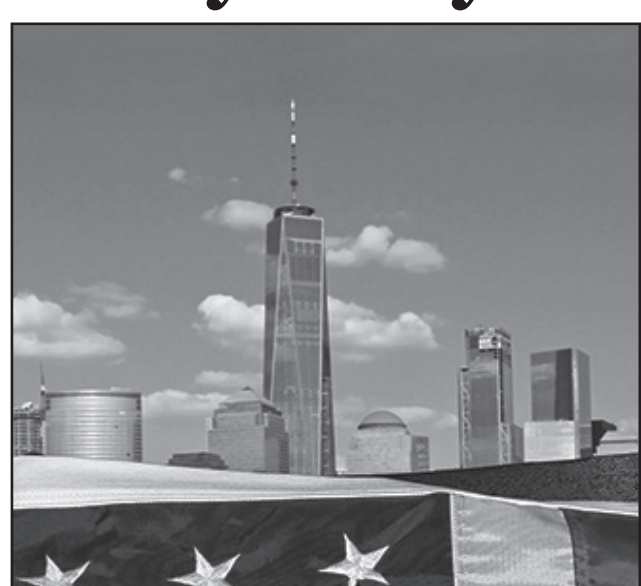
- If you display a flag at

your home or business, be sure to place it at half staff from sunrise to sunset to mourn the lives lost.

- Share stories of the heroism and bravery of first responders with young children who may not have been alive in 2001.

- Unite the country by promoting acceptance of and kindness to all people, regardless of religious or political beliefs.

This Patriot Day, there are many ways individuals can honor those who lost their lives on 9-11.



**VINCE'S PIZZA**  
SINCE 1967

**815.562.7300**

**Delivery & Curbside Pick Up**  
1071 N 7th St, Rochelle, IL  
[vinespizzainrochelle.com](http://vinespizzainrochelle.com)

**RE/MAX**  
**Hub City**

*Independently owned & operated.*  
**136 May Mart Dr.,  
Rochelle, IL**  
**815-562-7588**  
<https://hub-city-100425751.remax.com>

Jamie McLaughlin, Broker  
815-561-9488  
jmcj1953@yahoo.com

Norm McLaughlin, Broker  
815-901-2005  
Normm123@yahoo.com

**Rochelle**  
Community Hospital  
Your Local Healthcare Resource.

900 N. 2nd St., Rochelle  
[rochellehospital.com](http://rochellehospital.com)

September 11, 2001  
**Remember & Reflect**

**CENTRAL ILLINOIS LOAN**  
310 Eagle Dr.  
Rochelle, IL  
Phone (815) 561-4035  
Fax (815) 561-4440  
Branch Manager: Jami Hackman

**Boise Cascade**  
Building Materials Distribution  
600 Timber Lane, Rochelle  
[www.bc.com](http://www.bc.com)

**9.11**  
**NEVER FORGET**

**PEGASUS SPECIAL RIDERS**  
OREGON, IL

**"It's More Than Just a Ride."**  
The mission of Pegasus Special Riders is to facilitate healing and empowerment in the lives of physically, mentally, and/or emotionally challenged individuals through a variety of equine-assisted activities.

**Final 2023 Session starts  
September 12, 2023**  
Volunteers & Donations ALWAYS welcome - Ask how you can help replace our arena barn!

**815-973-3177**  
6668 S. Carthage Rd. Oregon, IL  
[pegassusspecialriders.org](http://pegassusspecialriders.org)

**Coming Soon!**  
Mane Event Charity Fundraiser - a Buffet Style Dinner & Band Nov. 4, 2023 at White Pines

We honor the victims, the survivors and the first responders of September 11, 2001.

*We will never forget.*

**Unger-Horner Funeral Home & Cremation Service**  
400 N. 6th Street, Rochelle | [www.ungerhorner.com](http://www.ungerhorner.com)

*Chad, Derek, Don, Mike and Annette*

**Walmart**  
Save money. Live better.

311 E. Route 38, Rochelle  
**815-562-3424**  
[walmart.com](http://walmart.com)

Open 6am-11pm daily  
Shop In-Store, Pick-Up or Home Delivery

"We will never forget everybody who was affected by the 9-11 terrorist attack and all those who risked everything to save others in need."

**ZIP'S Auto Body, Inc.**  
Complete Body Repair on domestic & foreign cars & trucks.  
Your Local Rhino® Dealer  
**815.562.5133**  
Rt. 251 S., Rochelle | [www.zipsautobody.com](http://www.zipsautobody.com)  
Proudly serving the Rochelle area for over 39 years!

**Floyd J. Tilton VFW Post #3878**

318 4th Ave., Rochelle, IL  
(815) 562-3878

**Rochelle Veterinary Hospital**  
(815) 562-5207

**We Will Never Forget Those Who Died on 9-11**

**Remembering 9-11**

**Scorpio Restaurant**  
815-562-4877  
Tue 6 AM-3 PM  
Wed - Mon 6 AM to 9 PM

**Rochelle Foods**  
1001 S. Main Street | Rochelle  
815-562-4141 | [rochellefoodsjobs.com](http://rochellefoodsjobs.com)

CHECK OUT OUR JOB POSTINGS TODAY!

**UNITED WE STAND IN REMEMBRANCE**

**Rochelle Pharmacy remembers all those who lost their lives and all the brave men and women who risked everything to save others in need.**

**Rochelle Pharmacy and Wellness Center**  
314 Lincoln Highway • Rochelle, IL  
815-562-4444 • [www.rochellerx.com](http://www.rochellerx.com)

We remember all those affected by the 9-11 terrorist attack and honor all the first responders who risked their own safety to help others in need.

**ROCHELLE POLICE**  
416 North Sixth St., Rochelle  
Non-Emergency 815-562-2131  
Emergency 911

Over 8,000 Vehicles Sold 400 Vehicles to Choose From

**Majeski Motors of Rochelle**  
QUALITY YOU CAN TRUST.  
**815-562-9000**

1010 S 7th St.  
Rochelle, IL 61068  
General Manager  
Ross Holcomb

**Precious Pastures**  
Delicious, Quality Raw Milk  
Fresh at the farm!

Monday - Saturday 6:30 - 8:00 am & 4:30 - 6 pm  
Sunday 6:30 - 8:00 am & 5 - 6:30 pm  
(Please schedule an appointment. 24 hours Notice Required.)

387 S. Malta Rd., Rochelle, IL 61068  
815-762-6867 • [PreciousPastures.com](http://PreciousPastures.com)

**QUEEN'S TRUCKING & CONSTRUCTION, INC.**

**We Aim for On Time, Every Time!**  
The Trusted Trucking Company of Many Local Distributors and Manufacturers.

**TRUCKING:**  
• Non-Union Local Freight Hauling  
• Van Trailer/Hopper/Flatbed/Dump  
• Daily Loads on the Customers Time Schedule

**CONSTRUCTION:**  
• Union Construction & Deconstruction  
• Excavation/Grading/Prep  
• Drainage/Sewer/Water Repair & Replacement  
• Union Heavy Hauling & Jobite Hauling

**Emergency Work:**  
• Restoration/Traffic Control  
• Sidewalk/Curb  
• Hourly or Bid Work (We can create a Specialized Rate for any Job)

**Queens Trucking & Construction Inc**  
322 Errett Road, Rochelle  
815-562-6064 | [queens-trucking.com](http://queens-trucking.com)

**GRABER FINANCIAL GROUP**  
409 4th Avenue  
Rochelle  
815-562-7139  
[sam@graberfinancialgroup.com](mailto:sam@graberfinancialgroup.com)

We remember all those who lost their lives during the 9-11 attack and all who courageously risked their own safety to help others in need.

**Heritage Woods of DeKalb**  
2626 N. Annie Glidden Rd.  
DeKalb, IL 60115  
815-787-6500 | [www.hw-dekalb-ilf.com](http://www.hw-dekalb-ilf.com)

**HEWITT & WAGNER**  
Attorneys at Law  
1124 LINCOLN HWY.  
ROCHELLE • 815-561-4207

**926 Custom Embroidery**  
Hours: M-F 10-5 • Sat 10-2  
Downtown Rochelle • 815-561-9500  
Rochelle's #1 Stop for all custom logo needs!

**9-11**  
**We Will Never Forget**

**BODY WERKS**  
**ROCHELLE'S FULL SERVICE BODY SHOP**

**815-562-4747**

Hwy 251 S., Rochelle  
636 S. 7th Street

**TOWING AVAILABLE**

**Davis Family Health LLC**  
Always in Our Hearts We Fix Boo Boos  
Veteran Owned & Operated

**Kelly Ann Tonielli Davis**  
DNP, APRN, FNP-BC-CME  
Most insurances accepted

1212 Currency Court,  
Rochelle, IL • 815-561-8500

1201 Meriden Street,  
Mendota, IL • 815-538-1800

Physicals, Weight Loss, Dermal Fillers, Botox Injections, Primary Care & Suboxone