



ROCHELLE News-Leader

WEEKEND EDITION | WWW.ROCHELLENEWS-LEADER.COM

FALL DIDDLEY®
38th Annual
SATURDAY, OCT. 14th
9 AM - 5 PM
SUNDAY, OCT. 15th
9 AM - 4 PM
Boone County Fairgrounds
Rt. 72 & Bus. Rt. 20, Belvidere
Over 250 Crafters & Artists
Quality Handcrafted Items
Bake Sale, Elegant Farmer Pies
Food Concession
FREE PARKING
Admission \$10 (Ages 12+)

"Like" Us on f at MHRL
Sponsored by Volunteers of The Mental Health Resource League for McHenry County
falldiddley.com
100% of the Net Proceeds Benefit Mental Health!

Today's RNL issue sponsored by Community Unity member:
Rochelle Community Unity
Changes Counseling, LLC
604 N. Main St.
815-501-2088
Vol. 103 • No. 45

LOCAL NEWS... LOCAL VIEWS

SUNDAY, OCT. 1, 2023

\$1.25

Ceremony held for joint training facility 'It'll be something that we can be proud of for decades to come'

BY JEFF HELFRICH
MANAGING EDITOR

ROCHELLE — On Wednesday, a groundbreaking ceremony was held for the Rochelle Fire Department and Ogle-Lee Fire Protection District's new joint training facility at 920 S. Main St.

Construction of the facility has and will consist of four phases. The first phase was land acquisition. The South Main Street site was donated to the city by Rochelle Main Street, LCC after officials had searched for sites across months. The second phase will consist of grading, construction of water retention, two concrete pads, an asphalt parking lot, two metal training structures specifically designed for live fire, and landscaping. The planning for phases one and two are complete and construction is set to begin in the next few days, RFD Chief Dave Sawlsville said Wednesday.

The future third phase will include the construction of a third concrete pad and the erecting of a four-story metal training structure to simulate a multi-story commercial or residential building that is also designed and built for live fire. Phase four will be construction of a brick & mortar building to house a classroom, reserve engines and breakout rooms for training.

"The path to today involved hours and hours of planning, conversation, cooperation and collabo-



(PHOTO BY JEFF HELFRICH)

On Wednesday, a groundbreaking ceremony was held for the Rochelle Fire Department and Ogle-Lee Fire Protection District's new joint training facility at 920 S. Main St.

ration," Sawlsville said. "I would like to send a heartfelt thank you to everyone who played a part in that process. Thanks to all of you for taking time to celebrate not only our progress, but the relationships that helped get us here."

Costs for the project will be split 50-50 between the City of Rochelle and the OLFDP. The OLFDP is made up of stations in Hillcrest, Flagg Center, Creston and Steward. The two organizations have partnered to provide emergency services to the area for a number of years.

"We're here for a very special occasion for a project that has been on the drawing board for many years in different forms," Rochelle Mayor John Bearrows said. "The collaborative effort between the Ogle-Lee Fire

Protection District and the City of Rochelle has been amazing. It's a great blessing for the city and the OLFDP. The ultimate winner of this merger was the residents of our community. Not only Rochelle, but the surrounding communities of Creston, Steward, Flagg Center, Hillcrest and everybody that's protected by the district."

Bearrows spoke about the importance of high-quality training and equipment for emergency services, which is what the joint training facility aims to ensure.

"The ultimate goal of the city and the OLFDP is to make sure that each of our personnel goes home to their families at night," Bearrows said. "We can't do that without making sure that we provide all of the tools and training that

they need. I'm so proud of this project. Once it's done, it'll be something that we can be proud of for decades to come. And it's because of the support of our city council and city manager and staff. We appreciate it very much."

OLFDP Board of Trustees Chairman Lance Noggle spoke at the groundbreaking event and thanked the city for its partnership and board members that started the partnership to begin with. He said the training facility idea has been worked on for many years by many levels of leadership in the local firefighting community. He thanked those that work on the front lines most of all.

"They're the ones that run into the calls on your worst day," Noggle said.

See CEREMONY p. 5



City eyeing marketing firm to help with Hickory Grove

BY JEFF HELFRICH
MANAGING EDITOR

ROCHELLE — In a closed session following its meeting on Sept. 25, the Rochelle City Council discussed hiring a marketing firm in the future to help with the development of the Hickory Grove site at 1127 N. 7th St., City Manager Jeff Fiegenschuh said.

The Hickory Grove building demolition was completed in early 2021 and the land has been vacant since. The city assumed ownership of the deteriorating building in early 2020 for \$1 with the intention of demolishing it and seeing development of the property. The building was previously owned by the Ogle County Civic Center Authority (OCCCA) board, which was under the Ogle County Board umbrella. The city decided to purchase the site so it could control it and likely would've had to deal with it later if it was abandoned due to OCCCA being in financial trouble.

Since the demolition and site clearing, the city has seen interest from three separate developers.

See CITY page 3

More coverage.
Less spendage.

Discounts up to 40%
Get more. Spend less. It's that simple when you get car insurance from us. Like a good neighbor, State Farm is there. CALL FOR A QUOTE 24/7.
Terri Schaefer, Agent
Bus: 815-562-7063
terri.schaefer.115n@statefarm.com



KNOW IT
TODAY



RCH enters 75th year with AHA

Rochelle Community Hospital celebrated 75 years as a member of the American Hospital Association. **Page 3**

WEATHER

SUNDAY	MONDAY
HIGH LOW	HIGH LOW
83 59	81 58
TUESDAY	WEDNESDAY
HIGH LOW	HIGH LOW
82 58	80 64

Today's RNL issue sponsored by Community Unity member:
Rochelle Community Unity
Shop • Play • Stay



333 Lincoln Highway
815-562-4155

OBITUARIES

• VIRGINIA JOAN MAXWELL
• MARY LOUISE SPENCER

See page 4

INSERTS

• MENARDS

INSIDE

Local News.....2, 3, 5
Obituaries.....4
Opinion.....6
Community.....7



Rochelle Township High School crowns 2023 Homecoming Court winners

Rochelle Township High School crowned its 2023 Homecoming Court winners during its Pep Rally on Thursday evening. Seniors Parker Lenkaitis and Elise Horner were named the 2023 Homecoming King and Queen. Juniors Khalil Winston and Abby Metzger were named the 2023 Prince and Princess. Sophomores Brode Metzger and Jaydin Dickey were named attendants for the Sophomore Class. Freshmen Dylan Manning and Emy Cacique were named attendants for the Freshman Class.

Holcomb Bank
Earn more with your money!
12-month CD*
at 4.55% APY*

*CD (Certificate of Deposit) requires \$1,000 minimum balance to earn APY. *Annual Percentage Yield (APY) is effective as of 07/07/23. Penalty for early withdrawal. Any fees may reduce earnings. For further information about fees and terms call or visit a Holcomb Bank location.
www.holcomb.bank

On the hunt for a new furnace or a furnace check up?
Hunt no further than
ANDERSON
PLUMBING & HEATING, INC.
621 First Ave. • Rochelle, IL • 815-562-8784
Have a safe and successful deer season, Illinois hunters!

LOCAL NEWS

(PHOTOS BY JEFF HELFRICH)



2023 Rochelle Township High School Homecoming Parade runs through downtown area Thursday

On Thursday evening, the 2023 Rochelle Township High School Homecoming parade was held in The Hub City. The parade started in the downtown area and ended near Tilton School, before students and community members made their way to RTHS football field for the pep rally, followed by the powderpuff football game. The Homecoming game took place Friday against Marengo and the Homecoming dance took place Saturday in the RTHS commons.

The 2024 From The Heart Cash Calendars are NOW AVAILABLE!!

The proceeds of the sale of the calendars benefit our From The Heart recipients: Pegasus Special Riders, Rochelle Christian Food Pantry, HOPE, Focus House, Shining Star Children's Advocacy Center, CASA, Rochelle Area Community Foundation, Hub City Senior Center & Rochelle Rotary.

OUR CHARITIES NEED OUR SUPPORT NOW MORE THAN EVER!



For Just \$20 you have a chance to be one of **365 DAILY WINNERS TOTAL CASH PRIZES \$18,250** PLUS Each Calendar Has VALUABLE LOCAL COUPONS

Here are 3 Ways to Purchase Your 2024 From The Heart Cash Calendar!

- **ONLINE:** Go to <http://fromtheheartrochelle.org> and click on **CASH CALENDARS**. Once the calendar is purchased we will mail it out to you! Shipping and processing fees will be added to cost.
- **IN PERSON:** You can pick up a 2024 From The Heart Cash Calendar **TODAY** at the following locations:
In Rochelle at: First State Bank, Stillman Bank, HOPE Chest, Colonial Flower Shoppe and Hub City Senior Center
In Oregon at: Merlin's
In Dixon at: Shining Star
In Mendota at: The Mendota Reporter/Amboy News office
- **BY MAIL:** Fill out the form below and send it in to us and we will mail a 2024 From The Heart Cash Calendar to you! Shipping fees are added to cost.

YES! Send me my 2024 From The Heart Cash Calendar!
(Please Print)

NAME: _____
ADDRESS: _____
CITY, STATE, ZIP: _____
PHONE: _____
NUMBER OF CALENDARS: _____

Clip and mail this form along with \$23 (\$20 per calendar plus \$3 per calendar postage) to:
Rotary Calendar, PO BOX 372, Rochelle, IL 61068

Hunley, Brizuela earn honors for middle school speech team

ROCHELLE — Drama, prose, speech! Kids at Rochelle Middle School can find a stage to showcase their voice and speaking skills by getting involved in the RMS Speech Team. Speech Team helps students grow their public speaking skills, linguistics, argumentative skills, and confidence. Students can choose from a variety of topics including prose, poetry, duets and radio. Last year, the seventh grade speech team achieved first place in each of the categories in which they competed. We are so proud of our seventh graders!

Mercy Hunley competed in the impromptu speech competition and earned the first place award. Mercy showed her excellent writing ability as this competition requires the student to write a short essay on the spot after being given a topic of interest. She enthralled the listeners with her friendly personality and gentle voice. Yeretzi Brizuela competed in the prose competition and won first place for her emotional reading from the novel "The Giver." Her dramatic flair and ability to connect with the audience made her reading interesting and easy to follow. She also competed in poetry where she read from a poem called "The



(COURTESY PHOTO)

Mercy Hunley (right) competed in the impromptu speech competition and earned the first place award. Yeretzi Brizuela (left) competed in the prose competition and won first place for her emotional reading from the novel "The Giver."

"Wolf Motives" originally written in Spanish. Her audience was captivated by her energetic and intense reading. She earned a first place award which was also well-deserved. We are looking forward

to the RMS Speech Team this year and can't wait to see the performances of our students. The seventh grade speech coaches are Mrs. Theresa Crystal and Ms. Jessica Hickey.

Shoot for the Heart event is Oct. 13

DAVIS JUNCTION — A Shoot for the Heart charity sporting clay event proceeds benefit for Hard Hats with Hearts and the American Heart Association will take place

Friday, Oct. 13 at Rock Ridge Sportsmen's Club at 14755 E. Edson Road in Davis Junction. Lunch and registration is from 11:30 a.m. to 12:30 p.m. and shooting begins at 1

p.m. More information on registration can be found at www.shootrockridge.com, by calling 815-382-1232 or emailing RockRidgeSportsmensClub@gmail.com.

LOCAL NEWS

CITY: Fiegenschuh discusses future of Hickory Grove site in Rochelle

From page 1

“Two of them were just potential interest and asking if the city was willing to talk,” Fiegenschuh said. “We were, and it really didn’t go anywhere. The other one was a mixed-use development and the council said it didn’t want to see a mixed use on that lot. Otherwise, nobody has come in with plans and specifics. It’s been very casual situations.”

Work is still ongoing on a land swap agreement between the city, the Comfort Inn & Suites hotel next door and the Concord Towers condo association. There are four parking spaces that the hotel owns that are on the Hickory Grove property that the city wants. The condos want access to a new garbage corral so their residents can get their garbage removed. The hotel operator wants property for an outdoor pool.

“We’re getting there,” Fiegenschuh said. “With the condos, you have a condo board that has to approve that and with the hotel owners there are multiple owners that have to agree. And then attorneys have to read all of the language. It’s just taken time. I think they have come to an agreement and now it’s just a matter of getting the condo association and the hotel ownership to sign off on it. Once that happens, then it will go before the Planning & Zoning Commission for the replatting of the property and then the city council. It’s hard to market property when you don’t have a final plat and we don’t own all of the spaces. I’m hoping to have that done this fall or winter.”

The city manager said that once all of the property is exchanged, the city has interest in having a marketing firm represent the property full-time. Current increased interest rates and project costs have likely also played a role in why more movement hasn’t been seen on the development front for the site, he said.

Ahead of a potential future development, the city

“We appreciate people’s patience. I would love to see something done with that property next year, even if it’s just temporary...”

Jeff Fiegenschuh

has considered utilizing the property for temporary uses. Ideas have included an outdoor ice skating rink and a concert venue.

“We appreciate people’s patience,” Fiegenschuh said. “I would love to see something done with that property next year, even if it’s just temporary. I’ve seen some comments on social media about an outdoor ice skating rink. Maybe that’s a good idea. At least something temporary to get a use out of the property. As a staff, we were talking about it maybe being a good concert venue in the future. It’s close to a residential neighborhood, and I’m not saying we’re going to do that. But we have started having conversations about some temporary uses to maybe utilize the property. I would remind folks that what’s there now is a lot better than what was there before. The OCCCA Board did the best it could, but the building really needed to go and it really does look a lot better than it did before.”

The city manager said that ideally, he would’ve liked to see more movement on a development at the Hickory Grove site by now, but it was purchased pre COVID-19 and economic changes and project price increases have been seen since.

“Everybody is always hopeful that projects happen sooner,” Fiegenschuh said. “The best thing we can do as leaders in the community is embrace the situation and make the best out of it. Again, maybe that means we do some kind of temporary use there to utilize the property just to keep the visibility there. But ultimately, I think we will see some development. I don’t know when that will happen, but it will happen at some point in Rochelle’s future.”

The choice of a future

development at Hickory Grove will be at the city council’s discretion. Fiegenschuh said the highest, best use would likely be some kind of tax-generating commercial entity.

“But that’s up to the council,” Fiegenschuh said. “I’m OK with whatever use they want there, because we removed a blight that was causing issues for the community. I think whatever they determine is the highest, best use is what we should go with. I’ve had a couple of council members say they’re not in any hurry. We’re not going to take a project we don’t really want just to get something there. We can wait and get the project we’re all the proudest of. We’ll see what happens.”

The city established its Northern Gateway Tax Increment Financing (TIF) district years ago with the redevelopment of Hickory Grove in mind. TIF districts can provide incentives for developers within them. If and when a developer purchases and builds on the site, it will no longer be publicly-owned, untaxed property and the increment generated will go into the TIF fund.

“I do think there’s a lot of opportunity for some incentives for a developer, whether it’s lower-cost land or TIF incentives,” Fiegenschuh said. “Other entities have taken advantage of the TIF including Benny’s Corner Market and Breakthru Beverage. I’m glad we established the TIF. Although Hickory Grove’s site hasn’t developed, in part because of the TIF we have a nice convenience store in Benny’s Corner Market and a former blight that’s being developed into Breakthru Beverage. I think the TIF has been very successful already.”

Eswood Community Club hosting Drive Thru Pork Chop Dinner

LINDENWOOD — Eswood Community Club is hosting a Drive Thru Pork Chop Dinner at Eswood Elementary School, 304 N. Main St., Lindenwood on Sunday, Oct. 15 from 10:30 a.m. to 2 p.m. Ogle County Pork

Producers will be cooking pork chops from Headons Fine Meats. Dinner includes pork chop or hot dog, baked beans, applesauce, chips, roll and a brownie. Advance ticket prices are \$12 for two dinners, \$10 for one dinner

and \$5 for a hot dog dinner. Advanced ticket sales will end on Tuesday, Oct. 3. Prepackaged pork chops are available for purchase: Package of five pork chops for \$18. Must be ordered in advance.

Lincoln Manor



Owned and operated by Lutheran Social Services of Illinois (LSSI) offering apartment living for older adults in Rochelle and the surrounding communities.

Rent based on 30% of a Resident's Adjusted Gross Income

- Secure Entry System
- Community room with kitchen
- Activities
- On-site coin operated laundry
- On-site management office
- Dependable 24/7 maintenance service
- On-site parking for residents

Full time Social Service Coordinator is available to assist residents

For more information, please call 815-562-1404

615 N. Lincoln Hwy.
Rochelle, IL 61068
TTY 847-390-1460

MANAGED BY:
Lutheran Social Services of Illinois
www.LSSI.org

07262023



(COURTESY PHOTO)

Administration pictured with the awarded plaque (left to right): Denise Bauer, RN, chief human resources officer; Karen Tracy, RN, chief executive officer; Kyle Auman, chief ancillary officer and Rhonda Marks, RN, chief nursing officer.

RCH celebrates 75th year as member of American Hospital Association

ROCHELLE — Earlier in September, Rochelle Community Hospital received a plaque from the American Hospital Association (AHA) to commemorate its 75th year as a member of its organization. In its commitment to being a member, RCH benefits from access to AHA’s resources, communications and advocacy in the future of health care with consideration specific to small and rural health care on a national level.

Recognized as the national advocate for

hospitals, communities and patients they serve, the AHA works with its members; state, regional, and metropolitan associations; and other organizations to shape and influence federal legislation and regulation to improve the ability of its members to deliver high-quality health care.

“This commitment [to keeping people healthy and caring for the sick and injured], which you display day in and day out, was recognized more than ever over the past three years during the historic

COVID-19 pandemic — where you were always there, ready to care — and our field was proven to be the most trusted partners in serving patients and protecting communities,” wrote Natalie Rudd, MA, BSN, RN, AHA regional executive.

RCH is proud of its accomplishments for the past 110 years, and looks forward to its continued success and stability with the help of Associations such as AHA. To learn more, visit our website: www.RochelleHospital.com.



EMPIRE TODAY®
CARPET & FLOORING

We Make Getting Beautiful New Floors Easy

GET FLOORS NOW, PAY OVER TIME*

OUR BEST SALE!

1/2 PRICE* SALE

Select Styles.

Get Half Price* Carpet, Hardwood, Vinyl, and Laminate, and get Half Price* Professional Installation!

Schedule a FREE In-Home Estimate!

Call **855-272-9908**

or visit **EmpireToday.com/SAVE**

*Discount is applied to the regular price of select styles of carpet, hardwood, vinyl, and laminate, basic installation, standard padding, and materials. Excludes upgrades, stairs, take-up of permanently affixed flooring, non-standard furniture moving, other miscellaneous charges, and prior purchases. Product may not be sold separately from installation. Residential installations only. Promotion not valid in AL, AR, GA, MN, MS and TN. Not available in all areas. Valid through 10/22/23. Subject to change. Details at EmpireToday.com.
**With approved credit. Details at EmpireToday.com/financing.
Sales (except AZ, CA, MA, ME, NH, RI, UT) and installation provided by independent contractors. Licensure at EmpireToday.com. CSLB 1047108
© 2023 Empire Today.com, LLC

LOCAL NEWS

OBITUARIES

Virginia Joan Maxwell

ROCHELLE — Virginia Joan Maxwell, age 70, of Rochelle, IL, formerly of Martinsville, IL, passed away at 11:38 a.m. on Monday, September 25, 2023 at OSF St. Anthony Medical Center in Rockford, IL. Virginia was born November 22, 1952 in rural Martinsville, IL, the daughter of Carroll Hinkle and Eva K. Brandenburg Hinkle. She married Larry Ray Maxwell on September 22, 1973 at the Pleasant Hill Christian Church in Kansas, IL.

Survivors include her husband of 50 years, Larry Maxwell of Rochelle, IL; children, Kimberly Miller (Jonathan) of Rochelle, IL, Samantha Diericks (Jason) of Malta, IL and Kyle Maxwell (Nikki) of Davis Junction, IL; grandchildren, Alexander Miller, Hailey Miller, Garrett Miller, Kendall Maxwell, Easton Max-

well, Maci Maxwell and Rhys Diericks; brother, Darrell Hinkle (Linda) of Effingham, IL and sisters, Margaret Seaton (Jerry) of Vandalia, IL and Rachel Holt (Richard) of Robinson, IL; many nephews and nieces and great nephews and nieces. She was preceded in death by her parents.

Virginia was a 1970 graduate of Martinsville High School and earned her Bachelors of Education degree from Eastern Illinois University in 1973. She was a retired special education teacher in Malta, IL and the Dekalb School District for 35 years. Virginia enjoyed traveling and spending time with her grandchildren.

A funeral service will be held at 11 a.m. on Saturday, September 30, 2023 at Greenwell Funeral Home with William Prose officiating. Interment



will follow in Ridgeland Cemetery in Martinsville, IL. Visitation will be from 10 – 11 a.m. on Saturday prior to the service at Greenwell Funeral Home, 30 N. Washington St., Martinsville, IL.

Memorial donations may be made to National Kidney Foundation, 215 W. Illinois St., Suite 1C, Chicago, IL 60654.

To view the full obituary, send a condolence message, light a candle or post photos, visit www.markwellfuneralhome.com. Greenwell Funeral Home of Martinsville, IL is in charge of the arrangements.

OGLE COUNTY SHERIFF'S DEPARTMENT

OREGON — On Sept. 27 at 9:30 p.m. deputies with the assistance of the Oregon Police Department were dispatched to Daysville Road and Main Street for a shooting complaint. After a brief investigation, deputies arrested, Corey Stone, 28, of Oregon, for aggravated domestic battery. Stone was transported to the Ogle County Jail and held pending an appearance before a judge.

On Sept. 27 at 7:03 p.m. deputies were dispatched to Lowden State Park (1444 North River

Road) for the report of a domestic. After a brief investigation, it was learned that Christopher Zewatski, 47, of Clinton Township, Michigan, was in violation of an order of protection. Zewatski was arrested for violation of order of protection and was transported to the Ogle County Jail and held pending a court appearance before a judge.

On Sept. 27 at approximately 11:37 p.m. deputies conducted a traffic stop in the 7,000 block of North Illinois Route 2. Upon in-

vestigation, Michelle P.M. Eckhardt, 27, of Franklin Grove, was placed under arrest for driving under the influence of alcohol. Eckhardt was also cited for improper lane usage and illegal transportation of alcoholic liquor as a driver. Eckhardt was transported to the Ogle County Jail, processed and released on a notice to appear. The sheriff's office was assisted by the Byron Police Department.

All individuals are considered innocent until proven guilty.

ROCHELLE POLICE DEPARTMENT

ROCHELLE — On Sept. 27 at 7:34 a.m. Thomas J. McCauley, 22, of Rochelle was arrested for aggravated battery and burglary and transferred.

On Sept. 28 at 8:24 a.m. Melissa A. Wallace, 40, of Rochelle was cited for failure to reduce speed

to avoid an accident and operating an uninsured vehicle. Wallace was issued a notice to appear and a Nov. 3 Rochelle court date.

On Sept. 28 at 4:27 p.m. Francisco Herrera, 56, of Rochelle was cited for parking within 15 feet

of a fire hydrant.

On Sept. 29 at 4:02 a.m. Kenneth L. Gregory, 71, of Rochelle was cited for speeding. He was given a Nov. 3 Rochelle court date.

All individuals are considered innocent until proven guilty.

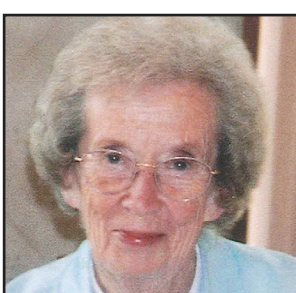
Mary Louise Spencer

ROCHELLE — Mary Louise Spencer, 94, passed away peacefully Tuesday, September 26, 2023 at Manor Court in Rochelle, Illinois. Mary was born on December 13, 1928 to Ray and Sadie (Reed) Wilson in Roseville, IL. She graduated with her bachelor's degree from Western Illinois where she met her future husband on a blind date at Homecoming. In 1951, she married Donald D. Spencer in Roseville, IL. He preceded her in death on April 11, 1990.

Mary was a devoted wife, mother, grandmother and great grandmother. She is survived by three children, ten grandchildren and nine great grandchildren; her son, Jack (Sam) Spencer of Yorkville, IL and their children and

grandchildren: Mike Spencer, his children: Adrian, Reid and Rose, Lisa (Dustin) Hartman and children: Leighton, Luke and Molly, and Brett (Jenny) Spencer and daughter, Penelope; her daughter, Nancy (Donnie) Kessen of Rochelle and their children and grandchild: Karissa (Maegan) Puzas-Kessen, Ashlyn Kessen and Robbie (Abigail) Kessen and son, Mordecai; and daughter, Susan (Greg) Young of Rochelle and their children and granddaughter: Katelynn (Charlie) Crum and daughter, Breelynn, Kersta (Adam) Baker, Teigan Young and M&L Lisa Young.

In addition to her parents and husband, Don, she was also predeceased by four siblings: Edwin Wilson, Bud Wilson, Jean



Johnson and Mae Rosine. Mary was a faithful and devoted member of the Rochelle United Methodist Church.

There will be a private family service per Mary's request. Burial will be at Lawnridge Cemetery in Rochelle. Memorial's may be made in Mary's memory to the Rochelle United Methodist Church or the Rochelle Park District. Visit www.ungerhorner.com to sign the online guest book.



(COURTESY PHOTO)

This year, Mr. Javier Zepeda was selected to be 2023 Homecoming grand marshal. Zepeda began his career as a part-time teacher over 20 years ago.

Zepeda serves as 2023 RTHS Homecoming grand marshal

ROCHELLE — Rochelle Township High School Student Council nominates individuals who have shown great Hub pride and dedication to the school, students, and community throughout the years. This year, Mr. Javier Zepeda was selected to be 2023 Homecoming grand marshal.

Zepeda began his career as a part-time teacher over 20 years ago. He spent 15 of those years in the classroom teaching Spanish and the rest being

a counselor to students at RTHS. Zepeda has also assisted the soccer program, the Ballet Folklorico group and the ELA department.

When asked what has made him enjoy being a part of the Hub community, he stated that RTHS has been a "fun and comfortable" place to be at. One of many accomplishments Mr. Zepeda is proud of is getting to be comfortable with students and parents, along with earning his two master's degrees (in ELL and counseling) to be in the position he is in now.

When asked what his future plans for retirement

are, he responded that he plans to "move to Texas and still be involved in school" by continuing his work with the schools, communities, or churches. His message to future generations is to "take that second opportunity" as he once did himself. "Take advantage of it, never give up on that opportunity and to continue working for your dreams. Work for the passion you have because that is the only way to get to where you want to be in a happy manner."

Mr. Zepeda's last words of wisdom are "once you get educated, no one can take that away from you."

AtlasAuto

"Quality Used Cars Since 2007"



- No Credit Checks
- Buy Here Pay Here
- Low Down Payments
- Flexible Payment Plans

Complete your ONLINE application TODAY!

1400 N. 7th Street
Corner of Flagg Rd & Hwy. 251 N.

815-562-7433

www.atlasautoinc.com

11032021

ROCHELLE News-Leader

211 IL Route 38 East, Rochelle, IL 61068
(815) 562-4171

USPS (467-820) ISSN (1075-2811)

Published every Wednesday and Sunday by Rochelle Newspapers Inc. at 211 E. State Route 38, Rochelle, IL 61068. Periodical postage paid at Rochelle, IL 61068. Postmaster send address changes to the Rochelle News-Leader, P.O. Box 46, Rochelle, IL 61068. Subscription rates are \$139.99 per year by mail in Ogle County. Outside county rate is \$149.99 per year. No mail delivery in newspaper-carrier serviced areas. The circulation department is open Monday through Friday from 8 a.m. to 5 p.m. If you are a carrier subscriber and your paper does not arrive, contact Kelly White at 561-2112.

IN-COUNTY REGULAR SUBSCRIPTION RATES

- \$139.99 for one year • \$79 for six months
- \$34.99 for three months • \$13.99 for one month

Call (815) 561-2112 or
Visit our website at
www.rochellenews-leader.com



HOW TO CONTACT US

News-Leader Main Switchboard (815) 562-4171

General Manager
Mike Feltes (815) 561-2124

Newsroom Staff
Jeff Helfrich, Managing Editor (815) 561-2151
Russ Hodges, Sports (815) 561-2152

To Place a Display Ad
Andrew Heiserman (815) 561-2123
Chris Ackland (815) 561-2153

To Place a Legal Ad
Mike Feltes (815) 561-2124

To Place a Classified Ad
Andrew Heiserman (815) 561-2123
Chris Ackland (815) 561-2153

Subscriptions and Delivery
Kelly White (815) 562-4171

REPORT POLICY

Any arrests listed in this paper are merely charges and the defendants are presumed innocent unless proven guilty in a court of law. Please note that all police reports received from the Rochelle Police, the Ogle County Sheriff's Department and the Illinois State Police, will be printed without exception. Requests to omit particular reports will not be considered or honored at any time.

LOCAL NEWS

CEREMONY: Groundbreaking held for Rochelle Fire and OLFPD joint facility

From page 1

“And hopefully this training facility will help them get educated more. A special tool for them is education and they will be able to do their job and return home to their families safely, and that’s the ultimate thing we want.”

City Manager Jeff Fiegenschuh spoke at the event as well and said the 12.06 acres of property will serve as more than a fire training facility. It will be able to host training opportunities for Rochelle Municipal Utilities, other city departments and possible state and national organizations such as the American Public Power Association and the Illinois Municipal Utilities Association.

The city manager said the driving force behind

the joint training facility project was getting a top-notch facility for RFD firefighters, paid on-call and volunteer firefighters of the OLFPD, and all city personnel, to train and prepare.

“As a city manager and a taxpayer, I am proud to know our team will have access to additional training that allows them to hone their skills and continue their important job of saving lives and keeping our community moving forward,” Fiegenschuh said. “I can honestly say this project is one of the favorites that I’ve had the honor of working on and one of the best collaborations between multiple local agencies I’ve seen in my 20 years as a city manager.”

Fiegenschuh thanked the mayor, city council

and OLFPD board for their support of the project, along with the Ogle County Board for its donation of \$50,000 in American Rescue Plan Act funds for the joint training facility.

“I want to recognize and thank Chief Sawlsville and his team at RFD,” Fiegenschuh said. “Our fire department is the best in the state. These men and women work hard to keep us safe. We look forward to several ribbon cuttings in the future to promote and showcase what will be the premier fire training facility in Northern Illinois.”

Sawlsville said that the best method towards developing exceptionally-skilled emergency service is the same as developing exceptional skill in any other field: Practice.

“Having the ability to go through the reps and



(PHOTO BY JEFF HELFRICH)

Mayor John Bearrows spoke about the importance of high-quality training and equipment for emergency services, which is what the joint training facility aims to ensure.

practice the same thing continuously over and over again, it becomes second nature,” Sawlsville said. “And that way, when something out of the

ordinary happens, you can think through it and make critical decisions. And that’s what this facility represents. A place where new skills are introduced.

And now with a designated place to practice, those new skills become ingrained, existing skills are revisited and revised to represent best practice.”

Rochelle Area

CHURCH DIRECTORY

Ashton Bible Church, corner of Main and Paddock in Ashton. Pastor Farrel Stauffer, church phone is (815)453-2190, church website www.ashtonbible.org. Sunday School for all ages 9:00-10:00am, Morning Worship 10:15am, Wednesday Prayer Meeting/Bible Study 6:30-8:00pm.

The Bridge Church, Pastor Greg Duncan, 11038 E. IL Route 38, Rochelle, IL 61068. Phone: 815-562-7750. Sunday School: 9:00 am; Sunday Service: 10:00 am; Nursery & Children’s ministry during am service; Bible Study Tuesday 10:00 am and Wednesday 7:00 pm. Web: thebridgechurchrochelle.com Email: thebridgechurchrochelle@gmail.com

Calvary Lighthouse Church, Assemblies of God, Senior Pastor, Dr. James Horvath. 14409 Hemstock Rd., Rochelle. Sunday Morning: Sunday Worship & Children’s Church 10:00 A.M., Wednesday Evening 7:00 P.M. – Adult Teaching, Missionettes & Royal Rangers Childrens Classes, Nursery available for all services. HE-Brews Cafe is open before and after services. For further information, please call the CLC office at 815-562-7701, or email us at staff@calvarylighthouse.com

Calvary Lutheran Church, LCMC - “To Know Christ and to Proclaim Christ in Word and Deed” -19 Perry Road, Lee, IL 60530 (the intersection of Perry Road and W. County Line Road). Rev. Martha Uecker Nelson, Pastor. Coffee Hour starts at 9:00 a.m., Sunday School, Confirmation, and Adult Bible Study are at 9:15 a.m. Worship is at 10:30 a.m. and is broadcast live on Facebook. Go to our website is at www.Calvarychurchlee.org and click on the link there. A Grief Support Group meets the third Tuesday of each month at 10:00 a.m. Call or text (815) 824-2825 or email CalvaryLeeIL@gmail.com with questions or for more information. Also check us out at www.facebook.com/Calvary-Lutheran-Church.

Rochelle Church of Christ, Keeping Christ at the center in the Hub City. We meet Sundays at 9:00am for Bible Study and 10:00am for worship. We also have a Wednesday Bible Study at 7:00pm. 206 Erickson Rd, Rochelle, IL 61068. You can call us at (815) 562-6572 or visit us on the web at rochellechurch.com. We also have a radio program Sundays just after 8am on WRHL 1060AM. Minister Dominic Venuso.

Creston United Methodist Church and Steward United Methodist Church - Rev. Ilhan You, Creston: 126 West South Street, P.O. Box 209, Creston, Illinois 60113. Sunday morning worship 9:00am. Coffee fellowship at 10:15am. Steward: 507 Main Street, P.O. Box 80, Steward, IL 60553. Adult Sunday School, 10:00am. Sunday morning worship and Children’s Sunday School 11:00am. Contact the church office at 847-730-4370 for more information. facebook.com/crestonumcil facebook.com/stewardilumc

Elim Reformed Church, 140 S. Church Road, Kings, IL 61068. Phone: 815-562-6811. Email goelimchurch@gmail.com Website www.goelimchurch.org Sunday Morning Worship 10:00 Rev. Marv Jacobs

Faith Lutheran Church – (14206 E. Flagg Rd.) – “Making Christ Known Through Lives of Faith.” In-person worship is available each Sunday at 9:00 a.m. or online at “Faith Lutheran Social” on YouTube. Worship resources are also available on our Facebook page - ‘Faith Lutheran Church ELCA.’ You may also e-mail Pastor Joy Alsop at Pastor@faithlcrochelle.org for more information. All are welcome to join us!

First Baptist Church of Rochelle, First Baptist Church of Rochelle invites you to experience our practical Bible services which have nurseries provided in every service along with a wide range of children’s and teen ministries. Sunday School is at 9:30 am with regular church services at 10:30 am and 1:00 pm. Wednesday Family Night starts at 6:30 pm with AWANA for the 5 yr. olds thru 6th grade. The Omega Teen Ministry also starts at 6:30 pm for 7th – 12th grades and the Adult Bible Study at 7:00 pm. First Baptist Church is located 6 blocks west of Hwy 251 at the corner of Woolf Ct. and 8th Ave. in Rochelle. Call 562-4168 for more information . Listen at 8:30 am Sunday mornings on WRHL 1060 AM for the Sunday morning “Bible Message.” www.firstbaptistrochelle.org

First General Baptist Church, 500 S. 12th St, Rochelle. Phone: 815-562-5221. Email: fgbcrochelle@gmail.com.Website: www.fgbcrochelle.org. Facebook: www.facebook.com/fgbcrochelle.Pastor: Rev. Angelo Bonacquisti. **Sunday worship services:** 8:30 am, 11:15 am and 6:00 pm. **Sunday school:** 10:00 am. We’d be honored to have you join us as we worship JESUS and continue to grow in truth and love for God and each other. A nursery, children’s church, youth group and small groups are available. If you need a ride please contact our church bus driver, John, at (815) 262-4275 by 8:30 am on Sunday. “For if you confess with your mouth that Jesus is Lord and believe in your heart that God raised him from the dead, you will be saved.” Romans 10:9

First Presbyterian Church – An Amazing Place for Amazing Grace- Rev. Doug Forsberg, Senior Pastor. 1100 Calvin Road, Rochelle. Email: info@placeforgrace.com. Sunday morning worship 9:00am and 10:30am. In person or streamed online. On our Website and Facebook Live. www.placeforgrace.com/ www.facebook.com/placeforgrace

Grace Fellowship Church — Pastor Jeff Ardissonne, 2128 Il Route 38, Ashton, 815-453-7464. Sunday School 8:30 a.m. Sunday Worship Service 9:45 a.m. www.graceisforyou.com

Harvest Baptist Church 241 Scott Ave. (Hillcrest). Rev. Duane Boehm, pastor. Email duane712@hotmail.com, cell 815-757-3427. Visit us on Facebook! Service times: Sunday morning worship with Children’s Church at 10 am. Wednesday night worship at 7 pm.

Immanuel Lutheran Church Missouri Synod 16060 E. Lindenwood Road, Lindenwood, IL 61049. Rev. Dr. Matthew Rosebrock. Church Phone 393-4500. Church Worship 9:00 a.m. Sunday School Christian Education Hour at 10:30 a.m.

Living Water Community Church 405 N. Main St, Downtown Rochelle. Phone 815-561-6249, Website: www.lwccr.com, Like us on Facebook. We are Non-Denominational, Christ Centered, Casual dress, Christ Centered Live Band Worship. Mike Vogeler - Outreach and Seven C’s Pastor, Chris Bender- Teaching Pastor and Doug Bunger - Missions and Children’s Pastor. Sunday Worship Service- 10:00am. Nursery/Toddlers Ages 0-5 available during the service in the Splash building. Swim- Grades 1st-5th worship with the adults then break out for age appropriate teaching. Youth groups, Small groups, Life Groups and Workshops meet throughout the year for Bible teaching. 7C’s Mission- serves the community physically & spiritually each month from 1135 Lincoln Hwy, providing lightly used clothing, Hygiene items, a light lunch and Elder Prayer open the second Saturday from 10am-2pm and the 4th Thursday from 4pm to 7:00pm and by appointment.. [f](#)

New Hope Fellowship (Church of God - Anderson, IN), 1501 10th Ave., Rochelle, IL 61068. Service: Sunday at 9 a.m. 10:30 a.m., (815)561-8400, www.NHFchurch.net Pastor: Dan Sergeant and Pastor Nick Tornabene. (Classes for children through age fifth grade during service.)

Rochelle United Methodist Church welcomes everyone to their worship service, and practices openness for all activities including communion. Worship is at 9:00 am. Sunday school for children begins around 9:15, following the Children’s Time in worship. A fellowship time with food and space for conversation occurs in Hicks Hall every week following the worship service. We celebrate communion with an open table on the first Sunday of every month, and on other appropriate occasions. Youth group is on Sunday evenings from 5:30-7:30. Our youth program includes service projects, discussion topics, Bible Study, and lots of fun and fellowship together. Some of our activities include packing meals at Feed My Starving Children, helping at Rochelle Christian Food Pantry and 7C’s, working with animals at Barn on Baseline, Mystery trips (Destination Unknown!), and Interactive experiences on Dating boundaries, refugees, and homelessness. Youth group is for grades 6-12 and friends are always welcome. Recorded services are available on our YouTube channel and our website at www.rochelleumc.com. Our services are on the radio (93.5 FM) on Sunday mornings at 9:00 am. Our Facebook page is www.facebook.com/rochelleumc. **Our pastor is the Rev. Dr. Katherine Thomas Paisley.** Our address is 709 Fourth Ave. (815) 562-2164. Email is admin@rochelleumc.com. At Rochelle United Methodist Church, everyone is welcome and loved!

St. Patrick Catholic Church Rev. Jesus Dominguez; Deacon Fermin Garcia; Deacon George Schramm; 244 Kelley Dr. (Corner of Kelley & Caron Rd.), PO Box 329, Rochelle, IL 61068. **Office Hours:** 9:00 AM- 4PM Monday-Thursday, Phone: 815-562-2370. **Mass times:** 8:00 AM Monday-Thursday, Saturday Vigil Mass 5:00 PM English, 7PM Spanish, Sunday Mass 7:30 AM, 9:00 AM in English and 11:00 AM in Spanish. **Confessions:** Monday 8:30AM & 6:30PM, Tuesday 8:30AM, Saturday 8:30am & 4:00-4:45 PM Or by appointment. **Religious Education:** Deacon George Schramm, Director of Religious Education. 903 Caron Road, Rochelle, IL 61068, 815-561-0079; Website: stpatricksrochelle.com Email: stpatrick-rochelle@rockforddiocese.org Facebook.com/StPatrickRochelle

St. Paul Lutheran Church “Building Relationships in Christ, Now and Forever!” Steven Hall, Principal, Parish Nurse-Marcia Schnorr. 1415 Tenth Ave., Rochelle. Church Office-562-2744. Worship times: 6:00 p.m. Saturday, 9:00 a.m. Sunday. Our service is broadcast over WRHL 1060AM at 10:00 a.m. Sunday. Sunday School 10:15-11:15 a.m. Call 562-6323 for more information about the school.



LOCAL VIEWS

GUEST COLUMN

Harvest: My favorite time of the year

THE feeling of Autumn is in the air. Breezy warm days and chilly nights. Evening skies filled with stars. The rustling of the wind as it blows through the amber waves of grain. The smell in the air of a campfire.

The season is both an end and a beginning on the farm. The end of a growing season, the beginning of a harvest. The fruits of the labor will be determined when the last ear or pod are delivered to the bin.

Long days of harvest that begin early and end well after sunset. It is without question my favorite time of year.

As farmers begin their preparation for harvest I ask folks, particularly motorists out there, to please be patient when you encounter farm equipment on the highway. Believe me, that farmer would

rather be in a field somewhere rather than on the road. But, necessity puts them there, and they are concerned for both your and their safety.

When traveling country roads, remain alert and aware of slow-moving vehicles and be prepared to stop quickly.

During planting and harvest seasons, motorists will encounter more large, slow-moving vehicles on the road as well as vehicles and equipment parked on the side of the road. Slow down anytime you are going around curves or up hills. Quickly approaching a piece of farm machinery increases your likelihood of getting into an accident. Give yourself plenty of space by slowing down and being prepared.

Also, be aware that farm machinery can enter a public road from a field or driveway, so keep your

eyes alert. Learn to recognize the SMV emblem. It alerts you that you are following a slow-moving vehicle, one that typically travels at less than 30 miles per hour. It has a red-orange fluorescent triangle at its center, surrounded by a highly reflective red border. This sign is common on rural roads and drivers must heed its warning. When you see the SMV emblem - SLOW DOWN!

Farm tractors generally move at top speeds from 15 to 30 miles per hour. When approaching from the rear, a car traveling at normal speed can overtake a slow-moving vehicle very quickly. Watch for SMV emblems and be patient. The driver will pull over to let you pass as soon as it's safe to do

so. Pass only in a legal passing zone.

When driving farm equipment and semis, the bulky equipment and the sizable load can easily block part of the farmer's view, making it hard to see approaching vehicles, so it is your responsibility to slow down. It is important to remember that if you do not see the driver, then the driver cannot see you. When in doubt, assume the driver does not see you.

Many farmers haul their grain using semis. When a semi tractor-trailer is full of grain, it takes them longer to stop. Do not pull out in front a moving semi. Also, do not follow farm equipment or semis too closely, as you want to see what is ahead (e.g. debris and other cars).



Ron Kern

Sometimes, farm equipment will take up more than one lane. These vehicles also make big, wide turns. When they are pulling to the side of the road, don't assume they are pulling over to allow you to pass. They may just be preparing to turn. Watch for them to acknowledge your presence and signal their turn. Pay close attention to the turn signals, especially before passing.

Tips on passing farm machinery

Check to be sure that machinery is not turning left. Look for left turn lights or hand signals. If the machinery slows and pulls toward the right side of the road, the operator is likely preparing to make a wide left turn. Likewise, sometimes to make a right turn with wide equipment, the driver must fade to the left.

Look for roadside obstacles such as mailboxes, bridges or road signs that may cause the machinery to move to the center of the road. Fading to the left does not mean the farmer wants you to pass on the right.

Be sure there is adequate distance for you to safely pass, and make sure the road is wide enough for your vehicle and the farm equipment.

Only pass where it is legal. Do not pass if there is a solid yellow center line. Furthermore, do not pass near an intersection, railroad tracks, tunnels, or bridges. These areas can be particularly dangerous.

"I never went out to intentionally hurt anybody. Unless it was important, like a league game." - Dick Butkus

Ron Kern is the manager of the Ogle County Farm Bureau.

Renewable energy: One path to powering the future

THERE has been much talk of "renewable energy", often referred to as "green energy" or "clean energy", in the news lately. And it seems as if everyone feels compelled to discuss how great, or how bad, it is. Because energy is a vital and promising facet of our modern world, we should try to understand as much about it as we can, so we aren't misled by those having a separate agenda to advance or something to sell us. Renewable energy serves as a one beacon of hope for addressing the uncomfortable reality of climate change and the quest for human development that is sustainable into the future. Renewable energy sources harness the power of nature to generate fuels and provide heating, all while minimizing the harmful impact on our environment. The key to understanding these sources is realizing how they are truly "renewable" because we can create more by growing crops, raising livestock, and collecting our waste. At its core, renewable energy represents a responsible and eco-conscious approach to meeting our energy needs.

I have previously ex-

plained the six different forms energy can take and I have also discussed the three broad categories of energy sources: exhaustible, renewable and inexhaustible energy sources. Remember that exhaustible energy sources are those that come from minerals like fossil fuels (coal, oil and natural gas) and uranium. These are resources that we must mine from the earth and create heat from by burning. Both fossil fuels and uranium create very hazardous products when used. In contrast, renewable energy derives from naturally-occurring processes that are constantly replenished, making them a sustainable and nearly inexhaustible source of power while simultaneously reducing the total amount of pollution output into our environment.

There is only one true category of renewable energy sources - biomass (or "bioenergy"). Biomass is the product or byproduct of organic plant and animal growth which contains hydrocarbons that can be burned directly to create heat (such as crop waste, forest residue or firewood), or collected and chemically processed to produce other

fuels to be burned (such as ethanol, biodiesel and methane). Biomass energy utilizes organic materials like wood, agricultural crops and residues, livestock waste and even municipal waste (our garbage) to produce fuel, heat and electricity.

Over 98 percent of U.S. gasoline available at gas stations contains a mixture of gasoline (from petroleum) and ethanol (from corn). Most of this blending occurs to meet the requirements of the 1990 Clean Air Act and the Renewable Fuel Standard from the Energy Independence and Security Act of 2007. There are three general categories of ethanol-gasoline blends: E10, E15, and E85. The "E" stands for ethanol, and the number stands for the percentage of ethanol in the fuel. For example, E85 contains 85 percent ethanol. If you look closely at the labeling near the pump handle, you will see the specific content of ethanol in your gas. All gasoline engines can use E10, and light-duty vehicles newer than 2001 may use E15. Flex fuel vehicles can use any ethanol gasoline blends up to E85.

However, the downside

to ethanol as a fuel is that it contains approximately 33 percent less energy than "pure" gasoline, and so vehicles get lower fuel economy (miles per gallon) when using ethanol blends. The specific fuel economy a vehicle gets will depend on the quality of the gas you buy, but in general vehicles burning E10 fuels get about three percent less miles per gallon than vehicles using pure gasoline.

Rochelle is home to CHS Ethanol Company, located south of our city along Steward Road, which uses an advanced fermenting and distilling process to convert corn into high-quality ethanol. This significantly reduces the amount of petroleum-based fuel we burn, it provides a market for farmers to sell their corn, and it creates jobs for our local economy.

Another infamous example of renewable energy is the production of methane from municipal waste contained in landfills. Landfills contain large amounts of organic waste in the form of disposed food and other organic materials, such as cardboard, which is trapped underground without ox-

ygen. There it produces carbon dioxide and methane as it decomposes. Most landfills are constructed with ventilation pipes running throughout the waste which collects the gas byproducts. Since CO2 and methane are greenhouse gases, landfills in Illinois are six out of the top 10 industrial methane emitters in our state. The Winnebago landfill tops the list of landfill emitters in Illinois. Fortunately, it is possible to reduce some of the methane from landfills by burning it. If you have ever noticed the bright flame burning along the highway at DeKalb County's landfill you have witnessed renewable methane production from landfill waste. While the flame performs the very useful task of burning away the methane before it enters our atmosphere as a harmful greenhouse gas, it is wasteful of the energy contained in the methane because the heat from the flames is simply lost into the atmosphere.

There are many issues surrounding the use of the renewable energy found in waste streams, including educating the public about the regulations and laws governing what can

and cannot be put into our garbage. The possibility of harmful materials in landfills make it very difficult to create reliable energy sources from our garbage, but progress is being made with technology used to convert landfill methane into useful electricity.

Unfortunately, nearly all media sources and advertisements mislead us by also including solar, wind and/or geothermal energy under the "renewable energy" label. They call these sources "renewable" apparently because their accurate descriptor, "inexhaustible energy", is not appealing enough, or considered to be too confusing, for us their target audience. Those sources are not only renewable, they are also even more noble, they are inexhaustible energy sources. Inexhaustible energy will be discussed in a future article.

Kurt Wolter has studied and taught technology, including production, transportation, energy, and communication, for over 30 years. He enjoys trying to understand technology and its past, present, and future while also attempting journalism. He can be reached at technohistory100@gmail.com.

How to contact government officials

U.S. Con. Darin LaHood
1424 Longworth HOB
Washington, D.C.
20515
(202) 225-6201

IL Sen. Win Stoller
Stratton Office Bldg
Springfield, IL 62706
(217) 782-1942

IL Rep. Bradley Fritts
Stratton Office Bldg
Springfield, IL 62706
(217) 782-0535

Have a letter you want to submit to us? Send it to news@rochelle-news-leader.com

KEEPING YOU IN TOUCH WITH YOUR LOCAL LEADERS

* Denotes Chairman/President

Rochelle City Council

*John Bearrows	jbearrows@rochelleil.us
Kathryn Shaw-Dickey	ksdaw-dickey@rochelleil.us
Bil Hayes	bhayes@rochelleil.us
Rosaelia Arteaga	rarteaga@rochelleil.us
Dan McDermott	dmcdermott@rochelleil.us
Tom McDermott	tmcdermott@rochelleil.us
Benjamin Valdivieso	bvaldivieso@rochelleil.us

Rochelle Elementary School Board

*Trisha Vaughn	tvaughn@d231.rochelle.net
Dave Casey	dcasey@d231.rochelle.net
Steve Builta	sbuilt@d231.rochelle.net
Ashley Jackson	ajackson@d231.rochelle.net
Stephanie White	swhite@d231.rochelle.net
Javier Zepeda	jzepeda@d231.rochelle.net
Jennifer Thompson	jthompson@d231.rochelle.net

Rochelle Township High School Board

*Tom Huddleston	tom.huddleston@rthsd212.org
Bill Ravnaas	bill.ravnaas@rthsd212.org
Jeff Tilton	jeff.tilton@rthsd212.org
Bobby Chadwick	bobby.chadwick@rthsd212.org
Brent Ohlinger	bhohlinger@rthsd212.org
Laurie Pillen	lpillen@rthsd212.org
Joel Thompson	jthompson@rthsd212.org

Flagg-Rochelle Park Board

Brent Carmichael	bcarmichael@rochelleparkdistrict.org
John Dobbs	jdobbs@rochelleparkdistrict.org
Dale Wells	dwells@rochelleparkdistrict.org
*Tim Hayden	thayden@rochelleparkdistrict.org
Jodie Hart	jhart@rochelleparkdistrict.org
Joe Lenkaitis	jlenkaitis@rochelleparkdistrict.org
Kristi Gonzales	kgonzales@rochelleparkdistrict.org

Ogle County Board Dist. 3

Austin Gillis	agillis@oglecounty.org
Dan Miller	dmiller@oglecounty.org
Joseph Simms	jsimms@oglecounty.org

Ogle County Board Dist. 4

Jackie Ramsey	jramsey@oglecounty.org
Skip Kenney	skenney@oglecounty.org
David Williams	dwilliams@oglecounty.org

Creston Village Board

*Tom Byro	tommyb_47@yahoo.com
Greg Hopkins	ghopkins522@comcast.net
Steve Katzman	skatzman@essex1.com
Mike Kerns	ac.kerns@comcast.net
Curt Ward	caward92@comcast.net
Mark Hibshman	
Reid Elliot	
Jennifer Payton	

Hillcrest Village Board

*Richard Rhoads	rrhoads@hillcrestil.us
Pam Pittman	ppittman@hillcrestil.us
Dan Potter	dpotter@hillcrestil.us
Tim Ball	tball@hillcrestil.us
Jose Huerta	jhuerta@hillcrestil.us
Eileen Braski	ebraski@hillcrestil.us
Joe Thompson	jthompson@hillcrestil.us

Flagg Township

Sue Messer	flaggtwp@rochelle.net
Joanna Patrick	flaggtwpcerk@rochelle.net
Susan Rothenberger	assessor@rochelle.net
Scott Seebach	scottseebach@gmail.com

Board of Trustees

Lance Noggle	noggle62@gmail.com
Eric Gruben	egruben@comcast.net
Susan Hager	susanhager303@comcast.net
Jim Kenney	jimk@rocketsupply.com

Flagg-Rochelle Library

*Jaqueline Dickow	dickow@comcast.net
Teresa Haggstad	haggstads@comcast.net
Michael Scanlan	scanlan@comcast.net
Lanning Nicoloff	nicoloff118@comcast.net
Sheri Klindera	alwayslefty2@gmail.com
Susan Sevedge	nit1prl22@yahoo.com
Darci Waltrip	doobs12@comcast.net

LETTERS TO THE EDITOR POLICY

The Rochelle News-Leader encourages responsible letters to the editor on subjects of interest to our readers. Editing may be necessary for space, clarity or to avoid obscenity or libel, but ideas will not be altered. All letters must bear the handwritten signature of the writer and include address and phone number or e-mail address for verification purposes. Neither the street address nor phone number will be printed. Letters should be typed or legibly

handwritten, and no anonymous letters will be published. Any letters from boards or organizations must include at least one name of an individual. Any criticism of public officials should be limited to issues related strictly to their position or actions made in office, as personal attacks will not be published. Letters involving private disputes between the writer and a business will not be published. Political endorsements will be published,

however letters from candidates endorsing themselves will not be printed. Letters may be dropped at the News-Leader office (211 IL Route 38 East), mailed to the News-Leader (P.O. Box 46, Rochelle, IL 61068) or e-mailed (news@rochellenews-leader.com). The News-Leader reserves the right to edit or reject any letter to the editor for any reason, and letters chosen for publication do not necessarily reflect the views of this newspaper.

COMMUNITY

Roberts wins Sept. 15 Chamber Lawn of the Week

ROCHELLE — The Rochelle Chamber of Commerce recently presented its Lawn of the Week award for the week of Sept. 15 to Jack Roberts. He received a sign and a \$25 Rochelle ACE Hardware gift card.

The chamber has partnered with Rochelle Ace Hardware to award gift cards to the winners.

The 2023 Lawn of the Week program has begun for the summer and will run through September. Nominate a neighbor/yard each week by submitting a name and address on the Rochelle chamber's website, <http://therochellechamber.com/lawn-of-the-week>.

Submissions can also be made by emailing rochellechamber@gmail.com. "We are proud to recognize our residents that



(COURTESY PHOTO)

The Rochelle Chamber of Commerce recently presented its Lawn of the Week award for the week of Sept. 15 to Jack Roberts. He received a sign and a \$25 Rochelle ACE Hardware gift card.

display community pride in Rochelle," Chamber Executive Director Tricia

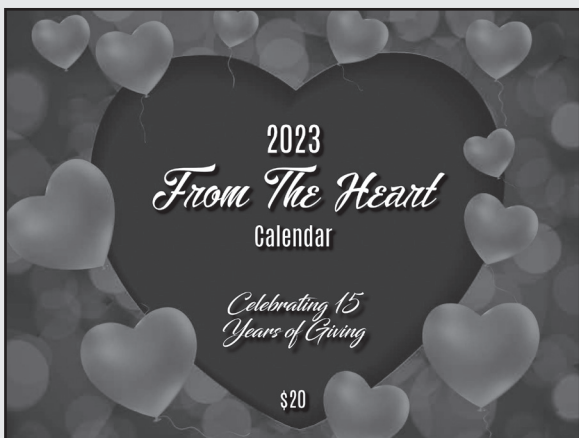
Herrera said. "We love that this program gives us the chance to showcase

the hard work and dedication they put in to making our city look great."



Rochelle DAR Chapter welcomes Holt as new member

The Rochelle Chapter Daughters of the American Revolution welcomed new member Cindy Holt at their chapter meeting in September. DAR encourages membership interest by any women aged 18 years or older, who can demonstrate direct lineage to an individual who supported the American cause during the Revolutionary War. Shown left to right: Cindy Holt, Chaplain Judy Schermerhorn and Regent Debby Katzman. For more information about the Rochelle Chapter, see the chapter's website at <https://ildar.org/chapters/rochelle> or Facebook page at <https://www.facebook.com/RochelleChapterNSDAR>. The next chapter meeting on Oct. 7 will host veteran Lyle Headon who will be speaking on the origin of TAPS.



- Sept. 5 - Ben Heck, Chana, \$25
- Sept. 6 - Mariah Wyrobek, Rochelle, \$25
- Sept. 7 - Linda Schreiber, Leaf River, \$25
- Sept. 8 - Jason Burdin, Rochelle, \$25
- Sept. 9 - Zekelman Employee, Rochelle, \$25
- Sept. 10 - Rochelle Area Community Foundation, \$50
- Sept. 11 - Alexis Barbosa, Newark, \$25
- Sept. 12 - Zekelman Employee, Rochelle, \$25
- Sept. 13 - Rochelle Area Community Foundation, \$25
- Sept. 14 - Rochelle Area Community Foundation, \$25
- Sept. 15 - Katherine Slattengren, Rochelle, \$25
- Sept. 16 - David Bills, Port Byron, \$25
- Sept. 17 - Norna Seaworth, Lindenwood, \$50
- Sept. 18 - Therese Fenwick, Winchester, VA, \$25
- Sept. 19 - Elizabeth Bontz, Amboy, \$25
- Sept. 20 - Rochelle Area Community Foundation, \$25
- Sept. 21 - The Kitchen Table, Rochelle, \$25
- Sept. 22 - Teresa Schlesinger, Compton, \$25
- Sept. 23 - Mark - Meyers Furniture, Rochelle, \$25
- Sept. 24 - Thelma Geske, Steward, \$50
- Sept. 25 - Brenda Bickerman, McNabb, \$25
- Sept. 26 - Dave Pest, Rochelle, \$25
- Sept. 27 - Steve Howell, Dixon, \$25
- Sept. 28 - Jodi Jacobs, Panama City, Florida, \$25
- Sept. 29 - Juan Martinez, Rochelle, \$25
- Sept. 30 - HOPE of Ogle County, \$25
- Oct. 1 - Caring Friends, Dixon, \$50



Coffee Break

MAGIC MAZE

Q J H S E C Z X U S Q N L J G
E C Z X T S T N A F N I S S S
V T P L A N T S R P N L T T T
J E L E P H A N T S H E N N N
C A Y N W V S I A T R A A A A
P N L C K T U I G C R G E R D
E C B H N S Z X S T I W G G N
U S R A T Y R A N T S L A P E
O S T N A V R E S M N L P J T
I U A T G E D B A Y X A W P T
M P U S T N A R D Y H T W S A

Find the listed words in the diagram. They run in all directions forward, backward, up, down and diagonally. Unlisted clue hint: NEWBORN BABIES

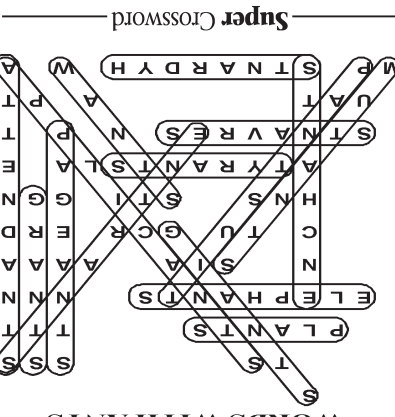
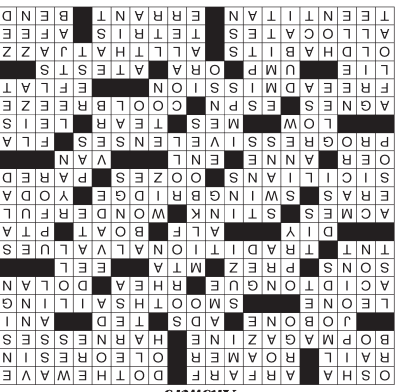
Applicants
Attendants
Elephants
Enchants

Entrants
Giants
Grants
Hydrants

Mutants
Pageants
Pantsuits
Plants

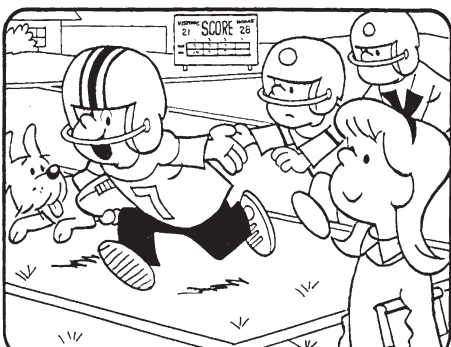
Servants
Tyrants
Wants

©2023 King Features Syndicate, Inc. All rights reserved.

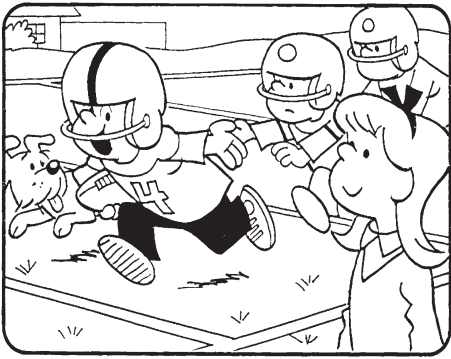


HOCUS-FOCUS

BY HENRY BOLTINOFF



Find at least six differences in details between panels.



Differences: 1. Ears are different. 2. Stripes are missing. 3. Number is different. 4. Scoreboard is missing. 5. Neckline is different. 6. Book is missing.

Super Crossword

STARTING SUBGENRES

ACROSS

- 1 Worker welfare gp.
5 Bark syllables
11 Perform a dynamic crowd action in a stadium
20 Hospital bed attachment
21 Nomadic type
22 Turpentine, for one
23 1983-2014 periodical for adolescents
25 Reins are parts of them
26 The first task on the to-do list
27 Help-wanted, e.g.
29 Musician Nugent
30 Musician DiFranco
31 Africa's Sierra —
33 No-problem advancement
37 What a bitingly sarcastic person has
41 Ostrich lookalike
42 Olympic swimmer Tom
43 Royal heirs, often
44 Veep's boss

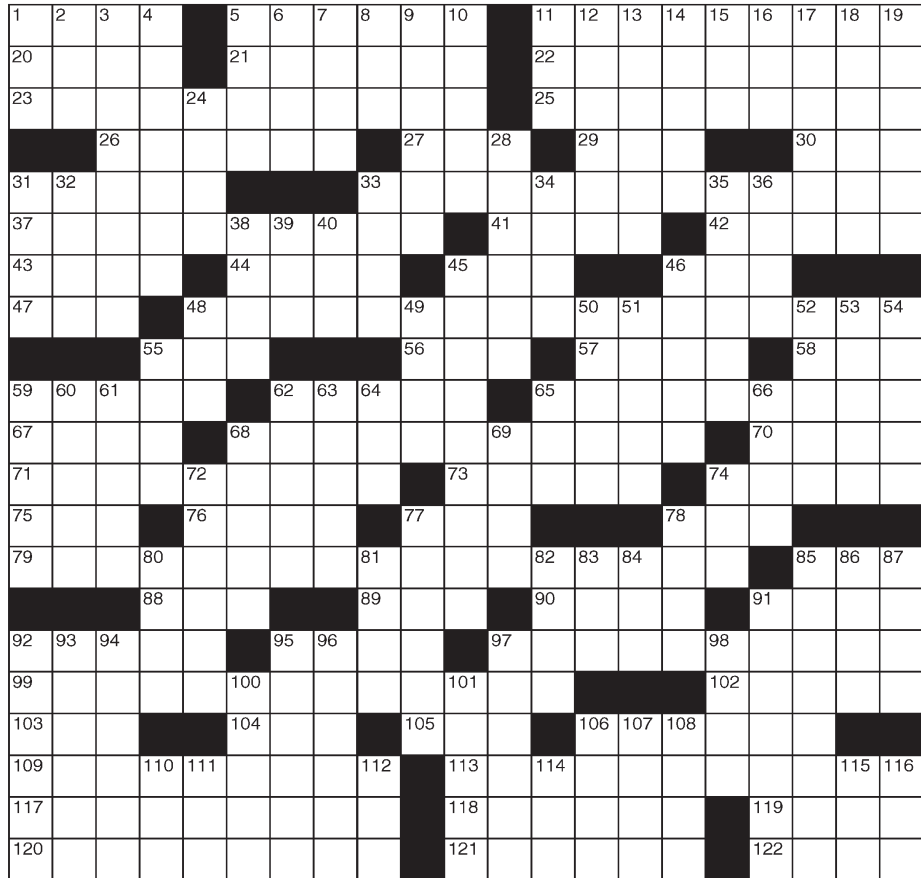
- 45 NYC subway org.
46 Shocking fish, at times
47 Stuff causing a blowup
48 Conservative moral principles
55 Like Ikea assemblies, for short
56 Sitcom alien
57 Sloop, e.g.
58 Sch. group
59 Summits
62 Smell terrible
65 Splendid
67 Special times
68 Span rotating horizontally to allow ships through
70 Sci-fi guru
71 Natives of Palermo or Catania
73 Runs slowly
74 Peeled
75 Above, in poems
76 Meara of "Southie"
77 Photo lab blowup: Abbr.
78 Ryder vehicle
79 Alternative to bifocals
85 Naples loc.
88 Deep, as a voice

- 89 Month, to Manuela
90 Put a rip in
91 Luau favors
92 De Mille of choreography
95 Game-airing channel
97 Welcome wind on a hot day
99 Entry at no charge
102 Key just above D
103 Tell untruths
104 Strike caller
105 "... boy — girl?"
106 Trial blasts, for short
109 They die hard, it's said
113 Bob Fosse film title relevant to the starts of eight answers in this puzzle
117 Distributes in shares
118 Shape-fitting game
119 For — (not pro bono)
120 Young superhero of DC Comics
121 Off the mark
122 Road curve

- DOWN
1 Globe
2 — Paulo
3 Coxa, more familiarly
4 Some nuts
5 Jason's ship
6 Horse hue
7 Perturb
8 Parisian bud
9 Title anew
10 One of the Corleones in "The Godfather"
11 Cry from Homer
12 City in Kansas
13 Actress Wright
14 Fit carmaker
15 Up 'til
16 "Cursed" director Craven
17 Really attack
18 Capital of Austria
19 Junior naval officer
24 Assist illicitly
28 More or less
31 Keep going
32 Business coll. topic
33 Rocker Quatro
34 Lighter — air
35 Imagine
36 Laze about
38 Grand Ole —

- 39 Firearm rights org.
40 H.S.-level exam
45 Popular dog biscuits
46 Shirk
48 "— the season ..."
49 Sharp taste
50 Place to live
51 Pines
52 Willing to participate in
53 Musical exercise
54 Mixed greens
55 Lover of Lucy
59 Fable penner
60 Town shout
61 User's shortcut
62 Relatives of geese
63 Rake parts
64 Those elected
65 Rapper — Khalifa
66 Actress Meg
68 Tendon
69 Croissant, e.g.
72 Crooner Julius
74 Dads
77 "Yeah, but still ..."
78 Noun follower, often

- 80 Open delight
81 Devilkins
82 School in Berkshire
83 Natal lead-in
84 Bando of baseball
85 Sense no danger
86 Oscar winner Minnelli
87 Play — (enjoy some tennis)
91 Alternative to a right hook
92 Drifting at sea
93 Car part between headlights
94 Acupuncture item
95 NFL rusher Smith
96 Savor pekoe, say
97 Certain fuel-carrying ship
98 Take a break
100 Burj Khalifa locale
101 Super-angry
106 Razor brand
107 Skinny
108 Toward dawn
110 Sweetie
111 Make a move
112 IRS ID
114 Env. insert
115 Buddhist discipline
116 Brits' alphabet ender



TELLER APPRECIATION WEEK

How entrepreneurs can approach funding their businesses

SUCCESSFUL entrepreneurs often say that few, if any, professional endeavors are as rewarding as starting a business and ultimately seeing it become profitable. The journey from start-up to profitable business is long, and it starts even before many companies open their doors.

Funding is a significant factor when starting a new business. In fact, the U.S. Small Business Administration notes that choices regarding how to fund a business are among the most important decisions business owners make. Funding a start-up can seem like a daunting task, but the SBA offers the following tips to help entrepreneurs get their businesses off the ground.

- Determine your needs. Entrepreneurs should not begin to seek funding until they've first determined just how much money they will need. These costs will be different for every

business, and calculating them requires a detailed analysis of your start-up expenses (i.e., office space, insurance, equipment, licenses and permits, etc.).

- Determine your own contributions. Start-ups will not necessarily require outside funding. Many entrepreneurs dip into their personal funds to help get their businesses up and running. This, too, requires careful consideration, especially for entrepreneurs who already have significant financial obligations, such as a family, a mortgage or even another business. The SBA notes that self-funding entrepreneurs may use money from their savings and even retirement accounts, though some may be unwilling to do so. While self-funding entrepreneurs take on all the risk, this approach affords them the chance to maintain complete control over the business. Deciding if reducing risk or maintaining complete control is



more important is part of determining if the business will be self-funded.

- Consider raising funds through venture capital firms. The SBA notes that venture capital firms typically focus on high-growth companies, so this might not even be a consideration for entrepreneurs starting small businesses that they hope to keep small. If

venture capital is an option, entrepreneurs must recognize that venture capital is not a loan, but rather money offered in exchange for an ownership stake in the company. That stake comes with decision-making rights, which means entrepreneurs will not have full control or ownership of the company.

- Seek a small business

loan. Unlike venture capital, small business loans are primarily designed for entrepreneurs who do not expect their businesses to become high-growth companies, at least not anytime in the near future. Banks and credit unions issue small business loans, but entrepreneurs who want to secure them must provide detailed business

plans, expense sheets and financial projections for the years ahead. The more detailed these plans are, the more entrepreneurs will know what to ask for and the more likely the lender is to approve a loan.

Entrepreneurs can raise funding in various ways. Choosing the best option requires careful consideration of a host of factors.

Stillman BANK

STILL LOCAL. STILL SOLID. STILL HERE FOR YOU.

Since 1882.

Thank you to our tellers for providing friendly and professional service to our customers every day!



Ilse M., Colleen R., Jeani C., Kylie H., Jasmin G.

Not Pictured: Terrell A. & Mary H.

www.stillmanbank.com

COME SEE YOUR FRIENDS



304 E. Hwy 38
Rochelle, IL

FIRST STATE BANK

firststatebank.biz | 815.562.2200



We appreciate our tellers!

Holcomb Bank would like to recognize the hard work & dedication of our Teller staff! Thank you for providing our customers with excellent service!



Holcomb Bank

WHERE RELATIONSHIPS MATTER



BYRON

CRESTON

NEW MILFORD

ROCHELLE

Rochelle • New Milford • Creston • Byron

815-562-3838

www.holcomb.bank

2023

BEST OF

OGLE COUNTY

Best of Ogle County

Voting has Ended

Look for the Winners' Section

in our Oct. 8th edition

NATIONAL

TACO DAY

OCTOBER 4

SUNDAY, OCT. 1, 2023

ROCHELLE NEWS-LEADER • SECTION 2 • PAGE 1

SPORTS



HUBS PLAY AT REGIONAL

The RTHS golf team competed at the IHSA 2A Rock Falls Regional on Wednesday.

See page 2 for more details

RTHS Boys Golf



(COURTESY PHOTO)
The RTHS golf team competed in the Interstate 8 Conference tournament at Kishwaukee Country Club on Monday. Above from left to right are Alex McBride, Chris Hickey, Chandler Cunningham, Owen Carmichael, Ian Metzger, Owen Messer, Obie Nava, Alex Dyer, Jacob Ost, Bryson Stewart, Parker Lenkaitis and Cale Workman.

Metzger wins Interstate 8 title

Hub sophomore shoots even-par 70 to take conference tournament crown

BY RUSSELL HODGES
SPORTS EDITOR

DEKALB — A full summer of training and preparation came to fruition for Rochelle sophomore Ian Metzger during Monday’s Interstate 8 Conference tournament at Kishwaukee Country Club.

After earning an Honorable Mention in the confer-

ence last season, Metzger entered Monday’s tournament in position to secure an All-Conference award for the first time in his high school career. Showing tremendous accuracy off the tees, Metzger frequently found the fairways and routinely capitalized with quality approach shots that led to consistent scoring opportunities.

The result was a historic round for the sophomore standout, who finished with a season-low, even-par round of 70 to win the conference tournament with a six-stroke lead over the field. Metzger, who carded two birdies and limited himself to only two bogeys, became the first boys conference champion in the nearly 30-year tenure

of Rochelle head coach Glen Mehrings.

“I knew I could win but I also knew that I would be facing some really good players,” Metzger said. “My goal coming in was to not make anything worse than a bogey... I thought I played a really good round and I managed my way around the course well. My mindset was really good and I stayed

focused... I knew I had a five-shot lead at the 15th hole and the next kid was in my group, so I knew that if I could beat him, I could win the tournament. It was a great feeling.”

Metzger recovered from a bogey on the third hole of the course, paring the next two holes before finding his first birdie of the round on the par-5 sixth hole. A

string of seven consecutive pars led into another birdie on the par-4 14th hole that put Metzger one stroke under par for the afternoon. Despite a bogey on the 18th hole, Metzger maintained a large enough lead to hold off runner-up finisher Liam Eber of Morris, who carded a 6-over-par 76.

See GOLF page 3

RTHS Volleyball

Rochelle takes conference match against Ottawa

Lady Hubs snap four-game losing streak with 25-22, 25-22 victory Tuesday

BY RUSSELL HODGES
SPORTS EDITOR

ROCHELLE—Junior outside hitter Lauren Dyer provided a spark for the Rochelle Lady Hub varsity volleyball team during the first set of Tuesday’s Interstate 8 match against Ottawa.

With the set even at 8-8, Rochelle funneled the ball to the outside, where Dyer helped ignite a run of four consecutive points to put the Lady Hubs ahead and force an Ottawa timeout. The junior finished the match with four kills, three digs and one ace as Rochelle held off the Pirates for a 25-22, 25-22 win. The Lady Hubs (12-9, 1-3 Interstate 8) snapped a four-game losing streak and avenged their loss to Ottawa during their home tournament earlier this season.

“We knew we had to come out strong because we lost to them the last time we played,” Dyer said. “We played our hardest and it feels great to win. Our setter Ali [Ohlinger] has been helping me with my confidence during practice and my goal tonight was to go out there and swing hard.”

The Pirates took the first three points of the opening

set, but Rochelle’s mid-set surge powered by Dyer’s offensive effort helped the Lady Hubs retake control over the match. Ottawa rallied back to even the score at 18-18, but a pair of timely kills from senior middle blocker Kennedy Adamski fueled a 4-1 run that forced another timeout. Rochelle clinched the first-set win with kills from Adamski and junior setter Ali Ohlinger, who had 22 assists, seven digs and five kills.

“It’s definitely a confidence builder because we were feeling a little down, but it feels great to win,” Dyer said. “I think our season is going well. We need to stay confident and start strong.”

Rochelle carried its positive momentum into the second set, where the Lady Hubs held a 15-9 advantage after breaking off a 6-1 run. Junior outside hitter Taelynn Rodeghero fueled the mid-set rally, swinging hard for a series of kill shots to keep Rochelle ahead of the Pirates. Rodeghero had a team-leading seven kills for the Lady Hubs, who picked up big blocks from Ohlinger and Adamski near the end of the set, where a hitting error sealed the Rochelle win.



(PHOTOS BY RUSSELL HODGES)
The Rochelle Lady Hub varsity volleyball team defeated Ottawa 25-22, 25-22 on Tuesday. At left, junior Ali Ohlinger prepares to serve. At right, junior Emma Kennay passes the ball forward.

Adamski finished with five kills for the Lady Hubs, while senior outside hitter Alivia Henkel added five kills and six digs. Junior libero Dempsey Atkinson led the defense with 15 digs and junior defensive specialist Emma Kennay followed with seven digs during Tuesday’s conference win.



The businesses featured on this page are
"Hubs Super Fans"
 They proudly support our local athletes and students.



Please show your appreciation by patronizing their businesses.

WE SUPPORT OUR HUBS!

HUB SPOTLIGHT



(PHOTO BY RUSSELL HODGES)

The Rochelle Hub varsity golf team finished seventh in the IHSA 2A Rock Falls Regional on Wednesday. Pictured above from left to right are Alex Dyer, Ian Metzger, Owen Messer, Jacob Ost, Obie Nava and Owen Carmichael.

Hubs finish seventh at IHSA 2A Rock Falls Regional

Metzger, Dyer advance to sectional tourney

BY RUSSELL HODGES
SPORTS EDITOR

DEER GROVE — Hub freshman Alex Dyer was one of several golfers vying for one of the final at-large qualifying bids during the IHSA 2A Rock Falls Regional at Deer Valley on Wednesday afternoon.

Sitting right above the cut line after double-bogeying the 15th hole and bogeying the 16th hole, Dyer needed a strong finish in order to secure his berth in next week's sectional tournament. With his focus on making quality swings, Dyer parred the 17th and 18th holes to end his round with a 90 and lock down the 10th and final at-large qualifying bid. The freshman, who ultimately finished 22nd overall on the day, will be one of two Rochelle golfers competing in the IHSA 2A Freeport Sectional next Monday.

"It's really cool to qualify as a freshman," Dyer said. "I thought I played alright and I was able to squeak in at the end. The course was tough and there were a lot of out-of-bounds areas where I had to take a few penalty strokes, but the greens were nice and I putted the ball really well. I was able to forget about the big scores and focus on playing my game and not doing too much. I calmed myself down before stepping into my shots to make sure I was making good swings."

Sophomore Ian Metzger will compete alongside Dyer at the sectional tournament, which will be played at Park Hills Golf Course in Freeport. Playing only two days after winning the Interstate 8 Conference

tournament, Metzger continued to fire low scores during the regional tournament, medaling in fourth place overall with a 3-over-par 75. Metzger finished with four birdies in his round including one on the 286-yard, par-4 18th hole that vaulted him into medal position.

"I thought I played a lot better than I did at the regional last year," said Metzger, who qualified for sectionals as a freshman last season. "I had a lot of confidence after the conference tournament and I thought I played really solid golf today. I knew I had to come out and hit fairways because I wouldn't have good angles into the pins from the rough... I only had one three-putt and I got up and down when I needed to. I made a lot of pars and I birdied two of my last three holes."

Metzger and Dyer's individual efforts led Rochelle (2-10, 0-5 Interstate 8) to a seventh-place team performance in the regional tournament. The Hubs recorded a team score of 367, with freshman Owen Carmichael shooting a 94 to take 28th overall. Seniors Obie Nava and Owen Messer followed with scores of 108 and 120, while junior Jacob Ost added a 121 to round out the varsity lineup. Metzger and Dyer are each seeking to become first-time state qualifiers.

"I have to limit my big mistakes and I can't have any big numbers," Metzger said. "I need to hit a lot of fairways and play really smart golf. I can't give shots away and make triple bogeys when I could take a bogey and bounce back with a birdie on the next hole. Those little things matter."

VINCE'S PIZZA
SINCE 1967

Enjoy a **15% Discount**
when Ordering Online at
VincesPizzainRochelle.com

815.562.7300
Delivery & Curbside Pick Up
1071 N 7th St, Rochelle, IL



Hello,
neighbor!

Huber Ins and Fin Svcs Inc
Shane B Huber, Agent
221 E. IL Rt. 38
Rochelle, IL 61068
Bus: 815-562-7011

Please stop by and say, "Hi!"
I'm looking forward to serving your needs for insurance and financial services.
Like a good neighbor, State Farm is there.
CALL ME TODAY.

State Farm

1001013.1 State Farm, Home Office, Bloomington, IL



Caring for your
family's health from
infant to adults.

Accepting
New Patients

For appointment, please call
815-227-9594
1212 Currency Ct, Rochelle, IL 61068
Most Insurance Accepted

Local People Providing Local Service



Water • Waste Water
Electric • Communications

Phone: 815-562-4155 333 Lincoln Highway
Fax: 815-562-5861 Rochelle, IL

www.rmu.net



Loans For All Your Needs
Auto • Home Improvement • Vacation
Jami Hackman • Tonia Holland

815-561-4035!

310 Eagle Drive, Rochelle
All loans subject to our normal credit requirements and policies.



If you can dream it, we can build it.



Rochelle Sales Office • Hwy. 251 N. • 877-613-3050



900 N. 2nd Street, Rochelle
815-562-2181
www.rochellehospital.com



209 Powers Road, Hwy 251 N
Rochelle, IL 61068
(815) 562-8792
www.meyersfurniture.com



• Residential
& Commercial
Concrete
• Additions

815-561-0099
Free Estimates • Fully Insured
www.brunsconstructioninc.com



Helping you create the life you want.
kish.edu



Queens Trucking & Construction Inc
322 Errett Road, Rochelle
815-562-6064 | queens-trucking.com



Plumbing, Heating & Cooling
Water Heaters, Water Softeners,
Drinking Water Systems, Iron Filters,
Sewer Rodding & Jetting & More!

Since 1976
621 First Ave., Rochelle
(815) 562-8784



Authentic Homemade Mexican Food
Carry-out & Catering Available
(815) 561-7576
1071 N. CARON RD. ROCHELLE, IL 61068



227 E. Rt 38 • Rochelle, IL
815-562-8706
www.rochellechiropractic.com
Now Accepting New Patients!



Alfano's
Pizzeria and Italian Restaurant

Taste The **TRADITION**
Taste The **DIFFERENCE**

Dine In • Carry Out •
• Home Delivery • Pizza • Pastas •
• Sandwiches • Salads •
• and Lots More!

Dine-In • Carry Out • Home Delivery
1115 TURKINGTON TERRACE, ROCHELLE
815-562-3312

JOHNSON TRACTOR

SALES • PARTS • SERVICE

200 Steward Road
800.262.1680
www.johnsontractor.com



BUY HERE - PAY HERE
You Work - You Drive

Se Habla Español **815-562-7433**

1400 N 7th St
Corner of Flagg Rd & Hwy 251 N

HUB-REMSEN
PRINT GROUP

101 Maple Ave • Rochelle, IL 61068
815.562.7057 • hub-remsen.com



"Proudly Serving the Rochelle Area Since 1945"



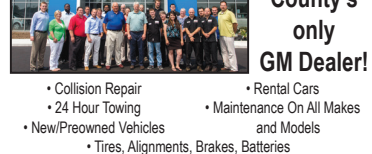
FREE ESTIMATES
Licensed and Insured

Residential • Commercial • Industrial

24 Hour Emergency Service

815-562-4937

500 Cleveland Avenue



Auto Group
JEFF PERRY

815-562-8787 www.jeffperrychevrolet.com

Busy Schedule?
Leave the cooking to us.

• Large menu of foods
• Rochelle's famous chicken
by the dinner or bucket
• Hand dipped ice cream
(16 flavors)

COUNTRY SCHOOL
DRIVE-IN RESTAURANT
251 N. ROCHELLE • 562-6039

Stillman BANK



Earning Your Trust Since 1882
www.stillmanbank.com



GOOD LUCK HUBS
FROM YOUR FANS AT:

815-562-2111 hre@haydenreinc.com

SPORTS



(COURTESY PHOTO)
Senior Elise Horner competed at the Interstate 8 Conference Girls Championship tournament at Sycamore Golf Course on Tuesday.

GOLF: Metzger, Dyer earn All-Conference recognition

From page 1

"I struggled hitting fairways during my last tournament, so I went to the range and worked on hitting my driver," Metzger said. "I hit a ton of fairways during the tournament and I left myself with good irons into the hole. I feel like one of the strongest areas of my game is when I'm able to attack pins and that's a lot easier out of the fairway than it is out of the shorter grass."

Metzger's championship effort allowed Rochelle to finish fifth out of six teams with a final score of 354. Freshman Alex Dyer carded an 84 and earned an All-Conference Honorable Mention for the season, while freshman Owen Carmichael followed with a 93.

Metzger ultimately placed third in the conference for the season, resulting in All-Conference First Team honors this year.

"I worked so hard over the summer," Metzger said. "I played every single day over the summer, sometimes multiple times. Knowing that I worked that hard and I was able to win the conference tournament and earn All-Conference is a great feeling. I did a lot of weightlifting to try and get more speed since I was a lot shorter last year and I added around 40 yards off the tees."

Seniors Obie Nava and Owen Messer each recorded 107 for the Hubs (2-10, 0-5 Interstate 8), who will travel for the IHSA 2A Rock Falls Regional at Deer Valley

on Wednesday. Advancing teams or individuals will then compete in the IHSA 2A Freeport Sectional at Park Hills, with qualifiers from that tournament moving on to the IHSA 2A State Championship in Normal.

Girls

Senior Elise Horner represented the Rochelle Township High School golf team during the Interstate 8 Conference Girls Championship tournament at Sycamore Golf Course on Tuesday. Horner carded a 113 in the 18-hole tournament to finish 12th out of 19 players.

Horner and senior Haley Bozinovich played in the IHSA 2A Sycamore Regional on Thursday. Horner shot a 117 to lead the way.

RTHS Girls Tennis

Lady Hubs notch road wins over Newman, Mendota

Zheng takes singles match at Sycamore

BY RUSSELL HODGES
SPORTS EDITOR

DIXON — The Rochelle Lady Hub varsity tennis team took two of the three doubles matches against Newman Central Catholic on Wednesday evening. Senior Elin Zheng secured a singles win as the Lady Hubs edged the Comets for a 3-2 win in nonconference action. Rochelle (5-8, 0-5 Interstate 8) will face the Belvidere Bucs on the road next Tuesday before battling the Princeton Tigers on the road next Thursday.

Zheng cruised to a two-set win over Maria Ardis at No. 1 singles, dropping only one game in her 6-0, 6-1 victory. Juniors Kitty Williams and Kendyl Darby played a flawless second set against Grace Tobias and Kaitlyn Conderman at No. 3 doubles, winning 6-3, 6-0. Seniors Allie Dickey and Annaleigh McKinney secured the team win with a 6-1, 6-3 win over Laurel Chavera and Mandy Taylor Steffens at No. 2 doubles.

Junior Riley Doyle and senior Macenzie Glosser went three sets against Julia Rhodes and Emily Beattie at No. 1 doubles,

claiming the second set but falling short in the third set for a 3-6, 6-4, 3-10 loss. Senior Kara Martinez took two games in her 1-6, 1-6 loss against Emmy Burger at No. 2 singles.

Sycamore

The Rochelle Lady Hub varsity tennis team concluded its Interstate 8 Conference schedule on Tuesday, falling 4-1 against Sycamore with senior Elin Zheng recording the team's lone victory in the match. Zheng faced Jeanny Ni at No. 1 singles, controlling the match from start to finish for a 6-1, 6-2 win.

Juniors Erin Murphy and Kitty Williams battled Abby Burgess and Layla Musich at No. 3 doubles, playing a close second set in their 2-6, 4-6 loss. Seniors Allie Dickey and Annaleigh McKinney took on Kate Elsner and Lizzie McConkie at No. 2 doubles, taking two games in a 1-6, 1-6 defeat.

Junior Riley Doyle and senior Macenzie Glosser also claimed two games in their 1-6, 1-6 loss to Madyson Block and Jetta Weaver at No. 1 doubles. Senior Kara Martinez fell 0-6, 0-6 against Jordyn

Tilstra at No. 2 singles.

Mendota

The Rochelle Lady Hub varsity tennis team followed its second-place showing at the Lady Hub Invitational on Saturday with a 4-1 road win over Mendota during nonconference play on Monday. Rochelle (4-7, 0-4 Interstate 8) swept both singles matches while taking two of the three doubles points to secure the victory.

Senior Elin Zheng cruised to a 6-1, 6-2 win at No. 1 singles, while senior Kara Martinez battled to earn a three-set win at No. 2 singles, recovering from a first-set loss to claim a 5-7, 6-1, 10-8 victory. Junior Riley Doyle and senior Macenzie Glosser dominated their No. 1 doubles match against the Trojans, winning 6-2, 6-1 in straight sets.

Juniors Erin Murphy and Kitty Williams didn't lose a single game in their No. 3 doubles match, coasting for a 6-0, 6-0 sweep. Seniors Allie Dickey and Annaleigh McKinney played a tough three-set match at No. 2 doubles, falling just short in a 6-3, 3-6, 8-10 loss.

RTHS Boys Soccer

Hubs lose sixth straight game

Three players score in loss at Kaneland

BY RUSSELL HODGES
SPORTS EDITOR

MAPLE PARK — Three Rochelle Hub varsity soccer players found the net during Wednesday's Interstate 8 Conference match against Kaneland. Junior Alberto Casillas as well as sophomores Heilly Zepeda and Emmanuel Nambo each scored goals as the Knights defeated Rochelle 10-3. Sophomore Antonio Hueramo finished with 15 saves

for the Hubs (3-10-2, 1-7 Interstate 8).

Junior Fernando Diaz and senior Diego Salazar each notched assists for the Hubs, who were out-shot 51-12 and 39-7 in shots on goal. Kaneland took the early lead over Rochelle, scoring in the first and ninth minutes before the Hubs answered with a goal during the 11th minute, with Salazar assisting Zepeda to make the score 2-1. The Knights followed with

four consecutive goals in the 17th, 20th, 22nd and 24th minutes to surge ahead of the Hubs 6-1 in the first half.

Diaz connected with Casillas for a Rochelle goal in the 31st minute, making the score 6-2 before Nambo's goal in the 35th minute brought the Knights within three. Kaneland held a 7-3 three at halftime and scored three second-half goals to clinch its conference win on Wednesday night.

COMMUNITY BOARD

Need to get the word out about a product or service you offer?
Give us a call at 815-562-4171.
We can reach over 9,000 homes!



Advertise Here

What Service Do You Offer?

562-4171

The Rochelle News-Leader

Gutters, Roofing & Siding

THEISEN ROOFING Free Estimates!

ROOFING
SIDING
GUTTERS

CONTACT US
815-758-8998
THEISENROOFING@COMCAST.NET

Family owned & operated for over 50 years

Plumbing, Heating & Cooling

ANDERSON PLUMBING & HEATING, INC.

Plumbing, Heating & Cooling
Water Heaters, Water Softeners,
Drinking Water Systems, Iron Filters,
Sewer Rodding & Jetting & More!

Since 1976

621 First Ave., Rochelle
(815) 562-8784

Heating & Air Conditioning

HULL HVAC & Household Services

Furnaces - Air Conditioners - Boilers
Duct Cleaning - Water Heaters

Precision Furnace Clean & Check
\$85.00
Includes FREE carbon monoxide test

24/7 Emergency Service
815-561-6551
www.HullHVAC.com

Concrete

Bruns Construction, Inc.

• Residential & Commercial Concrete
• Additions

FREE ESTIMATES!

Tim & Roger Bruns, Owners
Established 1997

815-561-0099
Free Estimates • Fully Insured
www.brunsconstructioninc.com

Storage Sheds

Rocky Ridge Structures

FREE Sales Rep. Evaluation At Your Site

We Deliver From Our Lot To Your Site

We Specialize in Portable/Quality Built Storage Sheds

- Stock & Custom Design
- Many Options Available
- Competitive Pricing
- Site Preparation Available

See Displays at 3500 S. Chana Rd. Chana IL 61015
Call Norm or Albert for Free Literature packet
779.861.3542

SPORTS

RTHS Cross Country



(COURTESY PHOTO)

Three Rochelle cross country runners earned medalist honors during the annual Matt Walter Invitational at Walcamp Park. Above are sophomore Annaliese Koziol and senior Luis Hernandez. Not pictured is sophomore Declan McGee.

Rochelle trio medals at Matt Walter Invitational

Hernandez, McGee & Koziol awarded

BY RUSSELL HODGES
SPORTS EDITOR

KINGSTON — Three Rochelle Township High School cross country runners earned medalist honors during the annual Genoa-Kingston Matt Walter Invitational at Walcamp Park on Tuesday.

Senior Luis Hernandez and sophomore Declan McGee medaled to lead the Hubs in the varsity race, while sophomore Annaliese Koziol medaled to spearhead the charge for the Lady Hubs. Her-

nandez finished sixth out of 72 varsity runners for the boys, clocking in with a time of 16:42.62 while McGee took 16th with a time of 17:21.00. Koziol placed 10th out of 60 varsity runners for the girls, crossing the finish line with a personal-record time of 19:49.90.

Sophomore Elijah Mayen finished 35th with a time of 18:40.46 for the Hubs, who took sixth out of 10 teams in the varsity race. Sophomore Levi Waddle finished 44th with a time of 19:32.75, while

freshman Hadley Losoya placed 46th with a time of 19:40.62. Sophomore Rose Luxton finished 32nd with a time of 24:03.59 for the Lady Hubs, who took seventh out of eight teams.

Junior Brisa Zepeda and sophomore Mary Chadwick rounded out the top five girls for Rochelle on Tuesday. Chadwick finished 39th with a time of 24:54.94 and Zepeda took 42nd with a time of 25:11.78. The Hub and Lady Hub teams will travel for the Freeport Invitational on Saturday.

ROCHELLE News-Leader

Follow The Leader

Stay in the loop with the latest and most accurate local news by following the Rochelle News-Leader on Facebook and link to our website at rochellenews-leader.com

Keep informed of all the happenings as we specialize in bringing you Local News... Local Views.

More than 6,200 followers on RNL's Facebook page!

03132022

211 Hwy. 38 East, Rochelle, IL 61068
Phone: 815-562-4171
www.rochellenews-leader.com

Rochelle News-Leader



9 Biggest Benefits Of Shopping Rochelle First

- Youth programs, schools and non-profit groups look to our businesses first when fundraising.** These community-minded businesses donate faithfully to local youth sports programs, community clubs, nonprofit groups and churches — just to name a few. Shouldn't we look to those same businesses first when we need goods and services? Of course we should!
- High rate of return.** For every \$100 spent in independently owned stores, \$68 returns to the community through payroll, taxes and other expenditures. Online orders return absolutely nothing to Rochelle, IL.
- Seeking health care in your hometown brings the comforts of receiving qualified care from people you know and trust.** Whether it be a trip to the dentist, regular health care screenings, a visit to a specialist or an emergency, you need not travel. It's all right here.
- Banking with people who know you is a luxury found only in hometowns.** You don't have to show your ID every time you go in. You can get a loan from people who know you and understand your needs, whether it be money for your first car or to help your business grow. Local banks believe in the value of community members helping one another.
- No one wants to have to make an insurance claim, but it's painless when your agent is your neighbor.** You don't have to convince them that there was a hail storm, or that the wind nearly took your roof off. They know because they live here. Which do you want when you've had a bad day: A face-to-face meeting with your local agent, or a machine answering the phone at that big national insurer that advertises on TV?
- Time is money.** It's simple math (especially when you figure in gas mileage.) Shopping locally can actually save you both time and money!
- Customer service after the sale is invaluable.** Local retailers not only take responsibility for the product they sold, they will often fix it or replace it — no questions asked. Appliances, furniture, computers and electronics sometimes have glitches. Would you rather box yours up, send it to who knows where, and wait six to eight weeks, or just go back to the nice guy that helped you when you bought it?
- Keeping it local encourages community growth.** By choosing to do business locally, you help maintain Rochelle's diversity, charm and appeal; which attracts new community members.
- One word: Jobs.** When you do business of any kind in Rochelle, it creates and maintains jobs for others in our area. A healthy employment rate is the cornerstone of all economies. How can you help the economy recover? Start at home.

ROCHELLE
News-Leader

Classified Marketplace

BUY OR SELL
Place A Classified Ad



ROCHELLE • HILLCREST • CRESTON • STEWARD • KINGS • ASHTON

101 LEGAL NOTICE

PUBLIC NOTICE
STATE OF ILLINOIS,
CIRCUIT COURT,
OGLE COUNTY
Request of Troy James Bantz
Case Number 2023 MR35
File Sept. 13, 2023
There will be a court date on the Request to change my name from Troy James Bantz to the new name of Victoria Emilia Madison Bantz
The court date will be held on Oct. 25, 2023 at 8:45 a.m. at 106 5th St., #203E, Oregon, Ogle County, in Courtroom #304.
No. 0919
(Sept. 17, 24 and Oct. 1, 2023)

NOTICE
IN THE CIRCUIT COURT OF THE 15th JUDICIAL CIRCUIT COUNTY OF OGLE IN THE MATTER OF THE ESTATE OF: SHARON C. KARRICK, 2023-PR-049 Deceased.
CLAIM NOTICE
NOTICE IS GIVEN of the death of SHARON C. KARRICK, of Rochelle, Ogle County, Illinois. Letters of Office as Executors were issued on August 29, 2023, to HEATHER M. HENSLEY whose address is 10426 E. Shagbark Lane, Rochelle, Ogle County, Illinois, and whose attorneys are Hewitt & Wagner, 1124 Lincoln Highway, Rochelle, Ogle County, Illinois, 61068.
Claims against the estate may be filed in the Office of the Clerk of the Circuit Court of Ogle County, Oregon, Illinois, or with the representative, or both, no later than six (6) months from the date of the first publication of this claim notice and any claim not filed within that period is barred. Copies of a claim filed with the Clerk must be mailed or delivered to the representative and to the attorney within ten (10) days after it has been filed.
Hewitt & Wagner Attorneys at Law For the Executors of the Estate of Sharon C. Karrick, deceased No. 0925 (Sept. 24, Oct. 1, and 8, 2023)

NOTICE OF PUBLIC HEARING
(HISTORIC DISTRICT)
PUBLIC NOTICE is hereby given to all persons in the City of Rochelle, Ogle County, Illinois, that a public hearing will be held by the Rochelle City Council on Monday, October 23, 2023 at 6:30 p.m. in the Rochelle City Hall Council Chambers, 420 North 6th Street relative to the following:
A public workshop will be held to educate business owners and the community on the Historic District and the importance of historic preservation.
All persons interested are invited to attend said hearing.
Anyone interested in participating in Public Commentary remotely should contact Rose Hueramo at rhueramo@rochelleil.us or 815-562-6161 to make arrangements.
Council members may participate in the City Council meeting remotely as a result of the Governor suspending the requirement for in-person attendance at Public Meetings.
The Council meeting will be broadcast live on YouTube.
Rose Hueramo, City Clerk
City of Rochelle No. 1013 (October 1, 2023)

NOTICE
Ogle County Housing Authority will be closing the Housing Choice Voucher Program (Section 8) waiting list to new applications on October 10, 2023, at 12:00 p.m. local time. No new applications for this program will be accepted after this time.
Ogle County Housing Authority No. 1014 (Oct. 1, 2, 8, and 9, 2023)

BINA NOTICE
The Mayor and City Council of the City of Rochelle, Ogle County, Illinois will hold a public hearing on October 10, 2023 at 6:30 p.m. The hearing will be held at the Council Chambers of City Hall of the City at 420 North 6th Street, in Rochelle, Illinois. The purpose of the hearing will be to receive public comments on the proposal to sell bonds in the amount of up to \$2,500,000 for the purpose of financing project costs, including certain capital projects within the City, including but not limited to the purchase and demolition of property, property redevelopment, installation of infrastructure including streets, curb and gutter, water mains, sewer lines and storm sewers, installation of new street lighting, and the installation and burying of electric infrastructure.
By: /s/ Rose Huéramo Title: City Clerk No. 1015 (October 1, 2023)

101 LEGAL NOTICE

This publication does not knowingly accept fraudulent or deceptive advertising. Readers are cautioned to thoroughly investigate all ads, especially those asking for money in advance.

105 BUSINESS OPPORTUNITIES

"This publication does not knowingly accept fraudulent or deceptive advertising. Readers are cautioned to thoroughly investigate all ads, especially those asking for money in advance."

113 FINANCIAL

NOTICE Advance Fee Loans or Credit Offers Companies that do business by phone can't ask you to pay for credit before you get it. For more information, call toll-free 1-877-FTC-HELP. A public service message from your hometown newspaper and the Federal Trade Commission.

119 ANNOUNCEMENTS

"This publication does not knowingly accept fraudulent or deceptive advertising. Readers are cautioned to thoroughly investigate all ads, especially those asking for money in advance."

127 SERVICES AND REPAIRS

FURMAN'S Lawn Care and Tree Work. Mowing, bushes, spring clean up, weeding and much more. Call Jeremy Furman 815-761-9619. Please leave a message will return

call ASAP. Fully insured, in business since 1999. Servicing Rochelle and surrounding areas.

201 DOMESTIC/CHILD CARE

NO INDIVIDUAL, unless licensed or holding a permit as a childcare facility, may cause to be published any advertisement soliciting a child care service. A childcare facility that is licensed or operating under a permit issued by the Illinois Department of Children and Family Services may publish advertisements of the services for which it is specifically licensed or issued a permit. Your Hometown Newspaper strongly urges any parent or guardian to verify the validity of the license of any facility before placing a child in its care.

203 HELP WANTED

EXPERIENCED
Housekeeper Wanted with References. Call 815-561-0021 (10042023A)

301 ANTIQUES

WANTED TO BUY:
Vintage Metal and Wood Signs, Milk Bottles & Local Advertising, Oak Icebox, Iron Door Stop and Antique Lighting... Call Dick Harms at 815-562-2928 or email dickharms@hotmail.com

ANTIQUES WANTED:
I pay cash for antiques; furniture, glassware, pottery & crocks, tin & iron toys, sterling silver, decoys. If it's antique, I'm interested in looking! Call 815-562-2928 or email dickharms@hotmail.com

307 MISCELLANEOUS FOR SALE

BUNDLED Newspaper -\$3 per Bundle. End Roll- Cost Depends on Weight of Roll. Available Monday-Friday 815-562-4171 (8AM-NOON ONLY) Rochelle News Leader.

2022 TROY-BILT Bronco Tiller 14 Inches. \$500 or Best Offer. Call 815-562-6974 (10/11/23ALL)

SPLIT Firewood For Sale. Contact 779-251-0254 (103023OCL)

405 HOUSES FOR SALE

ALL REAL ESTATE advertised herein is subject to the Federal Fair Housing Act, which makes it illegal to advertise any preference, limitation or discrimination based on race, color, religion, sex, handicap, familial status, or national origin, or intention to make any such preferences, limitation or discrimination. We will not knowingly accept any advertising for real estate which is in violation of the law. All persons are hereby informed that dwellings advertised are available on an equal opportunity basis



307 MISCELLANEOUS FOR SALE

NEW MILFORD REFRIGERATION

NEW, USED SCRATCH & DENT

- Refrigerators • Freezers
- Washers/Dryers • Stoves

We also carry a large selection of refurbished appliances with a warranty.

6331 11th Street, Rockford 815-262-3900



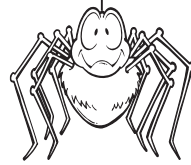
04092023

411 MOBILE HOMES

Mobile Home For Sale
3 bed
1 & 1/2 bath
2 sheds

For more info call:
815-679-8008
815-503-0598

ADVERTISE WITH US



103 AUCTIONS

ORDINANCE 23-03

ANNUAL BUDGET AND APPROPRIATION ORDINANCE FOR THE FISCAL YEAR BEGINNING THE 1ST DAY OF JULY, 2023 AND ENDING THE 30TH DAY OF JUNE 2024

WHEREAS, The Board of Trustees of the Creston-Dement Public Library District, in the County of Ogle, in the State of Illinois, has prepared a tentative form of the Annual Budget and Appropriation for said Public Library District for the fiscal year beginning July 1, 2023 and ending June 30, 2024. The tentative Budget and Appropriations Ordinance has been available for public inspection for at least thirty (30) days prior to our final action; and

WHEREAS, a public hearing was held as to such Annual Budget and Appropriation Ordinance on August 15, 2023. Notice of the hearing was provided at least thirty (30) days prior to the hearing by publishing notice of the hearing in a newspaper of general circulation in the Creston-Dement Public Library District; and

WHEREAS, all other legal requirements have been complied with by the Board of Trustees of Creston-Dement Public Library District;

NOW, THEREFORE, BE IT ORDAINED BY THE PRESIDENT AND BOARD OF TRUSTEES OF THE CRESTON-DEMENT PUBLIC LIBRARY DISTRICT, IN THE COUNTY OF OGLE, STATE OF ILLINOIS, AS FOLLOWS:

Section 1: That the following sums, or so much as by law may be authorized, are budgeted and appropriated for the specified Library Purposes for the fiscal year beginning July 1, 2023 and ending June 30, 2024. The purposes and amounts of the appropriations are as follows:

FOR CORPORATE PURPOSES [75 ILCS 16/35-6]:

1.	For payroll	\$ 79,200.00
2.	For professional services	\$ 2,400.00
3.	For books and materials	\$ 17,400.00
4.	For contractual services	\$ 9,900.00
5.	For rent	\$ 6,000.00
6.	For telecommunications	\$ 2,400.00
7.	For utilities	\$ 6,600.00
8.	For Board/Staff Development	\$ 900.00
9.	For publicity/public relations	\$ 1,100.00
10.	For dues and memberships	\$ 5,700.00
11.	For printing and postage	\$ 500.00
12.	For programming	\$ 4,500.00
13.	For operating supplies	\$ 2,500.00
14.	For technology	\$ 3,000.00
15.	For miscellaneous expenses/contingencies	\$ 1,800.00
TOTAL		\$ 143,900.00

FOR SOCIAL SECURITY FUND PURPOSES [40 ILCS 5/21-110; 21-110.1]:

Photocopy, cards, fax, and miscellaneous	\$ 5,000.00
Tax for General Corporate Library purposes	\$ 105,300.00
Tax for Social Security purposes	\$ 8,000.00
Tax for Liability and Insurance	\$ 39,100.00
Tax for Maintenance purposes	\$ 14,000.00
Expected cash on hand June 30, 2024	\$ 0

Section 3: Any unexpended balances in the General Library Fund, and Maintenance Fund appropriations will be deposited into the Special Reserve Fund pursuant to a plan in accordance with Article 40 of Chapter 75, Illinois Compiled Statutes.

Section 4: The Secretary of the Creston-Dement Public Library District is hereby authorized and directed to have this Ordinance published at least once in a newspaper of general circulation within this library district.

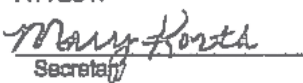
Section 5: This Ordinance shall be in full force and effect from and after its passage, approval and publication as provided by law.

Passed by the Board of Trustees of the Creston-Dement Public Library District and approved by the President thereof this 15th day of August, 2023.

BOARD OF TRUSTEES OF CRESTON-DEMENT PUBLIC LIBRARY DISTRICT

By:  Its President

ATTEST:


Secretary

No. 1009
(Oct. 1, 2023)

H.O.P.E

For Free Help
or
Information
Call
815-562-8890
24 Hours

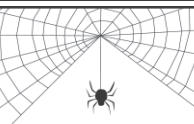
All Calls Are
Confidential.

Support,
Advocacy, Referral
Services,
Shelter for victims
of domestic
violence and their
children.

HOPE
of Ogle County



P.O. Box 131
Rochelle, IL 61068
Public Service
Announcement



An Advertising Proverb

When Mark Twain was editing a newspaper in Missouri, one of his subscribers wrote in, saying that he had found a spider in his newspaper and wondered whether it was a sign of good or bad luck. Twain's response: "Finding a spider is neither good luck nor bad. The spider was merely looking over our newspaper to see which merchant was not advertising, so that he could go to that store, spin his web across the door, and lead a life of undisturbed peace ever afterward."

Classified Marketplace

BUY OR SELL
Place A Classified Ad



ROCHELLE • HILLCREST • CRESTON • STEWARD • KINGS • ASHTON

ANNUAL STATEMENT OF AFFAIRS SUMMARY FOR FISCAL YEAR ENDING JUNE 30, 2023

The summary must be published in the local newspaper.

Copies of the detailed Annual Statement of Affairs for the Fiscal Year Ending June 30, 2023 will be available for public inspection in the school district/joint agreement administrative office by November 30 annually.
Individuals wanting to review this form should contact:

Creston CCSD 161	202 W South St Creston, IL 60113 0037	815-384-3920	
School District/Joint Agreement Name	Address	Telephone	Office Hours
Also by January 15 annually the detailed Annual Statement of Affairs for the Fiscal Year Ending June 30, 2023 will be posted on the Illinois State Board of Education's website at www.isbe.net			

SUMMARY: The following is the Annual Statement of Affairs Summary that is required to be published by the school district/joint agreement for the past fiscal year.

Statement of Operations as of June 30, 2023

		Educational	Operations & Maintenance	Debt Services	Transportation	Municipal Retirement/Social Security	Capital Projects	Working Cash	Tort	Fire Prevention & Safety
Local Sources	1000	1,218,705	118,276	48,814	60,228	35,817	0	24,607	213,913	23,620
Flow-Through Receipts/Revenues from One District to Another District	2000	0	0		0	0				
State Sources	3000	161,949	0	0	2,958	0	0	0	0	0
Federal Sources	4000	100,182	0	0	0	0	0	0	0	0
Total Direct Receipts/Revenues		1,480,836	118,276	48,814	63,186	35,817	0	24,607	213,913	23,620
Total Direct Disbursements/Expenditures		1,105,233	109,530	47,416	60,729	40,709	0		238,838	0
Other Sources/Uses of Funds		(48,000)	0	48,000	0	0	0	0	0	0
Beginning Fund Balances without Student Activity Funds - July 1, 2022		1,353,646	107,635	(21,600)	181,534	130,743	0	46,861	283,869	10,901
Other Changes in Fund Balances		0	0	0	0	0	0	0	0	0
Ending Fund Balances without Student Activity Funds - June 30, 2023		1,681,249	116,381	27,798	183,991	125,851	0	71,468	258,944	34,521
Ending Fund Balances (all sources) with Student Activity Funds - June 30, 2023		1,701,233	116,381	27,798	183,991	125,851	0	71,468	258,944	34,521

GROSS PAYMENT FOR CERTIFIED PERSONNEL

Salary Range: Less Than \$25,000	Salary Range: \$25,000 - \$39,999	Salary Range: \$40,000 - \$59,999	Salary Range: 60,000 - \$89,999	Salary Range: \$90,000 and Over
Christina Perkovich Daniel Randall Shannon Wilczek	Emily Byrne Lisa Hohlfeld Sophi Lim Linda Samp Gregory Stott Angela Young	Amanda Breneisen Carrie Larsen Hannar Larsen Bridget Messenger Merideth Weber	Brenda Ryan Tina Samo Jennifer Stachlewitz	Nicole Zellmer

GROSS PAYMENT FOR NON-CERTIFIED PERSONNEL

Salary Range: Less Than \$25,000	Salary Range: \$25,000 - \$39,999	Salary Range: \$40,000 - \$59,999	Salary Range: \$60,000 and Over
Diana Brizuela Rachael Haub Jodi Horn Kimberly Hohlfeld Thomas Huels Angelica Huerta Sarah Krich Vicki LaRue Matthew McMeekan Mila Reed Anna Samo Isabela Singleton Margaret Streit Teresa White Ashley Wixom Douglas Wood	Stephen King	Karen Collins	

Person, Firm, or Corporation	Aggregate Amount	Person, Firm, or Corporation	Aggregate Amount
ALM Fine Cabinetry	3,433	Ogle County Education Corporation	86,126
Blue Cross/Blue Shield	23,383	Open Up Resources	3,585
BMO Harris Bank	36,596	Prairie Farms	2,774
C & C Plumbing and Heating	6,223	Rochelle Janitorial Services	4,111
Caseys Mastercard	5,029	Rochelle Municipal Utilities	3,689
Comcast	6,383	Rochelle Vault Company	2,769
Common Goal Systems	6,161	Rudolph Masonry, Inc.	22,175
Country Mutual Insurance	17,770	Savvas Learning Compnay	3,882
EMG Linq, Inc.	4,796	SHI, International	2,520
Gary Adams	40,055	Village of Creston	3,035
Hillmer Painting	8,535	Xerox Financial Services	7,311
Houghton Mifflin Harcourt	5,168		
IXL Learning	3,600		
Johnson Controls	8,510		
Kohl Wholesale	12,091		
Midwest Bus Leasing	14,987		
Midwest Transit	23,155		
Mystry Science	2,685		
Newkirk & Associates	6,950		
Nicor Gas	15,485		
Northern Illinois Disposal	5,164		
NWEA	3,000		

No. 1004
(Oct. 1, 2023)

Top local stories • Sports • Associated Press • Daily weather updates • Obituaries • Classified • Display advertising • Special sections

Stay Connected Wherever You Go!

www.rochellenews-leader.com

Top local stories • Sports • Associated Press • Daily weather updates • Obituaries • Classified • Display advertising • Special sections

SPORTS

RTHS Football

(PHOTOS BY ROBIN RETHWILL)



JV Hubs battle Sycamore in Interstate 8/Kishwaukee River Conference crossover on Monday

The Rochelle Hub JV football team hosted Sycamore for an Interstate 8/Kishwaukee River Conference crossover matchup Monday evening. The Spartans defeated the Hubs 20-12 to drop the JV team to 0-2 in two JV games this season. Above at left, sophomore Van Gerber avoids pressure from a Sycamore defender. Above at right, sophomore Reece Harris fields a punt return on special teams. Below at left, sophomore Brenden Voight rushes toward the end zone. Below at right, junior Jack Tilton catches a pass after creating separation from a Sycamore defender.

Upgrade Your Home with a

NEW METAL ROOF

Guaranteed to Last a Lifetime!

LIMITED TIME OFFER

UP TO

50% off

YOUR INSTALLATION

+

10% off

TAKE AN ADDITIONAL

Install for Military, Health Workers and First Responders

ERIE Metal Roofs

Warranty- Limited Lifetime. Transferable to 1 subsequent owner from original purchaser. Terms and conditions apply. Hail up to 2.5". Appearance of the surface coating beyond normal wear and tear.

Limited time offer. Expires 12.31.23

STRONG AS STEEL WITH THE ATTRACTIVE LOOK OF VARIOUS ROOF STYLES

From Dimensional Shingles to classic styles reminiscent of Cedar Shake and Spanish Tile, an architectural roofing system by Erie Metal Roofs can enhance the beauty of your home while protecting your family and property for a lifetime.

Choose from 3 styles with multiple color options:

DIMENSIONAL SHINGLES

WOODEN SHAKE

SPANISH TILE

Call today to schedule your

FREE ESTIMATE

855-261-6005

getametalroof.com/NewRoof

ERIE Metal Roofs

MADE IN THE USA

BBB A+ rating

MADE IN THE USA

New orders only. Does not include material costs. Cannot be combined with any other offer. Minimum purchase required. Other restrictions may apply. This is an advertisement placed on behalf of Erie Construction Mid-West, Inc ("Erie"). Offer terms and conditions may apply and the offer may not be available in your area. If you call the number provided, you consent to being contacted by telephone, SMS text message, email, pre-recorded messages by Erie or its affiliates and service providers using automated technologies notwithstanding if you are on a DO NOT CALL list or register. Please review our Privacy Policy and Terms of Use on homeservicescompliance.com. All rights reserved. License numbers available at eriehome.com/erie-licenses/

FALL SUPER SALE

KICKOFF THE BIGGEST SAVINGS OF THE YEAR!!

20% OFF EVERYTHING

\$50 VISA GIFT CARD

Upon completion of appointment

Call Today for Your **FREE Estimate!**

BBB A+ rating

QUALITY TRUSTED "GOOD HOUSEKEEPING" Since 1999

Leafguard 18 YEARS BACKED BY THE SEAL

815-673-7532

Leafguard

Get it today. Protected for life.

*Guaranteed not to clog for as long as you own your home, or we will clean your gutters for free

- LIFETIME NO-CLOG WARRANTY
- MADE ONSITE SPECIFICALLY FOR YOUR HOME
- THE ONLY ONE-PIECE SEAMLESS DEBRIS SHEDDING GUTTER SYSTEM.
- SCRATCHGUARD® PAINT FINISH

SPECIAL FINANCING AVAILABLE

*All participants who attend an estimated 60-90-minute in-home product consultation will receive a \$50 VISA Gift Card. Retail value is \$50. Offer sponsored by LeafGuard Holdings Inc. Limit one per household. Company procures, sells, and installs seamless gutter protection. This offer is valid for homeowners over 18 years of age. If married or involved with a life partner, both collaborating persons must attend and complete presentation together. Participants must have a photo ID and be legally able to enter into a contract. The following persons are not eligible for this offer: employees of Company or affiliated companies or entities, their immediate family members, previous participants in a Company in-home consultation within the past 12 months and all current and former Company customers. Gift may not be extended, transferred, or substituted except that Company may substitute a gift of equal or greater value if it deems it necessary. Gift card will be mailed to the participant via first class United States Mail within 10 days of receipt of the promotion form. Not valid in conjunction with any other promotion or discount of any kind. Offer not sponsored and is subject to change without notice prior to reservation. Offer not available in the states of CA, IN, PA and MI. Expires 10/31/23. LeafGuard operates as LeafGuard of DC in Maryland under registration number MHC License #116693.

Majeski Motors

SALES AND SERVICE

ROCHELLE
MAJESKIMOTORS.COM



Stock # 11963
2022 Nissan Frontier Pro 4X
* ONLY 12K Miles

\$39,987



Stock # 11736
2020 Jeep Gladiator Sport
* UPFITTED

\$39,742



Stock # 11686
2019 Audi A6 3.0T
Premium Plus
* ONLY 35K Miles

\$38,748



Stock # 11066A
2017 Ram 1500 Sport
* Sublime Metallic Clearcoat

\$34,995



Stock # 11245C
2017 GMC Sierra 1500 SLE
* SUPER CLEAN

\$34,654



Stock # 11971
2008 BMW Z4 30i
* MUST SEE

\$16,995

Majeski Motors

Your Local Resource For Quality Pre-Owned Vehicles

815-562-9000 | 1010 S. 7th St., Rochelle, IL

All prices plus tax, title, license and fees

**Call
or Stop In
Today**