

# ROCHELLE News-Leader

WEEKEND EDITION | WWW.ROCHELLENEWS-LEADER.COM

**5.06% APY\***  
**CD SPECIAL**  
choose your own term.....  
3, 6, 12, 18, or 30 month  
CENTRAL-BANK.COM  
Central Bank  
ILLINOIS Member FDIC  
\*Annual Percentage Yield. The stated APY is accurate as of 11/08/2023. Minimum deposit to open is \$1,000. Substantial penalty for early withdrawal and fees may reduce earnings. Certain restrictions may apply. Offer may be withdrawn at any time.

Today's RNL issue sponsored by Community Unity member:  
**Rochelle**  
Shop • Play • Stay

**ClarkDietrich**  
501 S. Steward Road #100  
815-561-2360

Vol. 103 • No. 61

\$1.25

LOCAL NEWS... LOCAL VIEWS

SUNDAY, NOV. 26, 2023

## City presents facade grant check 'It was amazing to see it change from how it used to be to now'

BY JEFF HELFRICH  
MANAGING EDITOR

**ROCHELLE** — On Thursday, the City of Rochelle presented a check for \$5,000 to Ralfie's BBQ and Catering Owners Ralf and Tricia Herrera as part of its facade grant program.

The program covers half the cost of any improvements made to business fronts in town with a limit of \$5,000. The catering kitchen and event venue, the 302 at 410 Cherry Ave., is the latest recipient of the program. The 302 officially opened in late October.

Facade improvements to the building included changing from a storefront look and new brick work.

"It was much more of a storefront look at the beginning and we didn't need that and wanted to enclose it," Tricia Herrera said. "We did some brick work and then we had the facade updated and a place for a sign put in. We wanted it to be very welcoming and inviting. It's not open every day like a restaurant, so that kind of affected our decisions and budget. We just wanted to make it inviting with plenty of lighting."



(PHOTO BY JEFF HELFRICH)

On Thursday, the City of Rochelle presented a check for \$5,000 to Ralfie's BBQ and Catering Owners Ralf and Tricia Herrera as part of its facade grant program.

Tricia Herrera said the change from the old facade to the new look was "amazing to see" and said she and her husband have heard positive feedback from other business owners on the street. She thanked the city for the grant and was thankful to have access to

the program. She's seen its benefits in the past in her position as Rochelle Chamber of Commerce executive director.

"I've always worked with other people that have received facade grants," Tricia Herrera said. "To now be on the other end of

that, we're very fortunate. And I tell other communities all the time that we're very fortunate that the City of Rochelle works with small businesses so well. The chamber and our businesses didn't have to ask the city to start the program. The city took

the initiative to start these programs for us."

Mayor John Bearrows attended the check presentation Thursday and said the city has enjoyed the facade grant program's results since it started.

See FACADE page 3

## Groundbreaking ceremony held for Willis Senior Lofts senior housing development 'Sustainable housing supply is essential for a thriving community'

BY JEFF HELFRICH  
MANAGING EDITOR

**ROCHELLE** — On Nov. 17, a groundbreaking ceremony was held at the future site of Willis Senior Lofts at 410 Willis Ave. in Rochelle.

The event was hosted by the developer of Willis Senior Lofts, Lincoln Avenue Communities (LAC). The development will include 60 units of affordable housing for lower-income seniors in Rochelle who are facing a shortage of affordable homes.

Speakers included Rochelle Mayor John Bearrows, U.S. 16th District Rep. Darin LaHood, LAC Senior Vice President for Development Russell Condas, LAC Vice President & Regional Project Partner Hume An, and Linda Brace, assistant director of client services, Illinois Housing Development Authority.

An said that Willis Senior Lofts is LAC's second new construction deal in Illinois. It will be open to



(PHOTO BY JEFF HELFRICH)

On Nov. 17, a groundbreaking ceremony was held at the future site of Willis Senior Lofts at 410 Willis Ave. in Rochelle. The event was hosted by the developer of Willis Senior Lofts, Lincoln Avenue Communities (LAC).

those in Rochelle aged 55 and older. 45 of the units will be one-bedroom and restricted to 60 percent of the area median income

(AMI). The remaining 15 units will be two-bedroom, reserved for those at 30 percent of AMI.

"Within the building,

residents will be able to enjoy a double-volume community room that opens up to an outdoor patio, a theater room, fit-

ness center, shared laundry room and an indoor dog washing room," An said.

See LOFTS page 3

More coverage. Less spendage.

Discounts up to 40%  
Get more. Spend less. It's that simple when you get car insurance from us. Like a good neighbor, State Farm is there. CALL FOR A QUOTE 24/7.  
Terri Schaefer, Agent  
Bus: 815-562-7063  
terri.schaefer.115n@statefarm.com



KNOW IT TODAY



FFA bowls for a good cause

The Rochelle FFA Chapter held an event at T-Bird Lanes for a good cause.  
Page 7

### WEATHER

SUNDAY	MONDAY
HIGH LOW	HIGH LOW
38 29	34 26
TUESDAY	WEDNESDAY
HIGH LOW	HIGH LOW
40 26	35 25

Today's RNL issue sponsored by Community Unity member:  
**Rochelle**  
Shop • Play • Stay

**SILGAN**  
CONTAINERS CORPORATION

400 N. 15th St.  
815-562-1250

### OBITUARIES

• JAMES DALE BLANTON  
• CAROL A. BUILTA

See page 4

### INSERTS

• MENARDS

### INSIDE

Local News.....2, 3, 5  
Obituaries.....4  
Opinion.....6  
Community.....7



**Holcomb Bank** Rochelle | New Milford | Creston | Byron  
Where Relationships Matter

**Save the Date - 2024 Trips!**

Columbia & Snake River Cruise - May 19-27  
Grand Victoria Casino, Elgin IL - June 20th  
Ho-Chunk Casino, Madison IL - October 24  
Reefs & Rhythms Oceania Cruise - December 3-13

Contact Julie at 815.561.2627 for more information!



**Happy Thanksgiving!**  
From all of us at:

**ANDERSON**  
**PLUMBING & HEATING, INC.**  
621 First Ave., Rochelle, IL • 815-562-8784



# LOCAL NEWS

## Vehicles purchase for sheriff's office approved

### 2024 budget and appropriations approved during Tuesday's County Board meeting

BY JEFF HELFRICH  
MANAGING EDITOR

**OREGON** — At its monthly meeting Tuesday, the Ogle County Board unanimously approved the purchase of six 2023 Chevrolet Tahoe squad cars for the Ogle County Sheriff's Office.

The total of the vehicle purchase is \$268,384. Part of the purchase will be made with opioid grant money (\$82,500). The remainder of the balance (\$179,884) will be paid out of the county's federal American Rescue Plan Act interest funds.

Ogle County Sheriff Brian VanVickle said the vehicles were originally approved and budgeted for in fiscal year 2022, but saw a delay in delivery due to COVID-19 and supply chain lag. The county board's Tuesday approval moved those monies to fiscal year 2023.

The opioid grant money was distributed to counties by opioid manufacturers, VanVickle said, and the \$82,500 was only a portion of what the county received. The sheriff said that have 180,000 miles on them that need maintenance on them that we don't normally do. We normally get rid of the vehicles long before that. That's been the biggest struggle, just trying to keep the vehicles maintained while being cognizant of the tax dollars to not spend a lot of money

on them." "We ordered these vehicles 14 months before they came in, so that always makes things difficult," VanVickle said. "It changes our maintenance budget because we run a lot of miles on the cars.



(PHOTO BY JEFF HELFRICH)

At its monthly meeting Tuesday, the Ogle County Board unanimously approved the purchase of six 2023 Chevrolet Tahoe squad cars for the Ogle County Sheriff's Office. The board also approved its 2024 budget and appropriations.

Now we have vehicles that have 180,000 miles on them that need maintenance on them that we don't normally do. We normally get rid of the vehicles long before that. That's been the biggest struggle, just trying to keep the vehicles maintained while being cognizant of the tax dollars to not spend a lot of money

on them." "We ordered these vehicles 14 months before they came in, so that always makes things difficult," VanVickle said. "It changes our maintenance budget because we run a lot of miles on the cars.

VanVickle said following the board meeting. "It goes back to safety and having good vehicles. We run very limited deputies on a shift. We have three deputies and a sergeant working tonight. If they can't get to a call because a squad car breaks down, that makes our response time longer. We cover 750 square miles in this county, so the next squad car isn't close. It's probably 40 minutes away. That's something we've always prided ourselves on is a

quick response time. If we can't get there because a car is broken down, that becomes an issue."

Ogle County deputies utilize squad cars for more than just a means of getting to calls, VanVickle said.

"We're typically driving between 35,000-45,000 miles a year," VanVickle said. "Our deputies work about half of the year, as they work 12-hour shifts. And the squad cars are their offices. It's where they do all of their work out of and keep

all of their equipment and documentation. They type reports from the vehicles, too. It is important that we try to make sure that they have the best product possible, because it's their office and workspace."

### Budget

The board unanimously approved its 2024 budget and appropriations. The board held a budget meeting last month on Oct. 30 and changes were not made to the budget that day or since.



## HOME AUCTION



### 1.02 AC± | 1 TRACT

### WHITESIDE CO, IL

AUCTION: ONLINE AT  
RANCHANDFARMAUCTIONS.COM

### TIMED ONLINE ONLY

BIDDING ENDS: 12/14/23 AT 3:00 PM

### OPEN HOUSE:

11/28 | 2 - 6 PM & 12/9 | 11 AM - 3 PM

23120 ORCHARD LN, ROCK FALLS, IL

**BIDS STARTING AT ONLY \$700,000!**

IN COOPERATION WITH WHITETAIL PROPERTIES REAL ESTATE, LLC

TODD HENRY, AGENT: 815.997.2256

### RANCHANDFARMAUCTIONS.COM

WHITETAIL PROPERTIES REAL ESTATE LLC DBA RANCH & FARM AUCTIONS | 115 West Washington, Ste 900, Pittsfield, IL 62363  
Debbie S. Laux, Designated Managing Broker, License # 471.018541 | Joe Gizdic, Director, Ranch & Farm Auctions, 217.299.0332  
Todd Henry, IL Land Specialist, Whitetail Properties Real Estate, LLC, 815.997.2256 | Cody Lowderman, IL Auctioneer, 441.001255



### Kick off Christmas at

## Hidden Timber Gardens

### Fresh Cut Christmas Trees

Hand-tied Wreaths, Swags & Decor

Porch Pots

Made to Order Garland & Roping

Mixed Evergreen Bundles

S'mores, Coffee, & Hot Cocoa on the weekends

November 24th ~ 9am-5pm

November 25th - December 20th

Wednesday-Friday: Noon-5 pm

Saturday-Sunday: 9am-5pm

815-751-4162

[www.hiddentimbergardens.com](http://www.hiddentimbergardens.com)







SCAN FOR TICKETS

## NIU BASKETBALL

## SINGLE GAME TICKETS

### ON SALE NOW!

### MEN'S BASKETBALL

PRICES START AT

\$8

### WOMEN'S BASKETBALL

PRICES START AT

\$6

**GET YOUR TICKETS TODAY!**

815-753-7225 | [NIUHUSKIES.COM](http://NIUHUSKIES.COM)





# LOCAL NEWS



(PHOTOS BY JEFF HELFRICH)

Speakers at the ceremony included Rochelle Mayor John Bearrows (right), U.S. 16th District Rep. Darin LaHood, LAC Senior Vice President for Development Russell Condas, LAC Vice President & Regional Project Partner Hume An (left), and Linda Brace, assistant director of client services, Illinois Housing Development Authority.

## LOFTS: Ceremony held for new senior living apartments

From page 1

“The development grounds will also have a walking path, raised community garden, and bicycle parking for everyone to enjoy. Our goal in presenting this community was to deliver homes for our residents indistinguishable from, if not better than, the other rental options in the surrounding area. When you join us for the spring 2025 grand opening, I hope you’ll agree with us.”

LaHood said he enjoyed seeing new construction and progress taking place in the area and thanked the City of Rochelle and LAC for bringing the project to fruition. As he travels through his district and meets with constituents, the issue of affordable housing is brought up often, he said.

LaHood is the lead sponsor of the bipartisan Affordable Housing Credit Improvement Act, which will look to modernize and expand the federal low-income housing tax credit and make more projects like Willis Senior Lofts possible.

“Between inflation, high interest rates, supply chain disruptions and chronic underdevelopment of affordable housing supply, we’re experiencing a housing shortage in communities all across the country in urban, suburban and rural areas,” LaHood said. “This is an issue I’ve been actively working on with many of my colleagues to address. Sustainable housing supply is essential for a thriving community and

I look forward to seeing the positive impacts that Willis Senior Lofts will have on future tenants and the city.”

Brace called partnering on the project with LAC “a thrill” and said the need for affordable senior housing is “critical.” In Ogle County, the 65+ age group has increased by 20 percent in the past 10 years.

Condas said that Willis Senior Lofts represents LAC’s continued commitment to expanding affordable housing across the state.

“I want to thank our team for working to make this development a reality despite the challenges and uncertainty in the market,” Condas said. “Our mission is to expand access to high-quality, affordable housing in communities across the country and we’re excited to do just that in Rochelle with construction of the Willis Senior Lofts.”

Bearrows called Nov. 17 and the groundbreaking ceremony “a great day for the City of Rochelle.”

“I’ve been in real estate for many years and my conversations have always revolved around the shortage of housing,” Bearrows said. “I’m happy to see this project today. This day would not have come to fruition without the hard work, endless hours and true dedication of my fellow council members, City Manager Jeff Fiegenschuh and our staff. This has been a long, tedious process and this project started with a vision. I would like to thank everyone involved in this.”

“I’ve been in real estate for many years and my conversations have always revolved around the shortage of housing,” Bearrows said. “I’m happy to see this project today. This day would not have come to fruition without the hard work, endless hours and true dedication of my fellow council members, City Manager Jeff Fiegenschuh and our staff. This has been a long, tedious process and this project started with a vision. I would like to thank everyone involved in this.”

“I’ve been in real estate for many years and my conversations have always revolved around the shortage of housing,” Bearrows said. “I’m happy to see this project today. This day would not have come to fruition without the hard work, endless hours and true dedication of my fellow council members, City Manager Jeff Fiegenschuh and our staff. This has been a long, tedious process and this project started with a vision. I would like to thank everyone involved in this.”



### Volunteers load food at Prescott Brothers Ford

Volunteers loaded food into vehicles at Prescott Brothers Ford on Saturday, Nov. 18 following the Two-Ton Thanksgiving Food Drive that was held at the location. Over two tons of food and a grand total of \$12,318 was raised to benefit those in need over the holiday season through the Rochelle Christian Food Pantry.

## FACADE: Grant check presented to Ralfie’s BBQ & Catering

From page 1

He called small businesses the backbone of the community and thanked the city council for its support of the program and the city’s community development department for carrying it out.

“It’s truly a team effort and we’re just very excited to see the progress on this particular building,” Bearrows said. “It was a

major transformation and we’re just very happy to have them here and part of Rochelle. Seeing these investments shows that people are making a financial commitment. Doing these every year means we have a lot of businesses that are willing and able to put money into their businesses. And we just came off of a pandemic. It’s not so easy for businesses to make the changes they need. This

program helps that happen.”

City Community Development Director Michelle Pease said she was grateful to the mayor, city council and City Manager Jeff Fiegenschuh for funding the facade grant program.

“It’s a great way for us to be able to give back and our businesses are very grateful,” Pease said. “It’s a 50-50 match, so it’s a partnership with our small businesses.”

## RALPHIE & LULU’S



Join us on Friday nights for fish, chicken and more

Saturday we serve up Chicken Ralphie a fan favorite

The slots are hot and the beer is cold

Serving dinner Wednesday 5 - 8 p.m.  
Friday and Saturday 5 - 8 p.m.

812 Main St. - Ashton

## Lincoln Manor

Owned and operated by Lutheran Social Services of Illinois (LSSI) offering apartment living for older adults in Rochelle and the surrounding communities.

**Rent based on 30% of a Resident's Adjusted Gross Income**

- Secure Entry System
- Community room with kitchen
- Activities
- On-site coin operated laundry
- On-site management office
- Dependable 24/7 maintenance service
- On-site parking for residents

Full time Social Service Coordinator is available to assist residents

**For more information, please call 815-562-1404**

615 N. Lincoln Hwy.  
Rochelle, IL 61068  
TTY 847-390-1460

MANAGED BY:  
**Lutheran Social Services of Illinois**  
www.LSSI.org

07262023

# Kish

## KISHWAUKEE COLLEGE

Helping you create the life you want.

# kish.edu



# LOCAL NEWS

## OBITUARIES

### Carol A. Builta

**ROSCOE** — Carol A. Builta, 80, of Roscoe, IL passed away November 19, 2023. Arrangements through Honquest Family Funeral Home. Please visit [www.honquestfh.com](http://www.honquestfh.com) to view the full obituary and share condolences.

### James Dale Blanton

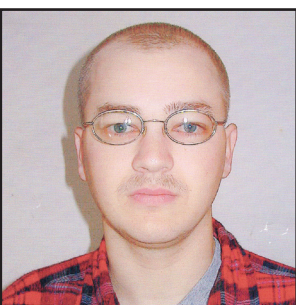
**J**AMES Dale Blanton, 48, of Rochelle, went to be with Jesus Christ on Wednesday, Nov. 22, 2023, at the Generation At Neighbore Home in Byron, after battling chronic renal disease for 20 years. He was born in Ottawa, the son of William Monroe Blanton and brother to Cathy Blanton-Belmonte and William Noah Blanton.

James was a family man, who loved everyone dearly. In his free time, he enjoyed fishing, remote controlled cars, off-roading in his Chevrolet Blazer, motorcycles, music, and movies. James found peace and joy in both automotive and

motorcycle mechanics. He was grateful for his family and shared a strong bond with them.

James' laugh and smile were pleasant to witness. Everyone within the family had a good time when they seen him cheerful. The strength James had was powerful and it was seen during his final days with his battle. James now reunites with his father and grandparents in Heaven. The family he leaves behind will forever look to the sky in remembrance of him until they are with him again.

James is survived by his sister, Cathy Blanton-Belmonte; brother-in-law Neftali Belmonte Sr., niece,



Kelly Ann Belmonte, great nephew Noah Bryan Osborne, nephew Neftali Belmonte Jr., great niece Milla Ruth Belmonte, brother William Noah Blanton, sister-in-law Marge Smith Blanton, nephew Zachary Russell Smith, niece Anna Marie Blanton, niece Shyanne Autumn Blanton and many others.

## ROCHELLE POLICE DEPARTMENT

**ROCHELLE** — On Nov 22, Naxieli S. Galvan, 32, Rochelle, was cited for operating an

**Happy Birthday**

The family of *Charlotte M. Bresson* will be celebrating her **90th birthday** with an Open House on **December 3rd** from **1-4 p.m.** at **St. Mary's Catholic Church Center in West Brooklyn**. Family & friends are welcome to attend. Light refreshments will be served. No gifts, please. If you are unable to join us, cards can be sent to: 1211 Melugins Grove Road, Compton, IL 61318.

Charlotte M. Pierce was born on December 4, 1933. She married the late Robert L. Bresson on February 20, 1954. They have two sons: Mark (Judy) and Jeff (Mary), grandsons Jake (Mariana) and the late Craig Bresson and one great-grandson Nicolas.

# Alfano's

## Pizzeria and Italian Restaurant

Taste The **TRADITION**  
Taste The **DIFFERENCE**

Dine In • Carry Out •

- Home Delivery • Pizza • Pastas •
- Sandwiches • Salads •
- and Lots More!

Dine-In • Carry Out • Home Delivery  
1115 TURKINGTON TERRACE, ROCHELLE  
**815-562-3312**

**ROCHELLE**

# News-Leader

211 IL Route 38 East, Rochelle, IL 61068  
(815) 562-4171

USPS (467-820) ISSN (1075-2811)  
Published every Wednesday and Sunday by Rochelle Newspapers Inc. at 211 E. State Route 38, Rochelle, IL 61068.  
Periodical postage paid at Rochelle, IL 61068. Postmaster send address changes to the Rochelle News-Leader, P.O. Box 46, Rochelle, IL 61068. Subscription rates are \$139.99 per year by mail in Ogle County. Outside county rate is \$149.99 per year. No mail delivery in newspaper-carrier serviced areas. The circulation department is open Monday through Friday from 8 a.m. to 5 p.m. If you are a carrier subscriber and your paper does not arrive, contact Kelly White at 561-2112.

**IN-COUNTY REGULAR SUBSCRIPTION RATES**

- \$139.99 for one year • \$79 for six months
- \$34.99 for three months • \$13.99 for one month

Call (815) 561-2112 or Visit our website at [www.rochellenews-leader.com](http://www.rochellenews-leader.com)

### HOW TO CONTACT US

News-Leader Main Switchboard	(815) 562-4171
<b>General Manager</b> Mike Feltes	(815) 561-2124
<b>Newsroom Staff</b> Jeff Helfrich, Managing Editor Russ Hodges, Sports	(815) 561-2151 (815) 561-2152
<b>To Place a Display Ad</b> Andrew Heiserman Chris Ackland	(815) 561-2123 (815) 561-2153
<b>To Place a Legal Ad</b> Mike Feltes	(815) 561-2124
<b>To Place a Classified Ad</b> Andrew Heiserman Chris Ackland	(815) 561-2123 (815) 561-2153
<b>Subscriptions and Delivery</b> Kelly White	(815) 562-4171



(COURTESY PHOTO)

**Adam and Jessica Honiotes, local entrepreneurs and concessionaires at Shabbona Lake State Park, were awarded the Kishwaukee College Foundation Distinguished Alumni Award at the Foundation's Annual Gala.**

## Kish Foundation honors Honioteses with Distinguished Alumni Award

**MALTA** — Adam and Jessica Honiotes were awarded the 2023 Distinguished Alumni Award at the Kishwaukee College Foundation Annual Gala on Saturday, Nov. 4. The award honors established alumni who have demonstrated service or outstanding contributions within the Kish community.

“It’s a big honor to be recognized with this award,” Jessica said. “We were both shocked to learn we were nominated. It’s very cool and exciting to receive this recognition from the Foundation and the Kish community.”

The Honioteses both started their college education at Kish. Jessica graduated from the Registered Nursing program in 2004, while Adam completed manufacturing, paramedic and general education courses from 2000-2005. Jessica currently works as a Registered Nurse at Northwestern Medicine Delnor Hospital in Geneva, and Adam serves as a Battalion Chief for the Sycamore Fire Department. They also own and operate Honiotes Brothers Farms, a local livestock business raising Scottish Highland cattle.

On top of their careers, the Honioteses are the concessionaires at Shabbona Lake State Park, running the park’s Pokanoka’s Dockside Café, the Outpost Camp Store, and Boondocks Bait & Sup-

ply, and boat rental since May 2021. At the time, the couple had the goal of opening a coffee shop in the Village of Shabbona, but the plans fell through. Then, another opportunity presented itself when the previous Shabbona Lake concession owners were looking to pass along the business to a local family.

“We saw such great potential and so many things we could build upon. So, we thought this was a great opportunity to grow our community,” Jessica said. “We really want to see our local area develop into a place that has something for everyone to enjoy. This was our chance to help with that.”

The facilities have seen various improvements during the Honiotes’ tenure, including complete interior remodels of the restaurant, camp store and bait shop. And while Adam and Jessica have experience as entrepreneurs, overseeing the park’s concessions is like running several businesses at once. Jessica said they have been able to depend on the park’s employees — several of whom are Kish students — to learn the different jobs.

“We’ve had to teach ourselves a lot of different skills, and we’ve had a lot of returning employees to show us how things were done and offer their ideas on where we can improve,” Jessica said.

Adam emphasized they

have leaned on experiences from their time at Kishwaukee College to help improve the business and continue their vision.

“There’s a lot of skills we’ve needed to run the concessions that I didn’t think I would be using again. But they have come back into play, and it has made a big difference,” Adam said.

With improved facilities and an increased number of activities available — including live music and children’s activities — the Honioteses have watched park attendance climb each year, with a growing interest from the local community. Additionally, Jessica and Adam are members of the Building Shabbona Together nonprofit.

“Education fills various needs for our students. Adam and Jessica are great examples of how Kish’s impact can benefit throughout life and how those benefits can be passed on to new generations. Their hard work and dedication to our community make them an excellent choice for the 2023 Distinguished Alumni Award,” said Dr. Kayte Hamel, executive director of the Kishwaukee College Foundation.

To learn more about the Kishwaukee College Foundation and the Distinguished Alumni Award, including nominating an alum, visit [kish.edu/foundation](http://kish.edu/foundation).

## Fehr Graham hires Keegan Kaspar as an engineering technician

**ROCHELLE** — Fehr Graham, a leading Midwest engineering and environmental firm, is proud to announce the hiring of Keegan Kaspar as an engineering technician.

Kaspar is gaining ex-

perience in AutoCAD and works with structural and civil engineers to draft infrastructure plans. He has strong communication skills and a keen attention to detail. He works in the company’s Rochelle office.

Kaspar earned an associate degree in manufacturing technology from Kishwaukee College.

Fehr Graham is a premier provider of engineering, environmental

and funding solutions for commercial, industrial, institutional and government clients with Midwest office locations in Illinois, Iowa and Wisconsin. In 2023, we’re celebrating 50 years of improving the communities where our clients live and work. Fehr Graham is an Engineering News-Record Top 500 Design Firm and Zweig Group Hot Firm. For more information, visit [fehrgraham.com](http://fehrgraham.com).

### Report policy

Any arrests listed in this paper are merely charges and the defendants are presumed innocent unless proven guilty in a court of law. Please note that all police reports received from the

Rochelle Police, the Ogle County Sheriff’s Department and the Illinois State Police, will be printed without exception. Requests to omit particular reports will not be considered or honored at any time.



# LOCAL NEWS

## Successful Ag Career Exploration Fair was held on Nov. 9

**OREGON** – Over 70 high school students attended the Ag Career Exploration Fair on Nov. 9 in Oregon. Students met with and asked questions to college recruiters and business representatives who focus on studies and careers in the agricultural field. Colleges shared information on the many majors in agriculture and what it takes to get a degree. Agriculture-related employers had representatives there to offer career knowledge and discuss the skills needed to perform specific jobs.

High schools that participated were from Oregon, Ashton-Franklin Center, Stillman Valley, and Rochelle. Colleges, universities and businesses that were on hand for the

students were Blackhawk College East Campus, Highland Community College, Kishwaukee College, Joliet Junior College, Sauk Valley Community College, Universal Technical Institute, University of Wisconsin-Platteville, Western Illinois University, WyoTech, Compeer Financial, and Etnyre.

Melinda Colbert, University of Illinois Extension Ag in the Classroom program coordinator, said, “The target audience is high school students, and sometimes ag teachers or guidance counselors bring the students. The home school population that attends continues to grow, along with students that come with their parents.”

The event was free and open to the public.



(COURTESY PHOTO)  
**Over 70 high school students attended the Ag Career Exploration Fair on Nov. 9 in Oregon. Students met with and asked questions to college recruiters and business representatives who focus on studies and careers in the agricultural field.**

*Rochelle Area*

## CHURCH DIRECTORY

**Ashton Bible Church**, corner of Main and Paddock in Ashton. Pastor Farrel Stauffer, church phone is (815)453-2190, church website [www.ashtonbible.org](http://www.ashtonbible.org). Sunday School for all ages 9:00-10:00am, Morning Worship 10:15am, Wednesday Prayer Meeting/Bible Study 6:30-8:00pm.

**The Bridge Church**, Pastor Greg Duncan, 11038 E. IL Route 38, Rochelle, IL 61068. Phone: 815-562-7750. Sunday School: 9:00 am; Sunday Service: 10:00 am; Nursery & Children's ministry during am service; Bible Study Tuesday 10:00 am and Wednesday 7:00 pm. Web: [thebridgechurchrochelle.com](http://thebridgechurchrochelle.com) Email: [thebridgechurchrochelle@gmail.com](mailto:thebridgechurchrochelle@gmail.com)

**Calvary Lighthouse Church, Assemblies of God**, Senior Pastor, Dr. James Horvath. 14409 Hemstock Rd., Rochelle. Sunday Morning: Sunday Worship & Children's Church 10:00 A.M., Wednesday Evening 7:00 P.M. – Adult Teaching, Missionettes & Royal Rangers Childrens Classes, Nursery available for all services. HE-Brews Cafe is open before and after services. For further information, please call the CLC office at 815-562-7701, or email us at [staff@calvalrylighthouse.com](mailto:staff@calvalrylighthouse.com)

**Calvary Lutheran Church, LCMC** - “To Know Christ and to Proclaim Christ in Word and Deed” - 19 Perry Road, Lee, IL 60530 (the intersection of Perry Road and W. County Line Road). Rev. Martha Uecker Nelson, Pastor. Coffee Hour starts at 9:00 a.m., Sunday School, Confirmation, and Adult Bible Study are at 9:15 a.m. Worship is at 10:30 a.m. and is broadcast live on Facebook. Go to our website is at [www.Calvarychurchlee.org](http://www.Calvarychurchlee.org) and click on the link there. A Grief Support Group meets the third Tuesday of each month at 10:00 a.m. Call or text (815) 824-2825 or email [CalvaryLeeIL@gmail.com](mailto:CalvaryLeeIL@gmail.com) with questions or for more information. Also check us out at [www.facebook.com/Calvary-Lutheran-Church](https://www.facebook.com/Calvary-Lutheran-Church).

**Rochelle Church of Christ**, Keeping Christ at the center in the Hub City. We meet Sundays at 9:00am for Bible Study and 10:00am for worship. We also have a Wednesday Bible Study at 7:00pm. 206 Erickson Rd, Rochelle, IL 61068. You can call us at (815) 562-6572 or visit us on the web at [rochellechurch.com](http://rochellechurch.com). We also have a radio program Sundays just after 8am on WRHL 1060AM. Minister Dominic Venuso.

**Creston United Methodist Church and Steward United Methodist Church** - Rev. Ilhan You, Creston: 126 West South Street, P.O. Box 209, Creston, Illinois 60113. Sunday morning worship 9:00am. Coffee fellowship at 10:15am. Steward: 507 Main Street, P.O. Box 80, Steward, IL 60553. Adult Sunday School, 10:00am. Sunday morning worship and Children's Sunday School 11:00am. Contact the church office at 847-730-4370 for more information. [facebook.com/crestonumcil](https://facebook.com/crestonumcil) [facebook.com/stewardilumc](https://facebook.com/stewardilumc)

**Elim Reformed Church**, 140 S. Church Road, Kings, IL 61068. Phone: 815-562-6811. Email [goelimchurch@gmail.com](mailto:goelimchurch@gmail.com) Website [www.goelimchurch.org](http://www.goelimchurch.org) Sunday Morning Worship 10:00 Rev. Marv Jacobs

**Faith Lutheran Church** – (14206 E. Flagg Rd.) – “Making Christ Known Through Lives of Faith.” In-person worship is available each Sunday at 9:00 a.m. or online at “Faith Lutheran Social” on YouTube. Worship resources are also available on our Facebook page - ‘Faith Lutheran Church ELCA.’ You may also e-mail Pastor Joy Alsop at [Pastor@faithlrochelle.org](mailto:Pastor@faithlrochelle.org) for more information. All are welcome to join us!

**First Baptist Church of Rochelle, First Baptist Church of Rochelle** invites you to experience our practical Bible services which have nurseries provided in every service along with a wide range of children's and teen ministries. Sunday School is at 9:30 am with regular church services at 10:30 am and 1:00 pm. Wednesday Family Night starts at 6:30 pm with AWANA for the 5 yr. olds thru 6th grade. The Omega Teen Ministry also starts at 6:30 pm for 7th – 12th grades and the Adult Bible Study at 7:00 pm. First Baptist Church is located 6 blocks west of Hwy 251 at the corner of Woolf Ct. and 8th Ave. in Rochelle. Call 562-4168 for more information. Listen at 8:30 am Sunday mornings on WRHL 1060 AM for the Sunday morning “Bible Message.” [www.firstbaptistrochelle.org](http://www.firstbaptistrochelle.org)

**First General Baptist Church**, 500 S. 12th St, Rochelle. Phone: 815-562-5221. Email: [fgbcrochelle@gmail.com](mailto:fgbcrochelle@gmail.com). Website: [www.fgbcrochelle.org](http://www.fgbcrochelle.org). Facebook: [www.facebook.com/fgbcrochelle](https://www.facebook.com/fgbcrochelle). Pastor: Rev. Angelo Bonacquisti. **Sunday worship services:** 8:30 am, 11:15 am and 6:00 pm. **Sunday school:** 10:00 am. We'd be honored to have you join us as we worship JESUS and continue to grow in truth and love for God and each other. A nursery, children's church, youth group and small groups are available. If you need a ride please contact our church bus driver, John, at (815) 262-4275 by 8:30 am on Sunday. “For if you confess with your mouth that Jesus is Lord and believe in your heart that God raised him from the dead, you will be saved.” Romans 10:9

**First Presbyterian Church** – An Amazing Place for Amazing Grace- Rev. Doug Forsberg, Senior Pastor. 1100 Calvin Road, Rochelle. Email: [info@placeforgace.com](mailto:info@placeforgace.com). Sunday morning worship 9:00am and 10:30am. In person or streamed online. On our Website and Facebook Live. [www.placeforgace.com/](http://www.placeforgace.com/) [www.facebook.com/placeforgace](https://www.facebook.com/placeforgace)

**Grace Fellowship Church** — Pastor Jeff Ardissonne, 2128 Il Route 38, Ashton, 815-453-7464. Sunday School 8:30 a.m. Sunday Worship Service 9:45 a.m. [www.graceisforyou.com](http://www.graceisforyou.com)

**Harvest Baptist Church** 241 Scott Ave. (Hillcrest). Rev. Duane Boehm, pastor. Email [duane712@hotmail.com](mailto:duane712@hotmail.com), cell 815-757-3427. Visit us on Facebook! Service times: Sunday morning worship with Children's Church at 10 am. Wednesday night worship at 7 pm.

**Immanuel Lutheran Church** Missouri Synod 16060 E. Lindenwood Road, Lindenwood, IL 61049. Rev. Dr. Matthew Rosebrock. Church Phone 393-4500. Church Worship 9:00 a.m. Sunday School Christian Education Hour at 10:30 a.m.

**Living Water Community Church** 405 N. Main St, Downtown Rochelle. Phone 815-561-6249, Website: [www.lwccr.com](http://www.lwccr.com), Like us on Facebook. We are Non-Denominational, Christ Centered, Casual dress, Christ Centered Live Band Worship. Mike Vogeler - Outreach and Seven C's Pastor, Chris Bender- Teaching Pastor and Doug Bunger - Missions and Children's Pastor. Sunday Worship Service- 10:00am. Nursery/Toddlers Ages 0-5 available during the service in the Splash building. Swim- Grades 1st-5th worship with the adults then break out for age appropriate teaching. Youth groups, Small groups, Life Groups and Workshops meet throughout the year for Bible teaching. 7C's Mission- serves the community physically & spiritually each month from 1135 Lincoln Hwy, providing lightly used clothing, Hygiene items, a light lunch and Elder Prayer open the second Saturday from 10am-2pm and the 4th Thursday from 4pm to 7:00pm and by appointment.. [f](https://www.facebook.com/lwccr)

**New Hope Fellowship (Church of God - Anderson, IN)**, 1501 10th Ave., Rochelle, IL 61068. Service: Sunday at 9 a.m. 10:30 a.m., (815)561-8400, [www.NHFchurch.net](http://www.NHFchurch.net) Pastor: Dan Sergeant and Pastor Nick Tornabene. (Classes for children through age fifth grade during service.)

**Rochelle United Methodist Church welcomes everyone to their worship service, and practices openness for all activities including communion. Worship is at 9:00 am. Sunday school for children begins around 9:15, following the Children's Time in worship.** A fellowship time with food and space for conversation occurs in Hicks Hall every week following the worship service. We celebrate communion with an open table on the first Sunday of every month, and on other appropriate occasions. Youth group is on Sunday evenings from 5:30-7:30. Our youth program includes service projects, discussion topics, Bible Study, and lots of fun and fellowship together. Some of our activities include packing meals at Feed My Starving Children, helping at Rochelle Christian Food Pantry and 7C's, working with animals at Barn on Baseline, Mystery trips (Destination Unknown!), and Interactive experiences on Dating boundaries, refugees, and homelessness. Youth group is for grades 6-12 and friends are always welcome. Recorded services are available on our YouTube channel and our website at [www.rochelleumc.com](http://www.rochelleumc.com). Our services are on the radio (93.5 FM) on Sunday mornings at 9:00 am. Our Facebook page is [www.facebook.com/rochelleumc](https://www.facebook.com/rochelleumc). **Our pastor is the Rev. Dr. Katherine Thomas Paisley.** Our address is 709 Fourth Ave. (815) 562-2164. Email is [admin@rochelleumc.com](mailto:admin@rochelleumc.com). At Rochelle United Methodist Church, everyone is welcome and loved!

**St. Patrick Catholic Church** Rev. Jesus Dominguez; Deacon Fermin Garcia; Deacon George Schramm; 244 Kelley Dr. (Corner of Kelley & Caron Rd.), PO Box 329, Rochelle, IL 61068. **Office Hours:** 9:00 AM- 4PM Monday-Thursday, Phone: 815-562-2370. **Mass times:** 8:00 AM Monday-Thursday, Saturday Vigil Mass 5:00 PM English, 7PM Spanish, Sunday Mass 7:30 AM, 9:00 AM in English and 11:00 AM in Spanish. **Confessions:** Monday 8:30AM & 6:30PM, Tuesday 8:30AM, Saturday 8:30am & 4:00-4:45 PM Or by appointment. **Religious Education:** Deacon George Schramm, Director of Religious Education. 903 Caron Road, Rochelle, IL 61068, 815-561-0079; Website: [stpatricksrochelle.com](http://stpatricksrochelle.com) Email: [stpatrick-rochelle@rockforddiocese.org](mailto:stpatrick-rochelle@rockforddiocese.org) Facebook.com/StPatrickRochelle

**St. Paul Lutheran Church** “Building Relationships in Christ, Now and Forever!” Steven Hall, Principal, Parish Nurse-Marcia Schnorr. 1415 Tenth Ave., Rochelle. Church Office-562-2744. Worship times: 6:00 p.m. Saturday, 9:00 a.m. Sunday. Our service is broadcast over WRHL 1060AM at 10:00 a.m. Sunday. Sunday School 10:15-11:15 a.m. Call 562-6323 for more information about the school.





# LOCAL VIEWS

GUEST COLUMN

## Ron Kern: Trade and biotech corn

THE Department of Agriculture released its monthly U.S. Agriculture Trade Update.

New monthly trade data from the Department of Agriculture shows a record monthly trade deficit for agriculture. Signaling what could be a downturn in commodity prices.

The new trade data puts us out through August of 2023. And in August, we had the largest monthly trade deficit that we've ever had in US agricultural trade. We had almost 12 and a half billion dollars in exports, a little over 16 billion in imports, which means we had a trade deficit of over \$3.6 billion in a single month.

The strong U.S. dollar is behind the deficit. The strong interest rates that we've seen in the Unit-

ed States over the last year and a half trying to combat inflation is really leading to a strong U.S. dollar. And that strong U.S. dollar makes imports relatively less expensive, but it makes it difficult for our exports to compete globally because our products are priced in a relatively expensive dollar. The strong dollar means agriculture export values are lower, and an increase in some imports.

Overall, U.S. ag export value is down by about nine percent. But when we break it out, what we see is that the vast majority of that decreases in major bulk products which are down 16 percent relative to the same time last year, whereas high value products are only down by four percent. When we look at imports

and where we're seeing those import numbers pop is in fresh and frozen vegetables, which are up over 15 percent this year compared to last year.

This bears keeping a close eye on as we move through the harvest season and into the Spring as lack of trade demand will weigh heavily on commodity prices received.

The U.S. Trade Representative's office is moving forward regarding Mexico banning the import of U.S. biotech corn. The Office of the U.S. Trade Representative, under procedures within the U.S. Mexico-Canada Agreement, has established a dispute resolution panel regarding Mexico's biotech corn bans.

The panel will deal with the issues brought up by Mexico's decrees which seek to stop the import of U.S. corn products produced with biotechnology. The U.S. believes this is a violation of the sanitary standards provisions of the USMCA and has brought this case.

The issue revolves around Mexican decrees against U.S. corn products produced with biotechnology, specifically glyphosate.

Recent decrees earlier in 2023 said that they were going to move ahead to stop the import of white corn but would allow the imports of U.S. yellow corn until they could find some alternatives. The U.S. has objected to these

decrees all along, saying that they're not scientifically based, and has been talking with the Mexican government all along, but especially ramped up the discussions last year. A resolution could come early next year, following technical consultations this year.

The time for that under procedures in the U.S.-Mexico-Canada Agreement has run out, so the Trade Rep's office is establishing a dispute panel. This will hear evidence from the two countries and make a final decision. Given the procedures governing such panels, a decision really can't be expected until sometime in early 2024.

Considering Mexico is one of the largest importers of US corn a decision upholding a ban could have devastating

implications to the US corn market and trade balance.

Since we are talking trade I will leave you with this:

And in today's stock news...Helium was up, feathers were down. Paper was stationary. Fluorescent tubing was dimmed in light trading. Knives were up sharply. Pencils lost a few points. Hiking equipment was trailing. Elevators rose, while escalators continued their slow decline. Weights were up in heavy trading.

Mining equipment hit rock bottom. Diapers remained unchanged. The market for raisins dried up. Balloon prices were inflated. And toilet paper touched a new bottom.

Ron Kern is the manager of the Ogle County Farm Bureau.



Ron Kern

## Scott Reeder: Antisemitism at universities

“IT'S the Jews' fault.”

I remember those words like they were yesterday, even though they were uttered by a co-worker more than 30 years ago.

The newspaper we worked for had just undergone a major layoff and later that week I found myself eating a plate of spaghetti in a dive restaurant listening to what portended to be a bizarre conspiracy theory. I didn't argue with him. I just looked him in the eye

and said, “I'm not going to listen to this. And if I hear you say anything like that again, I'm not having lunch with you again.”

Those words of mine probably sounded shrill and sanctimonious to my dining companion. But to be honest, I wasn't sure then – and I'm not sure now – what the appropriate retort to a bigoted utterance is.

The fellow I was eating with fit the stereotype of a right-wing zealot: rural, white, gun enthusiast. He wasn't particularly religious – but he hated a whole group of people

because their religion.

This past month, I've been thinking about that long-ago interaction in an Iowa restaurant as I watch antisemitism rear its head on elite college campuses.

It first came to mind when I saw a comment from Paul Miller, a Jewish acquaintance in a Chicago suburb who has a child the same age as my oldest daughter. He posted on Facebook that his No. 1 criteria for selecting a college for his son is that it be a safe place for Jewish people.

That brought me up short. I've visited a lot of college campuses with my daughter the last few months. While all parents are concerned about their children's safety, I've never worried that my child would be singled out for who she is.

But Paul was concerned for his son – and rightly so. Frightening things are happening on elite college campuses since Oct. 7 when Hamas launched its attack on Israel, killing more than 1,200 people.

The *New York Times* reported a pro-Palestinian

rally at Northwestern University in Evanston; students shouted, “Hey, Schill, what do you say, how many kids did you kill today?” an appropriation of a chant from the anti-Vietnam War movement, now directed at Northwestern's president, Michael H. Schill, who is Jewish.

Some other incidents of antisemitism cataloged in the last month by the *Washington Post* and *NYT* include:

At Tulane University two students were assaulted in a melee that began when someone tried to burn an Israeli flag.

At the Cooper Union, a college in New York City, frightened Jewish students hunkered down behind locked doors at a library while demonstrators shouted, “Free Palestine” and banged on the doors and windows.

Next to a Jewish fraternity at the University of Pennsylvania, someone scrawled “The Jews R Nazis.”

And at Cornell University, a computer science major was arrested for allegedly making online threats to shoot up a kosher dining hall and rape and murder Jewish students.

These are some of the most selective, competitive universities in the world. But their students are acting like idiots. Unlike my co-worker from so long ago, these aren't gun-toting red-necks. Disproportionate numbers of children from elite backgrounds attend these schools.

Some college administrators have taken a stand against such acts, but others have been silent. These administrators need to grow spines and condemn these acts of hatred. No student should ever be in fear of violence.

But as a practical matter, how do we as individuals combat antisemitism? Well, working together to do positive things is a good start.

I grew up in Galesburg, a town with many

churches and one small synagogue. When a major earthquake hit Guatemala in 1976 my father and two other men worked day and night to refurbish an Army surplus truck into an ambulance, load it with food and medical supplies and drive nonstop from Illinois to Guatemala City. My dad was Methodist, another was Mormon and the third was Jewish. But they were able to see past theological differences and work together to help others.

Another example from my family comes from my brother Danny. He was a hog farmer, a profession that didn't provide for many interactions with Jewish people. He suffered from a rare liver condition and had a transplant at the Mayo Clinic in 2003. His surgeon was Jewish. Because of this my brother, who I never knew to read for pleasure, became intensely curious about Judaism and read the book *Postville* about a Hasidic community in Iowa. He showed an interest in a faith other than his own.

There is a lot of false

information about various religions on the internet and elsewhere. I've learned that if you really want to understand another religion it's best to ask someone who belongs to that faith.

Years ago, I visited the pediatric cancer ward of Cedars Sinai Medical Center in Los Angeles and noticed a box on the doorframe of each room. I asked a Catholic friend who was showing me around what the purpose of the box was. I got a shrug and was told it had something to do with being a Jewish hospital.

Later I asked a Jewish person about the symbol and was told it is called a Mezuzah and it holds a scripture that says: “You shall love your God, believe only in Him, keep His commandments, and pass all of this on to your children.”

Those are good words for all of us to live by during these troubled times.

Scott Reeder, a staff writer for *Illinois Times* can be reached at [sreeder@illinoistimes.com](mailto:sreeder@illinoistimes.com).



Scott Reeder

### How to contact government officials

U.S. Con. Darin LaHood  
1424 Longworth HOB  
Washington, D.C.  
20515  
(202) 225-6201

IL Sen. Win Stoller  
Stratton Office Bldg  
Springfield, IL 62706  
(217) 782-1942

IL Rep. Bradley Fritts  
Stratton Office Bldg  
Springfield, IL 62706  
(217) 782-0535

Have a letter you want to submit to us? Send it to [news@rochelle-news-leader.com](mailto:news@rochelle-news-leader.com)

### KEEPING YOU IN TOUCH WITH YOUR LOCAL LEADERS

\* Denotes Chairman/President

#### Rochelle City Council

*John Bearrows	<a href="mailto:jbearrows@rochelleil.us">jbearrows@rochelleil.us</a>
Kathryn Shaw-Dickey	<a href="mailto:ksshaw-dickey@rochelleil.us">ksshaw-dickey@rochelleil.us</a>
Bil Hayes	<a href="mailto:bhayes@rochelleil.us">bhayes@rochelleil.us</a>
Rosaelia Arteaga	<a href="mailto:rarteaga@rochelleil.us">rarteaga@rochelleil.us</a>
Dan McDermott	<a href="mailto:dmcdermott@rochelleil.us">dmcdermott@rochelleil.us</a>
Tom McDermott	<a href="mailto:tmcdermott@rochelleil.us">tmcdermott@rochelleil.us</a>
Benjamin Valdivieso	<a href="mailto:bvaldivieso@rochelleil.us">bvaldivieso@rochelleil.us</a>

#### Rochelle Elementary School Board

*Trisha Vaughn	<a href="mailto:tv Vaughn@d231.rochelle.net">tv Vaughn@d231.rochelle.net</a>
Dave Casey	<a href="mailto:dcasey@d231.rochelle.net">dcasey@d231.rochelle.net</a>
Steve Builta	<a href="mailto:sbuilta@d231.rochelle.net">sbuilt@d231.rochelle.net</a>
Ashley Jackson	<a href="mailto:ajackson@d231.rochelle.net">ajackson@d231.rochelle.net</a>
Stephanie White	<a href="mailto:swhite@d231.rochelle.net">swhite@d231.rochelle.net</a>
Javier Zepeda	<a href="mailto:jzepeda@d231.rochelle.net">jzepeda@d231.rochelle.net</a>
Jennifer Thompson	<a href="mailto:jthompson@d231.rochelle.net">jthompson@d231.rochelle.net</a>

#### Rochelle Township High School Board

*Tom Huddleston	<a href="mailto:tom.huddleston@rthsd212.org">tom.huddleston@rthsd212.org</a>
Bill Ravnaas	<a href="mailto:bill.ravnaas@rthsd212.org">bill.ravnaas@rthsd212.org</a>
Jeff Tilton	<a href="mailto:jeff.tilton@rthsd212.org">jeff.tilton@rthsd212.org</a>
Bobby Chadwick	<a href="mailto:bobby.chadwick@rthsd212.org">bobby.chadwick@rthsd212.org</a>
Brent Ohlinger	<a href="mailto:brent.ohlinger@rthsd212.org">brent.ohlinger@rthsd212.org</a>
Laurie Pillen	<a href="mailto:laurie.pillen@rthsd212.org">laurie.pillen@rthsd212.org</a>
Joel Thompson	<a href="mailto:joel.thompson@rthsd212.org">joel.thompson@rthsd212.org</a>

#### Flagg-Rochelle Park Board

Brent Carmichael	<a href="mailto:bcarmichael@rochelleparkdistrict.org">bcarmichael@rochelleparkdistrict.org</a>
John Dobbs	<a href="mailto:jdobbs@rochelleparkdistrict.org">jdobbs@rochelleparkdistrict.org</a>
Dale Wells	<a href="mailto:dwells@rochelleparkdistrict.org">dwells@rochelleparkdistrict.org</a>
*Tim Hayden	<a href="mailto:thayden@rochelleparkdistrict.org">thayden@rochelleparkdistrict.org</a>
Jodie Hart	<a href="mailto:jhart@rochelleparkdistrict.org">jhart@rochelleparkdistrict.org</a>
Joe Lenkaitis	<a href="mailto:jlenkaitis@rochelleparkdistrict.org">jlenkaitis@rochelleparkdistrict.org</a>
Kristi Gonzales	<a href="mailto:kgonzales@rochelleparkdistrict.org">kgonzales@rochelleparkdistrict.org</a>

#### Ogle County Board Dist. 3

Austin Gillis	<a href="mailto:agillis@oglecounty.org">agillis@oglecounty.org</a>
Dan Miller	<a href="mailto:dmiller@oglecounty.org">dmiller@oglecounty.org</a>
Joseph Simms	<a href="mailto:jsimms@oglecounty.org">jsimms@oglecounty.org</a>

#### Ogle County Board Dist. 4

Jackie Ramsey	<a href="mailto:jramsey@oglecounty.org">jramsey@oglecounty.org</a>
Skip Kenney	<a href="mailto:skenney@oglecounty.org">skenney@oglecounty.org</a>
David Williams	<a href="mailto:dwilliams@oglecounty.org">dwilliams@oglecounty.org</a>

#### Creston Village Board

*Tom Byro	<a href="mailto:tommyb_47@yahoo.com">tommyb_47@yahoo.com</a>
Greg Hopkins	<a href="mailto:ghopkins522@comcast.net">ghopkins522@comcast.net</a>
Steve Katzman	<a href="mailto:skatzman@essex1.com">skatzman@essex1.com</a>
Mike Kerns	<a href="mailto:ac.kerns@comcast.net">ac.kerns@comcast.net</a>
Curt Ward	<a href="mailto:caward92@comcast.net">caward92@comcast.net</a>
Mark Hibshman	
Reid Elliot	
Jennifer Payton	

#### Hillcrest Village Board

*Richard Rhoads	<a href="mailto:rrhoads@hillcrestil.us">rrhoads@hillcrestil.us</a>
Pam Pittman	<a href="mailto:ppittman@hillcrestil.us">ppittman@hillcrestil.us</a>
Dan Potter	<a href="mailto:dpotter@hillcrestil.us">dpotter@hillcrestil.us</a>
Tim Ball	<a href="mailto:tbball@hillcrestil.us">tbball@hillcrestil.us</a>
Jose Huerta	<a href="mailto:jhuerta@hillcrestil.us">jhuerta@hillcrestil.us</a>
Eileen Braski	<a href="mailto:ebraski@hillcrestil.us">ebraski@hillcrestil.us</a>
Joe Thompson	<a href="mailto:jthompson@hillcrestil.us">jthompson@hillcrestil.us</a>

#### Flagg Township

Sue Messer	<a href="mailto:flaggtwp@rochelle.net">flaggtwp@rochelle.net</a>
Joanna Patrick	<a href="mailto:flaggtwpcerk@rochelle.net">flaggtwpcerk@rochelle.net</a>
Susan Rothenberger	<a href="mailto:assessor@rochelle.net">assessor@rochelle.net</a>
Scott Seebach	<a href="mailto:scotseebach@gmail.com">scotseebach@gmail.com</a>

#### Board of Trustees

Lance Noggle	<a href="mailto:noggle62@gmail.com">noggle62@gmail.com</a>
Eric Gruben	<a href="mailto:egruben@comcast.net">egruben@comcast.net</a>
Susan Hager	<a href="mailto:susanhager303@comcast.net">susanhager303@comcast.net</a>
Jim Kenney	<a href="mailto:jimk@rocketsupply.com">jimk@rocketsupply.com</a>

#### Flagg-Rochelle Library

*Jaqueline Dickow	<a href="mailto:dickow@comcast.net">dickow@comcast.net</a>
Teresa Haggstad	<a href="mailto:haggstads@comcast.net">haggstads@comcast.net</a>
Michael Scanlan	<a href="mailto:scanlan@comcast.net">scanlan@comcast.net</a>
Lanning Nicoloff	<a href="mailto:nicoloff118@comcast.net">nicoloff118@comcast.net</a>
Sheri Klindera	<a href="mailto:alwayslefty2@gmail.com">alwayslefty2@gmail.com</a>
Susan Sevedge	<a href="mailto:nit1prl22@yahoo.com">nit1prl22@yahoo.com</a>
Darci Waltrip	<a href="mailto:doobs12@comcast.net">doobs12@comcast.net</a>

### LETTERS TO THE EDITOR POLICY

The Rochelle News-Leader encourages responsible letters to the editor on subjects of interest to our readers. Editing may be necessary for space, clarity or to avoid obscenity or libel, but ideas will not be altered. All letters must bear the handwritten signature of the writer and include address and phone number or e-mail address for verification purposes. Neither the street address nor phone number will be printed. Letters should be typed

or legibly handwritten, and no anonymous letters will be published. Any letters from boards or organizations must include at least one name of an individual. Any criticism of public officials should be limited to issues related strictly to their position or actions made in office, as personal attacks will not be published. Letters involving private disputes between the writer and a business will not be published. Political endorsements will be published,

however letters from candidates endorsing themselves will not be printed. Letters may be dropped at the News-Leader office (211 IL Route 38 East), mailed to the News-Leader (P.O. Box 46, Rochelle, IL 61068) or e-mailed ([news@rochellenews-leader.com](mailto:news@rochellenews-leader.com).) The News-Leader reserves the right to edit or reject any letter to the editor for any reason, and letters chosen for publication do not necessarily reflect the views of this newspaper.



# COMMUNITY



### Rochelle FFA bowls for a good cause

The Rochelle FFA recently hosted Bowling 4 Byrds at T-Byrd Lanes. Members bowled two games, and the Rochelle FFA Chapter will donate one turkey per strike and one side dish per spare to the 2-Ton Thanksgiving Food Drive. The members were able to bowl 14 strikes and 12 spares in their bowled games.

### THE KITCHEN TABLE MENU

7034 S. Klondike Road | Rochelle, IL 61068 | 815-561-9074

If you would like to volunteer with us, please email us at [volunteer@kitchentablerochelle.org](mailto:volunteer@kitchentablerochelle.org)

**November 28** – (Tuesday) – Beef Stir Fry over Rice  
**November 30** – (Thursday) – Lasagna,

Bosco Sticks, Salad  
**December 3** – NO SUNDAY BRUNCH  
KIDS MENU: Chicken Nuggets w/Fries  
  
\*\*All menus are subject to change. If you would like to check before coming out, please call us at 815-561-9074  
[www.KitchenTableRochelle.org](http://www.KitchenTableRochelle.org)

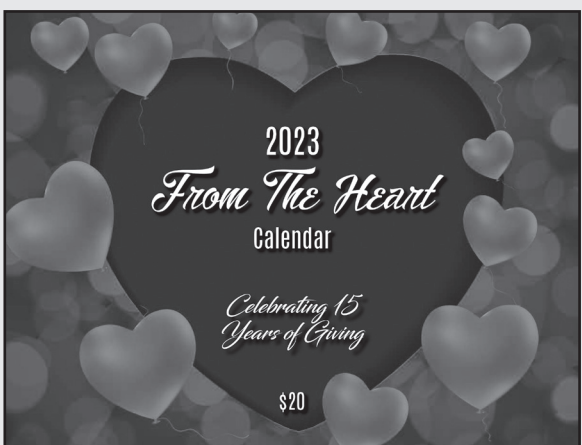
### BIRTHDAYS & ANNIVERSARIES

**Nov. 26**  
Marty & Sarah Brennan

**Nov. 27**  
Makayla Ludwig

**Nov. 29**  
Sam South

Call 815-561-2151 to submit names for birthdays and anniversaries



- Oct. 31 - Ashton Schuster, Ortonville, MI, \$250
- Nov. 1 - Lori Kersten, Dixon, \$25
- Nov. 2 - Rochelle Area Community Foundation, \$25
- Nov. 3 - Lucas Dobson, Davis Junction, \$25
- Nov. 4 - Dana Ptucha, Deer Park, New York, \$25
- Nov. 5 - From the Heart, \$50
- Nov. 6 - Carol Drummet, Freeport, \$25
- Nov. 7 - Jim May, Rochelle, \$25
- Nov. 8 - Elsie Johnson, Rochelle, \$25
- Nov. 9 - Rochelle Area Community Foundation, \$25
- Nov. 10 - Rochelle Chamber, \$250
- Nov. 11 - Hayvin Neale, Rochelle, \$25
- Nov. 12 - Nathan K. Timm, Rochelle, \$50
- Nov. 13 - Deanna Wooten, Rochelle, \$25
- Nov. 14 - Cindy Goldman, Ashton, \$25
- Nov. 15 - Jackson Graber, Rockford, \$25
- Nov. 16 - Paul Mott, Wautoma, WI, \$25
- Nov. 17 - Shane Waters, Rochelle, \$25
- Nov. 18 - Rita Thompson, Rochelle, \$25
- Nov. 19 - Ed Deets, Dixon, \$50
- Nov. 20 - HOPE of Ogle County, \$25
- Nov. 21 - Daniel Pineda, Ashton, \$25
- Nov. 22 - Zekelman Employee, \$25
- Nov. 23 - Dustin Shafer, Rochelle, \$500
- Nov. 24 - J'Sondra Veracini, Rochelle, \$25
- Nov. 25 - Willa Wood, Lindenwood, \$25
- Nov. 26 - Heather Bresson, Ashton, \$50



## Coffee Break

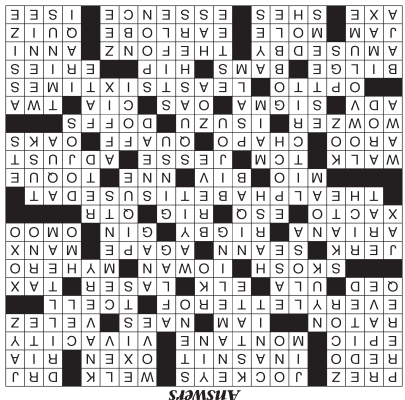
### MAGIC MAZE • FOR —

P G D A X S V S P N E K D I F  
C A X V S Q U E X A M P L E O  
L J H D E C C R L A I X R M V  
T R P N R N L O E S T J O I H  
F D B Y A O V M F T N X W T V  
N I A T R E C R I A A T E E R  
P O S M K F I E L R E G H F E  
D N O P B Z R V R T M E T I X  
I W N U E T R E A E E Q L L O  
N L G J I E G F E R H D L A C  
A Y X W V T K S D S T T A R S

Find the listed words in the diagram. They run in all directions forward, backward, up, down and diagonally  
Unlisted clue hint: FOR — NOR MONEY

A lifetime	Dear life	Instance	Sure
A song	Evermore	Keeps	The mean time
All the world	Example	Sale	The record
Certain	Free	Starters	

©2023 King Features Syndicate, Inc. All rights reserved.





# WINTER SURVIVAL



## Snow blower safety tips

Meteorologists are predicting an El Niño weather pattern this winter. What that spells out for particular regions of the country remains to be seen, but when snow hits certain areas hard, cleanup will be necessary.

It is essential for homeowners and business owners to get outdoors promptly to remove snow from walkways for the safety of pedestrians. Shoveling snow can be back-breaking work, particularly when the snow is very wet or compacted. That's why many people have invested (or plan to invest) in snow blowers to make faster work of snow removal. While these tools are quite effective, they require caution and proper technique to help avoid injuries. The Consumer Product Safety Commission estimates there are 5,740 hospital emergency room-related injuries associated with snow blowers each year. The organization Safety Now says most injuries associated with snow blowers involve injuries to the hands or fingers, including amputation.

Individuals can prevent common injuries and even death by following these

snow blower safety guidelines.

- Read the owner's manual to understand all of the controls and features before use.
- Dress accordingly for the weather, including using sturdy footwear with good traction. Boot or shoe grippers can reduce the risk of slips and falls. Also, avoid loose clothing, as scarves or jackets can become tangled in moving parts of the machine.
- Start the snow blower outside and not in a garage or shed. Gas-powered devices give off carbon monoxide.
- Stay focused on the task at hand, which means using the snow blower only when sober and not under the influence of medications that can cause drowsiness.
- Working at a brisk pace can help prevent the snow blower blades from getting clogged from the snow sticking. Wet, heavy snow is more likely to clog the machine, so it may require more passes to get the job done.
- Clogs can occur, and require extreme caution to dislodge. Always turn off the snow blower and disengage the clutch, says

the American Society for Surgery of the Hand. Wait for the impeller blades to stop spinning. Always use a broom handle or a stick to clear compacted snow. Never stick your hand down the chute or around the blades, even if the power switch is off.

- Keep all safety shields and mechanisms in place on the machine.
  - Do not leave a snow blower unattended.
  - If the snow blower is an electrical version, use an extension cord designed for outdoor use and plug it into an outlet equipped with a ground fault circuit interrupter. Keep the extension cord away from the auger.
- Even though snow blowing can be less physically taxing than manually shoveling snow, it still exerts the body. Take frequent breaks to rest. Exercise caution where you toss the snow, and make sure other people, particularly children, are not in the path of snow removal.

## Protect landscapes from wildlife and more over the winter

**L**ANDSCAPES are vulnerable to the elements during the cold weather months. Everything from de-icing products to hungry animals to the weight of snow can affect trees, shrubs and other plants.

Just because certain greenery will go dormant during the winter doesn't mean landscape maintenance ends when the mercury dips. Homeowners can take certain actions to winterproof their properties and safeguard landscapes so they recover more readily when spring arrives.

### Utilize barriers and deterrents

When resources are scarce, animals will be on the hunt for anything that's edible, and that includes whatever greenery is growing on a landscape. Physical barriers in garden beds and around trees can help prevent damage caused by moles, voles and deer. Line the bottom and sides of garden beds with garden cloth to prevent ground-burrowing animals from getting in from beneath, suggests the gardening resource I Must Garden.

Wrapping shrubs in burlap or covering them in temporary netting can deter deer, who will seek accessible food sources over the winter. Erect fencing around new trees to keep deer away from the bark and lower branches.

Make the yard less attractive to deer and burrowers by opting for fat-based suet cakes to feed birds rather than loose seeds and berries in feeders, which herbivores will enjoy. Also, don't overwater



or mulch landscapes too early. The loose soil and warmth of the mulch may entice moles and voles and other rodents to stick around in those areas and feed on plants.

### Use a safer melting product

Investigate options in snowmelt products, as traditional rock salt can injure buds and branches and kill lawns. In addition, avoid piling salted snow in one area of the landscape, as it will concentrate the salt in that spot. Spread out snow piles to help minimize the damage to delicate plants.

### Secure saplings and juvenile plants

Harsh winds and battering snow can damage young plants. Use stakes and lattices to secure them so they'll be better able to withstand the weather, suggests Total Landscape Management, a commercial and residential landscaping company.

### Erect a snow barrier

Prior observation tends to educate homeowners about which areas of the landscape are most vulnerable to snow drifts and blustery winds. During the winter, winds often blow in from a northeasterly direction, but each homeowner can make his or her own assessment. Put up a tarp between two stakes to serve as a "snow fence" that protects vulnerable areas of the landscape from blowing snow.

### Keep plants cozy


Wrap plants in burlap, garden blankets and plant domes to insulate them from cold weather and some animals. Move container plants into a garage or shielded area for the winter.

Winter can place landscapes in peril. A few strategies can provide protection.

Call "Spud" for all your insurance needs...James E. "Spud" Supancic  
We carry a wide variety of insurance providers including Mexico Insurance  
Auto • Home • Life • Health  
License, Title and Stickers

**James E. Supancic Insurance**

Hours: Mon.-Fri. 9am-5pm, Sat. 9am-12 Noon  
516 Lincoln Ave., Rochelle, IL 61068  
815-562-7552  
www.spudinsurance.com



10142019

**Bushman's Service**  
**On Farm Tire Service**  
Milledgeville, IL  
**815-225-7411**



**DAN'S AUTO REPAIR**  
Complete Auto & Truck Services  
Locally Owned & Operated for 30 Years  
Time to get your vehicles ready for Fall & Winter!

- Minor to Major • Brakes
- Oil Change • Complete Diagnostics
- Engine/Transmission
- Domestic & Most Foreign Cars

**815-734-6267**  
4377 E. Rt. 64, Mt. Morris, IL  
Dan Raney, Owner/Operator

**D&W GARAGE**  
Byron, Illinois  
815.234.2171  
AUTO REPAIRS • TOWING

Mike & Jodi Girtten, Owners

- All Auto and Truck Repairs
- 24 Hour Towing Service
- Hydraulic Hose Service and Repair

**815-234-2171**  
1503 Kysor Drive, Byron, IL

07/2023



**BARB CITY AUTOMOTIVE**  
Complete Automotive Repair - Foreign & Domestic  
John Volkert & Bobby Leon of Rochelle - Owners  
1150 S. 4th St. DeKalb, IL  
756-3898

11272023

**Full-Service Auto Repair & Maintenance**

From factory-schedule maintenance to emergency repairs and towing, we offer trusted service and great rates for unbeatable value.

**Blake Automotive**  
3678 IL 64, Mt. Morris  
815-734-7228

01202022

**Stan's Performance FULL SERVICE GARAGE**

- Computer Diagnostice
- Brakes • Tires
- Oil Change • Transmission Care
- Air Conditioning
- Tune Up & Repair

**We Do It All - Give Us A Try!**



815-734-4272  
409 E. Hitt St • Mt. Morris

10142019



# WINTER SURVIVAL

## How to prepare your car for winter

**S**UMMER and fall can stake their claim as road trip season, and even devoted drivers may admit that winter is generally a less desirable time to take to the open road. The elements factor heavily into that reputation, as fewer hours of daylight, snow and ice are just some of the variables that can make it less enjoyable, and potentially more dangerous, to drive in winter.

In anticipation of adverse driving conditions, vehicle owners can take various steps to prepare their cars and trucks for winter.

- Upgrade your wiper blades. Perhaps nothing is compromised more than visibility when driving in winter compared to other times of year. Snow makes it hard to see when driving, but fewer hours of daylight also can affect visibility.

In fact, the Insurance Institute for Highway Safety reports that approximately half of all fatal crashes occur between 6 p.m. and 6 a.m., even though the number of drivers on the road during those hours is considerably lower than it is during the daytime.

The difficulty of driving at night is even more significant when wiper blades are not up to the task of keeping rain and snow off drivers' windshields. Prior to winter, inspect wiper blades and upgrade them, if necessary. Streaks left on a windshield are a telltale sign that blades need to be replaced.

- Purchase winter tires. Winter tires may not be necessary in regions with relatively mild winters. However, drivers accustomed to winters marked by heavy snowfall and/or icy roads should consider replacing their existing tires with winter tires. Many newer vehicles are now equipped

with all-season tires, which the tire experts at Bridgestone note provide great performance but are not designed to handle extreme winter conditions like snow and ice. Winter tires are specially designed to handle such conditions, making them a worthy investment for drivers who live in regions where it's not unusual to encounter snow and ice throughout the winter.

- Study up on your engine oil. Some vehicle manufacturers recommend different grades of oil depending on the range of temperatures a car or truck will be driven in. The owner's manual will likely indicate if the manufacturer recommends using a different type of engine oil in especially cold temperatures. Even if the manual does not include such a suggestion, drivers can seek the advice of a local mechanic.

- Schedule a pre-winter tuneup. Even if a vehicle is not due for a tuneup, it can be wise to have it looked over by a local mechanic before the arrival of harsh winter weather. A mechanic can check the radiator, hoses and other components that could be affected by especially cold weather in the months to come. If any issues are found, address them immediately. After all, it's better to be proactive than leave yourself vulnerable to breakdowns or other issues once the mercury drops.

As fall gives way to winter, drivers can take steps to keep their cars running strong and safe in the months ahead.



## A homeowners' guide to ice dams

**C**OLD weather contributes to many different conditions that can affect homes. When winds are blowing fiercely, homeowners may soon discover deficits in insulation or in caulking around windows and doors. Icy conditions can cause walkways and stairs to become slick.

One winter condition can cause extensive headaches and damage and could be a mystery to many homeowners. Ice dams occur when warm air in the attic heats up the roof and melts accumulated snow. Water from this melt runs down the roof and refreezes when it reaches the colder roof edge. A mound of ice forms at the lower edge of the roofline as a result.

Ice dams may help create a picturesque winter vista, with icicles hanging and glinting in the sunlight, but they can cause significant damage. According to experts, ice dams can weigh hundreds of pounds if they get large enough, potentially affecting the structural integrity of roof eaves. In addition, ice dams can cause melted runoff to back up under roof shingles. This water can eventually make its way inside, ruining ceilings and walls. The roof, gutters, insulation, interior drywall, and other home surfaces can be damaged if ice dams are left unchecked.

The following are some conditions that make a home vulnerable to ice dam formation:

1. The presence of snow on the roof.
2. An average outdoor temperature that is 32 F or lower.

3. A roof surface temperature above 32 F at its higher points and below 32 F at the lower end.

4. Indoor heat making its way to the underside of the roof.

Homeowners should take a few steps to address ice dams. The first is preventing future ice dams from forming. According to First American Roofing and Siding, LLC, improving insulation in the ceiling below the attic and addressing any inefficiencies in the home is necessary. A professional can do a blower door test, which works by depressurizing the home and using a thermal camera to find areas where insulation is poor. In addition, adequate ventilation under the roof deck is necessary so cold air can circulate and prevent the attic from getting so warm that it will melt the snow on the roof.

The next step is to remove excess snow from the roof with a roof rake and keeping gutters clear. If ice dams have already formed, hire a professional to remove them, as it can be dangerous to do it oneself.

Snow-covered roofs and landscapes can be beautiful, but also dangerous if conditions that cause ice dams to form are not addressed.

**ANDERSON PLUMBING & HEATING, INC.**  
Plumbing, Heating & Cooling  
Water Heaters, Water Softeners,  
Drinking Water Systems, Iron Filters,  
Sewer Rodding & Jetting & More!  
**Since 1976**  
621 First Ave., Rochelle  
(815) 562-8784

**INSTANT \$1,400 ComEd UTILITY REBATE**  
WITH THE PURCHASE OF A YORK HMH7 16 SEER HEAT PUMP SYSTEM

The YORK® HMH7 Heat Pump is the ideal solution for spaces that require a compact design and a higher level of comfort. All with standard 10-year Compressor Limited Warranty, 10-year Parts Limited Warranty and available extended warranties for up to a full system replacement.

**Loescher**  
HEATING AND AIR CONDITIONING  
*The single source. The right choice.*

**Exceptional Comfort, Value & Flexibility**

- ▶ 16 SEER high-quality, efficient comfort
- ▶ 40% smaller footprint compared to traditional units
- ▶ 36% quieter operating sound
- ▶ Snow and organic debris don't hamper operation

**1 855 499 HEAT www.LoescherHVAC.com**  
**Top-Rated Local HVAC Pros, Trusted For Over 50 Years!**

**Freeport, IL Sterling, IL Lena, IL Monroe, WI**

**Bundle home & auto. It's easy.**  
Call me for a quote today

**State Farm®**

**Terri Schaefer, Agent**  
**Schaefer Ins and Fin Svcs Inc**  
603 Lincoln Highway, Rochelle, IL 61068-1646  
Bus: 815-562-7063  
terri.schaefer.115n@statefarm.com  
statefarm.com/agent/us/il/rochelle

**Availability and amount of discounts and savings vary by state. State Farm Mutual Automobile Insurance Company, State Farm Indemnity Company, State Farm Fire and Casualty Company, State Farm General Insurance Company, Bloomington, IL, State Farm County Mutual Insurance Company of Texas, State Farm Equity, Richardson, TX, State Farm Florida Insurance Company, Winter Haven, FL.**

**Get Winter Ready at**

**JEFF PERRY**  
Auto Group  
BUICK CHEVROLET CHRYSLER GMC Jeep

1300 N. 7th Street • Rochelle 815-562-8787  
1421 37th St. • Peru 815-223-0034  
www.jeffperryautos.com

**TORO®**  
TORO.com

**New snowblowers available at...**

**DEKALB** LAWN & EQUIPMENT COMPANY INC

219 N 7th Street, DeKalb  
**815-756-5722**

Hours: Monday - Friday 8-5, Saturday 8-12, Sunday Closed  
Check for both winter and holiday hours.



# Eat • Drink • Shop • Live

# Local

**CRUISIN'**  
Great Food and Spirits  
Monroe Center

**Cruisin' I-39**  
Breakfast • Lunch • Dinner

**\$5 Off**  
Your meal  
(\$15.00 minimum purchase)  
Expires 12-31-23

Dine with Us!  
After a long day of shopping, come join us for good food and a relaxing atmosphere!

Follow us on Facebook for deals and events!

5532 N Limestone Rd,  
Monroe Center, IL 61052  
815-393-7091

We Fix Boo Boos

**Davis Family Health LLC**  
Kelly Ann Tonielli Davis  
DNP, APRN, FNP-BC-CME

**2022 VOTED BEST OF ROCHELLE**

Voted Best Family Practice & Best Doctor!

1212 Currency Court, Rochelle, IL • 815-561-8500  
1201 Meriden Street, Mendota, IL • 815-538-1800

Primary Care, Physicals, Weight Loss, Dermal Fillers, Botox Injections, Suboxone Program  
Veteran Owned and Operated • Most insurances accepted

Stay Healthy for the Holidays!

**THE DOG HUB**  
GYROS • HOT DOGS • ITALIAN BEEF • BURGERS

**DINE-IN PICK-UP DELIVERY**

View the menu: [Dog-Hub.com](http://Dog-Hub.com)  
ONLINE ORDERING NOW AVAILABLE!

Monday-Saturday 10:30AM-9PM  
Sunday Closed

134 MAY MART DR  
ROCHELLE  
815-561-0001

Choose Hormel® Foods for the Holidays!

**Hormel Foods**

**Rochelle Foods**  
1001 S. Main Street | Rochelle  
815-562-4141 | [rochellefoodsjobs.com](http://rochellefoodsjobs.com)

**Kara's Byron BARBER SHOP**

Men • Boys

Hours:  
Mon, Tue, Thurs, and Fri 9AM - 5PM  
Sat 9AM - 1PM • Closed on Wed.

Appointments & Walk-Ins Welcome

**\$4 OFF Any Service**  
Offer good with coupon. Expires 12/31/23

**CUTS & Style**

**Kara's Byron Barber Shop**  
238 Blackhawk Dr.  
Byron  
815-315-2119

We welcome you to Diamond G Western Store.

We are celebrating our 50th year in business.

We have a large selection of western hats, boots, clothes, belts, and buckles, horse care products, tac and much more!

815-562-4050  
4564 S. Knoll Rd  
Rochelle IL

**THE RINK**

**Merry Christmas from The Rink!**

**Winter Hours:**  
Friday 7-10PM  
Saturday 1-4PM and 7-11PM  
Sunday 1-4PM

**Special Holiday Hours:**  
December 23rd 7-10PM  
December 24th and 25th CLOSED  
December 26th 1-4PM  
December 27th 6-9PM  
December 28th 6-9PM  
December 29th 1-4PM and 7-10PM  
December 30th 1-4PM

**Homemade Holidays**

**Catering & Party Trays**  
Tues-Fri - 9a-5:30p  
Sat - 9a-4p

• Beer • Wine • Seasonings • Prime Rib Roasts  
• Turkey • Ham • Holiday Favorites

815-384-3620  
[headons2go.com](http://headons2go.com)  
103 N. Main Street | Creston

**HEADONS FINE MEATS**  
EST. 1970 CRESTON, IL

Gift Certificates Available

**Shop Our Local Unique Boutique!**

Raku Potteryworks • Candles • Red Light Therapy Bed • Cocoon Wellness Pod • Versa Spray Tan • Purses • Jewelry • Scarves • CC Hats & Much More!

**Buy 1 Package GET 2<sup>ND</sup> PACKAGE 1/2 OFF!**

ALL PACKAGES INCLUDED. Give a gift of wellness! Offer good with coupon. Expires 12/31/23

*Red Light • Cocoon • Tanning*  
**Celestial Sun Wellnes Spa Boutique & Tanning**  
8725 N IL Rt 2 • Byron • 815-234-5588

**USA UKULELE STATION AMERICA**  
**OMG OREGON MUSIC GARAGE**

**UKULELE STATION AMERICA & OREGON MUSIC GARAGE**

Acoustic Guitars • Electric Guitars  
Bass Guitars • Banjos • Mandolins  
Ukuleles • Accessories • and More!

**OREGON MUSIC GARAGE**  
(Located directly behind Ukulele Station America)

1000 Washington Street, Oregon, Illinois 61061  
(815) 994-1246

Find the Perfect Gift this Season!



**Precious Pastures**

**Delicious, Quality Raw Milk**  
**Fresh at the farm!**

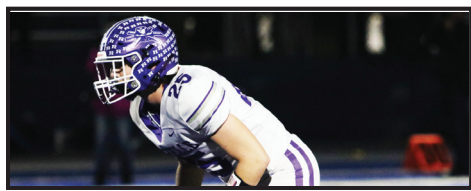
Monday - Saturday 6:30 - 8:00 am & 4:30 - 6 pm  
Sunday 6:30 - 8:00 am & 5 - 6:30 pm

(Please bring your own containers. 24 hours Notice Required.)

387 S. Malta Rd., Rochelle, IL 61068  
815-762-6867 • [PreciousPastures.com](http://PreciousPastures.com)



# SPORTS



## DEFENDER OF THE YEAR

Brock Metzger was named the I-8/KRC Blue Defensive Player of the Year.

See page 2 for more details

## RTHS Wrestling

# Hub matmen return to action

Rochelle splits triangular meet against Dixon, Burlington Central on Tuesday

BY RUSSELL HODGES  
SPORTS EDITOR

**DIXON** — One single dim light shined down on the middle of the circle inside The Pit at Dixon High School on Tuesday evening, when the Rochelle Hub varsity wrestling team squared off against the Dixon Dukes in a highly contested season-opening nonconference dual matchup.

With both teams exchanging pins throughout the battle, Rochelle and Dixon went point for point throughout most of the dual match. The Hubs found themselves in contention with just two bouts remaining, but a crucial fall for the Dukes in the 215-pound matchup enabled Dixon to hold on for a 39-38 win over Rochelle. The Hubs didn't come away empty handed, however, as Rochelle defeated Burlington Central 52-30 earlier in the evening to start the season with a win.

"There were some heroic performances throughout our lineup, but there were some that were a little underwhelming," head coach Alphonso Vrunos said. "The first eight or nine matches of the dual against Dixon resulted in us pinning them or them pinning us. We talked with the kids after the match that we can't be successful if we wrestle like that. If we're going to be a



(PHOTO BY RUSSELL HODGES)

**Sophomore Roman Villalobos attempts to turn over Burlington Central's Jonah Chavez during the Rochelle Hub varsity wrestling team's triangular meet at Dixon High School on Tuesday.**

good dual team, we have to wrestle hard for six minutes and we have to compete the whole time."

## Burlington Central

Rochelle took advantage of a short-handed Burlington Central lineup on Tuesday,

with three wrestlers including junior Kaiden Morris, senior Alex McBride and sophomore Freddie Hernandez receiving forfeits for the 215-pound, 285-pound and 106-pound matches. The Rockets scored their first win during the 113-pound bout, where Chace Hertel went into the third period

against Rochelle sophomore Keagan Albers before earning a victory by fall.

Sophomore Tony Milburn took a forfeit in the 120-pound bout for the Hubs, who saw junior Xavier Villalobos notch a first-period fall over Cole Biedenbach in the 126-pound bout. Back-to-

back pins from Burlington Central's David Hintz and Henry Deering during the 132-pound and 138-pound bouts allowed the Rockets to cut the Rochelle lead to 30-18.

Sophomore Brenden Voight brought the Hubs back in the 144-pound bout, battling into the third

period before recording a fall over Jack Aguirre. The Rockets bounced back with wins in the 150-pound and 157-pound bouts, where Ben Estrada and Zayn Afeef recorded falls over Hub freshmen Angel Hernandez and Tyler Etes.

See HUBS page 3

## RMS Boys Basketball

# Eighth-graders take home Oregon Tournament title

Rochelle wins four consecutive games, defeats Dixon 26-23 for championship

BY RUSSELL HODGES  
SPORTS EDITOR

**OREGON** — The Rochelle Middle School eighth grade boys basketball team recorded four straight victories to win the Oregon Tournament this past weekend. The team includes Jace Spears, Bo Lundquist, Tyson Pavlak, Maddox Hueramo, Holden Liebhaber, Sebastian Albertson, Brayden Harley, Trentin Neale, Ethan Sturges, Jax Sullivan and Nathan Rosas.

Rochelle tipped off the tournament with a 53-24 win over Rockford Christian. Holden Liebhaber led the Royals with 15 points, while Sebastian Albertson added 10 points and Nathan Rosas totaled nine points. Brayden Harley chipped in eight points for the Royals in the victory.

Rochelle moved to 2-0 in the tournament with a 63-37 victory against Genoa-Kingston. Rosas and Liebhaber each scored 14 points to lead the charge, while Jax Sullivan added nine points and Tyson Pavlak contributed eight points. Bo Lundquist



(COURTESY PHOTO)

**The Rochelle Middle School eighth grade boys basketball team recorded four straight victories to win the Oregon Tournament this past weekend. The team includes Jace Spears, Bo Lundquist, Tyson Pavlak, Maddox Hueramo, Holden Liebhaber, Sebastian Albertson, Brayden Harley, Trentin Neale, Ethan Sturges, Jax Sullivan and Nathan Rosas.**

drained two 3-pointers for six points.

Rochelle reached the semifinal round of the tournament with a 41-22

win over Oregon. Liebhaber finished with 15 points for the Royals, while Sebastian Albertson scored seven points and

Brayden Harley chipped in six points. Sullivan totaled five points for the Royals in the win.

Rochelle clinched the

championship with a 26-23 victory against Dixon in the final round. Liebhaber had 10 points for the Royals, while Harley added six

points on three field goals. Albertson and Rosas each recorded five points and two made field goals in the championship.





The businesses featured on this page are

**"Hubs Super Fans"**

They proudly support our local athletes and students.

Please show your appreciation by patronizing their businesses.

**WE SUPPORT OUR HUBS!**



## HUB SPOTLIGHT



(PHOTO BY MARCY DELILLE)

Senior Brock Metzger was named the Interstate 8/Kishwaukee River Blue Division's Defensive Player of the Year for the 2023 season.

## Metzger named I-8/KRC Blue Defensive Player of the Year

BY RUSSELL HODGES  
SPORTS EDITOR

ROCHELLE — Brock Metzger shared a special moment with his father, Brad, when the Rochelle Hub varsity football team held its season-ending awards banquet this past week.

Brock was named the Hackett Award winner this season, taking home the honor of the varsity football team's most valuable player. It was a fitting honor for Brock, whose father Brad was the Hackett Award winner in 1995 and 1996. The senior linebacker and tight end certainly earned the award this season, leading Rochelle with 58 tackles while tying for the team lead with two sacks. Brock also had seven tackles for loss, one forced fumble and one pass breakup this fall.

Not only was he named an All-Conference honoree in the Interstate 8/Kishwaukee River Blue Division this season, but he was named the I-8/KRC Blue Defensive Player of the Year for his efforts at linebacker. Metzger has started at inside linebacker over each of the last two years, helping Rochelle win 16 games and reach the IHSAA playoffs

during each of those seasons.

"I worked so hard for it and our team worked so hard this year," Metzger said. "I think I won the award because of how well we played. I worked a lot on being more physical this year. I wasn't as strong during my junior year, but I became stronger this season and I wanted to be a better player overall. We had an amazing season and we had so much together. It was a great year."

Metzger filled a reserve role on the varsity team during his sophomore season, when the Hubs went 8-3 and reached the second round of the postseason. He returned as a starting inside linebacker during his junior season, where he recorded a team-high 70 tackles including five tackles for loss as the Hubs went 9-3 and advanced to the state quarterfinals. Metzger finished his high school career as an All-Conference honoree over each of his final two seasons.

"My advice for my teammates coming back would be to keep working as hard as you can," Metzger said. "I didn't get a starting job until I was a junior, but I worked hard for it. Winning the conference championship at Richmond-Burton was my favorite moment from this season."

"I worked so hard for it and our team worked so hard this year. I think I won the award because of how well we played. I worked a lot on being more physical this year."

**Brock Metzger**

**VINCE'S PIZZA**  
SINCE 1967

Enjoy a **15% Discount**  
when Ordering Online at  
[VincesPizzainRochelle.com](http://VincesPizzainRochelle.com)



815.562.7300

Delivery & Curbside Pick Up



1071 N 7th St, Rochelle, IL



Hello,  
neighbor!

Huber Ins and Fin Svcs Inc  
Shane B Huber, Agent  
221 E. IL Rt. 38  
Rochelle, IL 61068  
Bus: 815-562-7011

Please stop by and say, "Hi!"  
I'm looking forward to serving your needs for insurance and  
financial services.  
Like a good neighbor, State Farm is there.  
**CALL ME TODAY.**

**State Farm**

1001013.1

State Farm, Home Office, Bloomington, IL

**DLX Medical**  
GROUP



Caring for your  
family's health from  
infant to adults.

Diana Alanis, MD

Accepting  
New Patients

For appointment, please call

**815-227-9594**

1212 Currency Ct, Rochelle, IL 61068  
Most Insurance Accepted

Local People Providing Local Service

**Rochelle**  
MUNICIPAL UTILITIES

Water • Waste Water  
Electric • Communications

Phone: 815-562-4155 333 Lincoln Highway  
Fax: 815-562-5861 Rochelle, IL

[www.rmu.net](http://www.rmu.net)

HS2016

**CENTRAL  
ILLINOIS  
LOAN**

Loans For All Your Needs  
Auto • Home Improvement • Vacation  
Jami Hackman • Tonia Holland

**815-561-4035!**

310 Eagle Drive, Rochelle  
All loans subject to our normal credit requirements and policies.

HS2016

**MORTON  
BUILDINGS**

If you can dream it, we can build it.



HSF2016

Rochelle Sales Office • Hwy. 251 N. • 877-613-3050

**Rochelle**  
Community Hospital  
Your Local Healthcare Resource.

900 N. 2nd Street, Rochelle  
815-562-2181  
[www.rochellehospital.com](http://www.rochellehospital.com)

HSF2017

**MEYERS**  
FURNITURE & FLOORING

209 Powers Road, Hwy 251 N  
Rochelle, IL 61068  
(815) 562-8792  
[www.meyersfurniture.com](http://www.meyersfurniture.com)

**Bruns**  
Construction, Inc.

FREE  
ESTIMATES!  
Tim & Roger Bruns,  
Owners  
Established 1997

• Residential  
& Commercial  
Concrete  
• Additions

**815-561-0099**  
Free Estimates • Fully Insured  
[www.brunsconstructioninc.com](http://www.brunsconstructioninc.com)

**Kish**  
KISHWAUKEE  
COLLEGE

Helping you create the life you want.

**kish.edu**

**QUEEN'S TRUCKING  
& CONSTRUCTION, INC.**

Small or Big Construction Jobs, We Do Them All!  
We Aim for On Time, Every Time!

We were Voted Mid-West Truckers  
Association, Inc. Northern Region  
Trucking Company of the year 2022

The Trusted Trucking Company of Many Local Distributors and Manufacturers.  
**Queens Trucking & Construction Inc**  
322 Errett Road, Rochelle  
815-562-6064 | [queens-trucking.com](http://queens-trucking.com)



**MEXICAN FOOD**  
**RESTAURANT TECALITLAN**  
Authentic Homemade Mexican Food  
Carry-out & Catering Available  
**(815) 561-7576**  
1071 N. CARON RD. ROCHELLE, IL 61068

GOOD LUCK HUBS  
FROM YOUR FANS AT:

**HAYDEN**  
REAL ESTATE  
INC.

RESIDENTIAL  
AGRICULTURAL  
COMMERCIAL

815-562-2111 • [hre@haydenreinc.com](mailto:hre@haydenreinc.com)

Member  
FDIC

**ANDERSON  
PLUMBING & HEATING, INC.**

Plumbing, Heating & Cooling  
Water Heaters, Water Softeners,  
Drinking Water Systems, Iron Filters,  
Sewer Rodding & Jetting & More!

Since 1976

621 First Ave., Rochelle  
(815) 562-8784

Lic# 055-013999

**Rochelle**  
Chiropractic  
Clinic  
Dr. Chad M. Piller



227 E. Rt 38 • Rochelle, IL  
**815-562-8706**  
[www.rochellechiropractic.com](http://www.rochellechiropractic.com)  
Now Accepting New Patients!





# SPORTS

## RTHS Boys Bowling

# Hub bowlers score Interstate 8 win over Ottawa

## Rochelle moves to 5-3 on the season after narrow home loss against Mendota

BY RUSSELL HODGES  
SPORTS EDITOR

**ROCHELLE** — The Rochelle Hub varsity bowling team nearly rallied for a nonconference win against Mendota on Tuesday evening. Sophomore Andrew Powell fired a team-high 620 series, while sophomore Levi Waddle rolled a 597 series as the Trojans held off the Hubs 3,414-3,356. Rochelle (5-3, 2-1 Interstate 8) will return home to face Kaneland on Tuesday, Nov. 28.

The Hubs took an early series lead over Mendota, defeating the Trojans 1,110-1,064 in the first game of the evening. Senior Sam Tracey led the charge for the Hubs, shooting a series-best 203 while junior Logan Frye added a series-best 199 and senior Christian Thorne recorded a series-best 193. Mendota took the series lead with a 1,281-1,146 win during the second game, where Powell shot a series-best 237 while Frye and Waddle fired scores of 195 and 193.

With a nonconference win on the line, Rochelle took the third and final game 1,100-1,069, but the Trojans gained a large enough lead after two

games to edge the Hubs in the final series score. Waddle concluded his evening with a series-best 219 in the third game, while Powell rolled a 196 and Frye shot a 178. Frye ended the evening with a 572 series and Tracey ended the evening with a 564 series after bowling scores of 184 and 177 over the final two games.

### Ottawa

The Rochelle Hub varsity bowling team earned its second Interstate 8 Conference win of the season on Monday. Sophomore Andrew Powell rolled a team-high 623 series, while seniors Sam Tracey and Christian Thorne followed with series scores of 558 and 550 as Rochelle took down the Pirates 3,257-2,498.

Rochelle blew the series wide open during the first game, where the Hubs dominated Ottawa 1,063-794 behind a 214 from Powell and a series-best 181 from senior Jon Alanis. Rochelle extended its series lead with an 1,106-853 victory during the second game, where Tracey rolled a series-best 203 and sophomore Levi Waddle fired a series-best 199 to lead the Rochelle side. Alanis added a 189



Senior Christian Thorne fires a shot down the lane during the Rochelle Hub varsity bowling match against Mendota on Tuesday.

in the second game. The Hubs clinched the conference sweep with a 1,088-851 win in the third and final game. Powell bowled out with a series-best 221 in the third game, while Thorne finished strong with a series-best 192 and junior Logan Frye concluded his evening with a series-best 189. Alanis finished with a 524 series and Frye totaled a 500 series for the Hubs in the victory on Monday.

# HUBS: Rochelle wrestlers begin season with 1-1 record

From page 1

Junior Grant Gensler delivered a much-needed win for Rochelle in the 165-pound bout, notching a second-period fall over Cameron Angerman.

Leading 42-30, Rochelle claimed the final two victories of the dual against the Rockets. Sophomore Roman Villalobos scored multiple takedowns in an 11-2 major decision over Jonah Chavez in the 175-pound bout, while senior Brock

Metzger earned a second-period fall over Xander Guerrero in the 190-pound bout to seal the team's first dual victory of the season.

"It's nice to get our first one out of the way," Bruno said. "We had a lot of young kids in the lineup and we have several freshmen and sophomores. We've grown a lot from last year, but we have freshmen and sophomores who want to prove that they belong on the varsity mat. They got that experience tonight and they

helped us earn the win, so that was exciting for us to see."

### Dixon

The Dukes held a 12-0 advantage over the Hubs after two matches, with Jack Ragan and Ayden Rowley recording back-to-back falls over Freddie Hernandez and Keagan Albers in the 106-pound and 113-pound bouts. Rochelle fired back with three consecutive victories, which were sparked after Tony Milburn earned

a fall over Riley Paredes in the 120-pound bout. Senior Tommy Tourdot followed with a fall over Jacob Renkes to win the 126-pound bout and Xavier Villalobos gave the Hubs an 18-12 lead after a fall over Gavin Kramer in the 132-pound bout.

Dixon tied the score when James Simpson won by fall over freshman Joshua Lassiter in the 138-pound bout. The seesaw battle continued over the next few bouts, with Brenden Voight pin-

ning Adam Staples in the 144-pound bout before Dixon's Jayden Weidman and Cade Hey notched falls over Angel Hernandez and Tyler Etes in the 150-pound and 157-pound bouts.

The streak of nine straight pins between the two teams ended in the 165-pound bout, where Grant Gensler fended off Jayce Kastner for a 9-0 major decision and Dixon's Steven Kitzman edged Roman Villalobos for a 5-2 decision in the

175-pound bout. Rochelle brought itself within one after Brock Metzger defeated Zack Clevenger by 8-0 major decision in the 190-pound bout.

The Dukes sealed the match with a clinching pin in the 215-pound bout, where Will Howell took down and pinned Alex McBride in the first period to win the dual. Kaiden Morris received a forfeit in the 285-pound bout, but the Hubs fell one point short of victory on Tuesday night.

# COMMUNITY BOARD

**Need to get the word out about a product or service you offer?**  
**Give us a call at 815-562-4171.**  
**We can reach over 9,000 homes!**



### Gutters, Roofing & Siding

**THEISEN ROOFING** *Free Estimates!*

ROOFING  
SIDING  
GUTTERS

CONTACT US  
815-758-8998  
THEISENROOFING@COMCAST.NET

Family owned & operated for over 50 years

### Plumbing Heating & Cooling

**ANDERSON PLUMBING & HEATING, INC.**

Plumbing, Heating & Cooling  
Water Heaters, Water Softeners,  
Drinking Water Systems, Iron Filters,  
Sewer Rodding & Jetting & More!

Since 1976

621 First Ave., Rochelle  
(815) 562-8784

### Advertise Here

**What Service Do You Offer?**

**562-4171**

The Rochelle News-Leader

### Heating & Air Conditioning

#### HULL

HVAC & Household Services

Furnaces - Air Conditioners - Boilers  
Duct Cleaning - Water Heaters

Precision Furnace  
Clean & Check  
**\$85.00**  
*Includes FREE carbon monoxide test*

**24/7 Emergency Service**

**815-561-6551**  
**www.HullHVAC.com**

### Concrete



• Residential & Commercial Concrete  
• Additions

**FREE ESTIMATES!**



Tim & Roger Bruns, Owners  
Established 1997

**815-561-0099**  
Free Estimates • Fully Insured

**www.brunsconstructioninc.com**

### Storage Sheds



We Specialize in Portable/Quality Built Storage Sheds

• Stock & Custom Design • Competitive Pricing  
• Many Options Available • Site Preparation Available

See Displays at 3500 S. Chana Rd. Chana IL 61015

Call Norm or Albert for Free Literature packet

**779.861.3542**



# SPORTS

## RTHS Boys Basketball

# Hubs defeat Dundee-Crown in Strombom opener

## Moore scores team-leading 29 points as Rochelle knocks off Chargers 82-70

BY RUSSELL HODGES  
SPORTS EDITOR

**SYCAMORE** — Junior guard Cayden Moore entered attack mode on Wednesday evening, when the Rochelle Hub varsity basketball team tipped off the Strombom Tournament at Sycamore High School with an opening-round matchup against the Dundee-Crown Chargers.

Attacking the basket off the dribble and scoring on offensive rebounds, Moore recorded a team-high 29 points to lead the Hubs over the Chargers 82-70. Rochelle (1-0, 0-0 Interstate 8) saw four players reach double figures in the victory, with junior Elijah Harley scoring 13 points while sophomore Brode Metzger earned himself an 11-point, 10-rebound double-double. Freshman Brody Bruns followed with 12 points to aid the Rochelle offense in his varsity debut.

"We've been working really hard and pushing each other during practice," Moore said. "I'm proud of how we played tonight. We grabbed a lot of offensive rebounds and my teammates trusted me to go up strong. My coaches have pushed me to go up strong and my teammates were looking out for me by getting me the ball... We've talked about our goals for this season and winning a regional is a must for this team. We're pushing really hard for that goal."

Dundee-Crown held the early lead on Wednesday, capitalizing on good floor spacing and dribble penetration to convert a series of 3-point shots. Metzger ignited the Rochelle offense in the first quarter, where the sophomore forward scored eight of his 11 points and provided the Hubs with a punch on the glass. The Chargers held a 22-16 lead entering the second quarter, where Moore made four shots and reached the free-throw line on multiple aggressive drives.

"We've been putting a lot of work in over the offseason," Harley said. "Cayden played really well tonight and we had a lot of players do some good things. I thought we played pretty well, but it's essential for us to stay together and stay humble. We did a pretty good job of that. We're hoping to have a winning record and our goal as a team is to win a regional championship."

Sophomore Van Gerber drilled Rochelle's first 3-pointer of the game late in the second quarter, helping the Hubs retake control of the game and enter the locker room with a 38-34 halftime advantage. Gerber converted a team-high three triples in the game, nailing his second and third 3-pointers in the third quarter to keep the Rochelle offense rolling. A fast-paced third quarter saw Dundee-Crown slip ahead 56-54, with the Chargers taking advantage of Hub



(PHOTO BY RUSSELL HODGES)

**Junior Cayden Moore scored a team-high 29 points to lead the Rochelle Hub varsity basketball team over Dundee-Crown on Wednesday.**

turnovers.

With a first-round win on the line, Rochelle saw its lone freshman Bruns step up with a series of

huge shots throughout the second half. After scoring four points in the third quarter, the 6-foot-5 forward put home three close-

range shots and added a pair of free-throws to help the Hubs clinch their victory on Wednesday. Senior Eli Luxton contributed

four points, 10 rebounds and nine assists for the Hubs, who will return to action on Friday at 6 p.m. against Sterling.

## The 2024 From The Heart Cash Calendars are NOW AVAILABLE!!

The proceeds of the sale of the calendars benefit our From The Heart recipients: Pegasus Special Riders, Rochelle Christian Food Pantry, HOPE, Focus House, Shining Star Children's Advocacy Center, CASA, Rochelle Area Community Foundation, Hub City Senior Center & Rochelle Rotary.

**OUR CHARITIES NEED OUR SUPPORT NOW MORE THAN EVER!**



**For Just \$20 you have a chance to be one of 365 DAILY WINNERS TOTAL CASH PRIZES \$18,250 PLUS Each Calendar Has VALUABLE LOCAL COUPONS**

## Here are 3 Ways to Purchase Your 2024 From The Heart Cash Calendar!

• **ONLINE:** Go to <http://fromtheheartrochelle.org> and click on **CASH CALENDARS**. Once the calendar is purchased we will mail it out to you! Shipping and processing fees will be added to cost.

• **IN PERSON:** You can pick up a 2024 From The Heart Cash Calendar **TODAY** at the following locations:

**In Rochelle at: First State Bank, Stillman Bank, HOPE Chest, Colonial Flower Shoppe and Hub City Senior Center**  
**In Oregon at: Merlin's**  
**In Dixon at: Shining Star**  
**In Mendota at: The Mendota Reporter/Amboy News office**

• **BY MAIL:** Fill out the form below and send it in to us and we will mail a 2024 From The Heart Cash Calendar to you! Shipping fees are added to cost.

**YES! Send me my 2024 From The Heart Cash Calendar!**  
(Please Print)

NAME: \_\_\_\_\_

ADDRESS: \_\_\_\_\_

CITY, STATE, ZIP: \_\_\_\_\_

PHONE: \_\_\_\_\_

NUMBER OF CALENDARS: \_\_\_\_\_

Clip and mail this form along with \$23  
(\$20 per calendar plus \$3 per calendar postage) to:  
**Rotary Calendar, PO BOX 372, Rochelle, IL 61068**

## HOME FOR HOLIDAYS Savings

**20% OFF**  
Does not include cost of materials

Upon completion of appointment

**Leafguard**  
Get it today. Protected for life.

\*Guaranteed not to clog for as long as you own your home, or we will clean your gutters for free

- LIFETIME NO-CLOG WARRANTY
- MADE ONSITE SPECIFICALLY FOR YOUR HOME
- THE ONLY ONE-PIECE SEAMLESS DEBRIS SHEDDING GUTTER SYSTEM.
- SCRATCHGUARD® PAINT FINISH

**SPECIAL FINANCING AVAILABLE**

Call Today for Your **FREE Estimate!**

**18 YEARS BACKED BY THE SEAL**

**815-673-7532**

\*All participants who attend an estimated 60-90-minute in-home product consultation will receive a \$50 VISA Gift Card. Retail value is \$50. Offer sponsored by LeafGuard Holdings Inc. Limit one per household. Company procures, sells, and installs seamless gutter protection. This offer is valid for homeowners over 18 years of age. If married or involved with a life partner, both cohabitating persons must attend and complete presentation together. Participants must have a photo ID and be legally able to enter into a contract. The following persons are not eligible for this offer: employees of Company or affiliated companies or entities, their immediate family members, previous participants in a Company in-home consultation within the past 12 months and all current and former Company customers. Gift may not be extended, transferred, or substituted except that Company may substitute a gift of equal or greater value if it deems it necessary. Gift card will be mailed to the participant via first class United States Mail within 10 days of receipt of the promotion form. Not valid in conjunction with any other promotion or discount of any kind. Offer not sponsored and is subject to change without notice prior to reservation. Except in the states of MD, NY and DC, where the gift card offer is limited to \$25. Offer not available in the states of CA, IN, PA and MI. Expires 11/30/23.





# 9 Biggest Benefits Of Shopping Rochelle First



**Youth programs, schools and non-profit groups look to our businesses first when fundraising.** These community-minded businesses donate faithfully to local youth sports programs, community clubs, nonprofit groups and churches – just to name a few. Shouldn't we look to those same businesses first when we need goods and services? Of course we should!



**High rate of return.** For every \$100 spent in independently owned stores, \$68 returns to the community through payroll, taxes and other expenditures. Online orders return absolutely nothing to Rochelle, IL.



**Seeking health care in your hometown brings the comforts of receiving qualified care from people you know and trust.**

Whether it be a trip to the dentist, regular health care screenings, a visit to a specialist or an emergency, you need not travel. It's all right here.



**Banking with people who know you is a luxury found only in hometowns.** You don't have to show your ID every time you go in. You can get a loan from people who know you and understand your needs, whether it be money for your first car or to help your business grow. Local banks believe in the value of community members helping one another.



**No one wants to have to make an insurance claim, but it's painless when your agent is your neighbor.** You don't have to convince them that there was a hail storm, or that the wind nearly took your roof off. They know because they live

here. Which do you want when you've had a bad day: A face-to-face meeting with your local agent, or a machine answering the phone at that big national insurer that advertises on TV?



**Time is money.** It's simple math (especially when you figure in gas mileage.) Shopping locally can actually save you both time and money!



**Customer service after the sale is invaluable.**

Local retailers not only take responsibility for the product they sold, they will often fix it or replace it – no questions asked. Appliances, furniture, computers and electronics sometimes have glitches. Would you rather box yours up, send it to who knows where, and wait six to eight weeks, or just go back to the nice guy that helped you when you bought it?



**Keeping it local encourages community growth.** By

choosing to do business locally, you help maintain Rochelle's diversity, charm and appeal; which attracts new community members.



**One word: Jobs.** When you do business of any kind in Rochelle, it creates and maintains jobs for others in our area. A healthy employment rate is the cornerstone of all economies.

How can you help the economy recover? Start at home.



# Classified Marketplace

**BUY OR SELL**  
Place A Classified Ad



**ROCHELLE • HILLCREST • CRESTON • STEWARD • KINGS • ASHTON**

## 101 LEGAL NOTICE

### NOTICE INVITATION FOR BIDS

Rochelle Municipal Utilities, Ogle County, Illinois will receive sealed bids for:

Rte. 38 Substation Switchgear Purchase until 2:00 p.m. local time on the 5th of December 2023 at the City of Rochelle, 420 N 6th Street, Rochelle, IL 61068

The plans and specifications are on file with the said City of Rochelle for viewing purposes only.

Copies of the documents may be acquired from BHMGE Engineers, Inc., 9735 Landmark Parkway Suite 110A, St. Louis, Missouri 63127, Consulting Engineers for the said Board. Please email Amy Woolldridge, AWoolldridge@bhmge.com with request. Bids shall be received for the aforementioned items.

A certified check or bank draft on a responsible, solvent bank, or a satisfactory bid bond executed by the bidder and an acceptable surety company, payable to the City of Rochelle, John Bearrows, Mayor or Government Bonds or cash in the amount of not less than five percent (5%) of bid, shall be submitted with each bid.

The bid shall be marked to identify bid package contents, reference specification 2201 K002.

The successful bidder will be required to:

- Register as a bidder for this project.
- Furnish in duplicate the following executed documents:

- Non-Collusion Affidavit
- Bid Form
- Bid Bond, Certified Check or Money Order
- And any other documents as required by the specifications.

No bid shall be withdrawn after the opening of bids without the consent of the Utility for a period of sixty (60) days after the scheduled time of closing bids.

The said Rochelle Municipal Utilities reserves the right to reject any or all bids and to waive any informalities in bidding, and to determine and accept the bid most advantageous to the Utility.

City of Rochelle, Illinois John Bearrows, Mayor Date: November 7, 2023 No. 1115 (Nov. 12, 19 and 26, 2023)

### NOTICE INVITATION FOR BIDS

Rochelle Municipal Utilities, Ogle County, Illinois will receive sealed bids for:

Rte. 38 Substation Transformer Purchase until 2:00 p.m. local time on the 5th of December 2023 at the City of Rochelle, 420 N 6th Street, Rochelle, IL 61068

The plans and specifications are on file with the said City of Rochelle for viewing purposes only.

Copies of the documents may be acquired from BHMGE Engineers, Inc., 9735 Landmark Parkway Suite 110A, St. Louis, Missouri 63127, Consulting Engineers for the said Board. Please email Amy Woolldridge, AWoolldridge@bhmge.com with request. Bids shall be received for the aforementioned items.

A certified check or bank draft on a responsible, solvent bank, or a satisfactory bid bond executed by the bidder and an acceptable surety company, payable to the City of Rochelle, John Bearrows, Mayor or Government Bonds or cash in the amount of not less than five percent (5%) of bid, shall

be submitted with each bid. The bid shall be marked to identify bid package contents, reference specification 2201 K001.

The successful bidder will be required to:

- Register as a bidder for this project.
- Furnish in duplicate the following executed documents:

- Non-Collusion Affidavit
- Bid Form
- Bid Bond, Certified Check or Money Order
- And any other documents as required by the specifications.

No bid shall be withdrawn after the opening of bids without the consent of the Utility for a period of sixty (60) days after the scheduled time of closing bids.

The said Rochelle Municipal Utilities reserves the right to reject any or all bids and to waive any informalities in bidding, and to determine and accept the bid most advantageous to the Utility.

City of Rochelle, Illinois John Bearrows, Mayor Date: November 7, 2023 No.1116 (Nov. 12, 19 & 26, 2023)

### NOTICE

A1 Storage Rochelle 800 N 20th st Rochelle IL 61068

Pursuant to the Landlord's Lien Provision in paragraph #3 in our lease agreement unit 312 Tenant name: Malinda Harris Payment must be received in full by Dec 1,2023 or contents will be disposed of.

No. 1121 (Nov. 19 and 26, 2023)

### NOTICE REQUEST FOR PROPOSAL

Section 8 Program Project Based Assistance Program

The Ogle County Housing Authority seeks competitive proposals from qualified applicants (owners, developers, and/or project sponsors) to offer and expand affordable housing opportunities for low and moderately low-income families. Ten (10) vouchers are available to the community under the Section 8 Project Based Voucher Program.

All interested parties may obtain a copy of the Request for Proposal by contacting the following: Ogle County Housing Authority 1001 Pines Road Suite A Oregon, IL 61061

Attn: David Ditzler, Executive Director 815-732-1301 dditzler@oglecountyhousing.org

RFP guidelines will be available beginning Monday, November 20, 2023.

Proposals are due on Thursday, December 21, 2023 at 3:00 pm CST to the above address.

No. 1126 (November 19 and 26, 2023)

### NOTICE OF SELF STORAGE SALE

Please take notice Hub City Self Storage located at 961 S 7th Street Rochelle, IL 61068 intends to hold an Auction of storage units listed below to enforce its privilege against the following parties at the facility for default of payment of Rent. The sale will occur as an online auction via www.storageasures.com on 12/15/2023 at 10:30AM. Meghan Linley unit #105. This sale may be withdrawn at any time without notice. Certain terms and conditions apply.

No. 1136 (Nov. 26 and Dec. 3, 2023)

## 101 LEGAL NOTICE

This publication does not knowingly accept fraudulent or deceptive advertising. Readers are cautioned to thoroughly investigate all ads, especially those asking for money in advance.

## 105 BUSINESS OPPORTUNITIES

"This publication does not knowingly accept fraudulent or deceptive advertising. Readers are cautioned to thoroughly investigate all ads, especially those asking for money in advance."

## 113 FINANCIAL

NOTICE Advance Fee Loans or Credit Offers Companies that do business by phone can't ask you to pay for credit before you get it. For more information, call toll-free 1-877-FTC-HELP. A public service message from your hometown newspaper and the Federal Trade Commission.

## 119 ANNOUNCEMENTS

"This publication does not knowingly accept fraudulent or deceptive advertising. Readers are cautioned to thoroughly investigate all ads, especially those asking for money in advance."

## 127 SERVICES AND REPAIRS

FURMAN'S Lawn Care and Tree Work. Mowing, bushes, spring clean up, weeding and much more. Call Jeremy Furman 815-761-9619. Please leave a message will return call ASAP. Fully insured, in business since 1999. Servicing Rochelle and surrounding areas.

## 201 DOMESTIC/CHILD CARE

NO INDIVIDUAL, unless licensed or holding a permit as a childcare facility, may cause to be published any advertisement soliciting a child care service. A childcare facility that is licensed or operating under a permit issued by the Illinois Department of Children and Family Services may publish advertisements of the services for which it is specifically licensed or issued a permit. Your Hometown Newspaper strongly urges any parent or guardian to verify the validity of the license of any facility before placing a child in its care.

## 301 ANTIQUES

WANTED TO BUY: Vintage Metal and Wood Signs, Milk Bottles & Local Advertising, Oak Icebox, Iron Door Stop and Antique Lighting... Call Dick Harms at 815-562-2928 or email dickharms@hotmail.com

ANTIQUES WANTED: I pay cash for antiques; furniture, glassware, pottery & crocks, tin & iron toys, sterling silver, decoys. If it's antique, I'm interested in looking! Call 815-562-2928 or email dickharms@hotmail.com

## 307 MISCELLANEOUS FOR SALE

BUNDLED Newspaper -\$3 per Bundle. End Roll- Cost Depends on Weight of Roll. Available

Monday-Friday 815-562-4171 (8AM-NOON ONLY) Rochelle News Leader.

SPLIT Firewood For Sale. Contact 779-251-0254

## 405 HOUSES FOR SALE

ALL REAL ESTATE advertised herein is subject to the Federal Fair Housing Act, which makes it illegal to advertise any preference, limitation or discrimination based on race, color, religion, sex, handicap, familial status, or national origin, or intention to make any such preferences, limitation or discrimination. We will not knowingly accept any advertising for real estate which is in violation of the law. All persons are hereby informed that dwellings advertised are available on an equal opportunity basis.



## GET HIRED

**Full-Time & Part-Time Openings Available Now**  
Check out the Help Wanted section of the Classifieds

**Start earning now!**

## 103 AUCTIONS

**FARMLAND AUCTION**  
323.65 ACRES M/L IN LEE COUNTY, ILLINOIS  
**TUESDAY, DECEMBER 12TH, 2023 | 10:00 AM**  
Paw Paw Community Center | 362 Chicago Road | Paw Paw, IL 61353

Tract 1: 85.4 acres m/l with 79.97 estimated tillable acres carrying an average PI of 125.6  
Tract 2: 69.0 acres m/l with 67.55 FSA cropland acres carrying an average PI of 134.2  
Tract 3: 90.0 acres m/l with 82.69 estimated tillable acres carrying an average PI of 129.1  
Tract 4: 79.25 acres m/l with 72.63 estimated tillable acres carrying an average PI of 127.7

Travis Smock | 319.361.8089  
Travis.Smock@PeoplesCompany.com | IL LIC 475187031

**PEOPLES COMPANY** PeoplesCompany.com Listino #17227 SCAN THE QR CODE

**RANCH & FARM AUCTIONS**

## LAND AUCTION

**83 AC± | 1 TRACT OGLE CO, IL**

**AUCTION:**  
LIVE AND ONLINE AT  
RANCHANDFARMAUCTIONS.COM

**AUCTION DATE:** 12/12/23  
**AUCTION TIME:** 11:00 AM  
**AUCTION LOCATION:**  
PLUM CREEK CLUB  
641 PALMYRA RD, DIXON, IL 61021

IN COOPERATION WITH WHITETAIL PROPERTIES REAL ESTATE, LLC  
TODD HENRY, AGENT: 815.997.2256

**RANCHANDFARMAUCTIONS.COM**

WHITETAIL PROPERTIES REAL ESTATE LLC DBA RANCH & FARM AUCTIONS  
18 W Washington, Ste 200, Peoria, IL 61605  
Dobbe S. Laws, Designated Managing Broker, License # 471.078541  
Joe Glick, Director, Ranch & Farm Auctions, 272.954.0332  
Todd Henry, IL Land Specialist, Whitetail Properties Real Estate, LLC, 815.997.2256  
Cody Lowderman, IL Auctioneer, 481.002256

## 307 MISCELLANEOUS FOR SALE

## NEW MILFORD REFRIGERATION

**NEW, USED SCRATCH & DENT**

- Refrigerators • Freezers
- Washers/Dryers • Stoves

We also carry a large selection of refurbished appliances with a warranty.

**6331 11th Street, Rockford 815-262-3900** 04092023

## Coming Up In December...

- Christmastime
- New Year's Eve
- New Year's Resolutions
- Hanukkah • Kwanzaa
- First Day of Winter
- National Cookie Day
- Poinsettia Day
- National Egg Nog Month
- Safe Toys & Gifts Awareness Month
- National Impaired Driving Prevention Month

...and more great advertising tie-ins for your business!

**Show & Sell**

**Place an Ad:**  
Rochelle News-Leader 815-562-4171  
Ogle County Life 815-732-2156

**Browse & Buy**

**All in the Classifieds!**

**Subscribe:**  
Rochelle News-Leader 815-562-4171  
Ogle County Life 815-732-2156

# TEXT AND WHATEVER JUST DON'T TEXT AND

**STOPTEXTSSTOPWRECKS.ORG**

**ad COUNCIL** **NHTSA**

**EVERY MORNING MY HUMAN SHAVES OFF HIS FACE FUR, HE'S FUNNY LIKE THAT.**

-TUCK adopted 05-04-11

**adopt**  
theshelterpetproject.org

A PERSON IS THE BEST THING TO HAPPEN TO A SHELTER PET



GET **TWO** GREAT GIFTS  
IN **ONE** BUY!

*You can't  
beat this  
holiday  
gift deal!*

**Start or Renew a 52-Week  
News-Leader  
Subscription for just**

**\$139.99\***

**and receive a Rotary  
Cash Calendar**

**FREE!**

*(a \$159.99 total value!)*

\* Offer expires December 31, 2023





# Majeski Motors

**SALES AND SERVICE**

**ROCHELLE**  
**MAJESKIMOTORS.COM**



Stock # 11331

**2023 Chevy Corvette Stingray**  
\* 75TH ANNIVERSARY EDITION  
55 MILES \*

**\$99,879**



Stock # 11138

**2023 Jeep Wrangler Rubicon 392**  
\* 470 HORSEPOWER  
70 MILES \*

**\$89,987**



Stock # 12014

**2023 Porsche Cayenne**  
\* 10K MILES \*

**\$79,890**



Stock # 12027

**2020 Ford F-150 775HP  
Shelby Super Snake**  
\* 18K MILES \*

**\$76,846**



Stock # 11678

**2023 Ford Bronco Wildcat**  
\* ONLY 160 MILES \*

**\$71,998**



Stock # 12037

**2023 Nissan Armada Platinum**  
\* 10K MILES \*

**\$59,995**

## Majeski Motors

**Your Local Resource For Quality Pre-Owned Vehicles**

**815-562-9000 | 1010 S. 7th St., Rochelle, IL**

*All prices plus tax, title, license and fees*

**Call  
or Stop In  
Today**