

A monthly publication of the Hot Springs Village Voice

HSV *life* M A G A Z I N E

APRIL 2024



Stephanie Heffer

**A LOVE OF COMMUNITY,
A PASSION FOR SERVICE**

Come Home to Hot Springs Village!



RE/MAX®

Hot Springs Village



REALTOR®

Pat Bollier



NIGHTLY RENTAL
RESERVATIONIST
Brooke Brinkley



REALTOR®

Deb Bryan



EXECUTIVE BROKER

Susie Burns



ASSOCIATE BROKER

Ray Clem



ASSOCIATE BROKER,
GRI, RCC
BJ Conner



REALTOR®

Randall Cummings



REALTOR®

Laura Floyd



REALTOR®

Linda Forry



REALTOR®

Pamela Graves



REALTOR®

Jim Harbour



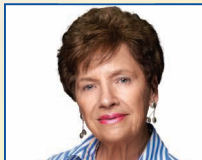
EXECUTIVE BROKER

Charlotte Hitchens



REALTOR®

Darla Hollansworth



REALTOR®

Jane Hollansworth



EXECUTIVE BROKER

Jeff Hollansworth



REALTOR®

Stephanie Iglehart



REALTOR®

Brenda Langley



REALTOR®

George Langley



REALTOR®

Chuck Luther



LONG-TERM
LEASING TEAM
Cheyenne Morel



EXECUTIVE BROKER

Alissa Nead



EXECUTIVE BROKER

Anthony Nicolosi



BACK OFFICE

Elizabeth Rusk



FRONT OFFICE ADMIN

Wynter Schmidt



REALTOR®

Ethan Simpson



EXECUTIVE BROKER,
TRLP, ABR

Dana Smith



FRONT DESK

Victoria Spann



REALTOR®

Modine Spruell



REALTOR®

Melanie Spurgeon



NIGHTLY RENTALS
MANAGER

Cindy Strait



REALTOR®

Hamp Wilson



BROKER/OWNER

Clara Nicolosi

Call 501-922-3777

REAL
ESTATE



SCAN ME

LONG-TERM
RENTALS



SCAN ME

NIGHTLY
RENTALS



SCAN ME

*Wishing You
Sunny Days!*

HAIL DAMAGE?

NEED A NEW ROOF?

CALL YOUR STORM DAMAGE
SPECIALISTS!

Choose KEITH'S ROOFING!

If recent weather events have wreaked havoc on your roof, call the trusted roof and hail damage repair experts for professional, reliable service and quality results. We will also deal directly with your insurance company to minimize paperwork and inconvenience to you, our valued customer.

“ I contacted Keith's Roofing to inspect the roof of a home I was purchasing in Hot Springs Village because the home had visible evidence of prior water damage on the ceiling near the chimney. Keith found hail damage on the roof, in addition to damage to some of the decking underneath as well as cracks in the chimney crown contributing to the water damage in the roof and ceiling. Keith came back and walked the roof with the owner's insurance adjuster, who agreed about the hail damage. Within two weeks, Keith's Roofing had returned and repaired the chimney, replaced the roof and the damaged decking underneath - with most of the cost covered by insurance. The crew did almost all of the work in one day and cleaned up before they left. The new roof looks great, and we've had no water problems after several heavy rains. ” - Mark C.

“ Called for a quote and they responded quickly, got me a quote on the spot, got to work immediately, came in at quoted price, and my roof was looking brand new in a day. Definitely recommend them. ” - Kelly S.



Voted BEST ROOFING COMPANY

HSV Village Voice 2023 Readers' Choice Awards

KEITHSROOFING.COM

KEITH'S ROOFING

501-922-2020 HSV

501-623-4747 HS

YOUR ROOFING SPECIALISTS

HSV *life*

M A G A Z I N E

Publisher
Jennifer Allen

Contributors
Darrell W. Brown
Robin Raborn Burns
Lewis Delavan
Sandy Johansen
Jeff Meek

Advertising
Summer Benedict
Stephanie Highfill
Kendall Kegley

Design/Layout
Michael G. Fox

HSV Life Magazine is a monthly publication of the Hot Springs Village Voice newspaper. For additional copies, visit our office. Please send any questions or comments to us following our "Viewpoints" guidelines.

Hot Springs
Village Voice

PO Box 8508 • 3576 N. Hwy. 7
Hot Springs Village, AR 71909

(501) 623-6397
news@hsvvoice.com
advertising@hsvvoice.com
hsvvoice.com

Copyright © MMXXIV
Hot Springs Village Voice



April bursts forth

April brings showers, sometimes followed by a rainbow.
(Jeff Meek photo)

When I think of the month of April I think of all the flowers and bushes that are or will very soon be blooming. The etymology behind the word April is "aperire," meaning "to open." Sounds about right to me. As you know, April showers bring May flowers.

Also coming to mind in April is Easter (this year on March 31) and April Fool's Day on April 1.

And of course, this year the big event is the total eclipse on April 8. Hot Springs Village is in full swing getting ready for festivities and travelers from across the country. Make sure you have the correct sunglasses for viewing.

Beautiful weather is the norm for the month of April, but it can get ugly, like back on April 25, 2011, when a tornado ripped through Hot Springs Village. We lived in an area where it came through and were without power for a little over 3 days. All our pine trees blew over. Luckily none of them landed on our house. Roof shingles were all over the yard, in the street and nearby common property. As it passed, I was certain the sound I was hearing was the roof getting torn off. Luckily, I was wrong.



Follow us on Facebook & Instagram.



Gardeners love April and it's known as the time of year for National Garden Month.

Many years ago there was another disaster – like event in April when the unsinkable RMS Titanic struck an iceberg on April 14 and went to the bottom of the ocean on April 15, 1912 taking an estimated 1,500 passengers and crew to a watery grave.

Yet another disaster occurred in Chernobyl, Ukraine when the nuclear plant blew up on April 26, 1986 causing a 300-mile wide evacuation.

And April is when “the shot heard round the world” took place on April 19, 1775, when troops took on the advancing British Army at Lexington and Concord in Massachusetts.

I drive a Ford Mustang, so I noticed the first Mustang came out on April 17, 1964. Cost: \$2,368.

April is one of the beautiful months of the year in Hot Springs Village. Not too cold, not too hot. The air conditioners and heat pumps get a break for a few weeks. So get out there and enjoy “The Natural State” and life in HSV.

Jeff Meek
VOICE CORRESPONDENT

CONTENTS

April bursts forth	4
ALL AROUND ARKANSAS	
Much Ado about Marshall	6
RV PARKS	
To RV or not to RV...	8
A Tradition of Quality	14
COVER STORY	
Passion For Her Community	18
LOCAL BUSINESSES	
Green Thumb	21
STEM	
Gender Equality	24
Daffodils in the Village	31
April Events	32
Recipe Corner	33

ON THE COVER: Stephanie Heffer has worked for the POA and now Arvest Bank, dedicating years of service to Hot Springs Village and its residents.

Much Ado about Marshall



View of the Ozark Mountains from the Marshall Overlook located on U.S. Highway 65. This is a very popular place to take photos.

Darrell W. Brown

On a recent weekend trip to Branson, my wife and I passed through Marshall, Arkansas. As many travelers along US Highway 65 do, we stopped at the beautiful overlook to take in the majestic view of the Ozark Mountains. And while those amazing views are arguably what Marshall is best known for, there's much more to this charming little town.

Marshall is the Searcy County seat and its largest city, with a population of about 1,300. The city lies at the foot of the Boston Mountain range and is about 11 miles south of America's first national river, the Buffalo National River. As such, Marshall serves as a

center for area tourism. Camping, floating and hiking are just a few of the recreational opportunities that the national river offers.

The history of Marshall dates to the earliest known settlers in the region, the Paleo Indians. The Paleo lived in what is now Marshall around 15,000 years ago. Numerous Paleo artifacts have been found in the area, including pottery shards and spear points.

In 1804, after the Louisiana Purchase, the federal government began relocating Native Americans in the southeast U.S. to Indian Territory, now Oklahoma. The Cherokees who were brought through Arkansas

on the Trail of Tears clashed with the Osage. The Osage were one of the three main tribes of what became our state. In 1817, the Treaty of the Cherokee Agency set aside land in northwest Arkansas. This land became the first Cherokee reservation west of the Mississippi River. And to help with the conflict between the two tribes, the Cherokees extended an invitation to the Shawnee to settle in the Buffalo River area.

The Shawnee established a village southwest of present-day Marshall. The chief of the village is believed to be Chief Peter Cornstalk, the grandson and namesake of the great chief of the Shawnee during the Revolutionary War.

Chief Cornstalk married Mary Adams in the mid-1930s. She was the granddaughter of Robert Adams, who was one of the original white settlers in the area. By the late 1840s, all tribes had been moved to Indian Territory.

The first white settlement was located at the foot of Devil's Backbone Mountain in a community called Raccoon Springs. The county seat was moved from Lebanon to Raccoon Springs in 1856, and it was renamed Burrowville (spelled Burrowsville in some early records) after Napoleon Bonaparte Burrow, a Crawford County planter and Democratic politician.

The Civil War era was a significant time of change for Marshall. The name of the town was changed, population declined for years, and after the war's end, Arkansas became a two-party political system in what for many years was a one-party (Democrat) state. And sadly, much of the town had been burned, including the county courthouse and county records. Union-supporting residents pushed to change the town's name from Burrowville to Marshall after U.S. Supreme Court Chief Justice John Marshall. The name change was approved by the state Legislature on March 18, 1867.

By the 1950s Marshall had become an agricultural town and strawberries were its major crop. In fact, during this time, the town promoted itself as the "Strawberry Capital of the World." Of course, this didn't sit too well with Bald Knob (White County), who promoted itself as the same.



"Welcome to Marshall" sign.

But all good things must end, and by the late 1960s, the strawberry industry was moving to states out west such as California and Texas. General stores and mercantiles were closing and being replaced with national companies like Sears and Walmart. These conditions and several others caused the beginning of a major change in the economy of the small Searcy County town.

Today, Marshall's economy is a mix of retail, general services and limited manufacturing, but tourism is its driving force.

A proud sixth-generation Arkansan, Darrell Brown is a lover of all things Arkansas. He lives in Saline County with his wife, Amy, and their beloved Boston Terrier, Dixie. Find him on Facebook and Instagram at AllAroundArkansas.



QUALITY SERVICE AGENT AWARD 2022



FULL SERVICE REALTOR® Staging | Advertising | Photography | Negotiation

At Your Service.
Call for your FREE market analysis.



DONNA BIGG 

501.922.8009 (cell) 501.223.2521 (broker)
www.C21UnitedHSV.com

  Each franchise is independently owned & operated.

RV PARKS

Plenty of space and shade at Hot Springs Village RV Park.



To RV or not to RV...

Sandy Johansen
STAFF WRITER

RV camping has become quite popular. Many want to get away from all the hustle and bustle of everyday life and enjoy nature, lakes, and the quietness to relax. Others enjoy the freedom and mobility and may find it more of a convenient way of traveling and give some of the comforts of home.

With summer months around the corner, you can

expect more vacationing going on. Maybe you, your family or friends will go camping this year, or for some, “glamping” for those who love having all the luxuries of home. Here are a few nearby RV camping sites you might recommend to those family and friends headed this way, or if you want to experience some of Arkansas’ State Parks.

HSVPOA RV PARK

375 Balearic Road - Hot Springs Village, Arkansas
(The following detailed information is courtesy of the HSV Parks and Recreation Department)

Hot Springs Village RV Park is a private park for members and sponsored guests. It is in a serene rural setting on Lake Coronado in Hot Springs Village, Arkansas. It sits within 26,000 acres of pristine lakes, beautiful golf courses, beaches, hiking, kayaking, restaurants, and much more including a performing arts center, just 20 minutes north of Hot Springs National Park.

The RV Park has twelve pull-through sites and nine back-in sites available. All campers must be self-contained. There are no bathrooms or showers onsite. Registered RV Park users may use the showers at the Coronado Fitness Center at no additional cost. The

CALL TO SCHEDULE YOUR FREE TOUR OF HOT SPRINGS VILLAGE

BIG RED REALTY

List WITH BIG RED
the Oldest & Most Trusted Name in HSV Real Estate!

- BUYERS • SELLERS
- PROPERTY MANAGEMENT
- RENTALS

Find us on Facebook

We Do More!

501-623-7905 • 3950 Hwy. 7N, Hot Springs Village, AR

Search for Homes online at BigRedRealty.com

Buyers: WE CAN SHOW YOU ANY HOME IN HOT SPRINGS VILLAGE!

Coronado Fitness Center is located only one mile away and can be accessed by a nature trail.

Sponsored guests are welcome. A member's ID number is required with reservation.

Non-sponsored guests interested in Hot Springs Village may contact the POA Discovery Center office at (501-922-5560) for sponsorship opportunities.

The RV Park is open year-round with full-service hookups (water, sewer, electric.)

Grills, fire rings, and picnic tables are provided at each site, and concrete picnic slabs are available on our back-in sites 13-21.

A daily rental fee is charged, and reservations are required. Sites are assigned at the time of the reservation. Call the Coronado Community Center at 501-922-5050 or Ponce de Leon Center at 501.922.4231 to make reservations. All RV payments are final and nonrefundable. The RV Park has an onsite Camp Host (Site 13) to assist guests of the park.

1. RV sites are available to Hot Springs Village members and sponsored guests for a maximum of 14 nights. Additional nights may be approved by the Director of Parks and Recreation. After maximum

number of nights, RV's must vacate the park for 14 days before returning.

2. RV's must register between the hours of 9:00 AM and 4:00 PM, Monday through Friday.

3. Late arrivals (after 4:00 PM) must register the next business day.

4. Pets must be always restrained and under owner control outside of the RV. Owners are required to clean up after their pets.

5. Damage to common property, such as cutting trees or picking wildflowers is prohibited.

6. Quiet hours are between 10:00 PM and 7:00 AM.

7. Washing vehicles in the park is prohibited.

8. A trash dumpster is provided on site and all trash must be deposited in the dumpster.

9. Towels and swim clothing are only allowed to dry on drying lines.

10. RV units must supply their own utility adapters. Tampering with utility outlets is not permitted. If a utility does not operate properly, contact the park manager below for assistance.

11. An above ground contained fire pit may be used unless area burn ban is in effect. Fires must be



White Furniture Company
DISTINCTIVE HOME FURNISHINGS

Time for a Spring Refresh!

206 S. Market St., Benton | 501.315.7482 | Delivery Available |  

extinguished before retiring for the night.

12. External generators are not allowed in the park.

13. All sites must be kept clean and orderly. All trash must be kept bagged.

14. Vehicle repair or maintenance is not allowed in the RV park. Contact the park manager to request an emergency vehicle repair authorization.

15. Music may be played only loud enough to be heard at your site.

16. Vehicle parking is allowed on your rented site only or other designated parking area.

17. Guest rates apply unless member is occupying site overnight.

18. Park Guests will be held responsible for payment for any damages caused to RV Park property/equipment requiring either repair or replacement.

2023 Rates are the same at this time unless raised prior to this publication notification

Member- \$29.70 (\$29.70 includes tax) nightly;
Guest- \$47.30 nightly (includes tax.)

PHONE NUMBERS:

Emergency (Fire, Medical, and Police): 911 (Notify operator you are calling from Hot Springs Village.)

Police non-emergency: 501.922.0011

Reservations & Questions: Coronado Community Center 501.922.5050 or Ponce de Leon Center



RV's and Tents welcome to Crystal Ridge.

501.922.4231, Monday – Friday, 9 AM-4:30 PM.

GULPHA GORGE CAMPGROUND

Gulpha Gorge campground is a tree lined retreat nestled on Gulpha Creek not far from Hot Springs Village and just a few minutes from downtown Hot Springs National Park and historic Bathhouse Row, located at 305 Gulpha Gorge Rd, Hot Springs. Campsites vary in size and can accommodate both tents and recreational vehicles (RV's).

All sites have full hookups: 30 and 50 amp electric, water and sewer connections. Sites are not pull-through. Each campsite has a picnic table, pedestal grill, and water. There are modern restrooms but no showers. Maximum occupancy is limited to eight people/two vehicles (one RV and one tent OR two tents) per site. Check in time is at 2:00 pm, and check out time is 12:00 pm. All 40 campsites at Gulpha Gorge Campground require prior reservation on www.recreation.gov, and will cost \$34 per night and is limited to a total of 14 consecutive days and a cumulative total of 30 days in any calendar year. Each 14-day consecutive stay must be followed by a minimum of a 7-day break.

NEW! OPEN SUNDAYS: 10A - 2P



***SAVE 25%**

Melinda's
CAFE & COFFEE

***DISCOUNT ONLY VALID MONDAY THRU FRIDAY
BETWEEN 8AM & 10AM WITH THIS COUPON
OFFER EXPIRES 5/01/2024**

MONDAY-SATURDAY 8:00-3:00 • SUNDAY 10-2
FRIDAY NIGHT DINNERS: RESERVATION ONLY

501-984-5393 | MELINDASHSV.COM

372 E. Glazypeau • Hot Springs Village AR 71909

For more information, visit <https://www.nps.gov/hosp/planyourvisit/campground.htm>

CRYSTAL RIDGE RV PARK AT RON COLEMAN MINING

Crystal Ridge has many facilities. Along with reservations, maps, rates and full descriptions of each area can be found at CrystalRidgesInfo:<https://crystalridgervpark.com/>

There is cabin rental which is full of amenities including heat, air, cable TV, refrigerator, stove, microwave, pots, pans, utensils, plates, glasses, linens and more.



The RV/Campground **RV's and Tents are welcome at Mount Nebo.** is located in Jessieville, Arkansas. Information at

the website includes description length and width of each site. A picnic table and fire ring are at 24 pet friendly sites. Ten full hookup campsites are available. Tent camping is welcomed, but not allowed on full hook-up campsites. There are shower and laundry facilities that are keypad operated for security of paid campground guests.

Browsing their website offers which sites are available and making reservation. Many sites were upgraded in 2022 including all electrical and water facilities. If you choose verbal communications you are free to call the camp host at 501-209-9933.

(All information that follow is courtesy of Arkansas State Parks on their websites)

MOUNT MAGAZINE

Mount Magazine State Park is Arkansas's highest point at 2,753 feet. It is a place of relaxation, exploration, nature study, and is within the Ozark-St. Francis National Forests. It is a destination for outdoor sports, mountain biking, horseback riding, backpacking and ATV riding. The park also offers a dramatic location for technical rock climbing and is only one of two parks that offer hang gliding launch areas.

NOW FEATURING PRODUCTS
MADE IN AMERICA
LUXURY VINYL PLANK FROM
TRUCOR & FirmFit

Free Estimates / Award Winning Customer Service

Southern
FLOOR CO.
-Affordable Elegance-

Villager Owned and Operated
4013 Highway 7N, Hot Springs Village, Arkansas
501-623-3000



Gulpha Gorge Campground is popular with visitors to Hot Springs National Park.

the rustic-style cabins, pavilions, bridges, and 32.6 miles of hiking and mountain biking trails. There are 34 campsites (24 Class B and 10 hike-in tent sites). Other facilities include a swimming pool (fee required), tennis courts, picnic areas, pavilions, and a visitor center with a gift shop. Cabin 1 was the first cabin rental in state park history. Twelve of the park's 15 cabins are located along the bluff and have

The Visitor Center overlooks trails, picnic areas, pavilion and a gift shop. The Lodge has 60 rooms. From its setting on the mountain's south bluff, the lodge offers breathtaking views of the Petit Jean River Valley and Blue Mountain Lake in the distance.

Thirteen cabins share the same view as the lodge. Choose from one-, two-, and three-bedroom options with fully equipped kitchens, fireplaces, and covered decks with outdoor hot tubs. There are also 18 campsites on the mountain (two Class AAA and 16 Class AA with tent-only options).

For more information visit the website at: <https://www.arkansasstateparks.com/parks/mount-magazine-state-park>.

MOUNT NEBO

Situated in the Arkansas River Valley just 45 minutes from Arkansas Wine Country, this state park sits atop the 1,350-foot Mount Nebo. The 1930s-era Civilian Conservation Corps constructed many of

views of the river valley below. Most of the campsites do as well.

Mount Nebo State Park is a certified Trail of Tears National Historic Trail Site. Mount Nebo, overlooking the Arkansas River from the south, witnessed the removal of all five of the tribes that were removed along the water route of the Trail of Tears.

Info: visit the website at: Mount Nebo: [https://en.wikipedia.org/wiki/Mount_Nebo_\(Arkansas\)](https://en.wikipedia.org/wiki/Mount_Nebo_(Arkansas))

QUEEN WILHELMINA STATE PARK

The park includes 41 campsites (eight Class A, 27 Class B, five tent sites with water, and one hike-in tent site), picnic areas, and trails. Interpretive programs highlight Rich Mountain's fauna and unique flora and connect you to the fascinating history of the three inns that have graced this mountaintop site.

This state park is located on Highway 88 West in Mena, Arkansas. Take the Talimena National Scenic Byway as the site is as rich in history as it is in scenery.

Not only are RV sites available, but the original lodge was built in the late 1800s as a Victorian resort names Wilhelmina Inn honoring the young Queen of the Netherlands, named "Castle in the Sky." Today's lodge offers 40 rooms a new look and modern updates. Campers and lodge guests are also offered Southern cuisine and first-class hospitality in the Queen's Restaurant.

Feel free to call for reservations and questions

Loving Care Assisted Living
"A place where we love to care"

3126 N. Hwy. 7 | 501-617-7816
mylovingcareassistedliving@gmail.com

We provide a safe environment that will balance and enrich the life of your loved ones with compassion, dignity, and respect.

- 1 to 3 caregiver/resident ratio
- Private room for each resident
- Fresh home cooked meals
- Assistance with activities of daily living
- Daily administration of medication
- Assistance with exercise activities
- Non-ambulatory care
- Devotional/prayer time services
- Housekeeping & laundry services
- Transportation with arrangement

24-hours a day at 479-394-2863 or visit their website at: Queen Wilhelmina State Park - <https://www.arkansasstateparks.com/parks/queen-wilhelmina-state-park>

PETIT JEAN STATE PARK

Petit Jean State Park features a total of 125 campsites (including 26 pull-through sites). Thirty-five of the sites—the Class AAA sites—have 50 amp electrical, water, and sewer hookups. The 90 Class B sites offer 30 amp electrical and water hookups. All sites can be reserved.

They welcome tents and RV's. Choose from wooded or lake view sites. Pull-through or back-in campsites are available.

Campsites are divided into four campground areas. Each includes a modern bathhouse with hot showers and flush toilets. Area "A" is near Lake Bailey and include sites along the lakeshore. Areas "B," "C," and "D" are located on the south side of Ark. 154 in wooded settings.

Other campsite choices in the main camping area include a 44-unit Rally-style Area with 20 amp electrical service available for camping clubs.

There is now Overflow Camping Area, but there are no picnic tables, fire rings, or charcoal grills available at these overflow campsites. The overflow sites offer 30 amp electrical and water hookups. Also, there are no ground fires allowed in this area. Call 501-727-5441 for reservations or go to their web at: <https://www.arkansasstateparks.com/parks/petit-jean-state-park/accommodations/camping>



Another beautiful view from Petit Jean State Park.

GREAT SELECTION!

SAVE BIG \$\$\$!

SOLID WOOD!

MADE IN THE U.S.A.

Now is the time to Refresh for Spring

Made in USA
Living Room Furniture
by Best Home Furnishings

Made in USA
Solid Wood Bedroom Furniture
by Vaughan-Bassett



JORDANBEDDING.COM

JORDAN BEDDING & FURNITURE GALLERY
handcrafted comfort

4735 Malvern Ave. | 501-262-1581
(3 miles east of MLK Expressway)
Open Monday-Friday 8:30am-5pm
Saturday 12:30-4:30pm | Closed Sunday



Shanna and Robin Jordan represent the family's second generation. (Submitted photos)

A Tradition of Quality

Jordan Bedding & Furniture is still a family run affair

Lewis Delavan
STAFF WRITER

Founded in 1958, Jordan Bedding & Furniture Gallery is still very much a family business run in the tradition of Buddy and Naomi Jordan.

Now in the 3rd generation of family members, Jordan Bedding & Furniture Gallery retains Buddy and Naomi's commitment to quality and service. Numerous customer testimonials at <https://www.jordanbedding.com> attest to Jordan's quality and service.

Shanna Jordan is still actively involved in day-to-day business, bookkeeping, customer service and marketing. "Robin Jordan is still our mattress expert and consultant when it comes to sourcing

materials and finding the best products for mattress construction.

"Rachel Callender – Robin and Shanna's daughter, and Buddy and Naomi Jordan's granddaughter – is now part of the business, along with her husband, Ryan Callender.

"Ryan Callender manages many of the day-to-day aspects of the business and we are proud to also have a dependable long-term employee, Daniel Lee, that is invaluable to the success of Jordan Bedding."

All Jordan mattresses are made at the factory store at 4735 Malvern Road, Hot Springs.

"We handcraft all of the mattresses and sell them



Rachel Callender, third generation representing the business, with her mother, Shanna Jordan

Benjamin F. Edwards Proudly Announces

The addition of

Jan Saunders

Vice President - Investments

to our Hot Springs Village, AR branch

Serving investors in the Hot Springs Village area



BENJAMIN F. EDWARDS®
INVESTMENTS *for* GENERATIONS®

Robbie Davis | Senior Vice President - Investments
Angela Mann | Financial Client Associate

4501 N. Hwy 7 | Suite 4 | Hot Springs Village, AR 71909 | P 501-431-2379 | TF 888-591-5080 | benjaminfedwards.com | 2023-2739 Exp. 10/31/2024 Member SIPC



Every Jordan mattress is handcrafted.



Ryan Callender prepares another Jordan mattress for a customer.

direct to our customers. We offer 14 different comfort levels so that we can help customers find the best product for their best sleep, whether it is traditional two-sided innersprings, pocketed coil units, pillow-top mattresses, memory foam, latex or luxurious adjustable beds.”

How does a relatively small mattress maker compete against the huge, nationally advertised brands?

“All businesses can stay competitive by providing exceptional products and customer service. I think our customers speak to the reason we have lasted so long. We continue to make our mattresses to the high standards that we started with. We refuse to cut corners to save money,” Shanna Jordan says.

“Another reason for our longevity in this business is customer loyalty. There is a reason we have been chosen best mattress store for many years in local reader choice awards. Word of mouth is the best marketing around.

“Almost every Jordan mattress can be custom sized for antique beds, RVs, house boats or other needs. Just come decide which one you like and we can make a custom size. We also have branched out into making some other specialty mattresses for specific needs, like hinged mattresses that are found in some RVs and boats.”

Customers can either come to the Hot Springs store or order online. “We deliver in about a 100-mile range on our trucks with a reasonable delivery charge. People can also order mattresses and we can get a freight quote to ship almost anywhere in the country. There are a lot of Jordan Mattresses out there across the country.”

What about sizes such as California King and Twin extra long?

“Jordan Mattress offers California King in most styles. It is a special order and we can price that for people if they need it. Twin extra long is available in all styles-it is most often used for adjustable bases to create a king size mattress where both partners have plenty of room and can benefit from all of the options an adjustable base has to offer.”

Jordan carries beautiful furnishings from the



Shanna Jordan, outside the factory store at 4735 Malvern Road, Hot Springs. (Lewis Delavan photo)

following brands: Best Home Furnishings – Made in USA, offers sofas, recliners, and chairs in more than 1,000 fabrics. They can be customized for any décor and have reasonable turn around on orders – get a custom order in 4 to 6 weeks.

Vaughan-Bassett Furniture – Made in USA bedroom groups. Vaughan-Bassett manufactures in the Blue Ridge Mountains and have been in business for over 100 years. They offer a variety of solid wood bedroom furniture that is made to last.

Steve Silver is a top quality importer of motion furniture. Several leather motion groups are sold in this brand.

To learn more, visit <https://www.jordanbedding.com>, call 501-262-1581, email sales@jordanbedding.com or come by the factory store. Hours are 9 a.m.-5 p.m. Monday-Friday, and 12:30-4:30 p.m. Saturday.

Voted Top Real Estate Agent 2023 HSVVoice Readers' Choice!



WINNER 2023
Voice
READERS'
CHOICE

Jane Hollansworth

Your 24/7 Realtor®





Leading
REAL ESTATE
COMPANIES
IN THE WORLD

Toll Free: (888) 828-9478
Office: (501) 922-3777
Cell: (501) 922-8177
E-mail: janeholl@ipa.net
Website: hsvAgent.com



RE/MAX
HOT SPRINGS VILLAGE

1400 DeSoto Blvd. in the RE/MAX Center

LIST WITH THE BEST & GET THE BEST RESULTS!

COVER STORY

PASSION FOR HER COMMUNITY

*Stephanie Heffer has
dedicated decades of service
to the people of HSV*

Jeff Meek
VOICE CORRESPONDENT

In this April issue of the Hot Springs Village HSV Life magazine, we take pleasure in profiling another resident, Stephanie Heffer. As you will see, she has devoted her life to service and a continuing love of community.

Born in Tulsa, Oklahoma, she grew up there and played softball (second base and centerfield) for Jenks High School. Next came enrollment at Oklahoma State, but soon came a move to Tulsa Community College from 1984 to 1986, to learn reporting and to become a stenographer. “I became a court reporter for a short time and married my high school sweetheart, Mark Gallemore,” said Heffer with that ever-present smile.

They moved to Sherman, Texas, had a child in 1989 and moved to Hot Springs Village in 1990 because Mark, who had a degree in golf course management, got a job as assistant golf course superintendent at DeSoto golf course.

For a time, Heffer stayed at home raising children, but then sought employment. In 1990 she found a job as a receptionist for the HSV Property Owners



Tom and Stephanie Heffer (Photos courtesy of Stephanie Heffer)

Association, being hired by Linda Mayhood. “I was just 22 years old, needed a job because we needed the money,” she explained.

Heffer soon moved up to the utility billings department and was then approached by John Paul who ran the golf department. “He asked me if I’d be interested in a position in the department and I said yes. I stayed in that department for a long time as we were building more golf courses. It was fun and I loved it. I fell in love with being out there. I got to immerse myself in the community. It’s where I built my confidence. It was exciting, something different every day. I got to do a lot of things,” she said.

After 15 years in the golf department, Heffer moved on to head up the Village recreation department and later found herself involved in many aspects of the Village. “I dealt with the ACC, the gates, a hodgepodge of things. I did a lot of committee work and if I didn’t know the answer to an issue I found someone who did, someone who could come up with answers and get things done” she said, adding that she’s very grateful



Heffer and Posy at Christmas time.



Congratulations Stephanie Heffer!

We’re proud of you for being included in Hot Springs Village Life Magazine.

Thanks for representing us with true passion for serving our customers.

ARVEST[®]

to those who worked with her along the way.

Under different Village leadership, Heffer became director of placemaking and development. As such she worked to learn ways to change unproductive land into revenue producing land. “We were losing \$3.5 million a year in uncollectables. I worked with committees and traveled a lot to other places to try and learn what worked in their community,” Heffer said. She also helped to develop Grove Park and Waypoint and helped reduce the recreation department subsidy by 20 percent and the food and beverage subsidy by 30 percent.

POA money was scarce, and expenses were climbing, so an effort was made to better market the Village. Heffer then took on that role and others, overseeing the Village restaurants. “It was a lot of work, but I enjoyed it,” she said. Her duties also included communications, compliance, permitting/zoning, amenities, and monitoring and coordinating all real estate acquisitions.

Heffer had many friends and one of them worked at Arvest Bank. She once mentioned to Heffer that if she left the position, it might be a good fit for her. Over the next many months casual talks about a move took place. Heffer said that the time came about 18 months later when a move seemed right. So in September 2021, she accepted a position at Arvest Bank on Hwy 7, currently working there as the bank’s business development and community advisor.

Currently Heffer is active in many ways in Hot Springs Village. She serves on the Board of Directors for the HSV Ouachita Speakers Series, HSV Community Foundation, HSV Walk for Cancer Research, HSV Razorback Club and Hot Springs Women’s Leadership



Stephanie Heffer

Alliance. Heffer is also a member of HSV Rotary and the POA’s GAC committee.

Heffer is married to Tom Heffer, tying the knot on Oct. 20, 2012. She has 2 children, Eric, Cole and one granddaughter Posy Blake Gallemore. She and Tom love to travel, spend time by the pool, read and just enjoy the journey.



Another photo of Heffer and Posy at Christmas time.

	<p>Putting you first made us #1.</p> <p>Making you our #1 priority is what's made State Farm® #1* in auto insurance. I'm here to listen to your needs and to help life go right. CALL ME TODAY. <small>*Based on written premium as reported by SNL Financial 2014.</small></p> <p> State Farm®</p> <p>Ike Eisenhauer Ins Agcy Inc Ike Eisenhauer, Agent 4705 N Highway 7 Hot Springs Village, AR 71909 Bus: 501-984-4100</p> <p>1601917</p> <p>State Farm Mutual Automobile Insurance Company State Farm Indemnity Company Bloomington, IL</p> <p>State Farm County Mutual Insurance Company of Texas Dallas, TX</p>
--	---

LOCAL BUSINESSES

Breshears Nursery has helped customers create outdoor spaces since 1970

**G
r
e
e
n**



Thumb

A wide variety of plants and flowers are available.

Lewis Delavan
STAFF WRITER

Breshears Nursery & Greenhouse carries a wide selection of flowering plants, bedding plants, trees and shrubs.

Customers can visit the plant nursery and the greenhouse nursery to discover healthy, beautiful plants and trees. The nurseries are at 4532 Park Ave., Fountain Lake.

Christ *United Methodist Church*
of the Hills

Bring In, Build Up, Reach Out
700 Balearic Road
(Corner of Balboa & Balearic Rds.)
Hot Springs Village

501-922-4503
www.cohumc.com

**Sunday
Traditional
Worship
Services:**
8:40 & 10:10am

THE GATHERING
A PRAISE & WORSHIP SERVICE
Sunday 10:10am

**Wednesday 5pm
Midweek
Devotion &
Communion**

The retail nursery carries brands including Proven Winners, Top Performers, First Editions and Encore Azaleas. As a local, family-owned garden nursery, the Breshears say they take great pride in providing the best plants, trees and flowers.

A friendly, knowledgeable staff can help customers create a flower or plant garden, flower bed and container garden. Staff can also suggest ideas for existing plant and flower gardens and flower beds.

The staff has years of experience helping customers create a hothouse for plants or greenhouse nurseries for flowers, fruit and vegetable plants.

Founded in 1970, Breshears Nursery & Greenhouse has helped customers create outdoor spaces by providing high-quality trees and shrubs, bedding flowers and other plants.

As a local, family-owned business, Breshears takes great pride in supplying only the best horticultural products to customers. Breshears is open Monday through Saturday.

Plans include annual and perennial plants and trees,

gardening products and accessories from Proven Winners, First Editions, Southern Living, Endless Summers, Encore Azaleas, Arkansas Diamond and more.

Breshears also carries seasonal decorations, year-round yard accents and outdoor furniture.

“We encourage customers to stop by to pick up everything they need to create an outdoor living space for relaxing and entertaining. We’re here to offer advice, gardening tips and other useful information.”

Planting trees and shrubs adds shade and visual appeal, while preventing soil erosion. Breshears carries fruit-producing and non-fruit-producing garden shrubs and trees throughout the year.

Adding shrubs, trees and bushes to existing landscaping requires planning and know-how to ensure strong growth. “We can help by providing expert tips and advice for planting, topsoil and fertilizer use, watering and pruning.”

At Breshears customers will find a variety of outdoor furniture for relaxing and entertaining. “Whether customers want to add a decorative bench in their garden or a pair of patio chairs or loungers on their deck or patio, we have outdoor patio furniture for all personal styles and preferences.”

Patio furniture should look and feel comfortable and relaxing. Breshears welcomes customers to the nursery to see all the outdoor furniture options available. Outdoor dining furniture helps create additional space for entertaining friends, family and neighbors.

Some tips: When selecting outdoor chairs and other furniture, customers should measure their patio or deck to determine the amount of available space.

Customers should also take into account barbecue grills, plant stands and other items on their deck or patio. Creating a comfortable area for sitting and entertaining requires enough room for guests to move around without bumping into furniture and other items.

With many colors and patterns to choose, customers will find outdoor furniture to complement their existing decor with outdoor furnishings that require little maintenance.

Breshears Nursery & Greenhouse is a member of the National Federation of Independent Business.



Call 501-922-5778 to Make an Appointment Today!

Our Focus is You!

We care for our patients just like we would care for our own family; focusing on individual needs one person at a time.

**Comprehensive Exams / Eye Disease Evaluation
Eyewear/ Contact Lenses / Sunglasses**

HSVeyecare.com

Michael Semmler, O.D. & Susan Semmler, O.D.
102 Plaza Carmona Place, Hot Springs Village, AR 71909



Breshears Nursery & Greenhouse is just south of the Fountain Lake roundabout.
 (Submitted photos)

DUCT & DRYER VENT CLEANING

- Reduces allergens/pet odors
- Helps prevent fires
- Freshens air
- Prolongs dryer life
- Saves on energy costs
- Improves HVAC/dryer efficiency



SEMI - ANNUAL CHECK & CLEAN

- Preventative Maintenance
- No Service Contract
- Test System
- Clean Outdoor Unit

**COMPLETE HEAT AND AIR
INSTALLATIONS and SERVICE**
 Mini Splits for your Arkansas Room

501-400-4566

Serving Hot Springs and Surrounding Areas

STEM

Gender Equality

Attracting more girls to STEM careers

Robin Raborn Burns
VOICE CORRESPONDENT

Girls should not base their entire sense of self-worth on their appearance. Preoccupation with being pretty enough to fit societal pressures should not be central to identity.

Intellectual accomplishments are certainly as important, if not more important. Gender inequity is a battle that continues to rage on. There has been a growing interest over the last decade in Science, Technology, Engineering and Math (STEM) careers among both men and women. The underrepresentation of women in the STEM fields continues to persist. According to the Global Gender Gap Report (2023), women comprise only 29.2 percent of the STEM workforce in 146 nations evaluated, compared to nearly 50 percent of non-STEM occupations. Women also face challenges when pursuing STEM leadership roles. For instance, women represent 29.9 percent of senior workers but only 12.4 percent in key leadership roles. The Report of the 2022 Arkansas Women's Commission highlighted the need to increase equity in STEM education. The report stated, "Research shows that gender differences in self-confidence in STEM subjects surface by middle school and increase through college, with girls reporting less confidence than boys." The Arkansas STEM Coalition is the statewide hub of STEM information, created through a robust partnership of leaders from the corporate,



Dannet Botkin, Technology, CEO/ Founder of Designs Group Consulting. (Photo courtesy of Dannet Botkin)

education, government, and community sectors. Together they encourage, coordinate, and advocate for policies, strategies, and programs supporting excellence in STEM education and creating pathways to high-demand, highly-skilled, higher-paying jobs. Having visible female role models in STEM is crucial to inspiring and encouraging girls and women to pursue STEM careers. The following four Hot Springs Village women have built careers in the STEM 'arena.' Their paths have been different, but each has excelled in their selected career, and they share a desire to encourage girls and young women to consider a career in STEM.

Dannet Botkin (Technology), Founder/ Owner of Designs Group Consulting. Born in Denver, CO, Dannet spent her formative years in Chester, NJ, then moved to Dallas, TX during her junior year in high school. She graduated from the University of North Texas within three years with a Bachelor of Science and a 3.8 GPA which granted her membership in The Gamma Beta Phi Society for outstanding scholastic achievement. Her first full-time job was as an Assistant Buyer/Office Manager for Neiman

Marcus in the corporate office in downtown Dallas. Her job at Neiman Marcus was her first introduction to technology in a work environment. Already highly proficient in Microsoft Office, the job helped her take her Excel skills to the next level – she gained a master skillset she would use throughout her working life. She was also introduced to custom databases, and order and logistic tracking systems.

Dannet moved to New York City and worked as an Account Executive for an Advertising Firm, as Director of Sales for an Importing Company, and as CEO for an import/export fashion company. She earned the distinction of being the first person to produce a fashion item as a third party for a major US retailer across several countries and states: China, South Korea, Italy, Ohio, and New York. Dannet also wrote business plans for expansion that won major contracts with well-known fashion designers for advantageous licensing deals. From New York City, Dannet moved to Galveston Texas to pursue a passion of hers – to help rehab and rescue marine mammals.

From Galveston, she was able to remotely perform the duties of her CEO position in NYC. Her Marine

Biology classes from Texas A&M Galveston prepared her to both rescue marine mammals and rehab them. She also worked in a pathology Lab in St. Petersburg, FL, necropsying manatees that were killed. Dannet also took her ever-growing expertise and knowledge to the international fashion world.

She moved to Barcelona, Spain to expand a Spanish Fashion Company into the United States and Asia. She served as the USA division CEO which required her to set up the business in full - research, procurement, and all aspects of technology to ensure successful operation of the business, both nationally and internationally. During her advertising and fashion careers,

Dannet became a master in GSI (barcode systems), logistics, merchandising, design, advertising and marketing, business operations, management, technology, website design, and more... Dannet's company, Designs Group Consulting, is a virtual marketing and business consulting firm. Her company works with almost every kind of software - Website design software, graphic design software, social media software, budgeting software, time tracking software, video and photo software, communications software,



LIVE Your
Healthiest **LIFE**

Technology that gets you dancing sooner.

Don't let joint pain keep you from doing what you love. Our orthopedic providers offer specialized care including robotic-assisted surgery for knees and hips, so you can experience more precision and a faster recovery, close to home. We'll help you live your healthiest life.

Discover orthopedic and other specialty and primary care services in Hot Springs Village at NationalParkPhysicianServices.com/HSV

HealthCenter at Hot Springs Village

121 Cordoba Center Drive, Ste 400
Hot Springs Village, AR 71909
501.915.0837



© 2024 CSR-WF1063791, EOE

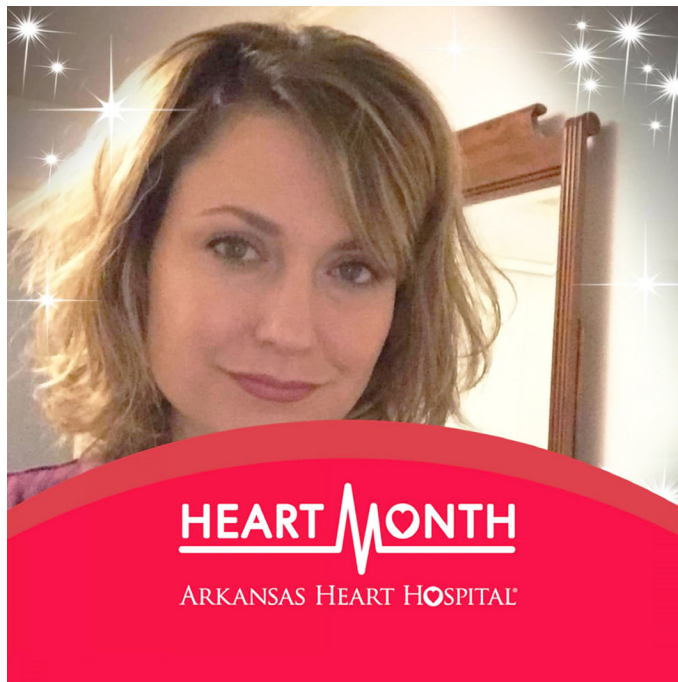
storage software, form software, and much more. Businesses from across industries hire her regularly to find out what and how technology can help them accomplish goals and/or automate their processes.

When asked for advice she would offer to girls and young women, Dannet says “I encourage everyone to learn all the technology they can. Each system you master will indeed help you in one way or another during your life either personally, professionally, or both. Do not be afraid to try new things! I have taught myself every bit of tech I have used over my lifetime. If I did not try, I would not have succeeded, so go for it!”

Kellie Esteves, Medical Laboratory Scientist, Arkansas Heart Hospital

Born and raised in western Oklahoma, Kellie grew up in a farming and oilfield community. She recalls that her community was filled with neighbors and citizens who demonstrated perseverance and charity, qualities she continues to admire and view as strengths. Kellie graduated from Cameron University in Lawton, OK with a bachelor’s degree in Medical Technology. Kellie is credentialed by the American Society for Clinical Pathology as a Medical Laboratory Scientist. She has always had a passion for learning, but she admits it took some time for her to figure out a career path. In junior high, she loved math; in high school, she was more interested in psychology and mental health. When she started college, she initially declared sociology as her major. On a personal level, she opted to live amidst the lushness of the forest and mountains, so she moved to Hot Springs ten years ago and to Hot Springs Village shortly after that.

After that first year of college and her first sociology class, Kellie realized she enjoyed her math and science classes more. She continued to take classes that would



Kellie Esteves, Medical Laboratory Scientist, Arkansas Hospital. (Photo courtesy of Kellie Esteves)

fulfill the requirements for admission into the Medical Technology program at Cameron University. In Medical Technology programs, classes include Clinical Chemistry, Hematology, and Clinical Microbiology, among others. These classes are preparation for upcoming clinical applications where students learn how to put into practice the skills they learned about and apply the medical knowledge they’ve acquired practically.

Kellie has worked in hospital laboratories for the last twenty years, (individuals in this career field sometimes work for clinics or specialty labs, in research, or in the food industry performing quality control and for companies installing and validating analyzers to be used for testing or repairing broken analyzers.) She currently works as a Blood Bank supervisor, but her responsibilities can include work in other departments throughout the lab. It’s not unusual to work in multiple departments, depending on the size of the hospital.

“One of the best things about my job is that I am always moving and always learning. In the laboratory, every analyzer and piece of equipment requires maintenance and quality control, usually daily and

An advertisement for Camp Bow Wow. On the left, two dogs are shown: a black and tan Rottweiler and a white and yellow Labrador Retriever, both looking happy. The background is a dark red color. Text on the right side includes "CAMP BOW WOW" in white, with "DOGGY DAY CARE & BOARDING • GROOMING" in smaller white text below it. Below that, "MAKING DOGS" is written in a white, rounded font, and "HAPPY!" is written in a larger, white, bubbly font with yellow starburst accents. At the bottom, a white banner contains the text "SEE WHAT ALL THE BARK IS ABOUT!" in red. Below the banner, the phone number "501-712-7773" and the website "campbowwow.com/benton-bryant" are listed in white.

sometimes multiple times each day. Maintenance can be simple tasks such as wiping down probes (the piece of an analyzer that draws up the sample from a tube of blood) or more complex, like removing and replacing parts. Quality control involves testing control samples with known values to ensure the analyzers and equipment are performing as they should, and that results are accurate. There are twelve analyzers in the lab I work in at least seven centrifuges and four microscopes. When analyzers are not performing to standard, it's my job as an MLS to use manuals to troubleshoot and repair the problem if the necessary tools are available. In addition to maintaining the lab equipment, I perform testing on specimens and sometimes collect the specimens. Specimens can be blood or urine samples, but also include spinal fluid, sputum, surgery tissues, swabs of the throat, wounds, and other sites; there are many different types of collections we process and test in the laboratory."

Kellie's favorite department to work in is the blood bank. "It is the department where the work can have an immediate impact on saving someone's life," she

says. "When patients are bleeding due to trauma or disease, the blood bank is responsible for supplying blood products that are safe and compatible for the patient." An MLS tests the patient's blood to find products that will help, and not harm, the patient. The Blood bank is also a department that oftentimes requires manual testing, which Kellie says she enjoys. There are test tubes in which an MLS mixes reagents and patient samples to test for different red blood cell antigens and antibodies.

The most well-known red blood cell antigens are A, B, and D. These are what determine a person's blood group/type; but 22 blood group systems include antigens capable of producing an immune response and causing harm to a patient." She also finds working in Hematology rewarding as testing specimens to determine if patients have normal quantities of red blood cells (RBCs) and white blood cells (WBCs) is an integral responsibility. An MLS ensures the right types of WBCs are present. We prepare blood smears on glass slides and stain them, then review them microscopically. We look for atypical forms of

- ALZHEIMER'S & DEMENTIA • IN-HOME CARE 24/7 • PHYSICAL DISABILITY CARE
- RELIEF & RESPITE CARE • TRANSPORTATION & POST SURGICAL SERVICES



198 Carmona, Ste. 12
Hot Springs Village, AR 71909

501-922-2224

Be cared for...at home.
In comfort. With love.

Schedule Your **FREE** Evaluation Today!



Visit us online at **VillageHomeCareHSV.com**

RBCs and WBCs and differentiate the WBCs by type. We are often the first step to receiving an accurate diagnosis for a patient. Around seventy percent of treatment decisions are based on tests performed in the lab, which means medical lab professionals make a meaningful impact on patient care.

We get to impact people's lives from behind the scenes and I love that." Kelly's advice to those who think they might be interested in a career in medical laboratory science? "Look into the programs. Classes that require utilizing a microscope will help prepare you for the field. It's a skill that will be needed. Don't be concerned if you have difficulty at first. It takes practice to get good at it. If interested in working while you are in school, there may be lab assistant jobs available that do not require a degree. It allows you to make a good impression on the laboratory manager and some insight into lab operations before clinical.

Sharon Taylor, Mechanical engineer, Novelis

Sharon was born in Lake Charles, LA, the youngest of three daughters. "We were a happy family, but our father's early death when I was 10 years old certainly impacted our lives. We saw our Mom struggle to stretch every penny to raise three girls on her own. We learned to do the things around the house that our father would have done, even activities that would have involved hiring contractors (well within reason - we didn't do roofing!).

This led Sharon to seek a career where she would be self-sufficient and able to support herself. She adds "My parents were always focused on our success in school - "work comes first, then play," she shared. Sharon reveals that "looking back, somehow my wonderful Mom was able to keep her three girls God-focused and eager learners - we were honor roll students, and we all graduated from college. Sharon graduated from McNeese State University with a BS in Mechanical Engineering in 1983. She later found out that McNeese had a higher proportion of females in Engineering compared to other accredited engineering schools.

She says "My only explanation is that Lake Charles, LA was a city with a lot of petroleum/chemical industries, and if a woman excelled in the science fields, then she either majored in Biology/Chemistry or Engineering." One of Sharon's sisters graduated from McNeese with a degree in Biology, and the



Sharon Taylor, Global Principal Mechanical Engineer, Novelis. (Photo courtesy Sharon Taylor)

other in Chemical Engineering. Also, Sharon adds that she feels fortunate that no one told her and her siblings that they couldn't do something when faced with a simple thing around the house that had failed, Sharon developed a curiosity for solving problems and developing solutions rather than just paying for someone else to fix it. "I learned about root-cause analysis long before I knew it had a name. I wanted to understand how things worked. This set the stage for a can-do attitude without limitations - which is where my curiosity and love for science was born."

In school, Sharon always enjoyed the math/physics/chemistry/biology classes more than the literature/history classes. "Today, I am a Global Principal Mechanical Engineer with Novelis, the world leader in aluminum rolling and recycling. I lead and support projects in the nine countries where our thirty-three manufacturing facilities are located, serving customers in aerospace, automotive, beverage, architecture, and consumer electronics. My responsibilities include all phases of project development and management, including equipment specification, design, installation, and commissioning," she related.

Sharon has worked with great cross-functional, international teams to design and implement several brownfield projects and a few greenfield facilities. Since the beginning of these projects, she developed

a tool for sharing the specifications and standards that are created through the course of the work effort. “Knowledge is power, and sharing that knowledge enhances the strengths within Novelis”, she shares. She has also had the pleasure of mentoring new engineers in the Novelis Engineering Development Program. Sharon’s advice to girls who may be considering a career in engineering is to be curious and try to answer your questions. Start simple with a trip to Mid-America museums – learn about electricity, astrology, geology, and more. Museums are a great place to have fun and learn at the same time. Think about how the things you play with impact your world. Then take it a step further – have an adult help you search the internet for some (SAFE) experiments you can try at home– and eventually, you may see which topic you are more passionate about. Today, Sharon lives in Hot Springs Village with her fiancé and fellow Mechanical Engineer Randell Rogers. She is the proud mother of a son and daughter, and she is blessed with four wonderful grandchildren.

Miste Ellis (Bookkeeper/ Accountant)

Miste says her mother-in-law was a bookkeeper and “she taught me that it’s all about the numbers!” Miste shares that one of her first jobs was as a bookkeeper for a church. Later, she got a job that required a knowledge of statistics – so she learned those processes.

Each job she has had utilized different accounting/ bookkeeping applications and that has provided her with a wealth of knowledge and experience that has helped her prepare for her current job at Diamante. It has been a progression of different facets of her profession – stepping stones of knowledge, she calls them. Miste has worked at the prestigious Diamante Country Club for a year and shares that she is comfortable with the ends and outs of bookkeeping (payroll/ cash/ food numbers, accrued revenue) required to perform her job with a high level of quality and satisfaction..

Miste says “In order to be a successful bookkeeper you need the versatility and the skill set to be able to understand numerous programs and systems. As a church accounting and bookkeeping manager, you have to recognize the sources of revenue in the church, which are mostly contributions. Also, you



Miste Ellis, Bookkeeper/Accountant, Diamante Country Club. (Robin Raborn Burns photo)

21 CENTURY 21
H.S.V. Realty

501.922.2021

www.C21HSVRealty.com *Selling Hot Springs Village Since 1976*
All Offices Are Independently Owned & Operated

121 Cordoba Center Drive, #100 in HSV

HOT SPRINGS VILLAGE RENTALS
Short & Long Term Available

COME STAY WITH US!

501.922.2929 | 866.RENT.HSV
HSVRENTALS.COM
LOCATED RIGHT AT THE HWY. 7 GATE OF HSV

need to know about the flow of money from the collection plate to the bank account. Obviously, the day-to-day operations at a Golf Country Club are a lot different – Accrued revenue (from varying membership categories), monthly food and beverage requirements, payments to vendors, etc.

Her career path is inspirational because she did not go the “traditional” route – she does not have a college degree. That does not in any way diminish her accomplishments. She learned from a trusted mentor who provided her with knowledge, taught her valuable skills, and helped her develop the strong work ethic she has today. Misté believes that college is not an option for everyone. There are logistical considerations, familial obligations, academic challenges, and the financial issues associated with the high cost of college can be insurmountable for many. There aren’t enough scholarships to go around. There are career and technical programs, and trade schools that can provide the tools for success. And there is the road to success through mentorship.

Misté was fortunate to have a family member who took her under her wing and “taught her the ropes. The best way to learn and grow is to build relationships with people who have been through the same struggles and successes. “You can go to college for accounting, but you still need to be competent in a variety of different systems. You have to develop a vast skill set. I had to learn the accrual system, spreading out income over the year - it’s just a different accounting method.”

Misté’s advice for girls and young women who like math, and want to explore options for bookkeeping? “Volunteer to help a bookkeeper at your church, volunteer to be a math tutor for younger students.

Volunteer where you can and ask to learn about how they track costs, expenses, and supplies. Ask questions.” Misté suggests that if a middle-school or high-school-age girl discovers she likes math, she should “reach out to a teacher or guidance counselor for help in identifying a mentor or advisor who could guide her on her continued path of learning. Don’t quit – keep learning all you can. You can start small and then ease your way into bigger things. Someone will see your drive and determination.”

Women in STEM careers have the power to share their knowledge, struggles, and successes with young girls and women. It really is a sisterhood, the sage counsel of those who walked those steps, helping prepare others for the path ahead. Arkansas offers a vast array of STEM learning experiences for all students, both in-school and out-of-school, through a rich PK-20 ecosystem. Some of these activities are designed specifically to encourage girls and women to pursue and persist in STEM learning and careers:

And, just for the record, as the photos and stories of these featured women show, girls can be both pretty and smart. The petals of a flower are beautiful to look out for, but the power and strength lie in the STEM!

STEM resources in Arkansas :

<https://arkansasstemcoalition.com/>

<https://arkansasstemcoalition.com/million-women-mentors/>

<https://womensfoundationarkansas.org/girls-of-promise/>

<https://ualr.edu/stemcenter/girls-stem-realities-resources/>

HEAR *Better!*
VILLAGE HEARING CLINIC


501-337-6222
Hearing Aids
Hearing Exams

Marilyn Phelan
Certified Audiologist
CCC-A/SLP

Early spring brings daffodils to the Village



Warm weather in February had daffodils 'springing' up all over the place. Here's a yard in the Village you don't want to miss! Drive by 89 Tiburon Way to see all the beautiful daffodils. The daffodil symbolizes rebirth and new beginnings. It's one of the first flowers to bloom at the end of winter, announcing the beginning of spring and signifying the end of the cold, dark days. (Sandy Johansen photos)



Local lending decisions.
Neighborly service.
Bank with trust.

JOE PATRICO
Loan Officer
Hot Springs Village

CB ChambersBank
Member FDIC
4575 N HWY 7 | HOT SPRINGS VILLAGE | 501.984.7600

APRIL EVENTS

Tulip Extravaganza
Garvan Woodland Gardens
Through March and April

Bridge St. Live! Eclipse Edition
Bridge Street
Thursday, April 4 at 3 p.m.

HSV Solar Eclipse Extravaganza Weekend
Hot Springs Village
April 5-8

Mitchell Tenpenny at Oaklawn
Oaklawn Racing Casino Resort
Saturday, April 6 at 7 p.m.

Eclipse Weekend Kickoff with Sol Def Band and
Lady Rock at Vapors Live
Vapors
April 5 and 6.

Atlas Obscura's Ecliptic Festival
Cedar Glades Park, 461 Wildcat Road
April 5-8

Total Solar Eclipse
Hot Springs Village and beyond
Monday, April 8. Totality is at 1:49 p.m.

Eclipse 2024 at Garvan
Garvan Woodland Gardens
Monday, April 8

2024 Ron Coleman Mining Eclipse Festival
Ron Coleman Mining
April 6-8

Oaklawn Total Eclipse 2024
Oaklawn Racing Casino Resort
Monday, April 8

Apple Blossom Handicap
Oaklawn Racing Casino Resort
Saturday, April 13

HSV Rotary Victory Day Dance
Coronado Community Center
Thursday, April 18 at 5:00 p.m

Edward Jones

> edwardjones.com | Member SIPC



Dreaming up the ideal retirement
is your job.

Helping you get there is ours.

We're excited to hear from you.



Kirk Bradshaw, AAMS*
Financial Advisor
710 Desoto Blvd Suite E
Hot Springs Village, AR 71909
501-922-1777



Deedra B Berkmeier, AAMS*
Financial Advisor
710 Desoto Blvd Suite E
Hot Springs Village, AR 71909
501-922-1777

IRT-1848H-A

Thinking of Selling Your Home?

Call Joe Stewart

U.S. ARMY VETERAN & 17 YEAR VILLAGE RESIDENT

501-209-0273

TRADEMARK HSV
Real Estate

REALTOR
EQUAL HOUSING
LENDER

TM
RE

Trademark HSV Real Estate - 1060 DeSoto Blvd, Hot Springs Village, AR 71909 - trademarkrealestatehsv.com



EASY SALMON CAKES

Serves 4

- 1 pound canned salmon, flaked
- 1/2 cup gluten-free bread crumbs
- 1 egg, beaten
- 1 tablespoon Dijon mustard
- 1 tablespoon chopped fresh dill, plus extra for garnish
- 1/2 teaspoon sea salt
- 1/8 teaspoon freshly ground black pepper
- 1 lemon, quartered, for garnish

1. Preheat the oven to 375 F. Line a baking sheet with parchment paper and set aside.
 2. In a large bowl, mix the salmon and bread crumbs.
 3. In a small bowl, whisk together the egg, mustard, dill, salt, and pepper. Fold this into the salmon and bread crumbs.
 4. Form the salmon mixture into 4 patties and place them on the prepared baking sheet.
 5. Bake for 5 minutes, flip, and bake for 5 minutes more, until the patties are golden. Garnish with fresh dill and lemon.
- Tip: To make this GERD-friendly, omit the black pepper and reduce the mustard to 2 teaspoons.



Open 6am-9pm • 7 Days per Week

**4444 HWY 5
BENTON, AR 72019**

(Located 20 minutes from the East Gate)

CATFISH DINNER
BUY ONE GET ONE
1/2 PRICE
All Day FRIDAYS

Must bring in coupon. Expires 6/30/24

WE CATER!

We provide everything you need to make your event a success!

Reunions • Anniversary • Holiday
Birthday Parties • Customer-Employee Appreciation
Receptions • Rehearsal Dinners • Fundraisers

*Fancy or Casual, Large or Small
Fixins' for Everyone, We do it ALL!*

Book Your Next Event, Call Rick at

501-794-0329

#1 Caterer

*We Cook U.S. Catfish,
Chicken Strips, Fried Shrimp,
Baked Beans, Cole Slaw,
French Fries and
Hush Puppies!
On Site For Groups
Up To 1500.*

Minimums Apply.





Tour with us!

Hot Springs Village Voice Travel Club

2024 TRIPS!

HURRY! SPACE IS LIMITED! MAKE YOUR RESERVATIONS TODAY!

**8
Days**



**Highlights of
Italy's Amalfi Coast
OCT. 8-17, 2024**

**17
Days**



**Best of Australia
& New Zealand
OCT. 21-Nov. 6, 2024**

ALSO AVAILABLE:

Utah's Might National Parks - 7 Days - May 5

Albuquerque Ballon Fiesta - 6 Days - Oct. 4

Historic Savannah & Charleston Holiday - 7 Days - Dec. 4

Pickup your trip brochures at our office
or visit HSVOICE.COM & click the
"Tour With Us" banner for more info!

Hot Springs
Village **Voice**

501-623-6397

jallen@hsvoice

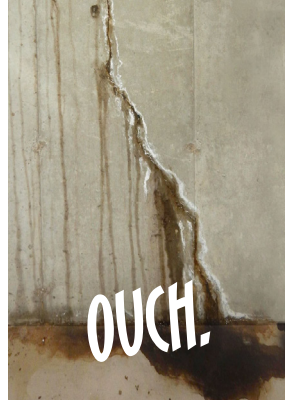
ALL THINGS CRAWL SPACE-Y!

WE FIX THIS



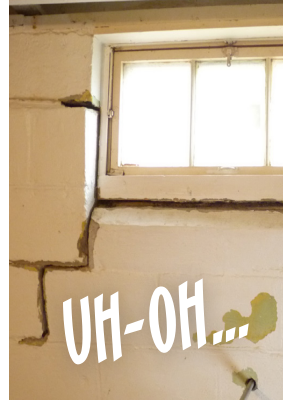
Wet Basements

...AND THIS



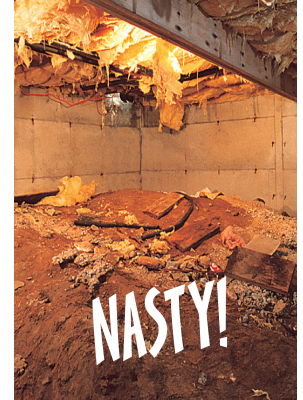
Wall Cracks

...AND THIS



Structural Problems

...AND THIS!



Crawl Spaces

- ✓ Nasty Crawl Spaces
- ✓ Sagging Floors
- ✓ Mold & Rot Repair
- ✓ Waterproofing

John Cossey's
CrawlSpace
of Arkansas
Solutions



\$200 OFF

Any Crawl Space Ecapsulation

Cannot be combined with any other offer. Not valid for prior work. Must be presented and redeemed at time of estimate. \$2000 minimum. Expires 05/1/24



Scan Me!

501-530-8938
CrawlSpaceHSV.com

FREE ESTIMATES*
FULL FINANCING AVAILABLE!

* For Homeowners

For advertising rates and information go to hsvvoice.com or call

501.623.6397

Postal Customer
Hot Springs Village, AR 71909



Village True Value®

HOME CENTER • BUILDING SUPPLY • LUMBERYARD
MORE THAN A HARDWARE STORE

4650 N. Highway 7, Hot Springs Village, AR | 501-984-6074

BARGAINS OF THE MONTH Good April 1-30, 2024



\$17.99
Green Thumb®
5,000 sq. ft.
Southern Weed & Feed



\$7.99
Green Thumb®
10-Pattern
Hose Nozzle

\$35.99
Teknor Apex®
50 ft. Zero-G
Garden Hose



\$5.99
Green Thumb®
3 ft. x 50 ft.
Black
Landscape
Fabric



\$49.99
Four Seasons
Courtyard®
Sunny Isles
Extra-Large
Zero Gravity Chair



\$15.99 SALE PRICE
-\$6.00 INSTANT REBATE*
\$9.99
FINAL PRICE
Miracle-Gro®
2 cu. ft. Potting Mix



\$13.99
Preen®
5.6 lb. Garden
Weed Preventer



\$14.99 YOUR CHOICE
Duracell®
16-Pk AAA or AA
Alkaline Batteries

Village True Value Community Calendar



April Charity:

Donate your change in April & we'll match it to benefit The Hot Springs Audubon Society



Friday, April 5th at 1:00 pm:

Guest Speaker from Reynolds Greenhouses



Come on down and get ready for the Solar Eclipse happening April 8th!

Find products to view and photograph it safely and much more right here at your local hardware store!

Solar Glasses 2.29!

Solar Snap Kit 16.99!

