

PSRST STD
US POSTAGE PAID
CONCORDIA, KS
PERMIT 30

Postal Patron Local
CR,RT, SORT

ECRWSS
LOCAL
POSTAL CUSTOMER

ADVERTISER

Published by the Blade-Empire • 510 Washington St.
Concordia, KS 66901 • 785-243-2424 • www.bladeempire.com

FREE
TAKE
ONE

Serving North Central Kansas

Wednesday, March 5, 2025

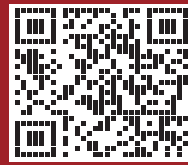
Farm Country
CONCORDIA, KS **Ford**



SHOP & BUY ONLINE!

We will deliver it right
to your driveway!

SCAN THIS QR CODE



TO VIEW OUR
INVENTORY

INVOICE PRICING

ON REMAINING IN-STOCK 2024s

'23 F-150



\$14,665 off MSRP
Or \$4,000 off MSRP
+ 0% for 72mos
APR AVAILABLE!

EDGES



\$12,000
OFF!

EXPLORERS



\$6,000
OFF!

*Pricing includes all Ford rebates and incentives. See dealer for details!



2012 Dodge Grand Caravan SXT
\$8,995



2017 Chevrolet Tahoe LT
\$23,995



2013 Ford Fusion SE
\$10,995



2021 Ford Bronco Sport Outer Banks
\$27,995



2019 Ford Explorer Limited
\$20,995



2024 Ford Maverick Lariat
\$33,995



2022 Ford Escape SE
\$22,995



2016 Ford F-350 Super Duty King Ranch
\$34,995



2022 Ford F-150 Lariat
\$44,995



2020 Ford Ranger XLT
~~\$30,995~~ \$29,995



2022 Ford Ranger STX
\$32,995



2019 Ford Explorer XLT
\$19,995



2022 Ford Maverick XL
~~\$22,995~~ \$21,995



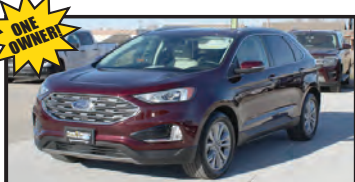
2018 Lincoln Navigator Premier
~~\$62,995~~ \$31,995



2023 Ford F-150 XLT
\$49,995



2021 Lincoln Corsair Reserve
~~\$27,995~~ \$26,995



2019 Ford Edge Titanium
\$18,995



2017 Lincoln MKX Black Label
~~\$28,995~~ \$22,995



2024 Kia Carnival LX
\$33,995



2023 Kia Soul GT
\$22,995



2018 Ford Explorer Limited
\$19,995



2021 Ford Edge ST-Line
\$22,995



2019 Ford F-150 XLT
\$25,995



2021 Ford Explorer XLT
~~\$23,995~~ \$22,995



2016 Ford F-350 Super Duty Lariat
\$43,995

Currently In-Stock

Farm Country
CONCORDIA, KS **KAWASAKI**

Currently In-Stock



2020 Kawasaki Mule PRO-FX
\$19,995



2023 Kawasaki Brute Force®
750 4X4i EPS CAMO \$8,995



2024 Kawasaki Mule PRO-FXT
1000 LE Ranch Edition \$22,324



2024 Kawasaki Mule PRO-FXT 1000
\$19,679



2024 Kawasaki Mule PRO-FXT 1000
\$19,679



2024 Kawasaki Mule PRO-MX
(EPS) LE \$14,649



2024 Kawasaki Ridge Ranch Edition
\$21,879



2024 Kawasaki Teryx KRX4 1000 eS
\$23,699



2024 Kawasaki Mule PRO-FXT 1000 LE
\$19,724



2024 Kawasaki Ridge 400 HVAC
\$26,999

CLASSIFIEDS

HELP WANTED

DIRECTOR OF ADULT EDUCATION
Cloud County Community College seeks a Director of Adult Education. This position oversees, develops, and teaches programs focused on English as a Second Language (ESL), General Education Development (GED), life skills, and other adult education initiatives as well as overseeing the grant. The ideal candidate will have a passion for education, strong organizational skills, and the ability to work effectively with diverse learners. Bachelor's Degree required. Teaching experience is preferred. This is a full-time, grant-funded, KPERs covered, 11-month position with a benefit package. **Email a letter of application, resume, and the names and phone numbers of five current references to cwilson@cloud.edu or send to the Office of Human Resources, Cloud County Community College, P.O. Box 1002, Concordia, Kansas 66901. EOE.**

SHUTTLE VAN DRIVER NEEDED
to transport railroad crews. The location is in Concordia. The hours and days are flexible, but it is an on call position. Part time. \$13.00/hr.
Please text or call 785-543-7314

BUS DRIVER
Cloud County Community College seeks a part-time Bus Driver. CDL with Passenger Endorsement License and medical card required. Bus Driver experience preferred. **Applications may be acquired by contacting the Office of Human Resources at (785) 243-1435. A completed application may be e-mailed to cwilson@cloud.edu or sent to Human Resources, Cloud County Community College, 2221 Campus Dr., Concordia, KS 66901.** Cloud County Community College, P.O. Box 1002, Concordia, Kansas 66901. EOE.

HELP WANTED
Cook- Full or part time
CNA/CMA for all shifts, full or part time
LPN/RN- Full time, includes every other weekend.

Sign on bonus of \$750 available

Park Villa is a family oriented facility that takes pride in the care they provide for their residents.

Please apply in person:
Park Villa Nursing Home
114 S. High, Clyde, KS

Stay Warm & Have a Great Day!!

MANNA HOUSE OF PRAYER

323 E. 5TH ST. CONCORDIA
• Journey Through Grief
March 12, 26, April 9, 23, May 7, 21, 2025
Presenter: Janet LeDuc, CSJ
The death of a loved one and other losses change our lives forever. Grief is a journey that deserves attention, respect, and the support of others to heal. Journey Through Grief is a grief support group with eight sessions to help you understand and embrace the journey. Caring for your needs will help you discover the fullness of living and loving again. Every other Wednesday, 3:30-5:00 p.m. Cost: \$100 or \$15 per session. . To register, call 785-243-4428, email retreatcenter@mannahouse.org, or visit our website at manna house.org.



DENTALDESIGNS
OF SOLOMON VALLEY, P.A.

JETTA HOLLOWAY-JANKOWSKI, DDS
TIM JANKOWSKI, DDS
785.738.3758 | 208 S. Mill Street | Beloit, KS 67420
www.dentaldesignsofsv.com

Division Dean for Math, Science, and Technical Programs

Cloud County Community College seeks a Division Dean for Math, Science, and Technical Programs. The Division Dean is responsible for assisting the Vice President for Academic Affairs in the coordination of the Math, Science, Agriculture, CDL, Welding, and Renewable Energy programs. Candidates must have a commitment to curriculum development, student learning, mentoring new faculty, assessment, and program reviews. A master's degree and college teaching experience required. Community College administrative experience in career and technical education is preferred. This is a full-time, 12-month position with a benefit package that includes health, dental and vision coverage, and paid leave time. **Email a letter of application, resume, a vision for the division relative to current programs, future programs, recruitment, and faculty development, and the names and phone numbers of five current references to cwilson@cloud.edu or send to the Office of Human Resources, Cloud County Community College, P.O. Box 1002, Concordia, Kansas 66901. EOE**

NOTICES

HOME IMPROVEMENT
Problems with farm buildings, houses, painting, metal roofs or windows? No Job Too Small.
Call Jack Gritten, 785-335-3512

REAL ESTATE

LAND FOR SALE

Two clean, well-cared-for pastures, Ottawa Co., 12-15 mi. east of Delphos. First: 80 acres with 28 acres cropland, legal W1/2 of SE 1/4 of 13-9-3. Second: 320 acres with 50 acres of cropland and brome waterway, legal S1/2 of 32-9-2. Generally good fences and ponds.

Please direct inquiries to 785-313-4040

Farm Ground for Sale
115 A of good Mitchell County farm ground for sale.
Legal description is S1/2 SW1/4 & NE 1/4 SW 1/4 34-9S-10W. Asking price \$3650/acre. A crop production report may be made available.

Call 402-750-2373

SALES CALENDAR

•Monday, March 10, 2025 - Wednesday, March 12, 2025– Online Auction. Bidding starts at 8:00 a.m. on Monday and ends at 1:00 p.m. on Wednesday. 35.50 Acres, 100% Tillable ground located at Highway 81 and Fir Road in Republic County, Kansas. **Matt Dowell, 785-564-1256. MDowell@FarmersNational.com www.FNCRealEstate.com**
•Saturday, March 15, 2025– Large Estate Auction at 10:00 a.m. located at the National Guard Armory on South 81 Highway on the South side of Concordia, Kansas. Crock Bowls, Vintage Meat Grinder, Old Christmas Decorations, Dryden Pottery, Wood Boxes, Mannequins, Assortment of Glass, Roy Rogers Items, Large Trunk, Frank Martin Signed Baseball, Swedish Items, Art Supplies, Games, Howdy Doody Items, Seed Advertiser, WWII Ration Coins and much more. **Kearn Auction, 785-243-3773 or 785-614-2082. Go to kearnauction.com for a full listing and pictures. Web site www.kearnauction.com E-mail @ kearnauction@yahoo.com**
• Saturday, March 22, 2025 – 39th Annual Optimist Club Auction located at the Coud County Fairgrounds on Industrial Road- East Side of Concordia, Kansas. Farm & Construction Equipment, Trucks, Cars, Shop Tools, Household Goods and Estate Items. **For Questions Call: Gale Longenecker @ 785-243-5598, Mike Cleveland @ 785-826-7897, Gary Fraser @ 785-243-1134 or Charles Johnson @ 785-243-9863**
• Saturday, March 29, 2025 – Estate Auction at 10:00 a.m. located at the National Guard Armory on South 81 Highway on the South side of Concordia, Kansas. Black Ford Taurus, Household and Antique Furniture. **Kearn Auction, 785-243-3773 or 785-614- 2082. Go to kearnauction.com for a full listing and pictures. Web site www.kearnauction.com E-mail @ kearnauction@yahoo.com**
• Sportsman Auction – Kearn Auction House, in coordination with Derek Champlin of DC Firearms LLC, will be holding a consignment auction for firearms, ammunition, and archery. DC Firearms will be conducting background checks. To list an item, Contact Dannie Kearn Jr at (785) 614-4656 or Derek Champlin at (785) 243-0723. **Date of auction to be announced when auction is full.**

BELLEVILLE EVENTS

•World Healing Service Community Supper
Every Friday 6 p.m.
1653 12th St, (Republic Fair Grounds & Rocky Pond) Belleville, KS 66935
•World Healing Service Support Group
Every Friday 6 p.m.
" Saving Lives by Empowering Lives"
Building identities as God in the Bible intended. Preventing suicide, addictions, illnesses & bad choices.

• Public Library Storytime and Art
*** Monday:**
Lapsit Storytime at 10:30 AM
*** Friday:**
Storytime at 9:30 AM
Evening of Art 5:00 pm: Join us for a creative night of freehand drawing and painting! All supplies will be provided—just bring your imagination

• Cornerstone Cafe, a Tabernacle Ministry ran by volunteers is located at the corner of M and 18th St., in Belleville, Kansas. Breakfast is served Mondays & Saturdays from 7am-10am. Smashburger Nights every 2nd Wednesday of the month from 5pm-8pm.

UPCOMING EVENTS

• Saturday, March 15, 2025– Celebrate National Quilting Day from 10:00 a.m. to 2:00 p.m. at the Concordia Lutheran Church Fellowship Hall. Quilt tying for Lutheran World Relief. Come for an hour or the whole session. Soup luncheon will be provided.
• Sunday, March 16, 2025 – The Nazareth Motherhouse Annual Spaghetti Dinner. The event begins with dinner at 11:00 am. Meal tickets are \$10 in advance and \$12 at the door. There will also be a Bake Sale, In-Person Silent Auction and Raffle Drawing. Tickets can be purchased in advance from the Nazareth Motherhouse or by contacting Ambria in the Development Office at agilliland@csjkansas.org or 785-243-2113 ext. 1225.

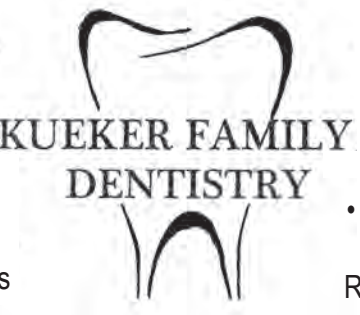


Kip Huse  Owner

Belleville, KS 66935
785 527 0905 cell
785 955 0208 office
khuse@solaro.solutions.com

24 Hr Service

- Water & Fire Restoration
- Carpet Cleaning
- Tile Cleaning
- Upholstery



KUEKER FAMILY DENTISTRY

- Cosmetic Fillings
- Crowns & Bridges
- Dentures
- Extractions
- Implants

- Whitening
- Veneers
- Sealants
- Root Canal
- Scaling & Root Planing

785-243-2212
Matthew S. Kueker, D.D.S, LLC
Abbey Allen, D.D.S

K-State weed specialist shares tips on controlling early-emerging kochia

Lancaster outlines herbicides that can be effective against invasive weed


BY PAT MELGARES
K-State Research and Extension news
MANHATTAN, Kan. – A Kansas State University weed specialist says farmers should be on the lookout for early-emergence of a troublesome weed that competes with farm crops for nutrients, water and light. Sarah Lancaster said kochia is among the first summer annual weeds to emerge in the spring. In 2024, kochia was found as early as Feb. 7, following a snow-storm in late January, and temperatures that hit the 50s and 60s in early February – conditions that were very similar to what much of Kansas experienced this year, as well.
“Early-emerging kochia seedlings use the limited spring soil moisture in dryland production fields,” said Lancaster, noting that good control of the first dense flush of kochia is essential for obtaining a good crop yield later in the season.
Lancaster said that kochia seedlings emerge in dense populations, which makes adequate herbicide coverage difficult. In addition, glyphosate-resistant kochia is prevalent across western Kansas.
“For those reasons, it is important to apply pre-emergence herbicides in late winter or early spring to control kochia before it emerges,” Lancaster said.
According to Lancaster, an herbicide program needs two components in order to successfully manage kochia:
A very soluble and effective herbicide that can be incorporated with very little precipitation, such as dicamba.
A herbicide that has longer residual activity, which will require perhaps ¾ inches or more precipitation for adequate incorporation, such as atrazine.
“Precipitation events during late winter are often too small to activate longer-lasting residual herbicides, but dicamba may control kochia for 4-6 weeks until atrazine is incorporate,” Lancaster said.
For those reasons, the best time to apply herbicides is generally January through the first week of March, according to Lancaster.
Other herbicides with good pre-emergence kochia activity include mesotrione, metribuzin, saflufenacil (Sharpen) and sulfentrazone. Lancaster urges farmers and herbicide applicators to check product labels for crop-specific planting intervals.
More information on controlling kochia and many other weeds is available in a recently released publication from the K-State Research and Extension bookstore, Chemical Weed Control for Field Crops, Pastures, Rangeland and Noncropland. Farmers can also get information at local extension offices in Kansas.
Brand names appearing in this article are used for identification purposes only and are not intended to indicate endorsement of any particular product.

COMMUNITY SUPPER

• Wednesday, March 5, 2025– Cloud County Community Supper from 5:00 to 6:00 p.m. Free Hot Meal, All Are Welcome! Concordia National Guard Armory, 2115 Blosser Drive. Curbside Pick Up Only! For information, call (785) 614-0148.
• Wednesday, March 12, 2025– Cloud County Community Supper from 5:00 to 6:00 p.m. Free Hot Meal, All Are Welcome! Concordia National Guard Armory, 2115 Blosser Drive. Curbside Pick Up Only! For information, call (785) 614-0148.

3RD SATURDAY CHICKEN DINNER

• Saturday, March 15– Every 3rd Saturday of the Month from 5:00 p.m. to 8:00 p.m. **American Legion Riders, Chapter 76 Concordia–All You Can Eat Buffet Style Chicken Dinner** (2nd meat option available). Dine In or To Go Orders. American Legion, 506 Washington, Concordia. (785) 243-9834.



BELOIT, KS.
(785) 738-4800
1234 N. Independence Ave • www.beloitmovies.com
MARCH 7 - MARCH 13

BONHOEFFER
(PG-13)
2 hrs 15 mins
Jonas Dassler
Phileas Heyblom
August Diehl
Fri/Sat - 7:00
Sun - 2:00 & 7:00
Tues - Thurs 7:00

THE UNBREAKABLE BOY
(PG)
1 hr 50 mins
Zachary Levi
Meghann Fahy
Jacob Laval
Fri/Sat - 7:30
Sun - 2:30 & 7:30
Tues - Thurs 7:30



Durflinger Disposal
Serving Concordia since 1978
• Friendly, Reliable Service
• Residential & Commercial
• Carry Out Service from Yard or Garage Available



Phone 785-527-5219

Gardening has wellness benefits for all ages

Keeping your garden safe for all ages helps increase usability, K-State horticulture expert says.

K-STATE RESEARCH AND EXTENSION NEWS SERVICE
MANHATTAN, Kan. — Gardening provides a variety of wellness benefits. Varied abilities among gardeners means that adaptations to traditional practices are necessary to keep gardeners safe and successful, regardless of age.

Kansas State University horticulture expert Cynthia Domenghini said gardeners can focus on three areas: tasks, tools and design.

Tasks
If you're gardening with a child, plan to spend plenty of time exploring and learning alongside them, Domenghini said. If time is limited, save challenging tasks for more experienced helpers or when you can do them alone later.

Certain tasks may be best done by a professional crew, if time and skills are limited.

"Make a list of the tasks that need to be accomplished each day and complete them in an order that varies the movements" Domenghini said.

Spending hours kneeling while weeding is going to cause strain, which can result in long-term damage. Domenghini recommended limiting such tasks to 15 minutes at a time followed by a task that requires different movement and posture.

"Keeping the garden small protects growers from becoming overwhelmed with maintenance. If you're worried you won't have enough produce, remember you can supplement your harvest by visiting the farmers market," Domenghini said. "You can grow less and do good by supporting local farmers."

She also suggests observing the garden from a different perspective.

"Identify ways to improve accessibility, such as increasing the raised beds to standing height," Domenghini said.

Tools
Proper tool maintenance is important. Keep pruning tools sharp so less effort is required to make each cut, and keep wooden handles on shovels and rakes free from splintering.

"Use lightweight tools such as those made with plastic, carbon, fiber or aluminum handles," Domenghini said. "Handle the tools prior to purchasing to ensure they are a good fit."

Most gardeners prefer lightweight tools with a long handle as this prevents bending over to work and adding strain to the back. Short-handled tools may be a better fit for gardening while seated.

"Kneeling pads and benches can protect joints while also reducing soil compaction," Domenghini said. "Rolling garden seats allow the gardener to sit while weeding and planting."

Invest in a good pair of gloves that will accommodate any gardening task to protect you from cuts and the potential for infection, Domenghini said.

Store tools in a central location and avoid leaving tools out where they can become a trip hazard. Also, unplug power tools and never leave tools unattended when gardening with children.

"It is important for young gardeners to learn tool safety, which includes supervision," Domenghini said.

Design
Garden pathways should be kept smooth and level to reduce the risk of falls.

"Window boxes, raised beds and a multitude of container types facilitate gardening while standing or seated," Domenghini said. "Keep the size of planters less than three feet across to reduce the need for reaching. All points in this size planter can be reached with short-handled tools."

Domenghini said the garden should allow for rest and relaxation. She suggests placing a comfortable seat in a shaded area of the garden.

"On days that are predicted to be warm, do garden work in the early morning hours," Domenghini said.

Minimize maintenance with the garden design by choosing the right plants for the right places. Also include automatic irrigation, when possible, to reduce the amount of time spent watering.

Bring your phone with you to the garden, especially if you garden alone in case you need help. But, she says, also bring a book to encourage taking a break, and do some reading in the shade.

"There are many considerations to make when designing a garden that is safe for everyone," Domenghini said.

Domenghini and her colleagues in K-State's Department of Horticulture and Natural Resources produce a weekly Horticulture Newsletter with tips for maintaining home landscapes and gardens.

Interested persons can subscribe to the newsletter, as well as send their garden and yard-related questions to hortsupport@ksu.edu, or contact your local K-State Research and Extension office.

Extension Extra

KELSEY HATESOHL, HORTICULTURE AGENT
River Valley Extension

Cutting Back Ornamental Grasses

Are the warm days making you want to get outside and work in your landscape? Well, March is a great time to remove dead foliage from the ornamental grasses in your landscapes. Ornamental grasses will green up earlier if the old foliage is removed. They are also more attractive without a mixture of dead and live leaves.

A number of tools can be used to cut back the previous year's growth. You could use hand clippers, weed whips (if the foliage is of a small enough diameter), weed whips with a circular blade attachment, or even a chain saw. If you are going to use a chain saw, you will want to use the top of the chainsaw bar to cut so the saw doesn't pull in debris and clog.

It is often helpful to tie the foliage together before cutting, so it doesn't interfere and it's easier to dispose of. Another option to removing the previous year's growth is to burn it. You only want to burn the grass if it is safe and legal to do so. Burning works well on smaller ornamental grasses. Another tip is these grasses may not burn for long, but they will burn extremely hot. So, you will want to check the surroundings of your grasses before you burn to make sure burning is a safe option.

After you have cut back your grasses, look at the center of your plant. If the center of the plant has started to die out, the plant would benefit from a division. The outer edge of the plant is the newest growth. As the plant gets larger, the middle will die out and the outer edges continue to grow, causing the plant to expand out and get larger. If the grass is getting too large for the space it is in, you can dig up the entire clump and separate the plant. Then replant the vigorous growth found on the outer edge of the clump. By dividing the grass, you can plant the rest in other parts of your landscape or share the others with a friend! If you have any questions feel free to stop by or contact me in the Washington office, 785-325-2121 or katesohl@ksu.edu.

Soil temperature is important for germination in the garden

Home gardeners can take their own soil temperature measurements, says K-State expert

K-STATE RESEARCH AND EXTENSION NEWS SERVICE
MANHATTAN, Kan. — Just in case home gardeners have not really considered the importance of soil temperature, Kansas State University horticulture expert Cynthia Domenghini says you should. Soil temperature, she says, affects germination of many garden foods.

Domenghini said peas can sprout in soil that is 40 degrees Fahrenheit, while lettuce can germinate in 35 F.

"Crops -- such as tomatoes, corn and other warm-season veggies -- need the soil to be at least 55 F for success," Domenghini said. "Peppers, cucumbers and melons need even warmer soil."

The Kansas Mesonet is a resource for guidance on what's happening below the ground. Domenghini said gardeners can also take their own soil temperature measurements using a soil thermometer, and measuring the soil at least 2.5 inches deep during late morning. "Find the average soil temperature over five days to determine when the time is right for planting," Domenghini said. "It is still important to watch the forecast for late season frosts and freezes."

Domenghini and her colleagues in K-State's Department of Horticulture and Natural Resources produce a weekly Horticulture Newsletter with tips for maintaining home landscapes and gardens.

Interested persons can subscribe to the newsletter, as well as send their garden and yard-related questions to hortsupport@ksu.edu, or contact your local K-State Research and Extension office.

What am I buying? A guide to meat labels

K-State assistant professor discusses protein labeling

BY JACOB KLAUDT
K-State Research and Extension news service

MANHATTAN, Kan. — "Gluten-free water" — she's not sure what that means, but it was an actual claim that Kanass State University assistant professor of sustainable meat science Erin Beyer saw on a water bottle in Australia back in 2015.

While Beyer is not quite sure how a label this "interesting" was approved, she does know that many other claims printed on protein products can be difficult for consumers to navigate. To help clear up confusion, Beyer recently joined the Agriculture Today radio program to discuss the definitions of heavily used terms like "natural" and "certified organic," and provide context for consumers.

"There is more label information today than I think there ever has been," she said. "The most basic labeling system for commodity products, though, is the Uniform Retail Meat Identity Standards."

Commodity markers — usually accompanied by a barcode and scale label — allow buyers to identify a cut of meat's species, the wholesale area which it originated and whether it's a steak or a roast. The meat industry classifies cuts thicker than 2 inches as roasts.

"The traditional label that comes on all commodity meat products helps people purchase products for their intended uses," Beyer said. "So, it's a system used that helps most buyers know they should not grill their roasts and should have a low, slow-type cooking method instead."

Outside of commodity labeling, the branded meat sector has become more popular over the past couple decades and now encompasses more than 75% of the market, according to Beyer. Certified Angus Beef stands amongst the most popular brands, and its merchandise must pass through 10 parameters to qualify for CAB status.

"Like with any branded program, you can look those specifications up online and learn more about them," she said. "A branded meat program usually is associated with premium meat or something in which purchasers have more trust that is higher quality than commodity."

She added: "Is that always true? Maybe not so much. However, they do separate themselves with their brand specifications."

However, consumers may find it challenging to discern natural products from "naturally raised" meat. Beyer said the key to understanding the differences lies in the phase of meat production they accompany.

"Natural meat is minimally processed post-harvest, has no artificial preservatives and contains all-natural ingredients like water and salt," she said. "Naturally raised is about the animal process, meaning it has never experienced antibiotics, growth promotants or additional hormones."

Beyer notes that most meat sold in stores falls under natural classification, however, not all processors take the time to get their goods approved for the label.

On the same note, the USDA prohibits giving certain livestock species — like poultry and swine — additional hormones, which may puzzle shoppers who see the designation "raised without added hormones" on beef and lamb products.

"There are hormones in all animal products," Beyer said. "We produce hormones as living beings just like animals produce hormones, so nothing is ever hormone-free, yet processors can tag meat as raised without added hormones if they did not receive hormone implants."

Moreover, a certified organic marker takes the requirements for claims like 'raised without added hormones' and 'natural' a step further by including that producers must raise meat animals using organic methods while feeding organic ingredients.

"Organic methods are a little vague, but those parameters actually start at the last trimester of gestation for our red meat species and the first day of life for poultry," Beyer said.

Beyer reminds protein purchasers, however, that certified organic and other claims do not mean that these goods differ in nutritional content nor change in food safety versus products without those labels.

More information about food product labeling is available online through the USDA.



L-2500031



ONLINE AUCTION

35.50 ± Acres Republic County, Kansas

Bidding starts | March 10, 2025 at 8:00 AM

Bidding closes | March 12, 2025 at 1:00 PM

To register and bid go to: WWW.FNCBID.COM

-- NW1/4 NW1/4 36-1-3W --

-- Highway 81 & Fir Rd --

-- 100% tillable --

For more information on property details, please contact:

Matt Dowell, Agent

Phone: (785) 564-1256

MDowell@FarmersNational.com

www.FNCRealEstate.com

WANTED

ITEMS FOR THE

OPTIMIST CLUB

39th ANNUAL

CONSIGNMENT SALE

SAT., MARCH 22, 2025

Cloud County Fairgrounds

Do you have any:

Farm & Construction Equipment

Trucks or Cars

Shop Tools

Household Goods

Estate Items

Schneider Auction Service

provides the professional auction service.

Sale commissions are used to support area youth organizations and activities.

For Questions or to Consign Items Call:

Gale Longenecker - 785-243-5598

Mike Cleveland - 785-826-7897

Gary Fraser - 785-243-1134

Charles Johnson - 785-243-9863



BELOIT MEDICAL CENTER, P.A.

We provide comprehensive healthcare for you,

including wellness exams, office visits when you are sick, in-patient hospital care, emergency room care, ICU and critical care support, internal medicine, yearly physicals, lab work, x-rays, coordination of testing that you may be eligible for, and family medicine with a very active obstetrical service.

To call and schedule an appointment,

please call the office and use extension 859 or 809 and someone can help you check your physician's availability, and schedule an appointment for you. If you know your party's extension, you may by-pass the recording at any time and dial that extension.

FAMILY PRACTICE

Carl L. Fugate, M.D.

Christine M. Marozas, D.O.

Jason A. Cheney, M.D.

Olivia C. You, D.O.

INTERNAL MEDICINE

Craig A. Cannonan, M.D., FACP

NURSE PRACTITIONER

Kerri Adams, APRN-C

Jessica Hawkins, APRN-BC

Kendra True, APRN-C

Brady True, APRN-C

Office Hours:

Monday through Thursday: 8:30 a.m. - 5:00 p.m.

Friday: 8:30 a.m. - 1:00 p.m.



BELOIT MEDICAL CENTER, P.A.

1005 N. Lincoln

Beloit, Kansas 67420

785-738-2246 (ext. 809/859) • www.beloitmedicalcenter.com

Business & Professional Directory

ACCOUNTANTS

Tax Corner
Public Accountants

Individual • Businesses
• Farms • Fiduciary
• Payroll

• 66 Years of Combined Experience

Donna A. Farrell, Jason Townsdin
townsdincompany.com

739 W. 11th 785-243-3818

AUTOMOTIVE

Miller's Automotive

Tony Miller - Owner

Complete Automotive Repair

307 E. 18th • Concordia

785-243-7233

KURT'S AUTO REPAIR

Kurt Johnston, Owner

(785)243-7663
(785)243-4570

1646 Rock Road

(2 miles east of the 11th St.
Stoplight in Concordia)

AUTOMOTIVE BODY

Chado's
AUTO BODY & GLASS

Lifetime warranty on
all insurance work with
original owner of vehicle

(785) 243-6142

TAYLOR KNOX AUTO BODY, LLC

Curt's
BODY SHOP

1600 E. 6th St. • Concordia, KS 66901

785-243-1488 Shop
785-614-3167 Cell

Curt Stupka

COMPUTERS

THE COMPUTER CURE

*"For whatever ails your
computer, we have the cure."*

785-243-4149

Serving North Central Kansas

www.thecomputercure.com

CHIMNEY SERVICE

CHIMNEY SERVICE

Johnnie & Haley Mastin

• CSIA Certified Chimney
Sweep
• Member of NCSG

NOW OFFERING DUCT
& VENT CLEANING!

Schedule your
appointment today!

785-427-6432

DENTISTRY

Dr. Greg Haffan
Dentist

501 Washington

Office Phone: 243-7927

Res. Phone: 243-2268

ELECTRICAL SERVICES

Hood Electric
785-243-1489

Commercial, Residential,
Industrial, & Agricultural

Phone, CATV, Trenching,
Generators, Transfer Switches
Licensed & Insured
New Construction & Remodels

Fast Response

Free Estimates
24/7 Emergency Service
Financing Available

STUPKA ELECTRIC
785-243-5263

COMMERCIAL - RESIDENTIAL
New Construction/Remodel
Services, Panel Upgrades,
Rewires, LED Lighting & Retrofits
& Generators

Licensed & Insured
Master Electrician for 31 Years

FIREARMS

Buffalo Creek Firearms

2 mi. w. of Randall & 1/4 mi. n. & 1/4 mi. e.

BUY • SELL • TRADE GUNS

785-739-2482

785-545-6041 (Kevin Shelton cell)

1 p.m. - 8 p.m., Monday-Saturday

Sundays, call for an appointment

Loaded & Loaded
GUN SHOP

William White Owner/Gunsmith

Home: 785-243-2773 Cell: 785-614-0452

For a Quote Email:
loadedandloadedgunshop@gmail.com

SPORTING
Mom's **GOODS**

1615 Lincoln St
Concordia, KS

Regular Hours:
Tue-Sat
10am - 6Pm
Open by
appointment
Sun-Mon or
after hours.
(785)-262-4480

HEATING, AIR CONDITIONING & PLUMBING

Hood Heating & Air
785-243-1489

Commercial & Residential
Heating & Air Conditioning

Geothermal Systems
Commercial Kitchen Equipment
Commercial Refrigeration
Service all Makes & Models

Fast Response

Free Estimates
24/7 Emergency Service
Financing Available

AFFORDABLE
PLUMBING & DRAIN
CLEANING

SERVES NORTH
CENTRAL KANSAS

CONTACT NOW
785-614-1979

Hot Water Heaters
Installation & Upgrade
Residential Plumbings
Drain Cleaning

FULLY LICENSED &
INSURED • 19 YRS EXP.

GREENWOOD
SALES & SERVICE

243-2037

• Heating • AC
• Electrical • Plumbing

Light Commercial
& Residential

Family Owned & Operated

WHY AREN'T YOU LISTED HERE IN OUR DIRECTORY

HOME IMPROVEMENT

KYMER CONTRACTING INC

JEFF KYMER, OWNER

Interior & Exterior
Home Improvement

785-275-1621

KYMER REMODELING

BAILEY KYMER, OWNER

• Custom Tile
• Handicap Accessible
Shower Installation
• Interior/Exterior Painting
• Designing Experience

785-275-1716

SALLMAN
CONSTRUCTION

Professional Remodeling,
5" & 6" Seamless Guttering,
Siding, Windows &
Commercial Construction

Same Day Call Backs!

785-564-0114

FARM SERVICES

CLOUD COUNTY CO-OP ELEV.

304 KANSAS • 243-2080

High Quality Pet Food

*Professional • Affordable • Experienced

Best Prices On Water Softener Salt

*Custom Mix Feed *Grain *Seed

*Feed Delivery *Fencing *Twine

INSURANCE

CONNIE S. WALENTA
• MEDICARE & LIFE •

115 E. 6TH STREET

785-243-3436

785-262-1094

Jeff Kindel
Sales
Representative

Kindel
INSURANCE
Services

903 Broadway • Concordia, Kan.

785-243-1571, office

785-275-2630, cell

• Crop • Auto • Home • Farm
• Business • Life • Specialty

The
Business &
Professional
Page is an
Affordable way
Call The Blade
Empire at
243.2424

MEDICAL SERVICES

Clyde Family Physicians

105 N. High Street • Clyde, Ks

446-2226

NEW PATIENTS WELCOME!

Marian K. Nelson, M.D.

Cary D. Murphy, M.D.

David C. Larson, M.D.

Christopher C. Worthen, M.D.

Audra Walter, APRN-FNP

MOWER SERVICES

Krier Mower & Electric

■ Lawn & Garden Sales &
Service ■ Alternator &
Starter Rebuilding

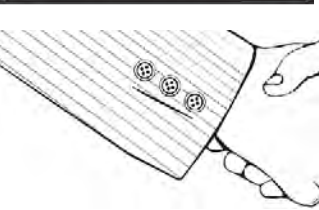
806 W. 4th • 243-7256

NEWSPAPER

Concordia
BLADE-EMPIRE

785-243-2424

510 Washington St.
Concordia, KS



REMODELING

C&K
Remodeling

SERVICES

• Remodeling • Concrete
• Siding, Windows, Doors
• Custom Tile Showers
• New Kitchen • Full Additions

PHONE: 785-275-2682

EMAIL: cjsp1969@gmail.com

This Space
Available For
\$45/ Month!

CALL FOR DETAILS
243.2424

This Space
Available For
\$35/ Month!

CALL FOR DETAILS
243.2424

SEPTIC TANKS

**Septic Tank Pumping,
Services & Installation**

Doug Fuller

785-527-0473

SHREDDING /PAPER

SECURE
SHRED
OF
N.C.K.

Mobile Document Destruction

785-243-2207

Concordia, KS

SKID STEERS

Stillwell Sales
Scottsville, Kan.

NOW SELLING
TRAILERS!

Your source
for skid steer
loaders & attachments

www.stillwellsales.com

785.738.0340

This Space
Available For
\$25/ Month!

**Out of Sight,
Out of Mind...**

**IT'S TIME
TO ADVERTISE**

LEARN MORE

Concordia
BLADE-EMPIRE

510 Washington Street | 785-243-2424

Your
customers
are using
this
directory to
find local
goods and
services!

LAWNCARE

Licensed & Insured PBL#9725

complete
lawncare

Full Service
Lawncare
Provider

Commercial & Residential

• Weed Control Programs
• Fertilizer Programs
• Hydroseeding
• Mowing
• Overseeding

Aaron Wachsnicht Owner/Operator

785-614-4856

OFFICE SUPPLIES

Print **5** FOR ALL
YOUR
OFFICE &
PRINTING
NEEDS

510 Washington

243.1520

PAINTING

Color
coordinations

• Interior & Exterior Painting
• Residential & Commercial
• Color Consultations
• Free Estimates
• Insured

Follow us on Facebook!

785.275.2239 Jasmine Conner

This Space
Available For
\$35/ Month!

CALL FOR DETAILS
243.2424

ROOFING

B&P is an
affordable way
to Advertise Your
Business!

243.2424

This Space
Available For
\$25/ Month!

This Space
Available For
\$35/ Month!

CALL FOR DETAILS
243.2424

This Space
Available For
\$45/ Month!

CALL FOR
DETAILS
243.2424

TREE CARE

PATRIOT MILLWORKS

• Portable saw-milling
service
• Tree Work
• Stump Grinding
• Live edge slabs for
sale

785-614-1542

Biery's Tree
Service

Tree Trimming, Tree
Removal and Bucket
Truck Service

Call Blake
(785)
275-1340

WINDOWS

STREAKLESS WINDOWS
& SOLAR PANEL
CLEANING

785-955-2930

Residential & Commercial

Shop

Support LOCAL Business

Concordia!

Support Your Local Businesses!

Picture This

1261 W. 11th St. Concordia

- *Museum Glass Available
- *Hundreds of Frames
- * Photo Restoration

Hours
Tues.-Fri. 10-12:30
& 1:30-5:00
Saturday
By Appt. Only



Making Your Water Better
is Our Only Business

Sales • Service
and
Rentals

1-785-243-1602
1-800-894-SOFT

MILLER
AG REPAIR

785-275-2703
1436 Trail Rd.
Concordia, KS 66901

FOR ALL YOUR HEAVY TRUCK,
CONSTRUCTION &
AG EQUIPMENT REPAIR NEEDS

facebook.com/milleragrepair
SMALL TOWN VALUES YOU CAN COUNT ON

El Puerto
Mexican
Restaurant

Daily Specials
Monday thru
Wednesday
217 W. 6th
243-6165

CHAMBER CORNER

By Annie Bergmann, Chamber Director

Please join us on March 11, 2025, as we travel to Prairie Land Partners, John Deere, 1441 Union Road, Concordia, KS 66901, from 8:00 a.m. to 9:00 a.m. for our weekly Chamber Coffee.

If you are interested in becoming a Chamber Member or being a Chamber Coffee Sponsor, please contact Annie Bergmann at 785-243-4290 or email info@concordiakansaschamber.com

Join us for coffee and donuts. Donuts provided by Me and Ma’s Bakery. Keep up to date on all the events and activities happening in Concordia and the surrounding area.

March 15, 2025 -National Quilting Day- 10 a.m.- 2 p.m. at the Concordia Lutheran Church

Budreau
Muffler

Automotive & Tow
1908 Lincoln St.
Concordia, Kan.
785-243-7508 • 800-536-7508

Let us help
keep you
safe on
the road!

Print
5

For all of your
paper &
office supply
needs!
510 Washington
Concordia
785-243-1520

Gambino's
Pizza
130 W. 6th
243-4600

LUNCH
SPECIAL
Any Small
Pizza

\$7⁹⁹



Download the
Dairy Queen
app for online
ordering

Visit us in
Concordia &
Belleville

MARCH 11TH 8 AM - 9 AM

CHAMBER OF COMMERCE

Traveling Chamber Coffee

PRAIRIELAND PARTNERS

JOHN DEERE

1441 Union Road

Chamber Coffee

MARCH 11, 2025
8 AM TO 9 AM

Print
5

WE MOVED!

510 Washington
Concordia

785-243-1520

- Custom Print Jobs
- Computer Repair
- Assorted Papers
 - Printer Inks
- Office Essentials
 - Ink Stamps
- Special Orders
- Local Delivery

INSIDE THE BLADE-EMPIRE BUILDING
We no longer take UPS drop-off

Denim
Sale!

6th Street Fashions
& Footwear

Hours: M-F 10-7
Saturday 10-5
Downtown Concordia
Like us on Facebook!
Follow us on Instagram!



Come See What's
New!
www.6thstreetconcordia.com

Concordia American Legion
Special March 7th • 5 - 8:30

Chicken Fried
Chicken \$12⁹⁹

Fish Basket \$10⁹⁹

Special Includes Salad Bar
Carry-Out Orders Call
785-243-9834

Take
\$10 Off
Regular
Priced
Denim!
Now-March 8th

NOW AVAILABLE

HONEY

AJ HONEY FARMS

2 oz., 8 oz., 12 oz.,

16 oz., 32 oz., 3 lb, 5 lb

HOT HONEY,

Sticky Nuts, Bee Balm

& Bee Salve

Call 785-243-4303

Cloud County Tourism

TRAVEL INFO CENTER

Hours: 9-5 M-F, 10-2 Sat.

130 E 6 • Concordia

Support Local
Journalism!



Concordia
BLADE-EMPIRE

510 Washington Street | Concordia, KS
785-243-2424 | www.bladeempire.com

Our Savior's Lutheran Church Men's

Swedish Pancake Supper

Swedish pancakes, scrambled eggs, scrumptious sausage patties, coffee, hot chocolate, tea and juice.

Come Hungry - Leave Satisfied!

Freewill donation



Norway Community Center, Norway, KS

Sunday, March 9th

5-7 p.m.

FIND US ON

facebook

Concordia

BLADE-EMPIRE

785-243-2424 • bladeempire.com

510 Washington

Concordia, Kansas

General Public Transportation

for all residents of Cloud Co.



Call to schedule a ride:

(855) 577-4337

Monday—Friday

8:00 a.m.—5:00 p.m.

First come, first served basis

All trips have equal priority

Funded in part by KDOT Public Transit Dept.

www.salinacitygo.com



Jeff Kindel

903 Broadway

Concordia, Kan.

785-243-1571

785-275-2630 (cell)

Jkindel@fumainsurance.com

• Crop • Auto • Home • Farm

• Business • Life • Specialty

VIEW

FOR

FREE!!

View the

Advertiser for

FREE

at www.blade-empire.com

Click on

weekly

Advertiser

at the top of

the page!

The Leader for Financial Success

WEALTH MANAGEMENT & TRUST SERVICES

CENTRAL NATIONAL BANK



Jesse Pounds, CTFA

Vice President & Trust Officer

Investments • Estate Planning

Trust Services • Wealth Management

Retirement Planning

Call (785) 243-8224 to Schedule an Appointment

130 East 7th Street

in Concordia, KS

454 S. Ohio Street

in Salina, KS

2604 General Hays Rd

Suite B in Hays, KS

www.centralnational.com

Products are: NOT Deposits | NOT FDIC Insured | NOT Guaranteed by the Bank | Subject to Possible Loss of Principal

Knights of Columbus Fish Fry

Our Lady of Perpetual Help

Parish Hall

307 East 5th St. • Concordia

Serving 5:30 - 7:00 p.m.

• We also have meals for pickup

• Curbside pickup available - north entrance

• Delivery available by calling 785-243-1099



March 7th, 14th, 21st,

28th & April 11th

Pollock Fish, Scalloped Potatoes, Vegetables,

Cole Slaw, Roll, Dessert with Tea or Coffee

Freewill donation accepted

HALE'S REFUSE

Low Monthly Rates

P.O. BOX 103

CONCORDIA

PHONE # 439-6431

The Hale Family since 1953

DUIS MEAT PROCESSING

Weekly Specials

March 6th to March 12th

Extra Lean Ground Beef: \$4.99/lb.

Extra Lean Ground Beef Patties: \$5.69/lb.


Center Cut Bone-In Pork Chops: \$3.69/lb.

Juicy Pork Steaks: \$3.49/lb.


Tender Pork Cutlets: \$6.19/lb.

25 Pound Beef Bundle: \$219.99/each

Includes: 2 Boneless Chuck Roasts, 1 Arm Roast, 4 Ribeye Steaks, Approximately 11# of Ground Beef



Duis Meat Processing proudly operates under full Kansas Department of Agriculture inspection.



Sides of Beef (Includes Processing): \$4.60/lb.

Prices for sides are subject to change.

Visit Us:

Monday—Friday—8:00am-5:30pm

Saturday—9:00am—12:00pm

Address: 1991 E. 6th Street, Concordia, KS 66901

Phone: 785-243-7850

www.duismeat.com

We accept credit and SNAP cards.

Special Announcement: We have many other high-quality cuts of meat at competitive prices available! Please take a short trip out to the edge of town to enjoy your local meat haven!

GoConcordia

General Public Transportation



OCCK Transportation is providing

FREE rides for ALL of Cloud County!*

M-F, 8a-4p

Call 785.826.1583 to schedule.

Part of a Pilot Program until May 30, 2025

*based on availability



North Central Regional Planning Commission



Salina Regional Health Foundation

Print

5

WE ARE AT OUR

New Location

INSIDE THE BLADE-EMPIRE BUILDING

510 WASHINGTON STREET

785-243-1520



FOOD SALES, INC.

F&A

15TH & LINCOLN - CONCORDIA, KANSAS

GROCERIES AT WHOLESALE PRICES - OPEN TO THE PUBLIC

WE ACCEPT FOOD STAMPS

OPEN 10-5:30 DAILY, 8:00 - 2:00 SAT.

DEL MONTE MANDARIN ORANGES

4 OZ CUP

5 FOR

99¢

CASE OF 48 - \$8⁹⁹

GRANDMA'S SOFT COOKIES

PEANUT BUTTER

CHOCOLATE CHIP

2-PACK

65¢

REG. \$1¹⁹ VALUE

POTATO PEARLS INSTANT POTATOES

28 OZ

\$3⁹⁹

MAKES 42 SERVINGS

LA BANDERITA

8" FLOUR TORTILLAS

PKG OF 12

\$1⁹⁹

CEDAR CREST

ICE CREAM

48 OZ

\$3⁹⁹

ALL FLAVORS

MARQUIS

PINEAPPLE CHUNKS

GALLON (#10) CAN

\$5⁴⁹

HOT POCKETS

PEPPERONI PIZZA -HAM & CHEESE-

8 OZ

\$1⁹⁹

STILWELL BREADED OKRA

5 LBS

\$19⁹⁵

GARDEN CLUB

WHITE CORN SYRUP

GALLON

\$11⁹⁹

Estate Auction

TO BE HELD @ NATIONAL GUARD ARMORY, CONCORDIA, KS

Saturday, March 15, 2025, Starting @ 10:00 a.m.

Auctioneer Note: A very large assortment of antiques. No Debit or Credit cards. Cash and Checks only. A Valid I.D. is required at this auction

Misc. Items: fish bowls, crock bowls, porcelain bowl, porcelain Black & Blue Bowls, vintage meat grinder, cistern pump, old singer sowing machine, old Christmas decoration, Dryden pottery, Fire King dishes, wood boxes, mannequins, assortment of glass, large mirror, Concordia bicentennial spoon, etched pictures, hand painted bottles, porcelain counter top, Aladdin lamps, fire king dish set, Appleton spotlight, Eva Ziesel dinnerware, antique glass Christmas ornaments, light fixtures, International deep silver jelly dish, Vintage Flower cabinet, display rack, sectional bookcase, etch glass, sunbeam mixer, small table/w shelf, text tiles aprons, feed scoop, porcelain table /w drawer, glass display case, picture frames, Zippo display case. 3- large display cases, washboard, pictures, Rory Rogers items, knitted pictures, music boxes, cookbooks, McCoy pottery, lazy Susan side table, text tiles, large trunk, Frank Martin signed baseball, silver mirror and brush set, floral pins, marbles, marble display case, signpane stove, Victoria tea set, porcelain buckets, worlds best 100 short story set. Candle holders, plastic & metal cookie cutters, jello molds, wall pockets, spoon ashtray, glass pens, seashells, small wood shelf, metal stool, silver butter dish, wicker baskets, 1847 Rogers children civil war, Swedish items, 1923 spoon from Sweden , art supplies, games, postal scale, old spice metal spoons, clocks, pottery, old clothespins, Howdy Doody items, seed advertiser, Tupperware, Harbor freight elect. Meat grinder, Sunbeam mixer, WWII ration coins, records, small Santa, glass vases, lighted display, adjustable loom, fabric snowman & reindeer, old pencil sharpener, glass angels, 1980's Nintendo Entertainment system deluxe, hats, Green & red chair covers, placemats, Frigidaire porcelain drawers, fabric mat, oil lamp globes, dining room table, corner wall shelf,

Auction Conducted & Clerked by Kearn Auction

Dannie & Dannie Kearn Jr. Auctioneers

Announcements day of sale take precedence over any printed material.

All items are sold As Is with No Guarantee from Kearn Auction or Seller.

Call (785) 243-3773 or (785) 614- 2082

(If you would like to have an auction.) web site www.kearnauction.com

E-mail @ kearnauction@yahoo.com